

Title

Dynamics and environmental drivers of methane and nitrous oxide fluxes at the soil and ecosystem levels in a wet tropical forest

Authors

Laëtitia M. Bréchet¹, Mercedes Ibáñez¹, Robert B. Jackson², Benoît Burban¹, Clément Stahl¹, Damien Bonal³, Ivan A. Janssens⁴

¹INRAE, UMR EcoFoG, CNRS, Cirad, AgroParisTech, Université des Antilles, Université de Guyane, Kourou, FR-97310, France

²Department of Earth System Science, Woods Institute for the Environment, and Precourt Institute for Energy, Stanford University, Stanford, CA 94305-2210, USA

³Université de Lorraine, AgroParisTech, INRAE, UMR Silva, Nancy, FR-54000, France

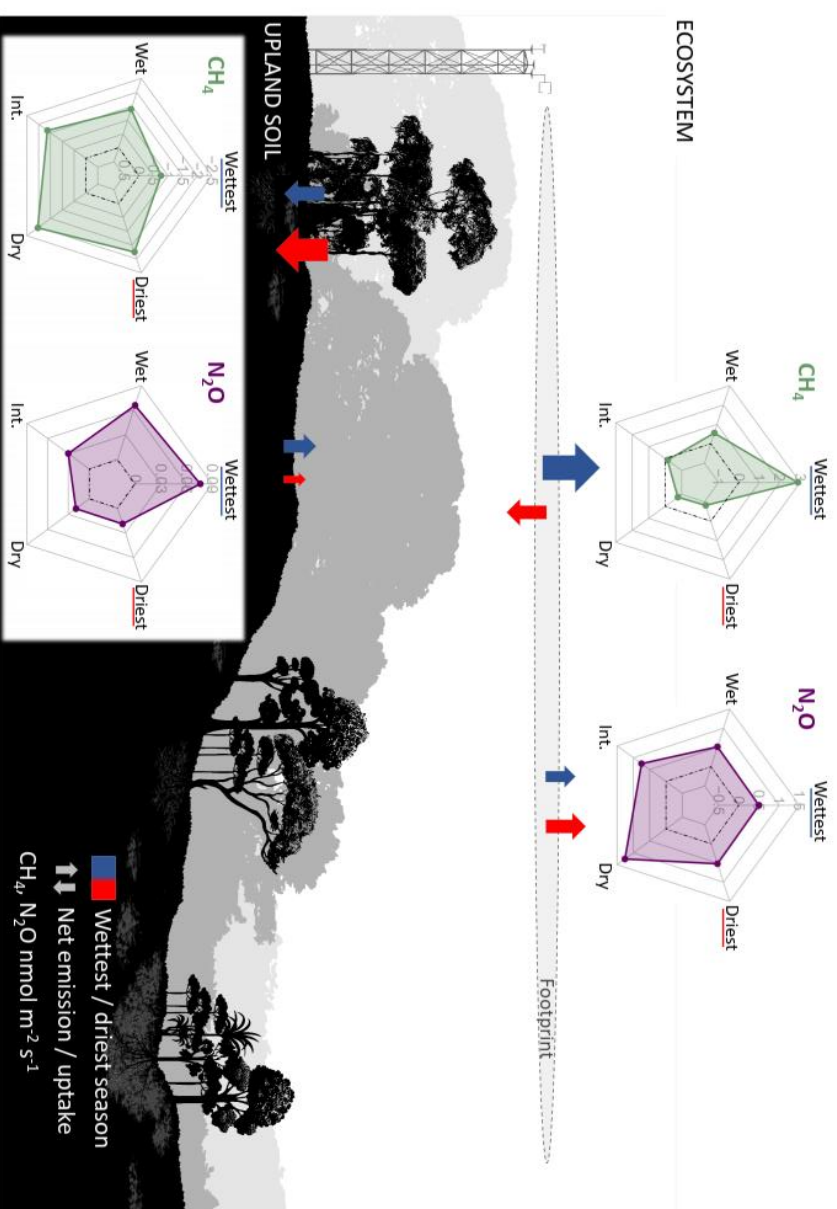
⁴Research Group Plant and Ecosystems (PLECO), Department of Biology, University of Antwerp, Wilrijk, BE-2610, Belgium

Correspondence: Laëtitia M. Bréchet (laeti.brechet@gmail.com)

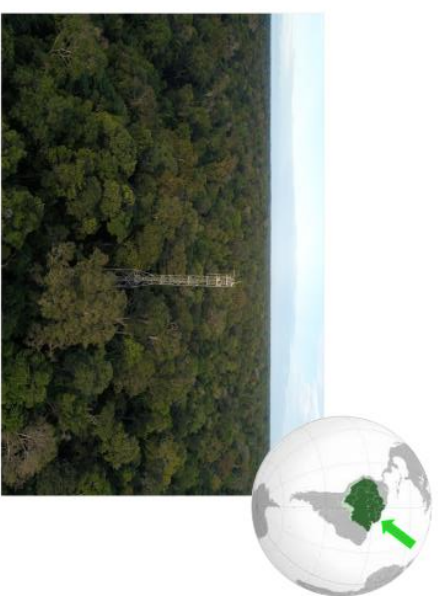
Abstract

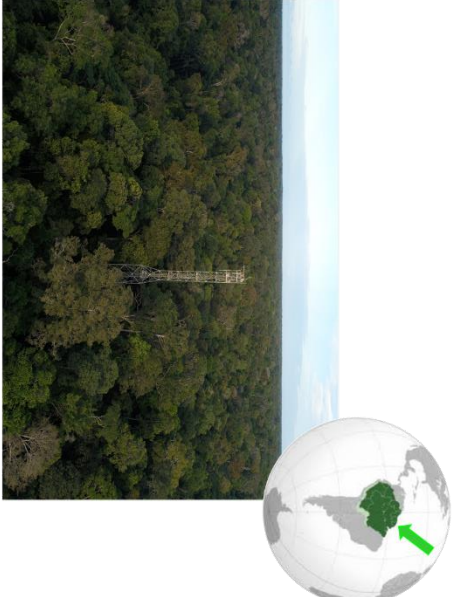
Tropical forests are critical for maintaining the global carbon balance and mitigating climate change, yet their exchange of greenhouse gases with the atmosphere remains understudied, particularly for methane (CH₄) and nitrous oxide (N₂O). This study reports on continuous measurements of CH₄ and N₂O fluxes at the ecosystem and soil levels, respectively through eddy covariance and an automated

chamber technique, in a wet tropical forest in French Guiana over a period of 26 months. We studied the magnitude of CH₄ and N₂O fluxes and their drivers (climatic variables) during two extreme periods, the driest and wettest seasons. Seasonal ecosystem fluxes showed near-zero net CH₄ uptake during the driest season and emissions occurring during the wettest season that were larger in magnitude than the uptake. Meanwhile, N₂O emissions were of similar magnitudes in both seasons. Some upland soils within the footprint of the eddy covariance tower emitted N₂O in both seasons, although these fluxes were particularly small. ~~None of the measured climatic variables could explain this soil N₂O flux variation.~~ In contrast, the upland soils were characterised by CH₄ uptake. Overall, seasonal ecosystem CH₄ and N₂O fluxes, as well as seasonal upland soil CH₄ and N₂O fluxes, were partially explained by seasonal variations in soil water content, soil temperature and global radiation. In addition to the upland soil fluxes studied, the magnitude and sign of the net ecosystem fluxes of CH₄ and N₂O were likely due to outgassing from aboveground biomass and the presence of seasonally flooded areas within the footprint of the eddy covariance system. Further studies of other ecosystem compartments in different forest habitats are needed to better understand the temporal variations in CH₄ and N₂O fluxes in wet tropical forests.



The 26-month study in a wet tropical forest revealed seasonal CH_4 and N_2O fluxes at the ecosystem and soil levels. Daily means of CH_4 and N_2O fluxes were highly variable, changing direction and magnitude on short time scales.





1 Introduction

The lack of knowledge on greenhouse gas fluxes in the tropical forests of the Amazon Basin contributes significantly to the uncertainty in the global greenhouse gas budget, particularly for methane (CH₄) and nitrous oxide (N₂O) (Davidson et al., 2012; Covey et al., 2021), the two most important greenhouse gases in the atmosphere after carbon dioxide (CO₂). Early observations show that tropical forests in the Amazon Basin may contribute disproportionately to global CH₄ and N₂O exchanges compared to other forests (Tian et al., 2015), but considerable uncertainties remain due to the paucity of data and lack of detailed understanding of CH₄ and N₂O cycling at both soil and ecosystem levels in these forests. The role of tropical forest soils is crucial here as they can act either as a source or a sink for CH₄ and N₂O (Bouwman et al., 1993). In contrast to the consistent emissions from soil microbial decomposition and root activity for CO₂, anaerobic CH₄-emitting microbes (methanogenic archaea) are dominant in wetland environments, whereas aerobic CH₄-consuming microbes (methanotrophic bacteria) are more abundant in upland soils (Ito and Inatomi, 2012; Welch et al., 2019) where they play the role of CH₄ sinks. For N₂O as well, both emission and uptake can occur in soils. N₂O can be produced by microbes under both anaerobic (via denitrification) and aerobic (via nitrification) conditions (Khalil et al., 2004), although the majority of N₂O production occurs in waterlogged soils (Oertel et al., 2016). On the other hand, soil microbes that are not denitrifiers can reduce N₂O to dinitrogen (Sanford et al., 2012; Jones et al., 2014).

Microbial CH₄ and N₂O fluxes in tropical soils are controlled by the complex interplay of multiple environmental and biological factors. The key factors regulating net CH₄ fluxes in tropical soils include redox potential and water table depth (Silver et al., 1999; Teh et al., 2005; von Fischer and Hedin, 2007), plant productivity (Whiting and Chanton, 1993; von Fischer and Hedin, 2007), labile soil organic matter (Wright et al., 2011), competition for carbon substrates among anaerobic microorganisms (Teh and Silver, 2006; von Fischer and Hedin, 2007), temperature (Knox et al., 2021), and the presence of plants that facilitate atmospheric escape (Pangala et al., 2013). The key factors regulating net soil N₂O fluxes in tropical soils include redox potential, soil water content (SWC) or water table depth,

temperature, pH, labile carbon availability and labile nitrogen availability (Groffman et al., 2009). For both CH₄ and N₂O flux dynamics, of all these factors, variations in soil redox conditions, mediated by variations in water table depth, play a particularly important regulatory role in tropical soils (Zhu et al., 2013; Yu et al., 2021) due to the underlying physiology of the microbes that produce and uptake CH₄ and N₂O.

Production and uptake of both CH₄ and N₂O in the soil are highly variable in space (hot spots) and time (hot moments) (Blagodatsky and Smith, 2012). This is because microbial processes are discontinuous (Blagodatsky and Smith, 2012), environmental conditions can change rapidly at short timescales, and the strong seasonality of climate conditions, with pronounced wet and dry seasons, in most tropical forests can significantly affect physical and ecophysiological ecosystem processes, which in turn affect greenhouse gas fluxes. In addition, most published N₂O and CH₄ flux data from tropical ecosystems have been derived from chamber-based measurements at the soil level, often with low spatial and temporal resolutions. Automated soil chambers capture fine-scale temporal variations, including hot moments. However, they represent only a tiny part of the landscape (i.e. a few square metres of soil surface at most) and therefore fail to capture emergent ecosystem properties that may be manifest at larger spatial scales. Moreover, above-ground plant tissues also exchange CH₄ and N₂O with the atmosphere (i.e. produced in the soil and transported in the transpiration stream and/or by diffusion, or produced within the stems), and this cannot be captured by soil chamber measurements alone. This makes chamber approaches insufficient to quantify the magnitude and seasonal pattern of whole-ecosystem greenhouse gas fluxes. Chamber-based measurements also hamper our ability to assess the role of tropical forests in the exchange of CH₄ and N₂O between the atmosphere and the land surface, and induce large uncertainties in our current assessment of the greenhouse gas sink potential of tropical forests.

On the other hand, a combination of soil and ecosystem level measurements can be a powerful tool to reduce the gap between different levels of measurement (e.g. plot to ecosystem) (Lucas-Moffat et al., 2018). Continuous ecosystem-level measurements via the eddy covariance technique provide high

temporal resolution data on mass and energy exchanges at the ecosystem level (Baldocchi, 2014, 2020; Delwiche et al., 2021) and more detailed information on ecosystem functioning at a broader spatial scale than do mere soil measurements, which miss above-ground exchanges and typically, also emissions from wetland areas within the ecosystem (Bonal et al., 2008; Aguilos et al., 2018; Wang et al., 2021; Liu et al., 2022). However, eddy covariance cannot indicate how much different land cover types relatively contribute to the ecosystem's total flux since the measurements integrate high and low frequency flux over time and space. Chamber and eddy covariance-based approaches each have their own strengths and weaknesses; however, taken together, they effectively represent the magnitude of ecosystem fluxes and can help determine the drivers of greenhouse gas flux dynamics (Eugster et al., 2015). We therefore combined these two approaches to test the following assumptions:

- H1: Ecosystem- and soil-level CH₄ and N₂O fluxes vary seasonally in the studied tropical forest, switching between uptake and emission,
- H2: At both the soil and ecosystem levels, SWC is the primary abiotic driver of these gaseous fluxes during the driest and wettest seasons.

This study provides, for the first time, a comprehensive assessment of CH₄ and N₂O dynamics at both ecosystem and soil levels based on high-frequency eddy covariance and continuous soil chamber time series over 26 months in a wet tropical forest.

2 Methods

2.1 Study site

Our research was conducted at the Guyaflux site (5°16'54"N, 52°54'44"W) (Bonal et al., 2008), an ICOS-associated ecosystem station (GF-Guy) located 15 km from the coast and approximately 40 km west of Kourou, in French Guiana, South America. On a decadal time scale, the average annual precipitation at the study site is 3102 ± 70 mm and average annual air temperature is 25.7 ± 0.1 °C (Aguilos et al., 2018). The climate is humid tropical and highly seasonal due to the north-south movement of the Inter-Tropical Convergence Zone (ITCZ), which drives regional precipitation. The ITCZ dictates the wet season

(from December to July, with rainfall of up to 500 mm month⁻¹) and the long dry season from mid-August (mid-November, with less than 100 mm month⁻¹). In the northernmost part of the Guiana shield, where the study site is located, the topography results in a succession of small elliptical hills from 10 to 40 m asl, with soils classified as nutrient-poor acrisols (IUSS Working Group WRB, 2015). The site is totally surrounded by undisturbed forest, locally characterised by a tree density of about 620 trees ha⁻¹ (for trees > 10 cm dbh), an average tree height of 35 m, an average tree diameter at breast height (DBH) of 40.1 cm, with emergent trees over 40 m tall, and a tree species richness of about 140 species ha⁻¹ (Bonal et al., 2008; Aguilos et al., 2018; Daniel et al., 2023).

2.2 Tower-based flux measurements

Continuous measurements of the surface-atmosphere exchange of CO₂, H₂O and energy were initiated in 2003 based on the Euroflux methodology (Aubinet et al., 2000) and the eddy covariance approach (Baldocchi, 2003); they have previously been reported and fully documented (Bonal et al., 2008; Aguilos et al., 2018). The Guyaflux flux tower is 55 m high and extends about 20 m beyond the top of the canopy. The putative average footprint of the eddy fluxes from the tower covers approximately 50 - 100 ha of undisturbed forest in the direction of the prevailing winds (Bonal et al., 2008; Fang et al., 2024). Within the estimated footprint of the Guyaflux tower, 52% of the area is upland forest, 13% is seasonally flooded forest and the rest (35%) is slope forest. Most of the meteorological and eddy flux sensors are mounted three meters above the top of the tower, and include equipment measuring air temperature and humidity (HMP155, Vaisala, Helsinki, Finland), bulk precipitation (ARG100, EM Imt, Sunderland, UK), wind direction and speed (A05103-5, Young, Traverse City, MI, USA), and global infrared incident and reflected radiation (R_g) (CNR1, Kipp and Zonen, Bohemia, NY, USA). All the meteorological data in the present study were collected at 1-min intervals and compiled as 30-min averages or sums with data loggers (CR23X, CR1000 or CR3000 models; Campbell Scientific Inc., Utah, USA).

In 2017, a closed-path fast greenhouse gas analyser (FGGA, Los Gatos Research, Mountain View, California, USA), whose head (gas inlet) was mounted 0.3 m from the head of a 3-D sonic anemometer (R3-50; Gill Instruments, Lymington, UK), was set up at the top of the eddy flux tower to provide eddy covariance measurements of the CH₄ and N₂O fluxes. The FGGA, equipped with a fourth-generation cavity-enhanced laser absorption spectroscopy analyser (DLT-100; Los Gatos Research Inc.), was connected to an external pump (Edwards XDS-35i, Edwards, England, UK) and to a 62 m long PFA inlet tube (4 mm inlet diameter) protected by black foam with a 15 µm filter. All data were sampled at a frequency of 20 Hz with data loggers (model CR3000; Campbell Scientific Inc.).

In addition, to take conditions where non-turbulent processes prevail (e.g. calm nights) into account, the eddy covariance measurements were complemented with a vertical profile measurement system to estimate variations in CH₄ and N₂O concentrations at six different heights (i.e. 0.5, 6, 13, 23, 32 and 58 m) with a 0.8 L min⁻¹ pump connected to a six-line solenoid valve and a closed-path FGGA. The entire system was controlled by a data logger (model CR10X; Campbell Scientific Inc.), which recorded greenhouse gas concentration data every 15 min. The vertical profile system for CH₄ and N₂O was stopped after one year because the storage of the gases was found to be negligible (see below).

2.3 Tower-based CH₄ and N₂O flux computation

We used EDDYPRO V6.2.2 (LI-COR Inc.), a software based on a set of standardised post-processing calculations and corrections, to calculate CH₄ and N₂O fluxes from the raw high-frequency eddy covariance data. The parameterization of the software included: a two-dimensional coordinate rotation to set lateral and vertical mean wind speed to zero; a time lag between each scalar and wind speed measurement estimated by covariance maximisation; an empirical frequency correction for high-frequency attenuation; and a Webb-Pearman-Leuning correction for density fluctuations where required, i.e. where concentrations were not measured as mixing ratios. Details of these corrections are given in Aubinet et al. (2012). After the greenhouse gas flux computation, the EDDYPRO output files contained continuous time series for ecosystem-atmosphere greenhouse gas (CH₄ and N₂O) fluxes

reported at a 30-min time step (from 17 May, 2016 to 2 August, 2018). The output files also included uncertainties, quality control flags, friction velocity, and basic environmental and meteorological data. To calculate net ecosystem production and uptake, we added the storage term to the turbulent flux measured by the eddy covariance tower. This correction is particularly relevant for CO₂ exchanges in forest ecosystems to reduce the uncertainty of the net flux estimate (Nicolini et al., 2018). However, for the net CH₄ and N₂O fluxes, the relevance of the storage term correction was only marginal. In contrast to CO₂, whose concentrations clearly built up at soil level during low-turbulence conditions, this was not the case for N₂O and CH₄, and comparisons between the ecosystem fluxes with and without correction for the storage term showed that the change in the resulting flux was minimal (Figs. S1, S2). Consequently, we assumed that the storage of CH₄ and N₂O was negligible and ignored it in this study. This meant that a larger period of eddy covariance flux measurements could be used (starting in 2016), in addition to the January 2017 - January 2018 period where CH₄ and N₂O storage data were available. Ecosystem fluxes of CH₄ and N₂O were ~~calculated every~~ half-hourly values in nmol m⁻² s⁻¹.

2.4 Chamber measurements

In addition to the flux tower and its associated instrumentation, automated ~~static~~-non-steady-state ~~flow~~-through-~~flow~~ chambers for continuous measurement of soil greenhouse gas fluxes were installed in June 2016 on hypoferralic soils with deep vertical drainage and a very deep water table (~15 m depth), approximately 50 m upwind from the flux tower in some of the upland forest part of the tower footprint. This automated system had two constraints, which when combined, limited the spatial coverage of the soil greenhouse gas flux measurements to the upland forest area: the power supply was only available at the flux tower, and the maximum distance between the automated chambers and the gas analysers was 30 m. Thirteen of the sixteen initial chambers functioned correctly throughout the study period and their data were retained in this study. Briefly, the chambers (LI-8100-104, LI-COR Inc., Lincoln, NE, USA) were mounted on PVC collars (20.3-cm inner diameter; enclosed

soil area $\sim 318 \text{ cm}^2$; offset $\sim 4 \text{ cm}$) that were permanently inserted into the soil. The chambers were connected to a multiplexer (LI-8150, LI-COR Inc.), used to program specific measurement cycles, which operated with a cavity ring-down spectroscopy (CRDS) analyser (G2308; Picarro Inc., Santa Clara, CA, USA) to measure CO_2 , H_2O and dry air- CH_4 and N_2O concentrations (water corrected concentrations) at 1 Hz. This analyser relied on an external recirculation pump (A0702; Picarro Inc.). The multiplexer program purged the system 15 s before and 45 s after the measurements to flush out the tubing and return to ambient-air greenhouse gas concentrations. A dead band of 60 s avoided potential measurement errors ascribed to pressure changes inside the chamber-tubing-analyser loop following chamber or solenoid valve closure and accounted for time lags. In addition, to maximise the percentage of fluxes that can be detected for N_2O and CH_4 without affecting spatial coverage and temporal resolution, we initially developed a program combining two different closure times. Briefly, each week, four of the initial sixteen chambers were manually set to remain closed for 25 minutes, while the other chambers were set to remain closed for a much shorter period of 2 minutes. This program was rotated across the chambers. The 25-min closure time was a compromise between reliably estimating low N_2O fluxes and ensuring a sufficient number of flux measurements per chamber and per day. The measurement cycle duration was 2.5 hours, providing approximately nine measurements per chamber per day for all gases. Each chamber was therefore measured with the longer closure time for one 7-consecutive-day period per month (4 weeks). More detail of equipment can be found in previous publications (Courtois et al., 2019; Bréchet et al., 2021).~~In addition, the program included two different closure times to account for high and low fluxes, i.e. 2 min and 25 min measurement periods. The equipment is described in more detail in previous publications (Courtois et al., 2019; Bréchet et al., 2021).~~

2.5 Chamber-based CH_4 and N_2O flux computation

We used the SOILFLUXPRO software (LI-COR Biosciences) to compute soil greenhouse gas fluxes based on the linear and exponential regression of the change in headspace concentrations over time, the

collar area and the system volume, after correction for atmospheric pressure and temperature. ~~Flux values were selected based on the model that provided the best fit and highest determination coefficient (R^2).~~

After calculating the fluxes and implementing our standard soil greenhouse gas QC procedure (Courtois et al., 2019; Bréchet et al., 2021), all CO_2 fluxes with an insufficiently high R^2 (< 0.90), an initial concentration greater than 900 ppm, or a value outside the range of variation from 0.10 to 30 $\mu\text{mol m}^{-2} \text{s}^{-1}$ were discarded for all three gases, based on the assumption that poor-quality CO_2 implied poor-quality values for CH_4 and N_2O . Based on previous work (Courtois et al., 2019), all CH_4 fluxes with $R^2 < 0.80$ were excluded (17% of the total 89380 values). These fluxes were not set to zero, as a low R^2 value does not provide information on the flux value itself. This criterion was inapplicable to N_2O , however, due to the low overall R^2 values, meaning all fluxes were retained for the study. Additionally, we computed the minimum detectable fluxes (MDF) suitable for high-resolution, in situ greenhouse gas measurements, using the metric proposed by Nickerson (2016): 0.040 $\text{nmol m}^{-2} \text{s}^{-1}$ and 0.002 $\text{nmol m}^{-2} \text{s}^{-1}$ for 2 min and 25 min, respectively, for CH_4 ; and 0.100 $\text{nmol m}^{-2} \text{s}^{-1}$ and 0.002 $\text{nmol m}^{-2} \text{s}^{-1}$ for 2 min and 25 min, respectively, for N_2O . This implies that null fluxes were included in the analysis if the flux values for each gas and measurement length fell within the range defined by the corresponding absolute MDF value.

~~After calculating the fluxes and implementing our standard soil greenhouse gas QC procedure (Courtois et al., 2019; Bréchet et al., 2021), all CO_2 fluxes with an insufficiently high R^2 (< 0.90), an initial concentration greater than 900 ppm, or a value outside the range of variation from 0.10 to 30 $\mu\text{mol m}^{-2} \text{s}^{-1}$ were discarded for all three gases, based on the assumption that poor-quality CO_2 implied poor-quality values for CH_4 and N_2O . As an improvement over Courtois et al. (2019), all CH_4 fluxes with $R^2 < 0.80$ were excluded regardless of the measurement length (i.e. 2-min and 25-min). For N_2O , all short measurements (i.e. 2-min) with $R^2 < 0.80$ were discarded. In addition, based on the metric proposed by Nickerson (2016), we calculated minimum detectable fluxes suitable for high-resolution in situ greenhouse gas measurements as 0.040 $\text{nmol m}^{-2} \text{s}^{-1}$ and 0.002 $\text{nmol m}^{-2} \text{s}^{-1}$ for 2 min and 25 min respectively for CH_4 and 0.100 $\text{nmol m}^{-2} \text{s}^{-1}$ and 0.002 $\text{nmol m}^{-2} \text{s}^{-1}$ for 2 min and 25 min~~

~~respectively for N₂O.~~ The soil fluxes of CH₄ and N₂O were expressed in nmol m⁻² s⁻¹ (unit of soil surface area).

2.6 Tower and chamber flux data analysis

In order to include the most complete information possible, we based the study period on the soil flux measurements and included all available data from 17 May, 2016 to 2 August, 2018. This 26-month period included both very dry and very wet seasons (Fig. 1).

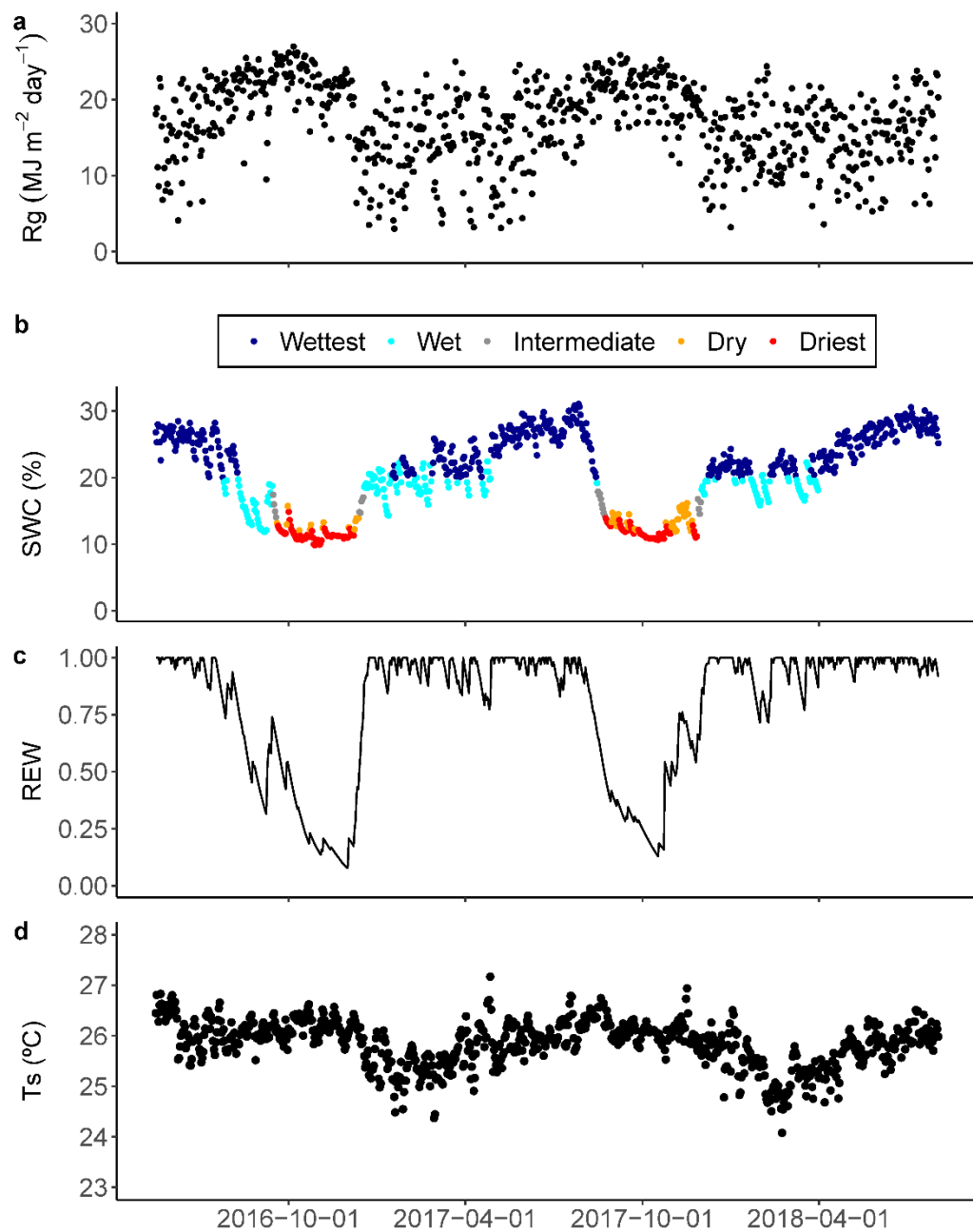


Figure 1. Daily (a) accumulated global radiation (Rg); (b) average soil water content (SWC) at 5 cm in depth during the wet, intermediate and dry seasons, and for two contrasted seasons defined as the wettest (dark blue dots) and the driest (red dots); (c) average relative extractable water (REW) to 3 m in depth based on the water balance model developed by Wagner et al. (2011); and (d) soil temperature (Ts) at 5 cm in depth, from 17 May, 2016 to 2 August, 2018 in the Guyaflux tropical forest, French Guiana. See Sect. 2.7 for details of the methods used to define the “driest” and “wettest” periods with extreme SWC.

Some flawed data was found (and eliminated) for both eddy covariance and soil chamber measurements. They resulted from particular physical or biological conditions at the sampling point or inside the soil chamber (e.g. wasp nests, disturbance by birds, dust, a branch preventing proper closure of the chamber and causing a leak), or from mechanical issues (e.g. a power cut, soil chamber remaining closed, gas analyser malfunction), which generated gaps in each time series. After flux computation, the eddy covariance data for CH₄ and N₂O were filtered: data below a u^* threshold of 0.15 m s⁻¹ were discarded (Bonal et al., 2008) - as were data with a quality flag of 2 (on a scale from 0 to 2) (Mauder and Foken, 2004).

~~For eddy covariance and chamber data, the 30 min observations were filtered and flux values outside the 5th – 95th percentile flux range were discarded. To calculate daily averages for greenhouse gas fluxes, we first estimated the optimal number of observations per day necessary to obtain representative daily averages. To do this, we selected a data pool with at least 42 observations per day in the eddy covariance dataset. In the soil chamber dataset, we firstly calculated daily means based on a minimum of five observations for each of the thirteen chambers. Then, for each day, we created subsets of values from 1 to 42 for the eddy covariance data, and from 1 to 13 for the soil chamber data, based on 100 bootstrap iterations. Representative daily means were found for minimum thresholds of 12 observations per day for the eddy covariance and 10 chambers per day for the soil flux system. To calculate daily averages for greenhouse gas fluxes, we first estimated the optimal number of observations per day necessary to obtain representative daily averages. To do this, we selected a data pool with at least 42 observations per day in the eddy covariance dataset. In the soil chamber dataset, we calculated daily means for each of the thirteen chambers and retained only the data when at least five observations per chamber per day were recorded. Subsets of values from 1 to 42 for the eddy covariance data and from 1 to 13 for the soil chamber data were then created for each day based on 100 bootstrap iterations. Representative daily means were found for thresholds of 12 minimum observations per day for eddy covariance and 10 for chamber data. These tests were performed separately for CH₄ and N₂O and the driest and wettest seasons, giving similar threshold results. Daily~~

means with a number of observations below the corresponding threshold were then discarded from further analyses. After filtering out the non-representative days, the missing daily means for the whole study period represented 27% for both CH₄ and N₂O flux data derived from eddy covariance, and 34% and 30%, respectively, for CH₄ and N₂O flux data derived from the soil chambers.

2.7 Environmental measurements

In the vicinity of the tower, we used temperature sensors (CS107; Campbell Scientific Inc., Logan, UT, USA) to measure surface soil temperature (Ts) and frequency domain sensors (CS615 or CS616; Campbell Scientific Inc.) to measure soil volumetric water content (SWC) at a depth of 5 cm. To estimate the daily relative extractable water (REW) for trees from the soil surface to a depth of 3 m, we used a soil water balance model previously validated for tropical forests (Wagner et al., 2011), with daily precipitation, evapotranspiration and solar radiation as input variables. Daily SWC (%), Ts (°C) and REW were defined as the average of the half-hourly flux values over 24 h, while daily Rg (MJ m⁻² day⁻¹) was the sum of the half-hourly flux values over 24 h.

To examine the effect of environmental variables on CH₄ and N₂O fluxes at the ecosystem and soil levels, we extracted data from two contrasting periods, termed “Driest” and “Wettest” (Fig. 1). The driest days occurred at the end of the dry season, when SWC was less than 15% and decreased for at least three consecutive days. The wettest days had a SWC above 20%, corresponding to a REW above 0.4, and unlimited available water for trees (Wagner et al., 2011) for more than two consecutive days.

2.8 Data analysis

We used the mgcv (Wood and Wood, 2015) and stats packages in R version V3.6.3 (R Core Team, 2020) for our data analyses and ggplot2 for visualisations (Wickham and Wickham, 2016). The significance level for all tests was set at 0.05.

We used Kolmogorov-Smirnov tests (ks.test function) to evaluate the effects of contrasting seasons, specifically the driest and wettest periods, on the distributions of CH₄ and N₂O fluxes at both ecosystem

and soil levels. A Student's t-test (t.test function) was used to determine if the greenhouse gas fluxes were statistically different from 0. Generalised additive models (GAM; gam function) were used to assess whether climate variables (i.e. Rg, Ts, SWC) explained the temporal variations in CH₄ and N₂O fluxes at the ecosystem and soil levels. We included the default thin-plate spline smoothing parameter selected by restricted maximum likelihood (REML), and modelled the fluxes of each greenhouse gas as a function of season, climate variables and their interaction. For all GAMs, the "select" option was set to TRUE so that terms could be removed from the GAM during model fitting if they provided no benefit (Wood, 2017). Because of the highly right-skewed nature of the data, particularly for net ecosystem CH₄ fluxes (Fig. 3), similar GAMs were conducted on the 1st - 99th percentile ranges of the data. This approach mitigated the influence of two episodic CH₄ production events that occurred during the wettest periods (e.g. July 2016 and June 2018; Fig. S5) at the ecosystem level, providing a more representative assessment of the extent to which each environmental variable predicts the fluxes.

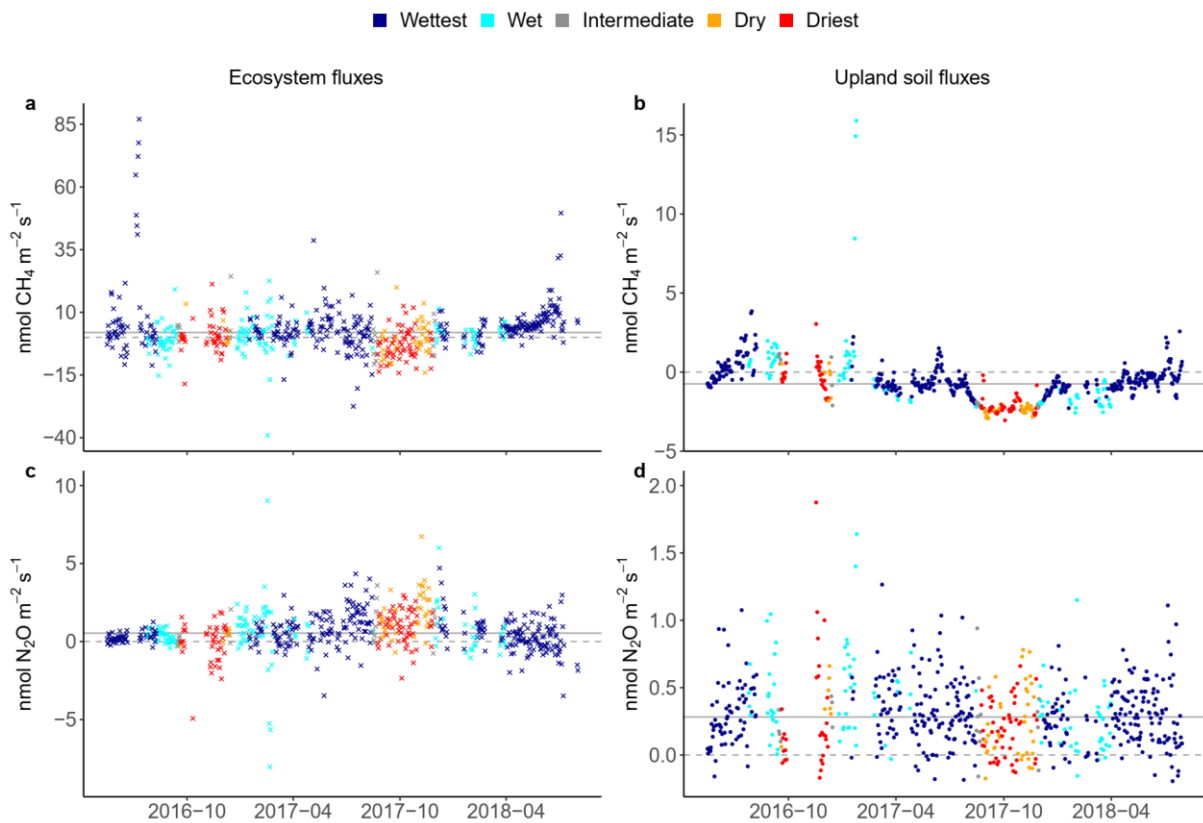
3 Results

3.1 Environmental seasonality

The Guyaflux site is characterised by an alternating wet and dry season, typical of a wet tropical climate. During the wet season, mean daily global radiation (Rg; Fig. 1a) was at its lowest, while soil water content (SWC; Fig. 1b) was at its highest, accompanied by peak values for relative extractable water (REW; Fig. 1c). In contrast, the dry season had elevated mean daily Rg, minimal SWC and the lowest values of REW. The soil temperature (Ts; Fig. 1d) also exhibited a clear seasonal pattern, albeit weak in absolute values (approximately 2°C), which was influenced by changes in air temperature. During the study period, the driest season (SWC ranging from 9.9% to 15.0%) covered 15.8% of the total study period (128 days), while the wettest season (SWC ranging from 20.0% to 30.0%) covered 55% of the total study period (444 days) and represented near-saturated conditions.

3.2 Greenhouse gas flux seasonality under contrasting environmental conditions

The ecosystem and soil CH₄ and N₂O fluxes also displayed some seasonality (Figs. 2, [S3](#), [S5S4](#)), with seasonal differences particularly evident between the wettest and the driest season (Fig. 3).



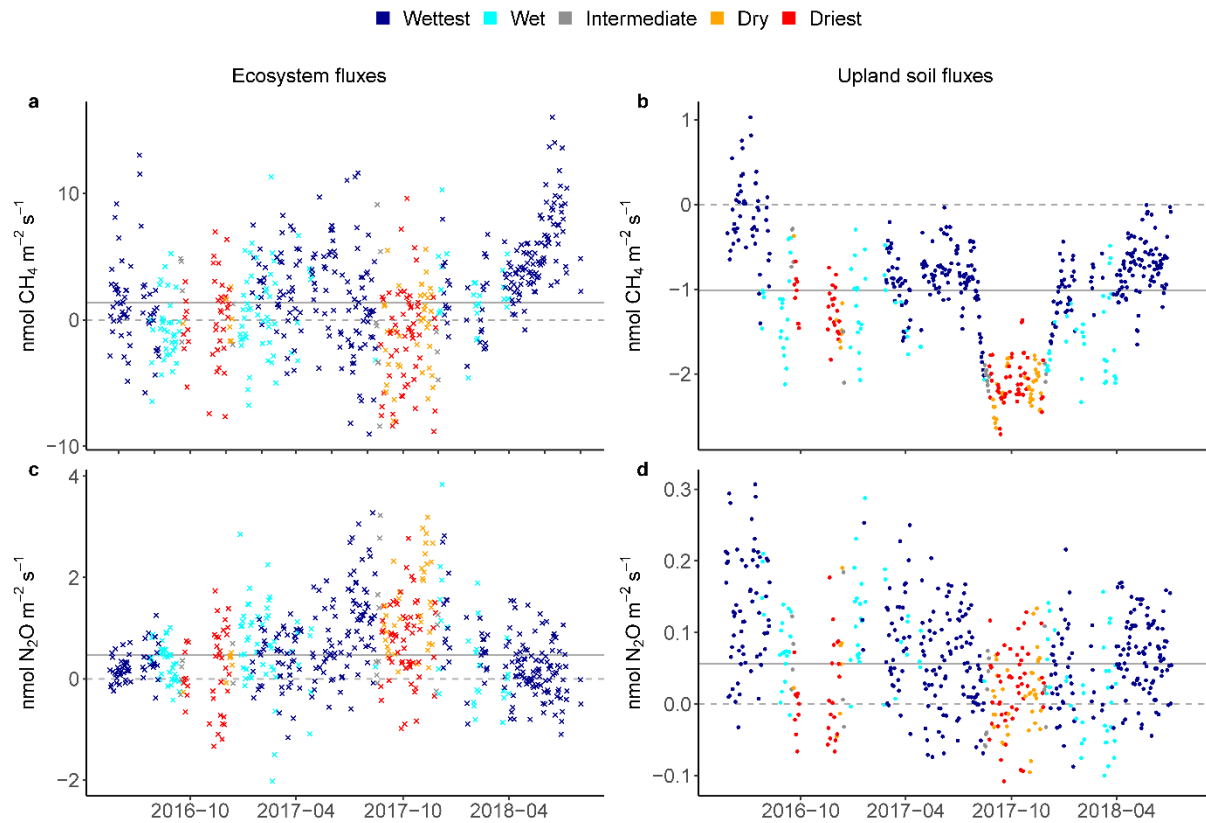
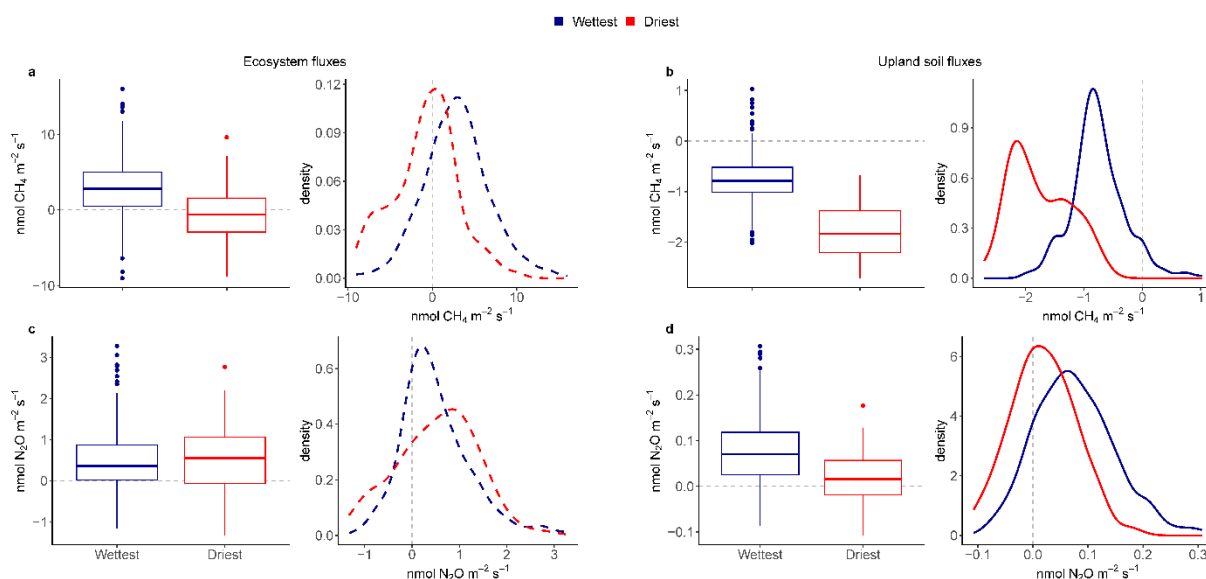
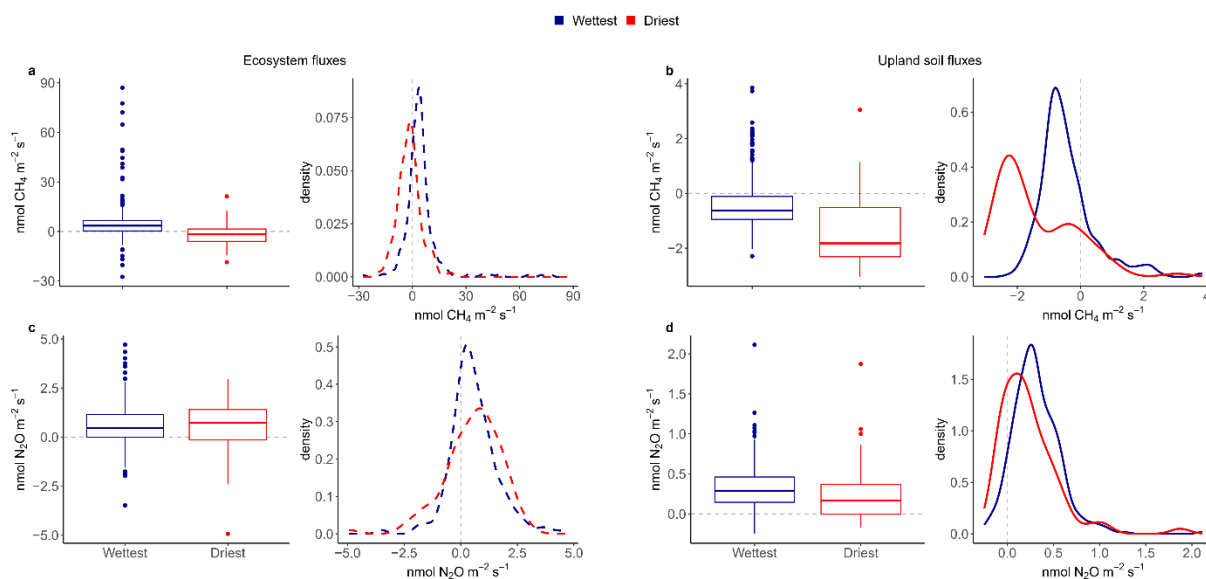


Figure 2. Seasonal courses of average daily ecosystem (crosses on the left) and upland soil (solid dots on the right) fluxes for the wet, intermediate and dry seasons, and for two contrasted seasons defined as the wettest (dark blue dots) and the driest (red dots) for 24-hour CH_4 fluxes (a, b) and N_2O fluxes from 17 May, 2016 to 2 August, 2018 (c, d) in the Guyaflux tropical forest, French Guiana. Positive fluxes (above the dashed grey “0” line) indicate greenhouse gas emissions and negative fluxes (below the “0” line) indicate greenhouse gas uptake; the solid grey line represents the median over the whole period. Note that the scale of the y-axis has been adjusted for each gas and compartment to improve clarity. Comparable seasonal courses of the 1st - 99th percentile range of CH_4 and N_2O flux data are shown in Fig. S5.



361 Figure 3. Boxplots and associated density plots of average daily ecosystem fluxes (dashed lines on the
 362 left) and upland soil (solid lines on the right) fluxes of 24-hour CH_4 fluxes (a, b) and N_2O fluxes (c, d) for
 363 the wettest (blue) and driest (red) seasons, from 17 May, 2016 to 2 August, 2018 in the Guyaflux
 364 tropical forest, French Guiana. In the box plots, solid bold lines represent medians, box boundaries
 365 mark the 25th and 75th percentiles and whiskers show the 10th and 90th percentiles. Dots mark outliers.
 366 In the density plots, positive fluxes on the right side of the dotted “0” line indicate greenhouse gas
 367 emissions and negative fluxes on the left side of the “0” line indicate greenhouse gas uptake. All fluxes,

368 except the ecosystem N₂O fluxes (c), exhibited statistically significant differences between the wettest
369 and driest seasons at $p < 0.05$ based on Kolmogorov-Smirnov tests.

Ecosystem CH₄ emissions were greater during the wettest season than during the driest season, when net fluxes hovered around zero (Table 1; Fig. 3a). In contrast to the ecosystem-level fluxes, soil CH₄ fluxes in some of the upland forest were mainly negative, indicating net soil CH₄ uptake throughout the year (Fig. 2b), even under varying environmental conditions (Table 1; Fig. 3b). Soil CH₄ uptake did decreased significantly in the wettest season compared to the driest season, although the fluxes remained negative overall (i.e. CH₄ uptake, Table 1; Fig. 3b).

Table 1. Mean, standard deviation (SD) and median ecosystem and upland soil CH₄ and N₂O fluxes for the wettest and driest seasons in the Guyaflux tropical forest, French Guiana. All values are different from 0 at p level < 0.05 based on Student's t-tests.

Fluxes	Wettest			Driest		
	Mean	SD	Median	Mean	SD	Median
Ecosystem flux (nmol_{CH4/N2O} m⁻² s⁻¹)						
CH ₄	2.94.9	3.911.2	23.85	-10.86	63.84	-0.1.67
N ₂ O	0.56	01.70	0.45	0.55	10.38	0.76
Upland soil flux (nmol_{CH4/N2O} m⁻² s⁻¹)						
CH ₄	-0.48	0.95	-0.68	-1.48	10.25	-1.8
N ₂ O	0.31	0.31	0.31	0.20	0.31	0.20

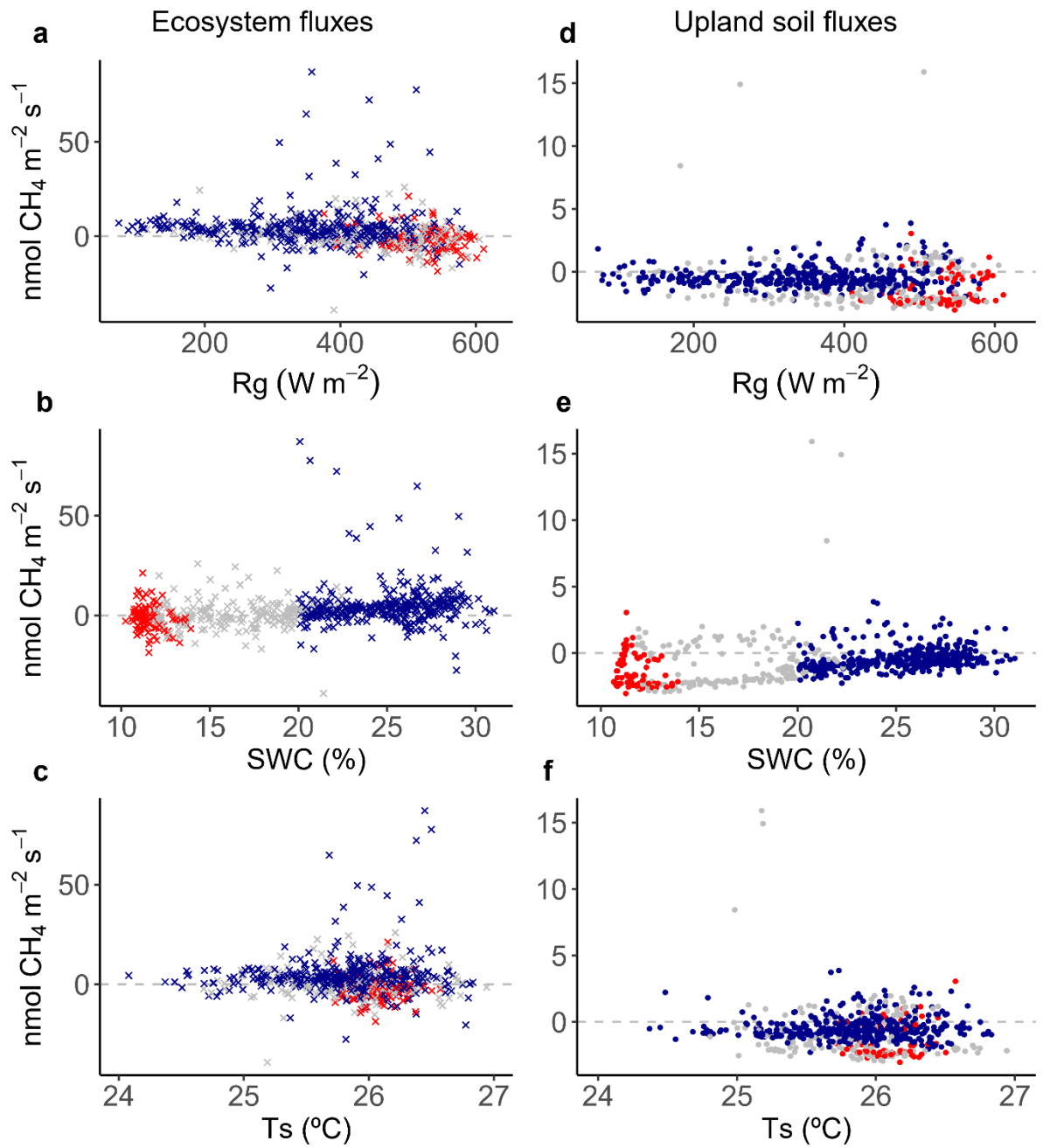
The seasonal pattern of ecosystem N₂O fluxes was less pronounced than ~~for that of~~ CH₄ (Fig. 2c); with similar emission rates observed between the driest and wettest seasons (Table 1; Fig. 3c). In contrast to the ecosystem-level fluxes, soil N₂O fluxes in upland areas not only had a more pronounced seasonal pattern, the upland soils also emitted more N₂O during the wettest season than during the driest season (Table 1; Fig. 3d). It is noteworthy that all the overall flux means were significantly different from zero (Table 1) and that there were significant differences in fluxes between seasons at both the ecosystem and soil levels, except for N₂O fluxes at the ecosystem level (Fig. 3). This suggests that the magnitude of the fluxes was substantial relative to seasonal variability. ~~It is noteworthy that, although there were significant differences between seasons for all fluxes and at both ecosystem and soil levels~~

~~(Fig. 3), the overall mean flux was significantly different from zero only for soil CH₄ fluxes during the driest season (Table 1). This indicates that the magnitude of the fluxes was very low relative to the large variability among the seasons.~~

3.3 Environmental drivers of ecosystem and upland soil greenhouse gas fluxes

Keeping the 1st - 99th percentile range of the flux data was sufficient to account for the majority of the statistical leverage (Tables 2, S3). This was particularly true for net ecosystem CH₄ fluxes, which showed that CH₄ emissions decreased with increasing Rg (Fig. 4a, S5a, S6a), although this negative correlation was statistically significant only during the wettest season (Table S3) when net emissions occasionally switched to net uptakes at highest Rg values (Fig. 4a, S6a). Net ecosystem CH₄ fluxes were strongly positively correlated with SWC (Fig. 4b, S6b), showing increased CH₄ emissions with increasing SWC, although this correlation too was statistically significant only during the wettest season (Table S3). ~~A weaker, yet statistically significant, correlation was detected between ecosystem CH₄ fluxes and Ts (Table 2).~~

■ Wettest ■ Driest



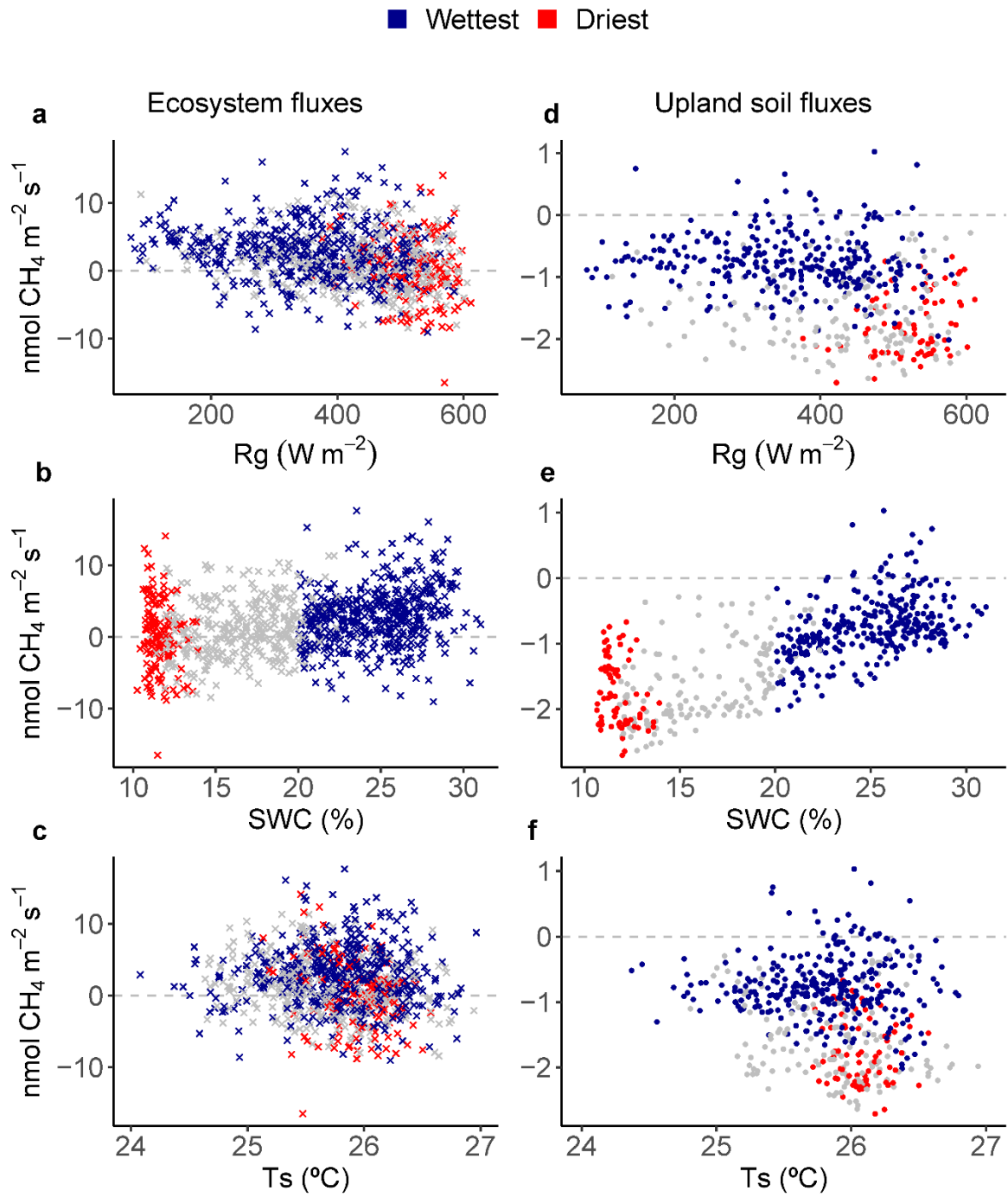


Figure 4. Relationships between environmental drivers (global radiation (R_g), soil water content (SWC) and soil temperature (T_s)) and daily average ecosystem (crosses on the left) and upland soil (solid dots on the right) CH_4 fluxes for the wettest (blue) and driest (red) seasons, with remaining data in grey, from 17 May, 2016 to 2 August, 2018 in the Guyaflux tropical forest, French Guiana. Positive fluxes above the horizontal “0” line indicate CH_4 emissions and negative fluxes below the horizontal “0” line

indicate CH₄ uptake. Comparable relationships with the 1st - 99th percentile range of CH₄ flux data are shown in Fig. S6.

Despite the different signs for the net CH₄ flux at ecosystem- and soil levels, relationships comparable with the environmental drivers observed for ecosystem CH₄ fluxes were also found for some of the upland soil: net soil CH₄ uptake increased with increasing R_g (Fig. 4d, S6d) and decreased with increasing SWC (Fig. 4e, S6e). While statistically significant terms were found during the driest season (i.e. Ts > R_g > SWC), the strongest relationship was observed with SWC during the wettest season (Table 2).~~The correlation between upland soil CH₄ fluxes and R_g was statistically significant in the driest season, while the correlation with SWC was equal and significant in both seasons (wettest and driest, Table 2).~~

Ecosystem N₂O fluxes only showed ~~relatively weak~~ a significant response to SWC during the wettest season ~~the environmental drivers we investigated~~ (Figs. 5a-cb). ~~The statistically significant terms in the model were SWC > R_g > Ts, and only during the wettest season.~~ However, the R² of the model was rather low (R² = 0.04; Table 2). The best results for upland soil N₂O fluxes were found with Ts and R_g, but only during the driest season~~For the upland soil N₂O fluxes, (none of the environmental drivers we investigated explained soil N₂O emissions~~ (Fig. 5; Table 2).

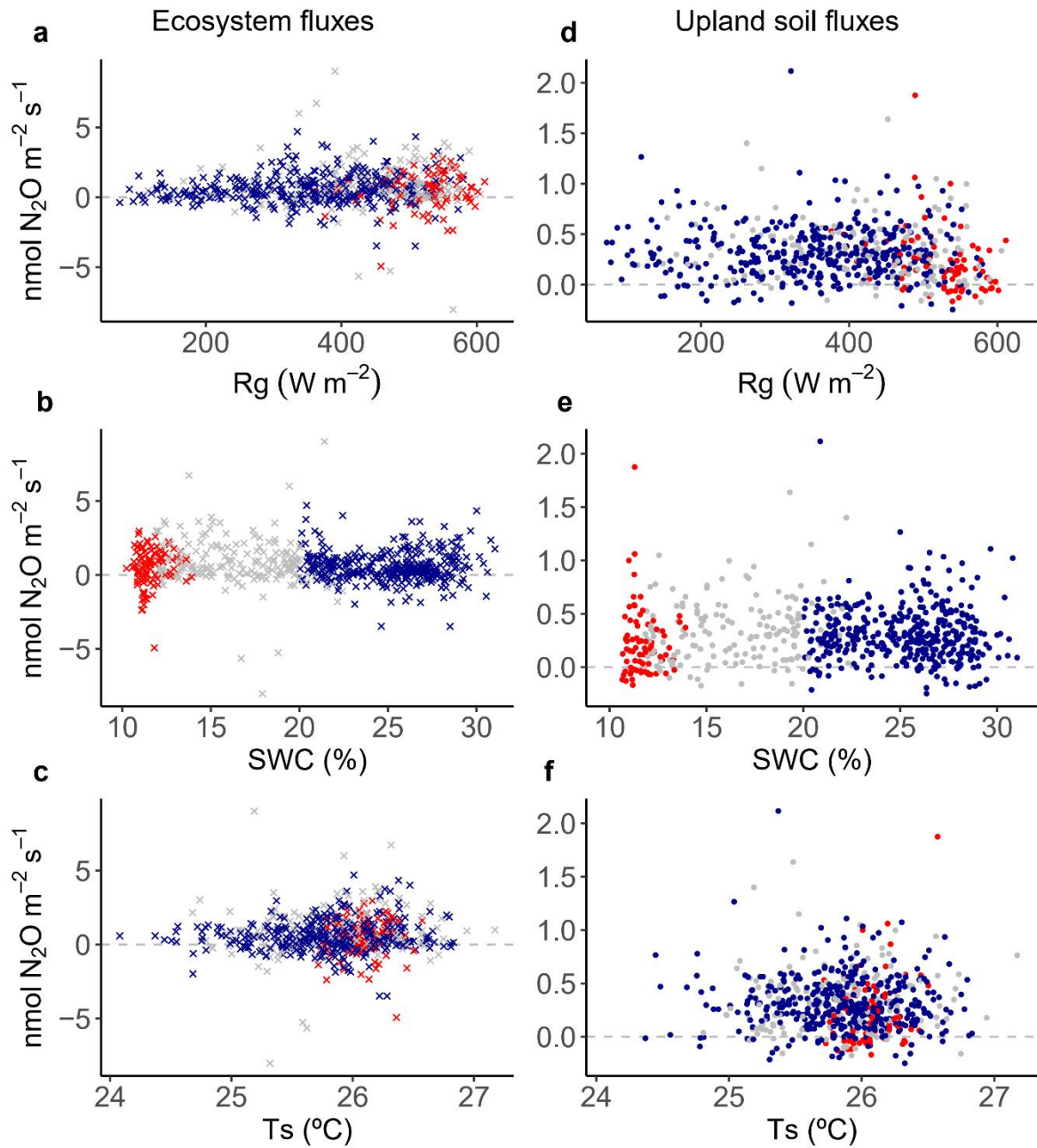
Table 2. Results of generalised additive models (GAM) assessing the relationships between environmental variables, i.e. global radiation (Rg), soil water content (SWC), soil temperature (Ts), and daily mean ecosystem and upland soil CH₄ and N₂O fluxes during the wettest and driest seasons from 17 May, 2016 to 2 August, 2018 in the Guyaflux tropical forest, French Guiana. The effective degrees of freedom (edf) and the reference number of degrees of freedom (Ref. df) of the fitted models, with values for each spline term, are shown. Significant terms at p level < 0.05 are shown in bold. Comparable GAM results with the 1st - 99th percentile ranges of CH₄ and N₂O fluxes are shown in Table S3.

	Fluxes	Best model predictors	R ²	Intercept	Coefficients		F value	p value
					edf	Ref. df		
Ecosystem level								
Daily	CH ₄		0.2007	04.009752				
		Rg: Wettest			0.80	9	0.5400	0.014743
		Rg: Driest			0.63	8	0.1905	0.113240
		Ts: Wettest			1.70	9	0.6233	0.025056
		Ts: Driest			0.0	9	0.00	0.477650
		SWC: Wettest			04.60	9	04.9200	<0.996
		SWC: Driest			0.05	6	0.0014	0.433174
Daily	N ₂ O		0.04	01.000090				
		Rg: Wettest			0.85	9	0.4113	0.026126
		Rg: Driest			0.50	8	0.0017	0.772128
		Ts: Wettest			04.28	9	0.3919	0.045109
		Ts: Driest			0.30	98	0.0500	0.247825
		SWC: Wettest			2.23	9	01.9333	0.011002
		SWC: Driest			0.0	6	0.00	0.35717
Upland soil level								
Daily	CH ₄		0.5422	-0.001602				
		Rg: Wettest			1.24	9	0.2461	0.156017
		Rg: Driest			1.51	9	10.2461	0.001012
		Ts: Wettest			0.74	9	0.2707	0.057189
		Ts: Driest						≤
		SWC: Wettest			02.05	9	01.0091	0.0010-865
					21.60	9	92.7482	< 0.001

Daily	N ₂ O	SWC: Driest	0.10	0.000313	1.96	7	30.5265	4
								0.00101
		Rg: Wettest			0.0	9	0.00	10.4190
								00
		Rg: Driest			0.96	78	0.1999	0.11200
								5
		Ts: Wettest			01.20	9	0.3200	0.08445
								6
		Ts: Driest						≤
								0.0014-0
		SWC: Wettest			40.06	9	03.0095	00
								0.80479
					0.0	9	0.00	0
		SWC: Driest			0.02	56	0.0005	10.0002
								61

437

■ Wettest ■ Driest



■ Wettest ■ Driest

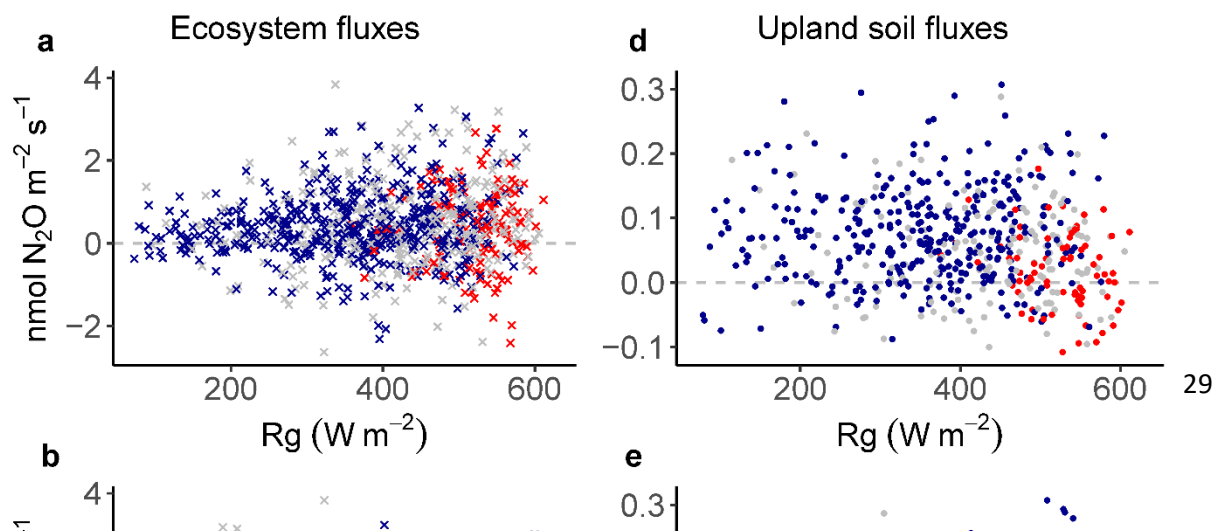


Figure 5. Relationships between environmental drivers (global radiation (R_g), soil water content (SWC) and soil temperature (T_s)) and daily average ecosystem (crosses on the left) and upland soil (solid dots on the right) N_2O fluxes for the wettest (blue) and driest (red) seasons, with remaining data in grey, from 17 May, 2016 to 2 August, 2018 in the Guyaflux tropical forest, French Guiana. Positive fluxes above the horizontal “0” line indicate N_2O emissions and negative fluxes below the horizontal “0” line indicate N_2O uptake. Comparable relationships with the 1st - 99th percentile range of N_2O flux data are shown in Fig. S7.

4 Discussion

To our knowledge, this is the first study to report on simultaneous ecosystem and upland soil CH_4 and N_2O flux observations in a wet tropical forest over a period of more than two years (Fig. 2). This study provides a unique opportunity to investigate the dynamics and environmental drivers of CH_4 and N_2O fluxes in these ecosystems.

4.1 Ecosystem and upland soil- CH_4 fluxes

4.1.1 Seasonal variations in ecosystem CH_4 fluxes: trends and drivers

Our long-term monitoring of eddy covariance CH_4 fluxes above the Guyaflux forest canopy showed high temporal variability, with changes in the sign (net emission or uptake) and amount of the ecosystem fluxes observed over short time scales, supporting hypothesis H1 (Fig. 2). Net CH_4 emission rates ($24.9 \pm 311.9 \text{ nmolCH}_4 \text{ m}^{-2} \text{ s}^{-1}$; Mean \pm SD) dominated during the wettest season, whereas net CH_4 uptake ($-01.8 \pm 36.8 \text{ nmolCH}_4 \text{ m}^{-2} \text{ s}^{-1}$) was more common during the driest season, although large temporal variations occurred throughout the study seasons (Figs. 2-3, Table S1). Much higher wet-season net fluxes had previously been found in two Brazilian tropical forests, Manaus and Sinop (62.3 and 34.6 $\text{nmolCH}_4 \text{ m}^{-2} \text{ s}^{-1}$, respectively; Carmo et al., 2006), though the studies were based on canopy air samples and a modelling approach. Surprisingly, these Brazilian forests acted as an even

larger CH₄ source during the driest season (64.1 and 88.3 nmolCH₄ m⁻² s⁻¹, respectively; Carmo et al., 2006), while the Guyaflux forest switched from a CH₄ source during the wet periods to a small sink during the dry ones. Ecosystem CH₄ fluxes are driven by a combination of plant, microbial and abiotic processes, which are mediated by both living and dead plants, and can explain episodic bursts (Eugster and Plüss, 2010; Covey and Megonigal, 2019). The mechanism underlying the large CH₄ emissions during the dry season observed in the Brazilian forests remains unknown, but the authors suggest that it may have been connected to the anaerobic decay of waterlogged wood, undrained soil patches or the waterlogged cavities of tank bromeliads. Concomitantly, drought-induced reduced oxidation in the soil surface layer may have exacerbated the net CH₄ emissions. Contrary to Carmo et al. (2006), Sakabe et al. (2018) found a seasonal pattern similar to the one we observed in our study where the eddy covariance technique was applied. Although the flux values they found had a higher range of variation (10.3 nmolCH₄ m⁻² s⁻¹ versus -8.5 nmolCH₄ m⁻² s⁻¹, respectively, in the wet and dry seasons), this was most likely due to the different ecosystem they studied, an Indonesian tropical peat swamp forest.

~~Surprisingly, in contrast to~~Consistent with H2, the generalised additive models (GAM) revealed that none of the environmental variables studied, including SWC, and to a lesser extent Rg and Ts, were relevant drivers of ecosystem CH₄ flux drivers, particularly during the wettest season (Table 2; Figs. 4a-c). However, a similar statistical analysis of the remaining 1st - 99th percentile range of data revealed a significant effect of various environmental drivers (Table S3). While these findings indicate that the models are relatively sensitive to extreme flux values, further explanation may be suggested. Indeed, a significant increase in SWC in the wettest season could stimulate CH₄ production in most compartments of the ecosystem, not only in the seasonally flooded soils. It is reasonable to assume that high SWC but relatively low Ts during the wettest season stimulated CH₄ production in most compartments of the ecosystem, not only in the seasonally flooded soils. At shallow depths, a higher SWC may reduce the amount of air-filled pore space, thereby decreasing the diffusion of oxygen and CH₄ from the atmosphere through the soil to methanotrophs. As a result, there may be a decrease in net uptake or an increase in net emissions, if production exceeds uptake (Wang et al., 2013). An

increase in SWC at shallow depths may reduce the amount of air-filled pore space in the soil. This reduction may decrease the diffusion of oxygen and CH₄ from the atmosphere through the soil to methanotrophs, resulting in a decrease in net uptake or an increase in net emissions, if production exceeds uptake (Wang et al., 2013). Such processes may occur in all the soil types within the footprint of the eddy flux tower (see Sect. 4.1.2), and they may partially explain some of the seasonal trends observed at our site. On Using the same other hand range of data (excluding episodic CH₄ peaks in July 2016 and June 2018), the a statistically significant, albeit weak, relationship was found between CH₄ emissions and Rg during the wettest season (Table S3). This could occur if the occasional high light intensity (Fig. 1a) is sufficient to stimulate plant-mediated CH₄ transport through sap flow, and / or if the measured forest area has more seasonally flooded areas than upland forest. However, the latter explanation is mitigated by the fact that the Guyaflux tower The latter explanation is, however, unlikely because the location of the Guyaflux tower (~300 m from the seasonally flooded area) was specifically chosen to guarantee consistent types of ecosystem flux observations regardless of the season and of associated changes in wind direction and atmospheric stability. Further research is needed to clarify the correlation between Rg and net CH₄ flux. Increased fluxes in the flooded areas and anaerobic microsites, rather than seasonal changes in the footprint, probably explain part of the observed seasonal variations.

Disentangling the drivers of net CH₄ fluxes is further complicated by aboveground processes that also contribute to CH₄ emissions and uptake in forest ecosystems. Soil-produced CH₄ dissolved in water can indeed be taken up by roots, transported through the xylem stream in the stem, branches and leaves, and then released into the atmosphere, thus bypassing the oxidation processes in the shallow soil layers. As such, the highest CH₄ emissions from trees have been found in waterlogged soils, for example, in wetland and riparian forests (Pangala et al., 2013; Covey and Megonigal, 2019; Gauci et al., 2025). However, recent studies have shown that tree compartments (i.e. stems, branches, and leaves) can also consume CH₄, particularly in free-draining upland soils (Gauci et al., 2024). At our study site, both stem CH₄ emission and uptake were observed within the footprint of the Guyaflux tower

(Bréchet et al., 2021, 2025; Daniel et al., 2023). Although these fluxes were weak, they may contribute to the seasonal variations in ecosystem CH₄ exchanges (Bréchet et al., 2021, 2025; Daniel et al., 2023).

4.1.2 Seasonal variations in upland soil CH₄ fluxes: trends and drivers

The upland soils studied within the tower footprint were active consumers of atmospheric CH₄ (Fig. 3b), with an overall net uptake rates of -0.48 ± 0.59 nmolCH₄ m⁻² s⁻¹ (or 1.0 mgCH₄ m⁻² d⁻¹), which is consistent with the global average for tropical forests (-0.7 nmolCH₄ m⁻² s⁻¹ or -2.5 kgCH₄-C ha⁻¹ yr⁻¹, Dutaur and Verchot, 2007). Our results were also close to those of an Australian tropical rainforest (-0.8 mgCH₄ m⁻² d⁻¹, Butterbach-Bahl et al., 2004), but higher (i.e. lower uptake) than those of a Kenyan rainforest (ranging from -2.8 to -1.3 mgCH₄ m⁻² d⁻¹, Werner et al., 2007), with both studies using automated chamber systems. higher than the global average for tropical forests (-0.7 nmolCH₄ m⁻² s⁻¹ or -2.5 kgCH₄-C ha⁻¹ yr⁻¹, Dutaur and Verchot, 2007) but lower than fluxes found in previous studies in tropical plantations and forests in Central and South America (Panama, -13.5 nmolCH₄ m⁻² s⁻¹, Keller et al., 1990; -19.9 nmolCH₄ m⁻² s⁻¹, Goreau and de Mello, 1988). CH₄ fluxes at our site ranged seasonally from -0.48 ± 0.59 nmolCH₄ m⁻² s⁻¹ in the wettest season to -1.84 ± 0.52 nmolCH₄ m⁻² s⁻¹ in the driest season (Table 1S2), supporting H1 and globally corroborating other seasonal studies in tropical forests. In addition, CH₄ flux dynamics in our upland soils were characterised by a large range of variation. The sign of the upland soil CH₄ fluxes were but a consistent sign, between the driest and wettest seasons.

A study conducted in a seasonal tropical forest in China with static chambers showed a comparable seasonal pattern for soils: they acted mainly as CH₄ consumers, with an uptake rate of 0.7 ± 0.0 nmolCH₄ m⁻² s⁻¹ (or 29.5 ± 0.3 µgCH₄-C m⁻² h⁻¹; Werner et al., 2006) during the dry period. The uptake decreased by approximately 50% after the first rainfall events and the associated increases in SWC. Another study carried out with the static chamber technique near the Guyaflux forest and in similar environmental conditions reported that upland soils consumed 1.0 ± 3.2 nmolCH₄ m⁻² s⁻¹ during the dry season (Courtois et al., 2018). Yet, those soils become slight emitters during the wet season (0.1 ± 0.9 nmolCH₄ m⁻² s⁻¹; corresponding to -44.0 ± 139.7 µgCH₄-C m⁻² h⁻¹ and 3.7 ± 40.1 µgCH₄-C m⁻² h⁻¹ for the

dry and wet seasons, respectively; Courtois et al., 2018). Although meaningful, these comparisons between studies should be interpreted with great caution because the measurement techniques differed (i.e. automated in our study versus manual chambers in the other studies) as well as study duration (i.e. months versus years). In addition, CH₄ flux dynamics in our upland soils were characterised by a large range of variation. Microtopographic and edaphic heterogeneity may have caused some chamber locations to remain aerobic in surface horizons, even during the wettest season. This may explain their year-round CH₄-uptake, albeit reduced during the wettest season. Other locations, in contrast, may have become anaerobic during the wet season, disabling methanotrophs to oxidize the produced CH₄ and eliciting a switch to net CH₄ emissions.

From the GAMs, the best set of climatic variables, explaining ~~53~~22% of the seasonal variation in CH₄ fluxes from upland soils, were SWC, Ts and Rg (Table 2), consistent with H2. We observed a net upland soil CH₄ uptake during both the driest and the wettest seasons; CH₄ emissions occurred only on a few days during the wettest season (Fig. 2b). This can likely be explained by the soil characteristics at our site where upland soils were hypoferralic Acrisols, characterised by deep vertical drainage (Epron et al., 2006). It is likely that these well aerated soils provided the aerobic conditions for methanotrophic CH₄ oxidation (Smith et al., 2003). The seasonal variations in net CH₄ fluxes were strong (Fig. 3b), with a net soil CH₄ uptake more than twice as three times higher in the driest season than in the wettest season. This is consistent with the known dependence of soil CH₄ fluxes on topsoil SWC (Fig. 4e, S6e; Tables 1, 3): dryer soil conditions favour soil methanotrophy (Le Mer and Roger, 2001), whereas and wetter soil conditions reduce methanotrophic communities and / or their activity (Covey and Megonigal, 2019). In addition, the significant influence of Ts on soil CH₄ uptake may be attributed to the temperature sensitivity of the underlying enzymatic process. However, at elevated temperatures (> 15 °C), such as in tropical forests, gas diffusion limitations and drought effects may supersede temperature responses (Steinkamp et al., 2001). The significant relationships between Rg and upland soil CH₄ fluxes are still unclear. Yet when the combined effects of changes in SWC and Ts were considered, the explanatory power of the GAM with regard to soil CH₄ flux variations remained low.

This suggests that other factors, such as substrate availability, soil aeration, gas diffusivity and microbial processes, may significantly control the temporal dynamics of CH₄ fluxes at our study site.

4.2 Ecosystem and upland soil-N₂O fluxes

4.2.1 Seasonal variations in ecosystem N₂O fluxes: trends and drivers

The measurements at the Guyaflux wet-tropical-forest site revealed very low N₂O fluxes, with an average net emission of 0.76 ± 10.38 nmolN₂O m⁻² s⁻¹ (Fig. 3c; Table S24). Though low, this loss of nitrogen (N) from the ecosystem is equivalent to approximately one-fifth-fourth of the annual atmospheric N deposition at the site (32.71 kgN₂O-N ha⁻¹ yr⁻¹ here ~~vs~~versus- 13 kgN₂O-N ha⁻¹ yr⁻¹ in Van Langenhove et al., 2020b). Compared to other publications on forest ecosystem N₂O fluxes from studies based on eddy covariance techniques, net ecosystem N₂O fluxes at our study site were ~~very~~ closesimilar to the average fluxes reported by Stiegler et al. (2023) for a regularly-fertilised Indonesian oil palm plantation (0.7 ± 0.0 nmolN₂O m⁻² s⁻¹ or 0.32 ± 0.003 gN₂O-N m⁻² yr⁻¹) but much higher than those reported by Mander et al. (2021) for a temperate riparian deciduous forest (0.1 nmolN₂O m⁻² s⁻¹ or 87.3 mgN₂O-N m⁻² for the September 2017 - December 2019 period).

Measured ecosystem-level N₂O fluxes at the Guyaflux site were highly variable, but overall showed little seasonal variation (means of 0.55 ± 01.83 nmolN₂O m⁻² s⁻¹ and 0.56 ± 01.70 nmolN₂O m⁻² s⁻¹, in the driest and the wettest seasons, respectively; Table 1S2), partially supporting H1. These observations fall within the range of net ecosystem N₂O exchanges measured by eddy covariance reported in an oil palm plantation in Indonesia, with similar-comparable mean N₂O emissions of 0.7 nmolN₂O m⁻² s⁻¹ for both the dry and wet seasons (Stiegler et al., 2023). Once again, this comparison must be interpreted with extreme caution even though both studies used the eddy covariance technique as the ecosystems and seasons concerned were different (a tropical oil palm plantation with strong seasons versus a primary wet tropical forest).

As with CH₄ fluxes, the temporal variability of the N₂O fluxes was very high (Fig. 2c). ~~Contrary-Although~~ the explanatory power of the relationships was poor ($R^2 = 0.04$, Table 2), the GAM analyses supported

~~H2 by attributing some of the variations in N₂O fluxes to changes in SWC. to H2, GAM analyses failed to explain or attribute the observed variations in N₂O fluxes to changes in SWC or other meteorological drivers ($R^2 = 0.04$, Table 2).~~ Furthermore, daily mean ecosystem N₂O fluxes switched signs and changed in order of magnitude on short time scales, most likely because these fluxes are controlled by discontinuous microbial processes (Blagodatsky and Smith, 2012). Yet, although there were no seasonal differences, we did find the statistically significant, ~~though very weak,~~ relationships between ecosystem N₂O fluxes and SWC, ~~Ts and Rg, suggesting suggested~~ that the wettest season may provide favourable conditions for soil bacterial N₂O production and plant-mediated N₂O transport, which could contribute to higher net N₂O emissions at the ecosystem level (Stiegler et al., 2023). It is worth noting that the extent to which trees mediate N₂O emissions is still uncertain; at Guyaflux, within the tower footprint, tree stems in the seasonally flooded forest emit N₂O while those in the upland forest absorb N₂O (Daniel et al., 2023). Other studies at Guyaflux and in a lowland tropical rain forest in the Réunion Islands reported that tree stems can absorb N₂O through as yet unknown mechanisms (Bréchet et al., 2021, 2025; Machacova et al., 2021). This could indeed counteract the overriding, albeit small, net ecosystem N₂O emissions, suggesting that the proportion of upland versus seasonally flooded areas should be taken into account.

4.2.2 Seasonal variations in upland soil N₂O fluxes: trends and drivers

In support of H1, N₂O fluxes recorded for the upland soils studied were small, averaging 0.31 ± 0.31 nmolN₂O m⁻² s⁻¹ (Table ~~1~~, S2), ~~and but slightly significantly~~ higher during the wettest season (0.31 ± 0.31 nmolN₂O m⁻² s⁻¹) compared to the driest season (0.20 ± 0.31 nmolN₂O m⁻² s⁻¹; Table ~~1~~ S2).

Our average flux value, 15.6 µgN₂O-N m⁻² h⁻¹, was nearly 3 time smaller than those reported for an a Kenyan rainforest (42.9 µgN₂O-N m⁻² h⁻¹, Werner et al., 2007) and about 1.5 time smaller than those found for an Australian tropical rainforest (25.6 µgN₂O-N m⁻² h⁻¹, Butterbach-Bahl et al., 2004), even though the soils in both cases were predominantly N₂O emitters and all measurements were performed ~~Our flux values were nine times smaller than those measured~~ with automated chamber

systems ~~in a western Kenyan rainforest ($0.9 \text{ nmolN}_2\text{O m}^{-2} \text{ s}^{-1}$; Werner et al., 2007), even though the~~
~~soils in both cases were predominantly N_2O emitters.~~ However, our seasonal N_2O flux observations
were within the same order of magnitude as those in two tropical rainforests where soil N_2O emissions
measured with manual chambers were lower in the dry season than in the wet season ($< 0.20 \text{ nmolN}_2\text{O}$
 $\text{m}^{-2} \text{ s}^{-1}$ and $0.34 \text{ nmolN}_2\text{O m}^{-2} \text{ s}^{-1}$, respectively, Yu et al., 2021; $0.10 \text{ nmolN}_2\text{O m}^{-2} \text{ s}^{-1}$ and $0.49 \text{ nmolN}_2\text{O}$
 $\text{m}^{-2} \text{ s}^{-1}$, respectively, Werner et al., 2006). In addition, net N_2O uptake was observed in the upland soil
at our site, a phenomenon that has rarely been reported in tropical forests. Previous observations at
the Guyaflux site revealed soil N_2O uptake and showed that, although these fluxes were low, they were
primarily recorded over short measurement periods (2 minutes instead of 25 minutes; Courtois et al.,
2019). The very low flux detection limit of our instrument (G2308; Picarro) may explain why net uptake
fluxes were frequently measured. Since N_2O uptake rates are typically small, setups with a high MDF,
which are usually employed in remote areas such as tropical rainforests, are often unable to detect
these small uptake fluxes. Regarding the seasonal pattern, we suspect that during the wet season,
when conditions are ideal for both litter mineralisation and heterotrophic N_2 fixation (Van Langenhove
et al., 2020a), as well as denitrification, N_2O production typically exceeds consumption. During the dry
season, however, the drier conditions in the topsoil favour N_2O uptake, enabling microbial
communities to consume all the N_2O produced on average.

Unlike H_2 , ~~none of our the~~ GAMs, including climatic meteorological drivers variables, (i.e. SWC, Ts, Rg)
could only partially predicted-predict the observed seasonal variations in upland soil N_2O fluxes, ~~when~~
~~only the driest and wettest seasons were taken into account with Ts and Rg as drivers~~ (Table 2; Fig. 5).
This was even more unexpected as it only occurred during the driest season (Table 2), when low SWC
occurred alongside high and stable Ts and Rg (Fig. 1b, d, a, respectively). Previous studies have
observed an exponential increase in soil N_2O fluxes with Ts (Schindlbacher et al., 2004; Smith et al.,
2003), which can be explained by the temperature sensitivity of the underlying enzymatic processes.
However, Ts at our tropical site did not vary greatly (Fig. 1d). In addition, the significant relationships
between Rg and the upland soil N_2O fluxes are still unclear. Although these relationships were

significant, their explanatory power was rather poor ($R^2 = 0.10$), suggesting that other controlling variables such as N and carbon availability (Morley and Baggs, 2010), or microbial community dynamics (Regan et al., 2011), may also substantially influence the temporal dynamics of N_2O fluxes. This emphasised the potential for both synergistic and antagonistic effects of key environmental drivers (e.g. Ts, SWC) on regulating variables, highlighting the complexity of predicting seasonal variations in N_2O flux in upland tropical forest soils.

However, when all the seasons were accounted for, an increase in SWC appeared to partially explain the increase in soil N_2O fluxes (Figs. 5e, S5d). Although both nitrification and denitrification can occur simultaneously in various soil microsites (Stevens et al., 1997), N_2O release often occurs on a daily basis in environments with rapidly shifting O_2 availability, which is the case for soils with changing SWC (Davidson, 1992; Fig. 1). Several studies in subtropical and tropical forests have reported significant effects of SWC on tropical soil N_2O fluxes (Kiese and Butterbach-Bahl, 2002; Werner et al., 2006, 2007; Gütlein et al., 2018).

5 Conclusion

Our long-term monitoring of ecosystem and soil CH_4 and N_2O fluxes over a period of 26 months under contrasting climatic conditions (driest versus wettest seasons) revealed highly variable fluxes that changed direction and amount on short time scales. At the ecosystem level, mean daily fluxes were low, but Although mean daily fluxes were low, N_2O emissions were observed all-year-round, whereas all year long. In contrast, for CH_4 emissions or uptake depended on the season. As expected, ‡Seasonality was statistically significant for he seasons had a statistically significant effect on ecosystem CH_4 and N_2O fluxes, with CH_4 uptake mainly occurring and higher N_2O emissions during the driest season than compared to during the wettest season. At the soil level, Upland soils exhibited highly variable CH_4 and N_2O fluxes were highly variable, with statistically significant an increase in CH_4 uptake and a decrease in N_2O emissions from the wettest to the driest season. The selected climatic variables we selected explained only a minor part of the seasonal variations in ecosystem CH_4 and N_2O fluxes

and were highly dependent on the selected ecosystem CH₄ fluxes. The best results were found when the effects of changes in SWC and Ts were considered, although the explanatory power of the models with regard to seasonal variations in soil CH₄ and N₂O fluxes was at most 20%. At the soil level, none of the climatic variables were significant for seasonal fluxes of N₂O whereas SWC was a strong driver of CH₄ fluxes.

Measurements at the ecosystem and soil levels showed divergent fluxes, probably because soil fluxes represent only one compartment of the whole ecosystem. Furthermore, upland soils (52% of the footprint area) are just one type of the wide variety of soils found within ~~the large range of soils found inside~~ the Guyaflux tower footprint. Soil chambers also provide integrated fluxes for a much smaller area than does the eddy covariance technique, which collects data from integrated processes across various forest habitats, soil types, tree species, hydrological conditions, and topographical positions. To improve the understanding of seasonal variations in ecosystem CH₄ and N₂O fluxes, it is crucial to characterise the fluxes in all existing ecosystem compartments simultaneously, ~~at the same time and to including~~ all tree components (leaves, stems, branches) and ~~tree~~ species in the forest habitats, not just those on upland soils. ~~However, o~~Our study still provides valuable data ~~that~~which, when combined with mechanistic models, could help to identify the missing drivers responsible for the seasonal variations in CH₄ and N₂O fluxes in wet tropical forest ecosystems.

Data availability

~~All raw data can be provided by the corresponding authors upon request.~~

The datasets analysed during the current study are available at the Zenodo repository (Bréchet et al., 2025): <https://doi.org/10.5281/zenodo.17535314>, and are also available from the corresponding author upon request.

Supplement link

The supplement related to this article is available online at...

Author contributions

LMB, MI, CS, DB, IAJ conceived the ideas and designed the methodology; LMB and BB collected the data; LMB and MI performed quality control checks on the data and analysed the data; IAJ and RBJ obtained the funding; LMB led the writing of the manuscript and all authors contributed to the manuscript and gave final approval for submission.

Competing interests

The authors declare that they have no conflict of interest.

Acknowledgements

We would like to thank Jean-Yves Goret, Nicola Arriga and Elodie Courtois for their technical support.

We thank Vicki Moore for correcting the English of this paper. We thank two anonymous reviewers who greatly contributed to a previous version of this manuscript.

Financial support

This work was supported by the European Research Council Synergy grant ERC-2013-SyG-610028-IMBALANCE-P and the European Commission through a Marie Skłodowska-Curie Individual Fellowship

H2020-MSCA-IF-2017-796438 awarded to L. M. Bréchet, the UMR “Ecologie des Forêts de Guyane” (EcoFoG) and the Research Fund of the University of Antwerp. This work was also supported by the Gordon and Betty Moore Foundation, Stanford University and the National Research Institute for Agriculture, Food and Environment (INRAE) through the Gordon and Betty Moore Foundation grant GBMF-11519 for L. M. Bréchet’s Postdoctoral Fellowship, and by an Investissement d’Avenir grant from the Agence Nationale de la Recherche (CEBA: ANR-10-LABX-25-01).

References

- Aguilos, M., Hérault, B., Burban, B., Wagner, F., Bonal, D.: What drives long-term variations in carbon flux and balance in a tropical rainforest in French Guiana?, *Agric. For. Meteorol.*, 253–254, 114–123, <https://doi.org/10.1016/j.agrformet.2018.02.009>, 2018.
- Aubinet, M., Grelle, A., Ibrom, A., Rannik, Ü., Moncrieff, J., Foken, T., Kowalski, A. S., Martin, P. H., Berbigier, P., Bernhofer, C., Clement, R., Elbers, J., Granier, A., Grünwald, T., Morgenstern, K., Pilegaard, K., Rebmann, C., Snijders, W., Valentini, R., Vesala, T.: Estimates of the annual net carbon and water exchange of European forests: the EUROFLUX methodology, *Adv. Ecol. Res.*, 30, 114–175, [https://doi.org/10.1016/S0065-2504\(08\)60018-5](https://doi.org/10.1016/S0065-2504(08)60018-5), 2000.
- Aubinet, M., Vesala, T. and Papale, D. eds.: Eddy covariance: a practical guide to measurement and data analysis, Springer Science and Business Media, 2012.
- Baldocchi, D. D.: Assessing the eddy covariance technique for evaluating carbon dioxide exchange rates of ecosystems: past, present and future, *Glob. Chang. Biol.*, 9, 479–92, <https://doi.org/10.1046/j.1365-2486.2003.00629.x>, 2003.
- Baldocchi, D.: Measuring fluxes of trace gases and energy between ecosystems and the atmosphere - the state and future of the eddy covariance method, *Glob. Chang. Biol.*, 20, 3600–9, <https://doi.org/10.1111/gcb.12649>, 2014.
- Baldocchi, D. D.: How eddy covariance flux measurements have contributed to our understanding of Global Change Biology, *Glob. Chang. Biol.*, 26, 242–60, <https://doi.org/10.1111/gcb.14807>, 2020.

- Bernhardt, E. S., Blaszcak, J. R., Ficken, C. D., Fork, M. L., Kaiser, K. E., Seybold, E. C.: Control points in ecosystems: moving beyond the hot spot hot moment concept, *Ecosystems*, 20, 665–82, <https://doi.org/10.1007/s10021-016-0103-y>, 2017.
- Blagodatsky, S., Smith P.: Soil physics meets soil biology: towards better mechanistic prediction of greenhouse gas emissions from soil, *Soil Biol. Biochem.*, 47, 78–92, <https://doi.org/10.1016/j.soilbio.2011.12.015>, 2012.
- Bonal, D., Bosc, A., Ponton, S., Goret, J.-Y., Burban, B. T., Gross, P., Bonnefond, J. M., Elbers, J., Longdoz, B., Epron, D., Guehl, J. M., Granier, A.: Impact of severe dry season on net ecosystem exchange in the Neotropical rainforest of French Guiana, *Glob. Chang. Biol.*, 14, 1917–1933, <https://doi.org/10.1111/j.1365-2486.2008.01610.x>, 2008.
- Bouwman, A. F., Fung, I., Matthews, E., John, J.: Global analysis of the potential for N₂O production in natural soils, *Global Biogeochem. Cy.*, 7, 557–597, <https://doi.org/10.1029/93GB01186>, 1993.
- Bréchet, L. M., Daniel, W., Stahl, C., Burban, B., Goret, J.-Y., Salomón, R. L., Janssens, I. A.: Simultaneous tree stem and soil greenhouse gas (CO₂, CH₄, N₂O) flux measurements: a novel design for continuous monitoring towards improving flux estimates and temporal resolution, *New Phytol.*, 230, 2487–500, <https://doi.org/10.1111/nph.17352>, 2021.
- Bréchet, L. M., Salomón, R. L., Machacova, K., Stahl, C., Burban, B., Goret, J.-Y., Steppe, K., Bonal, D., Janssens, I. A.: Insights into the subdaily variations in methane, nitrous oxide and carbon dioxide fluxes from upland tropical tree stems, *New Phytol.*, 245, 2451–2466, <https://doi.org/10.1111/nph.20401>, 2025.
- Butterbach-Bahl, K., Kock, M., Willibald, G., Hewett, B., Buhagiar, S., Papen, H., Kiese, R.: Temporal variations of fluxes of NO, NO₂, N₂O, CO₂, and CH₄ in a tropical rain forest ecosystem, *Global Biogeochem. Cy.*, 18, 3, <https://doi.org/10.1029/2004GB002243>, 2004.
- Carmo, J. B., Keller, M., Dias, J. D., Camargo, P. B., Crill, P.: A source of methane from upland forests in the Brazilian Amazon, *Geophys. Res. Lett.*, 33, 4, <https://doi.org/10.1029/2005GL025436>, 2006.
- Courtois, E. A., Stahl, C., Van den Berge, J., Bréchet, L., Van Langenhove, L., Richter, A., Urbina, I., Soong,

768 J. L., Penuelas, J., Janssens, I. A.: Spatial variation of soil CO₂, CH₄ and N₂O fluxes across
 769 topographical positions in tropical forests of the guiana shield, *Ecosystems*, 21, 1445–58,
 770 <https://doi.org/10.1007/s10021-018-0232-6>, 2018.

771 Courtois, E. A., Stahl, C., Burban, B., Van den Berge, J., Berveiller, D., Bréchet, L., Soong, J. L., Arriga, N.,
 772 Peñuelas, J., Janssens, I. A.: Automatic high-frequency measurements of full soil greenhouse gas
 773 fluxes in a tropical forest, *Biogeosciences*, 16, 785–96, <https://doi.org/10.5194/bg-16-785-2019>,
 774 2019.

775 Covey, K. R., Megonigal, J. P.: Methane production and emissions in trees and forests, *New Phytol.*,
 776 222, 35–51, <https://doi.org/10.1111/nph.15624>, 2019.

777 Covey, K., Soper, F., Pangala, S., Bernardino, A., Pagliaro, Z., Basso, L., Cassol, H., Fearnside, P.,
 778 Navarrete, D., Novoa, S., Sawakuchi, H.: Carbon and beyond: The biogeochemistry of climate in a
 779 rapidly changing Amazon, *Front. For. Glob. Change.*, 4, 1–20,
 780 <https://doi.org/10.3389/ffgc.2021.618401>, 2021.

781 Daniel, W., Stahl, C., Burban, B., Goret, J.-Y., Cazal, J., Richter, A., Janssens, I. A., Bréchet, L. M.: Tree
 782 stem and soil methane and nitrous oxide fluxes, but not carbon dioxide fluxes, switch sign along
 783 a topographic gradient in a tropical forest, *Plant Soil*, 488, 533–49,
 784 <https://doi.org/10.1007/s11104-023-05991-y>, 2023.

785 Davidson, E.A.: Sources of nitric oxide and nitrous oxide following wetting of dry soil, *Soil Sci. Soc. Am.*
 786 J., 56, 95–102, <https://doi.org/10.2136/sssaj1992.03615995005600010015x>, 1992.

787 Davidson, E. A., De Araújo, A. C., Artaxo, P., Balch, J. K., Brown, I. F., Mercedes, M. M., Coe, M. T.,
 788 Defries, R. S., Keller, M., Longo, M., Munger, J. W., Schroeder, W., Soares-Filho, B. S., Souza, C.
 789 M., Wofsy, S. C., The Amazon basin in transition, *Nature*, 481, 321–328,
 790 <https://doi.org/10.1038/nature10717>, 2012.

791 Delwiche, K. B., Knox, S. H., Malhotra, A., Fluet-Chouinard, E., McNicol, G., Feron, S., Ouyang, Z., Papale,
 792 D., Trotta, C., Canfora, E., Cheah, Y. W.: FLUXNET-CH₄: A global, multi-ecosystem dataset and
 793 analysis of methane seasonality from freshwater wetlands, *Earth Syst. Sci. Data Discuss.*, 2021,

1–11, <https://doi.org/10.5194/essd-13-3607-2021>, 2021.

Dutaur, L., Verchot, L.V.: A global inventory of the soil CH₄ sink. *Global Biogeochem. Cy.*, 21, 4, <https://doi.org/10.1029/2006GB002734>, 2007.

Epron, D., Bosc, A., Bonal, D., Freycon, V.: Spatial variation of soil respiration across a topographic gradient in a tropical rain forest in French Guiana, *J. Trop. Ecol.*, 22, 565–74, <https://doi.org/10.1017/S0266467406003415>, 2006.

Eugster, W., Plüss, P.: A fault-tolerant eddy covariance system for measuring CH₄ fluxes, *Agric. For. Meteorol.*, 150, 841–51, <https://doi.org/10.1016/j.agrformet.2009.12.008>, 2010.

Eugster, W., Merbold, L.: Eddy covariance for quantifying trace gas fluxes from soils, *Soil*, 1, 187–205, <https://doi.org/10.5194/soil-1-187-2015>, 2015.

Fang, J., Fang, J., Chen, B., Zhang, H., Dilawar, A., Guo, M. and Liu, S.A.: Assessing spatial representativeness of global flux tower eddy-covariance measurements using data from FLUXNET2015, *Sci. Data*, 11, 569, <https://doi.org/10.1038/s41597-024-03291-3>, 2024.

von Fischer, J. C., Hedin, L. O.: Controls on soil methane fluxes: Tests of biophysical mechanisms using stable isotope tracers, *Global Biogeochem. Cy.*, 21, 9-Gb2007, <https://doi.org/10.1029/2006gb002687>, 2007.

Gauci, V.: Tree methane exchange in a changing world, *Nat. Rev. Earth Environ.*, 6, 471–483, <https://doi.org/10.1038/s43017-025-00692-9>, 2025.

Gauci, V., Pangala, S. R., Shenkin, A., Barba, J., Bastviken, D., Figueiredo, V., Gomez, C., Enrich-Prast, A., Sayer, E., Stauffer, T., Welch, B.: Global atmospheric methane uptake by upland tree woody surfaces, *Nature*, 631, 796–800, <https://doi.org/10.1038/s41586-024-07592-w>, 2024.

~~Goreau, T. J., De Mello, W. Z.: Tropical deforestation: some effects on atmospheric chemistry, *Ambio.*, 17, 275–281, 1988.~~

Groffman, P. M., Butterbach-Bahl, K., Fulweiler, R. W., Gold, A. J., Morse, J. L., Stander, E. K., Tague, C., Tonitto, C., Vidon, P.: Challenges to incorporating spatially and temporally explicit phenomena (hotspots and hot moments) in denitrification models, *Biogeochemistry*, 93, 49–77,

820 <https://doi.org/10.1007/s10533-008-9277-5>, 2009.

821 Gütlein, A., Gerschläuer, F., Kikoti, I., Kiese, R.: Impacts of climate and land use on N₂O and CH₄ fluxes
822 from tropical ecosystems in the Mt. Kilimanjaro region, Tanzania, *Glob. Chang. Biol.*, 24, 1239–
823 55, <https://doi.org/10.1111/gcb.13944>, 2018.

824 Ito, A., Inatomi, M.: Use of a process-based model for assessing the methane budgets of global
825 terrestrial ecosystems and evaluation of uncertainty, *Biogeosciences*, 9, 759–73,
826 <https://doi.org/10.5194/bg-9-759-2012>, 2012.

827 IUSS Working Group WRB: World reference base for soil resources 2014, update 2015. International
828 soil classification system for naming soils and creating legends for soil maps, World Soil Resources
829 Reports No. 106. FAO, Rome (2015), 2015.

830 Jones, C. M., Spor, A., Brennan, F. P., Breuil, M. C., Bru, D., Lemanceau, P., Griffiths, B., Hallin, S.,
831 Philippot, L.: Recently identified microbial guild mediates soil N₂O sink capacity, *Nat. Clim.*
832 *Change*, 4, 801–5, <https://doi.org/10.1038/nclimate2301>, 2014.

833 ~~Keller, M., Mitre, M. E., Stallard, R. F.: Consumption of atmospheric methane in soils of central Panama:~~
834 ~~effects of agricultural development, *Global Biogeochem. Cy.*, 4, 21–27,~~
835 ~~<https://doi.org/10.1029/GB004i001p00021>, 1990.~~

836 Khalil, K., Mary, B., Renault, P.: Nitrous oxide production by nitrification and denitrification in soil
837 aggregates as affected by O₂ concentration, *Soil Biol. Biochem.*, 36, 687–99,
838 <https://doi.org/10.1016/j.soilbio.2004.01.004>, 2004.

839 Kiese, R., Butterbach-Bahl, K.: N₂O and CO₂ emissions from three different tropical forest sites in the
840 wet tropics of Queensland, Australia, *Soil Biol. Biochem.*, 34, 975–87,
841 [https://doi.org/10.1016/S0038-0717\(02\)00031-7](https://doi.org/10.1016/S0038-0717(02)00031-7), 2002.

842 Knox, S. H., Bansal, S., McNicol, G., Schafer, K., Sturtevant, C., Ueyama, M., Valach, A. C., Baldocchi, D.,
843 Delwiche, K., Desai, A. R., Euskirchen, E., et al.: Identifying dominant environmental predictors of
844 freshwater wetland methane fluxes across diurnal to seasonal time scales, *Glob. Chang. Biol.*, 27,
845 3582–604, <https://doi.org/10.1111/gcb.15661>, 2021.

846 Le Mer, J., Roger, P.: Production, oxidation, emission and consumption of methane by soils: a review,
847 Eur. J. Soil Biol., 37, 25–50, [https://doi.org/10.1016/S1164-5563\(01\)01067-6](https://doi.org/10.1016/S1164-5563(01)01067-6), 2001.

848 Liu, Z., Li, H., Wu, F., Wang, H., Chen, H., Zhu, Q., Yang, G., Liu, W., Chen, D., Li, Y., Peng, C.:
849 Quantification of ecosystem-scale methane sinks observed in a tropical rainforest in Hainan,
850 China, Land, 11, 154, <https://doi.org/10.3390/land11020154>, 2022.

851 Lucas-Moffat, A. M., Huth, V., Augustin, J., Brummer, C., Herbst, M., Kutsch, W. L.: Towards pairing plot
852 and field scale measurements in managed ecosystems: Using eddy covariance to cross-validate
853 CO₂ fluxes modeled from manual chamber campaigns, Agric. For. Meteorol., 256, 362–378,
854 <https://doi.org/10.1016/j.agrformet.2018.01.023>, 2018.

855 Luo, G. J., Kiese, R., Wolf, B., Butterbach-Bahl, K.: Effects of soil temperature and moisture on methane
856 uptake and nitrous oxide emissions across three different ecosystem types, Biogeosciences, 10,
857 3205–19, <https://bg.copernicus.org/articles/10/3205/2013>, 2013.

858 Machacova, K., Bäck, J., Vanhatalo, A., Halmeenmäki, E., Kolari, P., Mammarella, I., Pumpanen, J.,
859 Acosta, M., Urban, O., Pihlatie, M.: Pinus sylvestris as a missing source of nitrous oxide and
860 methane in boreal forest, Sci. Rep., 6, 23410, <https://doi.org/10.1038/s41598-017-13781-7>,
861 2016.

862 Machacova, K., Borak, L., Agyei, T., Schindler, T., Soosaar, K., Mander, Ü., Ah-Peng, C.: Trees as net sinks
863 for methane (CH₄) and nitrous oxide (N₂O) in the lowland tropical rain forest on volcanic Réunion
864 Island, New Phytol., 229, 1983–94, <https://doi.org/10.1111/nph.17002>, 2021.

865 Mander, Ü., Krasnova, A., Escuer-Gatius, J., Espenberg, M., Schindler, T., Machacova, K., Pärn, J.,
866 Maddison, M., Megonigal, J. P., Pihlatie, M., Kasak, K.: Forest canopy mitigates soil N₂O emission
867 during hot moments, npj Clim. Atmos. Sci., 4, 39, <https://doi.org/10.1038/s41612-021-00194-7>,
868 2021.

869 Mauder, M., Foken, T.: Documentation and instruction manual of the eddy covariance software
870 package TK2, Universität Bayreuth, Abt. Mikrometeorologie, Arbeitsergebnisse 26:44 pp.
871 Internet, ISSN 1614–8926, 2004.

Morley, N., Baggs, E. M.: Carbon and oxygen controls on N₂O and N₂ production during nitrate reduction, *Soil Biol. Biochem.*, 42, 1864–1871, <https://doi.org/10.1016/j.soilbio.2010.07.008>, 2010.

Nickerson, N.: Evaluating gas emission measurements using Minimum Detectable Flux (MDF), Eosense Inc., Dartmouth, Nova Scotia, Canada, 2016.

Nicolini, G., Aubinet, M., Feigenwinter, C., Heinesch, B., Lindroth, A., Mamadou, O., Moderow, U., Mölder, M., Montagnani, L., Rebmann, C., Papale, D., Impact of CO₂ storage flux sampling uncertainty on net ecosystem exchange measured by eddy covariance, *Agric. For. Meteorol.*, 248, 228–239, <https://doi.org/10.1016/j.agrformet.2017.09.025>, 2018.

Oertel, C., Matschullat, J., Zurba, K., Zimmermann, F., Erasmi, S.: Greenhouse gas emissions from soils—A review, *Geochem.*, 76, 327–52, <https://doi.org/10.1016/j.chemer.2016.04.002>, 2016.

Pangala, S. R., Moore, S., Hornibrook, E. R., Gauci, V.: Trees are major conduits for methane egress from tropical forested wetlands, *New Phytol.*, 197, 524–31, <https://doi.org/10.1111/nph.12031>, 2013.

Pitz, S., Megonigal, J. P.: Temperate forest methane sink diminished by tree emissions, *New Phytol.*, 214, 1432–9, <https://doi.org/10.1111/nph.14559>, 2017.

Regan, K., Kammann, C., Hartung, K., Lenhart, K., Müller, C., Philippot, L., Kandeler, E., and Marhan, S.: Can differences in microbial abundances help explain enhanced N₂O emissions in a permanent grassland under elevated atmospheric CO₂?, *Glob. Change Biol.*, 17, 3176–3186, <https://doi.org/10.1111/j.1365-2486.2011.02470.x>, 2011.

Sakabe, A., Itoh, M., Hirano, T., Kusin, K.: Ecosystem-scale methane flux in tropical peat swamp forest in Indonesia, *Glob. Chang. Biol.*, 24, 5123–36, <https://doi.org/10.1111/gcb.14410>, 2018.

Sanford, R. A., Wagner, D. D., Wu, Q., Chee-Sanford, J. C., Thomas, S. H., Cruz-García, C., Rodríguez, G., Massol-Deyá, A., Krishnani, K. K., Ritalahti, K. M., Nissen, S.: Unexpected nondenitrifier nitrous oxide reductase gene diversity and abundance in soils, *Proc. Natl. Acad. Sci.*, 109, 19709–14, <https://doi.org/10.1073/pnas.1211238109>, 2012.

898 Schindlbacher, A., Zechmeister-Boltenstern, S., ButterbachBahl, K.: Effects of soil moisture and
899 temperature on NO, NO₂, and N₂O emissions from European forest soils, J. Geophys. Res.,109,
900 D17302, <https://doi.org/10.1029/2004JD004590>, 2004.

901 Silver, W. L., Lugo, A., Keller, M.: Soil oxygen availability and biogeochemistry along rainfall and
902 topographic gradients in upland wet tropical forest soils, Biogeochemistry, 44, 301–328,
903 <https://doi.org/10.1007/BF00996995>, 1999.

904 Smith, K. A., Ball, T., Conen, F., Dobbie, K. E., Massheder, J., Rey, A.: Exchange of greenhouse gases
905 between soil and atmosphere: interactions of soil physical factors and biological processes, Eur.
906 J. soil sci., 54, 779–91, <https://doi.org/10.1111/ejss.12539>~~[https://doi.org/10.1046/j.1351-](https://doi.org/10.1046/j.1351-0754.2003.0567.x)~~
907 ~~0754.2003.0567.x~~, 2003.

908 Steinkamp, R., Butterbach-Bahl, K., Papen, H.: Methane oxidation by soils of an N limited and N
909 fertilized spruce forest in the Black Forest, Germany, Soil Biol. Biochem., 33, 145–153,
910 [https://doi.org/10.1016/S0038-0717\(00\)00124-3](https://doi.org/10.1016/S0038-0717(00)00124-3), 2001.

911 Stevens, R. J., Laughlin, R. J., Burns, L. C., Arah, J. R., Hood, R. C.: Measuring the contributions of
912 nitrification and denitrification to the flux of nitrous oxide from soil, Soil Biol. Biochem., 29, 139–
913 51, [https://doi.org/10.1016/S0038-0717\(96\)00303-3](https://doi.org/10.1016/S0038-0717(96)00303-3), 1997.

914 Stiegler, C., Koebsch, F., Ali, A. A., June, T., Veldkamp, E., Corre, M. D., Koks, J., Tjoa, A., Knohl, A.:
915 Temporal variation in nitrous oxide (N₂O) fluxes from an oil palm plantation in Indonesia: An
916 ecosystem-scale analysis, GCB Bioenergy, 15, 1221–39, <https://doi.org/10.1111/gcbb.13088>,
917 2023.

918 The, Y. A., Silver, W. L., Conrad, M. E.: Oxygen effects on methane production and oxidation in humid
919 tropical forest soils, Glob. Chang. Biol., 11, 1283–1297, [https://doi.org/10.1111/j.1365-](https://doi.org/10.1111/j.1365-2486.2005.00983.x)
920 [2486.2005.00983.x](https://doi.org/10.1111/j.1365-2486.2005.00983.x), 2005.

921 The, Y. A., Silver, W. L.: Effects of soil structure destruction on methane production and carbon
922 partitioning between methanogenic pathways in tropical rain forest soils, J. Geophys. Res. G:
923 Biogeosciences, 111, G1, <https://doi.org/10.1029/2005JG000020>, 2006.

924 Tian, H., Chen, G., Lu, C., Xu, X., Ren, W., Zhang, B., Banger, K., Tao, B., Pan, S., Liu, M., Zhang, C.: Global
 925 methane and nitrous oxide emissions from terrestrial ecosystems due to multiple environmental
 926 changes, *Ecosyst. Health Sustain.*, 1, 1–20, <https://doi.org/10.1890/EHS14-0015.1>, 2015.

927 Van Langenhove, L., Depaepe, T., Vicca, S., van den Berge, J., Stahl, C., Courtois, E. A., Weedon, J.,
 928 Urbina, I., Grau, O., Asensio, D., Peñuelas, J., Boeckx, P., Richter, A., Van Der Straeten, D.,
 929 Janssens, I. A.: Regulation of nitrogen fixation from free-living organisms in soil and leaf litter of
 930 two tropical forests of the Guiana shield, *Plant Soil*, 450, 93–110.
 931 <https://doi.org/10.1007/s11104-019-04012-1>, 2020a.

932 Van Langenhove, L., Verryckt, L. T., Bréchet, L., Courtois, E. A., Stahl, C., Hofhansl, F., Bauters, M.,
 933 Sardans, J., Boeckx, P., Fransen, E., Peñuelas, J., Janssens, I. A.: Atmospheric deposition of
 934 elements and its relevance for nutrient budgets of tropical forests, *Biogeochemistry*, 149, 175–
 935 93, <https://doi.org/10.1007/s10533-020-00673-8>, 2020**b**.

936 Wagner, F., Hérault, B., Stahl, C., Bonal, D., Rossi, V.: Modeling water availability for trees in tropical
 937 forests, *Agric. For. Meteorol.*, 151, 1202–13, <https://doi.org/10.1016/j.agrformet.2011.04.012>,
 938 2011.

939 Wang, Z. P., Chang, S. X., Chen, H., Han, X. G.: Widespread non-microbial methane production by
 940 organic compounds and the impact of environmental stresses, *Earth-Sci. Rev.*, 127, 193–202,
 941 <https://doi.org/10.1016/j.fuel.2015.12.074>, 2013.

942 Wang, H., Li, H., Liu, Z., Lv, J., Song, X., Li, Q., Jiang, H., Peng, C.: Observed methane uptake and
 943 emissions at the ecosystem scale and environmental controls in a subtropical forest, *Land*, 10,
 944 975, <https://doi.org/10.3390/land10090975>, 2021.

945 Welch, B., Gauci, V., Sayer, E. J.: Tree stem bases are sources of CH₄ and N₂O in a tropical forest on
 946 upland soil during the dry to wet season transition, *Glob. Chang. Biol.*, 25, 361–72,
 947 <https://doi.org/10.1111/gcb.14498>, 2019.

948 Werner, C., Zheng, X., Tang, J., Xie, B., Liu, C., Kiese, R., Butterbach-Bahl, K.: N₂O, CH₄ and CO₂ emissions
 949 from seasonal tropical rainforests and a rubber plantation in Southwest China, *Plant Soil*, 289,

335–53, <https://doi.org/10.1007/s11104-006-9143-y>, 2006.

Werner, C., Kiese, R., Butterbach-Bahl, K.: Soil-atmosphere exchange of N₂O, CH₄, and CO₂ and controlling environmental factors for tropical rain forest sites in western Kenya, *J. Geophys. Res.-Atmos.*, 112, D3, <https://doi.org/10.1029/2006JD007388>, 2007.

Wickham, H., Wickham, H.: Getting Started with ggplot2. ggplot2: Elegant graphics for data analysis, 11–31, 2016.

Whiting, G. J., Chanton, J. P.: Primary production control of methane emission from wetlands, *Nature*, 364, 794–5, <https://doi.org/10.1038/364794a0>, 1993.

Wright, E. L., Black, C. R., Cheesman, A. W., Drage, T., Large, D., Turner, B. L., Sjoegersten, S.: Contribution of subsurface peat to CO₂ and CH₄ fluxes in a neotropical peatland, *Glob. Chang. Biol.*, 17, 2867–81, <https://doi.org/10.1111/j.1365-2486.2011.02448.x>, 2011.

Wood, S., Wood, M. S.: Package “mgcv”. R package version, 1:729, 2015.

Wood, S. N.: Generalized additive models: an introduction with R. chapman and hall/CRC, Boca Raton., Pp 496, <https://doi.org/10.1201/9781315370279>, 2017.

Yu, L., Zhu, J., Ji, H., Bai, X., Lin, Y., Zhang, Y., Sha, L., Liu, Y., Song, Q., Dörsch, P., Mulder, J.: Topography-related controls on N₂O emission and CH₄ uptake in a tropical rainforest catchment, *Sci. Total Environ.*, 775, 145616, <https://doi.org/10.1016/j.scitotenv.2021.145616>, 2021.

Zhu, J., Mulder, J., Wu, L.P., Meng, X. X., Wang, Y. H., Dörsch, P.: Spatial and temporal variability of N₂O emissions in a subtropical forest catchment in China, *Biogeosciences*, 10, 1309–21, <https://doi.org/10.5194/bg-10-1309-2013>, 2013.