

## Supplementary material

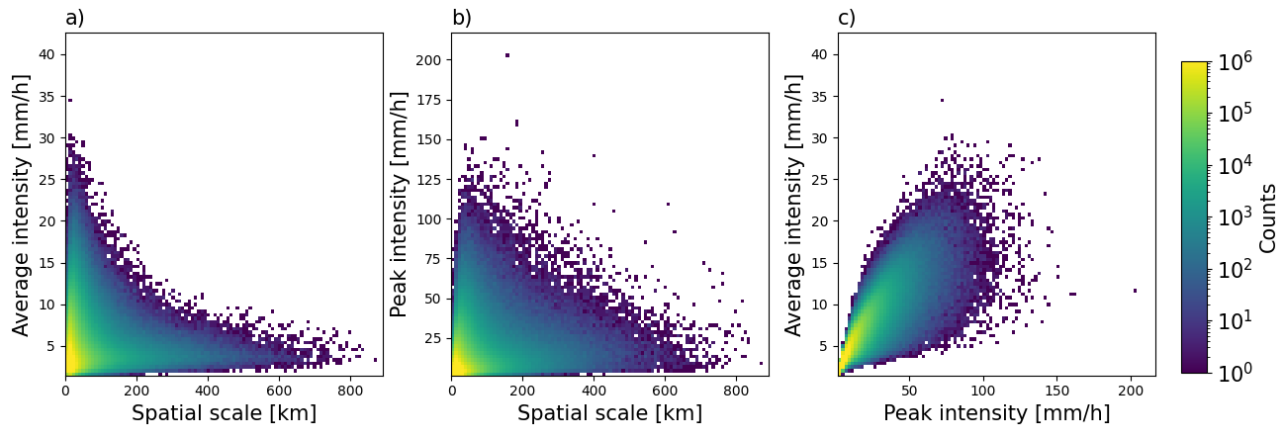


Figure S1: Scatter density plots showing the joint distribution of individual precipitation event characteristics over the entire study period. (a) Average intensity (tot\_tp/area) vs. spatial scale (axis\_maj); (b) Peak intensity (tp\_max) vs. spatial scale (axis\_maj); (c) Peak intensity (tp\_max) vs. average intensity (tot\_tp/area). Color scale indicates number of occurrences at each point.

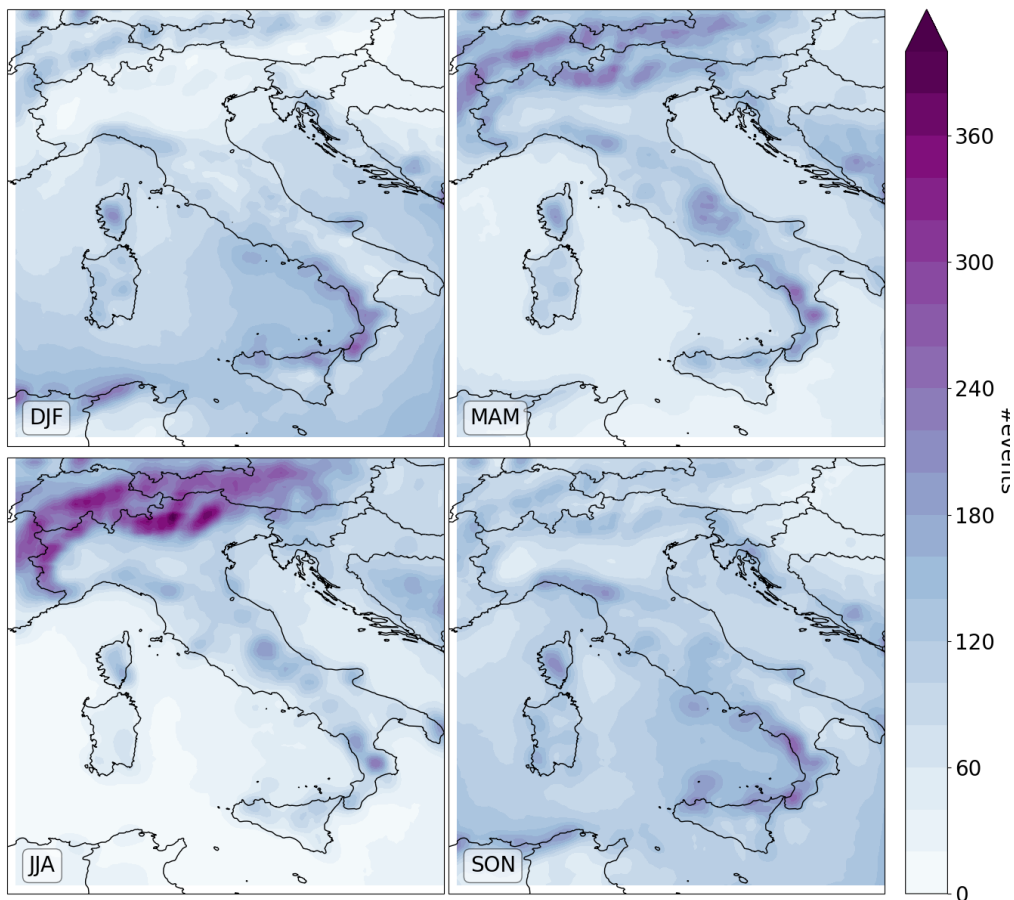


Figure S2: Seasonal map of number of events (N) occurring within the 0.5 x 0.5 window (step size 0.1), averaged annually over the period 1986–2022, from the dataset obtained with a fixed 1 mm threshold.

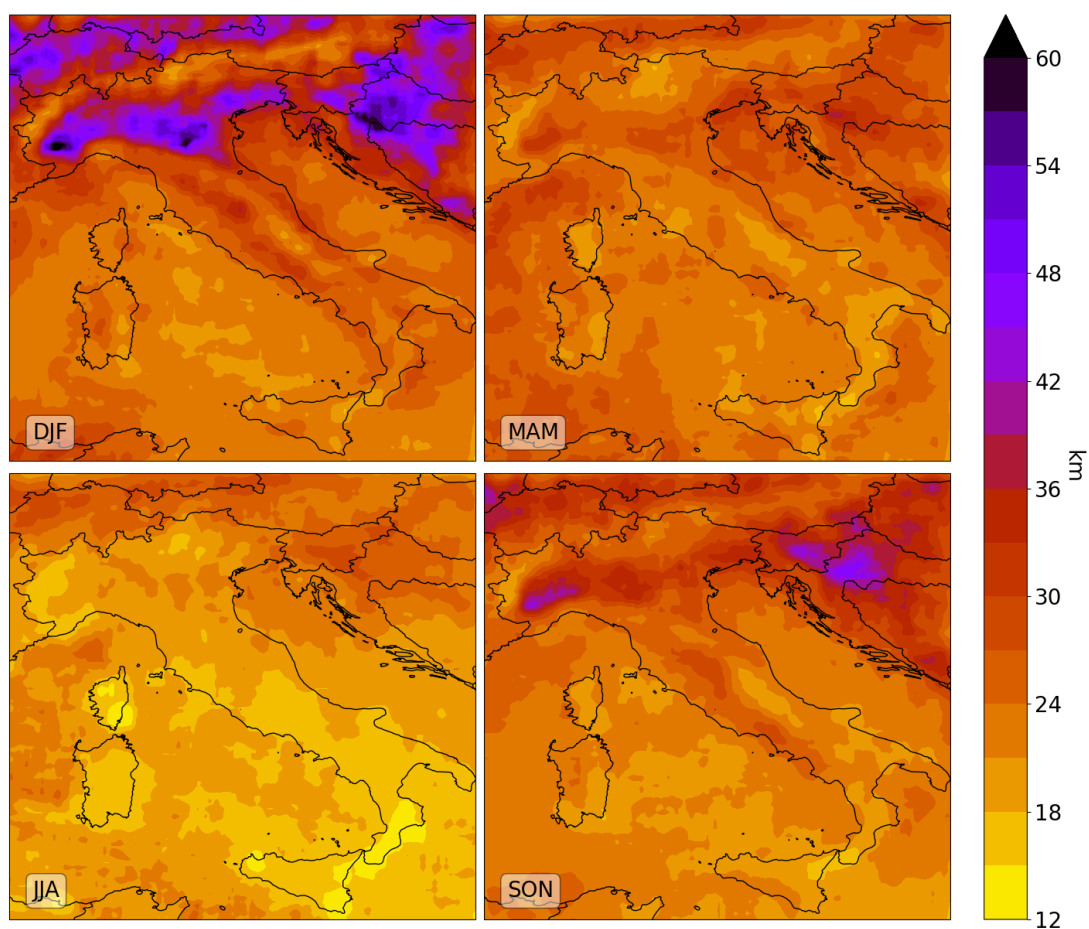


Figure S3: Seasonal map of the mean spatial scale (SpS) of the events occurring within the  $0.5 \times 0.5$  window (step size 0.1), averaged annually over the period 1986–2022, from the dataset obtained with a fixed 1 mm threshold.

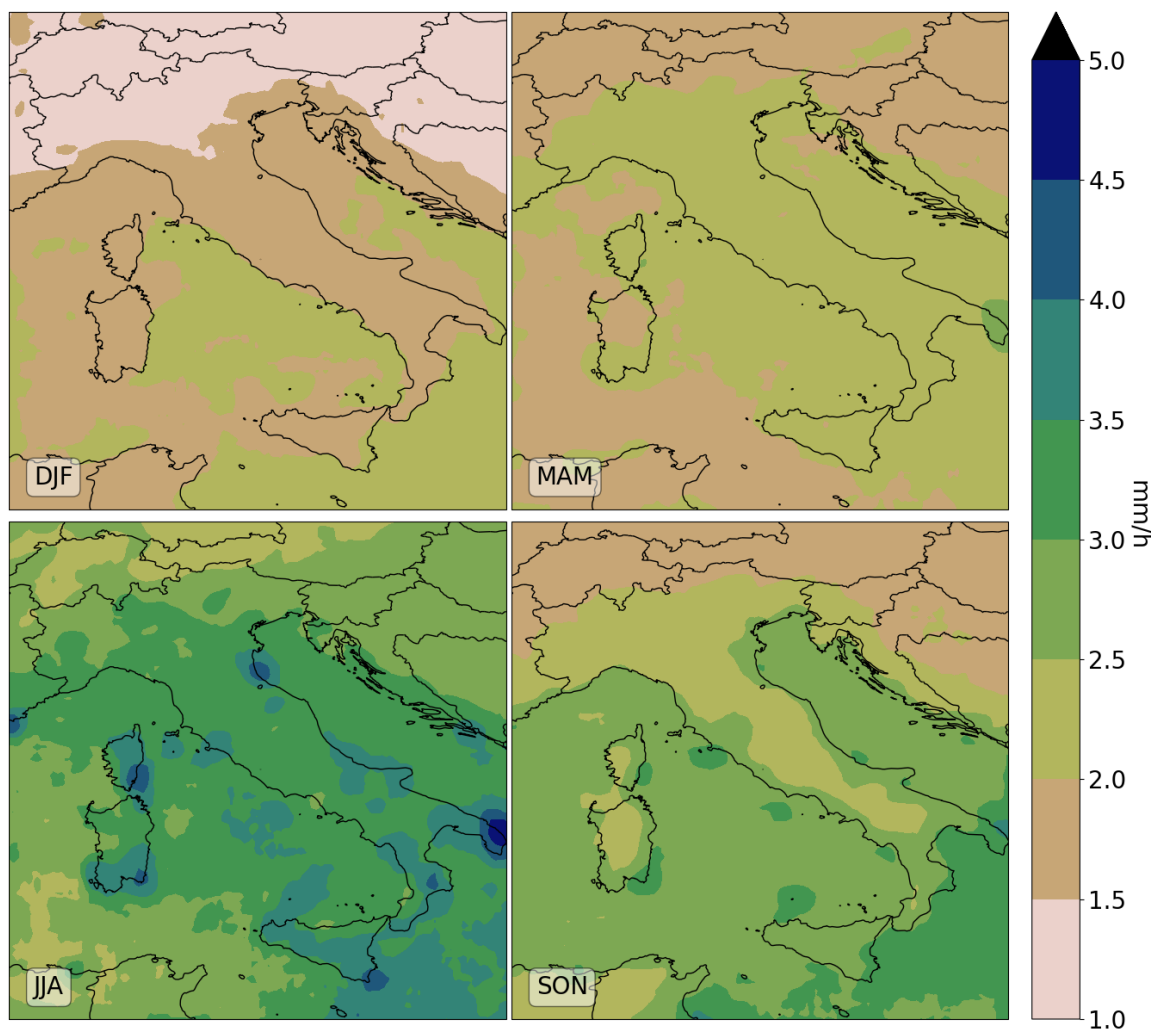


Figure S4: Seasonal map of the mean average intensity ( $AvIn$ ) of the events occurring within the  $0.5 \times 0.5$  window (step size 0.1), averaged annually over the period 1986–2022, from the dataset obtained with a fixed 1 mm threshold.

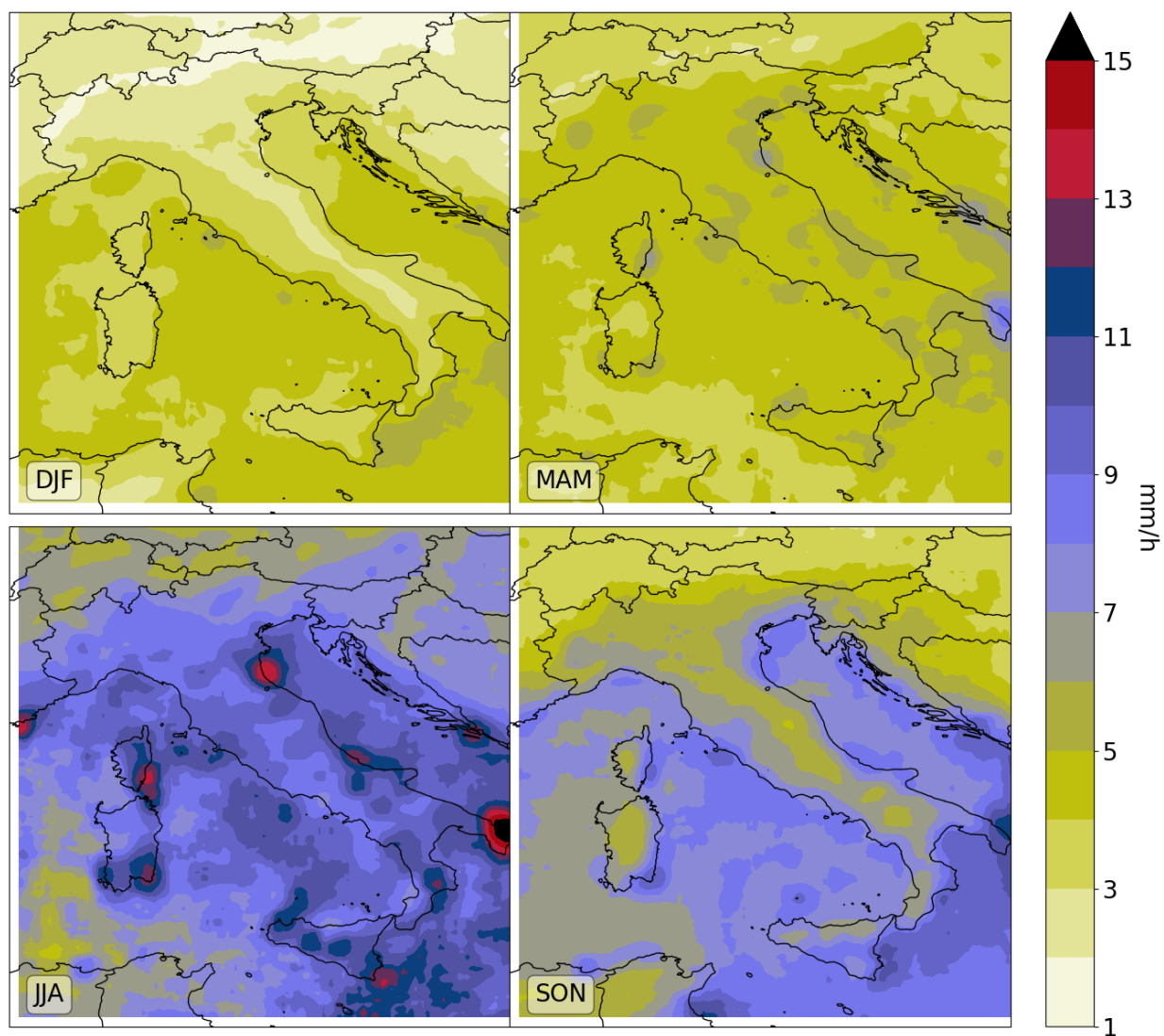


Figure S5: Seasonal map of the mean peak intensity (PkI) of the events occurring within the  $0.5 \times 0.5$  window (step size 0.1), averaged annually over the period 1986–2022, from the dataset obtained with a fixed 1 mm threshold.

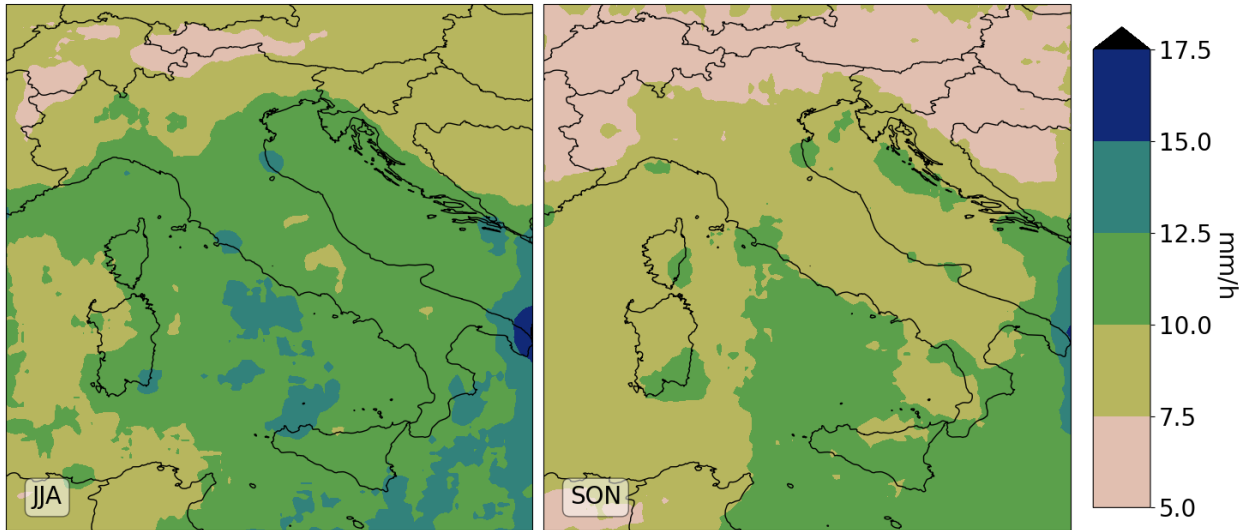


Figure S6: JJA and SON maps of the mean average intensity (AvIn) of EPEs occurring within the  $0.5 \times 0.5$  window (step size 0.1), averaged annually over the period 1986–2022.

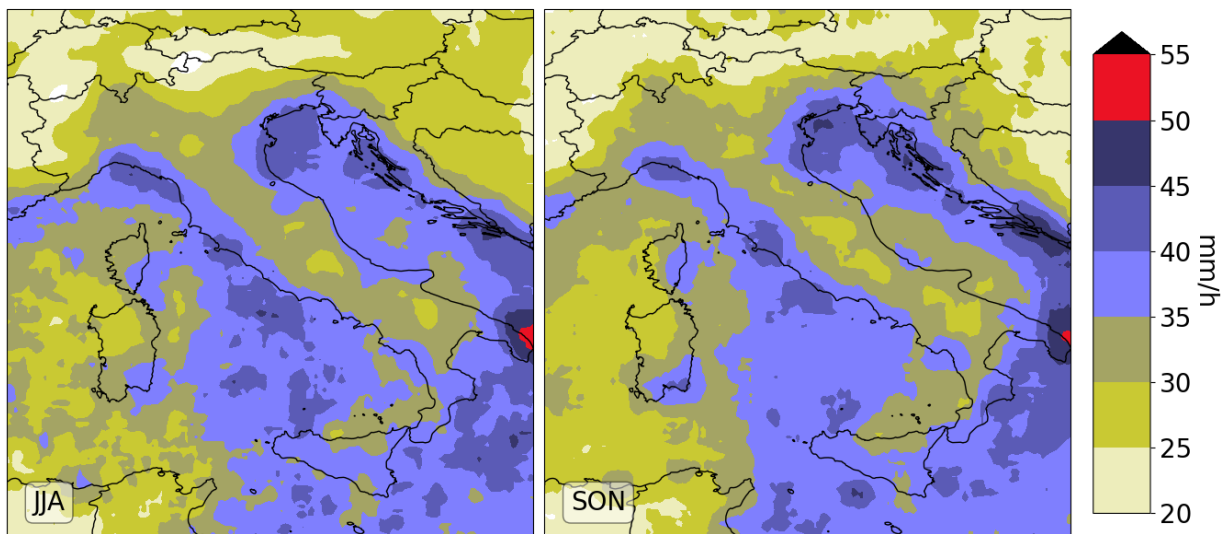


Figure S7: JJA and SON maps of the mean peak intensity (PKIn) of EPEs occurring within the  $0.5 \times 0.5$  window (step size 0.1), averaged annually over the period 1986–2022.

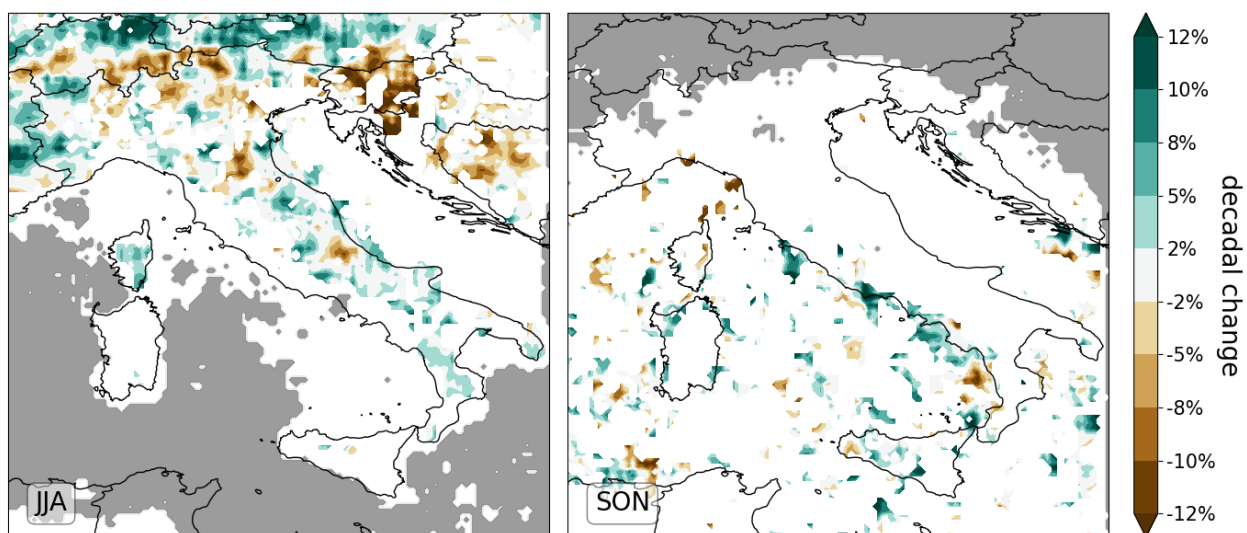


Figure S8: Maps of the decadal relative trends in the Spatial Scale (SpS) of EPEs occurring within each  $0.5^\circ \times 0.5^\circ$  window (sliding step:  $0.1^\circ$ ) for summer (JJA) and autumn (SON). Areas with more than 10 years without EPEs are masked in grey.

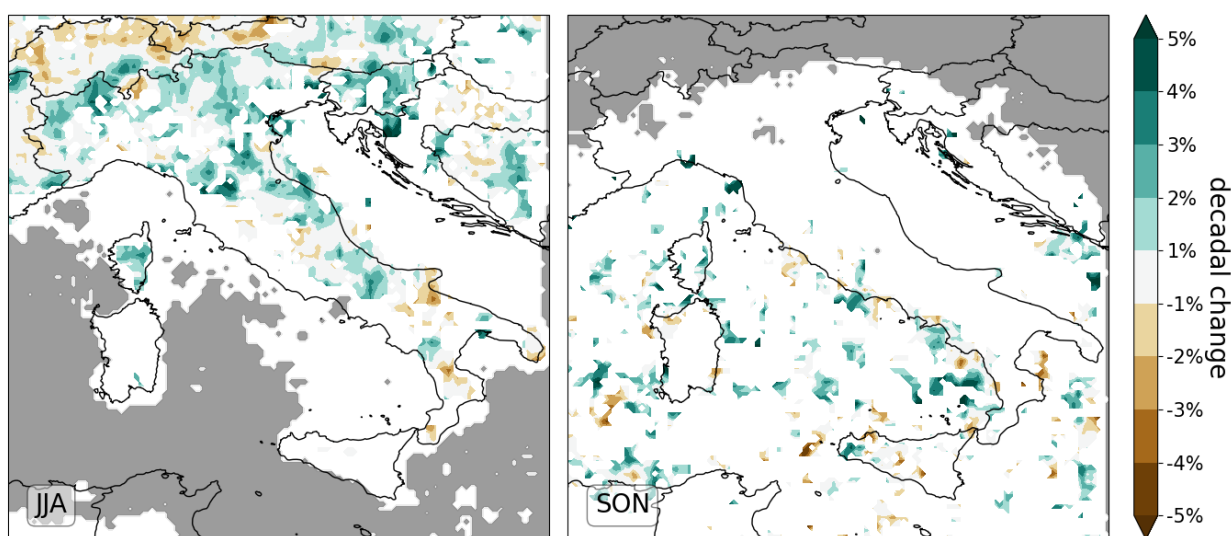


Figure S9: Maps of the decadal relative trends in the Average Intensities (AvIn) of EPEs occurring within each  $0.5^\circ \times 0.5^\circ$  window (sliding step:  $0.1^\circ$ ) for summer (JJA) and autumn (SON). Areas with more than 10 years without EPEs are masked in grey.



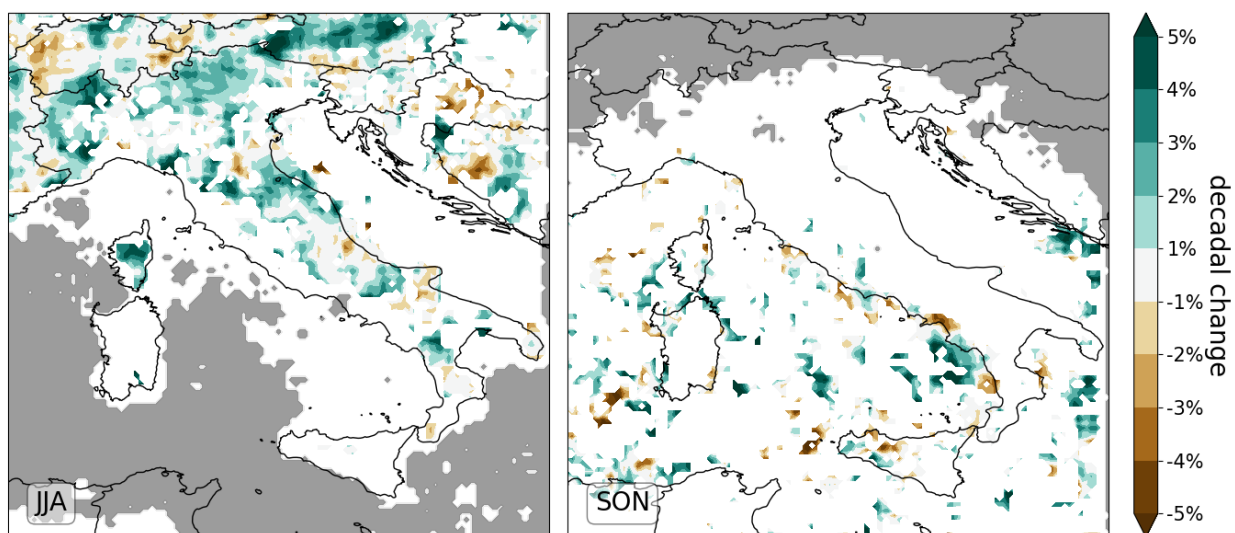


Figure S10: Maps of the decadal relative trends in the Peak Intensities (PklIn) of EPEs occurring within each  $0.5^\circ \times 0.5^\circ$  window (sliding step:  $0.1^\circ$ ) for summer (JJA) and autumn (SON). Areas with more than 10 years without EPEs are masked in grey.