

**Supplementary materials for ‘Can high-resolution convection-permitting climate models improve flood simulation in southern Quebec watersheds?’**

Behmard Sabzipour<sup>1</sup>, Philippe Lucas-Picher<sup>1</sup>, Richard Turcotte<sup>2</sup>, Gabriel Rondeau-Genesse<sup>3</sup>

<sup>1</sup>Centre pour l’Étude et la simulation du climat à l’échelle régionale (ESCER), Département des sciences de la Terre et de l’atmosphère, Université du Québec à Montréal, Montréal, H3C 3P8, Canada

<sup>2</sup>Direction principale de l’expertise hydrique (DPEH), Ministère de l’Environnement et de la Lutte contre les changements climatiques, de la Faune et des Parcs (MELCCFP), Québec, G1R 5V7, Canada

<sup>3</sup>Ouranos, Montréal, H3A 1B9, Canada

*Correspondence to:* Behmard Sabzipour (sabzipour.behmard@courrier.uqam.ca)

14 **Supplementary Materials S1 – Weather station information and histograms of Intensity-Frequency**  
15 **distribution of hourly precipitation**

16 Figure 3 in the paper presents the intensity–frequency distribution of hourly precipitation ( $>0.1$  mm/hour)  
17 over a 10-year period at the Montréal-Trudeau airport weather station. The remaining stations exhibit similar  
18 patterns, based on hourly precipitation data from the 2014–2023 period. Information about all weather  
19 stations is provided in Table S1. The figures presented here show the intensity–frequency histograms for the  
20 remaining weather stations.

21

22 Table S1. Weather stations information

	Weather stations' name from Environment and Climate Change Canada website <sup>1</sup>	Latitude	Longitude
1	BEAUPORT	46.84°N	71.20°W
2	DESCHAMBAULT	46.69 °N	71.97 °W
3	LETAPE	47.56 °N	71.23 °W
4	STEOFYULAVAL	46.78 °N	71.29 °W
5	LEMIEUX	46.30 °N	72.06 °W
6	QUEBEC/JEAN LESAGE INTL	46.80 °N	71.38 °W
7	FRELIGHSBURG	45.03 °N	72.85 °W
8	MCTAVISH	45.50 °N	73.58 °W
9	NICOLET	46.23 °N	72.66 °W
10	STE-CLOTILDE	45.17 °N	73.68 °W
11	MONTREAL/ST-HUBERT	45.52 °N	73.42 °W
12	SAINT-GERMAIN-DE-GRANTHAM	45.83 °N	72.54 °W
13	SHERBROOKE	45.44 °N	71.69 °W
14	THETFORD MINES RCS	46.05 °N	71.27 °W
15	BEAUCEVILLE	46.21 °N	70.79 °W
16	STE-ANNE-DE-BELLEVUE 1	45.43 °N	73.93 °W
17	ST-ANICET 1	45.12 °N	74.29 °W
18	LACADIE	45.29 °N	73.35 °W
19	MONTREAL/PIERRE ELLIOTT TRUDEAU INTL <sup>2</sup>	45.47 °N	73.74 °W
20	CHARLEVOIX	47.28 °N	70.64 °W
21	CAP TOURMENTE	47.08 °N	70.78 °W
22	FORET MONTMORENCY RCS	47.32 °N	71.15 °W
23	LAPOCATIERE	47.36 °N	70.03 °W
24	RIVIERE DULOUP	47.81 °N	69.55 °W
25	SAINT MICHEL DES-SAINTS	46.82 °N	74.09 °W
26	LATUQUE	47.41 °N	72.79 °W

23

24

<sup>1</sup> [https://climate.weather.gc.ca/historical\\_data/search\\_historic\\_data\\_e.html](https://climate.weather.gc.ca/historical_data/search_historic_data_e.html)

<sup>2</sup> The station has been shown in main part of the paper

## BEAUCEVILLE Station

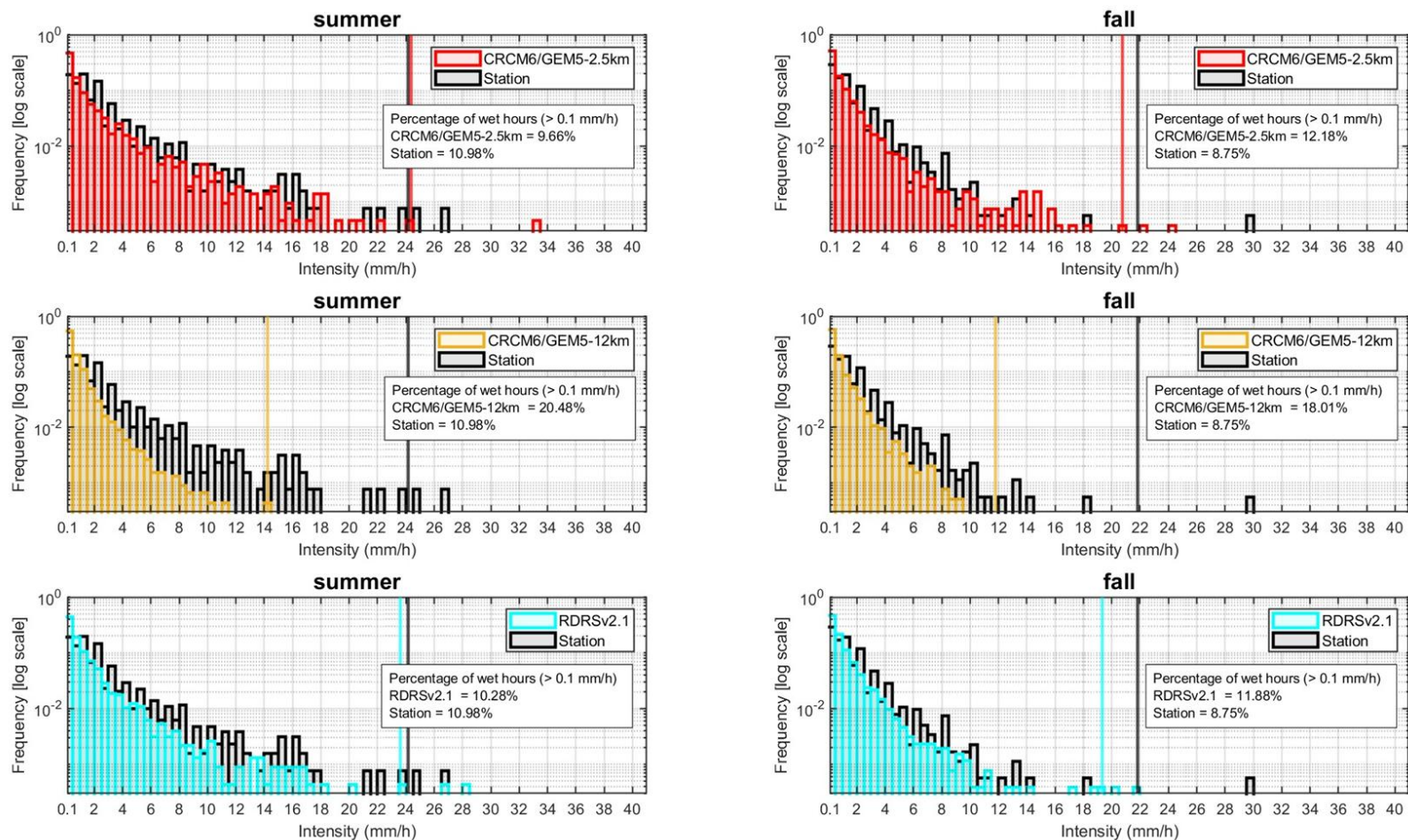


Figure S1. Black bins represent weather station data (2014–2023), yellow bins correspond to CRCM6-12 km (2011–2020), red bins correspond to CRCM6-2.5 km (2011–2020), and cyan bins correspond to RDRS (2009–2018). The vertical line represents the 99.99th percentile for each dataset. Left-side panels correspond to summer seasons (a, c, e), and right-side panels correspond to fall seasons (b, d, f). The bin size is 0.5 mm.

## BEAUPORT Station

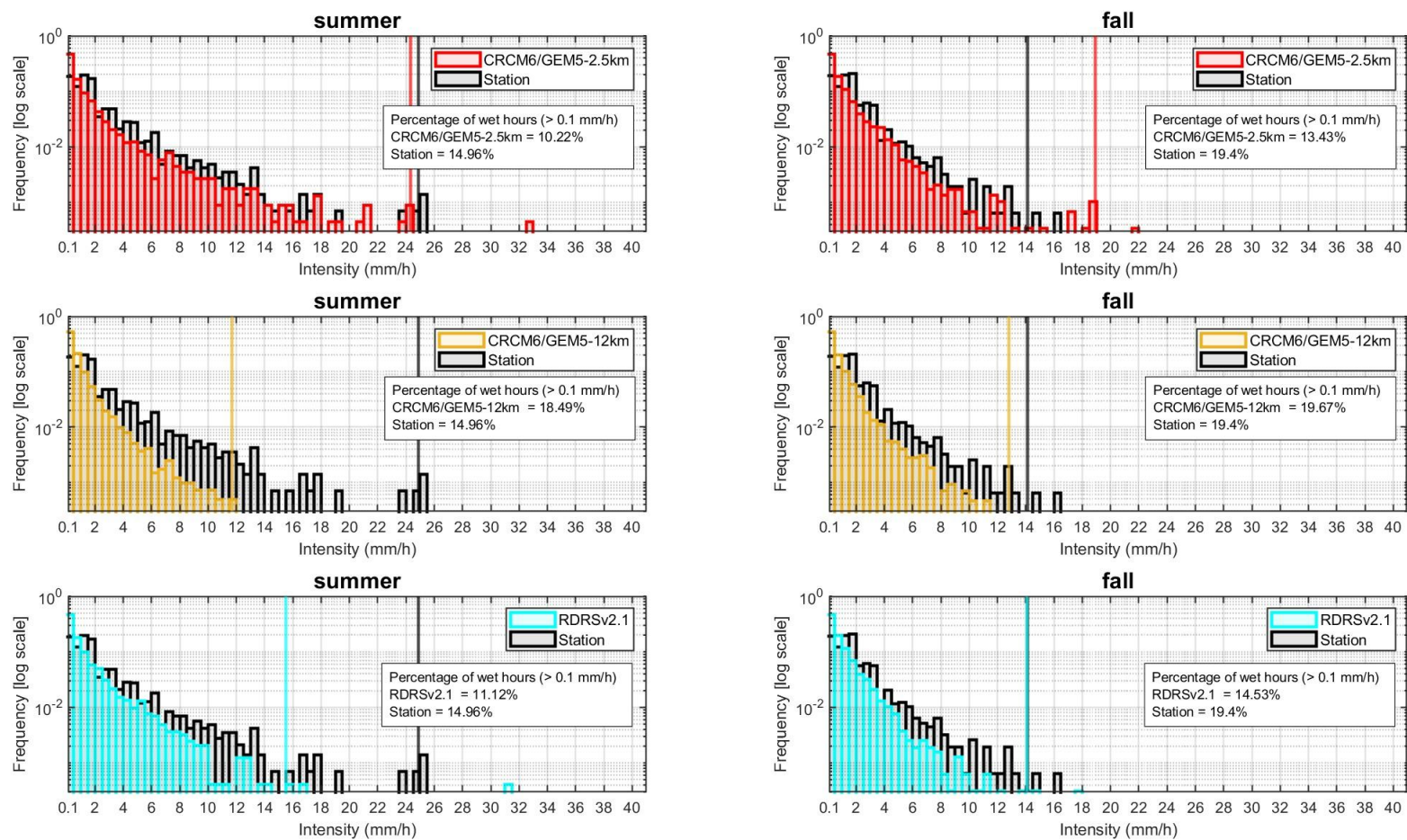


Figure S2. Black bins represent weather station data (2014–2023), yellow bins correspond to CRCM6-12 km (2011–2020), red bins correspond to CRCM6-2.5 km (2011–2020), and cyan bins correspond to RDRS (2009–2018). The vertical line represents the 99.99th percentile for each dataset. Left-side panels correspond to summer seasons (a, c, e), and right-side panels correspond to fall seasons (b, d, f). The bin size is 0.5 mm.

## CAP TOURMENTE Station

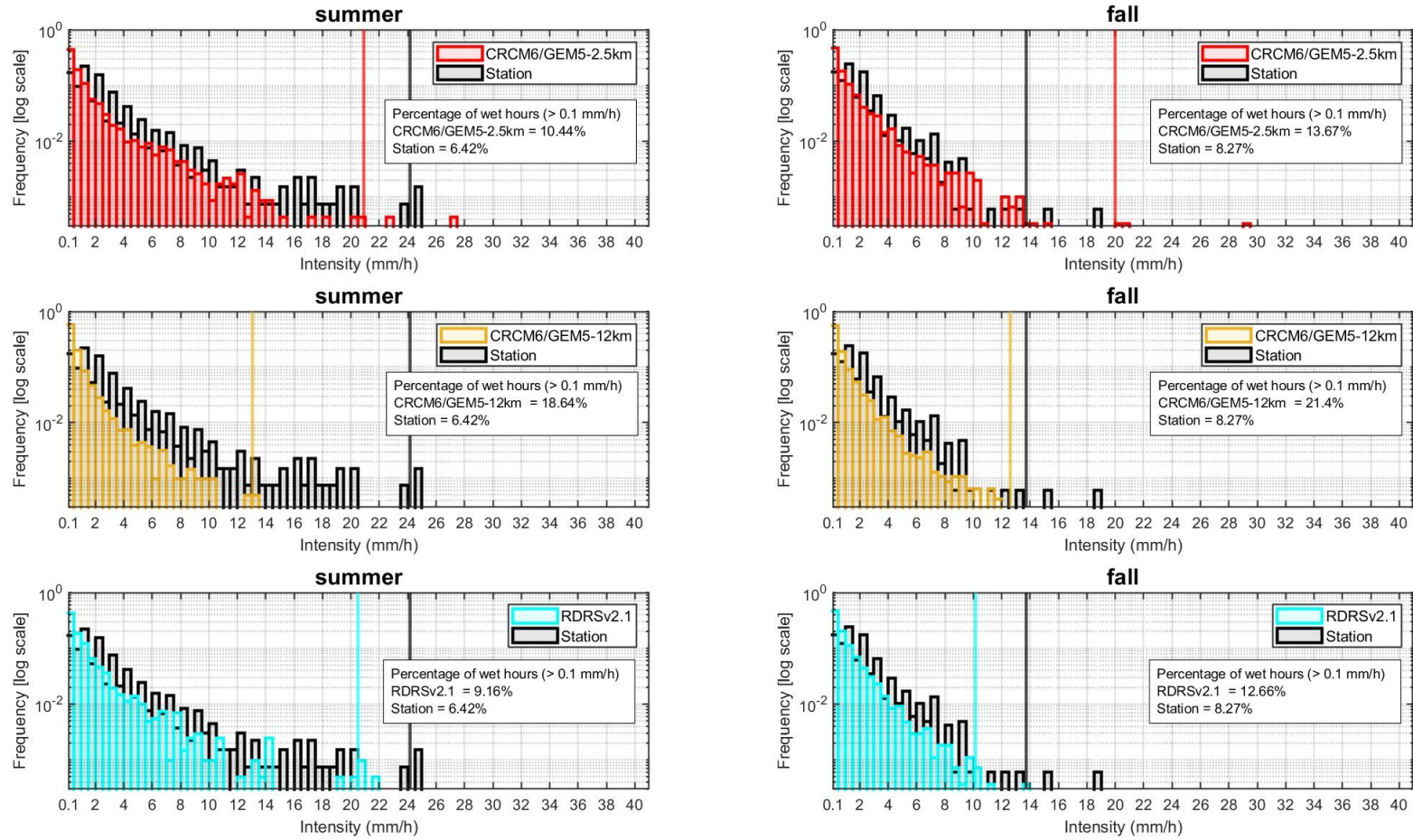


Figure S3. Black bins represent weather station data (2014–2023), yellow bins correspond to CRCM6-12 km (2011–2020), red bins correspond to CRCM6-2.5 km (2011–2020), and cyan bins correspond to RDRS (2009–2018). The vertical line represents the 99.99th percentile for each dataset. Left-side panels correspond to summer seasons (a, c, e), and right-side panels correspond to fall seasons (b, d, f). The bin size is 0.5 mm.

## CHARLEVOIX Station

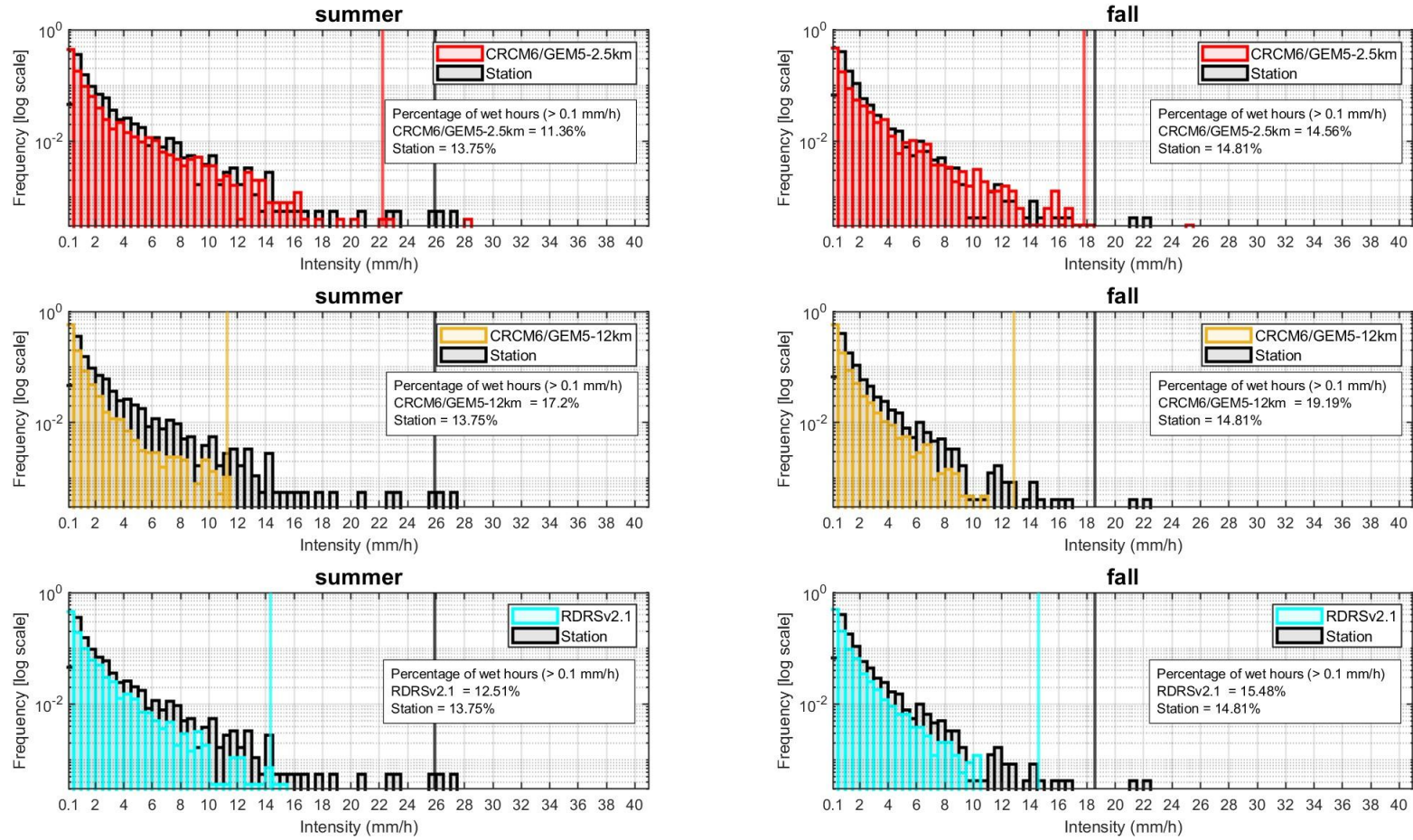


Figure S4. Black bins represent weather station data (2014–2023), yellow bins correspond to CRCM6-12 km (2011–2020), red bins correspond to CRCM6-2.5 km (2011–2020), and cyan bins correspond to RDRS (2009–2018). The vertical line represents the 99.99th percentile for each dataset. Left-side panels correspond to summer seasons (a, c, e), and right-side panels correspond to fall seasons (b, d, f). The bin size is 0.5 mm.

## DESCHAMBAULT Station

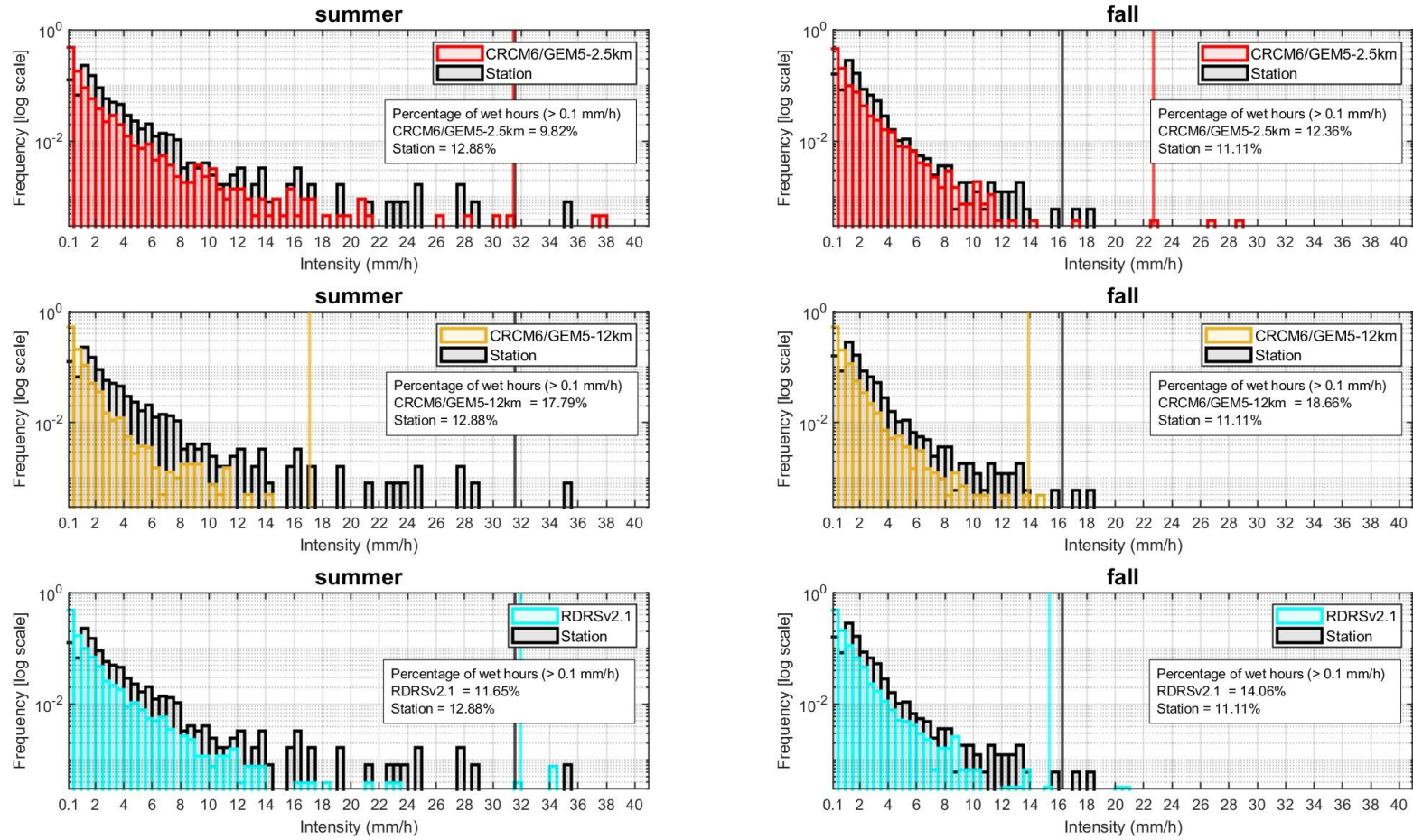


Figure S5. Black bins represent weather station data (2014–2023), yellow bins correspond to CRCM6-12 km (2011–2020), red bins correspond to CRCM6-2.5 km (2011–2020), and cyan bins correspond to RDRS (2009–2018). The vertical line represents the 99.99th percentile for each dataset. Left-side panels correspond to summer seasons (a, c, e), and right-side panels correspond to fall seasons (b, d, f). The bin size is 0.5 mm.

## FORET MONTMORENCY RCS Station

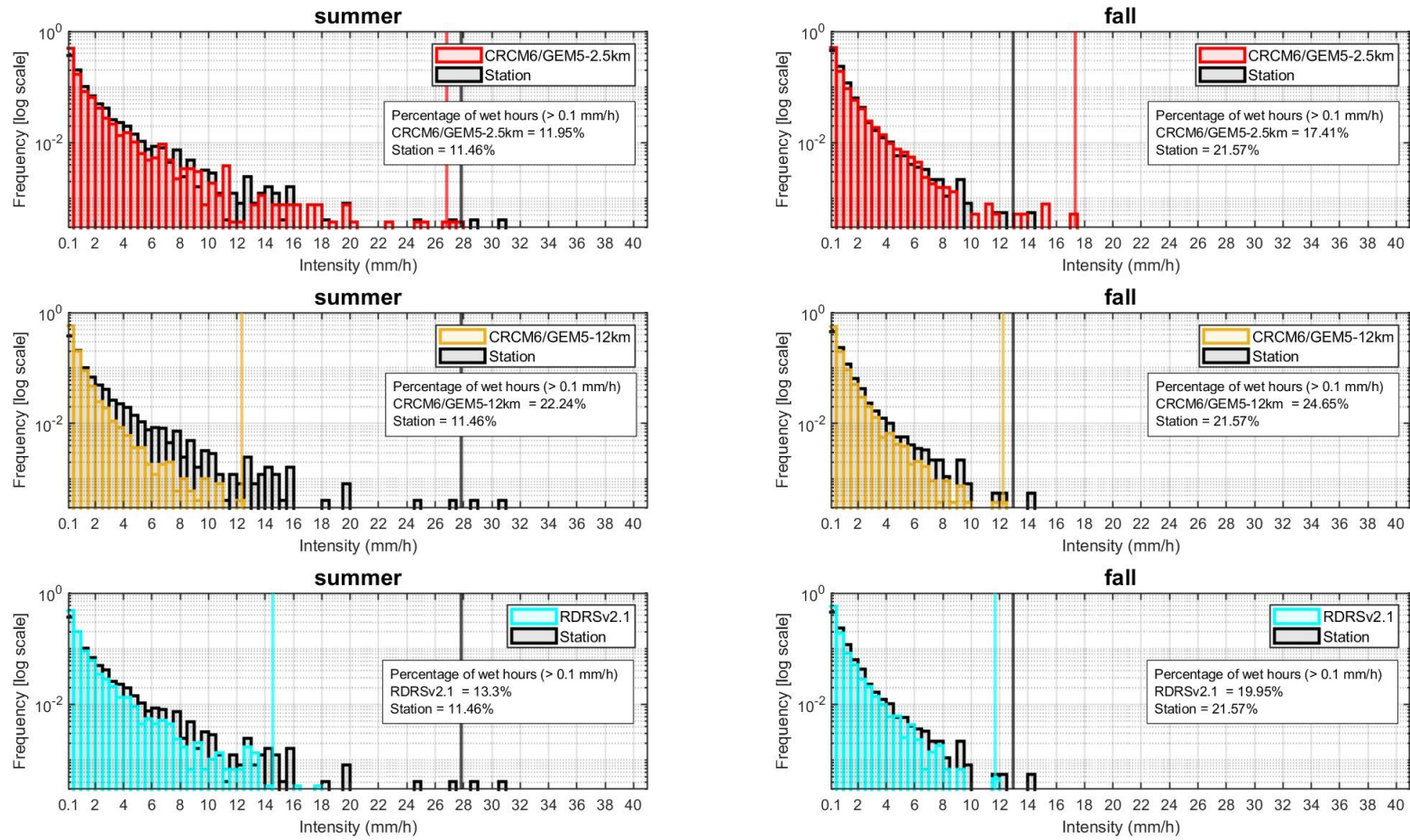


Figure S6. Black bins represent weather station data (2014–2023), yellow bins correspond to CRCM6-12 km (2011–2020), red bins correspond to CRCM6-2.5 km (2011–2020), and cyan bins correspond to RDRS (2009–2018). The vertical line represents the 99.99th percentile for each dataset. Left-side panels correspond to summer seasons (a, c, e), and right-side panels correspond to fall seasons (b, d, f). The bin size is 0.5 mm.

## FRELIGHSBURG Station

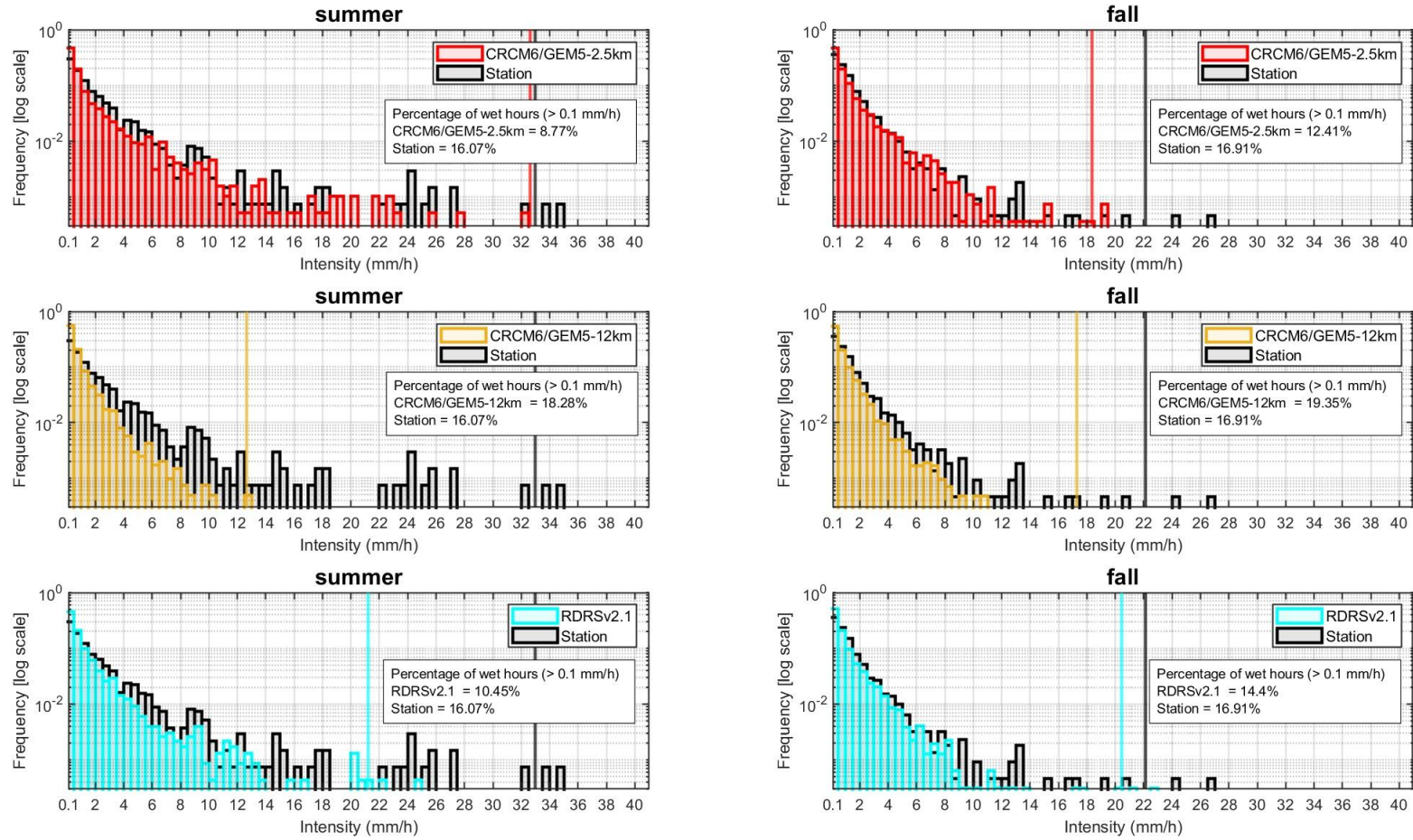


Figure S7. Black bins represent weather station data (2014–2023), yellow bins correspond to CRCM6-12 km (2011–2020), red bins correspond to CRCM6-2.5 km (2011–2020), and cyan bins correspond to RDRS (2009–2018). The vertical line represents the 99.99th percentile for each dataset. Left-side panels correspond to summer seasons (a, c, e), and right-side panels correspond to fall seasons (b, d, f). The bin size is 0.5 mm.

## LACADIE Station

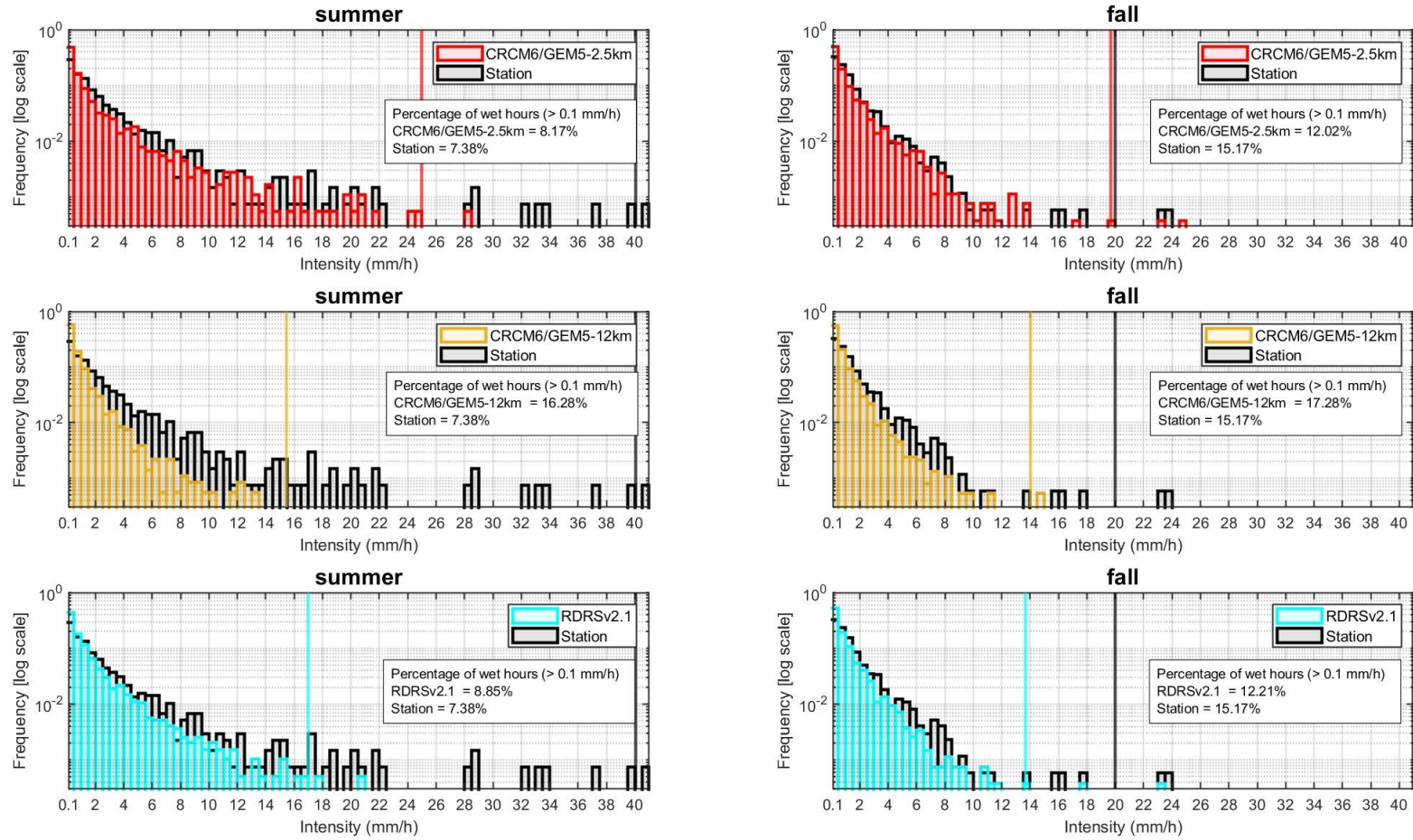


Figure S8. Black bins represent weather station data (2014–2023), yellow bins correspond to CRCM6-12 km (2011–2020), red bins correspond to CRCM6-2.5 km (2011–2020), and cyan bins correspond to RDRS (2009–2018). The vertical line represents the 99.99th percentile for each dataset. Left-side panels correspond to summer seasons (a, c, e), and right-side panels correspond to fall seasons (b, d, f). The bin size is 0.5 mm.

## LAPOCATIERE Station

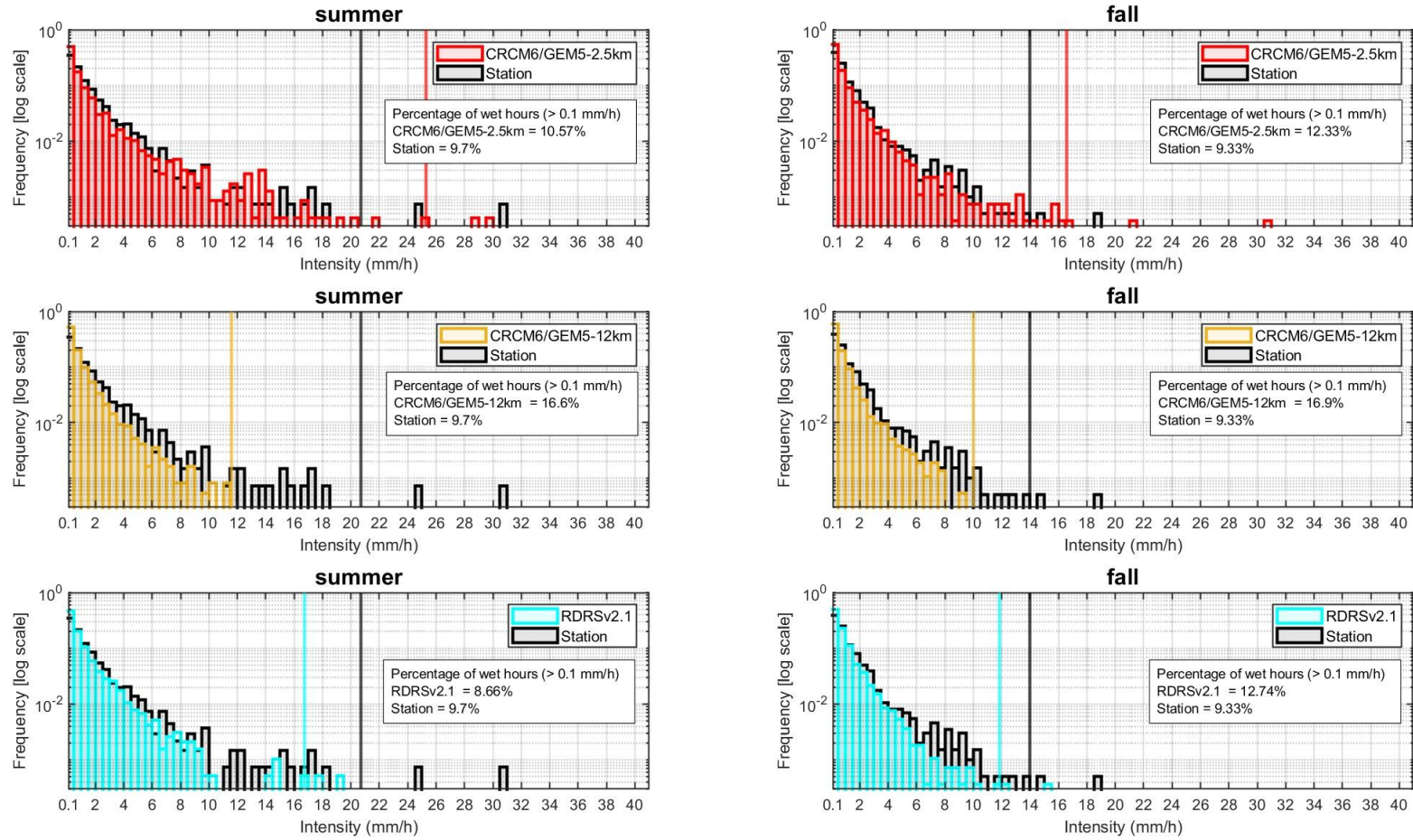


Figure S9. Black bins represent weather station data (2014–2023), yellow bins correspond to CRCM6-12 km (2011–2020), red bins correspond to CRCM6-2.5 km (2011–2020), and cyan bins correspond to RDRS (2009–2018). The vertical line represents the 99.99th percentile for each dataset. Left-side panels correspond to summer seasons (a, c, e), and right-side panels correspond to fall seasons (b, d, f). The bin size is 0.5 mm.

## LATUQUE Station

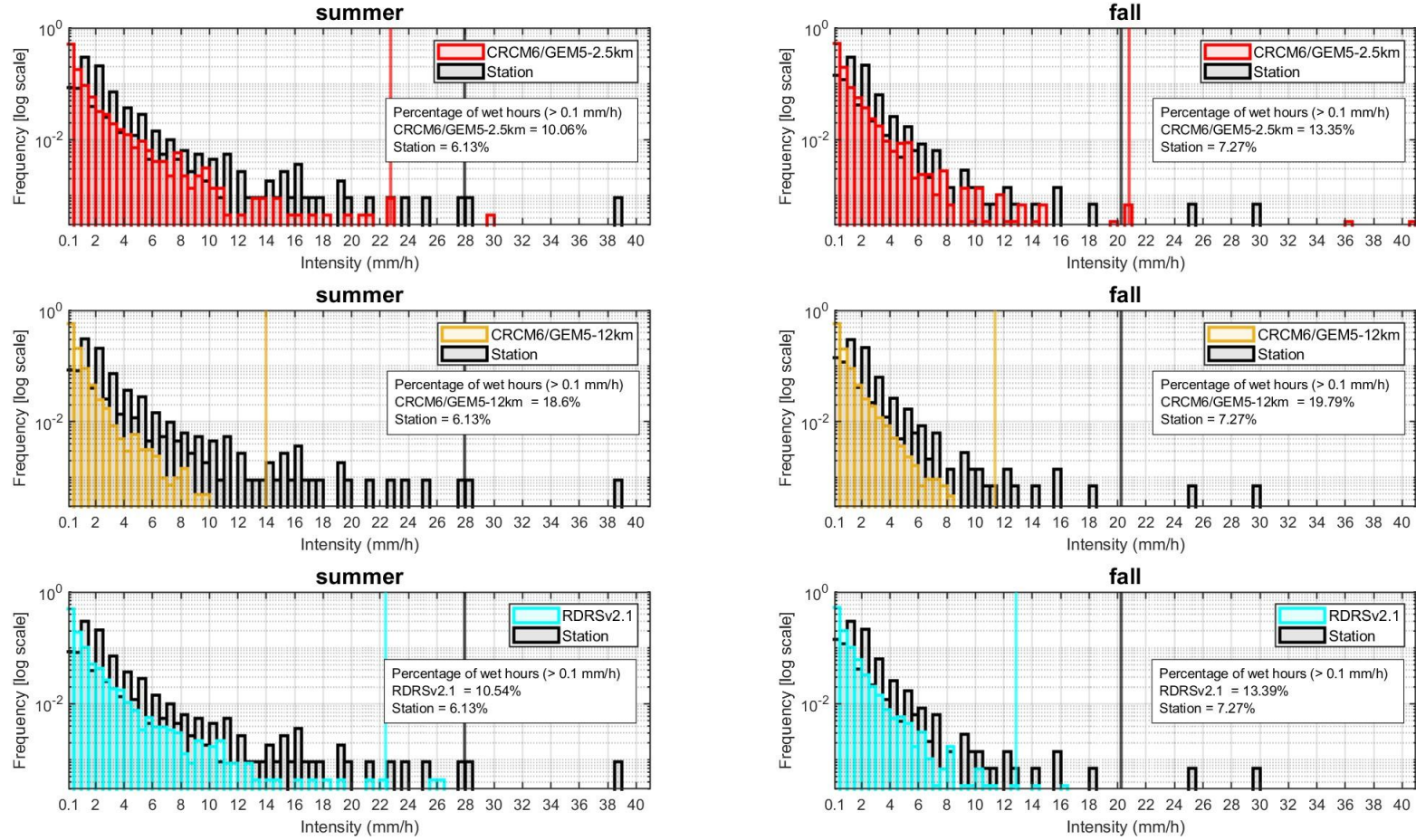


Figure S10. Black bins represent weather station data (2014–2023), yellow bins correspond to CRCM6-12 km (2011–2020), red bins correspond to CRCM6-2.5 km (2011–2020), and cyan bins correspond to RDRS (2009–2018). The vertical line represents the 99.99th percentile for each dataset. Left-side panels correspond to summer seasons (a, c, e), and right-side panels correspond to fall seasons (b, d, f). The bin size is 0.5 mm.

## LEMIEUX Station

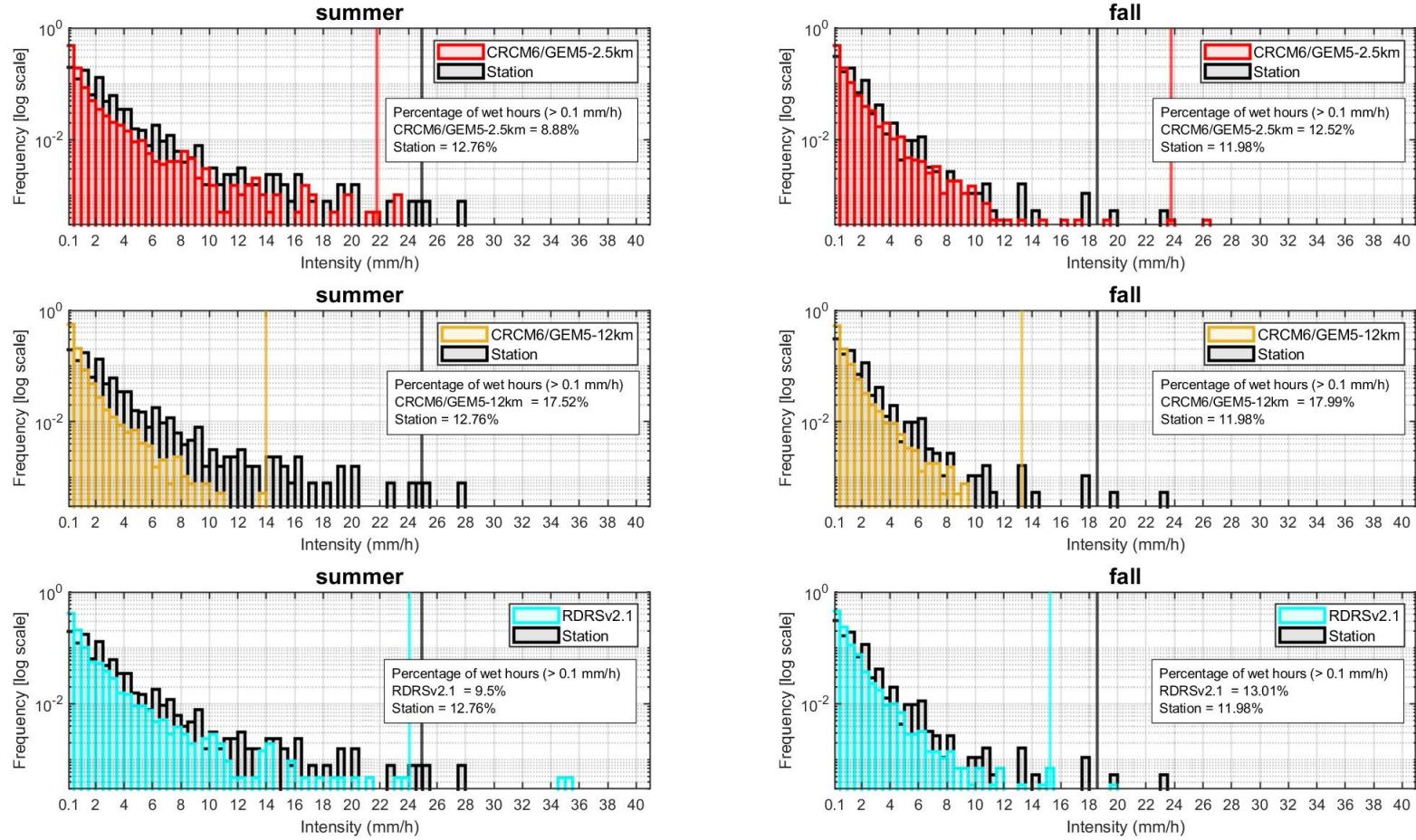


Figure S11. Black bins represent weather station data (2014–2023), yellow bins correspond to CRCM6-12 km (2011–2020), red bins correspond to CRCM6-2.5 km (2011–2020), and cyan bins correspond to RDRS (2009–2018). The vertical line represents the 99.99th percentile for each dataset. Left-side panels correspond to summer seasons (a, c, e), and right-side panels correspond to fall seasons (b, d, f). The bin size is 0.5 mm.

## LETAPE Station

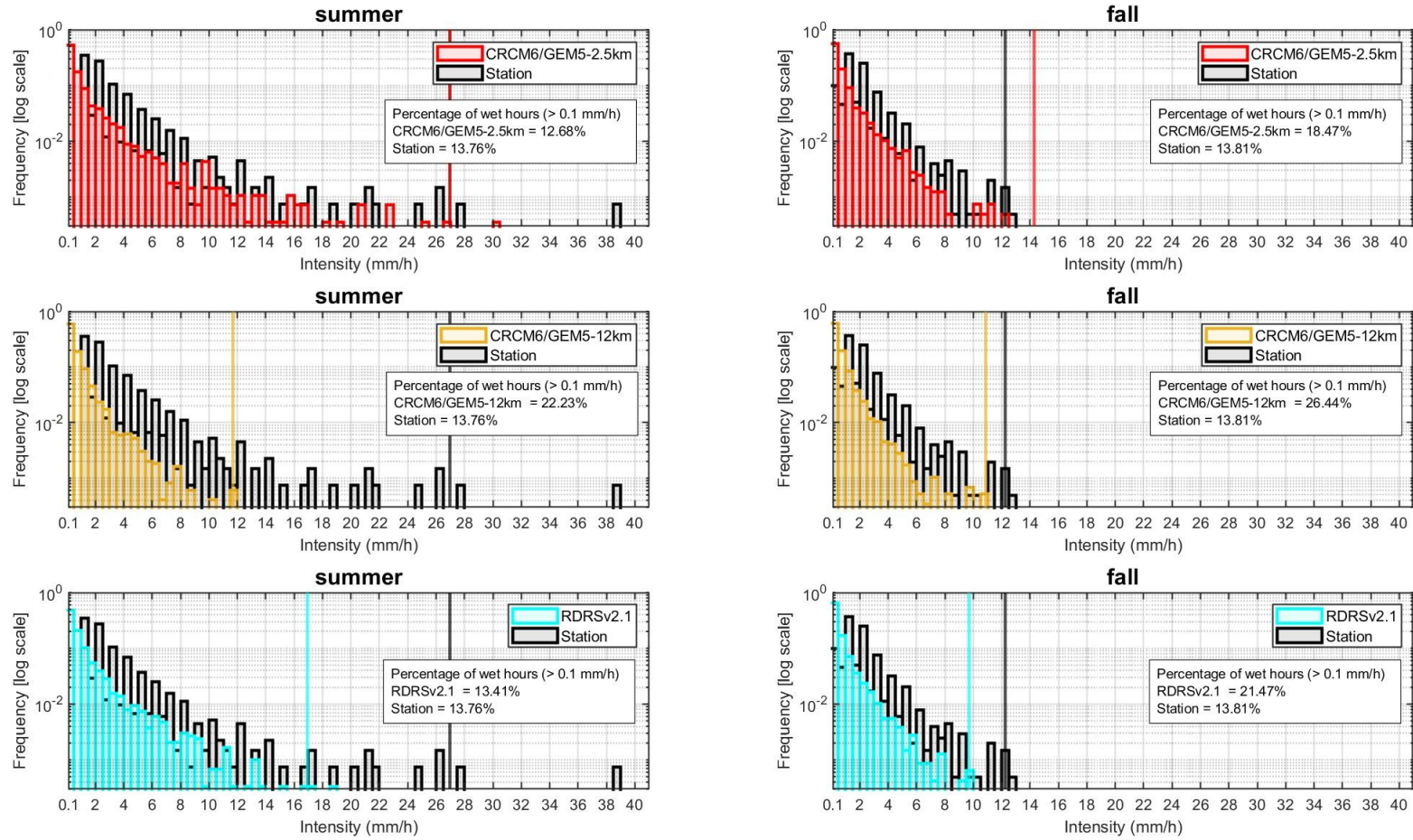


Figure S12. Black bins represent weather station data (2014–2023), yellow bins correspond to CRCM6-12 km (2011–2020), red bins correspond to CRCM6-2.5 km (2011–2020), and cyan bins correspond to RDRS (2009–2018). The vertical line represents the 99.99th percentile for each dataset. Left-side panels correspond to summer seasons (a, c, e), and right-side panels correspond to fall seasons (b, d, f). The bin size is 0.5 mm.

## MCTAVISH Station

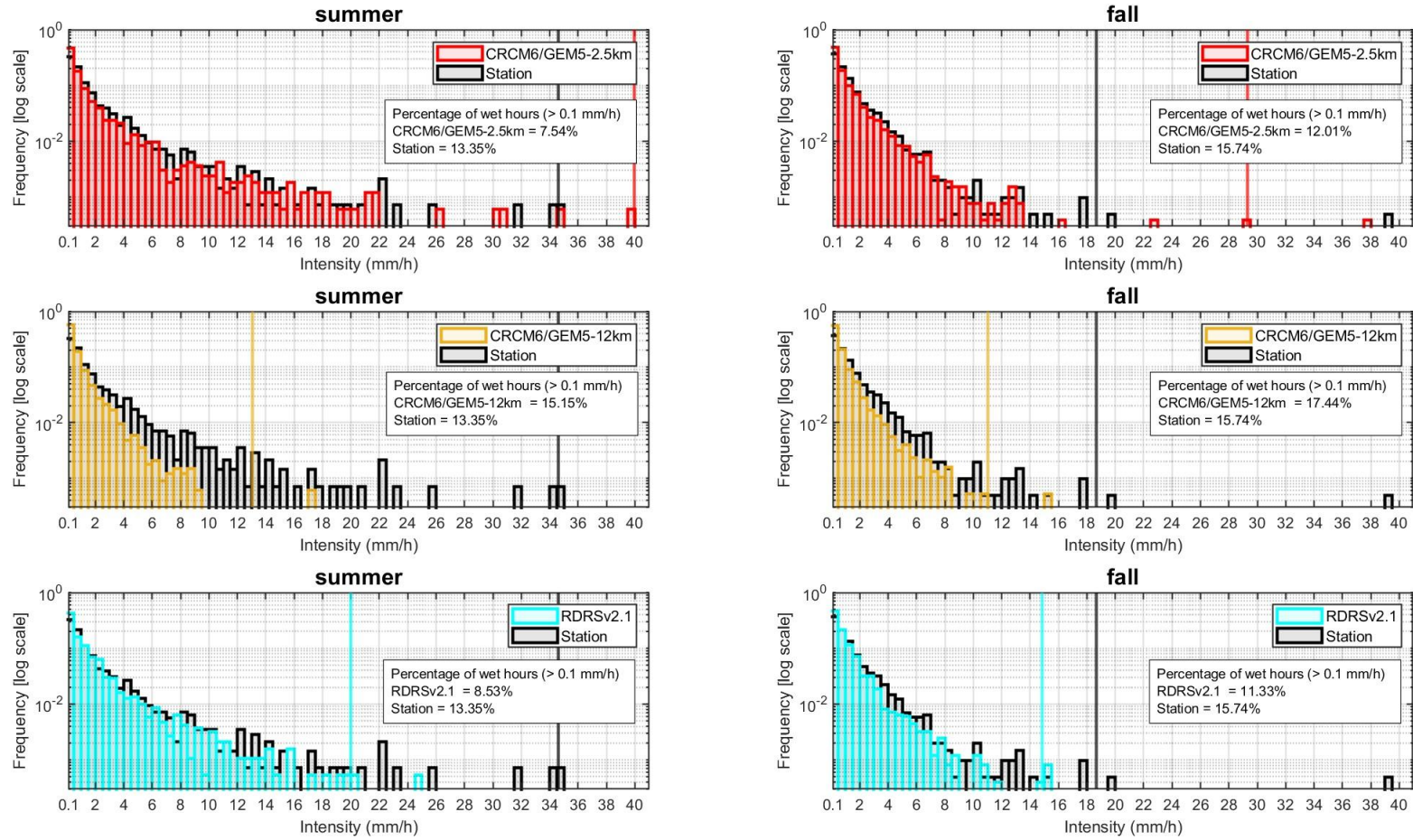


Figure S13. Black bins represent weather station data (2014–2023), yellow bins correspond to CRCM6-12 km (2011–2020), red bins correspond to CRCM6-2.5 km (2011–2020), and cyan bins correspond to RDRS (2009–2018). The vertical line represents the 99.99th percentile for each dataset. Left-side panels correspond to summer seasons (a, c, e), and right-side panels correspond to fall seasons (b, d, f). The bin size is 0.5 mm.

## MONTREAL/ST-HUBERT Station

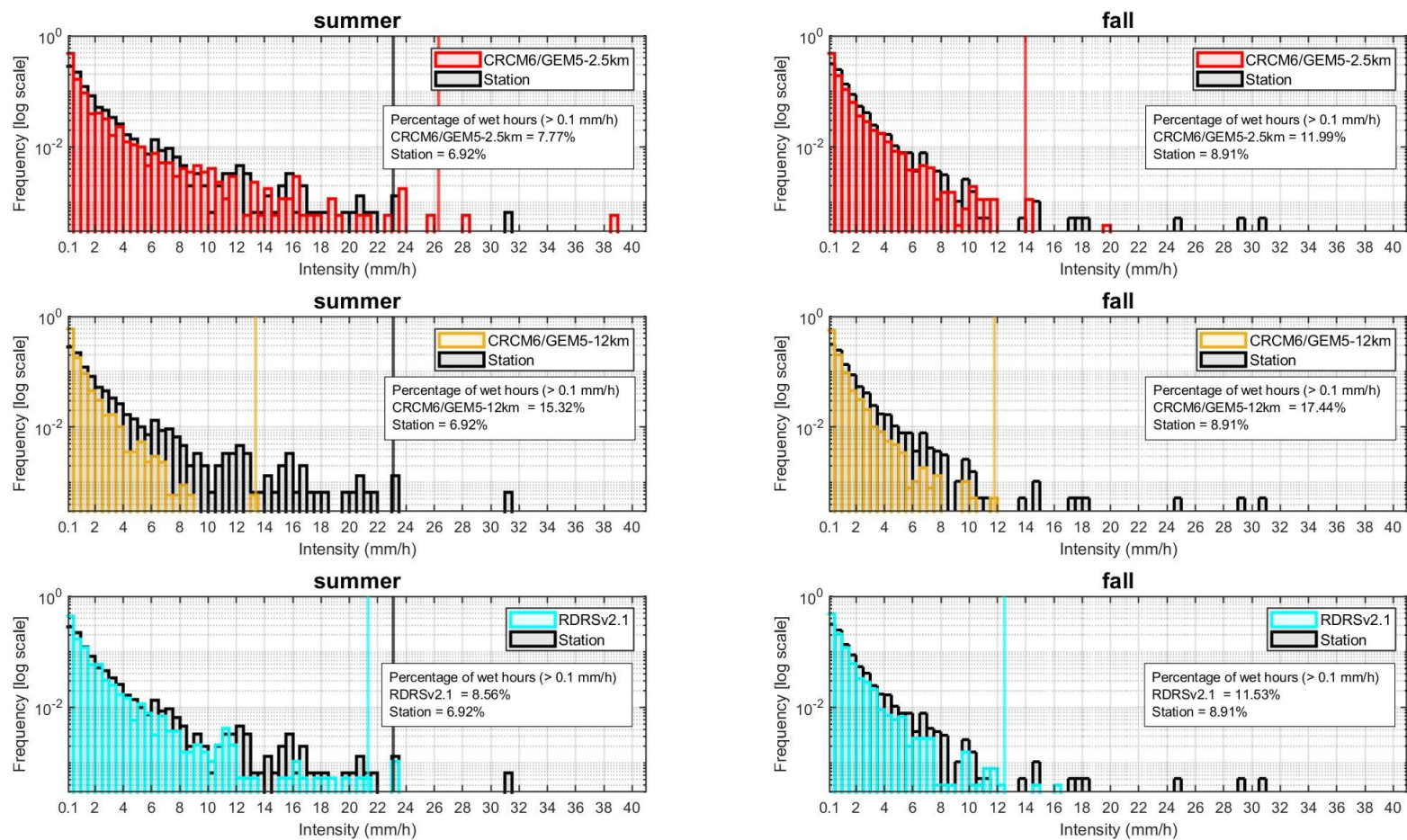


Figure S14. Black bins represent weather station data (2014–2023), yellow bins correspond to CRCM6-12 km (2011–2020), red bins correspond to CRCM6-2.5 km (2011–2020), and cyan bins correspond to RDRS (2009–2018). The vertical line represents the 99.99th percentile for each dataset. Left-side panels correspond to summer seasons (a, c, e), and right-side panels correspond to fall seasons (b, d, f). The bin size is 0.5 mm. The value corresponding to the 99.99th percentile of station data in fall is 80.97 mm/h, which exceeds the limits of the graphs.

## NICOLET Station

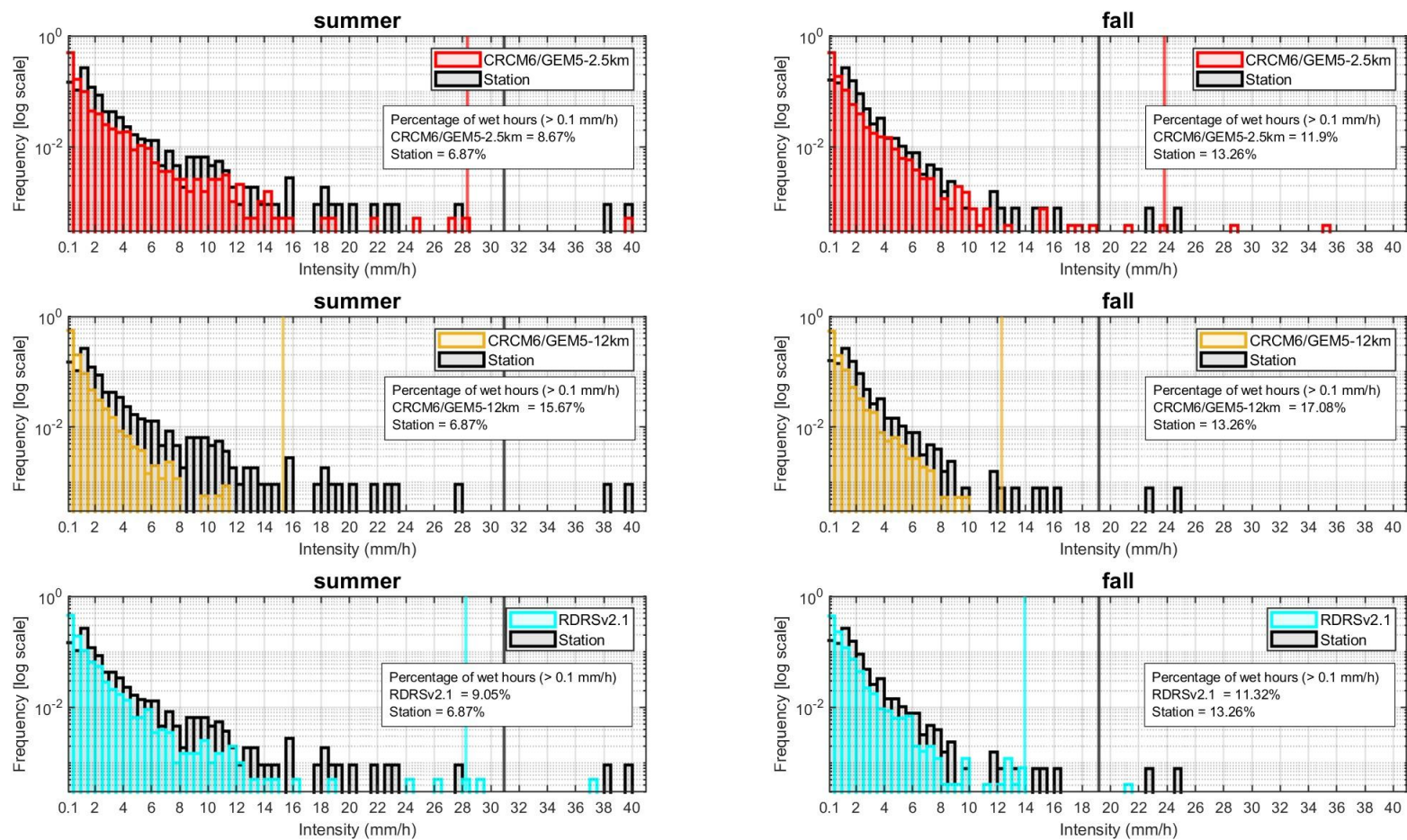


Figure S15. Black bins represent weather station data (2014–2023), yellow bins correspond to CRCM6-12 km (2011–2020), red bins correspond to CRCM6-2.5 km (2011–2020), and cyan bins correspond to RDRS (2009–2018). The vertical line represents the 99.99th percentile for each dataset. Left-side panels correspond to summer seasons (a, c, e), and right-side panels correspond to fall seasons (b, d, f). The bin size is 0.5 mm.

## QUEBEC/JEAN LESAGE INTL Station

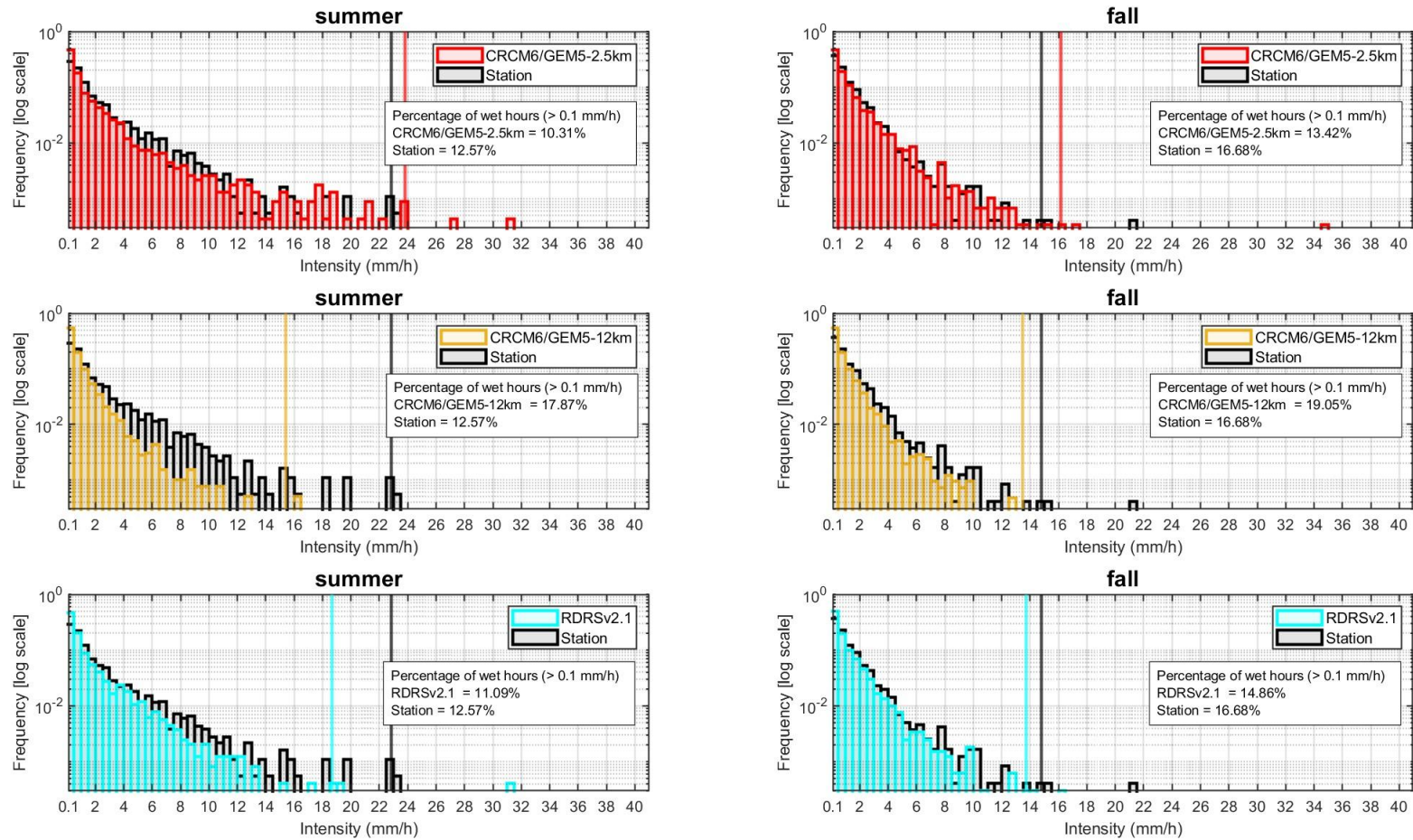


Figure S16. Black bins represent weather station data (2014–2023), yellow bins correspond to CRCM6-12 km (2011–2020), red bins correspond to CRCM6-2.5 km (2011–2020), and cyan bins correspond to RDRS (2009–2018). The vertical line represents the 99.99th percentile for each dataset. Left-side panels correspond to summer seasons (a, c, e), and right-side panels correspond to fall seasons (b, d, f). The bin size is 0.5 mm.

## RIVIERE DULOUP Station

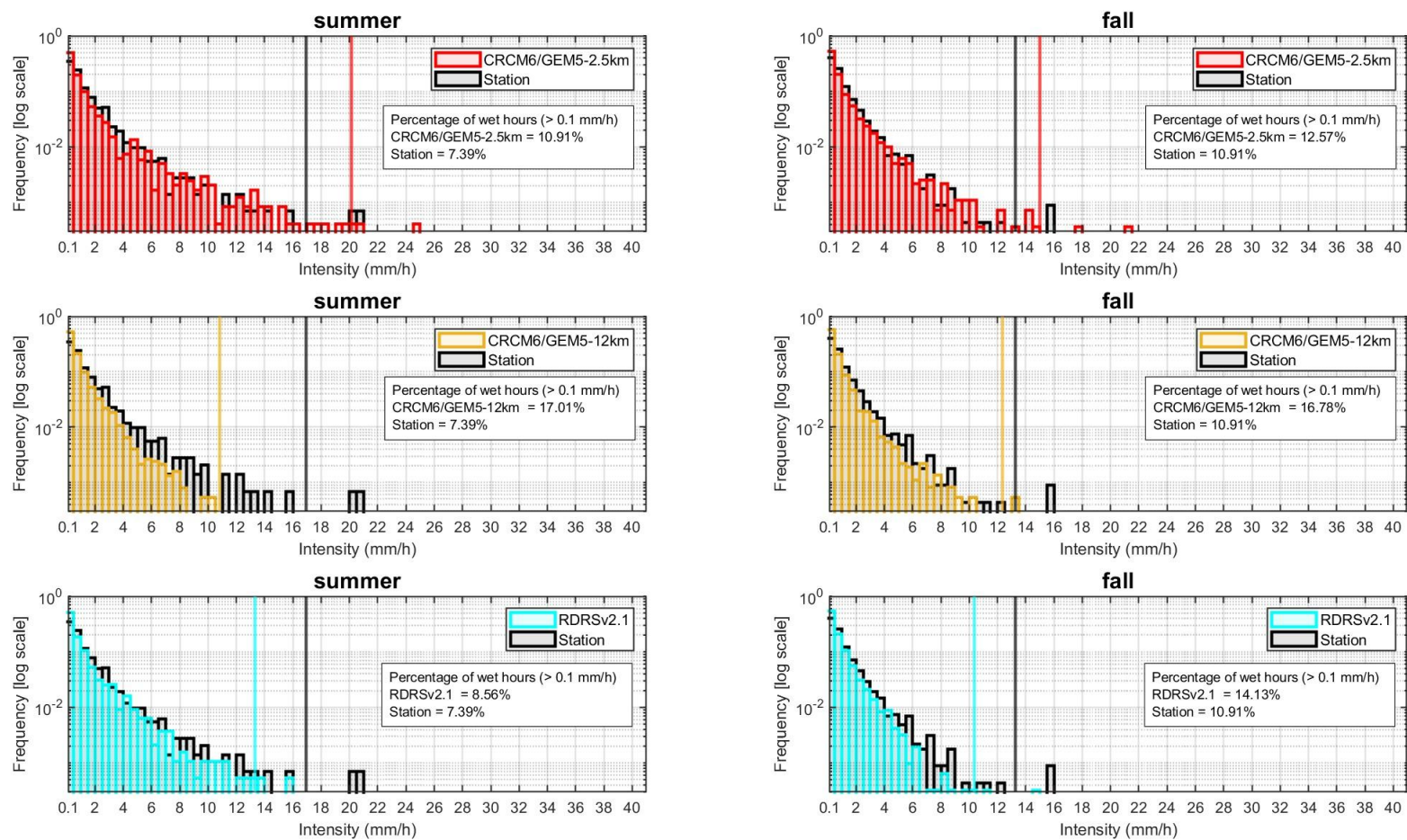


Figure S17. Black bins represent weather station data (2014–2023), yellow bins correspond to CRCM6-12 km (2011–2020), red bins correspond to CRCM6-2.5 km (2011–2020), and cyan bins correspond to RDRS (2009–2018). The vertical line represents the 99.99th percentile for each dataset. Left-side panels correspond to summer seasons (a, c, e), and right-side panels correspond to fall seasons (b, d, f). The bin size is 0.5 mm.

## SAINT-GERMAIN-DE-GRANTHAM Station

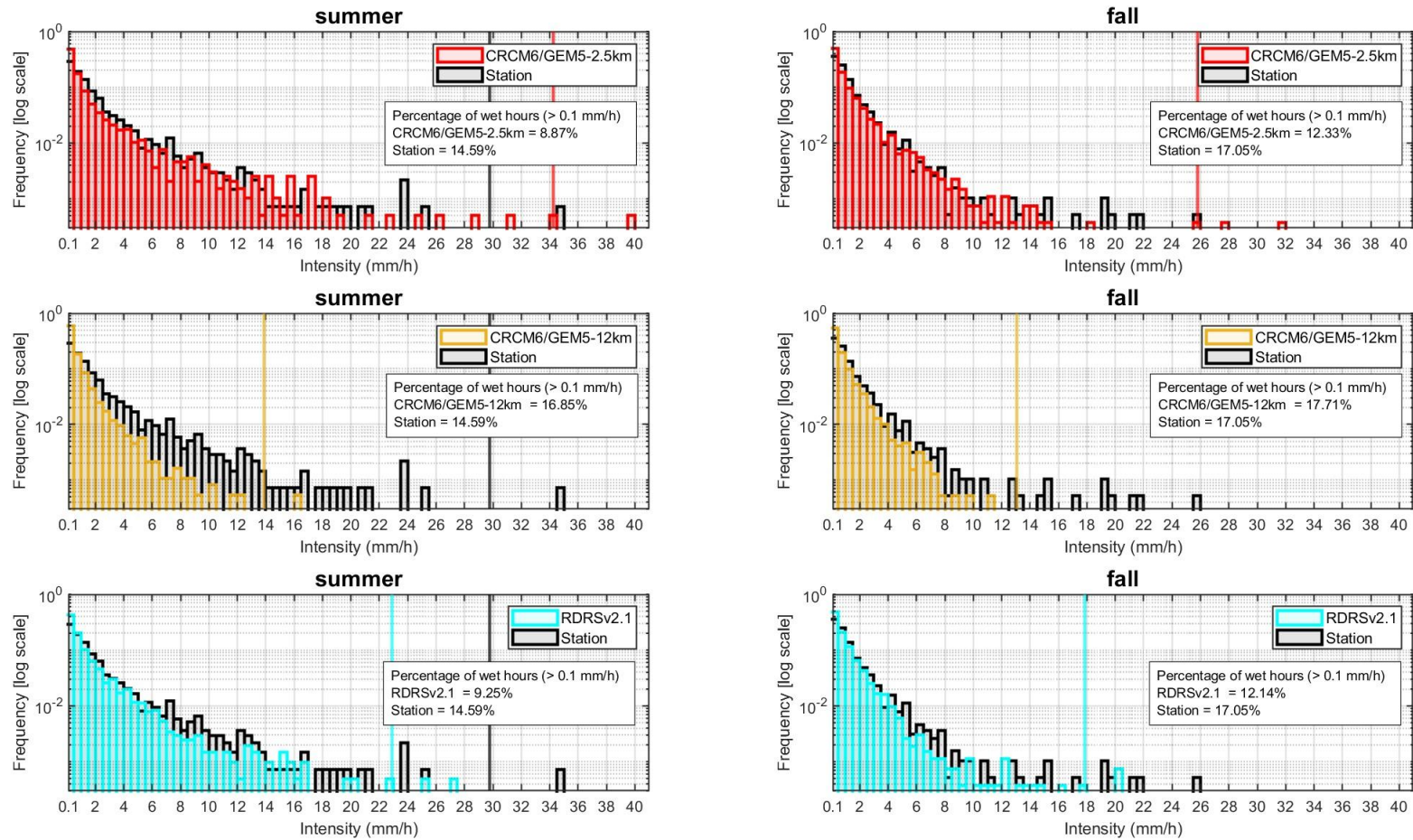


Figure S18. Black bins represent weather station data (2014–2023), yellow bins correspond to CRCM6-12 km (2011–2020), red bins correspond to CRCM6-2.5 km (2011–2020), and cyan bins correspond to RDRS (2009–2018). The vertical line represents the 99.99th percentile for each dataset. Left-side panels correspond to summer seasons (a, c, e), and right-side panels correspond to fall seasons (b, d, f). The bin size is 0.5 mm. The value corresponding to the 99.99th percentile of station data in fall is 45.28 mm/h, which exceeds the limits of the graphs.

## SAINT MICHEL DES-SAINTS Station

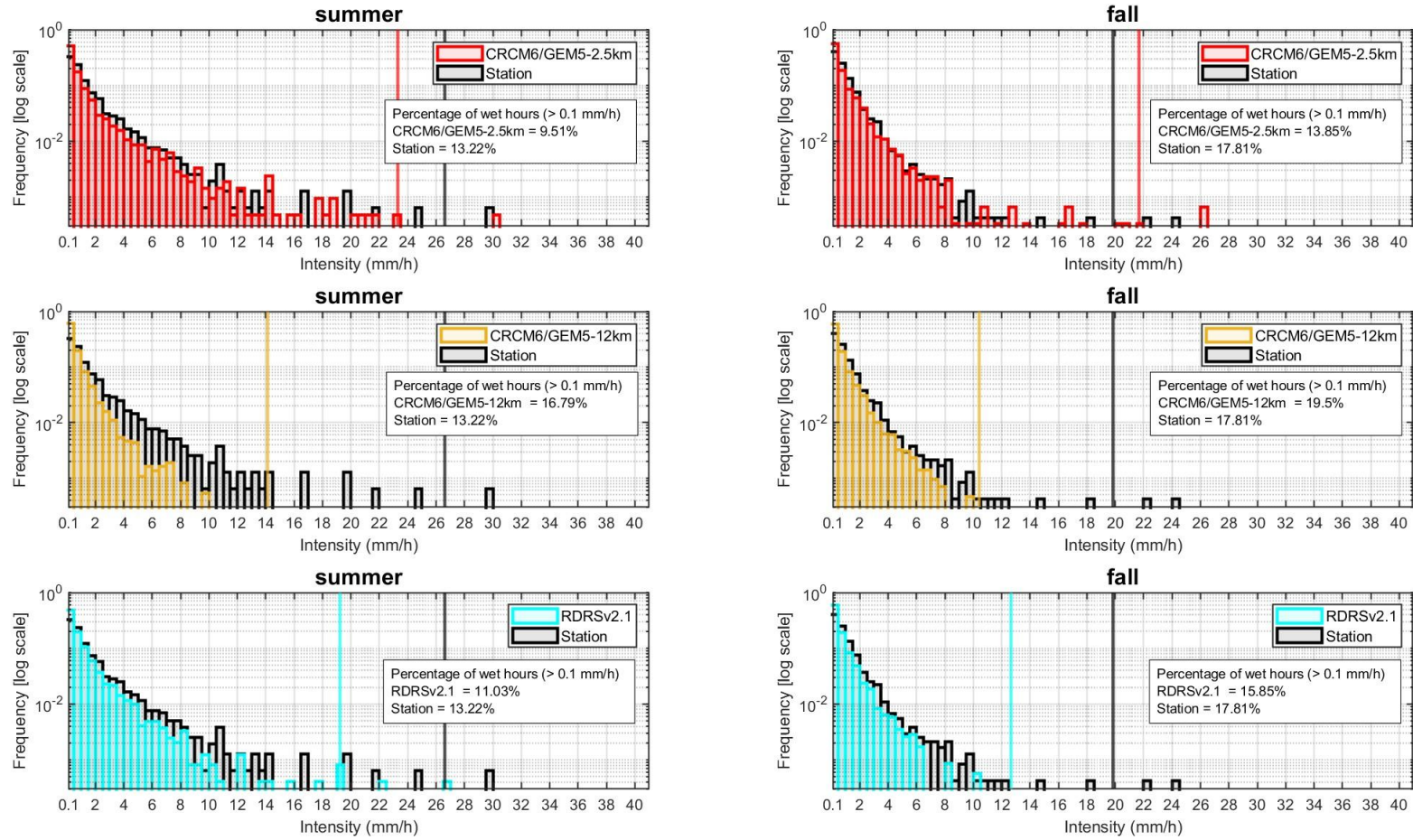


Figure S19. Black bins represent weather station data (2014–2023), yellow bins correspond to CRCM6-12 km (2011–2020), red bins correspond to CRCM6-2.5 km (2011–2020), and cyan bins correspond to RDRS (2009–2018). The vertical line represents the 99.99th percentile for each dataset. Left-side panels correspond to summer seasons (a, c, e), and right-side panels correspond to fall seasons (b, d, f). The bin size is 0.5 mm.

## SHERBROOKE Station

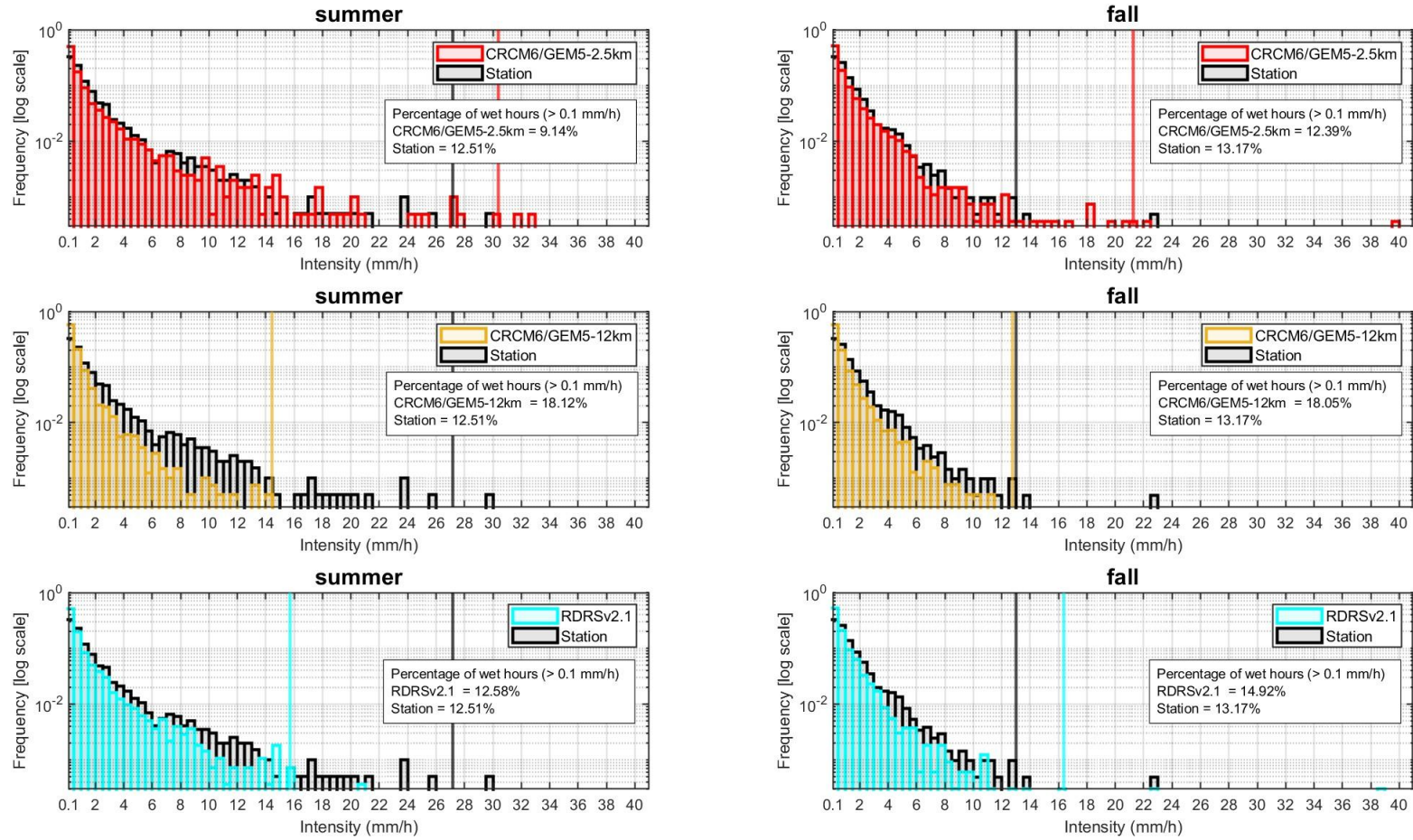


Figure S20. Black bins represent weather station data (2014–2023), yellow bins correspond to CRCM6-12 km (2011–2020), red bins correspond to CRCM6-2.5 km (2011–2020), and cyan bins correspond to RDRS (2009–2018). The vertical line represents the 99.99th percentile for each dataset. Left-side panels correspond to summer seasons (a, c, e), and right-side panels correspond to fall seasons (b, d, f). The bin size is 0.5 mm.

## ST-ANICET 1 Station

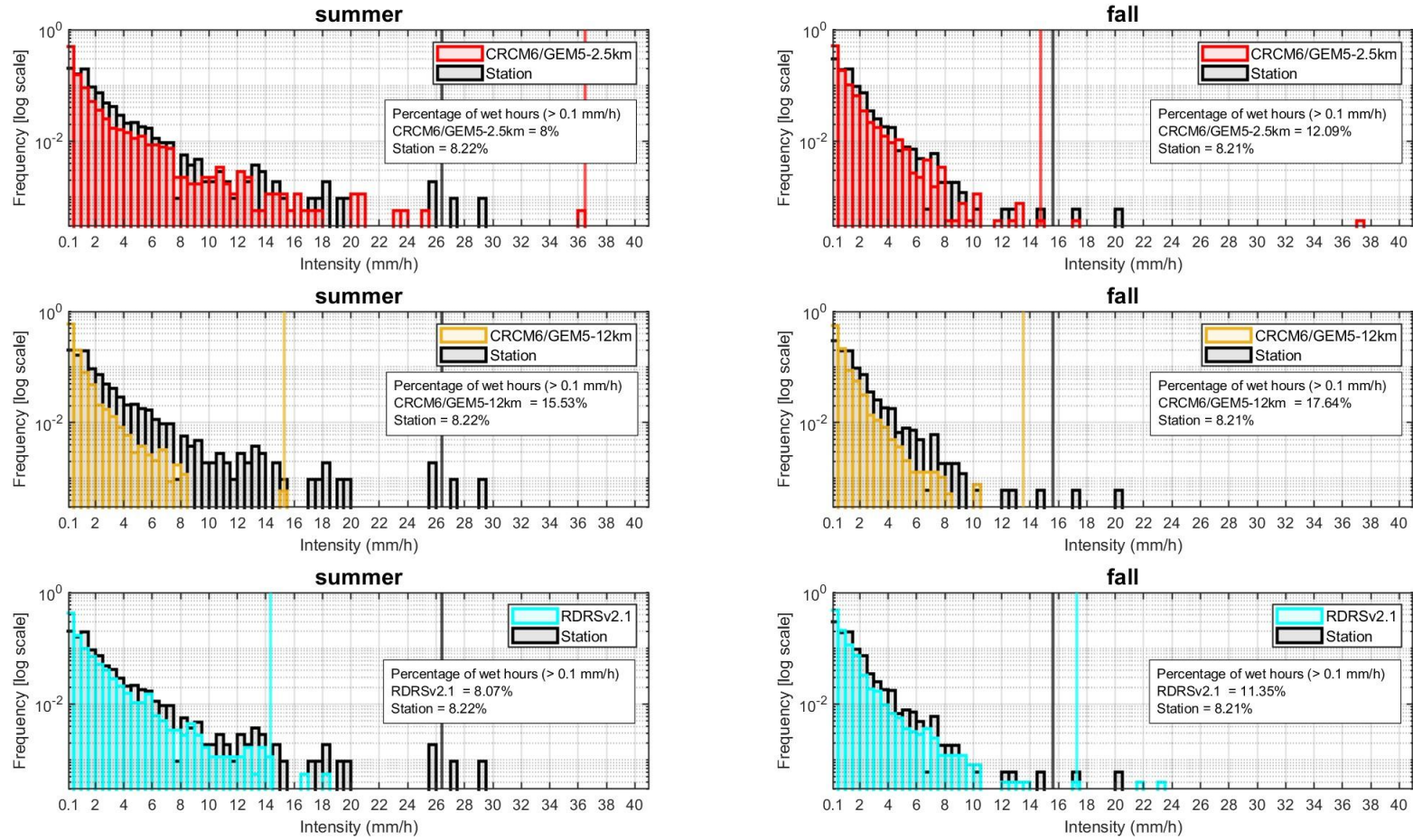


Figure S21. Black bins represent weather station data (2014–2023), yellow bins correspond to CRCM6-12 km (2011–2020), red bins correspond to CRCM6-2.5 km (2011–2020), and cyan bins correspond to RDRS (2009–2018). The vertical line represents the 99.99th percentile for each dataset. Left-side panels correspond to summer seasons (a, c, e), and right-side panels correspond to fall seasons (b, d, f). The bin size is 0.5 mm.

## STE-ANNE-DE-BELLEVUE 1 Station

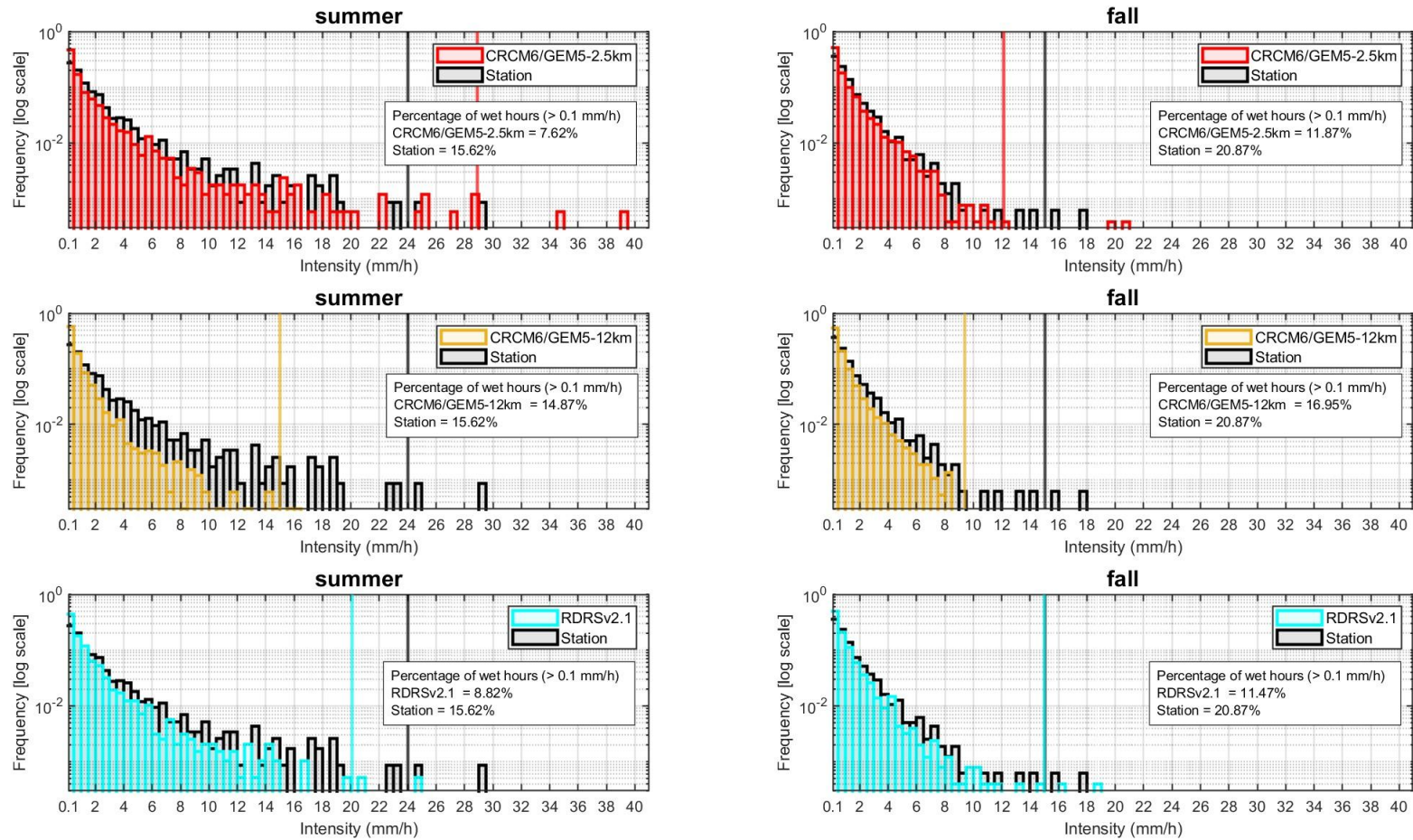


Figure S22. Black bins represent weather station data (2014–2023), yellow bins correspond to CRCM6-12 km (2011–2020), red bins correspond to CRCM6-2.5 km (2011–2020), and cyan bins correspond to RDRS (2009–2018). The vertical line represents the 99.99th percentile for each dataset. Left-side panels correspond to summer seasons (a, c, e), and right-side panels correspond to fall seasons (b, d, f). The bin size is 0.5 mm.

## STE-CLOTILDE Station

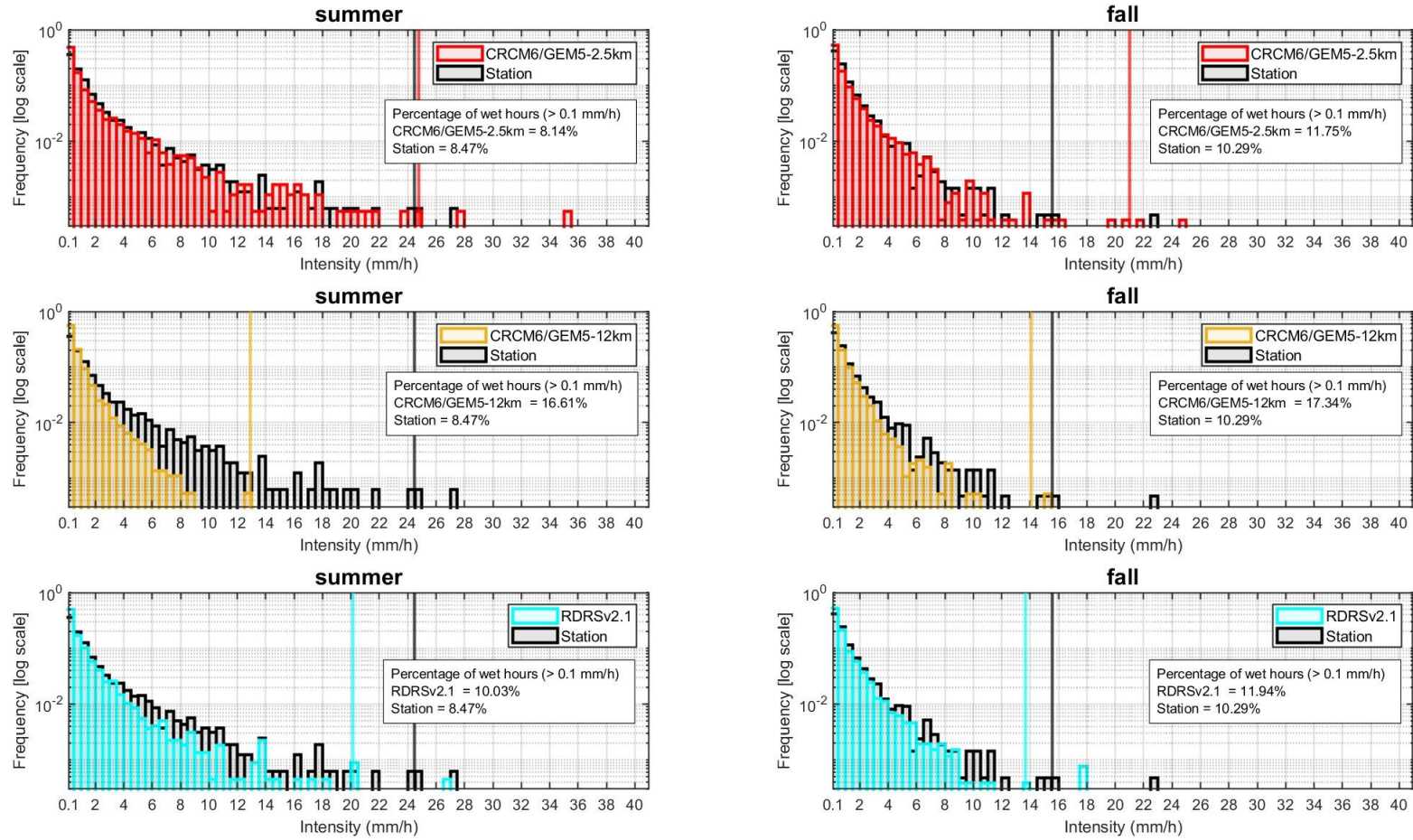


Figure S23. Black bins represent weather station data (2014–2023), yellow bins correspond to CRCM6-12 km (2011–2020), red bins correspond to CRCM6-2.5 km (2011–2020), and cyan bins correspond to RDRS (2009–2018). The vertical line represents the 99.99th percentile for each dataset. Left-side panels correspond to summer seasons (a, c, e), and right-side panels correspond to fall seasons (b, d, f). The bin size is 0.5 mm.

## STEFUYULAVAL Station

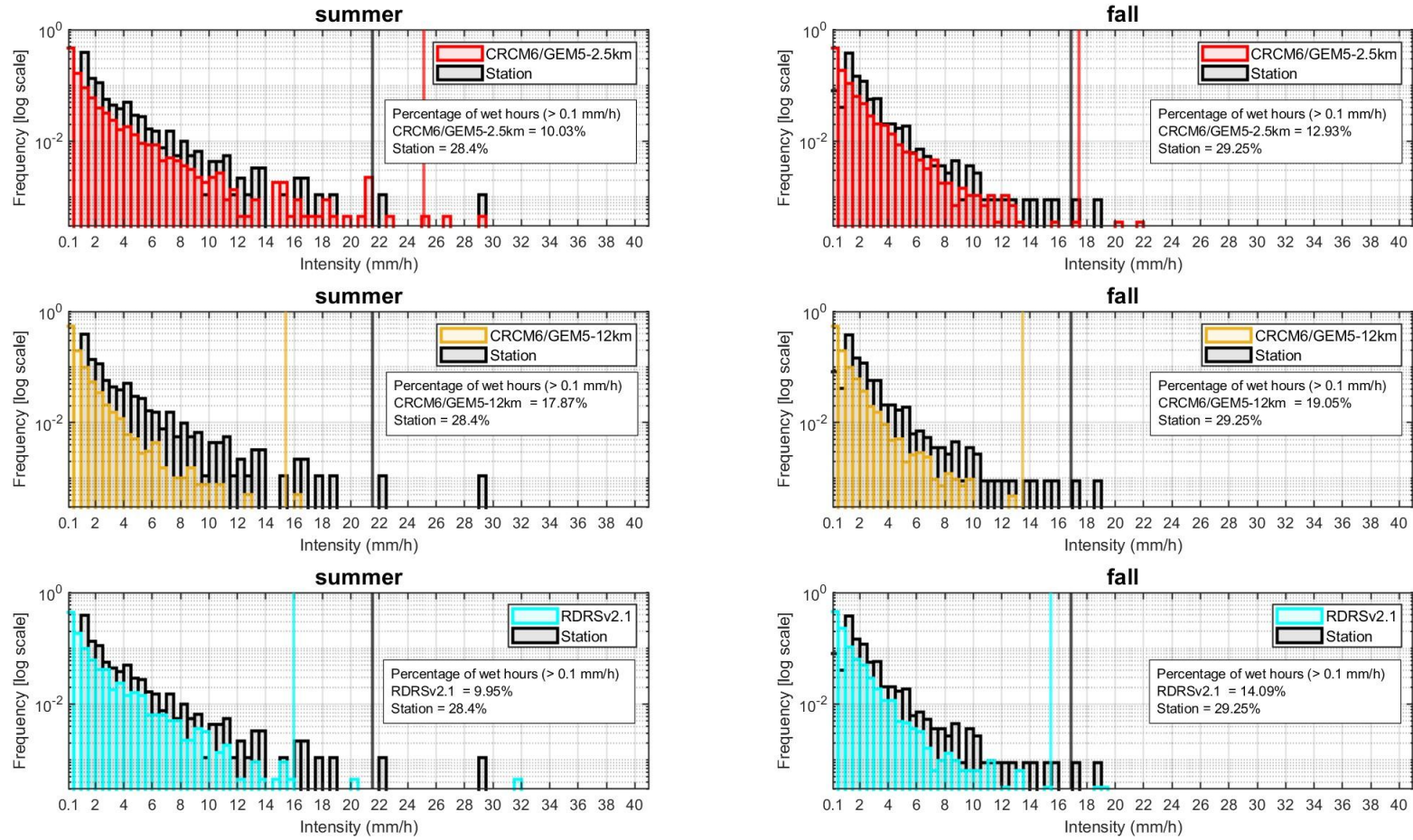


Figure S24. Black bins represent weather station data (2014–2023), yellow bins correspond to CRCM6-12 km (2011–2020), red bins correspond to CRCM6-2.5 km (2011–2020), and cyan bins correspond to RDRS (2009–2018). The vertical line represents the 99.99th percentile for each dataset. Left-side panels correspond to summer seasons (a, c, e), and right-side panels correspond to fall seasons (b, d, f). The bin size is 0.5 mm.

## THETFORD MINES RCS Station

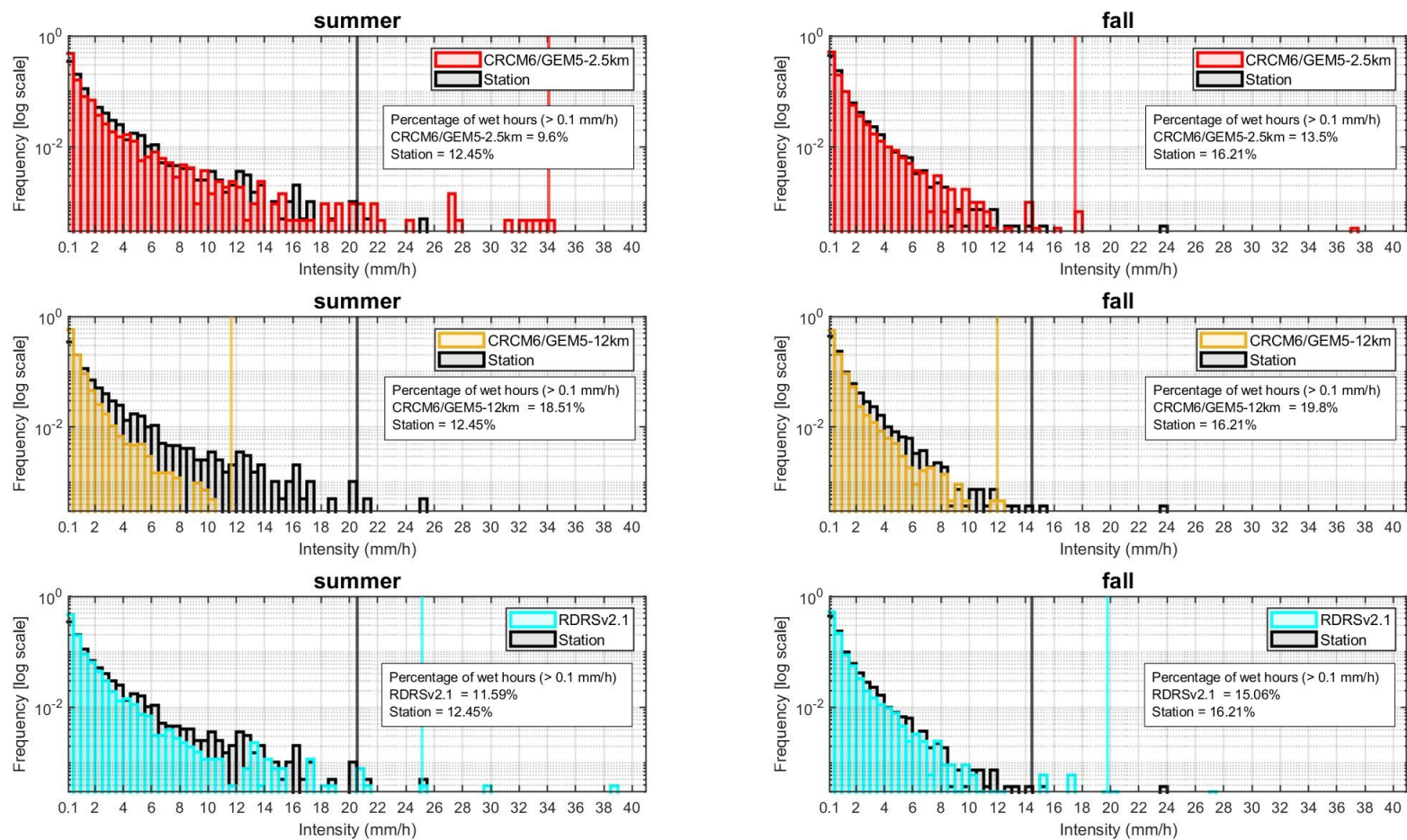


Figure S25. Black bins represent weather station data (2014–2023), yellow bins correspond to CRCM6-12 km (2011–2020), red bins correspond to CRCM6-2.5 km (2011–2020), and cyan bins correspond to RDRS (2009–2018). The vertical line represents the 99.99th percentile for each dataset. Left-side panels correspond to summer seasons (a, c, e), and right-side panels correspond to fall seasons (b, d, f). The bin size is 0.5 mm.