

Measurement report: Mobile measurements to estimate urban methane emissions in Tokyo

Taku Umezawa^{1,2}, Yukio Terao¹, Masahito Ueyama³, Satoshi Kameyama¹, Mark Lunt⁴, James Lawrence France^{4,5}

¹National Institute for Environmental Studies, Tsukuba, 305-8506, Japan

²Graduate School of Science, Tohoku University, Sendai, 980-8578, Japan

³Graduate School of Agriculture, Osaka Metropolitan University, Sakai, 599-8531, Japan

⁴Environmental Defense Fund, New York, NY 10010, USA

⁵Department of Earth Sciences, Royal Holloway University of London, Egham, TW20 0EX, United Kingdom

Correspondence to: Taku Umezawa (umezawa.taku@nies.go.jp)

Abstract. To investigate distributions and magnitudes of methane (CH₄) emissions in Tokyo, the world’s largest megacity, a vehicle-based mobile measurement was set up and 3-week measurement campaign was conducted in September to October 2023. As part of the campaign, we conducted a control release experiment to link downwind excess CH₄ values to CH₄ emission rate at the source. The empirical equation derived from the experiment was significantly different from those reported by previous studies, suggesting the limitation of such enhancement-to-emission rate conversion—that such conversion is not straightforward and, which is a source of large uncertainty in estimating urban CH₄ emissions based on street-level measurements. The uncertainty stems from different experiment settings and underlying assumptions (e.g., source distance and height) which do not always represent actual urban measurement environments. The mobile measurement campaign covered a large extent of the Greater Tokyo Area with total driving distance of over 2000 km. Locations of CH₄ enhancement were identified and C₂H₆-to-CH₄ enhancement ratios were determined for individual locations to categorize them into biogenic, fossil fuel and combustion CH₄ sources. Among a total of 565 locations inferred as CH₄ sources, 53 % and 42 % were considered as biogenic and fossil fuel origins, respectively, with the rest being minor contributions from combustion. Based on the statistics of measured CH₄ excesses, CH₄ emissions were estimated for the specific areas where relatively high measurement coverage was achieved. In the areas with biogenic facilities (landfill and wastewater treatment plants), our emission estimates are well correlated with local government reporting, indicating actual key contributions of the waste-sector facilities. On the other hand, in the residential areas, CH₄ emissions were predominantly of fossil-fuel origin, with a magnitude comparable to the area with waste facilities. However, such fossil-fuel emissions are not accounted for in local government reporting. The This results were consistent in emission tendency with the local government reporting for areas with the waste-sector facilities, but not for residential areas, suggesting highlights the need of for improved accounting of urban fossil fuel-related emissions.

1 Introduction

Methane (CH₄) is a strong greenhouse gas whose atmospheric abundance has increased over the industrial era (e.g., Etheridge et al. 1998; Umezawa et al. 2022) including the recent decades (e.g., Lan et al. 2025; Umezawa et al. 2025a) due to enhanced anthropogenic emissions (e.g., Chandra et al. 2021, 2024). Because of its relatively short lifetime in the atmosphere (about a decade), reduction of CH₄ emissions is effective to contribute to near-term mitigation of climate change towards the Paris Agreement goal (e.g., Collins et al. 2018). The Global Methane Pledge initiative further calls for emission reduction actions in the anthropogenic CH₄ source sectors. Despite great efforts, current understanding of the CH₄ budget remains incomplete from global to national scales (e.g., Chandra et al. 2021, 2024; Jackson et al. 2024; Niwa et al. 2025; Janardanan et al. 2024). Furthermore, for taking mitigation actions, accurate estimates of facility-scale emissions are needed (Varon et al. 2019; Maasackers et al. 2022).

CH₄ is emitted from various sources including wetlands, agriculture, fossil fuels and combustion. To attribute atmospheric CH₄ variations to contributions from different sources, previous studies utilized simultaneous measurements of isotopes of CH₄ (e.g., Quay et al. 1999; Umezawa et al. 2012; Morimoto et al. 2017; Michel et al. 2024) and other gas tracers such as carbon monoxide (CO) and ethane (C₂H₆) (e.g., Xiao et al. 2004; Baker et al. 2012; Simpson et al. 2012). In particular, due to coincident emissions of CH₄ and C₂H₆ from fossil fuel sources with characteristic hydrocarbon composition (e.g., Schwietzke et al. 2014), it has been shown that C₂H₆ measurements are useful to evaluate CH₄ emissions from oil and gas sectors (e.g., Peischl et al. 2013; Yakovitch et al. 2015).

Cities are considered to be sources of CH₄ with emissions mainly from energy and waste sectors (e.g., Hopkins et al. 2016a; Takano and Ueyama, 2021). The former includes fugitive emissions associated with downstream oil and gas supply chain (refining, storage, distribution and consumption), and the latter landfills and wastewater treatment. The latter is of biogenic origin, produced from anaerobic decomposition. Although activity-based CH₄ emission estimates for urban areas have been examined (Marcotullio et al. 2013; Crippa et al. 2021), observation-based methodologies for citywide verification have been still under development. Eddy covariance measurements provide accurate CH₄ fluxes for footprint areas at urban sites (e.g., Helfter et al. 2016; Takano and Ueyama, 2021), but, in many cases, they represent emissions from partial areas of a large city. Atmospheric transport modelling (including inverse analysis), combined with atmospheric mole fraction variations at upwind and downwind measurement sites, also provides quantification of CH₄ emissions for urban areas where atmospheric measurements and corresponding emission inventory data are available (McKain et al. 2015; Sargent et al. 2021; Saboya et al. 2022).

An increasing number of studies have examined on-street measurements using a vehicle to locate and quantify CH₄ emissions in cities (Zazzeri et al. 2015; Hopkins et al. 2016b; von Fischer et al. 2017; Weller et al. 2018; Maazallahi et al. 2020; Ars et al. 2020; Xueref-Remy et al. 2020; Defratyka et al. 2021; Fernandez et al. 2022; Wietzel and Schmidt, 2023; Joo et al. 2024; Ueyama et al. 2025). These studies have shown characteristics of CH₄ emissions from worldwide large cities such as London (Zazzeri et al. 2015), Los Angeles (Hopkins et al. 2016b), Tronto (Ars et al. 2020), Paris (Xueref-Remy et al. 2020; Defratyka

et al. 2021), Seoul (Joo et al. 2024) and Osaka (Ueyama et al. 2025), which indicated strong emissions from natural gas distribution and waste management sectors in these urban areas. Combining vehicle-based measurement data from different cities, Vogel et al. (2024) presented an analysis of natural gas leakage in Canada and European countries. Recently, Ueyama et al. (2025) conducted a vehicle-based CH₄ survey in Osaka, the second largest city in Japan. As part of the joint project of Ueyama et al. (2025), this study presents analogous measurements in Tokyo, which is Japan's and currently the world's largest megacity in population (United Nations, 2019).

According to Tokyo Metropolitan Government, CH₄ emissions from Tokyo Metropolis were ~~22~~21 kt CH₄ yr⁻¹ for ~~2021~~2023, which were predominantly from waste sectors (~~95.8~~96.0 %) with minor contributions of fuel combustion (~~3.4~~3.3 %) and agriculture (0.8 %) (Bureau of Environment of Tokyo Metropolitan Government, ~~2024~~2025). When aggregated for Tokyo Metropolis, the EDGAR (Emission Database for Global Atmospheric Research) dataset shows CH₄ emissions of 18 kt CH₄ yr⁻¹ for 2023, where waste, energy (including fossil fuel), and agriculture sectors constitute 45 %, 41 % and 14 % of the total emissions, respectively (Crippa et al. 2024). Given the general decreasing trends of CH₄ emissions of Tokyo (e.g., 0.5 % yr⁻¹ in the Tokyo Metropolitan Government reporting), ~~Comparison~~comparison of these datasets indicates discrepancy in magnitude and attribution of CH₄ sources in Tokyo between the local government reporting and the global data commonly used in the atmospheric science community, highlighting the importance to improve activity-based CH₄ emission datasets for Tokyo. In this study, we present our vehicle-based CH₄ measurements in Tokyo (including instrument evaluations), data analyses to identify CH₄ source locations and types, and current-best approximations of CH₄ emissions for specific areas where the data allows.

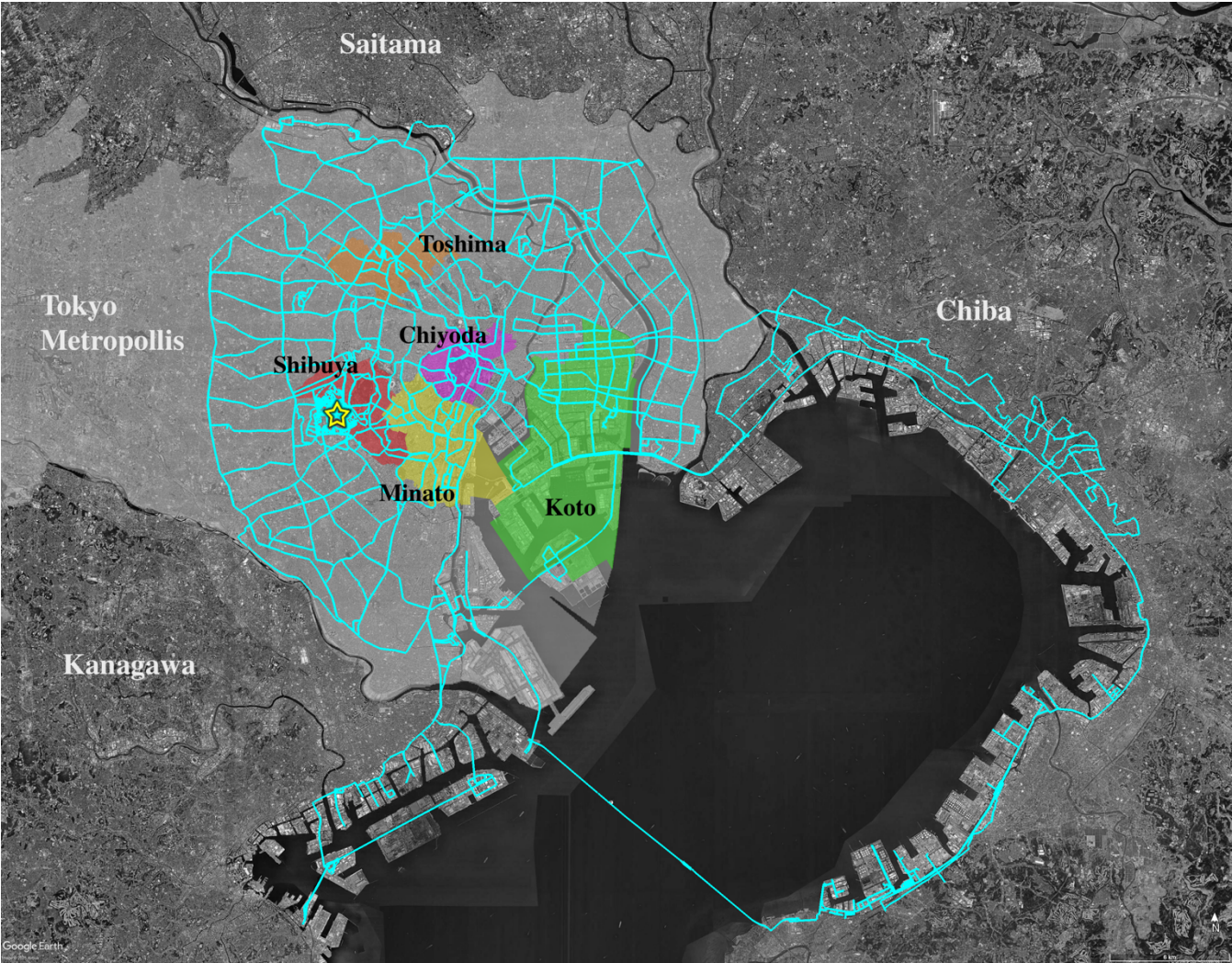
2 Method

2.1 Target area and measurement campaign

The Greater Tokyo Area is the world's most populated metropolitan area. According to the Japan Statistics Bureau, the Kanto Major Metropolitan Area, one of various definitions of the Greater Tokyo Area, is defined as the area that consists of all municipalities that have >1.5 % of their population (aged 15 and above) commuting to designated cities (Chiba, Kawasaki, Sagami-hara, Saitama and Yokohama) or the 23 special wards of Tokyo Metropolis. The area's population was about 38 million in 2020, according to the Census. To our knowledge, no vehicle-based measurements of CH₄ and C₂H₆ have been ever reported within this area. In designing driving routes, we therefore prioritized coverage of large extent of the Greater Tokyo Area. In addition, particular focus was the area around the Yoyogi site (35.66° N, 139.68° E). Atmospheric CH₄ mole fraction measurement (not shown in this study) is ongoing at the site located in the central part of Tokyo, with the surrounding main land cover being residential buildings (Ishidoya et al. 2020; Sugawara et al. 2021). The Tokyo Bay area was also of interest, as part of the area is occupied by Japan's two major industrial zones (Keihin and Keiyo Industrial Zones) that hold heavy industries (e.g., steel mills, oil refineries, chemical plants and electricity generation). In the area, there is also Tokyo Bay-side

Landfill in the Port of Tokyo, which is the final disposal site of solid wastes from the 23 special ward areas of Tokyo. In addition, the 23 special wards have 13 wastewater treatment plants, and they were also targets of the present measurement surveys. CH₄ emissions from the individual landfill and wastewater facilities are however beyond the scope of this study and will be investigated in a separate paper.

100 Our vehicle-based mobile measurements were conducted during daytime on 15 days (18–22 September, and 2–6, 16 and 18–21 October 2023: 14 weekdays and 1 Saturday). The measurement survey covered populated areas of Tokyo Metropolis as well as areas around the Tokyo Bay in Chiba and Kanagawa Prefectures, as shown in Fig. 1. The measurements were made on public roads only. The driving distance on each measurement day ranged from 71 to 208 km, depending on focus areas, and the total distance was 2012 km.



105 **Figure 1: A map showing the Greater Tokyo Area and the driving routes (light blue lines) of the measurement campaign conducted in September–October 2023. Tokyo Metropolis is shaded white and five selected special wards of Tokyo Metropolis (Chiyoda,**

Minato, Koto, Shibuya and Toshima) are shaded colors. A star in Shibuya Ward indicates the location of the site Yoyogi. The map imagery was from © Google Earth.

110

2.2 Laboratory evaluation

To measure atmospheric mole fractions of CH₄ and C₂H₆, we used a MIRA ~~ULTRA-Ultra~~ gas analyzer (Aeris Technologies, USA). The analyzer is a mid-infrared absorption spectrometer with a multi-pass cell (60 cm³ volume). The cell pressure is maintained at ~240 mbar by an internal pump. More descriptions on the analyzer were previously given in Travis et al. (2020) and Commane et al. (2023).

To determine the CH₄ and C₂H₆ mole fractions in sample air, we prepared a suite of dry-air standard gases containing CH₄ and C₂H₆ at ambient to urban elevated mole fraction levels, ranging approximately from 2 to 5 μmol mol⁻¹ (hereafter denoted as ppm) for CH₄ and 1 to 10 nmol mol⁻¹ (hereafter denoted as ppb) for C₂H₆. These standard gases were produced gravimetrically in 9.4 L aluminum cylinders by Taiyo Nippon Sanso JFP Corporation. The CH₄ and C₂H₆ mole fractions reported in this study are traceable to those in these standard gases. Prior to the measurements, the CH₄ mole fractions in the standard gases were measured by a cavity ring-down spectroscopy analyzer (G-2401, Picarro Inc., USA). The measurements confirmed that the CH₄ mole fractions in the standard gases show excellent linearity with reproducibility of <1.0 ppb. The standard gases were also measured for C₂H₆ by a preconcentration and refocusing gas-chromatography mass-spectrometry (GC-MS) system (Umezawa et al. 2025b). The measurement results showed a good linearity of the standard gases with reproducibility of <0.1 ppb.

The repeatability of the MIRA ~~ULTRA-Ultra~~ analyzer has been evaluated by Allan-Werle variance plots (e.g., Commane et al. 2023). We measured compressed air in a 47 L cylinder for about 24 hours and calculated the Allan-Werle variance (not shown). The same experiment was made twice: 6–7 September 2023 and 21–22 February 2024. The first experiment was soon after delivery of the analyzer and the second was made after the modified version of the software (data acquisition frequency increased) being implemented. Repeatability of MIRA ~~ULTRA-Ultra~~ for 100 s was 0.02 ppb for CH₄ and 0.004 ppb for C₂H₆, which were later improved to 0.007 ppb for CH₄ and 0.003 ppb for C₂H₆. These values exceed those reported by Commane et al. (2023) for the same product.

The standard gases were measured periodically to evaluate longer-term stability of the analyzer. The instrument showed good stability during the mobile measurement campaign period in Tokyo (18 September–21 October 2023), with the measured CH₄ values of the standard gases agreed to the nominal value within ~5 ppb at baseline level (~2 ppm). In contrast, the measured values for the standard gases with higher CH₄ mole fractions (up to ~5 ppm) showed differences up to ~25 ppb. ~~As this possible bias (~0.025 ppm) As those values are~~ relatively small in comparison to ~~the observed variability~~ (>1 ppm excess values with respect to the baseline), we apply no corrections for CH₄ measurements during the Tokyo mobile campaign measurements. It was also shown that measured C₂H₆ values by MIRA ~~ULTRA-Ultra~~ varied significantly from day to day. This suggests that raw C₂H₆ values reported from the analyzer are not compatible among different measurement days. We however confirmed

that the measurement span covered by the standard gases remained constant (for the mole fraction range approximately from 1 to 10 ppb) over the course of measurements, indicating that the excess values in the C₂H₆ mole fraction were robust. We therefore report excess values only for C₂H₆.

We evaluated two MIRA ~~ULTRA-Ultra~~ analyzers of two institutions (National Institute for Environmental Studies, NIES and Osaka Metropolitan University, OMU) for sensitivity to humidity as previously reported by Commane et al. (2023). The NIES and OMU analyzers were operated for the measurements in Tokyo (this study) and Osaka (Ueyama et al. 2025), respectively. Figure 2 displays the CH₄ and C₂H₆ mole fraction dependence on the amount of water vapor. The mole fractions here are ~~reported values by the instrument and applied no uncorrected edions-as was reported by the instrument~~. In this experiment, a compressed dry air was introduced into the analyzer. The air passed through a moisture exchanger (ME-110-72COMP-4, Perma Pure LLC) housed in a food container in which a humidor pack (84 % RH, Boveda Inc.) was placed. Warm up of the container increased humidity inside the container, which also increased the amount of water vapor in the sample flow of the air via the moisture exchanger. To examine response with low humidity, silica gel was placed in the container instead of the humidor pack to dry the sample air.

As shown in Fig. 2, CH₄ measurement by the analyzer showed a quadratic curve (grey and black lines) expressed by:

$$\text{NIES: } Y = -0.05478 + 8.4828 \times 10^{-6}X - 3.2856 \times 10^{-10}X^2 \quad (1)$$

$$\text{OMU: } Y = -0.020178 + 4.0952 \times 10^{-6}X - 2.07786 \times 10^{-10}X^2 \quad (2)$$

Commane et al. (2023) reported the humidity response of the MIRA ~~ULTRA-Ultra~~ analyzer, but interestingly, their experiment indicated a different curve in shape. They reported that the CH₄ value from the analyzer showed a quadratic but monotonically decreased curve with increasing humidity. In contrast, our results in Fig. 2 suggest that the measured CH₄ value has a plateau at water vapor range of approximately 5000–15000 ppm. For the NIES MIRA ~~ULTRA-Ultra~~, in the water vapor range of 7500–18000 ppm, the measured CH₄ value falls within –0.01 ppm relative to the top of the quadratic convex curve positioned at ~13000 ppm water vapor. This implies that measurements with water vapor in the above target range would report CH₄ values with better reproducibility. We therefore consider that (1) calibration of the analyzer should be made by reference gases humidified to as close as the target range, and (2) CH₄ values reported by the analyzer should be corrected according to the water vapor values.

For C₂H₆, the measured value from the NIES MIRA ~~ULTRA-Ultra~~ showed a slight increase with increasing humidity expressed by:

$$\text{NIES: } Y = -0.6521 + 4.8243 \times 10^{-5}X \quad (3)$$

In the above water vapor range (7500–18000 ppm), the C₂H₆ values are expected to fall within ±0.3 ppb from the nominal value. The C₂H₆ values reported by the analyzer should be corrected accordingly. In contrast, the MIRA ~~ULTRA-Ultra~~ analyzer of OMU did not show a consistent trend between experiments when the water vapor was increased and decreased (Fig. 2, bottom panel). Note that measurements by OMU MIRA ~~ULTRA-Ultra~~ are not included in this study and presented in the

companion paper (Ueyama et al. 2025). It should be noted that the water response curve, as presented in this study, is likely different from instrument to instrument even within the same model product MIRA ~~ULTRA~~Ultra; we therefore recommend careful evaluation of each analyzer for high-accuracy measurements.

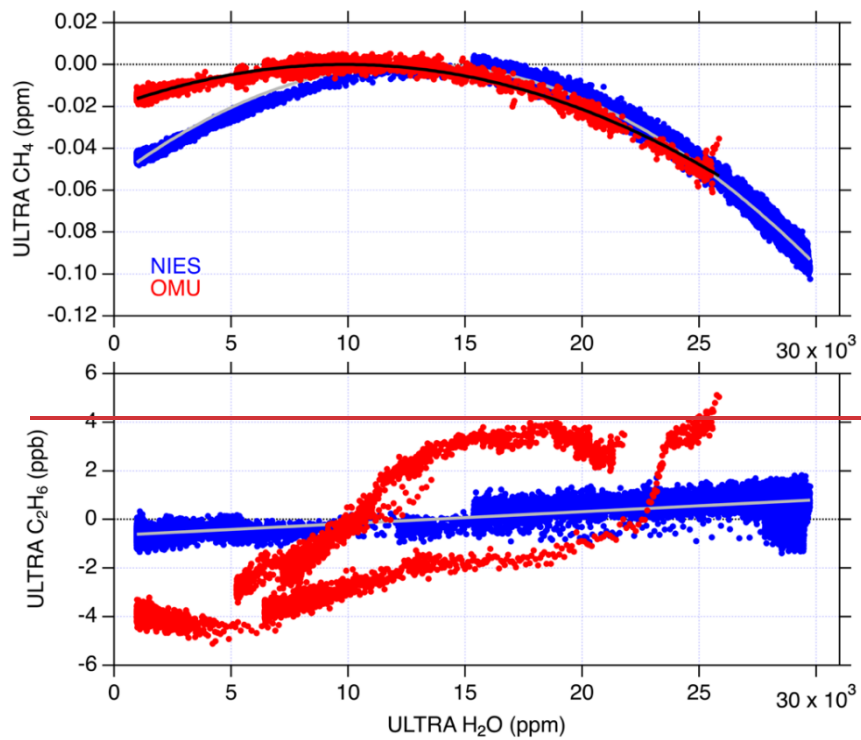
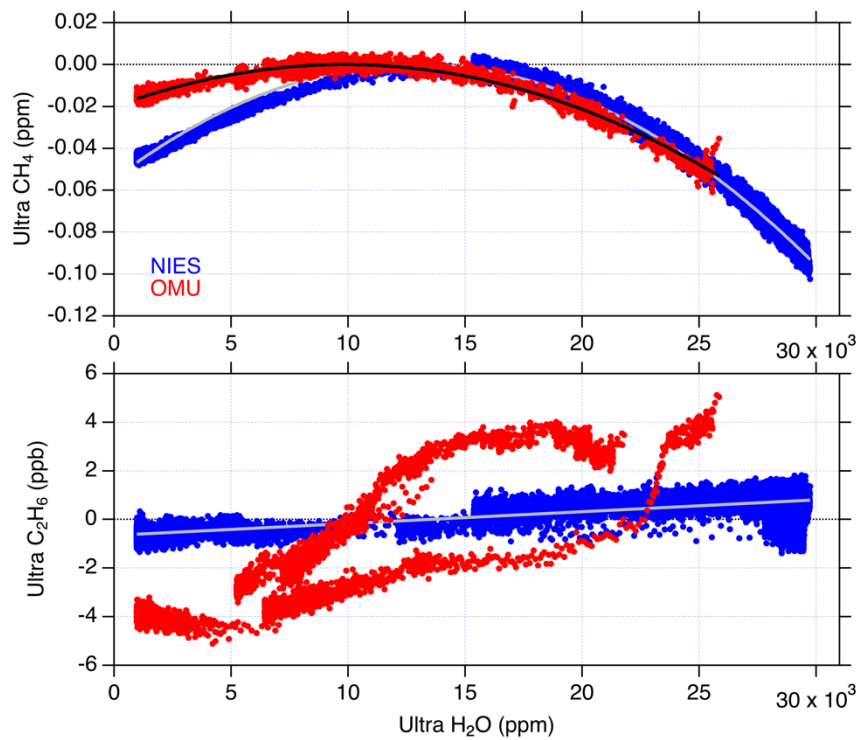


Figure 2: Sensitivity of the CH₄ (top) and C₂H₆ (bottom) mole fractions to the water vapor of the two MIRA ~~ULTRA~~Ultra analyzer of NIES (blue) and OMU (red). Note that CH₄ and C₂H₆ mole fractions are plotted as differences from nominal values.

2.3 Mobile measurement set-up

The vehicle-based measurement system consisted of the MIRA ~~ULTRA~~Ultra analyzer, a sample air inlet and connecting tubings, a GPS (Global Positioning System) receiver (16X-HVS, Garmin, USA), an anemometer (Portable Mini, Calypso Instruments, USA), a data logger (CR-1000X, Campbell Scientific, Inc., USA), and power supply. The car is equipped with the anemometer on the roof, the GPS receiver at the inner side of the front window, and the air inlet at front low part of the car (~0.5 m height from the ground). Sample air is drawn by the internal pump of the MIRA ~~ULTRA~~Ultra instrument. Length of the tubing from the air inlet to MIRA ~~ULTRA~~Ultra is 6.25 m (5-m 1/8" OD and 1.25-m 1/4" OD). Power is supplied from the car power socket (+12 VDC) via a power inverter to MIRA ~~ULTRA~~Ultra and the data acquisition system. The main component of the data acquisition system is the data logger, which collects data from the anemometer, GPS and MIRA ~~ULTRA~~Ultra. Prior to measurement, a gas mixture that contains 1 % of hydrocarbons including CH₄ and C₂H₆ was sprayed to the air inlet to measure response time from the air inlet to MIRA ~~ULTRA~~Ultra. The response time was 8 sec in most days with only a few days of 7 sec or 9 sec. The data were located with the response time corrected for each measurement day.

3 Control release experiment

Mobile vehicle-based measurements provide CH₄ mole fractions along the driving track so that emissions are indicated by enhancement from the background value. To give a preliminary estimate of CH₄ emission rate simply based on enhancements of the CH₄ mole fraction, we conducted a controlled CH₄ emission experiment. In the experiment, CH₄ outflow from a 47 L cylinder is controlled at a fixed flow rate for ~10 min, and the CH₄ gas is released from the downstream pipe at ~5 m height from the ground. The controlled flow rate ranged from 1.0 to 15.0 NL min⁻¹ at about 5-min intervals. The CH₄ mole fraction was measured ~50 m downwind by the MIRA ~~PICO~~Pico analyzer. The outlet pipe was visible from the measurement site and there was almost no obstacle that interfered wind advection in between except a mesh fence and bushes. The analyzer was subsequently calibrated by using a set of reference gases. Note that this experiment was not carried out by the MIRA ~~ULTRA~~Ultra analyzer, which was used in the mobile measurement campaign, but we confirmed consistency of response outputs from both analyzers within the measurement uncertainties.

The experiment was conducted on 28 July 2023. The first set of the experiment with the above varying flow rates started around 10:00 and ended around 12:30 local time, and it was repeated in the afternoon approximately from 14:00 to 16:30. The weather was sunny with temperatures of 31°C in the morning and up to 34°C in the afternoon. The easterly wind (direction of the outlet pipe to the measurement site) prevailed during the experiment with wind speed below 3 m s⁻¹. These weather conditions agree to those typically observed at the site and in Tokyo (Japan Meteorological Agency, 2025). From time series

of observed CH₄ enhancements, the excess CH₄ was defined as the CH₄ mole fraction difference from a background value, which was calculated as the median values in the 3-min time window (± 1.5 min from the individual data points). When the excess CH₄ exceeded +0.05 ppm from the background, the data point was tagged. Among the tagged data points with enhanced CH₄, the maximum excess CH₄ value in each emission period was plotted as a function of the CH₄ emission rate (Fig. 3a). The linear fit yielded the following relationship between the excess CH₄ (ppm) and CH₄ emission rate (g CH₄ min⁻¹):

$$\text{max excess CH}_4 = (0.118 \pm 0.117) + (0.033 \pm 0.019) \times \text{emission rate} \quad (4)$$

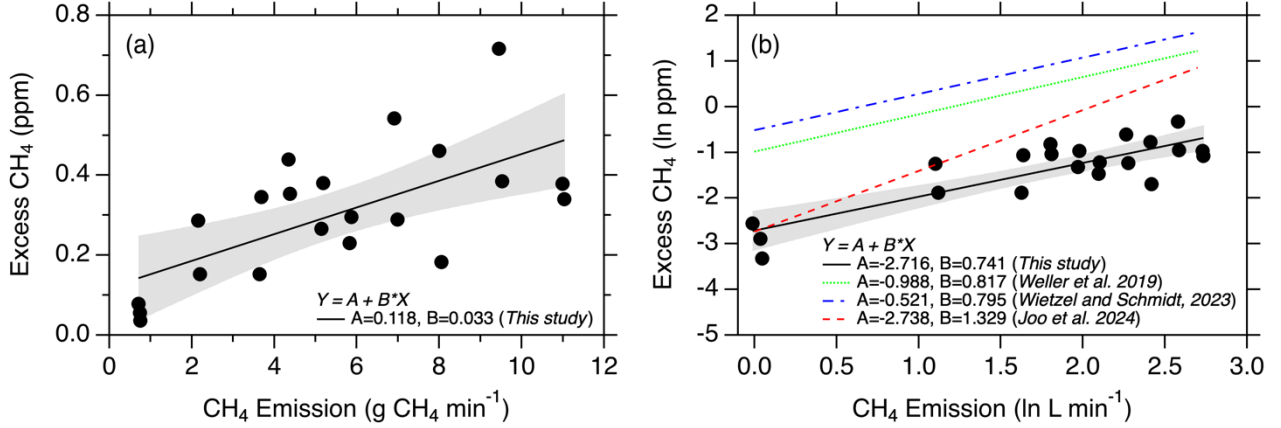


Figure 3: (a) The observed maximum excess CH₄ as a function of the CH₄ emission rate. The original CH₄ emission rate in unit NL min⁻¹ was converted to g CH₄ min⁻¹ with the gas density of CH₄ (0.717 kg m⁻³). **(b)** Same as (a), but both axes are on *ln* scales. Our experiment data and the linear fit are shown in black and the linear relationships suggested by Weller et al. (2019), Wietzel and Schmidt (2023) and Joo et al. (2024) are shown by green dotted, blue dash-dotted and red dashed lines, respectively. The linear regression coefficients are also shown. The grey shades indicate the 95 % confidence bands.

In Fig. 3b, the above linear relationship was converted into the natural log (*ln*) scales for comparison to those reported by previous studies (Weller et al. 2019; Wietzel and Schmidt, 2023; Joo et al. 2024). Our data aligned in the range of lower excess CH₄ with the slope being smaller than other studies, showing that our equation gives a larger estimate of the emission rate when given a same excess CH₄ value. The discrepancy may be attributable to difference in the experiment settings. Weller et al. (2019) and Wietzel and Schmidt (2023) assumed an average approximate distance between leak and measurement points to be 15.75 m and 7 m, respectively. Joo et al. (2024) assumed 0 m distance between leak and measurement location, as their test experiment was conducted on a narrow driving path surrounded by buildings. In contrast, our experiment data was collected with source distance of ~50 m after horizontal advection. These differences imply that distance to the source is an important factor. For the present experiment with distance of ~50 m, the equation by Weller et al. (2019) and Wietzel and Schmidt (2023) could underestimate the emission rate. Comparison to Joo et al. (2024) also suggests that the slope could be considerably different depending on surrounding environment of the experiments. Furthermore, in contrast to the 5-m height of CH₄ release in this study, CH₄ was released from the ground in the above three studies, where detection of leakage from

underground pipes was assumed. The emission height is also one of decisive initial conditions that determine how the gas
235 disperse in space and time (e.g., Yakovitch et al. 2015). In practice, given that the actual distance of an emission from the
measurement vehicle, as well as actual emission height in a city, is unknown, accurate estimation of emission magnitude
(choice of a suitable equation) is challenging. Emission estimates with different equations are discussed in the companion
paper (Ueyama et al. 2025).

4 Data analysis

240 4.1 Leak Indication (LI) and Leak Point (LP)

In this study, we identified CH₄ enhancements in a similar manner to previous studies (von Fischer et al. 2017; Weller et al.
2019; Maazallahi et al. 2020; Defratyka et al. 2021; Wietzel and Schmidt 2023; Fernandez et al. 2022; Vogel et al. 2024;
Ueyama et al. 2025). The baseline CH₄ mole fraction was defined as the 5th percentile of all the data obtained within ± 2.5 min
moving time window for individual data points. Subtracting the baseline from each measurement value allowed us to determine
245 the CH₄ excess value. When the CH₄ excess exceeds 0.1 ppm, the data point is tagged as a Leak Indication (LI), as visualized
in Fig. 4a. We then identified a Leak Point (LP) when 5 or more consecutive data points were tagged as LIs, which means that
CH₄ excess values of > 0.1 ppm lasted for > 5 secs at LPs, as our measurement was at 1 Hz. The central locations (latitude and
longitude) and the maximum excess CH₄ value among these consecutive data points were assigned to represent each LP. The
C₂H₆ mole fraction data were processed in the same manner to determine the C₂H₆ excess. To avoid possible influence from
250 the vehicle exhaust, the data points with vehicle speed less than 1.5 km h^{-1} was excluded.

It is noted that our threshold (0.1 ppm) is same as that in our companion paper (Ueyama et al. 2025), similar to that applied
for measurements in German cities (5 % by Wietzel and Schmidt, 2023) and smaller than that for measurements in Paris,
France (0.5 ppm by Defratyka et al. 2021) and Bucharest, Romania (0.2 ppm by Fernandez et al. 2022). In this regard, we
found that the magnitude of CH₄ excess was generally smaller in the Tokyo area than in US and Europe cities, and the threshold
255 (0.1 ppm) was appropriate for effective detection of LI as a CH₄ emitting location. For instance, a higher threshold of 0.2 ppm
would miss ~60% of LPs with smaller enhancements. In contrast, a lower threshold of 0.05 ppm would more than double the
LP counts, but, due to comparable magnitudes of the observed baseline CH₄ variability, the LP detection would entail larger
uncertainty. As shown in Fig. 5, the LPs with excess CH₄ < 0.2 ppm comprise 41 % of all the LPs found during the measurement
campaign. About 93 % of the LPs fell in the range of excess CH₄ values of < 1 ppm. On the other hand, we detected 28 LPs (5
260 %) exceeding excess CH₄ of 2 ppm with maximum of 19.8 ppm, of which 23 and 5 LPs were classified as biogenic and fossil
fuel sources (see Section 5). ~~When classified into emission magnitude categories by previous studies (von Fischer et al. 2017;
Fernandez et al. 2022; Ueyama et al. 2025), 531 (94 %) LPs were identified as low emissions (excess CH₄ of < 1.6 ppm or < 6
 L min^{-1} emission calculated by equation Weller et al. 2019), while 30 and 4 LPs were considered as medium (intermediate of
low and high categories) and high (> 7.6 ppm or $> 40 \text{ L min}^{-1}$) emissions, respectively. Among the 4 LPs of the high emission
265 category, 3 of them were found near wastewater treatment plants and the rest was in a residential area (see Section 5).~~

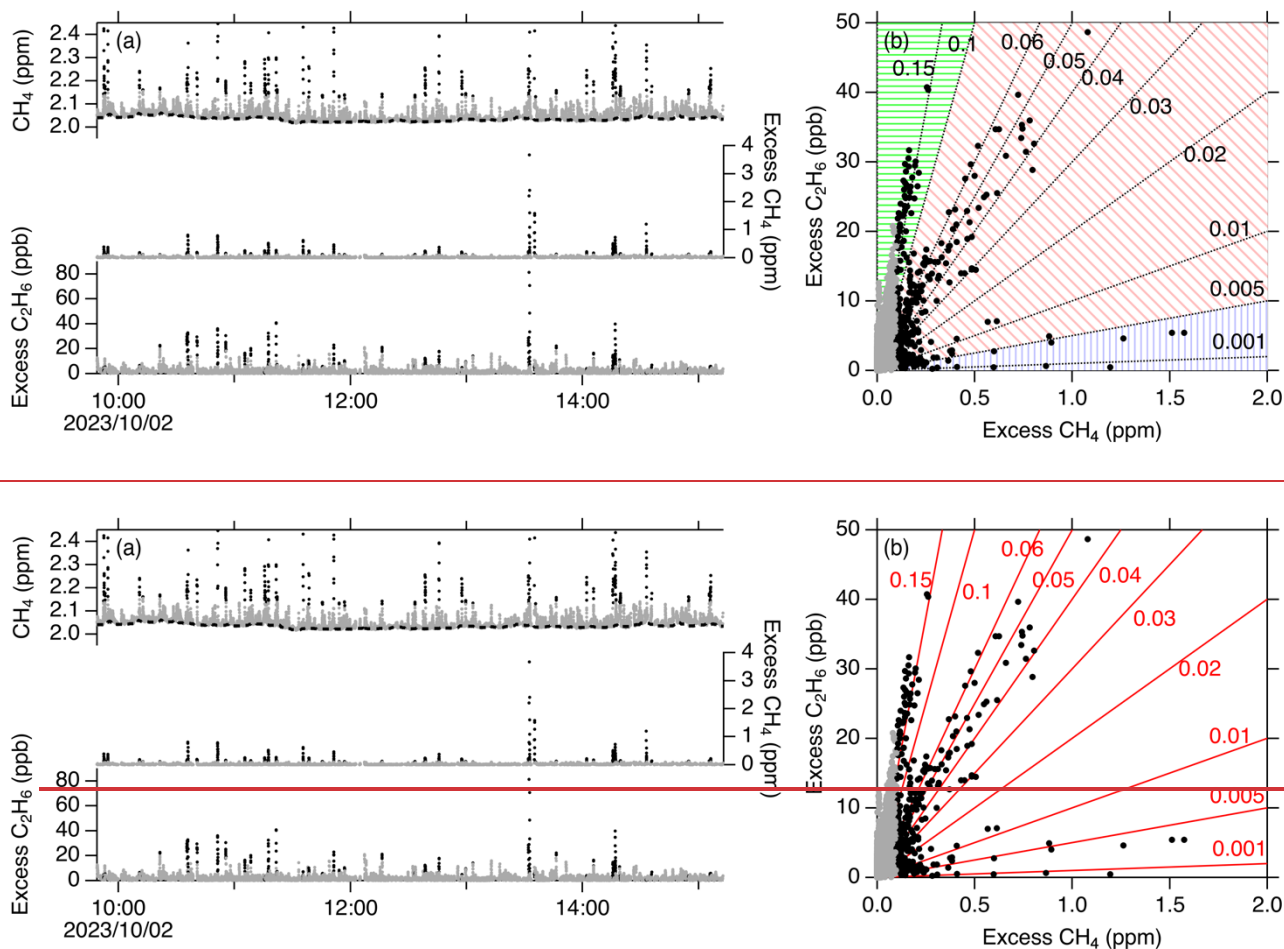


Figure 4: (a) An example of the Leak Indication (LI) methodology applied for the data obtained on 2 October 2023. The measured CH_4 mole fraction (top), excess CH_4 (middle) and excess C_2H_6 (bottom) on the driving vehicle are shown. The baseline CH_4 mole fraction was calculated as the 5th percentiles of the measurement data within ± 2.5 min moving time window (black dashed line) and the excess values were determined as deviations from the baseline. The excess C_2H_6 was calculated in the same manner. The data points identified as LI (the excess CH_4 of > 0.1 ppm) are shown by black dots, while other data are coloured grey. (b) Scatterplots of excess CH_4 and C_2H_6 values for the data in panel (a). The data points are coloured in the same manner. Red-Black dotted lines indicate slopes corresponding to different C_2/C_1 ratios (ppm ppm^{-1}), and each Leak Point (LP) was classified into biogenic (blue vertical-line area), fossil fuel (red slant-line area) and combustion (green horizontal-line area) sources accordingly.

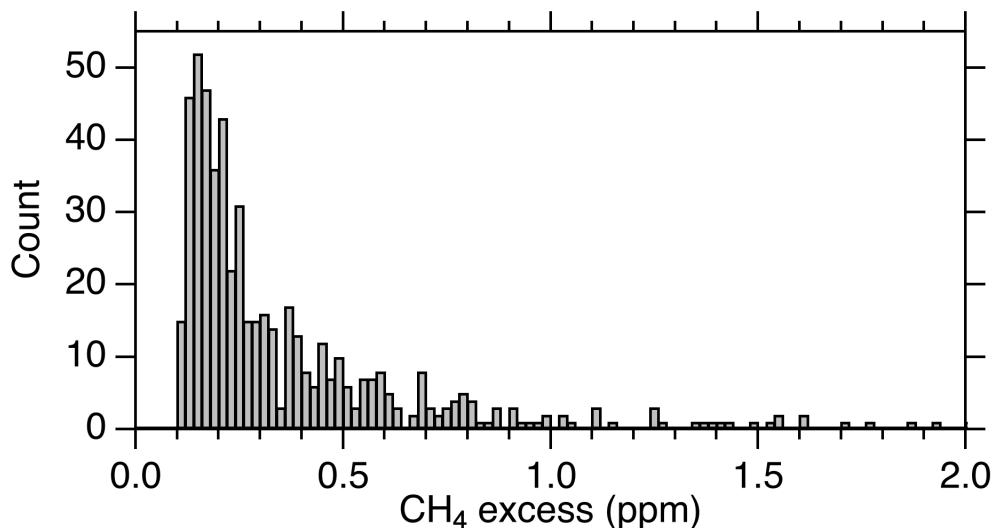


Figure 5: Histogram of the excess CH₄ values of all the LPs observed during the measurement campaign. Note that data points with excess CH₄ of <0.1 ppm were excluded in the data processing, and that 5 % of LPs (N=28) exceeded excess CH₄ of 2 ppm (see text).

280

4.2 C₂H₆ to CH₄ ratio (C2/C1 ratio) and source classification

As shown in Figs. 4a and 4b, we observed coincident increases of CH₄ and C₂H₆ mole fractions, and their enhancement ratio varied at different LPs. We determined C₂H₆-to-CH₄ enhancement ratios (C2/C1 ratio) for individual LPs. The C2/C1 ratio was used for source attribution of each LP according to the source classification by Fernandez et al. (2022); LPs with the C2/C1 ratio of <0.005, 0.005–0.1 and >0.1 are attributed to biogenic, fossil fuel and combustion sources, respectively. Note that the gas composition reported by the local gas company corresponds to the C2/C1 ratio of 0.063. For the measurement day shown in Fig. 4, we have clusters of the data categorized into biogenic (C2/C1<0.005), fossil fuel (C2/C1~0.05) and combustion (C2/C1~0.15). ~~Among 565 LPs identified during the whole measurement period, 300 LPs (53 %) were attributed to biogenic sources with little enhancement in C₂H₆, while 235 (42 %) and 30 (5 %) LPs were classified into fossil fuel and combustion origins, respectively.~~

290

5 Result and Discussion

Figure 6 presents LP locations identified during the measurement campaign. When classified into emission magnitude categories by previous studies (von Fischer et al. 2017; Fernandez et al. 2022; Ueyama et al. 2025), 531 (94 %) LPs were identified as low emissions (excess CH₄ of <1.6 ppm or <6 L min⁻¹ emission calculated by equation Weller et al. 2019), while 30 and 4 LPs were considered as medium (intermediate of low and high categories) and high (>7.6 ppm or >40 L min⁻¹)

295

emissions, respectively. Among the 4 LPs of the high emission category, 3 of them were found near wastewater treatment plants and the rest was in a residential area (see [Section 5 below](#)). The LPs were [also](#) grouped into three source categories (biogenic, fossil fuel and combustion) according to the C2/C1 ratio as described ~~above~~[in Section 4.2](#). Among 565 LPs identified during the whole measurement period, 300 LPs (53 %) were attributed to biogenic sources with little enhancement in C₂H₆, while 235 (42 %) and 30 (5 %) LPs were classified into fossil fuel and combustion origins, respectively. [In this study, due to the very limited number of the combustion LPs, our analysis below mainly addresses biogenic and fossil fuel sources.](#)

All the measurement data points were ~~also~~ classified into different survey areas: 23 special wards of Tokyo Metropolis, Chiba and Kanagawa Prefectures. Maximum excess CH₄ values at LPs in different areas are shown in Fig. 7. Relatively high CH₄ excesses were found mainly in the special wards of Tokyo Metropolis, although some smaller enhancements were detected also in the bay areas of Chiba and Kanagawa Prefectures. In the bay areas of Chiba, 28 biogenic LPs, 38 fossil fuel LPs, and 7 combustion LPs were found. The biogenic and fossil fuel LPs with the highest CH₄ excesses of 1.44 and 2.27 ppm, respectively, were located in the southern part of Keiyo Industrial Zone. In the bay area of Kanagawa (Keihin Industrial Zone), 3 biogenic LPs, 9 fossil fuel LPs, and 2 combustion LPs were found. The CH₄ excesses were at most 0.29 and 0.48 ppm for biogenic and fossil fuel LPs, respectively. In Tokyo Metropolis, we found large CH₄ enhancements such as biogenic LPs in Minato, Shinjuku, Sumida, Koto, Ota, Arakawa, Katsushika and Edogawa Wards as well as fossil fuel LPs in Shibuya and Toshima Wards. In these areas, many of biogenic LPs with large CH₄ enhancements (>1 ppm) were detected downwind of wastewater treatment plants, indicating importance of the large facilities in CH₄ emissions in Greater Tokyo Area. Below we address characterization of overview from the campaign measurements with focus on quantification of areal emissions. Detailed analysis of emissions from individual known CH₄ sources, such as the landfill site and wastewater treatment plants will be presented in a separate follow-up study.

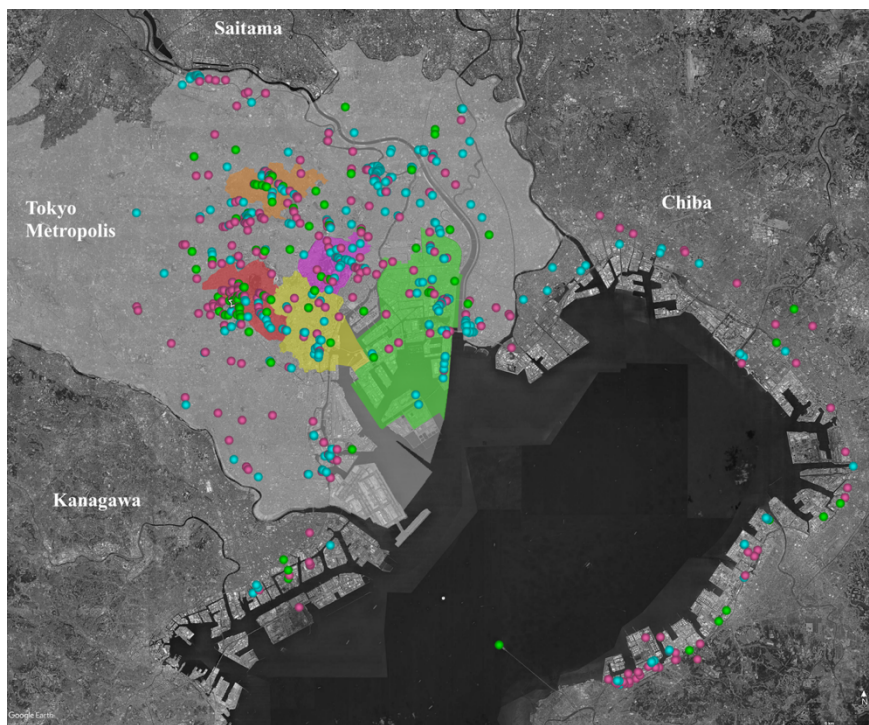


Figure 6: Overview of the Leak Point (LP) locations for all the measurement days. The LP locations are indicated by circles and categorized by the observed C₂/C₁ ratios: blue for biogenic, pink for fossil fuel, and green for combustion sources. Areas are shaded same as Fig. 1. The map imagery was from © Google Earth.

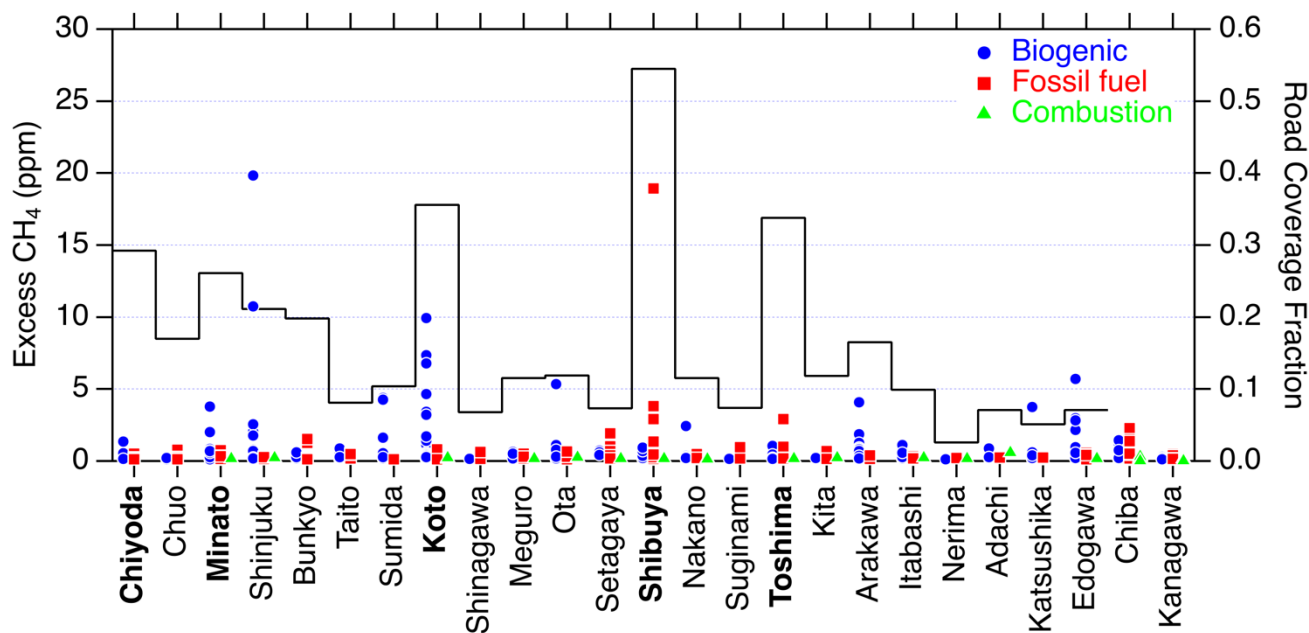


Figure 7: Excess CH₄ values at the LP locations observed in the 23 special wards of Tokyo, Chiba and Kanagawa Prefectures grouped into the three source categories: biogenic (blue circles), fossil fuel (red squares) and combustion (green triangles) sources. Coverage of road distance in each area is also shown by black solid line (right axis), although not applicable to Chiba and Kanagawa Prefectures due to very limited road coverage. Five selected special wards are in bold.

5.1 Characterization of LPs for different wards of Tokyo

Table 1 summarizes relevant statistics and the observed appearances of LPs for 5 selected wards. We note that the road distance covered by the present measurement campaign was only ~12 % of the total roads of Tokyo Metropolis. The coverage for each ward ranged from 2.6 % to 54.5 % (see Figure 7). As shown in Table 1, the best coverage was in Shibuya Ward, followed by Toshima, Koto, Chiyoda and Minato Wards (>25 %). Among 469 LPs found in Tokyo Metropolis, count of LPs ranged from 17 to 66 in these 5 wards, which correspond to LP densities from 0.16 to 0.47 km⁻¹. The LP density is count of LPs per travel distance and indicate average frequency of CH₄ enhancement encounters in a target city (Vogel et al. 2024; Ueyama et al. 2025). When grouped into source categories, biogenic and fossil fuel LP densities ranged from 0.07 to 0.35 km⁻¹ and from 0.08 to 0.20 km⁻¹, respectively. The average LP density in Tokyo Metropolis (0.33 km⁻¹) is comparable to that observed in Osaka (0.39 km⁻¹), the second largest city of Japan (Ueyama et al. 2025). When classified by source categories, the average LP densities of biogenic and fossil fuel origins in Tokyo were 0.18 and 0.13 km⁻¹, respectively, in comparison to 0.13 and 0.24 km⁻¹ in Osaka. Vogel et al. (2024) presented comparisons of leak indication densities across cities in Europe and North America. Although not exactly compared due to differences in data processing, the fossil fuel LP density in Tokyo is apparently as large as those of most European cities with relatively small numbers of leak indications (roughly from Barcelona to

Groningen in Figure 2 of Vogel et al. 2024). Note that we counted CH₄ enhancements of >0.1 ppm, which falls between thresholds used in the two classification methods of Vogel et al. (2024).

345 **Table 1: Measurement statistics and relevant information of the selected 5 wards of Tokyo Metropolis including road distances covered by the present measurements, areas and observed counts of LPs. The numbers in brackets in the column “Biogenic” show LP counts in the proximities of biogenic facilities (landfill and wastewater treatment plants).**

Ward	Roads covered (km)	Total roads of the ward (km) ^a	Coverage fraction (%)	Area of the ward (km ²) ^b	LP count				LP density (km ⁻¹)
					Total	Biogenic (proximity of biogenic facilities)	Fossil fuel	Combustion	
Chiyoda	51.29	175.57	29.2	11.66	17	9 (0)	8	0	0.33
Minato	79.11	303.74	26.1	20.36	36	22 (12)	12	2	0.46
Koto	125.32	395.91	35.6	42.99	66	49 (33)	20	3	0.47
Shibuya	148.19	271.85	54.5	15.11	43	10 (0)	30	3	0.29
Toshima	104.19	307.89	33.8	13.01	17	7 (0)	8	2	0.16
Total (23 wards)	1426.37	11976.67	12.1	627.51	469	268 (149)	186	21	0.33

^aBureau of Construction of Tokyo Metropolitan Government

^bTokyo Metropolitan Government

350

We analysed the observed frequency of the C2/C1 ratio in each ward. In many wards, as represented by Minato and Koto Wards, C2/C1 ratios close to zero (i.e., biogenic sources) were observed most frequently (Figure 8). In contrast, Shibuya Ward showed distinct characteristics of the C2/C1 ratio with the highest frequency at ~0.05, which is likely to correspond to fossil fuel sources. As a result, about three quarters of the LP counts in Shibuya Ward was attributed to the fossil fuel source (Table 1). Toshima and Chiyoda Wards also showed that about half of LPs was attributed to fossil fuel, although number of LPs were limited. The appearance of combustion LPs (C2C1 ratio of >0.1) was minor for all areas.

355

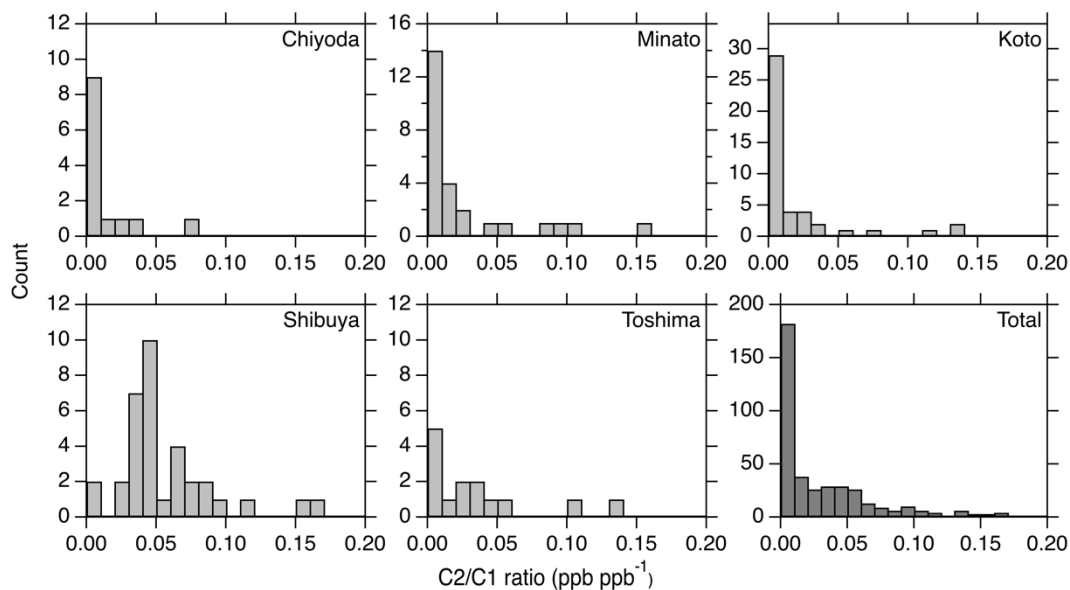


Figure 8: Histograms of the C2/C1 ratios at individual LPs for the five selected wards.

360

The different frequencies of the source attributions were plausibly associated with land uses and known CH₄ sources of the different wards. According to the report of Tokyo Metropolitan Government (Bureau of Urban Development 2023), Shibuya and Toshima Wards are mainly covered by residential land (68.7 and 68.3 %, respectively), while the fraction is relatively low in Koto Ward (47.5 %). In addition, we note that our measurements prioritized coverage of residential areas for Shibuya Ward.

365

The residential land of Koto Ward is occupied substantially by industrial areas (26.6 %), whereas the predominant coverage in other 4 wards are public, commercial, and residential spaces. It is also important to note that the present study surveyed streets near landfill sites (Tokyo Bay-side Landfill) and two wastewater treatment plants resided in Koto Ward, contributing to large number of biogenic LPs in the area. Minato Ward also has a wastewater treatment plant surveyed. In Koto Ward, 2 and 31 LPs were found in the vicinities of landfill site and wastewater treatment plants, respectively, among 44 biogenic LPs

370

in total (Table 1). In Minato Ward, 12 of 22 LPs were identified near the wastewater treatment plant. In contrast, our measurement did not survey any known biogenic CH₄ source facilities in Shibuya and Toshima Wards. It should be noted that the above LP counts (and its density) include those found at proximities of biogenic facilities as mentioned above. Other biogenic LPs could be related to sewer networks and other water environment distributed in the survey areas. These facility and non-facility sources should be separately evaluated in a more sophisticated approach to estimating areal CH₄ emissions,

375

but due to the limited data currently available, we do not distinguish these sources in the analysis below.

5.2 Emission estimates

To estimate areal CH₄ emissions, we employ empirical equations as referred in section 3 and previous studies. Also relevant is LP density (km⁻¹) defined as number of the observed LPs divided by the road distance covered in each ward (Table 1).

Below we estimate CH₄ emissions from the 5 selected wards (Chiyoda, Minato, Koto, Shibuya and Toshima) only, because estimates for other wards are considered to be far from representative due to limited data. Using the average maximum CH₄ excesses in the area (Table 2), we calculated emission rates (L min⁻¹ or g CH₄ min⁻¹) according to Equation 4 and equations suggested by previous studies. In this study, we present estimates using the equation by Weller et al. (2019) for compatibility with our companion paper (Ueyama et al. 2025) and previous studies (Maazallahi et al. 2020; Vogel et al. 2024). It is noted that, when Equation 4 (our control release experiment) was employed, the estimated emissions would be about 10 times larger than those using the Weller et al. (2019) equation, indicating that conversion from CH₄ excess to emission rate with an empirical equation is the considerable source of uncertainty. As described in Section 3, suitable choice of such an empirical conversion equation requires consideration of important factors such as emission height and distance from the source in the target area. Use of Weller et al. (2019) equation assumes that most CH₄ emissions are represented by ground emissions occurring near the vehicle (roughly within 10 m). In contrast, Equation 4 (our control experiment) assumes emissions some tens m away at 5 m height. The former might approximate emissions underground sources (e.g., natural gas distribution pipes or urban sewer networks), whereas the latter downwind advection from large facilities or local restaurants at significant distance (Ueyama et al. 2025). Since the survey areas have these mixtures, it is difficult to determine appropriateness of the equations for individual cases.

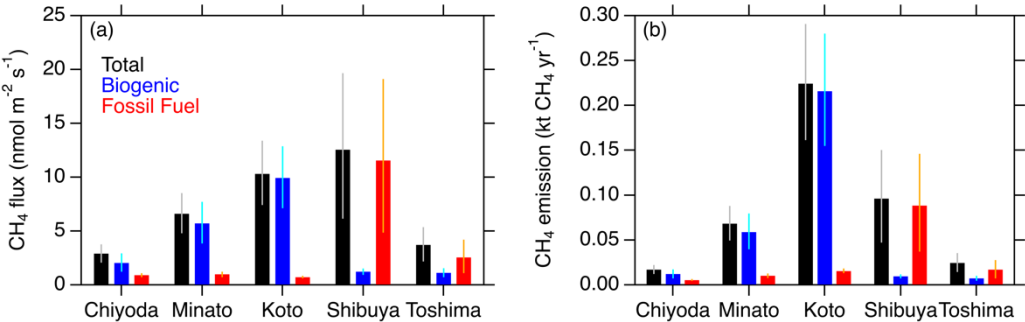
The areal flux was estimated by the following equation (Ueyama et al. 2025):

$$F=ER\times N\times RD/A \quad (5)$$

where F is the areal flux (nmol m⁻² s⁻¹), ER is the emission rate, N is the number of LPs per travel distance (km⁻¹), RD is the total road distance (km), and A is the total area of the ward (km²). The estimated areal fluxes for the selected wards are tabulated in Table 2 and shown in Fig. 9a. As seen in Fig. 9a, reflecting significant counts of the measurement data downwind of the landfill site and wastewater treatment plants, the estimated fluxes for Minato and Koto Wards were contributed predominantly by biogenic sources. In contrast, emissions from residential areas in Shibuya and Toshima Wards were almost entirely attributed to fossil fuel sources.

410 **Table 2: The averages of the maximum CH₄ excess values and estimated and reported emissions for the 5 selected wards of Tokyo Metropolis. The uncertainties (range) of the average of the maximum CH₄ excess and emission estimates were calculated using a Bootstrap method. The reported emissions for the year 2021 were available at <https://all62.jp/jigyoghgh.html> (in Japanese).**

Ward	Average of maximum CH ₄ excess (ppm)	Emission rate (L min ⁻¹)	Areal flux (nmol m ⁻² s ⁻¹)	Areal emission (ktCH ₄ yr ⁻¹)	Reported emission (ktCH ₄ yr ⁻¹)
Chiyoda	0.30±0.07	0.78 (0.55–1.01)	2.89 (2.06–3.76)	0.017 (0.012–0.022)	0.04
Minato	0.46±0.11	1.31 (0.95–1.69)	6.60 (4.78–8.52)	0.068 (0.049–0.088)	0.08
Koto	0.90±0.21	2.94 (2.11–3.81)	10.3 (7.41–13.4)	0.22 (0.16–0.29)	0.12
Shibuya	0.97±0.43	3.23 (1.58–5.05)	12.6 (6.15–19.6)	0.096 (0.047–0.15)	0.04
Toshima	0.46±0.16	1.28 (0.75–1.86)	3.69 (2.16–5.36)	0.024 (0.014–0.035)	0.04



415 **Figure 9: (a) Total areal flux estimates (black) and those of biogenic (blue) and fossil fuel (red) sources for the 5 selected wards of Tokyo Metropolis. (b) Same as (a), but for upscaled CH₄ emission estimates. The error bars indicate uncertainty ranges calculated using a Bootstrap method.**

The areal fluxes can be converted to annual areal emissions (kt CH₄ yr⁻¹) by multiplying the total areas of the individual wards as shown in Table 2 and Fig. 9b. Based on our measurements, it was indicated that Koto Ward had the largest CH₄ emission of 0.22 kt CH₄ yr⁻¹, followed by Shibuya (0.096 kt CH₄ yr⁻¹), and Minato (0.068 kt CH₄ yr⁻¹) Wards. As discussed earlier, our estimates suggested that the areal emissions were predominantly of biogenic origin for Chiyoda, Minato and Koto Wards, whereas fossil fuel sources dominated the total emissions of Shibuya and Toshima Wards. In comparison to our estimates, CH₄ emissions from these wards were reported to be 0.04, 0.08, 0.12, 0.04 and 0.04 kt CH₄ yr⁻¹ for respective wards (Table 2). Our estimates are therefore may appear comparable to the reported emissions. In addition Although these emission estimates are not considered to be conclusive due to large uncertainties, it is noteworthy that our biogenic emission estimates for the five selected wards were correlated with the reported emissions. This is apparently consistent with the reporting of the Tokyo Metropolitan Government that biogenic emissions account for most of the reported emissions according to the standard emission methodologies with nominal emission factors (Bureau of Environment of Tokyo Metropolitan Government, 2024).

However, for Shibuya and Toshima Wards, where our emission estimates attributed primarily to fossil fuel sources, the discrepancies between the estimated and reported emissions were large. This implies that either the fossil fuel emissions observed in this study were not taken into account or emission factors for the relevant sectors employed for the report were smaller than actual.

Lastly, we stress that our emission estimates presented in this study are preliminary and that accurate evaluation of the emission reporting by the local government is currently difficult. As described earlier, our survey covered only ~10 % of roads of the Tokyo Metropolis, and up to ~50 % at a maximum for the wards with relatively high measurement coverages. In addition, the survey prioritized measurements in the proximities of known CH₄ sources (mainly biogenic), by which the result may be biased towards biogenic emissions for the target wards with such known sources (Minato and Koto Wards). For residential areas where fossil fuel-related CH₄ enhancements were frequently found (Shibuya and Toshima Wards), the measurements were not even in space, by which the current estimates may be underrepresentative for respective areas. We plan the second phase of mobile measurement campaign in Tokyo to increase the road coverage. It should be also noted that upscaled calculation from vehicle-based mobile measurements at ground level could underestimate citywide emissions, since such observations could miss CH₄ emission signals taking place at heights above street level (Ueyama et al. 2025). Moreover, as discussed earlier, the empirical conversion from the CH₄ excess to the emission rate (Section 3) is a source of large uncertainty, roughly a factor of 10. The equation will be better evaluated through comparison to the ongoing eddy covariance measurements at the site Yoyogi located in a residential area of Shibuya Ward (Sugawara et al. 2021), as performed by Ueyama et al. (2025). For preliminary comparison to Ueyama et al. (2025), CH₄ flux estimations for selected wards of Tokyo would fall within the range of variability found in various areas in Osaka and Sakai cities if the same conversion equation from excess CH₄ to emission rate was applied, which implies comparable magnitudes of urban CH₄ emissions in both megacity areas.

6 Concluding remarks

Based on the vehicle-based mobile atmospheric CH₄ and C₂H₆ measurement data newly obtained in September–October 2023, this study significantly improved our understanding of urban CH₄ emissions in Tokyo. It is clearly inferred that CH₄ emitting locations of fossil fuel origin, identified by the C₂H₆ to CH₄ enhancement ratio, are almost ubiquitous in residential areas, which contrasts to the reporting of the Tokyo Metropolitan Government that account for 95 % of CH₄ emissions from waste sectors (biogenic CH₄). It is also shown that waste sectors, such as solid waste landfills and wastewater treatment plants, are consistently large CH₄ emitters, as high CH₄ enhancements were observed in downwind proximities. We also presented preliminary estimates of CH₄ emissions for 5 selected wards of Tokyo Metropolis where the measurement densities were relatively high. Although our preliminary estimates of areal CH₄ emissions are subject to large uncertainties, currently available data imply that Tokyo's natural gas emissions are as low as those of Osaka (Japan's second largest megacity, Ueyama et al. 2025) and European cities of the lower-emission group (Vogel et al. 2024). However, the present study has raised further

challenges for better understanding of urban CH₄ emissions in Tokyo. First, although 3-weeks of mobile measurements with a driving distance of roughly 2000 km were performed, coverage of the public roads of Tokyo Metropolis was only ~10 %. Although the coverages exceeded 30 % in a few special wards of Tokyo, more measurements are needed to reduce possible sampling biases in locating CH₄ emissions and attributing them to different sectors. Second, following earlier studies, this study also inferred a large uncertainty range originating from the empirical equation employed for conversion from CH₄ enhancement measurement to emission rate. To reduce uncertainties in estimating the upscaled emissions, usefulness of the equation in the measurement environment should be carefully evaluated, as examined in the companion paper (Ueyama et al. 2025). Even without such evaluation, mobile survey data can be utilized to support mitigation planning by identifying the largest point source fugitive emissions and prioritizing for repair. With further work, and when uncertainties in measurement-based CH₄ emission estimates are sufficiently reduced with increased data, our methodologies may be able to support tracking of mitigation actions of local governments through identifying CH₄ emission locations, sectors and magnitude.

Data availability

The dataset from the Tokyo mobile measurement campaign is ~~currently in preparation to be made available from the NIES Global Environmental Database (<https://db.eger.nies.go.jp/ged/en/>).~~ The dataset is available via Umezawa and Terao (2025) at <https://db.eger.nies.go.jp/MD/10.17595/2025XXXX.001.html.en>.

Author Contribution

TU, YT, and MU designed the study, conducted the measurement, and ensured data quality, with discussion of study goals with ML and JLF. TU analyzed the data with SK for analysis of the area allocation. TU wrote the manuscript with contributions of all co-authors.

Competing interests

The authors declare that they have no conflict of interest.

Acknowledgements

This study was supported by the Environmental Defense Fund and Climate Change and Air Quality Research Program of National Institute for Environmental Studies. The vehicle measurements were made by CLIMATEC, Inc. The control release

experiment was conducted at the Methane Emission Facility of the JGC Corporation (JGC R&D Center in Oarai, Ibaraki, Japan). We thank Hideki Nara for helpful discussion about evaluation of the analyzer.

References

- 490 Ars, S., Vogel, F., Arrowsmith, C., Heerah, S., Knuckey, E., Lavoie, J., Lee, C., Pak, N. M., Phillips, J. L., and Wunch, D.: Investigation of the Spatial Distribution of Methane Sources in the Greater Toronto Area Using Mobile Gas Monitoring Systems, *Environ. Sci. Technol.*, 54 (24), 15671–15679, doi:10.1021/acs.est.0c05386, 2020.
- Baker, A. K., Schuck, T. J., Brenninkmeijer, C. A. M., Rauthe-Schöch, A., Slemr, F., van Velthoven, P. F. J., and Lelieveld J.: Estimating the contribution of monsoon-related biogenic production to methane emissions from South Asia using
495 CARIBIC observations, *Geophys. Res. Lett.*, 39, L10813, doi:10.1029/2012GL051756, 2012.
- Bureau of Construction of Tokyo Metropolitan Government: <https://www.kensetsu.metro.tokyo.lg.jp>, last access: 31 January 2025 (in Japanese).
- Bureau of Environment of Tokyo Metropolitan Government: https://www.kankyo.metro.tokyo.lg.jp/climate/zenpan/emissions_tokyo/, last access: ~~6–25 February–October~~ 2025 (in
500 Japanese).
- Bureau of Urban Development, Tokyo Metropolitan Government: Land Use in Tokyo Special-Ward Area 2021 Edition, https://www.toshiseibi.metro.tokyo.lg.jp/seisaku/tochi_c/tochi_kekka_r3.html, last access: 31 January 2025, 2023 (in Japanese).
- Chandra, N., Patra, P. K., Bisht, J. S. H., Ito, A., Umezawa, T., Saigusa, N., Morimoto S., Aoki, S., Janssens-Maenhout, G.,
505 Fujita, R., Takigawa, M., Watanabe, S., Saitoh, N., Canadell, J. G: Emissions from the oil and gas sectors, coal mining and ruminant farming drive methane growth over the past three decades, *J. Meteorol. Soc. Jpn.*, 99(2), 309–337, doi:10.2151/jmsj.2021-015, 2021.
- Chandra, N., Patra, P. K., Fujita, R., Höglund-Isaksson, L., Umezawa, T., Goto, D., Morimoto, S., Vaughn, B. H., Röckmann, T.: Methane emissions decreased in fossil fuel exploitation and sustainably increased in microbial source sectors during
510 1990–2020, *Commun. Earth Environ.* 5, 147, doi:10.1038/s43247-024-01286-x, 2024.
- Collins W. J., Webber C. P., Cox P. M., Huntingford C., Lowe J., Sitch S., Chadburn S. E., Comyn-Platt E., Harper A. B., Hayman G., Powell T.: Increased importance of methane reduction for a 1.5 degree target, *Environ. Res. Lett.*, 13:054003, doi:10.1088/1748-9326/aab89c, 2018.
- Commane, R., Hallward-Driemeier, A., and Murray L. T.: Intercomparison of commercial analyzers for atmospheric ethane
515 and methane observations, *Atmos. Meas. Tech.*, 16, 1431–1441, doi:10.5194/amt-16-1431-2023, 2023.
- Crippa, M., Guizzardi, D., Pisoni, E., Solazzo, E., Guion, A., Muntean, M., Florczyk, A., Schiavina, M., Melchiorri, M., and Hutterli, A. F.: Global anthropogenic emissions in urban areas: patterns, trends, and challenges, *Environ. Res. Lett.* 16, 074033, 2021.

- Crippa, M., Guizzardi, D., Pagani, F., Banja, M., Muntean, M., Schaaf, E., Monforti-Ferrario, F., Becker, W.E., Quadrelli, R.,
 520 Risquez Martin, A., Taghavi-Moharamli, P., Köykkä, J., Grassi, G., Rossi, S., Melo, J., Oom, D., Branco, A., San-Miguel,
 J., Manca, G., Pisoni, E., Vignati, E. and Pekar, F.: GHG emissions of all world countries, Publications Office of the
 European Union, Luxembourg, doi:10.2760/4002897, JRC138862, 2024.
- Defratyka, S. M., Paris, J.-D., Yver-Kwok, C., Fernandez, J. M., Korben, P., and Bousquet, P.: Mapping Urban Methane
 Sources in Paris, France, *Environ. Sci. Technol.*, 55, 8583–8591, doi:10.1021/acs.est.1c00859, 2021.
- 525 Etheridge, D. M., Steel, L. O., Francey, R. J., and Langenfelds, R. L.: Atmospheric methane between 1000 A.D. and present:
 evidence of anthropogenic emissions and climatic variability, *J. Geophys. Res.*, 103, 15979–15993,
 https://doi.org/10.1029/98JD00923, 1998.
- Fernandez, J. M., Maazallahi, H., France, J. L., Menoud, M., Corbu, M., Ardelean, M., Calcan, A., Townsend-Small, A., van
 der Veen, C., Fisher, R. E., Lowry, D., Nisbet, E. G., and Röckmann T.: Street-level methane emissions of Bucharest,
 530 Romania and the dominance of urban wastewater, *Atmos. Environ.*, X 13, 100153, doi:10.1016/j.aecao.2022.100153, 2022.
- Helfter, C., Tremper, A. H., Halios, C. H., Kotthaus, S., Björkegren, A., Grimmond, C. S. B., Barlow, J. F., and Nemitz, E.:
 Spatial and temporal variability of urban fluxes of methane, carbon monoxide and carbon dioxide above London, UK,
Atmos. Chem. Phys., 16, 10543–10557, doi:10.5194/acp-16-10543-2016, 2016.
- Hopkins, F. M., Ehleringer, J. R., Bush, S. E., Duren, R. M., Miller, C. E., Lai, C.-T., Hsu, Y.-K., Carranza, V., and Randerson,
 535 J. T.: Mitigation of methane emissions in cities: How new measurements and partnerships can contribute to emissions
 reduction strategies, *Earth's Future*, 4, doi:10.1002/2016EF000381, 2016a.
- Hopkins, F. M., Kort, E. A., Bush, S. E., Ehleringer, J. R., Lai, C.-T., Blake, D. R., and Randerson, J. T.: Spatial patterns and
 source attribution of urban methane in the Los Angeles Basin, *J. Geophys. Res. Atmos.*, 121, 2490–2507,
 doi:10.1002/2015JD024429, 2016b.
- 540 Ishidoya, S., Sugawara, H., Terao, Y., Kaneyasu, N., Aoki, N., Tsuboi, K., and Kondo, H.: O₂:CO₂ exchange ratio for net
 turbulent flux observed in an urban area of Tokyo, Japan, and its application to an evaluation of anthropogenic CO₂
 emissions, *Atmos. Chem. Phys.*, 20, 5293–5308, doi:10.5194/acp-20-5293-2020, 2020.
- Jackson, R. B., Saunio, M., Martinez, A., Canadell, J. G., Yu, X., Li, M., Poulter, B., Raymond, P. A., Regnier, P., and Ciais,
 P.: Human activities now fuel two-thirds of global methane emissions, *Environ. Res. Lett.*, 19, 101002, doi:10.1088/1748-
 545 9326/ad6463, 2024.
- Janardanan, R., Maksyutov, S., Wang, F., Nayagam, L., Sahu, S. K., Mangara, P., Saunio, M., Lan, X., and Matsunaga, T.:
 Country-level methane emissions and their sectoral trends during 2009–2020 estimated by high-resolution inversion of
 GOSAT and surface observations, *Environ. Res. Lett.*, 19, 034007, doi:10.1088/1748-9326/ad2436, 2024.
- Japan Meteorological Agency, Tables of Monthly Climate Statistics: <https://www.data.jma.go.jp/stats/data/en/smp>, last access:
 550 29 October 2025.
- Joo, J., Jeong, S., Shin, J., and Chang, D. Y.: Missing methane emissions from urban sewer networks, *Environ. Pollut.*, 342,
 123101, doi:10.1016/j.envpol.2023.123101, 2024.

- Lan, X., Thoning, K. W., Dlugokencky, E. J.: Trends in globally-averaged CH₄, N₂O, and SF₆ determined from NOAA Global Monitoring Laboratory measurements, Version 2025-01, doi:10.15138/P8XG-AA10, 2025.
- 555 Maasakkers, J. D., Varon, D. J., Elfarsdóttir, A., McKeever, J., Jervis, D., Mahapatra, G., Pandey, S., Lorente, A., Borsdorff, T., Foorthuis L. R., Schuit, B. J., Tol, P., van Kempen, T. A., van Hees, R., and Aben, I.: Using satellites to uncover large methane emissions from landfills, *Sci. Adv.*, 8, 32, doi:10.1126/sciadv.abn9683, 2020.
- Maazallahi, H., Fernandez, J. M., Menoud, M., Zavala-Araiza, D., Weller, Z. D., Schwietzke, S., von Fischer, J. C., van der Gon, H. D., and Röckmann, T.: Methane mapping, emission quantification, and attribution in two European cities: Utrecht
- 560 (NL) and Hamburg (DE), *Atmos. Chem. Phys.*, 20, 14717–14740, doi:10.5194/acp-20-14717-2020, 2020.
- Marcotullio, P. J., Sarzynski, A., Albrecht, J., Schulz, N., and Garcia, J.: The geography of global urban greenhouse gas emissions: an exploratory analysis, *Clim. Change*, 121, 621–634, doi:10.1007/s10584-013-0977-z, 2013.
- McKain, K., Down, A., Raciti, S. M., Budney, J., Hutyra, L. R., Floerchinger, C., Herndon, S. C., Nehrkorn, T., Zahniser, M. S., Jackson, R. B., Phillips, N., and Wofsy, S. C.: Methane emissions from natural gas infrastructure and use in the urban
- 565 region of Boston, Massachusetts, 112(7), 1941–1946, doi:10.1073/pnas.1416261112, 2015
- Michel, S. E., Lan, X., Miller, J., Tans, P., Clark, J. R., Schaefer, H., Sperlich, P., Brailsford, G., Morimoto, S., Moossen, H., and Li, J.: Rapid shift in methane carbon isotopes suggests microbial emissions drove record high atmospheric methane growth in 2020–2022, *Pro. Nat. Ac. Sci.*, 121(44), e2411212121, doi:10.1073/pnas.2411212121, 2024.
- Morimoto, S., Fujita, R., Aoki, S., Goto, D., and Nakazawa, T.: Long-term variations of the mole fraction and carbon isotope
- 570 ratio of atmospheric methane observed at Ny- Ålesund, Svalbard from 1996 to 2013, *Tellus B*, 69, 1380497, doi:10.1080/16000889.2017.1380497, 2017.
- Niwa, Y., Tohjima, Y., Terao, Y., Saeki, T., Ito, A., Umezawa, T., Yamada, K., Sasakawa, M., Machida, T., Nakaoka, S.-I., Nara, H., Tanimoto, H., Mukai, H., Yoshida, Y., Morimoto, S., Takatsuji, S., Tsuboi, K., Sawa, Y., Matsueda, H., Ishijima, K., Fujita, R., Goto, D., Lan, X., Schuldt, K., Heliasz, M., Biermann, T., Chmura, L., Necki, J., and Xueref-Remy, I.: Multi-
- 575 observational estimation of regional and sectoral emission contributions to the persistent high growth rate of atmospheric CH₄ for 2020–2022, *Atmos. Chem. Phys.*, 25, 6757–6785, doi:10.5194/acp-25-6757-2025, 2025.
- Peischl, J., Ryerson, T. B., Brioude, J., Aikin, K. C., Andrews, A. E., Atlas, E., Blake, D., Daube, B. C., de Gouw, J. A., Dlugokencky, E., Frost, G. J., Gentner, D. R., Gilman, J. B., Goldstein, A. H., Harley, R. A., Holloway, J. S., Kofler, J., Kuster, W. C., Lang, P. M., Novelli, P. C., Santoni, G. W., Trainer, M., Wofsy, S. C., and Parrish, D. D.: Quantifying sources
- 580 of methane using light alkanes in the Los Angeles basin, California, *J. Geophys. Res. Atmos.*, 118, doi:10.1002/jgrd.50413, 2013.
- Quay, P., Stutsman, J., Wilbur, D., Snover, A., Dlugokencky, E., and Brown, T.: The isotopic composition of atmospheric methane, *Global Biogeochem. Cy.*, 13, 445–461, doi:10.1029/1998GB900006, 1999.
- Saboya, E., Zazzeri, G., Graven, H., Manning, A. J., and Englund Michel, S.: Continuous CH₄ and $\delta^{13}\text{CH}_4$ measurements in
- 585 London demonstrate under-reported natural gas leakage, *Atmos. Chem. Phys.*, 22, 3595–3613, doi:10.5194/acp-22-3595-2022, 2022.

- Sargent, M. R., Floerchinger, C., McKain, K., Budney, J., Gottlieb, E. W., Hutyra, L. R., Rudek, J., and Wofsy, S. C.: Majority of US urban natural gas emissions unaccounted for in inventories, *Proc. Nat. Ac. Sci.*, 118(44), e2105804118, doi:10.1073/pnas.2105804111, 2021.
- 590 Schwietzke, S., Griffin, W. M., Matthews, H. S., Bruhwiler, L. M. P.: Global bottom-up fossil fuel fugitive methane and ethane emissions inventory for atmospheric modelling, *ACS Sustainable Chem. Eng.* 2014, 2, 8, 1992–2001, doi:10.1021/sc500163h, 2014.
- Simpson, I., Andersen, M. P. S., Meinardi, S., Bruhwiler, L., Blake, N. J., Helmig, D., Rowland, F. S., and Blake, D. R.: Long-term decline of global atmospheric ethane concentrations and implications for methane, *Nature*, 488, 490–494, 595 doi:10.1038/nature11342, 2012.
- Sugawara, H., Ishidoya, S., Terao, Y., Takane, Y., Kikegawa, Y., and Nakajima, K.: Anthropogenic CO₂ emissions changes in an urban area of Tokyo, Japan, due to the COVID-19 pandemic: a case study during the state of emergency in April-May 2020, *Geophys. Res. Lett.*, 48, e2021GL092600, doi:10.1029/2021GL092600, 2021.
- Takano, T., and Ueyama, M.: Spatial variations in daytime methane and carbon dioxide emissions in two urban landscapes, 600 Sakai, Japan, *Urban Clim.*, 36, 100798, doi:10.1016/j.uclim.2021.100798, 2021.
- Tokyo Metropolitan Government: <https://www.metro.tokyo.lg.jp/tosei/tokyoto/profile/gaiyo/kushichoson.html>, last access: 31 January 2025 (in Japanese).
- Travis, B., Dubey, M., and Sauer J.: Neural networks to locate and quantify fugitive natural gas leaks for a MIR detection system, *Atmos. Environ.*, X 8, 100092, doi:10.1016/j.aeaoa.2020.100092, 2020.
- 605 Ueyama, M., Umezawa, T., Terao, Y., Lunt, M., and France, J. L.: Evaluating urban methane emissions and their attributes in a megacity, Osaka, Japan, via mobile and eddy covariance measurements, *EGUsphere* [preprint], doi:10.5194/egusphere-2024-3926, 2025.
- Umezawa, T., Machida, T., Aoki, S., and Nakazawa, T.: Contributions of natural and anthropogenic sources to atmospheric methane variations over western Siberia estimated from its carbon and hydrogen stable isotopes, *Global Biogeochem. Cy.*, 610 26, GB4009, doi:10.1029/2011GB004232, 2012.
- Umezawa, T., Sugawara, S., Kawamura, K., Oyabu, I., Andrews, S. J., Saito, T., Aoki, S., and Nakazawa T.: Towards reconstructing the Arctic atmospheric methane history over the 20th century: measurement and modelling results for the North Greenland Ice Core Project firn, *Atmos. Chem. Phys.*, 22, 6899–6917, doi:10.5194/acp-22-6899-2022, 2022.
- Umezawa, T., Tohjima, Y., Terao, Y., Sasakawa, M., Müller, A., Saeki, T., Machida, T., Nakaoka S., Nara, H., Nomura, S., 615 Nishihashi, M., Mukai, H., Frey, M. M., Morino, I., Ohyama, H., Yoshida, Y., Zeng, J., Noda, H., Saito, M., Matsunaga, T., Sugita, T., Tanimoto, H., Niwa, Y., Ito, A., Yamashita, Y., Shirai, T., Ishizawa, M., Ishijima, K., Tsuboi, K., Sawa, Y., and Matsueda, H.: Long-term and interannual variations of atmospheric methane observed by the NIES and collaborative observation networks, *Progress Earth Planet. Sci.*, doi:10.1186/s40645-025-00711-9, 2025a.

- Umezawa, T., Sugawara, S., Hikichi, S., Morimoto, S., Saito, T., Krummel, P. B., Fraser, P. J., and Weiss, R.: Evaluation of stratospheric age of air estimated from halocarbon measurements of air samples collected by a balloon-borne cryogenic air samples, *SOLA*, 21, 237–243, doi:10.2151/sola.2025-029, 2025b.
- Umezawa, T., and Terao, Y.: Mobile measurements of methane and ethane in the Tokyo area, Global Environmental Database [dataset], <https://db-eger.nies.go.jp/MD/10.17595/2025XXXX.001.html.en> <https://doi.org/10.17595/20251021.001>, 2025.
- United Nations, Department of Economic and Social Affairs, Population Division (2019). World Urbanization Prospects: The 2018 Revision (ST/ESA/SER.A/420). New York: United Nations.
- Varon, D. J., McKeever, J., Jervis, D., Maasakkers, J. D., Pandey, S., Houweling, S., Aben, I., Scarpelli, T., and Jacob D. J.: Satellite discovery of anomalously large methane point sources from oil/gas production. *Geophys. Res. Lett.*, 46, 13507–13516. doi:10.1029/2019GL083798, 2024.
- Vogel, F., Ars, S., Wunch, D., Lavoie, J., Gillespie, L., Maazallahi, H., Röckmann, T., Neçki, J., Bartyzel, J., Jagoda, P., Lowry, D., France, J., Fernandez, J., Bakkaloglu, S., Fisher, R., Lanoiselle, M., Chen, H., Oudshoorn, M., Yver-Kwok, C., Defratyka, S., Morgui, J. A., Estruch, C., Curcoll, R., Grossi, C., Chen, J., Dietrich, F., Forstmaier, A., Denier van der Gon, H. A. C., Dellaert, S. N. C., Salo, J., Corbu, M., Iancu, S. S., Tudor, A. S., Scarlat, A. I., and Calcan A.: Ground-Based Mobile Measurements to Track Urban Methane Emissions from Natural Gas in 12 Cities across Eight Countries, *Environ. Sci. Technol.*, 58, 2271–2281, doi:10.1021/acs.est.3c03160, 2024.
- von Fischer, J. C., Cooley, D., Chamberlain, S., Gaylord, A., Griebenow, C. J., Hamburg, S. P., Salo, J., Schumacher, R., Theobald, D., and Ham, J.: Rapid, Vehicle-Based Identification of Location and Magnitude of Urban Natural Gas Pipeline Leaks, *Environ. Sci. Technol.*, 51, 4091–4099, doi:10.1021/acs.est.6b06095, 2017.
- Xiao, Y., Jacob, D. J., Wang, J. S., Logan, J. A., Palmer, P. I., Sun-tharalingam, P., Yantosca, R. M., Sachse, G. W., Blake, D. R., and Streets, D. G.: Constraints on Asian and European sources of methane from CH₄-C₂H₆-CO correlations in Asian outflow, *J. Geophys. Res.*, 109, D15S16, doi:10.1029/2003JD004475, 2004.
- Xueref-Remy, I., Zazzeri, G., Bréon, F. M., Vogel, F., Ciais, P., Lowry, D., and Nisbet, E. G.: Anthropogenic methane plume detection from point sources in the Paris megacity area and characterization of their $\delta^{13}\text{C}$ signature, *Atmos. Environ.*, 222, 117055, doi:10.1016/j.atmosenv.2019.117055, 2020.
- Yakovitch, T. I., Herndon, S. C., Pétron, G., Kofler, J., Lyon, D., Zahniser, M. S., and Kolb, C. E.: Mobile Laboratory Observations of Methane Emissions in the Barnett Shale Region, *Environ. Sci. Technol.*, 49, 7889–7895, doi:10.1021/es506352j, 2015.
- Weller, Z. D., Roscioli, J. R., W. Daube, C., Lamb, B. K., Ferrara, T. W., Brewer, P. E., and von Fischer, J. C.: Vehicle-Based Methane Surveys for Finding Natural Gas Leaks and Estimating Their Size: Validation and Uncertainty, *Environ. Sci. Technol.*, 52(20), 11922–11930, doi:10.1021/acs.est.8b03135, 2018.
- Weller, Z. D., Yang, D. K., and von Fischer, J. C.: An open source algorithm to detect natural gas leaks from mobile methane survey data, *PLoS ONE*, 14(2), e0212287, doi:10.1371/journal.pone.0212287, 2019.

Wietzel, J. B., and Schmidt, M.: Methane emission mapping and quantification in two medium-sized cities in Germany: Heidelberg and Schwetzingen, *Atmos. Environ.*, X 20, 100228, doi:10.1016/j.aeaoa.2023.100228, 2023.

655 Zazzeri, G., Lowry, D., Fisher, R.E., France, J. L., Lanoisellé, M., and Nisbet, E. G.: Plume mapping and isotopic characterisation of anthropogenic methane sources, 110, 151–162, doi:10.1016/j.atmosenv.2015.03.029, 2015.