

Simulating carbon fluxes in boreal catchments: WSFS-Vemala model development and key insights

Marie Korppoo¹, Inese Huttunen¹, Markus Huttunen¹, Maiju Narikka¹, Jari Silander², Tom Jilbert³, Martin Forsius⁴, Pirkko Kortelainen⁴, Niina Kotamäki⁵, Cintia Uvo^{5,6}, Anna-Kaisa Ronkanen⁵

5 ¹ Climate solutions, Finnish Environment Institute (Syke), Helsinki, Finland

² Quality of information, Finnish Environment Institute (Syke), Helsinki, Finland

³ Environmental geochemistry group, Department of geosciences and geography, University of Helsinki, Finland

⁴ Nature solutions, Finnish Environment Institute (Syke), Helsinki, Finland

⁵ Marine and Freshwater solutions, Finnish Environment Institute (Syke), Helsinki, Finland

10 ⁶ Water Resources Engineering, Lund University, Sweden

Correspondence to: Marie Korppoo (marie.korppoo@syke.fi)

Abstract.

Lakes and streams play an important role in the global carbon cycle through carbon sedimentation and evasion. The development of carbon processes in the water quality model WSFS-Vemala (Vemala) presents a significant advancement in simulating carbon dynamics, particularly in capturing both total organic (TOC) and inorganic (TIC) carbon processes and their contributions to carbon retention and emissions through a river/lake network. The model was tested in the Vantaanjoki catchment, located in southern Finland and covering an area of 1680 km². The model's ability to simulate TOC and TIC loading across various land use and soil types aligns closely with reported literature values. The addition of organic acids to the total alkalinity definition improved pH simulations and thus the simulation of CO₂ emissions in the acidic and organic rich waters of Finland. Annual CO₂ emissions of 25 gC m² yr⁻¹ were simulated from lake Tuusulanjärvi, the largest lake in the catchment, and 223-260 gC m² yr⁻¹ from the river network, while only 3 gC m² yr⁻¹ was simulated as organic carbon burial in the lake sediments. The model's performance in estimating CO₂ emissions shows good correlations with established ranges for lakes as well as good correlation with TOC and TIC loads across the river network. The inclusion of sedimentation and mineralization processes in the lake carbon budget underlines the necessity of accounting for both organic and inorganic pathways in carbon modelling. This improved representation of the carbon cycling in Vemala, linked with the phytoplankton growth and nutrient cycling, allows to distinguish between carbon losses to the atmosphere and long-term carbon storage in the sediments of inland waters. Overall, the enhanced Vemala model provides a robust foundation for understanding carbon cycling and supporting sustainable, integrated water resource management and scenario assessments from sub-catchments to the national scale.

1 Introduction

Addressing the global challenge of climate change requires both mitigation and adaptation strategies, supported by high-quality observational data and advanced computational models. A critical aspect of this effort is understanding the processes that govern carbon (C) dynamics within catchments, including accumulation, sequestration, release, and transport. The intricate interplay between eutrophication and carbon accumulation/release in aquatic ecosystems remains a subject of limited understanding, posing challenges to effective river basin management (Ward et al., 2017). The importance of C budget estimates for comprehensive river basin management plans cannot be overstated, as it plays a crucial role in evaluating the effectiveness of carbon-related interventions. Lakes and rivers play a pivotal role in transporting, capturing and releasing dissolved organic carbon (DOC) and dissolved inorganic carbon (DIC) from terrestrial sources (Cole et al., 2007; Rantakari, 2010; Mendonça et al., 2017; Tranvik et al. 2018; Amora-Nogueira et al. 2022; Algesten et al., 2003; Allesson et al., 2022). At the global scale, catchment flux from land to sea of DOC is equivalent to DIC (Hope et al., 1994) and freshwater systems are supersaturated in CO₂ (Cole et al., 1994). In contrast, However, in-boreal environments are typically characterised by higher DOC fluxes are greater than DIC fluxes. Specifically for the Baltic Sea, DOC represents up to 80% of the carbon export from land to the Sea (Räike et al., 2016).

In boreal rivers and lakes, DOC constitutes the dominant fraction of total organic carbon (TOC). Mattsson et al. (2005) reported that, on average, 94% of TOC in Finnish rivers occurs in a dissolved form. Extensive peatlands, forested catchments, and cold and humid climatic conditions promote the mobilisation and export of organic carbon, resulting in humic and DOC-rich waters. A clear strong correlation-relationship exists between DOC concentration in lake water and CO₂ supersaturation has been observed (Sobek et al., 2005), especially in forested and humic systems lakes surrounded by forests (Rantakari and Kortelainen, 2008). As humic lakes are widespread in, suggesting that humic lakes, which are prevalent in boreal environments-region (Kortelainen, 1993), they may significantly influence regional carbon gas emissions in these regions (Rantakari and Kortelainen, 2008, Kortelainen et al. 2006, Forsius et al. 2017). Holmberg et al. (2023) estimated, using area-specific empirical emission coefficients, that greenhouse gas (GHG) emissions from lakes and rivers in Finland currently are about 13.4 TgCO₂eq yr⁻¹ or about 9% of total Finnish GHG emissions to the atmosphere. DIC in freshwater is composed of three main species: bicarbonate (HCO₃⁻), carbonate (CO₃²⁻) and dissolved carbon dioxide (H₂CO₃ or CO₂aq.) and is primarily derived from rock weathering and mineralisation of organic carbon. Due to the equilibrium reactions in the carbonate system, speciation of DIC is tightly linked to pH. Therefore, pH impacts on dissolved CO₂ concentration and thus CO₂ emissions through the water-atmosphere interface (Jarvie et al., 2017). Boreal catchments in Finland are characterised by silicate lithologies or non-carbonate bedrocks (Kortelainen et al., 2006) leading to inorganic carbon being mostly dissolved and low buffer capacity of the freshwater (low alkalinity and pH) that enhances the availability of dissolved CO₂ for evasion (Tranvik et al., 2009).

Recent developments in mathematical modeling of river basin biogeochemistry include the integration of DOC dynamics (e.g. INCA-C (Futter et al., 2007), SWAT-C (Qi et al., 2020)). However, DIC dynamics have been omitted from most models, despite the potential value of adding such processes to quantify carbon emissions from aquatic ecosystems (e.g. Jarvie et al., 2017, Marescaux et al., 2020). The THINCARB model (Jarvie et al., 2017) calculates DIC (HCO_3^- , CO_3^{2-} and H_2CO_3) and the excess partial pressure of carbon dioxide in a water sample based on pH and alkalinity measurements available in the Harmonised Monitoring Scheme of Great Britain. Marescaux et al. (2020) added an inorganic carbon module to the process-based biogeochemical model pyNuts-Riverstrahler model to quantify CO_2 emissions from the whole hydrographic network of the Seine catchment. In both models, alkalinity is calculated based primarily on the carbonate system. However, in low carbonate alkalinity regions with high DOC concentrations, organic acid anions can increase alkalinity (Hruska et al., 2003). Moreover, in acidic and organic rich waters such as found in boreal regions, the buffering capacities of the carbonate system are lower, which increases the sensitivity of calculated CO_2 concentrations and emissions (Abril et al., 2015).

The WSFS-Vemala model (Vemala; Huttunen et al. 2016), is a water quality and nutrient load model system developed by the Finnish Environment Institute (Syke) for Finnish watersheds. Vemala is operative and widely utilized in Finland in planning the implementation of the Water Framework Directive (WFD; 2000/60/EC) by the regional ELY Centres (Centres for Economic Development, Transport and the Environment in Finland) for both inland waters (Huttunen et al. 2016) and coastal waters (Lignell et al., 2024). While nutrient cycling is well incorporated into this model (Korppoo et al., 2017), regarding both terrestrial and aquatic processes, the same level of detail is lacking for C. This omission leaves a significant gap in our ability to support environmental permitting decisions, manage carbon related activities, and deepen our understanding of carbon dynamics. A pivotal aspect that demands exploration is the connection between nutrients and carbon, especially in the context of reducing nutrient loading in aquatic environments. If we reduce nutrient pollution without understanding its effect on carbon, we might unintentionally increase carbon emissions or miss opportunities to store carbon in aquatic systems. This connection is key for designing better environmental policies and carbon management strategies.

In this paper, we quantify carbon losses through the river and lake network by modelling total carbon (TC) processes including both total organic carbon (TOC) and total inorganic carbon (TIC) in the terrestrial and aquatic environments of Lake Tuusulanjärvi (5.9 km²) and the entire Vantaanjoki catchment (1680 km²), a Finnish river basin flowing to the Baltic Sea. For this purpose, we developed the TOC terrestrial model, based on Vemala-N model (Huttunen et al., 2016) and INCA-C model (Futter et al., 2007). The model represents ~~three~~two carbon storages in the soil linked to soil types and land uses (Fig.1), and uses annual litter fall (Minunno et al., 2019) and initial C storage in soil to allow for the simulation of DOC load transported from the soil and into the river network. Moreover, we developed the leaching of TIC using alkalinity as a proxy based on soil types to simulate the effect of rock weathering on TIC leaching. Finally, we added TIC as a variable in the existing Vemala biogeochemical submodel (Korppoo et al., 2017) and the processes affecting TIC in the water column including phytoplankton growth, TOC mineralization from water and sediments, and pH and alkalinity effects on the CO_2 emissions across the water-

air interface. The total alkalinity in the model was defined as carbonate and organic alkalinity to improve the representation of pH and therefore the simulation of CO₂ concentrations in the water column in organic rich waters.

100

This improved representation of the carbon cycling in Vemala, linked with the phytoplankton growth and nutrient cycling will allow us to specify the carbon losses in the catchment including the distinction between carbon losses to the atmosphere and long-term carbon storage in the sediments. Our aim is to quantitatively predict the importance of carbon losses at the scale of the whole aquatic ecosystem. For this purpose, we first assess the model's performance in the Vantaanjoki catchment in southern Finland by comparing the results to the observed daily total organic and inorganic carbon loads and to literature values. In a second step, we focus on the simulation of carbon sequestration in and emissions from the largest lake in the basin (Tuusulanjärvi) and the river network at a daily/annual time step. Finally, we run a sensitivity analysis of the model to examine how variations in mineralisation rates, phytoplankton growth and CO₂ air-water transfer rates affect carbon losses from the aquatic ecosystem. This analysis will help to identify the most influential processes and improve our understanding of carbon dynamics in the system.

110

2 Model description

2.1 Vemala hydrological submodel

A semi-distributed process-based physically based hydrological model (WSFS: Watershed Simulation and Forecasting System; Kolhinen et al., 2026~~Jakkila et al., 2014~~), is ~~integrated~~included into Vemala (Fig. 1). The spatial simulation unit in WSFS runoff simulations is a sub-catchment, called third level sub-catchment, with a mean size of 60 km² (Catchment area dataset, Syke, Fig. A1~~are...~~). For surface water routing and water quality simulations, these sub-catchments are divided into a fourth level of detail (Fig. A1) to take into account the variation of characteristics affecting hydrology and nutrient and carbon loading~~s~~. Small brook or fourth level sub-catchments are defined by a river width greater than 2m (Metadata: Shoreline10 from Syke and National Land Survey of Finland, MMLNLS). The median size of the catchments in Vemala is 0.8km² with 80% of the catchments smaller than 2km² (WSFS-Vemala dataset, Syke).

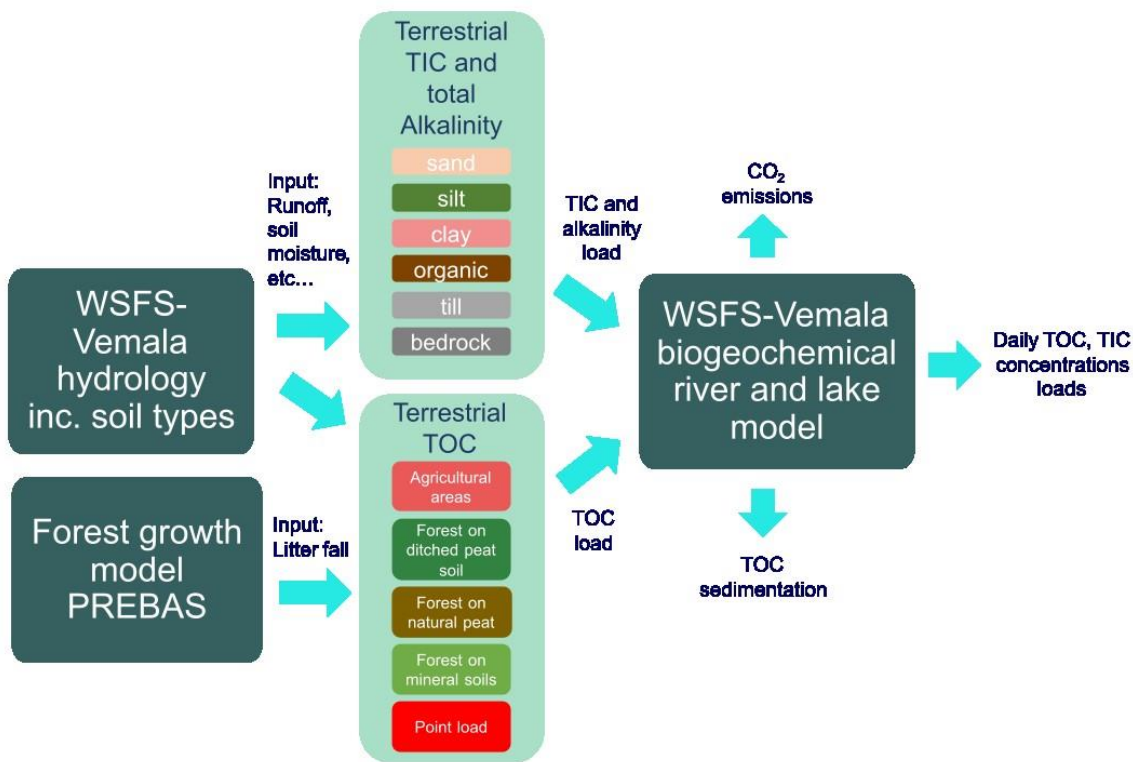
120

The unsaturated soil layer is represented by a 2-layer soil moisture model (surface and sub-surface), and a soil saturated layer characterizing groundwater. Water infiltrates from the surface layer to the sub-surface layer if the soil moisture content exceeds field capacity. The sub-surface layer produces the main part of the runoff to rivers and lakes and of the percolation to the groundwater (Jakkila et al., 2014). Runoff is produced from the surface layer only when the ground is frozen. Vemala simulates 40 different land-use and soil type combinations based on national soil and land cover datasets (Lilja et al. 2009-Finnish Soil Database, Natural Resources Institute Finland & Geological Survey of Finland, 2023 and Corine land cover 2018 dataset, Syke 2018). This integration description enables the simulation of hydrological processes that vary on mineral and organic soils, accounting for distinct hydraulic conductivities and water holding properties of mineral and peat soils. Finnish soil maps

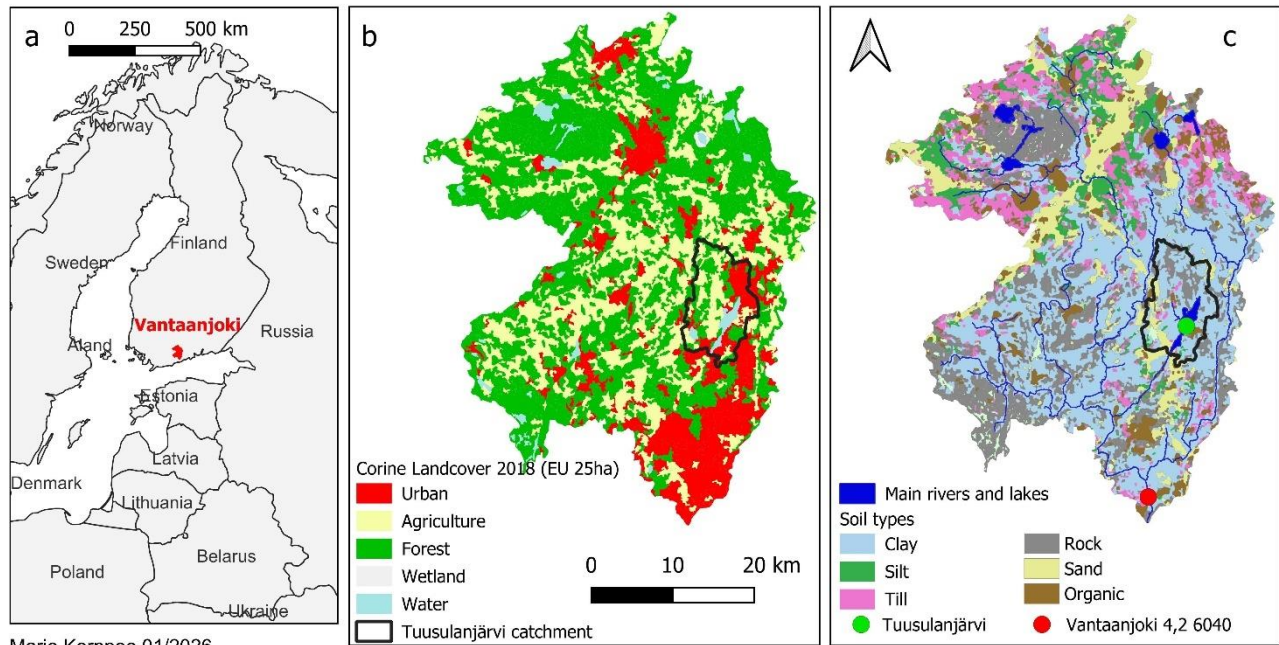
125

(Finnish Soil Database, Natural Resources Institute Finland & Geological Survey of Finland, 2023, Fig. 23c) are used for soil type distribution. Specifically, six soil types - organic, clay, till, silt, sand, and rocky soils - have been used as input to the model for each small brook catchment. Corine Land Cover data (Fig. 23b) was used to classify each small brook catchment into land use classes - field, forested, bog, or built areas. This classification is essential for simulating evapotranspiration accurately.

There are considerable differences in hydrological conditions and organic carbon content in mineral and peat soils, leading to different TOC leaching patterns. These differences have been considered both in the hydrological and the terrestrial TOC process-based models (Fig. 1). In peat soils, shallow groundwater can contribute the most to runoff through baseflow, especially during prolonged dry periods (Mozafari et al., 2023). Shallow water tables with small range of fluctuation are characteristic for peat soils. Shallow groundwater can have significantly higher DOC concentrations than deep groundwater. This pattern probably results from occurrence and movement of shallow groundwater through the organic-rich surficial deposits (Gibson et al., 2000). By definition, peat soils contain more organic matter (> 40%, Lemola et al., 2018) than mineral soils, and SOC (solid organic C) vertical distribution is different in mineral and peat soils. In mineral soils the SOC content generally decreases with depth, whereas in organic soils it increases with depth (Hiederer, 2009).



145 Figure 1: Schematic representation of the structure of the Vemala carbon model



Marie Korppoo 01/2026

Source: b- Corine Land Cover - Finnish Environment Institute (Syke), LUKE, MAVI, LIVI, DVV, EU, NLS 01/2017

Source: c- Soil types: Geological Survey of Finland (GTK) and Natural Resources Institute Finland (LUKE)

Figure 2: a- Vantaanjoki catchment in red in the European map; b- land cover (Corine Land Cover, 2018) in Vantaanjoki catchment; c- soil types in Vantaanjoki catchment

150 2.2 Terrestrial carbon submodels

Vemala TOC terrestrial model development (Fig. 1) ~~builds is based on~~ Vemala-N model (Huttunen et al., 2016) and INCA-C model (Futter et al., 2007). The model represents ~~There are three two~~ C storages in the soil: ~~—SOC and~~ DOC. These pools are defined separately for different and DIC linked to soil types and land use classes. The main inputs to the model are annual litter fall and the initial C storage in soil. Carbon exchanges between the SOC and DOC ~~Interactions among these~~ pools are represented through the as following processes:

- SOC can be disassociated into DOC, and DOC can be reassimilated into SOC vice versa.
- Both SOC and DOC can be mineralized into DIC that is simulated as a loss from the system to the air.
- DOC is transported from soil to water through leaches with the subsurface runoff and baseflow.

160

The model distinguishes re are six land use and soil type combinations: ~~classes in the TOC model~~ agriculture on clay, coarse and peat soils, forest on mineral soils and on ditched peatlands as well as and natural peat soils. Carbon mass balance of SOC

and DOC storages for two soil layers (unsaturated soil layer and groundwater layer) is simulated daily. DOC produced in the unsaturated layer is percolated to the groundwater layer. Percolation is simulated in the hydrological model for each combination of land use and soil texture type class separately. Leaching of DOC ($\text{kg}^{-1} \text{ha}^{-1} \text{d}^{-1}$) is calculated as follows: mass of DOC in layers (kg ha^{-1}) is divided by soil moisture or groundwater storage (mm) to obtain the simulated concentration. DOC concentration is then multiplied by daily runoff (mm d^{-1}) from each soil layer to obtain the DOC load ($\text{kg ha}^{-1} \text{d}^{-1}$) transported out from each layer (Eq. (1) and Eq. (2)). cf_{moisture} , cf_{gw} are plant unavailable water and groundwater adjustment parameters, which are manually calibrated for each land use/soil texture class.

$$DOC_{leaching,1} = \frac{m_{DOC,1}}{soil_{moisture} + cf_{moisture}} * runoff_1 \quad (1)$$

$$DOC_{leaching,2} = \frac{m_{DOC,2}}{groundwater_{storage} + cf_{gw}} * gw_{flow}_2 \quad (2)$$

At the national scale, the spatial variability in the input data has been considered in the TOC model. Methodology of the calculation of the initial C content in agricultural soils is given in Appendix B and is based on field parcel data from soil laboratory Viljavuuspalvelu oy which contains soil organic matter (SOM) class (vm - low, m - medium, rm - rich, erm - very rich, mm - mull, Tm - peat soil). Initial C content in mineral forest soils is based on Finnish multisource national forest inventory data (Mäkisara et al., 2016). Simulated initial C content decreases exponentially with the soil layer depth in mineral soils (Wen et al. 2020), whereas in peat soils carbon content is constant with depth. Annual Litter fall data for forests is obtained from PREBAS model results for 16x16m grids for all Finland and added to the soils in Vemala TOC model as daily input during autumn months. PREBAS combines carbon acquisition through photosynthesis, tree growth and soil carbon processes (Minunno et al., 2019). DOC production rates for peat soils are based on Laurén et al. (2019), and temperature dependency coefficient Q10 values, that describes relative change of C release rate under a 10-degree change in soil temperature, are calibrated. Soil temperature is simulated based on simulation of the energy flux between air, snow and soil layers, and distribution of energy to freeze the soil frost or to change soil temperature in the soil layers. DOC loads simulated by the TOC terrestrial model are calibrated against TOC observations in inland waters. and TOC is mostly under a dissolved form (Mattsson et al., 2005) in Finnish rivers. Therefore, TOC is assumed to be fully dissolved and represents DOC in Vemala.

Vemala TIC terrestrial model development (Fig. 1) is based on a regression model between TIC concentration, using alkalinity as a proxy, and runoff per soil type. TIC is assumed fully dissolved and thus ~~is~~ represents ing DIC. The alkalinity load per soil type ($Alk_{n,load}, \text{mol d}^{-1}$) is calibrated with runoff from each soil type (qr_n) in the catchment area (Eq. (3)):

$$Alk_{n,load} = \gamma_n * qr_n^{\epsilon_n} \quad (3)$$

with γ_n and ϵ_n the alkalinity coefficients for each soil type (n). Negative alkalinities are excluded from this model. The range of alkalinities per soil types was defined using the mean values measured by Korkka-Niemi (2001) from well waters in Finland and a variation of $\pm 20\%$ from the mean values (Table 1).~~The range of alkalinities per soil types was defined from Korkka-Niemi (2001) measurements of well waters in Finland using the mean values per soil type with a range of $\pm 20\%$ (Table~~

~~2).~~

200 Table 12: Calibrated parameters for the simulation of alkalinity in the Vantaanjoki catchment

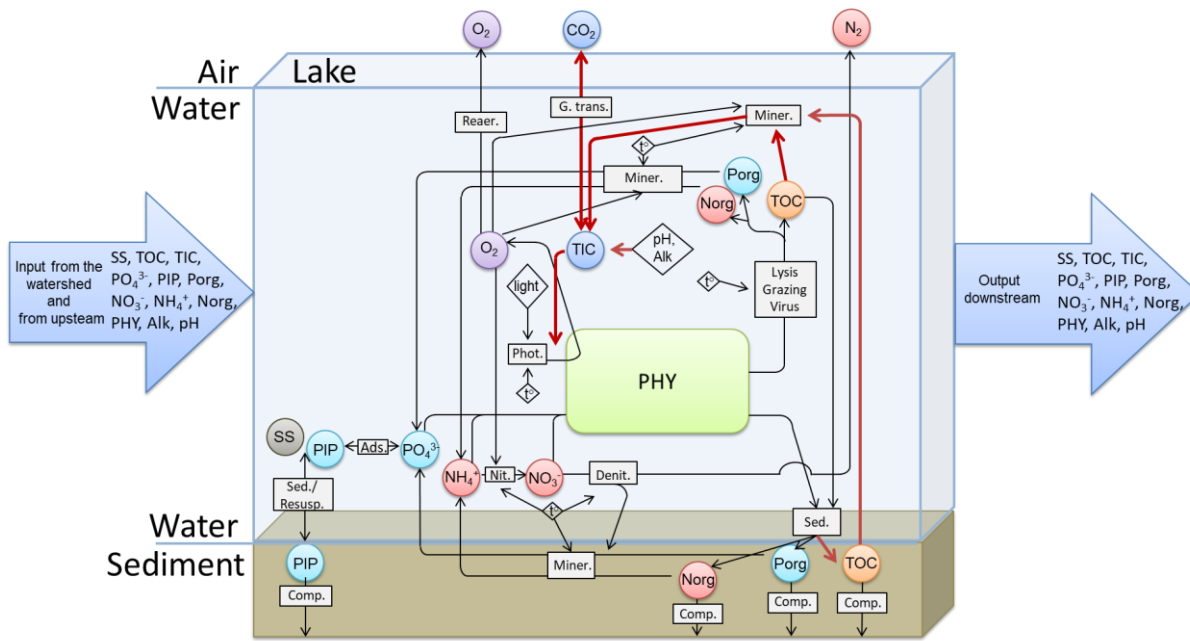
<u>Soil type</u>	<u>Calibrated range</u> <u>mmol L⁻¹</u>	<u>γF</u>	<u>ε</u>
<u>Sand</u>	<u>0.6 ±20%</u>	<u>0.513</u>	<u>-0.68</u>
<u>Silt</u>	<u>0.75 ±20%</u>	<u>0.6</u>	<u>-0.26</u>
<u>Clay</u>	<u>1.25 ±20%</u>	<u>1.02</u>	<u>-0.24</u>
<u>Organic</u>	<u>0.12 ±20%</u>	<u>0.1</u>	<u>-0.26</u>
<u>Till</u>	<u>0.7 ±20%</u>	<u>0.745</u>	<u>-0.67</u>
<u>Rock</u>	<u>1.5 ±20%</u>	<u>1.29</u>	<u>-0.25</u>

2.3 Aquatic biogeochemical submodel

205 The Vemala biogeochemical submodel (Korppoo et al., 2017) simulating the co-impact of nitrogen and phosphorus on algal growth and therefore eutrophication, was developed to couple organic carbon to inorganic carbon processes and simulate total carbon cycling. The aim is to simulate organic carbon long-term sedimentation or sequestration and CO₂ emissions to the air separately within the aquatic ecosystem (Fig. 32). The new state variables are TIC, alkalinity and pH. TIC represents the sum of three fractions (CO₂, HCO₃⁻, CO₃²⁻), TOC the sum of four fractions (DOCH₃, DOCH₂⁻, DOCH²⁻ and DOC³⁻; Hruska et al., 2003), and pH the hydrogen ions H⁺ (Eq. (4)):

$$pH = -\log[H^+] \quad (4)$$

210 The processes affecting C and simulated in Vemala are mineralisation that transforms TOC into TIC, photosynthesis that consumes TIC for algal growth, lysing, grazing and viruses that release TOC to the water, algal sedimentation as TOC, TOC compaction in the sediments representing long-term sedimentation, and exchange of CO₂ through the water-air interface (Fig. 32). In Finnish waters, most of the TOC is dissolved (Kortelainen et al., 2006, Mattsson et al., 2005) and thus direct sedimentation of TOC is neglected in the model and TOC is considered equivalent to DOC. However, TOC sedimentation happens through phytoplankton settling, thus feeding the sediments with organic matter. Other processes linked to DOC sedimentation are omitted from the model at this point.



SS: Suspended sediments, TOC: Total organic carbon, TIC: Total inorganic carbon, O₂: Oxygen, CO₂: Carbon dioxide, PO₄³⁻: Phosphate, PIP: Particulate inorganic phosphorus, Porg: Organic phosphorus, NO₃⁻: Nitrate, NH₄⁺: Ammonium, Norg: Organic nitrogen, N₂: Nitrogen gas, PHY: Phytoplankton, Alk: Alkalinity Reaer.: Reaeration, Miner.: Mineralisation, G.trans.: Gas transfer, Sed.: Sedimentation, Resus.: Resuspension, Ads.: Adsorption, Nit.: Nitrification, Denit.: Denitrification, Comp. Compaction, Phot.: Photosynthesis

220 **Figure 32:** Vemala ~~v3~~ biogeochemical model including the inorganic carbon cycling with new processes shown on the figure in red. Adapted from Korppoo et al. (2017).

The availability of TIC for release to the atmosphere depends on pH, alkalinity and TOC. pH models consider the acidity of the main acids in the water. The simple structure of pH models in freshwater use carbonate, oxide ions and protons to define the alkalinity (e.g. Munhoven, 2020, Marescaux et al., 2020). However, this type of model proved too simplistic for Finnish waters with high DOC and low concentrations of inorganic carbon (Abril et al. 2015). Hruska et al. (2003) quantified the acidity of dissolved organic carbon using three dissociation constants ($pK_{a1}=3.04$, $pK_{a2}=4.51$, $pK_{a3}=6.46$, Fig. C1A21) and a site density, which represents the number of carboxylic groups per milligram of DOC, of 10.2 microequiv mg⁻¹ of DOC +/- 0.6 for Swedish experimental sites. The pH buffering by DOC is thus significant in the pH range of 3.5-6.5. DOC can thus be simplified to a triprotic model with four fractions. DOCH₃ is omitted from this model as it is outside the range of pH for natural freshwaters. The resultant alkalinity definition in this model can be expressed in terms of TIC and TOC as we consider the total C fully dissolved in Finnish waters as (Eq. (5)):

$$Alk = (\alpha_1 + 2\alpha_2)[TIC] + [OH^-] - [H^+] + (\beta_1 + 2\beta_2 + 3\beta_3)[TOC] \quad (5)$$

With α_1 and α_2 the respective proportion of HCO₃⁻ and CO₃²⁻ ions in TIC (mmol L⁻¹) and β_1 , β_2 and β_3 the respective proportion of DOCH₂⁻, DOCH₂²⁻ and DOC³⁻ ions in TOC (mmol L⁻¹). OH⁻ (mmol L⁻¹) and H⁺ (mmol L⁻¹) are the concentrations of hydroxide ions and protons and Alk refers to alkalinity (mmol L⁻¹). The proportion of CO₂ compared to TIC in the water

depends on pH, alkalinity and TOC. This equilibrium between TOC, TIC, Alk and pH is solved using the Newton-Raphson algorithm after reformulating Eq. (5) to solve for $[H^+]$ using a polynomial equation as in Munhoven 2013 (Appendix [CA](#): pH model). Once pH is determined, CO_2 concentration in the water is calculated. The CO_2 gas exchange rate (F_{CO_2} , in $mgC\ m^{-2}\ d^{-1}$) at the water-atmosphere interface is calculated using (Eq. (6)):

$$F_{CO_2} = k_{CO_2} \times (CO_2 - CO_{2atm}) \quad (6)$$

with the concentration of CO_2 in the water column (CO_2 , $mgC\ m^{-3}$) and at equilibrium with the atmospheric CO_2 (CO_{2atm} , $mgC\ m^{-3}$) (Eq. (12)) and k_{CO_2} the gas transfer rate at the water atmosphere interface ($m\ d^{-1}$, Eq. (7)):

$$k_{CO_2} = k_{600} \times \left(\frac{Schmidt}{600}\right)^{-0.6667} \times (1 - z_{ice}) \quad (7)$$

with k_{600} the transfer velocity (Eq. (9) for the transfer velocity in a lake or Eq. (10) for the transfer velocity in a river) for the Schmidt number ($cm\ h^{-1}$), Schmidt is the Schmidt number for CO_2 (Eq. (8)) and z_{ice} the fraction of the lake covered by ice. This equation assumes that ice works as a cap on lakes impeding the exchange of gas at the water-atmosphere interface.

$$Schmidt = 1911.1 - 118.11 \times T_c + 3.4527 \times T_c^2 - 0.041320 \times T_c^3 \quad (8)$$

with T_c the temperature in Celsius (Wanninkhof, 1992).

$$k_{600lake} = \max(0.0, -1.318 + 2.067 \times xwind) \quad (9)$$

$k_{600lake}$ is the transfer velocity for the Schmidt number 600 ($cm\ h^{-1}$) for CO_2 and $xwind$ the wind speed at 10 m height ($m\ s^{-1}$) from Jonsson et al. (2008) for lakes.

$$k_{600river} = 13.82 + 0.35 * vel \quad (10)$$

with vel the water velocity ($cm\ s^{-1}$) and $k_{600river}$ the transfer velocity for the Schmidt number 600 ($cm\ h^{-1}$) for rivers up to a width of 100m (Eq. (10), Alin et al., 2011).

The atmospheric concentration of CO_2 has steadily increased in the past decades (Fig. [C2A32](#)). Data from the ICOS website (Integrated Carbon Observation System ICOS RI, licensed under CC4BY) allowed the modelling of the daily CO_2 concentration in the atmosphere (Eq. (11), $r^2=0.89$).

$$pCO_2 = 362 + 2.3 \times (Year - 1997) + 15 \times \sin\left(\frac{Date+60}{365.2425 \times 2 \times \pi}\right) \quad (11)$$

with pCO_2 , the atmospheric CO_2 (in ppm) as simulated based on the Hyytiälä and Pallas stations in Finland, Year is the simulation year and Date is the day of the year (1-365).

$$CO_{2atm} = pCO_2 \times K_0 \times M_c \times p_{atm} \times dens \quad (12)$$

In which CO_{2atm} is the CO_2 concentration at saturation in the water ($mgC\ m^{-3}$) and K_0 the solubility of CO_2 in the water ($molC\ kg^{-1}\ atm^{-1}$), M_c the molar mass of carbon ($12\ gC\ mol^{-1}$) and p_{atm} the atmospheric pressure and pCO_2 the atmospheric concentration of CO_2 (Eq. (11)), and $dens$ the density of the water as a function of the temperature (Chen and Millero, 1976).

2.4. Calibration and validation

The Vemala calibration process used a modification of the direct search Hooke-Jeeves optimisation algorithm as described in Huttunen et al. (2016) and considers both loads and concentrations during parameter optimisation. The model was calibrated over the period January 2004 to December 2023, while the period January 1990 to December 2003 was used for the validation of the model. The Nash-Sutcliffe criterion (NSE, Nash and Sutcliffe, 1970) was used to evaluate the model performance for loads; the NSE values were calculated separately for the calibration and validation. The NSE coefficient ranges from $-\infty$ to 1. A coefficient of 1 corresponds to a perfect match between simulated and observed loads, while a coefficient of 0 presents a model that is as accurate as the mean of the observed data. To evaluate the performance of the model in terms of concentrations the coefficient of determination for linear regression (r^2 , Krause et al., 2005) and the percent bias (PBIAS, Gupta et al., 1999) were calculated.

Vemala calibration is a process starting with the calibration of first the hydrological submodel followed by the terrestrial submodels and ending with the biogeochemical submodel. Vemala TOC model is calibrated in two steps: first, there is a manual calibration of parameters for each of the six land use classes against annual TOC exports reported in literature. Table DA1 shows the annual exports of TOC used in guiding the manual calibration. However, it is very hard to find national scale TOC export values because TOC export highly varies depending on ~~the~~ soil types, vegetation and along a South-North gradient in Finland. Export equations by Finér et al. (2021) are used for forests on mineral soils and peatlands, however these equations only consider the South-North gradient. The second step of the calibration is an automatic calibration of two parameters – coefficients for adjusting DOC production rates for upper and lower soil layer. Vemala TIC terrestrial model is calibrated via the alkalinity proxy. Alkalinity calibration is done automatically with two parameters for each soil type (γ_0 and $\epsilon_{n,ef}$ and $\epsilon_{p,exp}$ in Eq. (3)) at the Vantaanjoki catchment scale using all the alkalinity observations over the period 2004-2023 (Fig. 5b). Finally, water quality observation points monitored regularly in the catchment are used in the calibration of the biogeochemical model (Fig. 5b, Korppoo et al., 2017).

2.5 Sensitivity analysis

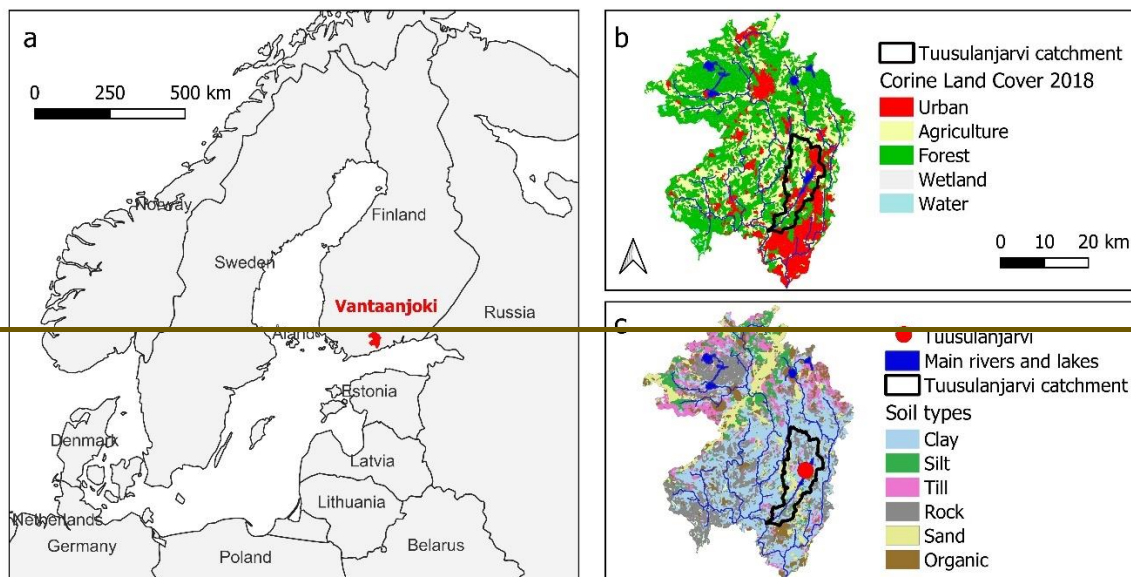
The biogeochemical deterministic model developed in this study is built on well-known enzyme-catalysed reactions (e.g. Michaelis-Menten) that focus on simulating the limiting reactions of the system affected by environmental conditions (e.g. light, temperature, flow). The range of parameters used in this application have been described in Korppoo et al. (2017) and are based on experimental measures or range from the literature. In this study, we run a sensitivity analysis of the latest processes added to the model in this development and affecting carbon cycling: mineralisation that transforms TOC into TIC, phytoplankton growth that through photosynthesis consumes TIC and through phytoplankton mortality releases TOC to the water, and exchange of CO_2 through the water-air interface. To evaluate the model's responsiveness to these processes, we

varied the associated parameters by $\pm 20\%$ around their calibrated values. This approach allows us to assess the robustness of the model and identify which processes exert the greatest influence on carbon loss from the aquatic system.

300 3. Study area and data description

3.1. Description of the Study site - Vantaanjoki catchment

The Vantaanjoki catchment, ~~covering an area of 1680 km², is located~~ in southern Finland (Fig. 2a), just north of the city of Helsinki and includes Tuusulanjärvi lake (Fig. ~~2b3a&cb~~). The river flows southwards and discharges into the Gulf of Finland. For model purposes, Vantaanjoki is divided into 48 third-level sub-catchments which are further subdivided into 989 small
305 brook catchments with an average size of 148 ha (e.g. Fig. A1). Land cover is dominated by forests on mineral soils (50%). ~~Forests on peat soils account for 7% of the area, agricultural fields for 22%, and lakes cover for 50%, 7%, 22% and 3% of the catchment. Urban areas cover, respectively, with~~ the remaining 18% ~~being of the catchment covered by urban areas~~ (Corine Land Cover 2018 and Peatland drainage status (Syke), Fig. ~~23b~~). The soil types are distributed between north and south with northern areas characterized by sand/till/silt/organic mostly covered by forests while the south is defined by clay overlay
310 allowing for more agriculture to take place. Overall, clay is the main soil type (37%) followed by rock, sand and till (22%, 12% and 11%, respectively) while organic soils and silt both cover 8% of the total catchment area (Fig. ~~23c~~). The average rainfall over the 10 year period 2014-2023 is 720mm. In southern Finland hydrology is characterized by the highest flow peaks occurring in spring during snowmelt and in autumn when rainfall is more abundant.



Marie Korppoo 01/2025

Source: b- Corine Land Cover - Finnish Environment Institute (Syke), LUKE, MAVI, LIVI, DVV, EU, NLS 01/2017

Source: c- Soil types: Geological Survey of Finland (GTK) and Natural Resources Institute Finland (LUKE)

315

Figure 3: a – Vantaanjoki catchment in red in the European map; b – land cover (Corine Land Cover, 2018) in Vantaanjoki catchment; c – soil types in Vantaanjoki catchment

320

Tuusulanjärvi catchment area is 91km² of which 50% is covered by clay, 21% by rock and 12 % by till (Fig. 23c). Lake coverage accounts for another 9% of the area, while forest (33%), agriculture (31%) and urban (27%) areas are equally distributed (Fig. 23b). Tuusulanjärvi Lake itself covers 5.9 km² and has a volume of 18 million m³ with a retention time of over 200 days and is the largest lake in the Vantaanjoki catchment. The lake is hypereutrophic (Schönach et al., 2018).

3.2 Monitoring data

325

The WSFS-Vemala model is developed and applied using long-term hydrological and water quality observations from national monitoring programmes maintained by the Finnish Environment Institute (Syke). Discharge data are obtained from the HYDRO dataset (open data, Syke), which consists of continuous flow measurements from gauging stations across Finland. Water quality data, including total organic carbon, total inorganic carbon, alkalinity, pH, nitrogen, phosphorus and phytoplankton are obtained from the VESLA dataset (open data, Syke), which is based on routine grab sampling and laboratory analyses following standardized national protocols. Sampling frequency typically ranges from monthly to seasonal, depending on site and variable.

330

For Vantaanjoki catchment, Mainly nine discharge stations and as well as ten lake water level observation stationspoints are used for the runoff parameter calibration of the hydrological model in Vantaanjoki catchment (Table 24). Since Because lakes cover only a small fraction of the catchment area and are relatively small in size there are no large lakes in the catchment, the

discharge observations ~~points are given greater weight~~ in the ~~runoff parameter~~ calibration process. The calibration is ~~done~~ performed by minimizing the difference between daily simulated and observed discharge in all points simultaneously.

335 The points with larger discharge get higher weight in the optimization function.

Both TOC observations and TOC calculated from COD_{Mn} observations were used in model calibration and validation. TOC data were estimated from COD_{Mn} data that correlates well with TOC in Finland (Kortelainen, 1993). As TOC data for rivers and lakes are scarce and COD_{Mn} have been more often ~~analyzed~~ analysed, this approach enables to use larger data-sets and improved model performance. Equation (13) is fitted for Vantaanjoki catchment with COD_{Mn} and TOC observations from
340 1990-2022 ([VESLA dataset, Syke](#)).

$$TOC = 0.797 \times COD_{Mn} + 1.076, r^2 = 0.89, n = 4193 \quad (13)$$

TIC observations ($mgC L^{-1}$) were scarce all over Finland and thus alkalinity (Alk in $mmol L^{-1}$) measurements in lake waters were used as a proxy using the expression (Rantakari and Kortelainen, 2008 with an $r^2=0.95$, Eq. (14)):

$$TIC = (0.996 * Alk * 1000 + 19.3) * \left(\frac{12}{1000}\right) \quad (14)$$

345 TOC and TIC are measured on unfiltered samples in Finland, while DOC and DIC are very rarely sampled. Water quality observation points monitored regularly in the catchment are used in the calibration of the Vemala model. Vantaa 4,2 6040 is the most frequently monitored water quality observation point downstream of the catchment with 15 or more observations per year (Fig. 5a). Based on the observations available in the ~~Hertta-VESLA dataset~~ data management system of (Syke); over the period 1990–2023, the mean (\pm standard deviation) total phosphorus, total nitrogen, TOC and TIC concentrations were $102 \mu g$
350 L^{-1} (± 61), $2.3 mg L^{-1}$ (± 0.9), $12.3 mg L^{-1}$ (± 3.5) and $10 mg L^{-1}$ (± 2.7) respectively and for alkalinity and pH the averages were 0.79 (± 0.23) and 7.27 (± 0.28). The ecological status of Vantaanjoki and Tuusulanjärvi is considered satisfactory (Syke). Additionally, samples were collected from the main tributaries and outlet of the Tuusulanjärvi lake during 2023. The samples were analysed at the MetropoliLab Oy for total organic carbon (SFS-EN 1484:1997), total inorganic carbon (SFS-EN 1484:1997), pH (SFS 3021:1979) and alkalinity (VYH87).

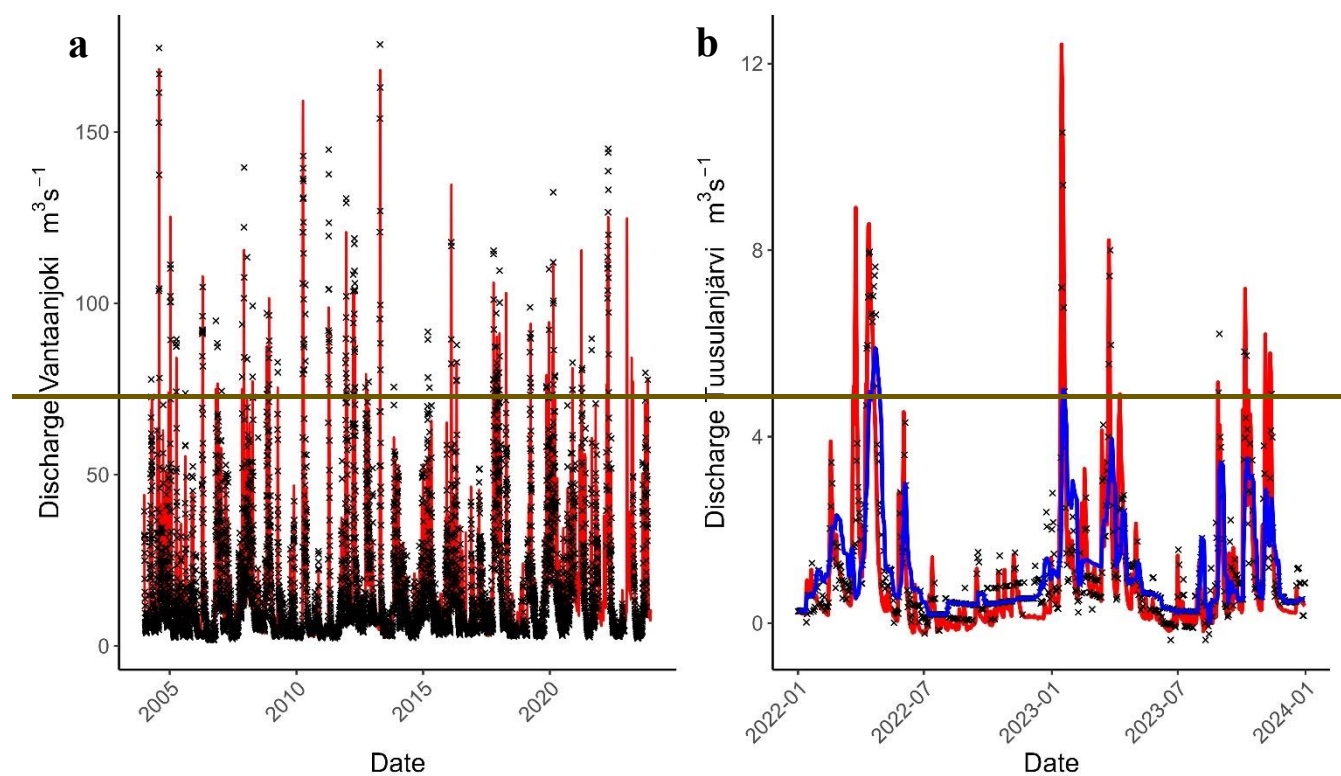
355 4. Results

4.1 River basin scale results

4.1.1 Discharge

Table 24 shows the discharge observation points used for model calibration, validation and NSE values for both periods. NSE for calibration period varies between 0.68-0.97, and for validation period between 0.87-0.97. The model can simulate
360 reasonably well observation points on small and medium-sized catchment areas. Figure 4a shows the daily simulated and observed discharge at Vantaanjoki Oulunkylä station (2004-2023) with a NSE=0.97 for the calibration period ([Fig 4a](#)). Water level observations of unregulated lakes are used to calibrate the lake rating curve parameters. For regulated lakes, such as

Tuusulanjärvi, outflow (Fig. 4b) and water level measurements, provide an estimate of ‘observed’ inflow to the lake, which is used in runoff parameter calibration.



365

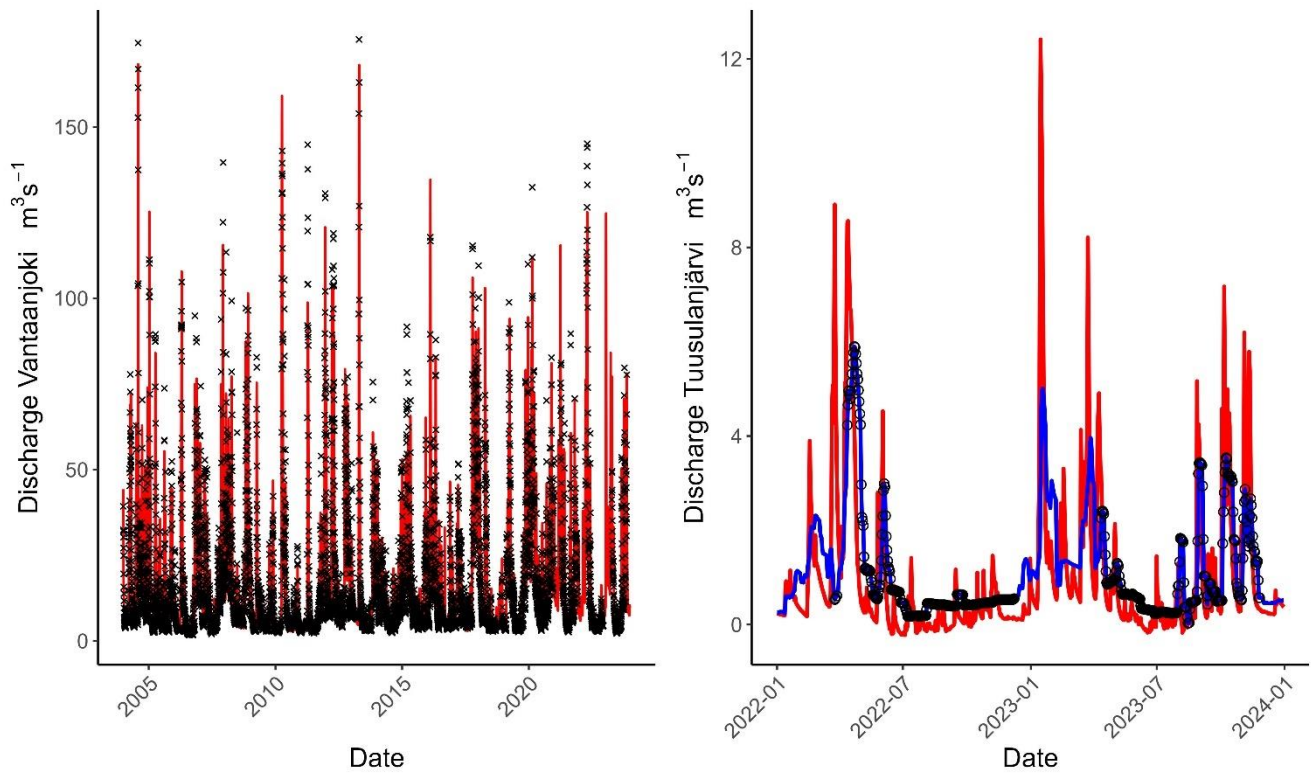


Figure 4. a- Simulated (red line) and observed (black cross) discharges at Vantaanjoki outlet for calibration period 2004 – 2023. b- ~~Observed inflow (black cross),~~ Simulated inflow (red line), observed outflow (black circle) and simulated outflow (blue line) of Tuusulanjärvi for calibration period 2022 – 2023.

370

375

380

Table 2. Discharge observations used for model calibration and validation, and NSE values for calibration and validation periods

Nr.	Name of the station	Period	Catchment area, km ²	NSE. Calibration 2004-2023	NSE. Validation 1990-2003
1	2101700 Oulunkylä	1990-2023	1688.52	0.97	0.97
2	2101220 Myllymäki	1990-2023	1232.2	0.96	0.96
3	2101500 Vantaa, Ylikylä	2001-2023	556.36	0.88	0.88
4	2101520 Hanala	1990-2023	313.38	0.92	0.91
5	2104900 Lepsämänjoki lm	1996-2023	214.07	0.93	0.93
6	2105400 Tuusulanjoki, Myllyky	2005-2010	125.74	0.96	-
7	2100946 Sandbacka	1990-2023	57.38	0.85	0.87
8	2100100 Lepsämänjoki anturi	2005-2018	23.36	0.73	-
9	2100101 Laurinoja	2010-2015	1.17	0.68	-

4.1.2. Total organic carbon

385 TOC concentrations in Finland using both TOC observations and COD_{Mn} observations as a proxy (Eq. (13)) range between 0.1-480 mg L⁻¹, with a mean and median of 12.5 and 9.8 mgC L⁻¹ respectively, based on 106512 observations available after 2000 from the [VESLAesla datasetbase](#) (Syke). The TOC concentrations in Vantaanjoki (13.1 mgC L⁻¹) and Tuusulanjärvi (9.8 mgC L⁻¹) are around the national mean and median respectively.

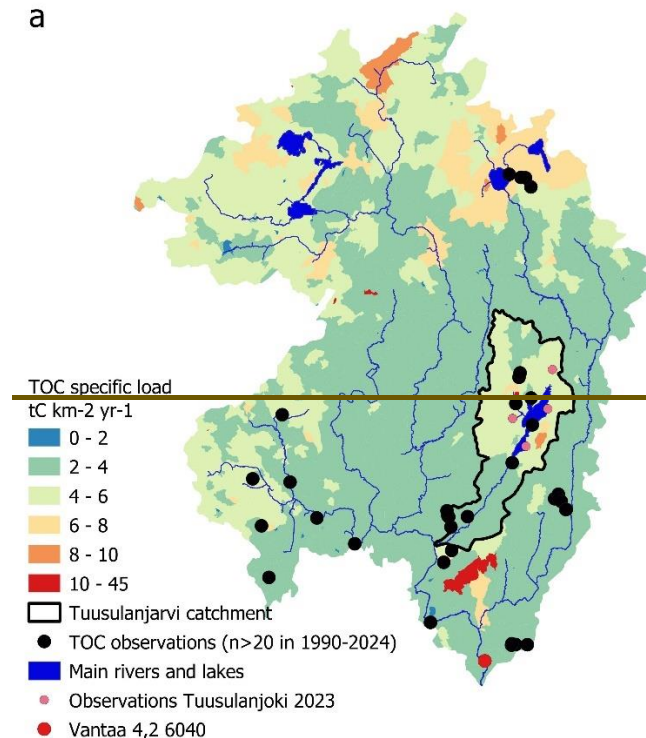
390 Vemala TOC model simulates the source apportionment of the TOC loading as well as spatial distribution of gross TOC loading for each small brook catchment. Figure 5a shows the simulated TOC specific loading spatial distribution, which depends on soil and land use classes. There are higher TOC loading areas in Vantaanjoki upstream sub-catchments, where relatively more peat soils are located. Simulated TOC specific loading from forests on drained peat soils is 9.2 tC km⁻² yr⁻¹, natural peat soils: 7.8 tC km⁻² yr⁻¹, forests on mineral soils: 3.6 tC km⁻² yr⁻¹ and agriculture on mineral soils: 3.0 tC km⁻² yr⁻¹. Even if the highest TOC specific loading is from peat soils, the highest source of TOC is forests on mineral soils (62%) as they cover the largest area in Vantaanjoki catchment. [Vemala performed well in terms of](#) For the TOC daily loads at the Vantaanjoki outlet observation point, [with a NSE was of](#) 0.65 for the calibration period (2004-2023), and 0.79 for the validation period (1990-2003) (Table 3), [as well as for the simulation of TOC daily concentrations \(r²=0.89 for both periods and pBIAS between](#) [7 and 16%, Table 4 and Fig. 6\).](#)

400

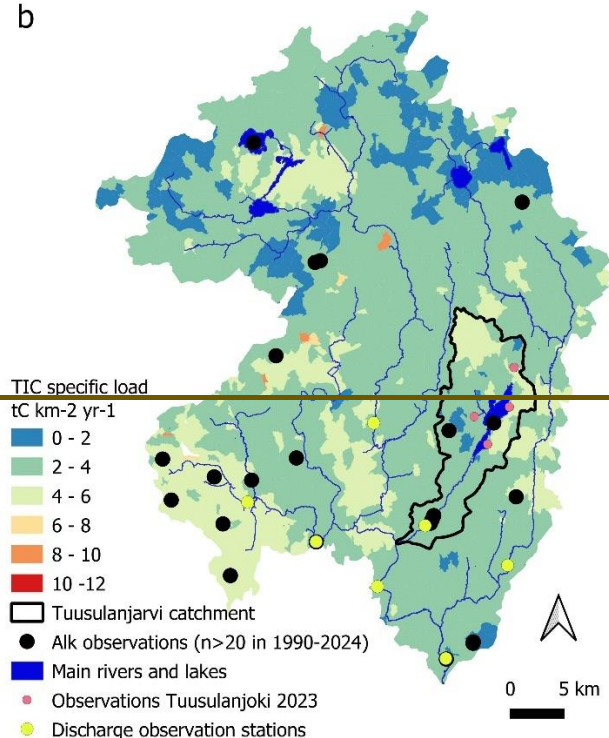
Table 3: Nash-Sutcliffe criterion of the WSFS-Vemala water quality simulations and number of observations in parenthesis of carbon and nutrient loading at the outlet of Tuusulanjärvi (Tuusulanjärvi luusua 1) and at the outlet of Vantaanjoki (Vantaanjoki 4.2 6040) over the calibration (2004-2023) and validation (1990-2003) periods with total organic carbon (TOC in $tC d^{-1}$), total inorganic carbon in the water (TIC in $tC d^{-1}$), alkalinity (Alk in $mol d^{-1}$), pH, total phosphorus (TP, $kgP d^{-1}$) and total nitrogen (TN, $tN d^{-1}$)

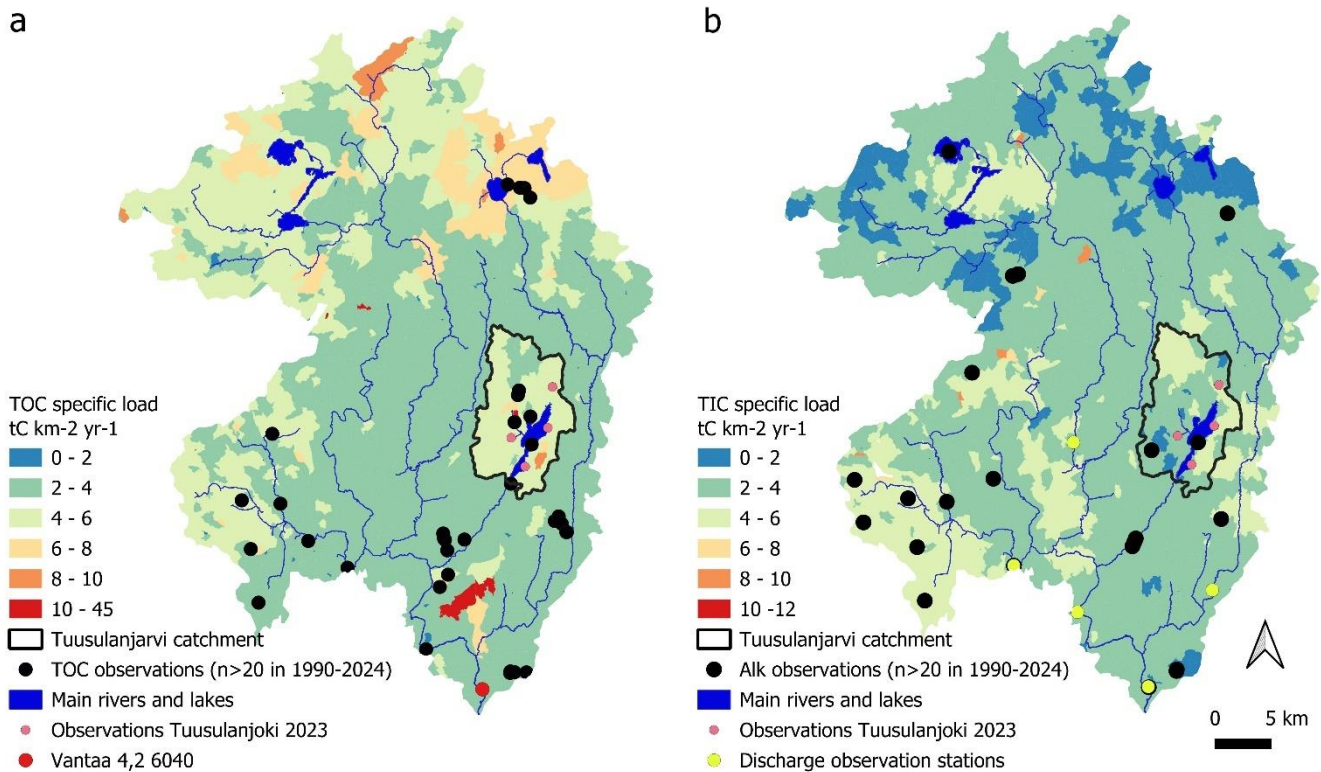
Observation point	Period	TOC ($tC d^{-1}$)	TIC ($tC d^{-1}$)	Alk ($mol d^{-1}$)	pH	TP ($kgP d^{-1}$)	TN ($tN d^{-1}$)
Tuusulanjärvi luusua1	1990- 2003					0.93 (n=163)	0.85 (n=162)
	2004- 2023	0.94 (n=26)	0.80 (n=8)	0.95 (n=7)	0.99 (n=84)	0.84(n=20 4)	0.74 (n=188)
Vantaanjoki 4.2 6040	1990- 2003	0.79 (n=193)	0.77 (n=12)	-0.50 (n=197)	0.98 (n=678)	0.85 (n=245)	0.71 (n=245)
	2004- 2023	0.65 (n=242)	0.63 (n=199)	0.60 (n=241)	0.99 (n=436)	0.74 (n=397)	0.70 (n=436)

a



b



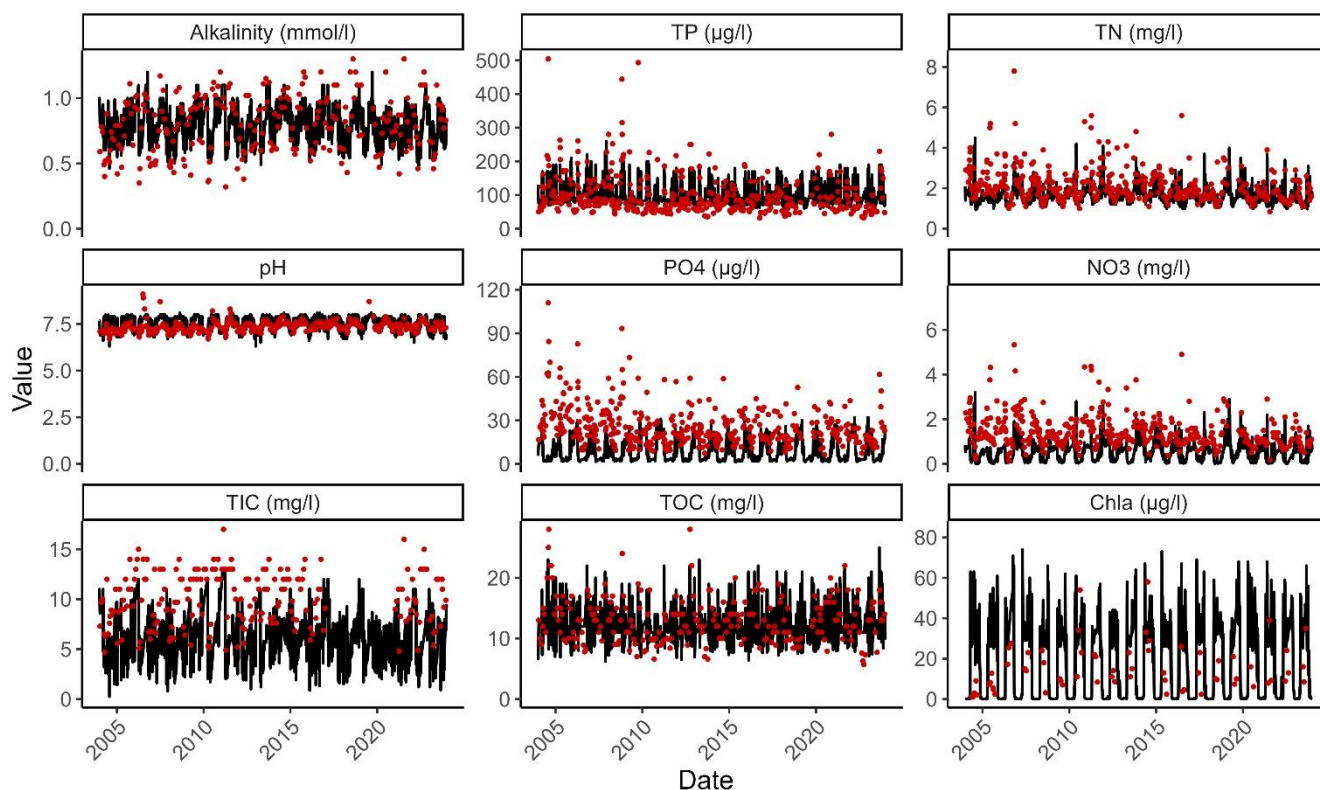


410

Figure 5. a- Simulated TOC specific loading ($tC\ km^{-2}\ yr^{-1}$) in Vantaanjoki, and TOC observation points, > 20 observations for the period 1990-2023 b- Simulated TIC specific loading ($tC\ km^{-2}\ yr^{-1}$) in Vantaanjoki, and alkalinity observation points, > 20 observations for the period 1990-2023. Source: WSFS-Vemala / Finnish Environment Institute (Syke)

415 **Table 4: The model performance statistics (r^2 , n = number of observations and pBIAS) for carbon and nutrient concentrations, alkalinity and pH at Tuusulanjärvi and Vantaanjoki outlets (Vantaanjoki 4,2 6040) during the calibration (2004-2023) and validation (1990-2003) periods. Variables include total organic carbon (TOC, $mgC\ L^{-1}$), total inorganic carbon (TIC, $mgC\ L^{-1}$), alkalinity (Alk, $mmol\ L^{-1}$), pH, total phosphorus (TP, $\mu g\ L^{-1}$) and total nitrogen (TN, $mg\ L^{-1}$).**

Observation point	Period	TOC ($mg\ L^{-1}$)		TIC ($mg\ L^{-1}$)		Alk ($mmol\ L^{-1}$)		pH		TP ($\mu g\ L^{-1}$)		TN ($mg\ L^{-1}$)	
		r^2	pBIAS	r^2	pBIAS	r^2	pBIAS	r^2	pBIAS	r^2	pBIAS	r^2	pBIAS
Tuusulanjärvi	1990-2003	0.93, n=28	18	0.99, n=9	25	0.99, n=169	-16	0.99, n=180	-6	0.91, n=202	-2	0.92, n=169	12
	2004-2023	0.98, n=47	24	0.98, n=4	17	0.98, n=209	-4	0.99, n=219	-4	0.90, n=265	5	0.93, n=209	10
Vantaanjoki 4.2 6040	1990-2003	0.89, n=193	7	0.95, n=12	17	0.93, n=197	-28	0.99, n=249	-3	0.86, n=252	-1	0.87, n=252	28
	2004-2023	0.89, n=242	16	0.88, n=199	33	0.93, n=241	2	0.99, n=436	-5	0.86, n=435	-0.5	0.89, n=436	25



420

Figure 6: Water quality in Vantaanjoki 4.2 6040 over the period 2004–2023 with observations (red dots) and simulations (black line) for alkalinity (mmol L^{-1}), pH, total inorganic carbon (TIC, mg L^{-1}), total phosphorus (TP, $\mu\text{g L}^{-1}$), phosphate (PO_4 , $\mu\text{g L}^{-1}$), total organic carbon (TOC, mg L^{-1}), total nitrogen (TN, mg L^{-1}), nitrate (NO_3 , mg L^{-1}) and phytoplankton (Chla, $\mu\text{g L}^{-1}$).

425

4.1.3. Total inorganic carbon

TIC concentrations in Finland using alkalinity observations as a proxy (Eq. (14)) range between $0.1\text{--}85 \text{ mgC L}^{-1}$, with a mean and median of 3.9 and 2.4 mgC L^{-1} respectively, using 23508 observations available after 2000 from [VeslaVESLA dataset \(Syke\)](#). The TIC concentrations in Vantaanjoki (9.7 mgC L^{-1}) and Tuusulanjärvi (8.5 mgC L^{-1}) are more than double the national mean.

430

Vemala simulates rock weathering and the resulting alkalinity, and thus TIC (Eq. (14)), from various soil types. There are 12 observation points for alkalinity in Vantaanjoki with more than 20 observations over the period 1990–2023. The highest alkalinity is calibrated as coming from rock and clay soils at runoff higher than 0.5 mm , while for lower runoff, sand and till

are contributing the most to alkalinity (Table 12). Figure 5b shows the spatial distribution of simulated TIC specific loading
435 in Vantaanjoki catchment ranging from 1-7 tC km⁻² yr⁻¹ depending on soil types.

For the alkalinity daily loads at the Tuusulanjärvi outlet observation point, NSE was 0.95 for the calibration period (2004-
2023), and for Vantaanjoki outlet NSE was 0.60 for the calibration period and was negative for the validation period (Table
3). The alkalinity daily concentrations were well simulated compared to the observations (r²=0.93-0.99); however alkalinity
440 was overestimated in the validation period (pBIAS between -16 and -28%) in Vantaanjoki and Tuusulanjärvi (Table 4). The
discrepancy in the results of alkalinity is explained by an increased alkalinity in Vantaanjoki over the calibration period with
an average alkalinity of 0.8 mmol L⁻¹ (Fig. 6-A43) compared to the validation period with an average of 0.62 mmol L⁻¹. TIC
daily concentrations showed a strong correspondence with the observations (r²=0.88-0.99 for both periods), however TIC
concentrations were underestimated in both periods (pBIAS between 17 and 33%, Table 4 and Fig. 6).

445

4.1.4. River basin carbon budget

The catchment annual loads of TOC can be compared to estimates derived from the monitoring data and an averaging method
for the period 1991-2020 (Helcom PLC database). The average net annual loading at the outlet of Vantaanjoki over the period
1991-2020 was 5974 tC yr⁻¹ in Vemala and 7098 tC yr⁻¹ in the estimation. Vemala underestimated the annual TOC loading
450 estimates by on average -16% over the period with a range from -33% to +25% with the largest underestimation in the wet
years 2012 and 2017. In 2012, only two samples have been recorded in October and November with high values (28 and 22
mgC L⁻¹). These peaks in concentrations are underestimated in Vemala, however, it is possible that the averaging method
overestimates the loading when using the interpolation method with too few values for the autumn loading.

455 The annual terrestrial average TC loads (gross loading) for the Vantaanjoki catchment were 11210 tC yr⁻¹ and 12870 tC yr⁻¹
respectively for the validation and calibration period. The annual average loading to the Sea (net loading) for TC was 8730 tC
yr⁻¹ and 9675 tC yr⁻¹ respectively for the validation and calibration periods with about 66% being TOC loading and 34% TIC
loading. The model simulated a retention/release of carbon through the river and lake network of 2480 tC yr⁻¹ and 2715 tC yr⁻¹
1 respectively for the validation and calibration periods or about 22% of the terrestrial total carbon reaching the aquatic
460 ecosystem. About half of the loss occurs in the lakes of the catchment (1030 tC yr⁻¹) that cover a total area of 37 km² (sizes
range from 0.001-5.9km²). If we consider a river network area of 6.5km², based on the geometry of river stretches, defined in
the Finnish basemap (Metadata: Shoreline10 from Syke and MMLNLS) with a discharge larger than 0.05 m³-s⁻¹ (WSFS-
Vemala, Syke), the resulting CO₂ emission rate is between 223-260 gC m⁻² yr⁻¹ in the river network itself.

4.2.1. Tuusulanjärvi tributaries

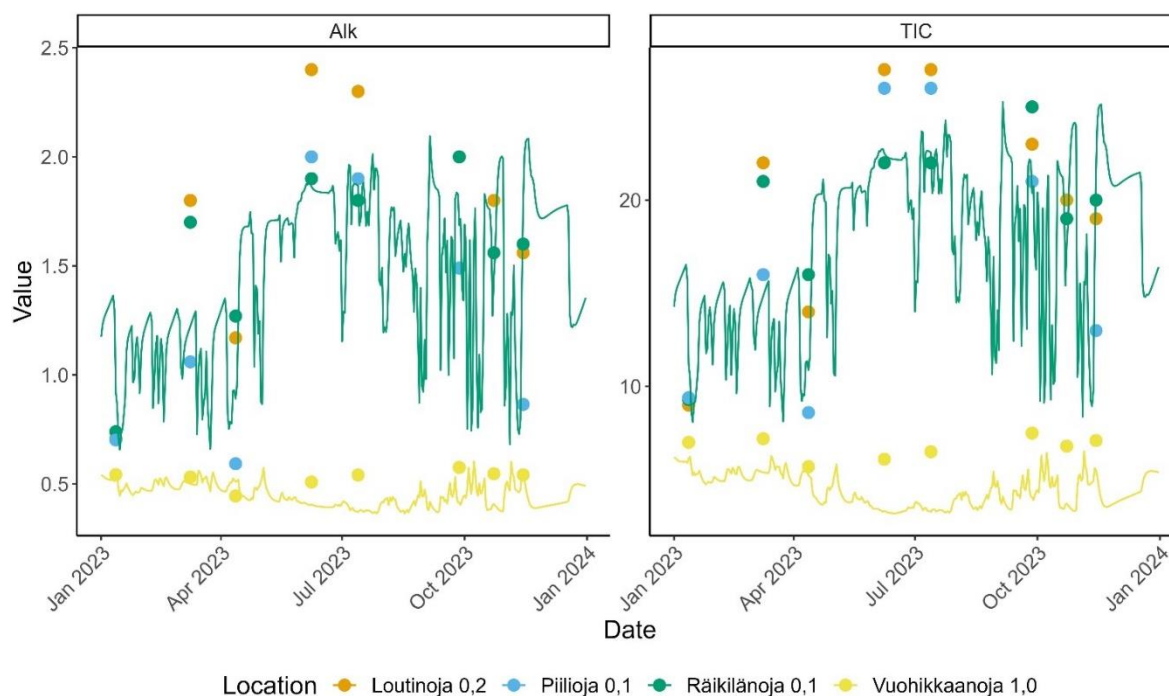


Figure 76: Observations (dots) and Vemala simulations (lines) of water quality variables in the rivers upstream Tuusulanjärvi in 2023 (Alk=alkalinity in mmol L^{-1} , TIC=total inorganic carbon in mg L^{-1}), monitored by the ELY Centres (Centres for Economic Development, Transport and the Environment in Finland)

The alkalinity in the various tributaries of Tuusulanjärvi monitored over the year 2023 can be divided into two groups, one presenting a lower alkalinity around $0.5\text{--}0.7 \text{ mmol L}^{-1}$ throughout the year and one presenting an alkalinity increasing during the summer months up to around 2 mmol L^{-1} or TIC concentrations up to 27 mgC L^{-1} (Fig. 76). High TIC summer concentrations are related to a large proportion of clay and rock in the catchments with up to 98% in Räikilänoja 0.1 (Table DA2). Vuohikkaanoja 1.0 on the other hand, which has only 40% of rock and up to 29% of sand presents low alkalinity and TIC concentrations throughout the year. Vemala results represent well the variability of TIC seasonal concentrations based on soil types in the upstream catchments (Fig. 67).

4.2.2 Water quality of Tuusulanjärvi

Tuusulanjärvi is a hypereutrophic lake presenting chlorophyll-a values up to a $100 \mu\text{g L}^{-1}$ during the summer (VESLA, Sykeesla). Vemala simulates well carbon (TOC, TIC, alkalinity, pH), nutrients (TN, nitrate (NO_3), TP, phosphate (PO_4)) and Chlorophyll-a (Chla) concentrations in Tuusulanjärvi lake compared with observations (Tuusulanjärvi syväne 1-2m depth,

Fig. 8 and Table 47) over the calibration period with both the inter and intra annual levels well represented. The concentrations in Tuusulanjärvi are well simulated with r^2 higher than 0.90 for all variables (Table 4), although some variables are underestimated like TIC (pBIAS between 17 and 25%) and TOC (pBIAS between 18 and 24%) (Table 4 and Fig. 8). The annual increase in TIC concentrations in the spring can be associated with the accumulation of CO_2 in the water over the winter period due to ice cover preventing the exchange of CO_2 gas at the water-air interface. However, as noted in the simulation of alkalinity at the outlet of the Vantaanjoki catchment, the increase in alkalinity in the later period of the calibration is visible from an average of 0.65 (2004-2012) to 0.75 (2013-2023). This increase cannot be explained by rainfall and discharge alone as the model simulates well the discharge in the catchment over both periods. A slight increase in pH can also be noted in the Tuusulanjärvi observations over the validation period, possibly due to the recovery to acidification or changes in soil weathering rates, unlike in the modelled results of pH. The model also simulates well the carbon and nutrients loads at the outlet of Tuusulanjärvi (Tuusulanjärvi luusua 1, Table 3) over the calibration and validation periods with NSE values higher than 0.74 for TOC, TIC, alkalinity, pH, TP and TN (Table 3).

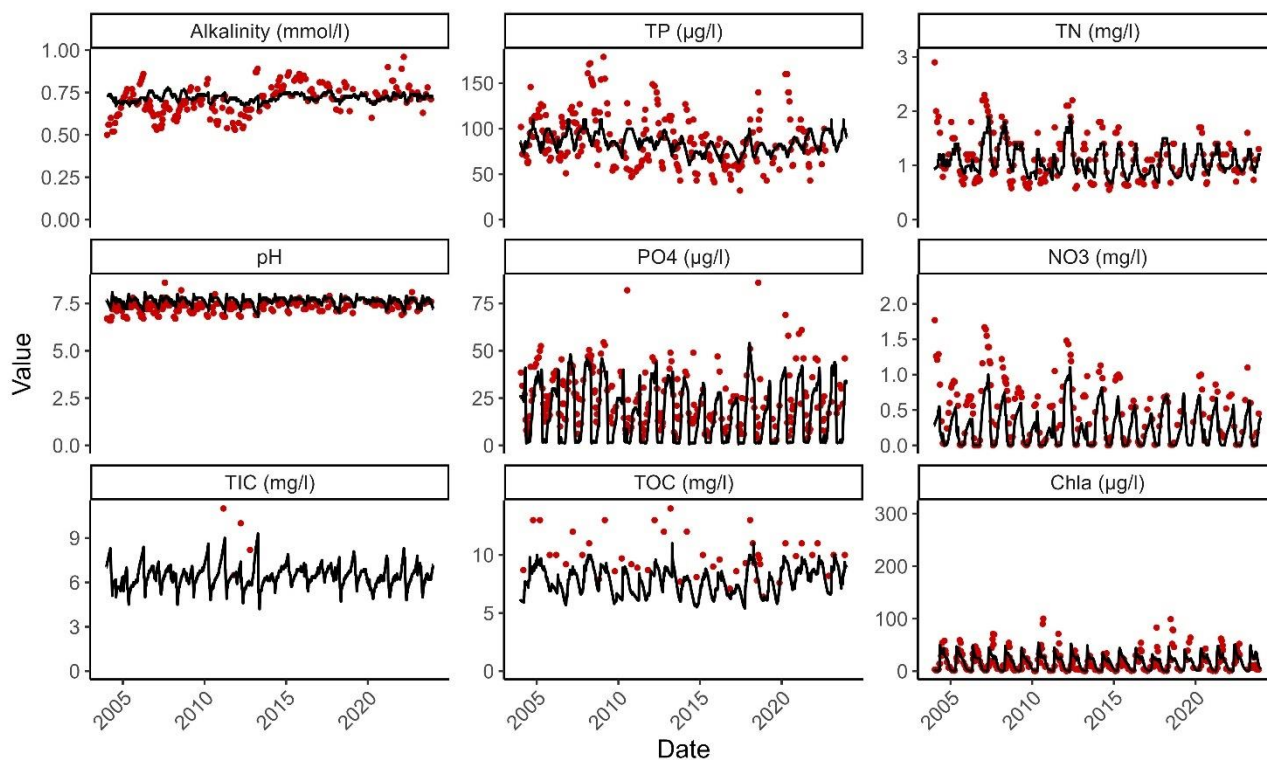


Figure 87: Water quality in Tuusulanjärvi over the period 2004-2023 with observations (red dots) and simulations (black line) for alkalinity (mmol L^{-1}), pH, total inorganic carbon (TIC, mg L^{-1}), total phosphorus (TP, $\mu\text{g L}^{-1}$), phosphate (PO_4 , $\mu\text{g L}^{-1}$), total organic carbon (TOC, mg L^{-1}), total nitrogen (TN, mg L^{-1}), nitrate (NO_3 , mg L^{-1}) and phytoplankton (Chla, $\mu\text{g L}^{-1}$).

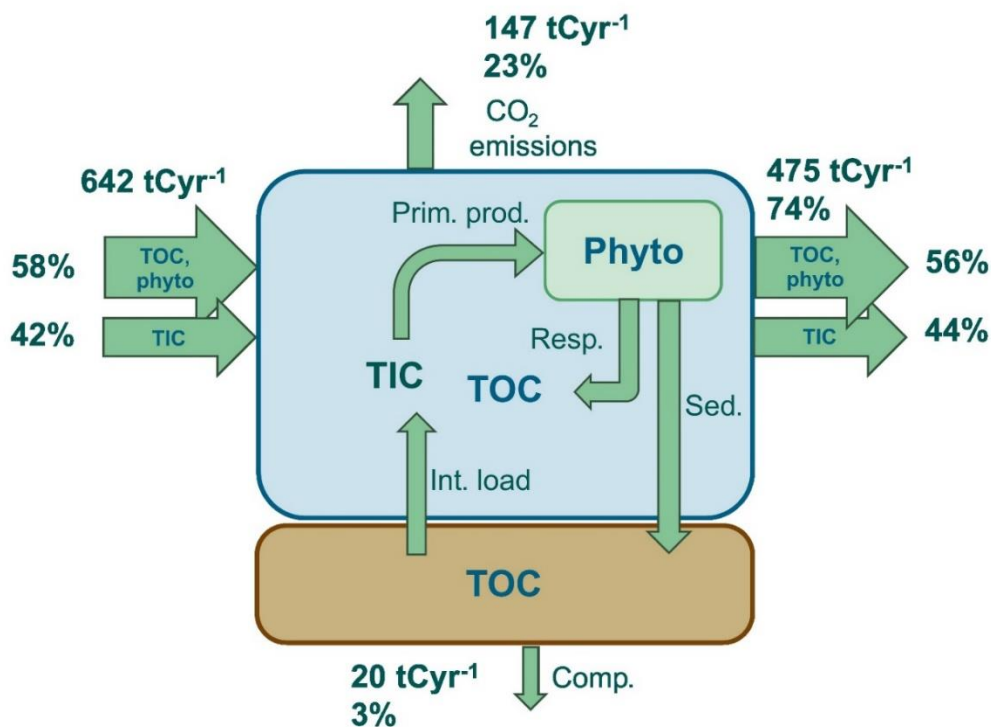
The average annual CO₂ emissions (22-27 gC m⁻² yr⁻¹) simulated by Vemala have increased between 1990-2003 and 2004-2023 along with an increase of CO₂ dissolved in the water from 537 mgC m⁻³ to 547 mgC m⁻³ (Table 54). This result can mainly be explained by higher water temperature, lower pH and higher wind speeds in the second period with a k₆₀₀ increasing from 6.7 to 7.1 cm h⁻¹. The increase in the atmospheric CO₂ from 362 to 400 ppm (Eq. (11)) does not counterbalance the effect of wind, temperature and pH on the CO₂ emissions between the periods (Table 54).

Table 54: Annual average CO₂ in the water (CO_{2aq} in ppm), CO₂ at saturation (CO_{2sat} in ppm), total inorganic carbon in the water (TIC in mgC L⁻¹), total organic carbon in the water (TOC in mgC L⁻¹), CO₂ transfer velocity at water temperature (k_{CO2} cm h⁻¹) and at 20°C (k₆₀₀ in cm h⁻¹), average daily (F in mgC m⁻² d⁻¹) and annual (F in gC m⁻² yr⁻¹) CO₂ emissions to the atmosphere, atmospheric CO₂ (CO_{2atm} in ppm) and pH averaged over the calibration period 2004-2023 and validation period 1990-2003 as simulated by Vemala in Tuusulanjärvi.

Period	CO _{2aq} (mg m ⁻³)	CO _{2sat} (mg m ⁻³)	TIC (mg L ⁻¹)	TOC (mg L ⁻¹)	k _{CO2} (cm h ⁻¹)	k ₆₀₀ (cm h ⁻¹)	F (mgC m ⁻² d ⁻¹)	F (gC m ⁻² yr ⁻¹)	CO _{2atm} (ppm)	pH	Water temperature (°C)
1990- 2003	537 (400- 628)	272 (258- 285)	6.7 (6.3-7.3)	7.3 (5.4-8.3)	3.1 (2.7-3.7)	6.7 (6.1-7.4)	61 (43-80)	22 (16- 29)	361 (347- 375)	7.7 (7.6- 7.8)	6.7 (5.9- 7.3)
2004- 2023	547 (382- 778)	297 (281- 314)	6.6 (6.0-7.0)	7.7 (6.7-8.7)	3.7 (2.9-4.7)	7.1 (6.1-7.8)	73 (53-94)	27 (19-34)	400 (377- 422)	7.6 (7.6- 7.7)	7.2 (6.2- 7.9)

4.2.3 Carbon emissions and long-term sedimentation

A simplified representation of the simulated average annual total carbon budget for the Tuusulanjärvi lake over the period 1990-2023 (Fig. 98) shows that most of the carbon (73%) is flowing downstream of the lake (474 tC yr⁻¹). However, a significant amount of carbon is released to the atmosphere annually (net emissions: 23% or 147 tC yr⁻¹ or 25 gC m⁻² yr⁻¹) while a smaller portion is sedimented on the long-term (3% or 20 tC yr⁻¹ or 3 gC m⁻² yr⁻¹). From the total carbon losses, TOC losses (108 tC yr⁻¹) represent 30% of the incoming TOC loading while TIC losses (65 tC yr⁻¹) represent 24% of the TIC loading to the lake. Primary production (PP) in the lake represents 200 tC yr⁻¹, which is larger than the amount of CO₂ net emissions from the lake. The PP is either sedimented (82 tC yr⁻¹) or returned to the water as TOC (respiration, 105 tC yr⁻¹) or exported as phytoplankton downstream (8 tC yr⁻¹) before being mineralised back into TIC.

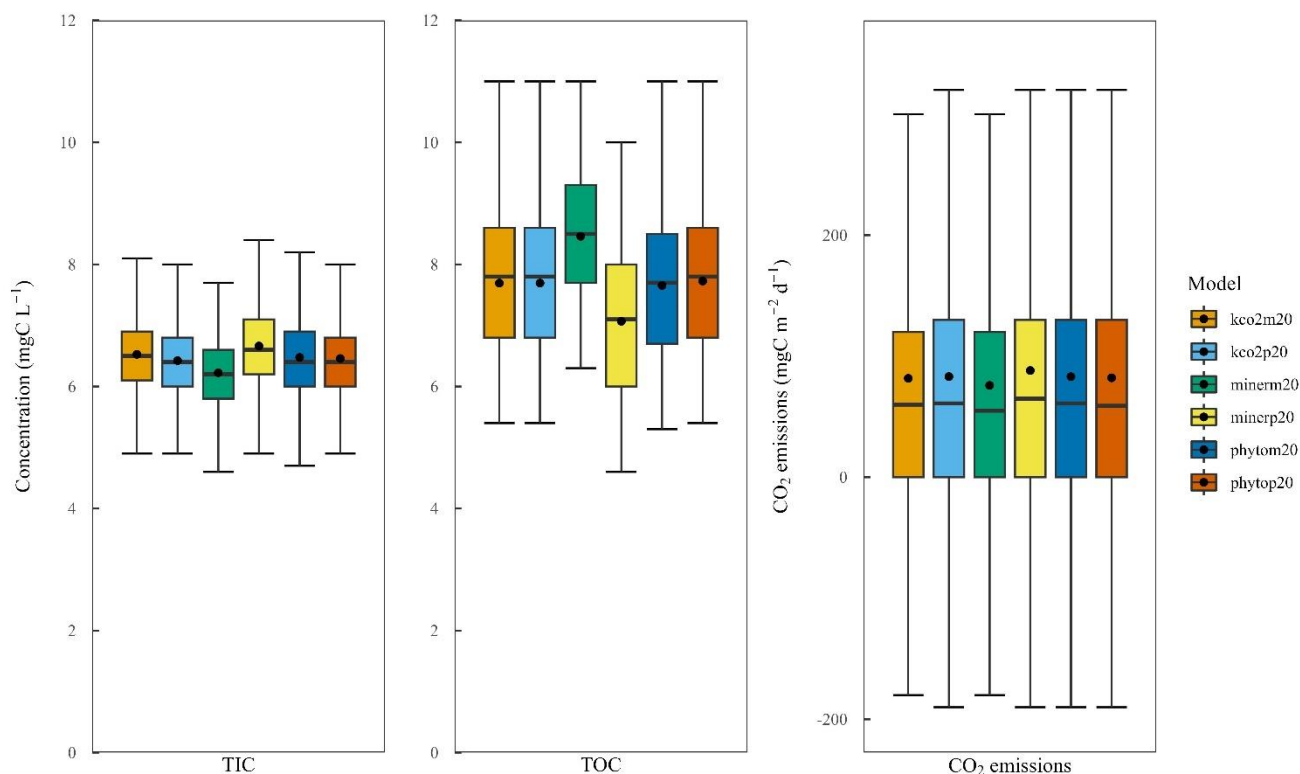


525 **Figure 98:** Simulated Tuusulanjärvi carbon budget (WSFS-Vemala) over the period 1990-2023 with TIC (total inorganic carbon), TOC (total organic carbon), phyto (phytoplankton), Prim.prod. (primary production), Resp. (respiration), Sed. (sedimentation), Comp. (burial), Int. load (internal loading)

4.2.4 Sensitivity analysis

530 The simulations of Tuusulanjärvi water quality for the period 2004-2023 show low sensitivity to a $\pm 20\%$ change in the CO_2 transfer coefficient across the water-atmosphere interface. The resulting variations in TIC ranged from -0.6% to $+1.3\%$, in TOC by approximately $\pm 0.1\%$, and in CO_2 emissions by $0.3\text{--}2\%$ (Figure 109). Similarly, a $\pm 20\%$ change in phytoplankton growth rates had minimal impact on model outputs: TIC varied between 0.0% and $+0.3\%$, TOC between -0.5% and $+0.5\%$, and CO_2 emissions increased by $+0.8\%$ to $+2\%$. However, the new model is more sensitive to changes in mineralisation rates.

535 A $\pm 20\%$ variation in the mineralisation rate resulted in CO_2 emissions changing by -7% to $+8\%$. TOC concentrations were even more responsive, showing an opposite effect with changes of -8% to $+10\%$, while TIC concentrations were moderately affected, varying between -3.5% and $+3\%$.



540

Figure 109: Sensitivity analysis of daily total inorganic carbon (TIC in mgC L^{-1}) and total organic carbon (TOC in mgC L^{-1}) concentrations in the water, and daily CO_2 emissions to/from the atmosphere (F in $\text{mgC m}^{-2} \text{d}^{-1}$) to an increase/decrease of the mineralisation rates (minerp20/minerm20), of the phytoplankton growth (phytop20/phytom20) and of the CO_2 exchange rate (kco2p20/kco2m20) by 20% over the period 2004-2023. The mean is represented by the black dot.

545

5. Discussion

A long-term goal for Vemala model development is to be able to simulate TOC and TIC leaching and transport at the national scale, involving model application on all types of land use/soil classes and over a wide range of climatic conditions. This is important especially in a lake abundant country such as Finland, where carbon processes in a large number of lakes will be affected by changing climate and human actions including the implementation of water and climate related policies. Subsequent changes in carbon release and sedimentation in inland waters could then be added to estimates of the national carbon balance and formal GHG reporting processes.

550

5.1 TOC

In Vantaanjoki, the simulated TOC specific loading for different land use/soil classes compares well with values reported in the literature. Vemala simulates 3 tC km⁻² yr⁻¹ TOC load from agriculture on mineral soils, which is in line with Manninen et al. (2018) who reported 2.5–5.2 tC km⁻² yr⁻¹ DOC load from cultivated fields on mineral soils. The DOC load has been reported to increase with increasing topsoil carbon content (Manninen et al., 2018). Vemala simulates a TOC load of 3.6 tC km⁻² yr⁻¹ from forests on mineral soils, which corresponds with Rantakari et al. (2010) findings 2.3 – 4.0 tC km⁻² yr⁻¹ of TOC load from forests on upland soils. TOC load from peat soils varies over a wide range depending on whether it is natural or drained, nutrient rich or oligotrophic and of the thermal gradient from south to north. Mean simulated TOC load for Vantaanjoki catchment from natural and drained peat soils were 7.8 and 9.2 tC km⁻² yr⁻¹ respectively, which are lower than 10.1 and 16.8 tC km⁻² yr⁻¹ calculated by export coefficient equations based on temperature sums for Vantaanjoki (Finer et al., 2021).

There is an increasing trend in both simulated and observed TOC concentrations in Tuusulanjärvi for the period 1990-2023. Observed mean TOC concentrations in 1990's has increased by 16% for the decade 2010-2020. The increasing TOC trends in various waterbody types, streams, lakes, rivers and coastal waters, has also been reported in Finland by Räike et al. (2024). According to Räike et al. (2024), the main reasons for increasing trends of TOC transport to waterbodies are decrease in acid sulphate deposition, increase in temperature, runoff, tree biomass and management of drained peatlands soil drainage. According to the Yasso07 model simulations, total litter fall input to the forest soils has increased by about 10% since 1990's (Lehtonen and Heikkinen, 2016). Although, there is practically no new peatland drainage being carried out in Finland; remedial drainage is still conducted, and previously drained peatlands continue to be managed for forestry, both of which contribute to increased TOC leaching. Already performed peatland drainage has possibly a long-term effect on increasing TOC trends (Nieminen et al., 2021).

5.2 TIC and alkalinity

Vemala performs well in simulating the loads of TIC, alkalinity and pH over both the calibration and validation periods with NSE higher than 0.6 at the outlets of Tuusulanjärvi and Vantaanjoki. There is however, one exception, with the NSE calculated for alkalinity over the validation period being negative (-0.5). In Tuusulanjärvi and Vantaanjoki, the observed alkalinity increase between the calibration and validation periods can be partly explained by an increased buffer capacity of freshwaters following a decrease in acid deposition (e.g. Vuorenmaa, 2007, de Wit et al., 2016) from the late 1980s onwards. Sulphate deposition load declined significantly by 60-70% over the period 1986-2003 in southern Finland (Vuorenmaa, 2007). In addition, soil weathering rates are sensitive to increasing temperatures, with predicted increases in alkalinity and pH of Finnish surface waters under climate change scenarios (Aherne et al., 2012). The Vemala model simulates alkalinity as a conservative

585 tracer and therefore does not consider the above secular changes due to acid deposition and temperature. Moreover, it omits
the impact of nitrification, denitrification and other processes affecting alkalinity as implemented in other carbon models (e.g.
Marescaux et al., 2020). The importance of these processes on the overall alkalinity model would however be limited with
findings from Marescaux et al. (2020) showing a contribution to alkalinity export from instream processes of less than 4%. At
this stage of the model development, it is thus justified to simulate alkalinity in the river network as a tracer.~~This is a
590 simplification that will be addressed in future development of the model.~~ Vemala must rely on variables with national
coverage for its development at the national scale, however observed TIC dataset (VESLA, Syke) is very limited. Thus,
alkalinity that is well correlated with TIC and is supported by comprehensive monitoring data across Finland is a good proxy
to simulate TIC in Finland.

595 The TIC loading at the outlet of the catchment is well simulated, although TIC concentrations overall are underestimated in
Vemala. In Tuusulanjärvi, some of the tributaries are presenting an increased TIC concentration in the summer up to 27 mgC
L⁻¹, while others present a low concentration throughout the year. In our model, TIC input loading is ~~based on~~ associated with
rock weathering using alkalinity and soil types rather than accounting for mineralisation of organic carbon in the soil. soil
types with a higher concentration coming from TIC load from bedrock and clay soils is higher than from coarse soils (sand
600 and silt) as analysed from well waters in Finland (Korkka-Niemi, 2001). ~~rather than from coarse soils (sand and silt).~~ Elevated
summer concentrations can be explained by elevated groundwater flow, ~~or~~ point sources from urban areas or wastewater
treatment plants. ~~Point sources of TIC are not included in this model nor is land use at this stage of the model development.~~
Runoff from agricultural land may increase DIC loading compared to forested land due to liming. In Sweden, Humborg et al.
(2010) estimated that 4% of the carbonate and bicarbonate export to the sea in Sweden was from pollution, mainly from liming
605 of agricultural land, which covers 8% of Sweden. However, it is difficult to assess the extent of the liming effect on agricultural
land on the stream water pH and thus inorganic C dissolved in the water (Huotari et al., 2013). Point sources of TIC are not
included in this model nor is the mineralisation process producing DIC in the soil at this stage of the model development.
Overall, the simplified representation of TIC loading based on soil types and runoff in Vemala represents well the variability
of TIC loading between different catchments as well as the intra-annual variability of TIC concentrations, even though the
610 overall loading is underestimated. In the future, the terrestrial TOC model could be coupled more tightly with the TIC model
to simulate mineralisation processes and greenhouse gas emissions from land areas.

5.3 CO₂ emissions

The simulation of the transfer velocity of CO₂ across the water-air interface, represented by k_{600} , is crucial in the calculation
615 of CO₂ emissions and requires the introduction of physical/topographic features like wind speed and water velocity to reduce

the uncertainty associated with k_{600} estimates at the catchment scale (Alin et al., 2011, Rocher-Ros et al., 2019). In this study, k_{600} was defined separately for lakes and rivers and correlated respectively to wind speed (Jonsson et al., 2008) and water velocity (Alin et al., 2011). Average values of k_{600} in Tuusulanjärvi over both periods ($k_{600}=6.1-7.8 \text{ cm h}^{-1}$ annual averages) are comparable to other measurements from lakes like Heiskanen et al. (2014) who calculated an average k_{600} of 7 cm h^{-1} in a small boreal lake during autumn. Alin et al. (2011) presented a k_{600} range between $5-55 \text{ cm h}^{-1}$ in rivers with a water velocity between $0.05-1 \text{ m s}^{-1}$. In Vantaanjoki, the average water velocity ranges between $0.02-0.35 \text{ m s}^{-1}$ over the period 1990-2023 (WSFS-Vemala, Syke), resulting in a range of k_{600} between $14-26 \text{ cm h}^{-1}$. This is below the range used to characterise rivers in Sweden ($k_{600} = 26-64 \text{ cm h}^{-1}$, Humborg et al., 2010), however, the velocity in the Swedish streams was much higher, ranging from $1-4 \text{ m s}^{-1}$, which would explain our lower estimates of k_{600} .

The average annual CO_2 emissions rate for Tuusulanjärvi of $25 \text{ gC m}^{-2} \text{ yr}^{-1}$ is comparable to other studies, for instance, using the equation related to open water rainfall from Rantakari & Kortelainen (2005) provides an average annual CO_2 emission rate of $24 \text{ gC m}^{-2} \text{ yr}^{-1}$. Our estimate also compares to other studies like the estimate, based on continuous CO_2 concentrations in the water (April 2005-October 2006), of $30-44 \text{ gC m}^{-2} \text{ yr}^{-1}$ from a meso-eutrophic, slightly acidic headwater lake in southern Finland (Huotari et al., 2009). However, our estimate is about half the estimate for its lake size class ($1-10 \text{ km}^2$) of $56 \text{ gC m}^{-2} \text{ yr}^{-1}$ but corresponds to a lake class with an area greater than 100 km^2 in the study from Kortelainen et al. (2006). Kortelainen et al.'s study did not account for residence time, eutrophication or acidity levels that can considerably influence carbon emissions from lakes.

The overall river network carbon emissions of $223-260 \text{ gC m}^{-2} \text{ yr}^{-1}$ were low compared to calculations based on the size of the rivers like in Humborg et al. (2010: $473-3032 \text{ gC m}^{-2} \text{ yr}^{-1}$, depending on the Strahler stream order). This discrepancy can first be explained by the discrepancy in the average velocity of rivers between the two papers as we have presented with the k_{600} values. These high emissions have also been reported by Rocher-Ros et al. (2019: median 1290 and mean $2790 \text{ gC m}^{-2} \text{ yr}^{-1}$) or Raymond et al. (2012: mean $3358 \text{ gC m}^{-2} \text{ yr}^{-1}$). However, in peat areas, lower CO_2 emissions have been reported like Rocher-Ros et al. (2019: $40 \text{ gC m}^{-2} \text{ yr}^{-1}$) or Dinsmore et al. (2010: $39 \text{ gC m}^{-2} \text{ yr}^{-1}$). TIC concentrations in Finnish waters can play a role in the lower estimates of CO_2 emissions. Indeed, in boreal environments DOC flux represents up to 80% of the carbon export to the Baltic Sea (Räike et al., 2016), while worldwide DIC export to the Sea is equivalent to DOC (Hope et al., 1994) and can even represent up to 80% of the carbon flux in UK rivers (Jarvie et al., 2017). In boreal catchments characterised by non-carbonate bedrocks, inland waters are low in alkalinity and in inorganic carbon explaining the lower CO_2 emissions. Finally, the lower estimates of carbon emissions in the streams could also be explained by an underestimation of TIC in the water column. The underestimation of TIC is due to a simplification of the TIC loading, which is in this model based uniquely on soil types and not incorporating the added diffuse sources of TIC from agriculture, peat or urban areas, nor the point sources like wastewater treatment plants.

5.4 Lake carbon budget

The older version of the Vemala model, simulating TOC only as a separate variable and including a retention term for both carbon emission and carbon sedimentation in the lake, simulated a TOC retention of 108 tC yr^{-1} equivalent to 20% of the TOC loading to the lake (Vemala, Huttunen et al., 2016). This value is lower than the combined total carbon loss from the lake in our new estimates (147 tC yr^{-1}) that includes not only carbon retention in the sediments but also carbon emissions to the atmosphere. Thus, over a third of the total carbon loss is omitted in the previous version of the model showing the importance of simulating TIC as well as TOC in carbon emission calculations. In this simulation, a large part of the total carbon is sedimented through phytoplankton sedimentation. However, only a relatively small fraction undergoes long-term burial (3% of TC), referred in this model as “compacted”, thus most of the sedimented TOC is mineralised in the surface of the sediments and returns to the water column as TIC. The capture of carbon in the sediments ($3 \text{ gC m}^{-2} \text{ yr}^{-1}$) is lower than in other lakes of similar sizes ($1\text{-}10\text{km}^2$: $7.2 \text{ gC m}^{-2} \text{ yr}^{-1}$) according to Pajunen (2000). The carbon cycling in inland waters has significantly changed due to human activities (Tranvik et al., 2009) and this link should be further explored using this model. It would be important to expand this study to the national scale to get the total estimate of carbon balance and flows in the aquatic environment, taking into account the variety in characteristics and loading of lakes and rivers. This would improve currently available estimates on GHG fluxes from Finnish surface waters, which are based on generalised emission coefficients (Holmberg et al., 2023). Evaluation of the regional-scale impacts of future changes in climate or land-use could also be improved (e.g. Forsius et al. 2017). Water residence times and nutrient concentrations are key predictors for organic carbon reactivity and CO_2 emissions from inland surface waters (Evans et al., 2017). [WSFS-Vemala through its biogeochemical submodel links nutrients to phytoplankton growth and carbon cycling in inland waters to further study these fundamental links between eutrophication and GHG emissions in the future.](#)

5.5 Sensitivity analysis

In the Vemala biogeochemical model, mineralisation is at the core of the carbon cycling in the water, which explains the sensitivity of the model to this process. The mineralisation process is simulated as affected by temperature following a sigmoid function (Korppoo et al., 2017). Future climate change scenarios will thus have an impact on the simulated mineralisation dynamics in the aquatic ecosystem. Mineralisation not only influences carbon dynamics but also affects nutrient availability and phytoplankton growth, making it a key driver of biogeochemical interactions in the system. The co-dependency of various variables to the mineralisation rates allows for a reduction in the uncertainty of the calibrated parameters as mineralisation rates are calibrated to fit not only TOC but also organic nitrogen and phosphorus. This demonstrates the benefit of deterministic process-based models that rely on well documented enzyme reaction rates as well as the simulation of interconnected variables affected by the same processes in the aquatic ecosystem. The sensitivity analysis highlights the performance of the model to represent well all variables in the water column considering the sensitivity of each output to each calibrated parameter.

6. Conclusion

The development of the carbon processes in WSFS-Vemala model presents a significant advancement in simulating carbon dynamics, particularly in capturing both TOC and TIC processes and their contributions to carbon retention and emissions through a river/lake network. This model is especially relevant in boreal catchments where TIC and TOC are mostly under a dissolved form. This improved representation of carbon cycling in Vemala, linked with phytoplankton growth and nutrient cycling, allows for the distinction between carbon losses to the atmosphere and long-term carbon storage in the sediments of inland waters. The model's ability to simulate TOC loading across various land use/soil types and TIC loading across soil types aligns closely with reported literature values, demonstrating its applicability in diverse climatic and geographical settings. Moreover, the addition of organic acids to the total alkalinity definition improved pH simulations and thus CO₂ emissions in acidic and organic rich waters like in Finland. The model's performance in estimating CO₂ emissions shows good correlations with established ranges for rivers and lakes. The inclusion of sedimentation and mineralization processes in the lake carbon budget underlines the necessity of accounting for both organic and inorganic pathways in carbon modelling.

Future development efforts for Vemala model should aim at applying the model to various land use/soil classes linking the TOC and TIC terrestrial submodels to represent TIC leaching from rock weathering and mineralisation in soils as well as CO₂ emissions from land areas and over a wide range of climatic conditions. This is important especially in a lake abundant country such as Finland, where carbon processes in a large number of lakes will be affected by changing climate and human actions including the implementation of water and climate related policies. Overall, the enhanced Vemala model provides a robust foundation for understanding carbon cycling and supporting sustainable, integrated water resource management and climate change scenario assessments from sub-catchments to the national scale. Subsequent changes in carbon release and sedimentation in inland waters could then be added to estimates of the national carbon balance and formal GHG reporting processes.

Author contribution

MK, IH and MH developed the model code, MK and JS designed the sampling campaign and MK and IH prepared the manuscript with contributions from all co-authors. The authors declare that they have no conflict of interest.

Acknowledgements

The development of the WSFS-Vemala carbon model has been funded by the Finnish Environment Institute (Syke) and the Ministry of Agriculture and Forestry of Finland (MMM, VN/28536/2020) through the Systeemihiili project and by the European union (NextGenerationEU and Water4all) through the Research Council of Finland projects: Green-Digi Basin: Green and digital transition in river basin management project (347703), Blue Lakes: digitizing the carbon sink potential of boreal lakes project (353316), C-NEUT: Evaluating integrated spatially explicit carbon-neutrality for boreal landscapes and

regions (347848), Pluralakes: Co-creating pathways to desirable nature futures of temperate lakes (367832) and Festival: Final Ecosystem Services in Transition: Aquatic Ecosystem Services in Forested Landscapes (367822).

710 **References**

- Abril, G., Bouillon, S., Darchambeau, F., Teodoru, C. R., Marwick, T. R., Tamooch, F., Ochieng Omengo, F., Geeraert, N., Deirmendjian, L., Polsenaere, P., and Borges, A. V.: Technical Note: Large overestimation of $p\text{CO}_2$ calculated from pH and alkalinity in acidic, organic-rich freshwaters, *Biogeosciences*, 12, 67–78, <https://doi.org/10.5194/bg-12-67-2015>, 2015.
- Aherne J, Posch M, Forsius M, Lehtonen A, Härkönen K.: Impacts of forest biomass removal on soil nutrient status under climate change: a catchment-based modelling study for Finland. *Biogeochemistry* 107: 471-488, Doi: 10.1007/s10533-010-9569-4, 2012.
- Algesten, G., Sobek S., Bergström A.K., Gren A.A., Tranvik L. J., and Jansson M.: The role of lakes for organic carbon cycling in the boreal zone. *Glob. Chang.Biol.* 10: 141–147, Doi: 10.1111/j.1365-2486.2003.00721.x, 2003.
- Alin, S.R., Rasera, M.D.F.F.L., Salimon, C.I., Richey, J.E., Holtgrieve, G.W., Krusche, A. V., Snidvongs, A.: Physical controls on carbon dioxide transfer velocity and flux in low-gradient river systems and implications for regional carbon budgets. *J. Geophys. Res.* 116, 17, doi:G01009 10.1029/2010jg001398, 2011.
- Alleson, L., Valiente, N., Dörsch, P. et al. Drivers and variability of CO_2 : O_2 saturation along a gradient from boreal to Arctic lakes. *Sci Rep* 12, 18989, <https://doi.org/10.1038/s41598-022-23705-9>, 2022.
- Amora-Nogueira, L., Sanders, C.J., Enrich-Prast, A. et al.: Tropical forests as drivers of lake carbon burial. *Nat Commun* 13, 4051, <https://doi.org/10.1038/s41467-022-31258-8>, 2022.
- [Catchment areas dataset /Syke: https://metadata.ymparisto.fi/dataset/{44394B13-85D7-4998-BD06-8ADC77C7455C}](https://metadata.ymparisto.fi/dataset/{44394B13-85D7-4998-BD06-8ADC77C7455C}), last access: 22/04/2025.
- Chen and Millero: The high pressure specific volume of seawater. *Deep-Sea Res.* 23:595-612, 1976.
- Cole, J.J., Caraco, N.F., Kling, G.W., Kratz T.K.: Carbon dioxide supersaturation in the surface waters of lakes *Science* 265(5178):1568-70, doi: 10.1126/science.265.5178.1568, 1994.
- Cole, J. J., Prairie, Y. T., Caraco, N. F., McDowell, W. H., Tranvik, L. J., Striegl, R. G., Duarte, C. M., Kortelainen, P., Downing, J. A., Middelburg J. J. & Melack J.: Plumbing the global carbon cycle: integrating inland waters into the terrestrial carbon budget. *Ecosystems*. 10, 171_184, <https://doi.org/10.1007/s10021-006-9013-8>, 2007.
- [Corine Land cover 2018 /Syke \(partly LUKE, MAVI, LIVI, DVV, EU, NLS Maastotietokanta 01/2017\), https://metadata.ymparisto.fi/dataset/{0B4B2FAC-ADF1-43A1-A829-70F02BF0C0E5}](https://metadata.ymparisto.fi/dataset/{0B4B2FAC-ADF1-43A1-A829-70F02BF0C0E5}), last access: 22/04/25.
- Dinsmore, K.J., Billett, M.F., Skiba, U.M., Rees, R.M., Drewer, J. and Helfter, C.: Role of the aquatic pathway in the carbon and greenhouse gas budgets of a peatland catchment. *Global Change Biology*, 16: 2750-2762, <https://doi.org/10.1111/j.1365-2486.2009.02119.x>, 2010.

- Evans, C., Futter, M.N., Moldan, F., Valinia, S., Frogbrook, Z. & Kothawala D.N.: Variability in organic carbon reactivity across lake residence time and trophic gradients. *Nature Geosci* 10, 832–835, <https://doi.org/10.1038/ngeo3051>, 2017.
- 740 Finér, L., Lepistö, A., Karlsson, K., Räike, A., Härkönen, L., Huttunen, M., Joensuu, S., Kortelainen, P., Mattsson, T., Piirainen, S., Sallantausta, T., Sarkkola, S., Tattari, S., Ukonmaanaho, L.: Drainage for forestry increases N, P and TOC export to boreal surface waters, *STOTEN*, Vol. 762, <https://doi.org/10.1016/j.scitotenv.2020.144098>, 2021.
- [Finnish Soil Database, 2016. Natural Resources Institute Finland, and Geological Survey of Finland. Version 1. CSC – IT](#)
- 745 [Center for Science, 2023. http://urn.fi/urn:nbn:fi:att:d0083b93-930c-426c-a231-74f0d9c0d71e](http://urn.fi/urn:nbn:fi:att:d0083b93-930c-426c-a231-74f0d9c0d71e)
- Forsius, M., Räike, A., Huttunen, I., Poutanen, H., Mattsson, T., Kankaanpää, S., Kortelainen, P. and Vuorilehto, V.-P.: Observed and predicted future changes of total organic carbon in the lake Päijänne catchment (southern Finland): Implications for water treatment of the Helsinki metropolitan area. *Boreal Environment Research* 22: 317–336, <http://www.borenav.net/BER/archive/pdfs/ber22/ber22-317-336.pdf>, 2017.
- 750 Futter, M. N., Butterfield, D., Cosby, B. J., Dillon, P. J., Wade, A. J., Whitehead, P. G.: Modeling the mechanisms that control in-stream dissolved organic carbon dynamics in upland and forested catchments. *Water Resources Research* Vol. 43 (2), <https://doi.org/10.1029/2006WR004960>, 2007.
- Gibson, J.J., Price, J.S., Aravena, R., Fitzgerald, D.F. and Maloney, D.: Runoff generation in a hypermaritime bog–forest upland. *Hydrol. Process.*, 14: 2711–2730, [https://doi.org/10.1002/1099-1085\(20001030\)14:15<2711::AID-](https://doi.org/10.1002/1099-1085(20001030)14:15<2711::AID-HYP88>3.0.CO;2-2)
- 755 [HYP88>3.0.CO;2-2](#), 2000.
- [Gupta, H.V., Sorooshian, S. and Yapo, P.O. 1999. Status of Automatic Calibration for Hydrologic Models: Comparison with Multilevel Expert Calibration. Journal of Hydrologic Engineering, Volume 4, Issue 2](#)
- [https://doi.org/10.1061/\(ASCE\)1084-0699\(1999\)4:2\(135\)](https://doi.org/10.1061/(ASCE)1084-0699(1999)4:2(135)).
- Heiskanen, J. J., Mammarella, I., Haapanala, S., Pumpanen, J., Vesala, T., Macintyre, S. & Ojala, A.: Effects of cooling and internal wave motions on gas transfer coefficients in a boreal lake, *Tellus. Series B: Chemical and Physical Meteorology*, vol. 66, 22827, <https://doi.org/10.3402/tellusb.v66.22827>, 2014.
- 760 HELCOM PLC database (https://nest.su.se/helcom_plc/, last access: 03/02/2025)
- [HERTTA database \(www.syke.fi/fi-FI/Avoim_tieto/Ymparistotietojarjestelmat\)](#)
- Hiederer, R.: Distribution of Organic Carbon in Soil Profile Data. EUR 23980 EN. Luxembourg: Office for Official Publications of the European Communities. 126pp, 2009.
- 765 Holmberg, M., Junttila, V., Schulz, T., Grönroos, J., Paunu, V.-V., Savolahti, M., Minunno, F., Ojanen, P., Akujärvi, A., Karvosenoja, N., Kortelainen, P., Mäkelä, A., Peltoniemi, M., Petäjä, J., Vanhala, P., Forsius, M.: Role of land cover in Finland’s greenhouse gas emissions. *Ambio* 52, 1697–1715, <https://doi.org/10.1007/s13280-023-01910-8>, 2023.
- Hope, D., Billett, M.F. and Cresser, M.S.: A review of the export of carbon in river water: fluxes and processes. *Environ. Poll.*, 770 84: 301–324, 1994.

- Hruska, J., Köhler, S., Laudon, H., Bishop, K.: Is a universal model of organic acidity possible: comparison of the acid/base properties of dissolved organic carbon in the boreal and temperate zones. *Environ Sci Technol* 37(9):1726-30, doi: 10.1021/es0201552, 2003.
- 775 Humborg, C., Mörrth, C.-M., Sundbom, M., Borg, H., Blenkner, T., Giesler, R., and Ittekkot, V.: CO₂ supersaturation along the aquatic conduit in Swedish watersheds as constrained by terrestrial respiration. *aquatic respiration and weathering. Global Change Biology* 16: 1966–1978, <https://doi.org/10.1111/j.1365-2486.2009.02092.x>, 2010.
- Huotari, J., Ojala, A., Peltomaa, E., Pumpanen, J., Hari, P., Vesala, T.: Temporal variations in surface water CO₂ concentration in boreal humic lake based on high-frequency measurements, *Boreal Environ. Res.*, **14**, Suppl. A, 48–60, 2009.
- 780 Huotari, J., Nykänen, H., Forsius, M., Arvola, L.: Effect of catchment characteristics on aquatic carbon export from a boreal catchment and its importance in regional carbon cycling. *Global Change Biology* 19, 3607–3620, doi: 10.1111/gcb.12333, 2013.
- Huttunen, I., Huttunen, M., Piirainen, V., Korppoo, M., Lepistö, A., Räike, A., Tattari, S., Vehviläinen, B.: A national scale nutrient loading model for Finnish watersheds – Vemala. *Environ Model Assess* 21, 83–109, DOI: 10.1007/s10666-015-9470-6, 2016.
- 785 [HYDRO dataset / Syke: https://metadata.ymparisto.fi/dataset/%7B86FC3188-6796-4C79-AC58-8DBC7B568827%7D](https://metadata.ymparisto.fi/dataset/%7B86FC3188-6796-4C79-AC58-8DBC7B568827%7D), last access: 22/04/2025.
- ~~Jakkila, J., Vento, T., Rousi, T., Vehviläinen, B.: SMOS soil moisture data validation in the Aurajoki watershed, Finland. *Hydrology Research* 45 (4-5): 684–702, <https://doi.org/10.2166/nh.2013.234>, 2014.~~
- Jarvie, H.P., King, S.M., Neal, C.: Inorganic carbon dominates total dissolved carbon concentrations and fluxes in British 790 rivers: Application of the THINCARB model – Thermodynamic modelling of inorganic carbon in freshwaters, *Science of The Total Environment*, Volume 575, 496-512, ISSN 0048-9697, <https://doi.org/10.1016/j.scitotenv.2016.08.201>, 2017.
- Jonsson, A., Åberg, J., Lindroth, A., and Jansson, M.: Gas transfer rate and CO₂ flux between an unproductive lake and the atmosphere in northern Sweden, *J. Geophys. Res.*, 113, G04006, doi:10.1029/2008JG000688, 2008.
- 795 [Kolhinen, V., M. Huttunen, J. Jakkila, P. Havu, M. Menberu, M. Kumpumäki, N. Fazel, A. Koistinen, B. Vehviläinen, and N. Veijalainen. Development and Validation of National Scale Process-Based Hydrological Model for Finland. *Journal of Hydrology*, Volume 665, 134650, ISSN 0022-1694, <https://doi.org/10.1016/j.jhydrol.2025.134650>, 2026.](https://doi.org/10.1016/j.jhydrol.2025.134650)
- Korkka-Niemi, K. I.: Cumulative geological, regional and site-specific factors affecting groundwater quality in domestic wells in Finland. *Boreal Environment Research. Monographs*, 20, 2001.
- 800 Korppoo, M., Huttunen, M., Huttunen, I., Piirainen, V., Vehviläinen, B.: Simulation of bioavailable phosphorus and nitrogen loading in an agricultural river basin in Finland using VEMALA v.3. *Journal of Hydrology* 549: 363-373, <http://dx.doi.org/10.1016/j.jhydrol.2017.03.050>, 2017.
- Kortelainen, P.: Content of total organic carbon in Finnish lakes and its relationship to catchment characteristics. *Can. J. Fish. Aquat. Sci.* 50: 1477–1483, 1993.

- Kortelainen, P., Rantakari, M., Huttunen, J. T., Mattsson, T., Alm, J., Juutinen, S., Larmola, T., Silvola, J., and Martikainen, P. J.: Sediment respiration and lake trophic state are important predictors of large CO₂ evasion from small boreal lakes, *Global Change Biol.*, 12, 1554–1567, 2006.
- [Krause, P., Boyle, D. P. and Base F.: Comparison of different efficiency criteria for hydrological model assessment. *Advances in Geosciences*, 5, 89–97, 2005. <https://doi.org/10.5194/adgeo-5-89-2005>, 2005.](https://doi.org/10.5194/adgeo-5-89-2005)
- Laurén, A., Lappalainen, M., Kieloaho, A.-J., Karhu, K., Palviainen, M.: Temperature sensitivity patterns of carbon and nitrogen processes in decomposition of boreal organic soils – Quantification in different compounds and molecule sizes based on a multifactorial experiment. *PLoS ONE* 14(10): e0223446, <https://doi.org/10.1371/journal.pone.0223446>, 2019.
- Lehtonen A. and Heikkinen J. Uncertainty of upland soil carbon sink estimate for Finland. *Canadian Journal of Forest Research*. 46(3): 310-322. <https://doi.org/10.1139/cjfr-2015-0171> 2016.
- Lemola, R., Uusitalo, R., Hyväluoma, J., Sarvi, M., Turtola, E.: Suomen peltojen maalajit, multavuus ja fosforipitoisuus. Vuodet 1996–2000 ja 2005–2009. (in Finnish). Luonnonvarakeskus (Luke), Helsinki 209 p, 2018.
- R. Lignell, E. Miettunen, H. Kuosa, et al.: Modeling how eutrophication in northern Baltic coastal zone is driven by new nutrient inputs, internal loading, and 3D hydrodynamics, *Journal of Marine Systems* (2024), <https://doi.org/10.1016/j.jmarsys.2025.104049>, 2024.
- Manninen, N., Soinne, H., Lemola, R., Hoikkala, L., Turtola, E.: Effects of agricultural land use on dissolved organic carbon and nitrogen in surface runoff and subsurface drainage, *STOTEN*, Vol. 618, pp 1519-1528, <https://doi.org/10.1016/j.scitotenv.2017.09.319>, 2018.
- Marescaux, A., Thieu, V., Gypens, N., Silvestre, M., and Garnier, J.: Modeling inorganic carbon dynamics in the Seine River continuum in France, *Hydrol. Earth Syst. Sci.*, 24, 2379–2398, <https://doi.org/10.5194/hess-24-2379-2020>, 2020.
- Mattsson, T., Finér, L., Kortelainen, P. et al.: Brook Water Quality and Background Leaching from Unmanaged Forested Catchments in Finland. *Water, Air, & Soil Pollution* 147, 275–298, <https://doi.org/10.1023/A:1024525328220>, 2003.
- Mattsson, T., Kortelainen, P., and Räsänen, A.: Export of DOM from boreal catchments: Impacts of land use cover and climate, *Biogeochem.*, 76, 373–394, 2005.
- Mendonça, R., Müller, R.A., Clow, D., Verpoorter, C., [Raymond](#), P., [Tranvik](#) L.J. & [Sobek](#) S.: Organic carbon burial in global lakes and reservoirs. *Nat Commun* 8, 1694, <https://doi.org/10.1038/s41467-017-01789-6>, 2017.
- Millero, F.J.: Thermodynamics of the carbon dioxide system in the oceans. *Geochimica et Cosmochimica Acta*, Vol. 59, No. 4, pp. 661-677, [https://doi.org/10.1016/0016-7037\(94\)00354-O](https://doi.org/10.1016/0016-7037(94)00354-O), 1995.
- Minunno, F., Peltoniemi, M., Härkönen, S., Kallioikoski, T., Mäkinen, H., Mäkelä, A.: Bayesian calibration of a carbon balance model PREBAS using data from permanent growth experiments and national forest inventory. *Forest Ecology and Management* 440: 208-257, 2019.
- Mozafari, B., Bruen, M., Donohue, S., Renou-Wilson, F., O'Loughlin, F.: Peatland dynamics: A review of process-based models and approaches, *Science of The Total Environment*, Vol. 877, <https://doi.org/10.1016/j.scitotenv.2023.162890>, 2023.

- Munhoven, G.: Mathematics of the total alkalinity–pH equation – pathway to robust and universal solution algorithms: the SolveSAPHE package v1.0.1. *Geoscientific Model Development*, 6, 1367–1388, <https://doi.org/10.5194/gmd-6-1367-2013>, 2013.
- 840 Munhoven, G.: SolveSAPHE (Solver Suite for Alkalinity-PH Equations). *Geoscientific Model Development* 1.1, Vol. 6, Number 4, pp. 1367–1388, <https://doi.org/10.5281/zenodo.4328965>, 2020.
- Mäkisara, K., Katila, M., Peräsaari, J., Tomppo, E.: The Multi-Source National Forest Inventory of Finland – methods and results 2013. Natural Resources Institute Finland (Luke), p 215, <http://urn.fi/URN:ISBN:978-952-326-186-0>, 2016.
- Natural Resources Institute Finland & Geological Survey of Finland: Finnish Soil Database, 2016. CSC – IT Center for
 845 Science, <http://urn.fi/urn:nbn:fi:att:d0083b93-930c-426c-a231-74f0d9c0d71e>, 2023.
- Nash, J.E., Sutcliffe, J.V.: River flow forecasting through conceptual models part I — A discussion of principles. *Journal of Hydrology*, Volume 10, Issue 3, Pages 282-290, ISSN 0022-1694, [https://doi.org/10.1016/0022-1694\(70\)90255-6](https://doi.org/10.1016/0022-1694(70)90255-6), 1970.
- Nieminen, M., Sarkkola, S., Sallantausta, T., Hasselquist, E.M., Hjalmar Laudon, H.: Peatland drainage - a missing link behind
 850 increasing TOC concentrations in waters from high latitude forest catchments? *Science of The Total Environment*, Vol. 774, 2021, <https://doi.org/10.1016/j.scitotenv.2021.145150>, 2021.
- Pajunen, H.: Lake sediments: their carbon store and related accumulation rates. Geological Survey of Finland, Special Paper 29, 39-69, 2000.
- Peatland drainage status /Syke:- <https://ckan.ymparisto.fi/dataset/%7B4C46F896-5D12-43AD-9919-55A8A4FD1714%7D> ,
 855 last access: 03/06/2025
- Qi, J., Du, X., Zhang, X., Lee, S., Wu, Y., Deng, J., Moglen, G.E., Sadeghi, A.M., McCarty, G.W.: Modeling riverine dissolved and particulate organic carbon fluxes from two small watersheds in the northeastern United States. *Environmental Modelling & Software*, Vol.124, <https://doi.org/10.1016/j.envsoft.2019.104601>, 2020.
- Rantakari, M.: The role of lakes in carbon cycling in boreal catchments. MONOGRAPHS of the Boreal Environment Research
 860 35, <http://hdl.handle.net/10138/22176>, 2010.
- Rantakari, M. & Kortelainen, P.: Interannual variation and climatic regulation of the CO₂ emission from -large boreal lakes. *Global Change Biology* 11: 1368-1380, 2005.
- Rantakari, M. and Kortelainen, P.: Controls of Organic and Inorganic Carbon in Randomly Selected Boreal Lakes in Varied Catchments. *Biogeochemistry*, Vol. 91(2/3), 151-162, <https://www.jstor.org/stable/40343625>, 2008.
- 865 Rantakari, M., Mattsson, T., Kortelainen, P., Piirainen, S., Finér, L., Ahtiainen, M.: Organic and inorganic carbon concentrations and fluxes from managed and unmanaged boreal first-order catchments. *Science of The Total Environment*, Volume 408, Issue 7, pp 1649-1658, <https://doi.org/10.1016/j.scitotenv.2009.12.025>, 2010.
- Raymond, P. A., et al., 2012. Scaling the gas transfer velocity and hydraulic geometry in streams and small rivers. *Limnol. Oceanogr.: Fluids Environ.* 2: 41–53. doi: 0.1215/21573689-1597669

- 870 Rocher-Ros, G., Sponseller, R.A., Lidberg, W., Mörth, C.-M., Giesler, R.: Landscape process domains drive patterns of CO₂ evasion from river networks. *Limnology and Oceanography Letters* 4, 87–95, 2019.
- Räike, A., Kortelainen, P., Mattsson, T. & Thomas, D.N.: Long term trends in the export of carbon from Finnish rivers to the Baltic Sea. Organic and inorganic components compared. *Aquatic Sciences* 78:505–523: DOI 10.1007/s00027-015-0451-2, 2016.
- 875 Räike, A., Taskinen, A., Härkönen, L., Kortelainen, P., Lepistö, A.: Browning from headwaters to coastal areas in the boreal region: Trends and drivers. *Science of The Total Environment*, Volume 927, <https://doi.org/10.1016/j.scitotenv.2024.171959>, 2024.
- Schönach, P.M., Nygrén, N.A., Tammeorg, O., Heikkinen, M.E., Holmroos, H.J., Massa, I., Niemistö, J.P., Tapio, P.E.J. & Horppila, J.A.: 'The past, present, and future of a lake: Interdisciplinary analysis of long-term lake restoration', *Environmental Science & Policy*, vol. 81, pp. 95-103, <https://doi.org/10.1016/j.envsci.2017.12.015>, 2018.
- 880 Shoreline 10 dataset /Syke & NLS (National Land Survey of Finland): <https://ckan.ymparisto.fi/dataset/{C40D8B4A-DC66-4822-AF27-7B382D89C8ED}>, last access 22/04/2025.
- Sobek, S., Tranvik, L.J., Cole J.J.: Temperature independence of carbon dioxide supersaturation in global lakes. *Global biogeochemical cycles* Vol.19 (2), <https://doi.org/10.1029/2004GB002264>, 2005.
- 885 Tranvik, L. J., Cole, J. J., Prairie, Y. T.: The study of carbon in inland waters—from isolated ecosystems to players in the global carbon cycle, *Limnology and oceanography letters* 3, 41-48, <https://doi.org/10.1002/lol2.10068>, 2018.
- Tranvik, L.J., Downing, J.A., Cotner, J.B., et al., Lakes and reservoirs as regulators of carbon cycling and climate, *Limnology and Oceanography*, 54, doi: 10.4319/lo.2009.54.6_part_2.2298, 2009.
- 890 VESLA dataset /Sykebase: <https://metadata.ymparisto.fi/dataset/%7BE7D10B36-D734-4C2A-95F2-5C3C544C6BB8%7D>, last access: 22/04/2025.
- Vuorenmaa, J.: Recovery Responses of Acidified Finnish Lakes Under Declining Acid Deposition. *Monographs of the Boreal Environment Research*, 30, 2007.
- Wanninkhof, R.: Relationship between wind-speed and gas ex-change over the ocean. *J. Geophys. Res.* 97: 7373– 7382, doi:10.1029/92JC00188, 1992.
- 895 Ward, ND, Bianchi, TS, Medeiros, PM, Seidel, M, Richey, JE, Keil, RG and Sawakuchi, HO: Where Carbon Goes When Water Flows: Carbon Cycling across the Aquatic Continuum. *Front. Mar. Sci.* 4:7, doi: 10.3389/fmars.2017.00007, 2017.
- Weiss R.: Carbon dioxide in water and seawater. The solubility of a non-ideal gas. *Mar. Chem.* 2, 203-215, [https://doi.org/10.1016/0304-4203\(74\)90015-2](https://doi.org/10.1016/0304-4203(74)90015-2), 1974.
- 900 Wen, H., Perdrial, J., Abbott, B.W., Bernal, S., Dupas, R., Godsey, S.E., Harpold, A., Rizzo, D., Underwood, K., Adler, T. Sterle, G., and Li, L. Temperature controls production but hydrology regulates export of dissolved organic carbon at the catchment scale. *HESS*, 24, 945–966, 2020, doi.org/10.5194/hess-24-945-2020.

De Wit, H.A., Valinia, S., Weyhenmeyer, G.A., Futter, M., Kortelainen, P., Austnes, K., Hessen, D.O., Räike, A., Laudon, H. and Vuorenmaa, J.: Current Browning of Surface Waters Will Be Further Promoted by Wetter Climate. Environ. Sci. Technol. Lett. 2016, 3, 430–435, DOI: 10.1021/acs.estlett.6b00396, 2016.

905 [WSFS-Vemala/Syke: https://ckan.ymparisto.fi/dataset/{7E6EB982-A3CA-4DE3-87C0-1B61462442DF}](https://ckan.ymparisto.fi/dataset/{7E6EB982-A3CA-4DE3-87C0-1B61462442DF}), last access
[22/04/2025](#).

910

915

920

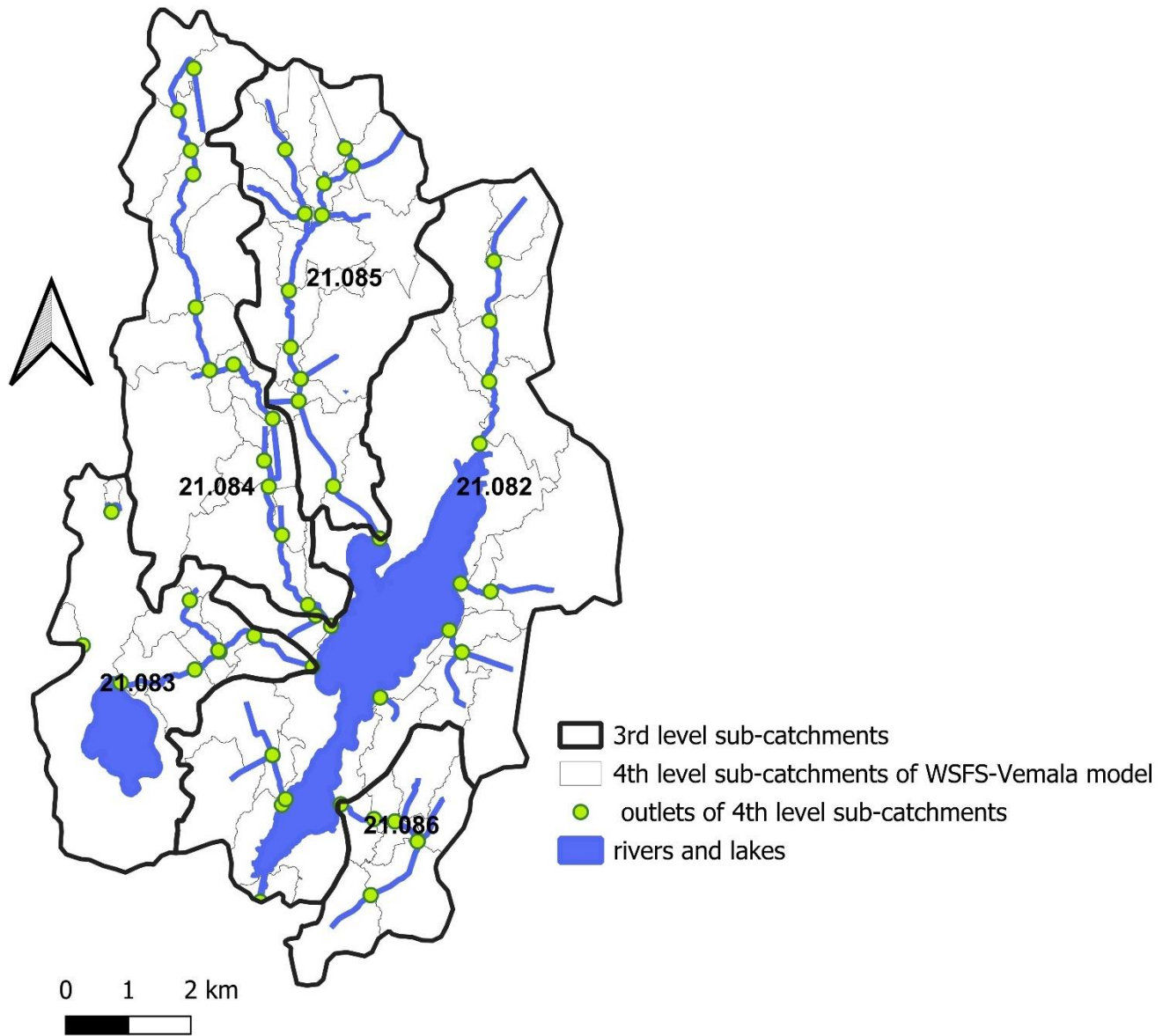


Figure A14: 3rd and 4th level sub-catchments -including rivers and lakes (blue) and the outlets of the 4th level sub-catchments (green dots) describing the river routing in Tuusulanjärvi catchment. (Source: WSFS-Vemala, Syke).

Appendix B

930 Calculation of the initial C content in soils

The C content calculation is performed at the national scale since the WSFS-Vemala TOC model is applied at this scale. The C content calculation in mineral agricultural soils is based on field parcel data from Soil testing laboratory Viljavuuspalvelu oy which contains soil organic matter (SOM) class (vm - low, m – medium, rm –rich, erm – very rich, mm – mull, Tm – peat soil). Only the 5 first classes are for mineral soil and ~~was~~ were used in
935 creating C content for mineral soils. Only 40% of fields have observations, so the mean C content for 3rd level subcatchments for clay or for coarse soils was extrapolated based only on 40% of observed data.

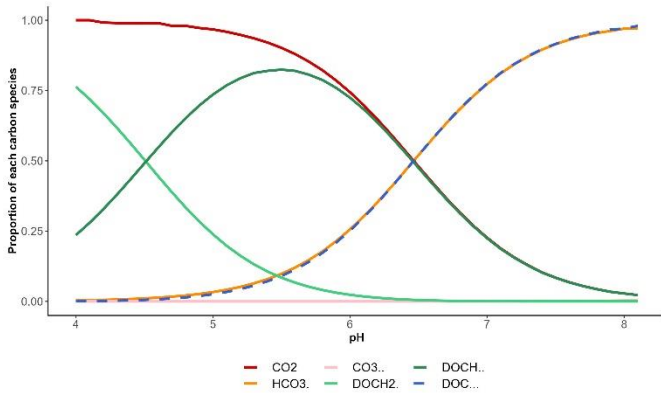
940 Table BA1. Soil organic matter classes according to soil type(mineral/organic) and soil organic matter percentage (Lemola et al. 2018)

<u>Organic matter, %</u>	<u>Organic matter class</u>	<u>Symbol</u>
<u>< 3</u>	<u>low</u>	<u>vm</u>
<u>3-5,9</u>	<u>medium</u>	<u>m</u>
<u>6-11,9</u>	<u>rich</u>	<u>rm</u>
<u>12-19,9</u>	<u>very rich</u>	<u>erm</u>
<u>20-39,9</u>	<u>mull</u>	<u>Mm</u>
<u>> 40</u>	<u>peat soil</u>	<u>Tm</u>

The methodology was as follow:

- 1) the mean SOM content in % for the top soil for each class was obtained from LUKE report (Lemola et al., 2018, see the Table B1)
- 945 2) the area of agricultural clay soils and coarse soils for each 3rd level subcatchment was estimated,
- 3) the mean SOM content for clay and coarse soils separately was estimated, and then weighted mean SOM content for 3rd level subcatchments was estimated,
- 4) SOM content 1000 kg ha⁻¹ is calculated using bulk density of the mineral soils and SOM content,
- 5) it is assumed that SOM content in the 0-1 m deep soil (Mg ha⁻¹) is decreasing exponentially with the layer depth.
- 950 The van Bemmelen factor of 0.58 was used to convert SOM data to SOC. Corresponding values for Vantaanjoki catchment are 180-200 Mg C/ha.

Appendix C



955

Figure C1A21: Carbon species proportion for both dissolved organic carbon (DOCH_2^- light green, DOCH_2^{2-} green, and DOC^{3-} dashed blue) and dissolved inorganic carbon (CO_2 red, HCO_3^- orange, CO_3^{2-} pink) depending on pH

pH model

960 Solubility of CO_2 is defined by Weiss 1974:

$$\ln K_0 = -60.2409 + 93.4517(100/T) + 23.3585 \ln (T/100) \quad (\text{C24})$$

Where K_0 is expressed in moles kg^{-1}atm and T the temperature in Kelvin.

Alkalinity is defined as the ability of water to neutralize acids. The expression to calculate alkalinity in this paper using both TIC and TOC is given by:

$$965 \text{ Alk} = [\text{HCO}_3^-] + 2[\text{CO}_3^{2-}] + [\text{OH}^-] - [\text{H}^+] + [\text{DOCH}_2^-] + 2[\text{DOCH}_2^{2-}] + 3[\text{DOC}^{3-}] \quad (\text{C32})$$

With,

$$[\text{TIC}] = [\text{H}_2\text{CO}_3] + [\text{HCO}_3^-] + [\text{CO}_3^{2-}] \quad (\text{C43})$$

$$[\text{TOC}] = [\text{DOCH}_3] + [\text{DOCH}_2^-] + [\text{DOCH}_2^{2-}] + [\text{DOC}^{3-}] \quad (\text{C54})$$

970 With DOCH_3 omitted from the following equations as its process is outside the range of freshwater pH ($\text{pK}_a=3.04$, Hruska et al., 2003).

The dissociation of water is determined by:

$$K_w = [\text{OH}^-][\text{H}^+] \quad (\text{C65})$$

With K_w , in mol kg^{-1} , the dissociation of water given by the adaptation of Millero's 1995 equation for freshwater:

$$\ln K_w = 148.9802 - \frac{13847.26}{T} - 23.6521 \ln T \quad (\text{C76})$$

975 The first dissociation constant of carbonic acid is given by:

$$K_1 = \frac{[\text{H}^+][\text{HCO}_3^-]}{[\text{H}_2\text{CO}_3]} \quad (\text{C87})$$

and the second dissociation constant is given by:

$$K_2 = \frac{[H^+][CO_3^{2-}]}{[HCO_3^-]} \quad (C98)$$

980

used:

$$\ln K_1 = 290.9097 - \frac{14554.21}{T} - 45.0575 \ln T + (-228.39774 + \frac{9714.36839}{T} + 34.485796 \ln T)S^{0.5} + (54.20871 - \frac{2310.48919}{T} - 8.19515 \ln T)S + (-3.969101 + \frac{170.22169}{T} + 0.603627 \ln T)S^{1.5} - 0.00258768S^2 \quad (C109)$$

$$\ln K_2 = 207.6548 - \frac{11843.79}{T} - 33.6485 \ln T + (-167.69908 + \frac{6551.35253}{T} + 25.928788 \ln T)S^{0.5} + (39.75854 - \frac{1566.13883}{T} - 6.171951 \ln T)S + (-2.892532 + \frac{116.270079}{T} + 0.45788501 \ln T)S^{1.5} - 0.00613142S^2$$

985

(C1140)

With K_1 and K_2 in mol kg⁻¹ and T the temperature in Kelvin

The dissociation constants of TOC are given by Hruska et al., 2003:

$$K1_{TOC} = \frac{[H^+][DOCH^{2-}]}{[DOCH_2^-]} = 10^{-4.51} \quad (C124)$$

$$K2_{TOC} = \frac{[H^+][DOC^{3-}]}{[DOCH^{2-}]} = 10^{-6.46} \quad (C134)$$

990

Solving analytically for protons the alkalinity equation (2) the polynomial resulting equation is:

$$[H^+]^6 + a[H^+]^5 + b[H^+]^4 + c[H^+]^3 + d[H^+]^2 + e[H^+] + f = 0 \quad (C144)$$

With,

$$a = Alk + K_1 + K1_{TOC} - TOC \quad (C154)$$

995

$$b = Alk * K1_{TOC} - K_w + K1_{TOC} * K2_{TOC} - 2 * K1_{TOC} * TOC + K_1 * K_2 + Alk * K_1 + K_1 * K1_{TOC} - K_1 * TOC - K_1 * DIC \quad (C164)$$

$$c = Alk * K1_{TOC} * K2_{TOC} - K_w * K1_{TOC} - 3 * K1_{TOC} * K2_{TOC} * TOC + K_1 * K_2 * Alk + K_1 * K_2 * K1_{TOC} - K_1 * K_2 * TOC + K_1 * Alk * K1_{TOC} - K_1 * K_w + K_1 * K1_{TOC} * K2_{TOC} - 2 * K_1 * K1_{TOC} * TOC - 2 * K_1 * K_2 * DIC + K1_{TOC} * K_1 * DIC \quad (C174)$$

1000

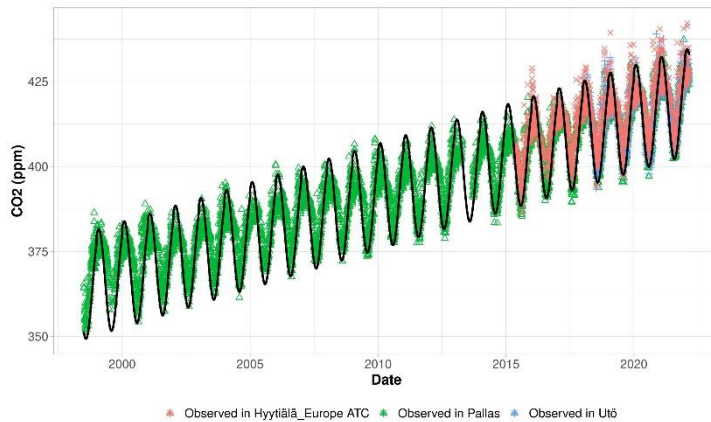
$$d = K_1 * K_2 * Alk * K1_{TOC} - K_w * K1_{TOC} * K2_{TOC} - K_w * K_1 * K_2 + K_1 * K_2 * K1_{TOC} * K2_{TOC} - 2 * K_1 * K_2 * K1_{TOC} * TOC + Alk * K1_{TOC} * K2_{TOC} * K_1 - K_w * K1_{TOC} * K_1 - 3 * K1_{TOC} * K2_{TOC} * K_1 * TOC - 2 * K_1 * K_2 * K1_{TOC} * DIC - K_1 * K1_{TOC} * K2_{TOC} * DIC \quad (C184)$$

$$e = K_1 * K_2 * Alk * K1_{TOC} * K2_{TOC} - K_w * K1_{TOC} * K_1 * K_2 - 3 * K1_{TOC} * K2_{TOC} * K_1 * K_2 * TOC - K_w * K1_{TOC} * K2_{TOC} * K_1 - 2 * K_1 * K_2 * K1_{TOC} * K2_{TOC} * DIC \quad (C194)$$

1005

$$f = -K_w * K1_{TOC} * K2_{TOC} * K_1 * K_2 \quad (C204)$$

The Eq. (13) is solved using the Newton-Raphson algorithm.



1010 **Figure C2A32: Atmospheric CO₂ (ppm) as recorded at the Finnish weather stations of Hyytiälä (pink marker), Pallas (green marker) and Utö (blue marker) compared with the simulated atmospheric CO₂ (black line, equation 6) (Source: Integrated Carbon Observation System ICOS RI, licensed under CC4BY)**

1015 **Appendix D**

Table D1A1. Annual exports of TOC (kg ha⁻¹ a⁻¹) used in the first step of Vemala TOC model calibration

Land use/soil class	kg ha ⁻¹ a ⁻¹	Equation, comments	Reference
Peatland, with drainage	159	-233.4+0.608*TS- 0.0002349*TS ²	Finér et al. 2021
Peatland, no drainage	102	-117.8+0.359*TS- 0.000145*TS ²	Finér et al. 2021
Forest, mineral soils	69	-122.5+0.277*TS- 0.0001*TS ²	Finér et al. 2021
Forest, mineral soils	30-44	some selected catchments	Mattsson et al. 2003
Agriculture, mineral soils	25-52		Manninen et al. 2018
Agriculture, coarse soils	32		Simulated from Löytäneenoja catchment (35_121)
Agriculture, peat soils	161		Merja Myllys, personal communication

* TS – Temperature sum (day degree, °C) = 1372 °C for Vantaanjoki catchment

Table D2: Land use and soil types in the upstream catchment of the tributaries and outlet of Tuusulanjärvi lake. The soil types Vertic Cambisol represents clay, Dystric Leptosol represents rock, Haplic Podzol 2 represents sand and Haplic Podzol 1 represents till as characterized by the lower soil layer.

Table D2A2: Land use and soil types in the upstream catchment of the tributaries and outlet of Tuusulanjärvi lake. With the soil types coloured blue for clay, grey for rock, orange for sand and green for till as characterized by the lower soil layer.

Sub-catchment	Tributary	Agric. (%)	Urban (%)	Forest (%)	Water (%)	Predominant soil type 1	Predominant soil type 2	Predominant soil type 3
21.082	Loutinoja		88	12		Vertic Cambisol (58%)	Dystric Leptosol (21%)	Haplic Podzol 2 (19%)
21.082	Räikilänoja	38	56	6		Vertic Cambisol (75%)	Dystric Leptosol (23%)	Haplic Podzol 1 (1%)
21.083	Vuohikanoja	33	16	41	10	Vertic Cambisol (40%)	Haplic Podzol 2 (29%)	Haplic Podzol 1 (5%)
21.086	Piiliojan va	17	46	37		Vertic Cambisol (60%)	Dystric Leptosol (12%)	Haplic Podzol 2 (12%)

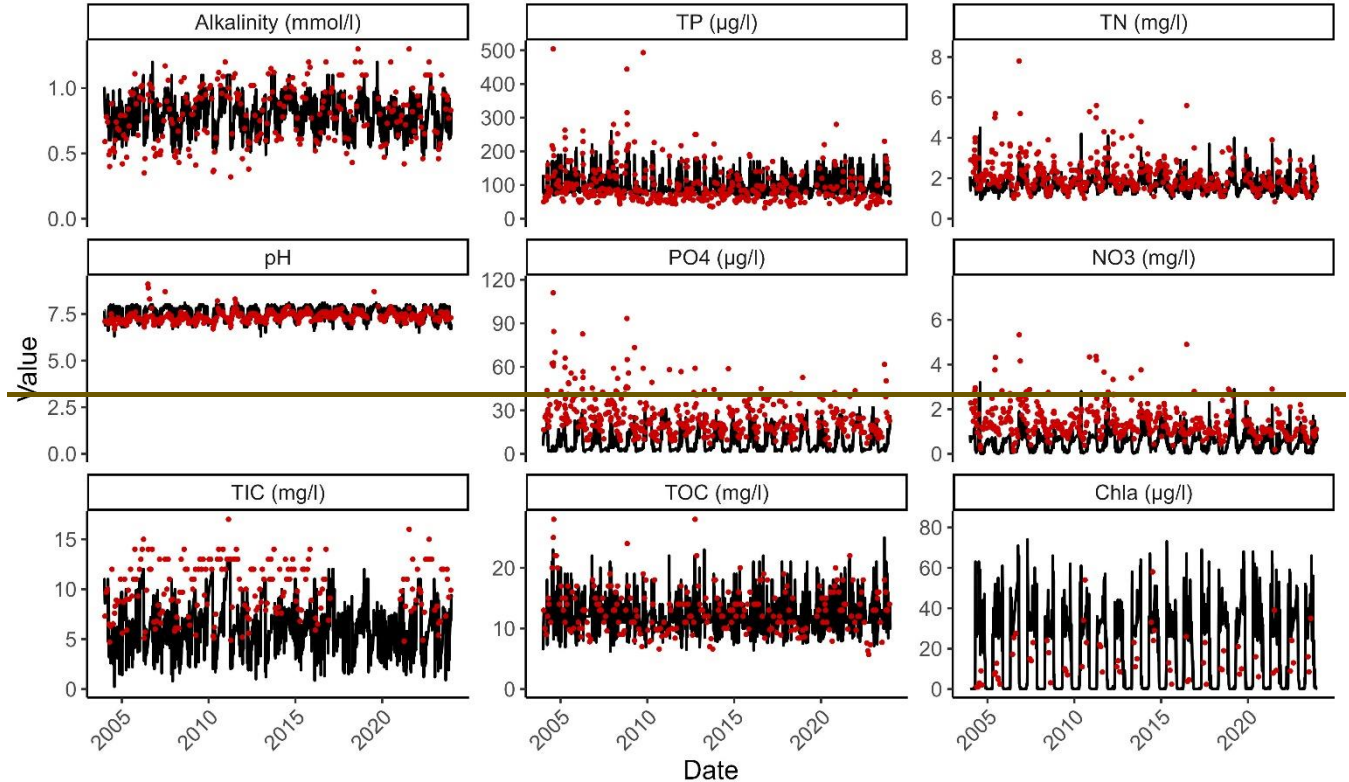


Figure A43: Water quality in Vantaanjoki 4.2 6040 over the period 2004-2023 with observations (red dots) and simulations (black line) for alkalinity (mmol L^{-1}), pH, total inorganic carbon (TIC, mg L^{-1}), total phosphorus (TP, μg

L⁻¹), phosphate (PO₄, µg L⁻¹), total organic carbon (TOC, mg L⁻¹), total nitrogen (TN, mg L⁻¹), nitrate (NO₃, mg L⁻¹) and phytoplankton (Chla, µg L⁻¹).

1035