

# Supporting Information

*for*

## 30 years of monitoring aromatic hydrocarbons (BTEX) at a suburban site in Europe

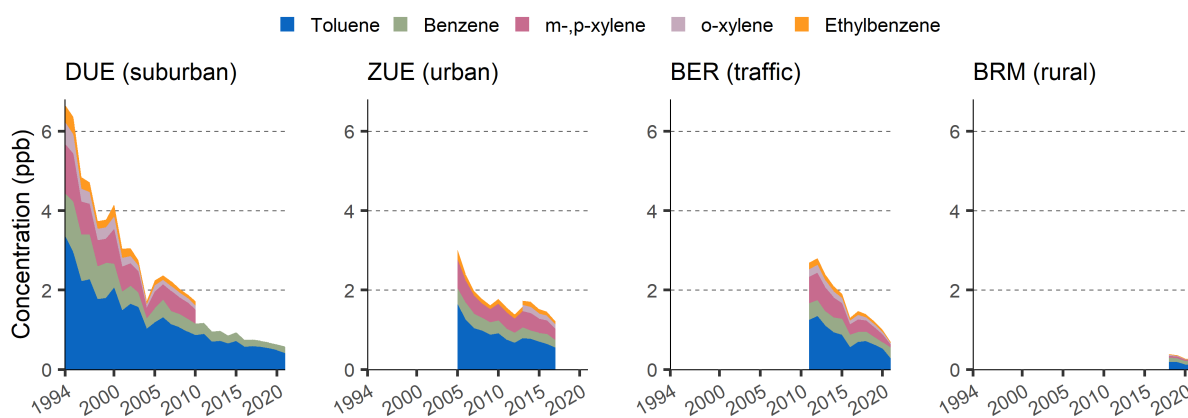
Le Bras Zoé<sup>1</sup>, Rubli Pascal<sup>1</sup>, Hueglin Christoph<sup>1</sup>, Reimann Stefan<sup>1</sup>

<sup>1</sup>Empa, Laboratory for Air Pollution / Environmental Technology, Ueberlandstrasse 129, 8600 Dübendorf, Switzerland

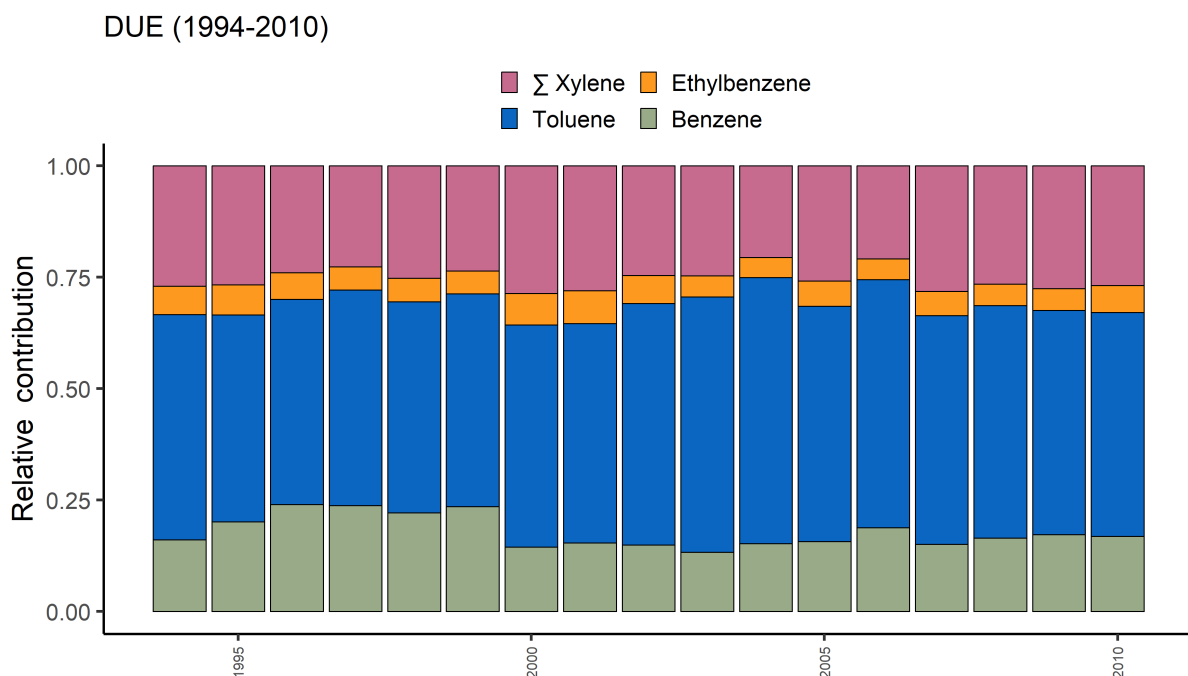
Correspondance: Reimann Stefan (stefan.reimann@empa.ch)

### List of Figures

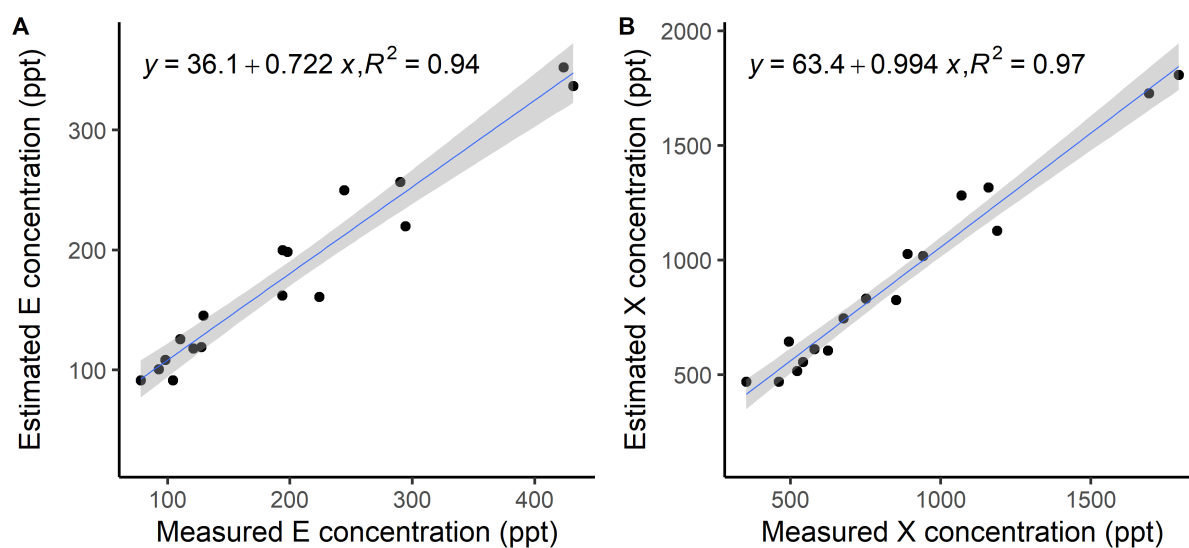
S1	Yearly BTEX average concentrations at the different Swiss monitoring stations . . . . .	2
S2	Yearly relative average contribution of each BTEX compound to total BTEX concentrations from 1994 to 2010 at Dübendorf . . . . .	2
S3	Comparison between estimated and measured concentrations for ethylbenzene and xylenes . . . . .	3



**Figure S1.** Yearly BTEX average concentrations at Dübendorf (DUE, suburban), Zurich Kaserne (ZUE, urban), Bern (BER, traffic) and Beromünster (BRM, rural) stations.



**Figure S2.** Yearly relative average contribution of each BTEX compound to the yearly average total BTEX concentrations from 1994 to 2010 at DUE. On average, benzene and toluene contributed  $66.2 \pm 3.2\%$ , xylenes  $28.1 \pm 2.8\%$  and ethylbenzene  $5.7 \pm 0.4\%$  to the total BTEX concentration.



**Figure S3.** Yearly average comparison between estimated concentration from the relative contribution to total BTEX and measured concentration for ethylbenzene (A) and xylenes (B) at DUE.