

Hydroeconomic Optimization of Water Management in the Yellow River Basin: Dealing with Scarcity

Yuhan Yan^{1,2,4}, Tingju Zhu^{1,2,3}, Ximing Cai³, Zhenxing Zhang⁴, Yunlu Ma^{1,2}, Jay R. Lund⁵

¹ZJU-UIUC Institute, International Campus, Zhejiang University, Haining, Zhejiang 314400, China

5 ²College of Civil Engineering and Architecture, Zhejiang University, Hangzhou, Zhejiang 310058, China

³Department of Civil and Environmental Engineering, University of Illinois at Urbana-Champaign, Urbana, IL 61801, USA

⁴Illinois State Water Survey, Prairie Research Institute, University of Illinois at Urbana-Champaign, Champaign, IL 61820, USA

⁵Department of Civil and Environmental Engineering, University of California, Davis, CA 95616, USA

10 *Correspondence to:* Tingju Zhu (tingjuzhu@intl.zju.edu.cn)

Abstract. Water scarcity is a key limiting factor for sustainable socioeconomic development especially in arid and semi-arid basins, and managing water effectively there often requires coherent and holistic policies and regulations at the basin scale. This study develops an integrated basin-scale hydroeconomic optimization model. The model reasonably details the representation of the hydrologic, infrastructural, water demand and regulatory components, with an objective to maximize overall economic benefits of irrigated crop production, water supply and hydropower generation, subject to resource, infrastructural, operational and policy constraints. A baseline calibration enhances the model's reliability and empirical validity for analyzing interconnected physical processes and decision-making, based on the interdependence of hydrologic and economic components. The model is applied to the Yellow River Basin (YRB), where water has been fully allocated and intense competition exists among different water users across the basin. Results show that water availability decreases by approximately 75% from upstream to downstream, with the corresponding marginal values rising from 0 to 9.14 yuan/m³ along the river in a severe dry year, implying a more challenging issue for downstream water security (especially the critical ecological requirements) and a larger requirement for water saving in upstream areas. Basin-wide management strategies highlighted in this study include: reallocating water to economically high-value production sectors; coordinating the operation of cascade reservoirs and taking advantage of reservoirs with inter-year operation capacity; monitoring and balancing water availability between upstream and downstream areas. The stabilization of water supply heavily relies on coordinated operation of aquifers and reservoirs with inter-year storage capacity, which mitigates hydrologic variability and improves downstream water availability. Water valuation analysis based on marginal value underscores the potential benefits of water trading and inter-regional transfers. The results offer insights for basin-scale water management, showing potential of reallocation strategies for improving management flexibility and increasing water productivity. Insights from the YRB are meaningful as guides for managing basins worldwide that face similar challenges.

15
20
25
30

1 Introduction

Water scarcity is a growing challenge in many river basins around the world where the demand for water, driven by population expansion, socioeconomic development, and evolving consumption habits, outstrips water supply (Hejazi et al., 2014; Kahil et al., 2018; Liu et al., 2017; Tian et al., 2021; United Nations, 2023). In many of those basins, water has already been
35 overallocated, leading to river basin closure, pervasive water scarcity, groundwater overdraft, and ecosystem degradation (Hanasaki et al., 2013; Molle et al., 2010; Scanlon et al., 2023; Zhou et al., 2020). Particularly, as nations strive to sustain growing populations and economies under changing climatic conditions, pressures from water overuse, ecological degradation, and cross-regional cooperation in large arid and semi-arid river basins are expected to intensify (Kahil et al., 2018). For instance, the Colorado River and Rio Grande basins face overexploitation dilemmas from historical agreements that overcommitted
40 actual water availability (Ward et al., 2006). Similarly, the Murray-Darling Basin in Australia (Ejaz Qureshi et al., 2013; Thevs et al., 2015) and the Ebro River Basin in Spain (Baccour et al., 2021) struggle to reconcile water quality deterioration with economic development objectives. The Syr Darya in Central Asia (Cai et al., 2002) and the Nile (Basheer et al., 2023) are significantly impacted by challenges in transboundary water allocation coordination. These challenges highlight the need for a systematic framework to analyze spatial and temporal trade-offs across interconnected water-related systems in large river
45 basins.

Hydroeconomic models (HEMs) have emerged as pivotal tools for guiding basin-scale water resources planning, incorporating both economic and hydrologic representations of water supply and demand (Pulido-Velazquez, 2022). Such models comprehensively characterize the infrastructure, management scheme and the economic value of water within the system (Harou et al., 2009; Ward, 2021), based on the mathematical framework that links biophysical, technological, and economic
50 processes (Cai, 2008; Kahil et al., 2018; Pulido-Velazquez, 2022). Earlier applications include basin-scale economic-engineering model of California's major water supply system to coordinate surface and groundwater operations, and to optimize statewide economic benefits from rural and urban water use (Draper et al., 2003). Considering conjunctive water use of surface and groundwater, Zhu et al. (2015) derived numerical solutions and analytical conditions for optimizing land and water use for crops, short-term and long-term urban water conservation alternatives, and water transfers. Kahil et al. (2016)
55 strengthened the linkage between physically-based representations of water sources and uses through integrated HEM to assess the impacts of climate change and policy options in the Jucar basin in Spain. To explore economic and environmental consequences of various policy scenarios, Cai et al. (2003) described interrelationships among hydrologic, agronomic, and ecological components in the Syr Darya River basin, where irrigation-induced salinity is a major challenge. Together, these studies highlight HEMs to inform basin-scale water management under multiple and competing objectives.

60 In this context, the Yellow River Basin (YRB) in northern China, offers a compelling case for examining basin development against severe water scarcity (Cai, 2008b; Peng et al., 2017; Shang et al., 2020). On the supply side, water availability in the YRB is constrained by decreasing streamflow from reduced precipitation, rising temperature and landscape evapotranspiration (Yin et al., 2021). On the demand side, with the total drainage area of 7.52×10^5 km², the YRB supports 12% of China's

population and 15% of its farmland with only 2.5% of the country's total water resource (Wu et al., 2004; Zhang et al., 2017).

65 Although infrastructure including reservoirs and dams has been constructed to regulate streamflow, and policies such as the "87 Water Allocation Scheme" (General Office of the State Council of the People's Republic of China, 1987) have been implemented for rational water allocation and conservation (Wang et al., 2020, 2018), competitions among water-use sectors have continued to intensify. Addressing the dual challenges of meeting development needs while ensuring reliable and sustainable water use therefore is of considerable concern for the YRB.

70 Previous studies on water management in the YRB have focused predominantly on supply-side issues (Xia and Pahl-Wostl, 2012; Yin et al., 2017), including the simulation of natural hydrologic responses to climate change (Bao et al., 2019; Chen et al., 2014; Zheng et al., 2009) and human interventions (Li et al., 2017; Wang et al., 2019; Yin et al., 2021), projections with hydrologic models (Cuo et al., 2013; Xu et al., 2011; Yuan et al., 2016; Zhang et al., 2017), and the optimization of reservoir operations (Bai et al., 2019, 2015; Chang et al., 2014; Meng et al., 2019; Peng et al., 2020). Nevertheless, a significant research

75 gap remains in studies that integrate physical water availability on the supply-side and decision-making behaviors on the demand-side, and basin-wide water management regulations within a unified quantitative framework.

To reveal demand-side behaviors, HEMs have been applied to the YRB at individual or sub-basin scales. For example, Yang et al. (2012) used a decentralized, multiple-agent optimization method to explore water allocation management at the agent scale. Cao et al. (2023) developed an integrated hydro-agro-economic optimization model for the Hetao Irrigation District

80 within the YRB, analyzing economically optimal land and water allocation, and environmental sustainability under water scarcity and soil salinization. Martinsen et al. (2021) formulated a linear programming-based HEM to assess the implications of perfect foresight of agro-hydrologic events for the South-to-North Water Transfer Project, addressing joint quantity and quality management. However, basin-wide models that holistically and quantitatively represent multiple water sources, diverse water-use sectors, coordinated reservoir operations, spatially coupled variations in water availability and value, and the supply-

85 demand interactions under realistic regulatory and institutional settings remain largely absent. As a result, existing models remain misaligned with the practical needs of the Yellow River Conservancy Commission (YRCC), which urgently requires an integrated basin-wide framework to guide evidence-based water allocation decisions and long-term water governance.

This study develops a basin-wide hydroeconomic optimization model for the YRB, which represents hydrologic, infrastructure, and water demand components using a node-arc network in a spatially explicit manner. The model follows the top-down

90 hierarchical water management institutional setting in the YRB and integrates surface water, groundwater, and multi-reservoir operations with spatially distributed economic activities across the entire YRB, aiming to maximize the economic benefits at the basin scale, including hydropower generation, agricultural production and urban water uses. This unified modelling framework allows a quantitative assessment of basin-wide water allocation and trade-offs among various water users across the basin. Specifically, this paper: (1) characterizes the relationships between water supply and demand under different

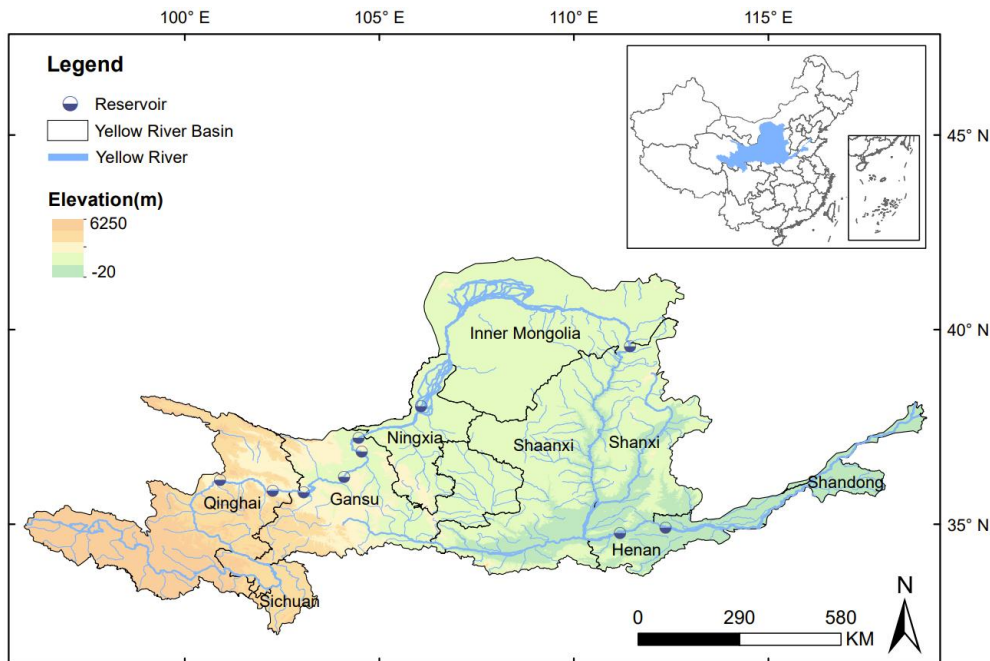
95 hydrologic conditions; (2) investigates synergies and trade-offs in economic benefits among water-use sectors; (3) assesses the marginal values of water and the degrees of water scarcity and provides insights for improving the current water governance in the basin. Notably, most previous optimization models for basin management are formulated as purely normative tools to

explore ideally optimal solutions. To better reflect real-world management, we adopt a “positive” optimization model, of which irrigation water use, the major water user in the YRB and many other basins, is calibrated to the observed conditions using the
100 Positive Mathematical Programming (PMP) approach (Howitt, 1995). The outputs of such a positive model show the adjustments from current practices, demonstrating that the proposed basin-wide optimization framework can be a useful scientific and practical tool to evaluate existing water allocation regulatory programs and policies and search for new alternatives in the YRB.

2 Study Area and Data

105 2.1 Study Area

As the second longest river in China and the fifth longest in the world, the Yellow River (Fig. 1) originates from the Tibetan Plateau, flows across nine provinces, and finally discharges into the Bohai Gulf (Zheng et al., 2014). The mean annual runoff of the Yellow River is 53.48 billion m³, which has been decreasing in the past 30 years, exacerbating water scarcity in the basin (Shang et al., 2020). Runoff is unevenly distributed (Fig. S1) due to strong spatiotemporal variation in precipitation
110 (Fig.S2). The average annual precipitation across the basin during the period from 1981 to 2010 varies spatially from 60 mm to 900 mm, increasing from the northwest to the southeast (Yin et al., 2017). Precipitation in the basin is highly seasonal, with approximately 60% of the annual precipitation occurring during the wet season (July-October), while only 10–20% in the dry season (March-June). Under a continental monsoon climate, most of the YRB is in arid and semi-arid regions, with average annual potential evapotranspiration of 1199.7 mm (Peng et al., 2017). To mitigate adverse impacts of floods and droughts,
115 numerous dams and reservoirs have been constructed to regulate streamflow. By 2020, 224 large and medium-sized reservoirs have been built (YRCC, 2020). Large reservoirs, such as Longyangxia, Liujiaxia and Xiaolangdi, serve as both water storage and hydropower generation facilities.



120 **Figure 1: The YRB in China: general topography, mainstream and tributaries, provinces and key reservoirs.**

The Yellow River is a major source of water supply for northern China, supporting irrigation, industries, domestic water uses and ecological flow requirements. With the development of the national economy, total water use in the basin, sourced from both surface water and groundwater, increased from 44.63 billion m³ in 1980 to 53.48 billion m³ in 2015 (Peng et al., 2017). Frequent drying up of the Yellow River's main channel occurred between 1972 and 2000 (Liu and Cheng, 2000), highlighting

125 severe spatial and temporal mismatches between water supply and demand. To address this issue, the Chinese government introduced the "87 Water Allocation Scheme" in 1987 (General Office of the State Council of the People's Republic of China, 1987), using the average annual natural runoff of 58 billion m³ from 1919 to 1975 as a water availability baseline. After reserving 21 billion m³ for environmental flow requirements, the remaining 37 billion m³ of water resources were allocated among the nine provinces and autonomous regions within the basin as well as Hebei Province and Tianjin City. However,

130 significant discrepancies between actual runoff and this baseline water availability gradually emerged. Meanwhile, due to insufficient regulatory enforcement, the scheme was not effectively implemented, leading to frequent water overuse in provinces such as Inner Mongolia and Shandong. In response, the scheme was revised in 1998, alongside the implementation of the "Yellow River Water Allocation and Management Regulations", which centralized water resource management under the YRCC (Wang et al., 2019a; Wang and Lou, 2022). Based on the original scheme, the regulations adhered to the principle

135 of "increasing allocations in wet years and reducing them in dry years", and water overuse by provinces was deducted from subsequent allocations to ensure compliance. Nevertheless, the contradiction between reduced water availability and growing water demand is growing and needs to be solved urgently (Wang et al., 2018, 2020).

Figure 2 depicts the basin network of water allocation among water sources (rivers, groundwater aquifers and reservoirs) and water users (hydropower stations, agricultural, industrial, municipal and ecological demand sites), detailed node-link information is listed in Table 1 and the Supplement (Table S2-1 to S2-6).

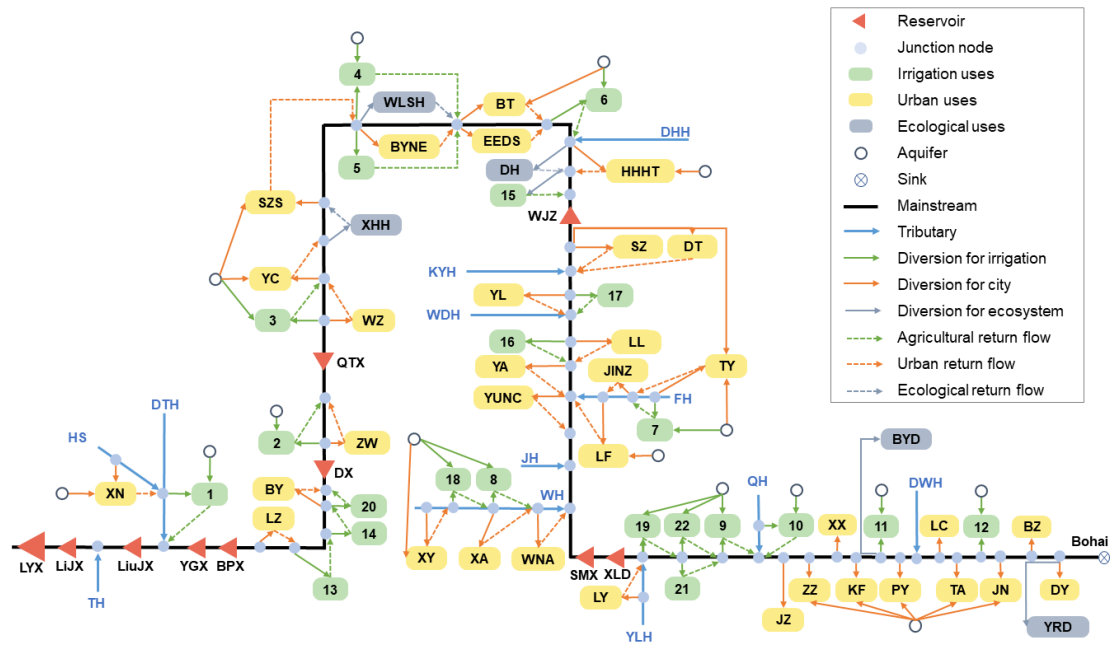


Figure 2: Schematic diagram of the river network system.

Table 1. Abbreviations and full names of nodes mentioned in the main text and associated provinces. Detailed node information is provided in the supplementary material (Table S2-1 to Table S2-6).

Node	Name	Province
<i>I3</i>	Ningxia irrigation district (NX)	Ningxia
<i>I4</i>	Hetao irrigation district (HT)	Inner Mongolia
<i>I5</i>	Nanan irrigation district (NA)	Inner Mongolia
<i>I8</i>	Weihe irrigation district (WH)	Shaanxi
<i>I12</i>	Shandong irrigation district (SD)	Shandong
<i>EEDS</i>	Ordos	Inner Mongolia
<i>XA</i>	Xi'an	Shaanxi
<i>WNA</i>	Weinan	Shaanxi
<i>DY</i>	Dongying	Shandong
<i>WLSH</i>	Wuliangsu Lake	Inner Mongolia
<i>YRD</i>	Yellow River Delta	Shandong
<i>LYX</i>	Longyangxia	Qinghai
<i>LiuJX</i>	Liujiaxia	Gansu
<i>QTX</i>	Qingtongxia	Ningxia
<i>WJZ</i>	Wanjiashai	Shanxi
<i>SMX</i>	Sanmenxia	Henan
<i>XLD</i>	Xiaolangdi	Henan

145 2.2 Data

The HEM for the YRB requires extensive data to set up, calibrate, and run. These include monthly meteorological and hydrologic time series, aquifer attributes, characteristics of storage, conveyance and pumping facilities, factors that determine water demands of domestic, industrial, agricultural and environmental sectors, and regulations and rules of water system management and operations. The data were acquired from various sources, such as governmental statistics, river basin agencies, research institutions, global databases, and expert consultations. Table 2 lists the categories, specific parameters, attributes and sources of the datasets used in the model.

Integrating diverse data types and scales to develop a unified model remains challenging. Water source data are evaluated based on hydrologic records reflecting natural conditions before human interventions, while water use data are gathered from governmental or institutional statistics. Both supply and demand-side data are subsequently aggregated to the source and demand “nodes” (Fig. 2) defined in this study. Specifically, gridded meteorological data are processed using geographic information systems (GIS) with the basin’s spatial configuration, and values for each spatial unit are extracted, aggregated and averaged at the node scale. For irrigation, primary data sourced from the MapSPAM database (International Food Policy Research Institute, 2019) are also processed using ArcGIS and cross-validated against observations from local agencies to ensure accuracy and reliability.

160 Parameters are either estimated from empirically-observed data or derived from existing publications, and are further refined through contextual adjustments. Parameter estimation for crop growth involves geographic distribution, growth period, and hydrothermal conditions, complemented by data from field observations and experiments. For reservoirs, key parameters of storage-elevation and storage-area curves, are derived from real operation and fitted to a quadratic function assumption. Economic items such as price elasticity coefficients for industrial and domestic water use, are primarily obtained from literature
165 at provincial or local levels.

Parameters with inherent uncertainties are initially estimated through preliminary assessments and refined during model calibration. Sensitivity analyses of such parameters have been conducted in HEMs applied to some major regions located in the YRB (Cao et al., 2023). The current study adopts the prior results. Moreover, the crop prices used in this study fall within the range of prices observed historically. Because these prices place the values of agricultural use well below the economic
170 values of water for industrial and domestic sectors, it is unlikely to see that realistic changes in agricultural prices dramatically alter operation of this model within constraints of water availability as well as capacity and policy constraints. In addition, we have strived to select reasonable and empirically-observed parameter values of other important economic parameters including electricity tariff (General Office of the State Council of the People’s Republic of China, 2024) and demand elasticities (Qin et al., 2022; Zhang and Cheng, 2022). Nevertheless, it will be ideal to assess the sensitivity of such important economic
175 parameters. However, this will require extensive sectoral survey data and econometric modelling, which is beyond the scope of the present study and be addressed in future studies. To enhance model stability, parameter and coefficient values are adjusted to comparable magnitudes, ensuring consistent numerical scales across variables. This reduces the risk of non-convergence caused by excessively large numerical ranges, thereby preventing infeasible solutions in a large-scale nonlinear optimization model (Cai, 2008a).

180 Table 2. Sources and attributes of data used in the HEM.

Category	Content	Parameter	Resolution and period	Source
Hydrometeorology	Meteorology	Precipitation, vapor pressure, temperature, cloud cover, potential evapotranspiration	0.5°×0.5°, 1996-2015	CRU TS 4.06 (Harris, 2024)
	Surface water	Streamflow	Monthly, 1996-2015	YRCC, Ministry of Water Resources of the PRC
	Groundwater	Aquifer area, specific yield		Yellow River Water Resources Bulletin (2020)
Water Infrastructure	Supply	Storage		—
		Conveyance	Surface water division requirement	Chai (2015)
		Hydropower	Installed capacity, firm power	—
Demand Sector	Irrigation	Observed area, production and yield	1/12°×1/12°	MapSPAM (International Food Policy Research Institute, 2019)
		Crop growth coefficients	2020	Local governmental agencies FAO 56 (Allen et al., 1998)
		Crop price, pumping cost	2020	Compilation of National Income from Agricultural Products (2021)
	Urban	Industrial and domestic water demand, price and supply cost	2020	Provincial water resources bulletin, statistical yearbook
	Ecological	Off-stream ecological water demand, instream environmental flow requirements	Monthly	Yellow River Water Regulation Plan (YRCC, 2025)
Management and Policy	Regulation	Inter-provincial water allocation		1987 Water Allocation Scheme (General Office of the State Council of the People's Republic of China, 1987)
	Constraint	Reservoir operation, hydropower output coefficient, flood control water level		Chang et al. (2017), Yan et al. (2012), Wei et al. (2003)

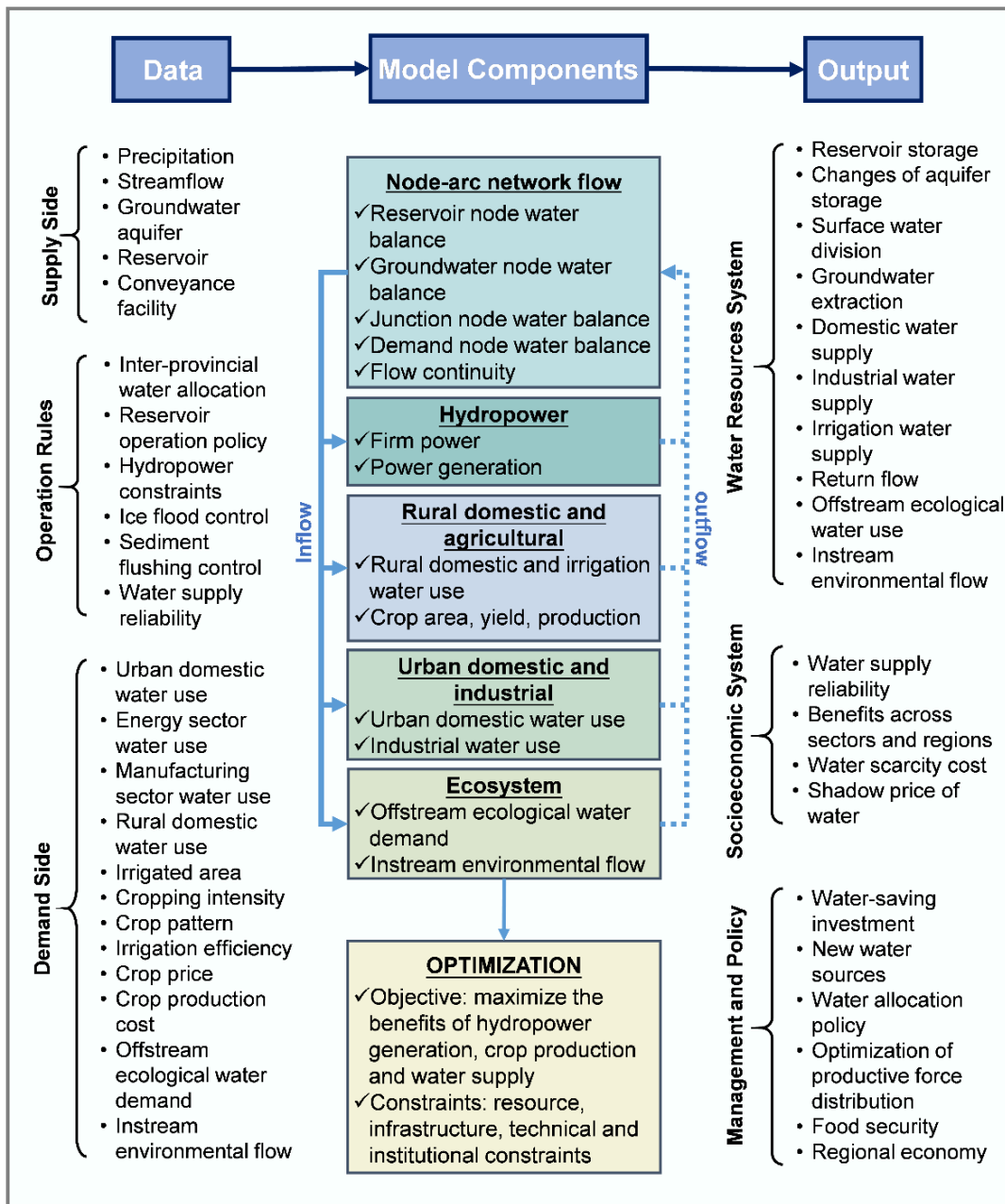
3 Model Formulation

As an optimization model, the HEM's objective is to maximize basin-wide economic benefits of water use to support economically efficient water allocation. The model assumes an idealized framework in which the YRCC achieves seamless information sharing across water sources and water-use sectors, and has complete control over basin-wide allocation decisions.

185 To certain extent, this setting aligns with real-world governance in the YRB, where the YRCC serves as a centralized authority with cross-provincial and cross-sectoral mandates for planning, water allocation, regulation, and emergency response, a top-down structure differing from decentralized and collaborative institutional frameworks (Giakoumis & Voulvoulis, 2018; Lawless et al., 2024; Rivera-Torres and Gerlak, 2021; Yang et al., 2013).

The HEM runs as a multi-year model with a monthly time step, using continuous monthly hydrologic data during the period
190 of 1996-2015, while fixing socioeconomic and infrastructure conditions at the 2020 level. The monthly time step is adopted to capture seasonal hydrologic variability with computational feasibility, and matches the frequency of management reporting from provincial governments to the basin authority YRCC. The selected unimpaired 1996-2015 monthly hydrologic series represents the most recent continuous and reliable hydrologic record, captures hydrological stochasticity, and enables the HEM's realistic representation of inter-year reservoir regulation. This model formulation follows established modelling
195 approaches for large-scale water resource planning (e.g., CALVIN; Draper et al., 2003; Harou et al., 2009), as well as YRCC's planning and practice (YRCC, 2015).

Figure 3 shows the overview of model framework. Input data are categorized into data on the supply side and demand side, and data specifying various operational, management and institutional rules. Structured in this way, the model includes benefit and cost computation of each modelled water-using sector to quantify the economic value of water, while imposing constraints
200 on the node-arc network to represent mass balance, infrastructure capacity limits, and policy requirements. Outputs include water allocation, economic performance, and management and policy results. The model is written in the General Algebraic Modeling System (GAMS) language and solved with CONOPT (GAMS System Overview). Detailed descriptions and units of variables and parameters are in the Supplement (Table S1).



205 Figure 3: Overview of the model framework.

3.1 Objective Function

The objective of the model is to maximize the total net benefit of water-use sectors in the basin, including hydropower generation, irrigated agricultural production, and urban domestic and industrial water uses. The objective function is formulated as:

$$210 \quad Max Z = \sum_t \sum_r HP_{r,t} + \sum_y \sum_i AG_{i,y} + \sum_y \sum_c UR_{c,y} - \sum_y \sum_i Cost_{PMP}^{i,y} - \sum_t \sum_g Cost_{Pump}^{g,t} - \sum_t \sum_d Cost_{water}^{d,t} \quad (1)$$

where the objective variable (Z) represents basin-wide net economic benefit over the entire multi-year period (1996-2015). The right-hand side of Eq. (1) denotes gross revenue of hydropower $HP_{r,t}$ from reservoir r , irrigation $AG_{i,y}$ in irrigated area i , and industrial and municipal activities $UR_{c,y}$ in city c , subtracted by the sum of cost terms including pumping cost $Cost_{Pump}^{g,t}$ from groundwater aquifer g , water resources fees $Cost_{water}^{d,t}$ at every water demand node d (including agricultural, industrial, 215 domestic uses), and total agricultural production cost $Cost_{PMP}^{i,y}$. The Positive Mathematical Programming (PMP) is used in this study to estimate parameter values in agricultural production cost functions, which enables replication of the observed land and water use patterns in the base year while adjusting smoothly to economic changes (Howitt, 1995; Zhu et al., 2015). Time value of year index ($y = 1, 2, \dots, Y$) can be determined using the value of the index for month sequence ($t = 1, 2, \dots, T$) (Table S1).

220 **Energy production and benefit:** The revenue from hydropower generation is calculated by flow rate through the turbine, net hydraulic head that drives the turbine, generation efficiency and average monthly electricity price:

$$HP_{r,t} = K_r \cdot QT_t^r \cdot (H_t^r - T_r) \cdot p_{HP_r} \quad (2)$$

where K_r is the product of generation efficiency of the hydropower plant, density of water, and gravitational acceleration, QT_t^r is solved monthly average flow through hydropower turbine, H_t^r is solved hydraulic head, T_r is tail water elevation, and p_{HP_r} 225 is the price of electricity.

Energy consumption for groundwater extraction depends on the pumping rate, depth of groundwater table, and the efficiency of pumping set. The pumping cost is:

$$Cost_{Pump}^{g,t} = \frac{\rho G}{\eta} \cdot H_t^g \cdot Q_t^g \cdot p_{GW} \quad (3)$$

where ρ is water density, G is gravitational acceleration, η is pumping efficiency, H_t^g is pumping depth at groundwater aquifer 230 g , Q_t^g is groundwater withdrawal, and p_{GW} is electricity energy price for pumping.

Agricultural production, cost and benefit: To reflect growing stage-specific crop sensitivity to water deficit over the growing period, the Jensen's crop water production function (Kipkorir and Raes, 2002; Sun et al., 2012) is applied to estimating crop relative yield. The gross benefit of crop production in an irrigated area is determined by crop yields, harvested areas and prices.

$$AG_{i,y} = \sum_{cp} RY_{cp,y}^i \cdot Ymax_{cp}^i \cdot A_{cp,y}^i \cdot p_{AG_{cp}} \quad (4)$$

235

$$RY_{cp,y}^i = \prod_{m=1}^M \left(\frac{ETa_{cp,t}^i}{ETc_{cp,t}^i} \right)^{\lambda_{cp}^m} \quad (5)$$

In equations (4) and (5), $RY_{cp,y}^i$ is solved relative yield for crop cp in irrigation district i , $Ymax_{cp}^i$ is maximum crop yield without water stress, $A_{cp,y}^i$ is harvested area, $p_{AG_{cp}}$ is crop price, $ETa_{cp,t}^i$ is actual crop evapotranspiration, $ETc_{cp,t}^i$ is potential crop evapotranspiration, and λ_{cp}^m is the sensitivity factor in growing stage m for crop cp (Table S3). The growing stage m represents the order of months within the growing period in year y .

240 A quadratic production cost function is estimated using the PMP approach for each crop in each irrigation district:

$$Cost_{PMP}^{i,y} = \sum_{cp} (\mu_{cp}^i + 0.5\varphi_{cp}^i \cdot A_{cp,y}^i) A_{cp,y}^i \quad (6)$$

where μ_{cp}^i and φ_{cp}^i are the intercept and slope in the PMP production cost function for crop cp in irrigation district i . In model calibration, the slope of the marginal crop is estimated by observed harvested area, land supply elasticity and gross margin. For other crops, cost functions are calculated based on the dual value of economic calibration using the PMP calibration constraint (Zhu et al., 2015).

245

Urban water-using benefit: Economic gains from water use in urban industrial and domestic activities are determined based on urban water prices and costs (Cai et al., 2006; Gohar et al., 2019):

$$UR_{c,y} = \sum_c \sum_k CS_c^{k,y} + \sum_c \sum_k (p_c^{k,y} - cost_c^{k,y}) Q_c^{k,y} \quad (7)$$

where $CS_c^{k,y}$ is consumer surplus for city c and industrial or domestic water use activity k $p_c^{k,y}$ is urban water tariff, $cost_c^{k,y}$ is the cost from suppliers providing water to users, and $Q_c^{k,y}$ is industrial or urban domestic water use in year y . It is important that $UR_{c,y}$ only represents the economic benefits that water, as a factor of production, contributes to industrial and/or domestic activities.

250

A demand function of water price with respect to water demand is specified as the following linear form:

$$p_c^{k,y} = \alpha_c^k - \beta_c^k \cdot Q_c^{k,y} \quad (8)$$

255 where α_c^k and β_c^k are the intercept and slope of the demand function, respectively, estimated based on observed prices and price elasticity of demand adopted from the literature.

Consumer surplus is derived from the integral of demand function as:

$$CS_c^{k,y} = \int_{p_c^{k,t}}^{p_c^{k,y}} (\alpha_c^k - \beta_c^k \cdot Q_c^{k,y}) dQ = \frac{1}{2} Q_c^{k,y} (\alpha_c^k - p_c^{k,y}) \quad (9)$$

Water resource fees: Charges for water delivered to demand node d from both surface water and groundwater are calculated as:

260

$$Cost_{water}^{d,t} = \sum_{nu} cost_{sur}^d \cdot Q_{sur_t}^{nu,d} + \sum_g cost_{gw}^d \cdot Q_t^{g,d} \quad (10)$$

where $cost_{sur}^d$ and $cost_{gw}^d$ are surface water and groundwater resources fees, respectively; $Q_{sur_t}^{nu,d}$ is surface water used from upstream inflow node nu to demand node d , and $Q_t^{g,d}$ is groundwater used from aquifer g to demand node d .

3.2 Water Balance and Capacity Constraints

265 3.2.1 Flow balance

Mass balance requires that storage change at a node equals the total incoming flow minus the total outgoing flow during the period:

$$S_t^n - S_{t-1}^n = \sum_{nu} Q_t^{nu,n} - \sum_{nd} Q_t^{n,nd} \quad (11)$$

where S_t^n is storage of node n in period t , $Q_t^{nu,n}$ is inflow from upstream node nu to node n , and $Q_t^{n,nd}$ is outflow from node
 270 n to downstream node nd . Eq. (11) applies to node n types including surface reservoir, groundwater aquifer, river reach, artificial conveyance facility such as canals and pipelines, and junction node. River reaches, conveyance facilities, and junction nodes have negligible storage capacity, so the left-hand side of the equation becomes zero, forcing total incoming flow to equal total outgoing flow in any time period. Incoming flows to node n include flows from upstream river reaches, local streams, reservoirs, groundwater aquifers, and return flows from irrigated area or urban nodes. Outgoing flow node types include
 275 reservoir, river reach, groundwater aquifer, reservoir evaporation as a sink, river basin outlet as a sink, and demand site. Specifically, for a reservoir node r with hydropower plant, total release to the downstream equals:

$$\sum_{nd} Q_t^{r,nd} = QT_t^r + QS_t^r \quad (12)$$

where QT_t^r is flow through turbine, QS_t^r is reservoir spill.

3.2.2 Water delivery

280 Total water delivery to demand node d in time period t equals the sum of surface water and groundwater deliveries:

$$Q_t^d = \sum_{nu} Q_{sur_t}^{nu,n} + \sum_g Q_t^{g,n} \quad (13)$$

where Q_t^d is total water delivery, $Q_{sur_t}^{nu,d}$ is surface water from upstream node nu to node d , $Q_t^{g,n}$ is groundwater from aquifer g to node d .

285 Irrigation only occurs when crop evapotranspiration requirement exceeds effective precipitation. Water delivered to an irrigated area equals total delivery multiplied by irrigation efficiency:

$$Q_t^i \cdot e_i = \sum_{cp} IWD_t^i \cdot A_{cp,y}^i \quad (14)$$

where e_i is irrigation efficiency in irrigation district i , and IWD_t^i is net irrigation water requirement determined by the difference between monthly effective precipitation and crop-specific monthly evapotranspiration when the latter is larger.

290 3.2.3 Capacity constraints

A set of constraints are applied, to set the upper and lower bounds of decision variables, including, but not limited to, reservoir storage capacity and dead storage, installed hydropower generation capacity and firm power, conveyance capacity, river flow regime for aquatic ecosystem protection or minimum instream flow requirement, range of planted areas of certain crops and guaranteed urban water supply.

295 Particularly, to avoid storage depletion by pursuing high net revenue and meeting high water demand, a constraint for major large reservoirs with inter-year storage capacity is added to reserve water for future use at the end of a water year:

$$S_{t_e}^r \geq S_{end}^r \quad (15)$$

where t_e is the last month of a water year and S_{end}^r is targeted carryover reservoir storage value.

3.3 Baseline Calibration

300 Due to incomplete representation of numerous implicit and qualitative factors in real-world physical processes and decision-making, the HEM is limited in reliably representing the actual water supply-demand dynamics with sufficient details, before being calibrated for adequate model fidelity. Thus, a baseline approach is adopted for this study, i.e., using a starting point to compare and evaluate results against observations. Obtaining a baseline of observed inputs and outputs is a crucial procedure to improve the model's applicability and reliability for policy analysis (Cai and Wang, 2006; Draper et al., 2003).

305 Calibration is usually used to develop a baseline for a computer-based model. The complexity to calibrate a HEM is to calibrate the connected hydrologic and economic components (Cai and Wang, 2006). Given the interdependence among these parameters, calibration simultaneously helps to reflect how hydrologic variability propagates to economic outcomes, and how economic behaviours conversely alter hydrologic regimes.

Hydrologic calibration is to adjust model parameters to ensure that system states closely match observed mass balance 310 conditions (Baccour et al., 2022). This process involves maintaining water balance across the entire basin and at each individual node, balancing water supplies, uses, consumptions, and changes of surface reservoir and groundwater storages. For reservoirs, water storage-release relationships are governed by physical characteristics and operational rules with embedded economic drivers from demand sites (Cai and Wang, 2006). During the ice-flood control periods, strict constraints are imposed on water releases from major reservoirs to critical river reaches (Chang et al., 2014; Hu et al., 2023a, 2023b; Yan et al., 2012).

315 Additionally, the operations of specific reservoirs during the flood season undertake sediment-flushing tasks, which align with basin-wide water regulation objectives (Gao et al., 2023; Zhai, 2004).

Economic calibration uses the PMP method (Howitt, 1995) to calibrate agricultural activities in the base year, replicating observed land and water use patterns while effectively addressing the issue of over-specialization inherent in traditional linear models. By incorporating nonlinearity into the objective function using the shadow values of the calibration constraints 320 (Section 3.1), PMP replicates base-year activity levels and resource allocation without introducing artificial constraints, allowing smooth adjustments to economic changes (Mérel and Howitt, 2014). This approach minimizes reliance on detailed

information and facilitates realistic representations of economic behaviours with limited data. The quadratic form of the cost function captures diminishing marginal returns on additional inputs, accounts for substitutability of different input factors, focuses on the impacts of water and land on crop yields, and reflects farmers' decision-making behaviours (Howitt, 1995; Medellín-Azuara et al., 2012, 2010). For industrial and domestic water demands, economic parameters such as price elasticities are adjusted, and water withdrawals are calibrated to baseline observations through a value-demand search process (Cai et al., 2006).

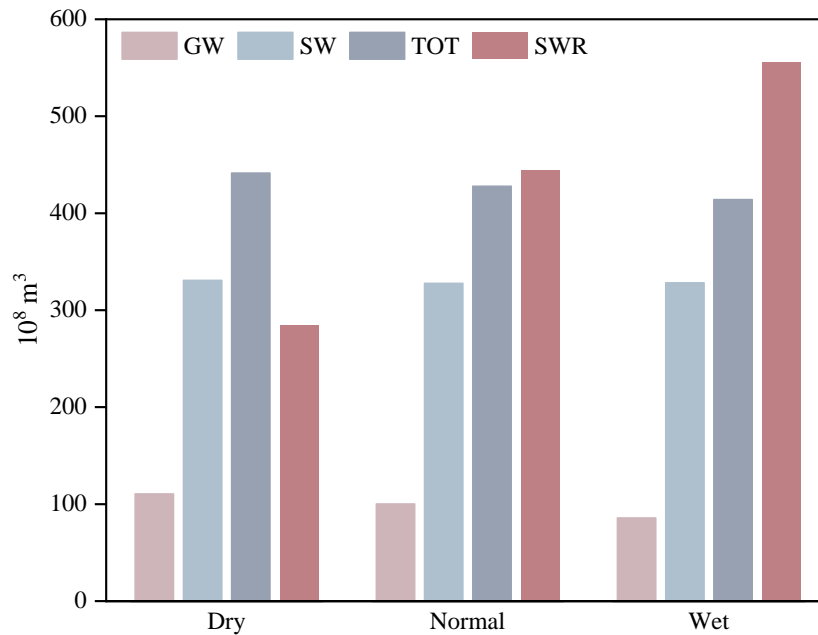
A model performance evaluation is conducted to assess the consistency of the calibrated HEM with observed system behaviour. Model outputs for major hydrological gauge stations, end-of-year reservoir storage, and agricultural water use are compared against observations using Percent Bias (PBIAS) and Normalized Root Mean Square Error (NRMSE). The performance check (Table S4) indicates that the modelled values fall within acceptable ranges relative to the observations, supporting the calibrated model for subsequent analysis.

4 Results

In this paper, the HEM is solved as an optimization model which uses monthly hydrologic and meteorological data from 1996 to 2015, while socioeconomic and water management conditions are fixed at the base-year (2020) level. Hydrological year types are determined by the frequency analysis of the unimpaired annual flow at the basin outlet, with the 5th (2002), 50th (1998), and 95th (2012) percentiles selected from the 1996-2015 period to represent dry, normal, and wet years, respectively.

4.1 Dynamics of Water Supplies and Uses

Figure 4 shows the supply of surface water and groundwater under different hydrologic conditions. Total water withdrawal (TOT) is higher in dry years than in wet years, primarily due to higher irrigation requirements under water scarcity. Surface water is the dominant source in the basin. However, due to hydrologic and climatic variabilities, natural surface runoff (SWR) fluctuates sharply with annual inflow differences exceeding 20 billion m³ between dry and wet years for the whole basin. The available surface water inflow is insufficient to meet actual surface water withdrawal (SW) during dry years, and the unmet demand is compensated through reservoir releases and water transfer projects. In contrast, groundwater supply (GW) is relatively stable across hydrologic conditions, compensating reduced surface water supplies in dry years. This highlights the important role of groundwater as a buffer resource to enhance the resilience of the basin's overall water supply system under unfavourable hydrologic conditions.



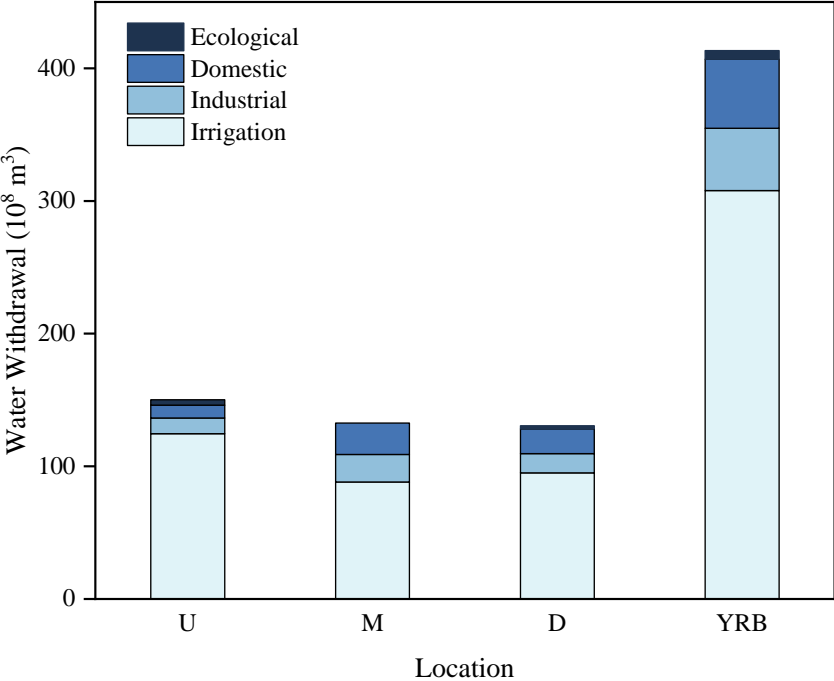
350 **Figure 4: Water supply by hydrological year type in the entire YRB (10⁸ m³). GW = groundwater withdrawal; SW = surface water withdrawal; TOT = GW + SW; SWR = natural surface runoff.**

Figure 5 shows annual water withdrawals, aggregated by various water uses for each sub-basin and for the entire basin. Irrigation uses the largest amount of water among all sectors, accounting for more than 70% of total water withdrawals in the basin. The high demand is from the extension of irrigated area, the diversity of crops, and the inconsistency between peak of water requirements for crop growth and rainfall seasonality. Agricultural water withdrawal decreases from upstream to downstream, in contrast to the increase in irrigated areas, suggesting more irrigation water use per unit planting area in the upstream regions. Because upstream regions have a more arid climate, only a relatively small portion of crop water requirements are met by effective precipitation, therefore increasing reliance on irrigation. Meanwhile, downstream irrigation districts, with more advanced irrigation technologies, have higher water use efficiency in reducing agricultural water withdrawals.

360 Industrial and domestic water demands are highest in the middle reaches of the YRB. Shanxi and Shaanxi provinces in the midstream region, have water-intensive heavy industries such as energy production, steel manufacturing, and metallurgy (Wang, 2023), resulting in substantial industrial water use. Additionally, 14 prefecture-level cities considered in these two provinces have large resident populations, leading to high domestic water demand. Henan and Shandong in lower reaches receives water from the Hai River and the Huai River in addition to the Yellow River. Consequently, their dependence on water withdrawals from the Yellow River are less than those upstream provinces.

365 As this study only considers five major off-stream ecological replenishment areas, ecological water withdrawal represents the smallest component of total water demand (1.6%). The primary objective of ecological water replenishment is to maintain the

health of wetland environments rather than to achieve maximum economic benefit, therefore environmental water use is enforced artificially through laws or regulations (Zhu and Sun, 2025).



370

Figure 5. Water withdrawal by water demand sectors and locations (10⁸ m³). U = upstream region; M = middle-stream region; D = downstream region; YRB = the Yellow River Basin.

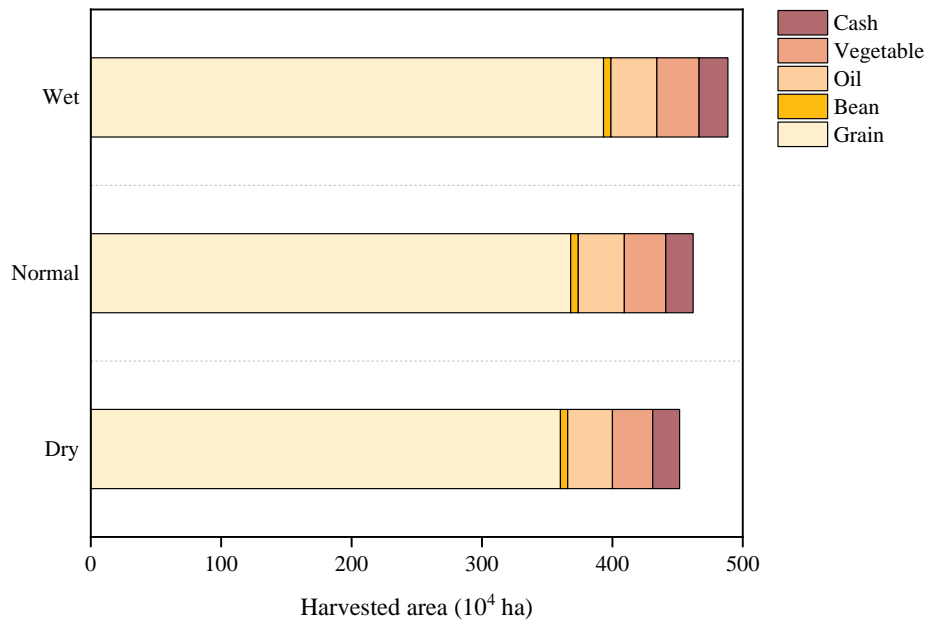
4.2 Demand Sector Behaviours

4.2.1 Irrigation and crop cultivation

375

For different hydrologic scenarios, the harvested area expands with improved water availability (Fig. 6), underscoring a positive correlation between water availability and land use. In wet years, grain crops have the largest expansion (330,000 hectares), while oil crops, vegetables, and cash crops have comparatively smaller increases, reflecting constraints on total arable land and agricultural infrastructure associated with crop patterns. However, the optimal cropping pattern of area shares across the entire basin shows relatively small variations (Fig. S3). Grain crops consistently occupy the largest share of the total planting area, maintaining a highly stable proportion regardless of hydrologic conditions, which reflects their cultivation prioritization in ensuring the security and resilience of food supply system. The shares of other crops increase in water-scarce conditions, suggesting farmers' willingness to cultivate drought-resistant or high-value crops with limited water. However, their overall share of non-grain crops remains small, exerting negligible impacts on the basin-wide cropping structure.

380



385 **Figure 6: Harvested area (10⁴ ha) by crop and hydrological year type.**

Table 3 shows the water productivity (WP, defined as crop production per unit of water) of major crops by different locations and hydrological year types in the YRB. The WP values differ significantly across crops. Vegetables have substantially higher WP than other crops, primarily from their efficient water use for biomass accumulation and higher crop prices. In contrast, cotton and rice have lower WP, reflecting their higher water requirements. Particularly, under drought conditions, the WP of rice is only 1.5% that of vegetables.

WP increases with improved water availability for most crops, indicating that sufficient water supply enhances crop growth and thereby increases crop yields. Notably, rice as a water-intensive crop, exhibits minimal WP variation between dry and normal years, whereas its WP doubles in wet years. This response is associated with rice's high sensitivity of stomatal conductance to water stress, as its photosynthetic rate increases by more than 40% when soil moisture exceeds 70% of field capacity (Bouman et al., 2007).

WP of each crop varies spatially under different hydrologic conditions. For instance, cotton's WP in downstream regions increases by 158% in wet years compared to dry years, whereas the corresponding increase in upstream regions is only 32%. This difference stems from the synergistic effects of the North China Plain's favourable soil and hydrothermal conditions, along with the implementation of water-saving irrigation systems in that region. Additionally, this spatial sensitivity is driven by the dual dependence of downstream irrigation on both local precipitation and water availability from upstream regions, making downstream WP more sensitive to hydrologic variability.

Table 3. Crop water productivity by location and hydrological year type (kg/m³).

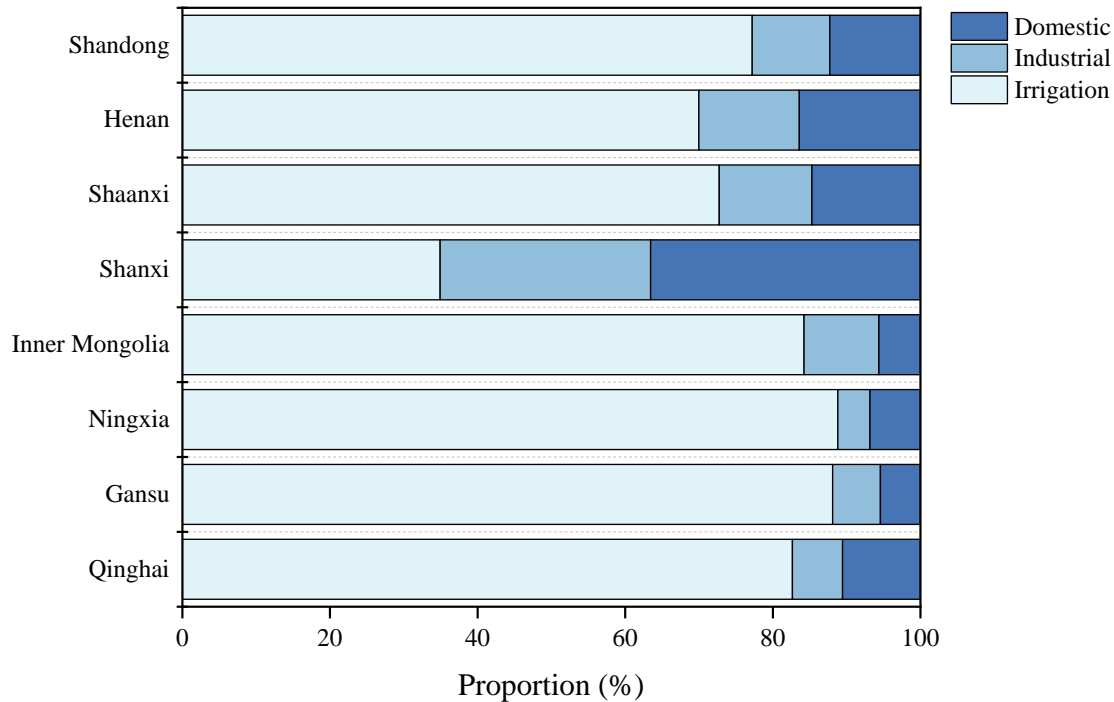
Crop Type	Location	Dry	Normal	Wet
Wheat	U	0.73	0.73	0.74
	M	0.81	0.94	0.93
	D	0.76	1.00	1.05
	YRB	0.77	0.95	0.98
Rice	U	0.08	0.11	0.20
	M	0.10	0.10	0.19
	D	0.12	0.12	0.19
	YRB	0.10	0.11	0.20
Maize	U	0.56	0.64	0.68
	M	0.85	1.21	2.55
	D	1.01	2.69	13.68
	YRB	0.81	1.35	2.39
Potato	U	1.69	1.84	1.93
	M	2.15	2.37	2.60
	D	2.61	6.57	5.18
	YRB	1.89	2.06	2.21
Cotton	U	0.26	0.30	0.35
	M	0.41	0.57	0.96
	D	0.44	0.68	1.15
	YRB	0.44	0.66	1.10
Vegetable	U	6.88	7.25	7.54
	M	6.33	6.79	8.35
	D	6.36	7.26	10.49
	YRB	6.47	7.02	8.51

4.2.2 Water use structure

Figure 7 shows provincial variations in sectoral water use structure within the basin. Provinces in the middle and lower reaches display higher proportions of industrial and domestic water uses than those in the upper reaches. Particularly, Shanxi has a distinct water use pattern, with a relatively low irrigation share (35%) and significantly higher industrial (28%) and domestic (37%) uses compared with other provinces. This structure is largely driven by the dominance of water-intensive industries such as coal mining and metallurgy (Wang, 2023), which account for a substantial portion of industrial water demand in Shanxi. Shandong and Henan, with advanced industrial systems, prioritize urban and industrial water allocation through stringent policies that constrain agricultural water quotas (Lyu et al., 2022; Yin and Yi, 2016; Yu, 2023). Concurrently, higher urbanization rate and population density in the middle and lower reaches result in higher domestic water demand, contrasting sharply with the sparsely populated upstream areas (Fig. S4). In upstream regions (Qinghai, Gansu, Ningxia, and Inner

Mongolia), agricultural sector plays a more important role in provincial economic development, and irrigation requirement is high due to semi-arid and arid climate there.

415 Compared to irrigation, urban water use varies less in response to climatic and hydrologic fluctuations. Under water scarcity, water is allocated based on the respective economic values of competing water use, provided all constraints regarding water allocation in the model are met. As a result, agricultural sector faces greater pressure to adapt when water availability declines. Thus, as hydroclimatic changes intensify, diminishing water supplies will exacerbate competitions for water among sectors and regions.



420

Figure 7: Water use proportion (%) by sector and province.

4.2.3 Reservoir operation

Figure 8 compares the Longyangxia Reservoir (LYX) annual storage change with its inflow from 1996 to 2015. A proportional relationship between reservoir inflow and storage shows that the reservoir releases water in dry years with low inflow and stores water in wet years with high inflow. As the only reservoir on the Yellow River with multi-year regulation capability, LYX is critical for inter- and intra-annual regulation, thereby improving water security, protecting ecological health within and outside the river channel, and meeting water demands for basin-wide economic and social development. Given the substantial inter-annual variability in streamflow and the frequent occurrence of consecutive dry years (e.g., 2000-2002), additional multi-year regulation reservoirs would benefit the YRB. However, constructing such reservoirs in the middle and

425

430 lower reaches of the Yellow River is highly challenging due to the lack of suitable dam sites and the high sediment concentration.

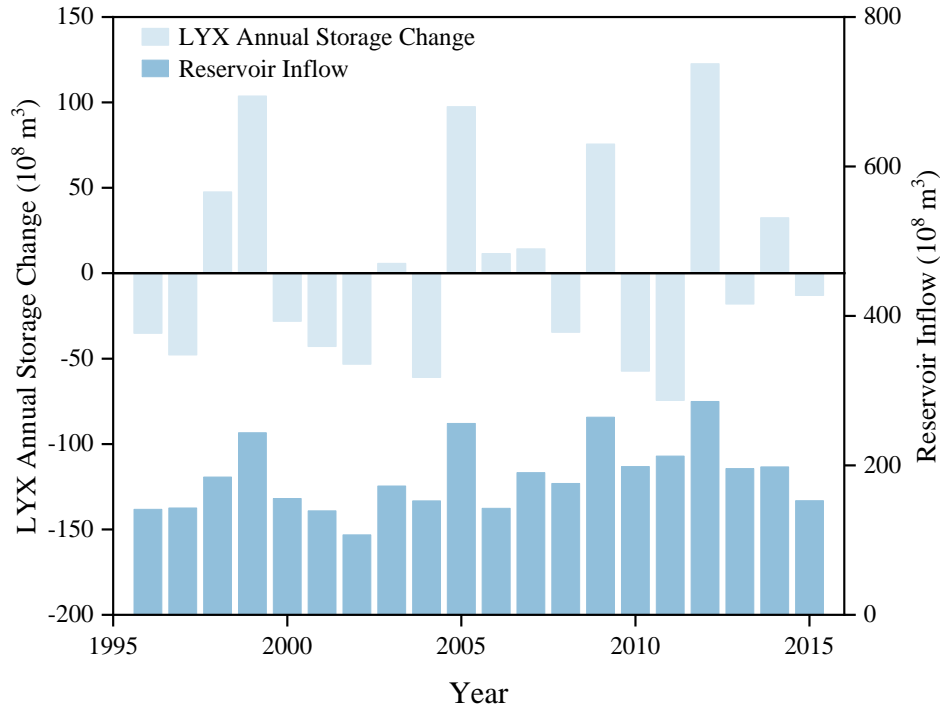


Figure 8: Longyangxia reservoir (LYX) annual storage change and inflow from 1996 to 2015 (10^8 m^3).

Table 4 summarizes the frequencies of full/empty storage (i.e., the upper/lower bound of active storage) for the major cascade
435 reservoirs during 1996-2015. LYX, with a total storage capacity of 24.7 billion m^3 , is designed for prolonged drought
mitigation, and therefore rarely reaches full or empty storage levels except in exceptionally wet or dry years. LiuJX, with about
23% of LYX's storage capacity, serves as a primary peak-shaving power station in the northwestern power grid of China and
is full several times every year in the study period, which is likely driven by electric power generation requirements. WJZ
440 shows high frequencies of being completely empty or full, due to its limited regulating storage capacity (896 million m^3),
which is only 3.6% of LYX's capacity, and its role in regulating water diversion from the Yellow River to Shanxi Province.
SMX and XLD never reach full capacity, because their key functions of flood control and sediment flushing require strict
water-level management to preserve adequate flood regulation space and to flush sediment *via* generated "artificial floods" to
downstream (Wu et al., 2021). To mitigate flood risks in the lower reaches, SMX is often preemptively drawn down during
the flood season to accommodate potential flood peaks.

445 During 2000-2005, all five reservoirs experience varying degrees of empty storage, as consecutive dry years reduce basin-
wide water availability. These full-empty storage occurrences are closely associated with inter-annual inflow variability, multi-
objective operational requirements (flood control, water supply, sediment transport, and ecological protection), and the joint

operation of cascade reservoirs, highlighting the need for dynamic reservoir scheduling to balance water use and flood risk mitigation.

450 **Table 4. The frequency of full (O) and empty (☒) storage in the cascade reservoirs from 1996 to 2015. The numbers in parentheses indicate the monthly occurrences of reservoir**
 451 **emptying or filling in the given year.**

Reservoir	1996	1997	1998	1999	2000	2001	2002	2003	2004	2005	2006	2007	2008	2009	2010	2011	2012	2013	2014	2015
<i>LYX</i>				O(1)				☒(4)		☒(3)				O(2)			O(2)	O(1)		O(1)
<i>LiuJX</i>	O(5)	O(4)	O(4)	O(4)	O(5)	O(6)	O(6)	O(3) ☒(2)	O(2)	O(2)	O(4)	☒(1)	O(4)	O(2)	☒(2)	☒(3)	☒(2)	O(4) ☒(1)	O(3) ☒(1)	O(6)
<i>WJZ</i>	O(3) ☒(4)	O(4) ☒(5)	O(2) ☒(3)	O(5) ☒(3)	O(3) ☒(5)	O(5) ☒(5)	O(3) ☒(4)	O(1) ☒(6)	O(4) ☒(4)	O(2) ☒(4)	O(2) ☒(4)	O(2) ☒(5)	O(4) ☒(4)	O(2) ☒(8)	O(3) ☒(7)	O(6) ☒(5)	O(4) ☒(5)	O(3) ☒(6)	O(5) ☒(3)	O(3) ☒(5)
<i>SMX</i>	☒(4)	☒(4)	☒(4)	☒(3)	☒(3)	☒(5)	☒(4)	☒(3)	☒(3)	☒(3)	☒(4)	☒(3)	☒(4)	☒(5)	☒(4)	☒(4)	☒(4)	☒(4)	☒(3)	☒(3)
<i>XLD</i>	☒(2)			☒(1)	☒(1)		☒(2)	☒(3)	☒(2)	☒(2)	☒(2)				☒(3)	☒(1)		☒(2)		☒(2)

452

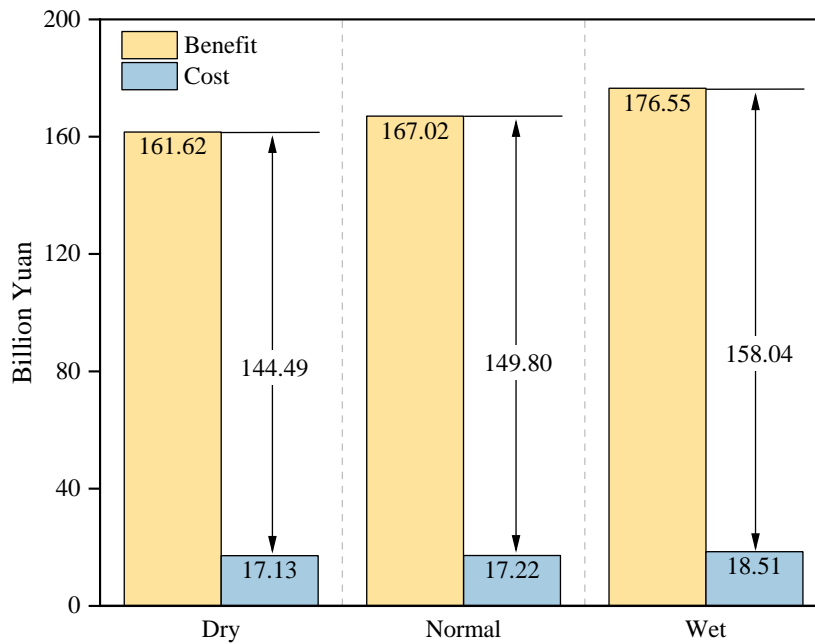
4.3 Economic Welfare

Table 5 presents the economic benefits and costs by water-use sectors under various hydrologic conditions. The majority of the economic benefits are from agricultural production, with an average value of 78.54 billion yuan, consistent with its dominant role in basin water use. Benefits from domestic water use remain relatively stable across different climatic and hydrologic conditions due to low price elasticity and stable water demand. Industrial benefits, however, are more sensitive to reductions in water availability due to higher price elasticity. Hydropower benefits depend directly on natural runoff, and consequently vary more with water variability.

Table 5. Economic benefits and costs by water demand sectors under different hydrological year types (billion yuan).

	Sector	Dry	Normal	Wet	Average
Benefit	Agricultural	73.49	78.60	85.48	78.54
	Domestic	59.39	59.62	59.97	59.49
	Hydropower	5.45	4.87	6.53	6.31
	Industrial	23.29	23.93	24.57	23.85
	Sum	161.61	167.02	176.54	168.20
Cost	PMP	16.78	16.96	18.32	17.21
	Pumping	0.06	0.05	0.02	0.07
	Resource	0.28	0.21	0.17	0.25
	Sum	17.13	17.22	18.51	17.32

Net benefit is calculated by the difference between total benefits and costs (Fig. 9). For a wetter hydrology case, total benefit (176.54 billion yuan), cost (18.51 billion yuan), and net benefit (158.04 billion yuan) are higher than those in dry years, reflecting higher water availability and larger water withdrawals in the basin. Nevertheless, the relatively small difference in net benefits across hydrologic years is attributed to several synergistic mechanisms: (1) As the dominant component of total benefits, agricultural revenue is stabilized through a minimum cultivated area constraint in the optimization model, which prevents excessive land fallowing while maintaining regional cropping patterns. Although grain crop areas expand preferentially in wet years, their limited contribution to total agricultural revenue persists due to low commodity prices. (2) Due to the prioritization of guaranteed water use for domestic and industrial sectors, urban water use varies little across water years, resulting in stable benefits from these sectors even under water scarcity. (3) Although hydropower benefit fluctuates significantly with water availability (Fig. S5), the small share of total benefits minimizes its overall impact. (4) The cascade reservoir system along the mainstream, particularly the LYX with its multi-year regulation capacity, enables inter-annual water reallocation. Surplus water is stored during wet years and released during droughts, effectively decoupling water availability from sectoral demands. Overall, the HEM optimization framework demonstrates robust stabilization of economic benefits, maintaining total net benefit fluctuations across all hydrologic scenarios.

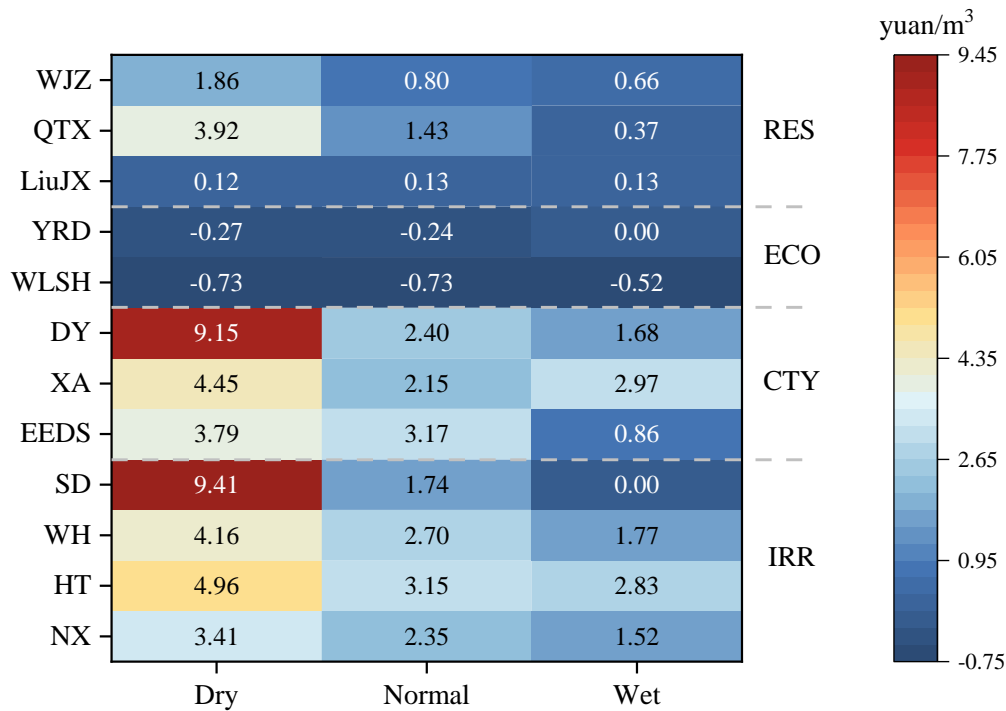


475

Figure 9: Benefits and costs by dry, normal and wet hydrologic cases (billion yuan).

4.4 Marginal Values

480 Marginal values (or equally shadow prices) offer decision-makers and water stakeholders' essential insights by quantifying the value of additional water and reflecting the degree of water scarcity. Figure 10 presents shadow prices for various demand sectors under different hydrologic conditions. For a given hydrological year type, the marginal value represents the economic gain (or cost reduction) for one additional unit of water available in that month for irrigation, urban use, and ecological replenishment, and annually for reservoirs. When water scarcity intensifies, shadow prices are higher. In this study, marginal values of water are determined based on total water withdrawals at the demand sites.



485 **Figure 10: Marginal values of water by water demand sectors under dry, normal and wet hydrologic conditions (yuan/m³) in different parts of the YRB. IRR = irrigation district; CTY = city; ECO = off-stream ecological replenishment area; RES = reservoir. See Table 1 for detailed node interpretation.**

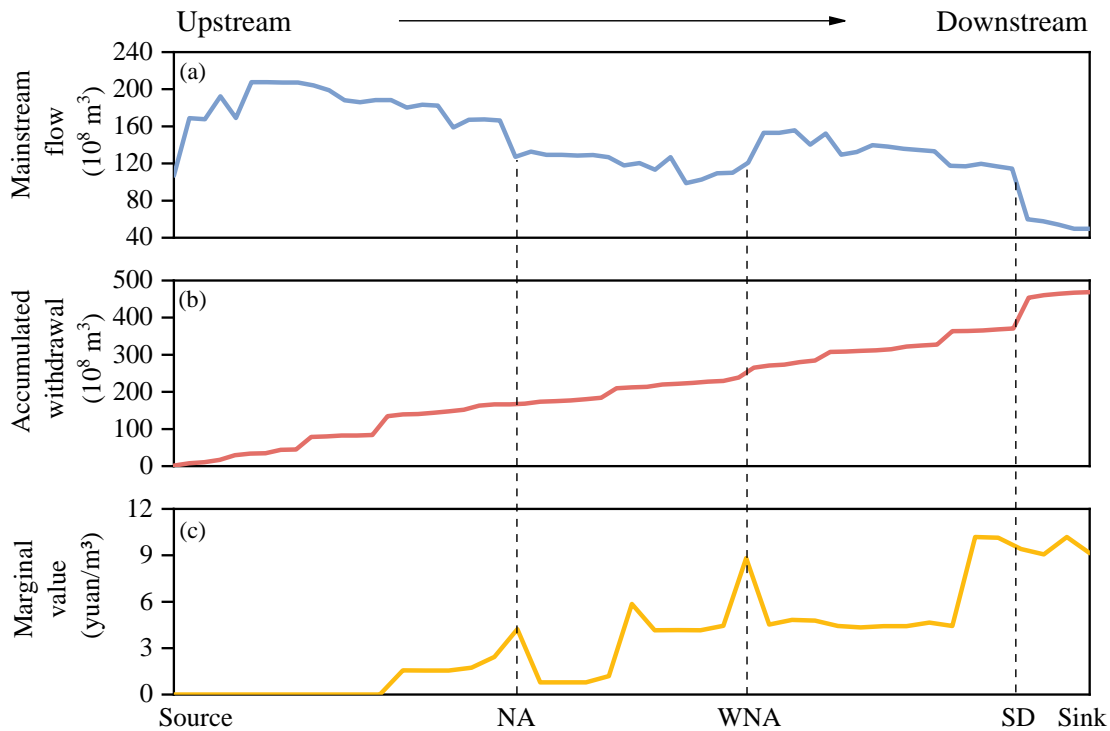
Irrigation: Marginal values appear only in months when irrigation demand exists in the corresponding irrigation district. NX and HT upstream, WH in the middle reaches, and SD downstream are selected as representatives. Compared to wet years, shadow prices in these major irrigation districts rise sharply in dry years, suggesting that reduced Yellow River water supply exacerbates shortages of irrigation water and reduces agricultural revenues. In the downstream, the shadow price of SD remains zero under wet conditions, indicating farmers' unwillingness to pay for additional delivered water since additional water supply does not increase additional returns.

Urban use: Marginal values of urban water use in three representative cities, EEDS (upper region), XA (middle region), and DY (lower region), reflect their varying dependence on the Yellow River as a primary water source. Higher marginal values under water scarcity indicate greater stress on urban water supply. From dry to wet years, shadow prices decrease by 77.3% in EEDS and 33.3% in XA, while DY shows a larger decline of 81.6%, highlighting its greater sensitivity to hydrologic variability. In dry years, an additional unit of water supply provides substantially higher benefits to urban activities in DY, consistent with its industrial-dominated economic structure.

Ecological replenishment: WLSH and YRD, as main off-stream ecological replenishment areas, are excluded from directly achieving economic value objectives. However, water replenished to these areas indirectly affects available water supply and related economic benefits for other water-use sectors. The negative sign means that using an additional unit of water for environmental protection reduces total (urban, agriculture, and hydropower) economic benefits. The absolute values of these

shadow prices are high in dry years due to prioritization of high-value economic sectors, but decline in wet years as increased water availability allows more water to be allocated to less economically productive uses.

Reservoirs: Marginal values of reservoirs refer to the benefits of increasing one additional unit of maximum reservoir storage capacity, related to both generating hydropower and meeting downstream water requirements. LiuJX, a large-capacity reservoir and major hydropower station on the main stem, shows lower marginal values than smaller reservoirs such as QTX and WJZ, reflecting both the limited contribution of additional storage to power generation and the satisfaction of local water demands. QTX primarily supports irrigation in surrounding districts, while WJZ diverts water from the Yellow River to Shanxi Province through the water transfer project. Both reservoirs alleviate water shortages, as demonstrated by their high marginal values. Higher values for the smaller reservoirs may be associated with more frequent refilling and greater hydropower head per unit of additional storage (Table 4). These marginal values should ultimately be compared with the costs of expanding reservoir capacities, as different sites can vary different economies or diseconomies of scale in construction.



515

Figure 11: Spatial dynamics of (a) mainstream flow (10^8 m^3), (b) cumulative withdrawals (10^8 m^3), and (c) marginal values of water (yuan/m^3) along the Yellow River in a typical dry year.

Figure 11 illustrates the spatial variations in streamflow (Fig. 11a), cumulative withdrawals (Fig. 11b), and marginal values of water (Fig. 11c) along the main stem of the Yellow River during a representative dry year. The co-occurrence of decreasing flow, increasing withdrawals, and rising marginal values highlights the intensification of water scarcity from upstream to downstream. Upstream regions, where flow remains relatively high, have low marginal values due to adequate water supply.

520

However, cumulative withdrawals substantially reduce available water along the mainstem, increasing the economic value of water. The most pronounced marginal value peaks occur in regions with limited alternative water sources and/or high-intensive production activities, such as NA relying solely on the Yellow River for irrigation, WNA depending on the Wei River for industrial and domestic use but facing competition from its upstream users, and SD with extensive irrigated areas but very limited water availability near the estuary.

Several factors affect marginal value spatial dynamics. First, intensive agricultural withdrawals reduce local water availability, increasing the value of additional water for sustaining crop yields. Second, growing industrial and urban water demands intensify water use competition, particularly in downstream cities with expanding populations and economic activities. Finally, institutional water allocation constraints, including inter-basin transfer regulations and environmental flow requirements, further restrict access to water, amplifying marginal values.

The strong correlation between withdrawal amount and marginal value underscores the need for targeted conservation and allocation strategies. Improving irrigation efficiency, optimizing industrial water use, and refining allocation mechanisms can mitigate excessive withdrawals and alleviate pressure on downstream users. Furthermore, market-based approaches such as water pricing and trading could facilitate more efficient allocation, supporting sustainable water management in water-scarce areas (Ringler et al., 2010; Trail and Ward, 2024; Zhao et al., 2023).

5 Discussion

5.1 Implications

Our results have some key implications for improving water management flexibility and water use efficiency. Spatiotemporal water supply variations (Fig. 5) across the basin highlight opportunities for more adaptive water management that can serve as a reference for planners to make better decisions to meet demand requirements. As irrigation water use occupies 74% of total basin water use, improving irrigation water-use efficiency is critical. Furthermore, to mitigate the impacts of water shortages that may lead to fallow land or shifts in cropping patterns, comprehensive reforms in agricultural water pricing and reward mechanisms for water conservation are essential. Additionally, most crops experience yield reductions under water-deficient conditions, while drought-resistant crops maintain relatively high productivity levels (Table 3). Expanding the cultivation of low water-consuming and drought-resistant crops, together with improvements in crop varieties through genetic enhancement, can help stabilize agricultural production under increasing water stress.

For industrial activities, water withdrawal in midstream and downstream cities accounts for 74.9% of total industrial water use across the basin (Fig. S4), with heavy industries dominating in these regions. Efforts should focus on maximizing the potential for water-saving by accelerating the adoption of advanced water-saving technologies and equipment. Priority should be given to water-saving measures in high water-consuming industries such as energy, chemical manufacturing, and construction materials production, as well as to improving urban wastewater reuse technologies.

Addressing the risk of severe water scarcity with consecutive dry-year conditions requires careful consideration of adaptive reservoir management strategies. In particular, appropriate hedging rules for multi-year reservoir operation are essential to improve the reliability of long-term water supply planning. While optimization models often assume perfect hydrologic foresight for computational convenience, such assumption does not align with real-world conditions. Reservoirs may operate based on “foreseen” future conditions that do not exist, leading to suboptimal storage and release decisions. Consequently, analysis on carryover storage of multi-year regulating reservoirs, such as the LYX, is important to provide a physical buffer against hydrologic and demand uncertainties and for reducing reliance on unrealistic modelling assumptions.

Based on the spatial and temporal variability in the marginal values of water across hydrologic conditions, sectors and locations (Fig. 10 and Fig. 11), economically-oriented water transfers and water rights trading can enhance reallocation of water resources. During dry years, downstream sectors show higher marginal values of water, indicating that transferring surplus water from upper to lower reaches *via* water markets or other negotiated agreements could generate greater economic benefits, foster inter-regional win-win outcomes, and mitigate water stress. Multi-purpose reservoirs, play a key role in this process. Their high marginal values underscore the significant economic and social benefits generated by each unit of water in meeting diverse objectives, including hydropower generation, flood control, and water supply. However, current storage capacities and regulation capabilities are insufficient to fully meet growing demands. Targeted investments in additional storage infrastructure or inter-basin water transfer projects could therefore enhance system resilience and improve overall water resource utilization.

5.2 Limitations and Future Development

The HEM developed in this study involves several simplifying assumptions. First, water allocation is driven exclusively by the basin-wide economic objective as long as the constraints are met. However, in real-world applications, water management is guided by broader criteria, including water supply reliability, environmental performance (Kahil et al., 2018), and political considerations. Second, representing basin components using a node-arc network, despite its convenience for modelling, assumes a representative water user at each demand node, thus ignoring heterogeneities in scales, technologies, productivity and user preferences across different users within each demand area. At the node level, the model simulates the exchange and allocation of flows between nodes but does not capture detailed local dynamic feedbacks, such as interactions between groundwater aquifers and surface water systems. For the time scale, the monthly time step adopted in the model run limits the representation of short-term hydrological extremes, such as flood peaks, reflecting the HEM’s focus on basin-scale water allocation rather than event-scale dynamics. Besides, the model broadly classifies water use into four sectors: irrigation, urban (industrial and domestic) use, hydropower, and ecology. Livestock and forestry within agriculture, light industry, individual household water use behaviour, or the functions of local ecological protection and aquaculture associated with reservoirs are omitted. Including these water users can improve the assessment of water competition among sectors and guide efficient allocation on a broader sectoral scale. Lastly, the model assumes that the river basin management authority has full control over all water-use sectors, possesses comprehensive access to and management of information from both supply and demand sides, and can respond promptly to any changes or adjustments within the system. Accordingly, the management authority is

conceptualized as an efficient decision-making entity capable of integrating information, optimizing resource allocation, and dynamically regulating operations. Consistent with this basin-level perspective, the model emphasizes coordinated allocation at the basin scale and therefore does not fully represent decentralized decision-making mechanisms operating at the provincial level. Thus, the model provides an idealized solution (rather than a directly implementable solution) including precise policy evaluation and strategy optimization that the basin authority can achieve if the flow of information and feedback within a complex water resource system can be followed. Nevertheless, idealized solutions provide insights and directions for policy and management improvements, they are not suitable for real-time scheduling and daily operational management, and face significant limitations at micro-level applications such as individual water users.

Another limitation of this study is the deficiency in information and data. Due to the lack of reliable biophysical and economic data, important local processes, impacts on water quality, interaction between surface water and groundwater, and changes in the cost of water supply over time, etc., are not fully represented. Especially, data acquisition presents significant challenges, such as limited data sharing among institutions and concerns over confidentiality, which restrict access to comprehensive datasets and affect the validation of the basin-wide model. Moreover, discrepancies in temporal and spatial resolution across data sources complicate data integration. Even after extensive processing, variability in numerical scales across datasets, combined with uncertainties from natural variability and measurement errors, poses difficulties in assessing the reliability of model outputs (Cai, 2008a).

Climatic water stress, population growth, and increasing concerns over regional water sharing and equity within many arid and semi-arid basins highlight the significance of designing models that can adapt to both natural change and socio-economic development. Future research should prioritize sustainable water use under long-term climate change and increasing extreme events, with greater emphasis on incorporating stochastic optimization or scenario-based analysis to evaluate future climate and socioeconomic pathways. It is also vital to consider large-scale infrastructure projects under construction or planning, including the western route of the South-North Water Transfer Project, to support evaluation of investment feasibility and future economic benefits. Finally, future model development should more explicitly represent conjunctive use of surface water, groundwater and other unconventional sources, especially given the unreliability of relying on a single source and the derivative risks from groundwater over-exploitation.

6 Conclusions

This study develops a hydroeconomic optimization model that integrates surface and groundwater hydrology, water infrastructure, and sector-specific water demands into a coherent analytical framework to assess spatiotemporal variations of water availability and water value in a large basin. The model adopts a PMP calibration method to suggest an optimal water allocation plan in which the optimized baseline conditions are consistent with data observed for irrigated areas, reservoir storage levels, and city water supplies, allowing identification of impacts from any new changes in policies and operational rules on water allocation and benefits at the basin scale. The framework captures trade-offs among competing water uses

including agricultural production, industrial and domestic activities, and ecological requirements, and offers quantitative support for basin-wide water management decisions.

620 The HEM is applied to the YRB in China, a large basin with pressing water security issues and a centralized basin authority (YRCC) to coordinate basin-wide management activities. By investigating supply-demand dynamics under different hydrologic conditions, the results indicate that:

- 625 (1) Meeting water demands of the various sectors with reliability, without major economic losses or compromising critical ecological requirements, depends heavily on coordinated reservoir operations and groundwater extraction, particularly during dry seasons or severe droughts.
- (2) Agricultural water use has significant spatial and climatic vulnerabilities. Arid regions face heightened water stress, therefore need technological advances to enhance irrigation efficiency. Differences in crop-specific water productivity identified by the model reveal opportunities to prioritize drought-resilient and high-value crops. Such adjustments could reduce irrigation demand without compromising yield stability, offering a path to decouple agricultural production from
630 water-intensive practices.
- (3) Multi-year regulating reservoirs are pivotal in mitigating interannual hydrologic variability, by reallocating water surpluses from wet to dry years and buffering against consecutive drought years. Analysis of storage cycles of the LYX shows its relatively low frequency of full or empty storage, implying that its capacity is sufficiently large to regulate extremely high and low flows, provided that active inter-year regulation capacity is maintained.
- 635 (4) Marginal value analysis highlights heterogeneity in water scarcity across sectors and regions. During periods of water scarcity, allocation priorities favouring industrial and domestic use as their higher water economic values often lead to ecological flow deficits and destabilized agricultural systems, thereby increasing long-term sustainability risks. These trade-offs necessitate adaptive allocation mechanisms that balance efficiency with equity, such as tiered pricing for high-value uses and compensatory schemes for environmental and subsistence needs.

640 Beyond the YRB, this study offers transferable modelling methods and insights for governance of other large river basins confronting scarcity and competition. The combination of the node-link representation, PMP calibration, and an integrated hydroeconomic model formulation provides a structured basis for evaluating basin-wide allocation strategies under diverse policy and hydrologic conditions. However, accomplishing such analyses in practice, depends on specific institutional settings. In the YRB, a strong centralized basin authority facilitates water governance. In more decentralized or collaborative settings,
645 comparable outcomes may require stronger coordination mechanisms, legal alignment, stakeholder negotiation, or market institutions. Thus, while the modelling framework is broadly applicable, its operational deployment must be adapted to local governance contexts.

While the model shows its usefulness as a planning tool for large basin authorities, it is formulated with water demand of aggregated sectors without considering intra-sectoral heterogeneity. Given its focus on large-scale dynamics, the model lacks
650 precision to capture technical variations, or behavioural preferences of individual users. Additionally, its emphasis on long-term planning and strategic analysis limits its applicability for real-time scheduling. Nevertheless, by adopting a macroscopic

perspective, the model effectively identifies system-level bottlenecks and supports the development of sustainable strategies for managing complex water allocation challenges.

655 Future research should focus on incorporating additional dimensions such as climate change impacts, water markets and exchanges, conjunctive use of surface water and groundwater, and inclusion of unconventional water sources in the water supply portfolio. Additionally, improving data availability and integrating socio-political factors can improve the robustness of decision-making frameworks, providing more actionable insights for sustainable water resource management in the YRB and similar arid basins worldwide.

Code and data availability

660 The model was implemented in the General Algebraic Modeling System (GAMS), which is available under a license (<https://www.gams.com/>). Code and data used in this study are not publicly available but can be obtained from the corresponding author upon reasonable request.

Author contributions

665 Yuhan Yan contributed to investigation, data curation, formal analysis, methodology, visualization and prepared the paper with contributions from all the co-authors, along with conducting review and editing. Tingju Zhu contributed to conceptualization, funding acquisition, project administration, supervision, validation, and review and editing. Ximing Cai contributed to visualization, validation and review and editing. Zhenxing Zhang, Yunlu Ma and Jay R. Lund contributed to review and editing.

Competing interests

670 The authors declare that they have no conflict of interest.

Disclaimer

675 Copernicus Publications remains neutral with regard to jurisdictional claims made in the text, published maps, institutional affiliations, or any other geographical representation in this paper. While Copernicus Publications makes every effort to include appropriate place names, the final responsibility lies with the authors. Views expressed in the text are those of the authors and do not necessarily reflect the views of the publisher.

Financial Support

This study was supported by the National Key Research and Development Program of China (2022YFC3202305; 2020YFA0608603) and the Start-up Research Fund provided by the International Campus of Zhejiang University.

References

- 680 Allen, R. G., Pereira, L. S., Raes, D., and Smith, M.: FAO Irrigation and Drainage Paper No. 56 - Crop Evapotranspiration, 1998.
- Baccour, S., Albiac, J., Kahil, T., Esteban, E., Crespo, D., and Dinar, A.: Hydroeconomic modeling for assessing water scarcity and agricultural pollution abatement policies in the Ebro River Basin, Spain, *J. Clean. Prod.*, 327, 1-13, <https://doi.org/10.1016/j.jclepro.2021.129459>, 2021.
- 685 Baccour, S., Ward, F. A., and Albiac, J.: Climate adaptation guidance: New roles for hydroeconomic analysis, *Science of the Total Environment*, 835, <https://doi.org/10.1016/j.scitotenv.2022.155518>, 2022.
- Bai, T., Chang, J., Chang, F. J., Huang, Q., Wang, Y. min, and Chen, G.: Synergistic gains from the multi-objective optimal operation of cascade reservoirs in the Upper Yellow River basin, *J. Hydrol. (Amst)*., 523, 758–767, <https://doi.org/10.1016/j.jhydrol.2015.02.007>, 2015.
- 690 Bai, T., Wei, J., Chang, F. J., Yang, W., and Huang, Q.: Optimize multi-objective transformation rules of water-sediment regulation for cascade reservoirs in the Upper Yellow River of China, *J. Hydrol. (Amst)*., 577, <https://doi.org/10.1016/j.jhydrol.2019.123987>, 2019.
- Bao, Z., Zhang, J., Wang, G., Chen, Q., Guan, T., Yan, X., Liu, C., Liu, J., and Wang, J.: The impact of climate variability and land use/cover change on the water balance in the Middle Yellow River Basin, China, *J. Hydrol. (Amst)*., 577, <https://doi.org/10.1016/j.jhydrol.2019.123942>, 2019.
- 695 Basheer, M., Nechifor, V., Calzadilla, A., Gebrechorkos, S., Pritchard, D., Forsythe, N., Gonzalez, J. M., Sheffield, J., Fowler, H. J., and Harou, J. J.: Cooperative adaptive management of the Nile River with climate and socio-economic uncertainties, *Nat. Clim. Chang.*, 13, 48–57, <https://doi.org/10.1038/s41558-022-01556-6>, 2023.
- Bouman, B. A. M., Lampayan, R. M., and Tuong, T. P.: *Water Management in Irrigated Rice: Coping with Water Scarcity*, 54 pp., 2007.
- 700 Cai, X.: Implementation of holistic water resources-economic optimization models for river basin management - Reflective experiences, *Environmental Modelling and Software*, 23, 2–18, <https://doi.org/10.1016/j.envsoft.2007.03.005>, 2008a.
- Cai, X.: Water stress, water transfer and social equity in Northern China-Implications for policy reforms, *J. Environ. Manage.*, 87, 14–25, <https://doi.org/10.1016/j.jenvman.2006.12.046>, 2008b.
- 705 Cai, X. and Wang, D.: Calibrating Holistic Water Resources–Economic Models, *J. Water Resour. Plan. Manag.*, 132, 414–423, [https://doi.org/10.1061/\(asce\)0733-9496\(2006\)132:6\(414\)](https://doi.org/10.1061/(asce)0733-9496(2006)132:6(414)), 2006.

- Cai, X., McKinney, D. C., and Lasdon, L. S.: Integrated Hydrologic-Agronomic-Economic Model for River Basin Management, *J. Water Resour. Plan. Manag.*, 129, 4–17, [https://doi.org/10.1061/\(asce\)0733-9496\(2003\)129:1\(4\)](https://doi.org/10.1061/(asce)0733-9496(2003)129:1(4)), 2003.
- Cai, X., Ringler, C., and Rosegrant, W. M.: Modeling Water Resources Management at the Basin Level: Methodology and
710 Application to the Maipo River Basin, 170 pp., 2006.
- Cao, Z., Zhu, T., and Cai, X.: Hydro-agro-economic optimization for irrigated farming in an arid region: The Hetao Irrigation District, Inner Mongolia, *Agric. Water Manag.*, 277, <https://doi.org/10.1016/j.agwat.2022.108095>, 2023.
- Chai, J.: Practical Experience of Operation and Dispatching for Shanxi Wanjiashai Yellow River Diversion Project, in: Proceedings of the 2015 Academic Annual Conference of the Chinese Society for Water Resources, Chinese Hydraulic
715 Engineering Society, 658-662, 2015.
- Chang, J., Meng, X., Wang, Z. Z., Wang, X., and Huang, Q.: Optimized cascade reservoir operation considering ice flood control and power generation, *J. Hydrol. (Amst.)*, 519, 1042–1051, <https://doi.org/10.1016/j.jhydrol.2014.08.036>, 2014.
- Chang, J., Li, Y., Yuan, M., and Wang, Y.: Efficiency evaluation of hydropower station operation: A case study of Longyangxia station in the Yellow River, China, *Energy*, 135, 23–31, <https://doi.org/10.1016/j.energy.2017.06.049>, 2017.
- 720 Chen, J., Xia, J., Zhao, C., Zhang, S., Fu, G., and Ning, L.: The mechanism and scenarios of how mean annual runoff varies with climate change in Asian monsoon areas, *J. Hydrol. (Amst.)*, 517, 595–606, <https://doi.org/10.1016/j.jhydrol.2014.05.075>, 2014.
- Cuo, L., Zhang, Y., Gao, Y., Hao, Z., and Cairang, L.: The impacts of climate change and land cover/use transition on the hydrology in the upper Yellow River Basin, China, *J. Hydrol. (Amst.)*, 502, 37–52,
725 <https://doi.org/10.1016/j.jhydrol.2013.08.003>, 2013.
- Draper, A. J., Jenkins, M. W., Kirby, K. W., Lund, J. R., and Howitt, R. E.: Economic-Engineering Optimization for California Water Management, *J. Water Resour. Plan. Manag.*, 129, 155–164, [https://doi.org/10.1061/\(asce\)0733-9496\(2003\)129:3\(155\)](https://doi.org/10.1061/(asce)0733-9496(2003)129:3(155)), 2003.
- GAMS System Overview: <https://www.gams.com/products/gams/gams-language/>, last access: 15 January 2026.
- 730 Gao, X., Zhu, C., Chen, C., Lu, J., and Zhao, X.: Study on the Optimization of Water and Sediment Regulation of the Xiaolangdi Reservoir Considering the Change of Wet-Dry Water and Sediment in the Yellow River, *Yellow River*, 45, 19–24, <https://doi.org/10.3969/j.issn.1000-1379.2023.10.004>, 2023.
- General Office of the State Council of the People’s Republic of China: 1987 Water Allocation Scheme, https://www.gov.cn/xxgk/pub/govpublic/mrlm/201103/t20110330_63799.html, last access: 23 September 2025, 1987.
- 735 General Office of the State Council of the People’s Republic of China: Guideline on Improving the Price Governance Mechanism, https://www.gov.cn/zhengce/202504/content_7016955.htm, last access: 6 February 2026, 2024.
- Giakoumis, T. and Voulvoulis, N.: The Transition of EU Water Policy Towards the Water Framework Directive’s Integrated River Basin Management Paradigm, *Environ. Manage.*, 62, 819–831, <https://doi.org/10.1007/s00267-018-1080-z>, 2018.

- Gohar, A. A., Cashman, A., and Ward, F. A.: Managing food and water security in Small Island States: New evidence from economic modelling of climate stressed groundwater resources, *J. Hydrol. (Amst)*, 569, 239–251, <https://doi.org/10.1016/j.jhydrol.2018.12.008>, 2019.
- Hanasaki, N., Fujimori, S., Yamamoto, T., Yoshikawa, S., Masaki, Y., Hijioka, Y., Kainuma, M., Kanamori, Y., Masui, T., Takahashi, K., and Kanae, S.: A global water scarcity assessment under Shared Socio-economic Pathways - Part 2: Water availability and scarcity, *Hydrol. Earth Syst. Sci.*, 17, 2393–2413, <https://doi.org/10.5194/hess-17-2393-2013>, 2013.
- Harris, I.: CRU TS Version 4.06 [Data set]. https://crudata.uea.ac.uk/cru/data/hrg/cru_ts_4.06/, 2024.
- Harou, J. J., Pulido-Velazquez, M., Rosenberg, D. E., Medellín-Azuara, J., Lund, J. R., and Howitt, R. E.: Hydro-economic models: Concepts, design, applications, and future prospects, *J. Hydrol. (Amst)*, 375, 627–643, <https://doi.org/10.1016/j.jhydrol.2009.06.037>, 2009.
- Hejazi, M., Edmonds, J., Clarke, L., Kyle, P., Davies, E., Chaturvedi, V., Wise, M., Patel, P., Eom, J., Calvin, K., Moss, R., and Kim, S.: Long-term global water projections using six socioeconomic scenarios in an integrated assessment modeling framework, *Technol. Forecast. Soc. Change*, 81, 205–226, <https://doi.org/10.1016/j.techfore.2013.05.006>, 2014.
- Howitt, R. E.: Positive Mathematical Programming, *Am. J. Agric. Econ.*, 77, 329–342, <https://doi.org/10.2307/1243543>, 1995.
- Hu, Y., Guo, W., Zhang, Y., Shen, Y., and Han, Z.: Analysis of the Evolution of Ice Regime in Ningxia-Inner Mongolia Reach of Yellow River from 2011 to 2020, *Yellow River*, 45, 2023a.
- Hu, Y., Liu, J., Zhang, Y., Kang, Y., and Chen, D.: Study on Optimal Operation of Longyangxia and Liujiaxia Reservoirs in the Yellow River During Ice Flood Season, *Yellow River*, 45, <https://doi.org/10.3969/j.issn.1000-1379.2023.08.016>, 2023b.
- International Food Policy Research Institute: Global Spatially-Disaggregated Crop Production Statistics Data for 2010 Version 2.0 [data set], <https://doi.org/https://doi.org/10.7910/DVN/PRFF8V>, 2019.
- Kahil, M. T., Ward, F. A., Albiac, J., Eggleston, J., and Sanz, D.: Hydro-economic modeling with aquifer-river interactions to guide sustainable basin management, *J. Hydrol. (Amst)*, 539, 510–524, <https://doi.org/10.1016/j.jhydrol.2016.05.057>, 2016.
- Kahil, T., Parkinson, S., Satoh, Y., Greve, P., Burek, P., Veldkamp, T. I. E., Burtscher, R., Byers, E., Djilali, N., Fischer, G., Krey, V., Langan, S., Riahi, K., Tramberend, S., and Wada, Y.: A Continental-Scale Hydroeconomic Model for Integrating Water-Energy-Land Nexus Solutions, *Water Resour. Res.*, 54, 7511–7533, <https://doi.org/10.1029/2017WR022478>, 2018.
- Kipkorir, E. C. and Raes, D.: Transformation of yield response factor into Jensen’s sensitivity index, *Irrigation and Drainage Systems*, 16, 47–52, <https://doi.org/10.1023/A:1015578829064>, 2002.
- Lawless, K. L., Garcia, M., and White, D. D.: Institutional Analysis of Water Governance in the Colorado River Basin, 1922–2022, *Frontiers in Water*, 6, <https://doi.org/10.3389/frwa.2024.1451854>, 2024.
- Li, H., Zhang, Q., Singh, V. P., Shi, P., and Sun, P.: Hydrological effects of cropland and climatic changes in arid and semi-arid river basins: A case study from the Yellow River basin, China, *J. Hydrol. (Amst)*, 549, 547–557, <https://doi.org/10.1016/j.jhydrol.2017.04.024>, 2017.
- Liu, C. and Cheng, L.: Analysis on Runoff Series with Special Reference to Drying up Courses of Lower Huanghe River, *Acta Geographica Sinica*, 55, 257–265, 2000.

- Liu, J., Yang, H., Cudennec, C., Gain, A. K., Hoff, H., Lawford, R., Qi, J., de Strasser, L., Yillia, P. T., and Zheng, C.: Challenges in operationalizing the water–energy–food nexus, *Hydrological Sciences Journal*, 62, 1714–1720, 775 <https://doi.org/10.1080/02626667.2017.1353695>, 2017.
- Lyu, J., Zhao, M., Li, A., and Cheng, R.: Study on the current situation of urban water use and water demand forecasting in the Huang-Huai-Hai River Basin, *Water&wastewater Engineering*, 48, 615–620, <https://doi.org/10.13789/j.cnki.wwe1964.2022.02.24.0005>, 2022.
- Martinsen, G., Liu, S., Mo, X., Davidsen, C., Payet-Burin, R., and Bauer-Gottwein, P.: The Impact of Assuming Perfect 780 Foresight in Hydroeconomic Analysis of Yellow River Diversions to the Hai River Basin, China: A Framework Combining Linear Programming and Model Predictive Control, *Frontiers in Water*, 3, 1–17, <https://doi.org/10.3389/frwa.2021.648934>, 2021.
- Medellín-Azuara, J., Harou, J. J., and Howitt, R. E.: Estimating economic value of agricultural water under changing conditions and the effects of spatial aggregation, *Science of the Total Environment*, 408, 5639–5648, 785 <https://doi.org/10.1016/j.scitotenv.2009.08.013>, 2010.
- Medellín-Azuara, J., Howitt, R. E., and Harou, J. J.: Predicting farmer responses to water pricing, rationing and subsidies assuming profit maximizing investment in irrigation technology, *Agric. Water Manag.*, 108, 73–82, <https://doi.org/10.1016/j.agwat.2011.12.017>, 2012.
- Meng, X., Chang, J., Wang, X., Wang, Y., and Wang, Z.: Flood control operation coupled with risk assessment for cascade 790 reservoirs, *J. Hydrol. (Amst.)*, 572, 543–555, <https://doi.org/10.1016/j.jhydrol.2019.03.055>, 2019.
- Mérel, P. and Howitt, R.: Theory and application of positive mathematical programming in agriculture and the environment, *Annu. Rev. Resour. Economics*, 6, 451–470, <https://doi.org/10.1146/annurev-resource-100913-012447>, 2014.
- Molle, F., Wester, P., and Hirsch, P.: River basin closure: Processes, implications and responses, *Agric. Water Manag.*, 97, 569–577, <https://doi.org/10.1016/j.agwat.2009.01.004>, 2010.
- 795 Peng, S., Zheng, X., Wang, Y., and Jiang, G.: Study on Water-energy-food Collaborative Optimization for Yellow River Basin, *Advances in Water Science*, 28, 681-689, <https://doi.org/10.14042/j.cnki.32.1309.2017.05.005>, 2017.
- Peng, S., Wang, Y., Shang, W., Zheng, X., and Li, K.: Response of Synergetic Optimal Operation of Cascade Reservoirs to Drought in the Main Stream of the Yellow River, *Advances in Water Science*, 31, 172-183, <https://doi.org/10.14042/j.cnki.32.1309.2020.02.003>, 2020.
- 800 Price Division of National Development and Reform Commission of the People’s Republic of China: *Compilation of National Income from Agricultural Products (2020)*, China Statistics Press, 2021.
- Pulido-velazquez, M., Tilmant A.: *Hydroeconomics*, Oxford Research Encyclopedia of Environmental Science, Oxford University Press, 1–29, <https://doi.org/10.1093/acrefore/9780199389414.013.686>, 2022.
- Ringler, C., Cai, X., Wang, J., Ahmed, A., Xue, Y., Xu, Z., Yang, E., Zhao, J., Zhu, T., Cheng, L., Fu, Y., Fu, X., Gu, X., and 805 You, L.: Yellow river basin: Living with scarcity, *Water Int.*, 35, 681–701, <https://doi.org/10.1080/02508060.2010.509857>, 2010.

- Rivera-Torres, M. and Gerlak, A. K.: Evolving together: transboundary water governance in the Colorado River Basin, *Int. Environ. Agreem.*, 21, 553–574, <https://doi.org/10.1007/s10784-021-09538-3>, 2021.
- 810 Qin, C., Qu, J., Sun, H., Li, H., and Jiang, S.: Construction and Application of Function Model for Urban Residents' Water Demand, *South-to-North Water Transfers and Water Science & Technology*, 20, <https://doi.org/10.1376/j.cnki.nsbdk.2022.0023>, 2022.
- 815 Scanlon, B. R., Fakhreddine, S., Rateb, A., de Graaf, I., Famiglietti, J., Gleeson, T., Grafton, R. Q., Jobbagy, E., Kebede, S., Kolusu, S. R., Konikow, L. F., Long, D., Mekonnen, M., Schmied, H. M., Mukherjee, A., MacDonald, A., Reedy, R. C., Shamsudduha, M., Simmons, C. T., Sun, A., Taylor, R. G., Villholth, K. G., Vörösmarty, C. J., and Zheng, C.: Global water resources and the role of groundwater in a resilient water future, *Nature Reviews Earth & Environment* 2023, 4, 1–15, <https://doi.org/10.1038/s43017-022-00378-6>, 2023.
- Shang, W., Peng, S., Wang, Y., Fang, W., Wu, J., and Xu, M.: Competition and Cooperation Relationship of Water Utilization in Water Shortage Basins: A Case Study of Yellow River Basin, *Advances in Water Science*, 31, 897-907, <https://doi.org/10.31857/s0320930x20040088>, 2020.
- 820 Sun, A., Zhu, S., Guo, Y., and Zhang, Z.: Jensen model and modified Morgan model for rice water-fertilizer production function, *Procedia Eng.*, 28, 264–269, <https://doi.org/10.1016/j.proeng.2012.01.717>, 2012.
- Tian, J., Guo, S., Deng, L., Yin, J., Pan, Z., He, S., and Li, Q.: Adaptive optimal allocation of water resources response to future water availability and water demand in the Han River basin, China, *Sci. Rep.*, 11, 1–18, <https://doi.org/10.1038/s41598-021-86961-1>, 2021.
- 825 Trail, S. M. and Ward, F. A.: Uniting agricultural water management, economics, and policy for climate adaptation through a new assessment of water markets for arid regions, *Agric. Water Manag.*, 305, <https://doi.org/10.1016/j.agwat.2024.109101>, 2024.
- United Nations: The United Nations World Water Development Report 2023: partnerships and cooperation for water, 210 pp., 2023.
- 830 Wang, X.: Regional Differences and Efficiency Evaluation of Urban Residential Water Use in the Middle Reaches of the Yellow River, *Water resources development and management (Chinese)*, 8, 60–71, <https://doi.org/10.16616/j.cnki.10-1326/TV.2023.08.11>, 2023.
- Wang, Y., Peng, S., and Zheng, X.: Key Scientific Issues of Water Allocation Plan Optimization and Comprehensive Operation for Yellow River Basin, *Advances in Water Science*, 29, 614–624, <https://doi.org/10.14042/j.cnki.32.1309.2018.05.002>, 2018.
- 835 Wang, Y., Peng, S., Wu, J., Ming, G., Jiang, G., Fang, H., and Chen, C.: Review of the Implementation of the Yellow River Water Allocation Scheme for Thirty Years, *Yellow River*, 41, 6-13,19, <https://doi.org/10.3969/j.issn.1000-1379.2019.09.002>, 2019a.
- Wang, Y., Zhao, W., Wang, S., Feng, X., and Liu, Y.: Yellow River water rebalanced by human regulation, *Sci. Rep.*, 9, 1–10, <https://doi.org/10.1038/s41598-019-46063-5>, 2019b.

- 840 Wang, Y., Peng, S., Wu, J., Chang, J., Zhou, X., and Shang, W.: Research on the Theory and Model of Water Resources Equilibrium Regulation in the Yellow River Basin, *Journal of Hydraulic Engineering*, 51, 44–55, <https://doi.org/10.13243/j.cnki.slx.20190523>, 2020.
- Wang, Y., Wu, J., Wang, T., Ming, G., Zheng, X., Zhou, X., and Wang, W.: Research on the Evaluation of the Fairness of Economic and Social Water Use in the Yellow River Basin, *China Rural Water and Hydropower*, 10, 54–60, 845 <https://doi.org/10.12396/znsd.230549>, 2023.
- Wang, Z. and Lou, J.: Some Thoughts on the Adjustment of Water Resources Allocation of “87 Scheme” of Yellow River, *Yellow River*, 44, 1–5, <https://doi.org/10.3969/j.issn.1000-1379.2022.08.001>, 2022.
- Ward, F. A.: Hydroeconomic Analysis to Guide Climate Adaptation Plans, *Frontiers in Water*, 3, 1–26, <https://doi.org/10.3389/frwa.2021.681475>, 2021.
- 850 Wei, X., Li, X., and Cai, B.: Problems of Ice Jam Flood in the Lower Reaches of the Yellow River after Xiaolangdi Reservoir Operating, *J. Glaciol. Geocryol.*, 25, 241–244, 2003.
- Wu, B., Wang, Z., and Li, C.: Yellow River Basin management and current issues, *Journal of Geographical Sciences*, supplement, 29–37, 2004.
- Wu, X., Wang, H., Bi, N., Xu, J., Nittrouer, J. A., Yang, Z., Lu, T., and Li, P.: Impact of Artificial Floods on the Quantity and 855 Grain Size of River-Borne Sediment: A Case Study of a Dam Regulation Scheme in the Yellow River Catchment, *Water Resour. Res.*, 57, 1–18, <https://doi.org/10.1029/2021WR029581>, 2021.
- Xia, C. and Pahl-Wostl, C.: The Development of Water Allocation Management in The Yellow River Basin, *Water Resources Management*, 26, 3395–3414, <https://doi.org/10.1007/s11269-012-0078-1>, 2012.
- Xu, H., Taylor, R. G., and Xu, Y.: Quantifying uncertainty in the impacts of climate change on river discharge in sub- 860 catchments of the Yangtze and Yellow River Basins, China, *Hydrol. Earth Syst. Sci.*, 15, 333–344, <https://doi.org/10.5194/hess-15-333-2011>, 2011.
- Yan, D., Li, D., and Qiao, M.: Research on Reservoir Regulation Scheme for Ice Run Prevention of the Lower Yellow River, *Yellow river*, 34, 4-6, <https://doi.org/10.3969/j.issn.1000-1379.2012.12.002>, 2012.
- Yang, X., Xu, J., Donzier, J. F., and Noel, C.: A comparison of the water management systems in France and China, *Front. 865 Environ. Sci. Eng.*, 7, 721–734, <https://doi.org/10.1007/s11783-013-0550-z>, 2013.
- Yang, Y.-C. E., Zhao, J., and Cai, X.: Decentralized Optimization Method for Water Allocation Management in the Yellow River Basin, *J. Water Resour. Plan. Manag.*, 138, 313–325, [https://doi.org/10.1061/\(asce\)wr.1943-5452.0000199](https://doi.org/10.1061/(asce)wr.1943-5452.0000199), 2012.
- Yin, W. and Yi, C.: Empirical Analysis on the Competitiveness of Industrial Structure and Its improvement of Luoyang, China population, *resources and environment*, 26, 2016.
- 870 Yin, Y., Tang, Q., Liu, X., and Zhang, X.: Water scarcity under various socio-economic pathways and its potential effects on food production in the Yellow River basin, *Hydrol. Earth Syst. Sci.*, 21, 791–804, <https://doi.org/10.5194/hess-21-791-2017>, 2017.

- 875 Yin, Z., Ottlé, C., Ciais, P., Zhou, F., Wang, X., Jan, P., Dumas, P., Peng, S., Li, L., Zhou, X., Bo, Y., Xi, Y., and Piao, S.: Irrigation, damming, and streamflow fluctuations of the Yellow River, *Hydrol. Earth Syst. Sci.*, 25, 1133–1150, <https://doi.org/10.5194/hess-25-1133-2021>, 2021.
- YRCC: Yellow River Water Regulation Plan, <http://yrcc.gov.cn/gzfw/yhgs/>, last access: 15 January 2026.
- YRCC: Yellow River Water Resources Bulletin (2020), yrcc.gov.cn/gzfw/szygb/202403/P020240321414822641155.pdf, last access: 15 January 2026.
- 880 YRCC: Executive Summary of the Yellow River Basin Comprehensive Planning 2012-2030, http://yrcc.gov.cn/zwzc/ghjh/202312/t20231220_365017.html, last access: 15 January 2026.
- Yuan, X., Ma, F., Wang, L., Zheng, Z., Ma, Z., Ye, A., and Peng, S.: An experimental seasonal hydrological forecasting system over the Yellow River basin - Part 1: Understanding the role of initial hydrological conditions, *Hydrol. Earth Syst. Sci.*, 20, 2437–2451, <https://doi.org/10.5194/hess-20-2437-2016>, 2016.
- 885 Yu, S.: Study on the path of population change in Henan Province to promote high-quality economic development, *Contemporary Economics*, 40, 75–84, 2023.
- Zhai, J.: Functions of Sanmenxia Reservoir in Flood Control Engineering System of the Yellow River, *Yellow River*, 26, 8-9, 32,2004.
- Zhang, F. and Cheng, X.: China's industrial water demand price elasticity: Based on simultaneous equations model, *Resources Science*, 44, 583–594, <https://doi.org/10.18402/resci.2022.03.12>, 2022.
- 890 Zhang, Q., Liu, J., Singh, V. P., Shi, P., and Sun, P.: Hydrological responses to climatic changes in the Yellow River basin, China: Climatic elasticity and streamflow prediction, *J. Hydrol. (Amst.)*, 554, 635–645, <https://doi.org/10.1016/j.jhydrol.2017.09.040>, 2017.
- Zhao, Y., Wang, H., Wang, Y., Niu, Z., Hu, Q., Zhao, F., Suo, L., Xu, Z., and Chen, X.: Efficient Utilization and Optimal Allocation of Agricultural Water Resources in the Yellow River Basin, *Chinese Journal of Engineering Science*, 25, 158-168,
895 <https://doi.org/10.15302/j-sscae-2023.04.013>, 2023.
- Zheng, H., Zhang, L., Zhu, R., Liu, C., Sato, Y., and Fukushima, Y.: Responses of streamflow to climate and land surface change in the headwaters of the Yellow River Basin, *Water Resour. Res.*, 45, 1–9, <https://doi.org/10.1029/2007WR006665>, 2009.
- Zheng, H., Lyle, C., and Wang, Z.: A comparative study of flexibility in water allocation in the context of hydrologic variability,
900 *Water Resources Management*, 28, 785–800, <https://doi.org/10.1007/s11269-014-0515-4>, 2014.
- Zhou, F., Bo, Y., Ciais, P., Dumas, P., Tang, Q., Wang, X., Liu, J., Zheng, C., Polcher, J., Yin, Z., Guimberteau, M., Peng, S., Ottlé, C., Zhao, X., Zhao, J., Tan, Q., Chen, L., Shen, H., Yang, H., Piao, S., Wang, H., and Wada, Y.: Deceleration of China's human water use and its key drivers, *Proc. Natl. Acad. Sci. U. S. A.*, 117, 7702–7711, <https://doi.org/10.1073/pnas.1909902117>, 2020.
- 905 Zhu, Q. and Sun, M.: Analysis of Horizontal Ecological Compensation Mechanism in the Yellow River Basin Based on Tax Revenue, *Yellow River*, 47, 24-29,55, <https://doi.org/10.3969/j.issn.1000-1379.2025.03.004>, 2025.

Zhu, T., Marques, G. F., and Lund, J. R.: Hydroeconomic optimization of integrated water management and transfers under stochastic surface water supply, *Water Resour. Res.*, 51, 3568-3587, <https://doi.org/10.1111/j.1752-1688.1969.tb04897.x>, 2015.