

*Supplement of*

# **Measurement report: Insights into seasonal dynamics and planetary boundary layer influences on aerosol chemical components in suburban Nanjing from a long-term observation**

Jialu Xu<sup>1,\*</sup>, Yingjie Zhang<sup>1,2,\*</sup>, Yuying Wang<sup>1</sup>, Xing Yan<sup>3</sup>, Bin Zhu<sup>1</sup>, Chunsong Lu<sup>1</sup>, Yuanjian Yang<sup>1</sup>, Yele Sun<sup>4</sup>, Junhui Zhang<sup>1</sup>, Xiaofan Zuo<sup>1</sup>, Zhanghanshu Han<sup>1</sup>, Rui Zhang<sup>5</sup>

<sup>1</sup>State Key Laboratory of Climate System Prediction and Risk Management/Key Laboratory for Aerosol-Cloud Precipitation of China Meteorological Administration/Special Test Field of National Integrated Meteorological Observation, Nanjing University of Information Science & Technology, Nanjing 210044, China

<sup>2</sup>School of Ecology and Nature Conservation, Beijing Forestry University, Beijing 100083, China

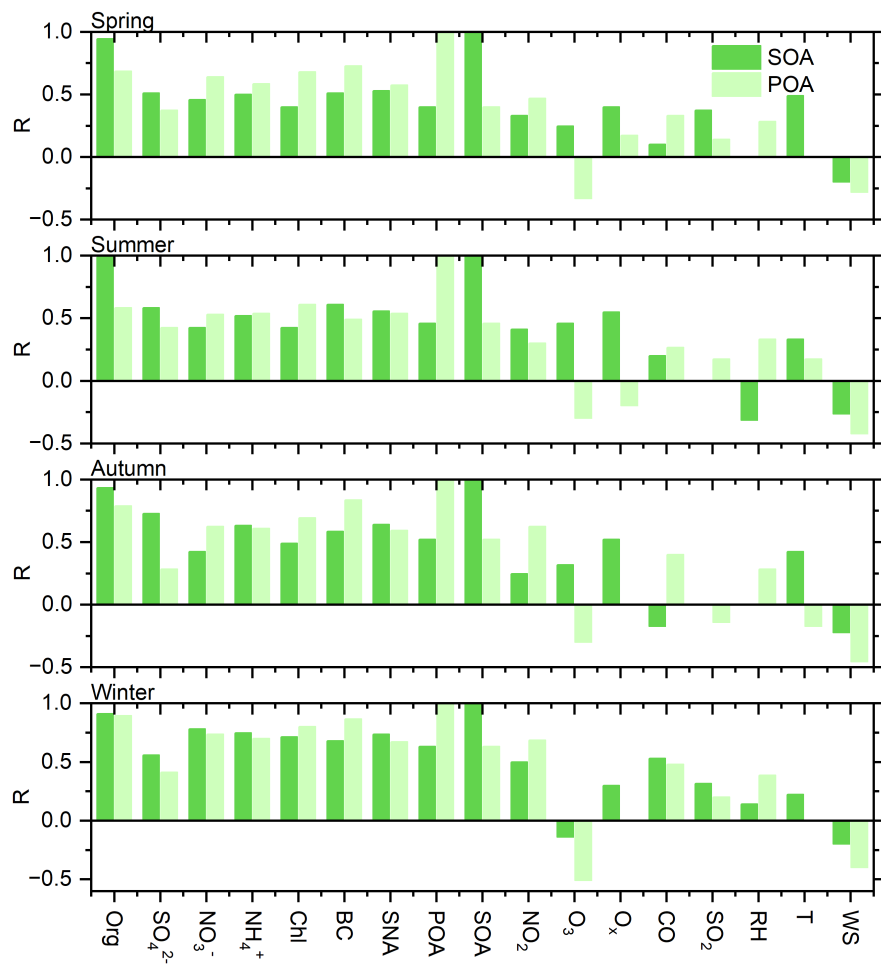
<sup>3</sup>Faculty of Geographical Science, Beijing Normal University, Beijing 100875, China

<sup>4</sup>State Key Laboratory of Atmospheric Environment and Extreme Meteorology, Institute of Atmospheric Physics, Chinese Academy of Sciences, Beijing 100029, China

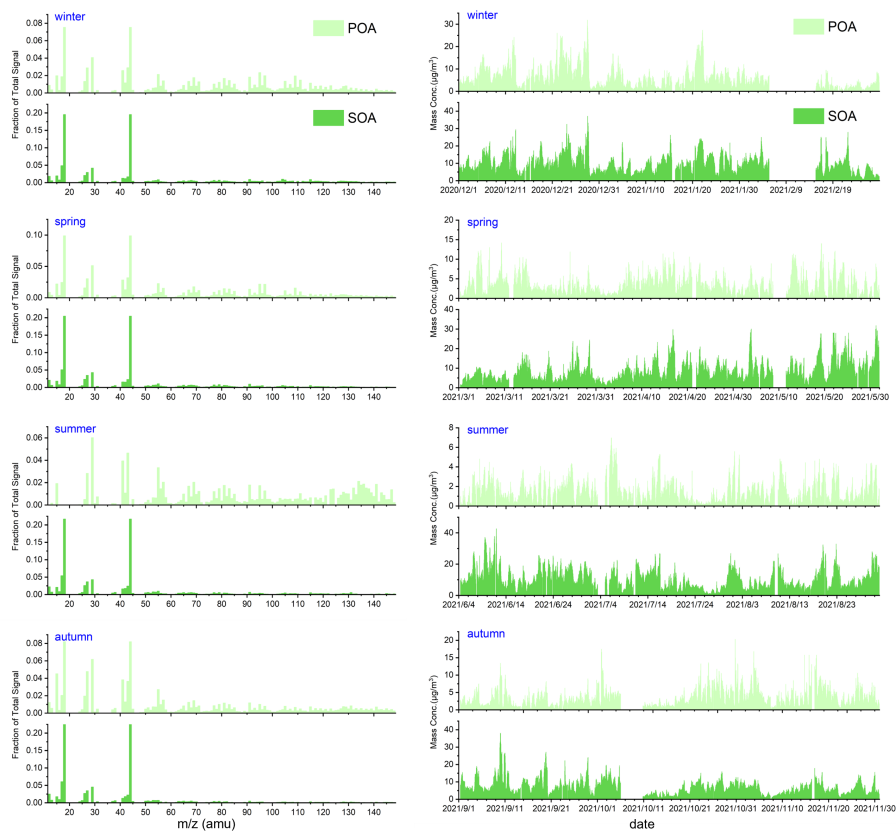
<sup>5</sup>Southern Marine Science and Engineering Guangdong Laboratory (Zhuhai), Guangdong Province Key Laboratory for Climate Change and Natural Disaster Studies, School of Atmospheric Sciences, Sun Yat-sen University, Guangzhou 519082, China

\*These authors contributed equally to this work.

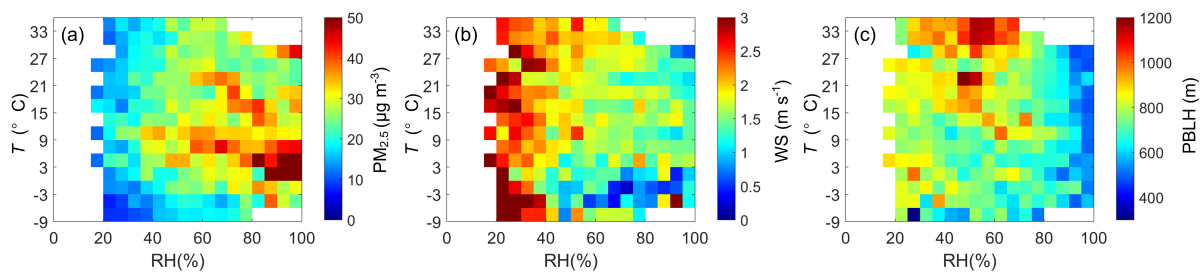
*Correspondence to:* Yuying Wang (yuyingwang@nuist.edu.cn)



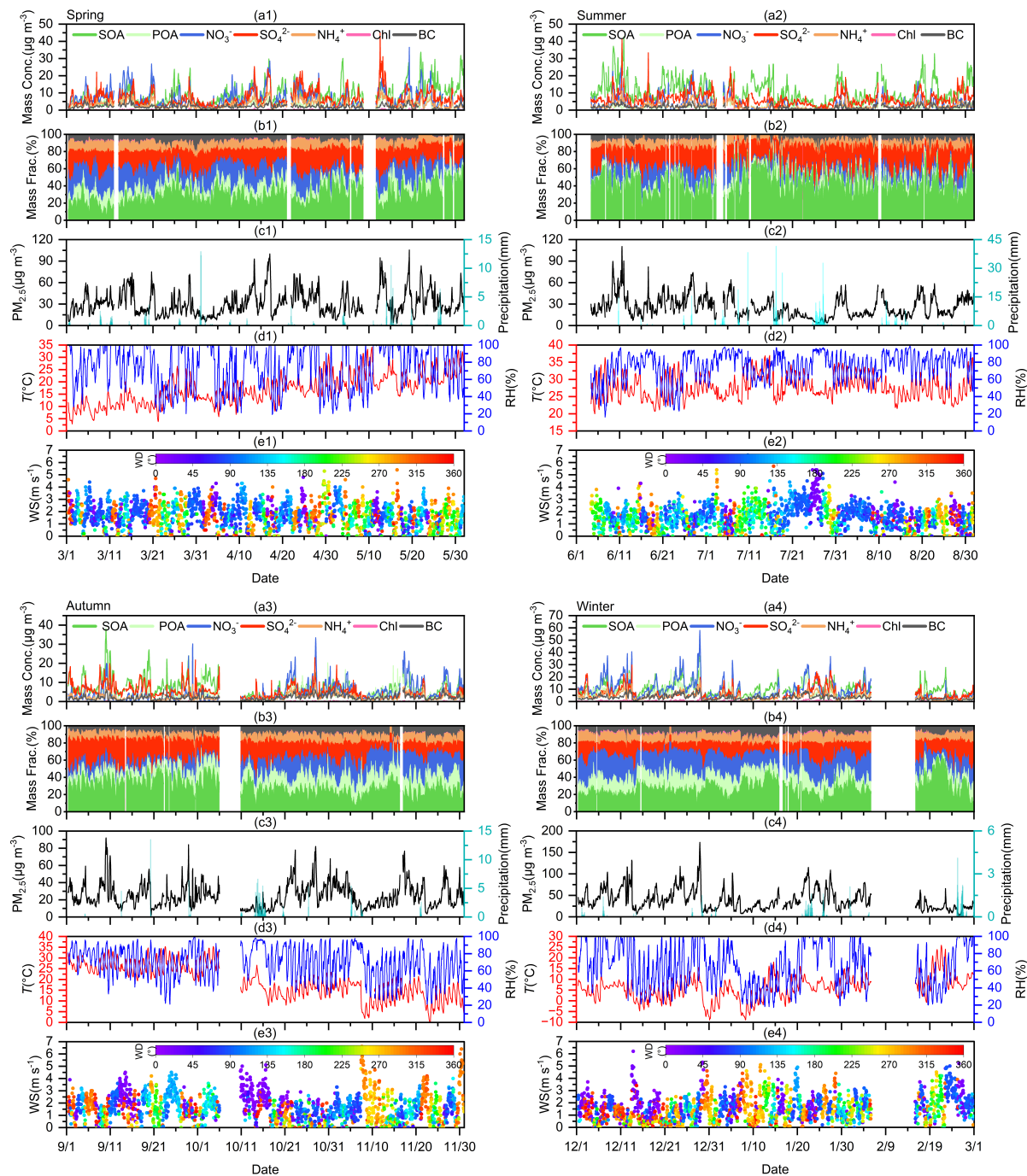
**Figure S1: Correlation coefficients between POA, SOA and different tracers during four seasons.**



**Figure S2: Mass spectral profiles and time series of POA and SOA in different seasons.**



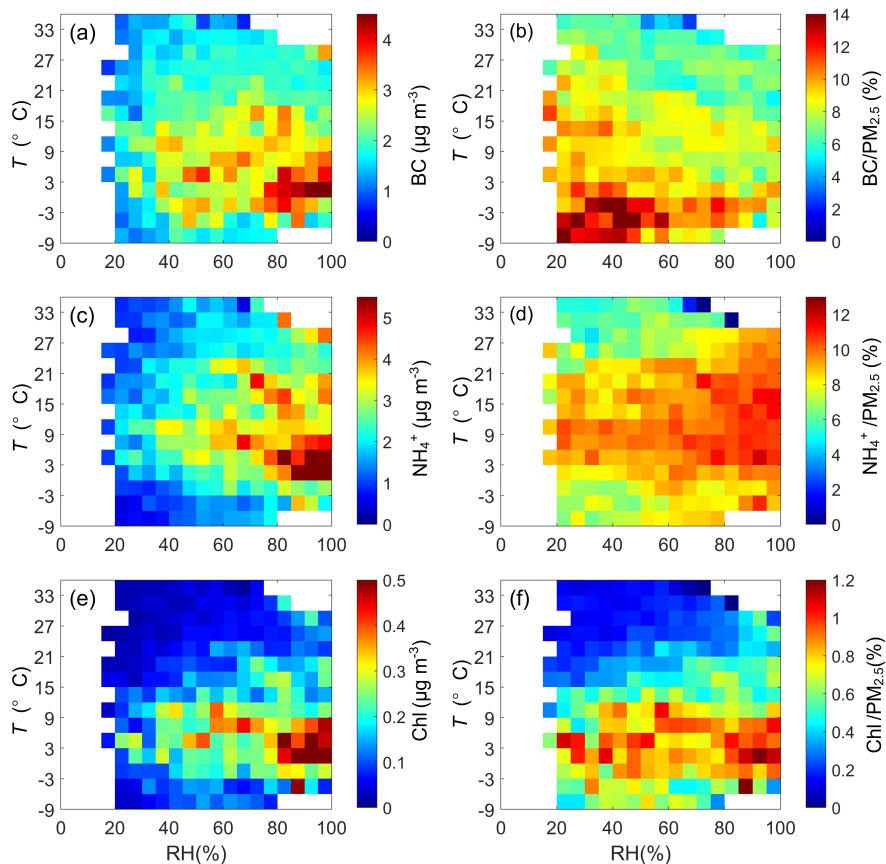
**Figure S3: RH/T dependence of (a)  $\text{PM}_{2.5}$  mass concentrations, (b) wind speed and (c) PBLH for the entire period. The data are grouped into grids with increments of RH and T being 5 % and 3  $^{\circ}\text{C}$ , respectively. Grid cells with the number of data points fewer than 10 are excluded.**



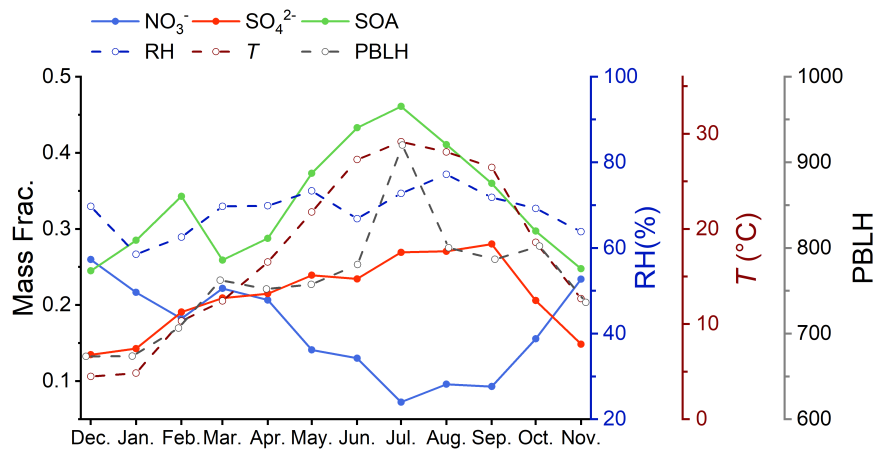
**Figure S4: Time series of (a) mass concentration of diverse chemical components of  $PM_{2.5}$ , (b) mass fraction of diverse chemical components of  $PM_{2.5}$ , (c) mass concentration of  $PM_{2.5}$  (left y axis, black lines) and precipitation (right y axis, cyan columns), (d)**



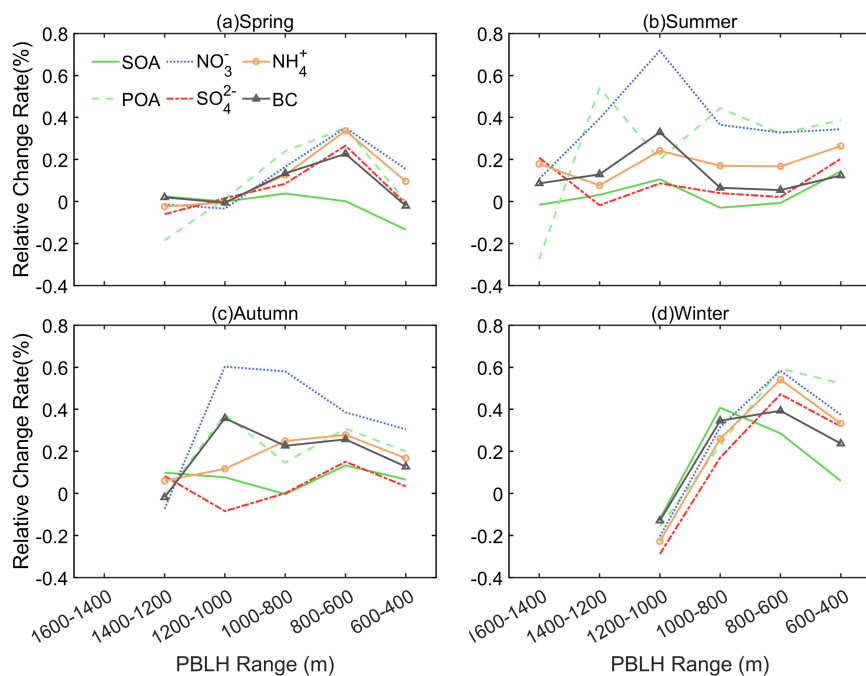
temperature ( $T$ , left y axis, blue lines) and relative humidity (RH, right y axis, red lines), (e) wind direction and wind speed (color scale) during four seasons



**Figure S5: RH /T dependence of mass concentrations and mass fractions of BC, ammonium, and chloride for the entire period. The data are grouped into grids with increments of RH and  $T$  being 5 % and 3 °C, respectively. Grid cells with the number of data points fewer than 10 are excluded.**



**Figure S6: Monthly average mass fractions of SOA, sulfate and nitrate, temperature( $T$ ), relative humidity (RH), and PBLH.**



**Figure S7: The relative change rate of PM<sub>2.5</sub> chemical components with the decrease of PBLH. The data are grouped in PBLH bins with 200 m increments. Bins with the number of data points fewer than 10 are excluded.**