



# Reflection seismic imaging of the manganese mineralisation in the Griqualand West Basin, South Africa

Mpofana Sihoyiya<sup>1</sup>, Musa S. D. Manzi<sup>1</sup>, Ian Jame<sup>1</sup>, Michael Westgate<sup>1</sup>

<sup>1</sup>School of Geosciences, University of the Witwatersrand, Johannesburg, Private Bag, Wits, 2050, Republic of South Africa.

5 Correspondence to: Mpofana Sihoyiya (mpofana.sihoyiya@wits.ac.za)

**Abstract.** The Kalahari Manganese Field (KMF) in the Northern Cape Province of South Africa hosts some of the world's richest manganese deposits, largely concealed beneath thick Cretaceous to Cenozoic Kalahari Group sediments. To improve imaging of the concealed Transvaal Supergroup strata, a high-resolution 2D reflection seismic survey was conducted in November 2023 across the Severn farm area. The survey comprised five profiles totalling 18.9 km, acquired using 5 Hz 1C geophones connected to wireless nodes, enabling effective burial beneath loose aeolian sand for improved coupling. A compact 500 kg drop hammer, mounted on a Bobcat, served as the seismic source, offering excellent manoeuvrability across challenging sandy terrain. Shot spacing was 10 m, with four vertical stacks per shot to enhance signal-to-noise ratio, yielding nearly five million seismic traces. Refraction tomography using first-break travel times provided near-surface P-wave velocity models, revealing variable Kalahari sediment thicknesses ranging from 20 to 70 m and bedrock velocities of ~5500 m/s associated with Karoo Supergroup strata. Despite the challenges posed by the thick sand cover, lithified calcrete horizons within the Kalahari sediments significantly aided seismic energy propagation. Post-stack Kirchhoff time migration imaging revealed nine laterally continuous high-amplitude reflectors between 0.05 and 3.42 km depth, corresponding to major stratigraphic boundaries from the Kalahari Group down to the Ghaap Group. Of particular interest is the moderate-amplitude reflection pair at 1.05–1.35 km depth, interpreted as the Hotazel Formation, the primary manganese host. This study demonstrates that, when appropriately designed, reflection seismic imaging can be a powerful tool for delineating deep mineralized strata beneath thick sedimentary cover in arid environments.

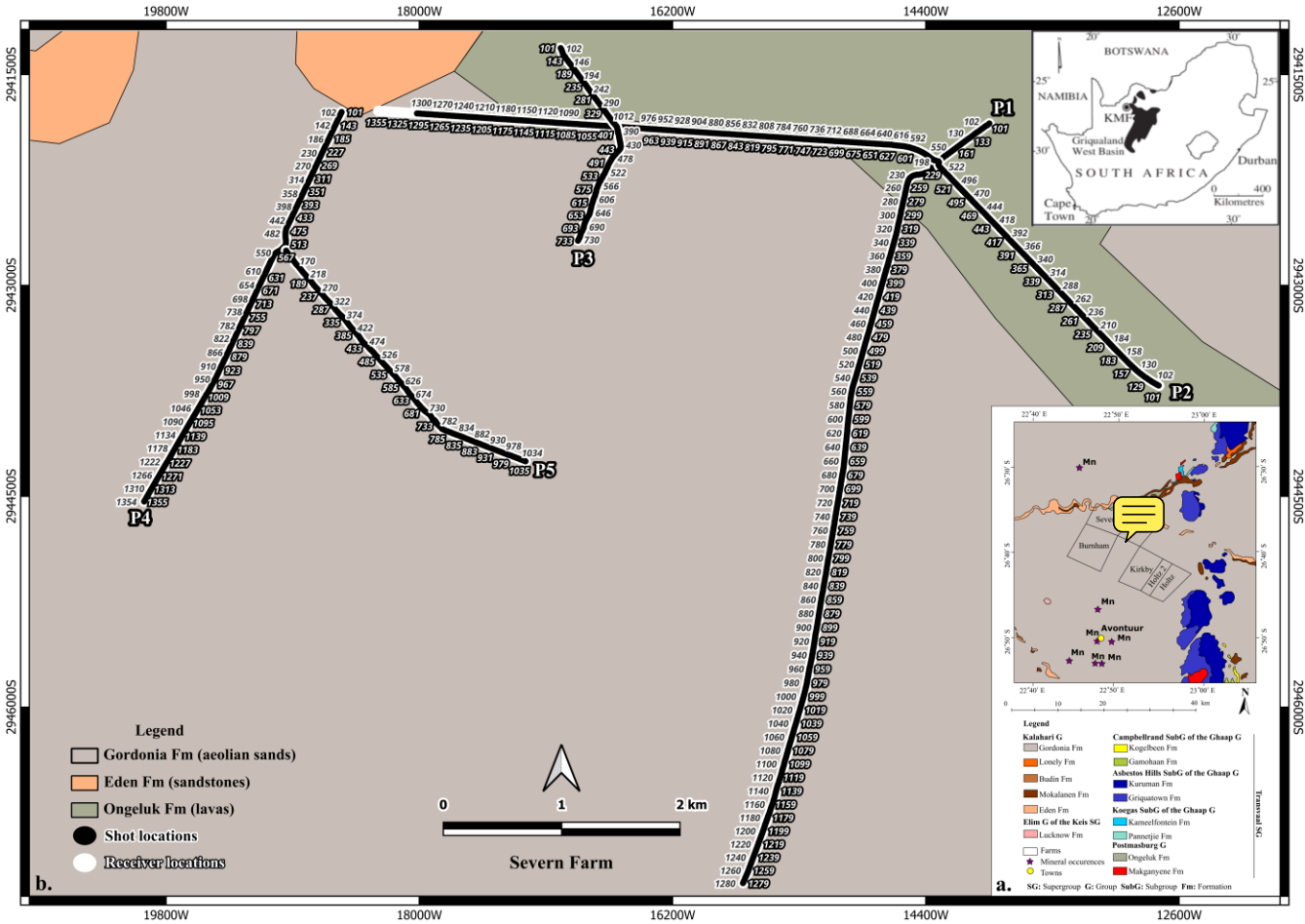
## 1 Introduction

The Paleoproterozoic Kalahari Manganese Field (KMF) of South Africa hosts the world's largest known Manganese (Mn) deposits, accounting for approximately 70 % of the global Mn resources ( $\approx$  5 billion tonnes of ore) (Cairncross and Beukes, 2013; Beukes et al., 2016; Schnebele, 2023). The initial discovery of these manganese-bearing lithologies was first documented by Rogers (1907). However, due to the remote location and logistical challenges posed by the overlying Kalahari sands and lack of water resources, large-scale exploitation of the deposit was delayed for several decades. Strategic interest in manganese surged during World War II due to global shortages, prompting renewed geological exploration in the region. This led to the



opening of the Black Rock Mine by Assmang (Associated Manganese Mines of South Africa) in 1940, followed by the  
30 initiation of underground mining operations in 1942 (Cairncross and Beukes, 2013; Beukes et al., 2016).  
During the 1950s and 60s, increased geological interest and systematic exploration efforts in the KMF led to the discovery of  
additional high-grade manganese ore bodies near the town of Hotazel in the Northern Cape province. These discoveries marked  
a pivotal shift in the regional mining landscape. Exploration drilling and geophysical surveys confirmed the economic viability  
of the deposits, particularly those hosted within the Hotazel Formation of the Postmasburg Group (Beukes et al., 2016). This  
35 culminated in the establishment of the Hotazel Mine, strategically located near the sub-outcrop of the formation. Shortly  
thereafter, the Mamatwan Mine was developed in 1960, becoming South Africa's first major open-pit manganese operation.  
Unlike the Hotazel deposit, which is known for more structurally controlled and hydrothermally upgraded ore, the Mamatwan  
deposit is characterized by thick, laterally extensive, and relatively flat-lying stratiform ore bodies. Although the ore grade at  
Mamatwan is lower (typically ~30–40 wt% Mn), its massive tonnage and ease of extraction make it highly suitable for large-  
40 scale open-cast mining. The consistent bedding and shallow depth of burial facilitated the adoption of mechanized mining  
techniques, making Mamatwan a cornerstone in the growth of the region's manganese industry. This development not only  
expanded South Africa's share of the global manganese supply but also laid the foundation for long-term infrastructure  
investments, including roads, railways, and processing facilities that supported subsequent mining operations in the KMF  
(Cairncross and Beukes, 2013; Beukes et al., 2016).  
45 From the 1980s onward, exploration in the KMF has intensified, characterized by both expansion and diversification. During  
the 1980s, increased geological reassessment, driven by structural and hydrothermal models, facilitated the discovery of high  
grade oxide ore near the N'Chwaning and Gloria mines, expanding the known mineralized footprint of the field (Beukes et al.,  
2016). In the early 2000s, Assmang further modernized operations by replacing the original N'Chwaning I with successive  
shafts (N'Chwaning II in 2004 and III in 2006) (Cairncross and Beukes, 2013). Simultaneously, legacy operations received  
50 renewed attention. The Smartt Mine, initially developed in 1959, was reopened in 2008 under new ownership, reflecting  
revived investment interest in previously mined areas (Havenga, 2014). In 2004, the South African government enacted the  
Mineral and Petroleum Resources Development Act (MPRDA), which transferred mineral rights from private to state  
ownership. This legislative shift catalyzed a surge in mining and prospecting licenses, expanding the number of active  
manganese producers in the KMF from two to at least seven by the 2010s (Cairncross and Beukes, 2013).  
55 In recent years, advanced geochemical and isotopic studies have continued to broaden the scientific scope of KMF research  
(De Kock et al., 2020; Vafeas et al., 2022). In November 2023, a high-resolution 2D reflection seismic survey was conducted  
along five carefully planned profiles across the Severn farm area (Fig. 1a and 1b) over a two-week period. The cost-effective  
seismic surveys aimed to achieve detailed delineation of the stratigraphic sequence within the KMF, with particular focus on  
mapping the geometry and continuity of the Hotazel Formation manganese-bearing units. Additionally, the seismic data  
60 acquisition sought to identify and characterize key structural features such as faults, folds, and fractures that potentially  
influence manganese mineralization and ore body distribution. The seismic technique leveraged a 500 kg mechanical drop  
hammer as the seismic source and utilized 1C geophones, enabling high spatial resolution imaging despite challenging surface

conditions dominated by unconsolidated Kalahari sands and anthropogenic noise. A detailed geological interpretation of these seismic lines is documented by Jogee et al. (2025).



**Figure 1: Location and layout of the reflection seismic profiles acquired in the Severn farm area within the Kalahari Manganese Field (KMF), Northern Cape Province, South Africa. (a) Regional geological map of the study area showing the distribution of major lithostratigraphic units, modified after Jogee et al. (2025). The map highlights the extensive Kalahari cover. (b) Detailed layout of the five 2D reflection seismic profiles acquired across the Severn property. Shot and receiver locations are overlain on the geological map, illustrating the spatial distribution of the acquisition geometry in relation to mapped geological features.**

Complementing the seismic data, an unmanned aerial vehicle (UAV) magnetic survey was undertaken in March and June, 2024 (Fig. 2a and 2b) across the study area. This magnetic survey, conducted using a high-sensitivity magnetometer mounted on a UAV, was designed to detect variations in the earth's magnetic field caused by contrasting lithologies and structural discontinuities. Although magnetic data were acquired to support broader geophysical interpretation, this study focuses primarily on the seismic surveys. The magnetic results are not interpreted here but are intended to be integrated in a future study. Together, these datasets contribute to a comprehensive geophysical framework aimed at improving our understanding of the structural controls on manganese mineralization in the KMF and to inform future exploration efforts in the region.

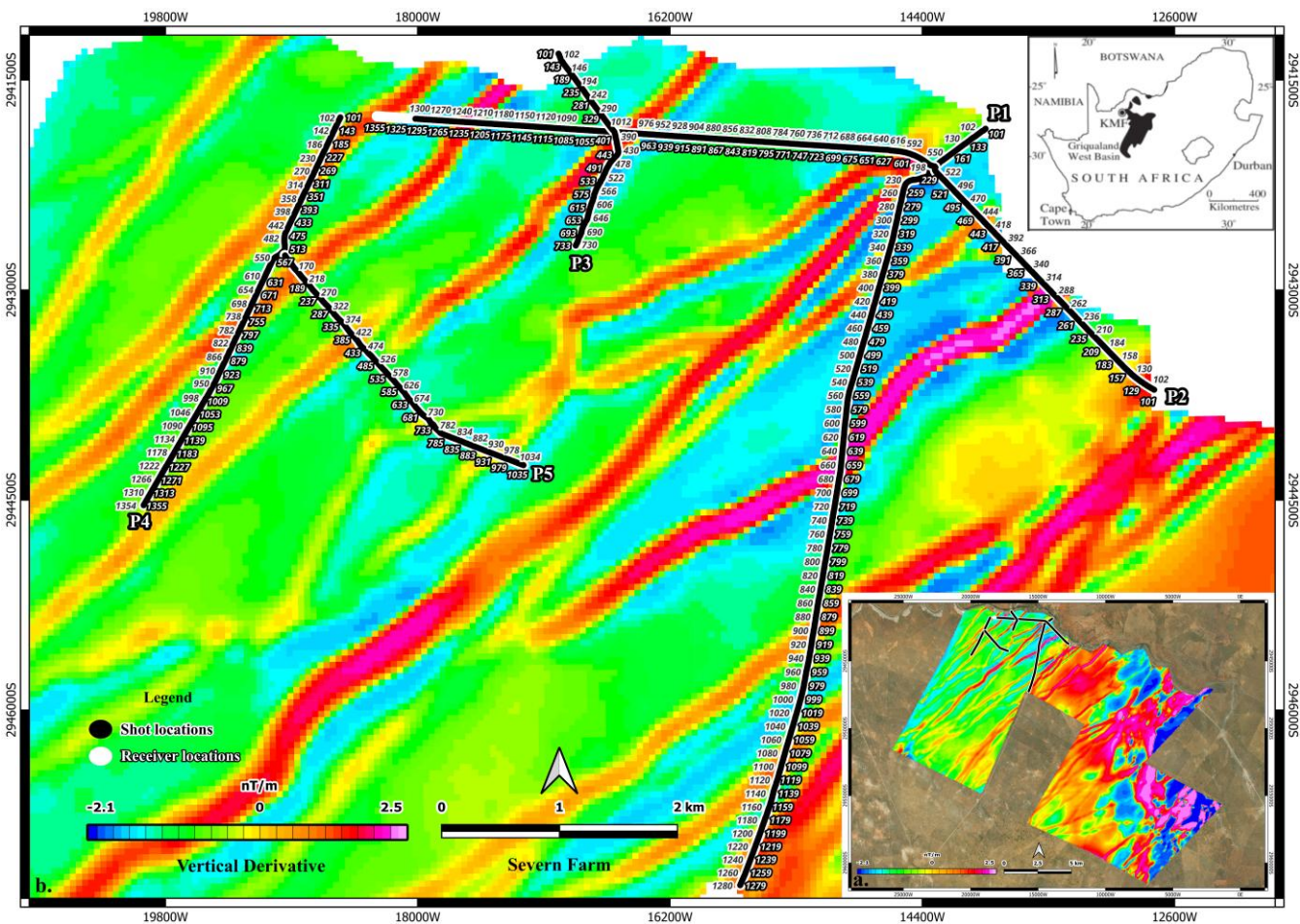


Figure 2: Seismic acquisition layout in relation to magnetic anomalies across the Kalahari Manganese Field (KMF). (a) First vertical derivative (IVD) of the Total Magnetic Intensity (TMI) map with 2D reflection seismic profiles overlain, illustrating the correlation between subsurface magnetic structures and the seismic survey lines. (b) Zoomed-in view of the Severn farm area showing the detailed layout of the 2D seismic profiles with shot and receiver positions superimposed on the magnetic map. The map highlights localized magnetic anomalies associated with subsurface lithological contrasts relevant to manganese exploration.

## 2 Geological Setting

The KMF is situated in the Northern Cape Province of South Africa, approximately 650 km southwest of Johannesburg (Beukes et al., 2016). These extensive ore bodies are hosted in the Hotazel Formation, a key unit of the Paleoproterozoic Transvaal Supergroup. Within the Northern Cape, the Transvaal Supergroup was deposited in the Griqualand West Basin and is subdivided into the Ghaap and Postmasburg Groups, which together form a thick succession of marine and volcanic strata. These include carbonates, banded iron formations (BIFs), shales, glacial diamictites, basaltic lava flows, and significant manganese ore horizons (Walraven and Martini, 1995; Eriksson et al., 2006). The Transvaal Supergroup is unconformably





overlain by the Meso- to Neoproterozoic sedimentary and volcanic sequences of the Keis Supergroup, which themselves are overlain unconformably by the Phanerozoic sediments of the Karoo Supergroup (Beukes et al., 2016; Coetzee et al., 2024).

The Hotazel Formation, part of the Postmasburg Group, is of particular geological and economic importance as it hosts the manganese ore of the KMF. This formation comprises a series of three manganese-rich layers of variable thickness, each interbedded with BIFs, forming a cyclic sedimentary sequence interpreted as the product of shallow marine depositional environments influenced by redox fluctuations (Beukes et al., 2016; Tsikos et al., 2003). These cycles reflect alternating conditions of iron and manganese precipitation and are critical for understanding the metallogeneses of the region.

Despite its vast mineral potential, the Transvaal Supergroup, including the Hotazel Formation, is largely obscured beneath a widespread cover of younger Cretaceous to Cenozoic sediments that constitute the Kalahari Group. These overlying units are part of the broader Kalahari Basin and comprise unconsolidated to semi-consolidated aeolian sand, pedogenic calcrete, fluvial gravels, and lacustrine clays (Thomas and Shaw, 1991; Haddon and McCarthy, 2005; Beukes et al., 2016). The Kalahari sands, derived through aeolian reworking of older sediments under prevailing arid to semi-arid conditions, form a near-continuous blanket across much of southern Africa and locally reach thicknesses exceeding 100 meters. These sands were transported by ancient river systems and subsequently reworked by wind, resulting in widespread dune fields and sheet sands that dominate the landscape (Lancaster, 2000; Thomas and Shaw, 2002).

In semi-arid regions like the Northern Cape, the upper portions of the Kalahari sedimentary cover have undergone pedogenic lithification to form calcrete, a calcium carbonate-rich indurated layer that results from the accumulation and precipitation of carbonate from percolating meteoric waters (Verboom, 1974; Bond, 1948). These calcrete horizons not only influence surface hydrology and soil development but also significantly affect subsurface geophysical properties. The basal Kalahari sediments, typically consisting of fluvial gravels and silty to clay-rich lacustrine deposits, were emplaced during earlier wetter climatic phases and often act as aquitards, impeding vertical groundwater flow (Pachero, 1976; du Plessis, 1993).

From a geophysical perspective, the nature of the Kalahari cover is particularly relevant. While unconsolidated sands typically scatter and attenuate seismic energy, making it difficult to image deeper stratigraphy, the presence of indurated calcrete layers within the study area has proven advantageous (White et al., 2009). These layers form a more coherent and consolidated near-surface medium that facilitates the transmission of seismic waves, enhancing the depth of penetration and improving resolution of the concealed mineralized horizons (Sheriff and Geldart, 1995). This has been crucial in enabling the acquisition of high-resolution seismic reflection data using a small seismic source in otherwise challenging near-surface environments.

However, the extensive cover of the Kalahari Group still poses a major obstacle to traditional geological mapping and surface-based exploration methods, as it obscures the outcrop expression of the underlying mineralized Transvaal Supergroup strata (Fig. 1b). As a result, indirect methods such as high-resolution seismic reflection profiling, UAV-based magnetic surveys, and satellite remote sensing are indispensable tools for delineating structural features and stratigraphic boundaries beneath the cover. These methods allow for improved subsurface characterization and targeting of manganese mineralization within the Hotazel Formation.



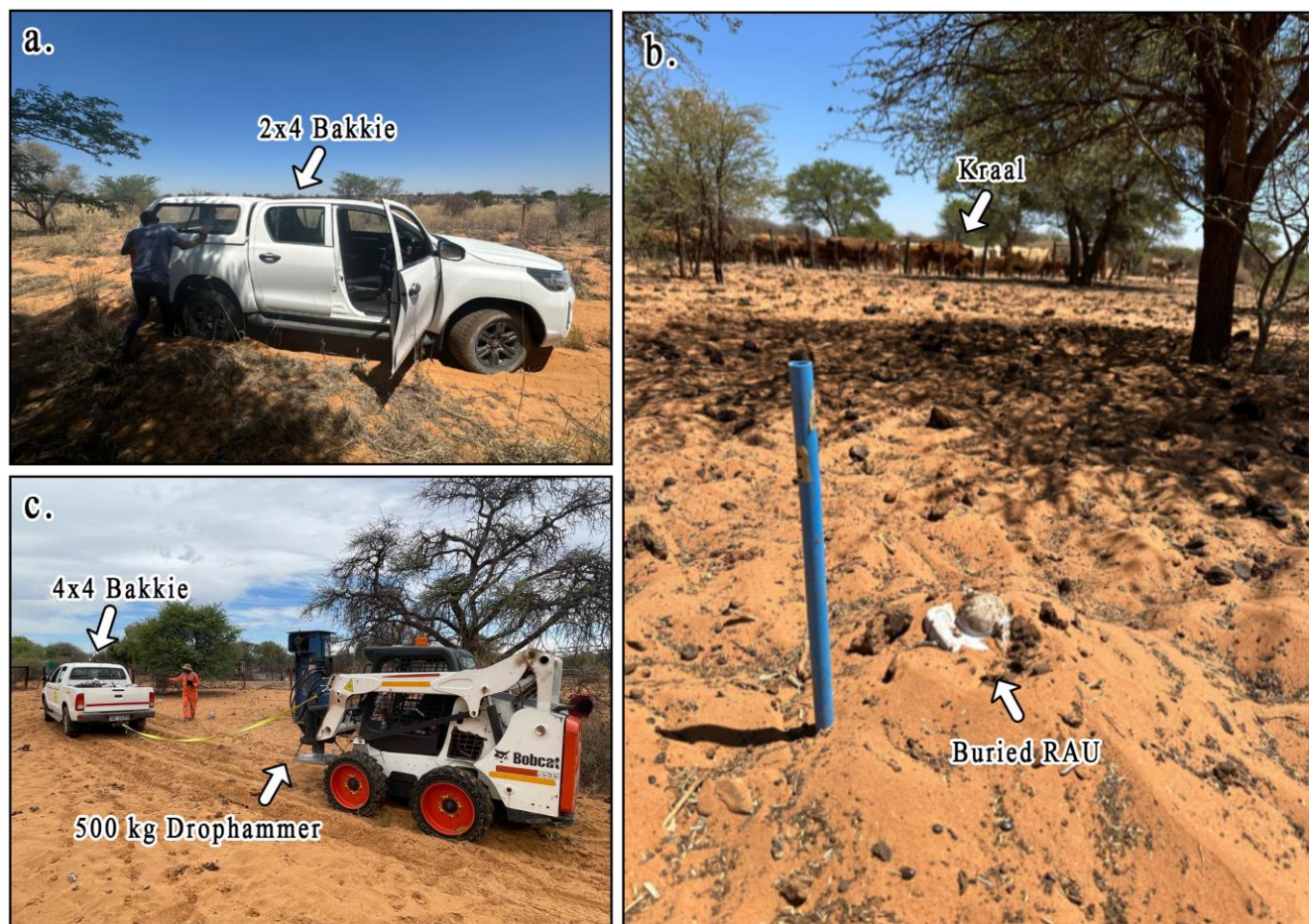
125 The manganese deposits of the KMF are confined to the Hotazel Formation of the Transvaal Supergroup, which lies between  
the mafic Ongeluk lavas and the overlying Mooidraai dolomites. Composed of finely laminated manganese- and iron-rich  
banded iron formations, the Hotazel Formation hosts dense and competent ore minerals such as braunite, hausmannite, and  
jacobsonite (Beukes et al., 2016; Tsikos and Moore, 1997). Although direct petrophysical measurements were unavailable, the  
high densities and moderate to high seismic velocities typical of these mineral assemblages are expected to produce strong  
130 impedance contrasts with adjacent units. These contrasts enhance reflection seismic responses, especially where mineralized  
zones are thickened or structurally focused, making the Hotazel Formation a suitable target for seismic imaging in the KMF.  
In summary, the KMF is not only a world-class manganese province in terms of resource size and ore quality but also presents  
unique challenges and opportunities for exploration due to its burial beneath a complex, semi-consolidated Kalahari  
sedimentary cover. Understanding the stratigraphic and geotechnical properties of this overburden is critical for the success of  
135 ongoing and future mineral exploration programs in the region.

### 3 Seismic Data

#### 3.1 Acquisition

Five 2D ~~high-resolution~~ reflection seismic profiles were collected in the Severn farm with a combined length of 18,930 m (Fig.  
1b) (Jogee et al., 2025). A 500 kg drop hammer mounted on a compact Bobcat utility vehicle was selected as the seismic  
140 source, offering several operational and technical advantages that made it especially suitable for the project area. The small  
and highly manoeuvrable nature of the Bobcat allowed for efficient movement across the loose, sandy terrain typical of the  
Kalahari region, significantly improving data acquisition time. In areas with sparse vegetation or minor topographic variations,  
the Bobcat became bogged down in thick sand; the lightness and compactness of the setup allowed it to be easily extracted  
using a standard 4×4 vehicle (bakkie), minimizing downtime and maintaining acquisition continuity (Fig. 3). The surface  
145 conditions in the study area were not favourable for small 2×4 vehicles, which frequently became stuck in the loose, dry  
Kalahari sand due to insufficient traction and clearance (Fig. 3a).

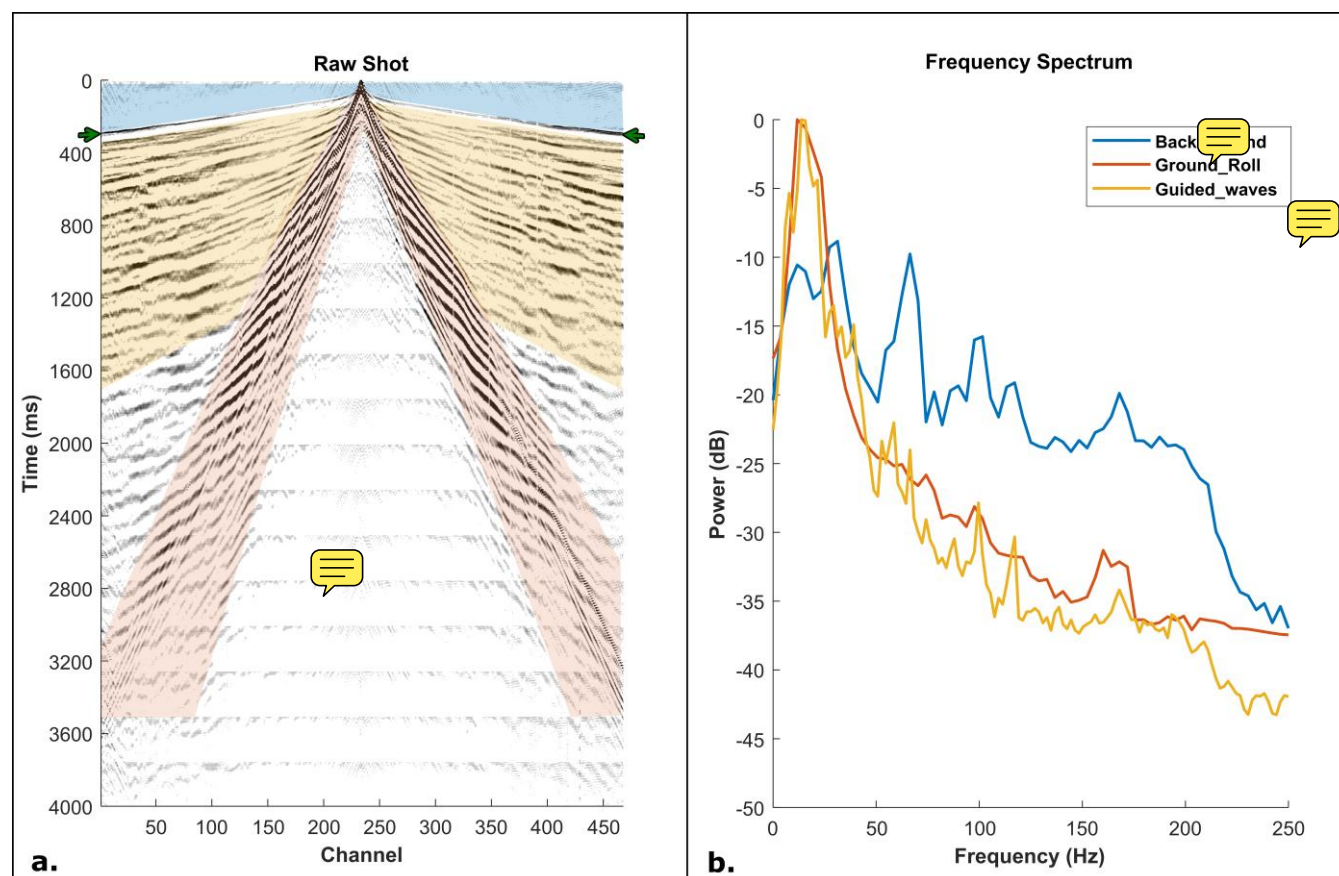
Data were recorded using 1C, 5 Hz geophones connected to wireless nodes, which enabled efficient burial beneath the loose,  
dry surface sand to improve geophone-ground coupling and data fidelity (Fig. 3b). The receivers were buried not only to  
improve coupling in the loose surface sand but also to protect the geophone cables from livestock present on the farm, which  
150 were known to chew through exposed wiring. Receiver spacing was 5 m in the central part of the farm (P4 and P5), where the  
seismic source was continuously pulled due to the presence of thick, loose sand (Fig. 3c), and 10 m along main roads (P1 to  
P3) (Jogee et al., 2025). Shots were fired every 10 m, with four records stacked at each shot point to enhance signal-to-noise  
ratio, yielding 1,899 shot points and 4,943,097 traces (Jogee et al., 2025).



155 **Figure 3: Field deployment of seismic acquisition equipment under challenging terrain conditions in the Severn farm area. (a) A 2×4 bakkie stuck in soft Kalahari sand, highlighting the need for specialized equipment for mobility. (b) A buried 5 Hz vertical geophone connected to a wireless node (RAU), positioned within the farm to prevent livestock interference. (c) A 500 kg drop hammer mounted on a compact Bobcat and towed by a 4×4 bakkie for improved manoeuvrability across sandy terrain.**

160 An example shot gather from profile P5 is presented in Fig. 4a, showing well-defined first arrivals (green arrows in Fig. 4a), while the corresponding frequency spectrum (Fig. 4b) reveals dominant low-frequency energy in the range of 8 to 14 Hz. The background (shaded blue in Fig. 4a), ground roll (shaded orange in Fig. 4a), and guided wave (shaded yellow in Fig. 4a) energy are highlighted in the shot gather, illustrating the different types of waveforms captured during acquisition.





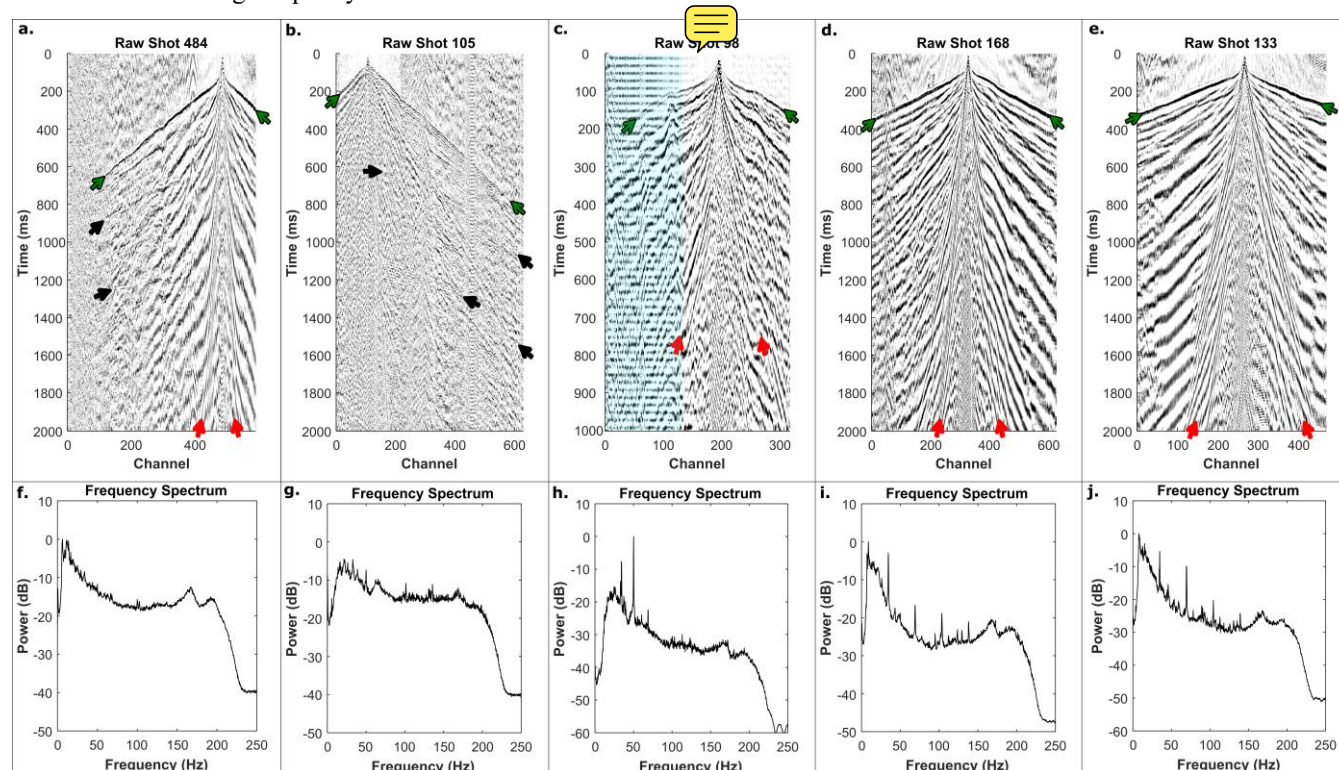
**Figure 4: a) Example shot gather from Profile 5 illustrating key components of the recorded wavefield. Background noise is shaded in blue, guided waves in yellow, and ground roll in orange, as well as clear first breaks shown by the green arrows. (b) Corresponding frequency spectrum graph showing dominant low-frequency energy concentrated between 8–14 Hz, characteristic of surface wave propagation in the unconsolidated near-surface Kalahari sediments.**

A variable presence of low-frequency energy (8–14 Hz) is observed across the five seismic profiles, with Profiles 1 to 3 exhibiting a relatively weaker presence of this signal, while Profiles 4 and 5 are almost entirely dominated by it. Fig. 5 presents examples of the shot gathers from each profile with trace amplitudes balanced for visualisation, demonstrating this variation in low-frequency content. In Profiles 1 (Fig. 5a) and 2 (Fig. 5b), coherent reflected wavefield energy is visible (indicated by black arrows). These profiles reveal relatively clear seismic events, suggesting a favourable signal-to-noise ratio in those areas. In contrast, Profile 3 is affected by strong 50 Hz electrical noise originating from overhead power lines, which is shaded blue in the Fig. 5c. This interference obscures a significant portion of the recorded signal. For Profiles 4 (Fig. 5d) and 5 (Fig. 5e), the reflected wavefield is masked by dominant low-frequency energy, possibly linked to surface wave propagation through unconsolidated or heterogeneously consolidated sand and calcrete layers. This strong low-frequency content significantly masks the deeper reflectors, complicating processing and interpretation. The ground roll energy is highlighted by red arrows in the shot gathers. The associated frequency spectra for each profile are shown in Figs 5f to 5j. These observations underscore





the spatial heterogeneity in near-surface conditions and highlight the importance of adaptive processing strategies to suppress noise and enhance signal quality.



**Figure 5: Example raw shot gathers from seismic profiles 1 to 5 (a–e, respectively). Each panel highlights characteristic wavefield components: clear first arrivals (green arrows), reflected wavefield energy (black arrows), ground roll (red arrows), and 50 Hz electrical noise (shaded blue). The corresponding frequency spectrum graphs are shown in panels (f–j), illustrating variations in dominant frequency content across the survey lines.**

### 3.2 Processing

The reflection seismic data were processed using a conventional workflow, incorporating key stages such as first-break picking, refraction statics correction, noise attenuation, deconvolution, velocity analysis, pre-stack migration, and post-stack enhancement. This systematic approach ensured improved signal-to-noise ratio, accurate positioning of reflection events, and enhanced resolution of subsurface features critical for geological interpretation. In summary, the seismic data processing workflow involved automated first-break picking followed by manual refinement, with calculated refraction statics yielding RMS errors up to 5 ms and data corrected to a final datum elevation per profile. Ground roll noise, dominant in the shot domain, was effectively suppressed using a radial trace filter, while linear noise and airwaves were attenuated using horizontal median and airwave filters, respectively. Reflection quality was enhanced through Wiener deconvolution and bandpass filtering (10–70 Hz), followed by multiple rounds of velocity analysis and surface-consistent residual statics. Isotropic Kirchhoff pre-stack time migration was applied to accurately position reflections, and post-stack processing included spherical



divergence correction, Tau-P coherency filtering, and spectral balancing to further improve reflection continuity and resolution for geological interpretation (Jogee et al., 2025).

### 3.3 Refraction Tomography

200 To investigate the thickness and lateral variability of the Kalahari Group sediments across the Severn project area, refraction tomography was applied using first-arrival travel times extracted from the surface seismic dataset. This method provided robust near-surface velocity models that offer critical insights into both the subsurface structure and material properties that influence seismic wave propagation. The analysis was conducted using a nonlinear travel time inversion algorithm developed by Zhang and Toksöz (1998), which employs ray tracing to iteratively match synthetic and observed traveltimes, refining the subsurface  
205 velocity model. The initial model consisted of three layers, constructed by fitting the observed gradients in the picked P-wave first arrivals, and was refined through successive iterations to minimize root-mean-square (RMS) errors between observed and calculated travel times.

Figure 6 shows the tomographic P-wave velocity models for seismic profiles 1 to 5, along with their associated ray paths. The ray coverage illustrates the distribution and density of seismic rays used in the inversion process, highlighting areas of good  
210 resolution within the velocity models. These models clearly delineate the low-velocity near-surface layers corresponding to the Kalahari Group sediments and the high-velocity Karoo Supergroup bedrock interface, providing key constraints on sediment thickness and lateral variability across the study area.

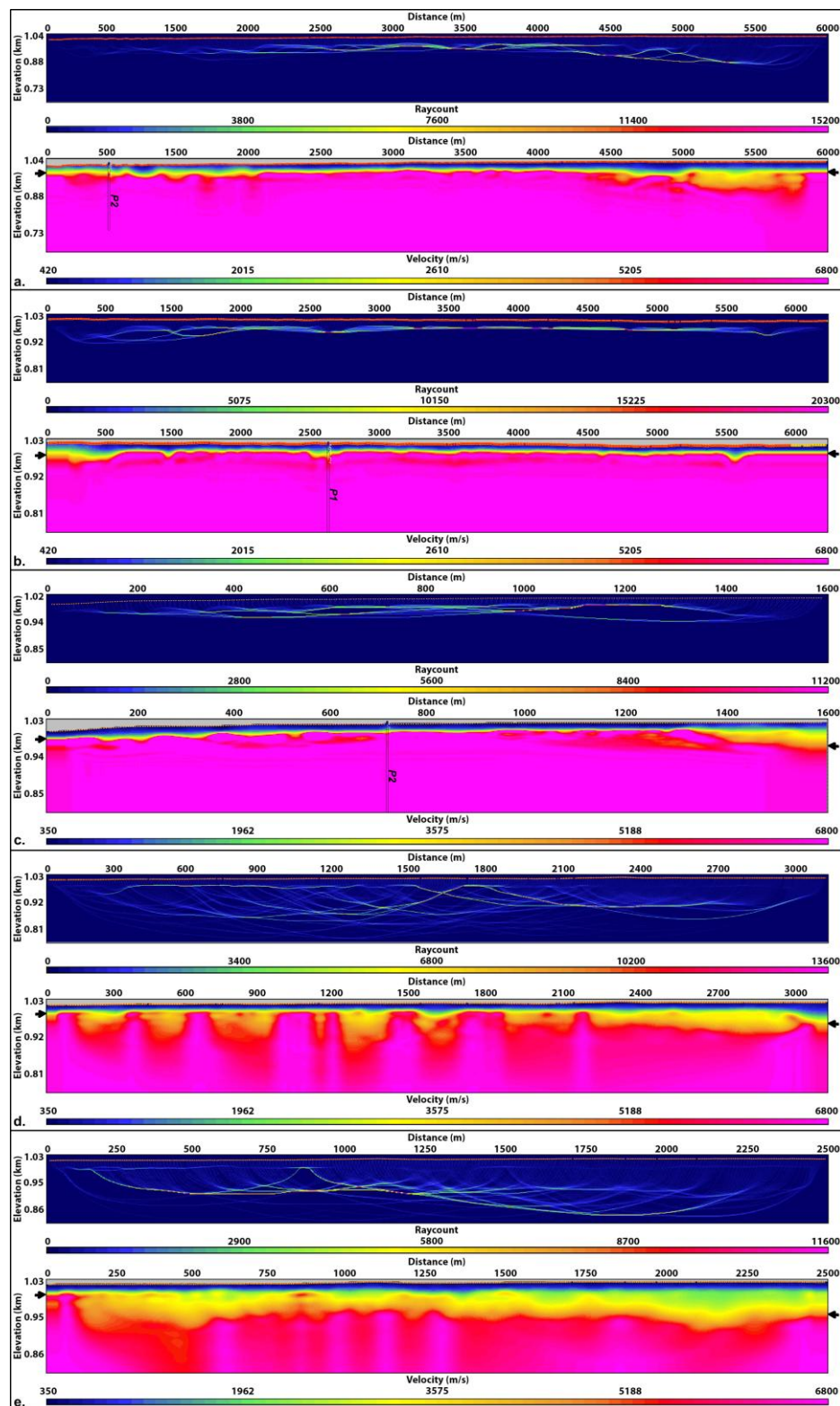
The velocity models generated from this tomographic inversion revealed significant spatial variations in the thickness and seismic velocities of the Kalahari Group cover sediments (black arrows in Fig. 6). Profiles 1, 2, and 3 were acquired along  
215 compacted gravel roads, where the Kalahari Group cover is comparatively thin, ranging from approximately 20 to 40 meters in total thickness. Specifically, Profile 1 has an estimated total Kalahari cover thickness of around 40 meters (Fig. 6a), of which approximately 20 meters comprises aeolian sand (Fig. 6a). Profiles 2 and 3 each show a reduced total Kalahari thickness of approximately 20 meters, with 10 meters of aeolian cover (Fig. 6b, c). These thinner sediment packages and the presence of compacted road surfaces facilitated better coupling of the geophones and higher-frequency seismic wave penetration, resulting  
220 in improved resolution of reflected wavefields in the seismic data. Additionally, Profile 2 crosses an outcrop of Ongeluk Formation basaltic lavas, a dense, high-velocity unit. Although basalts are generally known to attenuate and scatter seismic energy, especially when overlying target horizons, the shallow and laterally restricted nature of this outcrop likely limited such effects. Its presence may have improved geophone coupling and supported the transmission of higher-frequency energy into the subsurface, thereby enhancing the resolution of near-surface reflections in this profile (Sun et al., 2010).

225 In contrast, Profiles 4 and 5 were situated within the interior of the farm, away from road infrastructure, where Kalahari Group sediments are significantly thicker. Profile 4 reaches a maximum total Kalahari Group thickness of approximately 60 meters, with around 20 meters attributed to aeolian sands (Fig. 6d). Profile 5 shows the greatest thickness of Kalahari Group sediments, reaching approximately 70 meters, also with a 20-meter-thick aeolian cap (Fig. 6e). The thicker, low-velocity sand and clay-rich sediments (ranging from 600 to 4000 m/s) in these areas act as seismic waveguides, trapping surface wave energy and



230 giving rise to pronounced ground roll and guided waves. These wave types dominate the recorded data at low frequencies (8–  
14 Hz), which obscure deeper reflections in the raw shot gathers. This effect is most prominent in the low frequency dominated  
profiles (P4 and P5), in contrast to the clearer, more resolved reflections observed in Profiles 1 and 2.  
Beneath this sedimentary cover, the underlying Karoo Supergroup strata constitute the seismic bedrock, displaying P-wave  
velocities of approximately 5500 m/s. This significant contrast in seismic velocity between the unconsolidated to semi-  
235 consolidated Kalahari cover and the consolidated Karoo bedrock creates a well-defined refractor in the tomography models.  
The identification of this high-velocity horizon is critical for accurate static corrections, velocity model building, and  
interpretation of deeper seismic reflections. These tomographic models not only help constrain the structural and stratigraphic  
configuration of the near surface but also highlight the influence of variable sediment cover on seismic imaging quality,  
especially in mineral exploration settings where buried targets are masked by thick surficial deposits.







**Figure 6: Refraction tomographic P-wave velocity models with associated ray coverage for seismic profiles 1 to 5 (a–e, respectively). The models display near-surface velocity variations, with velocities ranging from 600 to 5500 m/s. The base of the Kalahari Group sediments is interpreted and indicated by black arrows.**

## 4 Results and Discussion

245 The processed reflection seismic profiles (Lines 1 to 5) reveal nine prominent, laterally continuous, high-amplitude reflections interpreted at depths of approximately 50 m, 300 m, 700 m, 1500 m, 1350 m, 1700 m, 2240 m, 2810 m, and 3420 m (Fig. 7). These reflectors, numbered 1 to 9 from bottom to top, correspond to major lithostratigraphic boundaries beneath the Kalahari Manganese Field (KMF), spanning the crystalline basement through the Transvaal, Keis, and Karoo Supergroups up to the near-surface Kalahari Group. Each reflector marks a transition between units with contrasting acoustic impedances, driven by  
250 changes in lithology, density ( $\rho$ ), and seismic P-wave velocity ( $V_p$ ):

1. Campbellrand–Schmidtsdrif contact: Dolomitic carbonates ( $\rho \approx 2.8 \text{ g/cm}^3$ ;  $V_p \approx 5.8\text{--}6.0 \text{ km/s}$ ) overlying deeper clastic-carbonate sediments ( $\rho \approx 2.5 \text{ g/cm}^3$ ;  $V_p \approx 4.8\text{--}5.2 \text{ km/s}$ ) (Tinker et al., 2002; Beukes et al., 2016).
2. Asbestos Hills–Koegas contact: Iron-rich BIFs ( $\rho \approx 3.3\text{--}3.6 \text{ g/cm}^3$ ;  $V_p \approx 6.2 \text{ km/s}$ ) transitioning into shale-dominated units ( $\rho \approx 2.4\text{--}2.6 \text{ g/cm}^3$ ;  $V_p \approx 3.5\text{--}4.5 \text{ km/s}$ ) (Tsikos and Moore, 1997; Beukes et al., 2016; Westgate et al., 2020).
- 255 3. Ghaap–Postmasburg contact: Carbonates to volcanogenic sediments, with an estimated velocity increase from  $\sim 5.0$  to  $6.0 \text{ km/s}$  and density from  $\sim 2.6$  to  $2.9 \text{ g/cm}^3$  (Beukes et al., 2016; Tinker et al., 2002).
4. Makganyene–Ongeluk contact: Diamictites ( $\rho \approx 2.3\text{--}2.5 \text{ g/cm}^3$ ;  $V_p \approx 3.0\text{--}4.0 \text{ km/s}$ ) overlain by mafic lavas ( $\rho \approx 2.9\text{--}3.0 \text{ g/cm}^3$ ;  $V_p \approx 5.5\text{--}6.0 \text{ km/s}$ ) (Reimold et al., 2002; Tinker et al., 2002; Beukes et al., 2016).
5. Ongeluk–Hotazel contact: Mafic lavas overlying manganese-rich BIFs ( $\rho \approx 3.4\text{--}3.6 \text{ g/cm}^3$ ;  $V_p \approx 6.2\text{--}6.5 \text{ km/s}$ ),  
260 producing a sharp impedance contrast (Beukes et al., 2016; Tsikos and Moore, 1997).
6. Hotazel–Moodraai contact: Dense BIFs beneath stromatolitic dolomites ( $\rho \approx 2.7\text{--}2.9 \text{ g/cm}^3$ ;  $V_p \approx 5.2\text{--}5.8 \text{ km/s}$ ) (Beukes et al., 2016; Van Niekerk and Beukes, 2019).
7. Transvaal–Keis Supergroup (pre-Gamagara unconformity): Transition from older carbonate-volcanic strata ( $\rho \approx 2.8\text{--}2.9 \text{ g/cm}^3$ ;  $V_p \approx 5.5\text{--}6.0 \text{ km/s}$ ) to metasedimentary rocks of the Keis Supergroup ( $\rho \approx 2.6\text{--}2.8 \text{ g/cm}^3$ ;  $V_p \approx 4.5\text{--}5.5$   
265  $\text{km/s}$ ) (Van Niekerk and Beukes, 2019; Westgate et al., 2020).
8. Keis–Karoo Supergroup contact: Folded metasediments ( $\rho \approx 2.6\text{--}2.8 \text{ g/cm}^3$ ;  $V_p \approx 4.5\text{--}5.0 \text{ km/s}$ ) overlain by Karoo siliciclastic sediments ( $\rho \approx 2.4\text{--}2.6 \text{ g/cm}^3$ ;  $V_p \approx 3.5\text{--}4.5 \text{ km/s}$ ) (Tinker et al., 2002).
9. Karoo–Kalahari Group contact: A strong near-surface contrast between consolidated Karoo bedrock ( $\rho \approx 2.5\text{--}2.6 \text{ g/cm}^3$ ;  $V_p \approx 4.0\text{--}5.0 \text{ km/s}$ ) and unconsolidated Kalahari cover ( $\rho \approx 1.8\text{--}2.2 \text{ g/cm}^3$ ;  $V_p \approx 0.5\text{--}2.0 \text{ km/s}$ ) (Reimold et  
270 al., 2002; Tinker et al., 2002).

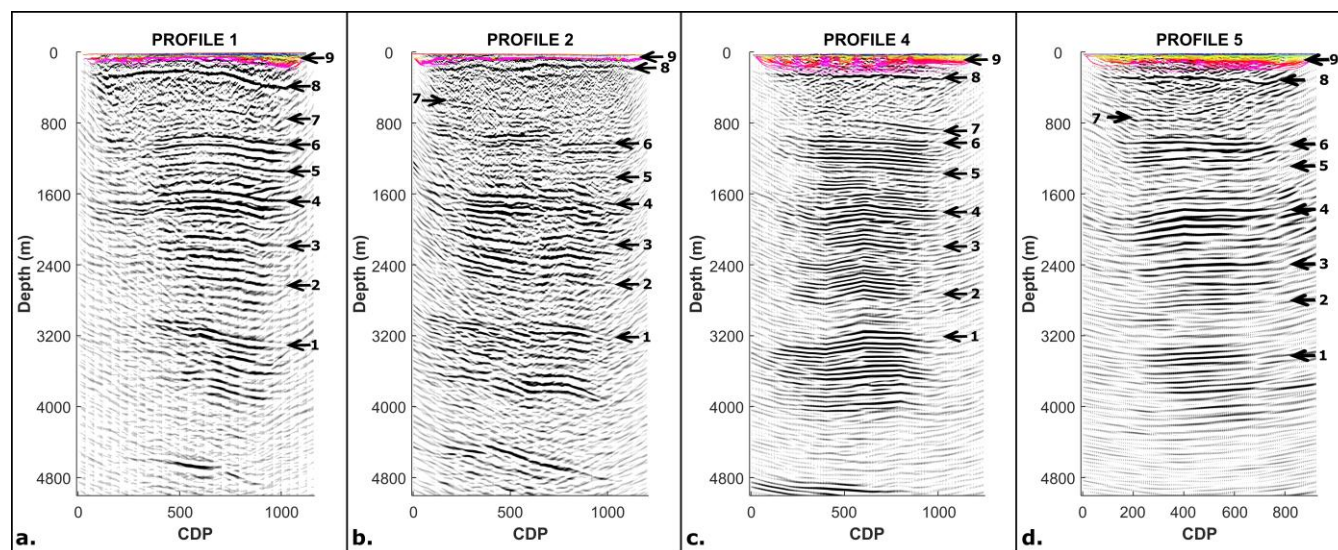
These velocity and density contrasts produce significant differences in acoustic impedance ( $Z = \rho \times V_p$ ), which account for the strength and continuity of the observed reflections across the seismic profiles. The values used to estimate these contrasts are derived from a combination of borehole sonic log data (e.g., KHK-1 and NEV-1; Reimold et al., 2002; Westgate et al.,



2020), tomographic velocity models from this stud, and published petrophysical parameters from prior geological and  
275 mineralogical investigations in the Transvaal and Griqualand West basins (Beukes et al., 2016; Tsikos and Moore, 1997;  
Tinker et al., 2002). Further support comes from regional seismic studies, including recent work by Westgate et al. (2020,  
2021), which documented similar lithological transitions and reflection patterns using legacy 2D seismic data.

The manganese-rich Hotazel Formation, composed predominantly of BIFs and minerals such as braunite, hausmannite, and  
jacobsonite is expected to exhibit bulk densities in the range of 3.4–3.6 g/cm<sup>3</sup> and P-wave velocities between 6.2 and 6.5 km/s  
280 (Beukes et al., 2016; Tsikos and Moore, 1997). This contrasts with the overlying Mooidraai dolomites and underlying Ongeluk  
lavas, which show lower densities (2.7–2.9 g/cm<sup>3</sup>) and velocities (5.2–5.8 km/s), creating a moderate but distinct acoustic  
impedance contrast. Similarly, deeper reflections associated with volcanic-carbonate interfaces and basement transitions  
exhibit stronger contrasts, with velocities exceeding 6.5 km/s and densities >3.0 g/cm<sup>3</sup> in the crystalline units (Reimold et al.,  
2002; Westgate et al., 2020).

285 These nine reflections thus establish a coherent and stratigraphically significant seismic framework, with near-horizontal dips  
(<5°) suggesting limited post-depositional deformation. Notably, the reflectors between ~1050 and 1350 m depth are  
interpreted as the base and top of the Hotazel Formation, the primary manganese-hosting unit of the KMF. The moderate  
reflection amplitudes observed at these depths are consistent with the estimated impedance contrasts between the Hotazel BIFs  
and their surrounding dolomitic units. This seismic expression is comparable to that seen in reprocessed legacy seismic sections  
290 from the western Kaapvaal Craton margin, where stratigraphic BIF contacts and mineralized zones were imaged under thick  
cover rocks (Westgate et al., 2020, 2021).



295 **Figure 7: The Kirchhoff post-stack time-migrated (PSTM) reflection seismic sections for profiles 1 (a), 2 (b), 4 (c), and 5 (d), with key interpreted reflectors annotated using black arrows. Overlain on each section is the cropped refraction tomographic P-wave velocity model, constrained to the portion of the profile with reliable ray coverage. The seismic sections reveal nine prominent, laterally continuous, high-amplitude reflections, interpreted as major lithostratigraphic contacts across the Kalahari Manganese Field (KMF). These are numbered 1 to 9 from bottom to top and correspond to: (1) the Campbellrand–Schmidtsdrif Subgroup contact; (2) the Asbestos Hills–Koegas Subgroup contact; (3) the boundary between the Ghaap and Postmasburg Groups; (4) the**



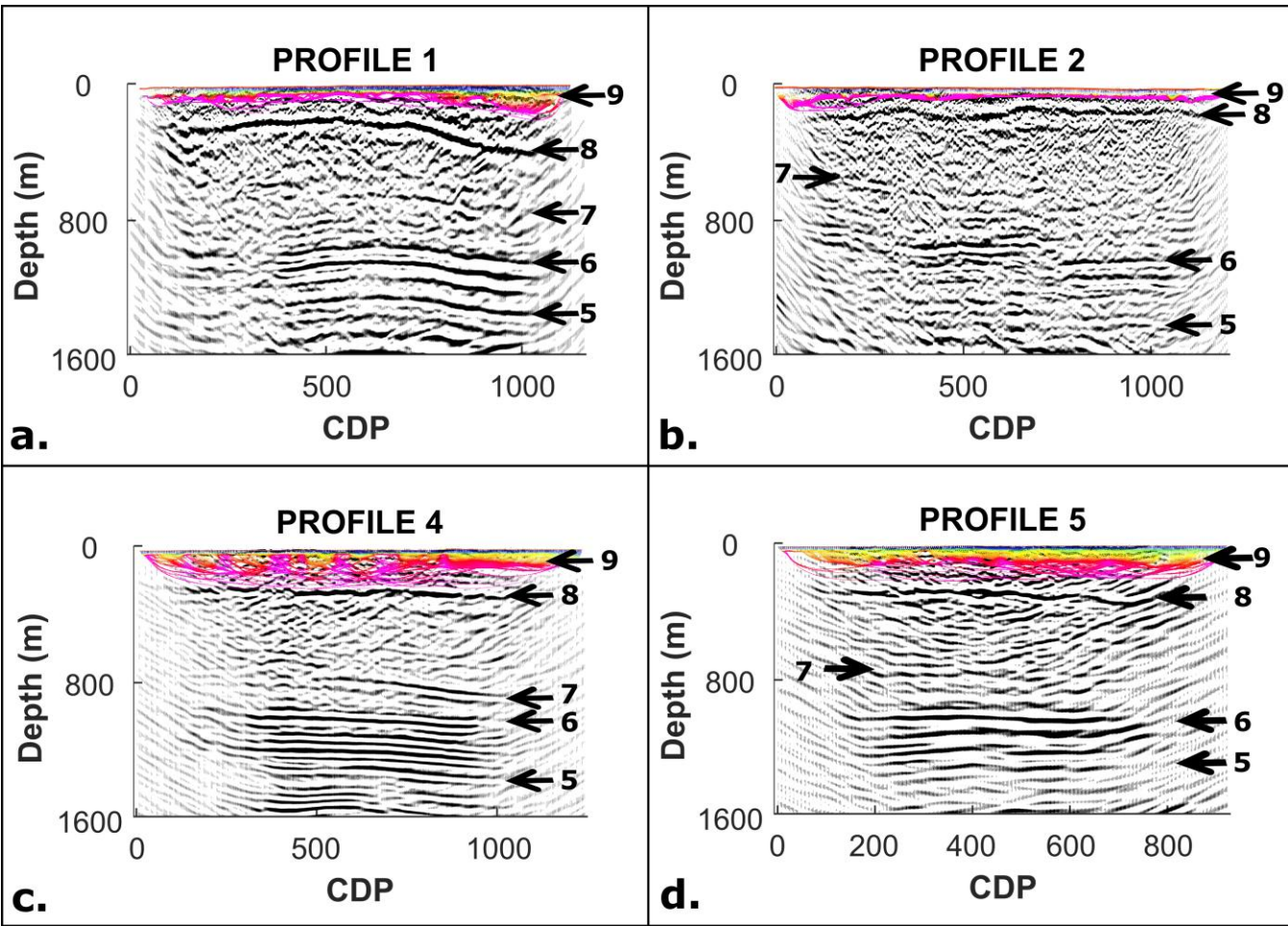


300 **Makganyene–Ongeluk Formation contact; (5) the Ongeluk–Hotazel Formation contact; (6) the Hotazel–Mooidraai Formation contact; (7) the pre-Gamagara unconformity between the Transvaal and Keis Supergroups; (8) the Keis–Karoo Supergroup contact; and (9) the surface unconformity between the Karoo Supergroup and the overlying Kalahari Group. These reflectors highlight the internal basin architecture and stratigraphic continuity, with particular emphasis on the Hotazel Formation interval (reflections 5 and 6), which hosts the primary manganese mineralization targeted in this study.**

305 Figure 8 presents the stacked reflection seismic sections for Profiles 1 through 5, overlaid with their corresponding near-surface P-wave velocity models derived from refraction tomography. For clarity, the tomographic models are truncated to include only the sections with sufficient ray coverage. These near-surface velocity models provide critical insights into the lithological and structural variability of the uppermost Kalahari Group sediments across the Severn survey area.

310 The tomographic results reveal that the near-surface Kalahari Group sediments generally exhibit low P-wave velocities, ranging from approximately 600 m/s to 4000 m/s. The shallowest portions of the model, where velocities fall below 1000 m/s, are interpreted as unconsolidated to semi-consolidated alluvial and aeolian sands and gravels of the Kalahari Group (Thomas and Shaw, 1991; Haddon and McCarthy, 2005; Beukes et al., 2016). These low-velocity units are laterally variable, with their thickness and depth extent decreasing notably from the interior farm profiles (P4 and P5) toward the road-based profiles (P1 and P2), where the aeolian cover is considerably thinner.

315 The seismic profiles also resolve a key stratigraphic boundary, the contact between the Karoo Supergroup and the underlying Keis Supergroup (Reflector 8). This contact is observed to occur at shallower depths in Profiles 1 and 2 (Fig. 8a, b), which correspond to the more elevated and sand-deficient regions of the survey area. In contrast, this contact is much deeper in Profiles 4 and 5 (Fig. 8c, d), where the overlying Kalahari Group sediments are thicker. These observations are consistent with the refraction tomography-derived thickness estimates and support the interpretation that the aeolian cover becomes progressively thicker toward the central parts of the farm.



**Figure 8:** A zoomed view of the upper 1600 meters from Figure 7, highlighting the near-surface Kalahari Group sediments and their seismic expression. This detailed section emphasizes the shallow stratigraphy and velocity variations within the cover sediments, providing clearer insight into the near-surface geological framework. (5) the Ongeluk–Hotazel Formation contact; (6) the Hotazel–Mooirdraai Formation contact; (7) the pre-Gamagara unconformity between the Transvaal and Keis Supergroups; (8) the Keis–Karoo Supergroup contact; and (9) the surface unconformity between the Karoo Supergroup and the overlying Kalahari Group. These reflectors highlight the internal basin architecture and stratigraphic continuity, with particular emphasis on the Hotazel Formation interval (reflections 5 and 6), which hosts the primary manganese mineralization targeted in this study.

Interestingly, despite the substantial thicknesses of low-velocity Kalahari cover in P4 and P5 (up to ~70 m), near-surface reflections are clearly imaged and show relatively high frequency content. This suggests that seismic energy was able to propagate effectively through the upper sand layers, a phenomenon attributed to the presence of lithified calcrete horizons. Calcretes, which form through pedogenic carbonate precipitation under semi-arid conditions, result in hardened crusts that increase the coherence and consolidation of the shallow subsurface (Bond, 1948; Verboom, 1974; Lancaster, 2000). These lithified layers provide improved geophone coupling and allow for enhanced transmission of seismic energy, thereby aiding in the imaging of deeper horizons. The effect is evident in the clarity of reflections within the shallow Kalahari strata observed in P4 and P5.



Nevertheless, the presence of thick unconsolidated aeolian sand in P4 and P5 also introduces complications. These layers act as waveguides for surface energy, resulting in strong ground roll and low-frequency guided waves that dominate the raw shot gathers. The guided wave energy, characterized by a dominant frequency range of 8–14 Hz, was particularly prominent in the interior farm profiles. This low-frequency noise is associated with the low shear-wave velocities of unconsolidated sand layers and is consistent with previous observations of near-surface seismic responses in arid regions (e.g., Xia et al., 1999).

The penetration depth of the low-frequency ground roll observed in the shot gathers can be approximated using the Rayleigh wave approximation Eq. (1):

$$h = \frac{\lambda}{2}, \quad (1)$$

where  $\lambda$  is the wavelength. Based on the measured moveout velocity of approximately 600 m/s for the ground roll and a dominant frequency range of 8–14 Hz, the estimated penetration depth ranges from ~21.5 m (at 14 Hz) to ~37.5 m (at 8 Hz). This estimate aligns well with the observed thickness of the shallow low-velocity zone in the tomographic model, supporting the interpretation that these guided waves are generated and sustained within the unconsolidated upper sand layer.

While calcrete horizons enhance coupling and allow signal transmission, the underlying unconsolidated units still lead to energy scattering and attenuation, reducing the resolution of deeper reflections, particularly below 4 km in P4 and P5. In contrast, the shallower aeolian sand cover along P1 and P2 allowed for greater high-frequency content and improved imaging continuity at depth.

This interplay between the lithification state of the near surface, seismic energy propagation, and depth of investigation highlights the complexity of seismic imaging in semi-arid regions with variable surficial geology. Understanding the seismic response of such cover sediments is crucial for optimizing acquisition and processing strategies, especially in mineral exploration contexts like the Kalahari Manganese Field.

## 5 Conclusion

A key outcome of the survey is the successful penetration of seismic energy through the thick Kalahari sand cover, long considered a major obstacle to geophysical exploration in the Kalahari Manganese Field (KMF). The Kalahari sand, which dominates the near-surface geology of the region, is predominantly composed of fine- to medium-grained, well-sorted, quartz-rich aeolian sands. Despite its loose and unconsolidated nature, several inherent properties of this material, including its low clay content, high porosity, and dry condition, contribute to reduced seismic attenuation. These characteristics minimize both scattering and absorption of seismic energy, allowing for the propagation of coherent wavefields and improving signal-to-noise ratios at shallow depths.


This favourable wave propagation environment was further enhanced by the presence of indurated calcrete horizons. These calcretized zones, developed through pedogenic carbonate accumulation, increase the stiffness and coherence of the shallow regolith, facilitating stronger seismic coupling and enabling deeper energy transmission. Together, the aeolian sands and





calcrete crusts created a stratified yet acoustically efficient medium that allowed high-quality seismic imaging of underlying lithologies.

370 The choice of the 500 kg drop hammer as the seismic energy source was instrumental to the success of the survey. Mounted on a compact and highly manoeuvrable Bobcat, the hammer could be efficiently deployed across diverse terrains, including deep sandy areas inaccessible to larger, heavier vehicles. Its mobility and relatively lightweight frame allowed for rapid repositioning and minimized the risk of vehicle immobilization in soft sand. In instances where it became stuck, the hammer assembly could be easily extracted using a 4x4 utility vehicle, further reducing delays and downtime. This operational flexibility proved especially valuable in areas where conventional vibroseis trucks or explosive sources would have faced  
375 severe logistical and environmental limitations.

Moreover, the high impulse force of the 500 kg drop hammer generated sufficient energy to image subsurface structures up to depths exceeding 4 km, as evidenced by the continuity and resolution of the deep reflections. The simplicity and repeatability of the  also contributed to the high signal fidelity observed in the shot gathers, making it ideal for stacking and processing. The vertical stacking of four shot records at each point enhanced the signal-to-noise ratio, particularly in the  
380 presence of low-frequency guided waves and ground roll generated within the unconsolidated sand layer.

The effectiveness of the acquisition was further supported by the use of wireless nodes connected to 1C, 5 Hz geophones. The nodes allowed for wireless, flexible deployment in rugged field conditions and, importantly, facilitated the burial of geophones beneath the loose surface sand. This not only improved seismic coupling by isolating sensors from wind-induced noise but also protected the cables from livestock interference, a frequent issue on operational farmlands.

385 Taken together, the combination of geologically informed acquisition design, lightweight high-energy source, and robust receiver technology enabled the successful acquisition of high-resolution 2D seismic data in a geologically complex and logistically challenging region. These results demonstrate that, with careful adaptation of equipment and methodology, cost-effective seismic imaging can be achieved even in environments dominated by thick unconsolidated cover. The insights gained from this survey offer a valuable framework for future seismic exploration campaigns across the broader Kalahari Basin and  
390 other similar sediment-covered mineral provinces in southern Africa.

## Acknowledgements

The authors gratefully acknowledge African Exploration Mining and Finance Corporation (AEMFC) for funding this research project. We extend our sincere thanks to the Wits Seismic Research Team from the School of Geosciences, University of the Witwatersrand (South Africa) for their invaluable assistance during seismic data acquisition. Their field support and technical  
395 expertise contributed significantly to the success of this study.



## References

- Beukes, N. J., Swindell, E. P., and Wabo, H.: Manganese deposits of Africa, *Episodes*, 39, 285–317, <http://dx.doi.org/10.18814/epiugs%2F2016%2Fv39i2%2F95779>, 2016.
- Beukes, N. J., and Gutzmer, J.: Origin and paleoenvironmental significance of major iron formations at the Archean–  
400 Paleoproterozoic boundary, *Rev. Econ. Geol.*, 15, 5–47, <https://doi.org/10.5382/Rev.15.01>, 2008.
- Beukes, N. J.: Facies relations, depositional environments and diagenesis in a major early Proterozoic stromatolitic carbonate platform to basinal sequence, Campbellrand Subgroup, Transvaal Supergroup, Southern Africa, *Sediment. Geol.*, 54, 1–46, [https://doi.org/10.1016/0037-0738\(87\)90002-9](https://doi.org/10.1016/0037-0738(87)90002-9), 1987.
- Bond, G.: The direction of origin of the Kalahari sand of Southern Rhodesia, *Geol. Mag.*, 85, 305–313,  
405 <https://doi.org/10.1017/S0016756800075828>, 1948.
- Beukes, N. J., and Smit, C. A.: New evidence for thrust faulting in Griqualand West, South Africa: implications for stratigraphy and the age of red beds, *S. Afr. J. Geol.*, 90, 378–394, 1987.
- Beukes, N. J.: Lithofacies and stratigraphy of the Kuruman and Griquatown iron formations, Northern Cape Province, South Africa, *Trans. Geol. Soc. S. Afr.*, 83, 69–86, 1980.
- 410 Cairncross, B., and Beukes, N.: *The Kalahari Manganese Field: The Adventure Continues*, Struik Nature, Cape Town, South Africa, 384 pp., 2013.
- Cairncross, B., Beukes, N. J., and Gutzmer, J.: *The Manganese Adventure: The South African Manganese Fields*, Associated Ore and Metal Corporation Ltd., 1997.
- Coetzee, L. L., Gutzmer, J., Smith, A. J. B., and Beukes, N. J.: Mineralogy and mineral paragenesis of the Palaeoproterozoic  
415 manganese ores of the Avontuur deposit of the Kalahari Manganese Field, South Africa, *S. Afr. J. Geol.*, 127, 31–54, <https://doi.org/10.25131/sajg.127.0016>, 2024.
- De Kock, M. O., Monareng, B. F., Blignaut, L., Smith, A. J. B., and Beukes, N. J.: Geochemistry of Paleoproterozoic saprolite developed in diabase intruding the Hotazel Formation in the Avontuur deposit of the Kalahari Manganese Field, South Africa, *S. Afr. J. Geol.*, 123, 1–18, <https://doi.org/10.25131/sajg.123.0001>, 2020.
- 420 du Plessis, P. I.: *The sedimentology of the Kalahari Group in four study areas in northern Botswana*, MSc Thesis, University of Stellenbosch, 1993.
- Haddon, I. G., and McCarthy, T. S.: The Mesozoic–Cenozoic interior sag basins of Central Africa: the late-Cretaceous–Cenozoic Kalahari and Okavango basins, *J. Afr. Earth Sci.*, 43, 316–333, <https://doi.org/10.1016/j.jafrearsci.2005.07.008>, 2005.
- 425 Havenga, M.: *Delineating possible Mn and iron ore target areas for further surveying on selected farms in the Kuruman district*, African Exploration Mining and Finance Corporation SOC Ltd (AEMFC), 2014.



- Jogee, B. A., Manzi, M. S. D., Maduna, N., Rapetsoa, M. K., Sihoyiya, M., and Smith, A. J. B.: Characterisation of Mn occurrences in the Kalahari Manganese Field: Constraints from high-resolution 2D seismic surveys, *S. Afr. J. Geol.*, 128, 53–72, <https://doi.org/10.25131/sajg.128.0003>, 2025.
- 430 Lancaster, N.: Eolian deposits, in: *Cenozoic of Southern Africa*, Partridge, T. C., and Maud, R. M. (Eds.), Oxford Monographs on Geology and Geophysics, Vol. 40, Oxford University Press, New York, 73–87, 2000.
- White, I., Bongajum, E., and Milkereit, B.: The Effect of Surface Overburden on 2D Seismic Response, AGU Spring Meeting Abstracts, S31A-25, 2009.
- Pachero, A.: Subsido para o Conhecimento do Sistema do Kalahari em Angola por, *Boletim Serv. Geol. Minas Angola*, 1, 29–38, 1976.
- 435 Reimold, W. U., Armstrong, R. A., and Koeberl, C.: A deep drillcore from the Morokweng impact structure, South Africa: petrography, geochemistry, and constraints on the crater size, *Earth Planet. Sci. Lett.*, 201, 221–232, [https://doi.org/10.1016/S0012-821X\(02\)00658-1](https://doi.org/10.1016/S0012-821X(02)00658-1), 2002.
- Rogers, A. W.: Geological survey of parts of Bechuanaland and Griqualand West, *Ann. Rep. Geol. Comm. Cape Good Hope*, 1906, 1–85, 1907.
- 440 Schnebele, E. K.: U.S. Geological Survey, Mineral Commodity Summaries: Manganese, USGS, January 2023.
- Sheriff, R. E., and Geldart, L. P.: *Exploration Seismology*, Cambridge University Press, 1995.
- Sun, W., Zhou, B., Hatherly, P., and Fu, L. Y.: Seismic wave propagation through surface basalts—implications for coal seismic surveys, *Explor. Geophys.*, 41, 1–8, doi:10.1071/EG09015, 2010.
- 445 Thomas, D., and Shaw, P. A.: *The Kalahari Environment*, Cambridge University Press, 1991.
- Thomas, D. S. G., and Shaw, P. A.: Late Quaternary environmental change in central southern Africa: new data, synthesis, issues and prospects, *Quat. Sci. Rev.*, 21, 783–797, [https://doi.org/10.1016/S0277-3791\(01\)00127-5](https://doi.org/10.1016/S0277-3791(01)00127-5), 2002.
- Tinker, J., de Wit, M., and Grotzinger, J.: Seismic stratigraphic constraints on Neoproterozoic evolution of the western margin of the Kaapvaal Craton, South Africa, *S. Afr. J. Geol.*, 105, 107–134, <https://doi.org/10.2113/105.2.107>, 2002.
- 450 Tsikos, H., and Moore, J. M.: Petrography and geochemistry of the Palaeoproterozoic Hotazel Iron-Formation, Kalahari manganese field, South Africa; implications for Precambrian manganese metallogenesis, *Econ. Geol.*, 92, 87–97, <https://doi.org/10.2113/gsecongeo.92.1.87>, 1997.
- Tsikos, H., Beukes, N. J., Moore, J. M., and Harris, C.: Deposition, diagenesis, and secondary enrichment of metals in the Palaeoproterozoic Hotazel iron-formation, Kalahari Manganese Field, South Africa, *Econ. Geol.*, 98, 1449–1462, <https://doi.org/10.2113/gsecongeo.98.7.1449>, 2003.
- 455 Vafeas, A., Beukes, N. J., and Gutzmer, J.: Radiogenic  $^{87}\text{Sr}/^{86}\text{Sr}$  isotope geochemistry of manganese ores in the Kalahari Manganese Field: Implications for post-depositional alteration, *Minerals*, 122, 237–248, <http://dx.doi.org/10.25131/sajg.122.0016>, 2022.



- Van Niekerk, H. S., and Beukes, N. J.: Revised definition/outline of the Kheis Terrane along the western margin of the  
460 Kaapvaal Craton and lithostratigraphy of the newly proposed Keis Supergroup, *S. Afr. J. Geol.*, 122, 187–220,  
<https://doi.org/10.25131/sajg.122.0014>, 2019.
- Verboom, W. C.: The Barotse loose sands of Western Province, Zambia, *Zambian Geogr. Mag.*, 27, 13–17, 1974.
- Westgate, M., Manzi, M. S. D., Malehmir, A., Gibson, R. L., Andreoli, M. A. G., and Bumby, A.: A reappraisal of legacy  
reflection seismic data from the western margin of the Kaapvaal craton, South Africa, with implications for Mesozoic-  
465 Cenozoic regional tectonics, *Tectonophysics*, 813, 228934, <https://doi.org/10.1016/j.tecto.2021.228934>, 2021.
- Westgate, M., Manzi, M. S. D., James, I., and Harrison, W.: New insights from legacy seismic data: reprocessing of legacy  
2D seismic data for imaging of iron-oxide mineralization near Sishen Mine, South Africa, *Geophys. Prospect.*, 68, 2119–2140,  
<https://doi.org/10.1111/1365-2478.12996>, 2020.
- Xia, J., Miller, R. D., and Park, C. B.: Estimation of near-surface shear-wave velocity by inversion of Rayleigh waves,  
470 *Geophysics*, 64, 691–700, <https://doi.org/10.1190/1.1444578>, 1999.
- Zhang, J., and Toksöz, M. N.: Nonlinear refraction traveltime tomography, *Geophysics*, 63, 1726–1737,  
<https://doi.org/10.1190/1.1444468>, 1998