

~~biogeodyn-MITgcmIS~~ Biogeodynamics-Ice sheet-Geneva-MITgcm (BIG-MITgcm, v1.0): a ~~biogeodynamical~~ simulation tool for exploring climate ~~steady~~ states with a ~~new~~ global-scale representation of global ice sheet modelsheets

Laure Moinat^{1,2,3}, Florian Franziskakis², Christian V  rard^{3,4}, Daniel N. Goldberg⁵, and
Maura Brunetti^{1,2,3}

¹Group of Applied Physics, University of Geneva, Rue de l'  cole de M  decine 20, 1205 Geneva, Switzerland

²Institute for Environmental Sciences, University of Geneva, Bd. Carl-Vogt 66, 1205 Geneva, Switzerland

³Centre pour la Vie dans l'Univers (CVU), University of Geneva, Geneva, Switzerland

⁴Section of Earth and Environmental Sciences, University of Geneva, Rue des Mara  chers 13, 1205 Geneva, Switzerland

⁵School of GeoSciences, University of Edinburgh, Edinburgh, UK

Correspondence: Laure Moinat (laure.moinat@unige.ch)

Abstract. Modelling the climate system on multi-millennial timescales is challenging when slow-response components, such as the deep ocean, vegetation, and ice sheets, must evolve alongside fast-response ~~ones~~ components such as atmospheric weather systems. This is crucial for investigating, for example, the dynamical structure of ~~the Earth~~ Earth's climate, including steady states, ~~their basin boundaries~~ mapping the attractor of those states in a multi-dimensional phase space, and their response to external forcing and internal variability. ~~While~~ Earth system models, such as those used in the Coupled Model Intercomparison Project (CMIP), are ~~too computational~~ often too computationally expensive for simulations spanning many thousands of years. Moreover, simplified parameterizations and coarse resolutions typically employed in Earth Models of Intermediate Complexity (EMICs) can significantly adversely affect the nonlinear interactions among the various climate components. Here, we describe a new tool, ~~biogeodyn-MITgcmIS~~ Biogeodynamics-Ice sheet-Geneva-MITgcm, ~~which is in~~ or
5 BIG-MITgcm for short — which attempts to fill in the hierarchy between these two ~~types of models~~ classes of model. The core of ~~biogeodyn-MITgcmIS~~ BIG-MITgcm is a coupled MITgcm setup that includes ~~atmosphere~~ atmospheric, ocean, thermodynamic sea ice, and land modules. To this, we ~~added asynchronous couplings with~~ asynchronously couple a vegetation model (BIOME4), a hydrological model (*pysheds*), and a new global-scale ice sheet model (*MITgcmIS*). The latter is implemented on the same cubed-sphere grid as MITgcm, using the shallow-ice approximation, ~~as well as MITgcm outputs and~~
15 and driven by a modified Positive Degree Day method to ~~estimate~~ evaluate the ice-sheet surface mass balance. Here, we ~~describe in detail~~ present a detailed description of the new ice sheet model and the coupling procedure employed. We evaluate ~~biogeodyn-MITgcmIS~~ BIG-MITgcm using a pre-industrial simulation initialized from ~~bedrock topography and leading to the~~ ice-sheet formation observations of bedrock topography, together with a forced simulation covering over the 1979-2009 period. The model spontaneously grows plausible ice sheets. These two experiments allow us to assess the model's performance
20 against CMIP-class models, as well as a combination of reanalyses and observations. To evaluate the ability of our model setup

to represent completely different climate conditions and continental configurations, we ~~discuss also~~ also discuss a Permian-Triassic ~~simulation~~ solution with a small ice sheet in the northern hemisphere. In summary, biogeodyn-MITgcmISBIG-MITgcm successfully ~~reproduces the captures many~~ large-scale ~~climate and its major components, with results comparable to those of two CMIP models with dynamical vegetation in the pre-industrial scenario~~. We discuss its properties of the current climate,
25 suggesting that it will be a very useful tool for exploring current, past, and future climates. We conclude by discussing potential applications and future developments.

1 Introduction

As ~~the atmospheric CO₂ concentration has raised since~~ concentrations rise from the pre-industrial era ~~leading to the present climate crisis~~, there is ~~an increasing a potential~~ risk of crossing critical thresholds ~~where some in which key~~ parts of the climate system may suddenly change, potentially ~~in an irreversible manner~~. In this context, it is important irreversibly (Wunderling et al., 2024). It is important, therefore, to understand the dynamical structure of ~~the Earth climate by identifying the different climate steady Earth's climate in which possibly different climate~~ states (attractors) ~~under co-exist with the same~~ external forcing (e.g. CO₂), ~~their limits of the limits of their~~ existence (basins of attraction), and ~~the associated boundaries, which may correspond to global tipping points (that is, forcing values beyond which the climate system shifts towards a new steady state)~~. Reaching stationarity
35 boundaries beyond which forcing shifts climate into a different steady state. Reaching a true steady state is an important property for characterizing climatic attractors (Hawkins et al., 2011; Drótos et al., 2017; Lucarini and Bódai, 2017; Brunetti et al., 2019; Brunetti and Ragon, 2023; Moinat et al., 2024). However, to reach equilibrium among all ~~climate components the components of climate, and particularly those with very slow response times, including those with a slow response,~~ such as the deep ocean, terrestrial vegetation, or ice sheets, ~~simulations must be run~~ experiments must be carried out on millennia time
40 scales. This ~~type of analysis requires dedicated modelling~~ requires dedicated modeling techniques.

~~Several numerical techniques have been proposed to study tipping points, from regional to global circulation models, at different levels of complexity in process representation, depending on the selected temporal and spatial scales (Wunderling et al., 2024)~~. ~~We Here, we~~ are interested in a modeling ~~setup that allows for the description of climates where the framework that allows us to explore global climate dynamics in which, for example,~~ ice sheets are not ~~necessarily~~ confined to high latitudes ~~but can spread to large regions like during glaciation equatorwards as in glacial periods, waterbelt or snowball states. Thus, we need a modeling setup that can span~~ The model must be able to span from daily to millennial timescales ~~at the global spatial scale, including at least on global spatial scales, and include~~ atmosphere, surface, and deep ocean, sea ice, land vegetation, and ice sheet dynamics. ~~While Although~~ these components are sometimes included in CMIP-like models (Eyring et al., 2016), ~~these models require high computational costs to run for thousands of years and thus simulations~~ such models are very demanding of
50 computational resources and solutions cannot reach stationarity in ~~slow the sluggish~~ deep-ocean and ~~ice sheet dynamics/or ice sheets~~ (Balaji et al., 2017). In contrast, Earth Models of Intermediate Complexity (EMICs) can economically reach a stationary state ~~rapidly~~ (Claussen et al., 2002; Willeit et al., 2022), but their ~~coarse spatial resolutions and simplified parameterizations~~

~~can~~ typically coarse spatial resolution (~500 km) and highly simplified parameterizations may have non negligible impacts on the nonlinear interaction among climatic components.

- 55 ~~Nowadays~~ Currently, there are few CMIP6 models with interactive ice sheets (~~Ackermann et al., 2020; Muntjewerf et al., 2020; Madsen et al., 2021~~) (e.g. ~~Ackermann et al., 2020; Muntjewerf et al., 2020; Madsen et al., 2022; Smith et al., 2021~~) and/or dynamical vegetation (~~Drüke et al., 2021~~). However, ~~high computational costs make these models appropriate~~ extreme computational cost makes such models ~~inappropriate~~ for studying climate evolution on ~~centennial-millennial~~ timescales. A technique for speeding up ~~complex models and thus enabling them to explore feedbacks on longer timescales~~ models in which components with disparate timescales ~~are brought together~~ is asynchronous coupling (~~Claussen, 1994; Herrington and Poulsen, 2011; Pohl et al., 2016~~). In practise, (~~Claussen, 1994; Herrington and Poulsen, 2011; Pohl et al., 2016; Sommers et al., 2021~~). In such an approach, for example, the climate is first ~~estimated-computed~~ with fixed ice sheets and vegetation, and ~~eventually~~ the latter are ~~then~~ updated to match the equilibrium conditions of the former (Foley et al., 1998). The procedure ~~can be~~ is repeated until convergence. In this way, fast and slow components evolve consistently until a stationary state is reached.
- 60 Here, we ~~propose~~ describe a simulation tool, ~~called~~ which we call *biogeodyn-MITgcmIS* *Biogeodynamics-Ice sheet-Geneva-MITgcm*, ~~that combines~~ (or *BIG-MITgcm* for short), that couples ice sheets, surface processes, ~~biology~~ adaptation ~~vegetation~~, and climate dynamics on ~~multimillennial~~ multi-millennial timescales, with a state-of-the-art ocean and simplified atmospheric parameterizations, ~~hence having a higher~~. It has a high vertical resolution in the ocean and a ~~higher~~ finer spatial resolution than traditional EMICs (Holden et al., 2016; Willeit et al., 2022). ~~Such coupled setup, which includes~~ The model employs asynchronous coupling with a vegetation model and a newly developed global-scale ice sheet model, ~~allows one to take into account in a consistent manner~~. In so doing, it consistently draws together the evolution of ~~major processes of the Earth over a multimillennial time scale~~ key Earth processes on multi-millennial time scales: vegetation, atmosphere, ocean, cryosphere, hydrosphere, and their interactions, under different boundary conditions given by continental and ~~oceanic configurations~~. ~~Therefore, this setup is also suitable for investigating ocean basin configurations~~. We have designed the system so that is can ~~also be used to investigate~~ deep-time climates, which are characterized by ~~huge uncertainties in the~~ large uncertainties in initial conditions, especially for ice sheets and vegetation. We provide a short description of the dynamical core (~~based on~~ MITgcm), the vegetation model (BIOME4) and the hydrology model (*pysheds*), ~~as they have been already explicitly detailed elsewhere, while we extensively describe~~: these have already been described in detail elsewhere. Our focus here is on the ice sheet model (*MITgcmIS*). To assess the ~~capability~~ ability of *biogeodyn-MITgcmIS* *BIG-MITgcm* to represent the present climate, we ~~validate~~ ~~its results against those obtained using~~ compare its climate state to those of some CMIP6 class models and reanalysis products. In addition, to ~~display~~ showcase its ability to simulate ice sheets ~~developing for different continental configurations that might develop in a world of very different continental configuration~~ and climate conditions, ~~a simulation for the~~ the climate state ~~appropriate to a~~ Permian-Triassic paleogeography based on Ragon et al. (2024) is ~~presented and discussed~~ described.
- 70
- 75
- 80

2 Biogeodynamical Details of the BIG-MITgcm simulation tool

85 Here, we describe each component of our biogeodynamical tool coupled model, including the boundary conditions employed and the coupling strategy.

2.1 GCM - Coupled MITgcm Setup

The dynamical core ~~of our tool is given by~~ is the MIT general circulation model (MITgcm) (Marshall et al., 1997a, b; Adcroft et al., 2004), which solves the Navier-Stokes equations for the atmosphere and the ocean ~~over on~~ the same cubed-sphere (CS) 90 grid (Marshall et al., 2004). In particular, we ~~consider~~ deploy MITgcm (version c68s) in a coupled setup including atmosphere, ocean, thermodynamic sea ice, and land (denoted as Coupled MITgcm Setup). ~~In our simulations, we~~ We use the so-called CS32 configuration, where each face of the cube has 32×32 grid cells, corresponding to an average horizontal resolution of 2.8° . This or similar ~~setups have been already~~ configurations have already been used for studying ~~idealised~~ idealized configurations such as the coupled aquaplanet (~~Ferreira et al., 2011; Rose, 2015; Ferreira et al., 2018; Brunetti et al., 2019; Ragon et al., 2022; Zhu and Rose, 2023~~ 95 (Marshall et al., 2007; Ferreira et al., 2011; Rose, 2015; Ferreira et al., 2018; Brunetti et al., 2019; Ragon et al., 2022; Zhu and Rose, 2023), deep-time climates (Brunetti et al., 2015; Ragon et al., 2024, 2025), and the present-day climate (Brunetti and V erard, 2018).

Physical parameterizations for the atmosphere are based on the 5-layer SPEEDY model (Simplified Parameterizations, primitivE-Equation DYnamics) (Molteni, 2003). SPEEDY is a model of intermediate complexity for the atmosphere, and includes simplified representations of convection, large-scale condensation, vertical diffusion, surface fluxes of momentum and 100 energy. The radiative scheme uses two spectral bands for the shortwave radiation and four for the longwave radiation. Cloud cover and thickness are defined diagnostically from the values of relative and absolute humidity. ~~Cloud~~ The cloud albedo depends on latitude, as done in Ragon et al. (2022), ~~for reducing the~~ to reduce net solar radiation at high latitudes and therefore ~~having a~~ to have better agreement with observational data (Kucharski et al., 2013). Five pressure levels are represented, ~~going~~ 105 ; and the remaining three the free troposphere. SPEEDY has been evaluated against ~~the~~ NCEP-NCAR and ERA5 reanalysis (Molteni, 2003) and, despite its simplified parameterizations, has been assessed to provide a realistic description of the atmosphere, with the advantage of requiring ~~less~~ fewer computer resources than state-of-the-art Atmospheric GCMs. A simple 2-layer land model (Hansen et al., 1983) is coupled to SPEEDY.

The physics packages ~~activated for the oceanic~~ used in the ocean component are the ~~KPP~~ K-profile parameterization 110 scheme (Large and Yeager, 2004) to account for vertical mixing in the water column ~~;~~ and the Gent and McWilliams scheme (Gent and McWilliams, 1990) to capture residual-mean circulation and mixing by mesoscale eddies. The Winton model (Winton, 2000) is used to ~~include~~ represent sea ice thermodynamics (THSICE), while sea ice dynamics is neglected. In our setup, there are 25 vertical nonuniform levels in the ocean, with thickness ranging between 20 m near the surface and 1300 m at the bottom.

The Coupled MITgcm Setup ~~needs to have the following input files~~ requires the following boundary conditions: bare-surface 115 albedos, vegetation fraction, ~~bathymetry~~ bathymetry, topography, runoff routing map, salinity ~~and sea~~ , and ocean temperature for all ocean levels (the latter two files are ~~provided at the initial step,~~ used to initialize the coupled model and then updated

by the dynamical core as the integration proceeds). Orbital parameters can be set by specifying ~~the~~ obliquity, precession, and eccentricity. In addition, the duration of the day and the ~~radiative influx from the sun~~ solar incoming radiative influx can be modified. ~~It runs~~ The whole system runs at a speed of about 200 years per day using 25 cores, which is equivalent to 300 CPU
120 hours for 100 simulated years.

2.2 ~~Boundary conditions – land-ocean configurations~~

~~Our tool~~

2.2 Boundary conditions — land-ocean configuration

Our model can be applied ~~for describing to~~ the present-day ~~climate as well as and~~ deep-time climates using different paleo-
125 geographies. ~~While the continental configuration for the present day~~ Although the present day observed continental configuration
is well known ~~and based on observations, we need to use paleogeography reconstructions~~, we employ reconstructions of
paleogeography for deep-time climates. Several options are available (Scotese, 2021; Merdith et al., 2021; V  rard, 2019). ~~Even~~
~~if in previous works MITgcm was coupled to~~ (V  rard, 2019; Scotese, 2021; Merdith et al., 2021). ~~Although in previous studies~~
MITgcm made use of the PANALEISIS reconstructions (Brunetti et al., 2015; Brunetti and V  rard, 2018; Ragon et al.,
130 2024, 2025), ~~it is important to note that our tool can be started from~~ the model can be initialized using any boundary con-
ditions (i. e. i. e., alternative paleogeographical reconstructions, ~~idealised~~ idealized land-ocean configurations, or aquaplanet)
and ocean depths, which is useful for exoplanet or conceptual studies.

In both ~~cases of~~ present-day and deep-time ~~climates~~ applications, the procedure for adapting the high resolution geographical
maps to the MITgcm grid is the same. ~~Either using~~ Using the present-day ETOPO global relief model (ETOPO, 2022) or a pa-
135 leogeographic reconstruction ~~from PANALEISIS~~, the input geography is given in ~~the a~~ latitude/longitude ~~coordinates~~ coordinate
system with arc-sec horizontal resolution. Since ~~the~~ simulations are performed with the cubed-sphere CS32 grid, ~~a smoothing~~
~~procedure is needed to upscale to the~~ interpolation and smoothing are used to upscale the resolution to 2.8   resolution (Ragon, 2024)
. Then, ~~we need to remove~~ isolated oceanic points or lakes ~~independent~~ are removed, irrespective of their size, ~~since the~~
~~MITgcm becomes numerically unstable to avoid numerical instability~~ when there are enclosed areas of water. Moreover, very
140 shallow waters are also prone to instability, especially when sea ice develops; ~~therefore, we set~~ all oceanic points shallower
than -20 m are set to this depth.

2.3 Vegetation - BIOME4

BIOME4 is a vegetation model that predicts the global steady state of the vegetation distribution corresponding to long-term
averages of monthly mean surface 2-m air temperature (denoted as surface air temperature in the following or SAT), sunshine
145 and precipitation (Kaplan, 2001). Additional inputs are soil depth and texture, which are used to determine water holding
capacity and percolation rates (Kaplan et al., 2003). Moreover, the atmospheric CO₂ content needs to be specified. All these
quantities are obtained from steady-state simulations performed using MITgcm in the coupled configuration described in

Sec. 2.1. ~~The albedo~~ Bare-surface albedos and the vegetation map obtained as outputs of BIOME4 are then reused in the next iteration of the coupling system. Water holding capacity and percolation rates are kept constant in our simulations and set to
150 the present-day average value.

BIOME4 follows the principle that ecosystems can be divided into a set of biomes characterised by the performance of plant functional types (PFTs), i. e., key parameters used to classify plant species having a similar response to the environment (Haxeltine and Prentice, 1996; Kaplan, 2001). The model selects among a set of 12 PFTs the subset that can be present in a grid cell on the basis of physiological and climatic constraints, like minimal temperature and water supply. Using a coupled carbon
155 and water flux model, BIOME4 calculates the net primary productivity (NPP) of each PFT and the corresponding seasonal maximum leaf area index (LAI) that maximises NPP. At this point, competition among PFTs is simulated by selecting the PFT with the optimal NPP as the dominant plant type. Opposing effects due to light competition and wildfires are included through semi-empirical rules. The final output is the vegetation distribution in terms of the dominant and secondary PFTs, total
160 LAI and NPP, which can be classified into biome types, for a total of 27 biomes (28 including land ice). Land-ice points are determined by the ice sheet extent computed by *MITgcmIS* (see next section). Therefore, the grid points that are identified as land ice overwrite the biome number given by BIOME4.

Main differences between BIOME4 and earlier versions (developed by Prentice et al. (1996); Haxeltine and Prentice (1996)) are the inclusion of new PFTs to represent vegetation types in the polar regions, and the calculation of photosynthetic pathways (for C₃ and C₄ plants) that depend on the PFT. BIOME4 and its earlier versions have been used to investigate climate-biosphere
165 interactions in the past (~~de Noblet-Ducoudré et al., 2000; M. Haywood et al., 2002; Kaplan et al., 2003; Salzmann et al., 2008; Sellwood and
(de Noblet-Ducoudré et al., 2000; M. Haywood et al., 2002; Kaplan et al., 2003; Salzmann et al., 2008; Sellwood and Valdes, 2008)~~
, and coupled to MITgcm in Ragon et al. (2024, 2025) for the Permian-Triassic Boundary. BIOME4 has also been used to assess the impact of current climate changes on the distribution of vegetation types (Allen et al., 2024).

2.4 Ice sheet - *MITgcmIS*

170 We have developed a Python code, called *MITgcmIS*, that describes the evolution of ice sheets at the global scale on the same cubed-sphere grid used by MITgcm. A global-scale ice sheet model is required when the climate state allows for the presence of ice sheets at low latitudes, for example during glaciation periods, waterbelt states or snowball states (Kirschvink, 1992; Hoffman and Schrag, 2002). Since we are interested in simulating the main processes occurring at spatial resolutions of around 2° or coarser, we neglect basal melting and other fine-scale processes, as calving and ice streams, since they cannot be resolved
175 at such coarse resolutions. Note that there is already an MITgcm module, called STREAMICE, which implements in Fortran these small-scale processes at the km-scale (Goldberg and Heimbach, 2013), however this package is not used in our coupled setup.

In *MITgcmIS*, we use the shallow-ice approximation (Cuffey and Paterson, 2010) to model the ice-sheet movement and the Positive Degree Day (PDD) method (Braithwaite, 1977) to compute the surface mass balance. In particular, we choose the
180 PDD approach as described in Tsai and Ruan (2018) instead of the Surface Energy Balance (SEB) method, since the latter requires quantities at the km-scale to estimate the energy budget, such as layer structure, surface roughness, and stability of the

surface terrain to obtain latent and sensible heat fluxes (Hock and Holmgren, 2005). Thus, the SEB method is generally used in regional climate models, which are able to reach the required accuracy in the representation of the climatic fields (especially clouds), in general provided by reanalyses (Wake and Marshall, 2015).

185 Although the PDD approach succeeds in representing the surface mass balance in coarse simulations, it can underestimate the melting in past periods of high insolation (Plach et al., 2018). Moreover, since this method does not account for energy exchanges between the ice sheet and the other components of the climate system, it cannot ensure a closed energy budget. Despite its limitations, we believe that the PDD method is the best choice when the representation of the atmosphere and snow processes are at the global scale on a coarse grid and simplified as in the SPEEDY and land modules (Sec. 2.1).

190 2.4.1 Basic description

We start from the equation that describes the depth-integrated mass conservation for incompressible ice (Schoof and Hewitt, 2013):

$$\frac{dH}{dt} = -\nabla \cdot \mathbf{q} + \dot{A} - \dot{B} \quad (1)$$

where $H = z_S - z_B$ is the height of the ice sheet between the bed z_B and the surface z_S vertical coordinates, $\mathbf{q} = \int_{z_B}^{z_S} \mathbf{U} dz$ is the horizontal flux obtained by vertical integration over the ice thickness of the horizontal part \mathbf{U} of the velocity vector, \dot{A} is the surface mass balance rate and \dot{B} is the basal melting rate. In our case, we neglect the basal melting rate, hence $\dot{B} = 0$. Eq. (1) is simply an expression of mass continuity; but the specific form of \mathbf{q} derives from the full Stokes equations in the so-called shallow-ice approximation, based on the low aspect ratio ($\sim 10^{-2}$ - 10^{-3}) between vertical and horizontal length in ice sheets. This relationship describes how ice flux responds to ice-sheet geometry, as described below.

200 Ice ~~rheology deformation~~ can be simplified by neglecting ~~the ice bed movement~~ basal sliding, by considering that the only important type of deformation is vertical shearing, and by assuming a power-law shear thinning viscous rheology, with strain rates $\dot{\epsilon}$ proportional to the driving stress τ_d , as $\dot{\epsilon} = a\tau_d^n$, where a is the Glen's law coefficient, which is assumed constant, and n is typically set to 3. This leads to the following relation (Cuffey and Paterson, 2010):

$$q = \frac{2a}{n+2} \tau_d^n H^2 = -D \nabla z_S \quad (2)$$

205 where $\tau_d = -\rho_i g H \nabla z_S$, ∇z_S is the surface slope, g the gravitational acceleration, $\rho_i = 920 \text{ kg m}^{-3}$ the ice density, and

$$D = \frac{2a}{n+2} (\rho_i g)^n |\nabla z_S|^{n-1} H^{n+2} \quad (3)$$

By combining the two relations, one obtains

$$\frac{dH}{dt} = \nabla \cdot (D \nabla H) + \nabla \cdot (D \nabla z_B) + \dot{A} \quad (4)$$

Eq. (4) is numerically integrated in Python on the cubed-sphere grid, once the surface mass balance rate \dot{A} is determined, as
210 detailed in the next section.

As noted above, we do not consider spatially varying Glen’s law parameter a or basal sliding. Both processes are sometimes included in modelling of paleo ice sheets, by employing thermomechanical components to model ice temperature (which influences Glen’s law, Cuffey and Paterson (2010)), and to determine where basal sliding occurs due to thawed-bed conditions (e.g., Moreno-Parada et al., 2023). However, the coarse resolution of our numerical grid does not allow ~~representing of one~~
215 ~~to represent~~ the fast streaming that results from basal melting. Since our purpose is to investigate climatic steady states in which ice sheets are in balance with the ocean, atmosphere, and biosphere, through their impacts of global albedo, large-scale orography and freshwater fluxes, we choose not to represent these km-scale processes. Moreover, the inclusion of such processes would introduce additional uncertain quantities and formulations – such as the temperature dependence of a , the pattern and magnitude of geothermal heat flux, and the response of basal stress to basal water formation and drainage. Instead,
220 using a single parameter, a , to describe ice-sheet dynamics allows it to be constrained straightforwardly using ice volume, as shown in Sec. 3.2.

2.4.2 Surface mass balance

To compute the surface mass balance we use a method based on the Positive Degree Day (PDD), which has in addition a percolation layer for correctly assessing the melting (Tsai and Ruan, 2018).

225 The idea of this PDD method is to account for the presence of a percolation layer of thickness H_p that creates a delay in melting at the ice surface, as the ice is not expected to melt as soon as the SAT reaches 0°C (Tsai and Ruan, 2018). The heat is assumed to be diffused downwards in the percolation layer, which reaches a uniform temperature T_p on a relatively fast timescale. In our setup, we assume that the percolation depth H_p is constant even if in reality it can slightly change, depending on the type of ice. Below the percolation depth, the temperature quickly relaxes to an equilibrium value that does not depend
230 on diffusion (Tsai and Ruan, 2018).

We assume that, between the ice surface ($z = 0$) and the height where the temperature measurement is performed ($z = h$), there is a constant temperature gradient. Thus, the heat flux can be written as:

$$q(t) = -k \frac{\partial T}{\partial z} = -k \frac{T_a(t) - T_p(t)}{h} \quad (5)$$

where k is the effective thermal conductivity of air, T_a is the temperature at $z = h$, and T_p is the percolation layer temperature.
235 From this assumption, and using conservation of energy between the percolation layer and the air, one can compute the ordinary differential equations for the percolation layer temperature T_p and for the ablation rate a_r (Tsai and Ruan, 2018):

$$\frac{dT_p}{dt} = \frac{k}{h\rho_i c_P H_p} (T_a - T_p) \quad \text{if } T_p < 0 \text{ or } T_a < 0 \quad (6)$$

$$a_r(t) = -\frac{dz_s}{dt} \frac{dz_s}{dt} = \frac{k}{h\rho_i L} (T_a - T_p) \quad \text{if } T_p = 0 \text{ or } T_a > 0 \quad (7)$$

where z_s is the ice surface elevation. Constants k , h , ρ_i , c_P , H_p and L are all assumed to be known. We have used
240 $\rho_i = 920 \text{ kg m}^{-3}$, $c_P = 2100 \text{ J kg}^{-1} \text{ }^\circ\text{C}^{-1}$ and $L = 334 \text{ kJ kg}^{-1}$ as in Tsai and Ruan (2018), and we set $k/h = 40 \text{ W m}^{-2} \text{ }^\circ\text{C}^{-1}$, $H_p = 10 \text{ m}$ and $h = 2 \text{ m}$ in our setup. The required input is the air surface temperature T_a at $h = 2 \text{ m}$, which is an MITgcm

output. Tsai and Ruan (2018) showed good agreement with observations, along with a significant improvement in capturing early-season melting compared to the classical PDD method. During each model iteration, we compute the surface mass balance by including ~~a lapse rate correction~~ the lapse rate effect that accounts for changes in surface elevation (see Sec. 2.4.3).

245 To determine the remaining contribution to the surface mass balance, we evaluate the accumulation of snow. This quantity is obtained by using outputs from the ~~MITgcm~~ Coupled MITgcm Setup. To be consistent with the energy budget in the MITgcm, the accumulation is estimated from the snow precipitation per grid cell. Since the MITgcm land module does not include accurate snow physics and, in particular, a process that densifies snow over time to obtain glacial ice, this densification is assumed to happen instantaneously. Therefore, as snow precipitation is expressed in units of $[\text{kg m}^{-2} \text{ s}^{-1}]$, we divide this
 250 quantity directly by the glacial ice density, $\rho_i = 920 \text{ kg m}^{-3}$ to obtain the accumulation rate in $[\text{m s}^{-1}]$ ice equivalent. Rain over the ice sheet cannot be freezed and is handled by the runoff routing scheme in Sec. 2.5.

In summary, two MITgcm outputs are needed: the surface-2-m air temperature (for the ablation) and the snow precipitation (for the accumulation). These two quantities are extracted from a simulation that has reached a steady state. We take daily outputs over an interval of 30 years, and then we take the average of these quantities for each day and each grid cell. Finally,
 255 the surface mass balance rate \dot{A} is obtained by subtracting the ablation from the accumulation rates, and inserted at the right-hand side of Eq. (4), which is then solved in terms of the ice thickness H .

2.4.3 Isostatic adjustment, lapse-rate, freshwater and sea-level corrections

Taking into account the isostatic adjustment due to the ice sheet mass can be computed in several ways. Here, we adopt the Local Lithosphere Relaxing Asthenosphere (LLRA) method, where a time delay is included (Greve and Blatter, 2009). The
 260 idea behind this method is that there is a vertical displacement w_{ss} (measured in meters) of the lithosphere that is due to the ice load. A steady state is reached when the buoyancy force equilibrates the ice load (Greve and Blatter, 2009):

$$\rho_a g w_{ss} = \rho_i g \Delta H_{\text{ice}} \quad (8)$$

where $\rho_i = 920 \text{ kg m}^{-3}$ is the ice density, $\rho_a = 3300 \text{ kg m}^{-3}$ is the density of the asthenosphere and ΔH_{ice} is the ice thickness calculated by the ice sheet model. Thus

$$265 \quad w_{ss} = \frac{\rho_i}{\rho_a} \Delta H_{\text{ice}} \quad (9)$$

However, the response of the asthenosphere is not immediate due to its viscous properties, and has a time delay that can be parameterised as:

$$\frac{dw}{dt} = -\frac{1}{\tau_a} (w - w_{ss}) \quad (10)$$

where τ_a is typically set to 3000 years (Greve and Blatter, 2009). At ~~the end of each iteration~~ Δt each time step $\Delta t = 1 \text{ yr}$ of
 270 *MITgcmIS*, the ice sheet elevation is computed as:

$$H_{\text{total}} = H_{\text{topo}} + \Delta H_{\text{ice}} - \frac{dw}{dt} \Delta t \quad (11)$$

where H_{topo} is given by the [topography file](#) [bedrock topography file](#), which for deep-time climates corresponds to [paleogeography reconstructions](#) (Vérard, 2019; Scotese, 2021; Merdith et al., 2021).

As the surface elevation is varied when an ice sheet develops by Δz , not only the topography changes but also the [SAT2-m air temperature](#). Thus, ~~a correction needs to be included by estimating the effect due to~~ the lapse rate dT/dz ~~needs to be included~~, as follows:

$$T_{\text{new } n} = T_{\text{old } n-1} - \frac{dT}{dz} \frac{dT_{n-1}}{dz} \Delta z \quad (12)$$

where ~~T_{new} is T_n~~ is used to run the ice sheet model, and the ~~temperature after the~~ lapse rate ~~correction~~. ~~The lapse rate~~ is computed at each ice-sheet grid point using the MITgcm output T_{n-1} of the previous ~~run~~ iteration. A temperature value is extracted from each pressure level in the atmosphere, and then, ~~based on the corresponding~~ [using the relation between pressure and](#) altitude, the slope of the linear regression (zonally averaged) is used to estimate the lapse rate.

Finally, since some ~~new ice sheets~~ [ice-sheet volume](#) V_{ice} may have formed or disappeared, the amount of water V_{water} that has been exchanged with the ocean is estimated [by](#) $V_{\text{water}} = V_{\text{ice}} \rho_{\text{ice}} / \rho_{\text{water}}$. To guarantee the conservation of salt, a ~~compensation is performed at the global scale, as it is done in North Atlantic hosing experiments~~ (Jackson et al., 2023). ~~volume compensation~~ (Mehling et al., 2026) is performed, $S_n = S_{n-1} V_{n-1} / V_n$, where S_n and V_n are the global salinity and ocean volume at iteration n , respectively. The variation of water volume in the ocean is converted in sea level change, with updated coastlines defining new topography (including ice sheet height), mask and bathymetry files.

2.5 Runoff - *pysheds*

In our study, we need to consider different continental configurations corresponding to the Earth's evolution, under a range of ice sheet loading. Hence, for each new configuration, we need to recalculate the runoff map. The [MITgcm-Coupled MITgcm Setup](#) needs as an input a file with three arrays, specifying for each land point L_i the corresponding precipitation storage area A_i and the ocean point O_i where it is drained (outlet point).

For present-day as well as for past (palæo-) topographies, we discriminate between land and ocean points by defining a contour line at 0 m in elevation. If any area with negative values are fully enclosed within area with positive values, they are considered as 'lakes' (unless elevation reaches values below -2000 m). In such cases, we re-assign the elevation ([without affecting the ocean volume](#)) in order to remove the depression and reroute the flow direction. For this purpose, as well as for cleaning local pits, depressions and flat terrains are corrected using the `fill_pits`, `fill_depressions`, and `resolve_flats` functions from *pysheds* (Bartos, 2020). This ensures a continuous Digital Elevation Model (DEM) with no single pixel or stagnant areas where water would not flow. Finally, we clip the DEM to all elevations above 0 m and retrieve the closest outlet point.

Every point in the MITgcm grid is hence defined as 'continental' or 'oceanic' depending on whether or not it is located inside the land (positive elevation) or not. Using the corrected topography, we generate a flow direction by applying an eight-direction (D8) flow routing algorithm from *pysheds*. This method assumes that water from each cell in the DEM will flow to one of its eight neighboring cells, the one that results in the steepest descent. The D8 algorithm is computationally efficient and widely used for hydrological modelling.

305 The slope from a cell c to each of its eight neighbors i is calculated as:

$$s_i = \frac{Z_c - Z_i}{d_i} \quad (13)$$

where Z_c is the elevation at the center cell, Z_i is the elevation of the i^{th} neighbor, and d_i is the distance to that neighbor. For cardinal directions (N, E, S, W), $d_i = 1$, and for diagonal directions (NE, SE, SW, NW), $d_i = \sqrt{2}$.

Then, the flow direction is determined by selecting the neighbor with the maximum positive slope:

$$310 \text{ flow_dir} = \arg \max_i (s_i), \quad \text{where } s_i > 0 \quad (14)$$

The resulting direction is encoded using a directional mapping:

$$[N, NE, E, SE, S, SW, W, NW] = [64, 128, 1, 2, 4, 8, 16, 32]$$

Each cell is assigned one of these values in the resulting flow direction map, indicating the direction water would flow from that cell based on the steepest slope. We then trace the flow path for every continental point using the flow direction until we reach the ocean, and define the nearest oceanic point as its outlet. Each initial continental point ultimately is being assigned one oceanic outlet, while initial oceanic points are their own outlet. Note that this approach mimicking the drainage system is
 315 different from grid schemes used in CMIP6 models (Hou et al., 2023).

Moreover, since the MITgcm has no proper online ice sheet model, excess water that would accumulate to form ice sheets is instead evacuated via runoff. More precisely, in the MITgcm code, snow precipitation P_{snow} exceeding the tolerated limit (usually set to 10 m) is automatically redirected into the ocean via the runoff. This creates an artificial excess of runoff in our asynchronous coupling, where P_{snow} is now used in the surface mass balance accumulation term, and hence a correction is
 320 necessary in the first steps of the coupling procedure, until a steady state is reached and the ice sheet is stabilised. Thus, we introduce the following correction in the precipitation storage area A_i at each land point:

$$A'_i = A_i \left(1 - \frac{P_{\text{snow}}^i}{P_{\text{tot}}^i + P_{\text{snow}}^i} \right) \quad (15)$$

where P_{tot}^i is the total ~~rain~~-precipitation at the land point i and $P_{\text{snow}}^i \leq P_{\text{tot}}^i$. This correction has an effect only on land points where the ice sheet is developing.

325 2.6 Coupling framework

Offline coupling between the Coupled MITgcm ~~atmosphere-ocean-sea-ice-land~~ Setup and BIOME4 has been already successfully applied in Ragon et al. (2024, 2025). Here, we will document the comprehensive framework that includes BIOME4, the new ice sheet module *MITgcmIS* and the runoff map calculation for different boundary conditions (present-day, paleo or idealised configurations), as schematically illustrated in Fig. 1.

330 A first simulation is run until the Coupled MITgcm Setup has reached a steady state, defined by having a surface energy balance $F_s < 0.2 \text{ W/m}^2$ (usually several thousands of simulated years are required). Afterwards, additional 30 yr are run with monthly frequency for the variables required by BIOME4, and with daily frequency for the variables required by *MITgcmIS*.

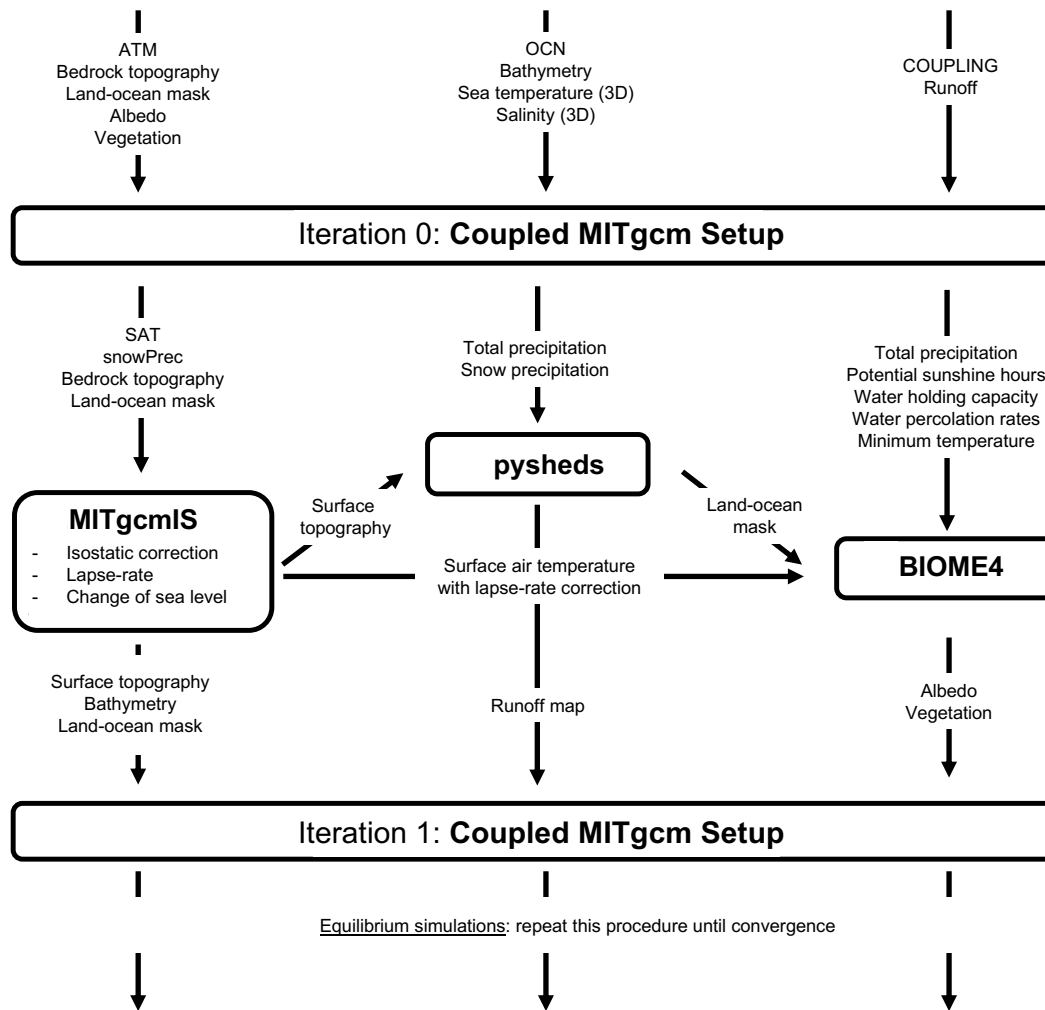


Figure 1. Schematic representation of the asynchronous coupling framework.

At this point, the offline coupling workflow can start. Before running the ice sheet model, the following corrections are required. For representing an advancing ice flow over shallow ocean, we mimic this process as follows: if the sea ice thickness is equal to the ocean depth (up to a depth of -20 m), the ocean point becomes a land point and hence the ice sheet can develop on it (up to -20 m of depth). Then, the corrected topography file is given as an input to the ice-sheet model, together with daily MITgcm outputs per grid cell for SAT and snow precipitation, which are used for calculating to calculate ablation and accumulation rates, respectively. *MITgcmIS* is run for 40-100 thousand years, during which the isostatic adjustment is calculated and the lapse rate from the previous convergence step is used, until the ice sheet reaches a steady state (MacAyeal, 1997). Sea level correction and salt compensation (Sec. 2.4.3) are included at this stage, giving rise to new topography (including ice sheet

Table 1. Models description: module names with corresponding number of vertical levels or type of coupling.

	<u>BIG-MITgcm</u>	<u>Levels/type</u>	<u>IPSL-CM6A-LR</u>	<u>Level/type</u>	<u>NorESM2-LM</u>	<u>Level/type</u>
<u>Resolution</u>	<u>2.8°</u>	<u>CS</u>	<u>1.6°</u>	<u>Lat/Lon</u>	<u>2°</u>	<u>Lat/Lon</u>
<u>Land</u>	<u>LAND</u>	<u>2</u>	<u>ORCHIDEE</u>	<u>11</u>	<u>CLM5</u>	<u>15</u>
<u>Atmosphere</u>	<u>SPEEDY</u>	<u>5</u>	<u>LMDZ6A-LR</u>	<u>79</u>	<u>CESM2.1-CAM6</u>	<u>7</u>
<u>Ocean</u>	<u>MITgcm</u>	<u>25</u>	<u>NEMO-OPA</u>	<u>75</u>	<u>BLOM</u>	<u>75</u>
<u>Ice sheet</u>	<u>MITgcmIS</u>	<u>asynchronous</u>	<u>NA</u>	<u>NA</u>	<u>NA</u>	<u>NA</u>
<u>Vegetation</u>	<u>BIOME4</u>	<u>asynchronous</u>	<u>ORCHIDEE</u>	<u>online</u>	<u>CLM5</u>	<u>online</u>
<u>Sea ice</u>	<u>THSICE</u>	<u>online</u>	<u>NEMO-LIM3</u>	<u>online</u>	<u>CICE</u>	<u>online</u>

height), mask and bathymetry files. Afterwards, *pysheds* is applied using the mask and the topography, closing lakes and small passages if necessary, and giving a new runoff map as output.

Finally, the vegetation model is run based on the new files. The outputs needed from MITgcm and the ice-sheet model (namely, precipitation, SAT and sunshine) are converted on a latitude/longitude grid and then given to the BIOME4 model. The equilibrium biome distribution is converted in new files for vegetation fraction and surface albedo using the values reported in Haywood et al. (2010). Due to the coordinate change, some land and ocean points can be inverted on the cubed-sphere grid. Hence, a vegetation fraction equal to 0 and an albedo value equal to the default water value of 0.07 are assigned to new ocean points on the CS grid, while the value of the closest land point is assigned to new land points.

Before running a second iteration, salinity and sea temperature at all ocean levels are averaged over the last 30 yr to generate new input files for the Coupled MITgcm Setup. Then, these files, along with the new vegetation fraction, albedo, topography, bathymetry, runoff and mask files, are given back to the MITgcm-Coupled MITgcm Setup to run the whole coupling process at least twice, so that the GCM has time to adjust to the new input files. Convergence is considered achieved when less than 10% of the land points experience a change in biome distribution and total ice sheet volume. Moreover, the Coupled MITgcm simulation needs to have a surface energy imbalance $F_s < 0.2 \text{ W m}^{-2}$, corresponding to extremely low drifts in both the global ocean temperature and the surface air temperature. The whole procedure forms the coupled biogeodyn-MITgcmISBIG-MITgcm modelsimulation tool, which thus describes the climatic steady state, including those components with a slow response, like deep-ocean dynamics, vegetation and ice sheets.

3 ResultsExperimental setup

3.1 Validation procedureComparison with data and CMIP models

360 3.1.1 biogeodyn-MITgcmIS initial conditions

To assess the performance of our climate framework *BIG-MITgcm*, we run three simulations. The first one, denoted as run1, is the pre-industrial simulation at 280 ppm starting from an input map of land elevation in the absence of ice. This simulation will be assessed against two CMIP6 models, as there is a lack of observational data for this period. The second simulation (run2), which corresponds to the 1979-2009 period with an average CO₂ concentration of 360 ppm (Lan et al., 2025), is started from the run1 steady state by applying a constant increase of CO₂ of 1 ppm/yr for 80 yr and keeping the ice sheet fixed. This run is evaluated against reanalysis and observational data. Finally, a third simulation (run3) is run using the Coupled MITgcm Setup at 280 ppm starting from ETOPO2 (thus, including present-day ice sheets) and the vegetation cover obtained in run1. Comparing run1 and run3 helps evaluate the ability of *BIG-MITgcm* to grow plausible ice sheets.

More specifically, for assessing the pre-industrial run at 280 ppm, we use the output data from the IPSL-CM6A-LR model (Boucher et al., 2018) and the NorESM2-LM model (Seland et al., 2020) using the *piControl* dataset (Eyring et al., 2016). We chose these two CMIP models because they include dynamical vegetation. For the second run at 360 ppm, we compare our data with the following datasets: ERA5 (Hersbach et al., 2023) for the atmosphere, OSRA5 (Copernicus Climate Change Service, 2021) for ocean diagnostics, MODIS for the vegetation, BedMachine for the surface elevation of Greenland and Antarctica (Morlighem et al., 2022), RAPID observations for the Atlantic Meridional Overturning Circulation (AMOC) profile (Moat et al., 2025), and the Sea Ice index for the sea ice extent (Fetterer et al., 2002).

Five iterations of the procedure illustrated in Fig. 1 were necessary to reach convergence in run1. The last 30 years of the fifth iteration are used for diagnostics. To be consistent in comparisons, all diagnostics are converted to the same longitude-latitude coordinate system with a spatial resolution of $2^\circ \times 2^\circ$.

The outputs were treated using Matlab version 2023b and the figures were made using python. The MITgcm took approximately 1500 simulated years per week to reach equilibrium using 25 processors for each iteration. BIOME4 and *pysheds* run in less than 5 minutes on a desktop computer. *MITgcmIS* needs around 1 hour of CPU time for 40 thousand years due to the daily stepping of eqs. (6)-(7) for all ice-covered points.

3.2 *BIG-MITgcm* initial conditions

To start the first run of our simulations, it is necessary to provide initial conditions that are representative of the present-day climate. The three-dimensional distributions of sea potential temperature and salinity are derived from the Levitus World Ocean Atlas (Levitus, 1982). Orbital forcing is prescribed at present-day values, with a solar constant of 1365.4 W m^{-2} and obliquity of 23.45° . Topography (including ice sheets and glaciers), bathymetry and the corresponding files are taken from the ETOPO2 dataset (ETOPO2, 2006) with a resolution of 2 arcminutes. Annual mean values of bare-surface albedos (in the absence of snow or sea-ice) and fraction of land-surface covered by vegetation are the same as those used in Molteni (2003) and derived from the ERA dataset. A smoothing procedure is Interpolation and smoothing are applied to convert these maps to the resolution of the MITgcm CS32 grid (Ragon, 2024).

In order to assess the ability of *MITgcmIS* to correctly generate the ice sheets, we need to provide an input map of land elevation in the absence of ice. This map was generated using the BedMachine dataset that is part of the MEaSUREs program of NASA (Morlighem, 2022; Morlighem et al., 2022), with the addition of an isostatic correction as in Paxman et al. (2022) for

395 Antarctica and Greenland. The BedMachine dataset provides a density-corrected satellite-based DEM of the ice sheet surface, as well as a data-constrained estimate of bedrock elevation and a mask for identifying the different parts of the ice sheets. There are two separate products for Antarctica (Morlighem, 2022) and Greenland (Morlighem et al., 2022), respectively. The surface elevation of the ice sheets are used to assess the performance of *MITgcmIS*, while bedrock elevations with isostatic adjustment are used as initial boundary conditions, as shown in Fig. 2. Note that, regarding paleoclimate simulations, PANALEISIS or
400 other reconstructions directly provide [unloaded](#) bedrock elevations.

Finally, it is important to also describe the tuning procedure. In order to obtain pre-industrial conditions at 280 ppm, once all the albedo values for vegetation cover, snow and ice have been fixed [and set to values within observational ranges](#), we tune the relative humidity threshold for the formation of low clouds (a parameter denoted as *RHCL2* in SPEEDY) so that the average global SAT becomes approximately equal to the observed value of 13.7°C (NOAA National Centers for Environmental
405 Information, 2024). The adjusted value, $RHCL2 = 0.7727$, is applied to all simulations. Moreover, the coefficient a in Glen’s law, which in our simulations is assumed to be constant (see eq. (2)) and governs the ice sheet formation, is determined as follows.

Evaluating the surface mass balance produced for Antarctica in our setup is necessary to calibrate the Glen’s law parameter using the total ice sheet volume. The reason is that the volume is strongly sensitive to both the net surface mass balance and the
410 Glen’s law coefficient; without a good estimate of the surface mass balance, the correct volume can be achieved for the wrong reasons. The surface mass balance of Antarctica is estimated by the Coupled MITgcm Setup started from the present-day ice sheets (ETOPO2), and turns out to be approximately 1500 Gt yr⁻¹. This value can be compared with the ensemble mean obtained from a comparison of Regional Climate Models (RCMs) in Mottram et al. (2021). In that study, the ensemble mean over the grounded ice sheet is estimated at 2073 ± 306 Gt/yr⁻¹. Although the value obtained in our simulation is **slightly**-lower
415 than this ensemble mean, as well as lower than the values obtained by all individual models in that comparison, it is important to consider that the spatial [interpolation and](#) smoothing applied to obtain 2.8° resolution in our simulations ([Ragon, 2024](#)) implies a different representation of the Antarctic continent compared to models with [higher-finer](#) resolutions (25-50 km). Additionally, there are known limitations in the representation of snow processes in the land module, as discussed in Sec. 2.4. Therefore, even if our value is **slightly**-lower than those obtained from RCMs, it remains within the same order of magnitude. Using this
420 value for the surface mass balance, we apply our ice sheet model *MITgcmIS* (which always starts from the bedrock and isostatic adjusted topography) with a range of a values. This yields different Antarctic volumes (Table A1), while maintaining a similar surface elevation profile. We selected $a = 0.6 \cdot 10^{-15} \text{ Pa}^{-3} \text{ syr}^{-1}$ as a compromise, as it produces a volume within 10% of the observed value and surface elevations consistent with observations.

3.2.1 **Comparison with data and CMIP models**

425 4 [Results](#)

Models description: module names with corresponding number of vertical levels or type of coupling. - biogeodyn-MITgcmISLevels/type IPSL-CM6A-LR Level/type NorESM2-LM Level/type Resolution 2.8 ° NA 1.6° NA 2°NA Land LAND 2 ORCHIDEE 11

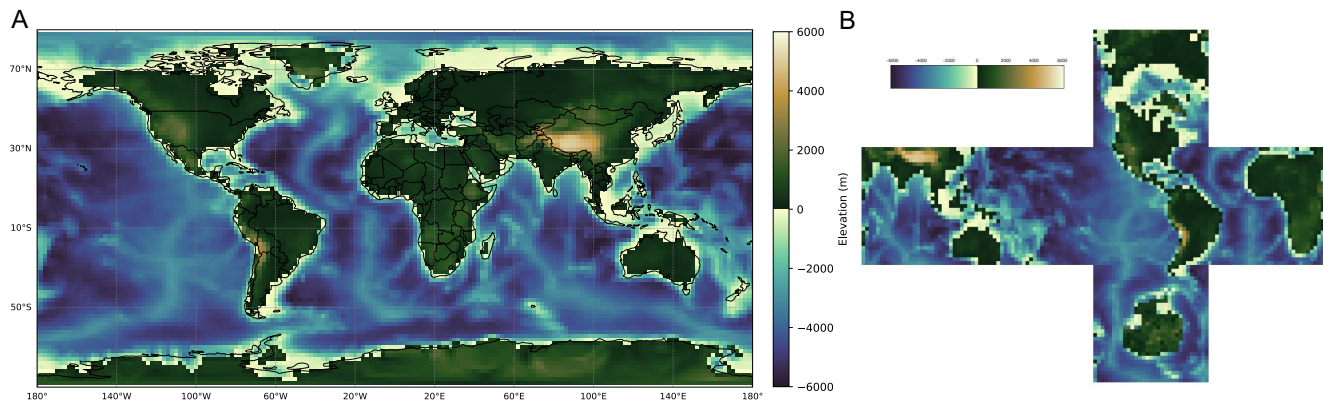


Figure 2. Bedrock topography (with isostatic adjustment) and bathymetry used as initial boundary conditions in [the pre-industrial run at 280 ppm \(run1\)](#) on the latitude-longitude grid (A) and on the cubed-sphere grid (B).

CLM5-15Atmosphere-SPEEDY-5-LMDZ6A-LR-79-CESM2.1-CAM6-7-Ocean-MITgcm-25-NEMO-OPA-75-BLOM-75-Ice
 sheet-MITgcmIS asynchronous-NANA-NA-NAVegetation-BIOME4-asynchronous-ORCHIDEE-online-CLM5-online-Sea ice
 430 THSICE-online-NEMO-LIM3-online-CICEonline-

4.1 BIG-MITgcm evaluation

To assess the performance of our climate framework, we run two simulations. The first one, denoted as run1, is the pre-industrial simulation at 280 ppm. This simulation will be assessed against two CMIP6 models, as there is a lack of observational data for this period. The second simulation (run2), which corresponds to the 1979-2009 period with an average CO₂ concentration of
 435 360 ppm (Lan et al., 2025), is started from the run1 steady state by applying a constant increase of CO₂ of 1 ppm/yr for 80 yr and keeping the ice sheet fixed. This run is evaluated against reanalysis and observational data-

More specifically, for assessing the pre-industrial run at 280 ppm, we use the output data from the IPSL-CM6A-LR model (Boucher et al., 2018) and the NorESM2-LM model (Seland et al., 2020) using the *piControl* dataset (Eyring et al., 2016). We chose these two CMIP models because they include dynamical vegetation. For the second run at 360 ppm, we compare our data
 440 with the following datasets: ERA5 (Hersbach et al., 2023) for the atmosphere, OSRA5 (Copernicus Climate Change Service, 2021) for ocean diagnostics, MODIS for the vegetation, BedMachine for the surface elevation of Greenland and Antarctica (Morlighem et al., 2022), RAPID observations for the Atlantic Meridional Overturning Circulation (AMOC) profile (Moat et al., 2025), and the Sea Ice index for the sea ice extent (Fetterer et al., 2002)-

Five iterations of the procedure illustrated in Fig. 1 were necessary to reach convergence in run1. The last 30 years of the fifth
 445 iteration are used for diagnostics. To be consistent in comparisons, all diagnostics are converted to the same longitude-latitude coordinate system with a spatial resolution of $2^\circ \times 2^\circ$.

Table 2. Global annual mean values averaged over the last 30 years, and associated standard deviations derived from interannual variability. The acronyms in the table are: surface air temperature (SAT), top-of-the-atmosphere budget (R_t), ocean surface budget (F_s), northern hemisphere (NH), southern hemisphere (SH), evaporation minus precipitation (E - P), sea surface temperature (SST) and sea surface salinity (SSS).

	Pre-industrial conditions			1979 - 2009 conditions	
	IPSL-CM6A-LR 1850–1880	NorESM2-LM 1850–1880	<i>biogeodyn-MITgemIS</i> <i>BIG-MITgcm</i> run1: 280 ppm	ERA5/OSRA5 1979–2009	<i>biogeodyn-MITgemIS</i> <i>BI</i> run2: transient 360
SAT (°C)	12.8±0.1	14.4±0.1	13.78±0.08	14.2±0.2	15.9±0.3
R_t (W m ⁻²)	0.8±0.6	0.0±0.3	-0.5±0.1	0.4±0.6	0.9±0.2
F_s (W m ⁻²)	1.3±0.2	0.6±0.5	0.0±0.2	7±2	2.48±0.37
NH sea ice extent (10 ⁶ km ²)	12.7±0.6	11.0±0.1	9.2±0.1	9.385±0.001	7.5±0.3
SH sea ice extent (10 ⁶ km ²)	13.4±0.6	6.9±0.5	22.6±0.5	8.732±0.001	15.8±0.7
$E - P$ (10 ⁻⁸ kg m ⁻² s ⁻¹)	-7±2	-3±2	0±2	0.08±0.01	0±2
SST (°C)	16.29±0.06	17.84±0.08	17.31±0.03	17.6±0.1	18.3±0.2
SSS (psu)	34.37±0.05	32.189±0.008	36.242±0.005	34.36±0.03	36.235±0.005

The outputs were treated using Matlab version 2023b and the figures were made using python. The MITgem took approximately 1500 simulated years per week to reach equilibrium using 25 processors for each iteration. BIOME4 and pyshedsrun in less than 5 minutes on a desktop computer. MITgemIS needs around 1 hour of CPU time due to the daily stepping of eqs. (6)-(7) for all land points.

4.2 biogeodyn-MITgemISEvaluation

To evaluate if our coupling setup correctly reproduces the modern Earth climate, we examined several diagnostics of the dynamical behavior of atmosphere, ocean, vegetation and cryosphere.

4.1.1 Atmosphere

In Table 2 global mean values of the relevant variables, calculated from the last 30 simulated years, are listed, together with the reanalysis data and the climatology values from the two CMIP models. The global mean SAT of 13.78 °C in run1 is intermediate between the two CMIP values, and close to the [real data-measured pre-industrial \(1850 yr\) value](#) of 13.7 °C (NOAA National Centers for Environmental Information, 2024) because of our tuning procedure. However, the global mean SAT of 15.9 °C [for the 1979-2009 period](#) in run2 is larger than the ERA5 value. This depends on the [Earth-Equilibrium Climate Sensitivity \(ECS\)](#), which is [5.4 around 5 °C](#) in our model, i. e., in the highest range of CMIP6 values (Nijssen et al., 2020; Zelinka et al., 2020).

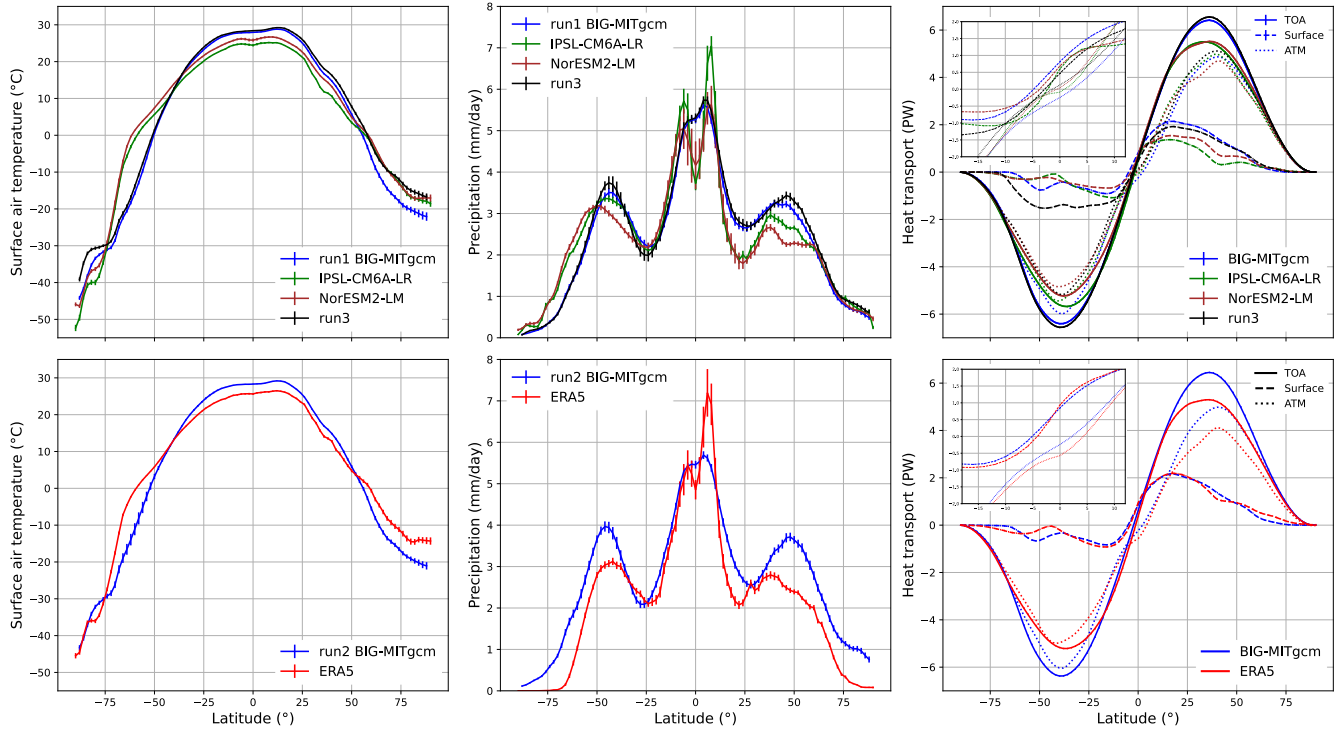


Figure 3. Zonal annual-mean profile of the surface air temperature for (first column), precipitation (second column) and the two heat transport (third column). The first line represents the simulations that were run under pre-industrial conditions (280 ppm) and the second line under the 1979 - 2009 conditions. For the pre-industrial conditions, *biogeodyn-MITgcm* *BIG-MITgcm* simulations run1 (blue), CMIP models *IPSL-CM6A-LR* (green), *NorESM2-LM* (dark red) and run3 (black) data are plotted. For the 1979-2009 conditions, *BIG-MITgcm* run2 (bleu) and *ERA5* (red) data are plotted. The heat transport panels contain the top-of-the-atmosphere (TOA, solid lines), the atmosphere (ATM, dotted lines) and the surface (dashed lines) components. The inset panel for the heat transport is a zoom around the equatorial region.

More in detail, if we look at the SAT zonal profile as profiles shown in Fig. ??3 (first column), we can make common remarks for the two runs concerning the polar regions. The overall behaviour is well reproduced in our simulations, except the temperature around 60S, which is approximately 10°C lower in *biogeodyn-MITgcm* *BIG-MITgcm* compared to the CMIP6 models and the ERA5 values, as also shown in Fig. A1. This is due to the southern hemisphere sea ice extent, which is higher than in CMIP models and observations, probably because our setup does not include dynamical but only thermodynamical effects. This is confirmed by run3, showing the same behavior. Fig. A1 also shows that SAT over ice sheets is higher than in CMIP models and observations. This can be due to the coarser resolution of the Coupled MITgcm Setup (2.8°), which underestimates the elevation of Antarctica and Greenland, hence giving higher temperatures than observations and CMIP models, where the ice sheet elevation is fixed to observed values.

Another important feature to be checked regarding the atmosphere dynamics is the model capability to correctly reproduce the Hadley cells, as shown in Fig. 4. In run2, our model gives rise to a weaker positive overturning cell near the Equator, as

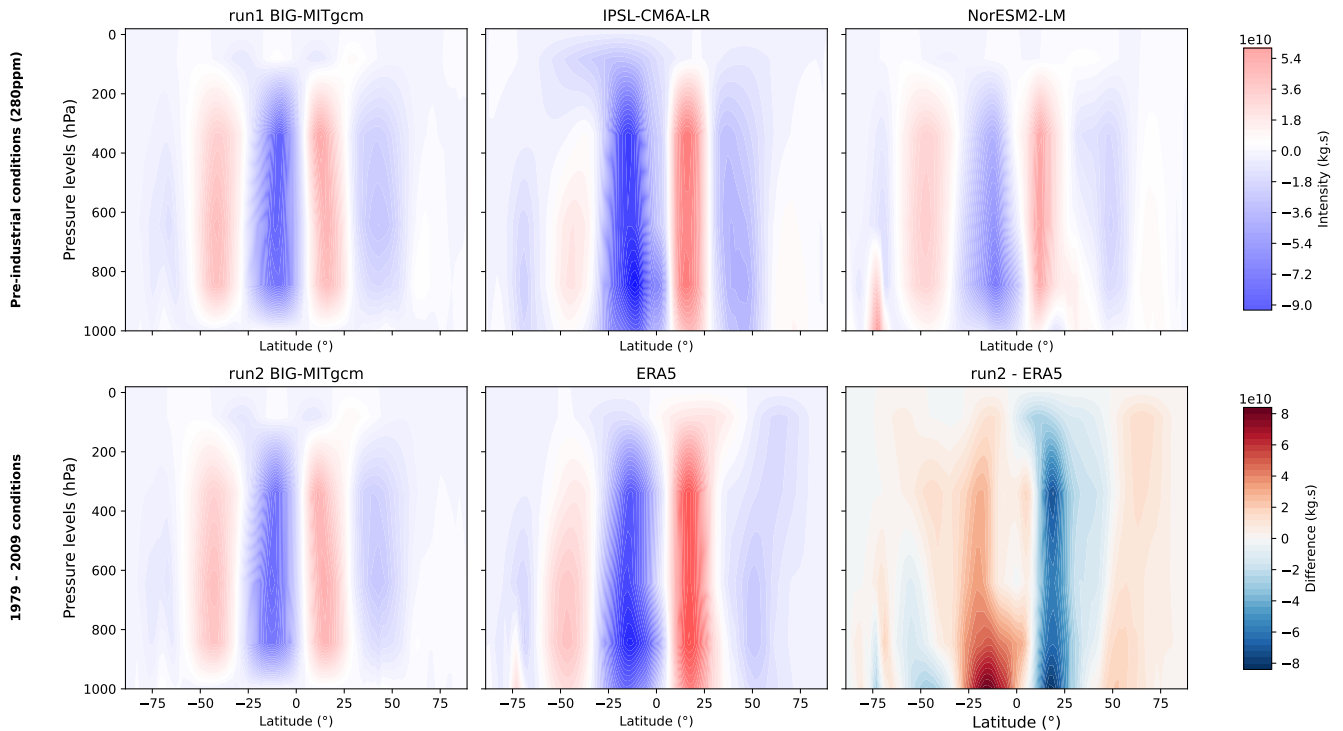


Figure 4. Atmospheric overturning cells for the two pre-industrial conditions (first line) and for the 1979 - 2009 conditions (second line). For the pre-industrial conditions, biogeodyn-MITgcm BIG-MITgcm simulations run1, CMIP-models IPSL-CM6A-LR and NorESM2-LM data are plotted in this respective order. For the 1979 - 2009 conditions, BIG-MITgcm run2, ERA5 data and the difference between the two are plotted, respectively.

also seen by Ruggieri et al. (2024) where the 8-layer SPEEDY module is coupled with the NEMO ocean. However, from run1 we see that the positive overturning cells reconstructed by NorESM2-LM are similarly weak, despite a number of vertical
475 layers in the atmosphere that is larger than the 5 layers in SPEEDY-MITgcm. In run1, SPEEDY gives cells with similar extent as the IPSL-CM6A-LR model, which has a state-of-the-art atmospheric module with 75 levels, while there is an additional positive south polar cell in the NorESM2-LM model. The lower branch of the positive Hadley cell is less intense than that in IPSL-CM6A-LR and ERA5. This feature has direct consequences on southward transport of water mass in the tropics, as shown in Fig. A2, which in our setup is indeed weaker than observations and CMIP models. In contrast, the transport towards
480 the southern polar region turns out to be larger in our simulations due to the comparatively intense Ferrel cell in the southern hemisphere. In addition, the mean zonal wind in our simulations, shown in Fig. A3, agrees with ERA5 and the two CMIP models, with a slightly lower intensity of the jet stream in the northern hemisphere. Despite these limitations, it is important to note that the total water mass $E - P$ shows only a small imbalance in our simulations with respect to the control runs of the two CMIP models, as reported in Table 2.

485 ~~Northward-water-mass-transport-in-the-atmosphere-for-the-two-biogeodyn-MITgemISsimulations,CMIP-models-and-ERA5.~~
~~Data-are-plotted-using-the-Carissimo-correction(Carissimo-et-al.,1985).~~

~~Zonal-annual-mean-precipitation-in-mm/day-for-the-two-biogeodyn-MITgemISsimulations,CMIP-models-and-ERA5.~~

As we can see in Fig. ~~??3(secondcolumn)~~, while the precipitation peak at the ITCZ is correctly reproduced in our simulations, at a mean latitude of approximately 6°N (Marshall et al., 2014) that corresponds to the ascending branch of the Hadley
490 cells, the precipitation intensity at ITCZ is underestimated due to weak Hadley overturning cells. In addition, our simulations do not capture the decrease in precipitation intensity at the Equator, as also observed in Ruggieri et al. (2024). The precipitation is in general overestimated in *biogeodyn-MITgemISBIG-MITgcm* with respect to observations in the extratropics, with peaks occurring at higher latitudes. However, the SPEEDY module captures the overall precipitation pattern in both runs (see Fig. A4), with localised maximum anomalies of around 5 mm/day in the equatorial region.

495 ~~Northward-heat-transport-at-the-top-of-the-atmosphere(solid-lines)-and-at-the-ocean-surface(dashed-lines).Their-difference-gives-the-heat-transport-in-the-atmosphere(dotted-lines).The-insets-show-a-zoom-of-the-tropical-region.~~

The heat transport at TOA in Fig. ~~??-3(thirdcolumn,solidlines)~~ shows that *biogeodyn-MITgemISBIG-MITgcm* closely follows the overall pattern in both runs, except for a slightly stronger total heat transport at approximately 40°S and 40°N . Across the Equator, the atmospheric heat transport (dotted lines) is southward in our simulations and in ERA5, correctly
500 compensating for the northward ocean heat transport driven by the AMOC, as described in Marshall et al. (2014). In contrast, the CMIP models do not show this compensation across the Equator despite their finer vertical resolution in the atmosphere, as can be seen in the inset of Fig. ~~??3(thirdcolumn)~~. Moreover, as shown in Table ~~??~~, the energy budget R_t at the top of the atmosphere (TOA) is almost closed in *biogeodyn-MITgemISBIG-MITgcm* run1 and within the range of CMIP models (Lembo et al., 2019). In run2, the TOA imbalance increases due to forcing conditions.

505 4.1.2 Ocean

In order to assess the capacity of *biogeodyn-MITgemISBIG-MITgcm* to correctly represent the ocean dynamics, we looked at the sea surface temperature (SST) and salinity (SSS), the sea ice extent, the water-mass budget, the AMOC profile and the heat transport at the surface.

As shown in Table 2, SST in *biogeodyn-MITgemISBIG-MITgcm* run1 is in between the two CMIP models, whereas it is
510 higher than in OSRA5 being consistent with SAT. Sea ice extent in our run1 simulation is lower in the northern hemisphere (NH) than in the southern hemisphere (SH), in contrast to NorESM2-LM results. Note that the NorESM2-LM model simulates a pre-industrial climate with less SH sea ice (with an extent of $6.9 \cdot 10^6 \text{ km}^2$) compared to ERA5 (with approximately $8.7 \cdot 10^6 \text{ km}^2$), even though ERA5 reflects a climate state with a higher atmospheric CO_2 content.

For run2, the values of sea ice extent in *biogeodyn-MITgemISBIG-MITgcm* differ from those in ERA5 (lower in the northern
515 hemisphere and higher in the southern hemisphere), due to the starting values obtained in the pre-industrial run. However, we observe that the sea ice extent obtained in our simulations, shown in Fig. A5, is in good agreement with that in Ruggieri et al. (2024), obtained with SPEEDY-NEMO for the period 1979-2014.

Our two simulations show a reduction in the sea ice extent with increasing atmospheric CO₂ concentrations. The total extent of sea ice in our run1 simulation is larger than in NorESM2-LM, which explains a higher value of salt concentration. It is comparable to that of IPSL-CM6A-LR, which, however, shows an imbalance in the water budget of $E - P = -7 \cdot 10^{-8} \text{ kg m}^{-2} \text{ s}^{-1}$ and a slightly lower value of salinity.

The ocean heat transport (OHT) in Fig. ??-(3 (third column, dashed lines) shows a larger amount of heat towards the northern polar region compared to CMIP models, explaining why our setup produces less sea ice there. The bulk of the OHT is dominated by the Ekman transport in the subtropical gyres. As mentioned before, the AMOC effect is to increase heat transport across the Equator (Marshall et al., 2014), which is of around 0.7 PW in all models. It is important to note that the surface energy imbalance F_s of run1 is very low ($|F_s| \leq 0.1 \text{ W/m}^2$, see Table 2), because it is run close to equilibrium. In contrast, $F_s = 2.48 \text{ W/m}^2$ in run2 and $F_s = 7 \text{ W/m}^2$ in the observations, reflecting forced conditions. Although they represent control runs, the two CMIP simulations exhibit values larger than 0.1 W/m^2 , indicating that they are not fully equilibrated.

As shown in Fig. 5, the AMOC produced by our coupled setup for run1 has a clockwise (positive) overturning cell with intensity comparable to the cell obtained by IPSL-CM6A-LR, which however develops at lower depths. The positive overturning cell in NorESM2-LM has a higher intensity than both *biogeodyn-MITgcmISBIG-MITgcm* and IPSL-CM6A-LR. For run2, the AMOC intensity produced by OSRA5 exhibits a maximum at the Tropics, while in our coupled setup there are several regions of high intensity. In both, there is a weak anticlockwise (negative) overturning cell at depths higher than 4 km. Right panels in Fig. 5 show vertical profiles at 26.5°N of the AMOC streamfunction. The two blue curves correspond to the *biogeodyn-MITgcmISBIG-MITgcm* simulations and show that there is a decrease in the intensity of the AMOC positive cell as the CO₂ concentration increases. This behavior is expected (Caesar et al., 2018) and demonstrates the ability of *biogeodyn-MITgcmISBIG-MITgcm* to produce consistent results. It is important to note that the two CMIP models exhibit strong negative values around 4500 m ~~that are not appearing~~ depth that do not appear in the observations. A similar pattern is also observed in another class of CMIP models described in Valdes et al. (2017), even in present-day simulations. However, *biogeodyn-MITgcmISBIG-MITgcm* shows the maximum of the positive cell around 1500 m, whereas it should be around 1000 m according to the RAPID measurements. This discrepancy may be related to the fact that the MITgcm ocean module includes only 25 vertical levels, compared to 75 in the two CMIP models.

~~NPP distribution for biogeodyn-MITgcmISrun1 (A) and run2 (B) (left panels), and zonal NPP profile (right panels) for all models and the MODIS dataset; C. Biomes distribution in biogeodyn-MITgcmISrun2.~~

545 4.1.3 Vegetation

In this section, we evaluate the capacity of the coupled system to correctly reproduce the present-day vegetation and to assess its performance against models with dynamical vegetation.

As shown in Fig. 6C, *biogeodyn-MITgcmISBIG-MITgcm* run2 gives rise to a good representation of the major biomes. Run2 displays the boreal forest, which, following the biome classification used in Kaplan et al. (2003) and Haywood et al. (2010), corresponds to cool mixed forests, evergreen and deciduous taiga (see the legend in Fig. 6C). It also displays the Amazon rainforest by returning the tropical evergreen forest biome, and the desert biome (Norby et al., 2005), although the latter is

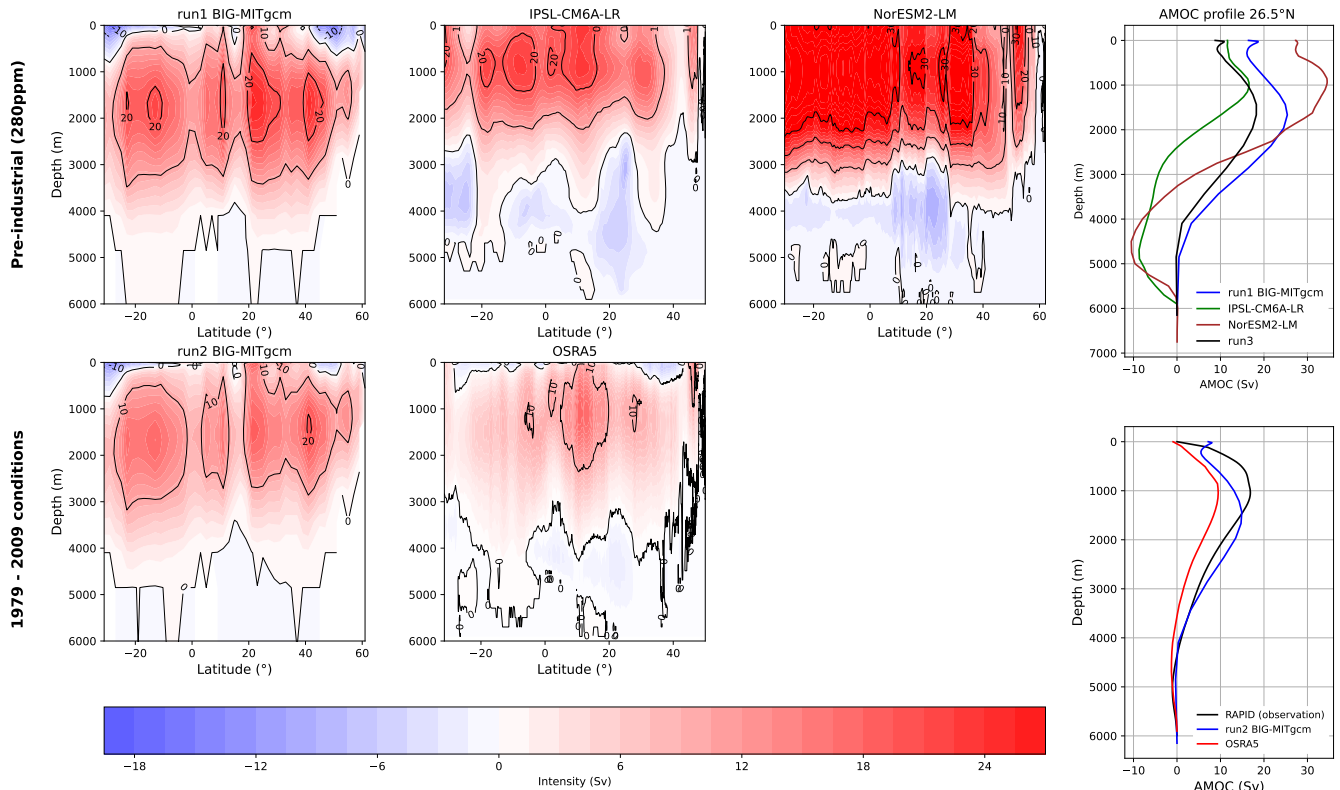


Figure 5. Atlantic meridional overturning circulation (AMOC) intensity for the two biogeodyn-MITgcm simulations, CMIP models pre-industrial conditions (first line) and OSRA5 the 1979 - 2009 conditions (second line). The vertical coloured plots represent the intensity of the overturning and the two most right panels represent the AMOC intensity profile at 26.5°N of (as in the AMOC-RAPID measurement). For the pre-industrial conditions, BIG-MITgcm run1, IPSL-CM6A-LR and NorESM2-LM intensity data are plotted (run3 is also added on in the right with 26.5°N profile). For the addition of the RAPID observations 1979-2009 conditions, BIG-MITgcm run2 and OSRA5 data are plotted.

smaller than in observations. This is directly linked to the excess of precipitation produced by the SPEEDY module in North Africa (Fig. A4).

Maps and zonal profiles of the Net Primary Production (NPP) for run1 and run2 are shown in Fig. 6A,B. The zonal profiles are compared to those of CMIP models and the MODIS dataset. Our simulations reproduce the general pattern by correctly displaying an increase in the equatorial region. However, they fail to capture the decrease at 10° and -25° latitude, as shown by MODIS. It is important to note that there is a difference in NPP intensity between run1 and run2. This is mainly explained by the increase of CO₂ concentration, precipitation and temperature, as shown in Figs. ?? and ?? Fig. 3 (first and second columns). The two CMIP models show different behaviors. NorESM2-LM captures quite well the decrease at 10° and -25°, as well as the increase in the equatorial region, despite lower intensities than MODIS. IPSL-CM6A-LR does not show vegetation at latitudes

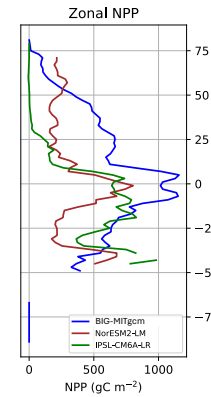
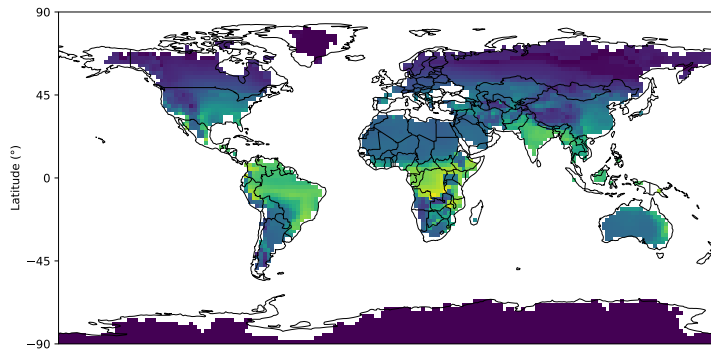
higher than 25°N, as ORCHIDEE does not include high-latitude biomes such as tundra (Dinh et al., 2024). The two dynamical vegetation models do not capture all the trends in the NPP pattern, even with more sophisticated land modules than the one used in our setup. This is confirmed by the correlation analysis shown in Fig. A6. The correlation coefficient r is close to 0.8 and the slope value is close to 1 when the results of run2 are plotted against MODIS, confirming a broad agreement with observations. The correlations of the results of run1 against the two CMIP models are around 0.6. This emphasizes that, even without online dynamical vegetation, our setup successfully captures global-scale vegetation features.

~~Map of the region where ice sheets form with biogeodyn-MITgcmIS, showing ESPG:3031 and ESPG:3413 projections for Antarctica and Greenland, respectively.~~

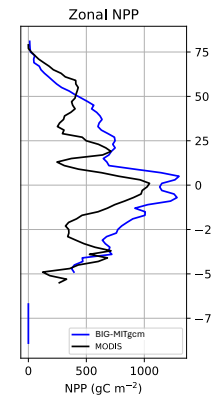
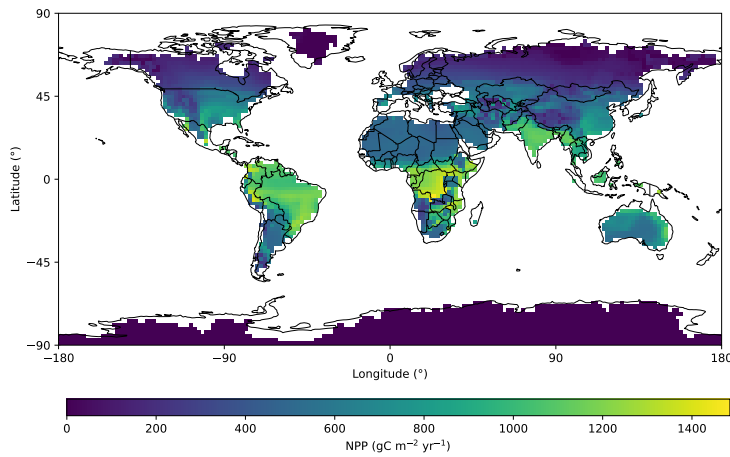
4.1.4 Ice sheet

The performance of *MITgcmIS* is evaluated against present-day observations using the BedMachine datasets. Since there are no observational data available for the pre-industrial period, and the two CMIP models do not include dynamical ice sheets, *biogeodyn-MITgcmIS* run 1 is assessed using present-day observations. We also ~~compared~~ compare the resulting climate in run1 with that obtained ~~by starting from in run3 (started from ETOPO2, i.e. fixed present-day ice sheets (from ETOPO2), and found as in run1).~~ by starting from in run3 (started from ETOPO2, i.e. fixed present-day ice sheets (from ETOPO2), and found as in run1). We find that the resulting climatic attractors are essentially the same, with very small differences in terms of temperature and precipitation, as shown in Fig. A7, and limited differences in the zonal profiles (see Figs. 3 and 5), demonstrating the ability of our procedure to reconstruct first-order processes in ice sheets.

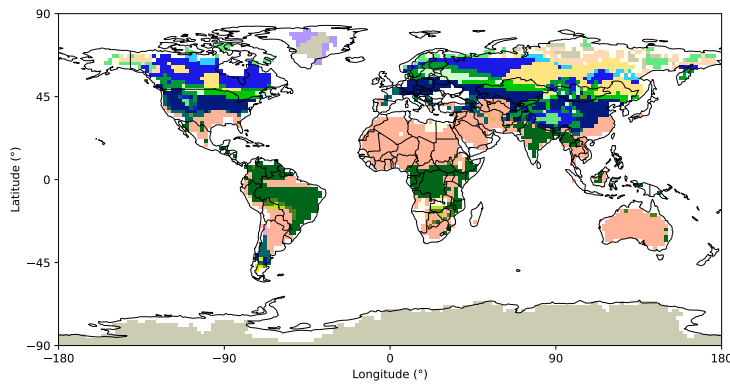
A run1: pre-industrial conditions (280ppm)



B run2: 1979 - 2009 conditions



C



- 1: tropical evergreen forest
- 2: tropical semi-deciduous forest
- 3: tropical deciduous forest/woodland
- 4: temperate deciduous forest
- 5: temperate conifer forest
- 6: warm-temperate mixed forest
- 7: cool mixed forest
- 8: cool conifer forest
- 9: cold mixed forest
- 10: evergreen taiga/montane forest
- 11: deciduous taiga/montane forest
- 12: tropical savanna
- 13: tropical xerophytic shrubland
- 14: temperate xerophytic shrubland
- 15: temperate sclerophyll woodland
- 16: temperate broad-leaved savanna
- 17: open conifer woodland
- 18: boreal parkland
- 19: tropical grassland
- 20: temperate grassland
- 21: desert
- 22: steppe tundra
- 23: shrub tundra
- 24: dwarf-shrub tundra
- 25: prostrate shrub tundra
- 26: cushion-forb, lichen
- 27: barren (soil)

Figure 6. Net primary productivity (NPP) for the pre-industrial conditions for *BIG-MITgcm* run1 (panel A) and 1979 - 2009 conditions for *BIG-MITgcm* run2 (panel B), biome distribution for the 1979 - 2009 conditions for *BIG-MITgcm* run2 (panel C), with the corresponding colormap biome designation. The right most panels are the zonal profiles of the NPP distribution in the pre-industrial conditions for *BIG-MITgcm*, *IPSL-CM6A-LR* and *NorESM2-LM*, and in the 1979 - 2009 conditions for *BIG-MITgcm* run2 and *MODIS*.

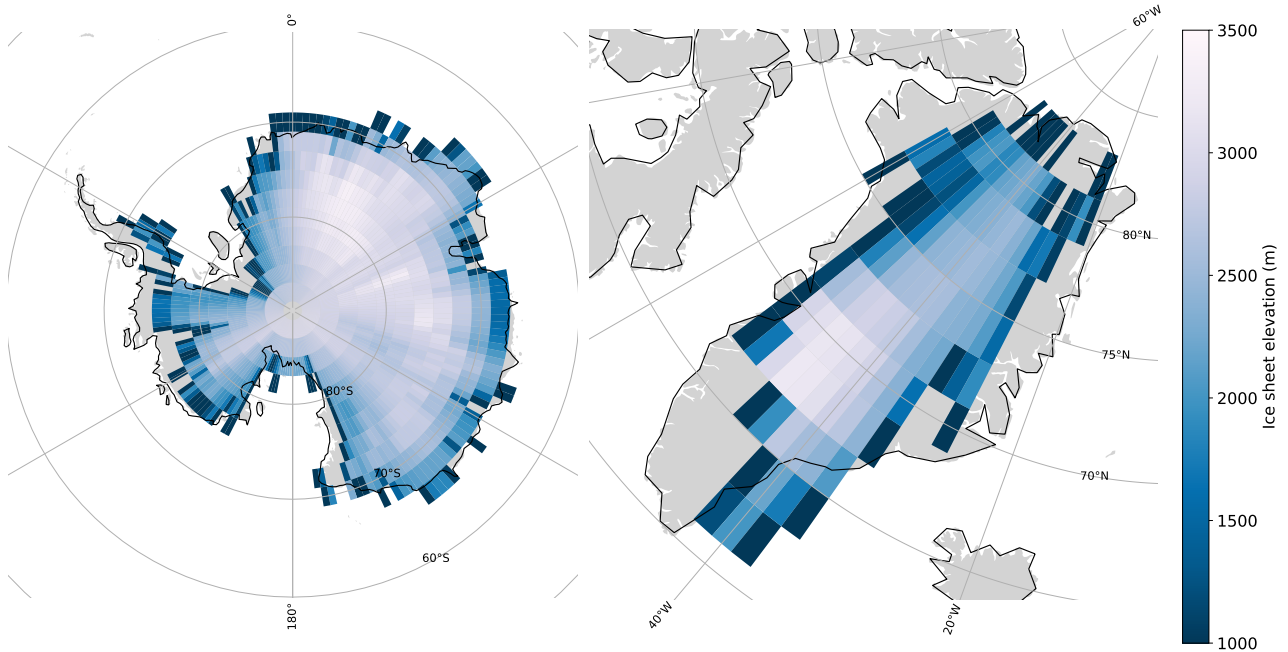


Figure 7. Ice sheet elevation for Antarctica in ESPG:3031 projection (left panel) and Greenland in ESPG:3413 projection (right panel) obtained from *BIG-MITgcm* run1.

The ice sheets obtained in run1 are shown in Fig. 7. The total volume is $24.5 \cdot 10^6 \text{ km}^3$, of which $22.0 \cdot 10^6 \text{ km}^3$ in Antarctica (due to the tuning procedure, sec. 3.2) and $2.5 \cdot 10^6 \text{ km}^3$ in Greenland. Hence, in run1 the ice sheet volume is of the same order as the observed volume ($22.9 \cdot 10^6 \text{ km}^3$, after smoothing ~~to the same spatial resolution on the same 32×32 cubed-sphere~~ grid) (Morlighem et al., 2022; Morlighem, 2022). Other glaciers (in Alaska, Canada, India, etc), with a global glacier volume of around $1.6 \cdot 10^5 \text{ km}^3$ (Farinotti et al., 2019), are not captured by our model due to its coarse resolution.

This overall agreement with observations (BedMachine dataset) is ~~reflected~~ confirmed in statistically significant Pearson correlation coefficients of 0.76 and 0.80 for the surface elevation of both ice sheets and Antarctica only, respectively, as shown in Fig. A8. However, the slope values of 0.33 and 0.35 for both ice sheets and Antarctica only, respectively, are lower than 1. This means that the model tends to underestimate the largest ice sheet heights and to overestimate the smallest ones on the edges. This pattern is evident in Fig. A9, particularly in West Antarctica. In contrast, conclusions about Greenland are more uncertain due to the limited pixel coverage. Overall, we observe that Antarctica in *MITgcmIS* agrees more closely with observations than Greenland.

If we examine the histograms in the right panel of Fig. A9, we observe that they support the conclusions discussed above. The excess accumulation in West Antarctica is also reported in Xie et al. (2022), which uses an ice sheet model of similar complexity. In addition, analogous biases in ice thickness are also observed in more sophisticated models, such as in Quiquet et al. (2018), which underestimates the ice thickness in central Antarctica of around 300-400 m. The fact that *MITgcmIS*

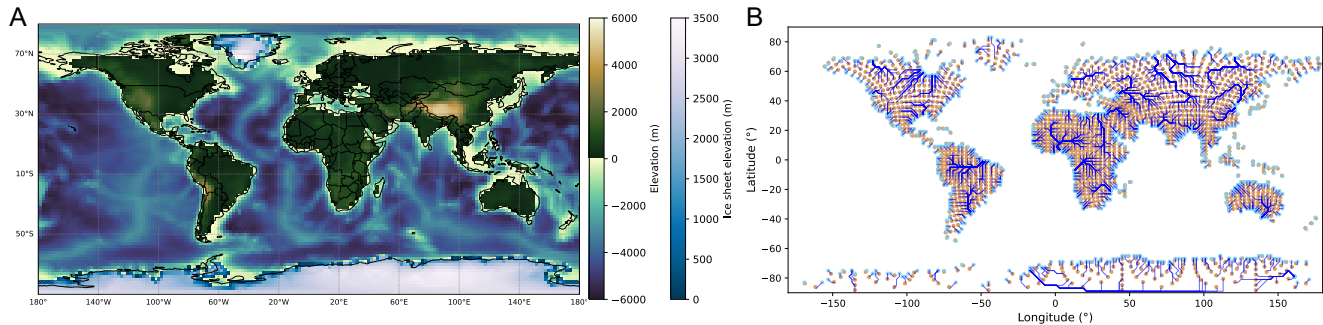


Figure 8. **A**-Topography with ice sheet elevation obtained [in as an output from BIG-MITgcm run1](#) ;**B**-[Runoff routing map for \(panel A\) and the corresponding topographyrunoff routing map \(panel B\)](#).

does not correctly capture the peak of ice sheet elevation in central Antarctica can be attributed to the model's coarse spatial resolution, confirming the role played by spatial resolution in ice sheet models (Rückamp et al., 2020). In addition, it is important to consider uncertainties related to [measurements of bedrock elevation](#), isostatic adjustment, and [measurements of the ice sheet thickness](#). Nevertheless, we can conclude that our model reproduces the first-order characteristics of the ice sheets reasonably well.

[Correlations in surface elevation between the ice sheets formed in run1 and BedMachine.](#)

4.1.5 Runoff

600 The final topography obtained in run1 is shown in Fig. 8A. The topography includes the ice sheets formed by iterating the asynchronous coupling procedure five times (Fig. 1). By applying *pysheds* to this topography, the drainage basins and the corresponding main rivers are identified, resulting in the runoff routing map shown in Fig. 8B. In this way, each land point is associated with an ocean point corresponding to the relevant river mouth. The main river paths can be clearly recognised, such as the Amazon, Congo, Nile or Yangtze rivers.

605 4.2 The Permian-Triassic case

We now demonstrate how the asynchronous procedure can be applied to a very different continental configuration. As an example, we consider the Permian-Triassic bedrock paleogeography as reconstructed by PANALEISIS (Vérard, 2019). Three alternative climatic steady states have been identified for this paleogeography by Ragon et al. (2024), with mean surface air temperatures (SAT) higher than present-day values. However, the so-called cold state, with an average SAT of around 17°C and a meridional overturning circulation characterised by a negative cell (i. e., flowing from north to south at the surface), corresponds to climate conditions where a small ice cap can develop in the Northern Hemisphere. Therefore, we applied our procedure to investigate this possibility.

Table 3. Global annual mean values averaged over the last 30 years, and associated standard deviations derived from interannual variability. The acronyms in the table are: surface air temperature (SAT), top-of-the-atmosphere budget (R_t), ocean surface budget (F_s), evaporation minus precipitation ($E - P$), sea surface temperature (SST) and sea surface salinity (SSS).

	Ragon et al., 2024	BIG-MITgcm
SAT ($^{\circ}\text{C}$)	17.20 ± 0.09	17.06 ± 0.09
R_t (W m^{-2})	-0.3 ± 0.2	-0.3 ± 0.2
F_s (W m^{-2})	0.07 ± 0.03	0.1 ± 0.2
Sea ice extent (10^6 km^2)	34.3 ± 0.4	36.1 ± 0.3
$E - P$ ($10^{-8} \text{ kg m}^{-2} \text{ s}^{-1}$)	0 ± 2	0 ± 1
SST ($^{\circ}\text{C}$)	21.11 ± 0.04	21.14 ± 0.05
SSS (psu)	38.19 ± 0.05	38.79 ± 0.02
Ice sheet volume (10^6 km^3)	–	7.8
Ice sheet extent (10^6 km^2)	–	5.0

We find that a small ice cap can indeed develop in the Northern Hemisphere in the cold state, as shown in the resulting topography in Fig. 9A. The associated runoff routing map is also shown in Fig. 9B. Global annual values of the main climatic variables, listed in Table 3, fall within the same range as those reported by Ragon et al. (2024), with slightly lower SAT and higher sea ice extent, indicating that this climatic state can be represented by the same attractor. The ice sheet extends in the north polar region with a volume of 7.8 million km^3 , corresponding to approximately -20 m of sea-level change relative to a climate state without ice sheets, and -65 m relative to the present-day value. Interestingly, this value falls within the range of eustatic variations in the Early Triassic reconstructed by global stratigraphic data (Haq, 2018; Simmons et al., 2020).

Regarding the vegetation cover, the main differences in NPP distribution relative to Ragon et al. (2024) occur at high latitudes, as shown in Fig. 10, due to the southward-equatorward migration of temperate forests and the disappearance of tundra in regions covered by the ice sheet.

4.3 Future developments

5 Future developments

In this paper, we have described how the implemented offline-asynchronous coupling framework successfully reproduces the large-scale climate and its major components, giving results comparable to those of two CMIP6 models for the pre-industrial climate, and demonstrating its capability to represent deep-time climates. However, further improvements are possible, some of which we discuss below.

The atmospheric module is currently based on a previous version of SPEEDY with five vertical levels, while a newer version with eight levels is now available (Kucharski et al., 2013). This updated version has recently been coupled with the NEMO ocean model (Ruggieri et al., 2024), providing a good representation of both climatology and the main modes of internal

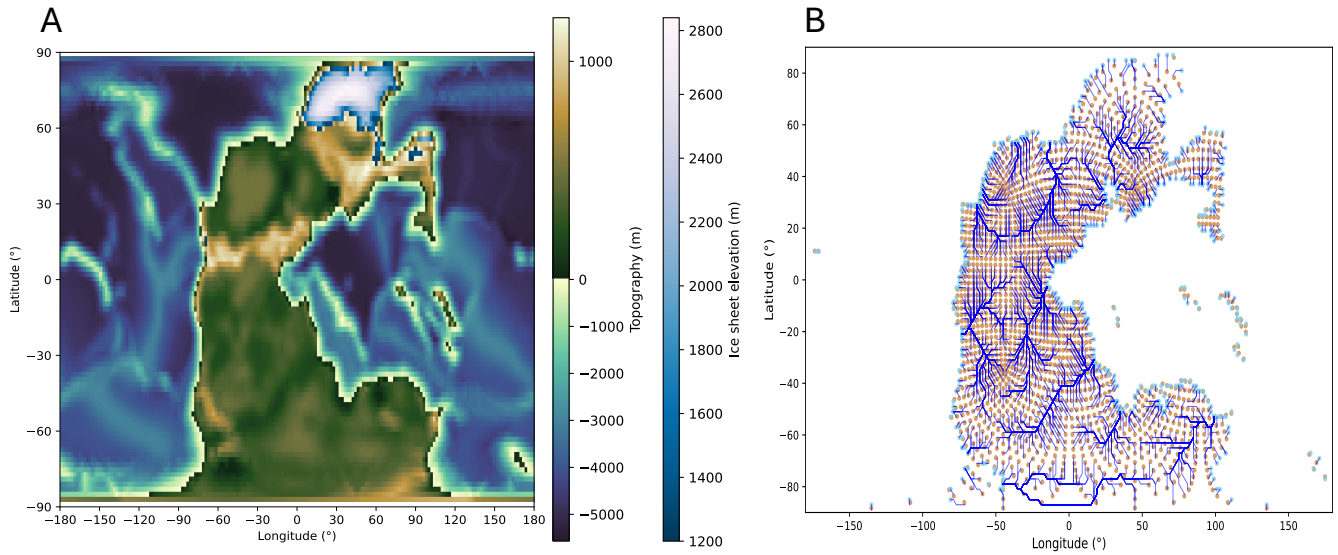


Figure 9. **A.**—Permian-Triassic topography [from the PANALEISIS reconstruction](#) with ice sheet elevation obtained using [biogeodyn-MITgcmISBIG-MITgcm](#) (the [panel A](#)). The bedrock elevation used to start the simulation can be found in [Ragon et al Ragon et al. \(2024\), 2024](#); **B.**—Runoff routing map for the corresponding topography ([panel B](#)).

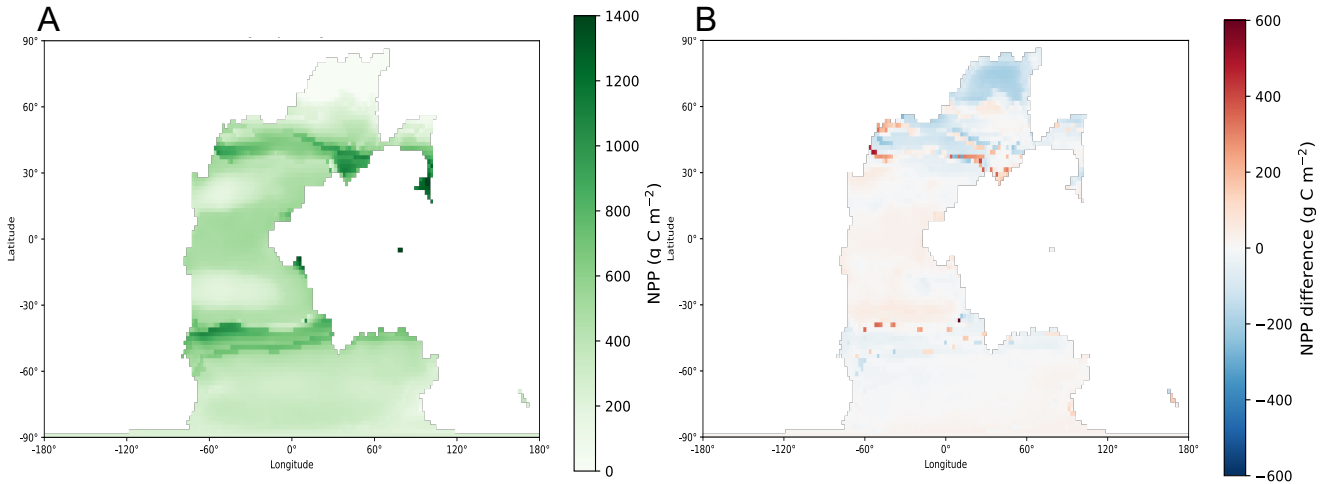


Figure 10. NPP distribution map obtained with [biogeodyn-MITgcmISBIG-MITgcm](#) ([panel A](#)) and the difference with the cold state in [Ragon et al Ragon et al. \(2024\), 2024](#).

variability. A further improvement would be to directly implement the [offline-asynchronous](#) coupling with BIOME4 on the MITgcm cubed-sphere grid, thereby eliminating interpolation errors, as discussed in Sec. 2.6.

Regarding the ice sheet model, we plan to provide the option of performing both online and offline coupling with the MITgcm dynamical kernel. This upgrade requires an enhancement of the land module within MITgcm. While incorporating a detailed land surface scheme, such as the one used in the JULES model (Wiltshire et al., 2020) would constitute a major improvement, we plan to follow a different approach, as only selected processes need to be represented at coarse spatial resolutions. As mentioned in the Methods section, the current two-layer land module in MITgcm lacks representations of processes such as heat conduction in snow, meltwater refreezing and retention, and snow compaction. All of these can significantly affect the ablation and accumulation in the surface mass balance, which is currently underestimated in our simulations. The use of the open-source snowpack model described in Essery (2015) could be a viable option. In future iterations of *MITgcmIS*, sliding and basal heat balance could easily be implemented – this would allow study of nonlinear processes that occur over continental and millennial scales, such as binge-purge oscillations (MacAyeal, 1993). Furthermore, incorporating a dynamical ice sheet model would lead to a more consistent energy budget across the different model components. However, due to the slow temporal evolution of ice sheets starting from bedrock conditions, a spin-up phase using offline coupling will always be necessary, since the Coupled MITgcm Setup cannot be run on timescales of hundreds of thousands of years due to computational costs.

6 Conclusions

In summary, the *biogeodyn-MITgcmISBIG-MITgcm* coupled setup provides a good representation of large-scale features of the present-day climate with reasonably low computational costs. Atmosphere and ocean dynamics broadly agree with observations, giving a model performance comparable to CMIP6-class models. Coupling with the BIOME4 vegetation model reproduces the main biomes, with results similar to those obtained using CMIP6 models with dynamical vegetation. Moreover, the vegetation cover obtained with *biogeodyn-MITgcmISBIG-MITgcm* exhibits coherent behavior under increasing CO₂ concentrations. The ice sheet component, *MITgcmIS*, reproduces reasonably well the surface mass balance, as well as the global volume and the thickness of Antarctica and Greenland ice sheets, considering its coarse spatial resolution. An upgrade of the land module and the development of an online ice sheet module could address some of the limitations of the current version and are planned for future development.

For now, this new tool, which describes the global-scale coupled dynamics of the ocean, atmosphere, vegetation, and ice over multimillennial timescales with relatively low computational costs, allows for a new range of climate investigations. Climatic steady states and their basin boundaries, including the position of unstable boundaries (so-called tipping points at the global scale) can be studied with our modelling framework that allows for the consistent evolution of all these interacting components. An additional advantage is that *biogeodyn-MITgcmISBIG-MITgcm* is adaptable to different modelling setups, as each module can be removed if needed. We expect that the proposed model will contribute to the investigation of the climate system on Earth, for both present-day and past continental configurations, as well as on idealised scenarios and exoplanet research.

Code and data availability. The BedMachine data for Antarctica and Greenland can be accessed through the NASA National Snow and
665 Ice Data Center at <https://nsidc.org/data/explore-data>. Data for the isostatic correction are available from the U.S. National Science Founda-
tion Arctic Data Center at <https://arcticdata.io/catalog/view/doi:10.18739/A2280509Z>. The sea ice extent data can be downloaded from
the National Snow and Ice data Center Sea Ice Index at <https://nsidc.org/data/g02135/versions/3#anchor-data-access-tools>. The MODIS
TERRA data for the NPP can be obtained at <https://modis.gsfc.nasa.gov/data/dataproduct/>. The RAPID data from the RAPID/MOCHA/WBTS
project are available from <https://rapid.ac.uk/>. CMIP6 model data can be freely downloaded on the ESGF nodes (for example [https://
670 esgf-node.ipsl.upmc.fr/search/cmip6](https://esgf-node.ipsl.upmc.fr/search/cmip6)). ERA5 and OSRA5 datasets are accessible via the Copernicus Climate Data Store at the following
link: <https://cds.climate.copernicus.eu/datasets>. MITgcm is open source and archived on <https://github.com/MITgcm/MITgcm>, the vegeta-
tion model BIOME4 is available from <https://github.com/jedokaplan/BIOME4>, *pysheds* from <https://github.com/mbartos/pysheds>.

The current version of *BIG-MITgcm* is available from the project website <https://doi.org/10.5281/zenodo.18723952> under the license
Creative Commons Attribution 4.0 International. The exact version of the model used to produce the results used in this paper is archived on
675 <https://doi.org/10.5281/zenodo.18723952> under DOI:10.5281/zenodo.18723952 (Moinat et al., 2025), as are input data and scripts to run the
model and produce the plots for all the simulations presented in this paper (Moinat et al., 2025).

Author contributions. MB planned the study and acquired funding. DNG implemented the main part of the *MITgcmIS* code with support
from LM. FF and CV implemented the hydrology component. LM ran the simulations with the help of MB, and made the plots. LM and MB
analysed the simulation results. LM, MB and DNG wrote the manuscript. All authors reviewed the paper.

680 *Competing interests.* The authors declare that they have no conflict of interest.

Acknowledgements. We are grateful to Jean-Michel Campin for solving an issue with the TOA budget [and to John Marshall for many useful
discussions](#). LM, FF, CV and MB acknowledge the financial support from the Swiss National Science Foundation (Sinergia Project No.
CRSII5_213539), and useful discussions with the Sinergia team. LM, FF, CV and MB thank the pan-EUROpean BIOgeodynamics network
(EUROBIG) COST Action (CA23150, <https://www.cost.eu/actions/CA23150>) and, in particular, Taras Gerya for inspiring discussions on
685 biogeodynamics. LM acknowledges the financial support from the EUROBIG COST Action (CA23150) ~~and the Outstanding Student Poster
and Presentation (OSPP) award obtained at EGU GA in 2025~~. DNG acknowledges support from the Natural Environment Research Council
(Project Nos. NE/X005194/1, NE/X01536X/1). [The authors thank anonymous referees for their helpful comments that improved the quality
of the manuscript](#).

Appendix A: Appendix A

690 Additional table and figures, mentioned in the main text, are shown in this Appendix.

Table A1. Glen's law parameter and corresponding ice sheet volume produced in Antarctica by *MITgcmIS*.

Glen's parameter ($10^{-15} \text{ Pa}^{-3} \text{ syr}^{-1}$)	Antarctica volume (10^6 km^3)
0.2	23.2
0.4	21.7
0.6	21.0
1.2	19.3
1.7	18.6
2.5	17.8
3.2	17.2

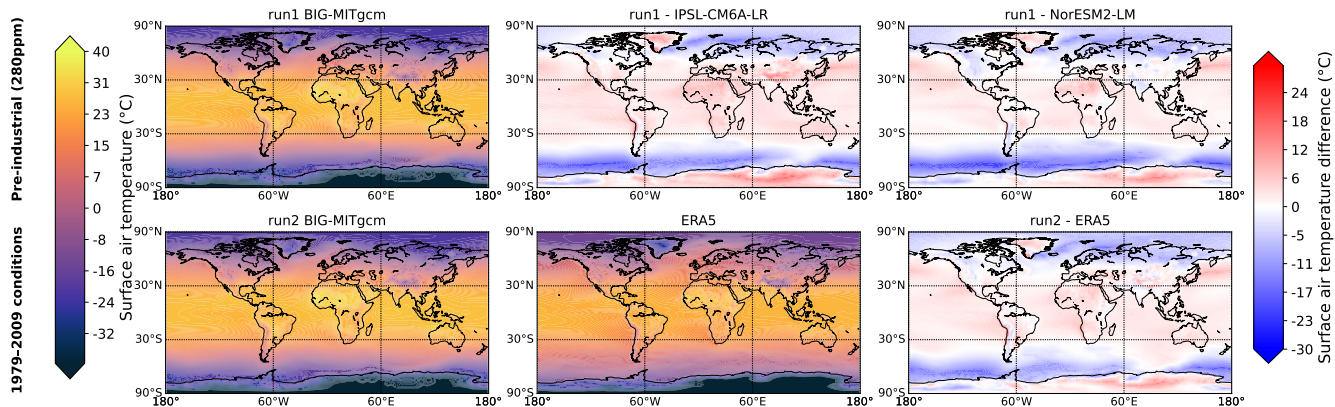


Figure A1. Climatology of surface Surface air temperature averaged over 30 years for the two pre-industrial conditions (first line) and the 1979 - 2009 conditions (second line). For the pre-industrial conditions, biogeodyn-MITgcm BIG-MITgcm simulations run1 temperature distribution, IPSL-CM6A-LR and the corresponding anomaly maps NorESM2-LM difference with respect to CMIP models BIG-MITgcm run1. For the 1979 - 2009 conditions, BIG-MITgcm run2 and ERA5 temperature distribution, and ERA5 difference with respect to BIG-MITgcm run2.

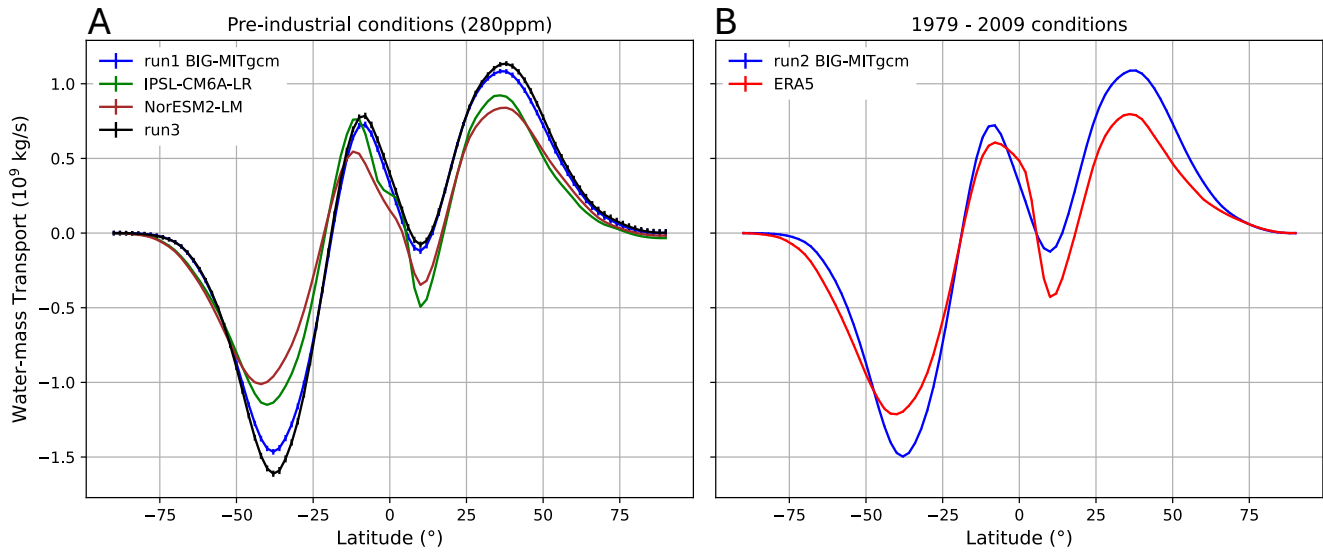


Figure A2. Zonal average of the northward water-mass transport in the atmosphere for the pre-industrial conditions (panel A) and the 1979 - 2009 conditions (panel B). Data are plotted using the Carissimo correction (Carissimo et al., 1985).

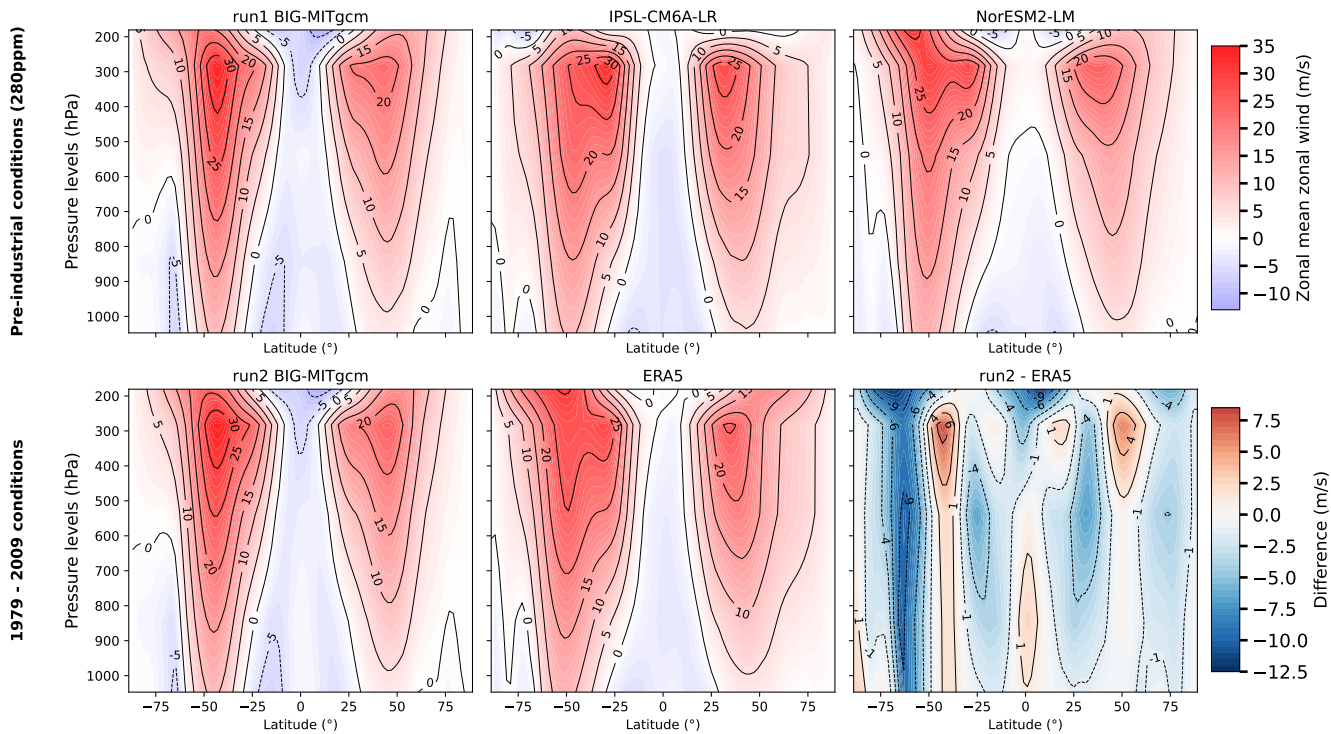


Figure A3. Zonal annual mean of zonal wind for the two pre-industrial conditions (first line) and the 1979 - 2009 conditions (second line). For the pre-industrial conditions, biogeodyn-MITgcm BIG-MITgcm simulations run1, CMIP-models-IPSL-CM6A-LR and NorESM2-LM data are plotted in this respective order. For the 1979 - 2009 conditions, BIG-MITgcm and ERA5 distribution, and ERA5 difference with respect to BIG-MITgcm run2.

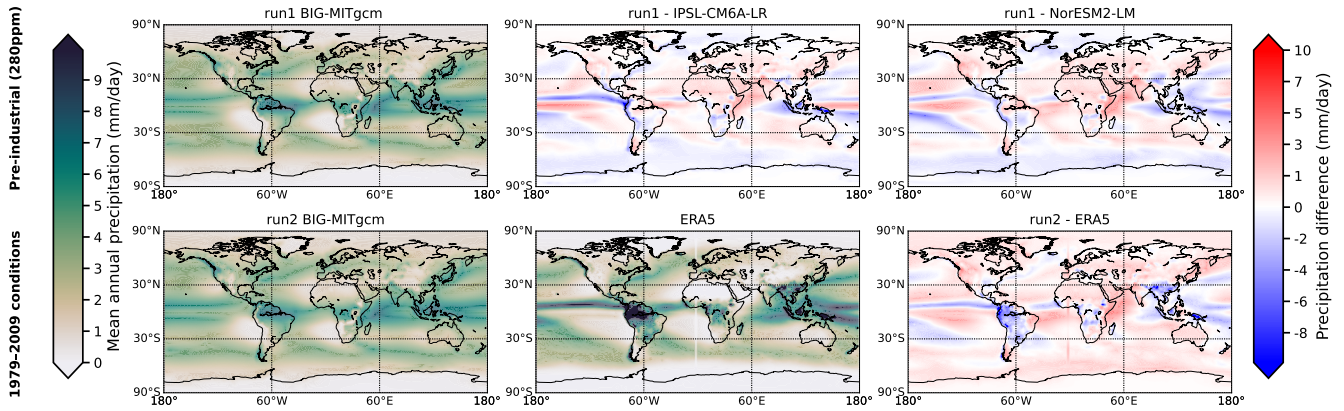


Figure A4. ~~Chmatology of precipitation~~ Precipitation averaged over 30 years for the ~~two~~ pre-industrial conditions (first line) and the 1979 - 2009 conditions (second line). For the pre-industrial conditions, ~~biogeodyn-MITgcm~~ *BIG-MITgcm* simulations-run1 precipitation distribution, *IPSL-CM6A-LR* and the corresponding anomaly maps *NorESM2-LM* difference with respect to ~~CMIP-models~~ *BIG-MITgcm* run1. For the 1979 - 2009 conditions, *BIG-MITgcm* run2 and *ERA5* precipitation distribution, and *ERA5* difference with respect to *BIG-MITgcm* run2.

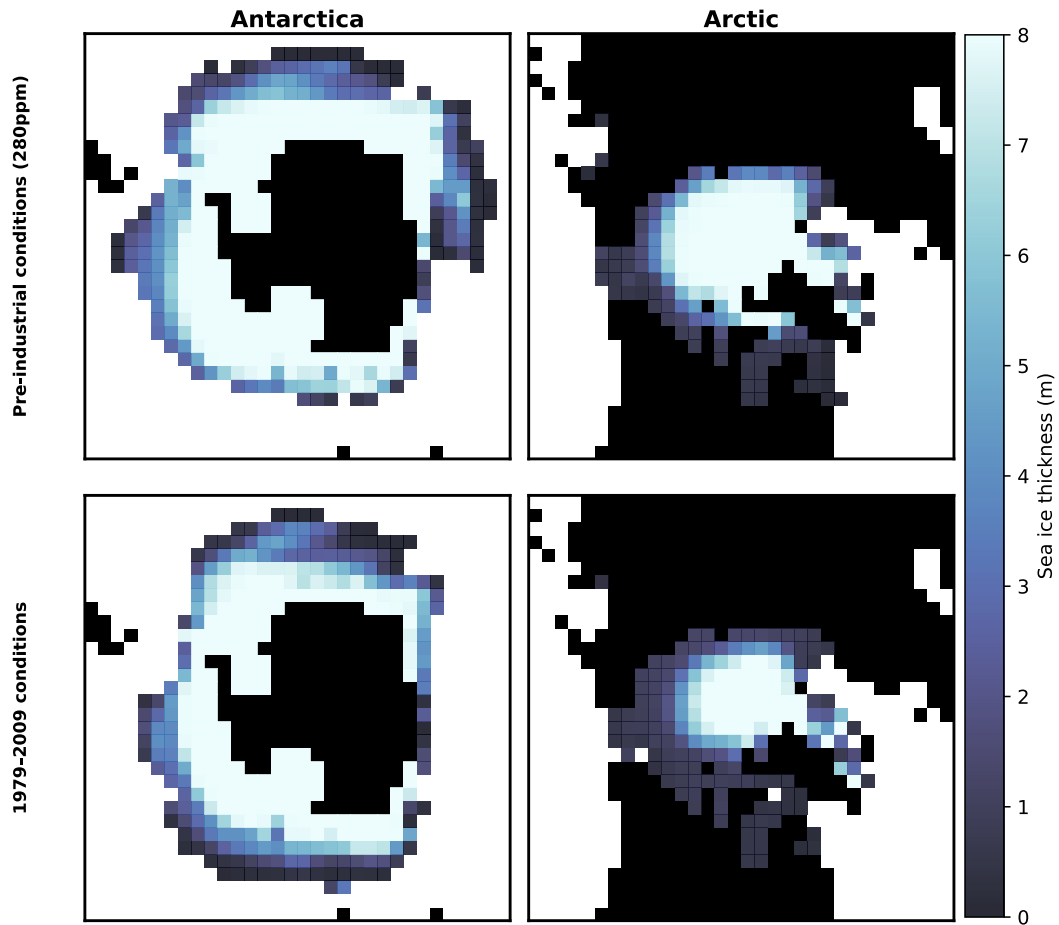


Figure A5. Annual mean sea ice thickness for *BIG-MITgcm* run1 (first line) and extent in the polar regions for the two *biogeodyn-MITgcm*IS*BIG-MITgcm* simulations-run2 (second line). The first column displays the Antarctica region and the second column the Arctic region. They are displayed on the cubed-sphere grid.

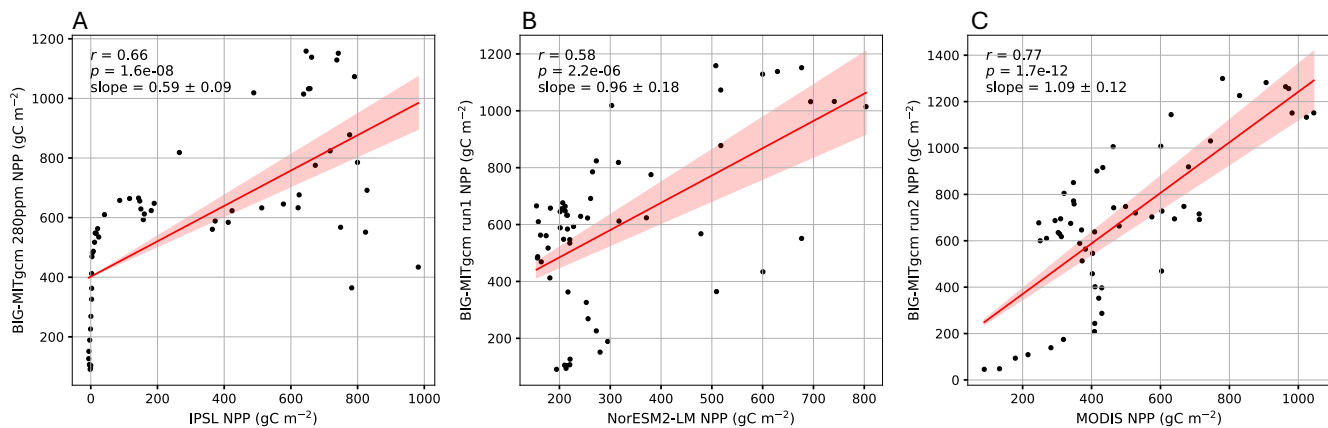


Figure A6. Linear regression (with corresponding r , p and slope values) of NPP obtained with *biogeodyn-MITgcm* *BIG-MITgcm* run1 against the CMIP models *IPSL-CM6A-LR* (panel A), *NorESM2-LM* (panel B) and with *biogeodyn-MITgcm* *BIG-MITgcm* run2 against the MODIS dataset (panel C).

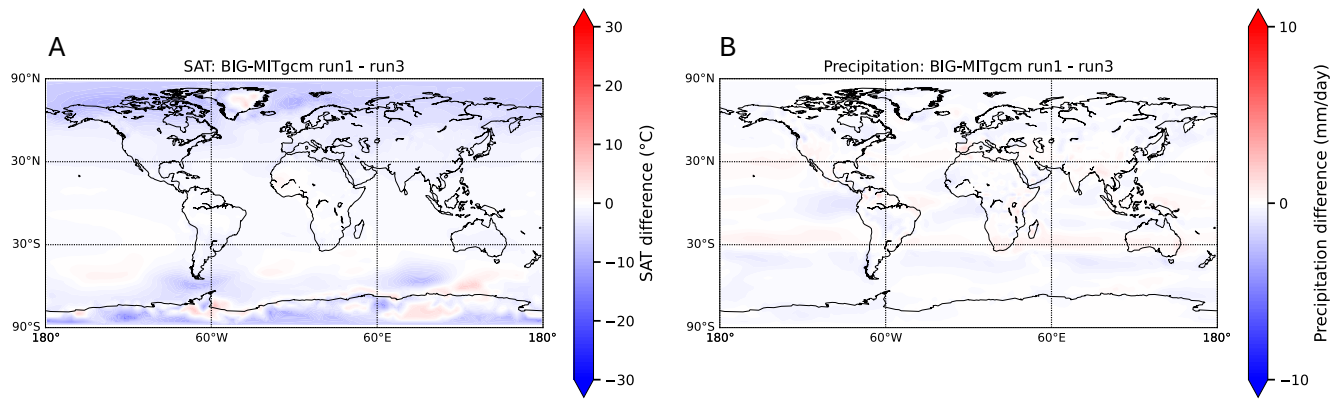


Figure A7. Maps of surface air temperature and precipitation for the difference Difference between *biogeodyn-MITgcm* BIG-MITgcm run1 and run3 for the simulation started from ETOPO2 surface air temperature and precipitation. Scales are the same as in the anomaly maps in Figs. A1 and A4.

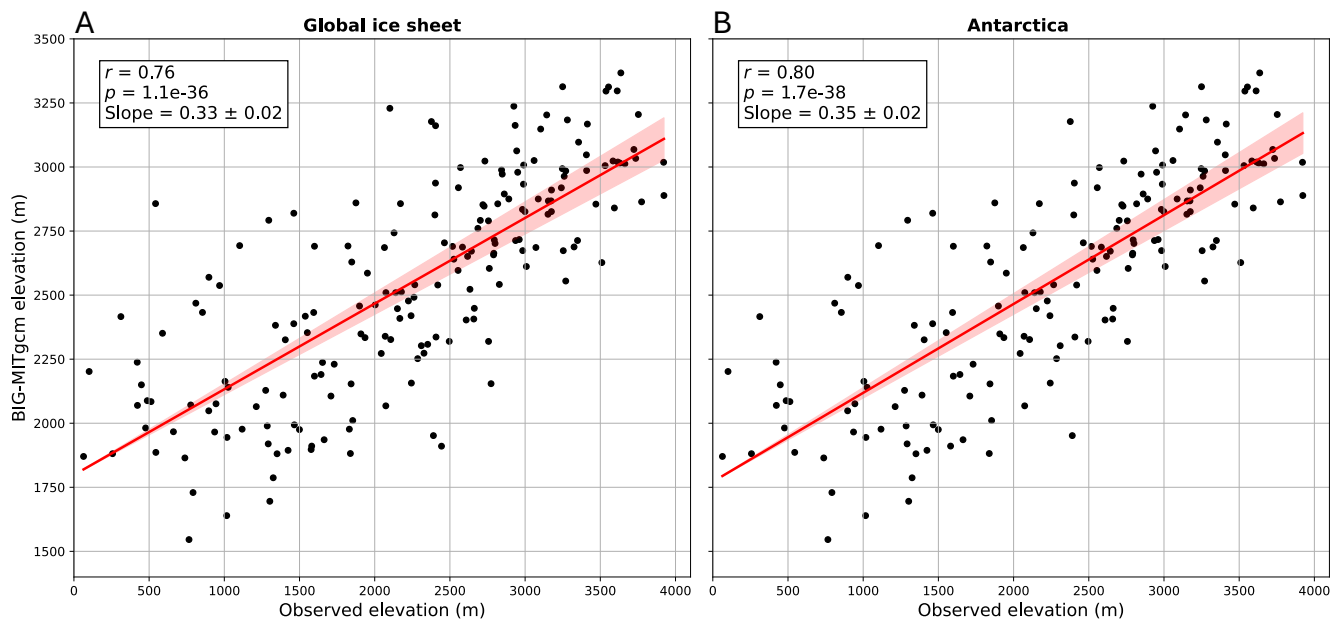


Figure A8. Correlations between the surface elevation of the ice sheets in *BIG-MITgcm* run1 and the BedMachine dataset for the global ice sheets (panel A) and Antarctica (panel B).

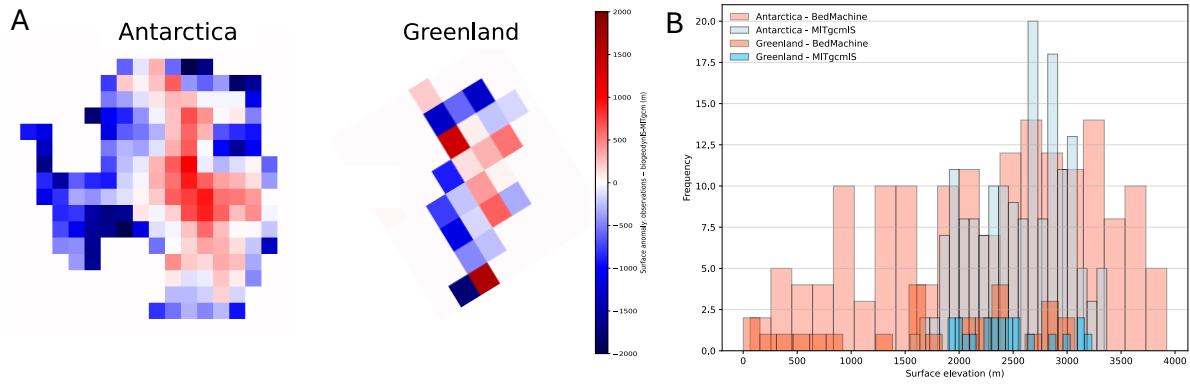


Figure A9. **A.** Anomaly maps of the surface elevation (BedMachine minus between the BedMachine dataset and *MITgcmISBIG-MITgcm* simulation where ice sheets form^{run1} for Antarctica and Greenland (panel A). **B.** Histograms of surface elevation where ice sheets form in *MITgcmISBIG-MITgcm* simulations^{run1} (blue) and in the BedMachine observations dataset (orange) (panel B).

References

- Ackermann, L., Danek, C., Gierz, P., and Lohmann, G.: AMOC Recovery in a Multicentennial Scenario Using a Coupled Atmosphere-Ocean-Ice Sheet Model, *Geophysical Research Letters*, 47, e2019GL086810, <https://doi.org/https://doi.org/10.1029/2019GL086810>, e2019GL086810 10.1029/2019GL086810, 2020.
- 695 Adcroft, A., Campin, J.-M., Hill, C., and Marshall, J.: Implementation of an atmosphere ocean general circulation model on the expanded spherical cube, *Monthly Weather Review*, 132, 2845–2863, <https://doi.org/10.1175/MWR2823.1>, 2004.
- Allen, B. J., Hill, D. J., Burke, A. M., Clark, M., Marchant, R., Stringer, L. C., Williams, D. R., and Lyon, C.: Projected future climatic forcing on the global distribution of vegetation types, *Philosophical Transactions of the Royal Society B: Biological Sciences*, 379, 20230011, <https://doi.org/10.1098/rstb.2023.0011>, 2024.
- 700 Balaji, V., Maisonnave, E., Zadeh, N., Lawrence, B. N., Biercamp, J., Fladrich, U., Aloisio, G., Benson, R., Caubel, A., Durachta, J., Foujols, M.-A., Lister, G., Mocavero, S., Underwood, S., and Wright, G.: CPMIP: measurements of real computational performance of Earth system models in CMIP6, *Geoscientific Model Development*, 10, 19–34, <https://doi.org/10.5194/gmd-10-19-2017>, 2017.
- Bartos, M.: pysheds: simple and fast watershed delineation in python, <https://doi.org/10.5281/zenodo.3822494>, 2020.
- Boucher, O., Denvil, S., Levavasseur, G., Cozic, A., Caubel, A., Foujols, M.-A., Meurdesoif, Y., Cadule, P., Devilliers, M., Ghattas, J., Lebas, N., Lurton, T., Mellul, L., Musat, I., Mignot, J., and Cheruy, F.: IPSL IPSL-CM6A-LR model output prepared for CMIP6 CMIP historical, 705 <https://doi.org/10.22033/ESGF/CMIP6.5195>, 2018.
- Braithwaite, R. J.: Air Temperature and Glacier Ablation — A Parametric Approach, Ph.D. thesis, McGill University, ph.D. thesis, *Interdisciplinary Studies in Glaciology*, 1977.
- Brunetti, M. and Ragon, C.: Attractors and bifurcation diagrams in complex climate models, *Phys. Rev. E*, 107, 054214, <https://doi.org/10.1103/PhysRevE.107.054214>, 2023.
- 710 Brunetti, M. and V erard, C.: How to reduce long-term drift in present-day and deep-time simulations?, *Climate Dynamics*, 50, 4425–4436, <https://doi.org/10.1007/s00382-017-3883-7>, 2018.
- Brunetti, M., V erard, C., and Baumgartner, P. O.: Modeling the Middle Jurassic ocean circulation, *Journal of Palaeogeography*, 4, 371–383, <https://doi.org/https://doi.org/10.1016/j.jop.2015.09.001>, 2015.
- 715 Brunetti, M., Kasparian, J., and V erard, C.: Co-existing climate attractors in a coupled aquaplanet, *Climate Dynamics*, 53, 6293–6308, <https://doi.org/10.1007/s00382-019-04926-7>, 2019.
- Caesar, L., Rahmstorf, S., Robinson, A., Feulner, G., and Saba, V.: Observed fingerprint of a weakening Atlantic Ocean overturning circulation, *Nature*, 556, 191–196, <https://doi.org/10.1038/s41586-018-0006-5>, 2018.
- Carissimo, B. C., Oort, A. H., and Haar, T. H. V.: Estimating the Meridional Energy Transports in the Atmosphere and Ocean, *Journal of Physical Oceanography*, 15, 82 – 91, [https://doi.org/10.1175/1520-0485\(1985\)015<0082:ETMETI>2.0.CO;2](https://doi.org/10.1175/1520-0485(1985)015<0082:ETMETI>2.0.CO;2), 1985.
- 720 Claussen, M.: On coupling global biome models with climate models, *Climate Research*, 4, 203–221, 1994.
- Claussen, M., Mysak, L., Weaver, A., Crucifix, M., Fichefet, T., Loutre, M.-F., Weber, S., Alcamo, J., Alexeev, V., Berger, A., et al.: Earth system models of intermediate complexity: closing the gap in the spectrum of climate system models, *Climate dynamics*, 18, 579–586, 2002.
- 725 Copernicus Climate Change Service: ORAS5 global ocean reanalysis monthly data from 1958 to present, <https://doi.org/10.24381/cds.67e8eeb7>, accessed on 12-MAR-2025, 2021.
- Cuffey, K. M. and Paterson, W. S. B.: *The physics of glaciers*, Academic Press, 2010.

- de Noblet-Ducoudré, N., Claussen, M., and Prentice, C.: Mid-Holocene greening of the Sahara: first results of the GAIM 6000 year BP Experiment with two asynchronously coupled atmosphere/biome models, *Climate Dynamics*, 16, 643–659, <https://doi.org/10.1007/s003820000074>, 2000.
- 730
- Dinh, T. L. A., Goll, D., Ciais, P., and Lauerwald, R.: Impacts of land-use change on biospheric carbon: an oriented benchmark using the ORCHIDEE land surface model, *Geoscientific Model Development*, 17, 6725–6744, <https://doi.org/10.5194/gmd-17-6725-2024>, 2024.
- Drótos, G., Bóday, T., and Tél, T.: On the importance of the convergence to climate attractors, *The European Physical Journal Special Topics*, 226, 2031–2038, <https://doi.org/10.1140/epjst/e2017-70045-7>, 2017.
- 735
- Drüke, M., von Bloh, W., Petri, S., Sakschewski, B., Schaphoff, S., Forkel, M., Huiskamp, W., Feulner, G., and Thonicke, K.: CM2Mc-LPJmL v1.0: biophysical coupling of a process-based dynamic vegetation model with managed land to a general circulation model, *Geoscientific Model Development*, 14, 4117–4141, <https://doi.org/10.5194/gmd-14-4117-2021>, 2021.
- Essery, R.: A factorial snowpack model (FSM 1.0), *Geoscientific Model Development*, 8, 3867–3876, <https://doi.org/10.5194/gmd-8-3867-2015>, 2015.
- 740
- ETOPO: 15 Arc-Second Global Relief Model, <https://doi.org/10.25921/fd45-gt74>, 2022.
- ETOPO2: 2-minute Gridded Global Relief Data (ETOPO2) v2, <https://doi.org/10.7289/V5J1012Q>, 2006.
- Eyring, V., Bony, S., Meehl, G. A., Senior, C. A., Stevens, B., Stouffer, R. J., and Taylor, K. E.: Overview of the Coupled Model Intercomparison Project Phase 6 (CMIP6) experimental design and organization, *Geoscientific Model Development*, 9, 1937–1958, <https://doi.org/10.5194/gmd-9-1937-2016>, 2016.
- 745
- Farinotti, D., Huss, M., Fürst, J. J., Landmann, J., Machguth, H., Maussion, F., Pandit, A., et al.: A consensus estimate for the ice thickness distribution of all glaciers on Earth, *Nature Geoscience*, 12, 168–173, <https://doi.org/10.1038/s41561-019-0300-3>, 2019.
- Ferreira, D., Marshall, J., and Rose, B.: Climate Determinism Revisited: Multiple Equilibria in a Complex Climate Model, *Journal of Climate*, 24, 992 – 1012, <https://doi.org/10.1175/2010JCLI3580.1>, 2011.
- Ferreira, D., Marshall, J., Ito, T., and McGee, D.: Linking Glacial-Interglacial States to Multiple Equilibria of Climate, *Geophysical Research Letters*, 45, 9160–9170, <https://doi.org/10.1029/2018GL077019>, 2018.
- 750
- Fetterer, F., Knowles, K., Meier, W., and Savoie, M.: Sea Ice Index, <https://doi.org/10.7265/N5QJ7F7W>, updated daily. [Indicate subset used], 2002.
- Gent, P. R. and McWilliams, J. C.: Isopycnal mixing in ocean circulation models, *Journal of Physical Oceanography*, 20, 150–160, [https://doi.org/10.1175/1520-0485\(1990\)020<0150:IMIOCM>2.0.CO;2](https://doi.org/10.1175/1520-0485(1990)020<0150:IMIOCM>2.0.CO;2), 1990.
- 755
- Goldberg, D. N. and Heimbach, P.: Parameter and state estimation with a time-dependent adjoint marine ice sheet model, *The Cryosphere*, 7, 1659–1678, <https://doi.org/10.5194/tc-7-1659-2013>, 2013.
- Greve, R. and Blatter, H.: *Glacial Isostasy*, pp. 185–201, Springer Berlin Heidelberg, Berlin, Heidelberg, ISBN 978-3-642-03415-2, https://doi.org/10.1007/978-3-642-03415-2_8, 2009.
- Hansen, J., Russell, G., Rind, D., Stone, P., Lacis, A., Lebedeff, S., Ruedy, R., and Travis, L.: Efficient Three-Dimensional Global Models for Climate Studies: Models I and II, *Monthly Weather Review*, 111, 609 – 662, [https://doi.org/10.1175/1520-0493\(1983\)111<0609:ETDGMF>2.0.CO;2](https://doi.org/10.1175/1520-0493(1983)111<0609:ETDGMF>2.0.CO;2), 1983.
- 760
- Haq, B. U.: Triassic eustatic variations reexamined, *GSA Today*, 28, 4–9, <https://doi.org/10.1130/GSATG381A.1>, 2018.
- Hawkins, E., Smith, R. S., Allison, L. C., Gregory, J. M., Woollings, T. J., Pohlmann, H., and de Cuevas, B.: Bistability of the Atlantic overturning circulation in a global climate model and links to ocean freshwater transport, *Geophysical Research Letters*, 38, <https://doi.org/10.1029/2011GL047208>, 2011.
- 765

- Haxeltine, A. and Prentice, I. C.: BIOME3: An equilibrium terrestrial biosphere model based on ecophysiological constraints, resource availability, and competition among plant functional types, *Global Biogeochemical Cycles*, 10, 693–709, <https://doi.org/https://doi.org/10.1029/96GB02344>, 1996.
- 770 Haywood, A. M., Dowsett, H. J., Otto-Bliesner, B., Chandler, M. A., Dolan, A. M., Hill, D. J., Lunt, D. J., Robinson, M. M., Rosenbloom, N., Salzmann, U., and Sohl, L. E.: Pliocene Model Intercomparison Project (PlioMIP): experimental design and boundary conditions (Experiment 1), *Geoscientific Model Development*, 3, 227–242, <https://doi.org/10.5194/gmd-3-227-2010>, 2010.
- Herrington, A. R. and Poulsen, C. J.: Terminating the Last Interglacial: The Role of Ice Sheet, Climate Feedbacks in a GCM Asynchronously Coupled to an Ice Sheet Model, *Journal of Climate*, 25, 1871 – 1882, <https://doi.org/10.1175/JCLI-D-11-00218.1>, 2011.
- 775 Hersbach, H., Bell, B., Berrisford, P., Biavati, G., Horányi, A., Muñoz Sabater, J., Nicolas, J., Peubey, C., Radu, R., Rozum, I., Schepers, D., Simmons, A., Soci, C., Dee, D., and Thépaut, J.-N.: ERA5 monthly averaged data on single levels from 1940 to present, <https://doi.org/10.24381/cds.f17050d7>, accessed on 12-MAR-2025, 2023.
- Hock, R. and Holmgren, B.: A distributed surface energy-balance model for complex topography and its application to Storglaciären, Sweden, *Journal of Glaciology*, 51, 25–36, <https://doi.org/10.3189/172756505781829566>, 2005.
- Hoffman, P. F. and Schrag, D. P.: The snowball Earth hypothesis: testing the limits of global change, *Terra Nova*, 14, 129–155, <https://doi.org/https://doi.org/10.1046/j.1365-3121.2002.00408.x>, 2002.
- 780 Holden, P. B., Edwards, N. R., Fraedrich, K., Kirk, E., Lunkeit, F., and Zhu, X.: PLASIM–GENIE v1.0: a new intermediate complexity AOGCM, *Geoscientific Model Development*, 9, 3347–3361, <https://doi.org/10.5194/gmd-9-3347-2016>, 2016.
- Hou, Y., Guo, H., Yang, Y., and Liu, W.: Global Evaluation of Runoff Simulation From Climate, Hydrological and Land Surface Models, *Water Resources Research*, 59, e2021WR031 817, <https://doi.org/https://doi.org/10.1029/2021WR031817>, 2023.
- 785 Jackson, L. C., Alastrué de Asenjo, E., Bellomo, K., Danabasoglu, G., Haak, H., Hu, A., Jungclaus, J., Lee, W., Meccia, V. L., Saenko, O., Shao, A., and Swingedouw, D.: Understanding AMOC stability: the North Atlantic Hosing Model Intercomparison Project, *Geoscientific Model Development*, 16, 1975–1995, <https://doi.org/10.5194/gmd-16-1975-2023>, 2023.
- Kaplan, J.: *Geophysical Applications of Vegetation Modeling*, Doctoral thesis (compilation), Department of Biology, ISBN 91-7874-089-4, 2001.
- 790 Kaplan, J. O., Bigelow, N. H., Prentice, I. C., Harrison, S. P., Bartlein, P. J., Christensen, T. R., Cramer, W., Matveyeva, N. V., McGuire, A. D., Murray, D. F., Razzhivin, V. Y., Smith, B., Walker, D. A., Anderson, P. M., Andreev, A. A., Brubaker, L. B., Edwards, M. E., and Lozhkin, A. V.: Climate change and Arctic ecosystems: 2. Modeling, paleodata-model comparisons, and future projections, *Journal of Geophysical Research: Atmospheres*, 108, <https://doi.org/https://doi.org/10.1029/2002JD002559>, 2003.
- Kirschvink, J. L.: Late Proterozoic Low-Latitude Global Glaciation: The Snowball Earth, in: *The Proterozoic Biosphere: A Multidisciplinary Study*, edited by Schopf, J. W. and Klein, C., pp. 51–52, Cambridge University Press, Cambridge, UK, 1992.
- 795 Kucharski, F., Molteni, F., King, M. P., Farneti, R., Kang, I.-S., and Feudale, L.: On the Need of Intermediate Complexity General Circulation Models: A SPEEDY Example, *Bulletin of the American Meteorological Society*, 94, 25 – 30, <https://doi.org/10.1175/BAMS-D-11-00238.1>, 2013.
- Lan, X., Tans, P., and Thoning, K. W.: Trends in globally-averaged CO₂ determined from NOAA Global Monitoring Laboratory measurements, <https://doi.org/10.15138/9N0H-ZH07>, <https://doi.org/10.15138/9N0H-ZH07>, version Monday, 05-May-2025 16:38:58 MDT, 2025.
- 800 Large, W. G. and Yeager, S. G.: Diurnal to decadal global forcing for ocean and sea-ice models: The data sets and flux climatologies, Technical note, National Center for Atmospheric Research (NCAR), Boulder, CO, <https://doi.org/10.5065/D6KK98Q6>, 2004.

- Lembo, V., Lunkeit, F., and Lucarini, V.: TheDiaTo (v1.0) – a new diagnostic tool for water, energy and entropy budgets in climate models, *Geoscientific Model Development*, 12, 3805–3834, <https://doi.org/10.5194/gmd-12-3805-2019>, 2019.
- Levitus, S.: *Climatological Atlas of the World Ocean*, NOAA Professional Paper 13, U.S. Government Printing Office, Washington, D.C., 1982.
- Lucarini, V. and Bóday, T.: Edge states in the climate system: exploring global instabilities and critical transitions, *Nonlinearity*, 30, R32–R66, <https://doi.org/10.1088/1361-6544/aa6b11>, 2017.
- 810 M. Haywood, A., Valdes, P. J., Sellwood, B. W., and Kaplan, J. O.: Antarctic climate during the middle Pliocene: model sensitivity to ice sheet variation, *Palaeogeography, Palaeoclimatology, Palaeoecology*, 182, 93–115, [https://doi.org/https://doi.org/10.1016/S0031-0182\(01\)00454-0](https://doi.org/https://doi.org/10.1016/S0031-0182(01)00454-0), 2002.
- MacAyeal, D.: *EISMINT: Lessons in ice-sheet modeling*, 1997.
- MacAyeal, D. R.: Binge/purge oscillations of the Laurentide Ice Sheet as a cause of the North Atlantic’s Heinrich events, *Paleoceanography*, 8, 775–784, <https://doi.org/https://doi.org/10.1029/93PA02200>, 1993.
- 815 Madsen, M. S., Yang, S., Aðalgeirsdóttir, G., et al.: The role of an interactive Greenland ice sheet in the coupled climate-ice sheet model EC-Earth-PISM, *Climate Dynamics*, 59, 1189–1211, <https://doi.org/10.1007/s00382-022-06184-6>, 2022.
- Marshall, J., Adcroft, A., Hill, C., Perelman, L., and Heisey, C.: A finite-volume, incompressible Navier Stokes model for studies of the ocean on parallel computers, *Journal of Geophysical Research: Oceans*, 102, 5753–5766, <https://doi.org/10.1029/96JC02775>, 1997a.
- 820 Marshall, J., Hill, C., Perelman, L., and Adcroft, A.: Hydrostatic, quasi-hydrostatic, and nonhydrostatic ocean modeling, *Journal of Geophysical Research: Oceans*, 102, 5733–5752, <https://doi.org/10.1029/96JC02776>, 1997b.
- Marshall, J., Adcroft, A., Campin, J.-M., and Hill, C.: Atmosphere–ocean modeling exploiting fluid isomorphisms, *Monthly Weather Review*, 132, 2882–2894, <https://doi.org/10.1175/MWR2835.1>, 2004.
- Marshall, J., Ferreira, D., Campin, J.-M., and Enderton, D.: Mean Climate and Variability of the Atmosphere and Ocean on an Aquaplanet, *Journal of the Atmospheric Sciences*, 64, 4270 – 4286, <https://doi.org/10.1175/2007JAS2226.1>, 2007.
- 825 Marshall, J., Donohoe, A., Ferreira, D., and McGee, D.: The ocean’s role in setting the mean position of the Inter-Tropical Convergence Zone, *Climate Dynamics*, 42, 1967–1979, <https://doi.org/10.1007/s00382-013-1767-z>, 2014.
- Mehling, O., Vanderborgh, E., and Dijkstra, H. A.: Critical freshwater forcing for AMOC tipping in climate models – compensation matters, *EGU sphere*, 2026, 1–24, <https://doi.org/10.5194/egusphere-2025-6215>, 2026.
- 830 Merdith, A. S., Williams, S. E., Collins, A. S., Tetley, M. G., Mulder, J. A., Blades, M. L., Young, A., Armistead, S. E., Cannon, J., Zahirovic, S., and Müller, R. D.: Extending full-plate tectonic models into deep time: Linking the Neoproterozoic and the Phanerozoic, *Earth-Science Reviews*, 214, 103 477, <https://doi.org/https://doi.org/10.1016/j.earscirev.2020.103477>, 2021.
- Moat, B. I., Smeed, D. A., Rayner, D., Johns, W. E., Smith, R., Volkov, D., Elipot, S., Petit, T., Kajtar, J., Baringer, M. O., and Collins, J.: Atlantic meridional overturning circulation observed by the RAPID-MOCHA-WBTS (RAPID-Meridional Overturning Circulation and Heatflux Array-Western Boundary Time Series) array at 26N from 2004 to 2023 (v2023.1a), <https://doi.org/10.5285/33826d6e-801c-b0a7-e063-7086abc0b9db>, 2025.
- 835 Moinat, L., Kasparian, J., and Brunetti, M.: Tipping detection using climate networks, *Chaos: An Interdisciplinary Journal of Nonlinear Science*, 34, 123 161, <https://doi.org/10.1063/5.0230848>, 2024.
- Moinat, L., Franziskakis, F., V  rard, C., Goldberg, D. N., and Brunetti, M.: Repository for: biogeodyn-MITgcmIS (v1): a biogeodynamical tool for exploratory climate modelling], <https://doi.org/10.5281/zenodo.18723952>, 2025.
- 840

- Molteni, F.: Atmospheric simulations using a GCM with simplified physical parametrizations. I: Model climatology and variability in multi-decadal experiments, *Climate Dynamics*, 20, 175–191, <https://doi.org/10.1007/s00382-002-0268-2>, 2003.
- Moreno-Parada, D., Alvarez-Solas, J., Blasco, J., Montoya, M., and Robinson, A.: Simulating the Laurentide Ice Sheet of the Last Glacial Maximum, *The Cryosphere*, 17, 2139–2156, <https://doi.org/10.5194/tc-17-2139-2023>, 2023.
- 845 Morlighem, M.: MEASUREs BedMachine Antarctica, Version 3, <https://doi.org/10.5067/FPSU0V1MWUB6>, accessed: 2025-03-21, 2022.
- Morlighem, M., Williams, C., Rignot, E., An, L., Arndt, J. E., Bamber, J., Catania, G., Chauché, N., Dowdeswell, J. A., Dorschel, B., Fenty, I., Hogan, K., Howat, I., Hubbard, A., Jakobsson, M., Jordan, T. M., Kjeldsen, K. K., Millan, R., Mayer, L., Mouginot, J., Noël, B., O’Cofaigh, C., Palmer, S. J., Rysgaard, S., Seroussi, H., Siegert, M. J., Slabon, P., Straneo, F., van den Broeke, M. R., Weinrebe, W., Wood, M., and Zinglensen, K.: IceBridge BedMachine Greenland (IDBMG4, Version 5), <https://doi.org/10.5067/GMEVBWFLWA7X>,
850 accessed: 2025-04-103, 2022.
- Mottram, R., Hansen, N., Kittel, C., van Wessem, J. M., Agosta, C., Amory, C., Boberg, F., van de Berg, W. J., Fettweis, X., Gossart, A., van Lipzig, N. P. M., van Meijgaard, E., Orr, A., Phillips, T., Webster, S., Simonsen, S. B., and Souverijns, N.: What is the surface mass balance of Antarctica? An intercomparison of regional climate model estimates, *The Cryosphere*, 15, 3751–3784, <https://doi.org/10.5194/tc-15-3751-2021>, 2021.
- 855 Muntjewerf, L., Petrini, M., Vizcaino, M., Ernani da Silva, C., Sellevold, R., Scherrenberg, M. D. W., Thayer-Calder, K., Bradley, S. L., Lenaerts, J. T. M., Lipscomb, W. H., and Lofverstrom, M.: Greenland Ice Sheet Contribution to 21st Century Sea Level Rise as Simulated by the Coupled CESM2.1-CISM2.1, *Geophysical Research Letters*, 47, e2019GL086836, <https://doi.org/https://doi.org/10.1029/2019GL086836>, e2019GL086836 10.1029/2019GL086836, 2020.
- Nijssen, F. J. M. M., Cox, P. M., and Williamson, M. S.: Emergent constraints on transient climate response (TCR) and equilibrium climate sensitivity (ECS) from historical warming in CMIP5 and CMIP6 models, *Earth System Dynamics*, 11, 737–750, <https://doi.org/10.5194/esd-11-737-2020>, 2020.
- NOAA National Centers for Environmental Information: Monthly Global Climate Report for Annual 2023, <https://www.ncei.noaa.gov/access/monitoring/monthly-report/global/202313>, <https://doi.org/10.25921/C00672>, published online January 2024, retrieved April 25, 2025, 2024.
- 865 Norby, R. J., DeLucia, E. H., Gielen, B., Calfapietra, C., Giardina, C. P., King, J. S., Ledford, J., McCarthy, H. R., Moore, D. J. P., Ceulemans, R., Angelis, P. D., Finzi, A. C., Karnosky, D. F., Kubiske, M. E., Lukac, M., Pregitzer, K. S., Scarascia-Mugnozza, G. E., Schlesinger, W. H., and Oren, R.: Forest response to elevated CO₂ is conserved across a broad range of productivity, *Proceedings of the National Academy of Sciences*, 102, 18 052–18 056, <https://doi.org/10.1073/pnas.0509478102>, 2005.
- Paxman, G. J. G., Austermann, J., and Hollyday, A.: Total isostatic response to the complete unloading of the Greenland and Antarctic Ice
870 Sheets, *Scientific Reports*, 12, 11 399, <https://doi.org/10.1038/s41598-022-15440-y>, 2022.
- Plach, A., Nisancioglu, K. H., Le clec’h, S., Born, A., Langebroek, P. M., Guo, C., Imhof, M., and Stocker, T. F.: Eemian Greenland SMB strongly sensitive to model choice, *Climate of the Past*, 14, 1463–1485, <https://doi.org/10.5194/cp-14-1463-2018>, 2018.
- Pohl, A., Donnadieu, Y., Le Hir, G., Ladant, J.-B., Dumas, C., Alvarez-Solas, J., and Vandenbroucke, T. R. A.: Glacial onset predated Late Ordovician climate cooling, *Paleoceanography*, 31, 800–821, <https://doi.org/https://doi.org/10.1002/2016PA002928>, 2016.
- 875 Prentice, C., Guiot, J., Huntley, B., Jolly, D., and Cheddadi, R.: Reconstructing biomes from palaeoecological data: a general method and its application to European pollen data at 0 and 6 ka, *Climate Dynamics*, 12, 185–194, <https://doi.org/10.1007/BF00211617>, 1996.

- Quiquet, A., Dumas, C., Ritz, C., Peyaud, V., and Roche, D. M.: The GRISLI ice sheet model (version 2.0): calibration and validation for multi-millennial changes of the Antarctic ice sheet, *Geoscientific Model Development*, 11, 5003–5025, <https://doi.org/10.5194/gmd-11-5003-2018>, 2018.
- 880 Ragon, C., Lembo, V., Lucarini, V., V  rard, C., Kasparian, J., and Brunetti, M.: Robustness of Competing Climatic States, *Journal of Climate*, 35, 2769 – 2784, <https://doi.org/10.1175/JCLI-D-21-0148.1>, 2022.
- Ragon, C., V  rard, C., Kasparian, J., and Brunetti, M.: Alternative climatic steady states near the Permian–Triassic Boundary, *Scientific Reports*, 14, 26 136, <https://doi.org/10.1038/s41598-024-76432-8>, 2024.
- Ragon, C., V  rard, C., Kasparian, J., Nowak, H., Kustatscher, E., and Brunetti, M.: Comparison between plant fossil assemblages and
885 simulated biomes across the Permian-Triassic Boundary, *Frontiers in Earth Science*, 13, <https://doi.org/10.3389/feart.2025.1520846>, 2025.
- Ragon, C. N.: Modelling the Permian-Triassic climate changes: new insights from the multistability framework, Phd thesis, University of Geneva, <https://doi.org/10.13097/archive-ouverte/unige:178745>, 2024.
- Rose, B. E.: Stable “Waterbelt” climates controlled by tropical ocean heat transport: A nonlinear coupled climate mechanism of relevance to Snowball Earth, *Journal of Geophysical Research: Atmospheres*, 120, 1404–1423, <https://doi.org/10.1002/2014jd022659>, 2015.
- 890 R  ckamp, M., Goelzer, H., and Humbert, A.: Sensitivity of Greenland ice sheet projections to spatial resolution in higher-order simulations: the Alfred Wegener Institute (AWI) contribution to ISMIP6 Greenland using the Ice-sheet and Sea-level System Model (ISSM), *The Cryosphere*, 14, 3309–3327, <https://doi.org/10.5194/tc-14-3309-2020>, 2020.
- Ruggieri, P., Abid, M. A., Garc  a-Serrano, J., et al.: SPEEDY-NEMO: performance and applications of a fully-coupled intermediate-complexity climate model, *Climate Dynamics*, 62, 3763–3781, <https://doi.org/10.1007/s00382-023-07097-8>, 2024.
- 895 Salzmann, U., Haywood, A. M., Lunt, D. J., Valdes, P. J., and Hill, D. J.: A new global biome reconstruction and data-model comparison for the Middle Pliocene, *Global Ecology and Biogeography*, 17, 432–447, <https://doi.org/https://doi.org/10.1111/j.1466-8238.2008.00381.x>, 2008.
- Schoof, C. and Hewitt, I.: Ice-Sheet Dynamics, *Annual Review of Fluid Mechanics*, 45, 217–239, <https://doi.org/https://doi.org/10.1146/annurev-fluid-011212-140632>, 2013.
- 900 Scotese, C. R.: An Atlas of Phanerozoic Paleogeographic Maps: The Seas Come In and the Seas Go Out, *Annual Review of Earth and Planetary Sciences*, 49, 679–728, <https://doi.org/https://doi.org/10.1146/annurev-earth-081320-064052>, 2021.
- Seland,   ., Bentsen, M., Oliv  i, D., Toniazzo, T., Gjermundsen, A., Graff, L. S., Debernard, J. B., Gupta, A. K., He, Y.-C., Kirkev  g, A., Schwinger, J., Tjiputra, J., Aas, K. S., Bethke, I., Fan, Y., Griesfeller, J., Grini, A., Guo, C., Ilicak, M., Karset, I. H. H., Landgren, O., Liakka, J., Moseid, K. O., Nummelin, A., Spensberger, C., Tang, H., Zhang, Z., Heinze, C., Iversen, T., and Schulz, M.: Overview
905 of the Norwegian Earth System Model (NorESM2) and key climate response of CMIP6 DECK, historical, and scenario simulations, *Geoscientific Model Development*, 13, 6165–6200, <https://doi.org/10.5194/gmd-13-6165-2020>, 2020.
- Sellwood, B. W. and Valdes, P. J.: Jurassic climates, *Proceedings of the Geologists’ Association*, 119, 5–17, [https://doi.org/https://doi.org/10.1016/S0016-7878\(59\)80068-7](https://doi.org/https://doi.org/10.1016/S0016-7878(59)80068-7), 2008.
- Simmons, M., Miller, K., Ray, D., Davies, A., van Buchem, F., and Gr  selle, B.: Phanerozoic Eustasy, in: *The Geologic Time Scale 2020*, edited by Gradstein, F. M., Ogg, J. G., Schmitz, M. D., and Ogg, G. M., chap. 13, pp. 357–400, Elsevier, <https://doi.org/10.1016/B978-0-12-824360-2.00013-9>, 2020.
- Smith, R. S., Mathiot, P., Siahhan, A., Lee, V., Cornford, S. L., Gregory, J. M., Payne, A. J., Jenkins, A., Holland, P. R., Ridley, J. K., and Jones, C. G.: Coupling the U.K. Earth System Model to Dynamic Models of the Greenland and Antarctic Ice Sheets, *Journal of*

- Advances in Modeling Earth Systems, 13, e2021MS002520, <https://doi.org/https://doi.org/10.1029/2021MS002520>, e2021MS002520
915 2021MS002520, 2021.
- Sommers, A. N., Otto-Bliesner, B. L., Lipscomb, W. H., Lofverstrom, M., Shafer, S. L., Bartlein, P. J., Brady, E. C., Kluzek, E., Leguy, G., Thayer-Calder, K., and Tomas, R. A.: Retreat and Regrowth of the Greenland Ice Sheet During the Last Interglacial as Simulated by the CESM2-CISM2 Coupled Climate–Ice Sheet Model, *Paleoceanography and Paleoclimatology*, 36, e2021PA004272, <https://doi.org/https://doi.org/10.1029/2021PA004272>, e2021PA004272 2021PA004272, 2021.
- 920 Tsai, V. C. and Ruan, X.: A simple physics-based improvement to the positive degree day model, *Journal of Glaciology*, 64, 661–668, <https://doi.org/10.1017/jog.2018.55>, 2018.
- Valdes, P. J., Armstrong, E., Badger, M. P. S., Bradshaw, C. D., Bragg, F., Crucifix, M., Davies-Barnard, T., Day, J. J., Farnsworth, A., Gordon, C., Hopcroft, P. O., Kennedy, A. T., Lord, N. S., Lunt, D. J., Marzocchi, A., Parry, L. M., Pope, V., Roberts, W. H. G., Stone, E. J., Tourte, G. J. L., and Williams, J. H. T.: The BRIDGE HadCM3 family of climate models: HadCM3@Bristol v1.0, *Geoscientific Model Development*, 10, 3715–3743, <https://doi.org/10.5194/gmd-10-3715-2017>, 2017.
- 925 V erard, C.: Panalexis: towards global synthetic palaeogeographies using integration and coupling of manifold models, *Geological Magazine*, 156, 320–330, <https://doi.org/10.1017/S0016756817001042>, 2019.
- Wake, L. and Marshall, S.: Assessment of current methods of positive degree-day calculation using in situ observations from glaciated regions, *Journal of Glaciology*, 61, 329–344, <https://doi.org/10.3189/2015JoG14J116>, 2015.
- 930 Willeit, M., Ganopolski, A., Robinson, A., and Edwards, N. R.: The Earth system model CLIMBER-X v1.0 – Part 1: Climate model description and validation, *Geoscientific Model Development*, 15, 5905–5948, <https://doi.org/10.5194/gmd-15-5905-2022>, 2022.
- Wiltshire, A. J., Duran Rojas, M. C., Edwards, J. M., Gedney, N., Harper, A. B., Hartley, A. J., Hendry, M. A., Robertson, E., and Smout-Day, K.: JULES-GL7: the Global Land configuration of the Joint UK Land Environment Simulator version 7.0 and 7.2, *Geoscientific Model Development*, 13, 483–505, <https://doi.org/10.5194/gmd-13-483-2020>, 2020.
- 935 Winton, M.: A reformulated three-layer sea ice model, *Journal of Atmospheric and Oceanic Technology*, 17, 525–531, [https://doi.org/10.1175/1520-0426\(2000\)017<0525:ARTLSI>2.0.CO;2](https://doi.org/10.1175/1520-0426(2000)017<0525:ARTLSI>2.0.CO;2), 2000.
- Wunderling, N., von der Heydt, A. S., Aksenov, Y., Barker, S., Bastiaansen, R., Brovkin, V., Brunetti, M., Couplet, V., Kleinen, T., Lear, C. H., Lohmann, J., Roman-Cuesta, R. M., Sinet, S., Swingedouw, D., Winkelmann, R., Anand, P., Barichivich, J., Bathiany, S., Baudena, M., Bruun, J. T., Chiessi, C. M., Coxall, H. K., Docquier, D., Donges, J. F., Falkena, S. K. J., Klose, A. K., Obura, D., Rocha, J.,
940 Rynders, S., Steinert, N. J., and Willeit, M.: Climate tipping point interactions and cascades: a review, *Earth System Dynamics*, 15, 41–74, <https://doi.org/10.5194/esd-15-41-2024>, 2024.
- Xie, Z., Dommenges, D., McCormack, F. S., and Mackintosh, A. N.: GREB-ISM v1.0: A coupled ice sheet model for the Globally Resolved Energy Balance model for global simulations on timescales of 100 kyr, *Geoscientific Model Development*, 15, 3691–3719, <https://doi.org/10.5194/gmd-15-3691-2022>, 2022.
- 945 Zelinka, M. D., Myers, T. A., McCoy, D. T., Po-Chedley, S., Caldwell, P. M., Ceppi, P., Klein, S. A., and Taylor, K. E.: Causes of Higher Climate Sensitivity in CMIP6 Models, *Geophysical Research Letters*, 47, e2019GL085782, <https://doi.org/https://doi.org/10.1029/2019GL085782>, e2019GL085782 10.1029/2019GL085782, 2020.
- Zhu, F. and Rose, B. E. J.: Multiple Equilibria in a Coupled Climate,ÄiCarbon Model, *Journal of Climate*, 36, 547 – 564, <https://doi.org/10.1175/JCLI-D-21-0984.1>, 2023.