

Estimation of annual ~~discharge-runoff~~ using supraglacial channel geometry derived from UAV surveys of Qiyi Glacier~~geomeric parameters of the UAV-based supraglacial channel over the Qiyi Glacier~~, northern Tibetan Plateau

Longjiang Xie^{1,2}, Yuwei Wu^{1,2}, Ninglian Wang^{1,2}, Anan Chen^{1,2,3}, Shiqiang Zhang¹, and Sheng Hu¹

¹Shaanxi Key Laboratory of Earth Surface System and Environmental Carrying Capacity, College of Urban and Environmental Science, Northwest University, Xi'an 710127, China

²Qiyi Glacier Station, College of Urban and Environmental Science, Northwest University, Xi'an 710127, China

³National Cryosphere Desert Data Center, Northwest Institute of Eco-Environment and Resources, Chinese Academy of Sciences, Lanzhou 730000, China.

Correspondence to: Yuwei Wu (yuwei.wu@nwu.edu.cn), Sheng Hu (husheng@nwu.edu.cn)

Abstract. Due to difficulties in direct field observation and uncertainties in glacier runoff models, accurately estimating the glacier runoff remains one of the foremost challenges in cryospheric science. Using a digital elevation model (DEM) and orthophotos (both with a resolution of 5 cm) obtained from an unmanned aerial vehicle (UAV), this study developed a novel remote sensing ~~novel~~ method for estimating the annual discharge ~~volume~~ of the supraglacial channel over Qiyi Glacier in the northern Tibetan Plateau, which contributes to the majority of the ~~annual~~ glacier runoff. Our results showed that the catchment areas of the six main supraglacial channels covered 92.02% of the total glacier area and transported 89.43% of the annual surface meltwater yield (each ranging from 0.07×10^6 to 0.66×10^6 m³). Some geometric parameters of the supraglacial channels (including lateral deviation, gradient, and width) were selected to predict the annual discharge using a stepwise regression model, which explained ~78.2% of the variance in the measurement-based glacier annual discharge, with the explained variance increasing to 81.8% after five-point moving filtering. In comparison, a nonlinear regression model incorporating only the lateral deviation and specific gradient, which were more easily obtained practically, performed somewhat less well, accounting for 66.2% of the discharge variation; however, the explained variance increased to 81.4% after five-point filtering. If satellite remote sensing data with meter-level spatial resolution are available for a specific glacier research area, our regression models, based solely on the UAV-derived supraglacial channel network, will be a promising solution for monitoring changes in annual glacier discharge.~~Our regression models, based solely on the UAV-derived supraglacial channel network, will be a promising solution for monitoring changes in annual glacier discharge if satellite remote sensing data have centimeter-class spatial resolution.~~

31 1 Introduction

32 In the context of global warming, most mountain glaciers worldwide are suffering from accelerated retreat with substantial
33 influences on the glacier-fed rivers, especially for the "water tower of Asia" (Tibetan Plateau), which seriously threatens the
34 livelihoods of hundreds of millions of people downstream with rising risks to water resource safety (Bolch et al., 2012; Huss,
35 2011; Immerzeel et al., 2020; Nie et al., 2021; Wang et al., 2021; Yao et al., 2022; Zemp et al., 2019). Emergent remote sensing
36 data from different types of spaceborne sensors have been widely used to study various aspects of the influence of climate
37 change on glaciers (Paul et al., 2015; Xu et al., 2025), such as glacier area (Burns and Nolin, 2014), ice mass change (Curran
38 et al., 2025; Kääb et al., 2012), equilibrium line altitude (ELA) (Rabatel et al., 2013), glacier surface velocity (Dehecq et al.,
39 2019; Kraaijenbrink et al., 2016), and glacier surface temperature (Ren et al., 2024; Wu et al., 2019). However, there is still a
40 lack of remote sensing retrieval methods for glacier runoff that link glacier changes directly to the water supply for downstream
41 human communities, which has become a major obstacle for understanding the patterns of glacier runoff changes for practical
42 water resource management and policy-making at the watershed or larger scale.

43 The supraglacial stream and channel network, one of the most common landscapes on the surfaces of continental ice sheets
44 and mountain glaciers, is formed by the incision and erosion effects of glacial meltwater, which has been shown to have river
45 morphology and processes similar to those of terrestrially based bedrock rivers (Knighton, 1981; Pitcher and Smith, 2019)
46 with the discharge closely related to the channel geometry (e.g., width and depth) (Jarosch and Gudmundsson, 2012). However,
47 compared with the relatively sophisticated methods for estimating terrestrial river runoff by retrieving the water level, river
48 width, channel slope, and flow velocity from satellite remote sensing data (Bjerklie et al., 2018; Xu et al., 2024), the retrieval
49 methods for meltwater runoff of mountain glaciers remain less developed, mainly for two reasons. First, most supraglacial
50 rivers of mountain glaciers are very narrow (sub-meter or meter scale), making it difficult to be identified from the commonly
51 used satellite images with meters or tens of meters pixel sizes, even though these satellite images have been widely used to
52 extract the spatial distribution of relatively wider supraglacial rivers on the Greenland Ice Sheet (GrIS) and other large polar
53 glaciers (e.g., Bell et al., 2017; Legleiter et al., 2014; Yang and Smith, 2016; Zhang et al., 2023). Second, it remains challenging
54 to obtain continuous field measurements or estimations of supraglacial river discharge from those ice sheets or mountain
55 glaciers under relatively harsh environmental and climatic conditions (Gleason et al., 2016). To date, estimates of meltwater
56 runoff at basin or larger scales have often relied either on the limited field observations (Gleason et al., 2016; Smith et al.,
57 2017, 2021) or on glacier runoff models driven by coarse-resolution climate data (Beamer et al., 2016; Hock, 2005; Sicart et
58 al., 2008; Wang et al., 2024; Yang et al., 2025). Although in situ meteorological observations from weather stations are used
59 in some glacier studies, such data are often unavailable or sparse for remote glacierized regions, leading to uncertainties in
60 modeled runoff that hinder a robust quantitative analysis of its relationship with supraglacial channel geometry estimates of
61 meltwater runoff at basin or larger scales have often relied either on the limited field observations (Gleason et al., 2016; Smith
62 et al., 2017, 2021) or on glacier runoff models driven by coarse resolution climate data (Beamer et al., 2016; Hock, 2005;
63 Sicart et al., 2008; Wang et al., 2024; Yang et al., 2025), but the lack of in situ meteorological observations has made the

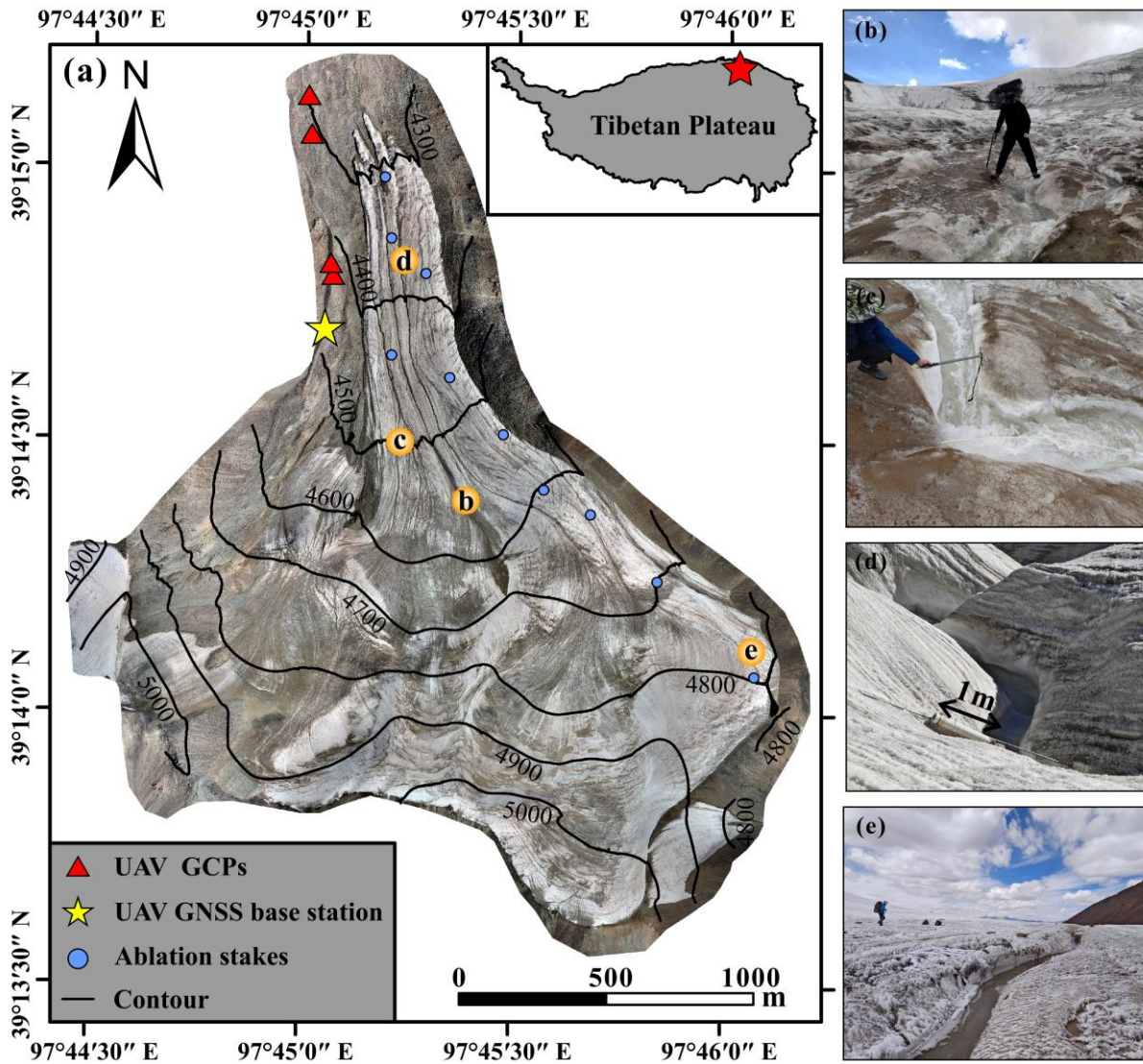
64 ~~accuracy of meltwater runoff estimation hardly adequate for quantitative analysis of its relationship with supraglacial river~~
65 ~~geometry~~ (Smith et al., 2017). Furthermore, during the ablation season, supraglacial channels can terminate in meltwater lakes,
66 moulins, and crevasses (Colgan et al., 2011; Smith et al., 2015; Yang and Smith, 2016), further complicating the estimation of
67 meltwater runoff of supraglacial rivers.

68 Currently, ~~uncrewed~~~~unmanned~~ aerial vehicle (UAV) remote sensing has been widely used to monitor glacier changes by
69 combining its optical images and digital elevation model (DEM) data or airborne synthetic aperture radar (SAR) images, which
70 are performed at a centimeter-level spatial resolution (Bhardwaj et al., 2016; Dall'Asta et al., 2017; Hugenholtz et al., 2013;
71 Immerzeel et al., 2014; Kraaijenbrink and Immerzeel, 2025; Śledź et al., 2021; Wang et al., 2025). Although UAVs are
72 generally equipped with visible light cameras, which have limited ability to discriminate water bodies from the surrounding
73 narrow and deep supraglacial channels on mountain glaciers, UAV remote sensing data have great strengths in identifying
74 supraglacial channel networks and their cross-sectional geometry. According to studies based on UAV field observations,
75 channel migration and curvature adjustments occur annually in supraglacial rivers in polar glaciers (Bergstrom et al., 2021;
76 Rippin et al., 2015; St Germain and Moorman, 2019). Similarly, significant interannual variability in supraglacial rivers has
77 also been reported in the Ganglongjama Glacier on the central Tibetan Plateau using a terrestrial laser scanner (TLS) data
78 (Xue et al., 2024). Our field observations at the Qiyi Glacier also revealed that supraglacial channel adjustment appears to be
79 positively related to the intensity of ice melting on an annual timescale: years of more intense melting are generally
80 characterized by stronger surface meltwater erosion with deeper and wider channels, and vice versa. This phenomenon inspired
81 us to investigate the relationship between the channel morphology and annual discharge ~~volume~~ of supraglacial rivers.
82 Therefore, in this study, using a DJI M300 series UAV, a 5 cm spatial resolution DEM and orthomosaic map over the Qiyi
83 Glacier were obtained to extract the channel geometric parameters at different elevations, which were used to explore their
84 relationships with meltwater discharge calculated by field observations rather than the glacier runoff model.

85 **2 Data and methods**

86 **2.1 Study area**

87 The Qiyi Glacier, located in the Qilian Mountains (39°14'13"N, 97°45'18"E), is a typical polythermal mountain glacier of the
88 Tibetan Plateau (Fig. 1). The elevation of the Qiyi Glacier ranges from 4,322 to 5,158 m.a.s.l., with a total area of approximately
89 2.69 km² and length of 2.9 km in 2023. Since 1975, the glacier area has shrunk by approximately 4.5%, with the terminus
90 continuously receding by 235 m. Mountain glaciers (including the Qiyi Glacier) offer important water resources to the
91 downstream arid regions over the Hexi Corridor, with glacier meltwater accounting for approximately 20% of the runoff of
92 the Beida River (Wang et al., 2017). According to our regular meteorological, hydrological, and mass balance observations
93 (June to August) starting in 2002, the Qiyi Glacier has suffered from an obviously increasing ice-melting trend since 2016
94 (Chen et al., 2024). Over the past decade, the acceleration of glacial melting has increased surface meltwater runoff, which has
95 contributed to the deepening and widening of supraglacial stream channels.



96

97

98

99

100

101

102

103

104

Figure 1. Location of the Qiyi Glacier and photos of its typical supraglacial stream channels. (a) Orthomosaic map of the Qiyi Glacier generated from UAV data (5 cm spatial resolution), with red triangles marking the locations of ground control points (GCPs) each with a fixed solution for UAV flights, yellow stars indicating the Global Navigation Satellite System (GNSS) base station of UAV, blue dots representing the locations of ablation stakes on the glacier, and orange circles showing the locations where photos (b)–(e) were taken.

2.2 UAV data acquisition and processing

A DJI Matrice300 real time kinematic (RTK) UAV was used to produce the DEM and orthophotos (both with a resolution of 5 cm) of the Qiyi Glacier. The UAV was equipped with a Zenmuse L1 lens integrating a visible-light camera and a light detection and ranging (LiDAR) sensor. From August 15 to August 20, 2023, 2,585 photographs and LiDAR data were collected

105 at a flight altitude of 100 m to cover the entire Qiyi Glacier. The geolocation accuracy requirements of the DEM and
106 orthomosaic map were ensured by ground control points (GCPs), and Hi-Target RTK was used to obtain fixed solutions for
107 high-precision geolocation information.

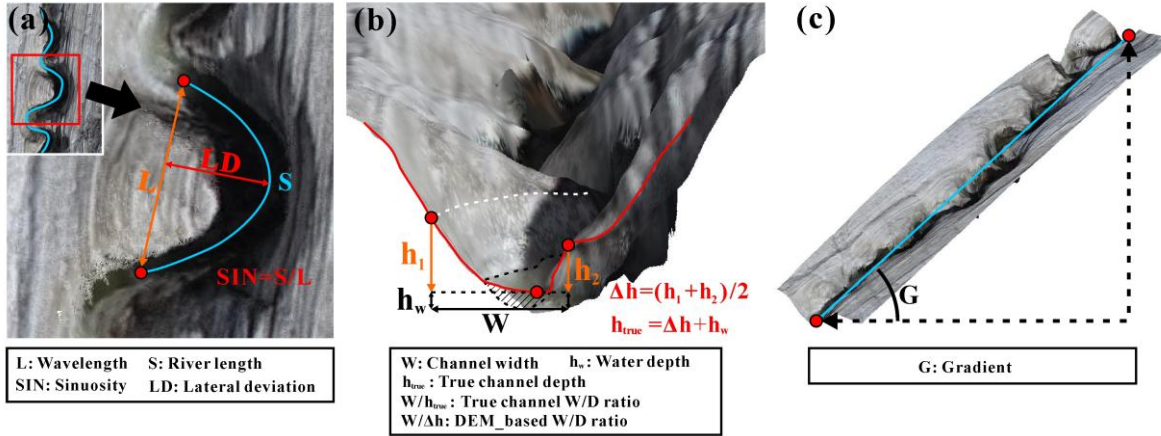
108 Pix4D Mapper 4.5.6 software was used to process the visible light images, including data preprocessing, aerial triangulation,
109 and point cloud encryption. The root mean square errors (RMSE) in x , y , and z directions for the positions of the GCPs were
110 0.24m, 0.09m, and 0.35m, respectively. The LiDAR data were processed using the CloudCompare and Lidar360 software,
111 including denoising, smoothing, thinning, and rasterizing the point cloud. It should be noted that it is relatively difficult to
112 identify homologous image points on the snow surface of the upper glacier under visible light, and the density of the point
113 cloud data generated from visible light images is very low, while for the photons actively emitted by the lidar sensor, due to
114 their property of being easily absorbed by the liquid water, the density of the point cloud is very low in the region of the lower
115 glacier where the melting is strong. Therefore, these two types of point-cloud data have good spatial complementarity for
116 generating a complete high-precision point-cloud dataset for glacier surfaces. The iterative closest point (ICP) algorithm was
117 applied to register these two, and the merged point-cloud data were rasterized to the final DEM with a spatial resolution of
118 0.05 m.

119 2.3 Extraction of morphological characteristics of supraglacial channels

120 The supraglacial channel network was extracted from UAV-derived DEM data by using the hydrological analysis module of
121 the ArcGIS platform and Global Mapper software, from which we extracted several morphological characteristics, including
122 channel sinuosity (SIN), lateral deviation (LD), channel gradient (G), and cross-section geometry (width W , depth Δh , and
123 width/depth ratio) (Fig. 2). To ensure consistency in defining channel geometry, we applied a standardized approach to
124 determine channel width and depth. Since supraglacial channels are continuously eroded by rapid water flow, there are
125 relatively distinct inflection points in the slope of the cross-section. The two points on the cross-section with the steepest slope
126 gradients were designated as h_1 and h_2 . Channel depth (Δh) was defined as the average vertical distance from these two points
127 to the lowest point of the channel, whereas channel width (W) was defined as the horizontal distance between h_1 and h_2 . A
128 representative cross-section (channel A at 4350 m) has been included in the Supplement (Fig. S1) to illustrate the positions of
129 h_1 and h_2 .

130 Supraglacial rivers can terminate in crevasses and moulins, potentially leading to the misidentification of channels. Although
131 crevasses also exist in the Qiyi Glacier, they are generally small in size and mainly distributed in the steep area of the upper
132 glacier as well as the edge area of the middle and lower parts; therefore, they have a minor influence on the process of river
133 confluence and continuity of the river channel (Fig. 1). After several comparative trials, a minimum drainage area of 0.02 km²
134 was determined as the threshold for the automatic extraction method. The automated algorithm identified a total of 33 channel
135 segments, including not only the six main channels (labeled A–F in Fig. 4a) but also smaller, low-order tributaries. To ensure
136 the realism of the extracted channels, all automatically derived streams were carefully compared with the orthophotos, channels
137 that could not be clearly identified in the orthophotos were truncated, particularly small tributaries and river sections at the

138 upstream headwaters. Finally, six main supraglacial channels on the Qiyi Glacier were correctly identified and extracted, from
 139 which the glacier was divided into six catchments (labeled A–F in Fig. 4a).



140
 141 **Figure 2.** Diagrams showing the process of obtaining the channel geometric parameters: (a) sinuosity and lateral deviation of an individual
 142 meander; (b) geometry of the channel profile (width, depth, and width/depth ratio); the white dashed line indicates the maximum slope, and
 143 the black dashed line and shaded area indicate the water surface and underwater channel profile, respectively; (c) the channel gradient.

144 2.4 Calculation of the annual glacial discharge transported by supraglacial channels

145 Excluding the negligible glacier mass loss due to surface sublimation, the annual meltwater yield of a given pixel ($5 \text{ cm} \times 5$
 146 cm) on the glacier can be estimated as follows:

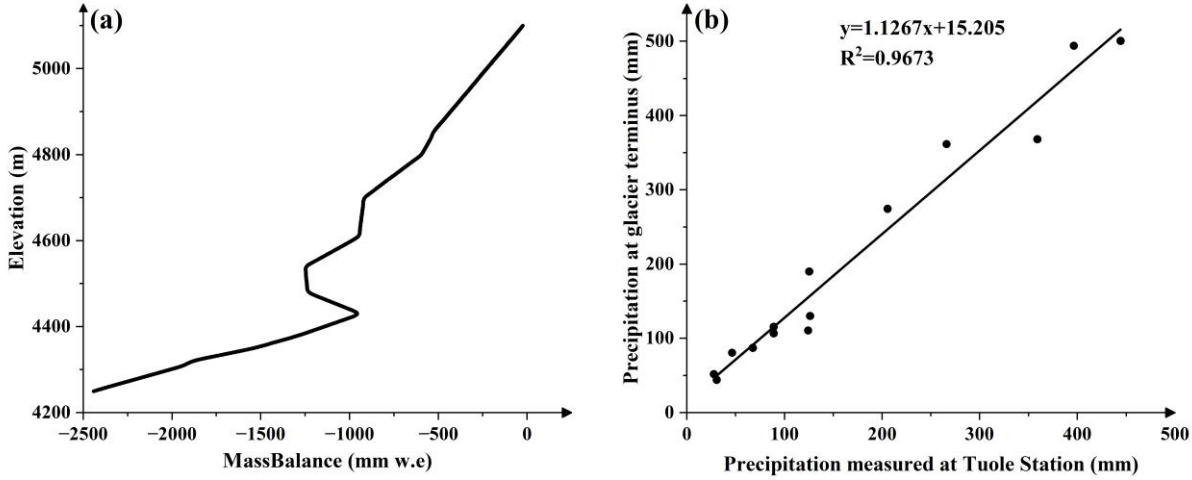
$$147 Q_a = (P_0 - MB + (H - 4310) \times 6.8/100) \times S, \quad (1)$$

148 where P_0 is the precipitation at the glacier terminus based on field observations, MB and H represent the glacier mass balance
 149 and the elevation of the pixel, -mass balance is expressed in millimeters water equivalent (mm w.e.), with negative values
 150 indicating mass loss, respectively, 4,310 (m) means the elevation of the glacier terminus, S denotes the area of the pixel, and
 151 6.8 mm/(100m) is the precipitation gradient regressed from rain gauge networks on the Qiyi Glacier (Jiang et al., 2010).

152 -From the nine ablation stakes across the glacier with long-term mass balance (MB) measurements, the MB of all pixels was
 153 calculated using spatial extrapolation~~linear interpolation~~ (Fig. 3a). The stakes were measured at annual intervals. Several new
 154 ablation stakes were installed on July 20, 2022, and subsequently measured and maintained on August 24, 2023. Detailed
 155 information for each stake data, including stake ID, position, elevation, and mass balance records, are provided in Supplement
 156 (Table S2). The uncertainty of the mass balance based on the ablation stakes is discussed in detail in Section 4.2.

157 -Because our rain gauge observations at the glacier terminus were not collected every year, precipitation data from a
 158 neighboring weather station (Tuole Station, ~70 km from the Qiyi Glacier) were used to establish a relationship to reconstruct
 159 the precipitation at the glacier terminus. Comparisons between two sets of precipitation data during the period 2006–2013 (Fig.
 160 3b) showed a good linear relationship, with the coefficient of determination (R^2) value as high as 0.967; therefore, the annual

161 precipitation (P_0) of 2023 at the glacier terminus (4,310 m) can be inferred from the precipitation data at the Tuole station (P_t)
 162 as follows:
 163 $P_0 = 1.1267 \times P_t + 15.205$. (2)
 164 Equations 1 and 2 were used to calculate the meltwater yield for each pixel. From the upper to the lower glacier, the volume
 165 of discharge transported by the ice channel at each 10 m elevation decrease can be determined from watershed analysis by
 166 placing outlets at each elevation interval (10 m).



167
 168 **Figure 3.** (a) Variations in mass balance of the Qiyi Glacier reconstructed from ablation stake measurements with elevation in 2023. (b)
 169 Comparisons of monthly/annual precipitation between Tuole station records and rain gauge observations at the terminus of Qiyi Glacier
 170 during 2006–2013.

171 2.5 Statistical modeling methods

172 Pearson's correlation (r) and Spearman's rank correlation (ρ) were used to analyze the correlation between the morphological
 173 characteristics of the supraglacial channels and the annual meltwater discharge transported by these channels at different
 174 elevations. Because previous studies found that the total energy of the flowing water (including pressure energy, gravitational
 175 potential energy, and kinetic energy) is the initial driving force for the channel formation (Rodríguez-Iturbe et al., 1992) and
 176 that discharge and slope are the most influential fluvial factors (St Germain and Moorman, 2019), here we took the product of
 177 gradient G and annual discharge Q_a as the water potential energy factor GQ_a in the correlation analysis.
 178 In addition to the water flow conditions (discharge and water potential energy), the morphology of supraglacial channels is
 179 influenced by other factors, such as pre-existing ice structure (e.g. fractures and moulins), thermal differences (ice and water
 180 temperatures and channel frictional heat), topographic relief (slope, roughness, and surface albedo), and ice velocity (Pitcher
 181 and Smith, 2019). To eliminate the influence of discharge and water potential energy, Q_a and GQ_a were used as control
 182 variables to conduct a partial correlation analysis for each pair of morphological characteristics.

183 The fitting model was developed using only morphological characteristics that showed a strong correlation with the discharge,
184 and the regression methods included simple linear regression, stepwise regression, and nonlinear least squares (NLS). The
185 coefficient of determination (R^2), root mean square error (RMSE), mean absolute error (MAE), and normalized root mean
186 square error (nRMSE) evaluated the performance of the fitting models. Specific details of the regression model and error
187 analysis can be found in Sections 3.4 and 4.2.

188 **3 Results**

189 **3.1 Supraglacial channel network and annual discharge**

190 The watersheds of the six main supraglacial channels covered 92.02% of the total area of the Qiyi Glacier (Fig. 4a) with an
191 annual discharge volume of about $2.4 \times 10^6 \text{ m}^3$ (each ranging from $0.07\text{--}0.66 \times 10^6 \text{ m}^3$), which contributed 89.43% to the total
192 meltwater of the glacier surface ($2.68 \times 10^6 \text{ m}^3$) during the hydrological year from August 2022 to August 2023. Approximately
193 63.21% of the channel discharge was transported to the glacial terminus (by channels A, B, C, and D). In particular, the
194 discharge in the lower reaches of channels A and C was significantly higher than that in the other channels (Fig. 4b), accounting
195 for approximately 45.30% of the total glacial discharge. Channel F was the only river that was newly formed during the
196 summer of 2023 because two separate smaller catchments merged into one larger catchment, reflecting how supraglacial rivers
197 reshape the surface topography in a short period as meltwater flow increases.

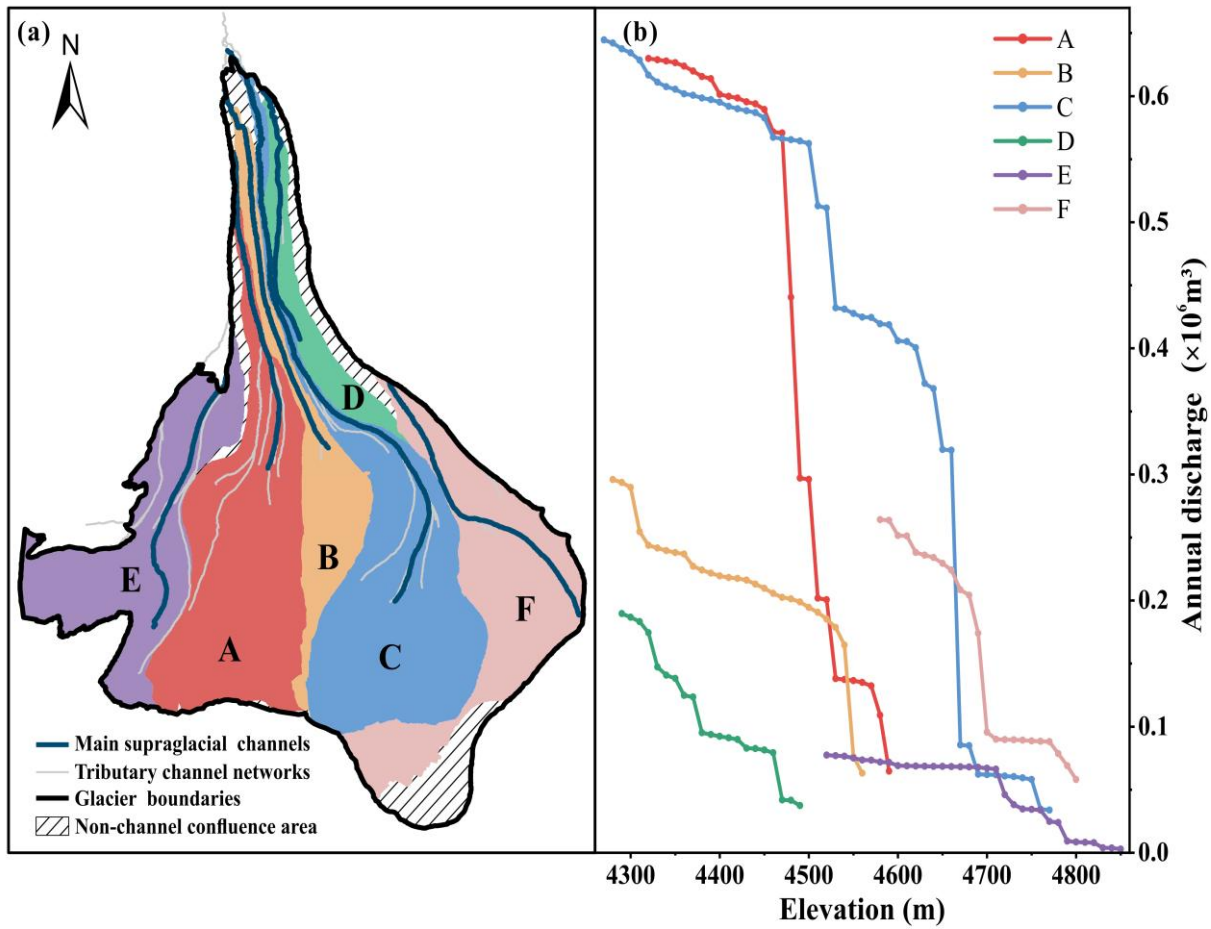


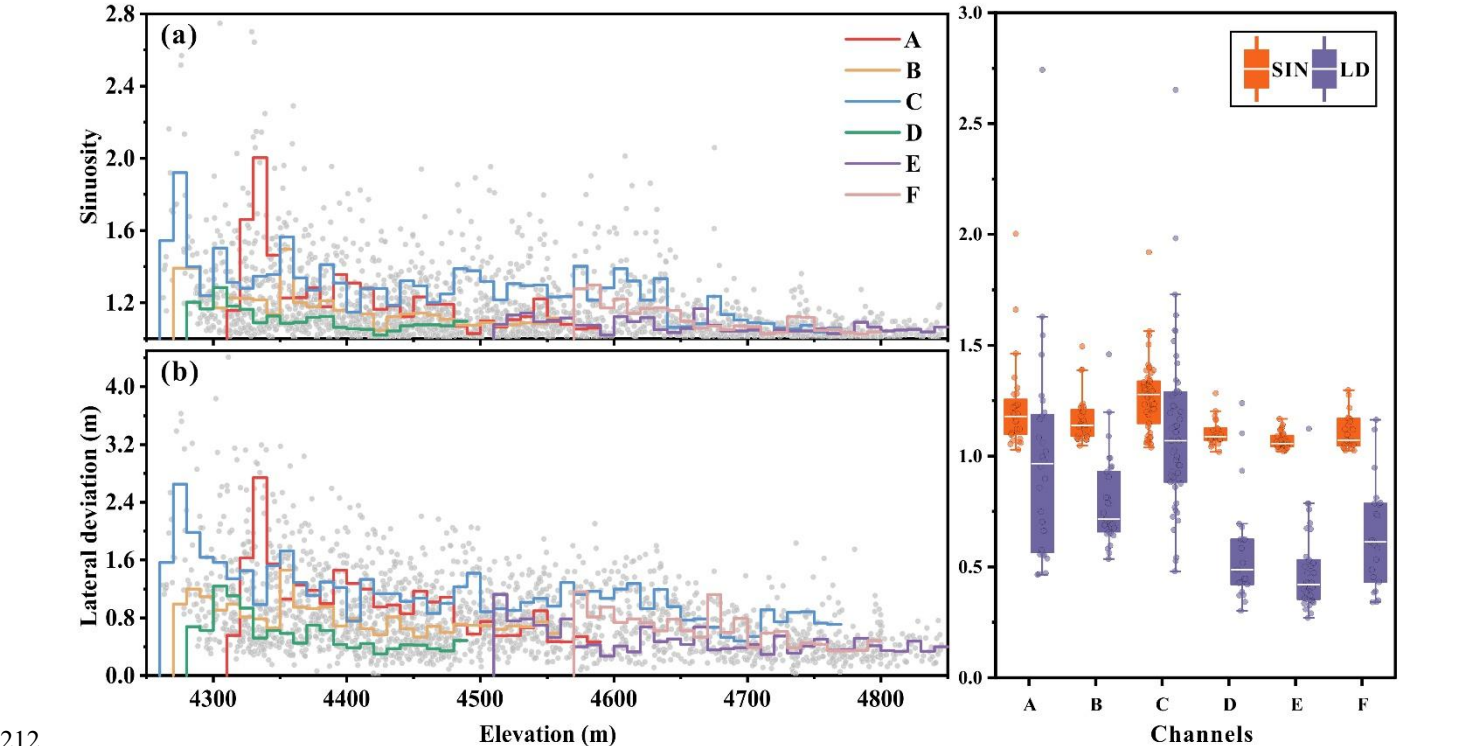
Figure 4. (a) Supraglacial channel network over the Qiyi Glacier and (b) variations in the annual discharge of six main supraglacial channels with elevation changes at a 10 m elevation interval. The catchment areas of the main channels are filled with different colors.

3.2 Spatial variability of morphological characteristics of supraglacial channels

3.2.1 Variations in the sinuosity and lateral deviation

The mean sinuosity and mean lateral deviation integrated with a 10 m elevation interval show similar variation trends among the six main supraglacial channels, and both are lower in the upper reaches and higher in the lower reaches (Fig. 5a and 5b). The median of 10 m average sinuosity and lateral deviation ranges from 1.05 to 1.27 and 0.42 to 1.06, respectively. The maximum sinuosity and lateral deviation were observed near the outfalls of channels C (2.75) and D (4.41), respectively. In general, channels with relatively higher discharge (channels A and C) tended to have larger sinuosity and lateral deviation in both their median and averagesmean, while those with relatively lower discharge (e.g., channels D and E) had lower sinuosity

210 and lateral deviation (Fig. 5c), suggesting a possible positive correlation between the discharge and sinuosity/lateral deviation
 211 of the supraglacial channel.



212 **Figure 5.** Variations in the (a) sinuosity and (b) lateral deviation of six supraglacial channels (gray dots indicate values at each meandering)
 213 and their averages-mean at a 10 m elevation interval (colored stairs); (c) box plot of 10 m average sinuosity and lateral deviation for six
 214 supraglacial channels, where the box represents the interquartile range (IQR), the whiskers denote 1.5 times the IQR from both ends of the
 215 box, and the white horizontal line shows the median; the labeling A to F corresponds to channels A to F as shown in Fig.4a.
 216

217 3.2.2 Variations in the channel gradient

218 The incision depth (no more than 1 m) of supraglacial rivers is much shallower than the ice thickness of the Qiyi Glacier (tens
 219 to hundreds of meters), which implies that their incision ability is relatively limited. Changes in the gradients of the six
 220 supraglacial channels showed a relatively consistent pattern because they were influenced by the complex undulating
 221 topography of the glacier surface (Fig. 6). The mean gradient of the six supraglacial channels ranges from 0.22 to 0.41, with
 222 channel E having the steepest mean gradient. For a 10 m elevation interval, the maximum channel gradient (0.81) was observed
 223 at an elevation of 4,640 m in channel E, while the minimum channel gradient (0.09) was found in channel F near the glacier-
 224 covered mountain pass.

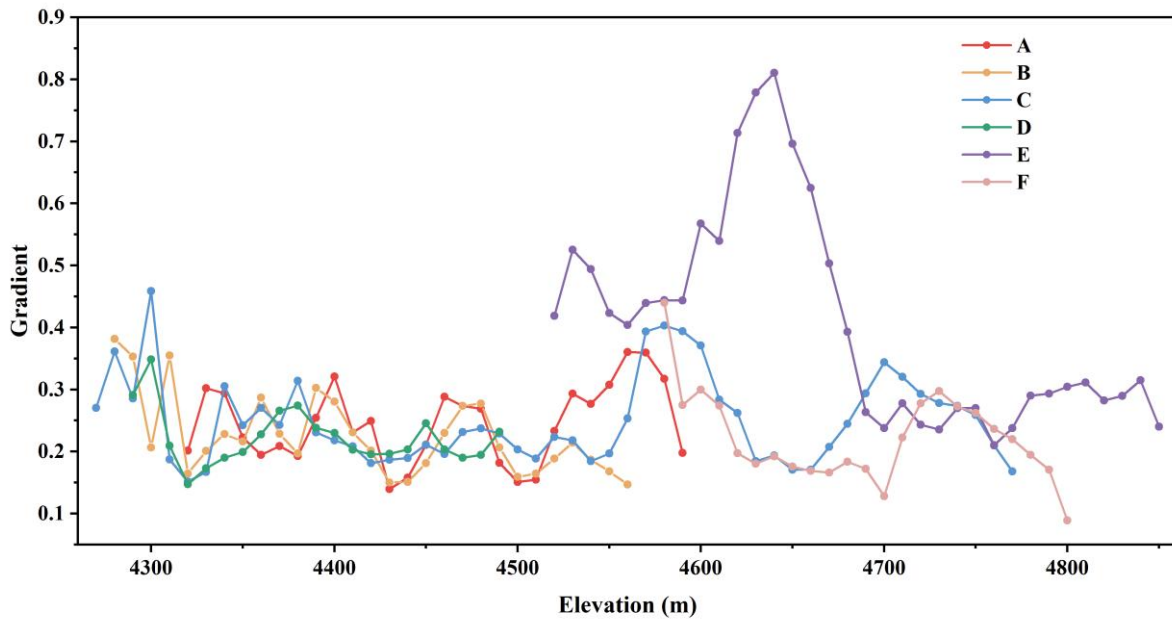


Figure 6. Variations in the gradient of six supraglacial channels with elevation at a 10 m interval (the labeling A to F corresponds to channels A to F as shown in Fig. 4a).

3.2.3 Variations in the geometry of the channel cross section

Both channel width and depth of all six supraglacial channels generally show decreasing trends with increasing elevation (Fig. 7a and 7b), with the maximum channel width and depth (1.25 and 1.00 m, respectively) observed near the channel outfall at the glacier terminus. In general, for a given channel, its width increases with depth and vice versa; however, exceptions are found for the lower reaches of channel C, which does not have the widest channel near the outlet with the deepest channel. Another noteworthy point is that, instead of the outlet, channel F has the deepest and relatively wider channel at its headwater at 4,800 m.a.s.l., possibly because its headwater is a shallow supraglacial lake over a relatively flat mountain pass that provides warmer meltwater to the channel.

Assuming a constant ratio of water depth to channel depth (water depth + Δh), the ratio of width to Δh was calculated as a surrogate for the true channel width/depth (W/D) ratio. In general, the W/D ratio increased with elevation for all channels, except the upper reaches of channel F, which may have been influenced by the supraglacial lake at the headwater (Fig. 7c). The distribution pattern of the W/D ratio with elevation suggests that regions with a larger discharge in the lower part of the glacier may experience stronger downward erosion than lateral erosion.

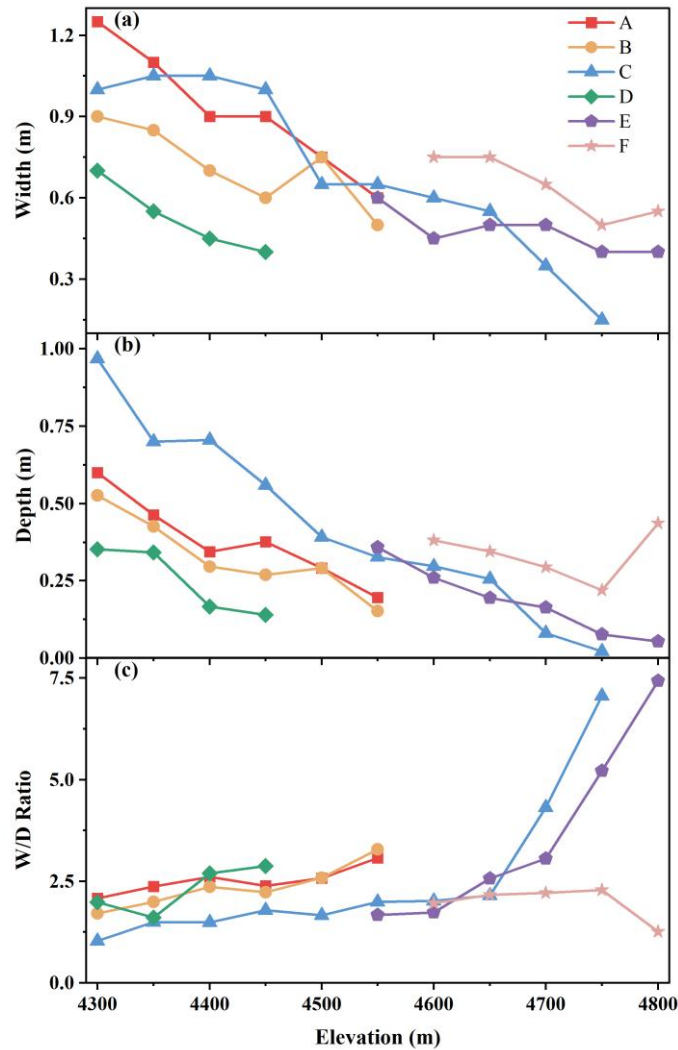


Figure 7. Variations in (a) width, (b) depth, and (c) W/D ratio of six supraglacial channels with elevation changes at a 50 m elevation interval.

3.3 Relationships between channel geometry and annual discharge

Both the Pearson and Spearman correlations showed that annual discharge (Q_a) was significantly positively correlated with sinuosity, lateral deviation, channel width and depth, but significantly negatively correlated with width to depth ratio (W/D) and gradient (Table 1). The water potential energy (GQ_a) showed a correlation pattern similar to that of discharge. Among all the geometric parameters, channel width showed the strongest correlation with discharge in both Pearson ($r = 0.82$) and Spearman ($\rho = 0.86$) correlation analyses, followed by lateral deviation ($r = 0.80$, $\rho = 0.82$), which was very similar to those of water potential energy despite of some slight differences. This suggests that both the channel profile and the meander of

250 supraglacial channels were closely correlated with the discharge and water potential energy, and thus could be considered as
251 indicators of changes in them.

252 Table 1. Pearson's (r) and Spearman's rank (ρ) coefficients of geometric parameters with discharge Q_a and water potential energy GQ_a . all
253 coefficients that are significant at a minimum level of 0.05, 0.01, and 0.001 are labeled with *, **, and ***, respectively.

	Sinuosity		Lateral deviation		Width		Depth		W/D		Gradient	
	r	ρ	r	ρ	r	ρ	r	ρ	r	ρ	r	ρ
Q_a	0.73***	0.80***	0.80***	0.82***	0.82***	0.86***	0.74***	0.76***	-0.44***	-0.51***	-0.20**	-0.21**
GQ_a	0.77***	0.82***	0.81***	0.79***	0.76***	0.82***	0.74***	0.74***	-0.43***	-0.53***	0.15*	0.10

254
255 Partial correlation analysis, after excluding the effects of discharge and water potential energy, further revealed an inherent
256 connection between the geometric parameters (Table 2). When discharge was considered the control variable, the highest
257 correlation coefficient was found between sinuosity and lateral deviation (0.75), followed by that between width and depth
258 (0.70). When water potential energy was used as the control variable, the highest correlation was observed between width and
259 depth (0.72), as well as between sinuosity and lateral deviation (0.72). Regardless of whether discharge or water potential
260 energy was used as the controlling factor, after removing their influence, strong correlations remained between sinuosity and
261 lateral deviation, width and depth, indicating that both channel meander and profile characteristics exhibited stable internal
262 variation patterns. Furthermore, the relatively weak correlation between channel meander characteristics and width or depth
263 showed that their variations may not be synergistic, and thus can be jointly used to estimate discharge. These findings provided
264 a crucial reference for the selection of independent variables in discharge regression models.

265 Table 2. The partial correlation coefficient between each two geometric parameters, with discharge Q_a and water potential energy GQ_a as
266 control variables. Significance levels of 0.05, 0.01, and 0.001 are denoted by *, **, and ***, respectively.

	Sinuosity		Lateral deviation		Width		Depth		W/D	
	Q_a	GQ_a	Q_a	GQ_a	Q_a	GQ_a	Q_a	GQ_a	Q_a	GQ_a
Lateral deviation	0.75***	0.72***								
Width	0.18*	0.20**	0.09	0.16*						
Depth	0.29***	0.24**	0.26***	0.24***	0.70***	0.72***				
W/D	-0.07	-0.05	0.04	0.05	-0.47***	-0.46***	-0.53***	-0.53***		
Gradient	0.20**	-0.14	0.13	-0.28***	0.13	-0.27***	0.29***	-0.08	-0.24**	-0.07

267

268 3.4 Regression models of annual discharge of the supraglacial channels

269 As stated in Section 2.5, bBoth linear and nonlinear regression models were used to fit the annual discharge Q_a of the
270 supraglacial channels using geometric parameters with significant correlations with Q_a . For the linear regression method, all
271 variables were initially included to obtain an optimal fit of Q_a ; then, a stepwise regression method was used to establish a more
272 efficient linear fitting formula by excluding variables with minimal impact on the regression results. For the nonlinear
273 regression method, the focus was on the robustness of the NLS model, which was fitted using a minimal number of parameters
274 that are easier to obtain without significantly reducing the simulation results.

275 As illustrated in Fig. 8a, the linear regression model incorporating all variables (SIN , LD , G , W , D , β , and Elevation) showed
276 a similar R^2 value to that of the stepwise regression model including only LD , G , and W (0.780 vs. 0.782), with RMSE of 0.096
277 and $0.097 \times 10^6 \text{ m}^3$, MAE of 0.077 and $0.076 \times 10^6 \text{ m}^3$, and nRMSE of 10.64% and 10.60%, respectively. This indicates that
278 the inclusion of Elevation, D , and β in the linear regression model does not improve the explanation of the variation in the
279 annual discharge. The stepwise regression model was expressed as follows:

$$280 Q_{step} = 0.230 \times LD - 0.232 \times G + 0.493 \times W - 0.181. \quad (3)$$

281 In contrast to the difficulty in obtaining width W in Eq. (3) from high-spatial-resolution satellite images, LD and SIN are the
282 most easily and accurately extracted supraglacial channel characteristics from the digitized river network. According to the
283 correlation analysis described in Section 3.3, the r values of LD and SIN with GQ_a were both improved compared with those
284 of Q_a , particularly for LD , which showed the highest r value with GQ_a . Therefore, it may be more appropriate to develop a
285 regression model using a nonlinear relationship. LD was selected as the independent variable using a simple linear regression
286 model.

$$287 GQ_a = a \times LD + b, \quad (4)$$

288 where a and b are the regression coefficients. The nonlinear equation can be obtained by transforming Eq. (4) as follows:

$$289 Q_{NLS} = a \times \frac{LD}{G} + \frac{b}{G} + c, \quad (5)$$

290 where the regression coefficients are $a = 0.108$, $b = -0.061$, and $c = 0.137$ in our study area and Q_{NLS} is the annual discharge
291 predicted using the nonlinear model. The R^2 , RMSE, MAE, and nRMSE values in Eq. (5) are 0.662, $0.122 \times 10^6 \text{ m}^3$, $0.091 \times$
292 10^6 m^3 , and 12.87%, respectively.

293 When compared with the observed annual discharge, both the linear and nonlinear models exhibited large fluctuations.
294 Therefore, the stepwise and NLS methods were smoothed using a five-point moving average, and the filtered results were
295 more consistent than the original curves, with R^2 increasing to 0.818 and 0.814, respectively. Their RMSE, MAE, and nRMSE
296 values were 0.091 and $0.099 \times 10^6 \text{ m}^3$, 0.073 and $0.077 \times 10^6 \text{ m}^3$, and 12.58% and 15.11%, respectively. The NLS model is
297 more robust and can be more widely applied as its input parameters require only LD and the channel gradient G , which can be
298 easily calculated from the DEM data.

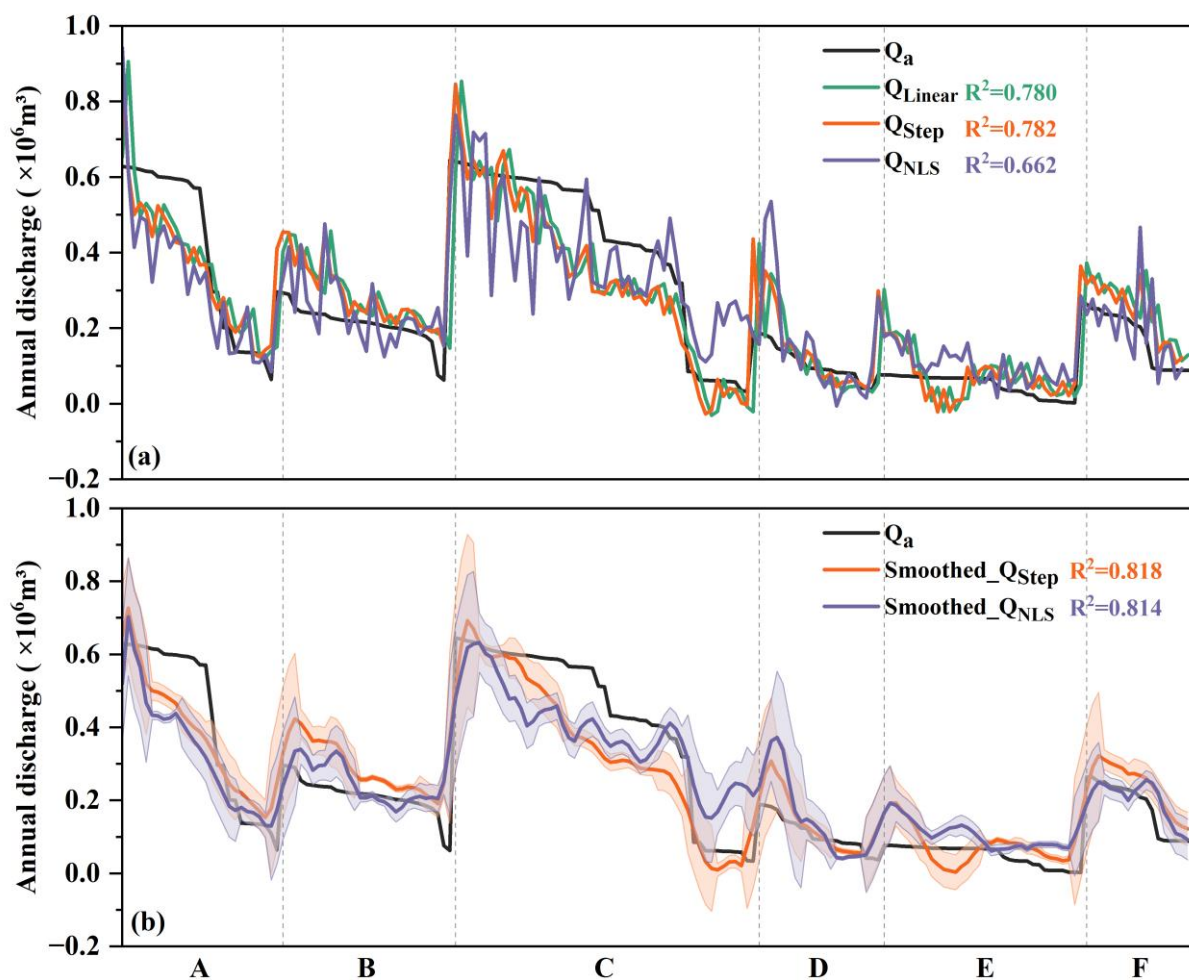


Figure 8. Comparison between observed annual discharge (Q_a) and (a) original results and (b) five-point moving average fitted results using linear, stepwise, and NLS regression models. The shaded error bands indicate twice the standard deviation range. The x axis is arranged at an order of increasing elevation for each channel meander, and each channel is divided by vertical gray dashed lines.

4 Discussion

Smith et al. (2015) highlighted that the processes of meltwater generation, storage and transport on the surface of the Greenland Ice Sheet "remain one of the least studied hydrological processes on Earth", especially for mountain glaciers. This knowledge gap is also significant for mountain glaciers. The extreme lack of field observations and challenges associated with data collection have resulted in significant uncertainties in our understanding and estimation of meltwater discharge volume from mountain glaciers, particularly in the Tibetan Plateau region. Previous studies have primarily estimated supraglacial runoff through direct discharge observations or runoff models driven by meteorological data (Muthyala et al., 2022; Yang et al.,

2019). Yang and Smith (2016) demonstrated that catchment area is a dominant control on runoff, with larger basins generally producing greater discharge. However, when catchments originate from high elevation mountain glaciers, steep and complex glacier surfaces may weaken the dominant relationship between catchment area and glacier runoff. The supraglacial channel morphology is more strongly influenced by local topography, which is one of the reasons we retained gradient as a variable. Building on established physical principles. In this study, given the significant correlations of Q_a and $1/GQ_a$ with the geometric parameters of the supraglacial channels (Table 1, 2 and Fig. 8a, 8b), we innovatively used these geometric parameters to predict the surface meltwater discharge in mountain glacier and establish quantitative relationship between supraglacial channel geometry and annual glacier runoffs. Our results are of great importance for estimating meltwater discharge over mountain glaciers with complex topography. In the following sections, we will further discuss the uncertainties of the supraglacial channel parameters, limitations of the regression models, and the applicability of these models.

320 4.1 Uncertainties in supraglacial channel parameters

321 The sinuosity and lateral deviation of supraglacial channels can be derived from DEM data based on hydrological analysis or
322 digitization of the orthomosaic map (Fig. 2a). If the spatial resolution requirements of visible-light images are satisfied, the
323 sinuosity and lateral deviation are the easiest parameters to obtain. However, the identification of other parameters such as
324 river width, ~~and depth~~ and gradient requires DEM data with a higher spatial resolution (Fig. 2b). ~~Although~~ While the
325 width is discernible in certain regions from visible light images (e.g., the wider parts of the river at the lower reaches of the
326 glacier), discriminating the spectral character between the narrower channel and the adjacent bank over the upper and middle
327 parts of the glacier remains a challenge, making it difficult to extract complete width data across the entire glacier based on
328 the visible light image alone. ~~Therefore, sinuosity and lateral deviation are currently the most promising and accurate~~
329 ~~supraglacial channel parameters that can be obtained using commercial optical satellite imagery at a centimeter resolution.~~

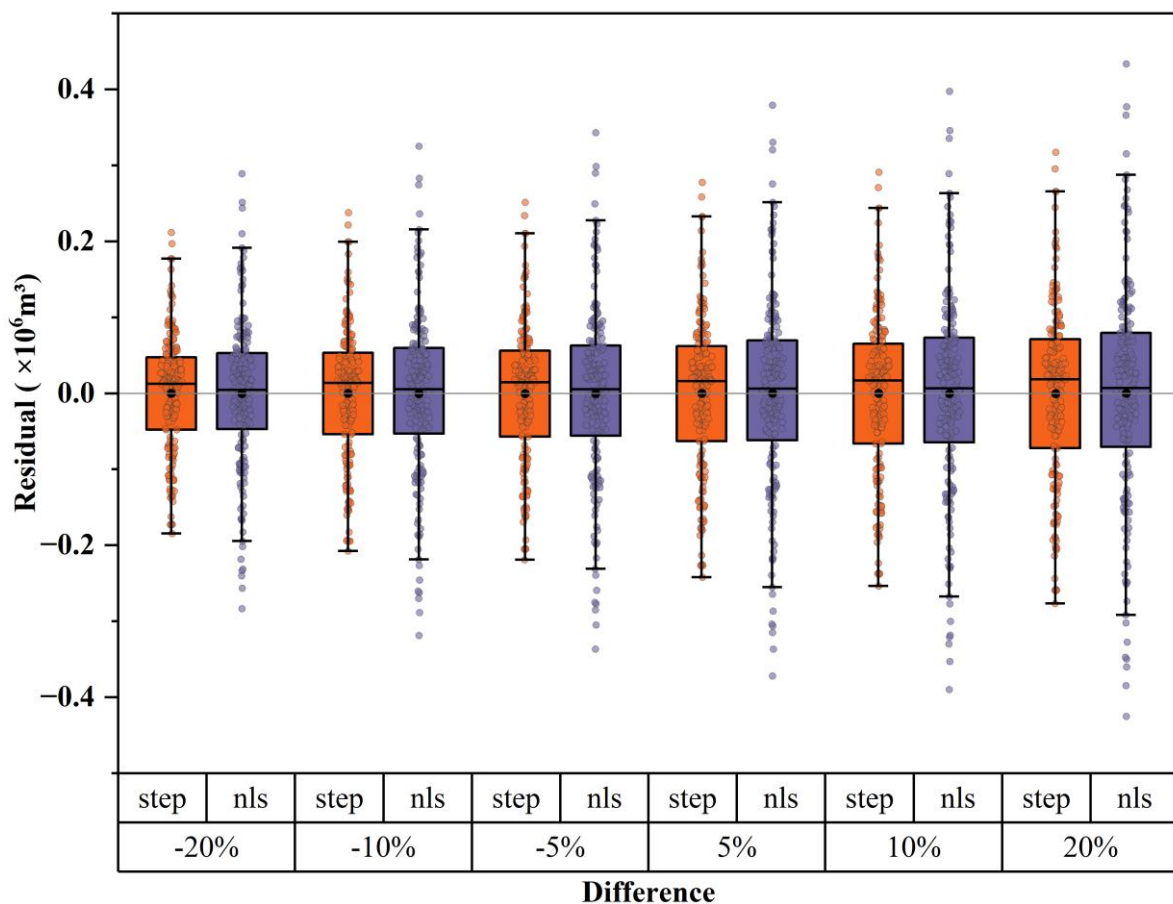
330 In addition, during the glacial ablation season, part of the supraglacial river channel is often occupied by flowing water, making
331 it difficult to derive the true channel depth from UAV-based DEM data. Therefore, the UAV-based depth (Δh) represents the
332 channel depth by considering the water surface as the "bottom" of the glacier (Fig. 2b). This might exert a greater influence in
333 the shallower channel over the upper glacier but a relatively minor influence for the deeper channel over the lower parts. This
334 study assumes a constant ratio of true channel depth to depth above the water surface (i.e., Δh), although this assumption
335 inevitably introduces some error when compared to actual conditions. Furthermore, the channel depth was not included in the
336 stepwise regression model, but this does not necessarily mean that the true channel depth cannot improve the predictive ability
337 of the regression model. Nevertheless, the depth of the supraglacial channel depends on centimeter-level DEM data, which
338 remains a challenge given the current development trend of high-resolution commercial optical satellites.

339 The channel gradient must also be derived from DEM data. In regions without UAV data, channel gradient derived from lower-
340 resolution DEMs (e.g., 30 m GDEM, SRTM) still require further evaluation regarding their applicability. Therefore, sinuosity
341 and lateral deviation are currently the most promising and accurate supraglacial channel parameters that can be obtained using
342 commercial optical satellite imagery at a centimeter resolution.

4.2 Uncertainties in the calculation of glacier annual discharge and regression model

The reliability of glacier discharge calculations depends heavily on the accuracy of the observed glacier mass balance and precipitation data. The estimation of the distributed glacier mass balance is hampered by a lack of true validation values, which complicates the error assessment of spatial patterns in mass balance calculations based on single-point measurements of ablation stakes (Kaser et al., 2006; Xu et al., 2019). Specifically, the uncertainties of stake-based mass balance can be classified into three groups: (1) errors in field observations; (2) errors related to spatial extrapolation over the entire glacier; and (3) error due to unaccounted interannual changes in glacier area (Dyurgerov et al., 2002). Among these, (1) is very small (centimeter scale) and negligible at the annual scale, and (3) typically arises in multi-year studies. Since this study focuses solely on Qiyi Glacier's 2023 data, it is also excluded. The primary error is spatial extrapolation from ablation stakes, which typically requires higher resolution DEMs (e.g., obtained by TLS laser scanning (Xue et al., 2024)) for assessment, but such data were unavailable for Qiyi Glacier in 2022–2023 due to the absence of the UAV-derived high-resolution DEM in 2022. However, given the geographic proximity, similar glacier types, and comparable elevation range covered by stakes, we adopted the error assessment from Urumqi Glacier No.1 reported by Xu et al. (2019) as a reference, where the error of traditional stake-based mass balance was about ± 0.12 m w.e., within 17%.

~~However, according to the assessment results from another subcontinental glacier in China, Urumqi No. 1 Glacier, the error in this traditional stake-based mass balance is about ± 0.12 m w.e. (Xu et al., 2019).~~ Regarding the error in the precipitation pattern over mountain glaciers, although the elevation effect of precipitation is obtained from in situ precipitation observations, the influence of wind and local topography also introduces some uncertainty in the precipitation distribution. To evaluate the combined effect of ~~uncertainties~~errors in mass balance and precipitation on glacier discharge calculations, ~~the meltwater volume of each pixel of the Qiyi Glacier was manually~~respectively changed by a range of $\pm 5\%$, $\pm 10\%$, and $\pm 20\%$ for both stepwise regression and NLS model results. Based on the reference from Xu et al. (2019), we set the maximum uncertainty range of our stake-based mass balance estimates at $\pm 20\%$. The error distribution of the fitting results showed that the MAE approached zero under different error scenarios, RMSE fluctuated in the range of $0.077\text{--}0.146 \times 10^6 \text{ m}^3$, and nRMSE ranged from 17.06% to 19.68% (Fig. 9), suggesting reasonable robustness of two current regression methods. These results indicate that, although spatial extrapolation uncertainty is the dominant error source, it does not affect our finding that channel geometry can be used to estimate glacier runoff.



369
 370 **Figure 9.** Residual distribution for two regression methods under three artificial error scenarios ($\pm 5\%$, $\pm 10\%$, and $\pm 20\%$). The black dots
 371 and black short lines of the box plots are the mean and median of the residuals, respectively; the whiskers denote 1.5 times the IQR from
 372 both ends of the box; the white horizontal line indicates the median.

373 4.3 Limitations of statistical regression methods

374 There is still a lack of studies on the physical theories of the formation of each morphological characteristic, which hinders us
 375 from proposing an ideal nonlinear statistical regression model framework, even after several attempts. For instance, we tried
 376 to consider the effect of ice temperature on erosion intensity by incorporating normalized elevation as well as more complex
 377 regression models from the physical symbolic optimization (PhySO) framework, but their performance did not improve
 378 evidently compared to our simple regression models. According to a theoretical model of channel meander formation
 379 (Karlstrom et al., 2013), for a given supraglacial channel with a fixed cross section, runoff, and ice temperature, a bender
 380 channel meander tends to produce more heat by flowing water, which favors ice melting and lateral migration at the vertex.
 381 This implies that, in addition to the influence of external forces, such as water discharge, the channel morphology itself has a
 382 complex self-feedback process. Although Pitcher and Smith (2019) emphasized the importance of integrating thermal forcing

models (ice and water temperature), topography, and hydraulic parameters because they are helpful in understanding the physical mechanism behind the formation of supraglacial river systems, the framework of physical-based models or more appropriate forms of nonlinear models that can help improve the performance of predicted discharge using only the geometric parameters of channels are still unavailable.

4.4 Applicability and perspective of ~~our~~ regression model

The Qiyi Glacier is a typical subcontinental glacier on the Tibetan Plateau with weak subglacial hydrological processes. As a result, meltwater mainly originates from the glacier surface and flows across the surface, forming a relatively continuous channel network. The model proposed in this study provides a valuable reference for quantifying the annual discharge of this type of glacier.

However, the applicability of this approach is limited for some other glacier types. For example, on ~~for~~ maritime glaciers with extensive crevasses and relatively stronger subglacial hydrological processes (e.g., in the southern Tibetan Plateau and the Greenland Ice Sheet) ~~over the southern Tibetan Plateau and the GRS~~, some supraglacial rivers often terminate ~~at-in~~ crevasses or moulins, which ~~makes our regression model less suitable for estimating glacier runoff. Similarly, temperate glaciers, debris-covered glaciers, and glaciers with strong surface structures are likely too complex to be represented without substantial modifications to the model. But the model~~ may not be suitable for use in our regression model when estimating glacier surface discharge, but it still has positive implications for supraglacial river segments between crevasses and moulins. The drainage areas of supraglacial river segments can be obtained by watershed delineation, and the meltwater discharge of each drainage area can be estimated from their geometry.

It should also be emphasized that, while channel geometric parameters can be derived from remote sensing data alone, the establishment of this regression model require mass balance data for calibrating the coefficients in runoff estimation due to scaling differences among glaciers. Therefore, the broader application of this method to other glaciers must be accompanied by reliable mass balance data.

5 Conclusions

Accurate estimation of glacier meltwater runoff is of great importance for quantifying the effects of climate change on glacier dynamics and evaluating the impacts of glacier changes on downstream water resource security. Based on high-precision UAV orthophotos and LiDAR data, this study derived a comprehensive supraglacial channel network over the Qiyi Glacier for the first time, from which a series of channel morphological characteristics were used to predict the meltwater discharge using different regression methods. Compared with traditional methods based on field observations or glacier runoff models, our study provides a novel perspective for accurately estimating annual glacier discharge for larger glaciated areas without meteorological and hydrological observations. The stepwise regression model incorporating the parameters of lateral deviation, channel gradient, and width of the supraglacial channel performed better, explaining approximately 78.2% of the variation in

414 the observed meltwater discharge. The regression accuracy improved to 81.8% after the five-point moving filtering. The NLS
415 regression model using only the more readily available parameters of lateral deviation and channel gradient performed slightly
416 less well, explaining 66.2% of the variation in meltwater discharge, whereas the explained variance was improved to 81.4%
417 after applying a five-point moving average. In recent years, centimeter-scale multi-satellite constellations with predominantly
418 onboard optical sensors, such as the WorldView Legion satellites, Pelican-2 satellite, and Gen-3 constellation, have become
419 an important development trend. Our study indicated that although the skill of the stepwise regression model incorporating
420 lateral deviation, channel gradient, and width was higher than that of the NLS regression model using only lateral deviation
421 and channel gradient, their performances were nearly the same after five-point moving filtering. When using centimeter-
422 resolution satellite remote sensing data to predict glacier meltwater yield over larger areas, it is recommended to use a nonlinear
423 fitting model with a minimum amount of input data and higher reliability.

424 **Author Contribution**

425 Conceptualisation: YW. Methodology: LX, YW, AC. Investigation: LX, YW, AC. Project administration: NW, SZ. Resources:
426 NW, SZ. Software: HS. Visualisation: LX, HS. Writing (original draft): LX. Writing (review and editing): YW.

427 **Competing interests**

428 The contact author has declared that none of the authors has any competing interests.

429 **Data Availability Statement**

430 The UAV-processed data (orthomosaic and DEM), supraglacial channel line vectors, and regression data (including geometric
431 parameters and regression results) are available online (Xie and Wu, 2025).

432 **Acknowledgements**

433 This work was supported by the National Natural Science Foundation of China (Grant No. 42171139, 42130516), the Second
434 Tibetan Plateau Scientific Expedition and Research Program (2019QZKK020102), and the Open Research Fund of National
435 Cryosphere Desert Data Center (Grant No.2024NCDC001).

436 References

- 437 Beamer, J. P., Hill, D. F., Arendt, A., and Liston, G. E.: High-resolution modeling of coastal freshwater discharge and glacier
438 mass balance in the Gulf of Alaska watershed, *Water Resour. Res.*, 52, 3888–3909,
439 <https://doi.org/10.1002/2015WR018457>, 2016.
- 440 Bell, R. E., Chu, W., Kingslake, J., Das, I., Tedesco, M., Tinto, K. J., Zappa, C. J., Frezzotti, M., Boghosian, A., and Lee, W.
441 S.: Antarctic ice shelf potentially stabilized by export of meltwater in surface river, *Nature*, 544, 344–348,
442 <https://doi.org/10.1038/nature22048>, 2017.
- 443 Bergstrom, A., Gooseff, M., Fountain, A., and Hoffman, M.: Long-term shifts in feedbacks among glacier surface change,
444 melt generation and runoff, MCMURDO Dry Valleys, Antarctica, *Hydrol. Process.*, 35, e14292,
445 <https://doi.org/10.1002/hyp.14292>, 2021.
- 446 Bhardwaj, A., Sam, L., Akanksha, Martín-Torres, F. J., and Kumar, R.: UAVs as remote sensing platform in glaciology:
447 Present applications and future prospects, *Remote Sens. Environ.*, 175, 196–204,
448 <https://doi.org/10.1016/j.rse.2015.12.029>, 2016.
- 449 Bjerklie, D. M., Birkett, C. M., Jones, J. W., Carabajal, C., Rover, J. A., Fulton, J. W., and Garambois, P.-A.: Satellite remote
450 sensing estimation of river discharge: Application to the Yukon River Alaska, *J. Hydrol.*, 561, 1000–1018,
451 <https://doi.org/10.1016/j.jhydrol.2018.04.005>, 2018.
- 452 Bolch, T., Kulkarni, A., Kääb, A., Huggel, C., Paul, F., Cogley, J. G., Frey, H., Kargel, J. S., Fujita, K., Scheel, M., Bajracharya,
453 S., and Stoffel, M.: The State and Fate of Himalayan Glaciers, *Science*, 336, 310–314,
454 <https://doi.org/10.1126/science.1215828>, 2012.
- 455 Burns, P. and Nolin, A.: Using atmospherically-corrected Landsat imagery to measure glacier area change in the Cordillera
456 Blanca, Peru from 1987 to 2010, *Remote Sens. Environ.*, 140, 165–178, <https://doi.org/10.1016/j.rse.2013.08.026>, 2014.
- 457 Chen, J., Wang, N., Wu, Y., Chen, A., Shi, C., Zhao, M., and Xie, L.: Quantifying Qiyi Glacier Surface Dirtiness Using UAV
458 and Sentinel-2 Imagery, *Remote Sens.*, 16, <https://doi.org/10.3390/rs16173351>, 2024.
- 459 Colgan, W., Steffen, K., McLamb, W. S., Abdalati, W., Rajaram, H., Motyka, R., Phillips, T., and Anderson, R.: An increase
460 in crevasse extent, West Greenland: Hydrologic implications, *Geophys. Res. Lett.*, 38,
461 <https://doi.org/10.1029/2011GL048491>, 2011.
- 462 Curran, J. H., Rick, B., Littell, J. S., and Sass, L. C.: Streamflow Response to Glacier Mass Loss Varies With Basin
463 Precipitation Across Alaska, *Water Resour. Res.*, 61, e2024WR037859, <https://doi.org/10.1029/2024WR037859>, 2025.
- 464 Dall'Asta, E., Forlani, G., Roncella, R., Santise, M., Diotri, F., and Cella, U. M. di: Unmanned Aerial Systems and DSM
465 matching for rock glacier monitoring, *ISPRS J. Photogramm. Remote Sens.*, 127, 102–114,
466 <https://doi.org/10.1016/j.isprsjprs.2016.10.003>, 2017.

467 Dehecq, A., Gourmelen, N., Gardner, A. S., Brun, F., Goldberg, D., Nienow, P. W., Berthier, E., Vincent, C., Wagnon, P., and
 468 Trouvé, E.: Twenty-first century glacier slowdown driven by mass loss in High Mountain Asia, *Nat. Geosci.*, 12, 22–27,
 469 <https://doi.org/10.1038/s41561-018-0271-9>, 2019.

470 Dyurgerov, M.: Glacier mass balance and regime: Data of measurements and analysis, Occasional Paper 55, Institute of Arctic
 471 and Alpine Research, University of Colorado, Boulder, CO, 2022

472 Gleason, C. J., Smith, L. C., Chu, V. W., Legleiter, C. J., Pitcher, L. H., Overstreet, B. T., Rennermalm, A. K., Forster, R. R.,
 473 and Yang, K.: Characterizing supraglacial meltwater channel hydraulics on the Greenland Ice Sheet from *in situ*
 474 observations, *Earth Surf. Process. Landf.*, 41, 2111–2122, <https://doi.org/10.1002/esp.3977>, 2016.

475 Hock, R.: Glacier melt: a review of processes and their modelling, *Prog. Phys. Geogr.*, 29, 362–391, 2005.

476 Hugenholtz, C. H., Whitehead, K., Brown, O. W., Barchyn, T. E., Moorman, B. J., LeClair, A., Riddell, K., and Hamilton, T.:
 477 Geomorphological mapping with a small unmanned aircraft system (sUAS): Feature detection and accuracy assessment
 478 of a photogrammetrically-derived digital terrain model, *Geomorphology*, 194, 16–24,
 479 <https://doi.org/10.1016/j.geomorph.2013.03.023>, 2013.

480 Huss, M.: Present and future contribution of glacier storage change to runoff from macroscale drainage basins in Europe,
 481 *Water Resour. Res.*, 47, <https://doi.org/10.1029/2010WR010299>, 2011.

482 Immerzeel, W. W., Kraaijenbrink, P. D. A., Shea, J. M., Shrestha, A. B., Pellicciotti, F., Bierkens, M. F. P., and de Jong, S.
 483 M.: High-resolution monitoring of Himalayan glacier dynamics using unmanned aerial vehicles, *Remote Sens. Environ.*,
 484 150, 93–103, <https://doi.org/10.1016/j.rse.2014.04.025>, 2014.

485 Immerzeel, W. W., Lutz, A. F., Andrade, M., Bahl, A., Biemans, H., Bolch, T., Hyde, S., Brumby, S., Davies, B. J., Elmore,
 486 A. C., Emmer, A., Feng, M., Fernández, A., Haritashya, U., Kargel, J. S., Koppes, M., Kraaijenbrink, P. D. A., Kulkarni,
 487 A. V., Mayewski, P. A., Nepal, S., Pacheco, P., Painter, T. H., Pellicciotti, F., Rajaram, H., Rupper, S., Sinisalo, A.,
 488 Shrestha, A. B., Viviroli, D., Wada, Y., Xiao, C., Yao, T., and Baillie, J. E. M.: Importance and vulnerability of the
 489 world’s water towers, *Nature*, 577, 364–369, <https://doi.org/10.1038/s41586-019-1822-y>, 2020.

490 Jarosch, A. H. and Gudmundsson, M. T.: A numerical model for meltwater channel evolution in glaciers, *The Cryosphere*, 6,
 491 493–503, <https://doi.org/10.5194/tc-6-493-2012>, 2012.

492 Jiang, X., Wang, N., He, J., Wu, X., and Song, G.: A distributed surface energy and mass balance model and its application to
 493 a mountain glacier in China, *Chin. Sci. Bull.*, 55, 2079–2087, <https://doi.org/10.1007/s11434-010-3068-9>, 2010.

494 Kääb, A., Berthier, E., Nuth, C., Gardelle, J., and Arnaud, Y.: Contrasting patterns of early twenty-first-century glacier mass
 495 change in the Himalayas, *Nature*, 488, 495–498, <https://doi.org/10.1038/nature11324>, 2012.

496 Karlstrom, L., Gajjar, P., and Manga, M.: Meander formation in supraglacial streams, *J. Geophys. Res. Earth Surf.*, 118, 1897–
 497 1907, <https://doi.org/10.1002/jgrf.20135>, 2013.

498 Kaser, G., Cogley, J. G., Dyurgerov, M. B., Meier, M. F., and Ohmura, A.: Mass balance of glaciers and ice caps: Consensus
 499 estimates for 1961–2004, *Geophys. Res. Lett.*, 33, <https://doi.org/10.1029/2006GL027511>, 2006.

500 Knighton, A. D.: Asymmetry of river channel cross-sections: Part I. Quantitative indices, *Earth Surf. Process. Landf.*, 6, 581–
501 588, <https://doi.org/10.1002/esp.3290060607>, 1981.

502 Kraaijenbrink, P., Meijer, S. W., Shea, J. M., Pellicciotti, F., De Jong, S. M., and Immerzeel, W. W.: Seasonal surface velocities
503 of a Himalayan glacier derived by automated correlation of unmanned aerial vehicle imagery, *Ann. Glaciol.*, 57, 103–
504 113, <https://doi.org/10.3189/2016AoG71A072>, 2016.

505 Kraaijenbrink, P. D. A. and Immerzeel, W. W.: Spatial and Temporal Variability of the Surface Mass Balance of Debris-
506 Covered Glacier Tongues, *J. Geophys. Res. Earth Surf.*, 130, e2024JF007935, <https://doi.org/10.1029/2024JF007935>,
507 2025.

508 Legleiter, C. J., Tedesco, M., Smith, L. C., Behar, A. E., and Overstreet, B. T.: Mapping the bathymetry of supraglacial lakes
509 and streams on the Greenland ice sheet using field measurements and high-resolution satellite images, *The Cryosphere*,
510 8, 215–228, <https://doi.org/10.5194/tc-8-215-2014>, 2014.

511 Muthyala, R., Rennermalm, Å. K., Leidman, S. Z., Cooper, M. G., Cooley, S. W., Smith, L. C., and van As, D.: Supraglacial
512 streamflow and meteorological drivers from southwest Greenland, *The Cryosphere*, 16, 2245–2263,
513 <https://doi.org/10.5194/tc-16-2245-2022>, 2022.

514 Nie, Y., Pritchard, H. D., Liu, Q., Hennig, T., Wang, W., Wang, X., Liu, S., Nepal, S., Samyn, D., Hewitt, K., and Chen, X.:
515 Glacial change and hydrological implications in the Himalaya and Karakoram, *Nat. Rev. Earth Environ.*, 2, 91–106,
516 <https://doi.org/10.1038/s43017-020-00124-w>, 2021.

517 Paul, F., Bolch, T., Kääb, A., Nagler, T., Nuth, C., Scharrer, K., Shepherd, A., Strozzi, T., Ticconi, F., Bhambri, R., Berthier,
518 E., Bevan, S., Gourmelen, N., Heid, T., Jeong, S., Kunz, M., Lauknes, T. R., Luckman, A., Merryman Boncori, J. P.,
519 Moholdt, G., Muir, A., Neelmeijer, J., Rankl, M., VanLooy, J., and Van Niel, T.: The glaciers climate change initiative:
520 Methods for creating glacier area, elevation change and velocity products, *Remote Sens. Environ.*, 162, 408–426,
521 <https://doi.org/10.1016/j.rse.2013.07.043>, 2015.

522 Pitcher, L. H. and Smith, L. C.: Supraglacial Streams and Rivers, *Annu. Rev. Earth Planet. Sci.*, 47, 421–452,
523 <https://doi.org/10.1146/annurev-earth-053018-060212>, 2019.

524 Rabatel, A., Letréguilly, A., Dedieu, J.-P., and Eckert, N.: Changes in glacier equilibrium-line altitude in the western Alps
525 from 1984 to 2010: evaluation by remote sensing and modeling of the morpho-topographic and climate controls, *The*
526 *Cryosphere*, 7, 1455–1471, <https://doi.org/10.5194/tc-7-1455-2013>, 2013.

527 Ren, S., Jia, L., Miles, E. S., Menenti, M., Kneib, M., Shaw, T. E., Buri, P., McCarthy, M. J., Yang, W., Pellicciotti, F., and
528 Yao, T.: Observed and projected declines in glacier albedo across the Third Pole in the 21st century, *One Earth*, 7, 1587–
529 1599, <https://doi.org/10.1016/j.oneear.2024.08.010>, 2024.

530 Rippin, D. M., Pomfret, A., and King, N.: High resolution mapping of supra-glacial drainage pathways reveals link between
531 micro-channel drainage density, surface roughness and surface reflectance, *Earth Surf. Process. Landf.*, 40, 1279–1290,
532 <https://doi.org/10.1002/esp.3719>, 2015.

533 Rodríguez-Iturbe, I., Ijjász-Vásquez, E. J., Bras, R. L., and Tarboton, D. G.: Power law distributions of discharge mass and
534 energy in river basins, *Water Resour. Res.*, 28, 1089–1093, <https://doi.org/10.1029/91WR03033>, 1992.

535 Sicart, J. E., Hock, R., and Six, D.: Glacier melt, air temperature, and energy balance in different climates: The Bolivian
536 Tropics, the French Alps, and northern Sweden, *J. Geophys. Res. Atmospheres*, 113, 2008JD010406,
537 <https://doi.org/10.1029/2008JD010406>, 2008.

538 Śledź, S., Ewertowski, M. W., and Piekarczyk, J.: Applications of unmanned aerial vehicle (UAV) surveys and Structure from
539 Motion photogrammetry in glacial and periglacial geomorphology, *Geomorphology*, 378, 107620,
540 <https://doi.org/10.1016/j.geomorph.2021.107620>, 2021.

541 Smith, L. C., Chu, V. W., Yang, K., Gleason, C. J., Pitcher, L. H., Rennermalm, A. K., Legleiter, C. J., Behar, A. E., Overstreet,
542 B. T., Moustafa, S. E., Tedesco, M., Forster, R. R., LeWinter, A. L., Finnegan, D. C., Sheng, Y., and Balog, J.: Efficient
543 meltwater drainage through supraglacial streams and rivers on the southwest Greenland ice sheet, *Proc. Natl. Acad. Sci.*,
544 112, 1001–1006, <https://doi.org/10.1073/pnas.1413024112>, 2015.

545 Smith, L. C., Yang, K., Pitcher, L. H., Overstreet, B. T., Chu, V. W., Rennermalm, Å. K., Ryan, J. C., Cooper, M. G., Gleason,
546 C. J., Tedesco, M., Jeyaratnam, J., van As, D., van den Broeke, M. R., van de Berg, W. J., Noël, B., Langen, P. L.,
547 Cullather, R. I., Zhao, B., Willis, M. J., Hubbard, A., Box, J. E., Jenner, B. A., and Behar, A. E.: Direct measurements of
548 meltwater runoff on the Greenland ice sheet surface, *Proc. Natl. Acad. Sci.*, 114, E10622–E10631,
549 <https://doi.org/10.1073/pnas.1707743114>, 2017.

550 Smith, L. C., Andrews, L. C., Pitcher, L. H., Overstreet, B. T., Rennermalm, Å. K., Cooper, M. G., Cooley, S. W., Ryan, J. C.,
551 Miège, C., Kershner, C., and Simpson, C. E.: Supraglacial River Forcing of Subglacial Water Storage and Diurnal Ice
552 Sheet Motion, *Geophys. Res. Lett.*, 48, e2020GL091418, <https://doi.org/10.1029/2020GL091418>, 2021.

553 St Germain, S. L. and Moorman, B. J.: Long-term observations of supraglacial streams on an Arctic glacier, *J. Glaciol.*, 65,
554 900–911, <https://doi.org/10.1017/jog.2019.60>, 2019.

555 Wang, K., Wu, Y., Qiu, X., Zhu, J., Zheng, D., Shangguan, S., Pan, J., Liu, Y., Jiang, L., and Li, X.: A novel airborne
556 TomoSAR 3-D focusing method for accurate ice thickness and glacier volume estimation, *ISPRS J. Photogramm. Remote*
557 *Sens.*, 220, 593–607, <https://doi.org/10.1016/j.isprsjprs.2025.01.011>, 2025.

558 Wang, L., Yao, T., Chai, C., Cuo, L., Su, F., Zhang, F., Yao, Z., Zhang, Y., Li, X., Qi, J., Hu, Z., Liu, J., and Wang, Y.: TP-
559 River: Monitoring and Quantifying Total River Runoff from the Third Pole, *Bull. Am. Meteorol. Soc.*, 102, E948–E965,
560 <https://doi.org/10.1175/BAMS-D-20-0207.1>, 2021.

561 Wang, L., Liu, H., Bhlon, R., Chen, D., Long, J., and Sherpa, T. C.: Modeling glacio-hydrological processes in the Himalayas:
562 A review and future perspectives, *Geogr. Sustain.*, 5, 179–192, <https://doi.org/10.1016/j.geosus.2024.01.001>, 2024.

563 Wang, S., Yao, T., Tian, L., and Pu, J.: Glacier mass variation and its effect on surface runoff in the Beida River catchment
564 during 1957–2013, *J. Glaciol.*, 63, 523–534, <https://doi.org/10.1017/jog.2017.13>, 2017.

565 Wu, Y., Wang, N., Li, Z., Chen, A., Guo, Z., and Qie, Y.: The effect of thermal radiation from surrounding terrain on glacier
566 surface temperatures retrieved from remote sensing data: A case study from Qiyi Glacier, China, *Remote Sens. Environ.*,
567 231, 111267, <https://doi.org/10.1016/j.rse.2019.111267>, 2019.

568 Xie, L. and Wu, Y.: Unmanned aerial vehicle data of Qiyi Glacier for 2023, <https://doi.org/10.5281/zenodo.15314577>, 2025.

569 Xu, C., Li, Z., Li, H., Wang, F., and Zhou, P.: Long-range terrestrial laser scanning measurements of annual and intra-annual
570 mass balances for Urumqi Glacier No. 1, eastern Tien Shan, China, *The Cryosphere*, 13, 2361–2383,
571 <https://doi.org/10.5194/tc-13-2361-2019>, 2019.

572 Xu, J., Wang, L., Yao, T., Chen, D., Wang, G., Jing, Z., Zhang, F., Wang, Y., Li, X., Zhang, Y., Wang, Y., Zeng, T., Chai, C.,
573 Liu, H., Liu, R., Long, J., Fan, X., Bhlon, R., and Xu, B.: Totaling river discharge of the third pole from satellite imagery,
574 *Remote Sens. Environ.*, 308, 114181, <https://doi.org/10.1016/j.rse.2024.114181>, 2024.

575 Xu, M., Wang, P., Zhang, X., Ma, T., Jin, J., Kang, S., Han, H., Wu, H., Hou, Z., Li, X., and Wu, X.: Impacts of glacier
576 shrinkage on peak melt runoff at the sub-basin scale of Northwest China, *J. Hydrol.*, 654, 132953,
577 <https://doi.org/10.1016/j.jhydrol.2025.132953>, 2025.

578 Xue, Y., Hong, X., He, X., Kang, S., Wang, S., and Ding, Y.: An evaluation of TLS-based glacier change assessment in the
579 central Tibetan plateau, *Int. J. Digit. Earth*, 17, 2375527, <https://doi.org/10.1080/17538947.2024.2375527>, 2024.

580 Yang, K. and Smith, L. C.: Internally drained catchments dominate supraglacial hydrology of the southwest Greenland Ice
581 Sheet, *J. Geophys. Res. Earth Surf.*, 121, 1891–1910, <https://doi.org/10.1002/2016JF003927>, 2016.

582 [Yang, K., Smith, L. C., Fettweis, X., Gleason, C. J., Lu, Y., and Li, M.: Surface meltwater runoff on the Greenland ice sheet](#)
583 [estimated from remotely sensed supraglacial lake infilling rate, *Remote Sens. Environ.*, 234, 111459,
584 \[<https://doi.org/10.1016/j.rse.2019.111459>, 2019.\]\(#\)](#)

585 Yang, Z., Bai, P., Tian, Y., and Liu, X.: Glacier Coverage Dominates the Response of Runoff and Its Components to Climate
586 Change in the Tianshan Mountains, *Water Resour. Res.*, 61, e2024WR037947, <https://doi.org/10.1029/2024WR037947>,
587 2025.

588 Yao, T., Bolch, T., Chen, D., Gao, J., Immerzeel, W., Piao, S., Su, F., Thompson, L., Wada, Y., Wang, L., Wang, T., Wu, G.,
589 Xu, B., Yang, W., Zhang, G., and Zhao, P.: The imbalance of the Asian water tower, *Nat. Rev. Earth Environ.*, 3, 618–
590 632, <https://doi.org/10.1038/s43017-022-00299-4>, 2022.

591 Zemp, M., Huss, M., Thibert, E., Eckert, N., McNabb, R., Huber, J., Barandun, M., Machguth, H., Nussbaumer, S. U., Gärtner-
592 Roer, I., Thomson, L., Paul, F., Maussion, F., Kutuzov, S., and Cogley, J. G.: Global glacier mass changes and their
593 contributions to sea-level rise from 1961 to 2016, *Nature*, 568, 382–386, <https://doi.org/10.1038/s41586-019-1071-0>,
594 2019.

595 Zhang, W., Yang, K., Smith, L. C., Wang, Y., van As, D., Noël, B., Lu, Y., and Liu, J.: Pan-Greenland mapping of supraglacial
596 rivers, lakes, and water-filled crevasses in a cool summer (2018) and a warm summer (2019), *Remote Sens. Environ.*,
597 297, 113781, <https://doi.org/10.1016/j.rse.2023.113781>, 2023.