

Figure 1. Spatial distribution of MDA8 O₃ mean bias for summer 2013 (all days). Mean bias (model minus observation) at each CNEMC monitoring site for six emission inventories: (a) SieMAC MR, (b) SieMAC HR, (c) MEGAN v2.1, (d) SieMAC MR_{VPD}, (e) SieMAC HR_{VPD}, and (f) MEGAN v3.1. Colors indicate bias magnitude in ppbv (scale at right); red shades show model overestimation and blue shades show model underestimation relative to observations.

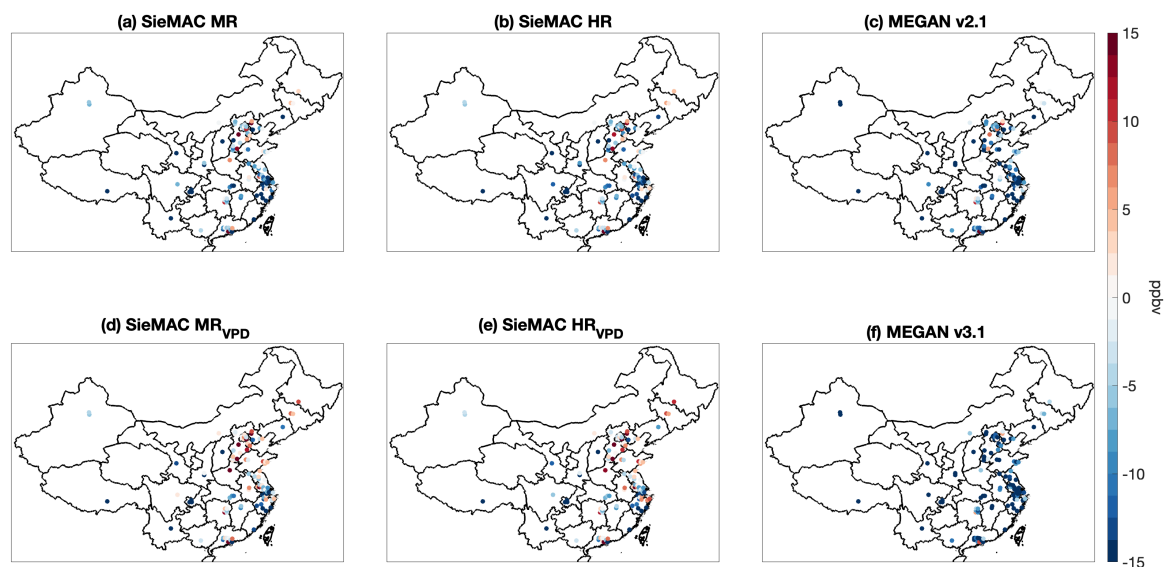


Figure 2. Spatial distribution of MDA8 O₃ mean bias for high ozone days (MDA8 O₃ ≥ 60 ppbv). Mean bias (model minus observation) at each CNEMC monitoring site during days when observed MDA8 ozone concentrations exceed 60 ppbv, shown for six emission inventories: (a) SieMAC MR, (b) SieMAC HR, (c) MEGAN v2.1, (d) SieMAC MR_{VPD}, (e) SieMAC HR_{VPD}, and (f) MEGAN v3.1. Colors indicate bias magnitude in ppbv (scale at right); red shades show model overestimation and blue shades show model underestimation relative to observations.