

The Representation of Climate Impacts in the FRIDAv2.1 Integrated Assessment Model

Christopher [D. Wells](#)¹, Benjamin Blanz², Lennart Ramme³, Jannes Breier⁴, Beniamino Callegari⁵, Adakudlu Muralidhar⁶, Jefferson K. Rajah⁷, Andreas Nicolaidis Lindqvist^{8,9}, Axel E. Eriksson^{4,9,10},
5 William Alexander Schoenberg^{7,11}, Alexandre C. Köberle¹², Lan Wang-Erlandsson^{9,13,14}, Cecilie Mauritzen¹⁵, Chris Smith^{16,17}

¹School of Earth and Environment, University of Leeds, Leeds, LS2 9JT, United Kingdom

²Research Unit Sustainability and Climate Risks, University of Hamburg, Grindelberg 5, 20144 Hamburg, Germany

³Max-Planck-Institute for Meteorology, Bundesstraße 53, 20146 Hamburg, Germany

10 ⁴Department of Earth System Analysis, Potsdam Institute for Climate Impact Research, Telegrafenberg A31, 14473 Potsdam, Germany

⁵School of Economics, Innovation and Technology, Kristiania University of Applied Sciences, Oslo, Norway

⁶Department of Ocean and Ice, Norwegian Meteorological Institute, 0313 Blindern, Oslo

⁷System Dynamics Group, University of Bergen, P.O. Box 7802, 5020 Bergen, Norway

15 ⁸RISE Research Institutes of Sweden, Ideon Beta5, Scheelevägen 17, 22370, Lund, Sweden

⁹Stockholm Resilience Centre, Stockholm University, Albanovägen 28, SE-106 91 Stockholm

¹⁰Department of Environmental and Energy Systems Studies, Lund University, Box 118, 221 00 Lund

¹¹isee systems inc., 24 Hanover St, Ste 8A, Lebanon, NH 03766 USA

20 ¹²Instituto Dom Luiz, Faculty of Sciences, Universidade de Lisboa, Campo Grande, Edifício C1, Piso 1, 1749-016, Lisboa, Portugal

¹³Potsdam Institute for Climate Impact Research, Member of the Leibnitz Association, 14473 Potsdam, Germany

¹⁴Anthropocene Laboratory, the Royal Swedish Academy of Sciences, 104 05 Stockholm, Sweden

¹⁵Climate Department, Norwegian Meteorological Institute, 0313 Oslo, Norway

¹⁶Department of Water and Climate, Vrije Universiteit Brussel, 1050 Brussels, Belgium

25 ¹⁷Energy, Climate and Environment Program, International Institute for Applied Systems Analysis (IIASA), Laxenburg, Austria

Correspondence to: Christopher Wells (c.d.wells@leeds.ac.uk)

Abstract. Feedbacks from the climate to other components of the coupled human-Earth system are expected to strongly
30 influence the co-evolution of human society and its environment. Representing these feedback loops between climate and society, via the Earth system's response to human activities and the subsequent effect back onto social systems, is essential in order to fully explore the dynamics of the coupled system. However, focus on these feedbacks has traditionally been limited, or excluded, in prior Integrated Assessment Models (IAMs) and IAM-based modelling protocols. This limits the understanding of the effects of climate change, and the response of the overall system to future emissions scenarios and
35 policies.

The new IAM Feedback-based knowledge Repository for IntegrateD Assessments version 2.1 (FRIDAv2.1), documented and explored within this [paper](#) collection, seeks to address this by internalising the feedbacks between subcomponents of the

human-Earth system. Within this new IAM, these connections are therefore a key part of the structure, and are documented and discussed here.

- 40 ~~FRIDA represents t~~These feedbacks from the climate to human societies, conceptualised as climate impacts, ~~are represented~~
~~asthrough~~ global impact functions ~~within FRIDA~~. Where possible, they are based on estimates from existing literature,
reframed as functions of global climate variables to facilitate their representation within FRIDA. Other impact channels, with
insufficient background literature to inform their structure and parameter values, are incorporated via the internal calibration
of the IAM.
- 45 Since the systematic representation of climate damages within an IAM is a relatively novel endeavour, the approach is
constrained by literature limitations and necessary simplifications. In addition, the high level of abstraction of the FRIDA
model imposes limits on the set of impacts which can reasonably be implemented, and the level of process detail amongst
those included. Nevertheless, FRIDA’s endogenous representation of climate feedbacks to human and natural systems
enables valuable insights and intuition building on an underexplored topic. The general nature of the climate damage
50 functions aggregated and documented here allows for their incorporation within other models and frameworks.

1 Introduction

- The new fully coupled FRIDA v2.1 Integrated Assessment Model (IAM), presented in ~~(Schoenberg et al., (submitted2025-)~~
and detailed further within this paper collection (on “The FRIDA model”), seeks to place ~~each~~ components of the human-
Earth system on an equal footing in terms of process complexity and interactions with other components. To operationalize
55 this, FRIDA is designed as a system dynamics-based coupled human and natural systems (CHANS) model building on prior
system dynamics approaches to human-Earth modelling (Schoenberg et al., 2025). FRIDA is composed of seven
interconnected top-level modules (Climate, Energy, Behavioural Change, Resources, Demographics, Economy, and Land
Use & Agriculture) – each representing the internal system components and their feedbacks (see Figure 1).–In this way,
interactions between the Climate module of FRIDA and other modules represent climate impacts, broadly conceived. ~~These~~
60 ~~Suchclimate impact~~ interactions are ~~expected to be~~ key drivers of the system’s overall development of the full system, and
are individually referred to within FRIDA as “climate impact channels”. Each channel denotes a single coherent process-
based mechanism through which changes in the climate system influence another part of the coupled system (Piontek et al.,
2021). This paper details the climate impact channels represented in FRIDA v2.1, documenting the connections between
outputs from the Climate module and inputs to other modules of the model.
- 65 FRIDA’s model boundary encompasses the entire human-Earth system, and as such must sacrifice process complexity for
the sake of legibility and tractability, as well as to ensure similar levels of detail in different domains, which is crucial for
systems modelling (Robinson et al., 2018). One consequence of this is that version 2.1 of FRIDA remains a global model,
with no spatial disaggregation of its stocks and flows. “Climate impact channels” within FRIDA are therefore represented at

this scale. Impact channels defined here reflect individual conceptual connections between a variable relating to climate and one which resides in a different domain.

Many theoretical and observed linkages exist between the climate and social systems, ~~with the~~ The Intergovernmental Panel on Climate Change (IPCC) Sixth Assessment Report (AR6) Working Group II (WGII) ~~outlines detailing~~ a wide range of ~~climate~~ impacts in its Technical Summary (Pörtner et al., 2022), ~~while and~~ Ripple et al., (2023) collate ~~ing~~ 41 ~~such distinct~~ processes. Complex connections have been studied across several domains and ~~have~~ been found to be crucial drivers of system behaviour (e.g. Moore et al., 2022; Robinson et al., 2018), playing important roles in the modelling of socio-environmental systems (Elsawah et al., 2020).

In implementing climate impacts in FRIDAv2.1, the set of impacts described in the IPCC WGII AR6 Technical Summary (Pörtner et al., 2022), representing the state-of-the-art comprehensive literature on climate impacts, were considered for inclusion. ~~As discussed in Section 3, w~~ While many impact channels are included in FRIDAv2.1, many more were not feasible for incorporation into this model, generally due to inapplicability to the scope of FRIDA as currently conceived (~~see Section 3~~).

The representation of climate impacts, as expected, has a strong influence on climate policy measures such as the Social Cost of Carbon (SCC; Rennert et al., 2022); for example Li et al., (2020) found a change in the cost-optimised policy pathway upon inclusion of sea level rise (SLR) impacts. Global-scale modelling of climate impacts is made challenging by the interactions between different spatial and temporal scales, as well as between modelling disciplines (Baldos et al., 2023).

Estimates of the total impact of climate change often ~~attempt to measure or model the overall impact focus~~ on ~~changes to~~ global Gross Domestic Product (GDP; see Howard & Sterner, (2017)). ~~This is often framed in~~ These estimates typically ~~follow~~ a top-down ~~modelling~~ approach, ~~whereby using~~ historical aggregate data ~~is used~~ to generate GDP damage functions, as opposed to a bottom-up process-based modelling approach, in which the specific processes driving impacts are studied and their total effect analysed.

~~While~~ Top-down empirical studies have found substantial projected climate damages (e.g. Burke et al., 2015; Kotz et al., 2022, 2024; Waidelich et al., 2024). ~~However,~~ debates ~~persist over on~~ whether climate impacts reduce GDP amounts (level effects) or their growth rates (growth effects) ~~persist, with m~~ Many studies modelling the lower damages associated with level effects with no persistence (e.g. Kotz et al., 2024; Waidelich et al., 2024), while Bastien-Olvera et al., (2022) have detected non-zero growth effects empirically.

~~Importantly, top-down approaches typically lack attribution to specific impact channels, and the modelled drivers of GDP impacts neglect several impact channels such as cyclones, as well as any effect of tipping points (Kotz et al., 2024). Empirical analyses based on reported extreme events are also complicated by spatially-dependent data limitations (Newman and Noy, 2023), which can lead to underestimates of total climate impacts. In contrast, Due to their somewhat piecemeal nature,~~ bottom-up ~~estimates modelling~~ benefits from transparency and legibility, with clear attribution of climate damages ~~across impact channels. However, they~~ can miss out impact channels (Howard and Sterner, 2017), leading generally to lower total impacts than top-down approaches (Shiogama et al., 2022). ~~However, empirical analyses based on reported extreme~~

105 ~~events are also complicated by spatially dependent data limitations (Newman and Noy, 2023), which can lead to underestimates of total climate impacts; and the modelled drivers of GDP impacts in top-down studies neglect several impact channels such as cyclones, as well as any effect of tipping points (Kotz et al., 2024).~~ In bottom-up approaches, care should must also be taken not to double-count impacts, particularly when global mean surface temperature change is used as a proxy for other climate variables.

110 In the FRIDA ~~integrated assessment model (IAM)~~, the drive for transparency and understanding of specific feedback loops necessitates a process-based, multi-channel impact framework rather than a single GDP effect. In keeping with other representations in process-based IAMs (Diaz and Moore, 2017), this allows for the validation of the model's structure, a key process in the system dynamics methodology (Barlas, 1996). A crucial step in the model's creation process is therefore the selection of the specific impact channels modelled, since missing impact channels will lead to an underestimation of climate impacts. For FRIDA v2.1, the process of including climate impacts involved reviewing the literature on overall climate impacts to identify important channels (e.g. Pörtner et al., (2022)), with subjective importance assessed as related to a channel's prominence in the literature, followed by channel-specific literature analyses to determine how to account for each impact.

120 ~~Other IAM frameworks have adopted a sector-specific approach to representing climate impacts, typically following a two-step methodology - using climate model output to drive sector-specific impact models. Several studies used older impact models, fed by climate model output, to explore the estimated sector based impacts of climate change (e.g. Arnell et al., 2016a, b). This two-step approach —using climate model output to drive sector specific impact models— has been systematically implemented and improved by successive generations of the Inter-Sectoral Impacts Model Intercomparison Project (ISIMIP). Several ISIMIP phases, in conjunction with phases of climate scenario modelling, have analysed the climate impacts of the Coupled Model Intercomparison Project Phase 5 (CMIP5) scenarios associated with the Fifth IPCC assessment report (Frieler et al., 2017), and more recently those of CMIP6 (Frieler et al., 2024). Within each modelling round, climate output from multiple Earth System Models, bias-corrected to more closely reflect climate observations (e.g. Lange, 2021), is fed into multiple impact models for a given sector. This approach allows for a systematic multi-model analysis of the sectoral impacts of climate change, and is designed supports to the generation of impact functions for use in IAMs such as FRIDA. The framework used in ISIMIP has also been modified to incorporate rapid emulation of climate model output, allowing for substantially faster simulation of climate impacts, though only for a single impact model (Mathison et al., 2025). Coupled human-climate interactions more broadly have also been studied within agent-based modelling frameworks, a distinct approach to the one in FRIDA (Lamperti et al., 2018; Rounsevell et al., 2012).~~

135 The split between changes in climate (as modelled in Earth System Models) and the effect of these changes on specific sectors (as simulated by impact models) is enshrined in the framework of the Shared Socioeconomic Pathways (SSPs), which simulated potential future demographic and emissions pathways without feedbacks from climate impacts (O'Neill et al., 2014). This framework separates climate changes from climate impacts to avoid double counting when feeding climate

model output into impact models, which have a more detailed representation of impact processes than the scenario-generating IAMs (van Vuuren et al., 2025). While the limitations of this framework are widely acknowledged, and calls have been made to integrate impacts more closely within the framework (Pirani et al., 2024), the next generation of scenarios
140 towards CMIP7 will likely feature the same split, with the emissions scenarios not including the effect of climate damages (Meinshausen et al., 2024; van Vuuren et al., 2025).

The ~~continuation-continued of this split~~separation between climate change and impacts motivates the development and use of fully coupled IAMs like FRIDA. Such models are instrumental for exploring the linkages between climate and society under future scenarios, and understanding how societal actions, occurring concurrently with ongoing climate change, may
145 significantly modify its trajectory. It should also be noted that the level and distribution of climate impacts depends on the baseline socioeconomic conditions (Pirani et al., 2024; Takakura et al., 2019), further motivating the exploration of this coupled system. FRIDA’s novelty lies in the overarching philosophy of treating climate impact channels as just a subset of the overall inter-system feedbacks across all components of the human-Earth system, conceptualised in FRIDA as its modules. As such, process-based feedbacks are sought to be represented at similar levels of detail across the model. In
150 addition, recognising the conceptual issue in frameworks such as the SSPs in neglecting impacts, FRIDA’s approach aims to represent as broad a set of climate impacts as reasonably possible, a goal which will continue to advance under future model development.

~~The framework used in ISIMIP has also been modified to incorporate rapid emulation of climate model output, allowing for substantially faster simulation of climate impacts, though only for a single impact model (Mathison et al., 2025). Coupled
155 human climate interactions more broadly have also been studied within agent based modelling frameworks, a distinct approach to the one in FRIDA (Lamperti et al., 2018; Rounsevell et al., 2012).~~

Several studies have suggested the existence of tipping points within the Earth system, with strongly nonlinear impacts upon reaching a given temperature threshold, and potential hysteresis in the response to a peak-and-decline scenario (Diaz and Moore, 2017; McKay et al., 2022), although the tipping point conceptual framework has been critiqued (Kopp et al., 2025).
160 The specific thresholds and responses are uncertain, and the spatial pattern of these impacts further complicates their inclusion in a global model. FRIDAv2.1 does not include explicit tipping behaviour in its climate module, though the interconnected nature of the components allows for strongly nonlinear behaviour; this is further discussed in Section 3.

The purpose of this paper is to document both the representation of climate impact channels in FRIDAv2.1, and the wider methodology for their selection and construction. Included in this is discussion of the represented set of impact channels in
165 the context of FRIDA development, and the potential for the use of these impact functions in other frameworks. Analysis of future scenarios in FRIDA and the role of climate impacts in the evolution of the coupled system remains out of scope here, due to the detail needed in that analysis and the need to fully document all climate impact channels here; this topic will instead be explored in future studies on FRIDAv2.1. The paper is structured as follows: Section 2 firstly introduces the full set of climate impacts in FRIDA, with Sections 2.1-2.6 then describinges the specific implementation of the climate impacts
170 represented in FRIDAv2.1 at the module-level, with additional detail provided in the appendix where necessary. In general,

for each identified impact channel, relevant literature was explored to identify possible routes for inclusion into FRIDA. Where possible, uncertainties are given for the 95 percent confidence (2.5th-97.5th percentile) range. The methodology and the broader context - including the possibility of utilising these impact functions outside the FRIDA IAM - are discussed in Section 3, and Section 4 provides conclusions.

175 2 Climate Impact Channels in FRIDAv2.1

This section describes the implementation of the climate impact channels in FRIDAv2.1. Figure 1 shows the set of climate impacts represented in FRIDA, indicating their drivers in the Climate module and the module impacted by each channel. ~~All~~ There are six non-climate modules in FRIDA – Energy, Behavioural Change, Resources, Demographics, Economy, and Land Use & Agriculture – which are each affected by one or more climate impact channel(s).

180 Table 1 provides a textual summary of impact channels considered in FRIDA, and the associated literature sources, functional form, treatment of uncertainty, and parameter values. Each channel is presented and discussed in ~~Section 2~~ this section. The resultant functions are shown in Fig. 1 and Fig. A1, with the functional forms detailed in Section A.2. The responses of the functions to a baseline emissions scenario are shown in Fig. A2.

The methodology for selecting climate impact channels for inclusion within FRIDAv2.1 involved the systematic
185 consideration of the climate impacts detailed in the Technical Summary to the WGII report of the IPCC AR6 (Pörtner et al., 2022). These impacts were categorised into three broad areas: those necessary for prioritised inclusion within FRIDAv2.1; those which could plausibly be represented in a model such as FRIDA, but which reflected a lower priority, whether due to the perceived magnitude of their effect or the timescale and detail required to facilitate their implementation; and finally those whose inclusion in a highly aggregated model such as FRIDA was not deemed feasible. The first category - the climate
190 impacts represented in FRIDAv2.1 - is documented in this section; Section 3.1 explores the other two.

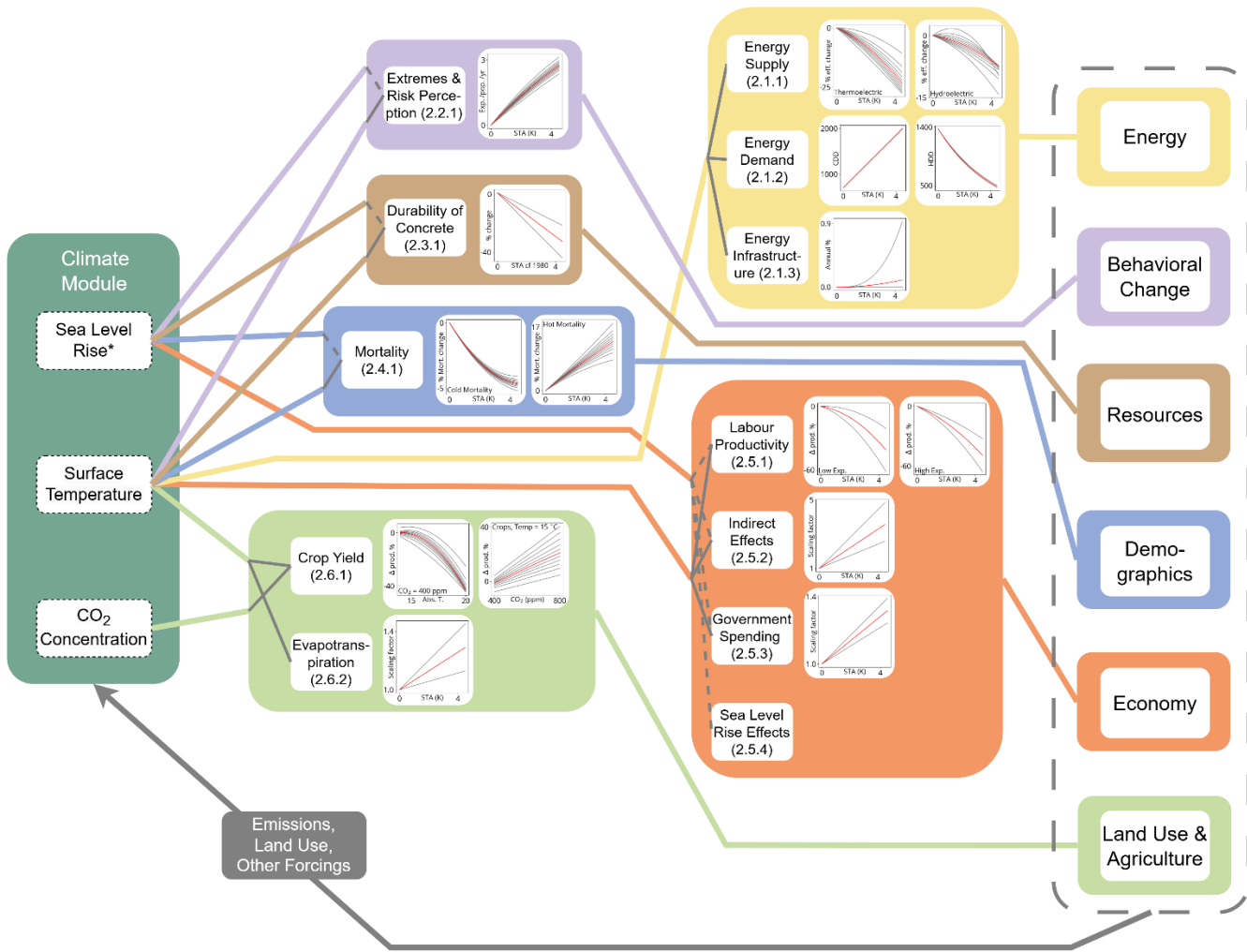


Figure 1: Outputs from the Climate module (left), and their linkages to other modules in FRIDA v2.1 (right) via climate impact channels. Coloured lines and groupings indicate the module affected by each set of impacts; grey lines inside the central boxes show the specific drivers of each damage. Each numbered box represents a distinct climate impact channel, with its implementation process described in the corresponding part of Section 2. Graphs to the right of each channel name show the damage function(s) implemented as part of that impact channel; see Fig. A1 for a more detailed version of these graphs. Within the graphs, red curves represent the median central estimate, with grey giving the uncertainty variation. In cases in which uncertainty is treated by “Sampled Percentiles” in Table 1, the 11 parameter sets representing the 2.5th to 97.5th percentiles, with equal uncertainty spacing, are shown; for the other impact channels, the range using the upper and lower parameter values after literature analysis and internal calibration is shown. Completion of the human-Earth system feedback loops, via the cascading effect on human drivers of the Earth system response, is represented schematically by the grey arrow. *Sea Level Rise impacts are indicated in this figure, but generally cannot be reduced to a single function, and therefore are not represented in the plots. Instead these are discussed in their respective sections and Ramme et al. (submitted).

Where possible, data to generate impact functions were ~~taken-sourced~~ from existing literature, either from modelling or empirical observation studies. ~~However, for several impact channels deemed essential for,~~ inclusion~~ed~~ in FRIDA due to their assessed importance in order to aid internal consistency, ~~had no identified~~ appropriate literature ~~could not be identified~~. These ~~channels~~ were therefore incorporated ~~with using expert-supplied~~ functional forms ~~—which were expert-supplied~~

210 ~~and that were ensured to be~~ dimensionally consistent, with the extreme condition response validated. ~~and the p~~Parameter values ~~for these functions were~~ calibrated internally ~~using the, as described in this paper as it relates to climate impact channels, and with the internal calibration~~ method described in (Schoenberg et al., (submitted2025-). Under uncertainty analysis in FRIDAv2.1, ~~u~~Uniform samples are ~~drawn from~~~~taken of~~ the ~~specified~~ parameter ranges ~~given in~~ (Table 1) for these channels.

215 For literature-based estimates, where possible, uncertainty was re-sampled using skewnorm distributions to ~~provide~~ generate 11 parameter sets with the overall impact equally spaced from the 2.5th to 97.5th percentiles (designated as “Sampled Percentiles” in the Uncertainty column of Table 1). This approach was chosen over independent sampling of each parameter ~~was done~~ to capture the impacts of covariance between parameter values within each impact channel, and to allow for the independent varying of uncertainties within future uncertainty analysis. Only the median values are given in Table 1, with all 11 shown in Fig. 1 and Fig. A1; for more information on the 11 parameter sets used, see the Code and Data Availability section.

220 Climate damages in FRIDA are driven by a combination of three climate outputs: global mean surface temperature (GMST), Sea Level Rise (SLR), and atmospheric CO₂ concentrations. The novel process-based SLR model in FRIDA, termed FRISIA, is documented in Ramme et al. (submitted). In FRISIA, the five most important contributors to SLR (thermal expansion, land water storage changes, and separate melting of mountain glaciers and the Greenland and Antarctic ice sheets) are modelled individually and calibrated to match observations and IPCC estimates including their uncertainty ranges (Fox-Kemper et al., 2021; Horwath et al., 2021). The rising sea level then causes damage along the global coast through a set of different impact strains. However, the strength of those impacts is highly dependent on the socio-economic evolution of the coastal zone. For this reason, the model of SLR impacts in FRIDAv2.1 specifically tracks stocks of coastal assets and population. While Ramme et al. (submitted) discuss the quantification of the impacts of SLR and how this model relates to other studies of SLR impacts, here the impact channels themselves are described, in their respective sections.

230 In contrast to other climate impacts in FRIDA, the possibility of detailed adaptation against SLR damages is incorporated, both because there is historical evidence of adaptation measures against storm surge damages, and since it has been shown that adaptation can substantially reduce future SLR-driven damages (IPCC, 2022; Tiggeloven et al., 2020; Wong et al., 2022). However, in FRIDA’s baseline run configuration, proactive adaptation against SLR is turned off, in line with the expected adaptation based on historical action against other climate impacts in FRIDA. In the remainder of this section, the climate impact channels represented in each of the six non-climate modules are detailed.

240

Category	Variable	Functional form	Uncertainty treatment	Parameter values	Reference
Energy supply (Section 2.1.1)	Hydropower energy efficiency	Quadratic in GMST anomaly (Form 1)	Sampled Percentiles*	a = -0.5316 %K ⁻¹ b = -0.2470 %K ⁻²	Van Vliet et al., (2016)
	Thermoelectric energy efficiency			a = -2.731 %K ⁻¹ b = -0.5341 %K ⁻²	
Energy demand (Section 2.1.2)	Cooling Degree Days (CDD)	Linear in GMST anomaly (Form 2 with intercept)	Internally calibrated in FRIDA	a = 704.2 K day b = 287.85 (287.01 - 288.69) day	Werning, Frank, et al., (2024)
	Heating Degree Days (HDD)	Exponential in GMST anomaly		a = 1376 K day b = -0.2326 (-0.2405 to -0.2246)K ⁻¹	
	Cooling energy change due to climate change	Linear in CDD	Internally calibrated to match literature	a = 0.000875 (0.0004 - 0.01) GJ (CDD) ⁻¹	Rode et al., (2021), Clarke et al., (2018)
	Cooling Heating energy change due to climate change	Linear in HDD		a = 0.002 (0.0001 - 0.01) GJ (HDD) ⁻¹	
Energy infrastructure	Damage rate of capital	Power law in GMST anomaly	Internally calibrated in	a = 0.0000501 (0 - 0.0001019) yr ⁻¹	N/A

damage (Section 2.1.3)			FRIDA	b = 2 (1 or 3)	
Exposure & Climate Risk Perception (Section 2.2.1)	Historical record-breaking extremes exposure per person per year	Quadratic in GMST anomaly (Form 1)	Sampled Percentiles*	a = 0.7207 Indices person ⁻¹ yr ⁻¹ K ⁻¹ b = -0.02483 Indices person ⁻¹ yr ⁻¹ K ⁻²	(Li et al., 2023)
Durability of Concrete (Section 2.3.1)	Average lifetime of concrete	Linear in GMST anomaly (Form 2)	Approximate d from literature	-7.5 (-5 to -15) %K ⁻¹	Bastidas-Arteaga & Stewart, (2015), Stewart et al., (2011), Wang et al., (2012)
Mortality (Section 2.4.1)	Cold impact on mortality	Quadratic in GMST anomaly (Form 1)	Sampled Percentiles*	a = -1.8993 %K ⁻¹ b = 0.1941 %K ⁻²	Bressler et al., (2021)
	Hot impact on mortality			a = 3.1996 %K ⁻¹ b = -0.0613 %K ⁻²	
Labour productivity (Section 2.5.1)	Productivity of low-exposure labour	Quadratic in GMST anomaly (Form 1)	Not possible from literature. Internally calibrated in FRIDA	a = -2.0826 (-4.6663 - 0.5010)%K ⁻¹ b = -1.5694 (-2 to -1.1387)%K ⁻²	Dasgupta et al., (2021)
	Productivity of high-exposure labour			a = -6.133 (-7.823 to -4.442) %K ⁻¹ b = -1.0620 (-1.5 to -0.6240) %K ⁻²	
Indirect Economic	Scaling factor on default loan failure	Linear in GMST anomaly (Form 2)	Internally calibrated in	0.5807 (0.35 - 0.85)K ⁻¹	N/A

Effects (Section 2.5.2)	rate		FRIDA		
Government Spending (Section 2.5.3)	Climate -driven component of government consumption	Linear in GMST anomaly (Form 2)	Internally calibrated in FRIDA	0.0706 (0.0543 - 0.0869) K ⁻¹	N/A
Sea Level Rise (Section 2.5.4)	See corresponding sections from Fig. 1 and Ramme et al. (submitted) for details.				
Crop yield and plant growth (Section 2.6.1)	Crop yield	Linear in CO ₂ , quadratic in absolute GMST (Form 3)	Sampled Percentiles*	a = -265.39 % b = 34.49 %K ⁻¹ c = -1.222 %K ⁻² d = 0.0553 %ppm ⁻¹	Franke et al., (2020)
Evapotranspiration (Section 2.6.2)	Scaling factor on baseline evapotranspiration rate	Linear in GMST anomaly (Form 2)	Internally calibrated in FRIDA	0.06435 (0.02870 - 0.1) K ⁻¹	N/A

Table 1: Summary of the climate impact channels represented in FRIDA v2.1. *-Uncertainty analysis of these impact channels follows the “Sampled Percentiles” approach, discussed in the main text; only the median set of parameter values is therefore given in the table. See Fig. 1 for the modules which each impact channel targets in FRIDA, and Fig. 1 and Fig. A1 for graphs of the damage functions utilised, and Fig. A2 for their response under a baseline emissions scenario. The Functional Form number refers to the equation in Appendix A.2.

250

2.1 Energy

2.1.1 Energy supply

Many studies investigate the effect of climate changes on the energy supply of various sources (Yalew et al., 2020), but many focus on local responses, rather than larger-scale effects relevant to FRIDA. Additionally, many uncertainties persist on larger scales, with a literature review by Yalew et al., (2020) determining broad ranges in regional and global impacts for different sources of energy. This diversity is unsurprising, due to the range of potential impact channels and scenarios available to be studied. Based on existing literature estimates, in FRIDA v2.1 only climate impacts on thermoelectric and hydroelectric power generation are simulated.

Since FRIDA models individual energy sources at the global level, climate change impacts were considered on this scale, for both renewable and fossil-fuel based energy production. ~~As discussed in Section 2.6.1, i~~Impacts on crop production are addressed in FRIDA (Section 2.6.1); this impact channel also affects bioenergy, and is accounted for in FRIDA as bioenergy utilises output from total crop production, which is impacted by this modelled effect. This follows the assumption that bioenergy crops are impacted on the global scale identically to food crops; this is unlikely, but in lieu of appropriate literature and to conserve crop production within the energy and land use feedback processes, this approach was followed to estimate bioenergy climate impacts in FRIDA.

~~Estimated effects on solar and wind energy production are mixed in the literature, and generally small on larger spatial scales (Yalew et al., 2020). Changes in solar power can be driven by changes in irradiance driven by circulation and cloud shifts, and by temperature dependent efficiencies. The global impact of these is uncertain and slight; Gernaat et al., (2021), when analysing total solar potential in ISIMIP climate model output, find a general reduction in efficiency under climate change approximately balanced by an increase in irradiance over Europe and North America. Wind power capacity and potential depends on similarly uncertain changes in low level winds, which substantially cancel on larger scales; Gernaat et al., (2021) find a slight global decrease in overall potential, though it is unclear how this might translate into actual capacity. Yalew et al., (2020) noted mixed overall reported impacts on wind energy systems. In light of the small magnitude and uncertain sign of these effects, and especially with regionally varying impacts partially cancelling out on larger scales, global climate impacts on solar and wind energy systems are not included in FRIDA v2.1.~~

Climate impacts on thermoelectric power production were found to be uncertain but consistently slightly negative on the global scale in the literature review by Yalew et al., (2020). One study in particular, Van Vliet et al., (2016), had a methodology consistent with the requirements for damage functions in FRIDA. Using a hydrological model to study the effects of climate change on local streamflows and temperatures, coupled with an inventory of existing thermoelectric power

285 plants, and a model for how the efficiency of thermal cooling depends on water temperature, Van Vliet et al., (2016) studied the impact of these two effects – changes in streamflow and in water temperature – on existing thermoelectric energy production under future climate change using early ISIMIP climate data.

For implementation of this effect in FRIDA, the impacts on global thermoelectric production under both scenarios (RCP2.6 and RCP8.5) and decades (2020s and 2050s) studied by Van Vliet et al., (2016)) were taken from their Table S5, and
290 regressed against global mean temperatures using a quadratic fit with no intercept (see the Appendix Section A.3 for details on data processing and the functional form).

This reduction in thermoelectric efficiency applies to energy production in power plants cooled by freshwater. For incorporation into FRIDA, modifications due to both these conditions - energy generated in power plants, and freshwater cooled - had to be implemented. First, the shares of energy from fossil fuels - split into coal, oil, and gas - which are
295 generated in cooled power plants were calculated by dividing data on electricity generation by source (Ember, 2024) by total energy generation by source (Energy Institute, 2024) with the implied assumption that electricity generation from fossil fuels (as opposed to heating or powering mobility) occurs in thermal power plants. For nuclear power, it was assumed that all energy production occurs in cooled power plants. Then, the share of power plants cooled by freshwater, described as 70.2% by Van Vliet et al., (2016), was calculated. This factor was assumed to be independent of the specific fuel. This contribution
300 to energy production was then modified by the efficiency change due to climate change.

These represented effects are driven by long-term changes in water temperature and streamflow - therefore they indicate the longer-timescale response, and cannot be interpreted as incorporating the impact of higher temporal-resolution processes such as storms.

As well as studying climate effects on thermoelectric power, Van Vliet et al., (2016) investigate the impact of climate change
305 on hydropower production. Unlike thermoelectric plants, hydropower plant efficiency is unaffected by water temperature; only the effects of changes in streamflow are modelled. Using data from their Table S4, and the same GMST data as used for the thermoelectric supply, a zero-intercept quadratic fit was applied. These impacts are lower than for thermal power generation, due to the lack of a water temperature effect. Since this effect applies to the hydropower sector as a whole, the further splicing of energy production performed in the thermal plant case was not needed here.

310 That the net effect of streamflow changes is negative reflects the overall effect of increases in very high latitudes and decreases in e.g. southern Europe and South America (Van Vliet et al., 2016). The net effect therefore depends on the distribution of power plants, which can be expected to change in the future due to multiple factors, including adaptation. No distributional changes are incorporated into the representation of this damage function in FRIDAv2.1.

Estimated effects on solar and wind energy production are mixed in the literature, and generally small on larger spatial scales (Yalew et al., 2020). Changes in solar power can be driven by changes in irradiance driven by circulation and cloud shifts, and by temperature-dependent efficiencies. The global impact of these is uncertain and slight; Gernaat et al., (2021), when analysing total solar potential in ISIMIP climate model output, find a general reduction in efficiency under climate change approximately balanced by an increase in irradiance over Europe and North America. Wind power capacity and potential

320 depends on similarly uncertain changes in low-level winds, which substantially cancel on larger scales; Gernaat et al., (2021)
find a slight global decrease in overall potential, though it is unclear how this might translate into actual capacity. Yalew et
al., (2020) noted mixed overall reported impacts on wind energy systems. In light of the small magnitude and uncertain sign
of these effects, and especially with regionally-varying impacts partially cancelling out on larger scales, global climate
impacts on solar and wind energy systems are not included in FRIDA v2.1.

325 The effects modelled by Van Vliet et al., (2016) represent only ~~these specific narrow~~ impact channels – changes in
streamflow and water temperature – and do not address other channels such as the effect of extreme events on infrastructure.
An additional channel in FRIDA is designed to account for these infrastructure damages, presented in Section 2.1.3.

2.1.2 Energy Demand

330 Under a warming climate, energy use for air temperature control can be expected to change. Potentially a key system
feedback, due to the close link between energy systems and emissions, the net effect is the balance between a reduction in
heating demand and an increase in cooling demand under global warming (Kennard et al., 2022; Rode et al., 2021; Yalew et
al., 2020). Since these two components of energy demand change generally feature different energy carriers – electricity-
powered air conditioning for cooling, and (typically) the burning of fossil fuels for direct heating – their drivers vary, with
335 their net effect dependent on the complex balance of differing processes, particularly the level of air conditioning penetration
(Clarke et al., 2018; Rode et al., 2021; Yalew et al., 2020). There is an overall spatial pattern to the response, with general
decreases in heating in high latitudes, and increases in cooling nearer the equator, with a consequent dependence on the
projected pattern of climate change (Deroubaix et al., 2021; Hartin et al., 2021). The effect on energy demand is further
modulated by the population distribution (Kennard et al., 2022).

340 Since FRIDA aims to explain feedback loops within the coupled human-Earth system using meaningful concepts at the
process level, the effect of climate change on energy demand has been implemented in a two-step process. First, a link
between the level of global warming and the change in energy-relevant climate metrics was established. This was then linked
to the overall change in demand, exploring literature uncertainties.

The energy-relevant climate concepts utilised in FRIDA ~~is~~ are the widely used Cooling and Heating degree days (CDDs and
345 HDDs). These represent the total exceedance of local temperatures of given hot and cold thresholds, summed over the daily
differences between the threshold and the actual temperature, and have undergone decreases and increases
respectively changes in observations since 1981 (Kennard et al., 2022), though historical trends are weak compared to future
projections (Deroubaix et al., 2021). Absolute HDD and CDD responses to climate change feature the expected spatial
structure – reductions in the former centred over high latitudes and increases in the tropics in the latter (Deroubaix et al.,
350 2021). Many implementations of this concept use simple summation of exceedances over various thresholds, with typical

~~heating and cooling thresholds of 18°C and 22°C respectively (Kennard et al., 2022; Miranda et al., 2023). A with other more complex methods also utilised defined by the UK Met Office involves utilising maximum and minimum temperatures in addition to the mean, allowing for heating and cooling on the same day (Deroubaix et al., 2021; Spinoni et al., 2021).~~ CDD and HDD are used as scaling proxies for heating demand, since they approximately represent the level of cooling and heating required on a given day. However, their lack of accounting for humidity renders CDD and HDD a suboptimal framework for analysing heating demand (Kennard et al., 2022).

~~HDD and CDD have undergone decreases and increases respectively in observations since 1981 (Kennard et al., 2022), with their relative magnitude dependent on the choice of threshold, though historical trends are weak compared to future projections (Deroubaix et al., 2021). Absolute HDD and CDD responses to climate change feature the expected spatial structure—reductions in the former centred over high latitudes and increases in the tropics in the latter (Deroubaix et al., 2021)~~

Arnell et al., (2019), using CMIP5 model data, found approximately linear global changes in CDD and HDD with global temperatures, weighted over populated regions. Using regional CMIP5 data coupled to SSP population data, Spinoni et al., (2021) found substantial changes in population-scaled CDD and HDD, with strong socioeconomic dependence at given global warming levels due to the population scaling.

For FRIDA, population-weighted CDD and HDD are required, to capture the energy demand-driving component of change. Adapting the framework by Werning, Hooke, et al., (2024), in FRIDA the response of global average annual CDD and HDD per person, using thresholds of 22°C and 18°C respectively, under a range of SSP projections of emissions and population, was calculated and modelled as a function of GMST.

Based on the fits and their residuals, for implementation in FRIDA, CDD was taken to increase approximately linearly in GMST, while HDD declines with an exponential decay (see Appendix Section A.4 and [Fig. A2](#)[Fig. A3](#) for the fits and their functional forms, and further data details).

These projections of population-weighted CDD and HDD were then combined with literature estimates of the overall impact of climate change on heating and cooling energy use, to represent the full effect. Clarke et al., (2018) find a net increase in residential energy use, with increased cooling outweighing decreased heating; however Rode et al., (2021) find the opposite effect, with a net decrease in energy use. Varying assumptions around access to air conditioning for cooling determine the overall balance in demand. In FRIDA, the sensitivity of demand to changes in CDD and HDD are separately calibrated to both these estimates, in order to explore the uncertainty within this impact. If FRIDA were to [resolve sectors](#) [sectoralise](#) in future development, the analysis by van Ruijven et al., (2019) could be utilised to drive sector-specific responses. Within FRIDA, the change in CDD is then also directly linked to consequent emissions of [Hydrofluorocarbons](#) (HFCs) required for air conditioning via the HFC134a-equivalent aggregated basket species for HFC emissions, since this sector is a key source of fluorinated gas emissions (Hartin et al., 2021).

The uncertainty in the CDD and HDD functions could have been explored within the data (see [Fig. A3](#)[Fig. A4](#)), but instead, a different approach was taken, whereby the parameters were only narrowly varied as part of the internal calibration (see

385 Table 1 and Fig. A1). This was done because of the direct linking of CDD and HDD to literature-based energy demand responses, with their own internal uncertainty. The uncertainty in the CDD connection to HFC emissions is also internally calibrated.

These literature-based responses reflect the process-level representation contained within the available literature; they can conceptually be thought of as driven by temperature-related shifts in long-term means and shorter-term processes such as
390 heatwaves.

Adaptation measures, such as changes to building standards reducing future air-conditioning demand per CDD, are not included mechanistically within FRIDAv2.1. Within the policy levers associated with Behavioural Choices, individual energy demand can be externally driven to explore the effect of demand-linked policy implementations.

2.1.3 Energy Infrastructure Damage

395 ~~As detailed in Section 2.1.1,~~ The effect of climate change on the efficiency of hydro- and thermo-electric power plants is represented in FRIDA, based on a literature estimate (Section 2.1.1). However, no suitable literature to represent the global effect of climate change on energy systems infrastructure was identified. This impact channel was therefore incorporated via an internally calibrated parameter (see Schoenberg et al., ~~submitted2025~~), with damages on energy infrastructure represented as a power law function of global temperature anomaly. This functional form was chosen based on its prevalence in IAM
400 literature (Füssel, 2010; Nordhaus, 2014). The parameters of the function are specified with a large uncertainty range reflecting the lack of knowledge to constrain them. The decay rate of energy capital stocks due to climate impacts is then given as:

$$D = a\Delta T^b. \tag{1}$$

405 Here T is the global mean temperature anomaly, and D is the decay rate of energy infrastructure due to climate change. In FRIDAv2.1, the decay rate is applied to the capital stocks of all energy sources equally.

2.2 Behavioural Change

2.2.1 Exposure to Climate Extremes

410 Populations' exposure to climate change-driven extreme events is expected to alter risk perceptions and thus behaviour, including those which influence anthropogenic climate forcing, which will alter the further evolution of the human-Earth system (Beckage et al., 2022; van der Linden, 2015). This feedback loop, initiated by the climate response, is therefore classified as a climate feedback within FRIDA. ~~Here~~In this documentation, the connection from global temperature change to human exposure to extreme climatic events across a range of domains is focused on, while the downstream adaptive
415 behavioural processes in, and response to, climate change risk perceptions is expanded upon in Rajah et al., (2025)).

Under historical climate change, exposure to climatic extremes has already been altered, and will increase at different rates under a range of scenarios (Lenton et al., 2023; Lange et al., 2020). ~~Lange et al., (2020) used ISIMIP2b data to suggest exposure to various climate impact events has increased 2.4 fold since pre industrial times, with substantial further increases projected through the 21st century. Looking specifically at annual mean temperatures, Lenton et al., (2023) found that the population exposed to temperatures above 29 °C have tripled to 1% since 1980, with this metric increasing to 8-40% by 2100. Changes in exposure to extremes such as these are expected to drive subsequent shifts in people’s behaviour, representing mitigation of and/or adaptation to climate changes (Akerlof et al., 2013; Beckage et al., 2018, 2022), with Myriad indicators and exposure metrics are used in the literature, covering a range from multiple sectors (Lange et al., 2020) to purely heat based exposures (Schwingshackl et al., 2021). In psychological models, personal experience with extreme weather events has been found to be a significant predictor of climate change risk perception (Akerlof et al., 2013; Xie et al., 2019).~~ Therefore, FRIDA uses individual population-average exposure to local weather extremes to partly drive the experiential process in risk perception. This population-weighted measure will vary under future scenarios due to changes in both climate and population distribution.

While Schwingshackl et al., (2021) have found a range of heat stress indicators to scale approximately linearly with GMST, with the gradient dependent on the chosen indicator, they only cover temperature (and humidity)-based metrics. Instead, B. Li et al., (2023) studied the change in population-scaled exceedances of historically-observed extremes in downscaled CMIP6 data from 35 models for the four “Tier 1” SSPs (SSP1-2.6, SSP2-4.5, SSP3-7.0 and SSP5-8.5), across a range of indices relating to temperature, precipitation, and compound events. A person was counted as exposed if they experienced an event more extreme than the historically-observed events for that gridcell. This was presented as decadal averages from the 2020s to the 2090s across a range of scenarios. For use in FRIDA, this was normalised by the global population, converting to the population-averaged response, and then summed over the seven available indices (Annual total precipitation, Maximum 1-day precipitation, Number of days with heavy precipitation, Warm days, Heatwave, Sequential precipitation-humid heatwave, and Compound drought and heatwave).

The overall metric therefore represents the average number of indices ~~of for~~ which a person experiences at least one weather event in a given year that is more extreme than the historical record. This total exposure to extreme weather events was then expressed as a zero-intercept quadratic function of GMST using the corresponding global temperatures (see the Appendix Section A.5 for the fit, and ~~Fig. A3~~[Fig. A4](#) for further details on the chosen indices). The imposed zero intercept shifts the exposure baseline, rendering the metric less directly measured, but this was necessary to represent exposure relative to pre-industrial levels. Through the incorporation of these metrics, the implied global exposure to heatwaves and storms, as well as changes in mean precipitation and compound events, are accounted for in FRIDA.

In FRIDA, exposure to sea level rise (SLR) is differentiated from temperature-related extreme weather events for climate change risk perception. SLR impacts are not only felt by comparatively smaller coastal populations, after additionally accounting for resilience and previous retreat, but also experienced as storm-surge flooding, which people may not directly associate with global climate change (Akerlof et al., 2017). Accordingly, SLR exposure is not included in the weather-

450 related indices described above. Instead, exposure to flooding from SLR is included as a distinct risk perception process. FRIDA tracks the number of people in the coastal zone flooded annually from SLR-related storm surges (Ramme et al., submitted). Future increased exposure to SLR-induced flooding is expected to result in increased public attention (Akerlof et al., 2017). Consequently, risk from SLR is perceived by the broader global population only when this metric crosses a large enough threshold, assuming it would receive international media attention and act as a vicarious experience (Akerlof et al., 455 2013).

2.3 Resources

2.3.1 Durability of Concrete

Concrete is the primary material used in modern housing and service building construction (Marinova et al., 2020) and constitutes a significant share of material used in infrastructure (Deetman et al., 2020). Its production contributes around 8- 460 9% of anthropogenic CO₂ emissions, via emissions from cement, and approximately 2-3% of global energy use (Monteiro et al., 2017). Any feedback between climate change and the use of concrete may therefore represent an important feedback within the coupled human-Earth system.

In FRIDA the global concrete sector is represented in a highly aggregated form consisting of two types of use: concrete in housing and service buildings, and concrete in infrastructure. Concrete structures of both types are built and as they age, they 465 move from the stock of new structures to the stock of old structures, before leaving the system upon reaching their service lifetime. Climate impacts are represented according to the logic that higher global average temperatures reduce the durability of concrete structures through carbonation- and chloride-induced corrosion, ultimately resulting in damages to the rebar structures of the buildings. Both types of corrosion are caused by a combination of temperature, CO₂, and chloride-exposure mechanisms (Bastidas-Arteaga and Stewart, 2015; Stewart et al., 2011). The magnitudes of these impacts are highly context- 470 dependent and vary with geography, distance to the ocean, type of structure, concrete mix, etc. Global-level averages for the impact are not available from the literature.

The service lifetime of concrete structures is therefore represented as declining by 5-15% linearly for every degree Celsius increase in global average temperature using the base average service lifetime of the structure (a calibrated parameter) as a baseline. In FRIDA a best estimate of 7.5% lifetime decline per degree is used, based on estimates of increased corrosion 475 rates. The range was derived from qualitative evaluation of existing literature of local-to-regional scale climate impacts on reinforced concrete durability (Bastidas-Arteaga and Stewart, 2015; Stewart et al., 2011; Wang et al., 2012). This reduction in service lifetime of concrete structures as a consequence of climate change, mediated by enhanced corrosion, is driven by three processes. First, elevated atmospheric carbon concentration accelerates carbonation and increases the carbonation depth in concrete, which increases the risk for corrosion and structural damage to the rebar structure. Second, elevated ambient 480 temperatures accelerate carbonation and chloride penetration, which exacerbates corrosion initiation and the risk of structural damages. Third, changes in relative humidity due to higher temperatures may allow carbonation and chloride penetration in

regions where these damages previously have been of minor concern (Wang et al., 2012). Due to the simplistic nature of the representation in FRIDA v2.1, these impacts are currently driven only by global temperatures; future development could incorporate CO₂ concentrations, moving towards a process-based representation of the corrosion effects.

485 While techniques for adaptation to this climate impact are not currently simulated in FRIDA, the process-level representation allows for the possibility of altering parameters to address this, such as by increasing building lifetimes, adjusting building standards, or changing the concrete mix to more durable alternatives. Cost considerations such as investments in research and the price differential of more durable alternatives would be explored under these possible adaptation methods.

To account for SLR damages on concrete use, the annual SLR-driven storm surge damage to coastal assets is multiplied by
490 the average historical concrete per asset ratio. This represents a simple initial implementation for the linkage between SLR and concrete resources, which can be expanded upon in future development.

2.4 Demographics

2.4.1 Mortality

Extreme hot and cold temperatures are associated with increased mortality (Cromar et al., 2022). These associations are
495 significantly stronger for older populations (Chen et al., 2024), and operate through complex mechanisms (Masuda et al., 2024). In FRIDA, age-stratified impacts of temperature on mortality are accounted for.

Discrete observations of mortality from specific, extreme events are substantially hindered by data availability issues, with strong geographic inequalities (Newman and Noy, 2023). While impacts of climate change on human mortality can be expressed in terms of economic damages (Newman and Noy, 2023), in FRIDA v2.1 the approach is to directly include the
500 mortality effect, with subsequent effects on the other human and climate systems occurring as a result.

A meta-analysis of epidemiological studies which modelled responses to hot and cold extremes produced regional risk functions, finding that increased heat-driven deaths under climate change consistently outweighed decreases in cold deaths on the regional level (Cromar et al., 2022). For FRIDA, the empirical analysis presented by Bressler et al., (2021) was utilised to project global impacts of climate on mortality. Using historical data, Bressler et al., (2021) built links between
505 daily mortality and daily mean temperature, separately for hot and cold impacts. While they express results on the country level, additionally accounting for income changes, they present global impacts as a function of GMST in their Fig. 3. This data was traced, and a zero-intercept quadratic fitted. The temperature data was offset to be relative to pre-industrial levels, thereby expressing the impacts as relative to the pre-industrial level. ~~As noted in Section 1, it~~ was decided to express uncertainties within climate impacts within 5-95 percentiles, where possible, to maximise consistency. The data in Bressler
510 et al., (2021) is given for these 5-95 percentiles, allowing their uncertainty representation to be directly used. The functional form and further data details are given in the Appendix Section A.6.

The use of daily data implies the incorporation of the effect of events on this timescale; i.e. that short-term heatwaves are included as drivers of this mortality effect.

Investigating the effect of ageing on temperature-driven mortality, Chen et al., (2024) presented scaling factors for mortality rates between different age groups; in the supplementary material they note that “Compared with the 0-64 age group, the 65-74 and ≥ 75 years age groups have 1.2 and 1.8 times of heat-related mortality risks and 1.9 and 2.4 times of cold-related mortality risks”. In FRIDA v2.1, this information was combined with the population fractions in 2024 to assign different mortality rates to these three age bands.

The approach taken in FRIDA therefore allows for the accounting of temperature mortality, split between hot and cold effects and by three age brackets. These health impacts are modelled at the global level but have a pronounced regional dependence, which may be expected to drive different dynamics than a globally uniform effect. However, Cromar et al., (2022) found that increased heat deaths outweighed decreased cold deaths in each region, suggesting a consistent overall dynamic, albeit varying significantly in strength. While it is plausible that measures could be taken to reduce heat exposure and thereby partially adapt to this climate damage, it is unclear how best to simulate this at the process level within a model such as FRIDA, or that this incorporation would substantially alter the trajectory of the overall system; investigation of this will form part of the future development of the model (Section 3.3).

Similarly to how FRIDA calculates the increasing exposure of coastal assets, it also calculates the increasing exposure of the coastal population to SLR-driven storm surge damages using a logistic function (Ramme et al submitted). After accounting for resilience and previous retreat of the coastal population, the fatality rate of the people that are living in flooded areas in one year is assumed to be 1%, as applied in Wong et al., (2022), adding an assumed uncertainty range of 0.5-2%. The loss of life is then added to the death rates of the individual age groups within FRIDA.

2.5 Economy

2.5.1 Labour Productivity

The ability of people to carry out activities such as work depends on the climate they experience. While effects of hot and cold temperatures affect overall work levels (Dasgupta et al., 2021), combinations of high temperature and humidity can make ambient conditions unliveable, when the wet bulb globe temperature (WBGT) exceeds uncertain thresholds (Clarke et al., 2022). This occurs via the limitation of the ability of humans to cool down via sweating, as well as by enhancing the risk of heat stroke (Masuda et al., 2024). [This impact is included in FRIDA v2.1 using Dasgupta et al., \(2021\) to simulate reductions in productivity by sector under global warming.](#)

While it is known that physiological reasons cause limits to work above certain WBGT levels, the value of this limit is uncertain between laboratory and empirical studies (Masuda et al., 2024; Orlov et al., 2020), partly due to uncertainties around adaptation practices, which may be numerous and complex (Masuda et al., 2024).

Reductions in work levels due to uncomfortable heat levels occur substantially below any physiological WBGT limit, and vary between regions due to historical adaptation (Dasgupta et al., 2021), raising the complex question of future adaptations

545 under climate change. These impacts depend on the nature of the work in question, with impacts split by work intensity and/or weather exposure (Dasgupta et al., 2021; Orlov et al., 2020).

Substantial aggregate climate impacts have been attributed to reductions in worker efficiency under climate change. Orlov et al., (2020) found a 1.4% drop in GDP in 2100 under the high-emissions RCP8.5 scenario; in a follow-up study focused on the agricultural sector, Orlov et al., (2021), using the GRACE computable general equilibrium model, found considerable

550 regional food price inflation due to increased production costs.

For FRIDA_{v2.1}, the results of Dasgupta et al., (2021) were utilised to model the impacts of climate change on labour output. Dasgupta et al., (2021) used empirical survey data to study the effect of climate on hours worked – termed “labour supply” – and coupled this with prior research on the impact of climate on the effectiveness of work done – “labour productivity” – to get the overall change in “effective labour”. This effective labour then includes both the effect of changed working hours and

555 changed work efficiency under climate change. Dasgupta et al., (2021) split work into two levels of exposure: High, designated as “outdoor work in the sun”, and Low, defined as “indoor work or outdoor work in the shade”.

The use of empirical survey data by Dasgupta et al., (2021) reduces concerns on the discrepancy between idealised laboratory studies and real-world impacts highlighted elsewhere (Masuda et al., 2024). One concern, however, is that the recent (1986-2005) estimated impacts of climate on labour are substantial, especially in the tropics, with widespread regions

560 with around 60% drops in work levels compared to the optimum climate (see their Fig. 3).

For use in FRIDA, data from Dasgupta et al., (2021) for the combined global effect of climate change on effective labour at 1.5°, 2°, and 3°C of global warming, relative to pre-industrial levels, were taken, and a quadratic function in GMST anomaly fit to the data, with an imposed zero intercept by definition. Note that, since uncertainty estimates were not taken from Dasgupta et al., (2021), the uncertainty bounds were determined from internal calibration within FRIDA (see the Appendix

565 Section A.7 for further details and the functional form).

It should be noted that future changes in the spatial distribution of sectoral work would affect this aggregate impact; for example, if high-exposure manufacturing work shifted to more climate-exposed regions, the overall climate impact would be enhanced. This is considered a second-order effect currently, and is therefore ignored in FRIDA_{v2.1}, though there may be scope to include this effect in future (Leimbach et al., 2023). In addition, in FRIDA_{v2.1} no explicit representation of

570 adaptation to this climate impact is modelled; in future, investment-driven adaptation could plausibly increase the share of low exposure labour relative to high exposure labour, partially mitigating this effect.

Since Dasgupta et al., (2021)’s results are recorded weekly, with significantly different results based on daily temperature, it can be assumed that these global temperature-driven effects are ultimately mediated by short-term temperature-based drivers, such as heatwaves.

575 In addition to the GMST-driven response, SLR-induced flooding adversely impacts labour productivity. Using the number of people that are living in flooded areas annually, accounting for resilience and previous retreat, the approach taken by the FUND model is followed, by which it is assumed that people in flooded areas do not work for two weeks (Tol, 2007; Waldhoff et al., 2014). This translates into a reduction factor of 0.96 for their annual productivity, which is expanded with an

580 uncertainty range between 0.9 and 0.99. The overall productivity reduction because of SLR then becomes $1 - \frac{\text{People flooded}}{\text{Global population}} \text{reductionFactor}$. As this is a relative effect on productivity, the unemployment rate and working age population fraction are accounted for.

2.5.2 Indirect Economic Effects

585 The climate impacts described by the other damage functions in FRIDA v2.1 cover direct physical effects of economic relevance. However, they do not cover the entire spectrum of potential economic consequences of climate change. A growing body of evidence and scientific literature points to the fact that the most significant impact of climate change is likely to be economic in nature, manifesting as shifts in expectations as climate uncertainty changes into climate risks, and is therefore priced by markets (Kantor, 1979; Stroebel and Wurgler, 2021), leading to cascading negative impacts in financial assets evaluation, with liquidity and solvency consequences (Bartsch et al., 2025; Carattini et al., 2023; Feng et al., 2024). These effects are likely to spread well beyond the range of physical damages, affecting the evaluation of both present and 590 future investments alike. As extreme climate events increase in both number and scope, economic assets that are physically whole yet potentially at risk of being damaged in a future event are also diminished in value, as expectations and market prices adjust to reflect the new information.

The complex nature of these indirect economic effects would require detailed financial and monetary markets to be satisfactorily explored. While FRIDA includes financial and monetary mechanisms, their highly aggregate nature limits the 595 representation of broader economic damages to an aggregate depiction of these effects, using the failure rate of loan as the primary process. In FRIDA, investments are associated with a failure rate, which rises linearly with GMST (Fig. 1), leading to increased, unexpected bankruptcies and associated non-performing loans. These unexpected defaults produce negative employment shocks in the short term and long-term changes in lending standards. As the financial sector revises future growth expectations downwards to account for climate damages, the social costs of climate change are mitigated but 600 investment, and therefore economic development, is curtailed (Dell'ariccia and Marquez, 2006; Fishman et al., 2024; Lown and Morgan, 2006; Rodano et al., 2018). Since this impact channel is less directly process-based than many others, and more embedded in the impacted module (in this case the Economy module), a further exploration of this impact channel will be presented in a forthcoming paper documenting the Economy module.

605 The strengths of these indirect economic effects are calibrated as part of the full-model calibration, using past data. This implies that these indirect economic effects are at work for the entire range of the model simulation. ~~It might be argued that small temperature changes are not generally associated with significant direct climate impacts.~~ Indirect economic effects, however, are primarily mediated on the one hand by expectations, whereby as evidence for future climate risks increases, reducing uncertainty, their weight in economic calculation similarly increases; and on the other by cascading effects, with destroyed assets in one region or sector triggering bankruptcies in entities that are dependent upon those destroyed assets.

610 Consequently, while logically secondary to other climate damages, the compounding, forward-looking nature of these effects implies that their economic consequences are significant.

2.5.3 Government Spending

Climate change significantly affects public spending by increasing costs for infrastructure repair, adaptation, and disaster response. Extreme weather events like floods, hurricanes, and wildfires can be expected to damage critical infrastructure
615 such as roads, bridges, power grids, and water systems, leading to costly repairs. These expenses strain public budgets, potentially reducing government investments and therefore hindering long-term economic growth (Avtar et al., 2023). In FRIDA, this process is simulated using the global mean surface temperature anomaly to linearly increase the fraction of government spending allocated to consumption (which includes repairs) at the expense of government investment. This extra climate-driven government consumption increases the debt to GDP ratio in the long-term, which over time compounds by
620 increasing government interest payments. Both of these impacts cause there to be less money available for investment by the government. The impact of this structure on overall economic growth is complex, as the lack of investment pulls down GDP, but the extra government spending tends to increase it, provided that economic resources are not already fully utilized.

2.5.4 Sea Level Rise Effects

There are three distinct SLR-driven economic impact channels in FRIDA v2.1 not discussed elsewhere in this section. These
625 affect the loan failure rate - which is also connected to GMST (Section 2.5.2) - as well as additional financial cost-based channels.

Firstly, SLR damages coastal assets. The major component of this is the increase in the severity of storm surges, as SLR raises the base level of the surge (Cazenave and Cozannet, 2014; Wong et al., 2022). This is reflected by modelling the annual exposure of coastal assets to storm surges using a logistic function of the mean sea level anomaly (subtracting any
630 rise in the flood protection height through protection investments), modified by the resilience of the coastal zone and previous asset retreat (Ramme et al., submitted). The other component of damage to coastal assets is the loss of assets due to inundation or retreat. This affects only the immobile part of assets, and, in the case of proactive retreat, 80-100% of the assets' values ~~are-is~~ assumed to be depreciated at the time of retreat, therefore not causing economic damage. The loss of assets is linked to the financial module of FRIDA and interpreted as a loss of safe loans. Therefore, SLR-driven asset
635 damages affect a similar part of the economy as the temperature-driven increase in the failure rate of loans (see Section 2.5.2), but they are applied conceptually differently. While the temperature effect is modelled as a change in the non-performing fraction of newly issued loans, the SLR effect is assumed to represent the defaulting of loans that would have otherwise been safe. However, the downstream economic consequences (unemployment shocks and a tightening of lending standards) are the same.

640 Secondly, people and assets can retreat from the coast because of SLR. This can either happen as an adaptation strategy to avoid future damages from storm surges, or it can be forced, when a home or an asset becomes inundated. Retreat causes

costs for moving mobile assets, costs to demolish abandoned immobile assets and costs to relocate people. A full description of how those costs are defined can be found in Ramme et al., (submitted). In FRIDA, those costs are summed and interpreted as owner consumption in the economy module of FRIDA. This is done because it is the owners of assets that must pay for its
645 relocation. Owner consumption in FRIDA transfers money from owner savings to firms' checking accounts.

Finally, instead of retreating or conducting no adaptation at all, the coastal zone also has the option to protect against future SLR-driven damages and inundation. The chosen formulation translates flood protection investments into an increase of the height of a generic seawall, whereby the costs to raise and maintain the flood protection grow quadratically with height (Wong et al., 2022; Ramme et al., submitted). The investments into raising the flood protection height, as well as the
650 additional maintenance costs of the raised flood protection, are assumed to be unproductive government expenditure in FRIDA. This means that flood protection costs are added to public expenditure, but they are not accounted for in the part of public expenditure that increases investments and consumption and thereby can grow the economy. The increase in unproductive public expenditure leads to the government taking up more debt and increases its debt to GDP ratio, which can impact future government expenditure on other expenses.

655 2.6 Land Use & Agriculture

Several connections are made between the Climate module and the Land Use & Agriculture module in FRIDAv2.1. Two of these - representing impacts on the agricultural sector, via crop yields and on irrigation evapotranspiration – are clear climate impact channels, imposing on domains within the human system, in this case agriculture, and are detailed here. The other connections, while still relevant for human systems and connected to them within FRIDA, are instead considered internal
660 climate feedbacks, linking across modules in FRIDA due to the necessary split of the carbon cycle between these modules. These connections are explored in Section 7.

Many methods have been developed to investigate the impacts of climate change on the agricultural sector. As when measuring whole-economy impacts, these can be separated into top-down and bottom-up approaches (Piontek et al., 2021), with FRIDA implementing a simplified process-based, bottom-up approach to climate impacts within this dichotomy, representing total climate impacts as the aggregated effect of individual channel responses at the process-level, with the representation within FRIDAv2.1 remaining at the global scale. Broader sectoral impacts extend to the impact of climate change on workers within the agricultural sector (Orlov et al., 2020), which is incorporated in FRIDA ~~as described in (Section 2.5.1), and changes to the efficiency of bioenergy infrastructure (Gernaat et al., 2021);~~ with the approach in FRIDA detailed in scc Section 2.1.1). Cascading impacts from the agricultural response can raise the social cost of carbon
670 (Moore et al., 2017), with supply-demand balance shifts causing effects on food prices (Kompas et al., 2024; Orlov et al., 2021; Rezaei et al., 2023), which manifest in FRIDA through the Economy module. Projected rainfall changes may also increase income inequality through impacts on the agricultural sector (Palagi et al., 2022), though this level of detail is not represented in FRIDA.

Changes in the agricultural sector cause associated feedbacks onto the climate system not just from greenhouse gas emissions, but also via changes in surface albedo (Ghimire et al., 2014) and H₂O emissions from irrigation (Sherwood et al., 2018); these effects are simulated and passed to the FRIDA Climate module. While these effects are slight, their inclusion incorporates interactions between the climate and human system only possible in a coupled model such as FRIDA.

2.6.1 Crop Yield

The approach in FRIDA focuses on a key variable in the food systems sector, namely crop yield. FRIDA represents only a single, aggregated crop yield, with no differentiation of different crop types. Changes are therefore represented in FRIDA in this crop- and region-aggregated yield, as a function of climate variables, following Müller et al., (2021).

Effects of climate change on yields have been explored via a range of approaches, from localised field experiments, to process-based modelling, to empirical statistical modelling (Hu et al., 2024; Zhao et al., 2017). Complex, nonlinear responses varying between regions and crops are reported, with a strong dependence on the method or model used Hu et al., 2024; Müller et al., 2021; Ruane et al., 2024). Crop yields are affected by multiple climate drivers; temperature, CO₂, and precipitation. The effect of increased CO₂ is to increase yields, via the CO₂ fertilisation effect, with a strong dependence on crop type and water stress (Ostberg et al., 2018), and uncertain magnitude (Gernaat et al., 2021; Müller et al., 2021). This CO₂ effect precludes the possibility of using global mean temperatures in FRIDA as the sole driver of the climate impact on crop yields (Ruane et al., 2024), as applied for some other impact channels in FRIDA.

Early single-model studies determined slight changes in crop yield under climate change (Levis et al., 2018; Tebaldi and Lobell, 2018), with the CO₂ fertilisation effect a key source of uncertainty (Ren et al., 2018). The ISIMIP project seeks to address these uncertainties using many experiments in a multi-model comparison (Müller et al., 2019; Ostberg et al., 2018). ISIMIP crop models generally simulate present-day yields well (Franke et al., 2020b; Müller et al., 2024), but models still exhibit large differences under future climate conditions (Heinicke et al., 2022; Müller et al., 2024).

In a recent literature review, Hu et al., (2024) found an overall decrease in yields of key crops under 1°C of global warming, though they note many studies neglect the CO₂ fertilisation effect. In the most recent round of the ISIMIP project, projections of uncertain yield changes reflect the complex balance between the responses to CO₂ and temperature (Müller et al., 2021). The global mean response in crop yields masks the spatial pattern of the response, which typically includes increased yields in high latitude regions and decreased yields in lower latitudes (Franke et al., 2020b; Ostberg et al., 2018), driven by the high baseline temperatures and predominance of less CO₂-sensitive C4 crops in the tropics (Rezaei et al., 2023).

Many studies focus on four main crops – wheat, maize, soybean, and rice – which comprise the majority of produced calories (Franke et al., 2020b; Hu et al., 2024; Müller et al., 2019; Zhao et al., 2017), with wheat further split into summer and spring production in the latest round of ISIMIP simulations (Franke et al., 2020a). The aggregation of these crops via calorie-weighting reduces overall inter-model uncertainty via compensating differences (Müller et al., 2021).

For use in FRIDA, data from analysis of the ISIMIP project was used (Müller et al., 2021). The experiments in ISIMIP input transient, realistic future climate scenarios (the SSPs) into crop models to study their effect. This only explores a small region of the driver space, since in many scenarios there is a strong correlation between temperature and CO₂. To address this, a “parameter sweep” approach has been carried out using ISIMIP models, whereby the driving dimensions of temperature, CO₂, water, and nitrogen are systematically perturbed (Franke et al., 2020a). This allows for the creation of grid-cell, crop, and model-specific functions with which to emulate the response to an arbitrary change in these drivers, accounting for their interaction effects (Franke et al., 2020b). This allows for further exploration of inter-model differences, with Müller et al., (2024) finding different relative importance attributed to different drivers between models. These derived functions, which accurately reproduce the individual model output (Franke et al., 2020a), have then been applied to transient scenario climate data from CMIP5 and CMIP6 (Müller et al., 2021), in order to more fully explore the scenario and climate model space.

This data from Müller et al., (2021) was used to generate the impact function for FRIDA. They estimated the response of crops aggregated over the four main cultivars (wheat, maize, soybean, and rice) and accounting for the current irrigation regime to estimate changes in total crop production in CMIP6 models under the SSPs, as well as idealised scenarios with zero CO₂ response in order to better explore the parameter space.

The sum over these key crop types was taken to match the single aggregate crop type in FRIDA. Changes in this total crop production were modelled as linear in CO₂ concentration, with first and second order temperature-mediated effects (see Table 1 for parameters, and the Appendix Section A.8 and Fig. A54 for the functional form equation and figure). Two-dimensional slices of the optimal fit against GMST and CO₂ are shown in Fig. 1.

Current crop models are thought to underestimate negative climate impacts on yield, from droughts and heatwaves (Heinicke et al., 2022) to extreme high rainfall (Liu et al., 2023), which has been found to negatively impact the agriculture sector in poorer regions (Kotz et al., 2022). In addition, potential impact channels such as changes in the levels and location of pests and diseases are not included in current crop models (Franke et al., 2020b), and therefore not reflected in FRIDA.

FRIDA represents the processes which close the gap between (crop) supply and demand. This is achieved via increased land expansion, fertiliser use, and irrigation. The latter two include technologically-driven improvements over time, which conceptually incorporate simple adaptations to this climate response under climate change.

Impacts of global temperatures on crops can occur through several mechanisms, from changes in plant growth rates, to flooding, heatwaves, and storms. To the extent that these mechanisms are represented in the crop models used to produce the utilised data, these physical mechanisms are accounted for within the FRIDA model.

2.6.2 Evapotranspiration

In FRIDA the impact of increasing surface temperatures on water lost to evapotranspiration during irrigation is represented on a per irrigated hectare per year basis. This is modelled using a calibrated, shallow linear function based on the GMST anomaly. Counteracting this effect is a representation of technological development, and the further rollout of more efficient

irrigation methods. This technological process is represented using a calibrated negative exponential function which reduces the amount of water applied per irrigated hectare per year, which reduces future evapotranspiration losses. Potential evaporation is primarily affected by surface air temperature, atmospheric humidity, wind speed, and net radiation (Monteith, 1965; Allen et al., 1998), and their respective importance with context. Temperature is often the most important variable (see e.g., Guo et al., 2017; Shi et al., 2020), and temperature-based equations are often used when data on other climate variables are not available (H. Hargreaves and A. Samani, 1985; Hamon, 1963). The relationship between air temperature and potential evaporation is not necessarily straightforward, due to e.g., soil moisture limits or negative atmospheric humidity feedback (increased temperature with higher humidity, which reduces evaporative demand).

The assumed linear relationship between air temperature and water withdrawal in FRIDA likely captures the overall tendencies, but in future development the extent of the validity could be checked against spatially distributed global models, as FRIDA doesn't explicitly represent changes in the patterns of climate variables under climate change which may affect potential evaporation. This includes wind speed (McVicar et al., 2012; though wind pattern changes under climate change are highly uncertain, as noted in Section 2.1.1), and precipitation and plant-available soil moisture, which may affect crop water demand from irrigation. This function is therefore internally calibrated.

3 Discussion

3.1 The present and future scope of climate impact channels in the FRIDA IAM

~~This paper has thus far documented the 16 climate impact channels that have been included in FRIDA v2.1 (also summarised in Table 1 and illustrated in Figs. 1 and A1). As discussed in Section 2, the set of climate impact channels explored in the Technical Summary to the WGII report of the IPCC AR6 (Pörtner et al., 2022) were split into three general types during the process of implementing damages in FRIDA v2.1: (1) impact channels deemed essential and were possible to include in FRIDA v2.1, (2) impact channels to be considered for future development, and (3) impact channels that are likely impossible to represent in a globally aggregated type of model.~~

~~The first category is documented in Section 2 and summarised in Table 1 and Figs. 1 and A1. These channels were deemed essential to be represented within FRIDA v2.1 to provide a reasonably comprehensive and internally consistent representation set of climate damages, suitable for in such a global-scale CHANS model such as FRIDA, to be able to explore the future trajectory of the coupled human-Earth system. The implementation of this broad set of climate damages, at the process level, enables FRIDA to allow for the exploration of the complex and cascading impacts of climate change on the coupled human-Earth system in FRIDA v2.1, in the context of its broader feedbacks and system interactions, and with a comprehensive investigation of the uncertainties in the responses.~~

~~In selecting and prioritizing the set of climate impact channels for inclusion, however, a set of potential impact channels had to be de-prioritised or excluded. Here, the rationale behind these decisions is outlined, and their implications discussed.~~

~~The second category comprises those~~First, there are climate impacts that are not currently included within FRIDA, but which could be explored as further development. For example, fires affect the carbon cycle and the climate and, as well as importantly, interacting directly with human systems, although the magnitude of their effect on populations is relatively small and driven also by complex socioeconomic dynamics (Clarke et al., 2022; Park et al., 2024). Their representation via the approximation of burnt area and its impacts as a function of global temperatures (Burton, Lampe et al., 2024) is currently being explored. ~~This as a~~ future development. ~~This~~ could form part of a broader “biodiversity nexus”, addressing a sparsely represented arena in ~~IAMs~~integrated assessment models; this could include effects such as changes in land use areas under climate change, direct impacts on livestock, and effects of ocean temperature and acidification changes on aquaculture. In this way, FRIDA could begin to represent key global drivers of biodiversity loss more comprehensively. ~~Similarly, Another~~ ~~nexus, relating to a~~ “human health” nexus, could ~~seek to~~ extend the current representation of climate impacts on mortality to include broader effects on morbidity, with potential extensions to wider conceptions of wellbeing. Other currently ~~excluded de-prioritised~~ impact channels include effects on and consequences of water scarcity, flood damages, and extensions of Sea Level Rise damages to wetlands and ports (see Ramme et al. (submitted)).

Additionally, the deterministic climate response in FRIDAv2.1 could be developed to include a stochastic component, ~~based drawing~~ on the representation used in the FaIR model ~~on which the Climate module of FRIDA is substantially based~~ (Smith et al., 2024), upon which the Climate module of FRIDA is substantially based (Wells et al., submitted). Future development could also incorporate ~~Representation of~~ threshold-based nonlinear climate responses such as melting permafrost, which may generate substantial carbon dioxide and methane emissions, ~~could be incorporated in future development~~. This concept could be extended to internally model “tipping points” with in both the Earth and social systems. While tipping dynamics can be currently— ~~which could be~~ explored in FRIDAv2.1 in bespoke scenarios, they but are not endogenously represented internally modelled due to the uncertainty surrounding ~~of~~ their thresholds (McKay et al., 2022). Any future integration of tipping points would need to carefully reflect associated uncertainties and cascading system-wide effects appropriately.— ~~while taking care to reflect uncertainties and cascading effects appropriately.~~

~~Secondly, The third category contains several~~ climate impact channels identified by the IPCC were deemed ~~which it does not seem~~ possible to incorporate in a global-scale aggregated modelling framework such as FRIDA, whether due to their high and unquantified uncertainty, their strongly regional dynamics, their dependence on detailed processes, or their relatively small global effect relative to their complexity. For example, any future “biodiversity nexus” as discussed above, if implemented at the global scale, would only enable a high-level representation of some key aspects of this system component, in particular global drivers of biodiversity loss rather than metrics for biodiversity itself. Highly regional channels such as pollution, habitat fragmentation, tree mortality, pest outbreaks, weeds, disease occurrence, species loss, and effects on marine ecosystems, as well as food-systems effect such as food diversity, nutritional quality, access, and safety, and pollination changes from species loss would likely be excluded. It is worth noting that these highly specific and process-

805 detailed biodiversity and food-related impact channels are generally not currently represented in the state-of-the-art land systems models. This currently negates the possibility for inclusion via damage functions trained on land systems models, and contextualises their exclusion at the process-level in FRIDA.

Similarly, a “human-health nexus” would only ~~incorporate~~ allow for idealised representations of this complex, highly regionally-disaggregated system component. While future development may enable the inclusion of aggregated effects of 810 climate change on water scarcity ~~may be implemented under future development~~, more detailed impacts such as changes in effects of climate changes on water quality, water-borne diseases, and local flooding will likely not be addressed in a global-scale model of this nature.

Finally, ~~while~~ climate change is also expected to affect the dynamics of migration and conflict, but these effects are highly uncertain and primarily act to modulate other ~~key~~ complex, unmodelled drivers of these processes. It would therefore be 815 infeasible to include these complex, highly regional dynamics within the global framework of the FRIDA model.

It should be noted that the scope of these categories is dependent on the model structure, and so any future development of the broader structure of FRIDA will alter this allocation. For instance, if the model is regionalised, more spatially-disaggregated impacts, or impacts which directly affect the connections between regions, may be plausibly represented in the model. Additionally, the level of detail in damage functions derived from other models is dependent on those models’ 820 representation of the relevant processes; utilising data from updated models featuring additional processes will facilitate the incorporation of these effects, at the abstracted level, within the FRIDA framework.

3.2 Evaluation of The climate impact channel representation methodology for representing climate damages in FRIDA v2.1

The FRIDA v2.1 model operates at the global scale, with no regionality. While this is justified on the basis of FRIDA’s focus 825 on broader human-Earth system-wide trends rather than detailed local analysis, it should be noted that this global-scale treatment necessitates the neglecting of important spatial inequalities of climate change and associated impacts (Burke et al., 2015; Méjean et al., 2024; Palagi et al., 2022; Waidelich et al., 2024). It should also be noted that aggregated modelling may allow for the partial cancellation of uncertainties in individual climate impacts, as Müller et al., (2021) found for crop yield responses. In addition, representations of global damages may be useful for aggregated analyses of future scenarios in cost- 830 benefit or similar analyses.

Bottom-up modelling of climate impacts benefits from transparency at the process-level and legibility, with clear attribution of climate damages across impact channels. However, the piecemeal nature of this approach risks neglecting impact channels, or double-counting impacts. ~~As documented in Section 2, e~~Care has been taken within FRIDA v2.1 to avoid double-counting, through the use of conceptually consistent literature choices (Section 2). ~~As discussed in Section 3.1,~~ 835 While FRIDA v2.1 contains many key impact channels, many are excluded, and while some may be incorporated in future development, several will likely not be contained in the FRIDA modelling framework (Section 3.1).

Several important climate impact mechanisms remain unrepresented in the FRIDA model, in keeping with concerns around bottom-up climate damage representations. However, the significant number of important channels systematically represented within the model provides a substantial step in incorporating the coupled effects of climate damages in such an IAM. It should be noted that, since several impact channels are included in the internal model calibration, a component of impact mechanisms not explicitly represented should be present via these channels, such as the failure rate of loans, to the extent that these impacts are present in the historical calibration data.

Where possible, climate impact channels were incorporated based on existing literature, with parameters taken from fits to existing data, whether empirical or modelling-based. However, for several important channels this was not possible (those with “N/A” in the Reference column of Table 1), necessitating these parameter values to be set via optimisation within the internal calibration of FRIDA. These impact channels are therefore candidates for study in more detailed and specific models, which may reveal them to be the combination of multiple more specific and therefore more readily measurable impacts. Future development of FRIDA will seek to replace these as literature allows; the inclusion of other literature-based impact channels can also be expected to reduce these calibrated channels’ effects during calibration.

Reviewing the list of climate damages compiled in the Technical Summary to the IPCC WGII AR6 ensured a systematic methodology in the approach. This allowed for the consideration of as many climate impacts as possible; while many of these were precluded from inclusion in FRIDA due to the model’s scope (see Section 3.1), this represents a consistent approach to a strategy for representing climate impacts in the model. It should be noted that despite the vast array of literature considered by the IPCC WGII, their list of impacts may not be exhaustive, with missing impact channels therefore not considered for inclusion here.

~~The separation between future scenarios and the effect of climate impacts in the ScenarioMIP framework, including in CMIP7 (van Vuuren et al., 2025), while justified on methodological and logistical grounds, renders the coupled effect of climate impacts unexplored within ScenarioMIP, and therefore allows for the creation of scenarios which may be highly unlikely; for example the overall dynamics of SSP1, SSP2 and SSP5 baselines are difficult to recreate in FRIDA v2.1 (Schoenberg et al., submitted.). Initiatives such as FRIDA v2.1, with its representation of climate damages, can therefore provide important insights into the future development of the human Earth system.~~

To couple climate impacts into an IAM such as FRIDA, explicit links must be created between outputs of the Climate module and variables within the other modules/model components. Since FRIDA v2.1 is a global model, the drivers of climate impacts are global mean quantities, namely temperature, sea level rise, and CO₂ concentrations. There is currently no stochastic internal variability within the climate system in FRIDA, meaning that for a given set of climate parameters, the same deterministic climate trajectory follows from the same set of emissions, though this will be explored in future development (Section 3.1). ~~For a given set of climate parameters, the same deterministic climate trajectory follows from the same set of emissions.~~ The consideration of internal variability has been found to drive differing impacts when using nonlinear damage functions (Calel et al., 2020; Schwarzwald et al., 2022), though this will be dampened on the global scale.

870 ~~It should be noted that the~~The climate impact functions in FRIDA v2.1 are driven by purely climate variables, whereas their overall effect can be expected to depend on the broader socioeconomic context, such as the level and form of technological development, and shifts in institutions and societal perspectives. Within the current FRIDA framework, these effects are best explored downstream of the damage functions, with some aspects of socioeconomic effects (e.g. technological change) suitable for analysis within the parameter uncertainty framework (see Schoenberg et al., 2025), and other, more qualitative aspects (e.g. institutional and decision-making changes) best studied using exogenous policy impositions. Future development of FRIDA can seek, where possible, to endogenise these effects into the internal damage functions.

875 While climate impacts in FRIDA are necessarily represented as functions of aggregate, globally averaged climate variables, these effects are in reality local, and mediated by specific physical events such as storms and heatwaves. Where possible, this paper describes these associated local drivers of given impact channels, which are not directly modelled in FRIDA but implicitly represented through their association with global mean values. Local impacts and extremes remain important, and will be considered should FRIDA be regionalized in a future version.

880 While the variety of SLR-driven impact streams is unprecedented in a globally aggregated IAM, there are also a range of remaining SLR impacts that are not accounted for. Coastal erosion will increase under future SLR (Cazenave and Cozannet, 2014). The construction of flood protection reduces wetland areas, and the land that is used for flood protection or abandoned potentially has an opportunity cost (Wong et al., 2022). Furthermore, the coastal zone could have socio-economic dynamics that are different from the global average, for example leading to relatively higher growth in coastal population or asset stocks, which could increase future damages even further. These other impact streams have not been included in FRIDA v2.1, because they do not necessarily have a corresponding impact channel in other parts of the model, or they are difficult to model in a globally aggregated setup.

890 No “tipping points” in the coupled human-Earth system, or in specific impact channels, are explicitly represented in FRIDA v2.1; the functions ~~used presented in~~ (Fig. 1 and Table 1) are smooth and continuous, ~~though many are non-linear~~. This is due to the large uncertainties in the specifics of any threshold temperatures above which tipping points may occur (Section 3.1; McKay et al., 2022). A candidate representation of Marine Ice Cliff Instability tipping has been implemented, but remains switched off in the default mode due to these uncertainties. The flexible nature and short runtime of FRIDA (a few seconds to run 1980-2150 on a standard laptop, with large ensembles also set up on a high-performance computer) means that implementation of threshold-based tipping elements would be straightforward, either if more robust evidence of these thresholds emerges, or simply as a sensitivity experiment, informed by existing literature estimates such as TipMip (<https://tipmip.pik-potsdam.de/>), McKay et al., (2022), and Wunderling et al., (2023). Furthermore, future development work within the project will investigate tipping-like behaviour in two Earth System models run to 2300 under overshoot and reversibility scenarios, which may inform any future representation of tipping points in the model. It should be noted that non-linear interactions between components of the system remain a key part of the FRIDA model (Schoenberg et al., ~~submitted~~2025.), allowing for the emergence of tipping elements within the coupled evolution of the model, even without the explicit inclusion of threshold-based physical climate impact tipping points.

While the inter-module feedbacks due to climate change are documented here, some other connections from climate variables are present in FRIDAv2.1, noted here for completeness. Firstly, internal climate feedbacks are represented in the model. These occur in the carbon cycle (effects of temperature and CO₂ on NPP in grass and forest, and of temperature on the lifetime of soil carbon and the growth of forest biomass, as well as effects on ocean CO₂ uptake) and the atmospheric lifetimes of various radiative species; these are described as part of the climate module as documented in Wells et al. (~~in~~ submitted prep). Secondly, outputs from the climate module are used to provide indications of changes in the biosphere, conceptualised as transgressions of the widely utilised “planetary boundaries” (Richardson et al., 2023). As described by Eriksson (2025), these use the atmospheric CO₂ concentrations and anthropogenic effective radiative forcing as indicators, but do not feed back to the rest of the system, and therefore are not characterised as climate impact channels here.

The ~~approach to treatment of~~ uncertainty in the climate impact parameters varies depending on whether between the impact channel is s which are literature-based or and those which are internally calibrated (see Table 1). For literature-based channels, Where uncertainty is extractable from the literature for a channel, the extracted uncertainty is sampled to give 11 parameter sets equally spaced between the 2.5th and 97.5th percentiles. For the internally calibrated channels, sets, the uncertainty is derived from the calibration process. Upon simulating the full ensemble - varying each model parameter across its uncertainty range - the ensemble is constrained to approximately reproduce historical observations, removing the most unrealistic samples (Schoenberg et al., submitted2025). This approach is not fully consistent across the impact channels, with qualitatively different approaches to different impact processes, reflecting the limitations within the existing literature. This serves as a call to the wider climate impact community for the generation of a broader set of internally consistent, readily applicable damage functions which can be utilised in IAMs. In addition, since some impact channels are unlikely to be implementable in a model like FRIDA, specific research into the effects of those channels is also crucial.

Relatedly, the damage functions generated as part of the process of implementing these impact channels in FRIDA, both literature-derived and internally calibrated, are general enough so as to be utilised in other modelling frameworks where appropriate.

3.3 Adaptation

Reductions in the level of realised climate impacts for a given level of climate change, termed adaptations, can play an important role in the dynamics of the human-Earth system trajectory (e.g. Colelli et al., 2022), with substantial uncertainty (e.g. Molina Bacca et al., 2023). Adaptation measures are historically underrepresented in IAMs, due to their high heterogeneity and dependence upon prior representation of climate impacts (Andrijevic et al., 2023; Holman et al., 2019; van Maanen et al., 2023). Currently, due to the initial focus on representing climate impact channels, few active adaptation mechanisms are represented in FRIDAv2.1, with gaps particularly in channels with strong expected near-term impacts.

Due to the high level of abstraction in FRIDA, some forms of adaptation to particular climate impact channels may never be explicitly represented, similarly to several climate impacts themselves. This aspect of modelling has not been fully explored in FRIDAv2.1, and will be extended further in updated versions, potentially using aggregated concepts such as adaptive

capacity (Andrijevic et al., 2023). In addition, some externally-imposed climate adaptation measures can be explored as part of a scenario analysis. Finally, the uncertainty in the magnitude of the climate impacts can also be utilised to study the effect of weaker climate damages than the mean response, as a proxy for adaptation strategies.

940 The level of representation of explicit adaptation measures is generally described in each subsection in Section 2; proactive adaptation is either explicitly represented (sea level rise; Section 2.5.4 and Ramme et al., (submitted)), implicitly partially included under other drivers of the downstream variables (crop yields, risk perception and adaptive behavioural responses), can be explored using externally imposed drivers (e.g. concrete), has plausible routes to relatively simple representation in future versions (labour productivity, energy supply), or remains unaddressed within FRIDA (e.g. temperature-driven mortality).

945 It should be noted that, due to the highly coupled nature of FRIDAv2.1, the occurrence of climate impacts drives cascading responses throughout the system, in ways which are often framed as forms of autonomous or implicit climate impact adaptation (Colelli et al., 2022; Holman et al., 2019; van Maanen et al., 2023). For instance, a balance between supply and demand for energy, food, and water is enforced; climate-linked changes in these (from e.g. impacts on energy supply, energy demand, crop yield, and evapotranspiration) is met via compensating changes in those systems, which have associated financial and other costs. Similarly, changes in economic damages - e.g. the indirect economic effects on lending standards (Section 2.5.2), or impacts on labour productivity (Section 2.5.1) - drive changes through the tightly-coupled economic module, affecting investment decisions in ways which represent a form of adaptation. Infrastructure damage filters through in a similar way, with rebuilding of damaged structures as a response to damage, without a proactive adaptation measure.

955 3.3 Contributions of FRIDA’s methodology for representing climate damages

960 The FRIDAv2.1 model offers a novel contribution to integrated assessment modelling by embedding multiple climate impact channels within a fully coupled, process-based framework. This approach departs from the two dominant traditions in climate impact representation: sector-specific and top-down frameworks. Sector-specific models such as the CIRA model (Neumann et al., 2020) simulate impacts within individual domains like health, agriculture, and coastal infrastructure, often using detailed empirical models but without coupling to broader system feedbacks. Conversely, top-down approaches, such as those used in empirical GDP damage studies (e.g. Burke et al., 2015), estimate aggregate economic losses from historical temperature–GDP relationships, but typically lack attribution to specific impact channels.

965 In contrast, FRIDA represents a wider set of climate impacts within a unified, feedback-rich system. To prioritize the broader human-Earth system-wide interactions over regional or local detail, it operates at a simplified global scale (Schoenberg et al., 2025). While this design choice has limitations, the model’s inclusion of a wide set of impact channels enables a more comprehensive exploration of climate damages and their systemic interactions, which are often excluded from IAMs.

970 The feedback-based representation of climate damages in FRIDA provides important insights into the future development of the human-Earth system, specifically the emergence of internally consistent futures shaped by both emissions and their consequences. In contrast, the ScenarioMIP framework, including its upcoming CMIP7 phase (van Vuuren et al., 2025), maintains a separation between future scenarios and the effect of climate impacts. While justified on methodological and logistical grounds, it precludes the exploration of the coupled effects of climate impacts, and therefore allows for the creation of scenarios which may be internally inconsistent or highly unlikely. For example, the overall dynamics of SSP1, SSP2 and
975 SSP5 baselines are difficult to recreate in FRIDAv2.1 (Schoenberg et al., 2025). Initiatives like FRIDA, with its representation of climate damages, can therefore inform the development of more realistic scenario frameworks.

Lastly, the general nature of the impact functions in FRIDAv2.1 (i.e. being driven by globally averaged climate variables) allows for their usage in other frameworks and IAMs. This is particularly the case for the literature-based functions, which
980 are externally validated and generally linked to widely used concepts or variables (such as population and crop yield). This may also be the case for the more bespoke internally calibrated functions provided here. Several functions were aggregated from gridded data, allowing for their adaptation to regional-scale modelling with only minor modifications to the code (see the Code and Data Availability statement for all damage functions and processing).

4 Conclusions

985 This paper has described the implementation of the 16 climate impact channels across 12 categories in the FRIDAv2.1 IAM (Fig. 1). ~~At least one impact channel has been linked to e~~Each of the non-climate modules within FRIDA ~~–(Land Use & Agriculture, Economy, Demographics, Energy, Behavioural Change, and Resources); –~~ is linked to at least one impact channel, with varying levels of process detail. Where possible, the parameters for these impacts are constructed using and condensing estimates from the existing literature; in other cases, the parameters have been calibrated within FRIDA,
990 ensuring the model reproduces historical (1980-2023) behaviour.

This representation of climate damages enables FRIDA to explore a wide range of questions concerning ~~These changes will allow the exploration of many broad questions within FRIDA, focusing on~~ the system-wide effect and interactions of one, several, or all of the impact channels documented here. Importantly, Theits process-based framework ~~followed in this model~~ allows for a more detailed understanding of their effects than the simplified representations in many IAMs, including
995 nonlinear hysteresis effects (Diaz and Moore, 2017).

While FRIDA includes many key climate impact channels ~~have been represented in FRIDA~~ (see Section 2), there exists a ~~vast-wide~~ array of potential climate impacts (Pörtner et al., 2022), many of which remain unexplored in the model. These have been systematically analysed, and filtered into ~~a set of climate impacts which those that are incompatible with will not be represented in~~ a global, aggregate model such as FRIDA, and those that are candidates for future inclusion ~~a set which could plausibly be included and which will therefore be investigated~~ (Section 3.1). Future work will assess the dynamics of
1000

the ~~currently implemented~~ impact channels ~~currently represented~~, and also explore the inclusion of these additional effects. ~~In addition, specific experiments utilising these damage functions to determine the potential response to climate forcings such as geoengineering and large volcanic eruptions will be investigated.~~

1005 The process undertaken to represent climate damages within FRIDA v2.1 reflects a shift in the philosophy for simulating future scenarios in a fully coupled IAM; ~~with treating~~ climate impact channels ~~—(i.e. connections between the climate and other human-Earth system components)— set_~~ on the same conceptual level as interactions between and within other parts of the system. The damage functions condensed as part of this process may be utilised in other modelling frameworks, working towards a clearer understanding of the dynamics of the coupled human-Earth system.

Code and Data Availability

1010 The literature-derived parameter sets and code used to process Figs. 1, ~~and~~ A-1, ~~and~~ A2 can be found in Wells (2025). The FRIDA v2.1 model and additional information can be found in Schoenberg et al., (2025).

Author Contribution

Conceptualisation: ~~all authors~~ CM, WAS. Funding acquisition: WAS, CS, CM. Investigation: CW, BB, LR, JB, BC, AM, JKR, ANL, AEE, WAS, and LWE. Methodology: all authors. Writing - original draft: CW. Writing and editing: all authors.

1015 **Competing Interests**

The authors declare that they have no conflict of interest.

Financial Support

This research was supported by the Horizon Europe research and innovation programs under grant agreement no. 101081661 (WorldTrans).

A.1 Climate Damage Functions

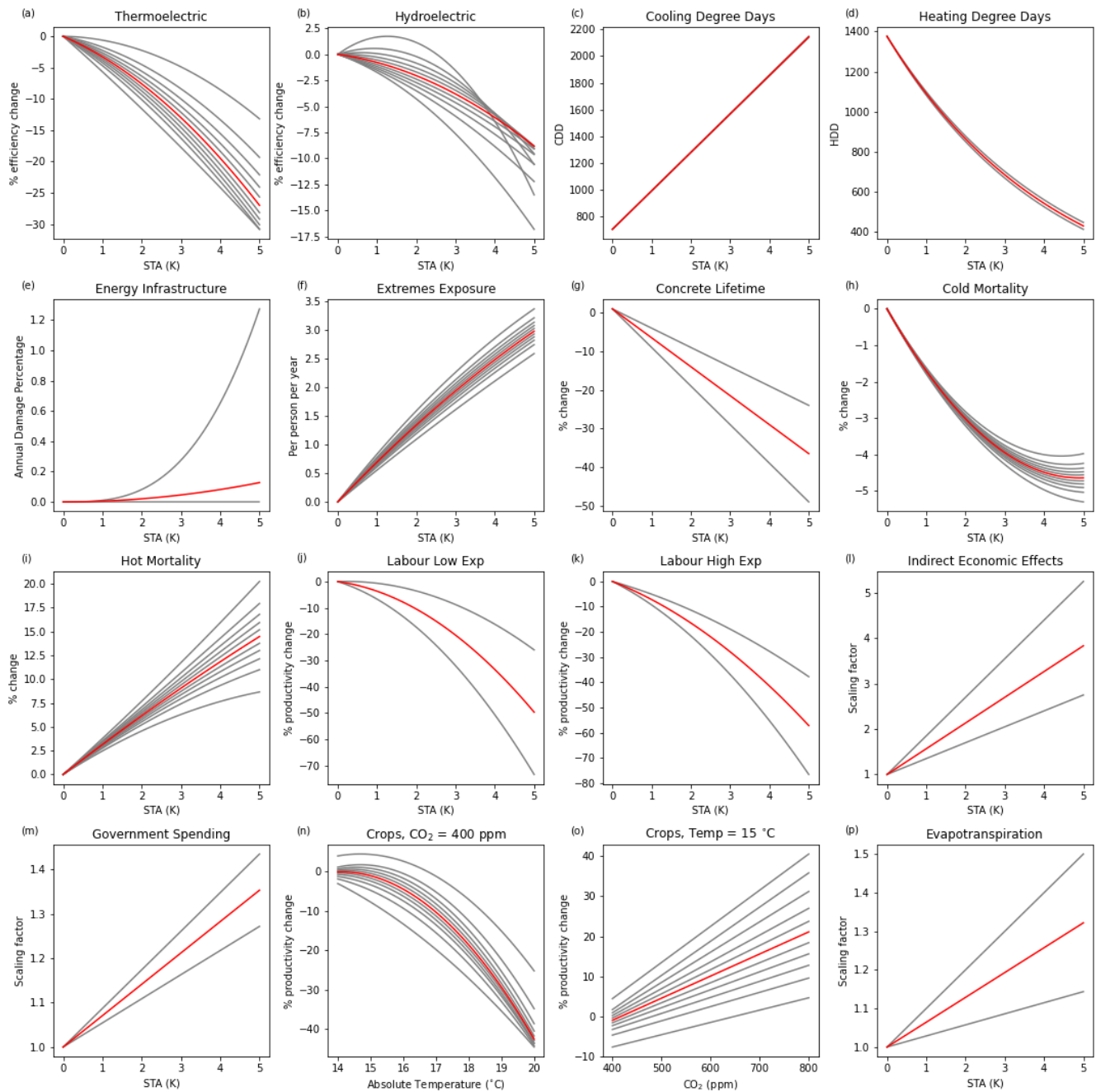
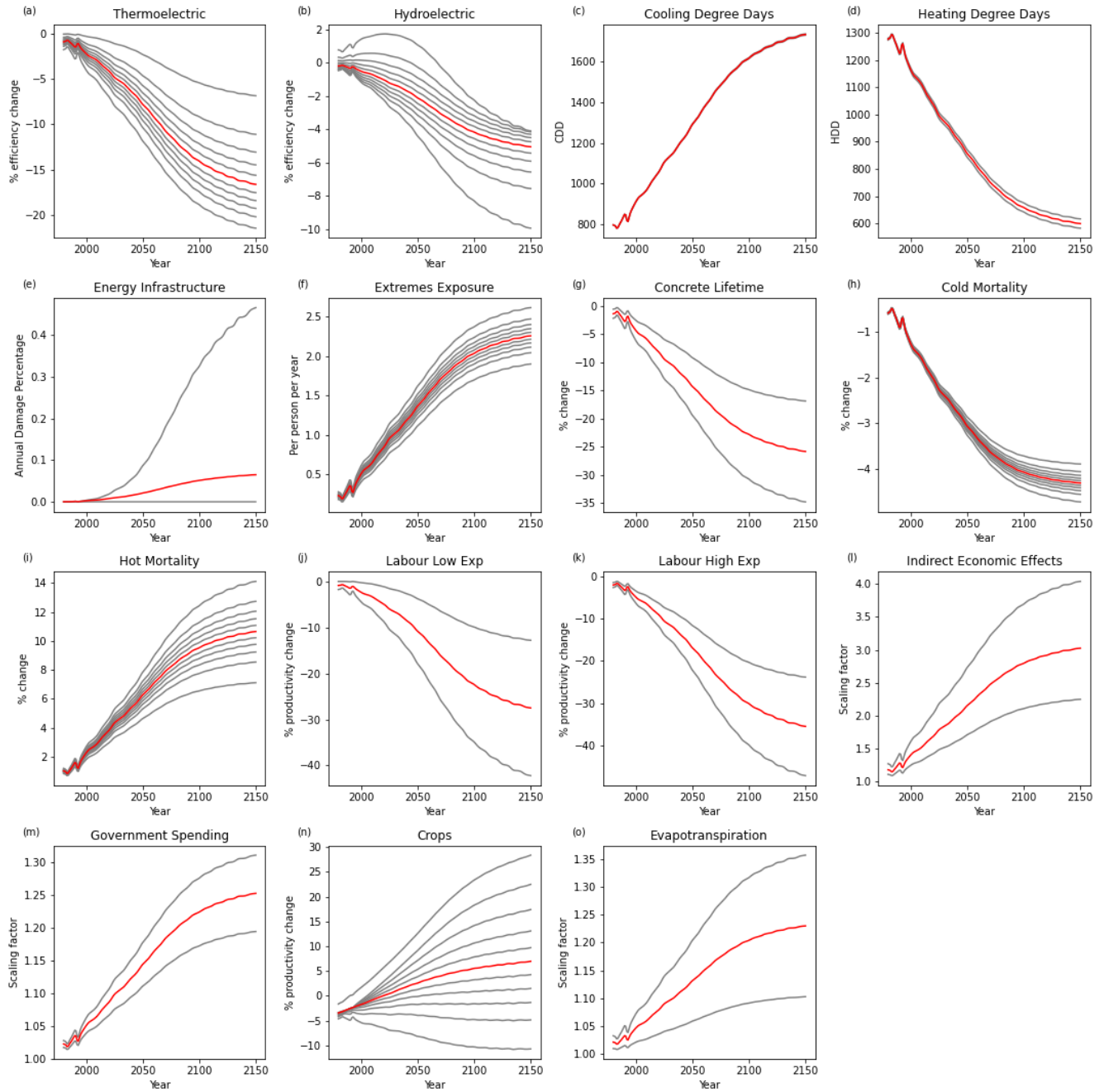


Figure A1: Panel plot of the climate impact channel functions displayed in Fig. 1 and described in Sections 2.1-2.6. Red curves represent the median central estimate, with grey giving the uncertainty variation. In cases in which uncertainty is treated by

1025 “Sampled Percentiles” in Table 1, the 11 parameter sets representing the 2.5th to 97.5th percentiles, with equal spacing, are shown; for the other impact channels, the range using the upper and lower parameter values after literature analysis and internal calibration is shown.



1030 Figure A2: Panel plot of the timeseries response of the impact functions under a baseline scenario in FRIDA which reaches 3.5K temperature change and 730ppm CO₂ concentrations by 2150 (see Code and Data Availability). Parameter sets shown as in Fig. A1; note that the crop response combines the temperature and CO₂ effects here.

A.2 Functional Forms

Equations A1-A3 show the functional forms applied to multiple damage functions, and referred to in Table 1. D represents the damage response; T represents global mean temperature anomaly; and C represents global CO₂ concentrations. A1 and
1035 A2 have zero intercept by design, since the damages at pre-industrial temperatures were conceptually assumed to be zero.

$$D = a\Delta T + b(\Delta T)^2 \quad (\text{A1})$$

$$D = a\Delta T \quad (\text{A2})$$

$$D = a + b\Delta C + c\Delta T + d(\Delta T)^2 \quad (\text{A3})$$

1040 A.3 Energy Supply

The temperatures used for generating the impact functions for thermo- and hydro-electric power were derived from the climate data used to drive the impact model, a process made more complicated due to the specific climate data used. The impact models were driven by RCP2.6 and RCP8.5, using ISIMIP FastTrack data. This data was produced using five GCMs, and the multi-model mean data, along with the minimum and maximum, was reported by Van Vliet et al., (2016). However,
1045 the climate data was only produced from 1961, meaning that temperatures relative to pre-industrial levels are not available. To account for this, the later ISIMIP2b historical data, available since 1861, was used for each model to estimate the offset between approximate pre-industrial and recent history (i.e. 1961 to 2000 minus 1861 to 1900). This offset was applied to the FastTrack data, with the 1961 to 2000 average subtracted, to give an approximation of the trajectory that would have been attained relative to pre-industrial times. Of the five GCMs used in the FastTrack data, three (IPSL-CM5A-LR, HadGEM2-
1050 ES, and GFDL-ESM2M) were also included in ISIMIP2b, making the combination of this data appropriate. One model had different versions between the simulation rounds (MIROC-ESM-CHEM in FastTrack, MIROC5 in ISIMIP2b), which was assumed consistent for this purpose, and one (NorESM1) had no counterpart in ISIMIP2b. For NorESM1, the mean across the other four models was used. This method is therefore an approximation of the actual temperature relative to pre-industrial levels, but any negative effects of this approximation are dampened by the continuity of most of the models
1055 between the rounds, and the small level of climate change from pre-industrial times to the mid-20th century.

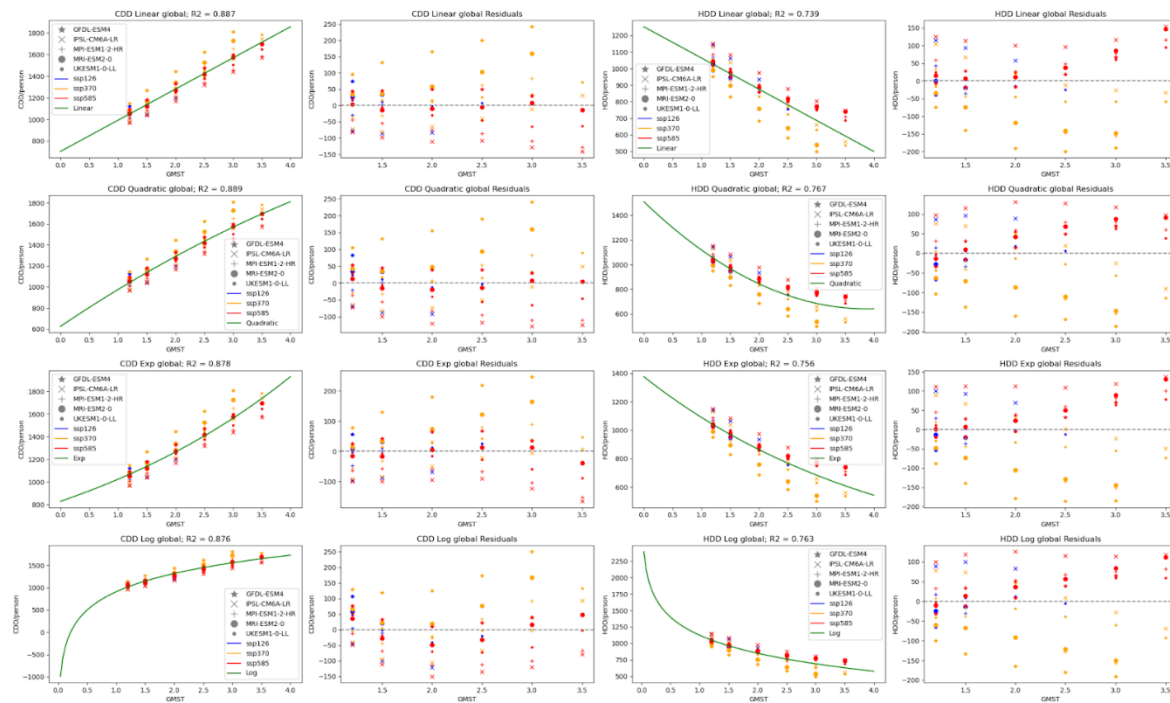
With the global temperatures offset to pre-industrial levels and their associated climate impacts on thermo- and hydro-electric power generation obtained, a quadratic fit with no intercept was performed to emulate the impacts relative to pre-industrial levels (Equation A1). This functional form was applied separately to power generation from thermo- and hydro-electric plants.

1060 The data was provided for the mean, minimum, and maximum from five models. Since all climate impact uncertainties should be expressed on a common range - in FRIDA, taken to be the 2.5-97.5 percentile range - and in the absence of additional uncertainty information, it was assumed that the five models uniformly sample the uncertainty space, with the minimum and maximum response representing the 17th and 83rd percentiles respectively. Assuming a skew-normal distribution at each temperature, the corresponding quadratic fits for the 2.5 and 97.5 percentiles were determined. The effects of climate change on thermoelectric plant efficiency via these effects is negative, with impacts from 3-11% at 2°C of global warming.

A.4 Energy Demand

1070 Data from five Earth System Models covering three future scenarios (SSP1-2.6, SSP3-7.0, and SSP5-8.5) were utilised as per Werning et al., (2024b, a). Modifications were made to the procedure of Werning, Frank, et al., (2024) to generate population-weighted values of CDD and HDD.

Figure A2 shows four fits to the simulated global population-weighted CDD and HDD - linear, quadratic, exponential, and logarithmic - along with their residuals.



1075 **Figure A32.** CDD and HDD expressed as functions of GMST, with different functional fits shown along with their residuals.

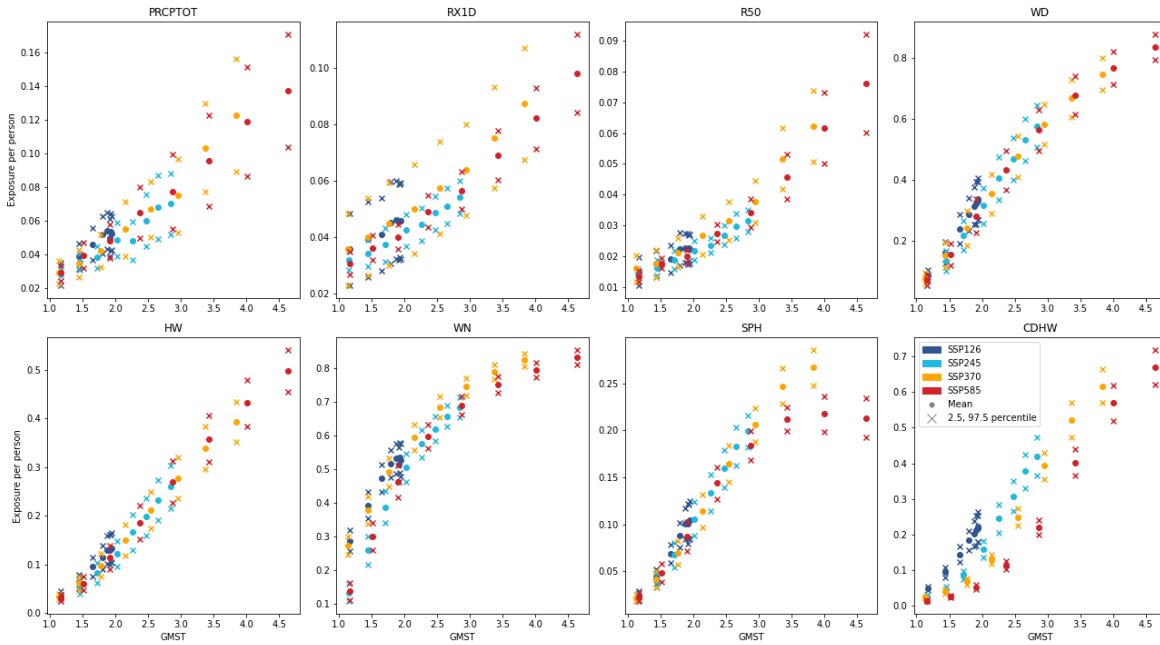
Based on these fits, for use in FRIDA a linear function in GMST was applied for population-weighted CDD, with an exponential function for population-weighted HDD:

$$CDD = a + b\Delta T, \tag{A4}$$

$$1080 \quad HDD = ae^{bT}. \tag{A5}$$

A.5 Exposure to Climate Extremes

The population-average exposures are shown against GMST in [Fig. A3](#)[Fig. A4](#). Variation between scenarios is due to systematic differences in population distribution, as well as internal variability. Note that, uniquely, the Warm Nights metric deviates between scenarios from the datapoint corresponding to the 2020s, when the population and climates are near-identical. The cause of this is unknown and so this metric's data was excluded from the analysis. The seven remaining metrics utilised are then (see B. Li et al., (2023) for exact definitions) PRCPTOT (Annual total precipitation), RX1D (Maximum 1-day precipitation), R50 (Number of days with heavy precipitation), WD (Warm days), HW (Heatwave), SPH (Sequential Precipitation-humid heatwave), and CDHW (Compound drought and heatwave).



1090 **Figure A43.** Changes in population-weighted exposure to extremes of various climate metrics, under multiple scenarios, as a function of global mean temperature. The mean and 2.5th and 97.5th percentile values across 21 climate models are shown.

The functional form of Equation A1 is used for the fit between the exposure metric (the average number of indices which a person experiences at least one event of in a given year which is more extreme than the historical record) and global mean temperature.

1095 **A.6 Mortality**

The functional form of Equation A1 is used for mortality impacts, with the damage D representing the fractional change in mortality. Accounting for the age-dependence as per Chen et al., (2024), using 2024 population levels, FRIDA scales the temperature effects by the following factors for cold and hot mortality responses: 0.9169 and 0.9651 (for 0-65 years); 1.742 and 1.1581 (for 65-75 years); 2.2004 and 1.7372 (for 75 plus).

1100 **A.7 Labour Productivity**

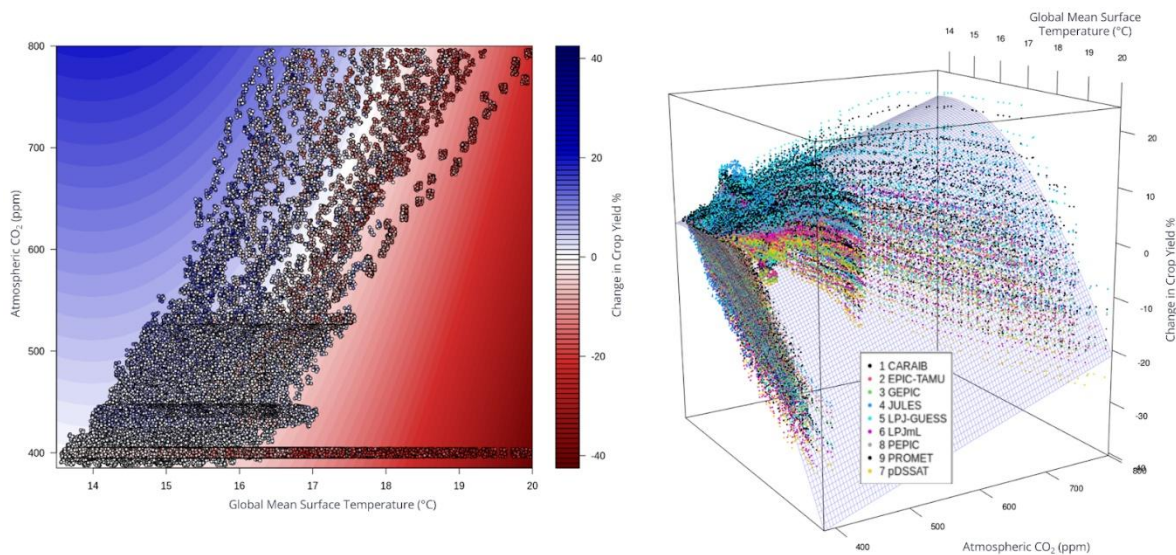
Data for the impact of temperature on labour productivity was traced from Dasgupta et al., (2021)'s Fig. 5 and Supplementary Fig. 5 for Low and High exposure respectively. Then Equation A1 was used to project the resultant relative percentage change in labour productivity.

While Dasgupta et al., (2021) present uncertainty ranges, it seems these represent variation in grid cells within regions - with
1105 the uncertainty bars for the global mean representing the variation spatially across the globe - and are therefore inappropriate for use in the global FRIDA model. Instead, the median values were used in FRIDA. In lieu of a reasonable estimate of this uncertainty, but with the knowledge that such an uncertainty exists and may be substantial, uncertainty in these parameters is explored as part of the broader model calibration, which is detailed in Schoenberg et al., (submitted).

Dasgupta et al., (2021)'s results were generated by categorising sectors of work in the survey data into the Low and High
1110 exposure categories; for FRIDA, then, this same sectoral mapping should be applied. Raw labour supply in FRIDA, measured as the number of people in employment, was first distributed between the three sectors agriculture, industry, and services, a common structural split (Leimbach et al., 2023; World Bank 2012) and the three sectors modelled in FRIDA. The fraction of employment in each sector was modelled as a function of GDP per capita, using historical data from the World Bank (2012). Generally, increasing GDP per capita drives a reduction in agriculture and an increase in services, with
1115 industry's share peaking and declining. Then, these sectors were mapped to the exposure types from Dasgupta: Low, High, and the zero-effect No exposure. The fraction of each sector represented as No/Low/High exposure was 0/0.1/0.9 for agriculture, 0.25/0.5/0.25 for industry, and 0.75/0.25/0 for services.

A.8 Crop Production

Changes in total crop production were represented using Equation A3. The absolute temperature (in Kelvin) is used for T ,
1120 converted from temperature anomaly within the Climate module, using the 1850-1900 value to account for the offset. The 1850-1900 absolute temperature is estimated by subtracting the 1850-1900 to 1961-1990 difference in the IPCC AR6 global mean surface temperature (GMST) from the HadCRUT absolute temperature estimate for 1961-1990 (Osborn et al., 2021). Absolute values of CO_2 concentration are also utilised.



1125 **Figure A45.** Response in crop yield as a function of global mean temperature and CO₂ concentrations. Individual data points represent climate model-crop model combinations from Müller et al., (2021)Müller et al., (2021)Müller et al., (2021)Müller et al., (2021), annually resolved. Data from multiple future SSP scenarios as well as idealised fixed-CO₂ versions are shown. Left panel shows the CO₂ - GMST combinations, with the chosen fit shown in coloured contours, and the annual model data as coloured datapoints. Right panel shows the results in 3D space, with the yield response in the 3rd dimension.

1130

References

- Akerlof, K., Maibach, E. W., Fitzgerald, D., Ceden0, A. Y., and Neuman, A.: Do people “personally experience” global warming, and if so how, and does it matter?, *Global Environmental Change*, 23, 81–91, <https://doi.org/https://doi.org/10.1016/j.gloenvcha.2012.07.006>, 2013.
- 1135 Akerlof, K., Covi, M., and Rohring, E.: Communicating Sea Level Rise, <https://doi.org/10.1093/acrefore/9780190228620.013.417>, May 2017.
- Andrijevic, M., Schleussner, C. F., Crespo Cuaresma, J., Lissner, T., Muttarak, R., Riahi, K., Theokritoff, E., Thomas, A., van Maanen, N., and Byers, E.: Towards scenario representation of adaptive capacity for global climate change assessments, *Nat Clim Chang*, 13, 778–787, <https://doi.org/10.1038/s41558-023-01725-1>, 2023.
- 1140 Arnell, N. W., Brown, S., Gosling, S. N., Hinkel, J., Huntingford, C., Lloyd-Hughes, B., Lowe, J. A., Osborn, T., Nicholls, R. J., and Zelazowski, P.: Global-scale climate impact functions: the relationship between climate forcing and impact, *Clim Change*, 134, 475–487, <https://doi.org/10.1007/s10584-013-1034-7>, 2016a.
- Arnell, N. W., Brown, S., Gosling, S. N., Gottschalk, P., Hinkel, J., Huntingford, C., Lloyd-Hughes, B., Lowe, J. A., Nicholls, R. J., Osborn, T. J., Osborne, T. M., Rose, G. A., Smith, P., Wheeler, T. R., and Zelazowski, P.: The impacts of

- 1145 climate change across the globe: A multi-sectoral assessment, *Clim Change*, 134, 457–474, <https://doi.org/10.1007/s10584-014-1281-2>, 2016b.
- Arnell, N. W., Lowe, J. A., Challinor, A. J., and Osborn, T. J.: Global and regional impacts of climate change at different levels of global temperature increase, *Clim Change*, 155, 377–391, <https://doi.org/10.1007/s10584-019-02464-z>, 2019.
- Avtar, R., Blickle, K., Chakrabarti, R., Janakiraman, J., and Pinkovskiy, M.: Understanding the linkages between climate change and inequality in the United States, *SSRN Electron. J.*, 2023.
- 1150 Baldos, U. L. C., Chepeliev, M., Cultice, B., Huber, M., Meng, S., Ruane, A. C., Suttles, S., and Van Der Mensbrugge, D.: Global-to-local-to-global interactions and climate change, <https://doi.org/10.1088/1748-9326/acc95c>, 1 May 2023.
- Barlas, Y.: Formal aspects of model validity and validation in system dynamics, *Syst Dyn Rev*, 12, 183–210, [https://doi.org/10.1002/\(sici\)1099-1727\(199623\)12:3<183::aid-sdr103>3.0.co;2-4](https://doi.org/10.1002/(sici)1099-1727(199623)12:3<183::aid-sdr103>3.0.co;2-4), 1996.
- 1155 Bartsch, F., Busies, I., Emambakhsh, T., Grill, M., Simoens, M., Spaggiari, M., and Tamburrini, F.: Designing a macroprudential capital buffer for climate-related risks: an application to transition risk, *Climate Policy*, 0, 1–14, <https://doi.org/10.1080/14693062.2025.2450279>, 2025.
- Bastidas-Arteaga, E. and Stewart, M. G.: Damage risks and economic assessment of climate adaptation strategies for design of new concrete structures subject to chloride-induced corrosion, *Structural Safety*, 52, 40–53, <https://doi.org/https://doi.org/10.1016/j.strusafe.2014.10.005>, 2015.
- 1160 Bastien-Olvera, B. A., Granella, F., and Moore, F. C.: Persistent effect of temperature on GDP identified from lower frequency temperature variability, *Environmental Research Letters*, 17, <https://doi.org/10.1088/1748-9326/ac82c2>, 2022.
- Beckage, B., Gross, L. J., Lacasse, K., Carr, E., Metcalf, S. S., Winter, J. M., Howe, P. D., Fefferman, N., Franck, T., Zia, A., Kinzig, A., and Hoffman, F. M.: Linking models of human behaviour and climate alters projected climate change, *Nat Clim Chang*, 8, 79–84, <https://doi.org/10.1038/s41558-017-0031-7>, 2018.
- 1165 Beckage, B., Moore, F. C., and Lacasse, K.: Incorporating human behaviour into Earth system modelling, <https://doi.org/10.1038/s41562-022-01478-5>, 1 November 2022.
- Bressler, R. D., Moore, F. C., Rennert, K., and Anthoff, D.: Estimates of country level temperature-related mortality damage functions, *Sci Rep*, 11, <https://doi.org/10.1038/s41598-021-99156-5>, 2021.
- 1170 Burke, M., Hsiang, S. M., and Miguel, E.: Global non-linear effect of temperature on economic production, *Nature*, 527, 235–239, <https://doi.org/10.1038/nature15725>, 2015.
- Burton, C., Lampe, S., Kelley, D. I., Thiery, W., Hantson, S., Christidis, N., Gudmundsson, L., Forrest, M., Burke, E., Chang, J., Huang, H., Ito, A., Kou-Giesbrecht, S., Lasslop, G., Li, W., Nieradzik, L., Li, F., Chen, Y., Randerson, J., Reyer, C. P. O., and Mengel, M.: Global burned area increasingly explained by climate change, *Nat Clim Chang*, 14, 1186–1192, <https://doi.org/10.1038/s41558-024-02140-w>, 2024.
- 1175 Calel, R., Chapman, S. C., Stainforth, D. A., and Watkins, N. W.: Temperature variability implies greater economic damages from climate change, *Nat Commun*, 11, 5028, <https://doi.org/10.1038/s41467-020-18797-8>, 2020.

- Carattini, S., Heutel, G., and Melkadze, G.: Climate policy, financial frictions, and transition risk, *Rev Econ Dyn*, 51, 778–794, <https://doi.org/https://doi.org/10.1016/j.red.2023.08.003>, 2023.
- 1180 Cazenave, A. and Cozannet, G. Le: Sea level rise and its coastal impacts, *Earths Future*, 2, 15–34, <https://doi.org/https://doi.org/10.1002/2013EF000188>, 2014.
- Chen, K., de Schrijver, E., Sivaraj, S., Sera, F., Scovronick, N., Jiang, L., Roye, D., Lavigne, E., Kysely, J., Urban, A., Schneider, A., Huber, V., Madureira, J., Mistry, M. N., Cvijanovic, I., Gasparri, A., Vicedo-Cabrera, A. M., Armstrong, B., Schneider, R., Tobias, A., Astrom, C., Guo, Y., Honda, Y., Abrutzky, R., Tong, S., de Sousa Zanotti Stagliorio Coelho, M., Saldiva, P. H. N., Correa, P. M., Ortega, N. V., Kan, H., Osorio, S., Orru, H., Indermitte, E., Jaakkola, J. J. K., Rytty, N., Pascal, M., Katsouyanni, K., Analitis, A., Mayvaneh, F., Entezari, A., Goodman, P., Zeka, A., Michelozzi, P., de’Donato, F., Hashizume, M., Alahmad, B., Diaz, M. H., De la Cruz Valencia, C., Overcenco, A., Houthuijs, D., Ameling, C., Rao, S., Carrasco-Escobar, G., Seposo, X., da Silva, S. P., Holobaca, I. H., Acquavota, F., Kim, H., Lee, W., Iniguez, C., Forsberg, B., Ragetti, M. S., Guo, Y. L. L., Pan, S. C., Li, S., Colistro, V., Zanobetti, A., Schwartz, J., Dang, T. N., Van Dung, D.,
- 1185
- 1190 Carlsen, H. K., Cauchi, J. P., Achilleos, S., and Raz, R.: Impact of population aging on future temperature-related mortality at different global warming levels, *Nat Commun*, 15, <https://doi.org/10.1038/s41467-024-45901-z>, 2024.
- Clarke, B., Otto, F., Stuart-Smith, R., and Harrington, L.: Extreme weather impacts of climate change: an attribution perspective, *Environmental Research: Climate*, 1, 012001, <https://doi.org/10.1088/2752-5295/ac6e7d>, 2022.
- Clarke, L., Eom, J., Marten, E. H., Horowitz, R., Kyle, P., Link, R., Mignone, B. K., Mundra, A., and Zhou, Y.: Effects of
- 1195 long-term climate change on global building energy expenditures, *Energy Econ*, 72, 667–677, <https://doi.org/10.1016/j.eneco.2018.01.003>, 2018.
- Colelli, F. Pietro, Emmerling, J., Marangoni, G., Mistry, M. N., and De Cian, E.: Increased energy use for adaptation significantly impacts mitigation pathways, *Nat Commun*, 13, <https://doi.org/10.1038/s41467-022-32471-1>, 2022.
- Cromar, K. R., Anenberg, S. C., Balmes, J. R., Fawcett, A. A., Ghazipura, M., Gohlke, J. M., Hashizume, M., Howard, P.,
- 1200 Lavigne, E., Levy, K., Madrigano, J., Martinich, J. A., Mordecai, E. A., Rice, M. B., Saha, S., Scovronick, N. C., Sekercioglu, F., Svendsen, E. R., Zaitchik, B. F., and Ewart, G.: Global Health Impacts for Economic Models of Climate Change A Systematic Review and Meta-Analysis, <https://doi.org/10.1513/AnnalsATS.202110-1193OC>, 1 July 2022.
- Dasgupta, S., van Maanen, N., Gosling, S. N., Piontek, F., Otto, C., and Schlessner, C. F.: Effects of climate change on combined labour productivity and supply: an empirical, multi-model study, *Lancet Planet Health*, 5, e455–e465, [https://doi.org/10.1016/S2542-5196\(21\)00170-4](https://doi.org/10.1016/S2542-5196(21)00170-4), 2021.
- 1205
- Deetman, S., Marinova, S., van der Voet, E., van Vuuren, D. P., Edelenbosch, O., and Heijungs, R.: Modelling global material stocks and flows for residential and service sector buildings towards 2050, *J Clean Prod*, 245, 118658, <https://doi.org/https://doi.org/10.1016/j.jclepro.2019.118658>, 2020.
- Dell’ariccia, G. and Marquez, R.: Lending Booms and Lending Standards, *J Finance*, 61, 2511–2546, <https://doi.org/10.1111/j.1540-6261.2006.01065.x>, 2006.
- 1210

- Deroubaix, A., Labuhn, I., Camredon, M., Gaubert, B., Monerie, P. A., Popp, M., Ramarohetra, J., Ruprich-Robert, Y., Silvers, L. G., and Siour, G.: Large uncertainties in trends of energy demand for heating and cooling under climate change, *Nat Commun*, 12, <https://doi.org/10.1038/s41467-021-25504-8>, 2021.
- 1215 Diaz, D. and Moore, F.: Quantifying the economic risks of climate change, *Nat Clim Chang*, 7, 774–782, <https://doi.org/10.1038/nclimate3411>, 2017.
- Elsawah, S., Filatova, T., Jakeman, A. J., Kettner, A. J., Zellner, M. L., Athanasiadis, I. N., Hamilton, S. H., Axtell, R. L., Brown, D. G., Gilligan, J. M., Janssen, M. A., Robinson, D. T., Rozenberg, J., Ullah, I. I. T., and Lade, S. J.: Eight grand challenges in socio-environmental systems modeling, *Socio-Environmental Systems Modelling*, 2, 16226, <https://doi.org/10.18174/sesmo.2020a16226>, 2020.
- 1220 Feng, Y., Pan, Y., Sun, C., and Niu, J.: Assessing the effect of green credit on risk-taking of commercial banks in China: Further analysis on the two-way Granger causality, *J Clean Prod*, 437, 140698, <https://doi.org/https://doi.org/10.1016/j.jclepro.2024.140698>, 2024.
- Fishman, M. J., Parker, J. A., and Straub, L.: A Dynamic Theory of Lending Standards, *Rev Financ Stud*, 37, 2355–2402, <https://doi.org/10.1093/rfs/hhae010>, 2024.
- 1225 Fox-Kemper, B., Hewitt, H. T., Xiao, C., Aðalgeirsdóttir, G., Drijfhout, S. S., Edwards, T. L., Golledge, N. R., Hemer, M., Kopp, R. E., Krinner, G., Mix, A., Notz, D., Nowicki, S., Nurhati, I. S., Ruiz, L., Sallée, J.-B., Slangen, A. B. A., and Yu, Y.: Ocean, Cryosphere and Sea Level Change, in: *Climate Change 2021: The Physical Science Basis. Contribution of Working Group I to the Sixth Assessment Report of the Intergovernmental Panel on Climate Change*, edited by: Masson-Delmotte, V., Zhai, P., Pirani, A., Connors, S. L., Péan, C., Berger, S., Caud, N., Chen, Y., Goldfarb, L., Gomis, M. I., Huang, M.,
- 1230 Leitzell, K., Lonnoy, E., Matthews, J. B. R., Maycock, T. K., Waterfield, T., Yelekçi, O., Yu, R., and Zhou, B., Cambridge University Press, Cambridge, United Kingdom and New York, NY, USA, 1211–1362, <https://doi.org/10.1017/9781009157896.011>, 2021.
- Franke, J. A., Müller, C., Elliott, J., Ruane, A. C., Jägermeyr, J., Snyder, A., Dury, M., Falloon, P. D., Folberth, C., François, L., Hank, T., Cesar Izaurralde, R., Jacquemin, I., Jones, C., Li, M., Liu, W., Olin, S., Phillips, M., Pugh, T. A. M., Reddy, A.,
- 1235 Williams, K., Wang, Z., Zabel, F., and Moyer, E. J.: The GGCM Phase 2 emulators: Global gridded crop model responses to changes in CO₂, temperature, water, and nitrogen (version 1.0), *Geosci Model Dev*, 13, 3995–4018, <https://doi.org/10.5194/gmd-13-3995-2020>, 2020a.
- Franke, J. A., Müller, C., Elliott, J., Ruane, A. C., Jägermeyr, J., Balkovic, J., Ciais, P., Dury, M., Falloon, P. D., Folberth, C., François, L., Hank, T., Hoffmann, M., Izaurralde, R. C., Jacquemin, I., Jones, C., Khabarov, N., Koch, M., Li, M., Liu,
- 1240 W., Olin, S., Phillips, M., Pugh, T. A. M., Reddy, A., Wang, X., Williams, K., Zabel, F., and Moyer, E. J.: The GGCM Phase 2 experiment: Global gridded crop model simulations under uniform changes in CO₂, temperature, water, and nitrogen levels (protocol version 1.0), *Geosci Model Dev*, 13, 2315–2336, <https://doi.org/10.5194/gmd-13-2315-2020>, 2020b.

- Frieler, K., Lange, S., Piontek, F., Reyer, C. P. O., Schewe, J., Warszawski, L., Zhao, F., Chini, L., Denvil, S., Emanuel, K.,
1245 Geiger, T., Halladay, K., Hurtt, G., Mengel, M., Murakami, D., Ostberg, S., Popp, A., Riva, R., Stevanovic, M., SuzGBRi,
T., Volkholz, J., Burke, E., Ciais, P., Ebi, K., Eddy, T. D., Elliott, J., Galbraith, E., Gosling, S. N., Hattermann, F., Hickler,
T., Hinkel, J., Hof, C., Huber, V., Jägermeyr, J., Krysanova, V., Marcé, R., Müller Schmied, H., Mouratiadou, I., Pierson, D.,
Tittensor, D. P., Vautard, R., Van Vliet, M., Biber, M. F., Betts, R. A., Leon Bodirsky, B., Deryng, D., Frohling, S., Jones,
C. D., Lotze, H. K., Lotze-Campen, H., Sahajpal, R., Thonicke, K., Tian, H., and Yamagata, Y.: Assessing the impacts of
1250 1.5°C global warming - Simulation protocol of the Inter-Sectoral Impact Model Intercomparison Project (ISIMIP2b),
Geosci Model Dev, 10, 4321–4345, <https://doi.org/10.5194/gmd-10-4321-2017>, 2017.
- Frieler, K., Volkholz, J., Lange, S., Schewe, J., Mengel, M., Del Rocío Rivas López, M., Otto, C., Reyer, C. P. O., Karger,
D. N., Malle, J. T., Treu, S., Menz, C., Blanchard, J. L., Harrison, C. S., Petrik, C. M., Eddy, T. D., Ortega-Cisneros, K.,
Novaglio, C., Rousseau, Y., Watson, R. A., Stock, C., Liu, X., Heneghan, R., Tittensor, D., Maury, O., Büchner, M., Vogt,
1255 T., Wang, T., Sun, F., Sauer, I. J., Koch, J., Vanderkelen, I., Jägermeyr, J., Müller, C., Rabin, S., Klar, J., Vega Del Valle, I.
D., Lasslop, G., Chadburn, S., Burke, E., Gallego-Sala, A., Smith, N., Chang, J., Hantson, S., Burton, C., Gädeke, A., Li, F.,
Gosling, S. N., Müller Schmied, H., Hattermann, F., Wang, J., Yao, F., Hickler, T., Marcé, R., Pierson, D., Thiery, W.,
Mercado-Bettín, D., Ladwig, R., Ayala-Zamora, A. I., Forrest, M., and Bechtold, M.: Scenario setup and forcing data for
impact model evaluation and impact attribution within the third round of the Inter-Sectoral Impact Model Intercomparison
1260 Project (ISIMIP3a), *Geosci Model Dev*, 17, 1–51, <https://doi.org/10.5194/gmd-17-1-2024>, 2024.
- Füssel, H.-M.: Modeling impacts and adaptation in global IAMs, *Wiley Interdiscip. Rev. Clim. Change*, 1, 288–303, 2010.
- Gernaat, D. E. H. J., de Boer, H. S., Daioglou, V., Yalaw, S. G., Müller, C., and van Vuuren, D. P.: Climate change impacts
on renewable energy supply, *Nat Clim Chang*, 11, 119–125, <https://doi.org/10.1038/s41558-020-00949-9>, 2021.
- Ghimire, B., Williams, C. A., Masek, J., Gao, F., Wang, Z., Schaaf, C., and He, T.: Global albedo change and radiative
1265 cooling from anthropogenic land cover change, 1700 to 2005 based on MODIS, land use harmonization, radiative kernels,
and reanalysis, *Geophys Res Lett*, 41, 9087–9096, <https://doi.org/10.1002/2014GL061671>, 2014.
- Guo, D., Westra, S., and Maier, H. R.: Sensitivity of potential evapotranspiration to changes in climate variables for different
Australian climatic zones, *Hydrol Earth Syst Sci*, 21, 2107–2126, <https://doi.org/10.5194/hess-21-2107-2017>, 2017.
- H. Hargreaves, G. and A. Samani, Z.: Reference Crop Evapotranspiration from Temperature, *Appl Eng Agric*, 1, 96–99,
1270 <https://doi.org/https://doi.org/10.13031/2013.26773>, 1985.
- Hamon, W. R.: Estimating potential evapotranspiration, *T. Am. Soc. Civ. Eng.*, 128, 324–338, 1963.
- Hartin, C., Link, R., Patel, P., Mundra, A., Horowitz, R., Dorheim, K., and Clarke, L.: Integrated modeling of human-earth
system interactions: An application of GCAM-fusion, *Energy Econ*, 103, <https://doi.org/10.1016/j.eneco.2021.105566>, 2021.
- Heinicke, S., Frieler, K., Jägermeyr, J., and Mengel, M.: Global gridded crop models underestimate yield responses to
1275 droughts and heatwaves, *Environmental Research Letters*, 17, <https://doi.org/10.1088/1748-9326/ac592e>, 2022.
- Holman, I. P., Brown, C., Carter, T. R., Harrison, P. A., and Rounsevell, M.: Improving the representation of adaptation in
climate change impact models, *Reg Environ Change*, 19, 711–721, <https://doi.org/10.1007/s10113-018-1328-4>, 2019.

- Horwath, M., Gutknecht, B. D., Cazenave, A., Palanisamy, H. K., Marti, F., Marzeion, B., Paul, F., Le Bris, R., Hogg, A. E., Otsuka, I., Shepherd, A., Döll, P., Cáceres, D., Müller Schmied, H., Johannessen, J. A., Nilsen, J. E. Ø., Raj, R. P., Forsberg, R., Sandberg Sørensen, L., Barletta, V. R., Simonsen, S., Knudsen Per and Andersen, O. B., Rannal, H., Rose Stine K and Merchant, C. J., Macintosh, C. R., von Schuckmann, K., Novotny, K., Groh, A., Restano, M., and Benveniste, J.: ESA Sea Level Budget Closure Climate Change Initiative (SLBC_cci): Time series of global mean sea level budget and ocean mass budget elements (1993-2016, at monthly resolution), version 2.2, November 2021.
- Howard, P. H. and Sterner, T.: Few and Not So Far Between: A Meta-analysis of Climate Damage Estimates, *Environ Resour Econ (Dordr)*, 68, 197–225, <https://doi.org/10.1007/s10640-017-0166-z>, 2017.
- Hu, T., Zhang, X., Khanal, S., Wilson, R., Leng, G., Toman, E. M., Wang, X., Li, Y., and Zhao, K.: Climate change impacts on crop yields: A review of empirical findings, statistical crop models, and machine learning methods, <https://doi.org/10.1016/j.envsoft.2024.106119>, 1 August 2024.
- (IPCC), I. P. on C. C. (Ed.): Sea Level Rise and Implications for Low-Lying Islands, Coasts and Communities, in: *The Ocean and Cryosphere in a Changing Climate: Special Report of the Intergovernmental Panel on Climate Change*, Cambridge University Press, Cambridge, 321–446, [https://doi.org/DOI: 10.1017/9781009157964.006](https://doi.org/DOI:10.1017/9781009157964.006), 2022.
- Kantor, B.: Rational Expectations and Economic Thought, *J Econ Lit*, 17, 1422–1441, 1979.
- Kennard, H., Oreszczyn, T., Mistry, M., and Hamilton, I.: Population-weighted degree-days: The global shift between heating and cooling, *Energy Build*, 271, <https://doi.org/10.1016/j.enbuild.2022.112315>, 2022.
- Kompas, T., Che, T. N., and Grafton, R. Q.: Global impacts of heat and water stress on food production and severe food insecurity, *Sci Rep*, 14, <https://doi.org/10.1038/s41598-024-65274-z>, 2024.
- Kopp, R. E., Gilmore, E. A., Shwom, R. L., Adams, H., Adler, C., Oppenheimer, M., Patwardhan, A., Russill, C., Schmidt, D. N., and York, R.: ‘Tipping points’ confuse and can distract from urgent climate action, *Nat Clim Chang*, 15, 29–36, <https://doi.org/10.1038/s41558-024-02196-8>, 2025.
- Kotz, M., Levermann, A., and Wenz, L.: The effect of rainfall changes on economic production, *Nature*, 601, 223–227, <https://doi.org/10.1038/s41586-021-04283-8>, 2022.
- Kotz, M., Levermann, A., and Wenz, L.: The economic commitment of climate change, *Nature*, 628, 551–557, <https://doi.org/10.1038/s41586-024-07219-0>, 2024.
- Lamperti, F., Dosi, G., Napoletano, M., Roventini, A., and Sapio, A.: Faraway, So Close: Coupled Climate and Economic Dynamics in an Agent-based Integrated Assessment Model, *Ecological Economics*, 150, 315–339, <https://doi.org/10.1016/j.ecolecon.2018.03.023>, 2018.
- Lange, S.: ISIMIP3b bias adjustment fact sheet, 2021.
- Lange, S., Volkholz, J., Geiger, T., Zhao, F., Vega, I., Veldkamp, T., Reyer, C. P. O., Warszawski, L., Huber, V., Jägermeyr, J., Schewe, J., Bresch, D. N., Büchner, M., Chang, J., Ciais, P., Dury, M., Emanuel, K., Folberth, C., Gerten, D., Gosling, S. N., Grillakis, M., Hanasaki, N., Henrot, A. J., Hickler, T., Honda, Y., Ito, A., Khabarov, N., Koutroulis, A., Liu, W., Müller, C., Nishina, K., Ostberg, S., Müller Schmied, H., Seneviratne, S. I., Stacke, T., Steinkamp, J., Thiery, W., Wada, Y.,

- Willner, S., Yang, H., Yoshikawa, M., Yue, C., and Frieler, K.: Projecting Exposure to Extreme Climate Impact Events Across Six Event Categories and Three Spatial Scales, *Earths Future*, 8, <https://doi.org/10.1029/2020EF001616>, 2020.
- 1315 Leimbach, M., Marcolino, M., and Koch, J.: Structural change scenarios within the SSP framework, *Futures*, 150, <https://doi.org/10.1016/j.futures.2023.103156>, 2023.
- Lenton, T. M., Xu, C., Abrams, J. F., Ghadiali, A., Loriani, S., Sakschewski, B., Zimm, C., Ebi, K. L., Dunn, R. R., Svenning, J. C., and Scheffer, M.: Quantifying the human cost of global warming, *Nat Sustain*, 6, 1237–1247, <https://doi.org/10.1038/s41893-023-01132-6>, 2023.
- 1320 Levis, S., Badger, A., Drewniak, B., Nevison, C., and Ren, X.: CLMcrop yields and water requirements: avoided impacts by choosing RCP 4.5 over 8.5, *Clim Change*, 146, 501–515, <https://doi.org/10.1007/s10584-016-1654-9>, 2018.
- Li, B., Liu, K., Wang, M., Wang, Q., He, Q., and Li, C.: Future Global Population Exposure to Record-Breaking Climate Extremes, *Earths Future*, 11, <https://doi.org/10.1029/2023EF003786>, 2023.
- Li, C., Held, H., Hokamp, S., and Marotzke, J.: Optimal temperature overshoot profile found by limiting global sea level rise as a lower-cost climate target, 2020.
- 1325 van der Linden, S.: The social-psychological determinants of climate change risk perceptions: Towards a comprehensive model, *J Environ Psychol*, 41, 112–124, <https://doi.org/https://doi.org/10.1016/j.jenvp.2014.11.012>, 2015.
- Liu, W., Ye, T., Müller, C., Jägermeyr, J., Franke, J. A., Stephens, H., and Chen, S.: The statistical emulators of GGCM phase 2: Responses of year-To-year variation of crop yield to CO₂, temperature, water, and nitrogen perturbations, *Geosci Model Dev*, 16, 7203–7221, <https://doi.org/10.5194/gmd-16-7203-2023>, 2023.
- 1330 Lown, C. and Morgan, D. P.: The Credit Cycle and the Business Cycle: New Findings Using the Loan Officer Opinion Survey, *J Money Credit Bank*, 38, 1575–1597, 2006.
- van Maanen, N., Lissner, T., Harmsen, M., Piontek, F., Andrijevic, M., and van Vuuren, D. P.: Representation of adaptation in quantitative climate assessments, <https://doi.org/10.1038/s41558-023-01644-1>, 1 April 2023.
- 1335 Marinova, S., Deetman, S., van der Voet, E., and Daioglou, V.: Global construction materials database and stock analysis of residential buildings between 1970-2050, *J Clean Prod*, 247, 119146, <https://doi.org/https://doi.org/10.1016/j.jclepro.2019.119146>, 2020.
- Masuda, Y. J., Parsons, L. A., Spector, J. T., Battisti, D. S., Castro, B., Erbaugh, J. T., Game, E. T., Garg, T., Kalmus, P., Kroeger, T., Mishra, V., Shindell, D., Tigchelaar, M., Wolff, N. H., and Vargas Zeppetello, L. R.: Impacts of warming on outdoor worker well-being in the tropics and adaptation options, <https://doi.org/10.1016/j.oneear.2024.02.001>, 15 March 2024.
- 1340 Mathison, C., Burke, E. J., Munday, G., Jones, C. D., Smith, C. J., Steinert, N. J., Wiltshire, A. J., Huntingford, C., Kovacs, E., Gohar, L. K., Varney, R. M., and McNeill, D.: A rapid-application emissions-to-impacts tool for scenario assessment: Probabilistic Regional Impacts from Model patterns and Emissions (PRIME), *Geosci Model Dev*, 18, 1785–1808, <https://doi.org/10.5194/gmd-18-1785-2025>, 2025.

- 1345 McKay, D. I. A., Staal, A., Abrams, J. F., Winkelmann, R., Sakschewski, B., Loriani, S., Fetzer, I., Cornell, S. E., Rockström, J., and Lenton, T. M.: Exceeding 1.5°C global warming could trigger multiple climate tipping points, *Science* (1979), 377, <https://doi.org/10.1126/science.abn7950>, 2022.
- McVicar, T. R., Roderick, M. L., Donohue, R. J., Li, L. T., Van Niel, T. G., Thomas, A., Grieser, J., Jhajharia, D., Himri, Y., Mahowald, N. M., Mescherskaya, A. V., Kruger, A. C., Rehman, S., and Dinpashoh, Y.: Global review and synthesis of trends in observed terrestrial near-surface wind speeds: Implications for evaporation, *J Hydrol (Amst)*, 416–417, 182–205, <https://doi.org/https://doi.org/10.1016/j.jhydrol.2011.10.024>, 2012.
- Meinshausen, M., Schleussner, C. F., Beyrer, K., Bodeker, G., Boucher, O., Canadell, J. G., Daniel, J. S., Diongue-Niang, A., Driouech, F., Fischer, E., Forster, P., Grose, M., Hansen, G., Hausfather, Z., Ilyina, T., Kikstra, J. S., Kimutai, J., King, A. D., Lee, J. Y., Lennard, C., Lissner, T., Nauels, A., Peters, G. P., Pirani, A., Plattner, G. K., Pörtner, H., Rogelj, J., Rojas, M., Roy, J., Samset, B. H., Sanderson, B. M., Séférian, R., Seneviratne, S., Smith, C. J., Szopa, S., Thomas, A., Urge-Vorsatz, D., Velders, G. J. M., Yokohata, T., Ziehn, T., and Nicholls, Z.: A perspective on the next generation of Earth system model scenarios: Towards representative emission pathways (REPs), <https://doi.org/10.5194/gmd-17-4533-2024>, 5 June 2024.
- Méjean, A., Collins-Sowah, P., Guivarch, C., Piontek, F., Soergel, B., and Taconet, N.: Climate change impacts increase economic inequality: evidence from a systematic literature review, <https://doi.org/10.1088/1748-9326/ad376e>, 1 April 2024.
- 1360 Miranda, N. D., Lizana, J., Sparrow, S. N., Zachau-Walker, M., Watson, P. A. G., Wallom, D. C. H., Khosla, R., and McCulloch, M.: Change in cooling degree days with global mean temperature rise increasing from 1.5 °C to 2.0 °C, *Nat Sustain*, 6, 1326–1330, <https://doi.org/10.1038/s41893-023-01155-z>, 2023.
- Molina Bacca, E. J., Stevanović, M., Bodirsky, B. L., Karstens, K., Chen, D. M.-C., Leip, D., Müller, C., Minoli, S., Heinke, J., Jägermeyr, J., Folberth, C., Iizumi, T., Jain, A. K., Liu, W., Okada, M., Smerald, A., Zabel, F., Lotze-Campen, H., and Popp, A.: Uncertainty in land-use adaptation persists despite crop model projections showing lower impacts under high warming, *Commun Earth Environ*, 4, 284, <https://doi.org/10.1038/s43247-023-00941-z>, 2023.
- Monteiro, P. J. M., Miller, S. A., and Horvath, A.: Towards sustainable concrete, *Nat Mater*, 16, 698–699, <https://doi.org/10.1038/nmat4930>, 2017.
- Moore, F. C., Baldos, U., Hertel, T., and Diaz, D.: New science of climate change impacts on agriculture implies higher social cost of carbon, *Nat Commun*, 8, <https://doi.org/10.1038/s41467-017-01792-x>, 2017.
- 1370 Moore, F. C., Lacasse, K., Mach, K. J., Shin, Y. A., Gross, L. J., and Beckage, B.: Determinants of emissions pathways in the coupled climate–social system, *Nature*, 603, 103–111, <https://doi.org/10.1038/s41586-022-04423-8>, 2022.
- Müller, C., Elliott, J., Kelly, D., Arneth, A., Balkovic, J., Ciais, P., Deryng, D., Folberth, C., Hoek, S., Izaurralde, R. C., Jones, C. D., Khabarov, N., Lawrence, P., Liu, W., Olin, S., Pugh, T. A. M., Reddy, A., Rosenzweig, C., Ruane, A. C., Sakurai, G., Schmid, E., Skalsky, R., Wang, X., de Wit, A., and Yang, H.: The Global Gridded Crop Model Intercomparison phase 1 simulation dataset, *Sci Data*, 6, <https://doi.org/10.1038/s41597-019-0023-8>, 2019.
- Müller, C., Franke, J., Jägermeyr, J., Ruane, A. C., Elliott, J., Moyer, E., Heinke, J., Falloon, P. D., Folberth, C., Francois, L., Hank, T., Izaurralde, R. C., Jacquemin, I., Liu, W., Olin, S., Pugh, T. A. M., Williams, K., and Zabel, F.: Exploring

- uncertainties in global crop yield projections in a large ensemble of crop models and CMIP5 and CMIP6 climate scenarios, *Environmental Research Letters*, 16, <https://doi.org/10.1088/1748-9326/abd8fc>, 2021.
- Müller, C., Jägermeyr, J., Franke, J. A., Ruane, A. C., Balkovic, J., Ciais, P., Dury, M., Falloon, P., Folberth, C., Hank, T., Hoffmann, M., Izaurralde, R. C., Jacquemin, I., Khabarov, N., Liu, W., Olin, S., Pugh, T. A. M., Wang, X., Williams, K., Zabel, F., and Elliott, J. W.: Substantial Differences in Crop Yield Sensitivities Between Models Call for Functionality-Based Model Evaluation, *Earths Future*, 12, <https://doi.org/10.1029/2023EF003773>, 2024.
- 1385 Neumann, J. E., Willwerth, J., Martinich, J., McFarland, J., Sarofim, M. C., and Yohe, G.: Climate Damage Functions for Estimating the Economic Impacts of Climate Change in the United States, *Rev Environ Econ Policy*, 14, 25–43, <https://doi.org/10.1093/reep/rez021>, 2020.
- Newman, R. and Noy, I.: The global costs of extreme weather that are attributable to climate change, *Nat Commun*, 14, <https://doi.org/10.1038/s41467-023-41888-1>, 2023.
- 1390 Nordhaus, W.: Estimates of the Social Cost of Carbon: Concepts and Results from the DICE-2013R Model and Alternative Approaches, *J Assoc Environ Resour Econ*, 1, 273–312, <https://doi.org/10.1086/676035>, 2014.
- O’Neill, B. C., Kriegler, E., Riahi, K., Ebi, K. L., Hallegatte, S., Carter, T. R., Mathur, R., and van Vuuren, D. P.: A new scenario framework for climate change research: The concept of shared socioeconomic pathways, *Clim Change*, 122, 387–400, <https://doi.org/10.1007/s10584-013-0905-2>, 2014.
- 1395 Orlov, A., Sillmann, J., Aunan, K., Kjellstrom, T., and Aaheim, A.: Economic costs of heat-induced reductions in worker productivity due to global warming, *Global Environmental Change*, 63, <https://doi.org/10.1016/j.gloenvcha.2020.102087>, 2020.
- Orlov, A., Daloz, A. S., Sillmann, J., Thiery, W., Douzal, C., Lejeune, Q., and Schleussner, C.: Global Economic Responses to Heat Stress Impacts on Worker Productivity in Crop Production, *Econ Disaster Clim Chang*, 5, 367–390, <https://doi.org/10.1007/s41885-021-00091-6>, 2021.
- 1400 Osborn, T. J., Jones, P. D., Lister, D. H., Morice, C. P., Simpson, I. R., Winn, J. P., Hogan, E., and Harris, I. C.: Land Surface Air Temperature Variations Across the Globe Updated to 2019: The CRUTEM5 Data Set, *Journal of Geophysical Research: Atmospheres*, 126, e2019JD032352, <https://doi.org/https://doi.org/10.1029/2019JD032352>, 2021.
- Ostberg, S., Schewe, J., Childers, K., and Frieler, K.: Changes in crop yields and their variability at different levels of global warming, *Earth System Dynamics*, 9, 479–496, <https://doi.org/10.5194/esd-9-479-2018>, 2018.
- 1405 Palagi, E., Coronese, M., Lamperti, F., and Roventini, A.: Climate change and the nonlinear impact of precipitation anomalies on income inequality, <https://doi.org/10.1073/pnas>, 2022.
- Park, C. Y., Takahashi, K., Fujimori, S., Phung, V. L. H., Li, F., Takakura, J., Hasegawa, T., and Jansakoo, T.: Future fire-PM2.5 mortality varies depending on climate and socioeconomic changes, *Environmental Research Letters*, 19, <https://doi.org/10.1088/1748-9326/ad1b7d>, 2024.
- 1410

- Piontek, F., Drouet, L., Emmerling, J., Kompas, T., Méjean, A., Otto, C., Rising, J., Soergel, B., Taconet, N., and Tavoni, M.: Integrated perspective on translating biophysical to economic impacts of climate change, <https://doi.org/10.1038/s41558-021-01065-y>, 1 July 2021.
- 1415 Pirani, A., Fuglestvedt, J. S., Byers, E., O'Neill, B., Riahi, K., Lee, J.-Y., Marotzke, J., Rose, S. K., Schaeffer, R., and Tebaldi, C.: Scenarios in IPCC assessments: lessons from AR6 and opportunities for AR7, *npj Climate Action*, 3, <https://doi.org/10.1038/s44168-023-00082-1>, 2024.
- Pörtner, H.-O., Roberts, D. C., Adams, H., Adelekan, I., Adler, C., Adrian, R., Aldunce, P., Ali, E., Begum, R. A., Friedl, B. B., Kerr, R. B., Biesbroek, R., Birkmann, J., Bowen, K., Caretta, M. A., Carnicer, J., Castellanos, E., Cheong, T. S., Chow, W., G. Cissé, G. C., and Ibrahim, Z. Z.: *Climate Change 2022: Impacts, Adaptation and Vulnerability*, Cambridge University Press, Cambridge, UK and New York, USA, 37–118 pp., 2022.
- 1420 Rajah, J. K., Blanz, B., Kopainsky, B., and Schoenberg, W.: An endogenous modelling framework of dietary behavioural change in the fully coupled human-climate FRIDA v2.1 model, *EGUsphere*, 2025, 1–35, <https://doi.org/10.5194/egusphere-2025-2260>, 2025.
- Ramme, L., Blanz, B., Wells, C., Wong, T. E., Schoenberg, W. A., Smith, C., and Li, C.: Feedback-based sea level rise impact modelling for integrated assessment models with FRISIAv1.0, submitted.
- 1425 Ren, X., Weitzel, M., O'Neill, B. C., Lawrence, P., Meiyappan, P., Levis, S., Balistreri, E. J., and Dalton, M.: Avoided economic impacts of climate change on agriculture: integrating a land surface model (CLM) with a global economic model (iPETS), *Clim Change*, 146, 517–531, <https://doi.org/10.1007/s10584-016-1791-1>, 2018.
- Rennert, K., Errickson, F., Prest, B. C., Rennels, L., Newell, R. G., Pizer, W., Kingdon, C., Wingenroth, J., Cooke, R., Parthum, B., Smith, D., Cromar, K., Diaz, D., Moore, F. C., Müller, U. K., Plevin, R. J., Raftery, A. E., Ševčíková, H., Sheets, H., Stock, J. H., Tan, T., Watson, M., Wong, T. E., and Anthoff, D.: Comprehensive evidence implies a higher social cost of CO₂, *Nature*, 610, 687–692, <https://doi.org/10.1038/s41586-022-05224-9>, 2022.
- 1430 Rezaei, E. E., Webber, H., Asseng, S., Boote, K., Durand, J. L., Ewert, F., Martre, P., and MacCarthy, D. S.: Climate change impacts on crop yields, <https://doi.org/10.1038/s43017-023-00491-0>, 1 December 2023.
- 1435 Richardson, K., Steffen, W., Lucht, W., Bendtsen, J., Cornell, S. E., Donges, J. F., Drüke, M., Fetzer, I., Bala, G., von Bloh, W., Feulner, G., Fiedler, S., Gerten, D., Gleeson, T., Hofmann, M., Huiskamp, W., Kummu, M., Mohan, C., Nogués-Bravo, D., Petri, S., Porkka, M., Rahmstorf, S., Schaphoff, S., Thonicke, K., Tobian, A., Virkki, V., Wang-Erlandsson, L., Weber, L., and Rockström, J.: Earth beyond six of nine planetary boundaries, *Sci Adv*, 9, eadh2458, <https://doi.org/10.1126/sciadv.adh2458>, 2023.
- 1440 Ripple, W. J., Wolf, C., Lenton, T. M., Gregg, J. W., Natali, S. M., Duffy, P. B., Rockström, J., and Schellnhuber, H. J.: Many risky feedback loops amplify the need for climate action, <https://doi.org/10.1016/j.oneear.2023.01.004>, 17 February 2023.
- Robinson, D. T., Di Vittorio, A., Alexander, P., Arnoeth, A., Michael Barton, C., Brown, D. G., Kettner, A., Lemmen, C., O'Neill, B. C., Janssen, M., Pugh, T. A. M., Rabin, S. S., Rounsevell, M., Syvitski, J. P., Ullah, I., and Verburg, P. H.:

- 1445 Modelling feedbacks between human and natural processes in the land system, *Earth System Dynamics*, 9, 895–914, <https://doi.org/10.5194/esd-9-895-2018>, 2018.
- Rodano, G., Serrano-Velarde, N., and Tarantino, E.: Lending Standards over the Credit Cycle, *Rev Financ Stud*, 31, 2943–2982, <https://doi.org/10.1093/rfs/hhy023>, 2018.
- Rode, A., Carleton, T., Delgado, M., Greenstone, M., Houser, T., Hsiang, S., Hultgren, A., Jina, A., Kopp, R. E., McCusker, K. E., Nath, I., Rising, J., and Yuan, J.: Estimating a social cost of carbon for global energy consumption, *Nature*, 598, 308–314, <https://doi.org/10.1038/s41586-021-03883-8>, 2021.
- 1450 Rounsevell, M. D. A., Robinson, D. T., and Murray-Rust, D.: From actors to agents in socio-ecological systems models, <https://doi.org/10.1098/rstb.2011.0187>, 19 January 2012.
- Ruane, A. C., Phillips, M., Jägermeyr, J., and Müller, C.: Non-Linear Climate Change Impacts on Crop Yields May Mislead Stakeholders, *Earths Future*, 12, <https://doi.org/10.1029/2023EF003842>, 2024.
- 1455 van Ruijven, B. J., De Cian, E., and Sue Wing, I.: Amplification of future energy demand growth due to climate change, *Nat Commun*, 10, <https://doi.org/10.1038/s41467-019-10399-3>, 2019.
- Schwarzwald, K., Lenssen, N., and by Timothy Palmer, E.: The importance of internal climate variability in climate impact projections, <https://doi.org/10.1073/pnas>, 2022.
- 1460 Schoenberg, W., Blanz, B., Ramme, L., Wells, C., Grimeland, M., Callegari, B., Breier, J., Rajah, J., Nicolaidis Lindqvist, A., Mashhadi, S., Muralidhar, A., and Eriksson, A.: FRIDA: Feedback-based knowledge Repository for Integrated Assessments, <https://doi.org/10.5281/zenodo.15310860>, 2025.
- Schoenberg, W. A., Blanz, B., Breier, J., Callegari, B., Grimeland, M., Muralidhar, A., Nicolaidis, A., Rajah, J. K., Ramme, L., Smith, C., Wells, C., and Mauritzen, C.: Introducing FRIDA v2.1: A feedback-based, fully coupled, global integrated assessment model of climate and humans, submitted.
- 1465 Schwingshackl, C., Sillmann, J., Vicedo-Cabrera, A. M., Sandstad, M., and Aunan, K.: Heat Stress Indicators in CMIP6: Estimating Future Trends and Exceedances of Impact-Relevant Thresholds, *Earths Future*, 9, <https://doi.org/10.1029/2020EF001885>, 2021.
- Sherwood, S. C., Dixit, V., and Salomez, C.: The global warming potential of near-surface emitted water vapour, *Environmental Research Letters*, 13, <https://doi.org/10.1088/1748-9326/aae018>, 2018.
- 1470 Shi, L., Feng, P., Wang, B., Li Liu, D., Cleverly, J., Fang, Q., and Yu, Q.: Projecting potential evapotranspiration change and quantifying its uncertainty under future climate scenarios: A case study in southeastern Australia, *J Hydrol (Amst)*, 584, 124756, <https://doi.org/https://doi.org/10.1016/j.jhydrol.2020.124756>, 2020.
- Shiogama, H., Takakura, J., and Takahashi, K.: Uncertainty constraints on economic impact assessments of climate change simulated by an impact emulator, *Environmental Research Letters*, 17, <https://doi.org/10.1088/1748-9326/aca68d>, 2022.
- 1475 Smith, C., Cummins, D. P., Fredriksen, H.-B., Nicholls, Z., Meinshausen, M., Allen, M., Jenkins, S., Leach, N., Mathison, C., and Partanen, A.-I.: fair-calibrate v1.4.1: calibration, constraining, and validation of the FaIR simple climate model for reliable future climate projections, *Geosci Model Dev*, 17, 8569–8592, <https://doi.org/10.5194/gmd-17-8569-2024>, 2024.

- Spinoni, J., Barbosa, P., Füssel, H. M., McCormick, N., Vogt, J. V., and Dosio, A.: Global population-weighted degree-day
1480 projections for a combination of climate and socio-economic scenarios, *International Journal of Climatology*, 41, 5447–
5464, <https://doi.org/10.1002/joc.7328>, 2021.
- Stewart, M. G., Wang, X., and Nguyen, M. N.: Climate change impact and risks of concrete infrastructure deterioration, *Eng
Struct*, 33, 1326–1337, <https://doi.org/https://doi.org/10.1016/j.engstruct.2011.01.010>, 2011.
- Stroebel, J. and Wurgler, J.: What do you think about climate finance?, *J financ econ*, 142, 487–498,
1485 <https://doi.org/https://doi.org/10.1016/j.jfineco.2021.08.004>, 2021.
- Takakura, J., Fujimori, S., Hanasaki, N., Hasegawa, T., Hirabayashi, Y., Honda, Y., Iizumi, T., Kumano, N., Park, C., Shen,
Z., Takahashi, K., Tamura, M., Tanoue, M., Tsuchida, K., Yokoki, H., Zhou, Q., Oki, T., and Hijioka, Y.: Dependence of
economic impacts of climate change on anthropogenically directed pathways, *Nat Clim Chang*, 9, 737–741,
<https://doi.org/10.1038/s41558-019-0578-6>, 2019.
- 1490 Tebaldi, C. and Lobell, D.: Estimated impacts of emission reductions on wheat and maize crops, *Clim Change*, 146, 533–
545, <https://doi.org/10.1007/s10584-015-1537-5>, 2018.
- Tiggeloven, T., de Moel, H., Winsemius, H. C., Eilander, D., Erkens, G., Gebremedhin, E., Diaz Loaiza, A., Kuzma, S., Luo,
T., Iceland, C., Bouwman, A., van Huijstee, J., Ligtoet, W., and Ward, P. J.: Global-scale benefit–cost analysis of coastal
flood adaptation to different flood risk drivers using structural measures, *Natural Hazards and Earth System Sciences*, 20,
1495 1025–1044, <https://doi.org/10.5194/nhess-20-1025-2020>, 2020.
- Tol, R. S. J.: The double trade-off between adaptation and mitigation for sea level rise: an application of FUND, *Mitig.
Adapt. Strateg. Glob. Chang.*, 12, 741–753, 2007.
- Van Vliet, M. T. H., Wiberg, D., Leduc, S., and Riahi, K.: Power-generation system vulnerability and adaptation to changes
in climate and water resources, *Nat Clim Chang*, 6, 375–380, <https://doi.org/10.1038/nclimate2903>, 2016.
- 1500 van Vuuren, D., O’Neill, B., Tebaldi, C., Chini, L., Friedlingstein, P., Hasegawa, T., Riahi, K., Sanderson, B., Govindasamy,
B., Bauer, N., Eyring, V., Fall, C., Frieler, K., Gidden, M., Gohar, L., Jones, A., King, A., Knutti, R., Kriegler, E., Lawrence,
P., Lennard, C., Lowe, J., Mathison, C., Mehmood, S., Prado, L., Zhang, Q., Rose, S., Ruane, A., Schleussner, C.-F.,
Seferian, R., Sillmann, J., Smith, C., Sörensson, A., Panickal, S., Tachiiri, K., Vaughan, N., Vishwanathan, S., Yokohata, T.,
and Ziehn, T.: The Scenario Model Intercomparison Project for CMIP7 (ScenarioMIP-CMIP7), *EGUsphere*, 2025, 1–38,
1505 <https://doi.org/10.5194/egusphere-2024-3765>, 2025.
- Waidelich, P., Batibeniz, F., Rising, J., Kikstra, J. S., and Seneviratne, S. I.: Climate damage projections beyond annual
temperature, *Nat Clim Chang*, 14, 592–599, <https://doi.org/10.1038/s41558-024-01990-8>, 2024.
- Waldhoff, S., Anthoff, D., Rose, S., and Tol, R. S. J.: The Marginal Damage Costs of Different Greenhouse Gases: An
Application of FUND, 8, <https://doi.org/doi:10.5018/economics-ejournal.ja.2014-31>, 2014.
- 1510 Wang, X., Stewart, M. G., and Nguyen, M.: Impact of climate change on corrosion and damage to concrete infrastructure in
Australia, *Clim Change*, 110, 941–957, <https://doi.org/10.1007/s10584-011-0124-7>, 2012.
- Wells, C., FRIDA Impacts plots [revised https://doi.org/10.5281/zenodo.1742908515874512](https://doi.org/10.5281/zenodo.1742908515874512), 2025.

- Wells, C., Ramme, L., Smith, C., Muralidhar, A., Li, C., Gjermundsen, A., Breier, J., Schoenberg, W. A., Blanz, B., and Mauritzen, C.: FRIDA-Clim: a Simple Climate Model with Process-Based Carbon Cycle used in the FRIDA v2.1 IAM, 1515 submitted.
- Werning, M., Frank, S., Hooke, D., Nguyen, B., Rafaj, P., Satoh, Y., Wögerer, M., Krey, V., Riahi, K., van Ruijven, B., and Byers, E.: Climate Solutions Explorer - hazard, impacts and exposure data , <https://doi.org/10.5281/zenodo.13753537>, September 2024a.
- Werning, M., Hooke, D., Krey, V., Riahi, K., van Ruijven, B., and Byers, E. A.: Global warming level indicators of climate change and hotspots of exposure, *Environmental Research: Climate*, 3, 045015, <https://doi.org/10.1088/2752-5295/ad8300>, 2024b.
- Wong, T. E., Ledna, C., Rennels, L., Sheets, H., Errickson, F. C., Diaz, D., and Anthoff, D.: Sea Level and Socioeconomic Uncertainty Drives High-End Coastal Adaptation Costs, *Earths Future*, 10, e2022EF003061, <https://doi.org/https://doi.org/10.1029/2022EF003061>, 2022.
- 1525 Wunderling, N., Winkelmann, R., Rockström, J., Loriani, S., Armstrong McKay, D. I., Ritchie, P. D. L., Sakschewski, B., and Donges, J. F.: Global warming overshoots increase risks of climate tipping cascades in a network model, *Nat Clim Chang*, 13, 75–82, <https://doi.org/10.1038/s41558-022-01545-9>, 2023.
- Xie, B., Brewer, M. B., Hayes, B. K., McDonald, R. I., and Newell, B. R.: Predicting climate change risk perception and willingness to act, *J Environ Psychol*, 65, 101331, <https://doi.org/https://doi.org/10.1016/j.jenvp.2019.101331>, 2019.
- 1530 Yalaw, S. G., van Vliet, M. T. H., Gernaat, D. E. H. J., Ludwig, F., Miara, A., Park, C., Byers, E., De Cian, E., Piontek, F., Iyer, G., Mouratiadou, I., Glynn, J., Hejazi, M., Dessens, O., Rochedo, P., Pietzcker, R., Schaeffer, R., Fujimori, S., Dasgupta, S., Mima, S., da Silva, S. R. S., Chaturvedi, V., Vautard, R., and van Vuuren, D. P.: Impacts of climate change on energy systems in global and regional scenarios, *Nat Energy*, 5, 794–802, <https://doi.org/10.1038/s41560-020-0664-z>, 2020.
- Zhao, C., Liu, B., Piao, S., Wang, X., Lobell, D. B., Huang, Y., Huang, M., Yao, Y., Bassu, S., Ciais, P., Durand, J. L., 1535 Elliott, J., Ewert, F., Janssens, I. A., Li, T., Lin, E., Liu, Q., Martre, P., Müller, C., Peng, S., Peñuelas, J., Ruane, A. C., Wallach, D., Wang, T., Wu, D., Liu, Z., Zhu, Y., Zhu, Z., and Asseng, S.: Temperature increase reduces global yields of major crops in four independent estimates, *Proc Natl Acad Sci U S A*, 114, 9326–9331, <https://doi.org/10.1073/pnas.1701762114>, 2017.