

Towards Improved Euro-Mediterranean Discharge Simulations in Regional Coupled Climate Models: A Comparative Assessment of Hydrologic Performance Regional-scale Hydrologic Model Comparison Including Calibration for Improved River Discharge Simulations into the Mediterranean Sea

Mohamed Hamitouche^{1,2,3}, Giorgia Fossier¹, Arezoo RafieeiNasab⁴, Alessandro Anav^{2,3}

¹University School for Advanced Studies IUSS, Pavia, Italy

²Climate Modeling Laboratory, ENEA – Italian National Agency for New Technologies, Energy and Sustainable Economic Development, CR Casaccia, Viale Anguillarese 301, 00123 Santa Maria di Galeria, Rome, Italy

³ICSC Italian Research Center on High-Performance Computing, Big Data and Quantum Computing, Bologna, Italy

⁴Research Applications Laboratory, NSF National Center for Atmospheric Research, Boulder, Colorado, USA

Correspondence to: Mohamed Hamitouche (mohamed.hamitouche@iusspavia.it)

Abstract. River discharge into the Mediterranean Sea is a vital component of the regional water cycle, influencing ecological and climatic dynamics. Although some regional coupled models that include a river routing component exist for the Mediterranean region, their performance in reproducing river discharge is poor. This study compares the hydrological routing models CaMa-Flood and WRF-Hydro for discharge simulations into the Mediterranean Sea, with the prospect of future coupling into regional and Earth system models such as ENEA-REG. Evaluating their performance across key basins, this study highlights CaMa-Flood's computational efficiency but underperformance in flow variability and high-flow extremes, contrasted by WRF-Hydro's superior timing and bias reduction, especially after calibration. In fact, results indicate that the calibration improved WRF-Hydro's metrics, including Kling-Gupta Efficiency (KGE) and lag times, underscoring its potential for precise discharge predictions at higher computational costs. These findings offer critical insights for advancing regional coupled Earth system models, enhancing hydrological forecasting, and addressing basin-specific hydrological challenges.

1 Introduction

River discharge into the Mediterranean Sea is a critical component of its water budget, alongside the net inflow from both the Atlantic through the Strait of Gibraltar and the Black Sea via the Dardanelles Strait, as well as evaporation and precipitation (Pinaridi et al., 2015; Pinaridi and Masetti, 2000). As one of the primary freshwater sources, river discharge plays a pivotal role in shaping the basin's hydrological and ecological dynamics. Not only it does provide essential freshwater input, particularly during spring when plentiful precipitation rates and snowmelt enhance the discharge, but also transports nutrients and minerals that influence coastal and sub-basin ecosystems (Struglia et al., 2004). Moreover,

variability in river discharge, whether natural or anthropogenic, can modulate the Mediterranean's thermohaline circulation on decadal scales, affecting salinity, dense water formation, and oxygenation rates across the basin (Zavatarelli et al., 1998).

Timely and accurate river discharge estimates into the Mediterranean are critical for managing water resources and related risks in the region (Cisterna-García et al., 2025). In a broader context, understanding the interplay between regional climate

35 change and hydrological processes is essential, and underscores the need to study the coupling of Earth system components, including atmospheric, hydrological, and oceanic processes. Since the early 21st century, major international research programs such as WCRP (World Climate Research Programme), IGBP (International Geosphere-Biosphere Program), GEWEX (The Global Energy and Water Cycle Experiment) and CORDEX (COordinated Regional climate Downscaling EXperiment) have emphasized the importance of integrating regional climate models (RCMs) with hydrology and ocean
40 models to address these challenges. Coupled atmospheric-hydrological-ocean models provide a framework to simulate the full water cycle and its feedback mechanisms between land, atmosphere and ocean. Such models reveal how terrestrial water flows influence the broader water cycle and regional climate dynamics over seasonal to decadal scales. For example, terrestrial water flow can alter atmospheric boundary layers and modulate convective precipitation during shorter time scales (Amelia, 2022). By enhancing the representation of water cycle processes, these coupled models aim to improve simulation
45 accuracy and forecasting capabilities. This evolution from traditional hydrological models to coupled models reflects the growing need for tools that capture the intricate interactions between land, ocean, and atmosphere, offering enhanced weather forecasts and improved predictions of river flow and extreme events.

Regional coupled models and climate change studies in the Mediterranean require a high-resolution discharge component to correctly reproduce the complex orography and land-sea distribution of the Mediterranean region and thus effectively close
50 the coupling among the Earth system components (Hagemann et al., 2020). However, the first coupled models did not consider the hydrological component and the coupling was limited to atmosphere-ocean-land only (e.g. RegIPSL (Shahi et al., 2022), EBU-POM (Djordjevic and Rajkovic, 2010) and MORCE (Drobinski et al., 2012)), where rivers are inadequately represented. This restricts their ability to make accurate predictions of river flow and forecasts for floods and droughts, necessitating downstream hydrological modelling, independently of land-atmosphere feedback or the advantages of data
55 assimilation. Additionally, while some models incorporate atmosphere-ocean-land-river coupling, they struggle to meet the high-resolution requirements essential for precise discharge simulations.

Recent advances have led to the development of several complex coupled models, aimed at achieving fully integrated hydrological predictions for the Mediterranean region. Despite the sophistication to simulate complex earth system interactions, these models still face significant challenges. In particular, some models systematically underestimate
60 freshwater input from river runoff, leading to inaccuracies in discharge predictions and contributing to surface water salinification in the Mediterranean (Anav et al., 2021; Reale et al., 2020; Storto et al., 2023). This underestimation seems to be with the Hydrological Discharge (HD) model (Hagemann and Dümenil, 1997), a river routing model used to simulate the river discharge with different horizontal resolutions (e.g. 5 minutes in MESMAR and 0.5 degrees in ENEA-REG coupled models). The HD model uses a pre-parametrization based on a linear reservoir routing concept with pre-defined reservoir

65 numbers and temporal constants tailored to runoff inputs from the HydroPy Land Surface Model (LSM) (Stacke and Hagemann, 2021), which neglects the energy budget and overestimates runoff. Consequently, replacing the biased routing model in these coupled systems has become essential to ensure a more accurate representation of the water cycle.

At the same time, enhancing discharge simulations would also benefit from selecting the most appropriate land surface runoff model based on its runoff generation mechanism. A recent study by Hamitouche et al. (2025a) analysed the impact of
70 seven different runoff schemes within the Noah-MP LSM on global discharge simulations across diverse climate regions and found that the Schaake runoff scheme performed best in warm temperate regions, including the Mediterranean basins. This study utilized the CaMa-Flood hydrodynamic model (Yamazaki et al., 2011) for discharge simulation, demonstrating overall good performance against observational discharges. However, the analysis also revealed certain limitations, such as delays in capturing seasonal peak flows due to inherent constraints in CaMa-Flood, which were accurately resolved by the WRF-
75 Hydro model (Gochis et al., 2021), tested in the same study. Additionally, the study identified significant biases, particularly in high-flow extremes, emphasizing the need for ongoing calibration of tuneable parameters to improve the accuracy of hydrological predictions.

This highlights the importance of thoroughly evaluating standalone routing models for their performance and limitations, before integrating them into regional coupled climate or Earth system models—such as the ENEA-REG atmosphere-land-
80 river-ocean (ALRO) coupled model, developed within the framework of the Mediterranean CORDEX (Med-CORDEX) initiative. Med-CORDEX aims to advance fully coupled regional climate simulations over the Euro-Mediterranean domain, which encompasses the Mediterranean and Black Seas and their contributing catchments (excluding the Nile), by improving the representation of key Earth system components, including atmospheric processes, land surface, hydrology and ocean dynamics (Ruti et al., 2016). The Med-CORDEX Phase 3 protocol outlines common requirements for domain extent, spatial
85 resolution, and coupling strategies—mandating, for example, a minimum resolution of 12 km for the atmosphere/land and 10 km for the ocean, and requiring river-to-ocean coupling. Further details on the protocol are available at <https://zenodo.org/records/11659642>.

Considering the poor performance in reproducing accurate discharge estimates as well as some limitations of the existing regional coupled model for the Mediterranean region, the aim of this study is to compare the performances of two process-
90 based hydrological routing models, i.e. CaMa-Flood and WRF-Hydro, driven by a Med-CORDEX regional coupled model (ENEA-REG), in reproducing the discharge for the most important Mediterranean rivers. This evaluation provides valuable information, as the analysed models could be regarded as alternatives to the river component used in current regional coupled models. CaMa-Flood, a global river routing model, is widely recognized for its computational efficiency and ability to simulate river discharge at large scales. However, within the Med-CORDEX domain (Fig. 1), it has been utilized only
95 outside the context of regional coupled models. On the other hand, WRF-Hydro, the hydrological extension of the WRF atmospheric model, is designed for high-resolution hydrological predictions, with multi-scale capabilities, enabling it to represent processes on various spatial scales (Gochis et al., 2021). Over the Mediterranean region, its application has primarily been limited to small isolated and relatively undisturbed basins, and short time periods (Galanaki et al., 2021;

Senatore et al., 2015; Sofokleous et al., 2023, 2024). In contrast, in this study, simulations were conducted at a daily time scale over a long-term period (1990-2014) for the entire Med-CORDEX domain. The evaluation focused on several Mediterranean basins as well as the Danube River, which drains into the Black Sea, allowing for robust regional generalizations and comparative analyses across diverse hydrological regimes. Additionally, the study analyzed the role of parameter calibration in improving discharge simulations, with a particular focus on WRF-Hydro, leveraging the capabilities of the NCAR WRF-Hydro calibration package.

105 This study addresses the following key questions:

- Can WRF-Hydro or CaMa-Flood serve as effective alternatives to improve hydrological simulations within Euro-Mediterranean regional coupled models?
- Can calibration enhance WRF-Hydro performance, and to what extent?

The paper is structured as follows: after the presentation of the used models and methods (section 2), the first part of result (section 3.1) focuses on comparing the two hydrological models in their default configurations, ~~interpreted as a baseline reference,~~ offering insights into the foundational performance of these models. This approach establishes a basis for comparison and lays the groundwork for future studies to refine and adapt these models for innovative applications, particularly in Mediterranean hydrological and climatic contexts. The second part of the results (section 3.2) evaluates the impact of calibration in further improving discharge simulations, highlighting the potential of parameter optimization to enhance hydrological model performance, ~~with a particular focusing~~ on WRF-Hydro, ~~by~~ leveraging the capabilities of the NCAR WRF-Hydro calibration package.

2 Materials and methods

2.1 Study area and river discharge observations

The river basins draining into the Mediterranean Sea encompass over 5 million km², including the Nile basin, but excluding rivers flowing into the Atlantic Ocean from Portugal and Spain (Lionello et al., 2012; Ludwig et al., 2009). Most of these catchments are medium to small-scale, with only a few major basins exceeding 80,000 km² (Lionello et al., 2012). The ten largest rivers contributing to Mediterranean discharge include Rhone, Po, Drin-Buna, Nile, Neretva, Ebro, Tiber, Adige, Seyhan and Ceyhan rivers (Ludwig et al., 2009), with 71% of the total discharge originating from northern Mediterranean countries, 12% from eastern regions (Turkey), and 17% from southern areas, primarily the Nile. Notably, the Rhone and the Po alone contribute 25% of the northern discharge. Annual freshwater input to the Mediterranean and Black Sea is estimated at 305–737 km³/year (Struglia et al., 2004).

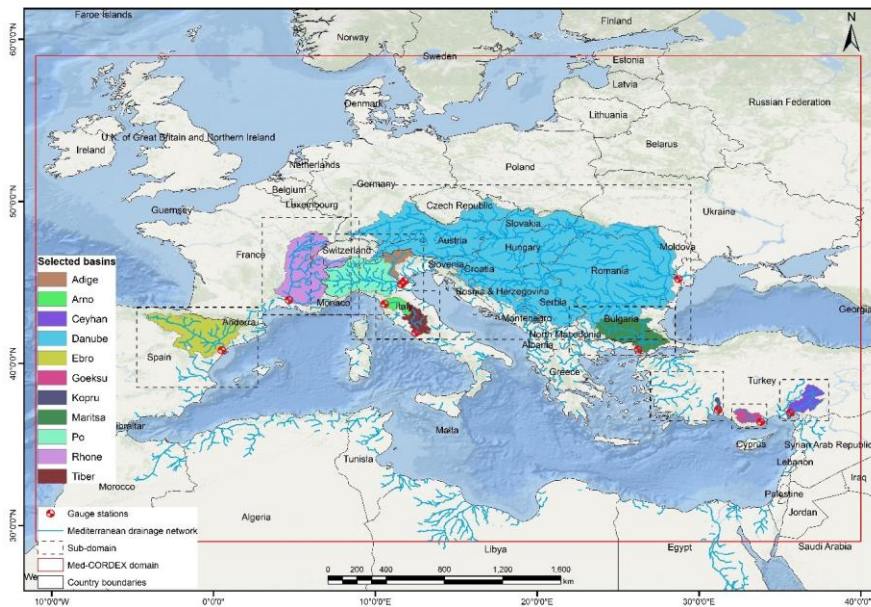
~~Considering the~~ The ENEA-REG model (Anav et al., 2021), ~~developed within the Med-CORDEX framework, incorporates into its~~ the ocean component ~~incorporates river~~ the discharge, ~~from 18 major Mediterranean rivers~~ simulated by the river routing model component. ~~Among these are several of the largest Mediterranean rivers—~~ from 18 main rivers, including Rhone, Po, Ebro, ~~Ceyhan,~~ Adige, Tiber, ~~and Ceyhan—~~ along with additional basins such as -Drin, ~~Merie~~ Maritsa, Goeksu, Vjosa, Jucar,

Buyuk Menderes, Arno, Kopru, and Struma, ~~as boundary conditions~~. For the Nile, a climatological monthly mean is prescribed, as suggested by the Med-CORDEX protocol (<https://zenodo.org/records/11659642>), due to the atmospheric model's limited domain coverage of the basin and the significant anthropogenic modifications to its natural discharge.

In this study, the validation focuses on 10 ~~of key the ENEA-REG routed rivers flowing into the Mediterranean Sea~~, in addition to the Danube River (Fig. 1), ~~for which~~ chosen based on the availability of at least five consecutive years of daily observations ~~after 1990 were available for validation~~. These rivers include: Maritsa, Goeksu, Arno, Kopru, Rhone, Po, Ebro, Ceyhan, Adige, and Tiber. Notably, six of these (Rhone, Po, Ebro, Tiber, Adige, and Ceyhan) are also among the ten largest Mediterranean rivers listed earlier, providing a representative mix of major and medium-sized basins. The selected rivers ~~span have~~ different climatic and morphologic conditions, ranging from mountainous alpine regions with pluvio-nival hydrological regimes (e.g., Rhone, Po, Adige) to the semi-arid climate of southern Turkey's Ceyhan River. Other river basins were excluded due to insufficient daily observational data ~~post-1990 or data records spanning less~~ shorter than five years.

The Júcar and Nile rivers were specifically excluded because their flow is heavily influenced by human interventions, such as reservoirs and water diversions, which are not explicitly represented in the modelling setup. ~~In the case of the Júcar, its relatively small drainage area (22,200 km²) combined with an exceptionally dense and complex regulation system—~~ including major reservoirs for flood control and water supply (e.g., Alarcón, Contreras, Tous, Bellús, Forata), hydropower reservoirs (e.g., Molinar, Cortes, Naranjero, La Muela), additional smaller reservoirs, river-aquifer connections, and inter-basin water transfers (Mombanch et al., 2014; Suárez-Almiñana et al., 2017)—strongly alters both the magnitude and timing of discharge. These extensive modifications suppress the natural hydrological signal, making it difficult for hydrological models to reproduce even the basic flow variability when compared with observations; meaningful validation is therefore not feasible under the present modelling configuration. For the Nile, in addition to the substantial anthropogenic modifications along its course, the Med-CORDEX atmospheric domain does not cover the full basin, which is why the protocol prescribes a monthly climatological discharge. As a result, the Nile cannot be included in the validation of dynamically simulated river flows.

For each selected river, simulated discharge was compared to observations from the nearest available station to the river mouth, covering upstream areas between 1,900 and 95,000 km² (807,000 km² for the Danube). Observational data were sourced from the Global Runoff Data Centre (GRDC, 2024), the Hydrographic Studies Center of CEDEX (CEH-CEDEX, 2024), and from Hagemann et al. (2020). To ensure accurate hydrograph construction and validation metrics, simulated discharge values corresponding to missing observational data were removed.



160 **Figure 1: Med-CORDEX simulation domain with its drainage network and the gauge stations (red dots) used in this study. The selected basins for evaluation and calibration are given distinct colours. The dashed contours refer to calibration sub-domains.**

2.2 Model description and experimental setup

This study is based on the use of CaMa-Flood and WRF-Hydro hydrological models for daily discharge simulations, driven by the ENEA-REG atmosphere-land-ocean coupled model run at 12km resolution over the Med-CORDEX domain. Within
 165 ENEA-REG, WRF model is used to dynamically downscale ERA5 data (Hersbach et al., 2020) and simulate the atmospheric variables, while the Noah-MP model simulates the runoff. The configurations of both models (WRF and Noah-MP) are provided in Table S1 and Table S2 in the supplement. All the ENEA-REG variables required as input by the two hydrological models are previously regridded to 6 km resolution using conservative remapping. In particular, CaMa-Flood uses as input daily runoff (surface + subsurface runoff, Fig. S1 in the supplement), while WRF-Hydro, which couples Noah-MP with the hydrological routing model, requires a set of atmospheric state variables —such as air temperature, surface pressure, specific humidity, horizontal wind components (10 m), downward shortwave and longwave radiation, and rainfall rate— provided at 6-hourly intervals (Fig. S2 in the supplement).
 170

To guide the reader through the experimental design, we structured the modelling experiments from the simplest to the most complex configuration. First, we evaluate the ENEA-REG-driven CaMa-Flood and WRF-Hydro in their default setups.

175 ensuring a fair comparison between the two models. These default configurations, described in Sections 2.2.1 and 2.2.2,
constitute the core model intercomparison of this study. In a second step (Section 2.2.3), we introduce an additional level of
complexity by calibrating key hydrological parameters of WRF-Hydro. This supplementary analysis assesses how much
calibration can further enhance discharge performance, providing insight into potential improvements when computational
resources permit.

180 Both CaMa-Flood and WRF-Hydro hydrological models are run for the period 1990-2014, after five years of spin-up. None
of the simulations considers reservoir operations and lakes, due to the lack of consistent and comprehensive information on
reservoir management and characteristics across all Mediterranean basins. This choice ensures a fair spatial evaluation across
the study domain, but we acknowledge it as a limitation that may contribute to reduced performance in some rivers.

2.2.1 CaMa-Flood processes and configuration

185 CaMa-Flood (v4.11, Yamazaki et al., 2011, 2013) is a global-scale distributed hydrodynamics model designed to simulate
river discharge, water levels, and floodplain inundation by routing runoff from land surface models through a predefined
river network map. The model employs a Manning's friction coefficient of 0.03 for main river channels and automatically
adjusts its routing time step to satisfy the Courant-Friedrichs-Lewy condition as used in previous studies (e.g., Bates et al.,
2010; Yamazaki et al., 2013).

190 CaMa-Flood employs the local inertial equation (a simplified form of the Saint-Venant equation that excludes the advection
term) to balance computational efficiency with physical accuracy. River basins are represented as unit catchments with
subgrid parameters for floodplain topography, allowing floodplain inundation to be modelled as a subgrid-scale process.
River discharge is calculated between upstream and downstream catchments based on the grid-vector hybrid river network,
while water levels and inundation areas are diagnosed from water storage in each catchment, assuming uniform water
195 surface elevation. Water storage is updated by conserving mass, incorporating upstream inflows, downstream outflows, and
local runoff inputs. Floodplains of neighbouring unit catchments can exchange flows through so-called bifurcation channels,
making it a quasi-2D model.

The river network map and subgrid topography parameters were extracted using the FLOW upscaling algorithm (Yamazaki
et al., 2009), applied to MERIT Hydro hydrography maps (Yamazaki et al., 2019) and MERIT DEM data at 3 arcsec (90 m)
200 resolution. Errors and obstacles in the DEMs, such as vegetation canopy, levees, water surface contamination, and radar
speckles, were corrected to ensure consistent downhill flow along streamlines (Yamazaki et al., 2012).

2.2.2 WRF-Hydro processes and configuration

WRF-Hydro (v5.2, Gochis et al., 2021) is a hydrological model designed to simulate surface and subsurface runoff
processes, either as a standalone model as in our case or coupled with the WRF atmosphere model. It integrates overland
205 flow, subsurface flow, baseflow, and channel routing to represent river discharge and hydrodynamics. WRF-Hydro solves
the Boussinesq equation for saturated subsurface lateral flow, accounting for hydraulic gradients driven by topography,

saturated soil depth, and hydraulic conductivity. It incorporates exfiltration from fully saturated cells and infiltration excess from the integrated Noah-MP land surface model (LSM), ensuring a dynamic interaction between surface and subsurface processes that together contribute to the 2-D overland flow and the 1-D channel routing.

210 Overland and channel flows are computed using the diffusive wave equation, an efficient approximation of the Saint-Venant equations that captures backwater effects and shallow water dynamics. The current surface water representation assumes one-way water flow into channels, without simulating overbank flow. Additionally, baseflow is represented using a conceptual storage-discharge bucket model, which gradually returns water to downstream channels.

215 Both the land surface model (LSM) and the hydrological routing model components of WRF-Hydro were run on the same 6 km spatial resolution grid. The land surface simulations were conducted at hourly intervals, while discharge was routed using a conservative terrain and channel routing timestep of 6 minutes. Streamflow outputs were recorded at a daily frequency.

For a fair comparison, WRF-Hydro was run using the same topography generated for CaMa-Flood. However, because WRF-Hydro requires high-resolution topography to generate the drainage network through its GIS preprocessing tool, the upscaled DEM was reconditioned both automatically and manually. This reconditioning was based on an available validated drainage network at a close resolution of 1/16° (Wu et al., 2012) and involved minimal intervention to avoid significantly altering flow velocity.

2.2.3 WRF-Hydro Calibration

225 Hydrological models, whether physical or conceptual, require calibration to achieve reliable streamflow simulations. This necessity arises from two key challenges: (i) the inability to measure all model parameters at the scale of application, and (ii) the simplification and spatiotemporal discretization of the complex and highly variable rainfall-runoff processes (Beck et al., 2020).

230 To maintain a fair and balanced comparison between the two models evaluated in this study, the WRF-Hydro calibration is presented as a distinct and complementary analysis rather than as part of the core intercomparison. This decision reflects several methodological and practical constraints. Unlike WRF-Hydro, neither CaMa-Flood nor the Noah-MP LSM currently allows basin-specific or spatially variable parameter calibration, and Noah-MP is not two-way coupled with CaMa-Flood in our framework. Additionally, calibration of WRF-Hydro was feasible due to the availability of the PyWRFHydroCalib package, whereas no equivalent calibration tool exists for CaMa-Flood. Given the substantial computational cost of regional-scale calibration, we therefore present the WRF-Hydro calibration results as an “add-on” analysis, illustrating the potential

235 benefits where resources permit while keeping the main model comparison consistent and unbiased.

The WRF-Hydro modelling system includes various predefined hydrological parameters, some of which are influenced by land use (e.g., vegetation type and density) and soil type (e.g., silt, clay, loam, sand) (Cerbelaud et al., 2022; Verma and J., 2023). These parameters can be adjusted or calibrated to account for the specific regional orographic and climatic characteristics (Lahmers et al., 2019; Yu et al., 2023), such as those of the Mediterranean basin, where default parameter

240 values are often insufficient. Calibration involves determining optimal tuneable coefficients by proportionally adjusting these spatial parameters relative to their default values, ultimately improving simulation accuracy (Cerbelaud et al., 2022; Verma and J., 2023). The WRF-Hydro calibration parameters are categorized into six groups related to: soil properties, runoff processes, groundwater dynamics, vegetation behaviour, snowpack melting, and channel characteristics. In this study, calibration focused on the first four groups, covering 16 parameters (Table S3), while snowmelt parameters were left at their default settings to ensure consistency across basins and fairness in the intercomparison, and for potential future regionalization over other snow-free basins. We acknowledge that this choice may limit performance in snow-influenced basins and that future work could further refine results by including these parameters. Similarly, channel parameters, such as channel roughness, were not calibrated because the channel routing resolution of ~6 km was considered too coarse for a reliable hydrological calibration.

250 For the calibration of the WRF-Hydro model, the Dynamically Dimensioned Search (DDS) algorithm, a heuristic single-solution-based global optimization method developed by Tolson and Shoemaker (2007), was employed by running the NCAR's (National Centre for Atmospheric Research) PyWrfHydroCalib package (<https://github.com/NCAR/PyWrfHydroCalib>). This algorithm is particularly suited for complex, high-dimensional hydrological models, enabling efficient exploration of parameter space while minimizing computational demands. DDS begins with a global search that transitions to a more localized search as iterations progress, guided by a scalar neighbourhood size perturbation parameter, which is typically set to 0.2. The dynamic adjustment of search size and probabilistic selection of parameters ensure rapid convergence toward good local or regional global optima, even without explicitly targeting the true global optimum (Tolson and Shoemaker, 2007). The stopping criterion is the number of user-defined iterations, which was set to 350 in this study. The calibration objective function, the Kling-Gupta Efficiency (KGE) (Gupta et al., 2009), is optimized to maximize agreement between simulated and observed streamflow. This method has been shown to yield efficient solutions for WRF-Hydro (Cosgrove et al., 2024; RafieeiNasab et al., 2025), balancing computational efficiency with calibration accuracy.

265 Additionally, to address the computational challenges posed by the WRF-Hydro model's complexity and the grid-based structure, which results in longer simulation times compared to other hydrological models (Kiliçarslan, 2022), a sub-domain approach was adopted to optimize calibration efficiency. Instead of calibrating the hydrological basins across the entire Med-CORDEX domain, smaller sub-domains (Fig. 1) were created. Each sub-domain focused on one or two basins (when their calibration date ranges overlapped) and was designed to closely match the Med-CORDEX grid, albeit with minor deviations. Calibration was then performed independently for each basin using an HPC system to ensure efficient utilization of computational resources. On average, the calibration simulations required a bit less than 3000 CPU hours per basin, effectively balancing performance and scalability to address the varying sizes and computational demands of the river basins. Following calibration, the optimized parameters for each basin were reintegrated into the larger Med-CORDEX domain for validation.

Before calibration, WRF-Hydro, driven by a regional coupled model (ENEA-REG), was “spun-up” for five years using default model parameters for each selected basin. This spin-up phase was critical for stabilizing soil moisture initial conditions. The model state at the end of this spin-up period served as a “warm start” for the calibration phase, which was performed for five years for each basin. Each calibration iteration included a one-year spin-up as an acclimation phase to align the model state with current conditions and suppress instabilities from parameter changes (RafieeiNasab et al., 2024; RafieeiNasab et al., 2025). The specific spin-up and calibration periods varied across basins and were selected based on the availability of reliable and continuous observational records (i.e. at least 5-year all falling within the 1990–2014 period), and are provided in Table S4 in the supplement. The optimized parameters from the calibration were then used to evaluate the model over the entire available period within 1990–2014, focusing on ensuring consistent performance across the selected basins. Although this evaluation is not fully independent—since the 5-year calibration window is included—it remains largely independent, given the 25-year evaluation window, and was chosen, in line with previous literature (e.g. Cosgrove et al., 2024), to ensure methodological consistency with the default (non-calibrated) WRF-Hydro evaluation, performed over the same full period. This alignment enables a direct, like-for-like assessment of the improvements attributable solely to calibration. Station-observed streamflow data served as the reference for both calibration and validation, providing a robust basis for model evaluation. Figure S3 in the supplement summarizes the different calibration steps.

2.3 Metrics

The evaluation of the performance of the different hydrological models relied on several complementary metrics to capture various aspects of hydrological behaviour, including correlation, bias, and flow variability. The metrics used in this study are described below:

1. Spearman’s Rho (Spearman, 1904):

This non-parametric measure of rank correlation assesses the monotonic relationship between simulated and observed streamflow, providing insight into the consistency of flow ranking without assuming linearity. Spearman’s rank-order correlation coefficient, used as an indication of flow timing, was chosen instead of Pearson’s coefficient due to its effectiveness in handling nonlinear and non-normally distributed data, such as hydrologic time series (Yue et al., 2002).

2. Kling-Gupta Efficiency (KGE) (Gupta et al., 2009):

The KGE was used as a comprehensive measure of model performance, combining correlation, bias, and variability.

3. Relative Standard Deviation (rSD):

The rSD compares the variability in simulated and observed streamflow, expressed as a ratio between the standard deviations of the simulated and observed streamflow.

4. Percent Bias (%Bias): The %Bias quantifies the systematic error in the simulation as a percentage of observed values. This metric, highlights over- or underestimation of the total flow by the model.

5. Low-flow Percent Bias (Bottom 30%) (Casper et al., 2012):

305 This metric evaluates the model's ability to simulate long-term low-flow conditions by calculating the bias for the bottom
310 30% of observed streamflow values, which are critical for drought analysis and ecological studies.

6. High-flow Percent Bias (Top 2%) (Yilmaz et al., 2008):

To assess the model's performance in simulating peak discharge events, the bias for the top 2% of observed streamflow
values was computed. This is particularly important for understanding flood dynamics and extreme events.

310 7. Time Lag:

The lag corresponding to the highest cross-correlation between observed and simulated streamflow was calculated to assess
the timing discrepancies. This metric helps identify whether the model captures the correct temporal alignment of flow
dynamics with observations.

Together, these metrics provide a comprehensive evaluation framework, addressing different aspects of hydrological
315 performance, from overall state to extreme conditions. Their corresponding value ranges and equations are detailed in Table
1.

320 **Table 1: List of evaluation statistical metrics. In particular, d is the difference in independent ranking for simulated and observed
values for day i and n is the number of values in each time series. σ_{sim} and σ_{obs} are the standard deviations of the simulated and
observed streamflow, respectively. QO_i and QS_i are observed and simulated flow values for day i , respectively. r is the Pearson
correlation coefficient, β is the relative bias (mean simulated divided by mean observed), and γ is the variability ratio (standard
deviation of simulated divided by standard deviation of observed). QO_i and QS_i are the bottom 30% observed and simulated flow
values. Q_{min} is the minimum flow value in the observed and simulated timeseries. μ_{obs} and μ_{sim} are the means of observed and
simulated flow values.**

Metric	Description	Range (Perfect)	Equation
r_s	Spearman's rho	-1 to 1 (1)	$r_s = 1 - \frac{6 \sum d_i^2}{n \times (n^2 - 1)}$ (1)
rSD	Relative Standard Deviation	0 to Inf (1)	$rSD = \frac{\sigma_{sim}}{\sigma_{obs}}$ (2)
%Bias	Percent Bias	-100 to Inf (0)	$\%Bias = 100 \times \frac{\sum_{i=1}^N (QS_i - QO_i)}{\sum_{i=1}^N QO_i}$ (3)
KGE	Kling- Gupta Efficiency	-Inf to 1 (1)	$KGE = 1 - \sqrt{(r - 1)^2 + (\beta - 1)^2 + (\gamma - 1)^2}$ (4)
%BiasFLV	Low-flow Percent Bias	-100 to Inf (0)	$\%BiasFLV = 100 \times \left(\frac{\sum_{i=1}^L \log \left(\frac{QS_i}{Q_{min}} \right)}{\sum_{i=1}^L \log \left(\frac{QO_i}{Q_{min}} \right)} - 1 \right)$ (5)

%BiasFHV	High-flow Percent Bias	-100 to Inf (0)	$\%BiasFHV = 100 \times \frac{\sum_{h=1}^N (QS_h - QO_h)}{\sum_{h=1}^N QO_h} \quad (6)$
τ	Time lag	≥ 0 (0)	Corresponds to the maximum value of the cross-correlation r_τ : $r_\tau = \frac{\sum_{i=1}^{n-\tau} (QO_i - \mu_{obs}) \times (QS_{i+\tau} - \mu_{sim})}{\sqrt{\sum_{i=1}^{n-\tau} (QO_i - \mu_{obs})^2 \sum_{i=1}^{n-\tau} (QS_{i+\tau} - \mu_{sim})^2}} \quad (7)$

3 Results and discussion

325 Before comparing the performances of CaMa-Flood and WRF-Hydro [models, driven by a regional coupled model ENEA-REG](#), we first present their simulated discharge time series, alongside observations and the discharge simulated by the [ENEA-REG-driven](#) HD model at both 0.5-degree and 5-minute spatial resolutions ([Fig. S4](#)). [These results are shown in Fig. 2 for a representative subset of basins, with the full set of basins provided in Fig. S4 in the Supplement.](#) The higher-resolution HD configuration is intended to improve the representation of the drainage network and catchment area, thereby

330 enhancing discharge estimates. However, both HD versions show a clear underestimation of freshwater inflow to the Mediterranean Sea and fail to reproduce the observed temporal patterns.

Quantitatively, the HD model exhibits very poor performance across Mediterranean basins. At 0.5-degree, the overall average KGE is -0.13 , with a mean bias of -37.4% , a Spearman's correlation of 0.36 , and a relative SD of only 0.23 . At 5-minute, the performance improves slightly (KGE = 0.00 ; %Bias = -16.6% ; $r_s = 0.48$), but variability remains strongly

335 damped (rSD = 0.25). The most critical shortcoming is the systematic underestimation of extremes: high-flow biases reach -70.3% (0.5-degree) and -65.7% (5-minute), while low-flow biases are also negative (-25.3% and -9.2% , respectively). Model performances at the basin scale for both HD versions (0.5-degree and 5-minute) are provided in Tables S5 and S6 of the Supplement, respectively, offering basin-specific details beyond the aggregated statistics presented here.

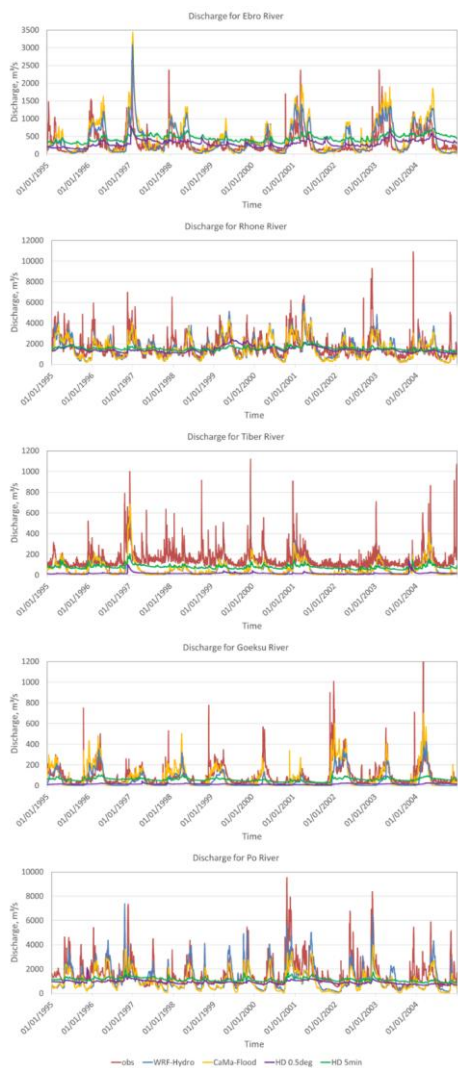
These results suggest that the underestimation of freshwater inflow by the HD model is not primarily due to the long-term

340 mean bias—which is moderate in the 5-minute configuration—but rather to its inability to capture discharge variability and high-flow peaks.

In contrast, visually WRF-Hydro and CaMa-Flood reproduce observed temporal dynamics much more closely, including variability and extremes, and therefore clearly outperform the HD model. Both models show strong potential for capturing observed patterns when using runoff from the Noah-MP land surface model—the default LSM in many Euro-Mediterranean

345 regional coupled and Earth system models—which has already been validated against ERA5-Land runoff data (Hamitouche et al., 2025a). This indicates that CaMa-Flood and WRF-Hydro are suitable alternatives to replace the HD model in this

modelling framework, despite some visual biases in low- and high-flow reproduction. The following section provides a detailed evaluation of their performances.



350 Figure 2: Observed and simulated daily discharge for the Ebro, Rhone, Tiber, Goeksu and Po rivers for common 10 years from 1995 to 2004. Simulations include ENEA-REG-driven WRF-Hydro and CaMa-Flood, as well as the HD model at 0.5-degree and 5-minute spatial resolutions, evaluated near the corresponding gauge stations.

3.1 WRF-Hydro vs. CaMa-Flood (default configurations)

355 In this section, we compare the performance of CaMa-Flood and WRF-Hydro in its default configuration, while a detailed discussion of the calibrated WRF-Hydro is provided in the next section. ~~To evaluate the predictive performance of the models, we used measures of accuracy, precision, and discrimination—percent bias, standard deviation, and Spearman’s rho, respectively. These metrics are presented in a Taylor diagram (Fig. 2). Lin et al. (2019) and Sanchez-Lozano et al. (2025) indicate that a good bias and variability should be within the range of $\pm 20\%$, representing values for the bias and variability ratio from 0.8 to 1.2. For Spearman’s rho, Tijerina-Kreuzer et al. (2021) used a threshold greater than 0.5 as an indicator of a good shape.~~

360 Overall, the two models, driven by a regional coupled model (i.e. ENEA-REG), show comparable skill in reproducing flow timing, but differ systematically in their ability to capture variability and discharge magnitude. CaMa-Flood tends to underestimate flow variability and both high- and low-flow magnitudes, while WRF-Hydro typically produces more realistic variability, though sometimes with excessive peaks and overestimation. Both models outperform the HD baseline included in ENEA-REG, demonstrating clear added value; however, neither model performs consistently well across all Mediterranean basins, and each shows strengths and weaknesses depending on basin characteristics and scale (Figs. 3–5).

365 Both models reproduce the seasonal flow timing reasonably well (Fig. 3). Their mean (0.64 for CaMa-Flood vs. 0.63 for WRF-Hydro) and median (0.64 for CaMa-Flood vs. 0.65 for WRF-Hydro) Spearman’s rho values are nearly identical, confirming that neither model has a systematic advantage in timing skill. Differences emerge at the basin level: WRF-Hydro excels in large basins such as the Danube, while CaMa-Flood performs better in smaller or steep catchments such as the Goeksu. The time-lag analysis (Table 2) reinforces this pattern: WRF-Hydro generally produces shorter delays in peak flow (with an average of 4.8 days vs. 8.5 days)—except in a few basins where CaMa-Flood achieves near-perfect timing. The striking 43-day lag in the Danube for the CaMa-Flood aligns with findings from by Hamitouche et al. (2025a). By analysing the ENEA-REG and WRF-Hydro simulated runoffs (Fig. S5 in the supplement), we observed a close alignment in timing, indicating that the coupling of the land surface model and routing in WRF-Hydro does not significantly affect runoff timing. This suggests that the substantial lag in CaMa-Flood is primarily due to its routing limitations.

370

375

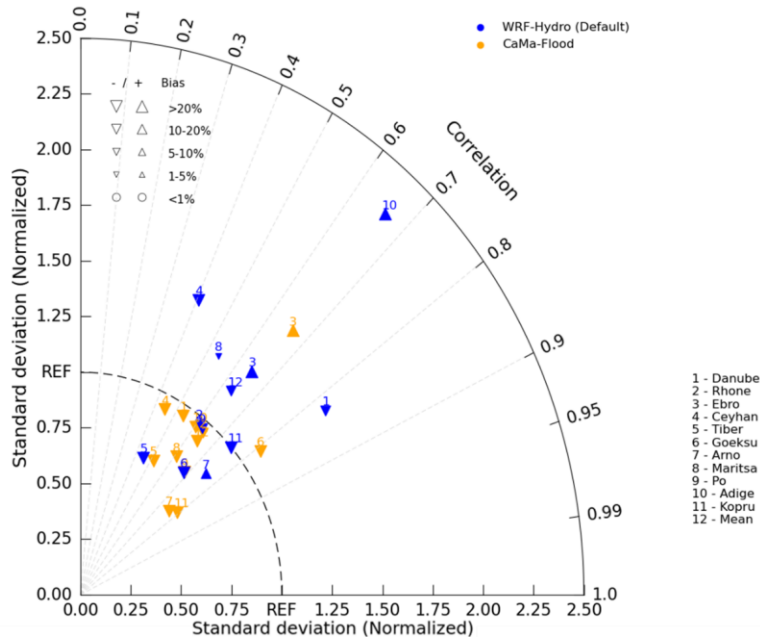


Figure 23: Taylor diagram showing the performance of CaMa-Flood (orange) and default WRF-Hydro (Default, blue) models, driven by a regional coupled model (EENA-REG), in different river basins numerated from 1 to 11. Number 12 refers to the mean value. The size and the orientation of the triangles represent the magnitude and under- or overestimation of the percent bias.

Table 2: Summary of time lag values for each model experiment (CaMa-Flood vs. WRF-Hydro (Default)) and each basin.

Basin	CaMa-Flood	WRF-Hydro (Default parameters)
Danube	43	0
Rhone	5	6
Po	6	2
Ceyhan	3	3
Adige	4	3
Tiber	6	9
Maritsa	8	7
Goeksu	1	6

<u>Arno</u>	<u>6</u>	<u>6</u>
<u>Kopru</u>	<u>1</u>	<u>4</u>
<u>Ebro</u>	<u>10</u>	<u>7</u>

Spearman's rho, which evaluates flow timing, reveals mixed performance between CaMa Flood and WRF Hydro. Across all basins, the overall average Spearman's rho is nearly identical for both models, with CaMa Flood at 0.64 and WRF Hydro at 0.63 (median 0.64 and 0.65 respectively), indicating comparable performance in capturing flow timing. In several individual basins, the two models exhibit similar performance, such as the Ebro (CaMa Flood: 0.66, WRF Hydro: 0.65), Arno (0.76 vs. 0.75), and Rhone (0.64 vs. 0.61). However, in some basins, one model clearly outperforms the other. For instance, WRF Hydro achieves noticeably better timing in the Danube (0.83 vs. 0.54), while CaMa Flood shows superior performance in the Goeksu basin (0.81 vs. 0.68). Both models generally meet the threshold for acceptable performance (Spearman's rho > 0.5), indicating reasonable flow timing for most basins. However, significant differences in performance in basins like the Danube and Goeksu suggest that model-specific parameterizations and routing schemes might influence timing accuracy.

The two models diverge more substantially in representing flow variability (Fig. 3). CaMa Flood consistently underestimates variability, often falling below the acceptable 0.8–1.2 range (Lin et al., 2019; and Sanchez Lozano et al., 2025). WRF Hydro displays a broader distribution, with several basins close to observed variability, but also instances of pronounced overestimation, especially in steep alpine basins (e.g., Adige). This contrast reflects inherent differences between a quasi-2D (solely) total runoff routing model (CaMa Flood) and a process-based distributed system (WRF Hydro), whose representation of soil–vegetation–atmosphere processes can amplify runoff responses and lead to stronger variability signatures.

Across all basins, the overall average relative standard deviation is 0.90 for CaMa Flood and 1.18 for WRF Hydro, while the median values are 0.93 and 1.00 respectively. This indicates that CaMa Flood generally underestimates variability, while WRF Hydro shows a more centred distribution, but leans toward slightly higher variability. For CaMa Flood, only five basins fall within the acceptable range (i.e. 0.8–1.2), namely the Danube, Rhone, Ceyhan, Adige, and Goeksu, while the majority are below 1. Notable examples of this underestimation include the Arno (0.58), Maritsa (0.78), and Tiber (0.70) basins, where variability is significantly lower than observed. In contrast, WRF Hydro exhibits a more equilibrated performance, with six basins showing standard deviations higher than 1 and five basins lower than 1. However, only four basins—Rhone, Po, Arno, and Kopru—fall within the acceptable range. Despite its relatively balanced distribution, WRF Hydro often displays excessive variability in basins where standard deviation values exceed 1. For instance, in the Danube (1.47), Adige (2.28), and Maritsa (1.27) basins, the variability is markedly overestimated, with the Adige basin standing out as an extreme case of overestimation. Overall, CaMa Flood demonstrates a consistent tendency to underestimate variability, with relatively few basins achieving balanced performance. WRF Hydro, on the other hand, shows a broader variability, with a more equilibrated performance across basins but also a noticeable tendency toward excessive variability in some

cases, occasionally to extreme levels. This distinction highlights fundamental differences in how the two models handle flow variability across the studied basins.

Both models show a general tendency to underestimate discharge, but CaMa-Flood does so more strongly (Fig. 3). WRF-Hydro achieves lower overall bias (-12.1% vs. -27.8%) but occasionally produces substantial overestimations in some basins—particularly where variability is already high. CaMa-Flood, by contrast, displays more uniform behaviour: predominantly negative biases and limited ability to reproduce high flows. These opposite tendencies explain why WRF-Hydro performs better in some mid-size basins, while CaMa-Flood offers more stable (but typically conservative) estimates. Across all basins, the overall average percent bias is -27.8% for CaMa-Flood and -12.1% for WRF-Hydro, while the median values are -26.6% and -17.1%, respectively. This result indicates that both models generally tend to underestimate flows, with CaMa-Flood exhibiting a more pronounced underestimation compared to WRF-Hydro. For CaMa-Flood, the percent bias exceeds -20% in most basins, such as the Ceyhan (-48.26%) and Kopru (-69.00%), underscoring a systematic tendency to underestimate flow. In contrast, WRF-Hydro demonstrates limited underestimation in certain basins, such as the Rhone (-8.47%) and Maritsa (-3.98%), while overestimates flow in others, such as the Adige (64.63%) and Arno (19.42%). These findings highlight that while WRF-Hydro generally achieves lower bias, it may introduce overestimation in certain cases.

KGE values across basins fall largely within the intermediate category ($0.30 < KGE \leq 0.65$; adapted from (Sanchez Lozano et al. 2025)) for both ENEA-REG-driven models (Fig. 4), showing that neither system consistently outperforms the other. WRF-Hydro reaches its best performance in large temperate basins, while CaMa-Flood excels in some smaller Mediterranean catchments. Notably, both models improve upon the HD model included in ENEA-REG, demonstrating the benefit of dedicated routing schemes over the simpler baseline.

The Kling-Gupta Efficiency (KGE) offers a more complete performance metric than traditional benchmarks by combining these three aspects (i.e., correlation, bias and relative variability). A KGE value greater than -0.41 indicates better performance than the average streamflow benchmark, which represents the simplest model where the simulated value is always the mean flow (Knoben et al., 2019). Furthermore, KGE values can be classified to indicate the quality of performance: values ≤ -0.41 are unacceptable, $-0.41 < KGE \leq 0.00$ are very poor, $0.00 < KGE \leq 0.30$ are poor, $0.30 < KGE \leq 0.65$ are intermediate, and $0.65 < KGE \leq 1.00$ are good (adapted from Sanchez Lozano et al. (2025)).

The overall average KGE values for the two models across all basins are 0.37 for CaMa-Flood and 0.32 for WRF-Hydro, with median values of 0.43 and 0.45, respectively. This result indicates that both models generally achieve intermediate performance, but with significant variability across basins (Fig. 3).

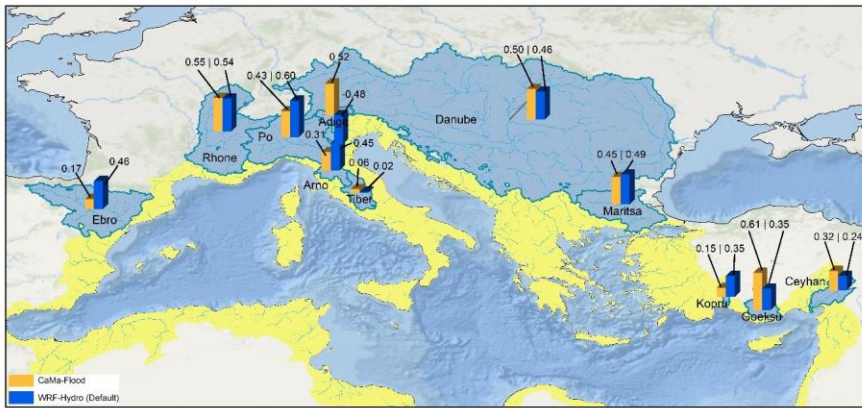


Figure 34: KGE values of each model experiment (CaMa-Flood vs. WRF-Hydro (Default)) across the studied basins.

For the CaMa-Flood model, the highest KGE value is observed in the Goeksu basin, falling within the "intermediate" performance category as the majority of the remaining basins (i.e., Rhone, Danube, and Adige). However, some basins, such as the Tiber, Koprulu, and Ebro, exhibit "poor" values, indicating limited predictive accuracy in these regions. WRF-Hydro shows a slightly more varied performance. Its highest values are observed in the Po basin and Rhone basin, both of which fall within the "intermediate" category as most of the other rivers. However, the Ceyhan and Tiber basins fall into the lower "poor" category ($0.00 < KGE \leq 0.30$), reflecting weaker predictive capability in these regions. Notably, the model significantly underperforms in the Adige basin, where its performance is categorized as "unacceptable," highlighting a key area for improvement. When comparing the two models, WRF-Hydro performs better than CaMa-Flood in basins such as the Po, Arno, and Ebro, while CaMa-Flood outperforms WRF-Hydro in Goeksu, Ceyhan, and Adige basins. In some basins, i.e., the Danube, Maritsa, and Rhone, the two models exhibit comparable performance. Overall, the analysis highlights that neither of the models achieves intermediate or good performance across all basins, but each model shows strengths and weaknesses depending on the specific region.

In addition to the Spearman's rho, the time-lag analysis offers valuable insights into the models' ability to capture the timing of peak flow events. The overall average time lag across all basins is 8.5 days for CaMa-Flood and 4.8 days for WRF-Hydro, with median values of 6 days for both models. These statistics highlight that WRF-Hydro generally achieves better timing accuracy, though both models exhibit variability across basins (Table 2).

Table 2: Summary of time lag values for each model experiment (CaMa-Flood vs. WRF-Hydro (Default)) and each basin.

Basin	CaMa-Flood	WRF-Hydro (Default parameters)
Danube	42	0

Rhone	5	6
Po	6	2
Ceyhan	2	2
Adige	4	2
Tiber	6	9
Mariton	8	7
Goeksu	1	6
Arno	6	6
Koprü	1	4
Ebro	10	7

460 For the Danube basin, WRF-Hydro demonstrates exceptional accuracy with no time-lag (0 days), while CaMa-Flood exhibits a remarkable lag of 43 days, highlighting a major discrepancy in flow timing for this basin. This result aligns with findings from Hamitouche et al. (2025a). By analysing the ENEA-REG and WRF-Hydro simulated runoffs (Fig. S5 in the supplement), we observed a close alignment in timing, indicating that the coupling of the land surface model and routing in WRF-Hydro does not significantly affect runoff timing. This suggests that the substantial lag in CaMa-Flood is primarily due to its routing limitations. In contrast, for most other basins, the two models show relatively similar performance, with time lags generally within a few days of each other. For instance, in the Rhone basin, both models exhibit minimal differences, with CaMa-Flood showing a lag of 5 days and WRF-Hydro 6 days. Similarly, in the Po, Ceyhan, Adige, and Arno basins, both models perform comparably, with time lags ranging from 2 to 6 days compared to observations. These results indicate that in these regions, the models are generally aligned in predicting peak flow timing. However, notable discrepancies arise in specific basins. In the Goeksu basin, CaMa-Flood achieves near-perfect timing with a lag of just 1 day, whereas WRF-Hydro lags by 6 days. Similarly, in the Tiber basin, WRF-Hydro exhibits a higher lag of 9 days compared to 6 days for CaMa-Flood, suggesting slightly better timing by CaMa-Flood in this case. In summary, while both models show comparable performance in many basins, WRF-Hydro consistently demonstrates superior timing in basins like the Danube, whereas CaMa-Flood achieves better timing in basins such as Goeksu. The large lag observed in the Danube for CaMa-Flood underscores a critical limitation of this model in capturing flow timing in specific regions.

465

470

475

Regarding low-flow and high-flow biases, these hydrological signatures evaluate performance using two segments of the flow duration curve (FDC) (Smakhtin, 2001; Vogel and Fennessey, 1994), as defined by Yilmaz et al. (2008). The high-flow segment (0–0.02 exceedance probabilities) represents watershed response to large precipitation events (Fig. S6 in the supplement) and is used to calculate high-flow bias (%BiasFHV, Eq. (6)). The low-flow segment (0.7–1.0 exceedance

480 probabilities) reflects long-term flow sustainability (Fig. S7 in the supplement) and is used to calculate low-flow bias (%BiasFLV, Eq. (5)).

High-flow and low-flow biases reveal complementary strengths (Fig. 5). CaMa-Flood systematically underestimates both extremes (-27.8% and -16.3%, respectively), reflecting a more damped hydrological response. WRF-Hydro shows more variable behaviour: it reduces high-flow underestimation on average (-2.1%) but can overestimate peak flows in certain
485 basins, while its low-flow errors range from strong underestimation to slight overestimation, with an average of -18.0%. These contrasting patterns indicate that WRF-Hydro generates a more dynamic flow regime, whereas CaMa-Flood tends toward smoother hydrographs.

The evaluation of high-flow and low-flow biases reveals significant variability in the performance of CaMa-Flood and WRF-Hydro across basins (Fig. 4). For high-flow bias, the overall average bias across all basins is -27.8% for CaMa-Flood and -2.1% for WRF-Hydro, with median values of -34.4% and -20.3%, respectively. This result indicates that CaMa-Flood generally underestimates high flows more frequently, while WRF-Hydro exhibits less pronounced biases but occasionally overestimates peak flows. For instance, WRF-Hydro shows large positive high-flow biases in basins like the Adige (89.25%) and Danube (34.83%). Conversely, CaMa-Flood tends to underestimate high flows substantially in basins such as the Kopru (-52.05%), Po (-44.95%), and Tiber (-42.89%). Notably, the Ebro basin stands out as the only instance where both models demonstrate positive high-flow biases, especially for CaMa-Flood (33.07% vs. 12.43% in WRF-Hydro).

495 Regarding low-flow biases, the overall average bias across all basins is -16.3% for CaMa-Flood and -18.0% for WRF-Hydro, with median values of -17.3% and -16.7%, respectively. Both models predominantly show negative low-flow biases, indicating an underestimation of base flows. However, the extent of these biases varies. For example, in the Tiber and Goeksu basins, WRF-Hydro exhibits significantly larger negative biases (-41.99% and -35.06%, respectively) compared to CaMa-Flood (-23.21% and -24.02%). On the other hand, WRF-Hydro shows positive low-flow biases in the Adige (9.74%) and Arno (14.44%) basins, suggesting occasional overestimations, whereas CaMa-Flood consistently maintains negative biases in these basins, with values of -9.70% for the Adige and -2.63% for the Arno.

500 Overall, CaMa-Flood demonstrates a more consistent tendency to underestimate both high and low flows across most basins, reflecting a conservative approach in capturing variability. In contrast, WRF-Hydro shows more mixed behaviour, with both significant overestimations (e.g., Adige and Danube for high flows) and underestimations (e.g., Tiber and Goeksu for low flows), highlighting its variable performance across different flow regimes and basins.

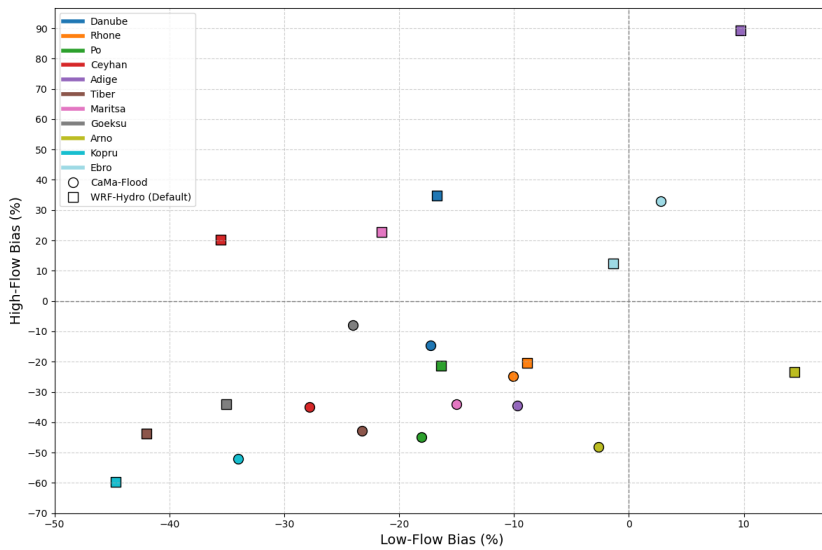


Figure 45: Scatterplot of low-flow bias vs. high-flow bias in each model experiment (CaMa-Flood vs. WRF-Hydro) and river basin.

To explore whether the basin size influences the model performance, we analysed the Pearson's correlation between key performance metrics and the size of the analysed Mediterranean river basins. These basins represent a wide range of upstream areas, from smaller basins like Kopru to larger ones such as the Rhone. The Danube basin was excluded from this analysis due to its significantly larger size compared to the others, which could substantially alter the correlation results. The results for Spearman's rho indicate that the flow timing of both CaMa-Flood and WRF-Hydro models, driven by a regional coupled model (ENEA-REG), shows a weak relationship with basin size, with both models having a correlation value of -0.13. The flow variability, as well as the time lag, increases with increasing basin size only for CaMa-Flood (correlation of 0.48 and 0.63 respectively). For percent bias, CaMa-Flood is less sensitive to basin size compared to WRF-Hydro (-0.32 vs. -0.67), especially in terms of high-flow bias (-0.18 for CaMa-Flood, -0.58 for WRF-Hydro) compared to low-flow bias (-0.46 for CaMa-Flood, -0.66 for WRF-Hydro). Although these correlations are not statistically valid due to the limited number of basins analysed, they are still useful for gaining insight into the sensitivity of each model to basin size.

In summary, both models provide added value over the HD baseline and can reproduce Mediterranean discharge dynamics to an intermediate level of skill.

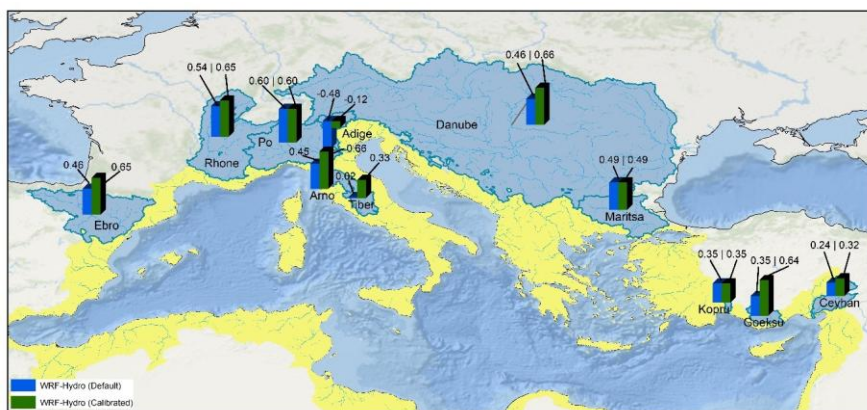
Their major applications include: improving freshwater fluxes into the ocean component to reduce biases in sea surface salinity; predicting hydrological extremes; supporting long-term water availability for planning; and projecting future hydrological impacts of climate change. Decomposing KGE into its components and examining high- and low-flow biases

525 helps to explain the underlying trade-offs in model performance across Mediterranean basins. CaMa-Flood tends to produce smoother hydrographs with smaller bias in some basins but underestimates variability and extremes, whereas WRF-Hydro more accurately captures flow timing and variability but occasionally overestimates peak flows.
These trade-offs have practical implications for different applications. For ocean–land coupling and improving mean freshwater fluxes into the Mediterranean, CaMa-Flood may be sufficient due to its stable estimates of flow volumes. For
530 extremes prediction, which focuses on high- and low-flow events relevant to short-term forecasting and risk assessment, WRF-Hydro is generally better suited due to its richer process representation, more dynamic flow regime, and ability to capture peak flows. CaMa-Flood retains the advantage of simulating floodplain dynamics, including flood depth and extent, which is valuable for flood hazard assessment in smaller or steep catchments. For projections of future hydrological impacts under climate change, which rely on climate model forcings and often assume stationarity of biases over time, both models
535 are appropriate, as moderate differences in extremes do not strongly affect long-term water balance. Additionally, WRF-Hydro is particularly suitable for studies investigating precipitation–soil moisture feedbacks, as it allows full coupling between soil hydrology and the atmosphere, capturing critical land–atmosphere interactions.
Basin characteristics further influence model suitability: WRF-Hydro performs well in large temperate basins, while CaMa-Flood provides stable, conservative estimates in smaller or steep catchments. Overall, model choice should be guided by the
540 intended application, basin characteristics, and the balance between process detail and computational efficiency.
While this study provides a systematic comparison between CaMa-Flood and WRF-Hydro, it is important to underscore that the two models are not driven by identical types of inputs. CaMa-Flood receives total runoff from Noah-MP within the ENEA-REG framework, which in our configuration is provided at daily resolution, although the model can also operate with higher-frequency inputs such as hourly runoff. In contrast, WRF-Hydro uses atmospheric fields generated by ENEA-REG at
545 6-hourly resolution to internally compute runoff through its embedded Noah-MP land-surface model, even though it is likewise capable of operating with finer-scale atmospheric forcing. Consequently, differences in simulated discharge reflect the combined influence of both runoff generation and routing processes. For this reason, the comparison should not be interpreted as a purely hydrological benchmark in which both systems operate under identical inputs. Instead, it reflects how each model performs within the coupling configuration in which it would realistically operate in a regional climate or Earth
550 system modelling environment. In such frameworks, CaMa-Flood is typically coupled downstream of a land-surface model, while WRF-Hydro employs its own land-surface component driven directly by meteorological fields. Forcing both models with identical runoff inputs would not represent their intended operational use and would fall outside the scope of this study. Our aim was therefore to assess their relative suitability and behaviour in configurations consistent with their implementation within regional coupled systems such as ENEA-REG.

555 3.2 WRF-Hydro calibration: performance improvements and related hydrological impacts

3.2.1 Performance metrics before and after Calibration

The calibration of WRF-Hydro, aimed to optimize the Kling-Gupta Efficiency (KGE), leads to an improvement of the model performances in most of the basins and metrics. In average, the calibration improved the KGE from 0.32 to 0.48, with the median increasing from 0.45 to 0.60. The quality of performance pass from intermediate to good (KGE > 0.6; adapted from (Sanchez Lozano et al, 2025)) in several basins such as the Arno (from 0.45 to 0.66), the Danube (from 0.46 to 0.66), the Rhone (from 0.54 to 0.65) and the Ebro (from 0.46 to 0.65). After calibration, Goeksu and Tiber rivers show intermediate performance, while for the Po, Kopru, and Maritsa basins the KGE remained unchanged (Fig. 56).



565 Figure 56: Comparison of KGE values between the calibrated and non-calibrated WRF-Hydro model experiments across the selected basins.

These unchanged KGE values are particularly noteworthy. They suggest that the default parameters for these basins were already close to optimal, and further calibration did not yield any improvements. This outcome highlights the robustness of the default parameter configuration in specific contexts and emphasizes the need for calibration strategies that are sensitive to basin-specific hydrological characteristics.

570 The components of the KGE offer further insight into these outcomes. The temporal correlation showed relative stability across most basins, with modest improvements in the Goeksu (from 0.68 to 0.76), Rhone (0.61 to 0.67) and Arno (from 0.75 to 0.80), while noticeable declines were found in the Ceyhan (from 0.41 to 0.28). These results indicate that the improved temporal alignment between modelled and observed discharges is not systematic for all basins. In terms of bias, calibration yielded mixed results: the bias reduced substantially for the Goeksu (-33%) and the Rhone (-8.2%) basins, while worsened in the Danube (+4.6%) and the Ceyhan (+8.2%). These changes illustrate that while calibration reduced bias in many cases, it

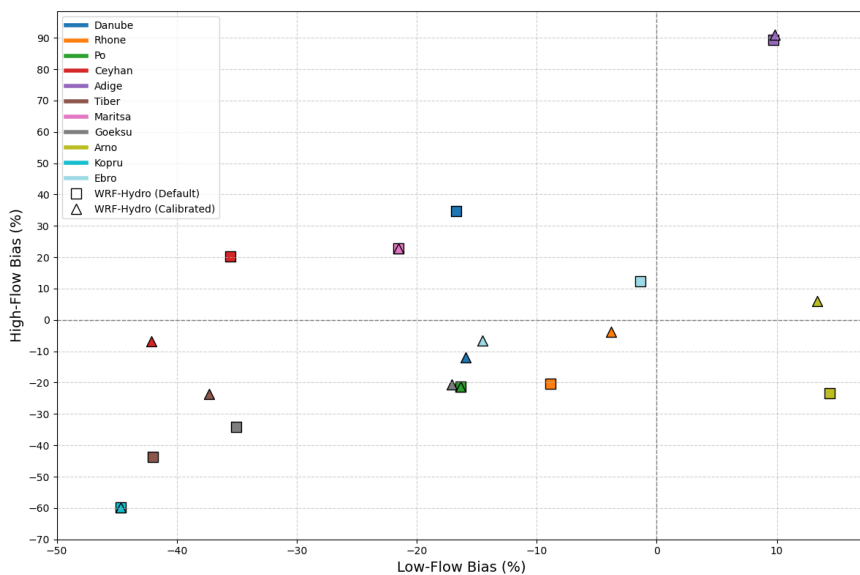
575

590

on the other hand, displayed mixed results: a reduction of the extreme positive biases in the Danube, (~~from 34.8% to -11.9%~~) and the Ceyhan (~~from 20.1% to -6.8%~~) together with a slight worsening in the Adige basin (~~from 89.3% to 90.9%~~).

Table 3: Summary of time lag values for the calibrated and non-calibrated WRF-Hydro model experiments in each basin.

Basin	WRF-Hydro (Default parameters)	WRF-Hydro (Calibrated)
Danube	0	3
Rhone	6	1
Po	2	
Ceyhan	3	0
Adige	3	0
Tiber	9	0
Maritsa	7	
Goeksu	6	3
Arno	6	0
Kopru	4	
Ebro	7	0



595 **Figure 78:** Scatterplot of low-flow bias vs. high-flow bias for the calibrated and non-calibrated WRF-Hydro model experiments in each river basin.

Overall, the calibration of WRF-Hydro enhanced discharge simulations for many Mediterranean basins, as reflected in the improvements in KGE and reductions in lag time. However, the trade-offs between correlation, bias, and standard deviation, along with the basin-specific variability, highlight areas where the calibration strategy could be refined to better capture the unique dynamics of each basin.

600 For the Adige basin, the poor performance, both with default and calibrated WRF-Hydro, observed particularly for the strong overestimation of high-flow events, the overall bias, and the variability, resulting in a very poor KGE, can be explained by the substantial corrections made to the drainage network. To disconnect the Adige basin from the adjacent Po River basin—necessary due to the coarse spatial resolution of the model—elevation reconditioning was applied. However, these corrections altered the topography slope, a critical factor in discharge calculations. The changes to the slope resulted in
 605 overly fast flows, which in turn caused exaggerated high-flow peaks and impacted the model's ability to simulate discharge accurately for the Adige basin. This finding underscores the sensitivity of WRF-Hydro, as any other hydrodynamic or hydrological model, to topography and the need for careful elevation reconditioning, particularly at coarse spatial resolutions. While such corrections are essential to accurately delineate basin boundaries and drainage networks, they must be implemented cautiously to avoid introducing errors that affect hydrological dynamics.

610 Excluding the Adige basin from the analysis demonstrated notable improvements in the overall performance of the WRF-Hydro model outperforming CaMa-Flood (Fig. 89). For instance, the calibrated WRF-Hydro configuration showed an increase in KGE from 0.48 (including Adige) to 0.53 (excluding Adige), compared to the default settings (0.32 and 0.4 respectively) and CaMa-Flood (0.37). Similarly, the percent bias improved from 23.9% to 21.5%, and the relative standard deviation became closer to 1, indicating better approximation of flow variability. These improvements underscore the sensitivity of WRF-Hydro's performance to accurate input parameters and the profound impact of specific basin corrections on overall model results.

615

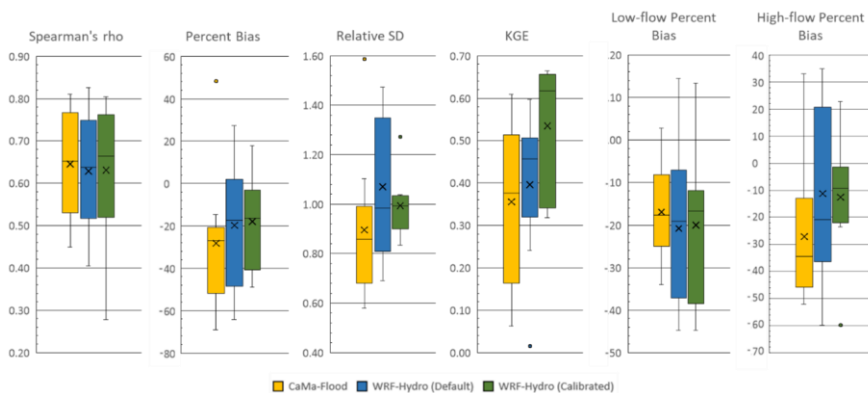


Figure 89: Performance metrics for each model experiment (with Adige basin excluded). The X represents the mean value.

It is worth noting that while some metrics, such as high-flow bias, showed a decrease in performance, this is primarily because the Adige basin's overestimation of high flows compensated for the negative biases in other basins. Nevertheless, the improvements in the key metrics—KGE, Percent Bias, and relative standard deviation—demonstrate the importance of addressing basin-specific challenges to enhance model reliability.

Post-calibration improvement was actually expected, particularly because [several important sources of structural and input uncertainty are not explicitly represented in our modelling framework.](#)

625 [First, none of the models account for human interventions such as reservoirs, hydropower operations, and water withdrawals, which can substantially modify the timing, magnitude, and variability of streamflow in many Mediterranean rivers. This omission is primarily due to the lack of consistent and comprehensive information on reservoir characteristics and management practices across all Mediterranean basins, which span multiple countries and governance systems. Consequently, the simulated discharge reflects a naturalized flow regime, whereas the observations often reflect regulated conditions, a well-documented issue for most Mediterranean rivers \(Grill et al., 2019\). This inherent mismatch contributes to discrepancies in low-flow periods, peak attenuation, and seasonal timing.](#)

630

635 Second, locally calibrated scores help compensate for errors in catchment boundaries (Kauffeldt et al., 2013; Lehner, 2012), primarily due to the coarse resolution of elevation data, as exemplified by the Adige basin. From a purely hydrological perspective, this resolution is inadequate, and a higher resolution on the order of hundreds of meters would be preferable to better represent small basins. However, this is constrained by the very high computational resources required for simulations covering a large domain, such as Med-CORDEX.

640 Third, and for calibration also mitigates errors in meteorological forcing, particularly in precipitation data (Beck et al., 2017, 2019), as shown in Sect. S1 and Fig. S8 in the supplement. The regional coupled models generate meteorological forcing at relatively coarse spatiotemporal resolution and rely on parameterized convection, known source of uncertainty and errors. In contrast, convection-permitting models, km-scale models that explicitly resolve deep convection, can more realistically represent sub-daily statistics and extreme events (Fosser et al., 2024; Struglia et al., 2025), highlighting an additional limitation of regional models in capturing high-flow and short-duration extremes. Further efforts in bias correction or data assimilation of climate forcing could improve hydrological model performance, pending the extension of convection-permitting models to large domains such as Med-CORDEX, given the substantial computational resources required.

645 Readers should interpret the findings within this context, and future work incorporating anthropogenic controls, higher-resolution runs, and refined meteorological forcing could further improve model performance.

3.2.2 Effects of calibration on runoff generation and partitioning

650 To better understand the source of performance improvements following calibration, we investigated how the calibrated parameters influenced key hydrological processes—particularly runoff generation and the surface–subsurface flow partitioning. This analysis helps explain the hydrological changes driving model behaviour across the Mediterranean basins. Specifically, we examined simulated total runoff, as it serves as the primary input for CaMa-Flood, and the ratio of subsurface to total runoff. As a reminder, runoff is simulated by the Noah-MP land surface model, which is integrated within WRF-Hydro and embedded in WRF—used to dynamically downscale ERA5 data within the ENEA-REG coupled model. Details on the calibrated parameters, their roles in controlling hydrological processes, and trends across basins are provided in the Supplement (Sect. S2 and Table S7), while Fig. 9–10 summarizes and compares the average daily total runoff (mm/day) and the subsurface-to-total runoff ratio simulated by the ENEA-REG model, and by WRF-Hydro using both default and calibrated parameter values. This comparison is essential for understanding the observed performance differences between the CaMa-Flood and WRF-Hydro models, alongside the distinct routing configurations in each model.

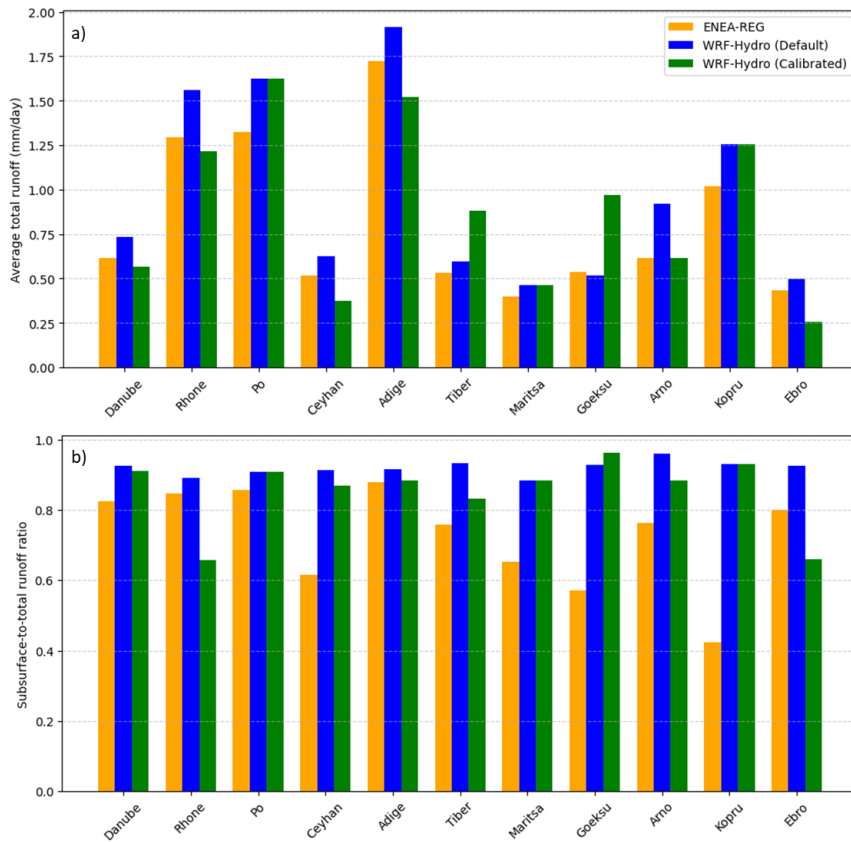


Figure 910: Comparison of a) average daily total runoff and b) the ratio of subsurface to total runoff across each river basin as simulated by ENEA-REG (orange), WRF-Hydro with default parameters (blue), and WRF-Hydro with calibrated parameters (green).

Our results indicate that WRF-Hydro (default) predominantly generate higher runoff compared to ENEA-REG, with percentage increases ranging from 11.1% to 49.8%, except for the Göksu basin, where it shows lower runoff by 3.6%. Similarly, the subsurface-to-total runoff ratio simulated by WRF-Hydro exceeds that of ENEA-REG across all basins, with percentage increases ranging from 4.1% to 119.9%. These findings underscore the sensitivity of runoff to the dynamic interactions between land surface models, routing processes, and the partitioning of surface and subsurface flows.

670 Excluding the Po, Maritsa, and Kopru basins—where default and calibrated parameters coincide—the calibration process (WRF-Hydro (calibrated)) led to a remarkable reduction in total runoff for most basins. This decrease, brought runoff values closer to, or even below, those simulated by ENEA-REG with an average reduction between 20.5% and 48.1%. However, in the Tiber and Göksu basins, the calibrated parameters produced a marked increase in total runoff. These variations can largely be attributed to changes in parameters that control transpiration and soil evaporation, as the slope parameter consistently decreased, limiting deep drainage.

675 For the subsurface-to-total runoff ratio, calibration effects varied. In the Göksu basin, there was a slight increase of 3.8%, while for other basins the ratio decreased, either marginally (e.g., Danube at -1.5%, Adige at -3.4%, and Ceyhan at -4.9%) or significantly (e.g., Rhone at -26.2% and Ebro at -28.7%). These changes stemmed from the combined influence of parameters governing infiltration and runoff partitioning. Together, the results highlight the critical role of parameter calibration in modulating both total runoff and its partitioning into surface and subsurface components, thereby influencing hydrological model performance.

4 Conclusions

This study assessed whether WRF-Hydro and CaMa-Flood can serve as effective alternatives to HD routing scheme for improving hydrological simulations within Euro-Mediterranean regional coupled models, and evaluated the extent to which calibration can enhance WRF-Hydro's performance.

685 ~~In their default configurations, both models, when driven by the ENEA-REG regional coupled system, demonstrated potential substantial to improvements hydrological simulations over the HD baseline, particularly in reproducing temporal dynamics and discharge variability across Mediterranean basins though their effectiveness varied across basins. CaMa-Flood delivered stable, conservative estimates with consistent underestimation of variability and extremes, while WRF-Hydro exhibited a more dynamic hydrological response with generally better representation of flow timing, variability, and high-flow behaviour. However, neither model performed uniformly across all basins, reflecting the diverse hydrological regimes of the Mediterranean region. Importantly, this model comparison should be interpreted within the context of their integration into a regional coupled modelling system, rather than as a pure hydrological benchmark with identical runoff inputs or meteorological forcings. CaMa-Flood excelled in computational efficiency and exhibited reasonable timing accuracy in certain basins, such as Goeksu. However, it consistently underestimated flow variability and high-flow extremes and showed notable limitations in large basins, such as the Danube, where significant timing delays occurred. These findings indicate that while CaMa-Flood provides a computationally efficient option for regional coupled models, but enhancements in its routing scheme are necessary to better capture flow variability and peak events.~~

695 ~~WRF-Hydro, in its default configuration, achieved comparable or superior performance to CaMa-Flood in many basins, particularly in capturing flow timing and reducing biases. For example, it performed better than CaMa-Flood in the Danube, where it achieved no timing lag compared to CaMa-Flood's 43-day delay. These findings demonstrate that both models can~~

Formatted: English (United Kingdom)

serve as viable alternatives for hydrological simulations, but their utility depends on basin-specific characteristics, the trade-offs between computational cost and simulation accuracy, and the distinct advantages offered by each model. For studies focusing on climate impacts on flooding and flooded areas, CaMa-Flood is particularly well suited as it allows for the simulation of floodplain inundation dynamics. Although it exhibits higher average bias, this bias remains within a reasonable range when applied to large, managed Mediterranean river basins where observed streamflow often deviates from natural flow conditions. Conversely, WRF-Hydro, with its full coupling between soil hydrology and the atmosphere, is ideal for studies investigating precipitation-soil moisture feedback mechanisms. These complementary strengths emphasize the importance of aligning model selection with the objectives of the study.

Calibration significantly improved the performance of WRF-Hydro across most basins—, increasing Key metrics such as Kling-Gupta Efficiency (KGE), and reducing timing lags, and improving the representation of discharge variability. These improvements were basin-dependent and were influenced by different sources of structural and input uncertainty—including the exclusion of human interventions, catchment boundary inaccuracies linked to coarse-resolution topography, and biases in precipitation forcing typical of regional climate models. The Adige basin highlighted the sensitivity of hydrodynamic models to drainage network corrections, underscoring the need for careful topographic preparation in coarse-resolution regional applications. demonstrated substantial improvements, with average KGE increasing from 0.32 to 0.48 and timing lags reducing from 4.8 days to 2 days. Notable improvements were observed in basins like the Rhone and Arno, where calibration reduced bias and improved flow variability alignment with observations. However, challenges remained in basins like the Adige, where coarse-resolution topographical corrections introduced errors that limited the effectiveness of calibration. These findings emphasize the need for careful preparation of model inputs, particularly at coarser resolutions, to ensure reliable simulations.

Overall, the findings demonstrate that both WRF-Hydro and CaMa-Flood are viable alternatives to the HD model for use in regional coupled modelling frameworks such as Med-CORDEX. WRF-Hydro provides stronger performance especially for applications requiring detailed representation of variability, extremes, and land-atmosphere interactions. CaMa-Flood, with its computational efficiency and capacity to simulate floodplain dynamics, offers a robust and scalable alternative, particularly for Mediterranean basins where stable discharge estimates are sufficient.

The calibrated parameters derived in this study hold promise for broader application. They can be extrapolated to other homogeneous basins with similar hydrological and climatic characteristics or used as a first-stage calibration for higher-resolution simulations. Although regionalization was not performed due to limited validation data, these results provide a valuable foundation for improving discharge simulations in other regions.

It is worth noting that this calibration is primarily intended for offline atmosphere-hydrological simulations to close the water cycle at the land-ocean interface. For studies aimed at assessing the feedback and impact of fully coupled atmosphere-hydrological models, a tailored calibration approach should be considered. The study also provides a calibrated parameter set for WRF-Hydro that may be transferable to hydrologically similar basins or serve as a baseline for higher-resolution

735 ~~applications. Future work should incorporate reservoir operations, enhanced topographic representation, and improved meteorological forcing, to further advance hydrological realism in regional coupled systems.~~

740 ~~In conclusion, both WRF-Hydro and CaMa-Flood, in their default configurations, can serve as viable alternatives for improving hydrological simulations within Euro-Mediterranean regional coupled models. WRF-Hydro generally offers greater potential, especially after calibration, which significantly enhances its performance. By leveraging the distinct advantages of each model, such as CaMa-Flood's ability to simulate floodplain inundation and its reasonable bias for disturbed basins, and WRF-Hydro's coupling between soil hydrology and the atmosphere, a basin-specific approach can improve hydrological predictions and projections.~~

Code and data availability

745 ERA5 data, provided by the European Centre for Medium-Range Weather Forecast (ECMWF), can be freely downloaded from the Copernicus Data Store (<https://doi.org/10.24381/cds.adbb2d47> (Hersbach et al., 2020)). All the model codes used in our study, including ENEA-REG, WRF-Hydro, CaMa-Flood, and the WRF-Hydro calibration package, as well as the discharge observation data used for model evaluation, are available at the following permanent repository: <https://doi.org/10.5281/zenodo.16625613> (Hamitouche et al., 2025b). Model output data are available from the corresponding author upon request due to their large volume. However, a step-by-step instruction file, along with all associated materials required to reproduce the results of this study, is publicly available on Zenodo at <https://doi.org/10.5281/zenodo.16333943> (Hamitouche et al., 2025c).

Author contribution

755 MH, GF, and AA: conceptualisation and methodology; MH: formal analysis, funding acquisition, investigation, visualisation and writing-original draft preparation; MH and AA: simulations; AR: helped with calibration setup; GF and AA: supervision; MH, GF, AA, and AR: validation and writing-review & editing. All authors have read and agreed to the published version of the paper.

Competing interests

The authors declare that they have no conflict of interest.

Acknowledgements

760 We would like to thank Stefan Hagemann for providing us with some discharge observation data and Day Yamazaki and Kevin Samspon for their valuable help in setting up the CaMa-Flood and WRF-Hydro models.

The analysis was partially carried out on the High Performance Computing DataCenter at IUSS, co-funded by Regione Lombardia through the funding programme established by Regional Decree No. 3776 of November 3, 2020.

Financial support

- This paper and related research have been conducted during and with the support of the Italian PhD course in Sustainable Development and Climate change (link: www.phd-sdc.it) at the University School for Advanced Studies IUSS and developed within the framework of the project “Dipartimento di Eccellenza 2023-2027”, with the financial support from the ICSC Italian Research Center on High-Performance Computing, Big Data and Quantum Computing and received funding from the European Union Next-GenerationEU (National Recovery and Resilience Plan-NRRP, Mission 4, Component 2, Investment 1.4-D.D: 3138 16/12/2021, CN00000013).
- 770 This research has also been supported by the CIHEAM Prize for the Best MSc Thesis 2022.

References

- Amelia, J.: Development of Two-Way Coupled Atmospheric Hydrological models, *Journal of Climatology & Weather Forecasting*, 11, 001-002, 2022.
- 775 Anav, A., Carillo, A., Palma, M., Struglia, M. V., Turuncoglu, U. U., and Sannino, G.: The ENEA-REG system (v1.0), a multi-component regional Earth system model: sensitivity to different atmospheric components over the Med-CORDEX (Coordinated Regional Climate Downscaling Experiment) region, *Geosci Model Dev*, 14, 4159–4185, <https://doi.org/10.5194/gmd-14-4159-2021>, 2021.
- 780 Bates, P. D., Horritt, M. S., and Fewtrell, T. J.: A simple inertial formulation of the shallow water equations for efficient two-dimensional flood inundation modelling, *J Hydrol (Amst)*, 387, 33–45, <https://doi.org/10.1016/j.jhydrol.2010.03.027>, 2010.
- 785 Beck, H. E., Vergopolan, N., Pan, M., Levizzani, V., van Dijk, A. I. J. M., Weedon, G. P., Brocca, L., Pappenberger, F., Huffman, G. J., and Wood, E. F.: Global-scale evaluation of 22 precipitation datasets using gauge observations and hydrological modeling, *Hydrol Earth Syst Sci*, 21, 6201–6217, <https://doi.org/10.5194/hess-21-6201-2017>, 2017.
- Beck, H. E., Pan, M., Roy, T., Weedon, G. P., Pappenberger, F., van Dijk, A. I. J. M., Huffman, G. J., Adler, R. F., and Wood, E. F.: Daily evaluation of 26 precipitation datasets using Stage-IV gauge-radar data for the CONUS, *Hydrol Earth Syst Sci*, 23, 207–224, <https://doi.org/10.5194/hess-23-207-2019>, 2019.
- 790

Beck, H. E., Pan, M., Lin, P., Seibert, J., van Dijk, A. I. J. M., and Wood, E. F.: Global Fully Distributed Parameter Regionalization Based on Observed Streamflow From 4,229 Headwater Catchments, *Journal of Geophysical Research: Atmospheres*, 125, e2019JD031485, <https://doi.org/10.1029/2019JD031485>, 2020.

795

Casper, M. C., Grigoryan, G., Gronz, O., Gutjahr, O., Heinemann, G., Ley, R., and Rock, A.: Analysis of projected hydrological behavior of catchments based on signature indices, *Hydrol Earth Syst Sci*, 16, 409–421, <https://doi.org/10.5194/hess-16-409-2012>, 2012.

800 CEH-CEDEX: Centro de Estudios Hidrográficos del Centro de estudios y experimentación de obras públicas, Spain, <https://ceh.cedex.es> (last access: 28 April 2024), 2024.

Field Code Changed

Cerbelaud, A., Lefèvre, J., Genthon, P., and Menkes, C.: Assessment of the WRF-Hydro uncoupled hydro-meteorological model on flashy watersheds of the Grande Terre tropical island of New Caledonia (South-West Pacific), *J Hydrol Reg Stud*, 40, 101003, <https://doi.org/10.1016/j.ejrh.2022.101003>, 2022.

805

Cisterna-García, A., González-Vidal, A., Martínez-Ibarra, A., Ye, Y., Guillén-Teruel, A., Bernal-Escobedo, L., and Skarmeta, A. F.: Artificial intelligence for streamflow prediction in river basins: a use case in Mar Menor, *Sci Rep*, 15, 19481, <https://doi.org/10.1038/s41598-025-04524-0>, 2025.

810

Cosgrove, B., Gochis, D., Flowers, T., Dugger, A., Ogden, F., Graziano, T., Clark, E., Cabell, R., Casiday, N., Cui, Z., Eicher, K., Fall, G., Feng, X., Fitzgerald, K., Frazier, N., George, C., Gibbs, R., Hernandez, L., Johnson, D., Jones, R., Karsten, L., Kefelegn, H., Kitzmiller, D., Lee, H., Liu, Y., Mashriqui, H., Mattern, D., McCluskey, A., McCreight, J. L., McDaniel, R., Midekisa, A., Newman, A., Pan, L., Pham, C., RafieeiNasab, A., Rasmussen, R., Read, L., Rezaeianzadeh, M., Salas, F., Sang, D., Sampson, K., Schneider, T., Shi, Q., Sood, G., Wood, A., Wu, W., Yates, D., Yu, W., and Zhang, Y.: NOAA's National Water Model: Advancing operational hydrology through continental-scale modeling, *JAWRA Journal of the American Water Resources Association*, 60, 247–272, <https://doi.org/10.1111/1752-1688.13184>, 2024.

815

Djordjevic, V., and Rajkovic, B.: Development of the EBU-POM coupled regional climate model and results from climate change experiments, Nova, New York, 2010.

820

Drobinski, P., Anav, A., Lebeaupin Brossier, C., Samson, G., Stéfanon, M., Bastin, S., Baklouti, M., Béranger, K., Beuvier, J., Bourdallé-Badie, R., Coquart, L., D'Andrea, F., de Noblet-Ducoudré, N., Diaz, F., Dutay, J.-C., Ethe, C., Foujols, M.-A., Khvorostyanov, D., Madec, G., Mancip, M., Masson, S., Menut, L., Palmieri, J., Polcher, J., Turquety, S., Valcke, S., and

825 Viovy, N.: Model of the Regional Coupled Earth system (MORCE): Application to process and climate studies in vulnerable regions, *Environmental Modelling & Software*, 35, 1–18, <https://doi.org/10.1016/j.envsoft.2012.01.017>, 2012.

[Fosser, G., Gaetani, M., Kendon, E. J., Adinolfi, M., Ban, N., Belušić, D., Caillaud, C., Careto, J. A. M., Coppola, E., Demory, M.-E., de Vries, H., Dobler, A., Feldmann, H., Goergen, K., Lenderink, G., Pichelli, E., Schär, C., Soares, P. M. M., Somot, S., and Tölle, M. H.:](#) Convection-permitting climate models offer more certain extreme rainfall projections, *NPJ Clim Atmos Sci*, 7, 51, <https://doi.org/10.1038/s41612-024-00600-w>, 2024.

Galanaki, E., Lagouvardos, K., Kotroni, V., Giannaros, T., and Giannaros, C.: Implementation of WRF-Hydro at two drainage basins in the region of Attica, Greece, for operational flood forecasting, *Natural Hazards and Earth System Sciences*, 21, 1983–2000, <https://doi.org/10.5194/nhess-21-1983-2021>, 2021.

Gochis, D. J., Barlage, M., Cabell, R., Casali, M., Dugger, A., Fitzgerald, K., Mcallister, M., McCreight, J., [RafieeinasadRafieeiNasab](#), A., Read, L., Sampson, K., Yates, D., and Zhang, Y.: The WRF-Hydro Modeling System Technical Description. (Version 5.2), NCAR Technical Note, 108 pp, <https://ral.ucar.edu/sites/default/files/docs/water/wrf-hydro-v511-technical-description.pdf> (last access: 27 February 2025), 2021.

GRDC: Data Portal, https://grdc.bafg.de/data/data_portal/ (last access: 28 April 2024), 2024.

[Grill, G., Lehner, B., Thieme, M., Geenen, B., Tickner, D., Antonelli, F., Babu, S., Borrelli, P., Cheng, L., Crochetiere, H., Ehalt Macedo, H., Filgueiras, R., Goichot, M., Higgins, J., Hogan, Z., Lip, B., McClain, M. E., Meng, J., Mulligan, M., Nilsson, C., Olden, J. D., Opperman, J. J., Petry, P., Reidy Liermann, C., Sáenz, L., Salinas-Rodríguez, S., Schelle, P., Schmitt, R. J. P., Snider, J., Tan, F., Tockner, K., Valdujo, P. H., van Soesbergen, A., and Zarfl, C.:](#) Mapping the world’s free-flowing rivers, *Nature*, 569, 215–221, <https://doi.org/10.1038/s41586-019-1111-9>, 2019.

850 Gupta, H. V., Kling, H., Yilmaz, K. K., and Martinez, G. F.: Decomposition of the mean squared error and NSE performance criteria: Implications for improving hydrological modelling, *J Hydrol (Amst)*, 377, 80–91, <https://doi.org/10.1016/j.jhydrol.2009.08.003>, 2009.

Hagemann, S. and Dümenil, L.: A parametrization of the lateral waterflow for the global scale, *Clim Dyn*, 14, 17–31, <https://doi.org/10.1007/s003820050205>, 1997.

Hagemann, S., Stacke, T., and Ho-Hagemann, H. T. M.: High Resolution Discharge Simulations Over Europe and the Baltic Sea Catchment, *Front Earth Sci (Lausanne)*, Volume 8-2020, <https://doi.org/10.3389/feart.2020.00012>, 2020.

860 Hamitouche, M., Fossier, G., Anav, A., He, C., and Lin, T.-S.: Impact of runoff schemes on global flow discharge: a comprehensive analysis using the Noah-MP and CaMa-Flood models, *Hydrol Earth Syst Sci*, 29, 1221–1240, <https://doi.org/10.5194/hess-29-1221-2025>, 2025a.

Hamitouche, M., Fossier, G., Rafieci-Nasab, A., Anav, A.: Model codes and observation data for "Regional-scale Hydrologic Model Comparison Including Calibration for Improved River Discharge Simulations into the Mediterranean Sea", Zenodo [model], <https://doi.org/10.5281/zenodo.16333943>, 2025b.

Hamitouche, M., Fossier, G., Rafieci-Nasab, A., Anav, A.: Step-by-step instructions to reproduce the results of "Regional-scale Hydrologic Model Comparison Including Calibration for Improved River Discharge Simulations into the Mediterranean Sea", Zenodo [workflow], <https://doi.org/10.5281/zenodo.16333943>, 2025c.

Hersbach, H., Bell, B., Berrisford, P., Hirahara, S., Horányi, A., Muñoz-Sabater, J., Nicolas, J., Peubey, C., Radu, R., Schepers, D., Simmons, A., Soci, C., Abdalla, S., Abellan, X., Balsamo, G., Bechtold, P., Biavati, G., Bidlot, J., Bonavita, M., De Chiara, G., Dahlgren, P., Dee, D., Diamantakis, M., Dragani, R., Flemming, J., Forbes, R., Fuentes, M., Geer, A., Haimberger, L., Healy, S., Hogan, R. J., Hólm, E., Janisková, M., Keeley, S., Laloyaux, P., Lopez, P., Lupu, C., Radnoti, G., de Rosnay, P., Rozum, I., Vamborg, F., Villaume, S., and Thépaut, J.-N.: The ERA5 global reanalysis, *Quarterly Journal of the Royal Meteorological Society*, 146, 1999–2049, <https://doi.org/10.1002/qj.3803>, 2020.

880 Kauffeldt, A., Halldin, S., Rodhe, A., Xu, C.-Y., and Westerberg, I. K.: Disinformative data in large-scale hydrological modelling, *Hydrol Earth Syst Sci*, 17, 2845–2857, <https://doi.org/10.5194/hess-17-2845-2013>, 2013.

Kiliçarslan, B. M.: Calibration and Evaluation of WRF-Hydro Modeling System for Extreme Runoff Simulations: Use of High-Resolution Sea Surface Temperature (SST) Data, Middle East Technical University (Turkey), 2022.

885 Knoben, W. J. M., Freer, J. E., and Woods, R. A.: Technical note: Inherent benchmark or not? Comparing Nash–Sutcliffe and Kling–Gupta efficiency scores, *Hydrol Earth Syst Sci*, 23, 4323–4331, <https://doi.org/10.5194/hess-23-4323-2019>, 2019.

Lahmers, T. M., Gupta, H., Castro, C. L., Gochis, D. J., Yates, D., Dugger, A., Goodrich, D., and Hazenberg, P.: Enhancing the Structure of the WRF-Hydro Hydrologic Model for Semiarid Environments, *J Hydrometeorol*, 20, 691–714, <https://doi.org/10.1175/JHM-D-18-0064.1>, 2019.

Lehner, B.: Derivation of Watershed Boundaries for GRDC Gauging Stations Based on the HydroSHEDS Drainage Network; Technical Report Prepared for the GRDC, Bundesanstalt für Gewässerkunde, 2012.

895 Lin, P., Pan, M., Beck, H. E., Yang, Y., Yamazaki, D., Frasson, R., David, C. H., Durand, M., Pavelsky, T. M., Allen, G. H., Gleason, C. J., and Wood, E. F.: Global Reconstruction of Naturalized River Flows at 2.94 Million Reaches, *Water Resour Res*, 55, 6499–6516, <https://doi.org/10.1029/2019WR025287>, 2019.

Lionello, P., Abrantes, F., Congedi, L., Dulac, F., Gacic, M., Gomis, D., Goodess, C., Hoff, H., Kutiel, H., Luterbacher, J., 900 Planton, S., Reale, M., Schröder, K., Vittoria Struglia, M., Toret, A., Tsimplis, M., Ulbrich, U., and Xoplaki, E.: Introduction: Mediterranean Climate—Background Information, in: *The Climate of the Mediterranean Region*, edited by: Lionello, P., Elsevier, Oxford, xxxv–xc, <https://doi.org/10.1016/B978-0-12-416042-2.00012-4>, 2012.

Ludwig, W., Dumont, E., Meybeck, M., and Heussner, S.: River discharges of water and nutrients to the Mediterranean and 905 Black Sea: Major drivers for ecosystem changes during past and future decades?, *Prog Oceanogr*, 80, 199–217, <https://doi.org/10.1016/j.pocean.2009.02.001>, 2009.

[Momblanch, A., Andreu, J., Paredes-Arquiola, J., Solera, A., and Pedro-Monzonis, M.: Adapting water accounting for integrated water resource management. The Júcar Water Resource System \(Spain\), *J Hydrol \(Amst\)*, 519, 3369–3385, 910 <https://doi.org/https://doi.org/10.1016/j.jhydrol.2014.10.002>, 2014.](https://doi.org/https://doi.org/10.1016/j.jhydrol.2014.10.002)

Pinardi, N. and Masetti, E.: Variability of the large scale general circulation of the Mediterranean Sea from observations and modelling: a review, *Palaeogeogr Palaeoclimatol Palaeoecol*, 158, 153–173, [https://doi.org/10.1016/S0031-0182\(00\)00048-1](https://doi.org/10.1016/S0031-0182(00)00048-1), 2000.

915 Pinardi, N., Zavatarelli, M., Adani, M., Coppini, G., Fratianni, C., Oddo, P., Simoncelli, S., Tonani, M., Lyubartsev, V., Dobricic, S., and Bonaduce, A.: Mediterranean Sea large-scale low-frequency ocean variability and water mass formation rates from 1987 to 2007: A retrospective analysis, *Prog Oceanogr*, 132, 318–332, <https://doi.org/10.1016/j.pocean.2013.11.003>, 2015.

920 [RafieeiNasab, A., Mazrooei, A., Enzlinger, T., Srivastava, I., Dugger, A., Gochis, D., Omani, N., Grim, J., Sampson, K., Zhang, Y., LaFontaine, J., Viger, R., Liu, Y., and Schneider, T.: A WRF-Hydro-based retrospective simulation of water resources for US integrated water availability assessment, *Hydrology and Earth System Sciences Discussions*, 2024, 1–37, 925 <https://doi.org/10.5194/hess-2024-262>, 2024.](https://doi.org/10.5194/hess-2024-262)

RafieeiNasab, A., Fienen, M. N., Omani, N., Srivastava, I., and Dugger, A. L.: Ensemble Methods for Parameter Estimation of WRF-Hydro, *Water Resour Res*, 61, e2024WR038048, <https://doi.org/10.1029/2024WR038048>, 2025.

930 Reale, M., Giorgi, F., Solidoro, C., Di Biagio, V., Di Sante, F., Mariotti, L., Farneti, R., and Sannino, G.: The Regional Earth System Model RegCM-ES: Evaluation of the Mediterranean Climate and Marine Biogeochemistry, *J Adv Model Earth Syst*, 12, e2019MS001812, <https://doi.org/10.1029/2019MS001812>, 2020.

Ruti, P. M., Somot, S., Giorgi, F., Dubois, C., Flaounas, E., Obermann, A., Dell'Aquila, A., Pisacane, G., Harzallah, A., Lombardi, E., Ahrens, B., Akhtar, N., Alias, A., Arsouze, T., Aznar, R., Bastin, S., Bartholy, J., Béranger, K., Beuvier, J., 935 Bouffies-Cloch e, S., Brauch, J., Cabos, W., Calmanti, S., Calvet, J.-C., Carillo, A., Conte, D., Coppola, E., Djurdjevic, V., Drobinski, P., Elizalde-Arellano, A., Gaertner, M., Gal n, P., Gallardo, C., Gualdi, S., Goncalves, M., Jorba, O., Jord , G., L'Heveder, B., Lebeaupin-Brossier, C., Li, L., Liguori, G., Lionello, P., Maci s, D., Nabat, P.,  nol, B., Raikovic, B., Ramage, K., Sevault, F., Sannino, G., Struglia, M. V., Sanna, A., Torma, C., and Vervatis, V.: Med-CORDEX Initiative for Mediterranean Climate Studies, *Bull Am Meteorol Soc*, 97, 1187–1208, <https://doi.org/10.1175/BAMS-D-14-00176.1>, 2016.

940 Sanchez Lozano, J. L., Rojas Lesmes, D. J., Romero Bustamante, E. G., Hales, R. C., Nelson, E. J., Williams, G. P., Ames, D. P., Jones, N. L., Gutierrez, A. L., and Cardona Almeida, C.: Historical simulation performance evaluation and monthly flow duration curve quantile-mapping (MFDC-QM) of the GEOGLOWS ECMWF streamflow hydrologic model, *Environmental Modelling & Software*, 183, 106235, <https://doi.org/10.1016/j.envsoft.2024.106235>, 2025.

945 Senatore, A., Mendicino, G., Gochis, D. J., Yu, W., Yates, D. N., and Kunstmann, H.: Fully coupled atmosphere-hydrology simulations for the central Mediterranean: Impact of enhanced hydrological parameterization for short and long time scales, *J Adv Model Earth Syst*, 7, 1693–1715, <https://doi.org/10.1002/2015MS000510>, 2015.

950 Shahi, N. K., Polcher, J., Bastin, S., Pennel, R., and Fita, L.: Assessment of the spatio-temporal variability of the added value on precipitation of convection-permitting simulation over the Iberian Peninsula using the RegIPSL regional earth system model, *Clim Dyn*, 59, 471–498, <https://doi.org/10.1007/s00382-022-06138-y>, 2022.

955 Smakhtin, V. U.: Low flow hydrology: a review, *J Hydrol (Amst)*, 240, 147–186, [https://doi.org/10.1016/S0022-1694\(00\)00340-1](https://doi.org/10.1016/S0022-1694(00)00340-1), 2001.

Sofokleous, I., Bruggeman, A., Camera, C., and Eliades, M.: Grid-based calibration of the WRF-Hydro with Noah-MP model with improved groundwater and transpiration process equations, *J Hydrol (Amst)*, 617, 128991, <https://doi.org/10.1016/j.jhydrol.2022.128991>, 2023.

960

Sofokleous, I., Bruggeman, A., and Camera, C.: The Role of Parameterizations and Model Coupling on Simulations of Energy and Water Balances – Investigations With the Atmospheric Model WRF and the Hydrologic Model WRF-Hydro, *Journal of Geophysical Research: Atmospheres*, 129, e2023JD040335, <https://doi.org/10.1029/2023JD040335>, 2024.

965 Spearman, C.: The Proof and Measurement of Association between Two Things, *Am J Psychol*, 15, 72–101, <https://doi.org/10.2307/1412159>, 1904.

Stacke, T. and Hagemann, S.: HydroPy (v1.0): a new global hydrology model written in Python, *Geosci Model Dev*, 14, 7795–7816, <https://doi.org/10.5194/gmd-14-7795-2021>, 2021.

970

Storto, A., Hesham Essa, Y., de Toma, V., Anav, A., Sannino, G., Santoleri, R., and Yang, C.: MESMAR v1: a new regional coupled climate model for downscaling, predictability, and data assimilation studies in the Mediterranean region, *Geosci Model Dev*, 16, 4811–4833, <https://doi.org/10.5194/gmd-16-4811-2023>, 2023.

975 Struglia, M. V., Mariotti, A., and Filograsso, A.: River Discharge into the Mediterranean Sea: Climatology and Aspects of the Observed Variability, *J Clim*, 17, 4740–4751, <https://doi.org/10.1175/JCLI-3225.1>, 2004.

980 [Struglia, M. V., Anav, A., Antonelli, M., Calmanti, S., Catalano, F., Dell’Aquila, A., Pichelli, E., and Pisacane, G.: Impact of spatial resolution on multi-scenario WRF-ARW simulations driven by the CMIP6 MPI-ESM1-2-HR global model: a focus on precipitation distribution over Italy, *Geosci Model Dev*, 18, 6095–6116, <https://doi.org/10.5194/gmd-18-6095-2025>, 2025.](https://doi.org/10.5194/gmd-18-6095-2025)

985 [Suárez-Almiñana, S., Pedro-Monzonis, M., Paredes-Arquiola, J., Andreu, J., and Solera, A.: Linking Pan-European data to the local scale for decision making for global change and water scarcity within water resources planning and management, *Science of The Total Environment*, 603–604, 126–139, <https://doi.org/10.1016/j.scitotenv.2017.05.259>, 2017.](https://doi.org/10.1016/j.scitotenv.2017.05.259)

Tijerina-Kreuzer, D., Condon, L., FitzGerald, K., Dugger, A., O’Neill, M. M., Sampson, K., Gochis, D., and Maxwell, R.: Continental Hydrologic Intercomparison Project, Phase 1: A Large-Scale Hydrologic Model Comparison Over the Continental United States, *Water Resour Res*, 57, e2020WR028931, <https://doi.org/10.1029/2020WR028931>, 2021.

990

Tolson, B. A. and Shoemaker, C. A.: Dynamically dimensioned search algorithm for computationally efficient watershed model calibration, *Water Resour Res*, 43, <https://doi.org/10.1029/2005WR004723>, 2007.

995 Verma, K. and J., I.: Applicability of SWOT data in calibrating WRF-Hydro hydrological model over the Tawa River basin,
Geocarto Int, 38, 2185292, <https://doi.org/10.1080/10106049.2023.2185292>, 2023.

1000 Verri, G., Pinardi, N., Gochis, D., Tribbia, J., Navarra, A., Coppini, G., and Vukicevic, T.: A meteo-hydrological modelling
system for the reconstruction of river runoff: the case of the Ofanto river catchment, Nat. Hazards Earth Syst. Sci., 17, 1741–
1761, <https://doi.org/10.5194/nhess-17-1741-2017>, 2017.

Vogel, R. M. and Fennessey, N. M.: Flow-Duration Curves. I: New Interpretation and Confidence Intervals, J Water Resour
Plan Manag, 120, 485–504, [https://doi.org/10.1061/\(ASCE\)0733-9496\(1994\)120:4\(485\)](https://doi.org/10.1061/(ASCE)0733-9496(1994)120:4(485)), 1994.

1005 Wu, H., Kimball, J. S., Li, H., Huang, M., Leung, L. R., and Adler, R. F.: A new global river network database for
macro-scale hydrologic modeling, Water Resour Res, 48, <https://doi.org/10.1029/2012WR012313>, 2012.

Yamazaki, D., Oki, T., and Kanae, S.: Deriving a global river network map and its sub-grid topographic characteristics from
a fine-resolution flow direction map, Hydrol Earth Syst Sci, 13, 2241–2251, <https://doi.org/10.5194/hess-13-2241-2009>,
2009.

1010 Yamazaki, D., Kanae, S., Kim, H., and Oki, T.: A physically based description of floodplain inundation dynamics in a global
river routing model, Water Resour Res, 47, <https://doi.org/10.1029/2010WR009726>, 2011.

1015 Yamazaki, D., Baugh, C. A., Bates, P. D., Kanae, S., Alsdorf, D. E., and Oki, T.: Adjustment of a spaceborne DEM for use
in floodplain hydrodynamic modeling, J Hydrol (Amst), 436–437, 81–91, <https://doi.org/10.1016/j.jhydrol.2012.02.045>,
2012.

1020 Yamazaki, D., de Almeida, G. A. M., and Bates, P. D.: Improving computational efficiency in global river models by
implementing the local inertial flow equation and a vector-based river network map, Water Resour Res, 49, 7221–7235,
<https://doi.org/10.1002/wrcr.20552>, 2013.

1025 Yamazaki, D., Ikeshima, D., Sosa, J., Bates, P. D., Allen, G. H., and Pavelsky, T. M.: MERIT Hydro: A High-Resolution
Global Hydrography Map Based on Latest Topography Dataset, Water Resour Res, 55, 5053–5073,
<https://doi.org/10.1029/2019WR024873>, 2019.

Yilmaz, K. K., Gupta, H. V., and Wagener, T.: A process-based diagnostic approach to model evaluation: Application to the
NWS distributed hydrologic model, Water Resour Res, 44, <https://doi.org/10.1029/2007WR006716>, 2008.

1030 Yu, E., Liu, X., Li, J., and Tao, H.: Calibration and Evaluation of the WRF-Hydro Model in Simulating the Streamflow over the Arid Regions of Northwest China: A Case Study in Kaidu River Basin, *Sustainability*, 15, <https://doi.org/10.3390/su15076175>, 2023.

1035 Yue, S., Pilon, P., and Cavadas, G.: Power of the Mann–Kendall and Spearman’s rho tests for detecting monotonic trends in hydrological series, *J Hydrol (Amst)*, 259, 254–271, [https://doi.org/10.1016/S0022-1694\(01\)00594-7](https://doi.org/10.1016/S0022-1694(01)00594-7), 2002.

Zavatarelli, M., Raicich, F., Bregant, D., Russo, A., and Artegiani, A.: Climatological biogeochemical characteristics of the Adriatic Sea, *Journal of Marine Systems*, 18, 227–263, [https://doi.org/10.1016/S0924-7963\(98\)00014-1](https://doi.org/10.1016/S0924-7963(98)00014-1), 1998.