

Lines 86-87:

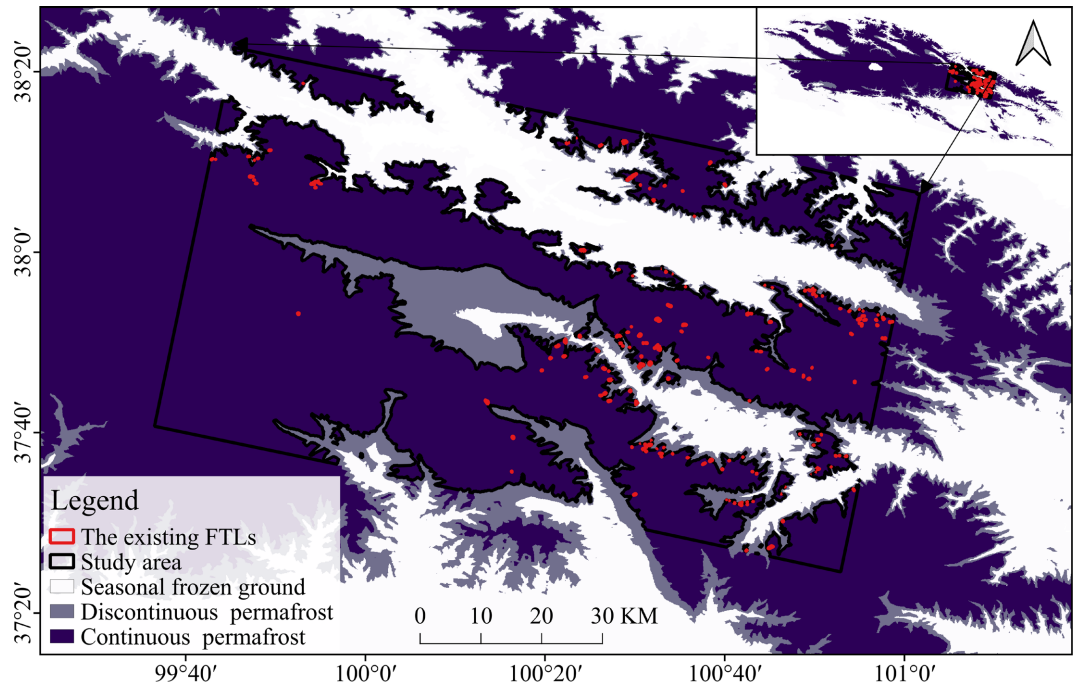


Figure S1 The study area and the existing FTLs (red regions).

Lines 307-310:

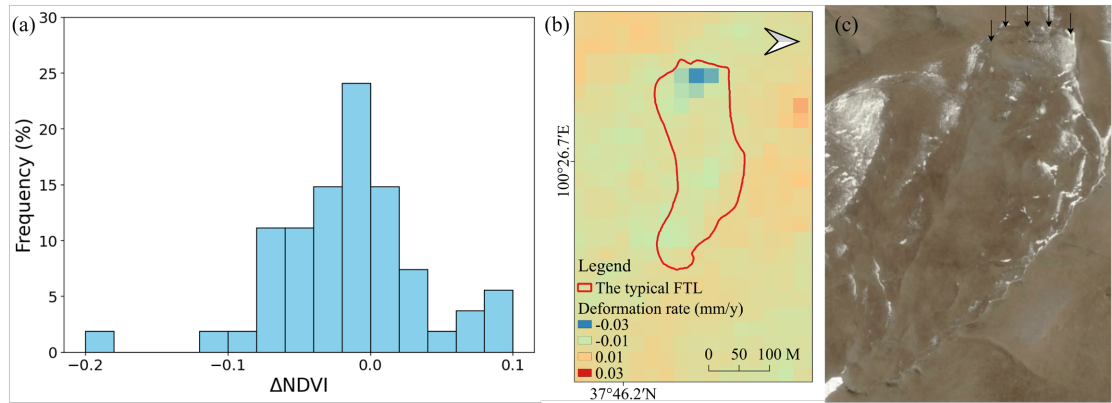


Figure S8 Diagnostic characteristics of a typical small and hidden freeze-thaw landslide: (a) histogram of ΔNDVI values within the FTL boundary; (b) surface deformation rate map with the FTL boundary marked by a red line; and (c) high-resolution optical image showing developing tension cracks at the landslide head (black arrows), corresponding to the area of maximum deformation in (b).

Lines 266-267:

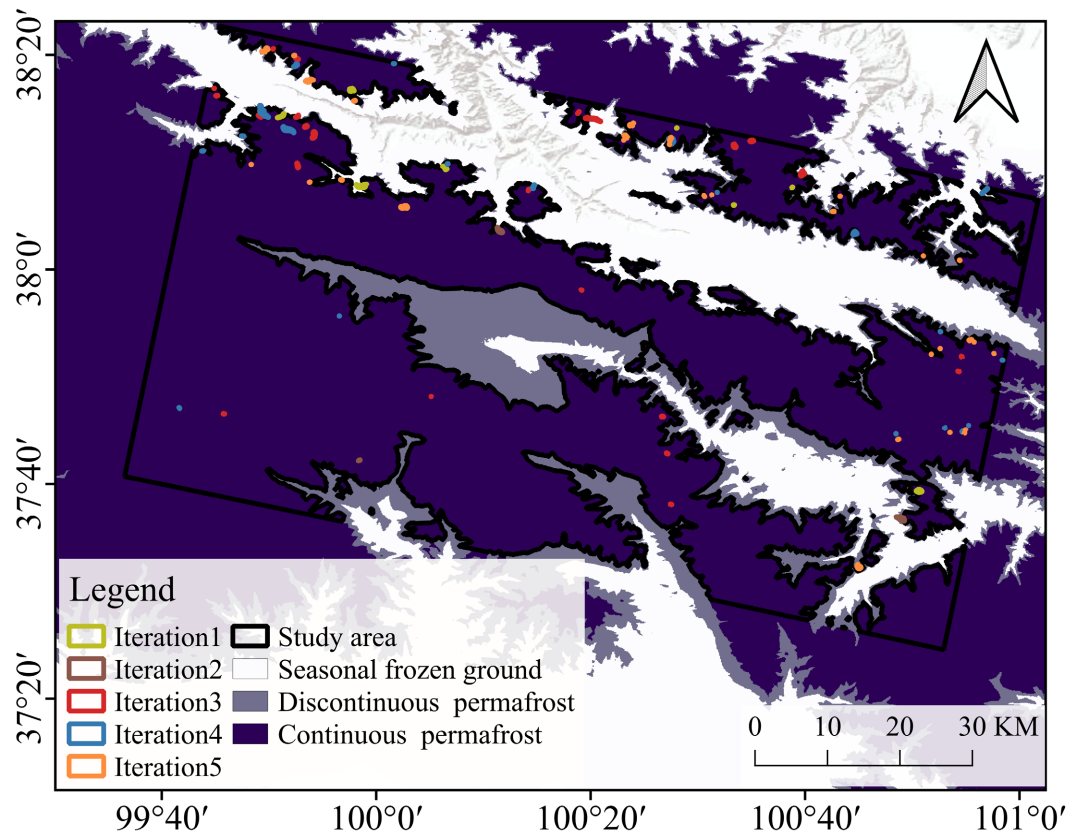


Figure S3 The spatial distribution of new freeze-thaw landslide in each iteration.