

A multidecadal sea level rise and its hiatus in the tropical Atlantic margin off northwest Africa

Hamed D. Ibrahim^{1,2,3} and Yunfang Sun⁴

¹University of Toronto, Department of Civil & Mineral Engineering, Toronto, ON, Canada

²University of Toronto, School of the Environment, Toronto, ON, Canada

³University of Toronto, Department of Physics, Toronto, ON, Canada

⁴University of South Florida, College of Marine Science, St Petersburg, FL, USA

Correspondence: Hamed D. Ibrahim (hameddibrahim@gmail.com, hamed.ibrahim@utoronto.ca) and Yunfang Sun (yunfangsun@gmail.com)

Abstract. Satellite and reanalysis data sets are used to find and explain the drivers of a multidecadal sea level rise and its pause in the tropical North Atlantic margin off northwest Africa. The study domain sea level was rising as far back as 1986 and a pause in sea level rise (hiatus) began around 2010 and stopped in 2019. Mean sea level anomaly during a rising period (1996–2004) and the hiatus period (2010–2018) are analyzed and compared. Results show that domain-wide seawater expansion owing to shifts in density structure (steric shifts) contributed 56% of the domain-wide multidecadal sea level shift, vertical land motion contributed 24%, increase in mass contributed 16%, and shifts in surface pressure contributed about 3%. There are, however, regional differences in the steric and mass shift patterns. In the northern subdomain, the steric shift is dominated by salinity-driven (halosteric) expansion, whereas in the southern subdomain the steric shift is dominated by temperature-driven (thermosteric) expansion. Stronger anticyclonic circulation shift in the Guinea Dome, a permanent upwelling region where isotherms are displaced upwards, and the necessary adjustment of horizontal flow toward this anticyclonic sink, enable accumulation of low-salinity water in the northern subdomain and precipitation in the southern subdomain. The low-salinity water influx to the northern subdomain is linked to a shift in the southward-flowing Canary Current. A probable hypothesis inferred from potential vorticity analysis is that this current was freshened by subpolar North Atlantic waters that reached the northwest African coast via two pathways: an open ocean path that is consistent with the Azores Current, and a Western Europe coastal ocean path. These results highlight a multidecadal linkage between subpolar salinity anomalies and tropical sea level anomalies in the North Atlantic, with a transit period of about 5.5 years.

1 Introduction

It is useful to specify the physical linkages between climatic events occurring in ocean margins and elsewhere in the ocean. Understanding the operating phenomena that accomplish these long-term linkages provides predictive power to anticipate adverse coastal change following events that have already occurred elsewhere in the ocean. More than 40% of the world's population reside within 150 km of the coast (Reimann et al., 2023; United Nations, 2018) and seafood from coastal marine ecosystems supplies about 15% of the protein consumed by this population (Sumaila et al., 2011). Another important reason

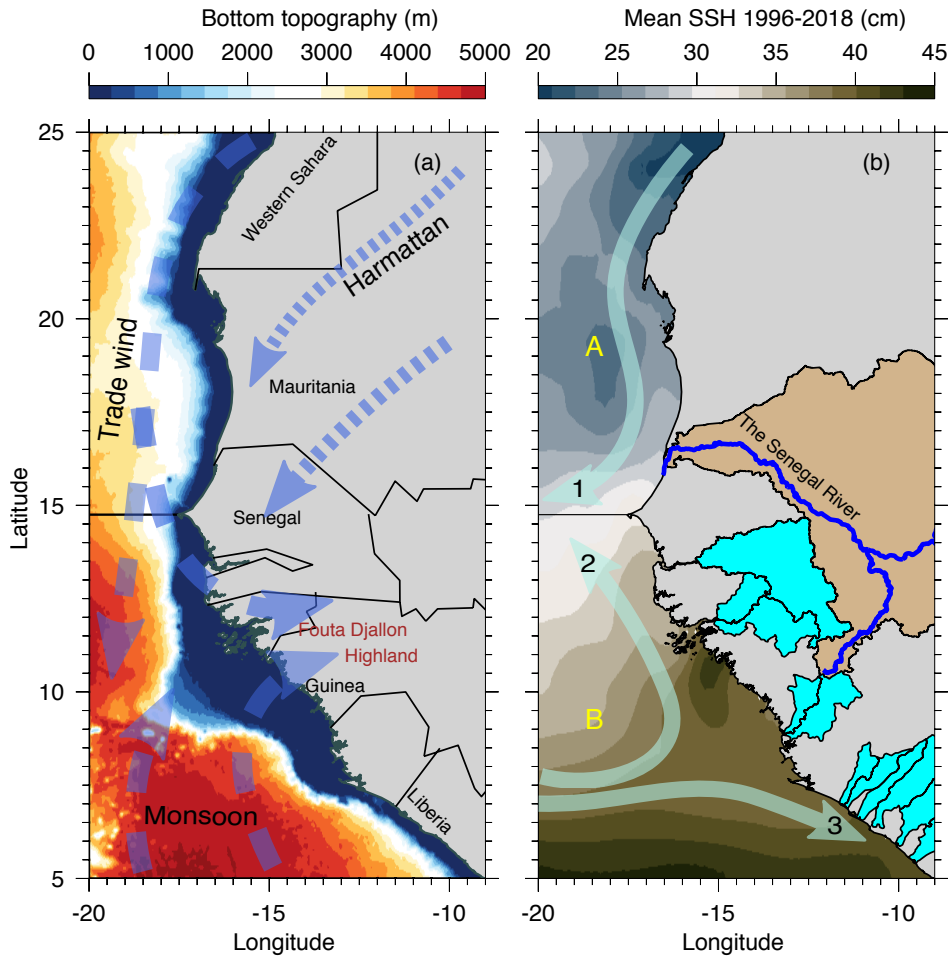


Figure 1. Characteristics of the eastern tropical Atlantic margin off northwest Africa (domain). **(a)** Bottom topography (GEBCO, 2021), and the mean annual spatial pattern of the three dominant atmosphere wind systems in the region (indicated in blue dash lines): trade wind, Harmattan wind, and monsoon wind. **(b)** Multi-year (1996–2018) mean annual sea-surface height (*SSH*) (C3S Climate Data Store, 2018), and the three dominant ocean current systems in the region (indicated in solid cyan lines): 1) the Canary Current, and the 2) north and 3) south branches of the bifurcated North Equatorial Countercurrent, respectively; capital letters A and B denote the two analysis subdomains identified from EOF analysis (section 2.3). The Canary Current traverses subdomain A (14.75°N–25°N, 9°W–20°W.), and the north branch of the bifurcated North Equatorial Countercurrent traverses subdomain B (5°N–14.75°N, 9°W–20°W) (Ibrahim and Sun, 2022). The regions colored in tan and cyan over land are the catchments of the rivers that discharge into subdomains A and B, respectively. See section 2.2 for more details.

for characterizing events in ocean margins is that fluctuations in coastal seawater properties express shifts in the heat and water fluxes that maintain the prevailing regional climate (Robinson and Brink, 2006). Analyzing satellite measurements of these
 25 fluctuations thus offers an approach to elucidate mechanisms of coastal climate change.

Sea level fluctuations in the eastern tropical Atlantic margin off northwest Africa (hereafter ‘domain,’ Fig. 1) is important for climate change investigations because it reflects changes in several elements of the global ocean and atmosphere circulation (Stramma et al., 2005). These elements include the northeasterly trade wind and its continental branch, the northeasterly Harmattan wind; the southeasterly Monsoon; the south-flowing Canary Current that supplies feed-water to the North Equatorial Current; the north and south branches of the North Equatorial Countercurrent that bifurcates near the African coast (Ibrahim and Sun, 2022); and the so-called ‘Guinea Dome,’ a region off the African coast with permanent upward flux of cool water from beneath that causes doming (i.e., upward displacement) of isotherms (Fig. 12). Moreover, because of persistent upwelling of nutrient-rich waters in large subregions of this domain, it is one of the three most productive marine ecosystems in the global ocean (Chavez, 2012). The complex interaction of these domain features promotes considerable interannual variability (Ibrahim and Sun, 2022) as shown in the deseasonalized time series of ocean and atmosphere quantities in the domain (Fig. 2 and Fig. 4).

The domain sea-surface temperature increased in 1995 (Ibrahim and Sun, 2022). However, changepoint analysis (Lanzante, 1996) of the domain satellite altimetry measurement (Pujol et al., 2016; C3S Climate Data Store, 2018) shows a hiatus in sea level rise between two change points in 2010 and in 2019 (Fig. 2[a]). Since the 2019 change point, the domain sea level has started rising again (not shown). The satellite record of sea level anomaly (*SLA*) is relatively short, thus, to determine the trend pattern prior to the start of satellite altimetry in 1993, we used the European Centre for Medium-Range Weather Forecasts (ECMWF) Ocean Reanalysis System 5 (hereafter ‘ORAS5’, see section 2.2) to also calculate the *SLA* trend (Zuo et al., 2019). ORAS5 *SLA* (SLA_{ORAS5}) and satellite altimeter *SLA* trend patterns are consistent during the overlap period (1993–2018), and SLA_{ORAS5} shows that the sea level there was rising as far back as 1986 (Fig. 2[a]).

Here our aim is to characterize the evolution of the sea level and its drivers during a period of rising sea level (the rising state, period one: 1996–2004) and pause in the sea level rise (the hiatus state, period two: 2010–2018). To do this, we performed two related tasks. First, to differentiate the relation among the drivers between the rising and hiatus states, we characterize the evolution of the drivers in each state. Second, we characterize the transition of the sea level and its drivers between the two states. In task one we answer two questions: what caused the sea level to continue rising during period one? What caused the sea level rise to pause during period two? In task two we answer the question: what caused the transition of the sea level from a rising state to a hiatus state? We chose period one because it overlaps with the satellite altimetry era and in order to avoid the transition period when sea level fluctuations can be comparatively unstable owing to large variations in heat and water fluxes (Ibrahim et al., 2020). We chose period two in order to assess the sea level drivers during the hiatus state. The explanation of the observed *SLA* trend must account for the steric, mass and atmospheric pressure shifts between period one and two, since these are the three factors that control *SLA* fluctuations (section 2.1). Moreover, because the atmospheric pressure shift is comparatively small in general, we anticipate that steric and mass shifts play the key roles in the sea level transition between the rising and hiatus states.

In order to achieve this aim, we first performed an empirical orthogonal function analysis of the domain *SLA*, which revealed two subregions (denoted ‘subdomain A’ and ‘subdomain B’ in Figure 1[b]) with differing horizontal pattern of *SLA* variability (section 2.3). This is followed by separating the multi-year mean *SLA* shift in each subdomain into its constituent

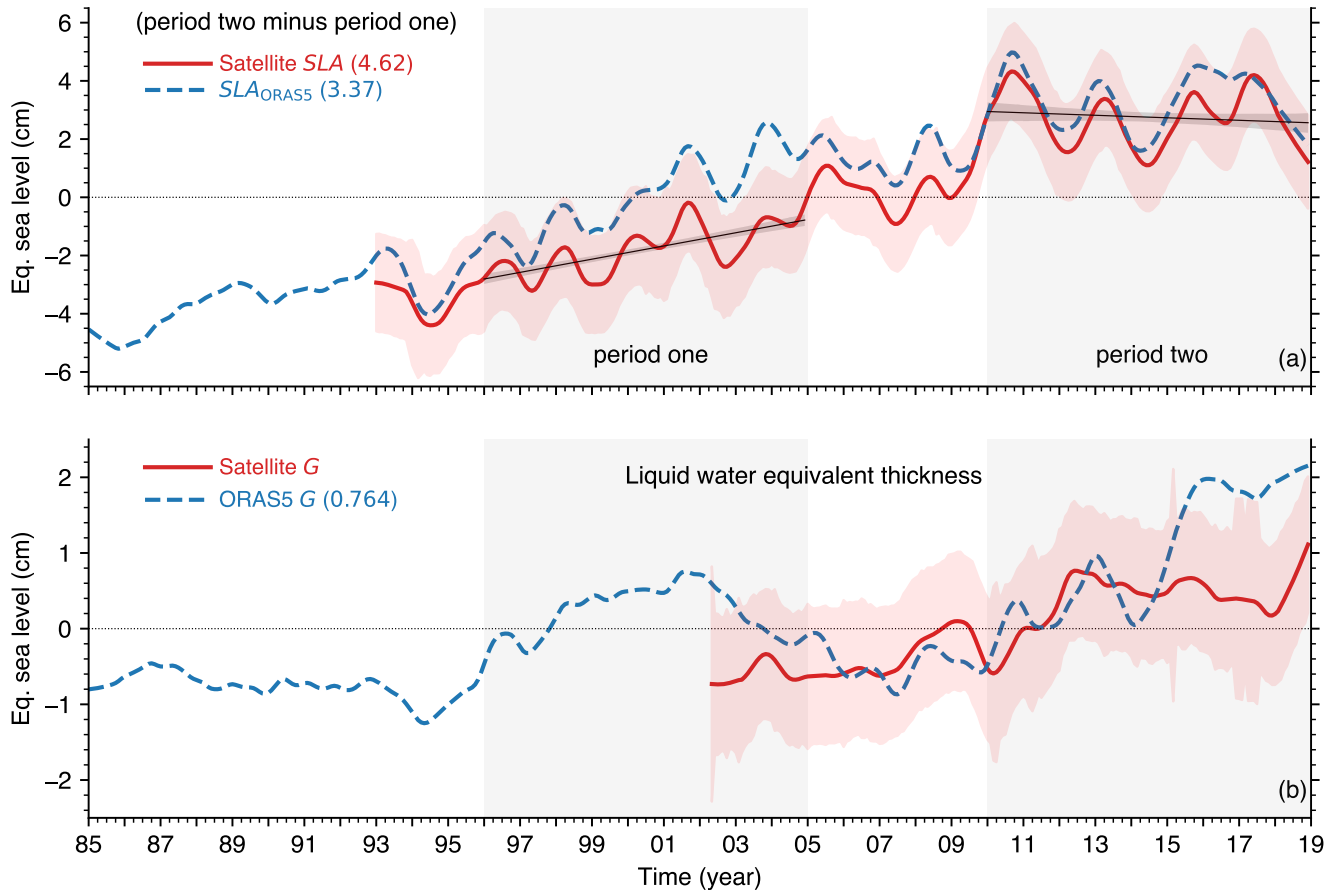


Figure 2. Area-average monthly time series (annual cycle removed) of domain characteristics and multi-year mean shifts (i.e., period two minus period one) in parenthesis. In this and subsequent figures, the lightly shaded background represent period one and two, respectively. **(a)** Satellite altimetry sea level anomaly (*SLA*) (red solid line) and measurement error (lightly shaded red region): regression line (black solid line) and 95% confidence interval (gray region around each line) for each period; and ORAS5 *SLA* (SLA_{ORAS5}) (blue dash line); for comparison, period one and two mean difference of satellite altimetry global average sea level is 4.02 cm. **(b)** GRACE satellite (see section 2.1) ocean mass change (*G*) (red solid line) and calculated ORAS5 *G* (blue dash line) (see section 2.2). GRACE *G* missing months (about 10% of the data set) have been infilled with the climatology of the missing month. A 13-month low-pass (moving average) filter is applied to all the time series; the lightly shaded red region is the GRACE measurement uncertainty (NASA, Jet Propulsion Laboratory, 2019).

steric, mass, atmospheric pressure shifts, thus identifying the drivers in each subdomain during the rising and the hiatus states and the drivers of the transition between the two states (section 3). Two key aspects of the dynamical chain of events resulting in the transition are discussed in section 4 and section 5, respectively. Our concluding remarks are in section 6.

2 Methods of analysis

65 To understand and characterize the measured domain *SLA* pattern (Fig. 2[a]), it is necessary to analyze the causes of change in the vertical displacement of the free ocean surface at each instant. The dominant causes have been known long ago and illustrated by several authors (Pattullo et al., 1955; Gill and Niller, 1973; Pinardi et al., 2014; Fukumori and Wang, 2013; Ibrahim and Sun, 2020). However, owing to the diversity of terminology in the sea level literature (Gregory et al., 2019), we briefly summarize these causes (section 2.1) to facilitate interpretation of our results. This is followed by a description of
70 the data sets that we used to calculate the shifts in these causes (section 2.2) and the results of EOF analysis that reveal two subdomains with differing pattern of *SLA* variability (section 2.3). Note that in section 2.1 we refer to SLA_{ORAS5} and $ORAS5$ G , which are both calculated using the $ORAS5$ reanalysis data sets that are described in section 2.2.

2.1 The causes of sea level fluctuations

The basic formulation of the physics of sea level fluctuation given by Gill and Niller (1973) is followed closely here and is thus
75 referred to for completeness. Introducing $\eta(\lambda, \phi)$ for the free ocean surface, where λ and ϕ are longitude and latitude (positive northward and eastward), respectively; H (m) for the seabed distance (i.e., depth from the mean ocean surface); ρ (kgm^{-3}) for seawater density; p_b ($\text{kgm}^{-1}\text{s}^{-2}$) for pressure at the ocean bathymetry (i.e., ocean bottom pressure); p_a ($\text{kgm}^{-1}\text{s}^{-2}$) for atmospheric pressure at the ocean surface, g (ms^{-2}) for the constant acceleration due to gravity, and γ (m) for the vertical
80 land motion; then based on the hydrostatic relation the variation of the free ocean surface from its time-mean, η' (m), can be approximated by (Gill and Niller, 1973)

$$\underbrace{\eta'}_{SLA} = \underbrace{\left(-\frac{1}{\rho_o} \int_{-H}^0 \rho' dz \right)}_{Z_\alpha} + \underbrace{\frac{p'_b}{g\rho_o}}_G + \underbrace{\left(\frac{-p'_a}{g\rho_o} \right)}_{\zeta_a} + \gamma \quad (1)$$

SLA_{ORAS5}

where ρ' , p'_a , p'_b are the variations of ρ , p_a and p_b from their time-mean, respectively, and ρ_o is a representative density (a constant). The mean sea level is defined as the geopotential surface $z = 0$ where the time average fluctuation of η is equal to zero (Apel, 1987). Eq. (1) states that η' , the sea level anomaly from its time-mean, hereafter *SLA* (cm), is caused by: (1) shifts in density structure resulting in expansion/contraction of the seawater column, i.e., steric fluctuation, hereafter Z_α (cm); (2)
85 variations in freshwater and salt mass (which determines weight and therefore pressure at the ocean bottom) inside the seawater column below the ocean surface, hereafter G (cm); and (3) variation in atmospheric pressure at the ocean surface, hereafter ζ_a (cm). Note that in the first and third term on the right-hand side of Eq. (1), a negative variation (i.e., $\rho' < 0$, or $p'_a < 0$) implies an increase in *SLA*, and vice versa.

For consistency, because satellite *SLA* trend pattern and ocean reanalysis *SLA*_{ORAS5} trend pattern are in agreement (Fig. 2[a]), we used *SLA*_{ORAS5} to evaluate Eq. (1). However, satellite *SLA* (Fig. 2[a]) is corrected for ζ_a (i.e., barometric correction), but *SLA*_{ORAS5} does not include atmospheric pressure forcing and vertical land motion (Zuo et al., 2019), i.e., *SLA*_{ORAS5} is the sum of Z_α and G as shown in Eq. (1). Since our aim is to specify the contribution of the four causes on the right side of Eq. (1) to the *SLA* shift, we therefore estimate and add ζ_a and γ to *SLA*_{ORAS5}. Hence, hereafter, *SLA* refers to *SLA*_{ORAS5} plus ζ_a and γ . Compared to Z_α and G , the contribution of ζ_a to *SLA* shifts is relatively small, so we use the approximation suggested by Gill and Niller (1973), p_a shift of 1 mbar corresponds to η' shift of 1 cm, which is consistent with direct calculations using term three on the right side of Eq. (1) and taking $\rho_o = 1025 \text{ kg m}^{-3}$.

ORAS5 is a Boussinesq model, meaning that it conserves volume but not mass. Greatbatch (1994) showed that requiring the conservation of mass in Boussinesq ocean models introduces two new terms in Eq. (1): the first term is weak and can be neglected, while the second term corresponds to the global inverse barometer effect, i.e., a spatially uniform net rate of expansion/contraction of the global sea level. Therefore, we calculate and include this second component, hereafter referred to as the ‘Boussinesq correction (ε),’ in our analysis, i.e., ε is added to the right-hand side of Eq. (1). However, for the sake of simplicity of description and because the contribution of ε is small in this study domain (less than 1% of the *SLA* shift, see Table A2), we do not write it in Eq. (1).

We used two methods to estimate Z_α . In method one we used ORAS5 reanalysis temperature and salinity to calculate G (ORAS5 G , see details in the next section); we then used ORAS5 G and *SLA*_{ORAS5}, together with Eq. (1), to obtain Z_α as a residual. Method one may be thought of as subtracting GRACE measurement from altimetry measurement. In method two we directly calculate Z_α , as well as its temperature-driven component (thermsteric change, hereafter Z_t) and salinity-driven component (halosteric change, hereafter Z_s), using the numerical formulation of (Tabata et al., 1986) which is given in pressure coordinates by

$$Z_\alpha = \frac{1}{g} \int_{p_a}^{p_b} (\Delta\alpha) dp \quad (2a)$$

$$Z_t = \frac{1}{g} \int_{p_a}^{p_b} \left(\frac{\partial\alpha}{\partial T} \right) \Delta T dp \quad (2b)$$

$$Z_s = \frac{1}{g} \int_{p_a}^{p_b} \left(\frac{\partial\alpha}{\partial S} \right) \Delta S dp \quad (2c)$$

where α (m^3kg^{-1}) is the specific volume; T ($^\circ\text{C}$) is temperature, S (gkg^{-1}) is salinity; $\Delta T = T - \bar{T}$ and $\Delta S = S - \bar{S}$ represent the mean monthly departure of T and S from their respective climatological annual means (\bar{T} and \bar{S}); $\Delta\alpha$ is the departure of specific volume corresponding to small values of ΔT and ΔS ; and the integration is carried out between pressure levels from the ocean surface to the seabed. Figure 5 shows the comparison of Z_α obtained from method one and two and the agreement

between them is good, which gives us confidence in our calculations. One source of error in Eq. (2) is that, because we neglect higher order derivatives in the estimation of the thermal expansion coefficient ($\partial\alpha/\partial T$) and haline contraction coefficient ($\partial\alpha/\partial S$), Eq. (2) may not capture high frequency steric fluctuations. However, because our focus here is on long-term low frequency *SLA* fluctuations, this error is unlikely to affect our results.

120 The satellite Gravity Recovery and Climate Experiment (GRACE) data set provides monthly estimates of G at 1° spatial resolution (Save et al., 2016; Save, 2020), but the record is short (March 2002 to October 2017) and it has many time gaps. To overcome this deficiency we used ORAS5 G (see calculation details in the next section). Figure 2[b] shows that ORAS5 G captures the GRACE G trend pattern, which gives us confidence in our calculations.

It is also possible to estimate G from its constituent components. Introducing P (cm) for precipitation averaged over the domain, E (cm) for evaporation averaged over the domain, R (cm) for land runoff into the domain, and F_{net} (cm) for seawater net flux through the domain boundaries, then G is given by

$$G = P - E + R + F_{\text{net}} \quad (3)$$

In reality, however, it is difficult to calculate F_{net} in Eq. (3) from ocean reanalysis data sets by calculating the fluxes through the domain boundaries because ORAS5 and most ocean reanalysis systems do not conserve mass. Therefore, because local salinity and temperature (e.g., from Argo floats) are assimilated into ORAS5, which enhances its reliability, we used the calculated ORAS5 G for the analysis here. By substituting this calculated G and the estimated P , E and R into Eq. (3), we derived F_{net} as a residual.

In order to estimate vertical land motion (γ), the fourth term on the right-hand side of Eq. (1), we subtracted tidal gauge (which moves with the land) measurements (OBS), from the absolute dynamic topography (ADT) altimetry measurements: i.e., $\gamma = ADT - OBS$ (Wöppelmann and Marcos, 2016). Two tide gauge stations are within the study domain: station 1816: 135 DAKAR 2 (17.42° W, 14.68° N), available from 1992 to 2018 (Permanent Service for Mean Sea Level, 2025, a); and station 2036: NOUAKCHOTT (16.04° W, 17.99° N), available from 2007 to 2015 (Permanent Service for Mean Sea Level, 2025, b). Station 2036, located in the north of the study domain, has a shorter record. Accordingly, using an inverse weighting approach to derive station weights (94% weight for station 1816 and 6% weight for station 2036), we calculated a weighted average from the two tide stations. We estimate the two period difference of γ to be 1.10 cm (Table A2), with a 95% confidence interval of 140 (0.232 cm, 1.97 cm).

2.1.1 Metric for analyzing *SLA* and its drivers during the rising and the hiatus states

To determine and compare what caused the sea level to continue rising during period one and what caused the sea level rise to pause during period two, we calculate the magnitude of the *SLA* and its drivers during period one and during period two. Introducing x for *SLA* or for its drivers and $m_{x,i}$ (m/month) for the linear least-squares regression (trend) line slope of x 145 during period i (period 1 or period 2, each having 108 months), the magnitude of x (\hat{x}) during each period i is given by

$$\hat{x}_i = m_{x,i} * 108 \quad (4)$$

2.1.2 Metric for analyzing the transition from the rising to the hiatus states

To determine what caused the sea level rise to pause during period two (i.e., what caused the transition of the SLA from a rising state to a hiatus state), we calculate the two period mean difference for SLA and for its drivers. Thus, if $\overline{x_{P1}}$ and $\overline{x_{P2}}$ are the period one and two means of x , respectively, the two period mean difference is $\overline{x_{P2}}$ minus $\overline{x_{P1}}$.

2.2 Data sets and processing

The altimeter SLA measurements that we used is the climate-oriented gridded, monthly, 0.25° horizontal resolution, Copernicus Climate Change Service satellite observations dataset version vDT2021, which is available from 1993 to present (C3S Climate Data Store, 2018). This satellite record is designed for monitoring the long-term evolution of sea level and other ocean and climate indicators, thus it is suitable for this study.

We obtained ocean reanalysis sea level anomaly (SLA_{ORAS5}), seawater salinity (S) and seawater temperature (T) from the monthly ECMWF ORAS5 ocean reanalysis data set (Zuo et al., 2019), which is available from 1979 to 2018. ORAS5 has 0.25° horizontal resolution and 75 vertical levels, and we downloaded it from the Integrated Climate Data Center, Hamburg University.

Notice the discrepancy between SLA and SLA_{ORAS5} (Fig. 2[a]): this is likely because 1) observations near the coast that are assimilated into ORAS5 have larger errors in general, 2) ORAS5 does not assimilate altimeter SLA near the coast, and 3) vertical land displacement is not well represented in ORAS5 (Zuo et al., 2019). Compared to SLA , the period two minus period one SLA_{ORAS5} difference for the domain and subdomains are about 5% larger: this discrepancy is accounted for by the barometric and Boussinesq corrections (see Table A2). ORAS5 assimilates in situ and satellite measurements (S , T and SLA), it uses information on the global mean sea level trend to close the fresh-water budget, and it includes a bias correction scheme for pressure in the tropical region and for salinity and temperature in the extra-tropical region (Zuo et al., 2019; Balmaseda et al., 2013). These ORAS5 characteristics are likely why SLA_{ORAS5} long-term trend in this domain is in good agreement with altimeter SLA measurements (Fig. 2[a]). Overall, Carton et al. (2019) showed that ORAS5 is suitable for long-term variability studies and Ibrahim and Sun (2022) have verified ORAS5 ensemble control member (opa0), which we use here, in this domain. This gives us confidence that ORAS5 data set is suitable for this study.

To calculate ORAS5 G , first, we used ORAS5 S and T , together with the Gibbs SeaWater (GSW) Oceanographic Toolbox of TEOS-10 version 3.6.19 in Python, to obtain in situ density (kg m^{-3}); second, using this density, together with ORAS5 layer thickness (m) and domain area (m^2), we calculated mass (kg); third, using seawater density of 1025 kg m^{-3} and the domain area, we obtained mass in equivalent water thickness units (cm), the same units as GRACE data (Save et al., 2016). Note that ORAS5 does not assimilate GRACE. Accordingly, GRACE is an independent source to validate the calculations of ORAS5 G . The agreement between ORAS5 G and GRACE data is good (Fig. 2[b]). However, there are discrepancies, particularly during 2003–2005 and from 2015, which may be explained by degraded GRACE data when the satellite orbit is near exact repeat (July–Dec 2004, Jan–Feb 2015) and when altimetry measurements are taken from only one accelerometer, starting around Aug 2016 (NASA, Jet Propulsion Laboratory, 2019).

180 We estimated P minus E ($P_{\text{minus}E}$) and ζ_a using the monthly ECMWF ERA5 atmospheric reanalysis surface data set (Hersbach et al., 2020), which is available from 1979 to present. ERA5 has 30 km spatial resolution and we downloaded it from the Copernicus Climate Change Service Climate Data Store (Hersbach et al., 2023). To estimate R we calculated $P_{\text{minus}E}$ over the catchment of the rivers that discharge into the domain (World Bank, 2019) (Fig. 1[b]). Compared to measured land runoff, this R is likely more accurate since it also includes coastal groundwater discharge into the domain. The large land area
185 extending inland around 10°N (Fig. 1[b]) is the catchment of the Niger River, which has its headwaters in the Fouta Djallon Highland and flows inland. There are three other land areas near the coast, around 11°N , 13°N , and 15°N , that are unresolved in the rivers data set that we used (World Bank, 2019), probably because these areas have no gauged rivers. In general, river contribution to SLA shift is comparatively small (Fig. 4[d]).

2.3 Analysis subdomains

190 As a first step to comparing the causes of the shift in SLA trend pattern between period one and two, we carried out an empirical orthogonal function (EOF) analysis of SLA in the domain to identify coherent horizontal structures (Fig. 3). This is useful to ensure correct spatial averaging of atmosphere and ocean variables for time series analysis. Fig. 3[a1] and Fig. 3[a2] are the spatial pattern and time series of EOF mode 1 without the annual cycle not removed, which enable reconstruction of the whole pattern of variability during 1985–2017: the temporal pattern shows an annual variability and a long-term steadily
195 rising SLA (Fig. 3[a2]).

EOF analysis mode 1 with the annual cycle removed explains more than 87% of the temporal-horizontal variance and it reveals two subregions with differing spatial patterns of SLA variability (Fig. 3[b1]), which are hereafter denoted ‘subdomain A’ and ‘subdomain B’ as shown in Figure 3[b1,c1]. EOF mode 1 with the annual cycle removed accounts for a large proportion of the total variance (87.3%), indicating that the spatial structure of SLA variation revealed in mode 1 is stable (Fig. 3[b1]). EOF
200 mode 2 with the annual cycle removed accounts for only 4% of the temporal-horizontal variance (Fig. 3[c1]). The horizontal pattern of mode 1 indicates a large SLA difference (greater than 24 cm) between subdomains A and B Figure 3[b1].

The boundary between subdomain A and B is around the 14.75°N line of latitude, at the western tip of the African continent near Dakar, Senegal (Fig. 1). Subdomain A and B correspond to regions of comparatively shallow and deep bathymetry (Fig. 1[a]) as well as to regions of comparatively low and high mean sea surface height (Fig. 1[b]), respectively. Based on this EOF
205 analysis, we analyze the causes of the shift in SLA pattern in each subdomain between period one and two.

3 Multidecadal shifts in the causes of sea level fluctuations

In order to specify and compare the drivers of the sea level shifts during the rising and the hiatus periods, in section 3.1 we describe the contribution of the two dominant causes (i.e., steric and mass) of sea level fluctuations (Eq. 1) in each period. To specify the drivers of the sea level transition from the rising state to the hiatus state, in section 3.2 we describe the relative
210 contributions of all the causes of sea level fluctuation. In section 3.3, we characterize the dominant driver of the transition.

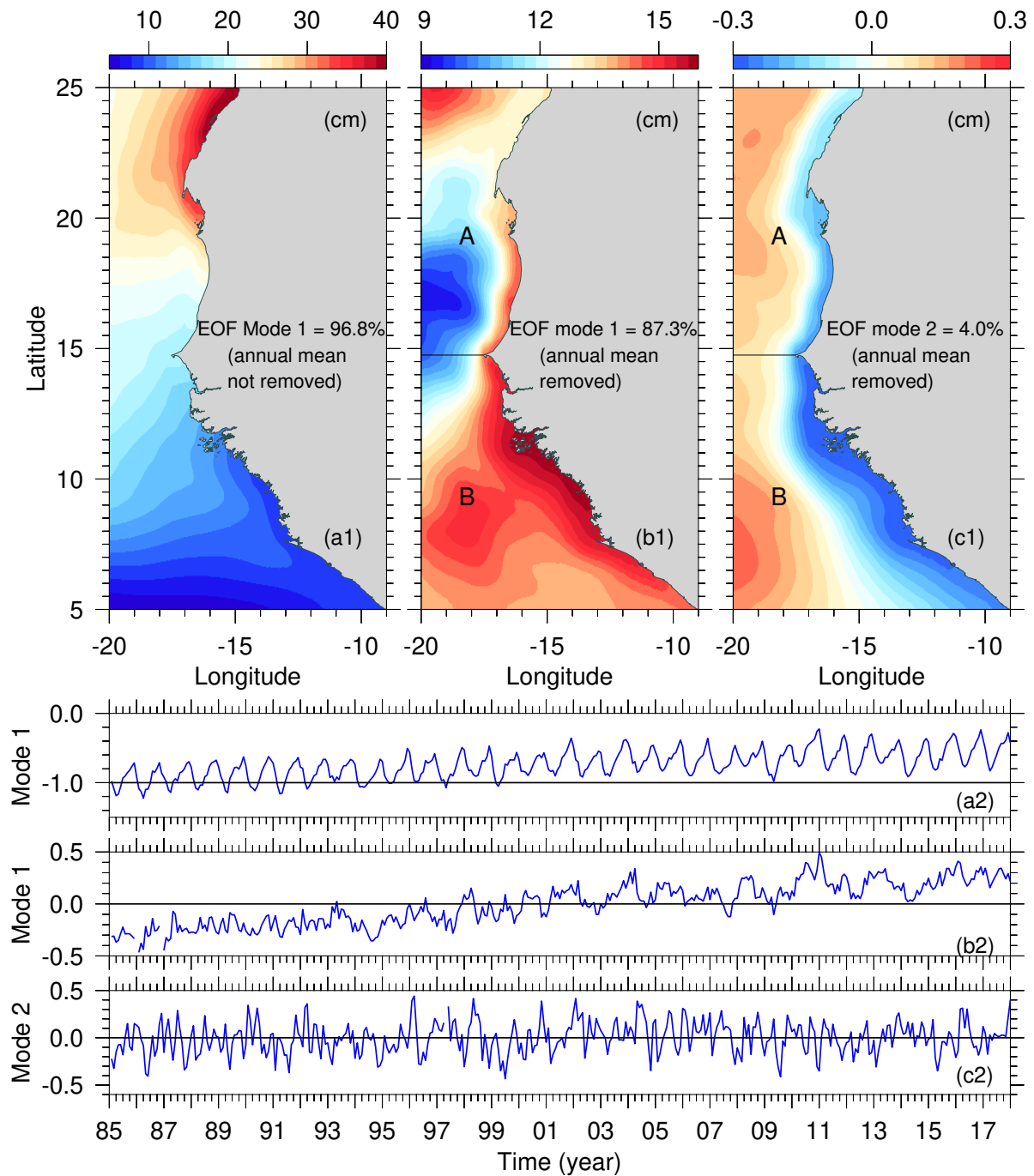


Figure 3. Empirical Orthogonal Function (EOF) analysis of the domain monthly *SLA*. **(a1)** Mode 1, annual mean not removed. **(b1)** Mode 1, annual mean removed. **(c1)** Mode 2, annual mean removed. **(a2–c2)** a1, b1 and c1 time series, respectively.

3.1 Contributions of steric and mass shifts during the rising state and the hiatus state

Table A1 gives the shift in SLA and the contribution of its drivers during period 1 and period 2. Because the barometric, Boussinesq, and vertical land motion terms (Eq. 1) are unlikely to change much during each period (9 years), we do not include these terms in Table A1. Here we summarize the imbalance between the two dominant terms (steric and mass) during period 1 (which resulted in rising sea level) and the balance between the two dominant terms during period 2 (which resulted in the pause in sea level rise).

In the domain as a whole, the rise in sea level during period 1 (4.03 cm) is mainly owing to a positive total steric shift (3.67 cm) and a small positive mass contribution (0.233 cm). But during the pause in sea level rise in period 2, a negative total steric shift (-2.84 cm) is nearly balanced by a positive mass shift (2.56 cm) (Table A1). This same pattern of contributions, imbalance between total steric and mass contributions during period 1 and balance between the two terms during period 2, is shown in subdomains A and B (Table A1). There is, however, a difference in the thermosteric and halosteric contributions to the total steric effect in the two subdomains. In both period 1 and period 2, the magnitude of the halosteric shifts is larger in subdomain A (3.39 cm and 3.56 cm) compared to subdomain B (0.823 cm and -0.306 cm), implying that halosteric effects is relatively more important in subdomain A during both periods (Table A1).

In summary, in the whole domain and in subdomains A and B, total steric effects is the key driver during the sea level rising state in period 1, whereas the pause in sea level rise (the hiatus state) during period 2 is associated with a balance in total steric effects and mass effects.

3.2 Relative contributions of sea level drivers to the transition from the rising state to the hiatus state

The two period difference (i.e., period two minus period one) of the area-average multi-year mean SLA and the factors that causes it to shift are given in Table A2, while we summarize the percentage contributions here. Using the residual calculation approach based on Eq. (1), the contribution of Z_α to the multi-year mean SLA shift is $\approx 56.5\%$ in the whole domain, 52% in subdomain A, and 58.9% in subdomain B; the contribution of γ to the SLA shift is $\approx 23.9\%$ in the whole domain, 25.4% in subdomain A, and 23% in subdomain B; the contribution of G to the SLA shift is $\approx 16.5\%$ in the whole domain, 18.4% in subdomain A, and 15.4% in subdomain B; and the contribution of ζ_a to the SLA shift is 2.71% in the whole domain, 3.64% in subdomain A, and 2.19% in subdomain B; (Eq. (2), Eq. (3), Table A2).

The temporal pattern of the residual Z_α (Eq. 1) and the calculated Z_α (Eq. 2) are almost identical (Fig. 5). The small discrepancy between them is likely because, unlike the calculated Z_α , the shift in ζ_a is included in the residual Z_α ; and, as stated before, we neglect second and higher order Taylor expansion terms for the steric expansion/contraction coefficients in Eq. (2) (Tabata et al., 1986).

In the domain, subdomain A and subdomain B, $P_{\text{minus}E}$ contributed about 13.8% , 2.22% , and 20.1% (Ibrahim and Sun, 2023) of the multi-year mean SLA shift, respectively; R contributed about -0.180% , -1.12% and 0.340% , respectively; and F_{net} contributed $\approx 2.90\%$, 17.3% and -4.96% , respectively, (Fig. 4 [c,d], Eq. (3), Table A2).

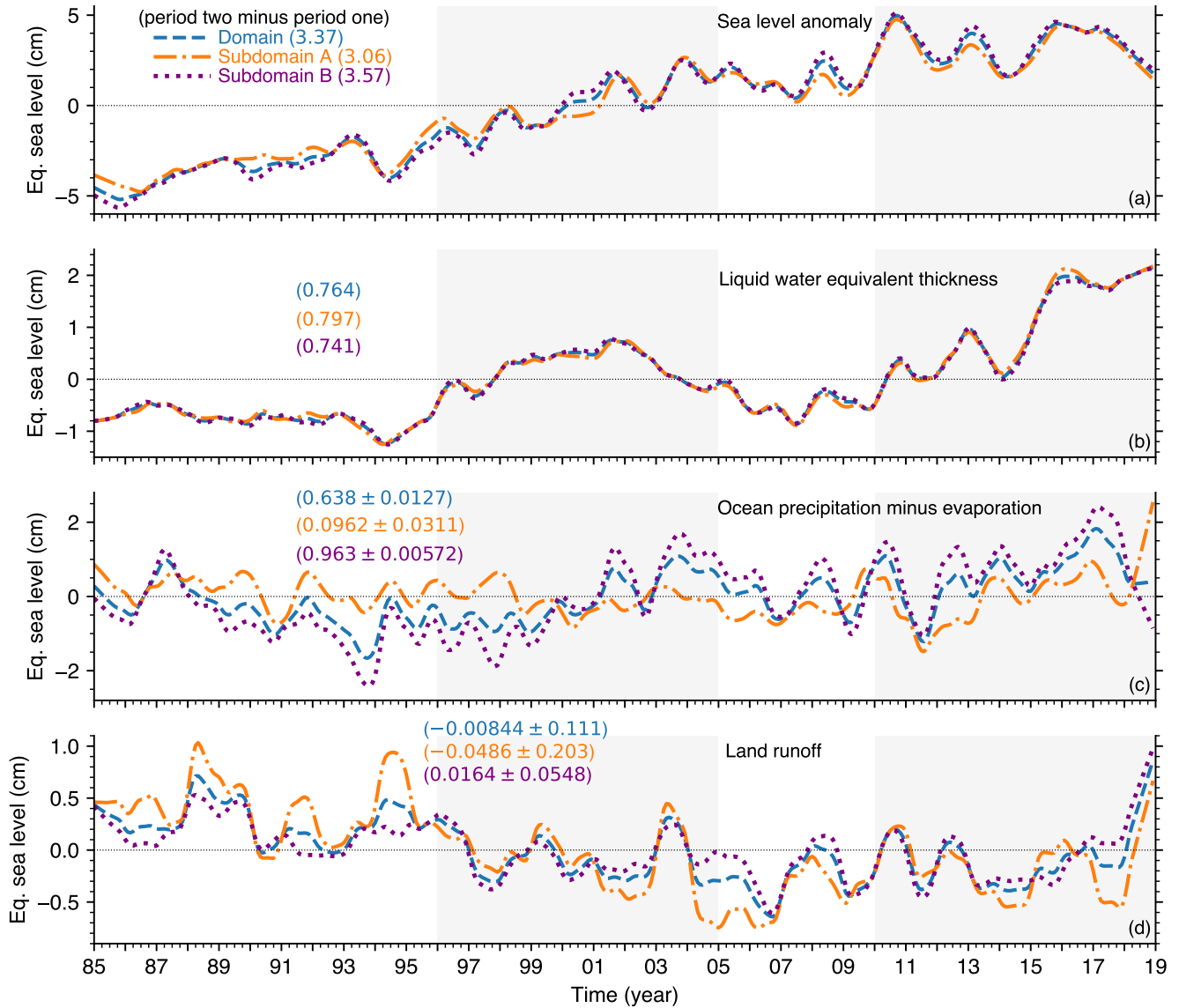


Figure 4. Monthly time series (annual cycle removed) of domain and subdomain characteristics, and multi-year mean shift (i.e., period two minus period one) in parenthesis. (a) Area-averaged SLA_{ORAS5} in the domain (blue dash line), subdomain A (orange dash-dotted line), and subdomain B (purple dotted line). (b) ORAS5 G , curves are as in a. (c) ERA5 precipitation minus evaporation ($P_{minus}E$) over the ocean and uncertainty, curves are as in a. (d) ERA5-derived land runoff and uncertainty, curves are as in a. (e) ORAS5 potential temperature at 50 m depth in the Guinea Dome region: 10°N–13.5°N, 21°W–30°W (see discussion in section 5). A 13-month low-pass (moving average) filter is applied to all the time series.

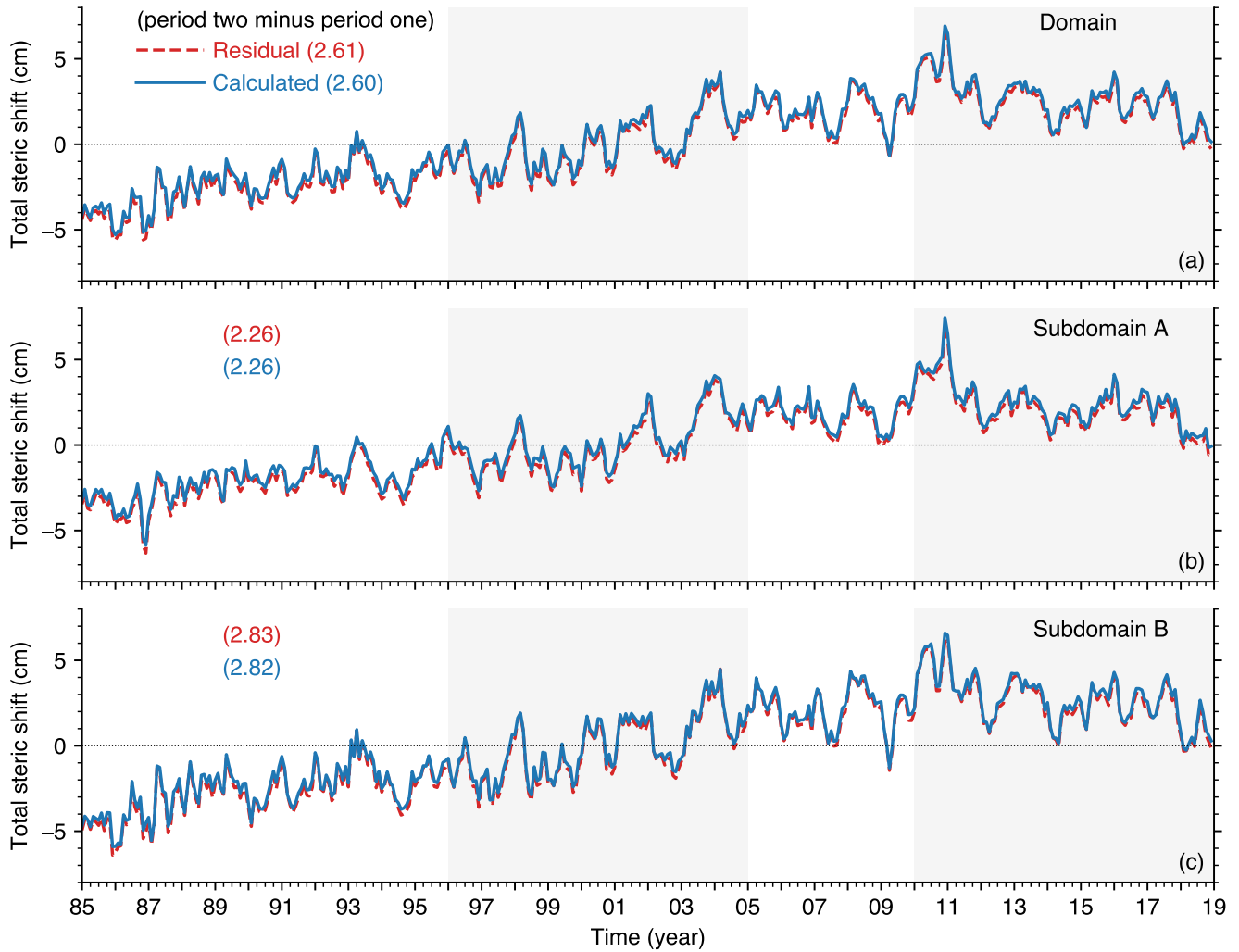


Figure 5. Comparison of total steric (Z_α) shift during 1985–2018 obtained with two different methods: in method one Z_α is obtained (red curve) as a residual using Eq. (1), i.e., SLA minus G , and in method two Z_α is directly calculated (blue curve) using Eq. (2).

In summary (Table A2), neglecting γ which has the same value in the whole domain and the subdomains, the three dominant drivers of SLA shift in the domain, in decreasing order of effect, are Z_α , $P_{\text{minus}E}$ and ζ_a ; for subdomain A they are Z_α , F_{net} and ζ_a ; and for subdomain B they are Z_α , $P_{\text{minus}E}$ and F_{net} . As expected, steric shift is the dominant driver of the observed sea-level variation pattern in the domain as well as in the two subdomains. The second dominant driver in subdomain A (F_{net} , 17.3%) is different from the second dominant driver in subdomain B ($P_{\text{minus}E}$, 20.1%). Since F_{net} expresses mass exchange between ocean regions and $P_{\text{minus}E}$ expresses mass exchange between the ocean and the atmosphere, one interpretation of these results is that, with regards to mass effects on long-term SLA variability in this domain (i.e., G in Eq. (1)), oceanic processes predominate in subdomain A, while atmosphere-ocean processes predominate in subdomain B. This interpretation is consistent with the differing spatial pattern of SLA variability in subdomain A and subdomain B that is revealed in the EOF analysis mode 1 with the annual cycle removed (Fig. 3[b1]), which shows a low and high pattern of variability in large areas of subdomain A and B, respectively.

Note that, because F_{net} and $P_{\text{minus}E}$ modulate the domain temperature and salinity (and therefore the domain density), these two factors also contribute to the steric shift (Z_α). To characterize the mechanism of Z_α and show the operating processes, in the following section we compare the relative roles of temperature and salinity on Z_α .

3.3 Relative effect of temperature and salinity shifts on the transition from the rising state to the hiatus state

In order to assess the comparative roles of temperature and salinity on the multi-year shift in subdomains A and B Z_α , and to specify the ocean current changes associated with the multi-year shift in subdomains A and B F_{net} , we examined subdomains A and B vertical structure. Figure 6[a1,b1] and Figure 6[a2,b2] show the T-S profile and T-S diagram, respectively, in subdomains A and B, averaged over periods one and two.

In subdomain A, there is a decrease in salinity in the depth range of ≈ 0 –1265 m during period two (Fig. 6[a1]), and the associated change in density structure is also evident (Fig. 6[a2]). Notice that period two shift in density vertical structure in subdomain A is dominated by salinity shifts (Fig. 6[a2]), suggesting that, compared to temperature, salinity adjustment plays a more important role in the multi-year positive shift in subdomain A Z_α . In subdomain B, near-surface salinity decreased during period two (Fig. 6[b2]), which confirms the multi-year mean increase in subdomain B $P_{\text{minus}E}$ (Fig. 4[c]). The shift in subdomain B density structure is mainly between surface and ≈ 300 m (Fig. 6[b2]).

To verify the changes in density structure in the two subdomains and specify the associated shifts in temperature and salinity temporal pattern at differing depths, we separated subdomains A and B into four vertical layers based on their salinity vertical profile (Fig. 7[a1,b1]). Layer 1 is at depth 0–50 m, layer 2 is at depth 50–735 m, layer 3 at depth 735–1725 m, and layer 4 is at depth 1725–5000 m.

Figure 7 shows the layer-averaged monthly time series (annual cycle removed) of temperature and salinity in subdomain A and B. Compared to period one, period two subdomain A layers 1–3 temperature decreased by 0.164°C, 0.0133°C and 0.110°C, respectively, while layer 4 temperature increased by 0.0386°C (Fig. 7[a1]): consequently, only layer 4 thermosteric expansion contributed to the multi-year positive shift in subdomain A Z_α . Subdomain A layers 1–4 salinity decreased by 0.0653 g/kg, 0.0211 g/kg, 0.0408 g/kg and 0.00122 g/kg, respectively, between periods one and two (Fig. 7[a2]): consequently, halosteric

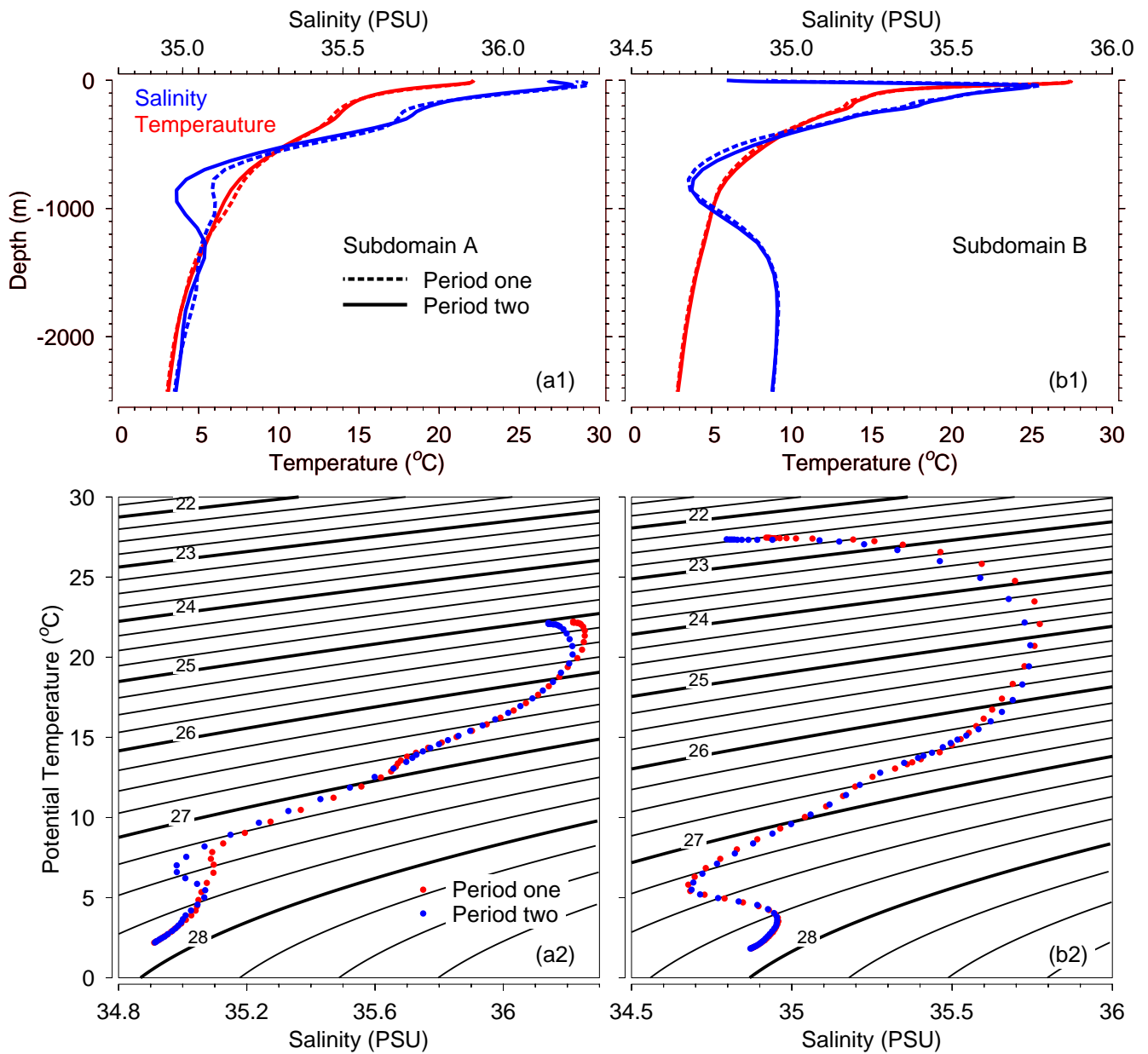


Figure 6. Multi-year mean vertical structure in the domain. **(a1, b1)** Period one (dotted line) and period two (solid line) T-S profile for subdomains A and B, respectively; salinity is shown in blue and temperature is shown in red. **(a2, b2)** Period one (red dotted line) and period two (blue dotted line) T-S diagram for subdomains A and B, respectively. Notice the large period two shift in subdomain A salinity (a1) and density (a2).

expansion in the entire water column contributed to the multi-year positive shift in subdomain A Z_α . Between periods one and two subdomain B layers 1–4 temperature increased by 0.0488°C, 0.219°C, 0.0619°C and 0.0181°C, respectively (Fig. 7[b1]), implying that thermosteric expansion in all four layers contributed to the multi-year positive shift in subdomain B Z_α .
280 Compared to period one, period two subdomain B layer 2 salinity increased by 0.0284 g/kg, while layers 1, 3 and 4 salinity decreased by 0.0962 g/kg, 0.00501 g/kg and 0.00209 g/kg, respectively (Fig. 7[b2]), implying that layers 1, 3 and 4 halosteric expansion contributed to the multi-year positive shift in subdomain B Z_α .

To ascertain the comparative role of temperature and salinity in subdomain A and B steric shifts, we calculated the thermosteric (Z_t) and halosteric (Z_s) shifts in each subdomain (Eq. 2b and 2c, Fig. 8). In the domain as a whole, Z_t is slightly
285 larger and Z_s , 1.51 cm versus 1.09 cm (Fig. 8), respectively. However, there are large differences between the two subdomains. In subdomain A, Z_t is ≈ -1.02 cm and Z_s is ≈ 3.28 cm; while in subdomain B Z_t is ≈ 3.07 cm and Z_s is ≈ -0.252 cm (Fig. 8). This means that in the domain, Z_t and Z_s contributed about 58% and 42%, respectively, of the total steric shift (Z_α) between period 1 and 2; in subdomain A, Z_t and Z_s contributed about -45% and 145% , respectively, of Z_α ; and in subdomain B Z_t and Z_s contributed about 109% and -9% , respectively, of Z_α . Therefore, halosteric expansion is the dominant driver
290 of the transition from rising state to the hiatus state in subdomain A, while thermosteric expansion is the dominant driver in subdomain B. These results highlight the role of salt as an important driver of long-term regional sea level shift, a role that is somewhat less recognized (compared to the role of heat) in discussions of sea level shifts under global climate change (Durack et al., 2014). Indeed, Ponte et al. (2021); Llovel and Lee (2015); Antonov et al. (2002) have suggested that shifts in salinity affect *SLA* shift in large areas of the world ocean at short and long timescales.

It is beyond the scope of this work to analyze the domain heat and salt balance to find the physical processes that caused the thermosteric and halosteric shifts in subdomain A and B. However, owing to three peculiarities of subdomain A that suggest the source of the freshening that caused the large halosteric shift there (145%/3.28 cm, Table A3), we give a probable explanation for subdomain A freshening. First, $P_{\text{minus}E}$ contributed only 2.22%/0.0962 cm of subdomain A *SLA* shift, indicating that precipitation is not the key driver of subdomain A freshening. Second, river runoff inside subdomain A is
300 small ($-1.12\%/ -0.0486$ cm) and there is no river runoff north of it, indicating that freshwater from land is not the source of subdomain A freshening. Third, the Mediterranean Sea outflow at the Strait of Gibraltar north of subdomain A has a higher salinity than subdomain A (Fig. 9[a1,b1,c1]) (Baringer and Price, 1997; Naranjo et al., 2017; Aldama-Campino and Döös, 2020), indicating that this outflow is not the cause of subdomain A freshening. Accordingly, we hypothesized that subdomain A freshening associated with the multi-year strengthening of F_{net} has its origin in salinity shifts occurring elsewhere in the
305 North Atlantic. To verify this hypothesis, we find the ocean currents that freshened subdomain A and describe them in the next section.

4 Freshening of the Canary Current by subpolar North Atlantic water mass

The most prominent ocean current traversing subdomain A is the southward-flowing Canary Current, a relatively shallow (down to ≈ 200 – 300 m) eastern boundary current of the North Atlantic Subtropical Gyre conveying North Atlantic Central

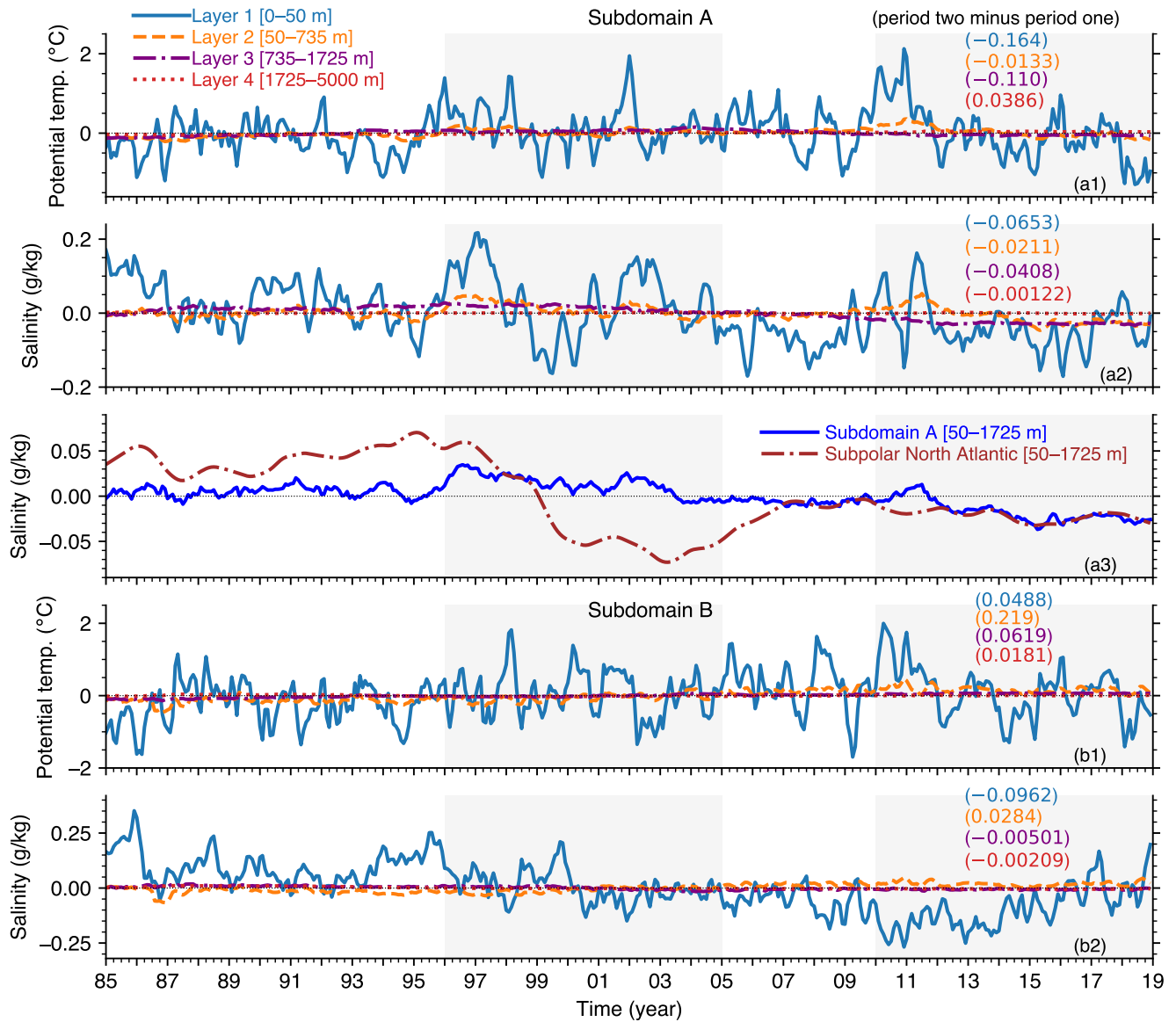


Figure 7. Monthly time series (annual cycle removed) of area-and-layer average ocean properties. **(a1)** Subdomain A potential temperature (temp.). **(a2)** Subdomain A salinity. **(a3)** Subdomain A salinity versus subpolar North Atlantic (52°N–53°N, 46°W–47°W) salinity, both averaged in layers 2 and 3; a 13-month low-pass (moving average) filter is applied to the subpolar time series to remove high frequency fluctuations that are attenuated during transit to the domain. **(b1)** Subdomain B potential temp. **(b2)** Subdomain B salinity. The numbers in parenthesis are period two minus period one values of temperature and salinity in each layer.

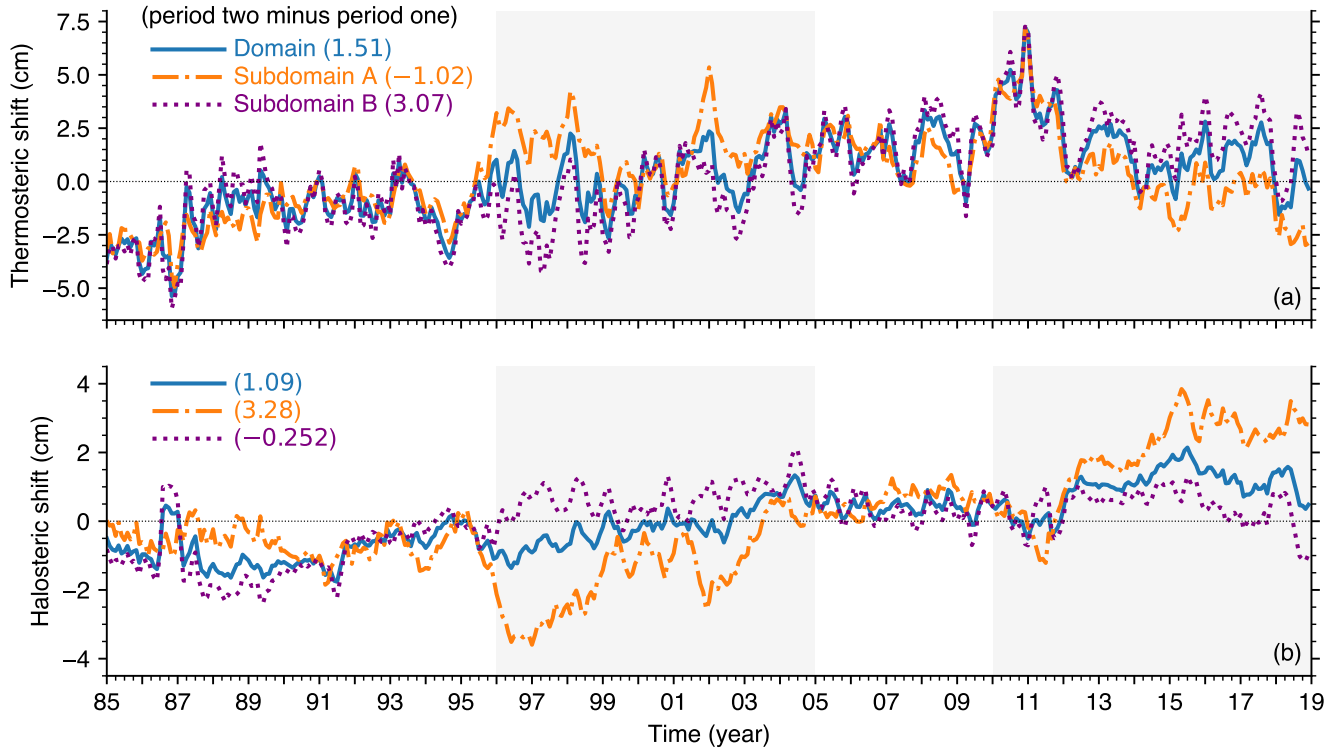


Figure 8. Monthly steric characteristics. **(a)** Area average thermosteric shifts in the domain (blue), subdomain A (orange) and subdomain B (purple). **(b)** Same as a but for halosteric shifts: notice the comparatively large multi-year halosteric shift in subdomain A. The time series are obtained from direct calculations using Eq. (2). The sum of **a** and **b** is the total steric shift, Z_α , which are given in Table A3.

310 Waters (Zenk et al., 1991; Mason et al., 2011; Pelegri and Peña-Izquierdo, 2015). The waters feeding the Canary Current comes from the subpolar North Atlantic area, partly through the so-called ‘Azores current,’ a relatively deep (down to ≈ 2000 m) narrow zonal jet that originates in the western North Atlantic margin where the Gulf Stream bifurcates. The Azores current propagates southward and then eastward between 33°N and 35°N towards the African coast and the Gibraltar Strait (Klein and Siedler, 1989; Stramma and Müller, 1989; Jia, 2000; Comas-Rodríguez et al., 2011; Mason et al., 2011; Frazão et al., 2022).

315 Figure 9[a1,b1,c1] shows the domain horizontal currents and salinity averaged in layers 1, 2 and 3, respectively, and Figure 7[a2,b2] show the time series of mean monthly salinity anomaly averaged in these layers for subdomains A and B. The linkage between the Azores current, which turns southward around 32°N , and the Canary Current, which traverses subdomain A, is particularly evident in layers 1 and 2 (Fig. 9[a1,b1]). Compared to period one, in period two the Canary Current strengthened by ≈ 0.01 m/s in northern subdomain A where salinity decreased by up to 0.4 g/kg (Fig. 9[a2]).

320 To find and describe the physical linkage between subdomain A freshening and salinity shifts occurring elsewhere in the North Atlantic, we calculated and analyzed the maximum Spearman cross-correlation (during 1985–2018) between salinity averaged in subdomain A layers 2 and 3 and salinity at each grid-point in the North Atlantic averaged in the same layers (Fig.

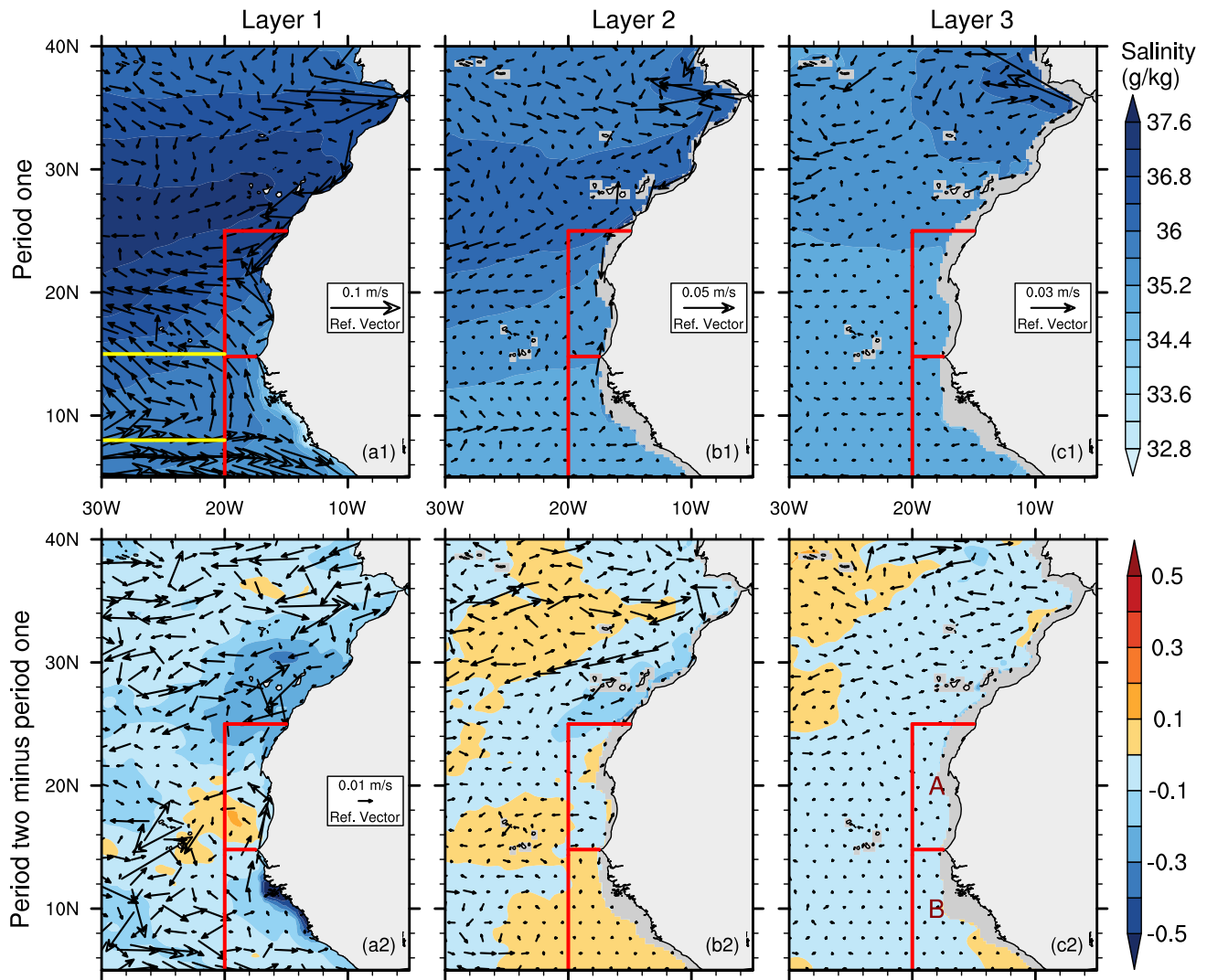


Figure 9. Salinity and ocean current structures and their multi-year shifts. **(a1,b1,c1)** Multi-year (period one) mean salinity and vector currents in layers 1–3, respectively. **(a2,b2,c2)** The same as a1–c1 but for period two minus period one. Notice the Guinea Dome indicated by the cyclonic circulation region between 8°N and 18°N in a1. The red lines delineate the domain, subdomain A, and subdomain B, and the yellow lines indicate the cyclonic circulation in the Guinea Dome region, between the North Equatorial Current and Countercurrent.

10[a]), at different time lags (1 to 72 months with subdomain A salinity lagging). **The time corresponding to the maximum correlation are shown in Fig. 10[b].** We chose these layers because, first, layer 2 and 3 account for 71.6% of the total steric expansion in subdomain A (not shown); second, layer 2 and 3 have large halosteric shifts in subdomain A during period two compared to layer 1 (only 50 m thick) and layer 4 (Fig. 7[a2]); and third, short-term air-sea fluxes that modify salinity are mostly attenuated in layers 2 and 3.

The spatial structure of the maximum cross-correlation reveal two pathways whereby western subpolar North Atlantic waters propagate to the source area of the Canary Current (Fig. 10[a]). Path 1 (green colored line) is consistent with the Azores current: western subpolar waters propagate southward and then eastward between 33°N and 35°N towards the African coast. Conversely, in path 2 (cyan colored line) western subpolar waters propagate eastward to the north European coast and then southward along the coast to subdomain A (Fig. 10[a]). **The spatial pattern of the time in which the maximum correlations are obtained shows that path 1 has a longer period and path 2 has a shorter period (Fig. 10[b]).** Moreover, time and depth average currents in layer 2 suggest that path 1 waters partly come from path 2 in a westbound flow around the 45° N line of latitude (thin green colored line) (Fig. 11[a]). We conclude therefore, based on path 1 and path 2, that there is a physical linkage between subdomain A salinity and salinity in the western subpolar North Atlantic.

Since it takes time for the currents carrying subpolar North Atlantic water mass to travel along path 1 and 2 to the west African coast, a necessary precondition for subpolar waters to drive subdomain A freshening is to observe subpolar North Atlantic freshening prior to subdomain A freshening. Accordingly, based on the maximum correlation of salinity spatial pattern (Fig. 10[a]), we compared the mean, monthly salinity anomaly time series for subdomain A and for a representative subpolar North Atlantic region (46°W–47°W, 52°N–53°N, purple colored box in Fig. 10[a]), both calculated in the same ocean layer (2 and 3). We chose this representative region because it has a large correlation with subdomain A salinity in layers 2 and 3 (Fig. 10[a]), and because it has a large salinity increase in period two (not shown). Neglecting short-term fluctuations and focusing on the long-term trend, the negative salinity anomaly in subdomain A began around 2004, while in the subpolar region the negative salinity anomaly began around 1999 (Fig. 7[a3]), demonstrating that the subpolar freshening preceded subdomain A freshening.

To show that fresher subpolar water mass is the driver of subdomain A freshening, thus confirming our hypothesis, we calculated and analyzed the potential vorticity, a conservative flow tracer that characterize ocean water mass. Introducing f (1/s) for the planetary vorticity, ζ (1/s) for the relative vorticity, and H (m) for the difference between the depth of two density surfaces (1025 kg/m³ and 1037 kg/m³), the potential vorticity, PV , is given by (Apel, 1987)

$$PV = \frac{f + \zeta}{H} \quad (5)$$

We chose these two density surfaces based on the density boundaries between layer 1 and 2, and between layer 3 and 4. Conservation of potential vorticity implies that, away from boundaries and the sea-surface, the ratio of the quantities on the right-hand side of Eq. (5) is conserved following the motion of a water mass parcel. Thus, variations in PV show variations in the associated water mass. To compare period one PV ($PV_{\text{period 1}}$) and period two PV ($PV_{\text{period 2}}$) while preserving the PV pathway, we used a PV ratio metric given by

$$PV \text{ ratio} = \left(\frac{PV_{\text{period 1}}}{PV_{\text{period 2}}} - 1 \right) \times 100 \quad (6)$$

Eq. (6) means that when $PV_{\text{period 1}}$ is greater than $PV_{\text{period 2}}$, PV ratio is positive; and when $PV_{\text{period 1}}$ is less than $PV_{\text{period 2}}$, PV ratio is negative. Figure 11[a,b] shows layers 2 and 3 averaged currents and the PV ratio calculated between these depths, respectively. The subpolar North Atlantic water mass propagation along **path 1** and **path 2** is visually clear

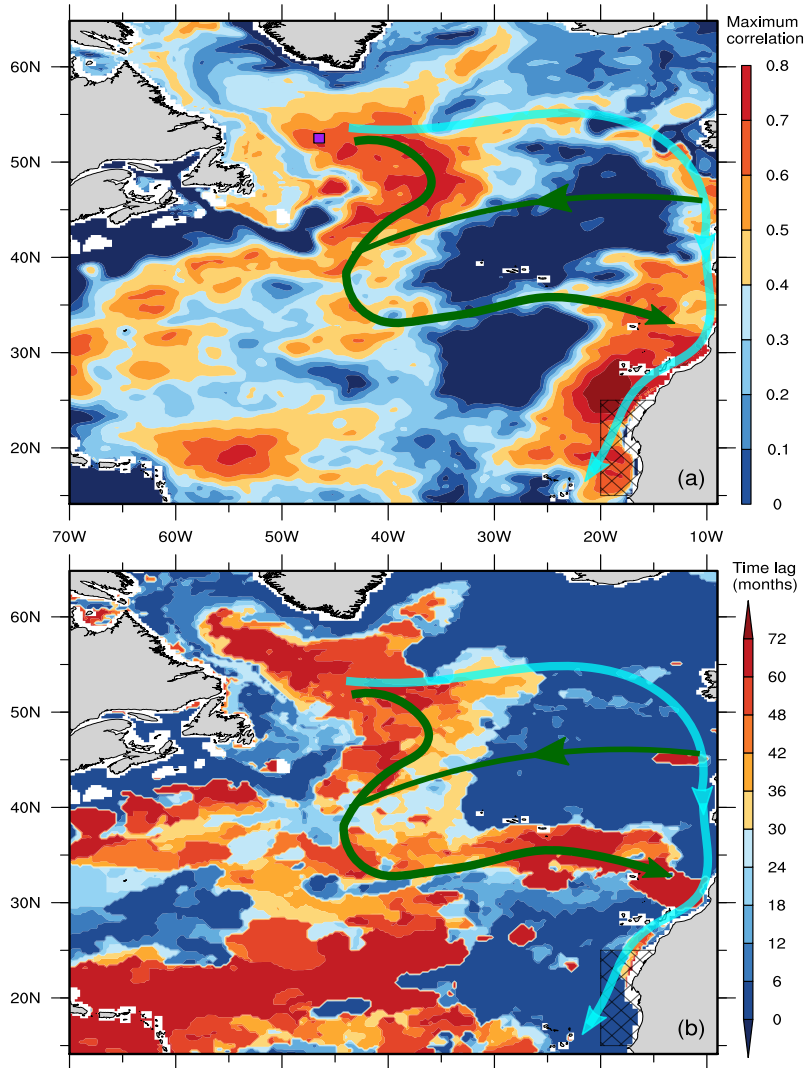


Figure 10. Physical linkage between subdomain A salinity and salinity elsewhere in the North Atlantic. **(a)** Maximum spearman cross-correlation during 1985–2018 at different time lags between salinity averaged in subdomain A layers 2 and 3 and salinity averaged in the same depth at each point in the North Atlantic, with subdomain A salinity lagging; the hatched region is subdomain A and the purple colored box (46° W– 47° W, 52° N– 53° N) is the high correlation region chosen to represent the subpolar North Atlantic. **(b)** The time when the maximum correlations are obtained (i.e., time lags). Notice the large correlation and time lags between subdomain A salinity and salinity in the subpolar North Atlantic. The curves overlaid on a and b show the probable pathways whereby subpolar waters propagate to subdomain A. In **path 1** (green curve) subpolar waters flow southward to around 30° N line of latitude and then flow eastward towards the northwest African coast where the Canary Current (that traverse subdomain A) originates; path 1 is consistent with the course of the so-called Azores current. In **path2** (cyan curve) subpolar waters flow eastward along about 52° N line of latitude to the northern European coast and then flow southward along the coast to subdomain A; a westward flow connects path 2 and path 1 around the 45° N line of latitude (thin green curve), see potential vorticity and layer-averaged velocity in Fig. 11.

in the PV ratio spatial pattern (Fig. 11[b], Fig. 10[a]). The PV ratio pattern reveal the source and path of the waters that reach subdomain A as indicated in the green and cyan colored paths. The positive PV ratio along these two paths imply that, compared to period one, PV is lower in period two. We therefore hypothesize that subdomain A freshening during period two is because of the Canary Current freshening by currents carrying fresher subpolar North Atlantic water mass via path 1 and 2.

The maximum lagged correlation between the time series of subpolar North Atlantic salinity and subdomain A salinity, ≈ 0.687 , occurred when subdomain A salinity is lagging by about 65 months, which is consistent with Figure 7[a3]. Hence, the transit period to propagate the fresher subpolar waters to subdomain A is about 5.5 years. We do not know the cause of the freshening in the subpolar North Atlantic. Holliday et al. (2020) reported that, owing to unusual winter wind patterns that rerouted Arctic-origin freshwater, in 2011 the largest freshening event in 120 years occurred in the subpolar North Atlantic area. However, the time series of salinity anomaly in the subpolar North Atlantic shows that the freshening there began as far back as late 1995 (Fig. 7[a3]). There is need for further research to characterize the salt dynamics in this subpolar region.

In summary, the results here show that a key aspect of the domain sea level rise hiatus is the freshening of subdomain A by fresher subpolar North Atlantic waters conveyed to the West African coast along two different paths, an open ocean path (path 1) and a coastal path (path 2). This work, accordingly, highlights a multidecadal linkage between salinity anomalies occurring in the western subpolar North Atlantic and sea level anomalies occurring in the eastern tropical North Atlantic. Moreover, the currents flowing along path 1 and path 2 also bring subpolar waters to the source area of the Mediterranean inflow near the Strait of Gibraltar (Fig. 9[a1,b1,c1], Fig. 10), suggesting the possibility of this same multidecadal linkage between the western subpolar North Atlantic and the Mediterranean Sea. Indeed, analysis of numerical experiments by (Jia, 2000) and (Özgökmen et al., 2001) suggest that the emergence of the Azores current is associated with the water sink generated in the eastern boundary by entrainment of the Mediterranean outflow as it descends the continental slope and by the Mediterranean inflow. Experimental research is needed to classify the modes of variability of currents along path 1 and path 2 and its linkage to ocean dynamics in the eastern boundary of the North Atlantic.

5 Guinea Dome thermal structure shift and water accumulation

Mass shift, G (Eq. (3), Fig. 4[b], Table A2), contributed 18.4% and 15.4% of the multi-year sea level shift in subdomains A and B, respectively, implying water accumulation inside the domain. Accordingly, we hypothesized a shift in ocean currents structure that enhanced domain-wide water accumulation.

In the area west of subdomain B, layer 1 averaged horizontal currents shows a cyclonic (anticlockwise) circulation region centered around 12°N and 22°W (Fig. 9[a1], Fig. 12). This is the so-called ‘Guinea Dome,’ a permanent, quasi-stationary feature situated between the westward-flowing North Equatorial Current and the eastward-flowing North Equatorial Counter-current. This thermal dome is characterized by upward flux of cooler water from beneath that causes doming (upward displacement) of isotherms (Mazeika, 1967; Siedler et al., 1992; Yamagata and Iizuka, 1995; Doi et al., 2009, 2010).

To verify the hypothesis that a shift in ocean currents structure enhanced domain-wide water accumulation (domain-wide increase in G contributed $\approx 16.5\%$ of the SLA shift, Table A2), our approach is to first demonstrate a linkage between

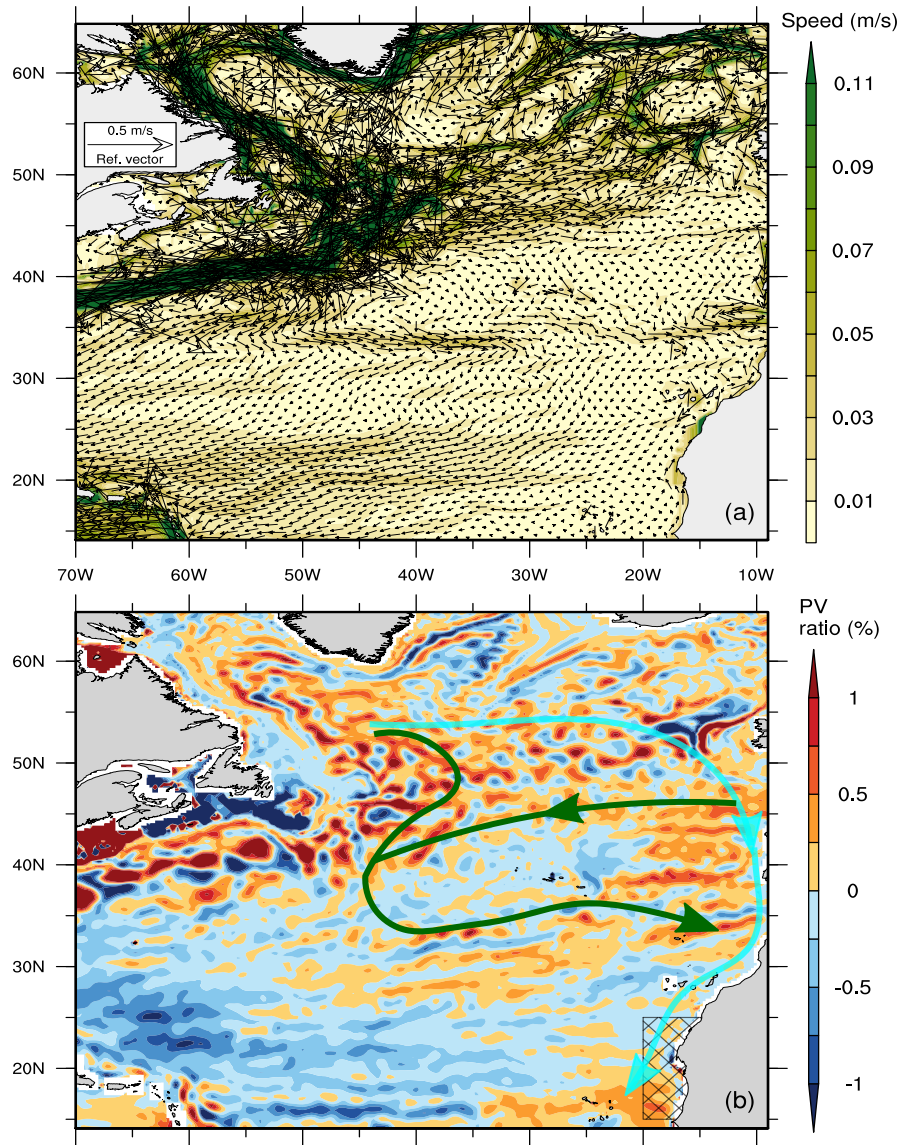


Figure 11. Physical relation between subdomain A salinity shift and salinity shift elsewhere in the North Atlantic. **(a)** Time (1985–2018) and layer 2 average currents, which more clearly shows the linkage between path 1 and 2. **(b)** *PV* ratio (Eq. 6) calculated between the depths of density layer 1025 kg/m^3 and density layer 1037 kg/m^3 , i.e., layers 2 and 3, see Eq. (5). Notice the positive *PV* ratio (*PV* decrease in period two) along **path 1** and **path 2** whereby subpolar North Atlantic water mass propagates to northern subdomain A.

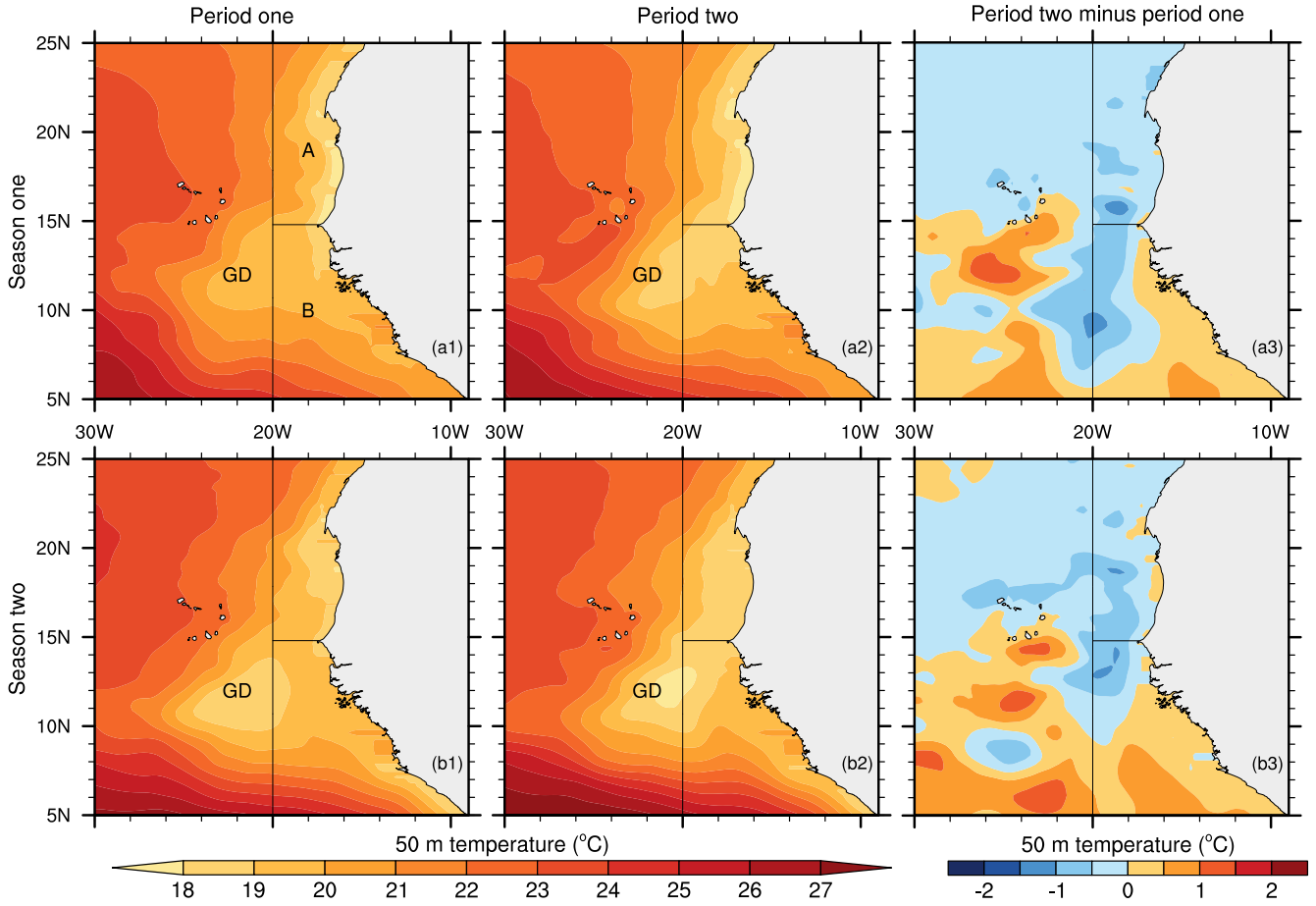


Figure 12. Thermal structure at 50 m depth, where the Guinea Dome (GD) is better developed (Mazeika, 1967; Doi et al., 2009) and its multi-year mean shift. **(a1,a2,a3)** season one (March–October) mean potential temperature in period one, period two, and period two minus period one. **(b1,b2,b3)** the same as a1–a3 but for season two (November–April). Notice the warming between 10°N and 15°N.

horizontal velocity in the domain and vertical velocity in the Guinea Dome region. From considerations of the continuity of water mass, in order for the displaced isotherms in the Guinea Dome to remain stationary, divergent (convergent) flow in the layer above the dome must be coupled to convergent (divergent) flow in a subsurface layer. Wyrтки (1964) offers an instructive illustration of the water balance of a thermal dome: consider a circular region of radius r (m) below the surface surrounding the dome core, the water flowing upward (downward) through this surface, with vertical average velocity w (m/s), must be removed (replaced) by horizontal water flow, with average velocity u (m/s), in a layer of thickness h (m) overlying the surface, thus

$$u \cdot 2\pi r h = w \cdot \pi r^2 \quad (7)$$

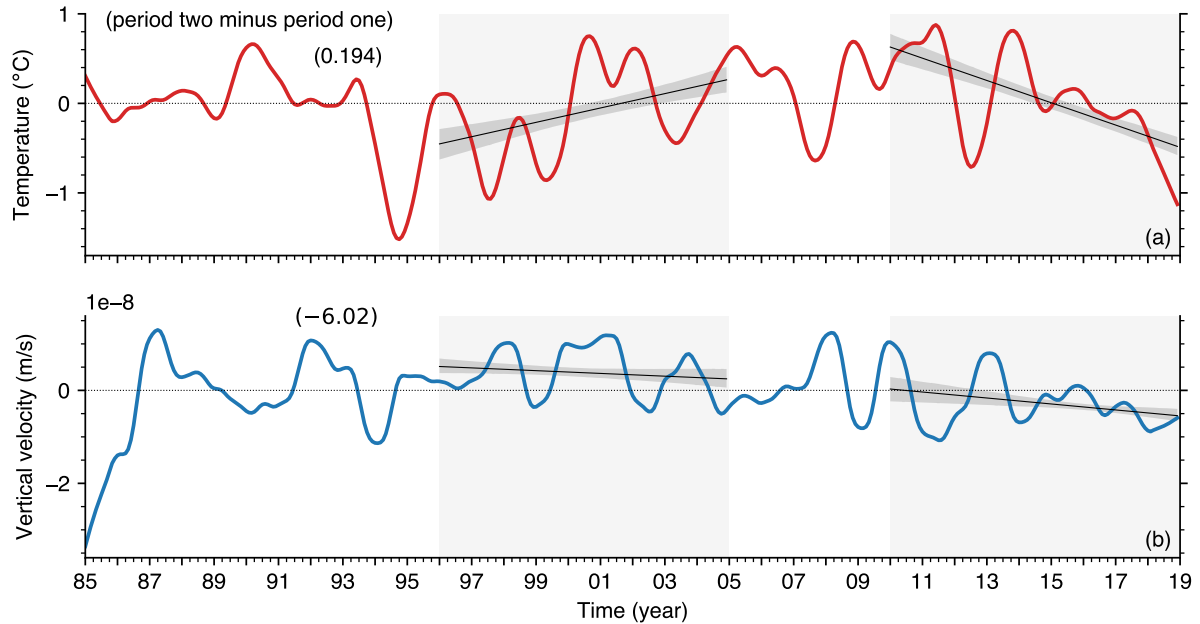


Figure 13. Monthly time series (annual cycle removed) of temperature and vertical velocity at 50 m depth in the Guinea Dome core (26°W – 20°W , 10°N – 15°N). **(a)** Potential temperature (temperature). **(b)** Vertical velocity, which is obtained as the negative of the horizontal velocity divergence at 50 m depth.

Eq. (7) shows that a change in vertical velocity in the dome core is associated with a change in horizontal velocity in a layer above the dome. Because the displaced isotherms do not reach the sea-surface (Doi et al., 2009), which demonstrates that the dome circulation must be in thermal balance, the maximal w is thus limited by the heat energy available for warming the water from beneath as it ascends (Wyrki, 1964). Accordingly, a shift in this available heat energy implies a shift in w , and consequently, a shift in u in accordance with Eq. (7).

We now describe the mutual shift in the dome thermal structure and water accumulation in the domain. A useful index of the dome thermal balance is the 50 m temperature in the dome core (Mazeika, 1967). The multi-year mean shift in layer 1 currents reveal an anticyclonic (clockwise) circulation region north of the Guinea Dome center around 12°N – 16°N and 22°W – 28°W (Fig. 9[a2]).

The anticyclonic shift will weaken upwelling of cooler water from beneath, resulting in warming in upper layers, and it will cause a convergence zone, resulting in downwelling of surface water that will increase warming beneath, as demonstrated by the shift in seasonal temperature at 50 m during period two (Fig. 12[a3,b3]) and by the shift in temperature and velocity time series at the Guinea Dome core (Fig. 13[a,b]). The downwelling, moreover, is opposite to the permanent upward flux of water in the Guinea Dome, which implies a weakening of the dome circulation between periods one and two. Our explanation, therefore, for the domain-wide water accumulation is that the necessary adjustment of horizontal current velocities (to the shift

in Guinea Dome thermal balance) strengthened period two surface flow towards the convergence zone from subdomains A and
415 B (Fig. 9[a2]), thereby enabling water accumulation in both of them.

The above explanation suggests an interrelated pattern of multi-year shift in several permanent ocean elements operating in
this region. Indeed, Cromewell (1958) suggested that the Costa Rica Dome in the eastern tropical Pacific Ocean, which exists
in a similar topographic setting as the Guinea Dome (i.e., located in the northern edge of the North Equatorial Countercurrent
and in close proximity to continental land-masses, in the eastern ocean boundary), is associated with cyclonic shear arising
420 from the interaction of the countercurrent and a northward coastal current. There is a year-round northward coastal current off
the northwest African coast (Ibrahim and Sun, 2022) and Figure 9[a2] shows a multidecadal shift in the horizontal currents in
the northern edge of the countercurrent between 8°N and 9°N lines of latitude. It is thus probable that the domain-wide water
accumulation (Fig. 2[b]), the shift in the dome thermal structure and vertical velocity (Fig. 13[a,b]), and the shift in horizontal
currents (Fig. 9[a2]) are all associated with the same phenomena occurring at multidecadal timescale.

425 One hypothesis that Wyrcki (1964) proposed for shifts in the Costa Rica Dome is that the cyclonic circulation separating
the North Equatorial Current and Countercurrent (just as in Fig. 9[a1]) is unstable, probably because of fluctuations in the
countercurrent strength and transport, which leads to recurring separation of eddies, and consequently, to shifts in the thermal
dome structure. Further research is needed to obtain estimates of the timescale for which eddies separate from tropical thermal
domes since it may be associated with sea level fluctuations in the tropical ocean margins. In situ under water observations, for
430 example, can be useful for elucidating the annual variation pattern of thermal dome spatial structure in the ocean margins.

6 Concluding remarks

We investigated a multidecadal sea level rise and its hiatus in the eastern tropical Atlantic margin off northwest Africa by
analyzing and comparing the drivers during 2010–2018, the period of sea level rise pause, and during 1996–2004, when the
sea level there was rising (2[a]). These are our major findings and interpretation.

- 435 1) In the domain as a whole, seawater expansion (steric shift) associated with shifts in density structure contributed about
56.5% of the multi-year positive shift in sea level between the two periods. Temperature-driven steric shift (thermosteric
expansion) is dominant in the southern subdomain, while salinity-driven steric shift (halosteric expansion) is dominant
in the northern subdomain, although thermosteric contraction is also large in the northern subdomain (section 3). This
halosteric expansion is associated with freshening of the Canary Current that traverses the northern subdomain (section
440 4). The Canary Current source area was freshened by western subpolar North Atlantic waters that reached the northwest
African coast via two pathways: an open-ocean path that is consistent with the Azores current, and a Western Europe
coastal ocean path. We estimate the time to propagate this freshening to the northwest African coast to be about 5.5 years.
- 2) These results emphasize the role of salt as a key driver of long-term regional sea level shift, a role that is somewhat not well
recognized in the literature. This is especially important in the context of the globally changing climate because changes
445 in local hydrological cycles can drive large shifts in salinity, resulting in large shifts in regional sea level.

- 3) Another conclusion from these results is a multidecadal linkage between salinity anomalies in the western subpolar North Atlantic and coastal sea level anomalies in the eastern tropical North Atlantic. It is thus probable that, given satellite or in situ observations of salinity shifts in this subpolar region, coastal sea level shifts in the northwest African coast can be anticipated with a lead time of about 5.5 years. The subpolar North Atlantic waters flowing in the open-ocean and coastal paths also supply water to the Mediterranean inflow region near the Strait of Gibraltar (Fig. 9[a1], Fig. 10, Fig. 11 section 4). Accordingly, it may also be possible to anticipate multidecadal shifts in the Mediterranean Sea characteristics based on observed shifts in the subpolar North Atlantic. Because freshening in the subpolar North Atlantic region is associated with surface phenomena (precipitation, river runoff, ice melt), surface observations may be useful for estimating this lead time. It is interesting and useful to contrast this low-frequency remote forcing of sea level in the ocean margin, which is realized through shifts in the salinity of source water advected to the margin, with high-frequency local atmospheric forcing that is realized through shifts in surface pressure over the margin. Considerations of the timescale and magnitude of sea level shift associated with these two forcing types facilitate design of sustainable infrastructure in coastal regions.
- 4) Domain-wide water accumulation contributed about 16.5% of the multi-year positive shift in sea level between the two periods. In the southern subdomain, the positive shift in precipitation contributed about 20.1% of the sea level shift there, whereas in the northern subdomain the positive shift in the net flux of seawater into this region contributed 17.3% of the positive sea level shift (Table A2, section 3). The dynamical adjustment of horizontal currents that enabled this water accumulation pattern appear to be related to multi-year shifts in the characteristics of several permanent ocean elements operating in this tropical Atlantic region including the Guinea Dome thermal structure and vertical velocity, and horizontal currents in the northern edge of the North Equatorial Countercurrent (section 5).
- 5) It is difficult to isolate the underlying mechanisms of this interrelated multidecadal shift in key elements of the ocean and atmosphere circulation operating this ocean margin (Fig. 1) by analyzing observational reanalysis data sets, as we have done here. This work thus highlight an important need for a high-resolution atmosphere and coastal ocean two-way, coupled model to incorporate all current knowledge in this ocean margin, to provide a system for performing numerical experiments that will increase our understanding of the operating mechanism in this vitally important tropical region, and to facilitate better predictions. [This type of 3D atmospheric and oceanic coupled model \(Ibrahim et al., 2020\), when nested with a larger domain ocean model and forced with land-surface hydrological inputs, can be used for experiments to identify and quantify critical processes that are involved in coastal deep ocean exchanges.](#) This will not only benefit neighboring countries through scientific management of coastal ocean resources, but it will improve our overall understanding of ocean-atmosphere interactions in ocean margins.

Table A1. Table of shift in *SLA* and the contribution of its drivers during the rising state (period 1) and the hiatus state (period 2). Table values are obtained using Eq. (4) and the transport (F_{net}) is derived from Eq. (3).

Variable [cm]	Domain		Subdomain A		Subdomain B	
	period 1	period 2	period 1	period 2	period 1	period 2
ORAS5 <i>SLA</i> (SLA_{ORAS5})	4.03	-0.247	3.68	-0.104	4.24	-0.335
Total steric ($Z_t + Z_s$)	3.67	-2.84	3.38	-2.82	3.85	-2.85
Thermosteric (Z_t)	1.87	-4.01	-0.0134	-6.38	3.03	-2.54
Halosteric (Z_s)	1.80	1.17	3.39	3.56	0.823	-0.306
Mass (G)	0.233	2.56	0.218	2.64	0.242	2.51
Transport (F_{net})	-1.47	1.19	0.908	1.07	-2.88	1.25
Rainfall/Evaporation ($P_{\text{minus}}E$)	1.87	1.10	-0.289	1.62	3.14	0.785
River runoff (R)	-0.164	0.273	-0.401	-0.0495	-0.0195	0.473

Table A2. Table values show the contribution of atmosphere and ocean variables to shift in sea level anomaly (*SLA*) in the North Atlantic margin off northwest Africa. The values in parenthesis in column 2, 3 and 4 indicate the percentage contribution of each variable to the *SLA* shift (row 1) in the domain, subdomain A, and subdomain B, respectively. $SLA = SLA_{\text{ORAS5}} + \text{barometric correction } (\zeta_a) + \text{Boussinesq correction} + \text{vertical land motion}$ (see discussion in method section). The total steric (residual Z_α) shifts reported in row two is obtained using the residual calculation approach (Eq.1).

Variable [cm]	Domain	Subdomain A	Subdomain B
Sea level anomaly (<i>SLA</i>)	4.62 (100%)	4.34 (100%)	4.80(100%)
ORAS5 <i>SLA</i> (SLA_{ORAS5})	3.37 (72.9%)	3.06 (70.5%)	3.57 (74.4%)
Total steric (residual Z_α)	2.61 (56.5%)	2.26 (52.0%)	2.83 (58.9%)
Mass (G)	0.764 (16.5%)	0.797 (18.4%)	0.741 (15.4%)
Transport (F_{net})	0.134 (2.90%)	0.749 (17.3%)	-0.238 (-4.96%)
Rainfall/Evaporation ($P_{\text{minus}}E$)	0.638 (13.8%)	0.0962 (2.22%)	0.963 (20.1%)
River runoff (R)	-0.00844 (-0.180%)	-0.0486 (-1.12%)	0.0164 (0.340%)
Boussinesq correction (ε)	0.0211 (0.460%)	0.0211 (0.490%)	0.0211 (0.440%)
Barometric (ζ_a)	0.125 (2.71%)	0.158 (3.64%)	0.105 (2.19%)
VLM (γ)	1.11 (23.9%)	1.11 (25.4%)	1.11 (23.0%)

Table A3. Table values show the salinity-driven (halosteric) and temperature-driven (thermosteric) contributions to total steric shift obtained from direct calculations using Eq. (2). The values in parenthesis in column 2, 3 and 4 indicate the percentage contributions in the domain, subdomain A, and subdomain B, respectively.

Variable [cm]	Domain	Subdomain A	Subdomain B
Total steric (Z_α)	2.60	2.26	2.82
Thermosteric (Z_t)	1.51 (58.1%)	-1.02 (-45.1%)	3.07 (108.9%)
Halosteric (Z_s)	1.09 (41.9%)	3.28 (145.1%)	-0.252 (-8.90%)

Data availability. All the data sets that we used for this study are publicly available and can be found with the following website links: 1) the GEBCO bottom topography data set: https://www.gebco.net/data_and_products/gridded_bathymetry_data/; 2) the satellite altimetry sea-level data set: <https://doi.org/10.24381/cds.4c328c78>; 3) the GRACE mass change data set: <http://www2.csr.utexas.edu/grace>; 4) the ERA5 monthly data sets: <https://doi.org/10.24381/cds.f17050d7>; 5) the ECMWF ORAS5 data set: <https://www.cen.uni-hamburg.de/en/icdc/data/ocean/easy-init-ocean/ecmwf-oras5.html>; 6) Tidal gauge data set: <https://psmsl.org/>.

Author contributions. HDI and YS jointly conceived the study, analyzed the data, and wrote and reviewed the manuscript draft.

Competing interests. The authors declare that they have no conflict of interest and have not received any specific funding for this work.

Acknowledgements. We thank the following agencies that produced the data sets that we used: Jet Propulsion Laboratory of the National Aeronautics and Space Administration, GFZ German Research Center for Geosciences, Jet Propulsion Laboratory, the University of Texas Center for Space Research, Astrium GmbH, Space Systems Loral, Onera and Eurockot GmbH, European Center for Medium-Range Weather Forecast, European Space Agency, Copernicus Marine Environment Service, and National Oceanography Centre of UK.

References

- Aldama-Campino, A. and Döös, K.: Mediterranean overflow water in the North Atlantic and its multidecadal variability, *Tellus A: Dynamic Meteorology and Oceanography*, 72, 1–10, <https://doi.org/10.1080/16000870.2018.1565027>, 2020.
- 490 Antonov, J. I., Levitus, S., and Boyer, T. P.: Steric sea level variations during 1957–1994: Importance of salinity, *Journal of Geophysical Research: Oceans*, 107, SRF 14–1–SRF 14–8, <https://doi.org/10.1029/2001JC000964>, 2002.
- Apel, J.: *Principles of Ocean Physics*, ISSN, Elsevier Science, ISBN 9780080570747, 1987.
- Balmaseda, M. A., Mogensen, K., and Weaver, A. T.: Evaluation of the ECMWF ocean reanalysis system ORAS4, *Quarterly Journal of the Royal Meteorological Society*, 139, 1132–1161, <https://doi.org/10.1002/qj.2063>, 2013.
- 495 Baringer, M. O. and Price, J. F.: Mixing and Spreading of the Mediterranean Outflow, *Journal of Physical Oceanography*, 27, 1654 – 1677, [https://doi.org/10.1175/1520-0485\(1997\)027<1654:MASOTM>2.0.CO;2](https://doi.org/10.1175/1520-0485(1997)027<1654:MASOTM>2.0.CO;2), 1997.
- C3S Climate Data Store: Copernicus Climate Change Service (C3S), Climate Data Store: Sea level gridded data from satellite observations for the global ocean from 1993 to present., <https://doi.org/10.24381/cds.4c328c78>, 2018.
- Carton, J., Penny, S., and Kalnay, E.: Temperature and salinity variability in soda3, ECCO4r3, and ORAS5 ocean reanalyses, 1993-2015, *Journal of Climate*, 32, <https://doi.org/10.1175/JCLI-D-18-0605.1>, 2019.
- 500 Chavez, F. P.: Climate change and marine ecosystems, *Proceedings of the National Academy of Sciences*, 109, 19 045–19 046, <https://doi.org/10.1073/pnas.1217112109>, 2012.
- Comas-Rodríguez, I., Hernández-Guerra, A., Fraile-Nuez, E., Martínez-Marrero, A., Benítez-Barrios, V. M., Pérez-Hernández, M. D., and Vélez-Belchí, P.: The Azores Current System from a meridional section at 24.5 °W, *Journal of Geophysical Research: Oceans*, 116, <https://doi.org/10.1029/2011JC007129>, 2011.
- 505 Cromewell, T.: Thermocline topography, horizontal currents and “ridging” in the eastern tropical Pacific, *Bulletin 3, Inter-American Tropical Tuna Commission*, La Jolla, California, 1958.
- Doi, T., Tozuka, T., and Yamagata, T.: Interannual variability of the Guinea Dome and its possible link with the Atlantic Meridional Mode, *Climate Dynamics*, 33, 985–998, <https://doi.org/10.1007/s00382-009-0574-z>, 2009.
- 510 Doi, T., Tozuka, T., and Yamagata, T.: The Atlantic Meridional Mode and Its Coupled Variability with the Guinea Dome, *Journal of Climate*, 23, 455 – 475, <https://doi.org/10.1175/2009JCLI3198.1>, 2010.
- Durack, P. J., Wijffels, S. E., and Gleckler, P. J.: Long-term sea-level change revisited: the role of salinity, *Environmental Research Letters*, 9, 114 017, <https://doi.org/10.1088/1748-9326/9/11/114017>, 2014.
- Frazão, H. C., Prien, R. D., Schulz-Bull, D. E., Seidov, D., and Waniek, J. J.: The Forgotten Azores Current: A Long-Term Perspective, *Frontiers in Marine Science*, 9, <https://doi.org/10.3389/fmars.2022.842251>, 2022.
- 515 Fukumori, I. and Wang, O.: Origins of heat and freshwater anomalies underlying regional decadal sea level trends, *Geophysical Research Letters*, 40, 563–567, <https://doi.org/10.1002/grl.50164>, 2013.
- GEBCO: GEBCO Compilation Group (2021) GEBCO 2021 GRID, <https://doi.org/10.5285/c6612cbe-50b3-0cff-e053-6c86abc09f8f>, 2021.
- Gill, A. and Niller, P.: The theory of the seasonal variability in the ocean, *Deep Sea Research and Oceanographic Abstracts*, 20, 141–177, [https://doi.org/10.1016/0011-7471\(73\)90049-1](https://doi.org/10.1016/0011-7471(73)90049-1), 1973.
- 520 Greatbatch, R. J.: A note on the representation of steric sea level in models that conserve volume rather than mass, *Journal of Geophysical Research: Oceans*, 99, 12 767–12 771, <https://doi.org/10.1029/94JC00847>, 1994.

- Gregory, J. M., Griffies, S. M., Hughes, C. W., Lowe, J. A., Church, J. A., Fukimori, I., Gomez, N., Kopp, R. E., Landerer, F., Cozannet, G. L., Ponte, R. M., Stammer, D., Tamisiea, M. E., and van de Wal, R. S. W.: Concepts and Terminology for Sea Level: Mean, Variability and Change, Both Local and Global, *Surveys in Geophysics*, 40, 1251–1289, <https://doi.org/10.1007/s10712-019-09525-z>, 2019.
- 525 Hersbach, H., Bell, B., Berrisford, P., Hirahara, S., Horányi, A., Muñoz-Sabater, J., Nicolas, J., Peubey, C., Radu, R., Schepers, D., Simmons, A., Soci, C., Abdalla, S., Abellan, X., Balsamo, G., Bechtold, P., Biavati, G., Bidlot, J., Bonavita, M., De Chiara, G., Dahlgren, P., Dee, D., Diamantakis, M., Dragani, R., Flemming, J., Forbes, R., Fuentes, M., Geer, A., Haimberger, L., Healy, S., Hogan, R. J., Hólm, E., Janisková, M., Keeley, S., Laloyaux, P., Lopez, P., Lupu, C., Radnoti, G., de Rosnay, P., Rozum, I., Vamborg, F., Vil-
530 laume, S., and Thépaut, J.-N.: The ERA5 global reanalysis, *Quarterly Journal of the Royal Meteorological Society*, 146, 1999–2049, <https://doi.org/10.1002/qj.3803>, 2020.
- Hersbach, H., Bell, B., Berrisford, P., Biavati, G., Horányi, A., Muñoz-Sabater, J., Nicolas, J., Peubey, C., Radu, R., Rozum, I., Schepers, D., Simmons, A., Soci, C., Dee, D., and Thépaut, J.-N.: ERA5 monthly data on single levels from 1979 to present. Copernicus Climate Change Service (C3S) Climate Data Store (CDS)., <https://doi.org/10.24381/cds.f17050d7>, 2023.
- 535 Holliday, N. P., Bersch, M., Berx, B., Chafik, L., Cunningham, S., Florindo-López, C., Hátún, H., Johns, W., Josey, S. A., Larsen, K. M. H., Mulet, S., Oltmanns, M., Reverdin, G., Rossby, T., Thierry, V., Valdimarsson, H., and Yashayaev, I.: Ocean circulation causes the largest freshening event for 120 years in eastern subpolar North Atlantic, *Nature Communications*, 11, 585, <https://doi.org/10.1038/s41467-020-14474-y>, 2020.
- Ibrahim, H. D. and Sun, Y.: Mechanism study of the 2010–2016 rapid rise of the Caribbean Sea Level, *Global and Planetary Change*, 191, 103 219, <https://doi.org/10.1016/j.gloplacha.2020.103219>, 2020.
- 540 Ibrahim, H. D. and Sun, Y.: Multidecadal Fluctuations of SST and Euphotic Zone Temperature off Northwest Africa, *Journal of Physical Oceanography*, 52, 3077 – 3099, <https://doi.org/10.1175/JPO-D-22-0031.1>, 2022.
- Ibrahim, H. D. and Sun, Y.: Sea Surface Cooling by Rainfall Modulates Earth’s Heat Energy Flow, *Journal of Climate*, 36, 5125 – 5141, <https://doi.org/10.1175/JCLI-D-22-0735.1>, 2023.
- 545 Ibrahim, H. D., Xue, P., and Eltahir, E. A. B.: Multiple Salinity Equilibria and Resilience of Persian/Arabian Gulf Basin Salinity to Brine Discharge, *Frontiers in Marine Science*, 7, 573, <https://doi.org/10.3389/fmars.2020.00573>, 2020.
- Jia, Y.: Formation of an Azores Current Due to Mediterranean Overflow in a Modeling Study of the North Atlantic, *Journal of Physical Oceanography*, 30, 2342 – 2358, [https://doi.org/10.1175/1520-0485\(2000\)030<2342:FOAACD>2.0.CO;2](https://doi.org/10.1175/1520-0485(2000)030<2342:FOAACD>2.0.CO;2), 2000.
- Klein, B. and Siedler, G.: On the origin of the Azores Current, *Journal of Geophysical Research: Oceans*, 94, 6159–6168, 550 <https://doi.org/10.1029/JC094iC05p06159>, 1989.
- Lanzante, J. R.: RESISTANT, ROBUST AND NON-PARAMETRIC TECHNIQUES FOR THE ANALYSIS OF CLIMATE DATA: THEORY AND EXAMPLES, INCLUDING APPLICATIONS TO HISTORICAL RADIOSONDE STATION DATA, *International Journal of Climatology*, 16, 1197–1226, [https://doi.org/10.1002/\(SICI\)1097-0088\(199611\)16:11<1197::AID-JOC89>3.0.CO;2-L](https://doi.org/10.1002/(SICI)1097-0088(199611)16:11<1197::AID-JOC89>3.0.CO;2-L), 1996.
- Llovel, W. and Lee, T.: Importance and origin of halosteric contribution to sea level change in the southeast Indian Ocean during 2005–2013, 555 *Geophysical Research Letters*, 42, 1148–1157, <https://doi.org/10.1002/2014GL062611>, 2015.
- Mason, E., Colas, F., Molemaker, J., Shchepetkin, A. F., Troupin, C., McWilliams, J. C., and Sangrà, P.: Seasonal variability of the Canary Current: A numerical study, *Journal of Geophysical Research: Oceans*, 116, <https://doi.org/10.1029/2010JC006665>, 2011.
- Mazeika, P. A.: Thermal dome in the eastern tropical Atlantic Ocean, *Limnology and Oceanography*, 12, 537–539, <https://doi.org/10.4319/lo.1967.12.3.0537>, 1967.

- 560 Naranjo, C., García-Lafuente, J., Sammartino, S., Sánchez-Garrido, J. C., Sánchez-Leal, R., and Jesús Bellanco, M.: Recent changes (2004–2016) of temperature and salinity in the Mediterranean outflow, *Geophysical Research Letters*, 44, 5665–5672, <https://doi.org/10.1002/2017GL072615>, 2017.
- NASA, Jet Propulsion Laboratory: Gravity Recovery and Climate Experiment Follow-on (GRACE-FO), Product User Handbook GRACE D-103133, National Aeronautics and Space Administration Jet Propulsion Laboratory, California Institute of Technology, 2019.
- 565 Özgökmen, T. M., Chassignet, E. P., and Rooth, C. G. H.: On the Connection between the Mediterranean Outflow and the Azores Current, *Journal of Physical Oceanography*, 31, 461 – 480, [https://doi.org/10.1175/1520-0485\(2001\)031<0461:OTCBTM>2.0.CO;2](https://doi.org/10.1175/1520-0485(2001)031<0461:OTCBTM>2.0.CO;2), 2001.
- Pattullo, J., Munk, W., Revelle, R., and Strong, E.: The seasonal oscillation in sea level, *Journal of Marine Research*, 14, 88–155, 1955.
- Pelegri, J. L. and Peña-Izquierdo, J.: Eastern boundary currents off North-West Africa. In: *Oceanographic and biological features in the Canary Current Large Marine Ecosystem.*, Technical Series 115, pp. 81-92, IOC-UNESCO, Paris, <http://hdl.handle.net/1834/9179>., 2015.
- 570 Permanent Service for Mean Sea Level, 2025: Dakar 2 (Station 1816) station data and metadata., <https://psmsl.org/data/obtaining/stations/1816.php>, Accessed on September 8, 2025, a.
- Permanent Service for Mean Sea Level, 2025: Dakar 2 (Station 2036) station data and metadata., <https://psmsl.org/data/obtaining/stations/2036.php>, Accessed on September 8, 2025, b.
- Pinardi, N., Bonaduce, A., Navarra, A., Dobricic, S., and Oddo, P.: The Mean Sea Level Equation and Its Application to the Mediterranean
- 575 Sea, *Journal of Climate*, 27, 442 – 447, <https://doi.org/10.1175/JCLI-D-13-00139.1>, 2014.
- Ponte, R. M., Sun, Q., Liu, C., and Liang, X.: How Salty Is the Global Ocean: Weighing It All or Tasting It a Sip at a Time?, *Geophysical Research Letters*, 48, e2021GL092935, <https://doi.org/10.1029/2021GL092935>, 2021.
- Pujol, M.-I., Faugère, Y., Taburet, G., Dupuy, S., Pelloquin, C., Ablain, M., and Picot, N.: DUACS DT2014: the new multi-mission altimeter data set reprocessed over 20 years, *Ocean Science*, 12, 1067–1090, <https://doi.org/10.5194/os-12-1067-2016>, 2016.
- 580 Reimann, L., Vafeidis, A. T., and Honsel, L. E.: Population development as a driver of coastal risk: Current trends and future pathways, *Cambridge Prisms: Coastal Futures*, 1, e14, <https://doi.org/10.1017/cft.2023.3>, 2023.
- Robinson, A. R. and Brink, K. H.: *The Sea, Volume 14b: The Global Coastal Ocean: Interdisciplinary Regional Studies and Syntheses*, vol. 14, Harvard University Press, Cambridge, MA, 2006.
- Save, H.: CSR GRACE and GRACE-FO RL06 Mascon Solutions v02, <https://doi.org/10.15781/cgq9-nh24>, 2020.
- 585 Save, H., Bettadpur, S., and Tapley, B. D.: High-resolution CSR GRACE RL05 mascons, *Journal of Geophysical Research: Solid Earth*, 121, 7547–7569, <https://doi.org/10.1002/2016JB013007>, 2016.
- Siedler, G., Zangenberg, N., Onken, R., and Morlière, A.: Seasonal changes in the tropical Atlantic circulation: Observation and simulation of the Guinea Dome, *Journal of Geophysical Research: Oceans*, 97, 703–715, <https://doi.org/10.1029/91JC02501>, 1992.
- Stramma, L. and Müller, T. J.: Some observations of the Azores Current and the North Equatorial Current, *Journal of Geophysical Research: Oceans*, 94, 3181–3186, <https://doi.org/10.1029/JC094iC03p03181>, 1989.
- 590 Stramma, L., Hüttl, S., and Schafstall, J.: Water masses and currents in the upper tropical northeast Atlantic off northwest Africa, *Journal of Geophysical Research: Oceans*, 110, <https://doi.org/10.1029/2005JC002939>, 2005.
- Sumaila, U. R., Cheung, W. W. L., Lam, V. W. Y., Pauly, D., and Herrick, S.: Climate change impacts on the biophysics and economics of world fisheries, *Nature Climate Change*, 1, 449–456, <https://doi.org/10.1038/nclimate1301>, 2011.
- 595 Tabata, S., Thomas, B., and Ramsden, D.: Annual and Interannual Variability of Steric Sea Level along Line P in the Northeast Pacific Ocean, *Journal of Physical Oceanography*, 16, 1378 – 1398, [https://doi.org/10.1175/1520-0485\(1986\)016<1378:AAIVOS>2.0.CO;2](https://doi.org/10.1175/1520-0485(1986)016<1378:AAIVOS>2.0.CO;2), 1986.
- United Nations: "Human Settlements on the Coast." *UN Atlas of the Oceans.*, <http://www.oceansatlas.org/subtopic/en/c/114/>, 2018.

- Wöppelmann, G. and Marcos, M.: Vertical land motion as a key to understanding sea level change and variability, *Reviews of Geophysics*, 54, 64–92, <https://doi.org/10.1002/2015RG000502>, 2016.
- 600 World Bank: Major River Basins of the World, <https://doi.org/https://datacatalog.worldbank.org/search/dataset/0041426>, accessed on [25 August 2023], 2019.
- Wyrtki, K.: Upwelling in the Costa Rica dome, *Fish. Bull. Fish Wildl. Serv.*, 63, 355–372, 1964.
- Yamagata, T. and Iizuka, S.: Simulation of the Tropical Thermal Domes in the Atlantic: A Seasonal Cycle, *Journal of Physical Oceanography*, 25, 2129 – 2140, [https://doi.org/10.1175/1520-0485\(1995\)025<2129:SOTTTD>2.0.CO;2](https://doi.org/10.1175/1520-0485(1995)025<2129:SOTTTD>2.0.CO;2), 1995.
- 605 Zenk, W., Klein, B., and Schroder, M.: Cape Verde Frontal Zone, *Deep Sea Research Part A. Oceanographic Research Papers*, 38, S505 – S530, [https://doi.org/10.1016/S0198-0149\(12\)80022-7](https://doi.org/10.1016/S0198-0149(12)80022-7), 1991.
- Zuo, H., Balmaseda, M. A., Tietsche, S., Mogensen, K., and Mayer, M.: The ECMWF operational ensemble reanalysis–analysis system for ocean and sea ice: a description of the system and assessment, *Ocean Science*, 15, 779–808, <https://doi.org/10.5194/os-15-779-2019>, 2019.