

# **Supplement File**

## Geophysical Investigations.

Livio et al. «Paleoseismic history of the intermountain Rieti Basin (Central Apennines, Italy)» - submitted to NHESS

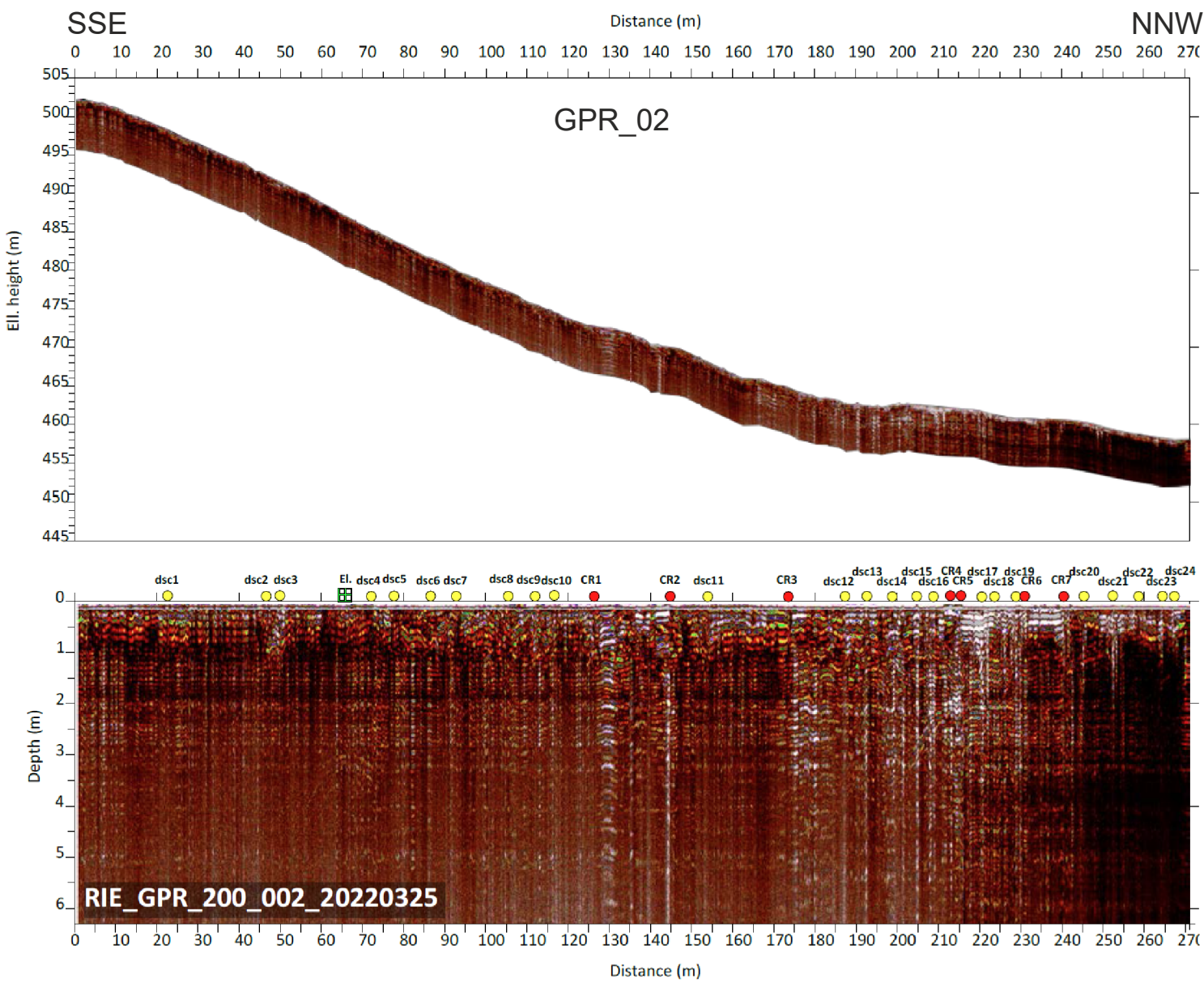
In this Supplementary Material we are attaching all the geophysical investigations performed in all the Study sites.

Investigations include GPR and ERT surveys.

All the investigation traces are shown in Figures 2, 4 and 8 of the paper.

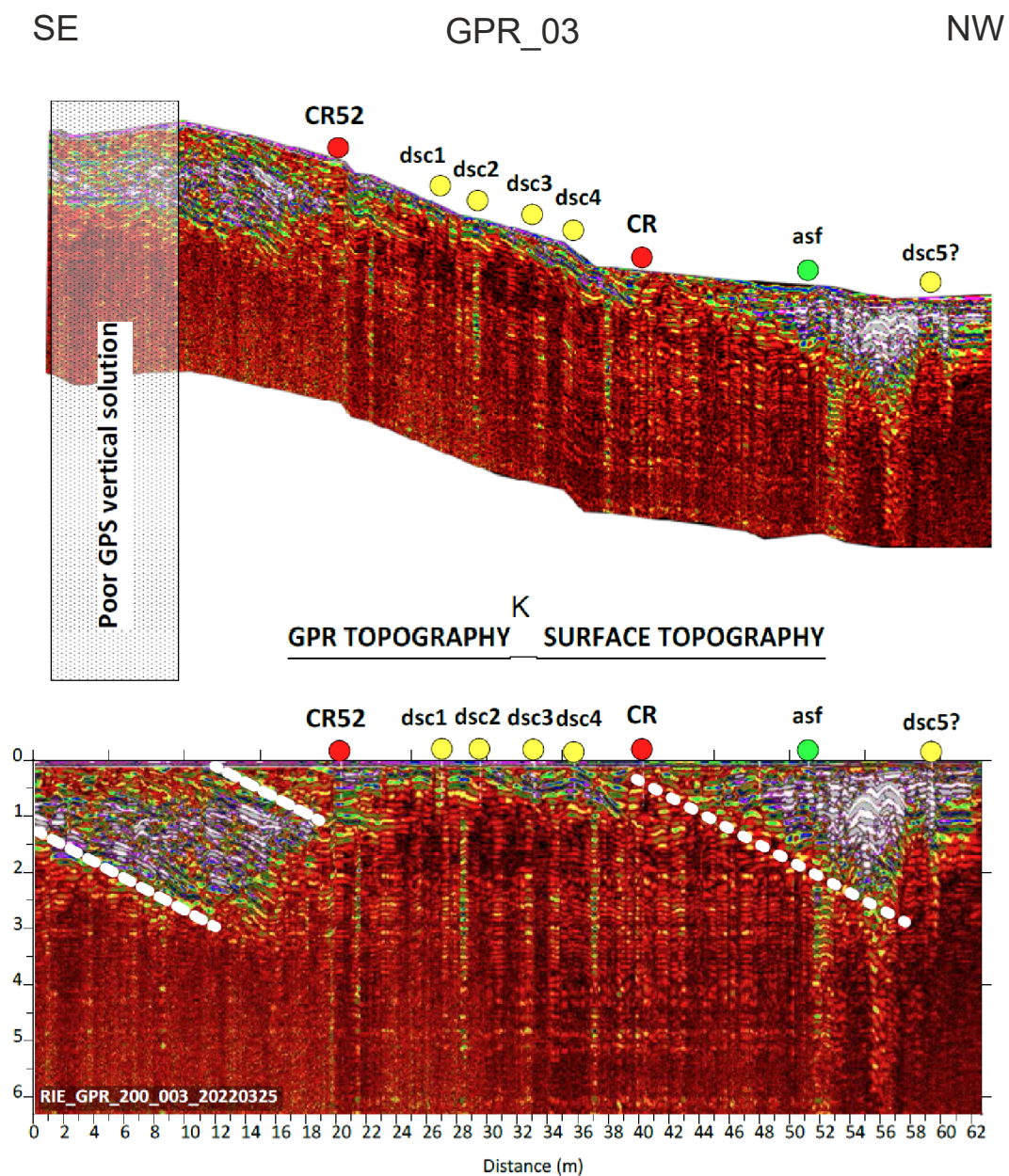
Investigations are listed following the numerical code. GPR lines first followed by the ERT lines.

ERT names indicate also the adopted array during aquisition.



**Figure S1**

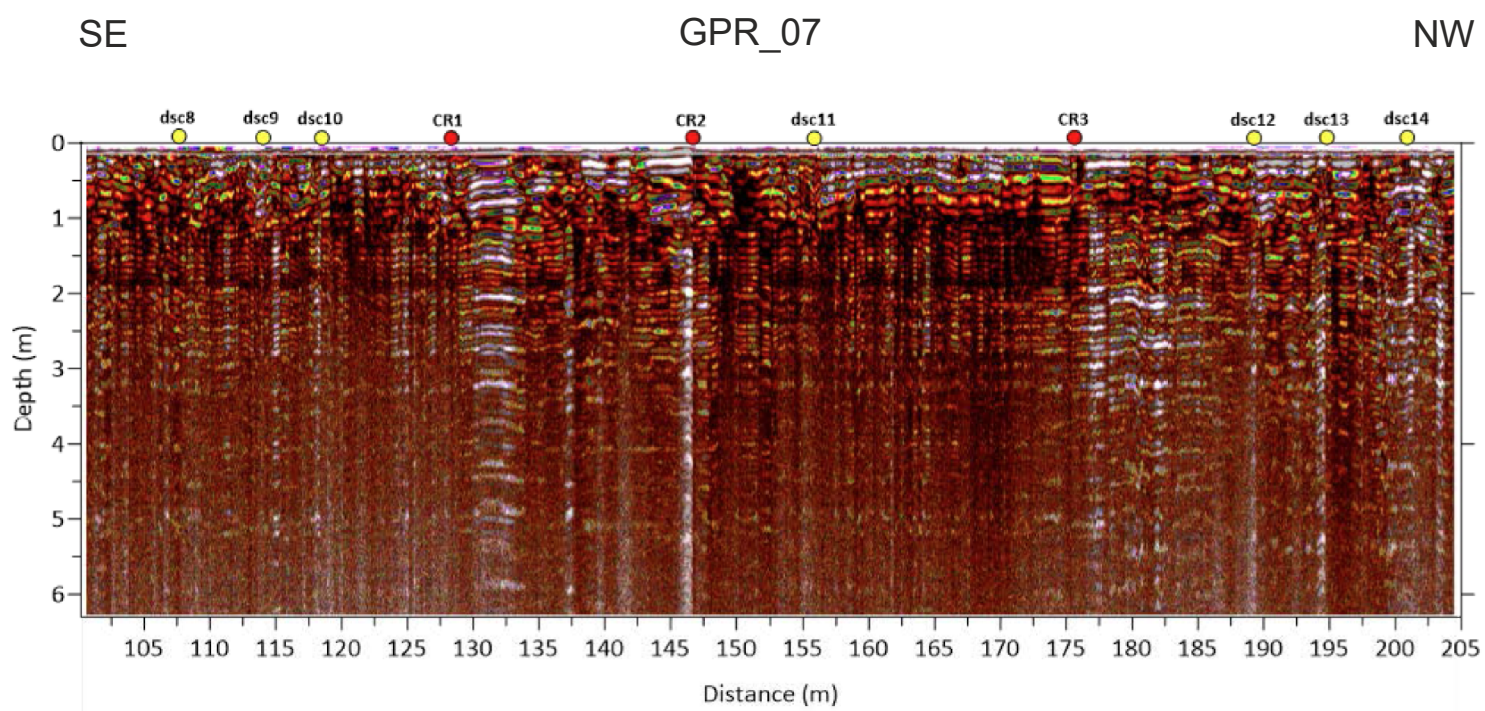
GPR profile of the GPR\_02 line in scale and with topographic correction (above) and vertically exaggerated (below). See figure 8b for the line trace.



**Figure S2**

GPR profile of the GPR\_03 line, with topographic correction (above) and vertically exaggerated (below). See Figure 8d for the line trace.

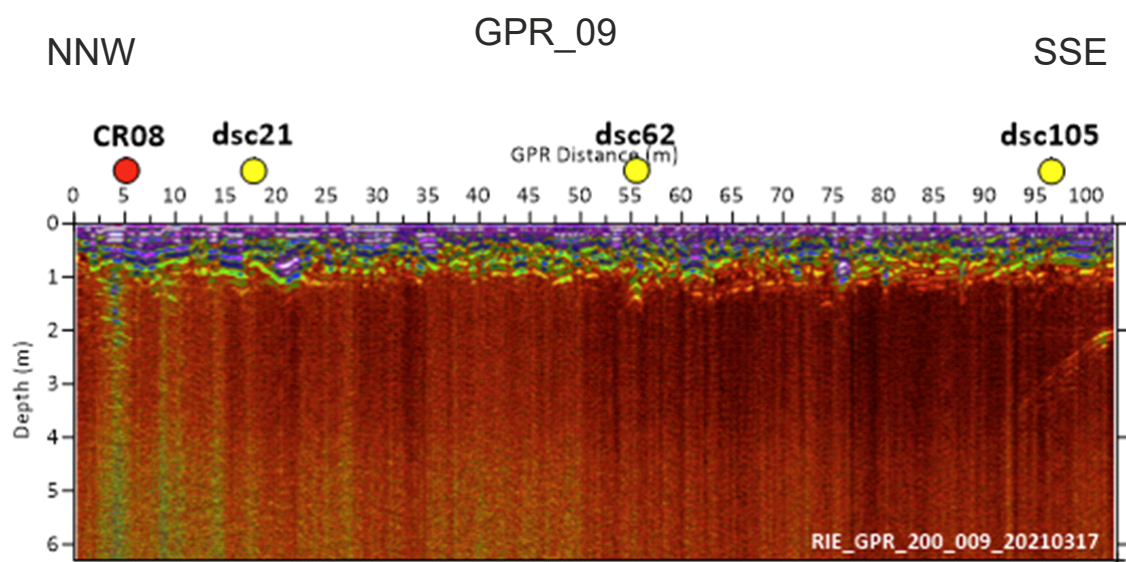




**Figure S3**

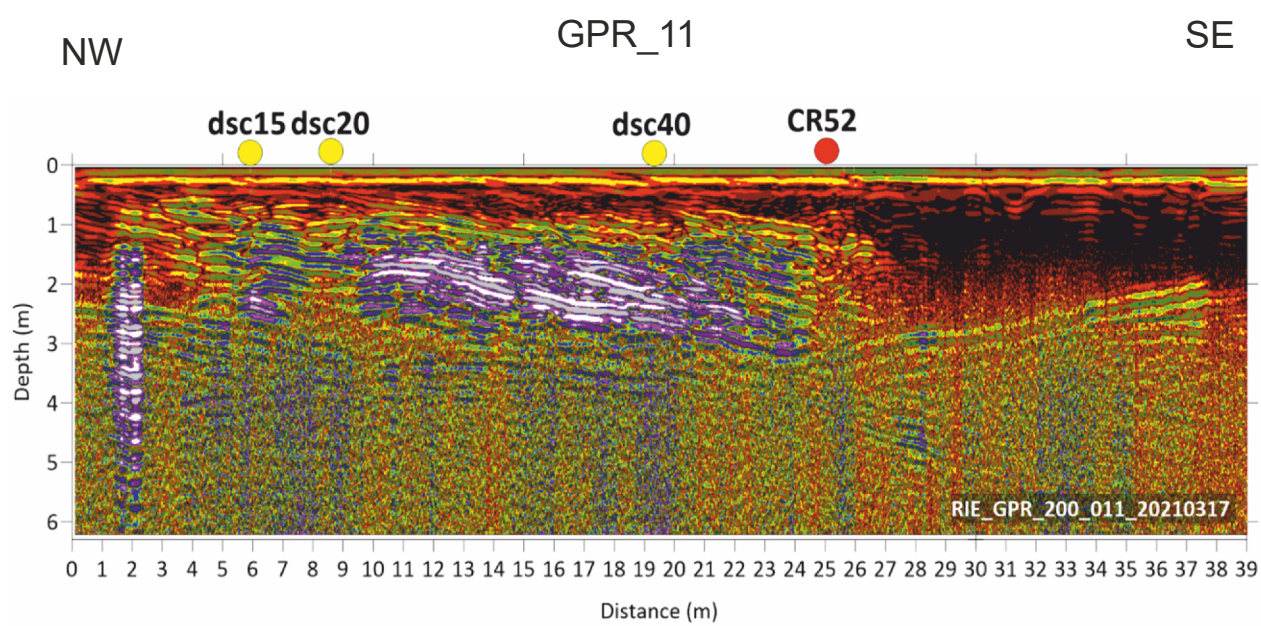
GPR profile of the GPR\_07 line (see figure 8b for the line trace)





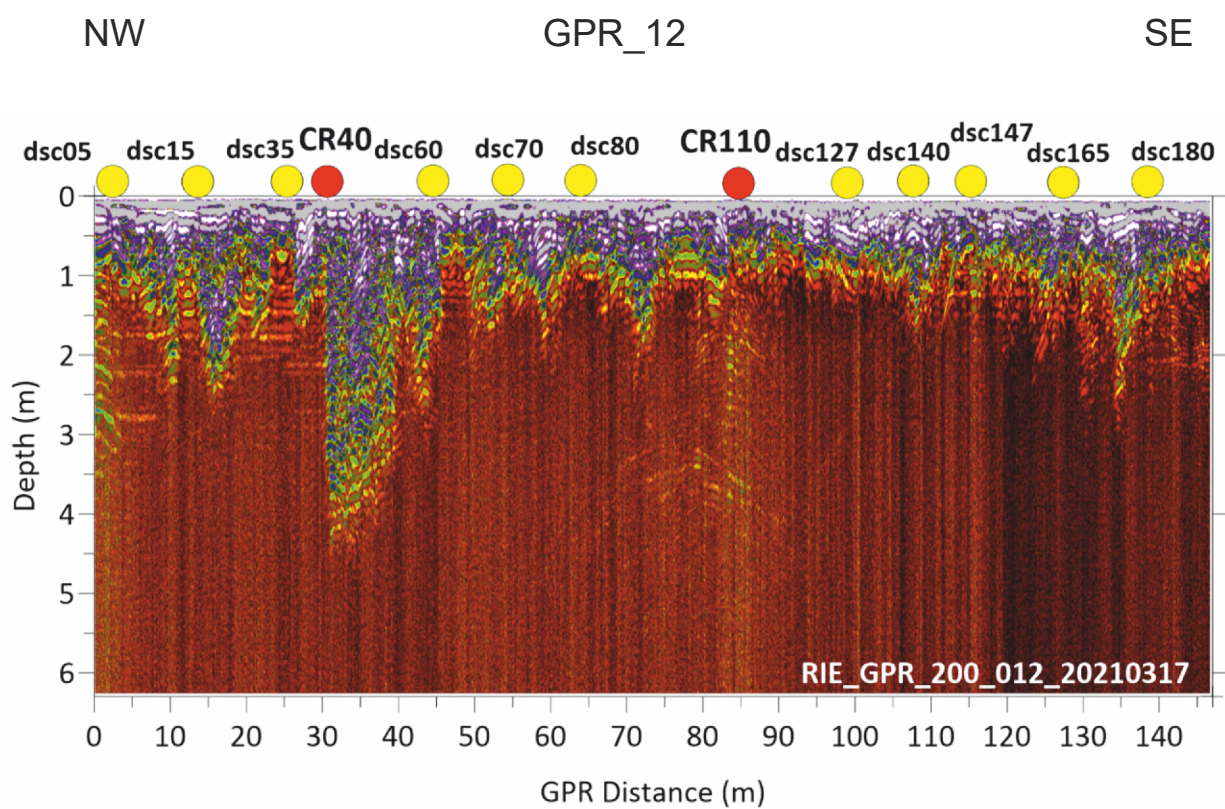
**Figure S4**

GPR profile of the GPR\_09 line. See Figure 8b for the line trace.



**Figure S5**

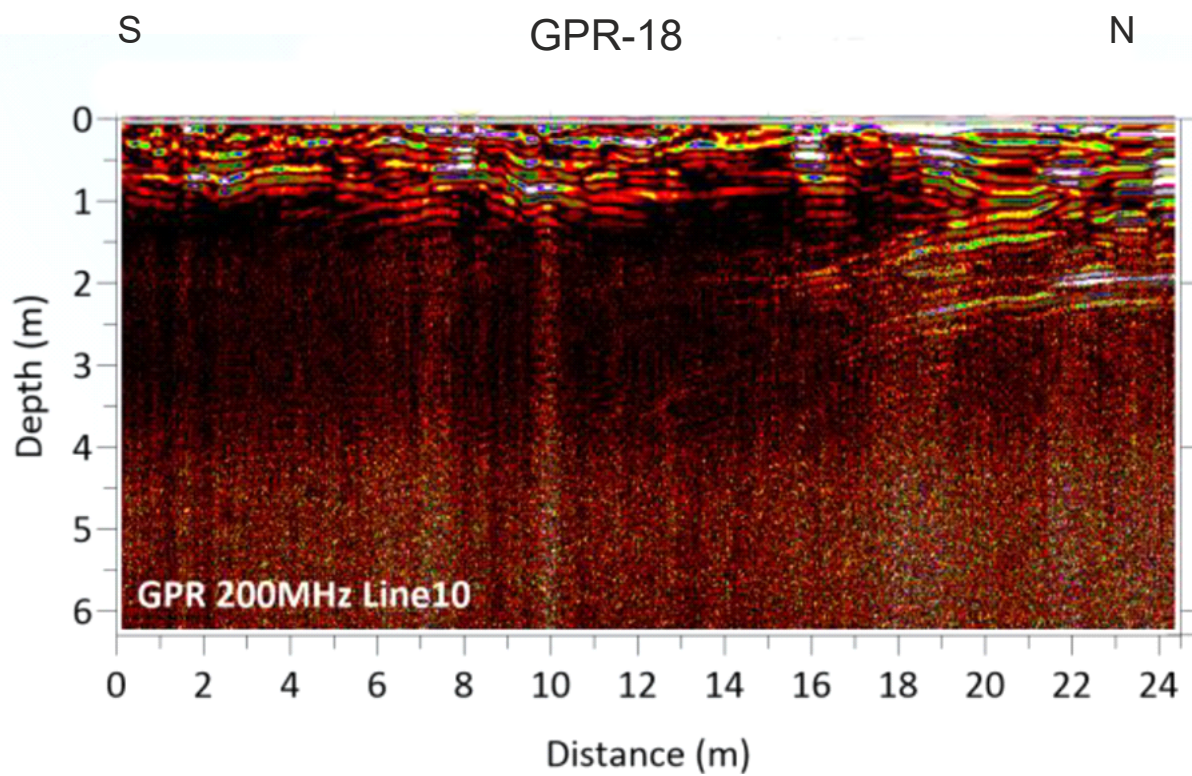
GPR profile of the GPR\_11 line. See Figure 8d for the line trace.



**Figure S6**

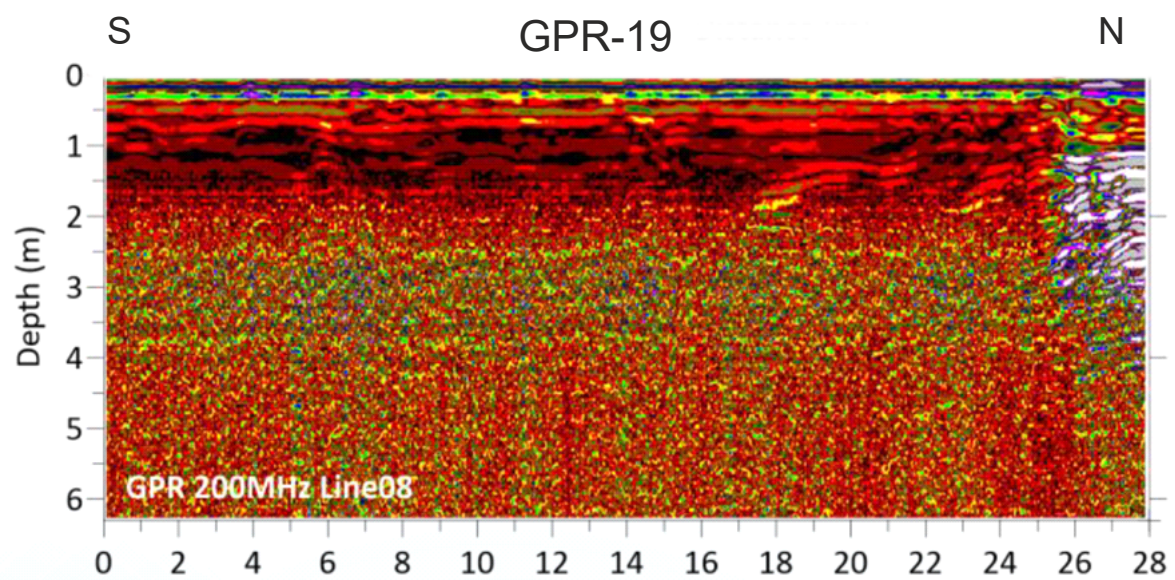
GPR profile of the GPR\_12 line. See Figure 8d for the line trace.





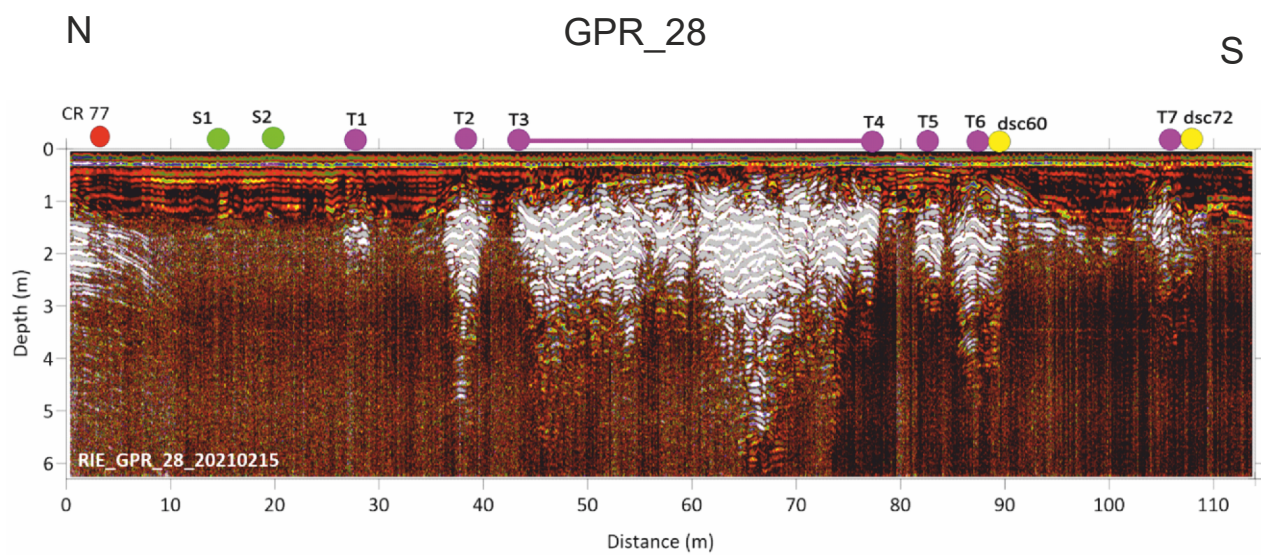
**Figure S7**

GPR profile of the GPR\_18 line. See Figure 2b for the line trace.



**Figure S8**

GPR profile of the GPR\_18 line. See Figure 2b for the line trace.



**Figure S9**

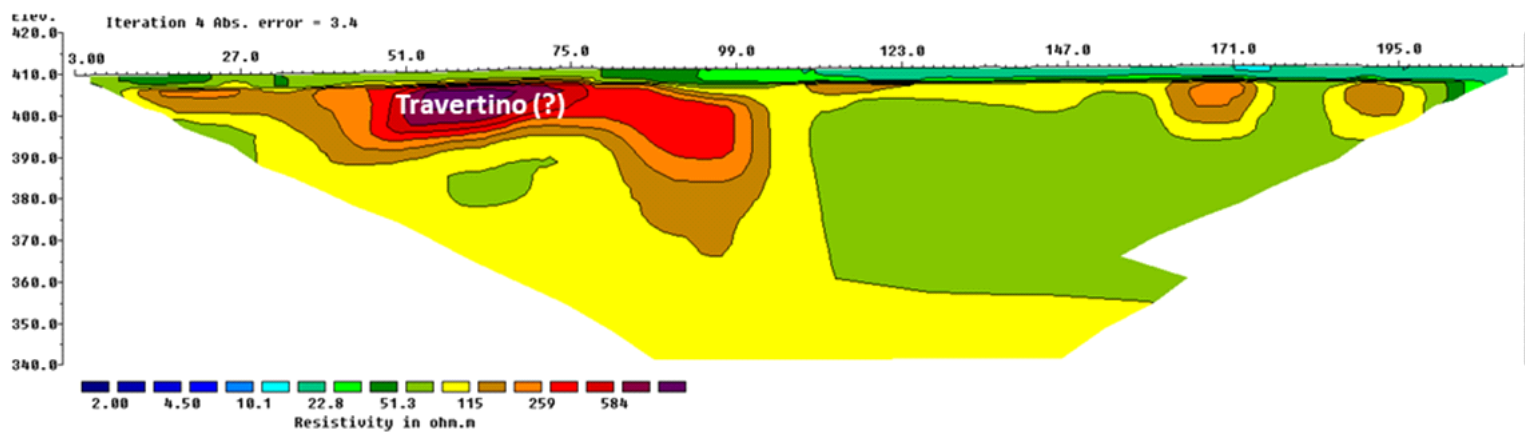
GPR profile of the GPR\_28 line. See Figure 8c for the line trace.



SSE

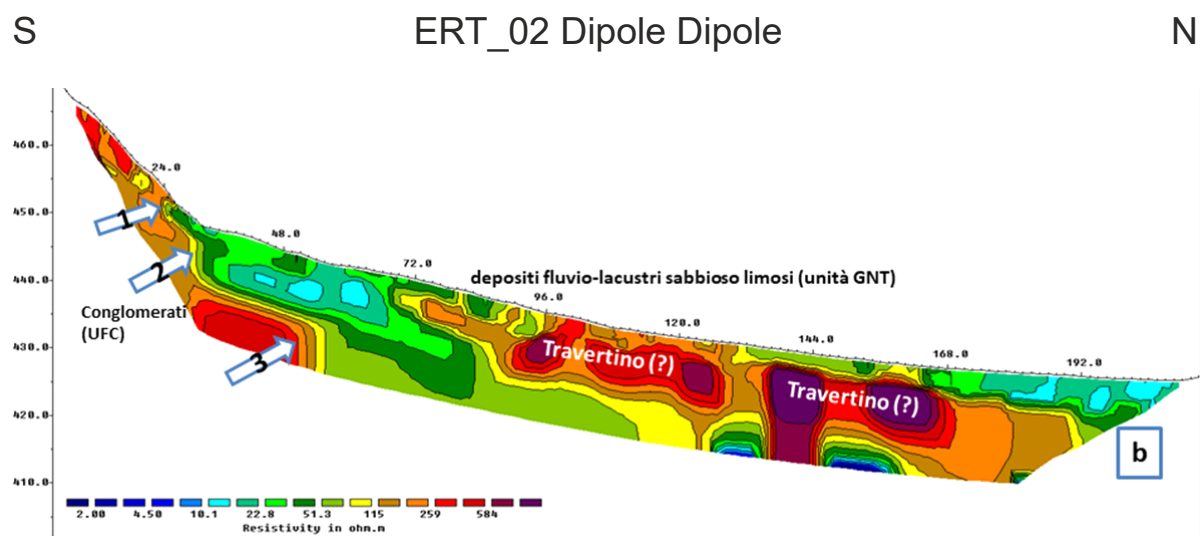
ERT\_01 - Dipole Dipole

NNW



**Figure S10**

ERT profile of the ERT\_01 line. See Figure 8b for the line trace.



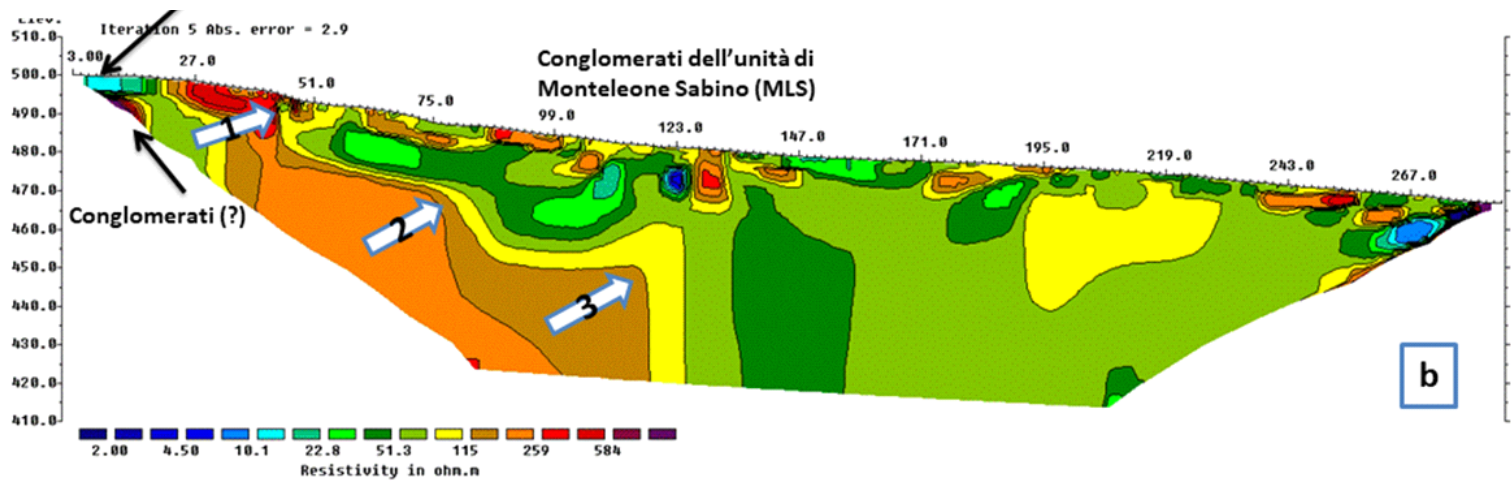
**Figure S11**

ERT profile of the ERT\_02 line. See Figure 8c for the line trace.

SE

ERT\_03 - Pole - Dipole

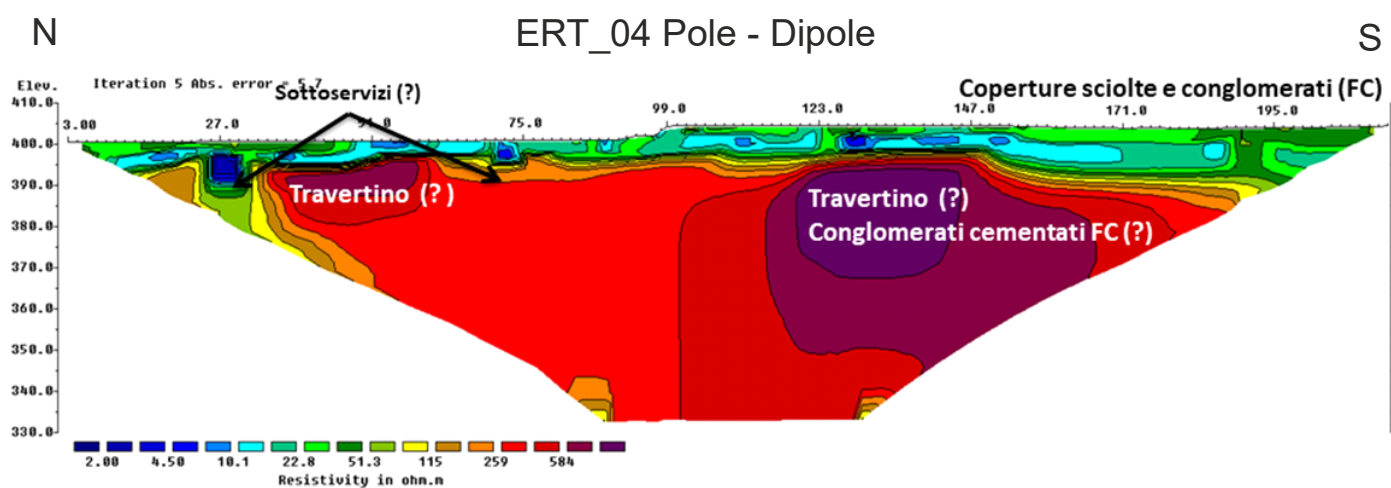
NW



**Figure S12**

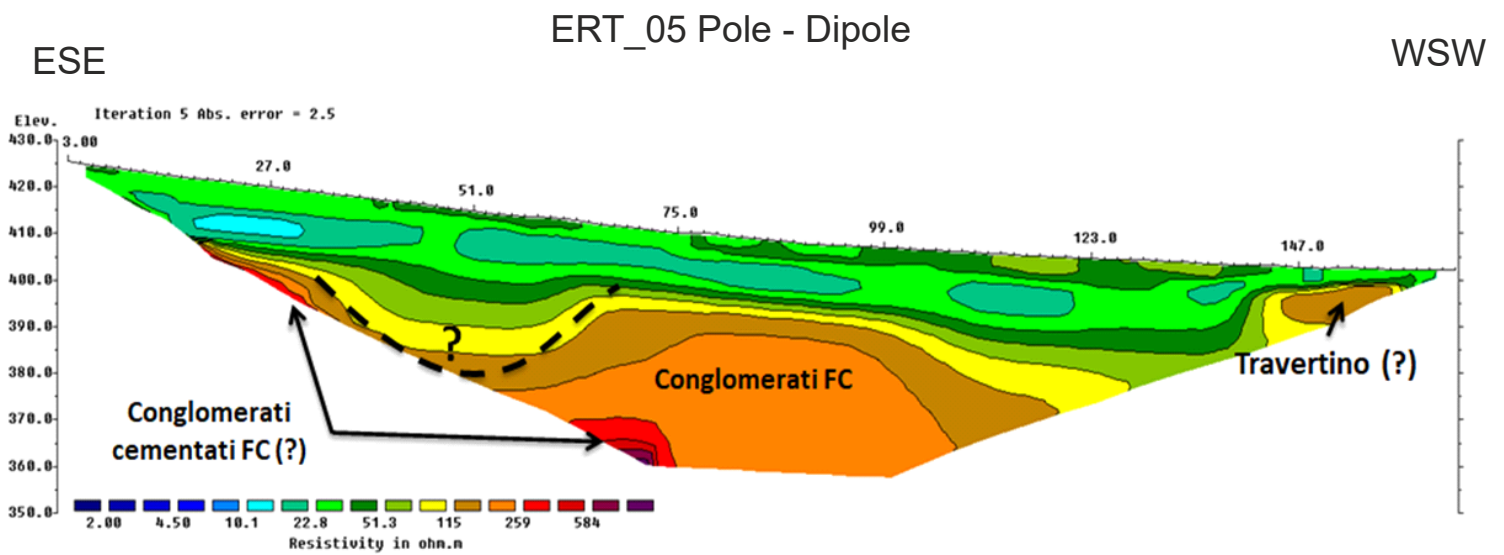
ERT profile of the ERT\_03 line. See Figure 8d for the line trace.





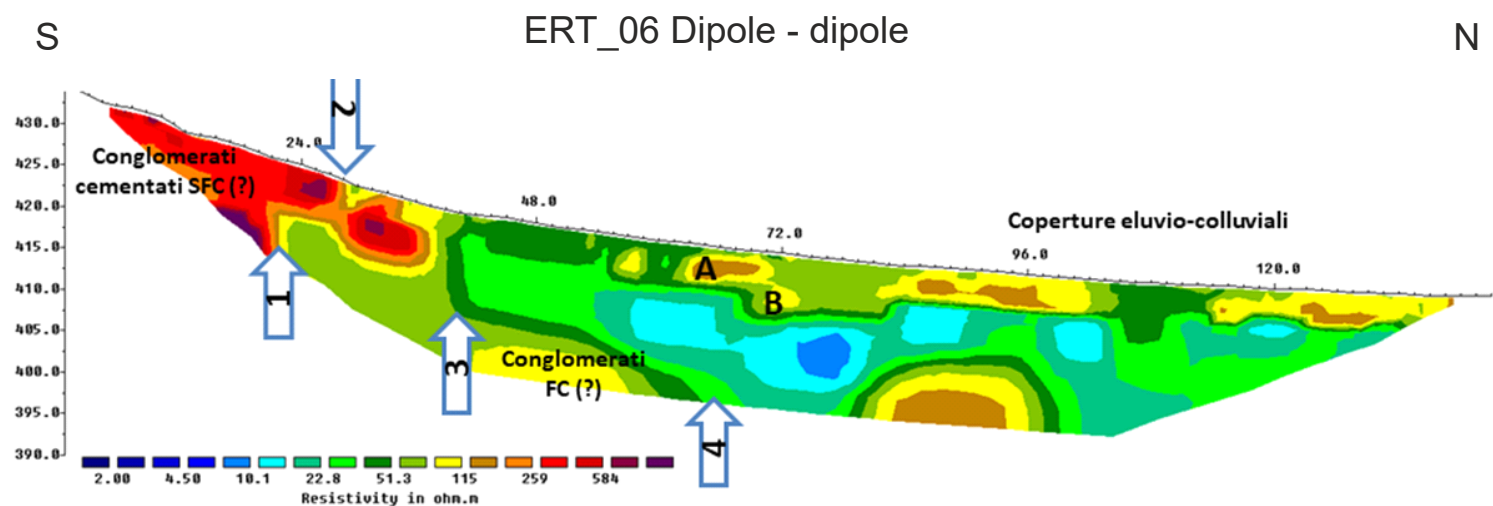
**Figure S13**

ERT profile of the ERT\_04 line. See Figure 8b for the line trace.



**Figure S14**

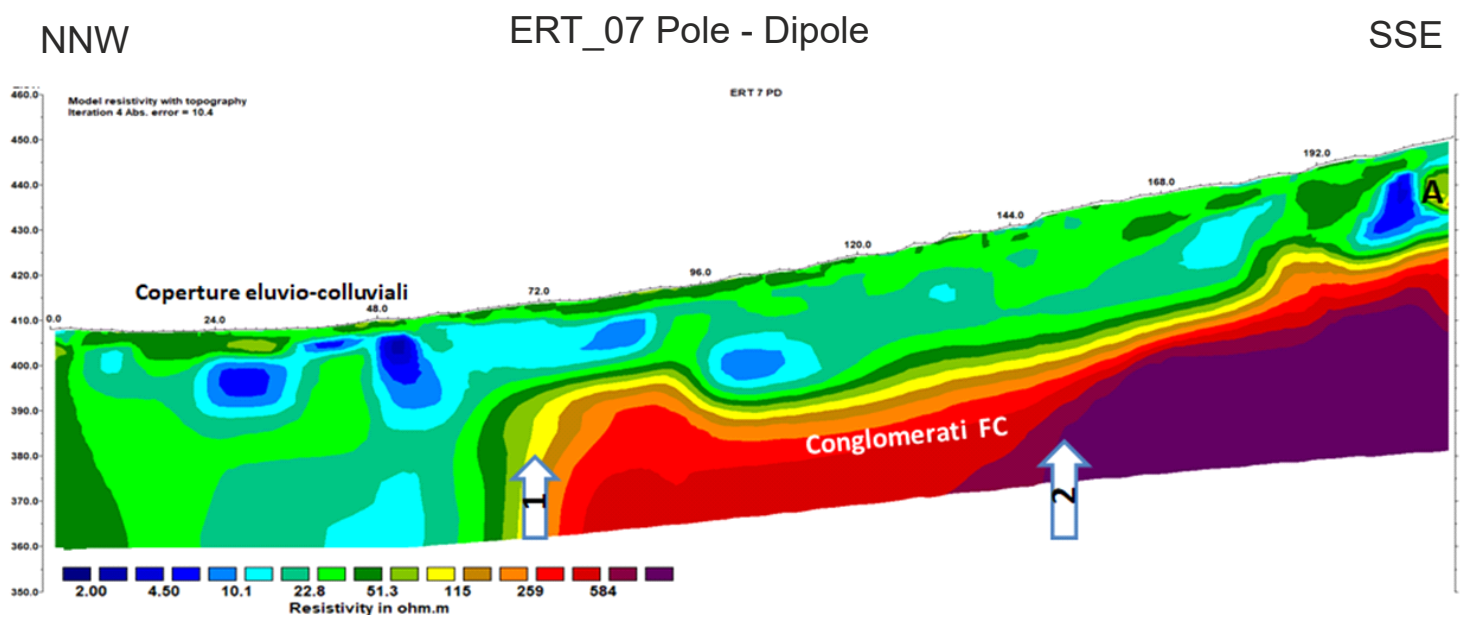
ERT profile of the ERT\_05 line. See Figure 8b for the line trace.



**Figure S15**

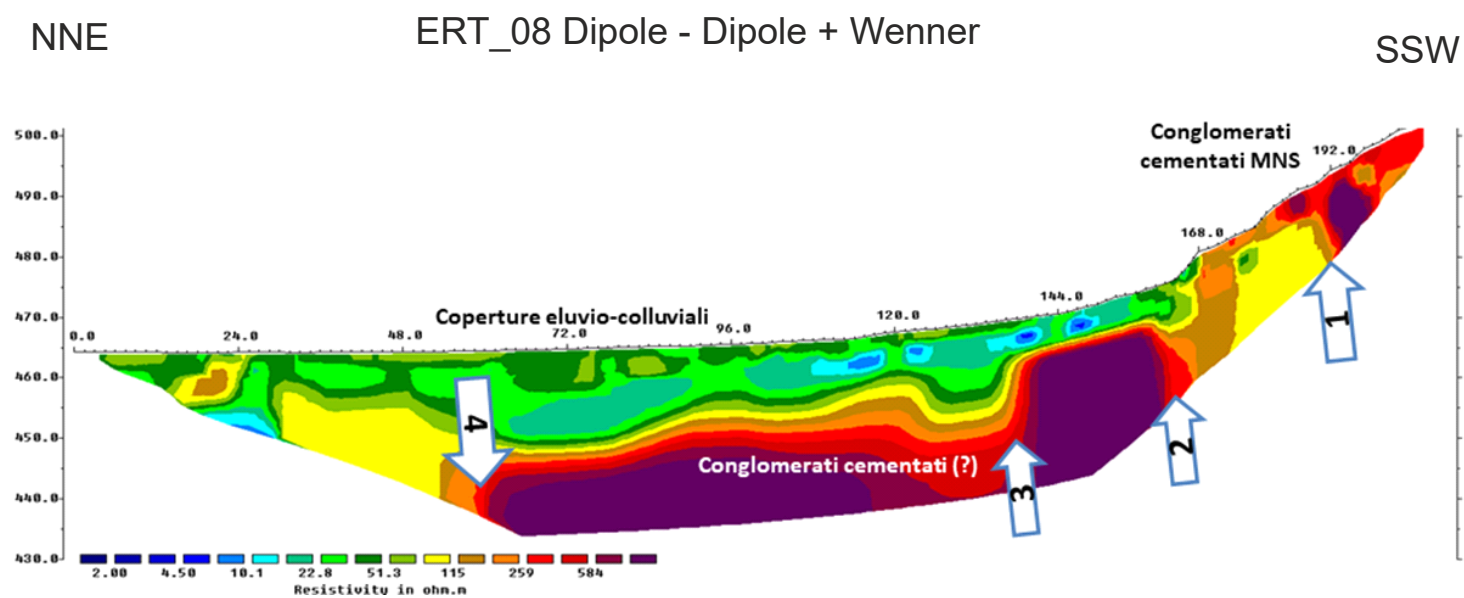
ERT profile of the ERT\_06 line. See Figure 8b for the line trace.





**Figure S16**

ERT profile of the ERT\_07 line. See Figure 8b for the line trace.



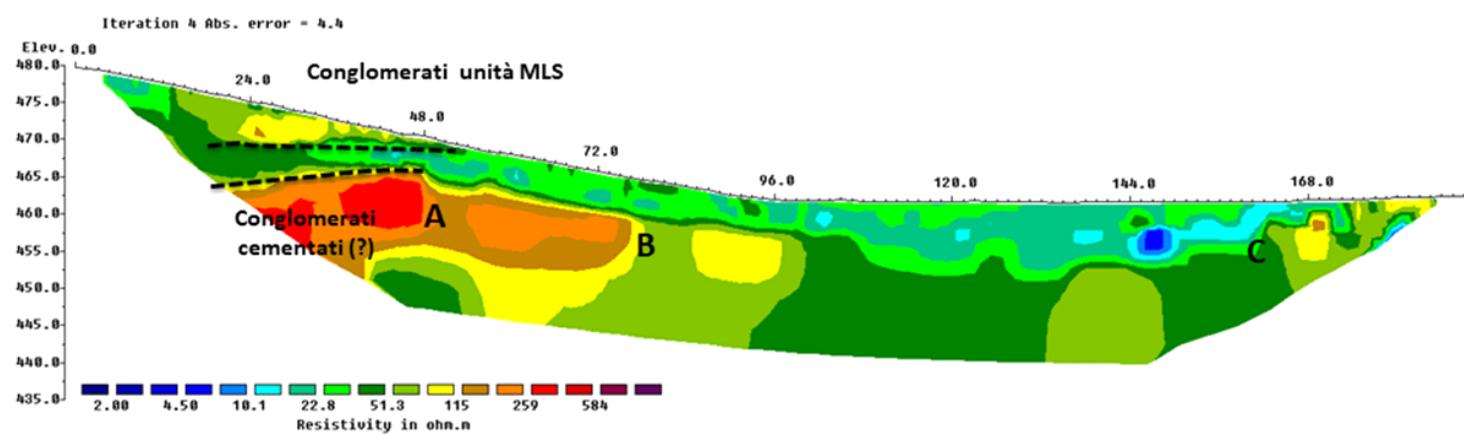
**Figure S17**

ERT profile of the ERT\_08 line. See Figure 8d for the line trace.

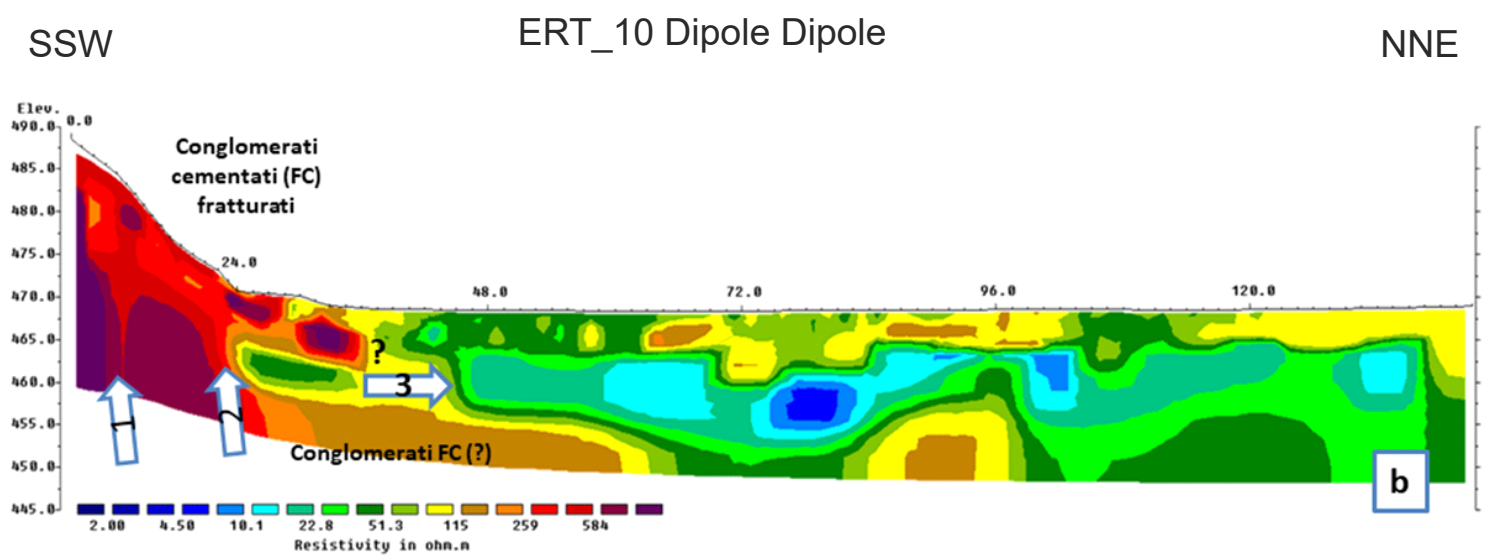
SSW

ERT\_09 Dipole - Dipole

NNE

**Figure S18**

ERT profile of the ERT\_09 line. See Figure 8d for the line trace.



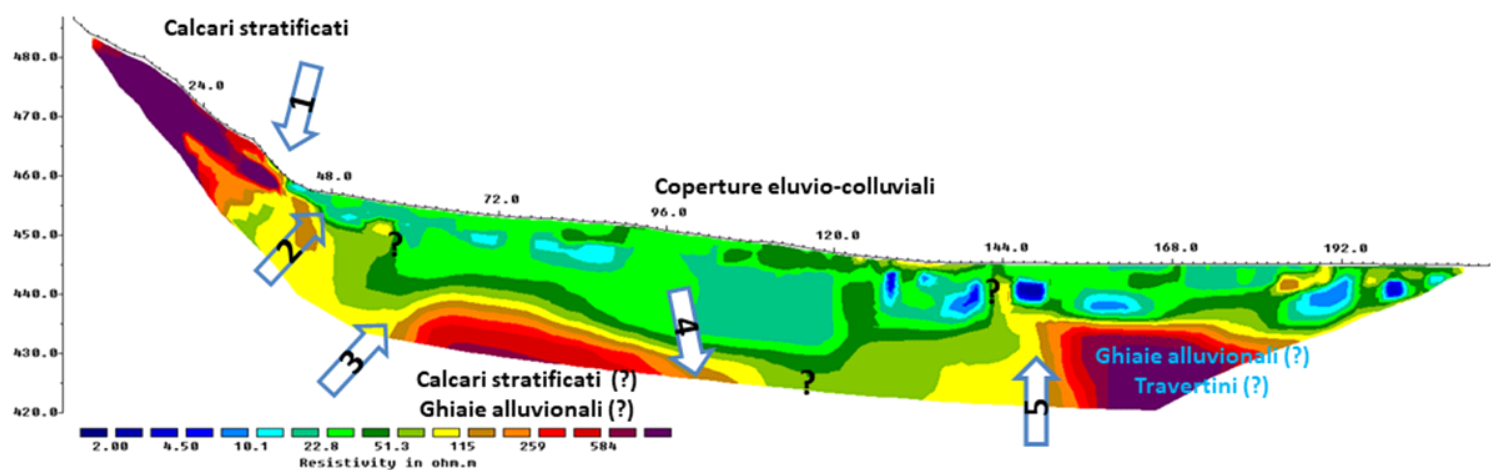
**Figure S19**

ERT profile of the ERT\_10 line. See Figure 8d for the line trace.

SSE

ERT\_11 Dipole Dipole

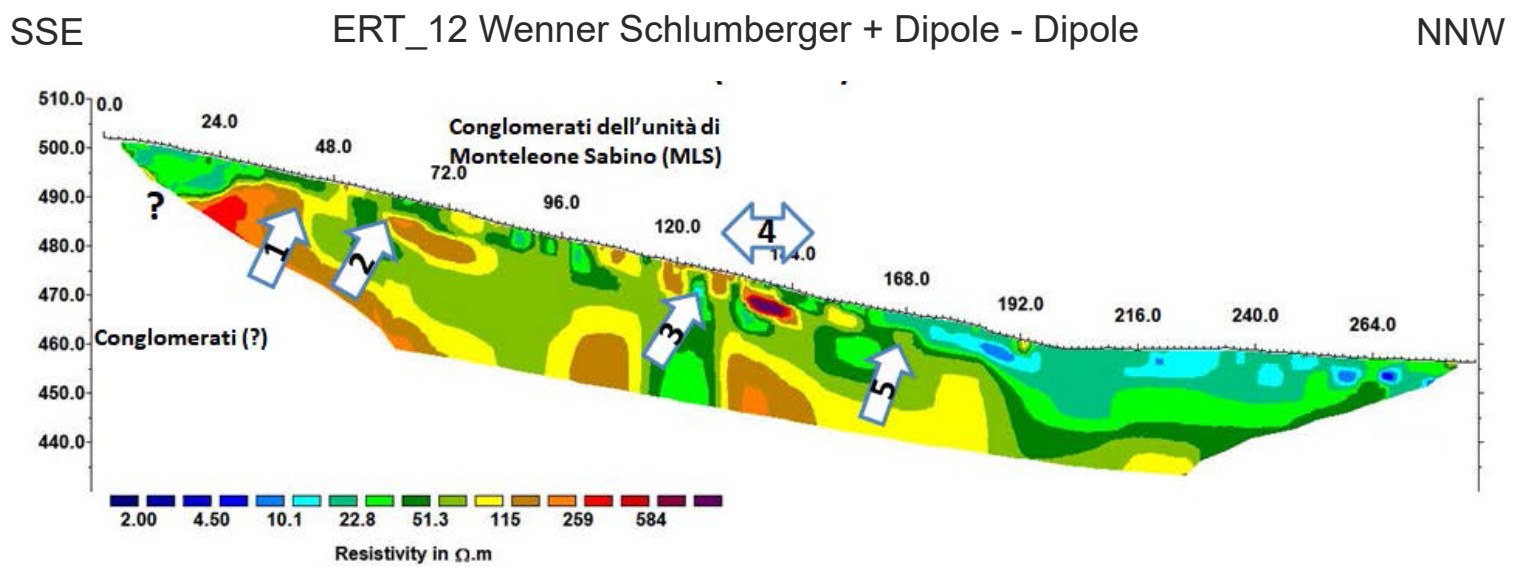
NNW



**Figure S20**

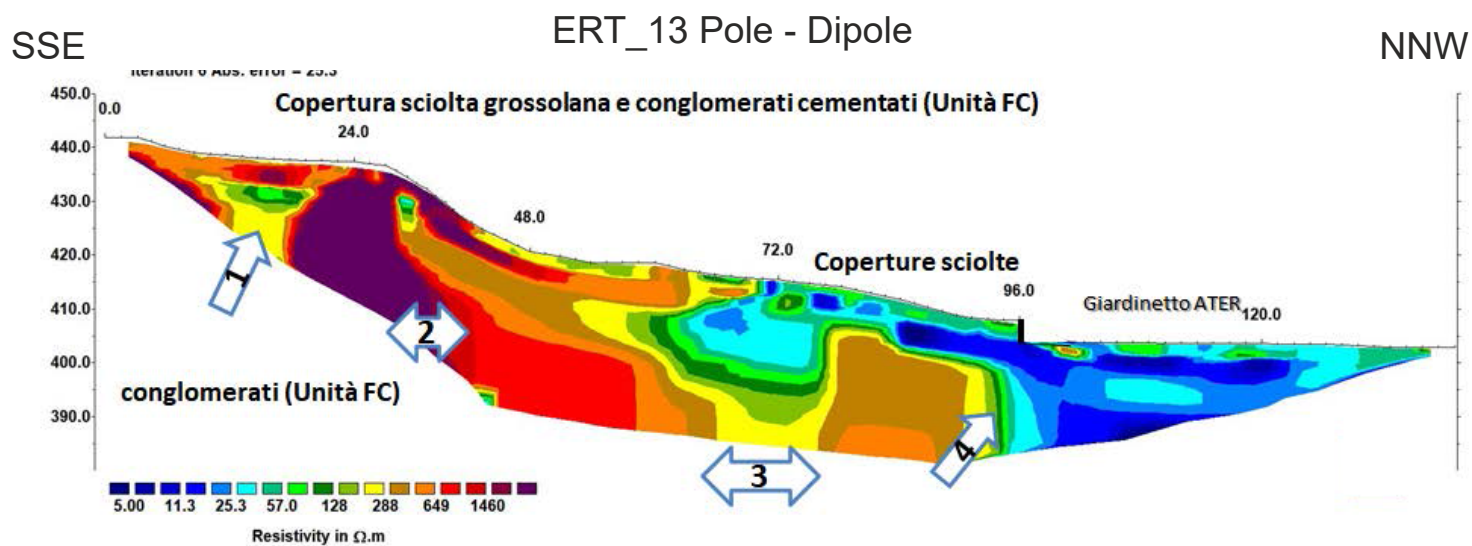
ERT profile of the ERT\_11 line. See Figure 8d for the line trace.





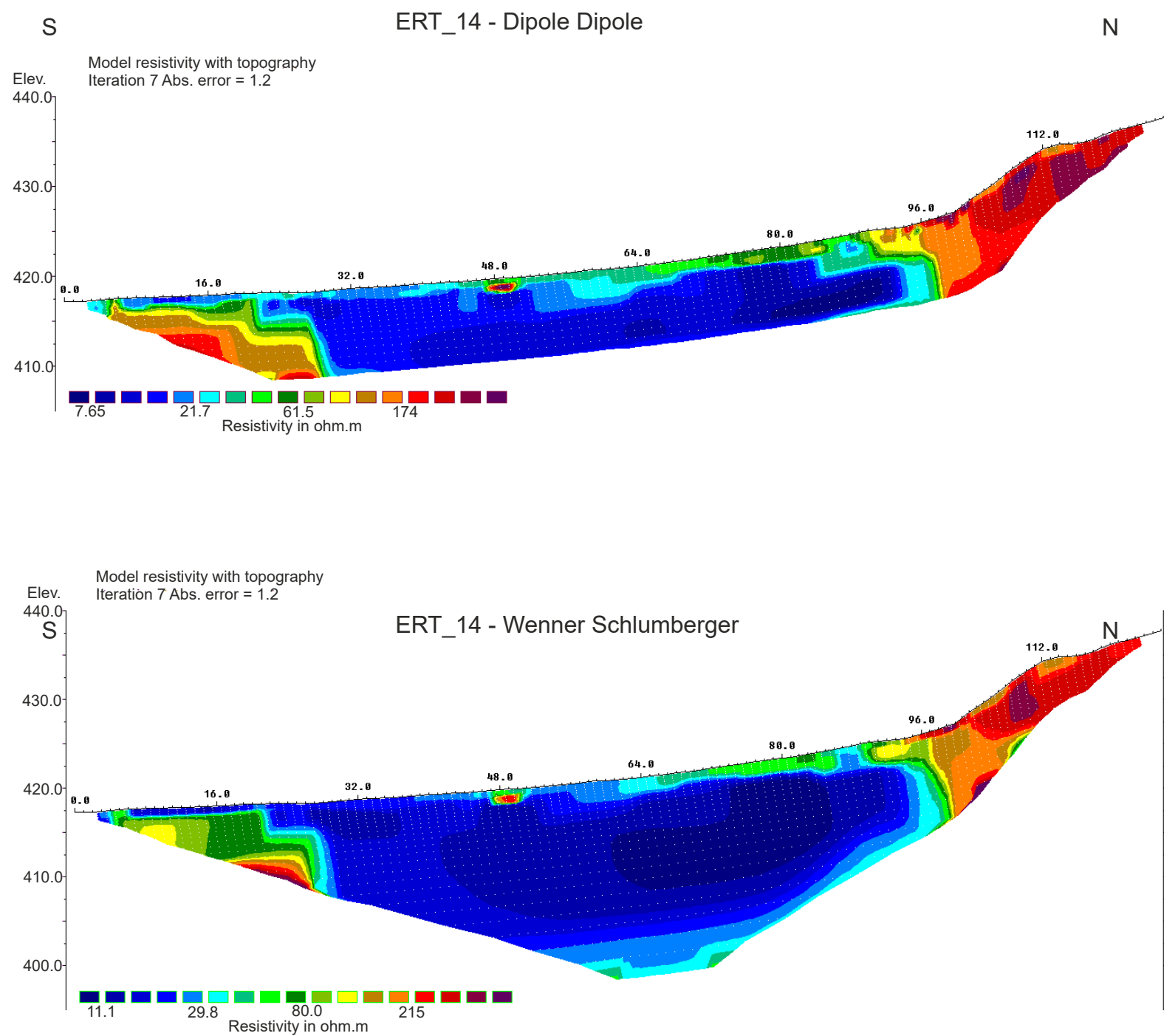
**Figure S21**

ERT profile of the ERT\_12 line. See Figure 8d for the line trace.



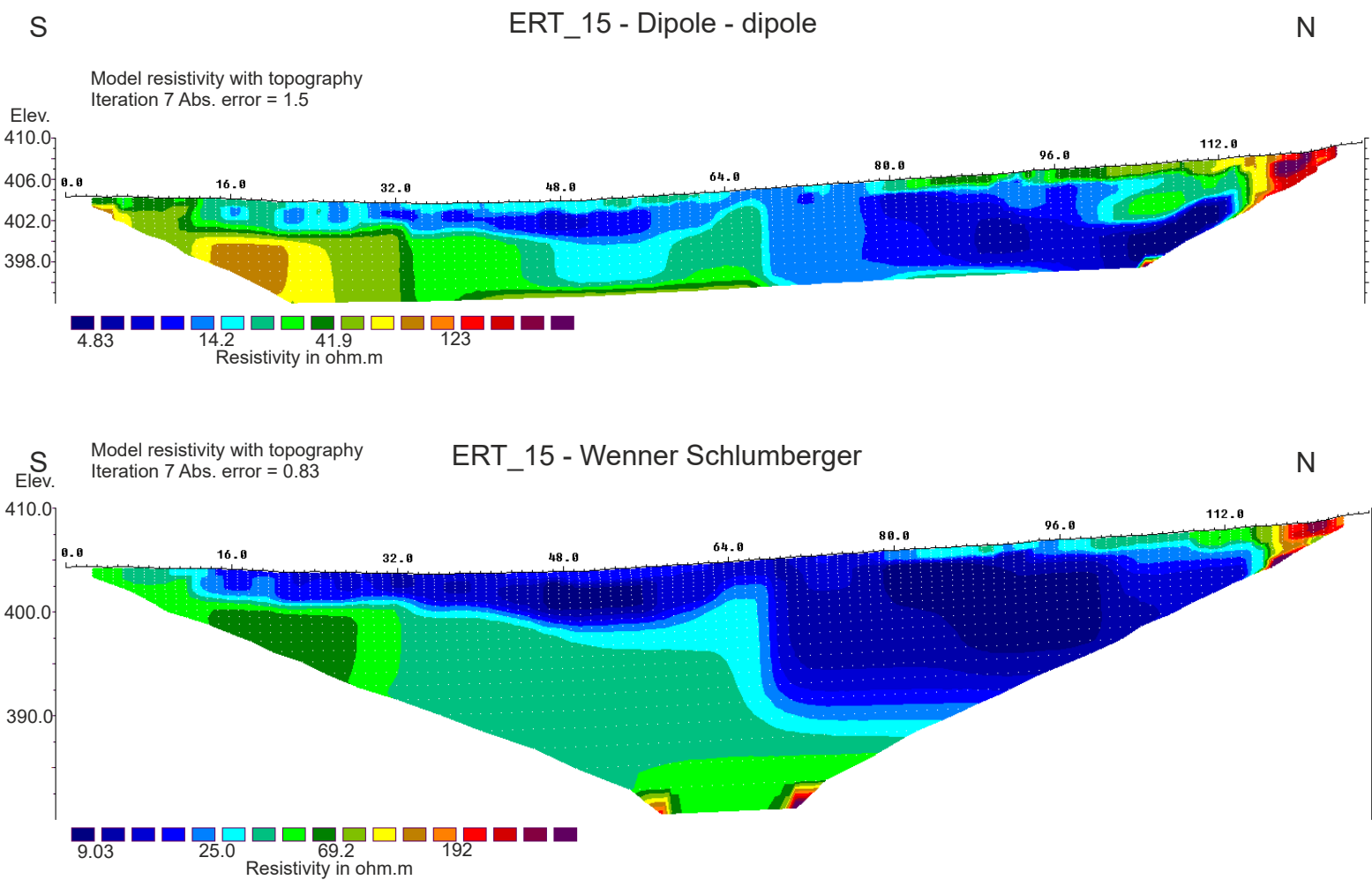
**Figure S22**

ERT profile of the ERT\_13 line. See Figure 8b for the line trace.



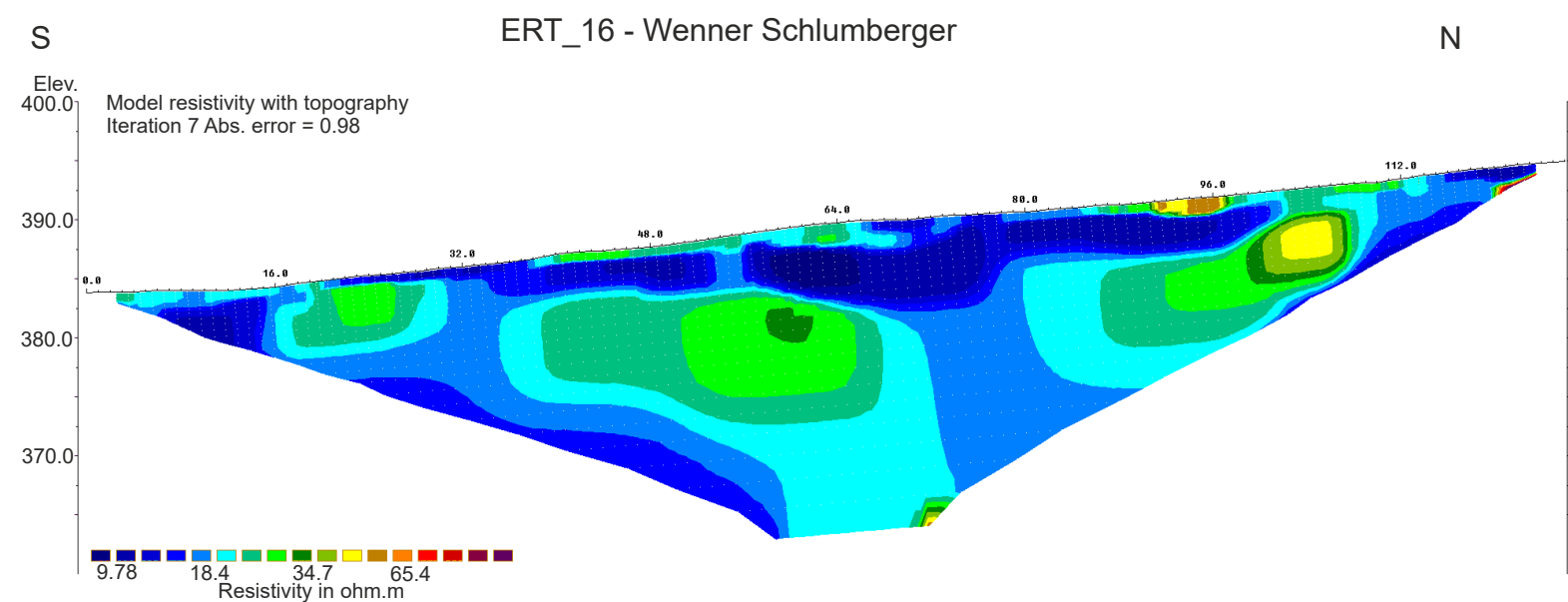
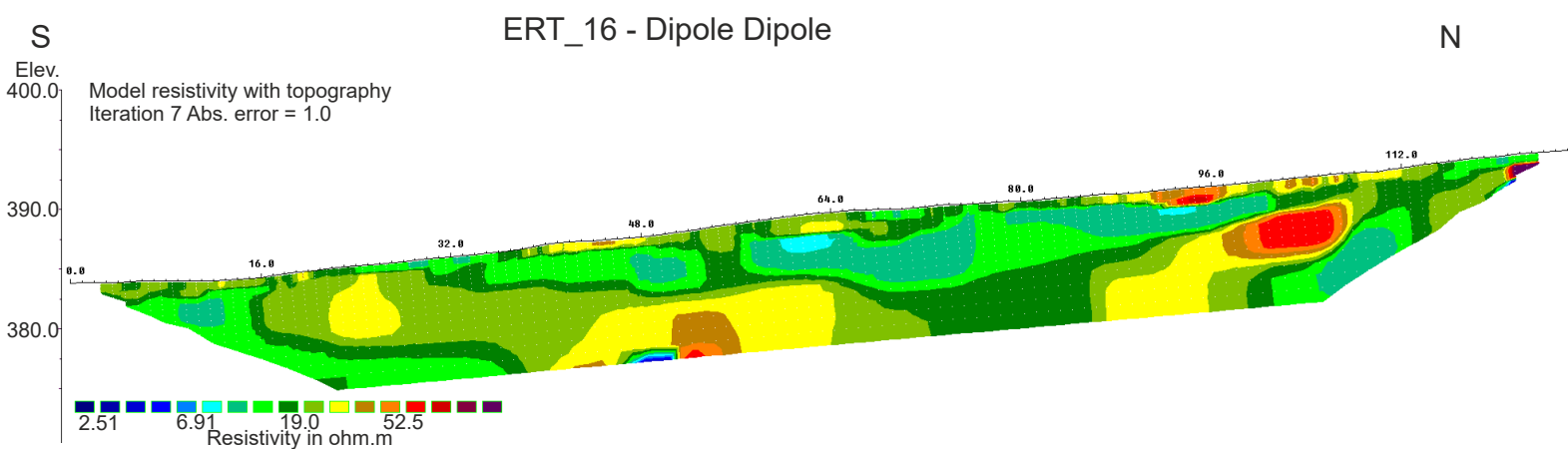
**Figure S23**

ERT profile of the ERT\_14 line acquired with the dipole - dipole array (above) and with the Wenner Schlumberger array (below). See Figure 2b for the line trace.



**Figure S24**

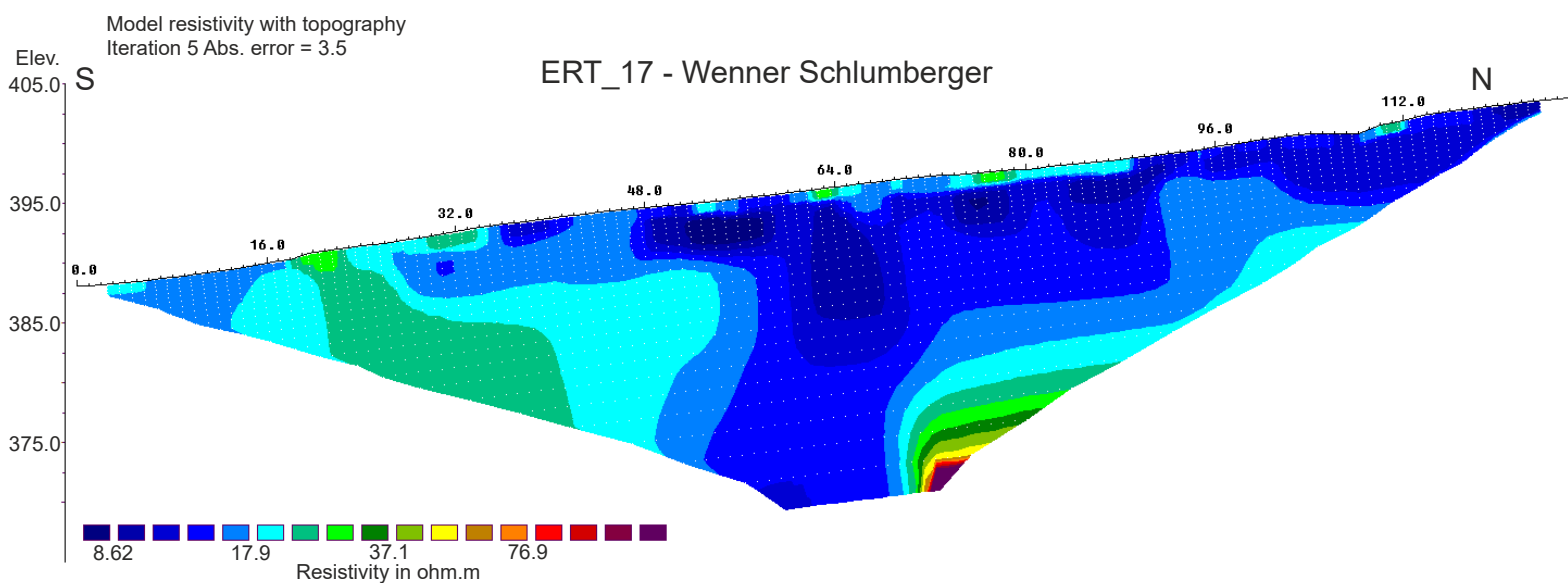
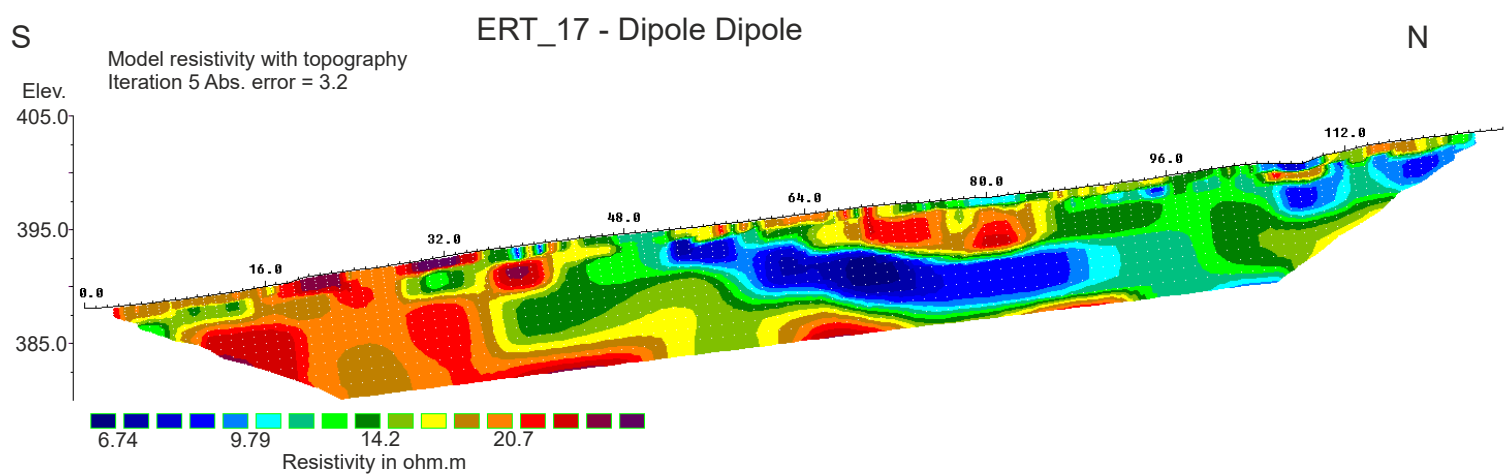
ERT profile of the ERT\_15 line acquired with the dipole - dipole array (above) and with the Wenner Schlumberger array (below). See Figure 2b for the line trace.



**Figure S25**

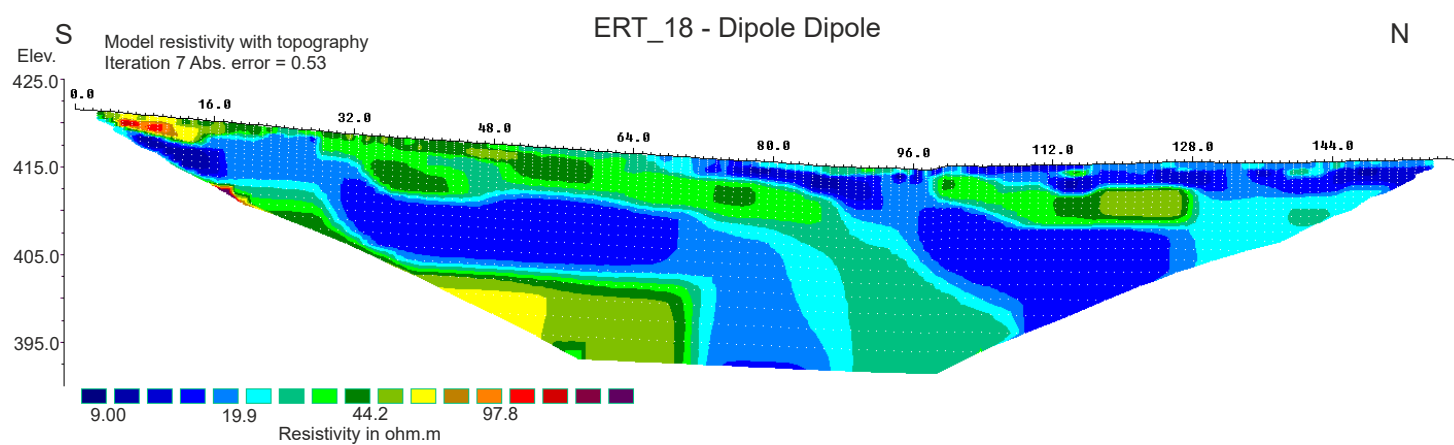
ERT profile of the ERT\_16 line acquired with the dipole - dipole array (above) and with the Wenner Schlumberger array (below). See Figure 2c for the line trace.





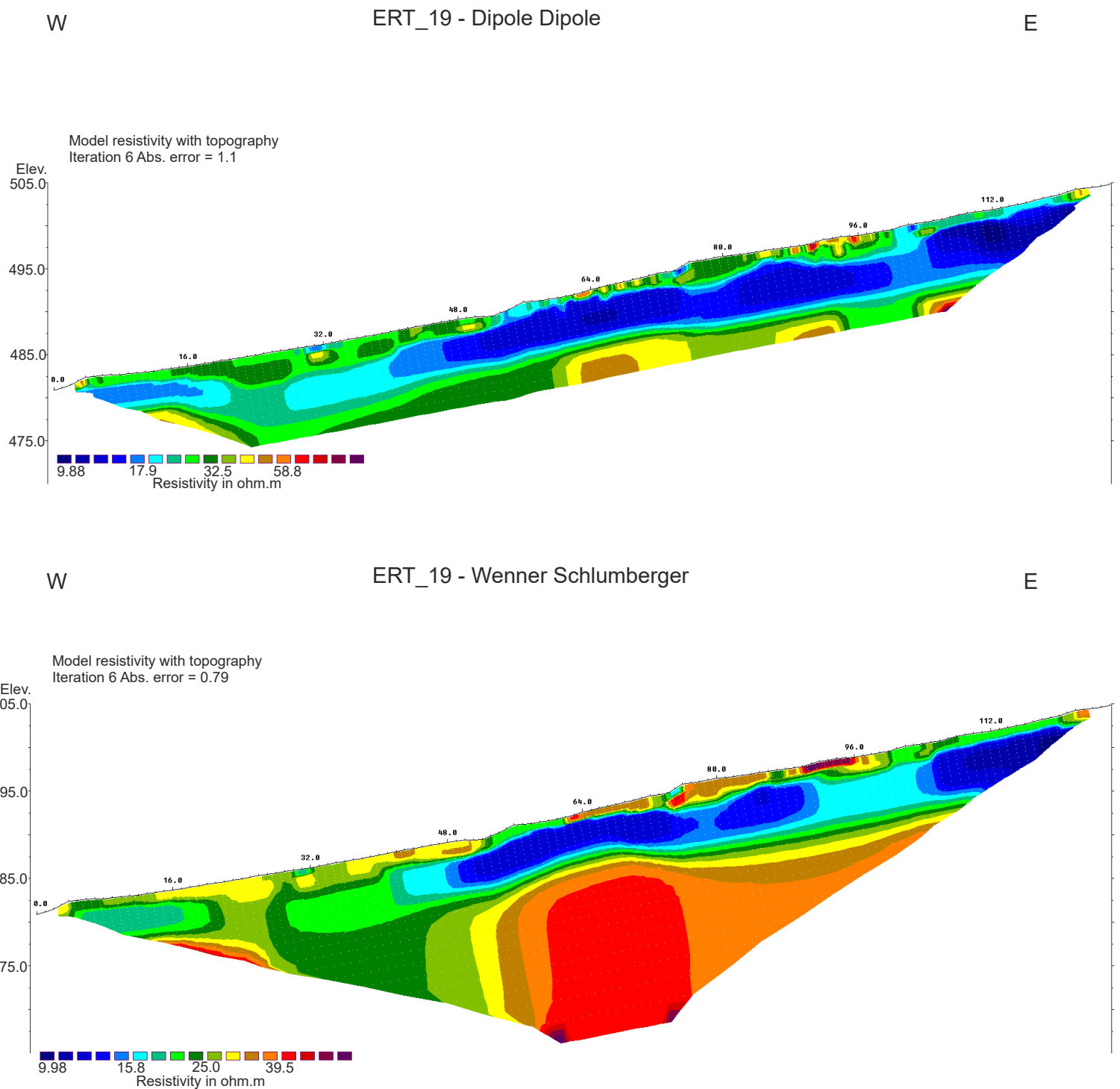
**Figure S26**

ERT profile of the ERT\_17 line acquired with the dipole - dipole array (above) and with the Wenner Schlumberger array (below). See Figure 2c for the line trace.



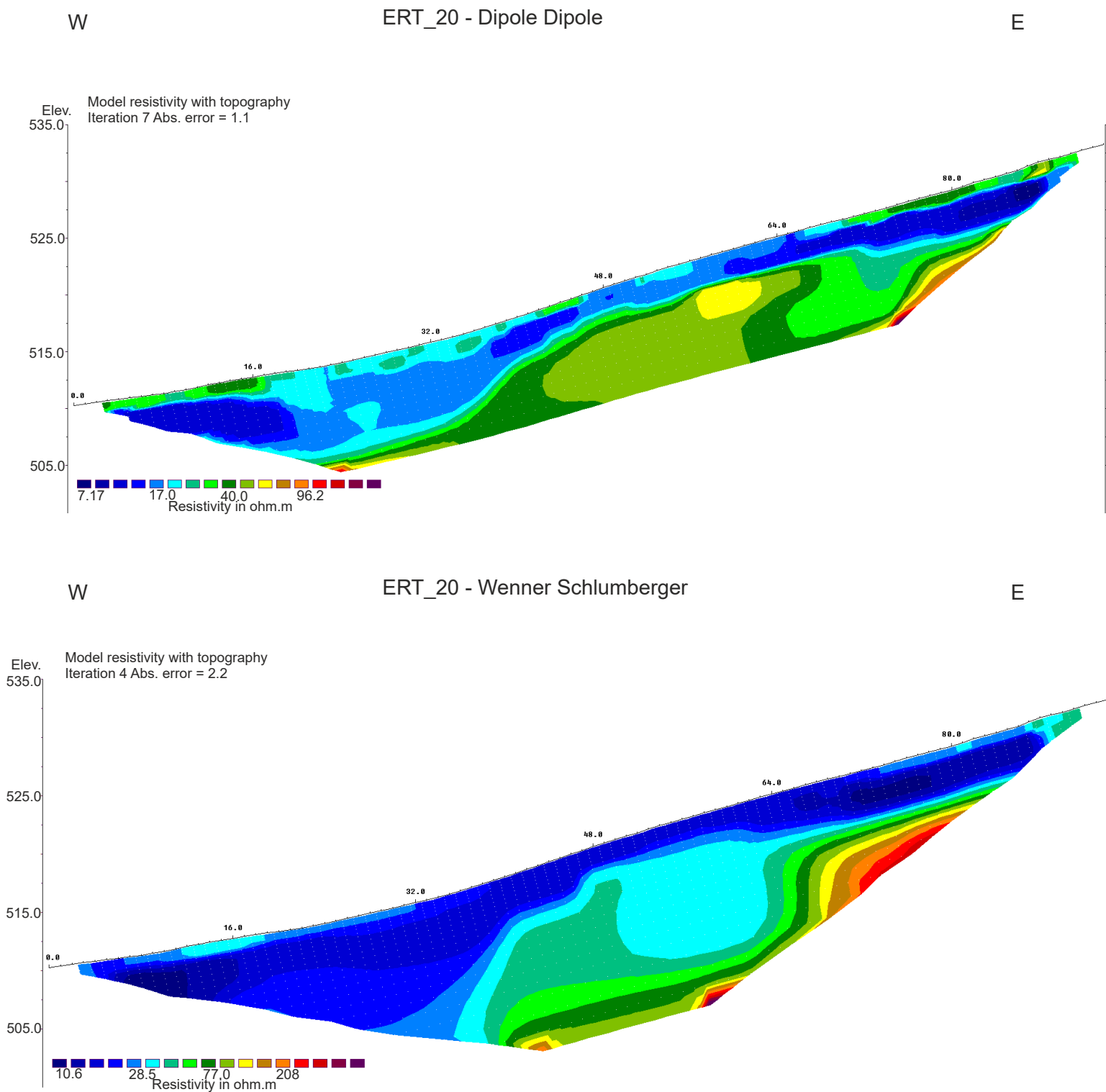
**Figure S27**

ERT profile of the ERT\_18 line acquired with the dipole - dipole array. See Figure 2c for the line trace.



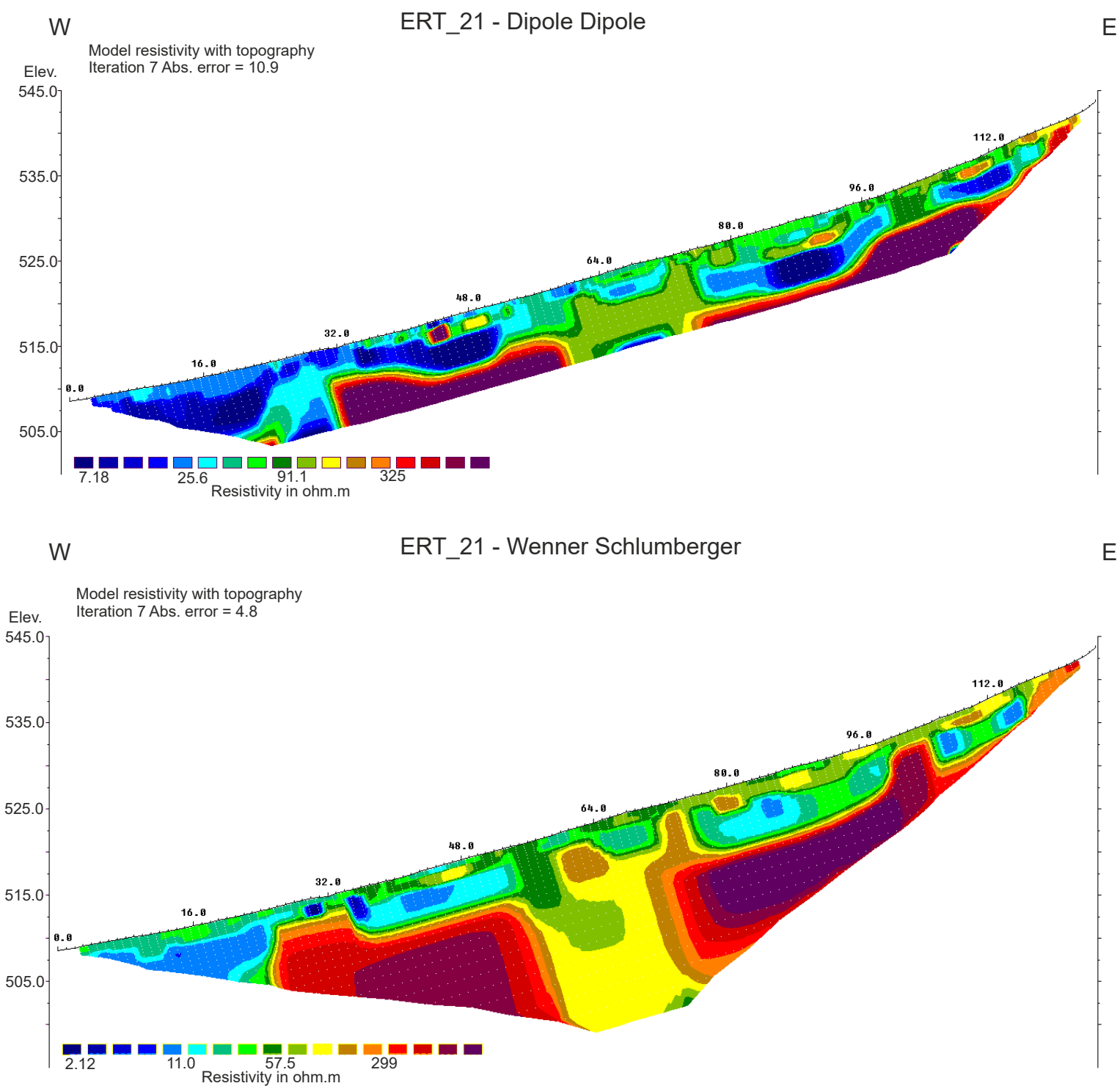
**Figure S28**

ERT profile of the ERT\_19 line acquired with the dipole - dipole array (above) and with the Wenner Schlumberger array (below). See Figure 5b for the line trace.



**Figure S29**

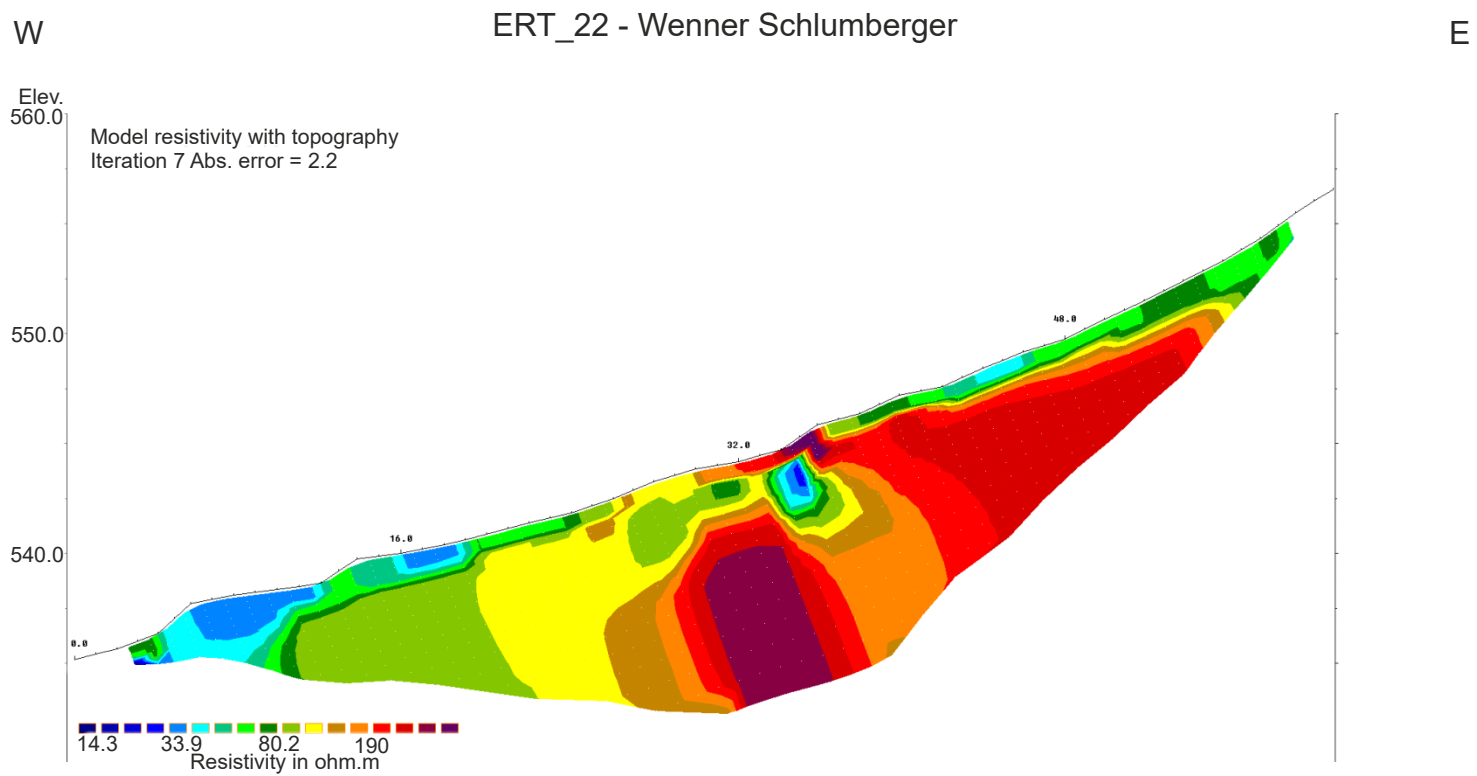
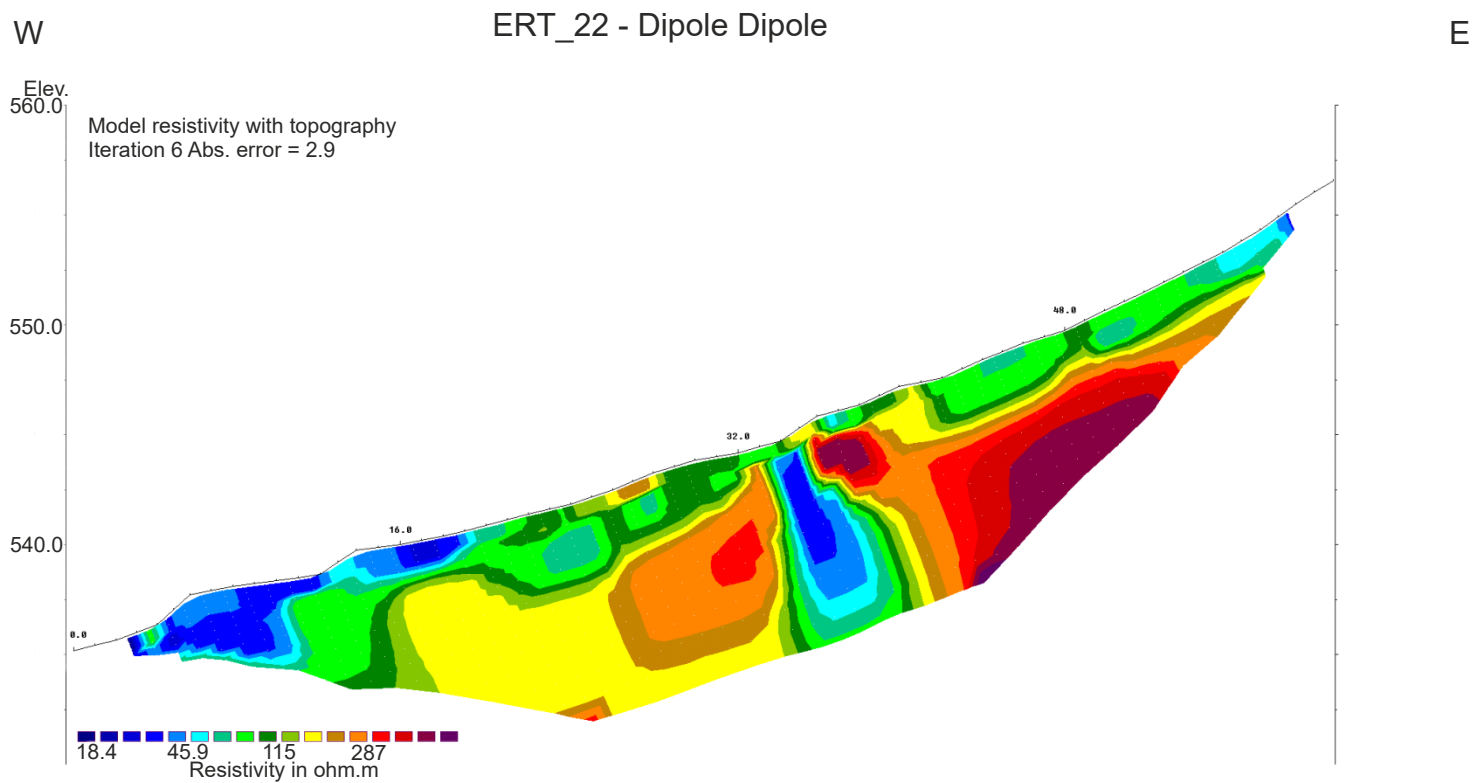
ERT profile of the ERT<sub>20</sub> line acquired with the dipole - dipole array (above) and with the Wenner Schlumberger array (below). See Figure 5b for the line trace.



**Figure S30**

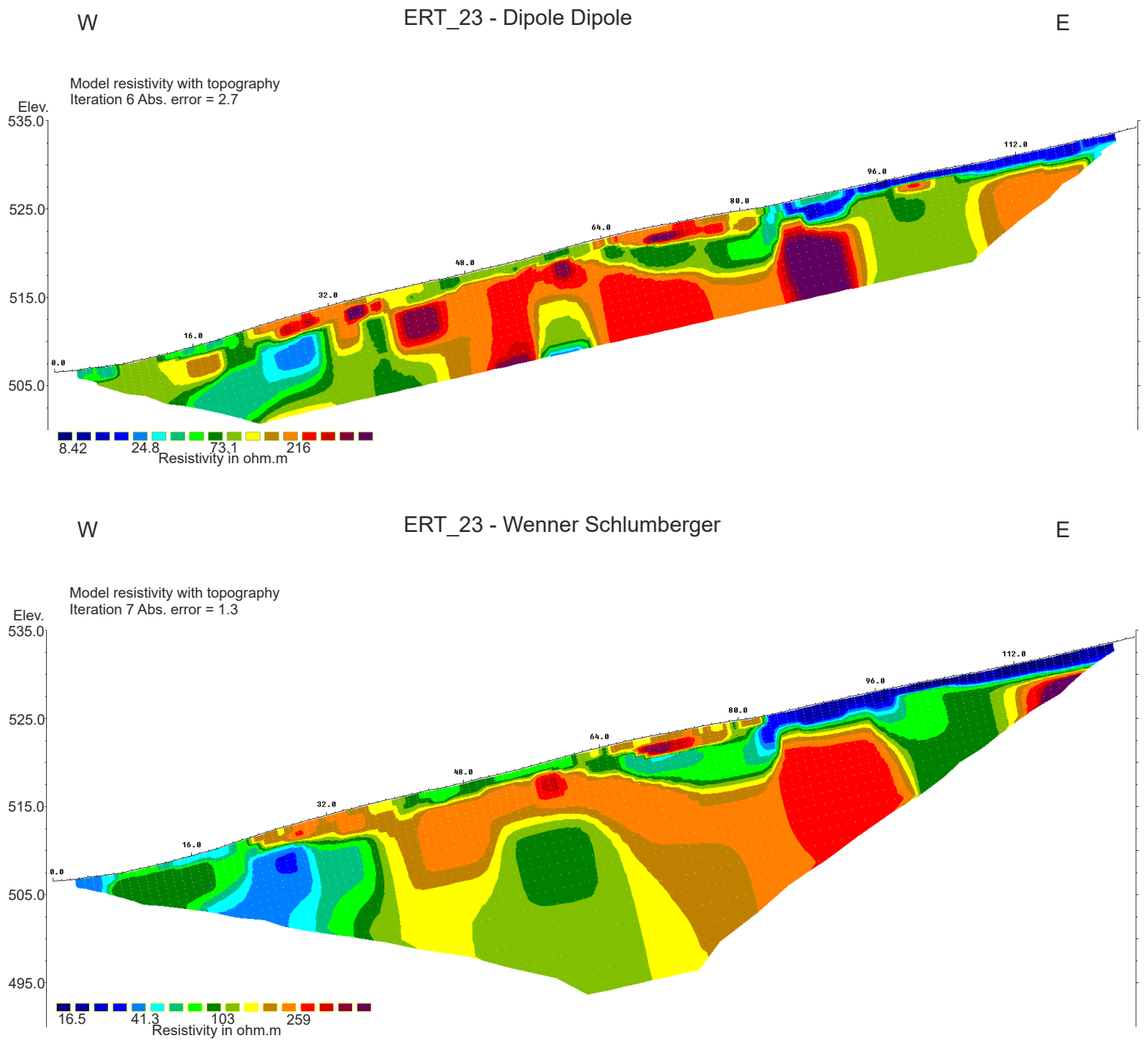
ERT profile of the ERT\_21 line acquired with the dipole - dipole array (above) and with the Wenner Schlumberger array (below). See Figure 5b for the line trace.





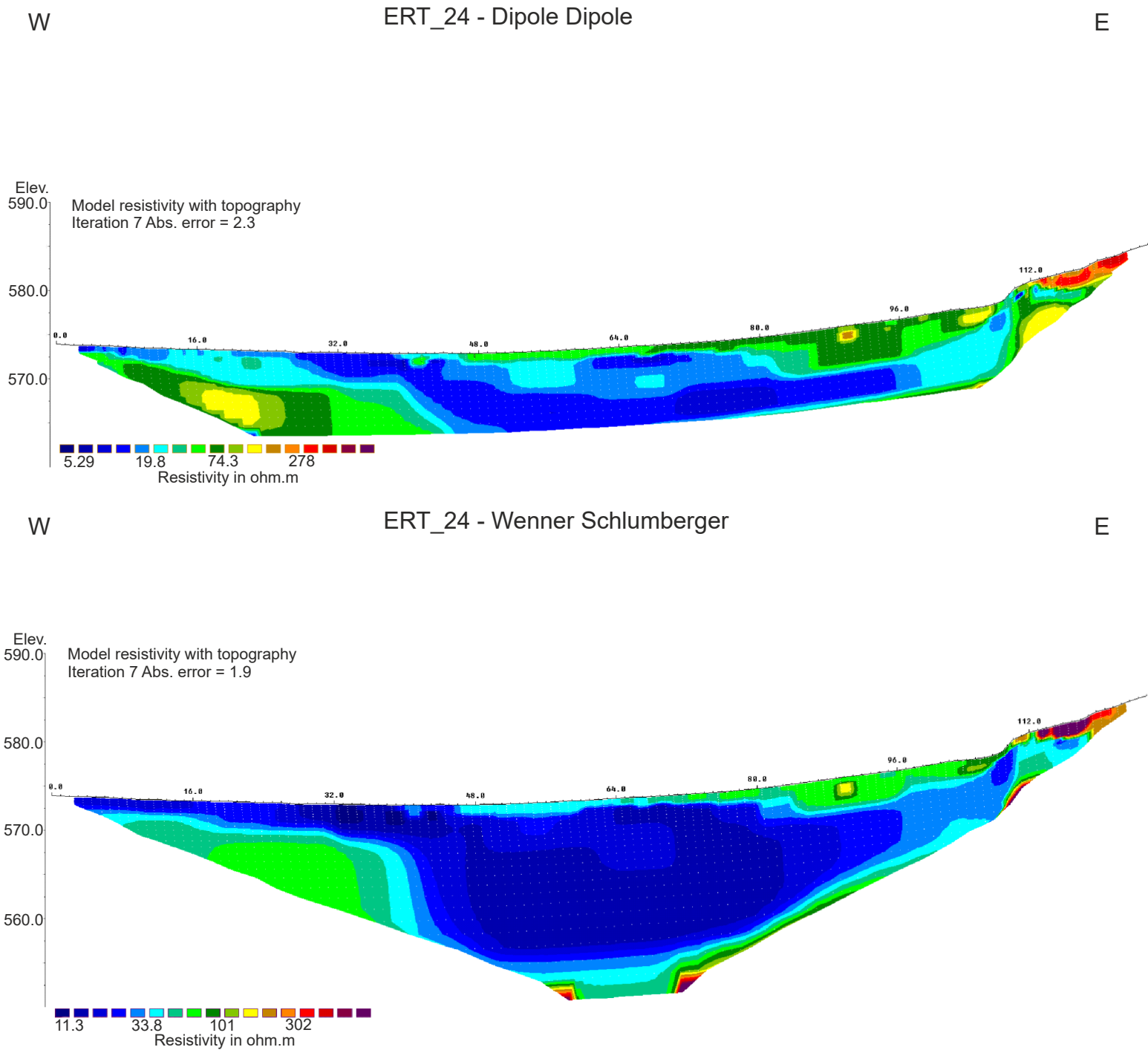
**Figure S31**

ERT profile of the ERT\_22 line acquired with the dipole - dipole array (above) and with the Wenner Schlumberger array (below). See Figure 5b for the line trace.



**Figure S32**

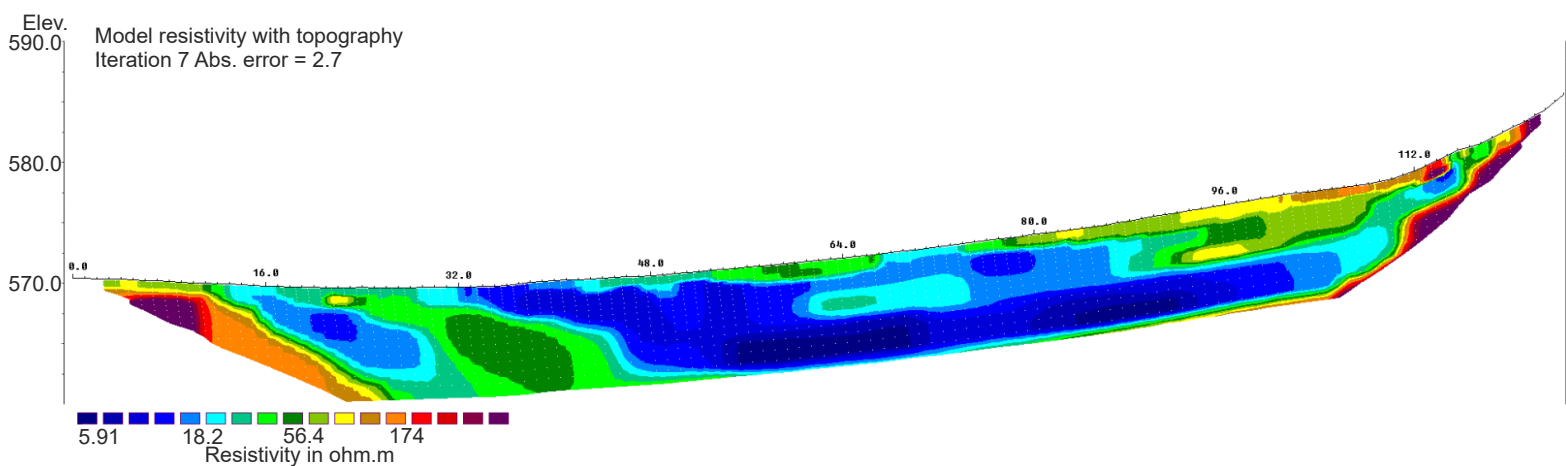
ERT profile of the ERT\_23 line acquired with the dipole - dipole array (above) and with the Wenner Schlumberger array (below). See Figure 5b for the line trace.



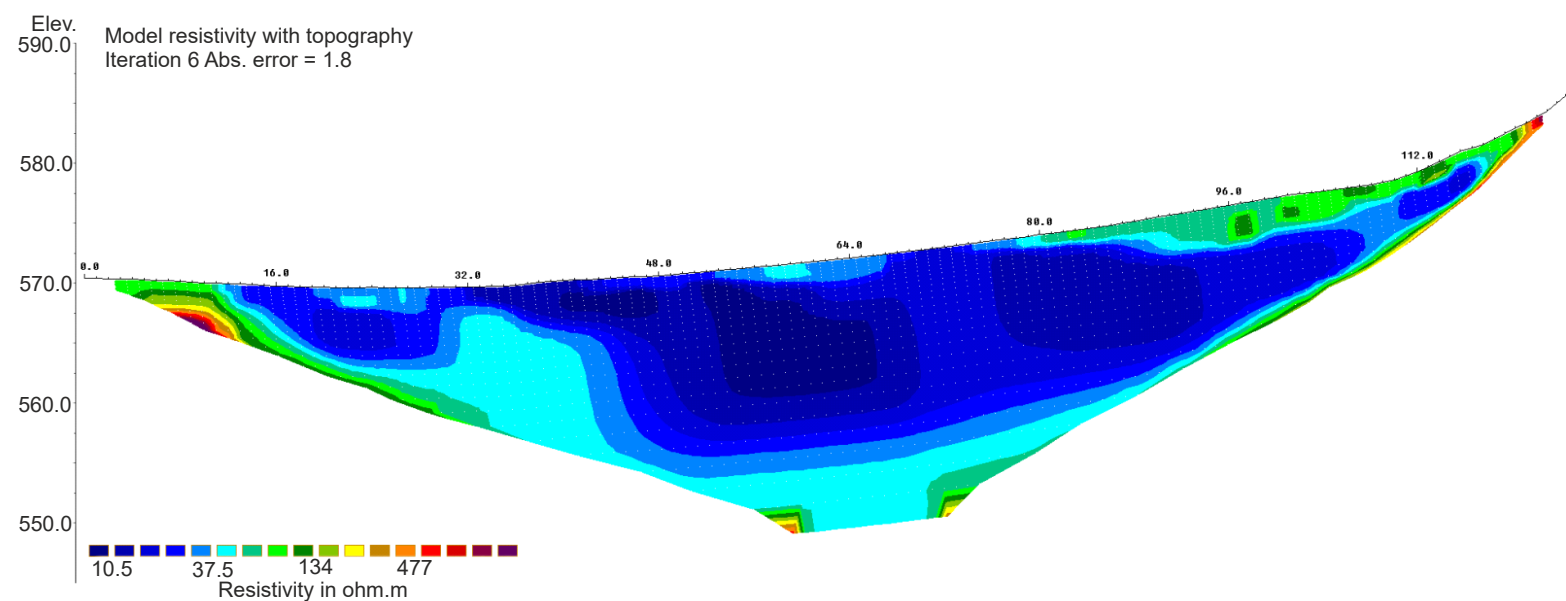
**Figure S33**

ERT profile of the ERT\_24 line acquired with the dipole - dipole array (above) and with the Wenner Schlumberger array (below). See Figure 5c for the line trace.

W ERT\_25 - Dipole Dipole E



W ERT\_25 - Wenner Schlumberger E



**Figure S34**

ERT profile of the ERT\_25 line acquired with the dipole - dipole array (above) and with the Wenner Schlumberger array (below). See Figure 5c for the line trace.