

1 **Paleoseismic history of the intermountain Rieti Basin (Central**  
2 **Apennines, Italy)**

3 Franz A. Livio<sup>1</sup>, Anna M. Blumetti<sup>2</sup>, Valerio Comerci<sup>2</sup>, Maria F. Ferrario<sup>1</sup>, Gilberto Binda<sup>4</sup>, Marco  
4 Caciagli<sup>3</sup>, Michela Colombo<sup>1</sup>, Pio Di Manna<sup>2</sup>, Fernando Ferri<sup>2</sup>, Fiorenzo Fumanti<sup>2</sup>, Roberto Gambillara<sup>1</sup>,  
5 Maurizio Guerra<sup>2</sup>, Luca Guerrieri<sup>2</sup>, Paolo Lorenzoni<sup>5</sup>, Valerio Materni<sup>6</sup>, Francesco Miscione<sup>2</sup>, Rosa  
6 Nappi<sup>7</sup>, Rosella Nave<sup>7</sup>, Kathleen Nicoll<sup>8</sup>, Alba Peiro<sup>9</sup>, Marco Pizza<sup>1</sup>, Roberto Pompili<sup>2</sup>, Luca M. Puzzilli<sup>2</sup>,  
7 Mauro Roma<sup>2</sup>, Aurora Rossi<sup>1</sup>, Valerio Ruscito<sup>2</sup>, Vincenzo Sapia<sup>6</sup>, Argelia Silva Fragoso<sup>1</sup>, Emanuele  
8 Scaramuzzo<sup>1</sup>, Frank Thomas<sup>1</sup>, Giorgio Tringali<sup>1</sup>, Stefano Urbini<sup>6</sup>, Andrea Zerboni<sup>10</sup>, Alessandro M.  
9 Michetti<sup>1,7</sup>

10 <sup>1</sup>Università degli Studi dell’Insubria, Como, Italy  
11 <sup>2</sup>ISPRA, Geological Survey of Italy, Roma, Italy  
12 <sup>3</sup>Istituto Nazionale di Geofisica e Vulcanologia, Sezione di Bologna, Italy  
13 <sup>4</sup>Norwegian Institute for Water Research, Oslo, Norway  
14 <sup>5</sup>Professional Soil Science Consultant, Rieti, Italy  
15 <sup>6</sup>Istituto Nazionale di Geofisica e Vulcanologia, Sezione di Roma 2, Italy  
16 <sup>7</sup>Istituto Nazionale di Geofisica e Vulcanologia, Osservatorio Vesuviano, Napoli, Italy  
17 <sup>8</sup>University of Utah, Salt Lake City, Utah USA  
18 <sup>9</sup>University of Zaragoza, Spain  
19 <sup>10</sup>Università degli Studi di Milano, Italy  
20  
21 *Correspondence to:* F.A. Livio ([franz.livio@uninsubria.it](mailto:franz.livio@uninsubria.it))

22 **Abstract.** From the paleoseismological and seismotectonic point of view, the intermountain basins of the Central Apennines  
23 of Italy are one of the most studied areas worldwide. Within this context, however, the Rieti Basin, bounded at its sides by  
24 active **normal** faults and with its peculiar rhombohedral shape, is a relatively overlooked area, and its most recent  
25 paleoseismological studies date back to the ‘90s. This is a key area both for completing the paleoseismological history of this  
26 sector of the chain and for understanding how the present-day extensional regime is accommodated **through time by the faults**  
27 bounding the basin. With this aim in mind, we excavated 17 paleoseismological trenches along the normal faults bordering the  
28 Rieti Basin (Central Apennines, Italy) and unveiled **at least 6** paleoearthquakes that ruptured the faults during the last ca. 20  
29 kyr.  
30 Our analysis of the paleoearthquake succession along the basin-bounding faults suggests that a **spatial pattern is followed**  
31 **during sequences of rupturing events**, with a maximum credible earthquake of Mw 6.5, consistently within this sector of the  
32 Central Apennines.

ha eliminato: ,

ha eliminato: 15

ha eliminato: of ruptures of ruptur

ha eliminato: temporal clustering of

ha eliminato: characterizes the basin

ha eliminato: These results suggest that for the Rieti Basin, stress transfer among surrounding faults can be ascribed as one of the processes behind the temporal clustering of earthquakes.

## 41 1 Introduction

42 The Central Apennines in Italy are among the best studied areas worldwide in terms of active tectonics and paleoseismology  
43 (Michetti et al., 1996; Pantosti et al., 1996; Galadini and Galli, 1999; Salvi et al., 2003; Roberts and Michetti, 2004; Galli et  
44 al., 2008, 2011; Gori et al., 2015; Moro et al., 2016; Blumetti et al., 2017; Di Domenica and Pizzi, 2017; Cinti et al., 2018;  
45 Iezzi et al., 2019, 2023; Roberts et al., 2025). Tens of paleoseismological trenches have been excavated along the active normal  
46 faults of this mountain belt, providing one of the world's most complete datasets for an extensional domain, together with the  
47 well-known Basin and Range Province of the western U.S. (McCalpin, 2009). This led to choosing the Italian Central  
48 Apennines as one important global case study for the development of codes for fault-based seismic hazard assessment (Faure  
49 Walker et al., 2021; Scotti et al., 2021).

50 Nonetheless, some overlooked areas within the Central Apennines lack comprehensive studies and investigations. This is the  
51 case of the Rieti Basin (Fig. 1), an intermountain fault-bounded depression located in the axial sector of the range. Following  
52 the contractional events that built the chain, the Rieti area experienced several phases of extensional tectonics during the Plio-  
53 Quaternary, leading to the present day-configuration. Today, the Rieti Basin morphology appears as a box-shaped alluvial  
54 plain, bounded by normal faults striking almost orthogonally to each other (Fig. 1). The master fault of the basin ("Rieti Fault";  
55 Roberts and Michetti, 2004, and references therein) is the ca. 21 km long Eastern Border Fault (Fig. 1). The Rieti Fault is part  
56 of a belt of active Quaternary normal faults (including the nearby Fiamignano and Fucino Faults; Bosi, 1975; Michetti et al.,  
57 1996; Mildon et al., 2022) that characterizes the western side of the Central Apennines (Cowie and Roberts, 2001).  
58 Past research focused on the Plio-Quaternary tectono-sedimentary evolution of the basin (Cavinato, 1993; Calderini et al.,  
59 1998; Cavinato et al., 2000, 2002; Guerrieri et al., 2006), but only a few studies from the mid-90s, revealed Late Pleistocene  
60 to Holocene strong seismic events by means of a paleoseismological approach. Observed Holocene slip rates at Piedicolle and  
61 La Casetta Sites are in the order of 0.2 - 0.4 mm/yr. This is in good agreement with slip-rates measured along post-glacial  
62 bedrock fault scarps (Cowie and Roberts, 2001), and long-term slip rates estimated from displacement of Early Pleistocene  
63 paleo-surfaces (e.g., Brunamonte et al., 1993; Michetti et al., 1995). In fact, some open questions are still pending on the area,  
64 including: i) the real seismotectonic potential of the Rieti Basin faults; ii) the coexistence and contemporary activity of two  
65 sets of ca. orthogonal normal faults under the same extensional domain; and iii) the possible occurrence of earthquakes  
66 rupturing the whole length of the Rieti Fault.

67 In 2020-2022, the Italian Government Extraordinary Commissioner for the 2016 Central Italy post-earthquake reconstruction  
68 funded a program of studies on faults affecting urbanized zones in the earthquake epicentral areas. Some of the inhabited  
69 centers under study are located along the northern, eastern and southern borders of the Rieti intermountain basin; boxes in  
70 Figure 1C show the selected Study Areas. In 2021 and 2022, our team discovered evidence of Late Pleistocene and Holocene  
71 activity along the investigated faults from study of 17 new paleoseismic trenches with 52 radiometric dates, and extensive  
72 geophysical prospecting. We describe trench siting and investigations on the three sides of the basin, identifying several  
73 paleoearthquakes that occurred in the last about 20 kyr. Based on these data, the paper aims at providing a summary of the

ha eliminato: which,

ha eliminato: f

ha eliminato: 3

paleoseismic history of the Rieti basin; we discuss Late Quaternary fault slip-rates, event chronology, and we present a space-time paleoseismological diagram to infer the possible sequence of single vs multi-rupture events that affected the basin.

## 2 Geological and seismotectonic setting

The Rieti Basin is within the Central Apennines, a former Meso-Cenozoic passive margin that evolved in a fold and thrust belt during the Neogene westward subduction of the Adriatic plate. The present-day setting is the result of an eastward progressive migration of the front of the accretionary wedge and of the back-arc extensional domain (Doglioni, 1991; Cavinato and De Celles, 1999; Cosentino et al., 2010), with the axial sector of the mountain chain currently affected by strong normal fault earthquakes due to active crustal extension (Fig. 1b).

The local paleogeographic domain is the Umbria-Marche Domain: a stack of tectonic units composed of Jurassic-Paleogene carbonate successions (i.e., the Mt. Sabini and Mt. Reatini units; Fig. 1c). The thrust sheets superposed on an inherited tectonic setting developed during Jurassic-Eocene rifting of the passive margin (Galluzzo and Santantonio, 2002; Santantonio and Carminati, 2011; Capotorti and Muraro, 2024), which was characterized by mainly N-S striking normal faults but locally represented by a dense grid of faults, also including ca. E-W and NW-SE normal faults (Capotorti and Muraro, 2024).

Presently, the Rieti Basin is a box-shaped morphological depression, bounded along all its sides by Quaternary normal faults. The development and evolution of the basin is closely related to the extensional regime that affected the western flank of the eastward migrating Apennine chain during the Quaternary (Calderini et al., 1998; Cavinato and De Celles, 1999; Cavinato et al., 2000, 2002; Roberts and Michetti, 2004; Guerrieri et al., 2006), in combination with regional uplifting (Dramis, 1992; Galadini et al., 2003). During the Early Pleistocene, the subsidence of the basin was controlled by the eastern border normal fault, striking ca. NNW-SSE (Fig. 1c). This structure, connected to a small monogenic volcano formed near Cupaello (Lustrino et al., 2025), acted as the master-fault, controlling a progressive deepening of a half-graben and promoting the deposition of thick alluvial fan deposits (i.e., the Fosso Canalicchio Synthem) and alluvial plain sequences (i.e., the Monteleone Sabino Synthem), pinching out to the west. During the Middle Pleistocene, along the margins of the basin, the Early Pleistocene deposits were displaced by a few hundred meters, with normal faulting slip rates in the order of 0.2 – 0.4 mm/yr (Michetti et al., 1995), with further deepening of the Rieti Basin. Regional uplift triggered strong fluvial erosion from the Nera River, which captured the Velino River through the Le Marmore threshold, and generated the northward diversion of the whole hydrographic network (Guerrieri et al., 2006). Later tectonic events developed other sets of faults, some of them in the inner portions of the basin, finally resulting in the orthogonal fault architecture presently bordering this intra-mountain depression. Faults also controlled fluid flow and, together with climate oscillations, the deposition and erosion of thick sequences of travertine, coincident with spring emergence and water flow mainly along the northern and southern border of the basin (Carrara et al., 1992). The fast Holocene growth (ca. 160 m of vertical accretion) of the Le Marmore travertine platform dammed the Velino River and caused alluvial overfilling in the Rieti Plain with sedimentation rates of ca. 3 mm/yr (Guerrieri

ha eliminato: ongoing

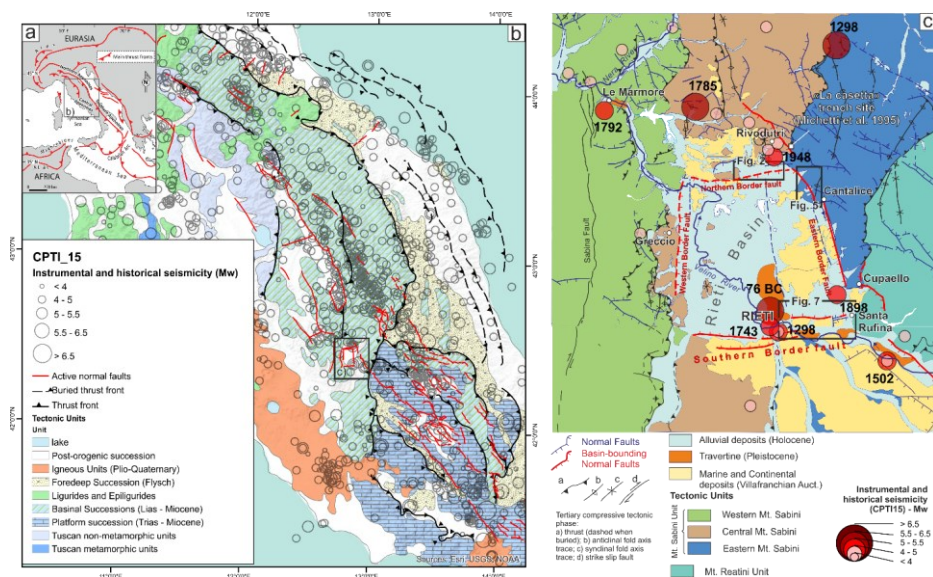
et al., 2006; Archer et al., 2019). Fluvial erosion and deposition processes are therefore one order of magnitude more efficient than tectonic faulting in shaping the local landscape of the Rieti Basin.

As already mentioned, we focus on the three areas along the border faults as requested by the Government Commissioner. To the east, we investigated the master fault in the Cantalice Study Area; to the north, we investigated the N border fault at the Rivodutri Study Area; to the south, we studied the eastern sector of the S border fault, at the Rieti-Santa Rufina Study Area (i.e., east of Rieti town; Fig. 1c). The extensive investigations conducted under the 2016 post-seismic reconstruction project provide a unique opportunity for a comprehensive characterization of local paleoearthquake surface faulting.

The seismicity of the Rieti Basin shows two ancient destructive events. The oldest (Io = X MCS; Me = 6.4) occurred in 76 BCE, of which, however, information is only available for the city of Rieti (Guidoboni et al. 2018, 2019). The second strongest event recorded here is the Dec. 1<sup>st</sup>, 1298, earthquake (Mw 6.26; Io = X MCS; Brunamonte et al., 1993; Rovida et al., 2022) whose epicenter is tentatively located to the north of the basin. Of note, a foreshock event occurred only a day before in the southern part of the basin (Mw = 4.4; Io = V-VI MCS).

Relevant M>6 earthquakes, with epicenters within 40 km from the Rieti Basin, are likely responsible for coseismic environmental effects recorded in the Rieti Basin itself (Archer et al., 2019). These include events that occurred on Sept. 9<sup>th</sup>, 1349 (Valle del Salto, Fiamignano Fault, Me = 6.1; Bosi, 1975; Mildon et al., 2022), Oct. 15<sup>th</sup>, 1639 (Amatrice, Laga Fault, Me = 6.2; Galli et al., 2017; Mildon et al., 2017) and Jan 14<sup>th</sup>, 1703 (Norcia Fault, Me = 6.7; Blumetti, 1995; Guidoboni et al. 2018, 2019; Galli et al., 2021).

Several moderate historical earthquakes hit the area during the last 3 centuries (Fig. 1 c; Rovida et al., 2022). The Oct. 9<sup>th</sup>, 1785 (Mw 5.76; Io VIII-IX MCS) hit to the northwest of the area. Two relatively recent moderate earthquakes occurred near the N and S border faults, which we investigated with exploratory trenches (Fig. 1c). The one to the south is the June 27<sup>th</sup>, 1898, Santa Rufina event (Mw 5.5; Io VIII-IX MCS; Comerci et al., 2003) whose causative fault, based on the epicentral area, could be either the eastern boundary fault or the southern boundary fault of the basin. A similar size earthquake hit the NE border of the basin near Rivodutri on December 31<sup>st</sup>, 1948 (Mw 5.3; Io VIII MCS; Bernardini et al., 2013).



**Figure 1: Geological setting:** a) regional tectonic framework; b) simplified geological map of the Central Apennines with thrust fronts, the active normal faults running along the axis of the chain and seismicity (CPTI15 Catalogue, Rovida et al., 2022; CFTISMed Catalogue, Guidoboni et al. 2018, 2019; and Baranello et al., 2024, for the 1743 Rieti earthquake); c) Rieti Basin area: simplified seismotectonic map (modified after Capotorti and Muraro, 2024; Servizio Geologico d'Italia, in press), the three Study Areas are delimited by boxes; note in the NW corner of the Figure, the Le Marmore travertine platform dams the Velino River Valley just before its confluence with the Nera River Valley, and therefore controls the drainage of the whole Rieti Plain.

### 3 Materials and Methods

We investigated the three Study Areas by means of a multidisciplinary approach that aimed for best imaging the border faults and locating the paleoseismological trenches. For the purposes of data description, in the following we divide the three investigated Areas (namely along the northern, eastern and southern Border Faults) into Sectors, each one containing multiple Sites (i.e., individual trenches).

Geophysical prospecting included Electric Resistivity Tomography (ERT) and Ground Penetrating Radar (GPR) imaging. We acquired ERT and GPR lines across the main strands of the border faults.

ERT data was acquired using alternatively i) the X612EM+ multichannel geo-resistivimeter (MAE - Molisana Apparecchiature Elettroniche s.r.l.) capable of handling 96 electrodes connected to 4 bidirectional 24-takeouts cables; ii) a Syscal R2 multichannel geo-resistivimeter (IRIS Instrument) capable of handling 64 electrodes connect to 4 cables (16-takeouts). Regarding the investigation strategy, measurements were taken by using at least two out of three different arrays (i.e., among

151 Wenner, Wenner-Schlumberger, dipole-dipole and pole-dipole) along each profile, exploiting the different sensitivity of each  
152 to achieve good resolution in both vertical and horizontal directions (see e.g. Dahlin & Zhou 2004). The sequences used during  
153 the surveys always consisted of collecting a large number of measurements, as it was preferred to adopt a "high-resolution"  
154 approach with an overabundant number of measurements for each layer/pseudo-depth. In particular, we used dipole-dipole  
155 and/or pole-dipole arrays almost at each Site, as considered most suitable for characterizing areas where both lateral and  
156 vertical variations in resistivity can be expected. This choice also made it possible to combine requirements for horizontal  
157 measurement coverage, resolution, depth of investigation as well as needs related to timing and logistics (e.g., temporary  
158 access to private areas). We carried out the 2D data inversion process after the quality check and data filtering using the  
159 Res2DInv software by Geotomo (Loke & Barker 1996). For each profile, each dataset derived from single array was processed  
160 individually and then, integrated into a single inversion process along with the others, to improve the quality of the final 2D  
161 model that would be adopted and interpreted.

162 We acquired GPR lines with a GSSI Sir4000 instrument equipped by a 200 MHz antenna and coupled with a differential  
163 GPS receiver Topcon GB1000 (post-processing kinematics) registering 1 position/sec. We summarize the acquisition as  
164 follows: range: 150 ns; samples: 512; acquisition rate: 40 scan/s; dynamic: 32 bit. Data processing included vertical and  
165 horizontal filtering, gain levelling, deconvolution and migration. We converted Two Way Traveltimes (TWT) to depth using  
166 an average of dielectric constants calculated from diffraction hyperbolas occurring in the dataset and verified after the trench  
167 excavations. ▼

168 We logged the paleoseismological trenches at the 1:20 scale, using a reference net, and by means of digital photogrammetry.  
169 For the latter, we used both portable LiDAR scanning (3D Scanner App for iOS) and a Structure from Motion and Multi-View  
170 Stereo workflow (SfM-MvS – Metashape software; Westoby et al., 2012; Bemis et al., 2014). Field descriptions and horizon  
171 designations followed internationally accepted guidelines (FAO, 2006), with the color definitions using nomenclature of the  
172 Munsell® System (1994). We also carefully considered the sediments, horizons, boundaries and the crosscut relations with  
173 structural features to chronologically constrain the progressive deformation affecting the stratigraphic sequences. Refer to the  
174 Supplementary Material 2 for the trench photomosaics.

175 In the three Study Areas, we excavated 17 trenches, 13 of them suitable for paleoseismological analyses. We collected 52  
176 samples for AMS dating, 21 from Rivodutri Municipality, 14 from Cantalice, 8 from Rieti and 9 from Santa Rufina  
177 (Cittaducale). We mapped the position of the samples on the trench logs, while Table 1 shows a summary of all the dated  
178 samples. The samples were analyzed by specialist laboratories (Beta Analytic and CEDAD); calibration was performed with  
179 the INTCAL20 curve using the OxCal ver 3.10 or the BetaCal4.20 software (CEDAD and Beta samples, respectively).

180 We also took into account results from the Michetti et al. (1995) trenching at 3 sites (Piedicolle, La Casetta and Caporio).  
181 Geochron Lab performed the radiocarbon dating of samples from these trenches; we revisited the original dates using the same  
182 calibration methods as above. Please note that throughout the text below we always refer to the calibrated ages listed in the  
183 last column of Table 1.

ha eliminato: T

ha eliminato: parameters are summarized

ha eliminato: ¶

187 In the following text, we present results from individual trenches and ERT/GPR profiles that are most relevant for the  
188 paleoseismological analysis. Please refer to the Supplementary Material, which includes information on all trenches and  
189 geophysical prospecting realized during this project.

190 **4 Results**

191 We list the dated samples from the 13 paleoseismological trenches in Table 1, supplemented with the samples collected by  
192 Michetti et al. (1995) in the La Casetta, Piedicolle and Caporio Sites. The Table presents both uncalibrated determinations and  
193 calibrated age. In order to keep the discussion consistent and understandable, when the probability distribution of these  
194 calibrated ages shows multiple peaks, in the following we will refer to the central age with the largest probability only (i.e.,  
195 the one age calibration with highest probability; underlined in Table 1).

197 **Table 1: Summary of AMS dating results; we indicate the municipality and trench number, together with uncalibrated and**  
198 **calibrated ages; “Dated Material” column abbreviations: “Org” for organic materials, “Charc” for charcoal, or burnt plant**  
199 **materials; LTL samples are from CEDAD, Centro di DAtazione e Diagnostica, Università del Salento, Lecce; Beta samples are from**  
200 **BETA Analytic, Inc., Miami.; GX samples (marked with \* ) are C14 dating after Michetti et al. (1995), recalibrated using the Oxcal**  
201 **software and IntCal 20 curve; analyses from Geochron Lab., Cambridge, Massachusetts.**

Municipality	Trench	ID sample	ID lab	Dated material	Uncal age (years BP)	Calibrated age (years) using IntCal20 curve
Rivodutri	APO T2	C01	LTL21211	Org	223 ± 45	1522-1574 CE (5.9%) 1625-1698 CE (29.0%) <u>1722-1814 CE (38.4%)</u> 1835-1882 CE (3.8%) 1910 CE (18.3%)
		C03	LTL21259	Org	10947 ± 100	11127-10795 BCE (95.4%)
		C04	LTL21213	Org	6670 ± 45	<u>5664-5512 BCE (90.4%)</u> 5505-5481 BCE (5.0%)
		C06	LTL21214	Org	4404 ± 45	3327-3225 BCE (14.9%) 3183-3154 BCE (3.0%) <u>3110-2907 BCE (77.5%)</u>
		C07	LTL21215	Org	4868 ± 45	3767-3721 BCE (6.6%) <u>3715-3603 BCE (69.5%)</u> 3588-3528 BCE (19.3%)
		C08	LTL21216	Org	4955 ± 45	3914-3876 BCE (5.8%) <u>3804-3641 BCE (89.6%)</u>

		C09	LTL21217	Org	4700 ± 45	3625-3560 BCE (17.3%) <u>3533-3370 BCE (78.1%)</u>
		C11	LTL21218	Plant remains	After 1950 CE	After 1950 CE
Rivodutri	CAM	C04	LTL22569	Org	15765 ± 120	17415-16872 BCE (95.4%)
		C06	LTL22570	Org	26571 ± 100	<u>29147-28749 BCE (87.0%)</u> 28666-28486 BCE (8.4%)
		C08	LTL22571	Org	17734 ± 65	19879-19280 BCE (95.4%)
		C10	LTL22572	Org	18557 ± 75	20739-20353 BCE (95.4%)
Cantalice	CUC	C02	Beta 634825	Charc	2280 ± 30	<u>401-351 BCE (51.3%)</u> 302-208 BCE (44.1%)
		C03	Beta 634826	Charc	2440 ± 30	<u>591-408 BCE (62.3%)</u> 751-684 BCE (22.3%) 668-634 BCE (9.7%) 622-613 BCE (1.1%)
	CANT-T1	C01	LTL21209	Charc	After 1950 CE	-
		C03	LTL21210	Charc	After 1950 CE	-
		C05	LTL21205	Charc	138 ± 40	<u>1797 - 1945 CE (57.3%)</u> 1670 - 1780 CE (38.1%)
	CANT-T3	C01	LTL22573	Org	17860 ± 65	20000 – 19475 BCE (95.4%)
		C02	LTL22574	Org	13860 ± 65	15083 – 14651 BCE (95.4%)
		C03	LTL22575	Org	9797 ± 45	9326 – 9206 BCE (95.4%)
Rieti	TR 1	C01	Beta 631859	Org	8710 ± 30	<u>7818-7597 BCE (94.6%)</u> 7931-7922 BCE (0.8%)
		C02	Beta 631860	Orgt	5000 ± 30	<u>3811-3701 BCE (65.2%)</u> 3942-3865 BCE (24.2%) 3682-3655 BCE (5.9%)
		C03	Beta 631861	Org	4310 ± 30	3011-2885 BCE (95.4%)

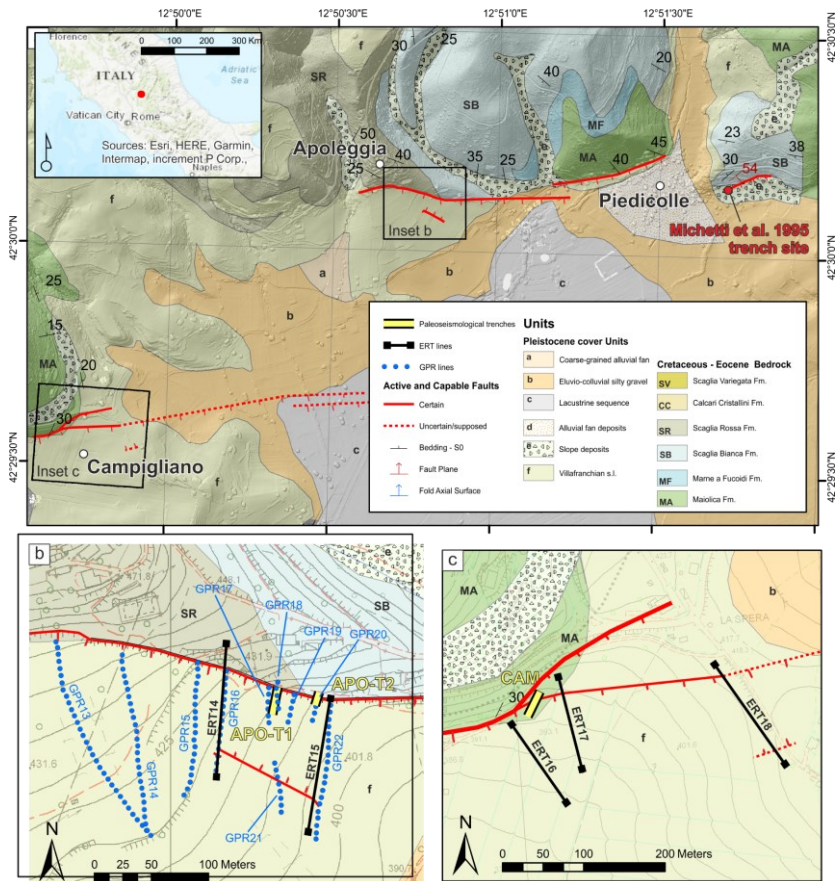


		C04	Beta 631856	Org	7510 ± 30	<del>6438–6340 BCE (71.9%)</del> 6313-6256 BCE (23.5%)
		C05	Beta 631857	Org	18670 ± 60	20919–20458 BCE (95.4%)
Rieti	TR 5	C03	Beta 631858	Org	4060 ± 30	<del>2673–2474 BCE (88.7%)</del> 2843-2813 BCE (6.3%) 2738-2735 BCE (0.4%)
Rieti	Villa Stoli South	C12	CEDAD LTL21261	Org	19127 ± 75	21261-20961 BCE (95.4%)
		C16	CEDAD LTL21260	Org	11801 ± 55	11835-11630 BCE (85.0%) 11601-11563 BCE (10.4%)
Santa Rufina (Cittaducale)	TR 3	C01	Beta 632175	Org	5270 ± 30	<del>4171–4036 BCE (60.9%)</del> 4233-4192 BCE (18.8%) 4027-3987 BCE (15.7%)
		C02	Beta 632176	Org	8640 ± 30	7729-7589 BCE (95.4%)
		C03	Beta 632177	Org	4870 ± 30	<del>3711–3627 BCE (87.7%)</del> 3560-3534 BCE (7.7%)
		C04	Beta 632178	Org	4550 ± 30	<del>3243–3102 BCE (57.2%)</del> 3371-3306 BCE (35.1%) 3300-3283 BCE (2.1%) 3276-3266 BCE (1.0%)
		C05	Beta 632179	Org	5910 ± 30	<del>4846–4712 BCE (95%)</del> 4878-4875 BCE (0.4%)
		C06	Beta 632180	Org	6000 ± 30	4988-4797 BCE (95.4%)
		C07	Beta 632181	Org	1690 ± 30	<del>326–424 CE (78.6%)</del> 255-286 CE (16.8%)
		C08	Beta63482 7	Char	8700 ± 30	7799-7597 BCE (95.4%)
Santa Rufina (Cittaducale)	TR 4	C01	Beta 632182	Org	1770 ± 30	224-376 CE (95.4%)
	CAS	C01*	GX-16336	Org	1530 ± 80	382-657 CE (95.4%)

Rivodutri, La Casetta		C02*	GX-16338	Org	1635 ± 85	245-594 CE (95.4%)
		C03*	GX-16335	Org	2865 ± 150	1436-786 BCE (95.4%)
		C04*	GX-16333	Org	3110 ± 90	1604-1583 BCE (0.8%) <u>1544-1116 BCE (94.7)</u>
		C05*	GX-16330	Org	4055 ± 175	3089-3056 BCE (0.7%) <u>3034-2128 BCE (93.7%)</u> 2091-2042 BCE (1.1%)
		C06*	GX-16337	Org	5040 ± 100	4044-4012 BCE (2.4%) <u>3999-3640 BCE (93.0)</u>
		C07*	GX-16332	Org	6425 ± 130	<u>5623-5205 BCE (89.4%)</u> 5173-5070 BCE (6.1%)
		C08*	GX-16331	Org	19800 ± 1650	26596-18541 BCE (95.4%)
		C09*	GX-16334	Org	20700 ± 1600	27370-19763 BCE (95.4%)
Rivodutri	PDC	C01*	GX-18926	Org	2265 ± 80	<u>541-95 BCE (94.6%)</u> 73-56 BCE (0.8%)
		C02*	GX-18925	Org	3440 ± 90	2008-2004 BCE (0.2%) <u>1971-1517 BCE (95.2%)</u>
		C03*	GX-18924	Org	5305 ± 150	4446-3794 BCE (95.4%)
		C04*	GX-18923	Org	6770 ± 215	6077-5307 BCE (95.4%)
		C05*	GX-18922	Org	10810 ± 470	11787-11764 BCE (0.2%) 11701-11686 BCE (0.1%) <u>11660-9322 BCE (95.1%)</u>
		C06*	GX-18921	Org	13490 ± 235	15056-13695 BCE (95.4%)
		C07*	GX-18920	Org	15650 ± 680	18814-15483 BCE (95.4%)
Cava Caporio	Caporio	C01*	GX-17913	Org	33300 +6400/-3500	
		C02*	GX-17916	Org	>37000	
		C03*	GX-17914	Org	>42000	
		C04*	GX-17915	Org	>37300	

203 4.1 Rivodutri area: Northern Border Fault

204 The northern Area includes two Sectors of investigation: Campigliano Sector, to the west and Piedicolle / Apoleggia Sector,  
205 to the east (Fig. 2a). We excavated 4 exploratory trenches in the Piedicolle / Apoleggia Sector, and one trench in the  
206 Campigliano Sector. In the following, we present results from two paleoseismological trenches at the Apoleggia Sector (APO-  
207 T1 and APO-T2; Fig. 2b) and one in the Campigliano Sector (CAM; Fig. 2c).



208 Figure 2: Study Area along the Northern Border fault: a) simplified geological map; b) and c) panels display detailed views on the  
209 two studied Sectors with the traces of the capable faults, of the geophysical investigations and the footprints of the excavated  
210 paleoseismological trenches; red dot in Fig. 2a is the Piedicolle trench Site from Michetti et al. (1995)  
211

ha eliminato: , c)  
ha eliminato: d  
ha eliminato: star

215 The fault scarp we investigated at Apoleggia Sector shows all the characteristics of a typical post-glacial bedrock fault scarp  
 216 (Roberts and Michetti, 2004, and references therein). The topographic profile of the bedrock fault scarp at the Apoleggia Site  
 217 shows a minimum post-glacial vertical displacement of 5.2 m (Fig. 3). [This value is calculated by projecting the topographic](#)  
 218 [slope in the footwall below the thickness of historical slope deposits. In fact, ERT profiles clearly show the position of the top](#)  
 219 [of the Pleistocene lacustrine deposits, which is parallel to the footwall slope and can be regarded as a proxy for the glacial](#)  
 220 [topographic slope.](#) As discussed in the literature, we assume that this vertical displacement occurred during the last 18 kyr and  
 221 we derive a consistent post-glacial slip-rate of 0.29 mm/yr at this site. We excavated two trenches at the contact between the  
 222 Cretaceous-Eocene Scaglia Rossa Fm. and the Early Pleistocene Villafranchian lacustrine deposits. Trench APO-T1 was 24  
 223 m long with a maximum depth of 3 m. We fully covered the excavation walls with detailed photographic survey. However,  
 224 due to problems in maintaining the stability of the trench walls, we could not prepare a grid for logging. The NE limit of the  
 225 trench is located a few meters from the bordering fault scarp characterized by the bedrock outcrop. We recognized four  
 226 stratigraphic units in the APO-T1 trench, reported on the log of Fig. 3a. The stratigraphic units are briefly described as follows:  
 227 U1a is comprised of white and light gray clays with calcium carbonate concretions at the base; U1b is a reddish-brownish soil  
 228 truncated at the top by an erosive surface; U2 is slope debris with angular flint; U3 is a colluvial deposit characterized by  
 229 loose limestone breccia with angular flint and minor calcareous clasts; U4 is a colluvial deposit characterized by loose  
 230 limestone breccia with prevalent calcareous clasts and probably very recent brick fragments. APO-T1 shows a man-made hole  
 231 filled with limestone blocks of various sizes between 15 m and 20 m (each trench is labelled with progressive numbers in  
 232 meters from the beginning of the excavation; Fig. 3a). An exploratory well was drilled with a hand auger in the NE end of the  
 233 trench. The drilling crossed the loose limestone breccia of Unit 2 until it touched the limestone bedrock at a depth of 1.8 m  
 234 below the bottom of the trench (Fig. 3a), thus constraining the geometry of the fault scarp at depth. Furthermore, APO-T1  
 235 shows some clinofolds possibly related to a rollover anticline whose geometry is consistent with that of the bordering fault  
 236 (Figure 3a). The clinofolds are also visible in the GPR\_18 (Figure 3a) located at the same position of APO-T1 (Fig. 2b).  
 237 Figure 3 shows the ERT\_14 section (see location in Fig. 2b); the main fault, dipping towards the S, separates a sector with  
 238 resistivity greater than 150  $\Omega$ m in the footwall, with a sector of low resistivity in the hanging wall (5-20  $\Omega$ m). The ERT\_14  
 239 profile shows another clear change in the resistivity values, which can be associated with an antithetic fault dipping toward the  
 240 N. Similar results are obtained from the ERT 15, presented in Figure 3d in dipole-dipole configuration, above, and Wenner-  
 241 Schlumberger, below.  
 242 The trench APO-T2 uncovered a sedimentary sequence comprising 5 units that were displaced along normal fault planes. The  
 243 stratigraphic units are described as follows: U1 is a massive fluvial deposit with yellow (10YR 7/4) silty sands; U2, U3, U4  
 244 and U5 are colluvial deposits characterized by a loose calcareous breccia with angular clasts in a silty-clay matrix with different  
 245 colors from reddish brown, in U2, to dark brown, in U5. Figure 3c shows the interpreted trench stratigraphy photomosaic and  
 246 the paleoseismic history reconstructed at the Site. The trench crossed a typical earthquake gravity graben (*sensu* Gilbert, 1897;  
 247 Slemmons, 1957; Fig. 3e). The main fault plane outcrops a few meters outside the trench, whereas in the trench, a secondary  
 248 fault shows evidence of repeated movements that occurred during the deposition of Units 2-5. An older earthquake is inferred

- ha eliminato: d
- ha eliminato: Toward the S of t
- ha eliminato: ,
- ha eliminato: (Fig. 3d)
- ha eliminato: Figure 3d shows s

254 from the deformation of Units 2 and 3: the top of Unit 2 and some stratigraphic markers within the unit are deformed and  
255 inclined by the fault plane. We interpret Unit 3 as a fine-grained colluvial wedge that was deposited after the first earthquake;  
256 this paleoseismic event is chronologically constrained by 14C dates between 11127 and 5512 cal yr BCE, with a minimum  
257 offset of 15 cm. A second paleoearthquake is identified from the deformation of Units 3-5. The top of U5 is undeformed, and  
258 the minimum offset of the underlying units is 22 cm; the age of this earthquake is between 3533 and 2907 cal yr BCE.

259 We excavated CAM trench (see location in Fig. 2c) for a length of 22 m and a maximum depth of 3 m. The stratigraphic units  
260 recognized are on the CAM trench log of Figure 4a. The sedimentary sequence exposed in the CAM trench (Fig. 4a) has silts  
261 and clays of the Villafranchian series (U1) at its base, presumably related to the Monteleone Sabino Unit (refer to Cavinato  
262 1993 for the basic reference about the local Plio-Quaternary Stratigraphic units). An erosive surface truncates this unit at the  
263 top. Loose sands and silts, with lenses of coarse gravel fining upwards to compacted silty clays (U2), lie on top of U1. This  
264 unit is interpreted as a colluvial depositional environment.

265 The succession is closed, at the top, by colluvial reddish silty sands (U3). The beds of the units and their lower and upper limits  
266 are crosscut by a series of faults that also induced considerable folds and deformation within the sediments. Three fault strands,  
267 belonging to the same deformation zone, have been identified and coded as Fault A, B and C in Figure 4a. The main fault  
268 strand is in fact located outside the trench, at an outcrop along a road cut that prohibited direct trenching. At this road cut  
269 location, the Villafranchian conglomerates of the Fosso Canalicchio Unit outcrop along a bedrock fault scarp that puts the  
270 conglomerates in tectonic contact with recent colluvial sediments. Logistical limitations did not allow the main fault plane to  
271 be directly investigated through a paleoseismological excavation; however, the trench wall exposed a series of subsidiary  
272 structures. The main fault plane, in fact, outcrops ca. 30 m west of the trench limit and, projected towards the trench, it runs  
273 only a few m to N of the trench. The fault plane dips towards the SE (Fig. 4a) and separates two different units within the  
274 Villafranchian lacustrine series (Monteleone Sabino Unit). Two fault strands, synthetic to the main one (i.e., Fault A and C),  
275 progressively displaced the hanging wall block. An antithetic fault (Fault B), slightly oblique to Fault A, delimits a graben that  
276 widens toward the east. Overall, the 'Villafranchian' series in the hanging wall of the fault is downthrown and backtilted  
277 northward, that is toward the main fault plane, forming an asymmetric half-graben (earthquake gravity graben sensu Gilbert  
278 1897; Slemmons, 1957; Fig. 4c). Faults A and B displaced the top of U1 in all the walls of the trench. The top of U2 along the  
279 east wall apparently seals both, while Fault A clearly displaces the same horizon in the west wall, with a cumulative vertical  
280 offset of ca. 35 cm. Given the clay-rich lithology, the limited cumulative vertical offset (i.e., less than 10 cm on a single fault  
281 strand) and the gradual transitions between units, we believe that both faults can be considered active during the deposition of  
282 the U3 colluvial deposit, and that U2 recorded the ultimate movement younger than 17415-16872 BCE. Fault C, synthetic to  
283 the main one but with low-angle bedding, appears to be sealed by U2 along the east wall, while displacing the base of U3 at  
284 the west wall. The total vertical offset of Fault C, measured at some levels in the Villafranchian deposits, is ca. 113 cm, while  
285 the base of U3 appears to be displaced by only 27 cm. In this case, Fault 3 is also considered to have been reactivated with the  
286 last movement during the deposition of U3.

ha eliminato: o

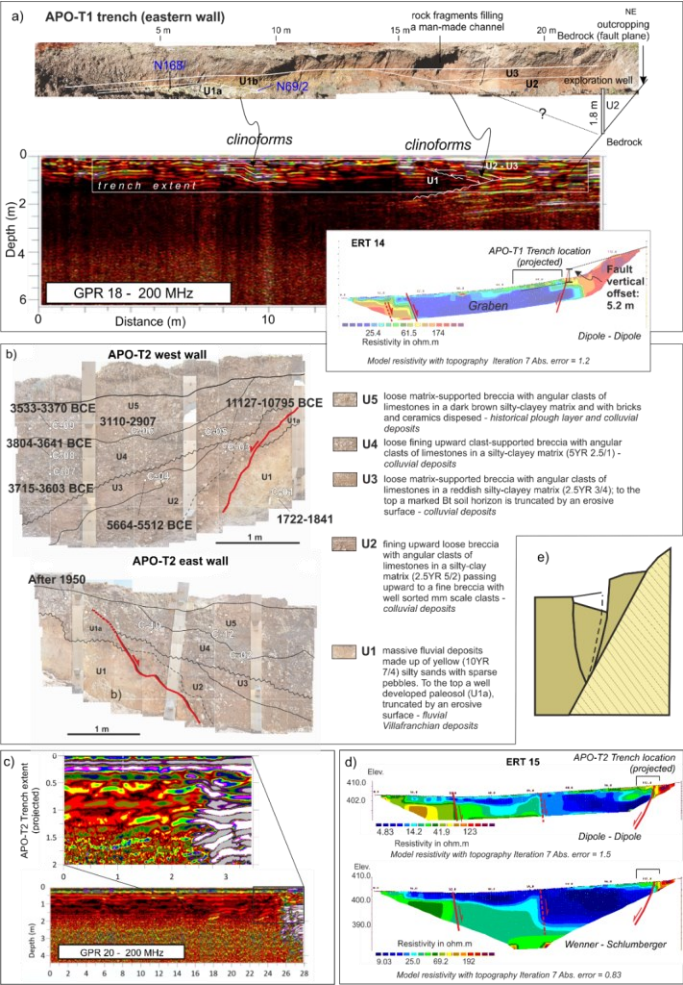


Figure 3: Paleoseismological trench and investigations along the Northern Border fault – Apoleggia Sector (see Figure 2 for the locations of trenches and geophysical line traces): a) APO-T1 trench eastern wall (for details on the cal ages see Table 1) and comparison with the GPR 18 and ERT14 lines; b) APO-T2 trench walls; c) GPR20 line; the inset shows a focus on the footprint of the APO-T2 trench (projected); d) ERT15 lines with indicated the footprint (projected) of the APO-T2 trench; (e) model of the gravity graben following the Gilbert's theory of grouped fault scarps in alluvium (redrawn after Gilbert, 1890; Slemmons, 1957).

295 CAM\_ERT\_17 section in Figure 4b appears to show a slight discontinuity in the resistivity values in its northern sector, along  
296 the progressive 90 and 70 m, probably associated with a S dipping fault. The high resistivity values at the base of the section,  
297 along the progressive 70 m, may be associated with the bedrock. It is worth noting that the section does not reach the bedrock  
298 at surface: the fault plane on bedrock is ca. 30 m far from the northern end of the section. Furthermore, a vertical change in the  
299 resistivity values along the progressives 32-45 m may be associated with an antithetic fault dipping towards the N.

ha eliminato: 02

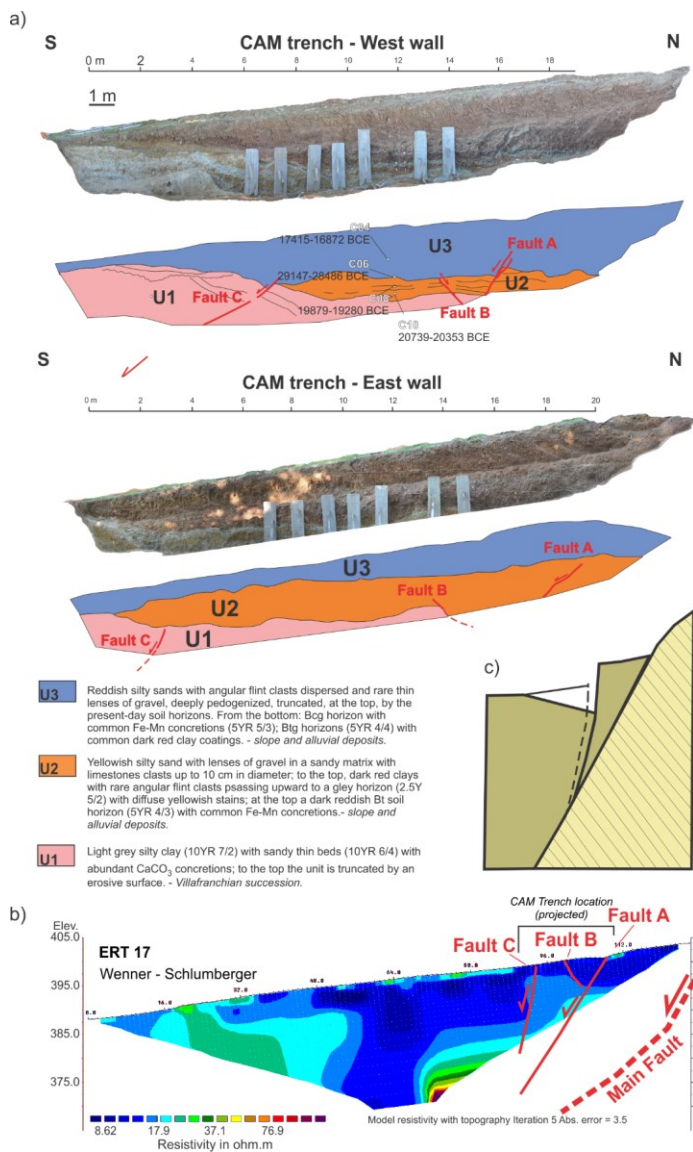


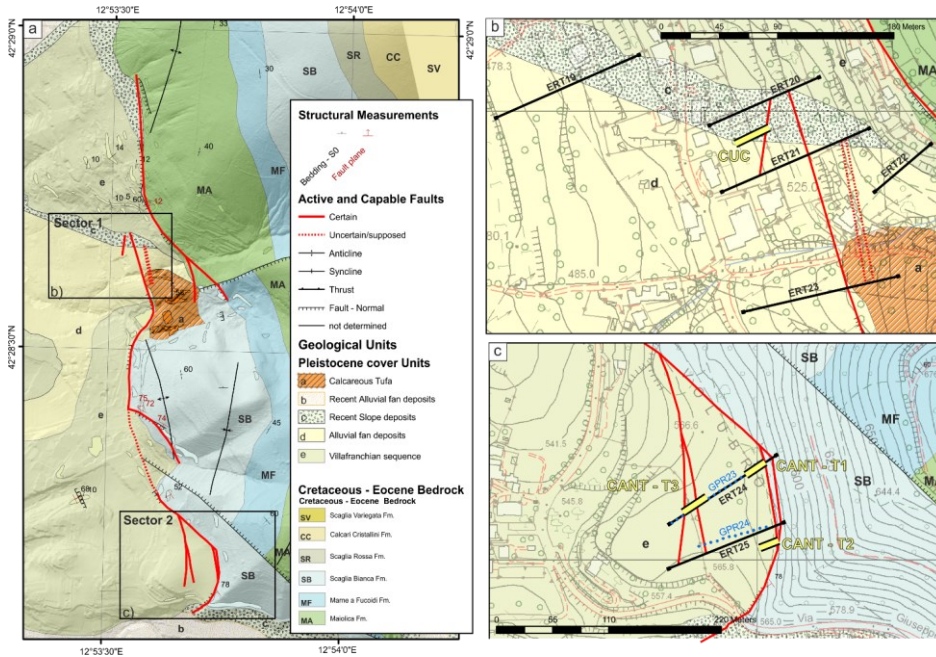


Figure 4: Paleoseismological trench and investigations along the Northern Border fault, Campigliano Sector; CAM trench (see Figure 2 for trench location); (a) photomosaic of the western and eastern walls (for details on the calibrated ages see Table 1); (b) Wenner -Schlumberger ERT 17 line (trace in Figure 2), the location of the CAM trench (projected) is indicated; (c) model of the gravity graben following the Gilbert's theory of grouped fault scarps in alluvium (redrawn after Gilbert, 1890; Slemmons, 1957).

#### 4.2 Cantalice area: Eastern Border Fault

We investigated the Eastern Border fault at two Sectors along the same fault strand (Fig. 5a). We excavated one trench in Sector 1 (Fig. 5b) and three trenches in Sector 2 (Fig. 5c), two of which will be presented in the following section. For the whole dataset, please refer to the Supplementary Material.

310



311

Figure 5: Study Area along the Eastern Border fault: a) simplified geological map; b) and c) panels display detailed views on smaller sectors with the mapped capable faults, the traces of the geophysical investigations and the footprints of the excavated paleoseismological trenches.

In Sector 1, we excavated the CUC trench for a length of 14 m and a maximum depth of 3 m. We reconstructed a stratigraphic sequence composed of four units, as described below, from the top to the base of the sequence. The uppermost unit of the stratigraphic sequence (U4) is represented by a matrix-supported conglomerate with well-rounded clasts of limestone (average

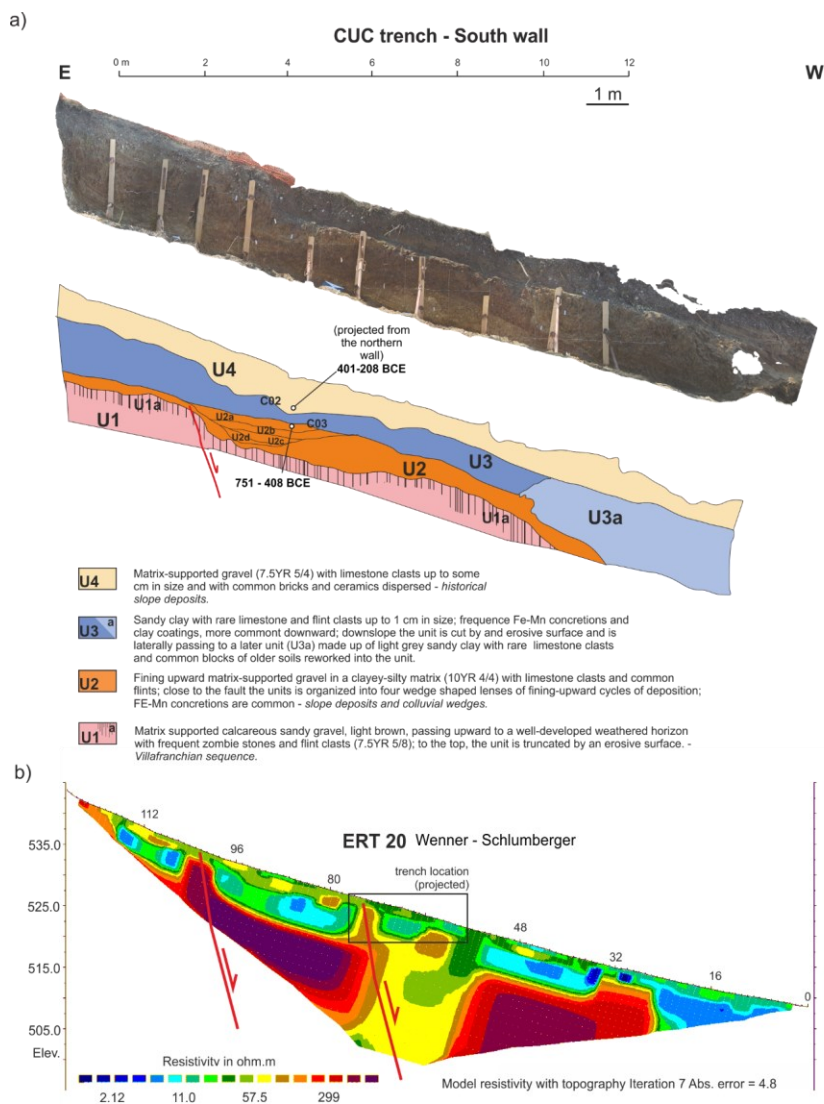
317

318 diameter 0.5 cm) embedded within a clay-rich matrix (7.5YR 5/4). Remains of roots, bricks and enameled ceramics are  
319 dispersed within the matrix.

320 Unit U3 consists of a matrix-supported gravel made of carbonate clasts embedded within a clay-rich matrix. The matrix of the  
321 U3 shows remarkable color variation, from 10YR 5/4; 10YR 4/3 up; 2.5YR 6/6 to base. At the top of the U3, the clasts show  
322 frequent Fe (7,5YR 6/8) and Fe-Mn (10YR 3/2) coatings. The amount of Fe-Mn clast coating increases downward. The sub-  
323 unit U3a shows local concentration of organic matter and Mn coatings (5YR 2.5/1) are present on clasts.

324

325 The unit U2 is made by a highly variable colored clay matrix (10YR 4/4; 10YR 3/1; 10yr 8/2) with rare limestone clasts  
326 dispersed within it. The clasts show a maximum size of 3-5 cm, with evidence of partial reworking. In the central part of the  
327 trench (i.e. progressive 2-4 meters; Fig. 6a) U2 has been split in several sub-units. From the base: the unit U2d consists of clay-  
328 sandy matrix (7.5YR 4/3) with Fe-Mn (7,5YR 5/1) and Fe (7,5YR 5/8) coatings on limestone clasts. Some clasts of the U2d  
329 unit are completely decarbonated. Above, the unit U2c is made of sandy-clay (10YR 4/4) with Fe-Mn levels of concretions  
330 (7.5 YR 4/1). Unit U2b is made of a clay matrix (10YR 3/2) with millimeter clasts of limestones and flints. Clasts are covered  
331 with Fe-Mn coatings (10YR 3/1). Finally, the unit U2a is made of a matrix-supported gravel of angular 1 cm sized clasts of  
332 limestones and flint, dispersed in clay-rich sand (10YR 4/3). Clasts are locally covered with Fe (10YR 8/6) staining.



**Figure 6: Paleoseismological trench and investigations at the Sector 1 of the Eastern Border Fault: a) CUC trench, no vertical exaggeration (southern wall; the footprint in Figure 5b; for details on the cal age determinations see Table 1); b) Wenner - Schlumberger ERT survey (see trace in Figure 5b), the location of the CUC trench (projected) is indicated**

The lowermost unit (U1) is a considerably older sequence, represented by a clast-supported breccia. At its top, unit U1 shows a decimeter-thick distinctive weathering horizon (U1a). The clasts inside the weathered horizon U1a are completely decarbonated. At the top, this horizon is cut by an erosive surface (Villanfranchiano Auct.; Upper Pliocene – Lower Pleistocene). A normal fault, dipping towards W, offsets the sequence exposed at the CUC trench, down-throwing the lowest stratigraphic units of the sequence, i.e., U1-U2. In the hanging wall of the fault, a wedge-shaped colluvial unit crops out (i.e., U2a – d). The fault exposed within the CUC trench shows a polyphasic activity, we observed that a cumulative offset of 87 cm is related to two surface rupturing events. The penultimate event shows an offset of 53 cm, while the last one shows an offset of 34 cm. Both seismic events predate the deposition of the stratigraphic unit U3.

The calibrated dating results obtained from the samples of the CUC trench constrain the last activity of this fault within the VI-V century BCE. In fact, the date of 751-408 BCE refers to the wash facies of the upper colluvial wedge (Unit U2a), which postdates the last surface faulting event. We remark that also the dated sample from Unit 4 gives a similar calibrated age of 401-208 BCE; the whole sequence of slope deposits therefore formed in a few centuries after the observed surface faulting events. It is possible to hypothesize that the fault splay located upslope from the trench that was imaged in the ERT 20 profile (Fig. 6b) also slipped during the same events. The 53 cm offset observed during the penultimate event in the CUC trench, that is relatively large when compared with the other trenches excavated during our investigations, might nevertheless be a minimum value for the coseismic displacement at this site. This would seem to agree with the position of the CUC trench located along the main fault of the Rieti Basin, where we expect the highest displacement during a strong earthquake.

At Sector 2, we investigated a strand of the eastern border fault, where a well-expressed bedrock fault scarp in the Cretaceous Scaglia Bianca Fm. faces a nearly flat paleosurface. The fault scarp we investigated shows all the characters of a typical post-glacial limestone fault scarp (Roberts and Michetti, 2004, and references therein). We acquired two ERT lines (24 and 25; Fig. 5c) that clearly show the tectonic contact between the high resistivity limestone and a package of conductive slope deposits at least 15-20 m thick. To the WSW, the ERT 24 line shows two other abrupt steps in the resistivity units, consistent with a set of antithetic normal faults, bounding the flat paleosurface. Topographic profiles of the bedrock scarp and thickness of Late Holocene to historical slope deposits show a minimum post-glacial vertical offset of 4.5 m (Fig. 7a), hence a slip-rate of 0.25 mm/yr.

The lateral contact between the ERT units, at the ENE tip of the ERT line, well fits with the location of the morphological scarp at the contact between the Cretaceous Scaglia Bianca Fm. and the Villafranchian lacustrine deposits, and with the occurrence of a fault plane, that has been exposed by trench excavation (trench CANT-T1; Fig. 7b). CANT-T1 trench exposes a sequence of Pleistocene Villafranchian units (U1 in Fig. 7b) separated by erosive surfaces, lying directly on a deeply weathered bedrock (U0). The Villafranchian, in turn, is covered by a thick bed of massive colluvial deposits of Late Glacial to historical age (U5). At the contact between the bedrock and the U1 unit an abrupt step was exposed, marked by the fold and

lowering of U1 toward the hanging wall block. A discrete fault plane has not been observed here, and we were not able to excavate further in the trench for security reasons. The fault zone is here expressed as a wide and distributed zone of strain accommodation, due to the highly plastic weathered units exposed. Nonetheless, episodic deformation events are here confirmed by the geometry of the erosive surfaces, with the erosive surface “es1” being deformed by a first fault movement, predating the erosive surface “es2”, instead. A possible second fault movement, can be inferred based on the abrupt step, only partially exposed, that the “es2” displays just on the floor of the trench.

Trench CANT-T3 exposes a sequence of Villafranchian units (U1 to U4; Fig. 7c), overlain by a sequence of colluvial beds with intercalated paleosol horizons. The units are involved in a set of asymmetric folds, which we interpret to be related to underlying blind normal faulting, based on the features of the ERT-24 line described above. Dated samples in the colluvial units indicate a Late Glacial to Holocene age. The colluvial beds, steeply dipping toward the mountain front, constitute the syn-growth sedimentation of the graben-structure with a contemporary infilling of the subsiding block. To the WSW, the trench also exposes a secondary normal fault in the Villafranchian Sequence, dipping to the SSE, crosscut almost along strike by our trench, and testifying to complex deformation and hanging wall release faulting in the graben block.

From the features described above, we can constrain several fault movements for this fault strand since Late Pleistocene. Deformation is distributed into a wide deformation zone with the development of a graben structure and near-surface fault-related extensional folds.

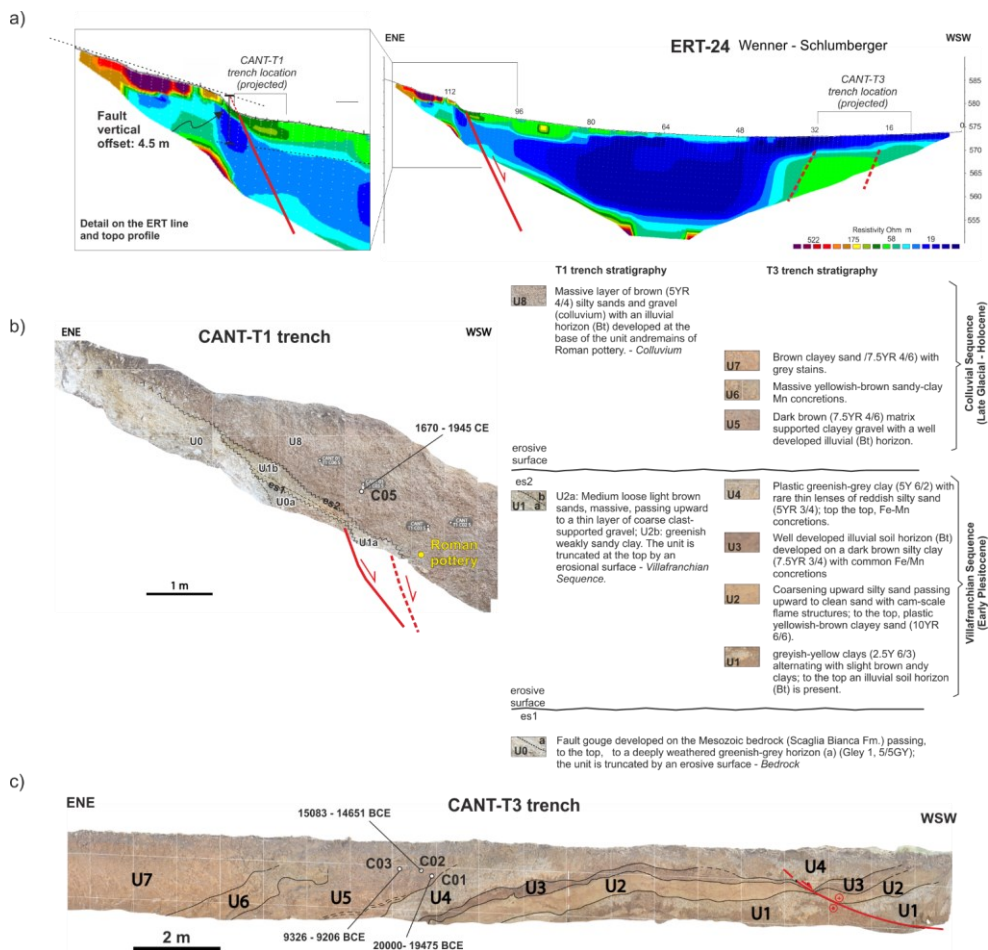


Figure 7: Paleoseismological trench and investigations at the Sector 2 of the Eastern Border Fault: a) ERT line with a zoom in on the fault scarp (see trace in Figure 5c); b) and c), paleoseismological trenches T1 and T3 respectively (the trenches footprints in Figure 5c; for details on the cal ages see Table 1).

#### 4.3 Rieti – Santa Rufina area: Southern Border Fault

The third Study Area extends about 5.5 km east of the historical center of Rieti, up to Santa Rufina, a hamlet of Cittaducale (RI), along the eastern part of the Rieti Southern Border Fault. The southern Area includes three Sectors of investigation (Fig.

391 8). We dug seven exploratory trenches in this Area (Figure 8b-d). Below, we describe the results of paleoseismological  
392 investigations carried out only on the three trenches (TR1, Villa Stoli South and TR3) where we find primary coseismic  
393 elements and, as examples of the structural styles of the fault zone, we show two trenches with only secondary elements (TR4  
394 and TR5; Figure 8).



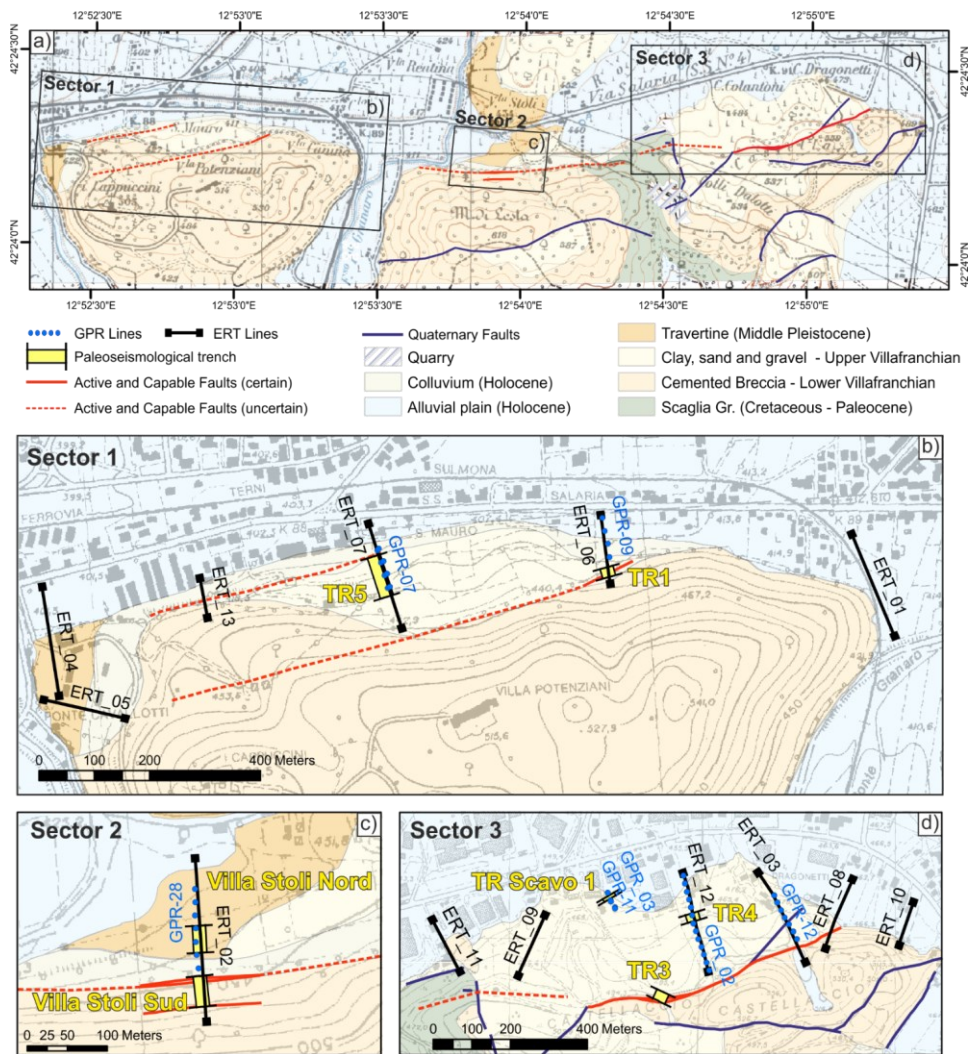


Figure 8: Study Area along the Southern Border Fault: a) simplified geological map; b), c) and d): detailed views on the three studies Sectors (extent is shown in a) with boxes) with the traces of the capable faults and of the geophysical investigations and the footprint of the excavated paleoseismological trenches.



399     **4.3.1 Sector 1: Trenches TR1 and TR5**

400     The 20 m long trench TR1 was excavated (location in Fig. 8b) with a NW-SE orientation where ERT 06 and GPR Line 09  
401     investigations showed clear geophysical discontinuities. Figure 9 shows the result of the inversion of the Dipole-Dipole data  
402     acquired along the ERT 06 profile (RMS 9.4%, 4 iterations) using 72 electrodes with an equidistance of 3 m. The tomographic  
403     model shows, in its southernmost part, two significant lateral variations in resistivity. In the same zone, also the GPR 09 profile  
404     shows several discontinuities in the electromagnetic characteristics of the shallow part of the terrain (dots lines). TR1  
405     confirmed the occurrence of a fault zone affecting both the Monteleone Sabino Synthem (Early Pleistocene, Upper  
406     Villafranchian in Fig. 8), which in this sector is completely pedogenised, and the recent *colluvia* above, outcropping in the  
407     upper wall of the excavation. As shown in Figure 9, the trench wall has in fact a ca. 1.5 m thick lower part, separated from the  
408     upper ca 70 cm thick upper part by a step about 1 m wide (“ledge” in Fig. 9).

409     The overlap between the stratigraphic log and the corresponding section of the GPR 09 profile clearly illustrates how the  
410     discontinuities detected by the radar correspond well to those observed in the trench. This result confirms the effectiveness of  
411     GPR prospecting in the siting of paleoseismic trenches.



412  
413  
414  
415  
416  
417

Figure 9 also presents the stratigraphic log of the W trench wall, accompanied by a legend that describes the various colluvial and soil horizons. Please refer to this legend for details on the stratigraphy visible in the trench walls. Throughout the trench, an ancient and deep pedogenesis characterizes Unit 11. However, in the upper part of the trench Unit 11 is affected by a much more superficial and recent soil horizon (Unit 11a), dated at 7818-7597 BCE. A N60°E trending, 70° NW dipping, fault offsets the Monteleone Sabino Synthem, such that the soil horizons present at its footwall do not correlate with any of the horizons at its hanging wall; the same fault also displaces the overlying succession of colluvial deposits. We identified this fault as the major fault at the base of the northern slope of the Cappuccini-Villa Potenziani relief.

In the upper wall of the trench, this fault brings in contact the pedogenized Monteleone Sabino Synthem, here characterized by a recent superficial soil horizon (indicated as Unit 11a), with a soil colluvium (Unit 3). The calibrated age of the faulted units provided age ranges of 7818–7597 BCE (Sample C01, Table 1) and 3811 –3701 BCE (Sample C02), respectively. This means that a surface faulting event occurred after 3811-3701 BCE (event TR1-2 in Fig. 15).

In the lower wall of the trench, the fault brings Unit 11 in contact with a colluvium (Unit 6) which, due to its geometry, we interpret as a colluvial wedge. This colluvial wedge returned a calibrated age of 20919–20458 BCE (Sample C05) and, considering its thickness, it is possible to estimate a surface dislocation of at least 15 cm necessary for it to be deposited. This event occurred just before the deposition of the colluvial wedge, then before 20919–20458 BCE (event TR1-1 in Fig. 15).

In sector 1 (Fig. 8b) we also excavated the trench TR5, providing evidence of several tectonic dislocations of the Monteleone Sabino Synthem deposits (Fig. 10). We interpreted these structures as secondary faults, presumably linked to a main fault located just to the north. However, it was impossible to verify this hypothesis; we were not able to extend the exploratory trench further N, due to the presence of an aqueduct.

TR5 - East

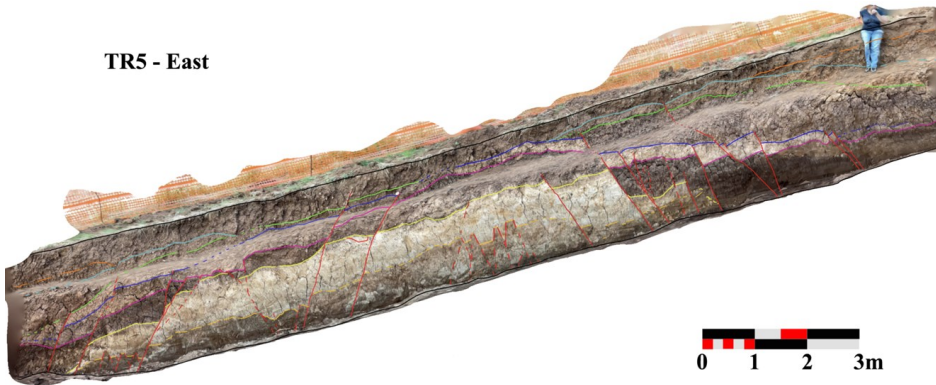


Figure 10: Southern Border Fault, Sector 1, trench 5 showed the Monteleone Sabino deposits dislocated by a dense grid of faults; the figure shows a portion of the east wall of the 77 m long trench, no vertical exaggeration.

#### 4.3.2 Sector 2: Villa Stoli South Trench

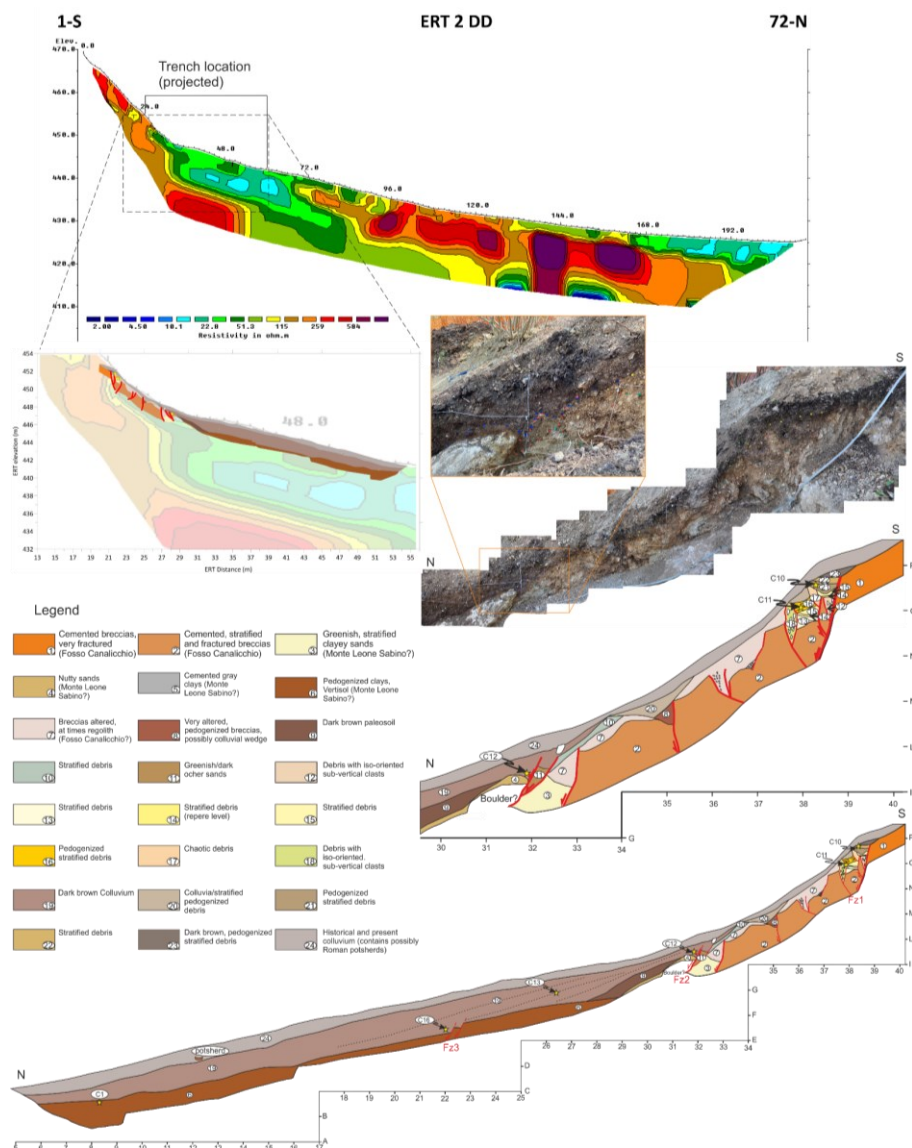
The second Sector under investigation is the Villa Stoli area, where ERT 02 and GPR 28 have been carried out (Fig. 8c; see Supplementary Data for GPR 28). In this case, only the tomography detected discontinuities due to tectonics. They are, in the southern part of the profile, corresponding to a wooded area where the GPR was not applied (Fig. 11). The anomalies detected, indeed, in the central-northern part of the ERT profile (Fig. 11) and in the GPR profile, correspond to the travertine slab found in the Villa Stoli Nord trench (see geology in Fig. 8c).

We excavated the Villa Stoli South trench for a length of 40 m, a depth of about 2 m and a width of 1 m. In the uphill, S part of the trench, we uncovered three major discontinuities, which were also detected by the ERT 02 survey. Figure 11 shows the stratigraphic log with tectonic elements.

The first discontinuity of the fault zone FZ1 offsets the Lower Pleistocene cemented breccia (Fosso Canalicchio Synthem, FC) and, with decimetric throw, also all the overlying deposits, until it is sutured by the current organic soil. Eight meters downstream, the elements of the FZ2 places the FC Synthem breccia (Unit 2) in contact with metric blocks of conglomerates associated with sandy-clayey sediments, interpreted as belonging to the Monteleone Sabino Synthem (MS). FZ2 fault zone upward cuts the overlying colluvium made of decarbonated dark reddish-brown soil (2.5YR 3/4) (Unit 19 in Fig. 11), whose AMS calibrated age (sample C12) is 21261-20961 BCE (95.4%). The faulted Unit indicates the occurrence of an event post 21261-20961 BCE. This event is possibly correlated with the one observed in Sector 1, TR1, where a colluvial wedge dated back to 20919–20458 BCE. The two events TR1-1 and VS-1 in Figure 15 might therefore indicate the same paleoearthquake.

457 Starting from this point, the soil colluvium (Unit 19) thickens downwards, resting on a decarbonated clayey horizon (Unit 6 in  
458 Fig. 11), developed on the clay-rich facies of the MS Synthem.

459 We identified another fault zone (FZ3) ten meters further downhill, toward the north. This fault offsets the interface between  
460 the soil colluvium (Unit 19) and the pedogenized clay-rich horizon (Unit 6) with a throw up to 30 cm. The 14C calibrated age  
461 of the younger deposits dislocated is 11835-11630 BCE (85.0%; Sample C16). This presumably means that a second seismic  
462 event occurred after this date.

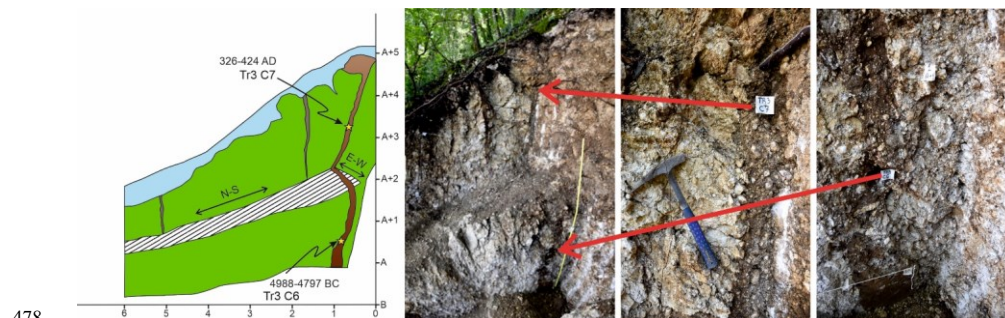


464 **Figure 11: Southern Border Fault, investigations at Sector 2 – Villa Stoli; Above: ERT 02 profile; Middle: Photographic mosaic and**  
 465 **stratigraphic log of the southern and upper part (first 10 m) of the E wall of the Villa Stoli Sud trench, including fault zones Fz1 and**  
 466 **Fz2, and stratigraphic log superimposed on the southern part of the ERT 02 profile; Below: Stratigraphic log of the whole Villa Stoli**  
 467 **South eastern trench wall.**

### 468 4.3.3 Sector 3: Trenches TR3 and TR4

469 We selected the location of the trench TR3 based on geological and geomorphological evidence, without carrying out  
 470 geophysical investigations. It was dug at the main slope break on the northern slope of the Castellaccio relief (Fig. 8d).

471 The excavation began where a fault outcrops in the cemented breccia of the Fosso Canalicchio Synthem (basal Lower  
 472 Pleistocene in age), where the trench walls revealed open fractures filled by colluvial deposits. The breccias present sub-  
 473 angular to angular clasts with generally centimetric up to decimetric diameters. The fracture, visible at progressive 1 m of the  
 474 E trench wall (Fig. 12), is filled by brown paleosols that were sampled at different depths. The calibrated ages of the lower  
 475 sample C06 and of the upper sample C07 resulted in 4988-4797 BCE (95.4%) and in 326-424 CE (78.6%) respectively. Since  
 476 the filling of a seismic-induced open fracture supposedly occurs just after the event, an event should be dated just before 326-  
 477 424 CE (event TR3-3 in Fig. 15) and another just before 4988-4797 BCE (event TR3-1 in Fig. 15).



478 **Figure 12: Southern Border Fault, Sector 3; Left: tectonic fracture outcropping at the S end of the trench TR3, filled by colluvial**  
 479 **deposits sampled in TR3 C7 (C07) and TR3 C6 (C06); calibrated C14 ages are, respectively, 326-424 CE (78.6%) and 4988-4797**  
 480 **BCE (95.4%); Right, log of the first 6 m of the E trench wall; “ledge” is a bench due to the backhoe excavation**

482 From progressive 11 m toward N, there is an over one-meter-wide fault zone which brings in contact the Fosso Canalicchio  
 483 Synthem with the overlying Monteleone Sabino Synthem (Fig. 13), the fault zone can be distinguished into two fault subzones.

484 The fault zones involve recent paleosols and colluvial deposits. Among them, Units 6 and 7 (Fig. 13), located only at the  
 485 hanging wall of the FZ1, are evidently backtilted toward the fault. Unit 7 is a brown paleosol (7.5YR 5/4) developed on the  
 486 sands of the Monteleone Sabino Synthem, with a calibrated age 4171-4036 BCE (60.9%; Sample C01). Above Unit 7 there is  
 487 a soil colluvium (Unit 6) that contains small calcareous clasts, with a calibrated age 7729-7589 BCE (95.4%; Sample C02).

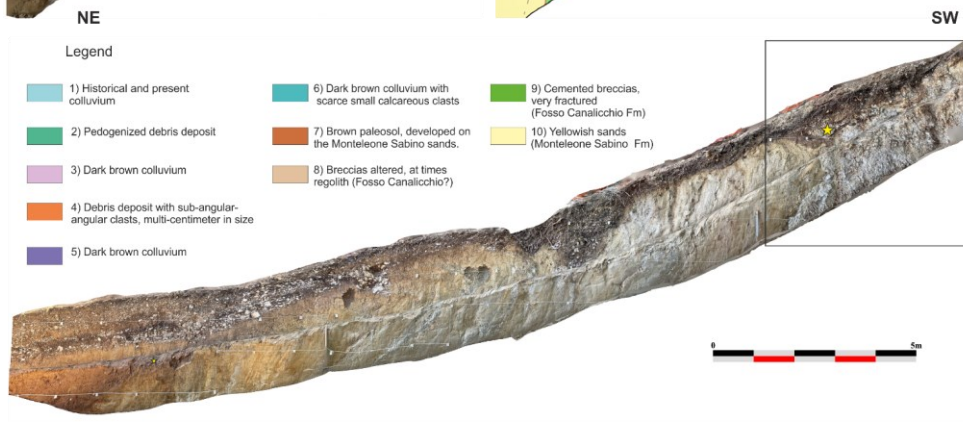
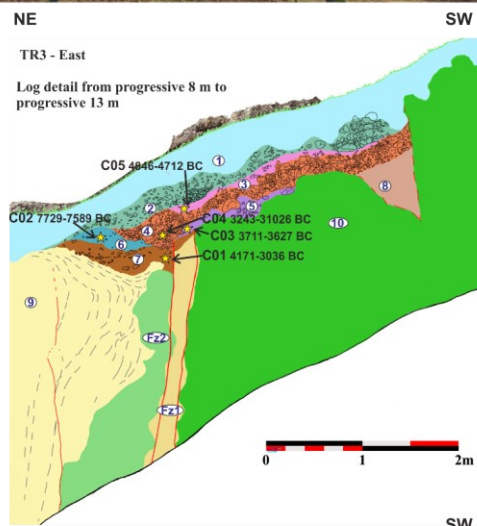
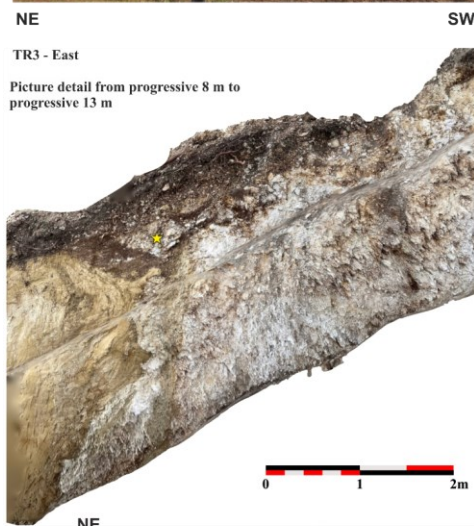
488    Going stratigraphically up section, Unit 5 is a dark brown colluvium (10YR 3/3) with a calibrated age 3711-3627 BCE (87.7%;  
489    Sample C03), and Unit 4 is made of sub-angular-angular deposits, multi-centimetric in size, with a pedogenized matrix, with  
490    a calibrated age 3243-3102 BCE (57.2%; Sample C04). The most downstream part of Unit 4 is thickened at the hanging wall  
491    of the FZ1 (yellow star in the picture detail of Fig. 13) and because of this, it is interpreted as a colluvial wedge that formed  
492    following the surface faulting event that tilted Unit 6 and 7. In this hypothesis, the underlying dark brown colluvium (Unit 5),  
493    interrupted by FZ1, must have been deposited before the seismic event. The coseismic fault slip is 13 cm. All the above  
494    considerations suggest the occurrence of a seismic event between 3627 and 3102 BCE. The age constraints for this event are  
495    very similar to those available for the last event detected at APO-3 trench near Apoleggia along the N Border Fault, on the  
496    opposite side of the Rieti Basin.

497    Moving N, the Monteleone Sabino Synthem outcrops with subvertical layers, parallel to the fault, probably because they were  
498    dragged along the fault itself. These deposits are characterized by alternations of sandy and silty layers, rarely interspersed  
499    with layers of fine gravel (millimetric clasts). Also, a system of mesoscale tectonic lineaments was recognized along the wall  
500    of the trench, which are generally subparallel to the bedding. Therefore, we assume bed-parallel tectonic slip occurred here.

501    Towards progressive 24-26 m, the inclination of the Monteleone Sabino Synthem deposits decreases and the contact with a  
502    pedogenized colluvium with clasts altered by pedogenesis (ghosts of clasts or “biscuit” clasts) has a slope of approximately  
503    30° towards the valley (see Fig. 13).

504    Above the pedogenized colluvium, there is sharp contact with colluvial deposits characterized by frequent sub-rounded  
505    calcareous clasts, with decimetric diameter, immersed in an abundant soil matrix. This contact, which is dipping about twenty  
506    degrees towards the valley, becomes abruptly sub-horizontal in the N terminal zone of the trench.



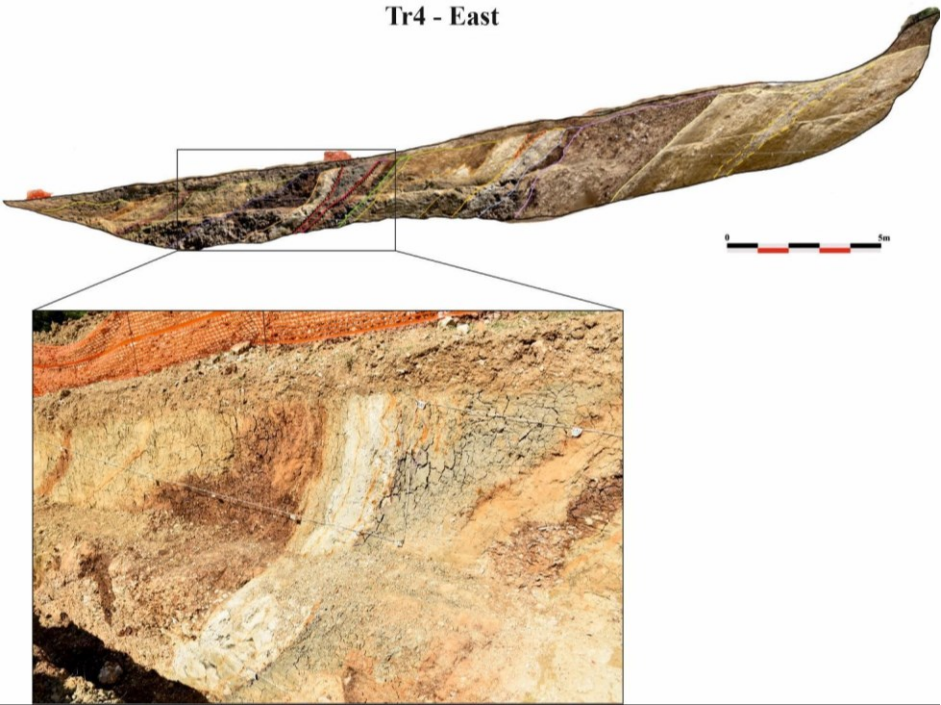


# Legend

- 1) Historical and present colluvium
- 2) Pedogenized debris deposit
- 3) Dark brown colluvium
- 4) Debris deposit with sub-angular-angular clasts, multi-centimeter in size
- 5) Dark brown colluvium
- 6) Dark brown colluvium with scarce small calcareous clasts
- 7) Brown paleosol, developed on the Monteleone Sabino sands.
- 8) Breccias altered, at times regolith (Fosso Canalicchio?)
- 9) Cemented breccias, very fractured (Fosso Canalicchio Fm)
- 10) Yellowish sands (Monteleone Sabino Fm)

508 **Figure 13: Southern Border Fault, Sector 3; portion (from progressive 8 m northwards to 26 m) of the E wall of the TR3 trench:**  
509 **detail and log of the fault zone putting in contact the Fosso Canalicchio Synthem (Unit 10) with the Monteleone Sabino Synthem**  
510 **(Unit 9); the stratigraphic log shows the deposits, the sampling points for AMS dating and the fault zones Fz1 and Fz2.**

511 In trench TR4, located north-east with respect to trench TR3 (see Fig. 8d) and 26 m long, we found the deposits of the  
512 Monteleone Sabino Synthem dipping toward north-west, with slopes between 40° and 70°. Between the progressive 18 m and  
513 19 m, gray silts diminish from the top to the bottom of the trench wall and are delimited by two fault surfaces (Fig. 14). In this  
514 case, as in TR3, bedding-parallel slip is assumed. We observe that the faults are directly sealed by ploughed soil, and no  
515 deposits younger than lower Pleistocene are involved in the deformation.



516  
517 **Figure 14: Southern Border Fault, Sector 3; trench TR4, the bedding of the Monteleone Sabino Synthem dips between 40° and 70°**  
518 **toward NW along the 26 m long trench; between the progressive 18 m and 19 m, gray silts diminishing from the top to the botto m**  
519 **of the trench wall are delimited by two faults.**

520 **5 Discussion**

521 Here, we provide a critical discussion of the results obtained in the Rieti Basin, contextualized in the wider framework of the  
522 Central Apennines. In fact, surface faulting events similar to those observed in the Rieti basin have been documented on nearby  
523 Quaternary faults located near the SW flank of the Central Apennines (e.g., Leonessa Fault: Mildon et al.,  
524 2022; Fiamignano Fault: Beck et al., 2018; Fucino Fault: Gori et al., 2017; Liri Fault: Maceroni et al., 2022). In particular,  
525 slip histories recovered from the 36Cl data using Bayesian Monte Carlo Markov Chain (MCMC) modelling show that the  
526 Leonessa Fault, Fiamignano Fault, Fucino Fault and Liri Fault exhibit a period of slip rate acceleration during the 7 to 5 kyr BP  
527 and 2.5 to 1.5 Kyr BP time windows (Roberts et al., 2025). These are the same time intervals during which the Rieti Basin  
528 faults generated the “Earthquake Sequences 1 and 2” based on the paleoseismic analyses described below.

529 The interpretation and correlation of paleoseismic data obtained during the study campaign on the Rieti Basin capable faults  
530 conducted in 2021 - 2022 is necessarily limited due to the peculiar logistic and the stratigraphic/geomorphic field setting.  
531 Nevertheless, we claim that a few elements of discussion can be pointed out.

532 First, we investigated selected areas identified based on administrative criteria. We conducted geophysical prospecting and  
533 trenching on “active and capable faults” as defined by the Microzoning Guidelines of the Italian Government (Commissione  
534 Tecnica per la Microzonazione Sismica, 2015). We worked in the framework of the “Scientific Collaboration Agreement  
535 between the Extraordinary Commissioner for Reconstruction and the National Institute of Geophysics and Volcanology  
536 (INGV)” for the redefinition of the Attention Zones of Active and Capable Faults emerging from the seismic microzonation  
537 studies carried out in the Municipalities affected by the seismic events that occurred starting from 24 August 2016  
538 (<https://sisma2016data.it/faglie-attive-e-capaci/>). For this reason, we aimed our investigations to specific technical targets, and  
539 associated progressive deadlines, for the timely definition of the avoidance belts where the construction of new buildings and  
540 the reconstruction of buildings damaged by the 2016-2017 seismic sequence had to be prevented.

541 Second, in the Rieti alluvial and lacustrine plain, literature data clearly show that the Late Holocene sedimentation rates are  
542 tenfold the expected fault- slip rates (Guerrieri et al., 2006; Archer et al., 2019; Brunamonte et al. 2022). We confirmed this  
543 conclusion also through our exploratory trenches in the N Study Area of the Rieti Basin. In the Rivodutri Area, we located two  
544 trenches (Villaggio Santa Maria and Piedicolle trenches) in the lower part of the slopes, where ERT profiles suggested the  
545 presence of faulting at shallow depth. In both trenches, we obtained AMS ages younger than 2000 years BP from colluvial and  
546 alluvial deposits at 3 m below the ground surface. The presence of Roman pottery at the base of the trench walls confirmed  
547 AMS dating. Therefore, our trenches did not reach the possible faults beneath the ground surface because of the excessive  
548 thickness of very young historical deposits. In general, in the Rieti plain it is challenging to find suitable sites for paleoseismic  
549 trenching; and it is not possible to expose faulted Holocene sediments in the high-resolution lacustrine stratigraphy. We  
550 excavated all our 13 trenches at or near the bedrock-slope deposits contact, typically delimiting the reconstruction of  
551 paleoseismic events with less well constrained chronologies and estimates of coseismic displacement.

ha eliminato: In the following

ha eliminato: will

ha eliminato: Before entering into the discussion of the data, it is necessary to highlight some “disclaimers”. In fact, t

ha eliminato: not possible

ha eliminato: stratigraphy

ha eliminato: sediments

559 Having this in mind, our new dataset, also compared with past paleoseismic analyses from Michetti et al. (1995), offers relevant  
560 information on the paleoearthquake dates and magnitude, as discussed in the following sections.

ha eliminato: provides

561 **5.1 Post- Last Glacial Maximum (post-LGM) fault slip-rates and limestone bedrock scarp evolution in the Rieti Basin**  
562 **landscape**

563 Data from our trench investigations confirmed the general model of post-LGM and Late Glacial to Holocene evolution for  
564 bedrock fault scarps in the Meso-Cenozoic pelagic marly limestones of the Umbria-Marche-Sabina Sequence. As extensively  
565 discussed in the literature (Bosi, 1975; Serva et al., 1986; Blumetti et al., 1993; Lorenzoni et al., 1993; Michetti et al., 1995;  
566 Roberts et al., 2025), the morphological evidence of Holocene tectonic and seismic activity is very clear along the mountain  
567 fronts carved in the Meso-Cenozoic Abruzzi carbonate platforms.

ha eliminato:

568 During the Last Glacial Maximum, the high elevations of the Central Apennines (up to 2900 m) supported valley glaciers, as  
569 indicated by moraines and associated glacial landforms. Beyond the glaciated zones, periglacial conditions dominated. On  
570 slopes composed of pure carbonate bedrock, rapid erosion and sedimentation—exceeding 0.2–0.4 mm yr<sup>-1</sup> (Tucker et al.,  
571 2011)—favored the development of alluvial fans emerging from ice-free valleys. These rates surpassed typical fault throw  
572 rates (Roberts and Michetti, 2004), as proved by fan surfaces and colluvial slopes graded to adjacent footwall bedrock.  
573 Following glacier retreat, the establishment of temperate vegetation stabilized both fans and slopes, while stream discharge  
574 declined, producing the smooth hillsides characteristic of former periglacial landscapes. Fan surfaces, bedrock slopes, and  
575 moraines are mantled by thin soils (0.5–1.0 m) enriched in organic matter and locally containing volcanic components  
576 deposited during and after deglaciation. Terminal moraines are frequently overlain by fluvial outwash or lacustrine deposits,  
577 which often include paleo-vegetation and volcanic ash suitable for radiocarbon dating and tephrochronology. These  
578 chronological datasets enable robust age determinations and correlations with climate records from Tyrrhenian Sea cores and  
579 other archives. The final major phase of glacial retreat occurred ca. 18–16 ka, coinciding with a marked  $\delta^{18}\text{O}$  shift in marine  
580 records, signaling a major climatic transition. Presently, normal fault scarps dissect these glaciation-related landscapes,  
581 exposing minimally degraded Mesozoic carbonate platform bedrock in footwalls. Conversely, marly-limestone bedrock of the  
582 Umbria-Marche-Sabina pelagic domain exhibits higher modern erosion rates than the Abruzzi carbonate platform ( $0.016 \pm$   
583  $0.005 \text{ mm yr}^{-1}$ ; Tucker et al., 2011). Prominent fault scarps in basins such as Rieti, Leonessa, and Norcia occur only where  
584 pure carbonate formations (e.g., Calcare Massiccio and Maiolica Fms.) are exposed.

ha formattato: Inglese (Stati Uniti)

ha formattato: Inglese (Stati Uniti)

ha formattato: Inglese (Stati Uniti)

ha formattato: Inglese (Stati Uniti)

585 The same is not true for the Rieti Basin and other Quaternary basins in the Umbria-Marche-Sabina sector (such as the Norcia,  
586 Leonessa and Colfiorito basins; Messina et al., 2002; Mildon et al., 2022), where the presence of forest cover on the slopes  
587 indicates the development of pedogenetic and colluvial processes on the material supplied by the Mesozoic marly-clay-rich  
588 units.

ha formattato: Inglese (Stati Uniti)

ha formattato: Inglese (Stati Uniti)

ha eliminato: The surface processes on the coherent pure limestone or dolostone bedrock from Mesozoic carbonate platform environments, which underwent slope recession during the Last Glacial, are now very limited and cannot cancel the morphological effects of tectonic movements.

589 Moreover, human impact on the mountain slopes through deforestation and agriculture generated a significant increase in the  
590 sedimentation rates of slope deposits since the early stage of the Roman Empire, and thereafter (Lorenzoni et al., 1993; Michetti  
591 et al., 1995; Borrelli et al., 2014). Stratigraphic and geoarchaeological data at La Casetta site clearly document this

599 anthropogenic impact, with meters of Roman to Middle Ages slope deposits containing abundant and well dated pottery  
600 remains.

601 This is therefore the reason why bedrock fault scarps in the Rieti Basin are discontinuous and relatively subdued. [As already](#)  
602 [mentioned, the selection of trench sites in our study was affected by logistic constraints, since the primary goal of our study](#)  
603 [was the characterization of capable faults in urban areas, aiming at post-emergency reconstruction.](#) However, we successfully  
604 investigated two of these bedrock fault scarps, one along the N border fault at Apoleggia sector, and the second along the E  
605 master fault at Cantalice sector. Trenching and geophysical prospecting in the Cantalice area, Sector 2, shows faulted historical  
606 colluvial deposits against the Scaglia Fm. fault plane. The measured slip-rate of 0.25 mm/yr is a minimum, because our  
607 trenching did not reach the base of historical slope sediments. We draw a similar conclusion also at Apoleggia. Here we  
608 observed a synthetic fault splay in the hanging wall of the bedrock fault scarp. Therefore, the measured slip-rate of 0.29 mm/yr  
609 is also a minimum estimate.

610 Nevertheless, these values are meaningful because we have both morphological and stratigraphic constraints. These new post-  
611 glacial fault slip-rate data confirm the previous estimates available in the Rieti Basin. Roberts and Michetti (2004) measured  
612 0.27 mm/yr at a site N of Rivodutri along the Rieti Eastern Border Fault; and Michetti et al. (1995) documented 0.4 mm/yr  
613 over the Holocene at the Piedicolle trench site along the Northern Border Fault.

614 Several Late Quaternary faults in Central Italy share similar post-glacial slip-rates (Roberts et al., 2025; Lombardi et al., 2025).  
615 For instance, the Mt. Morrone Fault ([0.20 – 0.40 mm/yr](#); Puliti et al., 2024); the Paganica Fault that generated the April 6,  
616 2009, Mw 6.0 earthquake ([0.25 – 0.30 mm/yr](#); Cinti et al., 2011) the Montereale Fault which ruptured during the January 16,  
617 1703, Mw 6.0, earthquake ([0.30 – 0.40 mm/yr](#); Cinti et al., 2018) and the Mt. Vettore–Mt. Bove normal fault system source of  
618 the Mw 6.5 Norcia earthquake of October 30, 2016 ([minimum 0.26 – 0.38 mm/yr](#); Cinti et al., 2019). [More recent slip rates](#)  
619 [estimates for the Mt. Vettore Fault are 0.8-1 mm/yr \(Puliti et al 2020\); 0.7-1.2 mm/yr \(based on <sup>36</sup>Cl exposure dating of](#)  
620 [bedrock fault plane; Pousse Beltran et al. 2022\); ranging from a minimum of 0.4 to a maximum of 1.3 mm/yr \(Galli et al.,](#)  
621 [2019\).](#)

## 622 5.2 The paleoseismic history of the Rieti Basin: a possible pattern in the earthquake sequence?

623 We compiled the paleo-earthquakes identified in the trenches with those recognized by Michetti et al. (1995) (i.e., the  
624 Piedicolle and La Casetta trenches, PDC and CAS, respectively, with original Geochron Lab. ~~radiocarbon~~ dates recalibrated  
625 using the IntCal20 curve) and summarized all the data in the space-time diagram in Figure 15.

626 Red bars are the time spans of the calibrated ages, defining the terminus *ante-* and/or *post-quem* for earthquakes (see Table 2).  
627 Some paleo-events are tightly constrained in time (e.g., CUC-2), whereas in other cases we have less robust chronological  
628 constraints, and in some cases can only bracket the timing of the paleoseismic events.

629 We highlighted five events, here coded as A to E, which are chronologically well-constrained (i.e., black boxes in Figure 15),  
630 plus one less-constrained additional event (F in Figure 15). The six events do not overlap in time, thus possibly representing  
631 distinct earthquakes. Correlation of paleoseismic events recognized in different trench sites are inherently speculative in nature.

Commentato [MF2]: Ho aggiunto questa frase per rispondere al commento sollevato da gerald (riga 545 paper originale). Valutare se tenere la frase

ha eliminato: Moreover

ha eliminato: ea

ha eliminato: ones

ha eliminato: R

636 Moreover, for the Rieti Basin we consider these correlations unlikely, given the large chronological uncertainty. Nevertheless,  
637 we think that these correlations should be taken seriously into account, as they depict a conservative scenario in terms of  
638 reconstructing the maximum credible earthquake magnitude and associated seismic hazard. Below we summarize the evidence  
639 driving our interpretation, supplemented with constraints from historical catalogues, and we discuss potential ruptures of the  
640 whole Rieti Basin Fault segment.

641 Event A is constrained at trench TR3 in the SE margin of the basin; the coseismic movements that occurred over time along  
642 the identified fault (Fig. 12) cyclically determined the reopening of the fracture, which was repeatedly filled with *colluvia*. The  
643 younger age obtained from the *colluvia* trapped in the fracture is 326-424 CE (1624-1526 cal BP). No event in the historical  
644 seismic catalogue matches with our Event A.

645 A few centuries before, a strong event is reported to have occurred in the Rieti area in 76 BCE (Guidoboni et al., 2018, 2019).  
646 Obsequens Iulius (1910) stated:

647 *“Reate terrae motu aedes sacrae in oppido agrisque commotae. Saxa quibus forum stratum erat, discussa.*  
648 *Pontes interrupti. Ripae [prae] labentis fluminis in aquam provolutae, fremitus inferni exauditi et post*  
649 *paucos dies, quae concussa erant, corruerunt”*

650 (Due to the earthquake, the sacred buildings in the town and the fields were moved. The stones with which  
651 the market was laid were broken up. Bridges broken. The banks of the flowing river were thrown into the  
652 water, the roar of hell was heard, and after a few days those that had been shaken collapsed).

654 **Table 2: Attributes summary of the paleo-earthquakes identified in the trenches excavated in the Rieti Basin; the “notes” column**  
655 **refers to the possible ruptures of the whole Rieti Fault segment as described in the text; asterisks mark the events that “control”**  
656 **Event A, B, C, D, E; F; the others are the possible correlations.**

Trench	Earthquake	Younger than	Older than	Offset	Notes
TR3	3	-	326-424 CE ( <u>1624-1526 cal BP</u> )	↗	A*
TR3	2	3711-3627 BCE ( <u>5661-5577 cal BP</u> )	3243-3102 BCE ( <u>5193-5052 cal BP</u> )	13 cm (min)	C
TR3	1	-	4988-4797 BCE ( <u>6938-6747 cal BP</u> )	↘	D*
TR1	2	3811–3701 BCE ( <u>5761-5651 cal BP</u> )	-	30 cm	A, B, C

ha eliminato: 35 cm (min)(TR3-3 + TR3-1)

ha eliminato: 35 cm (min)(TR3-3 + TR3-1)

TR1	1	-	20919–20458 BCE <u>(22869-22408 cal BP)</u>	15 cm (min)	F*
VS	2	11835-11630 BCE <u>(13785-13580 cal BP)</u>		38 cm	B, C, D, E
VS	1	21261-20961 BCE <u>(23211-22911 cal BP)</u>		78 cm	B, C, D, E, F
CUC	2	591-408 BCE <u>(2541-2358 cal BP)</u>	401-351 BCE <u>(2351-2301 cal BP)</u>	53 cm	B*
CUC	1	-	591-408 BCE <u>(2541-2358 cal BP)</u>	34 cm	C, D, E, F
CAS	1	5623-5205 BCE <u>(7573-7155 cal BP)</u>	3999-3640 BCE <u>(5949-5590 cal BP)</u>	80-100 cm	D
PDC	2	-	1971-1517 BCE <u>(3921-3467 cal BP)</u>	100 cm	C, D, E, F
PDC	1	4446-3794 BCE <u>(6396-5744 cal BP)</u>	-	90 cm	A, B, C
APO T2	2	3533-3370 BCE <u>(5483-5320 cal BP)</u>	3110-2907 BCE <u>(5060-4857 cal BP)</u>	22 cm (min)	C*
APO T2	1	11127-10795 BCE <u>(13077-12745 cal BP)</u>	5664-5512 BCE <u>(7614-7462 cal BP)</u>	15 cm	E*
CAM	1	17415-16872 BCE <u>(19365-18822 cal BP)</u>	-	27 cm (last event)	A, B, C, D, E

ha eliminato: 222

ha formattato: Motivo: Trasparente

ha eliminato: 222

ha formattato: Motivo: Trasparente



661

662 In the Italian seismic catalogue, the 76 BCE event has an Epicentral Intensity X and an intensity-derived magnitude Mw 6.4.  
663 (Guidoboni et al., 2018). Guidoboni et al. (2018, 2019), based on the only historical source available, place the epicenter in  
664 the town of Rieti, but its exact location could be anywhere in the basin area, or in the SE part of the basin, like the M 5.5 event  
665 occurred in 1898 [CE](#) (Rovida et al., 2022; Comerci et al., 2003). Chronological constraints obtained from the trenches indicate  
666 that the earthquakes identified in TR1 (S margin) or PDC and CAM (N margin) overlap with the 76 BCE, even though the  
667 dating uncertainties are high.

668 Regarding the extension of faulting associated with Event A, and possible involvement of multiple fault splays in the Rieti  
669 Basin, we note that paleo-earthquakes consistent with the chronology of Event A are found in trenches TR1 (S margin of the  
670 basin), PDC and CAM (N margin). We are indeed quite confident that Event A did not produce faulting at APO T2 Site, since  
671 the top of Unit 5 seals the deformation there and younger deposits are not faulted (Fig. 3).

672 Event B is tightly constrained at trench CUC (E margin of the basin); the earthquake occurred between 591-408 BCE ([2541-](#)  
673 [2358 cal BP](#)) and 401-351 BCE ([2351-2301 cal BP](#)), with an offset of 53 cm. A tentative hypothesis about a rupture affecting  
674 the E master fault and multiple fault splays in its hanging wall is supported by paleo-earthquakes identified at trenches TR1,  
675 VS, PDC and CAM; however, like Event A, such correlations seem highly speculative.

676 In the time span between 3 and 5 kyr BCE, all of the three investigated margins of the basin moved: the N margin hosted Event  
677 C, constrained at APO T2, dating between 3533-3370 BCE ([5483-5320 cal BP](#)) and 3110-2907 BCE ([5060-4857 cal BP](#)) and  
678 with a minimum offset of 22 cm. Trenching at La Cassetta site shows evidence for the movement of the E master fault, dated  
679 between 5623-5205 BCE ([7573-7155 cal BP](#)) and 3999-3640 BCE ([5949-5590 cal BP](#)). The movement of the S margin is  
680 constrained at TR3 Site, where two earthquakes have been recognized: the one dated between 3711-3627 BCE ([5661-5577 cal](#)  
681 [BP](#)) and 3243-3102 BCE ([5193-5052 cal BP](#)) has a good overlap with Event C, while the earthquake dated at 4988-4797 BCE  
682 ([6938-6747 cal BP](#)) is tightly constrained and identified as Event D. We can confidently claim that Events C and D are two  
683 distinct earthquakes, since the date ranges do not overlap. Therefore, Events C and D likely did rupture the whole length of  
684 the ca. 21 km long Rieti Basin with a Mw in the order of 6.5. This is consistent with coseismic displacement of more than 50  
685 cm observed at CUC (Event D, CUC1; Fig. 15), and in the order of 1 m observed at PDC (Events C and D, PDC1 and PDC2;  
686 Fig. 15).

687 Event E activated the N margin and is broadly constrained at APO T2 Site (date range between 11127-10795 and 5664-5512  
688 BCE, i.e., [13077-12745 and 7614-7462 cal BP](#)). Like for the other events, in this case weak correlations with movements on  
689 the other margins of the basin are possible.

ha eliminato: W



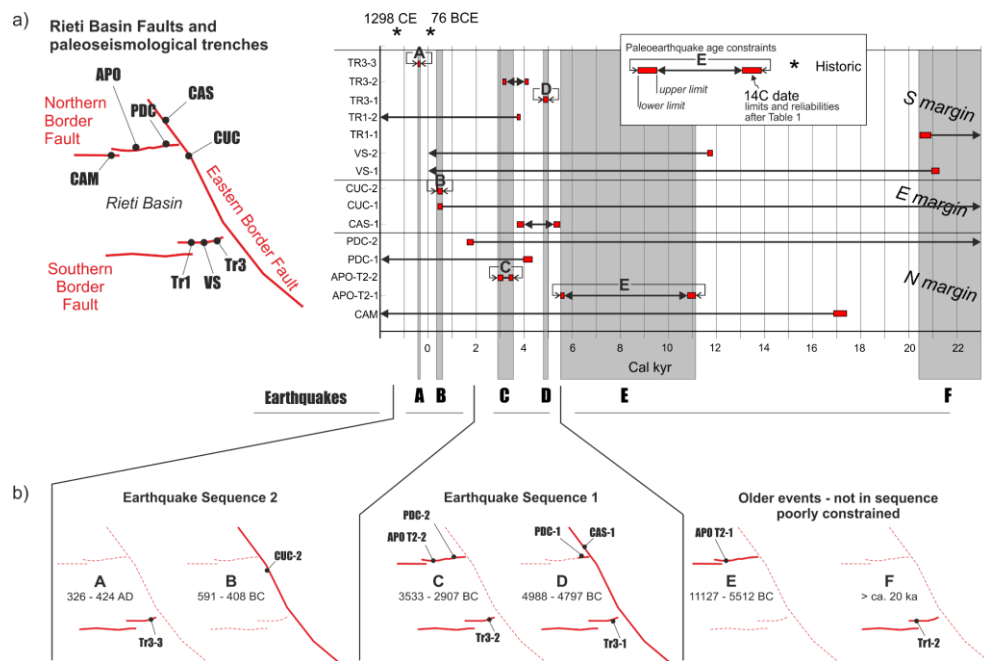


Figure 15: a) Space-time diagram at the basin scale; on the ordinates the acronym of the earthquakes recognized in each trench (from Table 2); each horizontal bar represents the temporal constraints to the occurrence of each earthquake; black boxes indicate well-constrained events, and the grey transparent bars are highlighting possible correlations across trenches; b) summary of the sequence of fault ruptures along the basin-bounding faults, based on well-constrained events (thick continuous lines indicate fault ruptures; thin dashed lines, not assessed).

Finally, Event F involved the S margin of the basin; it is constrained at TR1, with an estimated age older than 20919–20458 BCE (22869–22408 cal BP). This event is also responsible for the dislocation of the colluvial Unit 19 dated 21261–20961 BCE (23211–22911 cal BP) in the trench of Villa Stoli (Sample Ri12; event VS1).

Figure 15b summarizes the overall picture emerging from this complex pattern of fault ruptures, given the uncertainties of both the age dating and possible across-trenches correlations. Seven earthquakes have an age bracketed in time, three referring to the S margin (trench TR3), two on the E margin (events CUC-2 and CAS-1) and two on the N margin (trench APO T2). The average recurrence interval is of a few millennia on all the segments; given fault length and the long-term slip rate, the recurrence intervals obtained in our study are consistent with observations on a global scale (Mouslopoulou et al., 2025).

If we only rely on the chronologically well-constrained events correlated across-trenches, these indicate two sequences of rupturing events that follow a similar spatial pattern (i.e., Earthquake Sequences 1 and 2 in Fig. 15b). With the term “earthquake

ha formattato: Colore carattere: Automatico

ha eliminato: clusters

ha eliminato: events,

ha eliminato: which we label as

ha eliminato: (

sequence” we refer to a series of characteristic earthquakes rupturing adjacent fault segments or adjacent faults over a short time period.

Earthquake Sequence 1 started with the rupture of the main fault bordering the basin, the Eastern Border Fault, and of the Southern Border Fault around 4988 – 4797 BCE (6938-6747 cal BP; Event D). Possibly, also the easternmost tip of the Northern Border Fault ruptured, as recorded at the PDC trench (Michetti et al., 1995). The sequence ended up with the rupture of the Northern and Southern Border Faults around 3533 – 2907 BCE (5483-4857 cal BP).

After an apparent period of quiescence, the inception of Earthquake Sequence 2 is dated 591 – 408 BCE (2541-2358 cal BP), when the Eastern Border Fault ruptured with a major earthquake (Event C) that was later followed by the movement of the Southern Border Fault at 326 – 424 CE (1624-1526 cal BP).

The general recurring scheme here is that for each sequence, a main rupture of the Eastern Border Fault is later followed by movements on the other two structures.

The structural setting of the Rieti Basin might shed some light on such behavior. In fact, the basin is bounded to the east by a main west-dipping fault, whereas relatively short orthogonal faults bound it to the north and to the south. The latter faults are constrained within the hanging wall block of the main Eastern Border Fault. Such a fault architecture can be interpreted in terms of a hanging wall release faults model (*sensu* Destro, 1995; Figure 16a). The role of release faults is to accommodate the hanging wall deformation resulting from a bow-shaped profile of cumulative slip along a fault strike. If a significant displacement gradient exists along the fault strike, then resultant orthogonal extension can be accommodated by release faults. This is the case of the extensional faults in the Central and Southern Apennines, where structural inheritance from previous tectonic phases (Capotorti and Muraro, 2024) results in relatively short faults with high displacement gradients (e.g., Roberts and Michetti, 2004; Papanikolaou and Roberts, 2007; Porreca et al., 2020). The faults bounding the Rieti Basin are indeed located close to inherited rift-related faults. To the west, the basin bounding fault runs almost along the inherited Sabina Paleofault (Galluzzo and Santantonio, 2002). To the east, the main basin-bounding fault is running at the margin of a series of aligned Mesozoic structural highs (i.e., the so-called pelagic Carbonate Platforms - PCP; specifically, the Lisciano, Mt. Rosato and Polino ones; Capotorti and Muraro, 2024).

In this line, the proposed rupture sequence would originate from the entire rupture of the Eastern Border Fault: the resulting stress loading on the other two receiving faults would result in a later re-adjustment of the strain field by means of one or more earthquakes on the hanging wall release faults (e.g., Mildon et al., 2017; Valentini et al., 2024).

The architecture of the faults bordering the Rieti basin is apparently odd, with systems of normal faults striking at ca. 60°-120°. Nonetheless, other well-documented examples worldwide (Figure 16b-e) highlight that normal faulting events can result in a surprisingly complex pattern of deformation and surface ruptures, with faults trending at high angles to each other. This mainly results from i) oblique extension and/or ii) the presence of inherited structures partly misoriented with respect to the orientation of the stress field but may still be compliant for future re-activations.

As a general consideration, the rupture of the whole eastern master fault of the Rieti Basin seems to be the only scenario compatible with the Mw 6.4 estimated by the CFT15Med catalogue (Guidoboni et al., 2018, 2019) for the 76 BCE event, or

**Commentato [3]:** GERALD: I agree they look like release faults. However, you don't need structural inheritance to form these. If there is evidence for pre-existing structures in this specific example, please tell us what the evidence is. If there is no evidence, don't claim this

**ha eliminato:** descent

**ha eliminato:** faults

with the Mw 6.26 estimated by the CPTI15 catalogue (Rovida et al., 2022) for the 1298 event. In summary, the paleoseismic history described above suggests a maximum magnitude in the order of Mw 6.5. We discuss below that this interpretation agrees with the available data from surface faulting events that occurred in Central and Southern Italy during the instrumental era, and in particular over the past 45 years.

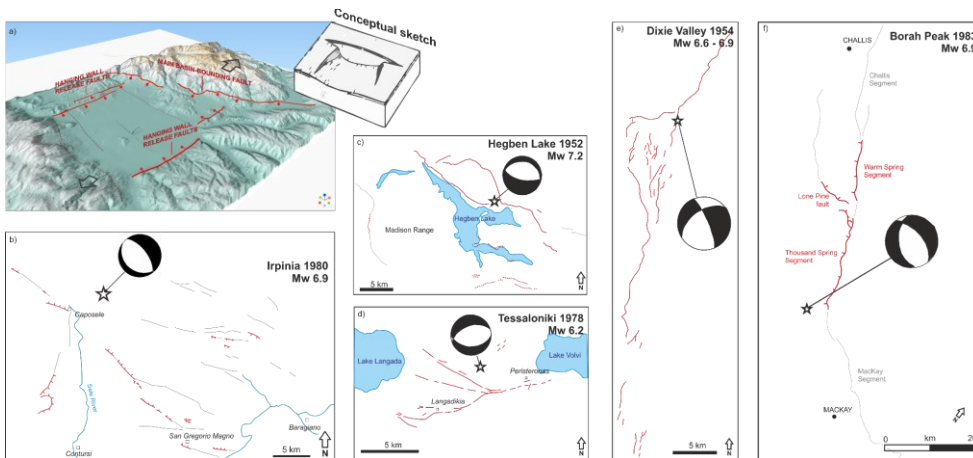


Figure 16: a) a 3D perspective on the Rieti basin with the studied faults and a conceptual scheme (after Destro, 1995, modified) illustrating the structural interpretation for the area, with the E Fault as Master Fault of the Rieti Basin and the N and S Faults as hanging wall release faults; b) to d): the complexity of the surface fracture pattern occurred during well-documented ruptures accompanying Mw 6.2 – 7.2 normal faulting earthquakes in Italy, Greece and the US Basin and Range Province, with the calculated moment tensor solutions (Doser, 1984; 1986; Crone, 1987; Liotler, 1989; Giardini, 1993).

ha eliminato: f

ha formattato: Colore carattere: Automatico

### 5.3 Fault displacement hazard in the Rieti basin

The paleo-earthquakes identified in the Rieti basin show offsets in the order of few cm to 1 m (Table 2). We consider these values consistent with the seismic potential of the region. In a broader perspective, the Rieti basin belongs to the seismotectonic setting of the Central-Southern Apennines, which in the last decades were repeatedly hit by groundbreaking earthquakes. As illustrated in Table 3, the Colfiorito 1997, L'Aquila 2009, Amatrice 2016 and Visso 2016 earthquakes had magnitude in the Mw 6.0 range and resulted in maximum displacement of 20 cm (Vittori et al., 2011; Boncio et al., 2012; Pucci et al., 2017). The much stronger Fucino 1915, Irpinia 1980 and Norcia 2016 earthquakes (Mw 6.5-6.9) instead generated metric displacements (max values 210 cm; Pantosti and Valensise, 1990; Michetti et al., 1996; Villani et al., 2018).

768 **Table 3: Ground rupture parameters for recent earthquake surface faulting along normal faults in the Central and Southern**  
769 **Apennines. SRL = Earthquake Surface Rupture Length**

Earthquake (dd/mm/yyyy)	Mw	SRL (Km)	MAX Disp (m)	Source
Fucino 13/01/1915	7.0	27 (36)*	1.0*	Michetti et al., 1996; Galadini and Galli, 1999*
Irpinia 23/11/1980	6.9	30	1.3	Pantosti and Valensise, 1990
Colfiorito 26/09/1997	6.0	12	0.08	Guerrieri et al., 2010
Sellano 14/10/1997	5.6	1.7	0.04	Guerrieri et al., 2010
Lauria 09/09/1998	5.6	0.2	0.02	Michetti et al., 2000
L'Aquila 06/04/2009	6.1	13.0	0.15	Vittori et al., 2011
Amatrice 24/08/2016	6.0	5.2	0.20	Pucci et al., 2017
Visso 28/10/2016	6.0	7.0	0.4	Scognamiglio et al., 2018
Norcia 30/10/2016	6.5	21.9	2.4	Villani et al., 2018

770  
771 The hypothetical rupture of the whole Rieti Fault would result in a surface faulting length of ca. 21 km. [Using literature](#)  
772 [empirical relations \(e.g., Wells and Coppersmith, 1994; Pavlides and Caputo, 2004\), the corresponding magnitude would be](#)  
773 [around 6.5](#). This is consistent with the coseismic ruptures in Table 3, in particular with those observed during the October 30,  
774 2016, Mw 6.5, Norcia earthquake.  
775 As a further speculation, we observe that in case of Mw 6.5 events, surface ruptures along the W margin of the Basin would  
776 not be seen as a surprise. In fact, the 2016 Mw 6.5 Norcia earthquake generated surface faulting several km west of the Mt.  
777 Vettore master fault, including antithetic ruptures that affected the San Benedetto subsurface road tunnel located ca. 8 km west  
778 of the master fault (Galli et al., 2020).  
779 On the other hand, Table 3 shows that the threshold for surface faulting during shallow crustal normal faulting earthquakes in  
780 the Central - Southern Apennines is ca. Mw 5.6. Again, this is consistent with observations from recent moderate magnitude  
781 events in the Rieti Basin. The June 27<sup>th</sup>, 1898, Santa Rufina event (Mw 5.5; Io VIII-IX MCS; Comerci et al., 2003) generated  
782 ground fractures E of Rieti. According to Moderni (1899), near Santa Rufina “seven large and long cracks” had formed in  
783 1898, parallel and close to each other; while five similar long cracks had formed 2-3 km W of Cupaello. However, during the  
784 December 31<sup>st</sup>, 1948, Rivodutri event (Mw 5.3; Io VIII MCS; Bernardini et al., 2013), near the NE border of the basin, we  
785 have no report of ground fractures.

ha eliminato: As already pointed out, t

**Commentato [MF4]:** Il revisore 2 chiedeva could the maximum magnitude be as high as 6.7 or 6.8? La frase qui sotto è nella risposta al revisore; vogliamo inserirla anche nel testo dell'articolo? — per me sarebbe un po' forzato. Since standard deviations of published empirical relations are ca. 0.3, we cannot rule out a Mw max of 6.8. However, comparison with well-studied recent earthquakes in the Central Apennines indicates that Mw 6.5 is a reasonable estimate.

787 **6 Conclusions**

788 In this paper, we present new insights regarding the paleoseismic history of the Rieti Basin in Central Italy, derived from the  
789 excavation of 17 paleoseismic trenches. Our work represents the first comprehensive characterization of the seismic hazard of  
790 the Rieti Basin, which so far has been underdocumented compared to other areas of the Italian Apennines.

791 Through extensive fieldwork and analyses, we identified and chronologically constrained up to 15 paleo-earthquakes that  
792 generated surface faulting on three sides of the box-shaped Rieti basin during the last ca. 20 ka. These results provide a baseline  
793 of tectonic activity in the region that was not known prior to this work.

794 Considering the spatio-temporal distribution of the faulting events, we propose a temporal development characterized by the  
795 earthquake rupture of the Eastern Border Fault, followed by seismic events either on the northern or southern border faults.  
796 This pattern is consistent with the structural architecture of the basin, which comprises two sets of nearly orthogonal faults.

797 Our results indicate that the maximum credible earthquake in the Rieti Basin is in the order of magnitude Mw 6.5, which is  
798 consistent with the general setting of the Central Apennines. Given the resolution of chronological constraints obtainable with  
799 radiocarbon dating techniques in paleoseismic trenches, we cannot disentangle the occurrence of a single earthquake as  
800 compared to multiple earthquakes occurring over a short time interval (like the 2016 seismic sequence). Additionally,  
801 paleoseismic data inherently focus on surface-rupturing earthquakes, thus aliasing smaller seismic events, which however  
802 could have caused significant damage.

803 Our study reinforces the need for detailed paleoseismic studies in a careful evaluation of the seismic hazard in such a densely  
804 populated region. The study of capable faults affecting urbanized zones indeed provides valuable contexts that should inform  
805 decision-making; we argue that conducting similar projects like ours could benefit other areas in and beyond the Italian  
806 territory.

807 **Author contribution**

808 Conceptualization and writing: FL, AMM, MFF, ES, VC, MCac, AMB. Field work, geological mapping, trenching and  
809 logging: FL, AMM, MFF, ES, VC, MCac, AMB, PDM, FF, RG, PL, ASF, MP, KN, GT, FT, AP, FF, MG, FM, RNaP, RNaV,  
810 RP, LMP, MR, AR, VR. Geophysical data acquisition and processing: LMP, VM, VR, VS, SU. Scientific discussion and text  
811 revision: KN, AZ, GB, MCoL, LG, PDM.

812 **Code/Data availability**

813 All the data are publicly available in this work and in the Supplementary Material. The data presented are included in the  
814 microzonation studies carried out in the municipalities of Central Italy affected by the seismic events starting from August 24,  
815 2016, as provided by Ordinance No. 24 of May 12, 2017, issued by the Extraordinary Commissioner.

816

817 With Ordinance No. 55, Article 5, "Amendments to Ordinance No. 24 of May 12, 2017," the general criteria were approved  
818 for the use of Level 3 Seismic Microzonation studies in the reconstruction of the areas affected by the seismic events starting  
819 from August 24, 2016. All the reports and data are publicly available at <https://sisma2016data.it/microzonazione/> )in Italian  
820 (last accessed on the 29<sup>th</sup>, May 2025).

821 **Competing interests**

822 The Authors declare that they have no conflict of interest.

823 **Acknowledgements**

824 We are grateful to the owners of the land where we conducted geophysical prospecting and trench investigations. The  
825 assistance of the Rivodutri, Cantalice, Rieti and Cittaducale Municipalities is gratefully acknowledged. Special thanks to  
826 Matteo Carrozzoni, Geologist at “Commissario Straordinario Ricostruzione Sisma 2016”, for the invaluable support to this  
827 project: without him our research would have been simply impossible. Thanks to Francesco Chiaretti and Domenico “Mimmo”  
828 Marchetti, authors of the local microzoning studies, for sharing their expertise and scientific discussion. We are grateful to  
829 Enzo Sepe, INGV leader of the 2016 post-seismic capable fault project, indeed a scientific leader; and to Carlo Doglioni,  
830 INGV President, who strongly believed in the realization of this project.

831 **Financial support**

832 The agreements of scientific collaboration between INGV, ISPRA, and Università degli studi dell’Insubria “Ridefinizione  
833 delle Zone di Attenzione delle Faglie Attive e Capaci emerse dagli studi di microzonazione sismica effettuati nel territorio  
834 comunale di Cittaducale (RI) e Rieti, interessati dagli eventi sismici verificatisi a far data dal 24 agosto 2016” signed on  
835 December 2020 and “Aggiornamento degli studi di microzonazione sismica a seguito degli approfondimenti dedicati alle zone  
836 delle faglie attive e capaci presenti nei territori dei Centri abitati di Rieti e Cittaducale (RI)” signed on April 2022 provided  
837 funding and the legal framework for the paleoseismic investigations in the Rieti Basin carried out by ISPRA and Università  
838 degli Studi dell’Insubria.  
839 Research funded by European Union – NextGenerationEU – Mission 4 “Education and Research” – Component 2 “From  
840 Research to Business” – Investment 3.1 “Fund for the realization of an integrated system of research and innovation  
841 infrastructures” – Project IR0000037 – GeoSciences IR - CUP I53C22000800006  
842 K. Nicoll acknowledges support and funding from the USA-Italy Fulbright Program.

843 **References**

- 844 Archer, C., Noble, P., Rosen, M., Sagnotti, L., Florindo, F., Mensing, S., Piovesan, G., and Michetti, A. M.: Lakes as  
845 paleoseismic records in a seismically-active, low-relief area (Rieti Basin, central Italy), *Quat. Sci. Rev.*, 211, 186–207,  
846 <https://doi.org/10.1016/j.quascirev.2019.03.004>, 2019.
- 847 Baranello, S., Camassi, R., and Castelli, V.: Behind the Italian catalogues: overlooked but far from negligible earthquakes,  
848 *Ann. Geophys.*, 67, SE215, <https://doi.org/10.4401/ag-9096>, 2024.
- 849 [Beck, J., Wolfers, S. and Roberts, G.P.: Bayesian earthquake dating and seismic hazard assessment using chlorine-36](#)  
850 [measurements \(BED v1\), \*Geoscientific Model Development\*, 11\(11\), pp. 4383–4397, 2018.](#)
- 851 Bemis, S. P., Micklethwaite, S., Turner, D., James, M. R., Akciz, S., Thiele, S. T., and Bangash, H. A.: Ground-based and  
852 UAV-Based photogrammetry: A multi-scale, high-resolution mapping tool for structural geology and paleoseismology, *J.*  
853 *Struct. Geol.*, 69, 163–178, 2014.
- 854 Bernardini, F., Castelli, V., Camassi, R., Caracciolo, C. H., and Ercolani, E.: A “Forgotten” Earthquake Rediscovered: the  
855 1948–1949 Monti Reatini (Central Apennines) seismic sequence, *Boll. Geof. Teor. Appl.*, 54, 3, 229–244,  
856 <https://doi.org/10.4430/bgta0113>, 2013.
- 857 Blumetti, A. M., Dramis, F., and Michetti, A. M.: Fault generated mountain fronts in the Central Apennines (Central Italy):  
858 geomorphological features and seismotectonic implications, *Earth Surf. Process. Landf.*, 18, 203–223, 1993.
- 859 Blumetti, A. M.: Neotectonic investigations and evidence of paleoseismicity in the epicentral area of the January–February  
860 1703, Central Italy, earthquakes, in: *Perspectives in Paleoseismology*, *Bull. Assoc. Eng. Geol., Spec. Publ.* 6, 83–100, 1995.
- 861 Blumetti, A. M., Grützner, C., and Guerrieri, L.: Quaternary earthquakes: Geology and palaeoseismology for seismic hazard  
862 assessment, *Quat. Int.*, 451, 1–10, <https://doi.org/10.1016/j.quaint.2017.04.002>, 2017.
- 863 Boncio, P., Lavecchia, G., Pace, B., and Visini, F.: Seismic hazard analysis for large earthquakes from a surface faulting hazard  
864 perspective: the example of the 2009 L'Aquila earthquake (central Italy) and its implications for earthquake recurrence in the  
865 Apennines, *Tectonophysics*, 522–523, 33–45, <https://doi.org/10.1016/j.tecto.2011.12.014>, 2012.
- 866 Borrelli, P., Domdey, C., Hoelzmann, P., Knitter, D., Panagos, P., and Schütt, B.: Geoarchaeological and historical  
867 implications of late Holocene landscape development in the Carseolani Mountains, central Apennines, Italy, *Geomorphology*,  
868 216, 26–39, 2014.
- 869 Bosi, C.: Osservazioni preliminari su faglie probabilmente attive nell'Appennino centrale, *Boll. Soc. Geol. It.*, 94, 4, 827–859,  
870 1975.
- 871 Brunamonte, F., Michetti, A. M., Serva, L., and Vittori, E.: Seismic-hazard evaluation in Central Italy: preliminary results of  
872 the Rieti Basin project, *Ann. Geophys.*, 36, 21, <https://doi.org/10.4401/ag-4309>, 1993.
- 873 Brunamonte, F., Michetti, A. M., Guerrieri, L., and Serva, L.: L'evoluzione tardo-aternaria del Bacino di Rieti e la  
874 formazione del Lacus Velinus, in: Virili, C. (Ed.), *Atti Giornata di Studi sulla Protostoria nell'area del Lacus Velinus*, Rieti,  
875 12 Dicembre 2009, Teseo Editore, Roma, 59–88, ISBN 978-88-95291-178, 2022.
- 876 Calderini, G., Calderoni, G., Cavinato, G. P., Gliozzi, E., and Paccara, P.: The upper Quaternary sedimentary sequence at the  
877 Rieti Basin (central Italy): a record of sedimentation response to climatic changes, *Palaeogeogr. Palaeoclimatol. Palaeoecol.*,  
878 140, 97–111, 1998.

879 Capotorti, F., and Muraro, C.: Jurassic to Quaternary reactivation of inherited structures in the central Apennines, Ital. J.  
880 Geosci., 143, 37–59, <https://doi.org/10.3301/IJG.2024.03>, 2024.

881 Carrara, C., Brunamonte, F., Ferrelì, L., Lorenzoni, P., Margheriti, L., Michetti, A. M., Raglione, M., Rosati, M., and Serva,  
882 L.: I terrazzi della medio-bassa valle del F. Velino, Studi Geol. Camerti, Spec. Vol. 1992/1, 97–102, 1992.

883 Cavinato, G. P.: Controls and stratigraphic implications of synsedimentary tectonics in Plio–Quaternary continental deposits  
884 of the Roman Basin, central Italy, Geol. Romana, 29, 81–100, 1993.

885 Cavinato, G. P., Carusi, C., Dall’Asta, M., Miccadei, E., and Piacentini, T.: Sedimentary and tectonic evolution of Plio–  
886 Pleistocene alluvial and lacustrine deposits of Fucino Basin (central Italy), Sediment. Geol., 148, 29–59, 2002.

887 Cavinato, G. P., and De Celles, P. D.: Extensional basins in the tectonically bimodal central Apennines fold-thrust belt, Italy:  
888 response to corner flow above a subducting slab in retrograde motion, Geology, 27, 955–958, 1999.

889 Cavinato, P., Gliozzi, E., and Mazzini, I.: Two lacustrine episodes during the Late Pliocene–Holocene evolution of the Rieti  
890 Basin (Central Apennines, Italy), AAPG Stud. Geol., 46, 527–534, 2000.

891 Cinti, F. R., Civico, R., Blumetti, A. M., Chiarini, E., La Posta, E., Pantosti, D., Papasodaro, F., Smedile, A., De Martini, P.  
892 M., and Villani, F.: Evidence for surface faulting earthquakes on the Montereale fault system (Abruzzi Apennines, central  
893 Italy), Tectonics, 37, 2758–2776, <https://doi.org/10.1029/2018TC005054>, 2018.

894 Cinti, F. R., De Martini, P. M., Pantosti, D., Baize, S., Smedile, A., Villani, F., et al.: 22-kyr-long record of surface faulting  
895 along the source of the 30 October 2016 earthquake (central Apennines, Italy), from integrated paleoseismic data sets. Journal  
896 of Geophysical Research: Solid Earth, 124, <https://doi.org/10.1029/2019JB017757>, 2019.

897 Cinti, F. R., Pantosti, D., De Martini, P. M., Pucci, S., Civico, R., Pierdominici, S., and Patera, A.: Evidence for surface faulting  
898 events along the Paganica fault prior to the 6 April 2009 L’Aquila earthquake (central Italy), J. Geophys. Res.-Sol. Ea., 116,  
899 B7, <https://doi.org/10.1029/2010JB007998>, 2011.

900 Comerci, V., Molin, D., Pasquarè, F. A., and Serva, L.: Risposta sismica dell’area urbana di Rieti in occasione del terremoto  
901 del 27 giugno 1898 nel bacino di Vazia (RI), Boll. Soc. Geol. It., 122, 147–156, 2003.

902 Commissione tecnica per la microzonazione sismica: Linee guida per la gestione del territorio in aree interessate da Faglie  
903 Attive e Capaci (FAC), versione 1.0, Conferenza delle Regioni e delle Province Autonome – Dipartimento della Protezione  
904 Civile, Roma, 66 pp., [https://www.protezionecivile.gov.it/it/pubblicazione/microzonazione-sismica-linee-guida-per-la-](https://www.protezionecivile.gov.it/it/pubblicazione/microzonazione-sismica-linee-guida-per-la-gestione-del-territorio-in-aree-interessate-da-faglie-attive-e-capaci--fac-/)  
905 [gestione-del-territorio-in-aree-interessate-da-faglie-attive-e-capaci--fac-/](https://www.protezionecivile.gov.it/it/pubblicazione/microzonazione-sismica-linee-guida-per-la-gestione-del-territorio-in-aree-interessate-da-faglie-attive-e-capaci--fac-/), 2015.

906 Cosentino, D., Cipollari, P., Marsili, P., and Scrocca, D.: Geology of the central Apennines: a regional review, J. Virtual  
907 Explor., 36, 1–37, 2010.

908 Cowie, P. A. and Roberts, G. P.: Constraining slip rates and spacings for active normal faults, J. Struct. Geol., 23, 1901–1915,  
909 [https://doi.org/10.1016/S0191-8141\(01\)00036-0](https://doi.org/10.1016/S0191-8141(01)00036-0), 2001.

910 Crone, A. J., Machette, M. N., Bonilla, M. G., Lienkaemper, J. J., Pierce, K. L., Scott, W. E., and Bucknam, R. C.: Surface  
911 faulting accompanying the Borah Peak earthquake and segmentation of the Lost River fault, central Idaho. *Bulletin of the*  
912 *Seismological Society of America*, 77(3), 739–770, 1987.

913 Dahlin, T., and Zhou, B. A numerical comparison of 2D resistivity imaging with 10 electrode arrays. Geophysical prospecting,  
914 52(5), 379–398, 2004

ha eliminato: (2019).

ha formattato: Italiano (Italia)

ha formattato: Italiano (Italia)

ha formattato: Italiano (Italia)

Codice campo modificato

Codice campo modificato

ha formattato: Inglese (Regno Unito)



916 Destro, N.: Release fault: A variety of cross fault in linked extensional fault systems, in the Sergipe-Alagoas Basin, NE Brazil,  
 917 J. Struct. Geol., 17, 615–629, [https://doi.org/10.1016/0191-8141\(94\)00100-X](https://doi.org/10.1016/0191-8141(94)00100-X), 1995.

918 Di Domenica, A. and Pizzi, A.: Defining a mid-Holocene earthquake through speleoseismological and independent data:  
 919 implications for the outer Central Apennines (Italy) seismotectonic framework, Solid Earth, 8, 161–176,  
 920 <https://doi.org/10.5194/se-8-161-2017>, 2017.

921 Doglioni, C.: A proposal for the kinematic modelling of W-dipping subductions—possible implications for the Apennines–  
 922 Maghrebides and the Alps, Terra Nova, 3, 423–434, <https://doi.org/10.1111/j.1365-3121.1991.tb00172.x>, 1991.

923 Doser, D. I.: Source parameters and faulting processes of the August 1959 Hebgen Lake, Montana earthquake sequence, Ph.D.  
 924 thesis, The University of Utah, USA, 1984.

925 Doser, D. I.: Earthquake processes in the Rainbow Mountain-Fairview Peak-Dixie Valley, Nevada, region 1954–1959, J.  
 926 Geophys. Res.-Sol. Ea., 91, 12572–12586, <https://doi.org/10.1029/JB091iB12p12572>, 1986.

927 Dramis, F.: Il ruolo dei sollevamenti tettonici a largo raggio nella genesi del rilievo appenninico, Studi Geol. Camerti, 1, 9–  
 928 15, 1992.

929 Faure Walker, J., Boncio, P., Pace, B., Roberts, G., Benedetti, L., Scotti, O., Visini, F., and Peruzza, L.: Fault2SHA Central  
 930 Apennines database and structuring active fault data for seismic hazard assessment, Sci. Data, 8, 87,  
 931 <https://doi.org/10.1038/s41597-021-00864-0>, 2021.

932 Galadini, F. and Galli, P.: The Holocene paleoearthquakes on the 1915 Avezzano earthquake faults (central Italy): implications  
 933 for active tectonics in the central Apennines, Tectonophysics, 308, 143–170, [https://doi.org/10.1016/S0040-1951\(99\)00103-](https://doi.org/10.1016/S0040-1951(99)00103-9)  
 934 [9](https://doi.org/10.1016/S0040-1951(99)00103-9), 1999.

935 Galadini, F., Messina, P., Giaccio, B., and Sposato, A.: Early uplift history of the Abruzzi Apennines (central Italy): available  
 936 geomorphological constraints, Quat. Int., 101, 125–135, [https://doi.org/10.1016/S1040-6182\(02\)00132-7](https://doi.org/10.1016/S1040-6182(02)00132-7), 2003.

937 Galli, P., Galadini, F., and Pantosti, D.: Twenty years of paleoseismology in Italy, Earth-Sci. Rev., 88, 89–117,  
 938 <https://doi.org/10.1016/j.earscirev.2008.01.001>, 2008.

939 Galli, P. A., Giaccio, B., Messina, P., Peronace, E., and Zuppi, G. M.: Palaeoseismology of the L’Aquila faults (central Italy,  
 940 2009, M w 6.3 earthquake): implications for active fault linkage, Geophys. J. Int., 187, 1119–1134,  
 941 <https://doi.org/10.1111/j.1365-246X.2011.05197.x>, 2011.

942 Galli, P., Castenetto, S., and Peronace, E.: The macroseismic intensity distribution of the 30 October 2016 earthquake in central  
 943 Italy (Mw 6.6): Seismotectonic implications, Tectonics, 36, 2179–2191, <https://doi.org/10.1002/2017TC004653>, 2017.

944 Galli, P., Galderisi, A., Martino, M., Scarascia Mugnozza, G., and Bozzano, F.: The coseismic faulting of the San Benedetto  
 945 tunnel (2016, Mw 6.6 central Italy earthquake), in: Tunnels and Underground Cities: Engineering and Innovation Meet  
 946 Archaeology, Architecture and Art, edited by: Peila, Viggiani and Celestino, 805–811, Taylor & Francis Group, London, ISBN  
 947 978-1-138-38865-9, 2020.

948 Galli, P., Galderisi, A., Peronace, E., Giaccio, B., Hajdas, I., Messina, P., Pieggi, D. and Polpetta, F.: The awakening of the  
 949 dormant Mount Vettore fault (2016 central Italy earthquake, Mw 6.6): Paleoseismic clues on its millennial silences. Tectonics,  
 950 38(2), 687-705, 2019.

951 Galli, P., Peronace, E., and Messina, P.: Archaeoseismic evidence of surface faulting in 1703 Norcia earthquake (Central  
 952 Italian Apennines, Mw 6.9), Geosciences, 12, 14, <https://doi.org/10.3390/geosciences12010014>, 2021.

ha formattato: Italiano (Italia)

ha formattato: Italiano (Italia)

ha formattato: Italiano (Italia)

Codice campo modificato

953 Galluzzo, F. and Santantonio, M.: The Sabina Plateau: a new element in the Mesozoic paleogeography of Central Apennines,  
954 Boll. Soc. Geol. Ital., 1, 561–588, 2002.

955 Giardini, D.: Teleseismic observation of the November 23, 1980, Irpinia earthquake, Ann. Geophys., 36, 1, 1993.

956 Gilbert, G. K.: Lake Bonneville (Vol. 1), U.S. Geol. Surv. Monogr., 1, 1438, 1890.

957 Gori, S., Falcucci, E., Di Giulio, G., Moro, M., Saroli, M., Vassallo, M., Ciampaglia, A., Di Marcantonio, P., and Trotta, D.:  
958 Active Normal Faulting and Large-Scale Mass Wasting in Urban Areas: The San Gregorio Village Case Study (L’Aquila,  
959 Central Italy). Methodological Insight for Seismic Microzonation Studies, Eng. Geol. for Soc. and Territ.-Vol. 5: Urban Geol.,  
960 Sustain. Plan. and Landsc. Exploit., Springer, 1033–1036, 2015.

961 [Gori, S., Falcucci, E., Galadini, F., Moro, M., Saroli, M., and Ceccaroni, E.: Geoarchaeology and paleoseismology blend to  
962 define the Fucino active normal fault slip history, central Italy, Quaternary International 451 \(2017\): 114-128, 2017.](#)

963 Guerrieri, L., Comerci, V., Ferrelli, L., Pompili, R., Serva, L., Brunamonte, F., and Michetti, A. M.: Geological evolution of the  
964 intermountain Rieti basin (Central Apennines), Mapping Geol. in Italy, SELCA, 123–130, 2006.

965 Guerrieri, L., Vittori, E., Comerci, V., Esposito, E., Michetti, A. M., and Porfido, S.: Ground effects and surface faulting in  
966 the April 6, 2009 L’Aquila earthquake (central Italy), Nat. Hazards Earth Syst. Sci., 10, 2311–2336,  
967 <https://doi.org/10.5194/nhess-10-2311-2010>, 2010.

968 Guidoboni, E., Ferrari, G., Mariotti, D., Comastri, A., Tarabusi, G., Sgattoni, G., and Valensise, G.: CFTI5Med, Catalogo dei  
969 Forti Terremoti in Italia (461 a.C.-1997) e nell’area Mediterranea (760 a.C.-1500), Istituto Nazionale di Geofisica e  
970 Vulcanologia (INGV), <https://doi.org/10.6092/ingv.it-cfti5>, 2018.

971 Guidoboni, E., Ferrari, G., Tarabusi, G., Sgattoni, G., Comastri, A., Mariotti, D., Ciuccarelli, C., Bianchi, M. G., and Valensise,  
972 G.: CFTI5Med, the new release of the catalogue of strong earthquakes in Italy and in the Mediterranean area, Sci. Data, 6, 80,  
973 <https://doi.org/10.1038/s41597-019-0091-9>, 2019.

974 Iezzi, F., Francescone, M., Pizzi, A., Blumetti, A., Boncio, P., Di Manna, P., Pace, B., Piacentini, T., Papasodaro, F., and  
975 Morelli, F.: Slip localization on multiple fault splays accommodating distributed deformation across normal fault complexities,  
976 Tectonophysics, 868, 230075, 2023.

977 Iezzi, F., Roberts, G., Walker, J. F., and Papanikolaou, I.: Occurrence of partial and total coseismic ruptures of segmented  
978 normal fault systems: Insights from the Central Apennines, Italy, J. Struct. Geol., 126, 83–99, 2019.

979 Liotier, Y.: Modelisation des ondes de volume des seismes se l’arc Ageen, DEA de l’Universite Joseph Fourier, Grenoble,  
980 France, 1989 (in French).

981 Lombardi, A. M., Cinti, F. R., and Pantosti, D.: Paleoearthquakes modeling and effects of uncertainties on probability  
982 assessment of next fault ruptures: the case of Central Italy surface faulting earthquakes, Geophys. J. Int., 2025; ggaf105,  
983 <https://doi.org/10.1093/gji/ggaf105>, 2025.

984 Lorenzoni, P., Raglione, M., Brunamonte, F., Michetti, A. M., and Pennacchioni, M.: Stratigrafia dei depositi di versante tardo-  
985 quaternari del Bacino di Rieti: la sezione de "La Casetta", Studi Geol. Camerti, Spec. Vol. 1992/1, 145–153, 1993.

986 Lustrino, M., Pistocchi, L., Ronca, S., Innocenzi, F., and Agostini, S.: Origin of ultrapotassic, ultracalcic, ultrabasic SiO2-  
987 undersaturated magmas: The case study of the Pleistocene Cupaello kamafugite monogenetic volcano, central Italy, Geochem.  
988 Geophys. Geosyst., 26, e2024GC011683, <https://doi.org/10.1029/2024GC011683>, 2025.

ha formattato: Italiano (Italia)

Codice campo modificato

Codice campo modificato

Codice campo modificato

989 [Maceroni, D., Dixit Dominus, G., Gori, S., Falcucci, E., Galadini, F., Moro, M., and Saroli, M.: First evidence of the Late](#)  
990 [Pleistocene—Holocene activity of the Roveto Valley Fault \(Central Apennines, Italy\).](#) *Frontiers in Earth Science*, **10**, 1018737,  
991 [2022.](#)

992 McCalpin, J. P.: Paleoseismology in extensional tectonic environments, *Int. Geophys.*, **95**, 171–269, 2009.

993 Messina, P., Galadini, F., Galli, P., and Sposato, A.: Quaternary basin evolution and present tectonic regime in the area of the  
994 1997–1998 Umbria–Marche seismic sequence (central Italy), *Geomorphology*, **42**(1-2), 97–116, 2002.

995 Michetti, A. M., Brunamonte, F., Serva, L., and Whitney, R. A.: Seismic hazard assessment from paleoseismological evidence  
996 in the Rieti Region (Central Italy), *Perspect. Paleoseismol., Assoc. Eng. Geol. Bull., Special Publ.*, 63–82, 1995.

997 Michetti, A. M., Brunamonte, F., Serva, L., and Vittori, E.: Trench investigations of the 1915 Fucino earthquake fault scarps  
998 (Abruzzo, Central Italy): geological evidence of large historical events, *J. Geophys. Res. Solid Earth*, **101**, 5921–5936, 1996.

999 Mildon, Z. K., Roberts, G. P., Faure Walker, J. P., and Iezzi, F.: Coulomb stress transfer and fault interaction over millennia  
1000 on non-planar active normal faults: The M w 6.5–5.0 seismic sequence of 2016–2017, central Italy, *Geophys. J. Int.*, **210**(2),  
1001 1206–1218, 2017.

1002 Mildon, Z. K., Roberts, G. P., Faure Walker, J. P., Beck, J., Papanikolaou, I., Michetti, A. M., and Vittori, E.: Surface faulting  
1003 earthquake clustering controlled by fault and shear-zone interactions, *Nat. Commun.*, **13**(1), 7126, 2022.

1004 Moderni, P.: Il terremoto di Rieti del 28 giugno 1898, *Bollett. Regio Comit. Geol. Italia*, **30**(3), 263–268, 1899.

1005 Moro, M., Falcucci, E., Gori, S., Saroli, M., and Galadini, F.: New paleoseismic data across the Mt. Marine Fault between the  
1006 2016 Amatrice and 2009 L’Aquila seismic sequences (central Apennines), *Ann. Geophys.*, 2016.

1007 Mouslopoulou, V., Nicol, A., Howell, A., and Griffin, J. D.: Comparison of paleoearthquake elapsed-times and mean  
1008 interevent-times for a global data set of active faults: Implications for future earthquakes and seismic hazard, *J. Geophys. Res.*  
1009 *Solid Earth*, **130**, e2024JB030036, <https://doi.org/10.1029/2024JB030036>, 2025.

1010 Obsequens Iulius: Prodigiorum liber, in "T. Livi Periochae omnium librorum. Fragmenta Oxyrhynchi reperta. Iulii Obsequentis  
1011 Prodigiorum liber", ed. O. Rossbach, pp.149-181, *Bibliotheca scriptorum Graecorum et Romanorum Teubneriana*, Leipzig,  
1012 1910.

1013 Pantosti, D., D’Addezio, G., and Cinti, F. R.: Paleoseismicity of the Ovindoli-Pezza fault, central Apennines, Italy: A history  
1014 including a large, previously unrecorded earthquake in the Middle Ages (860–1300 AD), *J. Geophys. Res. Solid Earth*, **101**,  
1015 5937–5959, 1996.

1016 Pantosti, D., and Valensise, G.: Faulting mechanism and complexity of the November 23, 1980, Campania-Lucania  
1017 earthquake, inferred from surface observations, *J. Geophys. Res. Solid Earth*, **95**, 15319–15341,  
1018 <https://doi.org/10.1029/JB095iB10p15319>, 1990.

1019 Papanikolaou, I. D., and Roberts, G. P.: Geometry, kinematics and deformation rates along the active normal fault system in  
1020 the southern Apennines: Implications for fault growth, *J. Struct. Geol.*, **29**(1), 166–188, 2007.

1021 [Pavlidis, S., and Caputo, R.: Magnitude versus faults' surface parameters: quantitative relationships from the Aegean](#)  
1022 [Region, \*Tectonophysics\*, \*\*380\*\*\(3-4\), 159-188, 2004.](#)

1023 Porreca, M., Fabbrizzi, A., Azzaro, S., Pucci, S., Del Rio, L., Pierantoni, P. P., and Barchi, M. R.: 3D geological reconstruction  
1024 of the M. Vettore seismogenic fault system (Central Apennines, Italy): Cross-cutting relationship with the M. Sibillini thrust,  
1025 *J. Struct. Geol.*, **131**, 103938, 2020.

ha formattato: Inglese (Stati Uniti)

ha formattato: Inglese (Stati Uniti)

ha formattato: Inglese (Stati Uniti)

ha formattato: Italiano (Italia)

1026 Pousse-Beltran, L., Benedetti, L., Fleury, J., Boncio, P., Guillou, V., Pace, B., Rizza M., Puliti I., Socquet A. and Aster Team:  
1027 36Cl exposure dating of glacial features to constrain the slip rate along the Mt. Vettore Fault (Central Apennines, Italy).  
1028 *Geomorphology*, 412, 108302, 2022.

1029 Pucci, S., De Martini, P. M., Civico, R., Villani, F., Nappi, R., Ricci, T., Azzaro, R., Brunori, C. A., Caciagli, M., Cinti, F. R.,  
1030 Sapia, V., De Ritis, R., Mazzarini, F., Tarquini, S., Gaudiosi, G., Nave, R., Alessio, G., Smedile, A., Alfonsi, L., Cucci, L.,  
1031 and Pantosti, D.: Coseismic ruptures of the 24 August 2016, Mw 6.0, Amatrice earthquake (central Italy), *GSA Today*, 27, 4–  
1032 10, <https://doi.org/10.1130/GSATG321A.1>, 2017.

1033 Puliti, I., Benedetti, L., Pizzi, A., Fleury, J., Francescone, M., Guillou, V., and Aster Team: Evidence for a constant slip rate  
1034 over the last ~40 ka along the Mt. Morrone fault system in Central Apennines, *Tectonics*, 43(3), e2023TC007871, 2024.

1035 Puliti, I., Pizzi, A., Benedetti, L., Di Domenica, A., and Fleury, J.: Comparing slip distribution of an active fault system at  
1036 various timescales: Insights for the evolution of the Mt. Vettore-Mt. Bove fault system in Central Apennines. *Tectonics*, 39(9),  
1037 e2020TC006200, 2020.

1038 Roberts, G. P., and Michetti, A. M.: Spatial and temporal variations in growth rates along active normal fault systems: an  
1039 example from the Lazio–Abruzzo Apennines, central Italy, *J. Struct. Geol.*, 26, 339–376, 2004.

1040 Roberts, G. P., Iezzi, F., Sgambato, C., Robertson, J., Beck, J., Mildon, Z. K., Papanikolaou, I., Michetti, A. M., Faure Walker,  
1041 J. P., Mitchell, S., Meschis, M., Shanks, R. P., Phillips, R., McCaffrey, K., Vittori, E., Visini, F., and Iqbal, M.: Characteristics  
1042 and modelling of slip-rate variability and temporal earthquake clustering across a distributed network of active normal faults  
1043 constrained by in situ 36Cl cosmogenic dating of fault scarp exhumation, central Italy, *J. Struct. Geol.*, 195, 105391,  
1044 <https://doi.org/10.1016/j.jsg.2025.105391>, 2025.

1045 Rovida, A., Locati, M., Camassi, R., Lolli, B., Gasperini, P., and Antonucci, A. (eds): Italian Parametric Earthquake Catalogue  
1046 (CPTI15), version 4.0, Istituto Nazionale di Geofisica e Vulcanologia (INGV), <https://doi.org/10.13127/cpti/cpti15.4>, 2022.

1047 Salvi, S., Cinti, F. R., Colini, L., D’Addezio, G., Doumaz, F., and Pettinelli, E.: Investigation of the active Celano–L’Aquila  
1048 fault system, Abruzzi (central Apennines, Italy) with combined ground-penetrating radar and palaeoseismic trenching,  
1049 *Geophys. J. Int.*, 155, 805–818, 2003.

1050 Santantonio, M., and Carminati, E.: Jurassic rifting evolution of the Apennines and Southern Alps (Italy): Parallels and  
1051 differences, *Bull.*, 123, 468–484, 2011.

1052 Scognamiglio, L., Tinti, E., Casarotti, E., Pucci, S., Villani, F., Cocco, M., Magnoni, F., Michelini, A., Dreger, D.: Complex  
1053 fault geometry and rupture dynamics of the MW 6.5, 30 October 2016, Central Italy earthquake. *Journal of Geophysical*  
1054 *Research: Solid Earth* 123, 2943–2964, 2018.

1055 Scotti, O., Visini, F., Faure Walker, J., Peruzza, L., Pace, B., Benedetti, L., Boncio, P., and Roberts, G.: Which Fault Threatens  
1056 Me Most? Bridging the Gap Between Geologic Data-Providers and Seismic Risk Practitioners, *Front. Earth Sci.*, 8, 626401,  
1057 <https://doi.org/10.3389/feart.2020.626401>, 2021.

1058 Serva, L., Michetti, A. M., and Trippa, G.: Trench investigations across the 1915 surface faulting in the Fucino Basin (central  
1059 Italy), *Mem. Soc. Geol. It.*, 35, 893–907, 1986.

1060 Slemmons, D. B.: Geological effects of the Dixie valley-Fairview peak, Nevada, earthquakes of December 16, 1954, *Bull.*  
1061 *Seismol. Soc. Am.*, 47(4), 353–375, 1957.

1062 Servizio Geologico d’Italia (in press) - Carta geologica d’Italia alla scala 1:50.000, F. 347 Rieti. ISPRA. Roma.

Codice campo modificato

Codice campo modificato

1063 [Tucker, G. E., McCoy, S. W., Whittaker, A. C., Roberts, G. P., Lancaster, S. T., and Phillips, R.: Geomorphic significance of](#)  
1064 [postglacial bedrock scarps on normal-fault footwalls. \*Journal of Geophysical Research: Earth Surface\*, 116, F01022, 1-14,](#)  
1065 [doi:10.1029/2010JF001861, 2011.](#)

1066 Valentini, G., Volatili, T., Galli, P., and Tondi, E.: A millennial perspective on Coulomb stress transfer impact in the seismicity  
1067 of the Central Apennine Fault System, EGU General Assembly 2024, Vienna, Austria, 14–19 Apr 2024, EGU24-7956,  
1068 <https://doi.org/10.5194/egusphere-egu24-7956>, 2024.

1069 Villani, F., Civico, R., Pucci, S., Pizzimenti, L., Nappi, R., De Martini, P. M., and the Open Emergeo Working Group: A  
1070 database of the coseismic effects following the 30 October 2016 Norcia earthquake in Central Italy, *Sci. Data*, 5(1), 1–11,  
1071 2018.

1072 [Wells, D. L., and Coppersmith, K. J.: New empirical relationships among magnitude, rupture length, rupture width, rupture](#)  
1073 [area, and surface displacement. \*Bulletin of the seismological Society of America\*, 84\(4\), 974-1002, 1994.](#)

1074 Westoby, M. J., Brasington, J., Glasser, N. F., Hambrey, M. J., and Reynolds, J. M.: ‘Structure-from-Motion’ photogrammetry:  
1075 A low-cost, effective tool for geoscience applications, *Geomorphology*, 179, 300–314, 2012.

1076