

ConcentrationTracker: Landlab components for tracking material concentrations in sediment

Laurent O. Roberge¹, Nicole M. Gasparini¹, Benjamin Campforts², and Gregory E. Tucker^{3,4,5}

¹Department of Earth & Environmental Sciences, Tulane University, New Orleans, 70118, USA

5 ²Department of Earth Sciences, Vrije Universiteit Amsterdam, Amsterdam, 1081 HV, Netherlands

³Department of Geological Sciences, University of Colorado at Boulder, Boulder, 80309, USA

⁴Cooperative Institute for Research in Environmental Sciences, University of Colorado at Boulder, Boulder, 80309, USA

⁵Community Surface Dynamics Modeling System Integration Facility, University of Colorado at Boulder, Boulder, 80303, USA

10 *Correspondence to:* Laurent O. Roberge (lroberge@tulane.edu)

Abstract. We present a set of new Landlab numerical model components that allow users to track sediment properties across a landscape grid. The components use a mass-balance approach to partition the mass concentration of each property based on sediment fluxes calculated by various Landlab flux components. The methods are generic, allowing the user to assign any sediment property that can be expressed as a mass, volume, or number concentration (for example, mass of magnetite, volume
15 of quartz, number of zircons, number of radiogenic ¹⁰Be atoms, “equivalent dose” of luminescence). Several properties can be tracked at once, each with concentration tracked in both sediment and bedrock at every location on the grid. Two ConcentrationTracker components have been formulated; one for distributed, space- and time-varying hillslope regolith movement and another for transport in fluvial networks, allowing for interaction between sediment in the water column and on the channel bed. These components can be used individually to study a single process or coupled to study the interactions
20 of multiple processes acting on a dynamic landscape. We present two examples that illustrate the diverse uses of the ConcentrationTracker components: colour banding in hillslope regolith and provenance tracking of fluvial sediments.

1 Introduction

Numerical landscape evolution models (LEMs) are commonly used to study the form and evolution of topography. LEMs typically compute the movement and storage of sediment across a terrain surface (e.g., FastScape: Braun and Willett, 2013; TTLEM: Campforts et al., 2017; Badlands: Salles, 2016; CHILD: Tucker et al., 2001; SIBERIA: Willgoose et al., 1991).
25 However, while some models track grain size populations (e.g., CAESAR: Coulthard et al., 2002; CHILD: Tucker et al., 2001), few LEMs account for the storage, fate, and transport of other sediment properties, such as lithology, geochemistry, or isotopic concentration (e.g., Cidre: Carretier et al., 2016, Carretier et al., 2023; Badlands: Petit et al., 2023; Reed et al., 2023; CAESAR-Lisflood: Xie et al., 2022, Coulthard and Macklin, 2003). Enabling models to make predictions about sediment tracers and
30 other properties would enhance our ability to interpret data and test hypotheses. Such a capability would be useful, for example, in ~~modeling~~modelling the propagation of source-to-sink sedimentary signals or understanding the effects of transient landscape

response to cosmogenic nuclide concentrations. As sediment travels from its source to its sink, properties such as isotope concentrations can change, necessitating tools that not only simulate sediment mass balance but also track the evolving characteristics of sediment.

35 Recently, a great focus has been placed on tracking cosmogenic nuclides, resulting in the development of several LEMs with this capability (Carretier et al., 2023; Mudd, 2017; Petit et al., 2023; Reed et al., 2023; Xie et al., 2022). A brief review of these models is presented in Section 1.1 of this paper. The same mass balance theory used to conserve cosmogenic nuclide concentrations can be applied more generally to conserve concentrations of any passive tracer of sediment and allow model users to simulate many other sediment properties (concentration of zircons or other minerals within sediment, heavy metal contamination, etc.). A LEM that provides the basic tracking functionality and allows the user to define the property being tracked could be applied to a wide range of landscape evolution studies.

Here, we present the *ConcentrationTrackers*, a set of Landlab components for tracking concentrations of user-defined sedimentary tracers in a gridded landscape evolution model that includes a surface layer of mobile regolith overlying bedrock. The *ConcentrationTracker* components are designed to work with other Landlab components that compute sediment fluxes, either as a 2D field of flux per unit width (as computed, for example, by the *DepthDependentDiffuser* component to represent soil creep) and/or as flux along a network of channel segments (as computed for example, by the *SpaceLargeScaleEroder* component to represent fluvial transport). These geomorphic components provide sediment fluxes to the *ConcentrationTrackers*, which use mass balance to transfer the passive sedimentary tracer concentrations across the landscape in the mobile regolith layer. The material being tracked can be any user-defined passive property of sediment that can be cast as a mass concentration (e.g., mass of magnetite per volume of sediment), volume concentration (e.g., volume of quartz grains per total volume of sediment), or number concentration (e.g., atoms of ^{10}Be , number of zircons per volume of sediment). The *ConcentrationTrackers* take advantage of the Landlab library to fill a niche un-supported by other concentration tracking models: a unit-agnostic approach that allows the user to define the property being tracked. This set of components is meant to be simple and generic, allowing the user to choose what transport processes and property concentrations are being modeled. In this paper, we show some examples ranging from a simple 1-dimensional hillslope profile showing downslope diffusion of a tracer pulse to a 2-dimensional catchment with fluvial erosion, transport, and deposition of sediment from two different lithologies.

1.1 Review of models

Repka et al. (1997) developed a 2-dimensional numerical model of a catchment subjected to hillslope and fluvial sediment transport processes. They tracked cosmogenic nuclide concentrations in moving grains to study pathway-dependent changes across the landscape, though they assumed an equilibrium landscape morphology in which there are no changes to topography. This approach has been followed up by many others (Ben-Israel et al., 2022; Carretier et al., 2009, 2019; Carretier and Regard, 2011; Codilean et al., 2010), but cannot be used to simulate transient topography or responses to external forcing on a landscape.

Small et al. (1999) added this possibility by including conservation of cosmogenic nuclide concentrations in a 1-dimensional numerical hillslope profile model with soil production and hillslope sediment transport. The hillslope profile approach was expanded upon over the next decade and a half, with a strong focus on cosmogenic nuclide concentrations (Anderson, 2015; Campforts et al., 2016; Ferrier and Kirchner, 2008; Heimsath, 2006).

Mudd (2017) ~~modeled~~modelled ^{10}Be and ^{26}Al concentrations in a 2-dimensional LEM that simulated hillslope sediment transport and detachment-limited fluvial incision on a gridded topographic surface. Unlike the 1-dimensional hillslope profile models, this approach does not track a mobile regolith layer nor resolve vertical concentration changes. This has been followed up by several other 2-dimensional cosmogenic nuclide-tracking LEMs, all with different approaches and potential uses (Carretier et al., 2023; Petit et al., 2023; Reed et al., 2023). Petit et al. (2023) used the Badlands model (Salles, 2016) to explore ^{10}Be transport in a source-to-sink system. Badlands simulates hillslope sediment transport and fluvial incision with a ~~similar~~ single-surface detachment-limited approach similar to that of Mudd (2017) and includes a submarine deposition component. The 2-dimensional LEM of Reed et al., (2023) conserves cosmogenic nuclide concentrations (e.g., ^{10}Be , ^{26}Al , ^{14}C) in a mobile regolith layer overlying bedrock and includes chemical weathering and explicit calculation of profiles in the regolith layer. The model uses a detachment-limited threshold stream-power incision approach for fluvial transport. The Cidre model (Carretier et al., 2016) uses a Lagrangian approach to track individual grains seeded across a landscape and transported within sediment fluxes. The fluxes are calculated using an erosion–deposition approach to solve for hillslope and fluvial processes. In 2023, the model was updated to include tracking of concentrations of several cosmogenic nuclides (^{10}Be , ^{26}Al , ^{21}Ne , ^{14}C , and others) within the individual grains as they travel across a landscape (Carretier et al., 2023).

The effects of episodic spalling and mass wasting on sedimentary tracer concentrations can be significant, ~~and have been studied in the context of ^{10}Be in several ways.~~ Lal (1991), Brown et al. (1995), Small et al. (1997), and Reinhardt et al. (2007) used 0-dimensional models simulating ~~^{10}Be cosmogenic nuclide~~ concentration response to periodic spalling or mass wasting events ~~that uniformly remove a specific depth of material.~~ Francis et al. (2020) ~~furthered extended the processes in~~ the 0-dimensional approach to include stochastic earthquake-triggered landslides and regolith storage. Niemi et al. (2005) and Yanites et al. (2009) used 2-dimensional catchment plan-view approaches to model the effects of spatially discrete landslide events on cosmogenic nuclide concentrations exported from the catchment. ~~In both cases, landslide frequency and area were derived from power-law frequency magnitude relationships. Landslides were located randomly throughout the domain without consideration for slope or aspect. Niemi et al. (2005) assumed a detachment limited system with no ability to cause topographic change and used the catchment for spatial statistics. On the other hand, Yanites et al. (2009) used a landscape evolution approach in which landslides erode material and transport it to the fluvial system. They used a mixing model to simulate fluvial storage of landslide-derived sediment but avoided modeling landslide deposits spatially.~~ Xie et al. (2022) used the CAESAR-Lisflood model to track the movements of landslide-derived sediment as it mixes with background fluvial and hillslope sediments. CAESAR-Lisflood is a cellular automaton ~~landscape evolution model~~LEM that ~~includes 2-dimensional hillslope creep, hydrodynamic, and sediment transport components~~uses a diffusion equation for hillslope creep and a two-dimensional hydrodynamic model and a choice of sediment transport equations to simulate fluvial morphology (Coulthard et

al., 2002, 2013; Van De Wiel et al., 2007). ~~Landslides occur as rules based emergent events in which locally over-steepened slopes iteratively adjust to a pre-defined threshold angle by moving material downslope (Coulthard et al., 2002).~~ Tracking functions have been implemented to allow tracking of grain size fractions, of heavy metal contaminants (Coulthard and Macklin, 2003), and of provenance from pre-assigned source areas (Xie et al., 2022).

~~With the *ConcentrationTracker* components, we take a more generalized approach than those described above. In contrast to the studies described above, which focus on specific tracers, we take a more generalized approach. The *ConcentrationTracker* Landlab components are designed to track unit-agnostic concentrations of sediment properties that act as passive sedimentary tracers. The unit-agnostic approach allows the user to define the sediment property of interest as long as it can be modelled as a mass, volume, or number concentration. The *ConcentrationTracker* framework is applicable to many geomorphic processes that can be simulated in Landlab (e.g., hillslope, fluvial, and marine sediment transport, and mass-wasting processes such as bedrock landsliding). The *ConcentrationTracker* components described in this study are implemented for fluvial sediment transport and for diffusive hillslope creep (described in Section 2). These passive sedimentary tracer components can be used in a Landlab derived LEM to track the mass concentration of any user defined sediment property.~~

2 Model description

The *ConcentrationTracker* set of components are mass balance models that define and track spatially variable concentrations of sediment properties as a numerical landscape evolves. The landscape evolution is determined by one or more geomorphic transport models that simulate sediment flux processes in Landlab. The sediment fluxes are then used by the *ConcentrationTracker* components to redistribute concentrations accordingly. Two *ConcentrationTracker* components couple with two different flux components, the *DepthDependentDiffuser* and the *SpaceLargeScaleEroder*, to enable tracking from sediment transport by hillslope and fluvial processes (Table 1). The components may be used independently of each other or may be coupled with one or more existing or future *ConcentrationTracker* components.

In this section, we summarize the Landlab ~~modeling~~*modelling* toolkit, then describe each *ConcentrationTracker* component along with a brief description of its corresponding Landlab flux component.

Table 1. Landlab surface process components and their companion *ConcentrationTracker* components.

Process	Flux components	<i>ConcentrationTracker</i> component
Hillslope weathering, transport	<i>DepthDependentDiffuser</i> <i>DepthDependentTaylorDiffuser</i>	<i>ConcentrationTrackerForDiffusion</i>
Fluvial erosion, transport, deposition	<i>SpaceLargeScaleEroder</i>	<i>ConcentrationTrackerForSpace</i>

125 2.1 Landlab ~~modeling~~modelling toolkit

Landlab is an open-source Python environment for ~~modeling~~modelling planetary surface processes (Barnhart et al., 2020; Hobley et al., 2017). It provides the core elements required for any surface dynamics model: a gridding engine, control of boundary conditions, and a modular set of individual surface process components that can be easily combined into multi-process models.

130 The gridding engine allows the user to create a model grid, store spatial data on the grid, and handle boundary conditions. The model grid contains nodes (points that can be regularly or irregularly spaced), cells (polygons that surround the nodes), and links (directional connections between pairs of nodes), as well as their dual complements (called corners, faces, and polygons). Data can be stored on any of these elements, for example surface elevation on nodes or directional sediment flux on links. Nodes can be set to either “boundary” nodes or “core” nodes. Boundary conditions are then easily handled by defining the
135 boundary nodes as open, fixed-gradient, or closed boundaries.

In Landlab, individual surface processes are ~~modeled~~modelled by individual components. Since they all act on the same grid and use the same set of basic functions for data storage and manipulation, they can easily be combined and interact with each other in multi-process models.

Landscape evolution components in Landlab, like other LEMs, typically treat gravitational (“hillslope”) and fluvial sediment transport processes in different ways. (e.g., Tucker and Slingerland, 1997). Hillslope processes are commonly represented by calculating the volume flux of sediment per unit width across a terrain surface. When a numerical solution is implemented on a two-dimensional grid, the usual approach is to compute a volumetric flux per width between each adjacent pair of grid nodes. On the other hand, fluvial transport is often (though not always) represented in terms of water and sediment flow along a quasi-1D network of channel segments. In this case, the usual approach is to compute, for each grid cell, a volumetric sediment
140 outflow rate, which is then used as a sediment inflow for one its neighbouring grid cells. In practice, this difference in the representation of sediment flow for hillslope versus fluvial processes necessitates two different implementations for the *ConcentrationTracker*: one designed to work with hillslope-process components or other components that use a distributed flux-per-width approach, and one for fluvial process components that rely on an embedded “routing network” approach. Below, we describe the general mass balance approach used for all *ConcentrationTracker* components followed by specific
145 descriptions of the two different implementations.

2.2 General mass balance approach

The *ConcentrationTracker* components follow a common mass balance foundation but differ in their respective details of mass transfer. The general mass balance equation is as follows:

$$\frac{\partial m_{xs}}{\partial t} = M_{xs_{in}} - M_{xs_{out}} + \Psi_{xs} , \quad (1)$$

155 where m is mass (units of mass, M), t is time (units of time, T), M_{in} and M_{out} are, respectively, the rate of mass transfer into and out of a defined area (M/T), and S is the rate of mass gain or loss from sources and sinks within that area (M/T). The subscripts Xs is used here to designate the sediment property of interest (X) carried by sediment (s) to differentiate from other similar variables. For example, m_{Xs} is the mass of the property of interest carried by sediment, while m_s is the mass of the sediment itself. Other materials that will appear in the equations in this paper are bedrock (subscript r), sediment produced by weathering (subscript p), water (subscript w), and sediment entrained in the water column (subscript sw). A list of variables is in Appendix A.

The Ψ_X term is defined by the user to allow specialized source and sink functions (for example, radionuclide production and decay) that may be independent of the specific sediment transport processes.

165 In both concentration tracking models, m_{Xs} is the product of the volume of sediment, V_s (L^3), and the mass concentration of the property carried by the sediment, C_{Xs} (M/ L^3). The governing equation for each *ConcentrationTracker* component when accounting for porosity, ϕ (unitless) becomes:

$$\frac{\partial C_{Xs} V_s}{\partial t} = - \left(\frac{1}{1-\phi} \right) \nabla \cdot Q_s C_{Xs} , \quad (2)$$

170 where sediment flux, Q_s (L^3/T) is calculated by the pre-existing Landlab sediment flux process components, which are all briefly described below in association with the respective *ConcentrationTracker* component. A complete derivation can be found in the supplemental material.

2.3 Concentration tracker for hillslope processes

2.3.1 Hillslope processes in Landlab

175 Here, we present two Landlab model components that simulate hillslope transport processes acting on a mobile regolith layer overlying bedrock: *DepthDependentDiffuser* and *DepthDependentTaylorDiffuser* (see depth-dependent creep laws in Barnhart et al., 2019). The former simulates hillslope sediment transport using a depth-dependent linear diffusion approach in the style of Johnstone and Hilley (2015). The latter uses a depth-dependent non-linear diffusion approach, combining the concepts of Ganti et al. (2012) and Johnstone and Hilley (2015). Both components are designed for use with a separate external code (which could be another component) that computes the rate of conversion of bedrock into mobile regolith (or ‘soil’). Given a mobile regolith layer, both components calculate a downslope sediment volume flux per unit width of that regolith, q_s (L^2/T).
180 For both components, the soil production rate, P_s (L/T), must be applied as an input. In this paper, we calculate P_s using the *ExponentialWeatherer* component, which follows an exponential production function in the style of Ahnert (1976):

$$P_s = P_0 e^{-H_s/H_d} , \quad (3)$$

where P_0 (L/T) is the maximum production rate, H_s (L) is the depth of the regolith layer, and H_d (L) is a depth-decay constant. P_s is multiplied by the timestep duration to calculate a height of regolith produced over that time, which is added to the mobile

185 regolith layer. Then, the sediment fluxes are calculated. For the *DepthDependentDiffuser*, the regolith transport rate is given by is:

$$Q_s = -DSH^*(1 - e^{-H_s/H^*}), \quad (4)$$

where D (L^2/T) is diffusivity, S (L/L) is local slope, and H^* (L) is regolith transport decay depth. The *DepthDependentTaylorDiffuser* replaces the above linear approach ($-DSH^*$) with a non-linear approach ($\frac{-DSH^*}{1-(S/S_c)^2}$)

190 approximated using a multi-term Taylor series expansion:

$$Q_s = -DSH^* \left(1 + \left[\frac{S}{S_c} \right]^2 + \left[\frac{S}{S_c} \right]^4 + \dots + \left[\frac{S}{S_c} \right]^{2(n-1)} \right) (1 - e^{-H_s/H^*}), \quad (5)$$

where S_c (L/L) is the critical slope and n is the user-defined number of terms.

Both hillslope diffusion components calculate fluxes on links between nodes. A Q_s value at one link is both an outflux from the upslope cell and an influx to the downslope cell. Therefore, the two components generate the same three in/outfluxes: P_s (an influx from the bedrock), Q_s entering the cell from upslope (an influx), and Q_s exiting the cell (an outflux). These are used in the *ConcentrationTrackerForDiffusion* mass balance described below.

2.3.2 Mass balance

Since the concentration is spatially variable and can be different between the bedrock and regolith layers, each of the in/outfluxes described above must have an associated concentration value. This weathered material associated with soil production rate, P_s , acting on an area, a , has a concentration value C_{Xp} , that can be equal to the concentration in bedrock (C_{Xr}) or provided with a user-defined value or equation for scenarios in which the weathering process changes the concentration, such as chemical enrichment or depletion (Brimhall and Dietrich, 1987; Ferrier et al., 2011; Riebe et al., 2017). Each sediment flux is also associated with a concentration value, so the governing mass balance (Eq. 2) becomes:

$$\frac{\partial C_{Xs} V_s}{\partial t} = \frac{-\nabla \cdot Q_s C_{Xs} + P_s a C_{Xp}}{1 - \phi}. \quad (6)$$

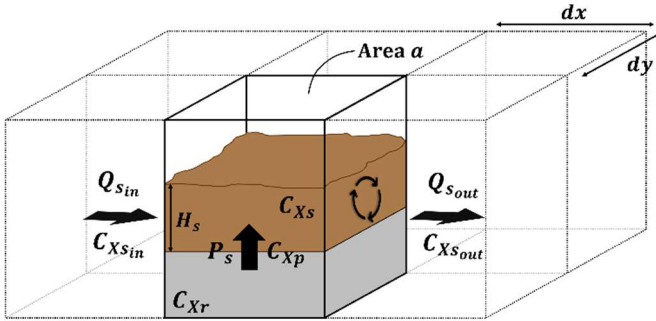


Figure 1: Conceptual sketch of one grid cell with variables defined. Black arrows show mass fluxes that contribute to changes in concentration.

2.3.3 Numerical implementation

Equation 6 is solved numerically using a first-order finite-volume approach that can act on most of Landlab's built-in grid types (e.g., rectilinear, hexagonal). The following discretization shows the numerical approach applied to a simplified 1-dimensional example with spatial dimension x . With one less spatial dimension, sediment flux is now expressed as q_s (L^2/T):

$$\frac{C_{Xs_i}^{t+1}H_{s_i}^{t+1} - C_{Xs_i}^t H_{s_i}^t}{\Delta t} = \frac{\left[-\frac{q_{s_{i+1/2}}^{t+1} C_{Xs_{i+1/2}}^{t+1} - q_{s_{i-1/2}}^{t+1} C_{Xs_{i-1/2}}^{t+1}}{\Delta x} \right] + P_{s_i}^{t+1} C_{Xp_i}^{t+1}}{1 - \phi}, \quad (7)$$

where t is the current timestep, $t + 1$ is the next timestep, i is the current node, and $i - 1$ is the upslope node. Solving for $C_{Xs_i}^{t+1}$:

$$C_{Xs_i}^{t+1} = \frac{\Delta t}{H_{s_i}^{t+1}(1 - \phi)} \left[-\frac{q_{s_{i+1/2}}^{t+1} C_{Xs_{i+1/2}}^{t+1} - q_{s_{i-1/2}}^{t+1} C_{Xs_{i-1/2}}^{t+1}}{\Delta x} \right] + C_{Xs_i}^t \frac{H_{s_i}^t}{H_{s_i}^{t+1}} + \Delta t C_{Xp_i}^{t+1} \frac{P_{s_i}^{t+1}}{H_{s_i}^{t+1}(1 - \phi)}. \quad (8)$$

Since all flux, q_s , and height, H_s , values for $t + 1$ are known (having been calculated by the *DepthDependentDiffuser* or *DepthDependentTaylorDiffuser*), and $C_{Xp_i}^{t+1}$ is known (as either the bedrock concentration, C_{Xr_i} , or from a user-defined value or function), the remaining unknown is $C_{Xs_i}^{t+1}$ on both sides of the equation. Using The method uses a first-order forward Euler approach that method sets $C_{Xs_i}^{t+1}$ on the right hand side equal $C_{Xs_i}^t$, the local concentration value at the current timestep, allowing us to solve for $C_{Xs_i}^{t+1}$ (on the left hand side), the local concentration at the next timestep. This latter method requires us to assume that the incoming sediment from upslope and from bedrock weathering fully mix with the local sediment already present before the resulting mix is fluxed onward to the next cell. Field studies show that timescales for uniform mixing of soils can vary from years to decades (e.g., Yoo et al., 2011) to centuries to millennia (e.g., Kaste et al., 2007; Roering et al., 2002). This diffusive approach works for regolith-mantled hillslopes over long timescales (Hanks et al., 1984; Pierce and Colman, 1986).

2.4 Concentration tracker for fluvial processes

2.4.1 Fluvial processes in Landlab

The concentration tracker for fluvial processes is designed to work with the *SpaceLargeScaleEroder*, as well as potential future components that use a similar mass-balance formulation. *SpaceLargeScaleEroder*, which is an update to the *Stream Power With Alluvium Conservation and Entrainment (SPACE)* component (Shobe et al., 2017), is a mass conservative erosion-deposition fluvial sediment transport model that acts on a mobile sediment layer and an underlying erodible bedrock layer. Bedrock erosion and sediment entrainment and deposition are explicitly calculated, allowing direct calculation of Q_s and of alluvial layer thickness, in which concentration C_{Xs} is tracked by the *ConcentrationTrackerForSpace*.

Mass must be conserved both for sediment in the water column and for sediment and rock on the channel bed. For the channel bed, the rate of change in topographic surface elevation, η (units of length, L), over time is the sum of changes to bedrock elevation, R (L), and sediment layer thickness, H_s (L):

$$\frac{\partial \eta}{\partial t} = \frac{\partial R}{\partial t} + \frac{\partial H_s}{\partial t} . \quad (9)$$

This can be expanded to include the processes driving those changes:

$$\frac{\partial \eta}{\partial t} = U - E_r + \left(\frac{D_{sw} - E_s}{1 - \phi} \right) , \quad (10)$$

where U (L T⁻¹) is bedrock uplift rate relative to a given baselevel, E_r is the erosion rate of bedrock, E_s is the entrainment rate of sediment from the bed into the water column, D_{sw} is the deposition rate of sediment from the water column (all L T⁻¹), and ϕ (-) is sediment porosity.

Fluvial erosion of bedrock, E_r (L T⁻¹), and sediment, E_s (L T⁻¹), follow a unit stream power formulation modified by an erosional efficiency term that modulates the relative effectiveness of each process. As sediment thickness increases, covering more of the bedrock bed, erosion of that sediment asymptotically approaches a maximum entrainment rate, while the erosion rate of the underlying bedrock declines toward zero. Fluvial sediment deposition rate, D_{sw} (L T⁻¹), uses a volumetric sediment-to-water flux ratio and a net effective settling velocity parameter, V (L T⁻¹), which accounts for turbulence and determines sediment transport distance, following Davy and Lague (2009). A complete description of the component's mathematics is provided in Shobe et al. (2017).

Conservation of mass in the water column is as follows:

$$\frac{\partial (Q_{sw}/Q_w)h_w}{\partial t} = E_s + (1 - F_f)E_r - D_{sw} - \frac{\partial (Q_{sw}/B)}{\partial l} . \quad (11)$$

Here, Q_{sw}/Q_w is the concentration of sediment in a water column of height h_w . We write this concentration as a ratio of sediment flux to water flux to differentiate it from the concentrations in the *ConcentrationTrackers*. F_f is a unitless fraction of fine sediment eroded from bedrock that becomes permanently suspended in the water column. B is channel width, and l is the streamwise spatial dimension, so $\partial/\partial l$ is the spatial derivative with respect to streamwise distance. An assumption is made that over large timescales, the relative change in sediment concentration for a given water column becomes negligible (i.e., that $\frac{\partial (Q_s/Q_w)h_w}{\partial t} = 0$). This means that *SpaceLargeScaleEroder* and *ConcentrationTrackerForSpace* should only be used over large timescales that are typically over the timescales of interest for landscape evolution models, so that the spatial gradient in sediment flux can then be calculated as:

$$\frac{\partial (Q_{sw}/B)}{\partial l} = E_s + (1 - F_f)E_r - D_{sw} . \quad (12)$$

As with the diffusion equations, the sediment flux is necessary for tracking concentrations as sediment moves across the landscape (in this case downstream). The numerical implementation solves this equation moving downstream from top to

bottom. Since sediment influx to any one node is equal to the sediment outflux of the upstream node, a local analytical solution can be implemented numerically at each cell of area a (units of L^2), [which is described in further detail in Shobe et al., \(2017\)](#):

$$Q_{sw\ out} = \frac{\sum Q_{sw\ in} + E_s a + E_r a}{1 + \frac{V a}{Q_w}}. \quad (13)$$

Figure 2 shows a diagram of one cell.

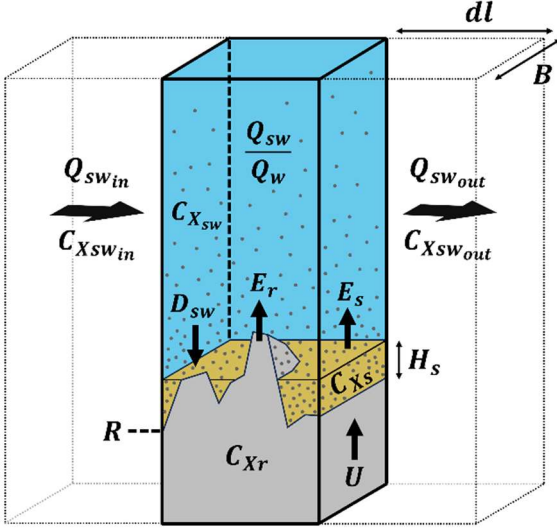


Figure 2: Conceptual sketch of one grid cell with variables defined. Black arrows show mass fluxes (D_{sw} , E_r , and E_s) that transport concentrations (C_{xsw} , C_{xr} , and C_{xs} , respectively) between parts of the cell and thus contribute to changes in concentration in sediment on the channel bed (C_{xs}), in the water column (C_{xsw}), and transported out of the cell by water flux ($C_{xsw\ out}$). Adapted from Shobe et al. (2017).

2.4.2 Mass balance

Concentration is tracked in the layer of mobile bed sediment. The mass balance is directly affected only by sediment deposition from the water column (D_{sw}) and entrainment from the bed (E_s). Erosion of bedrock (E_r) does not directly impact the mobile bed layer, as it is first entrained into the water column. Therefore Eq. 2 becomes:

$$\frac{\partial C_{xs} H_s}{\partial t} = \frac{C_{xsw} D_{sw} - C_{xs} E_s}{1 - \phi}. \quad (14)$$

However, the concentration associated with sediment in the water column, C_{xsw} , is unknown. This is calculated by applying a concentration mass balance to Eq. 11 for sediment conservation in the water column. We then use the same assumption that temporal change in mass is negligible when considering landscape evolutionary timescales and calculate the deposition term

as $D_{sw} = \frac{Q_{sw}}{Q_w} V$, where V is a net effective sediment settling velocity parameter. This assumes that the speed of sediment and

water are equal, so any changes in the $\frac{Q_{sw}}{Q_w}$ ratio must be driven by erosion and deposition. The result is a local solution to property concentrations associated with sediment suspended in the water column:

$$Q_{sw\ out} C_{Xsw\ out} = \frac{\sum Q_{sw\ in} C_{Xsw\ in} + E_s a C_{Xs} + (1 - F_f) E_r a C_{Xr}}{1 + \frac{V a}{Q_w}}. \quad (15)$$

This is the same local analytical solution as Eq. 13 for sediment fluxes, but now also tracks local concentrations of the user-defined sediment properties. The concentration in the water column (C_{Xsw}) is the same as that leaving the water column ($C_{Xsw\ out}$), so $D_{sw} C_{Xsw}$ can now be applied to the bed concentration (Eq. 14), thus allowing us to solve for C_{Xs} .

2.4.3 Numerical implementation

We use a first-order finite-volume method to numerically solve Eq. 14 for most of Landlab's built-in grid types (e.g., rectilinear, hexagonal). For simplicity, we show the numerical discretization applied to a 1-dimensional example that assumes flow is from left to right:

$$\frac{C_{Xs_i}^{t+1} H_{s_i}^{t+1} - C_{Xs_i}^t H_{s_i}^t}{\Delta t} = \frac{C_{Xsw_i}^{t+1} D_{sw_i}^{t+1} - C_{Xs_i}^t E_{s_i}^{t+1}}{1 - \varphi}, \quad (16)$$

where t is the current timestep, $t + 1$ is the next timestep, i is the current location, and $i - 1$ is the upstream location. Solving for C_i^{t+1} :

$$C_{Xs_i}^{t+1} = C_{Xs_i}^t \frac{H_{s_i}^t}{H_{s_i}^{t+1}} + \frac{\Delta t}{H_{s_i}^{t+1}} \left[\frac{C_{Xsw_i}^{t+1} D_{sw_i}^{t+1} - C_{Xs_i}^t E_{s_i}^{t+1}}{1 - \varphi} \right]. \quad (17)$$

The value of $C_{Xsw_i}^{t+1}$ remains unknown, so a solution to Eq. 15 must be calculated. Here, $\sum Q_{sw\ in} C_{Xsw\ in}$ is known, as it is sum of outfluxes from upstream nodes (in this case, the outflux from the single upstream node at location $i - 1$):

$$Q_{sw_i}^{t+1} C_{Xsw_i}^{t+1} = \frac{Q_{sw_{i-1}}^{t+1} C_{Xsw_{i-1}}^{t+1} + E_{s_i}^{t+1} a C_{Xs_i}^t + (1 - F_f) E_r^{t+1} a C_{Xr_i}^{t+1}}{1 + \frac{V a}{Q_w}}. \quad (18)$$

Solving for $C_{Xsw_i}^{t+1}$ provides the last piece of the puzzle to solve Eq. 17.

3 1-dimensional applications

Here we show 1-dimensional examples of the *ConcentrationTrackers* coupled with their respective companion flux components.

3.1 Hillslope processes

In this one-dimensional hillslope example, we couple the *ConcentrationTrackerForDiffusion* to the *DepthDependentDiffuser*. We generate a 200 m long hillslope that exists at a state of equilibrium with the local rock uplift rate using the parameters shown in Table 2. In this steady state, the rate of bedrock weathering is equal to the local rate of rock uplift relative to baselevel, such that the bedrock surface elevation remains steady in time. The increase in regolith depth caused by bedrock weathering is balanced by the rate of downslope regolith transport such that the regolith depth and regolith surface elevation also remain steady in time. Although the hillslope morphology is static in time, the sediment conveyor belt is constantly churning; bedrock is constantly rising and weathering into mobile regolith, which is then transported downslope. The rock and sediment making up the seemingly static hillslope are at no point static themselves. We show this effect with 3 examples [scenarios](#) of a 1-dimensional hillslope profile (Table 2) and a packet of tracer sediment using the *ConcentrationTrackerForDiffusion*.

Table 2. Parameters used for 1-dimensional hillslope example.

Parameter name	Symbol	Units	Value		
Number of columns	$ncols$	-	20		
Spatial resolution	dx	m	10		
Temporal resolution	dt	y	1		
Uplift rate	U	m/y	0.00001		
Depth-decay constant	H_d	m	1		
Soil transport decay depth	H^*	m	1		
Maximum soil production rate	P_0	m/y	0.0001	0.0001	0.001
Diffusivity constant	D	m ² /y	0.01	0.005	0.005
Scenario:			Ex: 1High D	Ex: 2Low D	Ex: 3High P_0

In [Example 1the high diffusivity scenario](#), the steady-state landscape comprises an approximately 20 m tall bedrock hillslope overlain by an approximately 2.3 m deep mobile regolith layer (Figure 3a). We place a virtual packet of tracer sediment at the 150 m mark by increasing the concentration to a value of 1 (here representing a volume concentration) for the regolith layer. This can be thought of as digging a virtual pit in the mobile regolith layer and replacing the removed material with tracer sediment, for example of a different colour. Aside from colour, this sediment is exactly the same as that comprising the rest of the regolith layer. We then run the numerical model for 10,000 years to track the downslope movement of this packet of tracer sediment through time (Figure 3d).

Since this [example-scenario](#) uses a linear diffusion equation, all transported sediment moves only from one node to the next downslope before it can then be transported further. This results in a key assumption: the regolith layer is homogeneously mixed at all times. There is no stratification of regolith and the process that causes downslope regolith movement of the soil also causes full mixing of the regolith column. Although not presented as an example [scenario](#), this is true also of the non-linear diffusion model. With homogeneous mixing, the tracer sediment becomes diluted as it travels downslope. With each

increment of downslope movement, any tracer sediment transported from upslope fully mixes with the local regolith layer before it can then be transported further.

Since this is a steady-state hillslope, the rate of regolith production from bedrock weathering matches the rock uplift rate. This means that the diffusivity constant, D , and the soil transport decay depth, H^* , both affect the steady-state topography of the hillslope in order to equilibrate regolith flux rates. This is shown by comparing [Example 1 the high diffusivity scenario](#) (Figure 3a) with [Example 2 the low diffusivity scenario](#) (Figure 3b), where the hillslope is taller and steeper in order to compensate for a smaller value of D (Table 2; Figure 3b). Despite the topographic change, the rate of movement of the sediment tracer pulse is unaffected by this change to D (Figure 3d and Figure 3e) because the regolith layer depth and flux rates do not change.

[Example 3 The high soil production rate scenario](#) (Table 2) shows a ~~scenario situation~~ (Figure 3c) in which the maximum soil production rate, P_0 , has increased by an order of magnitude. This increases the steady-state regolith depth to 4.6 m. The tracer sediment pulse travels more slowly downslope ~~in this scenario; when compared to the~~ than in the thinner soils ~~of in Examples 1 and 2 the high and low diffusivity scenarios~~ (Figure 3a,b), as it gets diluted into a larger reservoir of non-tracer sediment at each incremental downslope movement (Figure 3f). Figure 3g shows a time series of tracer concentration as it exits the domain at the toe of the slope throughout the 10,000-year model run for each of the three ~~examples~~ scenarios. For ~~Examples 1 and 2 the high and low diffusivity scenarios~~, concentration begins to increase after 1,000 years or so, when sufficient tracer sediment has made its way downslope to the toe. The tracer sediment pulse increases to a maximum near 3,000 years and then decreases again until about 6,000 years before tailing off toward zero again. In [Example 3 the high soil production rate scenario](#), the pulse moves slower, taking longer to start, to peak, and to return back to zero.

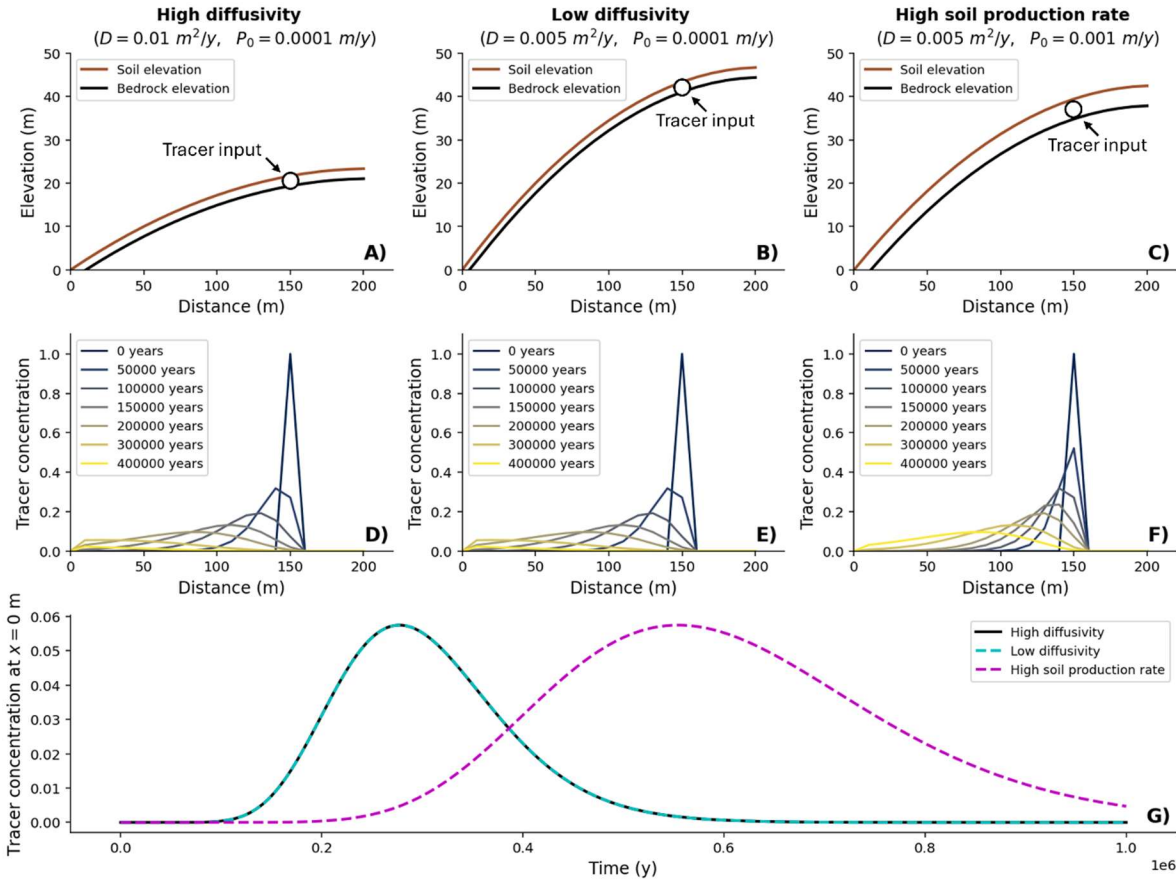


Figure 3. Three examples scenarios illustrating the downslope movement of a tracer packet in a steady-state 1-dimensional hillslope profile. The top row (a, b, and c) shows the steady-state hillslope profile. The middle row (d, e, and f) shows the spatial location of the tracer packet through time as it travels downslope. The bottom row (g) is a time series comparing the concentration at the toe of the slope for the three examples-scenarios through time. In Examples-the high and low diffusivity scenarios 1 and 2, despite differences in topography (a, b) the downslope movement of the tracer packet is the same (d, e), so the time series plot on top of each other in (g). In Example 3 the high soil production rate scenario, the regolith layer is thicker (c), therefore causing the tracer packet to move more slowly (f) and move across the toe of the slope later (g).

3.2 Fluvial processes

Here, we couple the *ConcentrationTrackerForSpace* to the *SpaceLargeScaleEroder* to produce a fluvial equivalent to the steady-state hillslope example described above. This time, we use the parameters in Table 3 to create a 2,000 m long river channel that exists at steady state. Bedrock erosion rate E_r equilibrates to the local rate of rock uplift such that the bedrock surface elevation remains steady in time. Sediment generated from bedrock erosion is transported downstream and either deposited onto the channel bed (at a rate of D_{sw}) or exits the numerical domain through the outlet of the channel. Deposition of bedrock-derived sediment is balanced by erosion of channel bed sediment (at a rate of E_s) such that the thickness of the channel bed sediment layer remains constant. Although the bedrock and channel bed elevations remain unchanged through time, the bedrock is constantly being uplifted, eroded, and then transported downstream as sediment in the water column. The

water column interacts with the channel bed by eroding and depositing sediment, so material is constantly moving throughout the system. Unlike the hillslope examples [scenarios](#) described earlier, the water column in *SpaceLargeScaleEroder* can transport sediment a long distance from its original location (i.e., more than the distance from one node to the next). This results in a sediment tracer pulse that acts differently than those in the hillslope [examples](#) [scenarios](#). We show two [examples](#) [fluvial scenarios](#) below in which we place a packet of tracer sediment into the steady-state channel bed in a manner comparable to the hillslope examples (Figure 4).

Table 3. Parameters used for 1-dimensional fluvial example.

Parameter name	Symbol	Units	Value	
Number of columns	$ncols$	-	20	
Spatial resolution	dx	m	100	
Temporal resolution	dt	y	1	
Uplift rate	U	m/y	0.001	
Sediment erodibility	K_s	$m^{-1} *$	0.0002	
Bedrock erodibility	K_r	$m^{-1} *$	0.0001	
Sediment porosity	ϕ	-	0	
Fraction of fine material	F_f	-	0	
Effective settling velocity	V	m/y	1	10
		Scenario:	Ex. 1 Long transport length scale	Short transport length scale Ex. 2
		* m is the area scaling exponent for stream power.		

In [Example 1 the long transport length scale scenario](#) (Table 3), the steady-state river channel rises from 0 m to about 4 m over the course of its 2,000 m long path and is overlain by a bed sediment layer about 0.07 m thick (Figure 4a). We replace the bed sediment at the 1,500 m mark with a packet of tracer sediment by increasing the concentration to a value of 1. As with the hillslope examples, the concentration is unit agnostic but is imagined here as a volumetric colour concentration. In other words, the tracer sediment is identical to all other sediment in the model except for its colour, which is identified by a concentration value. We run the numerical model for 250 years to track the downstream movement of this packet of tracer sediment (Figure 4c). Some of the tracer sediment that is eroded from its original location is transported partway downstream before being deposited on the channel bed. This results in a small increase in concentration at each downstream node. However, unlike the hillslope examples, some of the mobilized tracer sediment is transported far enough downstream that it leaves the numerical domain altogether in the first timestep. This can be seen in Figure 4e, which shows the tracer pulse tracked at the outlet of the channel. The onset of the fluvial tracer pulse is immediate, and it peaks at 26 years. The pulse has largely decayed by 209 years, at which point only 0.01% of the original tracer remains in the channel bed.

The primary driver of the tracer sediment packet speed is the net effective settling velocity parameter (V), which controls the transport length scale for sediment entrained into the water column. Increasing V causes sediment to travel a shorter distance before depositing, resulting in a tracer peak that takes longer to arrive at the outlet. In [Example 2 the short transport length scale scenario](#) (Table 3), we increase V tenfold ($V = 10 \text{ m/y}$). Entrained sediment is very quickly redeposited, so much of the river's erosive capability is spent re-eroding bed sediment that has ~~traveled~~[travelled](#) only a short way downstream. In

comparison to the **first example long transport length scale scenario**, this creates a steady-state channel that is much steeper (reaching a maximum bedrock elevation of about 21 m) overlain by a bed sediment layer that is much thicker (about 0.24 m), shown in Figure 4b. The increased net effective settling velocity slows the tracer packet (Figure 4d) such that it takes 2 years

390 for the first tracer sediment to reach the outlet (Figure 4e). The concentration at the outlet peaks at 61 years and decays back to 0.01% of the original tracer by 222 years (Figure 4e). At steady state, neither porosity of the channel bed layer, ϕ , (which affects the height of the bed sediment layer, but not its transport) nor the fraction of fine material, F_f , (which acts only on eroded bedrock material, not the bed sediment layer) have much effect on the tracer pulse.

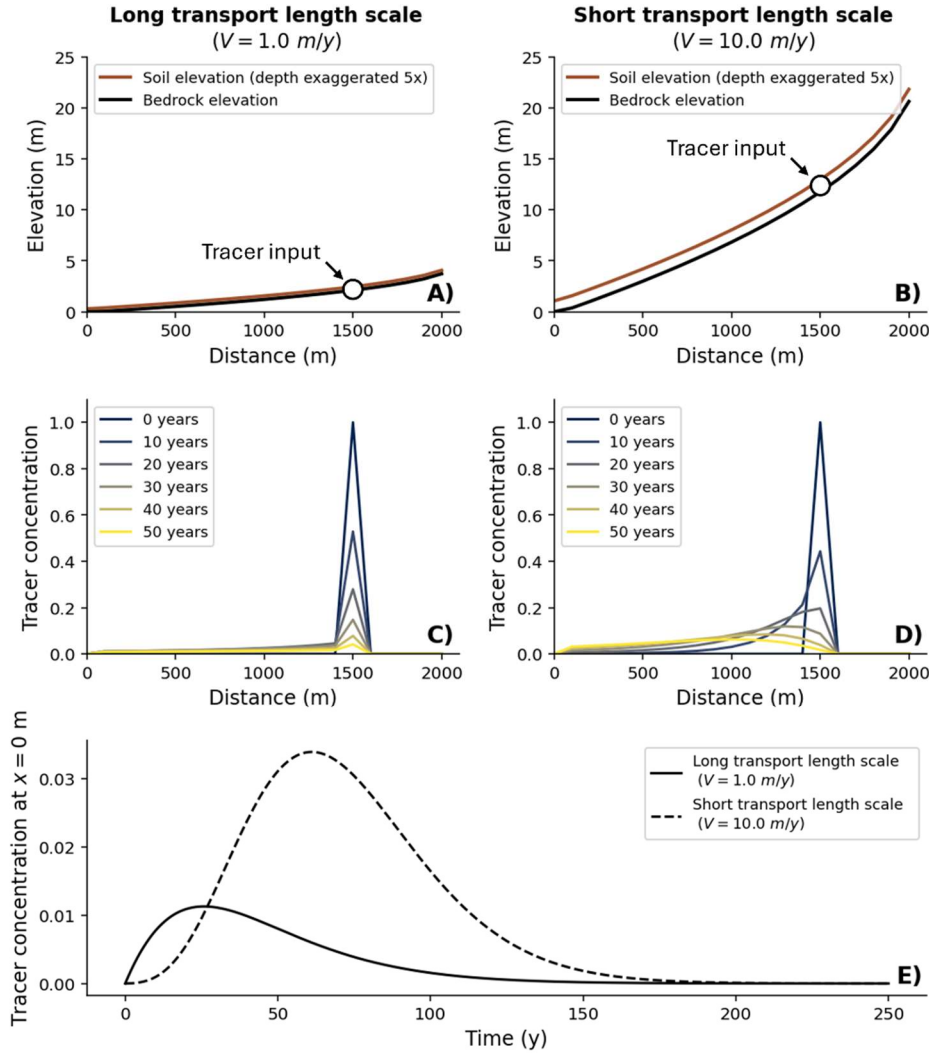


Figure 4. Two **examples scenarios** illustrating the downstream movement of a tracer packet in a steady-state 1-dimensional stream channel profile. The top row (a and b) shows the steady-state channel profile with the depth of the bed sediment layer exaggerated by a factor of 5. The middle row (c and d) shows the spatial location of the tracer packet through time as it travels downstream. The bottom row (e) is a time series comparing the concentration at the outlet of the channel for the two **examples scenarios** through time. In **Example 1 the long transport length scale scenario**, the low value of the net effective settling velocity, V , causes most

400 sediment eroded from the tracer packet to move far downstream with only a small fraction deposited along the way to the outlet. In
 | **Example 2** the short transport length scale scenario-example, V is increased tenfold, causing entrained sediment to become deposited
 not far downstream from its original location. The tracer packet therefore moves more slowly to the outlet.

4 2-dimensional applications

405 Here we show 2-dimensional examples of the *ConcentrationTrackers*. For hillslope sediment transport processes, we illustrate
 the effects of bedrock weathering on the surface expression of different coloured bedrock layers. For fluvial processes, we
 show an example of bedrock provenance in which fluvial sediments are recruited from two regions of different bedrock colour.
 We use colour as a simple visual tool. As explained before, the concentration values can be for any user-defined property of
 sediment that can be cast as a mass, volume, or number concentration.

4.1 Hillslope processes (hillslope colour bands)

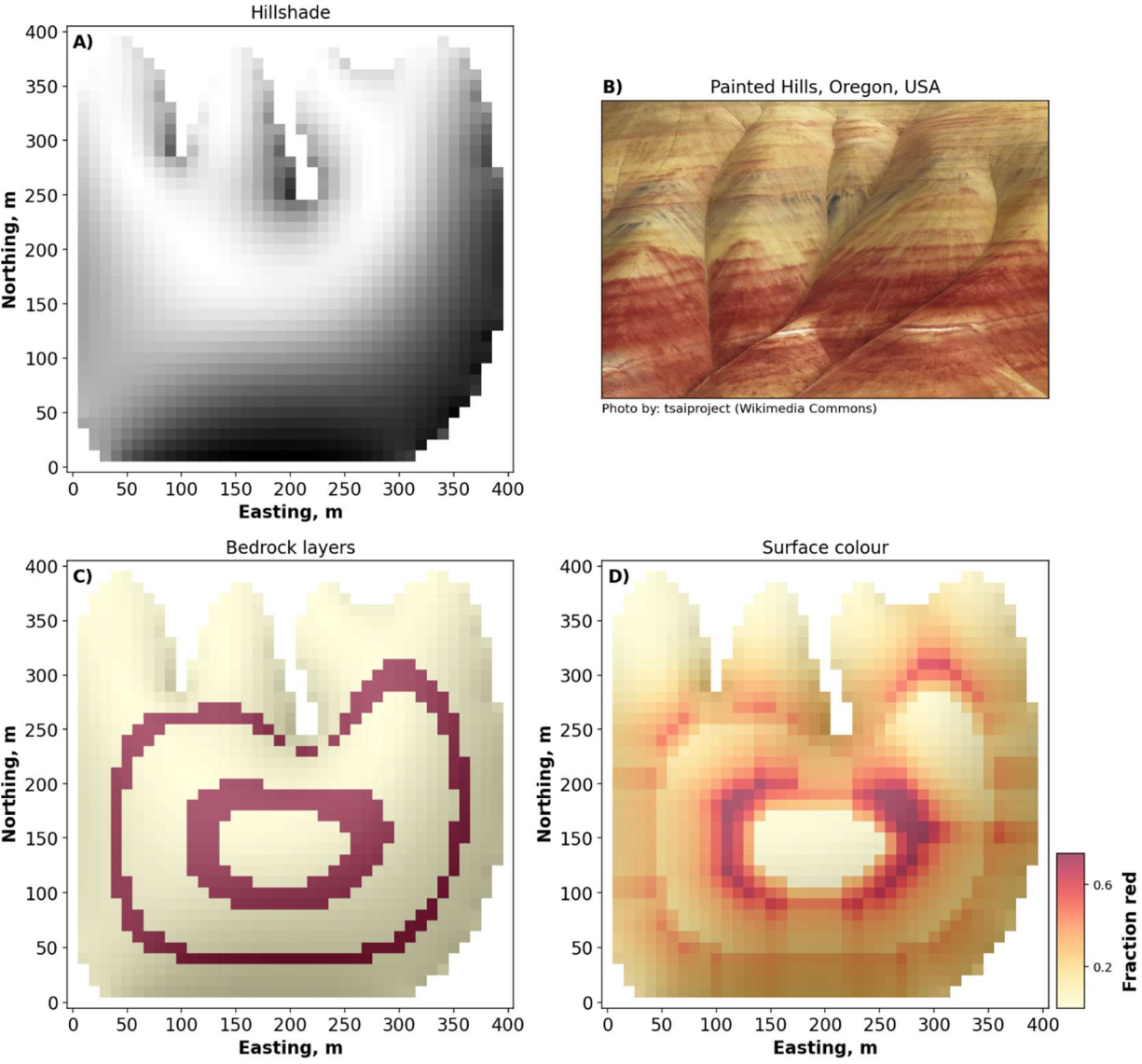
410 In the 1-dimensional hillslope example, we placed tracer sediments into the mobile regolith layer to see their downslope
 transport. Here, we instead place the tracer ‘colour’ within the bedrock. We then allow the regolith to inherit colour from its
 parent bedrock through the weathering process, enabling us to see the surface expression of the bedrock colour.
 To do this, we create an irregularly shaped hill on a 2-dimensional grid by setting a specific selection of grid nodes as open
 boundaries and evolving the landscape to a steady state over 200,000 years (hillshade shown in Figure 5a). We then apply two
 415 bands of colour to the bedrock by changing the “*bedrock_property__concentration*” values from 0 to 1 at two specific elevation
 bands (Figure 5c). We use a yellow-to-red colourmap to roughly match the colours found in the Painted Hills of Oregon, USA
 (Figure 5b). All model parameters are shown in Table 4.

Table 4. Parameters used for 2-dimensional hillslope example.

Parameter name	Symbol	Units	Value
Number of columns	$ncols$	-	41
Number of rows	$nrows$	-	41
Spatial resolution	dx	m	10
Temporal resolution	dt	y	1
Uplift rate	U	m/y	0.002
Depth-decay constant	H_d	m	1
Soil transport decay depth	H^*	m	1
Maximum soil production rate	P_0	m/y	0.01
Diffusivity constant	D	m ² /y	0.5

420 We then evolve the landscape a further 10,000 years to see the colour of the surface sediment change as sediment is transported
 downslope and replaced by newly weathered bedrock from below. At the outset, there is a period of transient change in regolith
 colour as the landscape evolves from the initial condition to a new equilibrium state. Weathering of bedrock in place causes
 the concentration value to increase in the regolith overlying the two red bedrock layers as the newly produced regolith mixes
 425 with the rest of the regolith column each timestep. Sediment transported downslope from above also mixes in, therefore

430 increasing or reducing the concentration value at the downslope node depending on the upslope concentration. The result is a muted, diffuse-looking surface expression of the bedrock layers (Figure 5d). Immediately noticeable are the differences between the horizontally convex noses and horizontally concave “gullies”. The regolith at a nose is mostly locally produced, as there is little to no supply from upslope. The concentration is therefore highly correlated with the underlying bedrock concentration, resulting in very intense colours. On the other hand, the gully sediment is an integration of all the sediment transported from the surrounding upslope areas. This elevated level of mixing results in a smeared-looking surface expression of the underlying layers.



435 **Figure 5.** Example of bedrock weathering and hillslope sediment transport on a 2-dimensional hillslope. (a) A hillshade of the irregularly shaped hillslope. (b) A picture of the Painted Hills in Oregon, USA. (c) An overlay on the hillshade showing the colour

of the bedrock (the two red bands have a concentration value of 1, while the yellow regions have values of 0). (d) A hillshade overlay showing the steady-state regolith layer colour, which is the surface expression of the two red bedrock layers after weathering and diffusional hillslope sediment transport.

4.2 Fluvial processes (provenance tracking)

Here, we again explore the surface expression of bedrock material, this time looking at fluvial channel bed sediments. We set up a 2-dimensional grid and close all boundary nodes except for one open outlet in the southwestern corner. The result is a river network that drains to this outlet (Figure 6a). We split the catchment into two regions: the northern third of the domain has the “*bedrock_property_concentration*” value set to 1, indicating “red” bedrock, while the two thirds remaining to the south are left with a value of zero, indicating “yellow” bedrock (Figure 6b). Other than this colour difference, the bedrock properties in the two regions are identical. All other model parameters are shown in Table 5.

Table 5. Parameters used for 2-dimensional fluvial example.

Parameter name	Symbol	Units	Value
Number of columns	$ncols$	-	50
Number of rows	$nrows$	-	50
Spatial resolution	dx	m	100
Temporal resolution	dt	y	1
Uplift rate	U	m/y	0.001
Sediment porosity	ϕ	-	0
Fraction of fine material	F_f	-	0
Effective settling velocity	V	m/y	1
Area scaling exponent *	m	-	0.5
Slope scaling exponent *	n	-	1
Sediment erodibility *	K_s	1/m	0.0002
Bedrock erodibility *	K_r	1/m	0.0001

* Parameters for *SpaceLargeScaleEroder*. See Shobe et al. (2017) for details.

We can look at the fraction of material that comes from the northern region by analyzing the concentration value in channel bed sediment at four different locations marked in Figure 6b: the outlet of the entire catchment (black star), the outlet of a southern sub-catchment (black diamond), the outlet of a middle sub-catchment (grey diamond), and the outlet of northern sub-catchment (white diamond). The southern sub-catchment only has a small portion of its headwaters in the red bedrock region, the northern sub-catchment is entirely within the red bedrock region, and the middle catchment has about 60% of its drainage area within the red bedrock region. Fluvial incision erodes red bedrock from the northern region. It is then transported downstream and deposited along the riverbed or removed from the domain entirely. After a period of transience, the sediment colours within the catchment reach a steady state (Figure 6c). At this point, the “*sediment_property_concentration*” value reflects the fraction of channel bed material sourced from the northern region, shown in Table 6.

Table 6. Concentration values at specific outlet points.

Outlet	% of catchment in red region	Bed sediment concentration value	Bedrock concentration value
--------	------------------------------	----------------------------------	-----------------------------

Main channel	33.33%	0.3333	0
Southern sub-catchment	1.29%	0.0129	0
Middle sub-catchment	60.43%	0.6043	0
Northern sub-catchment	100%	0.9999	1

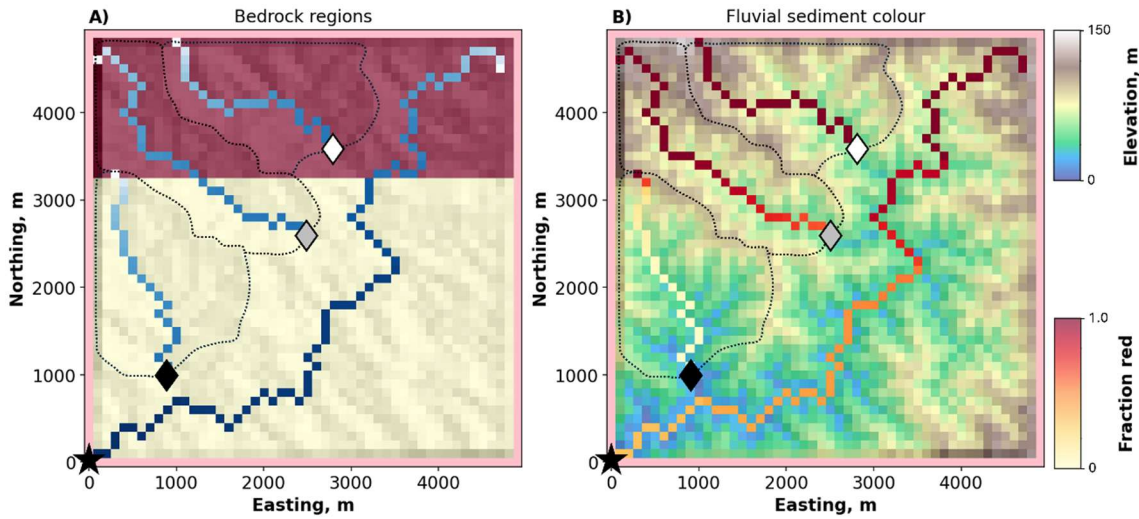


Figure 6. Example of fluvial sediment erosion, transport, and deposition changing the colour of channel bed sediment in a 2-dimensional erosional catchment. (a) A plan view hillshade overlain by a colour gradient showing topographic elevation. The shape of the river network is clearly visible. (b) A plan view hillshade overlain by the bedrock colour. The northern region has a bedrock concentration value of 1 (coloured red) and the larger southern region has a value of 0, corresponding to a yellow colour. The four coloured streams are the main channels of the four sampled watersheds. The blue colour of the stream changes from light to dark with increasing drainage area. (c) A plan view hillshade overlain by a colour gradient showing topographic elevation. The yellow to red colour of the four stream channels corresponds to the channel bed surface sediment colour at steady state. Transport and deposition of red sediment from the north causes a reddening of channel bed sediment that decreases downstream as it is mixed with more and more sediment from the southern region. In all three maps, the outlet of the entire catchment is marked with a black star and each sub-catchment is delineated and has its outlet marked with a diamond (black: south, grey: middle, white: north).

6 Potential applications

The *ConcentrationTracker* components allow the user to define the property of interest. Although the model is framed as a mass balance, the “mass concentration” is unit agnostic and can also act as a volume concentration (e.g., volume of quartz grains per volume of sediment) or a number concentration (e.g., number of atoms per volume of sediment). The colour concentration examples described above to illustrate the behaviour of the model can be changed to serve a wide variety of purposes.

However, since they depend on sediment fluxes calculated by other Landlab components, the concentrations must be properties that are physically transported as passive tracers, either as a fundamental feature of the sediment itself or as something physically sorbed to the sediment. Fluid tracers or chemicals transported in fluid cannot be simulated with the components presented here, though the same mass balance approach could be applied to a fluid flux component to achieve this. Chemical

weathering of passive sediment tracers, however, can be handled in the bedrock weathering process and/or as user-defined sources/sinks outside of the components themselves. As well, these components rely on the conceptual model of a landscape made up of a bedrock base overlain by a single homogeneous mobile regolith layer. Homogeneity requires an assumption of perfect mixing, which means that there can be no vertical variability in material or concentration values in the mobile layer.

485 The fluxes are also comprised of homogeneous material, so there can be no differential mobility, either of sediments or of the properties assigned to the sediments. There is no ability for the property to move at any rate other than that of the bulk sediment flux. With these constraints in mind, as long as the process components are well suited to the questions being asked, the *ConcentrationTrackers* can be used in many scenarios either specific to a single geomorphic process or when coupled together to simulate landscapes undergoing multiple geomorphic processes.

490 The *ConcentrationTracker* components were originally developed to study magnetic susceptibility in deposits sourced from regolith compared to those sourced from bedrock by tracking magnetite mass concentrations. Other provenance-style analyses could measure detrital zircon, or any other mineral of interest. Different concentration fields can be applied to zircon counts, ages, or masses from one or many source populations. Alternatively, different concentration fields could be used to track the mass of different minerals across the same landscape. Similarly, the components can be used for movement and deposition of
495 placer deposits and some specific types of soil contamination from known source areas. The latter is limited to contaminants sorbed to grains, as fluid contamination cannot be ~~modeled~~modelled.

One could also use *ConcentrationTracker* to model the luminescence characteristics of sediment, in which case the quantity of interest could be represented in terms of the “equivalent dose” of absorbed radiant energy per unit sediment mass required to reproduce an observed luminescence signal. For such an application, one would need to implement calculation of the gain
500 of signal due to background ionizing radiation, and for the loss of signal due to bleaching by sunlight exposure (for an overview and 1D applications of this concept, see Gray et al., 2017, 2018, 2019).

Cosmogenic nuclide concentrations can be calculated by adding a source/sink term into the model loop to calculate production and decay rates. Multiple radioactive isotopes (e.g., ^{10}Be - ^{26}Al , Uranium-series) can be ~~modeled~~modelled by tracking multiple concentration fields and applying separate production/decay equations to each one. Examples of such applications using similar
505 models can be found in Mudd (2017), Carretier et al. (2023), Petit et al. (2023), and Reed et al. (2023).

Although not a mass, the volume-averaged bulk age of sediment can be tracked as a number concentration within the mobile sediment layer (e.g., Brosens et al., 2020). From a given starting time, all sediment and bedrock can be provided with ages that increase through time. This property is transported with the sediment and averaged amongst mixing sediments, resulting in a volume-weighted average age for the sediment. This example is like our colour concentration examples. The
510 *ConcentrationTrackers* apply to any property can be tracked by volume of grains, if variation of that property does not impact the parameters in the process components.

The erosion-deposition formulation of *SpaceLargeScaleEroder* allows ~~modeling~~modelling of alluvial deposits. Although concentration values become perfectly mixed within the deposit, a synthetic stratigraphy of sorts can be rebuilt by saving deposition rates and their related concentrations prior to mixing at each timestep.

515 In all cases, the effects of transient landscape response can be ~~modeled~~modelled.
Landlab is open source, and anyone can build a *ConcentrationTracker* component as long the companion sediment flux process component is mass-conservative and fluxes can be tracked between grid nodes or on grid links.

7 Conclusions

We present a set of new numerical models to calculate passive sediment tracer concentrations in Landlab. These
520 *ConcentrationTracker* components use a common mass balance foundation that is then adapted to couple with specific pre-existing sediment flux components in Landlab. This paper presents the *ConcentrationTrackerForDiffusion*, a companion component to the *DepthDependentDiffuser* or *DepthDependentTaylorDiffuser* (used for linear and non-linear hillslope sediment transport, respectively) and the *ConcentrationTrackerForSpace*, a companion component to *SpaceLargeScaleEroder* (used for fluvial incision, transport, and deposition). The components can be coupled for use cases in which a multi-process
525 landscape is desired.

The properties being tracked must be passive tracers of sediment physically transported with the sediment itself. All sediment is assumed to always be homogeneously mixed. The components have numerous potential applications, such as calculation of erosion rates using cosmogenic radionuclide concentrations, provenance tracking using zircon counts, and sediment residence time calculations. We provide 1-dimensional and 2-dimensional examples of the *ConcentrationTrackers* for hillslope and
530 fluvial domains that show how tracer concentrations evolve differently through time depending on the sediment transport process at play. The code for the examples is shown step-by-step in two accompanying Jupyter notebook user manuals.

Appendix A

Table A1. List of variables.

Variable	Units	Variable description
a	L^2	Cell area
B	L	Stream channel width
C_X	M/L^3	Mass concentration (C) of property of interest (X) per volume of material denoted by subscript (r : bedrock, s : sediment, sw : sediment entrained in water column, p : sediment produced by weathering)
D	L^2/T	Diffusivity constant
D_{sw}	L/T	Rate of deposition of sediment from the water column, normalized by cell area
E_r	L/T	Rate of erosion of bedrock, normalized by cell area
E_s	L/T	Rate of erosion of sediment from the channel bed, normalized by cell area
F_f	-	Fraction of fine sediment (becomes permanently suspended in water column)
H_s	L	Depth of regolith layer
H_d	L	Depth-decay constant for regolith production
H^*	L	Regolith transport decay depth
h_w	L	Depth of the water column
K_r	$m^{-1} *$	Bedrock erodibility
K_s	$m^{-1} *$	Sediment erodibility
l	L	Streamwise length
m	-	Area scaling exponent
m_X	M	Mass (m) of property of interest (X)
$M_{X\text{in/out}}$	M/T	Rate of mass transfer (M) of property of interest (X) in/out
n	-	Slope scaling exponent
$ncols$	-	Number of columns in the gridded numerical domain
$nrows$	-	Number of rows in the gridded numerical domain
P_s	L/T	Soil production (bedrock weathering) rate
P_0	L/T	Maximum soil production rate
q_s	L^2/T	Sediment flux (normalized by width)
Q_s	L^3/T	Sediment flux
Q_{sw}	L^3/T	Sediment flux (sediment carried in water)
Q_w	L^3/T	Water flux
R	L	Bedrock elevation
S	L/L	Local slope
S_c	L/L	Critical slope
t	T	Time
U	L/T	Rock uplift rate
V	L/T	Net effective settling velocity parameter
V_s	M^3	Volume of sediment
$\Delta x, \Delta y$	L	x- and y- dimensions of a cell
η	L	Topographic surface elevation
φ	-	Porosity
Ψ_X	M/T	Rate of mass gain or loss from sources/sinks

535 Code availability

The source code for the current version of Landlab, including the *ConcentrationTrackerForDiffusion* and *ConcentrationTrackerForSpace* components, is available from the project website <http://github.com/landlab/landlab> (last access: June 2025) under the MIT License. Landlab's documentation, including installation instructions and software dependencies can be found at: <https://landlab.csdms.io/> (last access: June 2025). The static version of Landlab used to produce
540 the results in this paper are archived on Zenodo under <https://doi.org/10.5281/zenodo.15652866> (Roberge, 2025b). The scripts to run the components and produce the plots for all the simulations presented in this paper are archived on Zenodo under <https://doi.org/10.5281/zenodo.15653060> (Roberge, 2025a).

Interactive computing environment

Two Jupyter notebooks serve as user manuals. They describe how to use the model components and show step-by-step
545 instructions and code that walk through simplified versions of the 1D and 2D example applications presented in this paper. The simplified examples are adapted to run more quickly, so use less physically realistic parameter values, but show the same general results. They can be found at: https://github.com/loroberge/pub_Roberge_et_al_ConcentrationTracker_GMD/.

Author contribution

LR, NG, BC and GT conceptualized the model. LR developed the Landlab model code with help from BC. LR designed and
550 performed the simulations, wrote the original draft, and prepared the manuscript with contributions from all co-authors.

Competing interests

The authors declare that they have no conflict of interest.

References

- Ahnert, F.: Brief Description of a Comprehensive Three-Dimensional Process-Response Model of Landform
555 Development, *Z. Für Geomorphol., Supplementband* 25, 29–49, 1976.
- Anderson, R. S.: Particle trajectories on hillslopes: Implications for particle age and ^{10}Be structure, *J. Geophys. Res. Earth Surf.*, 120, 1626–1644, <https://doi.org/10.1002/2015JF003479>, 2015.
- Barnhart, K. R., Glade, R. C., Shobe, C. M., and Tucker, G. E.: Terrainbento 1.0: a Python package for multi-model analysis in long-term drainage basin evolution, *Geosci. Model Dev.*, 12, 1267–1297,
560 <https://doi.org/10.5194/gmd-12-1267-2019>, 2019.

- Barnhart, K. R., Hutton, E. W. H., Tucker, G. E., Gasparini, N. M., Istanbuluoglu, E., Hopley, D. E. J., Lyons, N. J., Mouchene, M., Nudurupati, S. S., Adams, J. M., and Bandaragoda, C.: Short communication: Landlab v2.0: a software package for Earth surface dynamics, *Earth Surf. Dyn.*, 8, 379–397, <https://doi.org/10.5194/esurf-8-379-2020>, 2020.
- 565 Ben-Israel, M., Armon, M., Aster Team, and Matmon, A.: Sediment Residence Times in Large Rivers Quantified Using a Cosmogenic Nuclides Based Transport Model and Implications for Buffering of Continental Erosion Signals, *J. Geophys. Res. Earth Surf.*, 127, e2021JF006417, <https://doi.org/10.1029/2021JF006417>, 2022.
- Braun, J. and Willett, S. D.: A very efficient O(n), implicit and parallel method to solve the stream power equation governing fluvial incision and landscape evolution, *Geomorphology*, 180–181, 170–179, <https://doi.org/10.1016/j.geomorph.2012.10.008>, 2013.
- 570
- Brimhall, G. H. and Dietrich, W. E.: Constitutive mass balance relations between chemical composition, volume, density, porosity, and strain in metasomatic hydrochemical systems: Results on weathering and pedogenesis, 1987.
- Brosens, L., Campforts, B., Robinet, J., Vanacker, V., Opfergelt, S., Ameijeiras-Mariño, Y., Minella, J. P. G., and Govers, G.: Slope Gradient Controls Soil Thickness and Chemical Weathering in Subtropical Brazil: Understanding Rates and Timescales of Regional Soilscape Evolution Through a Combination of Field Data and Modeling, *J. Geophys. Res. Earth Surf.*, 125, e2019JF005321, <https://doi.org/10.1029/2019JF005321>, 2020.
- 575
- Campforts, B., Vanacker, V., Vanderborght, J., Baken, S., Smolders, E., and Govers, G.: Simulating the mobility of meteoric ^{10}Be in the landscape through a coupled soil-hillslope model (Be2D), *Earth Planet. Sci. Lett.*, 439, 143–157, <https://doi.org/10.1016/j.epsl.2016.01.017>, 2016.
- 580
- Campforts, B., Schwanghart, W., and Govers, G.: Accurate simulation of transient landscape evolution by eliminating numerical diffusion: the TTLEM 1.0 model, *Earth Surf. Dyn.*, 5, 47–66, <https://doi.org/10.5194/esurf-5-47-2017>, 2017.
- Carretier, S. and Regard, V.: Is it possible to quantify pebble abrasion and velocity in rivers using terrestrial cosmogenic nuclides?, *J. Geophys. Res.*, 116, F04003, <https://doi.org/10.1029/2011JF001968>, 2011.
- 585
- Carretier, S., Regard, V., and Soual, C.: Theoretical cosmogenic nuclide concentration in river bed load clasts: Does it depend on clast size?, *Quat. Geochronol.*, 4, 108–123, <https://doi.org/10.1016/j.quageo.2008.11.004>, 2009.
- Carretier, S., Martinod, P., Reich, M., and Godderis, Y.: Modelling sediment clasts transport during landscape evolution, *Earth Surf. Dyn.*, 4, 237–251, <https://doi.org/10.5194/esurf-4-237-2016>, 2016.
- 590
- Carretier, S., Regard, V., Leanni, L., and Farías, M.: Long-term dispersion of river gravel in a canyon in the Atacama Desert, Central Andes, deduced from their ^{10}Be concentrations, *Sci. Rep.*, 9, 17763, <https://doi.org/10.1038/s41598-019-53806-x>, 2019.

- 595 Carretier, S., Regard, V., Abdelhafiz, Y., and Plazolles, B.: Modelling detrital cosmogenic nuclide concentrations during landscape evolution in Cidre v2.0, *Geosci. Model Dev.*, 16, 6741–6755, <https://doi.org/10.5194/gmd-16-6741-2023>, 2023.
- Codilean, A. T., Bishop, P., Hoey, T. B., Stuart, F. M., and Fabel, D.: Cosmogenic ^{21}Ne analysis of individual detrital grains: Opportunities and limitations, *Earth Surf. Process. Landf.*, 35, 16–27, <https://doi.org/10.1002/esp.1815>, 2010.
- 600 Coulthard, T. J. and Macklin, M. G.: Modeling long-term contamination in river systems from historical metal mining, *Geology*, 31, 451, [https://doi.org/10.1130/0091-7613\(2003\)031%253C0451:MLCIRS%253E2.0.CO;2](https://doi.org/10.1130/0091-7613(2003)031%253C0451:MLCIRS%253E2.0.CO;2), 2003.
- Coulthard, T. J., Macklin, M. G., and Kirkby, M. J.: A cellular model of Holocene upland river basin and alluvial fan evolution, *Earth Surf. Process. Landf.*, 27, 269–288, <https://doi.org/10.1002/esp.318>, 2002.
- 605 Coulthard, T. J., Neal, J. C., Bates, P. D., Ramirez, J., de Almeida, G. A. M., and Hancock, G. R.: Integrating the LISFLOOD-FP 2D hydrodynamic model with the CAESAR model: implications for modelling landscape evolution, *Earth Surf. Process. Landf.*, 38, 1897–1906, <https://doi.org/10.1002/esp.3478>, 2013.
- Erik Thorson Brown, Stallard, R. F., Larsen, M. C., Raisbeck, G. M., and Yiou, F.: Denudation rates determined from the accumulation of in situ-produced ^{10}Be in the Luquillo Experimental Forest, Puerto Rico, *Earth Planet. Sci. Lett.*, 129, 193–202, 1995.
- 610 Ferrier, K. L. and Kirchner, J. W.: Effects of physical erosion on chemical denudation rates: A numerical modeling study of soil-mantled hillslopes, *Earth Planet. Sci. Lett.*, 272, 591–599, <https://doi.org/10.1016/j.epsl.2008.05.024>, 2008.
- Ferrier, K. L., Kirchner, J. W., and Finkel, R. C.: Estimating millennial-scale rates of dust incorporation into eroding hillslope regolith using cosmogenic nuclides and immobile weathering tracers, *J. Geophys. Res. Earth Surf.*, 116, <https://doi.org/10.1029/2011JF001991>, 2011.
- Francis, O. R., Hales, T. C., Hobley, D. E. J., Fan, X., Horton, A. J., Scaringi, G., and Huang, R.: The impact of earthquakes on orogen-scale exhumation, *Earth Surf. Dyn.*, 8, 579–593, <https://doi.org/10.5194/esurf-8-579-2020>, 2020.
- 620 Ganti, V., Passalacqua, P., and Foufoula-Georgiou, E.: A sub-grid scale closure for nonlinear hillslope sediment transport models, *J. Geophys. Res. Earth Surf.*, 117, 2011JF002181, <https://doi.org/10.1029/2011JF002181>, 2012.
- Gray, H. J., Tucker, G. E., Mahan, S. A., McGuire, C., and Rhodes, E. J.: On extracting sediment transport information from measurements of luminescence in river sediment, *J. Geophys. Res. Earth Surf.*, 122, 654–677, <https://doi.org/10.1002/2016JF003858>, 2017.
- 625 Gray, H. J., Tucker, G. E., and Mahan, S. A.: Application of a Luminescence-Based Sediment Transport Model, *Geophys. Res. Lett.*, 45, 6071–6080, <https://doi.org/10.1029/2018GL078210>, 2018.

- Gray, H. J., Jain, M., Sawakuchi, A. O., Mahan, S. A., and Tucker, G. E.: Luminescence as a Sediment Tracer and Provenance Tool, *Rev. Geophys.*, 57, 987–1017, <https://doi.org/10.1029/2019RG000646>, 2019.
- 630 Hanks, T. C., Bucknam, R. C., Lajoie, K. R., and Wallace, R. E.: Modification of wave-cut and faulting-controlled landforms, *J. Geophys. Res. Solid Earth*, 89, 5771–5790, <https://doi.org/10.1029/JB089iB07p05771>, 1984.
- Heimsath, A. M.: Eroding the land: Steady-state and stochastic rates and processes through a cosmogenic lens, *Spec. Pap. Geol. Soc. Am.*, 415, 111–129, [https://doi.org/10.1130/2006.2415\(07\)](https://doi.org/10.1130/2006.2415(07)), 2006.
- 635 Hobbey, D. E. J., Adams, J. M., Nudurupati, S. S., Hutton, E. W. H., Gasparini, N. M., Istanbuluoglu, E., and Tucker, G. E.: Creative computing with Landlab: an open-source toolkit for building, coupling, and exploring two-dimensional numerical models of Earth-surface dynamics, *Earth Surf. Dyn.*, 5, 21–46, <https://doi.org/10.5194/esurf-5-21-2017>, 2017.
- Johnstone, S. A. and Hilley, G. E.: Lithologic control on the form of soil-mantled hillslopes, *Geology*, 43, 83–86, <https://doi.org/10.1130/G36052.1>, 2015.
- 640 Kaste, J. M., Heimsath, A. M., and Bostick, B. C.: Short-term soil mixing quantified with fallout radionuclides, *Geology*, 35, 243, <https://doi.org/10.1130/G23355A.1>, 2007.
- Lal, D.: Cosmic ray labeling of erosion surfaces: in situ nuclide production rates and erosion models, *Earth Planet. Sci. Lett.*, 104, 424–439, [https://doi.org/10.1016/0012-821X\(91\)90220-C](https://doi.org/10.1016/0012-821X(91)90220-C), 1991.
- 645 Mudd, S. M.: Detection of transience in eroding landscapes, *Earth Surf. Process. Landf.*, 42, 24–41, <https://doi.org/10.1002/esp.3923>, 2017.
- Niemi, N. A., Oskin, M., Burbank, D. W., Heimsath, A. M., and Gabet, E. J.: Effects of bedrock landslides on cosmogenically determined erosion rates, *Earth Planet. Sci. Lett.*, 237, 480–498, <https://doi.org/10.1016/j.epsl.2005.07.009>, 2005.
- 650 Petit, C., Salles, T., Godard, V., Rolland, Y., and Audin, L.: River incision, ^{10}Be production and transport in a source-to-sink sediment system (Var catchment, SW Alps), *Earth Surf. Dyn.*, 11, 183–201, <https://doi.org/10.5194/esurf-11-183-2023>, 2023.
- Pierce, K. L. and Colman, S. M.: Effect of height and orientation (microclimate) on geomorphic degradation rates and processes, late-glacial terrace scarps in central Idaho, *GSA Bull.*, 97, 869–885, [https://doi.org/10.1130/0016-7606\(1986\)97%253C869:EOHAOM%253E2.0.CO;2](https://doi.org/10.1130/0016-7606(1986)97%253C869:EOHAOM%253E2.0.CO;2), 1986.
- 655 Reed, M. M., Ferrier, K. L., and Perron, J. T.: Modeling Cosmogenic Nuclides in Transiently Evolving Topography and Chemically Weathering Soils, *J. Geophys. Res. Earth Surf.*, 128, e2023JF007201, <https://doi.org/10.1029/2023JF007201>, 2023.
- 660 Reinhardt, L. J., Hoey, T. B., Barrows, T. T., Dempster, T. J., Bishop, P., and Fifield, L. K.: Interpreting erosion rates from cosmogenic radionuclide concentrations measured in rapidly eroding terrain, *Earth Surf. Process. Landf.*, 32, 390–406, <https://doi.org/10.1002/esp.1415>, 2007.

- Repka, J. L., Anderson, R. S., and Finkel, R. C.: Cosmogenic dating of fluvial terraces, Fremont River, Utah, *Earth Planet. Sci. Lett.*, 152, 59–73, [https://doi.org/10.1016/S0012-821X\(97\)00149-0](https://doi.org/10.1016/S0012-821X(97)00149-0), 1997.
- Riebe, C. S., Hahm, W. J., and Brantley, S. L.: Controls on deep critical zone architecture: a historical review and four testable hypotheses, *Earth Surf. Process. Landf.*, 42, 128–156, <https://doi.org/10.1002/esp.4052>, 2017.
- 665 Roberge, L.: ConcentrationTracker: Landlab components for tracking material concentrations in sediment - Figure scripts, , Zenodo, <https://doi.org/10.5281/zenodo.15653060>, 2025a.
- Roberge, L.: ConcentrationTracker: Landlab components for tracking material concentrations in sediment - Source code, , Zenodo, <https://doi.org/10.5281/zenodo.15652866>, 2025b.
- 670 Roering, J. J., Almond, P., Tonkin, P., and McKean, J.: Soil transport driven by biological processes over millennial time scales, *Geology*, 30, 1115–1118, [https://doi.org/10.1130/0091-7613\(2002\)030%253C1115:STDBBP%253E2.0.CO;2](https://doi.org/10.1130/0091-7613(2002)030%253C1115:STDBBP%253E2.0.CO;2), 2002.
- Salles, T.: Badlands: A parallel basin and landscape dynamics model, *SoftwareX*, 5, 195–202, <https://doi.org/10.1016/j.softx.2016.08.005>, 2016.
- 675 Shobe, C. M., Tucker, G. E., and Barnhart, K. R.: The SPACE 1.0 model: a Landlab component for 2-D calculation of sediment transport, bedrock erosion, and landscape evolution, *Geosci. Model Dev.*, 10, 4577–4604, <https://doi.org/10.5194/gmd-10-4577-2017>, 2017.
- Small, E. E., Anderson, R. S., Repka, J. L., and Finkel, R. C.: Erosion rates of alpine bedrock summit surfaces deduced from in situ ¹⁰Be and ²⁶Al, *Earth Planet. Sci. Lett.*, 150, 413–425, 1997.
- 680 Small, E. E., Anderson, R. S., and Hancock, G. S.: Estimates of the rate of regolith production using ¹⁰Be and ²⁶Al from an alpine hillslope, 1999.
- Tucker, G. E. and Slingerland, R.: Drainage basin responses to climate change, *Water Resour. Res.*, 33, 2031–2047, <https://doi.org/10.1029/97WR00409>, 1997.
- 685 Tucker, G. E., Lancaster, S. T., Gasparini, N. M., and Bras, R. L.: The channel-hillslope integrated landscape development model (CHILD), in: *Landscape Erosion and Evolution Modeling*, edited by R. S. Harmon and W. W. Doe, Springer, New York, 349–388, 2001.
- Van De Wiel, M. J., Coulthard, T. J., Macklin, M. G., and Lewin, J.: Embedding reach-scale fluvial dynamics within the CAESAR cellular automaton landscape evolution model, *Geomorphology*, 90, 283–301, <https://doi.org/10.1016/j.geomorph.2006.10.024>, 2007.
- 690 Willgoose, G., Bras, R. L., and Rodriguez-Iturbe, I.: A coupled channel network growth and hillslope evolution model: 1. Theory, *Water Resour. Res.*, 27, 1671–1684, <https://doi.org/10.1029/91WR00935>, 1991.
- Xie, J., Coulthard, T. J., Wang, M., and Wu, J.: Tracing seismic landslide-derived sediment dynamics in response to climate change, *CATENA*, 217, 106495, <https://doi.org/10.1016/j.catena.2022.106495>, 2022.

Yanites, B. J., Tucker, G. E., and Anderson, R. S.: Numerical and analytical models of cosmogenic radionuclide dynamics in landslide-dominated drainage basins, *J. Geophys. Res. Earth Surf.*, 114, 695 <https://doi.org/10.1029/2008JF001088>, 2009.

Yoo, K., Ji, J., Aufdenkampe, A., and Klaminder, J.: Rates of soil mixing and associated carbon fluxes in a forest versus tilled agricultural field: Implications for modeling the soil carbon cycle, *J. Geophys. Res. Biogeosciences*, 116, <https://doi.org/10.1029/2010JG001304>, 2011.