

Detecting the occurrence of preferential flow in soils with stable water isotopes

Jonas Pyschik¹ and Markus Weiler¹

¹Chair of Hydrology, University of Freiburg, Freiburg, Germany

Correspondence: Jonas Pyschik (science@jonas-pyschik.com)

Abstract. Subsurface flow in preferential pathways in soils may transport water more rapidly than the soil matrix, ~~which~~ may be quickly activated during precipitation events and ~~enhancing~~ enhance infiltration or interflow. Vertical pathways are particularly important for runoff generation. However, identifying these pathways is challenging because traditional methods such as piezometers, soil moisture sensors, or hillslope trenches do not adequately capture the spatial scale and frequency of preferential flow features, while other experimental techniques like dye tracing are labor-intensive and invasive. In this study, we introduce a novel method to identify the locations of preferential flow by analysing vertical soil profiles of stable water ~~isotope~~ isotopes. Across four catchments, we drilled 100 soil cores (1-3 m deep) per catchment and analyzed the stable isotope composition of the soil water in 10-20 cm depth intervals to construct depth profiles. We employed clustering techniques to group soil-water isotope profiles and ~~selecting those that match~~ selected those that matched to a seasonal sampling date to establish a reference profile for each catchment using LOESS regression, representing profiles influenced solely by matrix infiltration. Deviations from these reference profiles were then used as indicators of being influenced by vertical or lateral preferential flow. Our results revealed evidence of preferential flow in all studied catchments. Especially in the alpine catchment with highly heterogeneous soils, many profiles showed distinct preferential flow features, including multiple, vertically independent pathways occurring at variable depths, even among adjacent profiles. These findings demonstrate the feasibility of using soil water isotope profiles to assess preferential flow pathways ~~highlighting and highlight~~ the substantial spatial and vertical variability of preferential flowpaths at hillslope and catchment ~~scales~~ scales.

1 Introduction

Preferential flow (PF) is an important process in soils, facilitating the rapid transport of substantial amounts of water through the soil (Anderson et al., 2009b; Beven and Germann, 2013; Angermann et al., 2017). During preferential flow, water ~~rather~~ flows through preferred pathways rather than the surrounding soil matrix, bypassing much of the soil (Kung, 1990; Nimmo, 2021). Preferential flow does not occur during every rainfall or infiltration event, but when it is activated, it can account for a significant proportion of annual flow though the soil ~~,ranging from 16-27%~~ (Eguchi and Hasegawa, 2008). Once formed, these pathways can persist across multiple events, with soil saturation playing a key role in determining which flow features become active (Wessolek et al., 2009; Anderson et al., 2009b; Guo et al., 2014).

25 Understanding the occurrence of preferential flow is important for ~~two reasons: understanding and~~ predicting runoff generation and contaminant transport. Preferential flow pathways can transport water much faster than the soil matrix (Anderson et al., 2009b; Beven and Germann, 2013; Angermann et al., 2017), with reported lateral velocities ranging from 0.3 m/s up to 0.8 m/s (Anderson et al., 2009b; Wilson et al., 2016). These high velocities can lead to rapid responses in streamflow. Additionally, the complex and interconnected nature of preferential flowpaths allows water to move through the soil with minimal
30 interaction with the soil matrix (Anderson et al., 2009b; Angermann et al., 2017). This reduces a soil's capacity to filter and retain contaminants, potentially leading to the rapid transport of pollutants into the groundwater or rivers (Khan et al., 2016).

Three primary modes of preferential flow can occur, also simultaneously, in soils: fingered flow, funneled flow and macropore flow (Kodešová et al., 2012; Nimmo, 2021).

Fingered flow occurs when the infiltration wetting front reaches a more permeable soil layer and instabilities cause down-
35 wards flow in ~~the fingers~~ (Selker et al., 1992a; Nimmo, 2021). It is driven by gravity with the highest water content at the finger tip, widening through diffusion into the soil matrix (Nimmo, 2021). Flow velocity within a finger decreases over time, thus more fingers form to transport an equal amount of water (Selker et al., 1992b).

Funneled flow occurs when infiltrating water reaches an impermeable or less conductive soil-layer, which then causes the flow to be channeled laterally (Kung, 1990; Kotikian et al., 2019; Heilig et al., 2003; Nimmo, 2021). This funneling effect can
40 guide water into vertical preferential flowpaths like macropores (Heilig et al., 2003).

Macropore flow is the predominant preferential flow process in many soils, transporting up to 95 % of water through less than 0.3 % of the total soil volume (Watson and Luxmoore, 1986). This type of flow includes various forms such as biopore flow, inter-aggregate flow, and preferential flow within soil aggregates (Bouma et al., 1977; Luo et al., 2008; Kodešová et al., 2012). Macropores are created through multiple mechanisms, including biological activity from soil fauna (e.g. earthworms, gophers, beetles) (Weiler and Naef, 2003; Badorreck et al., 2012), plant roots (Leslie and Heinse, 2013; Pinos et al., 2023), soil cracks caused by shrinkage (Thomas et al., 2013; Demand et al., 2019a) and soil pipes ~~formed~~ by internal erosion (Jones, 2010; Wilson et al., 2013). These macropores can persist for years, and in some cases, they may remain active for decades (Beven and Germann, 1982). Within a soil profile, smaller diameter flowpaths can restrict preferential flow throughout the whole soil (Paradelo et al., 2016). However, even small continuous macropores can transport significant volumes of water
50 if they maintain connectivity (Bouma, 1981). Macropore flow is initiated at or close to topsoil saturation (Weiler and Naef, 2003). During water flow in macropores, they are typically not filled entirely with water but a water film forms along the walls ~~if in~~ the pore, leaving the central part of the pore empty (Bouma et al., 1977; Bouma and Dekker, 1978). The complex network of macropores, particularly soilpipes in hillslopes, can ~~extent up to 190 m~~ extend for hundreds of meters and can contribute ~~up to 50 % to~~ substantially to overall discharge in streams (Jones, 2010; Wilson et al., 2016). This extensive and efficient transport
55 network underscores the importance of macropore flow in both hydrological and contaminant transport processes within soils.

In hillslopes the interplay of funneled and macropore flow is also called subsurface stormflow (SSF) (Guo et al., 2014). Macropores can rapidly transport infiltrating water to depths where it laterally discharges through soilpipes and funneled flow (Kelln et al., 2007). ~~While SSF only occurs in approximately 1/3 of rain events, it may transport up to 90 % of rainfall into the~~

soil-and-to-the-stream (Beasley, 1976). Observed SSF velocities in preferential flowpaths are higher than in the surrounding soil matrix (Angermann et al., 2017).

Detecting preferential flow is challenging due to the inherent complexity and heterogeneity of the relevant soil structures. Preferential flow occurs in a complex network of earthworm channels, inter-aggregate spaces (Bouma and Dekker, 1978) and root channels meso/micropores (Luo et al., 2008) spaces, and root meso- and micropores (Bouma and Dekker, 1978; Luo et al., 2008). However, simply identifying these voids is not sufficient, as not all voids carry alone is insufficient, as many do not actively transmit water during preferential flow events (Beven and Germann, 1982; Nimmo, 2021). Also, field surveys are only a snapshot of an environmental system, but flowpath arrangements can change completely within one year (Wessolek et al., 2009; Beven, 2019). Additionally, even when preferential flow features are successfully identified at the plot scale, these findings can not be easily extrapolated to the whole catchment. This limitation arises because hillslopes exhibit varying hydrological responses influenced by micro-topography, soil properties, and curvature, leading to significant spatial variability in preferential flow pathways. (Beven and Germann, 1982; Woods and Rowe, 1996; Gazis and Feng, 2004; Guo et al., 2014; Demand et al., 2019a). As a result, understanding and predicting preferential flow at broader scales remains a complex challenge that requires integrating spatial and temporal variability in soil structure and hydrological processes.

Many different methods exist to identify and partly quantify preferential flow in soils, but each has its own limitations:

- *Dye tracers and sprinkling experiments* are commonly used to visualize flowpaths in soils but have the disadvantage of destroying the site during excavation for surveying (Weiler and Naef, 2003; Alaoui and Helbling, 2006). Additionally, these techniques may miss flowpaths that transport pre-event water, as these pathways will not be marked by the dye of the event water (Beven and Germann, 2013).
- *Soil moisture sensors* located in a depth profile can detect preferential flow, by detecting rapid increases in moisture content that exceed what would be expected from matrix flow alone, or by observing non-sequential responses in sensors placed at different depths (Blume et al., 2009; Demand et al., 2019a). *Lysimeters* can be used in a similar way as the soil moisture sensors, if the outflow response occurs faster than predicted by advective or dispersive matrix transport (Małoszewski et al., 2006). Both methods, however, are limited by their spatial scale and require significant installation efforts.
- *Electric Resistivity Tomography (ERT) and Ground penetrating radar-Penetrating Radar (GPR)*. *GPR* can be used to detect soilpipes by identifying the pipe walls and tracking them spatially through the hillslope. *It can also be used in a time-lapse mode to visualize changes in soil water content and infer the presence of preferential flow pathways (Angermann et al., 2017)*. The main drawback of this technique is its limited resolution, which restricts its ability to detect only larger flow features (Holden et al., 2002).
- *X-Ray and computer tomography (CT)* can be used to visualize macropore networks or other pore structures in soils (Katuwal et al., 2015; Sammartino et al., 2015; Paradelo et al., 2016). However, as the sample volumes of the CTs are

related to the resolution, the undisturbed soil cores are difficult to obtain and, due to edge effects induced by the soil coring, can alter the measured flow.

- *Trenched hillslopes* have also been used to detect preferential flow, particularly lateral flow. Variable wetness or observed flow volumes on the hillslope face (the excavated cross section of hillslope soil) is the result from different flowpaths (Woods and Rowe, 1996; Tromp-van Meerveld and McDonnell, 2006; Scaini et al., 2017). However, trench excavation and monitoring is very labor intensive and results can only be interpreted at the plot scale.

This study aims to detect lateral and vertical preferential flowpaths in soils using stable water isotopes. Stable water isotopes are controlled by several factors (Sprenger et al., 2016b). The most relevant factor, fractionation, results from the phase transitions of water from the liquid to the gaseous phase and vice versa. Water vapor, which contains the heavier isotopes ^2H and ^{18}O , has a higher vapor pressure than water vapor of the lighter isotopes ^1H and ^{16}O , leading to a slower diffusion rate of heavy water molecules (Leibundgut et al., 2009). This results in a preference for light water molecules during evaporation and for heavier isotopes during condensation (Leibundgut et al., 2009). The fractionation effect is temperature-dependent, with colder conditions enhancing the enrichment of heavy isotopes in the liquid phase and lighter isotopes in the vapor phase (Dansgaard, 1964).

Stable isotope signatures in precipitation vary spatially due to factors such as the ~~continental-effect~~continental effect, where precipitation is progressively depleted of heavy molecules with increasing distance from the ocean. By favouring heavy water molecules in condensation, the air masses gradually lose heavy isotopes (Leibundgut et al., 2009; Liu et al., 2010). Conversely, high-intensity precipitation events can lead to *rain-out* fractionation, which favours lighter isotopes (Araguás-Araguás et al., 2000). *Altitude* also plays a role, as cooler temperature at higher elevations enhance condensation, leading to a depletion of heavier molecules (Ambach et al., 1968; Araguás-Araguás et al., 2000). In the Alps, this effect causes a change of -0.2‰ per 100 m elevation for $\delta^{18}\text{O}$ (Ambach et al., 1968).

Seasonal variations in temperature also influence isotope ratios, especially in temperate regions. During summer, precipitation tends to have more negative isotope signatures compared to winter (Rozanski et al., 2013). In particular the seasonal variation and rain-out effects provide a dynamic input of isotopic signatures into soils, making them an ideal tracer to determine water origin and flow processes within the soil (Gazis and Feng, 2004; Garvelmann et al., 2012; Mueller et al., 2014; David et al., 2018). Different flow mechanisms within the soil modify these signatures, creating distinct patterns in isotope depth profiles. By analyzing the isotopic signature of precipitation and soil cores, it is possible to infer the flow mechanisms operating within the soil (Gazis and Feng, 2004; Stumpp and Hendry, 2012).

During a rain event, precipitation first infiltrates into the topsoil, displacing older stored water and altering the isotopic signature with that of the recent precipitation (Zhao et al., 2013). The infiltrating water causes vertical transport (translatory flow) of the event water propagating through the soil matrix (Gazis and Feng, 2004; Mueller et al., 2014). This new event water pushes the older pre-event water deeper into the soil (Scaini et al., 2017). This process preserves the seasonal isotopic signature of precipitation within the soil, for example for observations during summer with higher isotopic ratios from recent summer

events near the surface and lower ratios from older winter precipitation at greater depths (Gehrels et al., 1998; Garvelmann et al., 2012; Eisele, 2013; Sprenger et al., 2016a).

However, other processes can modify the isotopic seasonality within the soil. Evaporation causes an enrichment of the heavier isotopes in the topsoil (Gazis and Feng, 2004; Garvelmann et al., 2012; David et al., 2018). Advective and dispersive transport further dampens the seasonal isotope signal with increasing depth due to stronger mixing with preexisting event water (Thomas et al., 2013). This mixing can also occur due to rising and falling groundwater levels (Uchida et al., 2005; Garvelmann et al., 2012). In hillslopes, upslope soils preserve the precipitation signal, but further downslope, lateral flow in the soil leads to mixing and a damped isotopic signal. At the footslope, the seasonality signal may be entirely lost (Garvelmann et al., 2012).

Preferential flow also distinctly alters the seasonality signal (Mathieu and Bariac, 1996; Thomas et al., 2013; Cheng et al., 2014). With preferential flow young event water can bypass older, stationary water in the soil matrix, and ~~reaches~~reach deeper layers, thereby modifying the isotopic profiles locally (Gazis and Feng, 2004; Peralta-Tapia et al., 2015). Initially, water in preferential flow paths reflects the isotopic signature of the recent event, Over time, however, the signatures ~~shifts~~shift towards those of pre-event water (Leaney et al., 1993; Gehrels et al., 1998; Kelln et al., 2007) due to lateral infiltration and exchange processes between the preferential pathways and the surrounding matrix (Weiler and Naef, 2003; Angermann et al., 2017). This exchange causes mixing, resulting in a composite isotopic signature (Leaney et al., 1993).

To assess the occurrence of preferential flow at the catchment scale and its relation to landuse and topography, we focus on identifying isotopic alterations in the soil matrix that indicate the occurrence of preferential flow. Previous studies have derived these alterations by comparing isotope profiles either to modeling results of soils without preferential flow (Mathieu and Bariac, 1996), or by analyzing soil cores sampled at different times (Cheng et al., 2014). In contrast, we compare simultaneous profiles against "reference profiles" derived from a subset of the data to identify deviations indicative of preferential flow.

2 Methods

2.1 Study Sites

Our research was conducted in four first-order catchments in three distinct low mountain ranges (Sauerland, Ore Mountains and Black Forest) and alpine landscapes (Tyrolean Alps). These sites were selected to capture a range of topographical, climatic, and land use conditions relevant to the study of preferential flow and isotopic signatures in soils.

The Obere Brachtpe (313-514 m a.s.l.) in the Rheinisch Massif (~~Sauerland~~Sauerland- SL) covers a drainage area of approximately 47.0 km (Gauge Husten). The dominant land uses are spruce forests and pastures. The mean annual temperature is 9.1°C, and the mean annual precipitation is 1227 mm, with 15-20% of the precipitation falling as snow. The main soil types are loamy Cambisols, Leptosols, and Stagnosols (Chiffard et al., 2008). The isotopic precipitation seasonality varies between $-40.7 \pm 7.0\text{‰}$ for δ^2H and $-5.8 \pm 0.9\text{‰}$ for $\delta^{18}O$ in summer, and $-68.0 \pm 11.7\text{‰}$ for δ^2H and $-9.5 \pm 1.5\text{‰}$ in winter (Nelson et al., 2021). All isotope values in this paper are expressed relative to Vienna Standard Mean Ocean Water (VSMOW).

Rütlibach and Eberbach (340-585 m a.s.l.), located at the western edge of the *Black Forest - BF*, Germany, are characterized by patches of grasslands and coniferous and broadleaf forests. The area receives 970 mm of precipitation annually, and

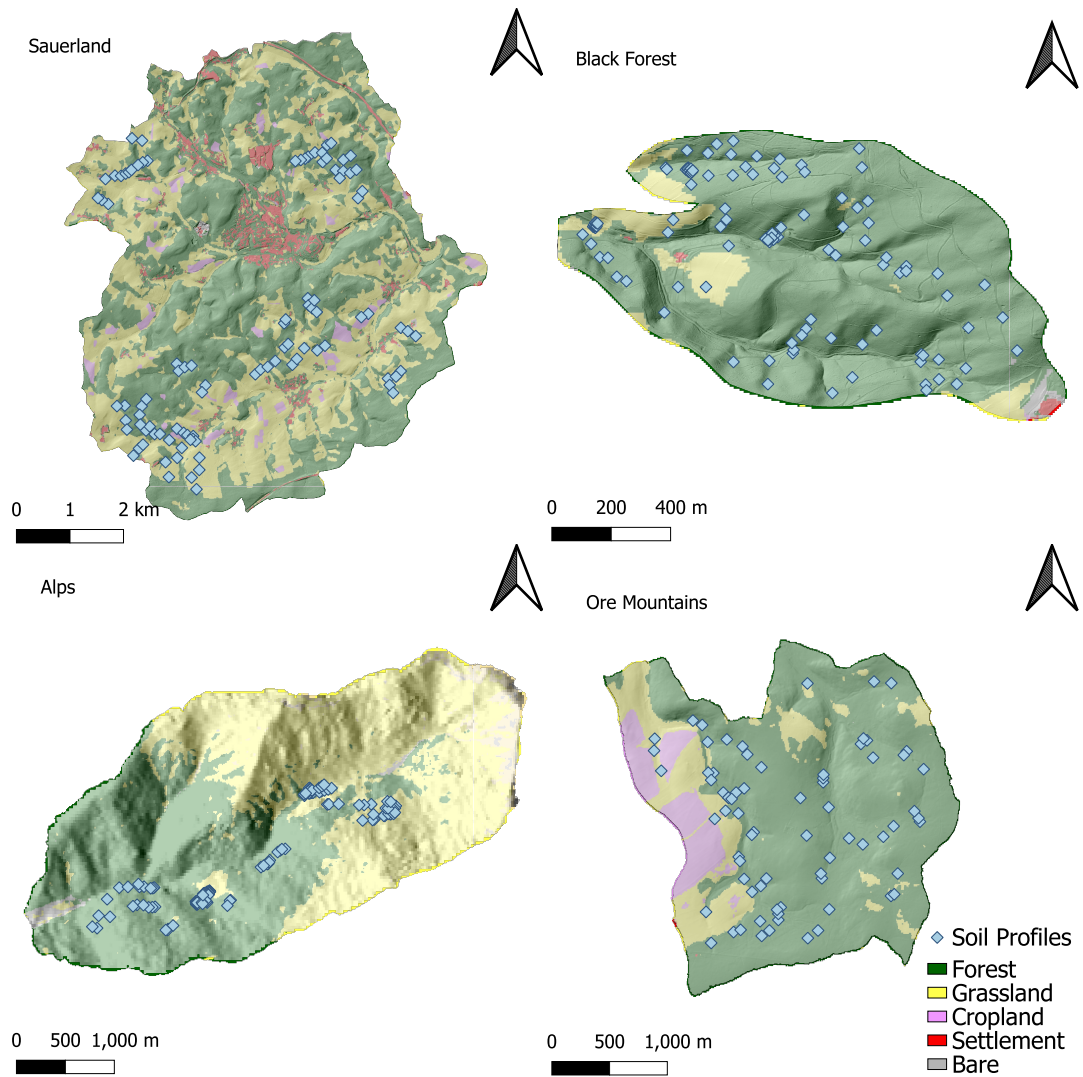


Figure 1. The four research catchments with dots representing the locations of the soil water stable isotope profiles: Sauerland (51.3548 N 7.9836 E, Germany; 106 profiles, Abbreviation: SL), Black Forest (47.9262 N 7.8268 E, Germany; 91 profiles, Abbreviation: BF), Alps (47.0023 N 11.4312 E, Austria; 96 profiles, Abbreviation: TA) and Ore Mountains (50.6987 N 13.2304 E, Germany; 86 profiles, Abbreviation: OM).

the mean annual temperature is 11°C. The predominant soil types are Cambisols on periglacial drift covers, with Gleysols and Colluviosols near the streams (Bachmair and Weiler, 2012, 2014). The isotopic precipitation seasonality varies between $-41.8 \pm 6.6\text{‰}$ for δ^2H and $-6.2 \pm 0.9\text{‰}$ for $\delta^{18}O$ in summer, and $-79.9 \pm 12.5\text{‰}$ for δ^2H and $-10.7 \pm 1.3\text{‰}$ in winter (Nelson et al., 2021).

The Padasterbach catchment (elevation 1060 - 2602 m a.s.l.) in the *Tyrolean Alps* - [TA](#), Austria, has the highest elevations among the research catchments. The landscape is predominantly spruce forest in the valleys and pastures with rock cliffs on the slopes. In 2024, the mean annual temperature was 6.1 °C with 1280 mm of annual precipitation. Summer precipitation signatures are $-53.6 \pm 9.7\text{‰}$ for δ^2H and $-8.3 \pm 1.1\text{‰}$ for $\delta^{18}O$, and winter precipitation signatures are $-112.9 \pm 14.0\text{‰}$ for δ^2H and $-15.2 \pm 1.7\text{‰}$ [for \$\delta^{18}O\$](#) (Nelson et al., 2021).

The Freiburger Mulde in the *Ore Mountains* - [OM](#), Germany (elevation 446 - 850 m a.s.l.), has a mean annual temperature of 6.6 °C and a mean annual precipitation of 930 mm. The land use is mostly spruce forest, pastures, and cropland. The predominant soil type is Stagno-gleyic Cambisols (Heller and Kleber, 2016). Summer precipitation signatures are $-46.6 \pm 6.6\text{‰}$ for δ^2H and $-6.8 \pm 0.8\text{‰}$ for $\delta^{18}O$, and winter precipitation signatures are $-84.9 \pm 13.1\text{‰}$ for δ^2H and $-11.5 \pm 1.5\text{‰}$ [for \$\delta^{18}O\$](#) (Nelson et al., 2021).

2.2 Soil Water Isotope Sampling and Analysis

Soil sampling was conducted in each catchment using an electrical auger (Makita HM1810) to drill [approx.](#) 100 holes to refusal depth. After extracting the core from the soil, the core was shaded and protected from rain to prevent isotopic alteration during sampling (Garvelmann et al., 2012). [Ore Mountains \(OM\) were sampled in mid summer \(OM-summer; July 2022; 59 profiles\) and end of winter \(OM-winter; March 2023; 28 profiles\). In the Black Forest \(BF\) catchment, samples were collected in spring \(BF-spring; May 2022; 65 profiles\) and summer \(BF-summer; August 2022; 26 profiles\). Sauerland \(SL\) samples were taken in summer \(SL-summer; June/July 2022; 64 profiles\) and fall \(SL-fall; October 2022; 49 profiles\). The Tyrolean Alps \(TA\) catchment were sampled only once in fall \(TA-fall; September 2022; 102 profiles\).](#) To avoid cross-contamination from core extraction or reinsertion, the top 5 cm of each core was scraped off and discarded. Soil samples were collected in consecutive depths intervals (10-20 cm), with finer sampling resolution closer to the soil surface to capture detailed vertical isotopic profiles.

Samples were stored into aluminum-laminated plastic bags (WEBER Packing GmbH; CB400-420BRZ; 500 ml) and sealed with a ziplock (Gralher et al., 2021). The samples were refrigerated and analyzed within four weeks to minimize isotopic shifts that could occur over time (Gralher et al., 2021). For isotopic analysis, the samples were processed using the direct vapor equilibration method (Wassenaar et al., 2008; Gralher et al., 2021). This involved inflating the sample bags and identical calibration standard bags with dry air before heat-sealing them. A silicone blot was then added to each bag as a septum. The samples were stored under constant climatic conditions ($20^\circ\text{C} \pm 1^\circ\text{C}$) for 48 hours to ensure isotopic equilibrium between the liquid and vapor phases within the bags.

After equilibration, the headspace vapor from the bags was analyzed using a laser spectrometer (Picarro LX-i2130 and LX-i2120). A cannula connected to the analyzers inlet port was inserted through the septum of each bag for sampling. Calibration standards were co-measured after every 15 samples. Most samples were measured by VapAuSa with identical stability criteria as reported in the technical note (Pyschik et al., 2025a). All measurements were referenced to the VSMOW-SLAP scale using in-house calibration standards, and isotope signatures were reported in the standard delta notation, representing the per-mil difference relative to Vienna Standard Mean Ocean Water (VSMOW) (Craig, 1961).

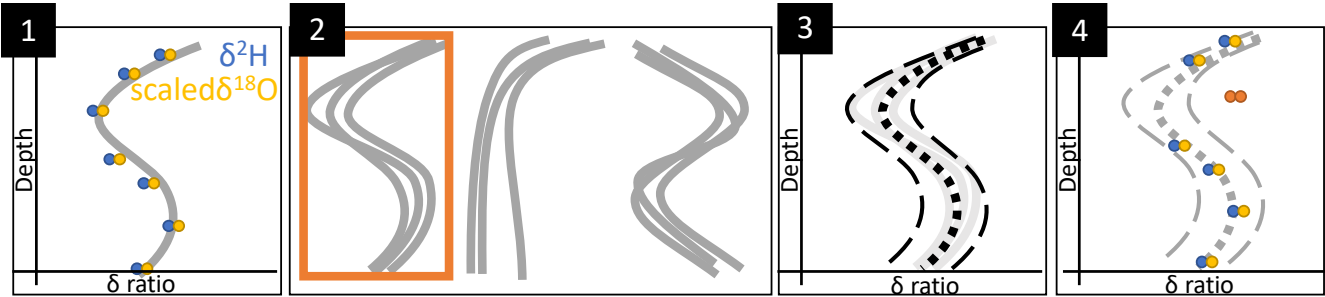


Figure 2. Visualization of the methodology: (1) scale $\delta^{18}\text{O}$ to $\delta^{2}\text{H}$ value range and fit a polynomial function, (2) cluster the fitted functions of all profiles and select the profile cluster which matches the isotopic seasonality, (3) calculate the mean and two standard deviation for the cluster to define a reference profile, (4) reference each individual profile and identify outliers which correspond to preferential flow

The identification of preferential flow in stable water isotope profiles relies on comparing measured values to established "reference profiles". The reference profiles aim to define a typical isotope profile under the premise of solely vertical matrix flow, thereby maintaining the isotopic seasonality of precipitation while accounting for a degree of dampening resulting from mixing processes and dispersion in the soil. Ideally, reference profiles would be derived by analyzing the stable water isotope composition of precipitation throughout the year and using this information to model the expected seasonality of the soil matrix. However, as such data is unavailable, we reconstructed the reference profiles based on the seasonal patterns observed directly in our soil water isotope measurements. This approach assumes that the dominant isotopic seasonality of matrix flow can be distinguished and extracted from a sufficiently large number of sampled profiles, despite local variability and potential preferential flow influences. To obtain these profiles, the entire dataset was subdivided by catchment and sampling period groups, hereafter referred to as subsets. For each subset the $\delta^{18}\text{O}$ measurements were scaled to the range of $\delta^{2}\text{H}$ using a simple linear regression, yielding *scaled* $\delta^{18}\text{O}$ values. This transformation was performed to consolidate the information into a single range of values, thereby increasing the number of effective support points for subsequent polynomial fitting. A 3rd-degree polynomial regression was fitted to each soil profile using the R stats package R Core Team (2024) and its poly function (figure 2.1). This smoothing approach reduces the influence of single-point outliersÖsome of which may later be classified as preferential flow (PF) featuresÖby fitting a continuous, curved function through the profile. As a result, the underlying seasonal signal of matrix water isotopes can be more reliably tracked, even in the presence of depth-specific disturbances caused by PF. The three coefficients and the intercept for each polynomial were then clustered using the k-means algorithm from the R caret package by Kuhn (2008). The optimal number of clusters, consistently found to be three, was determined using the silhouette method of the caret package. The cluster which most accurately represented the anticipated isotopic seasonality profile (Gehrels et al., 1998; Eisele, 2013; Sprenger et al., 2016a) was then visually selected to be used as the basis for the reference profile of the subset (figure 2.2). For example, if a subset was sampled in late summer, the cluster with high δ -value

summer precipitation ratios close to the soil surface and with low δ -value winter precipitation ratios further down in the profile, was selected. The polynomial profiles within the selected cluster were then used to calculate the reference profile for the whole subset. This was achieved by calculating a LOESS regression of the selected polynomial profiles and adding a \pm two standard deviation (figure 2.3). While applying a \pm standard deviation threshold is relatively conservative and may increase the risk of false negatives, it provides a more robust criterion for identifying PF depths. During threshold selection, we found that while narrower uncertainty bands led to a substantially higher number of identified PF depths, there was much lower confidence in their validity as actual PF occurrences. Measured values which lie within this range are considered to originate from vertical matrix flow. Only depths where both $\delta^2\text{H}$ and *scaled* ^{18}O values exceeded the reference range were considered for potential preferential flow (figure 2.4, orange points). These values were then compared to the value range of the topsoil (10-20 cm depth), under the assumption that preferential flow would exhibit an isotopic signature similar to that of the topsoil, as it most accurately reflects the current seasonal precipitation input. Only when both $\delta^2\text{H}$ and *scaled* ^{18}O values fell within the range of the topsoil and reference, these depths of the divergences from the reference profile were considered to be influenced by preferential flow. When signatures were not within that topsoil range but still outside the reference profile, or when only one isotope ratio was outside, this was not considered as preferential flow.

2.4 Mixing Models

Additionally, the profiles and depths classified as being influenced by preferential flow were subjected to a mixing analysis to determine the proportions of event water. A two end-member mixing model was applied using the R *simmr* package (Govan and Parnell, 2023). The inputs for the model included two sources: (1) the value range of the isotope signature of the topsoil at a depth of 10-20 cm of the reference and (2) the value range at the depth of the divergence of the reference profile (excluding depths 10-20 cm). The mixture was characterized by the actually measured (or scaled) $\delta^2\text{H}$ and $\delta^{18}\text{O}$ values of the divergence.

$$\delta_{\text{mixture}} = f \cdot \delta_{\text{topsoil}} + (1 - f) \cdot \delta_{\text{reference}} = \frac{\delta_{\text{mixture}} - \delta_{\text{reference}}}{\delta_{\text{topsoil}} - \delta_{\text{reference}}} \quad (1)$$

where δ_{mixture} is the measured isotope value at a given depth, δ_{topsoil} is the isotope value at 10-20 cm depth, $\delta_{\text{reference}}$ is the reference isotope value at the same depth as the mixture, and f is the proportion of the topsoil contribution to the mixture. By solving this equation, the proportion of preferential flow (f) at the identified depths was determined.

2.5 Spatial analysis

To analyse the spatial and topographic factors influencing preferential flow, all soil profiles were georeferenced. Elevation, slope and aspect were derived from Digital Elevation Models (DEM, European Space Agency (2024), 30 m resolution) for each sampling point. In addition, satellite-based land use data from the European Space Agency (ESA) were incorporated to investigate correlations between terrain characteristics and preferential flow paths (Zanaga et al., 2021). These variables were incorporated into the dataset to identify potential predictive patterns.

Logistic regression analysis was used to assess the influence of catchment, landuse, slope, elevation and aspect on the occurrence of preferential flow. Aspect, originally represented as a linear variable in degrees, was transformed into circular coordinates to account for its directional nature. The cosine transformation was applied, resulting in the following equations:

$$250 \quad \text{Aspect}_{\cos} = \cos\left(\frac{\text{Aspect} \cdot \pi}{180}\right) \quad (2)$$

These transformations made it possible to distinguish between north- or south-facing slopes (Aspect_{\cos}). By that, north facing Aspect values (0-45° and 315-360°) are therefore represented by Aspect_{\cos} values close to 1.

3 Results

3.1 Reference profiles

255 The derived reference profiles (Figure 3) show large differences in isotopic signature variations as well as profile shapes among the catchments as well as between sampling seasons within each catchment.

In the Ore Mountains (OM) ~~were sampled in mid-summer~~ ~~The summer profile~~ (OM-summer; ~~July 2022; 59 profiles~~) and end of winter (OM-winter; ~~March 2023; 28 profiles~~). ~~The summer profile~~ shows a uniform pattern with only the topsoil diverging to more positive δ -values. This deviation is expected from typical values of isotopic signatures in summer precipitation, as well as evaporation induced fractionation. With $\delta^2\text{H}$ and *scaled*¹⁸O signatures around -50 ‰ in the topsoil, the profile shows lower $\delta^2\text{H}$ and *scaled*¹⁸O signatures with depth, reaching -75 ‰ in 2 m depth. This water probably originated from the past winter. The summer profile has one of the highest standard deviations ($\delta^2\text{H}$ and *scaled*¹⁸O = ± 25 ‰). In contrast, the end-of-winter profile (OM-winter) portrays a more defined seasonality shape with low δ -values near the surface ($\delta^2\text{H}$ and *scaled*¹⁸O = -80 ‰) gradually increasing to higher $\delta^2\text{H}$ and *scaled*¹⁸O values of -65 ‰ in 2 m depth. Here, the seasonality is visible: low δ -value winter precipitation replaces the topsoil water, causing higher δ -value summer water to propagate downwards.

In the Black Forest (BF) catchment, ~~samples were collected in spring~~ ~~the spring profile~~ (BF-spring; ~~May 2022; 65 profiles~~) and summer (BF-summer; ~~August 2022; 26 profiles~~). ~~Here the spring profile~~ shows a smooth seasonal gradient with higher δ -value from spring water near the surface, low δ -value of winter water ($\delta^2\text{H}$ and *scaled*¹⁸O = -60 ‰) in 1 m depth, and a slight increase in δ -value near 2 m, originating from past fall ($\delta^2\text{H}$ and *scaled*¹⁸O = -55 ‰). In comparison, the summer profile (BF-summer) has higher $\delta^2\text{H}$ and *scaled*¹⁸O values with summer signatures of -30 ‰ near the surface and increasingly lower values at 1.7 m. These values are similar to the δ -values ($\delta^2\text{H}$ and *scaled*¹⁸O = -60 ‰) of the winter peak in the spring profile. The topsoil water from the spring profile has propagated downwards to 0.5 m in the summer profile.

Sauerland (SL) ~~samples were taken in summer~~ (SL-summer; ~~June/July 2022; 64 profiles~~) and fall (SL-fall; ~~October 2022; 49 profiles~~). Both reference profiles show variations with depth, indicating the preservation of isotopic seasonality in precipitation. The summer profile (SL-summer) shows higher $\delta^2\text{H}$ and *scaled*¹⁸O value summer precipitation at the surface (-35 ‰), decreasing with depth to the winter signatures ($\delta^2\text{H}$ and *scaled*¹⁸O = -55 ‰) in 0.5 m. A slight δ -value increase is visible in

Table 1. Summary of profile count with (multiple) preferential flow (PF) indications across Sample Groups

Group	No. of Samples	No. of Profiles	Profiles with PF	Profiles with multiple PF
OM-summer	532	59	2	1
OM-winter	266	27	6	1
BF-spring	645	65	2	1
BF-summer	285	26	17	9
TA-fall	934	96	38	21
SL-summer	577	60	2	
SL-fall	410	46	7	

1.2 m, decreasing again to winter signatures ($\delta^2\text{H}$ and $\text{scaled}^{18}\text{O} = -55 \text{ ‰}$) in 2 m depth. The fall profile (SL-fall) shows a more uniform shape with a low standard deviation of $\pm 2.5 \text{ ‰}$.

The Tyrolean Alps (TA) catchment, sampled only once in fall (TA-fall); ~~September 2022; 102 profiles~~, shows the largest seasonality and variability. The large standard deviation ($\pm 25 \text{ ‰}$) originates from the altitude effect (Ambach et al., 1968) due to a large (700 meter) elevation gradient within the catchment. Topsoil signatures indicate summer precipitation ($\delta^2\text{H}$ and $\text{scaled}^{18}\text{O} = -50 \text{ ‰}$), decreasing to winter signatures ($\delta^2\text{H}$ and $\text{scaled}^{18}\text{O} = -90 \text{ ‰}$) in 1 m depth. Below, $\delta^2\text{H}$ and $\text{scaled}^{18}\text{O}$ ratios increase slightly to -80 ‰ .

When the reference soil water isotope profiles are compared by season, BF-summer and SL-summer are strikingly similar. Both exhibit a characteristic S-shaped curve and comparable δ -values. OM-summer also shows an S-shaped curve, but with a considerably broader uncertainty band, indicating greater variability. Enriched precipitation signals are clearly visible in the topsoil across all summer profiles, while deeper layers retain more depleted isotopic signatures, likely from the preceding winter. By contrast, the TA-fall profile remains similar to that of summer, with enriched $\delta^{18}\text{O}$ and potentially evaporation-influenced $\delta^{18}\text{O}$ signatures persisting in the upper soil. However, the SL-fall profile deviates markedly, displaying more depleted isotopic values even at the surface. This suggests the early infiltration of autumn precipitation.

3.2 Identified preferential flow

By applying the reference profile thresholds to each individual profile, we identified 63 profiles from the total of 393 that met the preferential flow criteria (Table 1). Most profiles exhibit a shape akin to that depicted in figure 4-left, with all measurements laying within the reference profile interval. Figure 4-right shows a example profile with multiple identified preferential flowpaths. Most of the profiles identified for preferential flow (42) were located in the alpine catchment, the remaining equally distributed among the other three catchments. In the Alps, profiles often had multiple depths in which preferential flow was identified (mean: 2.32 depths in each identified profile). Preferential flow was predominantly identified at a depth of 50 - 65 cm, with a decrease observed at greater depths (Fig. 5). But also below 1 m preferential flow was frequently identified in the profiles.

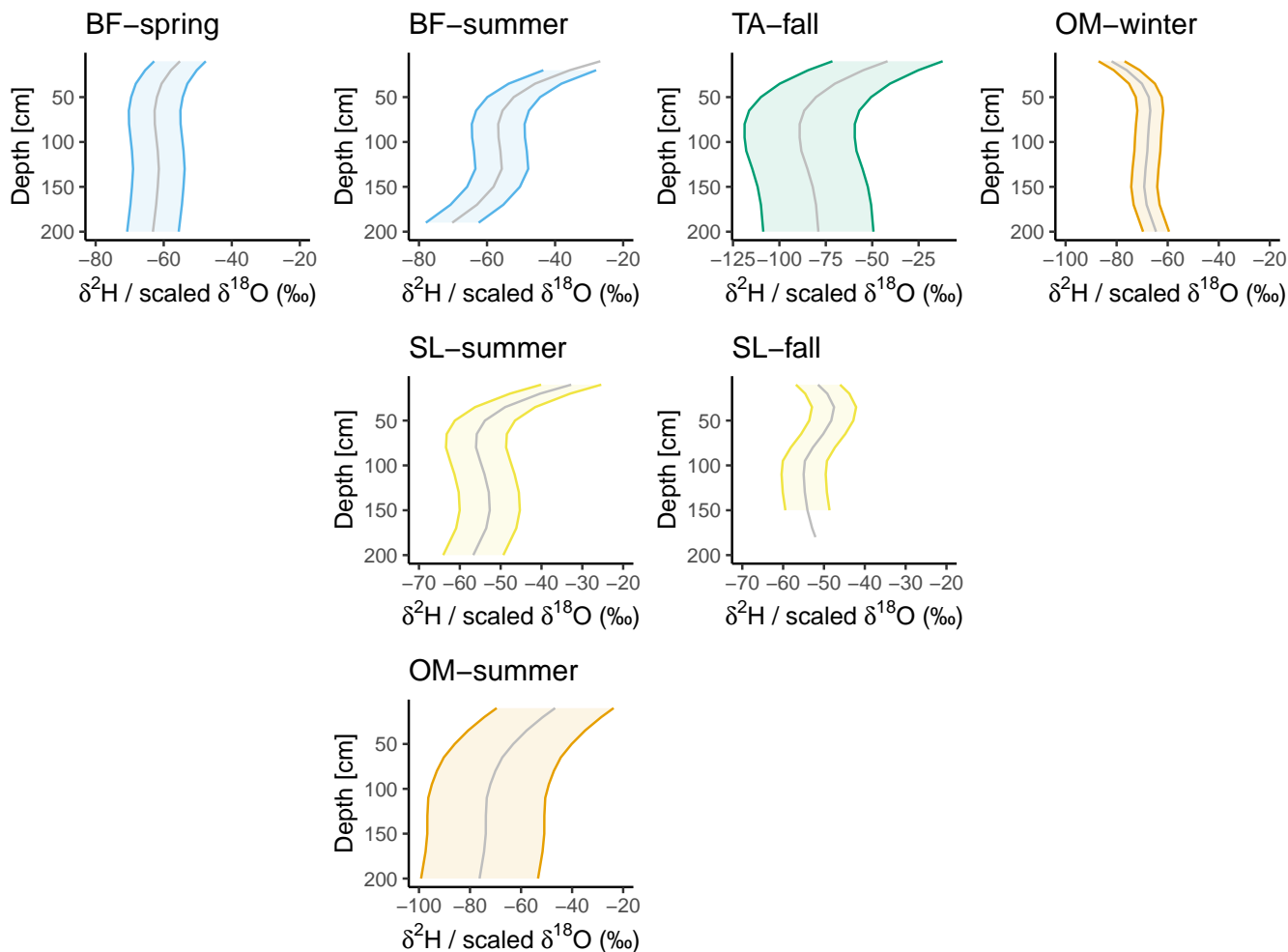


Figure 3. The reference profiles of Ore Mountains (OM), Black Forest (BF), Sauerland (SL) and Tyrolean Alps (TA) and their respective sampling season generated with the selected seasonality cluster and LOESS regression

300 The identified preferential flow could originate from vertical or lateral pathways. If preferential flow is identified at only one depth, it is impossible to determine whether the flow was lateral or vertical. However, in profiles where multiple depths have identical preferential flow isotopic signatures, this suggests that the water has moved vertically through the profile, like Profile TA-fall 7 shown in Figure 4. Additionally, these samples were taken in close proximity along a transect, with samples 9-11 positioned farthest upslope, samples 5-8 in the middle, and sample 4 situated further downslope. In these profiles, preferential
305 flow was identified at similar depths of approximately 50 cm and 110-130 cm. This pattern suggests the presence of a lateral preferential flow pathway in a certain depth range, such as a layer boundary with a transition to less conductive material, which forces infiltrated water to flow laterally down the hillslope and influences the isotopic signature uniformly in a specific depth.

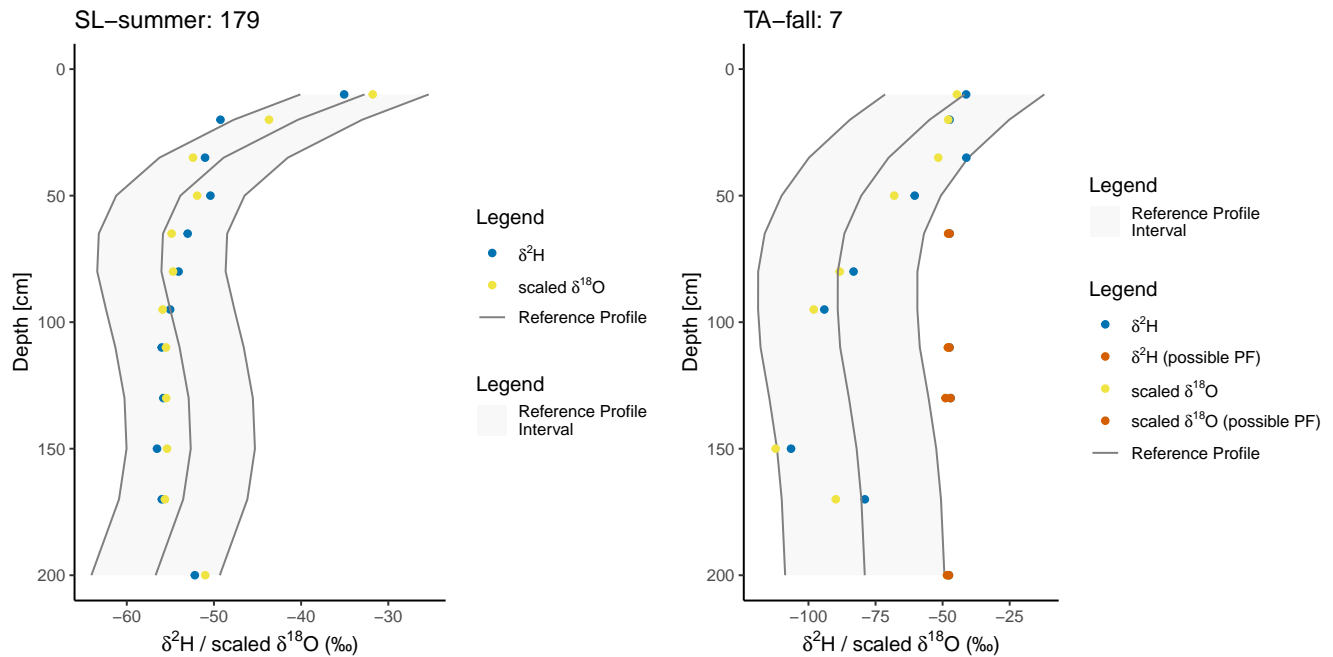


Figure 4. Profile Sauerland 179, where most points are within the reference profile and Profile Tyrolian Alps 7, where multiple samples (vermillion dots) diverge from the reference profile both in the measured/scaled δ -values and were therefore classified as preferential flow. Yellow and blue dots show the measured/scaled δ -value in each depth. The grey line portrays the generated reference profile with a \pm two standard deviation band as a preferential flow identification threshold.

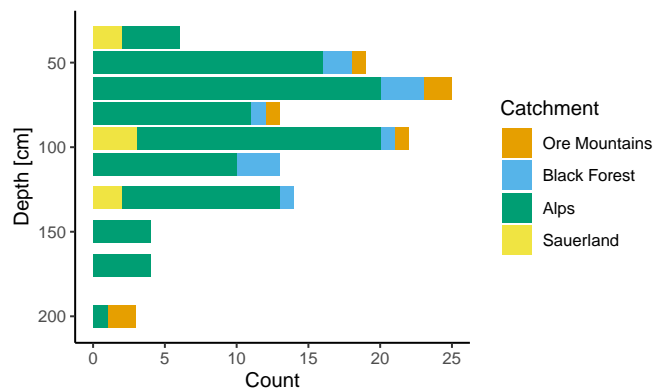


Figure 5. Depths in which preferential flow was detected within each catchment

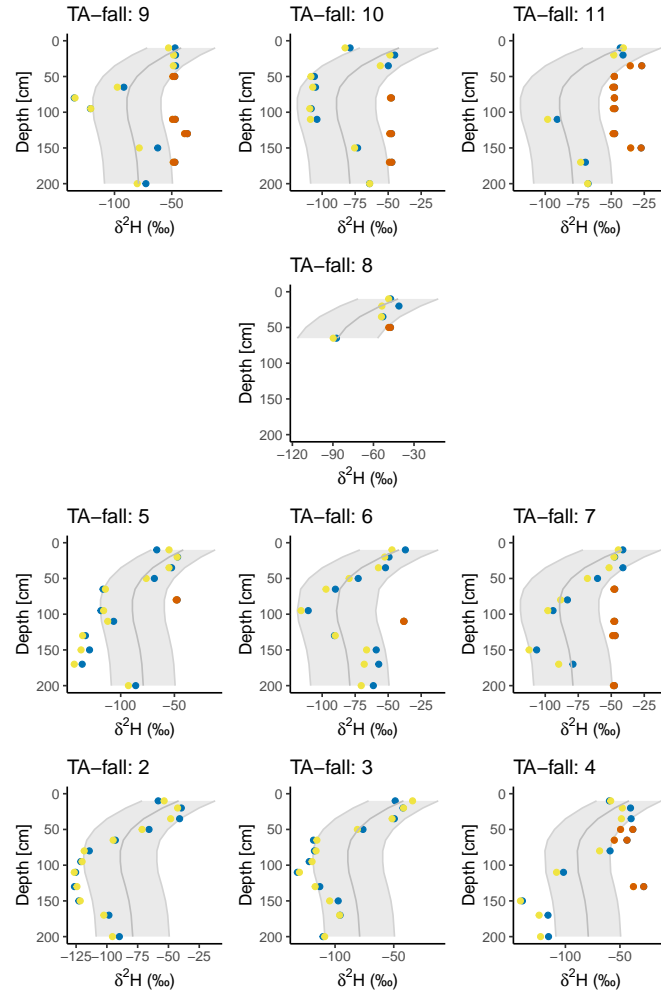


Figure 6. Profiles of TA-fall plots 2-11. Unlike most profiles which are scattered throughout the catchments, these profiles are in close vicinity on the same hillslope. Profile-rows: The profiles in the lowest row are spaced at the hill-foot and each row above is 10 m apart, upslope of the previous. Profile columns are spaced 5 m apart. Yellow and blue dots show the measured/scaled δ -value in each depth, vermilion dots indicate divergence from the reference profile. The grey line portrays the generated reference profile with a \pm two standard deviation band as a preferential flow identification threshold.

3.3 Mixing model

We applied mixing models to the isotopic compositions of the identified preferential flow samples to elucidate the composition of preferential flow. As the selected end-members were the topsoil signature and the reference signature at a given depth, a 50% result indicates an equal mixture of both "new" event water and the older, stored pre-event water. We observed no significant differences in the mixing proportions among the catchments or across different sampling times (Kruskal-Wallis test p-value

= 0.2539). Most samples identified as preferential flow exhibited a mixture of approximately 65% new event water and 35% older pre-event water. There were some outliers, with values exceeding 75% or falling below 50% topsoil water (Figure 7).

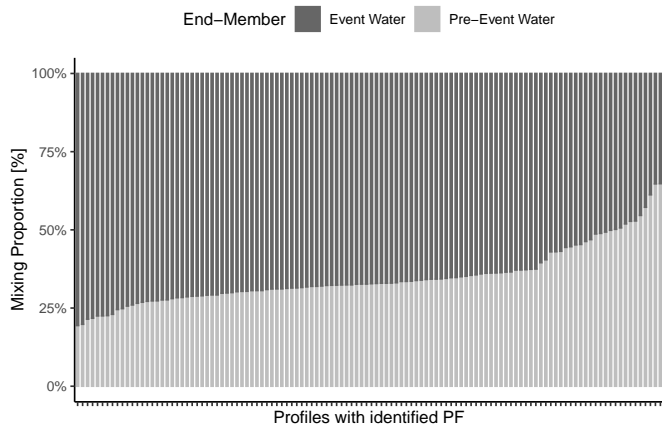


Figure 7. Distribution of Mixing Proportions for Preferential Flow

315 3.4 Spatial analysis

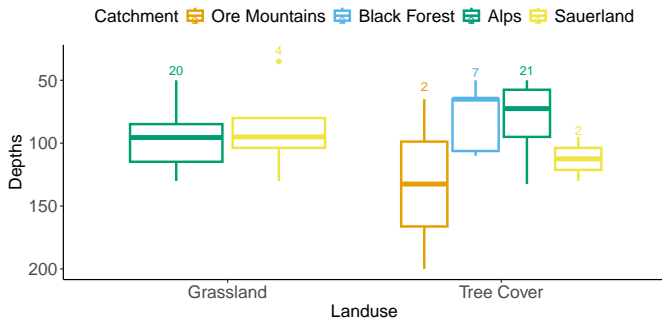


Figure 8. Landuse and depth of the identified profiles. Numbers above the boxplots indicate the number of observation in each.

Performing spatial analysis was difficult because only a small number of preferential flow locations were identified in most catchments, particularly outside the alpine region. In the BF spring, OM summer and SL summer periods, for example, only two PF profiles were identified in each case. Across the entire dataset, just eight PF profiles were found in OM and nine in SL out of a total of 86 and 106 profiles, respectively. This low occurrence limits the statistical power of spatial analyses. Nevertheless, exploring patterns in relation to topographic and land use variables may still offer useful insights, even if these remain exploratory in nature.

In terms of land use, catchments with similar proportions of grassland and forest areas had an equal distribution of preferential flow (Figure 8). In the catchments dominated by forests, specifically the Black Forest and Ore Mountains, preferential flow was observed exclusively within the forested areas, though the count was small ($n \leq 7$). There was a minor but non-significant trend (Wilcoxon p -value = 0.06) indicating forested hillslopes in the Tyrolean Alps catchment had shallower preferential flow-paths than grassland profiles.

~~Logistic regression analysis was used to assess the effect of different~~ We employed logistic regression analysis to evaluate the impact of various topographic factors on the occurrence of preferential flow. ~~Of the variables tested, only Aspect_{cos}, which represents the northerly direction of slopes, showed a statistically significant trend (preferential flow (PF) occurrence.~~
Due to the limited number of identified PF profiles, most variables, including catchment, land use, slope and altitude, showed no statistically significant correlations. Of the tested predictors, only the cosine-transformed aspect ($Aspect_{cos}$; Equation 2) exhibited a significant relationship ($p = 0.044$), indicating that north-facing slopes were more likely to exhibit preferential flow than their PF features than south-facing counterparts (Fig. ones (Figure 9c). ~~Other variables, including catchment, land use, slope and altitude, did not show significant effects~~ However, this trend was largely driven by the alpine catchment, where the majority of PF profiles were located on north-facing slopes. When analyzed at the catchment level, the relationship was no longer statistically significant. Furthermore, while the overall trend was significant, the effect size was small, indicating that although PF is more prevalent on north-facing slopes, the majority of soil profiles still show no evidence of preferential flow.

4 Discussion

The developed method allowed us to identify numerous isotopic deviations from the reference profile, which we interpreted as preferential flowpaths in the soil profiles. Scaling the $\delta^{18}\text{O}$ values to the $\delta^2\text{H}$ range and creating individual reference profiles for each sampling campaign was effective for this purpose. However, the method is subject to certain assumptions and trade-offs which we will now discuss.

Our soil core drill sampling approach offers several practical advantages for catchment-scale assessments, compared to traditional methods for identifying preferential flow, such as dye tracer sprinkling experiments, trenches, and soil moisture sensors. While conventional techniques are effective at the plot scale, they often require intensive excavation and incur high material and maintenance costs, especially for permanent installations. In contrast, soil coring is rapid, cost-effective and logistically straightforward, enabling broad spatial coverage across many hillslopes in a short period. This makes it especially useful for identifying the presence and distribution of preferential flow features across large catchments. However, the method has key limitations. It provides only a narrow, point-scale view (based on a 6 cm drill diameter) and intersecting a PF path is largely a matter of chance. Furthermore, it only detects macropore features that have interacted with the surrounding matrix, so bypass flow paths that do not mix with matrix water remain undetected (Anderson et al., 2009a, b; Angermann et al., 2017). Additionally, unlike trench installations or soil moisture sensor networks, the soil coring method does not allow preferential

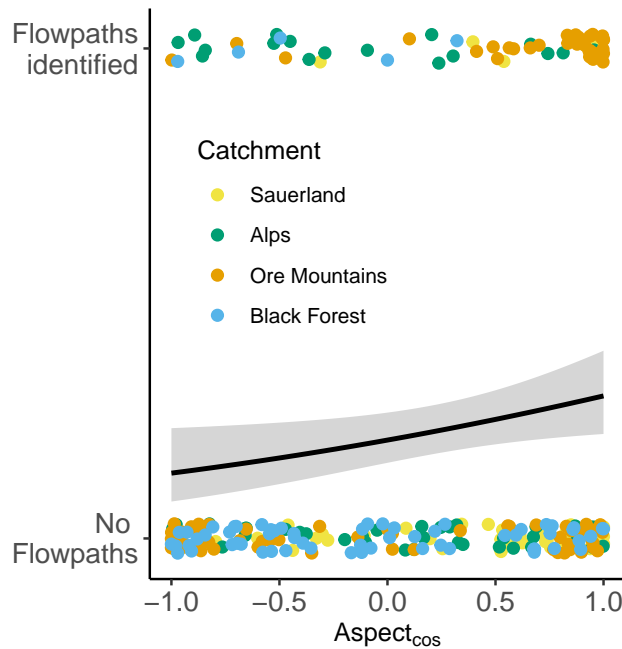


Figure 9. Logistic regression of the significant predictor for preferential flow occurrence Aspect_{\cos} (Equation 2) which distinguishes slope orientation, where -1 indicates south-facing and 1 indicates north-facing slopes

flow fluxes to be quantified. In contrast, though spatially limited, dye tracing experiments can visualize continuous flow paths over a larger plot-scale footprint and provide more detailed information on flow path structure, being less hit-or-miss.

One disadvantage is that a sufficient number of samples are required, with more samples improving analysis quality. BF.summer had the fewest profiles used in a sample group, with 26; Alps.fall had the most, with 96 (Table 1). Taking more samples may allow for robust and clearer reference profiles. ~~These improved reference profiles help to~~ Improved reference profiles reduce uncertainty, ~~resulting in a more solid basis for comparison. The reduced uncertainty improves the accuracy of~~ identifying outliers, which are classified as occurrences of preferential flow enabling more accurate detection of preferential flow outliers. Increasing the number of samples would take more time, but it is an efficient method for achieving a catchment-wide estimation of preferential flow compared to other approaches. ~~Dye-tracer-sprinkling-experiments, trenches, and soil moisture sensors, while effective on the plot scale, require intensive excavation and high material and maintenance costs for permanently installed equipment. In contrast, soil-core-drill-sampling provides a larger spatial distribution of information at a relatively lower~~ cost, making it a more practical solution. While the number of profiles is important for constructing robust reference profiles, it is equally critical that they are representative of the catchment. In order to characterize soil matrix seasonality reliably, it is essential to capture the full range of isotopic variability. To this end, we took samples from across the full range of land use types, slope gradients and aspect orientations present in each catchment.

The presented method assumes that preferential flow signatures are similar to those of topsoil. This is very likely as many
370 tracer sprinkling experiments (e.g. Weiler and Naef (2003); Alaoui and Helbling (2006); Kodešová et al. (2012)) have shown
that preferential flow consists of new infiltrated water that also seeped into the topsoil matrix. However, this is not always the
case. ~~Preferential~~ flow composition may differ from the topsoil signatures. For example, macropores can store older water
that is remobilized and transported preferentially during infiltration events (Klaus et al., 2013; Beven and Germann, 2013).
Also topsoil hydrophobicity due to dryness or soil freezing (Täumer et al., 2006; Kelln et al., 2007; Gimbel et al., 2016;
375 Demand et al., 2019b) funnels water into flowpaths without seeping into the topsoil matrix. In both ~~ease~~cases, the signatures
of preferential flow do not necessarily match those of the topsoil, and ~~thuzs~~thus are not classified as preferential flow. Because
sampling was not conducted during soil freezing condition and all soil samples were sufficiently moist for isotope analysis, the
hydrophobicity effect can be dismissed.

The method allows us to ~~also~~ observe the points where the preferential flow interacted with the soil matrix. A complex,
380 interconnected preferential flowpath system may transport water through soils without interacting with the matrix (Anderson
et al., 2009b; Angermann et al., 2017). The signature of preferential flow would then be undetectable in the soil profile, as the
water rushed through and out of the profile. When there is no interaction of preferential flow with the matrix, the method can
not identify these flowpaths. As a result, if the preferential flow does not interact with the matrix, the method will not detect
it, and the overall occurrence of preferential flow may be higher than our estimates. However, studies that reported the missing
385 interaction found this only in a few cases, while identifying pore-matrix interactions was typical in most cases (Anderson et al.,
2009b; Angermann et al., 2017).

Aside from preferential flow, sampling and analysis errors can also affect the soil water isotope profile. Because the sampling
cores are only one meter long, they must be removed after each meter of drilling. As a result, the borehole remained empty
at depths of about 1 m and 2 m for a short period during sampling. During this time, water-containing soil aggregates from
390 the overlying soil layers ~~could have may have fallen to~~may have fallen to the bottom of the borehole, altering the isotopic
signature at those depths. To address this, we removed the top 5 cm of each soil core and excluded all identified flowpaths from
our estimates where the sample matched the drilling cutoff. To reduce the impact of errors during sample analysis, we scaled
the $\delta^{18}\text{O}$ values to the $\delta^2\text{H}$ range and only considered a sample as correct if both values exceeded the reference profile. This
proved to be highly effective, as 103 profiles diverged in one isotope from the reference profile while the other was within the
395 uncertainty band.

In order to effectively differentiate between preferential flowing water and slowly moving matrix water, the catchment
must have measurable isotopic seasonality. For example, the alpine catchment exhibits much larger isotopic seasonality in
precipitation (range 10 ‰ in $\delta^{18}\text{O}$ and 100 ‰ in $\delta^2\text{H}$) compared to the other catchments (e.g. EG range 6 ‰ in $\delta^{18}\text{O}$ and
60 ‰ in $\delta^2\text{H}$) (Nelson et al., 2021). This greater seasonal contrast in isotopic composition improves the ability to distinguish
400 between different isotopic seasons. As a result, the pronounced isotopic variations in the alpine catchment provide clearer and
more distinct signals, making it easier to identify and distinguish between preferential flowing water and slowly flowing water
in the soil matrix. This level of differentiation is less noticeable in other catchments with lower isotopic seasonalities, where
overlapping isotopic seasons can obscure the distinction between the two flow pathways or the two water ages. In catchments

with low isotopic seasonality in precipitation, or where high groundwater levels or riparian zone mixing obscure seasonal signals in the soil profile, this method is not applicable.

Furthermore, the alpine catchment's soil properties may be better suited to preserve seasonal isotopic signals. In contrast, the other catchments showed mostly uniform profiles, indicating extensive mixing processes like lateral flow or advective and dispersive transport that obscure the seasonal signals (Małoszewski et al., 2006; Thomas et al., 2013). According to Garvelmann et al. (2012), upslope locations exhibit isotopic seasonality in their soil profiles, while further downslope, this signal is weakened due to mixing from lateral subsurface flow. Furthermore, the influence of well mixed groundwater with typically higher water ages, which increases at the base of the slopes in the riparian zone (Uchida et al., 2005), erases the seasonality signal from the soils. Groundwater influence was also visible in the soil cores of the lower mountain ranges through redoximorphic patterns that were not present in the alpine catchment. This extensive mixing complicates the identification of the "real" seasonality profile in those regions, making it impossible to identify preferential flow clearly.

Validating the findings is difficult, as there is currently no comparable data available for quantitatively identifying. Although our sampling only provides a snapshot of the catchment, some of the PF profiles identified may represent features that are active year-round. In locations where only one PF profile was detected, it is possible that the surrounding soils lack similar characteristics. In future studies, multiple sampling at different times in the year could help to tackle the questions. However, hillslopes such as in the TA-fall figure 6 consistently exhibit PF signatures across all profiles. This widespread occurrence strongly suggests that lateral preferential flow is a persistent feature throughout this section of the hillslope and is likely to transport water across much of the hydrological year.

These findings are difficult to validate due to the lack of comparable quantitative data on preferential flow pathways in the soils of these study catchments. However, subsurface flow trenches installed on selected hillslopes provided evidence of the presence of preferential flow paths within these catchments direct evidence of preferential flow features within the soils (Pyschik et al., 2025b). The results can also be placed in a broader context and compared to similar studies. The catchments showed a decrease in observed decline in the occurrence of preferential flow with depth (Fig. 5). Several other studies which investigated preferential flow figure 5) is consistent with the depth-dependent patterns reported in other studies (Thomas et al., 2013; Lu et al., 2022; Guan et al., 2023) found a general decrease with depth. These findings support the assumption that. This consistency across studies supports the plausibility of the results presented here follow a plausible pattern.

The mixing models used make several assumptions and are subject to uncertainty. The reference profile represents the average value of the stored pre-event matrix water in the soil, rather than the real, local value, which is difficult to determine. The topsoil signature, on the other hand, is a true measured value, albeit subject to measurement uncertainties. These measurements were performed either manually or with VapAuSa, with the following uncertainties: VapAuSa $\delta^2\text{H} = \pm 4.5 \text{ ‰}$, $\delta^{18}\text{O} = \pm 0.58 \text{ ‰}$, and manual $\delta^2\text{H} = \pm 5.7 \text{ ‰}$, $\delta^{18}\text{O} = \pm 0.37 \text{ ‰}$. As a result, the mixing proportions are only estimates and can vary up to 20% depending on the end member ranges. However, the end members of the reference profile and the topsoil are spaced farther apart than the measurement uncertainties, thus eliminating the possibility of no mixing.

The mixing model results revealed significant mixing at the depths where preferential flow was identified. This is consistent with previous research, which suggests that preferential flow is a mix of older, stored water and new event water. After a rain

event, preferential flow interacts with the soil matrix (Angermann et al., 2017), resulting in a mixed isotopic signature (Leaney
440 et al., 1993; Gazis and Feng, 2004). Although we did not sample during rain events, frequent rainfall in the preceding days or
hours supports the observed mixing.

As previously noted, it is challenging to draw conclusions from the relatively small number of profiles with identified
preferential flow (only 16 % of the total), yet this still offers the potential for meaningful insights. We found no relationships
between land use and the overall occurrence of preferential flow; however, we did observe a preference for shallower preferen-
445 tial flow in forested areas within the alpine catchment. Other studies have also identified land use-specific depth variations, but
their findings were reversed: shallower preferential flow in grasslands and deeper pathways in forests (Cheng et al., 2018). Other
researcher indicated that land use significantly impacts the distribution and type of preferential flow paths, leading to varied
discharge responses (~~Bachmair and Weiler, 2012; ?; Orłowski et al., 2015~~)(Bachmair and Weiler, 2012; Orłowski et al., 2015)
. It was concluded that shallower preferential flow paths lead to quicker discharge generation, whereas deeper pathways create
450 a sponge-like behavior, quickly retaining water and then releasing it slowly (Cheng et al., 2018).

Understanding the spatial and temporal variability of the isotopic composition of precipitation could aid in the analysis.
The alpine catchment with the highest elevation gradient showed the largest uncertainty in the reference profiles ($\pm 25 \%$)
whereas Sauerland with a low gradient only had an uncertainty of $\pm 5 \%$. In catchments with a high elevation gradient,
distributed isotopic precipitation data would allow for the quantification of the elevation effect. As this effect locally alters
455 the temporal variability of the isotopic composition, scaling all profiles to one elevation could reduce the uncertainty of the
reference profiles, allowing for higher precision to detect preferential flow. Furthermore, isotope precipitation data would allow
for the construction of reference profiles using soil hydrological models. They could be used to derive an idealized reference
pattern, assuming matrix flow is the only process involved (Sprenger et al., 2015). This model-based approach could potentially
provide a clearer comparison against observed profiles.

460 5 Conclusions

The methodology used in this study was effective in detecting isotopic deviations that can be attributed to preferred flow pro-
cesses. Notably, the alpine catchment exhibited the highest number of identifiable profiles. This is most likely due to the region's
greater seasonality of stable isotopes in precipitation, which makes it easier to detect isotopic divergences. However, the analy-
sis found no significant inter- or intra-catchment correlations with most topography variables or land use. The only significant
465 influence on the occurrence of preferential flow was the aspect of hillslopes, with north-facing slopes having more preferential
flow identified than other slopes. The soil coring approach used in this study provided a practical and cost-effective method
of detecting preferential flow at catchment scale. Its minimally invasive nature and operational efficiency enabled extensive
spatial coverage and the identification of vertical and lateral flow paths. However, the method has important limitations. It
may underestimate preferential flow where bypass occurs without matrix interaction, or where isotopic contrasts are weak.
470 The method's effectiveness also depends on sufficient sampling density, and it may be less effective in areas influenced by
groundwater mixing or low topographic variability, where isotopic signals are less distinct. The study focused on soils in hill-

slopes, neglecting riparian zones, where lateral flow can induce mixing, affecting isotopic signatures. It would be valuable to extend this investigation to riparian or into flat areas, where vertical flow predominates, to understand how it might alter isotopic signatures differently. Additionally, incorporating other environmental tracers such as environmental DNA (eDNA) or
475 dissolved organic carbon (DOC) in future studies could enhance the robustness and resolution of the analysis. This multidisciplinary approach could provide deeper insights into the dynamics of preferential flow and their underlying mechanisms.

Author contributions. Both authors designed the experiment. JP collected and analyzed the samples, conducted the data analysis and wrote the first draft. Both authors revised and approved the final manuscript. MW secured the funding for the study

Competing interests. At least one of the (co-)authors is a member of the editorial board of Hydrology and Earth System Sciences.

480 *Acknowledgements.* We want to thank all the technicians and people involved in fieldwork without whom it would have been impossible to gather all the soil samples (Julain Reichstein, Lars Morgenroth, Sören Köhler, Yvonne Schadowell, Benjamin Gralher, Florenz König, Jürgen Strub, Tamara Leins, Nils Jansen, Annika Feld-Golinski and Peter Chiffard); We also want to thank Tamara Leins for proofreading. This research has been supported by the Deutsche Forschungsgemeinschaft (project no. 453746323) through the research unit FOR 5288: "Fast and Invisible: Conquering Subsurface Stormflow through an Interdisciplinary Multi-Site Approach". ;

- Alaoui, A. and Helbling, A.: Evaluation of Soil Compaction Using Hydrodynamic Water Content Variation: Comparison between Compacted and Non-Compacted Soil, *Geoderma*, 134, 97–108, <https://doi.org/10.1016/j.geoderma.2005.08.016>, 2006.
- Ambach, W., Dansgaard, W., Eisner, H., and Møller, J.: The Altitude Effect on the Isotopic Composition of Precipitation and Glacier Ice in the Alps, *Tellus*, 20, 595–600, <https://doi.org/10.1111/j.2153-3490.1968.tb00402.x>, 1968.
- 490 Anderson, A. E., Weiler, M., Alila, Y., and Hudson, R. O.: Dye Staining and Excavation of a Lateral Preferential Flow Network, *Hydrology and Earth System Sciences*, 13, 935–944, <https://doi.org/10.5194/hess-13-935-2009>, 2009a.
- Anderson, A. E., Weiler, M., Alila, Y., and Hudson, R. O.: Subsurface Flow Velocities in a Hillslope with Lateral Preferential Flow: HILLS-LOPE PREFERENTIAL FLOW VELOCITIES, *Water Resources Research*, 45, <https://doi.org/10.1029/2008WR007121>, 2009b.
- Angermann, L., Jackisch, C., Allroggen, N., Sprenger, M., Zehe, E., Tronicke, J., Weiler, M., and Blume, T.: Form and Function in Hillslope Hydrology: Characterization of Subsurface Flow Based on Response Observations, *Hydrology and Earth System Sciences*, 21, 3727–3748, <https://doi.org/10.5194/hess-21-3727-2017>, 2017.
- 495 Araguás-Araguás, L., Froehlich, K., and Rozanski, K.: Deuterium and Oxygen-18 Isotope Composition of Precipitation and Atmospheric Moisture, *Hydrological Processes*, 14, 1341–1355, [https://doi.org/10.1002/1099-1085\(20000615\)14:8<1341::AID-HYP983>3.0.CO;2-Z](https://doi.org/10.1002/1099-1085(20000615)14:8<1341::AID-HYP983>3.0.CO;2-Z), 2000.
- 500 Bachmair, S. and Weiler, M.: Hillslope Characteristics as Controls of Subsurface Flow Variability, *Hydrology and Earth System Sciences*, 16, 3699–3715, <https://doi.org/10.5194/hess-16-3699-2012>, 2012.
- Bachmair, S. and Weiler, M.: Interactions and Connectivity between Runoff Generation Processes of Different Spatial Scales: INTER-ACTIONS RUNOFF GENERATION PROCESSES OF DIFFERENT SPATIAL SCALES, *Hydrological Processes*, 28, 1916–1930, <https://doi.org/10.1002/hyp.9705>, 2014.
- 505 Badorreck, A., Gerke, H. H., and Hüttl, R. F.: Effects of Ground-Dwelling Beetle Burrows on Infiltration Patterns and Pore Structure of Initial Soil Surfaces, *Vadose Zone Journal*, 11, <https://doi.org/10.2136/vzj2011.0109>, 2012.
- Beasley, R. S.: Contribution of Subsurface Flow from the Upper Slopes of Forested Watersheds to Channel Flow, *Soil Science Society of America Journal*, 40, 955–957, <https://doi.org/10.2136/sssaj1976.03615995004000060039x>, 1976.
- Beven, K.: How to Make Advances in Hydrological Modelling, *Hydrology Research*, 50, 1481–1494, <https://doi.org/10.2166/nh.2019.134>, 2019.
- 510 Beven, K. and Germann, P.: Macropores and Water Flow in Soils, *Water Resources Research*, 18, 1311–1325, <https://doi.org/10.1029/WR018i005p01311>, 1982.
- Beven, K. and Germann, P.: Macropores and Water Flow in Soils Revisited: REVIEW, *Water Resources Research*, 49, 3071–3092, <https://doi.org/10.1002/wrcr.20156>, 2013.
- 515 Blume, T., Zehe, E., and Bronstert, A.: Use of Soil Moisture Dynamics and Patterns at Different Spatio-Temporal Scales for the Investigation of Subsurface Flow Processes, *Hydrology and Earth System Sciences*, 13, 1215–1233, <https://doi.org/10.5194/hess-13-1215-2009>, 2009.
- Bouma, J.: Comment on “Micro-, Meso-, and Macroporosity of Soil”, *Soil Science Society of America Journal*, 45, 1244–1245, <https://doi.org/10.2136/sssaj1981.03615995004500060050x>, 1981.
- Bouma, J. and Dekker, L. W.: A Case Study on Infiltration into Dry Clay Soil I. Morphological Observations, *Geoderma*, 20, 27–40, [https://doi.org/10.1016/0016-7061\(78\)90047-2](https://doi.org/10.1016/0016-7061(78)90047-2), 1978.
- 520

- Bouma, J., Jongerius, A., Boersma, O., Jager, A., and Schoonderbeek, D.: The Function of Different Types of Macropores During Saturated Flow through Four Swelling Soil Horizons, *Soil Science Society of America Journal*, 41, 945–950, <https://doi.org/10.2136/sssaj1977.03615995004100050028x>, 1977.
- Cheng, L., Liu, W., Li, Z., and Chen, J.: Study of Soil Water Movement and Groundwater Recharge for the Loess Tableland Using Environmental Tracers, *Transactions of the ASABE*, pp. 23–30, <https://doi.org/10.13031/trans.57.10017>, 2014.
- Cheng, Y., Ogden, F. L., Zhu, J., and Bretfeld, M.: Land Use-Dependent Preferential Flow Paths Affect Hydrological Response of Steep Tropical Lowland Catchments With Saprolitic Soils, *Water Resources Research*, 54, 5551–5566, <https://doi.org/10.1029/2017WR021875>, 2018.
- Chiffard, P., Didszun, J., and Zepp, H.: Skalenübergreifende Prozess-Studien zur Abflussbildung in Gebieten mit periglazialen Deckschichten (Sauerland, Deutschland), *Grundwasser*, 13, 27–41, <https://doi.org/10.1007/s00767-007-0058-1>, 2008.
- Craig, H.: Isotopic Variations in Meteoric Waters, *Science*, 133, 1702–1703, <https://doi.org/10.1126/science.133.3465.1702>, 1961.
- Dansgaard, W.: Stable Isotopes in Precipitation, *Tellus*, 16, 436–468, <https://doi.org/10.1111/j.2153-3490.1964.tb00181.x>, 1964.
- David, K., Timms, W., Hughes, C. E., Crawford, J., and McGeeney, D.: Application of the Pore Water Stable Isotope Method and Hydrogeological Approaches to Characterise a Wetland System, *Hydrology and Earth System Sciences*, 22, 6023–6041, <https://doi.org/10.5194/hess-22-6023-2018>, 2018.
- Demand, D., Blume, T., and Weiler, M.: Spatio-Temporal Relevance and Controls of Preferential Flow at the Landscape Scale, *Hydrology and Earth System Sciences*, 23, 4869–4889, <https://doi.org/10.5194/hess-23-4869-2019>, 2019a.
- Demand, D., Selker, J. S., and Weiler, M.: Influences of Macropores on Infiltration into Seasonally Frozen Soil, *Vadose Zone Journal*, 18, 180 147, <https://doi.org/10.2136/vzj2018.08.0147>, 2019b.
- Eguchi, S. and Hasegawa, S.: Determination and Characterization of Preferential Water Flow in Unsaturated Subsoil of Andisol, *Soil Science Society of America Journal*, 72, 320–330, <https://doi.org/10.2136/sssaj2007.0042>, 2008.
- Eisele, B.: Spatial Variability of Stable Isotope Profiles in Soil and Their Relation to Preferential Flow, 2013.
- European Space Agency: Copernicus Global Digital Elevation Model GLO-30. Distributed by OpenTopography, <https://doi.org/10.5069/G9028PQB>, 2024.
- Garvelmann, J., Külls, C., and Weiler, M.: A Porewater-Based Stable Isotope Approach for the Investigation of Subsurface Hydrological Processes, *Hydrology and Earth System Sciences*, 16, 631–640, <https://doi.org/10.5194/hess-16-631-2012>, 2012.
- Gazis, C. and Feng, X.: A Stable Isotope Study of Soil Water: Evidence for Mixing and Preferential Flow Paths, *Geoderma*, 119, 97–111, [https://doi.org/10.1016/S0016-7061\(03\)00243-X](https://doi.org/10.1016/S0016-7061(03)00243-X), 2004.
- Gehrels, J. C., Peeters, J. E. M., De Vries, J. J., and Dekkers, M.: The Mechanism of Soil Water Movement as Inferred from ^{18}O Stable Isotope Studies, *Hydrological Sciences Journal*, 43, 579–594, <https://doi.org/10.1080/02626669809492154>, 1998.
- Gimbel, K. F., Puhlmann, H., and Weiler, M.: Does Drought Alter Hydrological Functions in Forest Soils?, *Hydrology and Earth System Sciences*, 20, 1301–1317, <https://doi.org/10.5194/hess-20-1301-2016>, 2016.
- Govan, E. and Parnell, A.: Simmr: A Stable Isotope Mixing Model, 2023.
- Gralher, B., Herbstritt, B., and Weiler, M.: Technical Note: Unresolved Aspects of the Direct Vapor Equilibration Method for Stable Isotope Analysis ($\delta^{18}\text{O}$, $\delta^2\text{H}$) of Matrix-Bound Water: Unifying Protocols through Empirical and Mathematical Scrutiny, *Hydrology and Earth System Sciences*, 25, 5219–5235, <https://doi.org/10.5194/hess-25-5219-2021>, 2021.
- Guan, N., Cheng, J., and Shi, X.: Preferential Flow and Preferential Path Characteristics of the Typical Forests in the Karst Region of Southwest China, *Forests*, 14, 1248, <https://doi.org/10.3390/f14061248>, 2023.

Guo, L., Chen, J., and Lin, H.: Subsurface Lateral Preferential Flow Network Revealed by Time-Lapse Ground-Penetrating Radar in a Hillslope, *Water Resources Research*, 50, 9127–9147, <https://doi.org/10.1002/2013WR014603>, 2014.

Heilig, A., Steenhuis, T. S., Walter, M. T., and Herbert, S. J.: Funneled Flow Mechanisms in Layered Soil: Field Investigations, *Journal of Hydrology*, 279, 210–223, [https://doi.org/10.1016/S0022-1694\(03\)00179-3](https://doi.org/10.1016/S0022-1694(03)00179-3), 2003.

Heller, K. and Kleber, A.: Hillslope Runoff Generation Influenced by Layered Subsurface in a Headwater Catchment in Ore Mountains, Germany, *Environmental Earth Sciences*, 75, 943, <https://doi.org/10.1007/s12665-016-5750-y>, 2016.

Holden, J., Burt, T. P., and Vilas, M.: Application of Ground-Penetrating Radar to the Identification of Subsurface Piping in Blanket Peat, *Earth Surface Processes and Landforms*, 27, 235–249, <https://doi.org/10.1002/esp.316>, 2002.

Jones, J. a. A.: Soil Piping and Catchment Response, *Hydrological Processes*, 24, 1548–1566, <https://doi.org/10.1002/hyp.7634>, 2010.

Katuwal, S., Moldrup, P., Lamandé, M., Tuller, M., and de Jonge, L. W.: Effects of CT Number Derived Matrix Density on Preferential Flow and Transport in a Macroporous Agricultural Soil, *Vadose Zone Journal*, 14, vzj2015.01.0002, <https://doi.org/10.2136/vzj2015.01.0002>, 2015.

Kelln, C., Barbour, L., and Qualizza, C.: Preferential Flow in a Reclamation Cover: Hydrological and Geochemical Response, *Journal of Geotechnical and Geoenvironmental Engineering*, 133, 1277–1289, [https://doi.org/10.1061/\(ASCE\)1090-0241\(2007\)133:10\(1277\)](https://doi.org/10.1061/(ASCE)1090-0241(2007)133:10(1277)), 2007.

Khan, M. R., Koneshloo, M., Knappett, P. S. K., Ahmed, K. M., Bostick, B. C., Mailloux, B. J., Mozumder, R. H., Zahid, A., Harvey, C. F., van Geen, A., and Michael, H. A.: Megacity Pumping and Preferential Flow Threaten Groundwater Quality, *Nature Communications*, 7, 12 833, <https://doi.org/10.1038/ncomms12833>, 2016.

Klaus, J., Zehe, E., Elsner, M., Külls, C., and McDonnell, J. J.: Macropore Flow of Old Water Revisited: Experimental Insights from a Tile-Drained Hillslope, *Hydrology and Earth System Sciences*, 17, 103–118, <https://doi.org/10.5194/hess-17-103-2013>, 2013.

Kodešová, R., Němeček, K., Kodeš, V., and Žigová, A.: Using Dye Tracer for Visualization of Preferential Flow at Macro- and Microscales, *Vadose Zone Journal*, 11, vzj2011.0088, <https://doi.org/10.2136/vzj2011.0088>, 2012.

Kotikian, M., Parsekian, A. D., Paige, G., and Carey, A.: Observing Heterogeneous Unsaturated Flow at the Hillslope Scale Using Time-Lapse Electrical Resistivity Tomography, *Vadose Zone Journal*, 18, 1–16, <https://doi.org/10.2136/vzj2018.07.0138>, 2019.

Kuhn, M.: Building Predictive Models in R Using the **Caret** Package, *Journal of Statistical Software*, 28, <https://doi.org/10.18637/jss.v028.i05>, 2008.

Kung, K.-J. S.: Preferential Flow in a Sandy Vadose Zone: 1. Field Observation, *Geoderma*, 46, 51–58, [https://doi.org/10.1016/0016-7061\(90\)90006-U](https://doi.org/10.1016/0016-7061(90)90006-U), 1990.

Leaney, F. W., Smettem, K. R. J., and Chittleborough, D. J.: Estimating the Contribution of Preferential Flow to Subsurface Runoff from a Hillslope Using Deuterium and Chloride, *Journal of Hydrology*, 147, 83–103, [https://doi.org/10.1016/0022-1694\(93\)90076-L](https://doi.org/10.1016/0022-1694(93)90076-L), 1993.

Leibundgut, C., Maloszewski, P., and Külls, C.: Tracers in Hydrology, Wiley, 1 edn., ISBN 978-0-470-51885-4 978-0-470-74714-8, <https://doi.org/10.1002/9780470747148>, 2009.

Leslie, I. and Heinse, R.: Characterizing Soil–Pipe Networks with Pseudo-Three-Dimensional Resistivity Tomography on Forested Hillslopes with Restrictive Horizons, *Vadose Zone Journal*, 12, vzj2012.0200, <https://doi.org/10.2136/vzj2012.0200>, 2013.

Liu, Z., Bowen, G. J., and Welker, J. M.: Atmospheric Circulation Is Reflected in Precipitation Isotope Gradients over the Conterminous United States, *Journal of Geophysical Research: Atmospheres*, 115, <https://doi.org/10.1029/2010JD014175>, 2010.

Lu, D., Wang, H., Geng, N., Xia, Y., Xu, C., and Hua, E.: Imaging and Characterization of the Preferential Flow Process in Agricultural Land by Using Electrical Resistivity Tomography and Dual-Porosity Model, *Ecological Indicators*, 134, 108 498, <https://doi.org/10.1016/j.ecolind.2021.108498>, 2022.

- Luo, L., Lin, H., and Halleck, P.: Quantifying Soil Structure and Preferential Flow in Intact Soil Using X-ray Computed Tomography, *Soil Science Society of America Journal*, 72, 1058–1069, <https://doi.org/10.2136/sssaj2007.0179>, 2008.
- Małozewski, P., Maciejewski, S., Stumpp, C., Stichler, W., Trimborn, P., and Klotz, D.: Modelling of Water Flow through Typical Bavarian
600 Soils: 2. Environmental Deuterium Transport, *Hydrological Sciences Journal*, 51, 298–313, <https://doi.org/10.1623/hysj.51.2.298>, 2006.
- Mathieu, R. and Bariac, T.: An Isotopic Study (2H and 18O) of Water Movements in Clayey Soils Under a Semiarid Climate, *Water Resources Research*, 32, 779–789, <https://doi.org/10.1029/96WR00074>, 1996.
- Mueller, M. H., Alaoui, A., Kuells, C., Leistert, H., Meusburger, K., Stumpp, C., Weiler, M., and Alewell, C.: Tracking Water Pathways in
605 Steep Hillslopes by $\delta^{18}\text{O}$ Depth Profiles of Soil Water, *Journal of Hydrology*, 519, 340–352, <https://doi.org/10.1016/j.jhydrol.2014.07.031>, 2014.
- Nelson, D. B., Basler, D., and Kahmen, A.: Precipitation Isotope Time Series Predictions from Machine Learning Applied in Europe, *Proceedings of the National Academy of Sciences of the United States of America*, 118, e2024107118, <https://doi.org/10.1073/pnas.2024107118>, 2021.
- Nimmo, J. R.: The Processes of Preferential Flow in the Unsaturated Zone, *Soil Science Society of America Journal*, 85, 1–27,
610 <https://doi.org/10.1002/saj2.20143>, 2021.
- Orlowski, N., Kraft, P., and Breuer, L.: Exploring Water Cycle Dynamics through Sampling Multitude Stable Water Isotope Pools in a Small Developed Landscape of Germany, Preprint, *Catchment hydrology/Instruments and observation techniques*, <https://doi.org/10.5194/hessd-12-1809-2015>, 2015.
- Paradelo, M., Katuwal, S., Moldrup, P., Norgaard, T., Herath, L., and de Jonge, L.: X-Ray CT-Derived Soil Characteristics Explain Varying
615 Air, Water, and Solute Transport Properties across a Loamy Field, *Vadose Zone Journal*, 15, <https://doi.org/10.2136/vzj2015.07.0104>, 2016.
- Peralta-Tapia, A., Sponseller, R. A., Tetzlaff, D., Soulsby, C., and Laudon, H.: Connecting Precipitation Inputs and Soil Flow Pathways to Stream Water in Contrasting Boreal Catchments, *Hydrological Processes*, 29, 3546–3555, <https://doi.org/10.1002/hyp.10300>, 2015.
- Pinos, J., Flury, M., Latron, J., and Llorens, P.: Routing Stemflow Water through the Soil via Preferential Flow: A Dual-Labeling Approach
620 with Artificial Tracers, *Hydrology and Earth System Sciences*, 27, 2865–2881, <https://doi.org/10.5194/hess-27-2865-2023>, 2023.
- Pyschik, J., Seeger, S., Herbstritt, B., and Weiler, M.: Technical Note: A Fast and Reproducible Autosampler for Direct Vapor Equilibration Isotope Measurements, *Hydrology and Earth System Sciences*, 29, 525–534, <https://doi.org/10.5194/hess-29-525-2025>, 2025a.
- Pyschik, J., Thoenes, E., Achleitner, S., Kohl, B., and Weiler, M.: Tracing Subsurface Stormflow: Insights into Preferential Flow and Pre-Event Water Contributions from Controlled Sprinkling Experiments, <https://doi.org/10.5194/egusphere-egu25-10457>, 2025b.
- 625 R Core Team: R: A Language and Environment for Statistical Computing, Vienna, Austria, 2024.
- Rozanski, K., Araguás-Araguás, L., and Gonfiantini, R.: Isotopic Patterns in Modern Global Precipitation, in: *Geophysical Monograph Series*, edited by Swart, P. K., Lohmann, K. C., Mckenzie, J., and Savin, S., pp. 1–36, American Geophysical Union, Washington, D. C., ISBN 978-1-118-66402-5 978-0-87590-037-7, <https://doi.org/10.1029/GM078p0001>, 2013.
- Sammartino, S., Lissy, A.-S., Bogner, C., Bogaert, R., Capowiez, Y., Ruy, S., and Cornu, S.: Identifying the Functional Macropore Network
630 Related to Preferential Flow in Structured Soils, *Vadose Zone Journal*, 14, <https://doi.org/10.2136/vzj2015.05.0070>, 2015.
- Scaini, A., Audebert, M., Hissler, C., Fenicia, F., Gourdol, L., Pfister, L., and Beven, K. J.: Velocity and Celerity Dynamics at Plot Scale Inferred from Artificial Tracing Experiments and Time-Lapse ERT, *Journal of Hydrology*, 546, 28–43, <https://doi.org/10.1016/j.jhydrol.2016.12.035>, 2017.

- Selker, J., Leclercq, P., Parlange, J.-Y., and Steenhuis, T.: Fingered Flow in Two Dimensions: 1. Measurement of Matric Potential, *Water Resources Research*, 28, 2513–2521, <https://doi.org/10.1029/92WR00963>, 1992a.
- Selker, J., Parlange, J.-Y., and Steenhuis, T.: Fingered Flow in Two Dimensions: 2. Predicting Finger Moisture Profile, *Water Resources Research*, 28, 2523–2528, <https://doi.org/10.1029/92WR00962>, 1992b.
- Sprenger, M., Volkmann, T. H. M., Blume, T., and Weiler, M.: Estimating Flow and Transport Parameters in the Unsaturated Zone with Pore Water Stable Isotopes, *Hydrology and Earth System Sciences*, 19, 2617–2635, <https://doi.org/10.5194/hess-19-2617-2015>, 2015.
- Sprenger, M., Erhardt, M., Riedel, M., and Weiler, M.: Historical Tracking of Nitrate in Contrasting Vineyards Using Water Isotopes and Nitrate Depth Profiles, *Agriculture, Ecosystems & Environment*, 222, 185–192, <https://doi.org/10.1016/j.agee.2016.02.014>, 2016a.
- Sprenger, M., Leister, H., Gimbel, K., and Weiler, M.: Illuminating Hydrological Processes at the Soil-Vegetation-Atmosphere Interface with Water Stable Isotopes: Review of Water Stable Isotopes, *Reviews of Geophysics*, 54, 674–704, <https://doi.org/10.1002/2015RG000515>, 2016b.
- Stumpp, C. and Hendry, M. J.: Spatial and Temporal Dynamics of Water Flow and Solute Transport in a Heterogeneous Glacial till: The Application of High-Resolution Profiles of $\delta^{18}\text{O}$ and $\delta^2\text{H}$ in Pore Waters, *Journal of Hydrology*, 438–439, 203–214, <https://doi.org/10.1016/j.jhydrol.2012.03.024>, 2012.
- Täumer, K., Stoffregen, H., and Wessolek, G.: Seasonal Dynamics of Preferential Flow in a Water Repellent Soil, *Vadose Zone Journal - VADOSE ZONE J*, 5, <https://doi.org/10.2136/vzj2005.0031>, 2006.
- Thomas, E. M., Lin, H., Duffy, C. J., Sullivan, P. L., Holmes, G. H., Brantley, S. L., and Jin, L.: Spatiotemporal Patterns of Water Stable Isotope Compositions at the Shale Hills Critical Zone Observatory: Linkages to Subsurface Hydrologic Processes, *Vadose Zone Journal*, 12, <https://doi.org/10.2136/vzj2013.01.0029>, 2013.
- Tromp-van Meerveld, H. J. and McDonnell, J. J.: Threshold Relations in Subsurface Stormflow: 1. A 147-Storm Analysis of the Panola Hillslope: SUBSURFACE FLOW RELATIONS, 1, *Water Resources Research*, 42, <https://doi.org/10.1029/2004WR003778>, 2006.
- Uchida, T., Asano, Y., Onda, Y., and Miyata, S.: Are Headwaters Just the Sum of Hillslopes?, *Hydrological Processes*, 19, 3251–3261, <https://doi.org/10.1002/hyp.6004>, 2005.
- Wassenaar, L., Hendry, M., Chostner, V., and Lis, G.: High Resolution Pore Water $\delta^2\text{H}$ and $\delta^{18}\text{O}$ Measurements by $\text{H}_2\text{O}(\text{Liquid})$ - $\text{H}_2\text{O}(\text{Vapor})$ Equilibration Laser Spectroscopy, *Environmental Science & Technology*, 42, 9262–9267, <https://doi.org/10.1021/es802065s>, 2008.
- Watson, K. W. and Luxmoore, R. J.: Estimating Macroporosity in a Forest Watershed by Use of a Tension Infiltrometer, *Soil Science Society of America Journal*, 50, 578–582, <https://doi.org/10.2136/sssaj1986.03615995005000030007x>, 1986.
- Weiler, M. and Naef, F.: An Experimental Tracer Study of the Role of Macropores in Infiltration in Grassland Soils, *Hydrological Processes*, 17, 477–493, <https://doi.org/10.1002/hyp.1136>, 2003.
- Wessolek, G., Stoffregen, H., and Täumer, K.: Persistency of Flow Patterns in a Water Repellent Sandy Soil – Conclusions of TDR Readings and a Time-Delayed Double Tracer Experiment, *Journal of Hydrology - J HYDROL*, 375, 524–535, <https://doi.org/10.1016/j.jhydrol.2009.07.003>, 2009.
- Wilson, G. V., Nieber, J. L., Sidle, R. C., and Fox, G. A.: Internal Erosion during Soil Pipeflow: State of the Science for Experimental and Numerical Analysis, *Transactions of the ASABE*, 56, 465–478, <https://doi.org/10.13031/2013.42667>, 2013.
- Wilson, G. V., Rigby, J. R., Ursic, M., and Dabney, S. M.: Soil Pipe Flow Tracer Experiments: 1. Connectivity and Transport Characteristics, *Hydrological Processes*, 30, 1265–1279, <https://doi.org/10.1002/hyp.10713>, 2016.
- Woods, R. A. and Rowe, L.: The Changing Spatial Variability of Subsurface Flow Across a Hillside, pp. 49–84, 1996.

- Zanaga, D., Van De Kerchove, R., De Keersmaecker, W., Souverijns, N., Brockmann, C., Quast, R., Wevers, J., Grosu, A., Paccini, A., Vergnaud, S., Cartus, O., Santoro, M., Fritz, S., Georgieva, I., Lesiv, M., Carter, S., Herold, M., Li, L., Tsendbazar, N.-E., Ramoino, F., and Arino, O.: ESA WorldCover 10 m 2020 V100, <https://doi.org/10.5281/ZENODO.5571936>, 2021.
- 675 Zhao, P., Tang, X., Zhao, P., Wang, C., and Tang, J.: Identifying the Water Source for Subsurface Flow with Deuterium and Oxygen-18 Isotopes of Soil Water Collected from Tension Lysimeters and Cores, *Journal of Hydrology*, 503, 1–10, <https://doi.org/10.1016/j.jhydrol.2013.08.033>, 2013.