

1 Supplementary Materials for:

2 **Urban-rural patterns and driving factors of particulate**
3 **matter pollution decrease in eastern china**

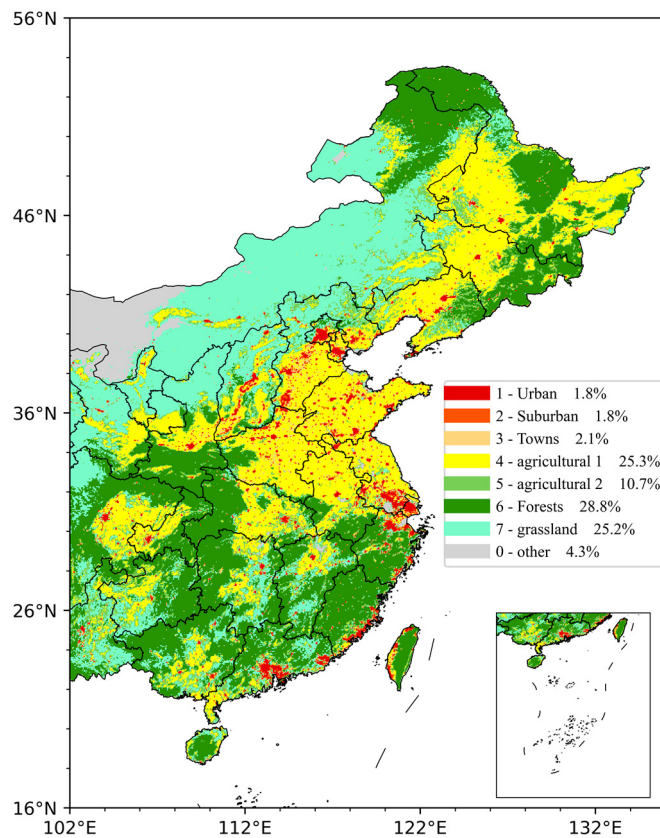
4
5 **Zhihao Song et al.**

6
7 *Corresponding to: Bin Chen (chenbin@lzu.edu.cn)

8
9 This PDF file includes:Figure S1 to S10

10

11



12

13 **Figure S1 Adjusted land cover types**

14

15

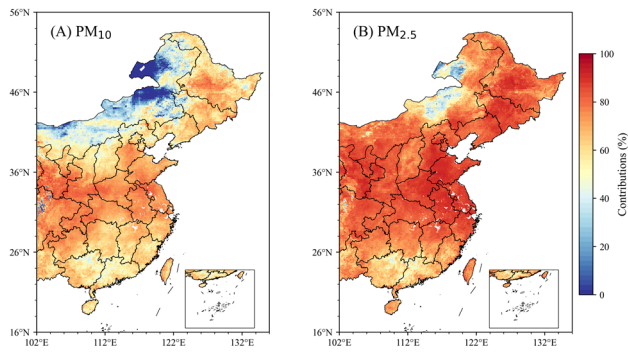


Figure S2. The explanatory power of the model in the calculation of driving factors.

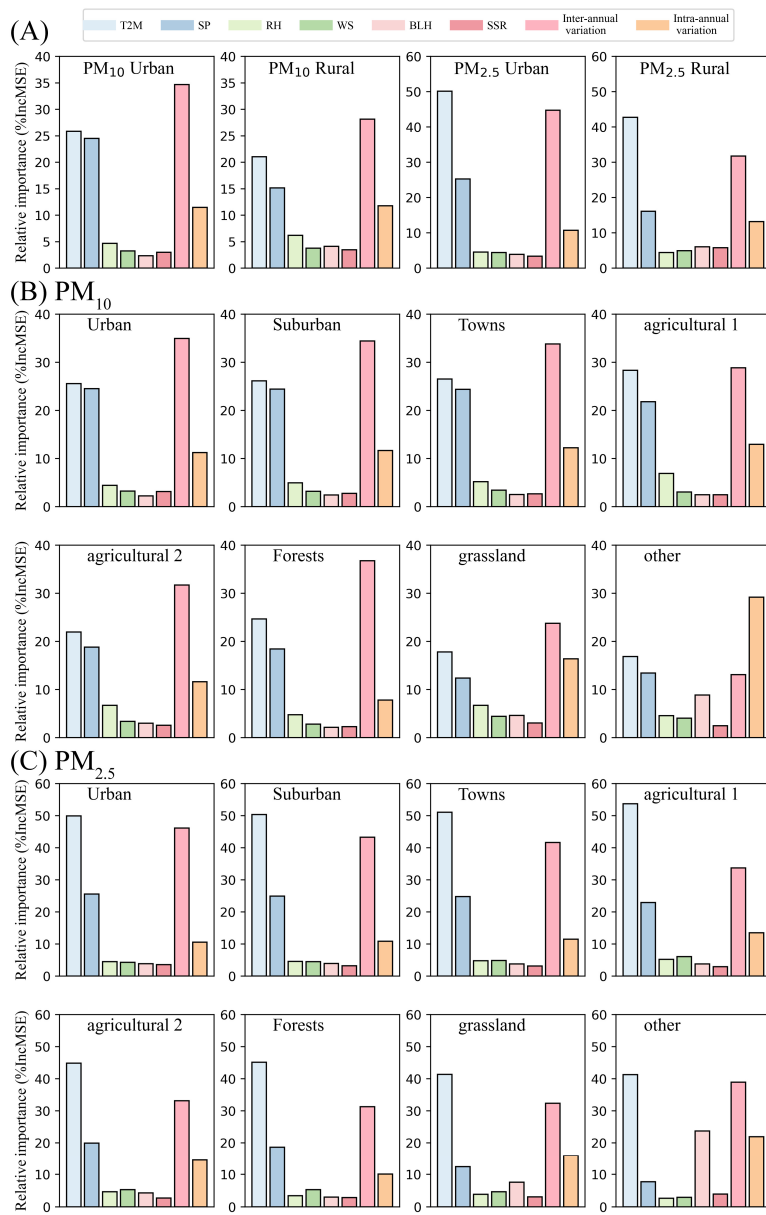


Figure S3. The urban and rural distribution of the relative importance of PM2.5 and PM10

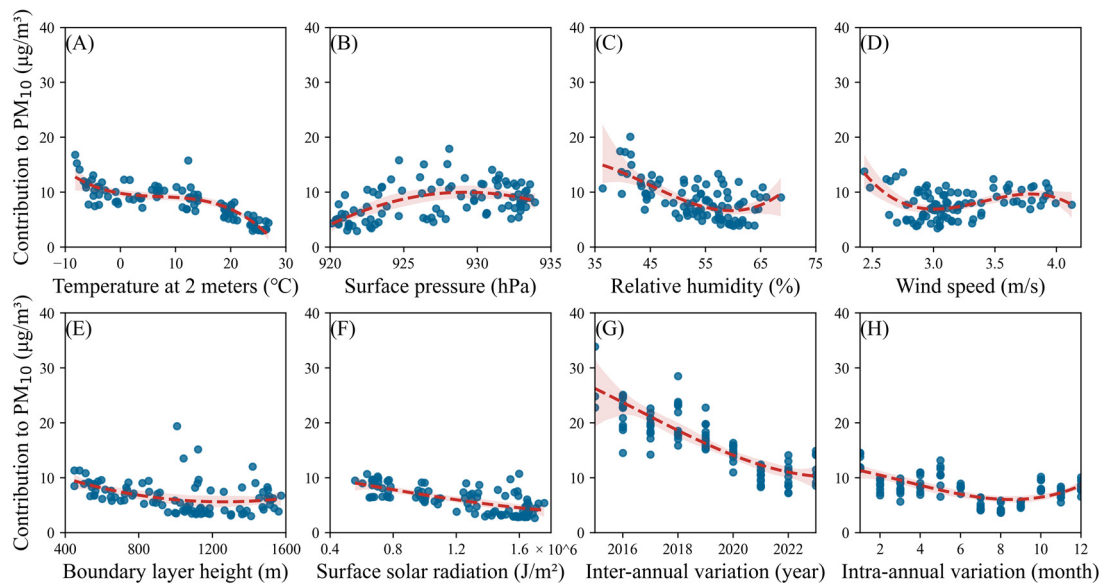


Figure S4. Scatter plot of the relative contributions of various variables to PM10

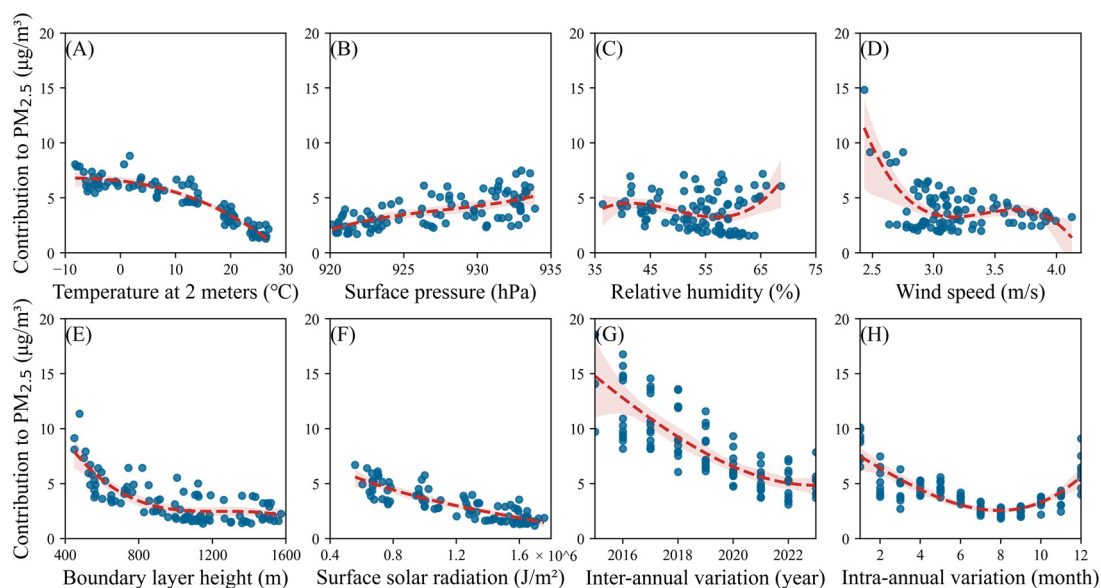


Figure S5. Scatter plot of the relative contributions of various variables to PM2.5.

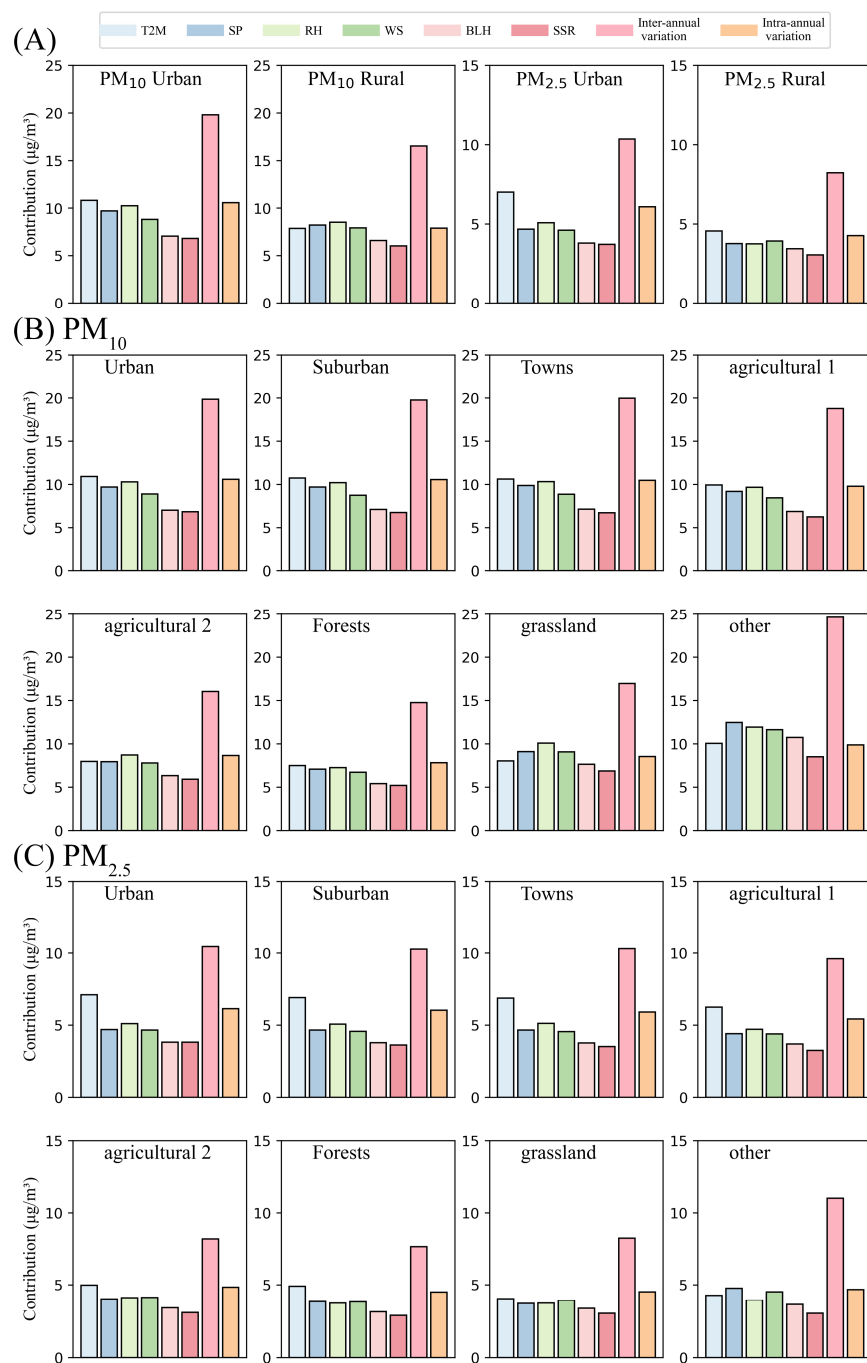


Figure S6. Distribution of the relative contribution of each variable to PM_{2.5} and PM₁₀ in urban and rural areas.

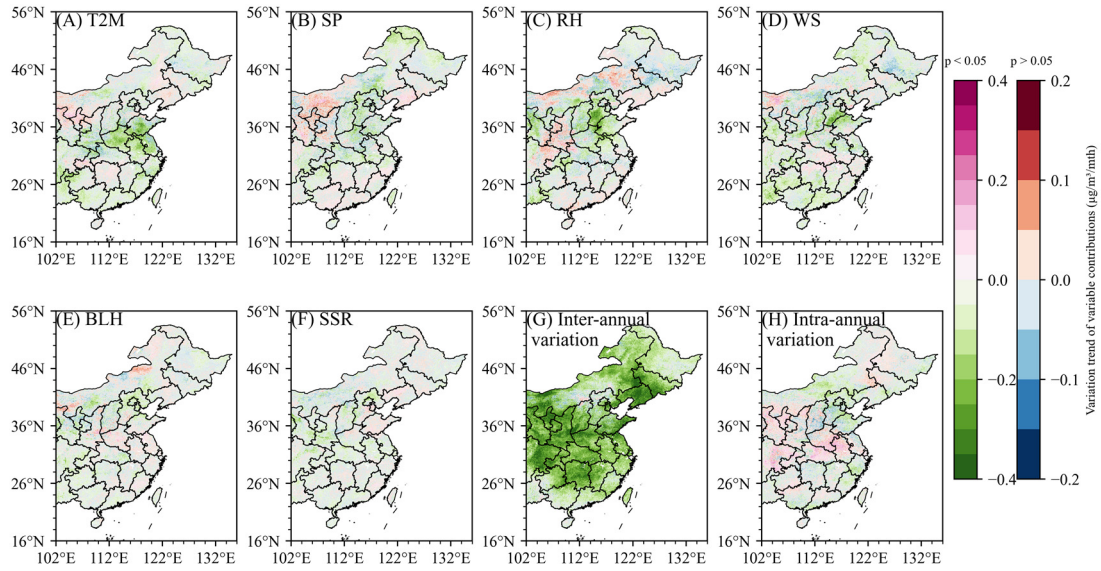


Figure S7. Trends in the relative contributions of various variables to PM10.

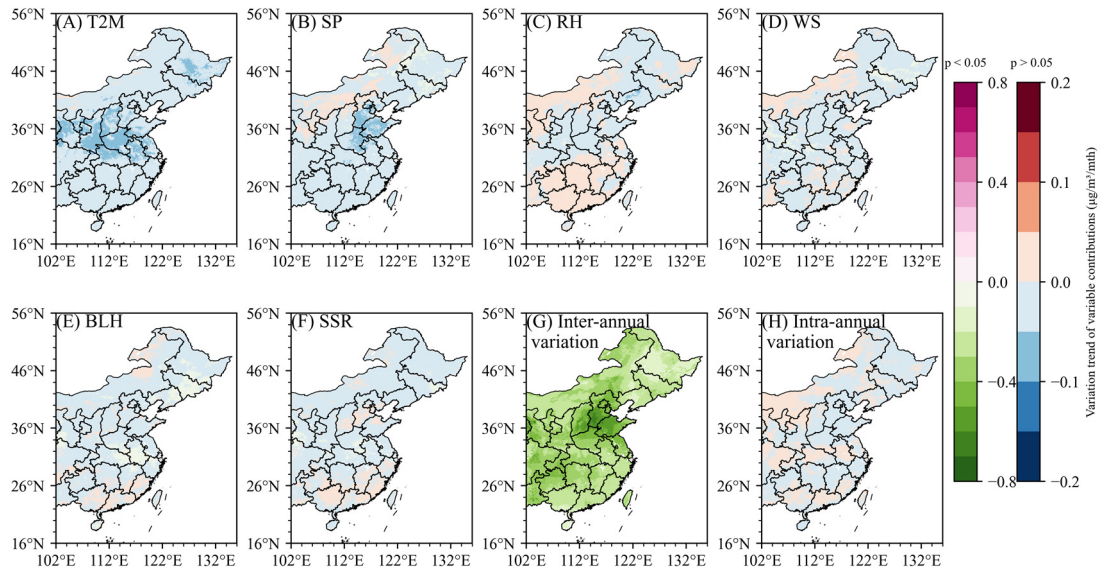


Figure S8. Trends in the SHAP values of various variables for PM10.

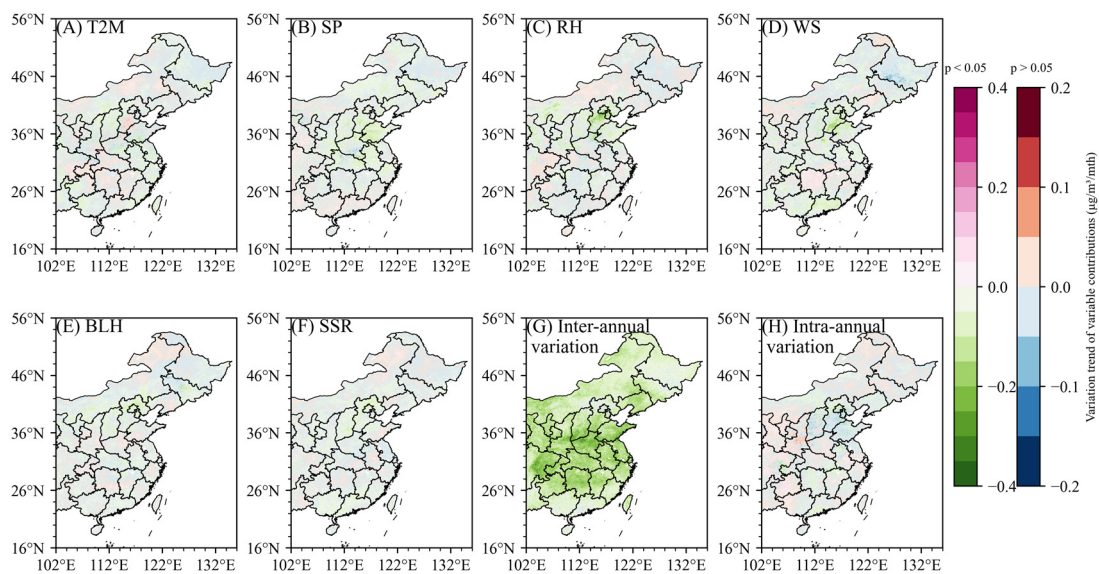


Figure S9. Trends in the relative contributions of various variables to PM2.5.

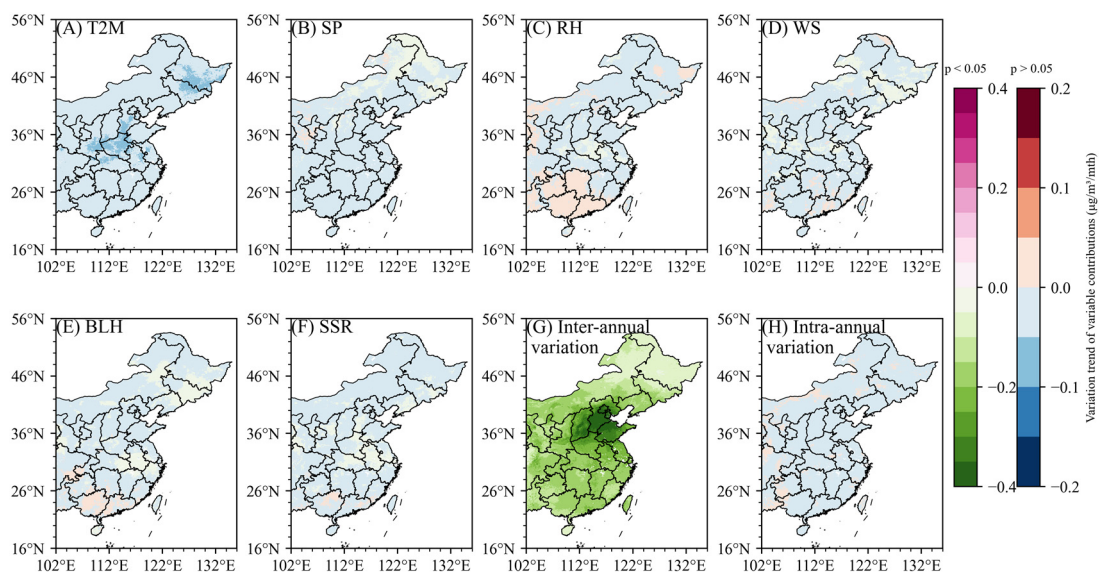


Figure S10. Trends in the SHAP values of various variables for PM2.5.