

# Wind and Phytoplankton Dynamics Drive Seasonal and Short-Term Variability of Suspended Matter in a Tidal Basin

Gaziza Konyssova<sup>1,2\*</sup>, Vera Sidorenko<sup>1,2</sup>, Alexey Androsov<sup>1,2</sup>, Sabine Horn<sup>2</sup>, Sara Rubinetti<sup>1,3</sup>, Ivan Kuznetsov<sup>1</sup>, Karen Helen Wiltshire<sup>2,4</sup>, Justus van Beusekom<sup>2,5</sup>

<sup>1</sup> Alfred-Wegener-Institut Helmholtz-Zentrum für Polar- und Meeresforschung, Bremerhaven, Germany

<sup>2</sup> Wadden Sea Station Sylt, Alfred-Wegener-Institut Helmholtz-Zentrum für Polar- und Meeresforschung, List/Sylt, Germany

<sup>3</sup> Dipartimento per lo Sviluppo Sostenibile e la Transizione Ecologica, University of Piemonte Orientale, Vercelli, Italy

<sup>4</sup> Climate Science Trinity College Dublin, Dublin, Ireland

<sup>5</sup> Institute for Carbon Cycles, Helmholtz Centre Hereon, Geesthacht, Germany

## \* Correspondence:

Gaziza Konyssova

gaziza.konyssova@awi.de

ORCID: 0009-0008-5460-4754

## Abstract

Suspended particulate matter (SPM) is a key component of coastal ecosystems, modulating light availability, nutrient transport, and food web dynamics. Its variability is driven by a combination of physical and biological processes that interact across temporal and spatial scales. Using the Sylt-Rømø Bight as a natural laboratory and focusing on the period 2000-2019, in this study, we integrate statistical analysis of observational data from the Sylt Roads monitoring program and local meteorological stations, neural network modelling and Lagrangian transport simulations. This multi-method approach enables us to disentangle and quantify the relative roles of tidal and wind forcing, as well as biological processes in shaping SPM concentrations across various time scales, based on near-surface measurements at two monitoring stations.

The findings show that wind intensity dominates short-term SPM variability, particularly at the shallow station, where SPM responds rapidly to local wind-induced resuspension. At the deep station, the wind effects appear with a delay of ~5 days, aligning with tidally induced transport timescales (~133 hours) from shallower resuspension zones, as revealed by Lagrangian simulations. Seasonal patterns are further modulated by both reduced wind intensities and the onset of biological processes, such as phytoplankton blooms, which promote flocculation and subsequent settling in spring and summer. Neural network experiments highlight the shifting seasonal balance between physical and biological controls. The median concentration of SPM decreased by up to 80% from winter to summer. Approximately 40% of this seasonal difference can be attributed to weaker wind conditions, while the remaining ~40% is likely driven by biologically mediated sinking processes.

## 36 1 Introduction

37 Suspended particulate matter (SPM) is a key component of coastal systems, influencing a wide range of  
38 physical and ecological processes. It consists of a mixture of small solid particles of both organic and  
39 inorganic origin suspended in the water column with concentrations, size (Eisma, 1986) and  
40 composition varying spatially and temporally (Schartau et al., 2019). The spatiotemporal variation in  
41 SPM concentrations is driven by an interplay of hydrodynamic, meteorological, and biological factors,  
42 which in turn, regulate nutrient availability, light penetration, and organic matter distribution. This  
43 directly impacts ecosystem productivity, including the timing of the phytoplankton bloom in spring  
44 (Cadée, 1986) and spatial gradients in primary productivity (Cloern, 1987; Colijn, 1982), and trophic  
45 interactions (Dolch and Reise, 2010; Graf and Rosenberg, 1997).

46 In tidally energetic environments like the Wadden Sea, the suspended matter gradient is kept upright by  
47 the density-driven coastward transport of bottom water and tidal straining (Becherer et al., 2016;  
48 Burchard et al., 2008; Flöser et al., 2011). Sediment accumulation is further influenced by  
49 hydrodynamic retention mechanisms such as enhanced settling due to the landward dissipation of  
50 current velocity, the scour-lag (Dyer, 1995; Friedrichs and Aubrey, 1988) and settling lag effects  
51 (Postma, 1967), and the tidal asymmetry formed by the presence of non-linear processes within the tidal  
52 system (Dronkers, 1986; Fofonova et al., 2019; Friedrichs and Aubrey, 1988; Hagen et al., 2022). The  
53 role of tidal currents in the variability of SPM concentrations is found to be significant through transport  
54 processes (Bartholomä et al., 2009; Christiansen et al., 2006) as well as sediment erosion even under  
55 calm and moderate weather conditions (Bartholomä et al., 2009; Lettmann et al., 2009). While tides  
56 regulate advection and maintain a baseline shear stress, the co-occurrence of strong winds and wave-  
57 induced turbulence during severe weather further enhances bottom stress and promotes additional  
58 erosion.

59 Wind stress and wave action are critical in short-term SPM dynamics. Wind-induced resuspension,  
60 particularly in shallow coastal areas, causes episodic increases in turbidity (Aarup, 2002; Fettweis et al.,  
61 2012). Stronger and more persistent wind forcing during winter maintains higher SPM concentrations,  
62 keeping fine sediments in suspension (de Jonge and van Beusekom, 1995; van Beusekom et al., 1999),  
63 while calmer conditions in summer enable enhanced settling (Bale et al., 1985; Verney et al., 2009).

64 Beyond physical resuspension and transport mechanisms, biochemical processes also influence SPM  
65 concentrations by modulating aggregation, stabilization, and vertical flux of particulate matter (de Jonge  
66 and van Beusekom, 1995; van Beusekom and de Jonge, 2002; Verney et al., 2009). For example,  
67 flocculation, the aggregation and breakup of particles, is a key mechanism by which biological activity  
68 modulates SPM concentrations (Wotton, 2004; Eisma, 1986). Phytoplankton blooms in spring and  
69 summer can promote flocculation, leading to enhanced particle settling and reduced SPM  
70 concentrations in the water column (de Jonge & van Beusekom, 1995; Schartau et al., 2019). The  
71 process is particularly enhanced by the occurrence of extracellular polymeric substances (EPS),  
72 including marine gels such as transparent exopolymeric particles (TEPs), but can also occur due to  
73 cohesive properties of fine-grained minerals like clays (Passow, 2002; Verney et al., 2009). The size  
74 and cohesiveness of these biologically mediated flocs also govern their settling velocities and  
75 resuspension thresholds, affecting how quickly particles are redistributed in the water column. Warmer  
76 temperatures also accelerate the decomposition of organic matter (OM), which is nearly always present

77 in natural flocs in various forms (detritus, adsorbed OM molecules, and living OM), and may range  
78 from a minor to a dominant fraction of total floc mass (Eisma, 1986; Engel and Schartau, 1999). This  
79 directly links SPM dynamics to food-web functioning (Wotton, 2004; Engel & Schartau, 1999). In  
80 addition, temperature also affects top-down controls such as zooplankton grazing, which alters SPM  
81 composition and concentration through multiple pathways. Grazing modifies the SPM field not only  
82 through phytoplankton consumption but also via the fragmentation of aggregates, production of fecal  
83 pellets and organic material that promote microbial and TEP-mediated aggregation. The effects of these  
84 processes can either promote particle settling or enhance recycling and suspension, depending on  
85 community composition, feeding modes, and environmental conditions (e.g., Passow, 2002; Toullec et  
86 al., 2019; Turner, 2002).

87 In the shallow coastal systems, light can reach the seafloor, stimulating benthic algae growth, provided  
88 water clarity allows sufficient light penetration (Loebl et al., 2007). These benthic processes further  
89 influence SPM concentrations through both stabilization and removal mechanisms. While  
90 microphytobenthos, consisting of benthic diatoms and cyanobacteria, produce biofilms that stabilize  
91 sediments and reduce resuspension (Stal, 2010), filter-feeding organisms, such as mussels (*Mytilus*  
92 *edulis*) and oysters (*Magallana gigas*), alter SPM dynamics by removing fine particles from suspension,  
93 affecting both sediment deposition rates and nutrient cycling (Graf and Rosenberg, 1997). Moreover,  
94 excessive nutrient loads can enhance phytoplankton blooms, whose decay products and extracellular  
95 polymeric substances facilitate biomineral floc formation (Passow, 2002; van Beusekom et al., 1999),  
96 which promotes OM sedimentation and alters benthic-pelagic coupling by influencing the availability of  
97 organic matter to both suspension and deposit feeders. These processes collectively shape coastal  
98 sediment dynamics, contributing to the long-term evolution of tidal flat environments.

99 While hydrodynamic and wind-driven influences on SPM have been extensively studied, their  
100 interaction with biological processes and relative contributions remain incompletely understood, despite  
101 growing interest. By leveraging long-term ecological monitoring data from the Sylt Roads program, this  
102 study aims to quantify the contributions of tidally induced and wind-driven resuspension and transport,  
103 as well as biologically mediated processes, to the spatiotemporal variability of SPM in the Sylt-Rømø  
104 Bight.

105 This analysis integrates high-resolution in situ measurements from two Long-Term Ecological Research  
106 (LTER) stations from 2000 to 2019, meteorological data from the station List (Sylt, Germany), and  
107 outputs from hydrodynamic and neural network modelling to evaluate SPM dynamics across short-term  
108 (hourly to daily) and seasonal timescales. The following research questions guide the study: (1) What  
109 are the dominant mechanisms driving SPM variability across different temporal scales? (2) How do  
110 these mechanisms differ between the two monitoring stations within the Sylt-Rømø Bight? (3) How  
111 important are biological processes in shaping observed SPM concentrations?

## 112 2 Data and Methods

### 113 2.1 Area Description

114 The investigations were carried out in the Sylt-Rømø Bight, a shallow, tidal basin in the northern  
115 Wadden Sea (southeastern North Sea; see Fig. 1). The basin is semi-enclosed due to two causeways at  
116 its northern and southern ends, isolating it from neighboring basins. Its only connection to the North Sea  
117 is through the deep tidal inlet Lister Deep, between the islands of Sylt and Rømø. The bay spans  
118 approximately 410 km<sup>2</sup> and features a highly variable topography, including extensive intertidal flats  
119 (>45%), shallow subtidal zones (~35%), and deep tidal channels (~10%). The Sylt-Rømø Bight's  
120 bathymetry is characterised by a mean water depth of approximately 4 m, with a maximum depth of  
121 about 37 m observed in the tidal inlet Lister Deep. Most subtidal and ~72% of intertidal sediments are  
122 sand-dominated. The basin also features a small sheltered embayment Königshafen, with an average  
123 depth of ~2m and encompasses large areas which become exposed at low tides.

124 The tidal range in the bight averages 2 m, based on observations at the List tide gauge (E.U. Copernicus  
125 Marine Service Information, doi.org/10.48670/moi-00036). Tidal forcing accounts for over 80% of  
126 depth-averaged velocity variability under regular wind conditions, in the absence of storms, and over  
127 90% during spring tides (Fofonova et al., 2019). The bight receives minimal fluvial input, with small  
128 rivers such as the Vidå and Brede Å (see Fig.1), contributing only 4–10 m<sup>3</sup>/s of freshwater (Purkiani et  
129 al., 2015). Water exchange with the open North Sea occurs exclusively through Lister Deep, a 2.8 km  
130 wide tidal inlet. At the mouth of Lister Deep, a prominent ebb-tidal delta extends seaward, acting as  
131 both a sediment trap and a pathway for sediment redistribution within the bight (Dissanayake et al.,  
132 2012). Localized anthropogenic disturbance may also influence sediment availability and distribution in  
133 the region, although detailed records of maritime traffic, dredging operations, and benthic trawling  
134 specific to the Sylt-Rømø Bight are limited. However, studies from the broader Wadden Sea show that  
135 anthropogenic activities such as bottom trawling (e.g., Bruns et al., 2023; Depestele et al., 2016),  
136 dredging (de Jonge and de Jong, 2002; de Jonge, 1983; van Maren et al., 2015), and mussel farming  
137 (Jansen et al., 2023) are recognized drivers of sediment disturbance and resuspension.

# Sylt-Rømø Bight

## Legend

- tidal flats
- bivalve beds
- seagrass
- salt marshes

- Water depth
- >1-2 m
  - >2-5 m
  - >5-10 m
  - >10-20 m
  - >20 m

- tide gauge stations
- LTER sampling stations

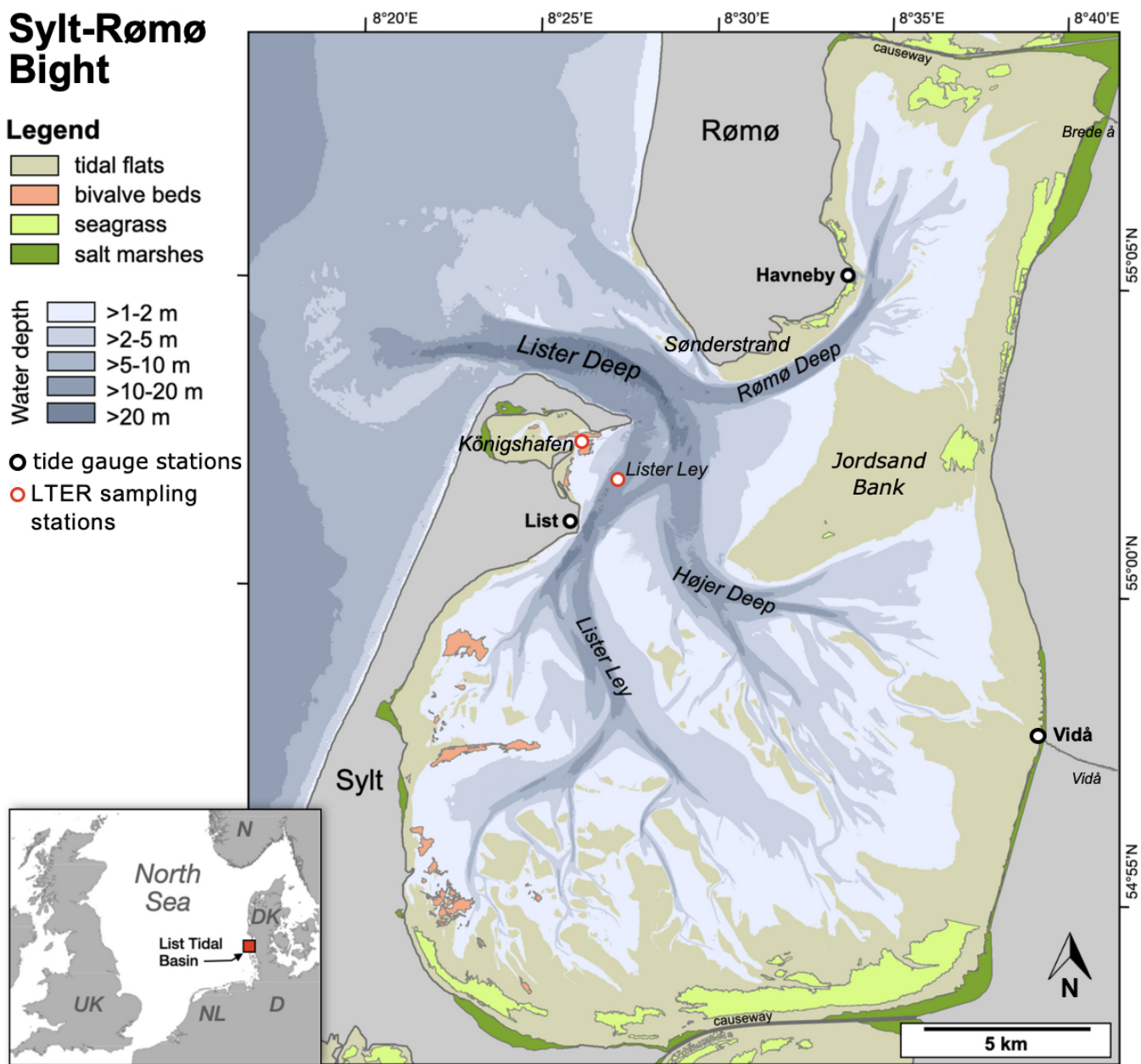


Figure 1: Map of the Sylt-Rømø Bight showing bathymetry, key habitats (tidal flats, bivalve beds, seagrass meadows, and salt marshes), LTER sampling stations (Deep Station – Lister Ley; Shallow Station – Königshafen), tide gauge locations (List, Havneby, Vidå), and rivers (Brede Å and Vidå). The basin is connected to the North Sea via the tidal inlet Lister Deep and laterally enclosed by causeways to the north and south.

## 2.2 FESOM-C Model

This study used the coastal hydrodynamic model FESOM-C (Androsov et al., 2019). FESOM-C is designed explicitly for high-resolution coastal applications and employs a finite-volume cell-vertex

146 discretization on unstructured meshes composed of triangles and quadrilaterals. This allows for flexible  
147 spatial resolution down to several metres, suitable for simulating complex coastal dynamics (Fofonova  
148 et al., 2019; Kuznetsov et al., 2020, 2024; Neder et al., 2022; Sprong et al., 2020; Sidorenko et al.,  
149 2025).

## 150 **2.2.1 Model Setup**

151 The setup utilized an unstructured hybrid mesh of 208,345 nodes and 211,545 elements. Due to the  
152 semi-enclosed state of the bight, the mesh contains a single open boundary at the seaward edge of the  
153 domain, connecting the basin with the North Sea. The horizontal spatial resolution varies from up to 2  
154 m in wetting-drying zones to 304 m in the deeper outer part (near the open boundary). The experiments  
155 were carried out by running 2D barotropic simulations with the wetting/drying option enabled to  
156 capture the periodic submergence and exposure of intertidal areas. The model timestep was set to  $\sim 0.25$   
157 seconds, with data output every  $\sim 20$  minutes of simulation time. The bottom friction coefficient was  
158 applied as 0.0025, a value identified as optimal in prior studies of the same study area when using  
159 TPXO9 tidal solution (Fofonova et al., 2019; Konyssova et al., 2025).

160 The simulations are driven by tidal forcing alone, applied at the open boundary. For an accurate  
161 simulation of the tidal dynamics, thirteen major tidal harmonic constituents (M2, S2, N2, K2, K1, O1,  
162 P1, Q1, Mm, Mf, MN4, 2N, and S1) and two over-harmonics (M4, MS4) were prescribed by their  
163 phases and amplitudes at the open boundary based on TPXO9 tidal atlas (Egbert and Erofeeva, 2002).  
164 This selection of the tidal solution was justified by its robust performance and is one of the most  
165 optimal for the North Sea (Fofonova et al., 2019). The current setup has been validated in a previous  
166 work by Konyssova et al. (2025). The model's performance has been validated using tidal gauge (TG)  
167 data from stations List, Vidå, and Havneby (see Fig. 1; performance results are provided in the  
168 Supplementary Materials, Table S1). Since the numerical setup remains unchanged, we refer to  
169 Konyssova et al. (2025) for full validation details.

## 170 **2.2.2 Lagrangian Module**

171 To assess tidally driven spatial connectivity and transport timescales within the basin, we performed  
172 Lagrangian simulations using FESOM-C Drift, a post-processing tool designed for particle tracking.  
173 The model advects massless passive particles based on the velocity fields produced by the  
174 hydrodynamic model. In this study, we use the term “passive tracers” to denote Lagrangian particles  
175 without weight or settling properties. This is equivalent to virtual Lagrangian particles commonly  
176 applied in particle tracking studies and should not be confused with dye experiments that represent  
177 concentration changes in space and time.

178 The experiment involved releasing passive tracers from all grid elements within the domain that are  
179 consistently inundated during every flood phase. We released about 90,000 tracers at three-hour  
180 intervals over six weeks (169 iterations in total). Each tracer was tracked for up to three weeks and was  
181 removed from the simulation once it reached either of the two Sylt Roads sampling stations (see Fig. 1  
182 and Section 2.3.1). The iterative release process was designed to capture the full range of tidal  
183 conditions and the complexity of hydrodynamic transport within the basin, ensuring that the results are

184 statistically robust. Upon arrival at a station, tracers were immediately removed to prevent post-arrival  
185 movements from influencing the mapped source regions and transport pathways. The simulations were  
186 conducted independently for each station, focusing exclusively on the paths from the release locations  
187 to the respective sampling site. If a tracer did not reach the designated station within the simulation time  
188 frame, it was considered to originate from a region that falls outside the station's dominant transport  
189 pathways.

190 The first analysis approach assessed the source regions of passive tracers arriving at the sampling  
191 stations. This allows us to evaluate the connectivity between different subareas of the basin and the  
192 sampling sites. The probability of SPM originating from a given area was mapped based on the  
193 cumulative occurrence of tracer pathways across all iterations. Higher probability values indicate areas  
194 that more frequently serve as source regions or transport pathways for SPM reaching the sampling  
195 stations.

196 The second part of the analysis was conducted to estimate the mean transit time of the tracers reaching  
197 the sampling stations from shallow source zones, where resuspension typically occurs (defined here as  
198 areas <2 m deep, based on de Jonge & van Beusekom, 1995). The mean transit time over all  
199 implementations was calculated for all elements whose tracers reached the stations within the simulated  
200 three weeks. To quantify how long it typically takes for high tracer concentrations to reach the station,  
201 we computed a probability-weighted median transit time, where mean transit times were weighted by  
202 their probability values. This approach ensures that frequent transport pathways are given greater  
203 influence in the median transit time calculation, reducing bias from rare, low-probability trajectories.

## 204 **2.3 Data**

### 205 **2.3.1 Biogeochemistry data**

206 This study used data from the Sylt Roads long-term ecological monitoring program, focusing on a  
207 subset from 2000 to 2019 to ensure consistent methodology and regular sampling. From a broad range  
208 of hydrographic and biogeochemical parameters covered in the dataset, this study specifically analyzed  
209 suspended particulate matter (SPM; mg/L, filtered through 0.4 µm nucleopore filters, rinsed with  
210 distilled water, stored frozen, and dried at 60 °C) and chlorophyll-a (Chl-a; µg/L, filtered through GF/C  
211 filters (Whatman), stored at -20 °C, and extracted using 90% acetone and analyzed  
212 spectrophotometrically using the trichromatic method as described by Jeffrey and Humphrey, (1975).  
213 Both parameters were measured twice weekly at a sampling depth of 1 m below the surface at two  
214 primary stations: the deep station at the Lister Ley channel and the shallow station at the entrance of  
215 Königshafen embayment (see Fig. 1). The full dataset is publicly available on the data portal  
216 PANGAEA (<https://www.pangaea.de>) and the recent evaluation is detailed in Rick et al. (2023).  
217 To analyze seasonal variability, we defined the seasons based on observed cycles in Chl-a  
218 concentrations at the study site, rather than calendar or astronomical definitions. Specifically, we used:  
219 - winter (November 20 – February 19, low biological activity, low Chl-a);  
220 - spring (February 20 – May 31, phytoplankton bloom initiation and peak);  
221 - summer (June 1 – September 19, post-bloom conditions, high light, reduced Chl-a);  
222 - autumn (September 20 – November 20, transitional period).

223 **2.3.2 Meteorological data**

224 For the statistical analysis, we also downloaded the quality checked historical meteorological data for  
225 station 3032, List auf Sylt, from Climate Data Center (CDC) of the Deutscher Wetterdienst (DWD).  
226 The data includes hourly mean wind speed and wind direction (dataset ID: urn:x-  
227 wmo:md:de.dwd.cdc::obsgermany-climate-hourly-wind), and daily sunshine duration (dataset ID:  
228 urn:wmo:md:de-dwd-cdc:obsgermany-climate-daily-kl).

229 **2.3.3 Sea Surface Height data**

230 Using the validated model setup (Fofonova et al., 2019; Konyssova et al., 2025), the sea surface height  
231 (SSH) data were reconstructed for the deep and shallow stations. In particular, the amplitudes and  
232 phases of the 15 harmonics mentioned above were obtained from the modeling output using Fast  
233 Fourier Transform analysis. Subsequently, the SSH signal was reconstructed for the exact timestamps  
234 of the LTER sampling using the *t\_tide* package (Pawlowicz et al., 2002). This allowed us to estimate  
235 the tidal elevation and phase (through the SSH and SSH gradients) at the time of sampling, which were  
236 then included as input features in the statistical and neural network (NN) analyses. Their relationship is  
237 illustrated and discussed in Supplementary Material, Figs. S3–S4.

238 **Table 1. The physical and hydrochemical parameters used in the study (short name, units, frequency, and source)**

Data	Unit	Frequency	Source
SPM	mg/L	twice weekly	Sylt Roads Marine Observatory
Chl-a	µg/L	twice weekly	Sylt Roads Marine Observatory
Wind speed and direction	m/s, degrees	hourly mean	Deutscher Wetterdienst
Light	hours	daily	Deutscher Wetterdienst
SSH	m	every 5 minutes	Model reconstruction using 13 harmonics and 2 over-harmonics from TPXO9 and verified with the tidal gauges

239 **2.4 Neural Network**

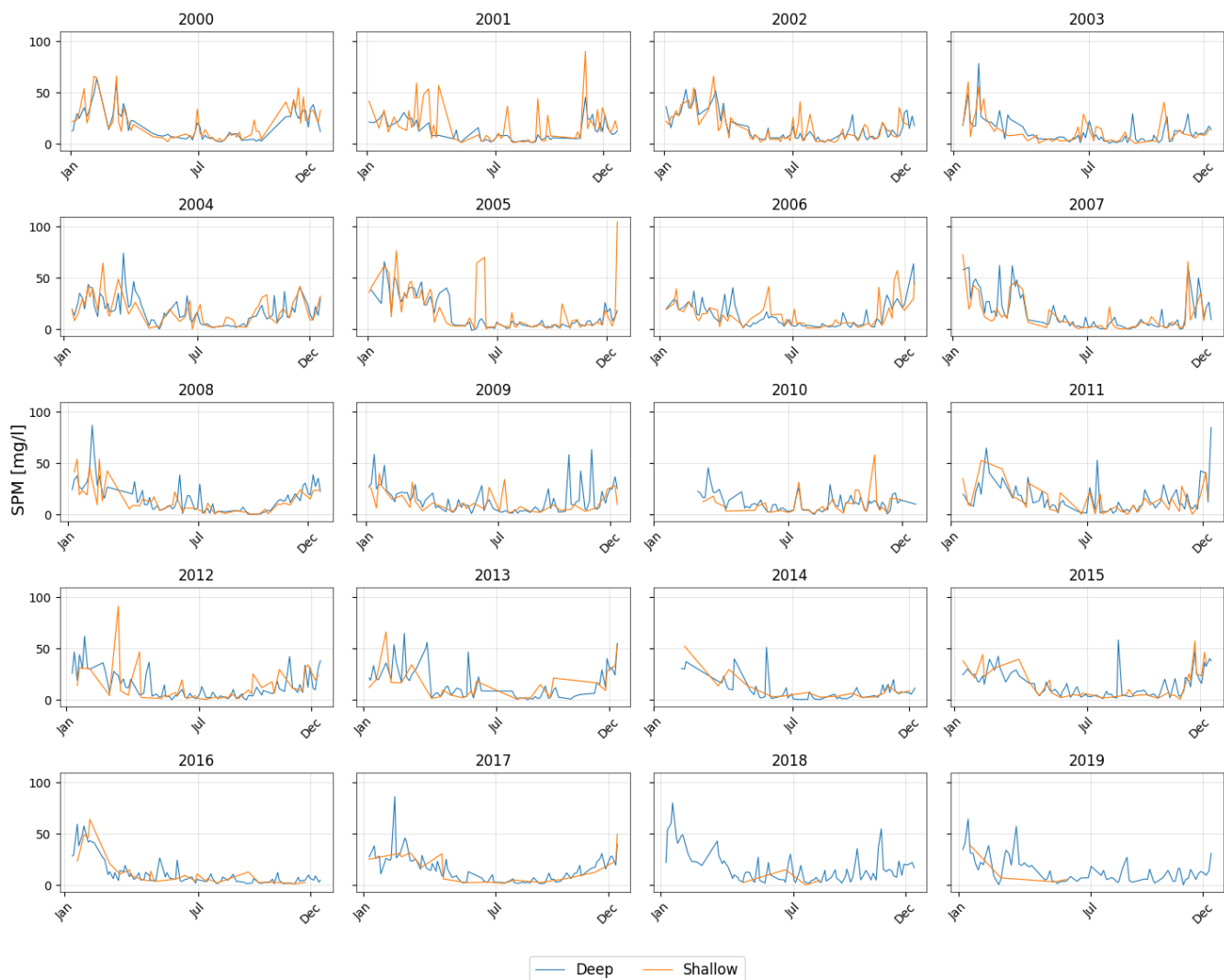
240 To assess the relative contribution of biotic conditions to SPM concentrations, we employed a forward  
241 NN to predict SPM based on environmental input parameters. The approach relies primarily on long-  
242 term observational data, thereby enhancing the robustness of the results, complemented by model-  
243 derived SSH and its temporal gradient data. Although numerical simulations are also powerful tools in  
244 this context, any discrepancies they produce can largely be attributed to the choice of numerical  
245 methods and the associated uncertainties, including unresolved processes, boundary conditions, and the  
246 spatial and temporal resolution of both modelled and observed data (Skogen et al, 2021). While it does  
247 not provide process-based understanding, the NN approach is particularly well-suited for this task, as it  
248 offers a cost-efficient and data-driven means to capture complex, non-linear relationships between  
249 influencing factors. We conducted several sensitivity experiments (not shown), varying both the



250 network depth and the number of neurons per layer. For the current application, increasing the network  
251 depth further did not improve performance.  
252 For the first part of the experiment, the primary regression task involved predicting SPM concentrations  
253 during the winter season, which is characterized by low biological activity, as indicated by minimal  
254 Chl-a concentrations. Focusing on winter allows for a clearer assessment of physical (abiotic) drivers,  
255 such as wind forcing, with reduced biological confounding. The input features, 19 in total, of the NN  
256 model include wind magnitude at the time of sampling and averages over a series of prior time intervals  
257 (6 to 240 hours, corresponding to the intervals analyzed in Subsection 3.2.2), dominant wind direction  
258 over 6 and 12 hours (even though the correlation analysis shows only a minor impact, the non-linear  
259 effects of wind direction may still be present), salinity, SSH, and the temporal gradient of SSH  
260 (computed using a forward scheme). The results of the winter model are presented in Section 3.3.1.  
261 To extend the analysis across seasons, we applied the same model architecture to the full dataset,  
262 initially using the same input features as in the winter setup (results in Section 3.3.3), and subsequently  
263 incorporating two additional features: temperature and the weekly sum of sunshine hours before the  
264 measurement date (21 features in total, Section 3.3.4). The latter serve as a pragmatic proxy for both  
265 Chl-a concentration and benthic algae abundance. While we do not attempt to separate these  
266 mechanisms individually, this approach is exploratory and intended to approximate their combined  
267 influence on seasonal SPM variability.  
268 The technical details of the NN architecture are provided in the Supplementary Material, together with  
269 the complete predictor list in Table S2.

## 270 **3 Results**

271 Figure 2 presents the time series of SPM concentrations at the deep and shallow stations in the Sylt-  
272 Rømø Bight from 2000 to 2019, based on data from the Sylt Roads monitoring program (Section 2.3.1;  
273 station locations shown in Fig. 1). Both stations display a pronounced seasonal cycle, with SPM  
274 concentrations typically peaking in winter and declining during summer. The deep station shows more  
275 frequent and sustained seasonal peaks in SPM concentrations throughout the time series, whereas the  
276 shallow station tends to exhibit higher concentrations during peak events. It is also important to note  
277 that the regular sampling at the shallow station was discontinued after 2013 following the replacement  
278 of the research vessel, resulting in reduced data coverage in subsequent years.



**Figure 2: Time series of SPM for the considered years (2000–2019) for the deep (blue) and shallow stations (orange) gridded per year. Each subplot represents a calendar year with time on the x-axis and SPM concentration [mg/l] on the y-axis.**

### 3.1 Seasonality of SPM concentrations

SPM concentrations show an apparent seasonality, which is further investigated in relation to biological activity and meteorological drivers in the subsequent analyses. Using Chl-a as a proxy for phytoplankton biomass, this subsection applies statistical analysis to examine how biological activity and wind forcing together shape seasonal patterns of SPM variability at both the deep and shallow stations.

### 3.1.1 Role of biological processes in seasonal SPM variations

Both stations exhibit distinct seasonal variations in SPM and Chl-a concentrations (Fig. 3). SPM concentrations are highest in late autumn and winter, with median values of about  $\sim 28$  mg/L ( $33.9 \pm 18.2$  mg/L) at the deep and median of  $\sim 26$  mg/L ( $38.6 \pm 16.4$  mg/L) at the shallow stations. In January, the peak reaches over 60 mg/L at both stations, with individual events exceeding 70 mg/L. The decline in concentrations is observed from February to May, reaching their lowest values in June to August (around 2-3 mg/L), although occasional peaks above 30-40 mg/L still occur. From September onward, SPM begins to increase. This pattern is similar at both stations, though the shallow station generally has slightly higher SPM concentrations, suggesting potential differences in sediment availability or resuspension dynamics.

Chlorophyll-a concentrations follow an inverse seasonal pattern. It remains low in December–January with a median around 2  $\mu\text{g/L}$  ( $2.1 \pm 0.7$   $\mu\text{g/L}$ ) at both stations. It increases sharply in early spring, with peaks in March–April exceeding 30  $\mu\text{g/L}$  at the deep station and 25  $\mu\text{g/L}$  at the shallow station. Concentrations then drop in summer, followed by a secondary increase in August–October, when values up to  $\sim 15$ -20  $\mu\text{g/L}$  are observed.

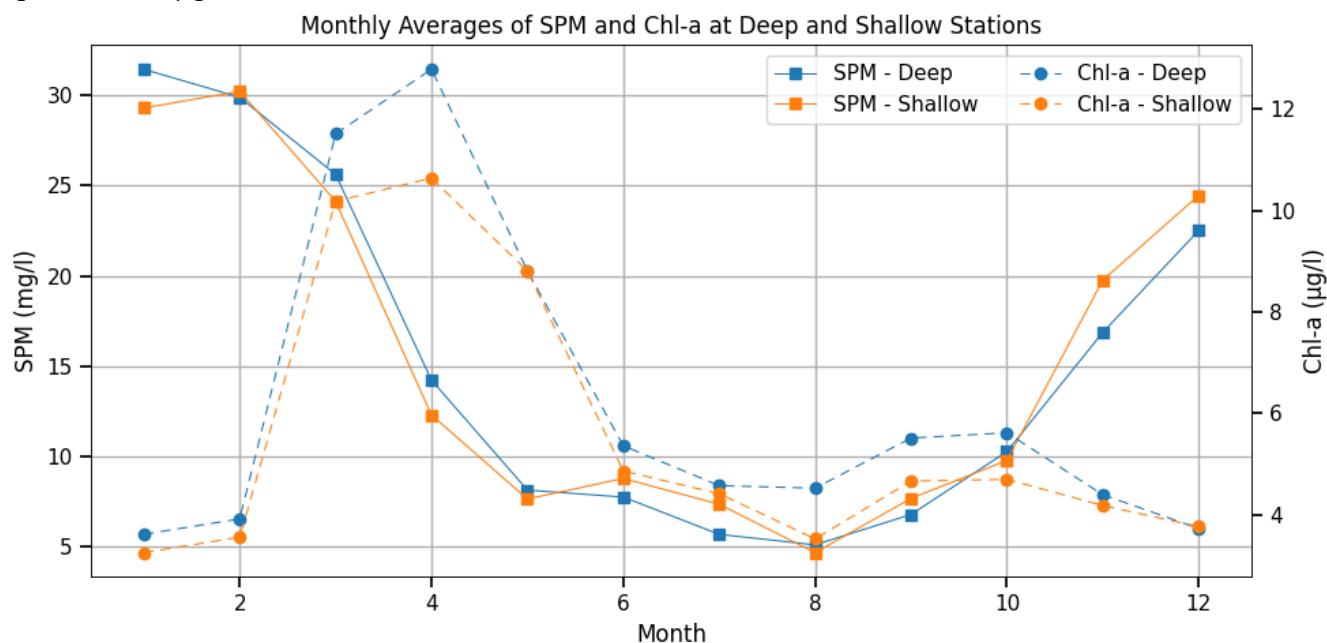
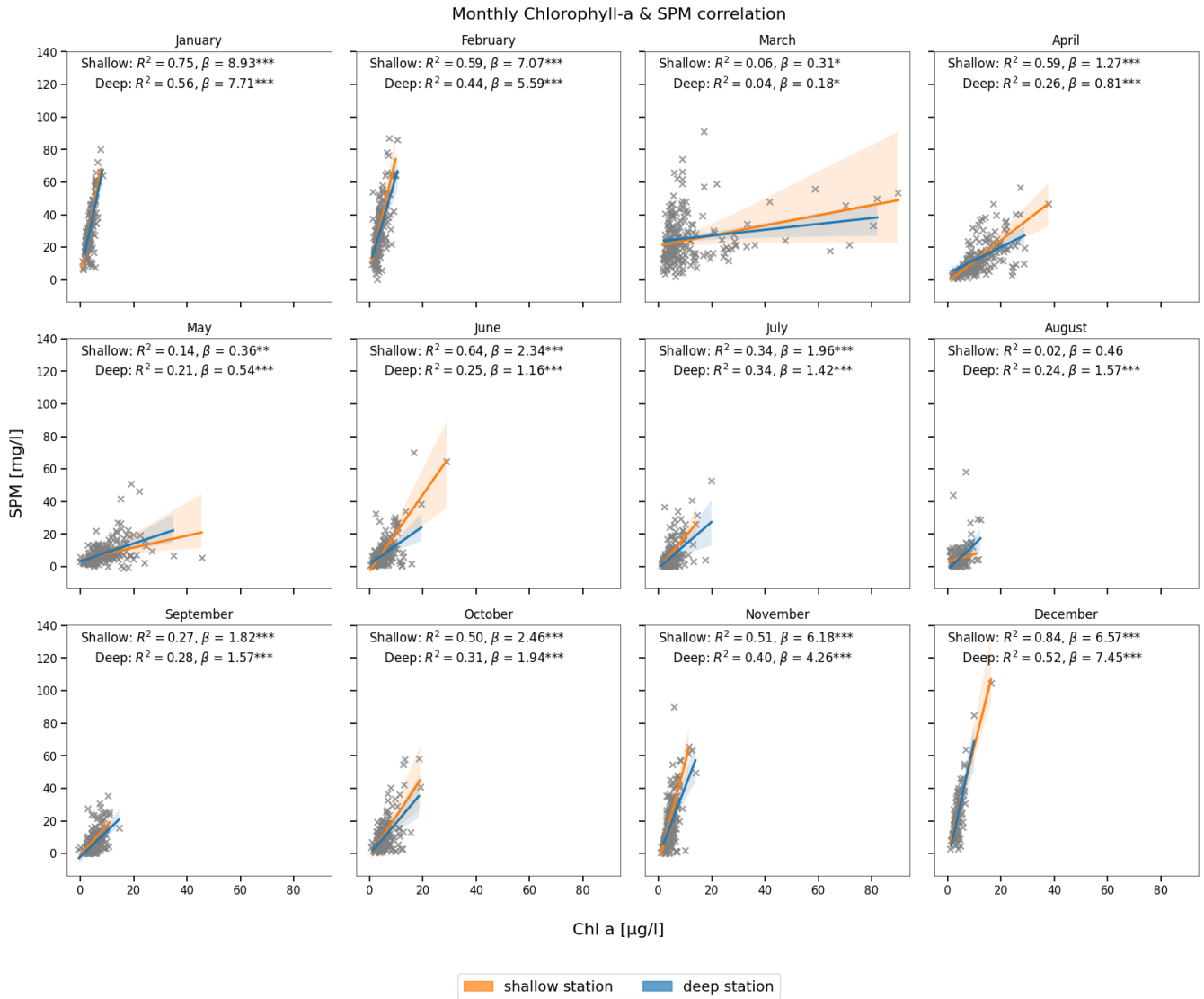


Figure 3: Monthly averages of SPM and Chl-a at the deep (blue) and shallow (orange) stations for the considered years (2000–2019). SPM concentrations (solid line with square marker, left axis) and Chl-a concentrations (dashed line with circle markers, right axis) are displayed separately for clarity. The x-axis represents the months from January to December.

The relationship between Chl-a and SPM varies across seasons (Fig. 4). During December–February, biological activity is low and Chl-a constitutes a relatively constant fraction of total SPM, both subject to the same resuspension-deposition processes. This co-settling behavior leads to strong positive correlations observed at both stations. The highest values occur at the shallow station, with  $R^2 = 0.84$  in December and  $R^2 = 0.75$  in January. At the deep station, correlations are relatively lower, reaching  $R^2 =$

0.52 in December and  $R^2 = 0.56$  in January. The strong correlation and the slope are in line with the resuspension of microphytobenthos as observed in winter by de Jonge and van Beusekom (1995). From March onward, the relationship becomes more complex. As Chl-a rises rapidly during the spring bloom and SPM concentrations decline, the correlation at both stations weakens with  $R^2$  values dropping to near-zero in March. This divergence reflects differences in vertical distribution and settling behavior. While phytoplankton is a component of SPM and both are retained on the filter, their decoupling in spring and summer may reflect that not all phytoplankton is floc-associated. Active phytoplankton may remain suspended near the surface, while denser biomineral flocs sink more rapidly, leading to weaker correlations in integrated surface samples. This non-linear and temporally variable influence of Chl-a also underlies the decision not to use it directly as a predictor in the neural network (Section 3.3), but instead to approximate biological activity through more general proxy variables such as temperature and light availability (see Table S2 in Supplementary Material). During June–August, as both the SPM and Chl-a concentrations reach low values, the correlation weakens further, with August showing almost no correlation at the shallow station. In November and December the correlation strengthens again as the role of biological activity reduces and physical drivers become dominant again.

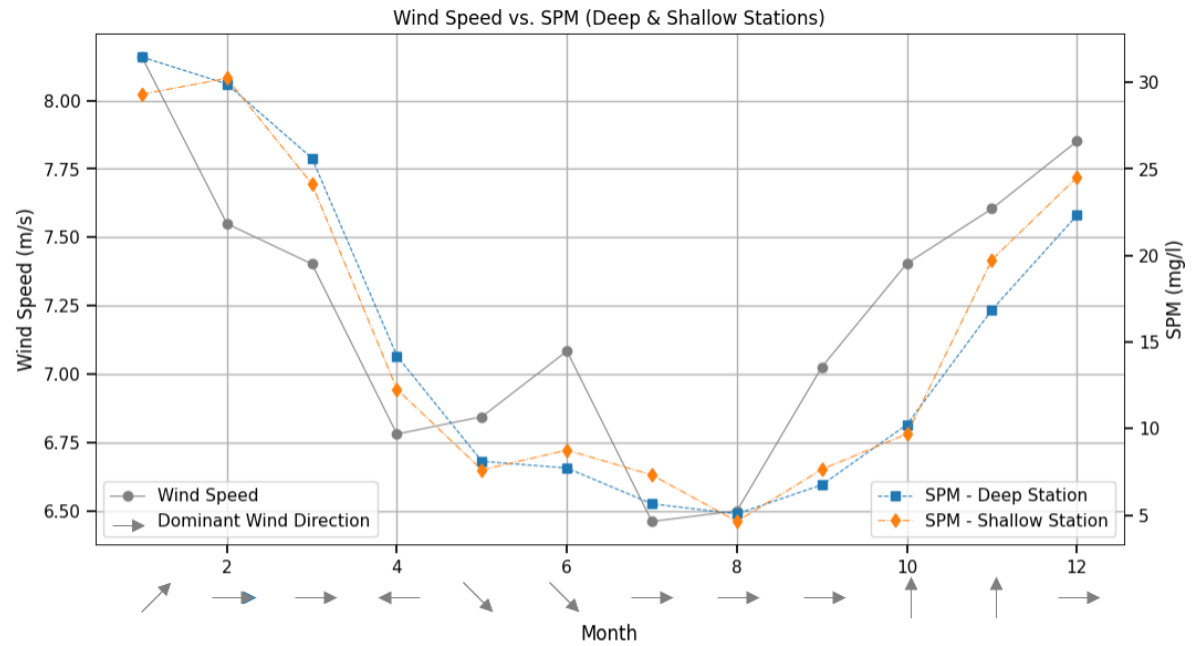


**Figure 4: Monthly correlation between Chl-a (x-axis) and SPM (y-axis) concentrations at the deep (blue) and shallow (orange) stations. The coefficient of determination ( $R^2$ ), slope ( $\beta$ ), and statistical significance (\*\*\* $p < 0.001$ , \*\* $p < 0.01$ , \* $p < 0.05$ ) are indicated in each panel.**

### 3.1.2 Role of wind forcing in seasonal SPM variations

The relationship between seasonal SPM concentrations and wind characteristics is illustrated in Fig. 5. Wind speeds are highest in January, averaging around  $8.5 \pm 2.8$  m/s, with peaks reaching  $14.2 \pm 1.7$  m/s, and gradually decline through spring months, reaching a minimum with mean speeds around  $6.5 \pm 3.1$  m/s and minima of  $2.0 \pm 0.7$  m/s in July–August. From August onward, wind speeds begin to rise again. This seasonal cycle aligns with the observed variability in SPM, with higher concentrations in winter and lower values in summer. Dominant wind directions also vary throughout the year, with

338 westerly and northwesterly winds prevailing in most months, easterly winds in April, and more  
 339 southerly winds during October–November. Seasonal wind roses illustrating these patterns are shown in  
 340 the Supplementary Material (Fig. S1). However, no clear linear relationship emerges between dominant  
 341 wind direction and seasonal SPM concentrations. To account for potential non-linear interactions that  
 342 may still play a role, wind direction was included as an input feature in the NN model.



343  
 344 **Figure 5: Monthly averages of wind speed, SPM concentrations, and dominant wind direction (2000–2019).** The figure illustrates  
 345 monthly mean wind speed (grey solid line, left axis) and SPM concentrations at the deep (blue squares) and shallow (orange  
 346 diamonds) stations (right axis). Grey arrows along the x-axis represent the dominant wind direction for each month, with arrow  
 347 orientation indicating the direction from which the wind originates, following standard meteorological convention.

348 While correlations are further explored in Section 3.2, the seasonal alignment of wind intensity and  
 349 SPM concentrations suggests strong physical modulation.

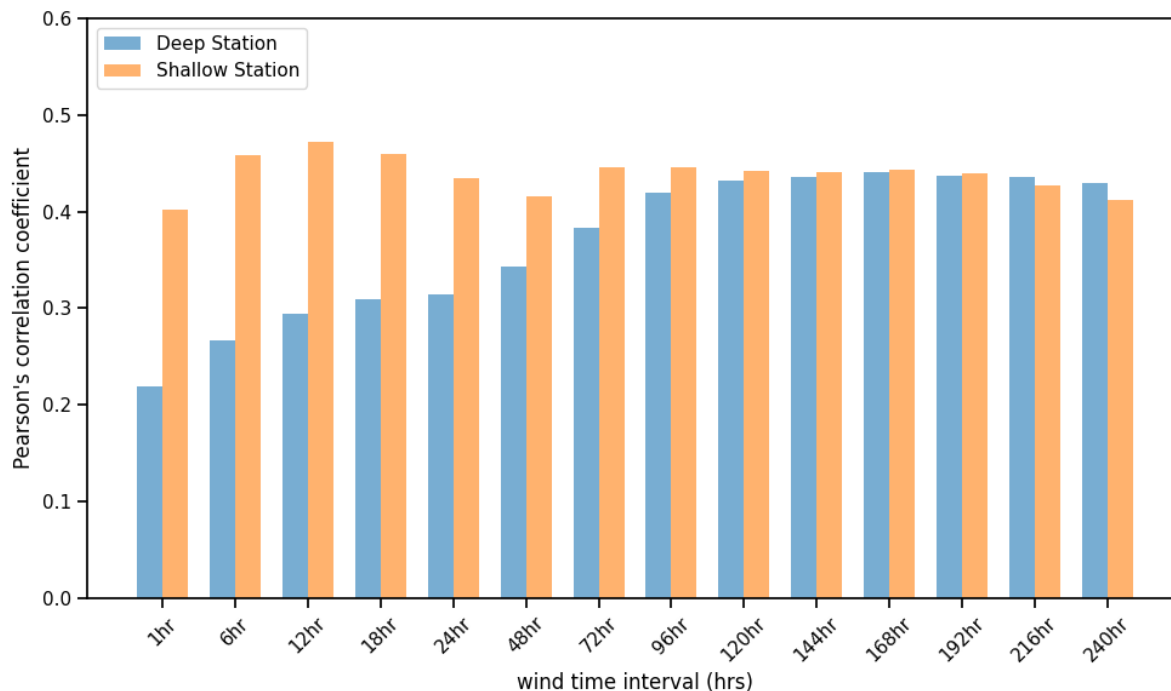
## 350 3.2 Resuspension and Time Scales of Inner Basin Transport

351 Beyond seasonal variation, there are mechanisms responsible for the variability of SPM concentrations  
 352 on shorter temporal scales, from hours to days. This subsection examines how wind-induced  
 353 resuspension operates over different time frames and the role of tidal transport within the basin.

### 354 3.2.1 Role of wind forcing in short time SPM variations

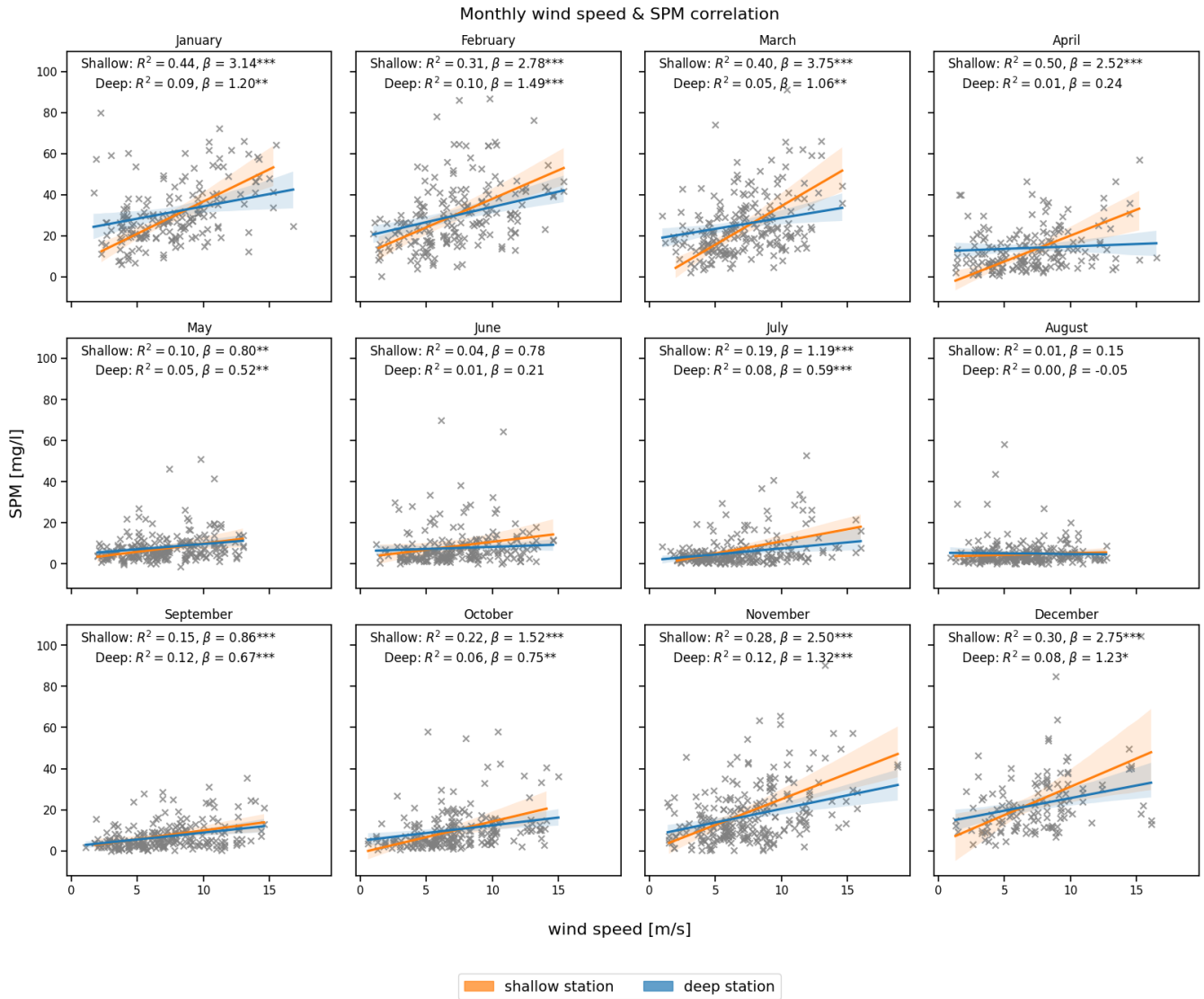
355 To quantify the short-term response of SPM to wind forcing, we computed Pearson correlation  
 356 coefficients between SPM concentrations and wind speed averaged over different time intervals,  
 357 ranging from 1 hour to 240 hours. This approach, commonly referred to as “wind memory,” allows us  
 358 to evaluate how the cumulative influence of past wind conditions affects SPM variability at different  
 359 depths and over varying time scales. Figure 6 illustrates how the strength of this relationship evolves as

360 wind speeds are averaged over progressively longer intervals, ranging from 1 hour to 240 hours. This  
 361 approach quantifies how SPM responds to the cumulative influence of past wind conditions over  
 362 varying time scales. The results show that correlation coefficients generally increase as wind memory  
 363 lengthens, reaching a peak around 12-18 hours at the shallow station and 120 hours at the deep station,  
 364 followed by a slight decline.  
 365 Monthly variations in the correlation patterns are provided in the Supplementary Material (Fig. S2),  
 366 showing that the correlation between wind speed and SPM is generally stronger in winter than in  
 367 summer, with more complex patterns during transitional months such as April and November.



368  
 369 **Figure 6: Pearson correlation coefficients between SPM and wind speed averaged over different time intervals, ranging from 1**  
 370 **hour to 240 hours. The two stations (deep station as blue and shallow station as orange) are represented separately, showing how**  
 371 **wind memory influences SPM variability at different depths.**

372 The correlation between instantaneous wind speed and SPM concentrations is strongest during winter  
 373 and early spring (Fig. 7), particularly at the shallow station, where the most substantial value occurs in  
 374 January ( $R^2 = 0.44$ ) and April ( $R^2 = 0.50$ ). In contrast, the deep station shows much weaker correlations,  
 375 with  $R^2$  values often near zero, reflecting a lagged effect on SPM concentrations.  
 376 During June–August, the relationship weakens significantly, with the lowest correlations observed in  
 377 August for both stations. The shallow station maintains minor correlation ( $R^2 \approx 0.15$ ) into late summer  
 378 and early autumn.

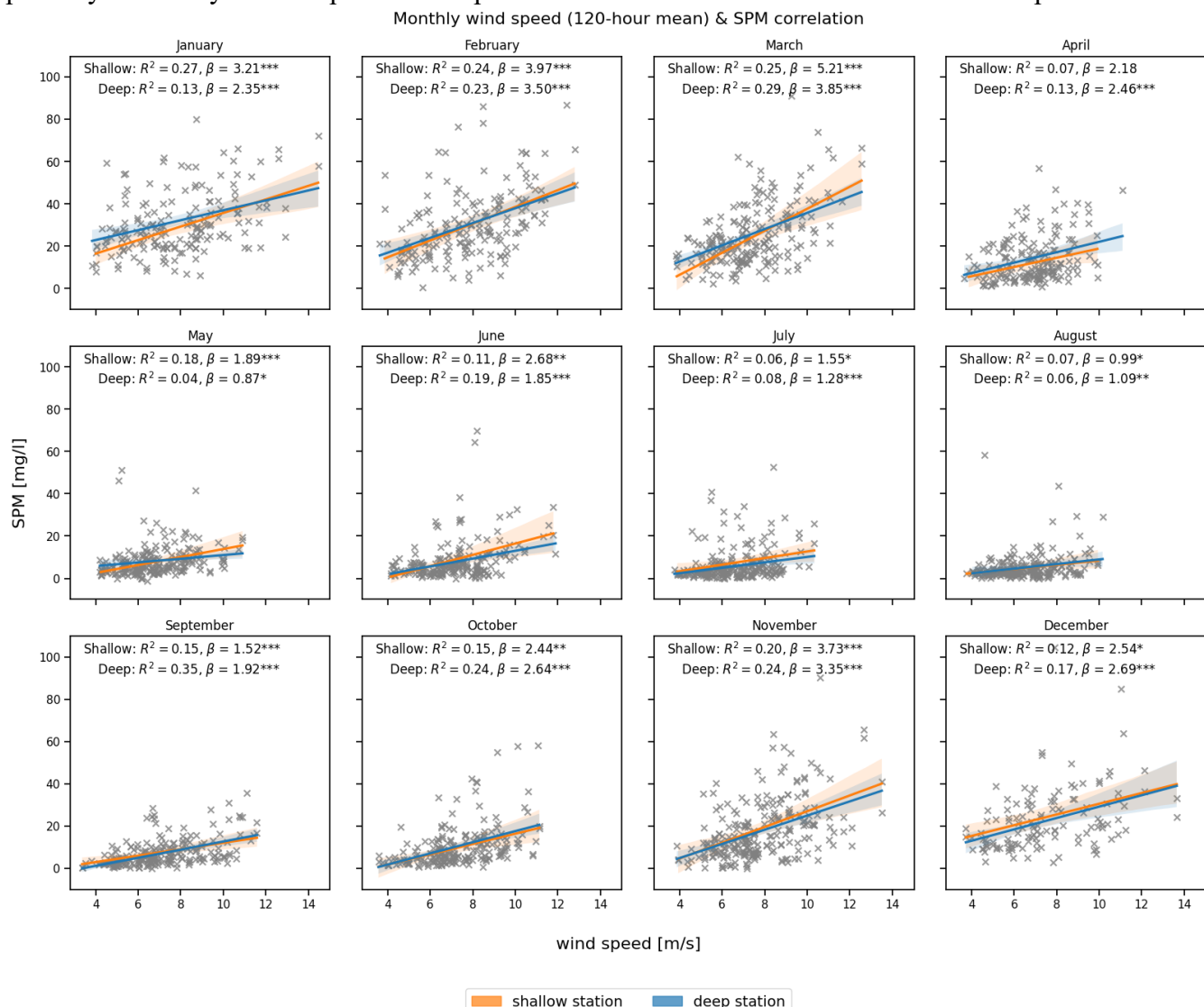


**Figure 7: Monthly correlation between wind speed at the time of sampling (x-axis) and SPM concentration (y-axis) at the deep (blue) and shallow (orange) stations. The coefficient of determination ( $R^2$ ), slope ( $\beta$ ), and statistical significance (\*\*\* $p < 0.001$ , \*\* $p < 0.01$ , \* $p < 0.05$ ) are indicated in each panel.**

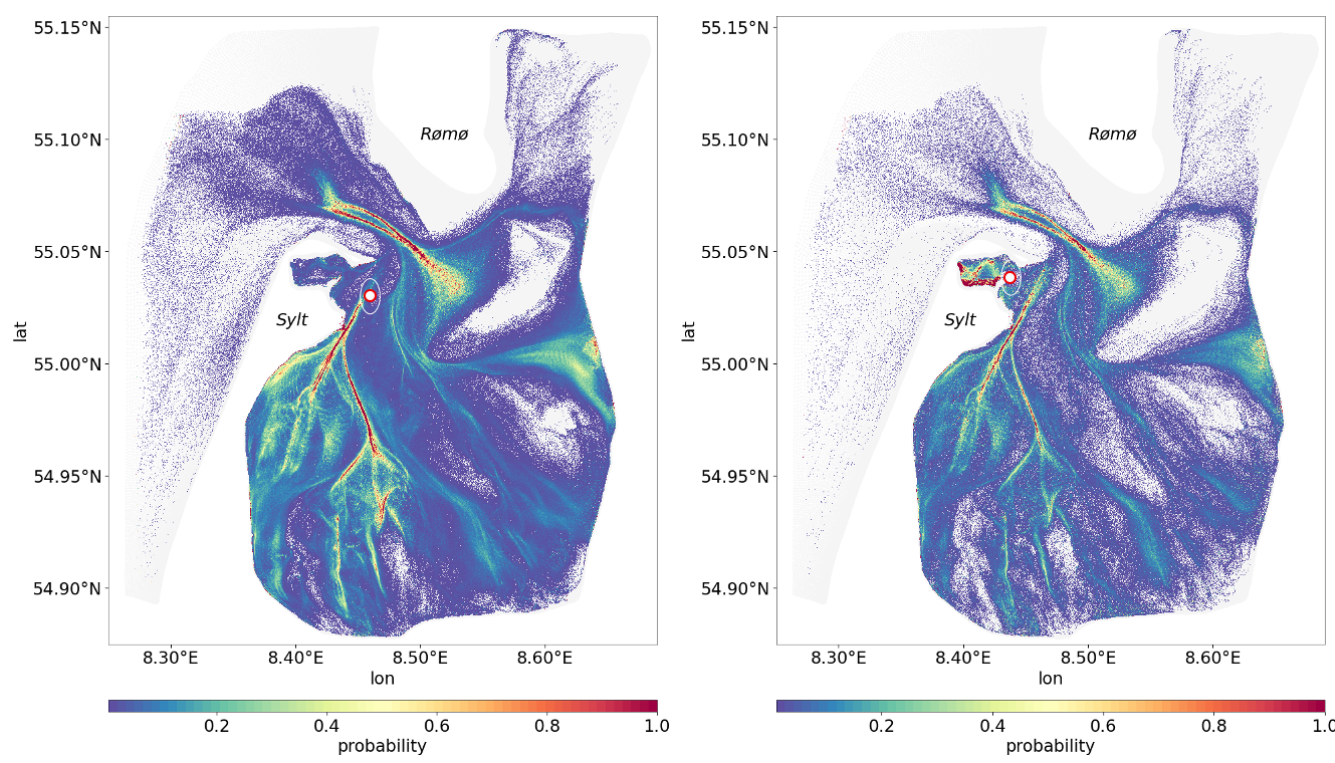
In contrast to the instantaneous impact of wind-speed, averaging wind speed over 120 hours (5 days) results in an improved correlation between wind and SPM at the deep station, as shown in Fig. 8, although the seasonal pattern remains similar. The stronger relationship is particularly evident in the winter and autumn months, especially at the deep station (e.g.,  $R^2 = 0.35$  in September, 0.24 in November and February). These findings indicate that the average wind-speed over several days have a stronger influence on SPM concentrations at the deep station than the wind at the time of sampling. The results highlight the role of wind forcing in modulating SPM concentration variability, particularly in shallow waters during winter and autumn. Naturally, the influence of wind is less pronounced in



391 deeper waters through direct resuspension mechanisms. However, it remains significant, with a time lag  
 392 possibly caused by the transport of resuspended material from shallower zones to the deep station.



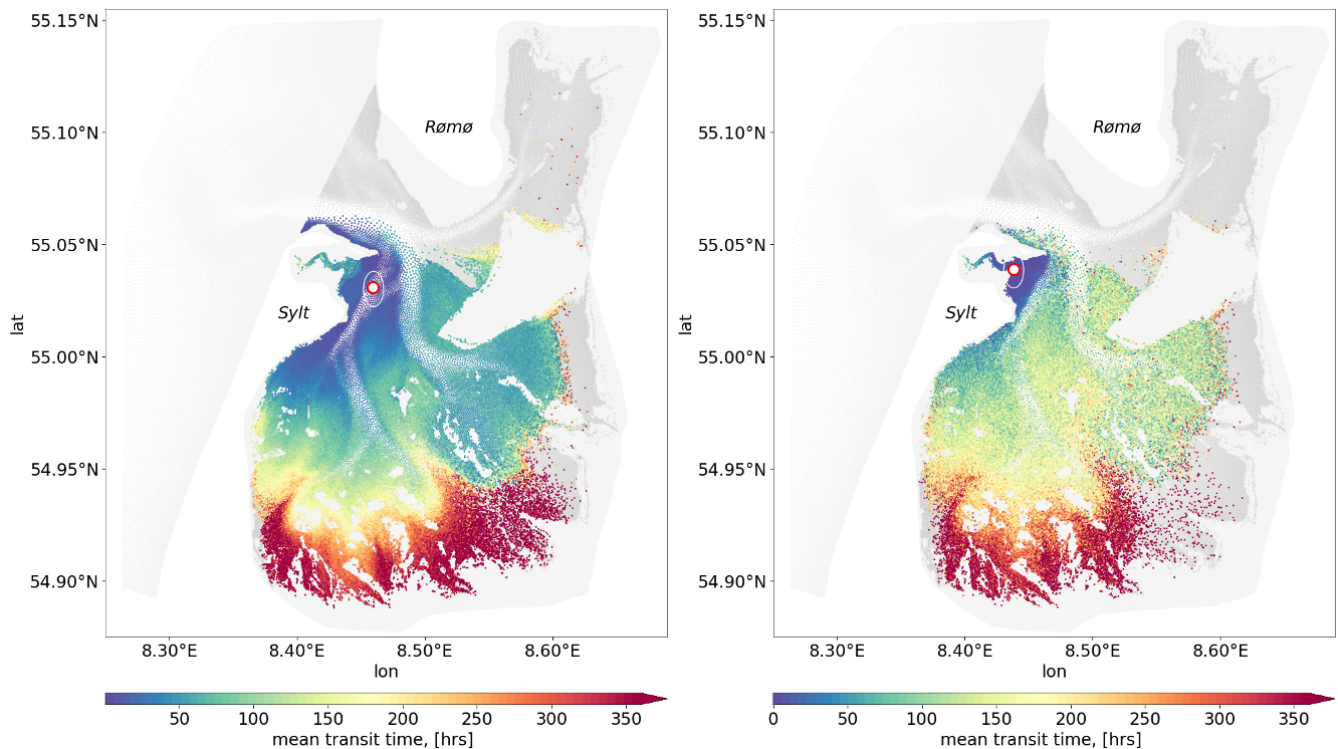
393  
 394 **Figure 8: Monthly correlation between wind speed averaged over a 120-hour (5-day) period (x-axis) and SPM concentration (y-**  
 395 **axis) at the deep (blue) and shallow (orange) stations. The coefficient of determination (R²), slope (β), and statistical significance**  
 396 **(\*\*\*p < 0.001, \*\*p < 0.01, \*p < 0.05) are indicated in each panel.**



**Figure 9: Probability distribution of passive tracer pathways to illustrate how frequently different areas act as source regions or transport corridors for passive tracers. Higher probability values (highlighted in yellow and red) indicate locations that more frequently contribute to SPM reaching the deep station (left panel) or shallow station (right panel).**

Figure 9 shows the spatial probability distribution of passive tracer connectivity within the basin, derived from Lagrangian simulations forced solely by tides. This setup isolates the dominant physical driver of material transport in the Sylt-Rømø Bight, where tidal processes account for roughly 80% of velocity variability (Fofonova et al., 2019). While regular wind forcing (excluding storm events and uncommon multi-day episodes of strong winds from a single direction) enhances lateral dispersion, its net contribution to basin-wide transport over several days is relatively minor (Konyssova et al., 2025). Note, in this region, typical wind events last about 5–6 hours, defined as consecutive hours of wind from the same direction within an eight-sector classification (Rubinetti et al., 2023). Residual currents generated by non-linear tidal interactions establish consistent, directional transport pathways, which are effectively captured by the simulated tracer trajectories.

The resulting network of tidally-induced transport pathways reveals apparent differences between the two stations. The shallow station is predominantly supplied by tracers originating in the northern parts of the bight, particularly Königshafen and its surroundings, reflecting localized and relatively rapid connections. In contrast, the deep station is influenced by broader and more distributed transport pathways, integrating material from a wider area of the basin.



**Figure 10: The mean transit time of passive tracers to reach the sampling station. The left panel corresponds to the deep station, while the right panel represents the shallow station. Grid elements that are consistently inundated with each flood phase, from which the passive tracers are released, are shown in grey. Elements that successfully reach one of the two sampling stations are colour-coded by their mean transit time (in hours), reflecting how long it takes for passive tracers to reach from a given location to each station.**

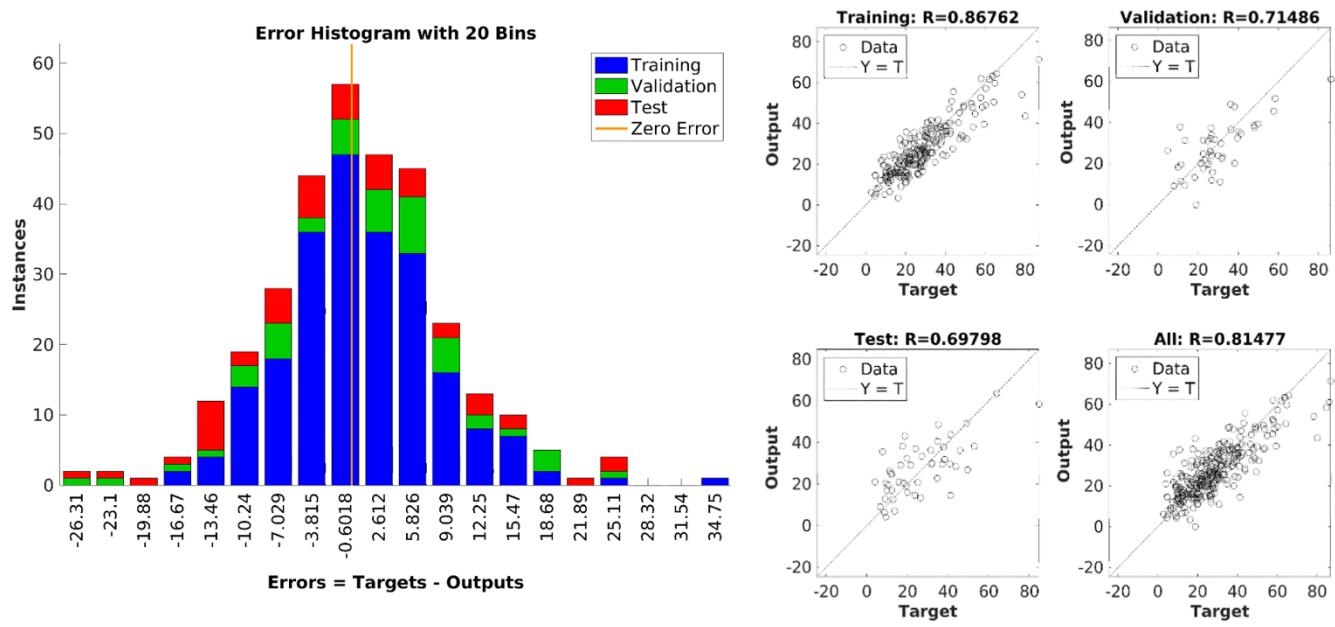
For both stations, shorter transit times (depicted in blue and green, Fig. 10) are observed in areas closer to the stations, whereas regions further away, particularly in the inner tidal flats, exhibit longer transit times (yellow to red hues, Fig. 10). The transit time patterns reveal that SPM originating from intertidal areas and tidal channels follows particular pathways before reaching the deeper and shallower monitoring stations, with transport occurring on timescales of days to weeks. The difference between the two panels suggests that the deep and shallow stations receive material from primarily distinct but partially overlapping source regions.

Together, these figures illustrate the tidal connectivity of the two monitoring stations with their surrounding basin, highlighting likely source regions and typical transport pathways. To quantify the typical timescale for SPM transport, a probability-weighted transit time was computed, where individual transit times were weighted according to their interpolated probability values. This approach ensures that the estimated transit time reflects the most frequently occurring transport pathways rather than rare, low-probability trajectories. The resulting probability-weighted median transit time was 133.3 hours for the deep station, which aligns with the ~5-day wind-memory interval identified in Section 3.2.2, and 44.4 hours for the shallow station, highlighting the pronounced contrast in transport efficiency between the two locations and likely reflecting differences in sediment source regions. Although not explicitly resolved in the simulations, this difference may also relate to grain-size

composition, as the deeper channels typically contain coarser material, whereas the intertidal flats have finer, more cohesive sediments (Bartholomä et al., 2009). At the shallow station, which is situated within the Königshafen area, SPM concentrations respond to wind forcing almost immediately through local resuspension. The longer transit time therefore does not indicate a delayed response, but rather reflects the additional supply of tracers arriving from a wider surrounding area, which extends the median transit time beyond the short wind-driven response captured in the memory analysis. In contrast, the deep station integrates SPM from more complex, multi-step transport routes over longer timescales. These transit times provide a key reference for interpreting observed SPM fluctuations at each station and may help distinguish between short-term and cumulative drivers of SPM variability.

### 3.3 Neural Network

#### 3.3.1 Winter SPM prediction (Baseline Model)



**Figure 11: Performance of the neural network (NN) trained on the winter dataset for the deep station. Left: Error histogram showing the distribution of prediction errors (in mg/L) for training, validation, and test subsets. Right: Regression plots comparing predicted vs. observed SPM values, with correlation coefficients (R) for each data subset. Due to the overall qualitative similarity between the pictures for deep and shallow stations, only the deep station is presented here.**

To evaluate how well physical drivers alone can explain SPM concentration variability, we first trained a baseline NN using only the winter dataset, when biological activity is minimal. This provides a reference to assess the contribution of wind and tidal forcing under conditions with limited biological influence. The error for training, validation and testing has a normal distribution (Fig. 11, left). For the deep station, the root mean square error (RMSE), a measure of average prediction error magnitude, is 9.4 mg/L for the testing set. Note that the observed mean and median SPM concentrations in winter are 27.6

and 25.9 mg/L respectively. As a result of the application of NN to the winter dataset, they are 27.2 and 25.5 mg/L respectively (Table 2). Regression analysis (Fig. 11, right) yields correlation coefficients between observed and simulated SPMs equal to  $\sim 0.87$ ,  $\sim 0.71$ ,  $\sim 0.7$  and  $\sim 0.81$  for training, validation, testing and all winter datasets, respectively. The results show that, by using tidal and wind forcing along with a proxy for baroclinic conditions (salinity), we can predict SPM concentrations during winter quite well without accounting for other factors. Notably, temperature, salinity, turbulent kinetic energy, and SPM concentrations themselves all influence flocculation processes, even without considering biological activity. Temperature was excluded from the feature set at this stage due to its strong seasonal cycle and its potential use as a proxy for biological conditions. Specifically, in our current approach, we cannot separate the influence of temperature on biological mechanisms from its physical effects (e.g. viscosity), which also impact flocculation.

### 3.3.2 Applying of NN trained on winter data to other seasons

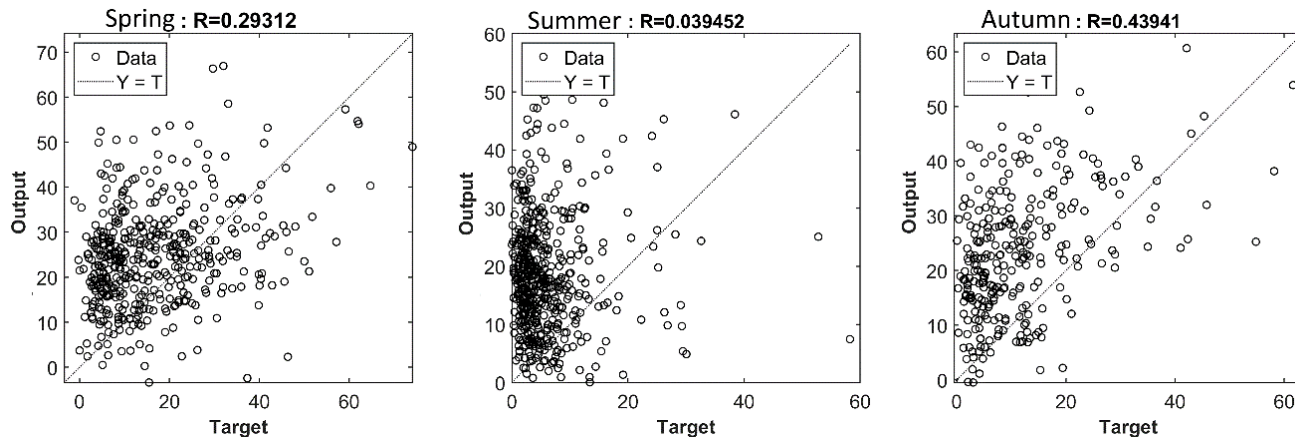
Next, we applied the NN trained under winter conditions to other seasons. This approach is justified by the fact that the long-term dataset captures a representative range of wind conditions in both winter and summer, including calm periods and strong wind events. Furthermore, salinity remains relatively stable across seasons, supporting the applicability of the model. Using the trained winter model, we attempt to predict SPM concentrations for spring, summer, and autumn. The goal of this step is to estimate the influence of biological processes on SPM concentrations. For both stations, the results of the NN application show significantly higher SPM concentrations compared to observations (Table 2).

**Table 2. Mean, median values and correlation (R) of SPM concentrations, [mg/L], from observations VS predictions by NN trained on winter dataset for the deep and shallow stations**

seasons		Deep Station		Shallow Station	
		observed	predicted	observed	predicted
winter	mean, [mg/L]	27.6	27.2	28.5	24.7
	median, [mg/L]	25.9	25.5	24.4	26.5
		$R = 0.81$		$R = 0.81$	
spring	mean, [mg/L]	16.5	24.8	15.6	20.6
	median, [mg/L]	13.3	24.3	11.3	18.0
		$R = 0.29$		$R = 0.5$	
summer	mean, [mg/L]	6.15	17.7	6.8	18.5
	median, [mg/L]	4.22	16.9	3.9	16.1
		$R = 0.04$		$R = 0.35$	



autumn	mean, [mg/L]	11.6	23.4	12.8	24.0
	median, [mg/L]	8.5	22.7	7.5	21.0
$R = 0.44$				$R = 0.54$	



**Figure 12: Regression analysis for NN trained on winter data and applied to spring, summer and autumn data vs observations. Results shown for the deep station; shallow station results are qualitatively similar and summarized in Table 2.**

This discrepancy suggests that while calmer wind conditions alone can explain approximately 40% of the SPM reduction in summer compared to winter, they do not account for the full ~80% decrease observed in the data (see Table 2). The overestimation of SPM by the NN is clearly visible in the regression plots (Fig. 12), where most of the predicted values are positioned above the  $Y = T$  line, particularly during summer and autumn. This does not necessarily imply that biological activity is weaker in spring, but rather that its impact is less well captured by the abiotic-only model, as biological processes contribute more strongly to variability than in autumn. The higher correlation between simulated and observed SPM in autumn likely reflects physical conditions that are more similar to winter, when the model was trained, including generally stronger winds (Section 3.2.2). In spring, enhanced biological activity and aggregation introduce variability that the model cannot account for, reducing correlation. During summer, the regression coefficient dropping below 0.05 indicates that processes not represented in the abiotic model become dominant (Fig. 12). The subsequent analysis of all seasons presented in Section 3.3.3 points to biologically mediated mechanisms, such as flocculation and sediment stabilization, as the main contributors to this variability.

### 3.3.3 NN trained at the data from all seasons

Previously we showed that there are factors, in particular biological processes, which significantly influence the SPM dynamics. To confirm this, we trained NN on all the dataset (not limited to winter) using the same input features representing only abiotic conditions, which we used in 3.3.1. As expected, the overall RMSE increases to approximately 11 mg/L, due to the omission of important features that influence SPM dynamics during the warm season (Supplementary Fig. S5). When the model is trained on data from all seasons, and applied specifically to winter conditions, it

underestimates SPM concentrations. For the deep station, the predicted mean and median are 19.17 mg/L and 17.2 mg/L, respectively, compared to observed values of 27.6 mg/L and 25.9 mg/L. At the shallow station, the model yields mean and median predictions of 20 mg/L and 17 mg/L, whereas the corresponding observed values are 28.45 mg/L and 24.35 mg/L. The regression coefficients also reflect this underperformance, with values of approximately  $R \approx 0.66$  (deep) and 0.72 (shallow). The seasonal regression analysis further highlights these biases (Supplementary Fig. S7, upper row). A complete numerical breakdown of observed and predicted seasonal values is provided in Table S3.

### 3.3.4 Neural network trained on all-season data including biological proxy features

Including temperature and sunshine duration as proxies for biological activity improved overall model skill, reducing the test RMSE to  $\sim 10$  mg/L. The regression analysis shows the correlation coefficient between observed and simulated SPM concentrations reached  $\sim 0.88$ ,  $\sim 0.76$ ,  $\sim 0.72$  and  $\sim 0.84$  for training, validation, testing and all datasets respectively (Supplementary Fig. S6). Seasonal regression plots also show marked improvements (Supplementary Fig. S7, lower row). For winter,  $R$  increased from 0.66 to 0.73 at the deep station and from 0.72 to 0.82 at the shallow station. The largest gains occurred in spring and summer, consistent with more substantial biological influence during these seasons. Table S3 provides the detailed seasonal comparison of observed and predicted means, medians, and correlations.

## 4 Discussion

This study set out to investigate the combined influence of wind forcing, tidal transport, and biological processes on SPM concentration variability in the Sylt-Rømø Bight. Using 20-year period monitoring data and applying statistical tools, neural network models, and Lagrangian simulations, we analyze the relative roles of these processes across seasonal and short-term timescales. The variability observed in SPM concentrations reflects the inherent complexity of the system, where several physical and biological mechanisms interact across different spatial and temporal scales. Wind-driven resuspension, tidal advection, and biologically mediated effects each contribute to the observed dynamics, with their relative importance shifting seasonally. This complexity highlights that the variability in SPM concentrations cannot be attributed to a single driver but rather to the combined response of the system to multiple, overlapping processes. In this chapter, we will further discuss topics that have not yet been fully addressed: the peculiarities of the Chl-a and SPM concentration relationship, biological processes that directly or indirectly influence SPM dynamics, further details on wind and tide control including SSH and SPM concentration relationship, details of NN related findings and study limitations.

### 4.1 Biological Interaction

The strong positive correlation between Chl-a and SPM concentrations in winter suggests that under low biological activity, such as limited phytoplankton growth, behaviour of both variables is driven mainly by physical processes such as wind-driven resuspension. This is consistent with previous

547 observations in the Wadden Sea and German Bight (van Beusekom et al., 1999; van Beusekom and de  
 548 Jonge, 2002). Together with SPM, the strong winds resuspend microphytobenthos attached to sediment  
 549 particles (de Jonge and van Beusekom, 1995), consistent with observations by Hommersom et al.  
 550 (2009), who found strong correlations between SPM and Chl-a in the Wadden Sea driven by  
 551 resuspension. Such patterns support the interpretation that, under winter conditions with low biological  
 552 production, a large fraction of Chl-a is contained within resuspended flocs, leading to the high  
 553 correlations observed in our study at both stations. In contrast, the correlation between Chl-a and SPM  
 554 concentrations begin to decline in spring, despite persistent wind forcing, and reaches a minimum in  
 555 summer. This seasonal decoupling suggests that biological aggregation processes become increasingly  
 556 dominant with the beginning of and following phytoplankton bloom, promoting the formation and  
 557 subsequent rapid settling of flocs (Schartau et al., 2019; Maerz et al., 2016; Lunau et al., 2006). For  
 558 example, the production of TEPs, secreted by phytoplankton and bacteria under certain physiological or  
 559 nutrient conditions, strongly enhance particle stickiness and promote the aggregation of both organic  
 560 and mineral particles (Passow, 2002). While our statistical analysis (however, not NN related efforts)  
 561 uses Chl-a as a proxy for biological activity, it is worth noting that TEP production responds to  
 562 additional drivers such as nutrient status and species composition, which can modulate flocculation  
 563 potential even at similar Chl-a levels. In addition to the biological feedback, the increase in water  
 564 temperature during summer also accelerates particle sinking rates by reducing water viscosity, further  
 565 promoting sediment deposition (Maerz and Wirtz, 2009). This supports the view that the Chl-a–SPM  
 566 relationship reflects an interplay of multiple biological and physical controls rather than a single, direct  
 567 pathway.

568 While both spring and autumn are characterized by peaks in Chl-a concentration, their influence on  
 569 SPM dynamics appears to differ. In spring, calmer conditions favor particle aggregation and settling,  
 570 often leading to reduced SPM levels. In autumn, however, the secondary bloom coincides with a  
 571 seasonal increase in wind speed (Fig. 5), resulting in elevated SPM concentrations despite high  
 572 biological activity. This suggests that enhanced organic matter availability in autumn may promote  
 573 flocculation, but stronger resuspension prevents effective settling. These seasonal contrasts highlight  
 574 that biological influence on SPM is strongly modulated by concurrent physical forcing.

575 In parallel, benthic microbial processes such as biofilm formation by microphytobenthos enhance  
 576 sediment stability and reduce its susceptibility to resuspension, thereby modulating the amount of SPM  
 577 remaining in the water column (Andersen, 2000; Stal, 2010). Beyond microbial stabilization, benthic  
 578 fauna also influences SPM dynamics through benthic-pelagic coupling. Filter-feeding benthos, such as  
 579 bivalves, consume suspended particulate organic carbon (POC), effectively removing material from the  
 580 water column and altering vertical fluxes of organic matter. In the Sylt-Rømø Bight, food web  
 581 modelling by Baird et al. (2004) estimated that benthic consumers remove approximately  $56.7 \text{ mgC m}^{-2}$   
 582  $\text{d}^{-1}$  of suspended POC – potentially a substantial fraction of total SPM, depending on the proportion of  
 583 organic material within it. Benthic consumption likely constitutes a significant sink for fine, organic-  
 584 rich particles, particularly in areas with dense benthic communities, as filter feeders remove SPM  
 585 primarily through ingestion and the production of faecal pellets, which promote deposition of organic-  
 586 rich material to seabed. Although the proportion of POC within SPM is known to depend on total SPM  
 587 concentration (Schartau et al., 2019), robust SPM-to-POC conversion factors remain uncertain due to  
 588 the unknown share of freshly formed organic matter. Although the effects of native species on benthic-



589 pelagic coupling have been relatively well studied in the region (Baird et al., 2007), the role of  
590 introduced species remains less clear. For example, the introduction and spread of alien species such as  
591 the American razor clam (*Ensis leei*) may further amplify benthic filtration effects. In the Dutch  
592 Wadden Sea, they have shown to significantly alter trophic carbon flows, increasing carbon  
593 consumption by secondary producers and redirecting energy flows away from higher trophic levels  
594 (Jung et al., 2020). Although the abundance of *E. leei* in the Sylt-Rømø Bight has not yet been  
595 quantified, its potential influence on observed SPM concentrations provides a basis for further  
596 investigation as part of long-term ecological changes in the region.

## 597 4.2 Wind & Tide Control

598 The results suggest that the intensity of winds, rather than their dominant directions, exerts a stronger  
599 influence on the seasonal cycle of SPM. The seasonal patterns of wind speed, with maximum values in  
600 winter and minima in summer, aligns closely with the observed SPM concentrations, suggesting a  
601 physically mediated control during high-energy periods. During summer, the weaker relationship  
602 between wind speed and SPM concentrations points to the increasing importance of biological  
603 contribution. These may include enhanced flocculation and settling of particles, increased filtration by  
604 benthic organisms, reduced sediment availability due to biological stabilization, and overall calmer  
605 wind conditions. Although tidal forcing itself does not vary seasonally, its influence on SPM  
606 concentrations also likely changes throughout the year because the sediment properties and biological  
607 activity that determine sediment availability and erodibility vary over time.  
608 Notably, correlations between wind speed and SPM are stronger at the shallow station compared to the  
609 deep station, as the shallow environments are more susceptible to wind-induced turbulence, including  
610 wave action. It should be noted that, since the study addresses observations of SPM concentrations,  
611 wind-induced resuspension is considered to include the effects of wave action.  
612 In addition, the area around the shallow station is characterized by relatively small depths. Therefore, at  
613 the shallow station, the short wind-memory intervals (12–18 hours) yield the strongest correlations.  
614 Lagrangian simulations support this interpretation by illustrating that the shallow station, located within  
615 the intertidal zone itself, receives SPM directly from resuspension at the site. While these simulations  
616 do not represent full sediment dynamics, they effectively illustrate dominant source areas and transport  
617 timescales. This relatively short response time aligns with earlier observations in tidal flat systems,  
618 where wind effects on SPM are immediate in intertidal zones but take longer to become apparent in  
619 deeper areas (de Jonge and van Beusekom, 1995).  
620 In contrast, the situation at the deep station is more complex. In addition to the larger distance between  
621 the observation point and the sea bottom, sediment characteristics in the channels are predominantly  
622 sandy, which typically requires stronger wind energy to be resuspended as opposed to the mud and finer  
623 material found in intertidal areas (Bartholomä et al., 2009). The delayed response seen in the wind  
624 memory analysis (~120 hours) and the tidally modulated transport pathways from our Lagrangian  
625 simulations (median transit time ~133 hours) likely reflects the combined influence of episodic wind-  
626 driven resuspension in shallow areas and subsequent advective transport to the deeper station  
627 (Friedrichs and Perry, 2001; de Jonge and van Beusekom, 1995). Similar multi-day lags in SPM  
628 response have been observed in other estuarine systems where tidally dominated transport pathways act

on resuspended sediments originating from more energetic, nearshore zones (see also Winterwerp, 2001). Together, these results highlight a clear contrast between the two stations: rapid, localized sediment response in the shallow embayment versus slower, more integrated transport processes at the relatively deep channel.

The Lagrangian tracer simulations provide additional spatial context, revealing weak connectivity between the north-eastern and southern sections of the Sylt-Rømø Bight under regular tidal conditions. Passive tracers released in the north-eastern region rarely reach either of the sampling stations. This indicates that the stations, while valuable for long-term monitoring, may not fully capture the spatial variability of SPM dynamics across the entire basin, especially on shorter time scales.

Beyond local wind and tidal resuspension and transport within the Sylt-Rømø Bight, tidal phases also influence SPM concentrations. Naturally, higher SPM concentrations are associated with lower water levels under otherwise equal conditions, as the measurements are always taken at the surface (Fig. S3). Due to the large role of non-linear processes in the area there is also an asymmetry between flood and ebb in terms of duration as well as mean and maximum velocities.

### 4.3 Neural Network findings

The NN experiments provide a line of evidence supporting the seasonal shift in dominant SPM drivers independent of the statistical analysis. When trained only on winter data, where biological activity is minimal, the NN successfully captured winter SPM concentrations using solely physical drivers such as wind conditions within different time intervals, salinity, and tidal elevation (through SSH and SSH gradient). At both stations, this winter model performed well ( $R \approx 0.81$ ), confirming that physical processes alone can account for most of the observed variability during this season. This reinforces the view that winter dynamics are dominated by abiotic drivers.

However, when the same winter-trained model was applied to other seasons, it consistently overestimated SPM concentrations, especially in summer when biological activity is high and wind speed is generally weaker. For example, at the deep station, the observed mean SPM concentration decreased by  $\sim 78\%$ , whereas the model reproduced only a  $\sim 36\%$  reduction, meaning that less than half of the observed seasonal decline could be explained by abiotic factors. Similarly, at the shallow station, observed SPM declined by  $80\%$ , while the model captured only a  $\sim 42\%$  reduction, accounting for just over half of the change. These mismatches underscore the increasing importance of biological drivers during the summer months. Interestingly, although both stations showed similar magnitudes of overestimation, the shallow station retained higher predictive skill ( $R \approx 0.35$ ) than the deep station ( $R \approx 0.04$ ) in summer. This difference likely reflects the stronger and more immediate influence of wind forcing at the shallow site, where even in summer, intermittent wind events can rapidly mobilize sediments.

The addition of biologically relevant features such as temperature and sunshine duration into the full-year NN model, in Section 3.3.4, significantly improved its performance, especially at the shallow station. While we do not explicitly resolve individual biological pathways, these proxies likely capture their cumulative effects as seen from the improved model fit indicating their aggregate influence is both detectable and substantial. These processes may include phytoplankton-driven aggregation and flocculation, microbial stabilization, and benthic-pelagic interactions such as benthic filtration. Our

669 interpretation remains exploratory rather than conclusive, as targeted biological data would be required  
670 to quantify these mechanisms in detail.

#### 671 **4.4 Study Limitations**

672 Although, in this study, we discuss the main driving mechanisms of SPM concentrations in the Sylt-  
673 Rømø Bight, we also acknowledge that the system is far more complex and has more factors  
674 influencing the fluctuations of SPM concentrations than we investigate here. Moreover, the SPM itself  
675 is a parameter that is composed of various components and sizes in nature, and such a level of detail is  
676 not readily available in the dataset. Incorporating measurements of sediment composition (organic  
677 versus inorganic fractions) and their sizes would add more certainty into the roles of considered  
678 mechanisms modifying SPM concentrations.

679 Our Lagrangian transport simulations use massless passive tracers, which do not account  
680 for flocculation, deposition, or resuspension processes. Incorporating such processes would require a  
681 different modeling framework and additional data that are not currently available, including detailed  
682 habitat maps and reliable estimates of SPM fluxes from the open boundary. Nonetheless, despite these  
683 simplifications, the model effectively captures key patterns of spatial connectivity pathways and  
684 timescales driven by tidal dynamics.

685 Another limitation is that changes in the SPM input from the open boundary cannot be quantified. Net  
686 coastward transport from the North Sea likely contributes to seasonal variability, for example, through  
687 enhanced import or retention in spring and summer (Burchard et al., 2008; Postma, 1981), but we lack  
688 data to resolve this numerically.

689 In addition, more precise SPM predictions would benefit from neural network architectures with  
690 “memory”, such as Long Short-Term Memory (LSTM) models, which can account for the delayed  
691 effects of biotic and abiotic conditions over several months. A North Sea-wide approach would be  
692 required to capture these long-term dynamics and boundary-driven influences. Within such a  
693 framework, it would also be appropriate to include additional predictors such as nutrient concentrations  
694 and benthic processes to represent better the complex interactions driving SPM variability.

695 While this study does not claim to offer a comprehensive representation of all the processes in play, we  
696 believe that our work presents new insights to understand better the baseline mechanisms of SPM  
697 concentration variability within the basin and across multiple timescales.

#### 698 **5 Conclusions**

699 This study investigated the primary drivers of SPM variability in the Sylt-Rømø Bight, a semi enclosed  
700 basin with well-mixed conditions and hydrodynamics dominantly shaped by tides. We combined long-  
701 term monitoring data (SPM, Chl-a, wind conditions, and light availability) with SSH reconstructed from  
702 a validated hydrodynamic model, and applied statistical analyses and neural network modelling. In  
703 addition, Lagrangian transport simulations were used to assess tidal connectivity and transport  
704 timescales. Together, these approaches revealed new insights on SPM concentration variability across  
705 multiple timescales and relative influence of the main driving mechanisms.

Our findings confirm that wind speed is the primary driver of short-term SPM variability, particularly at the shallow station, where SPM concentrations respond almost immediately to wind forcing. This rapid response, especially during winter and autumn, highlights the importance of wind-driven resuspension in shallow waters. In contrast, the deep station exhibits a more delayed response to wind forcing, with peak correlations occurring at longer wind memory intervals (~5 days). This lag reflects the fact that, at greater depths, direct resuspension due to immediate wind forcing plays a reduced role, while the transport of material from neighboring shallower areas becomes increasingly important. Tidal dynamics primarily regulate the advection processes within the basin, redistributing fine, easily resuspendable material from shallow to the deeper areas. Lagrangian simulations illustrate that SPM at the shallow station originates locally, predominantly from within or around the Königshafen embayment. Meanwhile, at the deep station, SPM is likely supplied from the intertidal and shallow areas by the tidally driven redistribution over a longer timescale (~133 hours), consistent with the observed wind-memory lag (~120 hours). These results highlight the fundamental distinction between localized, wind-driven resuspension and slower, broader-scale, tide-driven transport, both of which shape SPM variability but at different spatial and temporal scales. On seasonal timescales, however, biological processes exert an increasingly strong control. The onset of the spring phytoplankton bloom coincides with a decline in SPM concentrations, likely due to the enhanced production of TEPs and other extracellular polymers that promote biological aggregation and flocculation, leading to enhanced particle settling. This strengthening of biological effects reduces the efficiency of physical resuspension even under comparable wind conditions, which results in the pronounced decline in SPM concentrations toward summer. The inverse seasonal patterns of Chl-a and SPM support this interpretation, aligning with previous studies that describe the role of phytoplankton in promoting flocculation and sedimentation in coastal systems. NN experiments suggest that calmer wind conditions alone can explain approximately ~40% of the observed summer SPM reduction compared to winter concentrations. Still, they do not account for up to ~80% decrease seen in the data. This substantial reduction is likely influenced by a variety of biologically related mechanisms, ranging from the microbial activity, production of EPS to zooplankton grazing. Further studies are needed to quantify the relative contributions of these individual mechanisms. Overall, this study provides a comprehensive and quantitative assessment of how wind, tides, and biological activity interact to control SPM variability in a shallow, tidally dominated coastal system.

## **Conflict of Interest**

The authors declare that they have no conflict of interest.

## **Author Contributions**

GK performed the data analysis and wrote the initial draft of the manuscript. GK, VS, and AA carried out the numerical simulations. JvB, GK, and VS conceptualized the study. SH, SR, IK, and KHW contributed to the discussion of methods and interpretation of the results. All authors contributed to manuscript review and editing.

## 743 Funding

744 This study has been funded by the German Federal Ministry of Education and Research (BMBF) in the  
745 frame of the joint research projects MGF-Nordsee (FKZ 03F0847A), CREATE (03F0910B) and  
746 Coastal Futures (FKZ 03F0911J) part of the research mission “Protection and Sustainable use of Marine  
747 Areas”, within the German Marine Research Alliance (DAM).

## 748 Data Availability

749 The source code of the FESOM-C model is publicly available via Zenodo:  
750 <https://doi.org/10.5281/zenodo.2085177> (Androsov et al., 2018). The Sylt Roads observational dataset  
751 is accessible through the PANGAEA data portal: <https://doi.org/10.1594/PANGAEA.873549>,  
752 <https://doi.org/10.1594/PANGAEA.873547>, <https://doi.org/10.1594/PANGAEA.918018>,  
753 <https://doi.org/10.1594/PANGAEA.918032>, <https://doi.org/10.1594/PANGAEA.918027>,  
754 <https://doi.org/10.1594/PANGAEA.918023>, <https://doi.org/10.1594/PANGAEA.918033>,  
755 <https://doi.org/10.1594/PANGAEA.918028>, <https://doi.org/10.1594/PANGAEA.918024>,  
756 <https://doi.org/10.1594/PANGAEA.918034>, <https://doi.org/10.1594/PANGAEA.918029>,  
757 <https://doi.org/10.1594/PANGAEA.918025>, <https://doi.org/10.1594/PANGAEA.918035>,  
758 <https://doi.org/10.1594/PANGAEA.918030>, <https://doi.org/10.1594/PANGAEA.918026>,  
759 <https://doi.org/10.1594/PANGAEA.918036>, and <https://doi.org/10.1594/PANGAEA.918031>.  
760 Meteorological data, including hourly wind characteristics (station 3032, List auf Sylt; dataset ID: *urn:x-*  
761 *wmo:md:de.dwd.cdc::obsgermany-climate-hourly-wind*) and daily sunshine duration (*urn:wmo:md:de-*  
762 *dwd-cdc:obsgermany-climate-daily-kl*), are available from the Climate Data Center (CDC) of the  
763 Deutscher Wetterdienst (DWD): [https://opendata.dwd.de/climate\\_environment/](https://opendata.dwd.de/climate_environment/). The Lagrangian model  
764 output and Neural Network results are available from the corresponding author upon reasonable request.

## 765 Acknowledgements

766 We thank the teams involved in the Sylt Roads long-term ecological monitoring program for providing  
767 essential in-situ data. We also acknowledge the Deutscher Wetterdienst (DWD) Climate Data Center for  
768 access to freely available meteorological datasets. This study was conducted as part of the research  
769 mission “Protection and Sustainable Use of Marine Areas” of the German Marine Research Alliance  
770 (DAM) and was financially supported by the German Federal Ministry of Education and Research  
771 (BMBF).

## 772 References

773 Aarup, T.: Transparency of the North Sea and Baltic Sea - a Secchi depth data mining study,  
774 Oceanologia, 44, 323–337, 2002.

775 Andersen, T. J.: The role of fecal pellets in sediment settling at an intertidal mudflat, the Danish  
 776 Wadden Sea, in: *Proceedings in Marine Science*, vol. 3, edited by: McAnally, W. H. and Mehta, A. J.,  
 777 Elsevier, 387–401, [https://doi.org/10.1016/S1568-2692\(00\)80133-3](https://doi.org/10.1016/S1568-2692(00)80133-3), 2000.

778 Androsov, A., Fofonova, V., Kuznetsov, I., Danilov, S., Rakowsky, N., Harig, S., Holger, B., and  
 779 Wiltshire, K.H.: FESOM-C, , <https://doi.org/10.5281/ZENODO.2085177>, 2018.

780 Androsov, A., Fofonova, V., Kuznetsov, I., Danilov, S., Rakowsky, N., Harig, S., Brix, H., and  
 781 Wiltshire, K. H.: FESOM-C v.2: coastal dynamics on hybrid unstructured meshes, *Geosci. Model Dev.*,  
 782 12, 1009–1028, <https://doi.org/10.5194/gmd-12-1009-2019>, 2019.

783 Baird, D., Asmus, H., and Asmus, R.: Energy flow of a boreal intertidal ecosystem, the Sylt-Rømø  
 784 Bight, *Mar. Ecol. Prog. Ser.*, 279, 45–61, <https://doi.org/10.3354/meps279045>, 2004.

785 Baird, D., Asmus, H., and Asmus, R.: Trophic dynamics of eight intertidal communities of the Sylt-  
 786 Rømø Bight ecosystem, northern Wadden Sea, *Mar. Ecol. Prog. Ser.*, 351, 25–41,  
 787 <https://doi.org/10.3354/meps07137>, 2007.

788 Bale, A., Morris, A., and Howland, R.: Seasonal sediment movement in the Tamar Estuary,  
 789 *Oceanologica Acta*, 8, 1–6, 1985.

790 Bartholomä, A., Kubicki, A., Badewien, T. H., and Flemming, B. W.: Suspended sediment transport in  
 791 the German Wadden Sea—seasonal variations and extreme events, *Ocean Dynamics*, 59, 213–225,  
 792 <https://doi.org/10.1007/s10236-009-0193-6>, 2009.

793 Becherer, J., Flöser, G., Umlauf, L., and Burchard, H.: Estuarine circulation versus tidal pumping:  
 794 Sediment transport in a well-mixed tidal inlet, *JGR Oceans*, 121, 6251–6270,  
 795 <https://doi.org/10.1002/2016JC011640>, 2016.

796 Bruns, I., Bartholomä, A., Menjua, F., and Kopf, A.: Physical impact of bottom trawling on seafloor  
 797 sediments in the German North Sea, *Front. Earth Sci.*, 11, 1233163,  
 798 <https://doi.org/10.3389/feart.2023.1233163>, 2023.

799 Burchard, H., Flöser, G., Staneva, J. V., Badewien, T. H., and Riethmüller, R.: Impact of Density  
 800 Gradients on Net Sediment Transport into the Wadden Sea, *Journal of Physical Oceanography*, 38, 566–  
 801 587, <https://doi.org/10.1175/2007JPO3796.1>, 2008.

802 Cadée, G. C.: Increased phytoplankton primary production in the Marsdiep area (Western Dutch  
 803 Wadden Sea), *Netherlands Journal of Sea Research*, 20, 285–290, [https://doi.org/10.1016/0077-](https://doi.org/10.1016/0077-7579(86)90050-5)  
 804 7579(86)90050-5, 1986.

Christiansen, C., Vølund, G., Lund-Hansen, L. C., and Bartholdy, J.: Wind influence on tidal flat sediment dynamics: Field investigations in the Ho Bugt, Danish Wadden Sea, *Marine Geology*, 235, 75–86, <https://doi.org/10.1016/j.margeo.2006.10.006>, 2006.

Cloern, J. E.: Turbidity as a control on phytoplankton biomass and productivity in estuaries, *Continental Shelf Research*, 7, 1367–1381, [https://doi.org/10.1016/0278-4343\(87\)90042-2](https://doi.org/10.1016/0278-4343(87)90042-2), 1987.

Colijn, F.: Light absorption in the waters of the Ems-Dollard estuary and its consequences for the growth of phytoplankton and microphytobenthos, *Netherlands Journal of Sea Research*, 15, 196–216, [https://doi.org/10.1016/0077-7579\(82\)90004-7](https://doi.org/10.1016/0077-7579(82)90004-7), 1982.

de Jonge, V. N.: Relations Between Annual Dredging Activities, Suspended Matter Concentrations, and the Development of the Tidal Regime in the Ems Estuary, *Can. J. Fish. Aquat. Sci.*, 40, s289–s300, <https://doi.org/10.1139/f83-290>, 1983.

de Jonge, V. N. and van Beusekom, J. E. E.: Wind- and tide-induced resuspension of sediment and microphytobenthos from tidal flats in the Ems estuary, *Limnol. Oceanogr.*, 40, 776–778, <https://doi.org/10.4319/lo.1995.40.4.0776>, 1995.

de Jonge, V. N. and de Jong, D. J.: ‘Global Change’ Impact of Inter-Annual Variation in Water Discharge as a Driving Factor to Dredging and Spoil Disposal in the River Rhine System and of Turbidity in the Wadden Sea, *Estuarine, Coastal and Shelf Science*, 55, 969–991, <https://doi.org/10.1006/ecss.2002.1039>, 2002.

Depestele, J., Ivanović, A., Degrendele, K., Esmacili, M., Polet, H., Roche, M., Summerbell, K., Teal, L. R., Vanelslander, B., and O’Neill, F. G.: Measuring and assessing the physical impact of beam trawling, *ICES Journal of Marine Science*, 73, i15–i26, <https://doi.org/10.1093/icesjms/fsv056>, 2016.

Dissanayake, D. M. P. K., Ranasinghe, R., and Roelvink, J. A.: The morphological response of large tidal inlet/basin systems to relative sea level rise, *Climatic Change*, 113, 253–276, <https://doi.org/10.1007/s10584-012-0402-z>, 2012.

Dolch, T. and Reise, K.: Long-term displacement of intertidal seagrass and mussel beds by expanding large sandy bedforms in the northern Wadden Sea, *Journal of Sea Research*, 63, 93–101, <https://doi.org/10.1016/j.seares.2009.10.004>, 2010.

Dronkers, J.: Tidal asymmetry and estuarine morphology, *Netherlands Journal of Sea Research*, 20, 117–131, [https://doi.org/10.1016/0077-7579\(86\)90036-0](https://doi.org/10.1016/0077-7579(86)90036-0), 1986.

Dyer, K. R.: Chapter 14 Sediment Transport Processes in Estuaries, in: *Developments in Sedimentology*, vol. 53, Elsevier, 423–449, [https://doi.org/10.1016/S0070-4571\(05\)80034-2](https://doi.org/10.1016/S0070-4571(05)80034-2), 1995.

- 836 Egbert, G. D. and Erofeeva, S. Y.: Efficient Inverse Modeling of Barotropic Ocean Tides, *J. Atmos.*  
837 *Oceanic Technol.*, 19, 183–204, [https://doi.org/10.1175/1520-](https://doi.org/10.1175/1520-0426(2002)019<0183:EIMOBO>2.0.CO;2)  
838 [0426\(2002\)019<0183:EIMOBO>2.0.CO;2](https://doi.org/10.1175/1520-0426(2002)019<0183:EIMOBO>2.0.CO;2), 2002.
- 839 Eisma, D.: Flocculation and de-flocculation of suspended matter in estuaries, *Netherlands Journal of*  
840 *Sea Research*, 20, 183–199, [https://doi.org/10.1016/0077-7579\(86\)90041-4](https://doi.org/10.1016/0077-7579(86)90041-4), 1986.
- 841 Engel, A. and Schartau, M.: Influence of transparent exopolymer particles (TEP) on sinking velocity of  
842 *Nitzschia closterium* aggregates, *Mar. Ecol. Prog. Ser.*, 182, 69–76,  
843 <https://doi.org/10.3354/meps182069>, 1999.
- 844 Fettweis, M., Monbaliu, J., Baeye, M., Nechad, B., and van Den Eynde, D.: Weather and climate  
845 induced spatial variability of surface suspended particulate matter concentration in the North Sea and  
846 the English Channel, *Methods in Oceanography*, 3–4, 25–39, <https://doi.org/10.1016/j.mio.2012.11.001>,  
847 2012.
- 848 Flöser, G., Burchard, H., and Riethmüller, R.: Observational evidence for estuarine circulation in the  
849 German Wadden Sea, *Continental Shelf Research*, 31, 1633–1639,  
850 <https://doi.org/10.1016/j.csr.2011.03.014>, 2011.
- 851 Fofonova, V., Androsov, A., Sander, L., Kuznetsov, I., Amorim, F., Hass, H. C., and Wiltshire, K. H.:  
852 Non-linear aspects of the tidal dynamics in the Sylt-Rømø Bight, south-eastern North Sea, *Ocean Sci.*,  
853 15, 1761–1782, <https://doi.org/10.5194/os-15-1761-2019>, 2019.
- 854 Friedrichs, C. T. and Aubrey, D. G.: Non-linear tidal distortion in shallow well-mixed estuaries: a  
855 synthesis, *Estuarine, Coastal and Shelf Science*, 27, 521–545, [https://doi.org/10.1016/0272-](https://doi.org/10.1016/0272-7714(88)90082-0)  
856 [7714\(88\)90082-0](https://doi.org/10.1016/0272-7714(88)90082-0), 1988.
- 857 Friedrichs, C. and Perry, J.: Tidal salt marsh morphodynamics: a synthesis, *Journal of Coastal Research*,  
858 27, 7–37, 2001.
- 859 Graf, G. and Rosenberg, R.: Bioresuspension and biodeposition: a review, *Journal of Marine Systems*,  
860 11, 269–278, [https://doi.org/10.1016/S0924-7963\(96\)00126-1](https://doi.org/10.1016/S0924-7963(96)00126-1), 1997.
- 861 Hagen, R., Winter, C., and Kösters, F.: Changes in tidal asymmetry in the German Wadden Sea, *Ocean*  
862 *Dynamics*, 72, 325–340, <https://doi.org/10.1007/s10236-022-01509-9>, 2022.
- 863 Hommersom, A., Peters, S., Wernand, M. R., and de Boer, J.: Spatial and temporal variability in bio-  
864 optical properties of the Wadden Sea, *Estuarine, Coastal and Shelf Science*, 83, 360–370,  
865 <https://doi.org/10.1016/j.ecss.2009.03.042>, 2009.



866 Jansen, H., van Den Bogaart, L., Hommersom, A., and Capelle, J.: Spatio-temporal analysis of sediment  
867 plumes formed by mussel fisheries and aquaculture in the western Wadden Sea, *Aquacult. Environ.*  
868 *Interact.*, 15, 145–159, <https://doi.org/10.3354/aei00458>, 2023.

869 Jeffrey, S. W. and Humphrey, G. F.: New spectrophotometric equations for determining chlorophylls a,  
870 b, c1 and c2 in higher plants, algae and natural phytoplankton, *Biochemie und Physiologie der Pflanzen*,  
871 167, 191–194, [https://doi.org/10.1016/S0015-3796\(17\)30778-3](https://doi.org/10.1016/S0015-3796(17)30778-3), 1975.

872 Jung, A., van Der Veer, H., Philippart, C., Waser, A., Ens, B., de Jonge, V., and Schückel, U.: Impacts  
873 of macrozoobenthic invasions on a temperate coastal food web, *Mar. Ecol. Prog. Ser.*, 653, 19–39,  
874 <https://doi.org/10.3354/meps13499>, 2020.

875 Konyssova, G., Sidorenko, V., Androsov, A., Sander, L., Danilov, S., Rubinetti, S., Burchard, H.,  
876 Winter, C., Wiltshire, K.H.: Changes in tidal dynamics in response to sea level rise in the Sylt-Rømø  
877 Bight (Wadden Sea), *Ocean Dynamics*, 75, 43, <https://doi.org/10.1007/s10236-025-01688-1>, 2025.

878 Kuznetsov, I., Androsov, A., Fofonova, V., Danilov, S., Rakowsky, N., Harig, S., and Wiltshire, K. H.:  
879 Evaluation and Application of Newly Designed Finite Volume Coastal Model FESOM-C, Effect of  
880 Variable Resolution in the Southeastern North Sea, *Water*, 12, 1412,  
881 <https://doi.org/10.3390/w12051412>, 2020.

882 Kuznetsov, I., Rabe, B., Androsov, A., Fang, Y.-C., Hoppmann, M., Quintanilla-Zurita, A., Harig, S.,  
883 Tippenhauer, S., Schulz, K., Mohrholz, V., Fer, I., Fofonova, V., and Janout, M.: Dynamical  
884 reconstruction of the upper-ocean state in the central Arctic during the winter period of the MOSAiC  
885 expedition, *Ocean Sci.*, 20, 759–777, <https://doi.org/10.5194/os-20-759-2024>, 2024.

886 Lettmann, K. A., Wolff, J.-O., and Badewien, T. H.: Modeling the impact of wind and waves on  
887 suspended particulate matter fluxes in the East Frisian Wadden Sea (southern North Sea), *Ocean*  
888 *Dynamics*, 59, 239–262, <https://doi.org/10.1007/s10236-009-0194-5>, 2009.

889 Loebl, M., Dolch, T., and van Beusekom, J. E. E.: Annual dynamics of pelagic primary production and  
890 respiration in a shallow coastal basin, *Journal of Sea Research*, 58, 269–282,  
891 <https://doi.org/10.1016/j.seares.2007.06.003>, 2007.

892 Lunau, M., Lemke, A., Dellwig, O., and Simon, M.: Physical and biogeochemical controls of  
893 microaggregate dynamics in a tidally affected coastal ecosystem, *Limnol. Oceanogr.*, 51, 847–859,  
894 <https://doi.org/10.4319/lo.2006.51.2.0847>, 2006.

895 Maerz, J., Hofmeister, R., van Der Lee, E. M., Gräwe, U., Riethmüller, R., and Wirtz, K. W.: Maximum  
896 sinking velocities of suspended particulate matter in a coastal transition zone, *Biogeosciences*, 13,  
897 4863–4876, <https://doi.org/10.5194/bg-13-4863-2016>, 2016.

898 Maerz, J. and Wirtz, K.: Resolving physically and biologically driven suspended particulate matter  
899 dynamics in a tidal basin with a distribution-based model, *Estuarine, Coastal and Shelf Science*, 84,  
900 128–138, <https://doi.org/10.1016/j.ecss.2009.05.015>, 2009.

901 Neder, C., Fofonova, V., Androsov, A., Kuznetsov, I., Abele, D., Falk, U., Schloss, I. R., Sahade, R.,  
902 and Jerosch, K.: Modelling suspended particulate matter dynamics at an Antarctic fjord impacted by  
903 glacier melt, *Journal of Marine Systems*, 231, 103734, <https://doi.org/10.1016/j.jmarsys.2022.103734>,  
904 2022.

905 Passow, U.: Transparent exopolymer particles (TEP) in aquatic environments, *Progress in*  
906 *Oceanography*, 55, 287–333, [https://doi.org/10.1016/S0079-6611\(02\)00138-6](https://doi.org/10.1016/S0079-6611(02)00138-6), 2002.

907 Pawlowicz, R., Beardsley, B., and Lentz, S.: Classical tidal harmonic analysis including error estimates  
908 in MATLAB using T\_TIDE, *Computers & Geosciences*, 28, 929–937, [https://doi.org/10.1016/S0098-  
909 \*3004\(02\)00013-4\*, 2002.](https://doi.org/10.1016/S0098-3004(02)00013-4)

910 Postma, H.: Sediment transport and sedimentation in the estuarine environment, *American Association*  
911 *of Advanced Sciences*, 83, 158–179, 1967.

912 Postma, H.: Exchange of materials between the North Sea and the Wadden Sea, *Marine Geology*, 40,  
913 199–213, [https://doi.org/10.1016/0025-3227\(81\)90050-5](https://doi.org/10.1016/0025-3227(81)90050-5), 1981.

914 Purkiani, K., Becherer, J., Flöser, G., Gräwe, U., Mohrholz, V., Schuttelaars, H. M., and Burchard, H.:  
915 Numerical analysis of stratification and destratification processes in a tidally energetic inlet with an ebb  
916 tidal delta, *J. Geophys. Res. Oceans*, 120, 225–243, <https://doi.org/10.1002/2014JC010325>, 2015.

917 Rick, J. J., Scharfe, M., Romanova, T., van Beusekom, J. E. E., Asmus, R., Asmus, H., Mielck, F.,  
918 Kamp, A., Sieger, R., and Wiltshire, K. H.: An evaluation of long-term physical and hydrochemical  
919 measurements at the Sylt Roads Marine Observatory (1973–2019), *Wadden Sea, North Sea, Earth Syst.*  
920 *Sci. Data*, 15, 1037–1057, <https://doi.org/10.5194/essd-15-1037-2023>, 2023.

921 Rubinetti, S., Fofonova, V., Arnone, E., and Wiltshire, K. H.: A Complete 60-Year Catalog of Wind  
922 Events in the German Bight (North Sea) Derived From ERA5 Reanalysis Data, *Earth and Space*  
923 *Science*, 10, e2023EA003020, <https://doi.org/10.1029/2023EA003020>, 2023.

924 Schartau, M., Riethmüller, R., Flöser, G., van Beusekom, J. E. E., Krasemann, H., Hofmeister, R., and  
925 Wirtz, K.: On the separation between inorganic and organic fractions of suspended matter in a marine  
926 coastal environment, *Progress in Oceanography*, 171, 231–250,  
927 <https://doi.org/10.1016/j.pocean.2018.12.011>, 2019.

928 Sidorenko, V., Rubinetti, S., Akimova, A., Pogoda, B., Androsov, A., Beng, K. C., Sell, A. F., Pineda-  
929 Metz, S. E. A., Wegner, K. M., Brand, S. C., Shama, L. N. S., Wollschläger, J., Klemm, K., Rahdarian,  
930 A., Winter, C., Badewien, T., Kuznetsov, I., Herrling, G., Laakmann, S., and Wiltshire, K. H.:

931 Connectivity and larval drift across marine protected areas in the German bight, North Sea: Necessity of  
 932 stepping stones, *Journal of Sea Research*, 204, 102563, <https://doi.org/10.1016/j.seares.2025.102563>,  
 933 2025.

934 Skogen, M., Ji, R., Akimova, A., Daewel, U., Hansen, C., Hjøllø, S., van Leeuwen, S., Maar, M.,  
 935 Macias, D., Mousing, E., Almroth-Rosell, E., Sailley, S., Spence, M., Troost, T., and van de Wolfshaar,  
 936 K.: Disclosing the truth: Are models better than observations?, *Mar. Ecol. Prog. Ser.*, 680, 7–13,  
 937 <https://doi.org/10.3354/meps13574>, 2021.

938 Sprong, P. A. A., Fofonova, V., Wiltshire, K. H., Neuhaus, S., Ludwichowski, K. U., Käse, L.,  
 939 Androsov, A., and Metfies, K.: Spatial dynamics of eukaryotic microbial communities in the German  
 940 Bight, *Journal of Sea Research*, 163, 101914, <https://doi.org/10.1016/j.seares.2020.101914>, 2020.

941 Stal, L. J.: Microphytobenthos as a biogeomorphological force in intertidal sediment stabilization,  
 942 *Ecological Engineering*, 36, 236–245, <https://doi.org/10.1016/j.ecoleng.2008.12.032>, 2010.

943 Toullec, J., Vincent, D., Frohn, L., Miner, P., Le Goff, M., Devesa, J., and Moriceau, B.: Copepod  
 944 Grazing Influences Diatom Aggregation and Particle Dynamics, *Front. Mar. Sci.*, 6, 751,  
 945 <https://doi.org/10.3389/fmars.2019.00751>, 2019.

946 Turner, J.: Zooplankton fecal pellets, marine snow and sinking phytoplankton blooms, *Aquat. Microb.*  
 947 *Ecol.*, 27, 57–102, <https://doi.org/10.3354/ame027057>, 2002.

948 van Beusekom, J. E. E. and de Jonge, V. N.: Long-term changes in Wadden Sea nutrient cycles:  
 949 importance of organic matter import from the North Sea, in: *Nutrients and Eutrophication in Estuaries*  
 950 *and Coastal Waters*, edited by: Orive, E., Elliott, M., and de Jonge, V. N., Springer Netherlands,  
 951 Dordrecht, 185–194, [https://doi.org/10.1007/978-94-017-2464-7\\_15](https://doi.org/10.1007/978-94-017-2464-7_15), 2002.

952 van Beusekom, J. E. E., Brockmann, U. H., Hesse, K.-J., Hickel, W., Poremba, K., and Tillmann, U.:  
 953 The importance of sediments in the transformation and turnover of nutrients and organic matter in the  
 954 Wadden Sea and German Bight, *Deutsche Hydrographische Zeitschrift*, 51, 245–266,  
 955 <https://doi.org/10.1007/BF02764176>, 1999.

956 van Maren, D. S., van Kessel, T., Cronin, K., and Sittoni, L.: The impact of channel deepening and  
 957 dredging on estuarine sediment concentration, *Continental Shelf Research*, 95, 1–14,  
 958 <https://doi.org/10.1016/j.csr.2014.12.010>, 2015.

959 Verney, R., Lafite, R., and Brun-Cottan, J.-C.: Flocculation Potential of Estuarine Particles: The  
 960 Importance of Environmental Factors and of the Spatial and Seasonal Variability of Suspended  
 961 Particulate Matter, *Estuaries and Coasts*, 32, 678–693, <https://doi.org/10.1007/s12237-009-9160-1>,  
 962 2009.

- 963 Winterwerp, J. C.: Stratification effects by cohesive and noncohesive sediment, *J. Geophys. Res.*, 106,  
964 22559–22574, <https://doi.org/10.1029/2000JC000435>, 2001.
- 965 Wotton, R.: The Essential Role of Exopolymers (Eps) in Aquatic Systems, in: *Oceanography and*  
966 *Marine Biology*, vol. 20042243, edited by: Gibson, R., Atkinson, R., and Gordon, J., CRC Press, 57–94,  
967 <https://doi.org/10.1201/9780203507810.ch3>, 2004.