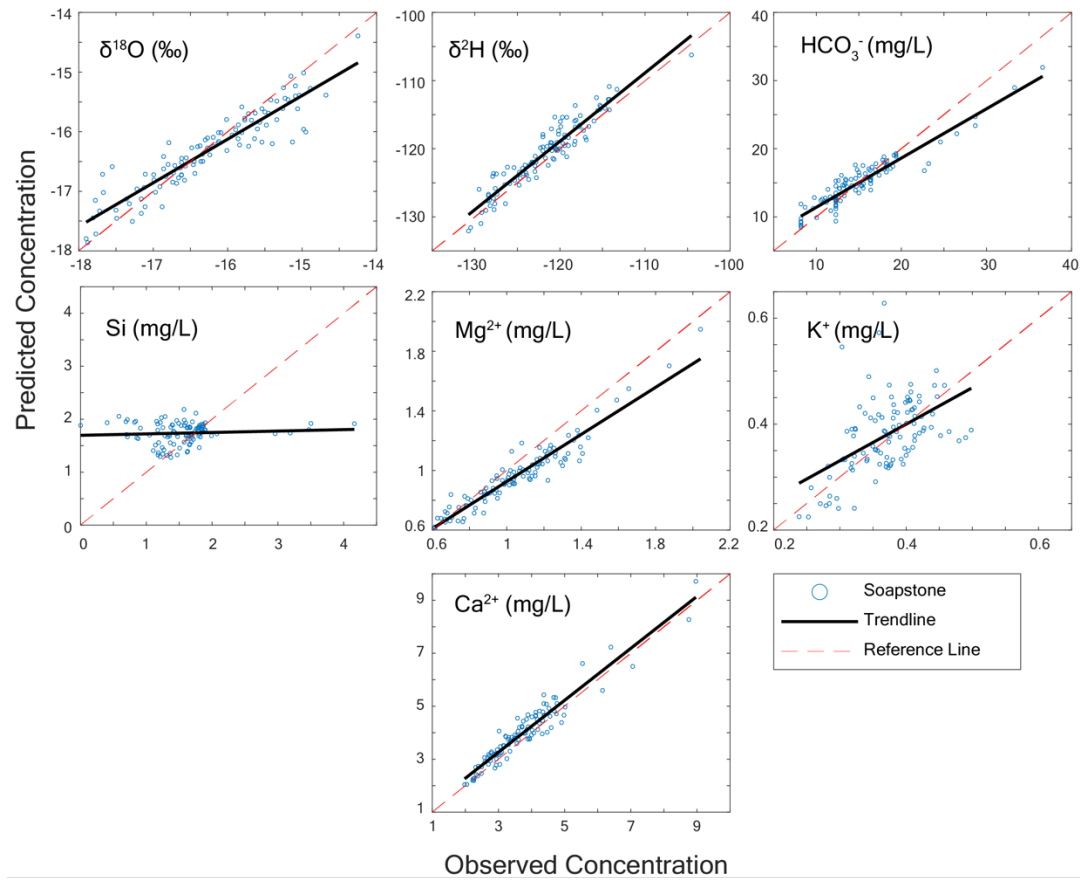
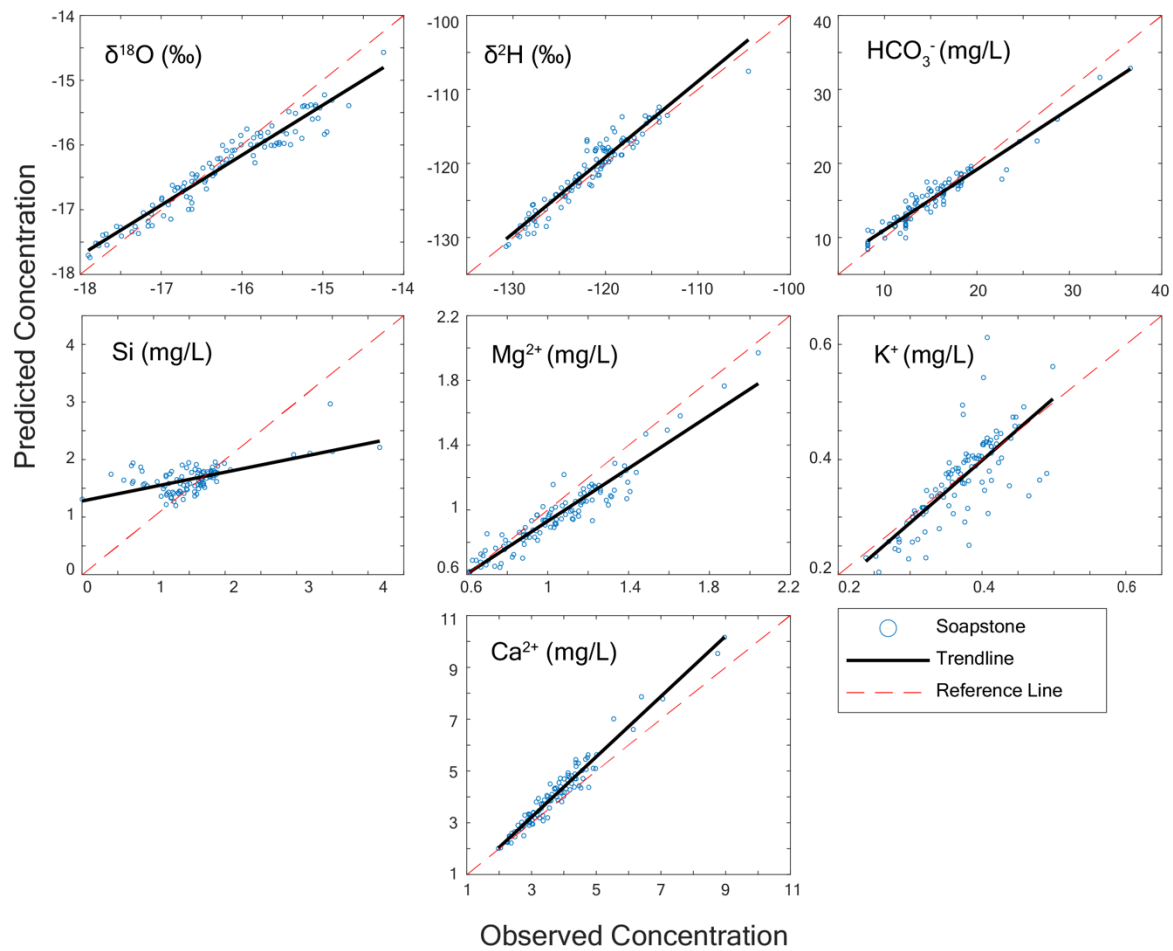


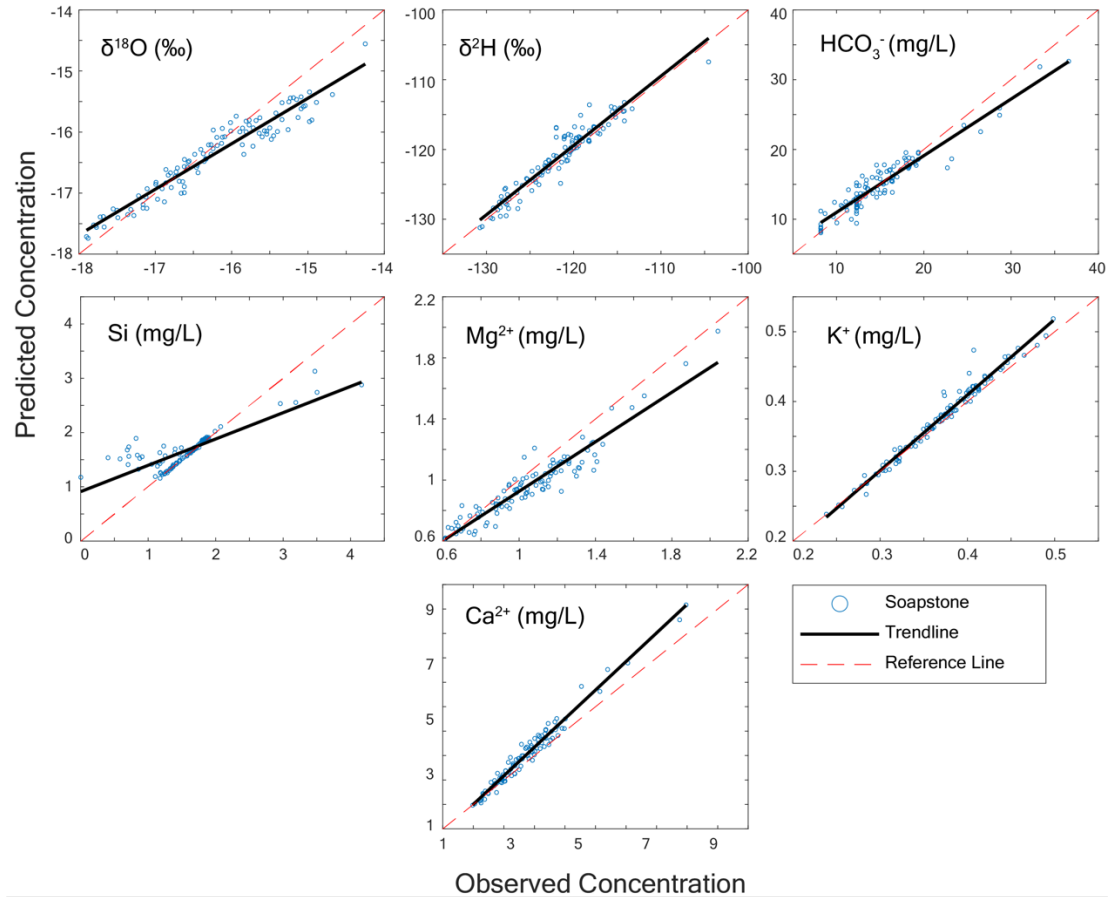
**Figure S1: Scree plot from Provo River PCA, indicating that a four PC model is ideal to describe the variance in the dataset.**



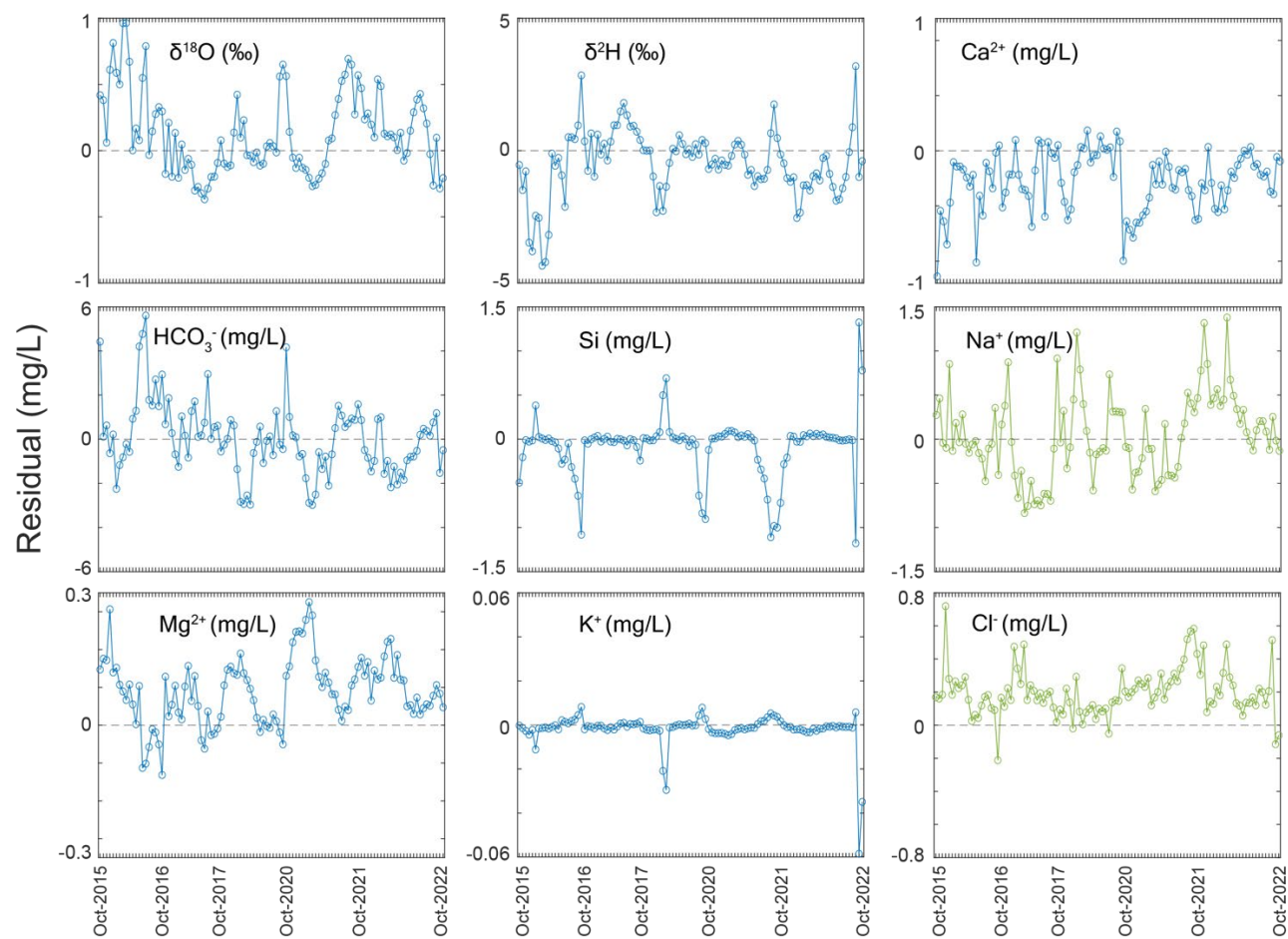
**Figure S2: Model predictions for the 2 PC/5 EM model. Most of the predictions remain similar to the 7 tracer/5 EM except for Si and K<sup>+</sup>.**



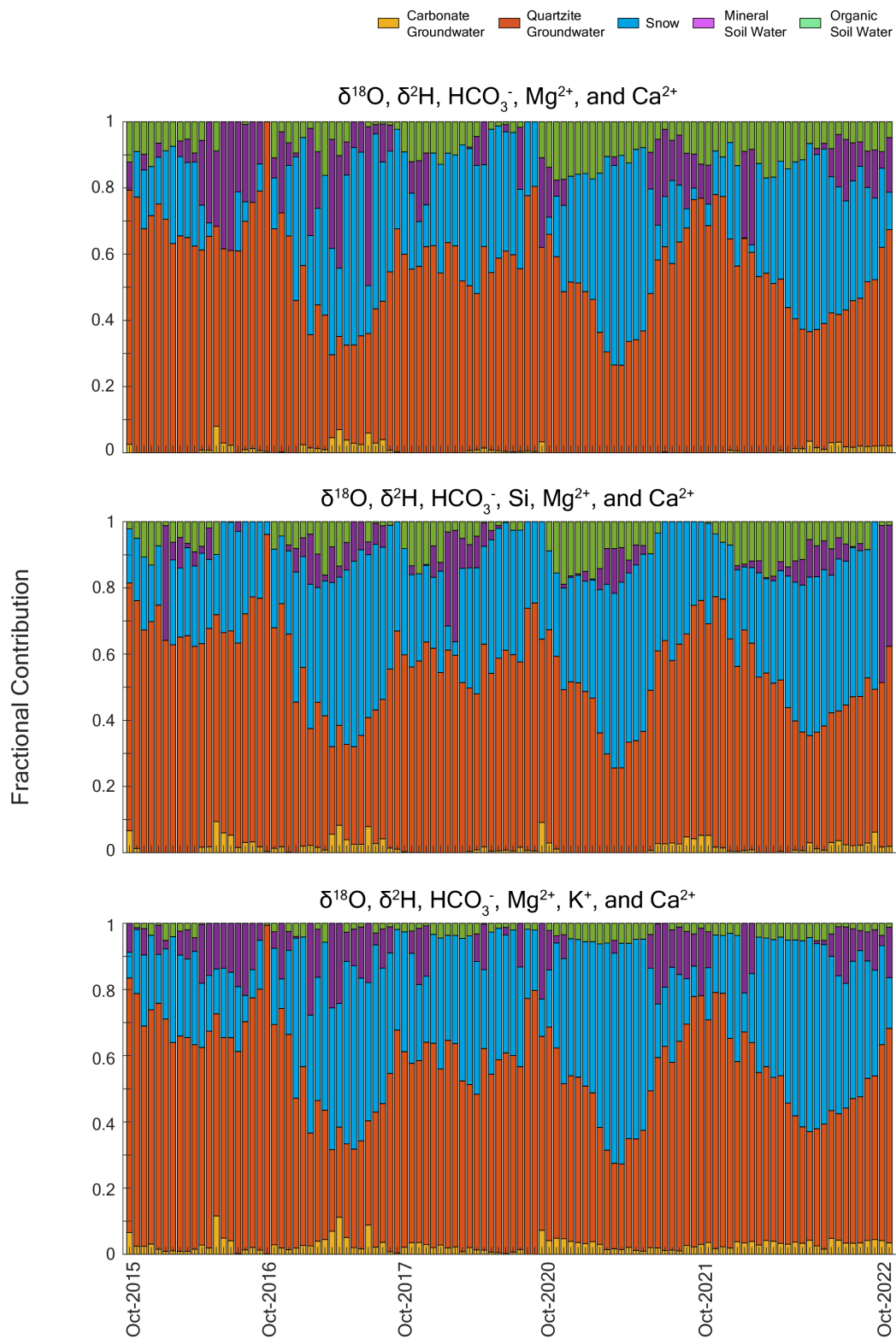
**Figure S3: Model predictions for the 3 PC/5 EM model. Most of the predictions remain similar to the 7 tracer/5 EM except for Si and  $\text{K}^+$ .**



**Figure S4: Model predictions for the 4 PC/5 EM model. Predictions are improved from the 2 PC/5 EM and 3 PC/5 EM model, but  $\text{K}^+$  are predicted more accurately in the 7 tracer/5 EM model.**



**Figure S5: Residual plot of tracer prediction concentrations over time.  $\text{Na}^+$  and  $\text{Cl}^-$  are coloured green to indicate that they were not included in the final model.**



**Figure S6: Fractional contributions calculated from varying combinations of tracers.**