

We are very grateful to the two reviewers for the constructive comments on our manuscript, which greatly helped us to improve the quality of this manuscript. We have now revised the manuscript following your comments and suggestions. Our responses to your comments are listed below in red.

Reviewer #2

In the current manuscript, Hu et al have investigated the impact of major sudden stratospheric warming events in the northern hemisphere high latitude on the OH changes in the mesosphere and lower thermosphere. Their work is mainly focusing on the model results (a specific-dynamic version of WACCM-X, SD-WACCM-X) with detailed middle-atmosphere chemistry and D-region chemistry (MAD). They used the MERRA2 reanalysis data to constrain the modelled atmospheric temperature/winds below 50 km from 2004-2023, which can be well reproduce the major SSW events over this period. The authors have made clear introduction and why this work is so important for the atmospheric research community.

First, they choose SSW event in January 2009 to start with and confirmed the elevated stratopause (ES_ and associated temperature/winds/OH changes (which has been studied/revealed by other studies before) in SD-WACCM-X results. Then they found the sharp OH changes are well correlated with meridional temperature gradient for the ten SSW events over the past 20 years (2004-2023). Figure 3 shows the climatological OH seasonal variations in the polar regions, which is nothing new here (this seems to be consistent with WACCM and other global atmospheric chemistry models, except the authors found some large discrepancies between SD-WACCM-X and other models). Then the authors have made composite analysis of temperature, zonal mean wind, OH and its anomaly during the ES-SSW events (before 15 days and after 2 months) to see the general pattern (and they thought it does not matter if SSW occurred in December, January or February, their Table1). This Figure 4 may cause some cautions because we can still see there are still some large daily variation in their Figures 1-3. Then they did similar for the atomic oxygen and temperature (Figure 5) to link the OH changes through the chemistry since OH can be depleted by reacting with O in the MLT region. Figures 6-9 shows the OH, O, T and residual circulation for different ES-SSW stages. Finally the authors investigated the causes by the gravity waves.

Overall, the manuscript has very clear message and it reads well. The results and discussions are useful. Personally I enjoy reading it. However, I am not sure if the conclusion would be changed if their current method changes (including the comments mentioned above).

We thank the reviewer for the positive comments and for raising this important point. We agree that daily variability is still visible in Figures 1–3. However, the purpose of the composite analysis in Figure 4 is to extract the robust and systematic signals associated with ES-SSW events from individual event variability. As shown in Figure 4d, the OH anomalies exhibit a coherent response to ES-SSW events, which cannot be explained by daily variations alone.

It should also be noted that Figure 3 is included to characterize the seasonal variability of OH in the polar regions. Although the general seasonal pattern has been reported in previous studies, presenting it here based on the same SD-WACCM-X simulations allows us to establish a consistent reference and reduce potential errors when comparing climatology with anomalies. The associated statements have been added to the revised manuscript (see lines 311-323).

We also note that the consistency of the OH response across ten ES-SSW events during 2004–2023 further supports the robustness of the results. Therefore, while daily variability remains present in individual cases, the composite analysis demonstrates that our main conclusions are not sensitive to the specific onset date or to short-term variability, but rather reflect the common dynamical and chemical processes associated with ES-SSW events.

1. I have noticed some differences/inconsistent of major SSW occurring date with published data at: <https://csl.noaa.gov/groups/csl8/sswcompendium/majorevents.html> although the definition of SSW is slightly different to Charlton and Polvani (2007) (<https://journals.ametsoc.org/view/journals/clim/20/3/jcli3996.1.xml>). For example, I did not see SSW events on 25 December 2018 (in Table 1) from the table in the above NOAA webpage (which showed it should be 2 January 2019 from MERRA2).

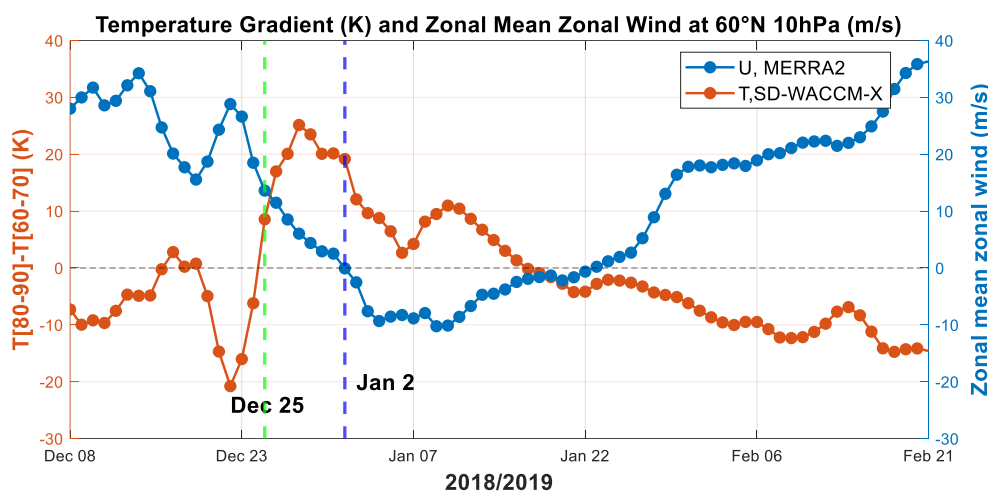


Figure R1. Temporal variation of the temperature difference between 60°N and 90°N at 10 hPa (red line) and the zonal-mean zonal wind at 60°N and 10 hPa (blue line). Vertical dashed green and blue lines denote the onset of the positive temperature difference and the zonal wind reversal, respectively.

Response: We thank the reviewer for pointing out the inconsistency of the SSW onset between the NOAA and our study. As the reviewer mentioned, the definition of SSW onset can vary among studies. While Charlton and Polvani (2007) and the NOAA typically define the onset based on the reversal of the zonal-mean wind at 60°N and 10 hPa, in our study, we adopt the day when the temperature difference turns positive as the onset date. Under this definition, we determine the onset on 25 December 2018.

As illustrated in Figure R1, the red line shows the meridional temperature difference from SD-WACCM-X, which turns positive on 25 December 2018. Based on our definition, this date is identified as the onset of the SSW. In contrast, the blue line represents the zonal-mean zonal wind at 60°N and 10 hPa from MERRA2, which reverses from westerlies to easterlies on 2 January 2019, consistent with the NOAA definition. The difference in onset timing, therefore, arises solely from the diagnostic criterion employed, rather than from inconsistencies in the data or simulation.

It should be noted that although the onset definition differs, previous studies also indicated that the 2019 SSW exhibited clear dynamical and thermal responses in late December 2018 (e.g., Gan et al., 2020; Ma et al., 2020; Yamazaki et al., 2025). In addition, our OH results are consistent with earlier findings (e.g., Damiani et al., 2010), further supporting the robustness of the adopted criterion. Therefore, the difference from the NOAA record (2 January 2019 from MERRA2) arises from diagnostic criteria rather than a mistake in our analysis, and it does not affect the subsequent results and conclusions of this study.

Reference:

- Damiani, A., Storini, M., Santee, M. L., and Wang, S.: Variability of the nighttime OH layer and mesospheric ozone at high latitudes during northern winter: influence of meteorology, *Atmospheric Chemistry and Physics*, 10, 10291–10303, <https://doi.org/10.5194/acp-10-10291-2010>, 2010.
- Gan, Q., Eastes, R. W., Burns, A. G., Wang, W., Qian, L., Solomon, S. C., Codrescu, M. V., and McClintock, W. E.: New observations of large-scale waves coupling with the ionosphere made by the GOLD Mission: Quasi-16-day wave signatures in the F-region OI 135.6-nm nightglow during sudden stratospheric warmings, *Journal of Geophysical Research: Space Physics*, 125, e2020JA027880, 2020.
- Ma, Z., Gong, Y., Zhang, S., Zhou, Q., Huang, C., Huang, K., Luo, J., Yu, Y., and Li, G.: Study of a Quasi 4-Day Oscillation During the 2018/2019 SSW Over Mohe, China, *JOURNAL OF GEOPHYSICAL RESEARCH-SPACE PHYSICS*, 125, <https://doi.org/10.1029/2019JA027687>, 2020.
- Yamazaki, Y., Sato, K., Koshin, D., and Yasui, R.: Atmospheric semidiurnal solar tide response to sudden stratospheric warmings in the JAGUAR-DAS Whole neutral Atmosphere Reanalysis (JAWARA) during 2004–2023, *Journal of Geophysical Research: Space Physics*, 130, e2024JA033688, 2025.

2. I expect ES-SSW onset date is later than SSW occurring date since the breaking of planetary waves propagate upward. However, the Table 1 has earlier onset ES-SSW date than SSW. Not sure if this caused by SD-WACCM-X simulation or the authors made some mistakes. If the basic onset day in Table 1 is wrong, obviously, all other figures (except Figure 3), results and discussion need to be changed.

Response: We thank the reviewer for the careful observation. We would like to clarify that an ES-SSW is a specific subtype of SSW. The elevated stratopause (ES) appears after the stratospheric warming has taken place; therefore, the occurrence of ES-SSW is inherently synchronized with that of the SSW, and its onset is the same as the SSW onset. The apparent difference in onset dates arises only from the choice of diagnostic criterion. In this study, we adopt the day when the zonal-mean temperature difference turns positive as the onset of SSW (and thus ES-SSW). By this definition, the 2019 event onset is determined to be 25 December 2018. In contrast, the NOAA and some other studies use the reversal of zonal-mean zonal wind at 60°N and 10 hPa, which gives 2 January 2019 as the onset.

Therefore, the earlier onset date listed in Table 1 is not due to mistakes in the SD-WACCM-X simulation or in our analysis, but rather reflects the use of a different diagnostic definition. Importantly, this choice does not affect the identification of ES-SSW events or the robustness of the subsequent results and conclusions.

3. For the residual circulation, why SD-WACCM looks different to WACCM (for example, Anne Smith's Figure at JGR(2011): please see the link: <https://agupubs.onlinelibrary.wiley.com/doi/full/10.1029/2011JD016083>. Maybe this is from WACCM6 physics and it is quite different to WACCM4 using in Smith et al. (2011). Not sure why the authors choose the most expensive SD-WACCM6-X (MAD) model (FXSD) since their work is mainly focusing in the MLT below 95 km? It seems to me this is the first long term SD-WACCM6-X simulation, it is unclear if this is from cesm2_1_3 or other version. So additional model validation is required.

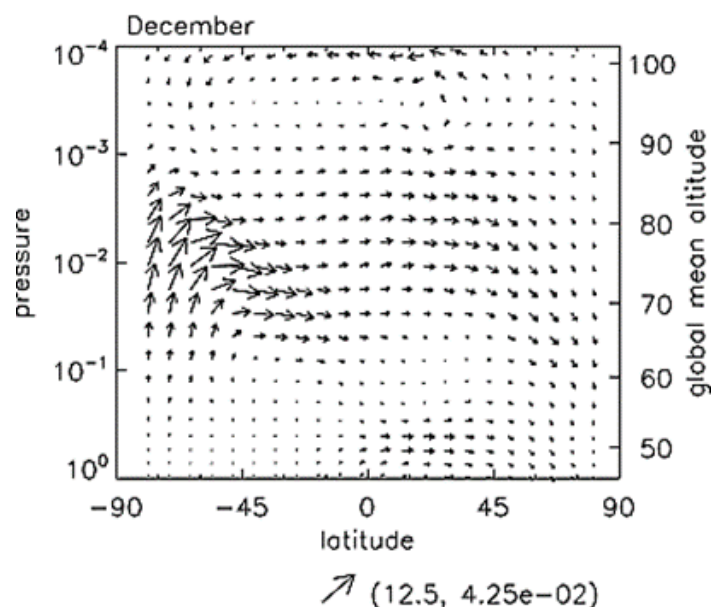


Figure R2. Vectors showing the WACCM climatological TEM flow for December averaged over 1960–2006 for four model realizations. The scale at the lower right shows the maximum equation image* and equation image* in m/s. For reference, the right axis on all figures gives the climatological global mean geometric altitude from WACCM (Smith et al., 2011).

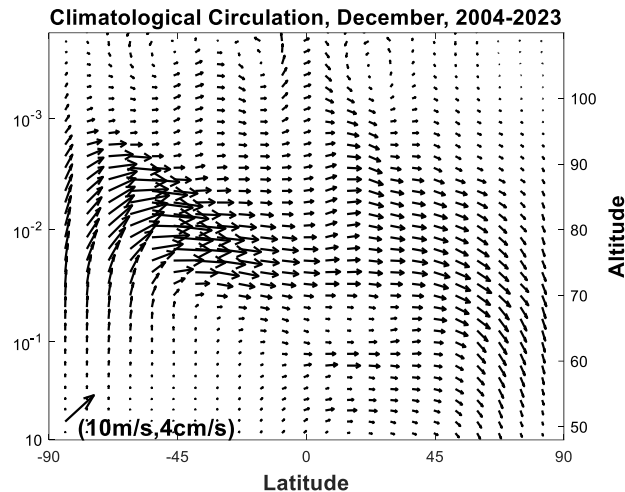


Figure R3. Vectors showing the SD-WACCM-X climatological residual circulation for December averaged over 2004–2023.

Response: We are grateful to the reviewer for the thoughtful comparison of our results with those of Smith et al. (2011). The apparent discrepancy arose because our original manuscript mistakenly described Figures 7-9 as climatological residual circulation, while they show the residual circulation anomaly. We have corrected this wording in the revised manuscript to avoid confusion.

To further clarify, we compared the climatological residual circulation reported by Smith et al. (2011) with the December climatology derived from SD-WACCM-X simulations (2004–2023 average). Their close agreement (Figures R2-R3) confirms the reliability and accuracy of SD-WACCM-X.

Regarding the choice of model, we employed SD-WACCM6-X because it is a whole-atmosphere model that self-consistently couples the middle atmosphere, thermosphere, and ionosphere. Although the present study focuses on the MLT region below 95 km, we performed the simulations over the entire atmospheric column since the outputs above 95 km will be used in our future studies. Running SD-WACCM6-X provides a consistent dataset that can be applied not only to the present analysis of OH variations but also to upcoming investigations of upper atmospheric and ionospheric processes.

The simulations were performed with CESM2.2.0, and the model description can be found in Gettelman et al. (2019). The associated statements have been added to the revised manuscript (see lines 119-120).

Reference:

Gettelman, A., Mills, M. J., Kinnison, D. E., Garcia, R. R., Smith, A. K., Marsh, D. R., Tilmes, S., Vitt, F., Bardeen, C. G., McNerny, J., Liu, H. L., Solomon, S. C., Polvani, L. M., Emmons, L. K., Lamarque, J. F., Richter, J. H., Glanville, A. S., Bacmeister, J. T., Phillips, A. S., Neale, R. B., Simpson, I. R., DuVivier, A. K.,

Hodzic, A., and Randel, W. J.: The Whole Atmosphere Community Climate Model Version 6 (WACCM6), *Journal of Geophysical Research-Atmospheres*, 124, 12380–12403, <https://doi.org/10.1029/2019jd030943>, 2019.

Smith, A. K., Garcia, R. R., Marsh, D. R., and Richter, J. H.: WACCM simulations of the mean circulation and trace species transport in the winter mesosphere, *Journal of Geophysical Research: Atmospheres*, 116, 2011.

4. Even if this is from cesm2_1_3, what the inputdata (emissions etc) are used beyond January 2015? It requires some clarification and make major changes before moving forward.

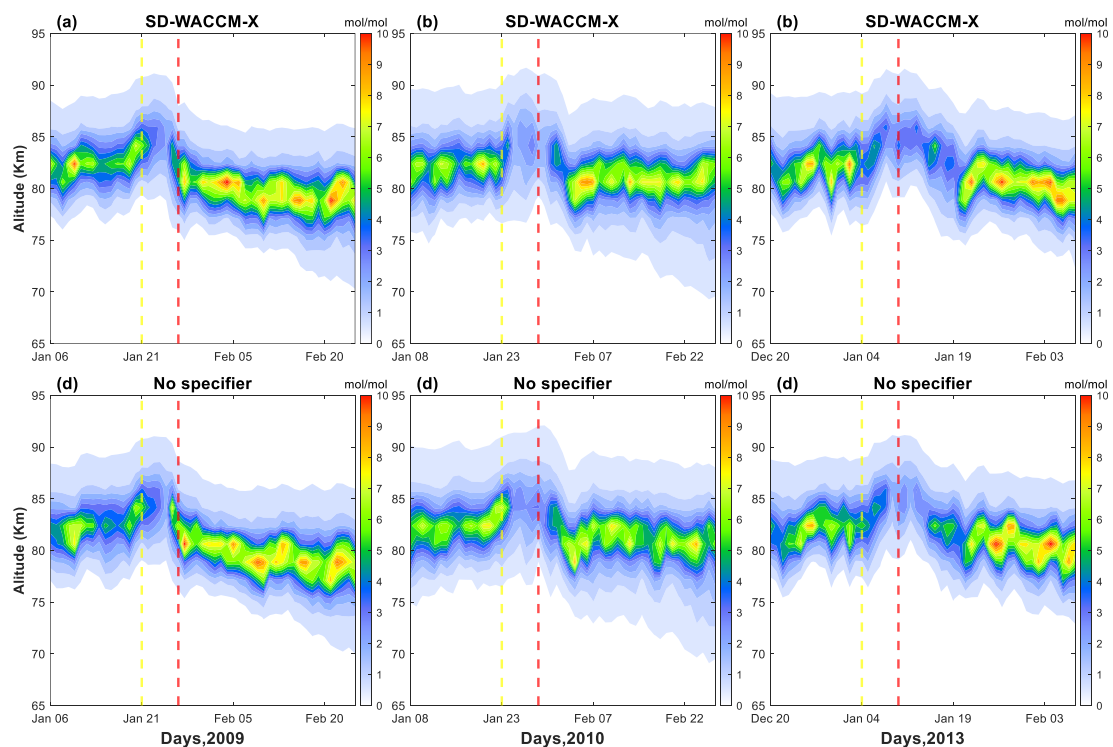


Figure R4. Temporal variation of OH concentrations in the polar region. Panels from left to right correspond to 2009, 2010, and 2013, and from top to bottom to SD-WACCM-X and SD-WACCM-X (No Specifier) simulations. Vertical dashed yellow and red lines are the onset of the stratosphere warming stage and the elevated stratopause stage, respectively.

Response: We thank the reviewer for raising this important point. To the best of our knowledge, CESM currently provides emission input files for the FXSD component only up to the year 2015. Accordingly, in our simulations, prescribed emission data files from CESM input (available at https://svn-ccsm-inputdata.cgd.ucar.edu/trunk/inputdata/atm/cam/chem/emis/CMIP6_emissions_1750_2015_2deg) were used prior to 2015, while for years beyond 2015, the emission fields were set to missing values (by specifying in the user_nl_cam file:

```
ext_frc_type = 'CYCLICAL',
ext_frc_specifier = ''
```

```
srf_emis_type = 'CYCLICAL',  
srf_emis_specifier = ' ').
```

To evaluate the potential impact of this treatment, we conducted sensitivity tests for three years before 2015 (2009, 2010, and 2013). For each year, simulations were performed both with the prescribed emissions and with the emission fields set to NaN. The results (see Figure R4) show that the temporal evolution of OH is nearly identical between the two cases. For example, in the 2009 event, both simulations reproduce a pronounced decrease in OH peak concentration during the stratospheric warming phase. Although some differences in the magnitude of OH variations can be noted between the two cases, the dynamical processes and response characteristics of the SSW remain unaffected. Moreover, comparisons across years confirm that SD-WACCM-X results are consistent regardless of whether emissions are specified.

These sensitivity tests demonstrate that the absence of emission data after 2015 has a negligible impact on the OH response to SSWs in the polar region. Therefore, we are confident that the results presented in this study remain robust and reliable. The associated statements have been added to the revised manuscript (see lines 145-153).