

Hydrological regime shifts in Sahelian watersheds: an investigation with a simple dynamical model driven by annual precipitation

Erwan Le Roux¹, Valentin Wendling², G  r  my Panthou³, Oc  ane Dubas³, Jean-Pierre Vandervaere³, Basile Hector³, Guillaume Favreau³, Jean-Martial Cohard³, Caroline Pierre⁴, Luc Descroix⁵, Eric Mougin⁶, Manuela Grippa⁶, Laurent Kergoat⁶, J  r  me Demarty⁷, Nathalie Rouche⁷, Jordi Etchanchu⁷, and Christophe Peugeot⁷

¹IMT Atlantique, Lab-STICC, UMR CNRS 6285, 29238, Brest, France

²HydroSciences Montpellier (Univ. Montpellier, IMT Mines Ales, CNRS, IRD) Ales, France

³Institut des G  osciences de l'Environnement (Univ. Grenoble Alpes, INRAE, CNRS, IRD, Grenoble INP), Grenoble, France

⁴Institut d'Ecologie et des Sciences de l'Environnement de Paris (CNRS, Sorbonne Univ., Univ Paris Est Creteil, IRD, INRAE, Univ. de Paris) Paris, France

⁵Patrimoines locaux, Environnement et Globalisation (MNHN, IRD, CNRS), Paris, France

⁶G  osciences Environnement Toulouse (CNRS, IRD, UPS, CNES) Toulouse, France

⁷HydroSciences Montpellier (IRD, Univ. Montpellier, CNRS) Montpellier, France

Correspondence: Erwan Le Roux (erwan.le-roux@imt-atlantique.fr)

Abstract. The Sahel, the semi-arid fringe south of the Sahara, experienced severe meteorological droughts in the '70s-'80s.

~~Since~~ During and after these droughts, watersheds in the Central Sahel have experienced an increase in the annual runoff coefficient (annual runoff normalized by annual precipitation). We hypothesize that these increases correspond to regime shifts. To investigate the timing of these regime shifts, we introduce a lumped model that represents feedbacks between soil, water and vegetation at the watershed scale and the annual time step. This model relies on runoff coefficient as a constraint for the state variable and precipitation as unique external forcing. Four watersheds (Gorouol, Dargol, Nakanb   and Sirba), with pluridecennial observations ('50s-2010s), are modeled. For each watershed, one million parameterizations of this model are sampled and run, and an ensemble of one thousand best parameterizations is selected based on observed runoff coefficients. Our results show that this model can reproduce the trend of runoff coefficients. For all watersheds, almost all selected parameterizations from the ensemble are bistable, ~~and can be utilized to~~. We define two alternative runoff coefficient regimes \div (a low and a high regime. ~~Most ensemble members~~) by splitting with a threshold the bifurcation diagram of bistable parameterizations. Most selected parameterizations undergo regime shifts: simulated runoff coefficients belong to the low regime in 1965 and to the high regime in 2014. Finally, we find that the year of the regime shift, defined as the ~~first year with more than 50% of ensemble members in the high regime~~, was 1968, 1976, 1977, 1987 year when the number of regime shifts is maximized, was 1971, 1972, 1973, 1983 for the Gorouol, ~~Dargol~~, Nakanb  , ~~Dargol~~ and Sirba watershed, respectively. ~~This article proposes several~~ These results were obtained with a parsimonious model which deliberately neglects fine-scale processes of Sahelian hydrology. It would therefore be wise to supplement this analysis with other models — with varying levels of complexity — that also allow regime shifting. Overall, this article proposes simple ideas toward improving the modelling and characterization of hydrological regime shifts.

20 1 Introduction

Complex dynamical systems (ecosystems, climate system) can ~~experience shifts to a contrasting regime (Scheffer et al., 2001)~~
~~Such regime shifts correspond to the transition from have,~~ for certain external conditions, several attractors (stable states)
towards which the system state converges depending on its initial value (Scheffer et al., 2001). The set of initial values converging
to the same attractor defines an attraction basin ~~to an alternative attraction basin~~. Regime shifts occur when a tipping point is
25 ~~crossed~~. Classically, one regime is associated with each attraction basin (Mathias et al., 2024). A regime shift, i.e. the transition
from one regime to an alternative regime, corresponds to the crossing of a tipping point: a critical value beyond which a system
switches to the alternative ~~basin~~regime, often abruptly and/or irreversibly (IPCC, 2023b). ~~In the literature, tipping points often~~
~~denote critical thresholds of (IPCC, 2023a)~~. Tipping points are often associated with critical thresholds in the external condition
of the dynamical system (Armstrong McKay et al., 2022). However, ~~we note that a tipping point~~ tipping points can also refer
30 to a critical level of noise in the state space or a critical rate of change in the external condition (Lenton, 2011; Ashwin et al.,
2012).

In hydrological science, better accounting for regime shifts remains a challenge (Blöschl et al., 2019; van Hateren et al., 2023)
~~that could lead to a new paradigm: accounting for non-stationary changes (Milly et al., 2008) and also for~~ as commonly used
hydrological models poorly account for such potential abrupt and/or irreversible changes (~~Fowler et al., 2022a~~)(Saft et al., 2016; Fowler et al.
35 . Some approaches ~~rely solely on data to emphasize multiple lines of evidence that could be related to a regime shift use~~
statistical methods to analyze regime shifts (Zipper et al., 2022; Fowler et al., 2022b; Rahimi et al., 2023; Goswami et al.,
2024). In particular, several studies ~~highlight have highlighted~~ a shift of watersheds toward lower streamflow ~~during after a~~
drought due to shifts in the relationships between surface water and groundwater (Saft et al., 2015; Peterson et al., 2021;
Fowler et al., 2022a; Liu et al., 2023). Other approaches ~~combine existing data with a dynamical model~~ rely on dynamical
40 ~~models~~ to analyze potential regime shifts: ~~Wendling et al. (2019) modeled in the Northern Mali. In Australia, Anderies (2005)~~
~~and Anderies et al. (2006) extract stable states from a dynamical model applied to a catchment, Peterson et al. (2012) extract~~
~~attractors, repulsors and attraction basins for a simple lumped groundwater model, while Peterson and Western (2014) investigate~~
~~multiple hydrological attractors with a semi-distributed hillslope eco-hydrological model. In Northern Mali, Wendling et al. (2019)~~
~~model a shift from a high-vegetation/low-runoff regime to a low-vegetation/high-runoff regime, while Dijkstra et al. (2019)-~~
45 ~~used~~. In Germany, Dijkstra et al. (2019) rely on an idealized model to show that a shift from a low to a high sediment
concentration regime may occur in the Ems River assuming low river discharge and increasing channel depth. ~~Spatial Eco-hydrological~~
~~regime shifts have also been studied with spatial~~ models of dryland vegetation ~~have also been used to study eco-hydrological~~
~~regime shifts~~ (Van Nes and Scheffer, 2005; Mayor et al., 2019; Kéfi et al., 2024).

This study focuses on the Sahelian hydrological paradox (Mahe et al., 2005; Descroix et al., 2009). In ~~several watersheds in~~
50 the Central Sahel (Mali, Burkina Faso, Niger), ~~the~~ annual runoff coefficients (annual runoff normalized by annual precipitation)
~~of watersheds~~ increased during the major meteorological droughts in the '70s-'80s and surprisingly kept increasing after them.
This paradox is attributed to the hydrological effect of land clearing (Leblanc et al., 2008; Favreau et al., 2009) which favors
soil crusting and thus Hortonian surface runoff (Horton, 1933), the dominant runoff generation process in the region (Casenave

and Valentin, 1992). In the northernmost areas where rainfed agriculture is not possible, the paradox is attributed to drought-
55 induced vegetation dieback, which results in similar effects on soil properties (Hiernaux et al., 2009; Gardelle et al., 2010; Gal
et al., 2017).

~~In-~~

Multiple lines of evidence suggest that this Sahelian hydrological paradox corresponds to a hydrological regime shift. These evidences include a cessation of the disturbance, i.e. the drought that ended in the mid- 1990s (Panthou et al., 2018), a shift in annual runoff coefficient, and an evidence of non-recovery (Descroix et al., 2009, 2018).

Here, we focus on a complementary line of evidence based on a dynamical model, where the occurrence of a regime shift is a starting assumption. Our objective is to better characterize these regime shifts by analyzing their timing. Other works have previously identified the timing of shifts, where regimes are identified statistically (Fig. S19 and S20 of Peterson et al. 2021). By contrast, in this study, ~~for every watershed,~~ regimes are defined using attractors from the dynamical model.

Our scientific approach is structured in three phases. First, for four Sahelian watershed, where major hydrological changes have been documented between the 1950s to mid-2010s (Gal et al., 2017; Descroix et al., 2009, 2018; Sauzedde et al., 2025), we assume that ~~this Sahelian hydrological paradox corresponds to a hydrological~~ the observed hydrological changes (Sahelian paradox) correspond to a regime shift from a low to a high runoff coefficient regime, ~~and~~. Then, we propose a dynamical model that can account for a regime shift, and evaluate if it can reproduce the observed trend in runoff coefficients. Finally, based on this model, we ask: when did ~~the shift between these two regimes~~ these shifts occur ?

In our methodology, we propose several novel contributions for the second and third phases of this approach. ~~Answering this question~~ The second phase requires a dynamical model that can account for a hydrological regime shift of Sahelian watersheds. However, to our knowledge, such a model does not yet exist. To fill this gap, we build on previous work in ecological modelling (~~van Nes et al., 2014; Wendling et al., 2019~~) with multiple attractors (Holling, 1973; May, 1977; van Nes et al., 2014; Wendling et al., 2019) to develop a lumped dynamical model that can simulate these regime shifts. ~~This~~ Following the parsimony principle, we deliberately chose to develop a minimal model capable of reproducing the first-order processes of such complex eco-hydrological systems (Scheffer et al., 2001; Sivapalan, 2018) because comprehensive datasets, required to inform more complex models, are not available in this region for the investigated period. Specifically, this model simulates annual runoff coefficient at the watershed scale and the annual time step, using annual precipitation as unique external forcing. This ~~interpretable model~~ incorporates model incorporates a new formalism capable of representing feedbacks between vegetation dynamics and runoff generation. ~~For four Sahelian watersheds, it is calibrated with an ensemble approach, using observations of precipitation and runoff coefficients.~~

Furthermore, ~~to answer our question, we have to be able~~ (soil crusting, erosion processes and growth and death of vegetation patches). The model is constrained by the observed runoff coefficients in order to ensure realistic simulations. The third phase of our approach, that consists in assessing the timing of regime shift, requires to quantitatively identify a regime shift. ~~Regime shifts are often conceptualized with state values that remain equal to attractors, i.e. values asymptotically reached by the dynamical model (see Figure 2 of Scheffer et al., 2001). However, in our study, the model displays transient dynamics (Hastings et al., 2018; Feudel, 2023), where state values are sometimes far from attractors. In this context~~ For this purpose, we propose to quantitatively identify a regime shift based on a definition of regimes that ~~involves splitting~~ splits the state space into two regimes: sub-spaces (a low and a high regime) and develop a method to identify when a transition between these two regimes occurs.

This paper is organized as follows. Section 2 presents our data. Section 3 develops our methodology. Results, discussions and conclusions are introduced in Sects. 4, 5 and 6, respectively.

2 Data

95 2.1 Sahelian watersheds

The four considered watersheds (Gorouol, ~~Dargol, Sirba~~, 23200 km²; ~~Dargol~~, 7350 km²; ~~Sirba~~, 40300 km²; Nakanbé, 21800 km²), located in central Sahel (Fig. 1), are selected on the basis of ~~their pluri-decennial observations~~ the availability of long-term observations from the 1950s to the mid-2010s. The first three are tributaries of the Niger River, and the last one feeds the Volta River. The climate of this semi-arid region is governed by the West African monsoon (Redelsperger et al., 2006; Lafore et al., 2011). Seasonal precipitation is provided by mesoscale convective systems between June and September. Intermittent rivers are supplied by surface runoff generated on hillslope during rainstorms. The study area is essentially rural: the north is dominated by natural pastures grazed by cattle, while the south contains a mosaic of savannahs ~~and fields (rainfed and fallow)~~, rainfed agricultural plots and fallows, where scattered shrub and tree species persist (Tucker et al., 2023).

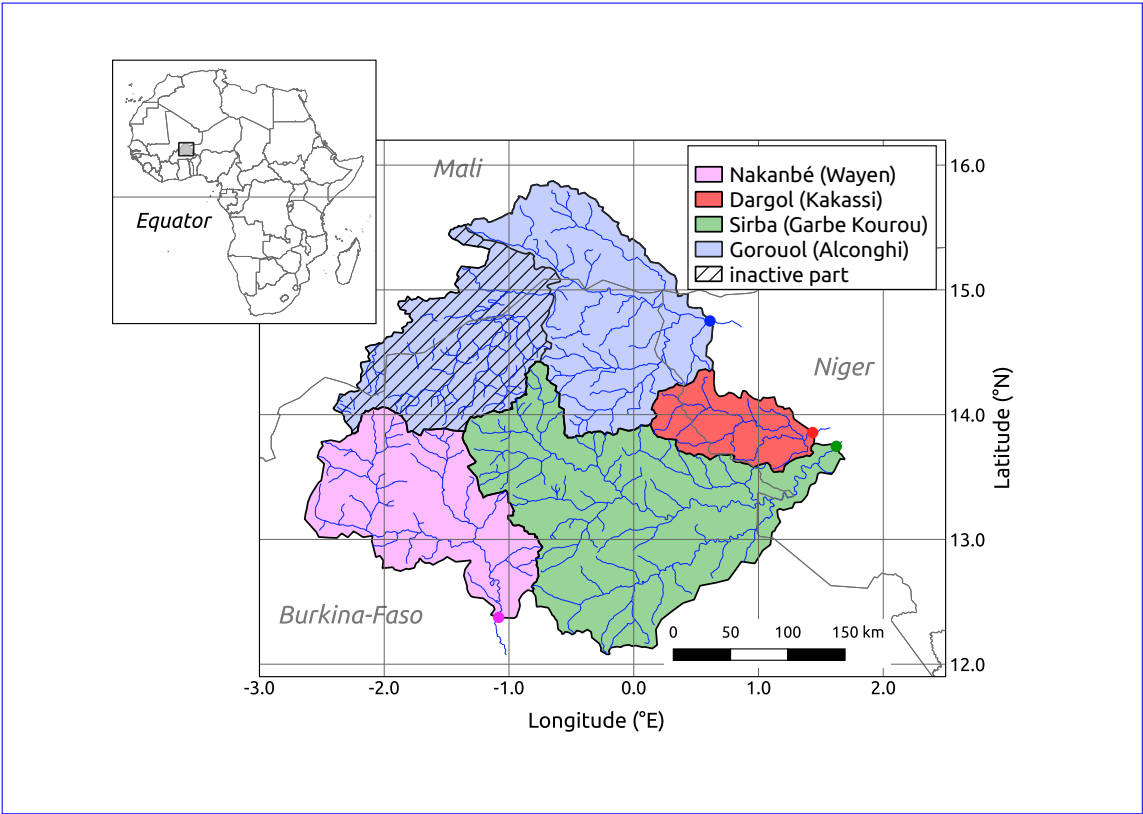


Figure 1. Location of the study area in Sub-Saharan Africa, and map of the four watersheds. The grey lines are the country borders. The large dots show the watershed outlet. The names of corresponding streamflow stations are in brackets in the legend. The upper Gorouol basin was inactive between the 1950s and the 2010s and does not contribute to the streamflow. Only the active sub-basin is considered.

2.2 Annual precipitation

- 105 Annual precipitation over each watershed are computed ~~using the approach proposed by Panthou et al. (2018).~~ based on Panthou et al. (2014, 2018) First, for each gauge station of the watershed, annual precipitation series are obtained by summing daily precipitation for each year. Then, annual precipitation means and anomalies are both interpolated using two kriging methods. Finally, annual precipitation of the watershed is computed as the sum of these two interpolated fields (means and anomalies) averaged spatially over the watershed.
- 110 Figure 2a presents annual precipitation over four watersheds for the period 1956-2014. Past annual precipitation can be grouped in three main periods: wet during the '50s-'60s, followed by a prolonged period with some severe droughts which ended up in the mid-'90s, and ~~recently~~ since then a period with a strong inter-annual variability where annual precipitation roughly equals the mean of the whole period (Le Barbé et al., 2002).

2.3 Annual runoff coefficient

- 115 The annual runoff coefficient K (-), ranging between 0 and 1, is equal to the annual watershed outflow V (m^3) per unit of watershed area A (m^2), normalized by the annual precipitation P (mm): $K = \frac{V}{A \times P}$. Annual watershed outflow V (m^3) is calculated from the mean daily discharge Q ($\text{m}^3 \text{ s}^{-1}$), ~~in a~~ over the hydrological year, starting on the first of March. For the ~~Nakanbe~~ Nakanbé watershed, we use discharges corrected for the effect of dams built in recent decades (Gbohoui et al., 2021). For the three other watersheds, discharges are merged from ~~several robust two~~ databases: SIEREM (Boyer et al., 2006) and
- 120 ADHI (Tramblay et al., 2021). We exclude years with more than 13 days of missing consecutive daily discharge values during the wet season (June-September). Otherwise, missing values are set to zero in the dry season, and linearly interpolated in the wet season. A sensitivity study (not shown) confirms that this interpolation has a limited effect on the mean annual discharge (bias < 10%).
- 125 Figure 2b presents the annual runoff coefficient series for each watershed. All watersheds have experienced a similar evolution toward higher annual runoff coefficients although the Northern watersheds display higher coefficients.

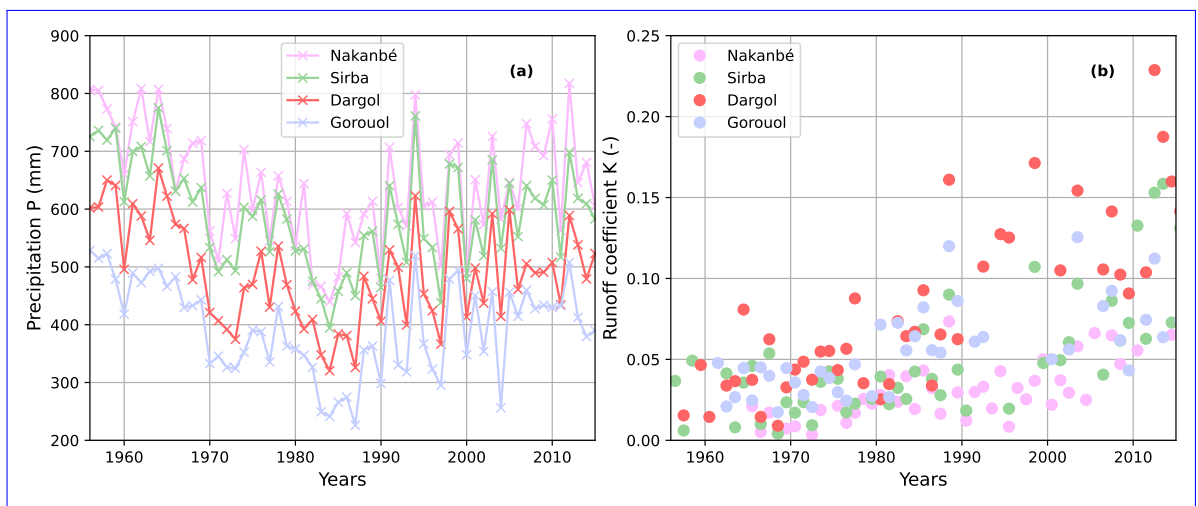


Figure 2. Observations of (left) annual precipitation and (right) annual runoff coefficient for the four watersheds between 1956 and 2014.

3 Methodology

All physical variables are defined at watershed scale and at annual time step, e.g. precipitation refers to annual precipitation of the watershed. Moreover

3.1 Dynamical model

130 In this article, variables are denoted with uppercase letters, whereas parameters are written with lowercase letters.

3.2 Dynamical model

Furthermore, in this study, most Sahelian watersheds have sub-domains that do not contribute to runoff at the outlet due to their endorheic nature. In order to account for this partial contribution, our model only focuses on the contributing areas. Therefore, all physical variables are defined at annual time step and at the scale of the watershed areas contributing to runoff. For instance, 135 the runoff coefficient K refers to the annual runoff coefficient for the areas of the watershed contributing to runoff.

~~We develop a~~ The proposed dynamical model is an extension of the hillslope-scale model proposed by Wendling et al. (2019), which reproduced a hydrological shift. Our lumped dynamical model that simulates the runoff coefficient K of a watershed. This parsimonious model has a single external forcing, the precipitation P (mm), and a single state variable, the water holding strength S (-). Intuitively, S represents all physical mechanisms that drive water retention within the watershed including soil 140 infiltration properties associated with vegetation dynamics, seepage losses or conversely runoff connectivity. S ranges from 0 to 1. The higher is S , the lower is K . In the model, ~~S represents all physical mechanisms that hold water including low runoff connectivity, closed basins that retain water, or soil infiltration properties due to developed vegetation cover.~~

The proposed dynamical model is an extension at the watershed scale of a previous hillslope-scale model (Wendling et al., 2019), inspired by ecological modelling (van Nes et al., 2014). Indeed, given the dominant role of vegetation in the Sahelian paradox, 145 the variations in S are assumed to be similar to those of a vegetation cover. In the model, S increases and decreases as a function of I (mm), an indicator of wetness representing the potential water for the vegetation, i.e. precipitation minus runoff.

Changes in the water holding strength S are modulated by a feedback loop (Fig. 3). The value of S impacts directly the proportion of outflow water K , that indirectly affects the indicator of wetness I , which finally drives the growth and decays of S . These assumptions are based on feedback mechanisms frequently observed in drylands worldwide (Turnbull et al., 2012). 150 Wet conditions favor vegetation development, which in turn favors infiltration and thus vegetation growth (i.e. high S values). Conversely, dry conditions are detrimental to vegetation, favoring bare soil and consequently low infiltration (i.e. low S values).

Mathematically, changes in S are prescribed using a differential equation, where the time derivative $\frac{dS}{dt}$ is denoted as \dot{S} . The computation of \dot{S} can be decomposed into three steps (Eq. 1, Eq. 2, Eq. 3), schematically represented illustrated in Figure 3, 155 and detailed below.

First, we assume that define the runoff coefficient K is as a function of the water holding strength S and the precipitation P :

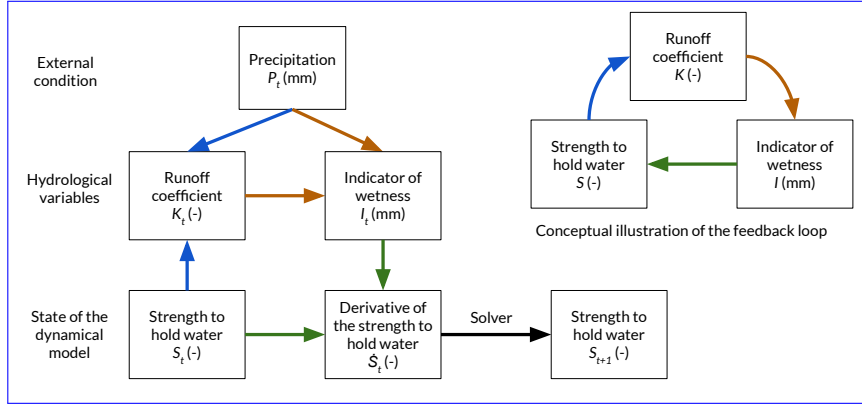


Figure 3. At every time t , the derivative of the water holding strength \dot{S}_t is computed in three steps: i) the runoff coefficient K_t is derived from the water holding strength S_t and the precipitation P_t (Eq. 1Eq. 1), ii) the indicator of wetness I_t is determined by the runoff coefficient K_t and the precipitation P_t (Eq. 2Eq. 2), iii) the derivative \dot{S}_t is calculated with the water holding strength S_t and the indicator of wetness I_t (Eq. 3Eq. 3).

$$K = \underline{f} \times k_{max} \cdot \left(\frac{P^a}{P^a + C^a} \right)^b \text{ with } C = c_{min} + S \times (c_{max} - c_{min}) \quad (1)$$

where C (mm) is the water holding capacity; a (-), b (-), \underline{f} (-), k_{max} (-), c_{min} (mm), c_{max} (mm) are positive parameters (Table-Tab. 1). Equation 1 is a fully derivable variant (well adapted to ODE solving) of the popular SCS model (Mockus, 1972), and of the equation used by (Massuel et al., 2011) to simulate runoff in the Sahel. It is also very similar to the formalism used by (Anderies 2005, Eq. 20) to represent the dependence of runoff to precipitation and to the watershed-scale water retention capacity, which is analogous to our variable S . Equation 1 is an S-shape function that controls the precipitation-runoff relationship: no runoff is produced below a certain precipitation amount, the runoff ratio varies only little for heavy precipitation, and it increases roughly linearly for intermediate precipitation. The runoff coefficient K is maximized when precipitation is extremely-substantially higher than the water holding capacity ($P \gg C$), i.e. when S is close to 0. Inversely, the runoff coefficient K is close to zero if $C \gg P$, i.e. when S is close to 1. The parameters a and b are shape factors allowing the model to adapt to a wide range of watersheds. This equation, although not properly physically-based, proposes a representation consistent with known hydrological processes.

In the second step, the indicator of wetness I (mm) is derived from the precipitation P and the runoff coefficient K :

$$I = P \cdot \left(1 - \frac{K}{\underline{f}} \right) \quad (2)$$

Finally, we further assume that the derivative of the water holding strength \dot{S} can be calculated from S and I :

$$\dot{S} = \overbrace{r_g \cdot \frac{I}{I + i_g} \cdot S \cdot (1 - S)}^{(1)} - \overbrace{r_d \cdot \frac{i_d}{I + i_d} \cdot S}^{(2)} + \overbrace{\mu \cdot (1 - S)}^{(3)} \quad (3)$$

where r_g (year^{-1}), i_g (mm), r_d (year^{-1}), i_d (mm) and μ (year^{-1}) are positive parameters. Equation 3 contains a growth term (1) and a decay term (2), whose rates (r_g and r_d) are modulated by I . The balance between these terms depends on S and I , and determines the sign of the derivative of S , hence its variation. The third term of Eq. 3 is small and only prevents the unrealistic convergence to $S = 0$. It can be interpreted as the representation of ~~physical processes that spontaneously all~~ the physical processes not included in the model which increase the water holding strength such as sand deposits by ~~the wind~~ ; wind and vegetation growth due to seeds imported. In general, this third term $\mu \cdot (1 - S)$ remains negligible as compared to the other terms of Eq. 3, because the range of values of μ (Tab. 1) are 2 to 3 orders of magnitude lower than the growth and decay rates r_g and r_d . The only exception is when S becomes close to 0: in this case terms 1 and 2 in Eq. 3 are also close to 0, and \dot{S} is close to μ (always positive), avoiding the trajectory of S to remain stuck in 0.

3.2 ~~Model calibration~~Selection of best parameterizations for the model

For each watershed, the ~~calibration of the dynamical model is performed using observed precipitations and runoff coefficients.~~ selection of best parameterizations rely on a comparison between observed runoff coefficients $K_{observed}$ with simulated runoff coefficients $K_{simulated}$ at the watershed scale. The watershed-scale simulated runoff coefficient $K_{simulated}$ can be computed from K , the runoff coefficient of the areas contributing to runoff (Eq. 1), as follows:

Formally, let

$$K_{simulated} = f \times K \quad (4)$$

where f (-) is the fraction of the watershed (between 0 and 1) that actually contributes to the watershed outlet.

Let $\theta = \{k_{max}, a, b, c_{min}, c_{max}, \underline{c_g}, \underline{c_g}, \underline{c_d}, \underline{r_g}, \underline{r_d}, \underline{i_g}, \underline{i_d}, \mu, f\}$ denote a parameterization of the dynamical model, i.e. a set of parameters for the equations (Eq. 1, Eq. 2, Eq. 3). ~~Calibrating a single optimal parameterization θ^* can be prone to equifinality, i.e. when different parameterization lead to similar results (Beven, 2006). This is one of the reasons why, for each watershed, we calibrate an ensemble of parameterizations. Following (Wendling et al., 2019), this ensemble is built in four steps:-~~

~~10⁶ parameterizations are sampled from a Latin hypercube sampling, using a uniform distribution over a large range of parameter values (Table 1). These ranges were adjusted through preliminary tests.~~

~~For each parameterization the trajectory of simulated water holding strength S is solved numerically, with a wrapper of the Fortran solver from ODEPACK Hindmarsh (1983a), using observed precipitations as a forcing.~~

~~For each parameterization, the trajectory of simulated runoff coefficient K is inferred from S using Eq. 1.~~

~~The calibrated ensemble Θ^* is defined as the set of 1000 best parameterizations, $\Theta^* = \{\theta^{(1)}, ..., \theta^{(1000)}\}$. The selection of best parameterizations is based on the root mean squared error between observed and simulated runoff coefficients, Eq. 4). For each parameter, values (or ranges of values) are shown in Table 1.~~

Selecting a single best parameterization θ^* can be prone to equifinality, i.e. different parameterizations lead to similar results (Beven, 2006). To circumvent this issue, we adopt a three-step approach to select an ensemble of relevant parameterizations:

1. 10⁶ parameterizations are sampled from a Latin hypercube sampling, using a uniform distribution over a range of parameter values (Table 1). These ranges were adjusted through preliminary tests. Note that a , b and k_{max} are fixed.
2. For each parameterization, using observed precipitations as a forcing, the trajectory of water holding strength S and runoff coefficient K are solved numerically by coupling 1, 2 and 3 with a wrapper of the Fortran solver from ODEPACK (Hindmarsh, 1983b). The trajectory of simulated runoff coefficient $K_{simulated}$ is then inferred from K using Eq. 4.
3. Following (Wendling et al., 2019), the best 1000 parameterizations are selected based on the lowest values of the root mean squared error (a classical objective function) between $K_{observed}$ and $K_{simulated}$. This ensemble of the 1000 best parameterizations is denoted as $\Theta^* = \{\theta^{(1)}, ..., \theta^{(1000)}\}$.

Parameter	Description	Unit	Value/Range
r_g	Growth rate	y^{-1}	[0.2, 2.0]
r_d	Decay rate	y^{-1}	[0.5, 5]
i_g	Half-saturation constant for growth	mm	[150, 700]
i_d	Half-decay constant for decay	mm	[10, 200]
μ	Minimum growth rate	y^{-1}	[2e-3, 5e-3]
c_{min}	Minimum value of water holding capacity	mm	[0, 140]
c_{max}	Maximum value of water holding capacity	mm	[600, 800]
k_{max}	Maximum runoff coefficient	-	0.9
a	Shape parameter (steepness)	-	1.5
b	Scale parameter (inflection point)	-	8.0
f	Land fraction contributing to the discharge outlet	-	[0.1, 1]

Table 1. Parameters of the dynamical model: name, description, unit and value or range of values ([adjusted with preliminary tests](#)).

3.3 ~~Bistable~~ Monostable and bistable parameterizations

For each parameterization θ of the ensemble Θ^* , we compute its bifurcation diagram (Fig. 54). This diagram is a graph that associates each forcing value with the corresponding attractors of the dynamical model (precipitation P) with its fixed points (attractors, repeller), i.e. the stable equilibrium states asymptotically reached by the model. Here, the attractors are calculated as the final value of values S after a 10000-year simulation with a series of constant precipitation values between 1 and 2000 mm such that $\dot{S} = 0$. Each simulation is initialized with two different states (

Here fixed points are calculated using a continuation method that finds the isoline defined by $\dot{S} = 0$, starting from an initial solution. In practice, we rely on the “pycont-lint” Python package, which is dedicated to numerical bifurcation analysis. We begin by setting the state value close to 0 ($S = 0.01$ and $S = 0.99$), which can lead to the same attractor (monostability) or to two different attractors (bistability).) for a very low precipitation ($P = 0.1$), and stop the continuation method when the isoline exceeds 4000 mm of precipitation. The precipitation range explored (until 4000 mm) is on purpose larger than the actual precipitation range (Sect. 2.2) in order to assess the sensitivity of the continuation method.

We define that a parameterization θ is i) monostable if it has a single attractor fixed point (an attractor) for every precipitation value between 1 and 2000 mm ii) 4000 mm, and bistable if it has two attractors several fixed points for at least one precipitation value.

Figure 5 In this case, the continuation algorithm provides both the stable (attractor) and unstable (repeller) fixed points. Figure 4 illustrates the bifurcation diagram for a monostable parametrization (Fig. 4 a), and a bistable parameterization θ . In particular, Figure 5 (parametrization (Fig. 4 b) shows a bifurcation diagram containing a precipitation range with two attractors (roughly between 700 and 1500 mm). For. In the bistable case, for any precipitation in this range, two the range 700 to 1500 mm, three S values (two attractors, one repeller) can be reached asymptotically depending on the initial state value. We denote

as lower and upper branch the lines formed by the lower and upper attractors, respectively. Sometimes, as exemplified in Figure 5c

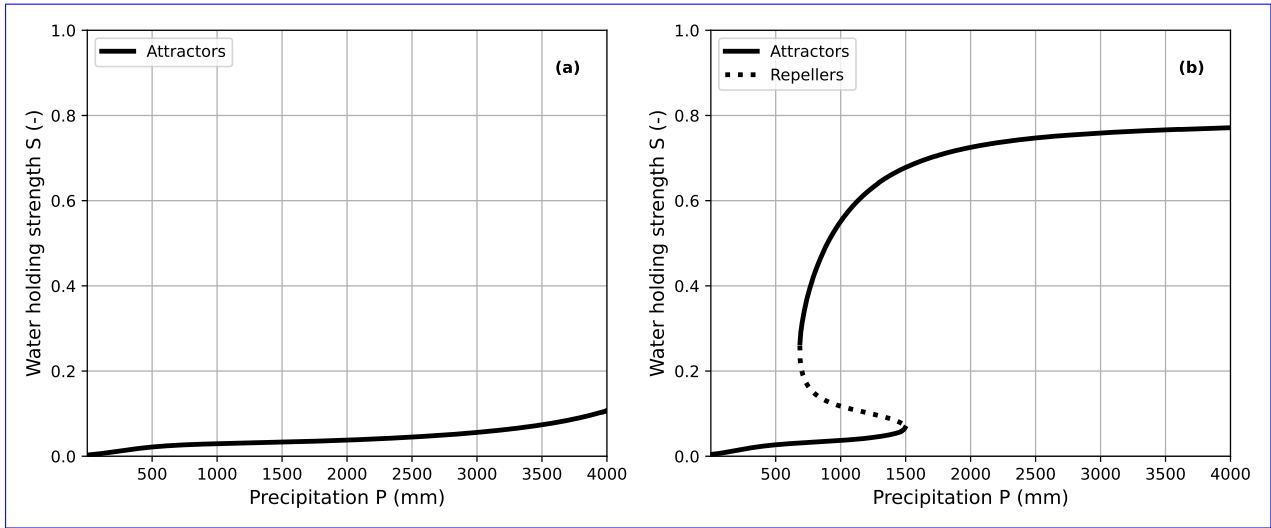


Figure 4. Bifurcation diagram of a (a) monostable (b) bistable parameterization θ for precipitation P between 1 mm and 4000 mm.

235 3.4 Regime definition

A bifurcation diagram is a useful tool to define regimes. For monostable parameterization (Fig. 4 ba), there exists a range of values S between the lower and upper branches of the attractors. These state values may converge asymptotically toward either the upper or lower branch depending on the forcing precipitation value P . is a unique regime, and changes in the state variable S or in the runoff coefficient K adapt to changes in precipitation in a reversible way. For bistable parameterizations, regimes and regime shifts require more subtle definitions, that we describe below.

Otherwise, the reason why we calculate attractors until 2000 mm Regimes and regime shift, i.e. roughly two times the maximum observed precipitation (Sect. 2.2), is to assess what is the maximum precipitation value where the lower branch of attractors ends.

Bifurcation diagram of a (a) monostable (b) bistable parameterization θ for precipitation P between 1 mm and 2000 mm. Runoff coefficient regimes are defined for bistable parameterizations. The separation of the two regimes is the value \diamond_S , which is the mean between the highest attractor of the lower branch \blacktriangle_S and the lowest attractor of the upper branch \blacktriangledown_S . Associated precipitation values are \blacktriangle_P and \blacktriangledown_P .

3.5 Regime shift

Regimes and regimeshifts the transition from one regime to the alternative regime, are often conceptualized with state values that remain equal to attractors (Scheffer et al., 2001). However, many systems (including ours) have transient dynamics, where

state values remain far from attractors (Hastings et al., 2018). ~~In these cases, regimes and regime shifts can be determined using quasi-static simulations, where the external forcing is changed infinitely slowly so that state values remain close to their attractors (Hankel and Tziperman, 2023). In our case study, due to the important variability of~~ Here we present two definitions of regimes suited for such a transient case. Both definitions split the bifurcation diagram into two regions: the "Low runoff coefficient regime" and the external forcing (precipitation) such simulations are irrelevant. Thus, we propose a simple definition of regimes that separates in two regions the bifurcation diagram. Specifically, for each bistable parameterization θ , we define two regimes ("High runoff coefficient regime", that correspond to a high water holding strength and low water holding strength, respectively).

Classically, a regime is associated with an attraction basin, i.e. the set of initial values converging to the same branch of attractors (Fig. 5 a). One drawback of this classical definition is that a state S cannot be directly classified into one regime, because the attraction basin also depends on the precipitation P . In other words, the same state S can switch regimes following changes in precipitation. For instance, $S = 0.2$ corresponds to the "Low runoff coefficient regime" and for $P = 750$ mm, and to the "High runoff coefficient regime" as follows:-

$$\text{Regime}(S|\theta) = \begin{cases} \text{"High runoff coefficient regime", i.e. with low water holding strength, if} & S < \diamond_S = \frac{\nabla_S + \blacktriangle_S}{2} \\ \text{"Low runoff coefficient regime", i.e. with high water holding strength, if} & S \geq \diamond_S = \frac{\nabla_S + \blacktriangle_S}{2} \end{cases}$$

where, for $P = 600$ mm.

We introduce an alternative definition of regimes based on a norm (Mathias et al., 2024). Visually, regimes are separated by a threshold (Fig. 5 b). This definition is more practical as any state value S can be directly classified into the low or high regime by comparing it with the threshold. Specifically, S is in the "High runoff coefficient regime" if $S < \diamond_S = \frac{\nabla_S + \blacktriangle_S}{2}$ while it is in the "Low runoff coefficient regime" if $S \geq \diamond_S = \frac{\nabla_S + \blacktriangle_S}{2}$. For a given bistable parameterization θ , \blacktriangle_S and ∇_S are the water holding strength for the highest attractor of the lower branch and for the lowest attractor of the upper branch, respectively (Fig. 5). In our results, for each year t , we analyze the percentage of ensemble members in the "High runoff coefficient regime". It is defined as the percentage of parameterization θ in the ensemble Θ^* such that $\text{Regime}(S(t)|\theta)$ is the "High runoff coefficient regime" b). The associated precipitation values are denoted as \blacktriangle_P and ∇_P .

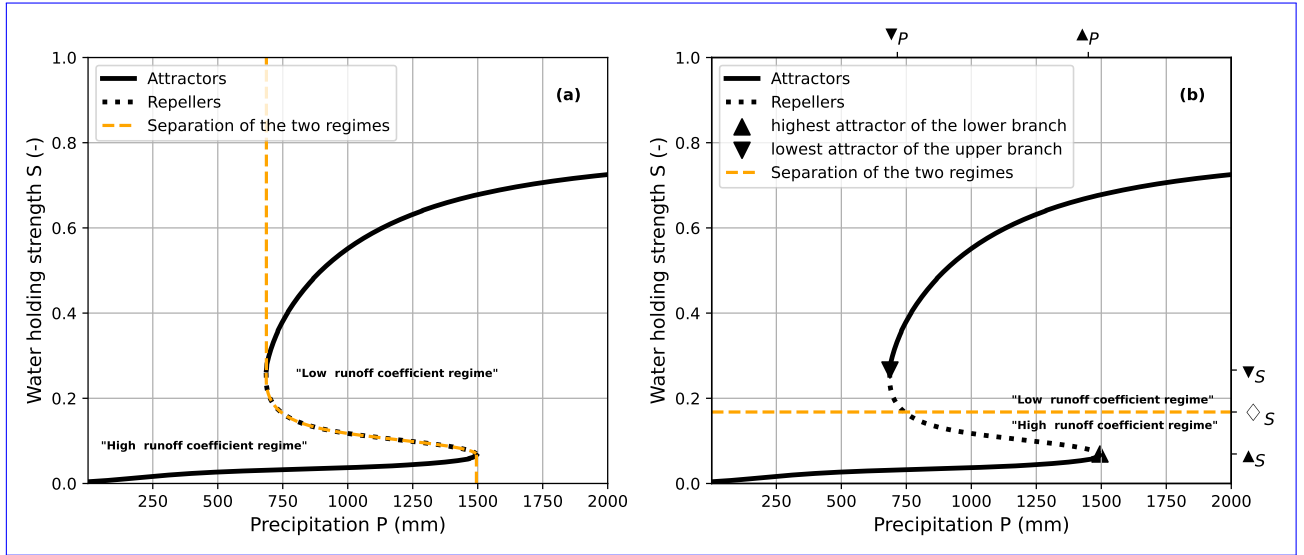


Figure 5. Bifurcation diagram of a bistable parameterization θ for precipitation P between 1 mm and 2000 mm (for readability). We illustrate (a) regimes based on attraction basin (b) regimes based on a threshold \diamond_S , where \diamond_S equals the mean of \blacktriangle_S and \blacktriangledown_S .

4 Results

275 4.1 ~~Model calibration~~Ensemble simulations

For each watershed, we study the ensemble Θ^* ~~of made of the best~~ 1000 parameterizations ~~obtained with the calibration.~~
~~In Figure ??, we depict~~ (Sect. 3.2). Figure 6 shows the ensemble of simulated runoff coefficients (Fig. ??-6 a,b) and water holding strength (Fig. ??-6 c, d). The starting year of the trajectories differs between each watershed as the initial state value S is computed with the first observed runoff coefficient and Eq. 1. The Sirba and the Dargol watersheds are initialized in 1956 and 1957, respectively (Fig. ??-6 a, c), whereas the Gorouol and the Nakanbé watersheds are initialized in 1961 and 1965, respectively (Fig. ??-6 b, d).

In Figure ??6, we observe that until 2014 the four watersheds have increasing trends of runoff coefficients (and decreasing trends of water holding strength, consistently with Eq. 1). This confirms that this simple dynamical model can reproduce the first-order dynamics (the trend) of the observed runoff coefficient. We note that the ensemble mean water holding strength reaches a plateau around the year 1990 for the Gorouol watershed, and around the year 2000 for the Dargol watershed. [A more detailed quantitative assessment of the fit is presented in App. A.](#)

4.2 Bistable parameterizations

[A bifurcation diagram is computed for each parameterization of the ensemble.](#) Bistable parameterizations represent [more than](#) 90% of ~~ensemble members for the watershed Nakanbé and 100% for the three other watersheds.~~ In Figure 7, ~~the ensemble~~
290 ~~for all the watersheds, whereas monostable parameterizations amount to 8.1%, 6.4%, 4.4% and 0% for the Dargol, Nakanbé, Sirba, and Gorouol watershed, respectively.~~ For these bistable parameterizations, ~~we illustrate the repartition~~ Figure 7 shows [the distribution](#) of $\nabla = (\nabla_P, \nabla_S)$ the lowest attractor of the upper branch and $\blacktriangle = (\blacktriangle_P, \blacktriangle_S)$ the highest attractor of the lower branch. ∇_P and \blacktriangle_P are bifurcation-induced tipping points, i.e. where small changes in annual precipitation can cause a shift to the alternative regime. In general, we find that the ~~repartition~~ [distribution](#) of ∇_P , a tipping point for the shift to the high runoff coefficient regime, is less spread than the distribution of \blacktriangle_P , a tipping point for the inverse transition. This is ~~likely~~ because this inverse transition (the decrease of runoff coefficient) was not observed [over the study period](#), and thus \blacktriangle_P can hardly be constrained. Lastly, we ~~note observe~~ that the drier the watershed (~~see the box plots in Figure 7~~), the more ~~shifted toward small precipitation values is~~ the distribution of ∇_P ~~shifts towards lower precipitation values, and the narrower the range of variation of these values becomes.~~

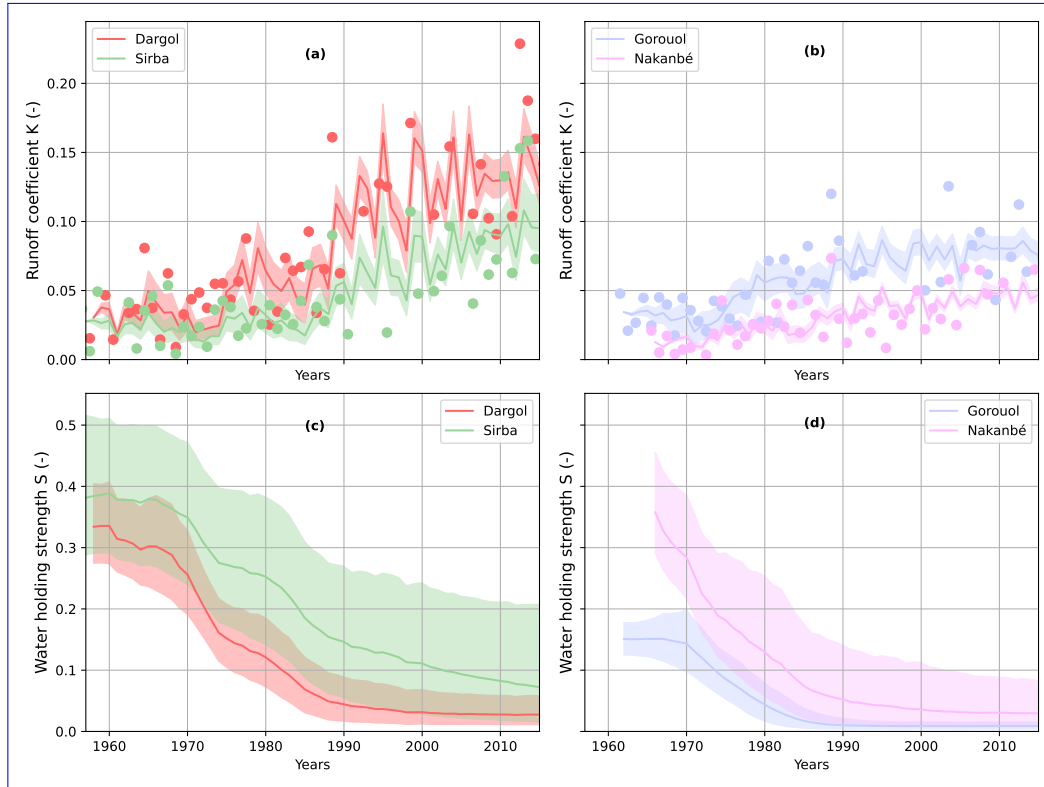


Figure 6. Trajectories of the (a,b) runoff coefficient and the corresponding (c,d) water holding strength for the four watersheds over the period 1956-2014. The colored line emphasizes the ensemble mean, the colored shaded area highlights the range between quantile 5% and quantile 95% of the ensemble. In the Figure (a,b) colored dots designate the runoff coefficient observations, as shown in Fig. 2.

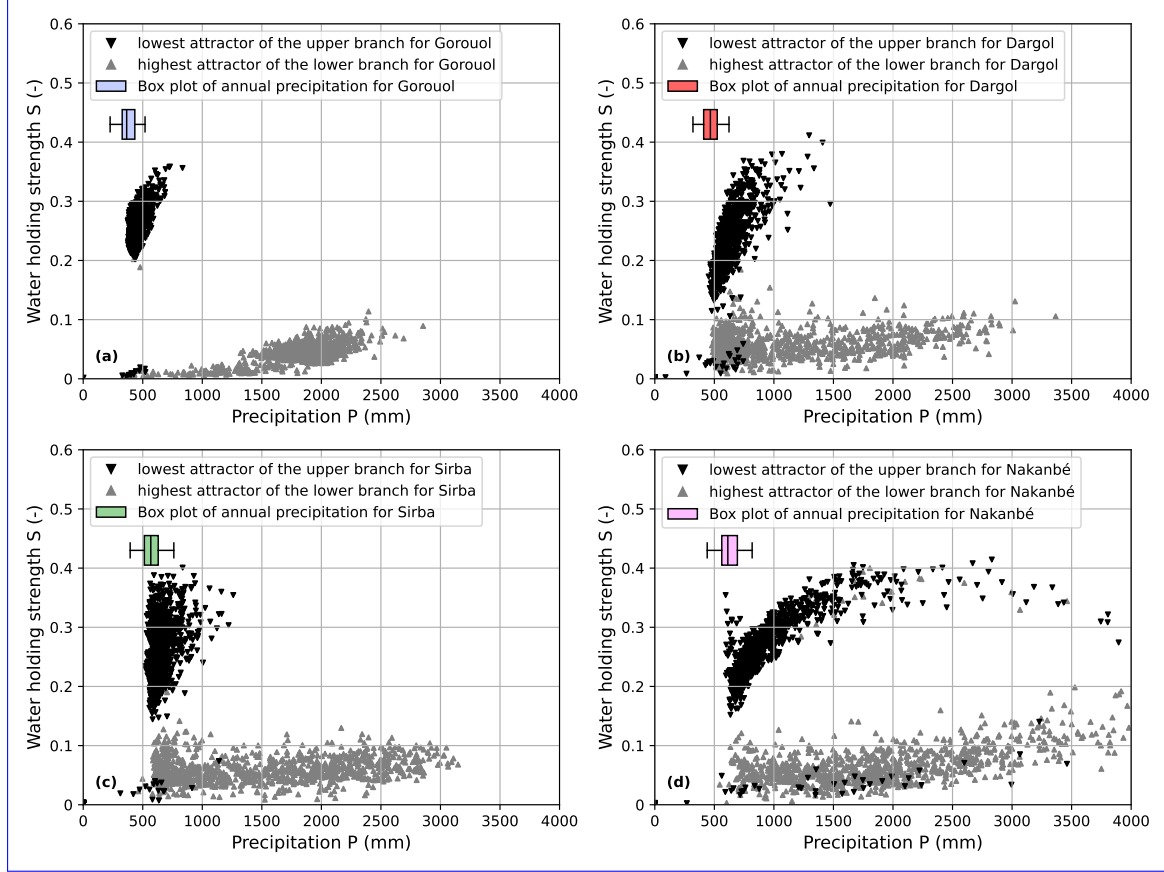


Figure 7. Repartition-Distribution of ▼ the lowest attractor of the upper branch (in black), and ▲ the highest attractor of the lower branch (in the color of the watershed). For each watershed, lowest and highest attractors of every bistable parameterization of the calibrated ensemble are shown for each watershed. We also illustrate a Each box plot (minimum, quantile 0.25, median, quantile 0.75, maximum) shows the distribution of annual precipitation for over the period 1965-2014. For readability, the y-axis was set between 0 and 0.6.

We analyze regime shifts between 1965 and 2014 ,in order to include all watersheds(Nakanbé is initialized in 1965) .

In Figure 8, we illustrate (common simulation period for all watersheds) by computing, each year, the percentage of ensemble members in selected parameterizations (from the ensemble) that are the "High runoff coefficient regime"(Eq. ??)from 1965 to 2014. In ,

305 When regimes are defined with attraction basins (Figure 8 a), this percentage is non-null in 1965 ,no ensemble members with bistable and increases afterwards for all watersheds, even though the four curves are far from smooth. This is most likely because this definition of regimes is sensitive to the variability in precipitation (Sect. 3.4) which results in a lack of robustness for the identification of regime shift.

When regimes are defined with a threshold (Fig. 8 b), all selected parameterizations are in the "High Low runoff coefficient regime" in 1965 for the Dargol, Sirba, and Nakanbé watersheds(all ensemble members are in the "Low runoff coefficient regime"). For the Gorouol watershed, 40% of the ensemble members selected parameterizations are already in the "High runoff coefficient regime" in 1965. In At the end of the simulation period in 2014, more than 85% of ensemble members 80% of selected parameterizations are in a "High runoff coefficient regime" for all watersheds. Thus, most ensemble members undergo regime shifts: most simulated runoff coefficients belong to the low regime in selected parameterizations underwent a

315 regime shift between 1965 and to the high regime in 2014.

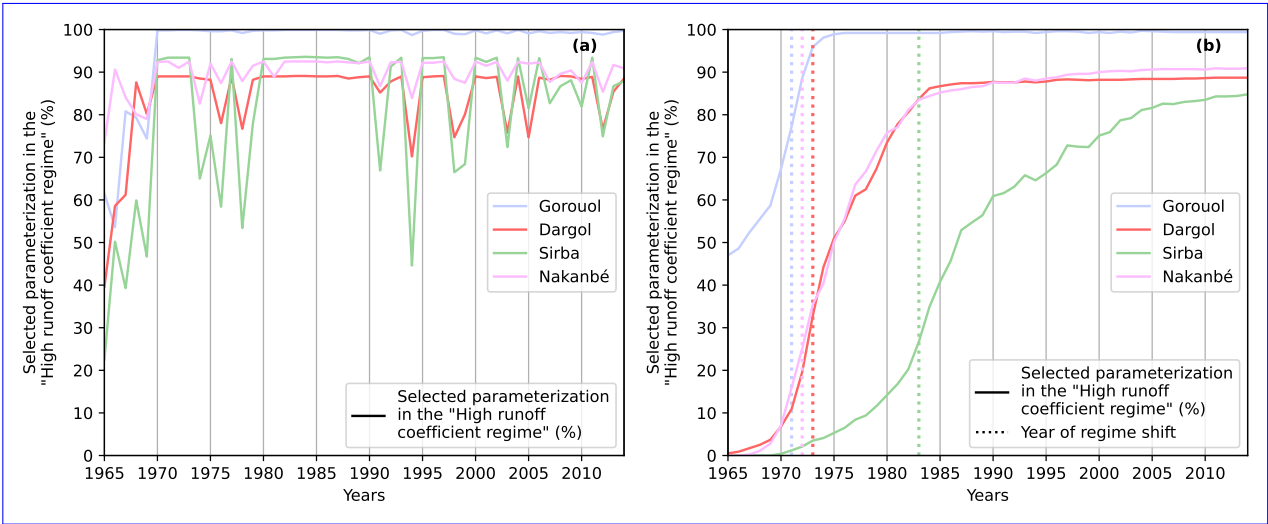


Figure 8. Percentage of selected parameterizations in the "High runoff coefficient regime" between 1965 and 2014. We illustrate this percentage for the four watersheds and for two definitions of regimes (a) regimes based on attraction basin (b) regimes based on a threshold.

To analyze the timing of the regime shift, we define the year of the shift as the first year when strictly more than 50% of ensemble members are in the "year with the greatest number of regime shifts. Graphically, it corresponds to the year when the slope of the curve "percentage vs. time" is maximized. In practice, we compute it as the year where "% of selected

parameterization in the High runoff coefficient regime". This (year+1)-% of selected parameterization in the High runoff
 320 coefficient regime (year-1)" is maximized. Following this definition, the regime shift occurred in 1968, 1976, 1977, 1987
 1971, 1972, 1973, 1983 for the Gorouol, Dargol, Nakanbé, Dargol, and Sirba watershed, respectively (Figure 8). Then, based
 on Figure 8, we can also analyze the uncertainty in the regime shift timing, i.e. if all ensemble members are shifting to the
 "High runoff coefficient regime" altogether or progressively. For b). For the Dargol and Nakanbé watersheds, the percentage
 of ensemble members in this regime goes selected parameterizations in the "High runoff coefficient regime" increased from 0%
 325 to 80% in approximately 75% in 15 years, while the same increase takes roughly it took approximately 30 years for the Sirba
 watershed.

Percentage of ensemble members in the "High runoff coefficient regime" between 1965 and 2014.

5 Discussion

The estimated timing of the regime shift depends on several choices such as i) considering the year of the arbitrary threshold
 330 of 50% ensemble members in the "High runoff coefficient regime" to identify a regime shift ii) the proposed definition of
 separation for the low and high regime, including the choice shift as the year with the highest number of regime shift; ii)
 selecting the definition of regimes separated by a threshold; iii) deciding to calculate attractors until 2000 mm iii) the design
 of 4000 mm; and iv) designing the dynamical model including the choice of and its external forcing. Indeed, this dynamical
 model was developed to represent the regime shift as simply as possible. This model, with annual In the rest of this discussion,
 335 we will mainly discuss the design of the dynamical model.

The proposed dynamical model is a lumped model operating at the annual timescale and at the watershed scale, with
 precipitation as unique external forcing, suffices to reproduce a regime shift of runoff coefficients. It has a single forcing,
 because such models are suited to simulate regime shifts and compute attractors (Scheffer and Carpenter, 2003).

However, adapting our approach to account for several external forcings could improve its realism (at the expense of making
 340 calibration more difficult) forcing. For instance, in the region, runoff coefficient is known to also largely depends on the
 precipitation intensity and on This deliberate choice was made for two main reasons. First, in this data-scarce region, one could
 hardly find the appropriate datasets back in the 1950s (i.e. before the satellite era) to realistically inform a complex, distributed
 model. Second, existing hydrological models poorly represent regime shifts mainly because they do not include key feedback
 processes (Avanzi et al., 2020; Fowler et al., 2022a). Therefore we develop a model, with limited complexity that is consistent
 345 with the available datasets and includes a representation of feedback processes, based on earlier work (Wendling et al., 2019)
 . Although the equations of the model are not derived from physics, they describe real hydrological mechanisms, rooted in
 the most recent knowledge about eco-hydrology in Sub-Saharan Africa. Despite its limited complexity, the model reproduces
 well the increasing trend in runoff coefficient, for which it was designed. However, the hydrological properties of the watershed,
 which are impacted by anthropogenic land use changes (Séguis et al., 2004; Deseroix et al., 2018; Gbohoui et al., 2021; Yonaba et al., 2021)
 350 . Furthermore, the dynamical model does not account for the varying influence of temperature on evapotranspiration. All in
 all, this choice of a single external forcing might explain why the model underestimate the interannual variability of the

runoff coefficient (Figure ??), with model under-represents year-to-year runoff variability, and many observed values outside the range between the quantile fall outside the 5% and the quantile 95% of the ensemble. However, this limitation does not affect the conclusion of the work, as the model aimed at identifying the timing of regime shift and not precisely reproducing observations. Moreover, despite its simplicity, our results show that it can reproduce the multi-year runoff trend from the annual precipitation alone.

For the Gorouol watershed, we find that the regime shift was around 1968. This result is surprising because before the droughts of the '70s-'80s this watershed did not endure years with a large deficit of annual precipitation, which could have triggered the shift (Figure 2). The main explanation to this timing of regime shift comes from the fact that in 1965 already 40% of ensemble members are, just after their initialization in 1961, in the "High runoff coefficient regime". Each simulated trajectory of the ensemble largely depends on its initial state value S , computed with the first observed runoff coefficient and Eq. 1. Another possibility is that the proposed dynamical model, using only annual precipitation as external forcing, is not adapted to this watershed. 95% quantile range of simulated runoff coefficient (Fig. 6). Compared to theoretical studies involving feedback loops e.g. (Van Nes et al., 2014), our approach goes one step further by using observations to externally force and constrain the model. The fact that our model performs better than a standard model forced by annual precipitation (App. C) suggests that this model strikes an acceptable balance between realism and predictability.

For the Nakanbé watershed, 10% of selected ensemble members are monostable parameterizations. This dynamical model has a unique external forcing: annual precipitation. This strong assumption derives from Wendling et al. 2019, where the prolonged precipitation deficit (the drought) was shown sufficient to trigger the regime shift. However, runoff in the Sahel also depends on other factors. Land clearing is the main driver of anthropogenic land cover changes in a large part of the region. These changes, together with the increase of precipitation intensities, contribute to the increase runoff in the region (Séguis et al., 2004; Gal, 2016; Descroix et al., 2012, 2018; Gbohoui et al., 2021; Yonaba et al., 2021, 2023; Bennour et al., 2023). The main reason we only use precipitation in this work is to test our unusual modelling approach in the simplest configuration, i.e. parametrizations without tipping points. This result suggests that the proposed model is flexible enough to simulate changes in runoff coefficients with or without tipping points. In practice, with the assumption that precipitation is the main determinant of hydrological behavior at the watershed scale. Accounting for land cover changes in the model is a methodological challenge since it requires combining endogenous dynamics (driven in the model by feedback mechanisms) and external forcing, while avoiding excessive constraints on either. This issue will be addressed in subsequent model developments, where the addition of further external forcing will enhance the realism of the model and enable a more detailed assessment of the contribution of each factor to hydrological regime shifts.

To our knowledge, there is no established methodology to constrain and select an ensemble of parameterization in the context of non-autonomous dynamical models. Although intellectually more satisfying, a formal Bayesian approach to calibrate an ensemble would need a series of assumptions (on the prior, the single branch of attractors of monostable parameterizations either cover a range of low S values (Fig. 5), or a range containing both low and high S values. In these monostable cases, the increase of simulated runoff coefficients is not induced by a regime shift (abrupt and/or irreversible), but follows the reversible

changes in likelihood, the dependence) whose justification is all but obvious. Therefore in this study we simply select the 1000 parameterizations with the lowest root mean square error (Sect. 3.2), and use them to analyze regime shifts.

For more than 90% of selected parameterizations, changes in the external forcing (abrupt or not abrupt). To sum up, in our results, the dynamics of simulated runoff coefficients are almost always induced by a regime shift, except in a minority of cases (for all the watersheds. However, for the Nakanbé, Dargol and Sirba watersheds, a small fraction of selected parameterizations (less than 10% of ensemble members for the Nakanbé watershed) for which the hydrological changes are reversibly adjusted to changes in precipitation.) are monostable, i.e. with one unique regime and without tipping points. This small fraction is insensitive to the maximum level of precipitation (4000 mm in our methodology) used to compute attractors, as long as it stays above 1500 mm (App. B). The fact that we can obtain both monostable and bistable parameterizations suggests that the proposed model is flexible enough to simulate changes in runoff coefficients with or without tipping points.

6 ~~Conclusions~~ Conclusion

In this article, we assume that the Sahelian paradox (increase in the annual runoff coefficient of Sahelian watersheds during the droughts in the '70s-'80s and after them) is a hydrological regime shift from a low runoff coefficient regime to a high regime, and ask: when did these regime shifts occur? For the Gorouol, ~~Dargol~~, Nakanbé, ~~Dargol~~ and Sirba watershed, our results show that Sahelian watersheds shifted during the droughts of the '70s-'80s (in 1971, with the exception of the Gorouol watershed which may have shifted before 1972, 1973 and 1983 respectively). These results were obtained with a parsimonious model which deliberately neglects fine-scale processes of Sahelian hydrology. It would therefore be wise to supplement this analysis with other models - with varying levels of complexity - that also allow regime shifting. These results depend on several design choices of choices for our two key methodological contributions: the dynamical model and the definition of regimes based on a threshold. Next we summarize these contributions and their potential extensions.

First, we develop a lumped dynamical model driven by precipitation that represents the runoff coefficient of a watershed. This simple model accounts for feedback analogous to the growth and death of vegetation patches. Our results show that the proposed model can reproduce the trend of runoff coefficients, and simulate regime shifts observed trend in runoff coefficient, even though the year-to-year variability is under-estimated. This model performs better than a classical hydrological model (without feedback) that fails to reproduce the observed trend. Our model only requires precipitation and runoff data. It could be used on other semi-arid regions, where runoff is mainly due to Horton overland flow, to contribute to the documentation of hydrological regime shifts. Furthermore, a large part of this model is physically interpretable, which is a desirable property for robust extrapolation. Indeed, we could coefficient may have experienced a hydrological regime shift. We could also rely on this dynamical model and climate projections to identify watersheds that are likely to experience a regime shift in the future. New model developments would be needed to account for the expected intensification of climatic and anthropogenic pressures on drylands (Wang et al., 2022).

Then, we also ~~Second, we~~ propose a novel definition of regimes for bistable parameterizations of the dynamical model. This definition makes it possible to identify regime shifts in the context of transient dynamics, where state values remain far

from attractors because the model is too slow to adjust to fast changes in the external forcing⁷. Such quantitative definition of regimes could pave the way to design attribution study for regime shifts, i.e. to assess whether past regime shifts have been made more or less likely by some specific causes, such as anthropogenic emissions.

In the future, ~~the-existence-of~~ regime shifts in hydrosystems could have direct implications for the adaptation to extreme hydrological events (flood, drought), as well as for water resources management and planning. Indeed, regime shift can lead to unexpected consequences as shown by the Sahelian paradox. ~~In this context, our article proposes two simple contributions toward improving~~ The approach proposed in this study could improve the modelling and characterization of hydrological regime shifts. Better accounting for regime shifts is a major challenge for the future of hydrology.

. ELR, VW, GP and CP designed the research. VW and CP designed the dynamical model. ELR performed the analysis and drafted the manuscript. CP ensured the funding acquisition. All authors discussed the results and edited the manuscript.

. The authors declare that they have no conflict of interest.

. This study was funded by the ANR (France) under contract no. ANR-20-CE01-0014-01 (TipHyc project). We ~~thank Patrick Gbohoui for the discharge of~~ kindly thank the ~~Nakanbe~~ Directorate-General for Water Resources (Ministry of Environment, Water and Sanitation) of Burkina Faso for providing the discharge dataset of the Nakanbé watershed.

Appendix A: Quantitative assessment of the fit for the dynamical model

In Table A1, for each watershed, we compute the root mean squared error (RMSE), bias, and Nash-Sutcliffe efficiency (NSE) of the runoff coefficient for the top 1000 parameterizations. The RMSE and bias are very low, which confirm the general good agreement between the simulations and the observations. Regarding the NSE criterion, the performances are good (e.g. Dargol) to moderate (Sirba, Gorouol and Nakanbé). Even if the model cannot simulate year-to-year runoff variability, the main objective of reproducing the trend i.e. the first-order hydrological dynamics on decadal time scale is fulfilled (Fig. 6).

	<u>RMSE</u>	<u>Bias</u>	<u>NSE</u>
<u>Gorouol</u>	<u>0.019 (0.018,0.02)</u>	<u>-0.0 (-0.01,0.01)</u>	<u>0.46 (0.43,0.53)</u>
<u>Dargol</u>	<u>0.027 (0.026,0.28)</u>	<u>-0.0 (-0.01,0.01)</u>	<u>0.72 (0.71,0.75)</u>
<u>Sirba</u>	<u>0.024 (0.022,0.025)</u>	<u>-0.0 (-0.01,0.01)</u>	<u>0.57 (0.54,0.66)</u>
<u>Nakanbé</u>	<u>0.013 (0.013,0.013)</u>	<u>0.0 (-0.0,0.0)</u>	<u>0.47 (0.45,0.5)</u>

Table A1. Root mean squared error (RMSE), bias, and Nash-Sutcliffe efficiency (NSE) for the four watersheds. Each score is displayed "mean (minimum, maximum)", where for instance "minimum" corresponds to the minimum score for the top 1000 selected parameterization.

Appendix B: Sensitivity of bistable parameterization with respect to the maximum level for the external forcing

440 In Figure B1, we analyze the variation of the percentage of bistable parameterization (among the top 1000 selected parameterization) with respect to the maximum level of precipitation considered to compute attractors (Sect. 3.3). We observe that between 1500 mm and 4000 mm the percentage of bistable selected parameterizations is almost constant for three watersheds (Gorouol, Dargol, Nakanbé). Thus, the number of bistable selected parameterizations is insensitive to the maximum threshold, as long as it is above 1500 mm. For the Nakanbé watershed, the percentage of bistable selected parameterizations is sensitive to the threshold (the percentage of bistability is increasing with the threshold). However, thankfully, our definition of “regime shift year” (Sect. 4.3), which does not depend on a percentage of bistable selected parameterizations that shift, implies that the sensitivity of the Nakanbé watershed will have little impact on the timing of regime shifts.

445

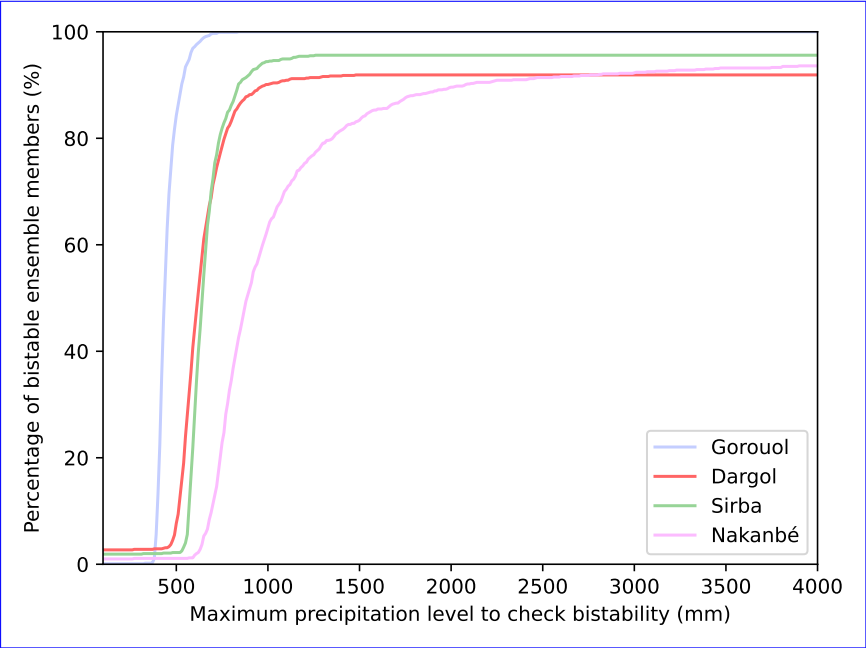


Figure B1. Percentage of bistable selected parameterizations with respect to the maximum precipitation level to check bistability (mm)

Appendix C: Benchmark against the model GR1A

450 We compare our model against the model GR1A (Mouelhi et al., 2006). This lumped bucket model with one single parameter runs at the annual time, using precipitation and potential evaporation (PET) as forcing. We use the same precipitation dataset as for our model, and annual watershed-average PET derived from ERA5. This model cannot represent feedback processes. The model was tuned with respect to the runoff coefficient for each watershed. Figure C1 shows that the simulated K is over-estimated at the beginning of the period and under-estimated at the end. The GR1A model fails to capture trends in runoff coefficients, and for the four watersheds, it performs worse than our model (Tab. C1).

	GR1A	our model
Gorouol	0.03	0.02
Dargol	0.06	0.03
Sirba	0.04	0.02
Nakanbé	0.02	0.01

Table C1. Benchmark of our dynamical model against the GR1A model. Comparison of the root mean squared error (RMSE) for the best fit of GR1A and the mean RMSE of the ensemble simulation (our model).

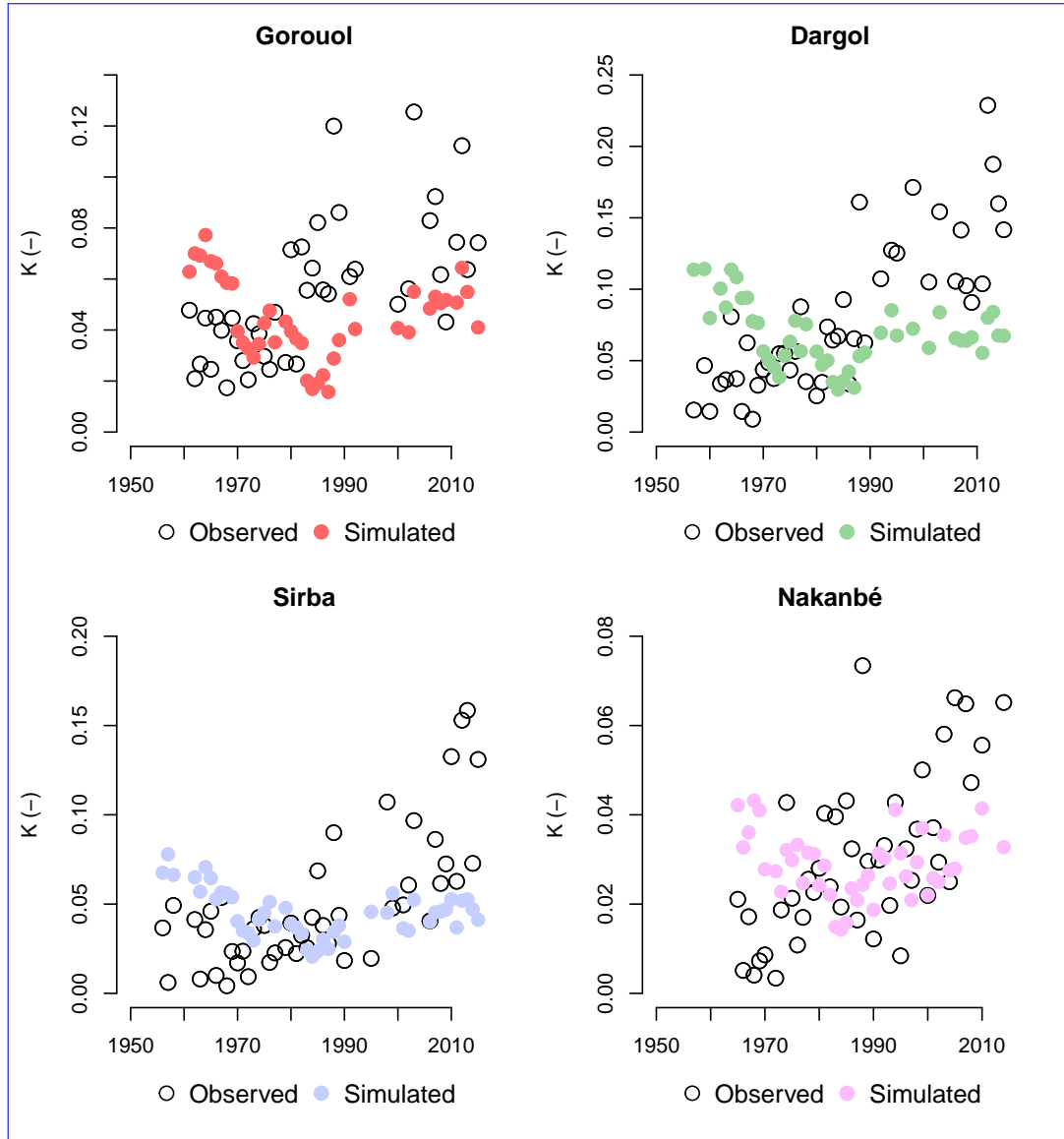


Figure C1. Fit of the model GR1A on the four Sahelian watersheds considered in our study. Runoff coefficient observations displayed as white dots on the Figures. Simulated runoff coefficients are displayed as colored dots.

- Anderies, J. M.: Minimal models and agroecological policy at the regional scale: An application to salinity problems in southeastern Australia, *Regional Environmental Change*, 5, 1–17, <https://doi.org/10.1007/s10113-004-0081-z>, 2005.
- Anderies, J. M., Ryan, P., and Walker, B. H.: Loss of resilience, crisis, and institutional change: Lessons from an intensive agricultural system in southeastern Australia, *Ecosystems*, 9, 865–878, <https://doi.org/10.1007/s10021-006-0017-1>, 2006.
- 460 Armstrong McKay, D. I., Staal, A., Abrams, J. F., Winkelmann, R., Sakschewski, B., Loriani, S., Fetzer, I., Cornell, S. E., Rockström, J., and Lenton, T. M.: Exceeding 1.5°C global warming could trigger multiple climate tipping points, *Science (New York, N.Y.)*, 377, eabn7950, <https://doi.org/10.1126/science.abn7950>, 2022.
- Ashwin, P., Wieczorek, S., Vitolo, R., and Cox, P.: Tipping points in open systems: bifurcation, noise-induced and rate-dependent examples in the climate system, *Philosophical Transactions of the Royal Society A: Mathematical, Physical and Engineering Sciences*, 370, <https://doi.org/10.1098/rsta.2011.0306>, 2012.
- 465 Avanzi, F., Rungee, J., Maurer, T., Bales, R., Ma, Q., Glaser, S., and Conklin, M.: Climate elasticity of evapotranspiration shifts the water balance of Mediterranean climates during multi-year droughts, *Hydrology and Earth System Sciences*, 24, 4317–4337, <https://doi.org/10.5194/hess-24-4317-2020>, 2020.
- Bennour, A., Jia, L., Menenti, M., Zheng, C., Zeng, Y., Barnieh, B. A., and Jiang, M.: Assessing impacts of climate variability and land use/land cover change on the water balance components in the Sahel using Earth observations and hydrological modelling, *Journal of Hydrology: Regional Studies*, 47, 101 370, <https://doi.org/10.1016/j.ejrh.2023.101370>, 2023.
- 470 Beven, K.: A manifesto for the equifinality thesis, *Journal of Hydrology*, 320, 18–36, <https://doi.org/10.1016/J.JHYDROL.2005.07.007>, 2006.
- Blöschl, G., Bierkens, M. F., Chambel, A., Cudennec, C., Destouni, G., Fiori, A., Kirchner, J. W., McDonnell, J. J., Savenije, H. H., Sivapalan, M., Stumpp, C., Toth, E., Volpi, E., Carr, G., Lupton, C., Salinas, J., Széles, B., Viglione, A., Aksoy, H., Allen, S. T., Amin, A., Andréassian, V., Arheimer, B., Aryal, S. K., Baker, V., Bardsley, E., Barendrecht, M. H., Bartosova, A., Batelaan, O., Berghuijs, W. R., Beven, K., Blume, T., Bogaard, T., Borges de Amorim, P., Böttcher, M. E., Boulet, G., Breinl, K., Brilly, M., Brocca, L., Buytaert, W., Castellarin, A., Castelletti, A., Chen, X., Chen, Y., Chen, Y., Chiffard, P., Claps, P., Clark, M. P., Collins, A. L., Croke, B., Dathe, A., David, P. C., de Barros, F. P., de Rooij, G., Di Baldassarre, G., Driscoll, J. M., Duethmann, D., Dwivedi, R., Eris, E., Farmer, W. H., Feiccabrino, J., Ferguson, G., Ferrari, E., Ferraris, S., Fersch, B., Finger, D., Foglia, L., Fowler, K., Gartsman, B., Gascoin, S., Gaume, E., Gelfan, A., Geris, J., Gharari, S., Gleeson, T., Glendell, M., Gonzalez Bevacqua, A., González-Dugo, M. P., Grimaldi, S., Gupta, A. B., Guse, B., Han, D., Hannah, D., Harpold, A., Haun, S., Heal, K., Helfricht, K., Herrnegger, M., Hipsey, M., Hlaváčiková, H., Hohmann, C., Holko, L., Hopkinson, C., Hrachowitz, M., Illangasekare, T. H., Inam, A., Innocente, C., Istanbuluoglu, E., Jarihani, B., Kalantari, Z., Kalvans, A., Khanal, S., Khatami, S., Kiesel, J., Kirkby, M., Knoben, W., Kochanek, K., Kohnová, S., Kolechkina, A., Krause, S., Kremer, D., Kreibich, H., Kunstmann, H., Lange, H., Liberato, M. L., Lindquist, E., Link, T., Liu, J., Loucks, D. P., Luce, C., Mahé, G., Makarieva, O., Malard, J., Mashtayeva, S., Maskey, S., Mas-Pla, J., Mavrova-Guirguinova, M., Mazzoleni, M., Mernild, S., Misstear, B. D., Montanari, A., Müller-Thomy, H., Nabizadeh, A., Nardi, F., Neale, C., Nesterova, N., Nurtaev, B., Odongo, V. O., Panda, S., Pande, S., Pang, Z., Papacharalampous, G., Perrin, C., Pfister, L., Pimentel, R., Polo, M. J., Post, D., Prieto Sierra, C., Ramos, M. H., Renner, M., Reynolds, J. E., Ridolfi, E., Rigon, R., Riva, M., Robertson, D. E., Rosso, R., Roy, T., Sá, J. H., Salvadori, G., Sandells, M., Schaeffli, B., Schumann, A., Scolobig, A., Seibert, J., Servat, E., Shafiei, M., Sharma, A., Sidibe, M., Sidle, R. C., Skaugen, T., Smith, H., Spiessl, S. M., Stein, L., Steinsland, I., Strasser, U., Su, B., Szolgay, J., Tarboton, D., Tauro, F., Thirel, G., Tian, F., Tong, R., Tussupova, K.,
- 480
- 485
- 490

- Tyralis, H., Uijlenhoet, R., van Beek, R., van der Ent, R. J., van der Ploeg, M., Van Loon, A. F., van Meerveld, I., van Nooijen, R., van Oel, P. R., Vidal, J. P., von Freyberg, J., Vorogushyn, S., Wachniew, P., Wade, A. J., Ward, P., Westerberg, I. K., White, C., Wood, E. F., Woods, R., Xu, Z., Yilmaz, K. K., and Zhang, Y.: Twenty-three unsolved problems in hydrology (UPH)—a community perspective, *Hydrological Sciences Journal*, 64, 1141–1158, <https://doi.org/10.1080/02626667.2019.1620507>, 2019.
- 495 Boyer, J. F., Dieulin, C., Rouche, N., Cres, A., Servat, E., Paturel, J. E., and Mahé, G.: SIEREM: an environmental information system for water resources, in: *Proceedings of the Fifth FRIEND World Conference*, vol. 308, pp. 19–25, IAHS Publications, Cuba, <https://iahs.info/uploads/dms/13630.08-19-25-111-308-Boyer.pdf>, 2006.
- Casenave, A. and Valentin, C.: A runoff capability classification system based on surface features criteria in semi-arid areas of West Africa, *Journal of Hydrology*, 130, 231–249, [https://doi.org/10.1016/0022-1694\(92\)90112-9](https://doi.org/10.1016/0022-1694(92)90112-9), 1992.
- 500 Descroix, L., Mahé, G., Lebel, T., Favreau, G., Galle, S., Gautier, E., Olivry, J. C., Albergel, J., Amogu, O., Cappelaere, B., Dessouassi, R., Diedhiou, A., Le Breton, E., Mamadou, I., and Sighomnou, D.: Spatio-temporal variability of hydrological regimes around the boundaries between Sahelian and Sudanian areas of West Africa: A synthesis, *Journal of Hydrology*, 375, 90–102, <https://doi.org/10.1016/j.jhydrol.2008.12.012>, 2009.
- 505 Descroix, L., Laurent, J. P., Vauclin, M., Amogu, O., Boubkraoui, S., Ibrahim, B., Galle, S., Cappelaere, B., Bousquet, S., Mamadou, I., Le Breton, E., Lebel, T., Quantin, G., Ramier, D., and Boulain, N.: Experimental evidence of deep infiltration under sandy flats and gullies in the Sahel, *Journal of Hydrology*, 424–425, 1–15, <https://doi.org/10.1016/j.jhydrol.2011.11.019>, 2012.
- Descroix, L., Guichard, F., Grippa, M., Lambert, L. A., Panthou, G., Mahé, G., Gal, L., Dardel, C., Quantin, G., Kergoat, L., Bouaïta, Y., Hiernaux, P., Vischel, T., Pellarin, T., Faty, B., Wilcox, C., Abdou, M. M., Mamadou, I., Vandervaere, J. P., Diongue-Niang, A., Ndiaye, O., Sané, Y., Dacosta, H., Gosset, M., Cassé, C., Sultan, B., Barry, A., Amogu, O., Nnomo, B. N., Barry, A., and Paturel, J. E.: Evolution of surface hydrology in the Sahelo-Sudanian Strip: An updated review, *Water (Switzerland)*, 10, <https://doi.org/10.3390/w10060748>, 2018.
- 510 Dijkstra, Y. M., Schuttelaars, H. M., and Schramkowski, G. P.: A Regime Shift From Low to High Sediment Concentrations in a Tide-Dominated Estuary, *Geophysical Research Letters*, 46, 4338–4345, <https://doi.org/10.1029/2019GL082302>, 2019.
- Favreau, G., Cappelaere, B., Massuel, S., Leblanc, M., Boucher, M., Boulain, N., and Leduc, C.: Land clearing, climate variability, and water resources increase in semiarid southwest Niger: A review, *Water Resources Research*, 45, <https://doi.org/10.1029/2007WR006785>, 2009.
- 515 Feudel, U.: Rate-induced tipping in ecosystems and climate: the role of unstable states, basin boundaries and transient dynamics, *Nonlinear Processes in Geophysics*, 30, 481–502, <https://doi.org/10.5194/npg-30-481-2023>, 2023.
- Fowler, K., Knoben, W., Peel, M., Peterson, T., Ryu, D., Saft, M., Seo, K. W., and Western, A.: Many Commonly Used Rainfall-Runoff Models Lack Long, Slow Dynamics: Implications for Runoff Projections, *Water Resources Research*, 56, <https://doi.org/10.1029/2019WR025286>, 2020.
- 520 Fowler, K., Peel, M., Saft, M., Nathan, R., Horne, A., Wilby, R., McCutcheon, C., and Peterson, T.: Hydrological Shifts Threaten Water Resources, <https://doi.org/10.1029/2021WR031210>, 2022a.
- Fowler, K., Peel, M., Saft, M., Peterson, T. J., Western, A., Band, L., Petheram, C., Dharmadi, S., Tan, K. S., Zhang, L., Lane, P., Kiem, A., Marshall, L., Griebel, A., Medlyn, B. E., Ryu, D., Bonotto, G., Wasko, C., Ukkola, A., Stephens, C., Frost, A., Gardiya Weligamage, H., Saco, P., Zheng, H., Chiew, F., Daly, E., Walker, G., Vervoort, R. W., Hughes, J., Trotter, L., Neal, B., Cartwright, I., and Nathan, R.: Explaining changes in rainfall-runoff relationships during and after Australia’s Millennium Drought: a community perspective, *Hydrology and Earth System Sciences*, 26, 6073–6120, <https://doi.org/10.5194/hess-26-6073-2022>, 2022b.
- 525

- Fowler, K. J., Peel, M. C., Western, A. W., Zhang, L., and Peterson, T. J.: Simulating runoff under changing climatic conditions: Revisiting an apparent deficiency of conceptual rainfall-runoff models, *Water Resources Research*, 52, 1820–1846, <https://doi.org/10.1002/2015WR018068>, 2016.
- Gal, L., Grippa, M., Hiernaux, P., Pons, L., and Kergoat, L.: The paradoxical evolution of runoff in the pastoral Sahel: Analysis of the hydrological changes over the Agoufou watershed (Mali) using the KINEROS-2 model, *Hydrology and Earth System Sciences*, 21, 4591–4613, <https://doi.org/10.5194/hess-21-4591-2017>, 2017.
- Gal, Y.: *Uncertainty in Deep Learning*, 2016.
- Gardelle, J., Hiernaux, P., Kergoat, L., and Grippa, M.: Hydrology and Earth System Sciences Less rain, more water in ponds: a remote sensing study of the dynamics of surface waters from 1950 to present in pastoral Sahel (Gourma region, Mali), Tech. rep., www.hydrol-earth-syst-sci.net/14/309/2010/, 2010.
- Gbohoui, Y. P., Paturel, J. E., Fowe Tazen, Mounirou, L. A., Yonaba, R., Karambiri, H., and Yacouba, H.: Impacts of climate and environmental changes on water resources: A multi-scale study based on Nakanbé nested watersheds in West African Sahel, *Journal of Hydrology: Regional Studies*, 35, <https://doi.org/10.1016/j.ejrh.2021.100828>, 2021.
- Goswami, P., Peterson, T. J., Mondal, A., and Rüdiger, C.: On the existence of multiple states of low flows in catchments in southeast Australia, *Advances in Water Resources*, 187, 104 675, <https://doi.org/10.5281/zenodo>, 2024.
- Hankel, C. and Tziperman, E.: An approach for projecting the timing of abrupt winter Arctic sea ice loss, *Nonlinear Processes in Geophysics*, 30, 299–309, <https://doi.org/10.5194/npg-30-299-2023>, 2023.
- Hastings, A., Abbott, K. C., Cuddington, K., Francis, T., Gellner, G., Lai, Y. C., Morozov, A., Petrovskii, S., Scranton, K., and Zeeman, M. L.: Transient phenomena in ecology, *Science*, 361, <https://doi.org/10.1126/science.aat6412>, 2018.
- Hiernaux, P., Diarra, L., Trichon, V., Mougin, E., Soumaguel, N., and Baup, F.: Woody plant population dynamics in response to climate changes from 1984 to 2006 in Sahel (Gourma, Mali), *Journal of Hydrology*, 375, 103–113, <https://doi.org/10.1016/j.jhydrol.2009.01.043>, 2009.
- Hindmarsh, A. C.: ODEPACK, a systematized collection of ODE solvers, *Scientific Computing*, 1, 55–64, <https://cir.nii.ac.jp/crid/1572543025424393088?lang=en>, 1983a.
- Hindmarsh, A. C.: ODEPACK, a systemized collection of ODE solvers, *Scientific computing*, 1983b.
- Holling, C. S.: Resilience and Stability of Ecological Systems, Tech. rep., <https://www.jstor.org/stable/2096802?seq=1&cid=pdf->, 1973.
- Horton, R. E.: The Rôle of infiltration in the hydrologic cycle, *Eos, Transactions American Geophysical Union*, 14, 446–460, <https://doi.org/10.1029/TR014i001p00446>, 1933.
- IPCC: Annex VII: Glossary, in: *Climate Change 2021 – The Physical Science Basis*, pp. 2215–2256, Cambridge University Press, <https://doi.org/10.1017/9781009157896.022>, 2023a.
- IPCC: Synthesis Report AR6, Tech. rep., <https://www.ipcc.ch/report/sixth-assessment-report-cycle/>, 2023b.
- Kéfi, S., Génin, A., Garcia-Mayor, A., Guirado, E., Cabral, J. S., Berdugo, M., Guerber, J., Solé, R., and Maestre, F. T.: Self-organization as a mechanism of resilience in dryland ecosystems, *Proceedings of the National Academy of Sciences of the United States of America*, 121, <https://doi.org/10.1073/pnas.2305153121>, 2024.
- Lafore, J. P., Flamant, C., Guichard, F., Parker, D. J., Bouniol, D., Fink, A. H., Giraud, V., Gosset, M., Hall, N., Höller, H., Jones, S. C., Protat, A., Roca, R., Roux, F., Saïd, F., and Thorncroft, C.: Progress in understanding of weather systems in West Africa, *Atmospheric Science Letters*, 12, 7–12, <https://doi.org/10.1002/asl.335>, 2011.

- 565 Le Barbé, L., Lebel, T., and Tapsoba, D.: Rainfall Variability in West Africa during the Years 1950–90, *Journal of Climate*, 15, 187–202, [https://doi.org/10.1175/1520-0442\(2002\)015<0187:RVIWAD>2.0.CO;2](https://doi.org/10.1175/1520-0442(2002)015<0187:RVIWAD>2.0.CO;2), 2002.
- Leblanc, M. J., Favreau, G., Massuel, S., Tweed, S. O., Loireau, M., and Cappelaere, B.: Land clearance and hydrological change in the Sahel: SW Niger, *Global and Planetary Change*, 61, 135–150, <https://doi.org/10.1016/j.gloplacha.2007.08.011>, 2008.
- Lenton, T. M.: Early warning of climate tipping points, *Nature Climate Change*, 1, 201–209, <https://doi.org/10.1038/nclimate1143>, 2011.
- 570 Liu, Q., Yang, Y., Liang, L., Yan, D., Wang, X., Li, C., and Sun, T.: Shift in precipitation-streamflow relationship induced by multi-year drought across global catchments, *Science of the Total Environment*, 857, <https://doi.org/10.1016/j.scitotenv.2022.159560>, 2023.
- Mahe, G., Paturel, J. E., Servat, E., Conway, D., and Dezetter, A.: The impact of land use change on soil water holding capacity and river flow modelling in the Nakambe River, Burkina-Faso, *Journal of Hydrology*, 300, 33–43, <https://doi.org/10.1016/j.jhydrol.2004.04.028>, 2005.
- Massuel, S., Cappelaere, B., Favreau, G., Leduc, C., Lebel, T., and Vischel, T.: Modélisation intégrée surface-souterrain
575 dans un contexte de hausse des réserves d’un aquifère régional Sahélien, *Hydrological Sciences Journal*, 56, 1242–1264, <https://doi.org/10.1080/02626667.2011.609171>, 2011.
- Mathias, J. D., Deffuant, G., and Brias, A.: From tipping point to tipping set: Extending the concept of regime shift to uncertain dynamics for real-world applications, *Ecological Modelling*, 496, <https://doi.org/10.1016/j.ecolmodel.2024.110801>, 2024.
- May, R. M.: Thresholds and breakpoints in ecosystems with a multiplicity of stable states, *Nature*, 1977.
- 580 Mayor, A. G., Bautista, S., Rodriguez, F., and Kéfi, S.: Connectivity-Mediated Ecohydrological Feedbacks and Regime Shifts in Drylands, *Ecosystems*, 22, 1497–1511, <https://doi.org/10.1007/s10021-019-00366-w>, 2019.
- Milly, P. C., Betancourt, J., Falkenmark, M., Hirsch, R. M., Kundzewicz, Z. W., Lettenmaier, D. P., and Stouffer, R. J.: Climate change: Stationarity is dead: Whither water management?, <https://doi.org/10.1126/science.1151915>, 2008.
- Mockus, V.: Estimation of Direct Runoff from Storm Rainfall., Tech. Rep. 210-VI-NEH, US Department of Agriculture, 1972.
- 585 Mouelhi, S., Claude, M., Perrin, C., and Andréassian, V.: Linking stream flow to rainfall at the annual time step: The Manabe bucket model revisited, *Journal of Hydrology*, <https://doi.org/10.1016/j.jhydrol.2005.12.022>, 2006.
- Panthou, G., Vischel, T., and Lebel, T.: Recent trends in the regime of extreme rainfall in the Central Sahel, *International Journal of Climatology*, 34, 3998–4006, <https://doi.org/10.1002/joc.3984>, 2014.
- Panthou, G., Lebel, T., Vischel, T., Quantin, G., Sane, Y., Ba, A., Ndiaye, O., Diongue-Niang, A., and Diopkane, M.: Rainfall intensification
590 in tropical semi-arid regions: The Sahelian case, *Environmental Research Letters*, 13, <https://doi.org/10.1088/1748-9326/aac334>, 2018.
- Peterson, T. J. and Western, A. W.: Multiple hydrological attractors under stochastic daily forcing: 1. Can multiple attractors exist?, *Water Resources Research*, 50, 2993–3009, <https://doi.org/10.1002/2012WR013003>, 2014.
- Peterson, T. J., Western, A. W., and Argent, R. M.: Analytical methods for ecosystem resilience: A hydrological investigation, *Water Resources Research*, 48, <https://doi.org/10.1029/2012WR012150>, 2012.
- 595 Peterson, T. J., Saft, M., Peel, M. C., and John, A.: Watersheds may not recover from drought, *Science*, <https://www.science.org>, 2021.
- Rahimi, M., Ghorbani, M., Ahmadaali, K., Salajeghe, A., and Azadi, H.: Dryland river regime shifts in Iran: Drivers and feedbacks, *River Research and Applications*, 39, 1173–1186, <https://doi.org/10.1002/rra.4138>, 2023.
- Redelsperger, J.-L., Thorncroft, C. D., Diedhiou, A., Lebel, T., Parker, D. J., and Polcher, J.: African Monsoon Multidisciplinary Analysis - An International Research Project and Field Campaign, Tech. rep., 2006.
- 600 Saft, M., Western, A. W., Zhang, L., Peel, M. C., and Potter, N. J.: The influence of multiyear drought on the annual rainfall-runoff relationship: An Australian perspective, *Water Resources Research*, 51, 2444–2463, <https://doi.org/10.1002/2014WR015348>, 2015.

- Saft, M., Peel, M. C., Western, A. W., Perraud, J. M., and Zhang, L.: Bias in streamflow projections due to climate-induced shifts in catchment response, *Geophysical Research Letters*, 43, 1574–1581, <https://doi.org/10.1002/2015GL067326>, 2016.
- Sauzedde, E., Vischel, T., Panthou, G., Tarchiani, V., Massazza, G., and Housseini Ibrahim, M.: Compound-event analysis in non-stationary hydrological hazards: a case study of the Niger River in Niamey, *Hydrological Sciences Journal*, 70, 406–421, <https://doi.org/10.1080/02626667.2024.2435534>, 2025.
- Scheffer, M. and Carpenter, S. R.: Catastrophic regime shifts in ecosystems: Linking theory to observation, <https://doi.org/10.1016/j.tree.2003.09.002>, 2003.
- Scheffer, M., Carpenter², S., Foley³, J. A., Folke, C., and Walker, B.: Catastrophic shifts in ecosystems, *Tech. rep.*, www.nature.com591, 2001.
- Séguis, L., Cappelaere, B., Milési, G., Peugeot, C., Massuel, S., and Favreau, G.: Simulated impacts of climate change and land-clearing on runoff from a small Sahelian catchment, *Hydrological Processes*, 18, 3401–3413, <https://doi.org/10.1002/hyp.1503>, 2004.
- Sivapalan, M.: From engineering hydrology to Earth system science: Milestones in the transformation of hydrologic science, *Hydrology and Earth System Sciences*, 22, 1665–1693, <https://doi.org/10.5194/hess-22-1665-2018>, 2018.
- Tramblay, Y., Rouché, N., Paturol, J.-E., Mahé, G., Boyer, J.-F., Amoussou, E., Bodian, A., Dacosta, H., Dakhlaoui, H., Dezetter, A., Hughes, D., Hanich, L., Peugeot, C., Tshimanga, R., and Lachassagne, P.: ADHI: the African Database of Hydrometric Indices (1950–2018), *Earth System Science Data*, 13, 1547–1560, <https://doi.org/10.5194/essd-13-1547-2021>, publisher: Copernicus GmbH, 2021.
- Tucker, C., Brandt, M., Hiernaux, P., Kariryaa, A., Rasmussen, K., Small, J., Igel, C., Reiner, F., Melocik, K., Meyer, J., Sinno, S., Romero, E., Glennie, E., Fitts, Y., Morin, A., Pinzon, J., McClain, D., Morin, P., Porter, C., Loeffler, S., Kergoat, L., Issoufou, B. A., Savadogo, P., Wigneron, J. P., Poulter, B., Ciais, P., Kaufmann, R., Myneni, R., Saatchi, S., and Fensholt, R.: Sub-continental-scale carbon stocks of individual trees in African drylands, *Nature*, 615, 80–86, <https://doi.org/10.1038/s41586-022-05653-6>, 2023.
- Turnbull, L., Wilcox, B. P., Belnap, J., Ravi, S., D’Odorico, P., Childers, D., Gwenzi, W., Okin, G., Wainwright, J., Caylor, K. K., and Sankey, T.: Understanding the role of ecohydrological feedbacks in ecosystem state change in drylands, *Ecohydrology*, 5, 174–183, <https://doi.org/10.1002/eco.265>, 2012.
- van Hateren, T. C., Jongen, H. J., Al-Zawaidah, H., Beemster, J. G., Boeke, J., Bogerd, L., Gao, S., Kannen, C., van Meerveld, I., de Lange, S. I., Linke, F., Pinto, R. B., Remmers, J. O., Ruijsch, J., Rusli, S. R., van de Vijzel, R. C., Aerts, J. P., Agoungbome, S. M., Anys, M., Blanco Ramírez, S., van Emmerik, T., Gallitelli, L., Chiquito Gesualdo, G., Gonzalez Otero, W., Hanus, S., He, Z., Hoffmeister, S., Imhoff, R. O., Kerlin, T., Meshram, S. M., Meyer, J., Meyer Oliveira, A., Müller, A. C., Nijzink, R., Scheller, M., Schreyers, L., Sehgal, D., Tasser, P. F., Teuling, A. J., Trevisson, M., Waldschläger, K., Walraven, B., Wannasin, C., Wienhöfer, J., Zander, M. J., Zhang, S., Zhou, J., Zomer, J. Y., and Zwartendijk, B. W.: Where should hydrology go? An early-career perspective on the next IAHS Scientific Decade: 2023–2032, *Hydrological Sciences Journal*, 68, 529–541, <https://doi.org/10.1080/02626667.2023.2170754>, 2023.
- Van Nes, E. H. and Scheffer, M.: Implications of spatial heterogeneity for catastrophic regime shifts in ecosystems, *Ecology*, 86, 1797–1807, <https://doi.org/10.1890/04-0550>, 2005.
- Van Nes, E. H., Hirota, M., Holmgren, M., and Scheffer, M.: Tipping points in tropical tree cover: Linking theory to data, *Global Change Biology*, 20, 1016–1021, <https://doi.org/10.1111/gcb.12398>, 2014.
- van Nes, E. H., Hirota, M., Holmgren, M., and Scheffer, M.: Tipping Points in Tropical Tree Cover: Linking Theory to Data, *Global Change Biology*, 20, 1016–1021, <https://doi.org/10.1111/gcb.12398>, 2014.
- Wang, L., Jiao, W., Macbean, N., Rulli, M. C., Manzoni, S., Vico, G., and Odorico, P. D.: Dryland productivity under a changing climate, <https://doi.org/10.1038/s41558-022-01499-y>, 2022.

- 640 Wendling, V., Peugeot, C., Mayor, A. G., Hiernaux, P., Mougin, E., Grippa, M., Kergoat, L., Walcker, R., Galle, S., and Lebel, T.: Drought-induced regime shift and resilience of a Sahelian ecohydrosystem, *Environmental Research Letters*, 14, <https://doi.org/10.1088/1748-9326/ab3dde>, 2019.
- Yonaba, R., Biaou, A. C., Koïta, M., Tazen, F., Mounirou, L. A., Zouré, C. O., Queloz, P., Karambiri, H., and Yacouba, H.: A dynamic land use/land cover input helps in picturing the Sahelian paradox: Assessing variability and attribution of changes in surface runoff in a
- 645 Sahelian watershed, *Science of the Total Environment*, 757, 143 792, <https://doi.org/10.1016/j.scitotenv.2020.143792>, 2021.
- Yonaba, R., Mounirou, L. A., Tazen, F., Koïta, M., Biaou, A. C., Zouré, C. O., Queloz, P., Karambiri, H., and Yacouba, H.: Future climate or land use? Attribution of changes in surface runoff in a typical Sahelian landscape, *Comptes Rendus. Géoscience*, 355, 1–28, <https://doi.org/10.5802/crgeos.179>, 2023.
- Zipper, S., Popescu, I., Compare, K., Zhang, C., and Seybold, E. C.: Alternative stable states and hydrological regime shifts in a large
- 650 intermittent river, *Environmental Research Letters*, 17, <https://doi.org/10.1088/1748-9326/ac7539>, 2022.