

Building multi-satellite DEM time series for insight into mélange inside large rifts in Antarctica

Menglian Xia^{1,2}, Rongxing Li^{1,2}, Marco Scaioni³, Lu An^{1,2}, Zhenshi Li^{1,2}, Gang Qiao^{1,2}

¹ Center for Spatial Information Science and Sustainable Development, Tongji University, 1239 Siping Road, Shanghai, China, 200092

² College of Surveying and Geo-Informatics, Tongji University, 1239 Siping Road, Shanghai, China, 200092

³ Department of Architecture, Built environment and Construction engineering (ABC), Politecnico di Milano, via Ponzio 31, Milano 20133, Italy

Correspondence to: Rongxing Li (RonLi_282@Hotmail.com)

Abstract. Front calving is a primary mechanism through which Antarctic ice shelves discharge ice mass into the Southern Ocean. It is an important process that influences ice shelf stability and thus, impacts the Antarctic Ice sheet's contribution to global sea level rise. Mélange dynamics inside rifts is recognized to potentially influence the rift propagation and subsequent iceberg calving. However, there has been a significant gap in large-scale, high-resolution observations of three-dimensional (3D) rift structural changes and mélange dynamics, which hinders our understanding of the role of mélange in ice shelf retreat and mechanisms underlying the weakening of ice shelf stability. We propose an innovative multi-temporal digital elevation model (DEM) adjustment model (MDAM) ~~that to builds~~ a multi-satellite DEM time series from meter-level resolution small DEMs. ~~It across large Antarctic ice shelves by removing~~ biases across large Antarctic ice shelves, as large as ~6 m in elevation, caused by tides, ice flow dynamics, and observation errors. Using 30 Reference Elevation Model of Antarctica (REMA) and ZY-3 sub-DEMs, we establish a cross-shelf DEM time series from 2014 to 2021 for the Filchner-Ronne Ice Shelf, the second largest ice shelf in Antarctica. This unified and integrated DEM series, with an unprecedented submeter elevation accuracy, reveals quantitative 3D structural and mélange features of atwo ~50 km long rifts, including rift lips, flank surface, pre-mélange cavities, and mélange elevations. For the first time, we have observed that while the mélange elevation in the rifts decreased by 2.74 ± 0.6 m from 2014 to 2021, the mélange within the rifts experienced a rapid expansion of (10.317.93 ± 0.03) × 10⁹ km³, or 1399%. This expansion is attributed to newly calved shelf ice from rift walls, associated rift widening, and other factors related to rift-mélange interactions. The developed MDAM system and the 3D mélange dynamics analysis methods can be applied for research on ice shelf instability and the future contribution of the Antarctic Ice Sheet to global sea level rise.

1 Introduction

Antarctic Ice Sheet (AIS) has shown a persistent pattern of mass loss and has contributed to global sea level rise ~~(GSLR)~~ since the beginning of the satellite earth observation era in the 1960s (-Jacobs et al., 1992; Allison et al., 2009; Rignot et al., 2019; Smith et al., 2020; Li et al., 2022 and 2023a; Otosaka et al., 2023). ~~Although ice mass of outlet glaciers discharged across the~~

~~grounding line of AIS is considered as contribution to GSLR,~~ The lost ice mass enters the Southern Ocean from ice shelves mainly through two processes, namely shelf front calving and basal melting, each accounting for ~50% (Depoorter et al., 2013; Liu et al., 2015; Smith et al., 2020; Greene et al., 2022). In contrast to basal melting that occurs on the bottom of ice shelves, calving events are directly observed by using satellite remote sensing in the past decades. Examples of large iceberg calving include a major calving event in the Filchner Ice Shelf in 1986 with an area loss of ~11,500 km² (Ferrigno and Gould, 1987), release of an iceberg of ~5,800 km² from Larsen C Ice Shelf in 2017 (Larour et al., 2021; Wang et al., 2022), and break out of a part of the “loose tooth” of ~1,680 km² from the Amery Ice Shelf in 2019 (Francis et al., 2021; Walker et al., 2021). Although the mechanism of ice shelf caving is not fully understood, calving processes are clearly related to the evolution of rifts as they advect to the shelf front and cut icebergs (Joughin and MacAyeal, 2005; Hulbe et al., 2010; Walker and Gardner, 2019; Greene et al., 2022). Furthermore, ~~the importance and challenges on studying~~ mélange (a mixture of shelf ice, snow, sea ice and water) changes ~~in relation to ice shelf fracturing~~ in Antarctica and glacier calving in both Greenland and Antarctica are ~~studied~~ fully recognized (Rignot and MacAyeal, 1998; Larour et al., 2004 ~~and 2021~~; Cassotto et al., 2021). Specifically, mélange thickness reduction is observed during rift widening on Amery Ice shelf, Ronne Ice Shelf and Larsen C Ice Shelf (Fricker et al., 2005; Walker et al., 2021; Larour et al., 2021). Modelling results indicate that mélange may have the capability of transmitting stresses across rift flanks and thus, influences rift propagation and shelf front calving (Larour et al., 2004 and 2021). However, there has been a lack of large-scale high-resolution observations of 3D rift structural changes and mélange dynamics in a sustained long period to support such a conclusion, ~~which~~ This, in turn, hinders our understanding of the role of mélange in ice shelf retreating and the mechanism of ice shelf stability weakening.

In recent decades, altimetric and stereo mapping satellites have been used to acquire 3D data of earth surface features, which are further used to derive digital elevation models (DEMs) where 3D rift structure and mélange information is inherently available. DEMs from satellite altimetry data at the Antarctic continental scale have relatively lower resolutions, for example, 500 m ICESat (Dimarzio et al., 2007) and ICESat-2 (Shen et al., 2022) DEMs, and 1000 m CryoSat-2 DEM (Slater et al., 2018). Those from optical and SAR satellite stereo mapping data are of higher resolutions and have the potential for geometric modeling and analysis of rifts and mélange features, including 90 m TanDEM-X DEM (Wessel et al., 2021), 30 m ASTER GDEM (Tachikawa et al., 2011), and especially, 2 m REMA DEM (Howat et al., 2019). However, these high-resolution DEMs are derived from relatively narrow swath satellite data and have smaller extents. Thus, the smaller DEMs of different timespans are mosaiced together to cover large rifts and large ice shelves, in which significant discrepancies between individual DEMs are induced by influences of tides, ice flow dynamics, and observation errors (Fig. 1a). Existing methods for co-registration of DEMs are mostly developed based on global fitting and used in a land environment, e.g., a seven-parameter DEM transformation for mountain glacier mass balance estimation (Li et al., 2023b) and a global optimization process for computing three parameters between DEMs using all grid points (Nuth and Kääb, 2011). Furthermore, REMA DEMs are registered to a control data set, such as airborne altimetric data or satellite altimetric data of ICESat and CryoSat-2 (Howat et al., 2019; Shean et al., 2019; Zinck et al., 2023). There is a lack of methods for handling heterogenous offsets between individual DEMs caused by ~~tides, ice flow,~~ rifts, mélange dynamics, and other factors in a dynamic Antarctic ice shelf environment.

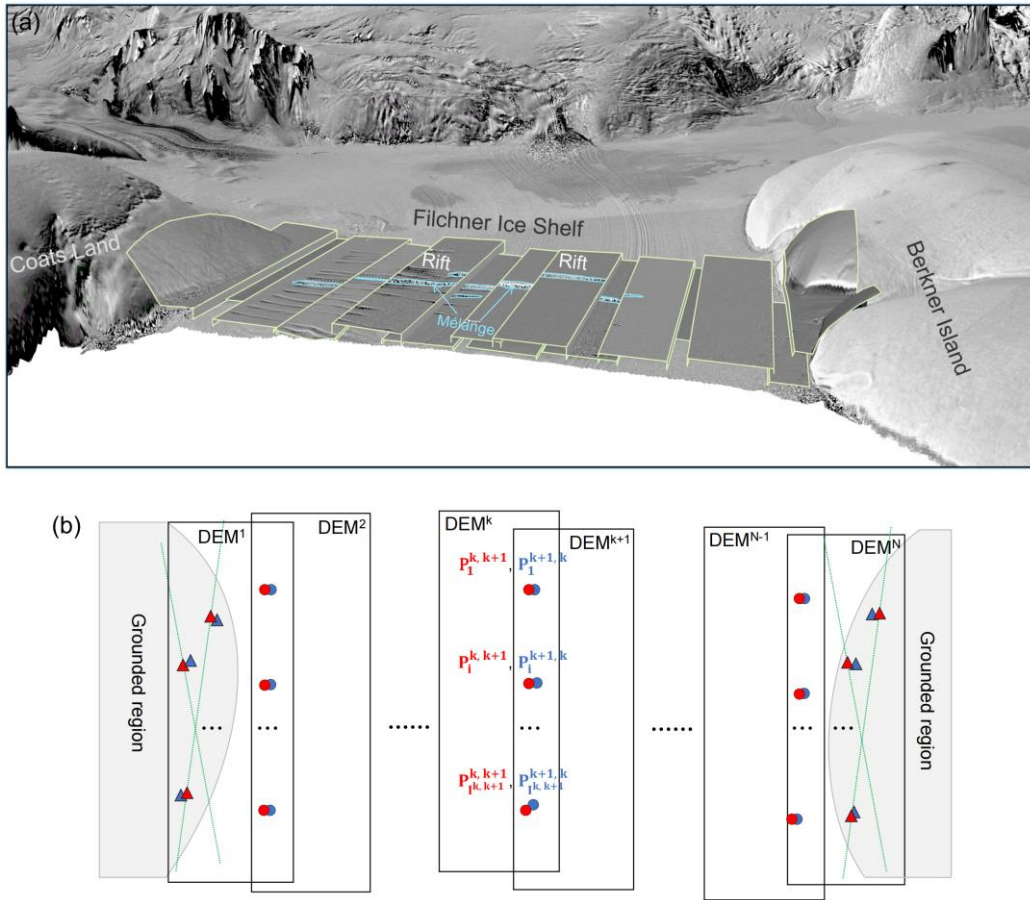


Figure 1. (a) High-resolution small-coverage DEMs (e.g., REMA strips of $\sim 16\sim 18\text{ km} \times \sim 110\sim 120\text{ km}$) are unified and integrated for accurate 3D rift structural and mélange dynamic monitoring in a large Antarctic ice shelf environment (e.g., $\sim 145\sim 165\text{ km}$ wide Filchner Ice Shelf). LIMA mosaic (Bindshadler et al., 2008) is draped on RAMP DEM (Liu et al., 2001) with a vertical exaggeration factor of 40 times. (b) Concept of the MDAM system to connect sub-DEMs across the ice shelf through “tie points” (TP, represented by circles) to create a DEM time series. The “ground control points” (GCP, represented by triangles) are used to fix the combined DEM model to grounded regions at ice shelf margins. The closely located red and blue circles (triangles) are from adjacent sub-DEMs and form corresponding TP (GCP) pairs.

We propose an innovative multi-temporal DEM adjustment model (MDAM) with the purpose to remove biases between adjacent sub-DEMs and to establish a unified and integrated multi-satellite DEM time series with a submeter elevation accuracy. We introduce tie points (TPs, see detailed description in Section 2.3) to connect the sub-DEMs and to formulate a DEM time series across a large ice shelf, which is then constrained to grounded regions using ground control points (GCPs). ICESat-2 altimetric data with a centimeter elevation accuracy (Markus et al., 2017) are applied to control the overall geometry of the DEM time series. We develop a data-driven approach to remove large offsets between adjacent sub-DEMs, namely the tide-induced elevation displacements and ice flow-induced horizontal discrepancies, by using a tide model and velocity maps, respectively. The residuals are then minimized in the MDAM system in a least-squares process to obtain the 3D correction parameters of each sub-DEM. The validated MDAM is applied in the Filchner-Ronne Ice Shelf, the second largest in Antarctica,

to establish a cross-shelf DEM time series ~~off~~from 2014–2021. ~~The Filchner Ice Shelf (Fig. 1a) is one of the dual ice shelves of Filchner-Ronne Ice Shelf that is the second largest in Antarctica (Fig. 3). Berkner Island and Coats Land are located at western and eastern margins of the ice shelf, respectively. The largest calving event recorded for this ice shelf, with an area loss of 11500 km², occurred in 1986 due to a rapid propagation of a prominent rift known as “Grand Chasm” (Ferrigno and Gould, 1987), producing three giant icebergs that greatly impacted the circulation and hydrography in the nearby ice shelf-ocean system (Grosfeld et al., 2001) (Fig. A1). Recently, two large rifts, T1 and T2 (Fig. 3), are detected in a Landsat satellite image in 1996 and an ARGON satellite image in 1963, respectively (Li et al., 2017a; Walker and Gardner, 2019; Lv et al., 2022). These rifts have a combined length of ~100 km and exhibit a similar propagation pattern as Grand Chasm.~~ We demonstrate the capability of the MDAM ~~for~~by quantitatively characterizing 3D structural and mélange features of ~~at these two~~ ~50 km long rifts, including rift lips, flank surface, pre-mélange cavities, and mélange elevations. Finally, we ~~demonstrate reveal how the observed mélange changes and estimated volumetric changes inside the rift changes its elevation and volume dynamically as the rift propagates in relation to rift widening and as the rifts~~ advects toward the ice shelf front during the study period.

2 Data and Method

2.1 Data

The sub-DEMs used in this study are ~~REMA strips and a Ziyuan-3 (ZY-3) DEM which are generated from two data sources, namely~~ stereo satellite images of WorldView (Anderson and Marchisio, 2012) and ~~Ziyuan-3 (ZY-3)~~ (Wang et al., 2014), ~~respectively (Table A1).~~ Both ~~are~~ formed by the along-track stereo mechanism (Li, 1998). REMA DEMs are available for the entire Antarctica and are produced from WorldView images using an open-source automatic photogrammetric processing software system, Surface Extraction from TIN-based Searchspace Minimization (SETSM) (Noh and Howat, 2015). The WorldView data set includes WorldView-1, -2 and, -3, and GeoEye-1 images with a small swath of 13.1–17.6 km and a high resolution of 0.3 m–0.5 m (Howat et al., 2019). Thus, each derived REMA DEM provides a high level of ice surface details, but with a relatively small extent, resulting in difficulties in covering large rifts or the entire ice shelf. More specifically, we use REMA DEM strips of 2016–2017 (Fig. 3a) and 2020–2021 (Fig. 3b) with a grid spacing of 2 m. On the other hand, ZY-3, launched in 2012, is the first Chinese high-resolution natural resource mapping satellite (Wang et al., 2014). It is equipped with a three-line mapping system that forms quasi-real-time along-track stereo image pairs using fore (3.5 m), nadir (2.1 m), and aft (3.5 m) views. The fore and aft combination has a large intersection angle of 47°, facilitating a high elevation accuracy for DEM generation. Its wide swath of ~52 km ensures a complete coverage of large rifts, such as T1 and T2 (Fig. 3a). The ZY-3 DEM used in this study has a time tag of February 28, 2014 and a grid spacing of 5 m. It has a relatively narrow strip because of cloud coverage, but it covers both T1 and T2. The DEM is registered to the ICESat-2 altimetry data and has an elevation accuracy of 0.3 m. ~~The ZY-3 DEM of 2014 has a full coverage of T1 and T2 and can provide a reference for comparison with the adjusted sub-DEMs of REMA. These combined ZY-3 and REMA sub-DEMs form a seven-year long time~~

[series from 2014 to 2021 with a time interval of 3–4 years, which can be used to analyze mélange elevation and volume changes.](#)

We use elevation points of the ICESat-2 ATL 6 data from 2019 to 2021 (Markus et al., 2017) to register the ZY-3 DEM. The

115 GCPs are also selected on or close to ICESat-2 ATL 6 elevation points to establish a unified reference system [in MDAM. To ensure that the GCPs are “stable” during the timespan between the ZY-3 DEM \(REMA sub-DEMs\) and ICESat-2, these GCPs are further required to be on grounded features with a low velocity \(\$< 10\text{--}20\text{ m y}^{-1}\$ \). In a special case we also select GCPs on the ice shelf where both the DEM images and ICESat-2 data were acquired within one day.](#) The ICESat-2 data are also used for validation of the bias-corrected DEM time series. Along each of the six beam tracks, ICESat-2 ATL 6 data provide
120 aggregated elevation points with a 20 m spacing and a revisit cycle of 91 days. Field validation studies have demonstrated that the ICESat-2 data reached an elevation accuracy within 2–4 cm in Antarctica (Brunt et al., 2019; Magruder et al., 2020; Li et al., 2021).

2.2 Multi-temporal DEM adjustment model (MDAM)

As illustrated in Fig. 1b, a set of sub-DEMs ($DEM^1, DEM^2, \dots, DEM^k, \dots, DEM^{N-1}, DEM^N$) are connected through TPs in
125 the overlapping areas between adjacent sub-DEMs. The two sub-DEMs at two shelf margins (DEM^1 and DEM^N) cover grounded regions, while those in between (from DEM^2 to DEM^{N-1}) cover the floating ice of the ice shelf. GCPs are used to fix the entire DEM time series to the grounded regions. They are input into the multi-temporal DEM adjustment model (MDAM) for removing biases between adjacent sub-DEMs (Fig. 2). Initially, relatively large vertical offsets, up to [~61.2 m](#), caused by tides are corrected for all sub-DEMs by using a tide model, CATS2008, with an accuracy of ~8 cm (Padman et al.,
130 2008; King et al., 2011). Then we manually select TPs in overlapping areas between sub-DEMs on the floating ice to cover the entire ice shelf [\(see Section 2.32–2 for details\)](#). The relatively large horizontal displacements between corresponding TP pairs (Fig. 1b), up to hundreds of meters, induced by ice flow dynamics are compensated by using ITS_LIVE velocity maps (Gardner et al., 2019). At the same time, we tie the GCP locations to satellite altimetry data of ICESat-2 [\(see Section 2.32–2 for details\)](#). [In the model inconsistencies at TP and GCP pairs are first reduced by the tide and velocity corrections, leaving the uncertainty originated from the sub-DEM production as residuals, including photogrammetric measurement errors and ephemeris data errors.](#) Thereafter, we use the least-squares adjustment method (McGlone et al., 2004) to estimate the [un](#)known
135 bias corrections of all sub-DEMs by minimizing ~~the residuals~~[inconsistencies at TP and GCP pairs, which consist of residuals after the tide and velocity corrections and uncertainty originated from sub-DEM production, including photogrammetric measurement errors and ephemeris data errors](#) (Li, 1998; McGlone et al., 2004; Shean et al., 2019). Finally, the corrected sub-
140 DEMs are applied for 3D analysis and modeling of large rifts and mélange dynamics.

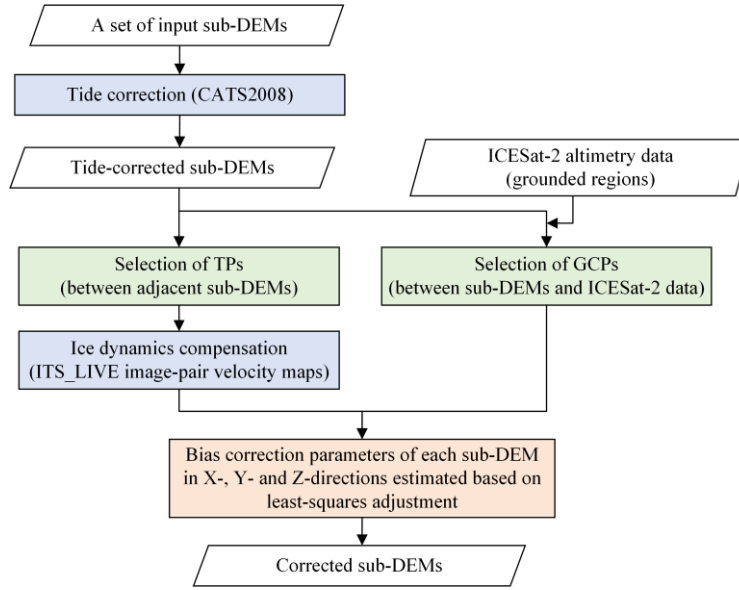


Figure 2. Data processing principle of the multi-temporal DEM adjustment model (MDAM).

For each pair of TPs $P_i^{k,k+1}$ and $P_i^{k+1,k}$ ($i=1, \dots, i^{k,k+1}$) (Fig. 1b), we measure 3D coordinates $(X_{P_i}^k, Y_{P_i}^k, Z_{P_i}^k)$ from DEM^k and $(X_{P_i}^{k+1}, Y_{P_i}^{k+1}, Z_{P_i}^{k+1})$ from DEM^{k+1} . We define 3D translational parameters of (dX^k, dY^k, dZ^k) as unknowns for bias removal. Thus, we establish the 3D positional relationships at tie point $P_i^{k,k+1}$ between DEM^k and DEM^{k+1} as observation equations for each pair of TPs:

$$\begin{cases} X_{P_i}^k + dX^k + VelX_i^k * (t^{k+1} - t^k) = X_{P_i}^{k+1} + dX^{k+1} + \epsilon_{x_i}^k \\ Y_{P_i}^k + dY^k + VelY_i^k * (t^{k+1} - t^k) = Y_{P_i}^{k+1} + dY^{k+1} + \epsilon_{y_i}^k \\ Z_{P_i}^k + dZ^k = Z_{P_i}^{k+1} + dZ^{k+1} + \epsilon_{z_i}^k \end{cases}, \quad (1)$$

where $k = 1, \dots, N-1$; and $i=1, \dots, i^{k,k+1}$. t^k and t^{k+1} are known data acquisition times for DEM^k and DEM^{k+1} . $VelX_i^k$ and $VelY_i^k$ are ice flow speed in X- and Y- directions at the TP given in a velocity map. [Here, ITS LIVE image-pair velocity maps are selected to spatially match the extent of each sub-DEM and to temporally align as closely as possible with the acquisition times of two adjacent sub-DEMs.](#) Similarly, $(dX^{k+1}, dY^{k+1}, dZ^{k+1})$ are unknown bias correction parameters for DEM^{k+1} . $(\epsilon_{x_i}^k, \epsilon_{y_i}^k, \epsilon_{z_i}^k)$ represent residuals [of at TPs in the observation equations, including photogrammetric measurement errors and ephemeris data errors.](#)

In the similar way, observation equations for ground control point $P_{GCP_i}^k$ are given as:

$$\begin{cases} X_{GCP_i}^k + dX^k = X_{P_i}^{GCP,k} + \epsilon_{x_i}^{GCP,k} \\ Y_{GCP_i}^k + dY^k = Y_{P_i}^{GCP,k} + \epsilon_{y_i}^{GCP,k} \\ Z_{GCP_i}^k + dZ^k = Z_{P_i}^{GCP,k} + \epsilon_{z_i}^{GCP,k} \end{cases} \quad (2)$$

where $k = 1$ and N ; and $i=1, \dots, i^{GCP,k}$. $(X_{GCP_i}^k, Y_{GCP_i}^k, Z_{GCP_i}^k)$ are 3D coordinates measured at the GCP from DEM^k .

$(X_{P_i}^{GCP,k}, Y_{P_i}^{GCP,k}, Z_{P_i}^{GCP,k})$ are 3D coordinates at the same point from the control data set (e.g., ICESat-2). $(\varepsilon_{x_i}^{GCP,k}, \varepsilon_{y_i}^{GCP,k}, \varepsilon_{z_i}^{GCP,k})$ represent residuals at GCPs in the observation equations, describing inconsistencies between the integrated DEM and the outside control data (e.g., ICESat-2). Furthermore, it is noticed that in the study area, elevation disagreements between adjacent REMA DEMs present a linear trend in the Y-direction (mainly ice flow direction). Thus, we use a linear term of $a_o^k + a_1^k Y_{OL_i}^k$ to replace dZ^k in Eqs. (1) and (2). Here, a_o^k and a_1^k are coefficients as unknowns, and $Y_{OL_i}^k$ is the Y coordinate defined in the local central coordinate system in the overlapping region ~~between~~, with the origin defined at the center of the overlapping area.

Eqs. (1) and (2) are combined and populated with all TPs and GCPs of the sub-DEM~~s~~S. They are further formulated as an observation equation system in a matrix form. Finally, the unknowns, namely bias correction parameters (dX^k , dY^k , a_o^k , and a_1^k), $(k = 1, \dots, N)$ ($k = 1, \dots, N$), are solved by an optimization procedure using the least-squares principle (McGlone et al., 2004). Uncertainties of the estimated bias correction parameters $(\sigma_{x_i}^k, \sigma_{y_i}^k, \sigma_{z_i}^k, \sigma_{x_i}^{GCP,k}, \sigma_{y_i}^{GCP,k}, \sigma_{z_i}^{GCP,k})$ are computed through an error propagation within the optimization procedure.

2.32 Implementation considerations

2.2.1 Site and data

The proposed MDAM model is validated and applied in the Filchner Ice Shelf, one of the dual ice shelves of Filchner-Ronne Ice Shelf that is the second largest in Antarctica (Fig. 3). Berkner Island and Coats Land are located at western and eastern margins of the ice shelf, respectively. The largest calving event recorded for this ice shelf, with an area loss of 11500 km², occurred in 1986 due to a rapid propagation of a prominent rift known as “Grand Chasm” (Ferrigno and Gould, 1987), producing three giant icebergs that greatly impacted the circulation and hydrography in the nearby ice shelf ocean system (Grosfeld et al., 2001). Recently, two large rifts, T1 and T2, are detected in a Landsat satellite image in 1996 and an ARGON satellite image in 1963, respectively (Li et al., 2017; Walker and Gardner, 2019; Lv et al., 2022). These rifts have a combined length of ~100 km and exhibit a similar propagation pattern as Grand Chasm. To study their 3D evolution and mélange dynamics inside the rifts is important for assessment of the ice shelf instability and forecasting of the next major calving event. In this study we focus on rift T1 because of its dynamic propagation characteristics and more matured mélange.

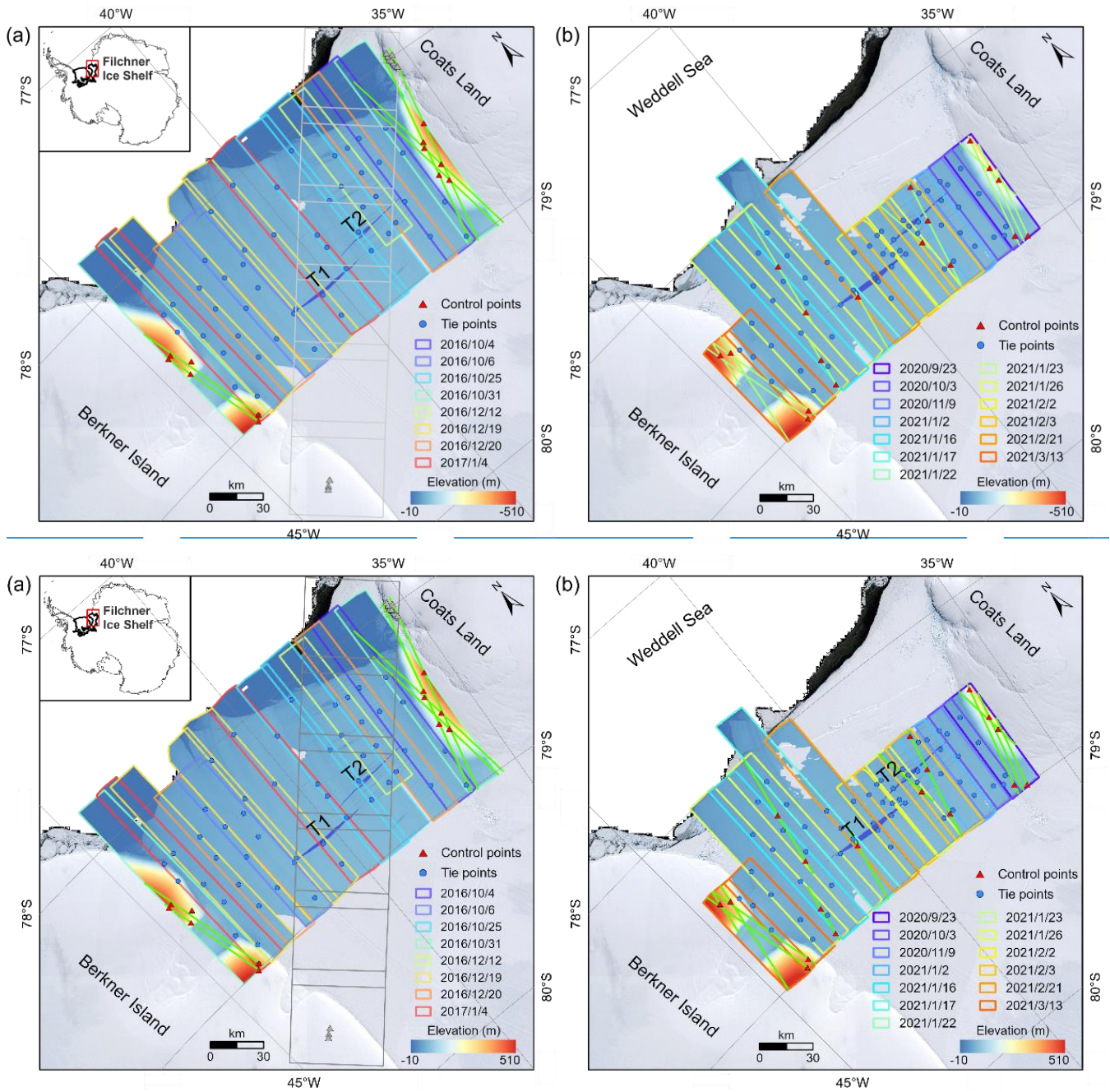


Figure 3. The Filchner Ice Shelf used as a validation and application site for the MDAM system. Colored boxes are REMA DEM coverages. Green lines at Berkner Island, and Coats Land and on the ice shelf are ICESat-2 tracks. Blue circles are TPs and red triangles are GCPs. (a) REMA DEMs of 2016–2017, ZY-3 DEM of 2014 (light gray lines), and rifts T1 and T2. (b) REMA DEMs of 2020–2021. GCPs are also selected on the ice shelf where both the DEM images and ICESat-2 data were acquired within one day. Background elevation information is from REMA DEM (Howat et al., 2019).

Ground Control Point Selection

Selection of high quality GCPs is of great importance to the accuracy of the entire DEM time series. We choose GCPs on the grounded regions at both margins of the ice shelf (Figs. 1b and 3) with considerations of stability, low ice velocity, and local peaks (Feng et al., 2022). Meanwhile, the GCPs are also chosen to be on or close to the ICESat-2 ATL 6 points from which their 3D coordinates can be measured. Despite the absence of outcrops and blue ice in the grounded regions of this study, we are able to identify relatively stable features for GCP selection, aided by multisource data, e.g., REMA DEMs, ICESat-2 data, ice flow velocity maps (Rignot et al., 2011), and bed topography (Morlighem et al., 2020).

Fig. 4 illustrates an example of GCP selection on the ice surface of Coats Land. Within a local area we drape a shaded relief map and a velocity map (Rignot et al., 2011) on the REMA DEM to make sure that a GCP candidate is selected not on a steep slope ($< 5^\circ$) and with a low ice flow speed ($< 10 \text{ m y}^{-1}$) (Fig. 4a and 4b). The candidate is approximately localized at a local peak (red [triangledot](#)). In a close-up view (Fig. 4c and 4d), an ICESat-2 elevation profile (blue line) is further used to finalize the GCP position by adjusting the candidate position to the local maximum of the terrain (red cross). Finally, 3D coordinates of the GCP are measured on the ICESat-2 profile as knowns ($X_{P_i}^{GCP,N}$, $Y_{P_i}^{GCP,N}$, $Z_{P_i}^{GCP,N}$) and from the sub-DEM as observations ($X_{GCP_i}^N$, $Y_{GCP_i}^N$, $Z_{GCP_i}^N$) that are used in Eq. (2).

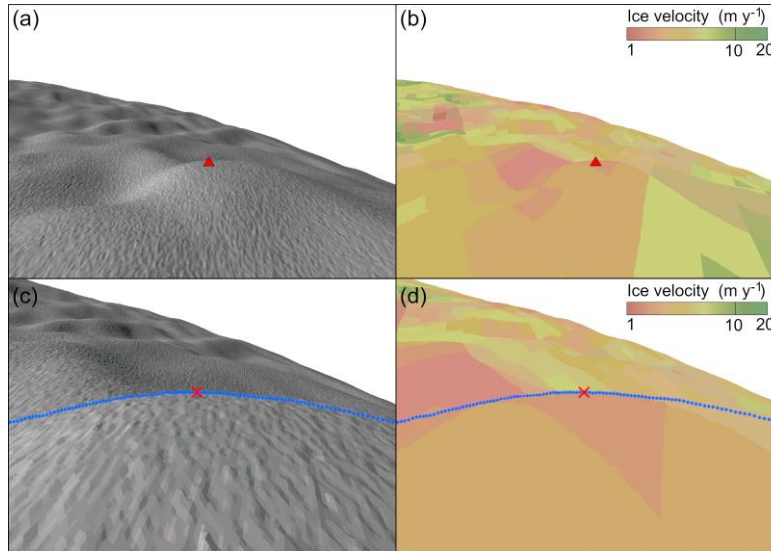
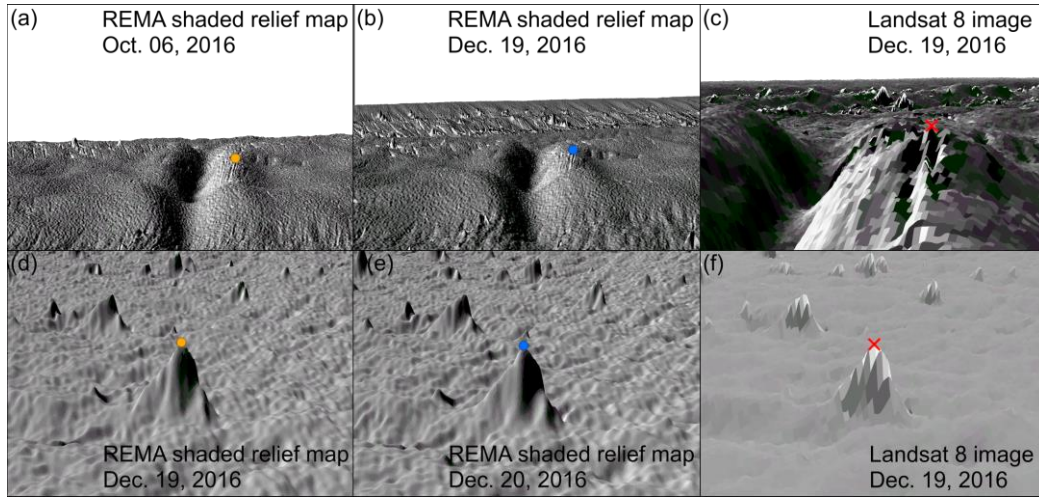


Figure 4. Local 3D view for GCP candidate (red [triangledot](#)) selection: shaded relief map (a) and velocity map (b) draped on the REMA DEM. 3D close-up view for GCP finalization (red cross): local maximum selected with help of the ICESat-2 elevation profile (blue line) (c) and velocity map (d).

210 Tie Point Selection

The key consideration for TP selection is to choose features that are identifiable on both adjacent sub-DEMs and unchanged during the time interval between the acquisitions of the sub-DEMs (Figs. 1b and 3). Further specific rules are followed: (1) if applicable, TPs be selected at distinct features, such as crevasses, rifts, and other relatively “stable” ice surface features; (2) elevated locations are preferred to avoid influences of shadows casted by different lighting conditions and obstacles in 3D visualization; and (3) TPs be approximately evenly distributed in the overlapping area. For example, to select a TP candidate on a rift lip, two shaded relief maps are produced from the adjacent sub-DEMs and used for 3D visualization (Figs. 5a and 5b) to check whether the feature (orange and blue dots in Fig. 5) is changed during the time interval between the two sub-DEMs. The TP is finalized (red cross) by a verification using a 3D Landsat image view with a different illumination geometry (Fig. 5c). Figs. 5d–5f shows another example of TP selection on a snow bridge that is formed by an ice surface process when snow is blown into a crevasse and-or rift and accumulated about tens of meters above the shelf surface (Williams et al., 2014; Thompson et al., 2020). Similarly, Figs. 5d and 5e show the 3D views from shaded relief maps with lower elevation angles produced from adjacent sub-DEMs. After a verification using a Landsat image (Fig. 5f), the peak of the snow bridge is defined as the TP. In both cases, 3D coordinates $(X_{P_i}^k, Y_{P_i}^k, Z_{P_i}^k)$ and $(X_{P_i}^{k+1}, Y_{P_i}^{k+1}, Z_{P_i}^{k+1})$ are measured and used in Eq. (1).



225 **Figure 5. TP selection on rift lip: 3D views from two shaded relief maps of adjacent REMA DEMs (a) and (b), and verification using a 3D Landsat image view (c). TP selection on snow bridge: 3D views from two shaded relief maps of adjacent REMA DEMs (d) and (e); verification using a 3D Landsat image view (f).**

Mélange Volume Estimation

To compute the mélange volumetric change, we apply the hydrostatic equilibrium principle to obtain the unknown thickness H of the mélange in each transect (Fricker et al., 2005):

$$H = \frac{\rho_{\text{water}}}{\rho_{\text{water}} - \rho_{\text{mélange}}} (h - h_{\text{sea}}) \quad (3)$$

where h is the average mélange elevation along the transect and h_{sea} is the average sea level (-15.2 m) estimated from the ICESat-2 altimetry data within a range of ~10 km from the ice shelf front from March 2019 to December 2021 during which the ICESat-2 data become stable after the initial stage of the mission (Magruder et al., 2021). ρ_{water} and $\rho_{mélange}$ are densities of seawater and mélange (1,028 kg m⁻³ and 865 kg m⁻³), respectively (King, 1994; Fricker et al., 2005; Adusumilli et al., 2020). The estimated change in mélange thickness H is relevant to ice sheet modeling. The observed mélange thinning may indicate that the stress propagation between flanks may be compromised (Larour et al., 2004). Consequently, the mélange volume of the transect is the product of the thickness H , rift width W , and transect interval, which is integrated over all transects to compute the mélange volume of the entire rift: $\Sigma (H \times W \times transect\ interval)$.

3 Results

3.1 Bias correction and adjusted DEM time series

The REMA DEMs of 2016-2017 consists of 14 sub-DEMs that cover the entire front part of Filchner Ice Shelf (Fig. 3a). We use 12 GCPs that are measured by using ICESat-2 data to tie the connected DEMs to the grounded regions of Berkner Island and Coats Land where the average ice flow speed at the GCPs is ~8 m y⁻¹. In total 51 TPs are used to connect the sub-DEMs on the floating part of the ice shelf, with 3-4 evenly distributed TPs in each overlapping area. Horizontal displacements at the TPs caused by the ice flow are in average ~90 m and are corrected by using the velocity map (Gardner et al., 2019). We establish the observation equations in Eqs. (1) and (2) using different weights. The weights for TPs are computed as inverse distances from the TPs to the nearest GCPs on grounded regions. Hence, the weights for GCPs are set to 1. Those TPs that are farther away from the grounded regions have smaller weights.

Table 1. Bias corrections (dX^k , dY^k , dZ^k) estimated for 14 sub-DEMs, ordered from Berkner Island to Coats Land, for the REMA DEMs of 2016-2017.

DEM^k	$dX^k \pm \sigma_{dX^k} (m)$	$dY^k \pm \sigma_{dY^k} (m)$	$dZ^k \pm \sigma_{dZ^k} (m)$
1	4.58±1.42	-4.20±1.45	3.15±0.07
2	8.68±2.58	-2.38±2.85	-1.15±0.13
3	6.24±3.14	-7.57±4.05	-1.08±0.18
4	7.79±3.53	-5.33±5.11	5.91±0.24
5	-5.28±3.80	-9.77±6.00	-5.76±0.29
6	1.55±4.03	2.31±6.69	4.38±0.36
7	3.07±4.12	0.19±7.18	-0.27±0.43
8	-0.24±4.10	1.07±7.12	-1.07±0.38
9	-1.36±4.00	9.98±6.69	-1.98±0.33
10	-2.03±4.07	11.61±6.00	-2.33±0.30

11	-4.00±4.07	13.71±5.11	3.11±0.24
12	-0.75±3.83	4.46±2.85	2.65±0.19
13	0.69±3.57	1.69±1.45	-2.40±0.16
14	-1.91±3.20	0.00±0.00	-0.48±0.09

DEM^k	$dX^k \pm \sigma_{dX} \text{ (m)}$	$dY^k \pm \sigma_{dY} \text{ (m)}$	$dZ^k \pm \sigma_{dZ} \text{ (m)}$
<u>1</u>	<u>4.6 ± 1.4</u>	<u>-4.2 ± 1.5</u>	<u>3.2 ± 0.1</u>
<u>2</u>	<u>8.7 ± 2.6</u>	<u>-2.4 ± 2.9</u>	<u>-1.2 ± 0.1</u>
<u>3</u>	<u>6.2 ± 3.1</u>	<u>-7.6 ± 4.0</u>	<u>-1.1 ± 0.2</u>
<u>4</u>	<u>7.8 ± 3.5</u>	<u>-5.3 ± 5.1</u>	<u>5.9 ± 0.2</u>
<u>5</u>	<u>-5.3 ± 3.8</u>	<u>-9.8 ± 6.0</u>	<u>-5.8 ± 0.3</u>
<u>6</u>	<u>1.6 ± 4.0</u>	<u>2.3 ± 6.7</u>	<u>4.4 ± 0.4</u>
<u>7</u>	<u>3.1 ± 4.1</u>	<u>0.2 ± 7.2</u>	<u>-0.3 ± 0.4</u>
<u>8</u>	<u>-0.2 ± 4.1</u>	<u>1.1 ± 7.1</u>	<u>-1.1 ± 0.4</u>
<u>9</u>	<u>-1.4 ± 4.0</u>	<u>10.0 ± 6.7</u>	<u>-2.0 ± 0.3</u>
<u>10</u>	<u>-2.0 ± 4.1</u>	<u>11.6 ± 6.0</u>	<u>-2.3 ± 0.3</u>
<u>11</u>	<u>-4.0 ± 4.1</u>	<u>13.7 ± 5.1</u>	<u>3.1 ± 0.2</u>
<u>12</u>	<u>-0.8 ± 3.8</u>	<u>7.9 ± 4.0</u>	<u>2.7 ± 0.2</u>
<u>13</u>	<u>0.7 ± 3.6</u>	<u>4.5 ± 2.9</u>	<u>-2.4 ± 0.2</u>
<u>14</u>	<u>-1.9 ± 3.2</u>	<u>1.7 ± 1.5</u>	<u>-0.5 ± 0.1</u>

255 The proposed MDAM system estimates the bias corrections (dX^k, dY^k, dZ^k) for all sub-DEM DEM^k ($k = 1, 2, \dots, 14$) (Table 1) through the least-squares procedure where their uncertainties are provided in the covariance matrix (McGlone et al., 2004). As illustrated in Fig. 6, uncertainties of the corrections in both horizontal and elevation directions are effectively controlled for sub-DEMs close to grounded regions in Berkner Island and Coats Land through GCPs, leaving those in the middle section of the ice shelf relatively higher. The average uncertainty of the elevation corrections is 0.24 m, with
260 the maximum of 0.43 m.

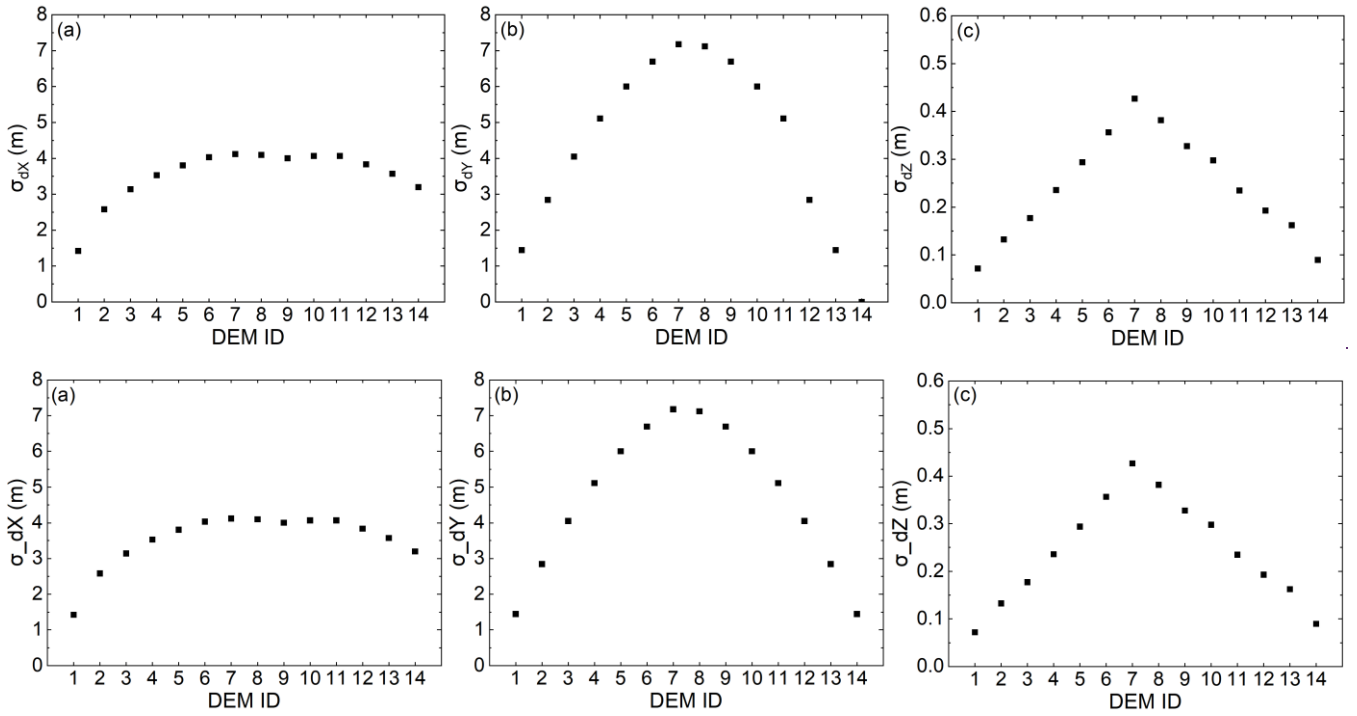
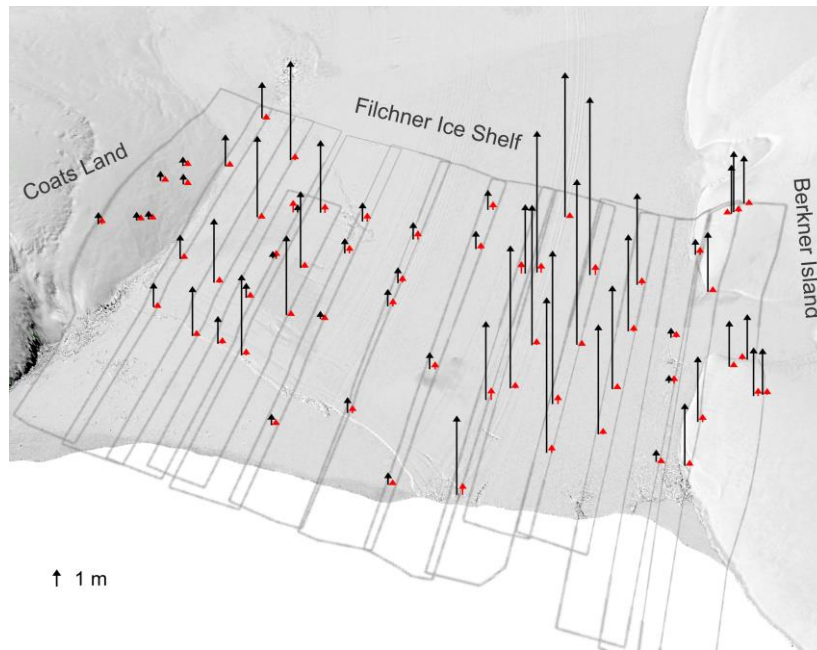


Figure 6. Illustration of uncertainties of the estimated bias corrections (dX^k , dY^k , dZ^k) in Table (1).

These corrections are then applied to each sub-DEMs to produce the bias-corrected REMA DEMs of 2016-2017. The effectiveness of the MDAM system is clearly demonstrated by a dramatic reduction of the elevation offset between adjacent sub-DEMs at the 51 TPs and 12 GCPs (Fig. 7), in average, from 12.73-72 m before bias-correction (black arrows) to 0.2-4 m thereafter (red arrows, also called residuals). Residuals vary from 0.1-1 m to 0.5-1 m.



270 **Figure 7. Elevation offsets between adjacent sub-DEMs at TPs and GCPs in the REMA DEMs of 2016-2017 before bias-correction (black arrows, tide and ice velocity compensated) and thereafter (red arrows).**

We process the second set of REMA DEMs of 2020-2021 (Fig. 3b) in the same way and establish the bias-corrected DEMs with an average uncertainty of 0.248 m for the elevation bias corrections of dZ^k (Table A24), estimated in the least-squares process. In addition, the ZY-3 DEM of 2014 is reconstructed as a cross-ice-shelf DEM and does not need to go through this bias-correction process. The DEM is co-registered to the ICESat-2 ATL06 data of 2019 [through a bundle adjustment procedure \(McGlone et al., 2004; Li et al., 1998 and 2017b\) using GCPs that are selected from “stable” features in the same way for those used in REMA sub-DEM co-registration.](#) with a an elevation accuracy of 0.30 m is achieved.

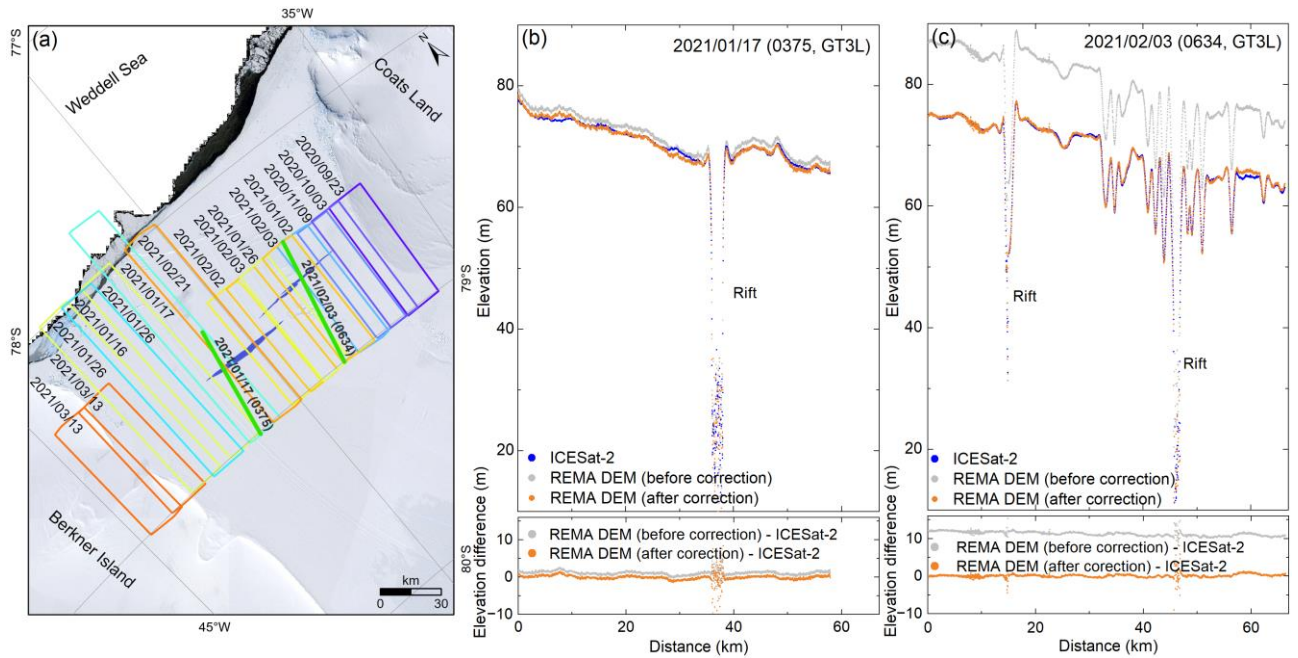


Figure 8. Verification of bias-corrected REMA DEMs of 2020-2021: (a) data acquisition times and footprints of REMA DEMs in different colors, and times and two ground tracks of ICESat-2 data in green color; (b) and (c) elevation profiles of REMA DEMs of 2020–2021 prior to (gray) and post (orange) bias-correction, and ICESat-2 ATL06 data of 2021 (blue), with their corresponding differences at bottom.

To validate the bias-correction results using an external dataset, we directly compare the bias-corrected REMA DEMs of 2020-2021 with two tracks of ICESat-2 ATL06 data acquired from January to February 2021 (green lines in Fig. 8a). The ICESat-2 data set is chosen because of its high elevation accuracy and along-track point density. Furthermore, we select two tracks of the ICESat-2 data that were acquired on the same times (within one day) as the REMA sub-DEMs to avoid displacements caused by the shelf ice advection and internal mélange changes. The timespans of other two sets of DEMs, REMA DEMs of 2016–2017 and ZY-3 DEM, fall outside the ICESat-2 temporal coverage. Along Orbit 0375-0735 Ground track GT3L, REMA DEM points prior to bias correction (gray) are relatively close to the ICESat-2 ATL 6 elevation points (blue points), with a smaller average difference of 1.107 m (Fig. 8b). However, the average difference of 11.23 m along Orbit 0634 Ground track GT3L is significantly larger (Fig. 8c). After bias-corrections, the differences are effectively controlled within 0.109 m on these two tracks and 0.218 m on mélange top.

3.2 3D mélange dynamics from 2014-2021

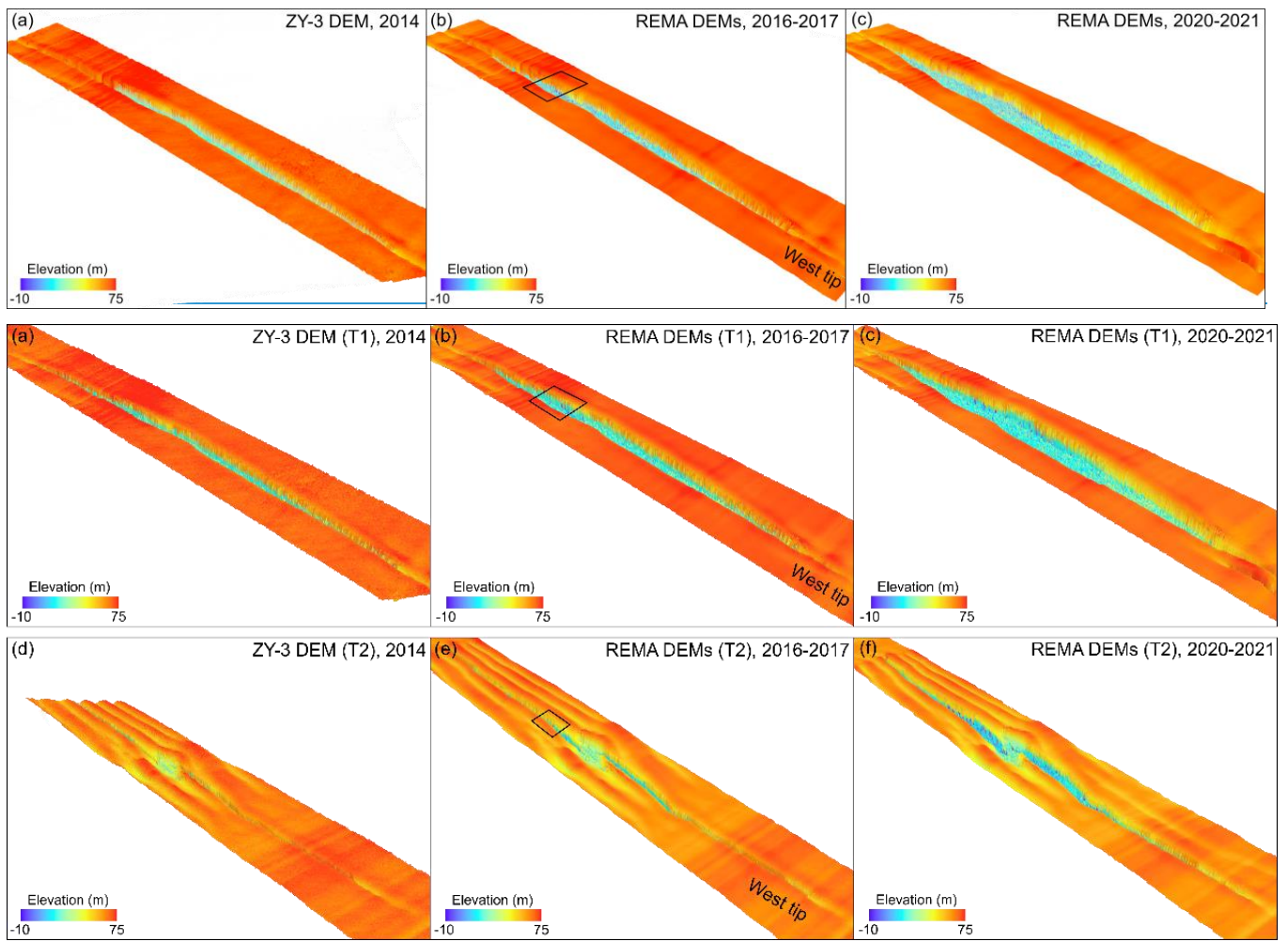
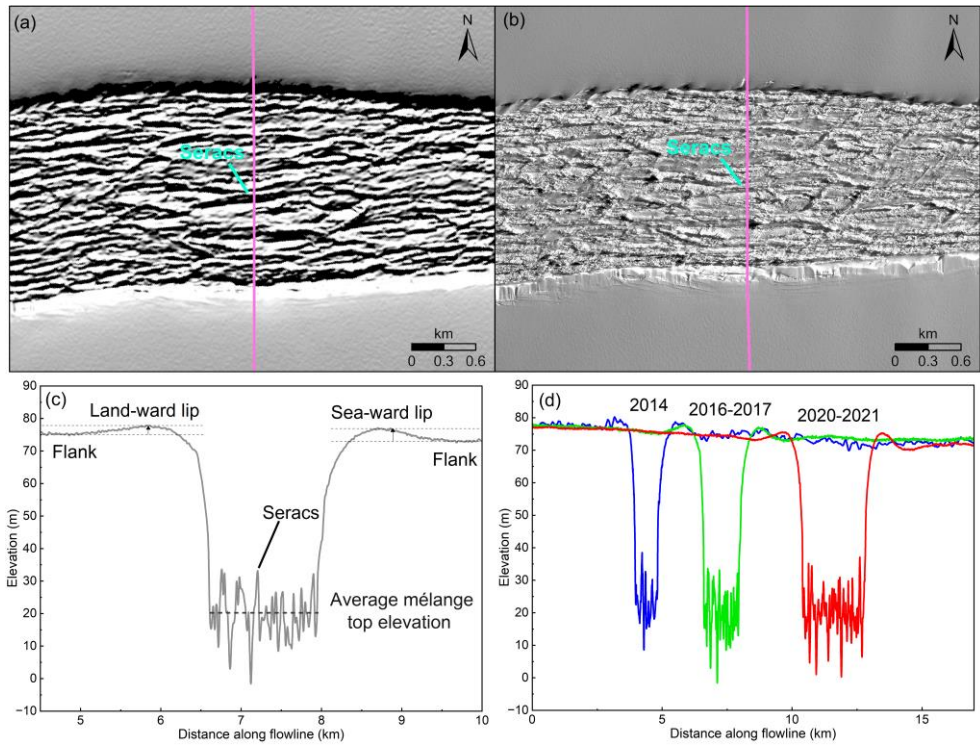
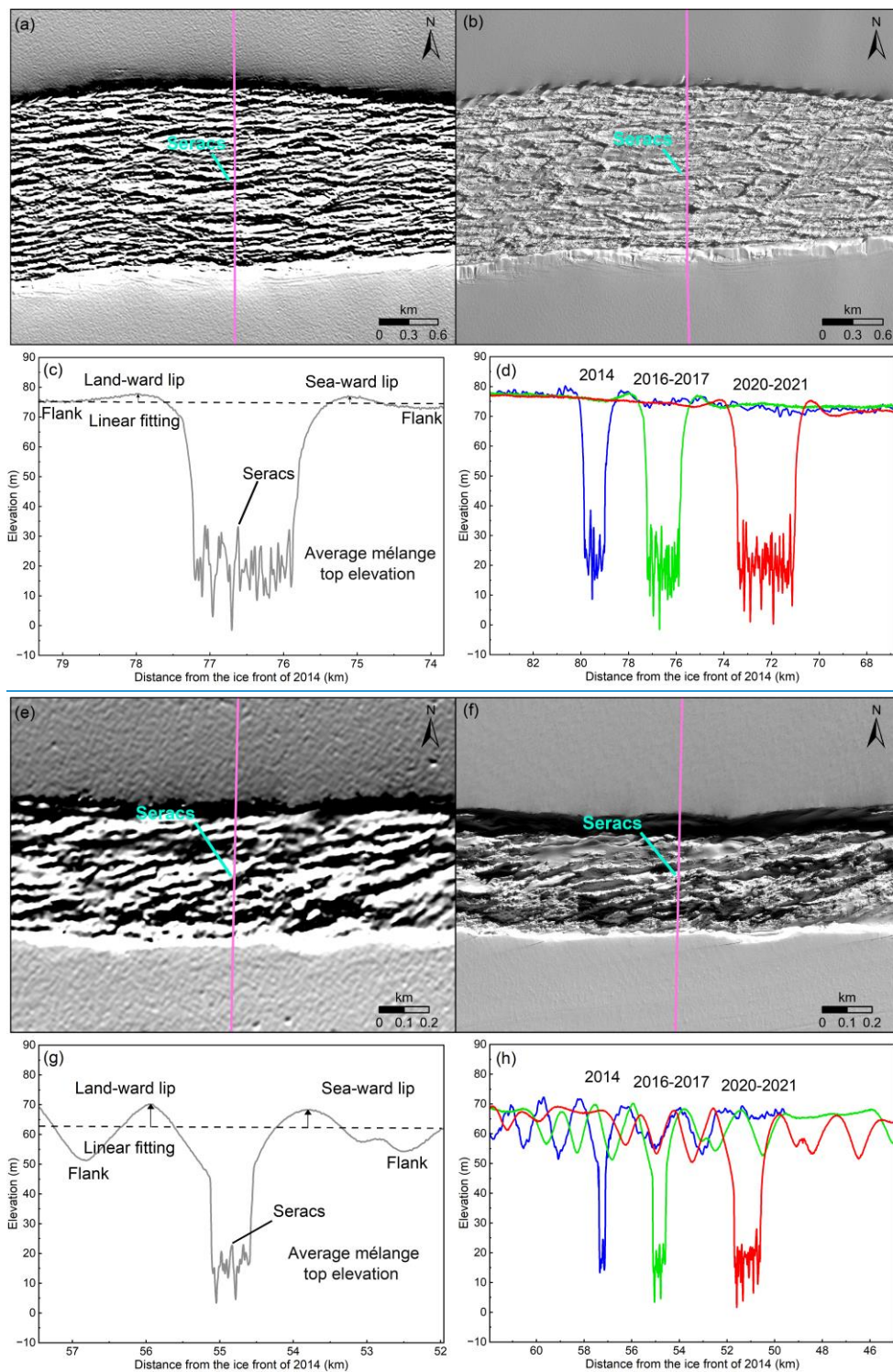


Figure 9. Multi-satellite DEM time series of the two large rifts (T1 and T2) on Filchner Ice Shelf from 2014 to 2021 in 3D: (a) and (d) are reconstructed ZY-3 DEM of 2014, (b) and (e) are bias-corrected REMA DEMs of 2016-2017, and (c) and (f) are bias-corrected REMA DEMs of 2020-2021. The boxes in (b) and (e) indicate two rift sections of the rift where details of 3D structure and mélange are presented in Fig. 10.

Based on the registered ZY-3 DEM of 2014 and bias-corrected sub-DEMs of REMA DEMs of 2016-2017 and 2020-2021, we establish a multi-satellite DEM time series of the large rift, T1 and T2, from 2014 to 2021 (Fig. 9, Table A12). The 2D maps of the DEM time series is presented in Fig. A2. Each of these periodical unified and integrated DEMs presents the unprecedented 3D structural information of these ~50 km long rifts. The unique DEM time series allows us to exploit 3D structure characteristics, including ice surface flank, rift lips, and mélange top and thickness (Figs. 10c and 10g). For the first time, we can accurately compute mélange elevation and volume changes within the entire rifts as they propagate and advect towards the shelf front during the period of 2014-2021 (Figs. 10d and 10h). To quantify 3D dynamic mélange changes within the rifts, we define a transect system for each rift based on the ZY-3 DEM of 2014 with transects are spaced at an

310 interval of 1 km along the rift centerline from the west tip to the east tip, which is also applied to the bias-corrected REMA DEMs of 2016-2017 and 2020-2021.





315 Figure 10. 3D sectional structure and mélange in T1: (a) and (e) are sectional shaded relief maps of a section of REMA DEMs of
 2016-2017 (January 4, 2017 and October 25, 2016) indicated by the boxes in Fig. 9b; (b) and (f) are WorldView images (0.5 m
 resolution) of February 25, 2016 and March 2, 2016; (c) and (g) are elevation profiles along the pink lines in (a) and (e), and 3D rift
 and mélange structure parameters; and (d) and (h) are rift and mélange changes along the profiles from 2014 to 2021 (February 28,
 2014 in blue, January 4, 2016-2017 in green, and February 2, 2020-2021 in red). Elevation displayed in (a) and (e) are
 320 by 10 times.

The lengths of Rifts T1 and T2 are ~~has a length of~~ 47.132-17 km and 48.324 km (a-maximum widths of 1.4576-65 km and
 1.532 km), respectively, measured on the ZY-3 DEM of 2014. Based on the bias-corrected DEM time series from 2014 to 2021
 (Fig. 9), we found that ~~the rift T1 and T2~~ propagated consistently during the period, resulting in an accelerated widening by
 646.83 m (2276.95 m y⁻¹) and 412 m (145 m y⁻¹), respectively, during 2014-2017; and 1,1098.71 m (268.36 m y⁻¹) and 834 m
 325 (203 m y⁻¹), respectively, during 2016-2021. Correspondingly, T1 and T2 ~~the rift~~ have lengthened by 2,393.17 m (84039.68 m
 y⁻¹) and 1701 m (597 m y⁻¹), respectively, during 2014-2017; ~~and but only~~ 1,082.83 m (262.10 m y⁻¹) and 1667 m (405 m y⁻¹),
 respectively, during 2016-2021. Based on the REMA DEMs of 2016-2017, the rift lips on the sea-ward sides ~~are~~ mostly
 higher than that on the landward side in the middle sections of the rifts (Table A3), with an average difference of 0.1560 m
 330 ~~from all transects and the largest difference of 3.08 m at the position located about 35 km from the west tip~~. This phenomenon
 of the greater heights of seaward rift lips ~~-based on the~~ precisely measurements from the bias-corrected sub-DEMs ~~of the~~
 large rift T1 is consistent with the results for some rifts on other Antarctic ice shelves presented in Walker et al. (2019).

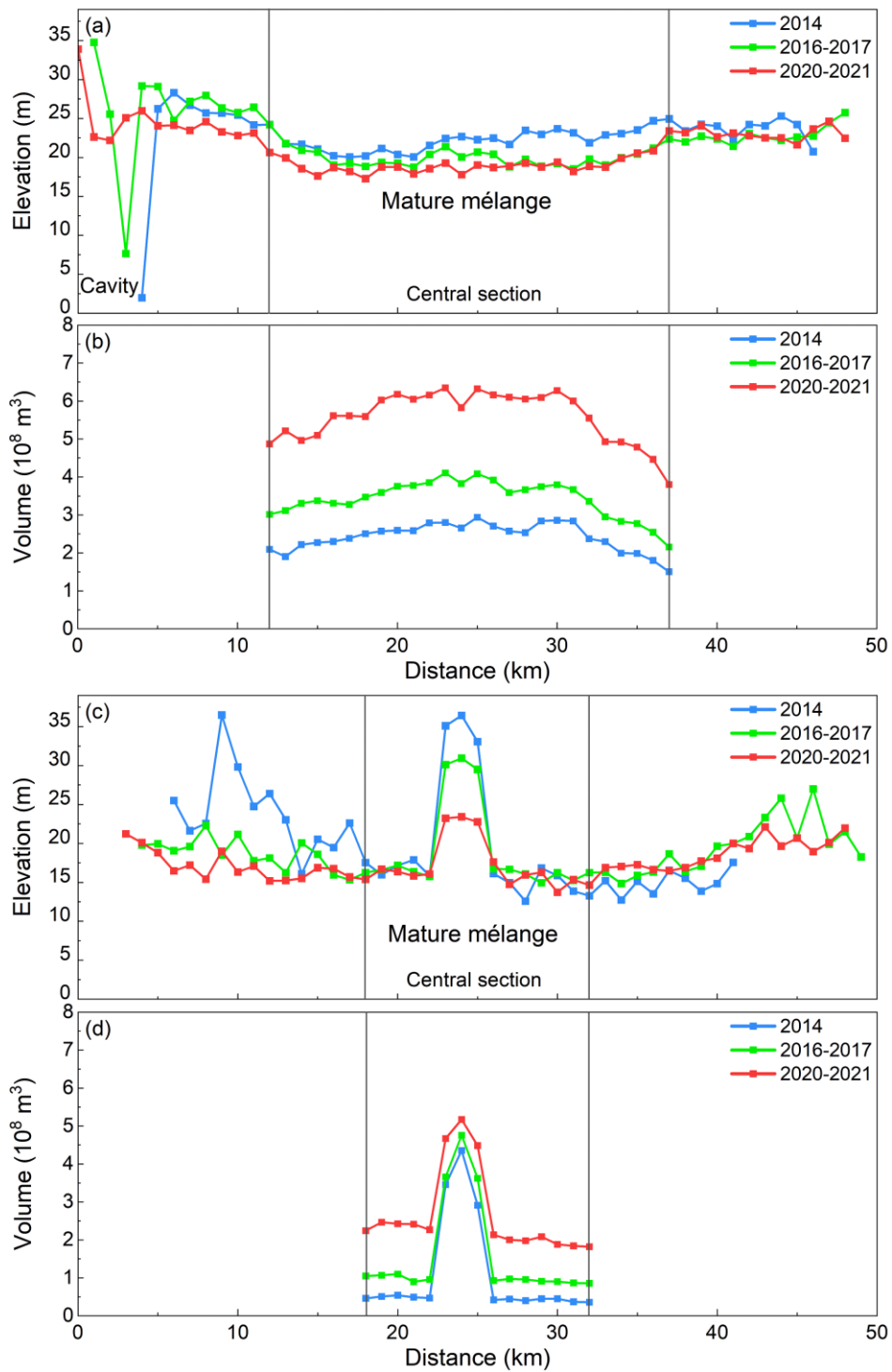


Figure 11. Elevation (a for T1 and c for T2) and volume (b for T1 and d for T2) of ice mélange inside the rifts T1 and T2 from the multi-satellite DEM series from 2014 to 2021. Average elevation and volume of each transect that are separated every 1 km along the rift centerline are illustrated from west tip to east tip.

Figs. 11a and 11c illustrates the average mélange top elevations inside T1 and T2 from the ZY-3 DEM of 2014, REMA DEMs of 2016-2017 and REMA DEMs of 2020-2021. Mélange top elevation profiles in the central sections of the rifts are relatively flat where distinct linear features, called Seracs in Neuburg et al. (1959) and Alley et al. (2023), appear floating with a dominant orientation parallel to the rift centerline in both shaded relief map of DEM (Fig. 10a) and WorldView satellite image (Fig. 10b).

We believe that the central sections of the rifts cuts through the ice shelf and call the mélange “mature mélange”. In contrast, the mélange in the sections close to both rift tips has relatively rugged surface. More specifically, we found cavities that are freshly opened during the fracturing process are found in the unmatured mélange section close to the west tip of T1 (Fig. 11a). These pre-mélange cavities which are verified in ZY-3 stereo images and reconstructed ZY-3 DEM (Fig. A34). They are initially as deep as 24.327 m in the ZY-3 DEM of 2014 (Fig. 11a). As the rift propagates in both length and width, new shelf ice in this section breaks apart from rift walls and fills in the cavities, resulting in a 5.766 m reduction in the cavity depth in the bias-corrected REMA DEM of 2016-2017 (Fig. 11a), and finally, disappearing during 2020-2021. During this process, we believe that the rift in this section cuts the ice shelf deeper and deeper, and the premature mélange becomes gradually mature.

The established DEM time series unveils an overall decrease of 2.74 ± 0.638 m (excluding cavity), at a rate of -0.430 ± 0.105 m y^{-1} , in mélange elevation inside the two rifts T1 from 2014 to 2021 (3.1 ± 0.4 m and 2.3 ± 0.4 m inside T1 (excluding cavity) and T2, respectively) (between blue and red lines in Figs. 11a and 11c). Correspondingly, the mélange thickness decreased by 17.1 ± 3.3 m (2.4 ± 0.4 m y^{-1}) during the period (19.7 ± 2.5 m and 14.5 ± 2.2 m for T1 and T2, respectively). This mélange thickness reduction observed during rift widening on Filchner Ice Shelf coincides with the earlier findings on Amery Ice shelf, Ronne Ice Shelf and Larsen C Ice Shelf (Fricker et al., 2005; Walker et al., 2021; Larour et al., 2021). To compute the corresponding volumetric change from this elevation change of the mélange, we apply the hydrostatic equilibrium principle to obtain the unknown thickness H of the mélange in each transect (Fricker et al., 2005):

$$H = \frac{\rho_{water}}{\rho_{water} - \rho_{mélange}} (h - h_{sea}) \quad (3)$$

where h is the average mélange elevation along the transect and h_{sea} is the average sea level (15.2 m) estimated from the ICESat 2 altimetry data within a range of ~10 km from the ice shelf front from March 2019 to December 2021 during which the ICESat-2 data become stable after the initial stage of the mission (Magruder et al., 2021). ρ_{water} and $\rho_{mélange}$ are densities of seawater and mélange ($1,028$ kg m^{-3} and 865 kg m^{-3}), respectively (King, 1994; Fricker et al., 2005; Adusumilli et al., 2020). We calculate the overall mélange volume inside the rift by an integration of the sub-volume of each transect ($\sum H \times transect\ interval \times sampling\ interval\ along\ transect$) in the mature mélange section. More importantly, Our results indicate that despite the significant decrease in mélange elevation from 2014 to 2021 (Figs. 11a and 11c), the inferred periodical mélange volumes reveal a rapid expansion of the mélange by $(10.31 \pm 0.03) \times 10^9$ km³ (139%) during the period, $(7.93 \pm 0.03) \times 10^9$ km³, or 430% for T1 and $(2.38 \pm 0.01) \times 10^9$ km³ for T2, respectively, during the period (Fig. 11b), mainly attributed to newly vacated space due to partial collapse of rift flank seaward shelf ice from rift walls, associated rift widening, and other rift-mélange interaction factors.

43.3 Discussion

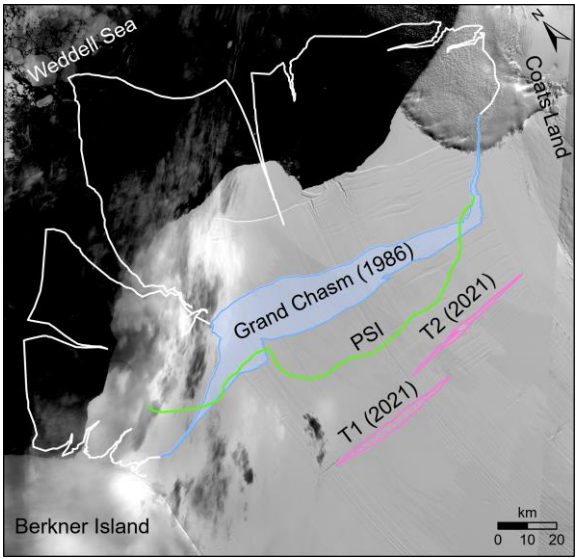
The developed multi-temporal DEM adjustment model MDAM has shown its effectiveness in removing biases between adjacent multi-satellite sub-DEMs and establishing a unified and integrated DEM time series. We demonstrate the full 3D mapping capability for characterizing rift structure (rift lips, pre-mélange cavities, mélange seracs, etc.) and estimating dynamic mélange volume changes from the ICESat-2 controlled DEM time series, extending from rift topography and mélange thickness estimated along ground tracks from ICESat and ICESat-2 measurements in previous studies (Fricker et al., 2005; Walker et al., 2021). Such high-resolution mélange dynamic observations allow us to understand the mélange movement inside a closed environment of large Antarctic rifts, and to further study its role in rapid rift propagation and iceberg calving. To make this model working in a more dynamic open ocean environment, such as Pine Island and Thwaites ice shelves, modifications need to be carried out to address the rapid calving process with incoherent mélange changes in ice shelf front. A thick mélange layer can effectively “freeze” a rift, enabling mechanical stress transmission between its flanks and ultimately suppressing rift propagation (Rignot and MacAyeal, 1998; Larour et al., 2021). In this study, we show that seracs appearing on the mélange surface are a part of the infill inside rifts. They are formed from partial collapsing of rift flanks. We propose that the surface part of the bottom rift wall is first excavated through interactions by tides (Padman et al., 2002 and 2008), melting caused by intrusion of warmer sea water into the rift (Poinelli et al., 2023a), and other factors. This, in turn, causes the collapse of the upper part of the rift flank due to the removal of the bottom support. This process, like coastal bluff erosion, repeats itself and becomes one of the mechanisms that widen the rift and increase the mélange volume. We find that the increased mélange volume in a rift promotes its widening rate, and may further increase ice front calving and impact the ice shelf stability. Although the iceberg calved from the shelf front in 1986 is mostly located inside the Passive Shelf Ice (PSI) area (Fig. A1), meaning no significant buttress reduction from the ice shelf (Doake et al., 1998; Fürst et al., 2016), the combined rifts of T1 and T2 propagated rapidly recently and have already covered ~58% the ice shelf laterally from Coats Land to Berkner Island. As warm water has recently been observed near Berkner Island (Davis et al., 2022), T1 and T2 have the potential to trigger a larger calving beyond the PSI boundary, which may be caused by a destabilization mechanism like that proposed for the Larsen C Ice Shelf (Poinelli et al., 2023a and 2023b).

54 Conclusion

We have developed an innovative multi-temporal DEM adjustment model (MDAM). This system successfully removed biases, as large as ~6 m in elevation, between 50 sub-DEMs across the Filchner Ice Shelf in East Antarctica. The bias-corrected multi-satellite DEM time series ~~has been validated by using the ICESat 2 altimetry data and~~ achieved an accuracy of 0.109 m ~~for the 2020-2021 REMA DEM assessed by ICESat-2 validation, and 0.2 m for the 2016-2017 REMA DEM and 0.3 m for the 2014 ZY-3 DEM estimated through the error propagation.~~ Using this unified and integrated high-resolution DEM time series from 2014 to 2021, for the first time, we unveiled the 3D structural and mélange parameters of the ~50 km long rifts of T1 and T2,

400 including the rift lip height, pre-mélange cavity, and mélange elevation [and thickness](#). Our findings indicate that while the
mélange elevation decreased by 2.74 ± 0.638 m from 2014 to 2021, the mélange within the rifts experienced a rapid expansion
by $(710.3193 \pm 0.03) \times 10^9 \text{ km}^3$, or 1390%, during the period. This expansion is attributed to newly calved shelf ice from rift
walls, associated rift widening, and other rift-mélange interaction factors. These new insights into 3D mélange dynamics are
important for studying the mechanisms and the role of mélange in rift propagation. The developed MDAM system can be
405 applied for research on ice shelf instability and future contribution of the AIS to global sea level rise.

Appendix A



410 [Figure A1. Rifts of T1 and T2 \(pink\) in 2021, Grand Chasm \(blue\) in 1986; PSI boundary \(green\) \(Fürst et al., 2016\);
ice bergs calved in 1986; background is Landsat image of February 11, 2021.](#)

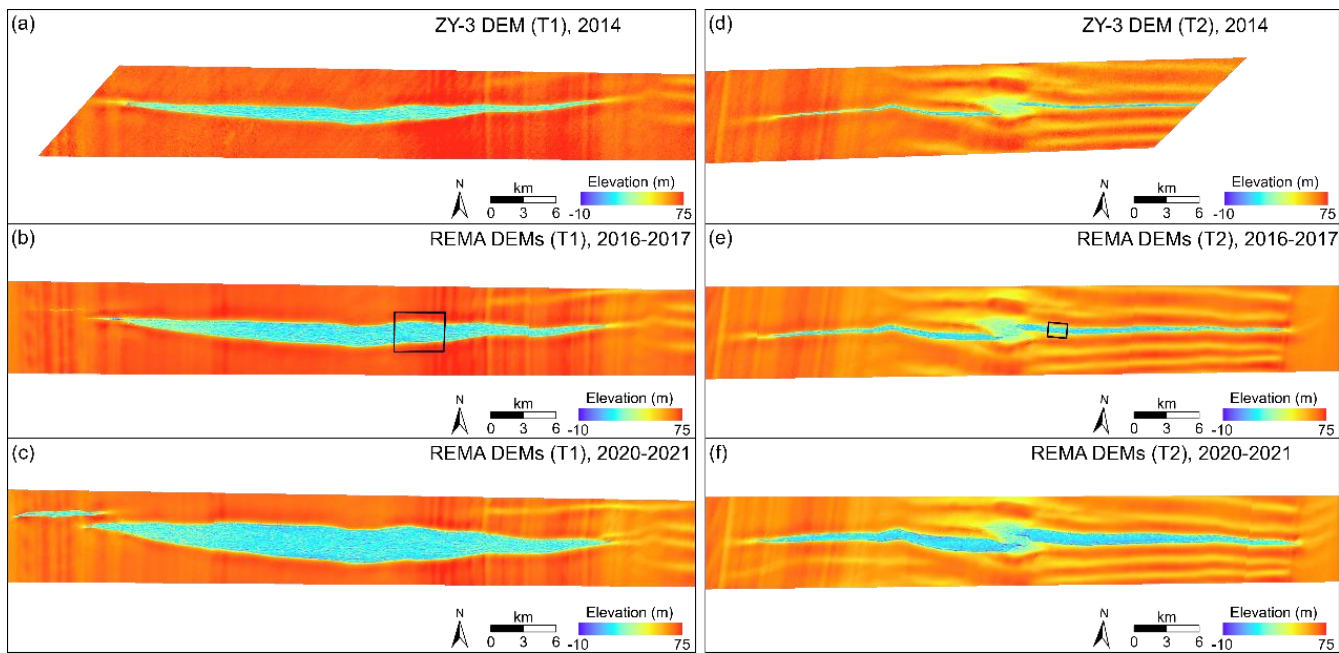


Figure A2. Multi-satellite DEM time series of the two large rifts (T1 and T2) on Filchner Ice Shelf from 2014 to 2021 in 2D: (a) and (d) are reconstructed ZY-3 DEM of 2014, (b) and (e) are bias-corrected REMA DEMs of 2016-2017, and (c) and (f) are bias-corrected REMA DEMs of 2020-2021. The boxes in (b) and (e) indicates two rift sections of the rift where details of 3D structure and mélange are presented in Fig. 10.

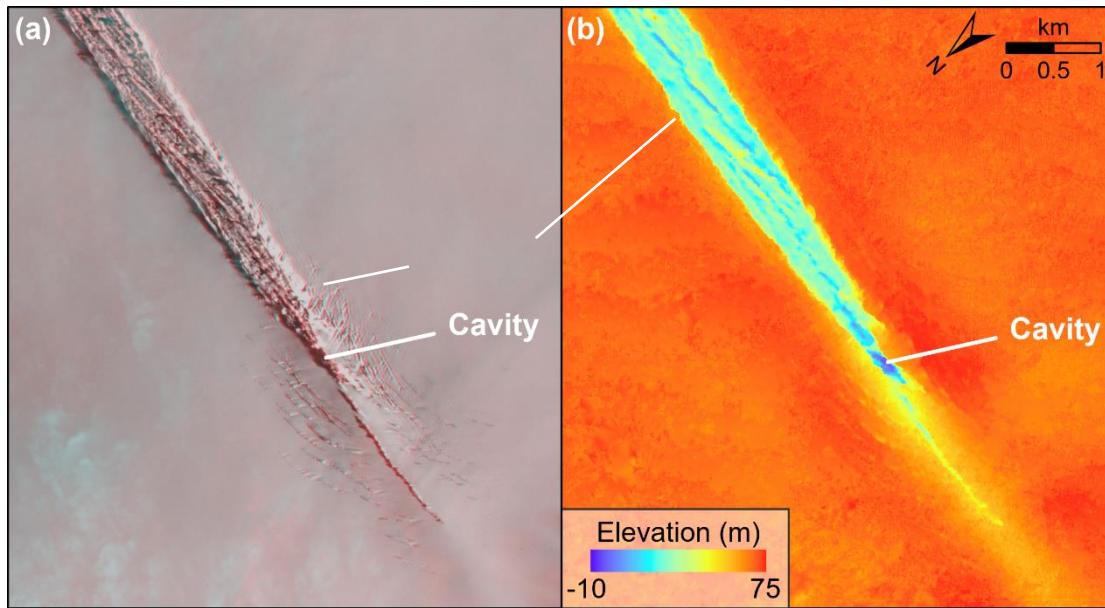


Figure A34. Anaglyph stereo pair of 2014 ZY-3 satellite images (a) and reconstructed ZY-3 DEM (b) showing cavities close to the western tip of rift T1.

425

Table A12. Information of images used for ZY-3 DEM reconstruction and REMA sub-DEMs (Howat et al., 2022).

<i>DEM type</i>	<i>DEM^k</i>	Time of image 1	Time of image 2	Time of image 3
<i>ZY-3 DEM</i>	-	2014/02/28 18:34:23	2014/02/28 18:34:54	2014/02/28 18:35:25
<i>DEM type</i>	<i>DEM^k</i>	ID of sub-DEM	Time of image 1	Time of image 2
<i>REMA DEMs (2016-2017)</i>	1	SETSM_s2s041_WV01_20161031_10200100560C2 900_1020010057847400_2m_lsf_seg1	2016/10/31 06:55:50	2016/10/31 06:54:45
	2	SETSM_s2s041_WV03_20170104_10400100262E6 300_10400100277D2F00_2m_lsf_seg1	2017/01/04 03:31:27	2017/01/04 03:30:17
	3	SETSM_s2s041_WV01_20161219_1020010058C54 700_1020010057729D00_2m_lsf_seg1	2016/12/19 13:55:22	2016/12/19 13:56:21
	4	SETSM_s2s041_WV01_20161220_102001005AC45 800_1020010058D62800_2m_lsf_seg1	2016/12/20 07:19:42	2016/12/20 07:20:36
	5	SETSM_s2s041_WV02_20161006_103001005E9F9 E00_103001005D8A5100_2m_lsf_seg1	2016/10/06 11:11:37	2016/10/06 11:10:09

	6	SETSM_s2s041_WV02_20161219_10300100615A4 D00_1030010062336300_2m_lsf_seg1	2016/12/19 08:59:46	2016/12/19 09:01:26
	7	SETSM_s2s041_WV01_20161219_1020010057514 C00_102001005A46ED00_2m_lsf_seg1	2016/12/19 13:56:00	2016/12/19 13:54:55
	8	SETSM_s2s041_WV01_20170104_10200100594C1 300_102001005ACFFC00_2m_lsf_seg1	2017/01/04 14:21:20	2017/01/04 14:20:11
	9	SETSM_s2s041_WV01_20161025_1020010056B75 500_102001005814FB00_2m_lsf_seg1	2016/10/25 07:33:35	2016/10/25 07:32:32
	10	SETSM_s2s041_WV01_20161025_1020010055CA2 A00_102001005658D200_2m_lsf_seg1	2016/10/25 07:33:55	2016/10/25 07:32:52
	11	SETSM_s2s041_WV02_20161212_1030010061560 200_10300100614D0D00_2m_lsf_seg1	2016/12/12 03:23:10	2016/12/12 03:22:00
	12	SETSM_s2s041_WV02_20161220_10300100633CF 200_1030010062317900_2m_lsf_seg1	2016/12/20 05:07:25	2016/12/20 05:05:43
	13	SETSM_s2s041_WV02_20161004_103001005E897 400_103001005E7A4B00_2m_lsf_seg1	2016/10/4 10:43:18	2016/10/4 10:45:21
	14	SETSM_s2s041_WV01_20161031_1020010057D5 DD00_1020010057C58900_2m_lsf_seg1	2016/10/31 06:55:20	2016/10/31 06:54:15
REMA DEMs (2020-2021)	1	SETSM_s2s041_WV01_20210313_10200100A22E ED00_10200100A41A1C00_2m_lsf_seg1	2021/03/13 14:29:27	2021/03/13 14:28:34
	2	SETSM_s2s041_WV01_20210313_10200100A4D4 E000_10200100A4DAC200_2m_lsf_seg1	2021/03/13 14:28:17	2021/03/13 14:29:08
	3	SETSM_s2s041_WV01_20210126_10200100A3E1F 100_10200100A6209000_2m_lsf_seg1	2021/01/26 14:01:59	2021/01/26 14:02:49
	4	SETSM_s2s041_WV01_20210116_10200100A3347 F00_10200100A6DCA900_2m_lsf_seg1	2021/01/16 06:48:32	2021/01/16 06:49:26
	5	SETSM_s2s041_WV01_20210126_10200100A0336 A00_10200100A3CAE800_2m_lsf_seg1	2021/01/26 14:01:37	2021/01/26 14:02:26
	6	SETSM_s2s041_WV02_20210117_10300100B354E 500_10300100B4CB5400_2m_lsf_seg1	2021/01/17 11:16:55	2021/01/17 11:18:08
	7	SETSM_s2s041_WV02_20210221_10300100B2BA 9B00_10300100B3853900_2m_lsf_seg1	2021/02/21 08:08:54	2021/02/21 08:07:50
	8	SETSM_s2s041_WV01_20210202_10200100A0839 200_10200100A67B9000_2m_lsf_seg1	2021/02/02 13:00:47	2021/02/02 13:01:35
	9	SETSM_s2s041_WV02_20210203_10300100B33FB 700_10300100B3535000_2m_lsf_seg1	2021/02/03 05:54:34	2021/02/03 05:53:18

10	SETSM_s2s041_WV02_20210126_10300100B37B2 C00_10300100B4999A00_2m_lsf_seg1	2021/01/26 09:05:41	2021/01/26 09:06:49
11	SETSM_s2s041_WV02_20210203_10300100B409A 800_10300100B4AEC000_2m_lsf_seg1	2021/02/03 10:51:17	2021/02/03 10:49:46
12	SETSM_s2s041_WV01_20210122_10200100A2B85 700_10200100A3D3D700_2m_lsf_seg1	2021/01/22 07:42:53	2021/01/22 07:43:45
13	SETSM_s2s041_WV01_20201109_102001009EC56 300_10200100A1685C00_2m_lsf_seg1	2020/11/09 06:48:36	2020/11/09 06:49:26
14	SETSM_s2s041_WV02_20201003_10300100AE149 700_10300100AE656F00_2m_lsf_seg1	2020/10/03 09:45:56	2020/10/03 09:46:59
15	SETSM_s2s041_WV01_20200923_102001009B59C F00_102001009C2DFD00_2m_lsf_seg1	2020/09/23 13:06:20	2020/09/23 13:05:24

430 Table A24. Bias corrections (dX^k , dY^k , dZ^k) estimated for 15 sub-DEMs, ordered from Berkner Island to Coats Land, for the REMA DEMs of 2020-2021.

DEM^k	$dX^k \pm \sigma_{dX} \text{ (m)}$	$dY^k \pm \sigma_{dY} \text{ (m)}$	$dZ^k \pm \sigma_{dZ} \text{ (m)}$
<u>1</u>	<u>2.0 ± 1.7</u>	<u>-1.9 ± 2.4</u>	<u>-3.9 ± 0.1</u>
<u>2</u>	<u>-4.6 ± 1.7</u>	<u>2.3 ± 2.3</u>	<u>-1.0 ± 0.1</u>
<u>3</u>	<u>-0.2 ± 1.7</u>	<u>-0.8 ± 2.4</u>	<u>-2.9 ± 0.2</u>
<u>4</u>	<u>4.7 ± 2.2</u>	<u>2.7 ± 3.1</u>	<u>0.7 ± 0.2</u>
<u>5</u>	<u>1.9 ± 1.8</u>	<u>-3.0 ± 2.5</u>	<u>-0.2 ± 0.2</u>
<u>6</u>	<u>6.8 ± 2.2</u>	<u>-5.2 ± 3.0</u>	<u>-1.2 ± 0.2</u>
<u>7</u>	<u>-3.8 ± 3.1</u>	<u>6.0 ± 4.2</u>	<u>0.1 ± 0.3</u>
<u>8</u>	<u>-1.2 ± 3.3</u>	<u>2.5 ± 4.6</u>	<u>-1.3 ± 0.3</u>
<u>9</u>	<u>-3.6 ± 2.9</u>	<u>5.9 ± 4.0</u>	<u>2.1 ± 0.2</u>
<u>10</u>	<u>5.3 ± 2.2</u>	<u>-6.2 ± 3.0</u>	<u>-0.7 ± 0.2</u>
<u>11</u>	<u>0.6 ± 1.7</u>	<u>-0.3 ± 2.3</u>	<u>-11.0 ± 0.1</u>
<u>12</u>	<u>-1.3 ± 2.6</u>	<u>3.2 ± 3.6</u>	<u>-1.7 ± 0.2</u>
<u>13</u>	<u>-1.4 ± 3.1</u>	<u>5.3 ± 4.2</u>	<u>1.2 ± 0.2</u>
<u>14</u>	<u>-0.6 ± 2.5</u>	<u>3.0 ± 3.5</u>	<u>2.2 ± 0.2</u>
<u>15</u>	<u>0.6 ± 1.5</u>	<u>-1.6 ± 2.1</u>	<u>-1.8 ± 0.1</u>

435

Table A3. Heights of rift lips measured on the land-ward (L) side and sea-ward (S) side, and their difference (S-L) at each transect along the centerlines of Rift T1 and T2 (REMA DEMs of 2016-2017).

Rift T1:

<u>Transect ID from west tip to</u> <u>east tip (1 km separation)</u>	<u>Land-ward lip</u> <u>height (L) (m)</u>	<u>Sea-ward lip</u> <u>height (S) (m)</u>	<u>Difference (S-L)</u> <u>(m)</u>
<u>0</u>	<u>-1.7</u>	<u>0.5</u>	<u>2.2</u>
<u>1</u>	<u>3.6</u>	<u>4.5</u>	<u>1.0</u>
<u>2</u>	<u>2.7</u>	<u>4.7</u>	<u>2.0</u>
<u>3</u>	<u>0.8</u>	<u>1.7</u>	<u>0.9</u>
<u>4</u>	<u>4.4</u>	<u>1.5</u>	<u>-2.9</u>
<u>5</u>	<u>0.7</u>	<u>1.7</u>	<u>1.0</u>
<u>6</u>	<u>1.8</u>	<u>2.0</u>	<u>0.2</u>
<u>7</u>	<u>2.3</u>	<u>2.6</u>	<u>0.3</u>
<u>8</u>	<u>1.3</u>	<u>1.4</u>	<u>0.2</u>
<u>9</u>	<u>0.1</u>	<u>1.7</u>	<u>1.7</u>
<u>10</u>	<u>-1.6</u>	<u>1.8</u>	<u>3.4</u>
<u>11</u>	<u>-0.7</u>	<u>1.1</u>	<u>1.7</u>
<u>12</u>	<u>1.6</u>	<u>3.4</u>	<u>1.8</u>
<u>13</u>	<u>2.8</u>	<u>3.0</u>	<u>0.2</u>
<u>14</u>	<u>1.6</u>	<u>2.6</u>	<u>1.0</u>
<u>15</u>	<u>1.6</u>	<u>2.3</u>	<u>0.8</u>
<u>16</u>	<u>1.8</u>	<u>2.1</u>	<u>0.3</u>
<u>17</u>	<u>1.5</u>	<u>1.9</u>	<u>0.5</u>
<u>18</u>	<u>2.5</u>	<u>2.2</u>	<u>-0.3</u>
<u>19</u>	<u>1.6</u>	<u>1.9</u>	<u>0.2</u>
<u>20</u>	<u>1.9</u>	<u>1.8</u>	<u>-0.1</u>
<u>21</u>	<u>2.3</u>	<u>1.6</u>	<u>-0.7</u>
<u>22</u>	<u>2.0</u>	<u>1.4</u>	<u>-0.6</u>
<u>23</u>	<u>1.7</u>	<u>0.9</u>	<u>-0.7</u>
<u>24</u>	<u>1.7</u>	<u>1.0</u>	<u>-0.7</u>

<u>25</u>	<u>0.9</u>	<u>1.0</u>	<u>0.1</u>
<u>26</u>	<u>1.9</u>	<u>0.3</u>	<u>-1.6</u>
<u>27</u>	<u>1.0</u>	<u>0.1</u>	<u>-0.9</u>
<u>28</u>	<u>0.7</u>	<u>1.5</u>	<u>0.8</u>
<u>29</u>	<u>2.4</u>	<u>3.4</u>	<u>1.0</u>
<u>30</u>	<u>1.4</u>	<u>2.1</u>	<u>0.7</u>
<u>31</u>	<u>3.3</u>	<u>3.7</u>	<u>0.5</u>
<u>32</u>	<u>3.3</u>	<u>3.9</u>	<u>0.6</u>
<u>33</u>	<u>3.7</u>	<u>2.1</u>	<u>-1.6</u>
<u>34</u>	<u>3.7</u>	<u>4.8</u>	<u>1.1</u>
<u>35</u>	<u>2.0</u>	<u>1.9</u>	<u>0.0</u>
<u>36</u>	<u>0.4</u>	<u>1.2</u>	<u>0.8</u>
<u>37</u>	<u>-0.3</u>	<u>-2.3</u>	<u>-2.0</u>
<u>38</u>	<u>2.8</u>	<u>3.5</u>	<u>0.7</u>
<u>39</u>	<u>2.5</u>	<u>1.3</u>	<u>-1.2</u>
<u>40</u>	<u>2.4</u>	<u>1.7</u>	<u>-0.6</u>
<u>41</u>	<u>2.0</u>	<u>1.1</u>	<u>-0.9</u>
<u>42</u>	<u>0.8</u>	<u>1.5</u>	<u>0.7</u>
<u>43</u>	<u>2.6</u>	<u>2.6</u>	<u>0.0</u>
<u>44</u>	<u>4.6</u>	<u>4.2</u>	<u>-0.4</u>
<u>45</u>	<u>3.1</u>	<u>2.7</u>	<u>-0.5</u>
<u>46</u>	<u>-0.8</u>	<u>0.1</u>	<u>1.0</u>
<u>47</u>	<u>1.8</u>	<u>1.9</u>	<u>0.1</u>
<u>48</u>	<u>-1.4</u>	<u>-1.8</u>	<u>-0.4</u>

Average lip height difference (s – l) within the section of mature mélange of T1: 0.1 m (max 1.8 m at 12 km from west tip).

Rift T2:

<u>Transect ID from west tip to east tip (1 km separation)</u>	<u>Land-ward lip height (L) (m)</u>	<u>Sea-ward lip height (S) (m)</u>	<u>Difference (S-L) (m)</u>
<u>0</u>	<u>0.4</u>	<u>3.0</u>	<u>2.5</u>
<u>1</u>	<u>0.6</u>	<u>0.7</u>	<u>0.1</u>
<u>2</u>	<u>-0.1</u>	<u>1.6</u>	<u>1.7</u>

<u>3</u>	<u>2.1</u>	<u>3.0</u>	<u>0.9</u>
<u>4</u>	<u>4.5</u>	<u>4.9</u>	<u>0.4</u>
<u>5</u>	<u>2.3</u>	<u>2.9</u>	<u>0.7</u>
<u>6</u>	<u>2.0</u>	<u>0.8</u>	<u>-1.2</u>
<u>7</u>	<u>2.0</u>	<u>2.7</u>	<u>0.7</u>
<u>8</u>	<u>-2.2</u>	<u>-1.8</u>	<u>0.4</u>
<u>9</u>	<u>-2.6</u>	<u>-0.9</u>	<u>1.7</u>
<u>10</u>	<u>0.1</u>	<u>0.5</u>	<u>0.5</u>
<u>11</u>	<u>-0.7</u>	<u>0.1</u>	<u>0.8</u>
<u>12</u>	<u>0.9</u>	<u>1.2</u>	<u>0.3</u>
<u>13</u>	<u>0.3</u>	<u>-0.9</u>	<u>-1.3</u>
<u>14</u>	<u>-0.3</u>	<u>-3.2</u>	<u>-2.9</u>
<u>15</u>	<u>-0.3</u>	<u>-2.4</u>	<u>-2.2</u>
<u>16</u>	<u>0.3</u>	<u>-0.9</u>	<u>-1.3</u>
<u>17</u>	<u>0.2</u>	<u>1.2</u>	<u>0.9</u>
<u>18</u>	<u>0.1</u>	<u>3.2</u>	<u>3.0</u>
<u>19</u>	<u>-1.6</u>	<u>4.6</u>	<u>6.1</u>
<u>20</u>	<u>-11.5</u>	<u>1.4</u>	<u>=</u>
<u>21</u>	<u>-7.8</u>	<u>-11.5</u>	<u>-3.7</u>
<u>22</u>	<u>-2.8</u>	<u>3.0</u>	<u>5.9</u>
<u>23</u>	<u>0.6</u>	<u>2.7</u>	<u>2.2</u>
<u>24</u>	<u>1.2</u>	<u>3.6</u>	<u>2.5</u>
<u>25</u>	<u>0.7</u>	<u>-16.7</u>	<u>=</u>
<u>26</u>	<u>-18.6</u>	<u>-5.2</u>	<u>=</u>
<u>27</u>	<u>-0.3</u>	<u>-1.9</u>	<u>-1.6</u>
<u>28</u>	<u>2.5</u>	<u>0.0</u>	<u>-2.5</u>
<u>29</u>	<u>1.8</u>	<u>1.6</u>	<u>-0.1</u>
<u>30</u>	<u>1.1</u>	<u>1.1</u>	<u>0.1</u>
<u>31</u>	<u>1.2</u>	<u>1.1</u>	<u>-0.1</u>
<u>32</u>	<u>0.6</u>	<u>-0.1</u>	<u>-0.7</u>
<u>33</u>	<u>1.9</u>	<u>1.5</u>	<u>-0.4</u>
<u>34</u>	<u>3.3</u>	<u>2.1</u>	<u>-1.2</u>

<u>35</u>	<u>2.9</u>	<u>2.8</u>	<u>0.0</u>
<u>36</u>	<u>3.6</u>	<u>3.5</u>	<u>-0.1</u>
<u>37</u>	<u>4.7</u>	<u>4.4</u>	<u>-0.3</u>
<u>38</u>	<u>3.9</u>	<u>3.3</u>	<u>-0.6</u>
<u>39</u>	<u>4.3</u>	<u>3.5</u>	<u>-0.8</u>
<u>40</u>	<u>3.2</u>	<u>2.7</u>	<u>-0.6</u>
<u>41</u>	<u>3.0</u>	<u>2.0</u>	<u>-1.0</u>
<u>42</u>	<u>3.4</u>	<u>1.4</u>	<u>-2.0</u>
<u>43</u>	<u>3.6</u>	<u>1.7</u>	<u>-1.9</u>
<u>44</u>	<u>3.5</u>	<u>2.0</u>	<u>-1.5</u>
<u>45</u>	<u>3.5</u>	<u>1.7</u>	<u>-1.9</u>
<u>46</u>	<u>4.3</u>	<u>1.6</u>	<u>-2.7</u>
<u>47</u>	<u>5.3</u>	<u>1.7</u>	<u>-3.6</u>
<u>48</u>	<u>6.1</u>	<u>4.7</u>	<u>-1.4</u>
<u>49</u>	<u>5.0</u>	<u>6.2</u>	<u>1.2</u>

440 Average lip height difference (s – l) within the section of mature mélange of T2: 0.2 m (max 5.9 m at 22 km from west tip).

Data availability. REMA DEMs used in this study are available at <https://www.pgc.umn.edu/data/rema/> (last access: December 17, 2024) (Howat et al., 2019). ITS_LIVE ice flow velocity maps are at <https://its-live.jpl.nasa.gov/> (last access: January 11, 2024) (Gardner et al., 2019).

Author contributions. RL led the study and designed the MDAM system. MX programmed and implemented the model. ZL performed accuracy verification. RL, MX, and MS were involved in data analysis and presentation. RL, MS, LA, and GQ edited the manuscript.

450 *Competing interests.* The contact author has declared that neither they nor their co-authors have any competing interests.

Acknowledgements. We thank the United States Geological Survey (USGS) for the Landsat images, and the Chinese Ministry of Natural Resources for the ZY-3 images. The WorldView images are purchased from DigitalGlobe.

455

Financial support. This research has been supported by the National Natural Science Foundation of China (Grant No. 42394131), the National Key R&D Program of China (Grant No. 2024YFF0808302), and the Fundamental Research Funds for the Central Universities.

460 **References**

- Adusumilli, S., Fricker, H. A., Medley, B., Padman, L., and Siegfried, M. R.: Interannual variations in meltwater input to the Southern Ocean from Antarctic ice shelves, *Nat. Geosci.*, 13, 616-620, 10.1038/s41561-020-0616-z, 2020.
- Alley, R. B., Cuffey, K. M., Bassis, J. N., Alley, K. E., Wang, S., Parizek, B. R., Anandakrishnan, S., Christianson, K., and DeConto, R. M.: Iceberg Calving: Regimes and Transitions, *Annual Review of Earth and Planetary Sciences*, 51, 189-215, 10.1146/annurev-earth-032320-110916, 2023.
- Allison, I., Alley, R. B., Fricker, H. A., Thomas, R. H., and Warner, R. C.: Ice sheet mass balance and sea level, *Antarctic Sci.*, 21, 413-426, 10.1017/S0954102009990137, 2009.
- Anderson, N. T. and Marchisio, G. B.: WorldView-2 and the evolution of the DigitalGlobe remote sensing satellite constellation: introductory paper for the special session on WorldView-2, in: *Algorithms and Technologies for Multispectral, Hyperspectral, and Ultraspectral Imagery XVIII*, 2012/05/14, 166-180, 10.1117/12.919756, 2012.
- Bindschadler, R., Vornberger, P., Fleming, A., Fox, A., Mullins, J., Binnie, D., Paulsen, S. J., Granneman, B., and Gorodetzky, D.: The Landsat image mosaic of Antarctica, *Remote Sens. Environ.*, 112, 4214-4226, 10.1016/j.rse.2008.07.006, 2008.
- Brunt, K. M., Neumann, T. A., and Smith, B. E.: Assessment of ICESat-2 Ice Sheet Surface Heights, Based on Comparisons Over the Interior of the Antarctic Ice Sheet, *Geophys. Res. Lett.*, 46, 13072-13078, 10.1029/2019GL084886, 2019.
- Cassotto, R. K., Burton, J. C., Amundson, J. M., Fahnestock, M. A., and Truffer, M.: Granular decoherence precedes ice mélange failure and glacier calving at Jakobshavn Isbræ, *Nat. Geosci.*, 14, 417-422, 2021.
- Davis, P. E. D., Jenkins, A., Nicholls, K. W., Dutrieux, P., Schröder, M., Janout, M. A., Hellmer, H. H., Templeton, R., and McPhail, S.: Observations of Modified Warm Deep Water Beneath Ronne Ice Shelf, Antarctica, From an Autonomous Underwater Vehicle, *J. Geophys. Res. Oceans*, 127, e2022JC019103, 10.1029/2022JC019103, 2022.
- Depoorter, M. A., Bamber, J. L., Griggs, J. A., Lenaerts, J. T. M., Ligtnerberg, S. R. M., van den Broeke, M. R., and Moholdt, G.: Calving fluxes and basal melt rates of Antarctic ice shelves, *Nature*, 502, 89-92, 10.1038/nature12567, 2013.
- DiMarzio, J., Brenner, A., Schutz, R., Shuman, C. A., and Zwally, H. J.: GLAS/ICESat 500 m laser altimetry digital elevation model of Antarctica, National Snow and Ice Data Center, 10.5067/K2IMI0L24BRJ, 2007.
- Doake, C. S. M., Corr, H. F. J., Rott, H., Skvarca, P., and Young, N. W.: Breakup and conditions for stability of the northern Larsen Ice Shelf, Antarctica, *Nature*, 391, 778-780, 10.1038/35832, 1998.
- Feng, T., Li, Y., Wang, K., Qiao, G., Cheng, Y., Yuan, X., Luo, S., and Li, R.: A hierarchical network densification approach for reconstruction of historical ice velocity fields in East Antarctica, *J. Glaciol.*, 1-20, 10.1017/jog.2022.58, 2022.
- Ferrigno, J. G. and Gould, W. G.: Substantial changes in the coastline of Antarctica revealed by satellite imagery, *Polar Record*, 23, 577-583, 10.1017/S003224740000807X, 1987.

- Francis, D., Mattingly, K. S., Lhermitte, S., Temimi, M., and Heil, P.: Atmospheric extremes caused high oceanward sea surface slope triggering the biggest calving event in more than 50 years at the Amery Ice Shelf, *The Cryosphere*, 15, 2147-2165, 10.5194/tc-15-2147-2021, 2021.
- Fricker, H. A., Young, N. W., Coleman, R., Bassis, J. N., and Minster, J.-B.: Multi-year monitoring of rift propagation on the Amery Ice Shelf, East Antarctica, *Geophys. Res. Lett.*, 32, 10.1029/2004GL021036, 2005.
- Fürst, J. J., Durand, G., Gillet-Chaulet, F., Tavard, L., Rankl, M., Braun, M., and Gagliardini, O.: The safety band of Antarctic ice shelves, *Nature Climate Change*, 6, 479-482, 10.1038/nclimate2912, 2016.
- Gardner, A. S., Fahnestock, M. A., and Scambos, T. A.: MEaSUREs ITS_LIVE Landsat Image-Pair Glacier and Ice Sheet Surface Velocities, Version 1, Boulder, Colorado USA, NASA National Snow and Ice Data Center Distributed Active Archive Center, 10.5067/IMR9D3PEI28U., 2019.
- Greene, C. A., Gardner, A. S., Schlegel, N.-J., and Fraser, A. D.: Antarctic calving loss rivals ice-shelf thinning, *Nature*, 609, 948-953, 10.1038/s41586-022-05037-w, 2022.
- Grosfeld, K., Schröder, M., Fährbach, E., Gerdes, R., and Mackensen, A.: How iceberg calving and grounding change the circulation and hydrography in the Filchner Ice Shelf-Ocean System, *J. Geophys. Res. Oceans*, 106, 9039-9055, 10.1029/2000JC000601, 2001.
- Howat, I. M., Porter, C., Smith, B. E., Noh, M.-J., and Morin, P.: The reference elevation model of Antarctica, *The Cryosphere*, 13, 665-674, 10.5194/tc-13-665-2019, 2019, 2019.
- Howat, I., Porter, C., Noh, M.-J., Husby, E., Khuvsi, S., Danish, E., Tomko, K., Gardiner, J., Negrete, A., Yadav, B., Klassen, J., Kelleher, C., Cloutier, M., Bakker, J., Enos, J., Arnold, G., Bauer, G., and Morin, P.: The Reference Elevation Model of Antarctica - Strips, Version 4.1 (V1), Harvard Dataverse, doi/10.7910/DVN/X7NDNY, 2022.
- Hulbe, C. L., LeDoux, C., and Cruikshank, K.: Propagation of long fractures in the Ronne Ice Shelf, Antarctica, investigated using a numerical model of fracture propagation, *J. Glaciol.*, 56, 459-472, 10.3189/002214310792447743, 2010.
- Jacobs, S. S., Helmer, H. H., Doake, C. S. M., Jenkins, A., and Frolich, R. M.: Melting of ice shelves and the mass balance of Antarctica, *J. Glaciol.*, 38, 375-387, 10.3189/S0022143000002252, 1992.
- Joughin, I. and MacAyeal, D. R.: Calving of large tabular icebergs from ice shelf rift systems, *Geophys. Res. Lett.*, 32, 10.1029/2004GL020978, 2005.
- King, E. C.: Observations of a rift in the Ronne Ice Shelf, Antarctica, *J. Glaciol.*, 40, 187-189, 10.3189/S0022143000003968, 1994.
- King, M. A., Padman, L., Nicholls, K., Clarke, P. J., Gudmundsson, G. H., Kulessa, B., and Shepherd, A.: Ocean tides in the Weddell Sea: New observations on the Filchner-Ronne and Larsen C ice shelves and model validation, *J. Geophys. Res. Oceans*, 116, 10.1029/2011JC006949, 2011.
- Larour, E., Rignot, E., and Aubry, D.: Modelling of rift propagation on Ronne Ice Shelf, Antarctica, and sensitivity to climate change, *Geophys. Res. Lett.*, 31, 10.1029/2004GL020077, 2004.

- Larour, E., Rignot, E., Poinelli, M., and Scheuchl, B.: Physical processes controlling the rifting of Larsen C Ice Shelf, Antarctica, prior to the calving of iceberg A68, *Proceedings of the National Academy of Sciences*, 118, e2105080118, 10.1073/pnas.2105080118, 2021.
- Li, R.: Potential of high-resolution satellite imagery for national mapping products, *Photogrammetric Engineering and Remote Sensing*, 64, 1165-1170, 1998.
- Li, R., Xiao, H., Liu, S., and Tong, X.: A Systematic study of the fracturing of Ronne - Filchner Ice Shelf, Antarctica, using multisource satellite data from 2001 to 2016, *The Cryosphere Discussions*, 1-38, 10.5194/tc-2017-178, 2017a.
- Li, R., Ye, W., Qiao, G., Tong, X., Kong, F., Liu, S., and Ma X.: A new analytical method for estimating Antarctic ice flow in 1960s from historical optical satellite imagery, *IEEE Transactions on Geoscience and Remote Sensing*, 55, 2771-2785, 10.1109/TGRS.2017.2654484, 2017b.
- Li, R., Li, H., Hao, T., Qiao, G., Cui, H., He, Y., Hai, G., Xie, H., Cheng, Y., and Li, B.: Assessment of ICESat-2 ice surface elevations over the Chinese Antarctic Research Expedition (CHINARE) route, East Antarctica, based on coordinated multi-sensor observations, *The Cryosphere*, 15, 3083-3099, 10.5194/tc-15-3083-2021, 2021.
- Li, R., Cheng, Y., Cui, H., Xia, M., Yuan, X., Li, Z., Luo, S., and Qiao, G.: Overestimation and adjustment of Antarctic ice flow velocity fields reconstructed from historical satellite imagery, *The Cryosphere*, 16, 737-760, 10.5194/tc-16-737-2022, 2022.
- Li, R., Cheng, Y., Chang, T., Gwyther, D. E., Forbes, M., An, L., Xia, M., Yuan, X., Qiao, G., Tong, X., and Ye, W.: Satellite record reveals 1960s acceleration of Totten Ice Shelf in East Antarctica, *Nat. Commun.*, 14, 4061, 10.1038/s41467-023-39588-x, 2023a.
- Li, T., Hu, Y., Liu, B., Jiang, L., Wang, H., and Shen, X.: Co-registration and residual correction of digital elevation models: a comparative study, *The Cryosphere*, 17, 5299-5316, 10.5194/tc-17-5299-2023, 2023b.
- Liu, H., Jezek, K., Li, B., and Zhao, Z.: Radarsat Antarctic Mapping Project digital elevation model version 2, Radarsat Antarctic Mapping Project digital elevation model version 2, Boulder, Colorado USA, NASA National Snow and Ice Data Center Distributed Active Archive Center, 10.5067/8JKNEW6BFRVD, 2001.
- Liu, Y., Moore, J. C., Cheng, X., Gladstone, R. M., Bassis, J. N., Liu, H., Wen, J., and Hui, F.: Ocean-driven thinning enhances iceberg calving and retreat of Antarctic ice shelves, *Proceedings of the National Academy of Sciences*, 112, 3263-3268, 10.1073/pnas.1415137112, 2015.
- Lv, D., Cheng, Y., Xiao, H., and Hai, G.: A Framework for Fracture Extraction Under Glaciological Property-Based Constraints: Scientific Application on the Filchner-Ronne Ice Shelf of Antarctica, *Earth and Space Science*, 9, e2022EA002293, 10.1029/2022EA002293, 2022.
- Magruder, L. A., Brunt, K. M., and Alonzo, M.: Early ICESat-2 on-orbit Geolocation Validation Using Ground-Based Corner Cube Retro-Reflectors, *Remote Sensing*, 12, 3653, 10.3390/rs12213653, 2020.
- Magruder, L., Neumann, T., and Kurtz, N.: ICESat-2 Early Mission Synopsis and Observatory Performance, *Earth and Space Science*, 8, e2020EA001555, 10.1029/2020EA001555, 2021.

Markus, T., Neumann, T., Martino, A., Abdalati, W., Brunt, K., Csatho, B., Farrell, S., Fricker, H., Gardner, A., Harding, D., Jasinski, M., Kwok, R., Magruder, L., Lubin, D., Luthcke, S., Morison, J., Nelson, R., Neuenschwander, A., Palm, S., Popescu, S., Shum, C., Schutz, B. E., Smith, B., Yang, Y., and Zwally, J.: The Ice, Cloud, and land Elevation Satellite-2 (ICESat-2):
560 Science requirements, concept, and implementation, *Remote Sens. Environ.*, 190, 260-273, 10.1016/j.rse.2016.12.029, 2017.

McGlone, J., Mikhail, E., Bethel, J., and Mullen, R.: *Manual of photogrammetry*, 5th ed., American Society for Photogrammetry and Remote Sensing, 2004.

Morlighem, M., Rignot, E., Binder, T., Blankenship, D., Drews, R., Eagles, G., Eisen, O., Ferraccioli, F., Forsberg, R., and Fretwell, P.: Deep glacial troughs and stabilizing ridges unveiled beneath the margins of the Antarctic ice sheet, *Nat. Geosci.*,
565 13, 132-137, 10.1038/s41561-019-0510-8, 2020.

Neuburg, H. A. C., Thiel, E., Walker, P. T., Behrendt, J. C., and Aughenbaugh, N. B.: The Filchner Ice Shelf, *Annals of the Association of American Geographers*, 49, 110-119, 10.1111/j.1467-8306.1959.tb01603.x, 1959.

Noh, M.-J. and Howat, I. M.: Automated stereo-photogrammetric DEM generation at high latitudes: Surface Extraction with TIN-based Search-space Minimization (SETSM) validation and demonstration over glaciated regions, *GIScience & Remote*
570 *Sensing*, 52, 198-217, 10.1080/15481603.2015.1008621, 2015.

Nuth, C. and Kääb, A.: Co-registration and bias corrections of satellite elevation data sets for quantifying glacier thickness change, *The Cryosphere*, 5, 271-290, 10.5194/tc-5-271-2011, 2011.

Otosaka, I. N., Shepherd, A., Ivins, E. R., Schlegel, N.-J., Amory, C., van den Broeke, M. R., Horwath, M., Joughin, I., King, M. D., Krinner, G., Nowicki, S., Payne, A. J., Rignot, E., Scambos, T., Simon, K. M., Smith, B. E., Sørensen, L. S., Velicogna, I., Whitehouse, P. L., A, G., Agosta, C., Ahlstrøm, A. P., Blazquez, A., Colgan, W., Engdahl, M. E., Fettweis, X., Forsberg, R., Gallée, H., Gardner, A., Gilbert, L., Gourmelen, N., Groh, A., Gunter, B. C., Harig, C., Helm, V., Khan, S. A., Kittel, C., Konrad, H., Langen, P. L., Lecavalier, B. S., Liang, C.-C., Loomis, B. D., McMillan, M., Melini, D., Mernild, S. H., Mottram, R., Mouginot, J., Nilsson, J., Noël, B., Pattle, M. E., Peltier, W. R., Pie, N., Roca, M., Sasgen, I., Save, H. V., Seo, K.-W., Scheuchl, B., Schrama, E. J. O., Schröder, L., Simonsen, S. B., Slater, T., Spada, G., Sutterley, T. C., Vishwakarma, B. D.,
580 van Wessem, J. M., Wiese, D., van der Wal, W., and Wouters, B.: Mass balance of the Greenland and Antarctic ice sheets from 1992 to 2020, *Earth Syst. Sci. Data*, 15, 1597-1616, 10.5194/essd-15-1597-2023, 2023.

Padman, L., Fricker, H. A., Coleman, R., Howard, S., and Erofeeva, L.: A new tide model for the Antarctic ice shelves and seas, *Ann. Glaciol.*, 34, 247-254, 10.3189/172756402781817752, 2002.

Padman, L., Erofeeva, S. Y., and Fricker, H. A.: Improving Antarctic tide models by assimilation of ICESat laser altimetry
585 over ice shelves, *Geophys. Res. Lett.*, 35, 10.1029/2008GL035592, 2008.

Poinelli, M., Schodlok, M., Larour, E., Vizcaino, M., and Riva, R.: Can rifts alter ocean dynamics beneath ice shelves?, *The Cryosphere*, 17, 2261-2283, 10.5194/tc-17-2261-2023, 2023a.

Poinelli, M., Nakayama, Y., Larour, E., Vizcaino, M., and Riva, R.: Ice-Front Retreat Controls on Ocean Dynamics Under Larsen C Ice Shelf, Antarctica, *Geophys. Res. Lett.*, 50, e2023GL104588, 10.1029/2023GL104588, 2023b.

- 590 Rignot, E. and MacAyeal, D. R.: Ice-shelf dynamics near the front of the Filchner—Ronne Ice Shelf, Antarctica, revealed by SAR interferometry, *J. Glaciol.*, 44, 405–418, 10.3189/S0022143000002732, 1998.
- Rignot, E., Mouginot, J., and Scheuchl, B.: Ice flow of the Antarctic ice sheet, *Science*, 333, 1427–1430, 10.1126/science.1208336, 2011.
- Rignot, E., Mouginot, J., Scheuchl, B., Van Den Broeke, M., Van Wessem, M. J., and Morlighem, M.: Four decades of
595 Antarctic Ice Sheet mass balance from 1979–2017, *Proceedings of the National Academy of Sciences*, 116, 1095–1103, 10.1073/pnas.1812883116, 2019.
- Shean, D. E., Joughin, I. R., Dutrieux, P., Smith, B. E., and Berthier, E.: Ice shelf basal melt rates from a high-resolution digital elevation model (DEM) record for Pine Island Glacier, Antarctica, *The Cryosphere*, 13, 2633–2656, 10.5194/tc-13-2633-2019, 2019.
- 600 Shen, X., Ke, C.-Q., Fan, Y., and Drolma, L.: A new digital elevation model (DEM) dataset of the entire Antarctic continent derived from ICESat-2, *Earth Syst. Sci. Data*, 14, 3075–3089, 10.5194/essd-14-3075-2022, 2022.
- Slater, T., Shepherd, A., McMillan, M., Muir, A., Gilbert, L., Hogg, A. E., Konrad, H., and Parrinello, T.: A new digital elevation model of Antarctica derived from CryoSat-2 altimetry, *The Cryosphere*, 12, 1551–1562, 10.5194/tc-12-1551-2018, 2018.
- 605 Smith, B., Fricker, H. A., Gardner, A. S., Medley, B., Nilsson, J., Paolo, F. S., Holschuh, N., Adusumilli, S., Brunt, K., Csatho, B., Harbeck, K., Markus, T., Neumann, T., Siegfried, M. R., and Zwally, H. J.: Pervasive ice sheet mass loss reflects competing ocean and atmosphere processes, *Science*, 368, 1239–1242, 10.1126/science.aaz5845, 2020.
- Tachikawa, T., Hato, M., Kaku, M., and Iwasaki, A.: Characteristics of ASTER GDEM version 2, 2011 IEEE international geoscience and remote sensing symposium, Vancouver, BC, Canada, 3657–3660, 10.1109/IGARSS.2011.6050017, 2011.
- 610 Thompson, S. S., Cook, S., Kulesa, B., Winberry, J. P., Fraser, A. D., and Galton-Fenzi, B. K.: Comparing satellite and helicopter-based methods for observing crevasses, application in East Antarctica, *Cold Regions Science and Technology*, 178, 103128, 10.1016/j.coldregions.2020.103128, 2020.
- Walker, C. and Gardner, A.: Evolution of ice shelf rifts: Implications for formation mechanics and morphological controls, *Earth Planet. Sci. Lett.*, 526, 115764, 10.1016/j.epsl.2019.115764, 2019.
- 615 Walker, C. C., Becker, M. K., and Fricker, H. A.: A High Resolution, Three-Dimensional View of the D-28 Calving Event From Amery Ice Shelf With ICESat-2 and Satellite Imagery, *Geophys. Res. Lett.*, 48, e2020GL091200, 10.1029/2020GL091200, 2021.
- Wang, S., Liu, H., Jezek, K., Alley, R. B., Wang, L., Alexander, P., and Huang, Y.: Controls on Larsen C Ice Shelf Retreat From a 60-Year Satellite Data Record, *J. Geophys. Res.- Earth Surf.*, 127, e2021JF006346, 10.1029/2021JF006346, 2022.
- 620 Wang, T., Zhang, G., Li, D., Tang, X., Jiang, Y., Pan, H., Zhu, X., and Fang, C.: Geometric Accuracy Validation for ZY-3 Satellite Imagery, *IEEE Geosci. Remote Sens. Lett.*, 11, 1168–1171, 10.1109/LGRS.2013.2288918, 2014.

- Wessel, B., Huber, M., Wohlfart, C., Bertram, A., Osterkamp, N., Marschalk, U., Gruber, A., Reuß, F., Abdullahi, S., and Georg, I.: TanDEM-X PolarDEM 90 m of Antarctica: Generation and error characterization, *The Cryosphere*, 15, 5241-5260, 10.5194/tc-15-5241-2021, 2021.
- 625 Williams, R. M., Ray, L. E., Lever, J. H., and Burzynski, A. M.: Crevasse Detection in Ice Sheets Using Ground Penetrating Radar and Machine Learning, *IEEE J. Sel. Topics Appl. Earth Observ. Remote Sens.*, 7, 4836-4848, 10.1109/JSTARS.2014.2332872, 2014.
- Zinck, A.-S. P., Wouters, B., Lambert, E., and Lhermitte, S.: Unveiling spatial variability within the Dotson Melt Channel through high-resolution basal melt rates from the Reference Elevation Model of Antarctica, *The Cryosphere*, 17, 3785-3801, 10.5194/tc-17-3785-2023, 2023.
- 630