

Electron-Driven Variability of the Upper Atmospheric Nitric Oxide Column Density Over the Syowa Station in Antarctica

Pekka T. Verronen^{1,2,3}, Akira Mizuno³, Yoshizumi Miyoshi³, Sandeep Kumar^{3,4}, Taku Nakajima³, Shin-Ichiro Oyama³, Tomoo Nagahama³, Satonori Nozawa³, Monika E. Szela², Tuomas Häkkinen², Niilo Kalakoski², Antti Kero¹, Esa Turunen¹, Satoshi Kasahara⁵, Shoichiro Yokota⁶, Kunihiro Keika⁵, Tomoaki Hori³, Takefumi Mitani⁷, Takeshi Takashima⁷, and Iku Shinohara⁷

¹Sodankylä Geophysical Observatory, University of Oulu, Finland

²Space and Earth Observation Centre, Finnish Meteorological Institute, Finland

³Institute for Space-Earth Environmental Research, Nagoya University, Japan

⁴NASA Goddard Space Flight Center, Greenbelt, MD, USA

⁵Department of Earth and Planetary Science, University of Tokyo, Japan

⁶Osaka University, Machikaneyama-cho, Toyonaka, Japan

⁷Japan Aerospace Exploration Agency (JAXA), Sagami-hara, Japan

Correspondence: P. T. Verronen (pekka.verronen@oulu.fi)

Abstract. In the polar middle and upper atmosphere, Nitric Oxide (NO) is produced in large amounts by both solar EUV and X-ray radiation and energetic particle precipitation, and its chemical loss is driven by photodissociation. As a result, polar atmospheric NO has a clear seasonal variability and a solar cycle dependency which have been measured by satellite-based instruments. On shorter timescales, NO response to magnetospheric electron precipitation has been shown to take place on a day-to-day basis. Despite recent studies using observations and simulations, it remains challenging to understand NO daily distribution in the mesosphere-lower thermosphere during geomagnetic storms, and to separate contributions of electron forcing and atmospheric chemistry and dynamics. This is due to the uncertainties existing in the available electron flux observations, differences in representation of NO chemistry in models, and differences between NO observations from satellite instruments. In this paper, we use mesospheric-lower thermospheric NO column density data measured with a millimeter-wave spectroscopic radiometer at the Syowa station in Antarctica. In the period 2012–2017, we study both the long-term and short-term variability of NO. Comparisons are made with results from the Whole Atmosphere Community Climate Model to understand the shortcomings of current electron forcing in models and how the representation of the NO variability can be improved in simulations. We find that, qualitatively, the simulated year-to-year and day-to-day variability of NO is in agreement with the observations. On the other hand, there is up to a factor of two underestimation of the NO column density in wintertime, ~~and~~, Also, the model captures only 27% of the ~~measured magnitude in the day-to-day variability~~ range of observed daily NO values. The observed day-to-day variability has a good correlation with three different geomagnetic indices, indicating the importance of electron forcing in atmospheric NO production. Using electron flux measurements from the Arase satellite, we demonstrate their potential in atmospheric research. Our results call for improved representation of electron forcing in simulations to capture the observed day-to-day variability.

1 Introduction

Nitric Oxide (NO) is a minor atmospheric constituent. In the polar upper atmosphere, it is produced in relatively large amounts by both solar irradiance and energetic particle precipitation, and is an important species for atmospheric energetics (e.g. Mlynczak et al., 2005). Because NO has a long chemical lifetime when its photodissociation-driven loss is diminished, in the winter pole it can descend to lower altitudes and provide a connection mechanism between solar and geomagnetic activity and stratospheric ozone variability (Solomon et al., 1982; Siskind et al., 1997; Callis and Lambeth, 1998; Funke et al., 2014; Damiani et al., 2016; Gordon et al., 2021).

Due to its production being solar-driven as well, upper atmospheric NO has a clear solar cycle variability (McPeters, 1989; Barth, 1992; Fuller-Rowell, 1993; Marsh et al., 2007). Production by irradiance peaks at solar maximum while that from electron precipitation peaks at auroral latitudes during declining solar activity phase. Both the spatial and temporal variability has been measured by satellite-based instruments and is included in reference models of NO (~~Barth, 1996; Siskind et al., 1998~~)(~~Barth, 1996; Siskind et al., 1998~~).

On shorter time scales, thermospheric NO response to magnetospheric electron precipitation has been shown to take place on a day-to-day basis (Solomon et al., 1999; Baker et al., 2001). Overall, satellite data analysis indicates that NO high-latitude variability is dominated by geomagnetic variability regardless of the phase of the solar cycle (Hendrickx et al., 2017). In the mesosphere, high-energy electrons contribute to NO production during specific events (Newnham et al., 2011; Turunen et al., 2016; Miyoshi et al., 2021). Recent studies using satellite-based observations have shown that it remains challenging to understand NO daily distribution in the mesosphere-lower thermosphere during geomagnetic storms, and how it is driven by electron forcing and atmospheric dynamics (Sinnhuber et al., 2021). This is due to the uncertainties existing in the available electron flux observations, differences in representation of NO chemistry in models, and differences between NO observations from satellite instruments.

Ground-based radiometers provide a ~~regional~~local view on NO variability, and can be used to better understand its sources, particularly when used together with satellite-based observations and atmospheric simulations. For more than ten years, radiometer observations have been made at Antarctic ground stations. British ~~Antartie~~Antarctic Survey operated an NO radiometer at the Halley station from 2013 to 2014 (Newnham et al., 2018). Focusing on two consecutive winters close to solar maximum, the strikingly different amounts of observed NO were explained by differences in geomagnetic activity and electron precipitation. Nagoya University has operated an NO radiometer at the Syowa station since 2012. First results from years 2012–2013, presented by Isono et al. (2014a, b), have shown that the seasonal variability is driven by solar radiation and NO photodissociation. In the short-term, over selected event time frames, NO was found to correlate with satellite-based electron fluxes and peaks 1–5 days after the beginning of geomagnetic storms.

In this paper, we use the Syowa radiometer NO data from the period 2012–2017. Compared to earlier studies using ground-based instrumentation, we have a uniquely long time series to analyse. We compare the radiometer observations with results from a global atmosphere model to understand the year-to-year variability, shortcomings of current electron forcing, and

how geomagnetic storms are driving day-to-day variability of NO. We also discuss the potential of mesospheric production contributing to the total amount of mesospheric-thermospheric NO, and the influence of the polar vortex on year-to-year and day-to-day NO changes.

2 Model and Data

2.1 Syowa radiometer

In this work, we make use of ground-based NO observations from a millimeter-wave spectroscopic radiometer at Syowa Station (69.01°S, 39.58°E; magnetic latitude 66°, L shell 6.25) in Antarctica. NO is observed using its spectral line at 250.796 GHz ($J = 5/2 - 3/2$, $p_{ul} = \rightarrow +$, $F = 7/2 - 5/2$), and these measurements have been made more or less continuously since 2012. The instrument, observations, and derivation method of NO column density are the same as those described in detail by Isono et al. (2014b).

The observations provide daily averaged, altitude-integrated column densities of NO in the mesosphere-lower thermosphere from the total intensity of NO emission by assuming optically thin NO line and a constant temperature of 200K for the entire NO line emitting region. An average and maximum errors due to the assumption of constant temperature were estimated to be about $\pm 10\%$ and $\pm 30\%$, respectively, taking [into account](#) the temperature variations expected from atmospheric models such as ~~MSIS and WACCM into account~~ [the Whole Atmosphere Community Climate Model \(introduced in Section 2.2\)](#). In general, vertical density or volume mixing ratio profiles of stratospheric molecules such as ozone can be retrieved in the ground-based microwave observations based on the pressure-line width relationship, but the line widths of NO spectra observed at Syowa station are too narrow to apply the relationship. Such narrow line widths are determined by the thermal Doppler motion rather than the pressure broadening, and the line widths no longer have information enough to retrieve vertical profiles. Isono et al. (2014b) discussed that the NO line emitting region is typically in the altitude range 75–105 km based on the kinetic temperature, but in practice it is difficult to determine the upper and lower borders with strict accuracy from each spectral data particularly for poor signal-to-noise cases. The column density is derived from the intensity integrated over a frequency range larger than the Doppler motion that is derived from the half-power full width of a typical spectral line, and emission from a slightly broader region than that suggested by Isono et al. (2014b) may contribute to the observed total intensity in some cases. We therefore compare the column density derived from observation with the NO distribution calculated by ~~WACCM~~ [the Whole Atmosphere Community Climate Model](#) over 65–140 km in this study. The horizontal size of the observed area is estimated to be ~ 2 km at an altitude of 100 km based on the beam size of the millimeter-wave spectroscopic radiometer.

[Because the radiometer NO measurements are averaged over 24 hours to improve the signal-to-noise ratio, any diurnal variability is incorporated but averaged out before the analysis. This means, e.g., that the well-known magnetic local time dependency in electron forcing \(and NO production\) can not be studied. Further, the time constant for transport by the zonal winds is in the order of days in the mesosphere and lower thermosphere, and we can assume that transport has a strong impact on NO distribution and, thus, on NO measured at the Syowa station. Thus, not only the impact of electron forcing above the Syowa station, but also that from a wider polar cap region is affecting the observed NO column density. In our current study, we](#)

are not assessing if any discrepancies between the observations and model could be due to transport. However, a comparison of daily average NO column densities should, to an extent, smooth out differences related to diurnal variability.

2.2 WACCM model

The Whole Atmosphere Community Climate Model Version 6 (~~WACCM6~~WACCM) is the atmosphere module of the Coupled Earth System Model Version 2 (Gettelman et al., 2019). WACCM is a global chemistry-climate model with about 1° horizontal resolution (latitude, longitude) and covering altitude range from ground-level to ≈ 140 km altitude. The extended altitude range allows for a full range of energetic particle forcing from auroral to relativistic energies to be applied including dependency on magnetic latitude and magnetic local time (Verronen et al., 2020). WACCM incorporates coupled, interactive dynamics and chemistry and, in order to include full chemical impacts from energetic particle precipitation, we run WACCM with its ionospheric chemistry extension as described by Verronen et al. (2016).

We have made WACCM simulations that cover the time period of radiometer observations in 2012–2017. In this study, WACCM’s specified dynamics configuration is used, with horizontal winds and temperatures below ≈ 50 km altitude nudged towards the Modern-Era Retrospective analysis for Research and Applications (Molod et al., 2015). At altitudes above, the model dynamics are free-running. Solar forcing was included as recommended by the Coupled Model Intercomparison Project Phase 6 (Matthes et al., 2017). Energetic particle forcing includes galactic cosmic rays, and solar protons and electrons. Radiation belt, medium-energy electrons in the 30–1000 keV energy range are from the ApEEP v1 proxy model driven by the daily geomagnetic Ap index (van de Kamp et al., 2016). Lower energy, auroral electrons are covered using a proxy model driven by the daily geomagnetic Kp index, and it provides a Maxwellian distribution with a characteristic energy of 2 keV (Roble and Ridley, 1987; Marsh et al., 2007). The Kp aurora and ApEEP models provide a statistical representation of electron forcing at magnetic latitudes $>45^\circ$ (L shell >2), i.e. covering a wide region around the Syowa station location. Although the ApEEP model is build from measurements that have a good magnetic local time coverage, diurnal variability of is not represented in the forcing.

Our selection of simulation output includes a range of chemical and dynamical parameters with temporal resolution varying from daily to monthly. In addition, we saved the results after every 30 minutes at the WACCM grid point (69.27°S , 40.00°E) which is closest to the Syowa station location. ~~In the following analysis, the station co-location output data from WACCM are used in comparisons with the~~ This analysis uses WACCM data co-located with Syowa Station observations to compare daily-averaged column density observations from the radiometer while global daily output is used, e.g., in calculation of NO column density. WACCM global data are also used to locate the polar vortex edges in the mesosphere.

2.3 Arase-based electron fluxes

Later, in Section 3.3, we will assess the sensitivity of NO column density to the impact due to medium-energy electron precipitation. To do this, we make use of electron fluxes measured by instruments on-board the Arase (ERG) satellite in the ~~van~~Van Allen radiation belts (Miyoshi et al., 2018c).

Arase is a magnetospheric satellite mission launched in 2016. Its instrumentation covers a range of electron energies, and in this work we utilise measurements made from 30 keV to 500 keV (12 energy channels) from the MEP-e and HEP-e detectors (Kasahara et al., 2018; Mitani et al., 2018). We averaged the fluxes over 12-hour periods into 31 L shell bins ranging from 2.0 to 8.0 (about 45° – 69° magnetic latitude). The Arase electron flux measurements up to 500 keV are magnetic-field-aligned with pitch angles from 0° to 10°. ~~However, because~~ Although the Arase pitch angle channel substantially overlaps with the bounce loss cone angle range (a few degrees), its coarse resolution also includes particles outside the loss cone ~~for atmospheric electron precipitation at the Arase measurement location is typically smaller (a few degrees), the measured fluxes include not only the precipitating electrons but also some electrons trapped in the belts, which are trapped in the radiation belts. For more precise identification of precipitating electrons, modeling of wave-particle interactions such as with chorus waves is required (e.g. Miyoshi et al., 2015; Miyoshi et al., 2020; Miyoshi et al., 2021), and this is left as a future task.~~

Arase has an orbital period of approximately 9 hours, and during a 12-hour interval, it typically traverses a magnetic local time (MLT) sector of a few hours, depending on its apogee position and the geomagnetic conditions. This means that the 12-hour average fluxes include measurements with only a partial MLT coverage. Thus, if localized electron precipitation occurs at a specific MLT sector that is not sampled directly by Arase, it could result in underestimation of the electron forcing.

For most of the time, Arase measurements cover the L shell range from 2 to 8, but there are time periods when data are not available at the highest L shells and the corresponding electron forcing is not accounted for. In cases of missing Arase fluxes, data are typically missing at $L > 7$. On the other hand, the Arase electron fluxes tend to peak at $L = 3 - 6$ corresponding to the outer radiation belt, i.e. in a range which is always measured.

For WACCM simulations, as electron forcing input, we need the atmospheric ionization rates corresponding to the fluxes. To calculate them, we make use of a method of parameterised electron impact ionization by Fang et al. (2010). The ionization rates were calculated on the WACCM altitude (km) grid which changes slightly from day to day but corresponds to a fixed pressure level grid. A revised input code for WACCM, described by ~~Häkkinen et al. (2024)~~ Häkkinen et al. (2025), allows to consider particle ionisation rates on any L shell, magnetic local time, and temporal resolution grid. The L shell-dependent ionization rates were converted to magnetic latitude. With the assumption of uniformity on magnetic local time, these rates are then projected onto the geographic (latitude, longitude) grid in WACCM.

3 Results

3.1 Year-to-year NO variability

Figure 1 shows the observed and simulated time series of daily NO column density at the Syowa location. Column densities are lowest during summer months, and highest during winter months when less dissociating solar radiation is present and the chemical lifetime of NO is longer, which allows more accumulation over time. Observed column densities vary from the highest value of $2.85 \times 10^{15} \text{ cm}^{-2}$ down to negative values, while the simulated values range between 0.25×10^{15} and $1.50 \times 10^{15} \text{ cm}^{-2}$. While observed summer column densities are rather similar in magnitude, there are clear difference between

150 individual winter periods. For the time period shown here, winter 2015 has the largest observed column densities overall while 2014 has the lowest.

Comparing the simulated column densities to the observations, there is an overall agreement in the variability of NO amount between individual winters. However, simulated wintertime values are consistently lower than observed ones and display less pronounced short-term variability. Looking at the ratio of 31-day running averages (bottom panel of Figure 1), during winter
155 periods the observed column density can be up to a factor of two larger, at which times the difference is comparable to, or even exceeds, the standard deviation of the observations. In summer periods, on the other hand, the observations typically show about half of the NO column density compared to simulations.

Figure 2 shows a scatter plot of the observed and simulated daily NO column densities. There is a clear relation between the data sets ~~with $R=0.65$~~ . The correlation coefficient $r = 0.65$ which is, however, below the 0.7 limit of strong correlation.
160 As already noted above, there is much weaker variability in the simulated column densities. ~~A~~ The slope of the linear fit shown in the Figure indicates that, overall, ~~in the simulated data~~ there is only 27% of the observed ~~magnitude variability~~ range of variability captured in the simulated data. In addition to ~~the showing~~ lower maximum values, the simulated column densities seem to ~~“saturate”~~ stagnate at the lower end and do not have values smaller than $0.25 \times 10^{15} \text{ cm}^{-2}$. The observed column densities extend to lower values than that, reaching zero and even negative values, the latter indicating relatively large
165 uncertainties ~~in the data inversion~~ of low summertime NO values. Because these uncertainties could mask some of the natural variability, we tested the robustness of the relation between the data sets by repeating the analysis but including wintertime data only (April – September). We find that the relation remains with only marginal changes ($r = 0.62$).

To understand the details behind the NO column density and reasons for the variability differences between the observed and simulated data, in the following we make use of the WACCM result and analyse the vertical data profiles from the Syowa
170 location. Figure 3 (a,c) shows simulated NO distribution at the 65–140 km altitude range for the years 2012–2017. The NO maximum density is located at about 105 km. Below 100 km, there is a clear variability in NO amount between summer (low NO) and winter (high NO) and strongest seasonal variability is seen around 80 km altitude. Analysing the NO column density (Figure 3b,d) ~~calculated~~ which we calculate by integrating across the altitude range, the 50%/50% limit altitude ranges between 94 km and 115 km ~~In other words~~ (median = 109 km). At the 50%/50% limit, one half of the total NO column density
175 ~~comes from above this limit altitude~~ is from the altitudes above it and another half ~~comes from~~ is from altitudes below it. The limit altitude is lowest in winter periods, which is consistent with the higher NO in the mesosphere contributing more to the total column density. During summer periods, a few short-duration peaks of increased mesospheric contribution can be seen, related to specific precipitation events. For example, the solar proton events of January 2012 and January 2014 can be identified in Figure 3d, e.g., from a sharp downward peak in the 5% contour line.

180 Figure 4 shows the time series of electron forcing, zonal wind speed, and ~~CO mixing ratio~~ Carbon Monoxide (CO) mixing ratio from the WACCM simulations, together with the NO column density. The electron impact altitude is dependent on its energy, *i.e.* higher energy allows for a deeper penetration in the atmosphere (e.g. Turunen et al., 2009, Figure 3). Looking at the altitude distribution of electron ionization applied in WACCM (Figure 4b), a major part of the ionization is at altitudes above 100 km caused by the Kp driven auroral electron forcing. This indicates that lower-energy electrons ($E \sim 1 \text{ keV}$ rather

185 than ~ 10 keV) control a major part of the NO production in the model. This also suggests that the stagnation of simulated NO values at $0.25 \times 10^{15} \text{ cm}^{-2}$ is a result of the auroral electron ionization which is never less than $10^3 \text{ cm}^{-3} \text{ s}^{-1}$. Although there is generally a smaller magnitude of variability above 100 km than below, the peak ionisation periods above and below 100 km occur very much at the same times and also coincide with increased NO values (Figure 4a).

The auroral electron forcing used in WACCM thus provides stronger ionization and NO production in the lower thermo-
190 sphere than the medium-energy electron ionization at mesopause and below. Of the summertime NO column density (Figure 3b,d), only about 15% is coming from below 100 km, while in the winter this fraction can be up to about 60%. This kind of seasonal variability is not seen in the electron ionization rates. The fact that mesospheric contribution to the NO column density is varying so much with the season is a result of a longer chemical lifetime (months), which allows transport and diffusion of NO into the mesosphere from higher altitudes, effectively taking place during winter periods. Figure 4(c,d), similar to the
195 observations presented by Isono et al. (2014b, Figure 5), shows that in WACCM high amounts of wintertime NO coincide with eastward winds and high amounts of CO-CO in the mesosphere, indicating presence of polar vortex and air descent through the mesopause, respectively. In the summer, winds are westward, mesospheric CO-CO is low, photodissociation reduces the NO chemical lifetime (days), and the effect of NO transport is much smaller. Thus the thermospheric contribution to the NO column density becomes larger.

200 3.2 Daily NO variability during EEP events

Short-term variability of observed NO column densities, especially strong increases on daily time scales, have previously been attributed to energetic electron precipitation (EEP) ionization events (e.g. Isono et al., 2014a; Newnham et al., 2018). Thus understanding the EEP forcing and its contribution to NO column density is essential at the latitudes under EEP forcing, as at the latitude of the Syowa station. Here we particularly want to assess the EEP forcing and NO short-term variability in
205 WACCM model at the Syowa location.

EEP proxy models, e.g. van de Kamp et al. (2016), often use a geomagnetic index as a driver to obtain a statistical representation of EEP forcing in atmosphere and climate simulations. But for individual events, the index that best represents the EEP characteristics such as magnitude and duration likely varies from event to event (Nesse Tyssøy et al., 2019). So, it is interesting to analyse how large daily NO increases seen in the Syowa radiometer observations and WACCM simulations
210 depend on geomagnetic indices.

To find strongest events of NO production from the observations, for each day we calculate the difference between the 1-day and 31-day running averages of the Syowa NO column density data. The largest differences then indicate to us the strongest daily increases in NO column density. There are all together 614 daily NO observations that are larger than the corresponding 31-day running mean. However, from these we select only those observations that meet all of the following criteria: 1) peak NO
215 increase is larger than the corresponding 31-day running standard deviation, 2) the peak day is more than 15 days apart from any larger peak, and 3) there are more than 10 daily values in the surrounding 31-day period. The first requirement screens out those days on which the NO increase is smaller than overall NO variability and thus less likely to be strongly affected by EEP. The second requirement ensures that events are only counted once. The third requirement screens out periods where robust

assessment is potentially restricted by a small amount of data. The list of the 60 identified events, *i.e.* meeting all criteria, is given in Table 1, and the event peak dates are also marked in Figure 1. As an example, the event of June 2015 is shown in Figure 5. It is the largest event identified in the 2012–2017 period with an increase of $1.41 \times 10^{15} \text{ cm}^{-2}$ above the 31-day mean on day 24.

Not all of the listed NO increases are necessarily EEP-driven because, e.g., polar vortex dynamics contribute to the NO variability. Later, in Section 3.4, we discuss the role of polar vortex with some examples. However, here we ~~make use of geomagnetic indices and in the following look at those events which coincide with use~~ geomagnetic disturbance indicating relation to EEP. indices to relate NO increase events with EEP and geomagnetic disturbances. Geomagnetic indices provide a measure of magnetic activity in the Earth's magnetosphere (e.g. Menvielle et al., 2011). Linked quantitatively to different current systems in the magnetosphere-ionosphere, they are related to different processes, different types of magnetic storms, and particle precipitation with different characteristics in terms of atmospheric forcing (e.g. Turunen et al., 2009). Figure 6 presents two selected events from the 2012–2017 period, showing both the observed and simulated differences in NO column density together with the geomagnetic Ap, Dst, and AE indices. These indices were selected because previous studies have discussed their connection to the precipitating energetic electron fluxes (Isono et al., 2014b; van de Kamp et al., 2016; Nesse Tyssøy et al., 2021a). Note that the simulated NO can be expected to follow the changes in the Ap index because in WACCM daily Ap and Kp are used as the proxy to drive ApEEP and auroral electron ionization, respectively.

The observed NO shows a response to Ap increase, characterized in many cases by a strong, single peak with elevated amounts around it. This is seen, e.g., in June 2015 (Figure 6, left panels). There is in many cases a one-day lag between the Ap peak and the peak NO increase, which can be explained by accumulation of NO during an EEP forcing. Strongest correlations are therefore typically found between NO and previous day's Ap. Compared to observed NO increases, in general WACCM data show similar peaks of NO but underestimate the magnitude of increase by a factor of 2–3. However, the overall day-to-day variability is typically well represented in WACCM. In the case of June 2015, correlation with Dst is slightly stronger than with Ap and there is no lag (note that Dst index during magnetic storms has a negative sign).

As seen from Table 1, the list of largest events includes mostly autumn-to-spring months at Syowa (April–November). Summer months and winter months are equally likely to have EEP-driven NO events but the summer events would, in theory, be easier to detect due to the lower 31-day background. However, observations of lower NO amounts have a poorer signal-to-noise ratio. Also, the shorter chemical lifetime due to enhanced photodissociation in summer compensates for NO increases faster. This means that some of the largest events could go undetected in the NO observations. If we consider the 30 largest events only, the seasonal distribution peaks in April and September, which is consistent with the known seasonal variability in magnetic activity and EEP forcing (e.g. Tanskanen et al., 2017).

An example of an autumn case is the St. Patrick's Day event in March, 2015 (Figure 6, right panels). Although this was a major event reported in many studies, e.g. Clilverd et al. (2020), it ranks only at #24 in our Table 1 with an increase of NO by $0.59 \times 10^{15} \text{ cm}^{-2}$. Interestingly, in terms of simulated increase this event is quite similar in magnitude to the June 2015 event, which suggests that this was indeed a major event also from NO point of view.

A feature seen during the March 2015 St. Patrick’s Day event is that the NO increase clearly has a shorter duration in the simulated data when compared to the observations. The simulated and observed NO have a similar buildup of NO until day 18. However, simulated NO has already decreased before the observed maximum on day 23. The simulated NO follows Ap which has a sharp peak on day 17. In this case, the maximum correlation between Ap and observed NO is 0.48 with a four-day lag. In contrast, the Dst index has a peak on day 18 and recovers slower than Ap over the following 6–7 days. Correlation between Dst and NO is largest at –0.69 with one-day lag. Similarly, the correlation between AE and NO is stronger than between Ap and NO. Therefore, during this event ~~NO behaviour follows more closely the Dst index. Also the correlation with AE is stronger than with Ap(one-day lag).~~ the temporal behaviour of NO follows the Dst and AE indices more closely than it follows the Ap.

To understand the overall relation between EEP forcing as represented by different geomagnetic indices and NO increases at Syowa, we calculate correlations and lags between NO and three indices: Ap, Dst, and AE. For the event listed in Table 1, we present the distribution of 31-day correlation coefficients and corresponding lags between the indices and NO in Figure 7. For reference, we also present here the distribution of correlations and lags between simulated NO and the Ap index. This provides a measure of an “optimal” case because in the WACCM model EEP forcing is driven by Ap and Kp indices.

Comparing the distribution of correlation coefficients r , NO column density variability is clearly related to all three indices. Median r is lowest at 0.53 with Ap and maximum at 0.57 with –Dst. There are clear differences in the r distribution, however. Correlation with –Dst is strong, *i.e.* larger than 0.7 in 17% of cases while this probability is 13% with AE and just 7% with Ap. ~~Therefore, it seems that on average the daily variability is better connected to Dst and AE indices than to Ap.~~ On the other hand, the correlation with Ap is more concentrated in the 0.5 – 0.6 range and thus, in a sense, more consistent throughout the events. As expected, the median correlation between Ap and WACCM NO is strong, 0.70, and exceeds those between NO observations and the indices. 43% of the events have stronger than 0.7 correlation between Ap and WACCM NO.

For the lag corresponding to the best correlation, the results are very similar for all indices. The lag is either zero or one day for the the majority 63% – 75% of the events, depending on the geomagnetic index. Median lag is one day with Ap and AE, and zero days for Dst. A one-day lag is consistent with the chemical lifetime of NO and results from previous studies (e.g. Solomon et al., 1999). When a daily average is used, Dst covers both the initial and main phase of the geomagnetic storm, which likely explains why the most probable lag is zero instead of one day. A lag of two or more days is seen in 18% – 25% of the events, again depending on the index used. The median lag between Ap and WACCM NO is also one day, consistent with the lag seen in the observations. However, in WACCM data only 3% of the cases have a lag of two or more days.

3.3 Sensitivity to medium-energy electron forcing

As discussed in Sections 2.2 and 3.1, a considerable contribution to the simulated NO column density is from thermospheric production by EEP ionization. From a previous study in the Southern Hemisphere, however, there is also evidence of an overestimation of polar thermospheric NO in WACCM simulations when compared to satellite-based observations while, on the other hand, mesospheric NO seems to be underestimated (Newnham et al., 2018). Therefore, in order to increase NO column density during EEP events, we proceed here to assess the contribution of medium-energy electron (MEE) forcing. There are also other reasons to focus on MEE forcing. One is the remaining discrepancies between data sets (Sinnhuber et al.,

2021), which indicates significant uncertainties in MEE forcing when applied in atmospheric simulations. Another is that a lot more variability can be expected from higher-energy EEP compared to EEP at auroral energies, so improving MEE forcing would likely help to improve also the NO variability.

290 To assess the sensitivity to the impact from MEE in WACCM simulations, we make use of electron fluxes measured by instruments on-board the Arase (ERG) satellite (see Section 2.3 for details). Arase measurements are available from March 2017 onwards. Thus we are only able to assess the impact from Arase-measured electron fluxes from May to December 2017. From Figure 1 and Table 1, there are several events of NO increase identified in this period. Selecting from these, based on flux data availability and preferring wintertime occurrence, we proceed to use Arase-based fluxes for six events (#13, #27, #28, 295 #29, #39, #50). These events begin in the end of May and continue monthly until November. For each of the event periods (6 days each), the WACCM ApEEP MEE forcing was replaced by those calculated from Arase electron flux data. The WACCM simulations were then repeated from April to December 2017, and the impact on NO column densities at the Syowa station were assessed. We can perhaps expect an NO increase from the Arase-based electron fluxes, also because Arase measurements include both precipitating and trapped electron fluxes in the radiation belt, while only the precipitating electrons will produce 300 an atmospheric impact.

As an example, Figure 8 shows Arase electron flux measurements from 22 July, 2017, and resulting ionisation rates at magnetic L shell 6.2 near the Syowa station. In general, the Arase-based ionisation tends to exceed the ApEEP MEE ionisation in the middle mesospheric altitudes while around the mesopause the ApEEP-driven ionisation and in the lower thermosphere the Kp-driven auroral ionisation used in the original WACCM simulation are stronger. Due to the high-energy limit of 500 keV 305 of the Arase measurements used here, ApEEP ionisation rates are larger in the lowermost mesosphere. Thus, when applied in WACCM simulations, the Arase-based ionisation does not necessarily increase mesospheric NO production or the mesospheric contribution to the NO column density. Although this is a typical example, we note that overall there is larger temporal variability in the Arase-based ionisation rates compared to those from the statistical ApEEP model. Here it should be noted, based on Figure 1, that year 2017 was not a high-NO year and the overall NO variability was moderate compared to some 310 previous years (e.g. 2015). We are, however, restricted to 2017 due to Arase data availability.

In Figure 9, we compare the Arase-driven NO column density to the radiometer observations and the original WACCM simulation. During all the event periods from May to August, there is clearly a smaller difference between the two simulations than between the simulations and the radiometer observations. Largest differences between the two simulations are seen during/after the September and October events but then the Arase-driven simulation is in a lesser agreement with the observations 315 than the original simulation. Following the end-of-May event, the simulated NO is now reaching $1.0 \times 10^{15} \text{ cm}^{-2}$, while NO is below that in the original simulation. However, this increase is seen on a few days only, is relatively small, and does not significantly improve the agreement with the radiometer measurements which reach up to $1.5 \times 10^{15} \text{ cm}^{-2}$. Thus, despite differences in the altitude-distribution of electron ionization, the variability of NO column density during the end-of-May event is underestimated also in the Arase-based simulation. On the other hand, the overall agreement in NO between the original 320 simulation driven by a proxy EEP model and the Arase-driven simulation gives confidence in both data sets, and suggest that Arase electron flux observations can be useful in atmospheric simulations.

3.4 Role of the polar vortex

As mentioned earlier, atmospheric dynamics also contribute to NO variability, especially in wintertime when NO chemical lifetime is months and it can accumulate inside the polar vortex. When considering the NO column density above 65 km, as measured by the Syowa radiometer, it must be noted that the polar vortex only ~~exist~~exists in the mesosphere but not in the thermosphere. Thus only a fraction of the NO column density is potentially affected by the polar vortex. However, this is the fraction which is directly impacted also by >30 keV, medium-energy electrons.

The Syowa station is located in the polar region at 69°S (geographic). Overall, based on 13 years of reanalysis data (Harvey et al., 2018), from March to August the station is most of the time located inside the mesospheric polar vortex where larger amounts of accumulated NO are expected. Nevertheless, day-to-day variability in vortex dynamics could lead to NO variability at Syowa and mask the variability driven by EEP. As an example, Figure 10 presents the vortex edges for the event of June 2015 (the largest event identified in Section 3.2). We calculate them from daily average WACCM ~~EO~~-CO maps at 0.015 hPa (≈ 74 km in June) using the chemical definition method for mesospheric polar vortex as presented by Harvey et al. (2015). This method does not rely on the horizontal wind fields which can be complicated in the mesosphere and lead to spurious day-to-day changes in vortex area. Although the following discussion is based on simulated data, we note that in the mesosphere WACCM can reproduce observed winter vortex size and frequency of occurrence reasonably well (Harvey et al., 2019).

Figure 10 shows how in the simulations the polar vortex evolves from day to day during the June 2015 event. On six out of the eight days presented, including the peak NO day 24, Syowa is clearly inside the vortex. On days 22 and 27, Syowa is close to the vortex edge. However, these two days do not show particularly high or low NO column density values in simulations or observations (see Figure 6). Rather, the NO column density values on these two days are closer to the 31-day mean than on most other days. Nevertheless, it seems possible that in this case mesospheric vortex dynamics might play an important role for NO column density variability because the high NO days are inside the vortex. On the other hand, over the 31-day period around the NO peak Syowa is outside the vortex on 7 days only, which indicates that the NO column density reference that we use when identifying NO increase events is calculated mostly from values measured inside the vortex.

Using the WACCM ~~EO~~-CO, we assess the Syowa station location in relation to vortex edges for all event periods on a daily basis to determine if the station was inside or outside of the vortex. Overall for all 60 events, Syowa is inside (outside) of the vortex on 48% (18%) of the peak NO days. In the rest 34% of cases, there is no vortex edge identified on the peak day, *i.e.* either ~~EO~~-CO does not have a maximum in the polar regions or ~~EO~~-CO gradients are not strong enough. As can be expected, the no-vortex cases take place in and around summer periods and there are in fact no such cases from April to August. Figure 11 presents the histograms for those events ($N = 47$) that have Syowa inside the polar vortex at least on one day during the surrounding 31-day period. These events are relatively evenly distributed from March to October, *i.e.* in autumn, winter and spring periods. On the peak NO day, 62% (23%) of the events Syowa is inside (outside) of the vortex. 15% of the events have no vortex identified on the peak day. Median number of vortex occurrence days at Syowa over the corresponding 31-day periods is 23. Thus, there is a considerable proportion of events identified even if Syowa is not always inside the vortex.

355 It seems that the mesospheric vortex impact on the lower half of the NO column plays a lesser role than the EEP forcing which affects the full column density above 65 km.

On longer time scales, year-to-year variability in the polar vortex occurrence rate and extent could affect the amount of the overall wintertime NO observed at the Syowa station. As seen in Figure 1, during the winter of 2014 the radiometer measured clearly less NO than during 2013 or 2015, a feature also seen in the WACCM data. Based on the vortex data calculated from the
360 WACCM daily CO in the mesosphere, there was little difference between the winters in terms of the polar vortex characteristics. Number of vortex occurrence days is 164, 158, and 178 in the winters of 2013, 2014, and 2015, respectively. Of those days, the equivalent latitude of the vortex edge is equator-ward of 69°S on 110, 105, and 126 days, respectively. Median equivalent latitude of the vortex edge is 57°S, 61°S, 58°S, respectively. These relatively small differences in vortex occurrence rate and extent indicate a minor impact on the NO column density. Thus the lower EEP forcing remains a major reason for lower NO
365 column density in 2014, which agrees with the NO results from the Halley station reported by Newnham et al. (2018).

4 Discussion

One of the open questions in EEP atmospheric impact research has been to understand the differences in ~~vertical distribution~~
both the amount and vertical distribution of NO in the mesosphere-lower thermosphere (MLT) region seen between different sets of observations and models (Randall et al., 2015; Hendrickx et al., 2018; Sinnhuber et al., 2021). Since the radiometer NO
370 column density observations do not include information on the NO altitude distribution, they are best used to understand the overall NO content which is a measure of the full EEP forcing in the MLT. Comparing these observations with WACCM results, and analysis of the NO altitude distribution in the model, allows us to investigate the reasons behind any differences between model data and observations. While the radiometer data are limited in altitude information, they provide a ~~regional~~
continuous local view which is not available from satellite-based observations.

375 Here we have found that the key discrepancy is in the amount of NO in the MLT, e.g. the highest simulated wintertime amounts do not reach those measured. On the other hand, the year-to-year and day-to-day NO variability is qualitatively well-presented. This suggests that the electron energy input in the atmosphere is underestimated in our simulations which apply the current recommendation of electron forcing. After the initial work on solar particle forcing (Matthes et al., 2017), a revision is currently being finalized for the Coupled Model Intercomparison Project Phase 7. Considering the increased
380 electron forcing in several new data sets when compared to the ApEEP model (Nesse Tyssøy et al., 2021b), the new forcing recommendation is expected to increase the production and amount of NO in simulations. Based on our results here, an increase in electron forcing is well justified.

As reported by Newnham et al. (2018), the BAS radiometer measured NO Antarctic column density at the Halley station (75.6°S, 26.3°W). During 2013–2014, their measurements showed strikingly different winters of high and low NO column
385 density, similar to what we show here for Syowa in Figure 1. Comparing the Syowa observations to the NO amounts shown by Newnham et al. (2018) in their Figure 4, there is an overall agreement between the two data sets. The highest NO column densities are consistently above (below) $1.0 \times 10^{15} \text{ cm}^{-2}$ in 2013 (2014). The agreement indicates that the NO column density

at a location, such as Syowa, is a reasonable representation of the polar cap situation, although we have to note that there are differences in magnetic latitude and geographic location of the two radiometers.

390 We have shown that the NO column density at Syowa correlates similarly with the Ap, AE, and Dst indices. Although the indices correspond to different processes related to different EEP characteristics, finding such agreement is perhaps not surprising. Especially in winter, ~~the accumulation and transport of NO will dilute~~ have an impact on its distribution and weaken the direct links ~~on to~~ detailed temporal and spatial extent of EEP. ~~Since or production and transport is an important part of the EEP-ozone-climate connection on monthly time scales, this eases the requirements on the representation of the EEP forcing in atmospheric simulations (Verronen et al., 2021). Similarly, Also, van de Kamp et al. (2016) have shown that statistical models based on same electron flux data but driven by Ap and Dst indices perform almost equally well. Thus, it seems that~~ the choice of proxy for EEP seems to be of lesser importance than having ~~better accuracy in good quality electron flux data to accurately represent~~ the magnitude of forcing.

We have found that the Arase electron flux measurements made in the radiation belt indicate different characteristics of mesospheric electron forcing compared to the ApEEP MEE model. Particularly, in many cases Arase data indicates more (less) atmospheric ionization at middle (upper) mesospheric altitudes. When the Arase-based ionisation is applied during specific events, it does not improve the day-to-day variation of simulated NO column density when compared to the radiometer observations. Instead, the two simulations are rather close to each other, which gives some confidence to both data sets. While this preliminary study was done in 2017 which had relatively low geomagnetic activity, we expect that the variability of NO column density will be more sensitive to the changes introduced in mesospheric electron forcing during more active years. It should be noted that characterization of electron precipitation from the fluxes measured in the radiation belts, as Arase does, would benefit from additional measurements that allow the trapped fluxes to be removed. This kind of approach has been demonstrated in a recent study by Duderstadt et al. (2021) who used a combination of observations from the Van Allen Probes and the Firebird II small-satellite to estimate electron forcing on the atmosphere. A similar approach could be potentially developed using the Arase electron flux measurements. ~~This, however, is~~ In addition, there are some issues related to the MLT and L shell coverage of the observations (see Section 2.3) that could be addressed to improve the usability of Arase data in atmospheric simulations. Detailed consideration of these is, however, outside the scope of this study.

It is evident from our results that the maximum and minimum values of NO day-to-day variability are not well captured in WACCM. Driven by the Ap and Kp indices, the proxy EEP models used in WACCM are statistical average models which by their nature provide a smoothed impact of the measured electron forcing. ~~While using the electron observations instead of proxies can be considered for help~~ Instead of using statistical proxy models, electron flux observations can be used directly for those time periods when data are available. However, this is not an option for climate simulations ~~that exceed which are typically extended beyond~~ the temporal limits of ~~available observations historically and/or in future predictions~~ observations (Matthes et al., 2017). As a next step, a stochastic approach, sampling on measured distributions of electron forcing, could be ~~used a useful method~~ to capture the extremes of variability better and to improve the representation of atmospheric impacts in models.

5 Conclusions

We have compared the mesosphere-to-thermosphere NO column densities from the Syowa radiometer and WACCM model.

1. ~~Overall~~ A qualitative agreement on year-to-year and day-to-day NO variability ~~exist~~ exists between the radiometer and
425 WACCM. However, compared to the observations, the simulated 31-day averages are up to a factor of two smaller
(larger) in the winter (summer) periods. The ~~day-to-day variability~~ magnitude range of daily NO column densities is
much larger in the observations, the simulation captures just 27% of the observed variability.
2. Observed day-to-day variability is driven by EEP forcing. During time periods of identified EEP events ($N = 60$), the NO
column density correlates with the Ap, Dst, and AE geomagnetic indices (with median $r = 0.53, -0.57, 0.55$, respec-
430 tively), with a 0–1 day lag. WACCM reproduces the observed day-to-day variability in most cases but with a diminished
magnitude.
3. The relatively small variability in mesospheric polar vortex occurrence rate and extent does not indicate a large impact
on the winter-to-winter or day-to-day NO column density variability at Syowa location.
4. Results from a simulation using Arase-based EEP forcing, based on precipitating and trapped electron flux measure-
435 ments, demonstrate the potential of such measurements in atmospheric research. More research on the variability of
NO column density is needed, including on the impact from high-energy electrons (> 30 keV) directly affecting the
mesosphere.

Code and data availability. NO column density data obtained by the radiometer at Syowa are available from Arctic Data archive System (ADS) operated by National Institute of Polar Research (Mizuno and Nagahama, 2025). Science data of the ERG (Arase) satellite were
440 obtained from the ERG Science Center operated by ISAS/JAXA and ISEE/Nagoya University (Miyoshi et al. (2018a), <https://ergsc.isee.nagoya-u.ac.jp/index.shtml.en>). Arase satellite data sets for this research are available in the following data citation references: MEPe L2 V01-02 (Kasahara et al., 2018), HEPe L2 V03-01 (Mitani et al., 2018), Orbit L2 v02 (Miyoshi et al., 2018b). WACCM source code is distributed freely through a public github code repository of the Coupled Earth System Model (CESM) (<https://www.cesm.ucar.edu/models/cesm2>, University Corporation of Atmospheric Research (UCAR), last access: March 2025). WACCM simulation data analysed in this paper
445 are available at the Finnish Meteorological Institute Research Data repository METIS (Verronen, 2025). The Ap, AE, and Dst geomagnetic indices are publicly available on the internet, e.g. from the World Data Center for Geomagnetism, Kyoto (<https://wdc.kugi.kyoto-u.ac.jp/wdc/Sec3.html>).

Author contributions. Sodankylä and Nagoya teams contributed to the research plan. A. Mizuno and T. Nagahama prepared the Syowa radiometer data for analysis. JAXA, Tokyo, Osaka, and Nagoya teams contributed to the Arase electron flux observations and data processing.
450 Y. Miyoshi and S. Kumar prepared the Arase electron flux data, P. T. Verronen created the Arase-based EEP input data for atmospheric

simulations. P. T. Verronen and Helsinki team prepared and made the atmospheric simulations. P. T. Verronen made the scientific data analysis and prepared the figures and manuscript, with contributions from the Nagoya, Helsinki, and Sodankylä teams.

Competing interests. Yoshizumi Miyoshi is a topical editor of Annales Geophysicae.

Acknowledgements. The radiometer observations were supported by Japanese Antarctic Research Expedition (JARE) phase VIII and IX
455 Prioritized Research Projects. This work is part of the outcome of CHAMOS Workshop held in October 2024 at the Institute for Space-Earth
Environmental Research (ISEE), Nagoya University (<https://chamos.fmi.fi>). The work at the Finnish Meteorological Institute ~~has been was~~
supported by the Research Council of Finland (grant no. 354331, GERACLIS). The work at the University of Oulu was supported by the
Research Council of Finland (grant no. 365202, SafeEarth). This work has been supported by JSPS KAKENHI Grant Number JP24H00751,
23H01229, 22KK0046, 22K21345, 21H04518, 21KK0059, 22H00173, 23K22554, and 24H00751. The work of Antti Kero is funded by the
460 Tenure Track Project in Radio Science at Sodankylä Geophysical Observatory, University of Oulu. This work was carried out by the joint
research program of Planetary Plasma and Atmospheric Research Center, Tohoku University.

References

- Baker, D. N., Barth, C. A., Mankoff, K. E., Kanekal, S. G., Bailey, S. M., Mason, G. M., and Mazur, J. E.: Relationships between precipitating auroral zone electrons and lower thermospheric nitric oxide densities: 1998–2000, *J. Geophys. Res.*, pp. 24 465–24 480, 2001.
- 465 Barth, C. A.: Nitric oxide in the lower thermosphere, *Planet. Space Sci.*, 40, 315–336, 1992.
- Barth, C. A.: Reference models for thermospheric nitric oxide, 1994, *Adv. Space Res.*, 18, 179–208, 1996.
- Callis, L. B. and Lambeth, J. D.: NO_y formed by precipitating electron events in 1991 and 1992: Descent into the stratosphere as observed by ISAMS, *Geophys. Res. Lett.*, 25, 1875–1878, <https://doi.org/10.1029/98GL01219>, 1998.
- Ciliverd, M. A., Rodger, C. J., van de Kamp, M., and Verronen, P. T.: Electron precipitation from the outer radiation belt during the
- 470 St. Patrick’s day storm 2015: Observations, modeling, and validation, *J. Geophys. Res. (Space Phys.)*, pp. 125, e2019JA027 725, <https://doi.org/10.1029/2019JA027725>, 2020.
- Damiani, A., Funke, B., Santee, M. L., Cordero, R. R., and Watanabe, S.: Energetic particle precipitation: A major driver of the ozone budget in the Antarctic upper stratosphere, *Geophys. Res. Lett.*, 43, 3554–3562, <https://doi.org/10.1002/2016GL068279>, 2016.
- Duderstadt, K. A., Huang, C.-L., Spence, H. E., Smith, S., Blake, J. B., Crew, A. B., Johnson, A. T., Klumpar, D. M., Marsh, D. R., Sample,
- 475 J. G., Shumko, M., and Vitt, F. M.: Estimating the impacts of radiation belt electrons on atmospheric chemistry using FIREBIRD II and Van Allen Probes observations, *J. Geophys. Res. (Atmos.)*, 126, e2020JD033 098, <https://doi.org/10.1029/2020JD033098>, 2021.
- Fang, X., Randall, C. E., Lummerzheim, D., Wang, W., Lu, G., Solomon, S. C., and Frahm, R. A.: Parameterization of monoenergetic electron impact ionization, *Geophys. Res. Lett.*, 37, L22 106, <https://doi.org/10.1029/2010GL045406>, 2010.
- Fuller-Rowell, T. J.: Modeling the solar cycle change in nitric oxide in the thermosphere and upper mesosphere, *J. Geophys. Res.*, 98,
- 480 1559–1570, 1993.
- Funke, B., López-Puertas, M., Holt, L., Randall, C. E., Stiller, G. P., and von Clarmann, T.: Hemispheric distributions and interannual variability of NO_y produced by energetic particle precipitation in 2002–2012, *J. Geophys. Res.*, 119, 13 565–13 582, <https://doi.org/10.1002/2014JD022423>, 2014.
- Gottelman, A., Mills, M. J., Kinnison, D. E. and Garcia, R. R., Smith, A. K., Marsh, D. R., Tilmes, S., Vitt, F., Bardeen, C. G., McInerny, J.,
- 485 Liu, H.-L., Solomon, S. C., Polvani, L. M., Emmons, L. K., Lamarque, J.-F., Richter, J. H., Glanville, A. S., Bacmeister, J. T., Phillips, A. S., Neale, R. B., Simpson, I. R., DuVivier, A. K., Hodzic, A., and Randel, W. J.: The whole atmosphere community climate model version 6 (WACCM6), *J. Geophys. Res. (Atmos.)*, 124, 12 380–12 403, <https://doi.org/10.1029/2019JD030943>, 2019.
- Gordon, E. M., Seppälä, A., Funke, B., Tamminen, J., and Walker, K. A.: Observational evidence of energetic particle precipitation NO_x (EPP- NO_x) interaction with chlorine curbing Antarctic ozone loss, *Atmos. Chem. Phys.*, 21, 2819–2836, [https://doi.org/10.5194/acp-21-](https://doi.org/10.5194/acp-21-2819-2021)
- 490 2819-2021, 2021.
- Häkkilä, T., Grandin, M., Battarbee, M., Szeląg, M. E., Alho, M., Kotipalo, L., Kalakoski, N., Verronen, P. T., and Palmroth, M.: Atmospheric odd nitrogen response to electron forcing from a 6D magnetospheric hybrid-kinetic simulation, *Ann. Geophys. Discuss.*, <https://doi.org/10.5194/angeo-2024-7>, in review, 2024.
- Häkkilä, T., Grandin, M., Battarbee, M., Szeląg, M. E., Alho, M., Kotipalo, L., Kalakoski, N., Verronen, P. T., and Palmroth, M.: Atmospheric odd nitrogen response to electron forcing from a 6D magnetospheric hybrid-kinetic simulation, *Ann. Geophys.*, 43, 217–240, <https://doi.org/10.5194/angeo-43-217-2025>, 2025.
- 495 Harvey, V. L., Randall, C. E., and Collins, R. L.: Chemical definition of the mesospheric polar vortex, *J. Geophys. Res. (Atmos.)*, 120, 10,166–10,179, <https://doi.org/10.1002/2015JD023488>, 2015.

- Harvey, V. L., Randall, C. E., Goncharenko, L., Becker, E., and France, J.: On the upward extension of the polar vortices into the mesosphere, *J. Geophys. Res. (Atmos.)*, 123, 9,171–9,191, <https://doi.org/10.1029/2018JD028815>, 2018.
- Harvey, V. L., Randall, C. E., Becker, E., Smith, A. K., Bardeen, C. G., France, J., and Goncharenko, L. P.: Evaluation of the mesospheric polar vortices in WACCM, *J. Geophys. Res. (Atmos.)*, 124, 10,626–10,645, <https://doi.org/10.1029/2019JD030727>, 2019.
- Hendrickx, K., Megner, L., Marsh, D. R., Gumbel, J., Strandberg, R., and Martinsson, F.: Relative importance of nitric oxide physical drivers in the lower thermosphere, *Geophys. Res. Lett.*, 44, <https://doi.org/10.1002/2017GL074786>, 2017.
- Hendrickx, K., Megner, L., Marsh, D. R., and Smith-Johnsen, C.: Production and transport mechanisms of NO in the polar upper mesosphere and lower thermosphere in observations and models, *Atmos. Chem. Phys.*, 18, 9075–9089, <https://doi.org/10.5194/acp-18-9075-2018>, 2018.
- Isono, Y., Mizuno, A., Nagahama, T., Miyoshi, Y., Nakamura, T., Kataoka, R., Tsutsumi, M., Ejiri, M. K., Fujiwara, H., and Maezawa, H.: Variations of nitric oxide in the mesosphere and lower thermosphere over Antarctica associated with a magnetic storm in April 2012, *Geophysical Research Letters*, 41, 2568–2574, <https://doi.org/10.1002/2014gl059360>, 2014a.
- Isono, Y., Mizuno, A., Nagahama, T., Miyoshi, Y., Nakamura, T., Kataoka, R., Tsutsumi, M., Ejiri, M. K., Fujiwara, H., Maezawa, H., and Uemura, M.: Ground-based observations of nitric oxide in the mesosphere and lower thermosphere over Antarctica in 2012–2013, *Journal of Geophysical Research: Space Physics*, 119, 7745–7761, <https://doi.org/10.1002/2014ja019881>, 2014b.
- Kasahara, S., Yokota, S., Mitani, T., Asamura, K., Hirahara, M., Shibano, Y., and Takashima, T.: "Medium-Energy Particle experiments – electron analyser (MEP-e) for the Exploration of energization and Radiation in Geospace (ERG) mission", *Earth Planets Space*, <https://doi.org/10.1186/s40623-018-0847-z>, 2018.
- Kiviranta, J., Pérot, K., Eriksson, P., and Murtagh, D.: An empirical model of nitric oxide in the upper mesosphere and lower thermosphere based on 12 years of Odin SMR measurements, *Atmos. Chem. Phys.*, 18, 13 393–13 410, <https://doi.org/10.5194/acp-18-13393-2018>, 2018.
- Marsh, D. R., Garcia, R. R., Kinnison, D. E., Boville, B. A., Sassi, F., Solomon, S. C., and Matthes, K.: Modeling the whole atmosphere response to solar cycle changes in radiative and geomagnetic forcing, *J. Geophys. Res. (Atmos.)*, 112, D23 306, <https://doi.org/10.1029/2006JD008306>, 2007.
- Matthes, K., Funke, B., Andersson, M. E., Barnard, L., Beer, J., Charbonneau, P., Clilverd, M. A., Dudok de Wit, T., Haberreiter, M., Hendry, A., Jackman, C. H., Kretschmar, M., Kruschke, T., Kunze, M., Langematz, U., Marsh, D. R., Maycock, A., Misios, S., Rodger, C. J., Scaife, A. A., Seppälä, A., Shangguan, M., Sinnhuber, M., Tourpali, K., Usoskin, I., van de Kamp, M., Verronen, P. T., and Versick, S.: Solar Forcing for CMIP6, *Geosci. Model Dev.*, 10, 2247–2302, <https://doi.org/10.5194/gmd-10-2247-2017>, 2017.
- McPeters, R. D.: Climatology of nitric oxide in the upper stratosphere, mesosphere, and thermosphere: 1979 through 1986, *Journal of Geophysical Research: Atmospheres*, 94, 3461–3472, <https://doi.org/10.1029/jd094id03p03461>, 1989.
- Menvielle, M., Iyemori, T., Marchaudon, A., and Nosé, M.: *Geomagnetic Indices*, pp. 183–228, IAGA Special Sopron Book Series, vol 5. *Geomagnetic Observations and Models*, edited by Mande, M. and Korte, M., Springer, Dordrecht., https://doi.org/10.1007/978-90-481-9858-0_8, 2011.
- Mitani, T., Takashima, T., Kasahara, S., Miyake, W., , and Hirahara, M.: High-energy electron experiments (HEP) aboard the ERG (Arase) satellite, *Earth Planets Space*, <https://doi.org/10.1186/s40623-018-0853-1>, 2018.
- Miyoshi, Y., Oyama, S., Saito, S., Fujiwara, H., Kataoka, R., Ebihara, Y., Kletzing, C., Reeves, G., Santolik, O., Clilverd, M. A., Rodger, C. J., Turunen, E., and Tsuchiya, F.: Energetic electron precipitation associated with pulsating aurora: EISCAT and Van Allen Probes observations, *J. Geophys. Res. (Space Phys.)*, 120, <https://doi.org/10.1002/2014JA020690>, 2015.

- Miyoshi, Y., Hori, T., Shoji, M., Teramoto, M., Chang, T.-F., Segawa, T., Umemura, N., Matsuda, S., Kurita, S., Keika, K., Miyashita, Y., Seki, K., Tanaka, Y., Nishitani, N., Kasahara, S., Yokota, S., Matsuoka, A., Kasahara, Y., Asamura, K., Takashima, T., and Shinohara, I.: The ERG Science Center, Earth Planets Space, 70, <https://doi.org/10.1186/s40623-018-0867-8>, 2018a.
- 540 Miyoshi, Y., Shinohara, I., and Jun, C.-W.: "The Level-2 orbit data of Exploration of energization and Radiation in Geospace (ERG) Arase satellite", <https://doi.org/10.34515/DATA.ERG-12000>, 2018b.
- Miyoshi, Y., Shinohara, I., Takashima, T., Asamura, K., Higashio, N., Mitani, T., Kasahara, S., Yokota, S., Kazama, Y., Wang, S.-Y., Tam, S. W. Y., Ho, P. T. P., Kasahara, Y., Kasaba, Y., Yagitani, S., Matsuoka, A., Kojima, H., Katoh, Y., Shiokawa, K., and Seki, K.: Geospace Exploration Project ERG, Earth Planets Space, 70, <https://doi.org/10.1186/s40623-018-0862-0>, 2018c.
- 545 Miyoshi, Y., Saito, S., Kurita, S., Asamura, K., Hosokawa, K., Sakanoi, T., Mitani, T., Ogawa, Y., Oyama, S., Tsuchiya, F., Jones, S. L., Jaynes, A. N., and Blake, J. B.: Relativistic Electron Microbursts as High-Energy Tail of Pulsating Aurora Electrons, *Geophys. Res. Lett.*, 47, e90360, <https://doi.org/10.1029/2020GL090360>, 2020.
- Miyoshi, Y., Hosokawa, K., Kurita, S., Oyama, S.-I., Ogawa, Y., Saito, S., Shinohara, I., Kero, A., Turunen, E., Verronen, P. T., Kasahara, S., Yokota, S., Mitani, T., Takashima, T., Higashio, N., Kasahara, Y., Matsuda, S., Tsuchiya, F., Kumamoto, A., Matsuoka, A., Hori, T.,
- 550 Keika, K., Shoji, M., Teramoto, M., Imajo, S., Jun, C., and Nakamura, S.: Penetration of MeV electrons into the mesosphere accompanying pulsating aurorae, *Sci. Rep.*, 11, 13724, <https://doi.org/10.1038/s41598-021-92611-3>, 2021.
- Mizuno, A. and Nagahama, T.: Partial column of Nitric Monoxide observed by millimeter-wave spectroradiometer, <https://ads.nipr.ac.jp/data/meta/A20250402-001>, (Version 1.00) [Dataset], 2025.
- Mlynczak, M. G., Martin-Torres, F. J., Crowley, G., Kratz, D. P., Funke, B., Lu, G., Lopez-Puertas, M., Russell, J. M., Kozyra, J., Mertens,
- 555 C., Sharma, R., Gordley, L., Picard, R., Winick, J., and Paxton, L.: Energy transport in the thermosphere during the solar storms of April 2002, *J. Geophys. Res.*, 110, A12S25, <https://doi.org/10.1029/2005JA011141>, 2005.
- Molod, A., Takacs, L., Suarez, M., and Bacmeister, J.: Development of the GEOS-5 atmospheric general circulation model: Evolution from MERRA to MERRA2, *Geosci. Model Dev.*, 8, 1339–1356, <https://doi.org/10.5194/gmd-8-1339-2015>, 2015.
- Nesse Tyssøy, H., Haderlein, A., Sandanger, M. I., and Stadsnes, J.: Intercomparison of the POES/MEPED loss cone electron fluxes with the
- 560 CMIP6 parametrization, *J. Geophys. Res. (Space Phys.)*, 124, 628–642, <https://doi.org/10.1029/2018JA025745>, 2019.
- Nesse Tyssøy, H., Partamies, N., Babu, E. M., Smith-Johnsen, C., and Salice, J. A.: The Predictive Capabilities of the Auroral Electrojet Index for Medium Energy Electron Precipitation, *Front. Astron. Space Sci.*, 8, <https://doi.org/10.3389/fspas.2021.714146>, 2021a.
- Nesse Tyssøy, H., Sinnhuber, M., Asikainen, T., Bender, S., Clilverd, M. A., Funke, B., van de Kamp, M., Pettit, J. M., Randall, C. E., Reddmann, T., Rodger, C. J., Rozanov, E., Smith-Johnsen, C., Sukhodolov, T., Verronen, P. T., Wissing, J. M., and Yakovchuk, O.:
- 565 HEPPA III intercomparison experiment on electron precipitation impacts: 1. Estimated ionization rates during a geomagnetic active period in April 2010, *J. Geophys. Res. (Space Phys.)*, 126, e2021JA029128, <https://doi.org/10.1029/2021JA029128>, 2021b.
- Newnham, D. A., Espy, P. J., Clilverd, M. A., Rodger, C. J., Seppälä, A., Maxfield, D. J., Hartogh, P., Holmén, K., and Horne, R. B.: Direct observations of nitric oxide produced by energetic electron precipitation into the Antarctic middle atmosphere, *Geophys. Res. Lett.*, 38, L20104, <https://doi.org/10.1029/2011GL048666>, 2011.
- 570 Newnham, D. A., Clilverd, M. A., Rodger, C. J., Hendrickx, K., Megner, L., Kavanagh, A. J., Seppälä, A., Verronen, P. T., Andersson, M. E., Marsh, D. R., Kovacs, T., Feng, W., and Plane, J. M. C.: Observations and modelling of increased nitric oxide in the Antarctic polar middle atmosphere associated with geomagnetic storm driven energetic electron precipitation, *J. Geophys. Res. (Space Phys.)*, 123, 6009–6025, <https://doi.org/10.1029/2018JA025507>, 2018.

Randall, C. E., Harvey, V. L., Holt, L. A., Marsh, D. R., Kinnison, D., Funke, B., and Bernath, P. F.: Simulation of energetic particle precipitation effects during the 2003–2004 Arctic winter, *J. Geophys. Res. (Space Phys.)*, 120, 5035–5048, <https://doi.org/10.1002/2015JA021196>, 2015.

Roble, P. B. and Ridley, E. C.: An auroral model for the NCAR thermospheric general circulation model (TGCM), *Ann. Geophys.*, 5A(6), 369–382, 1987.

Sinnhuber, M., Tyssøy, H. N., Asikainen, T., Bender, S., Funke, B., Hendrickx, K., Pettit, J., Reddmann, T., Rozanov, E., Schmidt, H., Smith-Johnsen, C., Sukhodolov, T., Szeląg, M. E., van de Kamp, M., Verronen, P. T., Wissing, J. M., and Yakovchuk, O.: Heppa III intercomparison experiment on medium-energy electrons, part II: Model-measurement intercomparison of nitric oxide (NO) during a geomagnetic storm in April 2010, *J. Geophys. Res. (Space Phys.)*, 127, e2021JA029466, <https://doi.org/10.1029/2021JA029466>, 2021.

Siskind, D. E., Bacmeister, J. T., Summers, M. E., and Russell, J. M.: Two-dimensional Model Calculations of Nitric Oxide Transport in the Middle Atmosphere and Comparison with Halogen Occultation Experiment Data, *J. Geophys. Res.*, 102, 3527–3545, 1997.

Siskind, D. E., Barth, C. A., and Russell, J. M.: A climatology of nitric oxide in the mesosphere and thermosphere, *Adv. Space Res.*, 21, 1353–1362, 1998.

Solomon, S., Crutzen, P. J., and Roble, R. G.: Photochemical coupling between the thermosphere and the lower atmosphere 1. Odd nitrogen from 50 to 120 km, *J. Geophys. Res.*, 87, 7206–7220, 1982.

Solomon, S. C., Barth, C. A., and Bailey, S. M.: Auroral production of nitric oxide measured by the SNOE satellite, *Geophys. Res. Lett.*, 26, 1259–1262, 1999.

Tanskanen, E. I., Hynönen, R., and Mursula, K.: Seasonal variation of high-latitude geomagnetic activity in individual years, *J. Geophys. Res. (Space Phys.)*, 122, 10,058–10,071, <https://doi.org/10.1002/2017JA024276>, 2017.

Turunen, E., Verronen, P. T., Seppälä, A., Rodger, C. J., Clilverd, M. A., Tamminen, J., Enell, C.-F., and Ulich, T.: Impact of different precipitation energies on NO_x generation during geomagnetic storms, *J. Atmos. Sol.-Terr. Phys.*, 71, 1176–1189, <https://doi.org/10.1016/j.jastp.2008.07.005>, 2009.

Turunen, E., Kero, A., Verronen, P. T., Miyoshi, Y., Oyama, S., and Saito, S.: Mesospheric ozone destruction by high-energy electron precipitation associated with pulsating aurora, *J. Geophys. Res. (Atmos.)*, 121, 11 852–11 861, <https://doi.org/10.1002/2016JD025015>, 2016.

van de Kamp, M., Seppälä, A., Clilverd, M. A., Rodger, C. J., Verronen, P. T., and Whittaker, I. C.: A model providing long-term datasets of energetic electron precipitation during geomagnetic storms, *J. Geophys. Res. (Atmos.)*, 121, 12 520–12 540, <https://doi.org/10.1002/2015JD024212>, 2016.

Verronen, P. T.: WACCM simulation data from the manuscript Electron-Driven Variability of the Upper Atmospheric Nitric Oxide Column Density Over the Syowa Station in Antarctica by Verronen et al., <https://doi.org/10.57707/FMI-B2SHARE.2060526DEE334B819746263EEE858F4E>, (Version 1.0) [Dataset], 2025.

Verronen, P. T., Andersson, M. E., Marsh, D. R., Kovács, T., and Plane, J. M. C.: WACCM-D – Whole Atmosphere Community Climate Model with D-region ion chemistry, *J. Adv. Model. Earth Syst.*, 8, 954–975, <https://doi.org/10.1002/2015MS000592>, 2016.

Verronen, P. T., Marsh, D. R., Szeląg, M. E., and Kalakoski, N.: Magnetic local time dependency of radiation belt electron precipitation: impact on ozone in the polar middle atmosphere, *Ann. Geophys.*, 38, 833–844, <https://doi.org/10.5194/angeo-38-833-2020>, 2020.

Verronen, P. T., Kero, A., Partamies, N., Szeląg, M. E., Oyama, S., Miyoshi, Y., and Turunen, E.: Simulated seasonal impact on middle atmospheric ozone from high-energy electron precipitation related to pulsating aurorae, *Ann. Geophys.*, 39, 883–897, <https://doi.org/10.5194/angeo-39-883-2021>, 2021.

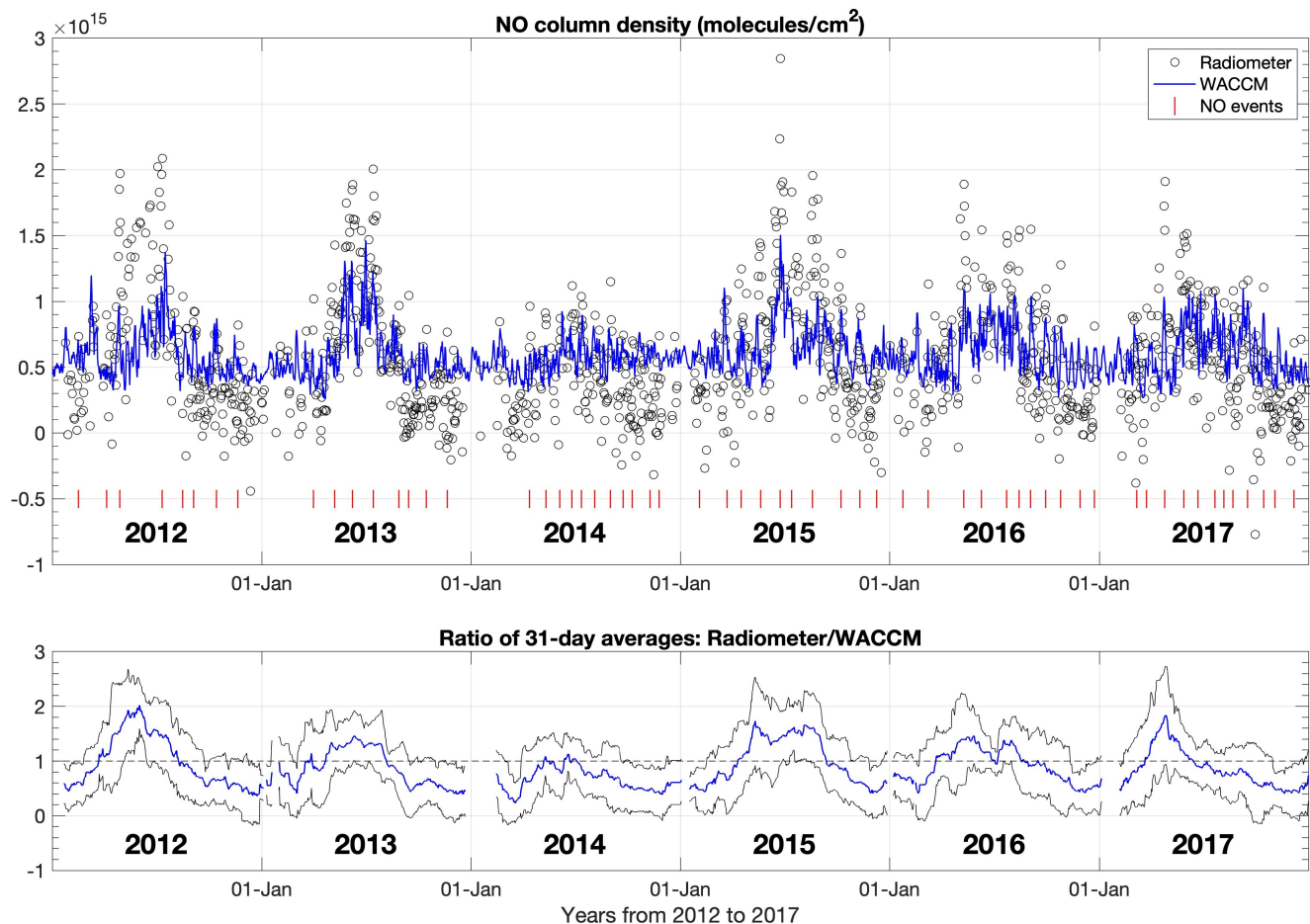


Figure 1. Comparison between Syowa observations and WACCM: (top) Daily time series of observed NO column density, and simulated column density at 65–140 km. Red marks: the dates of 60 events of observed NO increase, identified in Section 3.2 and Table 1. (bottom) Ratio of observed and simulated 31-day running mean column density. Black lines show the 31-day standard deviation of the observations.

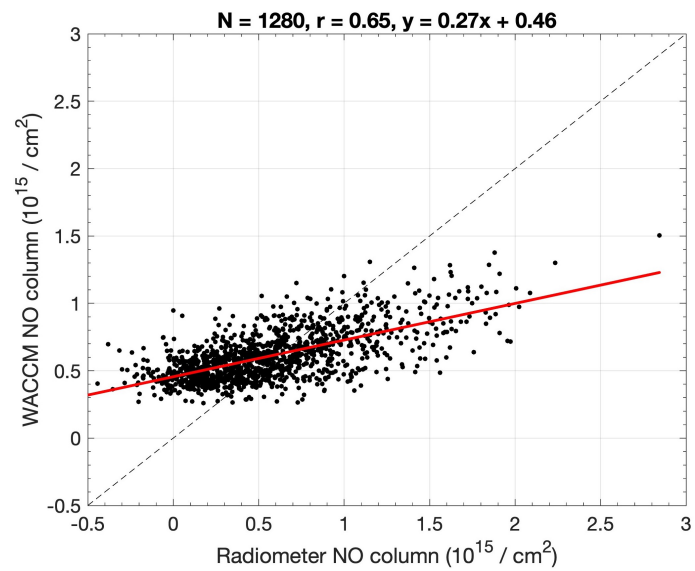


Figure 2. Comparison between Syowa observations and WACCM: relation between the daily NO column densities over the period 2012–2017.

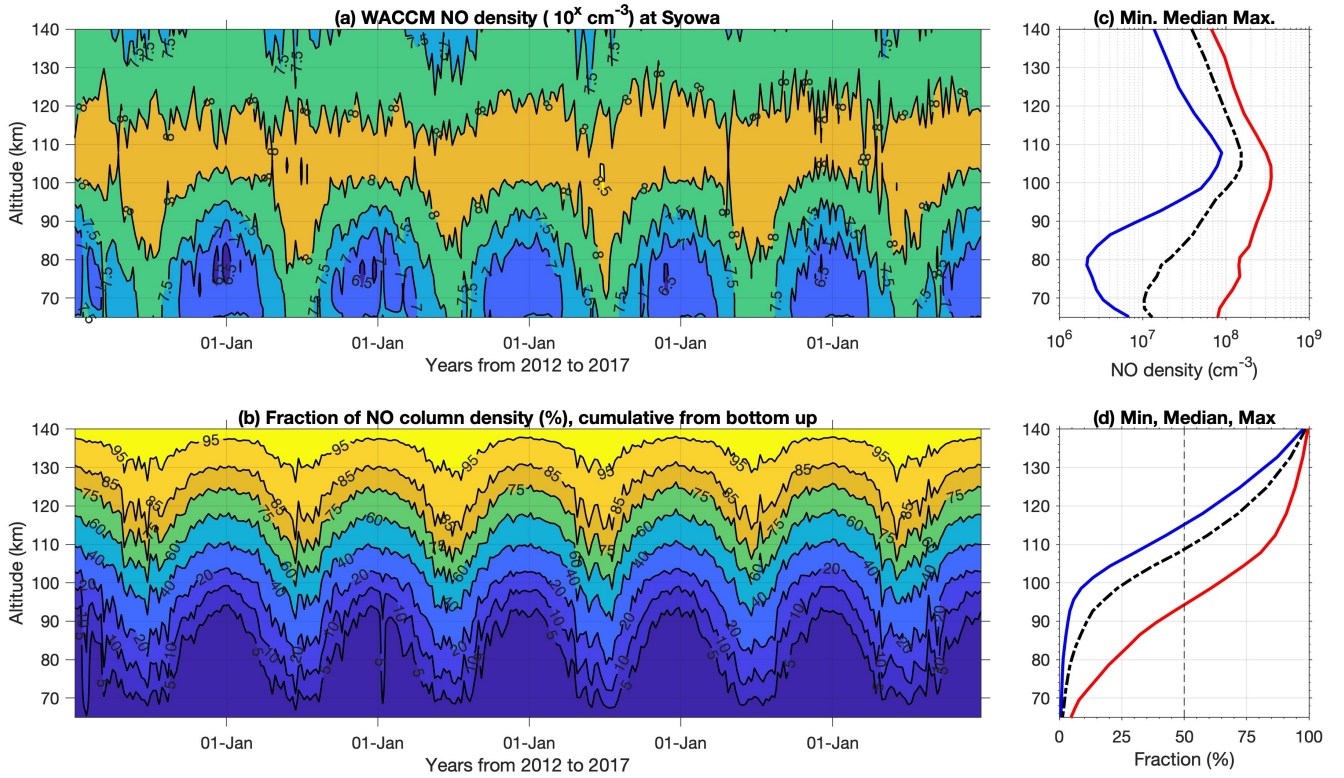


Figure 3. (a) WACCM NO altitude distribution in 2012–2017 at the Syowa station location (7-day running average). The contour lines are powers of ten at 6.5, 7.0, 7.5, 8.0, and 8.5. (b) Fraction of WACCM NO column density from 65–140 km altitude, cumulative from bottom up (7-day running average). The contour lines are at 5%, 10%, 20%, 40%, 60%, 75%, 85%, and 95%. (c) and (d) Altitude profiles of minimum (blue), median (black), and maximum (red) NO and NO fraction, respectively, over the 2012–2017 period.

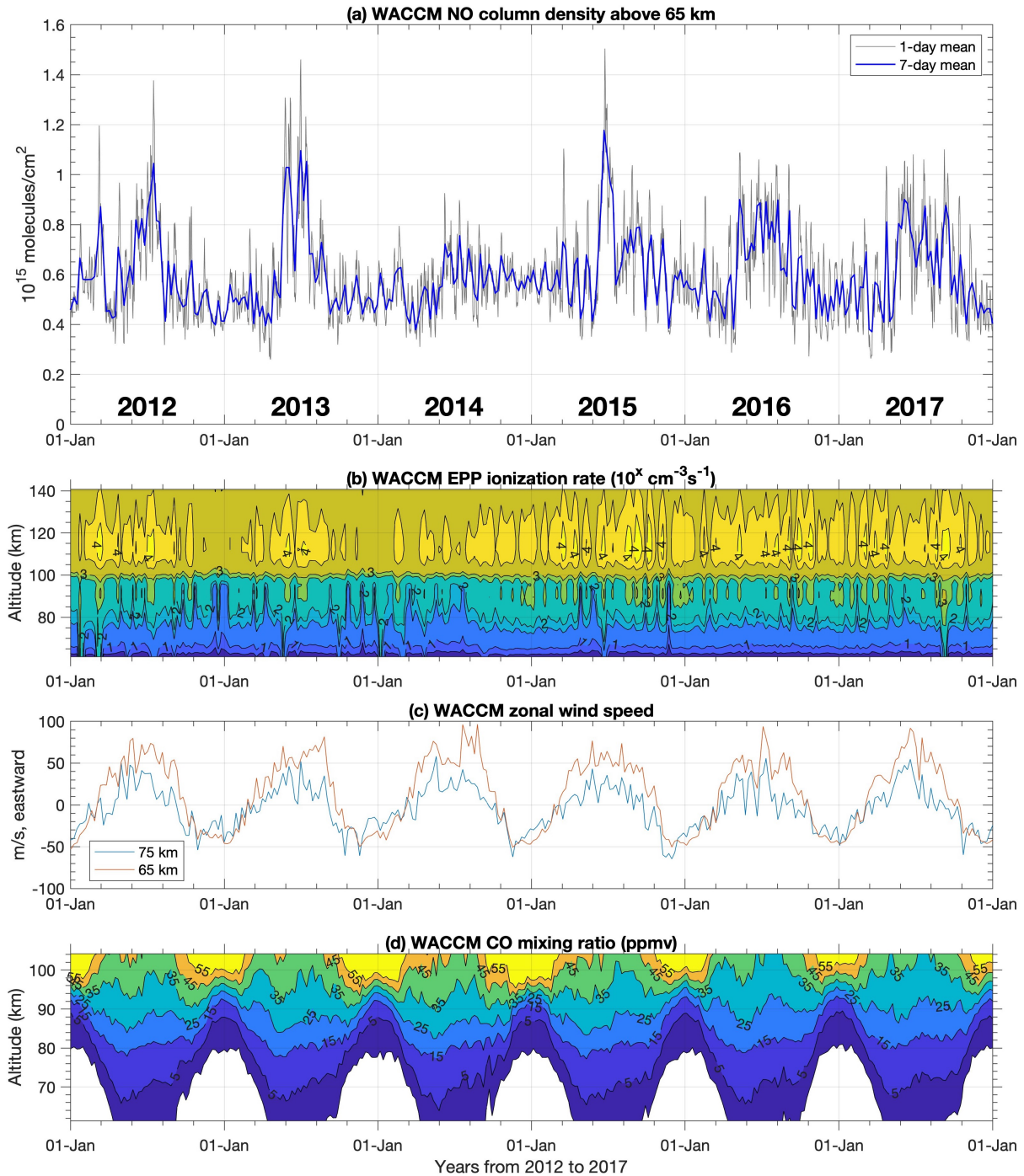


Figure 4. WACCM time series of 2012–2017 from 2012 to 2017 at the Syowa station location: (a) NO column density, (b) electron ionization rate (7-day running average), (c) zonal wind speed (7-day running average), and (d) CO–CO mixing ratio (7-day running average). Contour lines are powers of ten at 0.5, 1.0, 1.5, 2.0, 2.5, 3.0, 3.5, and 4.0. Contour lines are at 1, 5, 15, 25, 35, 45, and 55 ppmv. White areas indicate mixing ratios smaller than 1 ppmv.

Event Rank	Peak Date	Peak ΔNO 10^{15} cm^{-2}	Correlation with Dst Ap AE	Lag (days) Dst Ap AE	Event Rank	Peak Date	Peak ΔNO 10^{15} cm^{-2}	Correlation with Dst Ap AE	Lag (days) Dst Ap AE
1	2015-Jun-24	1.41	-0.71 0.68 0.44	+0 +1 +1	31	2012-Nov-20	0.54	-0.14 0.25 0.23	-2 -1 -1
2	2012-Apr-28	1.04	-0.63 0.65 0.65	+3 +4 +4	32	2016-Dec-23	0.52	-0.64 0.63 0.64	+0 +0 +0
3	2016-Sep-03	1.00	-0.52 0.59 0.62	+0 +1 +0	33	2013-Aug-28	0.51	-0.75 0.54 0.55	+0 +1 +1
4	2017-Apr-25	1.00	-0.88 0.84 0.86	+1 +3 +1	34	2017-Mar-24	0.51	-0.49 0.51 0.54	+1 +1 +2
5	2016-May-09	0.92	-0.87 0.64 0.75	+1 +1 +1	35	2012-Aug-16	0.50	-0.62 0.51 0.49	-1 +0 +0
6	2012-Jul-11	0.91	-0.58 0.68 0.57	+0 +1 +1	36	2014-Nov-25	0.50	-0.37 0.16 0.29	+1 -5 +1
7	2016-Oct-25	0.91	-0.86 0.90 0.89	+0 +0 +0	37	2016-Jul-23	0.49	-0.39 0.36 0.22	+2 +3 +0
8	2013-Jul-14	0.86	-0.49 0.51 0.44	+0 +0 +0	38	2012-Sep-04	0.49	-0.65 0.58 0.53	+0 +1 +1
9	2015-Aug-19	0.84	-0.69 0.59 0.67	+1 +1 +1	39	2017-Jul-21	0.49	-0.57 0.42 0.38	+0 +1 +1
10	2016-Aug-14	0.82	-0.16 0.26 0.40	+5 +2 +2	40	2017-Mar-07	0.49	-0.44 0.34 0.36	+5 +0 +0
11	2015-Oct-08	0.81	-0.69 0.65 0.75	+0 +1 +0	41	2013-Oct-15	0.48	-0.75 0.58 0.71	+0 +1 +1
12	2013-Sep-14	0.81	-0.48 0.39 0.42	+0 +1 +0	42	2014-Jul-12	0.47	-0.33 0.56 0.60	+4 +2 +2
13	2017-Oct-14	0.80	-0.37 0.46 0.40	+0 +3 +0	43	2014-Jun-26	0.46	-0.24 0.37 0.27	+4 +2 +2
14	2016-Mar-08	0.76	-0.73 0.62 0.77	+1 +1 +1	44	2017-Dec-06	0.46	-0.50 0.61 0.61	+0 +1 +1
15	2014-Sep-01	0.75	-0.80 0.55 0.54	+4 +5 +5	45	2017-Aug-06	0.46	-0.54 0.49 0.51	+0 +1 +1
16	2015-Apr-17	0.67	-0.65 0.45 0.59	+1 +2 +1	46	2014-Aug-05	0.45	-0.49 0.68 0.64	+0 +0 +0
17	2015-May-21	0.66	-0.64 0.43 0.57	+5 +5 +5	47	2014-Sep-23	0.45	-0.34 0.59 0.56	+0 +0 +0
18	2014-Apr-13	0.65	-0.74 0.37 0.56	+1 -4 +1	48	2014-Jun-05	0.41	-0.57 0.47 0.53	-5 -2 +0
19	2013-May-08	0.65	-0.33 0.31 0.31	+5 +2 +1	49	2014-Oct-09	0.40	-0.20 0.30 0.38	+0 +0 +0
20	2013-Jun-08	0.63	-0.63 0.51 0.59	+1 +1 +1	50	2017-Jun-22	0.40	-0.45 0.31 0.36	+5 +1 +1
21	2016-Jun-09	0.63	-0.40 0.59 0.62	+3 +4 -2	51	2012-Oct-14	0.39	-0.50 0.55 0.54	+1 +1 +1
22	2015-Jul-14	0.63	-0.60 0.52 0.49	+1 +1 +1	52	2012-Apr-05	0.39	-0.39 0.39 0.45	-2 -2 -2
23	2013-Apr-01	0.63	-0.75 0.74 0.75	+2 +3 +3	53	2015-Dec-09	0.39	-0.47 0.60 0.58	+0 +1 +1
24	2015-Mar-23	0.59	-0.69 0.48 0.60	+1 +4 +1	54	2012-Feb-16	0.38	-0.39 0.58 0.54	+3 -4 -4
25	2015-Nov-10	0.59	-0.62 0.63 0.61	+2 +0 +0	55	2014-Nov-09	0.38	-0.24 0.16 0.26	+1 -5 +4
26	2016-Sep-29	0.59	-0.68 0.74 0.74	+0 +0 +0	56	2014-May-12	0.35	-0.34 0.36 0.28	+0 +0 +0
27	2017-May-28	0.58	-0.59 0.45 0.57	+0 +5 +5	57	2017-Nov-03	0.32	-0.64 0.65 0.56	+0 +1 +1
28	2017-Sep-16	0.58	-0.35 0.42 0.50	+0 +0 +0	58	2015-Feb-03	0.30	-0.48 0.47 0.50	+1 +1 +1
29	2017-Aug-22	0.57	-0.69 0.58 0.65	+0 +1 +0	59	2016-Nov-28	0.29	-0.46 0.38 0.34	-2 +0 +4
30	2013-Nov-20	0.54	-0.37 0.35 0.40	+0 +1 +1	60	2016-Jan-24	0.29	-0.46 0.52 0.49	+0 +0 +0

Table 1. List of selected NO increase events from the Syowa column density observations in 2012–2017. Peak NO value is the difference between 1-day and 31-day NO column densities. Best correlations with the geomagnetic indices are listed over the 31-day period around the peak day, together with corresponding lags. The dates of the events are marked in Figure 1.

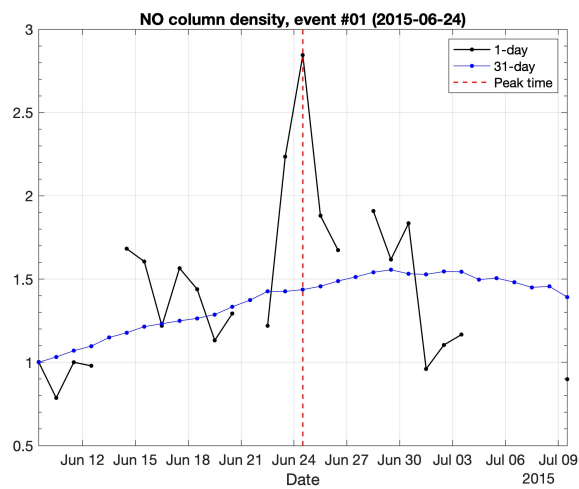


Figure 5. The largest NO increase event from the Syowa column density observations in 2012–2017. Both the 1-day and the 31-day average NO is shown for the event period. The event day is marked with a red vertical line.

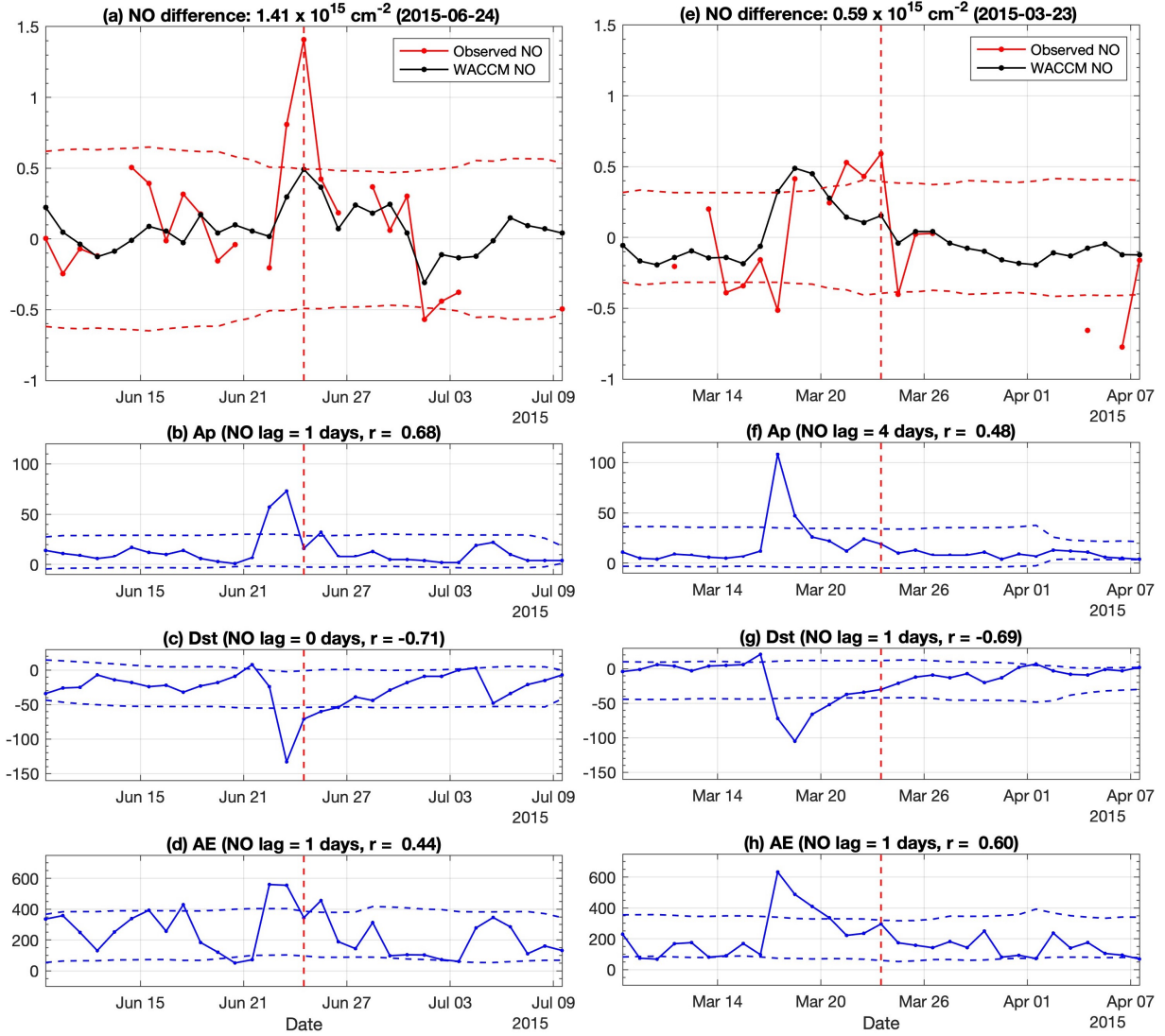


Figure 6. NO increase events #01 (left) and #24 (right): (a,e) Observed and simulated NO difference between 1-day and running 31-day averages. Dashed lines indicate the running 31-day standard deviation of observations. (b,c,d) and (f,g,h) Geomagnetic Ap, Dst, and AE indices for the event period. Dashed lines indicate standard deviation range of the 31-day running mean. The maximum correlation r and the corresponding lag between the index and the observed difference is given in the panel title.

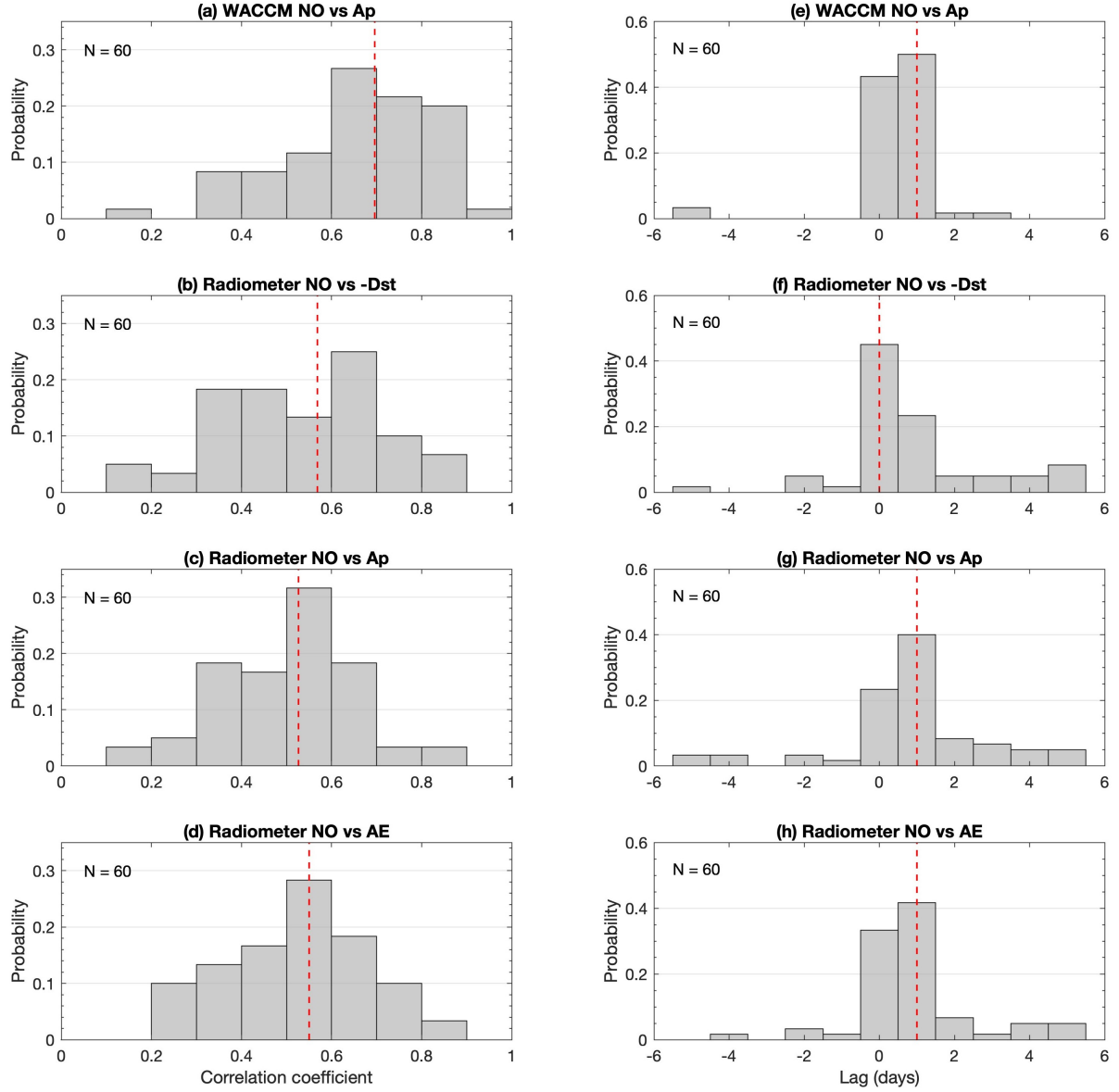


Figure 7. Histograms for the NO increase events (N = 60, see Table 1). (left) Correlation between geomagnetic indices and daily NO column density, (right) corresponding lag (days). In all panels, the vertical red line indicates the median of 60 events.

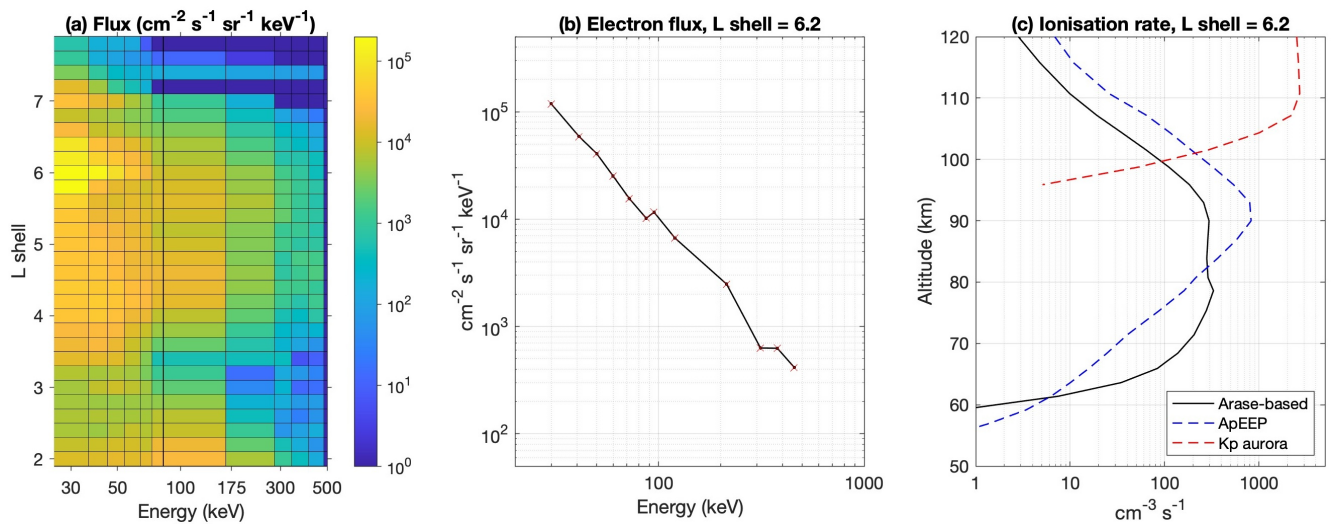


Figure 8. An example of Arase electron flux measurements and corresponding atmospheric ionization. (a) Average electron fluxes on 22nd of July, 2017, at 06–18 UT. (b) Arase electron fluxes at L shell 6.2. (c) Arase-based ionisation rates at L shell 6.2, together with ApEEP v1 and Kp aurora ionisation from WACCM.

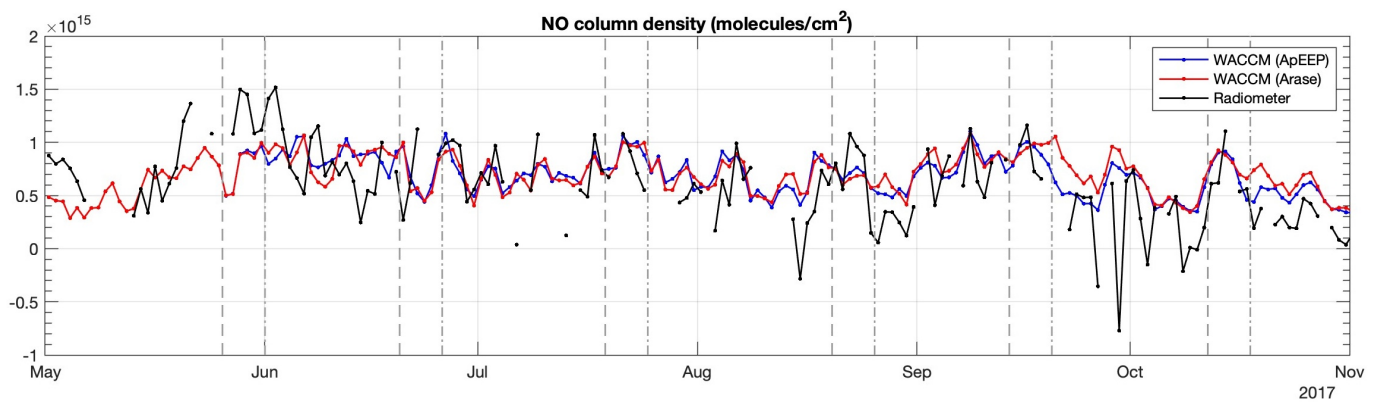


Figure 9. Daily time series of NO column density in 2017: Syowa radiometer observations and two WACCM simulations with different electron forcing (ApEEP v1; Arase-based trapped fluxes). The radiometer and WACCM (ApEEP) data are the same as those shown in Figure 1. Dashed and dash-dot lines mark the start and end times of the Arase-based electron forcing.

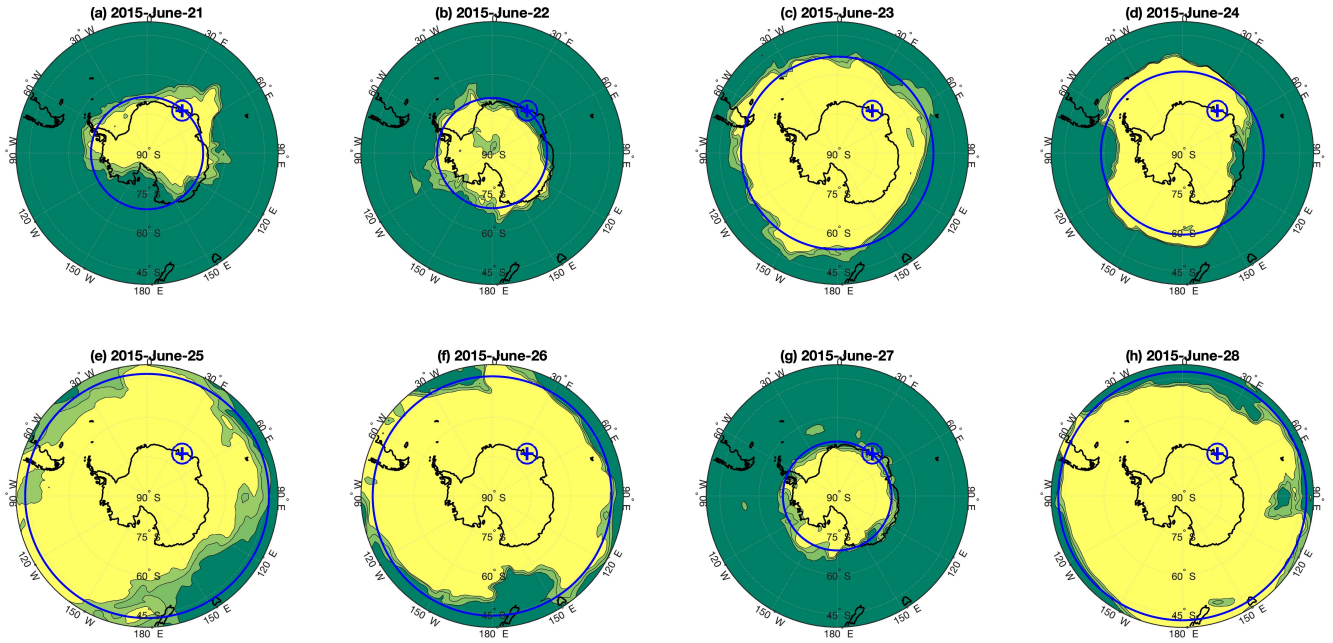


Figure 10. Polar vortex edges calculated from WACCM $\Theta\Theta$ -CO data for selected days around Event #1 (peak NO day: 24th). Yellow, light green and dark green areas are inside, on the edge, and outside of the vortex, respectively. Blue cross marks Syowa location, large blue circle is at the equivalent latitude of polar vortex area. Latitudes larger than 40°S are shown.

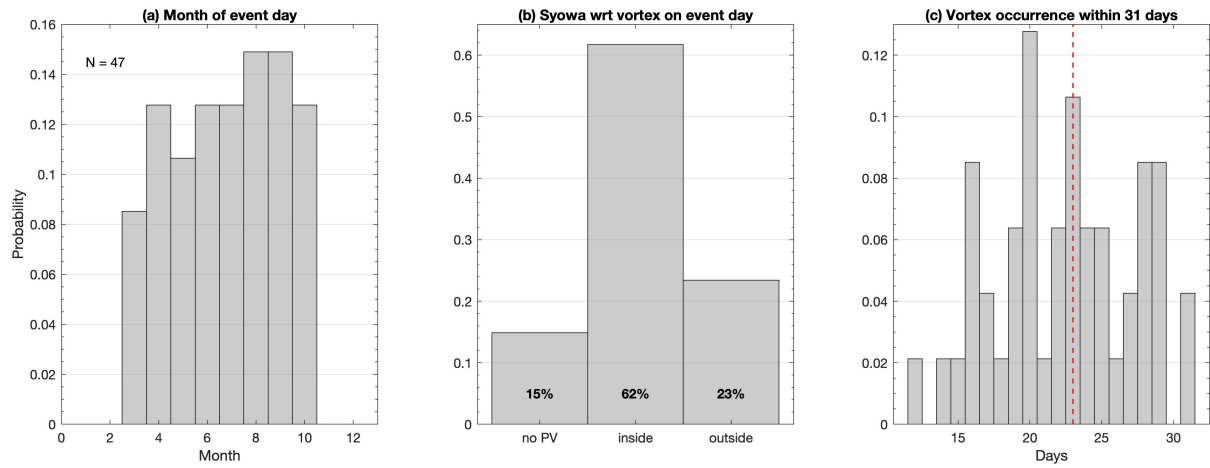


Figure 11. Histograms for NO increase events ($N = 47$, vortex is present at least on one day within the 31-day period surrounding the event). (left) Monthly distribution of NO peak day, (centre) Syowa location with respect to polar vortex on the peak day, (right) Number of vortex occurrence days within the surrounding 31-day period. The vertical red line indicates the median of 47 events.