

# Methane ebullition as the dominant pathway for carbon sea-air exchange in coastal, shallow water habitats of the Baltic Sea

Thea Bisander<sup>1</sup>, John Pytherch<sup>2</sup>, Volker Brüchert<sup>3, 4</sup>

<sup>1</sup> School of Natural Sciences, Technology and Environmental Studies, Södertörn University, Huddinge, 141 89, Sweden

<sup>2</sup> Department of Earth Sciences, Uppsala University, Uppsala, 75236, Sweden

<sup>3</sup> Department of Geological Sciences, Stockholm University, Stockholm, 10691, Sweden

<sup>4</sup> Bolin Centre for Climate Research, Stockholm, 10691, Sweden

Correspondence to: Thea Bisander (thea.bisander@sh.se)

**Abstract.** Shallow coastal marine habitats are hotspots for carbon dioxide (CO<sub>2</sub>) and methane (CH<sub>4</sub>) exchange with the atmosphere, yet these fluxes remain poorly quantified, limiting their integration into global and regional carbon budgets. ~~With the use of~~ Using floating chambers, this study quantified seasonal and annual CO<sub>2</sub> and CH<sub>4</sub> fluxes in common Baltic Sea habitats, including macroalgae-covered coarse sediments, sparsely to densely vegetated sands, submerged plant-covered mixed substrates, and reed-dominated muds. Monthly average CO<sub>2</sub> fluxes ranged from  $-937 \pm 161$  to  $3\,512 \pm 704$  mg CO<sub>2</sub> m<sup>-2</sup> d<sup>-1</sup>, with macroalgae and reed habitats exhibiting distinct flux ranges. ~~setting them apart from the sand and mixed substrate habitats.~~ Apart from ~~the~~ macroalgae, all habitats exhibited a net ~~efflux of annual~~ CO<sub>2</sub> ~~on an annual basis~~ ~~efflux~~. Diffusive CH<sub>4</sub> fluxes varied seasonally, from  $0.1 \pm 0.01$  to  $26 \pm 1.5$  mg CH<sub>4</sub> m<sup>-2</sup> d<sup>-1</sup>, with peak emissions in summer. Ebullition ~~fluxes~~ occurred ~~between from~~ March ~~and to~~ October, reaching up to 232 mg CH<sub>4</sub> m<sup>-2</sup> d<sup>-1</sup> ~~and contributed substantially to annual carbon-based greenhouse gas fluxes in the sand, mixed-substrate, and reed habitats, and significantly contributed to, or even dominated, the annual exchange of both CO<sub>2</sub> and CH<sub>4</sub> in the sand, mixed-substrate, and reed habitats. Contrary to previous findings that ebullition is confined to muddy, organic-rich sediments, this study found the highest CH<sub>4</sub> ebullition in vegetated sand habitats, indicating a broader spatial extent of intense CH<sub>4</sub> release than previously assumed.~~ Upscaling ~~these fluxes~~ to the shallow-water (< 6 m) zone of the Stockholm archipelago yielded total CO<sub>2</sub>-equivalent fluxes of between -0.01 and 0.2 Tg CO<sub>2</sub>-eq yr<sup>-1</sup> ~~(on a 100-year timescale). In For~~ comparison, Stockholm's energy- and transport sectors ~~emits approximately ~1.2 Tg CO<sub>2</sub>-eq yr<sup>-1</sup>~~, suggesting ~~that the shallow-water coastal zone could be a small, but significant contributor to the total source strength of the Stockholm region non-negligible regional source for carbon-based greenhouse gases.~~

## 1 Introduction

Coastal marine environments play a vital role in the global carbon cycle, functioning as atmospheric sources or sinks of carbon dioxide (CO<sub>2</sub>), and as sources of methane (CH<sub>4</sub>) (Friedlingstein et al., 2022). The sea-to-air exchange of these gases is governed by the water-air boundary layer conditions, which determine the gas transfer velocity (Liss & Slater, 1974) and the gas

saturation of surface waters (Liss & Slater, 1974). Coastal zones exhibit intense biogeochemical cycling fuelled by high rates of primary production, which, in combination with both terrestrial and riverine inputs of dissolved carbon species (Bauer et al., 2013), facilitates the exchange of CO<sub>2</sub> and CH<sub>4</sub> with the atmosphere (Resplandy et al., 2024).

Vascular plants and algae fix CO<sub>2</sub> via photosynthesis as organic material, while respiration and decomposition recycle it back to CO<sub>2</sub> (Gattuso et al., 1998). Dissolved CO<sub>2</sub> levels are also regulated by alkalinity, which affects the balance of carbonate species and is influenced by riverine input, groundwater input, sediment-seawater, and shelf-coastal exchange (Middelburg et al., 2020). In addition, CaCO<sub>3</sub> precipitation and dissolution can significantly modulate CO<sub>2</sub> dynamics in aquatic habitats (Champanois & Borges, 2021). In contrast, CH<sub>4</sub> in surface waters is mainly produced via methanogenesis in anaerobic, organic-rich, and sulphate-depleted sediments, and escapes via diffusion or ebullition (Reeburgh, 2007). Around 70 % of coastal CH<sub>4</sub> emissions are believed to come from sediment ebullition (Weber et al., 2019) which occurs when the partial pressure of the gases in the sediment exceeds their solubility at hydrostatic pressure, leading to the release of excess free gas in the form of bubbles. Due to its rapid rise rate, a large fraction of the free gas does not dissolve in the water column and hence avoids microbial oxidation before reaching the water-air boundary layer as ebullitive flux (Mao et al., 2022), adding to the diffusive exchange across the sea-air boundary (Hermans et al., 2024), particularly in shallow waters as ebullition increases with decreasing water depth (McGinnis et al., 2006). Due to their rapid rise rate, a large fraction of free gas avoids microbial oxidation in the sediment and water column and is transported towards the water-air boundary layer as ebullition flux (Hermans et al., 2024), adding to the diffusive exchange across the sea-air boundary (Mao et al., 2022). While ebullition may be the dominant flux pathway for CH<sub>4</sub> in coastal waters, the size of the flux remains uncertain due to its highly stochastic nature (Lohrberg et al., 2020).

There is increasing interest in using the carbon sequestration potential of the coastal ocean as a climate mitigation tool to help contain global warming as close to the 2015 Paris Agreement as possible (Claes et al., 2022). Emission reduction strategies could potentially benefit from coastal mitigation measures but require accurate quantification of emission or uptake of greenhouse gases in coastal areas. Significant uncertainties remain in the CO<sub>2</sub> and CH<sub>4</sub> budgets of coastal regions as a consequence of the scarcity of in-situ flux measurements and the difficulties of upscaling existing flux measurements data due to the high spatial and temporal variability, both within and between individual habitats (Dai et al., 2022; Bange et al., 2024). Habitat-based classifications are commonly used to upscale CO<sub>2</sub> and CH<sub>4</sub> fluxes in coastal environments, particularly in well-studied systems such as mangroves, seagrass meadows, and saltmarshes, where high productivity and sediment carbon storage potential have centred most research efforts (Rosentreter et al., 2023). These classifications are often tailored to tropical and subtropical environments but may not capture the full spectrum of coastal habitat diversity, especially in northern, temperate systems.

In regions like the Baltic Sea, habitats such as macroalgal beds, mixed vascular plant communities, and sparsely vegetated sediments have been shown to exchange significant amounts of CO<sub>2</sub> and CH<sub>4</sub> with the atmosphere (e.g. Lundevall-Zara et al., 2021; Asmala & Scheinin, 2023; Roth et al., 2023). These coastal shallow-water habitats vary between annual atmospheric sources of CO<sub>2</sub> (Honkanen et al., 2024) and annual sinks of CO<sub>2</sub> (Roth et al., 2023). At the same time, recent

Formatted: Font: (Default) +Headings (Times New Roman)

Formatted: Font: (Default) +Headings (Times New Roman)

Formatted: Font: (Default) +Headings (Times New Roman)

Formatted: Font: (Default) +Headings (Times New Roman)

Formatted: Font: (Default) +Headings (Times New Roman)

Formatted: Font: (Default) +Headings (Times New Roman)

Formatted: Font: (Default) +Headings (Times New Roman)

Formatted: Font: (Default) +Headings (Times New Roman)

Formatted: Font: (Default) +Headings (Times New Roman)

Formatted: Font: (Default) +Headings (Times New Roman)

studies indicate they exhibit CH<sub>4</sub> fluxes up to the same order of magnitude as mangroves (Rosentreter et al., 2018) or two orders of magnitude higher than more offshore areas of the Baltic Sea (Lundevall-Zara et al., 2021). However, the lack of a standardized, widely adopted classification system for these habitats limits the comparability and upscaling of these flux estimates. This challenge is globally further compounded by the scarcity of high-resolution coastal habitat maps (Rosentreter et al., 2023).

Only a few habitats in the Baltic Sea have observations of both CO<sub>2</sub> and CH<sub>4</sub> fluxes (Asmala & Scheinin, 2023; Roth et al., 2023), and among them almost none has a full annual coverage of flux estimates, which is crucial for the effect of the sea-air exchange on radiative forcing in the atmosphere. CH<sub>4</sub> has a sustained-flux global warming potential that is 45 or 96 times as efficient as CO<sub>2</sub> on a 100- or 20-year timescale, respectively (Neubauer & Megonigal, 2015), and as such, even relatively small mass quantities of CH<sub>4</sub> can significantly contribute to the net radiative forcing added to the atmosphere by the habitat (Roth et al., 2023). Since CH<sub>4</sub> ebullition is not included in many estimates due to the difficulties in capturing the ebullitive flux, the contribution from CH<sub>4</sub> is highly uncertain (Weber et al., 2019).

A critical step in upscaling CO<sub>2</sub> and CH<sub>4</sub> fluxes from the coastal zone is a suitable habitat classification system. Simple classifications based solely on single properties such as sediment or vegetation type can fail to capture the full spectrum of habitat diversity and variability leading to inaccurate representations of flux dynamics, while overly detailed classifications risk becoming impractical for data collection and analysis. Moreover, their effectiveness is constrained by the lack of detailed, high-resolution coastal habitat maps (Rosentreter et al., 2023).

Significant efforts have been made to constrain gas exchange in highly productive environments like mangroves, seagrass meadows, and saltmarshes due to their high potential for sediment carbon sequestration (Rosentreter et al., 2023). However, recent studies in the Baltic Sea indicate that northern, temperate habitats with macroalgae, mixed vascular plant vegetation, and even relatively unvegetated sediments, also contribute significantly to CO<sub>2</sub> and CH<sub>4</sub> exchange with the atmosphere (e.g. Lundevall-Zara et al., 2021; Asmala & Scheinin, 2023; Roth et al., 2023). Despite this, only a few studies have reported on both CO<sub>2</sub> and CH<sub>4</sub> fluxes in these habitats (Asmala & Scheinin, 2023; Roth et al., 2023), which is crucial to assess the effect the sea-air exchange has on radiative forcing in the atmosphere. CH<sub>4</sub> has a sustained-flux global warming potential that is 45 or 96 times as efficient as CO<sub>2</sub> on a 100- or 20-year timescale, respectively, and as such, even relatively small quantities of CH<sub>4</sub> can significantly contribute to the exchange (Neubauer & Megonigal, 2015).

Various methods exist for measuring gas exchange between the water and atmosphere. These are either based on water and air concentration sampling and determination of fluxes through a gas transfer velocity parametrisation (e.g. Humborg et al., 2019; Asmala & Scheinin, 2023; Roth et al., 2022, 2023), eddy covariance (e.g. Gutiérrez-Loza et al., 2019), or floating chamber techniques (e.g. Lundevall-Zara et al., 2021), each with their own strengths and limitations (Bastviken et al., 2022).

The floating chamber technique, together with the eddy covariance method, has the benefit that the flux is determined directly, therefore avoiding the use of a gas transfer velocity parametrisation and is capable of resolving the ebullitive flux from the diffusive flux component (Iwata et al., 2018; Żygadłowska et al., 2024). However, in addition, since the floating chamber measurements have a high (analyser-dependent) sensitivity and small footprint, small-scale habitat differences can be

Formatted: Font: (Default) +Headings (Times New Roman)

Formatted: Font: (Default) +Headings (Times New Roman)

Formatted: Font: (Default) +Headings (Times New Roman)

Formatted: Font: (Default) +Headings (Times New Roman)

resolved, and low fluxes can be included in habitat budgets. [The floating chamber technique has been criticised for interfering with the boundary layer, inducing extra turbulence, as well as creating an environment within the chamber that is not representative for outside conditions in terms of wind, temperature and pressure \(e.g. Mannich et al., 2019\).](#) However, taking caution in chamber design and use, these biases have been shown to have minor effects on the flux and for the chamber technique to produce similar flux values as other, non-interfering methods [\(Cole et al., 2010; Gålfalk et al., 2013; Lorke et al., 2015\).](#)

In this study, we conducted year-round floating chamber experiments in shallow (<4 m) coastal habitats in the Stockholm and Trosa archipelagos of the northwestern Baltic Proper to quantify diffusive CO<sub>2</sub> and diffusive and ebullitive CH<sub>4</sub> fluxes. The objective was to constrain the flux variability based on five habitat groups, including macroalgae-covered coarse sediments, sparsely to densely vegetated sands, submerged plant-covered mixed substrates, and reed-dominated muds. These habitats are commonly occurring along both the Swedish and Finnish Baltic Sea coast (Al-Hamdani & Reker, 2007). We hypothesized that CO<sub>2</sub> and CH<sub>4</sub> fluxes would vary systematically among these habitats, and that while within-habitat variability would occur, the boundaries for this variability would differ between the habitats. In this case, the habitat classification could help identify habitats that are the major contributors to the uncertainty associated with the coastal, shallow-water CO<sub>2</sub> and CH<sub>4</sub> flux. Further, the study aimed to quantify the relative contributions from CO<sub>2</sub> flux, diffusive CH<sub>4</sub> flux and CH<sub>4</sub> ebullition to the total CO<sub>2</sub>-equivalent flux, identifying the dominant pathway for carbon-based greenhouse gas exchange in these habitats.

## 2 Methods and materials

### 2.1 Sampling locations and habitat classification

The sampling was carried out in seven locations in the Stockholm and Trosa archipelago seas in the north-western Baltic Proper (Fig. 1 and Supplementary Material Fig. S1). Six out of seven sampling locations were on the island of Ingarö and the seventh sampling location was on the island of Askö.

The archipelagos are brackish systems where the salinity spans from close to zero in the inner archipelago near the outflow from Lake Mälaren and up to 8 ‰ in the outer archipelago (Fig. 1). The coastal biotopes consist of exposed rocky coastline, long and narrow fjord-like bays, and sheltered inlets (Hill & Wallström, 2008; Kautsky, 2008). The Stockholm archipelago is considered one of the most eutrophic archipelagos along the Swedish coastline (Hill & Wallström, 2008).

The classification scheme applied in this study is HELCOM HUB, an underwater biotope and habitat classification system developed for the Baltic Sea by HELCOM (HELCOM, 2013). The sampling locations were categorised based on bottom substrate and vegetation (Table 1). The seven sampling locations were divided into five distinct habitats: Coarse sediment with perennial algae cover (location A), sand with sparse epibenthic macrofauna community (location B), sand with submerged rooted plants (location C), mixed substrate with submerged rooted plants (locations D and E) and muddy

Formatted: Font: (Default) +Headings (Times New Roman)

Formatted: Font: (Default) +Headings (Times New Roman)

Formatted: Font: (Default) +Headings (Times New Roman)

Formatted: Font: (Default) +Headings (Times New Roman)

Formatted: Font: (Default) +Headings (Times New Roman)

130 sediment with emergent plants *Phragmites australis* (locations F and G). The classification was completed in September 2020. For further details on the HELCOM HUB classification and how it was carried out in the study, see Supplementary Material Text S1.

**Table 1.** Descriptions of the sampling locations A-G as shown in Fig. 1. Vegetation cover refers to the average coverage in the warmer months May, June, July and September, and as an average over the whole sampled area. Max-depth refers to the maximum depth that a flux measurement was taken at.

Location	Bottom substrate	Vegetation cover	Taxa description	Max depth Depth range	Salinity
A	Coarse sediment	40±10 % perennial algae	<i>Fucus vesiculosus</i> , <i>Cladophora glomerata</i> .	0.25 - 1 m	4.9 – 5.7
B	Sand	0< >10 % epibenthic macrocommunity	<i>Stuckenia pectinate</i> , <i>Ruppia</i> sp., phytoplanktonic algae blooms in summer.	0.5 - 4 m	3 – 5.7
C		50±10 % submerged rooted plants	<i>Phragmites australis</i> along shoreline and <i>Stuckenia pectinate</i> , <i>Ruppia</i> spp., <i>Myriophyllum spicatum</i> .	0.25 - 3 m	5 – 5.6
D	Mixed substrate	70±10 % submerged rooted plants	<i>Phragmites australis</i> along shoreline and <i>Stuckenia pectinate</i> , <i>Ruppia</i> spp., <i>Myriophyllum spicatum</i> , <i>Ceratophyllum demersum</i> together with an algal community of <i>Fucus</i> spp. and various filamentous algae	0.5 - 4 m	5.9 – 6.3
E				0.25 - 3 m	2.3 – 5.2
F	Muddy sediment	50±10 % Emergent vegetation	<i>Phragmites australis</i>	0.25 - 1 m	5 – 5.5
G				0.5 - 2 m	2.7 - 5

Formatted: Font: Italic

Formatted: Font: 10 pt

Formatted: Font: 10 pt, Italic

Formatted: Font: Italic

Formatted: Font: 10 pt, Italic

Formatted: Font: 10 pt, Italic, English (United Kingdom)

Formatted: Font: 10 pt, Italic, English (United Kingdom)

Formatted: Font: 10 pt, Italic, English (United Kingdom)

Formatted: Font: 10 pt, Italic, English (United Kingdom)

Formatted: Font: 10 pt, Italic, English (United Kingdom)

Formatted: Font: 10 pt, Italic, English (United Kingdom)

Formatted: Font: 10 pt, Italic, English (United Kingdom)

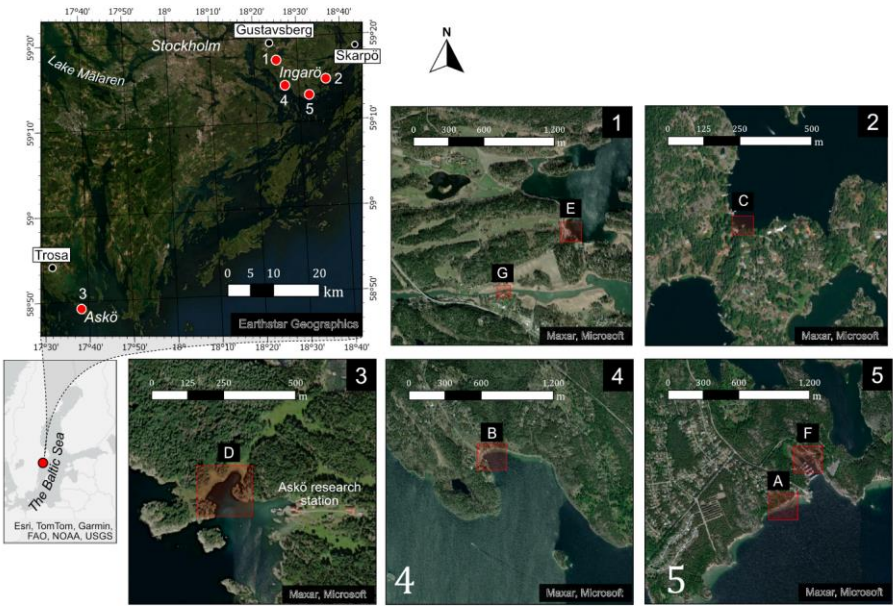
Formatted: Font: 10 pt, Italic, English (United Kingdom)

Formatted: Font: 10 pt, Italic

Formatted: Font: Italic

2.2 Field methods

Sampling was carried out between September 2020, and October 2022, with seasonal sampling periods broadly in January (Jan 25-26<sup>th</sup> 2021), March (Feb 27<sup>th</sup>-Apr 2<sup>nd</sup> 2021), May (Apr 28<sup>th</sup>-May 20<sup>th</sup> 2021), June (Jun 16<sup>th</sup>-17<sup>th</sup> 2021), July (Jul 8<sup>th</sup>-9<sup>th</sup> 2021), September (Sep 14<sup>th</sup>-15<sup>th</sup> 2020, Sep 14<sup>th</sup>-22<sup>nd</sup> 2022), October (Oct 26<sup>th</sup>-29<sup>th</sup> 2022), and the shift between November and  
140 December (Nov 25<sup>th</sup>-Dec 10<sup>th</sup> 2020).



**Figure 1:** Map showing the sampling locations (A-F) on Ingarö and Askö. Marked out are also the weather stations in Trosa, Gustavsberg and Skarpö.

To directly measure CH<sub>4</sub> and CO<sub>2</sub> fluxes, a floating plastic chamber was connected to an Off-Axis Integrated Cavity Output Spectroscopy (OA-ICOS) Los Gatos Research DLT-100 Greenhouse Gas Analyser (GGA). The chamber design and anchoring function is similar to those used in Schilder et al. (2016), but without an ebullition shield. The round chamber was covered with aluminium foil to reduce internal solar heating and had a volume of 7500 ml covering a surface area of 0.073 m<sup>2</sup>.  
145

Foam was attached to the downward-facing sides of the chamber for flotation, and the walls submerged 1.5-2 cm into the water depending on sea state [and the chamber was anchored to the seafloor](#). [See Supplementary Material Fig. S1a for a picture of the chamber](#).

The chamber was connected to the GGA via two [strands of](#) ~20 m long, plastic tubing with an inner diameter of 3 mm. The tubing was connected to the inlet of the GGA via two 100 ml Winkler bottles and an Acro® 50 vent filter to avoid particles and water [droplets](#) entering the GGA. The total volume of the chamber, tubing, Winkler bottles, filters, and cavity of the GGA was ca 7700 ml. Air was circulated using the GGA's internal pump and sampled at a frequency of 20 seconds. The flux was determined from the concentration gradient during the sampling time (see section 'Diffusive flux calculations').

Each flux measurement lasted ~20 minutes, after which the chamber was lifted from the water surface and the GGA allowed to equilibrate with the air. This short measurement time minimises bias from the effect on the flux of the increasing gas concentration within the chamber (Mannich et al., 2019). At each sampling location flux measurements were typically carried out in transects from close to shore to maximum 30 meters away from shore. The chamber was placed to account for variations in vegetation community and density equally and, where present, also placed over emerged vegetation. Between 3 and 76 flux measurements were done at each location, each sampling period. The sampled area per location was between 40 and 800 m<sup>2</sup>.

Local wind speed, wind direction, air temperature, atmospheric pressure, and precipitation were measured during flux sampling using a Eurochron wireless weather station, ECWCC1080, mounted on a mast 1.5 m above the water surface close to the sampling location. Wind speed was adjusted to 10 m height ( $U_{10}$ ) assuming a neutral logarithmic profile (Amorocho & DeVries, 1980). Eq. (1):

$$U_{10} = \frac{U_z}{1 - \sqrt{C_{10}} \ln\left(\frac{z}{z_0}\right)} \quad (1)$$

where  $U_z$  is the wind speed at the measurement height (m s<sup>-1</sup>),  $C_{10}$  is the drag coefficient for shallow water (0.0013),  $\kappa$  is the von Kármán constant (0.4) and  $z$  is the measurement height (m). [C<sub>10</sub> was chosen as the lower end of the range of 0.0013 and 0.0015 suggested by Stauffer \(1980\), since C<sub>10</sub> tends to decrease over shallow waters \(< 3 m\) and in the presence of surface films \(Van Dorn 1963; Hicks et al., 1974\).](#)

Regional timeseries of wind speed and air temperatures for [the](#) Stockholm and Trosa archipelagos were obtained from the Swedish Meteorological and Hydrological Institute (SMHI) from the weather stations in Gustavsberg, Skarpö and Trosa (Fig. 1). [W](#)-wind speed was only available from Skarpö (SMHI, 2024a; SMHI, 2024b).

Water salinity and temperature were measured close to the surface (at ~5 cm depth, [and within 10 m of the chamber deployments](#)) with a handheld sensor (conductivity WTW 340i).

### 2.3 Diffusive flux calculations

The diffusive fluxes of CO<sub>2</sub> and CH<sub>4</sub> were calculated from the change in gas concentration in the chamber-GGA system, [like according to](#) Eq. (2):

$$F_d = \frac{\Delta C \cdot V}{A \cdot \Delta t} \quad (2)$$

where  $F_d$  is the diffusive flux (mg CO<sub>2</sub>/CH<sub>4</sub> m<sup>-2</sup> d<sup>-1</sup>),  $\Delta C$  [is the gas concentration change \(mg L<sup>-1</sup>\), derived from the change in mole fraction as measured by the GGA](#) ~~is the gas concentration change measured by the GGA~~ (mg L<sup>-1</sup>),  $V$  is the volume of the chamber-GGA system (L),  $A$  is the chamber footprint (m<sup>2</sup>) and  $\Delta t$  is the duration of the measurement.

For diffusive flux measurements, the rate of concentration change measured by the GGA is expected to be near-linear. The variations in the rate of change due to changing gas transfer velocity (changes in turbulence in the boundary layer) or variations in the gas concentration during the measurement are expected to be small. This contrasts with ebullition events, which are apparent in the measured gas concentration as large, sudden changes. To exclude such events and also periods with other measurement artifacts (e.g., fitting leakage or induced turbulence from chamber deployment), we divided each measurement into five segments (each ~4 minutes long) and performed least-squares linear regression analysis on each segment. Segments that showed an approximate linear change ( $R^2 > 0.7$ ) were used for calculating the  $\Delta C$ .

For a description of the extrapolation of daily fluxes into annual fluxes, see Supplementary Material Text S2 and Table S1.

### 2.4 Ebullition flux

Ebullition was detected in the measurements as abrupt changes (at least three times the standard deviation of the change from the diffusive flux for a 20 second measurement interval) in concentration detected by the GGA (Supplementary Material Fig. S24). The ebullition events either appeared as a simple, step-up in concentration, or as a peak, followed by a more gradual increase in concentration characteristic of diffusive exchange afterwards. [The approach used to detect ebullition events is similar to Żygadłowska et al. \(2024\), and is discussed in more detail in Supplementary Material Text S3.](#)

[The amount of CH<sub>4</sub> released per event was calculated using Eq. \(3\):](#)

[Calculating the amount of CH<sub>4</sub> released per event was done using Eq. \(3\):](#)

$$m_e = (\Delta C_e \cdot V) - m_d \quad (3)$$

where  $m_e$  is the amount of CH<sub>4</sub> released per event (mg),  $\Delta C_e$  is the concentration increase during the ebullition event, from [that when](#) it started [to deviate](#) from the diffusive gradient [until to the time](#) the diffusive gradient [is](#)-restabilized (mg L<sup>-1</sup>),  $V$  is the volume of the chamber-GGA set-up (L) and  $m_d$  is the amount of CH<sub>4</sub> released via diffusive flux for the same time as the

Formatted: Font: (Default) +Headings (Times New Roman)

Formatted: Font: (Default) +Headings (Times New Roman),  
Font color: Auto



205 ebullition event lasted (mg) which could be derived from Eq. (2) and the gradient prior to the ebullition event (Supplementary Material Fig. S2<sup>†</sup>).

The daily CH<sub>4</sub> emission from ebullition was extrapolated from the total mass of CH<sub>4</sub> released-per event by ebullition as measured by all chamber deployments during the sampling period, assuming that the sampled ebullition was representative of the entire location and the entire day. Spatial extrapolation was conducted by assuming that the number of chamber measurements detecting ebullition for that sampling location and period relative to the total number of chamber measurements for that sampling location and period was proportional to the areal fraction of the bay that released ebullition. The flux per m<sup>2</sup> for the period of sampling was then extrapolated over 24 hours to obtain a daily ebullition flux. The extrapolation is summarized in Eq. (4).

$$F_e = m_{e\ tot} * \frac{Ch}{A} * \frac{24}{t} \tag{4}$$

215 where F<sub>e</sub> is the ebullition flux (mg CH<sub>4</sub> m<sup>-2</sup> d<sup>-1</sup>), m<sub>e tot</sub> is the total released CH<sub>4</sub> by ebullition during sampling in the specific period (mg), Ch is the number of chamber measurements with ebullition (each measurement containing between 1 and 4 ebullition events) divided by the total number of chamber measurements for the specific period, A is the footprint of the chamber (m<sup>2</sup>), t is the total time that sampling was performed in a location for that month-period (h).

220 Although diurnal variability in ebullition flux has been reported in aquatic systems, the patterns are inconsistent across habitats and plant growth stages (Kajiura & Tokida, 2024; Zhu et al., 2025). In this study, no clear relationship was found between ebullition flux and time of day or other diurnally varying factors such as temperature or wind speed (see Supplementary Material Table S1 and Fig. S3). Therefore, fluxes were scaled to 24 hours without applying corrections for potential diurnal variation.

## 2.4 Statistics

225 All statistical analyses were done using MATLAB R2022b. The confidence intervals of the average diffusive flux across different habitats were determined using bootstrapping to resample the flux data (Nelson, 2008). Bootstrapping involves generating multiple new datasets by randomly sampling the observed data with replacement (when a data point is selected from the original dataset to create a new dataset, it is not removed from the pool of possible selections). Each new dataset is has the same size as the original dataset and includes repeated values from the original data. By resampling in this way, the method estimates the variability of the sample average without assuming a normal distribution.

230 The data were first divided into two seasonal groups: 'summer' (May, June, July, and September) and 'winter' (March, October, and December). January was excluded as only two locations were sampled during that period, making the data insufficient for robust analysis. For each habitat and season, the flux data was resampled 2000 times from the original dataset.

Formatted: Space After: 0 pt

Formatted: Font color: Auto

Formatted: Font color: Auto

Formatted: Indent: First line: 1.27 cm

Formatted: Font color: Auto

Formatted: Font color: Auto

Formatted: Normal, Space Before: 0 pt, Line spacing:

Formatted: Font color: Dark Red

235 Habitat differences in ebullition were evaluated with a Kruskal-Wallis test (Kruskal & Wallis, 1952) which does not  
assume normal distribution in the data. The Kruskal-Wallis test was complemented with a Bonferroni Multiple Comparison  
240 test (Francis & Thunell, 2021), which corrects for type I errors. Differences where  $p < 0.05$  was considered to be significant.

### 3 Results

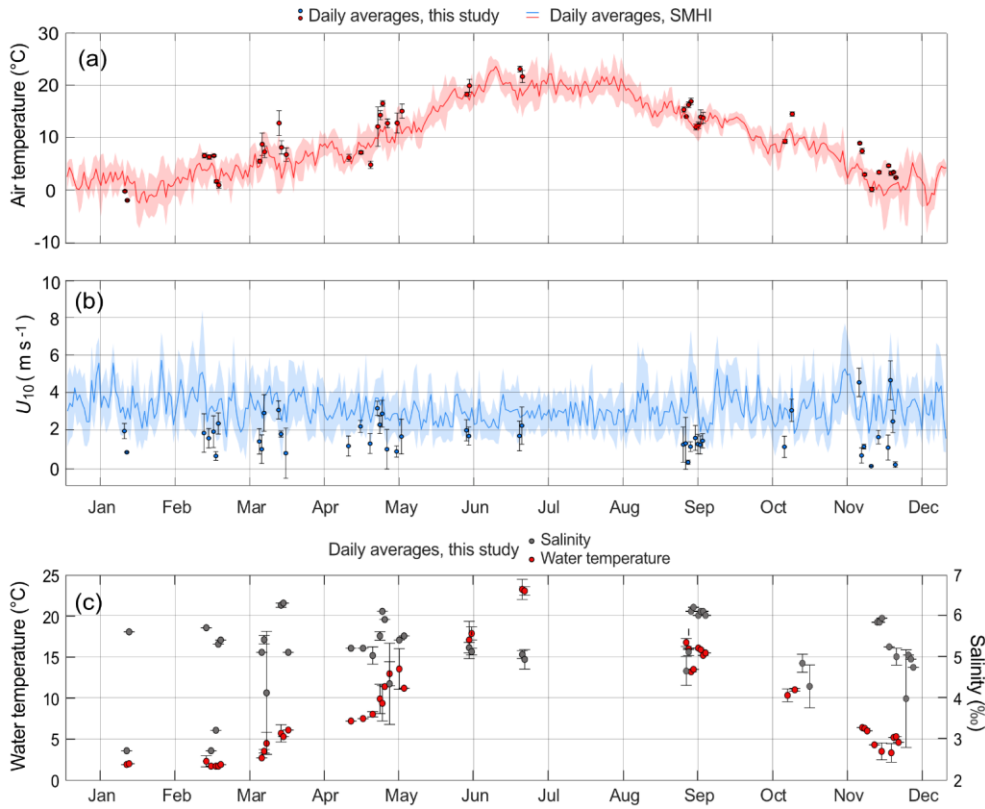
Throughout the text we use the convention that positive fluxes indicate emission of gas from the water surface to the  
atmosphere, while negative fluxes indicate uptake by the water surface from the atmosphere. Uncertainties in average flux  
240 values are reported as the standard error of the mean. Uncertainties in meteorological and environmental data are given as  
standard deviations.

#### 3.1 Meteorological and environmental data

During the sampling periods, locally measured air temperatures ranged from -2.0 to 24.0 °C, with the lowest temperatures  
recorded in January 2021 and the highest in July 2021. ~~Comparatively~~By comparison, daily mean air temperatures from the  
245 SMHI records for the same dates were, on average, 13 % lower than those measured locally (Fig. 2a).

Locally measured  $U_{10}$  varied from near zero to 5.8 m s<sup>-1</sup>, with an average of  $1.6 \pm 1.1$  m s<sup>-1</sup> (Fig. 2b). Greater variability  
in local  $U_{10}$  was observed from October to May, whereas measurements during June, July, and September were less variable.  
However, the monthly-averaged local  $U_{10}$  did not exhibit a clear seasonal pattern. When compared to the SMHI wind data for  
the corresponding dates and times at Skarpö station, ~~about 30 km to the northeast~~ (Fig. 1), the local daily average  $U_{10}$  was on  
250 average 44 % lower. Over the entire sampling campaign, the local average  $U_{10}$  was 47 % lower than the SMHI station's long-  
term average between 2020 and 2022, which included both day- and nighttime data.

Observed surface water temperatures were between 1.7 and 24.5 °C (Fig. 2c), with the highest temperatures observed  
in July, and the lowest in January, similar to the air temperatures. Surface water salinity was between 2.3 and 6.3 ‰ (Table 1  
and Fig. 2c), with >90 % of observed salinities above 4.0. Salinities below 4.0 were measured between January and April,  
255 which was coinciding with the period following ice break-up and during spring snowmelt (Fig. 2c).



**Figure 2.** Daily average air temperatures (a), and wind speeds at 10 m height,  $U_{10}$  (b) and water temperatures and salinity (c). The local measurements during the flux sampling are shown as circle markers, with whiskers representing standard deviations. The plotted lines in (a) and (b) are daily average data from SMHI between the years 2020 and 2022. Shaded areas are standard deviations. X-axis tick marks are on the 15<sup>th</sup> of every month.

### 3.2 CO<sub>2</sub> sea-to-air fluxes

The sea-to-air CO<sub>2</sub> fluxes at each of the different sampling locations are shown in Fig. 3a. Omitting January where only two locations were sampled, the monthly average fluxes ranged from  $-937 \pm 161$  to  $363 \pm 87$  mg CO<sub>2</sub> m<sup>-2</sup> d<sup>-1</sup> in the macroalgae-covered coarse sediment habitat (A), from  $-670 \pm 8$  to  $1\,496 \pm 68$  mg CO<sub>2</sub> m<sup>-2</sup> d<sup>-1</sup> in the sparsely vegetated sand habitat (B), from  $-673 \pm 27$  to  $1\,494 \pm 77$  mg CO<sub>2</sub> m<sup>-2</sup> d<sup>-1</sup> in the submerged plant-covered sand habitat (C), from  $-328 \pm 17$  to  $1\,725 \pm 139$  mg CO<sub>2</sub> m<sup>-2</sup> d<sup>-1</sup> in the submerged plant-covered mixed substrate habitats (D and E), and from  $294 \pm 26$  to  $1\,757 \pm 95$  mg CO<sub>2</sub> m<sup>-2</sup> d<sup>-1</sup> in the reed-covered muds (F and G).

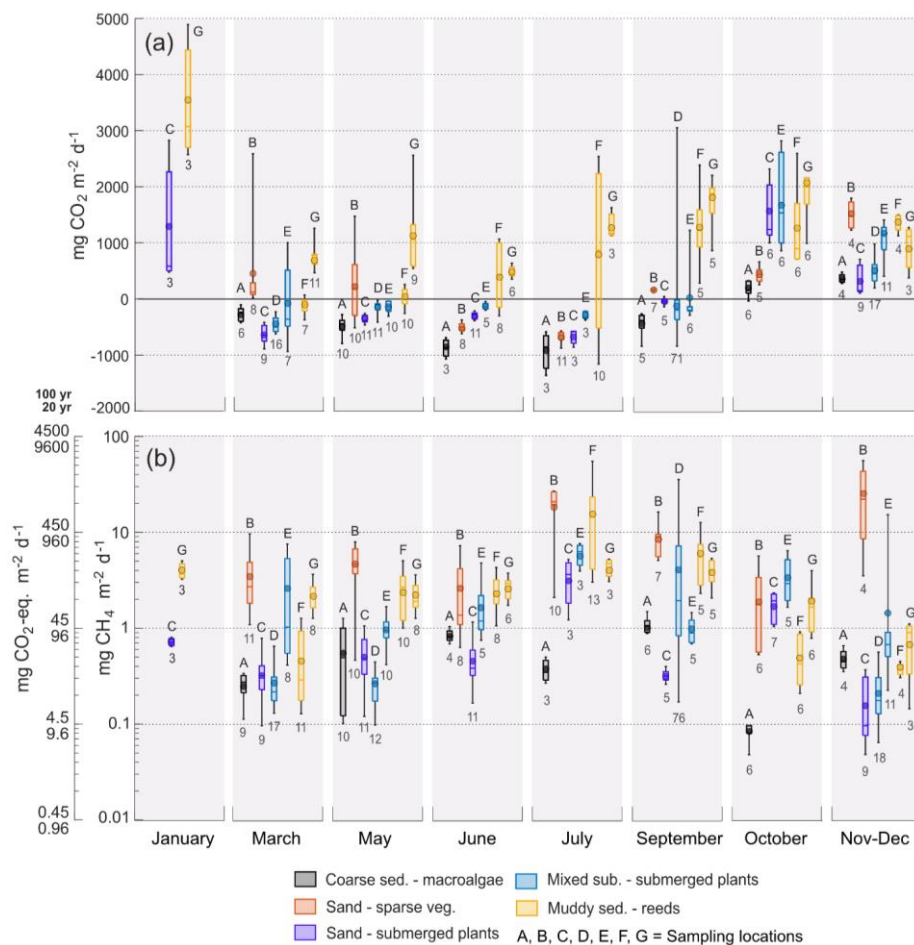


Figure 3. Boxplots with diffusive sea-air (a)  $\text{CO}_2$  and (b)  $\text{CH}_4$  fluxes from the chamber measurements, at each location and sampling period.  $\text{CH}_4$  fluxes are plotted as both  $\text{mg CH}_4 \text{ m}^{-2} \text{ d}^{-1}$  and as  $\text{mg CO}_2\text{-eq. m}^{-2} \text{ d}^{-1}$  over a 100 and 20 yr time scale. Boxes represent 25<sup>th</sup> and 75<sup>th</sup> percentiles, lines within the boxes are the median, whiskers are 100<sup>th</sup> and 0<sup>th</sup> percentiles, circle markers are the mean. Note the logarithmic scale in b. Numbers underneath the boxes are number of measurements and letters above are sampling location.

265 The macroalgae habitat (A), the submerged plant-covered sand habitat (C) and the mixed substrate habitats showed  
net CO<sub>2</sub> uptake throughout the warmer period of the year between March and September, while the sparsely vegetated sandy  
habitat (B) only took up CO<sub>2</sub> in June and July. The macroalgae habitat (A) was a net annual sink of - 109 ± 4 g CO<sub>2</sub> m<sup>-2</sup> yr<sup>-1</sup>  
since it only emitted small quantities of CO<sub>2</sub> in the autumn months of October to December (Table 2, Fig 3a). In the sand and  
mixed substrate habitats, the summer uptake was counterbalanced by high emissions in the autumn and winter months, so that  
270 these locations were acting as weak sources annually, spanning between 3 ± 8 and 111 ± 16 g CO<sub>2</sub> m<sup>-2</sup> yr<sup>-1</sup> (Table 2).

The reed-covered muds differed from the other habitats by ~~constantly~~ persistently showing net emission of CO<sub>2</sub>, except for  
location F in March. Annually, this habitat was a relatively strong source of CO<sub>2</sub> between 227 ± 23 and 496 ± 21 g CO<sub>2</sub> m<sup>-2</sup>  
yr<sup>-1</sup> (Table 2). While seasonal changes in CO<sub>2</sub> fluxes were apparent in most habitats, the sensitivity of the fluxes to  
environmental parameters such as water temperature and wind speed was generally low (see Supplementary Material Table  
S1).

275 In January the CO<sub>2</sub> emission from the two sampled locations, the submerged plant-covered sand habitat C, and the  
reed habitat G, were noticeably higher than during adjacent sampling periods of March and November – December. These  
elevated CO<sub>2</sub> fluxes in January corresponded with a time when the other ~~the~~ locations and, as well as much of the coastline,  
were ice-covered, while these locations were ice free. The monthly average emissions in January in C and G were up to three  
280 times higher than those in March and November–December.

3.3 Diffusive CH<sub>4</sub> sea-to-air fluxes

Table 2. Yearly fluxes (diffusiveon and ebullitiveon) of CH<sub>4</sub>, CO<sub>2</sub> and CO<sub>2</sub>-equivalent flux of both CO<sub>2</sub> and CH<sub>4</sub>  
calculated for all locations, ~~given in g m<sup>-2</sup> yr<sup>-1</sup>~~. Uncertainties are given as standard errors of the mean. CH<sub>4</sub> ebullitiveon  
fluxes are within brackets.

Habitats:	Locations:	<del>g CH<sub>4</sub> m<sup>-2</sup> yr<sup>-1</sup></del>	<del>g CO<sub>2</sub> m<sup>-2</sup> yr<sup>-1</sup></del>	<del>CO<sub>2</sub>-eq. 20 years</del>	<del>CO<sub>2</sub>-eq. 100 years</del>
				<del>g CO<sub>2</sub>-eq. m<sup>-2</sup> yr<sup>-1</sup></del>	<del>g CO<sub>2</sub>-eq. m<sup>-2</sup> yr<sup>-1</sup></del>
Coarse sed. – Macroalgae	A	0.16 ± 0.01	- 109 ± 4	-94 ± 5	-102 ± 4
Sand - Sparse veg.	B	3.3 ± 0.3 (+5.0)	74 ± 13	391 ± 42 (+480)	223 ± 27 (+225)
Sand – Subm. plants	C	0.4 ± 0.03 (+11)	14 ± 12	52 ± 15 (+1056)	32 ± 13 (+495)
Mixed sub. – Subm. plants	D	0.7 ± 0.07 (+1.6)	3 ± 8	70 ± 15 (+154)	35 ± 11 (+72)

Formatted: Indent: First line: 0 cm

Formatted: English (United Kingdom)

Formatted: English (United Kingdom)

Formatted: Superscript

Formatted Table

Formatted: Space Before: 0 pt

Formatted: Space Before: 0 pt

	E	0.8 ± 0.06 (+0.4)	111 ± 16	188 ± 22 (+38)	147 ± 19 (+18)
Muddy sed. – Reeds	F	1.5 ± 0.2 (+0.4)	227 ± 23	371 ± 42 (+38)	295 ± 32 (+18)
	G	1.0 ± 0.03	496 ± 21	592 ± 24	541 ± 22

All sampling locations were sources of CH<sub>4</sub> throughout the entire annual cycle, consistently showing a flux from the water to the atmosphere (Fig. 3b).

The average monthly diffusive sea-to-air CH<sub>4</sub> fluxes varied greatly across-between habitats. The macroalgae habitat (A) had the lowest flux, ranging from 0.1 ± 0.01 to 1.1 ± 0.1 mg CH<sub>4</sub> m<sup>-2</sup> d<sup>-1</sup>, with no clear seasonal pattern. In contrast, the submerged plant-covered sand habitat (C) exhibited slightly higher fluxes, ranging from 0.2 ± 0.01 to 3.3 ± 0.3 mg CH<sub>4</sub> m<sup>-2</sup> d<sup>-1</sup>, and displayed a clear seasonal trend, with elevated fluxes during warmer months. The mixed substrate habitats (D and E) had fluxes ranging from 0.7 ± 0.1 to 4.6 ± 0.7 mg CH<sub>4</sub> m<sup>-2</sup> d<sup>-1</sup>, and similar to sand habitat C the fluxes were higher in summer. The reed habitats (F and G) also showed increased fluxes in summer, but with a wider range from 0.5 ± 0.1 to 15 ± 3.6 mg CH<sub>4</sub> m<sup>-2</sup> d<sup>-1</sup>. The sparsely vegetated sand habitat (B) had the highest fluxes overall, with monthly averages ranging from 2.3 ± 0.3 to 26 ± 11 mg CH<sub>4</sub> m<sup>-2</sup> d<sup>-1</sup>. Similar to the macroalgae habitat (A), this habitat demonstrated little seasonal dependence, with the highest fluxes recorded during November–December.

Annually, the diffusive CH<sub>4</sub> fluxes ranged from 0.16 ± 0.01 g CH<sub>4</sub> m<sup>-2</sup> yr<sup>-1</sup> in the macroalgae habitat (A) to 3.3 ± 0.3 g CH<sub>4</sub> m<sup>-2</sup> yr<sup>-1</sup> in the sparsely vegetated sand habitat (B) (Table 2). Significant relationships between diffusive CH<sub>4</sub> flux and water temperature were more consistent than for the CO<sub>2</sub> flux but had generally low predictability (see Supplementary Material Table S1).

As observed for CO<sub>2</sub>, the diffusive CH<sub>4</sub> fluxes from the ice-free locations in January were unusually high. Fluxes from the sand habitat C (0.7 ± 0.02 mg CH<sub>4</sub> m<sup>-2</sup> d<sup>-1</sup>) were an order of magnitude higher, while fluxes from the reed habitat G (4.0 ± 0.3 mg CH<sub>4</sub> m<sup>-2</sup> d<sup>-1</sup>) were approximately three times greater than the respective fluxes measured at these locations during November–December.

### 3.4 CH<sub>4</sub> ebullition

CH<sub>4</sub> ebullition was detected during measurements in all habitats except the macroalgae habitat (A) (Fig. 4), and while some ebullition was measured from March to October, most events were observed between July and September (Fig. 4c).

During the ebullition events, the amount of CH<sub>4</sub> released per bubble ranged from 0.05 to 2 688 µg (Fig. 4a), with both the lowest and highest values recorded in the submerged plant-covered sand habitat (C). The sparsely vegetated sand habitat (B) released between 332 to 1 455 µg per bubble, which was significantly higher than that observed in the mixed substrate habitats (D and E) (1.2–679 µg) and the reed habitat (F) (36–151 µg).

Formatted: Indent: First line: 0 cm

Formatted: Normal, Indent: First line: 0 cm, Line spacing: single

Formatted: Indent: First line: 0 cm

At the locations and during the months when ebullition was detected, between 4–40 % of the chamber experiments recorded ebullition. Extrapolating the ebullition over a 24h period yielded CH<sub>4</sub> ebullitive fluxes between 0.001 and 232 mg CH<sub>4</sub> m<sup>-2</sup> d<sup>-1</sup> (Fig. 4b). The sparsely vegetated sand habitat (B) had ebullitive fluxes between 6 and 83 mg CH<sub>4</sub> m<sup>-2</sup> d<sup>-1</sup>, the submerged plant-covered sand habitat (C) had the largest range from 0.001 to 232 mg CH<sub>4</sub> m<sup>-2</sup> d<sup>-1</sup>, the mixed substrate habitats (D and E) ranged between 0.5 and 83 mg CH<sub>4</sub> m<sup>-2</sup> d<sup>-1</sup>, and the reed habitat (G) had only one ebullitive flux recorded in September, 12 mg CH<sub>4</sub> m<sup>-2</sup> d<sup>-1</sup>. No statistically significant differences could be found between the habitats, possibly due to the low number of calculated ebullitive fluxes, but generally the sand habitats showed the highest fluxes. The magnitude of the ebullitive flux was not found to have a statistically significant relationship with water temperature or water depth that was consistent across habitats (see Supplementary Material Table S1).

For the locations that showed contained-bubble emissions, between 0.3 and 96 % of the total (ebullitive + diffusive) CH<sub>4</sub> flux could be attributed to ebullition for a specific sampling month. When extrapolating both fluxes over a year, assuming that ebullition was absent the months where the measurements did not detect it, the ebullitive flux accounted for between 21 and 98 % of the total annual flux (Table 2).



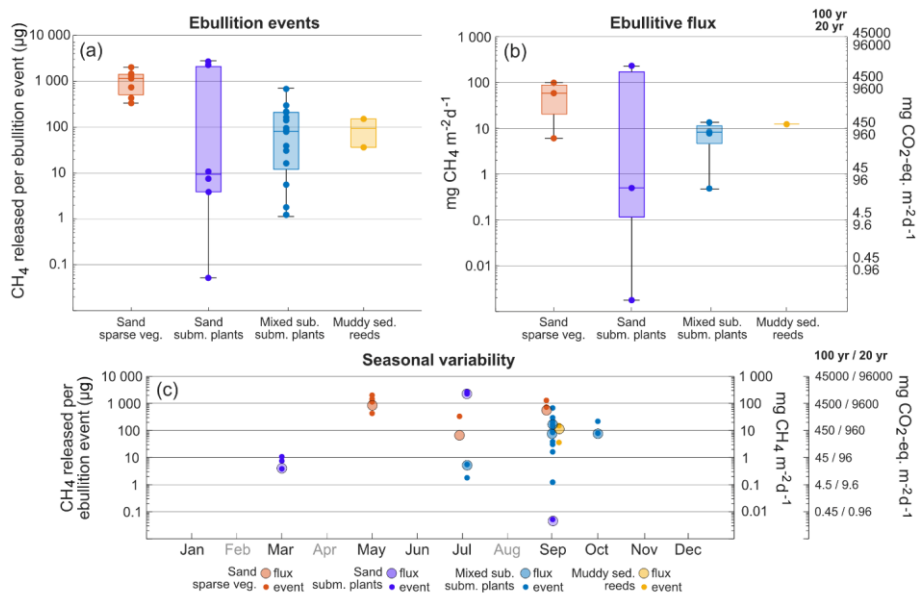


Figure 4. Boxplots with CH<sub>4</sub> released per ebullition event (a) and CH<sub>4</sub> ebullitive flux calculated for a specific location and period, reported in CO<sub>2</sub>-eq. flux as well (b). Boxes represents 25<sup>th</sup> and 75<sup>th</sup> percentiles, line within the box is the median, whiskers are 100<sup>th</sup> and 0<sup>th</sup> percentiles. Circle markers within boxplots are single events or single fluxes. CH<sub>4</sub> released per ebullition event and CH<sub>4</sub> ebullitive flux is also plotted for the specific months where it was detected (c). Months that has not been sampled are in grey.

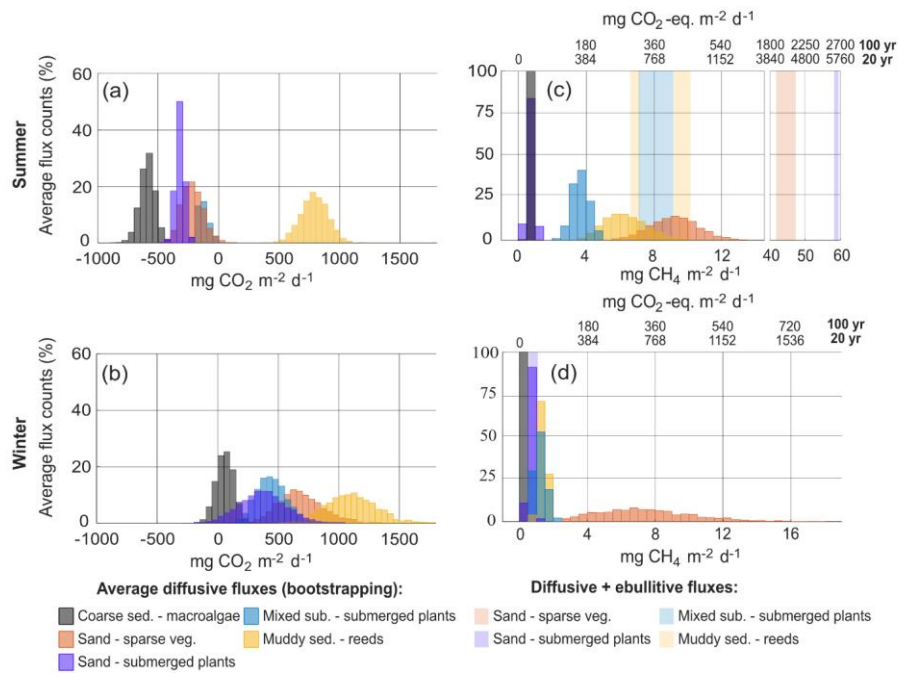
### 3.5 Habitat differences and variability

The bootstrapping (Fig. 5) determined that the summer average CO<sub>2</sub> flux (May to September) in the macroalgae habitat (A) had a 95 % confidence interval of -720 to -481 mg CO<sub>2</sub> m<sup>-2</sup> d<sup>-1</sup>, while the reed habitats (F and G) had an average between 575 and 1 011 mg CO<sub>2</sub> m<sup>-2</sup> d<sup>-1</sup>. These two habitats stood out as being statistically distinct at the 95 % level from any of the other habitats in summer (Fig. 5a). In contrast, the sparsely vegetated sand habitat (B), with a summer flux confidence interval of -

**Formatted:** Font: 10 pt, Bold, Font color: Auto, English (United Kingdom)

**Formatted:** Font: 10 pt, Bold, Font color: Auto

386 to -48 mg  $\text{CO}_2 \text{ m}^{-2} \text{ d}^{-1}$  could not be differentiated from either the submerged plant-covered sand habitat (C) (-389 to -258 mg  $\text{CO}_2 \text{ m}^{-2} \text{ d}^{-1}$ ) or the mixed substrate habitats (D and E) (-202 to -36 mg  $\text{CO}_2 \text{ m}^{-2} \text{ d}^{-1}$ ). However, the latter two habitats did exhibit statistical differences from each other.



**Figure 5.** Average diffusive flux values obtained from the bootstrapping exercise for  $\text{CO}_2$  (a and b) and  $\text{CH}_4$  (c and d), divided up into the summer months May, June, July, and September (a and c) and winter months March, October, and November-December (b and d). January has been excluded since only two locations were sampled. The

95% confidence intervals of the diffusive CH<sub>4</sub> have been added together with the average ebullition flux and are displayed as pale blocks in c and d.

During the ice-free months during-in winter (October, November, December, and March) none of the habitats had a distinct average CO<sub>2</sub> flux and each habitat overlapped at least one other habitat (Fig. 5b), although visual examination of the distributions of the average flux values indicates an increase from the macroalgae habitat (A) (-90 to 191 mg CO<sub>2</sub> m<sup>-2</sup> d<sup>-1</sup>) followed by, in order of increasing flux, the submerged plant-covered sand habitat (C) (-91 to 631 mg CO<sub>2</sub> m<sup>-2</sup> d<sup>-1</sup>), the mixed substrate habitats (D and E) (216 to 691 mg CO<sub>2</sub> m<sup>-2</sup> d<sup>-1</sup>), the sparsely vegetated sand habitat (B) (375 to 1 040 mg CO<sub>2</sub> m<sup>-2</sup> d<sup>-1</sup>) and lastly the reed habitats (F and G) (677 to 1 327 mg CO<sub>2</sub> m<sup>-2</sup> d<sup>-1</sup>).

During-in summer, the average diffusive CH<sub>4</sub> flux in the macroalgae habitat (A) (0.5 to 0.9 mg CH<sub>4</sub> m<sup>-2</sup> d<sup>-1</sup>) could not be distinguished was indistinguishable from the submerged plant-covered sand habitat (C) (0.4 to 1.1 mg CH<sub>4</sub> m<sup>-2</sup> d<sup>-1</sup>), although both these habitats were statistically distinct from the other habitats (Fig. 5c). However, including-when ebullition was included for the two sand habitats (B and C) the higher indicate-an average total (diffusive + ebullition) summer fluxes of around 45 and 60 mg CH<sub>4</sub> m<sup>-2</sup> d<sup>-1</sup>, respectively, clearly separated these two habitats from the rest. The mixed substrate habitats (E and D) and the reed habitats (G and F) could not be distinguished from each other in summer when both ebullition and diffusion were considered, and both had an average flux centred around 8 mg CH<sub>4</sub> m<sup>-2</sup> d<sup>-1</sup>.

In winter, all habitats except the sparsely vegetated sand habitat (B) had an confidence intervals-of-their average flux under 2 mg CH<sub>4</sub> m<sup>-2</sup> d<sup>-1</sup>, while the sand habitat (B) had a confidence interval between 3.1 and 14 mg CH<sub>4</sub> m<sup>-2</sup> d<sup>-1</sup> (Fig. 5d).

### 3.6 CO<sub>2</sub>-equivalent fluxes

To calculate the CO<sub>2</sub>-equivalent flux for CH<sub>4</sub> over a 20- and 100-year time period, the flux was multiplied by 96 or 45, respectively, to account for the sustained global warming potential of CH<sub>4</sub> (Neubauer & Megonigal, 2015).

Considering both a 20- and a 100-year time scales, the CO<sub>2</sub>-equivalent flux of CH<sub>4</sub> accounted for between 83 and 99 % of the total radiative forcing added to the atmosphere from the sand habitats on an annual basis (B and C), between 33 and 99 % from the mixed substrate habitats (D and E) and between 8 and 45 % in the reed habitats (F and G) (Table 2). In the macroalgae habitat (A) the CO<sub>2</sub>-equivalent flux of CH<sub>4</sub> offset the annual CO<sub>2</sub> uptake with between 7 and -14 %.

On a monthly basis, the CO<sub>2</sub>-equivalent fluxes of CH<sub>4</sub> had the greatest impact in the summer months due to the contributions from ebullition (Fig. 6).

Formatted: Indent: First line: 0 cm

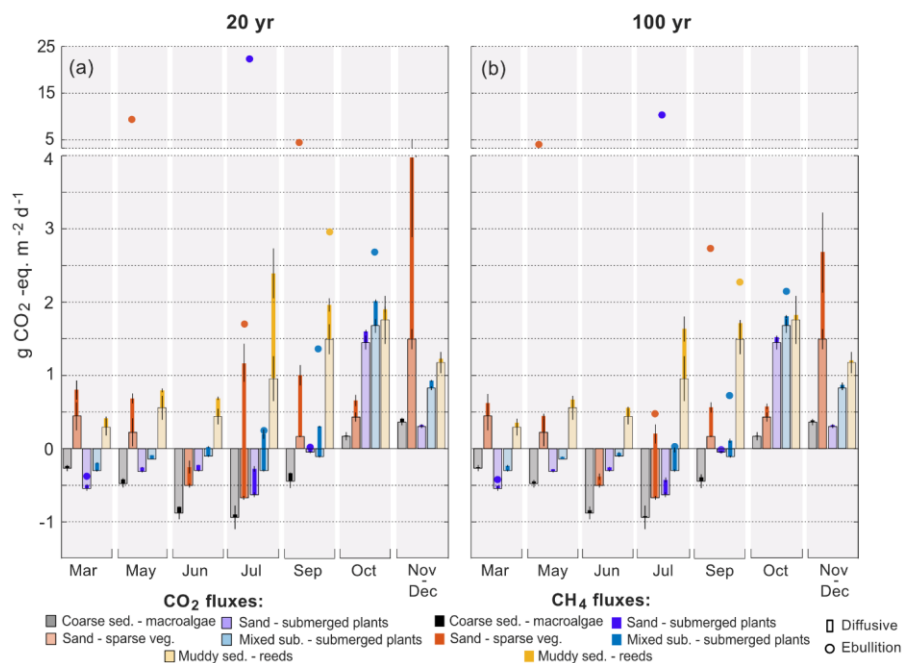


Figure 6. Diffusive CO<sub>2</sub> and CH<sub>4</sub> as average habitat CO<sub>2</sub>-equivalent fluxes for each sampling period, except January when only two locations were sampled, for both a 20-year time period (a) and 100-year time period (b). The CO<sub>2</sub>-equivalent CH<sub>4</sub> ebullition fluxes are not averages for each habitat but plotted as the calculated values for each location containing ebullition. Note the broken y-axis. CH<sub>4</sub> fluxes (diffusive + ebullition) are stacked on the CO<sub>2</sub> fluxes and therefore represent the flux value of both gases. Error bars are the standard error of the mean.

Formatted: English (United Kingdom)

Formatted: English (United Kingdom)

4 Discussion

4.1 Sediment and vegetation type as predictor for flux

~~The~~ It is well known that the shallow-water coastal zone ~~demonstrates~~ has significant variability in CO<sub>2</sub> and CH<sub>4</sub> fluxes ~~that~~ can spanning ~~over~~ two orders of magnitude over short spatial (< 50 m) and temporal (< 24 h) scales (Asmala & Scheinin, 2023; Roth et al., 2023). This variability complicates efforts for quantification and upscaling of the coastal contribution ~~of these greenhouse gases to the atmospheric budget~~. To address this, we assessed whether these fluxes could be reliably constrained ~~within~~ by habitat types ~~already of the coastal~~ Baltic Sea defined within HELCOM HUB (HELCOM, 2013). Linking flux variability to habitat types offers a potential pathway to streamline upscaling efforts.

Formatted: Indent: First line: 0 cm

**Table 3.** Sea-to-air CO<sub>2</sub> and/or CH<sub>4</sub> (diffusive + ebullitive) fluxes in shallow, near-shore waters (mean depth <4 m) in the Baltic Sea, where the study periods have stretched at least a few months. Fluxes are reported as the range of monthly averages and with annual averages within brackets where available, if not denoted with a \*, in which case it is an average over the whole study period. Fluxes are in the unit of mg m<sup>-2</sup> d<sup>-1</sup>.

Habitat		mg CH <sub>4</sub> m <sup>-2</sup> d <sup>-1</sup> fluxes	mg CO <sub>2</sub> m <sup>-2</sup> d <sup>-1</sup> fluxes	Months	Reference
Rocks and boulders	Macroalgae	0.1 – 1.1 (0.9)	-385 – 117 (-142)	Year-round	(Roth et al., 2023)
Coarse sediments	No vegetation	0.7 – 2		Jun. – Oct.	(Lundevall-Zara et al., 2021)
	Macroalgae	0.1 – 1.8 (0.4)	-937 – 363 (-299)	Year-round	This study (A)
	Submerged rooted plants	0.1 – 2.9 (1.5)	-763 – 390 (-195)	Year-round	(Roth et al., 2023)
Sand	Sparse or no vegetation	0.4 – 10		Jun. – Oct.	Lundevall-Zara et al. (2021)
		2.3 – 88 (23)	-670 – 1496 (203)	Year-round	This study (B)
	Submerged rooted plants	0.2 – 235 (31)	-673 – 1494 (38)	Year-round	This study (C)
Muddy sediments	No vegetation	0.1 – 2.5 (1.0)	-132 – 326 (82)	Year-round	(Roth et al., 2023)
	Phragmites australis	0.5 – 15 (3.4)	-62 – 3512 (990)	Year-round	This study (G and F)
		206* – 297*		Apr. – Nov.	(Koch et al., 2014; Liikanen et al., 2009)
	Mixed epibenthic biotic structures	0.3 – 163		Jun. – Oct.	(Lundevall-Zara et al., 2021)
Mixed sediments	Submerged rooted plants	0.7 – 16 (4.8)	-328 – 1725 (312)	Year-round	This study (D and E)

Coarse sediment habitats with macroalgae demonstrated low CO<sub>2</sub> and CH<sub>4</sub> flux variability and a total absence of CH<sub>4</sub> ebullition, likely reflecting limited organic matter deposition and ~~constrained-restricted rates of~~ sediment respiration and methanogenesis (Chen et al., 2022). ~~This~~ Our measurements within this habitat exhibited annual net CO<sub>2</sub> uptake ~~that~~ agreeing with prior studies of similar environments, including macroalgae on rocks and boulders and submerged rooted plants on coarse sediment (Roth et al., 2023). ~~The -and the-~~ CH<sub>4</sub> fluxes also align closely with other studies of coarse sediments studies in the Baltic Sea, differing by less than 1.1 mg CH<sub>4</sub> m<sup>-2</sup> d<sup>-1</sup> (Lundevall-Zara et al., 2021; Roth et al., 2023) (Table 3). This consistency

Formatted Table

Formatted: Space After: 0 pt

Formatted: English (United States), Not Superscript/ Subscript

Formatted: Not Superscript/ Subscript

Formatted: Not Superscript/ Subscript

Formatted: English (United States)

positions coarse sediments as a robust reference category for regional CO<sub>2</sub> and CH<sub>4</sub> flux scaling. Moreover, their similarity to rock and boulder habitats suggests potential for broader classification schemes.

Reed-dominated muddy habitats displayed greater variability in CO<sub>2</sub> fluxes. While brackish wetlands with Phragmites vegetation are typically reported as CO<sub>2</sub> sinks in summer outside the Baltic Sea (Martin & Moseman-Valtierra, 2015; Sanders-DeMott et al., 2022), this study found predominantly net emissions during summer. Persistent CO<sub>2</sub> oversaturation across during all seasons distinguishes the habitat in this study and likely reflects high remineralization rates of either allochthonous or autochthonous carbon (Chen et al., 2022). While CO<sub>2</sub> fluxes of this habitat type are less consistent with the existing literature, the clear deviation from the other habitats in this study underscores the need for a separate categorization.

The sand and mixed substrate habitats, despite differing their variable submerged plant compositions, exhibited overlapping CO<sub>2</sub> flux ranges and similar seasonal dynamics, indicating broadly comparable biogeochemical characteristics. While differences in primary production, respiration, and carbon burial, linked to the vegetation community, may exist and could be responsible for a part of the variability in flux magnitudes or temporal patterns (Gattuso et al., 1998), these differences appear insufficient to separate the habitats in terms of the averaged flux. Consequently, for large-scale flux estimations or upscaling efforts, detailed knowledge of subtle variations in vegetation community composition or sediment grain size may be less critical for predicting the CO<sub>2</sub> flux. Instead, focusing on dominant habitat features, such as overall sediment type and general vegetation presence, could provide a sufficiently practical and reliable framework for flux prediction for in these habitat groups.

CH<sub>4</sub> winter fluxes were consistently low across all habitats, aligning with the temperature sensitivity of methanogenesis (Yvon-Durocher et al., 2014). Habitat differences appeared less influential during this season, although the sparsely vegetated sand habitat exhibited anomalously elevated and variable fluxes with a 10 mg CH<sub>4</sub> m<sup>-2</sup> d<sup>-1</sup> confidence interval of the average winter flux. This outlier may reflect unaccounted drivers or localized factors not described by the HELCOM classification.

In summer, CH<sub>4</sub> flux variability increased drastically, mainly due to ebullition which amplified total fluxes by up to an order of magnitude. Our findings suggest that, in the coastal shallow-water zone, the variability in diffusive CH<sub>4</sub> fluxes may be of secondary importance when compared to the significant contribution of sea-air ebullition. Bubble emission not only overshadowed diffusive flux variability but also defined the upper limit of the flux magnitude in many habitats, similar to previous findings in the Baltic Sea shallow-water zone (Lundevall-Zara et al., 2021). The upper limits of CH<sub>4</sub> fluxes in sand, mixed substrate and muddy sediment habitats are variable between the studies performed in the Baltic Sea (Table 3), but are up to two orders of magnitude higher for the studies using floating chambers which can incorporate the bubble flux (Liikanen et al., 2009; Koch et al., 2014; Lundevall-Zara et al., 2021) than for the studies using concentration gradients between the water and air and then calculate a diffusive flux (Roth et al., 2023).

Contradicting previous findings that the majority of ebullition comes from muddy, organic-rich sediments (Crawford et al., 2014; Lundevall-Zara et al., 2021), this study identified the sand habitats as that those most prone to ebullition. While it cannot be overruled-ruled out that organic-rich sediment underlies the sand and contributes to the ebullition, the finding shows

that assumptions that widespread ebullition is isolated to a habitat that would be classified as a muddy sediment habitat will underestimate the area of the coastline that exhibits intense CH<sub>4</sub> ebullition.

4.2 Constraining the ebullition flux

The ebullition data from this study not only corroborates previous findings that CH<sub>4</sub> ebullition dominates coastal CH<sub>4</sub> emissions (Weber et al., 2019), but further demonstrates that ebullition could be the dominant component of the ~~total~~-coastal ~~shallow-water~~ carbon-based greenhouse gas flux. Most of the previous estimates for coastal CO<sub>2</sub> and CH<sub>4</sub> fluxes in the Baltic Sea have relied on bulk methods based on sea-air concentration gradients and *k* parameterization (e.g. Ma et al., 2020; Roth et al., 2022; Asmala & Scheinin, 2023). While effective for assessing diffusive exchange, and hence also for the sediment-derived gas ebullition that subsequently dissolves in the water column (Hermans et al., 2024), these approaches fail to account for direct bubble-mediated transport across the water-air interface, thereby leading to systematic underestimation of coastal CH<sub>4</sub> fluxes.

A common characteristic of ebullition studies in near-shore waters, including this one, is the large range of the observed fluxes which typically vary by over four orders of magnitude (Lundevall-Zara et al., 2021; Wang et al., 2021; Żygadłowska et al., 2024). However, our findings indicate that habitat type provides a useful predictor of both the frequency of ebullition events and, to a lesser extent, the amount of CH<sub>4</sub> released per event. This suggests that habitat-based classifications could serve as a valuable tool for constraining ebullition flux estimates, offering a more structured framework for quantifying CH<sub>4</sub> emissions in coastal ecosystems.

A key challenge remains in scaling episodic ebullition events into time- and space-averaged fluxes. Variability in bubble size, release frequency, and lateral distribution introduces significant uncertainty in determining representative flux values. Consequently, the methodological approach used to integrate ebullition events into broader estimates can significantly influence reported fluxes. Nevertheless, our results align with previous observations from a eutrophic coastal basin of the North Sea (Żygadłowska et al., 2024), and from the island of Askö in the Baltic Sea (Lundevall-Zara et al., 2021). Reported ebullition fluxes in the North Sea study were up to 3920 mg CH<sub>4</sub> m<sup>-2</sup> d<sup>-1</sup>, while at Askö the average monthly ebullition and diffusive fluxes were up to 163 mg CH<sub>4</sub> m<sup>-2</sup> d<sup>-1</sup>. The maximum monthly diffusive and ebullition flux observed in this study (235 mg CH<sub>4</sub> m<sup>-2</sup> d<sup>-1</sup>) falls within the same range, despite differences in methods used to integrate ebullition into time-averaged estimates.

4.3 The importance of winter fluxes for the annual budget

In January, the emission fluxes of both CO<sub>2</sub> and CH<sub>4</sub> at ice-free locations were high despite the coldest water temperatures of the sampling campaign, when both methanogenesis and respiration are expected to be lowest (Thamdrup et al., 1998; Yvon-Durocher et al., 2014). While wintertime efflux of CO<sub>2</sub> is expected to be higher compared to summertime when photosynthesis counteract the respiration, peak CO<sub>2</sub> emissions are usually observed in the autumn when temperatures are still sufficient for elevated respiration, but photosynthesis has decreased (Honkanen et al., 2024; Lainela et al., 2024). However, the CO<sub>2</sub> fluxes

Formatted: Font: (Default) +Headings (Times New Roman)

Formatted: Font: (Default) +Headings (Times New Roman)

Formatted: Font: (Default) +Headings (Times New Roman)



in January were substantially higher than in October in this study. Furthermore, since the solubility of CO<sub>2</sub> and CH<sub>4</sub> increases with decreasing water temperature, it should result in less outgassing to the atmosphere (Lucile et al., 2012; Guo & Rodger, 2013).

Previous studies have found increased gas fluxes following ice breakup in aquatic environments and suggested it to be a period of significant contribution to the annual flux budget (Jansen et al., 2019; Wang et al., 2023). During ice-covered periods, dissolved gases and bubbles accumulate under the ice, with little-to-no sea-air exchange and limited oxidation of CH<sub>4</sub> due to the low temperatures, which are later allowed to be outgassed-escape during ice-break-up (Denfeld et al., 2018; Roth et al., 2022). In our study, no active ice-melt or break-up was observed at the time of sampling, and ice observations were not made prior to the sampling periods. We speculate that the higher fluxes may be due to earlier ice-breakup, or horizontal transport of water from ice-covered areas.

Assuming that this elevated flux would persist for half a month to a full month (depending on whether it originates from previous local ice breakup or from transport from other ice-covered areas), its contribution to the annual exchange of CO<sub>2</sub> would range between 10 and 22 %, and between 3 and 12 % to the annual diffusive emission of CH<sub>4</sub>. However, from the perspective of the coastal greenhouse gas budget, these emissions may simply represent a shift in the timing or location of release rather than an overall increase in total flux. Establishing baseline winter emissions of CO<sub>2</sub> and CH<sub>4</sub> during ice-free conditions may suffice for budgetary assessments, as the presence of ice would primarily redistribute these emissions across time and space rather than add to the annual total emission.

#### 4.4 Coastal CO<sub>2</sub> and CH<sub>4</sub> budget of the Stockholm archipelago

Given the diversity of habitats along the Baltic Sea coastline and the relatively high anthropogenic pressure on the Stockholm archipelago (Hill & Wallström, 2008; Kautsky, 2008), extrapolation beyond this region could introduce large uncertainties. The Stockholm archipelago, which absorbs much of the city's anthropogenic load, differs from other urban coastal areas in the Baltic Sea, where habitat-specific flux ranges must be assessed independently. However, despite this regional specificity, the archipelago holds roughly one-fourth of Sweden's total coastline (mainland and islands) (Statistics Sweden, 2020), making it representative of a significant portion of the Swedish near-shore shallow-water zone.

The agreement of the temperature and wind data between the SMHI record (SMHI, 2024a, 2024b) and the local measurements suggests that the dataset has captured the seasonal cycle in the area, with deviations likely arising from differences in geographical settings of the SMHI stations and the sampling locations, as well as shorter averaging periods of the local measurements. However, we note that sampling was limited to wind speeds below 5.8 m s<sup>-1</sup>. Due to the commonly suggested non-linear dependence of gas transfer on wind speed (Wanninkhof et al., 2009), infrequent high wind periods may disproportionately influence the average flux.

Another source of uncertainty is the absence of nighttime flux data. While diurnal variations in CH<sub>4</sub> fluxes have been observed in coastal waters of the Baltic Sea (Roth et al., 2022) and on Sweden's west coast (Henriksson et al., 2024), daytime

470 increases were inconsistent across habitats and months. Further, reported CH<sub>4</sub> variability generally falls within the diffusive bootstrapping confidence interval for summertime fluxes in this study (0.02 to 6 mg CH<sub>4</sub> m<sup>-2</sup> d<sup>-1</sup>), making it a minor uncertainty compared to the ebullitive flux. For CO<sub>2</sub> fluxes, photosynthesis is expected to peak in the summer afternoons which may have led to a slight overestimation of uptake (Roth et al., 2023), although measured summer CO<sub>2</sub> fluxes in this study do align with prior estimates for coastal habitats which include nighttime values (Honkanen et al., 2024).

475 Despite these uncertainties, the dataset can provide a first estimate of the coastal shallow-water sea-air gas budget for the Stockholm area. Mattisson (2005) mapped the Stockholm archipelago based on the EUNIS classification scheme (Davies et al., 2004), a habitat classification scheme developed for Europe, an compatible with the ~~which the~~ HELCOM HUB ~~is compatible with, only with the difference that~~ the latter ~~is was~~ specifically developed for the Baltic Sea (HELCOM, 2013). The mapping found that the most common habitat groups in shallow waters (<6 m) were bedrock or coarse sediments, which 480 take up 40 % of the area (total mapped area: 681 km<sup>2</sup>). Applying the annual flux of the coarse sediment with macroalgae habitat to this area yields fluxes of -30 Gg CO<sub>2</sub> yr<sup>-1</sup> and 0.04 Gg CH<sub>4</sub> yr<sup>-1</sup>. Reed beds account for 1.6 % of the total area, and muddy sediments without specified vegetation account for another 18 % ~~is a~~ Applying the fluxes from the muddy sediment with reeds habitats yields ~~is a~~ fluxes of between 30 and 67 Gg CO<sub>2</sub> yr<sup>-1</sup> and 0.01 to 0.03 Gg CH<sub>4</sub> yr<sup>-1</sup>. Sublittoral sand, with or without vegetation (not distinguished in Mattisson (2005)), covers 2 % of the shallow water area. Applying the lowest and 485 highest flux estimate for the sand habitat yields fluxes ranging between 0.04 and 1.7 Gg CO<sub>2</sub> yr<sup>-1</sup> and 0.1 and 0.2 Gg CH<sub>4</sub> yr<sup>-1</sup>. The remaining 38 % is described as a mixture of consolidated clay, bedrock, and more mobile sediments, but is not described in terms of its vegetation. Applying the highest and lowest values from the annual fluxes from the coarse sediment habitat, the sand habitats and the mixed substrate habitats yields a large possible range of -28 to 29 Gg CO<sub>2</sub> yr<sup>-1</sup> and 0.04 to 2.9 Gg CH<sub>4</sub> yr<sup>-1</sup>.

490 Combining both CO<sub>2</sub> and CH<sub>4</sub> fluxes, the CO<sub>2</sub>-equivalent flux of the shallow-water coastal zone in the Stockholm archipelago adds up to between 0.005 and 0.4 Tg CO<sub>2</sub>-eq yr<sup>-1</sup> ~~and between~~ -0.01 and 0.2 Tg CO<sub>2</sub>-eq yr<sup>-1</sup> over a 20- or 100-year time period, respectively. At a regional scale, the Stockholm urban area emits approximately 1.2 Tg CO<sub>2</sub>-eq yr<sup>-1</sup> (100-year timescale) from the energy and transport sectors alone (Stockholms stad, 2024). While the coastal zone's emissions are small by comparison, its contribution to the regional carbon budget still has the potential to offset efforts to reduce overall 495 emissions.

#### 4.5 Implications for the coastal zone as a tool in climate mitigation

Distinguishing between air-sea fluxes and sediment carbon sequestration is crucial for accurately determining and communicating the climate mitigation potential of a habitat (Johannessen & Christian, 2023). While most of the sampling 500 locations show a net efflux of CO<sub>2</sub> to the atmosphere, they could still sequester organic carbon. An aquatic system can act as both a sink for organic carbon in the sediments and at the same time show net sea-air CO<sub>2</sub> and CH<sub>4</sub> emissions to the atmosphere,

505 due to the addition of allochthonous carbon that subsidises habitat respiration, indicating that these two properties are not always linked (Santoso et al., 2017). In fact, the coarse sediment with macroalgae habitat that showed the highest net uptake of CO<sub>2</sub> most likely has the lowest sediment carbon sequestration due to the exposed setting, limiting deposition. While it is true that carbon buried in anoxic sediments can be stored and isolated from atmospheric exchange for 1000+ years (Dahl et al., 2024), it is the actual exchange at the sea-air interface that directly affects atmospheric concentrations (Van Dam et al., 2021).

510 Integrating the carbon burial in coastal sediments into Nationally Determined Contributions (Herr & Landis, 2016) or in carbon trading (Claes et al., 2022) as a means of offsetting fossil fuel CO<sub>2</sub> emissions, without simultaneously accounting for the coastal sea-air exchange, risks undermining national and global climate targets (Williamson & Gattuso, 2022). Including the coastal zone in national carbon budgets is therefore more complex than the terrestrial environment and should in all cases include simultaneous measurements of CO<sub>2</sub> and CH<sub>4</sub> over the sea-air boundary layer. As evident from the results in this study, CH<sub>4</sub> can play a substantial, if not dominant, role in ~~this the annual~~ exchange and should be assessed with a method that can account for the ebullition ~~veon~~ component of the flux as well.

515

**5 Conclusions**

The study quantified seasonal and annual fluxes of CO<sub>2</sub> and CH<sub>4</sub> from five distinct coastal, shallow water habitat types (macroalgae-covered coarse sediments, sparsely or densely vegetated sands, submerged plant-covered mixed substrates, and reed-dominated muds) in the archipelago surrounding Stockholm and Trosa along the central Baltic Sea coast. Significant differences between the flux distributions in the various habitats were found for both diffusive CO<sub>2</sub> and CH<sub>4</sub> fluxes, primarily in summertime. Macroalgae-covered coarse sediments and reed-dominated muds stood out as having distinct CO<sub>2</sub> flux ranges, whereas the other three habitats showed more similarities. The occurrence of CH<sub>4</sub> ebullition and variation in flux magnitude allowed for a clear distinction between the habitats where the sand habitats had the highest emissions, followed by the reeds and mixed substrate habitats and lastly, the macroalgae habitat. The annual net CO<sub>2</sub>-equivalent exchange indicated that four out of five habitats were net sources of ~~carbon-based-greenhouse-gases~~CO<sub>2</sub> and CH<sub>4</sub> to the atmosphere where CH<sub>4</sub> ebullition dominated the exchange in three out of five habitats. An initial estimate of the budget of carbon-based greenhouse gases in the shallow-water coastal zone of the Stockholm archipelago suggests that this area is likely a weak source of carbon-based greenhouse gases to the atmosphere, with a range of 0.005 to 0.4 Tg CO<sub>2</sub>-eq yr<sup>-1</sup>, or -0.01 to 0.2 Tg CO<sub>2</sub>-eq yr<sup>-1</sup> over a 20- and 100-year time scale respectively.

530

**Data availability statement**

Data and metadata that support the findings of this manuscript are available at the Bolin Centre Database and can be revised at: (the data will be published openly and receive a DOI upon publication of the manuscript). For reviewers a link to view the data before publication has been provided.

535

**Author contribution statement**

TB was responsible for data curation, formal analysis, visualization, and writing of the original draft. JP and VB were responsible for providing resources, supervision, and writing – review and editing. VB was responsible for conceptualization. All authors contributed to the investigation.

540

**Competing interests**

The authors declare that they have no competing interests.

**Acknowledgments**

545

Thea Bisander acknowledge support from the School of Natural Sciences, Technology and Environmental Studies at Södertörn University. Volker Brüchert and John Prytherch acknowledge support from the Department of Geological Sciences and the Department of Meteorology at Stockholm University. The authors would like to express gratitude to M. Krisch Svärdby for assistance with fieldwork and to the staff at the Askö Laboratory for help with logistics when fieldwork was carried out at the station.

550

**Financial support**

Funding for field work was provided by the Bolin Centre for Climate Research ~~at Stockholm University in the research area Biogeochemical Cycles and Climate Change~~ through the project Scaling ~~t~~Trace ~~g~~Gas ~~e~~Exchange in ~~c~~Coastal ~~e~~Environments to VB.

555

**References**

Al-Hamdani, Z., and Reker, J (eds.): Towards marine landscapes in the Baltic Sea, BALANCE interim report no. 10, <https://doi.org/10.13140/RG.2.1.3197.2726>, 2007.

Amoroch, J., and DeVries J. J: A new evaluation of the wind stress coefficient over water surfaces, J. Geophys. Res. Oceans, 85(C1), 433–442, <https://doi.org/10.1029/JC085iC01p00433>, 1980.

Asmala, E., and Scheinin, M.: Persistent hot spots of CO<sub>2</sub> and CH<sub>4</sub> in coastal nearshore environments, Limnol. Oceanogr. Lett., 9, 119–127, <https://doi.org/10.1002/lol2.10370>, 2023.

Bange, H. W., Mongwe, P., Shutler, J. D., Arévalo-Martínez, D. L., Bianchi, D., Lauvset, S. K., Liu, C., Löscher, C. R., Martins, H., Rosentreter, J. A., Schmale, O., Steinhoff, T., Upstill-Goddard, R. C., Wanninkhof, R., Wilson, S. T., and Xie, H.: Advances in understanding of air–sea exchange and cycling of greenhouse gases in the upper ocean, *Elem. Sci. Anthropocene*, 12(1), 00044, <https://doi.org/10.1525/elementa.2023.00044>, 2024.

Bastviken, D., Wilk, J., Thanh Duc, N., Gålfalk, M., Karlsson, M., Neset, T.-S., Opach, T., Enrich-Prast, A., and Sundgren, I.: Critical method needs in measuring greenhouse gas fluxes, *Environ. Res. Lett.*, 17, 104009, <https://doi.org/10.1088/1748-9326/ac8fa9>, 2022.

Bauer, J. E., Cai, W.-J., Raymond, P. A., Bianchi, T. S., Hopkinson, C. S., and Regnier, P. A. G.: The changing carbon cycle of the coastal ocean, *Nature*, 504, 61–70, <https://doi.org/10.1038/nature12857>, 2013.

Champenois, W., and Borges, A. V.: Net community metabolism of a *Posidonia Oceanica* meadow, *Limnol. Oceanogr.*, 66(6), 2126–2140, <https://doi.org/10.1002/lno.11724>, 2021.

Chen, Z., Nie, T., Zhao, X., Li, J., Yang, B., Cui, D., and Li, X.: Organic carbon remineralization rate in global marine sediments: A review., *Reg. Stud. Mar. Sci.*, 49, 102112, <https://doi.org/10.1016/j.rsma.2021.102112>, 2022.

Claes, J., Hopman, D., Jaeger, G., and Rogers, M.: Blue carbon: The potential of coastal and oceanic climate action (p. 32), McKinsey & Company, <https://www.mckinsey.com/businessfunctions/sustainability/ourinsights/blue-carbon-the-potential-of-coastal-and-oceanic-climate-action>, 2022.

Crawford, J. T., Stanley, E. H., Spawn, S. A., Finlay, J. C., Loken, L. C., and Striegl, R. G.: Ebullitive methane emissions from oxygenated wetland streams, *Glob. Change Biol.*, 20(11), 3408–3422, <https://doi.org/10.1111/gcb.12614>, 2014.

Dahl, M., Gullström, M., Bernabeu, I., Serrano, O., Leiva-Dueñas, C., Linderholm, H. W., Asplund, M. E., Björk, M., Ou, T., Svensson, J. R., Andrén, E., Andrén, T., Bergman, S., Braun, S., Eklöf, A., Ežerinskis, Z., Garbaras, A., Hällberg, P., Löfgren, E., Kylander, M. E., Masqué, P., Šapolaitė, J., Smittenberg, R., and Mateo, M. A.: A 2,000-year record of Eelgrass (*Zostera marina* L.) colonization shows substantial gains in blue carbon storage and nutrient retention, *Glob. Biogeochem. Cycles*, 38(3), e2023GB008039, <https://doi.org/10.1029/2023GB008039>, 2024.

Dai, M., Su, J., Zhao, Y., Hofmann, E. E., Cao, Z., Cai, W.-J., Gan, J., Lacroix, F., Laurelle, G. G., Meng, F., Müller, J. D., Regnier, P. A. G., Wang, G., and Wang, Z.: Carbon fluxes in the coastal ocean: Synthesis, boundary processes, and future trends, *Annu. Rev. Earth Planet. Sci.*, 50, 593–626, <https://doi.org/10.1146/annurev-earth-032320-090746>, 2022.

Davies, C. E., Moss, D., and Hill, M. O.: Eunis habitat classification revised 2004, European Topic Centre on Nature Protection and Biodiversity, European Environment Agency, <https://www.eea.europa.eu/data-and-maps/data/eunis-habitat-classification-1/documentation/eunis-2004-report.pdf>, 2004.

Formatted: Normal, Left, Space After: 12 pt, Line spacing: single

Formatted

Denfeld, B. A., Baulch, H. M., Del Giorgio, P. A., Hampton, S. E., and Karlsson, J.: A synthesis of carbon dioxide and methane dynamics during the ice-covered period of northern lakes, *Limnol. Oceanogr. Lett.*, 3(3), 117–131, <https://doi.org/10.1002/lol2.10079>, 2018.

595 Francis, G., and Thunell, E.: Reversing Bonferroni, *Psychon. Bull. Rev.*, 28(3), 788–794, <https://doi.org/10.3758/s13423-020-01855-z>, 2021.

Friedlingstein, P., O’Sullivan, M., Jones, M. W., Andrew, R. M., Gregor, L., Hauck, J., Le Quéré, C., Luijkx, I. T., Olsen, A., Peters, G. P., Peters, W., Pongratz, J., Schwingshackl, C., Sitch, S., Canadell, J. G., Ciais, P., Jackson, R. B., Alin, S. R., Alkama, R., Arneeth, A., Arora, V. K., Bates, N. R., Becker, M., Bellouin, N., Bittig, H. C., Bopp, L., Chevallier, F., Chini, L.,  
600 P., Cronin, M., Evans, W., Falk, S., Feely, R. A., Gasser, T., Gehlen, M., Gkritzalis, T., Gloege, L., Grassi, G., Gruber, N., Gürses, Ö., Harris, I., Hefner, M., Houghton, R. A., Hurtt, G. C., Iida, Y., Ilyina, T., Jain, A. K., Jersild, A., Kadono, K., Kato, E., Kennedy, D., Klein Goldewijk, K., Knauer, J., Korsbakken, J. I., Landschützer, P., Lefèvre, N., Lindsay, K., Liu, J., Liu, Z., Marland, G., Mayot, N., McGrath, M. J., Metz, N., Monacchi, N. M., Munro, D. R., Nakaoka, S.-I., Niwa, Y., O’Brien, K., Ono, T., Palmer, P. I., Pan, N., Pierrot, D., Pocock, K., Poulter, B., Resplandy, L., Robertson, E., Rödenbeck, C., Rodriguez,  
605 C., Rosan, T. M., Schwinger, J., Séférian, R., Shutler, J. D., Skjelvan, I., Steinhoff, T., Sun, Q., Sutton, A. J., Sweeney, C., Takao, S., Tanhua, T., Tans, P. P., Tian, X., Tian, H., Tilbrook, B., Tsujino, H., Tubiello, F., van der Werf, G. R., Walker, A. P., Wanninkhof, R., Whitehead, C., Willstrand Wranne, A., Wright, R., Yuan, W., Yue, C., Yue, X., Zaehle, S., Zeng, J., and Zheng B.: Global Carbon Budget 2022, *Earth Syst. Sci. Data*, 14(11), 4811–4900, <https://doi.org/10.5194/essd-14-4811-2022>, 2022.

610 Gattuso, J.-P., Frankignoulle, M., and Wollast, R.: Carbon and carbonate metabolism in coastal aquatic ecosystems, *Annu. Rev. Ecol. Evol. Syst.*, 29, 405–434, <https://doi.org/10.1146/annurev.ecolsys.29.1.405>, 1998.

Guo, G.-J., and Rodger, P. M.: Solubility of aqueous methane under metastable conditions: Implications for gas hydrate nucleation, *J. Phys. Chem. B*, 117(21), 6498–6504, <https://doi.org/10.1021/jp3117215>, 2013.

[Gustafsson, E., Omstedt, A., and Gustafsson, B. G.: The air-water exchange of a coastal Sea—A sensitivity study on factors influencing the absorption and outgassing of CO<sub>2</sub> in the Baltic Sea, \*J. Geophys. Res. Oceans\*, 120\(8\), 5342–5357, <https://doi.org/10.1002/2015JC010832>, 2015.](https://doi.org/10.1002/2015JC010832)  
615

Gutiérrez-Loza, L., Wallin, M. B., Sahlée, E., Nilsson, E., Bange, H. W., Kock, A., and Rutgersson, A.: Measurement of air-sea methane fluxes in the Baltic Sea using the Eddy Covariance method, *Front. Earth Sci.*, 7, 93, <https://doi.org/10.3389/feart.2019.00093>, 2019.

620 HELCOM: HELCOM HUB - Technical report on the HELCOM underwater biotope and habitat classification. *Balt. Sea Environ. Proc.* No. 139.

https://www.aquabiota.se/wpcontent/uploads/BSEP139\_HELCOM\_2013\_HELCOM\_HUB\_TechnicalReport-on-the-  
HELCOM-Underwater-Biotope-and-habitat-classifi-cation\_Balt-Sea-Environ.pdf, 2013.

Henriksson, L., Yau, Y. Y. Y., Majtényi-Hill, C., Ljungberg, W., Tomer, A. S., Zhao, S., Wang, F., Cabral, A., Asplund, M.,  
and Santos, I. R.: Drivers of seasonal and diel methane emissions from a seagrass ecosystem, *J. Geophys. Res. Biogeosciences*,  
129(11), e2024JG008079, <https://doi.org/10.1029/2024JG008079>, 2024.

Hermans, M., Stranne, C., Broman, E., Sokolov, A., Roth, F., Nascimento, F. J. A., Mörrh, C.-M., ten Hietbrink, S., Sun, X.,  
Gustafsson, E., Gustafsson, B. G., Norkko, A., Jilbert, T., and Humborg, C.: Ebullition dominates methane emissions in  
stratified coastal waters, *Sci. Total Environ.*, 945, 174183, <https://doi.org/10.1016/j.scitotenv.2024.174183>, 2024.

Herr, D., and Landis, E.: Coastal Blue Carbon ecosystems: Opportunities for Nationally Determined Contributions. Policy  
Brief, The Nature Conservancy. <https://www.unep.org/resources/policy-and-strategy/coastal-blue-carbon-ecosystems-opportunities-nationally-determined>, 2016.

[Hicks, B. B., Drinkrow, R. L., and Grauze, G.: Drag and bulk transfer coefficients associated with shallow water surface,  
Bound.-Layer Meteorol., 6\(1\), 287-297, <https://doi.org/10.1007/BF00232490>, 1974.](#)

Hill, C., and Wallström, K.: The Stockholm Archipelago. In U. Schiewer (Ed.), *Ecology of Baltic Coastal Waters* (pp. 309–  
334), Springer, [https://doi.org/10.1007/978-3-540-73524-3\\_14](https://doi.org/10.1007/978-3-540-73524-3_14), 2008.

Honkanen, M., Aurela, M., Hatakka, J., Haraguchi, L., Kielosto, S., Mäkelä, T., Seppälä, J., Siirä, S.-M., Stenbäck, K.,  
Tuovinen, J.-P., Ylöstalo, P., and Laakso, L.: Interannual and seasonal variability of the air–sea CO<sub>2</sub> exchange at Utö in the  
coastal region of the Baltic Sea, *Biogeosciences*, 21(19), 4341–4359, <https://doi.org/10.5194/bg-21-4341-2024>, 2024.

Humborg, C., Geibel, M. C., Sun, X., McCrackin, M., Mörrh, C.-M., Stranne, C., Jakobsson, M., Gustafsson, B., Sokolov, A.,  
Norkko, A. and Norkko, J.: High emissions of carbon dioxide and methane from the coastal Baltic Sea at the end of a summer  
heat wave, *Front. Mar. Sci.*, 6, 493, <https://doi.org/10.3389/fmars.2019.00493>, 2019.

[Iwata, H., Hirata, R., Takahashi, Y., Miyabara, Y., Itoh, M., and Iizuka, K.: Partitioning eddy-covariance methane fluxes from  
a shallow lake into diffusive and ebullitive fluxes, Bound.-Layer Meteorol., 169\(3\), 413-428, <https://doi.org/10.1007/s10546-018-0383-1>, 2018.](#)

Jansen, J., Thornton, B. F., Jammet, M. M., Wik, M., Cortés, A., Friberg, T., MacIntyre, S., and Crill, P. M.: Climate-sensitive  
controls on large spring emissions of CH<sub>4</sub> and CO<sub>2</sub> from northern lakes, *J. Geophys. Res. Biogeosciences*, 124(7), 2379–2399,  
<https://doi.org/10.1029/2019JG005094>, 2019.

Johannessen, S. C., and Christian, J. R.: Why blue carbon cannot truly offset fossil fuel emissions, *Commun. Earth Environ.*,  
4, 411, <https://doi.org/10.1038/s43247-023-01068-x>, 2023.

**Formatted:** Normal, Left, Space After: 12 pt, Line spacing: single

**Formatted**

**Formatted**

**Formatted:** Normal, Left, Space After: 12 pt, Line spacing: single

**Formatted**

[Kajiura, M., and Tokida, T.: Diurnal variation in methane emission from rice paddy due to ebullition, J. Environ. Qual., 53\(2\), 265-273, <https://doi.org/10.1002/jeq2.20553>, 2024.](#)

Kautsky, H.: Askö area and Himmerfjärden. In U. Schiewer (Ed.), Ecology of Baltic Coastal Waters (pp. 335–360), Springer, [https://doi.org/10.1007/978-3-540-73524-3\\_15](https://doi.org/10.1007/978-3-540-73524-3_15), 2008.

655 Koch, S., Jurasinski, G., Koesch, F., Koch, M., and Glatzel, S.: Spatial variability of annual estimates of methane emissions in a *Phragmites Australis* (Cav.) Trin. Ex Steud. dominated restored coastal brackish fen, Wetlands, 34, 593–602, <https://doi.org/10.1007/s13157-014-0528-z>, 2014.

Kruskal, W. H., and Wallis, W. A.: Use of ranks in one-criterion variance analysis., J. Am. Stat. Assoc., 47, 583–621, <https://doi.org/10.2307/2280779>, 1952.

660 [Lainela, S., Jacobs, E., Luik, S.-T., Rehder, G., and Lips, U.: Seasonal dynamics and regional distribution patterns of CO<sub>2</sub> and CH<sub>4</sub> in the north-eastern Baltic Sea, Biogeosciences, 21\(20\), 4495-4519, <https://doi.org/10.5194/bg-21-4495-2024>, 2024.](#)

Liikanen, A., Silvennoinen, H., Karvo, A., Rantakokko, P., and Martikainen, P.: Methane and nitrous oxide fluxes in two coastal wetlands in the northeastern Gulf of Bothnia, Baltic Sea, Boreal Environ. Res., 14, 351–368, 2009.

Liss, P. S., and Slater, P. G.: Flux of gases across the air-sea interface, Nature, 247, 181–184, <https://doi.org/10.1038/247181a0>, 1974.

665 Lohrberg, A., Schmale, O., Ostrovsky, I., Niemann, H., Held, P., and Schneider von Deimling, J.: Discovery and quantification of a widespread methane ebullition event in a coastal inlet (Baltic Sea) using a novel sonar strategy, Sci. Rep., 10, 4393, <https://doi.org/10.1038/s41598-020-60283-0>, 2020.

Lucile, F., Cézac, P., Contamine, F., Serin, J.-P., Houssin, D., and Arpentinier, P.: Solubility of carbon dioxide in water and aqueous solution containing sodium hydroxide at temperatures from (293.15 to 393.15) K and pressure up to 5 MPa: Experimental measurements, J. Chem. Eng. Data, 57(3), 784–789, <https://doi.org/10.1021/jc200991x>, 2012.

670 Lundevall-Zara, M., Lundevall-Zara, E., and Brüchert, V.: Sea-air exchange of methane in shallow inshore areas of the Baltic Sea, Front. Mar. Sci., 8, 657459, <https://doi.org/10.3389/fmars.2021.657459>, 2021.

Ma, X., Sun, M., Lennartz, S. T., and Bange, H. W.: A decade of methane measurements at the Boknis Eck Time Series Station in Eckernförde Bay (southwestern Baltic Sea), Biogeosciences, 17, 3427-3438, <https://doi.org/10.5194/bg-17-3427-2020>, 2020.

675 Mannich, M., Fernandes, C. V. S., and Bleninger, T. B.: Uncertainty analysis of gas flux measurements at air–water interface using floating chambers, Ecohydrol. Hydrobiol., 19(4), 475–486, <https://doi.org/10.1016/j.ecohyd.2017.09.002>, 2019.

Formatted

Formatted: Normal, Left, Space After: 12 pt, Line spacing: single

Formatted

Formatted: Normal, Left, Space After: 12 pt, Line spacing: single

Formatted



Mao, S.-H., Zhang, H.-H., Zhuang, G.-C., Li, X.-J., Liu, Q., Zhou, Z., Wang, W.-L., Li, C.-Y., Lu, K.-Y., Liu, X.-T.,  
680 Montgomery, A., Joye, S. B., Zhang, Y.-Z., and Yang, G.-P.: Aerobic oxidation of methane significantly reduces global  
diffusive methane emissions from shallow marine waters, *Nat. Commun.*, 13, 7309, [https://doi.org/10.1038/s4146702235082-](https://doi.org/10.1038/s4146702235082-y)  
y, 2022.

Martin, R. M., and Moseman-Valtierra, S.: Greenhouse gas fluxes vary between *Phragmites Australis* and native vegetation  
zones in coastal wetlands along a salinity gradient, *Wetlands*, 35, 1021–1031, <https://doi.org/10.1007/s13157-015-0690-y>,  
685 2015.

Mattisson, A.: Kartläggning av marina naturtyper—En pilotstudie i Stockholms län. Länsstyrelsen i Stockholms län,  
[https://www.lansstyrelsen.se/stockholm/omoss/varatjanster/publikationer/2005/kartlaggning-av-marina-naturtyper-en-](https://www.lansstyrelsen.se/stockholm/omoss/varatjanster/publikationer/2005/kartlaggning-av-marina-naturtyper-en-pilotstudie-i-stockholms-lan.html)  
pilotstudie-i-stockholms-lan.html, 2005.

[McGinnis, D. F., Greinert, J., Artemov, Y., Beaubien, S. E., and Wüest, A.: Fate of rising methane bubbles in stratified waters: How much methane reaches the atmosphere?, J. Geophys. Res. Oceans, 111, C09007, https://doi.org/10.1029/2005JC003183, 2006.](#)

Middelburg, J. J., Soetaert, K., and Hagens. M.: Ocean alkalinity, buffering and biogeochemical processes, *Rev. Geophys.*,  
58(3), e2019RG000681, <https://doi.org/10.1029/2019RG000681>, 2020.

Nelson, W. A.: Statistical methods. In Jørgensen, S. E. and [Fath, B. D.](#) (Eds.), *Encyclopedia of Ecology* (pp. 3350-3362),  
695 Academic Press, Oxford., <https://doi.org/10.1016/B978-008045405-4.00661-3>, 2008.

Neubauer, S. C., and Megonigal, J. P.: Moving beyond global warming potentials to quantify the climatic role of ecosystems,  
*Ecosystems*, 18, 1000–1013, <https://doi.org/10.1007/s10021-015-9879-4>, 2015.

Reeburgh, W. S.: Oceanic methane biogeochemistry, *Chem. Rev.*, 107(2), 486-513, <https://doi.org/10.1021/cr050362v>, 2007.

Resplandy, L., Hogikyan, A., Müller, J. D., Najjar, R. G., Bange, H. W., Bianchi, D., Weber, T., Cai, W.-J., Doney, S. C.,  
700 Fennel, K., Gehlen, M., Hauck, J., Lacroix, F., Landschützer, P., Le Quéré, C., Roobaert, A., Schwinger, J., Berthet, S., Bopp,  
L., Chau, T. T. T., Dai, M., Gruber, N., Ilyina, T., Kock, A., Manizza, M., Lachkar, Z., Laruelle, G. G., Liao, E., Lima, I. D.,  
Nissen, C., Rödenbeck, C., Séférian, R., Toyama, K., Tsujino, H., and Regnier, P.: A synthesis of global coastal ocean  
greenhouse gas fluxes, *Glob. Biogeochem. Cycles*, 38(1), e2023GB007803, <https://doi.org/10.1029/2023GB007803>, 2024.

Rosentreter, J., Laruelle, G. G., Bange, H. W., Bianchi, T. S., Busecke, J. J. M., Cai, W.-J., Eyre, B. D., Forbrich, I., Kwon, E.  
705 Y., Maavara, T., Moosdorf, N., Najjar, R. G., Sarma, V. V. S. S., Van Dam, B., and Regnier, P.: Coastal vegetation and  
estuaries are collectively a greenhouse gas sink, *Nat. Clim. Chang.*, 13, 579-587, [https://doi.org/10.1038/s41558-023-01682-](https://doi.org/10.1038/s41558-023-01682-9)  
9, 2023.

Formatted

Formatted: Normal, Left, Space After: 12 pt, Line spacing: single

Formatted

Roth, F., Sun, X., Geibel, M. C., Prytherch, J., Brüchert, V., Bonaglia, S., Broman, E., Nascimento, F., Norkko, A., and Humborg, C.: High spatiotemporal variability of methane concentrations challenges estimates of emissions across vegetated coastal ecosystems, *Glob. Change Biol.*, 28(14), 4308–4322, <https://doi.org/10.1111/gcb.16177>, 2022.

Roth, F., Broman, E., Sun, X., Bonaglia, S., Nascimento, F., Prytherch, J., Brüchert, V., Lundevall Zara, M., Brunberg, M., Geibel, M. C., Humborg, C., and Norkko, A.: Methane emissions offset atmospheric carbon dioxide uptake in coastal macroalgae, mixed vegetation and sediment ecosystems, *Nat. Commun.*, 14, 42, <https://doi.org/10.1038/s41467-022-35673-9>, 2023.

Sanders-DeMott, R., Eagle, M. J., Kroeger, K. D., Wang, F., Brooks, T. W., O’Keefe Suttles, J. A., Nick, S. K., Mann, A. G., and Tang, J.: Impoundment increases methane emissions in Phragmites-invaded coastal wetlands, *Glob. Change Biol.*, 28(15), 4539–4557, <https://doi.org/10.1111/gcb.16217>, 2022.

Santoso, A. B., Hamilton, D. P., Hendy, C. H., and Schipper, L. A.: Carbon dioxide emissions and sediment organic carbon burials across a gradient of trophic state in eleven New Zealand lakes, *Hydrobiologia*, 795, 341–354, <https://doi.org/10.1007/s10750-017-3158-7>, 2017.

Schilder, J., Bastviken, D., van Hardenbroek, M., and Heiri, O.: Spatiotemporal patterns in methane flux and gas transfer velocity at low wind speeds: Implications for upscaling studies on small lakes, *J. Geophys. Res. Biogeosciences*, 121(6), 1456–1467, <https://doi.org/10.1002/2016JG003346>, 2016.

SMHI: Lufttemperatur timvärde, Swedish Meteorological and Hydrological Institute, <https://www.smhi.se/data/meteorologi/ladda-ner-meteorologiskaobservationer#param=airtemperature,stations=core>, 2024a.

SMHI: Vindriktning/vindhastighet timvärde, Swedish Meteorological and Hydrological Institute, <https://www.smhi.se/data/meteorologi/ladda-ner-meteorologiska-observationer/#param=wind,stations=core>, 2024b.

[Stauffer, R. E.: Windpower time series above a temperate lake, \*Limnol. Oceanogr.\*, 25\(3\), 513-528, <https://doi.org/10.4319/lo.1980.25.3.0513>, 1980.](https://doi.org/10.4319/lo.1980.25.3.0513)

Statistics Sweden: Along Sweden’s shores—Statistics on waterfront land use 2020, Statistics Sweden, <https://www.scb.se/publication/51193?>, 2020.

Stockholms stad: Klimathandlingsplan 2030 – En rättvis omställning för ett Stockholm utan globalt klimatavtryck, Stockholm stad, <https://start.stockholm/globalassets/start/om-stockholms-stad/politik-och-demokrati/styrdokument/klimathandlingsplan-2030.pdf>, 2024.

Formatted: Normal, Left, Line spacing: single

Formatted

735 Thamdrup, B., Hansen, J. W., and Jørgensen, B. B.: Temperature dependence of aerobic respiration in a coastal sediment, FEMS Microbiol. Ecol., 25(2), 189–200, <https://doi.org/10.1111/j.15746941.1998.tb00472.x>, 1998.

Van Dam, B. R., Zeller, M. A., Lopes, C., Smyth, A. R., Böttcher, M. E., Osburn, C. L., Zimmerman, T., Prüfrock, D., Fourqurean, J. W., and Thomas, H.: Calcification-driven CO<sub>2</sub> emissions exceed “Blue Carbon” sequestration in a carbonate seagrass meadow, Sci. Adv., 7(51), eabj1372, <https://doi.org/10.1126/sciadv.abj1372>, 2021.

740 [Van Dorn, W.: Wind stress on an artificial pond, J. Mar. Res., 12\(3\), 249–276, \[https://elischolar.library.yale.edu/journal\\\_of\\\_marine\\\_research/798\]\(https://elischolar.library.yale.edu/journal\_of\_marine\_research/798\), 1954,](#)

Wang, G., Xia, X., Liu, S., Zhang, L., Zhang, S., Wang, J., Xi, N., and Zhang, Q.: Intense methane ebullition from urban inland waters and its significant contribution to greenhouse gas emissions, Water Res., 189, 116654, <https://doi.org/10.1016/j.watres.2020.116654>, 2021.

745 Wang, L., Du, Z., Wei, Z., Ouyang, W., Maher, D. T., Xu, Q., and Xiao, C.: Large methane emission during ice-melt in spring from thermokarst lakes and ponds in the interior Tibetan Plateau, CATENA, 232, 107454, <https://doi.org/10.1016/j.catena.2023.107454>, 2023.

Wanninkhof, R., Asher, W., Ho, D., Sweeney, C., and McGillis, W.: Advances in quantifying air-sea gas exchange and environmental forcing\*, Annu. Rev. Mar. Sci., 1, 213–244, <https://doi.org/10.1146/annurev.marine.010908.163742>, 2009.

750 Weber, T., Wiseman, N. A., and Kock, A.: Global ocean methane emissions dominated by shallow coastal waters, Nat. Commun., 10, 4584, <https://doi.org/10.1038/s41467-019-12541-7>, 2019.

Williamson, P., and Gattuso, J.-P.: Carbon removal using coastal Blue Carbon ecosystems is uncertain and unreliable, with questionable climatic cost-effectiveness, Front. Clim., 4, 853666, <https://doi.org/10.3389/fclim.2022.853666>, 2022.

Yvon-Durocher, G., Allen, A. P., Bastviken, D., Conrad, R., Gudas, C., St-Pierre, A., Thanh-Duc, N., and Del Giorgio, P. A.: Methane fluxes show consistent temperature dependence across microbial to ecosystem scales, Nature, 507, 488–491, <https://doi.org/10.1038/nature13164>, 2014.

755 [Zhu, T., Zhou, Y., Ju, W., Mao, Y., and Xie, R.: Contributions of diffusion and ebullition processes to total methane fluxes from a subtropical rice paddy field in southeastern China, Agric. For. Meteorol., 367, 110504, <https://doi.org/10.1016/j.agrformet.2025.110504>, 2025,](#)

760 Żygadłowska, O. M., Venetz, J., Lenstra, W. K., van Helmond, N. A. G. M., Klomp, R., Röckmann, T., Veraart, A. J., Jetten, M. S. M., and Slomp, C. P.: Ebullition drives high methane emissions from a eutrophic coastal basin, Geochim. Cosmochim. Acta, 384, 1–13, <https://doi.org/10.1016/j.gca.2024.08.028>, 2024.

Formatted

Formatted: Normal, Left, Space After: 12 pt, Line spacing: single

Field Code Changed

Formatted: Default Paragraph Font

Formatted

Formatted

Formatted: Normal, Left, Space After: 12 pt, Line spacing: single

Formatted

Formatted: English (United Kingdom)