

Increasing Daily ~~Extreme and~~ Precipitation Extremes despite Declining Annual ~~Precipitation Totals~~ in Southern Europe: A Modeling Study on the Effects of Mediterranean Sea Warming

Alfonso Senatore¹, Luca Furnari¹, Gholamreza Nikravesh¹, Jessica Castagna¹, and Giuseppe Mendicino¹

¹Department of Environmental Engineering, University of Calabria, Rende 87036, Cosenza, Italy

Correspondence: Alfonso Senatore (alfonso.senatore@unical.it)

Abstract. Understanding the evolving patterns of intense rainfall in the Mediterranean under climate change is an urgent challenge. Focusing on southern Italy, a representative sub-region of the Mediterranean basin ~~in southern Italy~~, we examine in detail the role of sea-atmosphere-orography interactions, particularly the impact of increasing sea surface temperatures (SSTs), in enhancing heavy precipitation despite overall drying. Twenty consecutive precipitation events ~~identified in~~, identified
5 during a particularly intense rainy season (September-December 2019), are reproduced at a convection-permitting resolution (2 km) using the Weather Research and Forecasting (WRF) model ~~with forced by~~ ERA5 reanalysis boundary conditions. ~~Then, two scenarios are~~ Two additional scenarios are then tested: one with past SST levels approximating those of 1980, and another with SST increases ~~in line consistent~~ with end-of-century Shared Socioeconomic Pathways (SSPs) ~~projections~~. ~~WRF simulations thoroughly describe~~, such as SSP 3-7.0 and SSP 5-8.5. The WRF simulations accurately reproduce cyclone tracks
10 and precipitation patterns, ~~showing that increased SST boosts~~ indicating that, with all other factors held constant, increased SSTs could boost the frequency of heavy rainfall ~~events overland~~ over land by intensifying otherwise weaker events. However, ~~peak rainfall accumulations remain mostly for the most intense events analyzed, spatially averaged accumulated precipitation over land remains largely~~ unchanged because the ~~highest precipitations occur~~ heaviest precipitation occurs over the sea. The study ~~demonstrates the unique capability highlights the value~~ of high-resolution, convection-permitting ~~analyses to capture~~
15 simulations for capturing complex processes in orographically challenging regions and ~~contributes to clarifying helps shed light on~~ the seemingly contradictory ~~trend of rising coexistence of increasing~~ daily precipitation extremes ~~despite falling and declining~~ annual precipitation totals in Southern Europe.

1 Introduction

Observations from the last century confirm that the global warming trend has not had a uniform impact ~~worldwide~~ on local
20 climates and hydrological cycles worldwide. The carbon dioxide-induced warming is more emphasized in the Arctic pole, especially in winter (Stone, 2021), but severe implications on weather can also be detected in the mid-latitudes of the Northern Hemisphere, where ~~cold anomalies due to outbreaks of Arctic cold air are detected (Kömüçü and Oğuz, 2021) and~~ the expansion of the Hadley Cell is slightly faster than in the Southern Hemisphere (Xian et al., 2021). Generally, the atmospheric circulation of the thermally closed Hadley Cell pushes the warmer fluid from the equator polewards, while cold fluid is pushed

25 towards the subtropics and equatorward. Over the last few decades, as ~~confirmed~~ evidenced by chemical metrics, the Hadley Cell has ~~shown a poleward trend~~ exhibited a poleward shift, which may lead to more frequent droughts at higher latitudes (Xian et al., 2021). ~~For instance, the Mediterranean area, as well as the Middle East, Western Pacific, and Asian monsoon regions, are hit by more frequent heatwave events due to the expansion of the Hadley Cell.~~

30 Among the subtropical regions, the Mediterranean Basin is a recognized climate change hotspot (Giorgi, 2006), subject of particular interest due to the high number of inhabitants living in this region and its importance in several historical, economic, and social aspects, but also because of the peculiarities of the observed and projected climate change signals (Tuel and Eltahir, 2020). In particular, Alpert et al. (2002) had already highlighted a paradox in the increase of extreme daily rainfall despite a decrease in total precipitation, which in statistical terms can be summarized as an "increase in variance" overcoming the "reduction in the mean" (Meehl et al., 2000). Such dichotomous behavior, concerning both observations and projections, has
35 been confirmed and detailed in further studies (e.g., about mean reduction: Lionello and Scarascia 2018; Tuel and Eltahir 2020; Zappa et al. 2015; Babaousmail et al. 2022; about variance increase: Zappa et al. 2015; Zittis et al. 2021; Avino et al. 2024; furthermore, Lazoglou et al. 2024 adopted an approach identifying the spatial distribution of both trends under current conditions, while Bador and Alexander 2022 considered CMIP6 projections).

The geographical and climatological peculiarities of the Mediterranean Basin contribute to ~~a further increase~~ further increases
40 in Sea Surface Temperature (SST), thereby accelerating the effects of global warming (Pastor et al., 2020). The annual warming rate recorded in Mediterranean SST is about 0.35 °C/decade, corresponding to a rate increase of about 1.3 °C from 1982 to 2019 (Pastor et al., 2020; Mohamed et al., 2019) for the whole basin, with a maximum rate in the Eastern basin (0.40 °C/decade), and lower rates related to the western and central basin (0.35 °C/decade and 0.31 °C/decade, respectively) (Pastor et al., 2020; Sannino et al., 2022). In 2023 and 2024, the recorded Mediterranean Sea SST was the highest since the 1950s
45 (Cheng et al., 2024, 2025).

Moreover, the Mediterranean region is generally affected by significant cyclonic activity, which can even lead to the formation of tropical-like cyclones, known as Medicanes (Miglietta and Rotunno, 2019; Flaounas et al., 2022; Miglietta et al., 2025), characterized by destructive winds and torrential rainfall. For instance, frequent extreme precipitation events caused by Medicanes were recorded in Europe between 1979 and 2017, ~~among which with~~ over 20 ~~occurred~~ occurring in Italy, followed by
50 France, Croatia, Serbia, and Greece (Zhang et al., 2021). However, in the very recent years, the whole region has experienced several extreme events with severe consequences, whether they were classified as Medicanes (e.g., the Storm Daniel in Libya in 2023, Armon et al. 2025; Flaounas et al. 2024), cut-off low pressure systems (the Valencia event in Spain in 2024, Amiri et al. 2025) or persistent depression vortexes (the two consecutive events in Emilia Romagna (Italy) in 2023 and 2024, Arrighi and Domeneghetti 2024; Ferrari et al. 2025), all of which were correlated to particularly high SST values.

55 From ~~the point of view of physics~~, ~~cyclogenesis processes are influenced by thermodynamical~~ a physics perspective, cyclogenesis is influenced by thermodynamic and dynamical factors. Thermodynamically, the SST warming, which defines the air-sea heat flux, leads to larger evaporation and more moisture content, especially in the lower Planetary Boundary Layer (PBL) and in a minor part in the upper PBL (Khodayar et al., 2021; Sun and Wu, 2022). Additionally, the effects of increased moisture may dynamically interact with orographic lifting, causing deep convection, an increase in Convective Available Po-

60 tential Energy (CAPE), and, as a final result, extreme precipitation events (Müller et al., 2024; Ricchi et al., 2023; Pfahl et al., 2017; Meredith et al., 2015).

The increasing trend ~~of the in~~ Mediterranean SST is ~~predicted-expected~~ to continue. Future ~~scenario~~-projections of SST ~~suggest-additional~~ indicate further warming. As an example, under RCP8.5, an increase of over 3 °C is predicted (+3.31 °C for 2081-2100 related to the upper layer 0-100 m for the whole Mediterranean Basin, +2.98 °C for the western basin, and
65 +3.50 °C for the eastern basin) (Sannino et al., 2022). On the other hand, the spatial patterns of future precipitation trends are more heterogeneous and complex to detect. The great challenge of deciphering how global warming will affect rainfall at local scales (Chadwick, 2017) is particularly tough in regions with transitional climate regimes, such as the Mediterranean. In the subtropics, a large-scale ~~precipitation-decline~~ decline in precipitation is generally projected (He and Soden, 2017). However, the indications about how this phenomenon will affect local areas can be different depending on whether one relies on analyses
70 at low spatial resolutions, such as GCMs (General Circulation Models) (Pfahl et al., 2017; Bador and Alexander, 2022), or gradually increasing through climatic downscaling (Tramblay and Somot, 2018; Hosseinzadehtalei et al., 2020; Reale et al., 2022; Matte et al., 2022) up to convection-permitting resolutions (Müller et al., 2024).

Several studies have evaluated ~~the~~-SST's strong influence on cyclonic activity in the Mediterranean, ~~as well as~~ including on Medicanes. As intuitively expected, with a negative SST anomaly, cyclones are weaker, while in warmer SST conditions,
75 precipitation increases (Miglietta et al., 2011; Meredith et al., 2015; Ricchi et al., 2017, 2023; Varlas et al., 2023; González-Alemán et al., 2023; Bador et al., 2025). However, even slight uniform variations in SST (± 0.5 °C) can influence precipitation patterns under particular synoptic conditions (Senatore et al., 2014). Similarly, it has been shown that a larger variation of SST from -2 °C to +2 °C strongly affects extreme events, such as in the case of cyclone Ianos (~~Varlas et al., 2023~~) that occurred in 2020, ~~which for which it~~ produced a variation of precipitation intensity from -56% to +44% and influenced the tracks and the
80 landfall location ~~, and in~~ (Varlas et al., 2023). ~~In~~ the case of storm Alex, ~~occurring also which also occurred~~ in 2020, ~~for which~~ Bador et al. (2025) showed that storm intensity is significantly affected by regional (i.e., Mediterranean) SST changes, while changes in the Atlantic SST had a limited impact. Finally, in the case of the Valencia cyclone in 2024, Saurral et al. (2026) estimated that daily rainfall totals would have been up to 40% lower in the absence of SST anomalies. Additionally, the high-resolution representation of the SST pattern reveals a weak but ~~not-negligible-non-negligible~~ impact on operational forecasting
85 results in many cases (Ricchi et al., 2017; Senatore et al., 2020b; Pilatin et al., 2021), contributing to ~~the overall uncertainty~~ along overall uncertainty across the modeling chain (Senatore et al., 2020a).

So far, the majority of the studies that aimed at disentangling the SST effect on precipitation in the Mediterranean basin using high-resolution simulations have restricted their analysis to a limited number of events (e.g., Meredith et al. 2015; Stocchi and Davolio 2017; Ricchi et al. 2023; Ginesta et al. 2023), focusing in particular on tropical-like cyclones (Fita et al., 2007;
90 Miglietta et al., 2011; Ricchi et al., 2017; Noyelle et al., 2019; Varlas et al., 2023). To the authors' knowledge, only Armon et al. (2022) performed a systematic analysis by identifying 41 extreme events hitting the eastern Mediterranean over 24 years starting from 1990, and comparing them with "pseudo-global warming" (e.g., Rasmussen et al. 2011) simulations, in which the climate change signal related to the end-of-21st-century RCP8.5 scenario was added to several historical variables besides SST, including the whole skin temperature, surface pressure, and 3D fields of temperature, wind, and specific humidity.

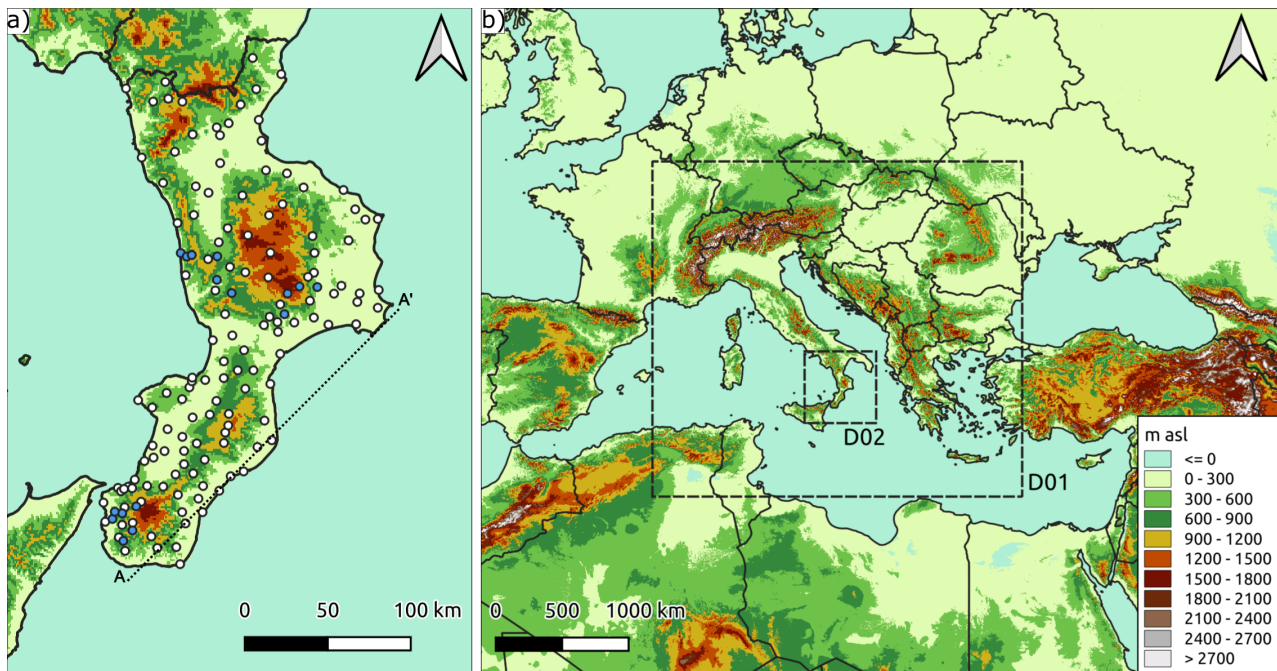


Figure 1. a) Overview of the Calabria Region with the administrative borders (bold black lines) and the location of the 150 precipitation gauges used for the analysis, 134 of which (white dots) have long enough series to allow historical trend analysis (Fig. ??S1 in the Appendix Supplementary). The vertical water vapor fluxes are calculated across section A-A' (Fig. 10); b) Topographic map of the Central Mediterranean area showing the two outermost (D01) and innermost (D02) WRF domains.

Senatore et al., 2020a). The peculiar physical characteristics of the territory not only make it prone to drought risk (generally higher in the eastern part) but contribute to the development of extreme and damaging hydrometeorological events on both eastern (Ionian) and western (Tyrrhenian) coasts, especially during the late summer until the late fall season when considerable amounts of precipitation in a short time cause severe floods with economic and social damages, including fatalities (e.g., Llasat et al. 2013; Petrucci et al. 2018; November 2015 - Avolio and Federico 2018; November 2016 - Senatore et al. 2020a; November 2019 - Furnari et al. 2022). The distinctive location and orography of the Calabrian Peninsula make it a perfect test bed for studying the peculiarities of ongoing climate change in the Mediterranean, with contrasting behaviors between average and extreme values, as a trend analysis reported in the Appendix Supplementary (Fig. ??S1) demonstrates.

Historically, the season most prone to extreme hydrometeorological events in southern Italy is the fall (from September to December), when cold-air intrusions reach the marine boundary layer, even with still high SST (Noyelle et al., 2019). For example, during the 2019 fall season, 20 precipitation events were recorded in southern Italy, among which two extreme events (from 11th to 13th of November, Marsico and Rotundo 2019, and from 23rd to 25th of November, Fusto et al. 2019) produced very intense precipitations (more than 200 mm of accumulated precipitation in some locations) and powerful wind speeds (gusts of up to 100 km/h), causing severe floods. Considering, therefore, the notable meteorological variability of this season

and the relative proximity in time, which allowed for a considerable number of measuring stations available from the regional monitoring network (150 gauges, roughly a gauge per 100 km²; Fig. 1a), the period from September to December 2019 was selected as a case study to assess the sensitivity of the events to varying SST boundary conditions. Precipitation data were spatially interpolated using inverse distance weighting (IDW) at the same resolution as the atmospheric model, ~~allowing for~~ facilitating easier comparison with ~~its-the model's~~ spatially distributed output. Although including ungauged (interpolated) areas in the evaluation introduces some uncertainty, three key points are worth noting: (i) a single gauge may not fully represent the model grid cell where it lies, especially in steep terrain so that also gauge-to-pixel comparisons can be biased; (ii) the region's dense monitoring network limits major misinterpretations of spatial precipitation patterns; and (iii) the fully validated observational dataset is currently the most reliable basis available for constructing a gridded dataset over the study area.

We used several datasets to analyze ~~the~~ observed and projected ~~SST values of~~ SSTs in the Mediterranean Sea, assessing a reasonable range of variations in the atmospheric model's boundary conditions. As observed data, the 5th generation ECMWF reanalysis, i.e., the monthly SST ERA5 reanalysis from 1980 to 2023, ~~combining which combines~~ global model data with ~~observations sampled globally~~ globally sampled observations, was selected. We also used the Copernicus Marine Service (CMEMS) observations (SST-GLO-SST-L4-REP-OBSERVATIONS-010-011, ID: ESACCI-GLO-SST-L4-REP-OBS-SST, C3S-GLO-SST-L4-REP-OBS-SST) on a daily scale from 1982 to October 2022, based on the reprocessing analysis of satellite and in-situ data. The spatial extensions of the analyzed region correspond to the external domain of the weather simulations (Section 2.2).

Regarding SST projections, we utilized the internationally coordinated Coupled Model Intercomparison Project Phase 6 (CMIP6), which provides 22 GCM (Global Circulation Model) results (Table ~~??S1~~ in the Supplementary). The projections selected belong to two different Shared Socioeconomic Pathways (SSPs, Meinshausen et al. 2020) scenarios:

- the medium-high emission scenario, i.e., SSP3-7.0 (called Regional Rivalry), characterized by high GHG emissions and CO_2 doubling around current levels until the end of the century;
- the worst-case scenario, SSP5-8.5 (named Fossil-Fueled Development - Taking the Highway), with very high GHG emissions and CO_2 ~~that roughly triple~~ roughly tripling from current levels by 2075.

Although the likelihood of these intermediate to very high warming scenarios is debated (e.g., Schwalm et al. 2020; Hausfather and Peters 2020), they were taken into account to highlight as much as possible the effects of climate change on SST and indirectly on precipitation events driven by sea surface-atmosphere interaction.

~~List of datasets (IDs 0_1 and 0_2) and GCMs (IDs 1-22) considered for assessing observed/estimated historical and estimated future SST evolution in the Mediterranean Area. GCMs data have been provided by Instituto de Física de Cantabria (IFCA)~~

2.2 WRF downscaling and validation

Weather simulations over the Calabrian region were performed using WRF V4.1. Two one-way nested domains were used (see Fig. 1b): the outermost (D01) centered on the Italian peninsula, with a horizontal resolution of about 10 km (33.04 – 49.85° N, 3.59 – 28.59° E, thus producing 187×205 grid points); the innermost (D02) centered on the Calabrian region, with 2 km

175 as horizontal resolution (37.10 – 40.87° N, 13.88 – 18.71° E, 200×200 grid points). Both domains were extended ~~on to~~ 44
vertical atmospheric layers ~~;~~ up to 50 hPa ~~;~~ ~~and~~ ~~and to~~ four soil layers. The time step size was set to 60 s and 12 s for the
D01 and D02 domains, respectively. The physical scheme configuration (Table ~~??S2 in the Supplementary~~) is the same as that
adopted by Avolio et al. (2019), with ~~the replacement of~~ NOAH-MP ~~for~~ ~~replacing~~ NOAH as the Land Surface Model. This
configuration has been operational for weather forecasting as an online service managed by the University of Calabria since
180 2020 (<https://cesmma.unical.it/cwfv2/>).

~~WRF physical schemes adopted:~~

The initial and boundary conditions were provided by ERA5 ~~using the pressure levels mode; specifically, in pressure-level
mode, specifically at~~ the following levels ~~were used~~: 1000, 950, 900, 850, 800, 700, 600, 500, 400, 300, 200, 150, 100, and 50
hPa. The update frequency of the boundary conditions was set to three hours. The simulations started on the 1st of September
185 2019 and went on until the 1st of January 2020.

To perform the sensitivity analysis with respect to sea surface temperature, in addition to the reference simulation, we
carried out two further experiments. In these experiments, the SST boundary conditions from ERA5 were uniformly modified
(increased or decreased) in both domains, D01 and D02, based on evidence from historical observations (lower SST values)
and GCM projections (higher SST values). The magnitude of the cold and warm SST perturbations, the method used to
190 calculate them, and the rationale for their selection are described in the Results section 3.1. Furthermore, regarding warm SST
perturbations, we ensured that ~~the addition of a relevant quantity~~ ~~adding a relevant amount~~ of energy to the modelled system
did not significantly alter the larger-scale dynamics, patterns, ~~and feedback~~ ~~or feedbacks~~. Therefore, we created another set of
simulations in which we applied spectral nudging to the outer domain (D01) on the geopotential (ERA5 source) at heights
above 500 m, as done in Meredith et al. (2015). The results of these additional experiments, shown in the Supplementary (Fig.
195 ~~S1S2~~), ensured consistency of the large-scale structures with ERA5 and confirmed the robustness of the analysis.

The model ~~performances were~~ ~~performance was~~ evaluated using two classical ~~weather forecast~~ ~~weather-forecast~~ indices: the
Fractional Skill Score (FSS) and the Critical Success Index (CSI), also ~~referred to~~ ~~known~~ as the Threat Score (TS) (Wilks,
2006). The FSS (Eq. 1) ranges from 0 (mismatch) to 1 (perfect match) and ~~highlights how~~ ~~indicates how well the forecasted
spatial pattern matches~~ the ~~spatial pattern forecasted could match with respect to the~~ observed one. Assuming a square-shaped
200 neighborhood of length (size) n , FSS_n is given by:

$$FSS_n = 1 - \frac{\frac{1}{N} \sum_{i=1}^N (P_f - P_o)^2}{\frac{1}{N} \left[\sum_{i=1}^N P_f^2 + \sum_{i=1}^N P_o^2 \right]} \quad (1)$$

In the above equation, N is the number of windows in the domain, and P_f and P_o are boolean values indicating if the
pixel value is higher or lower than the threshold related to the observation. We applied the FSS by considering the events
identified according to the procedure described in the next section 2.3 ~~and~~ ~~,~~ using the 90th percentile ~~on of~~ the cumulative
205 precipitation observed as the threshold. Moreover, according to Senatore et al. (2020a), we calculated the FSS only for the
Calabrian peninsula, where we collected and interpolated highly reliable spatial data, excluding the sea.

The CSI (Eq. 2) quantifies the fraction of observed and forecasted events that are correctly predicted by varying the rainfall thresholds. The index varies between 0 (no skill) and 1 (perfect skill):

$$CSI = \frac{hits}{hits + misses + false\ alarms} \quad (2)$$

210 We considered the observed and predicted precipitation cell by cell during the events to build ~~up~~ the contingency table by varying ~~the thresholds, whose selected values were~~ thresholds at 0.2, 0.5, 1, 2, 5, 10, 20, and 30 mm.

2.3 Space and time events identification and evaluation of the effects of the SST scenarios

During the selected period from September to December 2019 for WRF simulations, the spatial average of ~~the~~ simulated daily precipitation over the inner domain ~~with~~ under actual SST boundary conditions was used to identify and label the events ~~that~~
 215 ~~occurred~~. Each event was objectively recognized by using a fixed threshold of 0.8 mm on the average daily precipitation values simulated by the WRF reference run over the Calabria region. This procedure ensured that each event was treated as independent from the others. The analysis was based on the reference simulation rather than on actual observations, as the simulation proved highly reliable ~~in terms of~~ for event timing and facilitated subsequent comparisons with the SST sensitivity experiments.

220 The precipitation patterns for the current SST and modified SST scenarios were also evaluated. In particular, since we were interested in the localization of ~~the~~ accumulated precipitation peaks, for each event and given SST boundary conditions, we calculated the ~~positions of the~~ barycenters of the areas where ~~the~~ accumulated precipitation exceeded the 95th percentile. Specifically, the barycenters were calculated by considering all grid points in which the accumulated precipitation during the event was greater than the 95th percentile, according to the equations reported below:

$$225 \quad x = \frac{\sum_{i=1}^N Prec(i, j) * i}{\sum_{i=1}^N Prec(i, j)} \quad (3)$$

$$y = \frac{\sum_{j=1}^N Prec(i, j) * j}{\sum_{j=1}^N Prec(i, j)} \quad (4)$$

In the above equations, i and j indicate the indices of each of the N pixels exceeding the 95th percentile threshold, while $Prec(i, j)$ is the accumulated precipitation value in the pixel with coordinates (i, j) . Finally, x and y are the coordinates of the ~~barycenter of the precipitation event~~ precipitation event's barycenter.

230 Finally, to quantitatively assess the effects ~~of~~ the different SST scenarios, we calculated the SAL metrics (Wernli et al., 2008) for each of the 20 events, ~~considering using~~ the entire inner domain and the SST0 scenario as ~~a~~ the reference. The SAL method comprises three components: ~~the~~ The Structure component assesses whether the spatial patterns in the considered field align with the reference ones, focusing on the shape of the precipitation areas, specifically whether they are too smooth

(negative values) or too peaked/fragmented (positive values). Amplitude compares the average intensity, checking for over-
235 (positive values) or under-estimation (negative values). Location evaluates the ~~distance by which the precipitation fields are~~
~~displaced~~displacement of precipitation fields, focusing on their centers of mass.

3 Results

3.1 Observed and projected SST warming

Figure 2 shows the evolution of both the observed and projected yearly average SST in the external domain (D01) of the
240 WRF simulation (Fig. 1). The increasing trend is almost monotonic for both observations and projections, ~~whose agreement~~
~~lies in and their agreement lies within~~ the expected range (Menemenlis et al., 2025). ~~Concerning~~Regarding observations, a
~~substantially~~-similar difference of approximately 1.3 °C emerges when examining the average values ~~of for~~ the first and last five
years of both the ERA5 and CMEMS datasets. Such a difference, which ~~agrees is consistent~~ with previous literature (Mohamed
et al., 2019; Pastor et al., 2020; Sannino et al., 2022), is only slightly higher than that ~~found in the period from~~observed during
245 September to December (1.1 °C) ~~;-which and~~ will be further ~~addressed with the~~examined using WRF simulations.

Concerning projections, temperature changes were evaluated by comparing the future periods (2040-2069 and 2070-2098)
with the reference period (1985-2014) for both SSP scenarios (Fig. 3). At the annual scale, the projected temperature increase
for the SSP3-7.0 scenario is, on average, 1.7 ± 0.4 °C (with the term after the symbol "±" being the standard deviation) and
 2.8 ± 0.7 °C for the periods 2040-2069 and 2070-2098, respectively. Concerning the SSP5-8.5 scenario, instead, the differences
250 are, on average, equal, for the same periods, to 2.0 ± 0.5 °C and 3.5 ± 0.9 °C, respectively (not far from what was already
projected by the CMIP5 models, e.g. Sannino et al. 2022). The differences detected at the annual scale are nearly identical
to those found ~~in the period from~~ September to December, as highlighted by ~~an analysis performed at the monthly scale a~~
monthly-scale analysis. The values found for this 4-month period are equal to 1.7 ± 0.5 °C and 2.9 ± 0.7 °C for SSP3 and
 2.1 ± 0.6 °C and 3.6 ± 0.9 °C for SSP5, considering the 2040-2069 and 2070-2098 period, respectively. In particular, the 3rd
255 quartile in the period 2070-2098 is equal to 3.2 °C with SSP3-7.0 and 4.1 °C with SSP5-8.5.

The period selected for the high-resolution weather simulations was September to December 2019. During that time interval,
the average SST recorded was approximately 1.4 °C above the average SST of the first five years for which observations were
available, and approximately 0.9 °C higher than in the reference period 1985-2014. Therefore, a homogeneous 1 °C reduction
of the SST fields is a reasonable choice to trace back SST average conditions to the early '80s. In contrast, a homogeneous
260 increase of 3 °C in the SST fields allows for reproducing the warmest projected conditions for both the SSP3-7.0 and the
SSP5-8.5 scenarios in the farthest future period, 2070-2098 (Fig. 3). Hereafter, the simulation considering the actual SST
conditions will be referred to as SST0, the past scenario with uniformly reduced SST values as SST-1, and the future scenario
with uniformly increased SST values as SST+3.

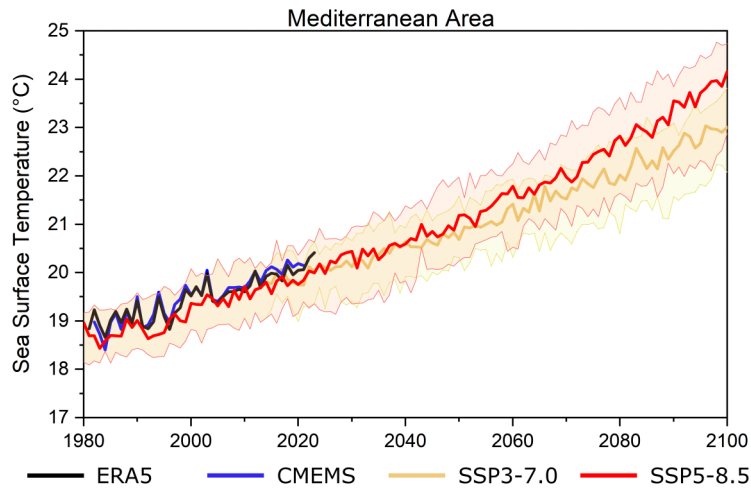


Figure 2. Annual average SST ($^{\circ}\text{C}$) in the external domain (D01) of the WRF simulation. For SSP3-7.0 and SSP5-8.5 scenarios, the thicker lines indicate the median for the model simulations, while the colored bands highlight the 10th and 90th percentiles, respectively. The area on which the values are calculated is the D01 domain, shown in Fig. 1.

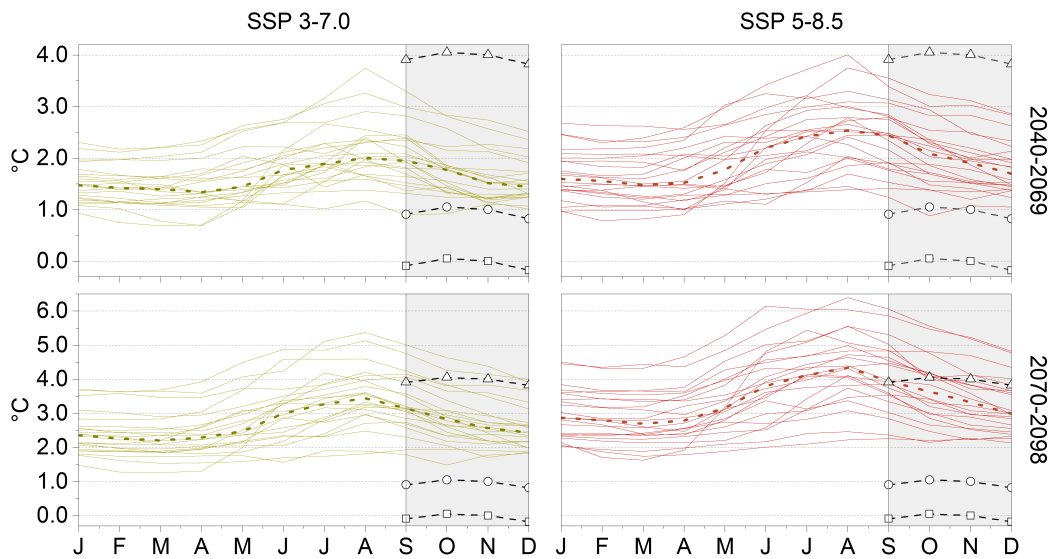


Figure 3. Monthly spaghetti graphs, showing the SST increase compared to 1985-2014 in the periods 2040-2069 and 2070-2098, considering 22 GCMs with both SSP3-7.0 and SSP5-8.5 scenarios, respectively. The dashed lines in each graph represent the medians, and the shaded areas highlight the period from September to December. The dashed lines with circles indicate the observed anomaly in 2019 compared to the reference period, while the triangles and squares represent the changes applied to the observed SST values (+3 $^{\circ}\text{C}$ and -1 $^{\circ}\text{C}$, respectively). The area on which the values are calculated is the D01 domain, shown in Fig. 1.

3.2 High-resolution atmospheric simulations

265 The time sequence of the 20 events identified and labeled during the analyzed season is depicted in Fig. 4, in which the average daily precipitation values obtained for the Calabria region by spatial interpolation of the 150 available gauges are shown.

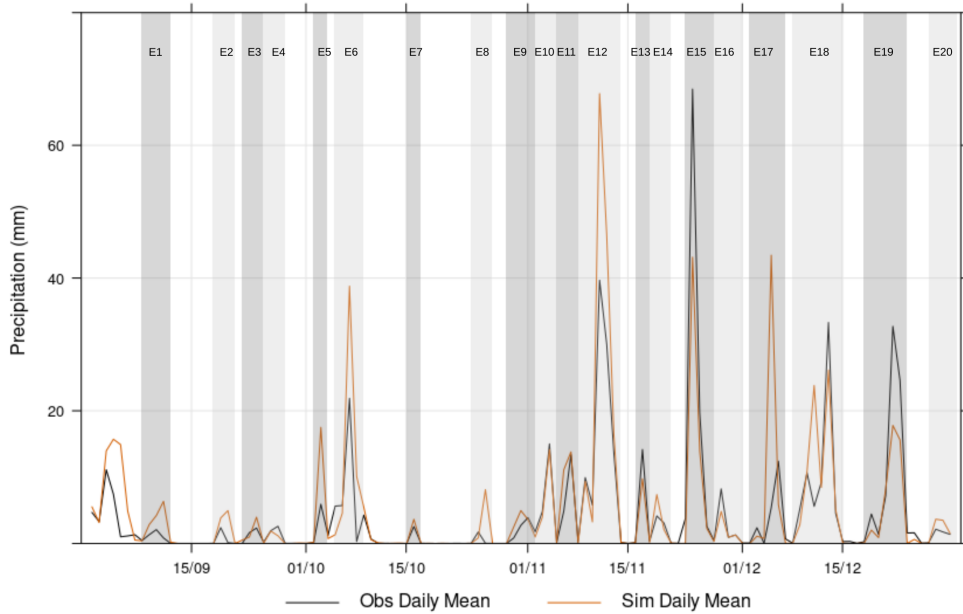


Figure 4. Temporal evolution of daily mean precipitation [mm] for the Calabria region in the analyzed fall 2019 period. The black line represents the observed values obtained through spatial interpolation of observations, and the orange line indicates the results of the SST0 simulation for the same area. In the Fig., each event is identified and labeled.

Model validation using SST0 was performed for all 20 detected events. While Figs. S5-S24 S3-S22 in the Supplementary show the observed and simulated accumulated precipitation maps for all events, Fig. 5 compares the verification indices FSS and CSI achieved for SST0, SST-1, and SST+3 scenarios, as well as the ERA5 reanalysis. Specifically, Fig. 5a illustrates the FSS, highlighting the importance of dynamic downscaling for an-accurate representation and demonstrating its superior performance compared-to-over the lower-resolution ERA5. Considering all 20 events, the median FSS increases for larger window sizes as expected, exceeding already for a window size of 3 km the value of 0.5, which is generally considered a benchmark for a skillful forecast, even though a small increase should be taken into account to consider the occurrence of half of a random forecast (Roberts and Lean, 2008; Necker et al., 2024). The FSS is also shown for the SST-1 and SST+3 simulations ,with-the-aim-of-highlighting-the-to-highlight-the extent to which SST representation affects the-simulations.-Due-to-its-higher-difference-from-them. Because SST+3 deviates more from the observed SST, SST+3-its performance does not increase as much as SST-1 does with increasing window size. Still, the SST+3 simulation remains better than the reanalysis.

Considering the CSI index (Fig. 5b), all models perform relatively well for smaller precipitation thresholds. In contrast, as the threshold increases, the ~~simulation with SST0 performs the~~ simulation performs best. It can also be seen that ERA5 has a median of 0 ~~when considering the threshold of~~ at the 30 mm threshold, indicating that at least 50% of ~~the~~ events have no ~~prediction~~ predictive skill.

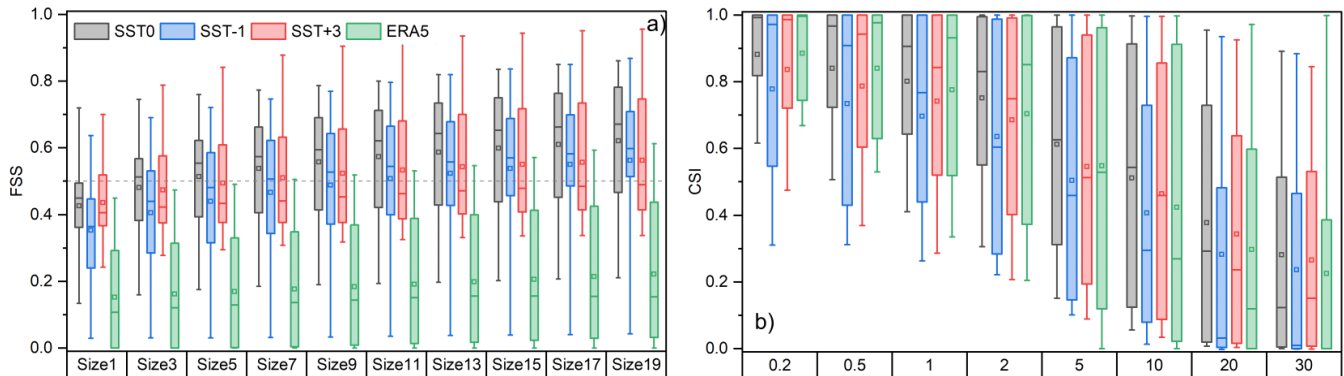


Figure 5. Box and whisker plots of the Fractional Skill Score (a) and the Critical Success Index (b) obtained by considering all the identified precipitation events and the three SST scenarios over the Calabria region. Each boxplot represents the variability across the 20 different events. The size in the FSS sub-figure indicates the size of the moving average windows, as specified in Eq. 1. Conversely, in the CSI sub-figure, the label indicates the precipitation threshold (mm). In the boxplots, the bottom and ~~up~~ upper whiskers indicate the 5th and 95th percentiles, respectively; the box limits the 1st and the 3rd quartiles, respectively, and the small line in the box is the median. The squares represent the average values.

After validating the simulations against observational data, we conducted an in-depth analysis of how varying sea surface temperature boundary conditions influence precipitation patterns. Considering the whole innermost domain at convection-permitting resolution (D02 in Fig. 1b), precipitation increases as the SST increases. In fact, the simulated accumulated precipitations for each of the 20 events analyzed are always lower for the past scenario (SST-1) and higher for the future scenario (SST+3) than the actual conditions (SST0), as shown in Table ~~??~~ S3 in the Supplementary and in Fig. 6a, which sets out the percentage of difference in precipitation between simulations using modified boundary conditions and the SST0 boundary condition compared to the accumulated precipitation simulated with SST0. This outcome indicates that higher precipitation occurs when a greater amount of more water vapor is available in the atmosphere, due to a larger contribution of greater evaporation from a warmer sea. Specifically, the precipitation amounts (spatial average) collected for all events with different SSTs are quite well linearly correlated so that it is $P_{SST-1} = 0.92 \cdot P_{SST0} - 1.4$ ($r = 0.99$) and $P_{SST+3} = 1.14 \cdot P_{SST0} + 6.4$ ($r = 0.95$), with P_{SST_x} [mm] indicating the accumulated precipitation with the given SST boundary condition.

If only accumulated rainfall on land is considered rather than over the whole domain D02 (Table ~~??~~ S3 in the Supplementary and Fig. 6b), the linear correlations between P_{SST0} and P_{SST-1} and P_{SST+3} still hold, being $P_{SST-1} = 0.94 \cdot P_{SST0} - 1.1$ ($r = 0.99$) and $P_{SST+3} = 0.88 \cdot P_{SST0} + 8.5$ ($r = 0.94$), respectively. Nevertheless, the increase in precipitation in response to SST increase is no longer always respected, especially for higher precipitation, as the slopes of the linear equations (higher for

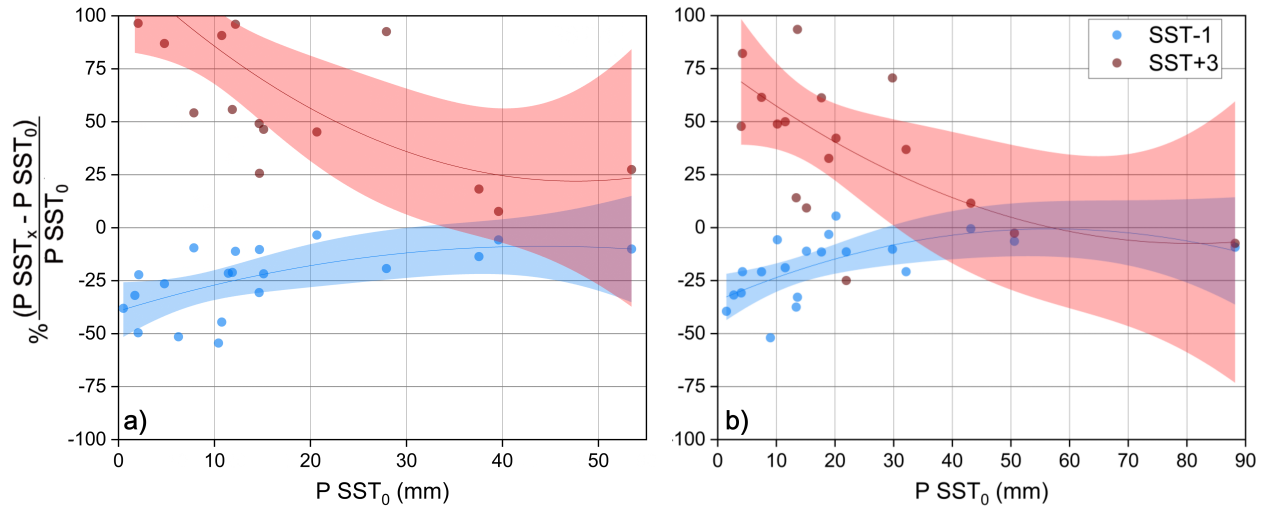


Figure 6. Percentage variation of the accumulated (spatially-averaged) precipitation all over the D02 domain (a) and only overland (b) for each event with SST-1 (blue dots) and SST+3 (red dots) boundary conditions vs. accumulated overland precipitation with SST0 boundary conditions. The shaded areas represent the 95th percentile confidence level performed for the 2nd-order polynomial fitting-fit (represented with by the lines) over-across the two different-scenarios.

P_{SST-1} in this case) suggest. Opposite trends arise considering SST-1 and SST+3. In the case of low SST0 precipitation values (i.e., light events), colder SST conditions (i.e., SST-1) lead to markedly reduced rainfall (approximately from -25% to -50%). In comparison, warmer SST conditions (SST+3) produce the opposite effect, with increases of up to +75% and even more higher.

300 However, when accumulated precipitation values increase with SST0 increase (i.e., in the case of for heavier events), both the colder/warmer SST-induced colder- and warmer-SST-induced precipitation differences tend to cancel out. For the two heavier events, the precipitation differences for SST-1 are equal to -6% and -9%, while for SST+3, they are equal to -3% and -7%, respectively.

The counterintuitive behavior of overland accumulated rainfall, which, for the heavier events, tends to decrease despite the

305 higher SST values, is linked to the changes in the spatial pattern of the precipitation fields in the domain and, in particular, to the eastward shift of the rainfall peaks. Figure 7 depicts with circles the locations of the barycenters of the precipitation patterns calculated as described in section 2.3. In the Figure, the circles related to the same event but with different SST boundary conditions are connected by blue (SST-1 to SST0 barycenters) and red (SST0 to SST+3 barycenters) lines, and the small arrows indicate the predominant wind directions at 850 hPa during the events for each event and boundary condition.

310 triplet, the size of the red (SST+3) circle, representing the average precipitation of the pixels exceeding the 95th percentile for that event, is always bigger than the sizes of the blue (SST-1) and grey (SST0) circles. Indeed, such as for average precipitation, also rainfall peaks (Table ??S3 in the Supplementary) are linearly correlated ($P_{SST-1} = 0.88 \cdot P_{SST0} - 1.6$ with $r = 0.98$ and $P_{SST+3} = 1.13 \cdot P_{SST0} + 28.6$ with $r = 0.92$, respectively).

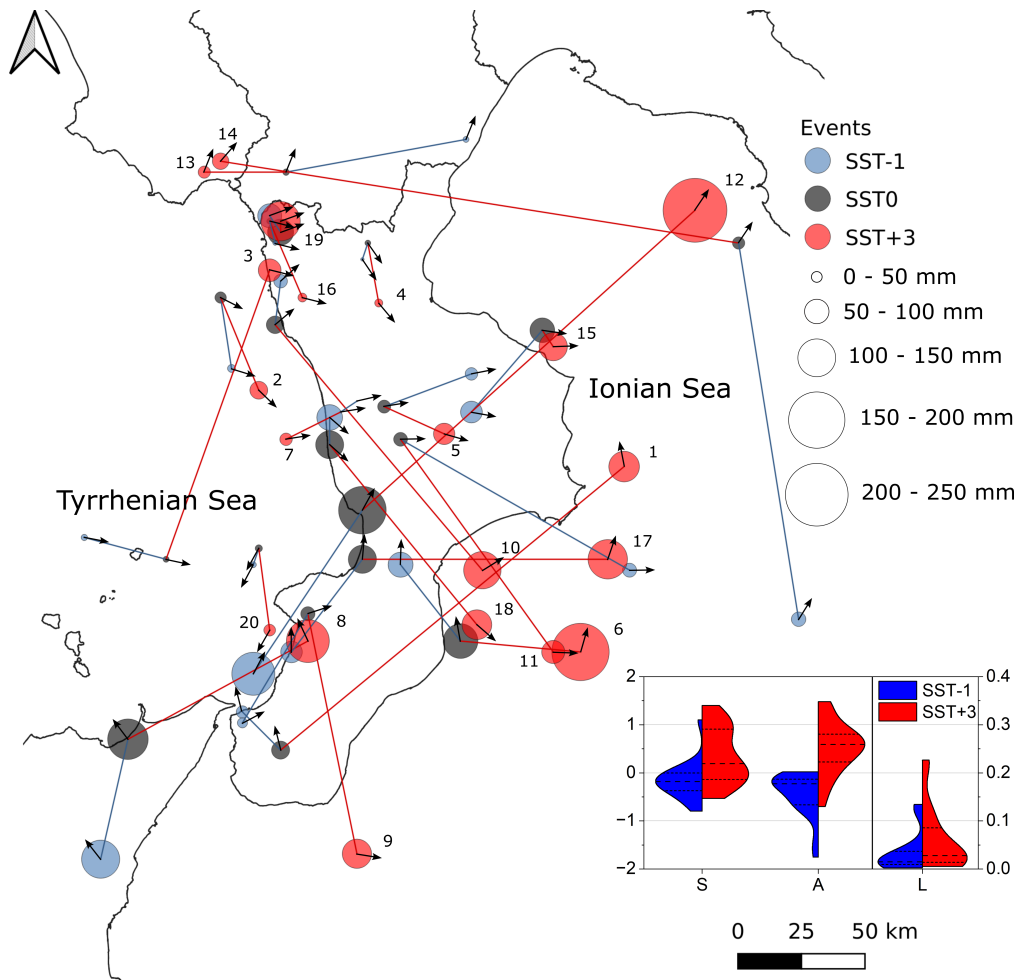


Figure 7. Locations of the centers of mass of the accumulated precipitation exceeding the 95th percentile for the 20 analyzed events, considering the innermost domain, with SST-1 (blue filled circles), SST0 (dark grey), and SST+3 (red). The [circles related to the same event but with different SST boundary conditions are connected by blue \(SST-1 to SST0 barycenters\) and red \(SST0 to SST+3 barycenters\) lines](#). The small arrows indicate the predominant wind directions at 850 hPa during the events, calculated as the average values over the whole D02 domain. The inset shows the SAL violin plot by considering the SST-1 and SST+3 scenarios with respect to SST0; the dashed line indicates the median, while the dotted lines highlight the 1st and 3rd quartiles, respectively.

Besides the ~~amount of rainfall peaks~~ [peaks in rainfall](#), however, for our purposes, their different locations are particularly important. Figure 7 highlights that in most cases, the increased rainfall peaks of the SST+3 events are shifted eastwards of the respective SST0 events. Some of them, notably the rainiest events (nos. 6 and 12), are relocated over the Ionian Sea, thereby saving the land from the heaviest rainfall. Such an effect was found especially for the cyclonic circulations that cross the Ionian Sea before reaching the eastern Calabrian coast, which are, in general, the heaviest and most impactful. The warmer boundary conditions modify appreciably the circulation pattern (for example, for event no. 12, the blue circle is over the Tyrrhenian Sea

320 and the red one over the Ionian Sea) and, mainly, foster the upload of significant moisture content from the sea, enhancing instability so that the heaviest precipitation is induced offshore rather than overland. Notably, this behavior is also ~~caught with~~ detected in lower-resolution simulations (Fig. ~~S22-S23~~ shows the same analysis ~~of as~~ Fig. 7 performed using the external domain). In addition, sensitivity analyses highlighted that the eastward ~~shifting is quite a robust outcome, not depending~~ shift is quite robust, not dependent on the atmospheric model parameterization (Fig. ~~S23-S24~~ shows that using a different PBL scheme, 325 i.e., YSU - Yonsei University scheme, Hong et al. 2006, does not cause substantial changes in SST0 and SST+3 precipitation patterns for event no. 12).

The eastward shift is caused by changes in cyclone structure induced by warmer sea-surface temperatures (SSTs). Higher SSTs increase the energy and moisture available to storms, producing deeper, larger cyclones with stronger winds. As a result, the cyclone precipitation footprint — which generally lies east–northeast of the pressure minimum (e.g., Field and Wood 330 2007) — becomes larger and extends further ~~east/northeast~~ east-northeast. This scaling also applies to the synoptic patterns most responsible for intense precipitation over the Calabrian peninsula, whose lows often center over a region including the Strait of Sicily and the Tyrrhenian Sea (e.g., Mastrantonas et al. 2022). Thus, SST-driven increases in cyclone size can relocate the heaviest precipitation from overland (where, however, orographic enhancement is possible) to offshore areas in the Ionian Sea.

335 The SAL analysis, shown in the inset of Fig. 12, objectively confirms the visual analysis. The SST-1 scenario ~~mainly~~ primarily generates negative S and A components, ~~thus thereby~~ smoothing and reducing ~~the~~ precipitation fields. On the other hand, the SST+3 scenario tends to be sharper and to increase the average precipitation. The L component, which in principle can vary from 0 to 2, depicts a more prominent increase in distance between the ~~centres~~ centers of mass when applying SST+3 compared to SST-1.

340 Event no. 12, which produced the heaviest simulated precipitation, was analyzed in detail as an ~~exemplary case~~ example to better explain the dynamics ~~leading that led~~ to the eastward shift of the precipitation maxima. Figure 8 shows a snapshot of the large-scale pattern during the event. As described above, the cyclone dominating the western Mediterranean Basin, though ~~being~~ in all cases broadly centered on western Sicily, is deeper and larger with SST+3 than with SST0 and SST-1, increasing the amount of precipitable water in the atmosphere and ~~moving eastward~~ shifting the barycenter of the water vapor concentration 345 pattern eastward. The characteristics of event no. 12 are also reflected in the large-scale analysis of other events, namely nos. 6 and 15, as shown in Fig. ~~S24S25~~, with the differences that for event no. 6 the ~~pressure low is centered~~ low-pressure center is southward, closer to the Libyan coast, and for event no. 15 in the central Tyrrhenian Sea.

Focusing on higher-resolution simulations (domain D02) of event no. 12, Fig. 9 shows the average CAPE during the night preceding the most intense rainfall (Figs. 9a, c, and e), together with the average water vapor mixing ratio, vertical wind and 350 vertical velocity omega profiles (Figs. 9b, d, and f) for a specific cross-section (red line in Figs. 9a, c, and e). The experiment produced a substantial increase in CAPE ~~on over~~ the Ionian Sea as SST increased, indicating ~~a more considerable~~ greater offshore instability for this ~~kind type~~ of event in future scenarios. The vertical profile of omega, water vapor mixing ratio, and vertical wind at the selected cross-section confirmed this result. Negative values of omega describe unstable conditions, which were shifted eastwards with increasing SST. Additionally, the specific humidity in the atmosphere increased over the Ionian

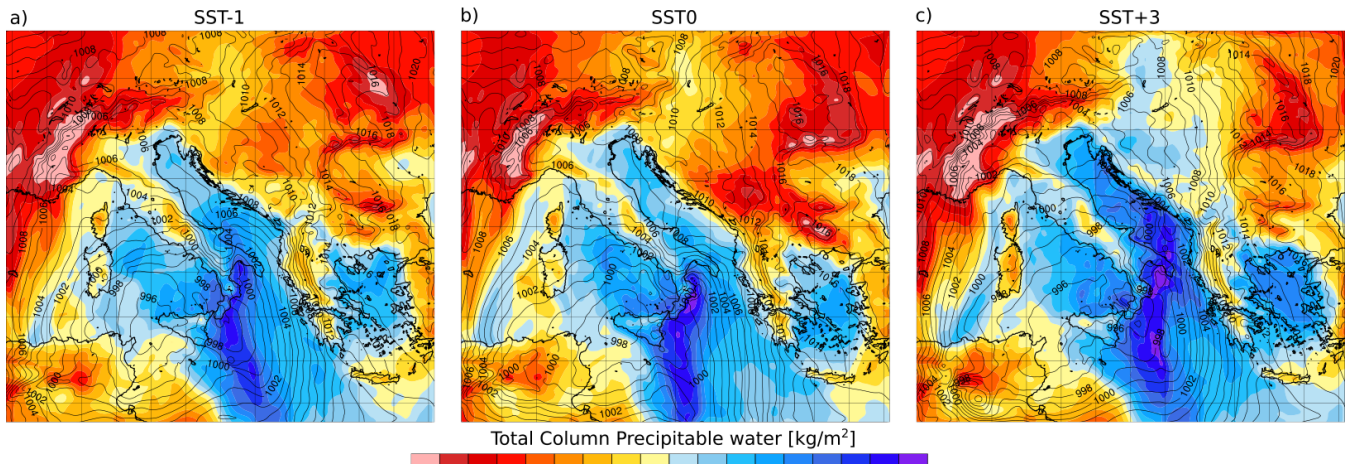


Figure 8. Column precipitable water (kg m^{-2}) for configurations a) SST-1, b) SST0, and c) SST+3 on 12 November 2019 at 03:00 GMT. The maps also show ~~sea-level~~sea-level pressure (contours; hPa).

355 Sea, and the ascending currents were stronger. Therefore, Fig. 9 underscores that the atmospheric instability and the moisture content can be shifted eastwards and offshore while moving towards warmer SST conditions. The same analysis, performed for events no. 6 (Fig. [S25S26](#)) and 15 (Fig. [S26S27](#)), showed similar outcomes, even though the difference in the vertical profile of omega in the latter case, having a minimal eastward shift, is less marked.

360 Finally, still focusing on event no. 12, another effect of the SST scenario selection is shown in Fig. 10, with the column-integrated water vapor flux crossing the section A-A' shown in Fig. 1a. The analysis indicates that the SST+3 scenario reduced the overall amount of water vapor flowing towards the eastern coast of Calabria by almost -24 %. According to previous analyses, ~~with in~~ the SST+3 simulation, ~~the water vapor mainly~~water vapor primarily flows northward, approximately parallel to the coastline, until it triggers intense rainfall.

4 Discussion

365 ~~To the best of the authors' knowledge~~Building on previous studies that investigated the role of SST anomalies on Mediterranean heavy precipitation systems, this research, ~~for the first time, aims at disentangling the expected influence~~provides a dedicated assessment of sea surface warming, ~~even combined including its interaction~~ with orography, on cyclonic event features in Southern Europe, ~~by analyzing an entire season with comprising~~ 20 events at a convection-permitting resolution, ~~and highlighting variations in features like with particular focus on land impacts~~, average and maximum ~~accumulation precipitation values and~~
 370 ~~overall spatial patterns~~accumulated precipitation, and spatial rainfall patterns.

Our experiments extend ~~and are directly comparable to~~ the existing body of literature ~~focusing and are directly comparable to it, with a focus~~ on the Mediterranean ~~are~~region. Meredith et al. (2015), ~~analysing~~analyzing a single Black Sea event at very

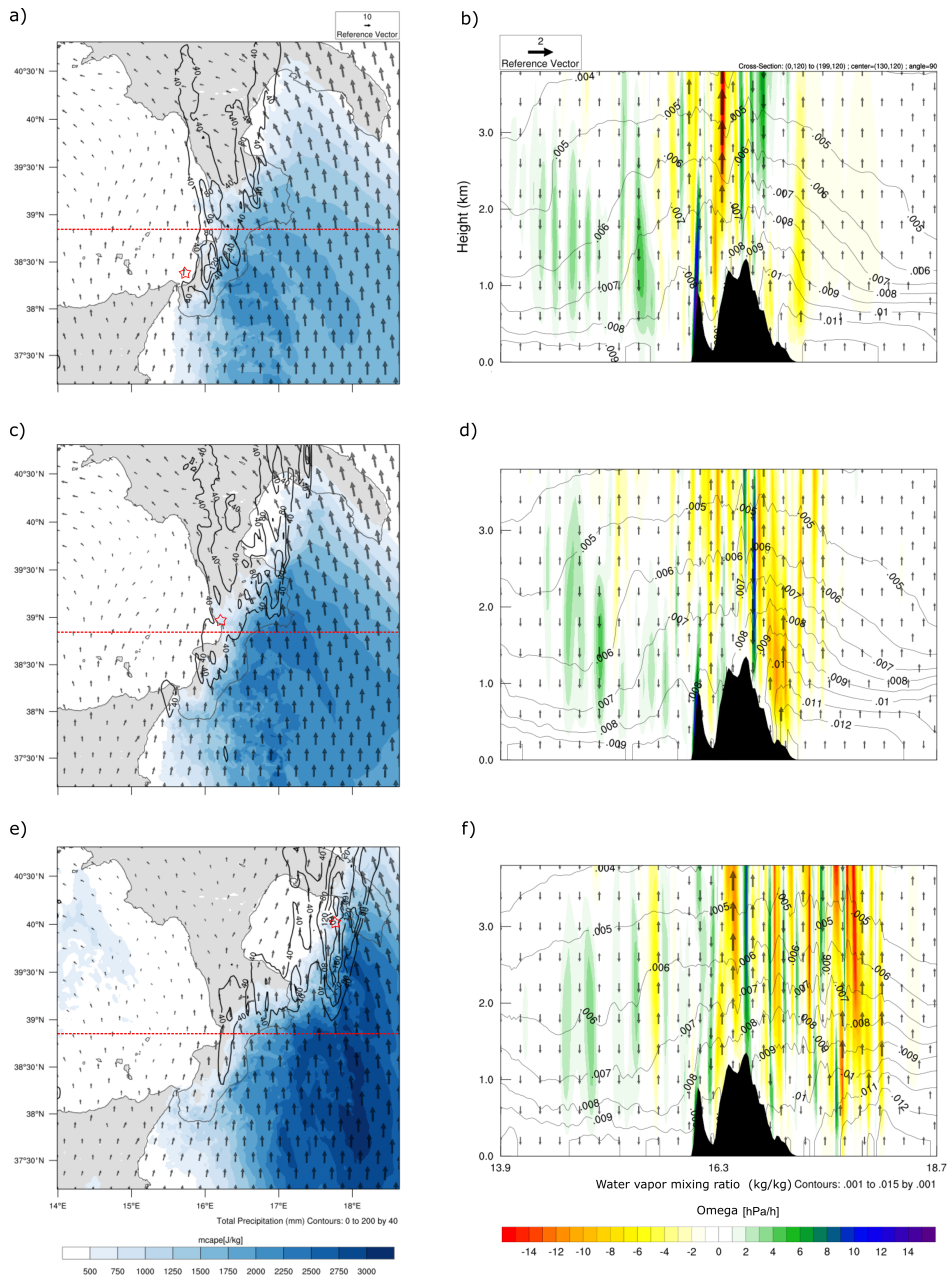


Figure 9. Left: Average CAPE (color bar), horizontal average wind at 850 hpa (arrows), and precipitation (isolines) during the eight hours preceding the most intense rainfall during event no. 12: a) SST-1, c) SST0, e) SST+3. The red star indicates the center of mass previously shown in Fig. 7. Right: vertical profile of omega (color bar), water vapor mixing ratio (isolines), and vertical wind (upward or downward arrows for direction; speed proportional to the reference vector) for b) SST-1, d) SST0, f) SST+3.

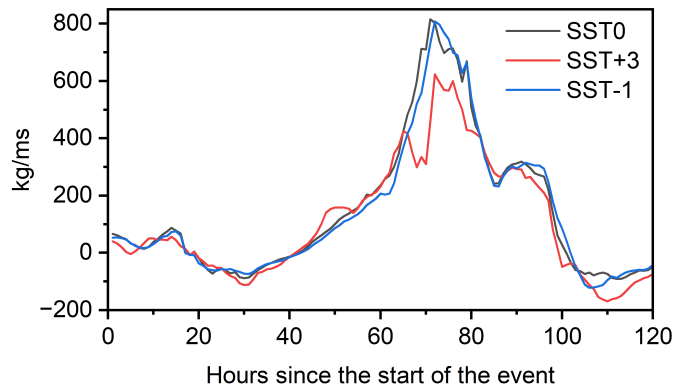


Figure 10. Temporal evolution of the vertically integrated water vapor flux (kg/ms), perpendicular to section A-A' shown in Fig. 1a, during event 12.

high resolution, chiefly reported a large increase in simulated precipitation and also substantial changes in the rainfall patterns with increasing SST. By contrast, studies that considered multiple events in the Adriatic (Stocchi and Davolio, 2017; Ricchi et al., 2023) ~~emphasised~~ emphasized that the effect of SST varies considerably ~~between~~ across events and that SST ~~mainly~~ primarily influences the stability of the atmospheric boundary layer. Focusing on Medicanes, Fita et al. (2007) and Miglietta et al. (2011) showed that warming or cooling of the sea surface can affect Medicanes formation, producing much more intense and larger systems with higher SST; Pytharoulis (2018) found an almost linear deepening of Medicanes with increasing SST anomalies and noted that Medicanes lifetime depends on SST. Noyelle et al. (2019), while agreeing on the strong SST influence on Medicanes intensity, concluded that the SST state has only a minor effect on cyclone tracks. Conversely, Varlas et al. (2023) attributed both the intensity and the track and landfall location of the Ianos Medicanes to SST changes, while Bador et al. (2025), similarly to our findings, also reported notable changes in the spatial pattern of heavy precipitation of the storm Alex, with an eastward shift with higher SSTs. ~~Finally,~~ González-Alemán et al. (2023) highlighted the crucial role of SST anomalies in the development of the 'derecho' windstorm event of August 2022, suggesting that further warming may lead to larger and stronger events in the future. ~~In other regions than the Mediterranean, ? argued that SST modifies the marine boundary layer jet, which can shift Taiwanese rainfall southward, whereas ? found that rainfall variations in the South Pacific Convergence Zone are driven by uncertain changes in the zonal SST gradient consistent with a "warmer gets wetter" mechanism.~~ Finally, Armon et al. (2022), ~~analysing~~ analyzing many historical events, reported a substantial decrease in rainfall accumulation in the eastern Mediterranean, caused by a marked reduction in storm rain area and shorter storm duration, even though mean conditional rain intensity increased.

While this research expressly focuses on SST warming trajectories, to achieve a more comprehensive overview of future conditions, ~~other information it~~ should be complemented with other information. For example, contrary to the pseudo-global warming approach used here, ~~generally,~~ the atmosphere's vertical profile is ~~also~~ generally expected to be modified as well. Varying only SST can lead to an ~~overestimate in the vertical gradient of temperature~~ overestimation of the vertical temperature

395 gradient and, therefore, biased effects on precipitation. The present analysis treats each event individually and regards them as isolated phenomena, such as ~~-, e.g., the~~ cold air intrusions that typically occur in this area at this time of year ~~;~~ and are therefore plausible ~~also~~ in a global warming scenario, ~~not without~~ undermining the relevance of our experiments. Nevertheless, changes in event frequency or seasonality cannot be assessed with our event-based, SST-only framework. Important forcings and feedbacks are omitted, such as ~~-, for example,~~ the effects of increased salinity levels due to lower precipitation and freshwater supply
400 (Verri et al., 2024), which could lead to reduced evaporation and ~~consequently,~~ consequently, less severe precipitation events (e.g., Lee and Hong 2019). Coupled GCM/RCM scenarios, on the other hand, account for multiple drivers simultaneously and can produce additional effects such as a shortened rainy season (Hochman et al., 2018), weakened land–sea thermal contrasts (Tuel and Eltahir, 2020), and altered cyclone frequency and tracks through changes in large-scale circulation. However, although much recent literature relying on GCM- and RCM-based scenarios focuses on ~~the projection of~~ projecting heavy
405 rainfall events in the central Mediterranean ~~-, it does not yet provide a unanimous response-~~

~~Analyzing the decomposed contribution from atmospheric thermodynamics and dynamics in (e.g., concerning CMIP5 projections, Pfahl et al. (2017) concluded that reduced cyclone frequency is expected in the broader Mediterranean region. Both Zappa et al. (2015), analyzing 17 CMIP climate models, and Reale et al. (2022), considering a higher resolution provided by the Med-CORDEX (CMIP5-derived) ensemble, for the end of this century found that the overall frequency decrease and
410 weakening of cyclones moving across the Mediterranean will be compensated, in the central part, by increased wind speed and precipitation rate. Using the EURO-CORDEX ensemble, Matte et al. (2022) projected for the Central Mediterranean an increase in the number of events exceeding the 90th percentile for the larger-sized precipitation systems and a small decrease for medium-sized systems. Also, Hosseinzadehtalaei et al. (2020), projecting intensity–duration–frequency curves over Europe, showed that the sub-daily extreme precipitation events with the highest return periods are expected to become more frequent.
415 Another analysis based on the EURO-CORDEX ensemble and focused on precipitation overland (Tramblay and Somot, 2018) emphasizes an overall increase in 20-year extreme precipitation in the northern Mediterranean coast and a decrease in the southern coast. Finally, by further increasing the spatial resolution with an ensemble of convection-permitting regional climate models under the RCP8.5 forcing scenario, Müller et al. (2024) found that more intense, heavy, and severe precipitation events must be expected in southern Italy, especially during fall in the form of landfalling and geographically forced events. Moving to
420 : Pfahl et al., 2017; Zappa et al., 2015; Reale et al., 2022; Matte et al., 2022; Hosseinzadehtalaei et al., 2020; Tramblay and Somot, 2018; : moving to CMIP6 projections, Bador and Alexander (2022), analyzing an ensemble of 29 models under the scenario SSP5-8.5, indicated at the annual scale an intensification of extremes and reduction in precipitation total, despite a consistent decline in both precipitation maxima and totals in three out of four seasons. Fernández-Alvarez et al. (2023), analyzing the Community Earth System Model Version 2 (CESM2; Danabasoglu 2023) under the SSP5-8.5 scenario, recognized a contrasting contribution
425 of moisture transport from the Mediterranean Sea and the North Atlantic Ocean to the western continental area of the Mediterranean basin, with the former increasing precipitation and the latter decreasing it. Finally, Anav et al. (2024) performed a dynamical downscaling of the MPI-ESM1-2-HR model (model no. 18 in Table ??). Concerning precipitation, they only provided results at the seasonal scale, revealing a substantial reduction. However, they demonstrated that the high-resolution air-sea coupling~~

improved the representation of high-impact events like marine heat waves.: Bador and Alexander, 2022; Fernández-Alvarez et al., 2023; A
430), it has not yet provided a unanimous response.
In the overview of heavy rainfall projections summarized above, the risk of high-impact events increases, in general, with
increasing resolution of the simulation. This outcome generally increases with higher simulation resolution. The benefits of such
a high-resolution, convection-permitting approach have been highlighted in several studies (e.g., Ban et al. 2014; Prein et al. 2015; Coppola
), and its advantages continue to be thoroughly evaluated in more recent studies (e.g., Fosser et al. 2024; Soares et al. 2024
435). Specifically, the simulated increase in risk can be explained by considering the more relevant effect of higher-resolution
the greater effect of better-represented complex topography in triggering convection (Ricchi et al., 2023). Using very high-
resolution (2 km) modeling, our study demonstrated that the interaction of an increasingly warmer and humid atmosphere
with coastal orography, which impacts the development of convective systems even offshore (Khodayar et al., 2021), further
enhances the moisture loading and favors their maturity so that rainfall accumulation peaks occur before landfall, especially
440 for more unstable systems. In this way, given a precipitation rate increase in the overall domain (i.e., considering both land
and sea), the overland precipitation rate increases for small to medium-sized events, making them more dangerous and impact-
ful, but is constant or even reduces slightly for heavy events, which, however, remain still dangerous. Therefore, the overall
tendency overland overland tendency, with all driving factors held constant except for increasing SST, can be summarized as
an expected increasing a projected rise in the frequency of heavy events rather than increasing (as currently weaker events tend
445 to intensify) rather than as an increase in their intensity.

5 Summary and conclusions

The research contributes to the investigation of the paradox of decreasing mean/increasing variance in precipitation in south-
ern Europe. Specifically, we examined the role of sea-atmosphere-orography interactions in explaining heavy precipitation
enhancement the enhancement of heavy precipitation despite the overall drying trend. In particular, we We isolated the impact
450 of sea surface warming by simulating an especially intense rainy season in over the Calabrian peninsula and comparing current
SST conditions with both past (SST-1) and future (SST+3) scenarios. The convection-permitting resolution of the dynamical
downscaling approach allowed for a highly dynamical downscaling enabled a detailed reconstruction of the different cy-
clone features and the resulting precipitation patterns induced by related precipitation patterns under varying SST boundary
conditions. The numerical experiments explained the enhancement Results showed that SST increase alone (the focus of our
455 experiments) may raise the frequency of overland heavy precipitation events' frequency by turning lighter events into heavier
ones, but did not indicate an increase in peak rainfall accumulation higher overland peak accumulations, since the most extreme
events should tend to produce their highest rainfall totals over the sea before reaching land.

The study's main methodological contribution is demonstrating the added value of high-resolution, convection-permitting
analyses in accurately capturing key processes unique in orographically complex regions like the one addressed. The benefit of
460 such an approach has been highlighted by several different studies in the past (e.g., Ban et al. 2014; Prein et al. 2015; Coppola et al. 2020; P
), but its advantages continue to be thoroughly evaluated even in more recent studies (e.g., Fosser et al. 2024; Soares et al. 2024

)-examined. While we showed that the main features of precipitation change can be observed already by examining precipitation change signals can already be identified in the outer (lower-resolution) domain, the approach adopted helps explain adopted approach helps clarify in detail the seemingly contradictory trends of not decreasing or increasing daily maximum rainfall and decreasing annual total precipitation, and can be generalized to much of the northern Mediterranean coast. As hyper-resolution climate simulations become more widely available, they will allow for further validation and refinement of these results.

Overall, our results help clarify the specific role of Mediterranean Sea warming in shaping the evolution of precipitation regimes changes in the precipitation regime in the study area. This work advances complements previous findings by systematically examining the effects of predicted projected SST increase over an entire rainy season. In doing so, it highlights changes not only in precipitation accumulation but also in its spatial distribution, including those linked to minor events. The findings reveal a distinctive situation characteristic pattern of the central-western Mediterranean domain, which contrasts with other zones of the basin, contrasting with other basin areas (i.e., the eastern Mediterranean; Armon et al. 2022), where synoptic circulation causes leads the sea to contribute differently as a reservoir of to atmospheric moisture for projected storms.

The focus on overland precipitation underscores the practical implications highlights the practical relevance of this study. As a general indication, the results achieved so far suggest that in the future, rather than the maximum intensity of heavy events, their return period will more probably change. The projected higher frequency The increase in the intensity (and possibly the frequency) of moderate-to-heavy events is a key factor to consider crucial for climate adaptation and territorial and urban planning, especially in terms of how extreme precipitation affects with respect to flood risk. Of course, this indication needs our indications need to be complemented by further analysis, which will be performed in future research. A key focus will be the quantification of the hydrological impact, as the expected rise in heavy precipitation event frequency could disproportionately elevate flood risk, but in different ways, according to the diverse features and sizes of the affected watersheds. The atmospheric modeling performed so far needs to be linked to detailed hydrological modeling to quantify changes in runoff, peak flows, and inundation patterns. Finally, robust assessment requires quantifying uncertainty robust assessment will require uncertainty analysis through multi-experiment ensembles. To this aim, the overall atmospheric-hydrological chain shall be supported by, including multiple pseudo-global-warming runs and convection-permitting GCM/RCM-driven simulations that account for warming-induced processes capture warming effects beyond SST changes, characterized by sufficiently high (convective-permitting) resolution so that convective processes are explicitly resolved and explicitly resolve convection and orographic enhancement effect is duly considered. Furthermore, a key focus will be on quantifying the hydrological impact by coupling atmospheric processes with detailed hydrological modeling of runoff, peak flows, and inundation.

Data availability. The daily precipitation at the high resolution simulated by the WRF model in the innermost domain D02 can be downloaded at <https://doi.org/10.5281/zenodo.16356046> for all three SST scenarios. Precipitation gauges data are available upon request from the Centro Funzionale Multirischi – ARPACAL (2025; <http://www.cfd.calabria.it/index.php/dati-stazioni/dati-storici>). ERA5-Land can be retrieved from <https://cds.climate.copernicus.eu/datasets/reanalysis-era5-land>. ERA5 Data can be retrieved from <https://cds.climate.copernicus>.

6

Figure ?? shows the results of a trend analysis applied to 134 historical gauges of the regional monitoring network stations (Fig. 1a) using the non-parametric trend tests of Mann-Kendall (identifying significance at a 5% level) and Sen's slope estimator (determining the trend slope per year), employed to analyze long-time (from 1955 to 2023) hydro-climatic series of annual precipitation (PRCPTOT) and maximum one-day precipitation (RX1day) in the wet season. To estimate missing daily values or reconstruct detected outliers, a linear correlation process was applied as follows: (i) daily rainfall data were collected for each station from 1955 to 2023. If fewer than 15 days were missing in a given year (approximately 4%, as suggested in several studies, e.g., Aguilar et al. 2005; Donat et al. 2013; Stephenson et al. 2014), the dataset for that year was considered complete. (ii) If more than 15 days were missing for a station in a given year, we performed a linear regression between that station's available data and the data from a nearby station with a strong correlation (always above 0.8, often much higher). The regression equation was then used to fill the gaps. While this approach could influence extreme event values, we applied it cautiously, taking into account the characteristics of the data.

Overall, for PRCPTOT the decreasing trend is quite clear (105 stations with negative trends, 29 of which are significant), while for RX1day the positive trend is less pronounced (78 stations with positive trends, only 7 of which are significant, against only 4 significant negative trends). Nevertheless, it clearly indicates that trends in extreme precipitation differ from those in average precipitation, especially in some zones of the region (e.g., the south and east), which are more exposed to events from the Ionian Sea.

Table ?? provides a detailed analysis of the 20 precipitation events identified in the September-December 2019 period. It quantifies average precipitation (mm) across the entire internal domain of the WRF simulation, overland-only precipitation, and precipitation above the 95th percentile, simulated by SST0, SST-1, and SST+3 scenarios, respectively.

Mann-Kendall and Sen's slope tests for observations of a) PRCPTOT at annual scale, b) RX1day at wet season scale from September to February over Calabria from 1955 to 2023. Black-contoured dots indicate stations with statistically significant trends:

ID	Start - End Date	n° days	\bar{P}	D02	SST0 \bar{P}	D02	SST-1 \bar{P}	D02	SST+3 \bar{P}	Land	SST0 \bar{P}	land	SST-1 \bar{P}	land	SST+3 \bar{P}	> 95 th	SST0	\bar{P}	> 95 th	SST-1 \bar{P}	> 95 th	SST+3																																																																																																																																							
09/09	11/09	3	10.4	4.7	23.8	13.6	9.1	26.3	71.7	48.9	121.9	2	19/09	20/09	2	6.2	3.0	14.2	13.4	8.4	15.3	45.1																																																																																																																																							
31	7	70.8	3	23/09	24/09	2	2.1	1.6	12.4	2.7	1.9	19.3	23.9	25.1	90.7	4	26/09	27/09	2	2.0	1.0	4.0	4.0	2.8	5.9	23.2	13.9	32.1	5	03/10	03/10	1	14.7	13.2	18.4	15.1	13.4	16.5	51.7	49.9	84.9	6	05/10	09/10	5	27.9	22.5	53.7	32.1	25.4	43.9	138.0	99.4	228.1	7	16/10	16/10	1	0.5	0.3	5.5	1.5	0.9	7.2	8.6	5.4	49.5	8	25/10	26/10	2	15.1	11.8	22.1	20.2	21.3	28.7	161.1	151.6	170.7	9	30/10	01/11	3	10.7	6.0	20.5	11.5	9.3	17.2	56.4	40.1	116.5	10	02/11	04/11	3	11.4	9.0	26.4	17.7	15.6	28.5	69.7	54.0	148.6	11	06/11	07/11	2	20.7	19.9	30.0	18.9	18.3	25.1	54.8	55.5	91.9	12	09/11	13/11	5	53.4	48.1	68.1	88.2	80.1	81.7	189.2	170.9	254.1	13	17/11	17/11	1	7.8	7.1	12.1	10.2	9.6	15.1	26.0	23.8	48.5	14	19/11	20/11	2	11.9	9.4	18.5	9.0	4.3	19.4	48.8	57.5

65.6 15-24/11-26/11 3 39.6 37.3 42.6 43.1 42.9 48.1 98.2 86.5 112.7 16-28/11-30/11 3 1.7 1.2 4.0 4.2 3.3 7.7 23.3 18.2 35.7
17-03/12-06/12 4 14.6 10.2 21.9 21.9 19.4 16.4 111.8 85.7 156.7 18-09/12-14/12 6 37.5 32.4 44.4 50.6 47.3 49.3 111.3 102.3
530 118.6 19-19/12-23/12 5 12.2 10.8 23.9 29.8 26.8 50.8 103.5 95.2 156.8 20-28/12-30/12 3 4.8 3.5 8.9 7.5 5.9 12.0 28.6 23.6
46.5 Main features of the events identified in the analyzed period: event ID; starting and ending dates; duration in number
of days; average precipitation \bar{P} in the innermost D02 domain simulated by SST0, SST-1, and SST+3 scenarios, respectively;
average overland precipitation \bar{P} simulated by SST0, SST-1, and SST+3 scenarios, respectively; average of the accumulated
precipitation \bar{P} exceeding the 95th percentile simulated by SST0, SST-1, and SST+3 scenarios, respectively. All values are
535 expressed in mm.

Author contributions. Conceptualization: A.S., G.M.; Data curation: L.F., G.N., Formal analysis: all authors; Investigation: all authors; Methodology: L.F., G.N., J.C., with support of A.S. and G.M.; Software: L.F., G.N.; Supervision: G.M.; Visualization: L.F., G.N., Writing – original draft: A.S. with support of all authors; Writing – review & editing: all authors.

Competing interests. The authors declare that they have no conflict of interest.

540 *Acknowledgements.* This work was funded by the Next Generation EU - Italian NRRP, Mission 4, Component 2, Investment 1.5, call for
the creation and strengthening of 'Innovation Ecosystems', building 'Territorial R&D Leaders' (Directorial Decree n. 2021/3277) - project
Tech4You - Technologies for climate change adaptation and quality of life improvement, n. ECS0000009. This work reflects only the authors'
views and opinions, neither the Ministry for University and Research nor the European Commission can be considered responsible for them.
We thank the "Centro Funzionale Multirischi" of the Calabrian Regional Agency for the Protection of the Environment for providing the
545 observed precipitation data. Finally, the authors thank Dr. Francesco Leonetti, Dr. Francesco Greco, and Dr. Fabio Cortale for their support
in preparing the revised figures.

References

- Alpert, P., Ben-Gai, T., Baharad, A., Benjamini, Y., Yekutieli, D., Colacino, M., Diodato, L., Ramis, C., Homar, V., Romero, R., Michaelides, S., and Manes, A.: The paradoxical increase of Mediterranean extreme daily rainfall in spite of decrease in total values, *Geophysical Research Letters*, 29, 31–1–31–4, <https://doi.org/https://doi.org/10.1029/2001GL013554>, 2002.
- 550 Amiri, A., Gumiere, S. J., Gharabaghi, B., and Bonakdari, H.: From warm seas to flooded streets: The impact of sea surface temperature on cutoff low and extreme rainfall in Valencia, Spain, *Journal of Flood Risk Management*, 18, e13 055, <https://doi.org/10.1111/jfr3.13055>, 2025.
- Anav, A., Antonelli, M., Calmanti, S., Carillo, A., Catalano, F., Dell’Aquila, A., Iacono, R., Marullo, S., Napolitano, E., Palma, M., Pisacane, G., Sannino, G., and Struglia, M. V.: Dynamical downscaling of CMIP6 scenarios with ENEA-REG: an impact-oriented application for the Med-CORDEX region, *Climate Dynamics*, 62, 3261 – 3287, <https://doi.org/10.1007/s00382-023-07064-3>, 2024.
- 555 Armon, M., Marra, F., Enzel, Y., Rostkier-Edelstein, D., Garfinkel, C. I., Adam, O., Dayan, U., and Morin, E.: Reduced Rainfall in Future Heavy Precipitation Events Related to Contracted Rain Area Despite Increased Rain Rate, *Earth’s Future*, 10, e2021EF002 397, <https://doi.org/https://doi.org/10.1029/2021EF002397>, e2021EF002397 2021EF002397, 2022.
- 560 Armon, M., Shmilovitz, Y., and Dente, E.: Anatomy of a foreseeable disaster: Lessons from the 2023 dam-breaching flood in Derna, Libya, *Science Advances*, 11, eadu2865, <https://doi.org/10.1126/sciadv.adu2865>, 2025.
- Arrighi, C. and Domeneghetti, A.: Brief communication: On the environmental impacts of the 2023 floods in Emilia-Romagna (Italy), *Natural Hazards and Earth System Sciences*, 24, 673–679, <https://doi.org/10.5194/nhess-24-673-2024>, 2024.
- Avino, A., Cimorelli, L., Furcolo, P., Noto, L. V., Pelosi, A., Pianese, D., Villani, P., and Manfreda, S.: Are rainfall extremes increasing in southern Italy?, *Journal of Hydrology*, 631, 130 684, <https://doi.org/10.1016/j.jhydrol.2024.130684>, 2024.
- 565 Avolio, E. and Federico, S.: WRF simulations for a heavy rainfall event in southern Italy: Verification and sensitivity tests, *Atmospheric Research*, 209, 14–35, <https://doi.org/10.1016/j.atmosres.2018.03.009>, 2018.
- Avolio, E., Cavalcanti, O., Furnari, L., Senatore, A., and Mendicino, G.: Brief communication: Preliminary hydro-meteorological analysis of the flash flood of 20 August 2018 in Raganello Gorge, southern Italy, *Natural Hazards and Earth System Sciences*, 19, 1619–1627, <https://doi.org/10.5194/nhess-19-1619-2019>, 2019.
- 570 Babauosmail, H., Hou, R., Ayugi, B., Sian, K. T. C. L. K., Ojara, M., Mumo, R., Chehbouni, A., and Ongoma, V.: Future changes in mean and extreme precipitation over the Mediterranean and Sahara regions using bias-corrected CMIP6 models, *International Journal of Climatology*, 42, 7280–7297, <https://doi.org/https://doi.org/10.1002/joc.7644>, 2022.
- Bador, M. and Alexander, L. V.: Future Seasonal Changes in Extreme Precipitation Scale With Changes in the Mean, *Earth’s Future*, 10, e2022EF002 979, <https://doi.org/https://doi.org/10.1029/2022EF002979>, e2022EF002979 2022EF002979, 2022.
- 575 Bador, M., Boé, J., Caillaud, C., Terray, L., Moine, M.-P., and Alias, A.: Cooler than observed sea surface could have reduced impacts of storm Alex and induced mediterranean heavy precipitation event in France, *Climate Dynamics*, 63, <https://doi.org/10.1007/s00382-025-07954-8>, 2025.
- Ban, N., Schmidli, J., and Schär, C.: Evaluation of the convection-resolving regional climate modeling approach in decade-long simulations, *Journal of Geophysical Research: Atmospheres*, 119, 7889–7907, <https://doi.org/https://doi.org/10.1002/2014JD021478>, 2014.
- 580 ~~Bentsen, M., Olivie, D. J. L., Seland, y., Toniazzo, T., Gjermundsen, A., Graff, L. S., Debernard, J. B., Gupta, A. K., He, Y., Kirkevåg, A., Schwinger, J., Tjiputra, J., Aas, K. S., Bethke, I., Fan, Y., Griesfeller, J., Grini, A., Guo, C., Ilicak, M., Karset, I. H. H., Landgren, O. A.,~~

- ~~Liakka, J., Moseid, K. O., Nummelin, A., Spensberger, C., Tang, H., Zhang, Z., Heinze, C., Iversen, T., and Schulz, M.: IPCC-DDC: NCC NorESM2-MMmodel output prepared for CMIP6 CMIP, , 2023.-~~
- 585 Berthou, S., Mailler, S., Drobinski, P., Arsouze, T., Bastin, S., Béranger, K., Flaounas, E., Lebeaupin Brossier, C., Somot, S., and Stéfanon, M.: Influence of submonthly air–sea coupling on heavy precipitation events in the Western Mediterranean basin, *Quarterly Journal of the Royal Meteorological Society*, 142, 453 – 471, <https://doi.org/10.1002/qj.2717>, 2016.
- ~~Boucher, O., Denvil, S., Levavasseur, G., Cozie, A., Caubel, A., Foujols, M.-A., Meurdesoif, Y., Cadule, P., Devilliers, M., Ghattas, J., Lebas, N., Lurton, T., Mellul, L., Musat, I., Mignot, J., and Cheruy, F.: IPCC-DDC: IPSL-IPSL-CM6A-LRmodel output prepared for CMIP6 CMIP, , 2023.-~~
- 590 Chadwick, R.: Sub-tropical drying explained, *Nature Clim Change*, 7, 10–11, <https://doi.org/10.1038/nclimate3167>, 2017.
- Cheng, L., Abraham, J., Trenberth, K. E., Boyer, T., Mann, M. E., Zhu, J., Wang, F., and Yu, F.: New Record Ocean Temperatures and Related Climate Indicators in 2023, *Advances in Atmospheric Sciences*, <https://doi.org/10.1007/s00376-024-3378-5>, 2024.
- Cheng, L., Abraham, J., Trenberth, K. E., Reagan, J., Zhang, H.-M., Storto, A., Von Schuckmann, K., Pan, Y., Zhu, Y., Mann, M. E.,
595 et al.: Record High Temperatures in the Ocean in 2024, *Advances in Atmospheric Sciences*, pp. 1–18, <https://doi.org/10.1007/s00376-025-4541-3>, 2025.
- ~~(CMEMS), E.-C.-M.-S.-I.: ESA-SST-CCIand-C3Sreprocessed-sea-surface-temperature-analyses, , accessed on 09-Oct-2024, 2023.-~~
- Coppola, E., Sobolowski, S., Pichelli, E., Raffaele, F., Ahrens, B., Anders, I., Ban, N., Bastin, S., Belda, M., Belusic, D., et al.: A first-of-its-kind multi-model convection permitting ensemble for investigating convective phenomena over Europe and the Mediterranean, *Climate Dynamics*, 55, 3–34, 2020.
- 600 ~~Danabasoglu, G.: IPCC-DDC: NCAR-CESM2-WACCMmodel output prepared for CMIP6 CMIP, , 2023.-~~
- ~~Dix, M., Bi, D., Dobrohotoff, P., Fiedler, R., Harman, I., Law, R., Mackallah, C., Marsland, S., O’Farrell, S., Rashid, H., Srbinovsky, J., Sullivan, A., Trenham, C., Vohralik, P., Watterson, I., Williams, G., Woodhouse, M., Bodman, R., Dias, F. B., Domingues, C. M., Hannah, N., Heerdegen, A., Savita, A., Wales, S., Allen, C., Druken, K., Evans, B., Richards, C., Ridzwan, S. M., Roberts, D., Smillie, J., Snow, K., Ward, M., and Yang, R.: IPCC-DDC: CSIRO-ARCCSS-ACCESS-CM2model output prepared for CMIP6 CMIP, , 2023.-~~
- 605 ~~Dutheil, C., Bador, M., Lengaigne, M., Lefèvre, J., Jourdain, N., Vialard, J., Jullien, S., Peltier, A., and Menkes, C.: Impact of surface temperature biases on climate change projections of the South Pacific Convergence Zone, *Climate Dynamics*, 53, 1–23, , 2019.-~~
- ~~(EC-Earth), E.-E.-C.: IPCC-DDC: EC-Earth-Consortium-EC-Earth-3-CCmodel output prepared for CMIP6 CMIP, , 2023.-~~
- Fernández-Alvarez, J. C., Pérez-Alarcón, A., Eiras-Barca, J., Rahimi, S., Nieto, R., and Gimeno, L.: Projected changes in atmospheric moisture transport contributions associated with climate warming in the North Atlantic, *Nature Communications*, 14, <https://doi.org/10.1038/s41467-023-41915-1>, 2023.
- 610 Ferrari, A., Passadore, G., Vacondio, R., Carniello, L., Pivato, M., Crestani, E., Carraro, F., Aureli, F., Carta, S., Stumpo, F., and Mignosa, P.: Brief communication: Hydrological and hydraulic investigation of the extreme September 2024 flood on the Lamone River in Emilia-Romagna, Italy, *Natural Hazards and Earth System Sciences*, 25, <https://doi.org/10.5194/nhess-25-2473-2025>, 2025.
- 615 Field, P. R. and Wood, R.: Precipitation and Cloud Structure in Midlatitude Cyclones, *Journal of Climate*, 20, 233 – 254, <https://doi.org/10.1175/JCLI3998.1>, 2007.
- Fita, L., Romero, R., De Luque Söllheim, A., Emanuel, K., and Ramis, C.: Analysis of the environments of seven Mediterranean tropical-like storms using an axisymmetric, nonhydrostatic, cloud resolving model, *Nat. Hazards Earth Syst. Sci*, 7, <https://doi.org/10.5194/nhess-7-41-2007>, 2007.

- 620 Flaounas, E., Davolio, S., Raveh-Rubin, S., Pantillon, F., Miglietta, M. M., Gaertner, M. A., Hatzaki, M., Homar, V., Khodayar, S., Korres, G., Kotroni, V., Kushta, J., Reale, M., and Ricard, D.: Mediterranean cyclones: current knowledge and open questions on dynamics, prediction, climatology and impacts, *Weather and Climate Dynamics*, 3, 173–208, <https://doi.org/10.5194/wcd-3-173-2022>, 2022.
- Flaounas, E., Dafis, S., Davolio, S., Faranda, D., Ferrarin, C., Hartmuth, K., Hochman, A., Koutroulis, A., Khodayar, S., Miglietta, M. M., Pantillon, F., Patlakas, P., Sprenger, M., and Thurnherr, I.: Dynamics, predictability, impacts, and climate change considerations of the catastrophic Mediterranean Storm Daniel (2023), *EGU sphere*, 2024, 1–29, <https://doi.org/10.5194/egusphere-2024-2809>, 2024.
- 625 Fossier, G., Gaetani, M., Kendon, E. J., Adinolfi, M., Ban, N., Belušić, D., Caillaud, C., Careto, J. A., Coppola, E., Demory, M.-E., et al.: Convection-permitting climate models offer more certain extreme rainfall projections, *NPJ Climate and atmospheric science*, 7, 51, 2024.
- Furnari, L., Magnusson, L., Mendicino, G., and Senatore, A.: Fully coupled high-resolution medium-range forecasts: Evaluation of the hydrometeorological impact in an ensemble framework, *Hydrological Processes*, 36, e14 503, <https://doi.org/10.1002/hyp.14503>, 2022.
- 630 Fusto, F., Marsico, L., and Rotundo, R.: Evento Meteopluviometrico del 23-25 novembre 2019. Rapporto di Evento, <https://www.cfd.calabria.it/DatiVari/Pubblicazioni/rapporto%20evento%2023-25%20novembre%202019.pdf>, in italian, last access 17 Feb 2025, 2019.
- Ginesta, M., Yiou, P., Messori, G., and Faranda, D.: A methodology for attributing severe extratropical cyclones to climate change based on reanalysis data: the case study of storm Alex 2020, *Climate Dynamics*, 61, 229–253, <https://doi.org/10.1007/s00382-022-06565-x>, 2023.
- Giorgi, F.: Climate change hot-spots, *Geophysical Research Letters*, 33, <https://doi.org/https://doi.org/10.1029/2006GL025734>, 2006.
- 635 González-Alemán, J. J., Insua-Costa, D., Bazile, E., González-Herrero, S., Miglietta, M. M., Groenemeijer, P., and Donat, M. G.: Anthropogenic Warming Had a Crucial Role in Triggering the Historic and Destructive Mediterranean Derecho in Summer 2022, *Bulletin of the American Meteorological Society*, 104, E1526 – E1532, <https://doi.org/10.1175/BAMS-D-23-0119.1>, 2023.
- Hausfather, Z. and Peters, G. P.: Emissions – the ‘business as usual’ story is misleading, *Nature*, 577, 618 – 620, <https://doi.org/10.1038/d41586-020-00177-3>, 2020.
- 640 He, J. and Soden, B. J.: A re-examination of the projected subtropical precipitation decline, *Nature Climate Change*, 7, 53 – 57, <https://doi.org/10.1038/nclimate3157>, 2017.
- ~~Hersbach, H., Bell, B., Berrisford, P., Hirahara, S., Horányi, A., Muñoz-Sabater, J., Nicolas, J., Peubey, C., Radu, R., Schepers, D., et al.: The ERA5 global reanalysis, *Quarterly Journal of the Royal Meteorological Society*, 146, 1999–2049, , 2020.~~
- Hochman, A., Harpaz, T., Saaroni, H., and Alpert, P.: The seasons’ length in 21st century CMIP5 projections over the eastern Mediterranean, *International Journal of Climatology*, 38, 2627–2637, <https://doi.org/https://doi.org/10.1002/joc.5448>, 2018.
- 645 Hong, S.-Y., Noh, Y., and Dudhia, J.: A New Vertical Diffusion Package with an Explicit Treatment of Entrainment Processes, *Monthly Weather Review*, 134, 2318 – 2341, <https://doi.org/10.1175/MWR3199.1>, 2006.
- Hosseinzadehtalaei, P., Tabari, H., and Willems, P.: Climate change impact on short-duration extreme precipitation and intensity–duration–frequency curves over Europe, *Journal of Hydrology*, 590, 125 249, <https://doi.org/10.1016/j.jhydrol.2020.125249>, 2020.
- 650 ~~Instituto de Física de Cantabria (IFCA), C.: IPCC-WGIAR6Interactive Atlas Dataset: CMIP6, , 2023.~~
- ~~Janjić, Z. I.: The Step-Mountain Eta Coordinate Model: Further Developments of the Convection, Viscous Sublayer, and Turbulence Closure Schemes, *Monthly weather review*, 122, 927–945, , 1994.~~
- ~~Jungelaus, J., Bittner, M., Wieners, K.-H., Wachsmann, F., Schupfner, M., Legutke, S., Giorgetta, M., Reick, C., Gayler, V., Haak, H., de Vrese, P., Raddatz, T., Esch, M., Mauritsen, T., von Storch, J.-S., Behrens, J., Brovkin, V., Claussen, M., Crueger, T., Fast, I., Fiedler, S., Hagemann, S., Hohenegger, C., Jahns, T., Kloster, S., Kinne, S., Lasslop, G., Kornbluch, L., Marotzke, J., Matei, D., Meraner, K., Mikolajewicz, U., Modali, K., Müller, W., Nabel, J., Notz, D., Peters-von Gehlen, K., Pincus, R., Pohlmann, H., Pongratz, J., Rast, S.,~~

- ~~Schmidt, H., Schnur, R., Schulzweida, U., Six, K., Stevens, B., Voigt, A., and Roeckner, E.: IPCC-DDC: MPI-M-MPIESM1.2-HRmodel output prepared for CMIP6 CMIP, , 2023.-~~
- 660 Khodayar, S., Davolio, S., Di Girolamo, P., Lebeaupin Brossier, C., Flaounas, E., Fourrie, N., Lee, K.-O., Ricard, D., Vie, B., Bouttier, F., et al.: Overview towards improved understanding of the mechanisms leading to heavy precipitation in the western Mediterranean: lessons learned from HyMeX, *Atmospheric Chemistry and Physics*, 21, 17 051–17 078, <https://doi.org/10.5194/acp-21-17051-2021>, 2021.
- ~~Kömüçü, A. Ü. and Oğuz, K.: Analysis of cold anomalies observed over Turkey during the 2018/2019 winter in relation to polar vortex and other atmospheric patterns, *Meteorology and Atmospheric Physics*, 133, 1327–1354, , 2021.-~~
- 665 ~~Krasting, J. P., John, J. G., Blanton, C., McHugh, C., Nikonov, S., Radhakrishnan, A., Rand, K., Zadeh, N. T., Balaji, V., Durachta, J., Dupuis, C., Menzel, R., Robinson, T., Underwood, S., Vahlenkamp, H., Dunne, K. A., Gauthier, P. P., Ginoux, P., Griffies, S. M., Hallberg, R., Harrison, M., Hurlin, W., Malyshev, S., Naik, V., Paulot, F., Paynter, D. J., Ploshay, J., Reichl, B. G., Schwarzkopf, D. M., Seman, C. J., Silvers, L., Wyman, B., Zeng, Y., Aderoft, A., Dunne, J. P., Dussin, R., Guo, H., He, J., Held, I. M., Horowitz, L. W., Lin, P., Milly, P., Shevliakova, E., Stock, C., Winton, M., Wittenberg, A. T., Xie, Y., and Zhao, M.: IPCC-DDC: NOAA-GFDL-GFDL-ESM4 model output prepared for CMIP6 CMIP, , 2023.-~~
- 670 Lazoglou, G., Papadopoulos-Zachos, A., Georgiades, P., Zittis, G., Velikou, K., Manios, E. M., and Anagnostopoulou, C.: Identification of climate change hotspots in the Mediterranean, *Scientific Reports*, 14, 29 817, <https://doi.org/10.1038/s41598-024-80139-1>, 2024.
- Lee, E. and Hong, S.-Y.: Impact of the Sea Surface Salinity on Simulated Precipitation in a Global Numerical Weather Prediction Model, *Journal of Geophysical Research: Atmospheres*, 124, 719–730, <https://doi.org/https://doi.org/10.1029/2018JD029591>, 2019.
- ~~Li, L.: IPCC-DDC: CAS-FGOALS-g3-model output prepared for CMIP6-ScenarioMIP, , 2023.-~~
- 675 ~~Lin, K.-J., Yang, S.-C., and Chen, S.-S.: Sensitivity of Extreme Rainfall in Taiwan to SST Over the South China Sea Through Modulation of Marine Boundary Layer Jet: A Mei-Yu Front Event During 1–4 June 2017, *Geophysical Research Letters*, 50, e2023GL104441, , e2023GL104441-2023GL104441, 2023.-~~
- Lionello, P. and Scarascia, L.: The relation between climate change in the Mediterranean region and global warming, *Regional Environmental Change*, 18, 1481–1493, <https://doi.org/10.1007/s10113-018-1290-1>, 2018.
- 680 Llasat, M., Llasat-Botija, M., Petrucci, O., Pasqua, A., Rosselló, J., Vinet, F., and Boissier, L.: Towards a database on societal impact of Mediterranean floods within the framework of the HYMEX project, *Natural Hazards and Earth System Sciences*, 13, 1337–1350, <https://doi.org/10.5194/nhess-13-1337-2013>, 2013.
- ~~Lovato, T. and Peano, D.: IPCC-DDC: CMCC-CMCC-CM2-SR5model output prepared for CMIP6 CMIP, , 2023.-~~
- 685 Marsico, L. and Rotundo, R.: Evento Meteopluviometrico del 11-13 novembre 2019. Rapporto di Evento, <https://www.cfd.calabria.it/DatiVari/Pubblicazioni/rapporto%20evento%2011-13%20novembre%202019.pdf>, in italian, last access 17 Feb 2025, 2019.
- Mastrantonas, N., Furnari, L., Magnusson, L., Senatore, A., Mendicino, G., Pappenberger, F., and Matschullat, J.: Forecasting extreme precipitation in the central Mediterranean: Changes in predictors' strength with prediction lead time, *Meteorological Applications*, 29, e2101, <https://doi.org/https://doi.org/10.1002/met.2101>, 2022.
- 690 ~~Matsui, T., Zhang, S.-Q., Lang, S.-E., Tao, W.-K., Ichoku, C., and Peters-Lidard, C. D.: Impact of radiation frequency, precipitation radiative forcing, and radiation column aggregation on convection-permitting West African monsoon simulations, *Climate Dynamics*, 55, 193–213, , 2020.-~~
- Matte, D., Christensen, J. H., and Ozturk, T.: Spatial extent of precipitation events: when big is getting bigger, *Climate Dynamics*, 58, 1861–1875, <https://doi.org/10.1007/s00382-021-05998-0>, 2022.

- Meehl, G. A., Karl, T., Easterling, D. R., Changnon, S., Pielke, R., Changnon, D., Evans, J., Groisman, P. Y., Knutson, T. R., Kunkel, K. E.,
695 Mearns, L. O., Parmesan, C., Pulwarty, R., Root, T., Sylves, R. T., Whetton, P., and Zwiers, F.: An Introduction to Trends in Extreme
Weather and Climate Events: Observations, Socioeconomic Impacts, Terrestrial Ecological Impacts, and Model Projections, *Bulletin of
the American Meteorological Society*, 81, 413 – 416, [https://doi.org/10.1175/1520-0477\(2000\)081<0413:AITTIE>2.3.CO;2](https://doi.org/10.1175/1520-0477(2000)081<0413:AITTIE>2.3.CO;2), 2000.
- Meinshausen, M., Nicholls, Z. R. J., Lewis, J., Gidden, M. J., Vogel, E., Freund, M., Beyerle, U., Gessner, C., Nauels, A., Bauer, N., Canadell,
700 J. G., Daniel, J. S., John, A., Krummel, P. B., Luderer, G., Meinshausen, N., Montzka, S. A., Rayner, P. J., Reimann, S., Smith, S. J., van den
Berg, M., Velders, G. J. M., Vollmer, M. K., and Wang, R. H. J.: The shared socio-economic pathway (SSP) greenhouse gas concentrations
and their extensions to 2500, *Geoscientific Model Development*, 13, 3571–3605, <https://doi.org/10.5194/gmd-13-3571-2020>, 2020.
- Mendicino, G. and Versace, P.: Integrated drought watch system: a case study in Southern Italy, *Water resources management*, 21, 1409–1428,
<https://doi.org/10.1007/s11269-006-9091-6>, 2007.
- Menemenlis, S., Vecchi, G., Yang, W., Fueglistaler, S., and Raghuraman, S. P.: Consequential differences in satellite-era sea surface temper-
705 ature trends across datasets, *Nature Climate Change*, 15, 897–903, <https://doi.org/10.1038/s41558-025-02362-6>, 2025.
- Meredith, E. P., Semenov, V. A., Maraun, D., Park, W., and Chernokulsky, A. V.: Crucial role of Black Sea warming in amplifying the 2012
Krymsk precipitation extreme, *Nature Geoscience*, 8, 615–619, <https://doi.org/10.1038/ngeo2483>, 2015.
- Miglietta, M. M. and Rotunno, R.: Development mechanisms for Mediterranean tropical-like cyclones (medicanes), *Quarterly Journal of the
Royal Meteorological Society*, 145, 1444–1460, <https://doi.org/10.1002/qj.3503>, 2019.
- 710 Miglietta, M. M., Moscatello, A., Conte, D., Mannarini, G., Lacorata, G., and Rotunno, R.: Numerical analysis of a Mediter-
ranean ‘hurricane’ over south-eastern Italy: Sensitivity experiments to sea surface temperature, *Atmospheric research*, 101, 412–426,
<https://doi.org/10.1016/j.atmosres.2011.04.006>, 2011.
- Miglietta, M. M., Flaounas, E., González-Alemán, J. J., Panegrossi, G., Gaertner, M. A., Pantillon, F., Pasquero, C., Schultz, D. M.,
715 D’Adderio, L. P., Dafis, S., Husson, R., Ricchi, A., Carrió, D. S. C., Davolio, S., Fita, L., Picornell, M. A., Pytharoulis, I., Raveh-
Rubin, S., Scoccimarro, E., Bernini, L., Cavicchia, L., Conte, D., Ferretti, R., Flocas, H., Gutiérrez-Fernández, J., Hatzaki, M., Santaner,
V. H., Jansà, A., and Patlakas, P.: Defining Medicanes: Bridging the Knowledge Gap Between Tropical and Extratropical Cyclones in the
Mediterranean, *Bulletin of the American Meteorological Society*, pp. BAMS–D–24–0289.1, <https://doi.org/10.1175/BAMS-D-24-0289.1>,
2025.
- ~~Mlawer, E. J., Taubman, S. J., Brown, P. D., Iacono, M. J., and Clough, S. A.: Radiative transfer for inhomogeneous atmospheres: RRTM, a
720 validated correlated-k model for the longwave, *Journal of Geophysical Research: Atmospheres*, 102, 16 663–16 682, , 1997.~~
- Mohamed, B., Abdallah, A. M., Alam El-Din, K., Nagy, H., and Shaltout, M.: Inter-Annual Variability and Trends of Sea Level
and Sea Surface Temperature in the Mediterranean Sea over the Last 25 years, *Pure and Applied Geophysics*, 176, 3787–3810,
<https://doi.org/10.1007/s00024-019-02156-w>, 2019.
- Müller, S. K., Pichelli, E., Coppola, E., Berthou, S., Brienen, S., Caillaud, C., Demory, M.-E., Dobler, A., Feldmann, H., Mercogliano, P.,
725 Tölle, M., and de Vries, H.: The climate change response of alpine-mediterranean heavy precipitation events, *Climate Dynamics*, 62, 165
– 186, <https://doi.org/10.1007/s00382-023-06901-9>, 2024.
- Necker, T., Wolfgruber, L., Kugler, L., Weissmann, M., Dorninger, M., and Serafin, S.: The fractions skill score for ensemble forecast
verification, *Quarterly Journal of the Royal Meteorological Society*, 150, 4457–4477, <https://doi.org/10.1002/qj.4824>, 2024.
- ~~Niu, G.-Y., Yang, Z.-L., Mitchell, K. E., Chen, F., Ek, M. B., Barlage, M., Kumar, A., Manning, K., Niyogi, D., Rosero, E., et al.: The
730 community Noah land surface model with multiparameterization options (Noah-MP): 1. Model description and evaluation with local-scale
measurements, *Journal of Geophysical Research: Atmospheres*, 116, , 2011.~~

- Noyelle, R., Ulbrich, U., Becker, N., and Meredith, E. P.: Assessing the impact of sea surface temperatures on a simulated medicane using ensemble simulations, *Natural Hazards and Earth System Sciences*, 19, 941–955, <https://doi.org/10.5194/nhess-19-941-2019>, 2019.
- ~~Panickal, S., Raghavan, K., Gopinathan, P. A., Narayanasetti, S., Choudhury, A. D., Singh, M., and Modi, A.: IPCC DDC: CCCR-HTM HTM-ESMmodel output data prepared for CMIP6 CMIP/DECK, , 2023.~~
- 735
- Pastor, F., Valiente, J. A., and Khodayar, S.: A Warming Mediterranean: 38 Years of Increasing Sea Surface Temperature, *Remote sensing*, 12, 2687, <https://doi.org/https://doi.org/10.3390/rs12172687>, 2020.
- Petrucci, O., Salvati, P., Aceto, L., Bianchi, C., Pasqua, A. A., Rossi, M., and Guzzetti, F.: The Vulnerability of People to Damaging Hydrogeological Events in the Calabria Region (Southern Italy), *International Journal of Environmental Research and Public Health*, 15, 48, <https://doi.org/10.3390/ijerph15010048>, 2018.
- 740
- Pfahl, S., O’Gorman, P., and Fischer, E.: Understanding the regional pattern of projected future changes in extreme precipitation, *Nature Climate Change*, 7, 423 – 427, <https://doi.org/10.1038/nclimate3287>, 2017.
- Pichelli, E., Coppola, E., Sobolowski, S., Ban, N., Giorgi, F., Stocchi, P., Alias, A., Belušić, D., Berthou, S., Caillaud, C., et al.: The first multi-model ensemble of regional climate simulations at kilometer-scale resolution part 2: historical and future simulations of precipitation, *Climate Dynamics*, 56, 3581–3602, 2021.
- 745
- Pilatin, H., Yucel, I., Duzenli, E., and Yilmaz, M. T.: Sensitivity of WRF-derived hydrometeorological extremes to sea surface temperatures in regions with complex topography and diverse climate, *Atmospheric Research*, 264, 105 816, 2021.
- Prein, A. F., Langhans, W., Fosser, G., Ferrone, A., Ban, N., Goergen, K., Keller, M., Tölle, M., Gutjahr, O., Feser, F., Brisson, E., Kollet, S., Schmidli, J., van Lipzig, N. P. M., and Leung, R.: A review on regional convection-permitting climate modeling: Demonstrations, prospects, and challenges, *Reviews of Geophysics*, 53, 323–361, <https://doi.org/https://doi.org/10.1002/2014RG000475>, 2015.
- 750
- Pytharoulis, I.: Analysis of a Mediterranean tropical-like cyclone and its sensitivity to the sea surface temperatures, *Atmospheric Research*, 208, 167–179, <https://doi.org/10.1016/j.atmosres.2017.08.009>, 2018.
- Rasmussen, R., Liu, C., Ikeda, K., Gochis, D., Yates, D., Chen, F., Tewari, M., Barlage, M., Dudhia, J., Yu, W., Miller, K., Arsenault, K., Grubišić, V., Thompson, G., and Gutmann, E.: High-Resolution Coupled Climate Runoff Simulations of Seasonal Snowfall over Colorado: A Process Study of Current and Warmer Climate, *Journal of Climate*, 24, 3015 – 3048, <https://doi.org/10.1175/2010JCLI3985.1>, 2011.
- 755
- Reale, M., Cabos Narvaez, W. D., Cavicchia, L., Conte, D., Coppola, E., Flaounas, E., Giorgi, F., Gualdi, S., Hochman, A., Li, L., et al.: Future projections of Mediterranean cyclone characteristics using the Med-CORDEX ensemble of coupled regional climate system models, *Climate dynamics*, pp. 1–24, <https://doi.org/10.1007/s00382-021-06018-x>, 2022.
- Ricchi, A., Miglietta, M. M., Barbariol, F., Benetazzo, A., Bergamasco, A., Bonaldo, D., Cassardo, C., Falcieri, F. M., Modugno, G., Russo, A., et al.: Sensitivity of a Mediterranean tropical-like cyclone to different model configurations and coupling strategies, *Atmosphere*, 8, 92, <https://doi.org/10.3390/atmos8050092>, 2017.
- 760
- Ricchi, A., Sangelantoni, L., Redaelli, G., Mazzarella, V., Montopoli, M., Miglietta, M. M., Tiesi, A., Mazzà, S., Rotunno, R., and Ferretti, R.: Impact of the SST and topography on the development of a large-hail storm event, on the Adriatic Sea, *Atmospheric Research*, 296, 107 078, <https://doi.org/10.1016/j.atmosres.2023.107078>, 2023.
- 765
- Roberts, N. M. and Lean, H. W.: Scale-Selective Verification of Rainfall Accumulations from High-Resolution Forecasts of Convective Events, *Monthly Weather Review*, 136, 78 – 97, <https://doi.org/10.1175/2007MWR2123.1>, 2008.
- ~~Rong, X.: IPCC DDC: CAMS CAMS_CSM1.0model output prepared for CMIP6 CMIP, , 2023.~~
- Sannino, G., Carillo, A., Iacono, R., Napolitano, E., Palma, M., Pisacane, G., and Struglia, M.: Modelling present and future climate in the Mediterranean Sea: a focus on sea-level change, *Climate Dynamics*, 59, 357–391, <https://doi.org/10.1007/s00382-021-06132-w>, 2022.

- 770 [Saurral, R. I., Campos, D. A., Grayson, K., Lapin, V., Trascasa-Castro, P., Tourigny, E., Donat, M. G., Materia, S., Ferrer, E., and Doblás-Reyes, F. J.: The key role of Mediterranean and North Atlantic sea surface temperatures on the 2024 record-breaking Valencia precipitation event, *Weather and Climate Extremes*, 52, 100877, <https://doi.org/https://doi.org/10.1016/j.wace.2026.100877>, 2026.](#)
- Schwalm, C. R., Glendon, S., and Duffy, P. B.: RCP8.5 tracks cumulative CO2 emissions, *Proceedings of the National Academy of Sciences of the United States of America*, 117, 19656 – 19657, <https://doi.org/10.1073/PNAS.2007117117>, 2020.
- 775 ~~Seferian, R.: IPCC-DDC: CNRM-CERFACS CNRM-ESM2-1model output prepared for CMIP6 CMIP, , 2023.-~~
~~Seland, y., Bentsen, M., Oliviè, D.J.-L., Toniazzo, T., Gjermundsen, A., Graff, L. S., Debernard, J. B., Gupta, A. K., He, Y., Kirkevåg, A., Schwinger, J., Tjiputra, J., Aas, K. S., Bethke, I., Fan, Y., Griesfeller, J., Grini, A., Guo, C., Hicak, M., Karset, I. H. H., Landgren, O. A., Liakka, J., Moseid, K. O., Nummelin, A., Spensberger, C., Tang, H., Zhang, Z., Heinze, C., Iversen, T., and Schulz, M.: IPCC-DDC: NCC NorESM2-LMmodel output prepared for CMIP6 CMIP, , 2023.-~~
- 780 ~~Semmler, T., Danilov, S., Rackow, T., Sidorenko, D., Barbi, D., Hegewald, J., Sein, D., Wang, Q., and Jung, T.: IPCC-DDC: AWI AWI-CM1-1MRmodel output prepared for CMIP6 CMIP, , 2023.-~~
- Senatore, A., Mendicino, G., Knoche, H. R., and Kunstmann, H.: Sensitivity of Modeled Precipitation to Sea Surface Temperature in Regions with Complex Topography and Coastlines: A Case Study for the Mediterranean, *Journal of Hydrometeorology*, 15, 2370–2396, <https://doi.org/https://doi.org/10.1175/JHM-D-13-089.1>, 2014.
- 785 Senatore, A., Davolio, S., Furnari, L., and Mendicino, G.: Reconstructing Flood Events in Mediterranean Coastal Areas Using Different Reanalyses and High-Resolution Meteorological Models, *Journal of Hydrometeorology*, 21, 1865–1887, <https://doi.org/10.1175/JHM-D-19-0270.1>, 2020a.
- Senatore, A., Furnari, L., and Mendicino, G.: Impact of high-resolution sea surface temperature representation on the forecast of small Mediterranean catchments' hydrological responses to heavy precipitation, *Hydrology and Earth System Sciences*, 24, 269–291, <https://doi.org/10.5194/hess-24-269-2020>, 2020b.
- 790 Skamarock, W. C., Klemp, J. B., Dudhia, J., Gill, D. O., Liu, Z., Berner, J., Wang, W., Powers, J. G., Duda, M. G., Barker, D. M., and Huang, X. y.: A Description of the Advanced Research WRF Model Version 4, Tech. rep., NCAR, <https://doi.org/10.5065/1dfh-6p97>, 2021.
- Soares, P. M., Careto, J. A., Cardoso, R. M., Goergen, K., Katragkou, E., Sobolowski, S., Coppola, E., Ban, N., Belušić, D., Berthou, S., et al.: The added value of km-scale simulations to describe temperature over complex orography: the CORDEX FPS-Convection multi-model ensemble runs over the Alps, *Climate Dynamics*, 62, 4491–4514, 2024.
- 795 Stocchi, P. and Davolio, S.: Intense air-sea exchanges and heavy orographic precipitation over Italy: The role of Adriatic sea surface temperature uncertainty, *Atmospheric Research*, 196, 62–82, <https://doi.org/https://doi.org/10.1016/j.atmosres.2017.06.004>, 2017.
- Stone, D. A.: Winter isn't what it used to be, *Nature Geoscience*, 14, 712–713, <https://doi.org/10.1038/s41561-021-00832-y>, 2021.
- Sun, X. and Wu, R.: Spatial scale dependence of the relationship between turbulent surface heat flux and SST, *Climate Dynamics*, 58, 1127–1145, <https://doi.org/10.1007/s00382-021-05957-9>, 2022.
- 800 ~~Swart, N. C., Cole, J. N., Kharin, V. V., Lazare, M., Seinocea, J. F., Gillett, N. P., Anstey, J., Arora, V., Christian, J. R., Jiao, Y., Lee, W. G., Majaess, F., Saenko, O. A., Seiler, C., Seinen, C., Shao, A., Solheim, L., von Salzen, K., Yang, D., Winter, B., and Sigmond, M.: IPCCDDC: CCCma CanESM5model output prepared for CMIP6 CMIP, , 2023.-~~
~~Tang, Y., Rumbold, S., Ellis, R., Kelley, D., Mulcahy, J., Sellar, A., Walton, J., and Jones, C.: IPCCDDC: MOHCUKESM1.0-LLmodel output prepared for CMIP6 CMIP, , 2023.-~~
- 805 ~~Thompson, G., Field, P. R., Rasmussen, R. M., and Hall, W. D.: Explicit Forecasts of Winter Precipitation Using an Improved Bulk Microphysics Scheme. Part II: Implementation of a New Snow Parameterization, *Monthly Weather Review*, 136, 5095–5115, , 2008.-~~

- ~~Fiedtke, M.: A Comprehensive Mass Flux Scheme for Cumulus Parameterization in Large-Scale Models, Monthly weather review, 117, 1779–1800, 1989.~~
- 810 Trambly, Y. and Somot, S.: Future evolution of extreme precipitation in the Mediterranean, *Climatic Change*, 151, 289 – 302, <https://doi.org/10.1007/s10584-018-2300-5>, 2018.
- Tuel, A. and Eltahir, E. A. B.: Why Is the Mediterranean a Climate Change Hot Spot?, *Journal of Climate*, 33, 5829 – 5843, <https://doi.org/10.1175/JCLI-D-19-0910.1>, 2020.
- 815 Varlas, G., Pytharoulis, I., Steeneveld, G.-J., Katsafados, P., and Papadopoulos, A.: Investigating the impact of sea surface temperature on the development of the Mediterranean tropical-like cyclone “Ianos” in 2020, *Atmospheric Research*, p. 106827, <https://doi.org/10.1016/j.atmosres.2023.106827>, 2023.
- Verri, G., Furnari, L., Gunduz, M., Senatore, A., Santos da Costa, V., De Lorenzis, A., Fedele, G., Manco, I., Mentaschi, L., Clementi, E., Coppini, G., Mercogliano, P., Mendicino, G., and Pinardi, N.: Climate projections of the Adriatic Sea: role of river release, *Frontiers in Climate*, Volume 6 - 2024, <https://doi.org/10.3389/fclim.2024.1368413>, 2024.
- 820 ~~Voldoire, A.: IPCC-DDC: CNRM-CERFACS CNRM-CM6-1-HRmodel output prepared for CMIP6 CMIP, , 2023.~~
~~Voldoire, A.: IPCC-DDC: CNRM-CERFACS CNRM-CM6-1model output prepared for CMIP6 CMIP, , 2023.~~
~~Volodin, E., Mortikov, E., Gritsun, A., Lykossov, V., Galin, V., Diansky, N., Gusev, A., Kostykin, S., Iakovlev, N., Shestakova, A., and Emelina, S.: IPCC-DDC: INM-INM-CM5-0 model output prepared for CMIP6 CMIP, , 2023.~~
- Wernli, H., Paulat, M., Hagen, M., and Frei, C.: SAL—A Novel Quality Measure for the Verification of Quantitative Precipitation Forecasts, *Monthly Weather Review*, 136, 4470 – 4487, <https://doi.org/10.1175/2008MWR2415.1>, 2008.
- 825 ~~Wieners, K.-H., Giorgetta, M., Jungelaus, J., Reick, C., Esch, M., Bittner, M., Legutke, S., Schupfner, M., Wachsmann, F., Gayler, V., Haak, H., de Vrese, P., Raddatz, T., Mauritsen, T., von Storch, J.-S., Behrens, J., Brovkin, V., Claussen, M., Crueger, T., Fast, I., Fiedler, S., Hagemann, S., Hohenegger, C., Jahns, T., Kloster, S., Kinne, S., Lasslop, G., Kornbluch, L., Marotzke, J., Matei, D., Meraner, K., Mikolajewicz, U., Modali, K., Müller, W., Nabel, J., Notz, D., Peters-von Gehlen, K., Pineus, R., Pohlmann, H., Pongratz, J., Rast, S., Schmidt, H., Schnur, R., Schulzweida, U., Six, K., Stevens, B., Voigt, A., and Roeckner, E.: PCC-DDC: MPI-M MPIESM1.2-LRmodel output prepared for CMIP6 CMIP, , 2023.~~
- 830 Wilks, D.: *Statistical Methods In The Atmospheric Sciences*, vol. 59, Academic Press, [https://doi.org/10.1016/S0074-6142\(06\)80036-7](https://doi.org/10.1016/S0074-6142(06)80036-7), 2006.
- Xian, T., Xia, J., Wei, W., Zhang, Z., Wang, R., Wang, L.-P., and Ma, Y.-F.: Is Hadley Cell Expanding?, *Atmosphere*, 12, 1699, <https://doi.org/10.3390/atmos12121699>, 2021.
- 835 ~~Xin, X., Zhang, J., Zhang, F., Wu, T., Shi, X., Li, J., Chu, M., Liu, Q., Yan, J., Ma, Q., and Wei, M.: IPCC-DDC: BCC-BCC-CSM2MRmodel output prepared for CMIP6 CMIP, , 2023.~~
- Zappa, G., Hawcroft, M., Shaffrey, L., Black, E., and Brayshaw, D.: Extratropical cyclones and the projected decline of winter Mediterranean precipitation in the CMIP5 models, *Climate Dynamics*, 45, 1727–1738, <https://doi.org/10.1007/s00382-014-2426-8>, 2015.
- 840 ~~Zeng, X. and Beljaars, A.: A prognostic scheme of sea surface skin temperature for modeling and data assimilation, Geophysical Research Letters, 32, , 2005.~~
- Zhang, W., Villarini, G., Scoccimarro, E., and Napolitano, F.: Examining the precipitation associated with medicanes in the high-resolution ERA-5 reanalysis data, *International Journal of Climatology*, 41, E126–E132, <https://doi.org/10.1002/joc.6669>, 2021.

845 ~~Ziehn, T., Chamberlain, M., Lenton, A., Law, R., Bodman, R., Dix, M., Wang, Y., Dobrohotoff, P., Srbinovsky, J., Stevens, L., Vohralik, P., Mackallah, C., Sullivan, A., O'Farrell, S., and Druken, K.: IPCC DDC: CSIRO ACCESS-ESM1.5 model output prepared for CMIP6 CMIP, 2023.~~

Zittis, G., Bruggeman, A., and Lelieveld, J.: Revisiting future extreme precipitation trends in the Mediterranean, *Weather and Climate Extremes*, 34, 100380, <https://doi.org/https://doi.org/10.1016/j.wace.2021.100380>, 2021.