

From fine to giant: Multi-instrument assessment of the dust particle size distribution at an emission source during the J-WADI field campaign

Hannah Meyer¹, Konrad Kandler², Sylvain Dupont³, Jerónimo Escribano⁴, Jessica Girdwood^{5,6,7}, George Nikolich⁸, Andrés Alastuey⁹, Vicken Etyemezian⁸, Cristina González-Flórez^{4,10}, Adolfo González-Romero^{4,9}, Tareq Hussein^{11,12}, Mark Irvine³, Peter Knippertz¹, Ottmar Möhler¹³, Xavier Querol⁹, Chris Stopford⁵, Franziska Vogel^{13,14}, Frederik Weis¹⁵, Andreas Wieser¹, Carlos Pérez García-Pando^{4,16}, and Martina Klose¹

¹Karlsruhe Institute of Technology (KIT), Institute of Meteorology and Climate Research Troposphere Research (IMKTRO), Karlsruhe, Germany.

²Technical University of Darmstadt, Germany.

³INRAE, Bordeaux Sciences Agro, ISPA, Villenave d'Ornon, France.

⁴Barcelona Supercomputing Center (BSC), Barcelona, Spain.

⁵Particle Instruments and Diagnostics, University of Hertfordshire, Hatfield, AL109AB.

⁶Now at: Centre for Atmospheric Science, School of Earth and Environmental Science, University of Manchester, Manchester, M13 9PL.

⁷Now at: National Centre for Atmospheric Science, School of Earth and Environmental Science, University of Manchester, Manchester, M13 9PL.

⁸Desert Research Institute (DRI), NV, USA.

⁹Institute of Environmental Assessment and Water Research - Consejo Superior de Investigaciones Científicas (IDAEA-CSIC), Spain.

¹⁰Now at: Danish Meteorological Institute (DMI), Copenhagen, Denmark.

¹¹Environmental and Atmospheric Research Laboratory (EARL), Department of Physics, School of Science, University of Jordan, Amman 11942, Jordan.

¹²Institute for Atmospheric and Earth System Research (INAR/Physics), Faculty of Science, University of Helsinki, PL 64, FI-00014 UHEL, Helsinki, Finland.

¹³Karlsruhe Institute of Technology (KIT), Institute of Meteorology and Climate Research Atmospheric Aerosol Research (IMKAAF), Germany.

¹⁴Now at: Institute of Atmospheric Sciences and Climate (ISAC), National Research Council (CNR), Bologna, Italy.

¹⁵Palas GmbH, Germany.

¹⁶Catalan Institution for Research and Advanced Studies (ICREA), Spain.

Correspondence: Hannah Meyer (hannah.meyer@kit.edu)

Abstract.

Mineral dust particles emitted from dry, uncovered soil can be transported over vast distances, thereby influencing climate and environment. Its impacts are highly size-dependent, yet large particles with diameters $d_p > 10 \mu\text{m}$ remain understudied due to their low number concentrations and instrumental limitations. Accurately characterizing the particle size distribution (PSD) at emission is crucial for understanding dust transport and climate interactions.

Here we characterize the dust PSD at an emission source during the Jordan Wind Erosion and Dust Investigation (J-WADI) campaign, conducted in Wadi Rum, Jordan, in September 2022, focusing on super-coarse ($10 < d_p \leq 62.5 \mu\text{m}$) and giant ($d_p > 62.5 \mu\text{m}$) particles. This study is the first to continuously cover the full range of diameters from $d_p = 0.4$ to $200 \mu\text{m}$ at an emission source by using a suite of aerosol spectrometers with overlapping size ranges. This overlap enabled a systematic intercomparison and validation across instruments, improving PSD reliability.

Results show significant PSD variability over the course of the campaign. During periods with friction velocities (u_{*f}) above 0.22 m s^{-1} (or $\sim 3.3 \text{ ms}^{-1}$ threshold 4 m wind speed), the approximate onset of local dust emissions, threshold for local dust emission by saltation, both dust concentrations and the contributions of super-coarse and giant particles were observed, with concentrations increasing with typically increased with increasing u_* , especially under neutral to unstable atmospheric stability conditions. These large particles accounted for about 90% of the total mass concentration during the campaign. A prominent mass concentration peak was observed near $d_p = 60 \mu\text{m}$ in geometric diameter. While particle concentrations for $d_p < 10 \mu\text{m}$ showed good agreement among most instruments, discrepancies appeared for larger d_p due to reduced instrument sensitivity at the size range boundaries and sampling inefficiencies. Despite these challenges, physical samples collected using a flat-plate sampler largely confirmed the PSDs derived from the aerosol spectrometers. These findings help to advance our understanding of the dust PSD and the abundance of super-coarse and giant particle at emission sources.

1 Introduction

Mineral dust aerosol originates from the suspension of particles of uncovered dry soil under conditions of strong enough winds. It represents the dominant fraction of the global aerosol mass in Earth's atmosphere (Textor et al., 2006), with a significant impact – from emission to deposition – on atmospheric processes and climate dynamics (e.g., Shao et al., 2011b; Kok et al., 2023). Mineral dust affects Earth's energy balance by scattering and absorbing solar and infrared radiation (e.g., Ryder et al., 2013b; Kok et al., 2018; Di Biagio et al., 2020) and influencing cloud formation and precipitation potential (e.g., Kumar et al., 2011; Hoose and Möhler, 2012; Froyd et al., 2022). It also transports nutrients to ecosystems, impacting carbon uptake and atmospheric CO_2 levels (Goudie and Middleton, 2001; Jickells et al., 2005; Schulz et al., 2012). Its overall radiative forcing remains highly uncertain, estimated at $-0.2 \pm 0.5 \text{ W m}^{-2}$, leaving it unclear whether dust ultimately warms or cools the climate (Kok et al., 2023).

The climate impact of dust aerosol is not only determined by the amount, shape, and mineralogical composition of the particles, but also by their particle size distribution (PSD, Mahowald et al., 2014). The optical diameters (d_o) typically used to report the PSDs obtained with optical particle counters (OPCs) are diameters of non-absorbing reference particles that produce the same scattered light intensity as the measured dust particles. Instead, dust modeling typically uses the geometric or volume-equivalent diameter (d_{geo}), which refers to the diameter of a sphere with the same volume as the aspherical particle. Area-equivalent (or projected area) diameter (d_{PA}) measures the diameter of a circle with the same 2D projected area as the dust particle (Kandler et al., 2007). For dust, the PSD is divided into different size ranges: fine dust with a diameter smaller than

$d_p < 2.5\mu\text{m}$, coarse dust with $2.5 \leq d_p < 10\mu\text{m}$, super-coarse dust with $10 \leq d_p < 62.5\mu\text{m}$, and giant dust with $d_p \geq 62.5\mu\text{m}$ (Adebisi et al., 2023).

- 40 ~~Coarse-~~Whereas fine dust exerts a substantial cooling effect at the top of the atmosphere, coarse, super-coarse, and giant dust particles tend to ~~warm the atmosphere because their~~ have a net warming effect in sum of the shortwave and longwave spectra, ~~because the particles'~~ absorption increases more significantly than their scattering as particle size grows (Adebisi et al., 2023). This is reflected in ~~their the~~ lower single-scattering albedo (SSA; ratio of scattered to total extinguished radiation) ~~for larger particles~~, which decreases from ~ 0.80 at $d_p = 10\mu\text{m}$ to even lower values for larger particles (Tegen et al., 1996; Adebisi et al., 2023) ~~in the shortwave spectrum~~. In addition to absorbing shortwave radiation, ~~these the~~ larger particles are also strong absorbers of longwave radiation, further contributing to atmospheric warming (Tegen et al., 1996; Dufresne et al., 2002). In contrast, smaller dust particles primarily cool the atmosphere by efficiently scattering solar radiation, with an SSA close to 1 ~~for particles $d_p < 1\mu\text{m}$~~ that decreases to approximately 0.95 at $d_p = 2\mu\text{m}$ (Kok et al., 2023). Thus, smaller particles dominate cooling effects, while larger particles contribute to atmospheric warming (Kok et al., 2017; Ryder et al., 2019; Kok et al., 2023).
- 50 Particle size is also important for cloud microphysics and precipitation processes (Min et al., 2009). Large dust particles can act as effective cloud condensation nuclei, promoting the formation of very large cloud droplets that enhance collision-coalescence processes, leading to precipitation (Mahowald et al., 2014).

- Despite of their importance in dust-climate interactions, coarse to giant dust particles have traditionally been presumed to sediment rapidly (e.g., Seinfeld and Pandis, 1998), limiting their atmospheric lifetime and potential for long-range transport.
- 55 Despite expectations of rapid settling, studies have sampled giant dust particles up to $450\mu\text{m}$ in diameter several thousand kilometers from their source regions (Betzer et al., 1988; van der Does et al., 2018). van der Does et al. (2018) estimated that $100\mu\text{m}$ particles could travel distances of up to 438 km at wind speeds of 25 m s^{-1} from an altitude of 7 km, assuming a deposition velocity of 400 m m s^{-1} . They concluded that this estimate cannot explain the long travel distances observed. In contrast, the prolonged suspension of giant particles suggests that mechanisms must exist to counteract gravitational settling
- 60 (e.g., turbulence, convective uplift, or electrostatic forces), yet these processes are not fully understood and remain an active area of research (Rosenberg et al., 2014; van der Does et al., 2018; Harper et al., 2022; Ratcliffe et al., 2024). Since the mechanisms driving the transport and prolonged suspension of large particles are poorly understood, their emission and transport are either excluded from numerical simulations or their presence in the atmosphere is underestimated (Adebisi and Kok, 2020). As a result, most models cannot represent the impacts of super-coarse and giant particles on climate, which introduces significant
- 65 uncertainties into dust-climate impact assessments (Kok et al., 2023).

- To better understand the mineral dust cycle and to include its impacts on climate into models, it is essential to accurately quantify and characterize the PSD of mineral dust, including super-coarse and giant particles. Accurately measuring the full PSD of mineral dust remains challenging, as no single instrument can cover its entire size spectrum (Mahowald et al., 2014). Giant dust particles are especially difficult to measure due to their relatively low expected number concentrations and the low
- 70 sampling efficiencies of instrument inlets (Adebisi et al., 2023; Schöberl et al., 2024). Aerosol instruments that actively draw in air are susceptible to sampling biases: Deviations from isokinetic sampling (where the airflow inside the inlet matches the ambient wind speed) can cause over-/underestimation of larger particles due to departures of their trajectories from the flow

streamlines. Additionally, inertial losses in tubing and gravitational settling in horizontal sampling lines often lead to under-sampling of super-coarse and giant particles, distorting the observed PSD (Kulkarni et al., 2011). To mitigate these issues, some aircraft measurement campaigns have avoided inlets altogether or explicitly quantified their losses, allowing for more accurate retrievals of super-coarse and giant dust particles (e.g., Rosenberg et al., 2014; Ryder et al., 2019). These studies give important insights into the PSD evolution during transport of mineral dust. However, as measured in several hundred meters height, they cannot provide much information about the PSD of dust directly after its emission.

Ground-based measurements at emission sources have predominantly targeted the fine and coarse fractions ($< 10\mu\text{m}$; Formenti and Di Biagio, 2024), and no campaign has yet comprehensively captured the full size spectrum from fine to giant mineral dust directly at an emission source. In addition to this gap, the variability-dependency of the emitted dust PSD on wind forcing is not yet fully understood. ~~For example, some studies predicted that the dust PSD at emission is influenced by wind speed (e.g., Alfaro et al., 1997; Shao, 2004; Ishizuka et al., 2008), others suggested that the dust size distribution is independent of it.~~ Some wind tunnel and field studies have shown an enrichment of the PSD with fine particles at increasing wind friction velocities (Alfaro et al., 1997; Ishizuka et al., 2008; Sow et al., 2009; Webb et al., 2021). Correspondingly, some theories predict that higher friction velocity increases the proportion of fine particles during dust emission and link the PSD to soil properties (e.g., Alfaro and Gomes, 2001; Shao, 2004). In contrast, Kok (2011b, a) and Kok et al. (2014) suggested, based on brittle fragmentation theory and existing measurements, that the emitted PSD is largely independent of wind friction velocity, at least in the fine and coarse ranges (Kok, 2011b). This independence is explained with findings that saltator impact speeds, key to dust emission, remain largely unaffected by variations in mean wind speed (Durán et al., 2011; Kok et al., 2012).

Shao et al. (2020) and Khalfallah et al. (2020) argued that the dust PSD at emission is influenced by atmospheric boundary-layer stability. Dupont (2022) suggested that friction velocity and air relative humidity may be the primary factors affecting the emitted dust PSD in these previous studies while stability may have no direct influence.

To address the gap in measuring the full PSD of mineral dust, including (super-) coarse and giant particles, and to capture its variability at a desert dust emission source, we conducted field measurements using a comprehensive suite of active and passive (including open-path) aerosol spectrometers and compared them with flat-plate sampler probes. We addressed key challenges in measuring large dust particles at emission by minimizing the use of inlets, accounting for inlet efficiencies, and resolving inter-instrument uncertainties.

In Sect. 2, we provide a detailed description of the field campaign setup and the instruments used, along with their respective measurement principles and data processing. Section 3 presents the results on the observed dust concentration PSD and its variability and uncertainties, followed by a comparison of our findings with other studies. Finally, we conclude in Sect. 4 with implications of our results on future research on mineral dust and its climate impacts.

2 Methods

105 The goal of our study is to better quantify the full-range mineral dust concentration PSD and its variability at emission. For this purpose, we use meteorological and aerosol spectrometer measurements collected during the J-WADI field campaign. To combine measurements from multiple aerosol spectrometer instruments, we apply a strict correction procedure and compare them with collected samples as detailed in the following.

2.1 J-WADI field campaign

110 The J-WADI (Jordan Wind erosion And Dust Investigation) field measurement campaign (<https://www.imk-tro.kit.edu/english/11800.php>, last accessed 5 Mar. 2025) was conducted in Wadi Rum, Jordan in September 2022. Its aim was to advance our understanding of the particle size and mineralogical composition of the emitted dust and their dependence on the parent soil and meteorological conditions. J-WADI was co-organized by the ERC Consolidator Grant FRAGMENT (FRontiers in dust minerAloGical coMposition and its Effects upoN climaTe; earlier studies in this context: González-Flórez et al., 2023; 115 González-Romero et al., 2023; Yus-Díez et al., 2023; González-Romero et al., 2024b, a) at the Barcelona Supercomputing Center (BSC) and the Helmholtz Young Investigator Group "A big unknown in the climate impact of atmospheric aerosol: Mineral soil dust" at KIT in collaboration with the University of Jordan.

The field site was located at 29°44'21"N, 35°22'56"E, in Wadi Rum (Fig. 1a) and nearby the village of Rashidiyah and approximately 700 m downwind of the Quweira solar power plant. During the measurement period, no significant human activity occurred at the power plant, and we therefore do not expect that its presence had any influence on our measurements. It was situated within a flat, open landscape surrounded by small hills (< 100 m in altitude, Fig. 1b). This configuration created a wide opening facing the expected predominant wind direction, while the opposite side featured a narrow opening where winds typically exited. Despite this surrounding topography, the measurement site was within a flat area that may occasionally be flooded during heavy rainfall periods, and lacked any significant surface roughness features. The location and timing of the 125 campaign were chosen based on analysis of remote sensing data, on-site inspection, and local guidance, considering scientific and practical aspects, such as expected dust emission potential and likelihood, accessibility, and logistics.

The site setup was similar to previous FRAGMENT campaigns in Morocco and Iceland (González-Flórez et al., 2023; Dupont et al., 2024), but with additional instrumentation emphasizing super-coarse and giant dust and atmospheric turbulence. To minimize the potential for instrument shadowing, we oriented the instruments approximately perpendicular to the expected predominant wind direction (Fig. 1b, c, d), determined by analysis of measurements at seven stations across Jordan available through the NOAA ISD meteo data (<https://www.ncei.noaa.gov/products/land-based-station/integrated-surface-database>, last accessed 24 Mar. 2025), and observation of local erosion, e.g. ripples. All instruments except one (SANTRI - powered by a photovoltaic panel on top of the device with battery buffering) were powered by a diesel generator placed approximately 200 m north of the measurement setup (see Fig. 1). Consequently, we expect minimal impacts of the generator exhaust on our near-surface PSD measurements, and only during northerly winds and for the smallest particle sizes. Here we present only 135 instruments and data used in this study. Other measurements from J-WADI are described elsewhere (e.g., Dupont et al., 2024).

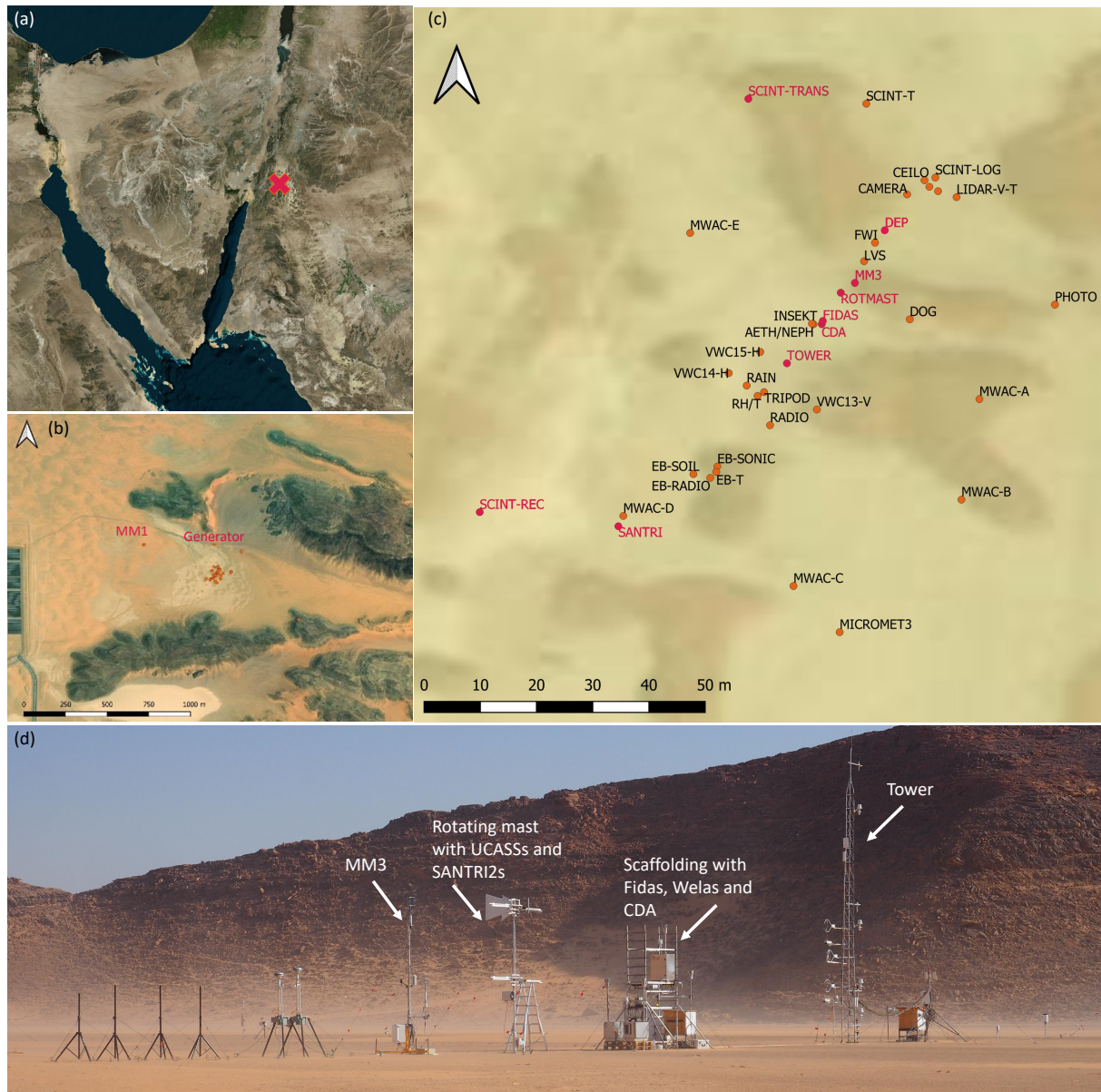


Figure 1. Field location and set-up. (a) Background image from Bing maps with the field site marked with a pink cross, (b) topographic map, field set-up, and surrounding of J-WADI, [including mobile mast MM1 and the diesel generator](#) (c) set-up at the measurement site with the instruments used [in this article](#) marked in pink ([SCINTTRANS](#) abbreviations: SCINT-TRANS/-REC = scintillometer transmitter/receiver, ROTMAST = rotating mast, DEP = deposition sampler, [MM3 = mobile mast 3](#)), (d) photo of the site center including most instruments used in this study in their field deployment. Background map copyright (a) © Microsoft, (b) and (c) Esri, Maxar, Earthstar Geographics, and the GIS User Community.

2.1.1 Meteorological retrievals

The meteorological instruments and data used here are summarized in Tab. 1. We obtained the friction velocity (u_{*}) and Obukhov length (L) using a large-aperture scintillometer (Scintec SLS-40, 1 min data rate) positioned parallel to the main instrument line (Fig. 2 a). The scintillometer measures the refractive index structure parameter (C_n^2) and sensible heat flux (H), from which u_{*} and L were derived based on Monin-Obukhov similarity theory (MOST). The Obukhov length L characterizes atmospheric stability as the ratio of mechanical turbulence to buoyancy effects, where negative values indicate unstable, positive values stable, and large magnitudes near-zero indicate neutral stratification. The primary reason for this choice is that the scintillometer provides values representative of a larger surface area, reducing local turbulence biases. The setup of the scintillometer consists of two primary components, both placed at $z = 2.54$ m height: a transmitter, which emits a laser beam, and a receiver (located 97 m away from the transmitter), which captured the transmitted light (Fig. 1c). Variations in air temperature along the path of the laser beam cause fluctuations in the intensity of the received light. Detecting these fluctuations gives information about turbulence along the beam's trajectory. Atmospheric stability classes were determined using z/L intervals following the classification by Berg et al. (2011). The classification distinguishes five stability regimes: unstable ($z/L \leq -0.2$), near-unstable ($-0.2 < z/L < -0.04$), neutral ($-0.04 \leq z/L \leq 0.04$), near-stable ($0.04 < z/L < 0.2$), and stable conditions ($z/L \geq 0.2$).

Some data gaps occurred due to scintillometer issues, including high noise levels, power cuts, and overheating. Gaps in u_{*} and L were filled based on measurements of a 3D sonic anemometer (Campbell Scientific® CSAT3, 50 Hz, Fig. 2b) mounted on a 10 m tower at 3.0 m height retrieved based on the eddy covariance (EC) method, as presented in Dupont et al. (2024). To calculate particle concentrations from particle counts detected by the UCASS and SANTRI2 instruments (described in Sect. 2.1.2 and mounted on a rotating mast), we used wind speed data at 2 m and 4 m height measured by 3D sonic anemometers (R. M. Young Company, model 81000 Ultrasonic Anemometer, 40 Hz, Fig. 2d) mounted on a 4 m mast (mobile mast MM3) located less than 2 m from the mobile-mast (rotating mast ROTMAST, Fig. 1c). Pressure was measured using a barometer (R.M. Young Company, Model 61202V) positioned at a height of 1 m on the 4 m mast, while (potential) temperature and relative humidity were measured (and inferred) using a temperature and humidity sensor (Rotronic, Model MP100) mounted at a height of 2 m on the 4 m mast (Fig. 2c). Some gaps in the data of the 4 m mast occurred due to power cuts and faulty data acquisition. To fill any gaps in the wind data, we used measurements of the 3D sonic anemometers from the 10 m tower at 2 m and 4 m heights (Fig. 2b). Gaps in temperature, relative humidity, and pressure measurements were filled using instruments of the same type mounted on an identical mobile mast located approximately 500 m upwind of the expected dominant wind direction (MM1 in Fig. 1b).

Threshold friction velocity: The threshold friction velocity u_{*t} represents the minimum friction velocity required to initiate saltation. To retrieve u_{*t} , we used saltation data from the SANTRI (Standalone AeoliaN Transport Real-time Instrument) platform (Etyemezian et al., 2017; Goossens et al., 2018; Klose et al., 2019) and implemented the Time Fraction Equivalence Method (TFEM Stout, 1998; Barchyn and Hugenholtz, 2011) for 15-min averaged data over the whole campaign period. This method assumes that the time fraction during which saltation is detected is equivalent to the time fraction during which the

Table 1. Overview of meteorological instruments and measured variables used in this article. Abbreviations: MOST - Monin-Obukhov Similarity Theory; EC - Eddy Covariance; TFEM - Time Fraction Equivalence Method

Instrument (Model)	Variable(s)	Height (m)	Temporal resolution	Purpose / Usage
Scintillometer (Scintec SLS-40)	C_n^2 , sensible heat flux (H); derived u_* and L	2.54	1 min (logging frequency)	Derivation of u_* and Obukhov length L via MOST; provides spatially representative turbulence measurements <i>gaps filled with 3D sonic anemometers (Campbell)</i>
3D sonic anemometer (Campbell CSAT3)	Wind vectors; temperature (sonic); u_* via EC	3.0 (on 10 m tower)	50 Hz (logging frequency)	Gap-filling for u_* and L when scintillometer data are missing and when wind data from MM3 are missing
3D sonic anemometers (R.M. Young 81000)	Wind speed, direction	2.0 and 4.0 (on MM3 mast)	40 Hz (logging frequency)	Wind input for particle concentration calculations; <i>gaps filled with 3D sonic anemometer (Campbell)</i>
Barometer (R.M. Young 61202V)	Air pressure	1.0 (on MM3 mast)	15-min mean (analysis frequency)	Provides pressure data for atmospheric context; <i>gaps filled with MM1 sensor</i>
Temperature and humidity sensor (Rotronic MP100)	Temperature and relative humidity	2.0 (on MM3 mast)	15-min mean (analysis frequency)	Used for ambient conditions and to derive humidity; <i>gaps filled using MM1 sensor</i>
Saltation sensor (SANTRI)	Saltation counts at three heights; streamwise saltation flux	0.05, 0.15, and 0.3	15-min mean (analysis frequency)	Used to derive threshold friction velocity u_{*t} via TFEM

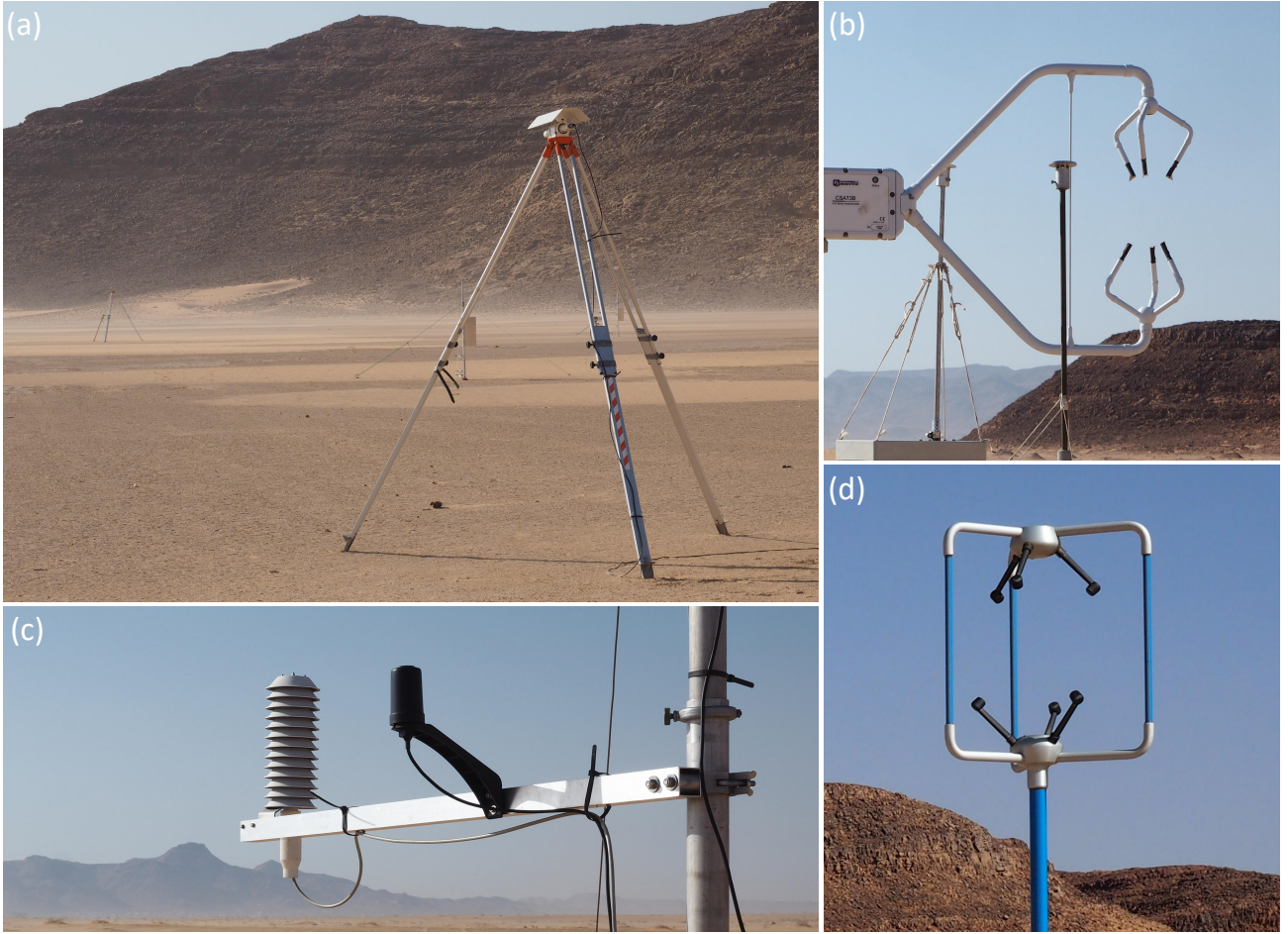


Figure 2. Meteorological instruments deployed during J-WADI and used in this study: (a) Scintillometer SLS40 used to retrieve the friction velocity u_* with transmitter in the foreground and receiver in the background. (b) 3D sonic anemometer Campbell Scientific® CSAT3B used to fill gaps from u_* , L and wind speed. (c) temperature, humidity and GPS sensor mounted on a 4 m meteorological mast. (d) 3D sonic anemometer R. M. Young Company, model 81000, mounted on the 4 m mast and used to retrieve particle concentrations from UCASS and SANTRI2.

friction velocity exceeds the threshold. SANTRI measures saltation counts at three heights as described in González-Flórez et al. (2023, Sect. 2.2.3). Here we counted times of active saltation as those during which at least two out of four sensors measured saltation and the height-dependent streamwise saltation flux (calculated as described in Klose et al. 2019) was non-zero. SANTRI are the original saltation measurement design of which later on the SANTRI2 (Sec. 2.1.2) evolved. It was located approximately 40 m from the tower (Figure 1e, Figs. 1c and 3). For values of u_* , we used the scintillometer data with gaps filled by the 3D sonic anemometer retrieved u_* .



Figure 3. SANTRI instrument to measure saltation and retrieve flux density to obtain threshold friction velocity.

2.1.2 Aerosol spectrometer measurements

In this study, we analyze a comprehensive set of aerosol spectrometer measurements from the J-WADI campaign to investigate the size distribution of airborne mineral dust particles, with a particular focus on the larger particles ($>10\mu\text{m}$). Our aerosol spectrometer suite included the UCASS (Universal Cloud and Aerosol Sounding System, designed at the University of Hertfordshire; Smith et al. 2019), the saltation particle counter SANTRI2 (Standalone AeoliaN Transport Real-time Instrument, second edition, designed at the Desert Research Institute; Etyemezian et al. 2017; Goossens et al. 2018), the CDA (Cloud Droplet Analyzer), the Welas 2500 (White Light Aerosol Spectrometer, Kuhli et al. 2010), and the Fidas 200S (González-Flórez et al. 2023; all three manufactured by the Palas GmbH). This multi-instrument approach was chosen to ensure a robust examination of the entire size distribution from approximately 0.4 to $200\mu\text{m}$, encompassing the fine and giant particle fractions with significant overlap between the size ranges covered by the instruments as shown in Fig. 4. The UCASS and SANTRI2 devices were positioned on the rotating mast (Fig. 5) and the two Welas, two Fidas, and CDA next to or on a scaffolding (Fig. 6). Key instruments properties are summarized in Table 2.

SANTRI2: To explore the giant particle size range, we employed SANTRI2, which uses optical gate devices to infer time and size resolved particle counts (Etyemezian et al., 2017; Goossens et al., 2018; Klose et al., 2019). Originally designed to measure saltation, these instruments are normally positioned vertically on the ground to detect particles transported in saltation at different heights. For the purpose of detecting giant dust particles – the size range of which fits to that of typical saltation particles – we mounted the SANTRI2 at greater height (2 m and 4 m) oriented horizontally to have multiple synchronous measurements at the same height. One unit consists of 5 sensors and each comprises a photosensor that is 9.53 mm away from the diode with 890 nm light wavelength. The onboard electronics interpret the reduction in light signal caused by a sand grain or giant dust particle traveling through the beam as voltage drop of a circuit in which the sensor is incorporated when it arrives at the photosensitive sensor. The SANTRI2 therefore measure projected-area diameters. We employed four SANTRI2 units measuring in the size range $d_{\text{PA}} \sim 85\mu\text{m}$ to $200\mu\text{m}$ (projected-area diameter) in 7 size bins. As the largest bin, which extends to diameters $d_{\text{PA}} > 200\mu\text{m}$, has no upper size limit, we did not use it for this study. The lower and upper diameter limits for each bin vary over time and were determined based on the recorded sensor reference voltage levels. The four SANTRI2 instruments

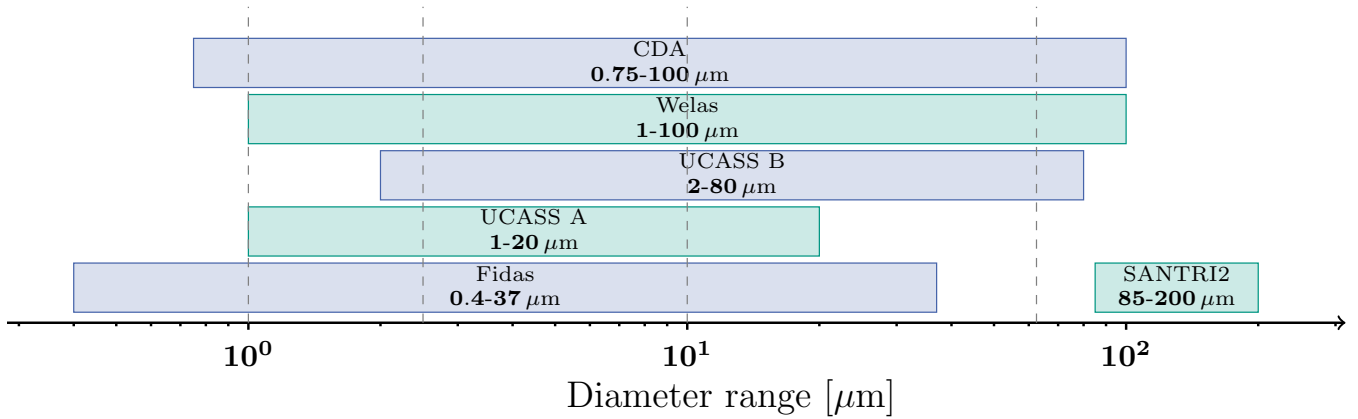


Figure 4. Size ranges covered by the five instrument types in terms of optical diameter (except SANTRI2, projected-area diameter). The multi-instrument strategy covers the full size range from about 0.4 to 200 μm , effectively encompassing fine to giant particle sizes. Dashed lines indicate the size ranges of the dust size classifications (Adebiyi et al., 2023).

Table 2. Characteristics of the [instruments-aerosol spectrometers](#) used in [the-this](#) study. [Diameters are optical diameters \(except for SANTRI2: projected-area diameter\).](#)

Instrument	Measurement principle	Light source	Inlet	Diameter size range	Scattering angle	Position	# of bins	Height	Number
UCASS	light scattering	laser: 658 nm	nearly open-path	1-20 μm , 2-80 μm	16-104°	rotating mast	16	4 m	2
Welas	light scattering	Xenon light	directional inlet	1-100 μm	90°	scaffolding	256	2/4 m	2
Fidas	light scattering	LED light	directional inlet	0.4-37 μm	90°	scaffolding	256	2/4 m	2
CDA	light scattering	white light	Sigma-2 head	0.75- 100 μm	90°	scaffolding	256	4 m	1
SANTRI2	shadowing	diode: 890 nm	open-path	85-200 μm	none	rotating mast	7	2/4 m	4 (each 5 sensors each)

were mounted on the rotating mast. It consisted of a wind vane and a rotating pole, so that the instruments were turned toward the wind. Two units were mounted at 2 m height and two at 4 m height with one unit facing upward and one facing downward at each height. This setup was chosen to avoid possible biases in particle detection due to interference between particle trajectories and flow around the (relatively slim) instruments' bodies. Analysis showed that the downward-facing units exhibited a high

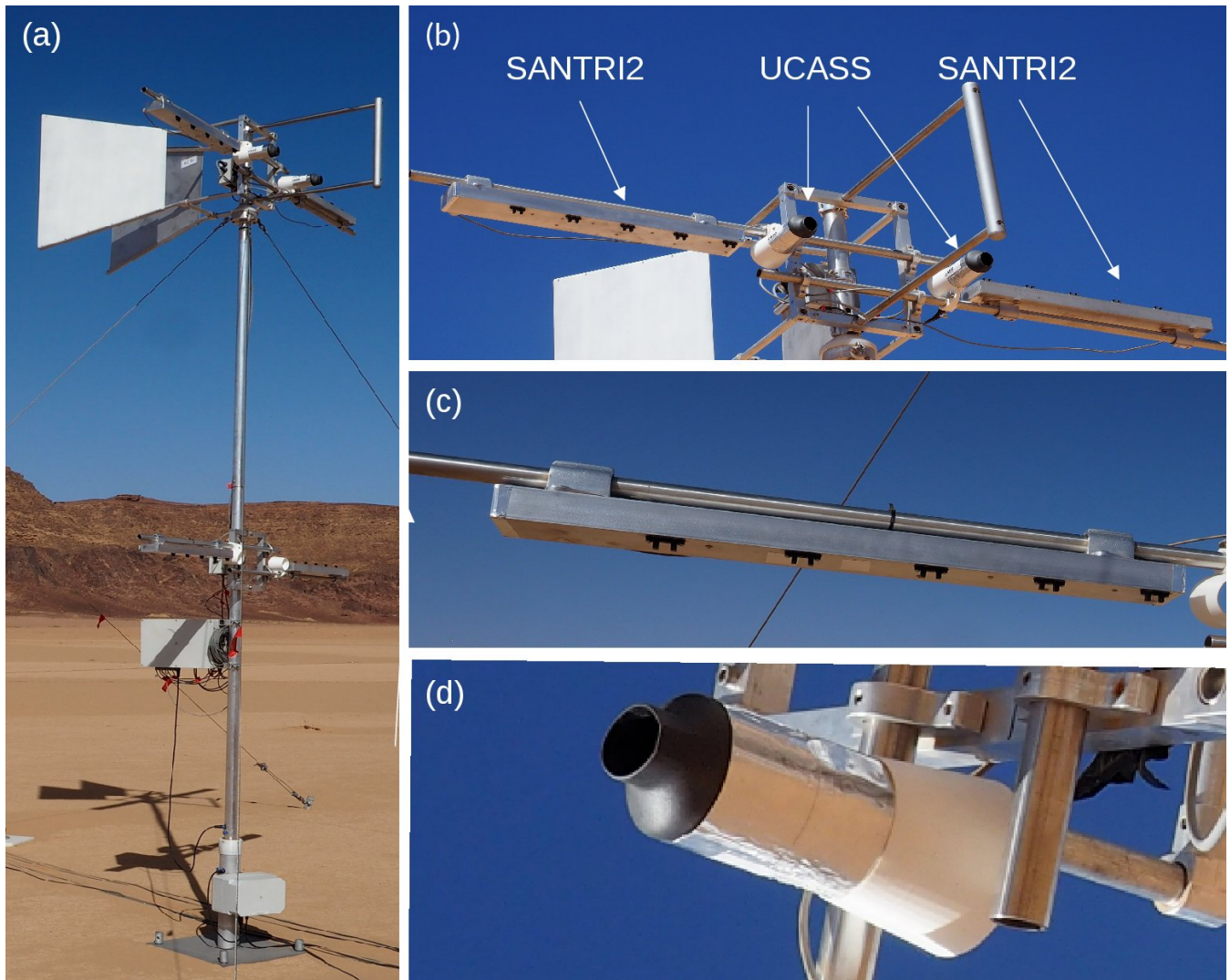


Figure 5. UCASS and SANTRI2 on the rotating mast: (a) The rotating mast (b) with two UCASS and two SANTRI2 at 4 m height and (c) SANTRI2 at 2 m height, (d) view from below the UCASS at 4 m height.

205 level of noise. They were therefore excluded from further analysis. The exact cause of this behavior remains unclear and requires further investigation.

UCASS: UCASS is a low-cost particle counter designed at the University of Hertfordshire. It was used for airborne measurements of aerosol and droplet concentrations and size distributions using, e.g., drones and dropsondes in greater heights (Smith et al., 2019; Girdwood et al., 2020, 2022) while we used it ground-based. Here, we deployed the UCASSs at 4 m on the rotating mast together with the SANTRI2 (Fig. 5a). As the measurement principle, it uses wide-angle elastic light scattering with a passive open-geometry system (nearly open-path). The input beam is a 658 nm continuous-wave diode laser, operating at 10

210

mW. The optical setup includes a laser with a collimator, a cylindrical lens, and a 2 mm aperture. The laser beam is directed into the instrument using a front-silvered mirror positioned at a 45° angle. When particles intersect the laser beam, they scatter light. An elliptical mirror then gathers the light scattered at angles between 16° and 104°, and focuses it onto the detector, where both the pulse height and duration are measured. We used two versions of the UCASS, measuring in 2 different size ranges: one in a larger size range with diameters d_o from 2 - 80 μm (UCASS B) and the other one in a smaller size range with $d_o = 1\text{-}20\ \mu\text{m}$ (UCASS A) in 16 different size bins each. To retrieve the (optical) particle diameter, Generalized Lorenz-Mie Theory (GLMT, Gouesbet 2019) is used. GLMT extends the classical Lorenz-Mie framework to account for scattering by particles under non-uniform or partial illumination, such as those exposed to focused or structured beams (e.g., Gaussian or Bessel beams). It adapts the incident field's spatial characteristics, modifies scattering coefficients, and uses numerical integration over the illuminated particle region to accurately model these complex interactions. To address the influence of outliers affecting the lower size boundary of the first bins, we excluded the first size bin from the analysis for both instruments.

Welas and Fidas: The Welas and Fidas systems measure number and size of aerosols through single-particle light scattering detection at a 90° angle. Both instruments use a white light source (Fidas = LED light, Welas = Xenon light) to homogeneously illuminate a T-shaped volume, minimizing optical limitations, border zone, and coincidence errors to illuminate a small, homogeneously lit measurement volume, minimizing optical limitations and ensuring high measurement accuracy. As particles traverse this volume, they scatter light pulses of varying intensities, which are detected and analyzed based on Mie theory, assuming spherical particles. To measure a wide size range within the same air volume, the active instruments Welas 2500 and Fidas 200S were connected through an optical tube, allowing both instruments to sense particles in the same air flow (Fig. 6 b).

The Fidas 200S measured particles in the size range of 0.4–4037 μm , whereas the Welas measured in the range between 1 and 100 μm , extending the joint size range of both instruments to include larger particles. Importantly, the pump of the Welas was not used; instead, the pump of the Fidas provided a steady flow rate of 4.8 l min⁻¹, ensuring consistent sampling conditions for both instruments. This setup, deployed for the first time in a field campaign, allowed simultaneous measurements across an expanded size range, enhancing the characterization of the particle size distribution. Instead of using the standard Palas Sigma-2 passive collector, we used a custom-made directional inlet to align the inlet flow with the mean wind. The exact dimensions of the inlet are provided in Fig. G1. After the inlet, the particles are guided through a sampling tube with drying section IADS (Intelligent Aerosol Drying System), avoiding condensation effects. We placed the combined instruments at 2.1 m (referred to as Welas_2m/Fidas_2m) and 3.8 m height (Welas_4m/Fidas_4m) on a scaffolding at a distance of about ~5 m from the rotating mast (Fig. 6a). We recorded single-particle data for the Welas in the 256 raw size bins, i.e. the instrument's raw data before compilation into size distributions. This approach provides high-resolution data, from which we then calculated the PSD. Here, we aggregated the raw 256 bins into 31 approximately logarithmically spaced bins to reduce noise and enhance the clarity of trends in the PSD. A reduction to 31 bins was sufficient to achieve this in case of the Welas. The Fidas data were analyzed with the PDAnalyze software from Palas GmbH and we summarized the 256 bins into 16 logarithmically-spaced bins similar to the approach in González-Flórez et al. (2023).

CDA: Next to Fidas_4m and Welas_4m, a CDA was placed at 4 m height on the scaffolding and set to measure in the size range of 0.8 – 100 μm with a flow rate of 5 l min⁻¹. The CDA uses the same measurement principle as the Fidas and Welas, but

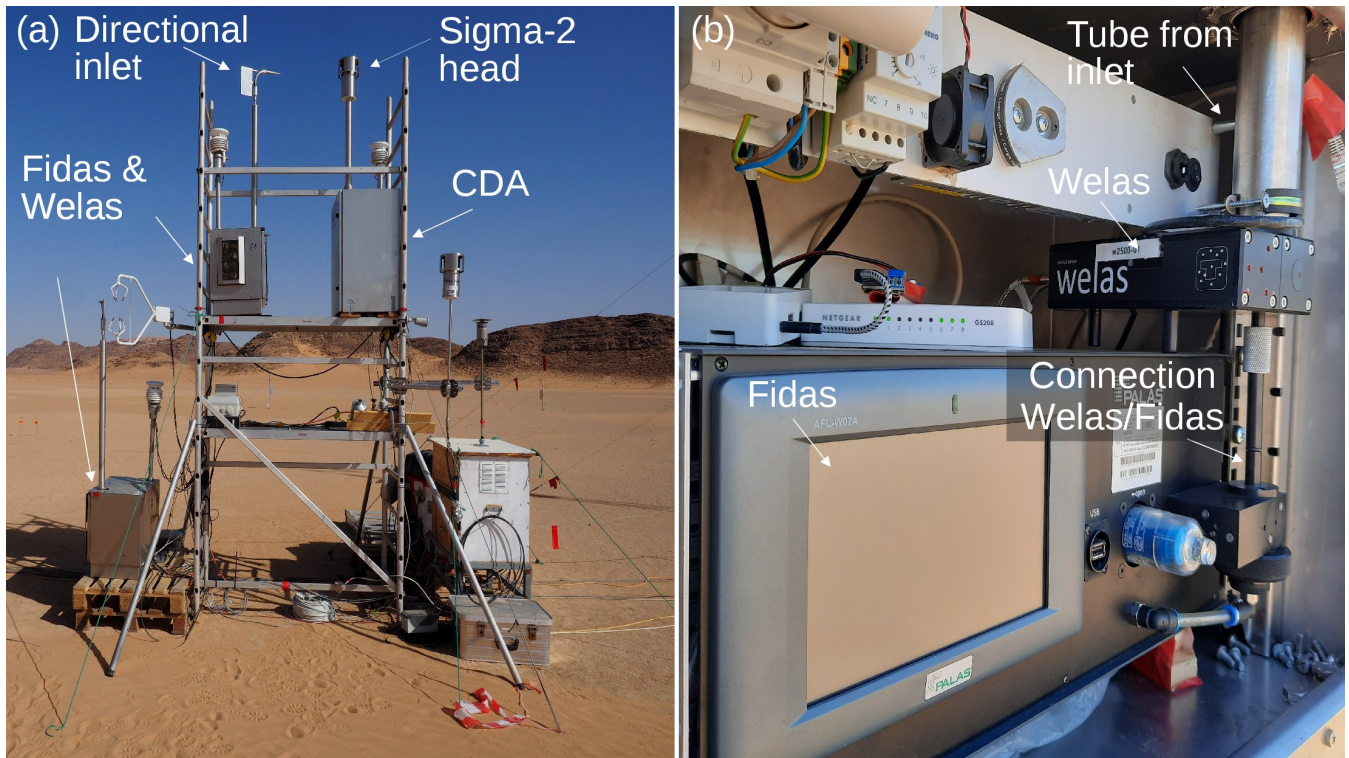


Figure 6. Welas, Fidas, and CDA (a) on and next to the scaffolding, (b) Welas and Fidas sharing the same air flow in the metallic box.

unlike the other two instruments, it senses the entire flow volume rather than just a portion of it. This approach was expected to be beneficial for larger particles, as their number concentrations in ambient air are typically much lower than those of smaller particles. By increasing the sensed volume, and thereby the number of detected particles for any given concentration, this setup should improve the statistical robustness at which the larger, less abundant particles are counted. For the CDA, we also recorded single-particle data (as for the Welas) and rebinned the 256 bins to the same 31 bins as for the Welas. The last bin of the Fidas, Welas, and CDA were removed because they correspond to the respective upper boundaries of the instruments' measurement range, where limitations in size classification accuracy and potential edge effects introduce uncertainties in the recorded data.

General data treatment: The measurements of all aerosol spectrometers were time-synchronized by connecting them to a time server. The devices used different sampling frequencies, mostly 1 Hz, but for the analysis we averaged them over 15 min (time stamps correspond to the end of the interval) in consistency with earlier campaigns (González-Flórez et al., 2023; Panta et al., 2023; Yus-Díez et al., 2023). Note that Dupont et al. (2024) used time stamps that corresponded to the middle of each interval, but that data used here (e.g. u_*) was re-assigned to match the time stamps used in this study. A time interval of 15 min was chosen as it is still small enough to identify variations, but also large enough to characterize the boundary layer turbulence spectrum. To derive mass concentration from number concentration, we assumed a particle density of $\rho = 2650 \text{ kg m}^{-3}$ as reported by Tegen and Fung (1994) but did not measure it in the field.

To gain information about the mineral dust emission, dust fluxes are often used to infer the emitted dust PSD (Shao, 2008). This emission PSD at height zero has never been measured directly. The dust fluxes are typically estimated using the flux-gradient (FG) and eddy covariance (EC) methods, but their applicability for particles $d_p > 10\mu\text{m}$ is limited (Fratini et al., 2007; Shao, 2008; Dupont et al., 2021). Recent experiments confirmed that dry deposition can strongly influence both concentration and diffusive flux PSDs, modulated by wind-dependent fetch length and friction velocity (González-Flórez et al., 2023), supporting earlier modeling studies (Dupont et al., 2015; Fernandes et al., 2019). Therefore, in this study, as a first step we approximate the ~~emission dust PSD~~ PSD of the emitted dust flux by the PSD ~~close to emission instead of emission dust fluxes~~ assuming that they will be finer than the of near-surface dust concentration during emission, assuming that the latter is shifted toward smaller sizes compared to the actual emission flux PSD due to the removal of large particles by gravitational settling.

To determine a representative central value for each size bin, we used the geometric mean of the upper and lower bin boundaries. Fidas, Welas, and CDA were calibrated using monodisperse polystyrene latex spheres (PSL, MonoDust 1500, manufactured by Palas GmbH). The Fidas and Welas instruments were calibrated at the start of the campaign, while the CDA and UCASS were calibrated prior to shipping (in the case of the UCASS: Girdwood et al., 2025). As a result, the optical diameters used to describe the original instrument PSD correspond to the diameters of latex spheres that produce the same intensity of scattered light as the dust particles being measured. We converted optical diameters into geometric (volume-equivalent) diameters for Fidas and Welas by following the approach proposed by Huang et al. (2021) that was implemented in González-Flórez et al. (2023) for the same Fidas instrument. We assumed an average complex refractive index (CRI) for the Middle East ($1.53 - 0.0011i$) from Di Biagio et al. (2019), and prolate biaxial ellipsoids shape for the dust particles with an aspect ratio of 1.49. Here, we made use of the single particle scattering calculations for biaxial spheroids from the Gasteiger and Wiegner (2018) database in this diameter conversion procedure. Figure E1 of the Appendix E compares the obtained geometric diameters with the default optical diameters. It reveals that the optical diameters underestimate the dust particle sizes ~~-, primarily-~~ due to the combined influence of dust asphericity and refractive index. Especially for larger particles the underestimation is substantial, whereas the differences decreases for smaller particles. This conversion to geometric diameter enables easier comparison of our observed with theoretical and modeled PSDs. For the SANTRI2, we converted projected-area into geometric diameters as explained in detail in Appendix E.

Outlier correction and harmonization: Throughout our research campaign, we observed irregularities in the mineral dust PSD across instruments, which presented two main challenges. Some instruments (UCASS, SANTRI2, occasionally Welas, and CDA) displayed sharp peaks in their size distribution data that were unrealistic and inconsistent with visual observations (e.g., periods of low wind) and did not align with data from other instruments (or other sensors, in the case of the SANTRI2). We attribute these anomalies to outliers, likely caused by unwanted light reflections or contaminated sensors.

Outliers are expected due to various instrumental factors: in SANTRI2, light reflected from surfaces can lead to erroneous detections; in UCASS, a faulty connection could result in recurring high numbers in the counts over time steps without similar values in the surrounding; and in Fidas, Welas, and CDA, outliers can arise from misclassification errors, where particle counts are incorrectly assigned to adjacent bins. These discrepancies in PSD underscored the necessity of correcting such outliers to ensure the accuracy and reliability of subsequent statistical analyses. This step was crucial for uncovering trends and patterns

in the data. To address outliers and harmonize measurements between instruments, various correction methods were applied, as detailed in Appendices C and D, and summarized below. The outliers detected in SANTRI2 data were managed by applying a filter based on comparison between counts registered at the different sensors and outlier statistics (Appendix C1). For the
300 UCASS, we used the count distribution as the basis to remove outliers (Appendix C2). For the Welas and CDA instruments, we excluded counts recorded in one of the 31 bins (from the summarized 256 raw bins) when no counts were detected in the preceding smaller bin over a 15-minute interval (Appendix C3).

To establish a baseline for identifying and quantifying systematic differences between the instruments, we conducted inter-comparison measurements at the end of the campaign. During this phase, all devices, except the SANTRI2, were placed in
305 close proximity and aligned at ~ 2 m height. The SANTRI2 devices were installed nearby and next to each other in the setup for which they were originally designed, i.e. vertically to measure saltating particles. This substantially increased the number of particles they registered and enabled a more robust statistical comparison. The Welas instruments utilize a light source with a guaranteed lifespan of 400 hours. Beyond this period, the light spectrum, and therefore also the bin classification, may shift, which we suspect occurred for Welas_2m. To reconcile discrepancies between the measurements from Welas_2m and
310 Welas_4m, the bin distribution of the Welas_2m data was stretched based on measurement differences obtained during the intercomparison period. Further details on this adjustment are provided in Appendix D3. For instruments of which we used more than one device, such as Fidas, Welas, and SANTRI2, we applied bin-wise linear regression corrections of the number counts to eliminate systematic biases between devices of the same type. This approach follows the methodology outlined in González-Flórez et al. (2023) and Dupont et al. (2024), and is detailed further in Appendix D1. To harmonize the PSDs from
315 instruments with different measurement principles and correct for systematic differences between them, we applied a constant scaling factor, using Fidas_4m as the reference. The scaling factor was retrieved by minimizing the difference between the PSDs of Fidas_4m and each of the other instruments in the size range $1 - 10 \mu\text{m}$ during the intercomparison period. The retrieved correction factor was then applied to the entire PSD for the corresponding instrument over its measurement period. This procedure is further detailed in Appendix D2.

320 Due to high inconsistencies in two SANTRI2 units (high noise level), the UCASS (oscillation) and CDA (decrease for $d_o > 20 \mu\text{m}$) data, we excluded them from the analysis (for more detail see Sect. 3.2). To create a unified PSD covering the entire size range, data from the two SANTRI2 (with 5 sensors each), the two Welas and the two Fidas instruments (2 and 4 m height) were combined by aligning overlapping size bins and correcting for inter-instrument differences. To harmonize the PSD across instruments, we applied a rebinning method that interpolates measurements from the original bin edges to a common
325 set of target bins, using bin-weighted averages based on overlapping size ranges. As instruments are less sensitive and reliable toward the edges of their measurement size ranges, we did not use the full size ranges of the individual instruments to combine them into the averaged PSD, and bins without valid contributions were assigned NaN values. The whole procedure is described in detail in Appendix F. For some analysis steps (e.g., comparison to other studies or the comparison of different time steps), to make the averaged PSDs' shape from different time steps comparable, they are normalized over a certain diameter range (Sect.
330 2.1.2) so that the integral is equal to 1 in every time step. The rebinning method described above was also applied to compare



Figure 7. Flat-plate sampler (FPS) used in the J-WADI campaign, adapted from Ott and Peters (2008). Positioned 10 m from the rotating mast, it consists of two brass plates at a distance of 16 mm and a circular substrate (diameter = 25 mm) in the center of the bottom plate.

our J-WADI data with results from other field campaigns and was normalized according to the approach outlined by Formenti and Di Biagio (2024).

2.1.3 Particle sampling and analysis

Dry deposition samplers of a 'flat-plate' type (FPS; Waza et al., 2019; Panta et al., 2023) were used to collect deposited particles directly on pure carbon adhesive substrates (SpectroTabs, Plano GmbH, Wetzlar, Germany). Briefly, the FPS consists of two circular brass plates, a top plate with a diameter of 203 mm and a bottom plate with a diameter of 127 mm with a distance of 16 mm (Fig. 7). Between the plates the wind is channeled and thus turbulence is reduced. A 25 mm aluminum stub is placed in the center of the lower plate with the adhesive surface level with the plate. As a function of wind speed, particles larger than a few hundreds of μm are generally prevented from reaching the sampling surface due to their large settling velocities (Ott and Peters, 2008). The sampler was placed approximately 10 m from the rotating mast and 1.5 m above ground on a tripod. The substrates were typically exposed for 24 hours with some exceptions during high dust loadings (Table B1).

Scanning electron microscopy (SEM) A FEI Quanta 400 FEG ESEM (FEI, Eindhoven, The Netherlands) was used to analyze the morphology, size, and surface features of individual particles by directing a focused beam of electrons onto a sample and detecting the resulting secondary and backscatter electrons (Scanning Electron Microscopy, SEM). The system is operated in a semi-automated way, in which backscatter images are used to detect the particle on the carbon substrate by their higher brightness. For each identified particle, size, shape and an X-ray fluorescence spectrum (using an X-Max 150 energy-dispersive X-ray detector (EDX), Oxford, Oxfordshire, UK) is recorded. The samples were analyzed under high-vacuum conditions

without pretreatment. An acceleration voltage of 12.5 kV, a beam current of 18 nA, and a working distance of approximately 10 mm were used. Analysis was carried out at two different magnifications (1.28 and $0.16\mu\text{m pixel}^{-1}$). This allowed for the sizing of particles with a minimum projected-area diameter of $0.2\mu\text{m}$ at the high magnification. The low magnification enabled the analysis of a large sample area, yielding sufficient counting statistics for larger particles. At higher magnification, analysis locations on the substrates were randomly selected, while at lower magnification the total substrate could be investigated. After the automated analysis, the images were manually inspected for obvious surface defects and the corresponding regions removed from the data (less than 1 % of the surface). Plant fibers found on some samples sized several $100\mu\text{m}$ were also disregarded. Also, particles with very low EDX count rates due to shading effects were not included. On average, 3500 particles were analyzed for each sample (min. 1700). ~~Mass deposition rates were calculated from the observed particles and the analysis area employing different geometric corrections. For details on the procedure refer to Kandler et al. (2018) and Panta et al. (2023).~~ Detection limits were calculated using 2σ of the peak intensity, and a final sorting step was applied to remove particles with low X-ray counts due to shading effects. For details on the procedure, we refer to Kandler et al. (2018) and Panta et al. (2023). Geometric (volume-equivalent) particles sizes for all diameters were estimated from the apparent projected area and the particle shape as explained in Appendix E.

Concentration conversion and deposition velocities: ~~Estimating atmospheric airborne concentrations from the NDR requires certain assumptions regarding the deposition velocity. Because the FPS captures particles that have settled out of the atmosphere, these measurements reflect number deposition rates (in $\# \text{ area}^{-1} \text{ time}^{-1}$), not directly the ambient airborne number concentration as for the aerosol spectrometers (in $\# \text{ volume}^{-1}$). To convert number deposition rates from the SEM (Scanning Electron Microscope) into atmospheric concentrations, assumptions about the settling velocity are necessary.~~ Sedimentation plays a key role in determining the atmospheric lifetime of dust particles. The terminal fall velocity of particles describes the rate at which particles settle onto surfaces and reflects the balance between gravitational and drag forces. Numerous expressions exist to estimate the velocity of particle deposition (e.g. Stokes approximation). However, most formulas are poorly suited for super-coarse and giant mineral dust particles (~~$d_p > 10\mu\text{m}$~~ $d_p > 10\mu\text{m}$) which have a complex aerodynamic behavior, that deviates from Stokes approximation and the idealized spherical shape (Adebiyi et al., 2023). This limitation is compounded by a lack of experimental data to validate their deposition, particularly under natural environmental conditions. Adebiyi et al. (2023) compared several expressions to estimate particle settling velocity and concluded that for $d_p = 450\mu\text{m}$, which represents the approximate size of the largest particles observed after long-range atmospheric transport (Betzer et al., 1988; van der Does et al., 2018), the measured deposition velocity ranges from approximately 1.5 to 3.5 ms^{-1} . This range aligns with the empirical relationships proposed by, e.g., Cheng (1997) and other expressions used in Adebiyi et al. (2023). ~~The~~ However, the assumptions underlying the estimates of deposition velocity presented in Adebiyi et al. (2023) may not fully apply to our field conditions. While terminal fall velocity describes the rate at which particles settle under gravitational and drag forces, the actual settling onto the FPS may be influenced by turbulent diffusion outside or inside the sampler which does not have such a strong dependence on particle size (Guha, 2008) and small lifting events before deposition, through, e.g., flow dynamics around the FPS (e.g., the top plate) and other instruments. Therefore, the particles might not reach the terminal fall velocity. Consequently, formulas for particle settling velocity – including those reviewed by Adebiyi et al. (2023) – might not accurately

represent the deposition behavior of the particles. Waza et al. (2019) and Panta et al. (2023) reported that with none of the traditional deposition velocity expressions the shape of aerosol spectrometer and FPS could be matched, but instead the deposition velocities appeared to have a much lower particle size dependency, i.e., their general shape were similar. In our study, we could confirm that none of the formulas could match the shapes of FPS with aerosol spectrometer and therefore also assumed a uniform deposition velocity for all particle sizes. A constant deposition velocity of $v_d = 0.0007 \text{ m s}^{-1}$ provided the best fit to our data as found by minimizing the sum of squared differences.

3 Results

This section provides an overview of meteorological conditions and measured dust mass concentrations during the campaign (Sect. 3.1). We present mass concentration PSDs from active dust emission events before and after applying correction methods (Sects. 3.2–3.3) and discuss discrepancies between instruments, including inlet efficiency estimates. The aerosol spectrometer PSDs are compared with FPS and SEM results (Sect. 3.6), followed by an analysis of PSD variability in relation to friction velocity and atmospheric stability is analyzed (Sect. 3.5), followed by a comparison of the aerosol spectrometer PSDs and FPS and SEM results (Sect. 3.6). Finally, we compare our findings with other field measurements (Sect. 3.3.7).

3.1 Meteorological and dust conditions during the campaign

The meteorological conditions during the campaign (Fig. 8) are characterized by high air temperatures, with mean daily minimum and maximum averages of $\bar{\theta}_{\text{daily min}} = 18.2^\circ\text{C}$ and $\bar{\theta}_{\text{daily max}} = 32.4^\circ\text{C}$, $\bar{T}_{\text{daily min}} = 18.2^\circ\text{C}$ and $\bar{T}_{\text{daily max}} = 32.4^\circ\text{C}$, respectively (Fig. 8a). Relative humidity at 4 m height was continuously low, with average daily minimum and maximum averages of $\overline{\text{RH}}_{\text{daily min}} = 20\%$ and $\overline{\text{RH}}_{\text{daily max}} = 61\%$ (Fig. 8b). No precipitation was recorded during the campaign. The mean atmospheric pressure during the campaign was 924 hPa, exhibiting a diurnal cycle with the lowest values occurring around 0 and 12 UTC (local time = UTC+03:00 h local time), and two maxima, one around 6 and the other around 21 UTC (Fig. 8c).

A plot of the mean meteorological and dust conditions is presented in the supplementary material. Local dust emissions predominantly occurred between 11 and 16 UTC at wind speeds of more than about $v_{4m} \approx 6 \text{ m s}^{-1}$, with usually north-westerly wind directions (Fig. 8 d, e, h). The 15 minute averaged dust mass concentration time series is shown in Fig. 8h. It represents the average of the two SANTRI2s (with 5 sensors on each), the two Welas and the two Fidas instruments (2 and 4 m height), including the correction procedure explained in Sect. 2.1.2 and in further detail in Appendices C-F. Results obtained with each instrument and more detail on the combined PSDs are presented in Sect. 3.4. Several events with high total mass concentrations ($C_m > 1 \times 10^4 \mu\text{g m}^{-3}$) were recorded, with significant contributions of particles with diameters greater than $20 \mu\text{m}$ and also regularly larger than $60 \mu\text{m}$. For higher total mass concentrations, typically also more larger particles contributed to the mineral dust mass. The most continuous dust event occurred on 29 September 2022 with intensive dust emission between 10 and 15:30 UTC and high total mass concentrations up to $C_m = 10^5 \mu\text{g m}^{-3}$.

We obtained a threshold friction velocity of $u_{*t} = 0.22 \text{ m s}^{-1}$ (or threshold 4 m wind speed of $\sim 3.3 \text{ m s}^{-1}$ when applying the same method to wind speed) using the Time Fraction Equivalence Method (Sect. 2.1.1). We note that saltation was occasionally

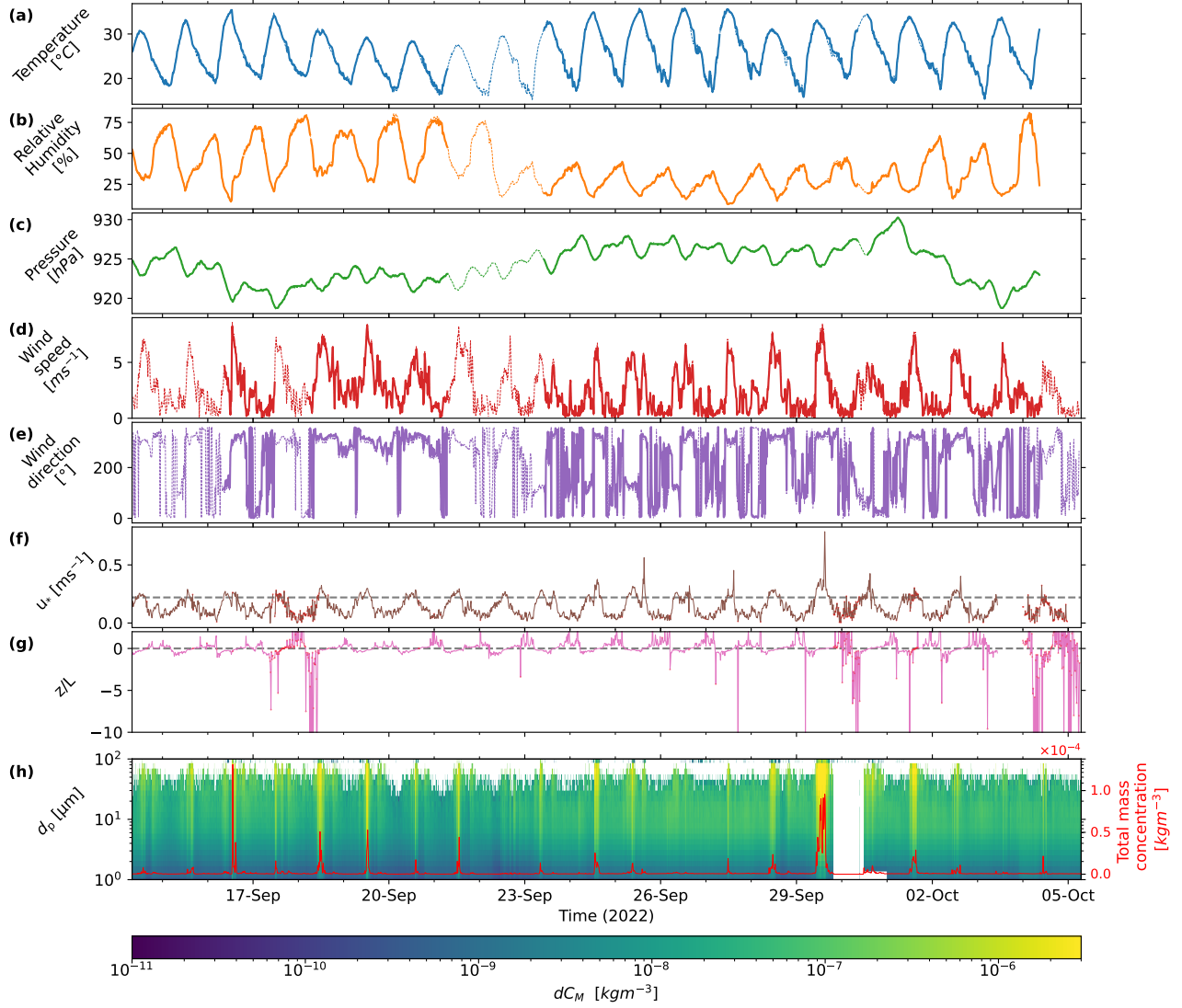


Figure 8. 15-minute averaged meteorological and dust conditions during the campaign. Dashed lines (a-e, mast data) and red dots (f-g, scintillometer data) indicate missing values in the measurements used that were filled with data from other instruments as described in Sect. 2.1. (a) Temperature (4 m), (b) relative humidity (2 m), (c) pressure (1 m), (d) wind speed (4 m), (e) wind direction (4 m), (f) Friction velocity u_* from the scintillometer (2.54 m) with the dashed line representing the threshold friction velocity $u_* = 0.22 \text{ m s}^{-1}$. (g) Atmospheric stability represented by z/L , where L is the Obukhov length from the scintillometer and z is the reference height 2.54 m. The dashed line represents $z/L = 0$. (h) Particle mass concentration by particle size averaged for Welas, Fidas, and SANTRI2. These data include the corrections explained in Sect. 2.1.2. Color shading represents the mass concentration in each size bin, whereas the red line indicates the total dust concentration summed over all bins.

415 registered already at lower friction velocities (Appendix A). This discrepancy could be due to intermittent saltation not captured within the 15-min periods used to derive u_{*t} , or localized variations in surface conditions.

During periods when the threshold friction velocity was exceeded ($u_* > 0.22 \text{ m s}^{-1}$, typically around noon or in the afternoon in UTC time, Fig. 8f, gray line), noticeable contributions from particles with diameters (d_p) exceeding $62.5 \mu\text{m}$ (giant mineral dust particles) were observed. Additionally, several particles $> 80 \mu\text{m}$ in diameter were registered. For unstable and
420 neutral conditions ($z/L \leq 0$), the majority of more intense dust events were observed, particularly during the transition from unstable to neutral conditions (Fig. 8g). A more detailed analysis of the sensitivity of observed dust mass concentrations to stability and friction velocity is presented in Sect. 3.5.

3.2 Uncorrected aerosol spectrometer size distributions

We present the uncorrected 15-minute average PSDs of mass concentration of the two Fidas, Welas, UCASS, and the one
425 from the CDA with optical diameters, and that of the two SANTRI2 with projected-area diameter in Fig. 9a. The diameters to which the mass concentrations are assigned are the geometric mean of the upper and lower bin boundaries. The PSDs highlight significant mass concentrations of particles larger than $10 \mu\text{m}$, with pronounced peaks between approximately $10 \mu\text{m}$ and $30 \mu\text{m}$ in diameter. The 15-minute average PSDs from each instrument demonstrate substantial temporal variability, as indicated by the error bars, which represent the standard errors within the corresponding averaging period, and for SANTRI2s also across
430 the analyzed sensors per instrument.

PSDs from Fidas_4m and Welas_4m are consistent for particle diameters smaller than $7 \mu\text{m}$ (Fig. 9a). Contrary to our expectations of higher dust concentrations and larger particles closer to the ground, Welas_2m PSDs show peak mass concentration at a smaller diameter of approximately $20 \mu\text{m}$ compared to Welas_4m, which peak at around $30 \mu\text{m}$ (Fig. 9a). For particles smaller than $10 \mu\text{m}$, Welas_4m and Welas_2m alternate in exhibiting higher mass concentrations. In contrast to the Welas
435 instruments, the behavior of the two Fidas PSDs aligns with expectations, as Fidas_4m generally shows lower concentrations across most of the size range. However, toward the upper end of the size range, the concentration of Fidas_4m partially exceeds that of Fidas_2m (e.g., Fig. 9a 2022-09-29 14:45). Another characteristic of the Fidas mass concentration PSDs is the absence of a distinct peak. Instead, their mass concentration appears to be relatively evenly distributed across sizes ~~from approximately~~
~~40~~between approximately 5-20 μm in Fig. 9a. Mostly, UCASS B and Welas_4m generally show good agreement. The measurements of UCASS B closely match those of Welas_4m for particle diameters $d_p < 4 \mu\text{m}$ and up to $d_p \approx 10 \mu\text{m}$. However,
440 the PSD measured by UCASS B exhibits oscillations instead of forming a smooth curve up to approximately $d_p = 10 \mu\text{m}$. Beyond this range, UCASS B shows a more gradual increase in concentration compared to Welas_4m, ~~although both instruments maintain similar distribution shapes~~. Both instruments exhibit peak concentrations in the particle size range of $d_p = 20$ to $30 \mu\text{m}$, with the peak concentration of UCASS B being roughly an order of magnitude smaller than that of Welas_4m. UCASS
445 A exhibits significant differences in its mass concentration PSD compared to the other instruments. At approximately $1 \mu\text{m}$, its mass concentration is comparable to that of the other instruments, but it increases by an order of magnitude for the third bin (around $1.3 \mu\text{m}$). For larger particles, the concentration decreases until it matches the concentrations of the other instruments at $\sim 2 \mu\text{m}$ and increases again at $\sim 3 \mu\text{m}$ to an order of magnitude higher than the concentrations of other instruments (at $\sim 4 \mu\text{m}$)

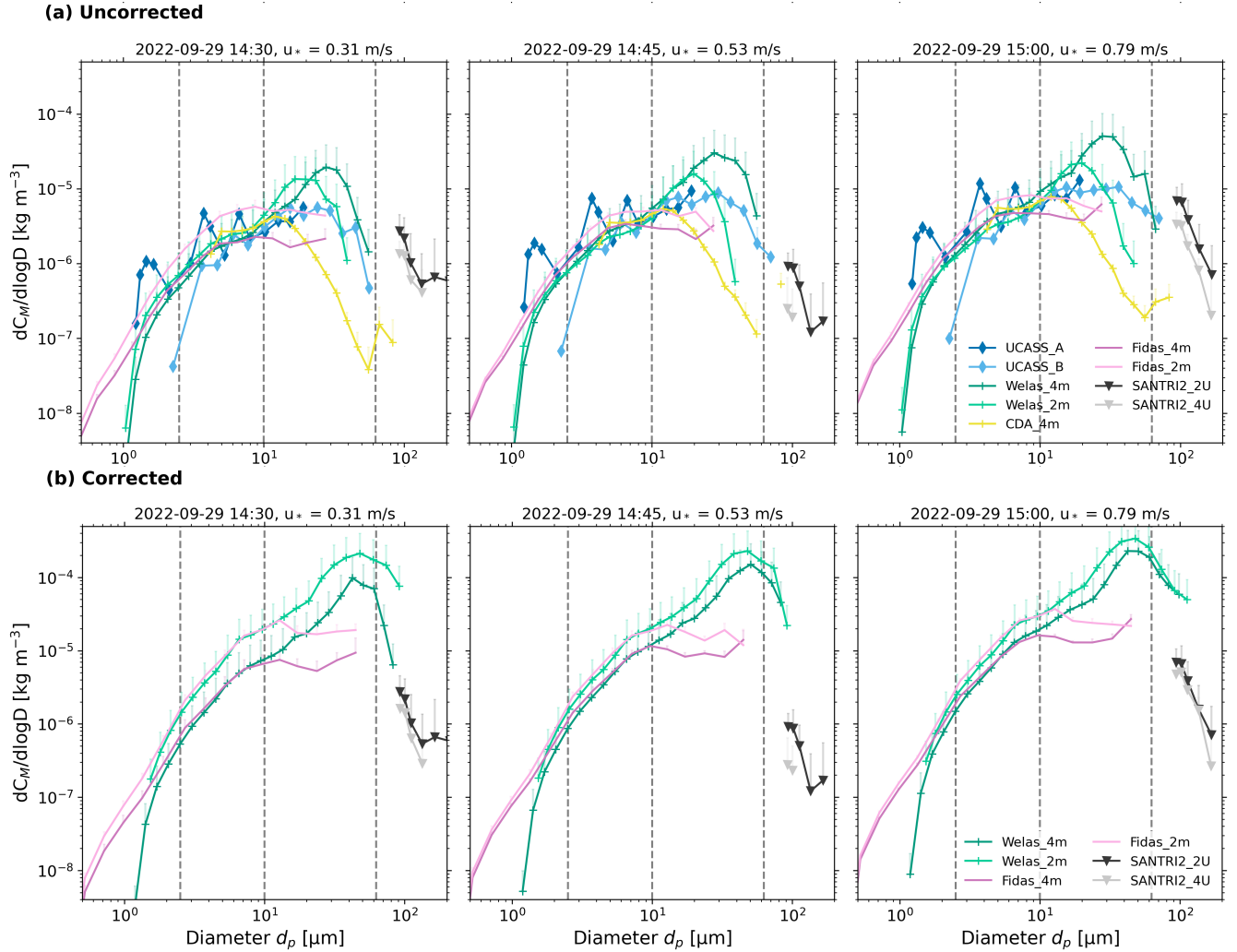


Figure 9. 15 minute average size distributions of mass concentration for dusty conditions on 29 September 2022 for 3 subsequent 15-min time periods from 14:30 until 15 UTC. (a) Uncorrected PSD with optical diameters (except SANTRI2, which uses projected-area diameter) and (b) corrected PSDs with geometric diameters. Standard errors are indicated by vertical lines (only positive errors are shown). Average 4 m friction velocity u_* for each 15-min period are indicated in the panel titles. Dashed lines indicate the size ranges of the dust size classifications (Adebiyi et al., 2023) (see Sect. 1).

and oscillates around the other instruments' PSDs for d_p up to $\sim 10 \mu\text{m}$. At $10 \mu\text{m}$, UCASS A's mass concentration aligns well with the UCASS B concentrations. The oscillations of the PSD, i.e., the classification of size bins, ~~remains an open question,~~ as and the conversion from scattering cross-section to particle diameter, seems to be unrealistic in comparison to the other instruments, and further adjustments may be needed to optimize particle categorization ~~and is~~. UCASS A and B are therefore excluded from further analysis. The CDA PSDs (measured at 4 m height) show significant differences compared to the PSDs of

the other instruments. Before peaking at around 15 μm , the CDA concentrations generally agree well with those of Fidas_4m and Welas. After the peak, the CDA concentration decreases rapidly, crossing below Fidas' mass concentration and eventually falling below all other measurements. This decrease could not be resolved by any correction method. We suspect that this decrease was due to either a reduced sampling efficiency of the Sigma-2 inlet in that size range or a lower sensitivity for larger particles -(e.g., due to saturation of the larger sampling volume during high particle concentrations), which was not the case for the other instruments. Consequently, the CDA data were also excluded from further analysis.

In certain cases, the SANTRI2 PSDs align well with the extended particle size trends observed with the other instruments (Figs. 9a 2022-09-29 14:45, 15:00). However, in Fig. 9a 2022-09-29 14:30, the two SANTRI2 units, each averaged over the five sensors, show higher mass concentration PSDs than expected, compared to measurements from the other instruments. It is important to note that the SANTRI2s recorded projected-area diameter whereas the other instruments recorded optical diameters which could potentially change the agreement between SANTRI2 and other instruments' PSDs.

3.3 Corrected size distributions

The uncorrected PSDs with optical diameter shown in Fig. 9a reveal the original measurements taken by our instruments, indicating potential biases and inaccuracies due to low sampling efficiencies and variability between instruments. The data presented in this Section was corrected as explained in Appendix C-E. Here, we discuss the corrected PSD mass concentrations as shown in 9b and the remaining variability between instruments. Overall, the comparison between Figs. 9a and 9b highlights that the correction procedures result in more consistent concentrations across instruments, although we could not eliminate all sources of discrepancy.

After correction, Welas_2m consistently show higher values than Welas_4m, with some exceptions for particles larger than 60 μm (Fig. 9b 2022-09-29 14:45, 15:00). Both instruments exhibit a peak at approximately the same diameter ($\sim 50 \mu\text{m}$). After correction, they better match the concentrations observed in the Fidas measurements, particularly for particles larger than $d_p = 1.2 \mu\text{m}$ and up to $\sim 10 \mu\text{m}$. In the Fidas' mass concentrations, a plateau in measurements for particles larger than $d_p \approx 12 \mu\text{m}$ is visible, which we attribute to potential limitations in measuring larger particles – limitations that could not be corrected by any of the correction mechanisms applied. In comparison to the uncorrected PSDs of the SANTRI2s, most of the corrected PSDs now better fit the prolongation of the other instruments. In Figs. 9b 2022-09-29 15:00, the two SANTRI2 present lower mass concentration PSDs than would be expected from the Welas but fit well the overall appearance. For further analysis, only the SANTRI2, Welas, and Fidas instruments were considered, as most of the differences between these instruments were resolved. They were also used for the combined overall PSDs shown in the next subsection.

3.4 Possible reasons for discrepancies between aerosol spectrometers

The observed differences in the uncorrected and corrected PSDs presented in Sects. 3.3 and 3.2 can be attributed to several instrumental factors.

The use of inlets: The use of inlets for aerosol sampling significantly influences the measurements. All instruments equipped with inlets, such as the Welas, Fidas, and CDA, experience sampling inefficiencies, particularly for larger particles, due to losses

within the inlet system (Kulkarni et al., 2011). In contrast, open-path instruments without inlets, do not suffer from inlet losses, but may be more susceptible to environmental interference. The sampling efficiency, η , is influenced by the inlet or pipe design, flow dynamics, and particle characteristics. The inlet losses of the different instruments used here are described in Appendix

490 G. The directional inlet of Fidas and Welas was characterized using empirical models explained in detail in Appendix G3. Their inlet efficiency for different wind conditions is shown in Fig. 10a. For wind speeds $v \leq 5 \text{ m s}^{-1}$ and particle diameters $d_p \leq 5 \mu\text{m}$, the efficiency η is approximately 100%, decreasing to 0% at $d_p \approx 30 \mu\text{m}$. For wind speeds $v > 5 \text{ m s}^{-1}$ and particle diameters $d_p > 5 \mu\text{m}$, the efficiency η increases, peaking at $d_p \approx 12 \mu\text{m}$, and then decreases to 0% at $d_p \approx 40 \mu\text{m}$. The peak for wind speeds $v = 11 \text{ m s}^{-1}$ is even at sampling efficiencies of 140%, so an oversampling of particles $d_p \approx 12 \mu\text{m}$ occurs.

495 Most of the losses stem from gravitational settling in the horizontal part of the pipe or impacts due to the bend. A similar inlet design with comparable dimensions was previously quantified by Schöberl et al. (2024). They reported cut-off diameters (defined as 50% loss) smaller than $10 \mu\text{m}$. In contrast, our calculations show a cut-off diameter of approximately $30 \mu\text{m}$ for $v = 5 \text{ m s}^{-1}$. The lower cut-off diameters observed by Schöberl et al. (2024) may be attributed to their slightly different inlet dimensions (inner diameter = 4.527 mm), the calculation of the bend efficiency η_{bend} in degrees instead of radians (as

500 noted in the supplementary material of Schöberl et al. 2024), or the high flow velocities and Reynold numbers associated with their airplane measurements. By dividing the mass concentration PSDs of the Fidas and Welas instruments [shown in Fig. 9b \(2022-09-29 14:30\)](#) by the sampling efficiencies η of the directional inlet under the measurement conditions, corrected PSDs can be estimated, as shown for an example PSD in Fig. 10b. For the Welas, no significant change in concentrations is observed for $d_p < 20 \mu\text{m}$, not even for the oversampling which occurs at $d_p \approx 12 \mu\text{m}$. However, for larger particle sizes, the corrected

505 PSDs are clearly increased by several orders of magnitude compared to the uncorrected ones. A similar trend is observed for the Fidas, although most of the Fidas size range remains unaffected by large inlet inefficiencies as their size range stops before $d_p = 50 \mu\text{m}$. The estimated inlet efficiencies suggest that almost no particles larger than around $20 \mu\text{m}$ should have been detected, yet our results show the measurement of a significant number of particles in this size range. The empirically estimated inlet efficiencies therefore appear unrealistic. The underestimation of inlet efficiencies for large particles could potentially

510 result from neglecting the re-emission of particles that initially settled, a process not accounted for in the applied formulas. Additionally, traditional deposition schemes may overestimate gravitational settling for large particles (Adebiyi et al., 2023), highlighting potential limitations in the modeled particle dynamics. Furthermore, the underestimation may also stem from limitations in the applicability of the used formulas, which might not be entirely suitable for our context – for instance, due to the presence of particles that are so large that the Stokes number regimes, for which the expressions are valid, is exceeded.

515 Results from application of the formulas beyond their valid range are indicated by dashed lines in Fig. 10a, overlapping with diameter ranges that have low η .

The UCASS is a passive instrument and in principle open-path (i.e. inlet-free), however its cylindrical shape may act similar to an inlet. Limited information about its sampling efficiency η is available beyond the findings of Girdwood et al. (2022), who reported low losses for droplet diameters between 3 and $10 \mu\text{m}$. Flow dynamics simulations by Smith et al. (2019) indicated

520 that the air velocity in the sampling area is approximately 12% higher than the ambient air velocity for an ambient wind speed of 5 m s^{-1} . Their results showed no significant turbulence inside the instrument and good sampling efficiency for particles

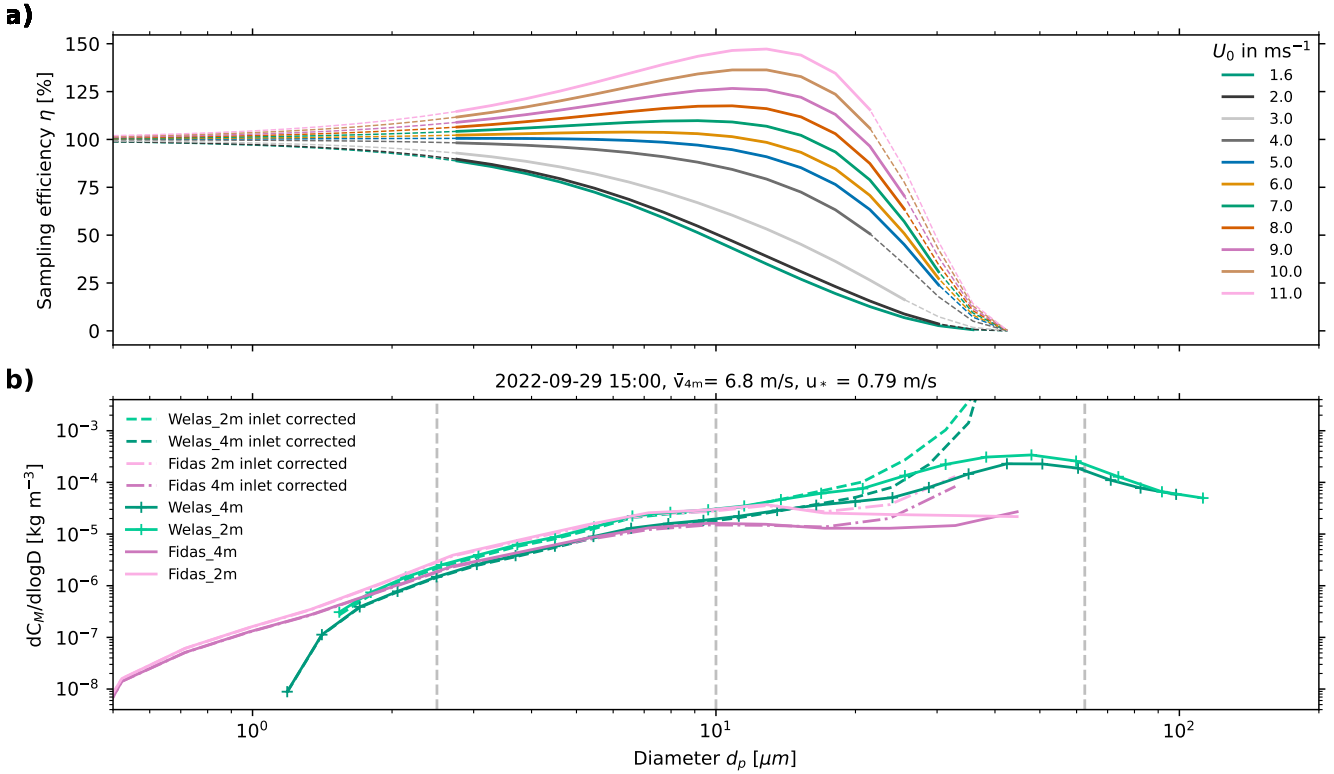


Figure 10. Sampling efficiency η_{sampling} (a) for different wind conditions U_0 for the directional inlet of Welas and Fidas. Dashed curves indicate that the applied formulas may not be valid for the respective diameter range and wind conditions. (b) Example PSD (solid lines) together with the corrected PSD corrected by the sampling efficiency η_{sampling} for Welas and Fidas in dashed lines. Vertical dashed lines indicate the size ranges of the dust size classifications (Adebisi et al., 2023) (Sect. 1).

smaller than $40 \mu\text{m}$. Therefore, due to its large opening (5 cm on the smaller side), significant losses in the nozzle are not expected. When applying the formulas described in Appendix G to a simplified geometry of the UCASS (*i.e.*, assuming a round instead of a oval opening, and no electronics inside the tube to disturb the flow), we found gravitational efficiencies (η_{grav}) close to one, but substantial losses due to turbulent inertial deposition ($\eta_{\text{turb-inert}}$). This phenomenon occurs when large particles, owing to their high inertia, are unable to follow the curved streamlines of turbulent eddies and are deposited on the walls of the instrument. For higher wind speeds around 10 m s^{-1} , inlet efficiencies rapidly decrease from approximately 90% for $11 \mu\text{m}$ particles to nearly 0% for particles of $20 \mu\text{m}$ due to the large pipe diameters, high flow rates, and resulting high Reynolds numbers (Eq. G9). These findings highlight a discrepancy in the turbulent flow in the UCASS between the empirical formulas and simulations, particularly for larger particles, which may stem from simplified assumptions in the modeled particle dynamics and the omission of re-suspension effects in the formulas, as partly discussed in Kulkarni et al. (2011).

Given the limitations of the calculation for the directional inlet and the UCASS housing and the apparent mismatch between the theoretical/empirical estimates of inlet efficiencies and the observed particle counts, the inlet efficiencies will not be applied for the correction of the PSD in the following analysis to avoid introducing additional uncertainties, particularly for particles larger than 10 μm . Instead, the results will be interpreted with awareness of potential losses due to turbulent inertial deposition (UCASS) and gravitational settling in sampling pipes or bends (directional inlet). The inlet efficiencies of the instruments will be investigated in more detail in the future using numerical modeling of the flow dynamics in the inlets.

Operating without any inlet, the SANTRI2 relies on the wind field to guide the particles through the optical path. Although this design avoids inlet-induced biases, turbulence effects caused by the (quite slim) platform to which the sensors are attached are possible. Despite this, the approach offers the most direct and unaltered sampling of ambient aerosol among our instruments, providing insights into the nearly undisturbed characteristics of large dust particles.

Measurement principle differences: A second reason for the discrepancies in PSDs between instruments lies in their measurement principles, such as optical scattering (used by Welas, Fidas, CDA, and UCASS) versus the optical gate mechanism employed by SANTRI2, which introduces additional variability as it measures the projected area. Optical instruments estimate particle size based on light scattering, which can be influenced by factors such as particle shape, composition, and refractive index. The various devices based on optical scattering differ in aspects like scattering angle, sensor area, and light source, which can lead to inaccuracies, especially for non-spherical or irregularly shaped particles. In contrast, optical gate devices determine particle size by measuring the shadow cast on a photodiode, meaning the obtained 2D shape for non-spherical particles is highly dependent on their orientation when illuminated. In order to overcome these limitations, we harmonized measurements from the different devices and transformed the particle sizes to geometric diameters, assuming biaxial ellipsoids. However, some of the aforementioned causes of uncertainties, such as particle shape and refractive index, remain unresolved. In Appendix H, the results ~~for~~ when assuming triaxial instead of biaxial ellipsoids are shown. They show that the estimation of geometric diameters is highly sensitive to particle shape assumptions and limited by the absence of optical data for large particles, leading to notable differences in the corrected size distributions.

Additional differences: The classification of particle size bins make use of different theoretical frameworks. For optical diameter measurements, Mie theory assuming spherical particles is commonly applied (e.g., Welas, Fidas, and CDA), whereas for the retrieval of projected area diameters, the projected area on the instrument is used. For the transformation to geometric diameters ellipsoidal particles are assumed, which are either based on databases for different CRI (e.g., Gasteiger and Wiegner, 2018, i.e., sensitive to assumed CRI) or on geometric calculations as described in Appendix E. These different approaches influence the shape of the retrieved PSDs.

Moreover, the instruments differ in how they handle partially illuminated particles: the Welas, Fidas, and CDA avoid them by their measurement principle, the UCASSs account for this in its calculations but the SANTRI2s do not.

In addition, the size ranges covered by different instruments introduce variability in accuracy towards the edges of these ranges. Instruments optimized for detecting fine particles may exhibit reduced accuracy and sensitivity for larger particles towards the edge of their size range, and vice versa. This discrepancy is particularly evident in the overlap regions where the detection capabilities of different instruments intersect, resulting in inconsistencies in PSDs.

Finally, the location of instruments can affect recorded PSDs due to proximity to emission locations, atmospheric conditions, and particle transport dynamics. Differences in height and positioning can cause variations in sheltering, turbulence, and detected dust concentrations. For Fidas and Welas, these differences should be minimal since they share the same volume and are separated only by a tube. However, discrepancies may arise if particles are trapped in the tube connecting both instruments (Fig. 6b), potentially reducing counts in the Fidas, though tube clogging was not observed during the campaign. After applying our correction steps, Fidas and Welas concentrations agreed well for $d_p < 10\mu\text{m}$, but discrepancies arose for larger particles, with Welas concentrations being up to an order of magnitude higher at the upper limit of its size range. It is unlikely that particles with $d_p > 10\mu\text{m}$ continuously got trapped before reaching the sensors of the Fidas, as we conducted measurements over several weeks with the instruments, and no impacts of enhanced blockage were evident from the Fidas measurements. Therefore, we attribute most of these differences to discrepancies in the instruments' sensitivities (especially at the edges of the instruments size ranges).

Overall, these instrumental differences underscore the importance of employing a suite of complementary measurement techniques to achieve a comprehensive and robust characterization of the full PSD, particularly in the challenging super-coarse and giant particle size ranges. Understanding these differences and their implications is crucial to improving the reliability of dust measurements and developing better calibration and correction methodologies.

3.5 Variability of particle size with u_* and stability

Figure 11a shows the corrected 15-minute averaged PSDs ~~calculated-combined~~ across SANTRI2, Welas and Fidas (shown individually in Fig. 9b) over the entire measurement period and ~~categorized-into-averaged within~~ different u_* ranges similar to González-Flórez et al. (2023). The process of combining and harmonizing the concentrations of these instruments is explained in App. F. Additional plots of the number and surface concentration are presented in the supplementary material. While the mean of all PSDs in Fig. 11a, indicated by a dashed black line, shows the peak at around $60\mu\text{m}$, the categorized PSDs differ in their shape and height. As expected, higher u_* values correlate with an increase in mass concentration (dC_M) across all particle diameters (Fig. 11a) although the level of increase varies. However, for lower u_* values ($< 0.2\text{ m s}^{-1}$, i.e. below the threshold friction velocity for saltation, u_{*t}), the PSDs remain largely consistent. Differences emerge at ~~$d_p = 30\mu\text{m}$~~ $d_p > 30\mu\text{m}$, where concentrations corresponding to lower u_* values decrease more rapidly – except in the $0.1\text{ m s}^{-1} \leq u_* < 0.2\text{ m s}^{-1}$ range where a peak at around $d_p = 60\mu\text{m}$ (same as for larger u_*) is visible – suggesting that some larger particles were already effectively lifted and detected at friction velocities ($> 0.1\text{ m s}^{-1}$) and below the calculated threshold friction velocity ($u_{*t} = 0.22\text{ m s}^{-1}$). For particles $d_p > 60\mu\text{m}$, the standard error increases significantly, casting doubt on the reliability of this relationship. Starting from $u_* \geq 0.25\text{ m s}^{-1}$, which is above the threshold friction velocity, significantly higher mass concentrations are observed, although the shape of the PSD remains largely consistent as for $0.2\text{ m s}^{-1} \leq u_* < 0.25\text{ m s}^{-1}$. For $u_* \geq 0.35\text{ m s}^{-1}$, only a small number of PSD samples is available, but the PSD for the two largest u_* categories are very similar, except for $d_p > 100\mu\text{m}$, where concentrations for $u_* > 0.4\text{ m s}^{-1}$ fall behind those observed at lower friction velocities. The SANTRI2 were the only devices operating for $d_p > 100\mu\text{m}$. In this size range, the PSDs show generally lower concentrations at smaller u_* values, but the behavior of dC_M becomes less consistent as-for small u_* decreases, either increasing or decreasing with friction

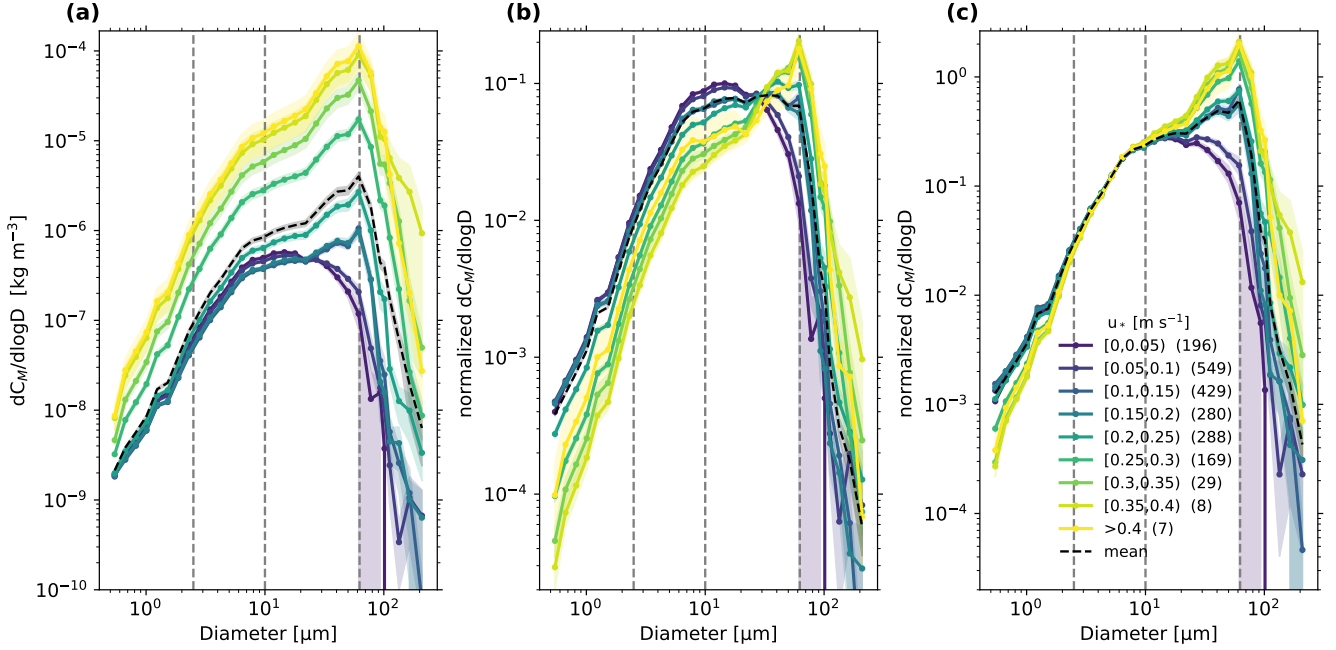


Figure 11. (a) Variability of mass concentration PSD with u_* deduced from SANTRI2, Welas and Fidas over the whole campaign time. Colors indicate u_* during the 15-min averaging time period corresponding to the PSDs and the black dashed line the mean of all PSD. Shaded areas depict the standard error of PSDs within each class across the different time steps, and the black dashed line the mean of all PSD used. Numbers in parentheses indicate the number of 15-min PSDs taken into account in each u_* range. Dashed lines indicate the size ranges of the dust size classifications (Adebiyi et al., 2023) (Sect. 1). (b) Same as (a) but normalized to unity in each time interval. (c) Same as (b) but normalized to unity up to $10\mu\text{m}$ in each time interval.

velocity. Especially for $u_* < 0.05\text{ m s}^{-1}$, the concentrations are decreasing to almost zero at $\sim d_p > 100\mu\text{m}$. In this friction velocity range, the presence of super-coarse and giant particles is expected to be low. Additionally, these particles may not be captured by the Welas due to inlet inefficiencies. However, the open-path approach of the SANTRI2 allows for direct sampling, increasing the likelihood of detecting these (few) larger particles which might explain the abrupt change in mass concentration.

Figure 11b shows mass concentrations normalized to unity (15-minute PSDs were first normalized, then averaged). Here, the relative amount of the different particle sizes can be observed and shows more prominently the shift in peak mass concentrations for different u_* . The slope of the concentrations are is relatively similar up to about $10\mu\text{m}$. However, the concentration peak shifts slightly gradually from $12\mu\text{m}$ to $60\mu\text{m}$ between 0.2 m s^{-1} and 0.3 m s^{-1} , which is in line with the threshold friction velocity, whereas the non-normalized ones already show this shift at $0.1\text{ m s}^{-1} \leq u_* < 0.15\text{ m s}^{-1}$. This discrepancy is likely driven by variations in mass concentrations, where higher concentrations have a stronger influence on the averaging process when the PSDs are not normalized for u_* exceeding 0.1 m s^{-1} .

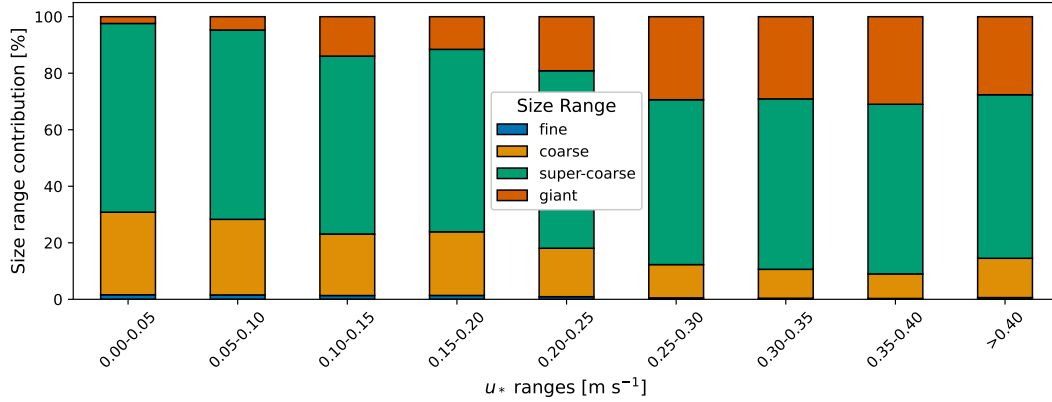


Figure 12. Percentage mass concentration abundance of particle size ranges deduced from SANTRI2, Welas and Fidas over the whole campaign time with u_* .

Variations in the normalized abundance of particles in different size ranges with varying u_* can also be observed in Fig. 12, which shows the total mass concentration contribution of fine, coarse, super-coarse, and giant particles across different u_* categories. Additional plots of the number and surface concentration PSDs are presented in the supplementary material. At low friction velocities ($u_* < 0.2 \text{ m s}^{-1}$), less than 10% of the mass concentration ~~is~~are contributed by giant particles, and approximately 60% by super-coarse particles. Below the threshold friction velocity ($u_{*t} = 0.22 \text{ m s}^{-1}$), recorded dust might be due to intermittent releases or due to dust previously emitted and/or advected from nearby sources. Dust that occurred at $u_* < 0.22 \text{ m s}^{-1}$, however, already contained a great amount of super-coarse and giant particles (see Fig. 12). As u_* increases up to 0.4 m s^{-1} , the contribution of giant particles rises to about 20%, while super-coarse particles contribute slightly over 60%. For $u_* > 0.4 \text{ m s}^{-1}$, the contributions of both super-coarse and giant particles decrease slightly, ~~possibly due to low statistics or the presence of potential outliers.~~ This ambiguous dependency suggests that This behavior suggests that either the large variability for this size range, which can be observed in Fig. 11 (not shown in Fig. 12), and low statistics blur the trend or that factors other than friction velocity alone, such as deposition processes, direct entrainment of large particles, or even inlet efficiency at these sizes, may influence the concentration of larger particles in the PSD.

Earlier studies focused on the finer part of the PSD. Alfaro et al. (1997); Shao (2004); Ishizuka et al. (2008); Kok (2011a) were restricted to particles $< 10 \mu\text{m}$ or $< 20 \mu\text{m}$, so only that part of our PSD can be directly compared. Our findings from the J-WADI campaign indicate that the shape of the mass concentration PSD is largely invariant in the size range $2 - 10 \mu\text{m}$ (see Fig. 11 c), supporting the conclusions of Kok (2011a) in that size range. Below $2 \mu\text{m}$, we find that the relative proportion of particle mass concentration decreases with increasing u_* . Alfaro et al. (1997); Shao (2004); Ishizuka et al. (2008) predicted a shift toward finer sizes for particles $< 10 \mu\text{m}$ or $< 20 \mu\text{m}$, whereas our results suggest a coarsening with increasing u_* both for diameters $< 2 \mu\text{m}$ and $> 10 \mu\text{m}$. It is also important to note that we analyzed the PSDs of dust concentration rather than dust emission fluxes, as done in the mentioned studies.

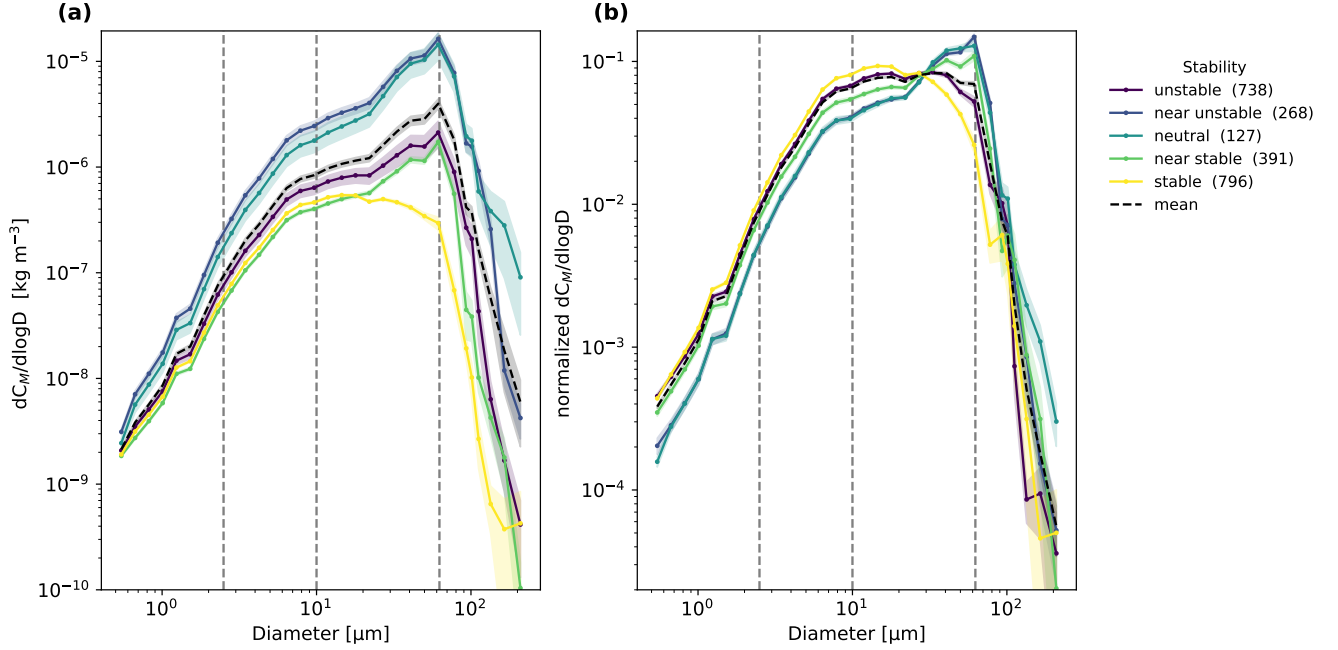


Figure 13. (a) Variability of mass concentration PSD deduced from SANTRI2, Welas and Fidas over the whole campaign time with atmospheric stability. The colors indicate different stability ranges and shaded areas the standard error of PSDs within each class across different time steps, and the black line the mean of all PSD. Numbers in parentheses indicate the number of PSDs available within each stability class. Dashed lines indicate the size ranges of the dust size classifications (Adebisi et al., 2023) (Sect. 1). (b) Same as (a) but normalized to unity in each time interval.

Fig. 13a shows 15-minute averaged PSDs over the entire measurement period, calculated across SANTRI2, Fidas, and Welas and categorized into different stability regimes (Sect. 2.1.1). The total mass concentration across all bins is greatest during near unstable and neutral conditions, followed by unstable conditions. The lowest mass concentrations are predominantly observed at night under stable and near stable conditions when friction velocities are small (Figure 8). For stable conditions, very few super-coarse and giant particles are present.

Fig. 13b shows the normalized PSDs. For stable conditions, smaller particles with diameters less than $20 \mu\text{m}$ are most abundant, followed by unstable, and near stable conditions. As stable stratification suppresses turbulence, the lifting and transport of larger particles is limited, while it allows smaller particles to remain suspended longer. In contrast, for particles larger than $20 \mu\text{m}$ but smaller than $90 \mu\text{m}$, the opposite trend is observed and they are more present for neutral and near (un)stable conditions. No clear trend in stability is apparent for particles larger than $90 \mu\text{m}$ in Fig. 13b. Further investigation is necessary to determine whether this behavior is due to instrument inaccuracies, limited particle statistics or other reasons.

Atmospheric stability and u_* are strongly interconnected as L depends on u_* and for large u_* , conditions become increasingly neutral. To investigate the dependency of mass concentration on stability while accounting for the interdependence

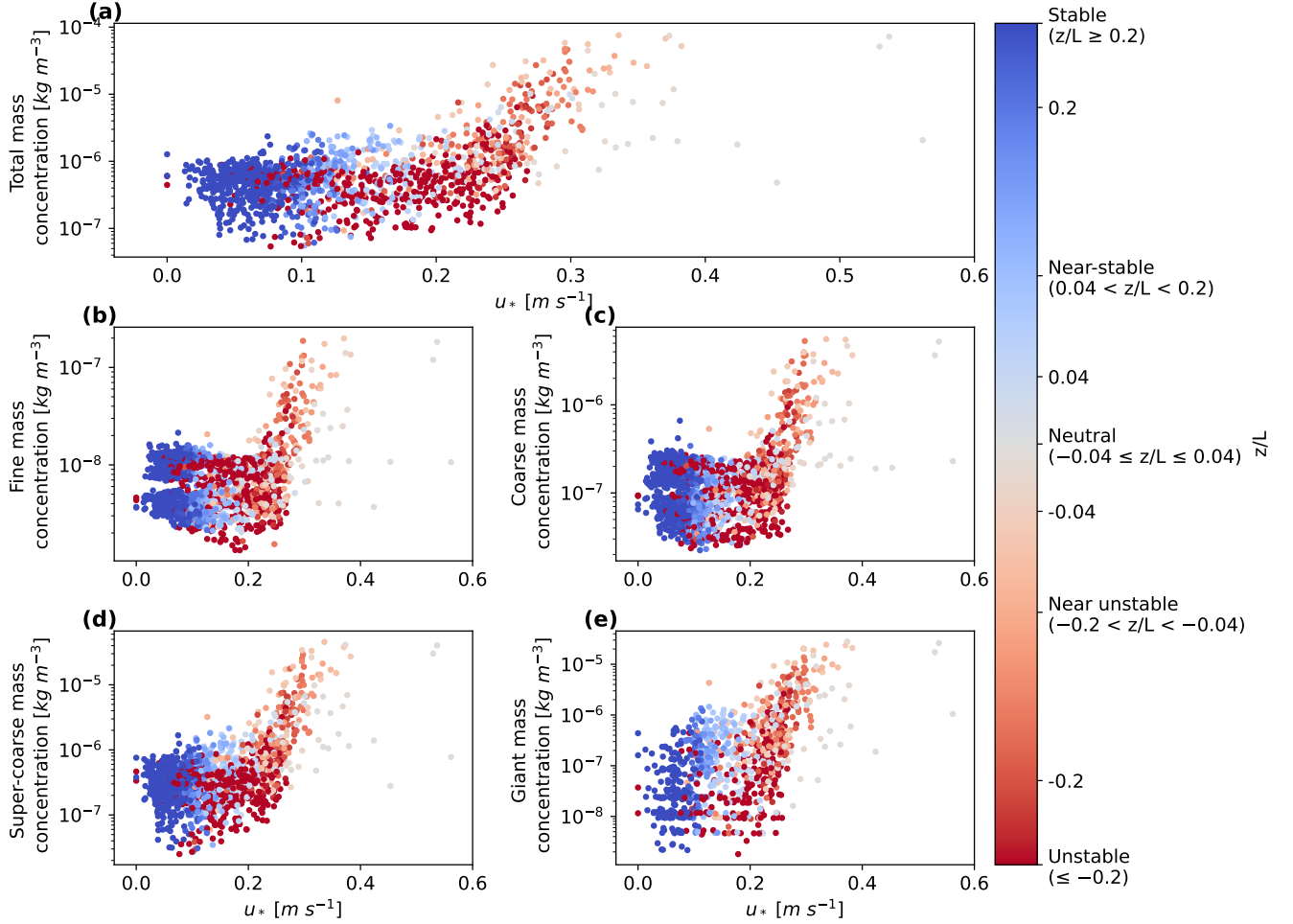


Figure 14. Mass concentration deduced from SANTRI2, Welas and Fidas over the whole campaign time over u_* . The colors indicate the different stability regimes in terms of z/L for (a) total, (b) fine, (c) coarse, (d) super-coarse, and (e) giant dust mass concentration.

between z/L and u_* , Fig. 14 presents mass concentration as a function of u_* and colored by z/L across different particle size ranges. For $u_* < 0.2 \text{ m s}^{-1}$, the majority of the total mass concentrations are below $10^{-6} \text{ kg m}^{-3}$ (Fig. 14a). Across all size ranges, stable conditions correspond to the lowest friction velocity values (mostly $u_* < 0.15 \text{ m s}^{-1}$), with the smallest mass concentrations observed. With increasing $u_* > 0.1 \text{ m s}^{-1}$, conditions become more unstable to neutral. Between $u_* = 0.1 \text{ m s}^{-1}$ and $u_* = 0.2 \text{ m s}^{-1}$, (near) stable and (near) unstable conditions are present. For larger u_* , mass concentrations increased sharply with slight increases in u_* (Fig. 14a). The majority of these data points is categorized as unstable conditions with some near unstable and near stable conditions. These near unstable time periods, however, tended to have slightly higher mass concentrations for a given u_* . For instance, for $u_* = 0.25 \text{ m s}^{-1}$ and for some data points of near unstable conditions, mass concentrations could reach

approximately one order of magnitude higher than the average for unstable conditions. However, most of the near unstable and near stable time period data points gather with the unstable conditions. For $u_* > 0.3 \text{ m s}^{-1}$, mostly neutral conditions were registered with a potentially lower mass concentration than would be expected for the elongation of unstable conditions, but with a lack of a clear pattern due to few data points. For all size ranges (Fig. 14b-e), the trends for (near) unstable and (near) stable conditions aligns with that of the total mass concentration (Fig. 14a). However, for giant particles, generally less data points exists. Most data points cluster between $u_* = 0.2 \text{ m s}^{-1}$ and $u_* = 0.4 \text{ m s}^{-1}$ for unstable conditions. For neutral conditions, the mass concentration started to increase at higher $u_* > 0.3 \text{ m s}^{-1}$ (Fig. 14e).

We observed a slight trend for increased mass concentrations for diameters $> 10 \mu\text{m}$ with near unstable followed by unstable and neutral conditions, but no clear pattern emerged. Our results neither fully support nor contradict previous findings by Khalfallah et al. (2020), ~~Shao et al. (2020)~~ or González-Flórez et al. (2023), and Dupont (2022). and Shao et al. (2020), which found a dependency of the PSD on atmospheric stability, or González-Flórez et al. (2023) and Dupont (2022), which did not find it. However, it should be noted that these analyses were restricted to particles $< 30 \mu\text{m}$, so only that part of our PSD can be directly compared and no direct dependency on stability is visible for this size range in the J-WADI data. Further investigation is required to fully understand these dynamics. ~~However~~ Moreover, it is important to note that we analyzed dust concentration PSDs rather than fluxes, as done in these studies.

3.6 Comparison between particle size distributions from aerosol spectrometers and FPS

To confirm the PSDs obtained with aerosol spectrometers (Sect. 3.3), we compared our results against-with those derived from physical samples collected using FPS and analyzed ~~through-by~~ SEM. This comparison allowed us to evaluate the accuracy of the spectrometers, particularly for larger particle sizes where instrumental biases, such as inlet efficiencies and optical corrections, might have affected the measurements more than for the FPS. As the diameters from the analysis of the FPS differed in every analysis step and to make them comparable to the aerosol spectrometer data, the FPS were linearly interpolated and binned into 25 bins over the full size range of the FPS.

Fig. 15 presents the mass of particles deposited per mm^2 per day, normalized by dlogD from the FPS and the average across ~~instruments from~~ the aerosol spectrometers SANTRI2, Welas and Fidas at different time steps. The samples and corresponding time frames are shown in Table B1. For ~~the aerosol spectrometer measurements~~ comparison with the FPS samples, the number of particles deposited per unit area and their corresponding particle sizes were determined from the aerosol spectrometer measurements as outlined in Sect. 2.1.3 assuming a constant deposition velocity with particle size of $v_d = 0.0007 \text{ m s}^{-1}$ across all size ranges (corresponding to the Stokes settling velocity of particles with diameter $\sim 2 \mu\text{m}$). The PSDs for different time steps derived from the FPS and aerosol spectrometer show reasonable agreement (always less than an order of magnitude difference, mostly less than 20% deviation). However, the PSDs sometimes differ in the position of the peak which is often at $d_p \approx 60 \mu\text{m}$ for the aerosol spectrometer measurements but at smaller particle sizes for the FPS (e.g. 2022-09-17). In many cases, the peak of the FPS is vague (2022-09-27) or matches the one of the aerosol spectrometer (e.g., 2022-09-21, 2022-09-24 11:03, 2022-09-26).

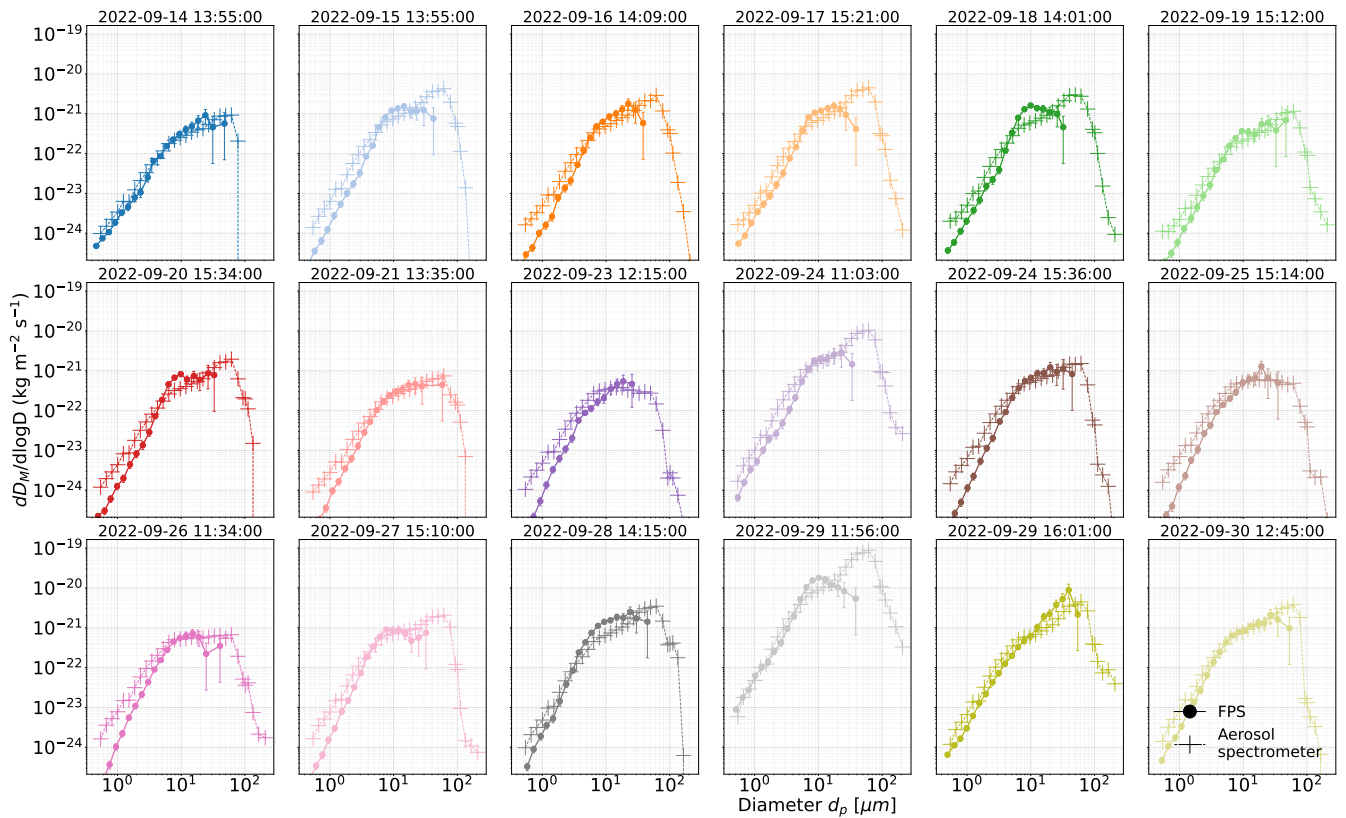


Figure 15. Mean aerosol spectrometer mass deposition rates combined from SANTRI2, Welas and Fidas with the flat-plate sampler (FPS) within the sample time steps shown one-on top of every subplot and in Table B1. Error bars for FPS represent the statistical 95% confidence interval for $dD_M/d\log D$ ($1.96 \times$ standard deviation, estimated according to the Poisson distribution as square roots).

Overall, the agreement between the PSDs obtained from different measurement techniques is quite good, considering the differences in sampling methods and instrument principles. However, discrepancies between the PSDs may be attributed to factors such as variations in sampling efficiency, changes in wind conditions, the underlying assumption on shape and orientation on the substrate or limitations in accurately capturing super-coarse and giant particles with the aerosol spectrometer setup, as discussed in Sect. 3.4. Despite these differences, the overall trends align well, reinforcing the robustness of the measurements across different techniques.

In a previous study (~~Panta et al., 2023~~), the using the same FPS in a different field experiment (Panta et al., 2023), data from the (Fidas 200S) aerosol spectrometer data aligned more closely with the FPS measurements ~~more closely~~ (almost perfectly matching, deviation for $d_p \approx 1.2 \mu\text{m}$ with less than 10 % deviation). However, in Panta et al. (2023), although the spectrometer measurements were conducted with a Fidas 200S (included in our averaged aerosol spectrometer data), a smaller size range ($d_p = 0.2 - 19 \mu\text{m}$) was probed and another magnification was used for the SEM. In the smaller size range, inlet inefficiencies

700 may have a negligible effect, as these particles are less likely to experience significant losses during sampling. Additionally, the re-binning of the FPS data in those studies was coarser, which may have reduced the observed differences.

~~We assumed~~ Our assumption of a constant deposition velocity ~~across all size ranges, to convert the aerosol spectrometer particle concentrations into deposition rates is~~ a simplification that ~~might have~~ likely has not fully captured the actual deposition dynamics. Larger particles are expected to typically experience higher gravitational settling velocities, while smaller particles are more influenced by atmospheric turbulence and Brownian motion. We tested different deposition assumptions, including those appropriate for larger particles as discussed in Adebiyi et al. (2023), but found that the constant deposition velocity provided the best fit to the deposition patterns observed with the FPS. This result may suggest that the strong deposition of large particles near emission sources may be even more doubtful than calculated in Adebiyi et al. (2023) as previously discussed in earlier studies (van der Does et al., 2018; Adebiyi and Kok, 2020; Ratcliffe et al., 2024). However, as discussed in Sect. 2.1, the assumptions that the particles reach their terminal fall speed might not be applicable due to potential turbulent behavior. Additionally, it is important to consider that the FPS may tend to overestimate the abundance of larger particles if smaller particles, which follow the airflow more efficiently, are less likely to settle onto the collection substrate. This could also explain why a lower settling velocity than would be expected from Stoke's settling for large particles yields a better comparison. The assumption of a constant deposition velocity across size ranges for aerosol spectrometers with the FPS data raises questions about the actual deposition processes for super-coarse and giant particles and should be further investigated in future research.

3.7 Comparative analysis of J-WADI data with other field campaigns

To contextualize the findings from the current study, we compared our results with previous research on mineral dust size distributions. Formenti and Di Biagio (2024) conducted a comprehensive analysis of mineral dust aerosol size distributions, synthesizing data from more than 50 years of in situ field observations to create a harmonized dataset. They organized dust size distributions by the stage in the dust transport life cycle: source (SOURCE, within one day after emission), mid-range transport (MRT, one to four days of transport), and long-range transport (LRT, more than four days of transport). Here, we compare our J-WADI dataset with the Formenti and Di Biagio (2024) SOURCE dataset, acknowledging that their conversion to geometric diameters was not completely equal to the ones we applied. Most of the measurements presented in Formenti and Di Biagio (2024) were ground-based and taken at heights of a few meters above the surface, similar to J-WADI, but the data from Rosenberg et al. (2014) and Ryder et al. (2013b) are aircraft-based and at heights where smaller concentrations of larger particles are expected. The compiled campaigns are summarized in Tab. 3. It has to be noted that particle diameters $d_p > 30\mu\text{m}$ were only covered by the aircraft-based measurements and in none of the ground-based studies.

Figure 16 compares the SOURCE data from different field campaigns Formenti and Di Biagio (2024). The mean for at least two PSDs from the Formenti and Di Biagio (2024) dataset is indicated in black (MEAN), with the standard deviation in gray. The averaged J-WADI data over the whole campaign, including dusty periods and non-dusty periods, are shown in dark red. As an example for dusty conditions, we also present results during daytime (10:00-15:30 UTC) on 29 September 2022, which is depicted in dark green, with shaded areas indicating the standard deviation. Data for active dust emission ($u_{*t} > 0.22\text{ms}^{-1}$).

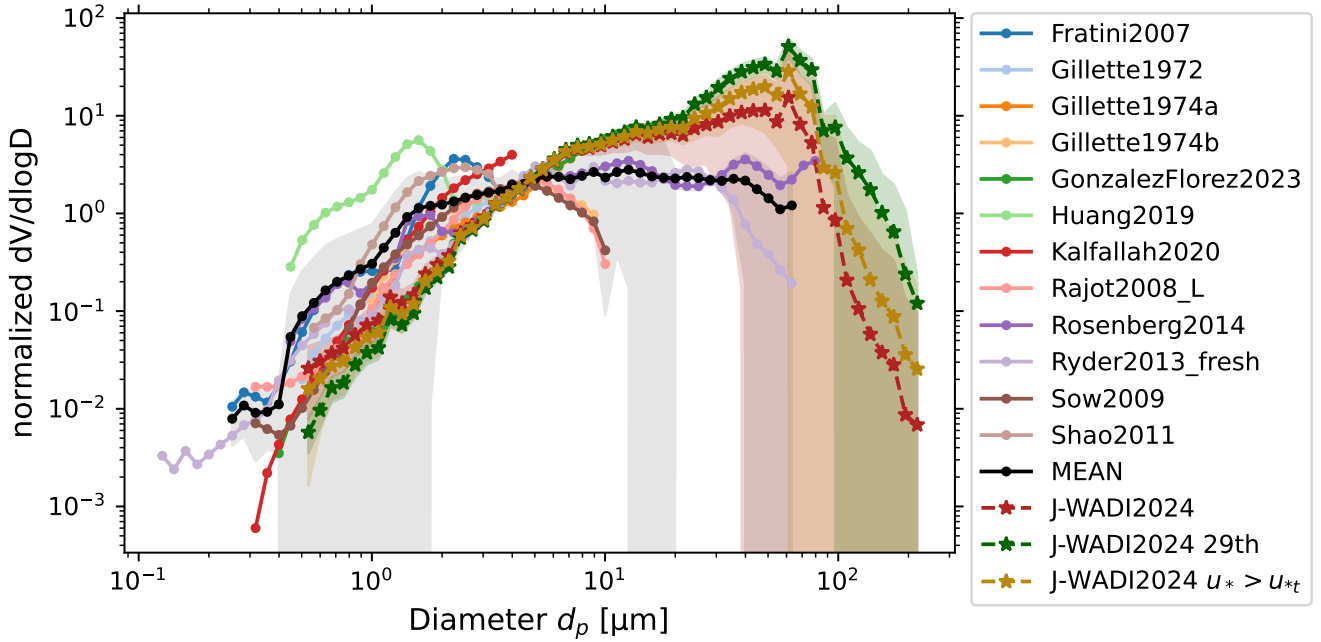


Figure 16. "SOURCE" PSDs from different field campaigns within one day after emission from Formenti and Di Biagio (2024), all normalized at the integral of 1 between 1.58 and 7.1 μm before weighting by $d\log D$. The mean of PSDs ("MEAN"), where at least two datasets are available in the diameter range, is indicated in black and the standard deviation in gray. J-WADI results averaged over the entire campaign are shown in dark red ~~and~~, averaged for ~~dusty-conditions-periods with active dust emission ($u_* > u_{*t}$)~~ in gold and on September 29 ~~during the most dusty period (between 9:30 and 17:15), a particularly dusty day~~, in dark green with shaded areas indicating the standard deviations across time.

Sects. 2.1.1, 3.1) are indicated in gold. The averaged J-WADI data aligns well with the averaged SOURCE dataset from Formenti and Di Biagio (2024), demonstrating overall consistency in the general shape of the PSD. However, some differences are evident: For fine and coarse particles up to around 6 μm , the J-WADI PSD exhibits lower values compared to Formenti and Di Biagio (2024), while for larger particles, the J-WADI PSD is ~~elevated~~ increased and extends to even larger particle diameters. This behavior becomes more pronounced in the dataset from 29 September, where the PSD reveals a distinct enhancement in the super-coarse and giant particle size ranges. In the averaged dataset from Formenti and Di Biagio (2024) (Fig. 16, black line), no clear maximum in the volume concentration PSD is observed. In contrast, a peak around 60 μm is visible in the both J-WADI datasets.

Compared to ~~SOURCE~~ the averaged SOURCE data, our normalized J-WADI dataset suggests a shift in the emitted dust size distribution toward coarser particles as shown in Table 4. While Formenti and Di Biagio (2024) reported a fine particle ($< 2.5 \mu\text{m}$) contribution of 10.8%, our dataset shows only ~~0.51.3%~~, indicating a lower proportion of fine particles in our measurements. The fraction of 2.5–10 μm particles is also smaller during ~~J-WADI~~ J-WADI (34.9% vs. ~~44.921.5%~~). In contrast,

Table 3. Summary of the field campaign data shown in Fig. 16 from the SOURCE category of Formenti and Di Biagio (2024).

Reference	Location, field campaign acronym	Measurement technique	Measured size range
Gillette et al. (1972); Gillette (1974) and Nebraska (1974)		Deposition sampler & microscopy	1 – 20 μm
Fratini et al. (2007)	Gobi Desert	Aerosol spectrometer	0.35 – 9.5 μm
Rajot et al. (2008)	Niger, AMMA – Local erosion	Aerosol spectrometer	up to \sim30 μm
Sow et al. (2009)	Niger, AMMA	Aerosol spectrometer	≥ 0.3 μm
Shao et al. (2011a)	Australia, JADE	Aerosol spectrometer	0.3 – 8.4 μm
Huang et al. (2019)	California	Aerosol spectrometer	0.49 – 7 μm
Khalfallah et al. (2020)	Dar Dhaoui, Tunisia, Wind-O-V's	Aerosol spectrometer	0.24 – 17.8 μm
González-Flórez et al. (2023)	Morocco, FRAGMENT	Aerosol spectrometer	0.2 – 19.1 μm
Ryder et al. (2013a, b)	Western Africa, airplane	Aerosol spectrometer	0.1 – 100 μm
Rosenberg et al. (2014)	Western Africa, airplane	Aerosol spectrometer	0.5 – 300 μm

Table 4. Comparison of volume size distribution percentages across different particle diameter ranges for the SOURCE dataset from Formenti and Di Biagio (2024) and from J-WADI (this study).

Dataset	$D \leq 2.5 \mu\text{m}$	$2.5 < D \leq 10 \mu\text{m}$	$10 < D \leq 62.5 \mu\text{m}$	$D > 62.5 \mu\text{m}$
SOURCE Formenti and Di Biagio (2024) (Formenti et al., 2024)	10.8%	34.9%	52.7%	1.6%
J-WADI complete measurement period	0.5 1.3%	11.9 21.5%	59.1 63.9%	28.5 13.3%
J-WADI $u_* > u_{*f}$	0.7%	13.7%	60.4%	25.2%
J-WADI 29 September 2022	0.3%	7.8%	57.4%	34.5%

our results indicate a higher proportion of super-coarse particles (~~59.1% vs. 52.7~~[52.7% vs. 63.9](#) %) and much higher fraction of giant particles ($>62.5 \mu\text{m}$; 1.6% vs. ~~28.5~~[13.3](#)%).

~~The results from~~ During periods of active dust emission (i.e. for $u_* > u_{*t}$), the contributions of fine, coarse, and super-coarse particles decreased (0.7%, 1.7%, and 60.4%, respectively), whereas the percentage of giant particles increased to 25.2% (Table 4). This behavior is even enhanced on 29 September ~~indicate lower fine~~ (0.3%) September, a particularly dusty day, where we found even lower fine and coarse particle fractions (0.3% and 7.8%). ~~Additionally, the data show a similar contribution for~~ With 57.4%, the contribution of the super-coarse range ~~(57.4%) than on average for J-WADI (59.9%) and for~~ was also lower on 29 September, but more similar to SOURCE (52.7%). ~~Especially for giant particles, the~~ The giant particle fraction with 34.5% is significantly increased for ~~the~~ 29 September in comparison to the average J-WADI data ~~(28.5%) and the source~~ 13.3%), J-WADI active dust emission periods (25.2%), and especially the SOURCE data (1.6%). ~~This indicates that~~ Overall, dust emission in J-WADI was characterized by a smaller proportion of ~~intermediate-sized~~ smaller particles (fine, coarse) and a larger proportion of larger particles (super-coarse and giant) compared to the reference data.

In the ~~for~~ $u_* > u_{*t}$ and 29 September J-WADI data, we included measurements taken during active dust emission. These conditions are similar to aircraft campaigns as for the two datasets including $d_p > 20 \mu\text{m}$ (Ryder et al., 2013b; Rosenberg et al., 2014), where they actively targeted dust outflow regions and therefore tended to sample elevated dust concentrations. On the other hand, the J-WADI campaign was conducted directly at an emission source, where a higher fraction of super-coarse and giant particles is expected, as these larger particles are more likely to settle out of the atmosphere before reaching greater height and distance from the source and may explain the elevated contributions of super-coarse and giant particles in our ~~data~~ averaged data over the whole campaign. This proximity to emission sources in J-WADI may therefore explain the ~~elevated~~ increased contributions of super-coarse and giant particles in our data.

4 Conclusions

An in-depth understanding of the full size distribution of mineral dust at emission and its behavior during atmospheric transport is crucial for an accurate representation in climate models and for assessing dust impacts on the climate and Earth systems. Large particles remain significantly underrepresented in models, largely due to an incomplete understanding of their physical behavior. This challenge is further compounded by the scarcity of observational data, as the measurement of large particles involves considerable technical and conceptual difficulties.

The comprehensive field measurements conducted during the Jordan Wind erosion And Dust Investigation (J-WADI) campaign have provided valuable insights into the size distribution of mineral dust particles ranging from ~ 0.4 to $200 \mu\text{m}$ at a desert emission source in Wadi Rum, Jordan. This study is the first to encompass such a broad range of particle diameters directly at the emission source, with a particular emphasis on super-coarse ($10 < d_p \leq 62.5 \mu\text{m}$) and giant ($d_p > 62.5 \mu\text{m}$) particles.

A key feature of this study was the utilization of a diverse set of aerosol spectrometers, including active, passive, and open-path devices, and their comparison with physical samples from a flat-plate sampler. The aerosol spectrometers covered different size ranges that were partly complementary to extend the overall observed size range, and partly overlapping to enable systematic intercomparison and validation. While agreement in mass concentrations was good for smaller particle sizes,

780 discrepancies arose for particles with $d_p > 10\mu\text{m}$, largely due to differences in measurement principles (e.g., light source and the illumination of the particles), size ranges (sensitivity limitations), and inlet effects.

Our results show that during ~~active dust emission events, which typically occurred at friction velocities (u_{*t}) exceeding 0.22 m s^{-1} , a dust event on 29 September 2022,~~ 0.3 % of the mass concentration was found in the fine, 7.8 % in the coarse, 57.4 % in the super-coarse range and 34.5 % in the giant range~~during a dust event on 29 September 2022.~~. Data averaged over
785 the whole campaign (including periods of calm winds) showed a slight shift toward the fine and coarse size fractions (~~0.5%, 41.9, 1.3%, 21.5 %, 59.1, 63.9 % and 28.5, 13.3 %~~), differing from findings from previous studies as compiled in Formenti and Di Biagio (2024) by showing larger proportions in the super-coarse and giant ranges.

We found that with higher friction velocities (u_*) and under (near) unstable and neutral atmospheric stability conditions, dust concentrations were highest and the abundance of super-coarse and giant particles was largest. A peak in mass concentration
790 PSD during periods of active emission was observed at around $60\mu\text{m}$, although the detection of larger particles was likely constrained by inlet inefficiencies and instrument insensitivity near the limits of their size ranges. Despite this, physical samples collected using a flat-plate sampler largely confirmed the PSDs derived from aerosol spectrometers.

The results highlight the challenges in accurately quantifying giant particles but also demonstrate strategies to overcome these challenges. A better characterization of inlet dynamics is necessary to advance the measurement of (dust) aerosol PSDs
795 in the future, particularly for large particles. Future work should also focus on further understanding the flow dynamics of the flat-plate sampler, how particles are deposited on the substrate, and how they influence the observed PSDs, especially for capturing the largest particles, and refining methods to harmonize size distribution data from different measurement techniques. In general, especially the super-coarse and giant particle range should be measured with several instruments to cover a large size range and to eliminate differences between instrument principles. Additionally, further research should focus on the inves-
800 tigation of particle shape and refractive index to better link different equivalent diameters (e.g., projected area and geometric). Despite these challenges, our results demonstrate a remarkably high abundance of super-coarse and giant particles in emitted dust. This emphasizes the need to account for the full PSD, including super-coarse and giant particles, in future studies.

This study advances our understanding of emitted dust PSD variability, particularly super-coarse and giant particles. By improving our knowledge of the size distribution and abundance of these particles at emission, we lay the foundation for
805 unraveling their evolution during atmospheric transport and their broader impacts on the climate system. Incorporating more accurate PSDs, particularly of super-coarse and giant particles, into dust models is essential for improving predictions of long-range dust transport, cloud microphysics, and radiative forcing. These advances will ultimately enable better assessments of the environmental and climatic impacts of mineral dust.

Appendix A: Flux density for calculating u_{*t}

810 Figure A1 shows the flux density from ~~SANTRI4~~ SANTRI together with u_* to retrieve u_{*t} as described in Sect. 2.1.1.

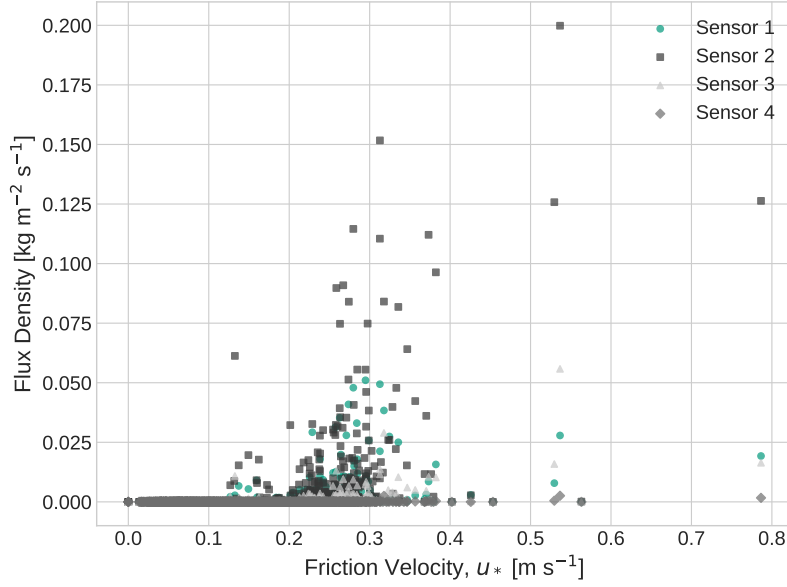


Figure A1. Flux density for the four sensors of the ~~SANTRI4~~SANTRI over u_* to retrieve u_{*t} .

Table B1. FPS and their corresponding time frames.

sample code	start timecode (UTC)	stop timecode (UTC)	sample code	start timecode (UTC)	stop timecode (UTC)
WRS_01	12.09.2022 13:55	13.09.2022 13:55	WRS_12	24.09.2022 11:03	24.09.2022 15:36
WRS_02	13.09.2022 13:55	14.09.2022 13:55	WRS_13	24.09.2022 15:36	25.09.2022 15:14
WRS_03	14.09.2022 13:55	15.09.2022 13:55	WRS_14	25.09.2022 15:14	26.09.2022 11:32
WRS_04	15.09.2022 13:55	16.09.2022 14:09	WRS_15	26.09.2022 11:34	27.09.2022 15:02
WRS_05	16.09.2022 14:09	17.09.2022 15:21	WRS_16	27.09.2022 15:10	28.09.2022 14:15
WRS_06	17.09.2022 15:21	18.09.2022 14:01	WRS_17	28.09.2022 14:15	29.09.2022 11:56
WRS_07	18.09.2022 14:01	19.09.2022 15:12	WRS_18	29.09.2022 11:56	29.09.2022 16:01
WRS_08	19.09.2022 15:12	20.09.2022 15:34	WRS_19	29.09.2022 16:01	30.09.2022 12:45
WRS_09	20.09.2022 15:34	21.09.2022 13:35	WRS_20	30.09.2022 12:45	01.10.2022 15:54
WRS_10	21.09.2022 13:35	23.09.2022 12:15	WRS_21	01.10.2022 15:54	02.10.2022 15:23
WRS_11	23.09.2022 12:15	24.09.2022 11:03			

Appendix B: Time step information on the sampling periods of the FPS samples

Table B1 shows the sample time for each FPS sample as collected in the field. The corresponding mass deposition fluxes are shown in Figure 15.

Appendix C: Outlier correction

815 Outliers were identified and removed in the SANTRI2, UCASS, and, to a lesser extent, in the Welas and CDA data as described in the following.

C1 SANTRI2

Since the SANTRI2 is an open-path instrument, its sensors are directly exposed to environmental factors such as sunlight, shadows, light reflections from nearby metal, and dirt. This exposure can result in artifacts in the data counts in different bins. 820 Additionally, fluctuations in light source intensity may be misinterpreted by the sensors as particles in the air. Both SANTRI2 upfacing units (2U and 4U) exhibited more daytime peaks than nighttime peaks during J-WADI and generally reported fewer counts compared to SANTRI2_2D and 4D, which displayed less systematic behavior with more disordered and ubiquitous high peaks and more counts in general. The behavior of the upfacing units (SANTRI2_xU) reflects the observations made by other instruments that dust concentrations during nighttime were generally lower due to calm winds. To better understand this 825 behavior, we investigated whether the elevated counts in the downward-facing SANTRI2 units were due to their orientation toward the light. Consequently, between 13:08 UTC on September 19 and 16:30 UTC on September 21, we inverted the upfacing units for testing so that they faced downward. No direct correlation was observed between turning the unit and corresponding counts in 2U and 2D. During this period, counts in SANTRI2 2D changed but not immediately after turning the unit (16:08 local time = 13:08 UTC) and persisted even after turning the unit back, suggesting no significant impact. With 830 increasing bin size, outliers became less pronounced, with most outliers disappearing in the 99 – 125 μm bin. This reduction in outliers may stem from higher noise sensitivity in smaller bins, where the corresponding voltage levels are relatively low. Although noise decreased for larger bins, the downward-facing units still show numerous unrealistic outliers, especially in the smaller bins, and also unrealistically high counts in the larger bins. Consequently, we decided to exclude the downward-facing units from our analysis, as these outliers do not appear to arise from misdirected light reflections but rather from other hardware 835 or software issues.

For the remaining two units, we applied the following steps: (1) times periods of instrument cleaning were removed from the data entirely; (2) we excluded sensors across all bins for the time frames which included highly unrealistic counts exceeding on average four times those recorded by other sensors; (3) Sensor 1 of SANTRI2_4U was removed entirely from the dataset due to persistent unrealistic behavior. After these initial steps, additional outliers were identified and removed using a statistical 840 comparison with measurements of other sensors of the same and of other SANTRI2 devices. The comparison was applied to all data points at their original 1 Hz frequency as discussed below:

I: Intra-Sensor and Intra-Instrument Comparison (Bins and Flux)

1. Signal 1 recorded by SANTRI2 corresponds to the voltage obtained by the photosensor. We removed counts which were outside the signal range 2750 to 3250 mV.

- 845 2. Signal 2 is the indicator of IR-led light source intensity required to keep the detector (Signal 1) in the range from 2500 - 3500 mV. We did not see any abnormal behavior here for the remaining two units.
3. The flux recorded by SANTRI2 is proportional to the cross-sectional area of the particles (Flux 1 over all bins, Flux 2 only the upper 3 bins) of all particles recorded in the corresponding time. Based on the visual observation of the time series, we assume that a Flux 1 value exceeding 1000 is unrealistic. Therefore, data points for which
- 850 Flux 1 surpassed this threshold were removed.
4. For a given time step in which a count in the smallest bin was significantly higher than its surrounding counts and which exceeded a predefined threshold, the counts in all bins were set to NaN. We considered these counts outliers, as observing numerous giant particles in one second and much fewer in the next was deemed unrealistic. This procedure was applied using two methods:
- 855 (a) **Local Anomaly in Individual Counts:** An individual count was considered an outlier if it was at least four times higher than the sum of the surrounding 180 data points. This method aimed to identify sharp, localized spikes in the data that significantly deviated from their immediate surroundings.
- (b) **Localized Spike in Sum:** An outlier was flagged if the sum of the surrounding 30 data points was at least ten times higher than the sum of the surrounding 300 data points. Additionally, individual counts were only
- 860 removed if their value exceeded 2, to prevent the removal of valid low-magnitude data.

II: Inter-Sensor and Inter-Instrument Comparison

1. We averaged counts over 3600 points (1 hour) and compare the 73-80 μm bin (first bin) to the mean of all other time-averaged sensors. If the mean of the 73-80 μm bin was greater than 3 counts (in order to not remove single counts/arbitrary threshold) and 10 times higher than the averaged other counts, we set the corresponding count in
- 865 all bins to NaN.

The thresholds and time windows for these methods were chosen based on exploratory analysis, as there is no defined standard for identifying outliers in data for such large particles. While somewhat arbitrary, these parameters effectively removed unrealistic spikes without eliminating data we considered realistic based on observatory analysis and in comparison with other instruments.

870 C2 UCASS

Although the electronics of the UCASS were protected from ambient light by a housing (Fig. 5), some light could still enter through the cylindrical opening but this did not result in systematic outliers. However, we observed a large number of counts with recurring values, such as 243, 512, 514, and 65535 ($2^{16} - 1$) but also others. The value 65535 corresponds to $2^{16} - 1$, which is the maximum value that can be recorded using a 16 bit variable. However, since the UCASS records data using

875 12-bit variables, the occurrence of this value indicates an anomaly, specifically suggesting faulty communication between the

UCASS and the Raspberry Pi. Those recurring values were removed from the data. For the remaining data, to identify other recurring count values, first, for each instrument, a count distribution of detected values was created for all particle size bins. The maximum observed value in each column was determined, and a complete range of integer values up to this maximum was generated. The actual frequency of occurrence for each integer value was then compared against this range, with missing values set to zero. To identify outliers, each detected value was assessed based on its local neighborhood. Specifically, for each value, the sum of occurrences in the five preceding and following integer bins was computed. If this sum was less than one-tenth of the observed value, the value was flagged as an outlier. Once the outliers were identified, a thresholding step was applied to remove only those outliers exceeding a minimum value of 2 to reduce noise in the filtering process. These flagged values were replaced with NaN values. Consequently, we excluded these values from the analysis.

885 C3 Welas, Fidas, and CDA outlier correction

There were almost no detectable outliers in Welas, Fidas, and CDA, except that occasionally, they measured counts for large d_p , but not in the smaller sizes. For instance, occasionally, they measured ten counts in a size range $d_p > 60\mu\text{m}$ but none for $40\mu\text{m} < d_p < 60\mu\text{m}$ in a 15 minutes time interval. For Welas and CDA, we applied a filtering criterion for particles larger than $10\mu\text{m}$, where we removed counts if particles were detected in one size bin but not in the preceding, smaller size bin. This criterion was applied to the integrated size distribution, where approximately eight raw bins were combined, over the 15-minute averaging intervals. Such outliers could arise due to inlet inefficiencies, which can lead to inaccurate size measurements, inconsistent particle sampling, or wrongly interpreted light scattering.

Appendix D: Intercomparison and bias correction

To identify and correct systematic errors between individual instruments, we conducted an intercomparison. From October 2nd to October 5th, 2022, at the end of the J-WADI measurement period, Welas, Fidas, CDA, and UCASS were installed in close proximity to each other at 2 m height for comparative analysis. The SANTRI2 units were mounted also next to each other on the ground and vertically, i.e. in their standard setup, to capture more large particles, now transported in saltation, and thereby to obtain a more robust statistical comparison. Unfortunately, there were no notable dust events during this period, which posed limitations to the comparative assessment, but we still measured particles in the time frame. In Sects. D1 – D2, we describe three procedures applied to correct for systematic errors.

D1 Systematic error correction via linear regression of Welas, Fidas, and SANTRI2

To remove systematic biases in dust concentration measurement between aerosol spectrometers of the same type (here: Welas, Fidas, and SANTRI2), a similar approach to the method described by González-Flórez et al. (2023) and Dupont et al. (2024) was applied. The average dust concentration in each 15-minute bin from one instrument was compared to the corresponding values from the other aerosol spectrometer of the same type. The systematic correction parameter, λ_i , for each bin i , was

calculated as the slope of the regression between the concentrations of the compared instrument bins:

$$c_{oc}(d_i) = \lambda_i c_r(d_i), \quad (D1)$$

where d_i represents diameter of bin i , c_r the concentration from the reference instrument and c_{oc} the concentration from the instrument to be corrected. A $\lambda_i > 1$ indicates that the concentration of the reference instrument was lower, and $\lambda_i < 1$ indicates that the concentration of the reference instrument was higher. A perfect match would yield a correction factor of one. The corrected concentration (c_{om}) was then obtained as:

$$c_{oc}(d_i) = c_{oc}^{uncorr.}(d_i) / \lambda_i. \quad (D2)$$

The correction parameter obtained during the intercomparison period was applied to the entire measurement period. The Pearson correlation coefficient r was used to assess the correlation between the instruments. At correlations less than $r = 0.6$, no correction was applied. For the Welas, few data points existed above $d_p > 45\mu\text{m}$ with low mass concentrations with many values being 0 in one instrument and small number in the other, therefore the concentrations across the last bins ($d_p > 45\mu\text{m}$) were averaged and treated together. This procedure was implemented for the different instrument types. Here, Fidas_4m, Welas_4m, and SANTRI2_2m served as the reference, while Fidas_2m, Welas_2m, and SANTRI2_4m were corrected and adjusted by the slope determined from the linear regression. The issue of unrealistically large numbers of counts in some bins of the SANTRI2 persisted during the intercomparison period for the SANTRI2s. For correction, we applied the first step of the outlier correction method (Sect. C1) without adjusting for higher fluxes, as higher fluxes are possible due to SANTRI2 being positioned at ground level.

λ_i for the different instruments and the corresponding bins or bin groups is given in Table D1, D3, and D2. For SANTRI2, the sensors closer to the ground (ascending from S1 to S5) and for small bins $\lambda_{i,S}$ are closer to 1, decreasing for sensors in more distance to the ground and larger bins. For the largest bins and the sensors furthest from the ground the correlation was < 0.6 , so $\lambda_{i,S}$ was set to 1.000. For Welas and Fidas, the values were closer to 1, except for Welas $d_i > 45\mu\text{m}$ ($= 0.5$) and $d_i = 1\mu\text{m}$ ($= 0.1$). For the last three bins of the Fidas, correlation was also < 0.6 , no correction was applied (indicated by 1.0 in Table D3).

Table D1. Correction parameter $\lambda_{i,S}$ to correct SANTRI2_4U. $\lambda_{i,S}$ was set to 1, if the correlation was lower than 0.6.

Sensor	Bin1	Bin2	Bin3	Bin4	Bin5	Bin6	Bin7
S1	0.9706	0.9720	0.9745	0.9722	0.9643	0.9739	0.9925
S2	1.0493	1.0349	1.0548	1.0548	1.1372	1.1793	1.2041
S3	1.1832	1.0386	0.8594	0.8481	0.7644	0.6887	1.0000
S4	0.7876	0.6137	0.4290	0.3004	1.0000	1.0000	1.0000
S5	0.4518	0.4193	0.4217	0.1936	1.0000	1.0000	1.0000

Table D2. Correction parameter $\lambda_{i,W}$ to correct Welas_2m. $\lambda_{i,W}$ was set to 1, if the correlation was lower than 0.6.

d_i in μm	1.5	1.8	2.1	2.6	3.1	3.7	4.5	5.5	6.6	8	9.6	12	14	17	21	26	31	38	>45
λ_i	0.1	0.6	0.8	0.7	0.8	0.8	0.8	0.7	0.6	0.7	0.7	0.7	0.7	0.7	0.7	0.7	0.7	0.6	0.5

Table D3. Correction parameter $\lambda_{i,F}$ to correct Fidas_2m. $\lambda_{i,F}$ was set to 1, if the correlation was lower than 0.6.

d_i in μm	0.36	0.49	0.67	0.92	1.2	1.7	2.4	3.4	4.7	6.4	8.8	12	16	22	30	40
λ_i	0.9	1	0.9	1	1	0.9	0.8	0.8	0.8	0.8	0.9	0.7	0.8	1.0	1.0	1.0

D2 Systematic instrument differences correction via comparison with Fidas_4m

930 Since the instruments rely on slightly different measurement principles, harmonizing their outputs is essential to ensure consistent and comparable PSD data. This harmonization minimizes systematic biases and allows for intercomparison across instruments.

In this study, we use Fidas_4m as the reference instrument due to its reliable performance and broad operational size range, which overlaps to some extent with all other instruments except with the SANTRI2. This makes it well-suited for establishing
935 correction factors for the other instruments. To remove systematic differences between instruments, we applied a constant correction factor relative to the reference instrument after re-binning all instruments to the Fidas bins, as explained in [SeetApp](#). F. The correction factor for each instrument was obtained by minimizing the difference between its PSD and that of the Fidas_4m during the intercomparison period. The correction factors were determined in specific size ranges in which they overlapped with Fidas_4m and which were not too close to the limits of their measurement range. For the Welas, a size range of 2 – 7 μm
940 was used, while size ranges of 2 – 10 μm and 4 – 7 μm were applied for UCASS A and UCASS B, respectively. For the CDA, a size range of 5 – 10 μm was used (CDA and both UCASSs not used for the later analysis).

To ensure the statistical robustness of the correction, we calculated the correction factor for every 15 minute time step in the intercomparison period and then we used a trimmed mean (5% on every end) over the whole time frame to calculate the scaling factors, reducing the influence of outliers. The scaling factors obtained were 1.03 for UCASS A, 1.22 for UCASS B,
945 1.10 for Welas_4m, 1.15 for Welas_2m, and 0.62 for CDA.

D3 Systematic x-axis (diameter) correction of the Welas

During the campaign, the Welas lamps were not exchanged. We assume that degradation of the lamps due to their limited nominal lifetime of approximately 400 hours, may have led to a gradual shift in bin classification toward smaller bins over time. Such an effect was evident in the Welas_2m data, as its results in number size distribution showed a large deviation in
950 number size distribution to the Welas_4m and to other instruments. For instance, it mostly recorded smaller concentrations than Welas_4m (contrary to what we expected) and smaller than Fidas_2m. In addition, it mostly measured less large particles than Welas_4m during the campaign (Fig. 9a). To correct this bias, we sought a method to transform the x-axis (diameter) of

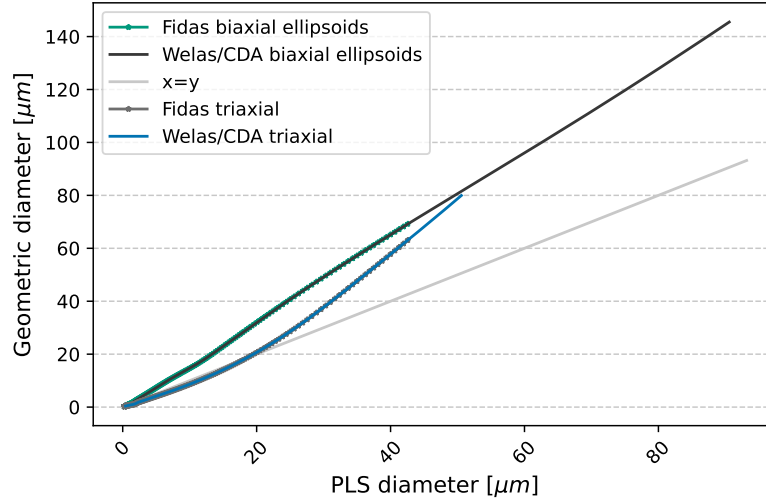


Figure E1. Conversion from optical (retrieval for PLS, x-axis) to geometric diameter (biaxial spheroids, y-axis) for Welas, Fidas, and CDA.

the PSDs by analyzing data collected during the intercomparison period, where both Welas instruments measured next to each other at the same height.

955 From this analysis, we identified a quadratic relationship of the form $a + bx + cx^2$ to correct the bin boundaries, with the parameters $a = 0.16$, $b = 1.15$, and $c = 0.006$. This correction approach was implemented by optimizing the diameter-wise alignment of the size distributions using data from both instruments. The optimization minimized the discrepancy between the two instruments by comparing the linearly interpolated concentration of Welas_2m with the observed values of Welas_4m across their overlapping size ranges. The correction parameters were determined using a global optimization routine, specifically the differential evolution algorithm (SciPy's differential evolution algorithm). The correction function $a + bx + cx^2$ with
 960 the corresponding parameters were then applied to the original bin diameters of Welas_2m.

Appendix E: Conversion from optical to geometric diameter

By deriving the geometric diameter for Welas, CDA, and Fidas, assuming biaxial ellipsoids as explained in Sect. 2.1.2, we made the measurements more tailored to dust. In Fig. E1, we compare the resulting geometric diameters (1) assuming biaxial
 965 ellipsoids with an aspect ratio of 1.49 (y-axis) and (2) assuming triaxial ellipsoids with the default optical diameters from PSL (x-axis). This shows that optical diameters of PSL tend to underestimate the sizes of biaxial dust particles, particularly for larger particles. In contrast, the transformation for smaller particles is minimal, which can be attributed to the combined effects of dust asphericity and the refractive index.

To determine the ratio of the volume-equivalent diameter d_{geo} to the projected-area diameter d_{PA} for the SANTRI2, the
 970 following equation was used, assuming randomly oriented particles:

$$d_{geo} = d_{PA} \cdot \sqrt{AR \cdot HWR} \cdot \left(\frac{3}{AR^p + HWR^p + (AR \cdot HWR)^p} \right)^{\frac{1}{2p}}, \quad (E1)$$

with, AR , the aspect ratio (length-to-width) and HWR is the height-to-width ratio, and p is a shape-dependent exponent:

$$p = \frac{\log(3)}{\log(2)}. \quad (E2)$$

This equation, derived from the surface area of spheres and triaxial ellipsoids, provides a geometric approximation of the relationship between d_{geo} and d_{PA} . While biaxial spheroids were assumed for the main analysis (consistent with Fidas and Welas), a more precise analysis should consider triaxial ellipsoids with $HWR \neq 1$ (Huang et al., 2020). We did use this approach in order to be in line with the assumptions for Welas and Fidas and the database to convert their optical diameters did not provide a size range $> 50\mu\text{m}$ (PSL, Meng et al., 2010). The results for triaxial ellipsoids are briefly discussed in Appendix H.

For the SANTRI2, $AR = 1.49$ (derived as median AR from SEM analyses) and $HWR = 1$ (in line with the biaxial assumption of the Welas and Fidas), the computed ratio is:

$$\frac{d_{geo}}{d_{PA}} = \sqrt{1.49} \cdot \left(\frac{3}{1.49^p + 1^p + (1.49)^p} \right)^{\frac{1}{2p}} \approx 1.055. \quad (E3)$$

For the SEM analyses, we used the approach of Huang et al. (2021). Their assumption is that the FPS collects dust particles in an orientation where their largest surface lies parallel to the collection substrate, meaning the smallest dimension (height H) is aligned perpendicular to the surface (Huang et al., 2021). Here, $HWR = 1$ but AR was used directly from the SEM analysis for every diameter.

$$\frac{d_{area}}{d_{geo}} = \frac{\sqrt{LW}}{\sqrt[3]{LWH}} = \frac{\sqrt[6]{AR}}{\sqrt[3]{HWR}}. \quad (E4)$$

Appendix F: Re-binning method for harmonizing and comparing PSD

To harmonize the PSDs from different instruments and enable averaging into a single PSD, we applied a re-binning method that calculates bin-weighted averages. The instruments included in this process are the two Welas, two Fidas, and the upward-looking units SANTRI2_xU. Due to differences in the operational size ranges of these instruments, we included their data to obtain an average PSD only above specific size thresholds to avoid inaccuracies near the boundaries of their measurement ranges. For the Welas, data were included from $d_p > 1.5\mu\text{m}$, for the Fidas from $d_p > 0.5\mu\text{m}$, and for the SANTRI_xU from $d_p > 80\mu\text{m}$.

The re-binning method interpolates measurements from the original (old) bin edges to a common set of target (new) bin edges. For each time step, we calculated the contributions of the old bins to the new bins by determining the overlapping bin widths. The relative amount from the old bin that overlaps with the new bin was then included in the new bin. This approach

accounts for both constant and varying (such as for SANTRI2) bin edges over time. In cases where no overlap exists between old and new bins, or where contributions to a specific new bin are entirely invalid (e.g., NaN values), the resulting value is set to NaN.

Appendix G: Sampling efficiency

Inlets are critical components of instruments used for aerosol sampling, and they serve the purpose of guiding particles into the measurement system. Aspirating an aerosol sample through an inlet toward a sensor involves several complexities. The sizes of the particles, inlet design as well as wind conditions in comparison to the aspiration airstream inside the inlet determine the occurring particle losses. The sampling efficiency η_{sampling} is used to describe the effectiveness of an inlet system in capturing and transporting particles from the environment to the measurement chamber. It is defined as the product of inlet and transport efficiencies, η_{inlet} (draw particles into an inlet) and $\eta_{\text{transport}}$ (losses inside the inlet):

$$\eta_{\text{sampling}} = \eta_{\text{inlet}} * \eta_{\text{transport}}. \quad (\text{G1})$$

When measuring larger particles, such as (super-) coarse and giant mineral dust particles, the choice of inlets can significantly impact the amount of particles detected and is therefore discussed for the different instruments used in this study.

G1 Inlet efficiency

The inlet efficiency (η_{inlet}) is the product of the aspiration and transmission efficiencies, representing the fraction of ambient particles delivered to the sampling system, defined as:

$$\eta_{\text{inlet}} = \eta_{\text{asp}} * \eta_{\text{transm}}. \quad (\text{G2})$$

For instruments that actively aspirate air with pumps, i.e., the directional and the Sigma-2 inlet in our study, measurements suffer from anisokinetic conditions which alter the particle concentration in the nozzle of the inlets compared to the original samples. Super-isokinetic conditions, where the airflow speed in the inlet U exceeds ambient air speed U_0 , lead to an underestimation of larger particles. Sub-isokinetic conditions, where the inlet airflow speed U is slower than the surrounding air speed U_0 , lead to an overestimation of larger particles. The concentration of particles of given size entering the inlet divided by their concentration in the ambient environment is defined as aspiration efficiency (η_{asp}).

Several studies have investigated sampling from a flowing gas using thin-walled nozzles under various conditions, including isokinetic and anisokinetic sampling in both isoaxial and anisoaxial flows. Summaries of this work are provided by Kulkarni et al. (2011). The developed models are applied under conditions of constant ambient and sample gas velocities, which are typically much higher than the particle settling velocity, making gravitational effects negligible. Among the various studies, we chose the correlation from Liu et al. (1989) and Zhang and Liu (1989) for the aspiration efficiency (η_{asp}) due to its applicability over a larger Stokes number (Stk) range ($0.01 \leq \text{Stk} \leq 100$) and wind speed range ($0.1 \leq \frac{U_0}{U} \leq 10$) to represent

particle sampling under various flow conditions. Aspiration efficiency (η_{asp}) is estimated as:

$$\eta_{asp} = \begin{cases} 1 + \frac{[\frac{U_0}{U} - 1]}{[1 + \frac{0.418}{Stk}]} & \text{for } \frac{U_0}{U} > 1 \\ 1 & \text{for } \frac{U_0}{U} = 1 \\ 1 + \frac{[\frac{U_0}{U} - 1]}{[1 + \frac{0.506\sqrt{U_0/U}}{Stk}]} & \text{for } \frac{U_0}{U} < 1. \end{cases} \quad (G3)$$

The transmission efficiency (η_{trans}) is the fraction of aspirated particles transmitted through the inlet (Kulkarni et al., 2011).

1030 Inertial transmission losses have been studied by Liu et al. (1989) and Hangal and Willeke (1990). For sub-isokinetic sampling (when $\frac{U_0}{U} > 1$), particles are often deposited on the nozzle walls, resulting in a transmission efficiency of less than 1 (Liu et al., 1989). Liu et al. (1989) proposed for the inertial transmission efficiency $\eta_{trans,inert}$ for sub-isokinetic isoaxial sampling as:

$$\eta_{transm,inert,L89} = \frac{1 + [\frac{U_0}{U} - 1] / [1 + \frac{2.66}{Stk^{2/3}}]}{1 + [\frac{U_0}{U} - 1] / [1 + \frac{0.418}{Stk}]}. \quad (G4)$$

Conversely, Hangal and Willeke (1990) assume no inertial transmission losses for sub-isokinetic isoaxial sampling. For super-
1035 isokinetic sampling (when $\frac{U_0}{U} < 1$), Liu et al. (1989) stated that the particle movement is not directed toward the walls, leading to a transmission efficiency of 1.

However, Hangal and Willeke (1990) argue that under these conditions, flow separation occurs at the nozzle inlet, leading to the formation of a constricted jet (vena contracta). This induces turbulence, which enhances particle deposition. They provide the following inertial transmission efficiency for super-isokinetic sampling:

$$1040 \quad \eta_{transm,inert,HW90} = \exp[-75I_v^2], \quad (G5)$$

where the parameter I_v describes the inertial losses in the vena contracta and is given by:

$$I_v = 0.09 \left(\frac{Stk}{(U_0/U)^{0.3}} \right). \quad (G6)$$

Equation (G4) applies for $0.01 \leq Stk \leq 100$ and $1 \leq \frac{U_0}{U} \leq 10$ (Liu et al., 1989) and Eq. (G5) for $0.02 \leq Stk \leq 4$ and $0.25 \leq \frac{U_0}{U} \leq 1.0$ (Hangal and Willeke, 1990). In our study, we combine the expression for sub-isokinetic sampling conditions from
1045 Liu et al. (1989) and for super-isokinetic sampling from Hangal and Willeke (1990) to estimate $\eta_{transm,inert}$.

We did not calculate the gravitational settling transmission efficiency $\eta_{trans,grav}$ due to the complexities and assumptions involved in accurately modeling particle deposition at the inlet, as highlighted by Kulkarni et al. (2011). Another minor issue is that the approximations might not be applicable for calm ($U_0 < 0.5 \text{ m s}^{-1}$) and slow wind conditions $0.5 < U_0 < 1.5 \text{ m s}^{-1}$ due to an enhanced gravitational force (Kulkarni et al., 2011). We neglect this issue here as we are particularly interested in the
1050 large-size of the PSD, which we assume to be most relevant under higher wind speeds.

G2 Transport efficiency

Transporting the aerosol sample through pipes to the measurement chamber involves bends and other flow elements, with either laminar or turbulent flow. Particle deposition during transport in the pipes can alter aerosol characteristics, influenced

by mechanisms such as agglomeration and re-entrainment. These phenomena depend on flow regime, rate, tube size and orientation, temperature gradients, and particle size (Kulkarni et al., 2011). The transport efficiency ($\eta_{\text{transport}}$) for a given particle size is the product of the efficiencies for each deposition mechanism, m , in each flow element, f :

$$\eta_{\text{transport}} = \prod_f \prod_m \eta_{f,m}$$

The different mechanisms and flow elements which lead to inlet inefficiencies for the inlets considered in our study are explained in the following.

Fuchs (1964) and Thomas (1958) developed expressions for gravitational settling in horizontal tubes with laminar flow. These losses are especially important for the directional inlet due to its horizontal first part. Heyder and Gebhart (1977) extended this to inclined tubes, providing a general correlation for gravitational deposition (η_{grav}) from laminar flow in circular tubes:

$$\eta_{\text{grav}} = 1 - \frac{2}{\pi} \left[2\kappa \sqrt{1 - \kappa^{2/3}} - \kappa^{1/3} \sqrt{1 - \kappa^{2/3}} + \arcsin(\kappa^{1/3}) \right] \quad (\text{G7})$$

with $\kappa = \varepsilon \cos \theta = \frac{3}{4} \frac{L}{d} \frac{V_{ts}}{U} \cos \theta$ and $\varepsilon = \frac{3}{4} Z = \frac{3}{4} \frac{L}{d} \frac{V_{ts}}{U}$ where $\frac{V_{ts} \sin \theta}{U} \ll 1$ with V_{ts} being the settling velocity, L the length of the pipe element, θ the possible inclination of the element, and d the diameter. This formula applies to various tube orientations and is consistent with experimental results (Kulkarni et al., 2011). It reduces to the case of the horizontal tube when $\theta = 0^\circ$. In vertical tubes, the transport efficiency for gravitational settling is 1 (100%) as particles do not deposit horizontally. Here, V_{ts} is the settling velocity that can be approximated by Stokes settling for small particles. However, as discussed in Adebisi et al. (2023), this cannot be applied for larger particles. Adebisi et al. summarize alternative calculations for V_{ts} and we implement Wu and Wang (2006) with a Corey Shape Factors of $= 0.7$ (typical for mineral dust).

Another relevant loss of particles during sampling is the transport efficiency for bends η_{bend} . This is an important part in the directional inlet. We implement a formula based on the experimental work developed in Wang et al. (2024) to calculate η_{bend} , as it shows advantages compared to other experimental data (Pui et al., 1987) and models proposed before Pui et al. (e.g., 1987) (Dean numbers 1000-4189, inner diameters 5-15 mm, and curvature ratios 2-10, it relies solely on the Stokes number, and accurately predicts particle transport efficiency for Stokes numbers between 0.001 and 10). It is defined as:

$$\eta_{\text{bend}} = \frac{1}{1 + (\text{Stk}/0.17)^{2.73}} \quad (\text{G8})$$

Turbulent inertial deposition occurs when large particles, due to their high inertia, cannot follow the curved streamlines of turbulent eddies and are deposited on the walls of a tube. For our study, this is relevant for the UCASS for their large pipe diameter but not for the directional inlet as we assume a laminar flow. This phenomenon is described by the transport efficiency $\eta_{\text{turb-inert}}$ (Kulkarni et al., 2011):

$$\eta_{\text{tube, turb-inert}} = \exp \left(-\frac{\pi d L V_t}{Q} \right) \quad (\text{G9})$$

where d is the tube diameter, L is the transport length, V_t is the turbulent inertial deposition velocity, and Q is the volumetric flow rate. Liu and Agarwal (1974) found that the dimensionless deposition velocity (V^+) increases with particle relaxation

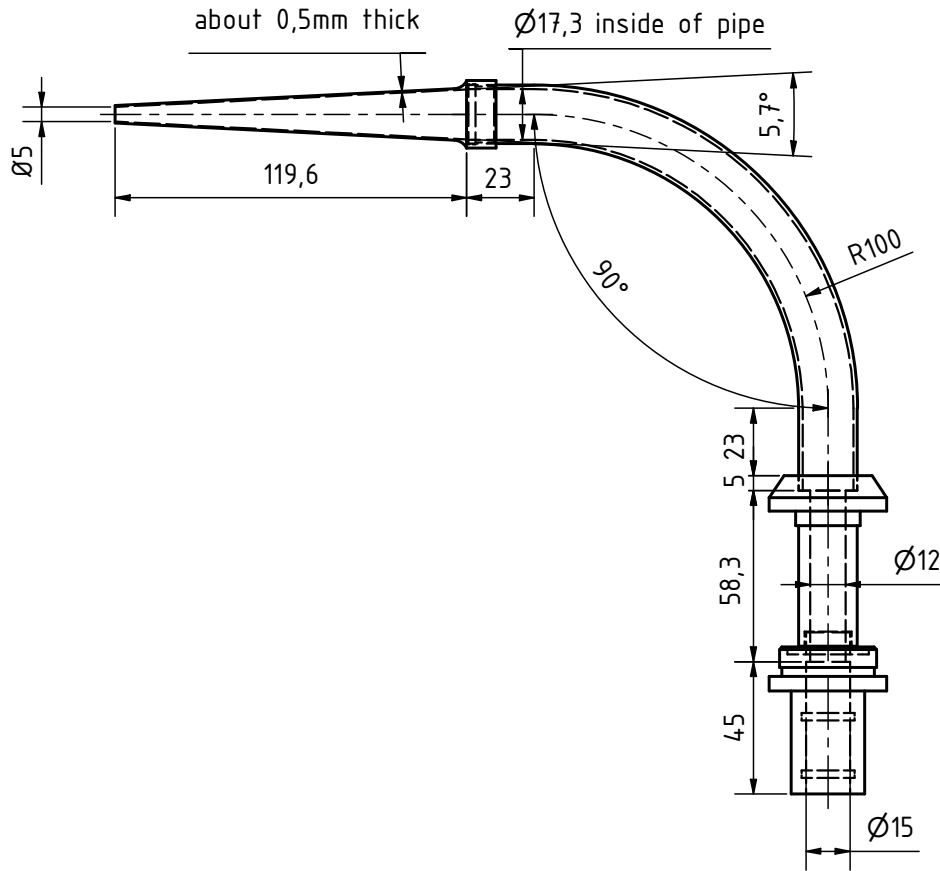


Figure G1. Design of the directional inlet used for Welas and Fidas. Figure by S. Haaß.

time (t^+) in the so-called turbulent diffusion–eddy impaction regime and peaks at $t^+ \approx 30$. For larger t^+ , deposition velocity decreases in the particle inertia-moderated regime, as reduced turbulence influence allows particles to penetrate the sublayer and deposit directly onto the wall.

The re-entrainment of particles could significantly influence the PSD. To our knowledge, there is no widely accepted approximation for the re-entrainment of particles (Kulkarni et al., 2011). We assume that especially for changing wind conditions or a moving directional inlet (Welas, Fidas, or rotating mast), re-entrainment could be a relevant alteration mechanism of the PSDs but could not be quantified further. Diffusional deposition becomes relevant only for particles $< 0.1\mu\text{m}$, and therefore we neglected it here. In addition, the calculation of the pipe enlargement was not included due to inconsistencies in published methods and difficulties in reproducing the reported calculations (Schade et al., 2007). In the following, the efficiencies of the inlets and instruments used in this study are quantitatively or qualitatively analyzed.

Welas and Fidas sampled the same air stream of 4.8 l min^{-1} and used the same inlet for guiding the aerosol to their corresponding measurement chambers during J-WADI. There, we deployed a directional inlet as shown in Fig. 6a and detailed in Fig. G1. In the directional inlet, particles are transported through a horizontal nozzle where the inlet undergoes enlargement, through a bend, guided through a vertical pipe piece, an IADS (Intelligent Aerosol Drying System) drying system, i.e., vertical transport, and eventually reach the measurement chamber.

We calculated the sampling efficiency with the following formula:

$$\eta_{\text{sampling}} = \eta_{\text{inlet}} * \eta_{\text{transport}} = \eta_{\text{asp}} * \eta_{\text{transm}} * \eta_{\text{grav}} * \eta_{\text{bend}}. \quad (\text{G10})$$

For η_{inlet} , we used the formulas introduced above for η_{transm} and η_{asp} (Eqs. G3, G4/sub-isokinetic conditions, G5/super-isokinetic conditions). As the Reynolds numbers for all parts of the inlet are smaller than 600, we assumed a laminar flow and that turbulent inertial deposition is negligible. The most relevant losses for the directional inlet for large particles are sedimentation losses (η_{grav}) in the horizontal part of the inlet, as they tend to settle out of the airstream due to gravity. These losses can result in underestimations of larger particle concentration.

The sampling efficiency η_{sampling} efficiency for the directional inlet is shown in Fig. 10a for different wind conditions U_0 . The dotted lines indicate that one or more formulas discussed above are not proven for the conditions shown in the figure. For wind speeds $U_0 \leq 5 \text{ m s}^{-1}$ and particle diameters $d_p \leq 5 \mu\text{m}$, the efficiency $\eta_{\text{sampling}} \approx 100 \%$ and decreases to 0 % at $d_p \approx 30 \mu\text{m}$. For $U_0 > 5 \text{ m s}^{-1}$ and $d_p > 5 \mu\text{m}$, η_{sampling} increases to a peak at $d_p 12 \mu\text{m}$ and decreases to 0 % at $d_p \approx 40 \mu\text{m}$. The peak is introduced due to sub-isokinetic conditions, whereas the sharp decrease starting at $20 \mu\text{m}$ is mainly caused by gravitational losses in the horizontal part of the inlet and losses in the bend. However, it should be noted that for wind speeds $U_0 < 5 \text{ m s}^{-1}$ and particles with $d_p > 30 \mu\text{m}$, most of the formulas are not valid.

1115 **G4 Sigma-2 inlet of the CDA**

The CDA used a Sigma-2 sampling head (Palas GmbH). The Association of German Engineers (VDI-2119, 2013) validated the Sigma-2 sampler after testing it in numerous investigations and concluded that it is a reliable collector for coarse and super-coarse particles (Dietze et al., 2006; Waza et al., 2019; Rausch et al., 2022; Tian et al., 2017). However, due to the low concentrations measured for particle diameters $d_p > 20 \mu\text{m}$ compared to the other instruments, we assume that substantial losses occurred for particles from that diameter on. We assume the inlet to have less gravitational losses than the directional inlet due to missing horizontal sampling lines. We also expect it to be able to sample from all horizontal angles, but to have losses due to the wire grid inside the head and the side panels between the three openings. To our knowledge, no inlet efficiency simulations or measurements were conducted and existing formulas cannot be adapted to the needs of the Sigma-2 head, so that we cannot quantify η_{sampling} for the Sigma-2 inlet. Conducting own numerical inlet simulations is beyond the scope of this paper, but we consider doing so in the future.

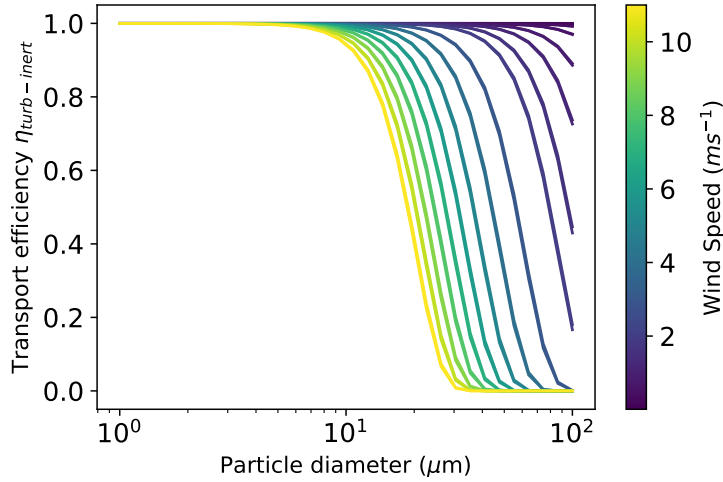


Figure G2. Turbulent inertial deposition within the UCASS for different wind conditions U_0 estimated based on Eq. G9.

G5 UCASS

The UCASS are also a passive system, nearly open-path where the electronics are placed in a housing with a 2.2 cm (small side) wide oval opening. By using the same calculations as for the Welas and Fidas inlet and assuming approximately the same air flow inside and outside the instrument, we estimated minimal particle losses in the housing and a high gravitational efficiency close to one throughout the whole particles range. In the large opening of the UCASS, high Reynolds numbers can develop. When applying Eq. G9 to a simplified geometry of the UCASS with two parts (enlargement and straight pipe: $L = 4.5$ cm and 9 cm and $D = 4.3$ cm and 6.4 cm for the different parts), we found substantial losses due to turbulent inertial deposition as shown in Fig. G2. For higher wind speeds around 10 m s^{-1} , inlet efficiencies rapidly decrease from approximately 90% for $11 \mu\text{m}$ particles to nearly 0% for particles of $20 \mu\text{m}$ due to the large pipe diameters, high flow rates, and resulting high Reynolds numbers (Eq. G9). Based on the calculations explained above and especially due to turbulent inertial deposition, we would not expect to measure particles with diameters larger than $d_p = 20 \mu\text{m}$. However, as we measured these large particles, $\eta_{\text{tube, turb-inert}}$ might be overestimated by Eq. G9.

G6 SANTRI2

Operating inlet-free, the SANTRI2 relies on the wind field to guide the particles through the optical path. Although this design avoids inlet-induced biases, potential turbulence effects caused by the underlying sensor platform can still lead to modifications of the aerosol sample seen by the sensors compared to its surrounding. Due to its slim design, we expect these alterations to be small.

Appendix H: PSD for triaxial particle assumption

Although it would be more realistic to assume triaxial ellipsoids rather than biaxial ones for geometric diameters (Huang et al., 2020), the lack of a suitable database for optical conversions of PSL particles with diameters $d > 50\mu\text{m}$ limits the applicability of this approach, as the Meng et al. (2010) database does not cover such large particles. Figure H1 presents 15-minute average size distributions of mass concentration for dusty conditions on 29 September 2022, focusing on three consecutive 15-minute intervals from 14:30 until 15:00 UTC. The PSDs in Figure H1c show the corrected PSDs assuming triaxial ellipsoids and after correction steps as explained in Appendix C-E are applied. They reveal differences compared to the biaxial assumption in Figure H1b. Notably, the Welas size range is not entirely covered since the Meng et al. (2010) database does not include particles from around $50\mu\text{m}$. Especially for Welas_4m, only particles $d_p < 70\mu\text{m}$ are covered whereas Welas_2m covers also larger particles due to the diameter correction. Furthermore, SANTRI2 are assigned to a smaller size range, due to the consideration of $HWR=0.45$, i.e., the third axis of the ellipsoid differing from the other two. Huang et al. (2021) assumes $HWR = 0.4$ but this is the smallest value in the database of Meng et al. (2010). Additionally, the PSDs of Welas_2m show a less smooth behavior likely due to the applied correction mechanisms. Furthermore, the peak of the size distributions shift slightly towards smaller diameters, but its position is ambiguous between 30 and $50\mu\text{m}$.

These results demonstrate that the estimation of geometric diameters is highly sensitive to particle shape assumptions and refractive index, the latter being estimated from Di Biagio et al. (2019) but not retrieved directly from the field data. As the interpretation depends on these parameters, further research is essential to improve the reliability of geometric diameter estimates, particularly for larger particles where uncertainties remain substantial.

Data availability. The data presented here will be available in a public repository upon acceptance of the manuscript.

Author contributions. HM processed aerosol spectrometer and most meteorological data, performed the analyses, created most figures, and drafted the article. MK supervised the work with contributions from PK, CPG-P, and KK. KK conducted the FPS sampling, SEM analysis, and provided the corresponding results. SD provided the sonic anemometer data from the 10 m meteorological mast. JE provided the transformation from optical to geometric diameter for the Fidas, CDA, and Welas. AG-R, KK, SD, MI, AA, XQ, TH, AW, FV, MK, and CPG-P implemented the field campaign. JG and CS provided the bin classification for the UCASS and corresponding scientific and technical support. OM contributed one UCASS and two Welas devices. VE and GN provided the four SANTRI2 and two SANTRI devices and corresponding scientific and technical support. FW contributed the CDA and provided scientific and technical support for CDA, Welas, and Fidas. CGF contributed to campaign preparation and provided support for the analysis. CPG-P and MK proposed and designed the measurement campaign with contributions from AW, AA, XQ, SD, KK, and TH. MK calculated the flux density, created Figs. 1b,d, and edited the manuscript. All authors provided feedback on the structure and/or the content of the final manuscript.

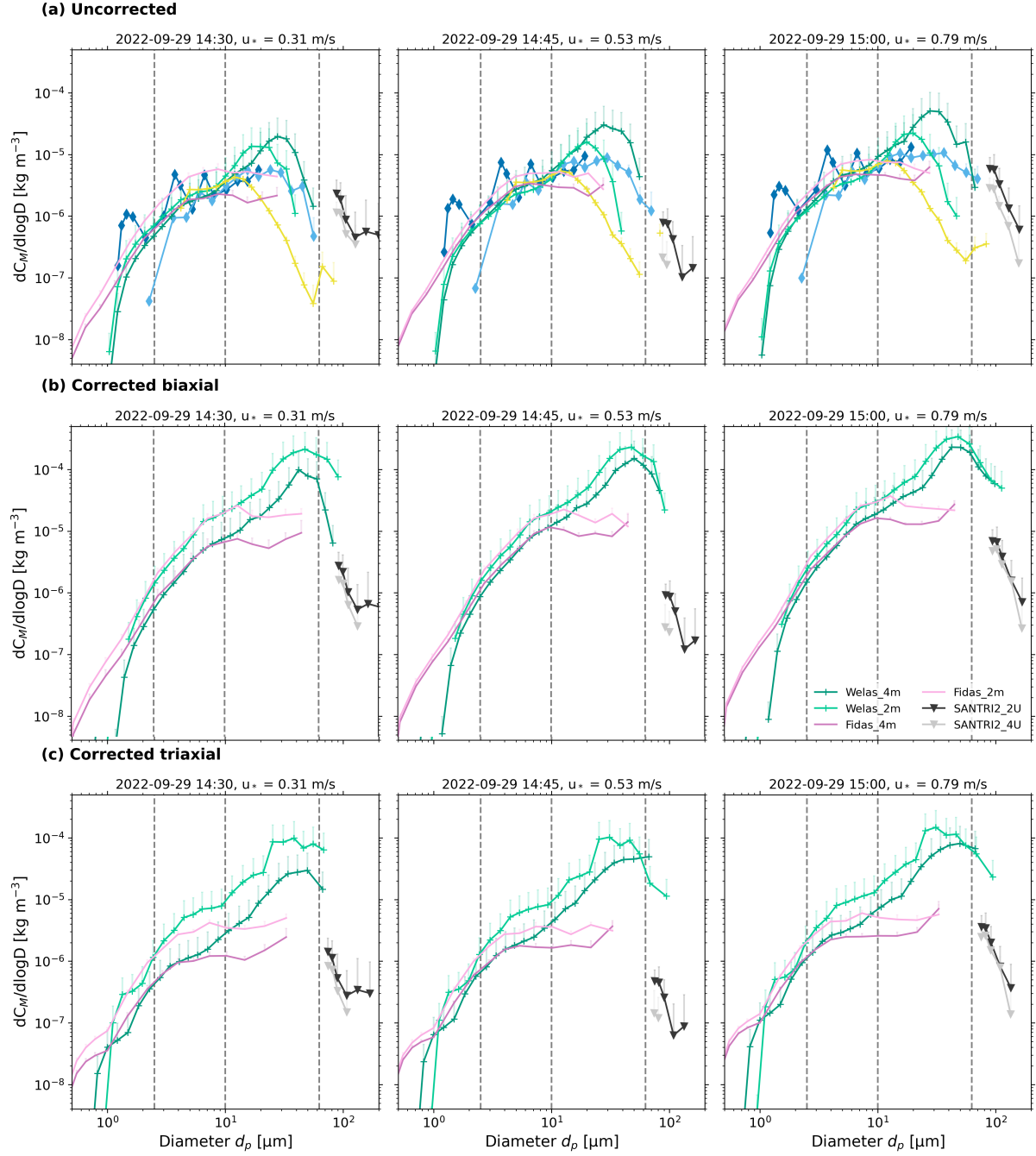


Figure H1. 15 minute average size distributions of mass concentration for dusty conditions on 29 September 2022 for 3 subsequent 15-min time periods from 14:30 until 15 UTC. (a) Uncorrected PSD with optical diameters (except SANTRI2, which uses projected-area diameter) and (b) corrected PSDs with geometric diameters assuming biaxial ellipsoids. (c) Same as (b) but with geometric diameters assuming triaxial ellipsoids. Standard errors are indicated by vertical lines (only positive errors are shown). Average 4 m friction velocity, u_* for each 15-min period are indicated in the panel titles. Dashed lines indicate the size ranges of the dust size classifications (Adebiyi et al., 2023).

Competing interests. The authors declare that they have no conflict of interests

Acknowledgements. J-WADI was funded through the Helmholtz Association's Initiative and Networking Fund (grant no. VH-NG-1533), which primarily funded the work presented here, and the European Research Council under the Horizon 2020 research and innovation programme through the ERC Consolidator Grant FRAGMENT (grant no. 773051). BSC co-authors also acknowledge support from the AXA Research Fund through the AXA Chair on Sand and Dust Storms at the Barcelona Supercomputing Center (BSC), and the Spanish Ministerio de Economía y Competitividad through the HEAVY project (grant PID2022-140365OB-I funded by MICIU/AEI/10.13039/50110001 and by ERDF, EU). Jerónimo Escribano acknowledges his AI4S fellowship within the "Generación D" initiative by Red.es, Ministerio para la Transformación Digital y de la Función Pública, for talent attraction (C005/24-ED CV1), funded by NextGenerationEU through PRTR. We are grateful to T. Gamer, S. Haaß, B. Deny, S. Scheer, S. Vergara Palacio, M. Gonçalves Ageitos, L. Ilic, R. Sousse Villa, R. Miller, and A. Böhmmländer for their support during campaign preparation and implementation. We acknowledge Wadi Rum Protected Area, Aqaba Special Economic Zone Authority, and the Directorate of Environmental Monitoring and Assessment at Ministry of Environment for their efforts to facilitate and organize the local infrastructure needed for the J-WADI. We acknowledge the use of ChatGPT (OpenAI) for assistance in refining the wording of certain sections of this manuscript.

- Adebiyi, A., Kok, J. F., Murray, B. J., Ryder, C. L., Stuut, J. B. W., Kahn, R. A., Knippertz, P., Formenti, P., Mahowald, N. M., García-Pando, C. P., Klose, M., Ansmann, A., Samset, B. H., Ito, A., Balkanski, Y., Biagio, C. D., Romanias, M. N., Huang, Y., and Meng, J.: A review of coarse mineral dust in the Earth system, *Aeolian Research*, 60, 100 849, <https://doi.org/10.1016/J.AEOLIA.2022.100849>, 2023.
- Adebiyi, A. A. and Kok, J. F.: Climate models miss most of the coarse dust in the atmosphere, *Science Advances*, 6, <https://doi.org/10.1126/sciadv.aaz9507>, 2020.
- Alfaro, S. C. and Gomes, L.: Modeling mineral aerosol production by wind erosion: Emission intensities and aerosol size distributions in source areas, *Journal of Geophysical Research: Atmospheres*, 106, 18 075–18 084, <https://doi.org/10.1029/2000JD900339>, 2001.
- Alfaro, S. C., Gaudichet, A., Gomes, L., and Maillé, M.: Modeling the size distribution of a soil aerosol produced by sandblasting, *Journal of Geophysical Research: Atmospheres*, 102, 11 239–11 249, <https://doi.org/10.1029/97JD00403>, 1997.
- 1195 Barchyn, T. E. and Hugenholtz, C. H.: Comparison of four methods to calculate aeolian sediment transport threshold from field data: Implications for transport prediction and discussion of method evolution, *Geomorphology*, 129, 190–203, <https://doi.org/10.1016/J.GEOMORPH.2011.01.022>, 2011.
- Berg, J., Mann, J., Bechmann, A., Courtney, M. S., and Jørgensen, H. E.: The Bolund Experiment, Part I: Flow Over a Steep, Three-Dimensional Hill, *Boundary-Layer Meteorology*, 141, 219–243, <https://doi.org/10.1007/S10546-011-9636-Y/METRICS>, 2011.
- 1200 Betzer, P. R., Carder, K. L., Duce, R. A., Merrill, J. T., and Tindale, N. W.: Long-range transport of giant mineral aerosol particles, *Nature*, 336, 568–571, <https://doi.org/10.1038/336568a0>, 1988.
- Cheng, N.-S.: Simplified Settling Velocity Formula for Sediment Particle, *Journal of Hydraulic Engineering*, 123, 149–152, [https://doi.org/10.1061/\(ASCE\)0733-9429\(1997\)123:2\(149\)](https://doi.org/10.1061/(ASCE)0733-9429(1997)123:2(149)), 1997.
- Di Biagio, C., Formenti, P., Balkanski, Y., Caponi, L., Cazaunau, M., Pangui, E., Journet, E., Nowak, S., Andreae, M. O., Kandler, K., Saeed, T., Piketh, S., Seibert, D., Williams, E., and Doussin, J. F.: Complex refractive indices and single-scattering albedo of global dust aerosols in the shortwave spectrum and relationship to size and iron content, *Atmospheric Chemistry and Physics*, 19, 15 503–15 531, <https://doi.org/10.5194/ACP-19-15503-2019>, 2019.
- 1205 Di Biagio, C., Balkanski, Y., Albani, S., Boucher, O., and Formenti, P.: Direct Radiative Effect by Mineral Dust Aerosols Constrained by New Microphysical and Spectral Optical Data, *Geophysical Research Letters*, 47, e2019GL086 186, <https://doi.org/10.1029/2019GL086186>, 2020.
- 1210 Dietze, V., Fricker, M., Goltzsche, M., and Schultz, E.: Air quality measurement in German health resorts - Part 1: Methodology and verification, *Gefahrstoffe Reinhaltung der Luft*, 66, 45–53, 2006.
- Dufresne, J.-L., Gautier, C., Ricchiazzi, P., and Fouquart, Y.: Longwave Scattering Effects of Mineral Aerosols, *Journal of The Atmospheric Sciences - J ATMOS SCI*, 59, 1959–1966, [https://doi.org/10.1175/1520-0469\(2002\)059<1959:LSEOMA>2.0.CO;2](https://doi.org/10.1175/1520-0469(2002)059<1959:LSEOMA>2.0.CO;2), 2002.
- 1215 Dupont, J. et al.: Near-surface dust flux enrichment in small articles during erosion events, *Geophysical Research Letters*, 42, 2015.
- Dupont, S.: On the Influence of Thermal Stratification on Emitted Dust Flux, *Journal of Geophysical Research: Atmospheres*, 127, e2022JD037 364, <https://doi.org/10.1029/2022JD037364>, 2022.
- Dupont, S., Rajot, J. L., Lamaud, E., Bergametti, G., Labiadh, M., Khalfallah, B., Bouet, C., Marticorena, B., and Fernandes, R.: Comparison Between Eddy-Covariance and Flux-Gradient Size-Resolved Dust Fluxes During Wind Erosion Events, *Journal of Geophysical Research: Atmospheres*, 126, e2021JD034 735, <https://doi.org/10.1029/2021JD034735>, 2021.
- 1220

- Dupont, S., Klose, M., Irvine, M. R., González-Flórez, C., Alastuey, A., Bonnefond, J.-M., Dagsson-Waldhauserova, P., Gonzalez-Romero, A., Hussein, T., Lamaud, E., Meyer, H., Panta, A., Querol, X., Schepanski, K., Palacio, S. V., Wieser, A., Yus-Díez, J., Kandler, K., and García-Pando, C. P.: Impact of Dust Source Patchiness on the Existence of a Constant Dust Flux Layer During Aeolian Erosion Events, *Journal of Geophysical Research: Atmospheres*, 129, e2023JD040657, <https://doi.org/10.1029/2023JD040657>, 2024.
- 1225 Durán, O., Claudin, P., and Andreotti, B.: On aeolian transport: Grain-scale interactions, dynamical mechanisms and scaling laws, *Aeolian Research*, 3, 243–270, <https://doi.org/10.1016/J.AEOLIA.2011.07.006>, 2011.
- Etyemezian, V., Nikolich, G., Nickling, W. G., King, J., and Gillies, J. A.: Analysis of an optical gate device for measuring aeolian sand movement, *Aeolian Research*, 24, 65–79, <https://doi.org/10.1016/j.aeolia.2016.11.005>, 2017.
- Fernandes, R., Dupont, S., and Lamaud, E.: Investigating the role of deposition on the size distribution of near-surface dust flux during erosion events, *Aeolian Research*, 37, 32–43, <https://doi.org/10.1016/J.AEOLIA.2019.02.002>, 2019.
- 1230 Formenti, P. and Di Biagio, C.: Large synthesis of in situ field measurements of the size distribution of mineral dust aerosols across their life cycles, *Earth System Science Data*, 16, 4995–5007, <https://doi.org/10.5194/ESSD-16-4995-2024>, 2024.
- Fratini, G., Ciccioli, P., Febo, A., Forgiione, A., and Valentini, R.: Size–segregated fluxes of mineral dust from a desert area of northern China by eddy covariance, *Atmospheric Chemistry and Physics*, 7, 2839–2854, <https://doi.org/10.5194/acp-7-2839-2007>, 2007.
- 1235 Froyd, K. D., Yu, P., Schill, G. P., Brock, C. A., Kupc, A., Williamson, C. J., Jensen, E. J., Ray, E., Rosenlof, K. H., Bian, H., Darmenov, A. S., Colarco, P. R., Diskin, G. S., Bui, T. P., and Murphy, D. M.: Dominant role of mineral dust in cirrus cloud formation revealed by global-scale measurements, *Nature Geoscience* 2022 15:3, 15, 177–183, <https://doi.org/10.1038/s41561-022-00901-w>, 2022.
- Fuchs, N.: *The Mechanics of Aerosols*. Pergamon, Oxford, 1964.
- Gasteiger, J. and Wiegner, M.: MOPSMAP v1.0: a versatile tool for the modeling of aerosol optical properties, *Geoscientific Model Development*, 11, 2739–2762, <https://doi.org/10.5194/gmd-11-2739-2018>, 2018.
- 1240 Gillette, D. A.: On the production of soil wind erosion having the potential for long range transport, *Journal de Recherche Atmosphérique*, 8, 734–744, 1974.
- Gillette, D. A., Blifford, I. H., and Fenster, C. R.: Measurements of Aerosol Size Distributions and Vertical Fluxes of Aerosols on Land Subject to Wind Erosion, *Journal of Applied Meteorology*, 11, 977–987, [https://doi.org/10.1175/1520-0450\(1972\)011<0977:MOASDA>2.0.CO;2](https://doi.org/10.1175/1520-0450(1972)011<0977:MOASDA>2.0.CO;2), 1972.
- 1245 Girdwood, J., Smith, H. R., Stanley, W., Ulanowski, Z., Stopford, C., Chemel, C., Doulgeris, K., Brus, D., Campbell, D. A., and Mackenzie, R.: Design and field campaign validation of a multi-rotor unmanned aerial vehicle and optical particle counter, *Atmospheric Measurement Techniques*, 13, 6613–6630, <https://doi.org/10.5194/amt-13-6613-2020>, 2020.
- Girdwood, J., Stanley, W., Stopford, C., and Brus, D.: Simulation and field campaign evaluation of an optical particle counter on a fixed-wing UAV, *Atmospheric Measurement Techniques*, 15, 2061–2076, <https://doi.org/10.5194/amt-15-2061-2022>, 2022.
- 1250 Girdwood, J., Ballington, H., Stopford, C., Lewis, R., and Hesse, E.: Calibration of optical particle spectrometers using mounted fibres, *Atmospheric Measurement Techniques*, 18, 305–317, <https://doi.org/10.5194/amt-18-305-2025>, 2025.
- González-Flórez, C., Klose, M., Alastuey, A., Dupont, S., Escribano, J., Etyemezian, V., Gonzalez-Romero, A., Huang, Y., Kandler, K., Nikolich, G., Panta, A., Querol, X., Reche, C., Yus-Díez, J., and García-Pando, C. P.: Insights into the size-resolved dust emission from field measurements in the Moroccan Sahara, *Atmospheric Chemistry and Physics*, 23, 7177–7212, <https://doi.org/10.5194/ACP-23-7177-2023>, 2023.
- 1255 González-Romero, A., González-Flórez, C., Panta, A., Yus-Díez, J., Reche, C., Córdoba, P., Moreno, N., Alastuey, A., Kandler, K., Klose, M., Baldo, C., Clark, R. N., Shi, Z., Querol, X., and García-Pando, C. P.: Variability in sediment particle size, mineralogy, and Fe mode of

- occurrence across dust-source inland drainage basins: the case of the lower Drâa Valley, Morocco, *Atmospheric Chemistry and Physics*, 23, 15 815–15 834, <https://doi.org/10.5194/ACP-23-15815-2023>, 2023.
- González-Romero, A., González-Flórez, C., Panta, A., Yus-Díez, J., Córdoba, P., Alastuey, A., Moreno, N., Hernández-Chiriboga, M., Kandler, K., Klose, M., Clark, R. N., Ehlmann, B. L., Greenberger, R. N., Keebler, A. M., Brodrick, P., Green, R., Ginoux, P., Querol, X., and García-Pando, C. P.: Characterization of the particle size distribution, mineralogy, and Fe mode of occurrence of dust-emitting sediments from the Mojave Desert, California, USA, *Atmospheric Chemistry and Physics*, 24, 9155–9176, <https://doi.org/10.5194/ACP-24-9155-2024>, 2024a.
- González-Romero, A., González-Flórez, C., Panta, A., Yus-Díez, J., Córdoba, P., Alastuey, A., Moreno, N., Kandler, K., Klose, M., Clark, R. N., Ehlmann, B. L., Greenberger, R. N., Keebler, A. M., Brodrick, P., Green, R. O., Querol, X., and García-Pando, C. P.: Probing Ice-land’s dust-emitting sediments: Particle size distribution, mineralogy, cohesion, Fe mode of occurrence, and reflectance spectra signatures, *Atmospheric Chemistry and Physics*, 24, 6883–6910, <https://doi.org/10.5194/ACP-24-6883-2024>, 2024b.
- Goossens, D., Nolet, C., Etyemezian, V., Duarte-Campos, L., Bakker, G., and Riksen, M.: Field testing, comparison, and discussion of five aeolian sand transport measuring devices operating on different measuring principles, *Aeolian Research*, 32, 1–13, <https://doi.org/10.1016/j.aeolia.2018.01.001>, 2018.
- Goudie, A. and Middleton, N.: Saharan dust storms: nature and consequences, *Earth-Science Reviews*, 56, 179–204, [https://doi.org/https://doi.org/10.1016/S0012-8252\(01\)00067-8](https://doi.org/https://doi.org/10.1016/S0012-8252(01)00067-8), 2001.
- Gouesbet, G.: Generalized Lorenz–Mie theories and mechanical effects of laser light, on the occasion of Arthur Ashkin’s receipt of the 2018 Nobel prize in physics for his pioneering work in optical levitation and manipulation: A review, *Journal of Quantitative Spectroscopy and Radiative Transfer*, 225, 258–277, <https://doi.org/10.1016/J.QSRT.2018.12.015>, 2019.
- Guha, A.: Transport and deposition of particles in turbulent and laminar flow, *Annual Review of Fluid Mechanics*, 40, 311–341, <https://doi.org/10.1146/ANNUREV.FLUID.40.111406.102220/CITE/REFWORKS>, 2008.
- Hangal, S. and Willeke, K.: Overall efficiency of tubular inlets sampling at 0–90 degrees from horizontal aerosol flows, *Atmospheric Environment. Part A. General Topics*, 24, 2379–2386, [https://doi.org/10.1016/0960-1686\(90\)90330-P](https://doi.org/10.1016/0960-1686(90)90330-P), 1990.
- Harper, J. M., Harvey, D., Huang, T., McGrath, J., Meer, D., and Burton, J. C.: The lifetime of charged dust in the atmosphere, *PNAS Nexus*, 1, <https://doi.org/10.1093/PNASNEXUS/PGAC220>, 2022.
- Heyder, J. and Gebhart, J.: Gravitational deposition of particles from laminar aerosol flow through inclined circular tubes, *Journal of Aerosol Science*, 8, 289–295, [https://doi.org/10.1016/0021-8502\(77\)90048-9](https://doi.org/10.1016/0021-8502(77)90048-9), 1977.
- Hoose, C. and Möhler, O.: Heterogeneous ice nucleation on atmospheric aerosols: A review of results from laboratory experiments, *Atmospheric Chemistry and Physics*, 12, 9817–9854, <https://doi.org/10.5194/ACP-12-9817-2012>, 2012.
- Huang, Y., Kok, J. F., Martin, R. L., Swet, N., Katra, I., Gill, T. E., Reynolds, R. L., and Freire, L. S.: Fine dust emissions from active sands at coastal Oceano Dunes, California, *Atmospheric Chemistry and Physics*, 19, 2947–2964, <https://doi.org/10.5194/acp-19-2947-2019>, 2019.
- Huang, Y., Kok, J. F., Kandler, K., Lindqvist, H., Nousiainen, T., Sakai, T., et al.: Climate models and remote sensing retrievals neglect substantial desert dust asphericity, *Geophysical Research Letters*, 47, e2019GL086 592, <https://doi.org/10.1029/2019GL086592>, 2020.
- Huang, Y., Adebisi, A. A., Formenti, P., and Kok, J. F.: Linking the Different Diameter Types of Aspherical Desert Dust Indicates That Models Underestimate Coarse Dust Emission, *Geophysical Research Letters*, 48, e2020GL092 054, <https://doi.org/10.1029/2020GL092054>, 2021.
- Ishizuka, M., Mikami, M., Leys, J., Yamada, Y., Heidenreich, S., Shao, Y., and McTainsh, G. H.: Effects of soil moisture and dried raindroplet crust on saltation and dust emission, *Journal of Geophysical Research: Atmospheres*, 113, <https://doi.org/10.1029/2008JD009955>, 2008.

- Jickells, T. D., An, Z., Andersen, K. H., Baker, A. R., Bergametti, G., Brooks, N., Cao, J., Boyd, P. W., Duce, R. A., Hunter, K. A., Kawahata, H., Kubilay, N., LaRoche, J., Liss, P. S., Mahowald, N. M., Prospero, J. M., Ridgwell, A., Tegen, I., and Torres, R.: Global iron connections between desert dust, ocean biogeochemistry, and climate, *Science*, 308, 67–71, <https://doi.org/10.1126/science.1105959>, 2005.
- Kandler, K., Benker, N., Bundke, U., Cuevas, E., Ebert, M., Knippertz, P., Rodríguez, S., Schütz, L., and Weinbruch, S.: Chemical composition and complex refractive index of Saharan Mineral Dust at Izaña, Tenerife (Spain) derived by electron microscopy, *Atmospheric Environment*, 41, 8058–8074, <https://doi.org/10.1016/J.ATMOSENV.2007.06.047>, 2007.
- Kandler, K., Schneiders, K., Ebert, M., Hartmann, M., Weinbruch, S., Prass, M., and Pöhlker, C.: Composition and mixing state of atmospheric aerosols determined by electron microscopy: Method development and application to aged Saharan dust deposition in the Caribbean boundary layer, *Atmospheric Chemistry and Physics*, 18, 13 429–13 455, <https://doi.org/10.5194/ACP-18-13429-2018>, 2018.
- 1300 Khalfallah, B., Bouet, C., Labiadh, M. T., Alfaro, S. C., Bergametti, G., Marticorena, B., Lafon, S., Chevaillier, S., Féron, A., Hease, P., des Tureaux, T. H., Sekrafi, S., Zapf, P., and Rajot, J. L.: Influence of Atmospheric Stability on the Size Distribution of the Vertical Dust Flux Measured in Eroding Conditions Over a Flat Bare Sandy Field, *Journal of Geophysical Research: Atmospheres*, 125, e2019JD031 185, <https://doi.org/10.1029/2019JD031185>, 2020.
- Klose, M., Gill, T. E., Etyemezian, V., Nikolich, G., Zadeh, Z. G., Webb, N. P., and Van Pelt, R. S.: Dust emission from crusted surfaces: Insights from field measurements and modelling, *Aeolian Research*, 40, 1–14, <https://doi.org/10.1016/j.aeolia.2019.05.001>, 2019.
- 1310 Kok, J.: Does the size distribution of mineral dust aerosols depend on the wind speed at emission?, *Atmospheric Chemistry and Physics*, 11, 10 149–10 156, <https://doi.org/10.5194/acp-11-10149-2011>, 2011a.
- Kok, J. F.: A scaling theory for the size distribution of emitted dust aerosols suggests climate models underestimate the size of the global dust cycle, *Proceedings of the National Academy of Sciences of the United States of America*, 108, 1016–1021, https://doi.org/10.1073/PNAS.1014798108/SUPPL_FILE/PNAS.1014798108_SI.PDF, 2011b.
- 1315 Kok, J. F., Parteli, E., Michaels, T., and Francis, D.: The physics of wind-blown sand and dust, *Reports on progress in physics. Physical Society (Great Britain)*, 75, 106 901, <https://doi.org/10.1088/0034-4885/75/10/106901>, 2012.
- Kok, J. F., Mahowald, N. M., Fratini, G., Gillies, J. A., Ishizuka, M., Leys, J. F., Mikami, M., Park, M. S., Park, S. U., Pelt, R. S. V., and Zobeck, T. M.: An improved dust emission model - Part 1: Model description and comparison against measurements, *Atmospheric Chemistry and Physics*, 14, 13 023–13 041, <https://doi.org/10.5194/ACP-14-13023-2014>, 2014.
- 1320 Kok, J. F., Ridley, D., Zhou, Q., Miller, R., Zhao, C., Heald, C., Ward, D., Albani, S., and Haustein, K.: Smaller desert dust cooling effect estimated from analysis of dust size and abundance, *Nature Geoscience*, 10, <https://doi.org/10.1038/ngeo2912>, 2017.
- Kok, J. F., Ward, D. S., Mahowald, N. M., and Evan, A. T.: Global and regional importance of the direct dust-climate feedback, *Nature Communications* 2018 9:1, 9, 1–11, <https://doi.org/10.1038/s41467-017-02620-y>, 2018.
- 1325 Kok, J. F., Storelvmo, T., Karydis, V. A., Adebisi, A. A., Mahowald, N. M., Evan, A. T., He, C., and Leung, D. M.: Mineral dust aerosol impacts on global climate and climate change, *Nature Reviews Earth & Environment*, 4, 71–86, <https://doi.org/10.1038/s43017-022-00379-5>, 2023.
- Kuhli, M., Weiss, M., and Steckel, H.: Characterisation of solution-based pressurised metered-dose inhaler aerosols with an optical particle counter, *European Journal of Pharmaceutics and Biopharmaceutics*, 75, 393–398, <https://doi.org/10.1016/J.EJPB.2010.03.018>, 2010.
- 1330 Kulkarni, P., Baron, P. A., and Willeke, K.: Aerosol Measurement: Principles, Techniques, and Applications: Third Edition, *Aerosol Measurement: Principles, Techniques, and Applications: Third Edition*, <https://doi.org/10.1002/9781118001684>, 2011.
- Kumar, P., Sokolik, I. N., and Nenes, A.: Cloud condensation nuclei activity and droplet activation kinetics of wet processed regional dust samples and minerals, *Atmospheric Chemistry and Physics*, 11, 8661–8676, <https://doi.org/10.5194/ACP-11-8661-2011>, 2011.

1335 Liu, B. Y. and Agarwal, J. K.: Experimental observation of aerosol deposition in turbulent flow, *Journal of Aerosol Science*, 5, 145–155,
[https://doi.org/10.1016/0021-8502\(74\)90046-9](https://doi.org/10.1016/0021-8502(74)90046-9), 1974.
 Liu, B. Y., Zhang, Z. Q., and Kuehn, T. H.: A numerical study of inertial errors in anisokinetic sampling, *Journal of Aerosol Science*, 20,
 367–380, [https://doi.org/10.1016/0021-8502\(89\)90012-8](https://doi.org/10.1016/0021-8502(89)90012-8), 1989.
 Mahowald, N., Albani, S., Kok, J. F., Engelstaeder, S., Scanza, R., Ward, D. S., and Flanner, M. G.: The size distribution of desert dust
 1340 aerosols and its impact on the Earth system, *Aeolian Research*, 15, 53–71, <https://doi.org/https://doi.org/10.1016/j.aeolia.2013.09.002>,
 2014.
 Meng, Z., Yang, P., Kattawar, G. W., Bi, L., Liou, K. N., and Laszlo, I.: Single-scattering properties of tri-axial ellipsoidal
 mineral dust aerosols: A database for application to radiative transfer calculations, *Journal of Aerosol Science*, 41, 501–512,
<https://doi.org/10.1016/J.JAEROSCI.2010.02.008>, 2010.
 Min, Q.-L., Li, R., Lin, B., Joseph, E., Wang, S., Hu, Y., Morris, V., and Chang, F.: Evidence of mineral dust altering cloud microphysics and
 1345 precipitation, *Atmospheric Chemistry and Physics*, 9, 3223–3231, <https://doi.org/10.5194/acp-9-3223-2009>, 2009.
 Ott, D. K. and Peters, T. M.: A Shelter to Protect a Passive Sampler for Coarse Particulate Matter, PM10 - 2.5, *Aerosol Science and
 Technology*, 42, 299–309, <https://doi.org/10.1080/02786820802054236>, 2008.
 Panta, A., Kandler, K., Alastuey, A., González-Flórez, C., González-Romero, A., Klose, M., Querol, X., Reche, C., Yús-Díez, J., and
 1350 García-Pando, C. P.: Insights into the single-particle composition, size, mixing state, and aspect ratio of freshly emitted mineral dust
 from field measurements in the Moroccan Sahara using electron microscopy, *Atmospheric Chemistry and Physics*, 23, 3861–3885,
<https://doi.org/10.5194/ACP-23-3861-2023>, 2023.
 Pui, D. H., Romay-Novas, F., and Liu, B. Y.: Experimental study of particle deposition in bends of circular cross section, *Aerosol Science
 and Technology*, 7, 301–315, <https://doi.org/10.1080/02786828708959166>, 1987.
 Rajot, J. L., Formenti, P., Alfaro, S., Desboeufs, K., Chevaillier, S., Chatenet, B., Gaudichet, A., Journet, E., Marticorena, B., Tri-
 1355 quet, S., Maman, A., Mouget, N., and Zakou, A.: AMMA dust experiment: An overview of measurements performed during
 the dry season special observation period (SOP0) at the Banizoumbou (Niger) supersite, *Journal of Geophysical Research*, 113,
<https://doi.org/10.1029/2008JD009906>, 2008.
 Ratcliffe, N. G., Ryder, C. L., Bellouin, N., Woodward, S., Jones, A., Johnson, B., Weinzierl, B., Wieland, L.-M., and Gasteiger, J.: Long
 range transport of coarse mineral dust: an evaluation of the Met Office Unified Model against aircraft observations, *EGUsphere*, 2024,
 1360 1–32, <https://doi.org/10.5194/egusphere-2024-806>, 2024.
 Rausch, J., Jaramillo-Vogel, D., Perseguers, S., Schnidrig, N., Grobéty, B., and Yajan, P.: Automated identification and quantification of tire
 wear particles (TWP) in airborne dust: SEM/EDX single particle analysis coupled to a machine learning classifier, *Science of The Total
 Environment*, 803, 149 832, <https://doi.org/10.1016/J.SCITOTENV.2021.149832>, 2022.
 Rosenberg, P. D., Parker, D. J., Ryder, C. L., Marsham, J. H., Garcia-Carreras, L., Dorsey, J. R., Brooks, I. M., Dean, A. R., Crosier, J.,
 1365 McQuaid, J. B., and Washington, R.: Quantifying particle size and turbulent scale dependence of dust flux in the Sahara using aircraft
 measurements, *Journal of Geophysical Research: Atmospheres*, 119, 7577–7598, <https://doi.org/https://doi.org/10.1002/2013JD021255>,
 2014.
 Ryder, C., Highwood, E., Walser, A., Seibert, P., Tipka, A., and Weinzierl, B.: Coarse and giant particles are ubiquitous in Saha-
 ran dust export regions and are radiatively significant over the Sahara, *Atmospheric Chemistry and Physics*, 19, 15 353–15 376,
 1370 <https://doi.org/10.5194/acp-19-15353-2019>, 2019.

- Ryder, C. L., Highwood, E. J., Lai, T. M., Sodemann, H., and Marsham, J. H.: Impact of atmospheric transport on the evolution of micro-physical and optical properties of Saharan dust, *Geophysical Research Letters*, 40, 2433–2438, <https://doi.org/10.1002/grl.50482>, 2013a.
- Ryder, C. L., Highwood, E. J., Rosenberg, P. D., Trembath, J., Brooke, J. K., Bart, M., Dean, A., Crosier, J., Dorsey, J., Brindley, H., Banks, J., Marsham, J. H., McQuaid, J. B., Sodemann, H., and Washington, R.: Optical properties of Saharan dust aerosol and contribution from the coarse mode as measured during the Fennec 2011 aircraft campaign, *Atmospheric Chemistry and Physics*, 13, 303–325, <https://doi.org/10.5194/ACP-13-303-2013>, 2013b.
- Schade, H., Kunz, E., Kameier, F., and Paschereit, C. O.: Strömungslehre, *Strömungslehre*, <https://doi.org/10.1515/9783110189728/HTML>, 2007.
- Schulz, M., Prospero, J. M., Baker, A. R., Dentener, F., Ickes, L., Liss, P. S., Mahowald, N. M., Nickovic, S., García-Pando, C. P., Rodríguez, S., Sarin, M., Tegen, I., and Duce, R. A.: Atmospheric transport and deposition of mineral dust to the ocean: Implications for research needs, *Environmental Science and Technology*, 46, 10 390–10 404, https://doi.org/10.1021/ES300073U/ASSET/IMAGES/MEDIUM/ES-2012-00073U_0002.GIF, 2012.
- Schöberl, M., Dollner, M., Gasteiger, J., Seibert, P., Tipka, A., and Weinzierl, B.: Characterization of the airborne aerosol inlet and transport system used during the A-LIFE aircraft field experiment, *Atmospheric Measurement Techniques*, 17, 2761–2776, <https://doi.org/10.5194/AMT-17-2761-2024>, 2024.
- Seinfeld, J. H. and Pandis, S. N.: *Atmospheric chemistry and physics from air pollution to climate change*, Wiley, 1998.
- Shao, Y.: Simplification of a dust emission scheme and comparison with data, *Journal of Geophysical Research*, 109, <https://api.semanticscholar.org/CorpusID:58906477>, 2004.
- Shao, Y.: *Physics and modelling of wind erosion*, Springer Nature, <https://doi.org/10.1007/978-1-4020-8895-7>, 2008.
- Shao, Y., Ishizuka, M., Mikami, M., and Leys, J. F.: Parameterization of size-resolved dust emission and validation with measurements, *Journal of Geophysical Research: Atmospheres*, 116, <https://doi.org/10.1029/2010JD014527>, 2011a.
- Shao, Y., Wyrwoll, K. H., Chappell, A., Huang, J., Lin, Z., McTainsh, G. H., Mikami, M., Tanaka, T. Y., Wang, X., and Yoon, S.: Dust cycle: An emerging core theme in Earth system science, *Aeolian Research*, 2, 181–204, <https://doi.org/10.1016/J.AEOLIA.2011.02.001>, 2011b.
- Shao, Y., Zhang, J., Ishizuka, M., Mikami, M., Leys, J., and Huang, N.: Dependency of particle size distribution at dust emission on friction velocity and atmospheric boundary-layer stability, *Atmospheric Chemistry and Physics*, 20, 12 939–12 953, <https://doi.org/10.5194/ACP-20-12939-2020>, 2020.
- Smith, H. R., Ulanowski, Z., Kaye, P. H., Hirst, E., Stanley, W., Kaye, R., Wieser, A., Stopford, C., Kezoudi, M., Girdwood, J., Greenaway, R., and Mackenzie, R.: The Universal Cloud and Aerosol Sounding System (UCASS): a low-cost miniature optical particle counter for use in dropsonde or balloon-borne sounding systems, *Atmospheric Measurement Techniques*, 12, 6579–6599, <https://doi.org/10.5194/amt-12-6579-2019>, 2019.
- Sow, M., Alfaro, S. C., Rajot, J. L., and Marticorena, B.: Size resolved dust emission fluxes measured in Niger during 3 dust storms of the AMMA experiment, *Atmospheric Chemistry and Physics*, 9, 3881–3891, <https://doi.org/10.5194/acp-9-3881-2009>, 2009.
- Stout, J. E.: Effect of averaging time on the apparent threshold for aeolian transport, *Journal of Arid Environments*, 39, 395–401, <https://doi.org/10.1006/JARE.1997.0370>, 1998.
- Tegen, I. and Fung, I.: Modeling of mineral dust in the atmosphere: Sources, transport, and optical thickness, *Journal of Geophysical Research: Atmospheres*, 99, 22 897–22 914, <https://doi.org/10.1029/94JD01928>, 1994.
- Tegen, I., Lacis, A. A., and Fung, I.: The influence on climate forcing of mineral aerosols from disturbed soils, *Nature* 380:6573, 380, 419–422, <https://doi.org/10.1038/380419a0>, 1996.

- Textor, C., Schulz, M., Guibert, S., Kinne, S., Bauer, S. E., Balkanski, Y., Bernsten, T., Berglen, T., Boucher, O., Chin, M., Dentener, F., Diehl, T., Feichter, H., Fillmore, D., Ghan, S., Ginoux, P., Gong, S., Grini, A., Hendricks, J., Horowitz, L., Isaksen, I., Iversen, T., Kirkevåg, A., Koch, D., Kristjansson, J. E., Krol, M., Lauer, A., Lamarque, J. F., Liu, X., Montanaro, V., Myhre, G., Penner, J., Pitari, G., Reddy, S., Seland, O., Stier, P., Takemura, T., and Tie, X.: Analysis and quantification of the diversities of aerosol life cycles within AeroCom, *Atmos. Chem. Phys.*, 6, 1777–1813, <https://doi.org/10.5194/acp-6-1777-2006>, 2006.
- Thomas, J. W.: Gravity settling of particles in a horizontal tube, *Journal of the Air Pollution Control Association*, 8, 32–34, <https://doi.org/10.1080/00966665.1958.10467825/ASSET/CMS/ASSET/29EDDDC4-21F1-4204-A74F-6F00ABD9A22B/00966665.1958.10467825.FP.PNG>, 1958.
- Tian, Z., Dietze, V., Sommer, F., Baum, A., Kaminski, U., Sauer, J., Maschowski, C., Stille, P., Cen, K., and Gieré, R.: Coarse-Particle Passive-Sampler Measurements and Single-Particle Analysis by Transmitted Light Microscopy at Highly Frequented Motorways, *Aerosol and Air Quality Research*, 17, 1939–1953, <https://doi.org/10.4209/AAQR.2017.02.0064>, 2017.
- van der Does, M., Knippertz, P., Zschenderlein, P., Giles Harrison, R., and Stuut, J.-B. W.: The mysterious long-range transport of giant mineral dust particles, *Science Advances*, 4, <https://doi.org/10.1126/sciadv.aau2768>, 2018.
- Wang, S., Lin, C.-W., Huang, S.-H., and Chen, C.-C.: Aerosol deposition in 90-degree bends: An enhanced empirical equation and a design concept of reducing losses, *Aerosol Science and Technology*, 58, 475–484, <https://doi.org/10.1080/02786826.2024.2316832>, 2024.
- Waza, A., Schneiders, K., May, J., Rodríguez, S., Eppele, B., and Kandler, K.: Field comparison of dry deposition samplers for collection of atmospheric mineral dust: Results from single-particle characterization, *Atmospheric Measurement Techniques*, 12, 6647–6665, <https://doi.org/10.5194/AMT-12-6647-2019>, 2019.
- Webb, N. P., LeGrand, S. L., Cooper, B. F., Courtright, E. M., Edwards, B. L., Felt, C., Zee, J. W. V., and Ziegler, N. P.: Size Distribution of Mineral Dust Emissions From Sparsely Vegetated and Supply-Limited Dryland Soils, *Journal of Geophysical Research: Atmospheres*, 126, <https://doi.org/10.1029/2021JD035478>, 2021.
- Wu, W. and Wang, S. S. Y.: Formulas for Sediment Porosity and Settling Velocity, *Journal of Hydraulic Engineering*, 132, 858–862, [https://doi.org/10.1061/\(ASCE\)0733-9429\(2006\)132:8\(858\)/ASSET/068AF0FC-3623-420B-9919-3FE73297D427/ASSETS/IMAGES/LARGE/4.JPG](https://doi.org/10.1061/(ASCE)0733-9429(2006)132:8(858)/ASSET/068AF0FC-3623-420B-9919-3FE73297D427/ASSETS/IMAGES/LARGE/4.JPG), 2006.
- Yus-Díez, J., Pandolfi, M., Alastuey, A., González-Flórez, C., Escribano, J., González-Romero, A., Ivančič, M., Rigler, M., Klose, M., Kandler, K., et al.: Quantifying variations in multi-wavelength optical properties of freshly-emitted Saharan dust from the Lower Drâa Valley, Moroccan Sahara, 2023.
- Zhang, Z. Q. and Liu, B. Y.: On the empirical fitting equations for aspiration coefficients for thin-walled sampling probes, *Journal of Aerosol Science*, 20, 713–720, [https://doi.org/10.1016/0021-8502\(89\)90060-8](https://doi.org/10.1016/0021-8502(89)90060-8), 1989.