

Auxiliary material for  
“Surface evolution and wind effects during a cyclonic eddy splitting  
event in the Balearic Sea”.

Donnet et al.

=====

The following auxiliary material contains:

1. Figure SM1: Brunt-Vaisala Frequency  $N^2$  to show the stratification conditions across the cyclone before its splitting. This result complement the background description.
2. Animation SM2: Drifter (CARTHEs/CODEs at 1m depth, SVPs at 15m depth) trajectories evolution during the period of interest (Feb 23-28, 2022) in the Balearic Sea, superimposed on the available daily chl-a satellite maps.

=====

Figure SM1:

=====

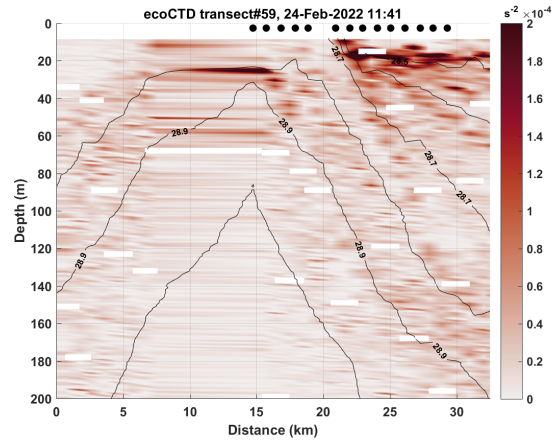


Figure 1: Brunt-Vaisala frequency  $N^2$  across the cyclone estimated from an EcoCTD transect in February 24, 2022. Black lines indicate isopycnals.