

Auxiliary material for
“Surface evolution and wind effects during a cyclonic eddy splitting
event in the Balearic Sea”.

Donnet et al.

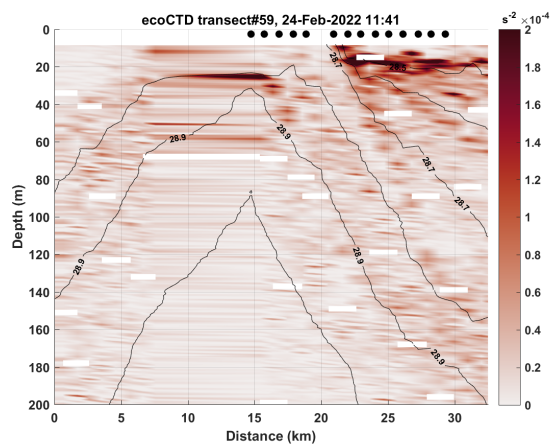
=====

The following supplementary material contains:

1. Figure SM1: Brunt-Vaisala Frequency N^2 to show the stratification conditions across the cyclone before its splitting. This result complement the background description.
2. Animation SM2: Daily chl-a maps from satellite observations, 17 February 2022 thorough 4 March 2022.
3. Animation SM3: Drifter (CARTHEs/CODEs at 1m depth, SVPs at 15m depth) trajectories evolution during the period of interest (Feb 23-28, 2022) in the Balearic Sea, superimposed on the available daily chl-a satellite maps.
4. Figure SM4: Statistical properties (number of samples and standard errors) for divergence and vertical velocity estimates for 23 Feb.

=====

Figure SM1:
=====

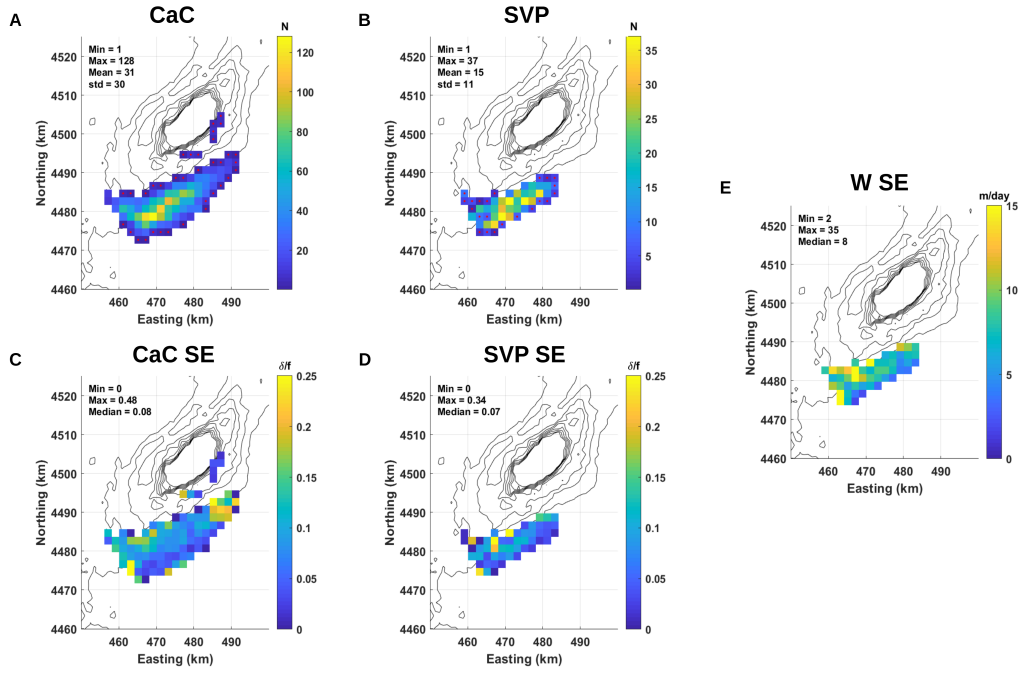


Brunt-Vaisala frequency N^2 across the cyclone estimated from an EcoCTD transect in February 24, 2022. Black lines indicate isopycnals.

Figure SM4:

=====

23 February



Number of triplets per bin for CaC (A) and SVP (B) divergence estimates; and standard errors for these estimates for CaC(C) and SVP (D) observations for 23 Feb. Panel (E) shows the resulting standard error for the vertical velocity at 15 m.