

Efficient use of a Lagrangian Particle Dispersion Model for atmospheric inversions using satellite observations of column mixing ratios

Rona L. Thompson¹, Nalini Krishnankutty¹, Ignacio Pisso¹, Philipp Schneider¹, Kerstin Stebel¹,
5 Motoki Sasakawa², Andreas Stohl³ and Stephen Platt¹

¹NILU, Kjeller, Norway

²Earth System Division, National Institute for Environmental Studies, Tsukuba, Japan

³University of Vienna, Vienna, Austria

10 *Correspondence to:* Rona L. Thompson (rlt@nilu.no)

Abstract

Satellite instruments for measuring atmospheric column mixing ratios have improved significantly over the past couple of decades with increases in pixel resolution and accuracy. As a result, satellite observations are being increasingly used in atmospheric inversions to improve estimates of emissions of greenhouse gases (GHGs), particularly CO₂ and CH₄, and to
15 constrain regional and national emission budgets. However, in order to make use of the increasing resolution in inversions, the atmospheric transport models used need to be able to represent the observations at these finer resolutions. Here, we present a new and computationally efficient methodology to model satellite column average mixing ratios with a Lagrangian Particle Dispersion Model (LPDM) and calculate the Jacobian matrices describing the relationship between surface fluxes of GHGs and atmospheric column average mixing ratios, as needed in inversions. We present a case study using this methodology in
20 the LPDM, FLEXPART, and the inversion framework, FLEXINVERT, to estimate CH₄ fluxes over Siberia using column average mixing ratios of CH₄ (XCH₄) from the TROPOMI instrument onboard the Sentinel-5P satellite. The results of the inversion using TROPOMI XCH₄ are evaluated against results using ground-based observations.

1. Introduction

Satellite remote sensing provides a wealth of information on the atmosphere and its composition. The number of satellite
25 missions monitoring long-lived greenhouse gases (GHGs), specifically CO₂ and CH₄, has grown substantially over the past couple of decades providing information on their variability, trends, and sources. From instruments onboard satellites it is possible to retrieve mixing ratios of GHGs, most commonly as column averages (e.g. XCO₂ and XCH₄) or, depending on the instrument, viewing angle and retrieval, as sub-columns, which can be used to derive estimates of surface-atmosphere fluxes using atmospheric transport models and inversion techniques (e.g. Alexe et al., 2015; Chen et al., 2023; Chevallier et al., 2005;
30 Peiro et al., 2022; Zhang et al., 2023, 2021). Satellite instruments can be classified as “area flux mappers” or “point source

Deleted: M

imagers” (Jacob et al., 2022). Area flux mappers are high precision instruments with larger pixel sizes (order of 0.1 to 10 km) and are designed to image mixing ratios on regional to global scales while point source imagers have smaller pixel size (< 0.1 km) and are designed to detect and quantify individual sources by mapping their plumes (Jacob et al., 2022). Specifically, it is the area flux mappers that are useful in inversions to estimate global and regional fluxes of CO₂ and CH₄, and they are becoming increasingly used to determine regional and national emission budgets and for comparisons with GHG emission inventories (e.g. Byrne et al., 2023; Deng et al., 2022; Maasakkers et al., 2021; Nesser et al., 2023; Worden et al., 2022). As satellite instrumentation has improved, there has also been an increase in pixel resolution. For example, for CH₄ the earliest satellite observations were from the SCIAMACHY instrument onboard ENVISAT, launched in 2002, which had a pixel size of 30 × 60 km, while the XCH₄ product from TROPOMI (TROPOspheric Monitoring Instrument) onboard Sentinel-5P, launched in 2017, has a pixel size at nadir of 5.5 × 7 km, and the recently launched MethaneSAT has a pixel size of just 0.1 × 0.4 km (Jacob et al., 2022). With this resolution increase it is important to consider how the observations are represented in atmospheric transport models for inverse modelling.

Up to the present, inversions with satellite observations have primarily been made using Eulerian atmospheric transport models, either using Green’s functions, adjoint models or ensemble approaches to relate the column average mixing ratios to fluxes (e.g. Bergamaschi et al., 2009; Tsuruta et al., 2023; Varon et al., 2023). This is because the number of model iterations or ensemble members is independent of the number of observations, which for satellites can be a very large number. In contrast, there are only very few examples in the literature in which Lagrangian particle dispersion models (LPDMs) have been used with satellite observations (e.g. Ganesan et al. 2017; Wu et al. 2018) because the number of model calculations required in their backwards mode is proportional to the number of observations making it computationally demanding.

On the other hand, LPDMs have some advantages over Eulerian models. LPDMs exhibit less numerical diffusion compared to Eulerian models, and because of this, generally better capture tracer filaments generated by atmospheric dispersion (Ottino, 1989) and fine structures in tracers mixing ratios resulting from long-range transport (Rastigejev et al., 2010). Furthermore, LPDMs can accurately represent any observation geometry, whereas in Eulerian models an observation is represented by a grid cell (Pisso et al., 2019). With the increasing resolution of satellite instruments, Eulerian model resolution may become a limiting factor in the ability to accurately represent an observation, hence the use of LPDMs becomes a more interesting alternative. Finally, LPDMs can be run in a backwards in time mode (without significant modifications to the code and computational cost), which allows the sensitivity of an observation to fluxes to be calculated, and in this way LPDMs are sometimes said to be “self adjoint”.

The main challenge of using LPDMs with satellite observations is the number of observations for which backwards computations need to be made, and that each retrieval is made over numerous vertical layers, which need to be represented in the model and combined with the retrieval’s averaging kernel and prior mixing ratio profile. Here, we present a novel

Deleted: not

Deleted: to any significant extent

Deleted: ,

methodology for representing total column observations efficiently in an LPDM and open the possibility to use LPDMs across a variety of spatial and temporal scales for atmospheric inversions with satellite data. The methodology has been implemented in the LPDM, FLEXPART (FLEXible PARTicle dispersion model, version 10.4, [Pisso et al. 2019](#)), but could be in principle be implemented in any LPDM. It can also be applied to any satellite retrieval.

We demonstrate the use of FLEXPART in a case study looking at CH₄ using retrievals from TROPOMI on board the Sentinel-5P satellite. The case study region is Siberia, which was chosen because it has significant CH₄ emissions from both natural sources (e.g. peatlands) and anthropogenic sources (e.g., fugitive emissions from oil and gas extraction and transportation as well as from coal mining). [We focus on the year 2020 and for the months March to October when there are an appreciable number of retrievals available](#). We use FLEXPART to model XCH₄ and, along with observed XCH₄, we derive estimates of CH₄ fluxes using the Bayesian inversion framework, FLEXINVERT (Thompson and Stohl, 2014). The fluxes from inversions using TROPOMI XCH₄ are evaluated by comparing with fluxes derived from inversions using ground-based observations from the JR-STATION [in-situ measurement network](#) (Sasakawa et al., 2010, 2012), [plus one in-situ site and three flask sampling sites available form the World Data Centre for Greenhouse Gases \(WDCGG\)](#).

Deleted: in-situ

Deleted:

2. Methodology

FLEXPART models atmospheric transport using virtual particles that are subject to transport and turbulent mixing as determined from meteorological fields. FLEXPART can be run in a backwards in time mode, which is theoretically consistent with the forward time mode calculations (Flesch et al., 1995; Thomson, 1990), to calculate the residence time of virtual particles in a surface layer within the boundary layer and thus the influence of surface fluxes on these particles. In this mode, Jacobian matrices representing the influence of fluxes on an atmospheric observation can be derived, which are termed “source-receptor-relationships” (SRRs), or sometimes “footprints” (Seibert and Frank, 2004). The SRRs can be integrated with flux fields to simulate mixing ratios and can be used in atmospheric inversions to update a prior estimate of the fluxes (e.g. Thompson and Stohl, 2014; Brioude et al., 2012). However, [as far as we are aware, LPDMs have not been used before to model large numbers of satellite observations owing to the computational cost](#).

Deleted: , until now SRRs have only been calculated for point observations of atmospheric mixing ratios, and not for column average mixing ratios as observed by satellites

2.1 Modelling total column observations with FLEXPART

Following Rodgers and Connor (2003) a modelled vertical profile, \mathbf{x} of mixing ratios can be compared with a retrieved profile using:

Formatted: Font: Bold, Not Italic

$$\mathbf{x}^{sm} = \mathbf{x}^{pri} + \mathbf{A}(\mathbf{x} - \mathbf{x}^{pri}) \quad (1)$$

where \mathbf{A} is the averaging kernel matrix (an $N \times N$ dimensional matrix), \mathbf{x}^{pri} is the a priori profile used in the retrieval and \mathbf{x}^{sm} is a smoothed version of the vertical profile, \mathbf{x} . For a retrieval performed on N discrete pressure layers, the column average mixing ratio, x^{avg} is the weighted sum of N sub-columns corresponding to the retrieval pressure layers (Apituley et al., 2021):

Formatted: Font: Bold

Formatted: Font: Bold, Not Italic

Formatted: Font: Bold, Not Italic

Formatted: Font: Bold, Not Italic

$$x^{avg} = x^{avg,pri} + \sum_{n=1}^N a_n w_n x_n - \sum_{n=1}^N a_n w_n x_n^{pri} \quad (2)$$

where $x^{avg,pri}$ is the prior column average mixing ratio, a_n is the n th element of the column averaging kernel, w_n is a pressure weighting term related to the thickness of the pressure layer, and x_n is the modelled mixing ratio for the n th retrieval layer. For LPDMs, x_n can be modelled as the product of the SRR for the n th retrieval layer, \mathbf{H}_n , (a $1 \times q$ dimensional matrix, where q is the number of flux variables) and the estimate of the fluxes, \mathbf{f} , ($q \times 1$), plus an estimate of the so-called “background” mixing ratio. Following Thompson and Stohl (2014), the background mixing ratio is modelled as the product of the background-receptor-relationship (BRR) matrix calculated from the positions of the virtual particles when they terminate, \mathbf{H}_n^{ini} and a 3D field of initial mixing ratios, \mathbf{y}^{ini} . Note, that chemical losses during the backward simulation period, e.g., from OH oxidation, can be taken into account in the SRR and BRR matrices. The modelled mixing ratio for the n th retrieval layer is thus:

$$x_n = \mathbf{H}_n \mathbf{f} + \mathbf{H}_n^{ini} \mathbf{y}^{ini} \quad (3)$$

By substituting Eq. 3 into Eq. 2 we obtain:

$$x^{avg} = x^{avg,pri} + \sum_{n=1}^N a_n (\mathbf{H}_n \mathbf{f} w_n + \mathbf{H}_n^{ini} \mathbf{y}^{ini} w_n) - \sum_{n=1}^N a_n w_n x_n^{pri} \quad (4)$$

Thus, the column average SRR can be expressed as:

$$\mathbf{H}^{col} = \sum_{n=1}^N a_n \mathbf{H}_n w_n \quad (5)$$

and similarly for the column average BRR, $\mathbf{H}^{col,ini}$.

Equations 2 to 5 represent the approach that has previously been used to model satellite observations with an LPDM, namely, the mixing ratio, x_n , has been calculated for each retrieval layer requiring calculation of the SRR, \mathbf{H}_n for each layer (Ganesan et al. 2017; Wu et al. 2018). Equation 5 requires maintaining information about each retrieval layer in order to calculate the column SRR. Our method (as described below) departs from this approach and is much more computationally efficient.

In FLEXPART (and LPDMs generally), SRRs are calculated by sampling the particles on a regular three-dimensional grid. In general, for a grid cell, i , the SRR for retrieval layer p is calculated as:

$$\mathbf{H}_{in} = \frac{1}{P_n} \sum_{p=1}^N \frac{l_{pin} \Delta t p_{in}}{\rho_i} \quad (6)$$

where l_{pin} is the transmission function for particle p (and represents the fraction of the mass remaining in the particle, which can change after release in the case of atmospheric chemistry), Δt_{pin} is the residence time of the particle in the grid cell, ρ_i is the air density in the grid cell and P_n is the number of particles released in layer p (Seibert and Frank, 2004). (Note in Eq. 6 the number of particles summed over is not specified as this depends on the number of particles that reside in the grid cell i and is $\leq P_n$). Thus the column SRR relationship is found by substituting Eq. 6 into Eq. 5:

$$\mathbf{H}_i^{col} = \frac{1}{\rho_i} \sum_{n=1}^N a_n w_n \frac{1}{P_n} \sum_{p=1}^N l_{pin} \Delta t p_{in} \quad (7)$$

However, using Eq. 7 would still require maintaining information about which retrieval layer a particle had originated from in order to calculate the column SRR and, furthermore, if P_n has the same value for all layers, this would mean that all layers are sampled equally even though particles originating in upper layers are much more unlikely to reach the surface layer and thus contribute to the SRR.

Formatted: Font: Bold

Formatted: Font: Italic

Formatted: Font: Bold, Not Italic

Formatted: Font: Italic

Formatted: Font: Bold

Formatted: Font: Bold, Not Italic

Formatted: Font: Bold

Formatted: Font: Italic

Formatted: Font: Bold

Formatted: Font: Italic

Deleted: F

Deleted: /k

Deleted: column

Deleted: can be obtained as

Formatted: Font: Italic

Formatted: Font: Italic

Formatted: Font: Italic

Formatted: Font: Italic

Formatted: Font: Italic

Formatted: Font: Italic

Formatted: Font: Italic

Formatted: Font: Italic

Deleted: $\mathbf{H}_{ijk}^{col} = \sum_{n=1}^N a_n w_n \frac{t}{m_n \rho_{ijk}} \sum_{p=1}^N J_{ijk,n} m_p \rightarrow \rightarrow \rightarrow \rightarrow \rightarrow \rightarrow (6)$

where m_n is the total mass released for each retrieval layer, ρ_{ijk} is the air density in the grid cell, t is the sampling time, m_p is the mass of the individual particles (which can change in the case of atmospheric chemistry), and $J_{ijk,n}$ is the number of particles in the grid cell ijk originating from retrieval layer n . (Note, in Eq. 6 the n th element is equivalent to $a_n \mathbf{H}_n w_n$).

Deleted: 6

Deleted: .

Instead, we carry the information of $a_n w_n$ by varying the particle density in each layer, where the number of particles released per layer, P_n , is:

$$P_n = P a_n w_n \quad (8)$$

155 where P is the total number of particles released per retrieval. By substituting $a_n w_n$ for P_n/P into Eq. 7 we derive:

$$\mathbf{H}_i^{col} = \frac{1}{\rho_i} \frac{1}{P} \sum_{n=1}^N \sum_{p=1}^{P_n} l_{pin} \Delta t_{pin} \quad (9)$$

Equation 9 can be simplified further by noting that the sum over N layers and the sum over particles in the grid cell originating from each layer is equivalent to summing over the particles in the grid cell originating from all layers:

$$\mathbf{H}_i^{col} = \frac{1}{\rho_i} \frac{1}{P} \sum_{p=1}^P l_{pi} \Delta t_{pi} \quad (10)$$

160 In Eq. 10 the information on the retrieval layer from which a particle originated from does not need to be kept (as it is taken into account at the particle initialization via P_n) and the equation is analogous to that for point observations. This implementation was compared to calculating the SRRs for each layer individually, and the results were the same within the limits of numerical rounding errors. However, by implementing the calculation this way, total column observations can be simulated with the same computational cost as for point observations.

165 Similarly, the total column BRR for the grid cell i can be obtained as:

$$\mathbf{H}_i^{col,ini} = \frac{1}{P} \sum_{p=1}^P l_{pin} \quad (11)$$

A further consideration when modelling satellite observations with a Lagrangian model, is the geometry of the retrieval, since the ground-based pixels are not necessarily rectangular and can be rotated with respect to the meridians and parallels. In FLEXPART, an observation can be represented by releasing virtual particles from a volume in which the particles are distributed randomly. However, the default is that this volume is rectangular and aligned with the meridians and parallels. Therefore, we have implemented an affine transformation on the particle positions so that the volume they represent matches the geometry of the retrieval (see Supplementary information for a complete description of the affine algorithm).

2.2 Averaging of retrievals

175 Even with the efficient modelling of total column measurements using FLEXPART, current satellite missions can provide on the order of 10,000 to 100,000 retrievals globally per day, making the cost of computing backward trajectories for each retrieval still computationally expensive if the study region is large. For this reason, we average the retrievals to so-called “super observations”. Averaging retrievals also has the advantage that the random error of the “super observation” is reduced compared to each individual retrieval.

180 However, in some areas where there is strong heterogeneity in the column average measurements, for instance, due to large localized sources, it would be advantageous to keep higher resolution observations. Therefore, we developed an optimal

Deleted: Therefore

Deleted: in the mass released for each retrieval layer

Deleted: 7

Deleted: rearranging Eq. 6 and

Deleted: $E\mathbf{H}_{ijk}^{col} = \frac{t}{m\rho_{ijk}} \sum_{n=1}^N \sum_{p=1}^{P_n} \frac{J_{ijk,n} P_n}{P} m_p \rightarrow \rightarrow \rightarrow \rightarrow \rightarrow \rightarrow \rightarrow (8)$
Equation 8

Deleted:

Deleted: further

Formatted: Font: Italic

Deleted: to:

Deleted: in which

Deleted: the calculation

Deleted:

Deleted: for point observations

Formatted: Font: Italic

Formatted: Font: Italic, Subscript

Deleted: j/k

Deleted: $\mathbf{H}_{ijk}^{col,ini} = \frac{1}{m} \sum_{n=1}^N \sum_{p=1}^{P_n} \frac{J_{ijk,n} P_n}{P} m_p \rightarrow \rightarrow \rightarrow \rightarrow \rightarrow \rightarrow \rightarrow (10)$

averaging routine in which the degree of averaging is based on the standard deviation of the column average mixing ratios.

The retrievals are averaged to rectangular grid cells that are aligned with the meridians and parallels. The user decides the finest resolution grid cell to be used, d_{min} , and the number of resolution steps, $nsteps$. The averaging is first performed for the coarsest resolution (given as $d_{min} \times 2^{nsteps-1}$), then the averaging is refined stepwise (from $nsteps-1$ to 0) by dividing grid cells into four where the standard deviation (recalculated at each step) is above a given threshold. If there are any quarters of the grid cell (as defined for the current step) where there are no retrievals, then the grid cell is any how divided in the next iteration to avoid having a super-observation for a grid cell that is not fully represented by the retrievals. Retrievals which are outside ± 2 standard deviations of the grid cell mean are not included in the average to avoid the influence of large outliers. The averaging is redefined each day based on the available retrievals.

Formatted

In the algorithm, the column average mixing ratio corresponding to the average of M retrievals is calculated as:

$$\bar{x} = \frac{1}{S} \sum_{m=1}^M (S_m x_m^{pri} + \sum_{n=1}^N S_m a_{mn} w_{mn} (x_{mn} - x_m^{pri})) \quad (12)$$

where \bar{x} is the total column mixing ratio corresponding to the average, x_m^{pri} is the prior column average mixing ratio of the m th retrieval, N is the number of vertical layers in the retrievals, S_m is the surface area, and S is the total surface area of all retrievals. By rearranging Eq. 12 we obtain:

$$\bar{x} = \frac{1}{S} \sum_{m=1}^M S_m x_m^{pri} + \frac{1}{S} \sum_{m=1}^M \sum_{n=1}^N S_m a_{mn} w_{mn} x_{mn} - \frac{1}{S} \sum_{m=1}^M \sum_{n=1}^N S_m a_{mn} w_{mn} x_m^{pri} \quad (13)$$

and this can be written as:

$$\bar{x} = \bar{x}^{pri} + \sum_{n=1}^N \bar{x}_n \bar{a}_n \bar{w}_n - \frac{1}{S} \sum_{m=1}^M \sum_{n=1}^N S_m a_{mn} w_{mn} x_m^{pri} \quad (if \text{ all } x_{mn} = \bar{x}_n) \quad (14)$$

where \bar{x}^{pri} is the area-weighted-average prior column mixing ratio, and $\bar{a}_n \bar{w}_n \bar{x}_n$ are the area-weighted-average column averaging kernel, and pressure weighting, and mixing ratio corresponding to the n th layer. Note that the condition if all $x_{mn} = \bar{x}_n$ is met when the FLEXPART release is made for the area over which the M retrievals are averaged. The uncertainty of the super observation is calculated as the quadratic sum of the uncertainties of the individual retrievals weighted by the ground-pixel area of the retrievals.

Deleted: 11

Deleted: 11

Deleted: M

Deleted: 12

Deleted: a

Deleted: w

Deleted: x

Deleted: 13

Deleted: ,

3. Case study on methane sources in Siberia

We demonstrate the use of FLEXPART for modelling column average mixing ratios, as well as the averaging algorithm, in a case study looking at CH₄ emissions in Siberia. Siberia was chosen as it is a region with significant CH₄ emissions from both natural sources (e.g. peatlands) and anthropogenic sources (e.g., fugitive emissions from oil and gas extraction and transportation as well as from coal mining). It was also in Siberia that one of the largest point source emissions of CH₄ was detected by GHGSat – from a coal mine in the Kemerovo region (<https://www.bbc.com/news/science-environment-61811481>) and significant CH₄ sources have also been detected in this region by TROPOMI (Trenchev et al., 2023). On the other hand, Siberia is a challenging region to study, since there are no observations available north of around 50°N in the winter and the

240 region is often cloudy, further limiting the number of available retrievals. Our inversion domain covers western and central Siberia (50° to 115°E and 40° to 80°N) and includes the Western Siberian Lowlands and major oil and gas fields, as well as important coal mining regions such as Kemerovo (Fig. 1). We limit the period of our study to March to October – months during which there are observations also north of 50°N and focus on the year 2020.

245 To evaluate the inversions using TROPOMI XCH₄, we make use of the JR-STATION ground-based network of CH₄ measurements. JR-STATION consists of 9 sites with in-situ measurements of CH₄ with the first sites having data from 2004 (Sasakawa et al., 2010, 2012).

3.1. Case study methodology

3.1.1 Inversion method

250 For the inversion we use the FLEXINVERT Bayesian inversion framework as described by Thompson and Stohl (2014). In this framework, the optimal fluxes are those that minimise the cost function:

$$J(\mathbf{z}) = \frac{1}{2}(\mathbf{z} - \mathbf{z}_b)^T \mathbf{B}^{-1}(\mathbf{z} - \mathbf{z}_b) + \frac{1}{2}(\mathbf{H}\mathbf{z} - \mathbf{y})^T \mathbf{R}^{-1}(\mathbf{H}\mathbf{z} - \mathbf{y}) \quad (15)$$

255 where \mathbf{B} is the prior error covariance matrix and describes the error and error correlation of the prior fluxes, \mathbf{R} is the observation error covariance matrix and describes the uncertainty in the observations, \mathbf{z}_b is the prior state vector, \mathbf{z} is the optimal (or posterior) state vector, and \mathbf{y} is the observation vector. The minimum of the cost function is found using the ~~M1QN3 quasi-Newton algorithm (Gilbert and Lemaréchal, 1989). This algorithm does not provide an estimate of the Hessian matrix $\nabla^2 J(\mathbf{z})$, therefore, the posterior uncertainty was calculated instead using a Monte Carlo ensemble following Chevallier et al. (2007).~~

260 The state vector variables include offsets to the prior fluxes, which are resolved at 14-day temporal resolution and at varying spatial resolution from 0.5° to 2.0° depending on how strongly the fluxes influence the observations (Thompson and Stohl, 2014). ~~The spatial resolution of the state vector was calculated separately for the TROPOMI and for the ground-based observations (see Supplementary Fig. S1 for maps of the spatial grid). For each 14-day interval this resulted in 2619 flux variables for the TROPOMI and 5920 for the ground-based observation inversions. Note, only land fluxes were optimized in the inversions, since the observations have little sensitivity to fluxes over the ocean. In any case, the contribution from ocean fluxes on the modelled mixing ratios was accounted for (only these fluxes were fixed to the prior values and not optimized).~~

265 The state vector also includes scalars of the boundary conditions (i.e., the initial mixing ratios in 3D space represented by the vector, \mathbf{y}^{ini} in Eq. 3). The scalars are defined for four latitudinal bands, 90°-30°N, 30°N-0°, 0°-30°S, and 30°-90°S, and for three vertical layers, from 0-2000, 2000-10,000 and 10,000-70,000 metres above ground level, and are optimized for 28-day averages. ~~The uncertainty in the scalars was set at 5% for the TROPOMI inversions and at 1% for the ground-based observation inversions. A larger uncertainty was chosen for the TROPOMI inversions after initial tests showed that lower uncertainties did not allow sufficient freedom to correct erroneous prior background mixing ratios (see Section 3.2.2).~~

270

Deleted: 14

Formatted: Font: Bold

Formatted: Font: Bold

Formatted: Font: Bold, Not Italic

Formatted: Font: Bold, Not Italic

Deleted: Lanczos version of the conjugate gradient algorithm (Lanczos, 1950).

Formatted: Font: Bold, Not Italic

Deleted: Although the Lanczos algorithm provides the

Deleted: Eigenvalues of

Deleted: in practice the number of iterations required to reach an accurate estimate of the posterior error covariance matrix is large.

Formatted: Font: Bold, Not Italic

Deleted: T

Deleted: Only fluxes over land were optimized. This results in 2619 flux variables f

Formatted: Font: Bold, Not Italic

For the case study, FLEXPART was run using the ECMWF meteorological reanalysis data ERA5 at $0.5^\circ \times 0.5^\circ$ and hourly resolution. Backwards trajectories were made using 30,000 particles for each TROPOMI super-observation. The trajectories were calculated for 20 days backwards in time from the time of the observation. The SRRs were calculated at 0.5° over the inversion domain and at 2.0° globally. In addition, the BRR (\mathbf{H}_n^{ini} in Eq. 3) was calculated at the termination of the particles. For comparison with the inversions using TROPOMI retrievals, we also performed inversions using ground-based observations. The FLEXPART runs for these observations used the same set-up as for the retrievals but with only 20,000 particles per observation, which was deemed sufficient to represent a point observation.

The so-called background mixing ratio for each column average observation, was calculated as $\mathbf{H}^{col,ini}$ (see Eq. 3-5) where \mathbf{y}^{ini} is a 3D field of CH_4 mixing ratios (resolved daily) and was taken from the CAMS data assimilation product, EGG4 (<https://ads.atmosphere.copernicus.eu/datasets/cams-global-ghg-reanalysis-egg4?tab=overview>). In addition, we have used 3D mixing ratio fields from the CAMS Greenhouse gas inversion product TM5-4DVAR (<https://atmosphere.copernicus.eu/greenhouse-gases-supplementary-products>) in a sensitivity test.

3.1.2 Observations

In this case study, we use the Weighting Function Modified Differential Optical Absorption Spectroscopy (WFMD) retrieval product (version 1.8) from the University of Bremen (Schneising et al., 2019, 2023). We selected retrievals that had a quality flag of 0 (where the quality value is either 0 (good) or 1 (bad)). The retrievals were averaged to super observations, as described in Sect. 2.2, using two resolution steps with grid cell sizes of 0.25° and 0.5° . Uncertainties for the super observations were calculated as the quadratic sum of the uncertainty for each retrieval weighted by the area of the ground-pixel of the retrieval. The full observation-space uncertainty was the quadratic sum of the super-observation uncertainty and an uncertainty estimated for the background column average mixing ratio. The resulting observation space uncertainties were typically in the range of 14 to 20 ppb with a median value of 16 ppb. The square of these uncertainties were used as the variances in the observation error covariance matrix, and we assumed that errors in the super observations were uncorrelated. On average, there were 3781 super-observations per day. (See Supplementary Fig. S2 for an overview of the number of super-observations by latitude and state vector time step).

For validation, we used ground-based observations from the Japan-Russia Siberian Tall Tower Inland Observation Network (JR-STATION) network (Sasakawa et al., 2010, 2012, 2025) (Fig. 1 and Table 1). It is comprised of nine (currently six operating) tower sites in Siberia where simultaneous multi-point semi-continuous observations of CO_2 and CH_4 have been made. The CH_4 mixing ratios were measured using a modified SnO_2 semiconductor sensor and determined against the NIES 94 CH_4 scale. The NIES 94 CH_4 scale ranges approximately 5 ppb higher than the WMO- CH_4 -X2004A scale, thus we adjusted the CH_4 mixing ratios to the WMO scale for use in the inversions. The JR-STATION system measures the air at each intake

Formatted: Font: Bold
Formatted: Font: Bold, Not Italic
Formatted: Font: Bold, Not Italic

Deleted: ranges from
Deleted: (0
Deleted: to
Deleted: (1)

Deleted: and t

Deleted: . T
Deleted: ,

height on the tower for three minutes at a time before switching the airflow to the next height. The 3-minute values for each height are averaged to obtain a representative value for each hour. In addition, we used observations from the flask sampling sites Ulaan Uul, Mongolia (UUM) and Teriberka, Russia (TER), and in-situ observations from the Global Atmospheric Watch site, Cholpon-Ata, Kyrgyzstan (CPA), which were all obtained from the World Data Centre for Greenhouse Gases (WDCGG). These data were filtered to remove observations that were flagged as “invalid” and for the flask data, pairs of flasks were averaged to one observation. The observation space uncertainties were typically in the range of 7 to 12 ppb with a median value of 8 ppb.

Deleted: .

3.1.3 Prior information

In the case study inversion, we optimize the total net CH₄ flux. A prior estimate for the total net flux was prepared using the following input datasets: i) the EDGAR-v8 for anthropogenic emissions (Crippa et al., 2023), ii) the land-surface model, LPX-Bern for natural fluxes from peatlands, wet and inundated soils, and the soil sink, iii) Etiope et al. (2019) for geological emissions, iv) GFED-v4.1s for biomass burning emissions (Werf et al., 2017), and v) the observation-based climatology of Weber et al. (2019) for ocean fluxes. An overview of the flux estimates used in the prior is given in Table 2. The input data are given at different temporal and spatial resolutions and thus were averaged/interpolated to the same spatial resolution as the SRRs for the inversion domain, i.e., 0.5° and interpolated to 14 days to match the state vector temporal resolution.

For the inversion using ground-based observations, prior uncertainties were calculated for each grid cell as 50% of the prior estimate but with a lower limit of 1×10^{-9} kg m⁻² h⁻¹, which is approximately the 10th percentile value of all fluxes over the inversion domain. For the inversions using TROPOMI, after a first inversion was run with the same uncertainties as for the ground-based inversion, and which showed very little change in the posterior versus the prior fluxes, the prior uncertainty was increased to 100%. The prior error covariance matrix, B, was calculated using the square of the prior uncertainties in each grid cell as the variances and the co-variances were calculated assuming that the correlation between two grid cells decays exponentially with a correlation scale length of 200 km, and the correlation between flux time steps decays exponentially with a correlation scale length of 28 days.

Deleted: P

Deleted: .

3.2 Results and discussion

3.2.1 Inversion diagnostics

The TROPOMI inversion was run for 25 iterations and the ground-based observation inversion was run for 30 iterations. For the TROPOMI inversions, 25 iterations was deemed a sufficient number for convergence based on the change in the cost at each iteration, which was <1% after 17 iterations. For the ground-based observation inversion, the change in cost was only consistently <1% after 26 iterations. (The cost at each iteration for both inversions is shown in Supplementary Fig. S3).

355 Another inversion diagnostic that is often used to determine the appropriateness of the state space and observation space
uncertainties is the reduced chi-squared value, which is twice the final cost (see Eq. 14) divided by the number of degrees of
freedom, which has an expected value of one (Tarantola, 2005). However, the reduced-chi-square criterion can be ambiguous
as pointed out by Chevallier et al. (2007). In any case, we report here the reduced chi-square values for the TROPOMI and
ground-based inversions, which were 1.08 and 4.86, respectively.

Formatted: Normal

360 **3.2.2 Modelled XCH₄**

Deleted: 1

Column mixing ratios of CH₄ were modelled for each of the super-observations using the set-up described above. The
observations for all months show high XCH₄ values for the southern part of the domain, especially in northern China. This is
also captured, but with lesser magnitude, in the prior and posterior modelled XCH₄ (Fig. 2). In the summer months (June to
August) there is also elevated XCH₄ in the central part of the domain, corresponding to the location of wetlands but also to oil
365 and gas fields. The posterior modelled XCH₄ had a much closer agreement with the observations, as expected. For example,
for March the a posteriori Mean Error (ME) and Root Mean Square Error (RMSE) was 2 and 16 ppb, compared to that a priori
with 45 and 50 ppb, respectively. For July, the a posteriori ME and RMSE was 3 and 13 ppb, compared to that a priori with
12 and 20 ppb. (See also Supplementary Fig. S4 for the differences between the posterior and prior modelled XCH₄).

Deleted:

Formatted: Subscript

370 The generally too high modelled XCH₄ using the prior state vector, especially in March, was primarily due to a too high
background estimate when this was based on initial mixing ratios from EGG4. Further simulations using the CAMS greenhouse
gas inversion product (CAMSV20r1) showed that the modelled XCH₄ is strongly sensitive to the fields of initial mixing ratio
used, and using CAMSV20r1 the prior modelled XCH₄ was considerably lower (see Supplementary Fig. S5). The reason is the
different vertical distributions of CH₄ in CAMSV20r1 versus EGG4 (see Supplementary Fig. S6), which convolved with the
375 averaging kernel and the FLEXPART-calculated averaging matrix, $\mathbf{H}^{ini,col}$ lead to quite different values for the background
column average mixing ratio. A bias is also seen when XCH₄ is calculated directly from the initial mixing ratio fields (by
applying Eq. 2) with EGG4 resulting in significantly higher, and CAMSV20r1 resulting in significantly lower, XCH₄ compared
to the observations in March, but with smaller biases in July (see Supplementary Fig. S7). For this reason, the boundary
conditions (i.e., 3D fields of initial mixing ratios) are optimized in the inversion simultaneously with the fluxes.

Deleted: S1

Deleted: S2

Formatted: Font: Bold, Not Italic

380 In the inversion using EGG4, the posterior scalars of initial mixing ratios were decreased in the latitude band 30°-90°N at all
altitude layers and timesteps, while the mixing ratios in the band 0°-30°N were increased slightly in the lowest altitude layer
and more strongly in the upper two layers, while the scalars for the Southern Hemisphere did not differ significantly from the
prior value of 1.0 (Fig. 3). In contrast, in the inversion using CAMSV20r1, the scalars for 30-90°N were decreased only for the
385 lowest altitude layer, remained close to the prior value for the mid layer and increased for the uppermost layer (see
Supplementary Fig. S8). Despite the very different background estimates using EGG4 versus CAMSV20r1, the inversions

Deleted: S3

Deleted: S4

395 resulted in very similar posterior fluxes, which indicates that the optimization of the boundary conditions is successful in minimizing biases due to these (see Supplementary Fig. S9).

Figure 4 shows the area-weighted mean XCH₄ for the domain for 2-weekly intervals from March to October. The prior modelled XCH₄ follows the prior background estimate, which is driven by variations in the boundary conditions (based on EGG4) and differs considerably from the variation in the observed XCH₄. After optimization, the modelled XCH₄ more closely follows the observations, which is largely due to the improvement to the background estimate. Both the prior and posterior modelled XCH₄ remain close to their respective backgrounds until late April, when fluxes in the domain start to increase and thus have a more significant impact on XCH₄ and return towards their background estimate after September.

3.2.3 Posterior fluxes and uncertainty reduction using TROPOMI

Figure 5 shows the mean posterior fluxes estimated from the inversion using TROPOMI observations as well as the posterior minus prior differences (flux increments). Overall, the posterior fluxes remain very close to those of the prior and the total mean posterior source over the domain for March to October is 30.3 ± 22.7 Tg/y compared to the prior estimate of 31.0 ± 24.5 Tg/y. The seasonal cycle also remained close to the prior estimate with a maximum in late July to early August (Fig. 6). The inversion did, however, reduce emissions for a few hotspots in northwestern Siberia in grid cells with important oil and gas sources, and increase emissions for a few hotspots in northern China, again in grid cells with important oil and gas sources.

410 It must be noted, however, that the uncertainty reduction on the fluxes (calculated as one minus the ratio of the posterior to prior flux uncertainty) is quite small and mainly limited to the areas of the Western Siberian Lowlands and to the southern part of the domain, where it reaches 20-50% (Fig. 7). This is similar to the results of Tsuruta et al. (2023), who likewise found limited uncertainty reduction for the high northern latitudes using TROPOMI and little difference between the prior and posterior fluxes for their region of Eurasia (including Fennoscandia). This is partly due to the poor observational coverage over Siberia where even outside of the winter season the number of observations is still limited (especially >50°N) and can be due to frequent cloud cover (Gao et al., 2023). (The low uncertainty reduction is discussed further in Section 3.2.4). The pattern of uncertainty reduction in our study is persistent for all months and is largely determined by the distribution of observations and of the prior flux uncertainty. The more southern part of the domain is better covered by observations, especially over Kazakhstan and northern China, while the prior flux uncertainties followed the distribution of the prior fluxes with larger uncertainties in the area of the Western Siberian Lowlands and for grid cells with hotspot emissions (see Supplementary Fig. S10).

3.2.4 Comparison with ground-based data inversions

Figures Sd and Se show the posterior fluxes and flux increments, respectively, from the inversion with ground-based observations. The mean posterior fluxes show large emissions over the Western Siberian Lowlands, and generally higher

Deleted: S5

Deleted: 2

Deleted: at least in

Deleted: due

Deleted: 6

Deleted: 3

Deleted: 8a

Deleted: 8b

emissions than in the prior estimate. They also indicate that some of the hotspot emission sources in northwestern Siberia are too large in the prior, which is consistent with the result of the inversion using TROPOMI. Moreover, the posterior fluxes indicate larger emissions for a few hotspots in southern Siberia coinciding with grid cells where there are coal mines. The mean posterior source over the domain from March to October is $33.9 \pm 14.3 \text{ Tg y}^{-1}$. The difference between the posterior fluxes from the inversion using ground-based observations versus that using TROPOMI (Fig. 5f) follows a very similar pattern to the posterior minus prior flux increments (Fig. 5d), as expected, since the posterior fluxes from the inversion using TROPOMI are very close to the prior.

The ground-based observation inversion indicates an earlier and more intense summer maximum compared to the prior estimate and to the estimate from the TROPOMI based inversion (Fig. 6). In the ground-based inversion the maximum occurs in early July, versus late July to early August in the prior, and reaches a maximum of 49.4 Tg y^{-1} for the mean of July versus 37.8 Tg y^{-1} in the prior.

Moreover, the inversion using ground-based observations is better constrained than that using TROPOMI, and there are uncertainty reductions of up to 50% over a significant part of Western Siberia, corresponding to where the continuous measurement sites are located, although some gaps remain (Fig. 8). On the other hand, the southern and eastern parts of the domain are less well constrained.

As a further check on the inversion using TROPOMI observations, we compared the mixing ratios modelled using the prior fluxes, the posterior fluxes from the ground-based inversion, and the posterior fluxes from the TROPOMI inversion, against observations at all ground-based sites (Fig. 9). In this comparison, the optimized boundary conditions were used to show only the differences due to the fluxes. Overall, there is an improvement in the fit to the observations using the posterior fluxes from the ground-based inversion compared to the prior fluxes as would be expected since these observations were used in the inversion. The RMSE over all observations was reduced from 37 ppb a priori to 25 ppb a posteriori. However, using the posterior fluxes from the inversion using TROPOMI observations, did not lead to an improvement (nor a deterioration) in the fit to the observations, which is simply because the posterior fluxes in this case remained very close to the prior.

The reason for the lower uncertainty reduction (and smaller flux increments) using TROPOMI versus ground-based observations is essentially two-fold: i) The TROPOMI column average observations have larger uncertainties compared to the ground-based observations (in this study the median uncertainty used for ground-based observations was 8 ppb versus 16 ppb for TROPOMI) and the model-observation errors are weighted by the inverse of the square of the observation uncertainties (see Eq. 15). ii) Since satellite observations are of the total atmospheric column, the air masses in the columns can have more diverse source regions resulting in column SRRs that are more spread-out compared to those of point observations. This tends to lead to smaller deviations over background for the satellite observations compared to the point observations and, since the

Deleted: 8c

Deleted: 8b

Deleted: 9

Deleted: ¶

Deleted: 10

cost function depends on the square of the model-observation differences, a few large differences have more influence than a larger number of small differences. Thus, to compensate for the weaker constraint of each individual retrieval on the fluxes, many more retrievals are needed to achieve a similar constraint as provided by the point observations. Although this applies for any region, this is more notable in higher latitudes where there are generally fewer observations compared to mid-latitudes, and where the background uncertainty is larger meaning that even greater departures in the modelled mixing ratios from the background mixing ratio would be needed to constrain the fluxes.

4. Summary and conclusions

We have developed an efficient method to model total column observations, such as those from satellites, using a Lagrangian Particle Dispersion Model (LPDM) and, furthermore, to compute Jacobian matrices describing the relationship between fluxes and the change in the column average mixing ratio as needed in inverse modelling. This method means that the computations are in principle no more costly than those for point observations. However, since backwards calculations are still needed for each observation, the computational cost is still a limiting factor for using this method on the global scale for satellites providing a very large number of retrievals, e.g. TROPOMI which provides ~100,000 retrievals globally each day. This limitation can be overcome though by using “super observations”, that is averages of retrievals, which reduces the number of calculations required. On the other hand, our method using an LPDM is well suited for regional inversion studies especially with observations from flux mapping satellites with a relatively high resolution, such as the TROPOMI XCH₄ product with a resolution of 5.5×7 km, the recently launched MethaneSAT with a resolution of 0.1×0.4 km, and the future missions, CO2M with 2×2 km and GeoCarb with 6×3 km.

We presented a case study using the methodology to estimate CH₄ fluxes over Siberia using WFMD retrievals of XCH₄ from the TROPOMI instrument. We found that, for this northern region, the boundary conditions have a strong influence on the modelled column mixing ratios, but by optimizing the boundary conditions any bias in these does not contribute to a bias in the posterior fluxes. Moreover, we compared the inversion with TROPOMI to one using ground-based observations. The ground-based observations provide a stronger constraint on the fluxes and greater uncertainty reduction compared to TROPOMI for this northern region. Although the posterior fluxes obtained using TROPOMI remained close to the prior, there were some consistent results with those obtained using ground-based observations, namely, a decrease in hotspot emissions in northern Siberia and an increase in a hotspot emission in northern China compared to the prior emissions.

Based on these results, the caveats of using satellite retrievals in regional inversions at high latitudes are: 1) the strong dependence of the modelled column mixing ratios on the boundary conditions and hence the need to set large uncertainties for the optimization of the boundary conditions, which has the effect of reducing the constraint of the observed column average

Deleted: ¶

505 mixing ratios on the fluxes, and 2) the limited observational constraint of the column average mixing ratios on surface fluxes
in Siberia and hence low uncertainty reduction from inversions.

Deleted: coverage and

Author contribution

RLT designed the algorithms, wrote the code, ran the ground-based observation inversions and wrote the manuscript. NK ran
FLEXPART for the satellite retrievals, ran the satellite-based inversions, and contributed to the manuscript. PS, IP, KS, SP,
510 AS and MS provided advice on the use of the satellite data and modelling with FLEXPART and contributed to the manuscript.

Competing interest statement

The authors declare that they have no conflict of interest.

Data availability

515 TROPOMI WFMD retrieval data as well as the corresponding data documentation are available from the University of Bremen
at https://www.iup.uni-bremen.de/carbon_ghg/products/tropomi_wfmd/. The JR-STATION data are available from the Global
Environmental Database, hosted by ESD, NIES: <http://db.cger.nies.go.jp/portal/geds/index>. The other ground-based
observations are available from the World Data Centre for Greenhouse Gases (WDCGG): <https://gaw.kishou.go.jp>. The
FLEXINVERT and FLEXPART codes used for this study are available from the GitLab repository: <https://git.nilu.no/flexpart>.

Acknowledgements

520 This study was supported by the ReGAME project funded by the Research Council of Norway (grant no. 325610) and by the
Horizon Europe project, EYE-CLIMA (grant no. 101081395). AS was partly supported by the Austrian Research Promotion
Agency under the project GHG-KIT (ID 42635422). We would like to acknowledge Oliver Schneising (University of Bremen)
for providing the TROPOMI WFMD retrievals. Development of the TROPOMI WFMD product was supported by the
European Space Agency via the projects GHG-CCI+, MethaneCAMP, and SMART-CH4 (ESA contract nos.
525 4000126450/19/I-NB, 4000137895/22/I-AG, and 4000142730/23/I-NS) and the Bundesministerium für Bildung und
Forschung within its project ITMS (grant no. 01 LK2103A).

References

530

Alexe, M., Bergamaschi, P., Segers, A., Detmers, R., Butz, A., Hasekamp, O., Guerlet, S., Parker, R., Boesch, H., and Frankenberg, C.: Inverse modelling of CH 4 emissions for 2010–2011 using different satellite retrieval products from GOSAT and SCIAMACHY, *Atmos. Chem. Phys.*, 15, 113–133, <https://doi.org/10.5194/acp-15-113-2015>, 2015.

535 Apituley, A., Pedergrana, M., Snee, M., Veefkind, J., Loyola, D., Hasekamp, O., Delgado, A. L., and Borsdorff, T.: Sentinel-5 precursor TROPOMI: Level 2 Product User Manual Methane, 2021.

Bergamaschi, P., Frankenberg, C., Meirink, J. F., Krol, M., Villani, M. G., Houweling, S., Dentener, F., Dlugokencky, E. J., Miller, J. B., Gatti, L. V., Engel, A., and Levin, I.: Inverse modeling of global and regional CH 4 emissions using SCIAMACHY satellite retrievals, *Journal of Geophysical Research: Atmospheres*, 114, D22301, <https://doi.org/10.1029/2009jd012287>, 2009.

540 Brioude, J., Petron, G., Frost, G. J., Ahmadov, R., Angevine, W. M., Hsie, E. Y., Kim, S. W., Lee, S. H., McKeen, S. A., Trainer, M., Fehsenfeld, F. C., Holloway, J. S., Peischl, J., Ryerson, T. B., and Gurney, K. R.: A new inversion method to calculate emission inventories without a prior at mesoscale: Application to the anthropogenic CO 2 emission from Houston, Texas, *Journal of Geophysical Research-Atmospheres*, 117, D05312, <https://doi.org/10.1029/2011jd016918>, 2012.

545 Byrne, B., Baker, D. F., Basu, S., Bertolacci, M., Bowman, K. W., Carroll, D., Chatterjee, A., Chevallier, F., Ciais, P., Cressie, N., Crisp, D., Crowell, S., Deng, F., Deng, Z., Deutscher, N. M., Dubey, M. K., Feng, S., Garcia, O. E., Griffith, D. W. T., Herkommer, B., Hu, L., Jacobson, A. R., Janardanan, R., Jeong, S., Johnson, M. S., Jones, D. B. A., Kivi, R., Liu, J., Liu, Z., Maksyutov, S., Miller, J. B., Miller, S. M., Morino, I., Notholt, J., Oda, T., O'Dell, C. W., Oh, Y.-S., Ohyama, H., Patra, P. K., Peiro, H., Petri, C., Philip, S., Pollard, D. F., Poulter, B., Remaud, M., Schuh, A., Sha, M. K., Shiomi, K., Strong, K., Sweeney, C., Té, Y., Tian, H., Velasco, V. A., Vrekoussis, M., Warneke, T., Worden, J. R., Wunch, D., Yao, Y., Yun, J., Zammit-Mangion, A., and Zeng, N.: National CO 2 budgets (2015–2020) inferred from atmospheric CO 2 observations in support of the global stocktake, *Earth Syst. Sci. Data*, 15, 963–1004, <https://doi.org/10.5194/essd-15-963-2023>, 2023.

555 Chen, Z., Jacob, D. J., Gautam, R., Omara, M., Stavins, R. N., Stowe, R. C., Nesser, H., Sulprizio, M. P., Lorente, A., Varon, D. J., Lu, X., Shen, L., Qu, Z., Pendergrass, D. C., and Hancock, S.: Satellite quantification of methane emissions and oil–gas methane intensities from individual countries in the Middle East and North Africa: implications for climate action, *Atmos. Chem. Phys.*, 23, 5945–5967, <https://doi.org/10.5194/acp-23-5945-2023>, 2023.

Chevallier, F., Fisher, M., Peylin, P., Serrar, S., Bousquet, P., Breon, F. M., Chédin, A., and Ciais, P.: Inferring CO 2 sources and sinks from satellite observations: Method and application to TOVS data, *Journal of Geophysical Research-Atmospheres*, 110, <https://doi.org/10.1029/2005jd006390>, 2005.

560 Chevallier, F., Bréon, F.-M., and Rayner, P. J.: Contribution of the Orbiting Carbon Observatory to the estimation of CO 2 sources and sinks: Theoretical study in a variational data assimilation framework, *Journal of Geophysical Research-Atmospheres*, 112, <https://doi.org/10.1029/2006jd007375>, 2007.

565 Crippa, M., Guizzardi, D., Banja, F., Banja, M., Muntean, M., Schaaf, E., Becker, W., Montforti-Ferrario, F., Quadrelli, R., Martin, A. R., Taghavi-Moharamli, P., Köykkä, J., Grassi, G., Rossi, S., Melo, J. B. D., Oom, D., Branco, A., San-Miguel, J., and Vignati, E.: GHG Emissions of all World Countries, Publications Office of the European Union, Luxembourg, 2023.

- Deng, Z., Ciaïis, P., Tzompa-Sosa, Z. A., Saunois, M., Qiu, C., Tan, C., Sun, T., Ke, P., Cui, Y., Tanaka, K., Lin, X., Thompson, R. L., Tian, H., Yao, Y., Huang, Y., Lauerwald, R., Jain, A. K., Xu, X., Bastos, A., Sitch, S., Palmer, P. I., Lauvaux, T., d'Aspremont, A., Giron, C., Benoit, A., Poulter, B., Chang, J., Petrescu, A. M. R., Davis, S. J., Liu, Z., Grassi, G., Albergel, C., Tubiello, F. N., Perugini, L., Peters, W., and Chevallier, F.: Comparing national greenhouse gas budgets reported in UNFCCC inventories against atmospheric inversions, *Earth Syst Sci Data*, 14, 1639–1675, <https://doi.org/10.5194/essd-14-1639-2022>, 2022.
- 570 Etiope, G., Ciotoli, G., Schwietzke, S., and Schoell, M.: Gridded maps of geological methane emissions and their isotopic signature, *Earth Sys Sci Data*, 11, 1–22, <https://doi.org/10.5194/essd-11-1-2019>, 2019.
- Flesch, T. K., Wilson, J. D., and Yee, E.: Backward-time Lagrangian stochastic dispersion models and their application to estimate gaseous emissions, *Journal of Applied Meteorology*, 34, 1320–1332, 1995.
- 575 [Ganesan, A. L., Rigby, M., Lunt, M. F., Parker, R. J., Boesch, H., Goulding, N., Umezawa, T., Zahn, A., Chatterjee, A., Prinn, R. G., Tiwari, Y. K., Schoot, M. van der, and Krummel, P. B.: Atmospheric observations show accurate reporting and little growth in India's methane emissions, *Nature communications*, 8, 836, <https://doi.org/10.1038/s41467-017-00994-7>, 2017.](#)
- 580 Gao, M., Xing, Z., Vollrath, C., Hugenholtz, C. H., and Barchyn, T. E.: Global observational coverage of onshore oil and gas methane sources with TROPOMI, *Sci. Rep.*, 13, 16759, <https://doi.org/10.1038/s41598-023-41914-8>, 2023.
- [Gilbert, J. C. and Lemaréchal, C.: Some numerical experiments with variable-storage quasi-Newton algorithms, *Math. Program.*, 45, 407–435, <https://doi.org/10.1007/bf01589113>, 1989.](#)
- Jacob, D. J., Varon, D. J., Cusworth, D. H., Dennison, P. E., Frankenberg, C., Gautam, R., Guanter, L., Kelley, J., McKeever, J., Ott, L. E., Poulter, B., Qu, Z., Thorpe, A. K., Worden, J. R., and Duren, R. M.: Quantifying methane emissions from the global scale down to point sources using satellite observations of atmospheric methane, *Atmos. Chem. Phys.*, 22, 9617–9646, <https://doi.org/10.5194/acp-22-9617-2022>, 2022.
- 585 [Maasakkers, J. D., Jacob, D. J., Sulprizio, M. P., Scarpelli, T. R., Nesser, H., Sheng, J., Zhang, Y., Lu, X., Bloom, A. A., Bowman, K. W., Worden, J. R., and Parker, R. J.: 2010–2015 North American methane emissions, sectoral contributions, and trends: a high-resolution inversion of GOSAT observations of atmospheric methane, *Atmos. Chem. Phys.*, 21, 4339–4356, <https://doi.org/10.5194/acp-21-4339-2021>, 2021.](#)
- 590 [Nesser, H., Jacob, D. J., Maasakkers, J. D., Lorente, A., Chen, Z., Lu, X., Shen, L., Qu, Z., Sulprizio, M. P., Winter, M., Ma, S., Bloom, A. A., Worden, J. R., Stavins, R. N., and Randles, C. A.: High-resolution U.S. methane emissions inferred from an inversion of 2019 TROPOMI satellite data: contributions from individual states, urban areas, and landfills, *EGUsphere*, 2023, 1–36, <https://doi.org/10.5194/egusphere-2023-946>, 2023.](#)
- 595 [Ottino, J.: *The Kinematics of Mixing: Stretching, Chaos and Trans-port*, Cambridge Univ. Press, New York, 1989.](#)
- Peiro, H., Crowell, S., and III, B. M.: Optimizing 4 years of CO₂ biospheric fluxes from OCO-2 and in situ data in TM5: fire emissions from GFED and inferred from MOPITT CO data, *Atmos. Chem. Phys.*, 22, 15817–15849, <https://doi.org/10.5194/acp-22-15817-2022>, 2022.
- 600 [Pisso, I., Sollum, E., Grythe, H., Kristiansen, N. I., Cassiani, M., Eckhardt, S., Arnold, D., Morton, D., Thompson, R. L., Zwaafink, C. D. G., Evangeliou, N., Sodemann, H., Haimberger, L., Henne, S., Brunner, D., Burkhart, J. F., Fouilloux, A.,](#)

Deleted: ¶

Deleted: Lanczos, C.: An iteration method for the solution of the eigenvalue problem, *J. Res. Natl. Bur. Standards*, 45, 255–282, 1950.¶

Formatted

605 Brioude, J., Philipp, A., Seibert, P., and Stohl, A.: The Lagrangian particle dispersion model FLEXPART version 10.4,
Geoscientific Model Development, 12, 4955–4997, <https://doi.org/10.5194/gmd-12-4955-2019>, 2019.

~~Rastigejev, Y., Park, R., Brenner, M., and Jacob, D.: Re-solving intercontinental pollution plumes in global models of
atmospheric transport, J. Geophys. Res., 115, D02302, <https://doi.org/10.1029/2009JD012568>, 2010.~~

Rodgers, C. D. and Connor, B. J.: Intercomparison of remote sounding instruments, J Geophys Res Atmospheres, 108(D3),
610 4116, <https://doi.org/10.1029/2002jd002299>, 2003.

Sasakawa, M., Shimoyama, K., Machida, T., Tsuda, N., Suto, H., Arshinov, M., Davydov, D., Fofonov, A., Krasnov, O., and
Saeki, T.: Continuous measurements of methane from a tower network over Siberia, Tellus B, 62, 403–416,
<https://doi.org/10.1111/j.1600-0889.2010.00494.x>, 2010.

Sasakawa, M., Ito, A., Machida, T., Tsuda, N., Niwa, Y., Davydov, D., Fofonov, A., and Arshinov, M.: Annual variation of
615 CH4 emissions from the middle taiga in West Siberian Lowland (2005–2009): a case of high CH4 flux and precipitation rate
in the summer of 2007, Tellus, 64, 2012.

~~Sasakawa, M., Tsuda, N., Machida, T., Arshinov, M., Davydov, D., Fofonov, A., and Belan, B.: Revised methodology for
CO2 and CH4 measurements at remote sites using a working standard-gas-saving system, Atmos. Meas. Tech., 18, 1717–
1730, <https://doi.org/10.5194/amt-18-1717-2025>, 2025.~~

620 Schneising, O., Buchwitz, M., Reuter, M., Bovensmann, H., Burrows, J. P., Borsdorff, T., Deutscher, N. M., Feist, D. G.,
Griffith, D. W. T., Hase, F., Hermans, C., Iraci, L. T., Kivi, R., Landgraf, J., Morino, I., Notholt, J., Petri, C., Pollard, D. F.,
Roche, S., Shiomi, K., Strong, K., Sussmann, R., Velasco, V. A., Warneke, T., and Wunch, D.: A scientific algorithm to
simultaneously retrieve carbon monoxide and methane from TROPOMI onboard Sentinel-5 Precursor, Atmos. Meas. Tech.,
12, 6771–6802, <https://doi.org/10.5194/amt-12-6771-2019>, 2019.

625 Schneising, O., Buchwitz, M., Hachmeister, J., Vanselow, S., Reuter, M., Buschmann, M., Bovensmann, H., and Burrows, J.
P.: Advances in retrieving XCH4 and XCO from Sentinel-5 Precursor: improvements in the scientific TROPOMI/WFMD
algorithm, Atmos. Meas. Tech., 16, 669–694, <https://doi.org/10.5194/amt-16-669-2023>, 2023.

Seibert, P. and Frank, A.: Source-receptor matrix calculation with a Lagrangian particle dispersion model in backward mode,
Atmos. Chem. Phys, 4, 51–63, <https://doi.org/10.5194/acp-4-51-2004>, 2004.

630 Thompson, R. L. and Stohl, A.: FLEXINVERT: an atmospheric Bayesian inversion framework for determining surface
fluxes of trace species using an optimized grid, Geosci Model Dev, 7, 2223–2242, <https://doi.org/10.5194/gmd-7-2223-2014>,
2014.

Thomson, D. J.: A stochastic model for the motion of particle pairs in isotropic high-Reynolds-number turbulence, and its
application to the problem of concentration variance, Journal of Fluid Mechanics, 210, 113–153,
635 <https://doi.org/10.1017/s0022112090001239>, 1990.

Trenchev, P., Dimitrova, M., and Avetisyan, D.: Huge CH4, NO2 and CO Emissions from Coal Mines in the Kuznetsk Basin
(Russia) Detected by Sentinel-5P, Remote Sens., 15, 1590, <https://doi.org/10.3390/rs15061590>, 2023.

Tsuruta, A., Kivimäki, E., Lindqvist, H., Karppinen, T., Backman, L., Hakkarainen, J., Schneising, O., Buchwitz, M., Lan,
X., Kivi, R., Chen, H., Buschmann, M., Herkommer, B., Notholt, J., Roehl, C., Té, Y., Wunch, D., Tamminen, J., and Aalto,

Formatted: Font: 10 pt,

Formatted: Font: 10 pt,

Deleted: ¶

Formatted: Font: 10 pt

Formatted: English (US)

- T.: CH₄ Fluxes Derived from Assimilation of TROPOMI XCH₄ in CarbonTracker Europe-CH₄: Evaluation of Seasonality and Spatial Distribution in the Northern High Latitudes, *Remote Sens.*, 15, 1620, <https://doi.org/10.3390/rs15061620>, 2023.
- Varon, D. J., Jacob, D. J., Hmiel, B., Gautam, R., Lyon, D. R., Omara, M., Sulprizio, M., Shen, L., Pendergrass, D., Nesser, H., Qu, Z., Barkley, Z. R., Miles, N. L., Richardson, S. J., Davis, K. J., Pandey, S., Lu, X., Lorente, A., Borsdorff, T.,
645 Maasakkers, J. D., and Aben, I.: Continuous weekly monitoring of methane emissions from the Permian Basin by inversion of TROPOMI satellite observations, *Atmos. Chem. Phys.*, 2023, 7503–7620, <https://doi.org/10.5194/acp-23-7503-2023>, 2023.
- Weber, T., Wiseman, N. A., and Kock, A.: Global ocean methane emissions dominated by shallow coastal waters, *Nature communications*, 10, 1–10, <https://doi.org/10.1038/s41467-019-12541-7>, 2019.
- 650 Werf, G. R. V. der, Randerson, J. T., Giglio, L., Leeuwen, T. T. van, Chen, Y., Rogers, B. M., Mu, M., Marle, M. J. E. van, Morton, D. C., Collatz, G. J., Yokelson, R. J., and Kasibhatla, P. S.: Global fire emissions estimates during 1997–2016, *Earth Syst. Sci. Data*, 9, 697–720, <https://doi.org/10.5194/essd-9-697-2017>, 2017.
- Worden, J. R., Cusworth, D. H., Qu, Z., Yin, Y., Zhang, Y., Bloom, A. A., Ma, S., Byrne, B. K., Scarpelli, T., Maasakkers, J. D., Crisp, D., Duren, R., and Jacob, D. J.: The 2019 methane budget and uncertainties at 1° resolution and each country
655 through Bayesian integration Of GOSAT total column methane data and a priori inventory estimates, *Atmos. Chem. Phys.*, 22, 6811–6841, <https://doi.org/10.5194/acp-22-6811-2022>, 2022.
- 660 [Wu, D., Lin, J. C., Fasoli, B., Oda, T., Ye, X., Lauvaux, T., Yang, E. G., and Kort, E. A.: A Lagrangian approach towards extracting signals of urban CO₂ emissions from satellite observations of atmospheric column CO₂ \(XCO₂\): X-Stochastic Time-Inverted Lagrangian Transport model \(“X-STILT v1”\), *Geosci. Model Dev.*, 11, 4843–4871, <https://doi.org/10.5194/gmd-11-4843-2018>, 2018.](https://doi.org/10.5194/gmd-11-4843-2018)
- Zhang, L., Jiang, F., He, W., Wu, M., Wang, J., Ju, W., Wang, H., Zhang, Y., Sitch, S., Walker, A. P., Yue, X., Feng, S., Jia, M., and Chen, J. M.: A Robust Estimate of Continental-Scale Terrestrial Carbon Sinks Using GOSAT XCO₂ Retrievals, *Geophys. Res. Lett.*, 50, <https://doi.org/10.1029/2023gl102815>, 2023.
- 665 Zhang, Y., Jacob, D. J., Lu, X., Maasakkers, J. D., Scarpelli, T. R., Sheng, J.-X., Shen, L., Qu, Z., Sulprizio, M. P., Chang, J., Bloom, A. A., Ma, S., Worden, J., Parker, R. J., and Boesch, H.: Attribution of the accelerating increase in atmospheric methane during 2010–2018 by inverse analysis of GOSAT observations, *Atmos. Chem. Phys.*, 21, 3643–3666, <https://doi.org/10.5194/acp-21-3643-2021>, 2021.

670 Table 1: Ground-based atmospheric observation sites. The altitude refers to that of the air intake.

Station ID	Station name, country	Measurement type	Latitude (°N)	Longitude (°E)	Altitude (masl)	Network/Institute
UUM	Ulaan Uul, Mongolia	Flask	44.45	111.09	1007	NOAA
TER	Teriberka, Russia	Flask	69.20	35.10	40	Voeikov Main Geophysical Observatory
CPA	Cholpon-Ata, Kyrgyzstan	In-situ	42.64	77.07	1613	Agency on Hydrometeorology under Ministry of Emergency Situations of the Kyrgyz Republic
AZV	Azovo, Russia	In-situ	54.71	73.03	110	JRSTATION
BRZ	Berezorechka, Russia	In-situ	56.15	84.33	168	JRSTATION
DEM	Demyanskoe, Russia	In-situ	59.79	70.87	63	JRSTATION
KRS	Karasevov, Russia	In-situ	58.25	82.42	76	JRSTATION
NOY	Noyabrsk, Russia	In-situ	63.43	75.78	108	JRSTATION
VGN	Vaganovo, Russia	In-situ	54.50	62.32	192	JRSTATION

Table 2: Overview of flux estimates used in the prior

Source type	Description	Resolution	Total for domain (Tg CH ₄)
Anthropogenic	EDGAR-v8	0.1°, annual	12.8
Peatlands, wet and inundated soils, soil sink	LPX-Bern	0.5°, monthly	Peatlands: 11.5 Wet and inundated soils: 5.8 Soil sink: -2.8
Biomass burning	GFED-v4.1s	0.25°, monthly	1.2
Ocean	Weber et al. (2019)	0.25°, monthly	0.5
Geological	Etioppe et al. (2019)	1.0°, annual	1.6

Figure 1: Map of the inversion domain indicating oil & gas extraction and coal mining locations and the ground-based sites used in the inversion. The oil & gas and coal mining data were obtained from Global Energy Monitor (<https://globalenergymonitor.org>).

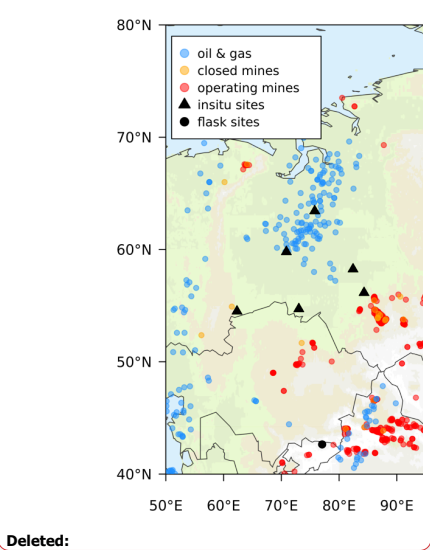
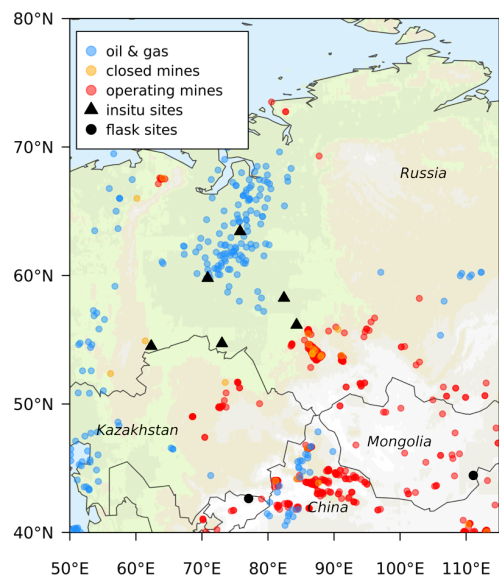
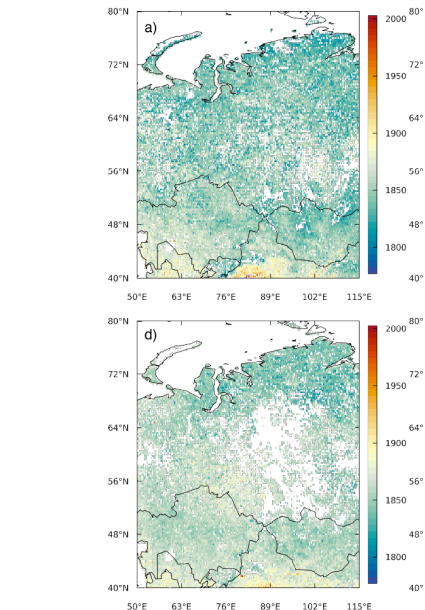
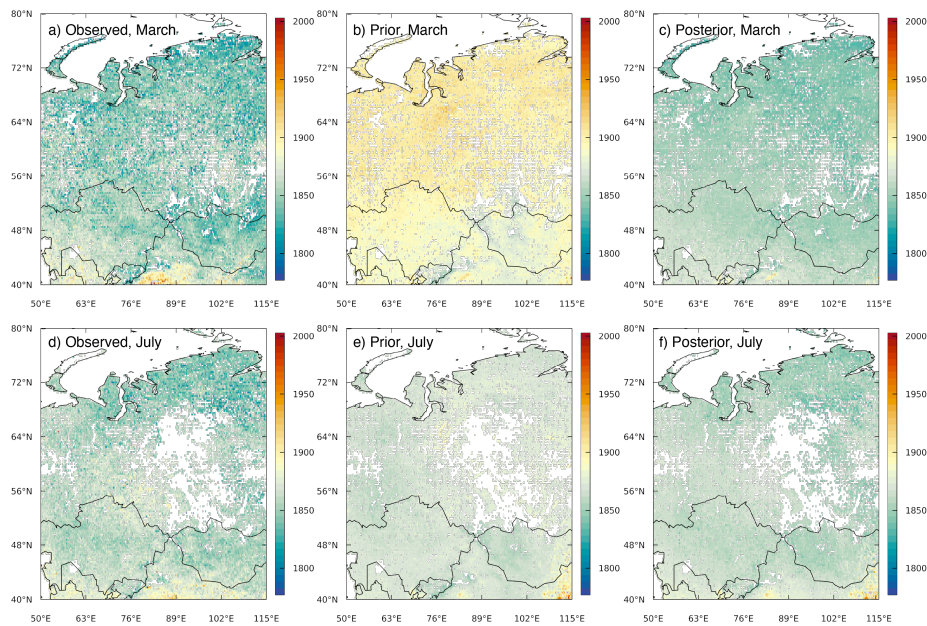


Figure 2: Monthly mean XCH₄ from super-observations in ppb for March 2020 from a) observations, b) modelled using prior fluxes, and c) modelled using posterior fluxes and scalars of initial mixing ratios. Panels d) to f) are as for a) to c) but for the monthly mean XCH₄ for July 2020. (For plotting, the super-observations were averaged to a regular grid of 0.25°).



Deleted:

Figure 3: Posterior scalars of the initial mixing ratios from the TROPOMI inversion using 3D initial mixing ratio fields from EGG4. In each sub-panel, the scalars are shown for each timestep of 28 days and for each of the four latitude bands.

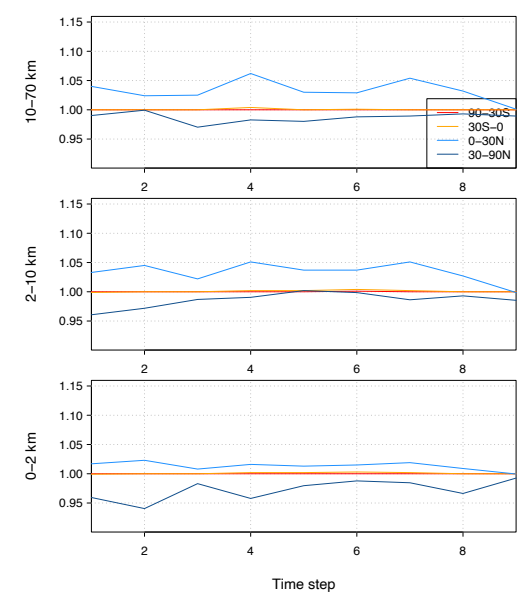
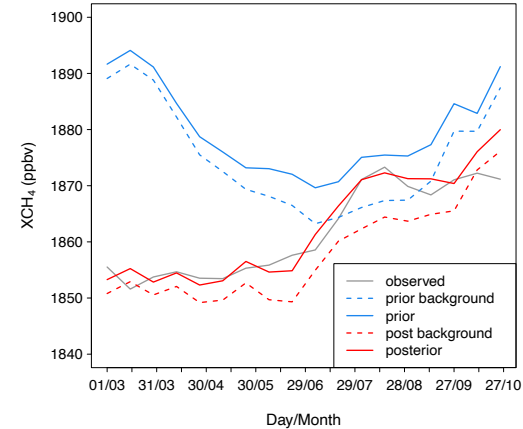
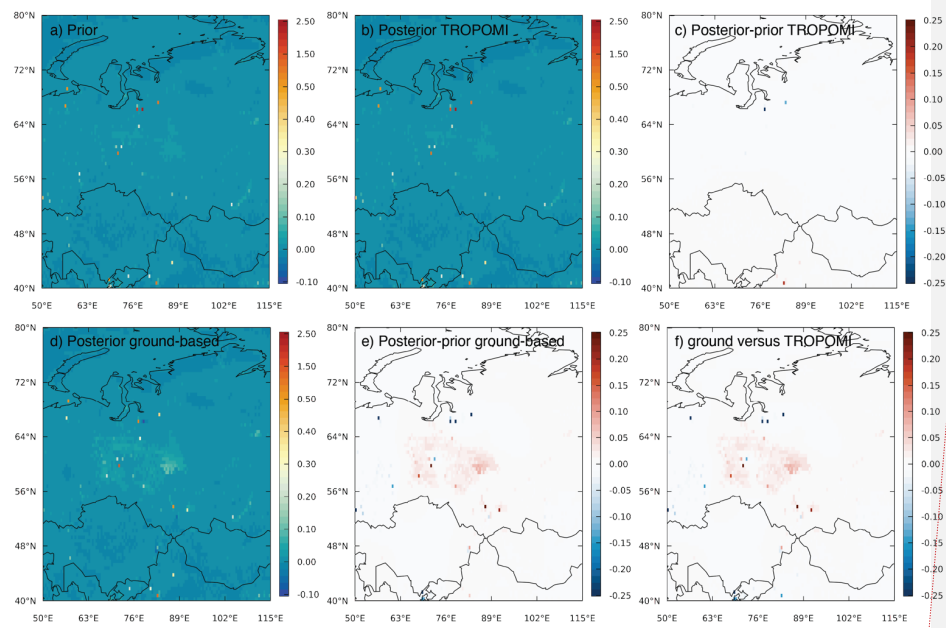


Figure 4: Area-weighted mean XCH_4 for two-weekly intervals integrated over the domain for the inversion using EGG4 for the boundary conditions.



695 **Figure 5: Mean CH_4 flux and flux increments (units of $\text{g}/\text{m}^2/\text{day}$) from the inversions. a) prior fluxes, b) posterior flux using TROPOMI, c) posterior-prior flux increments using TROPOMI, d) posterior flux using ground-based observations, e) posterior-prior flux increments using ground-based observations and f) the difference in posterior fluxes using ground-based observations versus TROPOMI.**



Deleted: flux of

Deleted: a

Deleted: prior,

Deleted: b

Deleted: c

Deleted: flux increments.

Deleted:

Figure 6: Total CH₄ source for the domain shown 2-weekly for the prior estimate and for the posterior estimates from the TROPOMI and ground-based observation inversions.

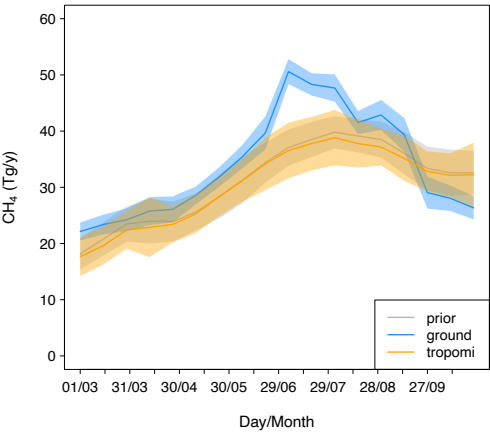


Figure 7: Uncertainty reduction for the inversion using TROPOMI a) mean of March to October, b) mean March to May, c) mean June to August

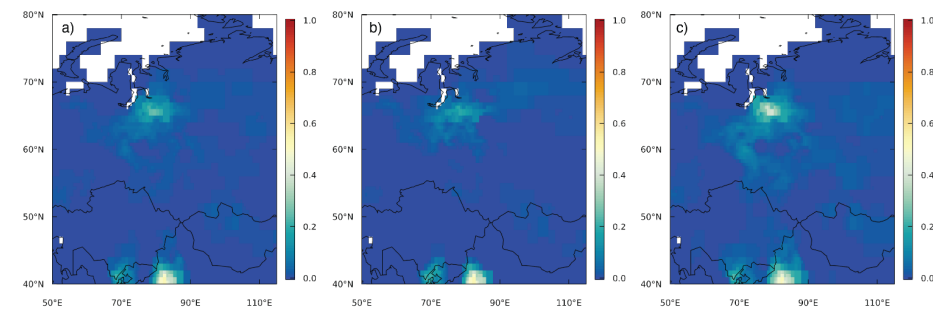
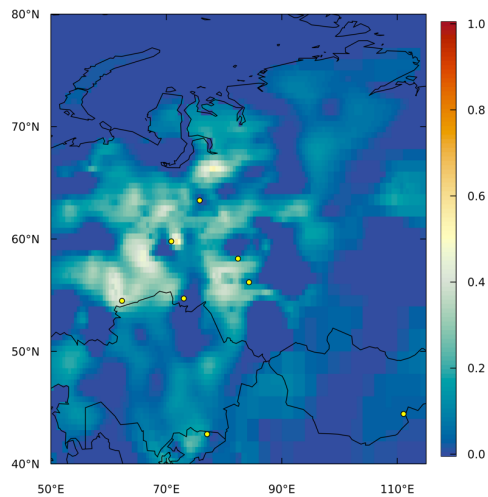
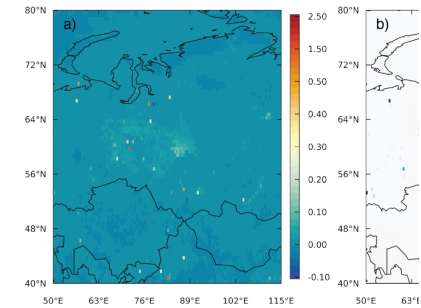


Figure 8: Uncertainty reduction for the inversion using ground-based observations. The observation sites are indicated by the yellow circles.



Deleted: Figure 8: Mean flux of CH₄ (units of g/m²/day) from the inversion using ground-based observations, a) posterior, b) flux increments, and c) difference with respect to the posterior fluxes from the inversion using TROPOMI observations.

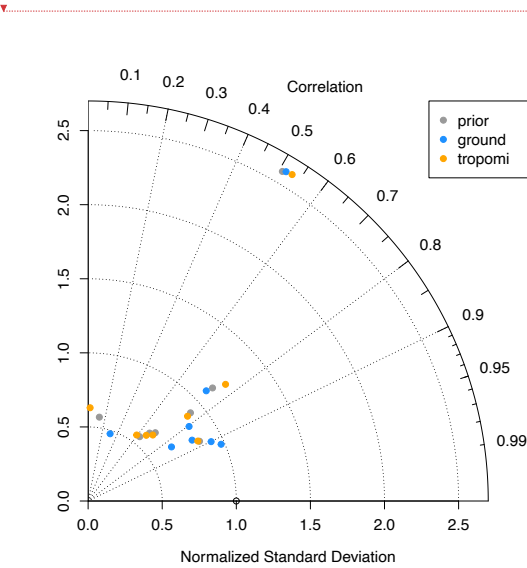


Page Break

Deleted: 9

730

Figure 9: Taylor diagram for the comparison of modelled versus observed CH₄ mixing ratios at ground-based sites. The angle gives the Pearson's correlation and the x-axis gives the normalized standard deviation for the comparison. Each point represents a site and the colour of the point indicates the modelled data used (prior: using the prior fluxes, ground: using the posterior fluxes from the inversion with ground-based observations, tropomi: using posterior fluxes from the inversion with TROPOMI observations). All model simulations used optimized boundary conditions to compare differences solely due to the fluxes used.



735

Deleted: 10

Deleted: 1

