

A REtrieval Method for optical and physical Aerosol Properties in the stratosphere (REMAPv1)

Andrin Jörimann^{1,2}, Timofei Sukhodolov¹, Beiping Luo³, Gabriel Chiodo^{3,4}, Graham Mann^{5,6}, and Thomas Peter³

¹Physikalisch-Meteorologisches Observatorium Davos / World Radiation Center, Davos, Switzerland

²Institute for Particle Physics and Astrophysics, ETH Zürich, Zürich, Switzerland

³Institute for Atmospheric and Climate Science, ETH Zürich, Zürich, Switzerland

⁴Institute of Geosciences, Spanish National Research Council, Madrid, Spain

⁵School of Earth and Environment, University of Leeds, Leeds, UK

⁶UK National Centre for Atmospheric Science, University of Leeds, Leeds, UK

Correspondence: Andrin Jörimann (andrin.joerimann@pmodwrc.ch)

Abstract. The stratospheric aerosol is an important climate forcing agent as it scatters some of the incoming solar radiation back to space, thus cooling the Earth's surface and the troposphere. At the same time it absorbs some of the upwelling terrestrial radiation ~~,-which-that~~ heats the stratosphere. It also plays an important role in stratospheric ozone chemistry by hosting heterogeneous reactions. Major volcanic eruptions can cause strong perturbations of stratospheric aerosol, changing its radiative and chemical effects by more than an order of magnitude. Many global climate models require prescribed stratospheric aerosol as input to properly simulate both climate effects in the presence and absence of volcanic eruptions. This paper describes REMAP, a retrieval method and code for aerosol properties that has been used in several model intercomparison projects (under the name SAGE-3/4 λ). The code fits a single-mode ~~log-normal~~lognormal size distribution for a pure aqueous sulfuric acid aerosol to aerosol extinction coefficients from observational or model data sets. From the retrieved size distribution parameters the code calculates the effective radius, surface area density, as well as extinction coefficients, single-scattering albedos, and asymmetry factors of the aerosol within the wavelength bands specified ~~by individual climate models~~for each individual climate model. We validate the REMAP using ~~balloon~~balloon-borne observations after the Pinatubo and ~~Hunga-Tonga~~Hunga-Hunga-Hunga Ha'apai volcanic eruptions, as well as four decades of LIDAR measurements. Within the constraints of a single-mode ~~log-normal-distribution~~lognormal distribution, REMAP generates realistic effective radii and surface area densities after volcanic eruptions and generally matches the LIDAR backscatter time series within measurement uncertainty. Deviations in aerosol backscatter by up to a factor of 2 arise when (non-volcanic) tropospheric intrusions (e.g. from wildfires) are present and the size distribution deviates significantly from the single-mode ~~log-normal~~lognormal type. We describe the products that have been used in CCMI, CMIP6 and other model intercomparison projects, and provide practical instructions for use of the code in future applications.

1 Introduction

The stratospheric aerosol has been of scientific interest since its discovery by Christian Junge and colleagues in 1960 (Junge et al., 1961; Chagnon and Junge, 1961). Aerosol particles have an impact on the radiative balance of the Earth system (Robock, 2000; Solomon et al., 2011; Santer et al., 2014) and they host important heterogeneous chemical reactions (Hofmann and Solomon, 1989; Solomon, 1999; Tilmes et al., 2008). Therefore, global models require information on stratospheric aerosol records and climatologies.//

The strength of heterogeneous chemical reactions scales with the surface area density (SAD) of stratospheric aerosols. The N_2O_5 hydrolysis on aerosol surfaces (e.g. Robinson et al. (1997)) alters the partitioning of active nitrogen NO_x to total reactive nitrogen NO_y , which affects stratospheric ozone chemistry throughout the aerosol layer, especially under volcanically perturbed conditions (Fahey et al., 1993). In very cold conditions, such as in the winter polar vortex or in the vicinity of the tropical tropopause, additional heterogeneous reactions may activate chlorine from its reservoir species, leading to enhanced ozone depletion (Hanson et al., 1994; Solomon, 1999; Tilmes et al., 2008). These chlorine activating reactions occur mainly at the liquid-gas interface and to a lesser extent within the liquid bulk phase of these cold binary H_2SO_4 - H_2O droplets. Therefore, size information is also required for the corresponding modelling of the heterogeneous reactions, in addition to the SAD (Hanson et al., 1994). Besides these cold H_2SO_4 - H_2O droplets, polar winter conditions also favor the formation of polar stratospheric clouds (PSCs), i.e. droplets and solid hydrate particles containing HNO_3 . However, PSCs are not the subject of this article and the transition from cold binary H_2SO_4 - H_2O particles to large ternary HNO_3 - H_2SO_4 - H_2O droplets and hydrates must be treated individually ~~be~~by each global climate model.

The radiative forcing of the stratospheric aerosol has been addressed by many authors in particular with respect to volcanic perturbations (Russell et al., 1993; Sato et al., 1993; Stenchikov et al., 1998; Robock, 2000; Stothers, 2001; Ammann et al., 2003; Thomason and Peter, 2006; Thomason et al., 2008; Vernier et al., 2011; Solomon et al., 2011; Arfeuille et al., 2013, 2014; Santer et al., 2014; Zanchettin et al., 2016). Recent major volcanic eruptions – e.g. El Chichón in 1982 and Pinatubo in 1991 – led to a temporary decrease of global mean surface temperature, estimated to reach up to 0.5 K (Santer et al., 2014). The moderate volcanic eruptions since 2005 of Augustine, Soufrière Hills, Shiveluch, Kasatochi, Sarychev and Nabro led to a moderate, but persistent increase in the stratospheric aerosol (Vernier et al., 2011; Carn et al., 2017), which may partly explain the early 21st century ‘warming hiatus’ (Solomon et al., 2011; Santer et al., 2014; Andersson et al., 2015). Stratospheric aerosol continues to be elevated by volcanic eruptions (~~Ambrae~~Ambae, Ulawun, Raikoke) in the past few years (Carn, 2022), including the water-rich Hunga Tonga-Hunga Ha’apai (HTHH) eruption (Vömel et al., 2022), joined by ~~non-sulfuric~~other not sulfur-dominated sources: several large wildfire events in British Columbia, Australia and Colorado (Madhavan et al., 2022; Trickl et al., 2023). A precise description of the radiative properties of the stratospheric aerosol following such events requires understanding of the distribution and transformation of particles, i.e. size distribution information, in the fresh volcanic plume (e.g. Sheng et al. (2015)). Global size distribution data sets, however, do not exist from direct measurements and need to be retrieved from satellite measured radiative properties. Thus, their quality relies on the retrieval method. This type of data could

55 further inform speculation, as to whether artificial stratospheric SO₂ injections are a suitable candidate for partially counter-acting global warming caused by greenhouse gas emissions (e.g. Crutzen (2006); Heckendorn et al. (2009); Weisenstein et al. (2022)).

The operation of global climate models requires knowledge on the radiative forcing by the stratospheric aerosol. This aerosol forcing can either be calculated online, provided that the employed model has microphysics and chemistry modules or it can be prescribed as external forcing, provided a sufficiently good observational data set is available. The former requires to model the conversion of aerosol precursor gases (OCS, SO₂) via photolysis and oxidation reactions into gaseous H₂SO₄, which can condense on preexisting aerosol particles or nucleate new ones; calculate size distributions of particles and transport them throughout the stratosphere; and finally calculate by Mie theory the ~~backward-scattering-of-visible~~ scattering of the incoming solar radiation and ~~the reduction of the incoming solar energy~~ absorption of terrestrial radiation. The extensive physico-chemical modelling is computationally intensive, but is now used by a number of the global climate models (Timmreck et al., 2018; Brodowsky et al., 2024). Yet, the resulting aerosol forcing may differ significantly over different models with interactive aerosols (Clyne et al., 2021; Quaglia et al., 2023), representing a major source of uncertainty. However, most Global Circulation Models (GCMs) still rely on prescribed chemical and aerosol forcing fields, and even many Chemistry-Climate Models (CCMs) prescribe stratospheric aerosols as a compromise between models' complexity and computational efficiency. Thus, a method of establishing the radiative forcing fields of the stratospheric aerosol for the use in global climate models is required. The operation of these models typically requires the space-time-resolved data fields of aerosol extinction coefficients (AEC in text; β in mathematical notation), single-scattering albedos (SSA; ω), and asymmetry factors (AF; g) for each wavelength band in each of the models. Establishing these fields, together with SAD and size information, is a major prerequisite for model intercomparison projects (MIPs) (Lanzante and Free, 2008; Eyring et al., 2010; Gettelman et al., 2010; Eyring et al., 2016; Morgenstern et al., 2017).

The starting point for calculating the radiative properties of aerosols is a size distribution that characterizes an aerosol ensemble. A method to derive size distribution parameters from SAGE (Stratospheric Aerosol and Gas Experiment) II multi-wavelength aerosol extinction measurements was originally proposed by Yue (1986) and Yue et al. (1986). They used AEC ratios to solve a system of equations for the parameters of a single-mode ~~log-normal~~ lognormal (SLN) size distribution. More efforts to retrieve SLN size distributions followed (e.g. Stenchikov et al. (1998) and references therein, Bingen et al. (2003); Arfeuille et al. (2013); Wrana et al. (2021)). In quiescent periods the SLN size distribution approximates the stratospheric aerosol fairly well (Deshler et al., 1992; Wurl et al., 2010). However, in volcanically enhanced stratospheric aerosol additional modes are often present (Deshler et al., 1992; Pusechel et al., 1992). Russell et al. (1996) mention that retrieved SLN size distributions can still produce accurate aerosol properties – even when the aerosol consists of two modes – given that the real distribution is not "extremely bimodal" (i.e. the modes overlap sufficiently well and do not have similar number densities). However, von Savigny and Hoffmann (2020) warn of systematic biases caused by ~~the~~ SLN size distributions retrieved from occultation measurements. These biases apply to conditions of the stratospheric aerosol, when ~~a~~ an SLN size distribution is

90 insufficient ~~in-capturing-to capture~~ the real distribution. While Thomason et al. (2008) retrieved aerosol SAD for two monodisperse modes with ~~prescribes-prescribed~~ number densities, most observational products do not provide enough independent information (wavelength channels) to reasonably constrain all parameters of a dual-mode ~~log-normal-lognormal~~ (DLN) size distribution. This was shown for SAGE data by Knepp et al. (2024). In this paper, we focus on a generalized best-fit retrieval approach for SLN size distributions and discuss the limitations of the SLN approximation using comparisons with balloon-borne in situ and LIDAR measurements.

Dedicated satellite missions to observe the stratospheric aerosol ~~started-began~~ in 1979 with the SAGE program. Spanning two full decades (1984-2005), the SAGE II data is a cornerstone of stratospheric aerosol observations, which has been used extensively. It includes AEC at ~~the~~-wavelengths 1020, 525, 452 and 386 nm, providing information on the size of aerosol particles. However, caution is advised, as the uncertainties in these 4 channels differ considerably, with systematically higher zonal standard deviations in channels 452 and 386 nm. The latest release of SAGE II data is version 7 (Damadeo et al., 2013) with improved retrieval algorithms compared to earlier versions. In June 2017 the operational period of the Stratospheric Aerosol and Gas Experiment III mounted externally on the International Space Station (~~SAGE III-on-ISS~~)/ISS; hereafter called SAGE III, since we do not treat SAGE III on the Meteor-3M satellite (SAGE III/M3M) in this article started providing the SAGE
105 III aerosol extinction on 9 different wavelengths, continuing the record of the SAGE instrument family after an interruption of over a decade. ~~Besides-In addition to~~ the improved range of the wavelength range further into the near-infrared (the longest wavelength of SAGE III is 1544 nm, as compared to its predecessor SAGE II with 1020 nm), a cloud-cleared version of the SAGE III data has been introduced. The ~~use-of-an-establishment of an official~~ aerosol/cloud categorization algorithm (Kovilakam et al., 2023) eliminates a time-intensive ~~-previously manual~~-step in pre-processing that previously had to be done in one
110 of various different ways by the user. The Global Space-based Stratospheric Aerosol Climatology (GloSSAC) incorporates both the SAGE II and SAGE III data sets, as well as CLAES-ISAMS (Cryogenic Limb Array Etalon Spectrometer – Improved Stratospheric and Mesospheric Sounder, Lambert et al. 1997), HALOE (Halogen Occultation Experiment, Hervig et al. 1995), OSIRIS and CALIOP data (described in S1.3) to produce a continuous AEC product from 1979 onward (see supplementary materials for more information on data sets). Since 2012, the Ozone Mapping and Profiler Suite Limb Profiler (OMPS-LP)
115 onboard the Suomi NPP satellite provides limb ~~backscatter-scatter~~ measurements. From these data, Taha et al. (2021) have retrieved AEC on 6 wavelengths, however, they report limited accuracy in some of the channels. In the future, the OMPS-LP data might be incorporated into GloSSAC as well, potentially making the composite more robust. ~~Additionally~~Furthermore, a new Climate Data Record of Stratospheric Aerosols (CREST) was published recently (Sofieva et al., 2024), providing a single-wavelength composite of 6 limb scatter and occultation measurement data sets.

120

In this paper, we describe and validate the latest version of a generalized method to retrieve SLN size distributions for sulfuric aerosol from the above-mentioned AEC data sets and use these to calculate a variety of aerosol optical and mass-related properties. The method is termed REtrieval Method for Aerosol Properties (REMAP). Its strength lies in its flexibility to provide optical properties for any prescribed wavelength band, so the output can be tailored to the spectral resolution of

any radiation scheme. The REMAP method, previously termed SAGE-4 λ and SAGE-3 λ , has been used in multiple past and ongoing MIPs (Table 1), but has not yet been described in sufficient detail. Arfeuille et al. (2013) described the preparation of a Pinatubo forcing data set using this method, ~~however this was~~. However, only a brief description of ~~one this~~ specific use case ~~was provided~~. Here, we ~~start by giving first give~~ an overview of all ~~the projects~~ projects, in which REMAP was used ~~in and including~~ the resulting data sets. We then describe the general methodology in full and give practical information on how to use the code, followed by a product validation against measurements.

2 Product overview

~~REMAP~~ The predecessors of REMAP were was first used to create the aerosol forcing for global models within the IGAC/A-PARC Chemistry-Climate Model Initiative (CCMI) Phase 1 experiment (Eyring et al., 2013). To this end, different satellite data sets were selected, screened for cloud contamination, interpolated, and ultimately combined to create a continuous and consistent 50 year record (1960 – 2011). This record was termed SAGE-4 λ , because its backbone were the four SAGE II wavelengths (4 λ). In addition to SAGE II data, some other satellite AEC, sun photometer data, as well as information from tropical ground-based LIDARs for the filling of data gaps under volcanically opaque conditions were combined. For details about the SAGE-4 λ record, including gap filling, see S1. In preparation for CMIP6, Thomason et al. (2018) constructed the first version of GloSSAC (v1.0), which contained an error in the conversion of CLAES data to SAGE II wavelengths. This was corrected in v1.1 as described ~~in Kovilakam et al. (2020), which we used for the by~~ Kovilakam et al. (2020), whereupon we corrected the SAGE-4 λ record and made it available to the modeling groups involved in CMIP6 for aerosol forcings. We based this data set on the homogenized single product GloSSAC, rather than incorporating ~~a variety of different sources, like we did for different sources as in~~ CCMI-1. ~~Still, Although~~ the CMIP6 forcing data set is primarily based on SAGE II. ~~However, we did not use, we no longer used~~ the shortest SAGE II wavelength at 386 nm, since its quality was insufficient to improve the result. The data set was ~~thus termed therefore designated as~~ SAGE-3 λ . Revell et al. (2017) describe the CLAES/SAGE II conversion error in their Corrigendum and show differences in the aerosol loading and forced temperature and ozone anomalies that arise from using the improved SAGE-3 λ data set versus the previous SAGE-4 λ . Shortly after we released SAGE-3 λ to the ~~modelling modeling~~ community, GloSSAC was further updated with new and improved satellite data sets as GloSSACv2.0, described ~~in by~~ Kovilakam et al. (2020). It also extended to the end of 2018 and was subsequently used for the historical hindcast period of the CCMI Phase 2 (CCMI-2022) ~~modelling modeling~~ activity (Plummer et al., 2021), which required prescribed radiative forcing data sets for stratospheric aerosol. Another set of sensitivity runs within CCMI-2022 simulated a climate intervention scenario and was called senD2-sai. For this experiment, the forcing needed to be derived from a separate model simulation – instead of observations – and spectrally regridded for participating models. Details on this procedure are given in Sect. 3.5. Finally, the ~~latest~~ version of GloSSAC at the time of writing this article (v2.22) includes an aerosol/cloud categorization algorithm (Kovilakam et al., 2023) and extends to the end of 2023. ~~We Finally, we~~ used all available GloSSAC wavelengths with their associated zonal standard deviations (eliminating the quality reduction ~~of the shortest wavelength by itself caused by the shortest SAGE wavelength~~) for the Hunga Tonga-Hunga Ha’apai Impact Model Observations Comparison (HTHH-MOC)

Table 1. Data sets produced with REMAP and used in different model intercomparison projects to prescribe a uniform stratospheric aerosol.

Data set	time	MIP	# of models	input data set	boundary conditions (T & RH)
SAGE-4λv2	1960-2011	CCMI-1	9	various*	ERA-Interim – 1991 climatology
SAGE-3λv4	1850-2014	CMIP6	>20	GloSSACv1.1	ERA-Interim – 1991 climatology
REMAP-CCMI-2022-ref	1960-2018	CCMI-2022	12	GloSSACv2.0	ERA-Interim – 1991 climatology
REMAP-CCMI-2022-sai	2025-2100	CCMI-2022	4	WACCM output	transient WACCM output
REMAP-GloSSAC-2023	1979*-2023	HTHH-MOC	7	GloSSACv2.22	transient ERA5

*Even though the data set was established for the entire duration of the GloSSACv2.22 data set (1979-2023), this MIP only required forcing from 2019-2023.

forcings (Zhu et al., 2024).

160 Table 1 shows all ~~the~~ data sets produced with REMAP that were distributed to ~~modelling~~ modeling groups, along with information about the respective inputs. ~~To summarize~~In summary, REMAP was used to provide data of stratospheric aerosol optical properties to

- 9 models participating in CCMI-1 in support of ozone and climate assessments (Eyring et al., 2013; Hegglin et al., 2014) [SAGE-4λv2 data set (Luo, 2013)],
- 165 - some 20 models participating in the Coupled Model Intercomparison Project Phase 6 (CMIP6) to better understand past, present and future climate in a multi-model context (Eyring et al., 2016) [SAGE-3λv4 data set (Luo, 2017)],
- 12 models participating in the CCMI Phase 2 / CCMI-2022 historical runs (also following CMIP6 forcing guidelines) (Plummer et al., 2021) [REMAP-CCMI-2022-ref data set (Luo, 2020)],
- 4 models participating in the CCMI-2022 senD2-sai experiment to assess a climate intervention (CI) scenario (~~Plummer et al., 2021~~; Plummer et al., 2021) [REMAP-CCMI-2022-sai data set (Jörimann, 2023); more information in Sect. 3.5],
- 170 (Plummer et al., 2021) [REMAP-CCMI-2022-sai data set (Jörimann, 2023); more information in Sect. 3.5],
- 7 models participating in the Hunga Tonga-Hunga Ha’apai Impact Model Observations Comparison (HTHH-MOC) to examine the effects of the largest phreatomagmatic explosion in the satellite record (Zhu et al., 2024) and to a single-model study examining effects of the HTHH eruption (Kuchar et al., 2025) [REMAP-GloSSAC-2023 ~~dataset~~ data set (Jörimann, 2024)].

175 **3 Description of the REtrieval Method for Aerosol Properties (REMAP)**

In order to estimate the radiative properties of the aerosol particles, the size distribution is required. It can be retrieved, in a best-fit sense, by comparing the calculated AEC of all size distributions in the allowed parameter space against observations. With the size distribution characterized, the AEC, SSA and AF of the aerosol ensemble can be calculated using Mie theory

(Bohren and Huffman, 1998). To this end, we assume that the stratospheric aerosol comprises pure aqueous sulfuric acid solution droplets. The sulfuric acid concentration is calculated from the atmospheric relative humidity and temperature using the water vapor pressure of aqueous sulfuric acid (Luo et al., 1995; Carslaw et al., 1995). For the relative humidity (RH) and temperature, both model output or reanalysis data can be used. The refractive index as a function of temperature and H_2SO_4 concentration is then calculated using the parameterization of Luo et al. (1996) for visible wavelengths and measurements of Biermann et al. (2000) for infrared wavelengths. In this way, we take the concentration and temperature dependence of the refractive index into account, both in the size distribution retrieval procedure and also in the final calculation of the optical properties.

SPECTRAL (RE)GRIDDING

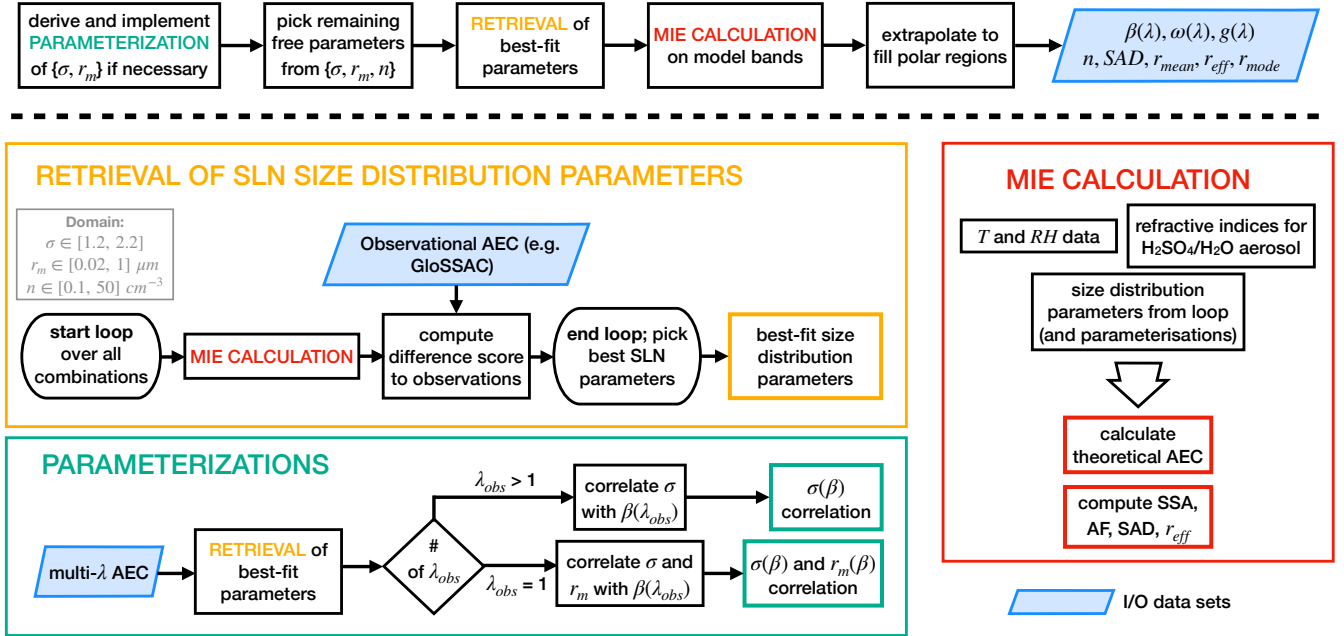


Figure 1. Scheme of the REMAP algorithms in general form. The spectral regridding method always involves the retrieval (yellow box) of aerosol size distribution parameters (n , r_m , σ) from observational AEC data and the Mie calculation (red box) of radiative properties (aerosol extinction coefficient $\text{AEC}(\lambda)$, single-scattering albedo $\text{SSA}(\lambda)$, asymmetry factor $\text{AF}(\lambda)$) in spectral resolution of choice. Optionally, the retrieval procedure is improved and in some cases made possible in the first place by parameterizations (turquoise box) separately retrieved from a data set with a high enough number of channels (multi- λ -data set). For details see text.

3.1 Retrieval of the size distribution

Figure 1 summarizes REMAP in its most general form and latest state. The core element is the retrieval procedure (yellow box), which uses the Mie calculation (red box) and is itself used in the optional derivation of parameterizations (turquoise

190 box). The retrieval procedure operates on a data set of AEC either from measurements or the output of a model simulation, which here we call the observational AEC data set.

The basic assumption throughout the whole method is that the aerosol size distribution of the aerosols can be represented by a SLN particle size distribution:

$$195 \quad \frac{dn(r)}{dr} = n \frac{1}{\sqrt{2\pi r \ln \sigma}} \exp\left(-\frac{\ln^2(r/r_m)}{2 \ln^2 \sigma}\right) \quad (1)$$

There are three unknowns: the number density, n , the ~~mode-median~~ radius, r_m , and the ~~half-width-geometric standard deviation~~ σ of the aerosol SLN size distribution. Ideally, the retrieval procedure fits all three parameters to the observational AEC. In that case the parameters can be directly retrieved by picking the parameter combination that best reproduces the measured AEC. However, this requires data on at least 3 wavelengths of good quality (see Sect. 3.2 for what constitutes
200 good quality). If there is no complete coverage with at least 3 wavelengths of good quality, or to simply improve the output consistency (cf. Arfeuille et al. (2013)), parameterizations can be used to replace one or two parameters. Here, we describe the method systematically for the distinct cases of ≥ 3 , 2 and 1 available wavelength.

(a) 3 or more wavelengths

The three parameters n , r_m and σ , which fit best to the measured AEC are directly retrieved (*full retrieval*, yellow box
205 in Figure 1). The best fit parameters are selected based on the minimum difference score D between measured and theoretical AEC across the range of possible parameter values. To achieve this, ~~an-a~~ program goes through the following steps for each set of parameters in the domain (grey box):

- The theoretical AEC k_{theor} are calculated on the same wavelengths λ that are available in the observational data using Mie theory (red box).
- 210 • For each wavelength the difference score D of the calculated to the measured extinction coefficients k_{obs} is computed.
- If available, the zonal standard deviation ς of the measurements is also taken into account. The theoretical-to-observed AEC ratio for each wavelength is weighted inversely with the associated scatter (i.e. the zonal standard deviation), which is typically higher at smaller wavelengths due to higher molecular-to-aerosol extinction ratio. If
215 no zonal standard deviations are available, each wavelength is weighted the same.
- The ratios for each wavelength are summed up to a total (weighted) difference score. The program keeps track of the lowest achieved difference score and the corresponding parameters n , r_m and σ . It only updates the parameters, once a lower difference score is generated. After all combinations are run, the best fit (according to Mie theory and assuming a SLN size distribution) is found.

- Summarized in mathematical notation, the difference score

$$D = \sum_{i=1}^n \left[\ln \left(\frac{\beta_{theor}(\lambda)}{\beta_{obs}(\lambda)} \right) \ln \left(\frac{\beta_{theor}(\lambda_i)}{\beta_{obs}(\lambda_i)} \right) \cdot weight \right]^2, \quad weight = \frac{\frac{\beta_{obs}(\lambda_i)}{\varsigma(\lambda_i)}}{\sqrt{\sum_{j=1}^n \left(\frac{\beta_{obs}(\lambda_j)}{\varsigma(\lambda_j)} \right)^2}} \quad (2)$$

is minimized at each grid point. From this difference score, we also report an error E , given by

$$E = \sqrt{D}. \quad (3)$$

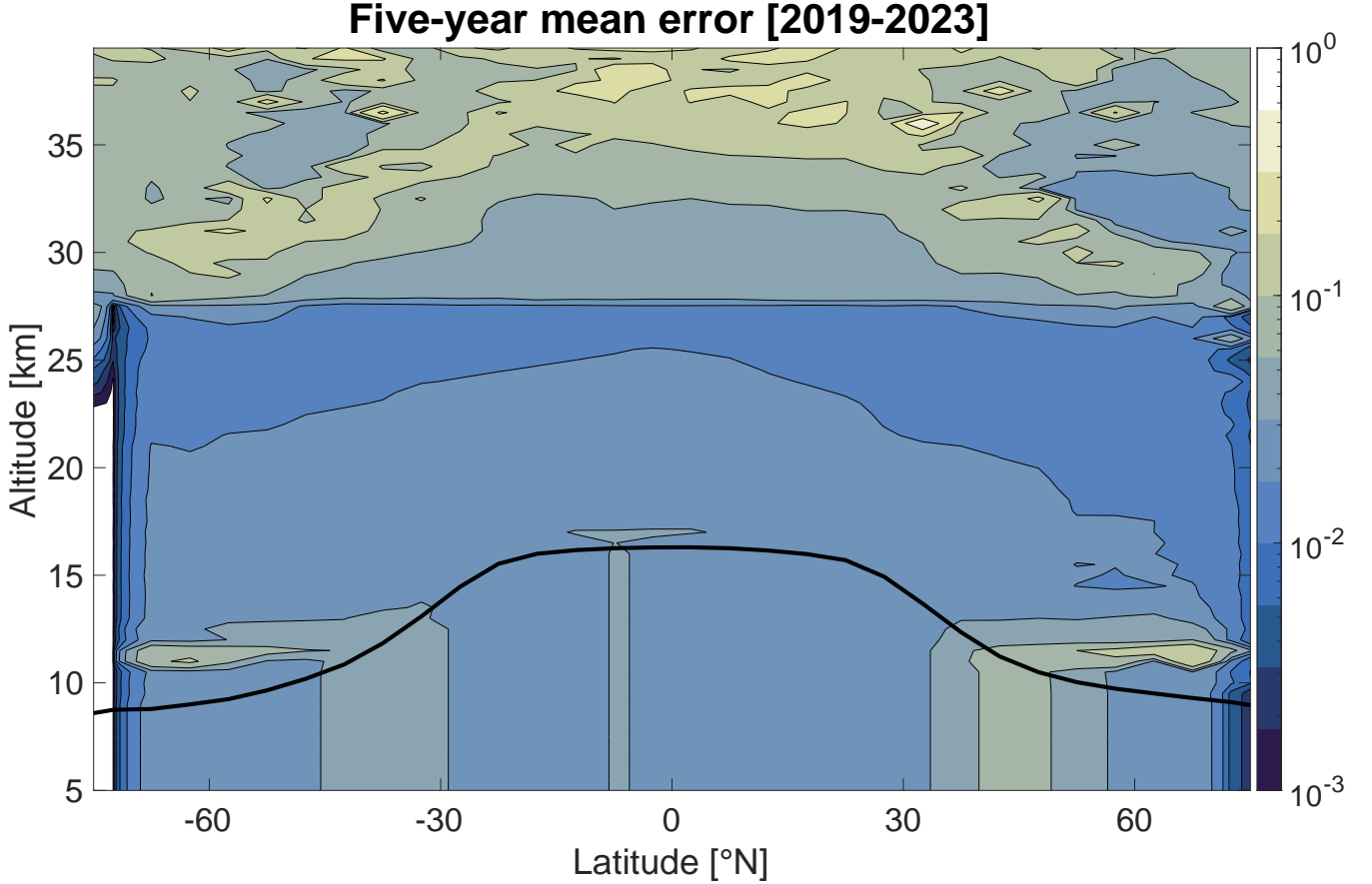


Figure 2. Latitude-altitude plot of the 5-year mean error from a retrieval of 6 SAGE III wavelengths [where available and gaps filled with GloSSACv2.22](#). The black line indicates the average tropopause height. The Junge layer is discernible from the minimum error values. The distinct rise in error above 27 km at all latitudes comes from the observational data set GloSSACv2.22 itself, which includes a high-altitude climatology.

The error E typically ~~assumes its lowest values in the core of the Junge layer~~ decreases with increasing altitude. This is illustrated in Figure 2, which is a latitude-altitude map of the mean error over 5 years that came from a retrieval on 6 wavelengths of SAGE III data. The ~~error tends to be higher above~~ trend comes from a general decrease in the zonal standard deviation ς with increasing height, probably due to shorter path lengths and less saturation of the occultation measurements at greater heights. Above 27 km ~~the error steps to higher values again; this is~~ due to those data coming from a ~~climatology and in high-altitude climatology~~ instead of (mostly) transient satellite data. In the lowest stratospheric region ~~just above the tropopause~~ ~~The actual ς sometimes spikes locally, which is reflected in~~ Figure 2. Also, tropospheric intrusions could cause a strongly multi-modal aerosol size distribution there. The actual error values depend on the number of wavelengths, the availability of measurement zonal standard deviation and the strength of the AEC signal itself. Therefore, it cannot be used to compare the retrieval quality between retrievals, where any of these factors vary, only within a single run.

To improve the convergence of the algorithm we constrained the range of σ to 1.2 – 2.2, the range of r_m to 0.02 – 1 μm and the range of n to 0.1 – 50 cm^{-3} . These upper and lower limits are physically reasonable constraints derived from the long-term in situ measurements over Laramie, Wyoming (Deshler, 2008). For the Mie calculation ~~the environmental variables temperature and RH are required, besides the size distribution. Temperatures and the size distribution and aerosol refractive indices are required. The refractive index of a medium depends on its chemical composition and to determine this the environmental variables temperature and~~ RH are also required to calculate the aerosol refractive index (Luo et al., 1996; Biermann et al., 2000), ~~the third boundary condition for the calculation of theoretical aerosol optical properties~~ real and imaginary parts of the aerosol refractive indices (Luo et al., 1996; Biermann et al., 2000). Table 1 shows, where these boundary conditions came from for different REMAP data sets.

The results of a *full retrieval* can still be heterogeneous, when all three parameters are unconstrained within the permitted parameter space. To improve this, a parameterization (see turquoise box in Figure 1) lays a further constraint on the retrieval process. With the parameterization function of the form $\sigma(k_{param})$ the retrieval algorithm can be repeated, this time only fitting the remaining two parameters.

(b) 2 wavelengths

If only two different wavelengths are available for the retrieval, a *full retrieval* cannot be performed and a parameterization function is required to start the process. These functions make use of an empirical relationship of one size distribution parameter with the observational AEC data, thus eliminating one degree of freedom. To establish the empirical relationship, another data set is required that is apt for a *full retrieval*. We found that the distribution half-width geometric standard deviation σ and mode-median radius r_m are best suited for parameterizations, since they most reliably produce monotonic parameterization functions. Figure 3 shows a 2D histogram of the SAGE III extinction coefficients at 1022 nm and the retrieved σ above 20 km. We used AEC on the wavelength 1022 nm, because they were very well reproduced by the algorithm (cf. Figure 4). An eighth grade fourier fit to the median (red line in Figure 3) was used to parameterize σ in this case:

$$\sigma = \begin{cases} 2.19 & \text{if } \ln \beta_{1022} < -13, \\ 1.636 & \\ -0.09632 \cos(\ln \beta_{1022} \cdot 0.6463) - 0.4427 \sin(\ln \beta_{1022} \cdot 0.6463) & \\ -0.08697 \cos(2 \ln \beta_{1022} \cdot 0.6463) + 0.1495 \sin(2 \ln \beta_{1022} \cdot 0.6463) & \\ +0.01438 \cos(3 \ln \beta_{1022} \cdot 0.6463) - 0.03937 \sin(3 \ln \beta_{1022} \cdot 0.6463) & \\ -0.02212 \cos(4 \ln \beta_{1022} \cdot 0.6463) + 0.06559 \sin(4 \ln \beta_{1022} \cdot 0.6463) & \text{if } -13 \leq \ln \beta_{1022} \leq -7.5, \\ +0.0277 \cos(5 \ln \beta_{1022} \cdot 0.6463) - 0.02724 \sin(5 \ln \beta_{1022} \cdot 0.6463) & \\ -0.005375 \cos(6 \ln \beta_{1022} \cdot 0.6463) + 0.009788 \sin(6 \ln \beta_{1022} \cdot 0.6463) & \\ +0.01021 \cos(7 \ln \beta_{1022} \cdot 0.6463) - 0.01863 \sin(7 \ln \beta_{1022} \cdot 0.6463) & \\ -0.01368 \cos(8 \ln \beta_{1022} \cdot 0.6463) + 0.004736 \sin(8 \ln \beta_{1022} \cdot 0.6463) & \\ 1.28 & \text{if } \ln \beta_{1022} > -7.5. \end{cases} \quad (4)$$

We summarize different existing parameterization functions for different past time periods in the supplementary materials. (All except the last parameterization therein were used to make the SAGE-4 λ record.) The last table entry there is the parameterization given above, which was derived from SAGE III data and used for the HTHH-MOC activity. Because SAGE III has the highest number of useful channels across a broad spectral range out of all satellite data sets, we further recommend this parameterization for general use, i.e. for time periods not covered by observations, i.e. outside of 1979-2023.

One example of the 2-wavelength case is the forcing for the HTHH-MOC activity. The observational data set used for this retrieval was GloSSAC version 2.22, which provides full coverage on 2 wavelengths (525, 1020 nm. With GloSSAC being short one channel to allow for a *full retrieval*, one free parameter needed to be eliminated. SAGE III data available between June 2017 and December 2023 provided 6 wavelengths of good quality (out of the 9 total) over the time period of interest and was therefore used as the multi- λ data set (see turquoise box in Figure 1) to get the empirical relationship between measured AEC and σ .

(c) **Periods with only single-wavelength aerosol extinction measurements.**

Under these conditions, an additional parameterization of r_m or σ (whichever has not yet been parameterized) as a function of a good-quality wavelength replaces yet another free parameter, leaving the aerosol number density n as the only remaining unknown, which is retrieved using the only measured AEC k_{obs} . The algorithm finds the value for n that minimizes D . This comes with potentially large, inter-dependent uncertainties for both r_m and σ and is thus likely to produce inaccurate results. For the historic SAGE-3 λ record, more sophisticated methods were used in this case, which are documented in S1.

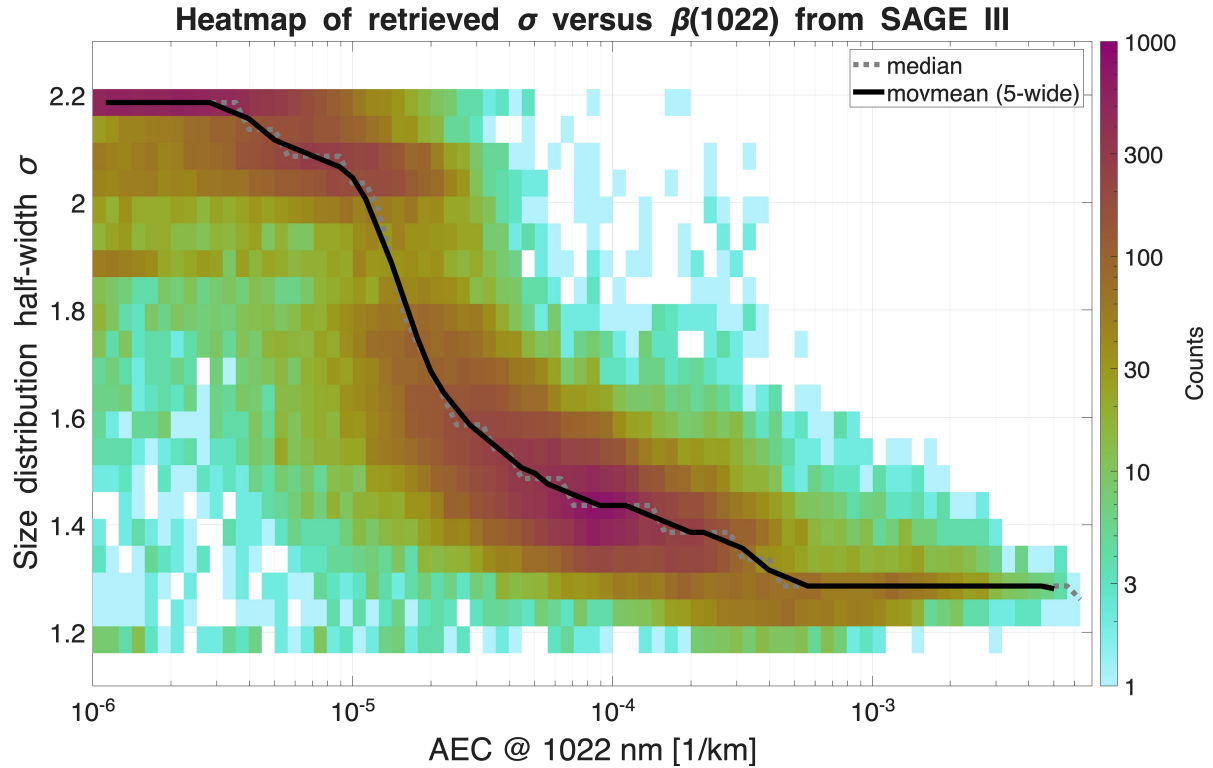


Figure 3. 2D histogram of all σ values retrieved from data of 6 selected SAGE III wavelengths (June 2017 – December 2023, above 20 km) against their corresponding aerosol extinction coefficients. The dotted grey line shows the median value for every extinction coefficient bin, the solid black line shows the moving mean of the median at a width of 5 bins. A function can be fitted to the black line to get the parameterization function $\sigma(\beta_{1022})$.

3.2 Wavelength quality

280 Assessing the quality of each available wavelength is vital for a consistent and useful size distribution retrieval. The number of good quality wavelengths available determines the protocol for REMAP, as described in the previous section. Satellite measurements rely on some algorithm to retrieve AEC data. Such an algorithm may already make assumptions about the aerosol size distribution. Notably, to retrieve AECs for limb scatter measurements some aerosol size distribution is assumed beforehand. This is necessary to produce such data in the first place, however, the procedure must be checked before using

285 satellite data for REMAP. If there are strong constraints on the product, or biases or low accuracy are reported for any channels of a satellite product, care must be exercised, when selecting REMAP input data. In composite products that synthesize different data sets, measurements are already processed and may have been transposed onto new wavelengths. If this is the case, or if a number of wavelengths have been made into a greater number of wavelengths, the method used must be checked, as the

information content in each channel may be limited. Ideally, each channel should represent a separate physical measurement.##

290

Selecting good quality wavelength was essential for the SAGE III parameterization. In this case using all 9 wavelength channels leads to an ambiguous (non-monotonic) parameterization (see Figure S5 in supplements). Only after assessing each wavelength and various wavelength combinations, did we achieve the correlation in Figure 3. This principle is further illustrated in Figure 4, which shows the ratio of calculated divided by observed AEC from one month of SAGE III. The size distribution retrieval was performed on a selection of 6 (black font) out of the 9 available wavelengths. From this the theoretical AEC were again calculated on all measurement wavelengths, as to compare the result on all channels. The 3 wavelengths that were omitted in the retrieval show significantly biased ratios, while the other 6 achieve agreement within $\pm 2.5\%$ in the Junge layer region. The biases are expected, since the measurements on the biased channels did not contribute to the constriction of the size distribution parameters. However, the ratios in the other channels diverge significantly from 1 if the retrieval is performed on all 9 wavelengths. Thus, the retrieval was improved by omission of biased channels. To identify biased channels, ratios could be calculated for many different combinations of retrieval wavelengths and then compared, but this is a lengthy process. In the next two sections, we describe two analytics that help evaluate the wavelength quality of each channel of an observational data set.

300

3.2.1 Data scatter

Shorter wavelengths tend to be ~~scattered more~~ more scattered due to the higher molecule-to-aerosol extinction ratio. (Because of this sensitivity, shorter wavelengths are also more susceptible to uncertainties in pressure and temperature.) This effect becomes most pronounced for AEC ~~$< 10^{-4}$~~ $< 10^{-4}$ and is visible in Figure 5. ~~But~~ However, also for longer wavelengths, the instrument design and sensitivity can produce systematic data scatter fingerprints. This is exemplified in SAGE III/ISS, which is mounted on the ISS international space station, a unique platform with distinct challenges. Leckey et al. (2021) describe these in detail alongside the advantages. A key feature that ~~decreased~~ degraded the signal-to-noise ratio for more than half of the occultation events is an optical window designed to avoid contamination of the instrument as rockets ~~access~~ approach the ISS. In comparison, SAGE II was flown on a smaller, unserviced spacecraft that ~~did not receive~~ were not exposed to exhaust gases from docking maneuvers ~~altogether~~. Data scatter is somewhat corrected for in data sets that include (zonal) standard deviations (e.g. GloSSAC), where the algorithm can then assign less weight to data points with a higher standard deviation. Based on Figure 5 we rejected the wavelengths 602 nm and 676 nm, because the ratios scatter strongly off the 1:1 line even for altitudes below 30 km. The wavelength 521 nm also shows significant bias towards underestimated calculated AEC already at low altitudes. This is consistent with Figure 4, where the 521 nm panel widely shows a low bias around 5 % for the calculated/observed ratio.

310

315

3.2.2 Color index

The theoretical AEC given by Mie theory have a wavelength dependence. This dependence can be seen in the log-log color index plots in Figure 6. The blue and red points are the median calculated and measured SAGE III AEC between 7 – 12 km

320

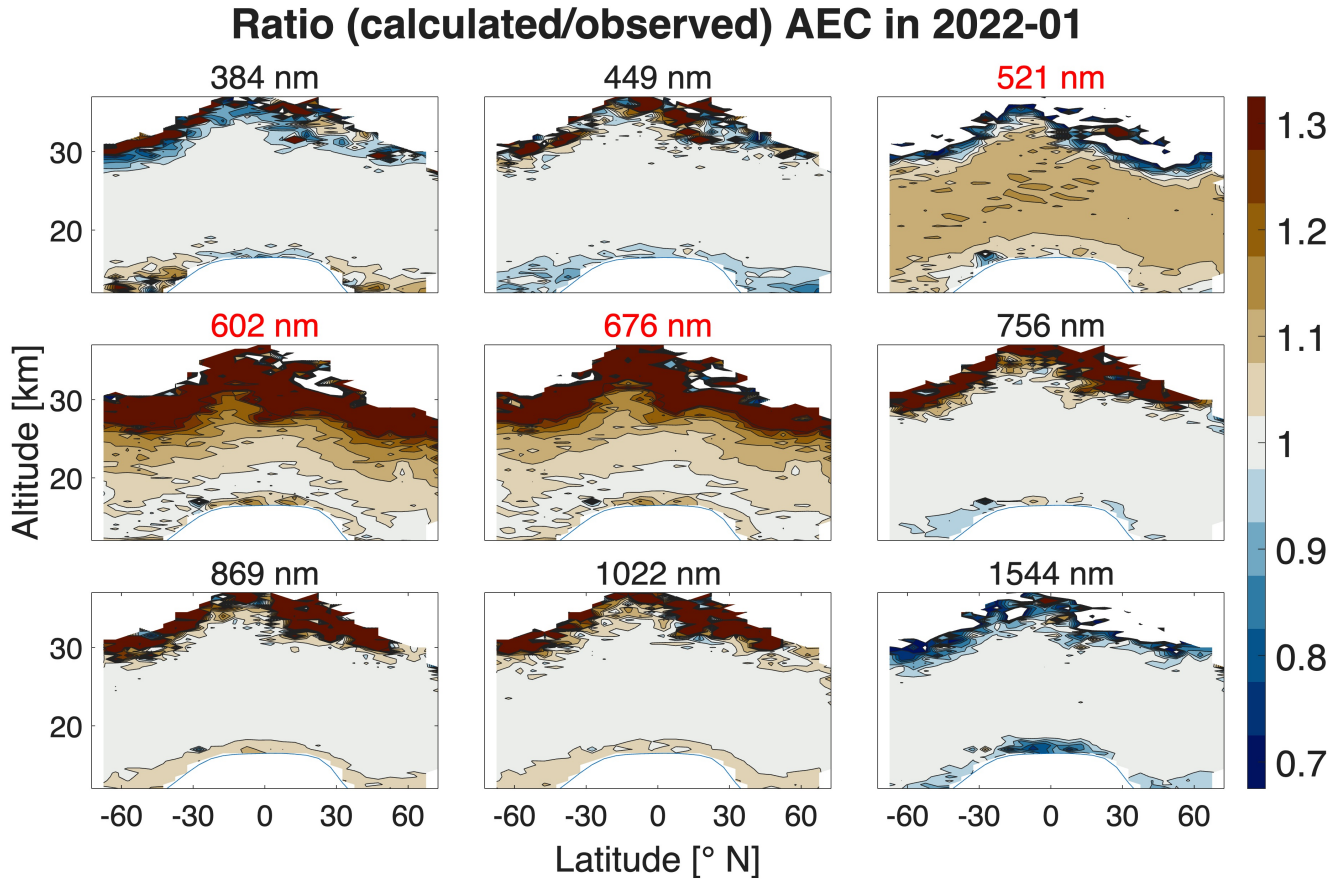


Figure 4. Ratios of the calculated and measured monthly mean AEC from SAGE III for January 2022. The calculated AEC are based on a retrieval with 6 good quality SAGE III wavelengths (black font), with three wavelengths (521 nm, 602 nm and 676 nm; red font) removed due to systematic biases. From this retrieval of selected wavelengths, theoretical AEC are again calculated on all 9 original wavelengths to demonstrate the biases.

above the mean tropopause. Two *full retrievals* are shown, one with all 9 SAGE III wavelengths and one with exclusion of the three wavelengths in red font in Figure 4. Since the blue points follow from Mie theory, they represent an idealized AEC function of wavelength. The measured ~~red~~ points do not perfectly trace out such an idealized dependence ~~if~~ there are biases in any of the wavelengths. This is evident in the left panel. Because REMAP finds the size distribution parameters that best fit the observations, it is not ~~in all cases always~~ clear from these color index plots, which wavelengths are biased. However, this ~~analytic analysis~~ definitively shows that the chosen ensemble of 6 wavelengths in the right plot yields theoretical AEC that are in better agreement with the measured AEC, reducing the root mean square error (RMSE) to a fourth and the mean absolute percentage error by 0.75 %.

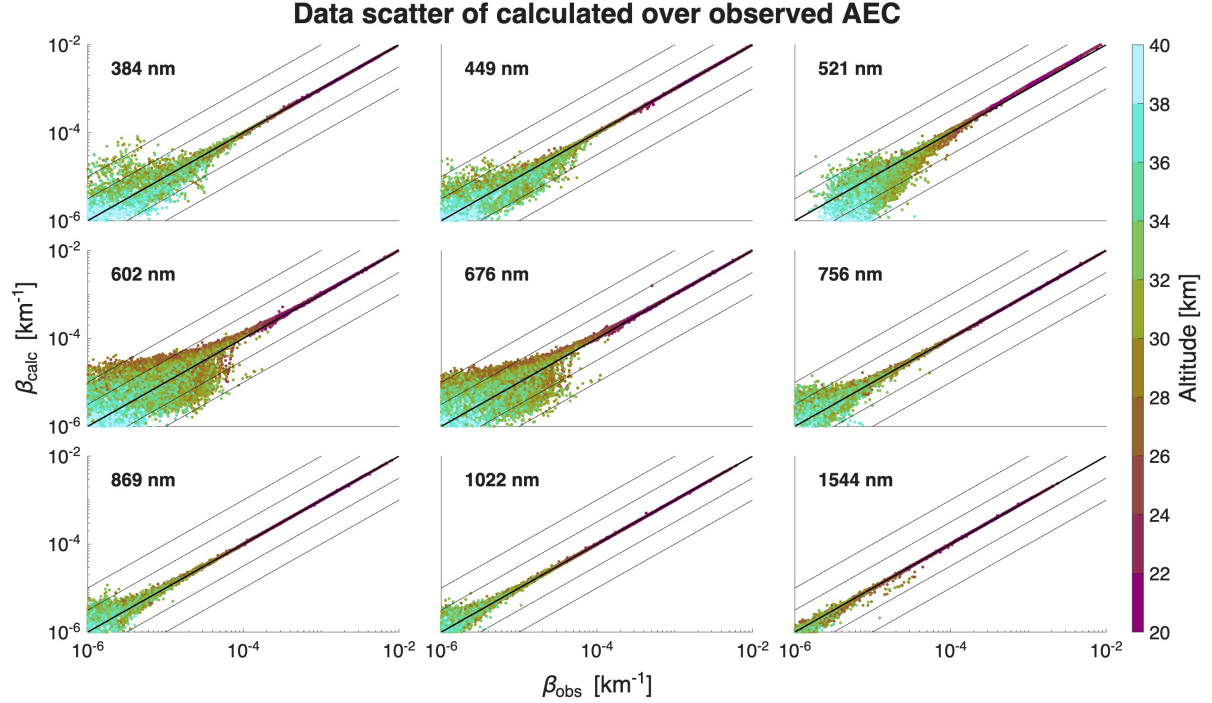


Figure 5. Scatter plots correlating calculated and measured AEC β on the 9 SAGE III channels for all measurements above 20 km. To calculate the AEC from Mie theory, the SLN size distribution was retrieved by fitting its parameters to all 9 wavelengths simultaneously. The calculated AEC were then computed on all same 9 wavelengths again. Symmetric scatter around the thick black line indicates a poorer signal-to-noise ratio, while the center of the point cloud veering off the line indicates a bias on the affected wavelength. The colors are coded to the height of the measurement, with smaller AEC typically coming from greater heights.

330 3.3 Calculation of aerosol properties

In this next step we calculate the AEC, SSA and AF for the wavelength bands of individual global models, using Mie theory. The extinction coefficient β of an aerosol ensemble at a given wavelength λ is given by

$$\beta(\lambda) = \int \frac{dn(r)}{dr} C_{ext}(\lambda, r) dr, \quad (5)$$

where $C_{ext}(\lambda, r)$ is the extinction cross section of a spherical droplet with radius r , which is readily calculated by Mie theory (Bohren and Huffman, 1998). The calculation of $C_{ext}(\lambda, r)$ requires the real and imaginary parts of the refractive index as a function of RH and temperature. We obtain the refractive indices from Luo et al. (1996) for wavelengths between 0.35 μm to 2 μm . For $\lambda < 0.35 \mu\text{m}$, we simply use the refractive index at 0.35 μm . We consider the imaginary part of the refractive index for $\lambda < 2 \mu\text{m}$ to be zero, i.e. negligible absorption. This assumption is well justified, because the absorption in the wavelength range of 0.2-2 μm of aqueous sulfuric acid solution is indeed very small (Jonasz and Fournier, 2007). For $\lambda < 0.2 \mu\text{m}$, there are

Wavelength dependence of median AEC (5-12 km above tropopause)

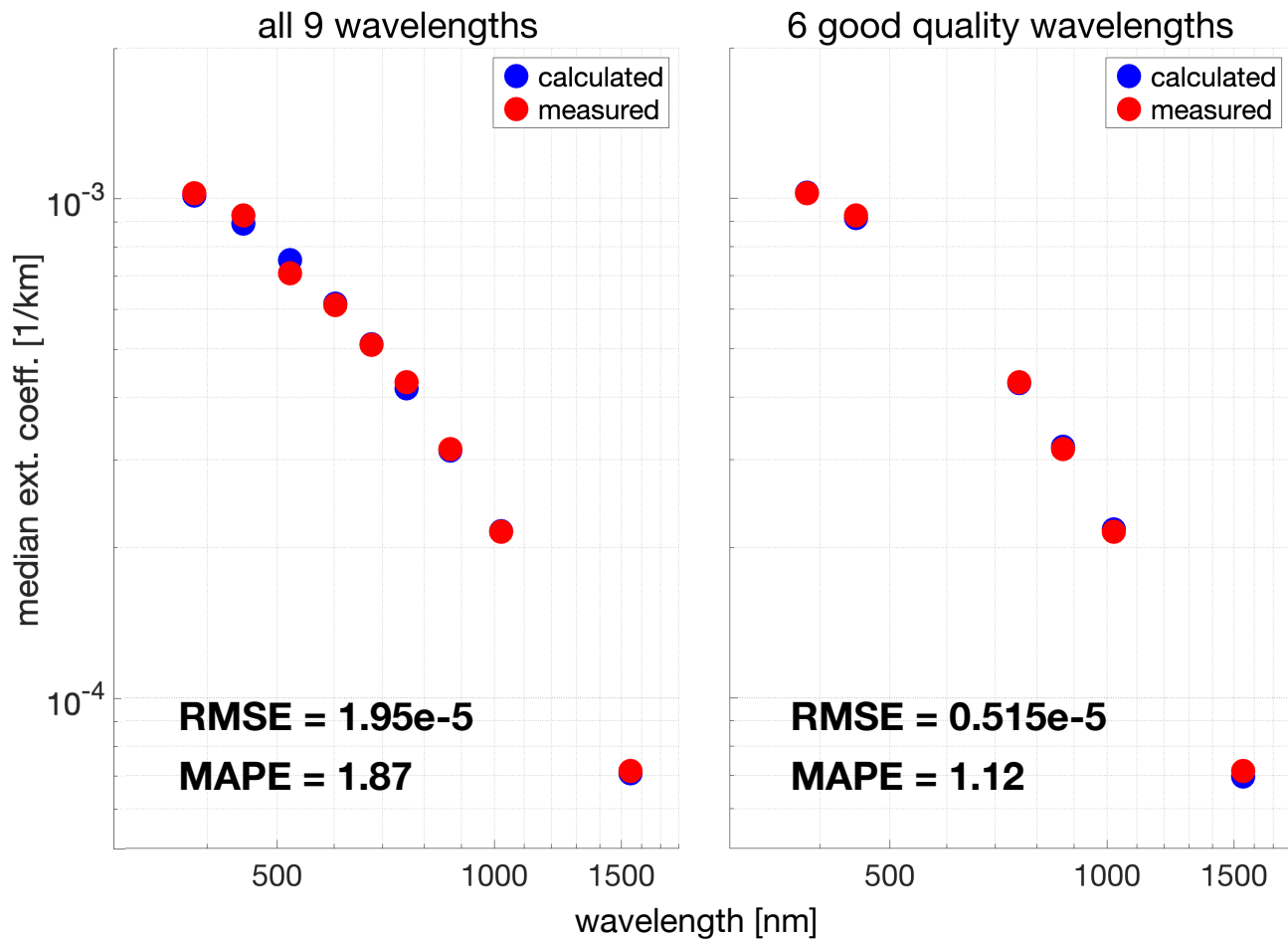


Figure 6. Color index plot of the calculated and measured SAGE III median aerosol extinction coefficients between 5 and 12 km above the mean tropopause, illustrating their wavelength dependence. The calculated aerosol extinction coefficients on the left are based on a size distribution retrieval using all 9 SAGE III wavelengths, whereas a selection of 6 good quality wavelengths is made for the retrieval for the plot on the right. The blue points are governed by Mie theory and trace out an ideal wavelength dependence, while also trying to fit the observations as best as possible. The residual mean square errors (RMSE) and mean absolute percentage errors (MAPE) both decrease with a retrieval based on selected good quality wavelengths, improving the fit.

340 some strong absorption features for aqueous $\text{H}_2\text{SO}_4\text{-H}_2\text{O}$ solutions, however the power in the solar radiation for $\lambda < 0.2 \mu\text{m}$ is negligible compared to the total solar radiation. For wavelengths longer than $2 \mu\text{m}$, we use the values reported in Biermann et al. (2000), which extend both the real and imaginary part up to $20 \mu\text{m}$. Beyond that point the refractive indices remain constant at the last reported value. In Eq. (5), the term dn/dr characterizes the SLN size distribution (Eq. (1)) that the extinction

cross section is multiplied with along the radius dimension and then integrated.

345

As the global models operate with wavelength bands, we need to perform a weighting of $\beta(\lambda)$ over a wavelength region assuming Planck's law for a black body:

$$B(\lambda, T_b) = \frac{2hc^2}{\lambda^5} \frac{1}{\exp\left(\frac{hc}{\lambda k_B T_b}\right) - 1}. \quad (6)$$

Here, B is the radiation intensity, h is the Planck constant, c the speed of light, k_B the Boltzmann constant, and T_b is the temperature of the black body. A black body temperature of 5900 K is used for the solar bands and 255 K for the terrestrial bands (representing the radiative temperature of the planet Earth). The weighted extinction coefficient $\bar{\beta}$ for the band from wavelength λ_1 to λ_2 is calculated as

$$\bar{\beta}(\lambda_1, \lambda_2) = \frac{\int_{\lambda_1}^{\lambda_2} B(\lambda, T_b) \beta(\lambda) d\lambda}{\int_{\lambda_1}^{\lambda_2} B(\lambda, T_b) d\lambda} \quad (7)$$

The single-scattering albedo ω is the ratio of weighted scattering coefficient $\bar{\delta}$ to weighted extinction coefficient

$$\omega = \frac{\bar{\delta}}{\bar{\beta}}, \quad (8)$$

where $\bar{\delta}(\lambda_1, \lambda_2)$ for the band bounded by λ_1 to λ_2 is calculated analogously to $\bar{\beta}$ from Eqs. (5 – 7).

The asymmetry factor g for a given wavelength λ of a droplet of radius r is defined as (Bohren and Huffman, 1998):

$$g(\lambda, r) = \frac{\int_{\Omega} \frac{dC_{sca}(\lambda, r, \theta)}{d\Omega} \cos(\theta) d\Omega}{C_{sca}(\lambda, r)} \quad (9)$$

with scattering cross section $C_{sca}(\lambda, r)$ and differential scattering cross section

360 $dC_{sca}/d\Omega$. The asymmetry factor for a given wavelength band $g(\lambda_1, \lambda_2)$ is given by integrating over the size of particles and over all wavelengths between the lower and upper band limits λ_1 and λ_2 :

$$g(\lambda_1, \lambda_2) = \int_{\lambda_1}^{\lambda_2} \int_r g(\lambda, r) C_{sca}(\lambda, r) \frac{dn(r)}{dr} B(\lambda, T_b) dr d\lambda \frac{1}{\bar{\delta}(\lambda_1, \lambda_2) \int_{\lambda_1}^{\lambda_2} B(\lambda, T_b) d\lambda}. \quad (10)$$

3.4 Products for global climate models

For the treatment of heterogeneous chemistry on the surfaces of stratospheric aerosol particles, primarily the SAD is required (e.g. for the ubiquitous N_2O_5 hydrolysis). In addition, for some reactions occurring in the bulk of the particles, the mean radius

365

r_{mean} is required, e.g. for HOCl + HCl, which is important under cold conditions, see Hanson et al. (1994). For the treatment of radiative effects of aerosols, the state-of-the-art CCMs have their own radiation schemes, which typically rely on three optical quantities for all model-specific wavelength bands: AEC, SSA and AF (see Figure 1).

3.4.1 Mass-related quantities

CCMs that explicitly treat heterogeneous reactions require the aerosol SAD to describe the kinetics. The rate coefficient of a heterogeneous reaction on aerosol surface R , is given by

$$R = \frac{\gamma \text{SAD} \bar{v}}{4}. \quad (11)$$

Here, γ is the reactive uptake coefficient and \bar{v} the mean thermal velocity. The radius dependence of γ was explored by Hanson et al. (1994), providing a framework for the reactive and diffusive properties of gases accommodated on liquid droplets.

The mean radius r_{mean} and effective radius r_{eff} , as well as the SAD, aerosol volume density V and H_2SO_4 mass $m_{\text{H}_2\text{SO}_4}$ can be calculated from the number density n , the mode-median radius r_m and the half-width-geometric standard deviation σ of the retrieved SLN size distributions. For the mass of sulfuric acid the mass fraction $w(T)$ and aerosol density (computed as a function of temperature) $\rho(T)$ are additionally required:

$$r_{\text{mean}} = r_m \exp [0.5 \ln^2 \sigma] \quad (12)$$

$$\text{SAD} = n 4 \pi r_m^2 \exp [2 \ln^2 \sigma] \quad (13)$$

$$V = n \frac{4}{3} \pi r_m^3 \exp [4.5 \ln^2 \sigma] \quad (14)$$

$$m_{\text{H}_2\text{SO}_4} = V \rho(T) w \quad (15)$$

$$r_{\text{eff}} = \frac{3V}{A} = r_m e^{\frac{2.5(\ln \sigma)^2}{\sigma}} \quad (16)$$

The values of SAD and r_{mean} are shown in Figure 7 for the latitude band 0 – 5° N. During volcanically quiescent times, the stratospheric SAD is 0.5 – 1 $\mu\text{m}^2\text{cm}^{-3}$. After large volcanic eruptions the SAD can reach 20 – 40 $\mu\text{m}^2\text{cm}^{-3}$.

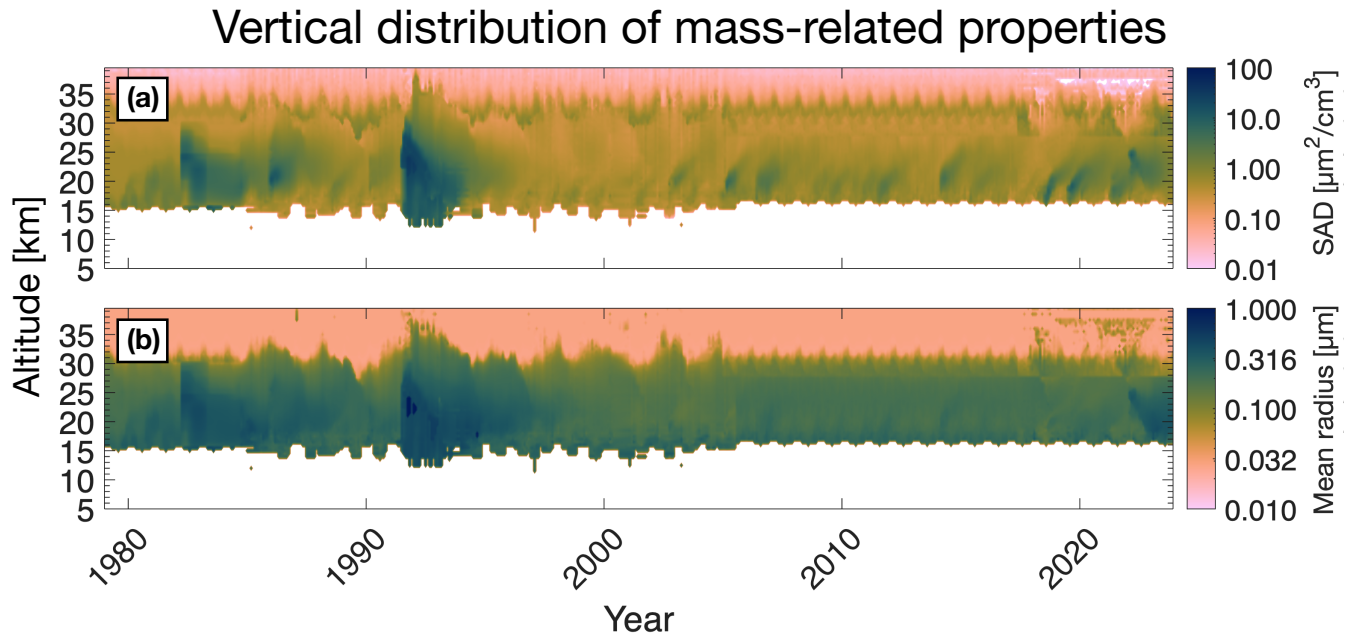


Figure 7. Surface area density (SAD) and mean radius for the time period 1979 and 2023 derived from the REMAP-GloSSAC-2023 record for the latitude band $0 - 5^\circ$ N.

3.4.2 Optical properties

In GCMs and CCMs, the optical properties $AEC(\lambda)$, $SSA(\lambda)$ and $AF(\lambda)$ are required for each wavelength band to compute the radiative forcing exerted by the aerosol on the model. Some models need only the sulfate mass $m_{H_2SO_4}$ and from there estimate the radiation effects; therefore, for these models we provided the total mass density of H_2SO_4 or other mass-related quantities as function of latitude, altitude and time.

We provided these radiative properties for the CCM1-1, CMIP6, CCM1-2022 and HTHH-MOC models listed in Table 1 and they are openly available as SAGE-3 λ (Luo, 2013), SAGE-4 λ (Luo, 2017), REMAP-CCMI-2022-ref (Luo, 2020), REMAP-CCMI-2022-sai (Jörmann, 2023) and REMAP-GloSSAC-2023 (Jörmann, 2024) data set (see "Data availability").

Figure 8 shows examples of $AEC(\lambda)$, $SSA(\lambda)$ and $AF(\lambda)$ for two wavelength bands of the GCM ECHAM6. The upper panels (a-c) show the results for one solar band, $0.442 - 0.625 \mu m$, the lower panels (d-f) for one terrestrial infrared band, $10.204 - 12.195 \mu m$. The SSA in the visible band is unity by definition (assuming no absorption, i.e. only the real part of the refractive index matters). The backscattered solar radiation reduces the power of the incoming solar radiation, exerting an overall cooling.

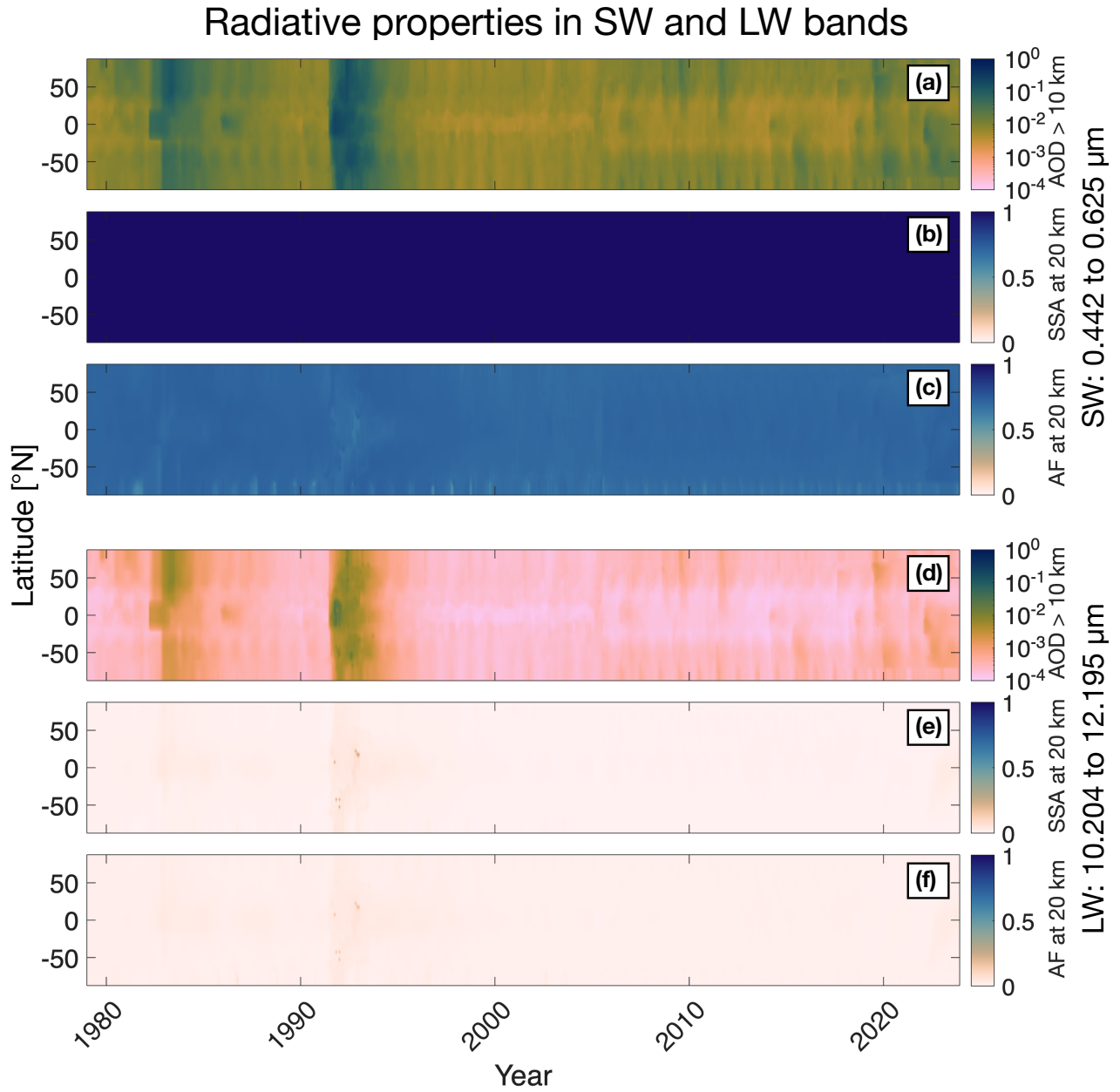


Figure 8. Aerosol radiative properties derived from REMAP-GloSSAC-2023: aerosol optical depth (AOD) above 10 km altitude, single-scattering albedo (SSA) and asymmetry factor (AF) at 20 km altitude from 1979 to 2023. (a – c) For one of the solar bands, 0.442 – 0.625 μm of the ECHAM6 GCM. Panel (b) has constant data, because all aerosol extinction is due to scattering, for visible light there is no absorption at 20 km. (d – f) For one of the terrestrial bands, 10.204 – 12.195 μm .

400 However, for the infrared band, 10 – 12 μm , the SSA is nearly zero. Then the largest part of the extinction is due to absorption, which is why the stratospheric aerosol leads to in situ heating of the lower stratosphere.

3.5 Method using model output

For the CCMI-2022 sensitivity experiment senD2-sai, an aerosol forcing simulating man-made stratospheric aerosol injection (SAI) needed to be uniformly prescribed in different models (~~Plummer et al., 2021; Tilmes et al., 2024~~)([Plummer et al., 2021](#))
405 . The forcing was derived from a single-model ensemble run in the Whole Atmosphere Community Climate Model, version 2 of the Community Earth System Model (WACCM-CESM2). To apply REMAP to model output – instead of observations – the workflow was altered.

Instead of retrieving size distribution information, the output variables aerosol mode wet diameter and number density of the
410 model’s trimodal distribution were directly used for the Mie theory calculations. Relative humidity, temperature and pressure fields were also readily available from the same source (cf. Table 1). For the three aerosol modes represented in WACCM-CESM2, we assumed a ~~half-width~~[geometric standard deviation](#) of $\sigma = 1.6$, $\sigma = 1.6$ and $\sigma = 1.2$ respectively. With this data, the AEC and the SSA are readily calculated for any spectral band using Eqs. (5 – 8). The AF is given by Eqs. (9) and (10), while the mean radius and SAD are calculated with Eq. (12) and Eq. (13), respectively.

415 4 Validation

Recently Trickl et al. (2023) published results of 45 years of ground based LIDAR measurement of stratospheric aerosols since 1976 at the station Garmisch-Partenkirchen (47.5° N, 11.0° E, Southern Germany). The integrated backscatter coefficients – a quantity required for SSA – at 694.3 nm can also be calculated using the REMAP method. The agreement between the measured (red symbols and line in Figure 9) and the calculated integrated backscatter coefficients (black line in Figure 9) is very
420 good. It should be noted that here we are comparing the zonal mean value of a 5° latitude band created with REMAP to the more fluctuating values from a single station. REMAP achieves excellent agreement after large volcanic eruptions (e.g. El Chichón in 1982, Pinatubo in 1991 and Raikoke in 2020), but slightly underestimates the sustained volcanic burden in the episode of moderate volcanic eruptions around 2010. The retrieved integrated backscatter is also consistently high-biased in the background state (visible between 1997 and 2004), although other stations also report higher values than Garmisch-Partenkirchen
425 in these years (Trickl, 2024; Personal communication). We can trace this overestimation back to the lowest [altitude](#) levels in the stratosphere, where the single-mode ~~log-normal~~[lognormal](#) distribution assumption does not hold and ~~non-sulfuric aerosol~~
~~is-sometimes-aerosol-not-dominated-by-sulfur-is~~ present, which cannot be correctly interpreted in REMAP. Especially large deviations accordingly occur during large wildfires without any concurrent volcanic eruption, e.g. during and after the British Columbia wildfires (BC fires in Figure 9) 2018. In this comparison, even for ~~thes-these~~ poorly captured events, the errors stay
430 well within a factor of 2.

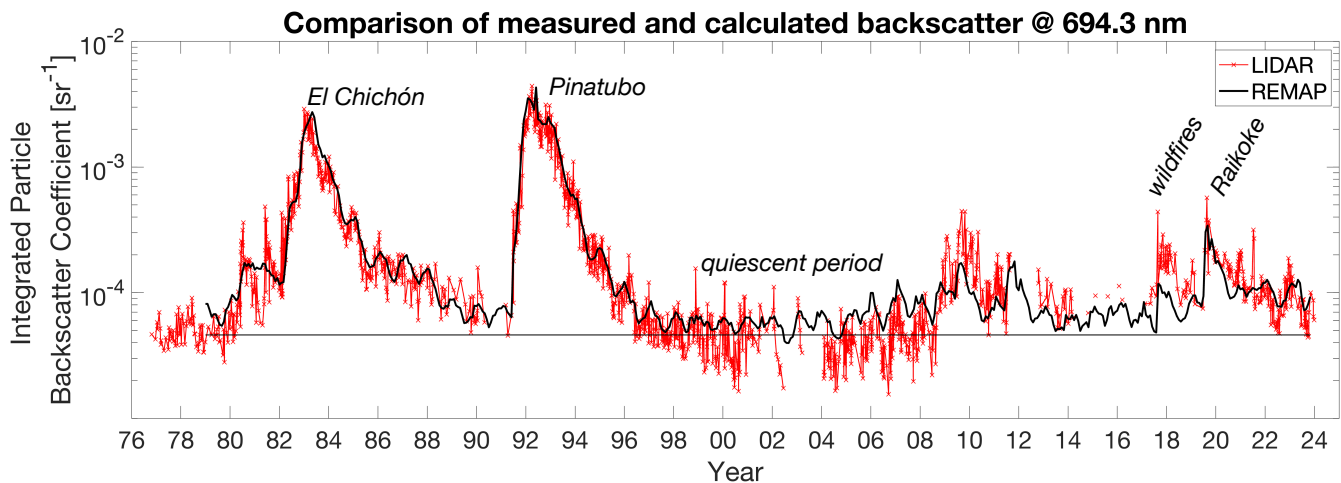


Figure 9. Integrated backscatter coefficients of stratospheric aerosol (integrated from 1 km above the tropopause to the upper end of the layer) over Garmisch-Partenkirchen, Germany (47.48° N, 11.06° E, 734 m asl). Red symbols and line: measured by the ground based LIDAR at 694.3 nm. Several significant events are marked: the volcanic eruptions of El Chichón 1982, Pinatubo 1991 and Raikoke [2020](#)[2019](#), an extended quiescent period in 1997-2004 and the British Columbia (BC) wildfires. From Trickl et al. (2023). Black line: zonal average monthly mean integrated backscatter coefficients for the latitude band 45° N to 50° N calculated from GloSSACv2.22 using REMAP with the parameterization $\sigma(\beta_{1022})$ (Eq. (4)).

Since 1971, in situ particle measurements using [the an](#) optical particle counter, OPC (Rosen and Kjome, 1991), combined with a condensation nuclei counter (CNC) (Delene and Deshler, 2000), were performed on average twice a month at Laramie, Wyoming (41.3° N, 105.5° W, USA). The OPC measures the aerosol number density with radii $r \gtrsim 0.15 \mu\text{m}$ in several size channels. The CNC detects number density condensation nuclei with radii $r \gtrsim 10 \text{ nm}$. Uni- or bimodal [log-normal](#)[lognormal](#) aerosol size distributions have been obtained by fitting the measured counts of individual size channels of the OPC and CNC (Deshler et al., 2019). Quaglia et al. (2023) then calculated the effective radius as the ratio of the third and second moment of the obtained size distributions. Panel (a) of Figure 10 shows mean aerosol effective radius after the Mount Pinatubo eruption (June 1991) between 14 and 30 km height above Laramie. Balloon measurements with one standard deviation are shown in blue and the corresponding REMAP values (37.5 – 42.5° N) in yellow. The momentary state of the stratosphere, measured by the balloons, fluctuates more than the monthly mean values captured by SAGE II, which the retrieval is mostly based on at this time. Regardless, the retrieved values mostly stay well within the measurement uncertainty range.

In panel (b) of Figure 10 measured and retrieved vertical profiles of aerosol SAD after the volcanic eruption of Hunga Tonga-Hunga Ha’apai (January 2022; [20 °S, 175 °W](#)) are compared. The measured profiles are the result of the Balloon Baseline Stratospheric Aerosol Profiles (B²SAP) campaign (Todt et al., 2023) and were taken at La Réunion (21° S, 55° E, FRA) with Portable Optical Particle Spectrometers (POPS), [starting](#) roughly a year after the eruption. The volcanic plume

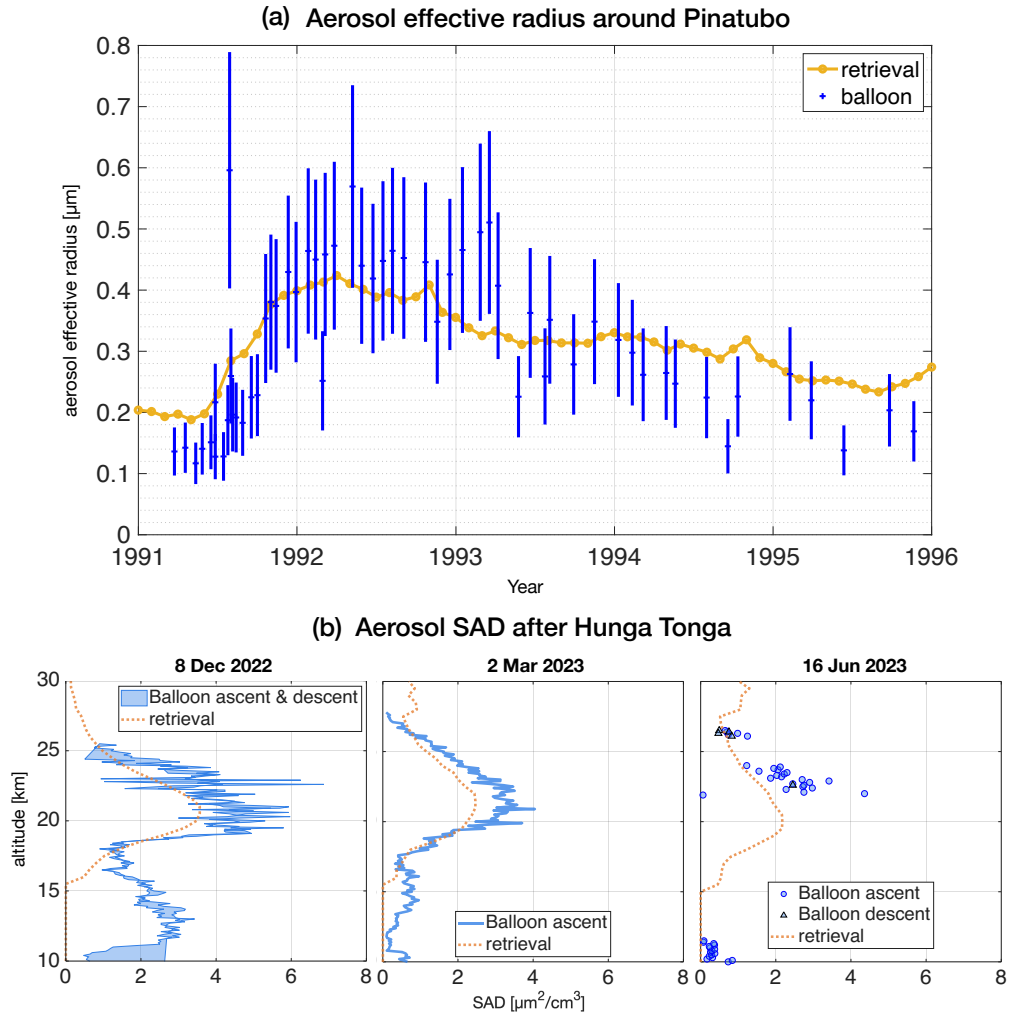


Figure 10. Comparison of balloon-borne measurements and REMAP monthly mean values retrieved using REMAP on GloSSAC. Panel (a) shows mean aerosol effective radius averaged over 14–30 km altitude over Laramie WY (41 °N, 105 °W) during the eruption of Mt. Pinatubo in 1991, while panel (b) shows two vertical surface area density and AEC (SAD) profiles over La Réunion (21 °S, 55° E) after the Hunga Tonga-Hunga-Tonga-Hunga Ha’apai eruption (20 °S, 175 °W) in January 2022. Balloon extinction 2022. The peak in SAD is not measured, but rather derived after fitting a size distribution to the OPC measurements, whereas volcanic plume. For the retrieval extinction is obtained using REMAP on SAGE III, there are no data below the tropopause at around 15 km.

at this time is well mixed zonally and thus visible as elevated SAD between 20-25 km in both ~~products. REMAP tends to underestimate SAD above 20 and overestimate it below, effectively resulting in a slightly shifted peak. The REMAP maxima~~
450 ~~are also around 10 smaller than the balloon maxima. The profile 08-12-2022 also illustrates that REMAP cannot capture tropospheric aerosol (below ~the balloon and retrieval data, even though the longitudes of the eruption site and the balloon launch site are different. Below 15 km here), as no satellite extinction coefficient no retrieval data is available (dotted orange line stays constant).~~ Extinction coefficients were also calculated for the POPS measurements (dotted blue line), assuming a uni- or bimodal distribution. It is evident that the retrieved SAD follows the GloSSACv2.22 AEC and, because the troposphere is
455 masked out, thus the orange line is constant at zero. For the profile 8 Dec 2022 measurements took place during both the ascent and descent of the balloon. The filled patch in light blue is bounded by these two profiles and illustrates the variability that the particle counter records during over slightly over a few hours of flight time. Since balloon campaigns see the momentary state of the atmosphere and the balloon AEC follows the measured SAD. This is logical, as in both cases the latter is constructed from the former. Therefore the differences between retrieved and measured SAD are mainly already encoded in the data
460 set used for the retrieval, i.e. GloSSACv2.22. Arguably, the main contributor to these differences is, again, that satellites provide satellite-based retrieval operates on zonal monthly means, while POPS records the momentary state of the stratosphere locally, with all the associated variability. A comparison without this limitation would require more abundant in-situ data of stratospheric aerosol some discrepancies are expected to show up on account of short-term variability. Apart from those, both products agree well on the shape and height of the volcanic plume. For the 2 Mar 2023 profile, only the balloon ascent is
465 available, which agrees well with the retrieval. The retrieval peak is roughly 25 % smaller than the OPC peak for this date, which again can be attributed to temporal and zonal averaging. For the 16 Jun 2023 profile, balloon data are scarce and show considerable scattering, thus no conclusive comparison can be made for this date. More balloon data have been collected at other sites and we offer an extended comparison, including background conditions, in the supplementary materials (S2).

5 Conclusions

470 The REMAP method is a useful tool for creating stratospheric aerosol forcings required as ~~input~~ input for climate models and converting between different aerosol properties. The retrieval algorithm performs well under typical stratospheric conditions, except ~~close to~~ near the tropopause and in regions with very low signal, typically close to the upper edge of the Junge layer. It has been used for studies on volcanic aerosol in the stratosphere and, more generally, to equip GCMs and CCMs in climate studies. The main limitation of the retrieval is the underlying assumption of a single-mode ~~log-normal~~ lognormal size
475 distribution, which is necessary for REMAP to flexibly work on many different data sets with limited wavelength channels. Despite this limitation, REMAP also reproduces the particle size distributions after volcanic eruptions reasonably well. The Mie calculation is based on theoretical understanding and produces optical properties for each wavelength as well as for each wavelength band. The output parameter space and its resolution can be ~~customized~~ customized at the cost of computational time.

480 ~~Backbone~~ The backbone of all the stratospheric aerosol data sets created with REMAP for different MIPs are the SAGE II and

III AEC at 3 and 6 wavelengths, respectively, which have provided the most complete coverage over multiple decades. These data are the basis for deriving important parameterizations that enable retrieval using only two, or even one single channel, thus permitting the use of the GloSSAC-composite. Between the end of the SAGE II and the beginning of the SAGE III operational period, there is a gap of over 10 years, meaning that no parameterization of similar quality can be established for this time.

485 While OMPS-LP data ~~is~~are available starting in 2012, we have not used ~~it~~them with REMAP, because of plans to integrate ~~it~~them into future GloSSAC versions (Kovilakam et al., 2024). Also, the limited accuracy of the OMPS(NASA) product reported by Taha et al. (2021) raises the question ~~,of~~ whether sufficient quality wavelength channels would be available for ~~a retrieval.~~
~~As of yet~~retrieval. Currently, no other OMPS-LP product suited for use with REMAP exists. Therefore, we suggest using the SAGE III parameterization to bridge the gap, which we also used for the entire GloSSAC period~~that~~, which is validated here.

490 The REMAP AEC calculated from the retrieved size distributions agree well with the measured data. This holds not only in the visible and near infrared (SAGE wavelengths at 525 (532 in SAGE III) nm and 1020 (1022) nm), but also in the far infrared (HALOE at 3.46 μm and ISAMS at 12.6 μm ; see Figure S3 in the supplementary to this paper for 3.46 μm and Figure S6 of Arfeuille et al. (2013) for 12.6 μm). We also found good agreement with other observational data sets under background and volcanic conditions. We observed major systematic differences only from tropospheric intrusions from wildfires. We conclude

495 that REMAP realistically reproduces the radiative (optical) and physical properties of the stratospheric aerosol, especially in the Junge layer. The main caveat is that the input data must be carefully selected and screened, as biases of individual wavelengths and contaminated data points can significantly change the quality of the product. This includes assessing the measurement method and any assumptions made for data-taking. Physical, mass-related properties retrieved using REMAP (notably surface area density and mean, median and mode radii) may be subject to larger errors under certain conditions. Even though we

500 show in the supplementary materials (S4) that REMAP successfully reproduces AECs of both unimodal and bimodal size distributions, it is conceivable that for a bimodal aerosol the retrieved size distribution parameters simply accurately recreate the optics, but not necessarily all other properties. We suggest that for the satellite-based retrieval of stratospheric aerosol properties the best way forward is to assimilate all of the available data and encourage the use of REMAP with the latest data releases to produce records and climate model input.

505

Code and data availability. The REMAP code and its products are freely available for download from the ETH research collection:

REMAPv1: Jörimann (2025), <https://doi.org/10.3929/ethz-b-000715168>

SAGE-4 λ v2: Luo (2013), <https://doi.org/10.3929/ethz-b-000714581>

SAGE-3 λ v4: Luo (2017), <https://doi.org/10.3929/ethz-b-000715155>

510 **REMAP-CCMI-2022-ref:** Luo (2020), <https://doi.org/10.3929/ethz-b-000715176>

REMAP-CCMI-2022-sai: Jörimann (2023), <https://doi.org/10.3929/ethz-b-000714654>

REMAP-GloSSAC-2023: Jörimann (2024), <https://doi.org/10.3929/ethz-b-000713396>

515 *Author contributions.* BL conceived the method with TP, wrote the REMAP code and produced and analyzed output data sets. AJ extended and edited the code, produced and analyzed records and wrote the paper. TS contributed to the analysis and writing process and supervised AJ. GM, GC and TP provided advice and insights for the writing process and edited the manuscript.

Competing interests. At least one of the (co-)authors is a member of the editorial board of the Geoscientific Model Development journal. The authors have no other competing interests to declare.

520 *Acknowledgements.* This work initiated from CCMI, the Chemistry-Climate Model Initiative of IGAC (<https://blogs.reading.ac.uk/ccmi/>). We thank the CCMI leadership for their support and guidance. Andrin Jörimann acknowledges the support from ETH Prof. Louise Harra, APARC (<http://www.aparc-climate.org>), and the Swiss National Science Foundation (SNSF) project AEON (grant no. 200020E_219166). Timofei Sukhodolov acknowledges the support from the Karbacher Fonds, Graubünden, and the Simons Foundation (SFI-MPS-SRM-00005208). Gabriel Chiodo acknowledges funding from the European Commission via the ERC Starting Grant 101078127. We acknowledge funding from the UK National Centre for Atmospheric Science (NCAS) for Graham Mann via the NERC multi-centre Long-Term Science programme on the North Atlantic climate system (ACSIS, NERC grant NE/N018001/1. Calculations have been performed at the ETH cluster EULER. [We acknowledge the use of the Scientific Colour Maps developed by Fabio Crameri \(Crameri, 2023\) to ensure perceptually uniform and colorblind-friendly visualizations in this work.](#) [We thank Elizabeth Asher and Alexandre Baron for the correspondence about and their work on the B²SAP balloon-borne data sets. For the latest Garmisch-Partenkirchen LIDAR data and insights on the comparison we thank Thomas Trickl.](#)

530

References

- Ammann, C. M., Meehl, G. A., Washington, W. M., and Zender, C. S.: A monthly and latitudinally varying volcanic forcing dataset in simulations of 20th century climate, *Geophysical Research Letters*, 30, <https://doi.org/10.1029/2003GL016875>, 2003.
- Andersson, S. M., Martinsson, B. G., Vernier, J.-P., Friberg, J., Brenninkmeijer, C. A. M., Hermann, M., van Velthoven, P. F. J.,
535 and Zahn, A.: Significant radiative impact of volcanic aerosol in the lowermost stratosphere, *Nature Communications*, 6, 7692, <https://doi.org/10.1038/ncomms8692>, 2015.
- Arfeuille, F., Luo, B. P., Heckendorn, P., Weisenstein, D., Sheng, J. X., Rozanov, E., Schraner, M., Brönnimann, S., Thomason, L. W., and Peter, T.: Modeling the stratospheric warming following the Mt. Pinatubo eruption: uncertainties in aerosol extinctions, *Atmospheric Chemistry and Physics*, 13, 11 221–11 234, <https://doi.org/10.5194/acp-13-11221-2013>, 2013.
- 40 Arfeuille, F., Weisenstein, D., Mack, H., Rozanov, E., Peter, T., and Brönnimann, S.: Volcanic forcing for climate modeling: a new microphysics-based data set covering years 1600–present, *Climate of the Past*, 10, 359–375, <https://doi.org/10.5194/cp-10-359-2014>, 2014.
- Biermann, U. M., Luo, B. P., and Peter, T.: Absorption Spectra and Optical Constants of Binary and Ternary Solutions of H₂SO₄, HNO₃, and H₂O in the Mid Infrared at Atmospheric Temperatures, *The Journal of Physical Chemistry A*, 104, 783–793,
545 <https://doi.org/10.1021/jp992349i>, 2000.
- Bingen, C., Vanhellemont, F., and Fussen, D.: A new regularized inversion method for the retrieval of stratospheric aerosol size distributions applied to 16 years of SAGE II data (1984–2000): method, results and validation, *Annales Geophysicae*, 21, 797–804, <https://doi.org/10.5194/angeo-21-797-2003>, 2003.
- Bohren, C. F. and Huffman, D. R.: *Absorption and Scattering of Light by Small Particles*, Wiley, ISBN 9780471293408,
550 <https://doi.org/10.1002/9783527618156>, 1998.
- Brodowsky, C. V., Sukhodolov, T., Chiodo, G., Aquila, V., Bekki, S., Dhomse, S. S., Höpfner, M., Laakso, A., Mann, G. W., Niemeier, U., Pitari, G., Quaglia, I., Rozanov, E., Schmidt, A., Sekiya, T., Tilmes, S., Timmreck, C., Vattioni, S., Visioni, D., Yu, P., Zhu, Y., and Peter, T.: Analysis of the global atmospheric background sulfur budget in a multi-model framework, *Atmospheric Chemistry and Physics*, 24, 5513–5548, <https://doi.org/10.5194/acp-24-5513-2024>, 2024.
- 555 Carn, S.: Multi-Satellite Volcanic Sulfur Dioxide L4 Long-Term Global Database V4, <https://doi.org/10.5067/MEASURES/SO2/DATA405>, accessed: October 21, 2024, 2022.
- Carn, S. A., Fioletov, V. E., McLinden, C. A., Li, C., and Krotkov, N. A.: A decade of global volcanic SO₂ emissions measured from space, *Scientific Reports*, 7, 44 095, <https://doi.org/10.1038/srep44095>, 2017.
- Carslaw, K. S., Luo, B., and Peter, T.: An analytic expression for the composition of aqueous HNO₃-H₂SO₄ stratospheric aerosols including gas phase removal of HNO₃, *Geophysical Research Letters*, 22, 1877–1880, <https://doi.org/10.1029/95GL01668>, 1995.
- 560 Chagnon, C. W. and Junge, C. E.: The vertical distribution of sub-micron particles in the stratosphere, *Journal of Atmospheric Sciences*, 18, 746–752, 1961.
- Clyne, M., Lamarque, J.-F., Mills, M. J., Khodri, M., Ball, W., Bekki, S., Dhomse, S. S., Lebas, N., Mann, G., Marshall, L., Niemeier, U., Poulain, V., Robock, A., Rozanov, E., Schmidt, A., Stenke, A., Sukhodolov, T., Timmreck, C., Toohey, M., Tummon, F., Zanchettin, D., Zhu, Y., and Toon, O. B.: Model physics and chemistry causing intermodel disagreement within the VolMIP-Tambora Interactive Stratospheric Aerosol ensemble, *Atmospheric Chemistry and Physics*, 21, 3317–3343, <https://doi.org/10.5194/acp-21-3317-2021>, 2021.
- 565 Cramer, F.: Scientific colour maps, <https://doi.org/10.5281/zenodo.8409685>, 2023.

- Crutzen, P. J.: Albedo Enhancement by Stratospheric Sulfur Injections: A Contribution to Resolve a Policy Dilemma?, *Climatic Change*, 77, 211, <https://doi.org/10.1007/s10584-006-9101-y>, 2006.
- 570 Damadeo, R. P., Zawodny, J. M., Thomason, L. W., and Iyer, N.: SAGE version 7.0 algorithm: application to SAGE II, *Atmospheric Measurement Techniques*, 6, 3539–3561, <https://doi.org/10.5194/amt-6-3539-2013>, 2013.
- Delene, D. J. and Deshler, T.: Calibration of a Photometric Cloud Condensation Nucleus Counter Designed for Deployment on a Balloon Package, *Journal of Atmospheric and Oceanic Technology*, 17, 459–467, [https://doi.org/10.1175/1520-0426\(2000\)017<0459:COAPCC>2.0.CO;2](https://doi.org/10.1175/1520-0426(2000)017<0459:COAPCC>2.0.CO;2), 2000.
- 575 Deshler, T.: A review of global stratospheric aerosol: Measurements, importance, life cycle, and local stratospheric aerosol, *Atmospheric Research*, 90, 223–232, <https://doi.org/10.1016/j.atmosres.2008.03.016>, 2008.
- Deshler, T., Hofmann, D. J., Johnson, B. J., and Rozier, W. R.: Balloonborne measurements of the Pinatubo aerosol size distribution and volatility at Laramie, Wyoming during the summer of 1991, *Geophysical Research Letters*, 19, 199–202, <https://doi.org/10.1029/91GL02787>, 1992.
- 580 Deshler, T., Luo, B., Kovilakam, M., Peter, T., and Kalnajs, L. E.: Retrieval of Aerosol Size Distributions From In Situ Particle Counter Measurements: Instrument Counting Efficiency and Comparisons With Satellite Measurements, *Journal of Geophysical Research: Atmospheres*, 124, 5058–5087, <https://doi.org/10.1029/2018JD029558>, 2019.
- Eyring, V., Shepherd, T. G., and Waugh, D. W.: SPARC CCMVal Report on the Evaluation of Chemistry-Climate Models, <http://www.sparc-climate.org/publications/sparc-reports/>, 2010.
- 585 Eyring, V., Lamarque, J.-F., Hess, P., Arfeuille, F., Bowman, K., Chipperfield, M., Duncan, B., Fiore, A. M., Gettelman, A., Giorgetta, M., Granier, C., Hegglin, M., Kinnison, D., Kunze, M., Langematz, U., Luo, B., Martin, R., Matthes, K., Newman, P., and Young, P. J.: Overview of IGAC/SPARC Chemistry-Climate Model Initiative (CCMI) community simulations in support of upcoming ozone and climate assessments, https://www.sparc-climate.org/wp-content/uploads/2017/12/SPARCnewsletter_No40_Jan2013_web.pdf, (last access: 25.07.2024), 2013.
- 590 Eyring, V., Bony, S., Meehl, G. A., Senior, C. A., Stevens, B., Stouffer, R. J., and Taylor, K. E.: Overview of the Coupled Model Intercomparison Project Phase 6 (CMIP6) experimental design and organization, *Geoscientific Model Development*, 9, 1937–1958, <https://doi.org/10.5194/gmd-9-1937-2016>, 2016.
- Fahey, D. W., Kawa, S. R., Woodbridge, E. L., Tin, P., Wilson, J. C., Jonsson, H. H., Dye, J. E., Baumgardner, D., Borrmann, S., Toohey, D. W., Avallone, L. M., Proffitt, M. H., Margitan, J., Loewenstein, M., Podolske, J. R., Salawitch, R. J., Wofsy, S. C., Ko, M. K. W., 595 Anderson, D. E., Schoeber, M. R., and Chan, K. R.: In situ measurements constraining the role of sulphate aerosols in mid-latitude ozone depletion, *Nature*, 363, 509–514, <https://doi.org/10.1038/363509a0>, 1993.
- Gettelman, A., Hegglin, M. I., Son, S.-W., Kim, J., Fujiwara, M., Birner, T., Kremser, S., Rex, M., Añel, J. A., Akiyoshi, H., Austin, J., Bekki, S., Braesike, P., Brühl, C., Butchart, N., Chipperfield, M., Dameris, M., Dhomse, S., Garny, H., Hardiman, S. C., Jöckel, P., Kinnison, D. E., Lamarque, J. F., Mancini, E., Marchand, M., Michou, M., Morgenstern, O., Pawson, S., Pitari, G., Plummer, D., Pyle, J. A., Rozanov, 600 E., Scinocca, J., Shepherd, T. G., Shibata, K., Smale, D., Teyssède, H., and Tian, W.: Multimodel assessment of the upper troposphere and lower stratosphere: Tropics and global trends, *Journal of Geophysical Research*, 115, D00M08, <https://doi.org/10.1029/2009JD013638>, 2010.
- Hanson, D. R., Ravishankara, A. R., and Solomon, S.: Heterogeneous reactions in sulfuric acid aerosols: A framework for model calculations, *Journal of Geophysical Research: Atmospheres*, 99, 3615–3629, <https://doi.org/10.1029/93JD02932>, 1994.

- 605 Heckendorn, P., Weisenstein, D., Fueglistaler, S., Luo, B. P., Rozanov, E., Schraner, M., Thomason, L. W., and Peter, T.: The impact of geo-engineering aerosols on stratospheric temperature and ozone, *Environmental Research Letters*, 4, 045 108, <https://doi.org/10.1088/1748-9326/4/4/045108>, 2009.
- Hegglin, M. I., Lamarque, J.-F., Eyring, V., Hess, P., Young, P. J., Fiore, A. M., Myhre, G., Nagashima, T., Ryerson, T., Shepherd, T. G., and Waugh, D. W.: IGAC/SPARC Chemistry-Climate Model Initiative (CCMI) 2014 Science Workshop, *Sparc Newsletter* No. 43, pp. 32–35, 610 2014.
- Hervig, M. E., Russell, J. M., Gordley, L. L., Daniels, J., Drayson, S. R., and Park, J. H.: Aerosol effects and corrections in the Halogen Occultation Experiment, *Journal of Geophysical Research: Atmospheres*, 100, 1067–1079, <https://doi.org/10.1029/94JD02143>, 1995.
- Hofmann, D. J. and Solomon, S.: Ozone destruction through heterogeneous chemistry following the eruption of El Chichón, *Journal of Geophysical Research: Atmospheres*, 94, 5029–5041, <https://doi.org/10.1029/JD094iD04p05029>, 1989.
- 615 Jonasz, M. and Fournier, G.: *Light scattering by particles in water : theoretical and experimental foundations*, Academic Press San Diego, 2007.
- Junge, C. E., Chagnon, C. W., and Manson, J. E.: STRATOSPHERIC AEROSOLS, *Journal of Atmospheric Sciences*, 18, 81–108, [https://doi.org/10.1175/1520-0469\(1961\)018<0081:SA>2.0.CO;2](https://doi.org/10.1175/1520-0469(1961)018<0081:SA>2.0.CO;2), 1961.
- Jörmann, A.: REMAP-CCMI-2022-sai: Stratospheric aerosol data for use in the CCMI-2022 stratospheric aerosol injection scenario, *ETH Research Collection [data set]*, <https://doi.org/10.3929/ethz-b-000714654>, previously distributed through ftp://iacftp.ethz.ch/pub_read/andrinj/CCMI-2022-sai (last accessed 08.06.2025), 2023.
- 620 Jörmann, A.: REMAP-GloSSAC-2023: Stratospheric aerosol data for use in HT-MOC models, *ETH Research Collection [data set]*, <https://doi.org/10.3929/ethz-b-000713396>, previously distributed through ftp://iacftp.ethz.ch/pub_read/andrinj/HT-MOC (last accessed 08.06.2025), 2024.
- 625 Jörmann, A.: A REtrieval Method for optical and physical Aerosol Properties in the stratosphere (REMAPv1), *ETH Research Collection [code]*, <https://doi.org/10.3929/ethz-b-000715168>, 2025.
- Knepp, T. N., Kovilakam, M., Thomason, L., and Miller, S. J.: Characterization of stratospheric particle size distribution uncertainties using SAGE II and SAGE III/ISS extinction spectra, *Atmospheric Measurement Techniques*, 17, 2025–2054, <https://doi.org/10.5194/amt-17-2025-2024>, 2024.
- 630 Kovilakam, M., Thomason, L. W., Ernest, N., Rieger, L., Bourassa, A., and Millán, L.: The Global Space-based Stratospheric Aerosol Climatology (version 2.0): 1979–2018, *Earth System Science Data*, 12, 2607–2634, <https://doi.org/10.5194/essd-12-2607-2020>, 2020.
- Kovilakam, M., Thomason, L., and Knepp, T.: SAGE III/ISS aerosol/cloud categorization and its impact on GloSSAC, *Atmospheric Measurement Techniques*, 16, 2709–2731, <https://doi.org/10.5194/amt-16-2709-2023>, 2023.
- Kovilakam, M., Thomason, L., Verkerk, M., Aubry, T., and Knepp, T.: OMPS-LP Aerosol Extinction Coefficients And Their Applicability 635 in GloSSAC, *EGUsphere*, 2024, 1–31, <https://doi.org/10.5194/egusphere-2024-2409>, 2024.
- Kuchar, A., Sukhodolov, T., Chiodo, G., Jörmann, A., Kult-Herdin, J., Rozanov, E., and Rieder, H. H.: Modulation of the northern polar vortex by the Hunga Tonga–Hunga Ha’apai eruption and the associated surface response, *Atmospheric Chemistry and Physics*, 25, 3623–3634, <https://doi.org/10.5194/acp-25-3623-2025>, 2025.
- Lambert, A., Grainger, R. G., Rodgers, C. D., Taylor, F. W., Mergenthaler, J. L., Kumer, J. B., and Massie, S. T.: Global evolution of the Mt. 640 Pinatubo volcanic aerosols observed by the infrared limb-sounding instruments CLAES and ISAMS on the Upper Atmosphere Research Satellite, *Journal of Geophysical Research: Atmospheres*, 102, 1495–1512, <https://doi.org/10.1029/96JD00096>, 1997.

- Lanzante, J. R. and Free, M.: Comparison of Radiosonde and GCM Vertical Temperature Trend Profiles: Effects of Dataset Choice and Data Homogenization*, *Journal of Climate*, 21, 5417–5435, <https://doi.org/10.1175/2008JCLI2287.1>, 2008.
- 645 Leckey, J. P., Damadeo, R., and Hill, C. A.: Stratospheric Aerosol and Gas Experiment (SAGE) from SAGE III on the ISS to a Free Flying SAGE IV Cubesat, *Remote Sensing*, 13, 4664, <https://doi.org/10.3390/rs13224664>, 2021.
- Luo, B.: SAGE-4 λ v2: Stratospheric aerosol data for use in CCMI models, ETH Research Collection [data set], <https://doi.org/10.3929/ethz-b-000714581>, previously distributed through ftp://iacftp.ethz.ch/pub_read/luo/ccmi (last accessed 08.06.2025), 2013.
- Luo, B.: SAGE-3 λ v4: Stratospheric aerosol data for use in CMIP6 models, ETH Research Collection [data set], <https://doi.org/10.3929/ethz-b-000715155>, previously distributed through ftp://iacftp.ethz.ch/pub_read/luo/CMIP6_SAD_radForcing_v4.0.0 (last accessed 650 08.06.2025), 2017.
- Luo, B.: REMAP-CCMI-2022-ref: Stratospheric aerosol data for use in the CCMI-2022 historical period, ETH Research Collection [data set], <https://doi.org/10.3929/ethz-b-000715176>, previously distributed through ftp://iacftp.ethz.ch/pub_read/luo/CMIP6_SAD_radForcing_v4.0.0_1850-2018 (last accessed 08.06.2025), 2020.
- Luo, B., Carslaw, K. S., Peter, T., and Clegg, S. L.: vapour pressures of H₂SO₄/HNO₃/HCl/HBr/H₂O solutions to low stratospheric temperatures, *Geophysical Research Letters*, 22, 247–250, <https://doi.org/10.1029/94GL02988>, 1995.
- 655 Luo, B., Krieger, U. K., and Peter, T.: Densities and refractive indices of H₂SO₄/HNO₃/H₂O solutions to stratospheric temperatures, *Geophysical Research Letters*, 23, 3707–3710, <https://doi.org/10.1029/96GL03581>, 1996.
- Madhavan, B. L., Kudo, R., Ratnam, M. V., Kloss, C., Berthet, G., and Sellitto, P.: Stratospheric Aerosol Characteristics from the 2017–2019 Volcanic Eruptions Using the SAGE III/ISS Observations, *Remote Sensing*, 15, 29, <https://doi.org/10.3390/rs15010029>, 2022.
- 660 Morgenstern, O., Hegglin, M. I., Rozanov, E., O'Connor, F. M., Abraham, N. L., Akiyoshi, H., Archibald, A. T., Bekki, S., Butchart, N., Chipperfield, M. P., Deushi, M., Dhomse, S. S., Garcia, R. R., Hardiman, S. C., Horowitz, L. W., Jöckel, P., Josse, B., Kinnison, D., Lin, M., Mancini, E., Manyin, M. E., Marchand, M., Marécal, V., Michou, M., Oman, L. D., Pitari, G., Plummer, D. A., Revell, L. E., Saint-Martin, D., Schofield, R., Stenke, A., Stone, K., Sudo, K., Tanaka, T. Y., Tilmes, S., Yamashita, Y., Yoshida, K., and Zeng, G.: Review of the global models used within phase 1 of the Chemistry–Climate Model Initiative (CCMI), *Geoscientific Model Development*, 10, 639–671, <https://doi.org/10.5194/gmd-10-639-2017>, 2017.
- 665 Plummer, D., Nagashima, T., Tilmes, S., Archibald, A., Chiodo, G., Fadnavis, S., Garny, H., Josse, B., Kim, J., Lamarque, J.-F., et al.: CCMI-2022: A new set of Chemistry-Climate Model Initiative (CCMI) community simulations to update the assessment of models and support upcoming ozone assessment activities, *SPARC Newsletter*, 57, 22–30, https://www.aparc-climate.org/wp-content/uploads/2021/07/SPARCnewsletter_Jul2021_web.pdf#page=22, (last accessed 08.06.2025), 2021.
- 670 Pusechel, R. F., Blake, D. F., Snetsinger, K. G., Hansen, A. D. A., Verma, S., and Kato, K.: Black carbon (soot) aerosol in the lower stratosphere and upper troposphere, *Geophysical Research Letters*, 19, 1659–1662, <https://doi.org/10.1029/92GL01801>, 1992.
- Quaglia, I., Timmreck, C., Niemeier, U., Visioni, D., Pitari, G., Brodowsky, C., Brühl, C., Dhomse, S. S., Franke, H., Laakso, A., Mann, G. W., Rozanov, E., and Sukhodolov, T.: Interactive stratospheric aerosol models' response to different amounts and altitudes of SO₂ injection during the 1991 Pinatubo eruption, *Atmospheric Chemistry and Physics*, 23, 921–948, <https://doi.org/10.5194/acp-23-921-2023>, 675 2023.
- Revell, L. E., Stenke, A., Luo, B., Kremser, S., Rozanov, E., Sukhodolov, T., and Peter, T.: Impacts of Mt Pinatubo volcanic aerosol on the tropical stratosphere in chemistry–climate model simulations using CCMI and CMIP6 stratospheric aerosol data, *Atmospheric Chemistry and Physics*, 17, 13 139–13 150, <https://doi.org/10.5194/acp-17-13139-2017>, 2017.

Robinson, G. N., Worsnop, D. R., Jayne, J. T., Kolb, C. E., and Davidovits, P.: Heterogeneous uptake of ClONO₂ and N₂O₅ by sulfuric acid solutions, *Journal of Geophysical Research: Atmospheres*, 102, 3583–3601, 1997.

Robock, A.: Volcanic eruptions and climate, *Reviews of geophysics*, 38, 191–219, 2000.

Rosen, J. M. and Kjome, N. T.: Backscattersonde: a new instrument for atmospheric aerosol research, *Applied Optics*, 30, 1552–1561, 1991.

Russell, P. B., Livingston, J. M., Dutton, E. G., Pueschel, R. F., Reagan, J. A., DeFoor, T. E., Box, M. A., Allen, D., Pilewskie, P., Herman, B. M., Kinne, S. A., and Hofmann, D. J.: Pinatubo and pre-Pinatubo optical-depth spectra: Mauna Loa measurements, comparisons, inferred particle size distributions, radiative effects, and relationship to lidar data, *Journal of Geophysical Research: Atmospheres*, 98, 22 969–22 985, <https://doi.org/10.1029/93JD02308>, 1993.

Russell, P. B., Livingston, J. M., Pueschel, R. F., Bauman, J. J., Pollack, J. B., Brooks, S. L., Hamill, P., Thomason, L. W., Stowe, L. L., and Deshler, T.: Global to microscale evolution of the Pinatubo volcanic aerosol derived from diverse measurements and analyses, *Journal of Geophysical Research: Atmospheres*, 101, 18 745–18 763, 1996.

Santer, B. D., Bonfils, C., Painter, J. F., Zelinka, M. D., Mears, C., Solomon, S., Schmidt, G. A., Fyfe, J. C., Cole, J. N. S., Nazarenko, L., Taylor, K. E., and Wentz, F. J.: Volcanic contribution to decadal changes in tropospheric temperature, *Nature Geoscience*, 7, 185–189, <https://doi.org/10.1038/ngeo2098>, 2014.

Sato, M., Hansen, J. E., McCormick, M. P., and Pollack, J. B.: Stratospheric aerosol optical depths, 1850–1990, *Journal of Geophysical Research: Atmospheres*, 98, 22 987–22 994, 1993.

Sheng, J.-X., Weisenstein, D. K., Luo, B.-P., Rozanov, E., Arfeuille, F., and Peter, T.: A perturbed parameter model ensemble to investigate Mt. Pinatubo’s 1991 initial sulfur mass emission, *Atmospheric Chemistry and Physics*, 15, 11 501–11 512, <https://doi.org/10.5194/acp-15-11501-2015>, 2015.

Sofieva, V. F., Rozanov, A., Szélag, M., Burrows, J. P., Retscher, C., Damadeo, R., Degenstein, D., Rieger, L. A., and Bourassa, A.: CREST: a Climate Data Record of Stratospheric Aerosols, *Earth System Science Data*, 16, 5227–5241, <https://doi.org/10.5194/essd-16-5227-2024>, 2024.

Solomon, S.: Stratospheric ozone depletion: A review of concepts and history, *Reviews of geophysics*, 37, 275–316, 1999.

Solomon, S., Daniel, J. S., Neely, R. R., Vernier, J.-P., Dutton, E. G., and Thomason, L. W.: The Persistently Variable “Background” Stratospheric Aerosol Layer and Global Climate Change, *Science*, 333, 866–870, <https://doi.org/10.1126/science.1206027>, 2011.

Stenchikov, G. L., Kirchner, I., Robock, A., Graf, H., Antuna, J. C., Grainger, R. G., Lambert, A., and Thomason, L.: Radiative forcing from the 1991 Mount Pinatubo volcanic eruption, *Journal of Geophysical Research: Atmospheres*, 103, 13 837–13 857, 1998.

Stothers, R. B.: Major optical depth perturbations to the stratosphere from volcanic eruptions, *Journal of Geophysical Research: Atmospheres*, 106, 2993–3003, 2001.

Taha, G., Loughman, R., Zhu, T., Thomason, L., Kar, J., Rieger, L., and Bourassa, A.: OMPS LP Version 2.0 multi-wavelength aerosol extinction coefficient retrieval algorithm, *Atmospheric Measurement Techniques*, 14, 1015–1036, <https://doi.org/10.5194/AMT-14-1015-2021>, 2021.

Thomason, L. W. and Peter, T.: Assessment of stratospheric aerosol properties (ASAP), 2006.

Thomason, L. W., Burton, S. P., Luo, B.-P., and Peter, T.: SAGE II measurements of stratospheric aerosol properties at non-volcanic levels, *Atmospheric Chemistry and Physics*, 8, 983–995, <https://doi.org/10.5194/acp-8-983-2008>, 2008.

Thomason, L. W., Ernest, N., Millán, L., Rieger, L., Bourassa, A., Vernier, J.-P., Manney, G., Luo, B., Arfeuille, F., and Peter, T.: A global space-based stratospheric aerosol climatology: 1979–2016, *Earth System Science Data*, 10, 469–492, <https://doi.org/10.5194/essd-10-469-2018>, 2018.

- Tilmes, S., Müller, R., and Salawitch, R.: The Sensitivity of Polar Ozone Depletion to Proposed Geoengineering Schemes, *Science*, 320, 1201–1204, <https://doi.org/10.1126/science.1153966>, 2008.
- 720 Tilmes, S., Bednarz, E. M., Jörimann, A., Vioni, D., Kinnison, D. E., Chiodo, G., and Plummer, D.: Stratospheric Aerosol Intervention Experiment for the Chemistry-Climate Model Intercomparison Project, <https://doi.org/10.5194/egusphere-2024-3586>, 2024.
- Timmreck, C., Mann, G. W., Aquila, V., Hommel, R., Lee, L. A., Schmidt, A., Brühl, C., Carn, S., Chin, M., Dhomse, S. S., Diehl, T., English, J. M., Mills, M. J., Neely, R., Sheng, J., Toohey, M., and Weisenstein, D.: The Interactive Stratospheric Aerosol Model Intercomparison Project (ISA-MIP): motivation and experimental design, *Geoscientific Model Development*, 11, 2581–2608, <https://doi.org/10.5194/gmd-11-2581-2018>, 2018.
- 725 Todt, M. A., Asher, E., Hall, E., Cullis, P., Jordan, A., Xiong, K., Hurst, D. F., and Thornberry, T.: Baseline Balloon Stratospheric Aerosol Profiles (B²SAP)—Systematic Measurements of Aerosol Number Density and Size, *Journal of Geophysical Research: Atmospheres*, 128, <https://doi.org/10.1029/2022JD038041>, 2023.
- Trickl, T., Vogelmann, H., Giehl, H., Jäger, H., and Perfahl, M.: Stratospheric Aerosol: 45 Years of Lidar Measurements at Garmisch-Partenkirchen, in: *Proceedings of the 30th International Laser Radar Conference*, pp. 885–891, Springer International Publishing, ISBN 978-3-031-37818-8, https://doi.org/10.1007/978-3-031-37818-8_113, 2023.
- 730 Vernier, J.-P., Thomason, L. W., Pommereau, J.-P., Bourassa, A., Pelon, J., Garnier, A., Hauchecorne, A., Blanot, L., Treppe, C., Degenstein, D., and Vargas, F.: Major influence of tropical volcanic eruptions on the stratospheric aerosol layer during the last decade, *Geophysical Research Letters*, 38, n/a–n/a, <https://doi.org/10.1029/2011GL047563>, 2011.
- von Savigny, C. and Hoffmann, C. G.: Issues related to the retrieval of stratospheric-aerosol particle size information based on optical measurements, *Atmospheric Measurement Techniques*, 13, 1909–1920, <https://doi.org/10.5194/amt-13-1909-2020>, 2020.
- 735 Vömel, H., Evan, S., and Tully, M.: Water vapor injection into the stratosphere by Hunga Tonga-Hunga Ha’apai, *Science*, 377, 1444–1447, <https://doi.org/10.1126/science.abq2299>, 2022.
- Weisenstein, D. K., Vioni, D., Franke, H., Niemeier, U., Vattioni, S., Chiodo, G., Peter, T., and Keith, D. W.: An interactive stratospheric aerosol model intercomparison of solar geoengineering by stratospheric injection of SO₂ or accumulation-mode sulfuric acid aerosols, *Atmospheric Chemistry and Physics*, 22, 2955–2973, <https://doi.org/10.5194/acp-22-2955-2022>, 2022.
- 740 Wrana, F., von Savigny, C., Zalach, J., and Thomason, L. W.: Retrieval of stratospheric aerosol size distribution parameters using satellite solar occultation measurements at three wavelengths, *Atmospheric Measurement Techniques*, 14, 2345–2357, <https://doi.org/10.5194/amt-14-2345-2021>, 2021.
- Wurl, D., Grainger, R. G., McDonald, A. J., and Deshler, T.: Optimal estimation retrieval of aerosol microphysical properties from SAGE II satellite observations in the volcanically unperturbed lower stratosphere, *Atmospheric Chemistry and Physics*, 10, 4295–4317, <https://doi.org/10.5194/acp-10-4295-2010>, 2010.
- 745 Yue, G. K.: Wavelength Dependence of Aerosol Extinction Coefficient for Stratospheric Aerosols, *Journal of Climate and Applied Meteorology*, 25, 1775–1779, [https://doi.org/10.1175/1520-0450\(1986\)025<1775:WDOAEC>2.0.CO;2](https://doi.org/10.1175/1520-0450(1986)025<1775:WDOAEC>2.0.CO;2), 1986.
- Yue, G. K., McCormick, M. P., and Chu, W. P.: Retrieval of Composition and Size Distribution of Stratospheric Aerosols with the SAGE II Satellite Experiment, *Journal of Atmospheric and Oceanic Technology*, 3, 371–380, [https://doi.org/10.1175/1520-0426\(1986\)003<0371:ROCADS>2.0.CO;2](https://doi.org/10.1175/1520-0426(1986)003<0371:ROCADS>2.0.CO;2), 1986.
- 750 Zanchettin, D., Khodri, M., Timmreck, C., Toohey, M., Schmidt, A., Gerber, E. P., Hegerl, G., Robock, A., Pausata, F. S., Ball, W. T., Bauer, S. E., Bekki, S., Dhomse, S. S., Grande, A. N. L., Mann, G. W., Marshall, L., Mills, M., Marchand, M., Niemeier, U., Poulain, V., Rozanov, E., Rubino, A., Stenke, A., Tsigaridis, K., and Tummon, F.: The Model Intercomparison Project on the climatic response

755 to Volcanic forcing (VolMIP): Experimental design and forcing input data for CMIP6, *Geoscientific Model Development*, 9, 2701–2719,
<https://doi.org/10.5194/gmd-9-2701-2016>, 2016.

Zhu, Y., Akiyoshi, H., Aquila, V., Asher, E., Bednarz, E. M., Bekki, S., Brühl, C., Butler, A. H., Case, P., Chabrillat, S., Chiodo, G., Clyne,
 M., Falletti, L., Colarco, P. R., Fleming, E., Jörimann, A., Kovilakam, M., Koren, G., Kuchar, A., Lebas, N., Liang, Q., Liu, C.-C., Mann,
 G., Manyin, M., Marchand, M., Morgenstern, O., Newman, P., Oman, L. D., Østerstrøm, F. F., Peng, Y., Plummer, D., Quaglia, I., Randel,
 760 W., Rémy, S., Sekiya, T., Steenrod, S., Sukhodolov, T., Tilmes, S., Tsigaridis, K., Ueyama, R., Visioni, D., Wang, X., Watanabe, S.,
 Yamashita, Y., Yu, P., Yu, W., Zhang, J., and Zhuo, Z.: Hunga Tonga-Hunga Ha’apai Volcano Impact Model Observation Comparison
 (HTHH-MOC) Project: Experiment Protocol and Model Descriptions, <https://doi.org/10.5194/egusphere-2024-3412>, 2024.