

1 Supplement of Comparison of Europe-wide simulations

The following plots show climate-response biases in low-resolution model output, calculated as the difference between the low- and high-resolution predictions, averaged over the period 2010–2014. The value from every high-resolution gridcell was subtracted from the value in the corresponding 10 × 10 low-resolution block. Only fully overlapping low- and high-resolution
5 gridcells are represented. Red indicates a higher value in the low-resolution run than in the high-resolution run.

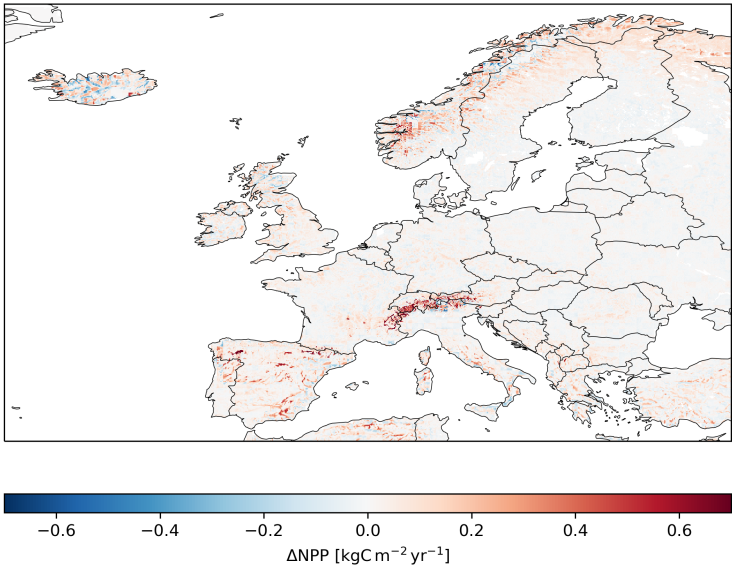


Fig. S1. Net Primary Productivity

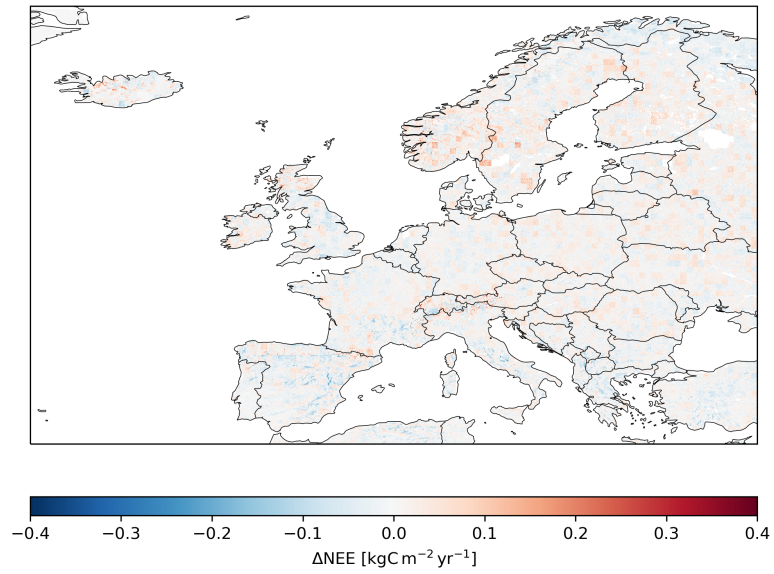


Fig. S2. Net ecosystem productivity

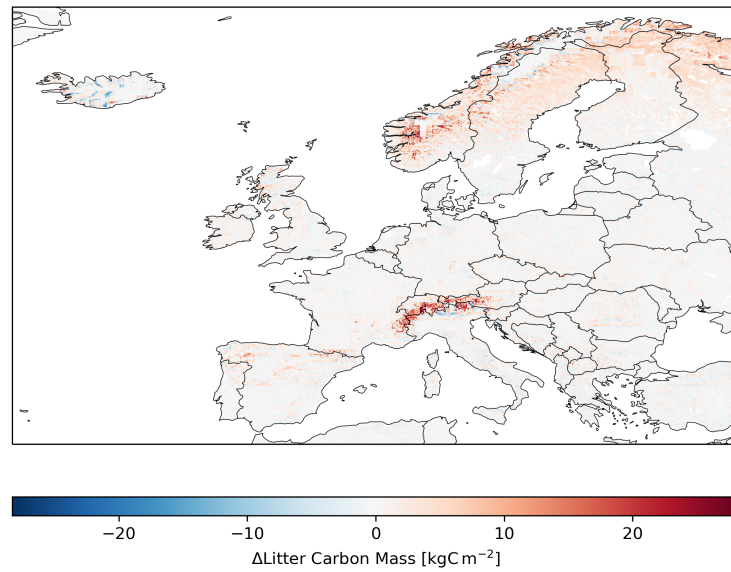


Fig. S3. Amount of carbon stored in litter

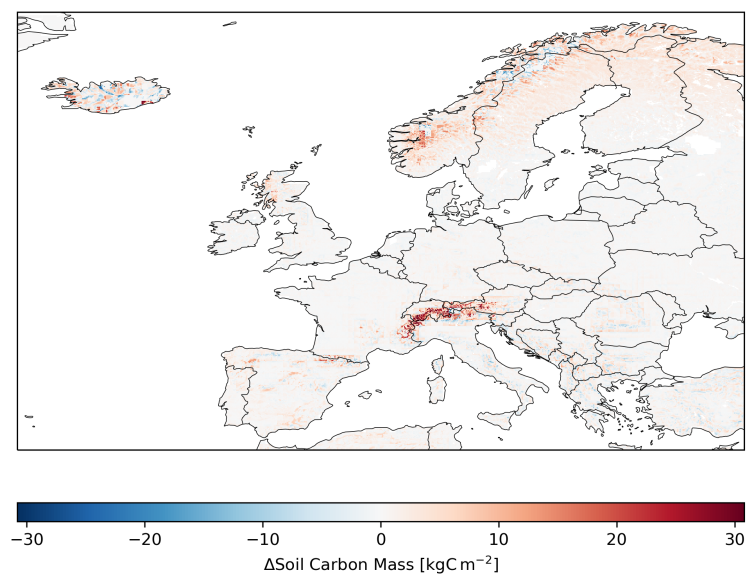


Fig. S4. Amount of carbon stored in the soil

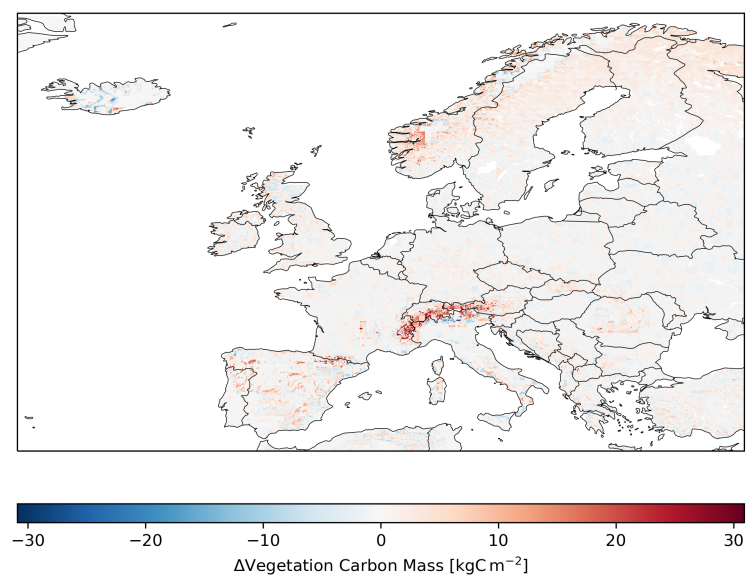


Fig. S5. Amount of carbon stored in above-ground vegetation

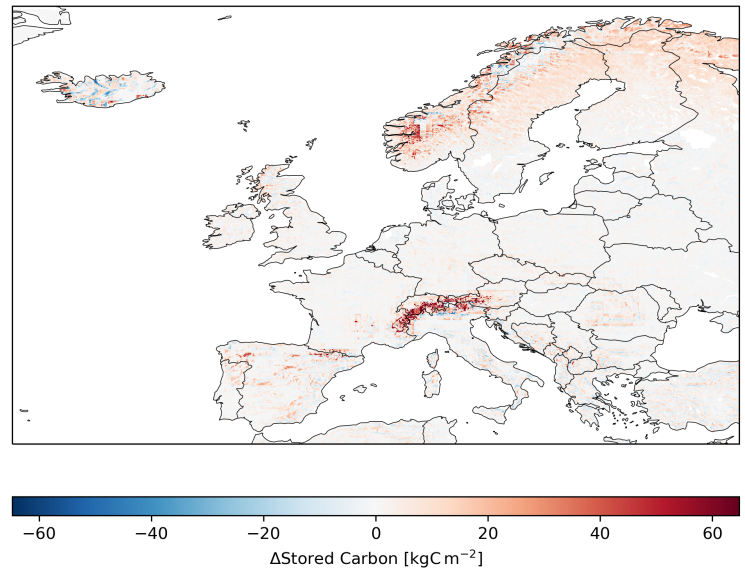


Fig. S6. Total amount of stored carbon

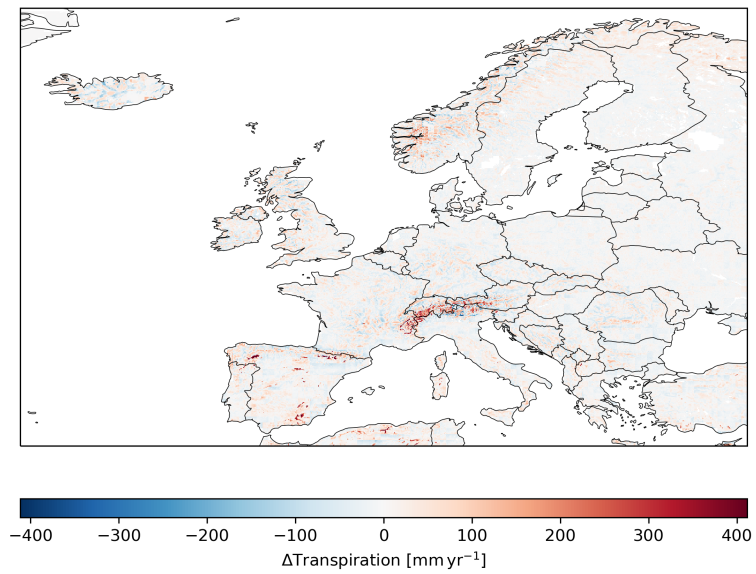


Fig. S7. Aggregated ecosystem transpiration

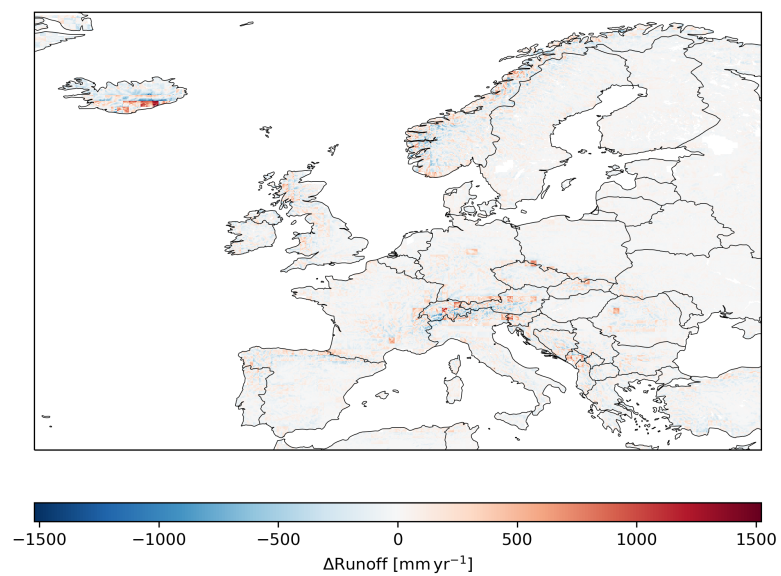


Fig. S8. Runoff

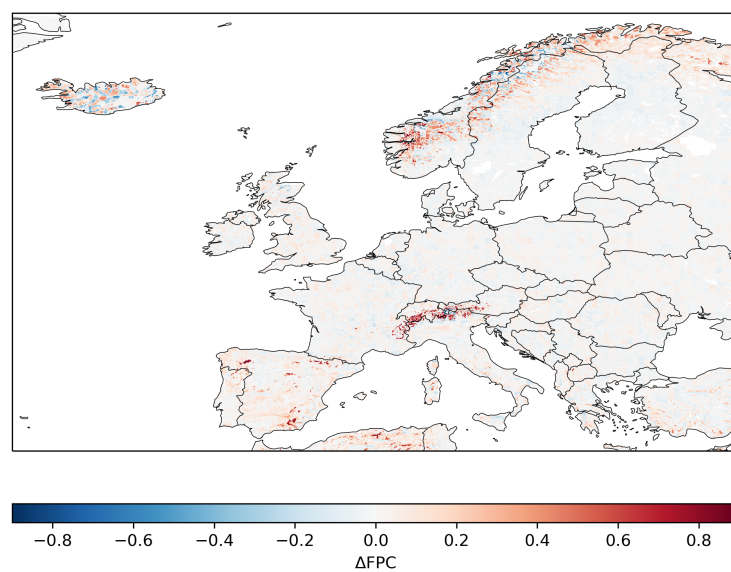


Fig. S9. Foliar Projective Cover

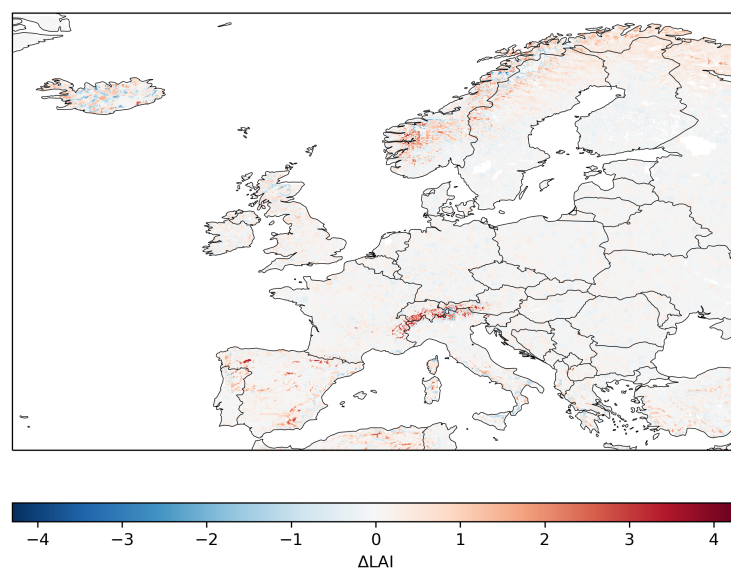


Fig. S10. Leaf Area Index