

Supplementary Information

Tracing Ammonia Emission Sources in California's Salton Sea Region: Insights from Airborne Longwave-Infrared Hyperspectral Imaging and Ground Monitoring

Sina Hasheminassab¹, David M. Tratt², Olga V. Kalashnikova¹, Clement S. Chang², Morad Alvarez², Kerry N. Buckland², Michael J. Garay¹, Francesca M. Hopkins³, Eric R. Keim², Le Kuai¹, Yaning Miao³, Payam Pakbin⁴, William C. Porter³, Mohammad H. Sowlat⁴

¹ Jet Propulsion Laboratory, California Institute of Technology, Pasadena, CA 91011, USA

² The Aerospace Corporation, Los Angeles, CA 90009, USA

³ University of California, Riverside, CA 92521, USA

⁴ South Coast Air Quality Management District, Diamond Bar, CA 91765, USA

* Correspondence to: Sina Hasheminassab (sina.hasheminassab@jpl.nasa.gov)

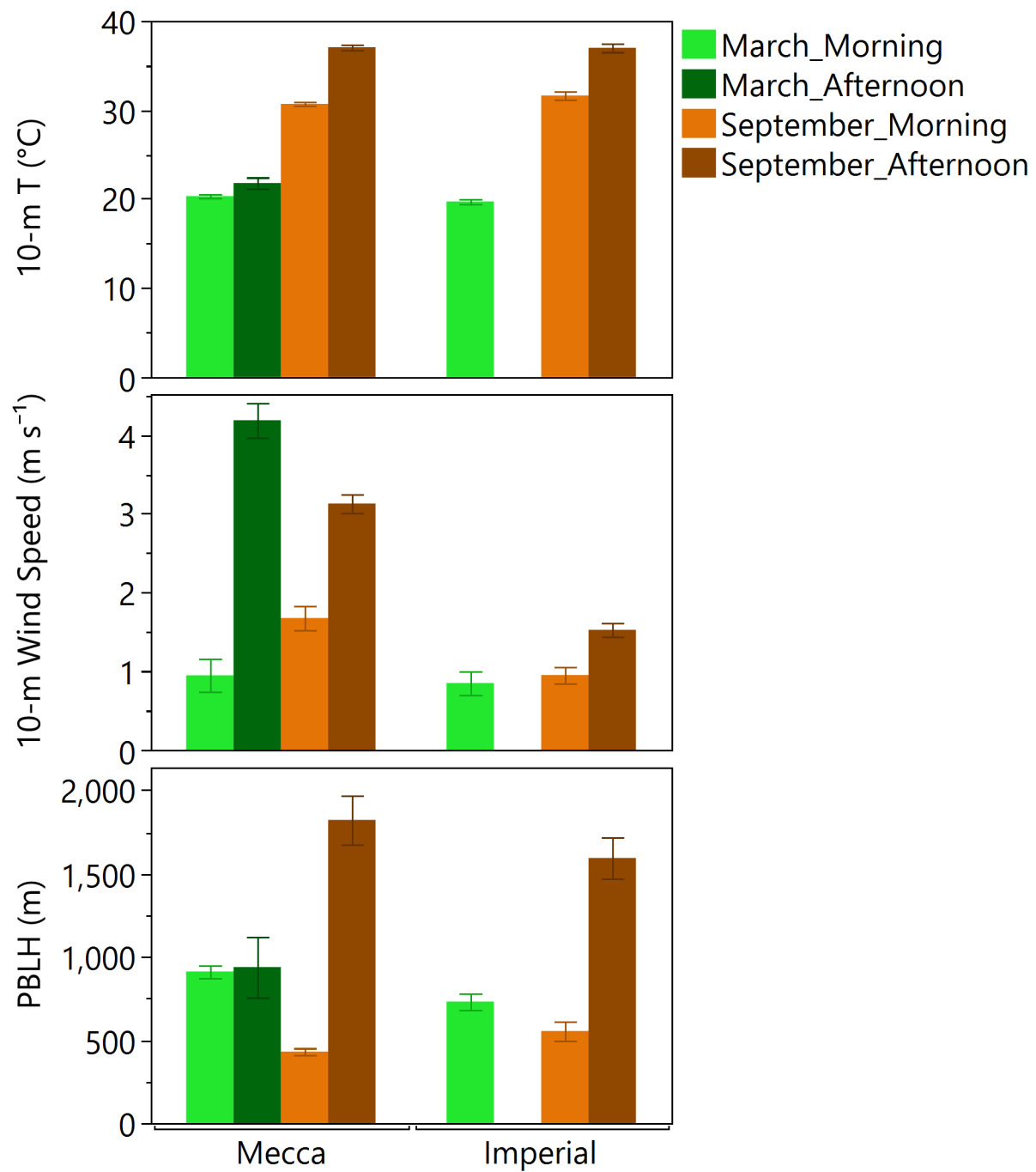


Figure S1. Average temperature and wind speed at 10 m above ground level, and planetary boundary layer height (PBLH) over the Mecca and Imperial study areas during the flight measurement sessions, retrieved from the HRRR model. Error bars represent confidence intervals.

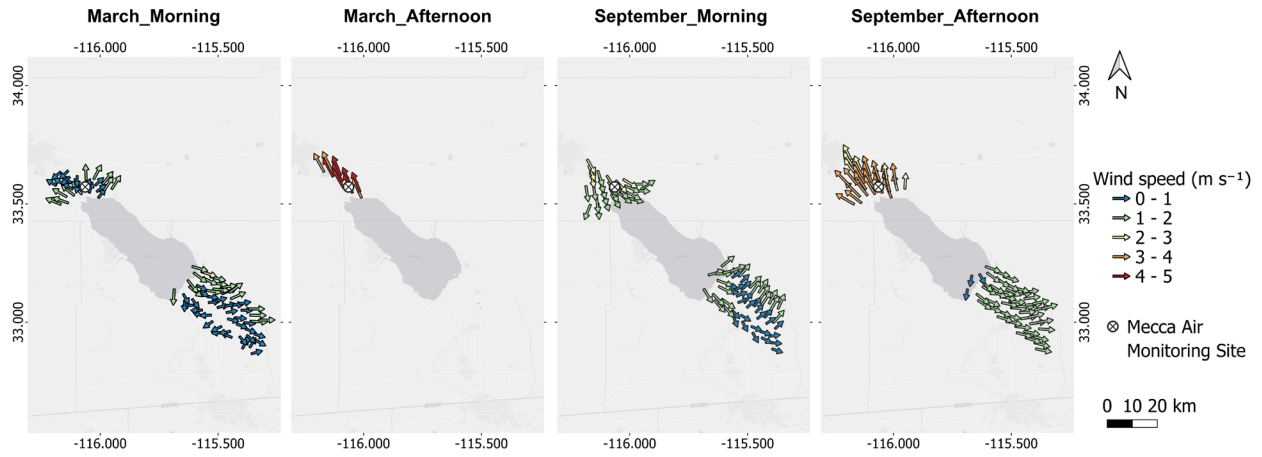


Figure S2. Wind fields at 10 m above ground level over the Mecca and Imperial study areas during flight measurement sessions, retrieved from the HRRR model. Map sources: Sources: Esri, HERE, Garmin, INCREMENT P, ©OpenStreetMap contributors, and the GIS User Community.

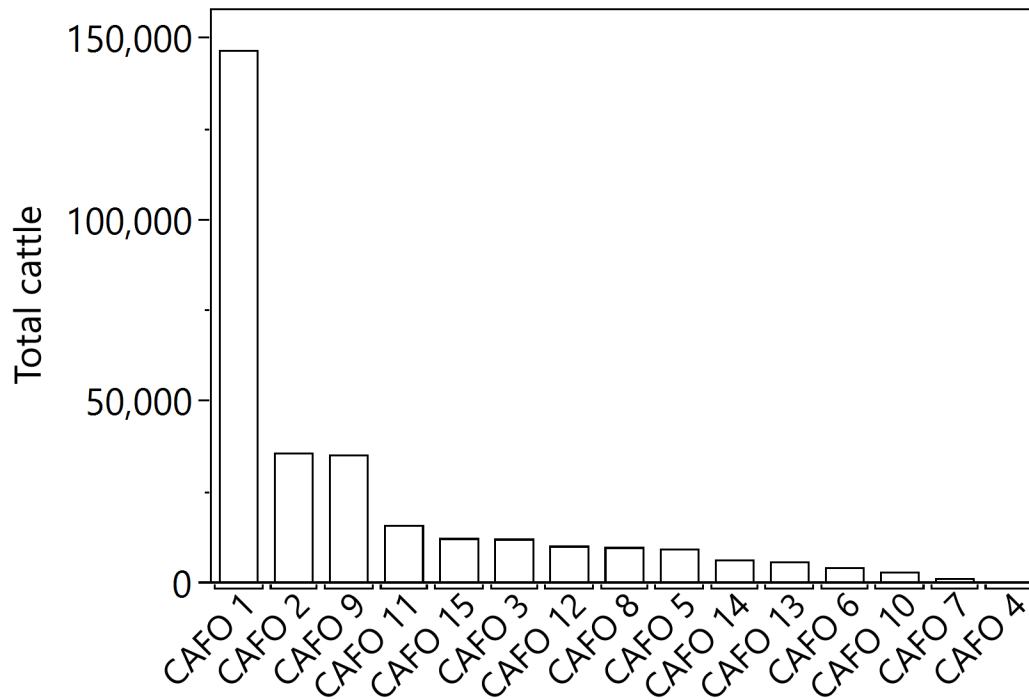


Figure S3. Total cattle population in 2022 at concentrated animal feeding operation (CAFO) facilities in the Imperial study area. Data were obtained from the California Air Resources Board’s (CARB) California Dairy & Livestock Database (CADD) (<https://ww2.arb.ca.gov/resources/documents/california-dairy-livestock-database-cadd>, accessed January 4, 2025).

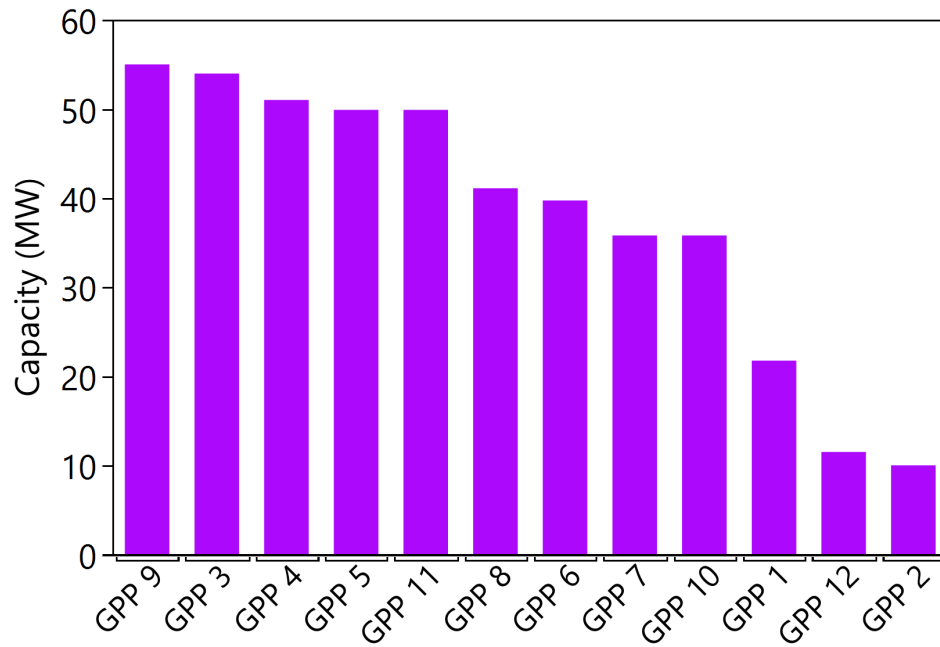


Figure S4. Generating capacity (MW) of geothermal power plants (GPP) in the Imperial study area. Data were obtained from the California State Geoportal (<https://gis.data.ca.gov>, accessed January 4, 2025).

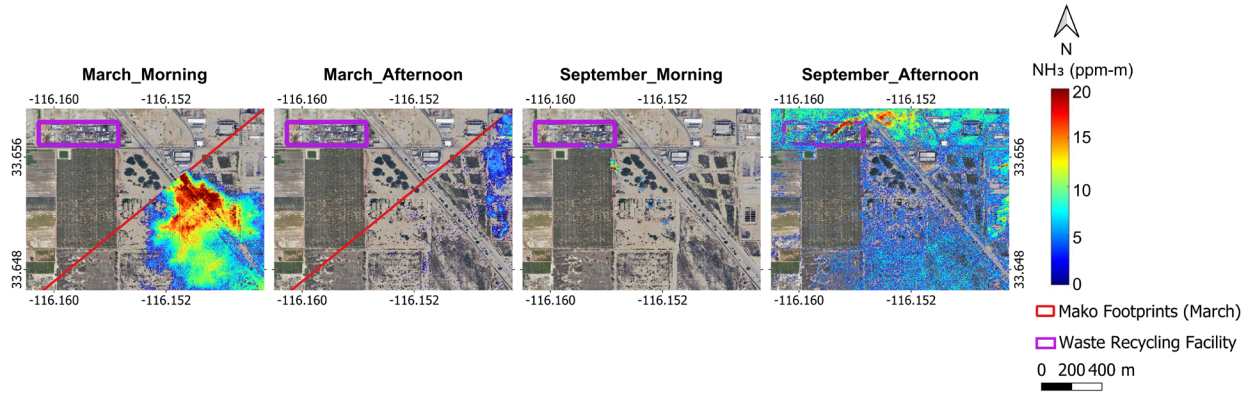


Figure S5. Retrieved NH_3 column density (ppm-m) maps over a waste recycling facility in the Mecca study area during each airborne measurement session. Null pixels that did not meet the t -statistic and ΔT thresholds are rendered transparent. Google Earth imagery is included for reference. Map data ©2025 Google.

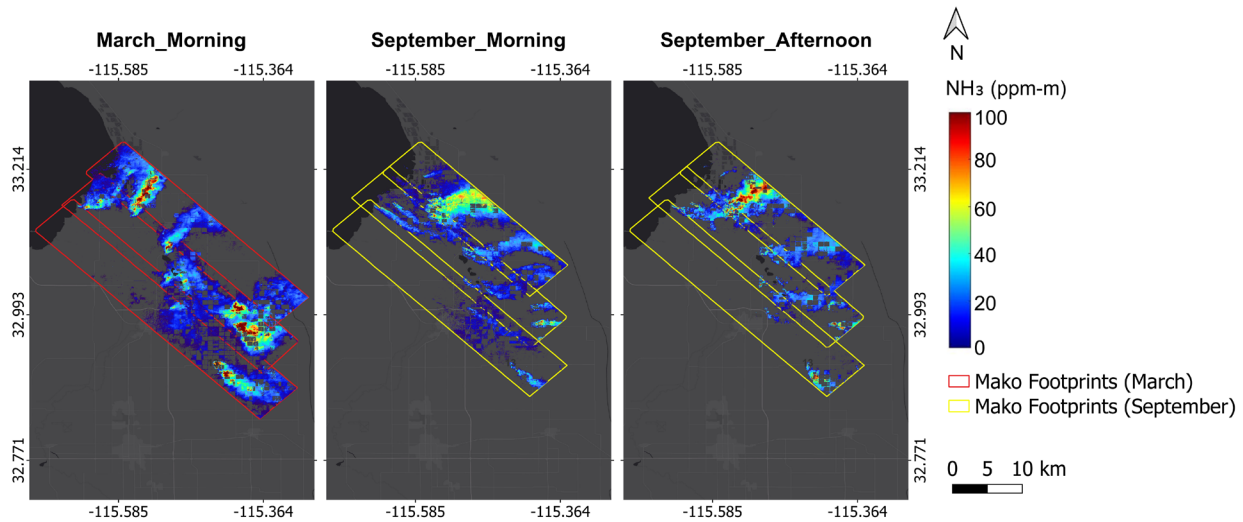


Figure S6. Retrieved NH_3 column density (ppm-m) maps over the Imperial study area during each airborne measurement session. Null pixels that did not meet the t-statistic and ΔT thresholds are rendered transparent. This figure is analogous to Figure 5 but without markers, providing a clearer depiction of the detected plume patterns. Map sources: Esri, HERE, Garmin, INCREMENT P, ©OpenStreetMap contributors, and the GIS User Community.

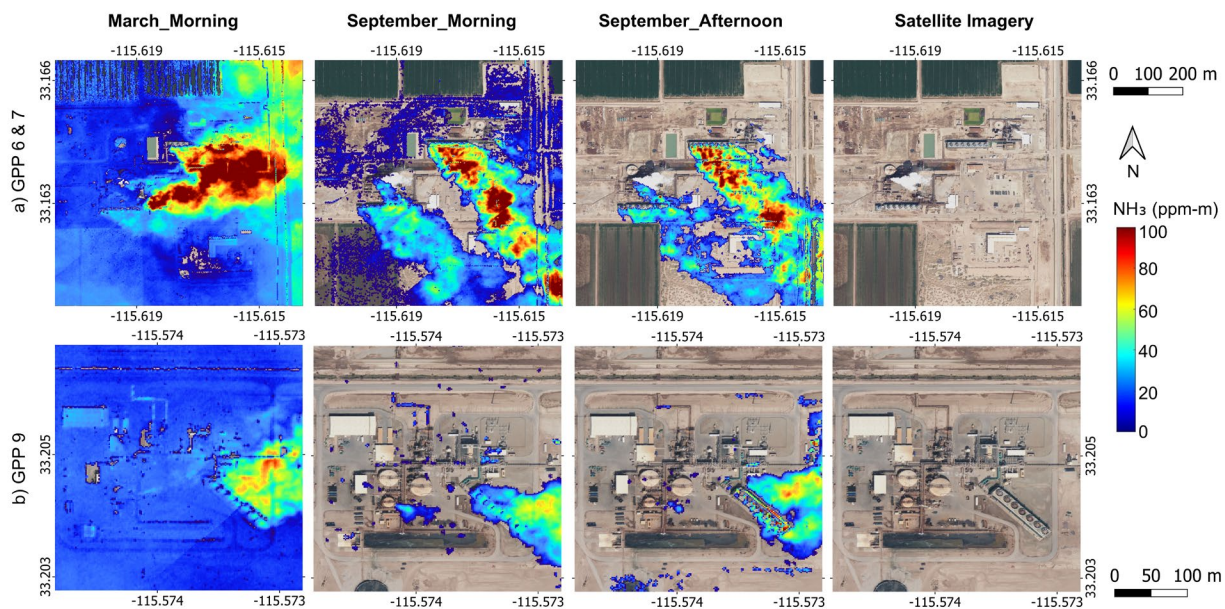


Figure S7 (a-b). Retrieved NH_3 column density (ppm-m) over geothermal power plants (GPP) 6, 7, and 9 in the Imperial study area during each airborne measurement session. Null pixels that did not meet the t-statistic and ΔT thresholds are rendered transparent. Google Earth imagery is included for reference. Map data ©2025 Google.

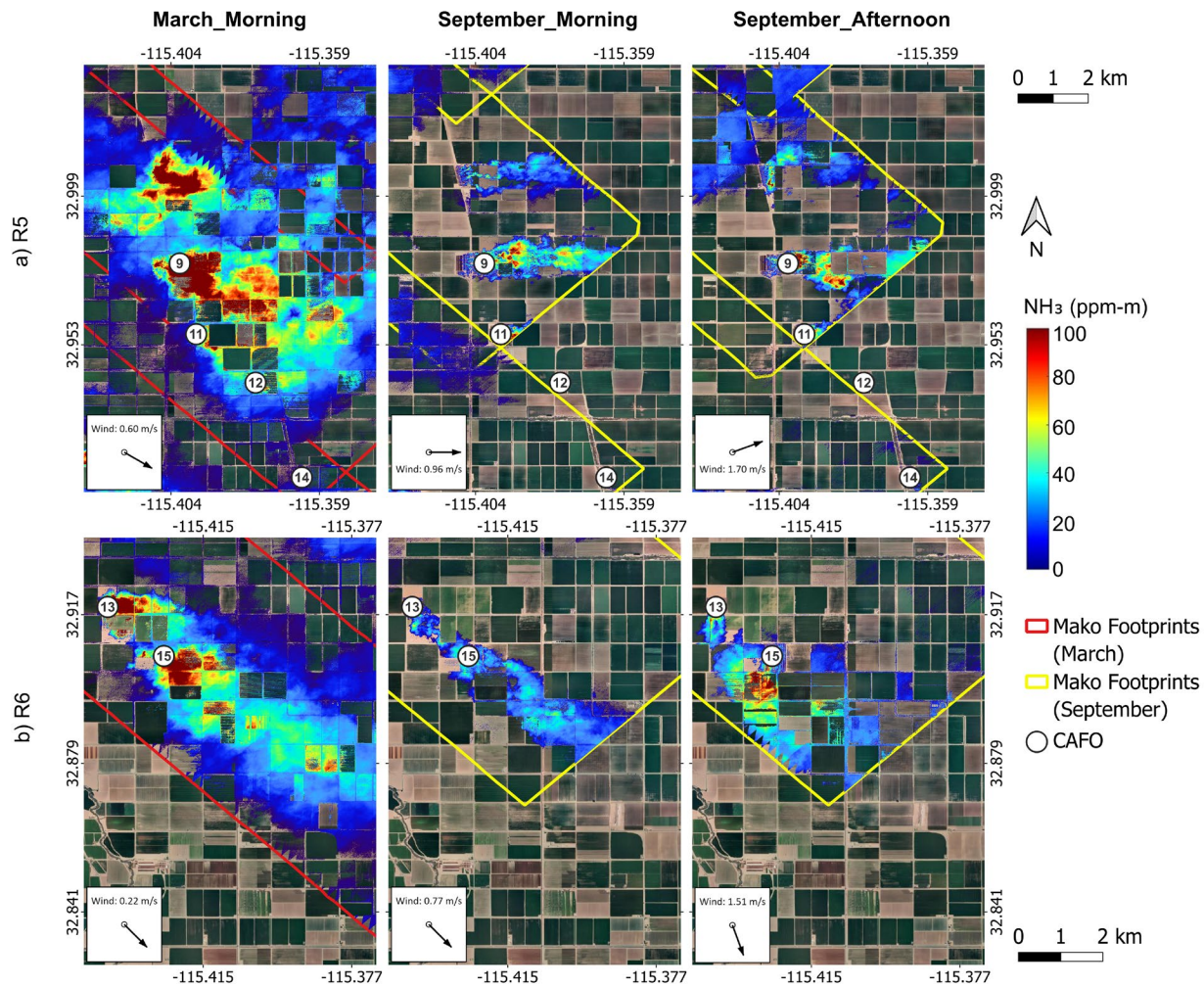


Figure S8 (a-b). Retrieved NH_3 column density (ppm-m) maps over predefined Regions 5–6 in Imperial during each airborne measurement session. Null pixels that did not meet the t-statistic and ΔT thresholds are rendered transparent. Wind directions were inferred from plume patterns, and average wind speeds were calculated from the nearest HRRR grid cells. Google Earth imagery is included for reference. Map data ©2025 Google.

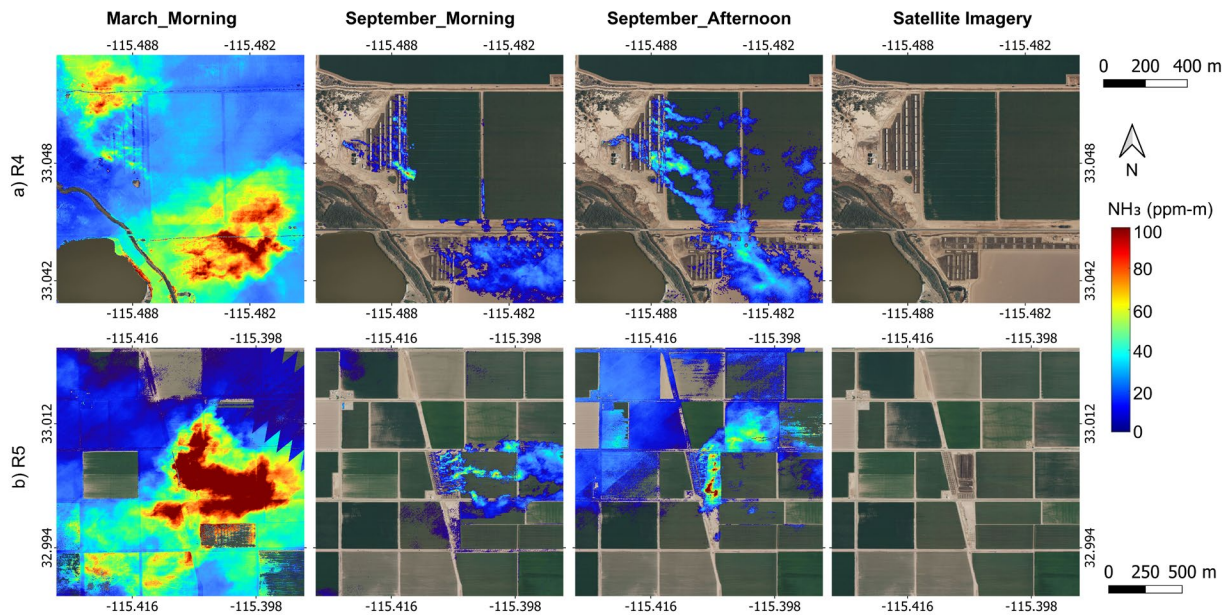


Figure S9 (a-b). Retrieved NH_3 column density (ppm-m) maps over sources not captured in existing records in regions 4 and 5 of the Imperial study area during each airborne measurement session. Null pixels that did not meet the t-statistic and ΔT thresholds are rendered transparent. Google Earth imagery is included for reference. Map data ©2025 Google.

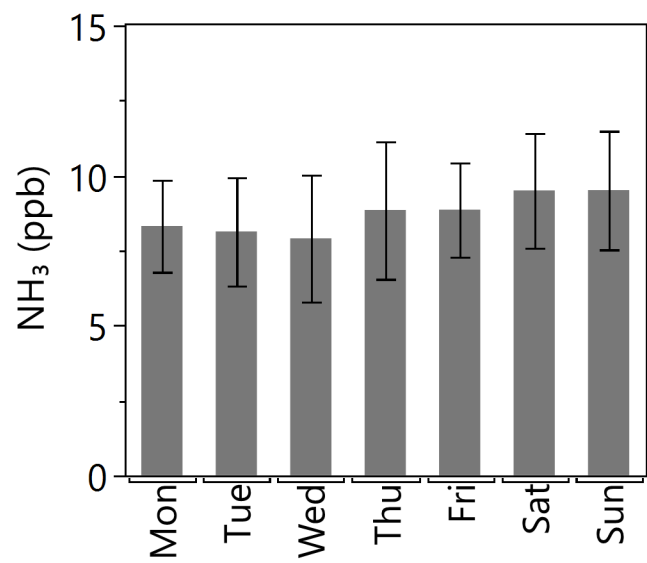


Figure S11. Average ground-level NH₃ concentrations (ppb) for each day of the week in 2023 measured at the Mecca air monitoring site. Error bars represent confidence intervals.

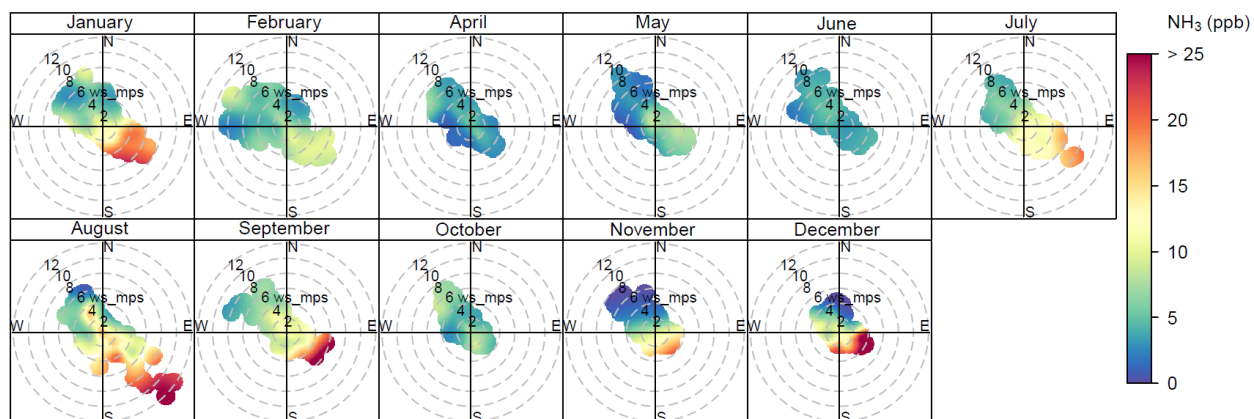


Figure S12. Monthly bivariate polar plots of ground-level NH_3 concentrations (ppb) in 2023, measured at the Mecca air monitoring site. March data is missing due to the NH_3 monitor being non-operational during that period.