

Environmental Impacts of Pastoral-Integrated Photovoltaic Power Plant in an Alpine Meadow on the Eastern Tibetan Plateau

5 Shaoying Wang^{1, 2}, Xianhong Meng^{1, 2}, Qian Li³, Zhenchao Li^{1,2}, Peipei Yang⁴,
Wenzhen Niu⁵, Lunyu Shang^{1,2}

¹Key Laboratory of Cryospheric Science and Frozen Soil Engineering, Northwest
10 Institute of Eco-Environment and Resources, Chinese Academy of Sciences, Lanzhou,
730000, China.

²Zoige Plateau Wetlands Ecosystem Research Station, Northwest Institute of Eco-
Environment and Resources, Chinese Academy of Sciences, Lanzhou, 730000, China.

³Shannxi Province Climate Center, Xi'an, 710014, China.

15 ⁴State Grid Lanzhou Electric Power Supply Company, Lanzhou, 730000, China.

⁵Wuling Power Ningxia Representative Office.

Correspondence to: Shaoying Wang (wangshaoying@lzb.ac.cn), Qian Li
(liqian2011@163.com)

20

25

Abstract: Rising global energy demand and the transition to low-carbon sources have driven the rapid expansion of photovoltaic (PV) power plants, introducing significant land-use changes with largely unexplored ecological consequences. This study examined the microclimatic and soil hydrothermal impacts of a pastoral-integrated PV power plant in an alpine meadow ecosystem on the eastern Tibetan Plateau. Year-round observations from two 10-meter towers, located inside and outside the PV power plant, revealed that PV installations increased annual net radiation by 28.9%, while reducing albedo and wind speed by 31.6% and 36.2%, respectively. Air temperature responses were highly asymmetrical, with daytime and summer warming but nighttime and winter cooling. The PV power plant induced strong spatial heterogeneity in soil temperature and moisture: At 5 cm depth, PV array gaps exhibited cold and moist conditions, whereas areas beneath the panels were cold and dry. These changes extended the soil frozen period by approximately 50 days and reduced the soil moisture depletion rate by 1.3 to 3.5 times compared to the reference site. These findings indicate that the PV power plant can alter local energy and water balances in ways that may buffer ecosystem responses to climate warming. However, further multi-year studies are needed to evaluate their long-term impacts on vegetation dynamics, carbon fluxes, and permafrost processes.

~~Rising global energy demand and the transition toward low-carbon energy sources have driven a rapid expansion of ground-mounted solar parks worldwide. This expansion constitutes a substantial land use change with largely unexplored implications for the ecosystems they occupy, particularly in the ecologically fragile and sensitive region of the Tibetan Plateau (TP). To assess the impacts of a typical photovoltaic (PV) power station on the alpine meadow ecosystem, this study conducted year-round observations of local microclimate and soil hydrothermal regimes within and adjacent to a pastoral-integrated PV plant on the eastern TP. The results show that PV installations significantly increase annual net radiation while reducing albedo and wind speeds. The influence of PV panels on air temperature is highly asymmetrical, with daytime heating, nighttime cooling, summer heating, and winter cooling. The PV arrays introduce notable spatial heterogeneity in soil hydrothermal regimes, show a cold-moist pattern in the array gaps and a cold-dry~~

distribution beneath the panels. Such changes extend the frozen period and reduces soil moisture depletion rates. Our findings suggest that PV arrays could, in fact, enhance ecosystem resilience to climate warming; however, further research is needed to assess their impacts on hydrological processes, carbon balance, and biodiversity.

Keywords: Photovoltaic power plant, Alpine meadow, Microclimate, Soil hydrothermal dynamics, Field observations

1. Introduction

Photovoltaic (PV) power generation is a critical solution for addressing the global energy crisis, mitigating climate change, and reducing environmental pollution (Kan et al., 2021; Právělie et al., 2019). In recent decades, significant strides in the solar energy industry have been driven by the global transition from carbon-intensive fossil fuels to renewable energy and the rapid decline in solar PV costs (Wei et al., 2024). As the global leader in the photovoltaic industry, China has maintained its dominant position in PV power generation, with cumulative installed capacity accounting for approximately one-third of the global total (Birol, 2022). In line with its carbon peaking and carbon neutrality goals, China is expected to continue rapidly expanding PV power generation nationwide.

Despite the clear advantages of PV power plants in clean energy production, their widespread deployment significantly alters local land surface properties and climate (Armstrong et al., 2016; Wei et al., 2024). These changes result primarily from the

combined effects of surface roughness, the dark surfaces of PV panels, their energy output, and heat released during power generation (Broadbent et al., 2019; Taha, 2013; Xu et al., 2024; Yang et al., 2017). However, the environmental impacts of PV power plants systems exhibit considerable regional variability, with studies reporting inconsistent trends and magnitudes of change depending on the local climate, ecosystem type, and PV power plants array-configuration.

For instance, PV power plants arrays significantly influence albedo, a critical land surface parameter that directly influences the surface energy balance and climate dynamics (Wei et al., 2024). Numerical simulations often assume a simplified albedo value of 0.1 for PV power plants arrays (Li et al., 2018; Lu et al., 2021), remote sensing and in-situ measurements typically report higher values, though with notable inconsistencies between the two methods (Chang et al., 2018; Li et al., 2022c; Wei et al., 2024; Xu et al., 2024; Yang et al., 2017). Similarly, PV power plants influence near-surface air temperatures, most field studies indicate that PV power plants panels

increase daytime air temperatures due to heat released during electricity generation, a phenomenon similar to the urban heat island effect (Armstrong et al., 2016; Broadbent et al., 2019; Fthenakis and Yu, 2013; Yang et al., 2017; Zheng et al., 2023). For example, Yang et al. (2017) showed that PV power plants panels in desert areas can increase both daytime and nighttime 2m air temperatures by approximately 0.7°C and 0.1°C, respectively, due to the heat released during power generation and the heat retention effect near the ground. In arid regions of California, Barron-Gafford et al. (2016) found that PV power plants panels raised summer 2.5m air temperatures by more than 3°C compared to nearby wildlands. However, Keiko et al. (2009) conducted research on large-scale PV power plants in desert regions and found that PV modules had a self-cooling mechanism at night, with temperatures 2–4°C lower than the surrounding atmospheric temperature when sunlight ceased. These significant variations in the environmental impacts of solar farms may be attributed to differences in their characteristics, such as type, spatial scale, capacity, installation methods, and background environmental conditions (Xu et al., 2024). These discrepancies highlight the need for observational studies to better understand the impacts of PV power plants

~~arrays~~ across diverse climate zones and surface types.

The Tibetan Plateau (TP), known as the "Third Pole," is one of the most ecologically fragile regions on earth, playing a crucial role in global climate regulation. Its complex soil freeze-thaw dynamics, important water conservation functions, and substantial carbon release potential make it highly sensitive to environmental disturbances (Chen et al., 2016; Yao et al., 2022). Additionally, the TP's long daylight hours, high solar radiation intensity, low temperatures and vast areas create ideal natural conditions for the development of PV industries (Li et al., 2022a; Tang et al., 2013; Wang and Qiu, 2009). In recent years, PV power plants have proliferated across the TP (Lyu et al., 2024), yet their impacts on microclimate and soil hydrothermal conditions, particularly in alpine meadows, remain underexplored. While extensive research exists on PV-induced microclimatic changes in deserts, a critical gap remains in understanding their effects on alpine ecosystems, which are both ecologically fragile and climate-sensitive. To address this gap, this study investigates the effects of a pastoral-integrated PV power plant on the microclimate and soil hydrothermal conditions of an alpine meadow on the eastern TP. Field observations were conducted at two neighboring sites within the Dongneng PV ~~power plant solar park~~ to monitor key variables, including air temperature, humidity, radiation balance, and soil hydrothermal conditions. The primary aim of this research is to evaluate and quantify the environmental impacts of PV ~~power~~ plant deployment in this unique ecosystem, providing valuable insights into the environmental consequences of large-scale PV ~~power plant power generation~~. This work seeks to contribute to a deeper understanding of the environmental effects of renewable energy and offer insights for sustainable development as PV energy continues to expand.

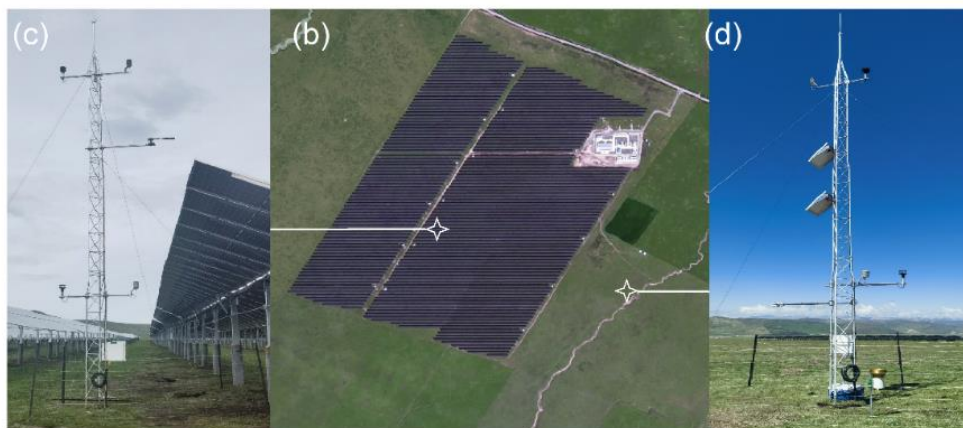
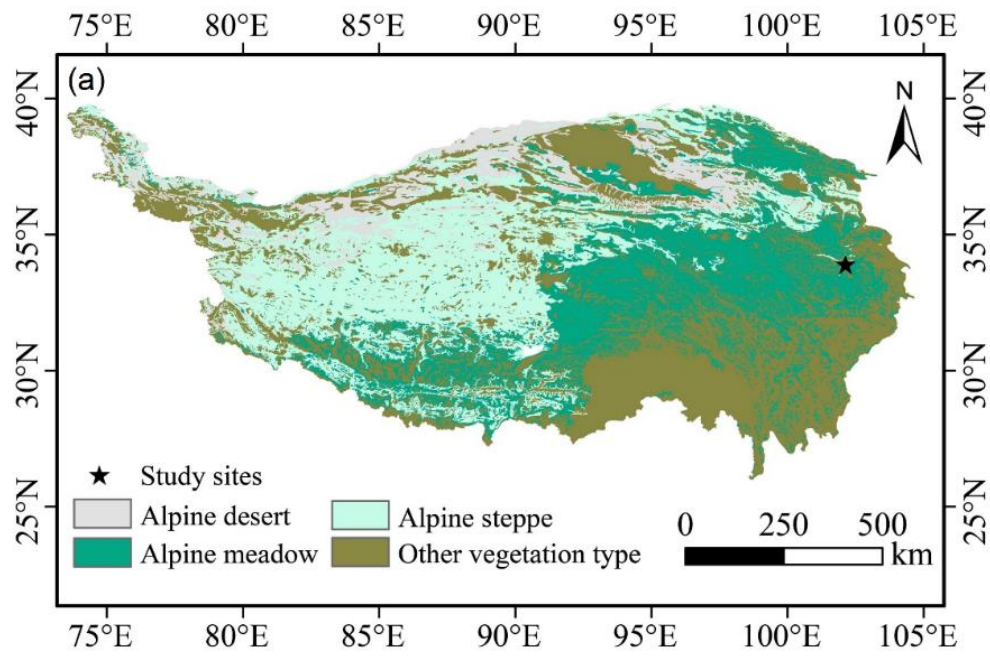
2. Site and Method

2.1 Site description

The Dongneng PV power plant (34°3'19.5"N, 101°53'17.6"E) is situated in Maqu, Gansu Province, on the eastern Tibetan Plateau at an altitude of 3440 m (Figure ~~0~~1a).

The region's climate is classified as a sub-frigid humid zone based on China's climate regionalization (Zheng et al., 2010). The nearest meteorological station, located approximately 15 km from the study site, recorded a mean annual precipitation of 607 mm and an average air temperature of 1.84 °C from 1971 to 2020. ~~The study area features alpine meadow vegetation dominated by *Stipa aliena*, *Potentilla anserina*, and *Scirpus pumilus*, with average vegetation heights of 0.3 m in summer and 0.1 m in winter.~~ The PV power plant, located on flat terrain, was constructed in September 2021 and became operational in August 2022. It has a capacity of 50 MW and utilizes bifacial photovoltaic panels (LONGi Green Energy Technology Co., Ltd.) with a photoelectric conversion efficiency of 21.1%. The arrays are south-facing, spaced 8 m apart, and fixed at an inclination angle of 36°. The panels are mounted 1.7 m and 4.4 m above the ground at their lower and upper edges, respectively.

This study deployed two 10-m towers (Fig. 01b): one within the PV power plant (PV site, Fig. 01c) and another reference site (RF site, Figure 1d) in an unmodified alpine meadow, approximately 180 m to east edge of the PV power plant. Both sites were situated within the same contiguous open alpine meadow without physical barriers or fencing, and both are situated on flat terrain with similar slope and aspect. The average vegetation heights of 0.3 m in summer and 0.1 m in winter. Free-ranging sheep grazing by local herders was conducted across the entire area from May to September annually. Given that both sites were subject to identical grazing regimes and stocking densities, potential impacts of trampling and grazing intensity on soil properties and vegetation were assumed to be comparable between the two locations.



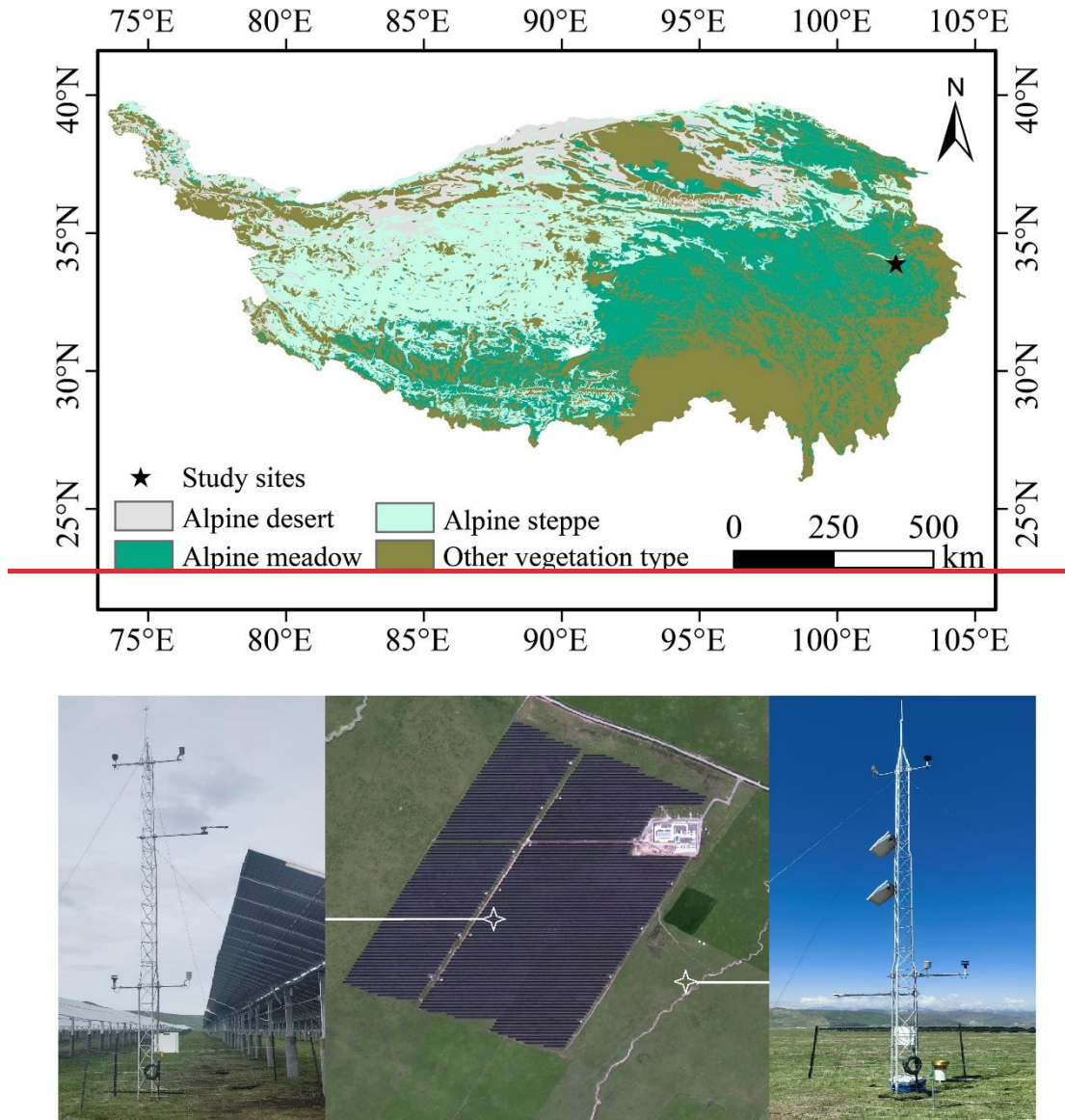


Figure 01. Map and photographs showing (a) location of the Dongneng solar power plant on the Tibetan Plateau. The study sites are marked with a star. (b) Google Earth image of the Dongneng solar power plant and its surrounding area. (c) Measurement tower installed within the PV power plant (PV site). (d) Measurement tower installed at the reference site (RF site) in an unmodified alpine meadow.

Soil samples collected from both the PV and RF sites were classified as sandy loam. At the RF site, bulk density was $0.71 \pm 0.07 \text{ g cm}^{-3}$ at 5 cm depth and $0.87 \pm 0.09 \text{ g cm}^{-3}$ at 10 cm depth. At the PV site, bulk density beneath the PV panels was $0.72 \pm 0.08 \text{ g cm}^{-3}$ and $0.84 \pm 0.05 \text{ g cm}^{-3}$ at 5 cm and 10 cm depths, respectively, while it was $0.76 \pm 0.10 \text{ g cm}^{-3}$

180 cm^{-3} and $0.99 \pm 0.05 \text{ g cm}^{-3}$ for the area between the panel rows at the same depths.
There were no significant differences in bulk density among positions at 5 cm depth ($p > 0.05$, paired t-test). However, at 10 cm depth, bulk density between the panel rows was
185 significantly higher than that beneath the PV panels and at the RF site ($p < 0.05$, paired t-test). The slightly higher bulk density at the PV site may result from anthropogenic
soil compaction associated with construction and maintenance activities. Vegetation
surveys conducted during the peak growing season using $0.3 \text{ m} \times 0.3 \text{ m}$ quadrats
showed vegetation cover exceeded 95% at all positions, with *Stipa aliena*, *Potentilla*
anserina, and *Scirpus pumilus* identified as the dominant species.

2.2 Measurements

190 ~~This study deployed two 10-m towers (Fig. 01b): one within the PV array (PV site, Fig. 01c) and another reference site (RF site, Figure 01d) in an unmodified alpine meadow, approximately 180 m east of the PV farm.~~ The RF site served as a baseline for
comparing environmental conditions in areas impacted by the PV power plant farm. Air
temperature and humidity were recorded using HC2A-S3 sensors (Rotronic Instrument
195 Corp., Switzerland) at 2.5 m and 10 m heights on both towers. Wind speed and direction
were measured with WindSonic4 sensors (Gill Instruments, UK) at the same heights to
evaluate the PV power plant array's effect on local airflow patterns. Four-component
radiation measurements (CNR-4, Kipp and Zonen, Netherlands) were taken at 2 m for
the RF site and at 7 m for the PV site to assess the differences in radiation balance above
200 the PV power plant array and over the natural meadow. Soil temperature (CS109,
Campbell Scientific, Inc., USA) and moisture (CS616, Campbell Scientific, Inc., USA)
were measured at depths of 5 cm and 10 cm. At the PV site, sensors were installed
beneath the PV panels and in the inter-row gaps to assess the hydrothermal effects of
shading. All sensors were set to a sampling frequency of 1 Hz, with data averaged every
205 10 minutes by the CR1000 data loggers (Campbell Scientific, Inc., USA). Data were
collected continuously over a one-year period, from June 2023 to May ~~2023~~2024, to
capture seasonal variations in microclimate and soil hydrothermal conditions. _

2.3 Data processing

To ensure data quality, the study applied the following quality control measures: (1) ~~the~~ short-wave radiation values at night ~~was-were~~ set to zero according to the solar altitude angle ; (2) ~~daytime downward removed-downward-sshortwave radiation values~~ exceeding the solar constant (1361 W/m²) ~~during-the-daytimewere removed;~~ ~~+~~ ~~and~~ (3) ~~the median absolute deviation (MAD) methodused the MAD-method~~ (Mauder et al., 2013) ~~were used to fordetect~~ outlier ~~detection~~ in temperature and humidity data. If three ~~or more~~ consecutive outliers were ~~presentdetected~~, they were not considered as actual anomalies. As a result of these procedures, more than 99% of the 10-minute microclimatic and soil hydrothermal data were preserved for the observation period from June 2023 to May 2024, with no continuous data gaps exceeding 1 hours. The data gaps were filled using linear interpolation with a centered 12-point (2-hour) moving window. Daily means were calculated only when at least 75% of 10-minute records were available for a given day. Seasonal and annual averages were computed from daily values with no gap-filling.

2.4 Method

Net radiation (R_n) was calculated as the sum of downward shortwave radiation (DR) and downward longwave radiation (DLR), minus upward shortwave radiation (UR) and upward longwave radiation (ULR):

$$R_n = DR + DLR - UR - ULR \quad (1)$$

Corresponding, surface albedo (α) was calculated as the ratio of upward to downward shortwave radiation:

$$\alpha = UR / DR \quad (2)$$

To assess the statistical significance of differences between the PV and reference sites, paired Student's t-tests were conducted for seasonal and annual averages of key microclimatic and soil variables.

To assess the relative importance of environmental drivers influencing soil moisture dynamics during dry periods, we applied a Boosted Regression Tree (BRT) modeling

approach (Elith et al., 2008). BRT is an ensemble machine learning method that combines the strengths of regression trees and boosting algorithms, allowing for flexible modeling of nonlinear relationships and high-order interactions among predictors. The response variable was the daily mean soil water content, while predictor variables included near-surface air temperature, vapor pressure deficit, wind speed, and shallow soil temperature. The analysis was performed separately for the RF site, the PV array gap, and beneath-panel locations. All predictors were standardized prior to model fitting, and model hyperparameters were optimized to minimize predictive deviance using 10-fold cross-validation.

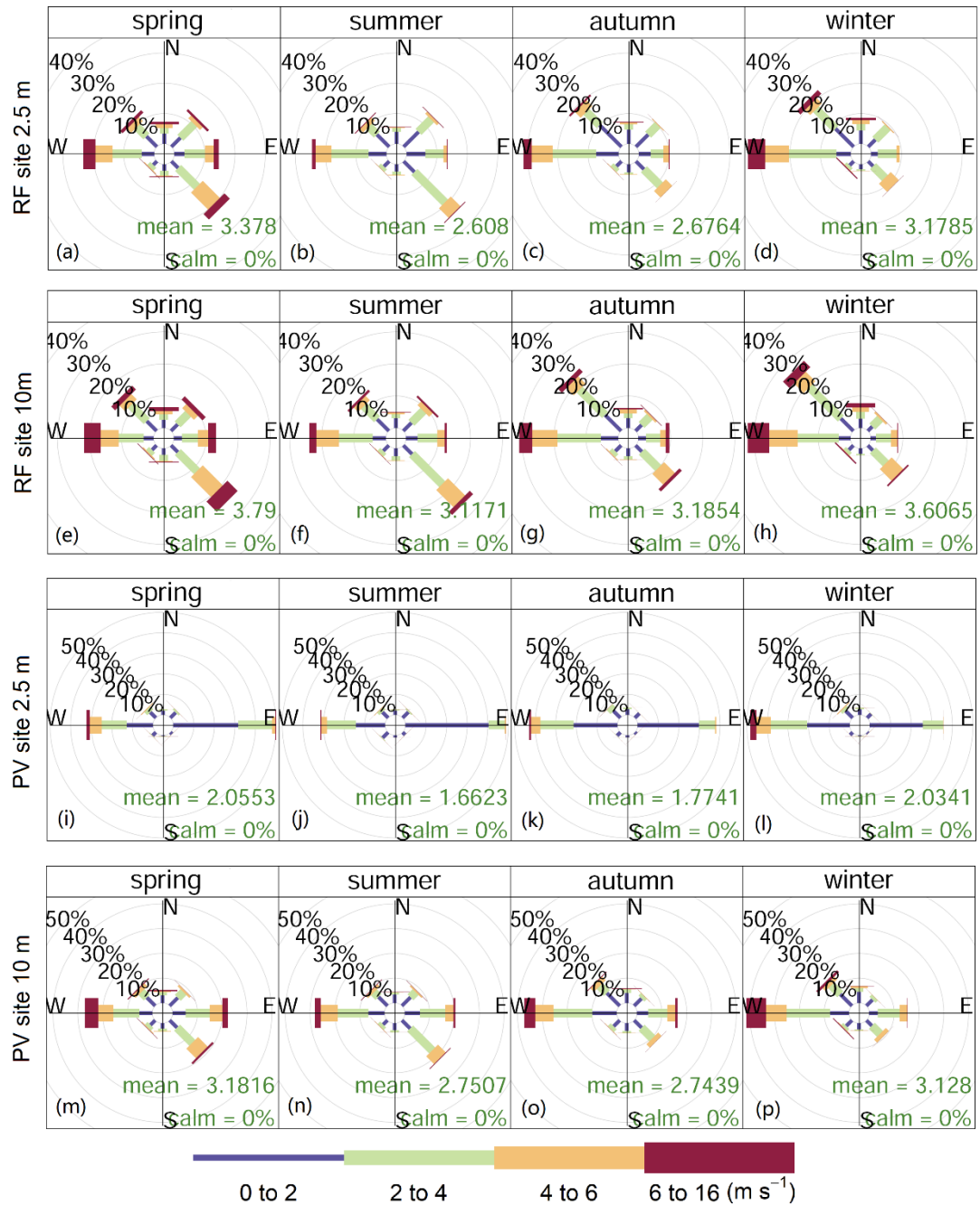


Figure 2. Seasonal wind roses at 2.5 m and 10 m heights for the RF site (a–h) and PV site (i–p) during spring, summer, autumn, and winter. The mean wind speed (m/s) is shown below each wind rose.

250 3. Results and discussion

3.1 The effect of PV ~~power plant~~arrays on wind regimes

During the observation period, the PV site experienced prevailing winds predominantly from the west and southeast (Figure 02). The structured layout of the PV panels redirected airflow primarily toward the east and west, contrasting with the more
255 variable wind directions observed at the RF site. At a height of 2.5 m, beneath the upper edge of the PV panels, west and east winds accounted for 48% of total airflow in summer and 57% in winter, compared to 38% and 43% at the RF site.

The presence of PV panels increased surface roughness, enhancing frictional drag and obstructing near-surface wind flow. Consequently, wind speeds at a height of 2.5 m
260 decreased by 39.1% in spring, 36.0% in summer, 33.6% in fall, and 36.2% in winter ($p < 0.001$ for all seasons, paired t-test). The reduction was most pronounced for southeast winds, exceeding 70% ($p < 0.001$, paired t-test), while the impact on west winds was relatively minor, with wind speed reductions of approximately 30% ($p < 0.001$, paired t-test).

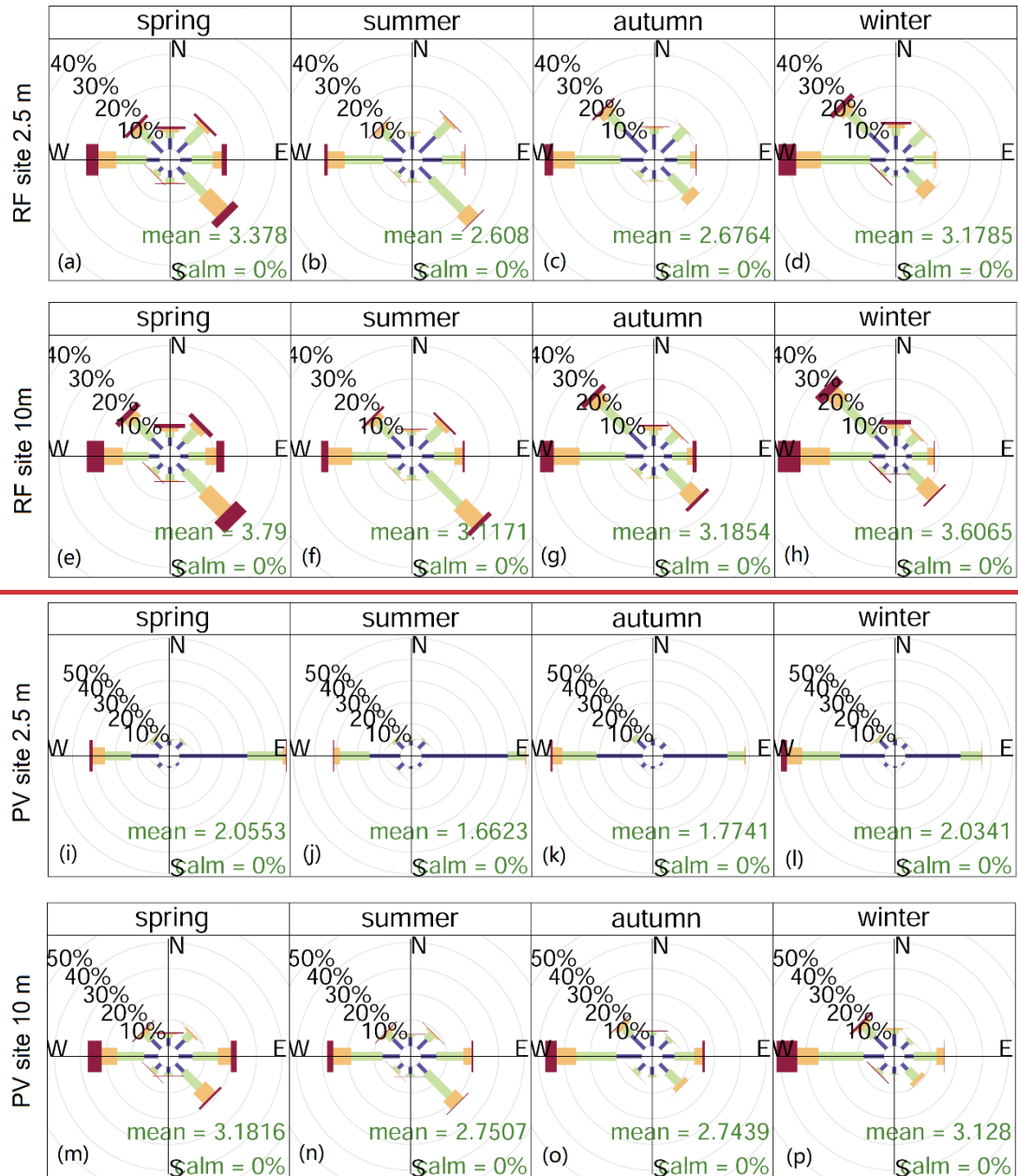
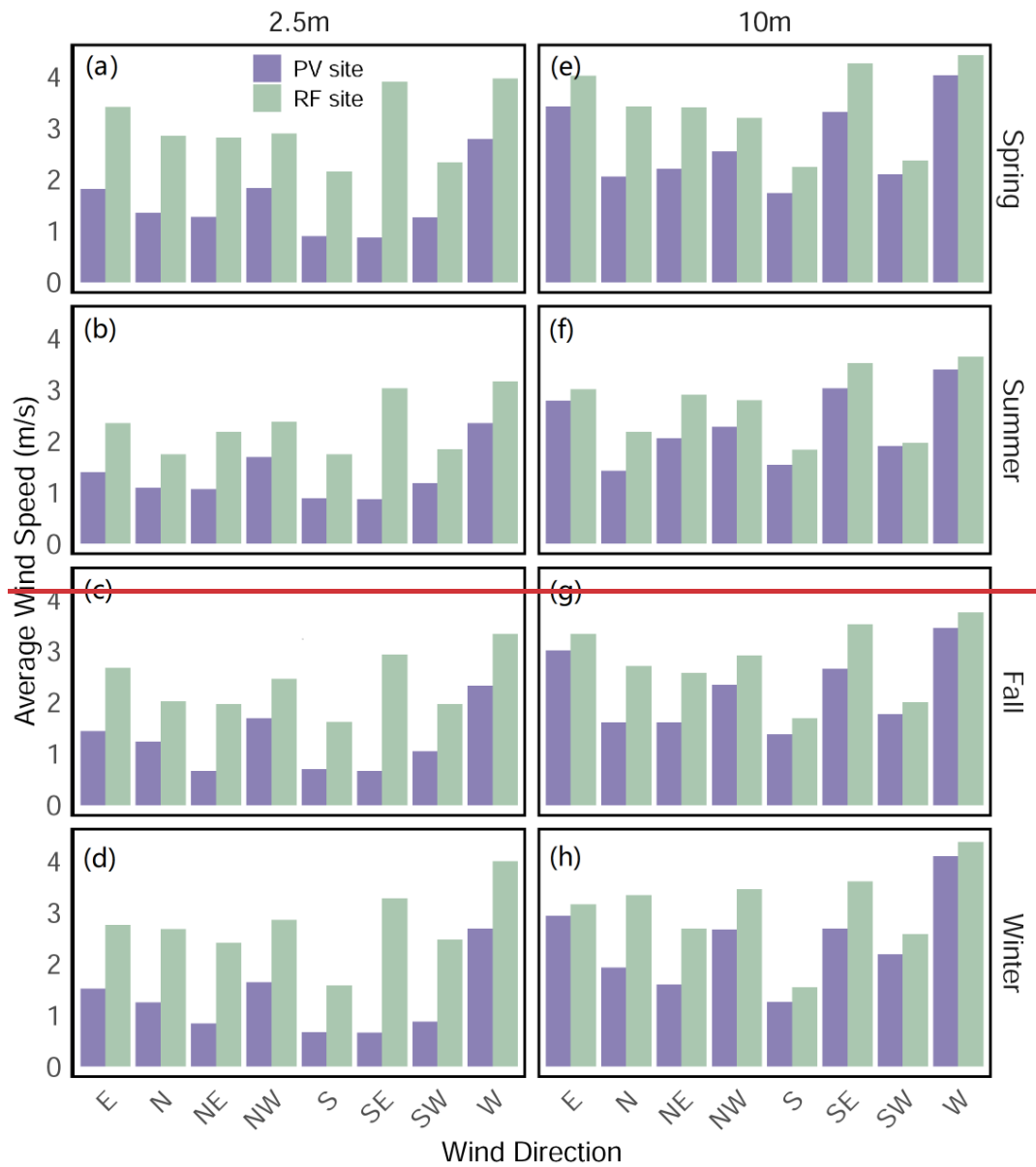


Figure 02 The wind roses at two comparative sites.

At 10 m, above the top edge of the PV panels, the directional redistribution of airflow by the panels remained consistent. West and east winds accounted for 48% of the total in summer and 56% in winter, compared to 36% and 40% at the RF site. However, the obstructive effect of the PV panels on wind speed was ~~less pronounced~~ also significant at this height, with reductions of 15.8% in spring, 11.9% in summer, 14.1% in fall, and 13.3% in winter. ($p < 0.01$ for all seasons, paired t-test) North winds experienced the largest reductions (approximately 40%) ($p < 0.001$, paired t-test), while west winds were minimally affected, with reductions of around 7% ($p < 0.05$, paired t-test).

275 These findings reveal a pronounced directional dependence of the PV panels' influence on wind regimes, consistent with previous studies (Jiang et al., 2021; Li et al., 2022b). However, variations in the magnitude of effects can be attributed to differences in PV field layouts and background climatic conditions.



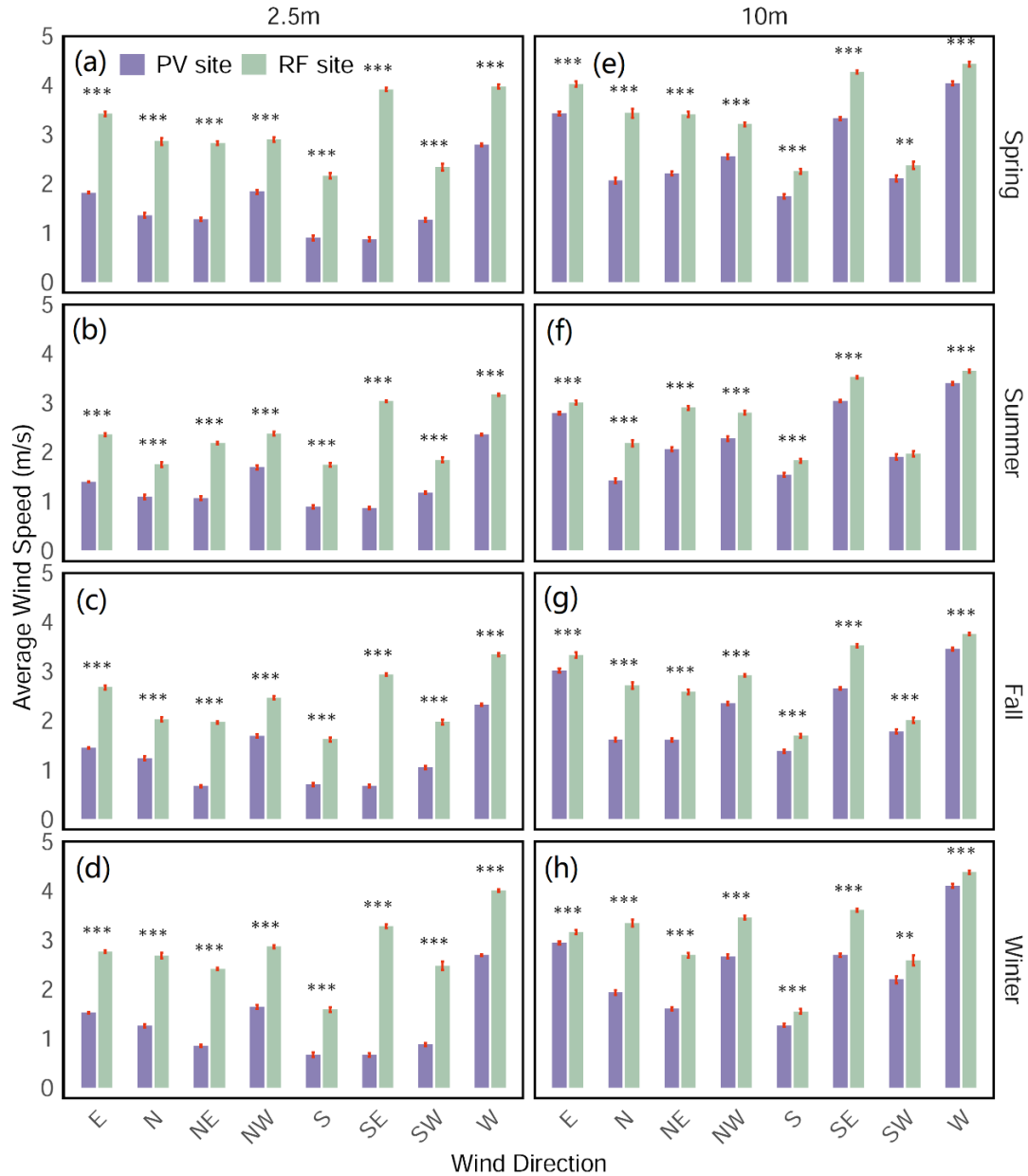
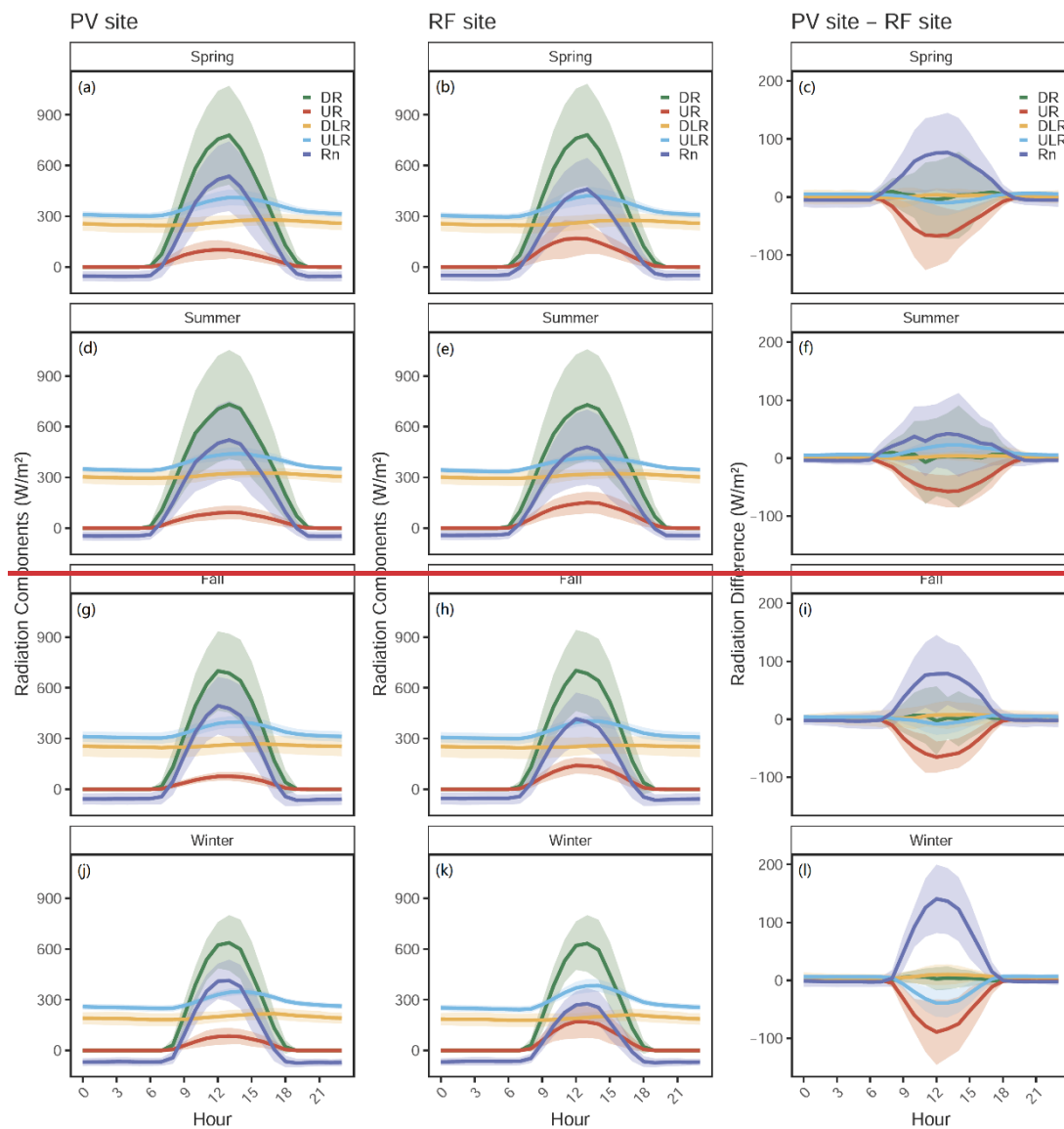


Figure-Figure 03. Seasonal variations in average wind speed (m/s) by direction at 2.5 m (a–d) and 10 m (e–h) heights for the PV site and RF site during spring, summer, autumn, and winter. Error bars represent standard deviations, and asterisks indicate statistically significant differences (* $p < 0.05$, ** $p < 0.01$, *** $p < 0.001$). Seasonal variations in average wind speed by direction at 2.5 m and 10 m heights for PV and RF sites.

3.2. The effect of PV power plant panels on surface radiation components

As shown in Figure 04 and Table 01, downward shortwave radiation (DR) and downward longwave radiation (DLR) measured above the PV panels were comparable to those observed over the natural meadow, with no statistically significant differences in daily totals across all seasons ($p > 0.05$, paired t-test).—However, upward shortwave

radiation (UR) was substantially significantly reduced above the PV panels at the PV site due to their-the strong solar absorption of the PV panels. This reduction was particularly pronounced in the peak values of the seasonal average diurnal variations. The peak UR values were approximately 38% lower in summer and 50% lower in winter at the PV site ($p < 0.001$, paired t-test). The daily total UR at the PV site was significantly lower than at the RF site across all seasons ($p < 0.001$, paired t-test), with reductions of ~~by~~ 36.7% in spring, 36.8% in summer, 43.2% in fall, and 47.8% in winter. On an annual scale, the UR at the PV site was reduced by 40.8% compared to the RF site ($p < 0.001$, paired t-test). -(Table 01).



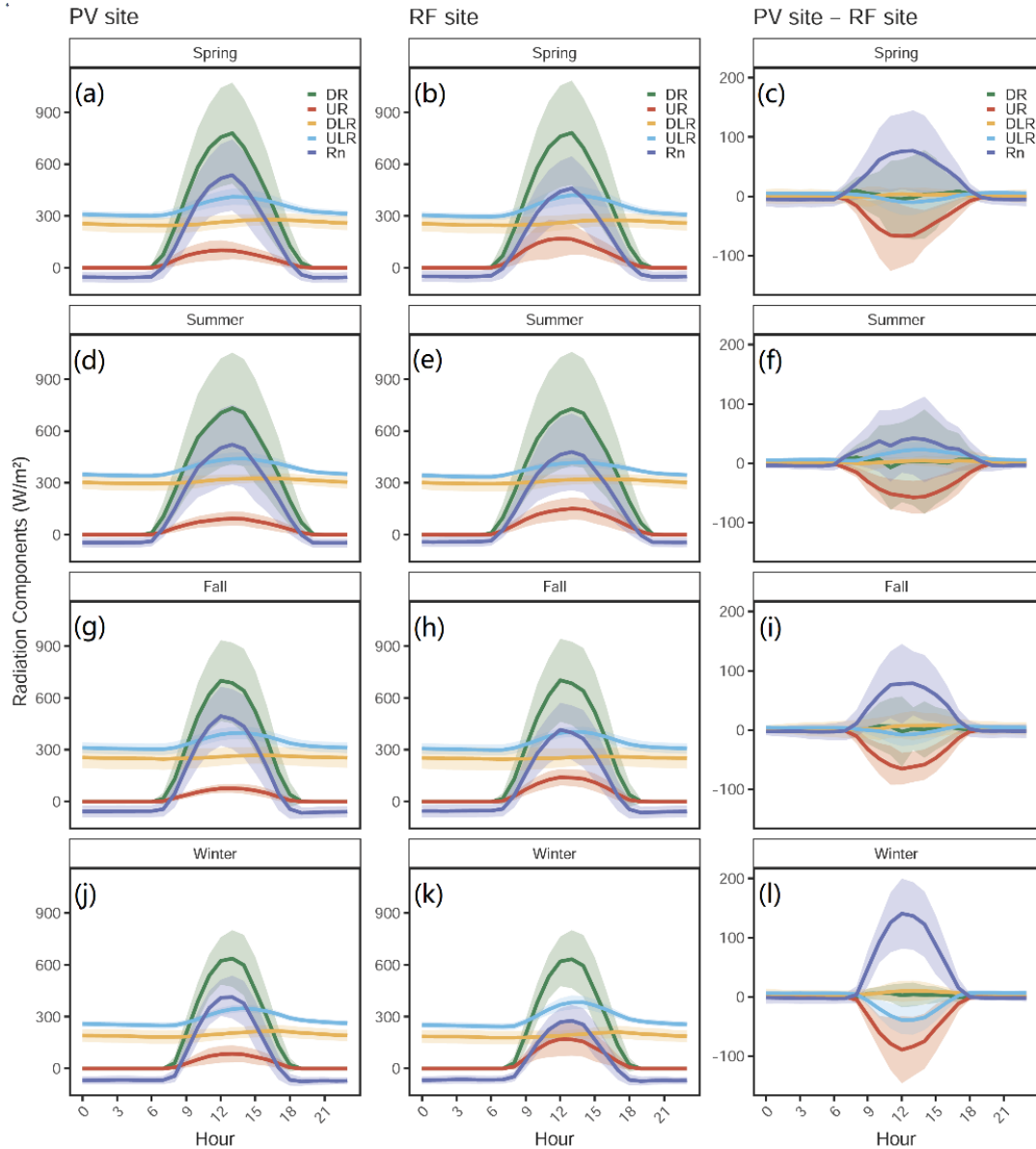


Figure 4. Seasonal averaged diurnal variations in radiation components at the PV site (a, d, g, j), RF site (b, e, h, k), and their differences (c, f, i, l) during spring, summer, autumn, and winter. Radiation components include downward shortwave radiation (DR), upward shortwave radiation (UR), downward longwave radiation (DLR), upward longwave radiation (ULR), and net radiation (Rn). Shaded areas around the lines represent standard deviations.

Figure 04 Seasonal averaged diurnal variations in radiation components and their differences between PV and RF sites.

Table 01. Averaged daily total radiation (MJ) components for PV and RF sites. Statistical significance between sites for each radiation component is denoted by asterisks (* $p < 0.05$, ** $p < 0.01$, *** $p < 0.001$)

		PV site	RF site	Relative change
DR	Spring	20.48±5.79	20.33±5.92	0.7%
	Summer	20.99±7.42	20.82±7.50	0.8%
	Fall	16.94±5.08	16.83±5.13	0.6%
	Winter	14.12±3.13	14.00±3.21	0.9%
	Annual	18.13±6.20	17.99±6.26	0.8%
UR	Spring	2.93±1.25	4.63±2.01	-36.7%***
	Summer	2.85±1.05	4.51±1.63	-36.8%***
	Fall	2.04±0.67	3.59±1.13	-43.2%***
	Winter	2.04±1.18	3.90±2.05	-47.8%***
	Annual	2.46±1.14	4.16±1.79	-40.8%***
DLR	Spring	22.54±2.76	22.46±3.03	0.4%
	Summer	26.77±3.65	26.59±3.73	0.7%
	Fall	22.15±4.49	21.95±4.70	0.9%
	Winter	15.94±2.42	15.81±2.42	0.8%
	Annual	21.85±4.80	21.70±5.00	0.7%
ULR	Spring	29.52±1.92	29.41±1.77	0.4 %**
	Summer	32.12±3.54	31.90±3.40	0.7%**
	Fall	29.04±2.54	28.88±2.21	0.6%**
	Winter	24.48±1.04	24.85±1.03	-1.5%***
	Annual	28.79±3.76	28.76±3.22	0.1%**
Rn	Spring	10.56±3.15	8.75±3.06	20.7%***
	Summer	12.79±4.18	11.00±3.77	16.3%***
	Fall	8.01±3.58	6.31±3.69	26.8%***
	Winter	3.55±2.11	1.05±1.42	238.1%***
	Annual	8.73±4.39	6.78±4.63	28.8%***

The daily surface albedo (α) at the PV site was 0.184159±0.074 in spring, 0.159144±0.013 in summer, 0.161139±0.027 in fall, and 0.228168±0.073 in winter. Compared to the RF site, the PV power plantarray significantly reduced the albedo by 2934.4.9%, 33.66.9%, 33.48.5%, and 30.141.5%, respectively (p < 0.001 for all seasons, paired t-test). At an annual scale, installation of a PV power plantfield led to a 31.566% decrease in surface albedo compared to the alpine meadow (p < 0.001, paired t-test). As summarized in Table 02, the reduction in albedo of this alpine meadow is slightly lower than the average findings over desert areas at annual and seasonal scales (Broadbent et al., 2019; Li et al., 2022c; Stern et al., 2023; Yang et al., 2017; Ying et al., 2023), but much higher than that observed over barren areas (Chang et al., 2018) and water body

(Ying et al., 2023). The reduction in this study aligns with the finding that the higher the albedo of the background surface, the more pronounced the relative change in surface albedo over the PV ~~power plant~~farm (Xu et al., 2024).

For upward longwave radiation (ULR), although the daily cumulative values between the two sites are relatively similar ~~(Table 1)-(Table 04),~~ the differences in seasonal and annual averages are statistically significant ($p < 0.01$, paired t-test). Additionally, ~~their variations differ~~differences vary between day~~time~~ and night~~time~~ ~~as well as across seasons.~~ During nighttime, ULR at the PV site is consistently slightly higher than that at the RF site across all seasons, with an average increase of approximately 5.0 W m^{-2} . However, during the daytime, seasonal variations showed contrasting patterns. In spring, fall, and winter, the PV site recorded lower ULR than the RF site. The daytime greatest negative deviation being most pronounced in winter (-39.0 W m^{-2}), followed by spring (-10.1 W m^{-2}) and autumn (-8.0 W m^{-2}).

PV ~~power~~ plant effects on ULR, which vary between daytime and nighttime as well as across different seasons, have also been observed in previous studies (Broadbent et al., 2019; Chang et al., 2018; Jiang et al., 2021; Li et al., 2022b; Yang et al., 2017). The underlying reasons for these variations are primarily attributed to three interrelated factors: (1) the lower emissivity of PV modules (~ 0.83) (Broadbent et al., 2019) compared to natural surface ($0.95\text{--}1$) (Campbell and Norman, 1998), which reduce ULR; 2) the cavity effect (Broadbent et al., 2019), where semi-enclosed spaces beneath PV modules cause repeated radiative exchanges, enhancing ULR; and 3) differences in land surface temperature (LST), which influences ULR patterns depending on the season and time of day (Chang et al., 2018; Yang et al., 2017). Wang et al. (2024b) reported that the PV site exhibited higher land surface temperatures (LST) during nighttime and the warm-season daytime, but lower LST during the daytime in the cold season. This result ~~suggests~~suggests that during both nighttime and warm-season daytime, the elevated LST at the PV site exerts a positive influence on ULR, while the reduced LST at the PV site during the cold-season daytime has a negative effect, diminishing ULR.

In this study, we infer that the higher ULR observed at the PV site during both nighttime

and summer daytime is primarily due to the combined positive effects of the cavity effect and the higher LST, which outweigh the negative effect of the PV modules' lower emissivity. Conversely, the lower ULR at the PV site compared to the reference site during the daytime in spring, autumn, and winter likely results from the dominant negative effects of lower LST and the PV modules' lower emissivity, which surpass the positive effect of the cavity effect.

Table 2. Comparison of in-situ albedo observations across different PV power plant sites.

<u>Location</u>	<u>Land cover</u>	<u>In-situ albedo observations</u>			<u>Source</u>
		<u>Background</u>	<u>Absolute change</u>	<u>Relative change</u>	
<u>36.136°N</u> <u>100.588°E</u>	<u>Barren</u>	<u>0.17^{Summer}</u>	<u>-0.01</u>	<u>-6.30%</u>	<u>Chang et al. (2018)</u>
<u>36.136°N</u> <u>100.588°E</u>	<u>Barren</u>	<u>0.19^{Winter}</u>	<u>0.02</u>	<u>11%</u>	<u>Chang et al. (2018)</u>
<u>36.503°N</u> <u>95.233°E</u>	<u>Desert</u>	<u>0.26^{Annual}</u>	<u>-0.07</u>	<u>-27%</u>	<u>Yang et al. (2017)</u>
<u>44.410°N</u> <u>87.660°E</u>	<u>Desert</u>	<u>0.23^{Summer}</u>	<u>-0.09</u>	<u>-39.10%</u>	<u>Li et al. (2022c)</u>
<u>44.410°N</u> <u>87.660°E</u>	<u>Desert</u>	<u>0.22^{Summer}</u>	<u>-0.08</u>	<u>-36.40%</u>	<u>Ying et al. (2023)</u>
<u>29.965°N</u> <u>35.059°E</u>	<u>Desert</u>	<u>0.38^{Annual}</u>	<u>-0.21</u>	<u>-55.20%</u>	<u>Stern et al. (2023)</u>
<u>32.555°N</u> <u>111.284°W</u>	<u>Desert</u>	<u>0.31^{October to June}</u>	<u>-0.11</u>	<u>-35.50%</u>	<u>Broadbent et al. (2019)</u>
<u>32.303°N</u> <u>119.793°E</u>	<u>Water body</u>	<u>0.101^{annual}</u>	<u>-0.019</u>	<u>-18.80%</u>	<u>Li et al. (2022b)</u>
<u>34.055°N</u> <u>101.888°E</u>	<u>Alpine meadow</u>	<u>0.242 ± 0.093^{Spring}</u>	<u>-0.083</u>	<u>-34.40%</u>	<u>This study</u>
<u>34.055°N</u> <u>101.888°E</u>	<u>Alpine meadow</u>	<u>0.229 ± 0.017^{Summer}</u>	<u>-0.084</u>	<u>-36.90%</u>	<u>This study</u>
<u>34.055°N</u> <u>101.888°E</u>	<u>Alpine meadow</u>	<u>0.227 ± 0.032^{Fall}</u>	<u>-0.087</u>	<u>-38.50%</u>	<u>This study</u>
<u>34.055°N</u> <u>101.888°E</u>	<u>Alpine meadow</u>	<u>0.288 ± 0.101^{Winter}</u>	<u>-0.12</u>	<u>-41.50%</u>	<u>This study</u>
<u>34.055°N</u> <u>101.888°E</u>	<u>Alpine meadow</u>	<u>0.246 ± 0.075^{annual}</u>	<u>-0.085</u>	<u>-40.00%</u>	<u>This study</u>

The net radiation (R_n) differences between the PV and RF sites also showed clear

seasonal dependencies. The PV site exhibited higher R_n across all seasons ($p < 0.001$ paired t-test), with peak diurnal variations exceeding the RF site by 76.8 Wm^{-2} in spring, 42.0 Wm^{-2} in summer, 78.8 Wm^{-2} in fall, and 140.6 Wm^{-2} in winter. The relative difference in R_n between two sites also showed that the influence of PV power plantpanels on R_n was most pronounced in winter (Table 01), corresponds to the result that the largest relative difference in albedo during this season. Consistent with previous studies (Broadbent et al., 2019; Chang et al., 2018; Jiang et al., 2021; Li et al., 2022b; Li et al., 2022c), PV modules can ~~significantly enhance~~amplify land surface energy availability. The relative difference in R_n between our two sites showed that the influence of PV power plantpanels on R_n was most pronounced in winter (Table 01), not only due to the largest relative difference in albedo during this season but also as a result of manual adjustments to the tilt angle of PV panels and snow clearing on their surfaces.

Table 02 Comparison of in-situ albedo observations across different PV power plant.

3.3 The effect of PV power plantarrays on air temperature and humidity

The PV power plantpanels significantly influenced air temperature (Ta) at both 2.5 m and 10 m heights, with diurnal and seasonal variations observed between the PV site and RF site (Figure 05). At 2.5 m, the PV site exhibited an average annual Ta increase of 0.08°C compared to the RF site ($p < 0.001$, paired t-test). This increase was more pronounced at 10 m, with an annual mean difference of 0.17°C ($p < 0.001$, paired t-test). The influence of PV power plantpanels on Ta demonstrated a distinct diurnal asymmetry. During the daytime, the PV site consistently shows a warm bias relative to the RF site due to heat released from PV panels. The maximum warm bias ranges from 0.65°C (winter) to 1.60°C (summer) at 2.5 m, and from 0.46°C (winter) to 0.70°C (summer) at 10 m. These values are consistent with previous studies in desert or barren areas, which reported local increases in daytime air temperature ranging from 0.1°C to 1.9°C (Broadbent et al., 2019; Fthenakis and Yu, 2013; Jiang et al., 2021; Yang et al., 2017).

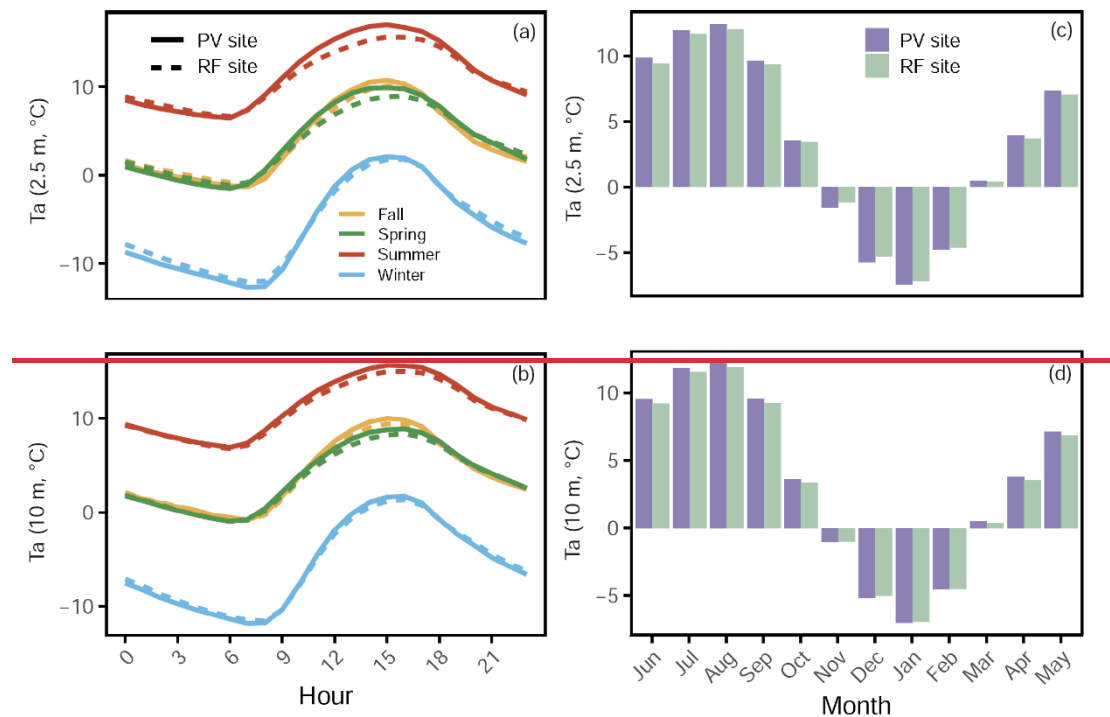


Figure 05 Diurnal and monthly variations of air temperature (Ta) at different heights (2.5 m and 10 m) for PV and RF sites.

During the nighttime, the PV site exhibits a cold bias relative to the RF site. At 2.5 m, the maximum cold bias ranges from -0.46°C in summer to -0.89°C in winter, while at

10 m, it varies between -0.01°C in summer and -0.46°C in winter. The cooling effect of PV power plant farms is primarily attributed to two key mechanisms (Barron-Gafford et al., 2016; Broadbent et al., 2019; Yang et al., 2017): (1) the shielding effect of PV panels, which minimizes heat accumulation in the soil and enhances nocturnal radiative cooling of the ground surface; and (2) the reduction in PV panel temperatures below ambient air temperature at night, further contributing to the cooling of near-surface air.

Interestingly, a small number of studies have reported that PV power plants also exhibit a nocturnal warming effect. For instance, Barron-Gafford et al. (2016) observed a significant nocturnal heating effect of $3\text{--}4^{\circ}\text{C}$ at a height of 2.5 m in a utility-scale PV power plant array in southern Arizona. This may be attributed to the presence of impervious surfaces near the PV power plant array, as well as the smaller and less continuous scale of the PV power plant array (Broadbent et al., 2019).

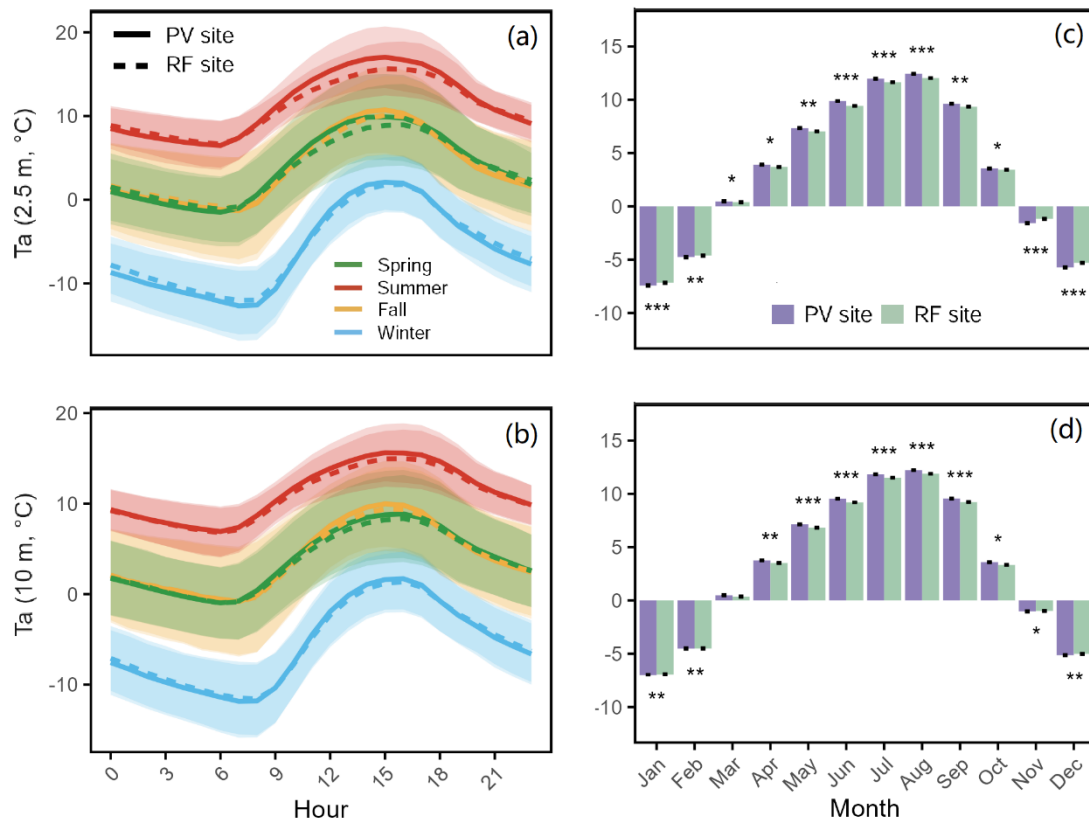


Figure 5. Diurnal (a, b) and monthly variations (c, d) in air temperature (Ta) at 2.5 m and 10 m height for PV and RF sites. The shaded areas around the lines represent standard deviation, and asterisks indicate statistically significant differences (* $p < 0.05$, ** $p < 0.01$, *** $p < 0.001$).

The dynamics of monthly T_a suggest that PV power plantpanels also exhibit asymmetrical effects on near-surface air temperature between warm and cold seasons (Figure 05c, d). From March to October, the PV site generally experiences significantly higher T_a than the RF site ($p < 0.001$, paired t-test). However, from November to February, the PV site sees lower T_a compared to the RF site ($p < 0.01$, paired t-test). This seasonal reversal may be attributed to the enhanced cooling effect and reduced warming effect of PV panels during the colder months with lower solar input.

The warming effect of PV power plantarrays on T_a in this alpine meadow region is much weaker than that observed in low-altitude areas (Barron-Gafford et al., 2016; Fthenakis and Yu, 2013; Jiang et al., 2021; Li et al., 2022b; Yang et al., 2017). This phenomenon can be attributed not only to differences in PV power plantarray characteristics but, more importantly, to the lower background temperature in this region. Higher daily temperatures are known to enhance the warming effect of PV power plantpanels (Broadbent et al., 2019; Jiang et al., 2021).

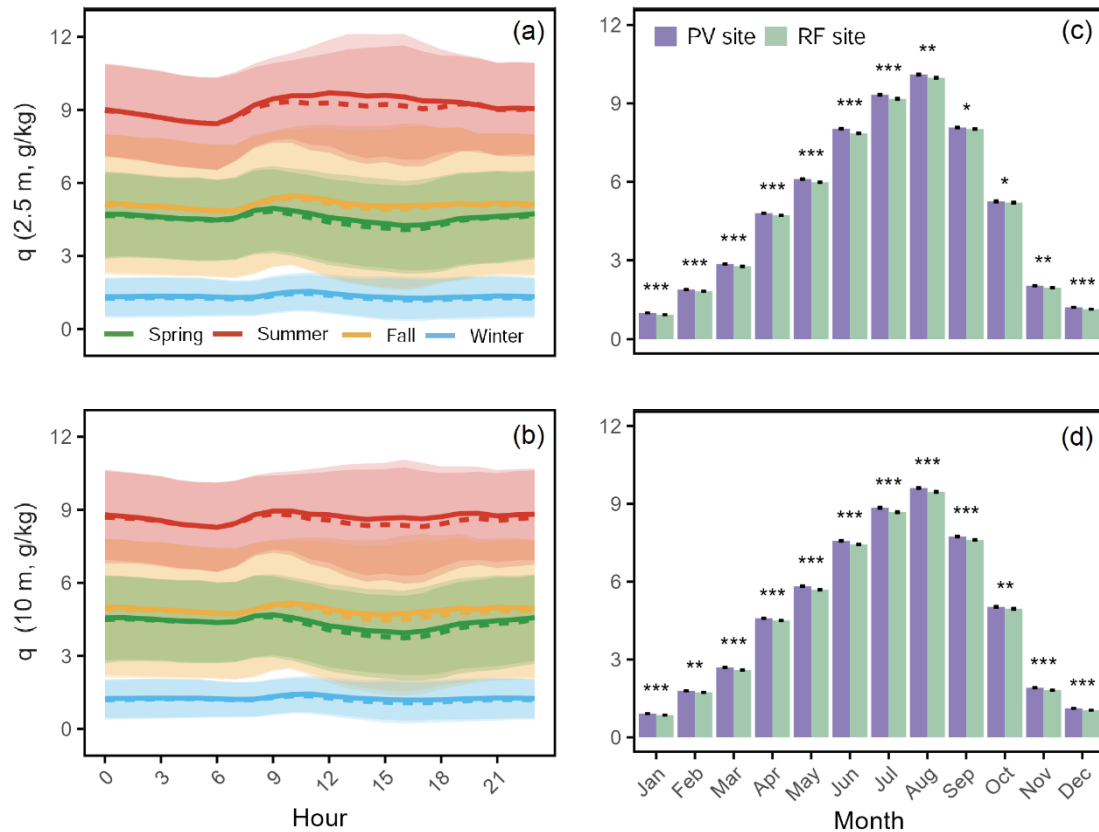


Figure 6. Diurnal (a, b) and monthly variations (c, d) in air specific humidity (q) at 2.5 m and 10 m height for PV and RF sites. The shaded areas around the lines represent standard deviation, and asterisks indicate statistically significant differences (* $p < 0.05$, ** $p < 0.01$, *** $p < 0.001$).

55

Specific humidity (q) was also influenced by the PV power plant panels. It was consistently higher than at the RF site (Figure 6). This increase was most significant during summer daytime ($p < 0.001$, paired t-test), when q at the PV site was up to 4% higher at a height of 2.5 m. This can be attributed to reduced wind speeds and lower evapotranspiration beneath the PV panels, which retain more moisture in the immediate environment. At 10 m, however, the differences in q between the two sites were less pronounced due to the reduced influence of near-surface shading.

60

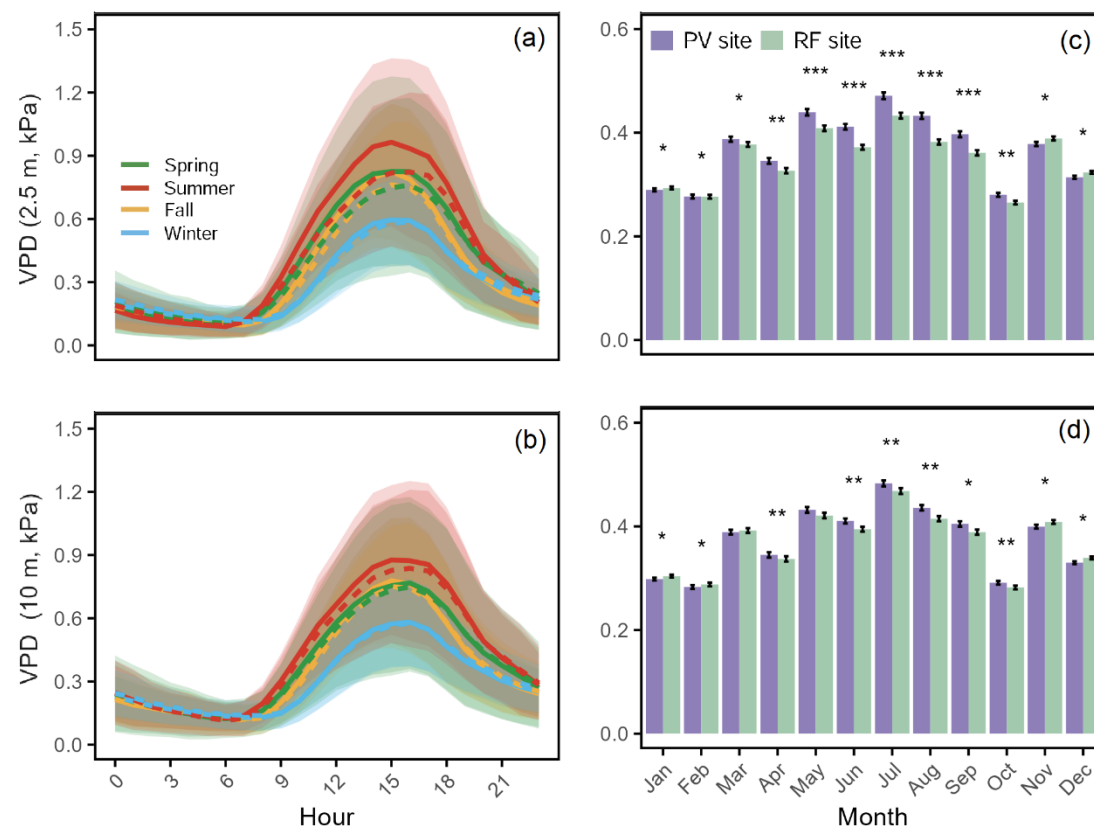


Figure 7. Diurnal (a, b) and monthly variations (c, d) in vapor pressure deficit (VPD) at 2.5 m and 10 m height for PV and RF sites. The shaded areas around the lines represent standard deviation, and asterisks indicate statistically significant differences (* $p < 0.05$, ** $p < 0.01$, *** $p < 0.001$).

65

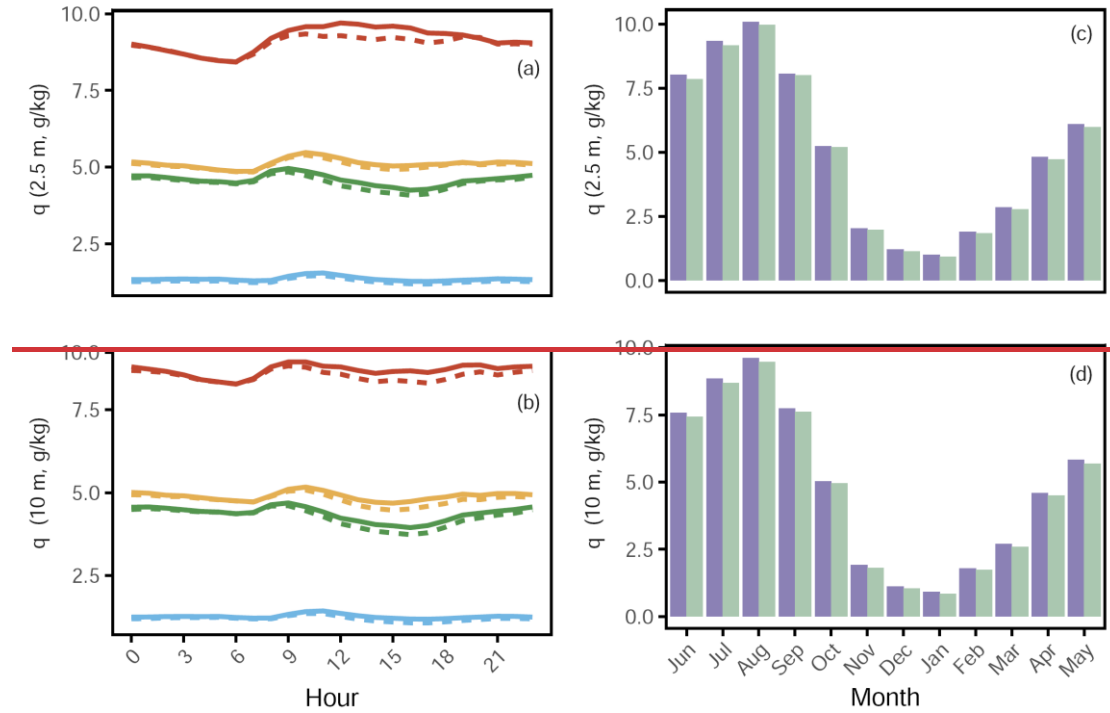


Figure 06 Diurnal and monthly variations of air specific humidity (q) at different heights (2.5 m and 10 m) for PV and RF sites.

The vapor pressure deficit (VPD) exhibits diurnal and seasonal patterns (Figure 07) similar to those of T_a (Figure 05). The daytime maximum positive bias ranges from 0.03 kPa (winter) to 0.16 kPa (summer) at 2.5 m, and from 0.01 kPa (winter) to 0.05 kPa (summer) at 10 m. The nighttime maximum negative bias occurs in spring, with a value less than 0.03 kPa. On a seasonal scale, the difference in VPD between the two sites reaches its peak in summer, with the average VPD at 2.5 m and 10 m at the PV site being approximately 10.8% ($p < 0.001$, paired t-test) and 4.1% ($p < 0.01$, paired t-test) higher than at the RF site, respectively. Annually, VPD at the PV site is slightly higher than at the RF site, with differences of about 5% at 2.5 m ($p < 0.001$, paired t-test) and 1% at 10 m ($p < 0.001$, paired t-test).

The discrepancy between VPD and q suggests that variations in VPD are primarily driven by temperature changes rather than differences in specific humidity in this alpine region. This indicates that, despite the higher q at the PV site, the warming effect of PV power plant panels during the daytime elevates the air's evaporative demand, potentially exacerbating water loss from vegetation and soil. However, the relatively higher soil moisture observed at the PV site may help offset this effect by sustaining local

evaporation and transpiration rates.

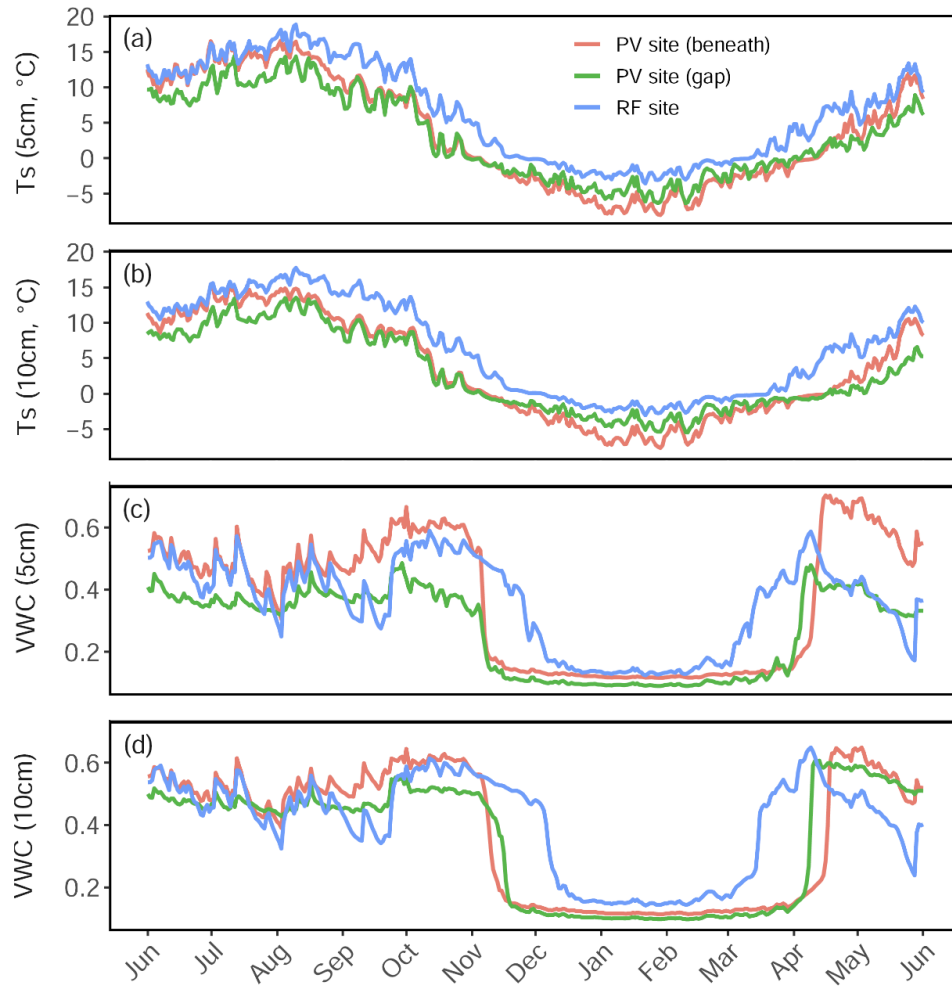


Figure 8. Seasonal variations in (a, b) soil temperature (Ts) and (c, d) volumetric water content (VWC) at 5 cm and 10 cm depths for the PV site (beneath panels and in gaps) and the RF site.

90

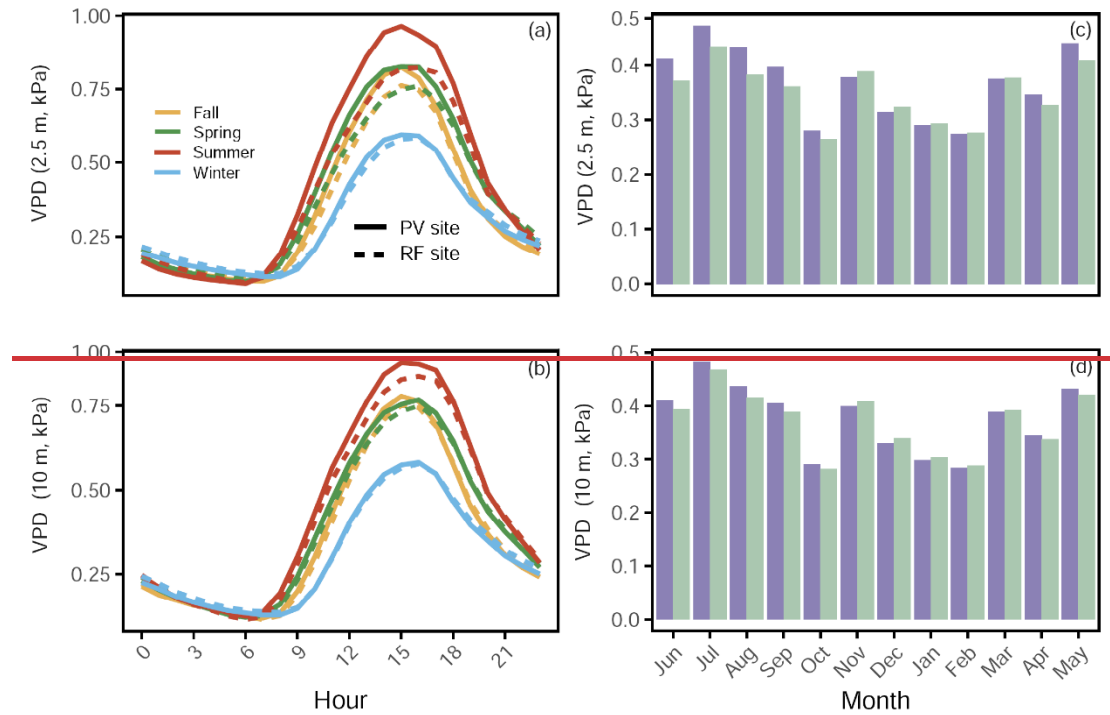


Figure 07 Diurnal and monthly variations of vapor pressure deficit (VPD) at different heights (2.5-m and 10-m) for PV and RF sites.

3.4. The effect of PV power plantarrays on soil temperature and soil moisture

95 The presence of PV power plantarrays significantly influences the thermal properties of the soil. The shading effect of PV power plantpanels results in consistently lower soil temperatures (T_s) beneath the panels and in the gaps between rows throughout the year. Soil beneath the panels begin to freeze (daily T_s below 0°C for three consecutive days) 27 days earlier and thaw 20 days later compared to the RF site. In the gaps between

100 rows, freezing begins 20 days earlier and thawing is delayed by 31 days. At a 10 cm depth, similar trends are observed, with freezing starting 28 days earlier and thawing delayed by 31 days beneath the panels, and in the gaps, freezing occurs 26 days earlier with a 28-day delay in thawing.

Table 3. Average soil temperature ($^{\circ}\text{C}$) at 5 cm and 10 cm depths for PV and RF sites.

	<u>Annual</u>	<u>Spring</u>	<u>Summer</u>	<u>Fall</u>	<u>Winter</u>
<u>RF site</u>	<u>6.50</u>	<u>5.29</u>	<u>14.64</u>	<u>7.73</u>	<u>-1.67</u>
<u>(5cm)</u>	<u>(± 0.031)</u>	<u>(± 0.040)</u>	<u>(± 0.025)</u>	<u>(± 0.048)</u>	<u>(± 0.011)</u>
<u>PV site</u>	<u>3.53</u>	<u>2.24</u>	<u>13.50</u>	<u>3.89</u>	<u>-5.50</u>
<u>(gap, 5cm)</u>	<u>(± 0.034)</u>	<u>(± 0.041)</u>	<u>(± 0.024)</u>	<u>(± 0.043)</u>	<u>(± 0.015)</u>

<u>PV site</u>	<u>2.97</u>	<u>1.65</u>	<u>10.73</u>	<u>3.50</u>	<u>-4.00</u>
<u>(beneath, 5cm)</u>	<u>(±0.027)</u>	<u>(±0.028)</u>	<u>(±0.024)</u>	<u>(±0.040)</u>	<u>(±0.015)</u>
<u>RF site</u>	<u>6.37</u>	<u>4.66</u>	<u>14.37</u>	<u>7.95</u>	<u>-1.49</u>
<u>(10cm)</u>	<u>(±0.029)</u>	<u>(±0.035)</u>	<u>(±0.019)</u>	<u>(±0.045)</u>	<u>(±0.008)</u>
<u>PV site</u>	<u>3.27</u>	<u>1.53</u>	<u>12.61</u>	<u>4.08</u>	<u>-5.14</u>
<u>(gap, 10cm)</u>	<u>(±0.031)</u>	<u>(±0.035)</u>	<u>(±0.017)</u>	<u>(±0.040)</u>	<u>(±0.014)</u>
<u>PV site</u>	<u>2.79</u>	<u>0.48</u>	<u>10.42</u>	<u>3.59</u>	<u>-3.34</u>
<u>(beneath, 10cm)</u>	<u>(±0.025)</u>	<u>(±0.020)</u>	<u>(±0.017)</u>	<u>(±0.036)</u>	<u>(±0.011)</u>

105

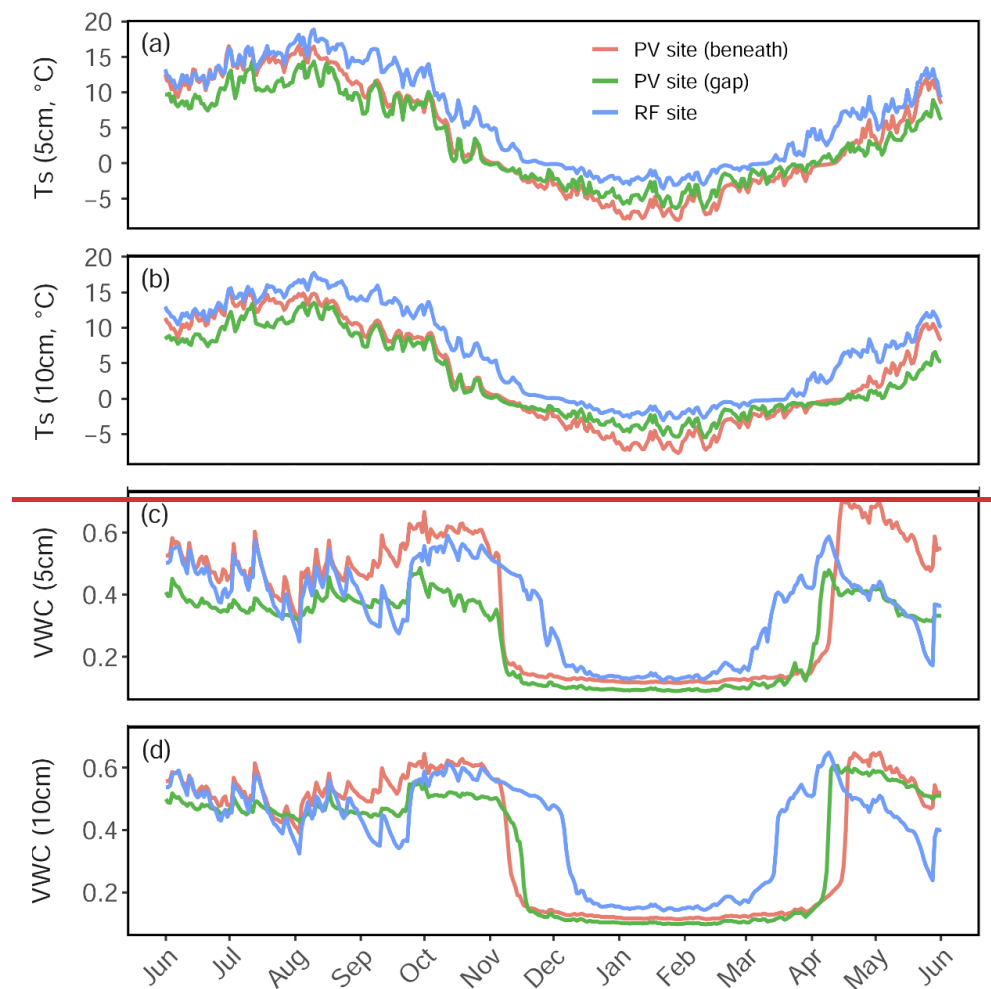


Figure 08 Seasonal dynamics of daily average soil temperature (Ts) and volumetric water content (VWC) at 5 cm and 10 cm depths.

110

During spring, summer, and fall, Ts at both depths are highest at the RF site, followed by the gaps between the rows, and lowest beneath the panels (Table 03). The differences in Ts between the locations are most pronounced in the fall, with the RF site showing

that Ts is 3.89°C higher than in the gaps (p<0.001, paired t-test) and 4.23°C higher than beneath the panels (p<0.001, paired t-test) at a depth of 5 cm. This result aligns with previous studies that have documented significant cooling effects in PV power
115 plantfields due to shading, which lowers the soil temperature relative to surrounding areas (Armstrong et al., 2016; Choi et al., 2024; Wu et al., 2022; Yue et al., 2021; Zheng et al., 2023).

Wintertime Ts shows a distinct spatial pattern, with values being highest at the RF site, intermediate beneath the panels, and lowest in the gaps between panel rows
120 During winter, the Ts pattern shifts to RF site > beneath the panels > in the gaps between the rows (Table 03). Specifically, at a 5 cm depth, the average Ts at the RF site is approximately 2.33°C higher than beneath the panels (p<0.001, paired t-test) and 3.83°C higher than in the gaps (p<0.001, paired t-test). At 10 cm depth, the temperature difference is approximately 1.89°C higher at the RF site compared to beneath the panels
125 (p<0.001, paired t-test), and 3.65°C higher compared to the gaps (p<0.001, paired t-test). The slightly higher Ts beneath the PV panels compared to the gaps may be attributed to the insulation effect of the panels and their thermal radiation properties. PV panels reduce direct exposure to cold air, limiting heat loss from the soil. Additionally, the panels absorb solar radiation and transfer some of the heat to the soil
130 beneath, helping to maintain relatively higher temperatures. In contrast, the soil in the gaps between the rows is more exposed to cold air, leading to greater temperature fluctuations and lower overall temperatures. (Yue et al., 2021) also reported that the soil beneath the PV panels maintains warmer soil conditions in winter due to the insulation and heat transfer provided by the PV panels. _

135 Table-03 Average soil temperature (°C) at 5 cm and 10 cm depths for PV and RF sites.

	Annual	Spring	Summer	Fall	Winter
RF site (5cm)	6.50	5.29	14.64	7.73	-1.67
PV site (gap, 5cm)	3.53	2.24	13.50	3.89	-5.50
PV site (beneath, 5cm)	2.97	1.65	10.73	3.50	-4.00
RF site (10cm)	6.37	4.66	14.37	7.95	-1.49

PV site (gap, 10cm)	3.27	1.53	12.61	4.08	-5.14
PV site (beneath, 10cm)	2.79	0.48	10.42	3.59	-3.34

Soil volumetric water content (VWC) also exhibits significant seasonal variations across different locations (Figure 08, Table 4). In spring and autumn, soil moisture at the RF site remains consistently higher compared to the other two locations ($p < 0.001$, paired t-test) (Table 04). This is primarily due to earlier soil thawing in spring and delayed freezing in autumn at the RF site. In summer, average SWC in gaps between the PV rows is higher than that at the RF site by about 9% at both depths ($p < 0.001$, paired t-test) (Table 04). This difference can be mainly attributed to two main factors:

(1) the inclined structure of the PV panels channels precipitation toward the gaps between the rows, significantly enhancing water recharge in this area; (2) the lower wind speed and reduced soil temperature within gaps between the rows, caused by shading from the PV power plant panels, effectively suppress evaporation and maintain higher soil moisture levels. This result align with Choi et al. (2024), who reported that the interspace of PV power plant arrays had the highest soil moisture (25 cm) regardless of whether the PV was bare or vegetated across three utility-scale PV facilities in Minnesota, USA.

Table 4. Average soil moisture at 5 cm and 10 cm depths for PV and RF sites.

	Annual	Spring	Summer	Fall	Winter
RF site (5cm)	0.36_ (±0.001)	0.38_ (±0.001)	0.44_ (±0.001)	0.46_ (±0.001)	0.15_ (±0.001)
PV site-site (gap, 5cm)	0.37_ (±0.001)	0.41_ (±0.002)	0.48_ (±0.001)	0.45_ (±0.002)	0.12_ (±0.001)
PV site-site (beneath, 5cm)	0.27_ (±0.001)	0.29_ (±0.001)	0.37_ (±0.001)	0.32_ (±0.001)	0.10_ (±0.001)
RF site-site (10cm)	0.40_ (±0.001)	0.44_ (±0.001)	0.47_ (±0.001)	0.51_ (±0.001)	0.18_ (±0.001)
PV site-site (gap, 10cm)	0.37_ (±0.001)	0.36_ (±0.002)	0.51_ (±0.001)	0.48_ (±0.002)	0.12_ (±0.001)

PV site-site (beneath, 10cm)	0.35_ (±0.001)	0.38_ (±0.002)	0.47_ (±0.001)	0.43_ (±0.001)	0.10_ (±0.001)
--	-------------------	-------------------	-------------------	-------------------	-------------------

Conversely, the summer average SWC beneath the PV panels is the lowest among the three locations (Table 04) due to precipitation interception by the panels, which limits direct water input to the underlying soil. Interestingly, at 10 cm depth, the summer average SWC shows no significant difference between the beneath-PV and RF sites ($p>0.05$). However, at 5 cm depth, the SWC beneath PV panels is approximately 16% lower than at the RF site ($p<0.001$, paired t-test). This suggests that subsurface soil layers under PV panels may benefit from lateral water redistribution and upward soil moisture migration driven by capillary action and vegetation root water uptake (Jury and Horton, 2004), partially offsetting the reduced surface recharge. Different from the result of Yue et al. (2021), who reported significantly higher SWC at depths of 10–40 cm beneath PV panels compared to non-PV areas during the rainy season, with the moisture difference decreasing with depth. Choi et al. (2024) observed inconsistent effects across facilities: the median SWC beneath PV panels was lower than the reference site in two facilities but higher in one. This highlights that, even under similar climatic conditions, variations in PV system structure, soil properties, and management practices can lead to inconsistent SWC patterns beneath PV panels.

Due to the seasonal variability of precipitation, seven consecutive 6-day periods without rainfall occurred in this alpine meadow when the soil was in a thawed state. The linear decline slopes of daily SWC at different locations inside and outside the PV power plant field were compared. The Figure 09 shows that the decrease rates of soil moisture at the RF site at 5 cm and 10 cm depths are significantly higher than those at PV sites, approximately 1.3 times and 3.5 times the rate of decrease between the PV rows ($p<0.05$, paired t-test) and beneath PV panels ($p<0.001$, paired t-test), respectively. These results further indicate that PV power plant can effectively mitigate topsoil moisture loss during dry periods.

presence of the PV field effectively inhibits soil moisture loss.

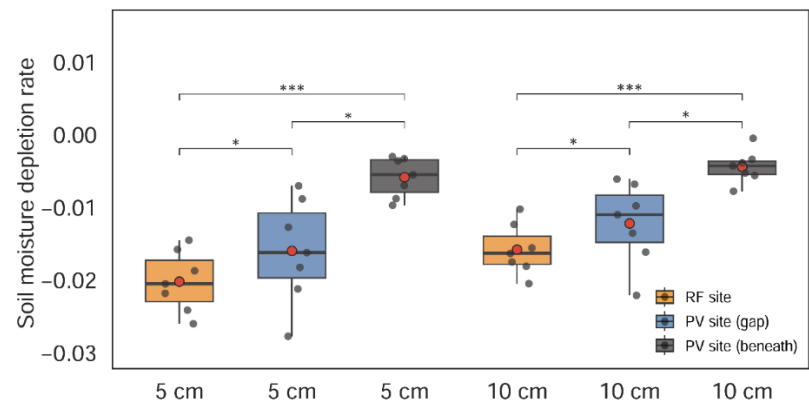


Figure 9. Soil moisture depletion rates at 5 cm and 10 cm depths for the RF site and PV site (gap and beneath panels) during dry periods. Asterisks indicate statistically significant differences (* $p < 0.05$, ** $p < 0.01$, *** $p < 0.001$).

To further investigate the mechanisms underlying these spatial differences, we applied a Boosted Regression Tree (BRT) model to quantify the relative importance of microclimatic variables for each site (Figure 10). At the RF site, near-surface VPD at 2.5 m and 10 m were the dominant predictors, jointly accounting more than 60% of the total importance (40.1% and 16.0%, respectively), reflecting the strong influence of atmospheric evaporative demand in open grassland. In contrast, the PV gap exhibited a shift toward energy-limited regulation, with shallow soil temperature at 5 cm (42.9%) and air temperature at 2.5 m (23.6%) identified as the primary controls, reflecting the effects of modified radiation regimes on surface energy balance. Beneath the PV panels, VPD at 2.5 m again emerged as the most important driver (40.6%), suggesting a reestablishment of atmospheric control on soil moisture dynamics despite persistent shading.

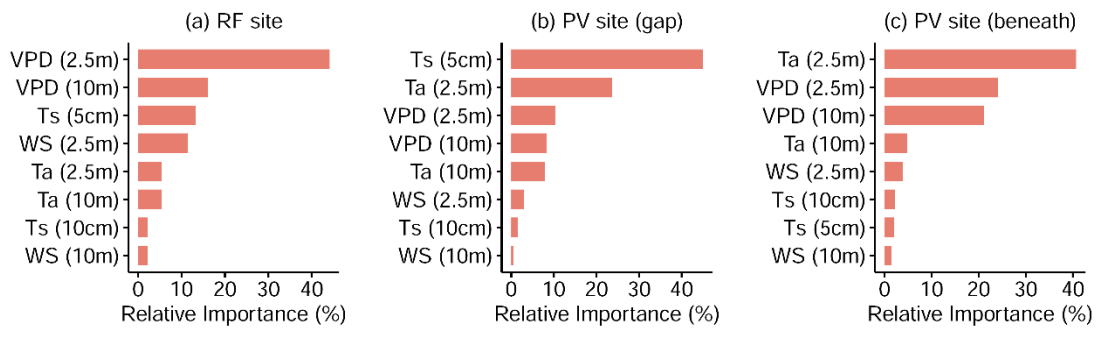


Figure 10. Relative importance of predictor variables in explaining changes in daily soil moisture

during dry periods at (a) the RF site, (b) the PV site (gap), and (c) the PV site (beneath panels), based on boosted regression tree (BRT) analysis. The predictor variables include vapor pressure deficit (VPD) at 2.5 m and 10 m, air temperature (Ta) at 2.5 m and 10 m, soil temperature (Ts) at 5 cm and 10 cm, and wind speed (WS) at 2.5 m and 10 m.

205 These spatial differences in variable importance point to fundamental shifts in the microclimatic drivers of soil moisture across the landscape. At the RF site, unshaded conditions allow for high solar input and strong turbulent mixing, promoting tight coupling between the surface and atmosphere. This coupling enhances air temperature and vapor pressure deficit (VPD), thereby driving strong evaporative demand and rapid

210 soil drying during dry spells. In the PV gap, intermittent shading modifies the radiation regime by reducing net radiation reaching the soil surface. As a result, soil and air temperature become more effective indicators of the constrained energy supply and emerge as dominant controls of soil moisture variability. This transition aligns with the observed soil moisture depletion rates (Fig. 9), where the PV gap exhibited significantly

215 slower drying than the RF site, suggesting a partial decoupling from atmospheric demand. Beneath the panels, the mechanisms are more complex. Although direct shortwave radiation is strongly reduced, the thermal environment is influenced by convective and longwave radiation emitted from the heated PV panel surfaces. This process elevates near-surface air temperature, which in turn sustains relatively high

220 VPD. As a result, VPD remains the dominant driver of soil moisture dynamics, not solely through ambient climate forcing but also via a structurally mediated atmospheric control pathway. Thus, beneath-panel soil moisture loss remains demand-limited, but the evaporative demand itself is shaped by infrastructure-induced microclimatic
feedbacks.

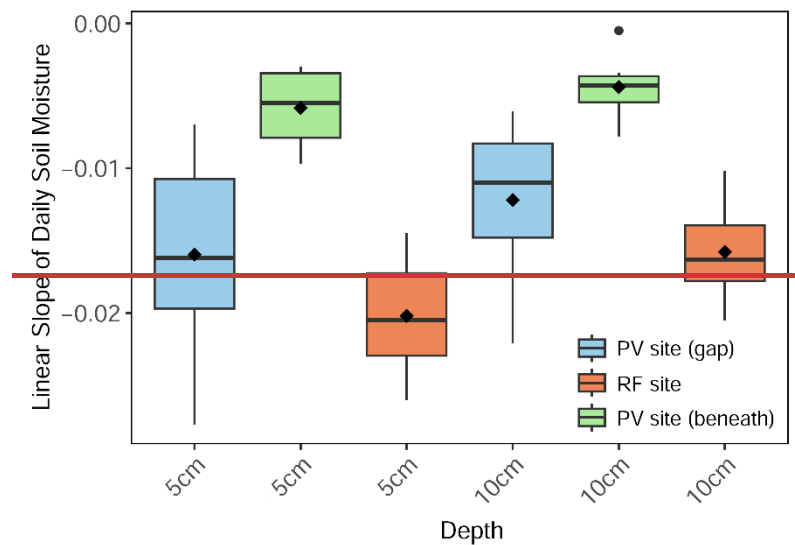


Figure 09 Linear decrease slopes of daily SWC (5cm and 10cm) at different locations for PV and RF sites during dry periods.

4. Conclusions and Implications

230 Pastoral-integrated PV power plant, a form of agrivoltaism, offer an innovative solution to the increasing demand for sustainable pastoralism and renewable energy. As solar PV energy development continues to expand, concerns about its potential impacts on the ecological environment, particularly in fragile and sensitive regions such as the Tibetan Plateau, are gaining prominence.

235 This study investigates the effects of PV power plant arrays on the local meteorological conditions and soil hydrothermal dynamics in a high-altitude alpine meadow on the eastern Tibetan Plateau. The findings reveal that the installation of PV panels increases annual mean net radiation by 28.9%, while reducing albedo and 2.5 m wind speed by 31.6% and 36.2%, respectively. Despite the slight warming effect on annual mean air temperature (Ta), the impact of PV power plant panels is highly asymmetric: daytime heating, nighttime cooling, summer warming, and winter cooling. During summer

240 daytime, Ta, q, and VPD at the PV site are 11.1%, 4%, and 22.2% higher, respectively, than at the RF site. The PV power plant field introduces substantial spatial heterogeneity in soil hydrothermal properties. At a depth of 5 cm, compared to the RF site, the annual

245 soil temperature (T_s) decreased by approximately 45.7% in the PV array gaps and 54.3% beneath the panels, while the annual soil water content (SWC) increased by about 2.8% in the gaps but decreased by 27.1% beneath the panels. Beneath the panels, the soil exhibits a cold-moist characteristic, while the gaps between PV rows display a cold-dry distribution. Lower soil temperatures extend the frozen period within the PV power plant field by nearly 50 days compared to the RF site. Furthermore, the rate of soil moisture loss during non-freezing periods is significantly reduced ($p < 0.001$), with depletion rates beneath the panels and in the gaps being up to 3.5 and 1.3 times lower, respectively, compared to the RF site. Taken together, these microclimatic and soil hydrothermal changes induced by the PV power plant pave the way for exploring their broader ecological implications.

255 These results suggest that PV arrays provide thermal buffering effects, which are crucial for mitigating the impacts of climate warming on the Tibetan Plateau. Climate projections indicate that global temperatures will likely surpass the 1.5 °C threshold, with regional warming on the Tibetan Plateau expected to exceed the global average due to elevation-dependent warming (You et al., 2020). Such rapid warming has already impacted soil freeze-thaw cycles, hydrological systems, carbon dynamics, and vegetation succession (Armstrong et al., 2014; Chen et al., 2022; Luo et al., 2020; Ma et al., 2022; Yang et al., 2014; Zhao et al., 2021). By buffering soil temperature fluctuations and extending the frozen period, PV power plant arrays may help delay soil thawing and potentially reduce permafrost degradation risks, although direct measurements of permafrost dynamics are needed to confirm this possibility. ~~can mitigate permafrost degradation and associated greenhouse gas emissions.~~ Moreover, reduced soil moisture depletion during dry periods potentially creates ~~creates~~ more favorable conditions for vegetation growth and photosynthesis. However, the shortened growing season may reduce vegetation carbon absorption, potentially offsetting some of these benefits. Thus, to verify these potential impacts on ecosystem carbon exchange, plant physiological responses and greenhouse gas fluxes need to be systematically measured. ~~However, the shortened growing season may reduce vegetation carbon absorption, potentially offsetting some of these benefits.~~

The study area, a critical water source region for the upper Yellow River, plays a vital role in regional hydrology. ~~The observed increase in Enhanced~~ soil moisture ~~and slower depletion during dry periods may promote~~ promotes deep percolation, ~~potentially enhancing groundwater recharge and supporting water conservation~~ which strengthens groundwater recharge and supports water conservation. However, changes in freeze-thaw dynamics, such as advanced freezing and delayed thawing, ~~could alter~~ may alter the spatial and temporal distribution of runoff ~~by affecting the release of. This is particularly evident in the release patterns of~~ meltwater and frozen soil water, ~~with potential consequences for~~ potentially disrupting downstream water availability. Although the current observational equipment in this study does not provide quantitative evapotranspiration (ET) results, an analysis based on the established relationship between ET and meteorological factors (Allen et al., 1998) indicates that PV ~~power plant~~ arrays may exert a dual impact on ET. On one hand, PV ~~power plants~~ systems elevate Ta and VPD, which ~~increase~~ are enhance atmospheric demand for water vapor, ~~and may potentially~~ thereby intensifying ET. On the other hand, the shading effect of PV ~~power plant~~ panels reduces the Rn reaching the soil surface, and the structural design of the arrays significantly decreases wind speed, ~~both of which tend to suppress ET. These two factors collectively suppress ET.~~ Therefore, subsequent research should utilize eddy covariance systems, along with lysimeters, to quantitatively assess the impact of PV ~~power plant~~ fields on ET.

From a biodiversity perspective, the introduction of microenvironmental heterogeneity through shading and moisture redistribution by PV ~~power plant~~ arrays may influence vegetation dynamics. ~~Observed reductions in shallow soil temperature and prolonged soil frozen periods in this PV power plant may reduce the competitive advantage~~ The reduced Ts and longer frozen conditions may limit the dominance of tall, light-demanding grasses, ~~potentially~~ creating niches for shade-tolerant C3 plants (Wang et al., 2024a). ~~Such shifts might~~ This shift could counteract vegetation homogenization trends, ~~promoting species diversity in alpine grasslands.~~ However, the shortened growing season poses challenges for species with growth cycles tied to freeze-thaw dynamics, potentially reducing their adaptive capacity. Overall, the PV power

plant arrays may ~~exert~~ as both stabilizing and destabilizing ~~influences~~ forces for on plant communities. ~~To verify these implications, future studies should incorporate species richness, plant growth, and plant trait composition into long-term monitoring frameworks necessitating further study on their long-term ecological impacts.~~ These broader-scale implications suggest that PV power plants may offer a pathway to enhance the resilience of alpine meadow ecosystems in a warming climate. However, given the ecological fragility of the Tibetan Plateau, the complexity of ecosystem feedbacks to both climate change and human activities, and the limited duration and scope of observations in this study, the sustainable and ecologically compatible development of PV infrastructure in this region still requires comprehensive investigation. Future research should incorporate multi-year observations and numerical modeling to assess the long-term effects of PV power plants on regional climate, hydrological processes, and ecological functions. ~~These broader-scale implications suggest that PV arrays offer a pathway to improve alpine meadow ecosystem resilience in a warming climate. Future research should incorporate multi-year observations and numerical models to evaluate the long-term effects of PV arrays on regional climate, hydrological processes, and ecological functions,~~ including biodiversity and carbon sequestration, under varying climatic conditions.

Code/Data availability

The data and code supporting the findings of this study are available upon request to the corresponding author, Shaoying Wang (wangshaoying@lzb.ac.cn).

Author contribution

Conceptualization: SW and XM; methodology: SW, PY and QL; funding acquisition: SW, XM, ZL and ZL; data curation and visualization: SW, LS, and WN; field measurement: SW, WN; All authors actively contributed to the discussions and to the writing of the final version of the paper.

Competing interests

The contact author has declared that none of the authors has any competing interests.

Acknowledgments

The authors would like to thank the Zoige Plateau Wetland Ecosystem Research Station
335 for providing the observation equipment used in this study. We are also deeply grateful
to the editor and reviewers for their constructive comments, which greatly improved
the quality of this paper.

Financial support

This study was supported by the National Science Fund for Distinguished Young
340 Scholars of China (42325502), the Key Project of Gansu Province Science and
Technology Plan (23ZDFA011), the National Natural Science Foundation of China
(41875018), the Science and Technology Research Plan of Gansu Province
(22JR5RA048), and the Ningxia Hui Autonomous Region Key Research and
Development Program (2024BEG03003).

| 345

References

- Allen, R.G., Pereira, L.S., Raes, D. and Smith, M., 1998. Crop evapotranspiration - Guidelines for
computing crop water requirements - FAO Irrigation and drainage paper 56. FAO Rome, 300(9):
D05109.
- 350 Armstrong, A., Ostle, N.J. and Whitaker, J., 2016. Solar park microclimate and vegetation management
effects on grassland carbon cycling. *Environmental Research Letters*, 11(7): 074016.
- Armstrong, A., Waldron, S., Whitaker, J. and Ostle, N.J., 2014. Wind farm and solar park effects on plant–
soil carbon cycling: uncertain impacts of changes in ground-level microclimate. *Global Change
Biology*, 20(6): 1699-1706.
- 355 Barron-Gafford, G.A. et al., 2016. The Photovoltaic Heat Island Effect: Larger solar power plants increase
local temperatures. *Scientific Reports*, 6(1): 35070.
- Birol, F., 2022. *World Energy Outlook 2022*. International Energy Agency: Paris, France, 522.
- Broadbent, A.M., Kravynhoff, E.S., Georgescu, M. and Sailor, D.J., 2019. The observed effects of utility-
scale photovoltaics on near-surface air temperature and energy balance. *Journal of Applied
Meteorology and Climatology*, 58(5): 989-1006.
- 360 Campbell, G.S. and Norman, J.M., 1998. *Radiation Basics*. In: G.S. Campbell and J.M. Norman (Editors),
An Introduction to Environmental Biophysics. Springer New York, New York, NY, pp. 147-165.

- Chang, R. et al., 2018. Observed surface radiation and temperature impacts from the large-scale deployment of photovoltaics in the barren area of Gonghe, China. *Renewable Energy*, 118: 131-137.
- Chen, H. et al., 2022. Carbon and nitrogen cycling on the Qinghai–Tibetan Plateau. *Nature Reviews Earth & Environment*, 3(10): 701-716.
- Chen, L. et al., 2016. Determinants of carbon release from the active layer and permafrost deposits on the Tibetan Plateau. *Nature Communications*, 7(1): 13046.
- Choi, C.S., Macknick, J., McCall, J., Bertel, R. and Ravi, S., 2024. Multi-year analysis of physical interactions between solar PV arrays and underlying soil-plant complex in vegetated utility-scale systems. *Applied Energy*, 365: 123227.
- Elith, J., Leathwick, J.R. and Hastie, T., 2008. A working guide to boosted regression trees. *Journal of Animal Ecology*, 77(4): 802-813.
- Fthenakis, V. and Yu, Y., 2013. Analysis of the potential for a heat island effect in large solar farms, 2013 IEEE 39th Photovoltaic Specialists Conference (PVSC). IEEE, pp. 3362-3366.
- Jiang, J., Gao, X., Lv, Q., Li, Z. and Li, P., 2021. Observed impacts of utility-scale photovoltaic plant on local air temperature and energy partitioning in the barren areas. *Renewable Energy*, 174: 157-169.
- Jury, W.A. and Horton, R., 2004. *Soil physics*. John Wiley & Sons.
- Kan, A. et al., 2021. The linkage between renewable energy potential and sustainable development: Understanding solar energy variability and photovoltaic power potential in Tibet, China. *Sustainable Energy Technologies and Assessments*, 48: 101551.
- Keiko, S., SINHA, S., Birendra, K. and KOJIMA, T., 2009. Self Cooling Mechanism in Photovoltaic Cells and Its Impact on Heat Island Effect from Very Large Scale PV Systems in Deserts. *Journal of Arid Land Studies*, 19(1): 5-8.
- Li, M. et al., 2022a. High-resolution data shows China's wind and solar energy resources are enough to support a 2050 decarbonized electricity system. *Applied Energy*, 306: 117996.
- Li, P., Gao, X., Li, Z., Ye, T. and Zhou, X., 2022b. Effects of fishery complementary photovoltaic power plant on near-surface meteorology and energy balance. *Renewable Energy*, 187: 698-709.
- Li, Y. et al., 2018. Climate model shows large-scale wind and solar farms in the Sahara increase rain and vegetation. *Science*, 361(6406): 1019-1022.
- Li, Z. et al., 2022c. A comparative study on the surface radiation characteristics of photovoltaic power plant in the Gobi desert. *Renewable Energy*, 182: 764-771.
- Lu, Z. et al., 2021. Impacts of Large-Scale Sahara Solar Farms on Global Climate and Vegetation Cover. *Geophysical Research Letters*, 48(2): e2020GL090789.
- Luo, S., Wang, J., Pomeroy, J.W. and Lyu, S., 2020. Freeze–Thaw Changes of Seasonally Frozen Ground on the Tibetan Plateau from 1960 to 2014. *Journal of Climate*, 33(21): 9427-9446.
- Lyu, X. et al., 2024. Mapping of Utility-Scale Solar Panel Areas From 2000 to 2022 in China Using Google Earth Engine. *IEEE Journal of Selected Topics in Applied Earth Observations and Remote Sensing*, 17: 18083-18095.
- Ma, L. et al., 2022. Warming changed the relationship between species diversity and primary productivity of alpine meadow on the Tibetan Plateau. *Ecological Indicators*, 145: 109691.
- Mauder, M. et al., 2013. A strategy for quality and uncertainty assessment of long-term eddy-covariance measurements. *Agricultural and Forest Meteorology*, 169: 122-135.
- Průvák, R., Patriche, C. and Bandoc, G., 2019. Spatial assessment of solar energy potential at global

- scale. A geographical approach. *Journal of Cleaner Production*, 209: 692-721.
- Stern, R. et al., 2023. Photovoltaic fields largely outperform afforestation efficiency in global climate change mitigation strategies. *PNAS Nexus*, 2(11): pgad352.
- 410 Taha, H., 2013. The potential for air-temperature impact from large-scale deployment of solar photovoltaic arrays in urban areas. *Solar Energy*, 91: 358-367.
- Tang, W., Yang, K., Qin, J. and Min, M., 2013. Development of a 50-year daily surface solar radiation dataset over China. *Science China Earth Sciences*, 56(9): 1555-1565.
- Wang, L. et al., 2024a. Drivers of plant diversification along an altitudinal gradient in the alpine desert grassland, Northern Tibetan Plateau. *Global Ecology and Conservation*, 53: e02987.
- 415 Wang, Q. and Qiu, H.-N., 2009. Situation and outlook of solar energy utilization in Tibet, China. *Renewable and Sustainable Energy Reviews*, 13(8): 2181-2186.
- Wang, X. et al., 2024b. Diurnal Asymmetry Effects of Photovoltaic Power Plants on Land Surface Temperature in Gobi Deserts, *Remote Sensing*.
- 420 Wei, S. et al., 2024. Small reduction in land surface albedo due to solar panel expansion worldwide. *Communications Earth & Environment*, 5(1): 474.
- Wu, C. et al., 2022. Ecohydrological effects of photovoltaic solar farms on soil microclimates and moisture regimes in arid Northwest China: A modeling study. *Science of The Total Environment*, 802: 149946.
- 425 Xu, Z., Li, Y., Qin, Y. and Bach, E., 2024. A global assessment of the effects of solar farms on albedo, vegetation, and land surface temperature using remote sensing. *Solar Energy*, 268: 112198.
- Yang, K. et al., 2014. Recent climate changes over the Tibetan Plateau and their impacts on energy and water cycle: A review. *Global and Planetary Change*, 112: 79-91.
- Yang, L. et al., 2017. Study on the local climatic effects of large photovoltaic solar farms in desert areas. *Solar Energy*, 144: 244-253.
- 430 Yao, T. et al., 2022. The imbalance of the Asian water tower. *Nature Reviews Earth & Environment*, 3(10): 618-632.
- Ying, J. et al., 2023. The characteristics and parameterizations of the surface albedo of a utility-scale photovoltaic plant in the Gobi Desert. *Theoretical and Applied Climatology*, 151(3): 1469-1481.
- 435 You, Q. et al., 2020. Tibetan Plateau amplification of climate extremes under global warming of 1.5 °C, 2 °C and 3 °C. *Global and Planetary Change*, 192: 103261.
- Yue, S., Guo, M., Zou, P., Wu, W. and Zhou, X., 2021. Effects of photovoltaic panels on soil temperature and moisture in desert areas. *Environmental Science and Pollution Research*, 28: 17506-17518.
- Zhao, D., Zhu, Y., Wu, S. and Zheng, D., 2021. Projection of vegetation distribution to 1.5 °C and 2 °C of global warming on the Tibetan Plateau. *Global and Planetary Change*, 202: 103525.
- 440 Zheng, J., Luo, Y., Chang, R. and Gao, X., 2023. An observational study on the microclimate and soil thermal regimes under solar photovoltaic arrays. *Solar Energy*, 266: 112159.