

Solving-Capturing dense shelf water cascading with a high-resolution ocean reanalysis

Helena Fos¹, Jesús Peña-Izquierdo², David Amblas¹, Marta Arjona-Camas^{1,3}, Laia Romero², Víctor Estella-Pérez², Cristian Florindo-Lopez², Antoni Calafat¹, Marc Cerdà-Domènech¹, Pere Puig⁴, Xavier Durrieu de Madron³ and Anna Sanchez-Vidal¹

¹GRC Geociències Marines, Departament de Dinàmica de la Terra i de l'Oceà, Universitat de Barcelona, Barcelona, Spain

²Lobelia Earth SL, Barcelona, Spain.

³CEFREM, UMR-5110 CNRS-Université de Perpignan Via Domitia, Perpignan, France.

⁴Institut de Ciències del Mar, CSIC, Barcelona, Spain.

10 *Correspondence to:* Helena Fos (hfos@ub.edu)

Abstract. Dense shelf water cascading (DSWC) is an oceanographic process occurring when dense shelf water overflows the shelf edge downslope towards the deep sea. Monitored in the Northwestern Mediterranean by moorings since 1993 in the Lacaze-Duthiers Canyon and since 2003-2005 in the Cap de Creus Canyon, numerical modeling with reanalysis extends this timeline further into the past. This study investigates a regional reanalysis (1987 – 2021) validated against mooring
15 observations at 750-1000 m depth. The reanalysis successfully reproduces observed Intense DSWC (IDSWC) events from 1999, 2000, 2005, 2006, 2012, 2013, and 2018, while identifying one previously unreported event in 1987, and detecting no IDSWC between 1988 and 1998. The reanalysis effectively matches 84% of observed IDSWC days within the same week and 56% on the exact date. Instead of assimilating IDSWC events from mooring observations to resolve the cascading process, the model relies solely on the seawater density on the shelf. ~~Reanalysis data have~~and revealed the seawater properties along the
20 canyon that caused IDSWC ~~and can be used to find other unreported cascading events elsewhere.~~ This work highlights the importance of high-resolution reanalyses to investigate mesoscale processes impacting on larger scales in the deep ocean.

1 Introduction

Dense Shelf Water Cascading (DSWC) is a localized oceanographic phenomenon in selected regions worldwide, characterized by the spilling and sinking of shelf water due to its increased density caused by cooling, evaporation, or freezing (Ivanov et al., 2004). Since these overflows are driven by air-sea interactions, sensitive to climate change, in-situ monitoring programs are key to detect alterations impacting deep water ventilation and threatening related deep-sea ecosystems. The broad shelf of the Gulf of Lion (GoL), in the Northwestern Mediterranean Sea (Fig. 1a), is a well-known site for dense coastal water formation during cold winters caused by heat loss of surface water through the blowing of the dry and cold northerly winds, namely Tramuntana and Mistral (Millot, 1990). This dense shelf water flows cyclonically southward to the Cap de Creus peninsula.
30 Then, it is forced to turn, overflow the shelf edge, and sink downcanyon if dense enough, channelized through submarine

canyons: mainly the Cap de Creus Canyon (CCC) and Lacaze-Duthiers Canyon (LDC) (Dufau-Julliand et al., 2004; Ulses et al., 2008a). The intensity of these cascades varies annually, and hence the maximum depth reached, from a few hundred meters (Arjona-Camas et al., 2025) to over 2000 m (Durrieu de Madron et al., 2023). During Intense DSWC (IDSWC) events, the shelf-water potential density (ρ_θ ; $\sigma_\theta = \rho_\theta - 1000 \text{ kg/m}^3$) exceeds that of the ~~Levantine~~Eastern Intermediate Water (~~ELIW~~; Schroeder et al., 2024) (σ_θ : 29.05 - 29.10 kg/m^3) found between 300 and 800 m depth, ~~which in previous studies was referred to as Levantine Intermediate Water (LIW)~~, and even ~~that of~~ the Western Mediterranean Deep Water (WMDW; MEDOC Group, 1970) ($\sigma_\theta \sim 29.10 - 29.16 \text{ kg/m}^3$) found deeper, enabling the cascading to the ~~bottom of the~~ basin floor, over 2400 m depth. IDSWC in GoL was observed in 1999, 2005, 2006, 2012 and 2013 with mooring lines (Béthoux et al., 2002; Canals et al., 2006; Durrieu De Madron et al., 2013; Heussner et al., 2006; Palanques et al., 2006), ~~with~~ hydrographic profiles (Puig et al., 2013), ~~and or with~~ gliders (Durrieu De Madron et al., 2013; Testor et al., 2018). Although these observations enable studying specific DSWC characteristics, a broader climatological perspective is needed, especially as climate projections under the IPCC A2 scenario ~~foreings~~ predict a 50-90% decline in DSWC in the GoL by the end of the century (Herrmann et al., 2008).

This work aims to study, ~~for the first time~~, the ~~climatology~~ of IDSWC using ~~multidecadal observations together with~~ an ocean reanalysis, which combines model simulations of past hydrography and dynamics with observational data assimilation. Since IDSWC observations are sparse and not assimilated by the reanalysis, they can be used to validate the underlying model resolving IDSWC. This approach provides decades of continuous daily data, revealing IDSWC in pre-observational years. Reproducing the IDSWC is challenging because reanalysis products typically exhibit reduced vertical resolution in the deep sea, hindering the reproduction of seafloor morphology and dynamics of submarine canyons where IDSWC occurs. This study is focused on the modeling of the CCC and LDC hydrodynamics during IDSWC, holding about two decades of in-situ observational data.

2 Data and Methods

This study uses the Mediterranean Sea Physics Reanalysis (hereafter MedSea) (Escudier et al., 2020, 2021) provided by the E.U. Copernicus Marine Environment Monitoring Service (CMEMS). This product is generated by a hydrodynamical model based on the Nucleus for European Modelling of the Ocean (NEMO) version 3.6 (Madec et al., 2016), and corrected by variational ocean data assimilation of in-situ salinity and temperature observations and sea level anomalies from satellite observations. According to the ~~CMEMS—CORA dataset~~ (CMEMS, 2023Szekely et al., 2024) and SeaDataNet (<https://www.seadatanet.org/>) observational database, ~~s~~ from which this reanalysis assimilates their salinity and temperature, the reanalysis does not assimilate any IDSWC observations. The model is initialized with climatological values from the C-GLORSv5 global ocean reanalysis (Storto and Masina, 2016). Boundary conditions are provided by the ERA5 ~~reanalysis~~ in the atmosphere (Hersbach et al., 2020), by the C-GLORSv5 in the Atlantic, and by monthly mean climatological datasets for river runoff (more details in Escudier et al., 2021). The model bathymetry is started by the GEBCO 30 arc-second grid

(Weatherall et al., 2015). Due to the high horizontal resolution of $1/24^\circ$ (~ 4 km), the reanalysis enables the representation of submarine canyons and ~~coastal~~inner shelf waters, with 141 vertical levels from 2 m width at the surface to 35 m at 1000 m depth. It provides daily averages from 1987 ~~to 2021, and this study focuses on the 1987-2021 period.~~

To validate the reanalysis results, we used in-situ observations from current meters, with temperature and current speed sensors moored 30-20 m above the seabed, at 750 and 1000 m depth in CCC, and at 1000 m in LDC (hereafter CC750, CC1000 and LD1000; Fig. 1). ~~The sampling intervals varied between 30, 20 and 15 minutes at CC1000; 20 minutes at CC750 and 60 minutes at LD1000.~~ The observations spanned 1993-2021 for LD1000, winter 2006 and 2011-2021 for CC1000, and winter 2005 for CC750. ~~More details are shown in Table 1.~~

Table 1. Information about the datasets used in this study.

	Reanalysis	In-situ observations (moorings)		
Abbreviation	MedSea	LD1000	CC1000	CC750
Zone (canyons)	Lacaze-Duthiers & Cap de Creus	Lacaze-Duthiers	Cap de Creus	Cap de Creus
Period	1987-2021	1993 - 2021	2006; 2011-2021	2005
Temporal resolution	Daily averages	60 min	30, 20 and 15 min	20 min
Depth	Surface to bottom	1000 m	1000 m	750 m
Distance from seafloor	=	20-30 m	20 – 30 m	20 – 30 m
Variables	Speed, θ , S, (σ_θ from S and θ)	Speed, θ	Speed, θ	Speed, θ

The bottom canyon locations at 1000 m depth in reanalysis data are 10 km downstream of the moorings, because the model resolution cannot resolve the sharp canyon incisions where the moorings were deployed (Fig. 1b). However, these different locations were chosen to capture the strongest DSWC events with signatures beyond the ELIW layer. There, ~~when comparing reanalysis with observations,~~ cascading shelf water was detected and defined with ~~a~~ daily mean potential temperature (θ) $\leq 12.6^\circ\text{C}$ (~~after~~ detrend~~ing~~) and ~~a~~ speed ≥ 0.1 m/s, ~~for reanalysis and observations.~~ For reanalysis-derived IDSWC transport ~~along the water column through the sections in Figure 1a,~~ additionally, salinity (S) ≤ 38.44 (fresher than WMDW), and $\sigma_\theta \geq 29.05$ kg/m³ (denser than ELIW) were chosen as dense shelf-water characteristics.

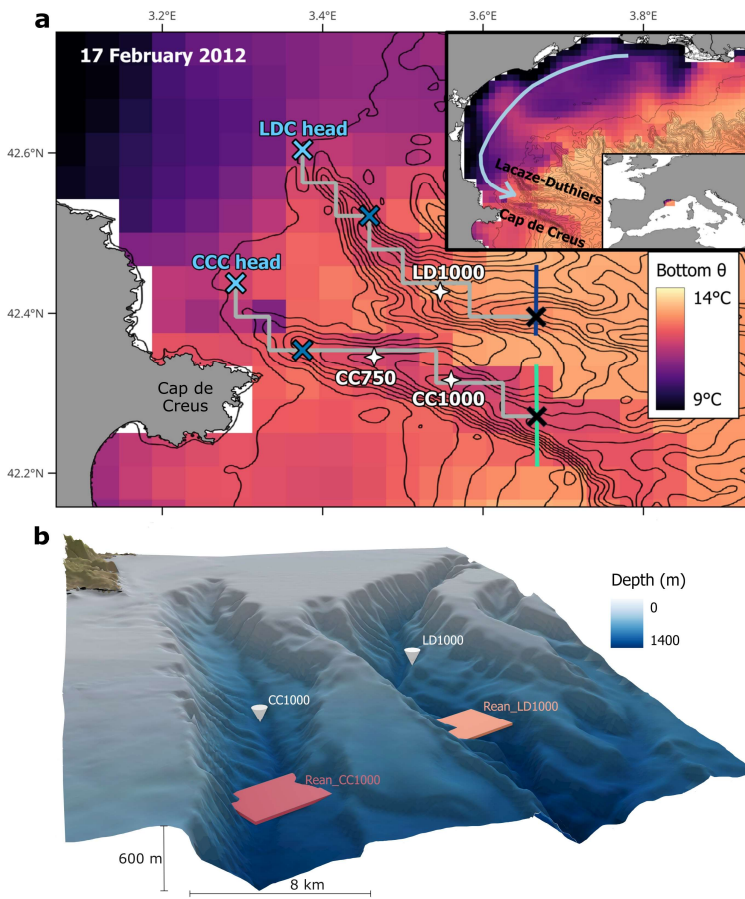
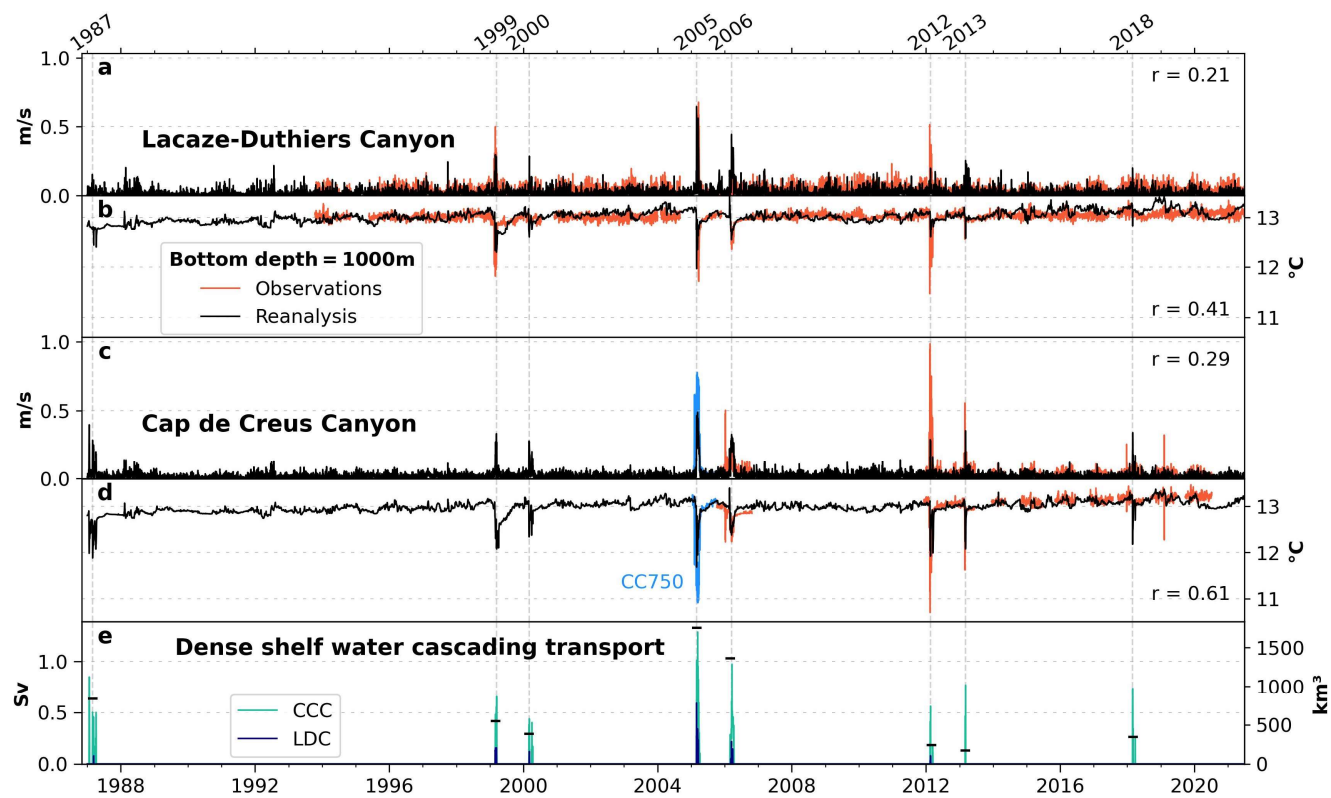
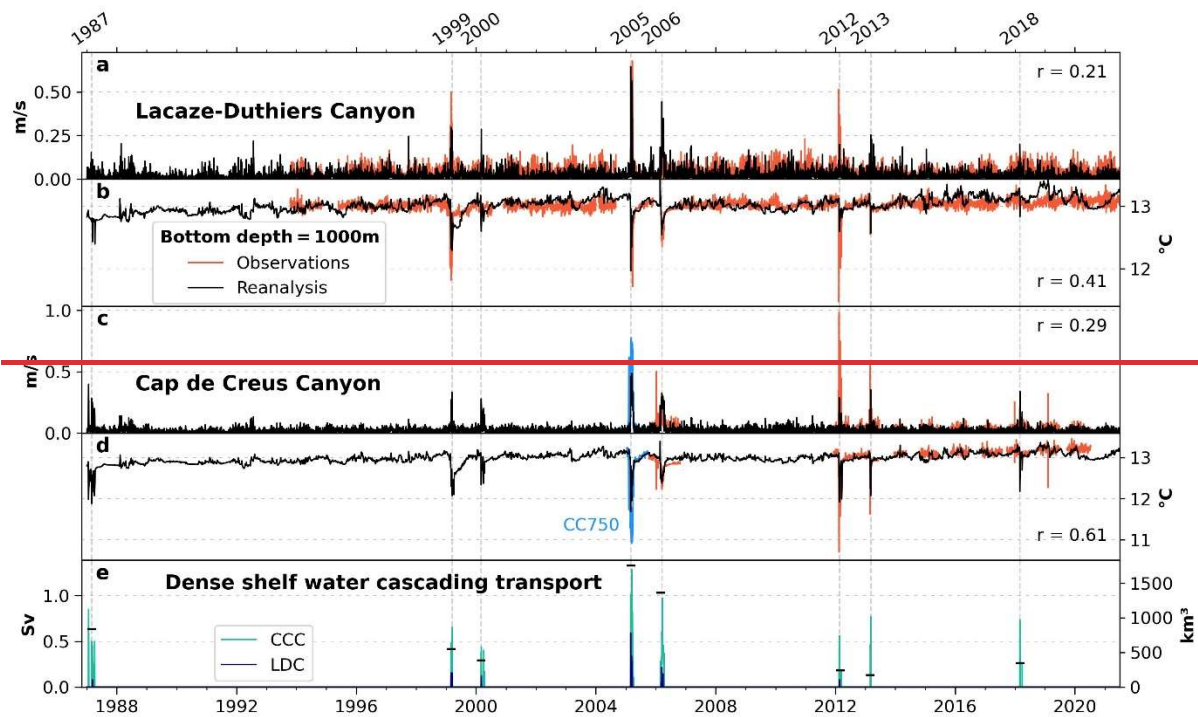


Figure 1: (a) Map with the mooring locations (white crosses) and near-bottom temperature from the MedSea reanalysis on 17-02-2012 (see Movie S1 and S2). Blue and turquoise N-S-oriented lines indicate the cross-sections used for IDS WC transport calculations. Grey lines indicate the canyon axes following the reanalysis bathymetry, with crosses at 100 (light-blue), 400 (dark-blue), and 1000 (black) m bottom depth. (b) Scheme of the canyons with real bathymetry at 200 m resolution from EMODnet (<https://emodnet.ec.europa.eu/>) showing the type of data used in this study: mooring observations sites (white cones) and reanalysis data grid points (colored boxes), comparing the resolution of the reanalysis with the width of the canyons. For clarity, the vertical axis is exaggerated by a factor of 5.

3 Results

The interannual variability of IDS WC in the LDC and CCC is shown in Fig. 2, presenting the full time series of reanalysis and observational data at 750-1000 m depth. High-speed values associated with drops in temperature during the winters of 1987, 1999, 2000, 2005, 2006, 2012, 2013, and 2018 indicate the cascading of cold dense shelf water (Fig. 2a-d). Notably, no IDS WC events are found from 1988 to 1998. Overall, the reanalysis identifies the same IDS WC years as the observations and additionally captures an event in 1987. Note that in 2019, CC1000 observations showed a one-day-long anomaly, not considered as an overflow for this analysis.

95 IDSWC events occur simultaneously in both canyons, with more intense and faster transport of colder shelf water in the CCC,
as indicated by both reanalysis and observations (Fig. 2a-d). Furthermore, the observed potential temperatures of both canyons
are strongly correlated ($r = 0.78$). Events tend to occur in paired years, as inferred from Durrieu de Madron et al., 2023, where
the second year is weaker and usually hardly detectable in the LDC. The observations reveal a significant negative anti-
correlation between potential temperature and speed in CC1000 ($r = -0.63$), weaker for the reanalysis ($r = -0.40$). Moreover,
100 the reanalysis correlates better with the observations for potential temperature ($r = 0.41$ in LDC, $r = 0.61$ in CCC) than for
velocity ($r = 0.21$ in LDC, $r = 0.29$ for CCC), all significantly at the 95% confidence level. A detailed examination of cascading
events is shown in Fig. 3.



105 **Figure 2. Daily-mean (1987-2021) bottom current speed (a, c), and potential temperature (b, d) at 1000 m depth in the Lacaze-Duthiers Canyon (LDC; (a-b)) and Cap de Creus Canyon (CCC; (c-d)). 750-meter-depth observations (CC750) are shown in blue. Vertical grey dashed lines indicate the dates of annual potential temperature minima at CCC, indicating intense dense shelf water cascading (IDSWC) events, defined with $\theta \leq 12.6^{\circ}\text{C}$ (after detrending) and speed ≥ 0.1 m/s. In 2019, the observed anomaly in panels c and d lasted just one day, due to its short duration, it is not considered an IDSWC event in this study. Pearson correlation**
 110 **coefficients (r) between observations and reanalysis data. (e) Daily-mean IDSWC transport (Sv; $1 \text{ Sv} = 10^6 \text{ m}^3/\text{s}$) at 1000 m for both canyons (CCC in turquoise, LDC in blue) from reanalysis data, computed for water with salinity ≤ 38.44 and $\sigma_{\theta} \geq 29.05 \text{ kg/m}^3$, and Total winter transport volume (km^3) across both canyons (is shown with black hyphen-shaped markers). The acronyms IDSWC, LDC, and CCC are used throughout the figures.**

Winters where the reanalysis standard deviations (SD) exceed the observations SD (Fig. 3i-j), mean an overestimation of the
 115 IDSWC and vice-versa. The higher the correlation, the better the timing agreement in IDSWC. Considering these two factors, the standardized SD error (SDE) (Wadoux et al., 2022) quantifies the discrepancy between the reanalysis and the observed IDSWC. In 2005 and 2012, the two strongest IDSWC events, the cascading lasted from late January/February to late May/April, with measured instantaneous speeds exceeding 0.8 and 1.2 m/s, respectively. In these two years, the reanalysis detects temperature and velocity anomalies with high temporal correlation to observations but underestimates their intensities
 120 (standardized SD $\ll 1$). IDSWC replicas in 2006 and 2013 are also well reproduced concerning time and intensity, particularly for the CCC, with slightly lower accuracy for the LDC (Fig. 3). These prominent DSWC events of 1999, 2005, 2006, 2012, and 2013 are the best-reproduced (SDE: 0.7 - 1.5). However, in 2018, the reanalysis overestimates the duration of IDSWC (Fig. 3i), since the observations show only a short sub-daily anomaly, preceded by another short event in December (Fig. 2). Overall, the reanalysis IDSWC flow is $0.13 \pm 0.05^{\circ}\text{C}$ warmer and 30% weaker than the observations in the CCC, and $0.37 \pm$
 125 0.15°C warmer but 6% stronger in the LDC.

Using the IDSWC definition criterion from section 2, between 2005 and 2020, 112 IDSWC days were observed at CC750 and CC1000, while the reanalysis identified 97 days (13% fewer). At LD1000, between 1993 and 2021, 50 IDSWC days were observed, compared to 39 in the reanalysis (22% fewer). The reanalysis performed better in the CCC (63% precision, 54% recall) than in the LDC (38% precision, 30% recall), meaning that over 60% and almost 40% of the simulated IDSWC days at
 130 CCC and LDC, respectively, could have actually occurred (Precision=Well_Predicted/Total_Predicted; Recall = Well_Predicted/Observed). Allowing a 7-day margin to stay in the same synoptic conditions improves the results: 78% of observed days with IDSWC are reproduced by the reanalysis in the CCC (84% in the LDC).

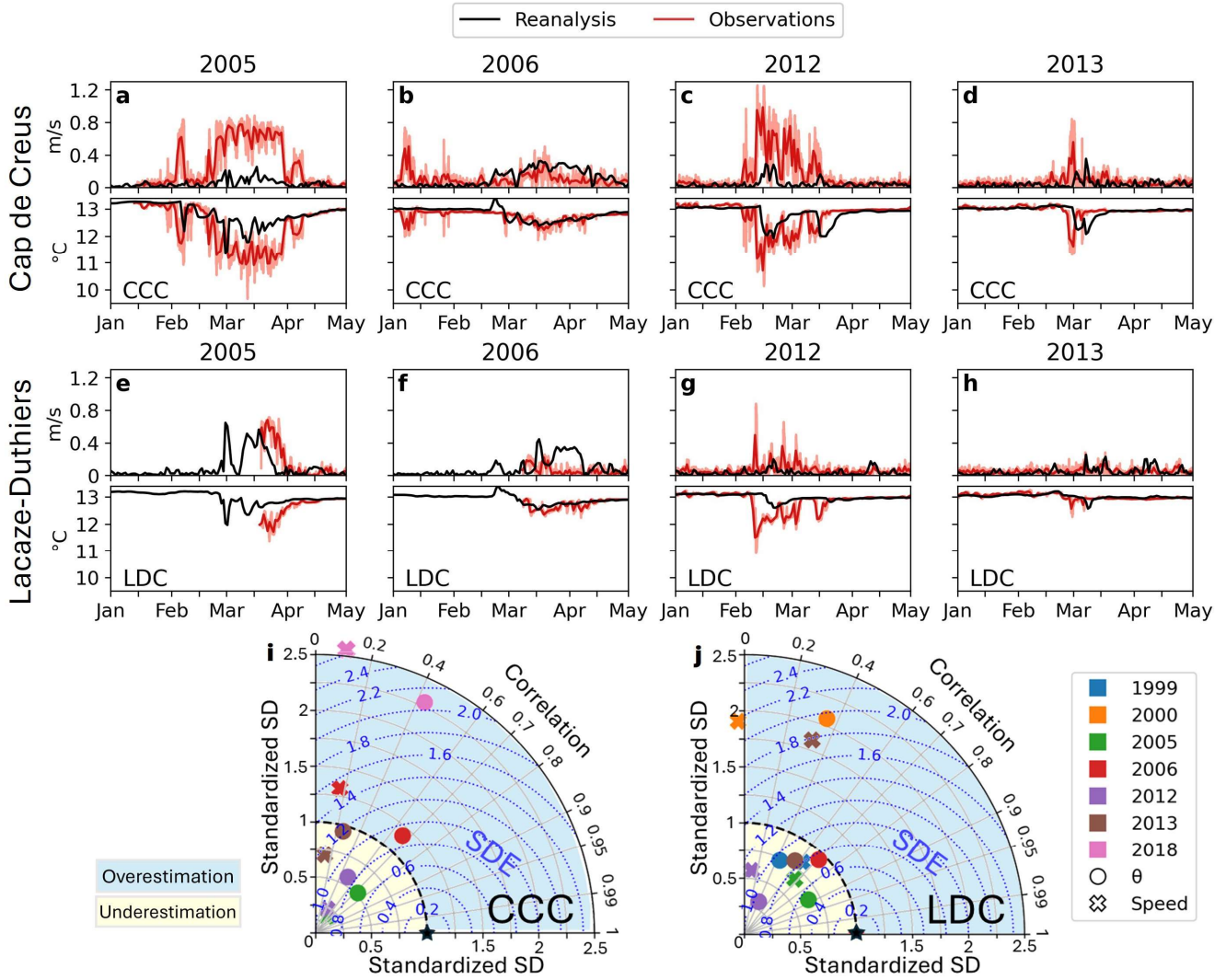


Figure 3. (a-h) Comparison of daily IDSWC between observations and reanalysis. Sub-hourly measurements (light red), and their daily mean (bright red). The 2005 data corresponds to mooring CC750 and the reanalysis at 750 m in the CCC. (i-j) Taylor diagrams for data from panels a-h and other IDSWC events, where the reanalysis standard deviations (SD) are standardized to the SD of the observations (black star), and the standardized SD error (SDE) is obtained. All the correlations are significant ($p < 0.05$) except for the speed in 2000 and 2012 in LDC, and in 2006, 2013, and 2018 in CCC. Values for 2018 are not shown in panel j because the IDSWC event was not found in LDC.

Peak DSWC transport values of 1.29 Sv are found in CCC, and 0.59 Sv₇ in LDC for 2005 (Fig. 2e). The winter-integrated transport is also highest in 2005: 1750 km³ summing the two canyons. From 1987 to 2021, the IDSWC transport decreased by 59% and the DSWC days in CCC dropped by 60%, but Mann-Kendall tests show non-statistical significance at 90% confidence level.

Figure 4 shows how the cold ($\theta < 12.6^\circ\text{C}$) and dense ($\sigma_\theta > 29.1 \text{ kg/m}^3$) shelf water flows along the seafloor from the shelf edge into both canyons. During a winter with IDSWC (Movie S3), the relatively fresh shelf water becomes colder until denser than intermediate water and sinks until reaching neutral density. Firstly, shelf water sinks into intermediate depths, as seen in Fig. 4c and 4d where temperature and salinity values at 100 m depth match the values at 400 m depth. Then, shelf water continues to cool and densify until reaching the density of the deeper water, and cascades more intensely. Consequently, the velocity at 1000 m increases and the temperature and salinity decrease. Peaks in density, speed and salinity, along with drops in temperature at 100, 400 and 1000 m depth occur almost simultaneously, meaning cascading shelf water reached the deep basin in less than 24 h.

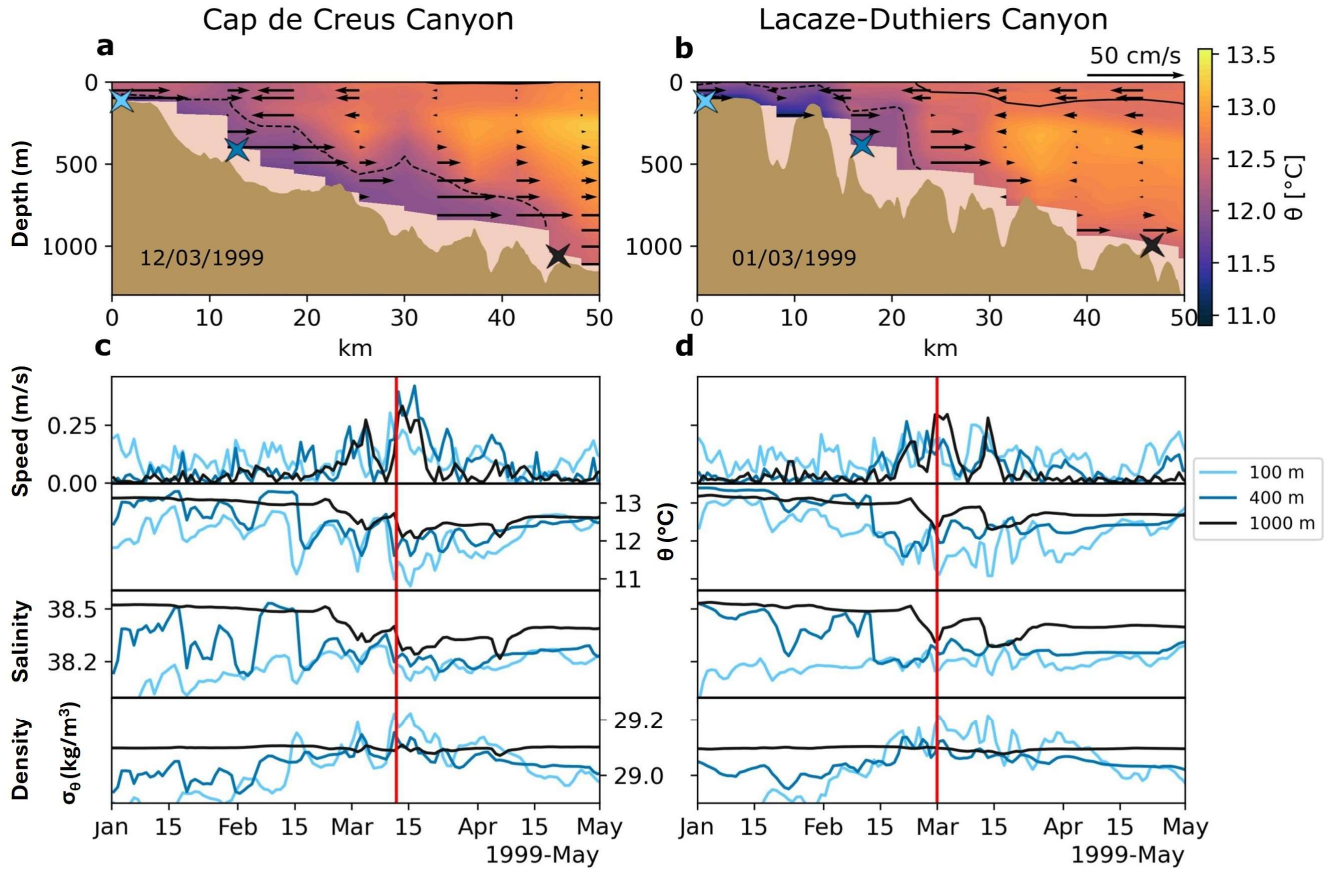


Figure 4. (a-b) IDSWC in 1999 in CCC and LDC from reanalysis. The black dashed line marks the 29.1 kg/m^3 isopycnal, and the solid black line, the 29.0 kg/m^3 isopycnal. Black vectors show downcanyon flow. Blue crosses mark the canyon bottom locations shown in c and d. The bathymetry corresponds to the reanalysis section represented with a grey line in Figure 1. (c-d) Time series of current speed, potential temperature, salinity and potential density. The red vertical line marks the date shown in a and b.

Figure 5 shows shelf water exceeding $\sigma_\theta > 29.16 \text{ kg/m}^3$ in 1987, 1999, 2000, 2005, 2006, 2012, 2013 and 2018, being denser at the canyon heads than at the basin bottom. Therefore, the model resolves the IDSWC and propagates this dense water

downcanyon. In other years such as 1992, 2003 and 2010, the densest shelf water is colder than in 2000 or 2006, but fresher,
 160 making it less dense and preventing cascading.

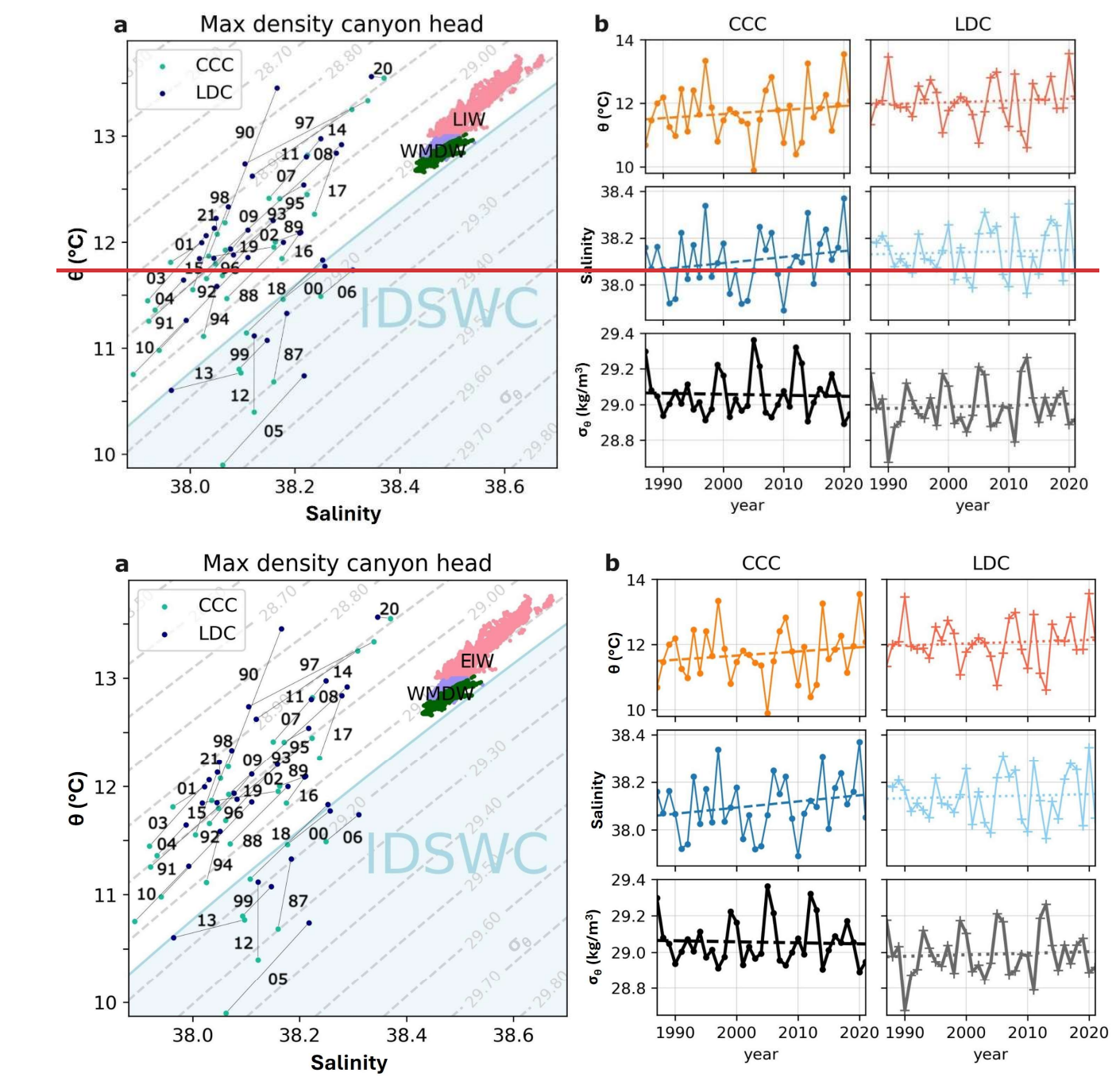


Figure 5. (a) θ -S diagrams with reanalysis data for the day with maximum density annually at the canyon heads (100 m depth). Two-

165 digit numbers indicate years, and the grey line connects canyon values. Eastern Intermediate Water (E-IW) and Western
Mediterranean Deep Water (WMDW) (pink and purple, respectively) are defined based on Juza et al. (2013) and correspond to the
hydrographic properties at the bottom of CCC between 400 and 1300 m of depth, and WMDW at 2300 m in the basin (dark green).
Blue shading highlights years with IDSWC, when canyon head potential density exceeds the maximum density of WMDW in our
170 data ($\sigma_\theta > 29.16 \text{ kg/m}^3$). (b) Annual maximum shelf-water density (bottom), salinity (middle), and temperature (top), in both canyons,
with dashed lines showing trends (non-statistically significant).

The maximum annual shelf-water potential density at the canyon heads (Fig 5a) shows that water in the CCC is generally
colder and fresher, but shelf-water densities in CCC and LDC are typically almost identical, with CCC often slightly denser,
or significantly as in 1987 and 2012. Both canyons exhibit densities sufficient to cascade deeply in 1987, 1999, 2000, 2005,
and 2012, 2013, and 2018. Comparing these shelf-water densities over time (Fig 5b), no significant trend is found: the slight
175 increase in temperature of $0.38^\circ\text{C}/30$ years and $0.17^\circ\text{C}/30$ years is compensated by an increase in salinity of $0.08/30$ years and
 $0.02/30$ years in the CCC and LDC, respectively.

4 Discussion

The MedSea reanalysis correctly reproduces IDSWC events, even with 84% recall for the correct week, due to the ~~balancee~~
~~between-contribution of~~ ERA5 atmospheric forcing, lateral advection, and assimilated shelf-water observations. Therefore, the
180 NEMO model succeeds in simulating opportune IDSWC given the right atmospheric and oceanic forcing conditions. This
provides reliability to the simulated IDSWC events in the pre-observational period. With its ~ 4 km horizontal resolution, the
reanalysis identifies submarine canyons (Fig. 1b) and simulates IDSWC. However, at 1000 m depth in the canyons, especially
during intense events such as in 2005 and 2012, the reanalysis temperature and speed are less extreme than the observed. This
is mainly due to resolution limitations, smoothing and oversimplifying the lateral and vertical hydrographic complexity of
185 IDSWC (Fig. 1b), and leaving the short-lived IDSWC flows poorly captured. The reanalysis aligns better with the observed
IDSWC days in the CCC, where the events are stronger, since the densest shelf water is accumulated by the Cap de Creus
peninsula (Fig. 1, Movie S1 and S2). Fig. 5a aligns with Fig. 2, 3 and 4, where colder IDSWC is found in CCC, but both
canyons exhibit densities sufficient to cascade in 1987, 1999, 2000, 2005, and 2012, 2013, and 2018. Both shelf-water
temperature and salinity are key in controlling shelf-water density and cascading (Fig. 5a). However, the reanalysis ignores
190 the interannual variability in river discharges, which may lead to possible discrepancies in salinity. The uncertainty in transport
estimates arises from the lack of full water-column observations, but IDSWC transport may be underestimated in years with
fewer IDSWC days and lower mean velocities than observed (e.g., 2012), and overestimated in the opposite case (e.g., 2018).
The slight decline in the IDSWC transport aligns with the observed IDSWC days, although more data are required to obtain a
significant trend.

195 The long-lasting IDSWC event revealed in 1987 aligns with ~~the cold atmospheric conditions triggering deep convection in the~~
~~GoL as studied by Schott & Leaman (1991) and Leaman & Schott (1991).~~ Béthoux et al. (2002), who suggested an IDSWC
event ~~in 1988 or after January 1987, with and~~ no events from 1988 to 1998, as confirmed by the reanalysis. ~~This 90s gap~~
~~coincides with the Eastern Mediterranean Transient (EMT) (Roether et al. 1996), an abnormal period in which Josey et al.~~

(2011) proved a warming over the northwestern Mediterranean, preventing shelf water from gaining enough density to cascade. However, more research is needed to determine the relationship between EMT and dense water formation. The two most significant observed events occurred in 2005 and 2012 (Figs. 2 and 3), as reported by Canals et al. (2006), Palanques et al. (2006), Sanchez-Vidal et al. (2008), Ulses et al. (2008b), Durrieu de Madron et al. (2013) and Puig et al. (2013). The strongest export of IDSWC occurred in 2005, the transport volume of which was estimated by Canals et al. (2006) at 750 km³, by Ulses et al. (2008b) at over 1200 km³, and 1750 km³ in the present study. The interannual variability of IDSWC found in the GoL coincides with the Adriatic Sea, where Paladini de Mendoza et al. (2023) observed cascading in 2012, 2017, and 2018, and less pronounced in 2019. This is probably because cold winter atmospheric forcing over the GoL also affected the Adriatic Sea, but the actual factors triggering IDSWC deserve further analysis.

5 Conclusion

The MedSea reanalysis is suitable for studying the IDSWC interannual variability in the NW Mediterranean, particularly in LDC and CCC, where IDSWC occurred in 1987, 1999, 2000, 2005, 2006, 2012, 2013, and briefly in 2018 and 2019. The reanalysis effectively captures IDSWC timing and intensity, revealing pre-observational events and transport variability in both canyons. IDSWC intensity is higher in the CCC, and events tend to recur the following winter. Due to this longer time series of reanalysis data, a 6-7-year frequency of paired IDSWC events is detected, interrupted during the EMT early and mid-1990s. Possible trends in IDSWC transport, duration, or shelf-water properties have appeared non-statistically significant, although it should continue to be monitored, as some decline has been perceived in recent years.

The success of using reanalysis to describe known IDSWC episodes provides a valuable tool for studying IDSWC or other overflows in recent years, even in the absence of observations, and could be applied elsewhere. The potential of the NEMO model to resolve IDSWC under the right forcing or preconditioning factors may enhance the prediction of these events, whose cyclic multiannual natural variability suggests a link to atmospheric modes of climate variability.

Data availability

MedSea reanalysis data are available on the CMEMS website (https://data.marine.copernicus.eu/product/MEDSEA_MULTIYEAR_PHY_006_004/services; Escudier et al., 2020). LD1000 dataset (Durrieu de Madron et al.; 2024) is available at <https://campagnes.flotteoceanographique.fr/series/62/> and <https://www.seanoe.org/data/00349/45980/>. CC1000 (Sanchez-Vidal et al., 2025) and CC750 (Puig & Palanques, 2025) datasets are available at <https://www.seanoe.org/data/00936/104746/> and <https://www.seanoe.org/data/00936/104799/> respectively.

Video supplement

Movie S1. Bottom θ from the Mediterranean Sea Physics Reanalysis in winter 2005. White markers represent the locations of the moorings.

Movie S2. Same as Movie S1 but for winter 2012.

230 Movie S3. Daily sequence of the hydrographic properties in the vertical sections of Cap de Creus and Lacaze-Duthiers canyons, as in Fig. 4, but for all the winters with IDSWC.

Author contributions

The study was carried out under the supervision of JPI, ASV, DA and LR, with the assistance of VEP, CFL, MAC, XDM, and PP. Mooring data acquisition and processing were performed by AC, MCD, ASV, DA, XDM, and PP. HF conducted the
235 analysis and wrote the original draft, with contributions from all co-authors in reviewing and editing.

Competing interests

The authors declare that they have no conflict of interest.

Acknowledgements

We acknowledge the support from the Spanish government through the grant FAR-DWO PID2020-114322RBI00 funded by
240 MCIN/AEI/10.13039/501100011033; and the Generalitat de Catalunya through the Excellence Research Groups Grants 2021-SGR-01195 and 2021-SGR-00433, the and its Secretaria d'Universitats i Recerca from Departament de Recerca i Universitats for supporting the FI-SDUR fellowship 2023-FISDU-00233, and the Direcció General de Política Marítima i Pesca Sostenible in the framework of the collaborative agreement between Universitat de Barcelona and Departament d'Acció Climàtica, Alimentació i Agenda Rural. ASV acknowledges the support by Catalan Institution for Research and Advanced Studies
245 ICREA. This work acknowledges the Severo Ochoa Centre of Excellence accreditation (CEX2019-000928-S). ~~We thank the crew from the vessel Lluerna and all the people involved in the CC1000 and LD1000 mooring operations during almost 2 decades of efforts at sea to maintain these long term deployments that are crucial to detect changes in the ocean. We acknowledge logistics support from Direcció General de Política Marítima i Pesca Sostenible in the framework of the collaborative agreement between Universitat de Barcelona and Departament d'Acció Climàtica, Alimentació i Agenda Rural.~~
250 We acknowledge the MOOSE program (Mediterranean Ocean Observing System for the Environment) funded by CNRS-INSU and the Research Infrastructure ILICO (CNRS-IFREMER). Sara Iftikhar is also acknowledged for providing the easy-mpl python package. Finally, we would like to thank the crew from the vessel Lluerna and all the people involved in the

CC1000 and LD1000 mooring operations during almost 2 decades of efforts at sea to maintain these long-term deployments that are crucial to detect changes in the ocean.

255 References

- Arjona-Camas, M., Durrieu de Madron, X., Bourrin, F., Fos, H., Sanchez-Vidal, A., and Amblas, D.: Dense shelf-water and associated sediment transport in the Cap de Creus Canyon and adjacent shelf under mild winter regimes: insights from the 2021–2022 winter, *EGUsphere* [preprint], <https://doi.org/10.5194/egusphere-2025-1310>, 2025.
- Arjona-Camas, M., Durrieu de Madron, X., Bourrin, F., Fos, H., Sanchez-Vidal, A., and Amblas, D.: Dense shelf water cascading dynamics in the Cap de Creus Canyon and adjacent shelf under mild winter regimes: insights from the 2021–2022 winter. Manuscript in preparation, 2025.
- Béthoux, J. P., Durieu de Madron, X., Nyffeler, F., and Tailliez, D.: Deep water in the western Mediterranean: Peculiar 1999 and 2000 characteristics, shelf formation hypothesis, variability since 1970 and geochemical inferences. *J. Mar. Syst.* 33–34, 117–131, [https://doi.org/10.1016/S0924-7963\(02\)00055-6](https://doi.org/10.1016/S0924-7963(02)00055-6), 2002.
- Canals, M., Puig, P., De Madron, X. D., Heussner, S., Palanques, A., and Fabres, J.: Flushing submarine canyons, *Nature*, 444, 354–357, <https://doi.org/10.1038/nature05271>, 2006.
- ~~CMEMS. Global Ocean CORA In situ Observations Yearly Delivery in Delayed Mode. E.U. Copernicus Marine Service Information, Marine Data Store (MDS). <https://doi.org/10.17882/46219>, 2023. (Accessed on 21-06-2024)~~
- Dufau-Julliand, C., Marsaleix, P., Petrenko, A., and Dekeyser, I.: Three-dimensional modeling of the Gulf of Lion’s hydrodynamics (northwest Mediterranean) during January 1999 (MOOGLI3 Experiment) and late winter 1999: Western Mediterranean Intermediate Water’s (WIW’s) formation and its cascading over the shelf break, *J Geophys Res Oceans*, 109, <https://doi.org/10.1029/2003JC002019>, 2004.
- Durrieu De Madron, X., Houpert, L., Puig, P., Sanchez-Vidal, A., Testor, P., Bosse, A., Estournel, C., Somot, S., Bourrin, F., Bouin, M. N., Beauverger, M., Beguery, L., Calafat, A., Canals, M., Cassou, C., Coppola, L., Dausse, D., D’Ortenzio, F., Font, J., Heussner, S., Kunesch, S., Lefevre, D., Le Goff, H., Martín, J., Mortier, L., Palanques, A., and Raimbault, P.: Interaction of dense shelf water cascading and open-sea convection in the northwestern Mediterranean during winter 2012, *Geophys Res Lett*, 40, 1379–1385, <https://doi.org/10.1002/grl.50331>, 2013.

- 280 Durrieu de Madron, X., Aubert, D., Charrière, B., Kunesch, S., Menniti, C., Radakovitch, O., and Sola, J.: Impact of Dense Water Formation on the Transfer of Particles and Trace Metals from the Coast to the Deep in the Northwestern Mediterranean, *Water (Switzerland)*, 15, <https://doi.org/10.3390/w15020301>, 2023.
- Durrieu de Madron, X., Heussner, S., Delsaut N., Kunesch S. and Menniti C.: BILLION observatory data. SEANOE. <https://doi.org/10.17882/45980>, 2024.
- 285 Escudier, R., Clementi, E., Omar, M., Cipollone, A., Pistoia, J., Aydogdu, A., Drudi, M., Grandi, A., Lyubartsev, V., Lecci, R., Creti, S., Masina, S., Coppini, G., and Pinardi, N.: Mediterranean Sea Physical Reanalysis (CMEMS MED-Currents) (Version 1) Data set. Copernicus Monitoring Environment Marine Service (CMEMS). https://doi.org/10.25423/CMCC/MEDSEA_MULTIYEAR_PHY_006_004_E3R1, 2020.
- Escudier, R., Clementi, E., Cipollone, A., Pistoia, J., Drudi, M., Grandi, A., Lyubartsev, V., Lecci, R., Aydogdu, A., Delrosso, D., Omar, M., Masina, S., Coppini, G., and Pinardi, N.: A High Resolution Reanalysis for the Mediterranean Sea, *Front Earth Sci (Lausanne)*, 9, <https://doi.org/10.3389/feart.2021.702285>, 2021.
- 290 Herrmann, M., Estournel, C., Déqué, M., Marsaleix, P., Sevault, F., and Somot, S.: Dense water formation in the Gulf of Lions shelf: Impact of atmospheric interannual variability and climate change, *Cont Shelf Res*, 28, 2092–2112, <https://doi.org/10.1016/j.csr.2008.03.003>, 2008.
- Hersbach, H., Bell, B., Berrisford, P., Hirahara, S., Horányi, A., Muñoz-Sabater, J., Nicolas, J., Peubey, C., Radu, R., Schepers, D., Simmons, A., Soci, C., Abdalla, S., Abellan, X., Balsamo, G., Bechtold, P., Biavati, G., Bidlot, J., Bonavita, M., 295 De Chiara, G., Dahlgren, P., Dee, D., Diamantakis, M., Dragani, R., Flemming, J., Forbes, R., Fuentes, M., Geer, A., Haimberger, L., Healy, S., Hogan, R. J., Hólm, E., Janisková, M., Keeley, S., Laloyaux, P., Lopez, P., Lupu, C., Radnoti, G., de Rosnay, P., Rozum, I., Vamborg, F., Villaume, S., and Thépaut, J. N.: The ERA5 global reanalysis, *Quarterly Journal of the Royal Meteorological Society*, 146, 1999–2049, <https://doi.org/10.1002/qj.3803>, 2020.
- Heussner, S., Durrieu de Madron, X., Calafat, A., Canals, M., Carbonne, J., Delsaut, N., and Saragoni, G.: Spatial and temporal 300 variability of downward particle fluxes on a continental slope: Lessons from an 8-yr experiment in the Gulf of Lions (NW Mediterranean), *Mar Geol*, 234, 63–92, <https://doi.org/10.1016/j.margeo.2006.09.003>, 2006.
- Ivanov, V. V., Shapiro, G. I., Huthnance, J. M., Aleynik, D. L., and Golovin, P. N.: Cascades of dense water around the world ocean, <https://doi.org/10.1016/j.pocean.2003.12.002>, 2004.
- ~~Josey, S. A., Somot, S., and Tsimplis, M.: Impacts of atmospheric modes of variability on Mediterranean Sea surface heat exchange, *J Geophys Res Oceans*, 116, <https://doi.org/10.1029/2010JC006685>, 2011.~~
- 305

- Juza, M., Renault, L., Ruiz, S., and Tintoré, J.: Origin and pathways of winter intermediate water in the northwestern mediterranean sea using observations and numerical simulation, *J Geophys Res Oceans*, 118, 6621–6633, <https://doi.org/10.1002/2013JC009231>, 2013.
- ~~Leaman, K. D., and Schott, F. Hydrographic structure of the convection regime in the Gulf of Lions: Winter 1987. *J. Phys. Oceanogr*, 21, 575–597. [https://doi.org/10.1175/1520-0485\(1991\)021<0575:HSOTCR>2.0.CO;2](https://doi.org/10.1175/1520-0485(1991)021<0575:HSOTCR>2.0.CO;2), 1991.~~
- Madec, G., ~~and~~ the NEMO team: NEMO ocean engine: version 3.6 stable. Note du Pole de modelisation, Institut Pierre-Simon Laplace N 27. ISSN No 1288-1619. <https://www.nemo-ocean.eu/doc/>, 2016.
- ~~MEDOC Group: Observation of formation of deep water in the Mediterranean Sea, 1969, *Nature*, 227, 1037-1040. <https://doi.org/10.1038/2271037a0>, 1970.~~
- 315 Millot, C.: The Gulf of Lions’ hydrodynamics, *Cont Shelf Res*, 10, 885–894, 1990.
- Palanques, A., Durrieu de Madron, X., Puig, P., Fabres, J., Guillén, J., Calafat, A., Canals, M., Heussner, S., and Bonnín, J.: Suspended sediment fluxes and transport processes in the Gulf of Lions submarine canyons. The role of storms and dense water cascading, *Mar Geol*, 234, 43–61, <https://doi.org/10.1016/j.margeo.2006.09.002>, 2006.
- Puig, P., Madron, X. D. de, Salat, J., Schroeder, K., Martín, J., Karageorgis, A. P., Palanques, A., Roullier, F., Lopez-Jurado, J. L., Emelianov, M., Moutin, T., and Houpert, L.: Thick bottom nepheloid layers in the western Mediterranean generated by deep dense shelf water cascading, *Prog Oceanogr*, 111, 1–23, <https://doi.org/10.1016/j.pocan.2012.10.003>, 2013.
- 320 Puig, P., and Palanques, A.: CC750 observatory data. SEANO. <https://doi.org/10.17882/104799>, 2025.
- ~~Roether, W., Manca, B. B., Klein, B., Bregant, D., Georgopolous, D., Beitzel, V., Kovacevic, V., and Luchetta, A. Recent changes in eastern Mediterranean deep waters. *Science*, 271, 333–335. <https://doi.org/10.1126/science.271.5247.333>, 1996.~~
- 325 Sanchez-Vidal, A., Pasqual, C., Kerhervé, P., Calafat, A., Heussner, S., Palanques, A., Durrieu de Madron, X., Canals, M., and Puig, P.: Impact of dense shelf water cascading on the transfer of organic matter to the deep western Mediterranean basin. *Geophys Res Lett*, 35. <https://doi.org/10.1029/2007GL032825>, 2008.
- Sanchez-Vidal, A., Calafat, A., Amblas, D., Cerdà-Domènech, M., Fos, H.: CC1000 observatory data. SEANO. <https://doi.org/10.17882/104746>, 2025.
- 330

- Schroeder, K., Ismail, S. Ben, Bensi, M., Bosse, A., Chiggiato, J., Civitarese, G., Falcieri, F. M., Fusco, G., Gačić, M., Gertman, I., Kubin, E., Malanotte-Rizzoli, P., Martellucci, R., Menna, M., Ozer, T., Taupier-Letage, I., Yáñez, M. V., Velaoras, D., and Vilibić, I.: A consensus-based, revised and comprehensive catalogue for Mediterranean water masses acronyms, *Mediterr Mar Sci*, 25, 783–791, <https://doi.org/10.12681/MMS.38736>, 2024.
- 335 ~~Schott, F., and Leaman, K.D. (1991). Observations with moored acoustic doppler current profilers in the convection regime in the Golfe du Lion. J. Phys. Oceanogr, 21, 558–574. [https://doi.org/10.1175/1520-0485\(1991\)021<0558:OWMADC>2.0.CO;2](https://doi.org/10.1175/1520-0485(1991)021<0558:OWMADC>2.0.CO;2), 1991.~~
- Storto, A. and Masina, S.: C-GLORSv5: An improved multipurpose global ocean eddy-permitting physical reanalysis, *Earth Syst Sci Data*, 8, 679–696, <https://doi.org/10.5194/essd-8-679-2016>, 2016.
- 340 ~~Szekely, T., Gourrion, J., Pouliquen, S., Reverdin, G. CORA, Coriolis Ocean Dataset for Reanalysis. SEANOE. <https://doi.org/10.17882/46219>, 2024~~
- Testor, P., Bosse, A., Houpert, L., Margirier, F., Mortier, L., Legoff, H., Dausse, D., Labaste, M., Karstensen, J., Hayes, D., Olita, A., Ribotti, A., Schroeder, K., Chiggiato, J., Onken, R., Heslop, E., Mourre, B., D’ortenzio, F., Mayot, N., Lavigne, H., de Fommervault, O., Coppola, L., Prieur, L., Taillandier, V., Durrieu de Madron, X., Bourrin, F., Many, G., Damien, P., Estournel, C., Marsaleix, P., Taupier-Letage, I., Raimbault, P., Waldman, R., Bouin, M. N., Giordani, H., Caniaux, G., Somot, S., Ducrocq, V., and Conan, P.: Multiscale Observations of Deep Convection in the Northwestern Mediterranean Sea During Winter 2012–2013 Using Multiple Platforms, *J Geophys Res Oceans*, 123, 1745–1776, <https://doi.org/10.1002/2016JC012671>, 2018.
- 345
- Ulses, C., Estournel, C., Bonnin, J., Durrieu de Madron, X., and Marsalei, P.: Impact of storms and dense water cascading on shelf-slope exchanges in the Gulf of Lion (NW Mediterranean), *J Geophys Res Oceans*, 113, <https://doi.org/10.1029/2006JC003795>, 2008a.
- 350
- Ulses, C., Estournel, C., Puig, P., Durrieu de Madron, X., and Marsaleix, P.: Dense shelf water cascading in the northwestern Mediterranean during the cold winter 2005: Quantification of the export through the Gulf of Lion and the Catalan margin, *Geophys Res Lett*, 35, <https://doi.org/10.1029/2008GL033257>, 2008b.
- 355 Wadoux, A. M. J. C., Walvoort, D. J. J., and Brus, D. J.: An integrated approach for the evaluation of quantitative soil maps through Taylor and solar diagrams, *Geoderma*, 405, <https://doi.org/10.1016/j.geoderma.2021.115332>, 2022.

Weatherall, P., Marks, K. M., Jakobsson, M., Schmitt, T., Tani, S., Arndt, J. E., Rovere, M., Chayes, D., Ferrini, V., and Wigley, R.: A new digital bathymetric model of the world's oceans, *Earth and Space Science*, 2, 331–345, <https://doi.org/10.1002/2015EA000107>, 2015.