

The vertical distribution of soil organic and inorganic carbon in a dry alpine rangeland of northern Qinghai-Tibetan Plateau

设置格式[za118]: 缩进: 首行缩进: 7.4 毫米
删除[za118]: Altitudinal

Qinglin Liu ^a, Ailin Zhang ^{a*}, Xiangyi Li ^b, Jinfei Yin ^a, Yuxue Zhang ^a, Osbert Jianxin Sun ^{a,c}, Yong Jiang ^a

^a School of Life Sciences, Hebei University, Baoding, 071002, China
^b Xinjiang Institute of Ecology and Geography, Chinese Academy of Sciences, Urumqi, 830011, China
^c School of Ecology and Nature Conservation, Beijing Forestry University, Beijing, 100083, China
* Corresponding authors.

E-mail address: alzhang@hbu.edu.cn (Ailin Zhang).

Abstract

The spatial patterns of soil carbon in water-constrained alpine ecosystems have been rarely investigated. It remains unclear how changes in biotic and abiotic factors with elevation would shape the distribution of soil carbon stocks when plant communities are co-limited by water and low temperature. To address this uncertainty, we uniformly selected seven points on the vertical gradient at an elevation of 3,000-4,000 meters in the northern part of the Qinghai-Tibet Plateau to analyze the changing trends of organic carbon (SOC) and inorganic carbon (SIC) in the surface soil. Our results showed that the total soil carbon density (TCD) and the SOC density (SOCD) increased with increases in elevation, but the SIC density (SICD) displayed a pattern of nonlinear change along the altitudinal gradient with a peak at the mid-slope of the range. While SIC dominated the soil carbon pool, accounting for 64 - 90% of TCD, the proportion of SOC increased from 10 to 36% of the TCD with increases in elevation. The increases in SOCD with elevation were associated with changes from scrub-dominated vegetation cover to herbaceous plant communities and decreasing MAT, which together attributed to increased level of plant-derived carbon inputs and reduced SOC mineralization at higher elevations. Whereas variations in SICD were mainly explainable by changes in soil C/N ratio and soil water content (SWC), and

设置格式[za118]: 缩进: 首行缩进: 2 字符
删除[za118]: altitude
删除[za118]: To address this uncertainty, we investigated changes in soil organic carbon (SOC) and inorganic carbon (SIC) along an altitudinal gradient between 3000-4000 m asl, in the northern Qinghai-Tibetan Plateau.
删除[za118]: altitude
删除[za118]: altitude
删除[za118]: altitude

likely resulted from non-linear changes in factors related to inorganic carbon production and leaking losses. Findings from this study help fill the knowledge gap on the underlying controls of SOC and SIC distribution along the altitudinal gradient in water- and low temperature-constrained alpine rangeland.

Keywords Qinghai-Tibet Plateau · arid region · carbon pool · soil organic carbon · soil inorganic carbon

1. Introduction

Because soil contains the largest proportion of C stocks in terrestrial ecosystems (Lal, 2018), the size, persistence and storage capacity of soil C pool have been the focal issues in global change research. However, despite extensive studies on soil carbon pools in the past, there is still great uncertainty regarding the response of soil C pools to global climate change. Part of the problems arises from differential alterations of pool size and functional structure of soil C among the world's terrestrial ecosystems as affected by environmental variability and climate change (Sun et al., 2019, 2023; Zhang et al., 2024). Soil C pool is made up of both organic (SOC) and inorganic chemical compounds (SIC). In general, SOC dominates the soil C pool on vegetated sites (Feyissa et al., 2023); Whereas SIC is a major component of soil carbon pool in arid areas where plants are scarce especially in drylands (Du and Gao, 2020; Dong et al., 2024). Previous research has well demonstrated that SOC are jointly controlled by vegetation, climate and soil physicochemical properties (Eswaran et al., 1993; Torn et al., 1997; Schuur et al., 2001; Callesen et al., 2003; Sun et al., 2004). In contrast, SIC pool is mainly affected by abiotic factors such as soil parent material, climate and elevations gradient (Chang et al., 2012; Ma et al., 2022; Dong et al., 2024). The variation patterns of soil organic carbon and silicon carbide reservoirs under different elevation gradients and vegetation types, as well as their response mechanisms to climate, indicators and soil factors, remain unclear. The Qinghai-Tibet Plateau rises sharply in the elevation gradient, and the ecosystem types have the characteristics of spatial differentiation. Among different

删除[za118]: C

删除[za118]: C

删除[za118]: C

设置格式[za118]: 缩进: 左侧: 0 毫米, 无项目符号或编号

删除[za118]: However, despite extensive studies, there are still great uncertainties in the response to, and mitigation potential of, global climate change by soil C.

删除[za118]: w

删除[za118]: altitude

删除[za118]: Under different altitude gradients and vegetation types, the change rules of SOC and SIC pools and the specific response factors are still unclear.

ecological types, there are significant differences in climate, vegetation and soil characteristics. With increases in elevation along the mountain slopes on the Plateau, air temperature markedly decreases, and precipitation and the intensity of solar radiation increases, contributing to altitudinal changes in vegetation and soil nutrient availability (Tiemann and Billings, 2011; García-Palacios et al., 2013; Wang et al., 2024). The unique topographic feature and presence of diverse ecosystems have made the region a hot spot for research geared at better understanding of the impacts by climate change on ecosystem structure and function. However, most studies in this region have mainly focused on the vegetation or soil change patterns of permafrost and meadow ecosystems (Wang et al., 2023; Chen et al., 2017; Cai et al., 2025). The variation patterns of vegetation and soil carbon pools in alpine meadow ecosystems in arid areas have been largely ignored. Alpine meadows in arid areas are also an important part of the alpine meadow ecosystem on the Qinghai-Tibet Plateau and are the foundation of agriculture and animal husbandry in the northern part of the Qinghai-Tibet Plateau (Zhang et al., 2021). On the Qinghai-Tibetan Plateau, the abiotic conditions, vegetation and soil types have undergone great changes at different elevations (Li et al., 2017), which would inevitably impose significant impacts on soil C dynamics due to altitudinal shift in vegetation type and hydrothermal conditions (Rodeghiero and Cescatti, 2005). Previous studies have shown substantial variations in the quality and quantity of SOC along the altitudinal gradients in mountainous landscapes (Pepin et al., 2015). The alpine grassland in the northern part of the Qinghai-Tibet Plateau is located in the arid climate area, with a relatively low vegetation coverage. The surface is severely eroded by wind and water, and the community type is mainly desert grassland. In arid alpine rangelands, such as that in the northern Qinghai-Tibetan Plateau region, SIC plays a more dominant role in the soil C storage (Batjes, 2006; Du and Gao, 2020). The soil carbon pool of alpine grassland in arid areas is more sensitive to changes in the microenvironment. Therefore, previous studies may have neglected the role of SIC in soil carbon inventory in this region. But whether or to what extent the altitudinal changes in

删除[za118]: The Qinghai-Tibetan Plateau is characterized by a drastic rise in elevation and occurrence of spatial divergence in ecosystem types typically exhibited by latitudinal and longitudinal patterns of vegetation but within a much-confined space.

删除[za118]: However, most of the studies in the region have been conducted with primary objectives to elucidate the changes and underlying controls in wetland and grassland plant communities, and/or changes in soil properties, in relation to the regional trend of climate change and permafrost degradation (Wang et al., 2023a; Chen et al., 2017; Cai et al., 2025), with the alpine dry rangeland been largely neglected.

删除[za118]: However, i

删除[za118]: vegetation cover is most sparse and

删除[za118]: previous studies have neglected the role of SIC in soil carbon inventory in terrestrial ecosystems. The Qinghai-Tibetan Plateau is a climate-sensitive region and the altitudinal variations in climatic factors are more pronounced because of the sharply raised terrain (You et al., 2021).

删除[za118]: With increases in altitude along the mountain slopes on the Plateau, air temperature markedly decreases, and precipitation and the intensity of solar radiation increases, contributing to altitudinal changes in vegetation and soil nutrient availability (Tiemann and Billings, 2011; García-Palacios et al., 2013; Wang et al., 2023b).

86 micro-environments and vegetation would affect SOC and SIC remains unknown.

87 In this study, we investigated the patterns of changes in SOC and SIC in the top
88 30 cm soil along the southern slope of the Altun Mountain across an altitudinal range
89 of 3000 - 4000 m above sea level (asl), in the northern Qinghai-Tibetan Plateau region,
90 and collected data on plant communities and soil physicochemical properties. The
91 aims of the study were to determine the altitudinal patterns in the density of SOC
92 (SOCD) and SIC (SICD). We hypothesized that (1) With the increase of elevation, the
93 decrease of temperature and the increase of vegetation, the content of soil organic
94 carbon increases; (2) With the increase of elevation, the drought limitation is
95 alleviated and the inorganic carbon content in the soil decreases; (3) With the increase
96 of elevation, the proportion of organic carbon in the soil carbon pool increases, while
97 the proportion of inorganic carbon decreases.

98 **2.Methods and materials**

99 2.1 Study sites and experimental design

100 Our study sites are located in the Altun Mountain Nature Reserve in the south of
101 Altyn Tagh, situated in the northeastern part of the Qinghai-Tibetan Plateau (87°10'E -
102 91°18'E, 36°N - 37°49'N). This area is known for harsh environmental conditions
103 characterized by a dry climate, with an average annual temperature of 0 °C and an
104 annual precipitation of around 110 mm. The soils are predominantly yermosols (FAO,
105 <http://www.fao.org/soils-portal/so>). The Reserve comprises diverse landcover types,
106 including deserts, scrubs, and grasslands. The herbaceous layer typically ranges from
107 5 to 20 cm in height, with a coverage of 10 - 30%, occasionally reaching 60 - 80%.
108 The main vegetation types being dwarf scrubs in the lower altitudinal range of the
109 slope and grassland at the upper slope. In this study area, the vegetation types are
110 mainly small shrubs and shrubs at the elevation of 3000-3300m, the vegetation types
111 are mixed shrubs and herbs at the elevation of 3300-3500m, and the vegetation types
112 above 3500m are mainly herbs (Fig. 1). Dominant plant species are represented by
113 *Stipa purpurea* Griseb. and *Kobresia robusta* Maxim., which are often accompanied
114 by common grassland plants including *Carex kunlumsannsis* N.R.Cui, *Koeleria*

删除[za118]: But it is not known if and to what extent the altitudinal changes in micro-environments and vegetation would affect soil C and if the stocks of SOC and SIC would co-vary with altitude

删除[za118]: (1) the relative importance of SOC to SIC decreases with altitude because of the imbalance between the inputs and mineralization of soil organic matter, and (2) SICD would become more profound at higher altitudes because of reduced inputs of plant-derived organic matter.

设置格式[za118]: 缩进: 左侧: 0 毫米, 无项目符号或编号

删除[za118]: °

删除[za118]: °

删除[za118]: °

删除[za118]: °

删除[za118]: altitude

删除[za118]: altitude

删除[za118]: S

cristata (L.) Pers., and *Oxytropis falcata* Bunge.

In August 2019, we conducted plant survey and soil sampling at seven elevations (designated as A1-A7) along a vertical transect in an altitudinal range of 3000-4000 m asl in the northern section of the Altun Mountain Nature Reserve. The distance between adjacent survey and sampling elevations ranged from 60 to > 100 m in elevation. All sites are geo-referenced. At each sample point, a 100 m x 100 m area was selected for sampling investigation. A 100 m sample line was set at the middle position, and 10 sample squares were evenly set on the sample line, with each sample square being 1 m x 1 m. Each sample square is spaced 1 meter apart. The altitudinal profile of the sampling sites is illustrated in Fig. 1.

删除[za118]: altitude

删除[za118]: altitude

删除[za118]: At each altitude, five quadrats (each measuring 100×100 cm) were setup along the contour for measurements of plants and soil sample collections, and the quadrats were separated by a ~20 m spacing between adjacent ones.

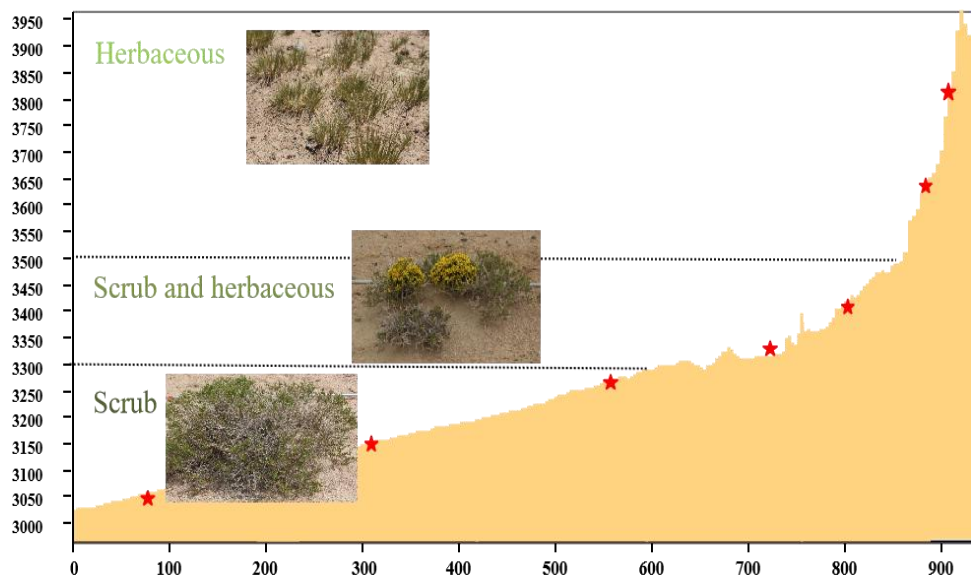


Fig. 1 The vertical profile of sample sites in the northern section of the Altun Mountain Nature Reserve, Qinghai-Tibetan Plateau

删除[za118]: altitudinal

2.2 Measurements of plant and soil variables

We determined the relative coverage of each species and the entire community and identified the dominant species. The coverage of the plant community was calculated as the sum of the coverage values for individual species as there are little overlap among plant species at our study sites. All plants within each quadrat were harvested and measured for both fresh and dry mass. Soil samples were collected to 30 cm depth using a 7-cm (inner diameter) augur at locations where the above-ground

tissues were harvested for biomass measurements. Roots were picked out of soil samples and measured for dry mass weight. Upon completing the field survey, plant samples were transported to laboratory and oven-dried at 75 °C for 48 h for determination of biomass. Soil water content (SWC) was determined gravimetrically by determining the fresh soil weight and then dry mass after subjecting to oven-drying at 105 °C for 48 h. Soil pH was determined using a conductometer (1:1 soil-water suspension) and acidimeter (1:5 soil-water suspension). Soil bulk density (BD) was determined using cutting ring method. The SOC and plant C contents (above-ground tissues and roots) were quantified using the K₂Cr₂O₇ oxidation, and soil TC using an elemental analyzer (TOCV wp; Shimadzu Corp., Tokyo, Japan). The content of SIC was directly determined by neutralization titration. The measurements for plant C were made with samples oven-dried at 75 °C for 48 h.

删除[za18]: The SIC content was determined through neutralization titration.

2.3 Data processing and statistical analysis

The climate data (MAT, NDVI) used in this study were extracted from the website of Global climate data (<http://worldclim.org>). For plant community structure, we quantified Shannon-Wiener index (H') and species richness (Whittaker and Niering, 1965).

One-way ANOVA was used to determine the effects of elevations on SWC and BD, and Duncan's multiple comparison test to determine the statistical significance of the differences of the variables among elevations. Linear regression was applied to examine the relationships of SOC and SIC with the indices of climate, plant community and soil. Redundancy analysis (RDA) was performed for identification of significant influencing factors on SOC and SIC, and Structural Equation Modelling (SEM) for analysis of direct and indirect influences of climate, plant and soil variables on SOC and SIC. We have developed models for SOCD and SICD that simultaneously consider vegetation, environmental factors, and soil properties. Based on the results of linear regression and RDA, the measurement variables associated with the three potential predictors for SOCD are the NDVI, species diversity, richness, MAT, bulk density BD, and soil N. In contrast, the measurement variables

设置格式[za18]: 缩进: 首行缩进: 0 字符

删除[za18]: altitude

删除[za18]: altitude

corresponding to the three potential predictors for SICD include root biomass, SWC, BD, and soil C/N. In the model, the significant paths ($p<0.05$) are represented by solid lines and the insignificant paths by dashed lines. The sample size of each measurement index is 35, and the initial model is presented in the supplementary materials (Fig. S1). We acknowledge that the influence of certain excluded variables on SOCD and SICD may have been overlooked. Nonetheless, we have minimized the model's complexity, thereby enhancing our understanding of the primary direct and indirect effects of vegetation, environmental factors, and soil properties on the soil carbon pool. This approach allows us to address our research questions more comprehensively and accurately. All observed variables were initially categorized into composite variables before being incorporated into the SEM. To assess the robustness of the relationships between key ecosystem factors and SOCD and SICD, we employed piecewise SEM to analyze the random effects at the sampling sites, detailing the "marginal" and "conditional" contributions of the predictive factors (Tian et al., 2021). All statistical analyses were implemented within Origin 9.3 and R 4.2.1 (R Core Team, 2020), and composite SEM model analysis in the R packages “piecewise SEM”, “nlme” and “lme4”.

设置格式[za118]: 字体: 倾斜

删除[za118]: We adjusted the model according to the theoretical understanding of the processes and removed the paths that are not significant or have only weak effects. Data were fitted to the models using the maximum likelihood estimation method

删除[za118]: SEM-composite

3.Results

3.1. Changes of soil C pools, plant community, climate and edaphic factors with elevations

删除[za118]: altitude

The total soil C (TC) pool was predominantly made up of inorganic component along the altitudinal gradient, accounting for 64 - 90% of TC (Fig. 2). With increases in elevation, the organic component of soil C (SOC) significantly and linearly increased (Fig. 2a), leading to its increased proportion from 10 to 36% of TC (Fig. 2b).

删除[za118]: altitude

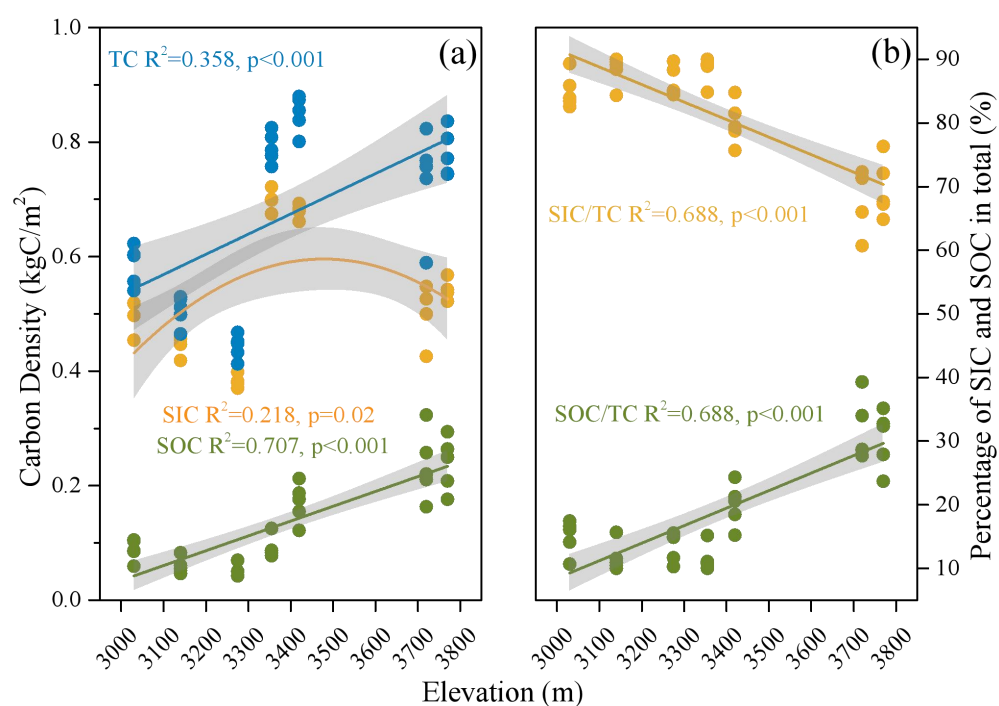


Fig. 2 Altitudinal changes in (a) densities of soil organic (SOC), inorganic (SIC) and total C (TC), and (b) proportions of SOC and SIC in TC in a dry alpine rangeland of Qinghai-Tibetan Plateau

Among the variables characterizing plant communities, NDVI, plant species diversity and richness all increased with rising elevation ($p<0.01$) (Fig. 3a-c), and above-ground biomass density decreased ($p<0.01$) (Fig. 3e). However, both fine root biomass density and vegetation cover displayed patterns of curvilinear changes with elevations (Fig. 3d and 3f).

删除[za118]:

删除[za118]: altitude

删除[za118]: altitude

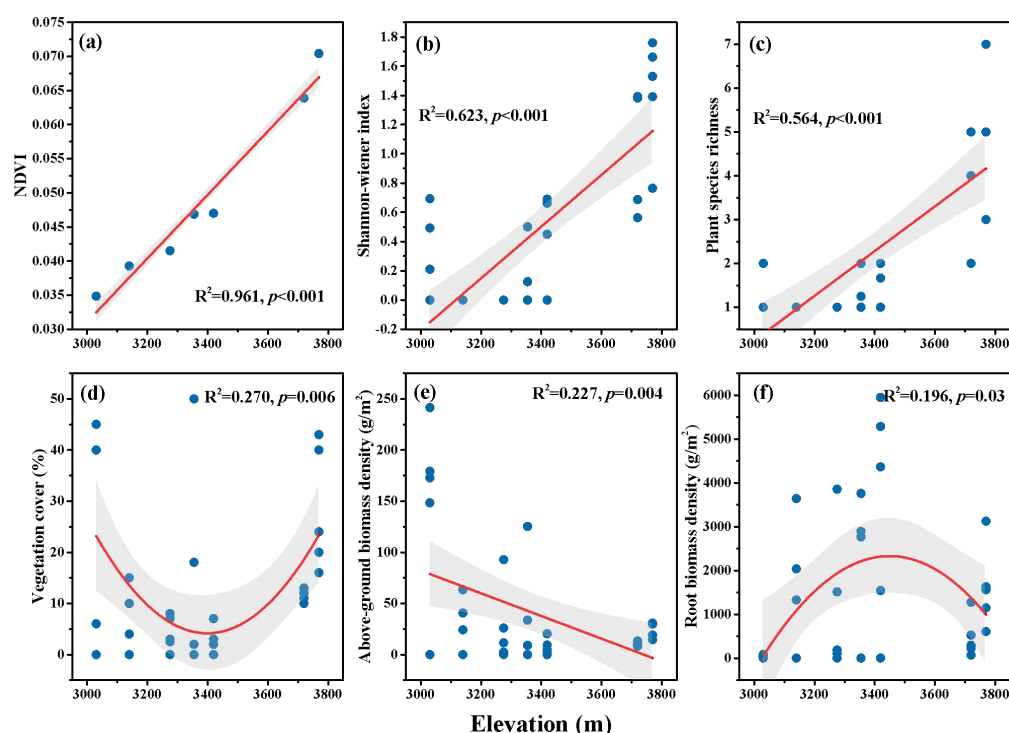
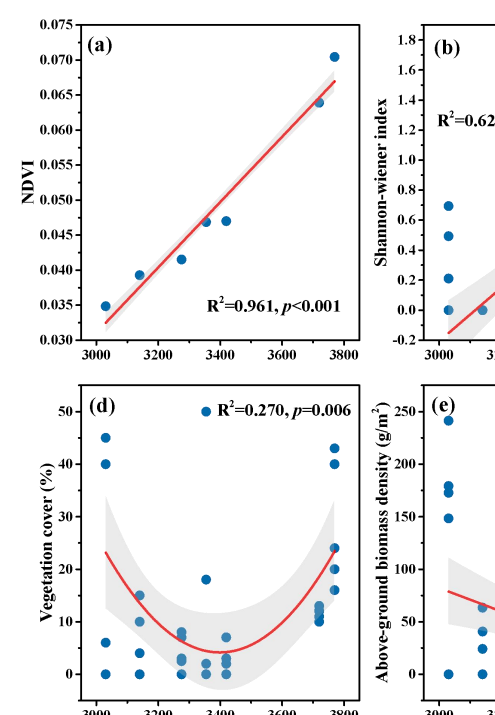


Fig. 3 The elevation variation of selective plant community characteristics in the alpine plateau area of the arid region of the Qinghai-Tibet Plateau. (a) Normalized difference vegetation index (NDVI); (b) Shannon-Wiener index; (c) plant species richness; (d) vegetation cover; (e) aboveground biomass density; and (f) fine root biomass density

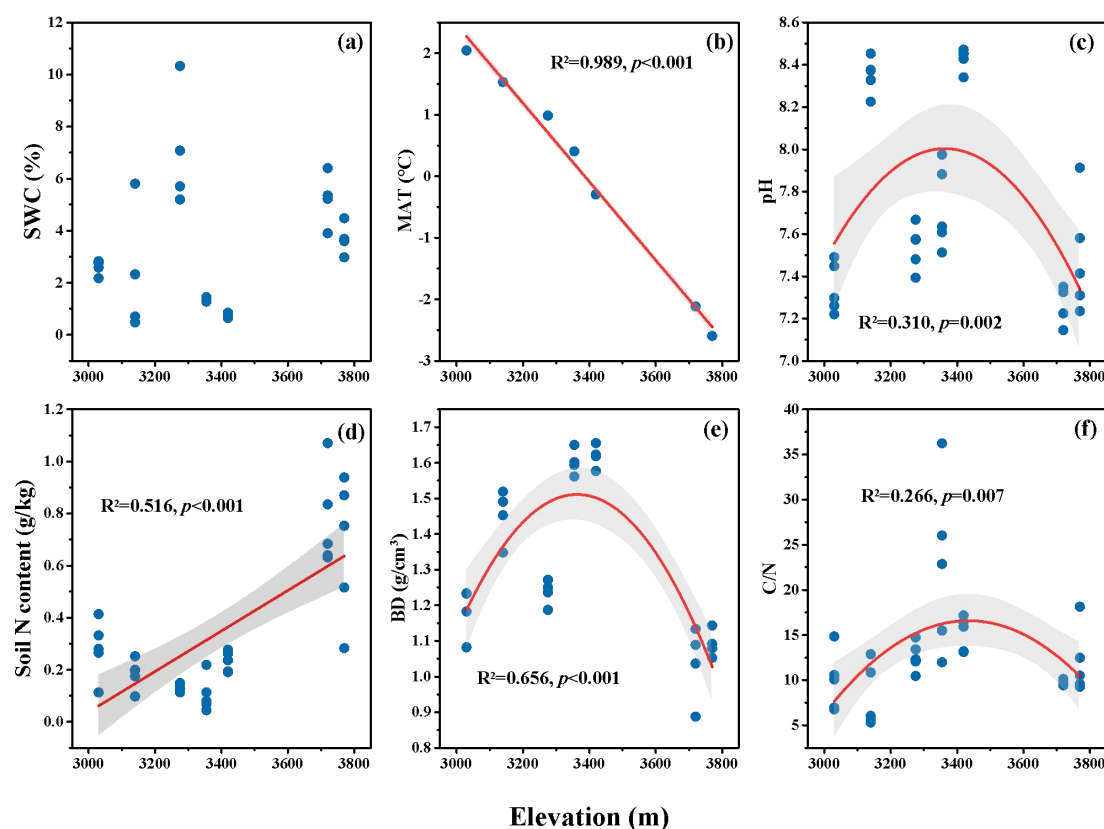
Among the climatic and edaphic variables, there were a significant linear decrease in MAT ($p<0.01$; Fig. 4b) and a significant linear increase in soil N content increased with increases in elevation ($p<0.01$; Fig. 4d). Soil pH, BD and C/N all exhibited a hump-shaped pattern of changes along the altitudinal gradient ($p<0.01$; Fig. 4c, e, f).



删除[za118]:

删除[za118]: Altitudinal changes in selective plant community traits in a dry alpine rangeland of Qinghai-Tibetan Plateau.

删除[za118]: altitude



删除[za118]:

删除[za118]: Altitudinal changes in

Fig. 4 The elevation variation of selective climatic and soil variables in a dry alpine rangeland of Qinghai-Tibetan Plateau. (a) Soil water content (SWC); (b) mean annual temperature (MAT); (c) soil pH; (d) soil N content; (e) soil bulk density (BD); (f) soil C to N ratio (C/N)

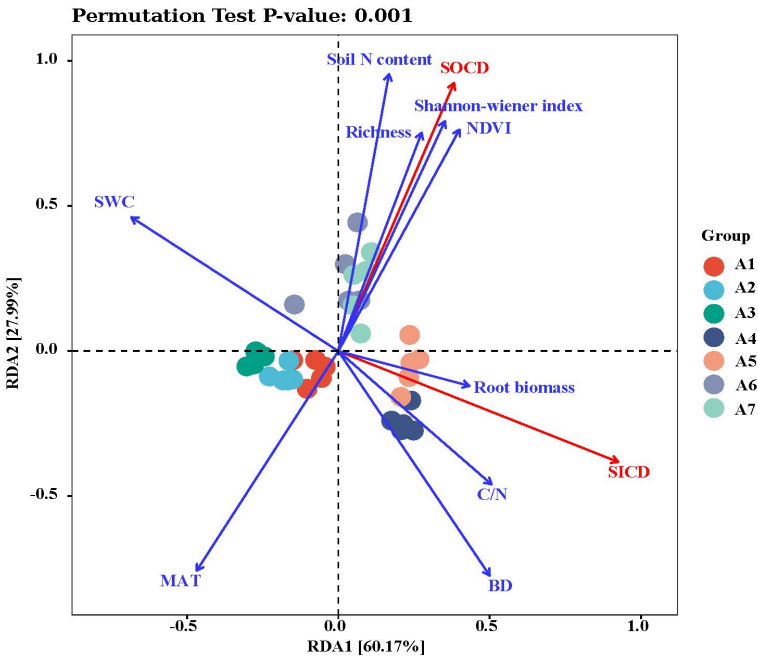
3.2. Influencing factors on changes in soil organic C density (SOCD) and inorganic C density (SICD)

The results from both correlation analysis and RDA showed that SOCD had a significant negative correlation with MAT, and significant positive correlations with BD, soil N content, NDVI and plant diversity (Table 1; Fig. 5). In contrast, SICD was negatively correlated with SWC, and positively with BD, soil C/N and fine root biomass density (Table 1; Fig. 5). In general, changes in SOCD was mostly explainable by variables related to climate and plant community traits; whereas SICD was predominantly associated with edaphic factors.

223 Table 1 Summary of the correlation coefficients for relationships of SOCD and SICD with
224 selective variables for climatic, edaphic and plant community characteristics. * $p<0.05$, ** $p<0.01$
225

	Climatic factors			Soil factors			Plant community factors						带格式表格[za118]
	SWC (%)	MAT (°C)	pH	BD (g/cm³)	Soil N content (g/kg²)	C/N	NDVI	Shannon -wiener index	Plant species richness	Vegetation cover (%)	Above-ground biomass density (g/m²)	Root biomass density (g/m²)	设置格式[za118]: 上标
SOCD													设置格式[za118]: 上标
(kg C/m²)	0.039	-0.872**	-0.244	0.394*	0.885**	-0.128	0.843**	0.843**	0.771**	0.279	-0.265	0.12	设置格式[za118]: 上标
SICD													设置格式[za118]: 上标
(kg C/m²)	-0.718**	-0.224	0.311	0.634**	-0.09	0.561**	0.163	0.113	0.055	0.034	-0.093	0.412*	设置格式[za118]: 上标

226



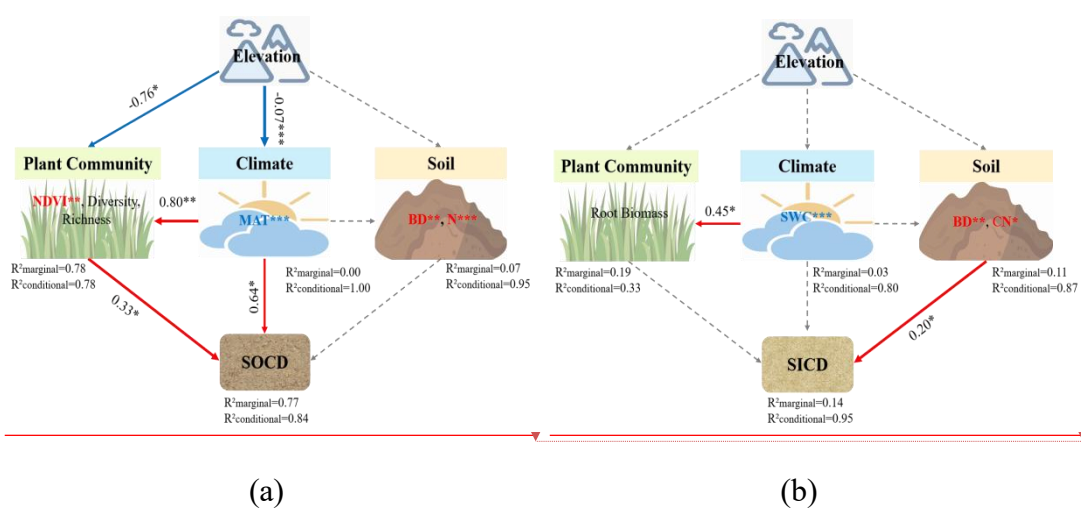
227 Fig. 5 RDA ranking of soil C pool (red line) and environmental variables (blue line)
228 at different elevations. Arrow-lines represent relative values of environmental
229

删除[za118]: altitude

variables and soil C pool. Correlations between environmental variables and soil C pool are indicated by the cosine of angles between the corresponding arrow-lines; angles $<90^\circ$ indicate a positive correlation, and $>90^\circ$ a negative correlation. Projecting the arrow-line for a soil C pool into an arrow-line for a corresponding environmental variable, the distance from the origin to the projection point indicates the relative power of the environmental variable in explaining the size of soil C pools.

In the structural equation modelling, the effects of elevation on SOCD were implemented via modifications of climate and plant communities (Fig. 6a); whereas variations in SICD were mainly associated with edaphic factors (Fig. 6b), consistent to the results from the RDA.

删除[za118]: altitude



删除[za118]:

Fig. 6 Structural equation models of the influences on (a) soil organic C density (SOCD) and (b) soil inorganic C density (SICD) by elevation, climate, and plant community, and soil. (a) Fisher's $C = 4.714$; $p = 0.318$; $df = 4$; $AIC = 44.714$; $BIC = 75.821$; (b) Fisher's $C = 5.000$; $p = 0.287$; $df = 4$; $AIC = 45.000$; $BIC = 76.107$. Numbers adjacent to arrows are the standardized path coefficients (equivalent to correlation coefficients). Arrow thickness indicate the strength of the relationships. Red solid arrows denote significant positive effects ($p < 0.05$) or marginally significant ($0.05 < p < 0.1$) effects. Blue solid arrows denote significant negative effects ($p < 0.05$) or marginally significant ($0.05 < p < 0.1$) effects. R^2 values associated with response variables indicate the variance accounted for by the model. * $p < 0.05$; ** $p < 0.01$; *** $p < 0.001$.

删除[za118]:

删除[za118]: altitude

设置格式[za118]: 字体: 倾斜

4. Discussion

Soil carbon pool, as the largest carbon pool in terrestrial ecosystem, has been extensively studied in different scales and regions (Zhang et al., 2024; Chalchissa and Kuris, 2024). However, previous studies have not paid much attention to the composition of different carbon pools in extreme environments. We studied the altitudinal patterns of soil organic and inorganic C pools in an alpine rangeland where ecosystem processes are co-limited by drought and low temperature. Contrary to the previous research results that the soil carbon pool of alpine meadows or moist grasslands was mainly composed of organic carbon (Chen et al., 2017; Chen et al., 2022). Our research results show that inorganic carbon in the soil of arid and alpine plateaus dominates. Our results showed a linear increase in soil organic C pool with rising elevation. Further, soil organic C pool linearly increased, while soil inorganic C pool appears to be nonlinear along the altitudinal gradient. In this study, the linear changes in soil organic C pool along the altitudinal gradient were positively related to the altitudinal distribution of plant diversity and NDVI, but negatively to aboveground biomass density. It is generally found that increases in plant diversity and species richness promote the formation of soil organic C (Gu et al., 2019; Xu et al., 2021; Spohn et al., 2023). This is because SOC are predominantly derived from plant residues (Schmidt et al., 2011). More diverse plant species optimize the complementary use of resources and increase community productivity in areas with lower species richness (Lehmann et al., 2020). Unexpectedly, this study found the negative correlation between soil organic C pool and aboveground biomass density. This could be explained by the shift in vegetation cover type from slow-turnover scrubs (e.g. *Krascheninnikovia compacta* (Losinsk.) Grubov and *Salsola abrotanoides*) at the lower altitudinal range to fast-turnover grassland plants (e.g. *S. purpurea* and *P. bifurca*) at the higher altitudinal range. Scrubs typically have greater standing biomass but much slower turnover rate the organs and tissues than herbaceous plants. Moreover, with increases in elevation, temperature decreased and precipitation increased, both of which favoring the preservation of soil organic C.

删除[zal18]: In contrast to the findings from prior studies with alpine meadow or moist grasslands (Chen et al., 2017; Chen et al., 2022), our results show the predominance of soil inorganic C in the dry alpine rangeland.

删除[zal18]: altitude

删除[zal18]: However, the pattern of changes in soil inorganic C pool appears to be nonlinear along the altitudinal gradient.

设置格式[zal18]: 缩进: 首行缩进: 0 字符

删除[zal18]: The negative correlation between soil organic C pool and aboveground biomass density in this study can be explained

删除[zal18]: altitude

282 Therefore changes in both vegetation and climatic conditions led to an increased SOC
 283 pool content at the higher elevations (De Deyn et al., 2008). 删除[za118]: altitude

284 Climate is an important abiotic factor affecting the size and stability of soil C
 285 pool (Possinger et al., 2021; Zhang et al., 2024). Our study showed that decreases of 删除[za118]: s
 286 MAT and SWC contributed to increased SOCD. This is contrary to the findings from 删除[za118]: and SICD.
 287 previous studies in humid environments that SOC increases with rising temperature
 288 (Chalchissa and Kuris, 2024; Jiang et al., 2024). The discrepancy is mainly because
 289 that our study area is situated in an extremely arid region, such that the transpiration is 删除[za118]: effect
 290 much greater than that of precipitation. When temperature decreases, the transpiration, 删除[za118]: effect
 291 decreases significantly, which is more conducive to plant growth and soil C accrual
 292 (Schmidt et al., 2011). In addition, lower temperature also significantly inhibits the
 293 activity of soil microorganisms, reducing the microbial decomposition of soil organic
 294 matter (Sun et al., 2019). In the case of small climate differences brought about by
 295 changes in elevation gradient, vegetation abundance and diversity increase with the 删除[za118]: altitude
 296 increase of elevation gradient, which leads to the increase of plant carbon input, but 删除[za118]: altitude
 297 the mineralization of microorganisms remains unchanged (Yue et al., 2017). Therefore,
 298 with the increase of the elevation gradient and the decrease of temperature, the
 299 vegetation type gradually changes from desert to grassland, the soil carbon input
 300 increases, the mineralization rate decreases, and the SOC content increases.

301 Apart from the effects of climatic factors and plant community factors, previous
 302 studies also suggested that soil properties had direct and major effects on soil C stock
 303 (Hemingway et al., 2019). Overall, however, we found that the effect of soil factors
 304 on SOC was weak, and indirectly through biological factors in the form of plant
 305 community structure (Fig. 6a). In this study, we found that soil N level was greater at
 306 the higher elevations, favoring the accumulation of SOC (Puspok et al., 2023). This is 删除[za118]: altitude
 307 mainly because that an increase in soil N content suggests the greater abundance of
 308 nitrogen-fixing plants and/or microorganisms, and the acceleration of underground N
 309 cycling. Under this condition, plants may grow faster and turn over more rapidly, 删除[za118]: ;
 310 thereby enhancing the inputs of soil organic matter (Reay et al., 2008; Sonam et al., 删除[za118]: under which conditions

311 2016).

312 In contrast to the clear altitudinal pattern of SOCD, SICD did not display a
313 consistent pattern of altitudinal changes. Previous studies have proved that soil
314 inorganic carbon is more influenced by abiotic factors such as topography, soil and
315 climate (Mi et al., 2008; Li et al., 2024). It initially decline with elevation up to about
316 3300 m asl (Fig. 2), but peaked at about 3400 m asl, at a position where the gentle
317 slope at the lower elevation gave way to a much steeper mountain slope (Fig. 1).

318 According to the sampling positions at each point, the abnormally high SICD value at
319 the foot of the steep slope could be attributed to alluvial deposit and carbonate rock
320 accumulations formed on the uphill slope, reflecting geological and hydrological
321 effects. The correlation analyses revealed that SICD was mostly related to non-biotic

322 factors such as soil bulk density and soil water. The main constituents of the SIC
323 reservoir are carbonate salts (Zhao et al., 2019). When soil water content is high, CO₂
324 is readily transformed into carbonic acid (H₂CO₃), carbonate (CO₃²⁻), and bicarbonate
325 (HCO₃⁻), which promotes the dissolution of calcium carbonate and reduces the SIC
326 content (Huber et al., 2019). The greater precipitation at the higher elevations may

327 facilitate the leaching of SIC to the deep layer, resulting in a decrease in the surface
328 soil inorganic C pool (Du and Gao, 2020). As a result, soil SIC content is higher and
329 more stable in the arid soils of low elevation area (Ren et al., 2024). Previous studies

330 have shown that SIC is not only affected by abiotic factors, but also by biological
331 factors (Ma et al., 2024). Increased plant growth and biological activity enhance root
332 respiratory secretion, resulting in dissolution and loss of SIC (Kuzyakov and Razavi,
333 2019). In this study, however, SICD was weakly correlated with root biomass, likely

334 due to the low level of soil development in the study area. In the composite SEM
335 model analysis, the increases in BD and soil C/N led increased level of soil inorganic
336 C (Fig. 6b). There are two main reasons for this phenomenon, on the one hand, the

337 distribution law of SIC comes from the distribution law of soil parent material itself,
338 which has nothing to do with external factors. On the other hand, the turnover rate of
339 SIC is low, the time stability is high, and the response to influencing factors is weak.

删除[za118]: Overall, however, we found that the effect of soil factors on SOC was weak, and indirectly through biological factors in the form of plant community structure (Fig. 6a).

删除[za118]: altitude

删除[za118]: altitude

删除[za118]: The abnormally high value of SICD at the foot of steep mountain slope could be consequences of alluvial deposit and accumulation of carbonate salt originated from the uphill, hence a reflection of geological and hydrological effects.

删除[za118]: altitude

删除[za118]: high

删除[za118]: elevation

删除[za118]: SEM

删除[za118]: -

删除[za118]: :

删除[za118]: ;

删除[za118]: o

340 The change of SIC in arid area is mainly influenced by long-term geological cycle.

341 **5. Conclusion**

342 Our research results show that in the dry, high and cold plateau area of the
343 Qinghai-Tibet Plateau, organic carbon increases linearly with the increase of elevation,
344 while silicon carbide first increases and then decreases with the increase of elevation,

345 SOC increased its relative contribution to total C pool at the higher elevations because
346 of changes in plant communities and climatic conditions promoting soil organic C
347 production and preservation. Overall, inorganic C played a predominant role in
348 determining the soil C pool size in dry alpine rangeland, the difference of SIC
349 distribution at different elevations is not affected by vegetation and climate change
350 caused by elevation gradient. The results show that the soil carbon pool in the alpine
351 desert region is mainly composed of SIC compared with that in the humid region, but
352 the influence of climate, vegetation and other environmental conditions on the soil
353 carbon pool is mainly achieved by changing SOC. Therefore, maintaining ecological
354 stability in cold and dry region has an important impact on the carbon cycle of
355 terrestrial ecosystems.

356

357 *Data availability.* The links to data are provided in the paper.

358

359 *Authorship contribution.* ALZ conceived and designed the experiments; QLL wrote
360 the manuscript; JFY and YXZ analysed the data and contributed to the discussion;
361 XYL, OJS, and YJ revised the article.

362

363 *Competing interests.* The authors declare that they have no known competing
364 financial interests or personal relationships that could have appeared to influence the
365 work reported in this paper.

366

367 *Disclaimer.* Publisher's note: Copernicus Publications remains neutral with regard to

设置格式[za118]: 缩进: 左侧: 0 毫米, 无项目符号或编号

删除[za118]: Contrary to our both hypotheses, our results show increased SOC with altitude while not exhibiting a clear directional change in SIC in the dry alpine rangeland of Qinghai-Tibetan Plateau.

删除[za118]: altitude

删除[za118]: altitude

删除[za118]: altitude

jurisdictional claims made in the text, published maps, institutional affiliations, or any other geographical representation in this paper. While Copernicus Publications makes every effort to include appropriate place names, the final responsibility lies with the authors.

Acknowledgments. We thank all participants for contribution to the field work and laboratory analysis.

References

- Batjes, N. H. Soil carbon stocks of Jordan and projected changes upon improved management of croplands. *Geoderma*, 132, 361-371. <https://doi.org/10.1016/j.geoderma.2005.05.013>, 2006.
- Cai, W. X., Xu, L., Wen, D., Zhou, Z. Y., Li, M. X., Wang, T., & He, N. P. The carbon sequestration potential of vegetation over the Tibetan Plateau. *Renewable & Sustainable Energy Reviews*, 207, 114937. <https://doi.org/ARTN11493710.1016/j.rser.2024.114937>, 2025.
- Callesen, I., Liski, J., Raulund-Rasmussen, K., Olsson, M. T., Tau-Strand, L., Vesterdal, L., & Westman, C. J. Soil carbon stores in Nordic well-drained forest soils-Relationships with climate and texture class. *Global change biology*, 9, 358-370. <https://doi.org/10.1046/j.1365-2486.2003.00587.x>, 2003.
- Chen, L. T., Jing, X., Flynn, D. F. B., Shi, Y., Kühn, P., Scholten, T., & He, J. S. Changes of carbon stocks in alpine grassland soils from 2002 to 2011 on the Tibetan Plateau and their climatic causes. *Geoderma*, 288, 166-174. <https://doi.org/10.1016/j.geoderma.2016.11.016>, 2017.
- Chen, Y., Han, M. G., Yuan, X., Hou, Y. H., Qin, W. K., Zhou, H. K., Zhao, X. Q., Klein, J. A., & Zhu, B. A. Warming has a minor effect on surface soil organic carbon in alpine meadow ecosystems on the Qinghai-Tibetan Plateau. *Global Change Biology*, 28, 1618-1629. <https://doi.org/10.1111/gcb.15984>, 2022.
- De Deyn, G. B., Cornelissen, J. H. C., & Bardgett, R. D. Plant functional traits and

soil carbon sequestration in contrasting biomes. *Ecology Letters*, 11, 516-531.
<https://doi.org/10.1111/j.1461-0248.2008.01164.x>, 2008.

Eswaran, H., Van Den Berg, E., & Reich, P. Organic carbon in soils of the world. *Soil science society of America journal*, 57, 192-194.
<https://doi.org/10.2136/sssaj1993.03615995005700010034x>, 1993.

Lehmann, J., Hansel, C. M., Kaiser, C., Kleber, M., Maher, K., Manzoni, S., ... & Kögel-Knabner, I. Persistence of soil organic carbon caused by functional complexity. *Nature Geoscience*, 13, 529-534.
<https://doi.org/10.1038/s41561-020-0612-3>, 2020.

Feyissa, A., Raza, S. T., & Cheng, X. L. Soil carbon stabilization and potential stabilizing mechanisms along elevational gradients in alpine forest and grassland ecosystems of Southwest China. *Catena*, 229, 107210. <https://doi.org/ARTN10721010.1016/j.catena.2023.107210>, 2023.

García-Palacios, P., Maestre, F. T., & Milla, R. Community-aggregated plant traits interact with soil nutrient heterogeneity to determine ecosystem functioning. *Plant and Soil*, 364, 119-129. <https://doi.org/10.1007/s11104-012-1349-6>, 2013.

Gu, X., Fang, X., Xiang, W. H., Zeng, Y. L., Zhang, S. J., Lie, P. F., Peng, C. H., & Kuzyakov, Y. Vegetation restoration stimulates soil carbon sequestration and stabilization in a subtropical area of southern China. *Catena*, 181, 10409810. <https://doi.org/ARTN10409810.1016/j.catena.2019.104098>, 2019.

Hemingway, J. D., Rothman, D. H., Grant, K. E., Rosengard, S. Z., Eglinton, T. I., Derry, L. A., & Galy, V. V. Mineral protection regulates long-term global preservation of natural organic carbon. *Nature*, 570, 228-231.
<https://doi.org/10.1038/s41586-019-1280-6>, 2019.

Reay, D. S., Dentener, F., Smith, P., Grace, J., & Feely, R. A. Global nitrogen deposition and carbon sinks. *Nature Geoscience*, 1, 430-437.
<https://doi.org/10.1038/ngeo230>, 2008.

Huber, D. P., Lohse, K. A., Commendador, A., Joy, S., Aho, K., Finney, B., & Germino, M. J. Vegetation and precipitation shifts interact to alter organic and

inorganic carbon storage in cold desert soils. *Ecosphere*, 10, e02655.
<https://doi.org/ARTN e0265510.1002/ecs2.2655>, 2019.

Jiang, M. D., Li, H. L., Zhang, W., Liu, J. B., & Zhang, Q. Effects of climate change and grazing on the soil organic carbon stock of alpine wetlands on the Tibetan Plateau from 2000 to 2018. *Catena*, 238, 107870. <https://doi.org/ARTN 10787010.1016/j.catena.2024.107870>, 2024.

Kuzyakov, Y., & Razavi, B. S. Rhizosphere size and shape: Temporal dynamics and spatial stationarity. *Soil Biology & Biochemistry*, 135, 343-360.
<https://doi.org/10.1016/j.soilbio.2019.05.011>, 2019.

Lal, R. Digging deeper: A holistic perspective of factors affecting soil organic carbon sequestration in agroecosystems. *Global Change Biology*, 24, 3285-3301.
<https://doi.org/10.1111/gcb.14054>, 2018.

Li, C. L., Cao, Z. Y., Chang, J. J., Zhang, Y., Zhu, G. L., Zong, N., He, Y. T., Zhang, J. J., & He, N. P. Elevational gradient affect functional fractions of soil organic carbon and aggregates stability in a Tibetan alpine meadow. *Catena*, 156, 139-148.
<https://doi.org/10.1016/j.catena.2017.04.007>, 2017.

Li, J., Pei, J., Fang, C., Li, B., & Nie, M. Drought may exacerbate dryland soil inorganic carbon loss under warming climate conditions. *Nature Communications*, 15, 617. <https://doi.org/10.1038/s41467-024-44895-y>, 2024.

Schmidt, M. W. I., Torn, M. S., Abiven, S., Dittmar, T., Guggenberger, G., Janssens, I. A., Kleber, M., Kögel-Knabner, I., Lehmann, J., Manning, D. A. C., Nannipieri, P., Rasse, D. P., Weiner, S., & Trumbore, S. E. Persistence of soil organic matter as an ecosystem property. *Nature*, 478, 49-56.
<https://doi.org/10.1038/nature10386>, 2011.

Ma, Y. J., Xie, T., & Li, X. Y. Spatial variation of soil organic carbon in the Qinghai Lake watershed, northeast Qinghai-Tibet Plateau. *Catena*, 213, 106187.
<https://doi.org/ARTN 10618710.1016/j.catena.2022.106187>, 2022.

Ma, Y. Q., Yu, Y., Nan, S. Z., Chai, Y., Xu, W. Y., Qin, Y., Li, X. L., & Bodner, G. Conversion of SIC to SOC enhances soil carbon sequestration and soil structural

stability in alpine ecosystems of the Qinghai-Tibet Plateau. *Soil Biology & Biochemistry*, 195, 109452. <https://doi.org/ARTN10945210.1016/j.soilbio.2024.109452>, 2024.

Mi, N. A., Wang, S., Liu, J., Yu, G., Zhang, W., & Jobbagy, E. Soil inorganic carbon storage pattern in China. *Global change biology*, 14, 2380-2387.. <https://doi.org/10.1111/j.1365-2486.2008.01642.x>, 2008.

Pepin, N., Bradley, R. S., Diaz, H. F., Baraer, M., Caceres, E. B., Forsythe, N., Fowler, H., Greenwood, G., Hashmi, M. Z., Liu, X. D., Miller, J. R., Ning, L., Ohmura, A., Palazzi, E., Rangwala, I., Schöner, W., Severskiy, I., Shahgedanova, M., Wang, M. B., . . . Grp, M. R. I. E. W. Elevation-dependent warming in mountain regions of the world. *Nature Climate Change*, 5, 424-430. <https://doi.org/10.1038/Nclimate2563>, 2015.

Possinger, A. R., Weiglein, T. L., Bowman, M. M., Gallo, A. C., Hatten, J. A., Heckman, K. A., Matosziuk, L. M., Nave, L. E., SanClements, M. D., Swanston, C. W., & Strahm, B. D. Climate Effects on Subsoil Carbon Loss Mediated by Soil Chemistry. *Environmental Science & Technology*, 55, 16224-16235. <https://doi.org/10.1021/acs.est.1c04909>, 2021.

Püspök, J. F., Zhao, S., Calma, A. D., Vourlitis, G. L., Allison, S. D., Aronson, E. L., Schimel, J. P., Hanan, E. J., & Homyak, P. M. Effects of experimental nitrogen deposition on soil organic carbon storage in Southern California drylands. *Global Change Biology*, 29, 1660-1679. <https://doi.org/10.1111/gcb.16563>, 2023.

Ren, Z. B., Li, C. J., Fu, B. J., Wang, S., & Stringer, L. C. Effects of aridification on soil total carbon pools in China's drylands. *Global Change Biology*, 30, e17091. <https://doi.org/ARTN e1709110.1111/gcb.17091>, 2024.

Rodeghiero, M., & Cescatti, A. Main determinants of forest soil respiration along an elevation/temperature gradient in the Italian Alps. *Global Change Biology*, 11, 1024-1041. <https://doi.org/10.1111/j.1365-2486.2005.00963.x>, 2005.

Schuur, E. A., Chadwick, O. A., & Matson, P. A. Carbon cycling and soil carbon storage in mesic to wet Hawaiian montane forests. *Ecology*, 82, 3182-3196.

删除[za118]:

[https://doi.org/10.1890/0012-9658\(2001\)082\[3182:CCASCS\]2.0.CO;2](https://doi.org/10.1890/0012-9658(2001)082[3182:CCASCS]2.0.CO;2), 2001.

Tashi, S., Singh, B., Keitel, C., & Adams, M. Soil carbon and nitrogen stocks in forests along an altitudinal gradient in the eastern Himalayas and a meta-analysis of global data. *Global Change Biology*, 22, 2255-2268. <https://doi.org/10.1111/gcb.13234>, 2016.

Spohn, M., Bagchi, S., Biederman, L. A., Borer, E. T., Brathen, K. A., Bugalho, M. N., Caldeira, M. C., Catford, J. A., Collins, S. L., Eisenhauer, N., Hagenah, N., Haider, S., Hautier, Y., Knops, J. M. H., Koerner, S. E., Laanisto, L., Lekberg, Y., Martina, J. P., Martinson, H., . . . Yahdjian, L. The positive effect of plant diversity on soil carbon depends on climate. *Nature Communications*, 14, 6624. <https://doi.org/ARTN 662410.1038/s41467-023-42340-0>, 2023.

Sun, O. J., Campbell, J., Law, B. E., & Wolf, V. Dynamics of carbon stocks in soils and detritus across chronosequences of different forest types in the Pacific Northwest, USA. *Global Change Biology*, 10, 1470-1481. <https://doi.org/10.1111/j.1365-2486.2004.00829.x>, 2004.

Sun, X., Tang, Z., Ryan, M. G., You, Y., & Sun, O. J. Changes in soil organic carbon contents and fractionations of forests along a climatic gradient in China. *Forest Ecosystems*, 6, 1-12. <https://doi.org/10.1186/s40663-019-0161-7>, 2019.

Tian, P., Liu, S., Zhao, X., Sun, Z., Yao, X., Niu, S., ... & Wang, Q. Past climate conditions predict the influence of nitrogen enrichment on the temperature sensitivity of soil respiration. *Communications Earth & Environment*, 2, 251. <https://doi.org/10.1038/s43247-021-00324-2>, 2021.

Tiemann, L. K., & Billings, S. A. Changes in variability of soil moisture alter microbial community C and N resource use. *Soil Biology and Biochemistry*, 43, 1837-1847. <https://doi.org/10.1016/j.soilbio.2011.04.020>, 2011.

Torn, M. S., Trumbore, S. E., Chadwick, O. A., Vitousek, P. M., & Hendricks, D. M. Mineral control of soil organic carbon storage and turnover. *Nature*, 389, 170-173. <https://doi.org/10.1038/38260>, 1997.

Wang, M. M., Zhang, S., Guo, X. W., Xiao, L. J., Yang, Y. H., Luo, Y. Q., Mishra, U.,

513 & Luo, Z. K. Responses of soil organic carbon to climate extremes under
 514 warming across global biomes. *Nature Climate Change*, 14, 98-105.
 515 <https://doi.org/10.1038/s41558-023-01874-3>, 2024.

516 Wang, Z. W., Huang, L. M., & Shao, M. A. Spatial variations and influencing factors
 517 of soil organic carbon under different land use types in the alpine region of
 518 Qinghai-Tibet Plateau. *Catena*, 220, 106706. [https://doi.org/ARTN](https://doi.org/ARTN10670610.1016/j.catena.2022.106706)
 519 10670610.1016/j.catena.2022.106706, 2023.

520 Xu, M., Li, X. L., Kuyper, T. W., Xu, M., Li, X. L., & Zhang, J. L. High microbial
 521 diversity stabilizes the responses of soil organic carbon decomposition to
 522 warming in the subsoil on the Tibetan Plateau. *Global Change Biology*, 27,
 523 2061-2075. <https://doi.org/10.1111/gcb.15553>, 2021.

524 Yue, K., Fornara, D. A., Yang, W. Q., Peng, Y., Peng, C. H., Liu, Z. L., & Wu, F. Z.
 525 Influence of multiple global change drivers on terrestrial carbon storage: additive
 526 effects are common. *Ecology Letters*, 20, 663-672.
 527 <https://doi.org/10.1111/ele.12767>, 2017.

528 Zhang, A., Li, X., Wu, S., Li, L., Jiang, Y., Wang, R., ... & Li, L. Spatial pattern of C:
 529 N: P stoichiometry characteristics of alpine grassland in the Altunshan Nature
 530 Reserve at North Qinghai-Tibet Plateau. *Catena*, 207, 105691.
 531 <https://doi.org/10.1016/j.catena.2021.105691>, 2021.

532 Zhang, Y. X., Guo, X. W., Chen, L. X., Kuzyakov, Y., Wang, R. Z., Zhang, H. Y., Han,
 533 X. G., Jiang, Y., & Sun, O. J. Global pattern of organic carbon pools in forest
 534 soils. *Global Change Biology*, 30, 17386. [https://doi.org/ARTN](https://doi.org/ARTNe1738610.1111/gcb.17386)
 535 e1738610.1111/gcb.17386, 2024.

536 Zhao, W., Zhang, R., Cao, H., & Tan, W. F. Factor contribution to soil organic and
 537 inorganic carbon accumulation in the Loess Plateau: Structural equation
 538 modeling. *Geoderma*, 352, 116-125.
 539 <https://doi.org/10.1016/j.geoderma.2019.06.005>, 2019.

删除[zal18]:

You, Q. L., Cai, Z. Y., Pepin, N., Chen, D. L., Ahrens, B.,
 Jiang, Z. H., Wu, F. Y., Kang, S. C., Zhang, R. N., Wu, T. H.,
 Wang, P. L., Li, M. C., Zuo, Z. Y., Gao, Y. H., Zhai, P. M., &
 Zhang, Y. Q. Warming amplification over the Arctic Pole and
 Third Pole: Trends, mechanisms and consequences.
Earth-Science Reviews, 217, 103625. [https://doi.org/ARTN](https://doi.org/ARTN10362510.1016/j.earscirev.2021.103625)
 10362510.1016/j.earscirev.2021.103625, 2021.