

# rsofun v5.1: A model-data integration framework for simulating ecosystem processes

Josefa Arán Paredes<sup>1,2,\*</sup>, Fabian Bernhard<sup>1,2,\*</sup>, Koen Hufkens<sup>1,2</sup>, Mayeul Marcadella<sup>1,2</sup>, and Benjamin D. Stocker<sup>1,2</sup>

<sup>1</sup>Institute of Geography, University of Bern, Hallerstrasse 12, 3012 Bern, Switzerland

<sup>2</sup>Oeschger Center for Climate Change Research (OCCR), University of Bern, Hochschulstrasse 6, 3012 Bern, Switzerland

\*These authors contributed equally to this work.

## Abstract.

Mechanistic vegetation models serve to estimate terrestrial carbon fluxes and climate impacts on ecosystems across diverse biotic and abiotic conditions. Systematically informing them with data is key for enhancing their predictive accuracy and estimating uncertainty. Here, we demonstrate and evaluate the Simulating Optimal FUNctioning (*rsofun*) R package, which provides a computationally efficient implementation of the P-model for site-scale simulations of ecosystem photosynthesis and the acclimation of photosynthetic traits, complemented with functionalities for Bayesian model-data integration and the estimation of model parameters and prediction uncertainty. We estimated model parameters simultaneously from observed time series of ecosystem gross primary productivity (GPP), and from globally distributed data on leaf carbon-13 isotopic discrimination ( $\Delta^{13}\text{C}$ ) and the ratio of the maximum biochemical rates of carboxylation to electron transport ( $V_{\text{cmax}}/J_{\text{max}}$ ). The multi-target calibration yielded unbiased predictions for all variables simultaneously and produced similar distributions of prediction–observation residuals for both calibration and out-of-sample test data, indicating that the model generalises robustly across diverse environments. We found that a step-wise approach to successive model integration and calibration yielded best results, and that correlations among parameters related to representing water stress effects underpinned non-robust parameter estimations. This likely indicates a dominant source of model structural uncertainty related to the representation of the response of photosynthesis to dry conditions in soil and air.

## 1 Introduction

The modelling of land ecosystem processes and structure, water, and carbon fluxes relies on both mechanistic and statistical approaches (Dietze et al., 2018; Hartig et al., 2012; Van Oijen et al., 2005). Mechanistic models are formulated as mathematical descriptions of functional relationships between the abiotic environment and ecosystem states, rates, and dynamics. These descriptions reflect available theory and general empirical patterns and provide a means for "translating" hypotheses about governing principles and causal relationships into testable predictions (Marquet et al., 2014), and for upscaling model-based estimates in geographical space and to novel environmental conditions. However, mechanistic models rely also on empirical descriptions of processes at varying levels of abstraction.

Mechanistic models have model parameters that are either specified or fitted to data. A great advantage of mechanistic models is that they explicitly link known physical constants with process representations (e.g., molecular mass of CO<sub>2</sub> for diffusion and assimilation, or the gravitational constant and viscosity of water for its transport and transpiration). Other parameters may be specified based on independent measurements under controlled conditions (e.g., the activation energy of Arrhenius-type metabolic rates), or represent measurable plant functional traits, taken as constant over time and within plant functional types (PFTs - the basic unit in mechanistic vegetation models). Both types of parameters have traditionally been directly specified in models ('direct parameterization', (Hartig et al., 2012)). Yet other model parameters may not be directly observable and describe processes that are not explicitly resolved but can be described at a higher level of abstraction. Such parameters are often fitted to observational data such that the agreement between one (or several) related model predictions and observations is optimised. Parameter estimation for mechanistic vegetation models typically employs generic optimization algorithms or Bayesian statistical approaches and is often used to specify diverse types of parameters (except for universal physical constants). Bayesian methods have the advantage that they enable a systematic assessment of the correlation structure among multiple fitted parameters, provide a means to consider uncertainty in inputs, observations, models, and available prior information, generate probabilistic parameter estimations and model predictions, and provide a basis to quantify the constraints by various calibration target data and to identify errors arising from model structural choices (Bagnara et al., 2015; Dietze et al., 2018; Hartig et al., 2012; van Oijen, 2017; Raj et al., 2016; Van Oijen et al., 2005; Xiao et al., 2019).

As the number of parameters increases in state-of-the-art mechanistic vegetation models, taking into account multiple PFTs and ecosystem components (e.g. soil, microbes, hydrology), larger amounts of data and computing resources are required to fully explore the parameter space (Hartig et al., 2012). This poses a limitation for systematic model-data integration and Bayesian parameter estimation. Eco-evolutionary optimality (EEO) principles have been proposed for reducing model complexity and for a robust grounding of models in governing principles (Franklin et al., 2020; Harrison et al., 2021). They enable parameter-sparse representations, limit the distinction of separate PFTs, and may enable better model generalisations to novel environmental regimes. As such EEO principles make predictions of plant functional traits that would otherwise have to be prescribed – typically as temporally fixed model parameters. Parameters in EEO models are considered to be universally valid, e.g., across different PFTs. Ideally, they represent known physical constants or quantities that can be measured independently. However, not all can be measured directly – e.g., the marginal cost of water in Cowan and Farquhar (1977), or the unit cost ratio in Prentice et al. (2014) and need to be fitted to data.

The P-model (Prentice et al., 2014; Wang et al., 2017; Stocker et al., 2020) is an example of an EEO-guided model for terrestrial photosynthesis and its acclimation. It avoids the requirement for prescribing PFT-specific parameters of photosynthesis and stomatal regulation but instead predicts them from universal EEO principles for the full range of environmental conditions across the Earth's (C<sub>3</sub> photosynthesis-dominated) biomes. Through its representation of the vegetation as a *big leaf* (ref), it represents the scaling between leaf traits and ecosystem-level photosynthetic CO<sub>2</sub> uptake (gross primary productivity, GPP). However, despite its foundation on EEO theory and resulting parameter-sparseness, a small set of model parameters remains (Stocker et al., 2020) (Table 2) and must be fitted to data.

Here, we explore the respective constraints provided by ecosystem-level fluxes and leaf-level traits for a probabilistic (Bayesian) multi-target estimation of the P-model parameters. The selection of observational target data types is motivated by their known effectiveness in model calibration and parameter estimation from previous work (Prentice et al., 2014; Wang et al., 2017; Stocker et al., 2020). Specifically, we use observations-based GPP time series from multiple eddy covariance measurement sites, and compilations of globally distributed measurements of leaf traits, including the leaf carbon isotopic fractionation relative to the atmosphere ( $\Delta^{13}\text{C}$ , hereafter shortened to  $\Delta$ ), and the ratio of the maximum biochemical rate of carboxylation to electron transport ( $V_{\text{cmax}}/J_{\text{max}} \equiv \text{VJ}$ ). Data from these two leaf traits have previously been used for independently estimating separate model parameters in the P-model (Wang et al., 2017). In Stocker et al. (2020), these independently estimated model parameters were then specified for model simulations (direct parametrization), and were not subject to model parameter calibration. Here, we demonstrate how the combined consideration of diverse data types within a Bayesian model-data integration framework – combining ecosystem flux data and leaf traits data – enables the simultaneous estimation of a comprehensive set of model parameters that control functional dependencies of processes at multiple organisational levels – from the leaf to the canopy. This enables a better understanding of interdependencies between model parameters and a more reliable estimation of model prediction uncertainty.

Unbalanced observations of multiple calibration targets can lead to parameter estimates that compensate structural errors in the (nonlinear) model, as shown previously with synthetic data (MacBean et al., 2016; Oberpriller et al., 2021; Cameron et al., 2022). We are therefore interested in the questions i) if the P-model can be calibrated in a consistent manner to these targets resulting in unbiased parameter estimates (relative to expected ranges based on our process-based *interpretation* of each parameter), and ii) if the calibrated model can be validated on an independent test data set.

We start by providing a brief description of the P-model and introduce the P-model implementation in the Simulating Optimal FUNCTIONing *rsofun* version v5.1 modelling framework, made available as an R package (Stocker et al., 2025). A more comprehensive description of the P-model can be found in Stocker et al. (2020). *rsofun* implements the P-model and its connection to data through Bayesian parameter optimisation and analysis. We demonstrate the functionalities implemented in and accessible through *rsofun* with different calibration setups – i.e., different combinations of model parameters subjected to Bayesian calibration and different observational data types. Alternative calibration setups serve to elucidate the role of different observations in constraining estimates for different model parameters. *rsofun* functionalities demonstrated here include the flexible specification of likelihood functions for connecting model predictions to specific data types, Bayesian model calibration using Monte Carlo Markov Chain sampling, the analysis of posterior distributions of estimated parameters, and the estimation of prediction uncertainty, probabilistic predictions of GPP, VJ, and  $\Delta$ , and their evaluation against out-of-sample test data.

## 2 Methods

### 2.1 P-model description

The P-model predicts the acclimation of leaf-level photosynthesis to a (slowly varying) environment based on EEO principles. It thereby yields a parameter-sparse representation of ecosystem-level quantities, generalising across ( $\text{C}_3$  photosynthesis-

dominated) vegetation types and biomes. The P-model combines established theory for  $C_3$  photosynthesis following the Farquhar-von Caemmerer-Berry (FvCB) model (Farquhar et al., 1980) with the Least-Cost hypothesis for the optimal balancing of water loss and carbon gain (Prentice et al., 2014), and the coordination hypothesis (Wang et al., 2017), which states that the light and Rubisco-limited assimilation rates (as described by the FvCB model) are equal for representative daytime environmental conditions.

The theory results in a prediction of the ratio of leaf-internal to ambient  $CO_2$  concentration ( $c_i : c_a \equiv \chi$ ) as a function of the atmospheric environment, characterised by the following meteorological variables: daytime mean air temperature  $T$  ( $^{\circ}C$ ), daytime mean vapor pressure deficit  $D$  (Pa), and the atmospheric  $CO_2$  partial pressure ( $c_a$ , Pa).

$$\chi = \frac{\Gamma^*}{c_a} + \left(1 - \frac{\Gamma^*}{c_a}\right) \frac{\xi}{\xi + \sqrt{D}} \quad (1)$$

$$\xi = \sqrt{\frac{\beta(K + \Gamma^*)}{1.6 \eta^*}} \quad (2)$$

$\Gamma^*$  is the photorespiratory compensation point (Pa).  $\eta^*$  is the ratio the (temperature-dependent) viscosity of water, relative to its value at  $25^{\circ}C$ , and  $K$  is the Michaelis–Menten coefficient for photosynthesis (Pa).  $\beta$  (unitless) is the unit cost ratio of carboxylation to transpiration in the EEO framework of Prentice et al. (2014), and is calibrated to data here (see Tab. 1). The functional dependency of  $\Gamma^*$  on temperature and atmospheric pressure, the dependency of  $\eta^*$  on temperature, and the dependency of  $K$  on temperature and atmospheric pressure are described in detail in Stocker et al. (2020) based on published work (Farquhar et al., 1980; Bernacchi et al., 2001; Huber et al., 2009). Involved parameters are held fixed here and are not calibrated.

A set of corollary predictions, physically and physiologically consistent with the predicted  $\chi$ , follows. The following predicted quantities are used for model-data integration here. A complete description of the mathematical derivation of these quantities from first principles is given in (Stocker et al., 2020).

### 2.1.1 Isotope fractionation by photosynthesis

$\chi$  directly controls isotopic discrimination of carbon assimilates ( $\Delta$ ) relative to the atmospheric signature ( $\delta^{13}C_a$ ) (Farquhar et al., 1989, 1982; Lavergne et al., 2020).

$$\Delta = a_{\Delta} + (b_{\Delta} - a_{\Delta}) \chi - f_{\Delta} \frac{\Gamma^*}{c_a}, \quad (3)$$

Here, parameters represent the isotope fractionation from  $CO_2$  diffusion in air ( $a_{\Delta} = 4.4\%$ , Craig (1953)), from Rubisco carboxylation ( $b_{\Delta} = 27\%$ ), and from photorespiration ( $f_{\Delta} = 8.0\%$ , Ubierna and Farquhar (2014)). Also these parameters were held fixed here and not subjected to calibration.

### 2.1.2 Maximum rates of carboxylation and electron transport

For daytime conditions, averaged over multiple days, the P-model assumes the Rubisco carboxylation-limited and the electron transport-limited rates of photosynthesis to be equal:

$$A_C = A_J \quad (4)$$

Following the Farquhar-von Caemmerer-Berry (FvCB) model for  $C_3$  photosynthesis (Farquhar et al., 1980; von Caemmerer and Farquhar, 1981), the maximum rate of carboxylation  $V_{\text{cmax}}$  can thus be expressed as

$$V_{\text{cmax}} = \varphi_0 I_{\text{abs}} \frac{m'}{m_C}, \quad (5)$$

with

$$m_C = \frac{c_i - \Gamma^*}{c_i + K}, \quad (6)$$

and with

$$m' = m \sqrt{1 - \left(\frac{c^*}{m}\right)^{2/3}} \quad (7)$$

and

$$m = \frac{c_i - \Gamma^*}{c_i + 2\Gamma^*}. \quad (8)$$

Here,  $\varphi_0$  is the intrinsic quantum yield of photosystem II ( $\text{mol mol}^{-1}$ ) which depends on the leaf temperature  $T$  (see Eq. 14) – here taken as identical to air temperature.  $c^*$  (unitless) is the unit cost of electron transport and is treated as a calibratable model parameter (see Table 2 for an overview of calibrated model parameters).  $I_{\text{abs}}$  is the photosynthetic photon flux density absorbed by the leaf.

Eq. 7 accounts for a limited electron transport capacity ( $J_{\text{max}}$ ) such that  $m'$  can also be written as

$$m' = m \frac{1}{\sqrt{1 + \left(\frac{4\varphi_0 I_{\text{abs}}}{J_{\text{max}}}\right)^2}} \quad (9)$$

Again using  $A_C = A_J$ ,  $J_{\text{max}}$  can be solved for and can be expressed as

$$J_{\text{max}} = \frac{4\varphi_0 I_{\text{abs}}}{\sqrt{L^{-2} - 1}}, \quad (10)$$

with

$$L = V_{\text{cmax}} \frac{c_i + 2\Gamma^*}{\varphi_0 I_{\text{abs}}(c_i + K)}. \quad (11)$$

The ratio  $VJ = V_{\text{cmax}}/J_{\text{max}}$  is finally calculated by dividing respective values obtained with Eqs. 5 and 10.

### 2.1.3 Gross primary productivity

Gross primary productivity (GPP) can be expressed in the form of a light use efficiency model (Prentice et al., 2024; Bao et al., 2022; Monteith, 1972):

$$145 \quad \text{GPP} = \text{fAPAR} \cdot \text{PPFD} \cdot \text{LUE} , \quad (12)$$

with fAPAR being the fraction of absorbed photosynthetically active radiation (unitless), PPFD being the photosynthetic photon flux density, PPFD ( $\text{mol s}^{-1} \text{ m}^{-2}$ ), and LUE ( $\text{g C mol}^{-1}$ ) being the light use efficiency, calculated as

$$\text{LUE} = \varphi_0(T) f_\beta(\theta) M_C m' . \quad (13)$$

Here,  $f_\beta$  is the unitless soil moisture stress function, varying between 0 and 1 (see Eq. 15), with  $\theta$  representing the plant-  
150 available soil water content in mm.  $M_C$  is the molar mass of C ( $12.0107 \text{ g mol}^{-1}$ ). Note that the application of Eq. 12 assumes GPP to scale linearly with absorbed light. This functional relationship is assumed here to describe the relationship between multi-day sums of GPP and PAR and emerges from the assumption of the Coordination Hypothesis (Wang et al., 2017). However, it cannot be expected to describe the functional dependencies at shorter time scales, where the limitation by the electron transport capacity ( $J_{\max}$ ) becomes effective (Mengoli et al., 2022; Farquhar et al., 1980).

155 Such acclimation is considered by employing the P-model theory to gradually varying environmental conditions ( $P$ ,  $D$ ,  $\text{CO}_2$ , and PAR) where variations are damped by a low-pass filter with a characteristic, empirically determined time scale  $\tau$  (days) (see equation B1 for the definition of the low-pass filter).

### 2.1.4 Quantum yield efficiency

The temperature dependency of the quantum yield efficiency  $\varphi_0$  is empirically parametrized as:

$$160 \quad \varphi_0(T) = \varphi_0^*(1 + a_\varphi(T - b_\varphi)^2), \quad \text{bounded to the range } [0, \varphi_0^*]. \quad (14)$$

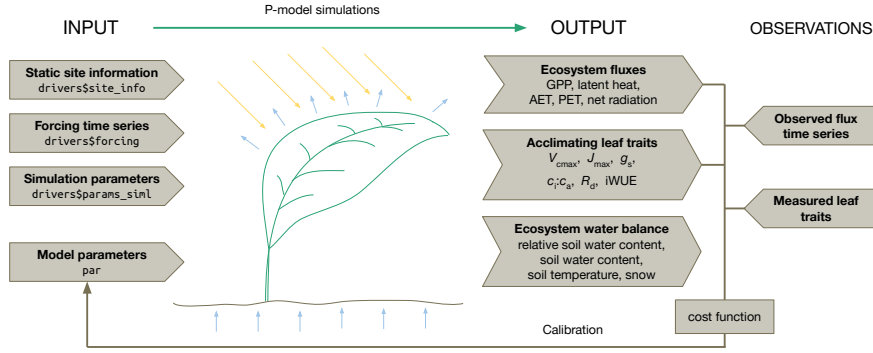
This is in contrast to the formulation used in Stocker et al. (2020), where  $a_\varphi$  and  $b_\varphi$  were effectively prescribed and not subjected to calibration.

### 2.1.5 Soil moisture stress

Soil moisture stress is computed as

$$165 \quad f_\beta(\theta) = \begin{cases} 1 - \frac{(\theta - \theta^*)^2}{\theta^{*2}} & \text{if } \theta \geq 0, \\ 1 & \text{if } \theta < 0. \end{cases} \quad (15)$$

where  $\theta^*$  (mm) represents the threshold below which GPP is reduced. The soil water balance is simulated with a bucket model of soil water content (uniform total water storage capacity), whereby the dynamics of  $\theta$  (mm) considers daily precipitation, the snow melt, a Priestley-Taylor-based evapotranspiration estimate, and runoff when the bucket is full. Except for implicitly



**Figure 1.** P-model inputs, outputs, and target observations for the parameter estimation. The model takes as inputs static site information, time series of meteorological forcings, simulation parameters, and common model parameters for all sites. The simulation returns a time series of several ecosystem fluxes, acclimating leaf traits and ecosystem states. By comparing these outputs with measured traits and flux data in a Bayesian calibration routine, model parameters can be estimated.

enforcing  $f_{\beta}(\theta = 0) = 0$  here, this formulation follows the description in Stocker et al. (2020) and is based on the SPLASH  
 170 model (Davis et al., 2017).

## 2.2 Calibration setups

Different calibration setups were used to illustrate the constraints imposed by the different calibration targets for the same task of simultaneously fitting all parameters listed in Tab. 1.

**Table 1.** Overview of targets used and parameters estimatable in the six calibration setups. For parameter description and units see Table 2. Columns with c) mean the posterior of that setup had been used as (truncated) prior.

Setup	Data			Model parameters							Error model parameters		
	$\Delta$	VJ	GPP	$\varphi_0^*$	$a_{\varphi}$	$b_{\varphi}$	$\theta^*$	$\beta$	$\tau$	$c^*$	$\sigma_{\text{GPP}}$	$\sigma_{\Delta}$	$\sigma_{\text{VJ}}$
a)	x							x			x		
b)		x						x		x			x
c)	x	x						x		x	x	x	
d)			x	x	x	x	x	x	x	x	x		
e)	x	x	x	x	x	x	x	x	x	x	x	x	x
h)	x	x	x	x	x	x	x	c)	x	c)	x	x	x

The choice of calibration setups was guided by our expectation of constraints contained in the different target data sets and  
 175 their combinations, given the model structure. Using common priors across (most) setups, the resulting parameter estimates can illustrate the constraints imposed by data alone. This approach can be seen as an extreme form of the approach suggested by

Cameron et al. (2022), where they increased the number of observations of certain target variables to identify model structural errors. Here, the setups systematically tested each trait target individually:  $\Delta$  in setup a), VJ in setup b), and in combination in setup c); before then considering GPP alone setup d), and combined with the traits setup e). Finally, setup h) tested a stepwise approach using the posteriors from setup c) as prior specification, to inclusion of trait information in the final estimates in spite of potential model misspecifications.

We use the implementation of P-model in the *rsofun* framework (Stocker et al., 2025) to model daily gross primary productivity, GPP, and leaf-level traits, namely the ratio of the rates of photosynthetic capacities in the FvCB model, VJ, and the isotopic fractionation of assimilated carbon,  $\Delta$ . Implementation details of the *rsofun* framework are provided in Appendix C.

Three latent (not directly observable) parameters govern the optimality-guided water-carbon trade-off: the unit cost ratio,  $\beta$ , (governing the balancing of maintaining the carboxylation capacity versus the transpiration stream), the marginal cost of maintaining the electron transport rate,  $c^*$ , and the quantum yield efficiency  $\varphi_0$  (parametrized with  $\varphi_0^*$ ,  $a_\varphi$ ,  $b_\varphi$ ).

The parameters  $\tau$ ,  $\beta$ ,  $c^*$  have previously been calibrated separately to data and have been specified as fixed model parameters in the P-model (Stocker et al., 2020; Wang et al., 2017). Here they were instead calibrated simultaneously to multiple calibration targets, together with additional parameters.

For simplicity, the same  $\theta^*$ , the soil water volume (mm) below which plants are stressed, was used across all sites.

Three different calibration targets were used in this study.  $\Delta$  represents accumulated assimilates and is influenced by stomatal opening through the leaf-internal to ambient carbon dioxide ratio. Eq. 2 indicates its dependency on the parameter  $\beta$ . VJ is assumed constant throughout the season. Observations of this ratio (Eq. 5 and 10) are expected to inform the model parameters  $\beta$  and  $c^*$ . GPP( $t$ ) observations represent daily values of ecosystem-level photosynthetic CO<sub>2</sub> uptake fluxes (with acclimation of LUE( $t$ )). Eqs. 12 to 3 illustrate the dependence of these observations to model parameters  $\beta$ ,  $c^*$ , as well as  $\theta^*$ ,  $\tau$ ,  $\varphi_0^*$ ,  $a_\varphi$ , and  $b_\varphi$ .

Note that  $V_{\text{cmax}}$  and  $J_{\text{max}}$  both scale linearly with  $\varphi_0$  (Eq. 5 and 10). This dependency to  $\varphi_0$  cancels out when considering the ratio of the two VJ.

## 2.3 Calibration target and test data

The data set consisted of 50 sites with GPP flux time series (172'055 site-dates in total), 49 sites with a total of 597 individual VJ observations (multiple individual plants and/or species per site sampled), and 325 sites with a total of 2357  $\Delta$  observations. Data for all variables were split by sites for model calibration (training) and out-of-sample testing (Fig. 2 and listed in Tab. S2 in the supplemental material). The split into training and test data sets was performed in a stratified manner according to vegetation type and land cover class (Beck et al., 2018; Copernicus Climate Change Service, 2019; Hufkens and Stocker, 2025) to ensure balanced representations of each stratum in the test and training data set. For GPP sites, we additionally required that a site contained more than 12 years of good-quality gap-free data to be available as a training site. We used GPP data from 12 sites for training and data from the remainder 38 sites for testing. The VJ and the  $\Delta$  data were split such that data from roughly 50% of all sites in each stratum were used for training and testing, respectively.



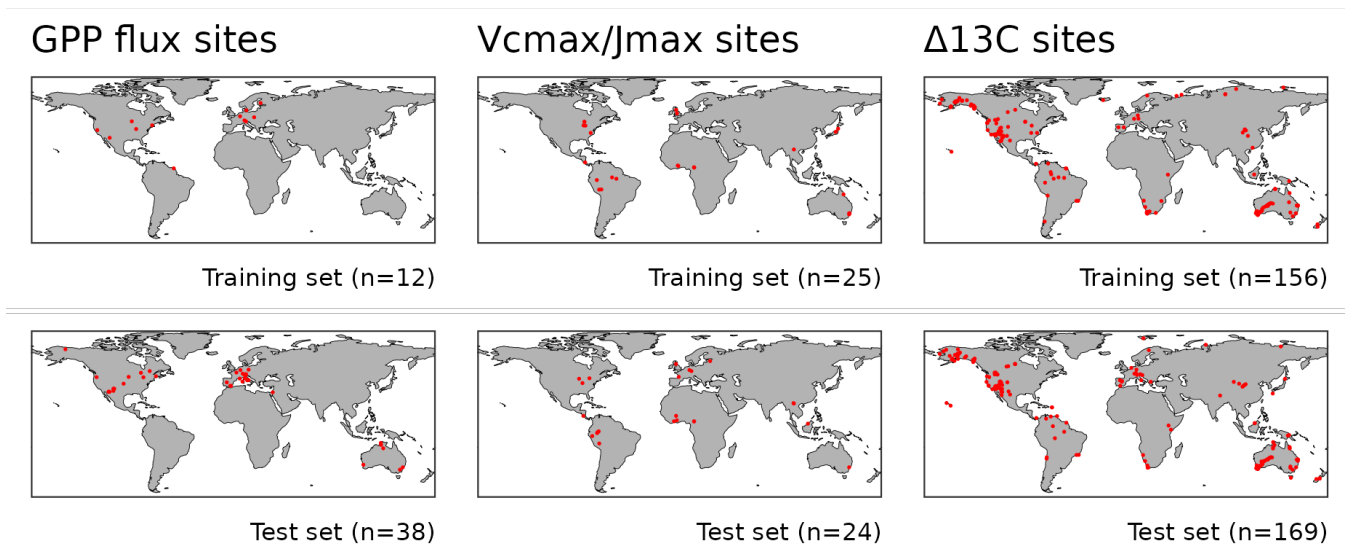
**Table 2.** Parameter listing with description, including Maximum A Posteriori (MAP) estimates and prior specifications, obtained from different calibration setups (in columns). The values given in square brackets represent the lower and upper bounds of uniform prior distributions or truncated normal prior distributions. Parameters that were held fixed for the calibration are marked with a single number in brackets and an asterisk (\*) in the corresponding setup columns.

Symbol	Units	Description	Setup a)	Setup b)	Setup c)	Setup d)	Setup e)	Setup h)
$\varphi_0^*$	mol mol <sup>-1</sup>	Quantum yield at optimal temperature				0.09 [0.02, 0.15]	0.09 [0.02, 0.15]	0.08 [0.02, 0.15]
$a_\varphi$	°C <sup>-2</sup>	Shape parameter for the temperature dependence of the quantum yield				-0.001 [-0.004, -0.001]	-0.001 [-0.004, -0.001]	-0.001 [-0.004, -0.001]
$b_\varphi$	°C	Optimal temperature for the quantum yield				28.2 [10, 30]	28.2 [10, 30]	27.5 [10, 30]
$\theta^*$	mm	Soil moisture limitation threshold (eq. 15)				23.9 [1, 250]	24.5 [1, 250]	26.7 [1, 250]
$\beta$	unitless	Unit cost ratio of carboxylation to transpiration	207.3 [14.6, 438.0]	18.7 [14.6, 438.0]	207.1 [14.6, 438.0]	14.6 [14.6, 438.0]	14.6 [14.6, 438.0]	187.5 $\mathcal{N}(207.9, 6.8^2)^b$
$\tau$	days	Acclimation time scale of photosynthesis				1.0 $\mathcal{N}(14, 64)^a$	1.0 $\mathcal{N}(14, 64)^a$	1.0 $\mathcal{N}(14, 64)^a$
$c^*$	unitless	Unit cost of electron transport		0.21 [0.04, 1.23]	0.42 [0.04, 1.23]	0.45 [0.04, 1.23]	0.45 [0.04, 1.23]	0.58 $\mathcal{N}(0.4, 0.02)$
$\sigma_{\text{GPP}}$	gC m <sup>-2</sup> s <sup>-1</sup>	Gaussian error standard deviation of GPP				2.11 [0.01, 3]	2.11 [0.01, 3]	2.04 [0.01, 3]
$\sigma_\Delta$	‰	Gaussian error standard deviation of $\Delta$	2.18 [0.01, 15]		2.18 [0.01, 15]		6.57 [0.01, 15]	2.04 [0.01, 15]
$\sigma_{\text{VJ}}$	unitless	Gaussian error standard deviation of VJ		0.17 [0.01, 3]	0.18 [0.01, 3]		0.25 [0.01, 3]	0.19 [0.01, 3]

<sup>a</sup> truncated to [0.0, 40.0]

<sup>b</sup> truncated to [187.5 to 228.2]

210 GPP observations were taken from FluxDataKit (FDK v3.4.2) (Hufkens and Stocker, 2025; Pastorello et al., 2020), which combines published releases of consistently processed eddy-covariance data from multiple regional networks (Ukkola, 2020; Warm Winter 2020 Team et al., 2022; Drought 2018 Team et al., 2020). GPP estimated through the nighttime flux partitioning was used (variable 'GPP\_NT\_VUT\_REF' Reichstein et al. (2005)). For model calibration and evaluation, we filtered data



**Figure 2.** Global maps of site with observations of the three target types in the training and test data sets.

to retain only (daily) values that were computed with at least 80% measured or good-quality, gap-filled (half-hourly) values.  
 215 Sites, classified as croplands or wetlands were removed, as well as any site with five or less complete years of data. Based on  
 visual inspection, the following site-year combinations exhibited spurious patterns and were additionally removed: ES-LJu,  
 year 2006; US-Ho2, year 2007; CH-Dav, year 2010; US-Whs years 2016 and 2017.

Observations of VJ were obtained from the data compilation of Smith et al. (2019), containing data reported for top canopy  
 from multiple sources (De Kauwe et al., 2016; Keenan and Niinemets, 2016; Smith and Dukes, 2017; Kattge et al., 2011;  
 220 Wang et al., 2018; Fürstenau Togashi et al., 2018; Togashi et al., 2018; Domingues et al., 2010; Ferreira Domingues et al.,  
 2015; Serbin et al., 2015; Tarvainen et al., 2013; Ellsworth, 2016; Rogers et al., 2017).

Observations of carbon-13 isotope discrimination in leaf material  $\Delta$  were taken from a global data set (Cornwell et al., 2018;  
 Cornwell, 2025), subsetting only observations that were marked as C3 plants. We used  $\Delta$  values that were derived from the  
 isotopic signature of leaf material in relation to the atmospheric signature at the date and latitude measurements were made.

## 225 2.4 Forcing data

For simulations of GPP time series, daily meteorological measurements, obtained in parallel with GPP observations, were used  
 as model forcing. Daily forcing data was taken from FluxDataKit (FDK v3.4.2) (Hufkens and Stocker, 2025; Pastorello et al.,  
 2020). The required daily variables are listed in Tab. S1 in the supplemental material.

For predictions of the two leaf traits ( $\Delta$ , VJ), the P-model was forced with average climate conditions during the growing  
 230 season, derived from the global WorldClim data set (Fick and Hijmans, 2017) (comprising monthly averages of daily minimum,  
 maximum and average temperature, vapor pressure, and solar radiation) and considering geographic positions of the sites.

The monthly WorldClim data were temporally disaggregated to daily values through polynomial interpolation (daily minimum, maximum, and average temperatures, cloud cover fraction, solar radiation, and vapor pressure). Interpolated daily maximum and minimum temperatures were then combined to an average daytime temperature using location-based day length  
 235 assuming a sinusoidal temperature profile (Davis et al., 2017; Peng et al., 2023). The average daytime vapor pressure deficit ( $D$ ) was derived from the average vapor pressure and daily maximum and minimum temperature.

Daily values were averaged to conditions representing the growing season. Growing season was defined as the period with daily average temperature above 0 °C. Then, daytime temperature, vapor pressure deficit  $D$  and solar radiation were averaged (mean) across all days of the growing season and used as model forcing ( $T$ ,  $D$ , PAR) for a non-temporally resolved single  
 240 prediction of VJ or  $\Delta$  for each site. Atmospheric pressure  $P$  was derived from the ETOPO-1 digital elevation model (NOAA National Geophysical Data Center, 2009), using site positions and assuming standard atmospheric pressure. CO<sub>2</sub> was taken from yearly mean values from the Mauna Loa record (Keeling et al., 2017), using the corresponding observation year (or the year 2000 if observation year was unavailable).

## 2.5 Bayesian calibration

We estimated model parameters  $\beta$ ,  $c^*$ ,  $\tau$ ,  $\varphi_0^*$ ,  $a_\varphi$ ,  $b_\varphi$ , and  $\theta^*$  (See Tab.2 for a description of parameters) in multiple combinations of parameters and target data (Sec. 2.3 and Tab. 1). Parameter estimation was done through a Bayesian calibration approach, using Markov chain Monte Carlo (MCMC) sampling (Clark, 2004; Dietze et al., 2013), using the DREAMzs sampling algorithm (Vrugt et al., 2009) as implemented in *BayesianTools* (Hartig et al., 2023). Eight independent chains were run, each for 100'000 iterations split among three internal chains, burn-in period was set to 30'000 and convergence was checked  
 250 visuall with trace plots and Gelman-Rubin statistics (Gelman and Rubin, 1992). Parameters were calibrated to all sites' data simultaneously and are thus assumed to be universal across space and environmental conditions.

### 2.5.1 Likelihood

The choice of likelihood summarized our assumptions about different sources of uncertainties. Uncertainties in model inputs (parameters  $p$  and forcings  $x$ ), in model structure  $f$ , and in the measured observations  $y$  of all target types (van Oijen, 2017)  
 255 combine as

$$y + \varepsilon_y = f(p, x + \varepsilon_x) + \varepsilon_f$$

where  $\varepsilon_y$  and  $\varepsilon_f$  represent (unknown) observational errors and model structural errors, respectively.  $\varepsilon_x$  is the error in the forcing data.

For all target variables, we assumed an additive and normally distributed model error term around the model prediction  
 260 (Trotsiuk et al., 2020) and expressed the fit to observed data via the Gaussian log-likelihood

$$\mathcal{L}(p | y) = \frac{1}{\sqrt{2\pi\sigma^2}} \exp\left(-\frac{1}{2\sigma^2}(y - f(p, x))^2\right) \quad (16)$$

with target-specific standard deviations  $\sigma_{\text{GPP}}$ ,  $\sigma_{\Delta}$ , and  $\sigma_{\text{VJ}}$ . These standard deviations of the error model were estimated together with the model parameters (Tab. 2). Individual observations were considered independent from each other, thus the total likelihood for a dataset simply multiplied the likelihoods of each observation. With this likelihood, we neglected input error  $\varepsilon_x = 0$  and lumped together observational uncertainties and model structural uncertainties into a single 'mismatch' or 'residual' uncertainty (van Oijen, 2017; Dietze et al., 2013).

Since the P-model is conceived as a single-big-leaf model (Fig. 1), it represents average properties and fluxes for the whole canopy. The estimated residual uncertainty thus contains also a potential uncertainty due to the scale mismatch between observation and model. Moreover, across-tree and across-species variabilities are also included since the likelihood was computed for each VJ and  $\Delta$  observations of individual trees.

While describing leaf-level quantities at relatively high mechanistic detail, the link between the leaf and the canopy-scale was not explicitly resolved. Instead, an empirical approach for leaf-to-canopy scaling of GPP was employed by treating the quantum yield parameter  $\varphi_0$  to be representative for the canopy-scale and allowing it to be calibrated to ecosystem-level GPP flux data.

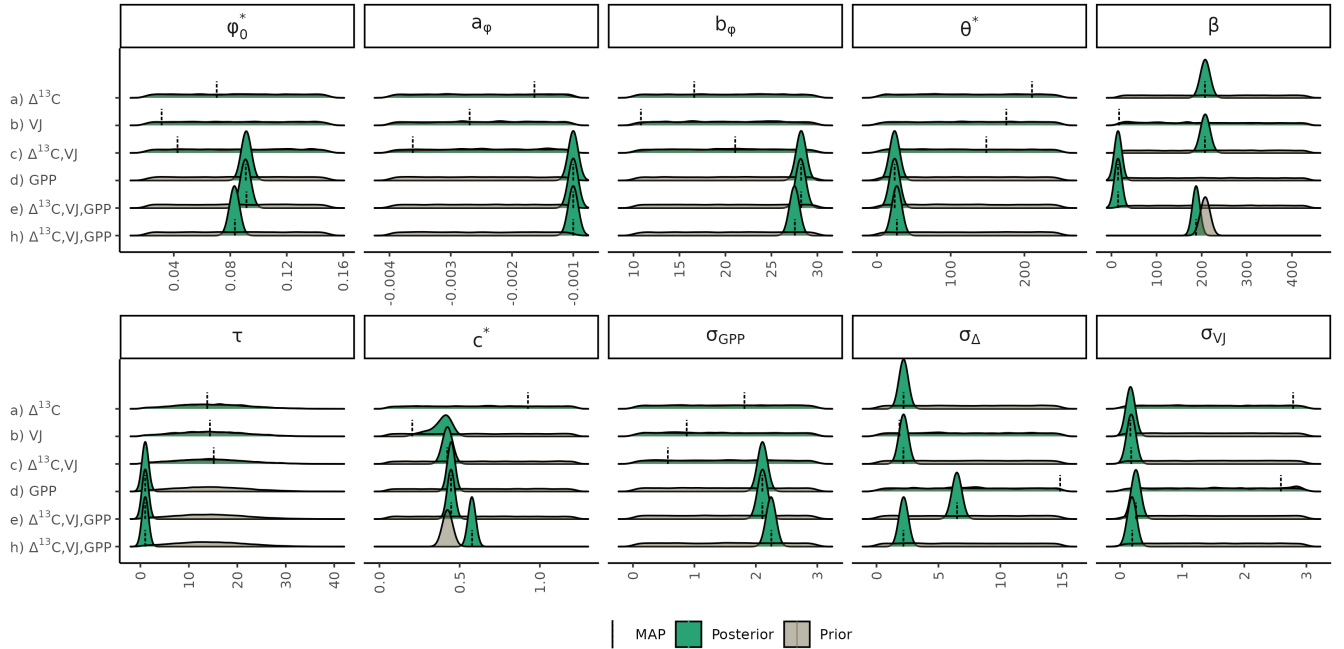
## 2.5.2 Priors

Prior distributions were defined based on prior knowledge and kept the same across all calibration setups, except for setup h), where the posteriors of the model parameters  $\beta$  and  $c^*$  estimated from setup c), were used as priors (Tab. 2 and shown in grey in Fig. 3). These posteriors from setup c) were characterized as uni-variant normal distribution. For  $\beta$ , it was additionally truncated to the mean  $\pm$  three times the standard deviation.

The prior knowledge on the acclimation time scale  $\tau$  was approximated by a normal distribution ( $\mathcal{N}(14, 64)$ ) based on prior findings (Mäkelä et al., 2004; Liu et al., 2024; Mengoli et al., 2022) and truncated to the range from 0 to 40 days). For all other parameters, uniform priors with distinct ranges were used. Ranges for  $\beta$ ,  $c^*$ , and  $\varphi_0^*$  were specified to range between 10% and 300% of published estimates of 146 (unitless), 0.41 (unitless), and  $0.05 \text{ mol mol}^{-1}$ , respectively, (Stocker et al., 2020; Wang et al., 2017). We chose wide uniform priors with the aim that posteriors would solely be informed by the used observations. The optimal temperature  $b_\varphi$  and shape parameter  $a_\varphi$  were specified to range between 10 and 30 °C and -0.004 and -0.001 °C<sup>-2</sup>. The soil moisture limitation threshold  $\theta^*$  was specified to range between 1 and 250 mm. Given the lack of prior knowledge on the error parameters characterizing the combined structural and observational uncertainty large, uninformative priors were assumed.

## 2.6 Prediction uncertainty

The parameter sets generated by the MCMC chains provide the basis for model prediction including an estimation of the uncertainty in the predictions on the train and test data set. Here, we propagated both characterized uncertainties: the parametric and the residual (structural and observational) uncertainty.



**Figure 3.** Prior and posterior distributions of the calibrated model parameters and error model terms in the setups. The maximum a posteriori (MAP) estimates are indicated with a dashed line and fixed parameters with solid lines. For parameter description and units refer to Table 2.

Retaining 20 samples from the combined Markov chains, representative of the joint parameter posterior distribution (including parameter correlations), we ran the P-model for each set of parameters to predict the target variables for the test and training data set. These 20 sets of predictions represented the parametric uncertainty of the model.

Additionally, for each prediction (i.e. target, site, and date combination) three observational errors were drawn from the residual error model (characterized by  $\sigma_{GPP}$ ,  $\sigma_\Delta$ , and  $\sigma_{VJ}$ ) and added to the prediction. These 60 sets of predictions represented the combined parametric and residual uncertainty of the model. A third comparison with observations was based on one set of predictions using the Maximum A Posteriori estimate as a single set of parameters and without considering the residual uncertainty.

### 3 Results

#### 3.1 Calibrated parameters

MCMC sampling with DREAMzs of 8 parallel, independent chains took between 2.5 (b) and 68 (h) hours to reach 100'000 iterations for the setups a) to h). The trace plot of the chain of setup h), including computations of the scale reduction factors (Gelman and Rubin, 1992) are reported in the Appendix (Fig. D1).

Posterior distributions of the estimated parameters varied across the different setups (Fig. 3). Setup a) (using only  $\Delta$  as observational target) constrained  $\beta$  to a maximum a posteriori (MAP) of 207 (unitless), a median of 208 and with an inter-quartile range (IQR) from 203 to 213 and the residual prediction error  $\sigma_{\Delta}$  to a MAP of 2.18 (unitless), which corresponds to a 10% of the mean of predicted  $\Delta$ . Other parameters were not informed by the calibration and their posteriors remained largely identical to their prior distributions. This reflects model structural dependencies of parameters and predicted quantities ( $\Delta$  is independent of the other model parameters, see Eq. 3).

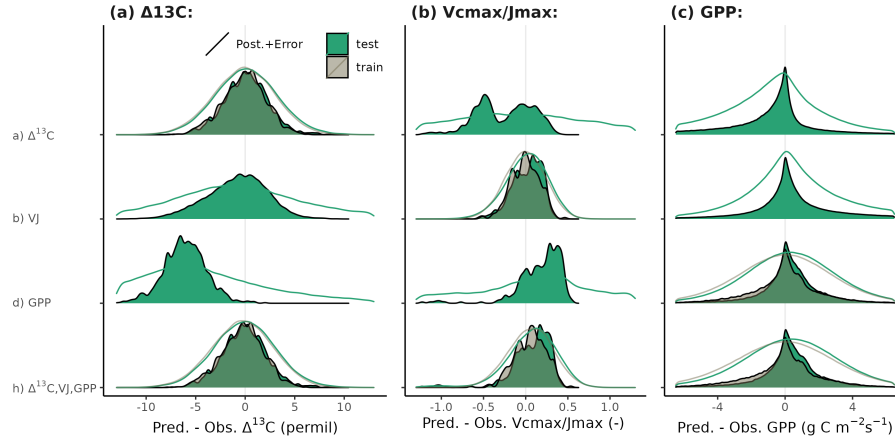
Setup b) (using only VJ as observational target) constrained  $c^*$  to a MAP of 0.214 (unitless), (median of 0.397, IQR from 0.347 to 0.428). As revealed by the posterior correlation analysis, these two parameters showed a strong correlation ( $r = 0.86$ , Fig. D2). These compensating effects were disentangled when simultaneously calibrating to  $\Delta$  and VJ in setup c). This constrained  $\beta$  to a MAP of 207.1 (unitless), (median of 207.9, IQR from 203.5 to 212.3) and  $c^*$  to MAP of 0.419 (unitless) (median of 0.425, IQR from 0.410 to 0.439), slightly higher than in setup b), and avoided the correlation of posteriors (Figs. 3 and D3). The error model parameters associated with the two targets  $\Delta$  and VJ were estimated to MAPs of 2.18‰ and 0.178 (unitless).

Setups that use GPP as observational target and uninformed priors – setups d), and e) – yield estimates of  $\beta$  that are at the lower bound of the uniform prior range (i.e 14.6 (unitless)), while  $\tau$  is estimated to be exactly 1 day. This indicates that GPP observations "push" estimates of  $\beta$  towards extremely high unit costs of transpiration in relation to carboxylation, and that no smoothing of the daily meteorological conditions (Eq. B1) was necessary to optimize the likelihood of observing the GPP data. However, while improving the likelihood of GPP, the fit with  $\Delta$  observations was deteriorated in these setups, as indicated by an offset between model predictions and observations (Figs. 4 and 5). Only setup h), using GPP in combination with a truncated and prior for  $\beta$ , informed by the reduced setup of c), mitigates this offset. Also here, the posterior estimate of  $\beta$  came to lie at the border of the truncated region (14.6 (unitless)). The error model parameter associated with the GPP target was estimated to a MAP of  $2.04 \text{ gC m}^{-2} \text{ s}^{-1}$  in setup h), which was slightly smaller than the error in setups d) and e). In the posterior parameters of setup h), correlations of  $r = 0.89$  remain between  $\varphi_0^*$  and  $c^*$  and of  $r = 0.81$  between  $\varphi_0$  and  $b_{\varphi}$  (Fig. D4).

### 3.2 Prediction uncertainty

Model predictions were unbiased and residuals were of similar magnitude when evaluated on the test and on the training data sets (Fig. 4), which indicates a good generalizability of the parametrized model. Including structural and observational uncertainties on top of parametric uncertainties only slightly increased the deviations between predicted and observed targets in setup h), with strongest relative increases for GPP.

$\Delta$  and GPP predictions based on MAP parameter sets of setup h) showed no magnitude-dependent bias (linear slopes of regressions between predicted and observed values were close to 1), whereas VJ showed a prediction range that appears too large when compared to the observed range (slope close to 0, Fig. 5). Setup h) showed a slightly worse root mean squared error (RMSE) than setup e) for GPP, but clearly reduced RMSE for  $\Delta$  and VJ.



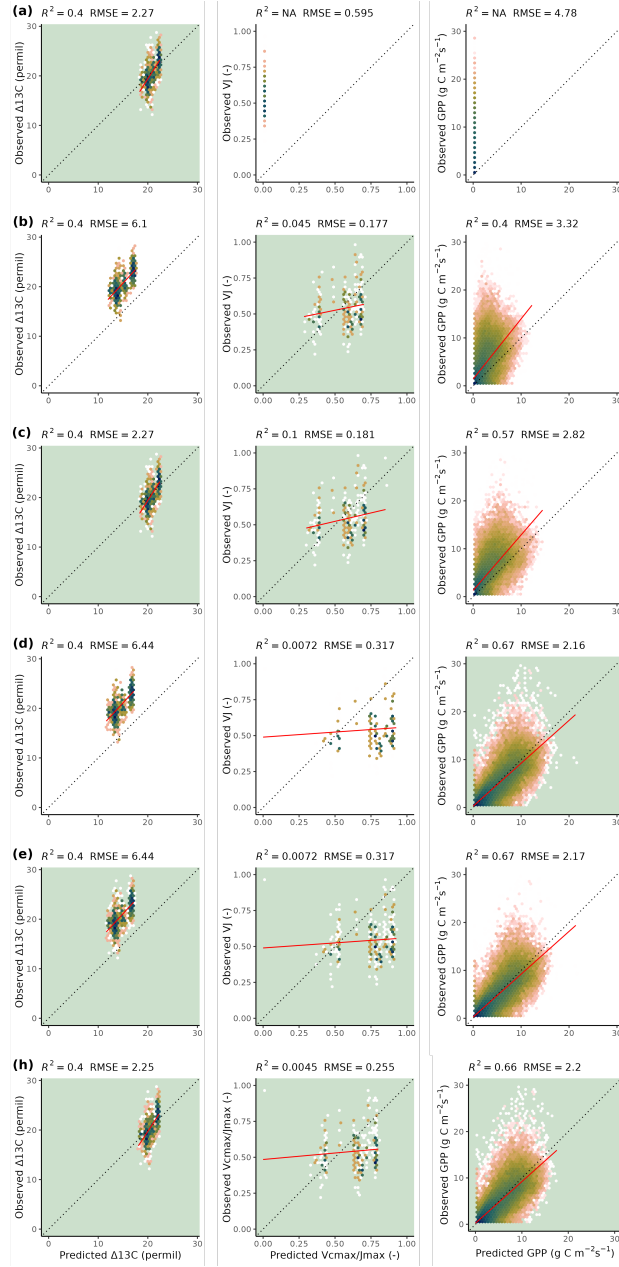
**Figure 4.** Density plot of residuals between predicted and observed values from the training and test sets for calibration setups a, b, d, and h. Model output is computed with parametric uncertainty (filled area, based on 20 samples from the posterior distribution) and residual uncertainty (solid line, based on 3 samples from error model). Model outputs are compared against individual observations (dates from all sites pooled for GPP, and individual observations of each site for  $\Delta$  and VJ).

Time series of GPP of a few select years on training site data showed that the model successfully reproduced seasonal patterns and differences across site in GPP for most sites (Fig. D5), with some shortcomings in accurate simulations of GPP during under dry conditions, as seen for site US-Var, and a general low bias for the moist tropical site of GF-Guy. The model also tends to systematically overestimate GPP in the early growing season at US-MMS and US-PFa – a known bias (Luo et al., 2023).

## 4 Discussion

This study showed that a model for ecosystem photosynthesis and its acclimation to the environment can be robustly parameterised and that its predictions of multiple variables generalise well across a wide range of environmental conditions. Multiple model parameters can be estimated simultaneously by using diverse calibration target data types, combining ecosystem flux time series and static, species-specific traits data. This demonstrates how the explicit representation of connections between traits and process rates enable model-data integration on the basis of diverse observations, obtained at multiple organisational levels – from the leaf to the canopy. The robustness of the parameter estimates is indicated by the convergence of the MCMC chains (Fig. D1) and the resulting narrow posterior distributions of Bayesian parameter estimates (Fig. 3). Despite being calibrated to only a relatively small set of sites with GPP data ( $N = 12$ ), the calibrated model generalizes well, as validated against an independent and much larger set of test data for GPP from 38 sites (Figs. 4 and 5).

Our results confirmed the expectation that the use of multiple observational targets yields more robust parameter estimates compared to a calibration setup that relies on a single data source, and that specific observation types imposed constraints for



**Figure 5.** Predicted versus observed values for different target variables ( $\Delta$ , VJ, and GPP along columns) and calibration setups (a, b, c, d, e, and h, along rows), evaluated on the test set. Model output is computed with Maximum A Posteriori parameter values (MAP) for each calibration setup. Note that the MAP parameters from setup a) result in null-predictions of VJ and GPP. Color indicates density, red line indicates a linear regression. Green panel backgrounds indicate which variables were used as targets for model calibration in the corresponding setup. Model outputs are compared against individual observations (predicted and observed daily GPP values from all sites pooled and site-specific predictions against all observations from the respective site for  $\Delta$  and VJ).



specific model parameters. Leaf carbon fractionation observations,  $\Delta$ , allowed to constrain the unit cost ratio of carboxylation to transpiration,  $\beta$  (Fig. 3). Observed ratios of the biochemical rates of carboxylation to electron transport, VJ, constrained  $\beta$  and  $c^*$ , albeit with strong correlations between them, indicating compensating effects and a lack of robustness in resulting parameter estimates (Figs. 3 and D2). The combination of both these observation types allowed to constrain both parameters simultaneously, avoiding correlations between parameter estimates. This indicates that the use of two observational targets simultaneously made use of their complementary information content for parameter estimation in our model (Fig. D3).

Despite the general robustness of parameter estimates, we found several limitations and aspects that indicate challenges for model calibration in our case. When observations of GPP were included in calibration setups, parameter estimates of  $\beta$  differed strongly from results obtained from setups that used only observations of  $\Delta$  and tended towards the lower margin of the uniform prior range – substantially lower than the value used for direct parameterisation of the model in previous work (Wang et al., 2017).  $\beta$  represents the ratio between the unit cost of carboxylation to transpiration within the EEO modelling framework applied here (Prentice et al., 2014). An extremely low value of  $\beta$  implies relatively high costs associated with transpiration, which is driven by VPD. The calibration tending towards low values of  $\beta$  potentially reflects a compensating effect for the lack of GPP reductions under conditions of dry soils, e.g., during the dry summer periods at the site US-Var (Fig. D5). In other words, this apparent lack of robustness of parameter estimate may indicate a misspecification of the model structure. This interpretation could be tested with targeted setups (e.g., removing dry sites from the calibration data set) or by alternative specifications of the soil moisture stress that better accounts for its limiting effect on GPP.

To address this challenge and avoid unexpectedly low estimates of the unit cost ratio parameter  $\beta$ , we resorted to a step-wise Bayesian calibration (MacBean et al., 2016) and used the posterior distribution of setup c) as a prior in setup h). This resulted in the disappearance of offsets in  $\Delta$  observation, a  $c^*$  closer to, but not at, the upper limit of the prior (MAP = 0.58), and a slightly lower  $\varphi_0^*$  than in GPP-only setup (d) or in the unconstrained GPP- $\Delta$ -VJ setup (e). The step-wise posterior estimation and prior specification of P-model parameters in setup h) yield estimates of all parameters that compare favourably with previous estimates (Stocker et al., 2020; Wang et al., 2017). This study estimated (MAP):  $\beta=208$  (unitless, compared with 146 and the range from 200 to 240),  $c^*=0.58$  (unitless, compared with 0.41), and  $\varphi_0^* = 0.05 \text{ mol mol}^{-1}$  (compared to 0.05). However, the MAP estimate of  $\tau = 1$ , indicated an instantaneous acclimation appeared to yield better agreement of model output with daily GPP observations, than a delayed acclimation using smoothed versions of the environmental conditions. This contrasts with previous estimations of the acclimation time scale being on the order of 14 to 15 days (Mäkelä et al., 2004; Liu et al., 2024; Mengoli et al., 2022).

Remaining correlations in posterior parameters of setup h) between  $\varphi_0^*$  and  $c^*$  indicate some equifinality. These compensating effects indicate another potential source of misinterpretation of what the parameter  $c^*$  represents in setup b) versus setup h). The Bayesian approach allows propagating the effect of this into predictive uncertainties by using posterior *distributions* instead of point-estimates of parameters. Still, this entanglement might be resolved in future calibrations by fixing one of these two parameters or by using additional observations. Future work is needed to look into causes of this posterior variability of  $c^*$ , identify potential observational constraints, and potentially to revise related model structures.

390 The calibrated model of setup h) showed unbiased predictions against observations in an independent test data set, indicating the model's generalizability. Based on the universal validity of the EEO parameters across plant functional types and biomes, the calibrated P-model can may be scaled to new locations sites and environmental conditions. However, it should be noted that our estimates of prediction uncertainty and the finding of robust generalisability only applies to environmental conditions that are within the domain of (or similarly distanced to) sites used for training and testing here (Ludwig et al., 2023). Further caveats  
395 apply. The choice of the specification of soil moisture stress, which uses a single global parameter  $\theta^*$ , may be overly simplistic for describing diverse physiological responses to dry-downs across sites characterised by different soil texture (Fu et al., 2022; Wankmüller et al., 2024) and the model neglects the highly variable rooting zone water storage capacities across space globally (Stocker et al., 2023). Although generalization to the test data set did globally show unbiased predictions across all sites (Fig. 4), shortcomings were visible for certain sites (e.g., US-Var, Fig. 5) and warrant a re-consideration and potential revision  
400 of the related process representations. An improved representation of soil moisture stress effects and across-site variations of critical soil moisture thresholds and storage capacities may potentially also mitigate the need for targeted interventions into the calibration procedure, e.g., through the truncation of the prior for  $\beta$  or the step-wise approach to model calibration. More specifically,  $\theta^*$  could potentially be expressed by additionally considering soil structural information (Wankmüller et al., 2024), which could be provided as additional information for each site. Alternatively, the Bayesian approach allows for the use  
405 of hierarchical models (van Oijen, 2017) that could make use of potential, globally available predictors (or covariates) for the site-specific parameters.

Generally, design choices related to the Bayesian likelihood specification and parameter calibration were adequate to show-case the sensitivity of parameter estimates across setups and retrieve an unbiased, generalizable model. While simple, the additive Gaussian error model chosen for the likelihood allowed to showcase the constraints, it could use improved functional  
410 forms more suited e.g. to the positivity of GPP, or to disentangle the observation uncertainty from model structural uncertainty (van Oijen, 2017). Independent estimates of observation uncertainty could be included as fixed parameters or as informed priors. This would potentially lead to a reduced residual error representing more closely the structural model uncertainty. Potential estimates for these could be the error on GPP measurements or errors of a trait measurement to represent the model scale (i.e. the ecosystem-level averages across species instead of individual observations). Alternatively, fitting to average observations  
415 instead of individual observations might reduce the (independent) observational errors. This would mean fitting to averaged traits over different species at a given site or weekly cumulative fluxes instead of daily values.

A strength of the Bayesian approach is to update model parameters iteratively with additional data by using previous posterior as new prior distributions. Our illustration of this approach in setup h) relied on manual extraction and specification of these distributions. A future development step for the *rsOfun* framework would thus be to support easier specifications of these type  
420 of stepwise calibration (MacBean et al., 2016) directly through the model interface.

P-model is limited in scope to the to canopy. We found even for models with this degree of complexity, parameter interactions and structural model errors can to lead parameter biases. The stepwise calibration approach allowed to rectify the perceived bias in  $\beta$ . This violated the initial aim of simultaneously estimating all parameters, but is interpreted here as indications of where to find structural deficiencies and target model improvements (Oberpriller et al., 2021). More comprehensive vegetation

425 models of larger scope will likely face similar challenges, considering that structural deficiencies are unavoidable and more parameter interactions may arise through feedbacks in the soil-plant system. Our findings indicate that stepwise approaches to model calibration can be potential solutions to this challenge.

While this study looked at seven model parameters simultaneously, several other parameters were held fixed, namely those involved in describing temperature and pressure dependencies of physical and physiological quantities, isotope fractionation, 430 etc. This simplified the calibration and parameter estimation task, but assumed that the uncertainty stemming from these is negligible for the prediction of target variables. This is a strong assumption and should be relaxed in future attempts at calibrating P-model.

Lastly, the chosen likelihood ignored input data uncertainty  $\varepsilon_x$ . For GPP sites, we expect small uncertainty in meteorological variables thanks to local measurements, but fAPAR data is obtained from satellite remote sensing data, which is likely to include 435 uncertainties. For  $\Delta$  and VJ sites, input forcing was based on a global dataset of high spatial resolution ( $\sim 1$  km around the equator). However, topographical effects and related micro-climata that deviate from the larger climate could be remaining sources of errors.

The *rsofun* R package provides a user-friendly and efficient implementation of the P-model and off-the-shelf model-data assimilation functionalities through its connection to the *BayesianTools* R package (Hartig et al., 2023), while maintaining 440 flexibility for altered calibration setups and likelihood definitions. P-model's computational efficiency offered the potential for effective model parameter and uncertainty estimation using Bayesian statistical methods in combination with flux and traits data here.

Our model implementation as an R package takes inspiration from the *r3PG* forest model (Trotsiuk et al., 2020), and our implementation of model-data integration on the basis of ecosystem data serves similar, yet reduced, aims and functionalities 445 compared to PEcAn (<https://pecanproject.github.io/index.html>) (LeBauer et al., 2013). *rsofun* is designed to be minimally reliant on package dependencies and connections to specific data, while limiting the scope to a predefined set of process models (currently P-model, BiomeE at an experimentation stage). *rsofun* and the implementation of our simulations and analyses analyses shown here in accompanying code (see code availability statement) and package vignettes provide a blueprint for model-data assimilation.

## 450 5 Conclusions

This study used *rsofun* (available as an R package) to calibrate latent P-model parameters to a set of flux and traits data, obtained from 193 training sites and 231 test sites. Predictions across all test sites showed that the calibrated model generalized well, not showing any biases and similar prediction residuals between train and test data. The Bayesian calibration also exhibited challenges. Structural uncertainty, the imbalanced data set, and a potentially too simplistic likelihood lead to biased parameters 455 ( $\beta$ ) and predictions ( $\Delta$ ) in the first calibration attempt. An alternative calibration setup made use of a stepwise calibration and the hierarchical design of the model structure and predictions, enabling a successive model integration and parameter

calibration. The necessity for this approach to obtain robust and reliable parameter estimations may indicate model structural deficiencies, which we identified here as primarily being related to the representation of effects by dryness in soil and air.

*Code and data availability.* The *rsofun* R package can be installed from CRAN (<https://cran.r-project.org/package=rsofun>) or directly from its source code on GitHub (publicly available at <https://github.com/geco-bern/rsofun> under an AGPLv3 licence). Versioned releases of the GitHub repository are deposited on Zenodo (<https://doi.org/10.5281/zenodo.15189864>). Code to reproduce the analysis and plots presented here is contained in the repository at [https://github.com/geco-bern/rsofun\\_doc](https://github.com/geco-bern/rsofun_doc) and archived on Zenodo (Bernhard and Stocker, 2025). The model forcing and evaluation data for GPP sites are based on the publicly available FLUXNET2015 data, prepared by FluxDataKit v3.4.2 (10.5281/zenodo.14808331). Scripts for generating these data files from open access sources are contained in the repository in the subdirectory 'data-raw/'. Outputs of the analysis presented here are archived in the subdirectory 'analysis-output/'. The model forcing for  $\Delta$  and VJ sites are based on the publicly available WorldClim (Fick and Hijmans, 2017), ETOPO1 (NOAA National Geophysical Data Center, 2009), and Mauna Loa CO<sub>2</sub> (Keeling et al., 2017) data. The model evaluation data for  $\Delta$  sites are based on data associated with (Cornwell et al., 2018) available at (Cornwell, 2025). The model evaluation data for VJ sites are based on the freely available subset of the data from (Smith et al., 2019). Scripts for generating these data are contained in the repository in subdirectory 'data-raw/'. Outputs of those scripts and of the analysis presented here are archived in the subdirectory 'data/' and 'analysis-output/'.

## Appendix B: Acclimation

Damped acclimation to daily environmental conditions was considered for the GPP prediction, while for  $\Delta$  and VJ predictions used growing season average conditions.

The the low-pass filter of characteristic time scale  $\tau$  (days) is defined as

$$T(t+1) = T(t) + \frac{1}{\tau}(T'(t+1) - T(t)) \quad \text{initialized as } T(0) = T'(0), \quad (\text{B1})$$

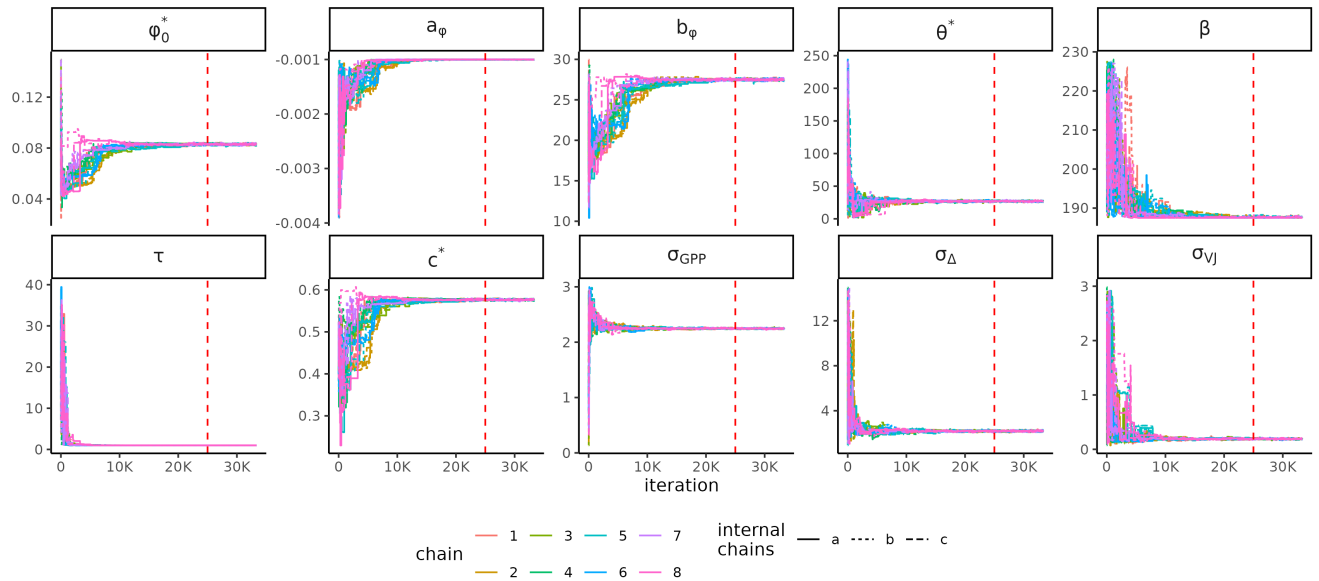
where  $T$  is the low-pass filtered quantity (here temperature) and  $T'$  the daily observations, resulting in a daily time series of the damped quantity. Equivalent expressions with the same  $\tau$  are used for  $P$ ,  $D$ , CO<sub>2</sub>, and PAR.

## Appendix C: The *rsofun* model framework

*rsofun* implements the P-model (Stocker et al., 2020) and provides off-the-shelf methods for Bayesian (probabilistic) parameter and prediction uncertainty estimation. *rsofun* is distributed as an R package on R's central and public package repository. *rsofun* also implements the BiomeE vegetation demography model (Weng et al., 2017, 2015). The latter is not further described here and is implemented at an experimental stage in *rsofun* version v5.0. The P-model implementation in *rsofun* is designed for time series simulations by accounting for temporal dependencies in the acclimation to a continuously varying environment. Function wrappers in R make the simulation workflow user-friendly and all functions and input forcing data structures are comprehensively documented (<https://geco-bern.github.io/rsofun/>).

out\_calib\_scen231\_DREAMzs-100000-0iter\_8x3chains\_on\_CPU8x1\_continued.rds

GelmanDiagnostics: mpsrf=1.2; psrf: $\phi_0^*=1.09$ ,  $a_\phi=1.13$ ,  $b_\phi=1.13$ ,  $\theta^*=1.05$ ,  $\beta=1.09$ ,  $\tau=1.11$ ,  $c^*=1.10$ ,  $\sigma_{GPP}=1.03$ ,  $\sigma_\Delta=1.06$ ,  $\sigma_{vj}=1.07$

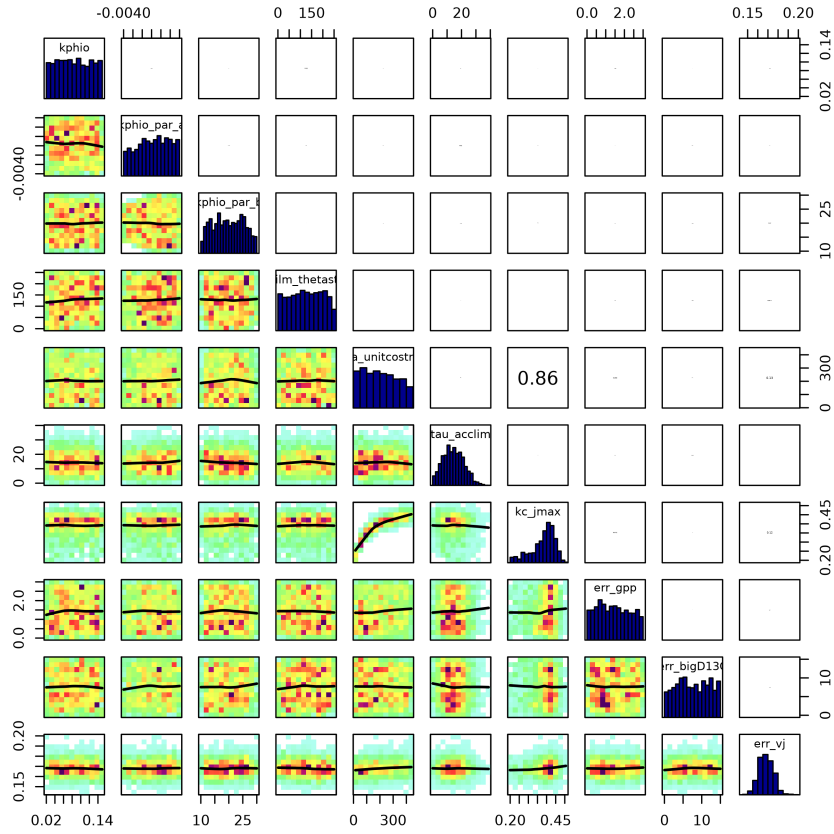


**Figure D1.** Trace plot of MCMC sampling of all parameters in setup h).

In *rsofun*, model parameters can be calibrated using a calibration function `calib_sofun()`, providing two modes of calibration, one based on generalised simulated annealing (`{GenSA}` R package) for global optimization (Xiang et al., 2013) and one based on Markov chain Monte Carlo (MCMC) implemented by the *BayesianTools* R package, giving access to a wide variety of Bayesian methods (Hartig et al., 2023). The former being fast, while the latter provides more informed parameter optimization statistics (Clark, 2004; Dietze et al., 2013). This gives the option for both exploratory and more in-depth analysis of estimated parameters. A set of standard cost functions are provided for the calibration, facilitating the exploration of various metrics or target variables and the specification of calibrated model parameters. Furthermore, the vignettes accompanying the package (<https://geco-bern.github.io/rsofun/articles/>) explain how to customise the calibration cost functions and interpret the calibration results.

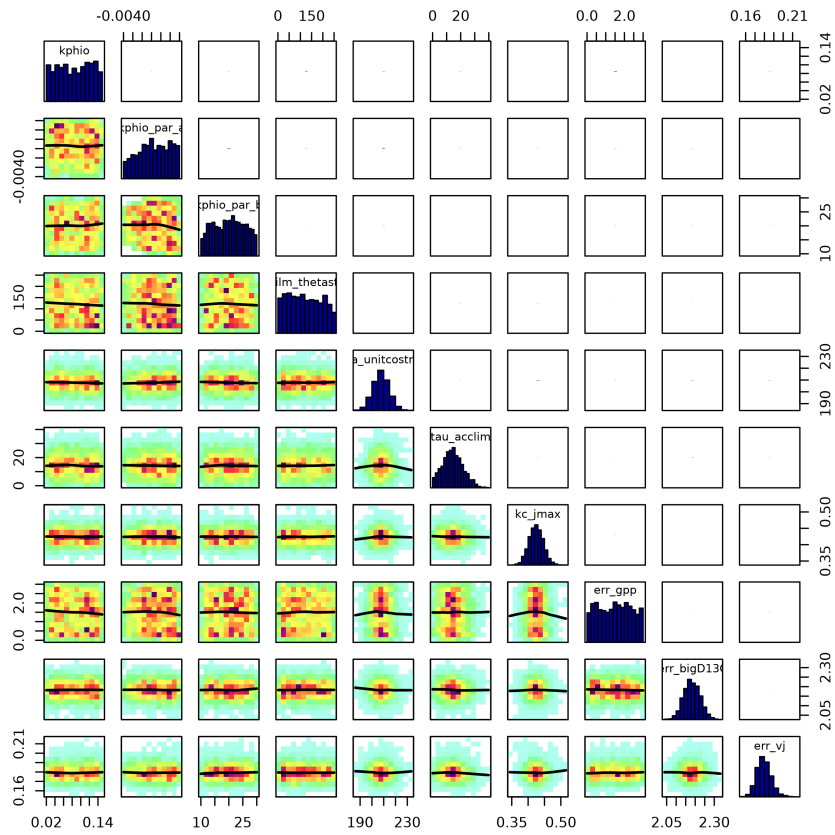
## Appendix D: Posterior parameter estimates

### D1 Posterior parameter sampling

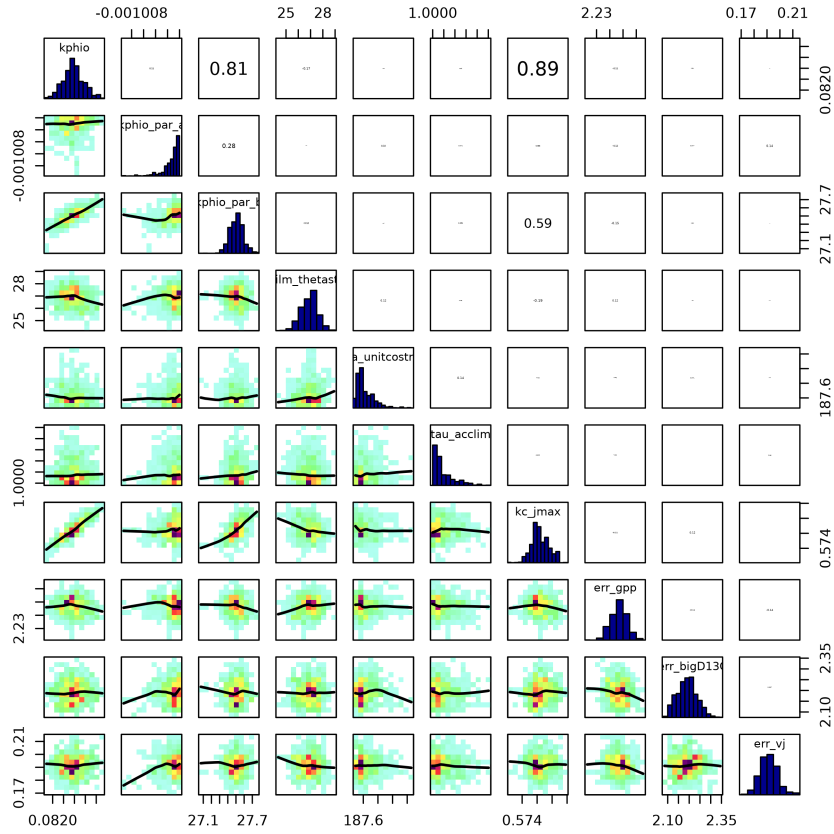


**Figure D2.** Parameter correlation of posterior parameters in setup b) with 100'000 iterations and 30'000 burnin.

## D2 Posterior parameter correlations



**Figure D3.** Parameter correlation of posterior parameters in setup c) with 100'000 iterations and 30'000 burnin.



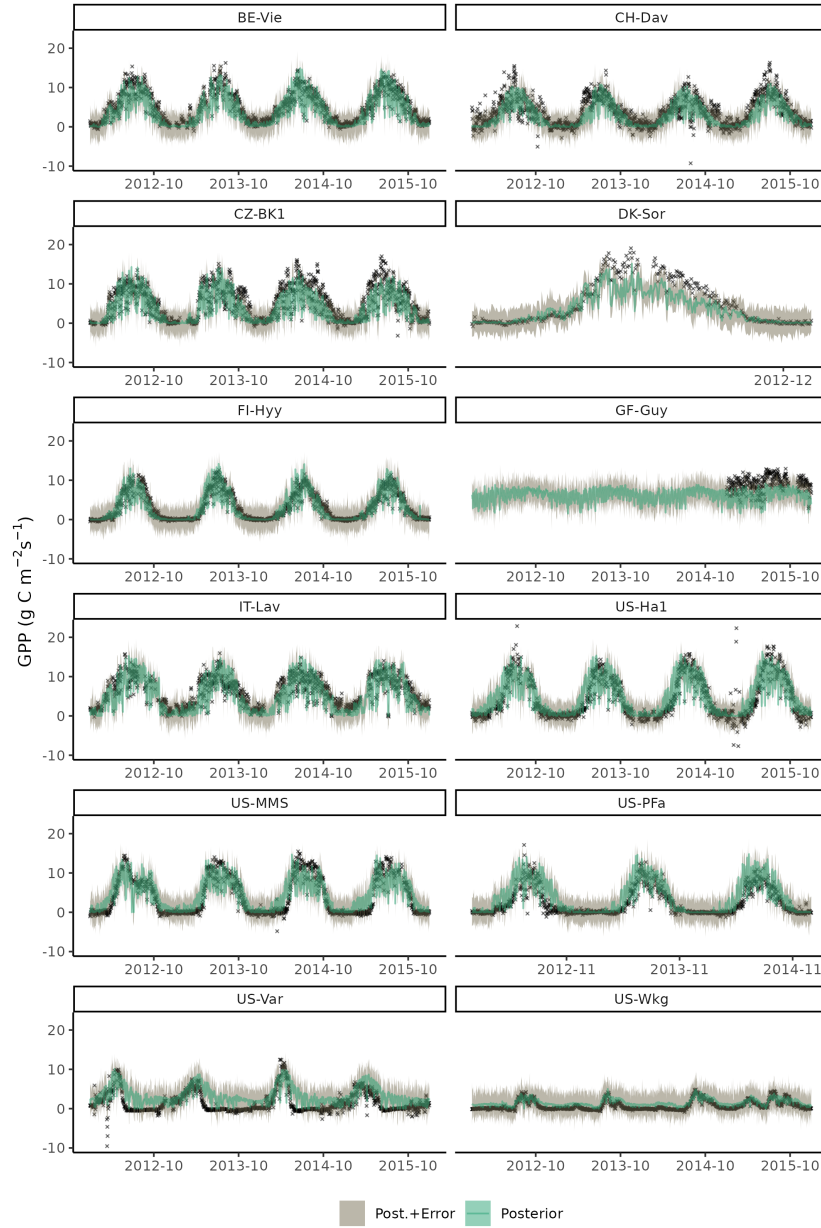
**Figure D4.** Parameter correlation of posterior parameters in setup h) with 100'000 iterations and 30'000 burnin.

### D3 Posterior parameter predictions

*Author contributions.* B.D.S. and F.B. designed the study. B.D.S. wrote the Fortran code, J.A.P. wrote the calibration implementation in the R package, sensitivity analysis and uncertainty estimation. M.M. and F.B. prepared the package for publication to CRAN. K.H. and J.A.P. wrote the initial draft of the manuscript. F.B. processed the observational data, ran the analysis, and finalized the manuscript. All authors contributed to manuscript writing.

*Competing interests.* The authors declare that they have no conflict of interest.





**Figure D5.** Time series plot of observed (black crosses) and modelled daily gross primary production (GPP) for setup h for years 2012 to 2015 of the training data set. Model output is computed with parametric uncertainty (green shaded area, based on 20 samples from the posterior) and structural uncertainty (grey shaded area, based on 3 samples from error model).

*Acknowledgements.* We thank Florian Hartig for advice on uncertainty modelling and the maintenance of the BayesianTools package,  
505 Volodymyr Trotsiuk for an initial template of the R package, and Colin Prentice for comments on the manuscript. We thank Nick Smith  
for providing data for VJ. B.D.S. was funded by the Swiss National Science Foundation grant PCEFP2\_181115. This work is a contribution  
to the LEMONTREE (Land Ecosystem Models based On New Theory, obseRvations and ExperimEnts) project, funded through the generos-  
ity of Eric and Wendy Schmidt by recommendation of the Schmidt Futures program (K.H., B.D.S.). Calculations were performed on AMD  
EPYC 7742 (2.25, 3.4 GHz) processors on UBELIX (<https://www.id.unibe.ch/hpc>), the HPC cluster at the University of Bern.

- Bagnara, M., Sottocornola, M., Cescatti, A., Minerbi, S., Montagnani, L., Gianelle, D., and Magnani, F.: Bayesian optimization of a light use efficiency model for the estimation of daily gross primary productivity in a range of Italian forest ecosystems, *Ecological Modelling*, 306, 57–66, <https://doi.org/10.1016/j.ecolmodel.2014.09.021>, 2015.
- Bao, S., Wutzler, T., Koirala, S., Cuntz, M., Ibrom, A., Besnard, S., Walther, S., Šigut, L., Moreno, A., Weber, U., Wohlfahrt, G., Cleverly, J., Migliavacca, M., Woodgate, W., Merbold, L., Veenendaal, E., and Carvalhais, N.: Environment-sensitivity functions for gross primary productivity in light use efficiency models, *Agricultural and Forest Meteorology*, 312, 108 708, <https://doi.org/10.1016/j.agrformet.2021.108708>, 2022.
- Beck, H. E., Zimmermann, N. E., McVicar, T. R., Vergopolan, N., Berg, A., and Wood, E. F.: Present and future Köppen-Geiger climate classification maps at 1-km resolution, *Scientific Data*, 5, 180 214, <https://doi.org/10.1038/sdata.2018.214>, publisher: Nature Publishing Group, 2018.
- Bernacchi, C. J., Singsaas, E. L., Pimentel, C., Portis Jr, A. R., and Long, S. P.: Improved temperature response functions for models of Rubisco-limited photosynthesis, *Plant, Cell & Environment*, 24, 253–259, <https://doi.org/10.1111/j.1365-3040.2001.00668.x>, <https://onlinelibrary.wiley.com/doi/pdf/10.1111/j.1365-3040.2001.00668.x>, 2001.
- Bernhard, F. and Stocker, B.: *geco-bern/rsfun\_doc: v1.0.0*, <https://doi.org/10.5281/zenodo.17204362>, 2025.
- Cameron, D., Hartig, F., Minunno, F., Oberpriller, J., Reineking, B., Van Oijen, M., and Dietze, M.: Issues in calibrating models with multiple unbalanced constraints: the significance of systematic model and data errors, *Methods in Ecology and Evolution*, 13, 2757–2770, <https://doi.org/10.1111/2041-210X.14002>, <https://onlinelibrary.wiley.com/doi/pdf/10.1111/2041-210X.14002>, 2022.
- Clark, J. S.: Why environmental scientists are becoming Bayesians: Modelling with Bayes, *Ecology Letters*, 8, 2–14, <https://doi.org/10.1111/j.1461-0248.2004.00702.x>, 2004.
- Copernicus Climate Change Service: Land cover classification gridded maps from 1992 to present derived from satellite observations, <https://doi.org/10.24381/CDS.006F2C9A>, 2019.
- Cornwell, W.: *traitecoevo/leaf13C: v0.2.2*, <https://doi.org/10.5281/ZENODO.15239220>, 2025.
- Cornwell, W. K., Wright, I. J., Turner, J., Maire, V., Barbour, M. M., Cernusak, L. A., Dawson, T., Ellsworth, D., Farquhar, G. D., Griffiths, H., Keitel, C., Knohl, A., Reich, P. B., Williams, D. G., Bhaskar, R., Cornelissen, J. H. C., Richards, A., Schmidt, S., Valladares, F., Körner, C., Schulze, E., Buchmann, N., and Santiago, L. S.: Climate and soils together regulate photosynthetic carbon isotope discrimination within C<sub>3</sub> plants worldwide, *Global Ecology and Biogeography*, 27, 1056–1067, <https://doi.org/10.1111/geb.12764>, 2018.
- Cowan, I. and Farquhar, G.: Stomatal function in relation to leaf metabolism and environment., in: *Society for Experimental Biology Symposium*, edited by Jennings, D., vol. 31, pp. pp. 471–505, publisher: Cambridge University Press, Cambridge, 1977.
- Craig, H.: The geochemistry of the stable carbon isotopes, *Geochimica et Cosmochimica Acta*, 3, 53–92, [https://doi.org/10.1016/0016-7037\(53\)90001-5](https://doi.org/10.1016/0016-7037(53)90001-5), 1953.
- Davis, T. W., Prentice, I. C., Stocker, B. D., Thomas, R. T., Whitley, R. J., Wang, H., Evans, B. J., Gallego-Sala, A. V., Sykes, M. T., and Cramer, W.: Simple process-led algorithms for simulating habitats (SPLASH v.1.0): robust indices of radiation, evapotranspiration and plant-available moisture, *Geoscientific Model Development*, 10, 689–708, <https://doi.org/10.5194/gmd-10-689-2017>, publisher: Copernicus GmbH, 2017.
- De Kauwe, M. G., Lin, Y., Wright, I. J., Medlyn, B. E., Crous, K. Y., Ellsworth, D. S., Maire, V., Prentice, I. C., Atkin, O. K., Rogers, A., Niinemets, Ü., Serbin, S. P., Meir, P., Uddling, J., Togashi, H. F., Tarvainen, L., Weerasinghe, L. K., Evans, B. J., Ishida, F. Y., and

- Domingues, T. F.: A test of the ‘one-point method’ for estimating maximum carboxylation capacity from field-measured, light-saturated photosynthesis, *New Phytologist*, 210, 1130–1144, <https://doi.org/10.1111/nph.13815>, 2016.
- Dietze, M. C., Lebauer, D. S., and Kooper, R.: On improving the communication between models and data, *Plant, Cell & Environment*, 36, 1575–1585, <https://doi.org/10.1111/pce.12043>, eprint: <https://onlinelibrary.wiley.com/doi/pdf/10.1111/pce.12043>, 2013.
- Dietze, M. C., Fox, A., Beck-Johnson, L. M., Betancourt, J. L., Hooten, M. B., Jarnevich, C. S., Keitt, T. H., Kenney, M. A., Laney, C. M., Larsen, L. G., Loescher, H. W., Lunch, C. K., Pijanowski, B. C., Randerson, J. T., Read, E. K., Tredennick, A. T., Vargas, R., Weathers, K. C., and White, E. P.: Iterative near-term ecological forecasting: Needs, opportunities, and challenges, *Proceedings of the National Academy of Sciences*, 115, 1424–1432, <https://doi.org/10.1073/pnas.1710231115>, publisher: Proceedings of the National Academy of Sciences, 2018.
- Domingues, T. F., Meir, P., Feldpausch, T. R., Saiz, G., Veenendaal, E. M., Schrod, F., Bird, M., Djagbletey, G., Hien, F., Compaore, H., Diallo, A., Grace, J., and Lloyd, J.: Co-limitation of photosynthetic capacity by nitrogen and phosphorus in West Africa woodlands, *Plant, Cell & Environment*, 33, 959–980, <https://doi.org/10.1111/j.1365-3040.2010.02119.x>, eprint: <https://onlinelibrary.wiley.com/doi/pdf/10.1111/j.1365-3040.2010.02119.x>, 2010.
- Drought 2018 Team, ICOS Ecosystem Thematic Centre, ICOS Ecosystem Thematic Centre, and Trotta, C.: Drought-2018 ecosystem eddy covariance flux product for 52 stations in FLUXNET-Archive format, <https://doi.org/10.18160/YVR0-4898>, medium: Collection of FLUXNET product ZIP archives Version Number: 2.0, 2020.
- Ellsworth, D.: A global dataset of photosynthetic CO<sub>2</sub> response curves measured in the field at controlled light, CO<sub>2</sub> and temperatures, <https://doi.org/10.4225/35/569434CFBA16E>, 2016.
- Farquhar, G., O’Leary, M., and Berry, J.: On the Relationship Between Carbon Isotope Discrimination and the Intercellular Carbon Dioxide Concentration in Leaves, *Functional Plant Biology*, 9, 121, <https://doi.org/10.1071/PP9820121>, 1982.
- Farquhar, G. D., von Caemmerer, S., and Berry, J. A.: A biochemical model of photosynthetic CO<sub>2</sub> assimilation in leaves of C<sub>3</sub> species, *Planta*, 149, 78–90, <https://doi.org/10.1007/BF00386231>, 1980.
- Farquhar, G. D., Ehleringer, J. R., and Hubick, K. T.: Carbon Isotope Discrimination and Photosynthesis, *Annual Review of Plant Biology*, 40, 503–537, <https://doi.org/10.1146/annurev.pp.40.060189.002443>, publisher: Annual Reviews, 1989.
- Ferreira Domingues, T., Ishida, F. Y., Feldpausch, T. R., Grace, J., Meir, P., Saiz, G., Sene, O., Schrod, F., Sonké, B., Taedoumg, H., Veenendaal, E. M., Lewis, S., and Lloyd, J.: Biome-specific effects of nitrogen and phosphorus on the photosynthetic characteristics of trees at a forest-savanna boundary in Cameroon, *Oecologia*, 178, 659–672, <https://doi.org/10.1007/s00442-015-3250-5>, 2015.
- Fick, S. E. and Hijmans, R. J.: WorldClim 2: new 1-km spatial resolution climate surfaces for global land areas, *International Journal of Climatology*, 37, 4302–4315, <https://doi.org/10.1002/joc.5086>, 2017.
- Franklin, O., Harrison, S. P., Dewar, R., Farrior, C. E., Brännström, Å., Dieckmann, U., Pietsch, S., Falster, D., Cramer, W., Loreau, M., Wang, H., Mäkelä, A., Rebel, K. T., Meron, E., Schymanski, S. J., Rovenskaya, E., Stocker, B. D., Zaehle, S., Manzoni, S., van Oijen, M., Wright, I. J., Ciais, P., van Bodegom, P. M., Peñuelas, J., Hofhansl, F., Terrer, C., Soudzilovskaia, N. A., Midgley, G., and Prentice, I. C.: Organizing principles for vegetation dynamics, *Nature Plants*, 6, 444–453, <https://doi.org/10.1038/s41477-020-0655-x>, publisher: Nature Publishing Group, 2020.
- Fu, Z., Ciais, P., Makowski, D., Bastos, A., Stoy, P. C., Ibrom, A., Knohl, A., Migliavacca, M., Cuntz, M., Šigut, L., Peichl, M., Lous-tau, D., El-Madany, T. S., Buchmann, N., Gharun, M., Janssens, I., Markwitz, C., Grünwald, T., Rebmann, C., Mölder, M., Varlagin, A., Mammarella, I., Kolari, P., Bernhofer, C., Heliasz, M., Vincke, C., Pitacco, A., Cremonese, E., Foltýnová, L., and Wigneron, J.-P.:

- Uncovering the critical soil moisture thresholds of plant water stress for European ecosystems, *Global Change Biology*, 28, 2111–2123, <https://doi.org/10.1111/gcb.16050>, eprint: <https://onlinelibrary.wiley.com/doi/pdf/10.1111/gcb.16050>, 2022.
- 585 Fürstenau Togashi, H., Prentice, I. C., Atkin, O. K., Macfarlane, C., Prober, S. M., Bloomfield, K. J., and Evans, B. J.: Thermal acclimation of leaf photosynthetic traits in an evergreen woodland, consistent with the coordination hypothesis, *Biogeosciences*, 15, 3461–3474, <https://doi.org/10.5194/bg-15-3461-2018>, 2018.
- Gelman, A. and Rubin, D. B.: Inference from Iterative Simulation Using Multiple Sequences, *Statistical Science*, 7, <https://doi.org/10.1214/ss/1177011136>, 1992.
- 590 Harrison, S. P., Cramer, W., Franklin, O., Prentice, I. C., Wang, H., Brännström, Å., de Boer, H., Dieckmann, U., Joshi, J., Keenan, T. F., Lavergne, A., Manzoni, S., Mengoli, G., Morfopoulos, C., Peñuelas, J., Pietsch, S., Rebel, K. T., Ryu, Y., Smith, N. G., Stocker, B. D., and Wright, I. J.: Eco-evolutionary optimality as a means to improve vegetation and land-surface models, *New Phytologist*, 231, 2125–2141, <https://doi.org/10.1111/nph.17558>, eprint: <https://onlinelibrary.wiley.com/doi/pdf/10.1111/nph.17558>, 2021.
- 595 Hartig, F., Dyke, J., Hickler, T., Higgins, S. I., O'Hara, R. B., Scheiter, S., and Huth, A.: Connecting dynamic vegetation models to data - an inverse perspective: Dynamic vegetation models - an inverse perspective, *Journal of Biogeography*, 39, 2240–2252, <https://doi.org/10.1111/j.1365-2699.2012.02745.x>, 2012.
- Hartig, F., Minunno, F., and Paul, S.: *BayesianTools: General-purpose MCMC and SMC samplers and tools for bayesian statistics*, <https://doi.org/10.32614/CRAN.package.BayesianTools>, 2023.
- 600 Huber, M. L., Perkins, R. A., Laesecke, A., Friend, D. G., Sengers, J. V., Assael, M. J., Metaxa, I. N., Vogel, E., Mareš, R., and Miyagawa, K.: New international formulation for the viscosity of H<sub>2</sub>O, *Journal of Physical and Chemical Reference Data*, 38, 101–125, 2009.
- Hufkens, K. and Stocker, B.: *FluxDataKit v3.4.2: A comprehensive data set of ecosystem fluxes for land surface modelling*, <https://zenodo.org/records/14808331>, 2025.
- Kattge, J., Díaz, S., Lavorel, S., Prentice, I. C., Leadley, P., Bönsch, G., Garnier, E., Westoby, M., Reich, P. B., Wright, I. J., Cornelissen, J. H. C., Violle, C., Harrison, S. P., Van Bodegom, P. M., Reichstein, M., Enquist, B. J., Soudzilovskaia, N. A., Ackerly, D. D., Anand, M., Atkin, O., Bahn, M., Baker, T. R., Baldocchi, D., Bekker, R., Blanco, C. C., Blonder, B., Bond, W. J., Bradstock, R., Bunker, D. E., Casanoves, F., Cavender-Bares, J., Chambers, J. Q., Chapin Iii, F. S., Chave, J., Coomes, D., Cornwell, W. K., Craine, J. M., Dobrin, B. H., Duarte, L., Durka, W., Elser, J., Esser, G., Estiarte, M., Fagan, W. F., Fang, J., Fernández-Méndez, F., Fidelis, A., Finegan, B., Flores, O., Ford, H., Frank, D., Freschet, G. T., Fyllas, N. M., Gallagher, R. V., Green, W. A., Gutierrez, A. G., Hickler, T., Higgins, S. I., Hodgson, J. G., Jalili, A., Jansen, S., Joly, C. A., Kerkhoff, A. J., Kirkup, D., Kitajima, K., Kleyer, M., Klotz, S., Knops, J. M. H., Kramer, K., Kühn, I., Kurokawa, H., Laughlin, D., Lee, T. D., Leishman, M., Lens, F., Lenz, T., Lewis, S. L., Lloyd, J., Llusià, J., Louault, F., Ma, S., Mahecha, M. D., Manning, P., Massad, T., Medlyn, B. E., Messier, J., Moles, A. T., Müller, S. C., Nadrowski, K., Naeem, S., Niinemets, Ü., Nöllert, S., Nüske, A., Ogaya, R., Oleksyn, J., Onipchenko, V. G., Onoda, Y., Ordoñez, J., Overbeck, G., Ozinga, W. A., Patiño, S., Paula, S., Pausas, J. G., Peñuelas, J., Phillips, O. L., Pillar, V., Poorter, H., Poorter, L., Poschlod, P., Prinzing, A., Proulx, R., Rammig, A., Reinsch, S., Reu, B., Sack, L., Salgado-Negret, B., Sardans, J., Shiodera, S., Shipley, B., Siefert, A., Sosinski, E., Soussana, J., Swaine, E., Swenson, N., Thompson, K., Thornton, P., Waldram, M., Weiher, E., White, M., White, S., Wright, S. J., Yguel, B., Zaehle, S., Zanne, A. E., and Wirth, C.: TRY – a global database of plant traits, *Global Change Biology*, 17, 2905–2935, <https://doi.org/10.1111/j.1365-2486.2011.02451.x>, 2011.
- 615 Keeling, R. F., Morgan, E. J., and Keeling, C. D.: Atmospheric Monthly In Situ CO<sub>2</sub> Data - Mauna Loa Observatory, Hawaii. In *Scripps CO<sub>2</sub> Program Data*, <https://doi.org/10.6075/J08W3BHW>, 2017.
- 620

- Keenan, T. F. and Niinemets, Ü.: Global leaf trait estimates biased due to plasticity in the shade, *Nature Plants*, 3, 16201, <https://doi.org/10.1038/nplants.2016.201>, 2016.
- Lavergne, A., Voelker, S., Csank, A., Graven, H., de Boer, H. J., Daux, V., Robertson, I., Dorado-Liñán, I., Martínez-Sancho, E., Battipaglia, G., Bloomfield, K. J., Still, C. J., Meinzer, F. C., Dawson, T. E., Julio Camarero, J., Clisby, R., Fang, Y., Menzel, A., Keen, R. M., Roden, J. S., and Prentice, I. C.: Historical changes in the stomatal limitation of photosynthesis: empirical support for an optimality principle, *New Phytologist*, 225, 2484–2497, <https://doi.org/10.1111/nph.16314>, \_eprint: <https://nph.onlinelibrary.wiley.com/doi/pdf/10.1111/nph.16314>, 2020.
- LeBauer, D. S., Wang, D., Richter, K. T., Davidson, C. C., and Dietze, M. C.: Facilitating feedbacks between field measurements and ecosystem models, *Ecological Monographs*, 83, 133–154, <http://www.jstor.org/stable/23596747>, 2013.
- 630 Liu, J., Ryu, Y., Luo, X., Dechant, B., Stocker, B. D., Keenan, T. F., Gentine, P., Li, X., Li, B., Harrison, S. P., and Prentice, I. C.: Evidence for widespread thermal acclimation of canopy photosynthesis, *Nature Plants*, 10, 1919–1927, <https://doi.org/10.1038/s41477-024-01846-1>, 2024.
- Ludwig, M., Moreno-Martinez, A., Hölzel, N., Pebesma, E., and Meyer, H.: Assessing and improving the transferability of current global spatial prediction models, *Global Ecology and Biogeography*, 32, 356–368, <https://doi.org/10.1111/geb.13635>, \_eprint: <https://onlinelibrary.wiley.com/doi/pdf/10.1111/geb.13635>, 2023.
- 635 Luo, Y., Gessler, A., D’Odorico, P., Hufkens, K., and Stocker, B. D.: Quantifying effects of cold acclimation and delayed spring-time photosynthesis resumption in northern ecosystems, *New Phytologist*, 240, 984–1002, <https://doi.org/10.1111/nph.19208>, \_eprint: <https://onlinelibrary.wiley.com/doi/pdf/10.1111/nph.19208>, 2023.
- MacBean, N., Peylin, P., Chevallier, F., Scholze, M., and Schürmann, G.: Consistent assimilation of multiple data streams in a carbon cycle data assimilation system, *Geoscientific Model Development*, 9, 3569–3588, <https://doi.org/10.5194/gmd-9-3569-2016>, publisher: Copernicus GmbH, 2016.
- 640 Marquet, P. A., Allen, A. P., Brown, J. H., Dunne, J. A., Enquist, B. J., Gillooly, J. F., Gowaty, P. A., Green, J. L., Harte, J., Hubbell, S. P., O’Dwyer, J., Okie, J. G., Ostling, A., Ritchie, M., Storch, D., and West, G. B.: On Theory in Ecology, *BioScience*, 64, 701–710, <https://doi.org/10.1093/biosci/biu098>, 2014.
- 645 Mengoli, G., Agustí-Panareda, A., Boussetta, S., Harrison, S. P., Trotta, C., and Prentice, I. C.: Ecosystem Photosynthesis in Land-Surface Models: A First-Principles Approach Incorporating Acclimation, *Journal of Advances in Modeling Earth Systems*, 14, e2021MS002767, <https://doi.org/10.1029/2021MS002767>, \_eprint: <https://onlinelibrary.wiley.com/doi/pdf/10.1029/2021MS002767>, 2022.
- Monteith, J. L.: Solar Radiation and Productivity in Tropical Ecosystems, *The Journal of Applied Ecology*, 9, 747, <https://doi.org/10.2307/2401901>, 1972.
- 650 Mäkelä, A., Hari, P., Berninger, F., Hänninen, H., and Nikinmaa, E.: Acclimation of photosynthetic capacity in Scots pine to the annual cycle of temperature, *Tree Physiology*, 24, 369–376, <https://doi.org/10.1093/treephys/24.4.369>, 2004.
- NOAA National Geophysical Data Center: ETOPO1 1 Arc-Minute Global Relief Model, <https://doi.org/10.7289/V5C8276M>, 2009.
- Oberpriller, J., Cameron, D. R., Dietze, M. C., and Hartig, F.: Towards robust statistical inference for complex computer models, *Ecology Letters*, 24, 1251–1261, <https://doi.org/10.1111/ele.13728>, 2021.
- 655 Pastorello, G., Trotta, C., Canfora, E., Chu, H., Christianson, D., Cheah, Y.-W., Poindexter, C., Chen, J., Elbashandy, A., Humphrey, M., Isaac, P., Polidori, D., Reichstein, M., Ribeca, A., van Ingen, C., Vuichard, N., Zhang, L., Amiro, B., Ammann, C., Arain, M. A., Ardö, J., Arkebauer, T., Arndt, S. K., Arriga, N., Aubinet, M., Aurela, M., Baldocchi, D., Barr, A., Beamesderfer, E., Marchesini, L. B., Bergeron, O., Beringer, J., Bernhofer, C., Berveiller, D., Billesbach, D., Black, T. A., Blanken, P. D., Bohrer, G., Boike, J., Bolstad, P. V., Bonal, D.,

- Bonnefond, J.-M., Bowling, D. R., Bracho, R., Brodeur, J., Brümmer, C., Buchmann, N., Burban, B., Burns, S. P., Buysse, P., Cale, P., Cavagna, M., Cellier, P., Chen, S., Chini, I., Christensen, T. R., Cleverly, J., Collalti, A., Consalvo, C., Cook, B. D., Cook, D., Coursolle, C., Cremonese, E., Curtis, P. S., D'Andrea, E., da Rocha, H., Dai, X., Davis, K. J., Cinti, B. D., Grandcourt, A. d., Ligne, A. D., De Oliveira, R. C., Delpierre, N., Desai, A. R., Di Bella, C. M., Tommasi, P. d., Dolman, H., Domingo, F., Dong, G., Dore, S., Duce, P., Dufrêne, E., Dunn, A., Dušek, J., Eamus, D., Eichelmann, U., ElKhidir, H. A. M., Eugster, W., Ewenz, C. M., Ewers, B., Famulari, D., Fares, S., Feigenwinter, I., Feitz, A., Fensholt, R., Filippa, G., Fischer, M., Frank, J., Galvagno, M., Gharun, M., Gianelle, D., Gielen, B., Gioli, B., Gitelson, A., Goded, I., Goeckede, M., Goldstein, A. H., Gough, C. M., Goulden, M. L., Graf, A., Griebel, A., Gruening, C., Grünwald, T., Hammerle, A., Han, S., Han, X., Hansen, B. U., Hanson, C., Hatakka, J., He, Y., Hehn, M., Heinesch, B., Hinko-Najera, N., Hörtnagl, L., Hutley, L., Ibrom, A., Ikawa, H., Jackowicz-Korczynski, M., Janouš, D., Jans, W., Jassal, R., Jiang, S., Kato, T., Khomik, M., Klatt, J., Knohl, A., Knox, S., Kobayashi, H., Koerber, G., Kolle, O., Kosugi, Y., Kotani, A., Kowalski, A., Kruijt, B., Kurbatova, J., Kutsch, W. L., Kwon, H., Launiainen, S., Laurila, T., Law, B., Leuning, R., Li, Y., Liddell, M., Limousin, J.-M., Lion, M., Liska, A. J., Lohila, A., López-Ballesteros, A., López-Blanco, E., Loubet, B., Loustau, D., Lucas-Moffat, A., Lüers, J., Ma, S., Macfarlane, C., Magliulo, V., Maier, R., Mammarella, I., Manca, G., Marcolla, B., Margolis, H. A., Marras, S., Massman, W., Mastepanov, M., Matamala, R., Matthes, J. H., Mazzenga, F., McCaughey, H., McHugh, I., McMillan, A. M. S., Merbold, L., Meyer, W., Meyers, T., Miller, S. D., Minerbi, S., Moderow, U., Monson, R. K., Montagnani, L., Moore, C. E., Moors, E., Moreaux, V., Moureaux, C., Munger, J. W., Nakai, T., Neiryneck, J., Nesic, Z., Nicolini, G., Noormets, A., Northwood, M., Nosetto, M., Nouvellon, Y., Novick, K., Oechel, W., Olesen, J. E., Ourcival, J.-M., Papuga, S. A., Parmentier, F.-J., Paul-Limoges, E., Pavelka, M., Peichl, M., Pendall, E., Phillips, R. P., Pilegaard, K., Pirk, N., Posse, G., Powell, T., Prasse, H., Prober, S. M., Rambal, S., Rannik, Ü., Raz-Yaseef, N., Rebmann, C., Reed, D., Dios, V. R. d., Restrepo-Coupe, N., Reverter, B. R., Roland, M., Sabbatini, S., Sachs, T., Saleska, S. R., Sánchez-Cañete, E. P., Sanchez-Mejia, Z. M., Schmid, H. P., Schmidt, M., Schneider, K., Schrader, F., Schroder, I., Scott, R. L., Sedláč, P., Serrano-Ortiz, P., Shao, C., Shi, P., Shironya, I., Siebicke, L., Šigut, L., Silberstein, R., Sirca, C., Spano, D., Steinbrecher, R., Stevens, R. M., Sturtevant, C., Suyker, A., Tagesson, T., Takanashi, S., Tang, Y., Tapper, N., Thom, J., Tomassucci, M., Tuovinen, J.-P., Urbanski, S., Valentini, R., van der Molen, M., van Gorsel, E., van Huissteden, K., Varlagin, A., Verfaillie, J., Vesala, T., Vincke, C., Vitale, D., Vygodskaya, N., Walker, J. P., Walter-Shea, E., Wang, H., Weber, R., Westermann, S., Wille, C., Wofsy, S., Wohlfahrt, G., Wolf, S., Woodgate, W., Li, Y., Zampedri, R., Zhang, J., Zhou, G., Zona, D., Agarwal, D., Biraud, S., Torn, M., and Papale, D.: The FLUXNET2015 dataset and the ONEFlux processing pipeline for eddy covariance data, *Scientific Data*, 7, 225, <https://doi.org/10.1038/s41597-020-0534-3>, number: 1 Publisher: Nature Publishing Group, 2020.
- Peng, Y., Prentice, I. C., Bloomfield, K. J., Campioli, M., Guo, Z., Sun, Y., Tian, D., Wang, X., Vicca, S., and Stocker, B. D.: Global terrestrial nitrogen uptake and nitrogen use efficiency, *Journal of Ecology*, 111, 2676–2693, <https://doi.org/10.1111/1365-2745.14208>, [\\_eprint: https://besjournals.onlinelibrary.wiley.com/doi/pdf/10.1111/1365-2745.14208](https://besjournals.onlinelibrary.wiley.com/doi/pdf/10.1111/1365-2745.14208), 2023.
- Prentice, I. C., Dong, N., Gleason, S. M., Maire, V., and Wright, I. J.: Balancing the costs of carbon gain and water transport: testing a new theoretical framework for plant functional ecology, *Ecology Letters*, 17, 82–91, <https://doi.org/10.1111/ele.12211>, 2014.
- Prentice, I. C., Balzarolo, M., Bloomfield, K. J., Chen, J. M., Dechant, B., Ghent, D., Janssens, I. A., Luo, X., Morfopoulos, C., Ryu, Y., Vicca, S., and van Hoolst, R.: Principles for satellite monitoring of vegetation carbon uptake, *Nature Reviews Earth & Environment*, 5, 818–832, <https://doi.org/10.1038/s43017-024-00601-6>, publisher: Nature Publishing Group, 2024.
- Raj, R., Hamm, N. A. S., Tol, C. v. d., and Stein, A.: Uncertainty analysis of gross primary production partitioned from net ecosystem exchange measurements, *Biogeosciences*, 13, 1409–1422, <https://doi.org/10.5194/bg-13-1409-2016>, publisher: Copernicus GmbH, 2016.
- Reichstein, M., Falge, E., Baldocchi, D., Papale, D., Aubinet, M., Berbigier, P., Bernhofer, C., Buchmann, N., Gilmanov, T., Granier, A., Grünwald, T., Havránková, K., Ilvesniemi, H., Janous, D., Knohl, A., Laurila, T., Lohila, A., Loustau, D., Matteucci, G., Mey-

ers, T., Miglietta, F., Ourcival, J.-M., Pumpanen, J., Rambal, S., Rotenberg, E., Sanz, M., Tenhunen, J., Seufert, G., Vaccari, F., Vesala, T., Yakir, D., and Valentini, R.: On the separation of net ecosystem exchange into assimilation and ecosystem respiration: review and improved algorithm, *Global Change Biology*, 11, 1424–1439, <https://doi.org/10.1111/j.1365-2486.2005.001002.x>, [\\_eprint: https://onlinelibrary.wiley.com/doi/pdf/10.1111/j.1365-2486.2005.001002.x](https://onlinelibrary.wiley.com/doi/pdf/10.1111/j.1365-2486.2005.001002.x), 2005.

700 Rogers, A., Serbin, S. P., Ely, K. S., Sloan, V. L., and Wullschlegel, S. D.: Terrestrial biosphere models underestimate photosynthetic capacity and CO<sub>2</sub> assimilation in the Arctic, *New Phytologist*, 216, 1090–1103, <https://doi.org/10.1111/nph.14740>, 2017.

Serbin, S. P., Singh, A., Desai, A. R., Dubois, S. G., Jablonski, A. D., Kingdon, C. C., Kruger, E. L., and Townsend, P. A.: Remotely estimating photosynthetic capacity, and its response to temperature, in vegetation canopies using imaging spectroscopy, *Remote Sensing of Environment*, 167, 78–87, <https://doi.org/10.1016/j.rse.2015.05.024>, 2015.

705 Smith, N. G. and Dukes, J. S.: LCE: leaf carbon exchange data set for tropical, temperate, and boreal species of North and Central America, *Ecology*, 98, 2978–2978, <https://doi.org/10.1002/ecy.1992>, [\\_eprint: https://esajournals.onlinelibrary.wiley.com/doi/pdf/10.1002/ecy.1992](https://esajournals.onlinelibrary.wiley.com/doi/pdf/10.1002/ecy.1992), 2017.

Smith, N. G., Keenan, T. F., Colin Prentice, I., Wang, H., Wright, I. J., Niinemets, Ü., Crous, K. Y., Domingues, T. F., Guerrieri, R., Yoko Ishida, F., Kattge, J., Kruger, E. L., Maire, V., Rogers, A., Serbin, S. P., Tarvainen, L., Togashi, H. F., Townsend, P. A., Wang, M., Weerasinghe, L. K., and Zhou, S.: Global photosynthetic capacity is optimized to the environment, *Ecology Letters*, 22, 506–517, <https://doi.org/10.1111/ele.13210>, 2019.

710 Stocker, B. D., Wang, H., Smith, N. G., Harrison, S. P., Keenan, T. F., Sandoval, D., Davis, T., and Prentice, I. C.: P-model v1.0: an optimality-based light use efficiency model for simulating ecosystem gross primary production, *Geoscientific Model Development*, 13, 1545–1581, <https://doi.org/10.5194/gmd-13-1545-2020>, publisher: Copernicus GmbH, 2020.

715 Stocker, B. D., Tumber-Dávila, S. J., Konings, A. G., Anderson, M. C., Hain, C., and Jackson, R. B.: Global patterns of water storage in the rooting zones of vegetation, *Nature Geoscience*, 16, 250–256, <https://doi.org/10.1038/s41561-023-01125-2>, number: 3 Publisher: Nature Publishing Group, 2023.

Stocker, B. D., Hufkens, K., Arán Paredes, J., Bernhard, F., and Marcadella, M.: *geco-bern/rsfun*: v5, <https://doi.org/10.5281/ZENODO.3712928>, 2025.

720 Tarvainen, L., Wallin, G., Rantfors, M., and Uddling, J.: Weak vertical canopy gradients of photosynthetic capacities and stomatal responses in a fertile Norway spruce stand, *Oecologia*, 173, 1179–1189, <https://doi.org/10.1007/s00442-013-2703-y>, 2013.

Togashi, H. F., Atkin, O. K., Bloomfield, K. J., Bradford, M., Cao, K., Dong, N., Evans, B. J., Fan, Z., Harrison, S. P., Hua, Z., Liddell, M. J., Lloyd, J., Ni, J., Wang, H., Weerasinghe, L. K., and Prentice, I. C.: Functional trait variation related to gap dynamics in tropical moist forests: A vegetation modelling perspective, *Perspectives in Plant Ecology, Evolution and Systematics*, 35, 52–64, <https://doi.org/10.1016/j.ppees.2018.10.004>, 2018.

725 Trotsiuk, V., Hartig, F., and Forrester, D. I.: *r3PG* – An *r* package for simulating forest growth using the 3-PG process-based model, *Methods in Ecology and Evolution*, 11, 1470–1475, <https://doi.org/10.1111/2041-210X.13474>, [\\_eprint: https://onlinelibrary.wiley.com/doi/pdf/10.1111/2041-210X.13474](https://onlinelibrary.wiley.com/doi/pdf/10.1111/2041-210X.13474), 2020.

730 Ubierna, N. and Farquhar, G. D.: Advances in measurements and models of photosynthetic carbon isotope discrimination in *C<sub>3</sub>* plants, *Plant, Cell & Environment*, 37, 1494–1498, <https://doi.org/10.1111/pce.12346>, 2014.

Ukkola, A.: *PLUMBER2*: forcing and evaluation datasets for a model intercomparison project for land surface models v1.0, <https://doi.org/10.25914/5FDB0902607E1>, 2020.



- van Oijen, M.: Bayesian Methods for Quantifying and Reducing Uncertainty and Error in Forest Models, *Current Forestry Reports*, 3, 269–280, <https://doi.org/10.1007/s40725-017-0069-9>, 2017.
- Van Oijen, M., Rougier, J., and Smith, R.: Bayesian calibration of process-based forest models: bridging the gap between models and data, *Tree Physiology*, 25, 915–927, <https://doi.org/10.1093/treephys/25.7.915>, 2005.
- von Caemmerer, S. and Farquhar, G. D.: Some relationships between the biochemistry of photosynthesis and the gas exchange of leaves, *Planta*, 153, 376–387, <https://doi.org/10.1007/BF00384257>, 1981.
- Vrugt, J. A., Ter Braak, C., Diks, C., Robinson, B. A., Hyman, J. M., and Higdon, D.: Accelerating Markov Chain Monte Carlo Simulation by Differential Evolution with Self-Adaptive Randomized Subspace Sampling, *International Journal of Nonlinear Sciences and Numerical Simulation*, 10, <https://doi.org/10.1515/IJNSNS.2009.10.3.273>, 2009.
- Wang, H., Prentice, I. C., Keenan, T. F., Davis, T. W., Wright, I. J., Cornwell, W. K., Evans, B. J., and Peng, C.: Towards a universal model for carbon dioxide uptake by plants, *Nature Plants*, 3, 734–741, <https://doi.org/10.1038/s41477-017-0006-8>, number: 9 Publisher: Nature Publishing Group, 2017.
- Wang, H., Harrison, S. P., Prentice, I. C., Yang, Y., Bai, F., Togashi, H. F., Wang, M., Zhou, S., and Ni, J.: The China Plant Trait Database: toward a comprehensive regional compilation of functional traits for land plants, *Ecology*, 99, 500–500, <https://doi.org/10.1002/ecy.2091>, [\\_eprint: https://esajournals.onlinelibrary.wiley.com/doi/pdf/10.1002/ecy.2091](https://esajournals.onlinelibrary.wiley.com/doi/pdf/10.1002/ecy.2091), 2018.
- Wankmüller, F. J. P., Delval, L., Lehmann, P., Baur, M. J., Cecere, A., Wolf, S., Or, D., Javaux, M., and Carminati, A.: Global influence of soil texture on ecosystem water limitation, *Nature*, pp. 1–8, <https://doi.org/10.1038/s41586-024-08089-2>, publisher: Nature Publishing Group, 2024.
- Warm Winter 2020 Team, ICOS Ecosystem Thematic Centre, ICOS Ecosystem Thematic Centre, and Trotta, C.: Warm Winter 2020 ecosystem eddy covariance flux product for 73 stations in FLUXNET-Archive format—release 2022-1, <https://doi.org/10.18160/2G60-ZHAK>, medium: Collection of FLUXNET product ZIP archives Version Number: 1.0, 2022.
- Weng, E., Farrior, C. E., Dybzinski, R., and Pacala, S. W.: Predicting vegetation type through physiological and environmental interactions with leaf traits: evergreen and deciduous forests in an earth system modeling framework, *Global Change Biology*, 23, 2482–2498, <https://doi.org/10.1111/gcb.13542>, [\\_eprint: https://onlinelibrary.wiley.com/doi/pdf/10.1111/gcb.13542](https://onlinelibrary.wiley.com/doi/pdf/10.1111/gcb.13542), 2017.
- Weng, E. S., Malyshev, S., Lichstein, J. W., Farrior, C. E., Dybzinski, R., Zhang, T., Shevliakova, E., and Pacala, S. W.: Scaling from individual trees to forests in an Earth system modeling framework using a mathematically tractable model of height-structured competition, *Biogeosciences*, 12, 2655–2694, <https://doi.org/10.5194/bg-12-2655-2015>, publisher: Copernicus GmbH, 2015.
- Xiang, Y., Gubian, S., Suomela, B., and Hoeng, J.: Generalized Simulated Annealing for Global Optimization: The GenSA Package, *The R Journal*, 5, 13, <https://doi.org/10.32614/RJ-2013-002>, 2013.
- Xiao, J., Chevallier, F., Gomez, C., Guanter, L., Hicke, J. A., Huete, A. R., Ichii, K., Ni, W., Pang, Y., Rahman, A. F., Sun, G., Yuan, W., Zhang, L., and Zhang, X.: Remote sensing of the terrestrial carbon cycle: A review of advances over 50 years, *Remote Sensing of Environment*, 233, 111 383, <https://doi.org/10.1016/j.rse.2019.111383>, 2019.