

The Impact of Convection-Permitting Model Rainfall on the Dryland Water Balance

George Blake¹, Katerina Michaelides¹, Elizabeth Kendon^{1,2}, Mark Cuthbert³, Michael Bliss Singer^{3,4}

¹ School of Geographical Sciences, University of Bristol, Bristol, BS8 BSS, United Kingdom

² Met Office Hadley Centre, Fitzroy Road, Exeter, EX1 3PB, United Kingdom

³ School of Earth and Environmental Sciences, Cardiff University, Cardiff, CF10 3AT, United Kingdom

⁴ Earth Research Institute, University of California Santa Barbara, CA 93106, USA

Correspondence to: George Blake (george.blake@bristol.ac.uk)

Abstract. In drylands, rainfall is typically delivered during short-lived, localised convective storms, whose characteristics strongly influence how water is partitioned into different terrestrial stores. However, the rainfall data often used in modelling future projections of water resources is typically derived from climate models that are too coarse to represent convective processes occurring at scales smaller than the model grid. In this paper we quantify the impact of climate model representation of convection on the simulated water balance at four locations in the Horn of Africa: a humid site in the Ethiopian Highlands, a semi-arid site in southern Kenya, an arid site in eastern Ethiopia, and a hyper-arid site in northern Somalia. We benchmark a novel pan-Africa convection permitting climate model (CP4A) and its parameterised counterpart (P25) against high-resolution satellite-derived gridded datasets of rainfall (IMERG) and PET (hPET). The comparison shows that explicitly resolving convection improves the representation of dryland rainfall characteristics: such as rainfall frequency, intensity, and the relative contribution of low vs high-intensity rainfall to annual totals. We also demonstrate that convective representation can impact model PET, but differences are more muted relative to rainfall, and both CP4A/P25 can capture seasonal and diurnal PET dynamics. To establish how the impact of convective representation on rainfall characteristics can control hydrology, we used Hydrus 1-D to run 1D vadose zone hydrological simulations at our four study sites, where Hydrus is driven by rainfall and PET from CP4A and P25 (and hPET). We find that the ‘drizzle’ bias in P25 means when rainfall is propagated through Hydrus, wetting fronts are confined to upper soil layers, resulting in higher evaporative losses, lower soil moisture, and bottom drainage in drylands. The improved representation of dryland rainfall characteristics in CP4A means that cumulative (in mm) surface runoff is up to ten times higher (over the ten-year simulation), bottom drainage (indicative of potential recharge) is up to 25 times higher, and soil moisture remains above the wilting point for longer compared to P25 Hydrus runs (despite simulating lower total rainfall and infiltration). Whereas at our humid site, water partitioning is less sensitive to rainfall characteristics and hydrological fluxes more closely follow annual rainfall totals. Our results demonstrate dryland vadose zone hydrology is highly sensitive to the impact of convective representation on rainfall characteristics, and that studies focused on modelling future water resources using climate models that parameterise the average effects of convection risk misrepresenting societally relevant fluxes such as soil moisture, groundwater availability, and surface runoff.

1 Introduction

Drylands are characterised by limited and highly variable rainfall (both in space and time), where high temperatures, minimal humidity, and high solar radiation means the atmospheric water demand exceeds the available moisture supply (J Reynolds et al., 2007). When rainfall does occur in drylands, it typically falls during intense, localised, short duration rainstorms that are convective in nature (Nicholson, 2011; Singer and Michaelides, 2017; Singer et al., 2018; Hill et al., 2023). These storms are a critical source of moisture and represent a key control on dryland sub-surface water availability (Singer et al., 2018; Quichimbo et al., 2021, 2023). Therefore, the representation of convection and convective storms in climate models is critical for capturing dryland rainfall characteristics and subsequent water partitioning when rainfall is propagated through hydrological models. However, the grid resolution of general (global) or regional climate models (GCM/RCMs), which can range from 10 – 250 km, means they are unable to explicitly represent convective processes, which are occurring at the sub-grid scale (Prein et al., 2015; Clark et al., 2016).

The inability of GCM/RCMs to explicitly resolve convection means they may fail to adequately represent dryland rainfall characteristics, which is a major limitation in understanding future global climate resilience, as drylands cover ~45% of the Earth's land surface, are home to around 3 billion people, and represent the largest biome on Earth (Schimel, 2010; Mirzabaev et al., 2019). This is particularly important for people living in drylands, where livelihoods are often tightly linked to the regional expression of climatic variability, especially where populations primarily rely on intermittent surface water resources and rainfed pasture and crops (Stringer et al., 2009; Davenport et al., 2017, 2018; Hoffman et al., 2022).

One such region is the Horn of Africa (HOA), where inconsistent seasonal rainfall during the two rainy seasons of Mar – May and Oct – Dec, and increasingly severe and frequent drought (Lyon and DeWitt, 2012; Lyon, 2014; Funk et al., 2019; Wainwright et al., 2019) are increasing the risk of regional food and water insecurity (Cheechi and Robinson, 2013; Nicholson, 2014; Funk et al., 2019). With research suggesting climate change will exacerbate water stress, desertification, and land degradation (Cook et al., 2020; Hoffman et al., 2022; Kimutai et al., 2023), there is a pressing need to understand how future rainfall will impact surface and subsurface water availability in the HOA.

However, hydrological processes are particularly complex in drylands as the partitioning between infiltration, runoff, evaporation, transpiration, and recharge is highly dependent on the spatial and temporal characteristics of rainfall, rather than annual or seasonal totals (R Taylor et al., 2013; Arpuv et al., 2017; Singer and Michaelides, 2017; Cuthbert et al., 2019; Adloff et al., 2022; Kipkemoi et al., 2021; Quichimbo et al., 2021, 2023). ~~The dryland water balance is also sensitive to atmospheric evaporative demand (PET or potential evapotranspiration), both in how high PET impacts antecedent soil moisture conditions (soils quickly dry out between rainfall events) (Zhang and Shilling, 2006; Nazariéh et al., 2018; Cuthbert et al., 2019; Schoener and Stone, 2019; Schoener, 2021; Boas and Mallants, 2022) and its direct impact on agricultural yields and drought severity (Porporato et al., 2002; Lobell et al., 2011; Vicente Serrano et al., 2018; Tugwell Wootton et al., 2020; Kimutai et al., 2023).~~

In drylands high-intensity, short-lived, and localised convective rainfall events (or longer duration rainfall events of sufficient intensity) are a vital source of moisture, as they can produce sufficient rainfall to overcome the high evaporative demand, resulting in high infiltration rates, enhanced soil moisture, and groundwater recharge (R Taylor et al., 2013; Batalha et al., 2018; Kipkemoi et al., 2021; Adloff et al., 2022; Boas and Mallants, 2022). These intense convective events can also yield additional focused recharge when rainfall is heavy enough to generate surface runoff, where a certain proportion of runoff can enter dry ephemeral river channels and generate substantial flows that can lead to localised transmission losses (Osborn 1983; Scanlon et al., 2006; Cuthbert et al., 2016, 2019, Singer and Michaelides, 2017; Seddon et al., 2021; Zarate et al 2022; Quichimbo et al., 2021, 2023). On the contrary, if rainfall is low-intensity and long-duration, evaporative losses will be higher and rainfall will be quickly returned to the atmosphere (Batalha et al., 2018, Kipkemoi et al., 2021). Furthermore, precipitation dry spell length can impact evaporative losses and influence the antecedent soil moisture conditions that can govern hydrological responses to rainfall (Zhang and Shilling, 2006; Nazarieh et al., 2018; Schoener and Stone, 2019; Schoener, 2021; Boas and Mallants, 2022).

The non-linear relationship between rainfall and hydrology in drylands makes it challenging to understand how anthropogenically-driven changes in rainfall and PET will impact dryland water security in the HOA, particularly as the GCMs and RCMs often used to make future assessments of dryland water resources (Crosbie et al., 2010; McKenna and Sala, 2017; Razack et al., 2019; Cook et al., 2022) poorly represent convective processes. Climate models with horizontal grid spacings larger than 10 km must rely on parameterisation schemes to estimate the average effects of convection (Prein et al., 2015, Kendon et al., 2017), which results in ‘parameterised’ climate models systematically overestimating the frequency of low intensity rainfall events, simulating rainfall too early in the day, and underestimating the magnitude of extreme rainfall (Stephens et al., 2010; Stratton and Stirling, 2012; Prein et al., 2013; Ban et al., 2014; Kendon et al., 2019; Finney et al., 2019). As water partitioning in drylands is highly sensitive to rainfall characteristics, such biases could have significant impacts on future water resource projections.

While the primary focus of this study is how model representation of convection influences rainfall characteristics and subsequent water partitioning, we also consider the role of potential evapotranspiration (PET). In drylands, actual evapotranspiration (AET) is primarily constrained by soil moisture rather than atmospheric demand (i.e., water- rather than energy-limited), meaning that the direct hydrological effects of PET are typically small relative to those of precipitation (Vicente-Serrano et al., 2019). However, PET can still exert an important influence on vegetation and soil moisture dynamics, and plays a key role in land–atmosphere feedbacks (Seneviratne et al., 2010). Moreover, the strong temporal variability of rainfall means that drylands are not always water-limited—for example, during or following high-rainfall periods -when PET can shape antecedent soil moisture conditions before the next rainfall event, as soils dry rapidly between events (Zhang and Shilling, 2006; Nazarieh et al., 2018; Cuthbert et al., 2019; Schoener and Stone, 2019; Schoener, 2021; Boas and Mallants, 2022).

One approach to improving the representation of dryland rainfall characteristics is using convection-permitting models (CPMs), which are run at sufficiently high resolution (< 5 km) to explicitly resolve deep convection and represent a step-change in climate modelling capabilities (Clark et al., 2016). Here, we assess whether CPMs can better capture dryland rainfall characteristics relative to traditional parameterised climate models, if there are differences in PET dynamics between CPMs and parameterised climate models, and critically if dryland water partitioning is sensitive to climate model representation of convection (via its impact on rainfall and PET).

We compare two climate models that share the same underlying model physics and driving GCM, but one is a high-resolution (~ 4.5 km) convection-permitting model explicitly represents convection (CP4A), while the other is a regional climate model (~ 25 km) that parameterises the average effects of convection (P25). While both models simulate comparable annual and seasonal rainfall totals (Kendon et al., 2019; Wainwright et al., 2019), the impact of convective representation on rainfall characteristics could have implications for how moisture propagates through a dryland hydrological system. Furthermore, to our knowledge no studies to date have assessed how model representation of convection affects PET when it is externally calculated from model atmospheric variables (using the Penman-Monteith equation for reference crop evapotranspiration - see section 2.2 and Eq. (1)). Accordingly, we consider three key questions:

- (1) Does explicitly resolving convection in climate models improve the representation of dryland rainfall characteristics and hydrologically relevant rainfall metrics in the Horn of Africa?
- (2) Does convective representation affect simulated PET dynamics in the Horn of Africa?
- (3) Does the impact of convective representation on rainfall characteristics and PET influence how water is partitioned between different stores in drylands?

To do this we compare our CPM (CP4A) and a conventional RCM (P25) to high-resolution hourly gridded satellite derived datasets of rainfall (IMERG) and PET (hPET), focusing on the ability of each model to capture key hydrologically relevant dryland rainfall and PET metrics. Then to assess hydrological sensitivity to rainfall characteristics and PET, we force a 1-D vadose zone hydrological model (Hydrus 1-D) with climate model rainfall and PET at four locations along an aridity gradient across the HOA.

2 Methods

2.1 Climate Model Description

This study utilises data from two pan-African climate models run under the Future Climate for Africa (FCFA) Improving Model Processes for African cLimAte (IMPALA) project (Stratton et al 2018.; Kendon et al., 2019). Both the Convection-Permitting Model for Africa (CP4A) and the 25-km regional model (P25) are configurations of the Met Office Unified Model (Walters et al., 2017). ~~Two ten year time slices of hourly data~~ CP4A is run at a horizontal

resolution of 4.5 km x 4.5 km in CP4A and 26 x 39 km in P25 ~~and is are~~ available ~~for a historical from~~ (1997-2007),
although it is worth noting that while it simulates a plausible sequence of weather consistent with the observed large-
scale climate of 1997-2007, it does not reproduce the actual day-to-day or event-level sequence of observed weather
over this period. It realistically captures annual totals, rainfall seasonality, and the distribution of rainfall
characteristics, but the precise timing, duration, spatial pattern, and intensity of individual storms do not correspond
to those seen in IMERG ~~and a future period (2095-2105 RCP8.5)~~. Both CP4A and P25 utilise the same domain,
aerosol and land surface forcing, and are forced by the 25 km Unified Model GCM at their lateral boundaries and
Reynolds sea-surface temperature observations (R Reynolds et al., 2007; Walters et al., 2017; Stratton et al., 2018).
While CP4A and P25 use different cloud and blended boundary layer schemes, and CP4A also considers moisture
conservation, the biggest difference is that the deep convection parameterisation scheme has been ‘switched off’ in
CP4A (Stratton et al., 2018).

While CP4A is clearly a potential step forward, it remains subject to certain limitations, such as the use of a uniform
sandy soil across the entire domain. For water limited regions such as the HOA, soil moisture (partly a function of soil
properties) directly regulates evapotranspiration and can contribute to precipitation via moisture recycling
(Seneviratne et al., 2010), so a uniform soil map risks poor representation of the soil moisture – precipitation feedbacks
critical to inducing convective rainfall and a realistic spatial pattern of rainfall (Taylor et al., 2011, 2012; Hsu et al.,
2017; Zhou et al., 2021). There are also clearly limitations with results based upon the use of a single climate model,
although ~~there is a consistent pattern among CPMs in being able to better capture consistent agreement between CP4A~~
~~and other CPMs in terms of reproducing~~ rainfall characteristics ~~(compared to non-convection permitting models seen~~
~~in observations)~~ increases confidence in CP4A (Kouadio et al., 2018; Luu et al., 2022).

2.2 Climate Data

To establish whether CP4A can better capture dryland rainfall characteristics and PET dynamics (relative to P25), we
compared both climate models (historical run) to the gridded Integrated Multi-satellite Retrievals for GPM (IMERG,
Huffman et al., 2012) rainfall product and an hourly potential evapotranspiration dataset (hPET, Singer et al., 2021).

IMERG provides rainfall estimates at 0.1° (spatial) and 30 mins (temporal) resolution using space-based radar, passive
microwave, infrared, and rain gauge data from the Global Monthly Precipitation Climatology Centre (Huffman et al.,
2020). ~~A~~ although in the HOA there are ~~few rain gauges and there are~~ persistent gaps in any available rain gauge data.
IMERG compares well to other satellite-derived rainfall datasets and gauge data in the HOA where such data is
available (Dezfuli et al., 2017; Cocking et al., 2024). ~~and it is typically only available at daily resolution (Cocking et~~
~~al., 2024). Critically it is t~~he high spatial and temporal resolution of IMERG ~~that~~ means it is the most appropriate for
evaluating dryland rainfall metrics at a regional scale (Ageet et al., 2022) ~~however, it is only available from June~~
2000, so we can only compare CP4A/P25 to 6.5 years of rainfall data.

The hPET global hourly PET dataset (Singer et al., 2021) is derived from ERA5-Land variables (Muñoz Sabater, 2024) using the Food and Agriculture Organisations' (FAO) Penman-Monteith equation (Eq. (1)) for reference crop evapotranspiration (Allen et al., 1998). hPET is available at a high spatial (0.1 degrees) and temporal (hourly) resolution and can capture both diurnal and seasonal variability in atmospheric evaporative demand (Singer et al., 2021). We computed PET from CP4A and P25 outputs using the same FAO equation (Eq. (1)). Note while most variables could be directly outputted from the model, this did require converting 10-m wind speeds to 2-m (Eq. (2)) and estimating relative humidity from specific humidity, surface pressure, and air temperature. Full details of the PET calculation (Eq. (5) – Eq. (14)) and rationale behind this approach is provided in Appendix [A.6.1](#).

Climate model PET at an hourly resolution (t) at each pixel (x) in our domain was calculated using Eq. (1).

$$hPET_{x,t} = \frac{0.408\Delta(R_n - G + \gamma(\frac{37}{T_a + 273})u_2(e_s - e_a))}{\Delta + \gamma(1 + 0.34u_2)} \quad (1)$$

Where R_n is hourly net radiation (MJ m^{-2}), G is the soil heat flux (MJ m^{-2}), γ is the psychrometric constant ($\text{kPa } ^\circ\text{C}^{-1}$), Δ is the slope of saturation vapour pressure ($\text{kPa } ^\circ\text{C}^{-1}$), T_a is hourly air temperature ($^\circ\text{C}$), e_s is saturation vapour pressure (kPa), e_a is the actual vapour pressure, and u_2 is wind speed (m s^{-1}) at 2 m above the land surface.

Surface net solar radiation (J m^{-2}), surface net thermal radiation (J m^{-2}), atmospheric surface pressure (Pa), and 2 m air temperature (K) can all be directly outputted from CP4A/P25. Wind speed is also directly outputted from CP4A/P25 but is only available at 10 m above the surface, so zonal and meridional wind speed was converted to the required 2 metre value using the logarithmic velocity profile above a short grass surface (Eq. (2)):

$$u_2 = u_z \left(\frac{4.87}{\ln(67.8z - 5.42)} \right) \quad (2)$$

Where u_z is the wind speed at height z above the land surface (10 meters in this case) computed as (Eq. (3)):

$$u_z = \sqrt{u^2 + v^2} \quad (3)$$

Since the 2 m dew point temperature is not directly outputted from CP4A/P25, it was calculated using the 2 m air temperature and relative humidity (also not directly outputted by CP4A/P25), with relative humidity calculated using 2 m air temperature, surface pressure, and specific humidity (see Appendix A Eq. (5) – Eq. (8)). For a breakdown of how the saturation vapour pressure (e_s), actual vapour pressure (e_a), slope of saturation vapour pressure (Δ), net radiation (R_n), and the soil heat flux (G) used in Eq 1 were calculated please refer to Eq. (9) – Eq. (14) given in Appendix [A.6.1](#).

2.3 Dryland Rainfall Metrics

Several studies have demonstrated that CP4A better captures rainfall frequency, extremes, the diurnal cycle, and the spatial structure of rainfall events (Ban et al., 2014; Prein et al., 2015; Kendon et al., 2017, 2019; Finney et al., 2019, 2020). ~~But~~ Here we benchmark CP4A and P25 against a series of metrics that are explicitly indicative of the key dryland rainfall characteristics that are important in hydrological partitioning:

1. Rainfall mode – Percentage of annual rainfall from high intensity ($>95^{\text{th}}$ percentile IMERG rainfall) versus low-intensity drizzle (≤ 1 mm/hr).
2. Maximum dry spell length – average longest run of dry days in any given year.
3. Extreme rainfall magnitude – 99^{th} percentile of wet hour rainfall in the dominant rainy season.

For all of the above metrics we define a wet hour as any hour with ≥ 0.1 mm of rainfall. For the extreme rainfall metric we define the dominant rain season ~~and defined the wettest season~~ at each grid cell based on the percentage of annual rainfall delivered in each of the following seasons: Jan-Feb, Mar-May, Jun-Sep, and Oct-Dec. For dryland regions which have a bimodal regime the ~~the~~ wettest season will either be MAM or OND, and for the more humid Ethiopian Highlands it is more likely to be JJAS (Fig.1 & ~~Appendix annex BD~~ – Fig. ~~BD~~1)

To capture the high-intensity, low-duration nature of rainfall in drylands, our analysis was conducted at hourly rather than three-hourly resolution as has been done elsewhere (Bethou et al., 2019; Kendon et al., 2019; Finney et al., 2019, 2020), as resampling to a lower temporal resolution dampens the intensity of rainfall and impacts water partitioning (Batalha et al., 2021; Kipkemai et al., 2021). To ensure consistency, all datasets were re-gridded using first order conservative re-gridding to the P25 grid (26 x 39 km).

2.4 Hydrological Modelling

2.4.1 Hydrus 1-D

We used Hydrus 1-D v4.17 (Šimůnek et al., 2012) to simulate dynamic changes in infiltration, surface runoff, evaporation, transpiration, soil moisture, and bottom drainage when forced with each climate model rainfall and PET. Hydrus 1-D uses timeseries of rainfall, PET, and Leaf Area Index (LAI) to numerically solve a version of the Richards equation (Richards, 1931; Šimůnek et al., 2012). It can simulate vertical water redistribution in the soil subsurface under a wide range of different climatic, soil, and vegetation conditions, and has been widely used to understand soil moisture, evapotranspiration, and groundwater recharge in both arid and humid landscapes (Leterme et al., 2012; McKenna and Sala, 2017; Batalha et al., 2018; Rodriguez et al., 2020; Boas and Mallants, 2022; Corona and Ge, 2022). However, it does not consider lateral flows, and larger scale moisture redistribution processes.

Hydrus 1-D requires parameterisation of soil hydraulic properties, which are typically obtained from in-situ measurements or derived using soil textures filtered through a pedotransfer function (van Genuchten, 1980). It also includes a sink term to account for root water uptake (also referred to as transpiration), which is estimated using the

water stress response function detailed by Feddes (1978). For further details on Hydrus 1-D please refer to (Šimůnek et al., 2012).

2.4.2 Hydrological Study Sites

We ran four 1-D vadose-zone hydrological simulations along an aridity gradient across the HOA, ranging from the humid Ethiopian Highlands to hyper-arid Northern Somalia (Fig. 1). We classify aridity based on aridity index (AI = P/PET) values taken from the CGIAR-CSI (Consortium of International Agricultural Research Centres' Consortium for Spatial Information) (Zomer et al., 2007) using the classification of Mirzabaev et al (2019).

The Aridity Index (AI) is a numerical indicator of climatic aridity based on long-term precipitation deficits relative to atmospheric water demand (Eq. (4)):

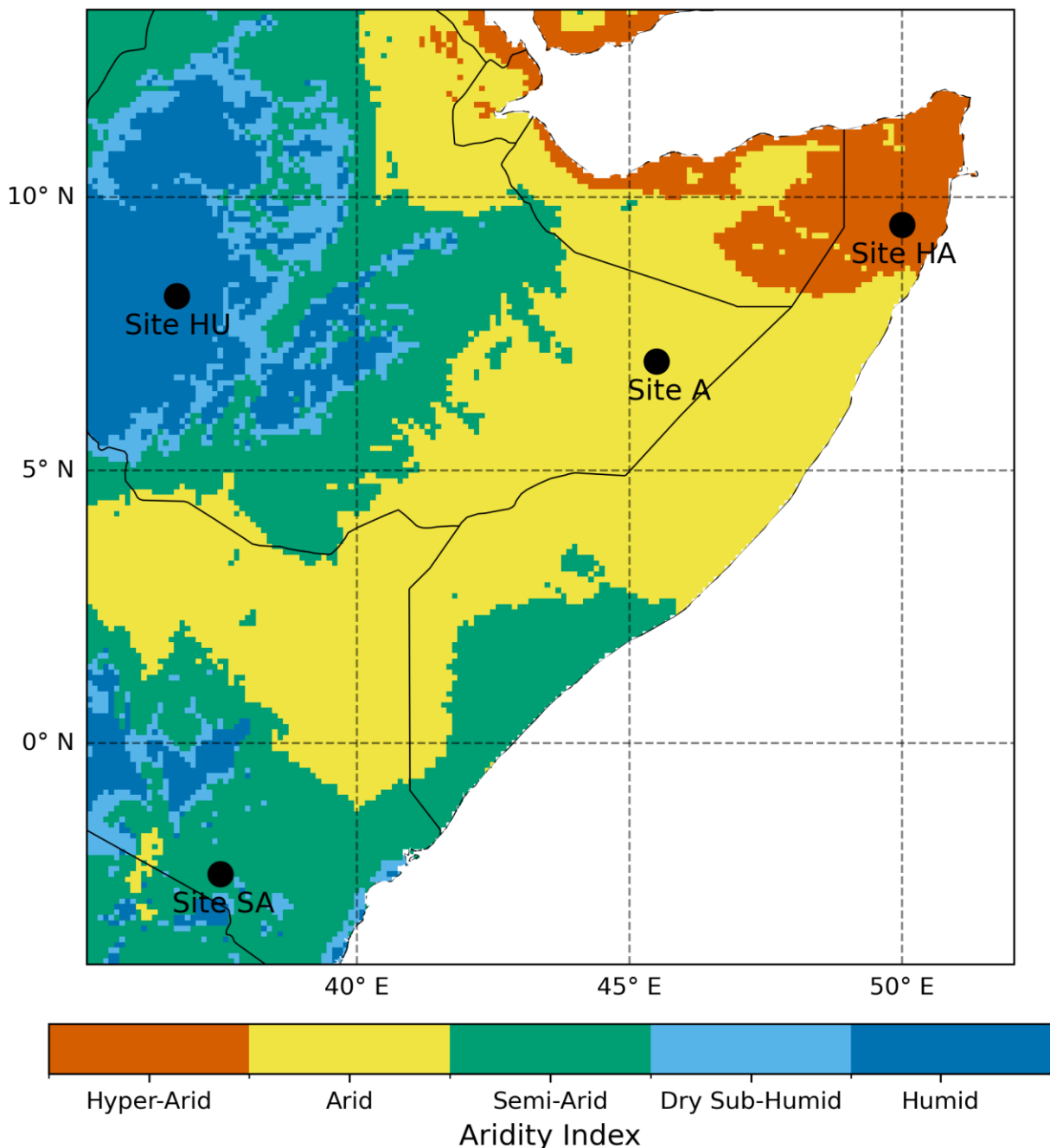
$$AI(AridityIndex) = MAP/MAE \quad (4)$$

Where MAP is mean annual precipitation and MAE is mean annual potential evaporation, CGIAR-CSI calculate both MAP and MAE using data obtained from WorldClim Global Climate Data (Hijmans et al, 2005). CGIAR-CSI outputs AI values at 1 km resolution, which can be used to define the climate type based on the climate classification of Mirzabaev et al, 2019, as shown in Table 1.

Climate Type	Aridity Index
Hyper-Arid	AI < 0.05
Arid	0.05 <= AI < 0.2
Semi-Arid	0.2 <= AI < 0.5
Dry Sub-Humid	0.5 <= AI < 0.65
Humid	AI >= 0.65

Table 1 – Climate classifications based on aridity index thresholds taken from (Mirzabaev et al, 2019).

Fig. 1 shows the climatic zones of the HOA along with the locations of our four sites, with one site in each major aridity zone: humid (9.7% of land mass), semi-arid (31.8%), arid (43.6%), and hyper-arid (7.7%). For this study we define drylands as any grid cell with an AI ≤ 0.5 rather than 0.65, so our ‘dryland’ region refers to any grid cell identified as Hyper-Arid, Arid, or Semi-Arid (not Dry Sub-Humid).



275 **Figure 1. Horn of Africa Aridity Index and Study Site Locations.** Locations of the four Hydrus locations plotted against aridity index values taken from CGIAR-CSL. Sites are found in the humid Ethiopian Highlands (Site HU), semi-arid southern Kenya (Site SA), arid eastern Ethiopia (Site A), and hyper-arid northern Somalia (Site HA).

For each hydrological site, we tried to choose locations within each aridity classification where mean annual rainfall and PET was comparable, but in lieu of perfect matches, we selected locations where P25 simulated higher mean annual rainfall (Table 2). At each site (represented by a single climate model grid cell) P25 simulated 15% (humid), 12% (semi-arid), 23% (arid), and 33% (hyper-arid) higher total annual rainfall. Choosing locations where P25 simulates higher total rainfall ensures that if fluxes such as soil moisture or bottom drainage are higher when forcing Hydrus with CP4A rainfall, it is reflective of differences in rainfall characteristics rather than simply higher annual rainfall totals. P25 also simulated 3%, 14%, 15% higher total annual PET at our dryland sites (SA, A, and HA respectively), while PET is 9% higher using CP4A at our humid site (HU). However, this still means that at all sites the ratio of P/PET is higher using P25. [Please refer to Appendix B for mean monthly rainfall at each site \(Fig. B1\), mean monthly PET \(Fig. B2\), and the raw hourly timeseries of rainfall at each site \(Fig. B3\).](#)

Site	Rainfall (CP4A)	PET (CP4A)	Vegetation
Site HU (humid) – Ethiopian Highlands	2000 mm (1730 mm)	1290 mm (1400 mm)	Maize
Site SA (semi-arid) – Southern Kenya	670 mm (600 mm)	1620 mm (1580 mm)	Shrubs
Site A (arid) – Eastern Ethiopia	430 mm (350 mm)	2180 mm (1920 mm)	Shrubs
Site HA (hyper-arid) – Northern Somalia	240 mm (180 mm)	1970 mm (1720 mm)	Bare Soil

Table 2. Mean annual rainfall, PET, and vegetation type at our four study sites. Rainfall and PET simulated by CP4A are in bold, and P25 in non-bold. Vegetation type is taken from the iSDAsoil dataset (iSDA, 2024).

2.4.3 Hydrological Model Set Up, Data, and Sensitivity

This aim of this study is to use a series of experimental, one-dimensional Hydrus simulations to examine the impact of convective representation on rainfall characteristics and subsequent partitioning when rainfall is propagated vertically through the vadose zone at a 1D scale. Although one-dimensional point-based hydrological modelling is a clear simplification of the hydrological system and does not represent watershed-scale surface and sub-surface lateral flows, the focus on the 1D water balance and processes was a deliberate decision to ensure we could most effectively isolate the impact of rainfall characteristics – specifically the representation of convection on rainfall intensity-duration – on vertical vadose zone hydrological partitioning, without the complexity that would be introduced by lateral and non-local processes if modelling was carried out at a basin or regional scale. We are not dismissing the importance of overland flow generation and runoff as significant hydrological processes in dryland catchments, we exclude their consideration to simply understand the balance between evapotranspiration, soil moisture and deeper drainage in response to differing rainfall characteristics. And while our simulations are experimental, they use plausible soil hydraulic and vegetation parameters where available.

All Hydrus simulations utilised a three-meter soil profile (preliminary simulations suggested minimal water fluxes below this depth at some locations) with a free draining bottom boundary (no interactions between water table and soil profile above). Although a simplification, this setup is not unreasonable as the water table is commonly deep

across the Horn of Africa (Bonsor and MacDonald, 2011; Fan et al, 2013) and in drylands generally. However this does mean that the simulated bottom drainage is not necessarily indicative of groundwater recharge, as it is unlikely the water table would be so shallow (Bonsor and MacDonald., 2011; Fan et al., 2013), and there is robust evidence that dryland acacia shrubs (dominant shrub species in the HOA) are particularly deep rooted and are capable of extracting water directly from the water table (Stone and Kalisz, 1991; Maeght et al., 2013; Shadwell and February 2017).

For the top boundary layer, we used atmospheric boundary conditions with surface runoff, meaning where model rainfall exceeds the infiltration capacity of the topsoil, water is re-routed as runoff and cannot enter the soil profile (Fig. 2). For all simulations the soil profile was discretized in 2 cm intervals, with a minimum and maximum time step interval of 5 seconds to 20 days (high max time step needed as long periods with no rainfall in drylands). This ensured the model converged (using default Hydrus water content and pressure head tolerances) within 10 timesteps (Hydrus default) and relative mass balance errors remained below 1%. All model runs at each site were initially forced using the mean hourly IMERG and hPET climatology (over 2000-2007) until steady state conditions were reached and relative mass balance errors were below 0.1% (6 – 15 years depending on study site).

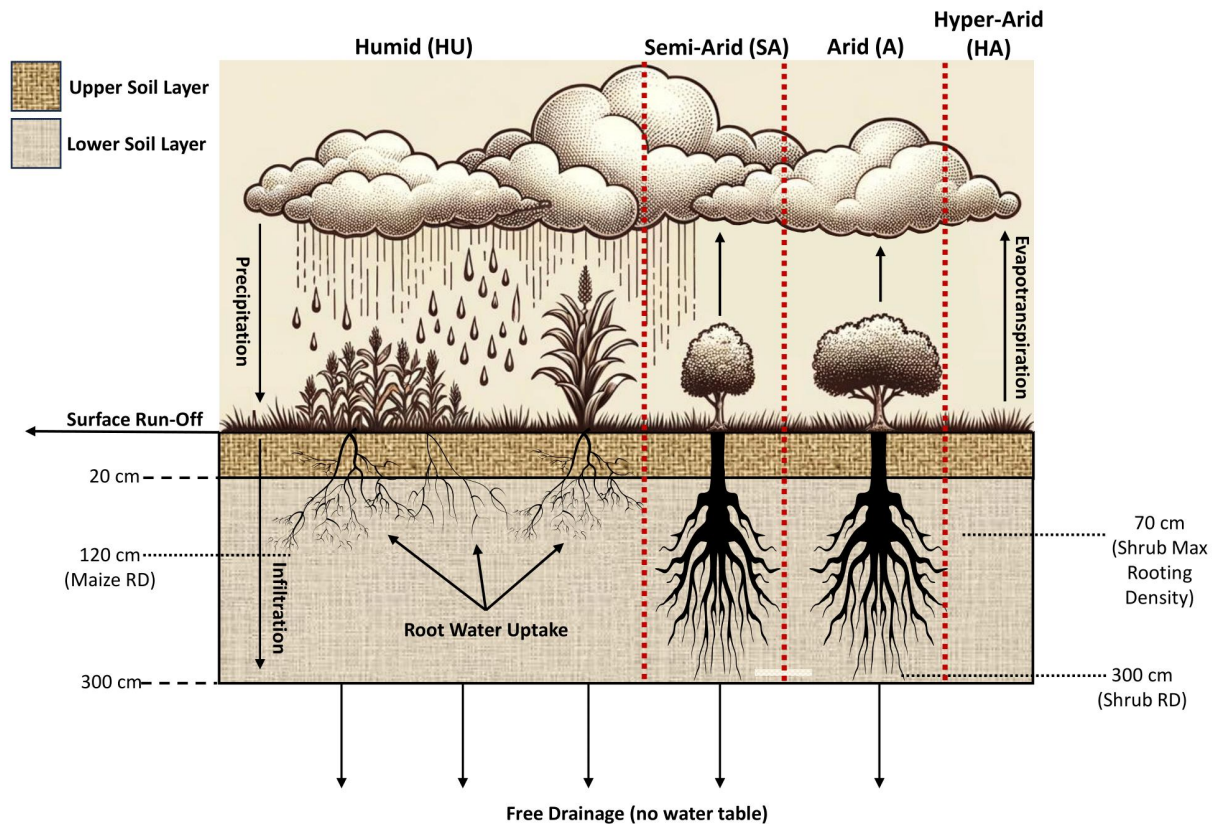


Figure 2. Hydrus Simulations Schematic. Conceptual schematic of how water is partitioned within Hydrus 1D at any given timestep within the simulation. Please note that in the figure shrubs, maize, and bare soil are represented, whereas only one vegetation type can be modelled in any one simulation. Here the schematic is divided to represent the model set up for each site-specific simulation. For all sites the soil profile is divided into two layers (boundary is marked at 20 cm) and is

discretised at a resolution of 2 cm. At Site HU, maize roots to a depth of 120 cm, while at Sites SA and A shrubs utilise moisture through the entire 300 cm profile. At Site HA we assume grass cover is extremely sparse, so here we only consider bare soil evaporation and no transpiration.

Soil hydraulic properties were calculated using Genuchten-Mualem (Van Genuchten, 1980) equations based on soil texture values taken from the iSDAsoil database (iSDA, 2024), which applies a multiscale ensemble machine learning approach to a range of fine and coarse-scale satellite observations to predict soil properties at 30 m resolution at two depth intervals (0 – 20 cm and 20 – 50 cm) (Hengl et al., 2021). While robust estimates of water movement would require soil textures for the entire profile, here we divided our three-meter profile into two layers following the iSDAsoil data depth intervals (which uses 0 – 20 and 20 – 50 cm). This means we divide our profile into an upper (0 – 20 cm) and lower layer (20 – 300 cm), a significant simplification as it assumes that soil properties from 50 – 300 cm follows those at shallower depths (20 – 50 cm).

To calculate transpiration Hydrus needs land cover (Table 2) and leaf area index (LAI) data, which were taken from iSDA (as of 2019) and the National Centers for Environmental Information AVHRR LAI dataset (Vemote, 2019) respectively. Hydrus uses the Feddes' (1978) approach to estimate transpiration (referred to as root water uptake within Hydrus) under various pressure heads (water stress) and root densities. For Site HU (humid) we utilised Feddes' parameters for maize (from the internal Hydrus database – Wesseling (1991)) and set the maximum rooting depth to 1.2 mbgl (Zinyengere et al., 2011). Shrubs are not included in the internal Hydrus vegetation database, and there is limited information on Feddes' parameters for dryland (acacia) shrubs, so we combined data from available literature to estimate a reasonable parameter set (Appendix CB - Table CB12) (Xia and Shao, 2008; Sela et al., 2015; Watson, 2015). As dryland shrubs tend to be deep-rooted (Stone and Kalisz, 1991; Maeght et al., 2013; Shadwell and February 2017), we assumed they can utilise moisture from the entire soil profile and specified maximum root density at ~0.7 mbgl, which tends to be the depth at which shrub root water uptake is greatest (Geißler et al., 2019).

Given the uncertainty with Feddes' acacia shrub parameters, at Sites SA (southern Kenya) and A (eastern Ethiopia) (site HA is bare soil), we ran additional Hydrus simulations using a range of shrub Feddes' parameters (Appendix CB - Table CB12) as given by Sela et al (2015). Within the range given by Sela et al (2015) we used the upper parameter set as our 'default' run, as the wilting point corresponded better with other published data (Xia and Shao, 2008, Watson, 2015).

At all sites, we also ran Hydrus simulations using low (lowK) and high (highK) hydraulic conductivity soil parameters (Appendix CB - Table CB24), and to assess dryland hydrological sensitivity to PET, we also forced Hydrus with climate model rainfall but replaced climate model-derived PET with gridded hPET values (see Section 2.2). However, unless stated otherwise, all results refer to simulations forced using climate model rainfall/PET and the default soil hydraulic and Feddes' parameters given in Appendix CB - Table CB1 & CB2.

3. Results

3.1 Rainfall

Fig. 3a-b shows rainfall intensity distributions for humid ($AI \geq 0.65$) and dryland regions ($AI < 0.50$) in the HOA, based on all rainfall hours ≥ 0.1 mm/hr. The plots highlight the 'drizzle' effect associated with parameterised climate models (shown by the large frequency peaks in rainfall intensities between 10^{-1} and 10^1 mm/hr – dashed black circles), with P25 overestimating the frequency of rainfall events ≤ 1 mm/hr in both regions, but particularly drylands (Fig. 3b). CP4A does not simulate the same 'drizzle effect' in drylands, although (in both humid and dryland regions) CP4A simulates fewer rainfall events with an intensity of > 10 mm/hr compared to IMERG.

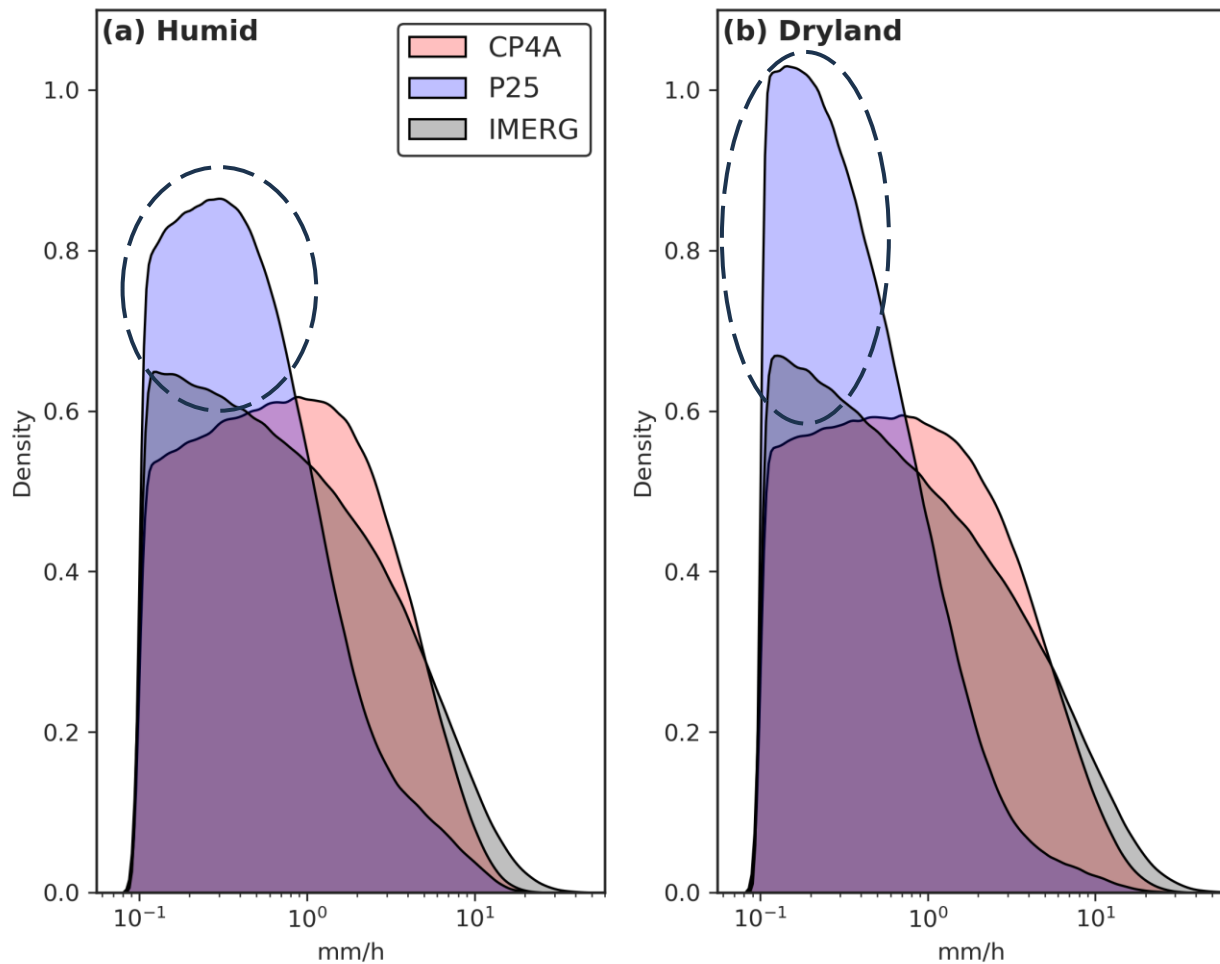


Figure 3. Rainfall KDE Plots. Kernel density estimate (KDE) plots of CP4A, P25, and IMERG hourly rainfall in humid (a) ($AI \geq 0.65$) and dryland (b) ($AI < 0.5$) regions of the Horn of Africa. Plots exclude dry hours by dropping any hours that receive < 0.1 mm/hr. Black dashed circles indicate the 'drizzle' effect seen in P25 simulations.

We used the Kolmogorov–Smirnov (KS) test with a null hypothesis that the modelled distribution of hourly rainfall intensities (based on all hours with rainfall ≥ 0.1 mm/h) is drawn from the same distribution as IMERG. Both P25

and CP4A show statistically significant differences from IMERG ($p < 0.05$), but the KS statistic is markedly lower for CP4A (0.03) than for P25 (0.24), indicating CP4A better matches the observed distribution (IMERG). Also, while Fig. 3 aggregates data across the entire study period, the ‘drizzle’ effect seen in P25 simulations remains consistent between years and across each of the four seasons in the region (Appendix [D6](#) – Fig. [D61](#)).

The tendency for P25 to overestimate the frequency of light rainfall events means most annual rainfall is delivered via events with a magnitude of ≤ 1 mm/hr (Fig. 4a-c) across the HOA. In humid regions, on average P25 simulates 39.0% of annual rainfall falling as ‘drizzle’ versus 17.1% and 13.6% in CP4A and IMERG respectively. This bias is even more pronounced in dryland areas, where the median proportion of annual rainfall falling as drizzle is 51.5% in P25 versus 14.1% and 13.0% for CP4A and IMERG. Apart from a few isolated locations, no areas in the drylands receive more than 20% of rainfall via ‘drizzle’ in CP4A and IMERG (Table 3).

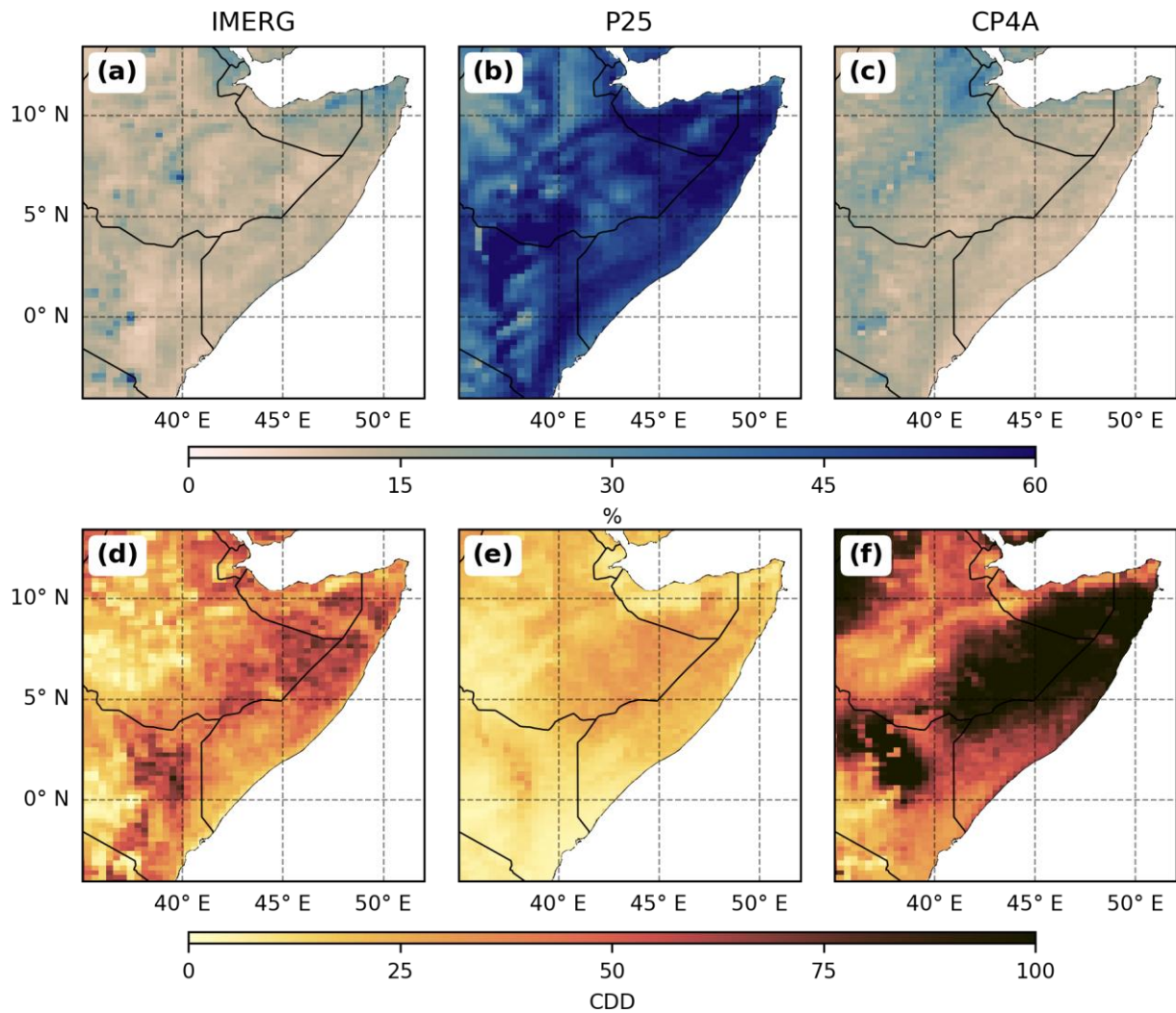


Figure 4. Percentage of Annual Rainfall delivered as drizzle and maximum number of consecutive dry days. Percentage of mean annual rainfall that falls as ‘drizzle’, where ‘drizzle’ is any rain hour with an intensity ≤ 1 mm/hr (top panel) for

IMERG (a), P25 (b), and CP4A (c). Bottom Panel - Mean annual maximum dry spell length, where a dry hour is any hour that receives less than 0.1 mm of rain IMERG (d), P25 (e), and CP4A (f).

The ‘drizzle’ bias also means P25 underestimates maximum dry spell length (CDD – consecutive dry days) compared to IMERG and CP4A (Fig. 4d - f). Both climate models replicate the spatial pattern of CDD observed in IMERG, where CDD is higher in drylands (compared to the humid Ethiopian Highlands), but P25 underestimates CDD length compared to IMERG and CP4A overestimates CDD length (Table 3). In IMERG, median CDD in drylands is ~38 days, in P25 it is ~18 days and only increases to ~20 days in arid regions ($AI < 0.2$). Whereas in CP4A there are dry spells of over 100 days across large parts of eastern Ethiopia, northern Somalia, and northern Kenya (Fig. 4f). In humid regions CP4A also overestimates CDD length relative to P25 and IMERG.

Fig. 5a–c compares the ‘extreme’ rainfall (99th percentile of wet hours in the wettest rainy season) and shows both climate models underestimate the magnitude of wet extremes relative to IMERG. However, the bias is reduced in CP4A, which is in line with other studies using three-hourly data (Bethou et al., 2019; Kendon et al., 2019; Finney et al., 2019, 2020). The improvement in CP4A is more pronounced in drylands (Table 3), whereas differences between CP4A and P25 are more muted in humid regions, where the median 99th percentile value is 36% higher in CP4A vs P25 (compared to over 110% in drylands) and IQR ranges overlap (Table 3). Also, unlike CP4A, P25 simulates higher median 99th percentiles in humid (7.1 mm/hr) rather than dryland (5.8 mm/hr) regions (see Table 3 for IQR), although the 99th percentile may appear lower in drylands (in P25) because the large number of light rain events (most pronounced in drylands) dilutes the distribution of wet-hour rainfall (not necessarily because absolute rainfall extremes are lower).

Humid	Drizzle (% of annual rainfall)	Heavy Rainfall (% of annual rainfall)	99 th Percentiles (mm/hr)	Max CDD
IMERG	12.0 – 16.2	N/A	14.2 – 19.3	7 – 19 days
P25	30.6 – 46.8	5.1 – 13.4	5.4 – 9.2 mm/hr	7 – 14 days
CP4A	14.7 – 20.0	8.8 – 13.3	8.4 – 11.1 mm/hr	24 – 73 days
Drylands				
IMERG	11.6 – 14.8	N/A	12.4 – 16.3 mm/hr	27 – 51 days
P25	45.2 – 56.6	3.8 – 11.0	4.6 – 7.1 mm/hr	11 – 24 days
CP4A	12.5 – 16.6	13.5 – 25.4	10.9 – 14.4 mm/hr	48 – 95 days

Table 3. Interquartile ranges of the percentage of rainfall delivered as ‘drizzle’ and ‘heavy’ rain, extreme rainfall (99th wet season percentiles), and the maximum number of consecutive dry days (CDD) in humid ($AI \geq 0.65$) and dryland ($AI < 0.5$) regions of the HOA (see Fig. 1). Where ‘drizzle’ is any rain hour with an intensity ≤ 1 mm/hr, and the ‘heavy’ rain threshold is spatially variable and is based on the 95th percentile of hourly wet season IMERG rainfall (see Fig. 5d).

420 A greater proportion of annual rainfall is also delivered via ‘heavy’ rainfall events in CP4A relative to P25 (Fig. 5e –
 425 f), most notably in drylands. The percentage of annual rainfall that falls as ‘heavy’ rainfall is based on the 95th
 percentile of hourly IMERG rainfall rather than using a consistent mm/hr intensity across the entire domain. This
 means our threshold varies (Fig. 5d) grid cell by grid cell (2.3 mm/hr – 10.9 mm/hr in humid regions and 2.9 mm/hr
 – 16.2 mm/hr in dryland regions) and ensures we reflect the tendency for a greater percentage of rainfall to fall as
 ‘heavy’ events in drylands.

In western humid regions both models simulate comparable contributions from ‘heavy’ rainfall, with overlapping
 IQRs (Table 3), whereas in drylands the IQR of the percentage of annual rainfall falling during ‘heavy’ events is
 13.5% - 25.4% in CP4A versus 3.8% - 11.0% in P25 (Table 3). In arid regions (eastern Ethiopia and Somalia) the
 430 difference is more pronounced, with the median contributions of heavy rainfall being 21.5% and 7.8% in CP4A and
 P25 respectively. CP4A also better replicates the spatial pattern one would expect, where dryland regions in the east
 tend to receive more rainfall via ‘heavy’ events relative to humid regions in the west (median values of 19.2% vs
 13.8%), whereas the opposite is true in P25 (median values of 6.8% vs 8.4%).

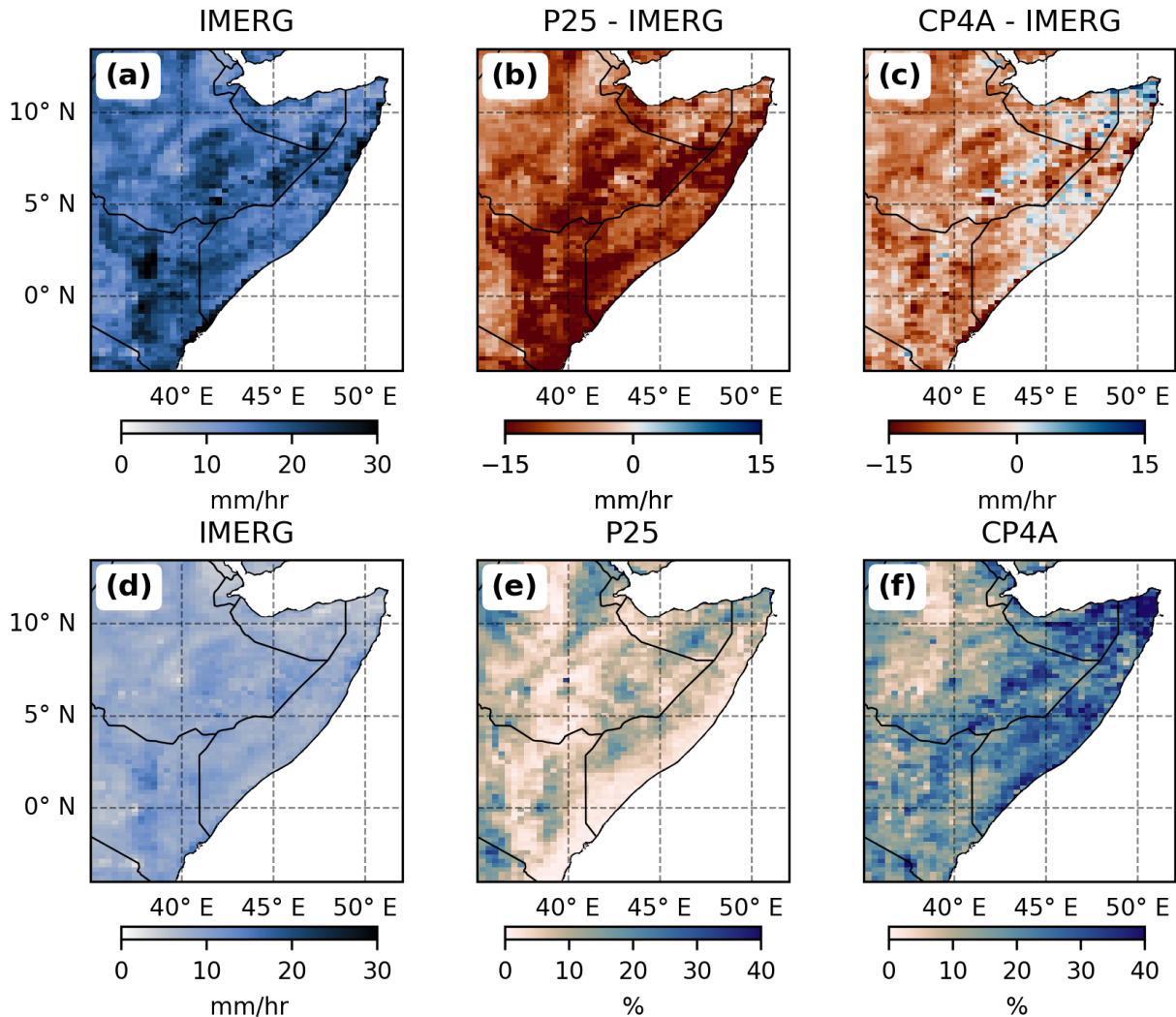


Figure 5. 99th Percentiles and percentage of rainfall delivered via ‘heavy’ events. Wet season ‘extreme’ precipitation (top panel) for IMERG observations (a), and anomalies with respect to IMERG for P25 (b) and CP4A (c). Extreme precipitation is defined as the 99th percentile of all wet hours, where wet hours are any hours that receive ≥ 0.1 mm of rain. Bottom Panel – 95th percentile of all wet hours in IMERG observations (d), this is used as the ‘heavy’ rain threshold for panels (e) and (f), which show the percentage of annual rainfall that falls as ‘heavy’ rainfall in P25 (e) and CP4A (f) respectively.

3.2 Potential Evapotranspiration (PET)

PET derived from climate model atmospheric variables captures the seasonal (Fig. 6e-g) and diurnal cycle (Fig. 6d-f) seen in hPET, although both models simulate earlier peaks in diurnal PET (12:00 vs 13:00). Both models also correctly simulate higher evaporative demand in eastern drylands compared to the more humid Ethiopian Highlands (Fig. 6a–c) and produce comparable annual magnitudes (hPET – 1715 mm, CP4A – 1787 mm, P25 – 1883 mm). CP4A simulates marginally higher mean annual PET in humid regions (1416 mm vs 1387 mm) but lower in arid regions (1901 mm vs 2027 mm). The most pronounced differences are in arid Somalia and Eastern Ethiopia (Fig. 6g), where CP4A exceeds 2000 mm yr⁻¹ in 18% of cells versus 53% and 43% in P25 and hPET, respectively.

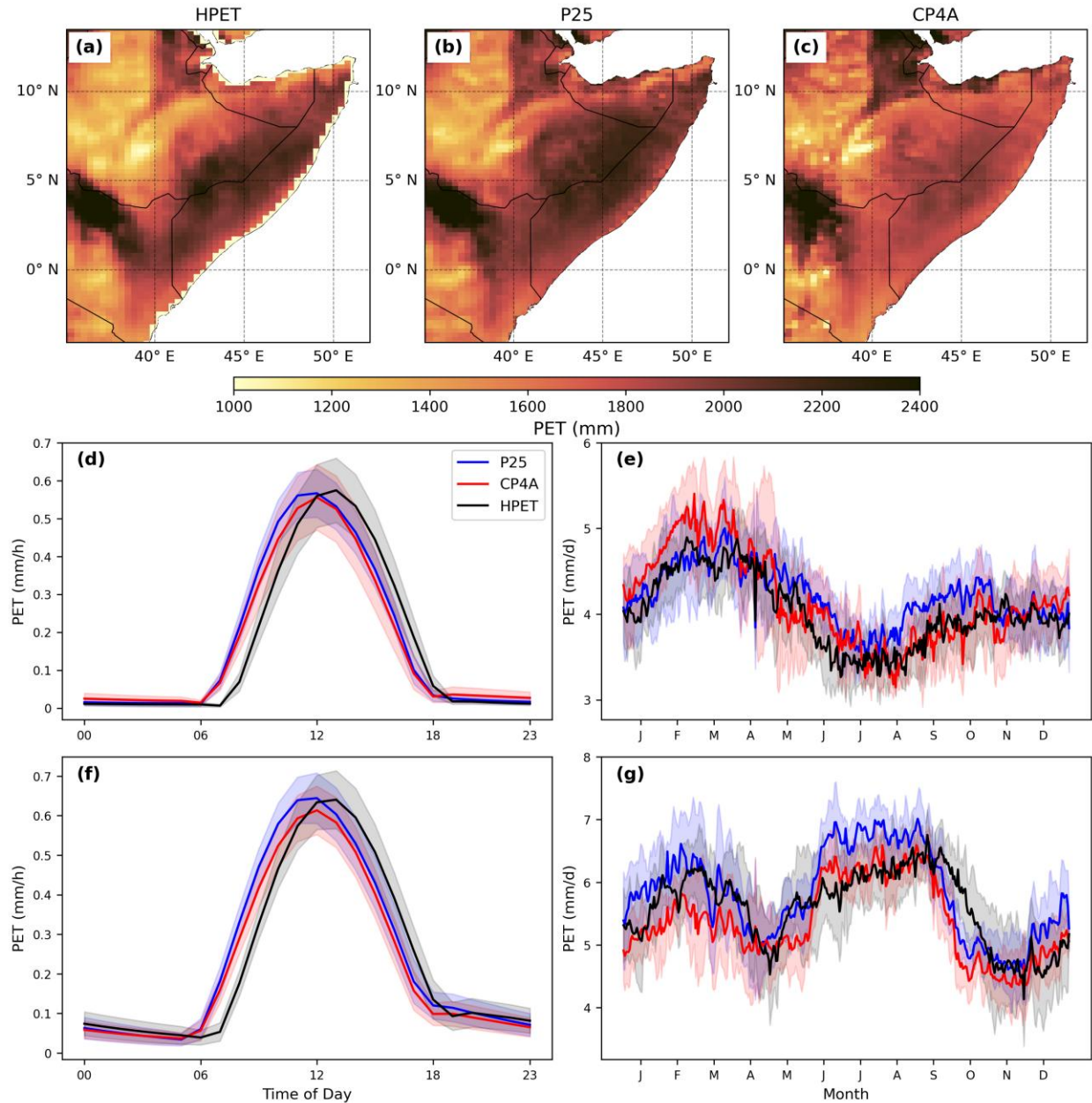


Figure 6. Mean annual PET, diurnal PET cycle, and daily climatology of PET. Spatial plots of mean annual PET (top panel) for HPET observations (a), P25 (b), and CP4A (c). Mean diurnal cycle and daily climatology of PET in humid ($AI \geq 0.65$) (middle panel) and arid to hyper-arid ($AI < 0.2$) (bottom panel) regions of the Horn of Africa for HPET, P25, and CP4A.

During dry seasons (JF, JJAS) in arid regions, P25 PET (median = 1098 mm yr⁻¹) exceeds CP4A (1000 mm yr⁻¹) and hPET (1035 mm yr⁻¹). In rainy seasons (MAM, OND), P25 PET remains higher (905 mm yr⁻¹) relative to CP4A (860 mm), but lower compared to hPET (912 mm). Multi-linear regression (MLR) attributes CP4A-P25 PET differences mainly to temperature and dew point temperature (in both humid and dryland regions), with meridional wind speed also important in drylands (Appendix [DC](#) - Table [DC1](#)), with higher P25 wind speeds during JJAS partly driving the higher P25 PET during JJAS (Appendix [DC](#) – Fig. [DC2](#)).

3.3 Water Partitioning

At all study sites, CP4A and P25 reproduce the seasonal cycle of rainfall and produced broadly comparable seasonal totals (Appendix [B](#) – Fig. [B](#)1), though P25 delivers higher annual rainfall (Table 4). Both models also produced comparable PET totals and simulated the same seasonal cycle, although P25 simulates substantially higher PET during JJAS at Site HA (Appendix [B](#) – Fig. [B](#)2). Critically, differences in rainfall characteristics follow the results discussed above in section 3.1 (Table 4).

	Site HU	Site SA	Site A	Site HA
P25 Total Rainfall (mm)	2000	670	430	240
CP4A Total Rainfall (mm)	1730	600	350	180
P25 Total 'Drizzle' (mm) (% of Annual Total)	650 (33%)	358 (53%)	234 (54%)	133 (55%)
CP4A Total 'Drizzle' (mm) (% of Annual Total)	329 (19%)	80 (13%)	40 (11%)	22 (12%)
P25 Total 'Heavy' Rain (mm) (% of Annual Total)	449 (22%)	75 (11%)	53 (12%)	71 (30%)
CP4A Total 'Heavy' Rain (mm) (% of Annual Total)	378 (22%)	149 (25%)	170 (49%)	148 (82%)
P25 99th Percentile (mm/hr)	8.5	5.8	5.5	4.3
CP4A 99th Percentile (mm/hr)	9.1	15.6	11.2	17.9
P25 Max CDD (days)	13	12	8	20
CP4A Max CDD (days)	41	43	105	107

Table 4. Mean annual rainfall, ‘drizzle’, ‘heavy’ rain, 99th wet season percentiles, and maximum number of consecutive dry days (CDD) at each of our four sites. The percentage of annual rainfall that falls as ‘drizzle’ or ‘heavy’ rain (based on the 95th percentile of hourly wet season IMERG rainfall) is given in brackets.

Fig. 7a-d shows histograms of depth-integrated soil moisture (% soil saturation in entire 300 cm of the soil profile), where soil moisture is expressed as a saturation percentage (given the symbol θ_s). Soil saturation reflects the proportion of pore spaces filled with water relative to if all pore space is saturated (e.g. 100% means all pore space is filled with water, 0% means all pores are filled with air). Despite simulating lower total rainfall, forcing Hydrus with CP4A rainfall results in higher θ_s at all dryland locations (Table 5), although the IQR of θ_s still overlap at all sites other than Site HA. Focusing on the depth-integrated θ_s masks differences relative to θ_s at specific depths. For example, the relative difference in θ_s between driving Hydrus with CP4A (vs P25) at Site SA increases from + 7.5% at a depth of 90 cm, to 16.1% at 2.1 mbgl, while at Site HA the difference ranges from 17.0% (0.2 mbgl) to 23.1% (1.2 mbgl). There are statistically significant differences (p-values are statistically significant to 95% confidence) in medians (Mann-Whitney) and distributions (Kolmogorov-Smirnov) at all depths (see Appendix [E](#) - Table [E](#)1 for depth intervals) and all sites (including Site HU), with the KS Test Statistic increasing with depth (Appendix [E](#) - Table [E](#)1). Calculating the KS Test Statistic using the entire depth-integrated θ_s values shows differences in distributions are more pronounced in drylands (KS Test Statistics: HU– 0.08, SA – 0.29, A – 0.37, HA – 0.92).

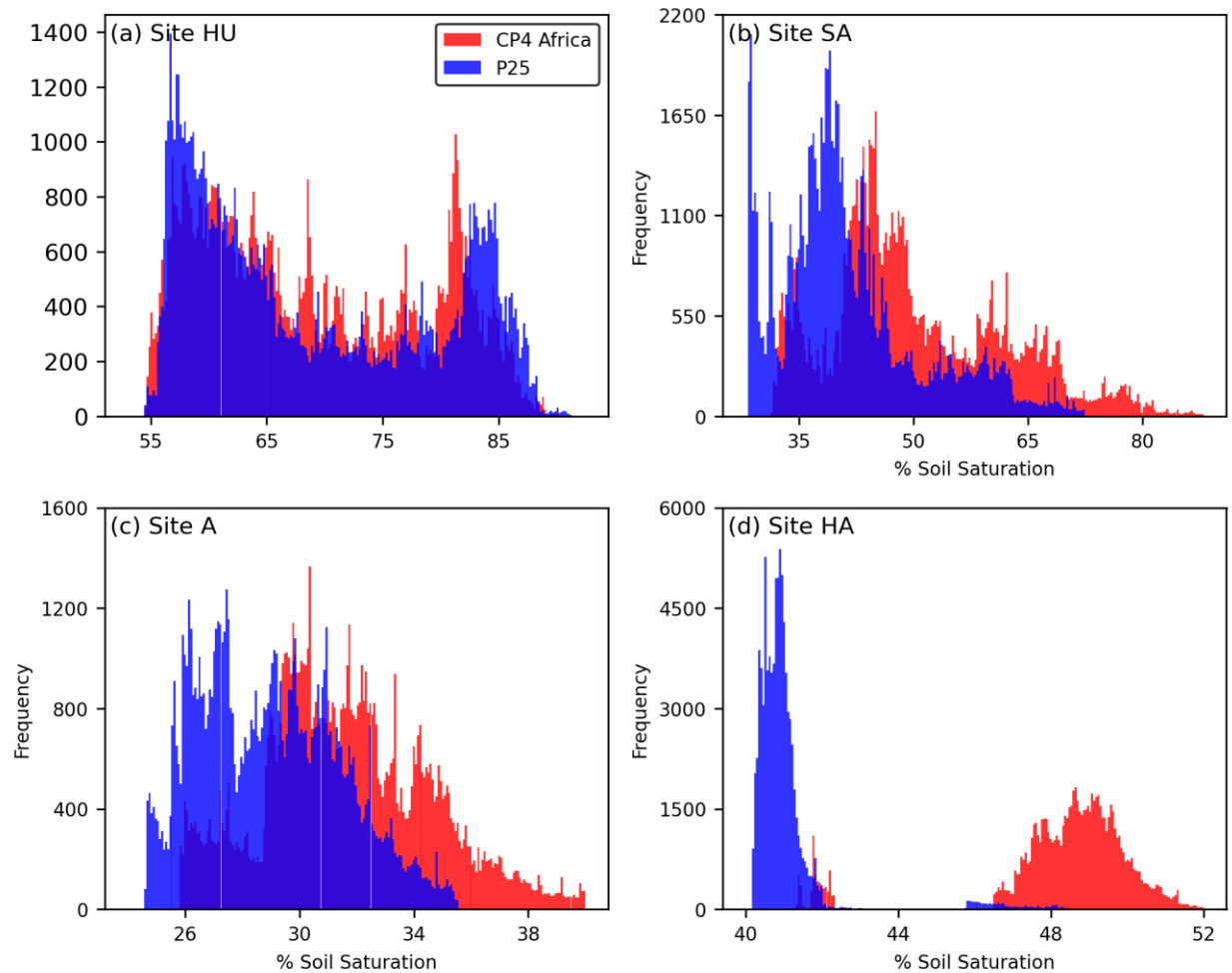


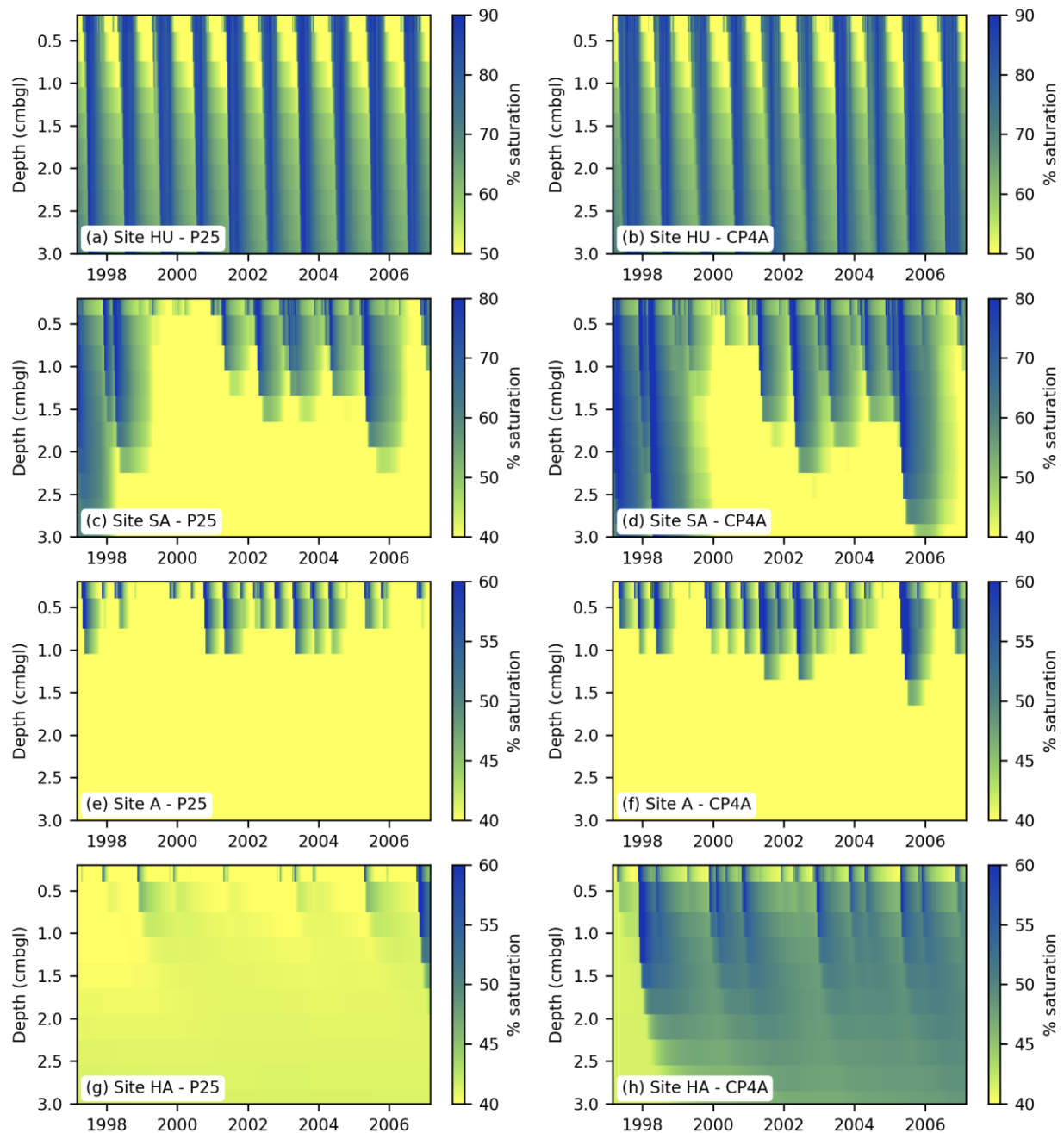
Figure 7. Depth Integrated Soil Moisture Distributions. Modelled distribution of depth integrated soil moisture in the three-meter soil profile when driving Hydrus using P25 (blue) and CP4A (red) rainfall and PET at our humid (a), semi-arid (b), arid (c), and hyper-arid sites (d).

1.2 Meters Below Ground Level	Site SA	Site A	Site HA	Site HU
CP4A	49.7 - 63.6	37.7 - 46.5	47.2 - 51.3	53.0 - 78.9
P25	43.4 - 58.2	31.4 - 41.0	39.7 - 41.1	51.6 - 81.3
3.0 Meters Below Ground Level				
CP4A	42.7 - 59.0	29.7 - 33.7	47.8 - 49.5	60.6 - 77.7
P25	35.4 - 45.1	27.0 - 30.8	40.5 - 41.1	59.6 - 79.4

Table 5 – Interquartile ranges of depth integrated soil moisture in the upper 1.2 meters of the soil profile (top), and the entire three-meter profile (bottom) in our CP4A and P25 default (soil and Feddes’ parameters) runs. All values refer to the % saturation.

Fig. 8a-h visualises the deeper wetting fronts in drylands when forcing Hydrus with CP4A, most notably at Sites SA and HA. Shallower wetting fronts in P25 could have ecological implications, for example, at Site A θ_s is above the wilting point (WP) (for shrubs) at a depth of 1.2 mbgl for 44% of the Hydrus simulation compared to 83% using CP4A (Fig. 9b). However, it is important to note that this is using the ‘upper’ default Feddes’ shrub parameters (Appendix CB - Table CB12), if one uses the ‘lower’ Feddes’ parameters soil moisture never exceeds the wilting point in P25

(‘upper’ WP = ~25%, ‘mid’ WP = ~ 55%). It is a similar story at Site SA, where θ_s is above WP for 27% of the time using P25 versus 50% using CP4A based on the ‘upper’ Feddes’ parameter set (Fig. 9a). The large WP range depending on choice of Feddes’ parameters highlights the importance of accurately quantifying the Feddes’ parameters used for any given vegetation (Fig. 9). ~~However~~ But the key finding is that regardless of the Feddes’ parameters used, θ_s is either above the wilting point for longer when forcing Hydrus with CP4A, or where both models simulate θ_s as always above the WP, using CP4A means θ_s is high enough for vegetation to transpire at the maximum rate for longer (Site SA – 78% vs 57%, Site A – 13% vs 0%). Appendix E Table E2 shows that median soil moisture is ~~The same is true when varying the soil hydraulic parameters, the finding that higher when~~ driving Hydrus with



CP4A rainfall and PET, with the same also true regardless of the soil hydraulic parameters, yields higher soil moisture remains consistent (Appendix [ED](#) - Table [ED32](#)).

Figure 8. Modelled soil moisture profiles using P25 (left) and CP4A (right) rainfall and PET to drive Hydrus at our humid (a-b), semi-arid (c-d), arid (e-f), and hyper-arid (g-h) sites across the HOA.

We also forced Hydrus with climate model rainfall and hPET (rather than model PET), where once again at all depths and at every site, there are statistically significant differences in θ_s between Hydrus simulations, although KS test statistics are marginally lower (Appendix [ED](#) – Table [ED4](#)). However, PET alone can exert an influence; the percentage of time θ_s is above the WP at Site SA is lower when forcing Hydrus with CP4A rainfall and hPET (41% vs 50%), although θ_s is still above the WP for longer using CP4A compared to P25 (41% vs 24%). The reduction is especially pronounced when considering the WP at Site A, where the percentage of time θ_s is above the WP (using the ‘upper’ Feddes parameter set) drops from 83/44% to 44/21% for CP4A and P25 respectively. That there is a reduction in soil moisture when using hPET despite PET being lower than P25 PET highlights how offsets between rainfall and PET can influence the antecedent conditions that govern hydrological responses to rainfall.

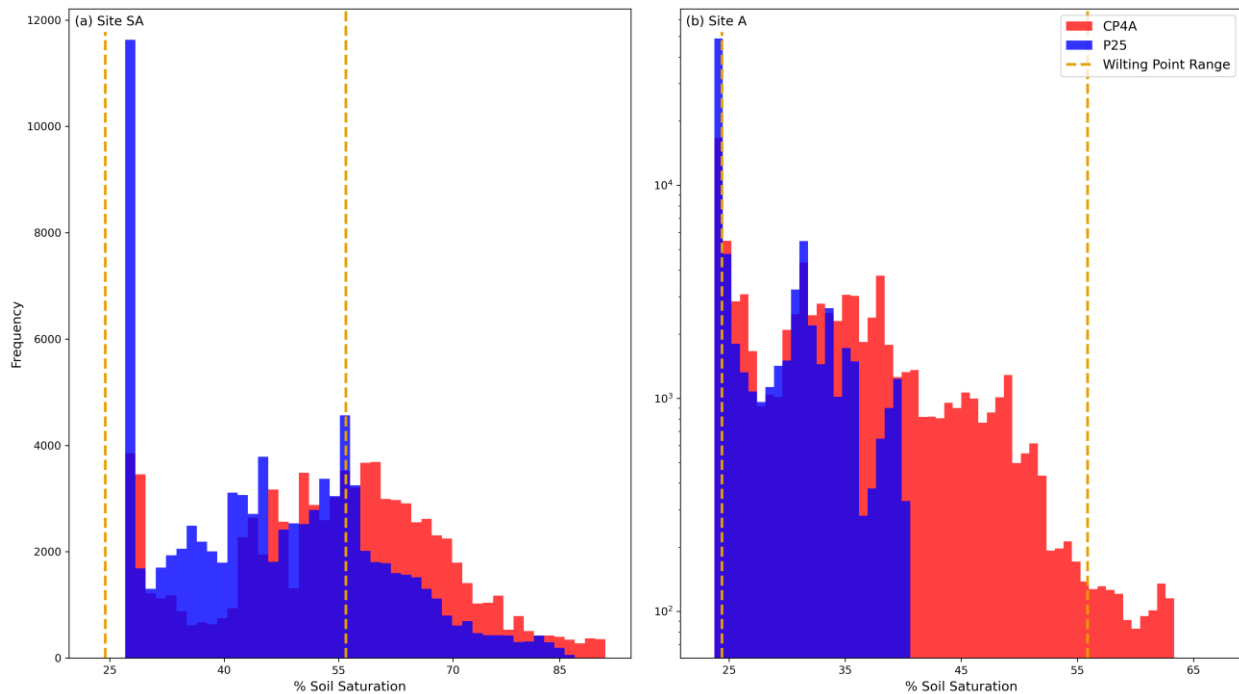


Figure 9. Soil Moisture Distributions with Wilting Points at Sites SA & A. Modelled distribution of soil moisture at 1.2 mbgl at Site SA (a) and A (b) using P25 (blue) and CP4A (red) rainfall and PET. The dashed orange lines represent the wilting point range for Acacia shrubs, based on taking the upper and lower Feddes’ parameters given in Appendix [C2](#) - Table [CB12](#) (wilting point = $P2H$) (Sela et al, 2015).

Fig. 10 details how water is partitioned between surface runoff, evaporation, transpiration, and bottom drainage at our dryland sites when CP4A/P25 rainfall and PET is propagated through Hydrus (for clarity infiltration and Site HU data

is not included in Fig. 10, but can be seen in Table 6). Given that θ_s tends to be above the WP for longer in the CP4A runs, and shrubs can transpire at the maximum rate for longer, it is unsurprising that Fig. 10a - f shows substantially higher transpiration at our semi-arid and arid sites when using CP4A (Table 6) despite total infiltration being lower. The shallower wetting fronts when using P25 means evaporative losses are higher (Table 6), with 79%-83% of infiltration returned to the atmosphere at sites SA & A respectively, versus 67% – 72% using CP4A rainfall. Whereas at Site HU evaporative losses are near identical (23.3% vs 23.6%) and transpiration is higher in the P25 Hydrus simulations (Table 6).

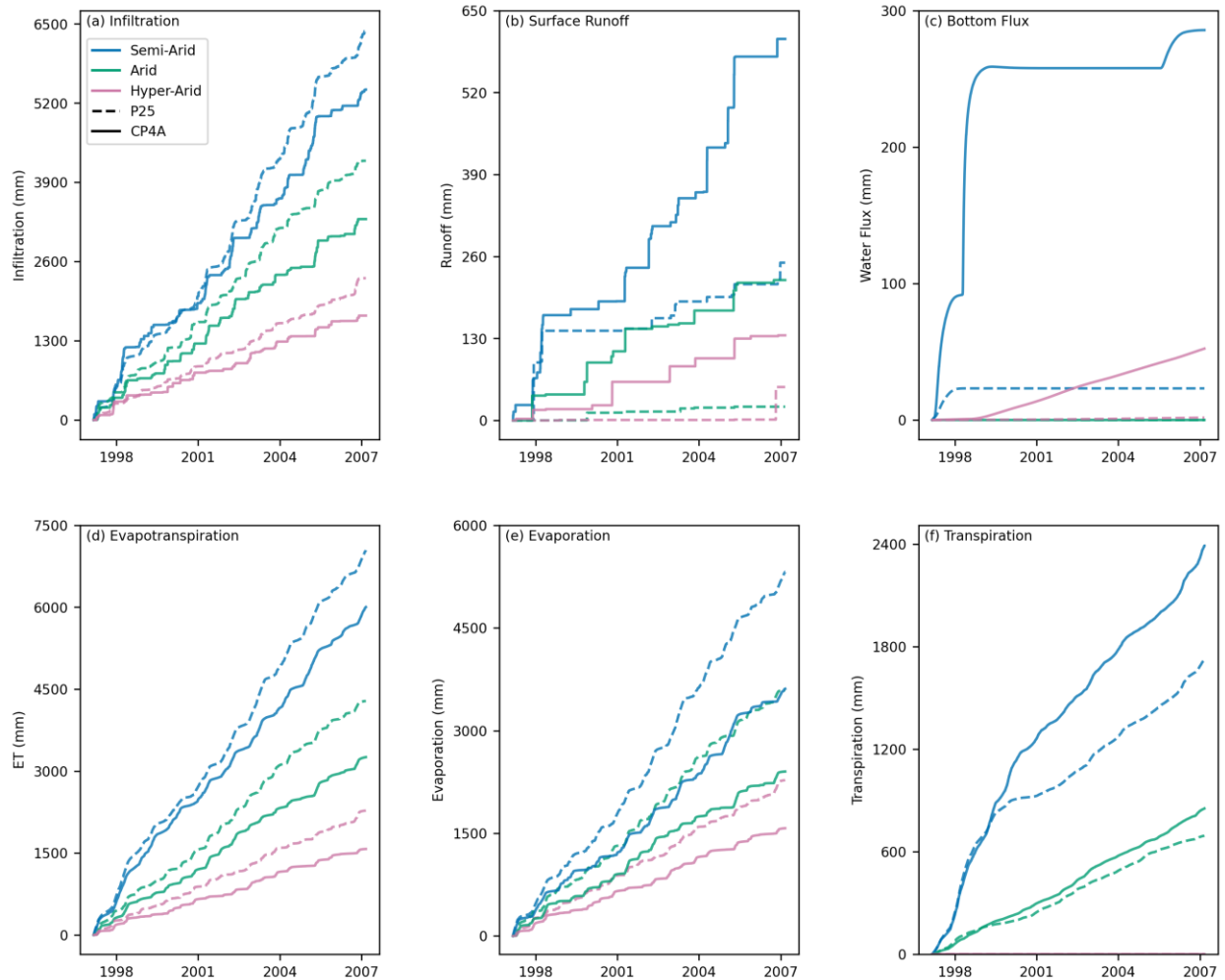


Figure 10. Cumulative Infiltration Runoff, Surface Runoff, Bottom Drainage, Evapotranspiration, Evaporation, and Transpiration. Modelled components of the water balance using CP4A (solid lines) and P25 (dashed lines) rainfall/PET as input for Hydrus 1-D at each of our dryland sites – Site SA (blue), Site A (green), and Site HA (pink). Plots show cumulative infiltration (a), surface run-off (b), bottom drainage (c), evapotranspiration (d), evaporation (e), and transpiration (f). So, for example, the solid blue line shows the CP4A semi-arid simulations, and the pink dashed line is the P25 hyper-arid simulation. To avoid using multiple axis, Site HU is not included, but the raw values are given in Table 6.

Even when forcing Hydrus with hPET (rather than model PET) (Appendix [E](#) – Table [E5](#)) evaporative losses are higher when using P25, the percentage of rainfall lost to evaporation in P25 (CP4A) simulations are 24% (23%), 81% (66%), 88% (75%), and 96% (90%) at Sites HU, SA, A, and HA respectively. In the CP4A runs, using hPET reduces transpiration totals, but they remain significantly higher than P25 runs in drylands (30%-36% higher in absolute terms) (Appendix [E](#) – Table [E5](#)). Transpiration totals are also obviously sensitive to the Feddes' parameters used, but it doesn't impact the relative bias in totals between the CP4A and P25 Hydrus runs (Appendix [6](#) – Table [E67](#)).

Surface runoff is also greater when using CP4A rainfall despite lower annual totals (Table 6), in dryland locations, between 6% and 10% of rainfall is lost to runoff in the CP4 Hydrus runs versus 0.3 - 2% with P25 rainfall. There are also large differences in bottom drainage from the soil profile, 286 vs 23 mm at Site SA and 52 vs 2 mm at Site HA (there was no drainage at Site A). Bottom drainage is lower in the hPET runs for both climate models, but the relative bias remains (Appendix [E](#) – Table [E56](#)). Drainage is also sensitive to the soil and Feddes' parameters used, but again in all cases CP4A runs simulate higher bottom drainage at our dryland sites (Appendix [E](#) – Table [E6](#) & [E7](#)). Whereas at our humid location (Site HU) P25 simulated 21% higher bottom drainage, closely following the difference in the volume of cumulative rainfall delivered (15%) (Table 6).

Default Hydrus Run	Rainfall (mm)	PET (mm)	Runoff (mm)	Infiltration (mm)	ET (mm)	Evaporation (mm)	Transpiration (mm)	Drainage (mm)
Site HU	17333 (20003)	13982 (12894)	0 (30)	17300 (19863)	10474 (11418)	4030 (4693)	6445 (6725)	7154 (8638)
Site SA	5952 (6669)	15750 (16230)	605 (250)	5423 (6398)	6003 (7044)	3611 (5320)	2392 (1724)	286 (23)
Site A	3521 (4289)	19233 (21817)	223 (22)	3297 (4254)	3255 (4283)	2402 (3598)	853 (694)	0 (0)
Site HA	1849 (2394)	17181 (19714)	135 (53)	1713 (2328)	N/A	1574 (2277)	N/A	52 (2)

Table 6 – Cumulative rainfall, potential evapotranspiration (PET), runoff, infiltration, evapotranspiration (ET), evaporation, transpiration, and drainage from the bottom of the soil profile. All values are given in mm and are the totals over the entire ten-year Hydrus simulations. All results are taken from the default (soil and Feddes' parameters) Hydrus runs forced with CP4A/P25 rainfall/PET. Those values given in brackets are the P25 Hydrus runs, non-brackets are CP4A.

4. Discussion

In this paper we evaluated how climate model representation of convection influences rainfall characteristics and PET dynamics across the Horn of Africa (HOA), and what impact this has on the 1D water balance at four sites along an aridity gradient in the HOA. In line with other studies, we find that climate models that explicitly resolve convection (CPMs) capture key dryland rainfall characteristics more effectively than those that parameterise the average effects of convection (when compared against satellite-derived rainfall observations). Both CP4A and P25 simulate comparable annual/seasonal totals, but they deliver rainfall in fundamentally different ways (light/frequent vs heavy/infrequent), resulting in distinct hydrological outcomes at a point-based scale when their output is propagated

through a vadose-zone hydrological model. This study also verifies that while dryland vadose-zone hydrology ~~is more sensitive to PET than in humid regions, can be impacted by PET, but~~ water partitioning is far more sensitive to rainfall characteristics (not rainfall totals or PET), and convective representation exerts a greater control on rainfall dynamics compared to PET.

Our modelling supports other work demonstrating that water partitioning in drylands is sensitive to the magnitude-duration spectrum of rainfall (R Taylor et al., 2013; Arpuv et al., 2017; Singer and Michaelides, 2017; Cuthbert et al., 2019; Kipkemai et al., 2021; Adloff et al., 2022, Quichimbo et al., 2023), whereas in humid regions hydrological fluxes are more closely tied to seasonal rainfall totals. Our direct comparison between CPM and a traditional parameterised model (P25) provides another stark example of the importance of rainfall characteristics, where despite both models using the same global model configuration (Walters et al., 2017), simulating comparable annual totals, and seasonal cycles (Wainwright et al., 2021), hydrological outcomes differ significantly in the dryland vadose-zone when climate model rainfall is propagated through a simple 1-D model. This highlights that while any hydrological study must carefully select the driving datasets, the importance of this choice increases in drylands as one must explicitly consider both rainfall totals and characteristics.

The ability of CPMs to better represent rainfall frequency, intensity, and the magnitude of extremes ~~(with the improvement most marked in dryland regions of the HOA)~~ is well documented (Prein et al., 2015, Kouadio et al., 2018; Berthou et al., 2019; Luu et al., 2022), including in the context of the HOA (Bethou et al., 2019; Kendon et al., 2019; Finney et al., 2019; 2020). This study demonstrates this improvement is most marked in dryland regions of the HOA ($AI \leq 0.5$) compared to more humid ($AI > 0.65$) regions (Ethiopian Highlands). This is problematic, as despite their reduced skill in drylands, conventional climate models (those that parameterise the average effects of convection) are widely used to make future projections of dryland rainfall (Huang et al., 2017) and used as driving datasets for hydrological modelling (Crosbie et al., 2010; Mckenna and Sala, 2017; Razack et al., 2019; Cook et al., 2022).

Our modelling demonstrates water partitioning in drylands is sensitive to the magnitude-duration spectrum of rainfall delivery (R Taylor et al., 2013; Arpuv et al., 2017; Singer and Michaelides, 2017; Cuthbert et al., 2019; Kipkemai et al., 2021; Adloff et al., 2022, Quichimbo et al., 2023). That two climate model products based on the same global model configuration (Walters et al., 2017), with comparable annual totals, and seasonal cycles (Wainwright et al., 2021) produce such differing hydrological outcomes when propagated through a simple 1-D model highlights the importance of carefully selecting driving datasets in A key limitation with any one-dimensional modelling study is that lateral and non-local processes are explicitly excluded, however were such processes to be considered, it is unlikely to contradict our findings that using parameterised climate model output in dryland hydrological studies will lead to higher evaporative losses, lower soil moisture, transpiration, and potential groundwater recharge (bottom drainage) relative to CPMs. In fact, one could make the argument that differences would only become more pronounced were such analysis conducted at a basin/regional scale.

The low infiltration rates and high rainfall intensities typical of drylands partition rainfall into some combination of surface runoff and infiltration (Zhu et al., 2018; Aryal et al., 2020), where runoff is predominately generated via the infiltration-excess overland flow mechanism (Hortonian overland flow) (Horton, 1933). Whether runoff is generated is a function of storm characteristics and land surface properties, with only the most intense rainfall events able to generate enough surface runoff to form the ephemeral channels/pools that lead to large recharge events (R Taylor et al., 2013; Schreiner-McGraw et al., 2019). If one was to use a basin/regional scale process-based dryland hydrological model that accounts for these processes (Quichimbo et al., 2021), it is reasonable to assume that the more intense rainfall (Prein et al., 2015, Kouadio et al., 2018; Berthou et al., 2019; Kendon et al., 2019; Finney et al., 2019; 2020; Luu et al., 2022) and higher surface runoff (Folwell et al., 2022) when using CPMs as a driving dataset (relative to conventional parameterised models) would yield more realistic surface runoff patterns and greater non-local recharge. Furthermore, within such a basin/regional simulation, local infiltration in response to light rainfall is still more likely to be lost to evaporation (as this study has demonstrated), so were one to drive a regional dryland model with parameterised climate model output (compared to a CPM), there would be less surface runoff available for non-local recharge, and less localised recharge.

Hence, regardless of the spatial scale (point-based or regional-scale), it is critical that any dryland hydrological study uses rainfall data that correctly captures rainfall totals and characteristics, discounting either risk misrepresenting societally relevant aspects of the hydrological cycle. For example, it is quite evident that any dataset that underestimates the tails of the rainfall distribution will result in lower estimates of flood risk (Ascott et al., 2023; Archer et al., 2024), but biases in rainfall characteristics could also have implications for crop health and groundwater recharge projections. Our results showing that using CP4A increases the volume of water penetrating deeper into the soil profile and higher transpiration rates which continue longer into the dry season (Folwell et al., 2022) suggests forcing crop models using parameterised climate model rainfall could result in an underestimation of crop yields and an overestimation of the risk of failure. Although equally, taking P25 as an example, lower rainfall intensities (reduced crop flooding) and shorter dry periods (lower water stress) could lead to overly optimistic projections of crop health relative to CP4A. Either way, it is clear that for dryland regions of sub-Saharan Africa, where livelihoods are heavily dependent on subsistence agriculture and pasture (Davenport et al., 2017, 2018; Hoffman et al., 2022), ensuring agricultural impact assessments use data that represents dryland rainfall characteristics is critical for providing more realistic projections of future change.

Driving hydrological models with datasets that correctly represent dryland rainfall characteristics could also be used to produce more realistic projections of future groundwater resources, the only source of perennial freshwater in drylands (MacDonald et al., 2012). Because as discussed above, groundwater recharge is highly sensitive to rainfall characteristics (R Taylor et al., 2013; Batalha et al., 2018; Boas and Mallants, 2022) and does not linearly trend with higher seasonal rainfall totals. For example, in the context of the HOA, despite a decline in seasonal rainfall totals, groundwater storage is increasing driven by a positive trend in extreme rainfall intensity (Adloff et al., 2022). In the HOA and drylands more broadly, future water resources will not simply follow changes in mean seasonal rainfall

(even at point-scale where we exclude critical non-local processes, our results show enhanced drainage from the bottom of the soil profile when forcing Hydrus with CP4A despite lower seasonal rainfall), so it is critical any future assessments of groundwater resources utilise driving datasets that capture dryland rainfall characteristics.

Although while CPMs may provide valuable insights into projected changes in future rainfall characteristics (Bethou et al., 2019; Kendon et al., 2019; Finney et al., 2019, 2020) they are not currently a panacea for the wider uncertainty that limits our understanding of future climate change impacts on water resources in the HOA. As while explicitly resolving convection can influence regional circulation patterns (Finney et al., 2020), CPMs still inherit the underlying uncertainties in the driving GCM, meaning it is unlikely they will resolve the failure of climate models to reproduce the observed drying trend in MAM rainfall over the last 30 years (named as the ‘East Africa Climate Paradox’) (Lyon and Vigaud, 2017; Wainwright et al., 2019; Schwarzwald and Seager, 2024) and their inability to capture important modes of variability and wider large-scale processes (Schwarzwald et al., 2023). So while robustly capturing rainfall characteristics is critical, the uncertainty and the computational costs associated with CPM simulations means utilising stochastic rainfall generators (Singer et al., 2018; Rios Gaona et al., 2024) and process-based scaling approaches consistent with CPM behaviour may a better approach for producing a range of plausible time-evolving futures in the HOA (Klein et al., 2021). Taking such a ‘storyline’ approach (Shepherd et al., 2018) could provide more valuable insights than simply forcing hydrological simulations using RCMs or GCMs that struggle to capture the mean climate state as well the dryland rainfall characteristics, as doing so risks producing misrepresentative projections of metrics such as soil moisture, transpiration, and groundwater recharge, which could contribute to sub-optimal decision making around long-term land use or water supply policy.

5. Conclusions

In this study, we find that explicitly resolving convection improves the ability of climate models to capture dryland rainfall characteristics compared with models that parameterise the average effects of convection, CP4A dramatically reduces the systemic ‘drizzle’ bias seen in P25, and better represents dry spell length, the magnitude of extremes, and the contribution of heavy rainfall events to seasonal totals. Despite using similar model physics and simulating comparable seasonal totals, the impact of convective representation on rainfall characteristics results in different hydrological outcomes when rainfall is propagated through a simple one-dimensional vadose-zone hydrological model. In dryland locations, using CP4A to drive Hydrus 1-D produces higher soil moisture, transpiration, and bottom drainage, despite simulating lower total rainfall and infiltration compared to P25. The ‘drizzle’ bias in P25 confines infiltration to the upper layers of the soil profile, where it is quickly returned to the atmosphere via evaporation. Our results also show that while PET can influence vadose-zone hydrological outcomes, dryland hydrology is more sensitive to the impact of convective representation on rainfall characteristics. These findings suggest that any impact assessments of dryland hydrological resources must carefully consider the spatiotemporal resolution and characteristics of rainfall datasets (or climate model rainfall), or they risk misrepresenting societally relevant aspects of the water cycle.

680

685

6. Appendices

690 6.1 Appendix A

Appendix A provides additional detail around the calculation PET as discussed in section 2.2.

As discussed, in section 2.2 dew point temperature is not directly outputted from either climate model, it was calculated using near-surface air temperature and relative humidity using the Clausius–Clapeyron approximation (Eq. (7)) (Alduchov and Eskridge, 1996). Relative humidity is also not directly outputted from the models, so to calculate relative humidity (RH) we used the following equation (Eq. (5)):

$$RH = \frac{\omega}{\epsilon + \omega} \frac{\epsilon + \omega_s}{\omega_s} \quad (5)$$

700 Where ω is the mixing ratio, ω_s is the saturation mixing ratio, and ϵ is the molecular weight ratio of vapor to dry air.

For the above equation ω is calculated using Eq. (6), where q is specific humidity:

$$\omega = \frac{q}{(1 - q)} \quad (6)$$

705

To calculate dew point temperature (we T_d) use the following equation (Eq. (7)):

$$T_d = \frac{b \cdot \gamma(T, RH)}{a - \gamma(T, RH)} \quad (7)$$

Where T is air temperature (in °C), RH is the relative humidity computed in Eq. (5), a refers to the empirical constant controlling the slope of the temperature–vapour pressure relationship ($a = 17.625$), and b is temperature intercept in the saturation vapour pressure curve ($b = 243.04$ °C). In the above equation $\gamma(T, RH)$ is computed using Eq. (8).

$$\gamma(T, RH) = \frac{a \cdot T}{b + T} + \ln\left(\frac{RH}{100}\right) \quad (8)$$

Eq. (6) – Eq. (10) provides details the equation used to calculate the saturation vapour pressure (e_s), actual vapour pressure (e_a), slope of saturation vapour pressure (Δ), net radiation (R_n), and the soil heat flux (G) used to compute PET in Eq 1 in the main body of text.

For use in Eq 1, e_s and e_a were calculated using the Tetens equation (Tetens, 1930) using hourly air temperature (T_a) and dew point temperature (T_{dew}) as detailed below (calculations are in in °C after converting from K):

$$e_s = 0.6108 \exp\left(\frac{17.27 * T_a}{T_a + 237.3}\right) \quad (9)$$

$$e_a = 0.6108 \exp\left(\frac{17.27 * T_{dew}}{T_{dew} + 237.3}\right) \quad (10)$$

The Slope of saturation vapour pressure (Δ) and the psychrometric constant (γ) were calculated as follows:

$$\Delta = \frac{4098 e_s}{(T_a + 237.3)^2} \quad (11)$$

$$\gamma = \frac{C_p * P}{\varepsilon * \lambda} \quad (12)$$

Where P is atmospheric pressure, C_p is the air's specific heat at constant pressure based on the ideal gas law with a value of 1.013×10^{-3} MJ kg⁻¹ per °C, ε is the ratio of the molecular weight of water vapor to that of dry air (0.622), and λ is the latent heat of vaporization, (2.45 MJ kg⁻¹).

Net radiation (R_n) is estimated using net solar (R_s) and thermal radiation (R_t) as (all values in MJ m⁻²):

$$R_n = R_s - R_t \quad (13)$$

Finally soil heat flux (G) is estimated as:

$$G = \begin{cases} G_{day} = 0.1 * R_n \\ G_{night} = 0.5 * R_n \end{cases} \quad (14)$$

Where the soil heat flux (G) is estimated to be 10% of net radiation (R_n) during the day and 50% during the night (as the night-time heat flux is negative). At each pixel we use net solar radiation to define day and nighttime periods. Following the method used to calculate hPET (Singer et al., 2021), nighttime PET values have not been automatically set to zero.

It is important to note that while other studies have used CP4A and other convection-permitting models to explore evapotranspiration (Folwell et al., 2022; Halladay et al., 2023, Lee and Hohenegger., 2024), they used internal model evapotranspiration (ET), rather than externally calculating PET from model-derived atmospheric variables. While studying internal ET is useful for exploring land-atmosphere interactions — particularly feedbacks between soil moisture and precipitation — it reflects the model’s internal assumptions about land surface properties, such as soil type and vegetation. In the case of CP4A, for example, ET is calculated using a uniform sandy soil across the entire domain, which limits its applicability in spatially heterogeneous hydrological studies. By contrast, externally calculating PET from model-derived atmospheric variables provides a consistent measure of atmospheric evaporative demand, independent of land surface parameterizations. For hydrological purposes where more detailed or locally calibrated soil and vegetation data is available, it is preferable to use the potential atmospheric evaporative demand (PET) computed using atmospheric climate model outputs.

6.2 Appendix B

[Appendix B provides additional figures and tables relevant to the analysis of Hydrus simulations \(section 3.3\). Fig. B1 shows the mean monthly CP4A and P25 rainfall at each of our four sites. Both models broadly capture the observed seasonality in the region \(Wainwright et al., 2019\), simulating the bimodal rainfall regime at our dryland sites \(Sites SA, A, and HA\) and the unimodal regime in the humid Ethiopian Highlands \(Site HU\). However, it is worth noting that P25 tends to simulate rainfall in every month \(including July and August\) at our dryland sites \(CP4A simulates negligible rainfall\) and simulates substantially higher rainfall totals during June and July at Site HU.](#)

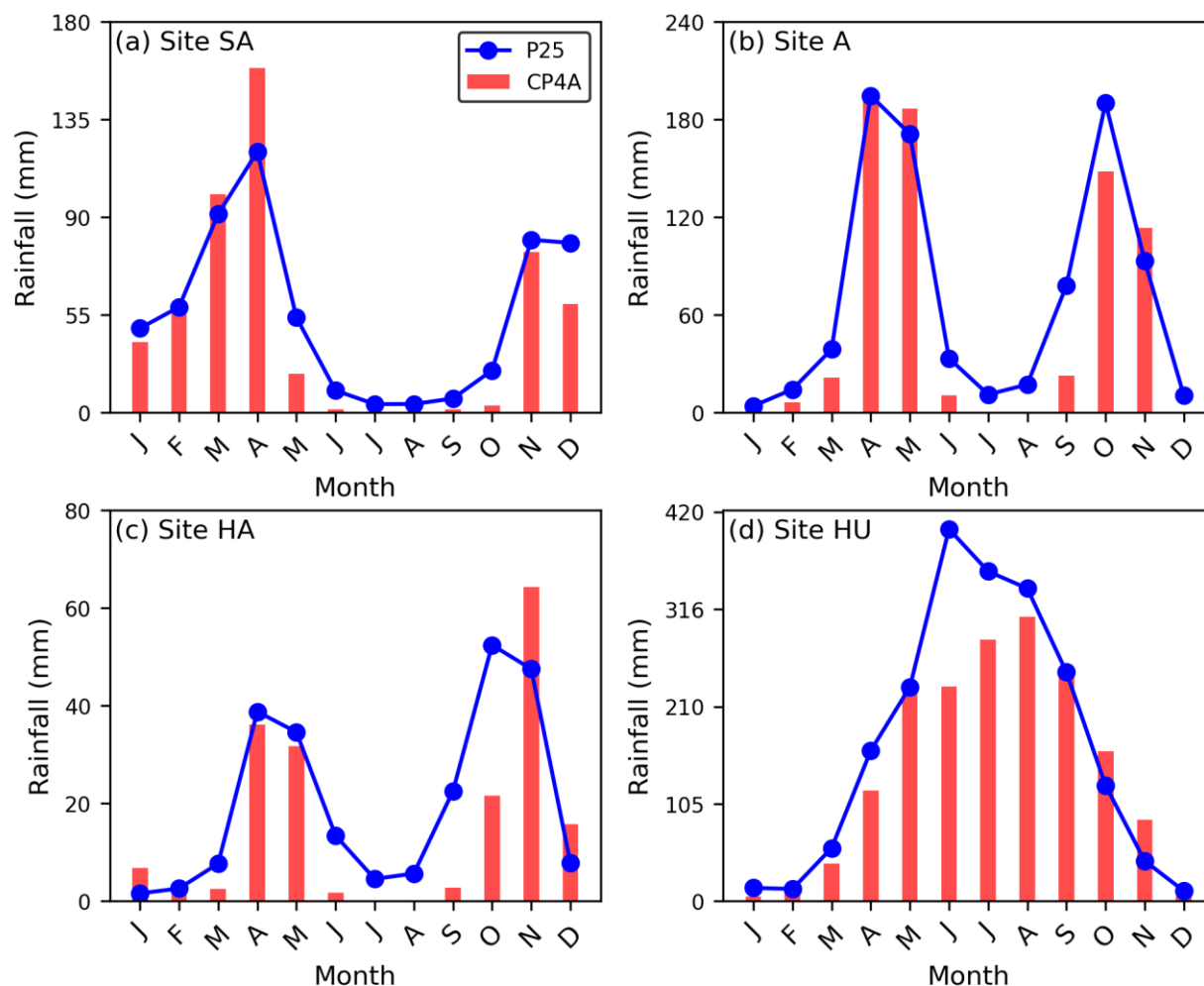


Figure B2 – Mean monthly rainfall at each of our four hydrological study sites.

Fig. B2 shows mean monthly CP4A and P25 PET at each of our four study sites. At all sites both models simulate comparable seasonal cycles and totals, although P25 consistently simulates higher PET at Sites A and HA. It is also worth noting that P25 simulates substantially higher PET during the months June – August, matching the higher JJAS PET simulated by P25 across the entire arid region of the HOA.

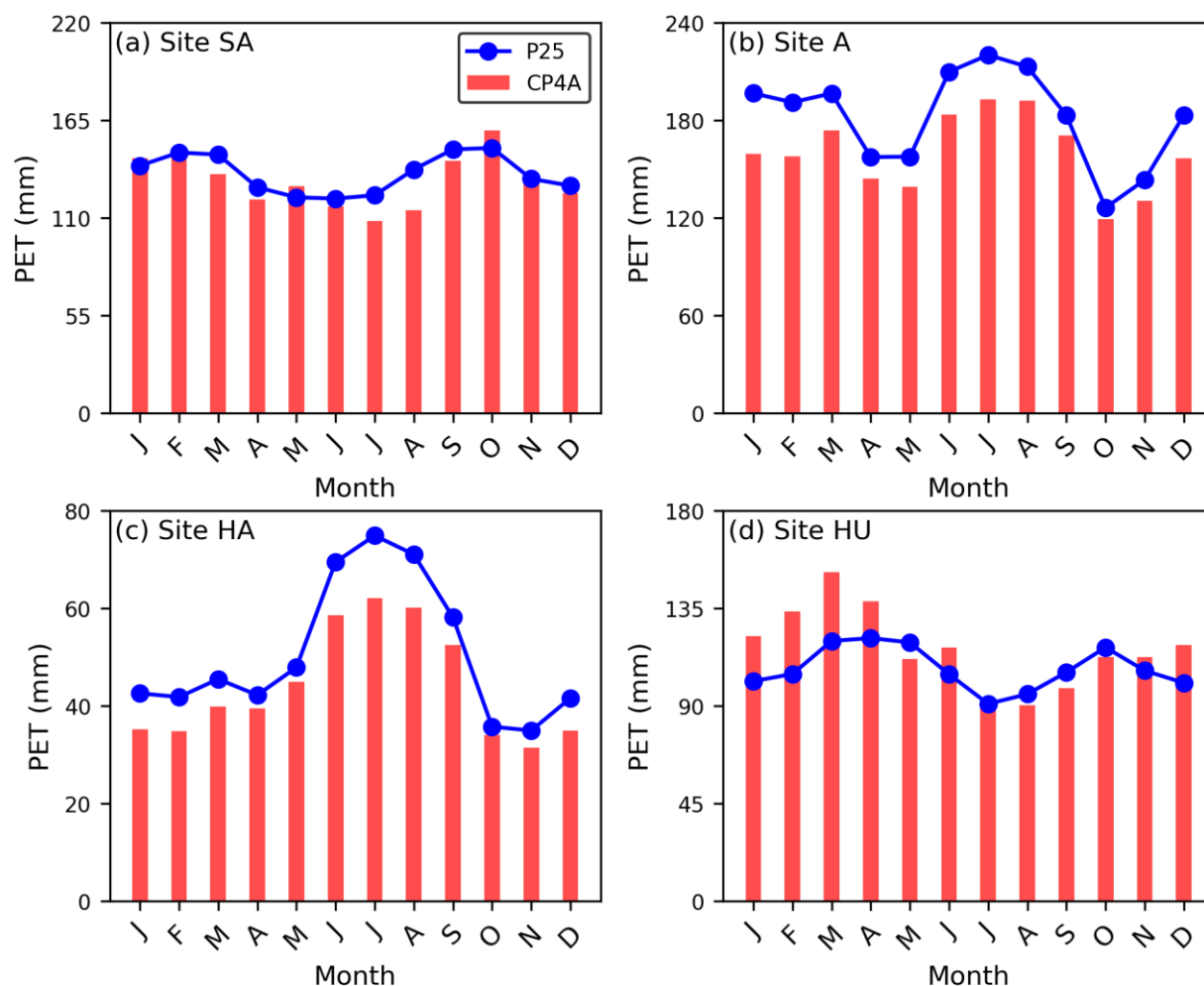


Figure B92 – Mean monthly PET at each of our four hydrological study sites.

Fig. B3 shows the raw time series of rainfall at each study site, it provides a clear demonstration of the tendency for CP4A to simulate heavier extreme rainfall events, as well as more frequent intense rainfall events at our dryland study sites (Sites SA, A, and HA). Whereas at our humid site in the Ethiopian Highlands, the differences are far more muted and at times it is P25 that is simulating heavier rainfall events.

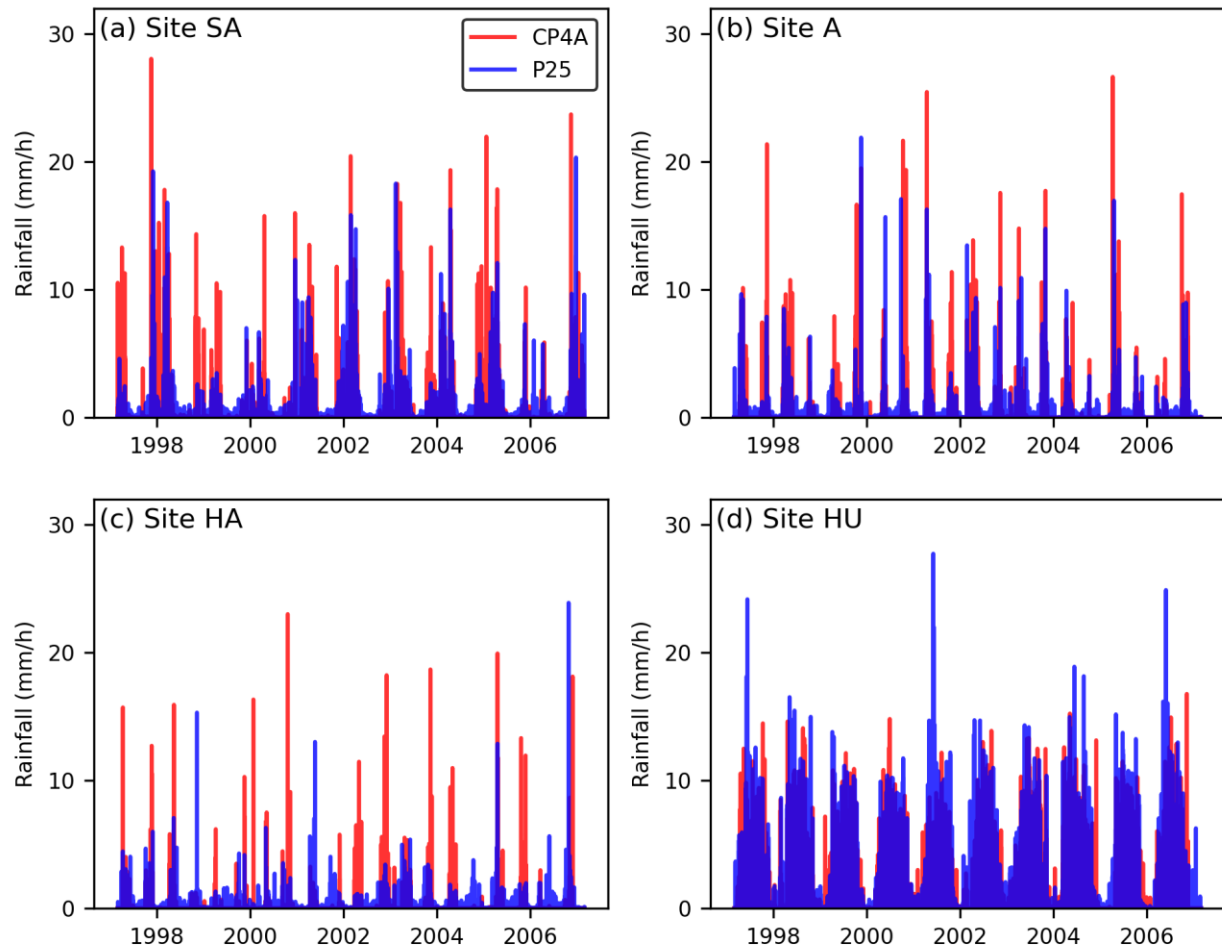


Figure BD3 – Raw time series of rainfall at each of our four hydrological study sites.

6.3 Appendix CB

Appendix CB details the parameters that were altered between the different Hydrus simulations used at each site.

Table C1 shows the Feddes' parameters used to compute transpiration (root water uptake) within Hydrus (Feddes, 1978). Where $P0$ is pressure value at which roots start to extract water from the soil, $POpt$ is the pressure head at which roots extract water at the maximum possible rate, $P2H$ is the pressure head at which roots can no longer extract water at the maximum possible rate (assumes a potential transpiration rate of $r2H$), $P2L$ is the same above but instead assumes a maximum possible transpiration rate of $r2L$, and $P3$ is the value of the pressure head at which roots can no uptake any water from the soil (wilting point). Vegetation type was taken from iSDA based on 2019 data (iSDA, 2024).

Hydrus has an internal database of Feddes' parameters for various crop types; the maize parameters were taken from this database and are based on Wesseling (1991). However, shrubs are not in this database and there is very little published information on Feddes' parameters for shrubs. We were able to locate some thresholds for dryland shrubs: *Acacia Mearsii*, *Caragana korshinkii*, and *Sarcopoterium spinosum* (Xia and Shao, 2008, Sela et al., 2015, Watson, 2015). Sela et al (2015) provided a range of Feddes' parameters used in their calibration process to correctly quantify transpiration rates of *Caragana korshinkii* in Hydrus 1-D, settling on an optimal parameter set (Table C1).

However, we decided to use the upper range (here referred to as def) of the parameters given by Sela et al (2015) as they better matched estimates given by Xia and Shoa (2008) and Watson (2015), particularly the wilting point. However, to ensure results any biases seen between CP4A and P25 Hydrus runs were consistent regardless of the Feddes' parameters chosen, we also used the optimal and lower values provided by Sela et al (2015) at sites SA and A (where shrubs are the dominant land cover). However, unless stated otherwise all results reported in the main body of text were computed using the upper (def) Feddes' values – **given in bold below**.

Feddes' Parameter	<i>P0 (mm)</i>	<i>POpt (mm)</i>	<i>P2H (mm)</i>	<i>P2L (mm)</i>	<i>P3 (mm)</i>	<i>r2H (mm/hr)</i>	<i>r2L (mm/hr)</i>
Shrubs Upper (def)	-150	-300	-5000	-15000	-240000	0.208	0.042
Shrubs Mid	-58	-224	-326	-6700	-15570	0.208	0.042
Shrubs Lower	0	-150	-300	-5000	-15000	0.208	0.042
Maize	-150	-300	-3250	-6000	-80000	0.208	0.042

Table C1 – Feddes parameters controlling root water uptake (transpiration) for shrubs and maize used in Hydrus 1-D simulations. Values were for shrubs were taken from Sela et al (2015) and maize from Wesseling (1991).

At each site we used three different soil hydraulic parameters (Table [CB24](#)): lowK, def, and highK. Where def (**given in bold**) refers to the default soil parameters that are used for all simulations discussed in the main text, lowK refers to low hydraulic conductivity simulations, and highK is high hydraulic conductivity simulations. For example, at Site A hydraulic conductivity (K_s) ranges from 3.5 mm/hr (lowK) to 21.8 mm/hr (highK).

These soil parameters were estimated using Genuchten-Mualem (Van Genuchten, 1980) equations based on soil texture values taken from the Innovate Solutions for Decision Agriculture (iSDA) soil database (Hengl et al., 2021). Where Q_r refers to residual soil water content, Q_s is the saturated water content, α is Parameter α in the soil water retention function [L^{-1}], n is parameter n in the soil water retention function, K_s is the saturated hydraulic conductivity [LT^{-1}], and I is the tortuosity parameter in the conductivity function [-]. iSDA provides a lower and upper bound of sand, silt, and clay percentages (Hengl et al., 2021), our default ('def') parameter set was estimated using the mid-point of these lower and upper bounds for each soil texture.

While to create our low ('lowK') and high hydraulic conductivity ('highK') soil parameters, we used the lower and upper bound of the sand percentage respectively, and then proportionally adjusted the silt and clay percentage to ensure values equalled 100. So, for example, our 'highK' scenarios have higher saturated hydraulic conductivity (K_s) as the relative percentage of sand is higher than in our 'def' and 'lowK' scenarios. We used the same labelling for each site as they follow the same methodology and are designed to be comparable across sites, although soil parameters will differ between sites based on the relative proportion of sand, silt, and clay at each site.

Site HU (Humid)							
Scenario	Depth	Q_r	Q_s	α	n	K_s (mm/hr)	I
LowK	0 - 20 cm	0.103	0.545	0.002	1.339	18.342	0.500
LowK	20 - 500 cm	0.105	0.543	0.002	1.315	15.650	0.500
Def	0 - 20 cm	0.096	0.525	0.002	1.384	19.117	0.500
Def	20 - 500 cm	0.100	0.529	0.002	1.349	17.833	0.500
HighK	0 - 20 cm	0.084	0.510	0.002	1.405	22.588	0.500

HighK	20 - 500 cm	0.090	0.512	0.002	1.384	19.996	0.500
Site SA (Semi-Arid)							
Scenario	Depth	Q_r	Q_s	α	n	K_s (mm/hr)	I
LowK	0 - 20 cm	0.076	0.416	0.001	1.405	3.221	0.500
LowK	20 - 500 cm	0.081	0.423	0.002	1.351	3.204	0.500
Def	0 - 20 cm	0.068	0.409	0.002	1.400	5.658	0.500
Def	20 - 500 cm	0.076	0.418	0.002	1.354	4.175	0.500
HighK	0 - 20 cm	0.066	0.408	0.002	1.401	6.663	0.500
HighK	20 - 500 cm	0.072	0.417	0.002	1.367	6.100	0.500
Site A (Arid)							
Scenario	Depth	Q_r	Q_s	α	n	K_s (mm/hr)	I
LowK	0 - 20 cm	0.081	0.431	0.001	1.426	3.542	0.500
LowK	20 - 500 cm	0.085	0.436	0.001	1.404	3.338	0.500
Def	0 - 20 cm	0.067	0.418	0.002	1.415	7.558	0.500
Def	20 - 500 cm	0.069	0.419	0.002	1.404	6.363	0.500
HighK	0 - 20 cm	0.055	0.414	0.003	1.475	21.817	0.500
HighK	20 - 500 cm	0.058	0.413	0.002	1.439	16.004	0.500
Site HA (Hyper-Arid)							
Scenario	Depth	Q_r	Q_s	α	n	K_s (mm/hr)	I
LowK	0 - 20 cm	0.070	0.417	0.002	1.400	5.779	0.500
LowK	20 - 500 cm	0.069	0.417	0.002	1.394	6.783	0.500
Def	0 - 20 cm	0.067	0.417	0.002	1.406	7.633	0.500
Def	20 - 500 cm	0.069	0.417	0.002	1.394	6.783	0.500
HighK	0 - 20 cm	0.056	0.413	0.003	1.480	21.646	0.500
HighK	20 - 500 cm	0.056	0.411	0.003	1.466	19.329	0.500

Table CB24 - Soil Hydraulic parameters used in all Hydrus simulation at our humid (HU), semi-arid (SA), arid (A), and hyper-arid (HA) sites across the HOA.

Table B2 shows the Feddes' parameters used to compute transpiration (root water uptake) within Hydrus (Feddes, 1978). Where P_0 is pressure value at which roots start to extract water from the soil, POp_1 is the pressure head at which roots extract water at the maximum possible rate, P_2H is the pressure head at which roots can no longer extract water at the maximum possible rate (assumes a potential transpiration rate of r_2H), P_2L is the same above but instead assumes a maximum possible transpiration rate of r_2L , and P_3 is the value of the pressure head at which roots can no uptake any water from the soil (wilting point). Vegetation type was taken from iSDA based on 2019 data (iSDA, 2024).

Hydrus has an internal database of Feddes' parameters for various crop types; the maize parameters were taken from this database and are based on Wesseling (1991). However, shrubs are not in this database and there is very little published information on Feddes' parameters for shrubs. We were able to locate some thresholds for dryland shrubs: *Acacia Mearsii*, *Caragana korshinskii*, and *Sarcopoterium spinosum* (Xia and Shao, 2008, Sela et al., 2015, Watson, 2015). Sela et al (2015) provided a range of Feddes' parameters used in their calibration process to correctly quantify transpiration rates of *Caragana korshinskii* in Hydrus 1-D, settling on an optimal parameter set (Table B2). However, we decided to use the upper range (here referred to as def) of the parameters given by Sela et al (2015) as they better matched estimates given by Xia and Shao (2008) and Watson (2015), particularly the wilting point. However, to ensure results any biases seen between CP4A and P25 Hydrus runs were consistent regardless of the Feddes' parameters chosen, we also used the optimal and lower values provided by Sela et al (2015) at sites SA and

A (where shrubs are the dominant land cover). However, unless stated otherwise all results reported in the main body of text were computed using the upper (def) Feddes' values—given in bold below.

Feddes' Parameter	<i>P0</i> (mm)	<i>POpt</i> (mm)	<i>P2H</i> (mm)	<i>P2L</i> (mm)	<i>P3</i> (mm)	<i>r2H</i> (mm/hr)	<i>r2L</i> (mm/hr)
Shrubs Upper (def)	-150	-300	-5000	-15000	-240000	0.208	0.042
Shrubs Mid	-58	-224	-326	-6700	-15570	0.208	0.042
Shrubs Lower	0	-150	-300	-5000	-15000	0.208	0.042
Maize	-150	-300	-3250	-6000	-80000	0.208	0.042

Table B2— Feddes parameters controlling root water uptake (transpiration) for shrubs and maize used in Hydrus 1-D simulations. Values were for shrubs were taken from Sela et al (2015) and maize from Wesseling (1991).

6.4 Appendix [D](#)

Appendix [D](#) provides additional figures and materials on the analyses of CP4A/P25 rainfall and PET simulations (sections 3.1 and 3.2). Fig. [D](#)1 is a replication of Fig. 3 in the main body of text, plotting the distribution of rainfall intensities for all rainfall hours (based on a threshold of 0.1 mm/hr) for humid (AI \geq 0.65) and dryland regions (AI $<$ 0.50) in each season across the HOA. The plots highlight the 'drizzle' effect simulated by P25 (shown by the large frequency peaks in rain hours between 10^{-1} and 10^1 mm/hr) is consistent across seasons, with P25 overestimating the number of wet hours in both wet (MAM & OND) and dry (JF & JJAS) seasons.

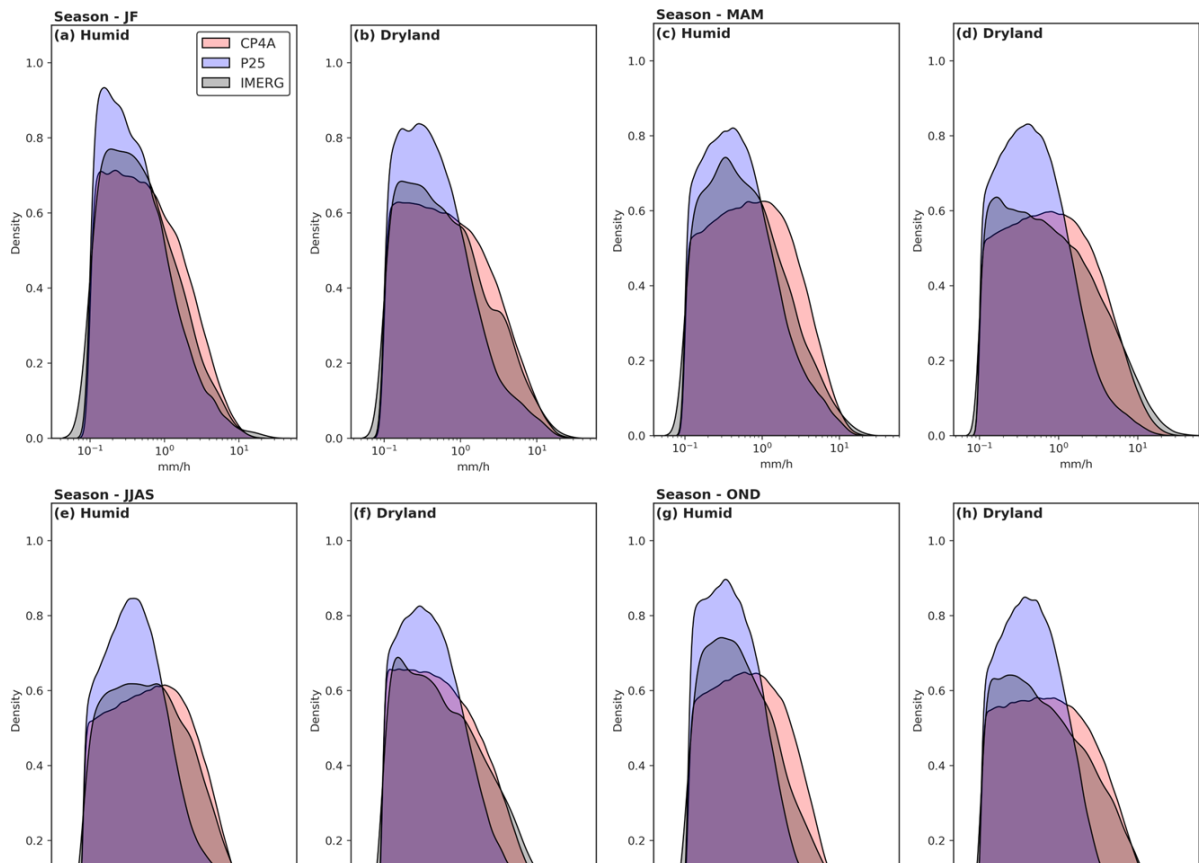


Figure [D](#)1. Rainfall KDE Plots. Kernel density estimate (kde) plots of CP4A, P25, and IMERG hourly rainfall in humid (AI \geq 0.65) and dryland (AI $<$ 0.5) regions of the Horn of Africa for JF (a-b), MAM (c-d), JJAS (e-f), and OND (g-h). Plots exclude dry hours by dropping any hours that receive $<$ 0.1 mm/hr of rainfall.

To understand the drivers of PET differences between CP4A and P25 we conducted a multiple-linear regression between PET and the seven atmospheric variables described in section 2.2. Table [D€1](#) shows the results of this multi-linear regression between the daily PET climatology and the daily climatology of the seven atmospheric variables used to compute PET in humid and arid regions of the Horn of Africa (discussed in section 3.2).

<u>Humid Regions</u>					
Variable	Coefficient	Std Error	P> t	0.025 CI	0.975 CI
Temp	0.127 (0.438)	0.028 (0.046)	0 (0.000)	0.072 (0.349)	0.182 (0.529)
Dew Point	0.152 (-0.129)	0.021 (0.031)	0 (0.000)	0.112 (-0.191)	0.193 (-0.068)
Surface Pressure	0.0001 (-0.002)	0.000 (0.000)	0.58 (0.000)	0.000 (-0.002)	0.000 (-0.001)
Short Wave Radiation	7.2e-7 (7.9e-07)	1.6e-7 (2.2e-7)	0.000 (0.001)	4.1e-7 (3.4e-7)	1.0e-6 (1.2e-6)
Long Wave Radiation	-7.9e-6 (2.6e-6)	1.4e-6 (1.8e-6)	0.000 (0.149)	-1.1E-5 (-9.5e-7)	-5.1E-6 (6.2e-6)
Meridional Wind	0.041 (-0.108)	0.024 (0.034)	0.081 (0.002)	-0.005 (-0.174)	0.088 (-0.041)
Zonal Wind	-0.181 (-0.178)	0.027 (0.039)	0 (0.000)	-0.235 (-0.255)	-0.127 (-0.100)
<u>Arid Regions</u>					
<u>Variable</u>	<u>Coefficient</u>	<u>Std Error</u>	<u>P> t </u>	<u>0.025 CI</u>	<u>0.975 CI</u>
Temp	0.285 (0.232)	0.033 (0.027)	0.000 (0.000)	0.220 (0.179)	0.349 (0.285)
Dew Point	-0.364 (-0.391)	0.026 (0.018)	0.000 (0.000)	-0.401 (-0.426)	-0.327 (-0.356)
Surface Pressure	0.0009 (-0.001)	0.000 (0.000)	0.58 (0.000)	-0.001 (-0.001)	-0.001 (-0.000)
Short Wave Radiation	2.0e-06 (7.0e-6)	2.1e-07 (4.5e-7)	0.000 (0.001)	1.6e-06 (6.1e-06)	2.4e-06 (7.8e-06)
Long Wave Radiation	9.6e-06 (1.2e-5)	1.4e-06 (1.2e-6)	0.000 (0.149)	6.8e-06 (1.0e-5)	1.2e-05 (1.5e-5)
Meridional Wind	0.178 (0.103)	0.025 (0.019)	0.000 (0.002)	0.130 (0.066)	0.226 (0.139)
Zonal Wind	-0.095 (0.016)	0.026 (0.019)	0.000 (0.000)	-0.146 (-0.022)	-0.044 (0.053)

Table [D€1](#) - Results of the multi-linear regression analysis on the drivers of PET in CP4A and P25 in humid (top panel) ($AI \geq 0.65$) and arid ($AI < 0.2$) regions of the HOA. Bold values refer to CP4A, while non-bold values refer to P25.

Table [D€1](#) suggests meridional wind speed is relatively important in arid regions, Fig. [D€2](#) shows the daily meridional wind speed climatology in arid regions of the Horn of Africa. It appears that the positive significant relationship between meridional wind speed and PET (Table [D€1](#)) is the driving factor behind higher PET in P25 during the months of June to September (see Fig. 3g), as Fig. [D€2](#) closely matches Fig. 3g.

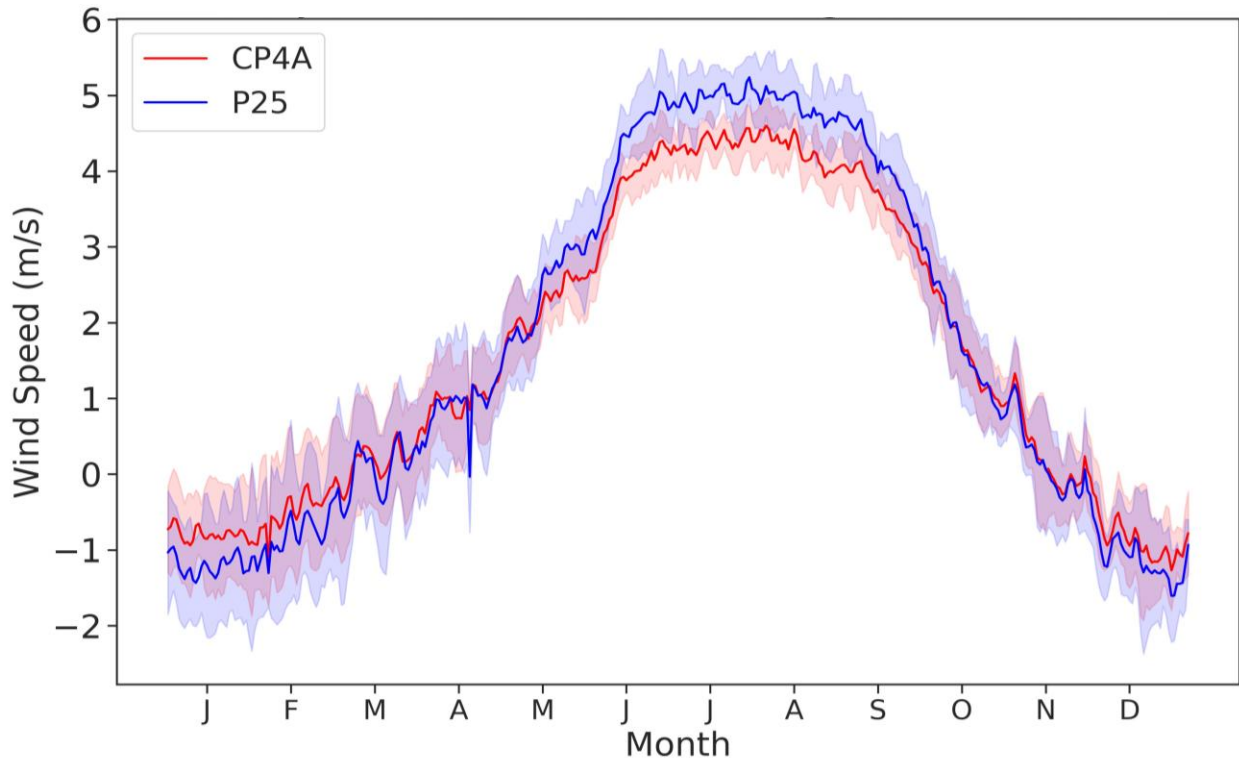


Figure [D€2](#) - Daily climatology of meridional wind speed in arid ($AI < 0.2$) regions of the HOA.

6.5 Appendix E

Appendix D provides additional figures and tables relevant to the analysis of Hydrus simulations (section 3.3). Fig. D1 shows the mean monthly CP4A and P25 rainfall at each of our four sites. Both models broadly capture the observed seasonality in the region (Wainwright et al., 2019), simulating the bimodal rainfall regime at our dryland sites (Sites SA, A, and HA) and the unimodal regime in the humid Ethiopian Highlands (Site HU). However, it is worth noting that P25 tends to simulate rainfall in every month (including July and August) at our dryland sites (CP4A simulates negligible rainfall) and simulates substantially higher rainfall totals during June and July at Site HU.

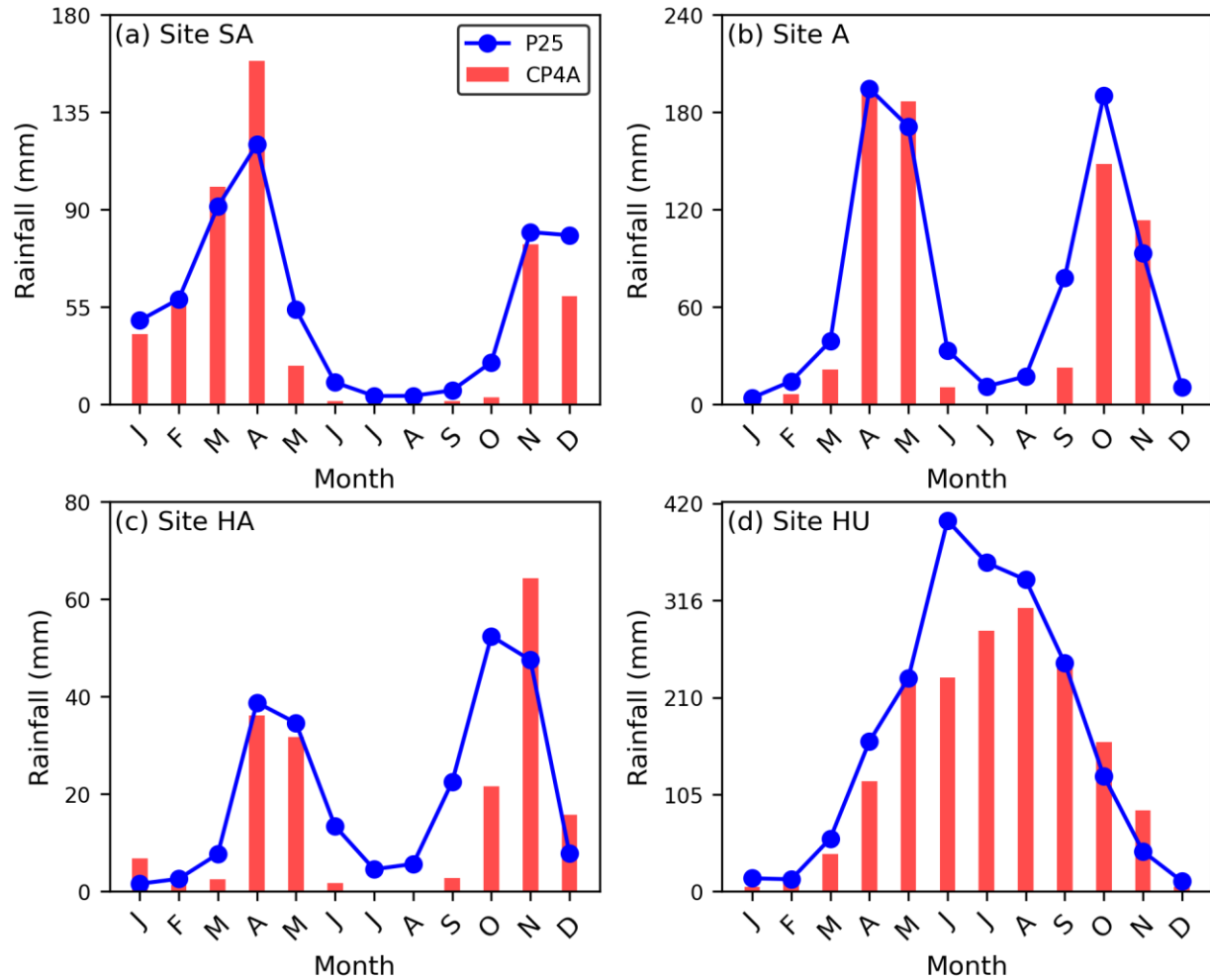


Fig. D2 shows mean monthly CP4A and P25 PET at each of our four study sites. At all sites both models simulate comparable seasonal cycles and totals, although P25 consistently simulates higher PET at Sites A and HA. It is also worth noting that P25 simulates substantially higher PET during the months June–August, matching the higher JJAS PET simulated by P25 across the entire arid region of the HOA.

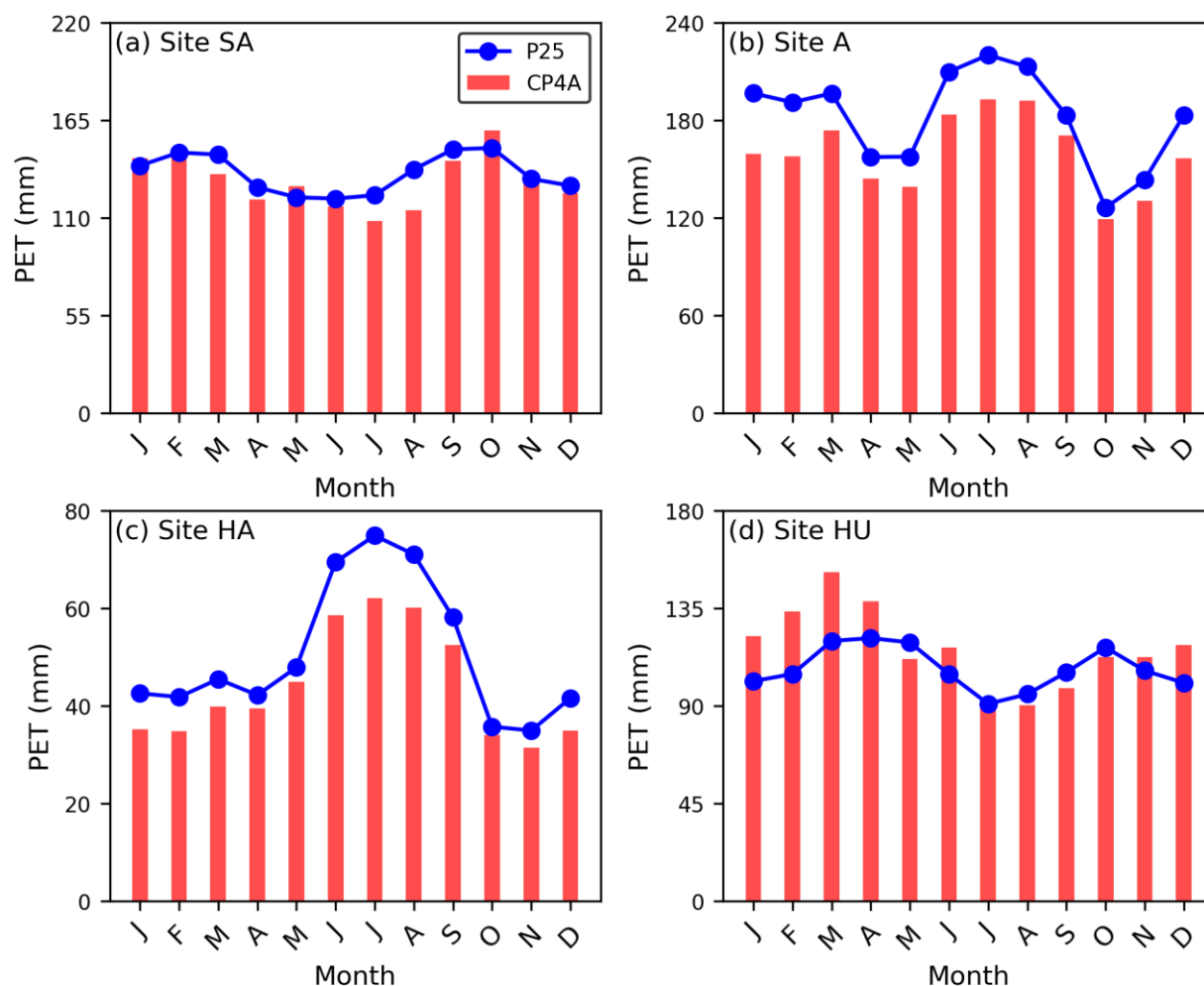


Figure D2 – Mean monthly PET at each of our four hydrological study sites.

Fig. D3 shows the raw time series of rainfall at each study site, it provides a clear demonstration of the tendency for CP4A to simulate heavier extreme rainfall events, as well as more frequent intense rainfall events at our dryland study sites (Sites SA, A, and HA). Whereas at our humid site in the Ethiopian Highlands, the differences are far more muted and at times it is P25 that is simulating heavier rainfall events.

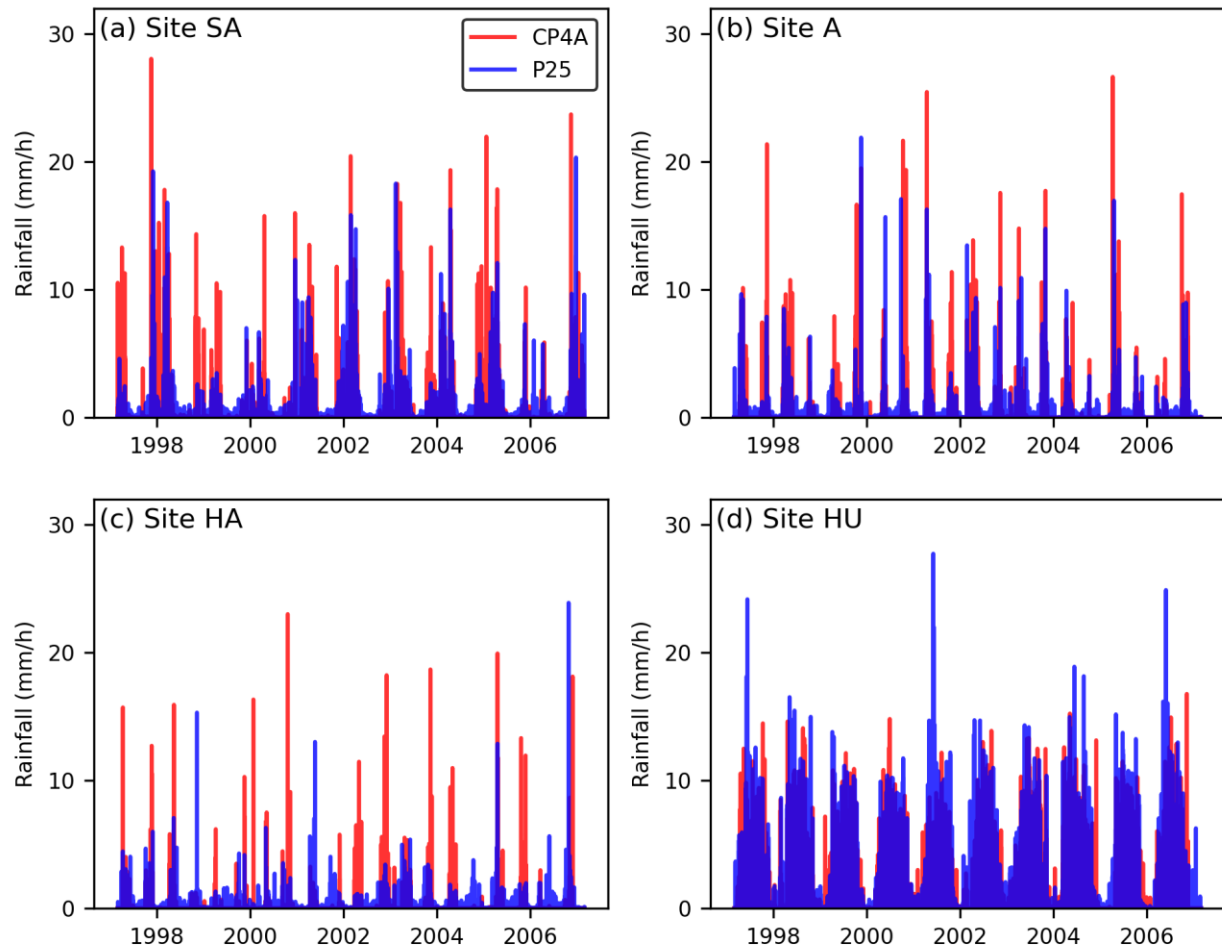


Figure D3 – Raw time series of rainfall at each of our four hydrological study sites.

The following tables will provide additional detail on the soil moisture results for each site, building and
 885 complimenting what was discussed in the main body of text.

Table [ED1](#) shows that differences in soil moisture distributions are more pronounced (based on the Kolmogorov-Smirnov Test statistic) at the dryland sites versus Site HU. In all cases there are statistically significant differences
 890 between the CP4A and P25 runs ($p < 0.05$).

Depth (meters below ground level)	Site SA	Site A	Site HA	Site HU
0.2 mbgl	0.16	0.14	0.74	0.07
0.6 mbgl	0.22	0.27	0.89	0.07
0.9 mbgl	0.22	0.44	0.93	0.08
1.2 mbgl	0.23	0.40	0.94	0.08
1.5 mbgl	0.35	0.49	0.98	0.08
1.8 mbgl	0.46	0.15	0.99	0.09
2.1 mbgl	0.41	0.00	1.00	0.09

2.4 mbgl	0.49	0.00	1.00	0.09
2.7 mbgl	0.38	0.00	1.00	0.09
3.0 mbgl	0.38	0.00	0.85	0.08

Table [E1](#) - Kolmogorov–Smirnov (KS) test statistics comparing soil moisture distributions at our hydrological four sites across different depths. Higher KS values indicate greater differences between distributions. All results are statistically significant ($p < 0.05$). Site HA consistently shows the largest differences, while Site HU exhibits the smallest KS values, suggesting the least divergence. All results refer to Hydrus simulations driven by CP4A rainfall and PET using default soil and Feddes’ parameters.

Table E2 shows that forcing Hydrus with CP4A rainfall also yields higher soil moisture values regardless of the Feddes’ parameters (Table C1) used to estimate the root water uptake (transpiration) of dryland shrubs.

<u>Hydrus Run (depth meters below ground level)</u>	<u>Site SA (Semi-Arid)</u>	<u>Site A (Arid)</u>
<u>Low (least water resilient) Feddes’ Parameters (1.2 mbgl)</u>	<u>6.2</u>	<u>3.6</u>
<u>Low (least water resilient) Feddes’ Parameters (3.0 mbgl)</u>	<u>10.7</u>	<u>2.4</u>
<u>Mid Feddes’ Parameters (1.2 mbgl)</u>	<u>6.4</u>	<u>8.5</u>
<u>Mid Feddes’ Parameters (3.0 mbgl)</u>	<u>10.9</u>	<u>4.7</u>
<u>Default/Upper (most water resilient) Feddes’ Parameters (1.2 mbgl)</u>	<u>10.3</u>	<u>15.5</u>
<u>Default/Upper (most water resilient) Feddes’ Parameters (3.0 mbgl)</u>	<u>20.7</u>	<u>9.1</u>

Table E2 - Relative percentage difference in median depth integrated soil moisture between CP4A and P25 Hydrus runs. Default/Upper (given in bold) refers to the default Feddes’ parameters that are used for all simulations discussed in the main text, low refers to simulations using the low (least water resilient) Feddes’ parameters, and mid refers to simulations using the mid-range Feddes’ parameter set. The low, mid, and upper Feddes’ parameters are taken from Sela et al (2015). See Appendix C Table C1 for more details on each simulation. For all values reported, it is a positive percentage difference between CP4A and P25 soil moisture. Eg CP4A simulates higher soil moisture in all cases.

Table [E32](#) shows that forcing Hydrus with CP4A rainfall yields higher soil moisture values regardless of the soil hydraulic parameters used (Table [CB2+](#)).

Hydrus Run (depth - meters below ground level)	Site SA	Site A	Site HA	Site HU
Low Hydraulic Conductivity (1.2 mbgl)	10.6	10.5	17.0	5.2
Low Hydraulic Conductivity (3.0 mbgl)	14.4	5.1	14.7	2.5
Default (1.2 mbgl)	10.3	15.5	21.4	2.5
Default (3.0 mbgl)	20.7	9.1	19.4	5.2
High Hydraulic Conductivity (1.2 mbgl)	10.4	32.0	22.3	5.7
High Hydraulic Conductivity (3.0 mbgl)	22.6	21.9	25.5	2.6

Table [E32](#) – Relative percentage difference in median depth integrated soil moisture between CP4A and P25 Hydrus runs. Default (given in bold) refers to the default soil parameters that are used for all simulations discussed in the main body of text, lowK refers to low hydraulic conductivity simulations, and highK is high hydraulic conductivity simulations. See Appendix 6.2 (Table [CB2](#)) for more details on each simulation. For all values reported, it is a positive percentage difference between CP4A and P25 soil moisture. Eg CP4A simulates higher soil moisture in all cases.

Table D3 shows that forcing Hydrus with CP4A rainfall also yields higher soil moisture values regardless of the Feddes' parameters (Table B2) used to estimate the root water uptake (transpiration) of dryland shrubs (Table D3).

Hydrus Run (depth meters below ground level)	Site SA (Semi-Arid)	Site A (Arid)
Low (least water resilient) Feddes' Parameters (1.2 mbgl)	6.2	3.6
Low (least water resilient) Feddes' Parameters (3.0 mbgl)	10.7	2.4
Mid Feddes' Parameters (1.2 mbgl)	6.4	8.5
Mid Feddes' Parameters (3.0 mbgl)	10.9	4.7
Default/Upper (most water resilient) Feddes' Parameters (1.2 mbgl)	10.3	15.5
Default/Upper (most water resilient) Feddes' Parameters (3.0 mbgl)	20.7	9.1

Table D3—Relative percentage difference in median depth integrated soil moisture between CP4A and P25 Hydrus runs. Default/Upper (given in bold) refers to the default Feddes' parameters that are used for all simulations discussed in the main text, low refers to simulations using the low (least water resilient) Feddes' parameters, and mid refers to simulations using the mid-range Feddes' parameter set. The low, mid, and upper Feddes' parameters are taken from Sela et al (2015). See Appendix 6.2 for more details on each simulation. For all values reported, it is a positive percentage difference between CP4A and P25 soil moisture. Eg CP4A simulates higher soil moisture in all cases.

Running Hydrus with CP4A rainfall and hPET PET data (rather than CP4A PET) also demonstrates that differences in soil moisture between the CP4A and P25 Hydrus runs are primarily driven by rainfall (Table E4). As while the KS test statistic is lower (suggesting smaller differences in soil moisture distributions) compared to Hydrus simulations driven by CP4A rainfall and PET (Table E1D4), there are still statistically significant differences between CP4A and P25 at all sites ($p < 0.05$) and at all depths. The tendency for the KS statistic to be higher in drylands also remains (Table E4).

CP4A + hPET Hydrus Runs	Depth	Site SA	Site A	Site HA	Site HU
	0.2 mbgl	0.12	0.13	0.67	0.09
	0.6 mbgl	0.16	0.28	0.84	0.10
	0.9 mbgl	0.14	0.37	0.86	0.10
	1.2 mbgl	0.19	0.29	0.86	0.10
	1.5 mbgl	0.30	0.19	0.85	0.10
	1.8 mbgl	0.33	0.12	0.84	0.10
	2.1 mbgl	0.35	0.00	0.85	0.10
	2.4 mbgl	0.27	0.00	0.83	0.10
	2.7 mbgl	0.34	0.00	0.80	0.10
	3.0 mbgl	0.20	0.00	0.79	0.10

Table E4 - Kolmogorov–Smirnov (KS) test statistics comparing soil moisture distributions at our hydrological four sites across different depths. Higher KS values indicate greater differences between distributions. All results are statistically significant ($p < 0.05$). Compared to Hydrus simulations driven by CP4A rainfall and PET, those driven by CP4A rainfall and hPET exhibit marginally lower KS values. However, all results remain statistically significant ($p < 0.05$), the KS test statistic at Site HU still exhibit the smallest values, suggesting the least divergence.

The following tables provide additional detail around the water balance components results discussed in section 3.3.

Table [E5](#) shows the same results as Table 6 in the main body of text, but for the Hydrus simulations using CP4A rainfall and hPET PET (rather than CP4A PET). It shows that while the raw values differ, the pattern where P25 loses more infiltration to evaporation and CP4A simulates higher transpiration and bottom drainage remains.

CP4A/hPET Hydrus Run	Rainfall (mm)	PET (mm)	Runoff (mm)	Infiltration (mm)	ET (mm)	Evaporation (mm)	Transpiration (mm)	Drainage (mm)
Site SA	5952 (6669)	15243	566 (246)	5450 (6405)	6052 (7007)	3936 (5382)	2117 (1625)	162 (22)
Site A	3521 (4289)	20223	158 (10)	3330 (4297)	2637 (3789)	2637 (3789)	693 (509)	0 (0)
Site HA	1849 (2394)	18972	94 (51)	1750 (2325)	N/A	1665 (2291)	N/A	36 (1)
Site HU	17333 (20003)	13086	0 (29)	17171 (19810)	10926 (11237)	4188 (4620)	6737 (6617)	6601 (8634)

Table [E5](#) – Cumulative rainfall, potential evapotranspiration (PET), runoff, infiltration, evapotranspiration (ET), evaporation, transpiration, and drainage from the bottom of the soil profile. All values are given in mm and are the totals over the entire ten-year Hydrus simulations. All results are taken from the default (soil and Feddes’ parameters) Hydrus runs forced with CP4A/P25 rainfall and hPET, rather than climate model PET. Those values given in brackets are the P25 rainfall Hydrus runs, all others are forced using CP4A rainfall.

Table [E6](#) shows the cumulative water balance values at sites SA and A under our different Feddes’ parameters (Table [C1](#)), it shows that whether we use the most or least water resilient set of parameters, the results remain consistent (P25 – higher evaporative losses, CP4A – higher transpiration, runoff, and bottom drainage).

Lower Feddes Run	Runoff	Infiltration	ET	Evaporation	Transpiration	Drainage
Site SA	611 (254)	5418 (6394)	5807 (6859)	3707 (5433)	2099 (1426)	394 (35)
Site A	176 (23)	3344 (4253)	3314 (4271)	2657 (3734)	657 (537)	4 (3)
Mid Feddes Run						
Site SA	610 (253)	5418 (6394)	5819 (6859)	3697 (5424)	2121 (1435)	382 (31)
Site A	226 (11)	3292 (4261)	3266 (4286)	2514 (3813)	752 (474)	4 (3)
Def Run Type						
Site SA	605 (250)	5423 (6398)	6003 (7044)	3611 (5320)	2392 (1724)	286 (23)
Site A	223 (22)	3297 (4254)	3255 (4283)	2402 (3598)	853 (694)	0 (0)

Table [E6](#) – Cumulative rainfall, potential evapotranspiration (PET), runoff, infiltration, evapotranspiration (ET), evaporation, transpiration, and drainage from the bottom of the soil profile. All values are given in mm and are the totals over the entire ten-year Hydrus simulations. The lower Feddes’ refers to simulations using the low (least water resilient) Feddes’ parameters, mid refers to simulations using the mid-range Feddes’ parameter set, and the Def run is our default run which uses the most water resilient parameter set (see Table [C1](#)). Def is the run reported in the main body of text. The low, mid, and upper (def) Feddes’ parameters are taken from Sela et al (2015). See Appendix C for more details on each simulation. Those values given in brackets are the P25 Hydrus runs, all others are forced by CP4A.

Table [E7](#) shows the same cumulative water balance components at each site under our low hydraulic conductivity (LK), high hydraulic conductivity (HK) scenarios. In line with the soil moisture results, altering soil hydraulic parameters does not alter the biases seen between CP4A and P25, where P25 loses more infiltration to evaporation and CP4A simulates higher transpiration, surface runoff, and bottom drainage. ~~The same can be said for the choice of~~

Feddes' parameters, Table D7 shows the cumulative water balance values at sites SA and A under our different Feddes' parameters. It shows that whether we use the high or low water resilient set of parameters, the results remain consistent (P25 — higher evaporative losses, CP4A — higher transpiration, runoff, and bottom drainage).

960

LK Run Type	Runoff (mm)	Infiltration (mm)	ET (mm)	Evaporation (mm)	Transpiration (mm)	Drainage (mm)
Site SA	983 (391)	5043 (6256)	5660 (6928)	3573 (5319)	2087 (1608)	145 (23)
Site A	326 (34)	3192 (4239)	3159 (4273)	2477 (3681)	681 (592)	0 (0)
Site HA	147 (66)	1700 (2314)	N/A	1590 (2273)	N/A	31 (2)
Site HU	4 (43)	17300 (19849)	10485 (11424)	4045 (4709)	6440 (6715)	7145 (8620)
HK Run Type						
Site SA	467 (197)	5564 (6450)	6116 (7075)	3590 (5294)	2525 (1781)	376 (24)
Site A	7 (0)	3512 (4273)	3458 (4308)	2357 (3599)	1100 (709)	0 (0)
Site HA	2 (4)	1846 (2377)	N/A	1641 (2271)	N/A	97 (5)
Site HU	0 (12)	17299 (19880)	10437 (11384)	3999 (4667)	6438 (6717)	7189 (8685)

Table E476 – Cumulative rainfall, potential evapotranspiration (PET), runoff, infiltration, evapotranspiration (ET), evaporation, transpiration, and drainage from the bottom of the soil profile. All values are given in mm and are the totals over the entire ten-year Hydrus simulations. lowK refers to low hydraulic conductivity simulations, and highK is high hydraulic conductivity simulations. Those values given in brackets are the P25 Hydrus runs, all others are forced by CP4A.

965

Table D7 shows the cumulative water balance values at sites SA and A under our different Feddes' parameters.

Lower Feddes Run	Runoff	Infiltration	ET	Evaporation	Transpiration	Drainage
Site SA	611 (254)	5418 (6394)	5807 (6859)	3707 (5433)	2099 (1426)	394 (35)
Site A	176 (23)	3344 (4253)	3314 (4271)	2657 (3734)	657 (537)	4 (3)
Mid Feddes Run						
Site SA	610 (253)	5418 (6394)	5819 (6859)	3697 (5424)	2121 (1435)	382 (31)
Site A	226 (11)	3292 (4261)	3266 (4286)	2514 (3813)	752 (474)	4 (3)
Def Run Type						
Site SA	605 (250)	5423 (6398)	6003 (7044)	3611 (5320)	2392 (1724)	286 (23)
Site A	223 (22)	3297 (4254)	3255 (4283)	2402 (3598)	853 (694)	0 (0)

Table D7 — Cumulative rainfall, potential evapotranspiration (PET), runoff, infiltration, evapotranspiration (ET), evaporation, transpiration, and drainage from the bottom of the soil profile. All values are given in mm and are the totals over the entire ten-year Hydrus simulations. The lower Feddes' refers to simulations using the low (least water resilient) Feddes' parameters, mid refers to simulations using the mid-range Feddes' parameter set, and the Def run is our default run which uses the most water resilient parameter set (see Table B2). Def is the run reported in the main body of text. The low, mid, and upper (def) Feddes' parameters are taken from Sela et al (2015). See Appendix 6.2 for more details on each simulation. Those values given in brackets are the P25 Hydrus runs, all others are forced by CP4A.

970

7. Code Availability

The code used to extract precipitation and all variables needed to compute climate model PET (as well as the code to compute PET) can be found at: <https://doi.org/10.6084/m9.figshare.28187072.v2>. All other code used to analyse CP4A rainfall/PET data and Hydrus simulations can be provided upon request.

8. Data Availability

CP4A and P25 data is publicly available at the Centre for Environmental Data Analysis Archive under the IMPALA: Improving model processes for African climate. The CP4A/P25 PET datasets for the Horn of Africa can be downloaded separately from <https://doi.org/10.6084/m9.figshare.28187072.v2>. Or you can use the provided code to compute PET for another domain. IMERG is publicly available at the NASA Global Precipitation Measurement Mission Data Directory, and the code needed to extract hPET data for any region of interest can be found at: <https://github.com/Dagmawi-TA/hPET>

9. Author Contribution

GB, KM, EK, MC, and MBS designed this study. GB performed all analysis of climate model data, PET computation, and all Hydrus simulations. EK facilitated access to CP4A data via JASMIN. KM and EK assisted GB in analysis of results. MC assisted in Hydrus parameterisation and model set up. All authors contributed to writing and revising the manuscript.

10. Acknowledgements

This work was funded by the UKRI Natural Research Environment Council under reference NE/S007504/1 with assistance from those funded under the Horizon 2020 DOWN2EARTH project. I would also like to acknowledge the UK Met Office, which provided additional funding and facilitated access to CP4A via JASMIN.

Aspects of the schematic of our Hydrus simulations provided in Fig. 2 were created with the use of Artificial Intelligence (DALL·E 3).

11. Competing Interests

The authors declare that they have no conflict of interest.

References

Adloff, M., Singer, M. B., MacLeod, D. A., Michaelides, K., Mehrnegar, N., Hansford, E., Funk, C., and Mitchell, D.: Sustained water storage in Horn of Africa drylands dominated by seasonal rainfall extremes, *Geophys. Res. Lett.*, 49, <https://doi.org/10.1029/2022GL099299>, 2022.

- Ageet, S., Fink, A. H., Maranan, M., Diem, J. E., Hartter, J., Ssali, A. L., and Ayabagabo, P.: Validation of satellite rainfall estimates over equatorial East Africa, *J. Hydrometeorol.*, 23, 129–151, <https://doi.org/10.1175/JHM-D-21-0145.1>, 2022.
- Alduchov, O.A. and Eskridge, R.E.: Improved Magnus form approximation of saturation vapor pressure. *Journal of Applied Meteorology*, pp.601-609, <https://www.jstor.org/stable/26187406>, 1996.
- Allen, R. G., Pereira, L. S., Raes, D., and Smith, M.: Crop evapotranspiration-Guidelines for computing crop water requirements-FAO Irrigation and Drainage Paper 56, FAO, Rome, 300 pp, 1998.
- Apurv, T., Sivapalan, M. and Cai, X.: Understanding the role of climate characteristics in drought propagation, *Water Resources Research*, 53(11), pp.9304-9329, <https://doi.org/10.1002/2017WR021445>, 2017.
- Archer, L., Hatchard, S., Devitt, L., Neal, J.C., Coxon, G., Bates, P.D., Kendon, E.J. and Savage, J: Future Change in Urban Flooding Using New Convection-Permitting Climate Projections, *Water Resources Research*, 60(1), <https://doi.org/10.1029/2023WR035533>, 2024.
- Aryal, S.K., Silberstein, R.P., Fu, G., Hodgson, G., Charles, S.P. and McFarlane, D.: Understanding spatio-temporal rainfall-runoff changes in a semi-arid region, *Hydrological Processes*, 34(11), pp.2510-2530, <https://doi.org/10.1002/hyp.13744>, 2020.
- Ascott, M.J., Christelis, V., Lapworth, D.J., Macdonald, D.M.J., Tindimugaya, C., Iragena, A., Finney, D., Fitzpatrick, R., Marsham, J.H. and Rowell, D.P.: On the application of rainfall projections from a convection-permitting climate model to lumped catchment models, *Journal of Hydrology*, 617, p.129097, <https://doi.org/10.1016/j.jhydrol.2023.129097>, 2023.
- Ban, N., Schmidli, J., and Schär, C.: Evaluation of the convection-resolving regional climate modeling approach in decade-long simulations, *J. Geophys. Res.-Atmos.*, 119, 7889–7907, <https://doi.org/10.1002/2014JD021478>, 2014.
- ~~Batalha, M. S., Barbosa, M. C., Faybishenko, B., and Van Genuchten, M. T.: Effect of temporal averaging of meteorological data on predictions of groundwater recharge, *J. Hydrol. Hydromech.*, 66, 143–152, DOI: 10.1515/johh-2017-0051, 2018.~~
- ~~Batalha, M. S., Barbosa, M. C., Faybishenko, B., and Van Genuchten, M. T.: Effect of temporal averaging of meteorological data on predictions of groundwater recharge, *J. Hydrol. Hydromech.*, 66, 143–152, 2018.~~
- Berthou, S., Rowell, D. P., Kendon, E. J., Roberts, M. J., Stratton, R. A., Crook, J. A., and Wilcox, C.: Improved climatological precipitation characteristics over West Africa at convection-permitting scales, *Clim. Dyn.*, 53, <https://doi.org/10.1007/s00382-019-04759-4>, 2019.
- Boas, T., and Mallants, D.: Episodic extreme rainfall events drive groundwater recharge in arid zone environments of central Australia, *J. Hydrol. Reg. Stud.*, 40, <https://doi.org/10.1016/j.ejrh.2022.101005>, 2022.
- ~~Bonsor, H.C. and MacDonald, A.M.: An initial estimate of depth to groundwater across Africa, <https://nora.nerc.ac.uk/id/eprint/17907>, 2011.~~
- ~~Bonsor, H.C. and MacDonald, A.M.: An initial estimate of depth to groundwater across Africa, 2011.~~
- Cheechi, F and Robinson, C. H.: Mortality among populations of southern and central Somalia affected by severe food insecurity and famine during 2010-2012, FAO, Rome, 87pp., 2013
- Clark, P., Roberts, N., Lean, H., Ballard, S. P., and Charlton-Perez, C.: Convection-permitting models: A step-change in rainfall forecasting, *Meteorol. Appl.*, 23, 165–181, <https://doi.org/10.1002/met.1538>, 2016.
- ~~Cocking, K., Singer, M.B., MacLeod, D., Cuthbert, M.O., Rosolem, R., Muthusi, F., Paron, P., Kimutai, J., Omondi, P., Hassan, A.M. and Teshome, A.: Locally defined seasonal rainfall characteristics within the Horn of Africa drylands from rain gauge observations, *Journal of Hydrometeorology*, 25(12), pp.1845-1861, <https://doi.org/10.1175/JHM-D-23-0228.1>, 2024.~~
- ~~Cocking, K., Singer, M.B., MacLeod, D., Cuthbert, M.O., Rosolem, R., Muthusi, F., Paron, P., Kimutai, J., Omondi, P., Hassan, A.M. and Teshome, A.: Locally defined seasonal rainfall characteristics within the Horn of Africa drylands from rain gauge observations. *Journal of Hydrometeorology*, 25(12), pp.1845–1861, 2024.~~
- Cook, P. A., Black, E. C., Verhoef, A., Macdonald, D. M. J., and Sorensen, J. P. R.: Projected increases in potential groundwater recharge and reduced evapotranspiration under future climate conditions in West Africa, *J. Hydrol. Reg. Stud.*, 41, 101076, <https://doi.org/10.1016/j.ejrh.2022.101076>, 2022.

Corona, C. R., and Ge, S.: Examining subsurface response to an extreme precipitation event using HYDRUS-1D, *Vadose Zone J.*, 21, <https://doi.org/10.1002/vzj2.20189>, 2022.

Crosbie, R. S., McCallum, J. L., Walker, G. R., Francis, H., and Chiew, S.: Modelling climate-change impacts on groundwater recharge in the Murray-Darling Basin, Australia, *Hydrogeol. J.*, 18, <https://doi.org/10.1007/s10040-010-0625-x>, 2010.

~~Crosbie, R. S., McCallum, J. L., Walker, G. R., Francis, H., and Chiew, S.: Modelling climate-change impacts on groundwater recharge in the Murray-Darling Basin, Australia, *Hydrogeol. J.*, 18, 2010.~~

Cuthbert, M. O., Acworth, R. I., Andersen, M. S., Larsen, J. R., McCallum, A. M., Rau, G. C., and Tellam, J. H.: Understanding and quantifying focused, indirect groundwater recharge from ephemeral streams using water table fluctuations, *Water Resour. Res.*, 52, 827–840, <https://doi.org/10.1002/2015WR017503>, 2016.

Cuthbert, M.O., Gleeson, T., Moosdorf, N., Befus, K.M., Schneider, A., Hartmann, J. and Lehner, B.: Global patterns and dynamics of climate-groundwater interactions, *Nature Climate Change*, 9(2), <https://doi.org/10.1038/s41558-018-0386-4>, 2019

Davenport, F., Grace, K., Funk, C., and Shukla, S.: Child health outcomes in sub-Saharan Africa: a comparison of changes in climate and socio-economic factors, *Global Environ. Change*, 46, 72–87, <https://doi.org/10.1016/j.gloenvcha.2017.04.009>, 2017.

Davenport, F., Funk, C., and Galu, G.: How will East African maize yields respond to climate change and can agricultural development mitigate this response?, *Clim. Change*, 147, 491–506, <https://doi.org/10.1007/s10584-018-2149-7>, 2018.

Dezfuli, A.K., Ichoku, C.M., Huffman, G.J., Mohr, K.I., Selker, J.S., van de Giesen, N., Hochreutener, R. and Annor, F.O.: Validation of IMERG precipitation in Africa, *Journal of Hydrometeorology*, 18(10), pp.2817-2825, <https://doi.org/10.1175/JHM-D-17-0139.1>, 2017.

FAO-SWALIM: Devastating floods overwhelm parts of Somalia, Somalia Flood Update Series: https://www.faoswalim.org/resources/site_files/Devastating%20floods%20Overwhelm%20parts%20of%20Somalia_0.pdf, last access: 19 October 2021.

Fan, Y., Li, H. and Miguez-Macho, G.: Global patterns of groundwater table depth, *Science*, 339(6122), pp.940-943, [10.1126/science.1229888](https://doi.org/10.1126/science.1229888), 2013.

~~Fan, Y., Li, H. and Miguez-Macho, G.: Global patterns of groundwater table depth. *Science*, 339(6122), pp.940-943, 2013.~~

Feddes, R. A.: Simulation of field water use and crop yield, in: *Simulation of Plant Growth and Crop Production*, pp. 194–209, <https://edepot.wur.nl/172222>. 1978.

~~Feddes, R. A.: Simulation of field water use and crop yield, in: *Simulation of Plant Growth and Crop Production*, pp. 194–209, 1978.~~

Finney, D. L., Marsham, J. H., Jackson, L. S., Kendon, E. J., Rowell, D. P., Boorman, P. M., Keane, R. J., Stratton, R. A., and Senior, C. A.: Implications of improved representation of convection for the East Africa water budget using a convection-permitting model, *J. Climate*, 32, 2109–2129, <https://doi.org/10.1175/JCLI-D-18-0387.1>, 2019.

Finney, D. L., Marsham, J. H., Rowell, D. P., Kendon, E. J., Tucker, S. O., Stratton, R. A., and Jackson, L. S.: Effects of explicit convection on future projections of mesoscale circulations, rainfall, and rainfall extremes over Eastern Africa, *J. Climate*, 33, 2701–2718, <https://doi.org/10.1175/JCLI-D-19-0328.1>, 2020.

Folwell, S.S., Taylor, C.M. and Stratton, R.A.: Contrasting contributions of surface hydrological pathways in convection permitting and parameterised climate simulations over Africa and their feedbacks on the atmosphere, *Climate Dynamics*, 59(1), pp.633-648., <https://doi.org/10.1007/s00382-022-06144-0>, 2022.

Funk, C., Shukla, S., Thiaw, W. M., Rowland, J., Hoell, A., McNally, A., Husak, G., Novella, N., Budde, M., Peters-Lidard, C., and Adoum, A.: Recognizing the famine early warning systems network: Over 30 years of drought early warning science advances and partnerships promoting global food security, *Am. Meteorol. Soc.*, 100, 1011–1027, <https://doi.org/10.1175/BAMS-D-17-0233.1>, 2019.

Geißler, K., Heblack, J., Uugulu, S., Wanke, H., and Blaum, N.: Partitioning of water between differently sized shrubs and potential groundwater recharge in a semiarid savanna in Namibia, *Front. Plant Sci.*, 10, 1411, <https://doi.org/10.3389/fpls.2019.01411>, 2019.

- Halladay, K., Kahana, R., Johnson, B., Still, C., Fossier, G. and Alves, L.: Convection-permitting climate simulations for South America with the met office unified model, *Climate Dynamics*, 61(11), pp.5247-5269, <https://doi.org/10.1007/s00382-023-06853-0>, 2023.
- Halladay, K., Kahana, R., Johnson, B., Still, C., Fossier, G. and Alves, L.: Convection-permitting climate simulations for South America with the met office unified model. *Climate Dynamics*, 61(11), pp.5247-5269, 2023.
- Hengl, T., Miller, M. A., Križan, J., Shepherd, K. D., Sila, A., Kilibarda, M., Antonijević, O., Glušica, L., Dobermann, A., Haefele, S. M., and McGrath, S. P.: African soil properties and nutrients mapped at 30 m spatial resolution using two-scale ensemble machine learning, *Sci. Rep.*, 11, 6130, <https://doi.org/10.1038/s41598-021-85639-y>, 2021.
- Hijmans, R.J., Cameron, S.E., Parra, J.L., Jones, P.G. and Jarvis, A.: Very high-resolution interpolated climate surfaces for global land areas. *International Journal of Climatology: A Journal of the Royal Meteorological Society*, 25(15), pp.1965-1978, <https://doi.org/10.1002/joc.1276>, 2005.
- Hijmans, R.J., Cameron, S.E., Parra, J.L., Jones, P.G. and Jarvis, A.: Very high-resolution interpolated climate surfaces for global land areas. *International Journal of Climatology: A Journal of the Royal Meteorological Society*, 25(15), pp.1965-1978, 2005.
- Hill, P. G., Stein, T. H., and Cafaro, C.: Convective systems and rainfall in East Africa, *Q. J. R. Meteorol. Soc.*, <https://doi.org/10.1002/qj.4540>, 2023.
- Hoffmann, R., Wiederkehr, C., Dimitrova, A., and Hermans, K.: Agricultural livelihoods, adaptation, and environmental migration in sub-Saharan drylands: a meta-analytical review, *Environ. Res. Lett.*, 17, 083003, [10.1088/1748-9326/ac7d65](https://doi.org/10.1088/1748-9326/ac7d65), 2022.
- Hoffmann, R., Wiederkehr, C., Dimitrova, A., and Hermans, K.: Agricultural livelihoods, adaptation, and environmental migration in sub-Saharan drylands: a meta-analytical review, *Environ. Res. Lett.*, 17, 083003, 2022.
- Horton, R.E.: The role of infiltration in the hydrologic cycle. *Eos, Transactions American Geophysical Union*, 14(1), pp.446-460, <https://doi.org/10.1029/TR014i001p00446>, 1993.
- Horton, R.E.: The role of infiltration in the hydrologic cycle. *Eos, Transactions American Geophysical Union*, 14(1), pp.446-460, 1993.
- Hsu, H., Lo, M. H., Guillod, B. P., Miralles, D. G., and Kumar, S.: Relation between precipitation location and antecedent/subsequent soil moisture spatial patterns, *J. Geophys. Res.-Atmos.*, 122, 6319-6328, <https://doi.org/10.1002/2016JD026042>, 2017.
- Huang, J., Yu, H., Dai, A., Wei, Y. and Kang, L.: Drylands face potential threat under 2 C global warming target, *Nature Climate Change*, 7(6), pp.417-422, <https://doi.org/10.1038/nclimate3275>, 2017.
- Huffman, G.J., Bolvin, D.T., Braithwaite, D., Hsu, K., Joyce, R., Xie, P. and Yoo, S.H., 2015. NASA global precipitation measurement (GPM) integrated multi-satellite retrievals for GPM (IMERG), Algorithm theoretical basis document (ATBD) version, 4(26), pp.2020-05.
- iSDA: The first field-level soil map for Africa: <https://www.isda-africa.com/isdasoil/>, last access: 20 October 2024
- Kendon, E. J., Ban, N., Roberts, N. M., Fowler, H. J., Roberts, M. J., Chan, S. C., Evans, J. P., Fossier, G., and Wilkinson, J. M.: Do convection-permitting regional climate models improve projections of future precipitation change?, *Am. Meteorol. Soc.*, 98, 79-93, <https://doi.org/10.1175/BAMS-D-15-0004.1>, 2017.
- Kendon, E. J., Stratton, R. A., Tucker, S., Marsham, J. H., Berthou, S., Rowell, D. P., and Senior, C. A.: Enhanced future changes in wet and dry extremes over Africa at convection-permitting scale, *Nat. Commun.*, 10, 1794, <https://doi.org/10.1038/s41467-019-09776-9>, 2019.
- Kimutai, J., Barnes, C., Zachariah, M., Philip, S., Kew, S., Pinto, I., Wolski, P., Koren, G., Vecchi, G., Yang, W. and Li, S.: Human-induced climate change increased drought severity in Horn of Africa. *Weather and Climate Extremes*, Vol. 47, <https://doi.org/10.1016/j.wace.2025.100745>, 2025.
- Kipkemai, I., Michaelides, K., Rosolem, R., and Singer, M. B.: Climatic expression of rainfall on soil moisture dynamics in drylands, *Hydrol. Earth Syst. Sci. Discuss.*, 1-24, <https://doi.org/10.5194/hess-2021-48>, 2021.

- 135 [Klein, C., Jackson, L. S., Parker, D. J., Marsham, J. H., Taylor, C. M., Rowell, D. P., Guichard, F., Vischel, T., Famien, A. M., and Diedhiou, A.: Combining CMIP data with a regional convection-permitting model and observations to project extreme rainfall under climate change, *Environ. Res. Lett.*, 16, 10.1088/1748-9326/ac26f1, 2021.](#)
- ~~Klein, C., Jackson, L. S., Parker, D. J., Marsham, J. H., Taylor, C. M., Rowell, D. P., Guichard, F., Vischel, T., Famien, A. M., and Diedhiou, A.: Combining CMIP data with a regional convection-permitting model and observations to project extreme rainfall under climate change, *Environ. Res. Lett.*, 16, 2021.~~
- 1140 Kouadio, K., Bastin, S., Konare, A., and Ajayi, V. O.: Does convection-permitting simulate better rainfall distribution and extreme over Guinean coast and surroundings?, *Clim. Dyn.*, 55, 153–174, <https://doi.org/10.1007/s00382-018-4308-y>, 2020.
- [Lee, J. and Hohenegger, C.: Weaker land–atmosphere coupling in global storm-resolving simulation, *Proceedings of the National Academy of Sciences*, 121\(12\), <https://doi.org/10.1073/pnas.2314265121>, 2024.](#)
- ~~Lee, J. and Hohenegger, C.: Weaker land–atmosphere coupling in global storm-resolving simulation. *Proceedings of the National Academy of Sciences*, 121(12), 2024.~~
- 1145 [Leterme, B., Mallants, D. and Jacques, D.: Sensitivity of groundwater recharge using climatic analogues and HYDRUS-1D, *Hydrology and Earth System Sciences*, 16\(8\), pp.2485-2497, 10.5194/hessd-9-1389-2012, 2012. Leterme, B., Mallants, D., and Jacques, D.: Estimation of future groundwater recharge using climatic analogues and Hydrus 1D, *Hydrol. Earth Syst. Sci. Discuss.*, 9, 2012.](#)
- 1150 Lobell, D. B., Bänziger, M., Magorokosho, C., and Vivek, B.: Nonlinear heat effects on African maize as evidenced by historical yield trials, *Nat. Clim. Change*, 1, 42–45, <https://doi.org/10.1038/nclimate1043>, 2011.
- Luu, L. N., Vautard, R., Yiou, P., and Soubeyroux, J. M.: Evaluation of convection-permitting extreme precipitation simulations for the south of France, *Earth Syst. Dynam.*, 13, 687–702, <https://doi.org/10.5194/esd-13-687-2022>, 2022.
- Lyon, B. and Vigaud, N.: Unraveling East Africa's climate paradox. Climate extremes: Patterns and mechanisms, <https://doi.org/10.1002/9781119068020.ch16>, 2017.
- 1155 Lyon, B.: Seasonal drought in the Greater Horn of Africa and its recent increase during the March–May long rains, *Journal of Climate*, 27(21), <https://doi.org/10.1175/JCLI-D-13-00459.1>, 2014.
- Maeght, J. L., Rewald, B., and Pierret, A.: How to study deep roots—and why it matters, *Front. Plant Sci.*, 4, 299, <https://doi.org/10.3389/fpls.2013.00299>, 2013.
- 1160 [MacDonald, A.M., Bonsor, H.C., Dochartaigh, B.É.Ó. and Taylor, R.G.: Quantitative maps of groundwater resources in Africa, *Environmental Research Letters*, 7\(2\), 10.1088/1748-9326/7/2/024009, 2012.](#)
- ~~MacDonald, A.M., Bonsor, H.C., Dochartaigh, B.É.Ó. and Taylor, R.G.: Quantitative maps of groundwater resources in Africa. *Environmental Research Letters*, 7(2), 2012.~~
- [McKenna, O. P., and Sala, O. E.: Groundwater recharge in desert playas: current rates and future effects of climate change, *Environ. Res. Lett.*, 13, 10.1088/1748-9326/aa9eb6, 2017.](#)
- 1165 ~~McKenna, O. P., and Sala, O. E.: Groundwater recharge in desert playas: current rates and future effects of climate change, *Environ. Res. Lett.*, 13, 014025, 2017.~~
- Mirzabaev, A., et al.: Desertification, in: *Climate Change and Land: an IPCC special report on climate change, desertification, land degradation, sustainable land management, food security, and greenhouse gas fluxes in terrestrial ecosystems*, IPCC, 2019.
- 1170 Muñoz Sabater, J.: ERA5-Land hourly data from 1950 to present, Copernicus Climate Change Service (C3S) Climate Data Store (CDS), <https://doi.org/10.24381/cds.e2161bac>, 2019.
- [Nazarieh, F., Ansari, H., Ziaei, A. N., Izady, A., Davari, K., and Brunner, P.: Spatial and temporal dynamics of deep percolation, lag time and recharge in an irrigated semi-arid region, *Hydrogeol. J.*, 26, 2507–2520, <https://doi.org/10.1007/s10040-018-1789-z>, 2018.](#)
- 1175 ~~Nazarieh, F., Ansari, H., Ziaei, A. N., Izady, A., Davari, K., and Brunner, P.: Spatial and temporal dynamics of deep percolation, lag time and recharge in an irrigated semi-arid region, *Hydrogeol. J.*, 26, 2507–2520, 2018.~~
- Nicholson, S. E.: *Dryland Climatology*, Cambridge University Press, Cambridge, 2011.

- Osborn, H. B.: Timing and duration of high rainfall rates in the southwestern United States, *Water Resour. Res.*, 19, 1036–1042, <https://doi.org/10.1029/WR019i004p01036>, 1983.
- 180 ~~Osborn, H. B.: Timing and duration of high rainfall rates in the southwestern United States, *Water Resour. Res.*, 19, 1036–1042, 1983.~~
- Porporato, A., D’Odorico, P., Laio, F., Ridolfi, L., and Rodriguez-Iturbe, I.: Ecohydrology of water-controlled ecosystems, *Adv. Water Resour.*, 25, 1335–1348, [https://doi.org/10.1016/S0309-1708\(02\)00058-1](https://doi.org/10.1016/S0309-1708(02)00058-1), 2002.
- Prein, A. F., Gobiet, A., Suklitsch, M., Truhetz, H., Awan, N. K., Keuler, K., and Georgievski, G.: Added value of convection-permitting seasonal simulations, *Clim. Dyn.*, 41, 2655–2677, <https://doi.org/10.1007/s00382-013-1744-6>, 2013.
- 1185 Prein, A. F., Langhans, W., Fosser, G., Ferrone, A., Ban, N., Goergen, K., Keller, M., Tölle, M., Gutjahr, O., Feser, F., and Brisson, E.: A review on regional convection-permitting climate modeling: Demonstrations, prospects, and challenges, *Rev. Geophys.*, 53, 323–361, <https://doi.org/10.1002/2014RG000475>, 2015.
- Quichimbo, E. A., Singer, M. B., and Cuthbert, M. O.: Characterising groundwater–surface water interactions in idealised ephemeral stream systems, *Hydrol. Process.*, 34, 3792–3806, <https://doi.org/10.1002/hyp.13847>, 2021.
- 1190 Quichimbo, E. A., Singer, M. B., Michaelides, K., Rosolem, R., MacLeod, D. A., Asfaw, D. T., and Cuthbert, M. O.: Assessing the sensitivity of modelled water partitioning to global precipitation datasets in a data-scarce dryland region, *Hydrol. Process.*, 37, e15047, <https://doi.org/10.1002/hyp.15047>, 2023.
- 195 ~~Quichimbo, E.A., Singer, M.B., Michaelides, K., Hobley, D.E., Rosolem, R. and Cuthbert, M.O.: DRYP 1.0: a parsimonious hydrological model of DRYland Partitioning of the water balance, *Geoscientific Model Development Discussions*, 2021, pp.1-34, <https://doi.org/10.5194/gmd-14-6893-2021>, 2021. Quichimbo, E.A., Singer, M.B., Michaelides, K., Hobley, D.E., Rosolem, R. and Cuthbert, M.O.: DRYP 1.0: a parsimonious hydrological model of DRYland Partitioning of the water balance. *Geoscientific Model Development Discussions*, 2021, pp.1–34, 2021.~~
- Razack, M., Jalludin, M., and Houmed-Gaba, A.: Simulation of climate change impact on a coastal aquifer under arid climate. The Tadjourah Aquifer (Republic of Djibouti, Horn of Africa), *Water*, <https://doi.org/10.3390/w11112347>, 2019.
- 200 ~~Reynolds, J. F., Smith, D. M. S., Lambin, E. F., Turner, B. L., Mortimore, M., Batterbury, S. P., Downing, T. E., Dowlatabadi, H., Fernández, R. J., Herrick, J. E., and Huber-Sannwald, E.: Global desertification: building a science for dryland development, *Science*, 316, 847–851, 10.1126/science.1131634, 2007.~~
- 205 ~~Reynolds, J. F., Smith, D. M. S., Lambin, E. F., Turner, B. L., Mortimore, M., Batterbury, S. P., Downing, T. E., Dowlatabadi, H., Fernández, R. J., Herrick, J. E., and Huber-Sannwald, E.: Global desertification: building a science for dryland development, *Science*, 316, 847–851, 2007.~~
- Reynolds, R. W., Smith, T. M., Liu, C., Chelton, D. B., Casey, K. S., and Schlax, M. G.: Daily high-resolution-blended analyses for sea surface temperature, *J. Clim.*, 20, 5473–5496, <https://doi.org/10.1175/2007JCLI1824.1>, 2007.
- ~~Richards, L. A.: Capillary conduction of liquids through porous mediums, *Phys.*, 1, 318–333, <https://doi.org/10.1063/1.1745010>, 1931.~~
- 210 ~~Richards, L. A.: Capillary conduction of liquids through porous mediums, *Phys.*, 1, 318–333, 1931.~~
- Rios Gaona, M.F., Michaelides, K. and Singer, M.B.: STORM v. 2: A simple, stochastic rainfall model for exploring the impacts of climate and climate change at and near the land surface in gauged watersheds, *Geoscientific Model Development*, 17(13), pp.5387–5412, <https://doi.org/10.5194/gmd-17-5387-2024>, 2024.
- 1215 Rodríguez, P., Giménez, R., Nasetto, M. D., Jobbágy, E. G., and Magliano, P. N.: Changes in water fluxes partition related to the replacement of native dry forests by crops in the Dry Chaco, *J. Arid Environ.*, 183, 104281, <https://doi.org/10.1016/j.jaridenv.2020.104281>, 2020.
- Scanlon, B. R., Keese, K. E., Flint, A. L., Flint, L. E., Gaye, C. B., Edmunds, W. M., and Simmers, I.: Global synthesis of groundwater recharge in semiarid and arid regions, *Hydrol. Process.*, 20, 3335–3370, <https://doi.org/10.1002/hyp.6335>, 2006.
- ~~Schimel, D. S.: Drylands in the earth system, *Science*, 327, 418–419, 10.1126/science.11849, 2010.~~
- 220 ~~Schimel, D. S.: Drylands in the earth system, *Science*, 327, 418–419, 2010.~~

Schoener, G., and Stone, M. C.: Impact of antecedent soil moisture on runoff from a semiarid catchment, *J. Hydrol.*, 569, 627–636, <https://doi.org/10.1016/j.jhydrol.2018.12.025>, 2019.

Schoener, G.: Soil Moisture Dependent Runoff in a Dryland Region: An Investigation of the Role of Antecedent Conditions, Monitoring, and Modeling Strategies, PhD Thesis, University of New Mexico, 2021.

1225 ~~Schreiner-McGraw, A.P., Ajami, H. and Vivoni, E.R.: Extreme weather events and transmission losses in arid streams, *Environmental Research Letters*, 14(8), 10.1088/1748-9326/ab2949, 2019.~~

~~Schreiner-McGraw, A.P., Ajami, H. and Vivoni, E.R.: Extreme weather events and transmission losses in arid streams. *Environmental Research Letters*, 14(8), p.084002, 2019.~~

230 ~~Schwarzwalz, K., and Seager, R.: Revisiting the ‘East African Paradox’: CMIP6 models also fail to simulate observed drying trends in the Horn of Africa Long Rains, *Copernicus Meetings*, No. EGU24-4687, 10.5194/egusphere-egu24-4687, 2024.~~

~~Schwarzwalz, K., and Seager, R.: Revisiting the ‘East African Paradox’: CMIP6 models also fail to simulate observed drying trends in the Horn of Africa Long Rains, *Copernicus Meetings*, No. EGU24-4687, 2024.~~

1235 Schwarzwalz, K., Goddard, L., Seager, R., Ting, M., and Marvel, K.: Understanding CMIP6 biases in the representation of the Greater Horn of Africa long and short rains, *Clim. Dyn.*, 61, 1229–1255, <https://doi.org/10.1007/s00382-022-06622-5>, 2023.

Seddon, D., Kashaigili, J. J., Taylor, R. G., Cuthbert, M. O., Mwihumbo, C., and MacDonald, A. M.: Focused groundwater recharge in a tropical dryland: Empirical evidence from central, semi-arid Tanzania, *J. Hydrol. Reg. Stud.*, 37, <https://doi.org/10.1016/j.ejrh.2021.100919>, 2021.

1240 Sela, S., Svoray, T., and Assouline, S.: The effect of soil surface sealing on vegetation water uptake along a dry climatic gradient, *Water Resour. Res.*, 51, 7452–7466, <https://doi.org/10.1002/2015WR017109>, 2015.

~~Seneviratne, S.I., Corti, T., Davin, E.L., Hirschi, M., Jaeger, E.B., Lehner, I., Orlowsky, B. and Teuling, A.J.: Investigating soil moisture–climate interactions in a changing climate: A review, *Earth-Science Reviews*, 99(3-4), pp.125-161, <https://doi.org/10.1016/j.earscirev.2010.02.004>, 2010.~~

245 ~~Seneviratne, S.I., Corti, T., Davin, E.L., Hirschi, M., Jaeger, E.B., Lehner, I., Orlowsky, B. and Teuling, A.J.: Investigating soil moisture–climate interactions in a changing climate: A review. *Earth-Science Reviews*, 99(3-4), pp.125-161, 2010.~~

~~Shadwell, E., and February, E.: Effects of groundwater abstraction on two keystone tree species in an arid savanna national park, *PeerJ*, 5, <https://doi.org/10.7717/peerj.2923>, 2017.~~

~~Shadwell, E., and February, E.: Effects of groundwater abstraction on two keystone tree species in an arid savanna national park, *PeerJ*, 5, 2017.~~

250 ~~Shepherd, T.G., Boyd, E., Calel, R.A., Chapman, S.C., Dessai, S., Dima-West, I.M., Fowler, H.J., James, R., Maraun, D., Martius, O. and Senior, C.A.: Storylines: an alternative approach to representing uncertainty in physical aspects of climate change, *Climatic change*, 151, pp.555-571, <https://doi.org/10.1007/s10584-018-2317-9>, 2018.~~

~~Shepherd, T.G., Boyd, E., Calel, R.A., Chapman, S.C., Dessai, S., Dima-West, I.M., Fowler, H.J., James, R., Maraun, D., Martius, O. and Senior, C.A.: Storylines: an alternative approach to representing uncertainty in physical aspects of climate change. *Climatic change*, 151, pp.555-571, 2018.~~

255 ~~Šimuněk, J., Van Genuchten, M.T. and Šejna, M., 2012. HYDRUS: Model use, calibration, and validation. *Transactions of the ASABE*, 55(4), 10.13031/2013.42239, 2012.~~

~~Šimuněk, J., Van Genuchten, M.T. and Šejna, M., 2012. HYDRUS: Model use, calibration, and validation. *Transactions of the ASABE*, 55(4), pp.1263-1274.~~

260 ~~Singer, M. B., and Michaelides, K.: Deciphering the expression of climate change within the Lower Colorado River basin by stochastic simulation of convective rainfall, *Environ. Res. Lett.*, 12, 10.1088/1748-9326/aa8e50, 2017.~~

~~Singer, M. B., and Michaelides, K.: Deciphering the expression of climate change within the Lower Colorado River basin by stochastic simulation of convective rainfall, *Environ. Res. Lett.*, 12, 2017.~~

- 1265 Singer, M. B., Michaelides, K., and Hobley, D. E. J.: STORM 1.0: A simple, flexible, and parsimonious stochastic rainfall generator for simulating climate and climate change, *Geosci. Model Dev.*, 11, 3713–3726, <https://doi.org/10.5194/gmd-11-3713-2018>, 2018.
- Singer, M.B., Asfaw, D.T., Rosolem, R., Cuthbert, M.O., Miralles, D.G., MacLeod, D., Quichimbo, E.A. and Michaelides, K.: Hourly potential evapotranspiration at 0.1 resolution for the global land surface from 1981-present, *Scientific Data*, 8(1), <https://doi.org/10.1038/s41597-021-01003-9>, 2021.
- 1270 Stephens, G. L., L'Ecuyer, T., Forbes, R., Gettelmen, A., Golaz, J. C., Bodas-Salcedo, A., Suzuki, K., Gabriel, P., and Haynes, J.: Dreary state of precipitation in global models, *J. Geophys. Res.-Atmos.*, 115, D24211, <https://doi.org/10.1029/2010JD014532>, 2010.
- [Stone, E. L., and Kalisz, P. J.: On the maximum extent of tree roots, *For. Ecol. Manage.*, 46, 59–102, \[https://doi.org/10.1016/0378-1127\\(91\\)90245-Q\]\(https://doi.org/10.1016/0378-1127\(91\)90245-Q\), 1991.](https://doi.org/10.1016/0378-1127(91)90245-Q)
- ~~[Stone, E. L., and Kalisz, P. J.: On the maximum extent of tree roots, *For. Ecol. Manage.*, 46, 59–102, 1991.](https://doi.org/10.1016/0378-1127(91)90245-Q)~~
- 1275 Stratton, R. A., and Stirling, A. J.: Improving the diurnal cycle of convection in GCMs, *Q. J. R. Meteorol. Soc.*, 138, 1121–1134, <https://doi.org/10.1002/qj.991>, 2012.
- Stratton, R. A., Senior, C. A., Vosper, S. B., Folwell, S. S., Boutle, I. A., Earnshaw, P. D., Kendon, E., Lock, A. P., Malcolm, A., Manners, J., and Morcrette, C. J.: A Pan-African convection-permitting regional climate simulation with the Met Office Unified Model: CP4-Africa, *J. Clim.*, 31, 3485–3508, <https://doi.org/10.1175/JCLI-D-17-0503.1>, 2018.
- 1280 Stringer, L. C., Dyer, J. C., Reed, M. S., Dougill, A. J., Twyman, C., and Mkwambisi, D.: Adaptations to climate change, drought and desertification: local insights to enhance policy in southern Africa, *Environ. Sci. Policy*, 12, 748–765, <https://doi.org/10.1016/j.envsci.2009.04.002>, 2009.
- Taylor, C. M., de Jeu, R. A., Guichard, F., Harris, P. P., and Dorigo, W. A.: Afternoon rain more likely over drier soils, *Nature*, 489, 423–426, <https://doi.org/10.1038/nature11377>, 2012.
- 1285 Taylor, C. M., Gounou, A., Guichard, F., Harris, P. P., Ellis, R. J., Couvreur, F., and De Kauwe, M.: Frequency of Sahelian storm initiation enhanced over mesoscale soil-moisture patterns, *Nat. Geosci.*, 4, 430–433, <https://doi.org/10.1038/ngeo1173>, 2011.
- Taylor, R. G., Todd, M. C., Kongola, L., Maurice, L., Nahozya, E., Sanga, H., and MacDonald, A. M.: Evidence of the dependence of groundwater resources on extreme rainfall in East Africa, *Nat. Clim. Change*, 3, 374–378, <https://doi.org/10.1038/nclimate1731>, 2013.
- 1290 Tetens, O.: Über einige meteorologische Begriffe. *Z. geophys*, 6, pp.297-309, 1930.
- Tugwell-Wootton, T., Skrzypek, G., Dogramaci, S., McCallum, J., and Grierson, P. F.: Soil moisture evaporative losses in response to wet-dry cycles in a semiarid climate, *J. Hydrol.*, 590, 125533, <https://doi.org/10.1016/j.jhydrol.2020.125533>, 2020.
- [Van Genuchten, M. T.: A closed-form equation for predicting the hydraulic conductivity of unsaturated soils, *Soil Sci. Soc. Am. J.*, 44, 892–898, <https://doi.org/10.2136/sssaj1980.03615995004400050002x>, 1980.](https://doi.org/10.2136/sssaj1980.03615995004400050002x)
- 295 ~~[Van Genuchten, M. T.: A closed-form equation for predicting the hydraulic conductivity of unsaturated soils, *Soil Sci. Soc. Am. J.*, 44, 892–898, 1980.](https://doi.org/10.2136/sssaj1980.03615995004400050002x)~~
- Vermote, E.: NOAA Climate Data Record (CDR) of AVHRR Leaf Area Index (LAI) and Fraction of Absorbed Photosynthetically Active Radiation (FAPAR), Version 5, NOAA National Centers for Environmental Information, 2019.
- Vicente-Serrano, S. M., Miralles, D. G., Domínguez-Castro, F., Azorin-Molina, C., El Kenawy, A., McVicar, T. R., Tomás-Burguera, M., Beguería, S., Maneta, M., and Peña-Gallardo, M.: Global assessment of the standardized evapotranspiration deficit index (SEDI) for drought analysis and monitoring, *J. Clim.*, 31, 5371–5393, <https://doi.org/10.1175/JCLI-D-17-0775.1>, 2018.
- 1300 [Vicente-Serrano, Sergio M., Tim R. McVicar., Diego G. Miralles., Yuting Yang., and Miquel Tomas-Burguera.: "Unraveling the influence of atmospheric evaporative demand on drought and its response to climate change.", *Wiley Interdisciplinary Reviews: Climate Change* 11, <https://doi.org/10.1002/wcc.632>, 2020;](https://doi.org/10.1002/wcc.632)
- 305 [Climate Change 11, <https://doi.org/10.1002/wcc.632>, 2020;](https://doi.org/10.1002/wcc.632)

- Wainwright, C.M., Marsham, J.H., Keane, R.J., Rowell, D.P., Finney, D.L., Black, E. and Allan, R.P., 2019. 'Eastern African Paradox' rainfall decline due to shorter not less intense Long Rains, *npj Climate and Atmospheric Science*, 2(1), <https://doi.org/10.1038/s41612-019-0091-7>, 2019.
- 1310 Wainwright, C. M., Finney, D. L., Kilavi, M., Black, E., and Marsham, J. H.: Extreme rainfall in East Africa, October 2019–January 2020 and context under future climate change, *Weather*, 76, 26–31, <https://doi.org/10.1002/wea.3824>, 2021.
- Walters, D., Boutle, I., Brooks, M., Melvin, T., Stratton, R., Vosper, S., Wells, H., Williams, K., Wood, N., Allen, T. and Bushell, A.: The Met Office unified model global atmosphere 6.0/6.1 and JULES global land 6.0/6.1 configurations, *Geoscientific Model Development*, 10(4), pp.1487–1520, <https://doi.org/10.5194/gmd-10-1487-2017>, 2017.
- 1315 Watson, A.: The use of environmental isotopes, soil water measurements and soil water modelling to understand tree water use of an *Acacia mearnsii* (Black Wattle) stand in KwaZulu-Natal, MSc Thesis, University of KwaZulu-Natal, 135 pp., 2015.
- Wesseling, J. G., Elbers, J. A., Kabat, P., and Van den Broek, B. J.: SWATRE: instructions for input, Internal Note, Winand Staring Centre, Wageningen, the Netherlands, p. 700, 1991.
- 1320 Xia, Y. Q., and Shao, M. A.: The process modeling of soil water carrying capacity for vegetation in small watershed within the wind-water crisscrossed erosion zone on the Loess Plateau, Institute of Geographical Sciences and Natural Resources Research, Chinese Academy of Sciences, 2008.
- Zarate, E., Hobley, D., MacDonald, A. M., Swift, R. T., Chambers, J., Kashaigili, J. J., Mutayoba, E., Taylor, R. G., and Cuthbert, M. O.: The role of superficial geology in controlling groundwater recharge in the weathered crystalline basement of semi-arid Tanzania, *J. Hydrol. Reg. Stud.*, 36, 100833, <https://doi.org/10.1016/j.ejrh.2021.100833>, 2021.
- 1325 Zhang, Y. K., and Schilling, K. E.: Effects of land cover on water table, soil moisture, evapotranspiration, and groundwater recharge: a field observation and analysis, *J. Hydrol.*, 319, 328–338, <https://doi.org/10.1016/j.jhydrol.2005.06.044>, 2006.
- Zhou, S., Williams, A. P., Lintner, B. R., Berg, A. M., Zhang, Y., Keenan, T. F., Cook, B. I., Hagemann, S. I., Seneviratne, S. I., and Gentile, P.: Soil moisture–atmosphere feedbacks mitigate declining water availability in drylands, *Nat. Clim. Change*, 11, 38–44, <https://doi.org/10.1038/s41558-020-00945-z>, 2021.
- 1330 ~~Zhu, Z., Wright, D.B. and Yu, G.: The impact of rainfall space-time structure in flood frequency analysis, *Water Resources Research*, 54(11), pp.8983–8998, <https://doi.org/10.1029/2018WR023550>, 2018.~~
- ~~Zhu, Z., Wright, D.B. and Yu, G.: The impact of rainfall space-time structure in flood frequency analysis. *Water Resources Research*, 54(11), pp.8983–8998, 2018.~~
- 1335 Zinyengere, N., Mhizha, T., Mashonjowa, E., Chipindu, B., Geerts, S., and Raes, D.: Using seasonal climate forecasts to improve maize production decision support in Zimbabwe, *Agric. For. Meteorol.*, 151, 1792–1799, <https://doi.org/10.1016/j.agrformet.2011.07.015>, 2011.
- Zomer, R., Trabucco, A., van Straaten, O., and Bossio, D.: Carbon, land and water: A global analysis of the hydrologic dimensions of climate change mitigation through afforestation/reforestation, *IWMI*, Vol. 101, 2007.