

Controls on dense water formation along the path of the North Atlantic subpolar gyre

Oliver J. Tooth^{1,2}, Helen L. Johnson¹, and Chris Wilson³

¹University of Oxford, Oxford, United Kingdom

²National Oceanography Centre, Southampton, United Kingdom

³National Oceanography Centre, Liverpool, United Kingdom

Correspondence: Oliver J. Tooth (oliver.tooth@earth.ox.ac.uk)

Abstract. The North Atlantic Subpolar Gyre (SPG) plays a fundamental role in the global climate system through the formation of dense North Atlantic Deep Water (NADW) as part of the Atlantic Meridional Overturning Circulation. Observations show pronounced decadal variability in SPG water mass properties; however, it remains unclear to what extent such thermohaline changes impact the formation of dense water. Here, we explore the mechanisms governing dense water formation along the path of the SPG using Lagrangian water parcel trajectories in an eddy-rich ocean sea-ice hindcast. We show that neither the rate of transformation of water parcels across density surfaces nor their thermohaline properties on arrival into the eastern SPG are rate-limiting factors governing dense water formation. Instead, the total amount of dense water formed during transit around the SPG can be skilfully predicted based solely on the volume transport of light, upper limb waters arriving into the eastern SPG via the branches of the [NACNorth Atlantic Current](#). This relationship between upper limb volume transport and dense water formation emerges since the SPG boundary current is long enough for all upper limb thermal anomalies to be damped during transit. ~~Multi-decadal subpolar overturning variability in density-space is therefore closely related to the~~ [Our findings emphasise the close relationship between the](#) strength of the SPG [and subpolar dense water formation on multi-decadal timescales](#), such that a stronger SPG circulation following persistent positive phases of the North Atlantic Oscillation results in greater NADW formation along-stream. ~~Our findings emphasise the coupling between the SPG and overturning circulations and underseore the~~ [This underscores the](#) importance of monitoring the state of the SPG for both decadal and longer-term climate predictions.

1 Introduction

Observations and ocean reanalyses indicate that the upper subpolar North Atlantic Ocean (SPNA) exhibits pronounced thermohaline variability on decadal timescales (Curry et al., 1998; Bersch, 2002; Bersch et al., 2007; Lozier and Stewart, 2008; Holliday et al., 2018, 2020; Fu et al., 2020), with significant implications for both regional and global climate (e.g., Zhang et al., 2019; Kim et al., 2020). On a regional scale, the northward propagation of upper ocean thermohaline anomalies from the SPNA into the Nordic Seas yields predictable climate impacts on surface air temperatures over northwest Europe (Collins and Sinha, 2003; Keenlyside et al., 2008; Li et al., 2013; Årthun et al., 2017), Arctic sea ice extent (Zhang, 2015; Yeager et al., 2015) and the rates of Greenland glacial melting (Straneo and Heimbach, 2013). The impacts of North Atlantic multi-decadal

25 SST variability also extend far beyond the regional scale, including through hemispheric teleconnections which contribute to changes in West African and Indian summer monsoon rainfall (Feng and Hu, 2008; Goswami et al., 2006; Luo et al., 2011; Martin and Thorncroft, 2014; Martin et al., 2014) and Pacific decadal climate variability (Zhang et al., 2007; d’Orgeville and Peltier, 2007; Zhang et al., 2019).

Both observational and numerical modelling studies have repeatedly identified low-frequency subpolar ocean dynamics as the principal source of high-latitude upper ocean thermohaline variability (Årthun and Eldevik, 2016; Desbruyères et al., 2015; Grist et al., 2010; Robson et al., 2016; Yeager and Robson, 2017; Chafik et al., 2023). In particular, multi-decadal changes in the subpolar gyre (SPG) and overturning circulations (Yeager et al., 2021; Kim et al., 2024), excited by fluctuations in the North Atlantic Oscillation (NAO; Hurrell 1995; Marshall et al. 2001), have been shown to modulate the poleward heat transport by warm and saline subtropical waters into the eastern SPNA (Jacobs et al., 2019; Desbruyères et al., 2013). Two important examples are the 1990s and 2010s when persistent positive phases of the NAO induced a delayed warming and salinification of the upper eastern SPG (Desbruyères et al., 2021; Fu et al., 2020; Chafik et al., 2023), which propagated downstream into the Nordic Seas (Fan et al., 2023; Passos et al., 2024). This potentially predictable influence of subpolar ocean dynamics on the North Atlantic climate system is further underscored by initialised decadal predictions (Marotzke et al., 2016; Smith et al., 2019; Boer et al., 2016), which show a strong sensitivity in retrospective forecast skill to the initialised subpolar ocean state (e.g., Robson et al., 2012; Msadek et al., 2014; Hermanson et al., 2014; Yeager and Robson, 2017).

To date, very few studies (e.g., Passos et al., 2024) have investigated the extent to which the arrival of such anomalies persist to impact the formation of dense water masses downstream. On the one hand, we might expect that upper ocean thermohaline anomalies will feed back onto the ~~strength of the subpolar overturning circulation~~ production of North Atlantic Deep Water (NADW) by impacting the efficiency of diapycnal water mass transformation ~~and, therefore, the production of North Atlantic Deep Water (NADW) downstream~~. Indeed, this view forms the basis of the salt-advection feedback (Stommel, 1961; Rahmstorf, 1996; de Vries and Weber, 2005), in which a weakened Atlantic Meridional Overturning Circulation (AMOC) transports less salt into the SPNA, thereby reducing NADW formation through increasing stratification, which further weakens the AMOC. However, this view is at odds with a number of recent observational studies (Fu et al., 2020; Fraser and Cunningham, 2021; Mercier et al., 2024; Koman et al., 2024), which show that the strength of subpolar overturning has remained relatively stable in spite of the large-scale thermohaline variability observed throughout the SPNA during recent decades. Fu et al. (2020) reconcile this by suggesting that only a weak coupling exists between upper limb thermohaline anomalies and the magnitude of subpolar dense water formation on multi-decadal timescales. However, precisely what controls the amount of dense water formed along the path of the SPG and its relationship to subpolar overturning variability on multi-decadal timescales remains poorly understood.

When exploring the downstream evolution of upper ocean thermohaline anomalies in the SPNA, studies adopting the traditional Eulerian frame of reference typically use lagged correlation analysis (Holliday et al., 2008; Årthun and Eldevik, 2016; Årthun et al., 2017; Fan et al., 2023), which relies upon the coherent propagation of signals downstream. In reality, however, thermohaline anomalies are communicated over a diverse range of advective timescales owing to the dispersive nature of subpolar circulation pathways (e.g., Yashayaev and Seidov, 2015), which often convolve water masses from many different

60 sources. In this study, we overcome this challenge by adopting a Lagrangian approach to investigate the controls on dense water formation along the path of the SPG. By evaluating Lagrangian water parcel trajectories in an eddy-rich ocean sea-ice hindcast, we are able to trace the evolution of upper limb thermohaline anomalies arriving into the eastern SPNA and directly assess their influence on the formation of NADW during their transit of the SPG.

This study is organised as follows. In Section 2, we introduce the eddy-rich ocean sea-ice hindcast, Lagrangian particle tracking experiments and both the Eulerian and Lagrangian diagnostics used in our analysis. Section 3.1 explores the nature of dense water formation along the path of the SPG, including validation against OSNAP observations. We investigate the sources of variability in along-stream dense water formation in Section 3.2. In Section 3.3, we propose a linear model to skilfully predict along-stream dense water formation. Section 3.4 explores the two dense water formation pathways circulating cyclonically around the SPG. Finally, in Section 3.5, we assess the role of remote buoyancy forcing in driving decadal variations in dense water formation along the path of the SPG. The study concludes with a critical discussion and summary of our main findings and their wider implications for observing subpolar AMOC variability in Section 4.

~~Time-mean (2014-2020) Eulerian diapycnal overturning stream functions at (a) OSNAP East and (b) OSNAP West calculated using the ORCA0083-GO8p7 hindcast (black) and OSNAP observations (purple). The shaded regions represent ± 1 (monthly) standard deviation in the Eulerian overturning stream function. Time series of maximum Eulerian diapycnal overturning at (c) OSNAP East and (d) OSNAP West calculated using the ORCA0083-GO8p7 hindcast (black) and OSNAP observations (purple).~~

2 Methods

2.1 Ocean General Circulation Model

To investigate the variability of dense water formation along the path of the subpolar gyre, we use output from the eddy-rich, global ORCA0083-GO8p7 numerical ocean model configuration (Megann et al., 2022; Archibald et al., 2025). This uses the Nucleus for European Modelling of the Ocean (NEMO) ocean circulation model version 4.0.4 (Madec et al., 2019) implemented in the UK Global Ocean (GO) version 8 configuration. This is a pre-release configuration of the Global Ocean and Sea Ice (GOSI) version 9 (Guiavarc’h et al., 2025) developed by the UK Joint Marine Modelling Programme in preparation for CMIP7.

85 The NEMO ocean model is discretised on an Arakawa C-grid with a nominal $1/12^\circ$ resolution (equivalent to ~ 8 km in the subtropical North Atlantic and ~ 4 km in the Arctic). The extended version of the quasi-isotropic ORCA12 orthogonal tri-polar grid (eORCA12) is used, with poles located on land in Canada, Siberia and Antarctica. In the vertical, the model uses 75 unevenly spaced z^* -partial-step coordinate levels with unperturbed depth increments ranging from 1 m to 250 m. The depth increment of the grid cells at each vertical level varies through time due to the implementation of a non-linear free surface (Madec et al., 2019). Within the NEMO framework, the NEMO Ocean Engine (NEMO-OCE) is coupled to the SI³ sea-ice model (Vancoppenolle et al., 2023; Blockley et al., 2024). For a comprehensive description of the ORCA0083-GO8p7 model configuration users are referred to Guiavarc’h et al. (2025).

The ORCA0083-GO8p7 integration is initialised from rest with temperature and salinity from the climatology of an Argo-based observational objective analysis (EN4; Good et al., 2013) covering 1995-2014. The model is forced by the Japanese 55-year atmospheric reanalysis (JRA55-do; Tsujino et al., 2018) for the period 1958-2021. We disregard the initial 18 years of the integration when model adjustment is largest and make use of the monthly-mean velocity and tracer fields output between 1975-2021.

To assess the fidelity of the subpolar ocean circulation in the ORCA0083-GO8p7 hindcast, we compare the simulated diapycnal overturning to OSNAP observations between 2014-2020. Figures 1a-b show the time-mean Eulerian diapycnal overturning stream functions at the OSNAP East and OSNAP West sections calculated using both the model and observations. Overall, we find good agreement between the modelled and observed overturning stream functions in density space at the OSNAP array. At OSNAP East, the maximum of the time-mean diapycnal overturning stream function in the model (13.5 ± 2.3 Sv at 27.51 kg m^{-3}) is slightly weaker than observed (14.5 ± 3.0 Sv at 27.55 kg m^{-3}). However, this is primarily due to the weaker time-mean net northward transport across the section in the model (0.8 ± 1.1 Sv) compared to the 1.6 Sv imposed in the OSNAP observational calculation. Figure 1b shows that there is also close agreement between both the magnitude and isopycnal of maximum diapycnal overturning in the model (2.1 ± 2.8 Sv at 27.70 kg m^{-3}) and observations (2.2 ± 1.8 Sv at 27.69 kg m^{-3}) at OSNAP West. This is particularly encouraging, given that many eddy-rich models considerably overestimate the time-mean strength of diapycnal overturning in the Labrador Sea (e.g., Petit et al., 2023; Markina et al., 2024). Once we account for the larger net southward flow across the OSNAP West section in the model (-2.4 ± 0.8 Sv) compared with that imposed in the OSNAP observational calculation (-1.6 Sv), we do find that the modelled diapycnal overturning is slightly stronger than observed.

Figures 1c-d show the time series of diapycnal overturning strength at OSNAP East and OSNAP West determined by calculating the maximum of each monthly overturning stream function. Although we find a significant correlation ($r = 0.55$, $p < 0.01$) between the modelled and observed diapycnal overturning strength at OSNAP East, it is clear that the model (monthly SD = 2.6 Sv) underestimates the monthly overturning variability captured in observations (monthly SD = 3.0 Sv). In contrast, at OSNAP West, we find a much weaker correlation ($r = 0.27$, $p < 0.05$) since the observed diapycnal overturning strength is less variable than found in the model, especially on seasonal timescales. The stronger overturning seasonality in the model is due to the presence of warmer ($+ 0.14^\circ\text{C}$) and saltier ($+ 0.1 \text{ g kg}^{-1}$) waters in the western Labrador Sea compared with OSNAP observations, which experience less density compensation between wintertime cooling and year-round freshening (Zou et al., 2020; Bebieva and Lozier, 2023).

In addition to reproducing much of the observed strength and monthly variability of overturning along the OSNAP array, we also find reasonably good agreement between the modelled (6.5 ± 1.0 Sv) and observed (5.8 ± 0.7 Sv; Østerhus et al., 2019) overturning strength at the Greenland-Scotland Ridge (1995-2015). Given our focus on the formation of dense water along the boundary current of the SPG in this study, we also highlight the close agreement between the time-mean top-to-bottom strength of the East Greenland Current (-33.8 ± 2.7 Sv) in the model and that observed by Danialt et al. (2016) (-33.1 ± 2.6 Sv) between 2002-2012 along the OVIDE section. However, in the Labrador Sea, the model (-27.4 ± 5.8 Sv) slightly

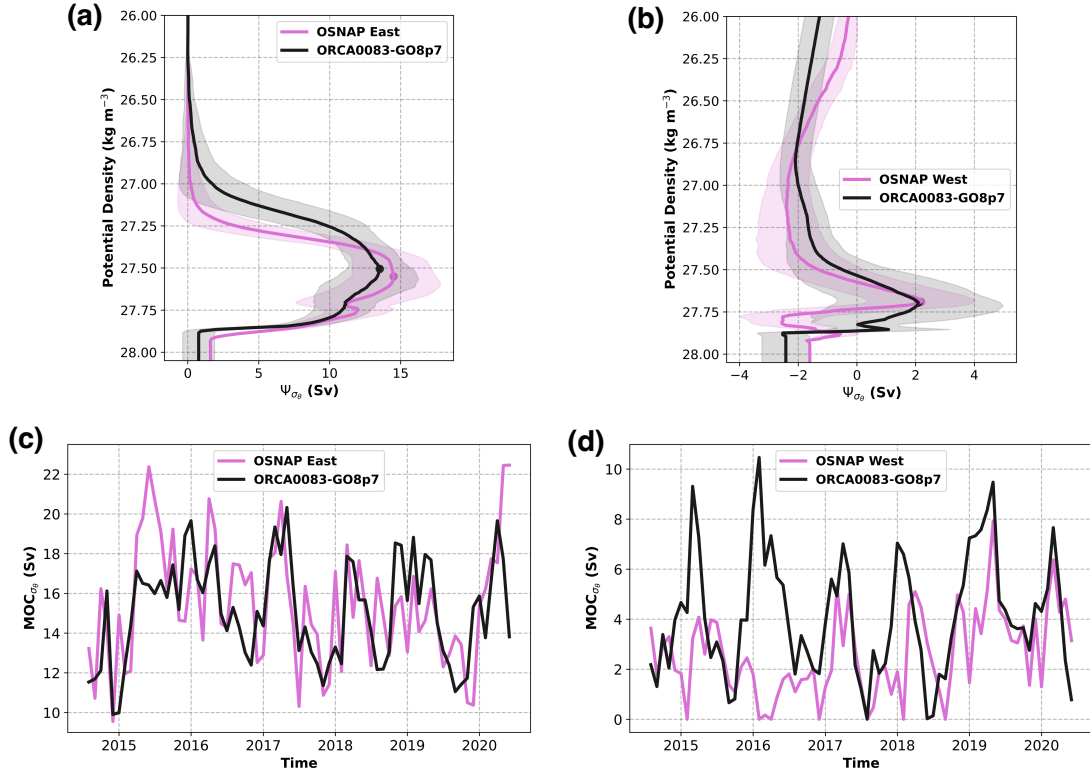


Figure 1. Time-mean (2014-2020) Eulerian diapycnal overturning stream functions at (a) OSNAP East and (b) OSNAP West calculated using the ORCA0083-GO8p7 hindcast (black) and OSNAP observations (purple). The shaded regions represent ± 1 (monthly) standard deviation in the Eulerian overturning stream function. Time series of maximum Eulerian diapycnal overturning at (c) OSNAP East and (d) OSNAP West calculated using the ORCA0083-GO8p7 hindcast (black) and OSNAP observations (purple).

underestimates the time-mean (1997-2014) strength of the DWBC at 53°N as reported by Zantopp et al. (2017) (-30.2 ± 6.6 Sv where $\sigma_{\theta} \geq 27.68 \text{ kg m}^{-3}$).

In spite of these differences, we consider the broad overall agreement between the strength of both the SPG and diapycnal
 130 overturning circulations simulated in the ORCA0083-GO8p7 hindcast and that observed along trans-basin arrays as sufficient justification for using this model to investigate the nature of dense water formation along the path of the SPG.

2.2 Lagrangian Particle Tracking

We evaluate the Lagrangian trajectories of virtual water parcels advected by the time-evolving velocity fields of the ORCA0083-GO8p7 hindcast using TRACMASS version 7.1 (Aldama-Campino et al., 2020). TRACMASS belongs to the inaugural family
 135 of Lagrangian particle tracking tools, which allow users to quantify the volume transport pathways of a steady, incompressible flow field by modelling water parcel trajectories as individual stream tubes (e.g., Blanke and Delecluse, 1993; Döös, 1995).

Here, we use the stepwise stationary scheme, which divides the duration between successive monthly-mean velocity fields into 100 intermediate time steps during which volume transports are assumed constant. We calculate purely advective water parcel trajectories without attempting to parameterise the effects of vertical convective mixing in the surface mixed layer. This is because Tooth et al. (2023b) showed that introducing random vertical displacements along water parcel trajectories inside the surface mixed layer did not influence the strength and variability of along-stream diapycnal transformation.

~~The Lagrangian experiment used in this study evaluates the~~ To investigate the extent to which thermohaline anomalies arriving in the eastern SPG influence the formation of dense water along-stream, we evaluate the forward-in-time trajectories of water parcels sampling the full-depth northward transport across a subsection of the OSNAP East array extending from the Reykjanes Ridge (RR, 30°W) to the Scottish Shelf (SS). ~~We choose this~~ This approach differs from previous studies (e.g., MacGilchrist et al., 2020; Georgiou et al., 2021; Fröhle et al., 2022), which employ backwards-in-time trajectories to identify the sources and export pathways of NADW flowing southward in the lower limb.

We consider only a subsection of the OSNAP array to focus our analysis on the waters which flow northward across OSNAP East in the northern, central and southern branches of the ~~NAC~~ North Atlantic Current (NAC) and to avoid sampling the recirculating upper limb waters which return northward in the Irminger Current (see Fig. 2). One limitation resulting from this decision is that we do not quantify the contribution of upper limb water parcels which flow directly into the Irminger Sea via the northernmost NAC branch (e.g., Daniault et al., 2016; Chafik et al., 2022) to NADW formation along the path of the SPG.

Water parcels are initialised every month for 456 consecutive months between 1975-2012. Water parcels are assigned to each grid cell along the model-defined OSNAP East array (~~RR-SS~~) in proportion to the northward volume transport across the grid cell face. Each water parcel represents a volume transport ≤ 2.5 mSv to ensure that a sufficiently large number of water parcels are initialised to calculate robust Lagrangian diagnostics (Jones et al., 2016).

In total, more than 12.5 million water parcels are advected forwards-in-time using monthly mean velocity fields for a maximum of 9-years to determine their future trajectories. Water parcel trajectories are terminated on reaching the maximum advection time (τ_{max}) or upon meeting any one of the following geographical criteria (Fig. 2): (i) crossing (southward) a subsection of the OSNAP West array (53°N) (ii) crossing the Greenland-Scotland Ridge, (iii) crossing the Davis or Hudson Straits or (iv) crossing 51°N. Figures 3a-e-a-b show that the 9-year maximum advection time is sufficient to capture the SPG circulation because the accumulated volume transports reaching OSNAP West and the Greenland-Scotland Ridge have stabilised within this period. The location, conservative temperature and absolute salinity along each water parcel trajectory are calculated through linear interpolation using the monthly-mean model tracer fields. The potential density referenced to the sea surface (σ_θ) is calculated along each trajectory using the TEOS-10 equation of state (McDougall et al., 2012) as implemented in the ORCA0083-GO8p7 hindcast (Megann et al., 2022).

2.3 Lagrangian Diagnostics

To quantify the amount of dense water formed along the path of the North Atlantic SPG, we calculate the Lagrangian diapycnal overturning stream function (Tooth et al., 2023a), $F(\sigma_\theta, t)$, in density-coordinates using only the subset of water parcel trajectories initialised at time t which transit from OSNAP East (NAC) to OSNAP West (53°N) within the $\tau_{max} = 9$ -year maximum

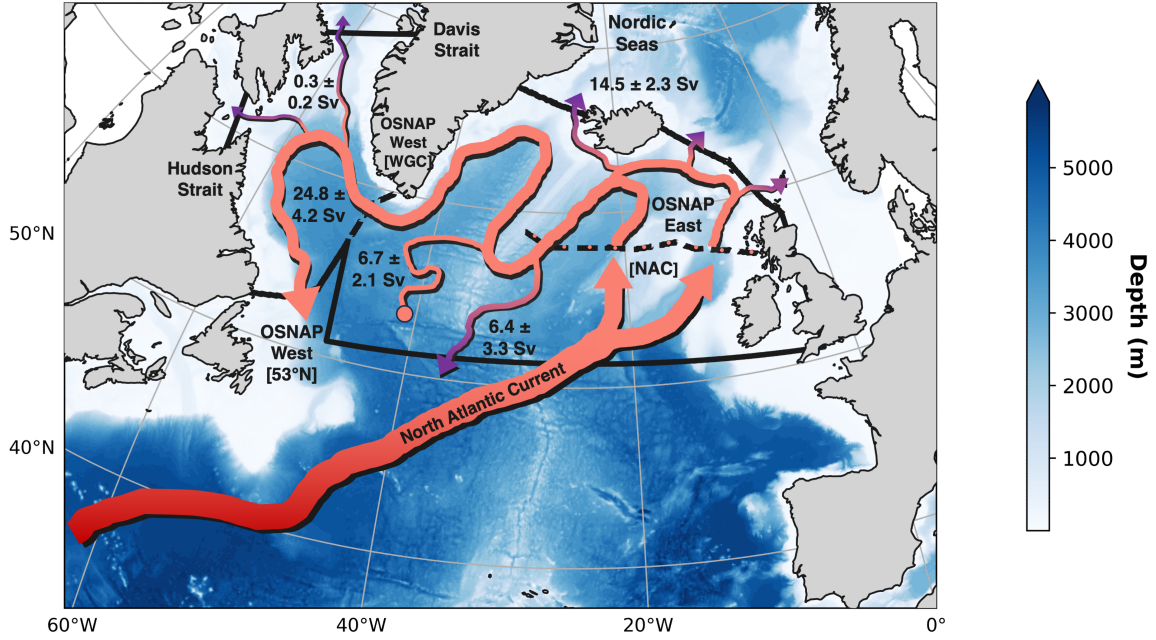


Figure 2. Schematic of the North Atlantic Subpolar Gyre (SPG) circulation and Lagrangian experiment domain (solid black lines). Water parcels are initialised northward across the subsection of the OSNAP East array extending from the Reykjanes Ridge ($\sim 31^\circ\text{W}$) to the Scottish Shelf (NAC, black dashed line with orange markers). The SPG pathway (orange) contains all water parcels which flow southward across the OSNAP West array between the Labrador Coast and the basin interior (53°N , solid black line) once initialised across OSNAP East and within the 9-year maximum advection period. Purple arrows represent the pathways of water parcels which are terminated on reaching the boundaries of the Lagrangian experiment domain. Water parcels remaining in the Lagrangian experiment domain are represented by the pathway terminating with an orange circle. The time-mean (1975-2012) volume transports conveyed by each pathway are shown in bold.

advection period (i.e., $0 < \tau_{out} \leq \tau_{max}$ where τ_{out} is the transit time for each water parcel). We focus on this particular subset of water parcels since the overwhelming majority of water parcels which exit via the southern boundary at 51°N or remain inside the domain following 9 years of advection are already contained within the lower limb on flowing northward across the OSNAP East section and therefore are not involved in dense water formation. The Lagrangian diapycnal overturning stream function for each monthly ensemble of $N(t)$ water parcels initialised across the OSNAP East section at time t is calculated following Tooth et al. (2023a, b):

$$F(\sigma_\theta, t) = \sum_{\sigma_\theta^* = \sigma_{min}}^{\sigma_\theta} V_{NAC, \sigma_\theta^*}(t) - V_{53^\circ N, \sigma_\theta^*}(t + \tau_{out}) \quad (1)$$

where V_{NAC, σ_θ^*} and $V_{53^\circ N, \sigma_\theta^*}$ represent the absolute volume transport distributions of SPG water parcels in density-coordinates on their initial northward (NAC) and final southward (53°N) crossings of the OSNAP array.

180 In order to investigate the downstream evolution of thermohaline anomalies, we additionally define the volume-weighted mean of a specified quantity q (e.g., potential density) for each monthly ensemble of $N(t)$ water parcels at some time τ following their initialisation:

$$\bar{q}(t, \tau) = \frac{\sum_{n \in N(t)} V_n q_n(\tau)}{\sum_{n \in N(t)} V_n} \quad (2)$$

where V_n is the volume transport conveyed by an individual water parcel with index n and $q_n(\tau)$ represents the value of q recorded along its trajectory at time τ following initialisation, where $t \leq \tau \leq t + \tau_{out}$.

2.4 Eulerian Diagnostics

2.4.1 Surface-Forced Water Mass Transformation

A major advantage of quantifying the strength of subpolar overturning in density rather than traditional depth coordinates is that it can be directly related to surface buoyancy fluxes and diapycnal mixing through the water mass transformation framework
190 (Walín, 1982; Marsh, 2000; Speer and Tziperman, 1992; Evans et al., 2023). To quantify the amount of dense water formed by surface buoyancy loss over our Lagrangian experiment domain, we first compute the surface density flux due to the fluxes of heat (Q_H , W m^{-2}) and freshwater (Q_{FW} , $\text{kg m}^{-2} \text{s}^{-1}$) at the sea surface following Speer and Tziperman (1992):

$$f(x, y, t) = -\frac{\alpha}{C_p} Q_H(x, y, t) + \beta \frac{S(x, y, t)}{1 - S(x, y, t)} Q_{FW}(x, y, t) \quad (3)$$

where α is the thermal expansion coefficient, β is the haline contraction coefficient, C_p is the specific heat capacity of seawater
195 and S is the sea surface salinity. To calculate the surface-forced diapycnal water mass transformation $H(\sigma_2, t)$ across an outcropping isopycnal surface, we then integrate the surface density flux over the area of each surface density outcrop σ_2^* :

$$H(\sigma_2, t) = \sum_{\sigma_2^* = \sigma_{min}}^{\sigma_2} \sum_y \sum_x \frac{1}{\Delta\sigma_2} \iint f(x, y, t) \Pi(\sigma_2^*(x, y, t)) \frac{\Delta x(x, y)}{\Delta\sigma_2} \frac{\Delta y(x, y)}{\Delta\sigma_2} dy \quad (4)$$

where

$$\Pi(\sigma_2^*(x, y, t)) = \begin{cases} 1 & \text{for } |\sigma_2^*(x, y, t) - \sigma_2| \leq \frac{\Delta\sigma_2}{2} \\ 0 & \text{elsewhere} \end{cases}$$

200 ~~The sea surface potential density σ_2 . We use the potential density~~ referenced to 2000 ~~mis-computed~~, σ_2 , in our Eulerian water mass transformation analysis to better identify Labrador Sea Water formation in this model, motivated by previous studies (e.g., Yashayaev, 2007; Yashayaev et al., 2007; Xu et al., 2018; Yeager et al., 2021). We compute the potential density σ_2 at the sea surface using model monthly-mean sea surface temperature and salinity fields. The density bin size is given by $\Delta\sigma_2 = 0.02 \text{ kg m}^{-3}$ following Yeager et al. (2021).

We define Labrador Sea Water (LSW) from the long-term average surface-forced diapycnal water mass transformation calculated over our Lagrangian experiment domain following the methodology of Yeager et al. (2021). The potential density range of LSW at OSNAP West is determined as the interval over which positive annual mean formation of LSW occurs in the 1975-2012 climatology of $H(\sigma_2, t)$ over the region north of OSNAP West in our Lagrangian experiment domain. In this study, LSW is defined by the density range $\sigma_2 = 37.01 - 37.11 \text{ kg m}^{-3}$. To account for the lighter composition of LSW in the eastern SPG, we use a modified potential density range $\sigma_2 = 36.95 - 37.11 \text{ kg m}^{-3}$ to define LSW in the Irminger Sea. We quantify the interior LSW thickness, Δz_{LSW} , in the Labrador and Irminger Seas by calculating the average layer thickness of LSW defined by the potential density ranges along both OSNAP West and OSNAP East where the ocean depth exceeds 2000 m.

3 Results

215 3.1 Characterising dense water formation along the path of the subpolar gyre

To characterise the nature of dense water formation along the path of the SPG, we begin by describing the circulation pathways of water parcels flowing northward into the eastern SPG between 1975-2012 (Fig. 2).

On average, $52.7 \pm 9.0 \text{ Sv}$ flows northward across the OSNAP East array between the Reykjanes Ridge and the Scottish Shelf via the branches of the NAC. Of this total northward transport, $24.8 \pm 4.2 \text{ Sv}$ ($47.0 \pm 3.1\%$; Fig. 2) circulates around the SPG before flowing southwards across the OSNAP West array at 53°N (between the Labrador coast and basin interior), which we shall herein refer to as the SPG pathway. The remaining northward transport across OSNAP East is distributed between pathways crossing the Greenland-Scotland Ridge ($27.0 \pm 4.5\%$), the Davis and Hudson Straits ($0.5 \pm 0.4\%$) and 51°N ($12.4 \pm 4.2\%$), with a small fraction remaining within the SPG interior following 9-years of advection ($11.4 \pm 2.0\%$).

Figure 3d shows that the $14.5 \pm 2.3 \text{ Sv}$ flowing northward into the Nordic Seas is dominated by ~~shallow~~ relatively light ($\sigma_\theta \leq 27.3 \text{ kg m}^{-3}$) water parcels, sourced almost equally from the upper 500 m of the central and southern NAC branches, which typically reach the Greenland-Scotland Ridge in less than a year. Interestingly, although this ~~Nordic Seas~~ inflow is larger than ~~observed~~ the observed Atlantic inflow to the Nordic Seas (Chafik and Rossby, 2019; Østerhus et al., 2019), we find reasonable agreement between the modelled ($6.5 \pm 1.0 \text{ Sv}$) and observed ($5.8 \pm 0.7 \text{ Sv}$; Østerhus et al., 2019) Eulerian diapycnal overturning strength at the Greenland-Scotland Ridge (1995-2015), suggesting that a substantial fraction of northward transport across the ridge is recirculated within the upper limb in the model.

As a typical water parcel flows cyclonically around the SPG, it forms dense NADW by cooling ($\Delta\theta_{SPG} = -4.0 \pm 0.2^\circ\text{C}$) and freshening ($\Delta S_{SPG} = -0.36 \pm 0.03 \text{ g kg}^{-1}$) along-stream (Fig. 4). Figure 4b shows that, on average, the total light-to-dense transformation of SPG water parcels peaks across the $\sigma_\theta = 27.66 \text{ kg m}^{-3}$ isopycnal, which we herein refer to as $\bar{\sigma}_{DWF}$. We hence define the along-stream Dense Water Formation (DWF) as the total volume flux of water parcels across this constant isopycnal between their initial release along OSNAP East and final southward crossing of OSNAP West (i.e., $DWF_{SPG}(t) = F(\bar{\sigma}_{DWF}, t)$). Notably, $\bar{\sigma}_{DWF}$ agrees closely with the isopycnal of maximum overturning recorded in OSNAP

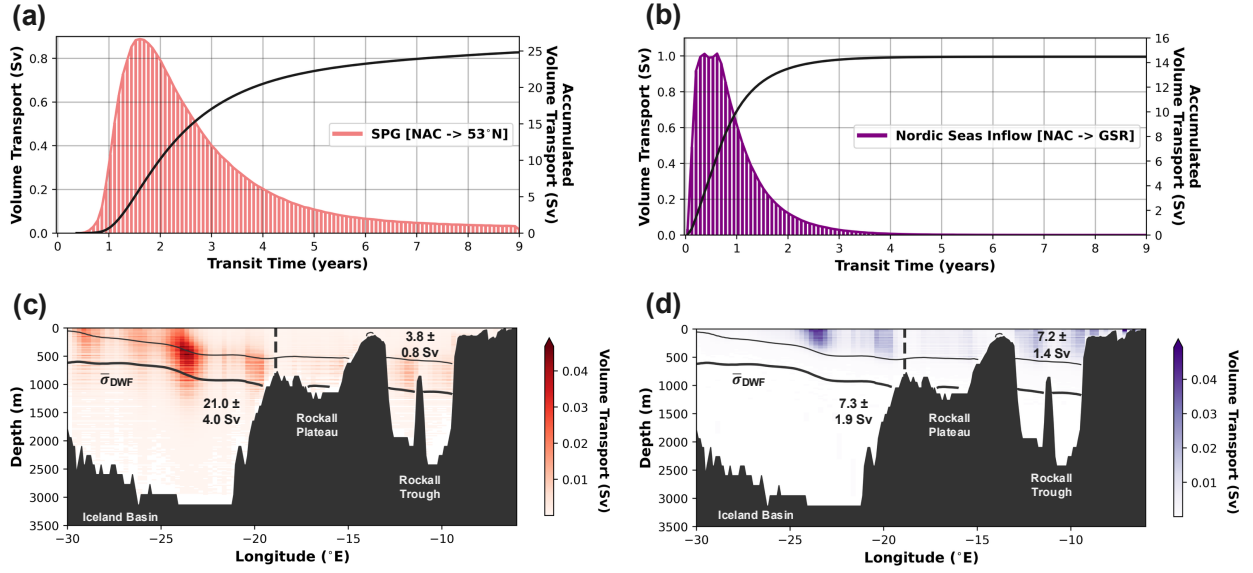


Figure 3. (a,b) Volume transport distributions of (a) SPG and (b) Nordic Seas inflow water parcels as a function of the time taken to reach either (a) OSNAP West at 53°N or (b) the Greenland-Scotland Ridge, after initialisation across OSNAP East in the NAC. The solid black lines represent the accumulated volume transport as a function of water parcel transit time. (c,d) Water parcel release locations in the NAC along OSNAP East between the Reykjanes Ridge and the Scottish Shelf for the SPG pathway (c, red) and the inflows to the Nordic Seas (d, purple). The black dashed line at -18.875 °E is used to distinguish between the northward volume transport arriving in the Iceland Basin and that arriving in the Rockall Trough and Plateau. The time-mean volume transport distributions for each pathway are calculated by summing the absolute volume transports conveyed by water parcels in discrete longitude-depth bins, where the bin widths are $\Delta x = 0.25^\circ\text{E}$ and $\Delta z = 20\text{ m}$. The black solid lines show the time-mean (1975-2012) position of the 27.3 kg m^{-3} and $\bar{\sigma}_{DWF} = 27.66\text{ kg m}^{-3}$ isopycnals.

observations ($\bar{\sigma}_{MOC} = 27.63\text{ kg m}^{-3}$ during 2014-2020 in Fu et al. (2023)), although we acknowledge that this lies outside of our study period. We herein refer to water parcels with a potential density less than or greater than $\bar{\sigma}_{DWF}$ as being found in the upper or lower limb of the AMOC, respectively. Furthermore, we refer to lower limb water parcels collectively as NADW throughout the study since $\bar{\sigma}_{DWF}$ constitutes the time-mean upper isopycnal limit of NADW.

Of the $24.8 \pm 4.2\text{ Sv}$ circulating around the SPG, Figure 4b indicates that $12.7 \pm 1.9\text{ Sv}$ forms dense NADW (i.e., $\sigma_{53^\circ\text{N}} \geq \bar{\sigma}_{DWF}$) prior to crossing OSNAP West. However, ~~it is not possible for all of the water circulating around the SPG to form NADW along-stream, given that $5.6 \pm 1.4\text{ Sv}$ flows northward of the water flowing northwards~~ across OSNAP East is already in the lower limb. ~~Therefore, on average, we find that, and this~~ $12.7 \pm 1.9\text{ Sv}$ of NADW formation represents a significant fraction of the $19.2 \pm 3.0\text{ Sv}$ flowing northward across OSNAP East in the upper limb ~~forms NADW before returning southward across 53°N .~~

We additionally decompose the total DWF along-stream into the separate contributions made in the eastern and western SPG by calculating partial Lagrangian overturning stream functions using the properties of water parcels on their north-

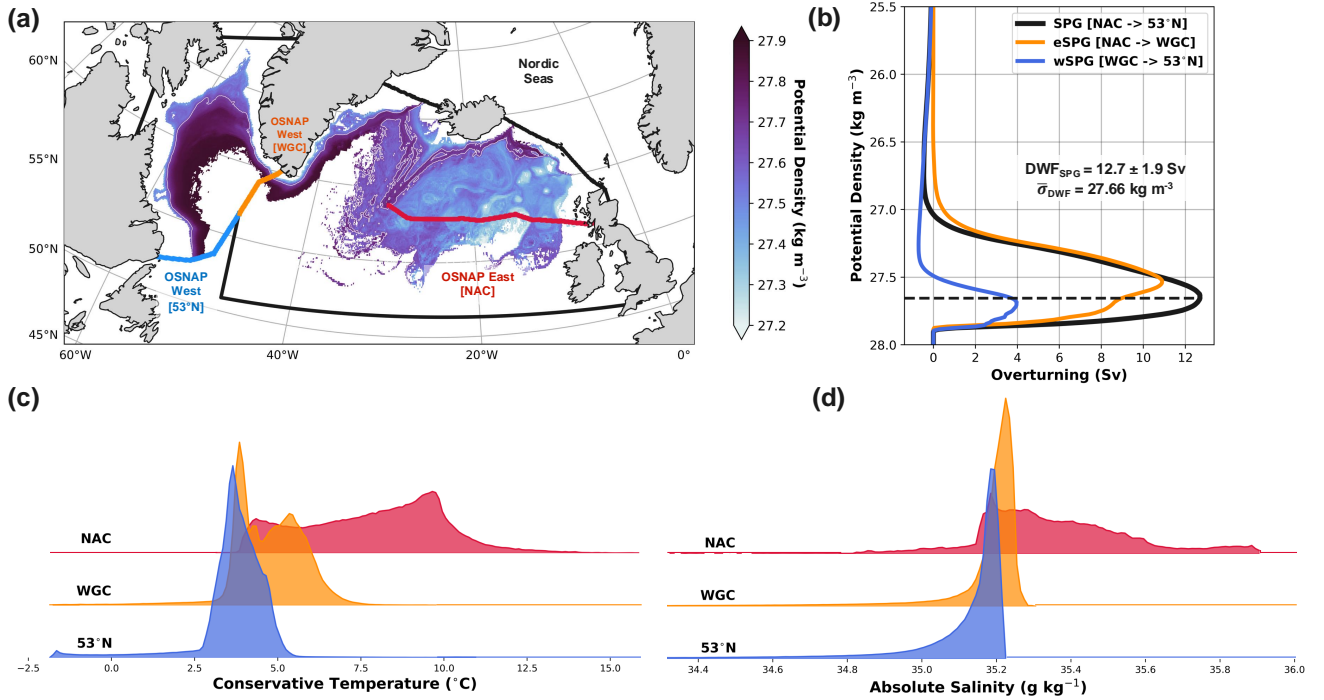


Figure 4. Water mass transformation along the path of the North Atlantic SPG. (a) Example evolution of potential density along the SPG pathway for the subset of water parcels which form NADW after flowing northward across OSNAP East in January 1995. The potential density sampled along each trajectory transiting from the NAC inflows across OSNAP East to 53°N along OSNAP West is binned in discrete latitude-longitude space ($\Delta x, \Delta y = 0.1^\circ$) before calculating the average in each bin. The white contour superimposed shows the location of the 27.66 kg m^{-3} isopycnal used to define the AMOC upper and lower limbs. The potential density values south of OSNAP East are due to water parcels recirculating south of the array en route to 53°N. (b) Time-mean (1975-2012) Lagrangian overturning stream functions in density-coordinates for the SPG pathway. The total diapycnal overturning along the full path of the SPG (black) is decomposed into the contributions of water mass transformation in the eastern (orange) and western SPG (blue). The black dashed line indicates the isopycnal of the maximum of the time-mean Lagrangian overturning stream function denoted as $\bar{\sigma}_{DWF}$. (c, d) Time-mean (1975-2012) volume transport distributions of water parcels along the path of the SPG in conservative temperature and absolute salinity coordinates. The three distributions shown in each panel correspond to the water parcel properties at their initial location along OSNAP East (NAC, red), their subsequent northward crossing of OSNAP West (WGC, orange) and their final southward crossing of OSNAP West (53°N, blue)

ward crossing of the OSNAP West array via the West Greenland Current (WGC; Fig. 4a). In agreement with OSNAP observations (Lozier et al., 2019; Li et al., 2021), we find that the time-mean DWF_{SPG} is dominated by **cooling-driven-diapycnal transformation-NADW formation** in the eastern SPG ($9.0 \pm 1.7 \text{ Sv}$; Fig. 4b). In contrast, DWF is much weaker in the Labrador Sea ($3.7 \pm 0.9 \text{ Sv}$) since there is greater density compensation between cooling and freshening along-stream (Fig. 4c-d). The mean strength of along-stream DWF in the Labrador Sea agrees well with the magnitude of diapycnal overturning observed

along OSNAP West (3.0 ± 1.5 Sv during 2014-2020 in Fu et al. (2023)). An equivalent comparison of DWF with observations in the eastern SPG is impeded by the contribution of the Nordic Seas overflows in the Eulerian diapycnal overturning stream function calculated at OSNAP East. However, we note that our finding that the eastern SPG accounts for 9.0 ± 1.7 Sv of the total along-stream DWF agrees closely with both the results presented in Tooth et al. (2023a) and previous estimates from observations and ocean reanalyses, which suggest that between 9-10 Sv of diapycnal transformation takes place in the Iceland and Irminger Basins (e.g., Sarafanov et al., 2012; Chafik and Rossby, 2019; Koman et al., 2022; Buckley et al., 2023; Fu et al., 2024).

3.2 What governs dense water formation along the path of the subpolar gyre?

Figure 5a shows that the amount of dense NADW formed along the path of the SPG varies substantially across seasonal to decadal timescales. We next explore whether the initial properties of an upper limb water parcel on release across OSNAP East have any influence on the likelihood of forming dense NADW downstream.

Consistent with Tooth et al. (2023b), we find that variability in the composition of the upper limb at OSNAP East is dominated by seasonality (Fig. 5b); upper limb water parcels are, on average, lighter when crossing OSNAP East northwards during autumn and denser when crossing during spring. However, Figure 5b shows that DWF_{SPG} is not significantly correlated ($p > 0.05$) with the volume-weighted average potential density (nor the conservative temperature or absolute salinity) of water parcels flowing northward across OSNAP East in the upper limb. Furthermore, we find no statistically significant relationship between annual-means of DWF_{SPG} and upper limb potential density (buoyancy), suggesting that along-stream DWF is not influenced by the arrival of upper limb buoyancy anomalies into the eastern SPG on either seasonal or interannual timescales. In contrast, we find a strong positive correlation ($r = 0.86$, $p < 0.01$) between DWF_{SPG} and the total northward upper limb transport flowing cyclonically from OSNAP East to OSNAP West (53°N), such that a larger volume transport of upper limb waters into the eastern SPG results in greater NADW formation ~~downstream~~along-stream (Fig. 5c).

There are several important reasons why this enhanced DWF along the path of the SPG may not necessarily project onto Eulerian diapycnal overturning variability diagnosed along the full OSNAP array. Firstly, as we shall later see in Section 3d, the formation of dense water occurs at many different locations around the SPG, meaning that there is a wide range of transit times for newly formed NADW to reach 53°N (Fig. 3a). Second, when calculating the Eulerian overturning along the full OSNAP array, the properties and volume fluxes of water parcels whose histories include dense water formation in the Nordic Seas and the Arctic Ocean are convolved with those transformed within SPG. (The thermohaline properties of water parcels enter this Eulerian overturning calculation because it involves integration within density classes.)

To better understand the relationship between upper limb volume transport and along-stream diapycnal transformation, we can express the total DWF along the path of the SPG as:

$$DWF_{SPG}(t) = \kappa(t)V_{SPG[UL]}(t) \quad (5)$$

where $V_{SPG[UL]}(t)$ represents the SPG upper limb volume transport arriving at OSNAP East ~~at a time t~~ and $\kappa(t)$ represents the fraction of this upper limb volume transport that will form ~~dense NADW~~NADW prior to reaching OSNAP West. We recall

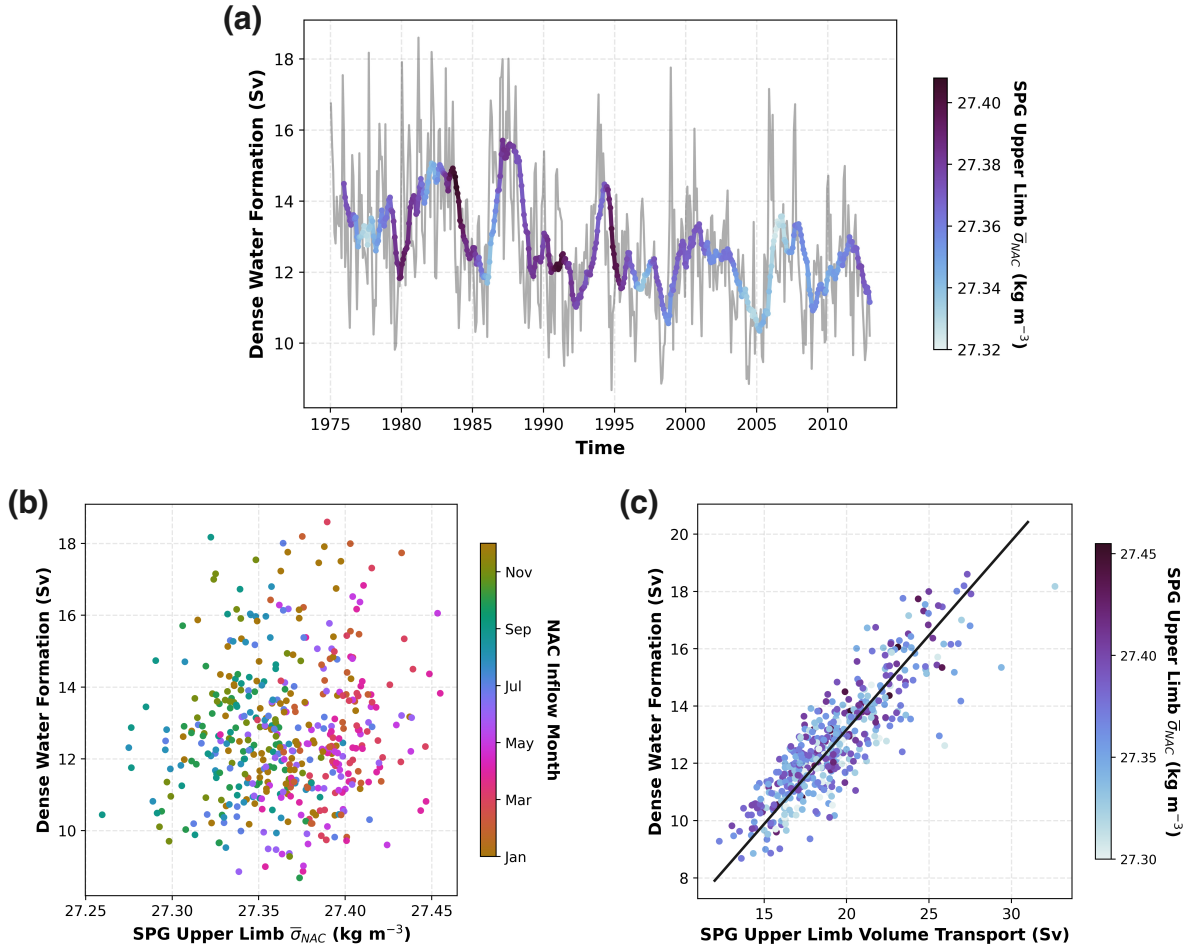


Figure 5. Controls on dense water formation along the path of the North Atlantic SPG. (a) Dense water formation (i.e., total volume flux of water parcels across $\bar{\sigma}_{DWF}$) along the path of the SPG (NAC to 53°N) plotted according to the common inflow time when water parcels flow northward across OSNAP East. The bold line is obtained by applying a 12-month running mean filter to the monthly dense water formation (light grey line) coloured by the volume-weighted mean potential density of the SPG upper limb (i.e., $\sigma_{NAC} \leq \bar{\sigma}_{DWF}$) water parcels. (b) Monthly dense water formation plotted against the volume-weighted mean potential density of SPG upper limb water parcels coloured by their month of release across OSNAP East in the NAC. (c) Monthly dense water formation plotted against the total volume transport of SPG upper limb water parcels coloured by their volume-weighted mean potential density on release across OSNAP East.

that the time t refers to the shared time when water parcels flow northward across OSNAP East, not the time at which they subsequently form NADW downstream. Furthermore, by decomposing each term into its steady and fluctuating components (i.e., $\kappa(t) = \bar{\kappa} + \kappa'(t)$ and $V_{SPG[UL]}(t) = \bar{V}_{SPG[UL]} + V'_{SPG[UL]}(t)$), we can clearly see that variations in DWF_{SPG} are potentially due to a complex combination of changes in the amount of upper limb water flowing northward across OSNAP East, $V'_{SPG[UL]}(t)$, and changes in the efficiency by which water parcels are transferred from the upper to the lower limb along-stream,

$\kappa'(t)$:

$$DWF_{SPG}(t) = \bar{\kappa} \bar{V}_{SPG[UL]} + \bar{\kappa} V'_{SPG[UL]}(t) + \kappa'(t) \bar{V}_{SPG[UL]} + \kappa'(t) V'_{SPG[UL]}(t) \quad (6)$$

Surprisingly, Figure 5c suggests that the efficiency of along-stream diapycnal transformation $\kappa'(t)$ is not the rate-limiting factor governing DWF along the path of the SPG. Instead, variations in DWF_{SPG} are proportional to the amount of upper limb water imported into the eastern SPG via the branches of the NAC (i.e., $DWF_{SPG}(t) \propto V'_{SPG[UL]}(t)$). This implies that along-stream diapycnal transformation is sufficient to transfer a steady fraction $\bar{\kappa}$ of upper limb water parcels into the lower limb, irrespective of their initial thermohaline properties on their northward crossing of OSNAP East. Furthermore, the SPG upper limb volume transport is also strongly correlated with the total volume transport along the path of the SPG ($r = 0.97$, $p < 0.01$), indicating that DWF_{SPG} is closely related to the overall strength of the SPG circulation.

3.3 How predictable is subpolar gyre dense water formation?

Since we have shown that DWF along the path of the SPG is proportional to the upper limb volume transport imported into the eastern SPNA, we next develop a simple linear model to predict the amount of dense NADW formed along-stream. By assuming that the efficiency of water mass transformation from the upper to the lower limb is time-independent (i.e., $\kappa = \bar{\kappa}$), we can formulate a linear model for DWF_{SPG} as follows:

$$DWF_{SPG}(t) = \bar{\kappa} V_{SPG[UL]}(t) + \epsilon(t) \quad (7)$$

where $\bar{\kappa}$ is the constant fraction of the upper limb volume transport which forms NADW along-stream and $\epsilon(t)$ represents the residual error, which is given by:

$$\epsilon(t) = \kappa'(t) \bar{V}_{SPG[UL]} + \kappa'(t) V'_{SPG[UL]}(t) \quad (8)$$

We find that $\bar{\kappa} = 0.66$, implying that, on average, 66% of upper limb waters flowing northward across OSNAP East are transferred into the lower limb prior to their southward crossing of OSNAP West (53°N). Figure 6a shows the strong predictive skill of the linear model on both monthly (RMSE = 1.1 Sv) and interannual (RMSE = 0.8 Sv) timescales, accounting for 74% and 68% of the variance in monthly and interannual (12-month running mean filtered) DWF, respectively.

To better understand the sources of error in our linear model, we decompose the residual DWF $\epsilon(t)$ into its two components in Figure 6b. We find that the residual DWF is almost exclusively explained by fluctuations in the efficiency of along-stream diapycnal transformation from the upper to the lower limb acting on the time-mean volume transport of the SPG upper limb ($\kappa'(t) \bar{V}_{SPG[UL]}$). More specifically, the linear model overestimates the amount of dense NADW formed during the late 1970s and mid-1980s, indicating that the time-independent efficiency of diapycnal transformation of the linear model is too large during these periods (i.e., $\bar{\kappa} > \kappa(t)$). In contrast, during the early and late 2000s, the efficiency of transformation is slightly underestimated (i.e., $\bar{\kappa} < \kappa(t)$) resulting in an underestimation of the DWF downstream. Despite these differences, the high predictive skill of the linear model, especially on interannual to decadal timescales, suggests that changes in diapycnal transformation efficiency play a secondary role in governing variations in DWF_{SPG} when compared to variability in the upper limb transport imported into the eastern SPG.

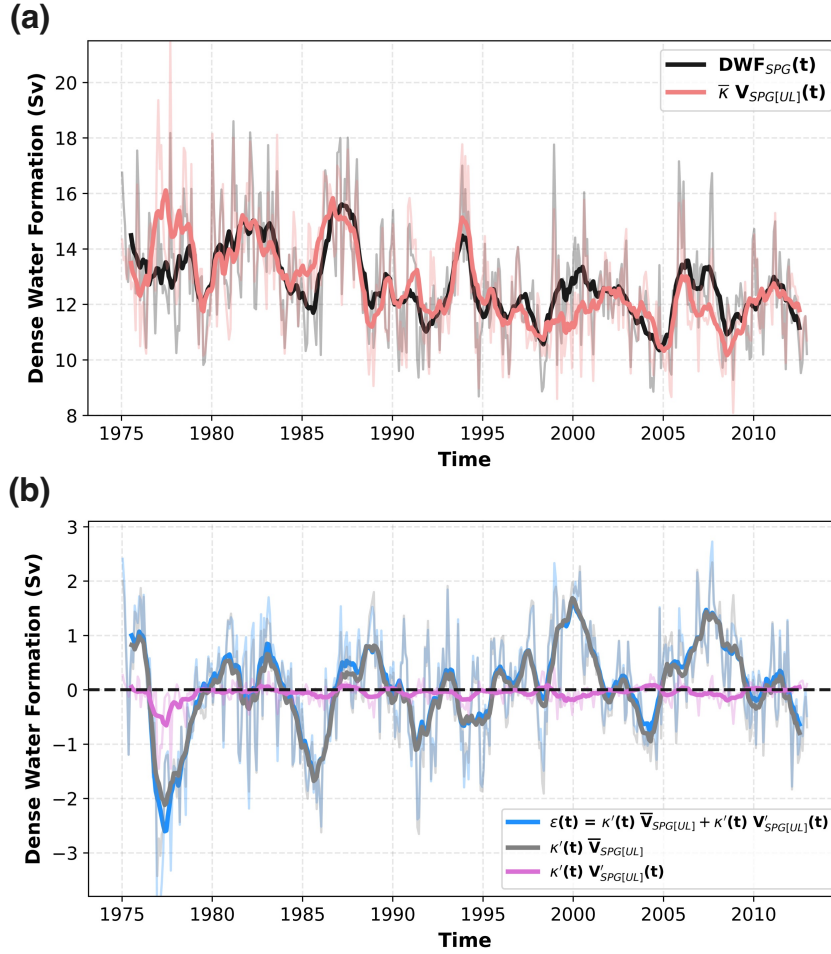


Figure 6. A linear model for Dense Water Formation (DWF) along the path of the North Atlantic SPG. (a) Monthly DWF along the path of the SPG (NAC to 53°N, black) and estimated DWF using a simple linear model $\bar{\kappa} V_{SPG[UL]}(t)$ (pink). (b) The residual DWF $\epsilon(t)$ which is not included in the simple linear model is decomposed into the contributions made by the fluctuations in the efficiency of diapycnal transformation from the upper to the lower limb acting on the time-mean transport of the upper limb and a non-linear term representing the correlation between fluctuations in the efficiency of diapycnal transformation and in the upper limb volume transport. The bold lines are obtained by applying a 12-month running mean filter to the monthly values.

Given that $\bar{\kappa} = 66\%$ of the upper limb waters arriving across OSNAP form dense NADW along the path of the SPG, we next consider what happens to the remaining $(1 - \bar{\kappa}) = 34\%$ of upper limb waters which do not form dense NADW before crossing OSNAP West at 53°N. Of the 6.4 ± 1.7 Sv of upper limb water which does not form dense NADW along the path of the SPG, we find that 1.5 ± 0.5 Sv becomes lighter through entrainment into the fresh Labrador Coastal Current. Meanwhile, the majority of outstanding upper limb transport (5.0 ± 1.4 Sv) becomes denser but not dense enough to be transferred into the

lower limb on crossing OSNAP West via the Labrador Current. To determine the fate of these denser water parcels remaining
 330 in the upper limb at 53°N , we extend our original Lagrangian experiment by continuing to track upper limb water parcels after
 they cross the OSNAP West section. We find that almost all of the denser upper limb water parcels (94%) are either transformed
 into dense NADW south of the OSNAP West section or return to OSNAP East via the NAC to continue circulating around
 the SPG. Thus, of the total upper limb transport imported into the eastern SPG, we would expect that, on average, almost
 92.5% will form dense NADW during one or more additional circuits of the SPG, whereas 7.5% will join the fresh, estuarine
 335 circulation confined to the shelves of the SPNA.

3.4 Two dense water formation pathways around the subpolar gyre

We have demonstrated that the total DWF along the path of the SPG can be skilfully predicted with knowledge of only the
 northward upper limb transport which flows cyclonically around the SPG and a time-independent parameter $\bar{\kappa}$, representing
 the efficiency of diapycnal transformation along-stream.

Figure 7 reveals that there are, in-fact, two distinct pathways by which dense water is formed along the path of the SPG. By
 decomposing DWF_{SPG} into the separate contributions made by the NAC branches flowing northward in the Iceland Basin and
 in the Rockall Trough (Figure 7a), we find that upper limb water parcels sourced from the Iceland Basin (DWF_{IB}) account
 for almost three quarters (9.3 ± 1.8 Sv) of the time-mean DWF_{SPG} and 88% of its variance on interannual timescales (Fig.
 7b). This contrasts with upper limb water parcels flowing northward in the Rockall Trough, which account for 3.4 ± 0.7 Sv
 345 (DWF_{RT}) of along-stream DWF and around 31% of the interannual variability in DWF_{SPG} . These differences in along-stream
 DWF are partly explained by the larger northward transport entering the Iceland Basin across OSNAP East (21.2 ± 4.0 Sv)
 compared with the Rockall Trough (3.9 ± 0.8 Sv in Fig. 3bc). However, this is far from the complete picture, given that
 these two dense water pathways ~~also exhibit~~ are also characterised by distinct modes of diapycnal transformation ~~downstream~~
 (Figures 7c-d), resulting in markedly different efficiencies in the transformation of water parcels from the upper to the lower
 350 limb.

We find that 59% ($\bar{\kappa}_{IB} = 0.59$, Fig. 8a) of upper limb waters entering the Iceland Basin via the northern and central branches
 of the NAC form upper NADW downstream ($\bar{\sigma}_{DWF} < \sigma_{53^\circ\text{N}} < 27.80$ kg m $^{-3}$). Consistent with the dominant Lagrangian
 overturning pathway identified in Tooth et al. (2023a), we find that upper limb water parcels undergo progressive ~~transformation~~
~~by surface buoyancy loss and diapycnal mixing~~ diapycnal transformation along-stream (Fig. 4a and 7c). In contrast, practically
 355 all ($\bar{\kappa}_{RT} = 0.97$, Fig. 8a) of the upper limb waters arriving subsurface in the Rockall Trough form dense lower NADW ($\sigma_{53^\circ\text{N}} >$
 27.80 kg m $^{-3}$) by intense, localised diapycnal ~~mixing with Iceland-Scotland Overflow Waters (ISOW) at~~ transformation near
 the exit of the Faroe-Bank Channel (Fig. 4a and 7d). This finding is consistent with previous studies (e.g., Sarafanov et al.,
 2012; Devana et al., 2021; Chafik and Holliday, 2022), which identify a ‘short-cut’ pathway for subtropical-origin waters to
 penetrate the deep ocean on sub-decadal timescales by diapycnal mixing with overflow waters south of the Iceland-Faroes
 360 Ridge. The clear distinction between the character of dense water formed along these two pathways is evident from the two
 peaks in the conservative temperature distribution of SPG water parcels on their northward crossing of OSNAP West via the
 WGC in Figure 4c.

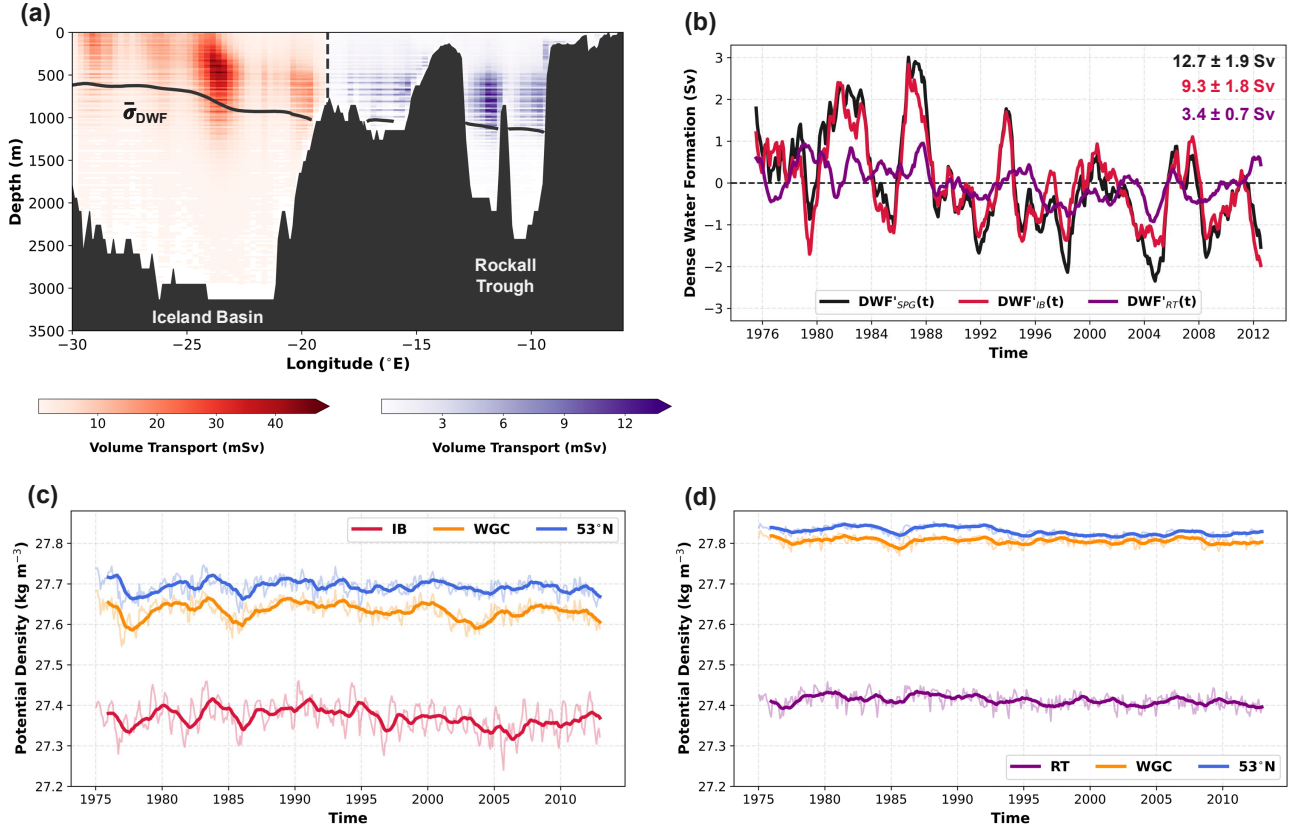


Figure 7. Dense water formation along the two circulation pathways of the North Atlantic SPG. (a) Time-mean (1975-2012) volume transport of SPG water parcels originating from the Iceland Basin (**IB**, red) and the Rockall Trough (**RT**, purple) across OSNAP East. Water parcel volume transports are binned in discrete longitude-depth space ($\Delta x = 0.25^{\circ}\text{E}$, $\Delta z = 20 \text{ m}$) according to their initial release locations along OSNAP East. The black solid line shows the time-mean (1975-2012) position of the $\bar{\sigma}_{DWF}$ isopycnal used to define along-stream dense water formation and hence delimits the upper and lower limbs of the AMOC in this study. (b) Anomalies in the total DWF along the path of the SPG ($DWF'_{SPG}(t)$, black) decomposed into the contributions made by upper limb water parcels sourced from the Iceland Basin ($DWF'_{IB}(t)$, red) and the Rockall Trough ($DWF'_{RT}(t)$, purple). We apply a 12-month running mean filter to the monthly DWF anomalies in order to highlight interannual to decadal variability. (c,d) Volume-weighted mean potential density evolution of upper limb water parcels, sourced from the **IB** (c) and the **RT** (d), which experience a net positive diapycnal transformation along-stream ($\Delta\sigma > 0 \text{ kg m}^{-3}$). The bold lines are obtained by applying a 12-month running mean filter to the monthly mean potential density values recorded on initialisation across OSNAP East (**IB** / **RT**) and on crossing OSNAP West via both the West Greenland Current (WGC) and the Labrador Current (53°N). Note, values are plotted according to the time when water parcels flow northward across the OSNAP East section in panels (b-d).

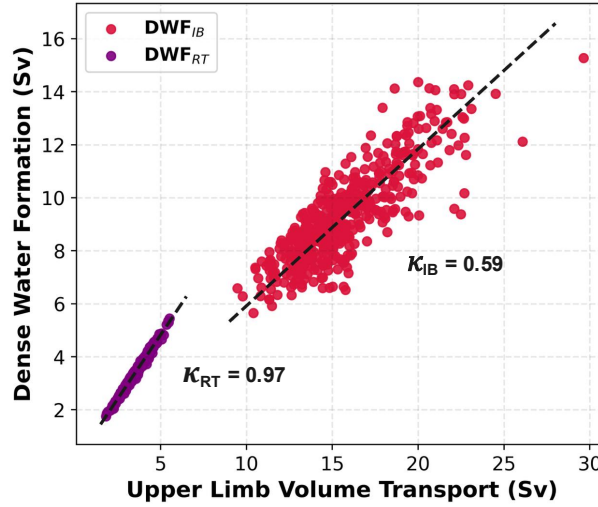


Figure 8. ~~Variability in dense water formation along the two circulation pathways of the North Atlantic SPG. (a)~~ Dense water formation and the total volume transport of SPG upper limb water parcels sourced from the Iceland Basin (**IB**, red) and the Rockall Trough (**RT**, purple) inflows across OSNAP East. The values of $\bar{\kappa}$ overlaid represent the fraction of upper limb waters sourced from the **IB** and **RT** which form dense NADW before reaching 53°N at OSNAP West. ~~(c, d) Volume-weighted mean potential density of SPG upper limb water parcels ($\bar{\sigma}_{IB}$, $\bar{\sigma}_{RT}$) and their volume-weighted mean net densification along-stream ($\bar{\sigma}_{53^\circ\text{N}} - \bar{\sigma}_{IB}$, $\bar{\sigma}_{53^\circ\text{N}} - \bar{\sigma}_{RT}$) coloured by the year of their initial northward-crossing of OSNAP East.~~ We include only the SPG upper limb water parcels experiencing a net positive diapycnal transformation (i.e., $\Delta\sigma > 0 \text{ kg m}^{-3}$) along-stream to exclude those entrained into the fresh estuarine circulation in the Labrador Sea.

Concordant with our earlier analysis in Section 3b, Figures 7c-d show that potential density (buoyancy) anomalies conveyed by upper limb water parcels arriving in both the Iceland Basin and the Rockall Trough are strongly damped ~~downstream. This~~
 365 ~~along-stream. This increasing homogeneity of water parcel properties on reaching 53°N~~ is particularly evident in the Iceland Basin (Fig. 7c), where we find that variations in the average potential density of upper limb water parcels can only explain around 30% of their downstream variability at 53°N (i.e., $r(\sigma_{IB}, \sigma_{53^\circ\text{N}}) = 0.56$, $p < 0.01$). ~~The increasing homogeneity of the two dense water pathways on reaching the exit of the Labrador Sea (53°N) is also evident in Figures 8b-e, which present the relationship between the initial potential density of upper limb water parcels (excluding those entrained into the fresh estuarine~~
 370 ~~circulation) and their net change in potential density along-stream. We find that, on seasonal to interannual timescales, upper limb waters sourced from both the Iceland Basin and the Rockall Trough experience a net densification which is inversely proportional to their potential density on flowing northwards across OSNAP East (Figs. 8b-e).~~

3.5 What drives decadal variability in subpolar gyre dense water formation?

We have seen that the amount of dense water formed along the path of the SPG exhibits substantial variations on decadal
 375 timescales (Fig. 5a), which principally result from changes in the transport of upper limb water arriving across OSNAP East

via the branches of the NAC. More specifically, we find that DWF_{SPG} transitions from a relatively strong period between 1975-1987 (13.7 ± 2.0 Sv) to a weaker, less variable period extending from 2000-2012 (12.1 ± 1.5 Sv; see Fig. 7b). Since the amount of upper limb water flowing northward in the NAC is also strongly correlated with the total volume transport circulating around the SPG, we next investigate the mechanisms responsible for generating variability in the strength of the SPG and, hence, DWF on decadal to multi-decadal timescales.

Previous numerical modelling studies have highlighted the important role of localised surface buoyancy forcing, driven by low-frequency changes in the NAO, in modulating decadal variability in the subpolar ocean circulation (Jackson et al., 2022; Yeager and Danabasoglu, 2014; Yeager et al., 2015; Yeager, 2020; Böning et al., 2006; Robson et al., 2012; Delworth and Zeng, 2016; Kim et al., 2018; Khatri et al., 2022). Consistent with the mechanisms proposed in these studies, we find that the generation of subsurface density anomalies and the densification of the AMOC lower limb are both important precursors to sustained positive anomalies in DWF along the path of the SPG. In particular, Figures 9a-b show that persistent positive phases of the NAO during the mid-1980s and early 1990s were responsible for enhanced surface heat loss and, therefore, an intensification in deep convection in the SPG interior. This resulted in anomalously strong surface-forced water mass transformation in the LSW density range (i.e., $\sigma_2 > 37.0$ kg m⁻³ in Fig. 9b), which increased the thickness of the LSW layer in the central Labrador and western Irminger Seas (Fig. 9c). The densification of the SPG interior also manifests at the surface through a depression in the sea-surface height (SSH) field (see Fig. 9d), which induces a delayed spin-up of the SPG circulation by steepening the SSH gradient across the basin (Häkkinen and Rhines, 2004; Eden and Willebrand, 2001; Kostov et al., 2023) (Eden and Willebrand, 2001; Yeager, 2020; Kostov et al., 2023). In agreement with recent studies (Chafik et al., 2022; Roussenov et al., 2022; Mercier et al., 2024), we find that SSH (density) anomalies in the Irminger Sea interior play an important role in determining the northward geostrophic transport of the upper limb by modulating the pressure gradient across the NAC. Specifically, Figure 9e shows that the stronger upper limb transport arriving in the Iceland Basin between 1975-1987 is associated with a period of anomalously low sea-surface heights in the Irminger Sea interior, whereas elevated sea-surface heights are concomitant with the weaker upper limb transport recorded during 2000-2012 (Fig. 9d).

To further demonstrate that multi-decadal variations in the upper limb transport entering the Iceland Basin are concordant with low-frequency changes in SPG dynamics, Figure 9f shows the average transit times taken for upper limb water parcels to circulate around the SPG. We can clearly see that the greater upper limb volume transport across OSNAP East during 1975-1987 coincides with a faster SPG circulation. Meanwhile, during 2000-2012, the slower SPG circulation is responsible for the weaker upper limb transport arriving in the NAC. Finally, since we have already shown that DWF along the path of the SPG depends linearly on the upper limb transport flowing northward across OSNAP East, Figure 9f shows that multi-decadal changes in SPG DWF are largely determined by the response of the gyre circulation to remote (i.e., Labrador Sea) surface buoyancy forcing. The strong interannual variability superimposed on this multi-decadal variability in DWF likely reflects the faster wind-driven response of the SPG circulation to changes in the NAO (e.g., Eden and Willebrand, 2001; Khatri et al., 2022). For example, Wang et al. (2021) show that wind-stress curl induced variations in the transport of the NAC branches arriving in the Iceland Basin and the Rockall Trough play an important role in driving interannual variability in the upper limb transport across OSNAP East.

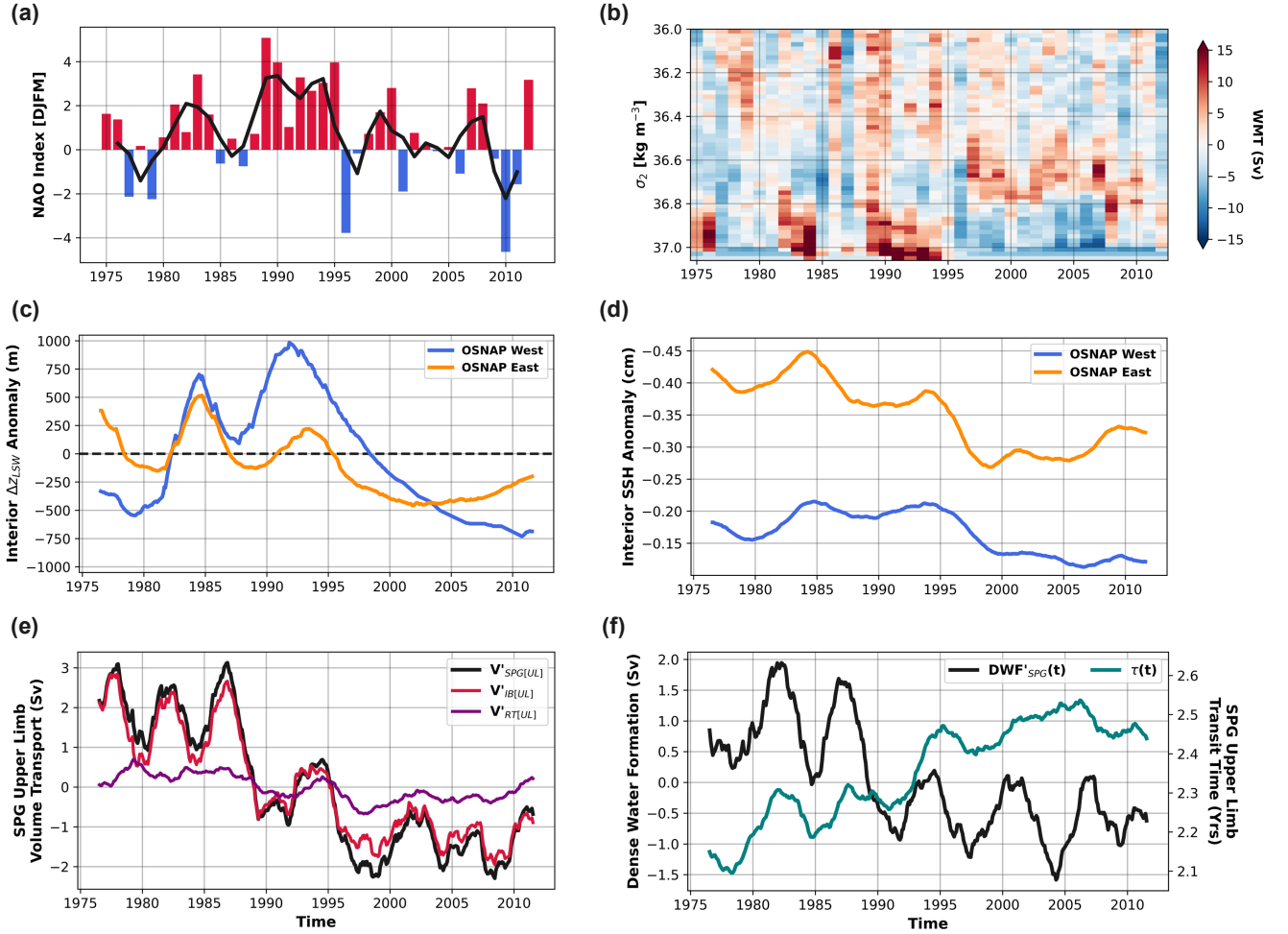


Figure 9. Mechanisms governing decadal variability in dense water formation along the path of the North Atlantic SPG. (a) Winter [DJFM] station-based North Atlantic Oscillation (NAO) index. (b) Surface-forced-Winter (DJFM) surface-forced Water Mass Transformation (WMT) anomalies relative to the 1975-2012 winter climatology calculated over the Lagrangian experiment domain (see Fig. 1a) in σ_2 potential density coordinates (referenced to 2000 m). (c) Layer thickness anomalies of Labrador Sea Water (Δz_{LSW}) in the basin interior (where bathymetry exceeds 2000 m) along the OSNAP West (blue) and OSNAP East (orange) arrays. (d) Basin interior (where bathymetry exceeds 2000 m) Sea Surface Height (SSH) anomaly relative to the section-wide mean SSH along the OSNAP West (blue) and OSNAP East (orange) arrays. (e) Variations in the total volume transport of SPG upper limb water parcels ($V_{SPG[UL]}$, black) decomposed into contributions from water parcels sourced from the Iceland Basin ($V_{IB[UL]}$, red) and the Rockall Trough ($V_{RT[UL]}$, purple). (f) Dense water formation along the path of the SPG (black) and the volume-weighted mean transit time of upper limb water parcels circulating around the SPG (teal). Note that values in panels (e-f) are plotted according to the time when water parcels flow northward across the OSNAP East section. All anomalies are determined by removing the long-term time-mean (1975-2012) from monthly values before applying a 36-month running mean filter.

In summary, we have shown that decadal surface buoyancy forcing anomalies in the central Labrador and Irminger Seas can remotely influence NADW formation taking place along the path of the SPG by modulating the strength of the SPG circulation and hence the availability of upper limb waters [in an eddy-rich ocean hindcast](#).

4 Discussion

415 Despite substantial multi-decadal variability in the water mass properties of the subpolar North Atlantic Ocean, the extent to which large-scale thermohaline changes impact the formation of NADW in the [subpolar-gyre-SPG](#) remains poorly understood. Here, we have investigated the physical mechanisms governing DWF along the [path-boundary current](#) of the SPG by taking a Lagrangian perspective to determining how much dense water is formed as water parcels circulate around the SPG in an eddy-rich ocean model. Our analysis has revealed three important insights into the nature of dense water formation along the [boundary-current-path](#) of the SPG: (a) the coupling between the subpolar gyre and overturning circulations, (b) the decoupling between upper limb thermohaline anomalies and dense water formation, and (c) the influence of remote surface buoyancy forcing on decadal subpolar [overturning-dense water formation](#) variability.

4.1 [The coupling-Coupling](#) between the subpolar gyre & overturning circulation components

In Section 3c, we demonstrated that DWF along the [path-boundary current](#) of the SPG can be skilfully predicted using a simple linear model in which a constant fraction $\bar{\kappa} = 66\%$ of the available upper limb volume transport is transformed into NADW during each circuit of the SPG. We have seen that one interpretation of $\bar{\kappa}$ is a measure of the efficiency of diapycnal transformation from the upper to the lower limb. However, this can also be conceptualised as a measure of the relative alignment between the gyre and diapycnal overturning circulations at subpolar latitudes. To illustrate this, we can consider the idealised case in which the SPG and overturning circulations are perfectly aligned (i.e., $\bar{\kappa} = 100\%$), such that all of the upper limb waters flowing northward in the NAC are transformed into lower limb waters on returning southward in the Labrador Current. In this case, the volume transport flowing around the SPG would be equivalent to the DWF along-stream and we could quantify the subpolar overturning by simply measuring the strength of the SPG circulation via the total volume transport advected in the branches of the NAC. However, we know from observations that ~~$\bar{\kappa} < 100\%$ since the isopycnal delimiting upper NADW does not persistently outcrop one the western side of the Labrador Sea (see Fig. 4 in Zantopp et al., 2017), meaning that the Labrador~~ [the Labrador](#)
435 Current transports both upper and lower limb waters southward ~~Thus, (see Fig. 4 in Zantopp et al., 2017), indicating that,~~ in reality, the SPG circulation projects onto a diapycnal overturning cell (and thus the formation of NADW) with a time-evolving efficiency characterised by ~~$\kappa(t)\kappa(t) < 100\%$~~ .

Since dense water is also formed via progressive diapycnal transformation along the boundary current encircling the Nordic Seas (e.g., Eldevik et al., 2009; Isachsen et al., 2007; Mauritzen, 1996), it would be interesting to extend the Lagrangian methodology introduced in this study to establish if a similar linear relationship can be found between the northward transport of Atlantic Waters across the Greenland-Scotland Ridge and the along-stream formation of lower NADW (i.e., $DWF_{NS} = \bar{\kappa}_{NS} V_{AW}$). Previous studies have estimated that approximately 70-75% of the Atlantic Water inflow to the Nordic Seas partic-

ipates in the thermohaline circulation to form dense overflow waters (Østerhus et al., 2019; Le Bras et al., 2021), suggesting that $\bar{\kappa}_{NS} \approx 0.7 - 0.75$.

4.2 Decoupling between upper limb thermohaline anomalies & subpolar dense water formation

We have also seen that the likelihood of downstream transformation into the lower limb is strongly dependent on where upper limb waters arrive into the eastern SPG. In particular, we showed that upper limb waters arriving subsurface in the Rockall Trough are almost guaranteed ($\bar{\kappa}_{RT} = 97\%$) to form dense lower NADW via vigorous mixing with ISOW, whereas only $\bar{\kappa}_{IB} = 59\%$ of upper limb waters arriving in the Iceland Basin will form upper NADW ~~downstream. Consistent~~ along-stream.
 450 In agreement with the conclusion of Fu et al. (2020), we found that the amount of dense water formed along each pathway is independent of the initial properties of water parcels arriving in the NAC on seasonal to interannual timescales, indicating that upper limb potential density anomalies do not feed back onto the strength of DWF ~~and hence diapycnal overturning in this~~ eddy-rich ocean model.

To better understand this decoupling between the strength of ~~diapycnal overturning~~ dense water formation and upper ocean
 455 properties in the SPNA, we consider the length scales on which upper limb thermohaline anomalies evolve along their path from the Iceland Basin to the western subpolar North Atlantic. For an idealised boundary current which exchanges buoyancy with both the overlying atmosphere and the basin interior (Fig. 10a), temperature and salinity adjust exponentially along-stream towards equilibrium values (Wåhlin and Johnson, 2009). The cyclonic boundary current will therefore reach an equilibrium density provided that its length exceeds the adjustment length scales with respect to both temperature and salinity. Following
 460 Wåhlin and Johnson (2009), and assuming the inflow to the Iceland Basin is 200 km wide, a temperature relaxation coefficient of 80 W m^{-2} and an exchange rate between the boundary current and basin interior of $M = 2.0 \text{ m}^2 \text{ s}^{-1}$, we estimate the adjustment length scales for the upper limb waters sourced from the Iceland Basin to be approximately 2400 km and 7100 km for temperature and salinity, respectively. (Note that in the case of salinity this estimate is an upper limit, because we have assumed that the along-stream addition of freshwater F is small compared with the freshwater exchanged with the basin
 465 interior.) Comparing these length scales with the typical path length of upper limb water parcel trajectories travelling from the Iceland Basin to OSNAP West at 53°N (approximately 6000 km) we expect that the boundary current is fully adjusted in terms of temperature, but not in terms of salinity.

The temperature of water reaching 53°N is therefore virtually independent of both the volume transport and initial temperature of upper limb waters flowing ~~north~~ northward across OSNAP East, whereas some signature of salinity anomalies arriving
 470 in the Iceland Basin may persist. Figure 10b shows that upper limb potential density anomalies arriving in the Iceland Basin are dominated by temperature rather than salinity fluctuations on monthly to decadal timescales (i.e., $r(-\alpha\theta'_{IB}, \sigma'_{IB}) = 0.82$, $p < 0.01$). This dominance of thermal anomalies in the upper limb, combined with their efficient damping by air-sea fluxes and mixing during their transit of the gyre, explains both the strong decoupling between decadal changes in upper-ocean properties and SPG DWF (e.g., Fu et al., 2020) and the narrow potential density range of upper NADW in observations ($27.68 - 27.74$
 475 kg m^{-3} ; Rhein et al., 2011; Kieke et al., 2007). On longer, centennial timescales, it is possible that the persistence of salinity

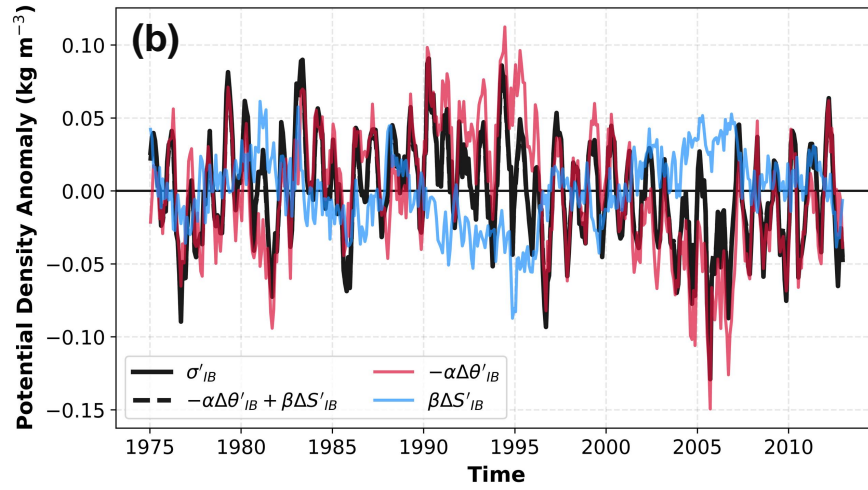
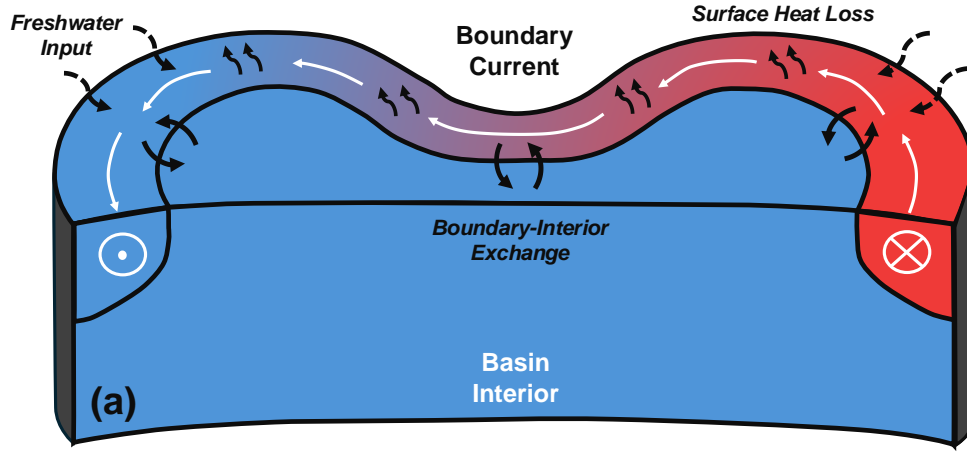


Figure 10. (a) Schematic of an idealised boundary current circulating cyclonically around a subpolar basin. (b) Decomposition of the volume-weighted mean potential density anomaly of upper limb waters flowing northward across OSNAP East in the Iceland Basin. Potential density anomalies from the time-mean (σ'_{IB} , black) are decomposed into their respective diathermal ($-\alpha\Delta\theta'_{IB}$, red) and diahaline ($\beta\Delta S'_{IB}$, blue) components using a linearised equation of state for seawater. Note that the potential density anomaly (solid black line) of upper limb waters is entirely reconstructed by the sum of diathermal ($-\alpha\Delta\theta'_{IB}$) and diahaline ($\beta\Delta S'_{IB}$) components (underlying dashed black line).

anomalies will become the dominant control on NADW formation (via the salt advection feedback) as highlighted in previous coupled climate modelling studies (e.g., Delworth and Zeng, 2012; Menary et al., 2012).

The use of monthly-mean model velocity and tracer fields to evaluate Lagrangian water parcel trajectories is an important limitation of this study, albeit necessary to make our calculations tractable. This is because we likely underestimate the dispersive nature of Lagrangian trajectories and, hence, the volume exchanges between the boundary current and the interior of the Labrador and Irminger Seas (Georgiou et al., 2020, 2021). By using daily or 5-day mean velocity and tracer fields, we would expect shorter circulation times (Blanke et al., 2012) and greater boundary-interior exchanges along the path of the SPG (Roach and Speer, 2019). However, the effects of eddy exchange between the boundary current and the basin interior are implicitly captured in the tracer fields, sampled along water parcel trajectories (Chenillat et al., 2015), and are therefore included in our estimates of along-stream DWF.

4.3 ~~The influence~~ Influence of remote surface buoyancy forcing on decadal ~~subpolar overturning~~ NADW formation variability

A further implication of the strong decoupling between the properties of upper limb waters arriving in the eastern SPG and the strength of ~~DWF downstream~~ NADW formation is that potential density anomalies advected along the path of the SPG do not play an active role in driving subpolar overturning variability on seasonal to decadal timescales, since they are unable to persist downstream. This supports the conclusion of Buckley et al. (2012) that, although decadal AMOC variability can generate upper-ocean thermohaline anomalies, these anomalies are not themselves responsible for generating decadal subpolar overturning variability. Instead, decadal variations in the DWF along the path of the SPG are driven remotely by surface buoyancy forcing localised in the central Labrador and Irminger Seas in this model.

Concordant with recent studies (e.g., Roussenov et al., 2022; Kostov et al., 2023, 2024), we find that enhanced surface buoyancy loss during persistent positive phases of the NAO drives a geostrophic increase in the northward upper limb transport into the Iceland Basin, which is consistent with an intensification of the cyclonic SPG circulation in response to the densification of the Irminger Sea interior. Since along-stream DWF is proportional to the amount of upper limb water flowing northward across OSNAP East, we might anticipate that this spin-up of the SPG circulation would directly translate into an increase in the strength of the basin-scale diapycnal overturning circulation. However, in order for DWF to imprint onto the Eulerian overturning at lower latitudes, lower limb waters must also be exported out of the SPG and into the subtropical North Atlantic (Buckley et al., 2023; Zou and Lozier, 2016). By comparing the long-term mean subpolar AMOC strength (~ 16 Sv) to the typical southward transport of NADW at 53°N (~ 30 Sv; Fröhle et al., 2022; Zantopp et al., 2017), Buckley et al. (2023) estimate that only around half of all NADW is exported to the subtropics, whilst the remainder recirculates in the SPG. Although it is beyond the scope of this study, it would be interesting to investigate whether decadal changes in DWF can influence the rate at which NADW is exported to the subtropical North Atlantic and, hence, act to modulate the advective propagation of overturning anomalies downstream.

We also recognise that model biases may play a role in amplifying the relationship between remote surface buoyancy forcing and DWF along the path of the SPG in this ocean model. For example, the larger-than-observed lower NADW

510 formation ($>27.75 \text{ kg m}^{-3}$ in Figure 1b) north of OSNAP West in this hindcast is indicative of excessive Labrador Sea deep convection (a well-established bias in eddy-rich models; Petit et al. 2023; Jackson and Petit 2023), which would enable the deeper penetration and greater persistence of density anomalies originating from surface buoyancy forcing (Reintges et al., 2024)

5 Conclusions

515 In this study, we have identified the controls on the formation of NADW along the boundary current of the SPG by tracing the evolution of upper limb waters from their arrival in the eastern SPNA to their southward return along the western boundary of the Labrador Sea. We have shown that neither the efficiency of along-stream diapycnal transformation, nor the arrival of thermohaline anomalies in the NAC, are the rate limiting factors governing DWF. Instead, the amount of dense water formed downstream-along-stream can be skilfully predicted based solely on the volume transport of upper limb waters circulating cyclonically around the SPG, which is modulated by remote surface buoyancy forcing in the interior Labrador and Irminger Seas on decadal timescales. This central finding suggests that low-frequency changes in subpolar overturning must also manifest in the SPG circulation, thereby underscoring the importance of monitoring the state of the SPG for both decadal and longer-term climate predictions as previously highlighted by Bingham et al. (2007) and Buckley et al. (2012).

More broadly, our findings imply that the projected decline of the AMOC over the 21st century will be closely related to the evolution of the SPG circulation and its representation in coupled climate models (Hirschi et al., 2020). On the one hand, the robust weakening and contraction of the SPG circulation in response to external anthropogenic forcing in coupled climate models (Sgubin et al., 2017; Swingedouw et al., 2021, 2020; Born and Stocker, 2014) is entirely consistent with a decline in along-stream NADW formation. However, this is undermined by the substantial biases exhibited by current generation coupled climate models, which favour NADW formation through excessive deep convection in the basin interior (Heuzé, 2017, 2021) rather than via continuous diapycnal transformation along the boundary current of the SPG (Hirschi et al., 2020). Moving forward, diagnosing precursor quantities of low-frequency subpolar dense water formation, such as Labrador Sea subsurface density (Ortega et al., 2017, 2021) or SPG transport indices (Curry and McCartney, 2001; Koul et al., 2020), may prove to be an effective means of quantifying future AMOC weakening alongside monitoring the state of the circulation itself.

Code and data availability. Monthly mean outputs from the ORCA0083-GO8p7 ocean sea-ice hindcast (Megann et al., 2022) are available from <https://dx.doi.org/10.5285/399b0f762a004657a411a9ea7203493a>. Overturning in the Subpolar North Atlantic Program (OSNAP) data were collected and made freely available at <https://doi.org/10.35090/gatech/70342> by the OSNAP project and all the national programs that contribute to it (www.o-snap.org). The Lagrangian trajectory code TRACMASS was developed by Aldama-Campino et al. (2020) and is available from https://github.com/oj-tooth/Tracmass_v7.1. The Lagrangian trajectory crossings of the OSNAP arrays can be obtained from <https://doi.org/10.5281/zenodo.14870254>. The analysis of Lagrangian trajectories was performed using the Lagrangian Trajectories Toolbox, an open-source Python library available from https://github.com/oj-tooth/Lt_toolbox.

Author contributions. OJT, HLJ & CW conceptualised the study. OJT designed and performed the Lagrangian experiments and developed the LT-Toolbox analysis software. OJT prepared the original manuscript draft. OJT, HLJ & CW contributed to the interpretation of results, reviewed and edited the manuscript.

Competing interests. The authors declare that they have no conflict of interest.

545 *Acknowledgements.* O.J. Tooth is grateful for the financial support of the UK Natural Environment Research Council (NE/S007474/1) and the Atlantic Climate and Environment Strategic Science (AtlantiS) grant (NE/Y005589/1). H.L. Johnson was supported by the NERC-NSF SNAP-DRAGON project (NE/T013494/1). C.W. was supported by the CANARI project (NE/W004984/1). We would like to thank Alex Megann for performing the ORCA0083-GO8p7 simulation as part of the North Atlantic Climate System Integrated Study (ACSIS) programme. We are also grateful to Laura Jackson, who kindly provided the original code to extract the coordinates of OSNAP arrays from
550 the NEMO model grid.

References

- Aldama-Campino, A., Döös, K., Kjellsson, J., and Jönsson, B.: TRACMASS: Formal Release of Version 7.0, <https://doi.org/10.5281/ZENODO.4337926>, 2020.
- Archibald, A. T., Sinha, B., Russo, M. R., Matthews, E., Squires, F. A., Abraham, N. L., Bauguitte, S. J.-B., Bannan, T. J., Bell, T. G., Berry,
555 D., Carpenter, L. J., Coe, H., Coward, A., Edwards, P., Feltham, D., Heard, D., Hopkins, J., Keeble, J., Kent, E. C., King, B. A., Lawrence,
I. R., Lee, J., Macintosh, C. R., Megann, A., Moat, B. I., Read, K., Reed, C., Roberts, M. J., Schiemann, R., Schroeder, D., Smyth, T. J.,
Temple, L., Thamban, N., Whalley, L., Williams, S., Wu, H., and Yang, M.: Data Supporting the North Atlantic Climate System Integrated
Study (ACSIS) Programme, Including Atmospheric Composition; Oceanographic and Sea-Ice Observations (2016–2022); and Output
from Ocean, Atmosphere, Land, and Sea-Ice Models (1950–2050), *Earth System Science Data*, 17, 135–164, [https://doi.org/10.5194/essd-
17-135-2025](https://doi.org/10.5194/essd-
560 17-135-2025), 2025.
- Årthun, M. and Eldevik, T.: On Anomalous Ocean Heat Transport toward the Arctic and Associated Climate Predictability, *Journal of
Climate*, 29, 689–704, <https://doi.org/10.1175/JCLI-D-15-0448.1>, 2016.
- Årthun, M., Eldevik, T., Viste, E., Drange, H., Furevik, T., Johnson, H. L., and Keenlyside, N. S.: Skillful Prediction of Northern Climate
Provided by the Ocean, *Nature Communications*, 8, 15 875, <https://doi.org/10.1038/ncomms15875>, 2017.
- Bebieva, Y. and Lozier, M. S.: Fresh Water and Atmospheric Cooling Control on Density-Compensated Overturning in the Labrador Sea,
565 *Journal of Physical Oceanography*, 53, 2575–2589, <https://doi.org/10.1175/JPO-D-22-0238.1>, 2023.
- Bersch, M.: North Atlantic Oscillation–Induced Changes of the Upper Layer Circulation in the Northern North Atlantic Ocean, *Journal of
Geophysical Research: Oceans*, 107, <https://doi.org/10.1029/2001JC000901>, 2002.
- Bersch, M., Yashayaev, I., and Koltermann, K. P.: Recent Changes of the Thermohaline Circulation in the Subpolar North Atlantic, *Ocean
570 Dynamics*, 57, 223–235, <https://doi.org/10.1007/s10236-007-0104-7>, 2007.
- Bingham, R. J., Hughes, C. W., Roussenov, V., and Williams, R. G.: Meridional Coherence of the North Atlantic Meridional Overturning
Circulation, *Geophysical Research Letters*, 34, 2007GL031 731, <https://doi.org/10.1029/2007GL031731>, 2007.
- Blanke, B. and Delecluse, P.: Variability of the Tropical Atlantic Ocean Simulated by a General Circulation Model
with Two Different Mixed-Layer Physics, *Journal of Physical Oceanography*, 23, 1363–1388, [https://doi.org/10.1175/1520-
0485\(1993\)023<1363:VOTTAO>2.0.CO;2](https://doi.org/10.1175/1520-
575 0485(1993)023<1363:VOTTAO>2.0.CO;2), 1993.
- Blanke, B., Bonhommeau, S., Grima, N., and Drillet, Y.: Sensitivity of Advective Transfer Times across the North Atlantic Ocean to the
Temporal and Spatial Resolution of Model Velocity Data: Implication for European Eel Larval Transport, *Dynamics of Atmospheres and
Oceans*, 55–56, 22–44, <https://doi.org/10.1016/j.dynatmoce.2012.04.003>, 2012.
- Blockley, E., Fiedler, E., Ridley, J., Roberts, L., West, A., Copsey, D., Feltham, D., Graham, T., Livings, D., Rousset, C., Schroeder, D.,
580 and Vancoppenolle, M.: The Sea Ice Component of GC5: Coupling SI³ to HadGEM3 Using Conductive Fluxes, *Geoscientific Model
Development*, 17, 6799–6817, <https://doi.org/10.5194/gmd-17-6799-2024>, 2024.
- Boer, G. J., Smith, D. M., Cassou, C., Doblas-Reyes, F., Danabasoglu, G., Kirtman, B., Kushnir, Y., Kimoto, M., Meehl, G. A., Msadek, R.,
Mueller, W. A., Taylor, K. E., Zwiers, F., Rixen, M., Ruprich-Robert, Y., and Eade, R.: The Decadal Climate Prediction Project (DCPP)
Contribution to CMIP6, *Geoscientific Model Development*, 9, 3751–3777, <https://doi.org/10.5194/gmd-9-3751-2016>, 2016.
- Böning, C. W., Scheinert, M., Dengg, J., Biastoch, A., and Funk, A.: Decadal Variability of Subpolar Gyre Transport and Its Reverberation
585 in the North Atlantic Overturning, *Geophysical Research Letters*, 33, 2006GL026 906, <https://doi.org/10.1029/2006GL026906>, 2006.

- Born, A. and Stocker, T. F.: Two Stable Equilibria of the Atlantic Subpolar Gyre, *Journal of Physical Oceanography*, 44, 246–264, <https://doi.org/10.1175/JPO-D-13-073.1>, 2014.
- Buckley, M. W., Ferreira, D., Campin, J.-M., Marshall, J., and Tulloch, R.: On the Relationship between Decadal Buoyancy Anomalies and
 590 Variability of the Atlantic Meridional Overturning Circulation, *Journal of Climate*, 25, 8009–8030, <https://doi.org/10.1175/JCLI-D-11-00505.1>, 2012.
- Buckley, M. W., Lozier, M. S., Desbruyères, D., and Evans, D. G.: Buoyancy Forcing and the Subpolar Atlantic Meridional Overturning Circulation, *Philosophical Transactions of the Royal Society A: Mathematical, Physical and Engineering Sciences*, 381, 20220 181, <https://doi.org/10.1098/rsta.2022.0181>, 2023.
- 595 Chafik, L. and Holliday, N. P.: Rapid Communication of Upper-Ocean Salinity Anomaly to Deep Waters of the Iceland Basin Indicates an AMOC Short-Cut, *Geophysical Research Letters*, 49, <https://doi.org/10.1029/2021GL097570>, 2022.
- Chafik, L. and Rossby, T.: Volume, Heat, and Freshwater Divergences in the Subpolar North Atlantic Suggest the Nordic Seas as Key to the State of the Meridional Overturning Circulation, *Geophysical Research Letters*, 46, 4799–4808, <https://doi.org/10.1029/2019GL082110>, 2019.
- 600 Chafik, L., Holliday, N. P., Bacon, S., and Rossby, T.: Irminger Sea Is the Center of Action for Subpolar AMOC Variability, *Geophysical Research Letters*, 49, <https://doi.org/10.1029/2022GL099133>, 2022.
- Chafik, L., Penny Holliday, N., Bacon, S., Baker, J. A., Desbruyères, D., Frajka-Williams, E., and Jackson, L. C.: Observed Mechanisms Activating the Recent Subpolar North Atlantic Warming since 2016, *Philosophical Transactions of the Royal Society A: Mathematical, Physical and Engineering Sciences*, 381, 20220 183, <https://doi.org/10.1098/rsta.2022.0183>, 2023.
- 605 Chenillat, F., Blanke, B., Grima, N., Franks, P. J. S., Capet, X., and Rivi re, P.: Quantifying Tracer Dynamics in Moving Fluids: A Combined Eulerian-Lagrangian Approach, *Frontiers in Environmental Science*, 3, <https://doi.org/10.3389/fenvs.2015.00043>, 2015.
- Collins, M. and Sinha, B.: Predictability of Decadal Variations in the Thermohaline Circulation and Climate, *Geophysical Research Letters*, 30, 2002GL016 504, <https://doi.org/10.1029/2002GL016504>, 2003.
- Curry, R. G. and McCartney, M. S.: Ocean Gyre Circulation Changes Associated with the North Atlantic Oscillation*, *Journal of Physical*
 610 *Oceanography*, 31, 3374–3400, [https://doi.org/10.1175/1520-0485\(2001\)031<3374:OGCCAW>2.0.CO;2](https://doi.org/10.1175/1520-0485(2001)031<3374:OGCCAW>2.0.CO;2), 2001.
- Curry, R. G., McCartney, M. S., and Joyce, T. M.: Oceanic Transport of Subpolar Climate Signals to Mid-Depth Subtropical Waters, *Nature*, 391, 575–577, <https://doi.org/10.1038/35356>, 1998.
- Daniault, N., Mercier, H., Lherminier, P., Sarafanov, A., Falina, A., Zunino, P., P rez, F. F., R os, A. F., Ferron, B., Huck, T., Thierry, V., and Gladyshev, S.: The Northern North Atlantic Ocean Mean Circulation in the Early 21st Century, *Progress in Oceanography*, 146, 142–158,
 615 <https://doi.org/10.1016/j.pocean.2016.06.007>, 2016.
- de Vries, P. and Weber, S. L.: The Atlantic Freshwater Budget as a Diagnostic for the Existence of a Stable Shut down of the Meridional Overturning Circulation, *Geophysical Research Letters*, 32, 2004GL021 450, <https://doi.org/10.1029/2004GL021450>, 2005.
- Delworth, T. L. and Zeng, F.: Multicentennial Variability of the Atlantic Meridional Overturning Circulation and Its Climatic Influence in a 4000 Year Simulation of the GFDL CM2.1 Climate Model, *Geophysical Research Letters*, 39, 2012GL052 107,
 620 <https://doi.org/10.1029/2012GL052107>, 2012.
- Delworth, T. L. and Zeng, F.: The Impact of the North Atlantic Oscillation on Climate through Its Influence on the Atlantic Meridional Overturning Circulation, *Journal of Climate*, 29, 941–962, <https://doi.org/10.1175/JCLI-D-15-0396.1>, 2016.
- Desbruy res, D., Thierry, V., and Mercier, H.: Simulated Decadal Variability of the Meridional Overturning Circulation across the A25-Ovide Section, *Journal of Geophysical Research: Oceans*, 118, 462–475, <https://doi.org/10.1029/2012JC008342>, 2013.

- 625 Desbruyères, D., Mercier, H., and Thierry, V.: On the Mechanisms behind Decadal Heat Content Changes in the Eastern Subpolar Gyre, *Progress in Oceanography*, 132, 262–272, <https://doi.org/10.1016/j.pocean.2014.02.005>, 2015.
- Desbruyères, D., Chafik, L., and Maze, G.: A Shift in the Ocean Circulation Has Warmed the Subpolar North Atlantic Ocean since 2016, *Communications Earth & Environment*, 2, 48, <https://doi.org/10.1038/s43247-021-00120-y>, 2021.
- Devana, M. S., Johns, W. E., Houk, A., and Zou, S.: Rapid Freshening of Iceland Scotland Overflow Water Driven by Entrainment of a Major
630 Upper Ocean Salinity Anomaly, *Geophysical Research Letters*, 48, <https://doi.org/10.1029/2021GL094396>, 2021.
- Döös, K.: Inter-ocean Exchange of Water Masses, *Journal of Geophysical Research: Oceans*, 100, 13 499–13 514, <https://doi.org/10.1029/95JC00337>, 1995.
- d’Orgeville, M. and Peltier, W. R.: On the Pacific Decadal Oscillation and the Atlantic Multidecadal Oscillation: Might They Be Related?, *Geophysical Research Letters*, 34, 2007GL031 584, <https://doi.org/10.1029/2007GL031584>, 2007.
- 635 Eden, C. and Willebrand, J.: Mechanism of Interannual to Decadal Variability of the North Atlantic Circulation, *Journal of Climate*, 14, 2266–2280, [https://doi.org/10.1175/1520-0442\(2001\)014<2266:MOITDV>2.0.CO;2](https://doi.org/10.1175/1520-0442(2001)014<2266:MOITDV>2.0.CO;2), 2001.
- Eldevik, T., Nilsen, J. E. Ø., Iovino, D., Anders Olsson, K., Sandø, A. B., and Drange, H.: Observed Sources and Variability of Nordic Seas Overflow, *Nature Geoscience*, 2, 406–410, <https://doi.org/10.1038/ngeo518>, 2009.
- Evans, D. G., Holliday, N. P., Bacon, S., and Le Bras, I.: Mixing and Air–Sea Buoyancy Fluxes Set the Time-Mean Overturning Circulation
640 in the Subpolar North Atlantic and Nordic Seas, *Ocean Science*, 19, 745–768, <https://doi.org/10.5194/os-19-745-2023>, 2023.
- Fan, H., Borchert, L. F., Brune, S., Koul, V., and Baehr, J.: North Atlantic Subpolar Gyre Provides Downstream Ocean Predictability, *npj Climate and Atmospheric Science*, 6, 145, <https://doi.org/10.1038/s41612-023-00469-1>, 2023.
- Feng, S. and Hu, Q.: How the North Atlantic Multidecadal Oscillation May Have Influenced the Indian Summer Monsoon during the Past Two Millennia, *Geophysical Research Letters*, 35, 2007GL032 484, <https://doi.org/10.1029/2007GL032484>, 2008.
- 645 Fraser, N. J. and Cunningham, S. A.: 120 Years of AMOC Variability Reconstructed From Observations Using the Bernoulli Inverse, *Geophysical Research Letters*, 48, e2021GL093 893, <https://doi.org/10.1029/2021GL093893>, 2021.
- Fröhle, J., Handmann, P. V. K., and Biastoch, A.: Major Sources of North Atlantic Deep Water in the Subpolar North Atlantic from Lagrangian Analyses in an Eddy-Rich Ocean Model, *Ocean Science*, 18, 1431–1450, <https://doi.org/10.5194/os-18-1431-2022>, 2022.
- Fu, Y., Li, F., Karstensen, J., and Wang, C.: A Stable Atlantic Meridional Overturning Circulation in a Changing North Atlantic Ocean since
650 the 1990s, *Science Advances*, 6, eabc7836, <https://doi.org/10.1126/sciadv.abc7836>, 2020.
- Fu, Y., Lozier, M. S., Biló, T. C., Bower, A. S., Cunningham, S. A., Cyr, F., de Jong, M. F., de Young, B., Drysdale, L., Fraser, N., Fried, N., Furey, H. H., Han, G., Handmann, P., Holliday, N. P., Holte, J., Inall, M. E., Johns, W. E., Jones, S., Karstensen, J., Li, F., Pacini, A., Pickart, R. S., Rayner, D., Straneo, F., and Yashayaev, I.: Seasonality of the Meridional Overturning Circulation in the Subpolar North Atlantic, *Communications Earth & Environment*, 4, 181, <https://doi.org/10.1038/s43247-023-00848-9>, 2023.
- 655 Fu, Y., Lozier, M. S., Majumder, S., and Petit, T.: Water Mass Transformation and Its Relationship With the Overturning Circulation in the Eastern Subpolar North Atlantic, *Journal of Geophysical Research: Oceans*, 129, e2024JC021 222, <https://doi.org/10.1029/2024JC021222>, 2024.
- Georgiou, S., Ypma, S. L., Brüggemann, N., Sayol, J.-M., Pietrzak, J. D., and Katsman, C. A.: Pathways of the Water Masses Exiting the Labrador Sea: The Importance of Boundary–Interior Exchanges, *Ocean Modelling*, 150, 101 623,
660 <https://doi.org/10.1016/j.ocemod.2020.101623>, 2020.

- Georgiou, S., Ypma, S. L., Brüggemann, N., Sayol, J.-M., Van Der Boog, C. G., Spence, P., Pietrzak, J. D., and Katsman, C. A.: Direct and Indirect Pathways of Convected Water Masses and Their Impacts on the Overturning Dynamics of the Labrador Sea, *Journal of Geophysical Research: Oceans*, 126, e2020JC016654, <https://doi.org/10.1029/2020JC016654>, 2021.
- Good, S. A., Martin, M. J., and Rayner, N. A.: EN4: Quality Controlled Ocean Temperature and Salinity Profiles and Monthly Objective Analyses with Uncertainty Estimates, *Journal of Geophysical Research: Oceans*, 118, 6704–6716, <https://doi.org/10.1002/2013JC009067>, 2013.
- Goswami, B. N., Madhusoodanan, M. S., Neema, C. P., and Sengupta, D.: A Physical Mechanism for North Atlantic SST Influence on the Indian Summer Monsoon, *Geophysical Research Letters*, 33, 2005GL024803, <https://doi.org/10.1029/2005GL024803>, 2006.
- Grist, J. P., Josey, S. A., Marsh, R., Good, S. A., Coward, Andrew. C., De Cuevas, B. A., Alderson, S. G., New, A. L., and Madec, G.: The Roles of Surface Heat Flux and Ocean Heat Transport Convergence in Determining Atlantic Ocean Temperature Variability, *Ocean Dynamics*, 60, 771–790, <https://doi.org/10.1007/s10236-010-0292-4>, 2010.
- Guivarc’h, C., Storkey, D., Blaker, A. T., Blockley, E., Megann, A., Hewitt, H., Bell, M. J., Calvert, D., Copsey, D., Sinha, B., Moreton, S., Mathiot, P., and An, B.: GOSI9: UK Global Ocean and Sea Ice Configurations, *Geoscientific Model Development*, 18, 377–403, <https://doi.org/10.5194/gmd-18-377-2025>, 2025.
- Häkkinen, S. and Rhines, P. B.: Decline of Subpolar North Atlantic Circulation During the 1990s, *Science*, 304, 555–559, <https://doi.org/10.1126/science.1094917>, 2004.
- Hermanson, L., Dunstone, N., Haines, K., Robson, J., Smith, D., and Sutton, R.: A Novel Transport Assimilation Method for the Atlantic Meridional Overturning Circulation at 26°N, *Quarterly Journal of the Royal Meteorological Society*, 140, 2563–2572, <https://doi.org/10.1002/qj.2321>, 2014.
- Heuzé, C.: North Atlantic Deep Water Formation and AMOC in CMIP5 Models, *Ocean Science*, 13, 609–622, <https://doi.org/10.5194/os-13-609-2017>, 2017.
- Heuzé, C.: Antarctic Bottom Water and North Atlantic Deep Water in CMIP6 Models, *Ocean Science*, 17, 59–90, <https://doi.org/10.5194/os-17-59-2021>, 2021.
- Hirschi, J. J.-M., Barnier, B., Böning, C., Biastoch, A., Blaker, A. T., Coward, A., Danilov, S., Drijfhout, S., Getzlaff, K., Griffies, S. M., Hasumi, H., Hewitt, H., Iovino, D., Kawasaki, T., Kiss, A. E., Koldunov, N., Marzocchi, A., Mecking, J. V., Moat, B., Molines, J.-M., Myers, P. G., Penduff, T., Roberts, M., Treguier, A.-M., Sein, D. V., Sidorenko, D., Small, J., Spence, P., Thompson, L., Weijer, W., and Xu, X.: The Atlantic Meridional Overturning Circulation in High-Resolution Models, *Journal of Geophysical Research: Oceans*, 125, <https://doi.org/10.1029/2019JC015522>, 2020.
- Holliday, N. P., Hughes, S. L., Bacon, S., Beszczynska-Möller, A., Hansen, B., Lavín, A., Loeng, H., Mork, K. A., Østerhus, S., Sherwin, T., and Walczowski, W.: Reversal of the 1960s to 1990s Freshening Trend in the Northeast North Atlantic and Nordic Seas, *Geophysical Research Letters*, 35, 2007GL032675, <https://doi.org/10.1029/2007GL032675>, 2008.
- Holliday, N. P., Bacon, S., Cunningham, S. A., Gary, S. F., Karstensen, J., King, B. A., Li, F., and Mcdonagh, E. L.: Subpolar North Atlantic Overturning and Gyre-Scale Circulation in the Summers of 2014 and 2016, *Journal of Geophysical Research: Oceans*, 123, 4538–4559, <https://doi.org/10.1029/2018JC013841>, 2018.
- Holliday, N. P., Bersch, M., Berx, B., Chafik, L., Cunningham, S., Florindo-López, C., Hátún, H., Johns, W., Josey, S. A., Larsen, K. M. H., Mulet, S., Oltmanns, M., Reverdin, G., Rossby, T., Thierry, V., Valdimarsson, H., and Yashayaev, I.: Ocean Circulation Causes the Largest Freshening Event for 120 Years in Eastern Subpolar North Atlantic, *Nature Communications*, 11, 585, <https://doi.org/10.1038/s41467-020-14474-y>, 2020.

- Hurrell, J. W.: Decadal Trends in the North Atlantic Oscillation: Regional Temperatures and Precipitation, *Science*, 269, 676–679, <https://doi.org/10.1126/science.269.5224.676>, 1995.
- Isachsen, P. E., Mauritzen, C., and Svendsen, H.: Dense Water Formation in the Nordic Seas Diagnosed from Sea Surface Buoyancy Fluxes, *Deep Sea Research Part I: Oceanographic Research Papers*, 54, 22–41, <https://doi.org/10.1016/j.dsr.2006.09.008>, 2007.
- Jackson, L. C. and Petit, T.: North Atlantic Overturning and Water Mass Transformation in CMIP6 Models, *Climate Dynamics*, 60, 2871–2891, <https://doi.org/10.1007/s00382-022-06448-1>, 2023.
- Jackson, L. C., Biastoch, A., Buckley, M. W., Desbruyères, D. G., Frajka-Williams, E., Moat, B., and Robson, J.: The Evolution of the North Atlantic Meridional Overturning Circulation since 1980, *Nature Reviews Earth & Environment*, 3, 241–254, <https://doi.org/10.1038/s43017-022-00263-2>, 2022.
- Jacobs, Z. L., Grist, J. P., Marsh, R., and Josey, S. A.: A Subannual Subsurface Pathway From the Gulf Stream to the Subpolar Gyre and Its Role in Warming and Salinification in the 1990s, *Geophysical Research Letters*, 46, 7518–7526, <https://doi.org/10.1029/2019GL083021>, 2019.
- Jones, B. T., Solow, A., and Ji, R.: Resource Allocation for Lagrangian Tracking, *Journal of Atmospheric and Oceanic Technology*, 33, 1225–1235, <https://doi.org/10.1175/JTECH-D-15-0115.1>, 2016.
- Keenlyside, N. S., Latif, M., Jungclauss, J., Kornblueh, L., and Roeckner, E.: Advancing Decadal-Scale Climate Prediction in the North Atlantic Sector, *Nature*, 453, 84–88, <https://doi.org/10.1038/nature06921>, 2008.
- Khatry, H., Williams, R. G., Woollings, T., and Smith, D. M.: Fast and Slow Subpolar Ocean Responses to the North Atlantic Oscillation: Thermal and Dynamical Changes, *Geophysical Research Letters*, 49, e2022GL101480, <https://doi.org/10.1029/2022GL101480>, 2022.
- Kieke, D., Rhein, M., Stramma, L., Smethie, W. M., Bullister, J. L., and LeBel, D. A.: Changes in the Pool of Labrador Sea Water in the Subpolar North Atlantic, *Geophysical Research Letters*, 34, L06605, <https://doi.org/10.1029/2006GL028959>, 2007.
- Kim, W. M., Yeager, S., Chang, P., and Danabasoglu, G.: Low-Frequency North Atlantic Climate Variability in the Community Earth System Model Large Ensemble, *Journal of Climate*, 31, 787–813, <https://doi.org/10.1175/JCLI-D-17-0193.1>, 2018.
- Kim, W. M., Yeager, S., and Danabasoglu, G.: Atlantic Multidecadal Variability and Associated Climate Impacts Initiated by Ocean Thermohaline Dynamics, *Journal of Climate*, 33, 1317–1334, <https://doi.org/10.1175/JCLI-D-19-0530.1>, 2020.
- Kim, W. M., Ruprich-Robert, Y., Zhao, A., Yeager, S., and Robson, J.: North Atlantic Response to Observed North Atlantic Oscillation Surface Heat Flux in Three Climate Models, *Journal of Climate*, 37, 1777–1796, <https://doi.org/10.1175/JCLI-D-23-0301.1>, 2024.
- Koman, G., Johns, W., Houk, A., Houpert, L., and Li, F.: Circulation and Overturning in the Eastern North Atlantic Subpolar Gyre, *Progress in Oceanography*, 208, 102884, <https://doi.org/10.1016/j.pocean.2022.102884>, 2022.
- Koman, G., Bower, A. S., Holliday, N. P., Furey, H. H., Fu, Y., and Biló, T. C.: Observed Decrease in Deep Western Boundary Current Transport in Subpolar North Atlantic, *Nature Geoscience*, 17, 1148–1153, <https://doi.org/10.1038/s41561-024-01555-6>, 2024.
- Kostov, Y., Messias, M.-J., Mercier, H., Johnson, H. L., and Marshall, D. P.: Fast Mechanisms Linking the Labrador Sea with Subtropical Atlantic Overturning, *Climate Dynamics*, 60, 2687–2712, <https://doi.org/10.1007/s00382-022-06459-y>, 2023.
- Kostov, Y., Messias, M.-J., Mercier, H., Marshall, D. P., and Johnson, H. L.: Surface Factors Controlling the Volume of Accumulated Labrador Sea Water, *Ocean Science*, 20, 521–547, <https://doi.org/10.5194/os-20-521-2024>, 2024.
- Koul, V., Tesdal, J.-E., Bersch, M., Hátún, H., Brune, S., Borchert, L., Haak, H., Schrum, C., and Baehr, J.: Unraveling the Choice of the North Atlantic Subpolar Gyre Index, *Scientific Reports*, 10, 1005, <https://doi.org/10.1038/s41598-020-57790-5>, 2020.
- Le Bras, I., Straneo, F., Muilwijk, M., Smedsrud, L. H., Li, F., Lozier, M. S., and Holliday, N. P.: How Much Arctic Fresh Water Participates in the Subpolar Overturning Circulation?, *Journal of Physical Oceanography*, 51, 955–973, <https://doi.org/10.1175/JPO-D-20-0240.1>, 2021.

- Li, F., Lozier, M. S., Bacon, S., Bower, A. S., Cunningham, S. A., de Jong, M. F., de Young, B., Fraser, N., Fried, N., Han, G., Holliday, N. P., Holte, J., Houpert, L., Inall, M. E., Johns, W. E., Jones, S., Johnson, C., Karstensen, J., Le Bras, I. A., Lherminier, P., Lin, X., Mercier, H., Oltmanns, M., Pacini, A., Petit, T., Pickart, R. S., Rayner, D., Straneo, F., Thierry, V., Visbeck, M., Yashayaev, I., and Zhou, C.: Subpolar North Atlantic Western Boundary Density Anomalies and the Meridional Overturning Circulation, *Nature Communications*, 12, 3002, <https://doi.org/10.1038/s41467-021-23350-2>, 2021.
- Li, J., Sun, C., and Jin, F.-F.: NAO Implicated as a Predictor of Northern Hemisphere Mean Temperature Multidecadal Variability, *Geophysical Research Letters*, 40, 5497–5502, <https://doi.org/10.1002/2013GL057877>, 2013.
- Lozier, M. S. and Stewart, N. M.: On the Temporally Varying Northward Penetration of Mediterranean Overflow Water and Eastward Penetration of Labrador Sea Water, *Journal of Physical Oceanography*, 38, 2097–2103, <https://doi.org/10.1175/2008JPO3908.1>, 2008.
- Lozier, M. S., Li, F., Bacon, S., Bahr, F., Bower, A. S., Cunningham, S. A., de Jong, M. F., de Steur, L., deYoung, B., Fischer, J., Gary, S. F., Greenan, B. J. W., Holliday, N. P., Houk, A., Houpert, L., Inall, M. E., Johns, W. E., Johnson, H. L., Johnson, C., Karstensen, J., Koman, G., Le Bras, I. A., Lin, X., Mackay, N., Marshall, D. P., Mercier, H., Oltmanns, M., Pickart, R. S., Ramsey, A. L., Rayner, D., Straneo, F., Thierry, V., Torres, D. J., Williams, R. G., Wilson, C., Yang, J., Yashayaev, I., and Zhao, J.: A Sea Change in Our View of Overturning in the Subpolar North Atlantic, *Science*, 363, 516–521, <https://doi.org/10.1126/science.aau6592>, 2019.
- Luo, F., Li, S., and Furevik, T.: The Connection between the Atlantic Multidecadal Oscillation and the Indian Summer Monsoon in Bergen Climate Model Version 2.0, *Journal of Geophysical Research*, 116, D19 117, <https://doi.org/10.1029/2011JD015848>, 2011.
- MacGilchrist, G. A., Johnson, H. L., Marshall, D. P., Lique, C., Thomas, M., Jackson, L. C., and Wood, R. A.: Locations and Mechanisms of Ocean Ventilation in the High-Latitude North Atlantic in an Eddy-Permitting Ocean Model, *Journal of Climate*, 33, 10 113–10 131, <https://doi.org/10.1175/JCLI-D-20-0191.1>, 2020.
- Madec, G., Bourdallé-Badie, R., Chanut, J., Clementi, E., Coward, A., Ethé, C., Iovino, D., Lea, D., Lévy, C., Lovato, T., Martin, N., Masson, S., Mocavero, S., Rousset, C., Storkey, D., Vancoppenolle, M., Müller, S., Nurser, G., Bell, M., and Samson, G.: NEMO Ocean Engine, <https://doi.org/10.5281/ZENODO.3878122>, 2019.
- Markina, M. Y., Johnson, H. L., and Marshall, D. P.: Response of Subpolar North Atlantic Meridional Overturning Circulation to Variability in Surface Winds on Different Timescales, *Journal of Physical Oceanography*, 54, 1871–1887, <https://doi.org/10.1175/JPO-D-23-0236.1>, 2024.
- Marotzke, J., Müller, W. A., Vamborg, F. S. E., Becker, P., Cubasch, U., Feldmann, H., Kaspar, F., Kottmeier, C., Marini, C., Polkova, I., Prömmel, K., Rust, H. W., Stammer, D., Ulbrich, U., Kadow, C., Köhl, A., Kröger, J., Kruschke, T., Pinto, J. G., Pohlmann, H., Reyers, M., Schröder, M., Sienz, F., Timmreck, C., and Ziese, M.: MiKlip: A National Research Project on Decadal Climate Prediction, *Bulletin of the American Meteorological Society*, 97, 2379–2394, <https://doi.org/10.1175/BAMS-D-15-00184.1>, 2016.
- Marsh, R.: Recent Variability of the North Atlantic Thermohaline Circulation Inferred from Surface Heat and Freshwater Fluxes, *Journal of Climate*, 13, 3239–3260, [https://doi.org/10.1175/1520-0442\(2000\)013<3239:RVOTNA>2.0.CO;2](https://doi.org/10.1175/1520-0442(2000)013<3239:RVOTNA>2.0.CO;2), 2000.
- Marshall, J., Johnson, H., and Goodman, J.: A Study of the Interaction of the North Atlantic Oscillation with Ocean Circulation, *Journal of Climate*, 14, 1399–1421, [https://doi.org/10.1175/1520-0442\(2001\)014<1399:ASOTIO>2.0.CO;2](https://doi.org/10.1175/1520-0442(2001)014<1399:ASOTIO>2.0.CO;2), 2001.
- Martin, E. R. and Thorncroft, C. D.: The Impact of the AMO on the West African Monsoon Annual Cycle, *Quarterly Journal of the Royal Meteorological Society*, 140, 31–46, <https://doi.org/10.1002/qj.2107>, 2014.
- Martin, E. R., Thorncroft, C., and Booth, B. B. B.: The Multidecadal Atlantic SST—Sahel Rainfall Teleconnection in CMIP5 Simulations, *Journal of Climate*, 27, 784–806, <https://doi.org/10.1175/JCLI-D-13-00242.1>, 2014.

- Mauritzen, C.: Production of Dense Overflow Waters Feeding the North Atlantic across the Greenland-Scotland Ridge. Part 1: Evidence for a Revised Circulation Scheme, *Deep Sea Research Part I: Oceanographic Research Papers*, 43, 769–806, [https://doi.org/10.1016/0967-0637\(96\)00037-4](https://doi.org/10.1016/0967-0637(96)00037-4), 1996.
- McDougall, T. J., Jackett, D. R., Millero, F. J., Pawlowicz, R., and Barker, P. M.: A Global Algorithm for Estimating Absolute Salinity, *Ocean Science*, 8, 1123–1134, <https://doi.org/10.5194/os-8-1123-2012>, 2012.
- Megann, A., Blaker, A., Coward, A., Guiavarc’h, C., and Storkey, D.: Model Output from 1/12° Global JRA55-forced Integration of GO8p7 Global Ocean-Sea Ice Model from 1958 to 2021, <https://doi.org/10.5285/399B0F762A004657A411A9EA7203493A>, 2022.
- Menary, M. B., Park, W., Lohmann, K., Vellinga, M., Palmer, M. D., Latif, M., and Jungclaus, J. H.: A Multimodel Comparison of Centennial Atlantic Meridional Overturning Circulation Variability, *Climate Dynamics*, 38, 2377–2388, <https://doi.org/10.1007/s00382-011-1172-4>, 2012.
- Mercier, H., Desbruyères, D., Lherminier, P., Velo, A., Carracedo, L., Fontela, M., and Pérez, F. F.: New Insights into the Eastern Subpolar North Atlantic Meridional Overturning Circulation from OVIDE, *Ocean Science*, 20, 779–797, <https://doi.org/10.5194/os-20-779-2024>, 2024.
- Msadek, R., Delworth, T. L., Rosati, A., Anderson, W., Vecchi, G., Chang, Y.-S., Dixon, K., Gudgel, R. G., Stern, W., Wittenberg, A., Yang, X., Zeng, F., Zhang, R., and Zhang, S.: Predicting a Decadal Shift in North Atlantic Climate Variability Using the GFDL Forecast System, *Journal of Climate*, 27, 6472–6496, <https://doi.org/10.1175/JCLI-D-13-00476.1>, 2014.
- Ortega, P., Robson, J., Sutton, R. T., and Andrews, M. B.: Mechanisms of Decadal Variability in the Labrador Sea and the Wider North Atlantic in a High-Resolution Climate Model, *Climate Dynamics*, 49, 2625–2647, <https://doi.org/10.1007/s00382-016-3467-y>, 2017.
- Ortega, P., Robson, J. I., Menary, M., Sutton, R. T., Blaker, A., Germe, A., Hirschi, J. J.-M., Sinha, B., Hermanson, L., and Yeager, S.: Labrador Sea Subsurface Density as a Precursor of Multidecadal Variability in the North Atlantic: A Multi-Model Study, *Earth System Dynamics*, 12, 419–438, <https://doi.org/10.5194/esd-12-419-2021>, 2021.
- Østerhus, S., Woodgate, R., Valdimarsson, H., Turrell, B., De Steur, L., Quadfasel, D., Olsen, S. M., Moritz, M., Lee, C. M., Larsen, K. M. H., Jónsson, S., Johnson, C., Jochumsen, K., Hansen, B., Curry, B., Cunningham, S., and Berx, B.: Arctic Mediterranean Exchanges: A Consistent Volume Budget and Trends in Transports from Two Decades of Observations, *Ocean Science*, 15, 379–399, <https://doi.org/10.5194/os-15-379-2019>, 2019.
- Passos, L., Langehaug, H. R., Årthun, M., and Straneo, F.: On the Relation between Thermohaline Anomalies and Water Mass Transformation in the Eastern Subpolar North Atlantic, *Journal of Climate*, <https://doi.org/10.1175/JCLI-D-23-0379.1>, 2024.
- Petit, T., Robson, J., Ferreira, D., and Jackson, L. C.: Understanding the Sensitivity of the North Atlantic Subpolar Overturning in Different Resolution Versions of HadGEM3-GC3.1, *Journal of Geophysical Research: Oceans*, 128, e2023JC019672, <https://doi.org/10.1029/2023JC019672>, 2023.
- Rahmstorf, S.: On the Freshwater Forcing and Transport of the Atlantic Thermohaline Circulation, *Climate Dynamics*, 12, 799–811, <https://doi.org/10.1007/s003820050144>, 1996.
- Reintges, A., Robson, J. I., Sutton, R., and Yeager, S. G.: Subpolar North Atlantic Mean State Affects the Response of the Atlantic Meridional Overturning Circulation to the North Atlantic Oscillation in CMIP6 Models, *Journal of Climate*, <https://doi.org/10.1175/JCLI-D-23-0470.1>, 2024.
- Rhein, M., Kieke, D., Hüttel-Kabus, S., Roessler, A., Mertens, C., Meissner, R., Klein, B., Böning, C. W., and Yashayaev, I.: Deep Water Formation, the Subpolar Gyre, and the Meridional Overturning Circulation in the Subpolar North Atlantic, *Deep Sea Research Part II: Topical Studies in Oceanography*, 58, 1819–1832, <https://doi.org/10.1016/j.dsr2.2010.10.061>, 2011.

- Roach, C. J. and Speer, K.: Exchange of Water Between the Ross Gyre and ACC Assessed by Lagrangian Particle Tracking, *Journal of Geophysical Research: Oceans*, 124, 4631–4643, <https://doi.org/10.1029/2018JC014845>, 2019.
- Robson, J., Sutton, R., Lohmann, K., Smith, D., and Palmer, M. D.: Causes of the Rapid Warming of the North Atlantic Ocean in the
815 Mid-1990s, *Journal of Climate*, 25, 4116–4134, <https://doi.org/10.1175/JCLI-D-11-00443.1>, 2012.
- Robson, J., Ortega, P., and Sutton, R.: A Reversal of Climatic Trends in the North Atlantic since 2005, *Nature Geoscience*, 9, 513–517, <https://doi.org/10.1038/ngeo2727>, 2016.
- Roussenov, V. M., Williams, R. G., Lozier, M. S., Holliday, N. P., and Smith, D. M.: Historical Reconstruction of Subpolar North Atlantic
Overturning and Its Relationship to Density, *Journal of Geophysical Research: Oceans*, 127, <https://doi.org/10.1029/2021JC017732>, 2022.
- 820 Sarafanov, A., Falina, A., Mercier, H., Sokov, A., Lherminier, P., Gourcuff, C., Gladyshev, S., Gaillard, F., and Daniault, N.: Mean Full-Depth Summer Circulation and Transports at the Northern Periphery of the Atlantic Ocean in the 2000s, *Journal of Geophysical Research: Oceans*, 117, <https://doi.org/10.1029/2011JC007572>, 2012.
- Sgubin, G., Swingedouw, D., Drijfhout, S., Mary, Y., and Bennabi, A.: Abrupt Cooling over the North Atlantic in Modern Climate Models, *Nature Communications*, 8, 14 375, <https://doi.org/10.1038/ncomms14375>, 2017.
- 825 Smith, D. M., Eade, R., Scaife, A. A., Caron, L.-P., Danabasoglu, G., DelSole, T. M., Delworth, T., Doblas-Reyes, F. J., Dunstone, N. J., Hermanson, L., Kharin, V., Kimoto, M., Merryfield, W. J., Mochizuki, T., Müller, W. A., Pohlmann, H., Yeager, S., and Yang, X.: Robust Skill of Decadal Climate Predictions, *npj Climate and Atmospheric Science*, 2, 13, <https://doi.org/10.1038/s41612-019-0071-y>, 2019.
- Speer, K. and Tziperman, E.: Rates of Water Mass Formation in the North Atlantic Ocean, *Journal of Physical Oceanography*, 22, 93–104, [https://doi.org/10.1175/1520-0485\(1992\)022<0093:ROWMFI>2.0.CO;2](https://doi.org/10.1175/1520-0485(1992)022<0093:ROWMFI>2.0.CO;2), 1992.
- 830 Stommel, H.: Thermohaline Convection with Two Stable Regimes of Flow, *Tellus*, 13, 224–230, <https://doi.org/10.1111/j.2153-3490.1961.tb00079.x>, 1961.
- Straneo, F. and Heimbach, P.: North Atlantic Warming and the Retreat of Greenland’s Outlet Glaciers, *Nature*, 504, 36–43, <https://doi.org/10.1038/nature12854>, 2013.
- Swingedouw, D., Ifejika Speranza, C., Bartsch, A., Durand, G., Jamet, C., Beaugrand, G., and Conversi, A.: Early Warning from
835 Space for a Few Key Tipping Points in Physical, Biological, and Social-Ecological Systems, *Surveys in Geophysics*, 41, 1237–1284, <https://doi.org/10.1007/s10712-020-09604-6>, 2020.
- Swingedouw, D., Bily, A., Esquedo, C., Borchert, L. F., Sgubin, G., Mignot, J., and Menary, M.: On the Risk of Abrupt Changes in the North Atlantic Subpolar Gyre in CMIP6 Models, *Annals of the New York Academy of Sciences*, 1504, 187–201, <https://doi.org/10.1111/nyas.14659>, 2021.
- 840 Tooth, O. J., Johnson, H. L., and Wilson, C.: Lagrangian Overturning Pathways in the Eastern Subpolar North Atlantic, *Journal of Climate*, 36, 823–844, <https://doi.org/10.1175/JCLI-D-21-0985.1>, 2023a.
- Tooth, O. J., Johnson, H. L., Wilson, C., and Evans, D. G.: Seasonal Overturning Variability in the Eastern North Atlantic Subpolar Gyre: A Lagrangian Perspective, *Ocean Science*, 19, 769–791, <https://doi.org/10.5194/os-19-769-2023>, 2023b.
- Tsujino, H., Urakawa, S., Nakano, H., Small, R. J., Kim, W. M., Yeager, S. G., Danabasoglu, G., Suzuki, T., Bamber, J. L., Bentsen, M.,
845 Böning, C. W., Bozec, A., Chassignet, E. P., Curchitser, E., Boeira Dias, F., Durack, P. J., Griffies, S. M., Harada, Y., Ilıcak, M., Josey, S. A., Kobayashi, C., Kobayashi, S., Komuro, Y., Large, W. G., Le Sommer, J., Marsland, S. J., Masina, S., Scheinert, M., Tomita, H., Valdivieso, M., and Yamazaki, D.: JRA-55 Based Surface Dataset for Driving Ocean–Sea-Ice Models (JRA55-do), *Ocean Modelling*, 130, 79–139, <https://doi.org/10.1016/j.ocemod.2018.07.002>, 2018.

- Vancoppenolle, M., Rousset, C., Blockley, E., Aksenov, Y., Feltham, D., Fichet, T., Garric, G., Guémas, V., Iovino, D., Keeley, S., Madec, G., Massonnet, F., Ridley, J., Schroeder, D., and Tietsche, S.: SI3, the NEMO Sea Ice Engine, <https://doi.org/10.5281/ZENODO.7534900>, 2023.
- Wåhlin, A. K. and Johnson, H. L.: The Salinity, Heat, and Buoyancy Budgets of a Coastal Current in a Marginal Sea, *Journal of Physical Oceanography*, 39, 2562–2580, <https://doi.org/10.1175/2009JPO4090.1>, 2009.
- Walín, G.: On the Relation between Sea-Surface Heat Flow and Thermal Circulation in the Ocean, *Tellus A: Dynamic Meteorology and Oceanography*, 34, 187, <https://doi.org/10.3402/tellusa.v34i2.10801>, 1982.
- Wang, H., Zhao, J., Li, F., and Lin, X.: Seasonal and Interannual Variability of the Meridional Overturning Circulation in the Subpolar North Atlantic Diagnosed From a High Resolution Reanalysis Data Set, *Journal of Geophysical Research: Oceans*, 126, e2020JC017130, <https://doi.org/10.1029/2020JC017130>, 2021.
- Xu, X., Rhines, P. B., and Chassignet, E. P.: On Mapping the Diapycnal Water Mass Transformation of the Upper North Atlantic Ocean, *Journal of Physical Oceanography*, 48, 2233–2258, <https://doi.org/10.1175/JPO-D-17-0223.1>, 2018.
- Yashayaev, I.: Hydrographic Changes in the Labrador Sea, 1960–2005, *Progress in Oceanography*, 73, 242–276, <https://doi.org/10.1016/j.pocean.2007.04.015>, 2007.
- Yashayaev, I. and Seidov, D.: The Role of the Atlantic Water in Multidecadal Ocean Variability in the Nordic and Barents Seas, *Progress in Oceanography*, 132, 68–127, <https://doi.org/10.1016/j.pocean.2014.11.009>, 2015.
- Yashayaev, I., Bersch, M., and Van Aken, H. M.: Spreading of the Labrador Sea Water to the Irminger and Iceland Basins, *Geophysical Research Letters*, 34, 2006GL028999, <https://doi.org/10.1029/2006GL028999>, 2007.
- Yeager, S.: The Abyssal Origins of North Atlantic Decadal Predictability, *Climate Dynamics*, 55, 2253–2271, <https://doi.org/10.1007/s00382-020-05382-4>, 2020.
- Yeager, S. and Danabasoglu, G.: The Origins of Late-Twentieth-Century Variations in the Large-Scale North Atlantic Circulation, *Journal of Climate*, 27, 3222–3247, <https://doi.org/10.1175/JCLI-D-13-00125.1>, 2014.
- Yeager, S., Castruccio, F., Chang, P., Danabasoglu, G., Maroon, E., Small, J., Wang, H., Wu, L., and Zhang, S.: An Outsized Role for the Labrador Sea in the Multidecadal Variability of the Atlantic Overturning Circulation, *Science Advances*, 7, eabh3592, <https://doi.org/10.1126/sciadv.abh3592>, 2021.
- Yeager, S. G. and Robson, J. I.: Recent Progress in Understanding and Predicting Atlantic Decadal Climate Variability, *Current Climate Change Reports*, 3, 112–127, <https://doi.org/10.1007/s40641-017-0064-z>, 2017.
- Yeager, S. G., Karspeck, A. R., and Danabasoglu, G.: Predicted Slowdown in the Rate of Atlantic Sea Ice Loss, *Geophysical Research Letters*, 42, <https://doi.org/10.1002/2015GL065364>, 2015.
- Zantopp, R., Fischer, J., Visbeck, M., and Karstensen, J.: From Interannual to Decadal: 17 Years of Boundary Current Transports at the Exit of the Labrador Sea, *Journal of Geophysical Research: Oceans*, 122, 1724–1748, <https://doi.org/10.1002/2016JC012271>, 2017.
- Zhang, R.: Mechanisms for Low-Frequency Variability of Summer Arctic Sea Ice Extent, *Proceedings of the National Academy of Sciences*, 112, 4570–4575, <https://doi.org/10.1073/pnas.1422296112>, 2015.
- Zhang, R., Delworth, T. L., and Held, I. M.: Can the Atlantic Ocean Drive the Observed Multidecadal Variability in Northern Hemisphere Mean Temperature?, *Geophysical Research Letters*, 34, 2006GL028683, <https://doi.org/10.1029/2006GL028683>, 2007.
- Zhang, R., Sutton, R., Danabasoglu, G., Kwon, Y.-O., Marsh, R., Yeager, S. G., Amrhein, D. E., and Little, C. M.: A Review of the Role of the Atlantic Meridional Overturning Circulation in Atlantic Multidecadal Variability and Associated Climate Impacts, *Reviews of Geophysics*, 57, 316–375, <https://doi.org/10.1029/2019RG000644>, 2019.

Zou, S. and Lozier, M. S.: Breaking the Linkage Between Labrador Sea Water Production and Its Advective Export to the Subtropical Gyre, *Journal of Physical Oceanography*, 46, 2169–2182, <https://doi.org/10.1175/JPO-D-15-0210.1>, 2016.

890 Zou, S., Lozier, M. S., Li, F., Abernathey, R., and Jackson, L.: Density-Compensated Overturning in the Labrador Sea, *Nature Geoscience*, 13, 121–126, <https://doi.org/10.1038/s41561-019-0517-1>, 2020.