

~~Observed currents~~ Currents and their Drivers in the Archipelago Sea: Insights from ADCP measurements

Hedi Kanarik¹, Laura Tuomi¹, Pekka Alenius¹, Elina Miettunen², Milla Johansson¹, Tuomo Roine¹, Antti Westerlund¹, and Kimmo K. Kahma¹

¹ Finnish Meteorological Institute, P.O.Box 503, FI-00101 Helsinki, Finland

² Finnish Environment Institute, Latokartanonkaari 11, FI-00790 Helsinki, Finland

Correspondence: Hedi Kanarik (hedi.kanarik@fmi.fi)

Abstract.

The Archipelago Sea (AS) in the Baltic Sea is a complicated fragmented sea area with numerous small islands and islets that are crossed by several deeper straits. The area functions as a major route for both transport and leisure activities on the sea as well as many other forms of blue economy. Even with the high maritime activities in this sea area, knowledge of the currents along the deep channels crossing the AS has been limited due to the lack of ~~quality-ensured measurements~~ quality-assured measurements. To enhance the general understanding of the dynamics in the AS, we have collected and analysed currents in 10 different locations across the AS using ADCP (Acoustic Doppler Current Profiler) current measurements made during numerous short measurement campaigns over the last two decades. Currents in the AS are restricted by the geometry of the area and typically have two main flow directions, with a slightly wider directional distribution at the southern parts of the AS.

10 In open areas of the AS, surface currents have a mean magnitude of around 8 cms^{-1} . ~~Currents in the AS and~~ can momentarily grow to significant magnitudes, as even the shortest measurement time series (of around 4 months) have measured currents exceeding at least 40 cms^{-1} . The current magnitudes in the long and narrow straits are almost double (14 cms^{-1}) the general current magnitudes of the area, and current magnitudes up to 115 cms^{-1} have been measured at the northern end of the long ~~NE~~ north-eastern strait. The AS currents are mostly driven by local winds, but strong oscillations in the surrounding ~~basing~~ basins can cause significant ~~current~~ currents (up to 80 cms^{-1} in narrow straits) if the local winds are weak enough (below 10 ms^{-1}) or from ~~non-optimal direction-related~~ non-optimal directions with respect to the straits. Our analysis shows that especially strong seiche in the Gulf of Finland combined with low sea levels in the Gulf of Bothnia is a significant factor in forcing currents in the AS.

15

1 Introduction

20 The Archipelago Sea is a unique and complicated coastal archipelago located in the Baltic Sea (Fig. 1). It is a region with over 40 000, small islands and islets, narrow channels between islands, and a large variation in bottom topography. Together with the Åland Sea, the Archipelago Sea (AS) separates the two major Baltic Sea basins with independent oscillation and circulation patterns: the Baltic proper together with the Gulf of Finland from the Gulf of Bothnia (Wubber and Krauss, 1979;

Jönsson et al., 2008). The AS is also a heavily trafficked area with narrow fairways. In some of these fairways there can be sudden strong currents (Kanarik et al., 2018), potentially causing dangerous situations for navigation, when the flow direction is from the side of the vessel. For safety of the marine traffic it is essential that different operators, e.g. pilots, have detailed knowledge of areas and situations in which such strong currents can occur. Thus, understanding the main features of currents in different areas of the archipelago and the drivers behind them is important. As currents also transport substances within the water column, understanding circulation dynamics provides knowledge-based information to support spatial planning for offshore activities such as aquaculture.

The first current measurements in the Baltic Sea were conducted more than a century ago using a large network of light-ships lightships, which were essentially floating lighthouses that were also utilised for marine observations (Witting, 1912; Palmén, 1930; Hela, 1952). Studies based on these measurements gave us information on the general circulation patterns of the Baltic Sea and showed that the currents, especially in the surface layer, are strongly dependent on the wind climate. The general Baltic Sea wind fields are characterised by dominant south-westerly (SW) and secondary north-northwesterly (NNW) winds (Soomere and Keevallik, 2001; Männikus et al., 2020), as shown also in the AS area (Miettunen et al., 2024). The Baltic Sea is located at the end of the North Atlantic storm track and has large seasonal variability in occurrence of windstorms, with most frequent occurrences between November and January, and least between May and August (Laurila et al., 2021a), while also experiencing large annual and decadal variability (Laurila et al., 2021b). These variations in wind and atmospheric pressure are also the main factors affecting short-term sea level variations in the Baltic Sea (Johansson, 2014). Recent studies have also been able to further identify that most extreme sea level events in the Baltic Sea are related to events with clusters of cyclones crossing the Baltic Sea region in a short period of time (Rantanen et al., 2024).

Today, only observation-based studies of the circulation in the Baltic Sea are rather rare and have been mainly focused on certain areas as part of temporary moorings utilising Acoustic Doppler Current Profiles (ADCPs) (e.g., Muchowski et al., 2023; Mattias Green et al., 2006). Several studies have recently focused on the Gulf of Finland, where analysis of measured currents has shown that while currents are mainly driven by wind and bathymetry, seiche and tides can play a significant role in the area's circulation dynamics (Lilover et al., 2011). In the Gulf of Finland, current oscillations have been shown to be strongly aligned with seiche modes in different parts of the water column depending on the prevailing stratification (Suhhova et al., 2018). Seiche oscillation is a specific feature of the semi-enclosed Baltic Sea sea level variations. It typically forms when wind and air pressure induce strong sea level gradients between different sub-basins (e.g., Gulf of Finland – Baltic proper). After the atmospheric forcing ceases, strong gradient between basins can result in an oscillation of water back and forth between the sub-basins. The periods of these oscillations range up to 27 hours between the Baltic proper and the Gulf of Finland, and up to 39 hours between the Baltic proper and the Gulf of Bothnia (Lisitzin, 1974; Wubber and Krauss, 1979). The tides in the Baltic Sea are usually of the order of a few centimetres (e.g., Witting, 1908, 1911). The strongest tidal oscillations have been observed in the Gulf of Finland with amplitudes of 17–19 cm (Medvedev et al., 2013), and are clearly distinguishable in the current spectrum (Lilover, 2012).

In the AS, the first current measurements were made in 1922 as part of a study related to water exchange studies between the Baltic proper and the Bothnian Sea (Witting, 1925; Lisitzin, 1951). Measurements made near the surface and at 20 m depth

showed a strong steering of the currents due to the bathymetry and geometry of the islands. In 1977, current measurements were made at three locations in the Archipelago Sea (Ambjörn and Gidhagen, 1979). Those records included a strong northward current of 91 cm s^{-1} at one of the measurement locations at the narrow south-northward strait, while the maximums at the two other locations were around 50 cm s^{-1} . During the years 1974–1977, a large measurement campaign was carried out in the inner part (closer to the mainland) of the AS (Virtaustutkimuksen neuvottelukunta, 1979) with the aim of evaluating the fate of substances released from wastewater sources. Measurements were made at 15 locations and showed that currents in the inner and mid archipelago have short-term fluctuations between two main directions. The current magnitude was weak on average, but occasionally there were high magnitudes. The highest measured current magnitude was c. 50 cm s^{-1} . In 2004, 2006 and from 2016 onwards there have been newer current measurement campaigns in the outer regions of the Archipelago Sea using ~~Acoustic Doppler Current Profiles (ADCPs)~~ADCPs; however, they have been largely unrepresented and ~~published~~unpublished before this paper.

Earlier research on AS currents has focused mainly on the effect of the wind and the geometry of the area to explain the drivers of the current fields. Virtaustutkimuksen neuvottelukunta (1979) evaluated the effect of winds on currents in the inner parts of the AS and concluded that the interactions are ~~extremely~~very complicated due to the heterogeneity of the area. ~~The~~They found that the connection between wind direction and current direction was clearest when the winds ~~blow~~were aligned along the channels and blowing from the same direction for longer periods~~and are aligned along the channels~~. A model study, focussing on the more open areas of the AS, has shown that due to the geometry of the archipelago and the orientation of the channels, the southward transports were the largest with NNW winds and the northward transports with SSE–SE winds (Miettunen et al., 2020). The prevailing wind direction in the area, SW, is not optimal for northward or southward flow through the archipelago. This was also demonstrated by the analysis of current measurements in the Lövsjär cross section, where currents were shown to be very sensitive to even small changes in wind directions and that even 15 m s^{-1} SW winds were not able to induce strong currents in ~~this area~~that cross section (Kanarik et al., 2018). Recent modelling studies have shown that there is large spatial and year-to-year variability in current speeds and directions in the Archipelago Sea (Tuomi et al., 2018; Miettunen et al., 2020, 2024). The model results show that in the deep, narrow channels that cross the area in the N–S or NW–SE direction, the current speeds are highest and the directions are strongly aligned along the axis of the channels. In more open areas, the directional distribution of currents is wider and the currents are weaker.

In this paper, we publish ADCP datasets from the Archipelago Sea area and describe the general features of the measured currents. In our analysis, we considered the heterogeneity in the temporal and spatial coverage of the data set. Using some of the longer datasets, we examined the drivers of the strong currents in the AS, which were left unexplained in the earlier research that focused mainly on the local wind conditions (Virtaustutkimuksen neuvottelukunta, 1979; Kanarik et al., 2018). This was done by also considering the differences in sea level and atmospheric pressure over the AS.

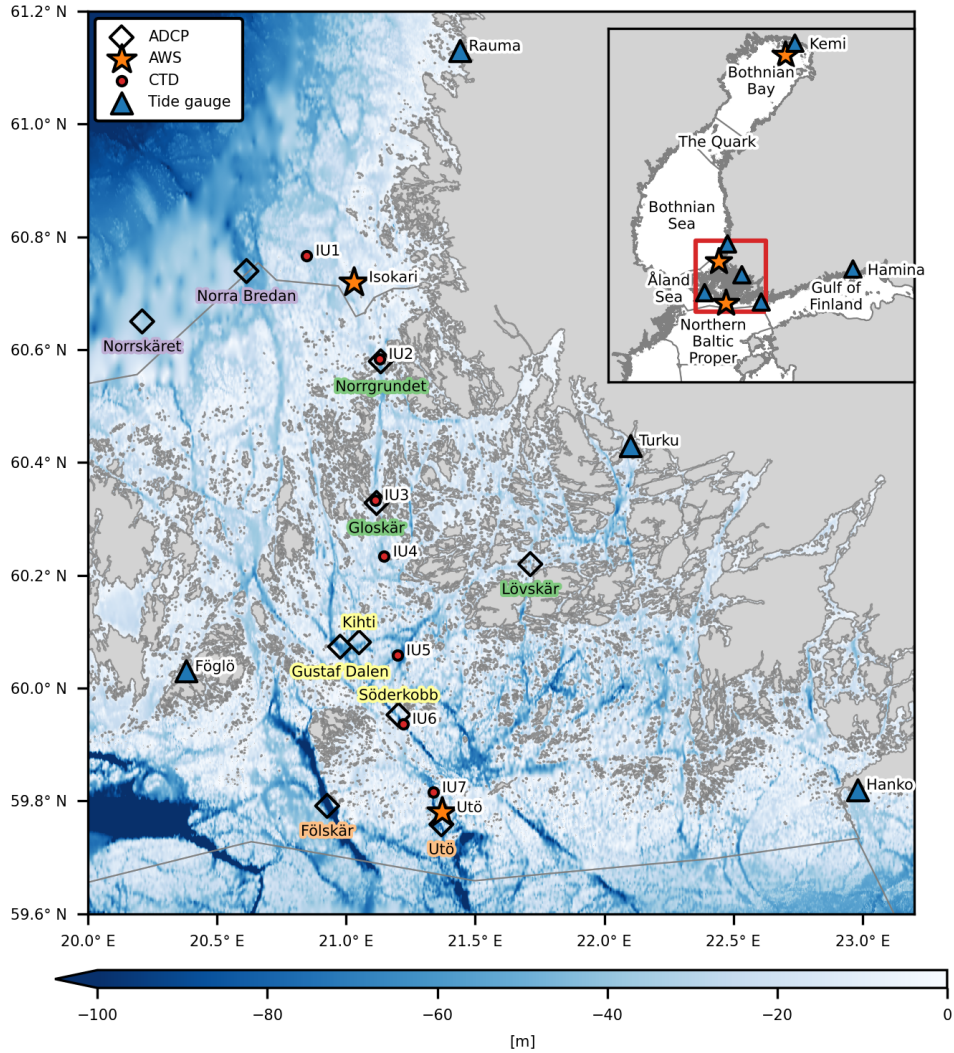


Figure 1. Locations of the current measurements (ADCP, acoustic Doppler current profiler) in the Archipelago Sea (AS), indicated with diamonds. Fölskär and Utö measurement stations (names highlighted with orange) are located at the southern edge of the AS. Kihti, Gustaf Dalen and Söderkobb (yellow) in the central AS, Norrgrundet, Gloskär and Lövsjär (green) in narrow straits and Norrskäret and Norra Bredan (purple) at the northern edge of the AS, as presented in the corresponding Sections 3.1 to 3.4. The stars and triangles indicate the locations of the automatic weather stations (AWS) and tide gauges, respectively. Red dots indicate the location of the routine CTD (conductivity–temperature–depth) stations between Isokari and Utö. The background colour represents the bathymetry (EMODnet Bathymetry Consortium, 2020). The smaller map shows the different basins in the northern Baltic Sea, and the red rectangle indicates the location of the study area. Basin borders and coastline from HELCOM (2018).

Table 1. ADCP ([acoustic Doppler current profiler](#)) moorings used in this study. The given depth is the depth measured during the deployment of the ADCP. [Stations with multiple deployments in same location are highlighted with a – in the Name column. Area column identifies the type of the region \(presented in Section 3\) where the measurement were conducted.](#)

Name	ID	Measurement period	Location	Depth	Area
Fölskär	SVT04	11 May – 11 Oct 2004	59°47.466' N, 20°55.596' E	115 m	southern edge
– Fölskär	SVM2S	25 Apr – 25 Aug 2006			
Söderkobb	SVM1S	25 Apr – 25 Aug 2006	59°57.15' N, 21°12.17' E	60 m	central region
Norrskäret	SVM2N	27 Apr – 22 Aug 2006	60°39.000' N, 20°12.600' E	49 m	northern edge
Lösvkär	lov13	18 June – 13 Nov 2013	60°13.183' N, 21°42.800' E	44 m	narrow strait
Norra Bredan	S1-16	6 Sept 2016 – 22 Feb 2017	60°44.358' N, 20°36.852' E	68 m	northern edge
Norrgrundet	S2-16	6 Sept 2016 – 16 Oct 2018 7 May 2017 ¹	60°34.752' N, 21°08.046' E	54 m	narrow strait
– Norrgrundet	S2-17	device changed on 7 May 2017 – 16 Oct 2018			
– Norrgrundet	S2-21	20 May 2021 – 3 Dec 2021			
Utö	uto17	26 July 2017 – 27 June 2018	59°45.510' N, 21°22.146' E	76 m	southern edge
Kihti	kih19	19 Nov 2019 – 23 May 2020	60°04.872' N, 21°03.000' E	41 m	central region
Gustaf Dalen	mame2020	14 Oct 2020 – 6 Sept 2022 10 Aug 2021 ²	60°04.399' N, 20°58.600' E	66 m	central region
– Gustaf Dalen	mame2021	device changed on 10 Aug 2021 – 6 Sept 2022			
Gloskär	IU3	20 May 2021 – 2 June 2022	60°19.690' N, 21°07.063' E	50 m	narrow strait

¹ Device replaced on 7 May 2017, ² Device replaced on 10 Aug 2021

90 2 Materials and methods

2.1 Current measurements

In this paper, we present and analyse only current measurements that are done with ADCP current profilers. We had data from 10 different locations around the Archipelago Sea (Table 1, Figure 1). Measurements were done using [bottom-mounted](#) Tele-

dyne RD Instruments' ~~bottom-mounted~~ 300 kHz WORKHORSE Sentinel Broadband Acoustic Doppler Current Profiler. Data

95 were quality checked using internal quality parameters (signal correlation, echo intensity, percent good, and error velocity) based on recommendations by Book et al. (2007) and Symonds (2006). For more detailed information on the exact procedure and the threshold values used, see Kanarik et al. (2018, Section 3). In the following analysis, we used only ensembles qual-

ity flagged as 1 (good data). [Bad quality data was marked as nan in the analysis, thus leaving data from unmeasured areas completely out of the analysis. Data sets that have a large amount of missing data are marked in the figures to highlight the](#)

100 [higher uncertainty of the given values.](#)

The amount of subsurface bins that were rejected due to side slope contamination varied between the measurement stations and are presented in Table 2 together with information about the depth of the first measured bin, bin size, ensemble interval,

Table 2. Quality information about the ADCP measurements. ~~*Check Sect. 2.1.1 for more precise description of the quality issues, presented in same order as in Table 1.~~

Name	Bin size (m)	Ensemble interval (s)	Pings/Ens	std (cm/s)	1st bin depth from the sea floor (m)	Last bin distance from the surface (m)	Quality issues *issues ¹
Fölskär	2 m	1800	100	0.70	4.0	22	depth and scatterers
– <u>Fölskär</u>	2 m	1800	100	0.70	6.0	7	scatterers
Söderkobb	2 m	1800	100	0.70	5.5	4	-
Norrskäret	2 m	1800	100	0.70	5.0	4	-
Lövsjär	1 m	1200	120	1.24	4.7	5	-
Norra Bredan	1 m	1800	60	1.75	4.8	4	-
Norrgrundet	1 m	1800	65	1.68	4.8	5	-
– <u>Norrgrundet</u>	1 m	1800	65	1.68	8.8	5	ice and bottom
– <u>Norrgrundet</u>	1 m	1800	130	1.19	4.7	5	-
Utö	1 m	1800	160	1.07	4.7	7	ice and scatterers
Kihti	1 m	1200	120	1.24	4.8	4	-
Gustaf Dalen	1 m	1200	140	1.15	4.9	5	ice and scatterers
– <u>Gustaf Dalen</u>	1 m	1200	140	1.15	4.6	5	ice and scatterers
Gloskär	1 m	1800	229	0.91	4.6	4	-

¹ Check Sect. 2.1.1 for more precise description of the quality issues.

number of pings per ensemble and the corresponding standard deviation (std) of the measurements. As the sea surface variations in the Archipelago Sea (AS) are small, typically less than the bin size of the measurements, one depth level was used for flagging the data for side slope contamination for each time series (cf. Last bin distance from the surface Table 2). ADCP was set to reach the sea surface in all but one data set: the Fölskär measurements from 2004, in which the topmost bin was at 22 m depth. In the used configurations, we lost data from the about five metre boundary layers at the sea surface and at the sea floor. Magnetic variation was ~~taken into account during the deployment setup,~~ corrected by calibrating compasses prior to deployments and applying up to date magnetic declination correction.

110 **2.1.1 Quality issues**

At some measurement sites and periods, there was loss of data due to physical or biogeochemical conditions (e.g., ice cover or lack of scatters). These are marked as "quality issues" in Table 2. The amount of good data for the whole water column for each station is presented monthly in Figure 2, where the values indicate the fraction of good data for the whole month from all of the measured depths. If measurements started or ended in the middle of the month, then only the fraction of the measured

115 month is marked as good. For example, measurements at Kihti station started on 19 November and there were no major issues in the measurements so the measurements covered about 40% of that month.

The ice cover affected the measurement quality in February and March 2019, 2021, and 2022 (Fig. 2). The effects of ice were notable on Feb–Mar 2018 in Norrgrundet, on March 2018 in Utö, and in Gustaf Dalen on two winters: Feb–Mar 2021 and Dec 2021–Mar 2022 (Fig. 2). At the Utö and Gustaf Dalen sites, ice affected the measurements mainly only in the upper half
120 of the water layer. However, in Norrgrundet, the ice corrupted the measurements in the entire water column and the data were discarded for the whole time period from February 6 to March 22, 2018. During March 2018, also most of the measurements at the Utö station were bad quality.

The lack of scatterers in spring and early summer also caused reoccurring quality issues in the ADCP data. Because of this, the ADCP did not receive enough valid signals from certain depths of the water column, typically around pycnocline. At Gustaf
125 Dalen, ADCP was unable to measure currents around 10–2 m depths during May 2021 (Fig. 2). Data were also missing at the Utö station in the beginning of June 2018 at depths of 10–24 m and in the topmost 10 m layer in the last half of June. In some areas, measurements were successful during the night, when zooplankton migrates to the surface. An example of this lack of data in parts of the water column can be seen in Westerlund et al. (2022, Fig. 4). Zooplankton movement also caused some minor issues, e.g. in the thermocline in the Lövsjär dataset (Kanarik et al., 2018), but only a nominal part of the data had to be
130 rejected.

The depth of the Fölsjär site (115 m) was too deep for the 300 kHz ADCP as the ~~device~~ device was mostly unable to acquire measurements in the upper 50–60 m of the water column. In the first data set (measured in 2004), the maximum number of measurements was missed at depths of 36–38 m, where ADCP was unable to compute the ~~velocity-solution~~ current velocities from 68% of the ~~ensembles~~ measured times. The next measurement campaign in 2006, was only slightly more successful with
135 the maximum amount of missing data being 53% at 36–38 m depth. The lack of scatterers also contributed to the amount of missing data in this site. Data were missing most frequently between June and July in both years. Measurements close to the surface (7 m depth, Table 2) were only obtained in 2006 from mid-June onwards. Together, of the two measurement campaigns in Fölsjär, only 35% of the measurements were successful at the near-surface layer above the seasonal thermocline. However, there were almost no missing data in either of the measurement below the 60 m ranging to almost 110 m depth.

140 In the second Norrgrundet dataset (ID S2-17, Table 1), vertical velocities and thus error velocities were exceptionally high at the bottommost 4 bins. The error velocity tests rejected 21% of the data from these depths, but since the vertical velocities still had unrealistic data after these automatic quality checks, we rejected all measurements from the four bottommost depth bins in this data set.

2.2 Wind, sea level and hydrography data

145 We used wind data from two automated weather stations (AWS) to represent weather conditions in the surrounding seas. Utö AWS (59°46' 44.74" N 21°22' 29.24" E) is located on the southernmost island of the AS and Isokari AWS (60°43' 19.91" N, 21°1' 36.52") at the northeast edge of the AS (locations shown in Fig. 1). Easterly, southerly and westerly winds (measured at 25 m above mean sea level) at the Utö AWS represent the conditions in the northern Baltic proper, but northerly winds are

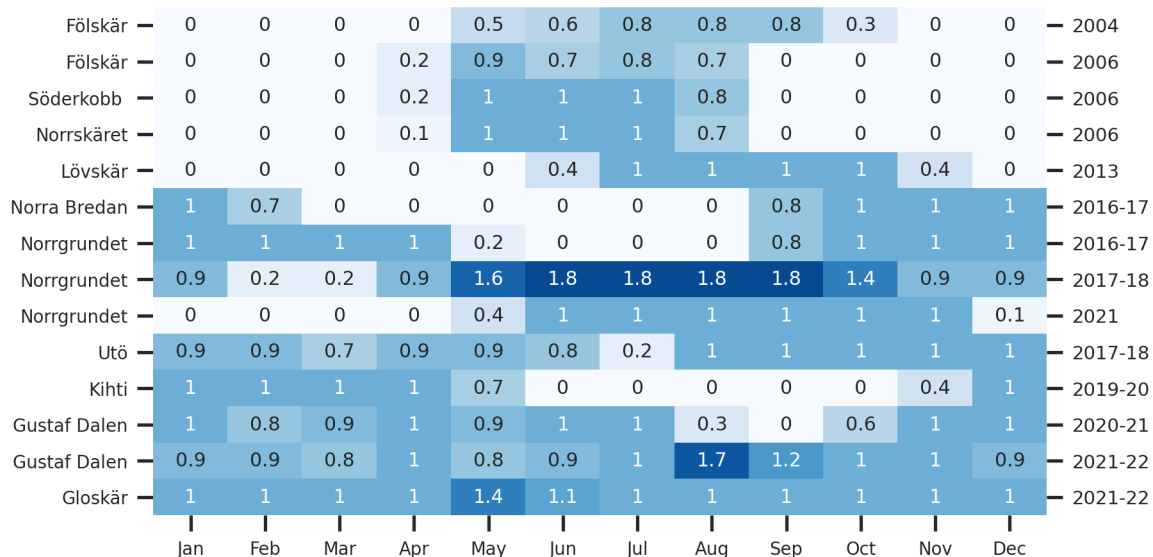


Figure 2. Amount of good data available throughout the whole water column per month for each measurement dataset (Table 1). The years of the measurements are shown on the right-hand side y-axis. Value 1 indicates that data were good throughout the water column for a whole month and currents were measured at this location only during one year. Values greater than 1 indicate that the measurements spanned the next year. See Table 1 for the exact measurement periods.

affected by the northern islands and NW peninsulas of Utö island. Isokari AWS has open sea from SW to N and the winds are measured at 31 m above mean sea level. ~~The~~ As wind measurements are made on the eastern edge of the Isokari island, the size and shape of the ~~Isokari~~ island weaken the winds from ~~NNE to S~~ the western sector between the S and NNE directions; however, winds from E are slightly overestimated due to the height of the measurement device. For analysis of larger-scale atmospheric conditions, atmospheric pressure measurements from Kemi lighthouse AWS (65°23' 6.28" N, 24°5' 44.46", Fig. 1) were used together with Uto AWS measurements.

For statistical analysis of general wind conditions over AS, we used climatological standard normal period of 1991 to 2020. For the first decade, data ~~was were~~ available only once every 3 hours. Thus, statistical analysis over given 30 year period was done using the same time interval of 3 hours. The highest available temporal resolution was used when the winds were analysed against simultaneous current measurements. Measurements with 10-minute intervals were available in Utö AWS starting from September 13, 2006 and in Isokari AWS from May 2, 2006. ~~Continues~~ Continuous simultaneous data of atmospheric pressure from multiple ~~ASW-AWS~~ stations were available only from 2007 onwards, and the statistical analysis on this variable was thus conducted over a shorter time period.

To evaluate the relation between currents and the sea level differences over the area, we analysed ~~hourly~~ instantaneous sea level data from tide gauges at Rauma (61°8' 2.03" N, 21°26' 33.47" E), Hanko (59°49' 22.32" N, 22°58' 35.70" E), Turku (60°25' 41.81" N, 22°6' 1.92" E), Föglö Degerby (60°1' 54.78" N, 20°23' 5.34" E), Hamina (60°33' 45.96" N, 27°10' 45.12"

165 E) and Kemi (65°40' 24.13" N, 24°30' 54.94" E). The locations are marked in Figure 1 with triangles. ~~As in this study, we are interested in the sea level tilt driving the currents, we used hourly sea levels.~~ The sea level values used are given relative to the theoretical mean sea level~~for statistical analysis.~~ For statistical analysis of typical sea level difference, we used hourly instantaneous data over climatological standard normal period of 1991 to ~~2020 and half-hourly measurements for analysis on simultaneous current and sea level measurements.~~ 2020.

170 Wind and sea level measurements are openly available in the FMI's open database (<https://en.ilmatieteenlaitos.fi/open-data>). Temperature and salinity profiles were collected from 7 stations located along a north–south transect across the Archipelago Sea from Isokari to Utö (Fig. 1, IU locations). Data were analysed for years 1991 to 2021 during which the total number of profiles measured at each station varied between 35 and 66. ~~This data is~~ These data are available through <https://www.marinefinland.fi/en-US> or through the ICES data system (<https://www.ices.dk>).

175 2.3 Calculation of persistency (P)

The variability of the current direction was described using the persistency value (P) as defined by Witting (1912) and Palmén (1930):

$$P = \frac{\sqrt{(\frac{1}{N} \sum_n u_n)^2 + (\frac{1}{N} \sum_n v_n)^2}}{\frac{1}{N} \sum_n \sqrt{u_n^2 + v_n^2}} \times 100, \quad (1)$$

180 where ~~u and v~~ u_n and v_n are the eastward and northward ~~velocity components of the currents, respectively~~ components, of the current velocity at time step n . N stands for the total number of observations in the time series, n indexes each observation from 1 to N , and \sum denotes the sum over all time steps from $n = 1$ to N . Currents that are unidirectional in time have a persistency of 100%.

3 General characteristics of the Archipelago Sea currents

Due to the temporal and spatial heterogeneity of the dataset, we divided it according to geographical location and season. 185 Geographically, we used four areas: 1. The southernmost part of AS, which has been shown to have a wider directional distribution and lower current magnitudes than the other areas (e.g., Miettunen et al., 2024); 2. Central open areas of AS; 3. Narrow straits with fairways (e.g., Kanarik et al., 2018) and; 4. Northern areas, which are geographically located at the Bothnian Sea, but have connection to AS through the narrow straits crossing the northern part of the AS.

The distribution into seasons was done based on variation in hydrography, winds, and ice conditions. The seasonal thermocline is most prominent in July, August, and September, typically at depths of 15–20 m (Fig. 3). During other seasons, 190 temperature and salinity are vertically mostly homogeneous. The extent of ice in the Archipelago Sea is typically highest in February and March. Wind conditions also show a large seasonal variation. Wind storms are frequent between October and March, while the warm season between April and September is typically calmer (Laurila et al., 2021a). Also, the wind direction has seasonal variation, e.g. NNW winds are more typical during warm seasons (Fig. 4). Based on these, we decided to use the

195 following division into seasons: Winter – January to March (JFM); Spring – April to June (AMJ); Summer – July to September (JAS); and Autumn – October to December (OND).

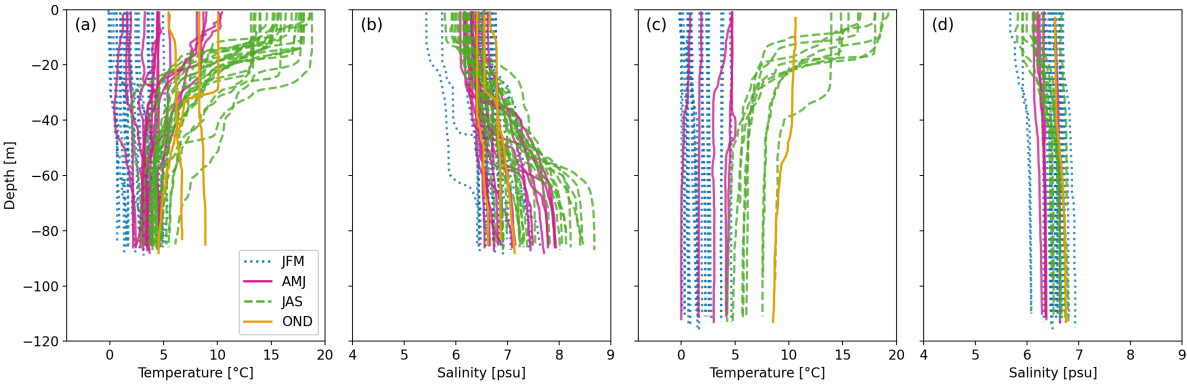


Figure 3. CTD profile measurements from 1991–2021 from IU7 (a,b) and IU6 (c,d) stations in the southern Archipelago Sea (locations marked in Fig. 1). There are a total of 67 profiles from IU7 and 35 profiles from IU6. Colours represent different seasons.

3.1 Currents in the southern edge of the archipelagoArchipelago Sea

Utö and Fölskär measurements represent the southernmost AS where the occasional halocline and seasonal thermocline divide
divides the water into two or three layers (see station IU7 in Fig. 3), of which the topmost, surface layer, is directly affected
200 by winds. The mean magnitudes calculated from the entire water column were around 6-7 cms⁻¹ with higher values measured
at the Utö station than in Fölskär. The maximum magnitudes reached 58 cms⁻¹ in Utö (surface layer) and 53 cms⁻¹ in
Fölskär (intermediate layer¹, above the halocline). Halocline~~The halocline~~ in this area has a large seasonal and interannual
variation in its occurrence and depth, as shown, e.g., by Laakso et al. (2018). The presence of the halocline during our current
measurement campaigns can be observed from the change in flow directions in different layers of the water column from the
205 two southernmost stations.

The prominent current direction in the surface~~surf~~ac layer was towards NW with persistency (P) of 38% in the western-
most strait (Fölskär, Fig. 5) with a mean magnitude of 7 cms⁻¹ and with P of 38%, and towards W at the easternmost station
(Utö, Fig. 5) with a mean magnitude of 8 cms⁻¹ and P of 23%. At the bottommost layer, separated from the rest of the water
column by the halocline, the flow was mostly steered by the bottom topography and directed towards the SSE (P of 24%) at the
210 Fölskär station and toward the NW at the Utö station where the P was highest (49%) in the area. The mean magnitudes at the
bottom varied between 4 and 6 cms⁻¹ with lower values measured in Fölskär. Even at the bottom, magnitudes up to 21 cms⁻¹
(Fölskär) and 38 cms⁻¹ (Utö) were measured.

¹Note that at Fölskär station, surface measurements were only available from mid June 2006 to end of the August at Fölskär station (Sec 2.1.1). Surface measurements were not available at the time of the maximum measured current magnitude.

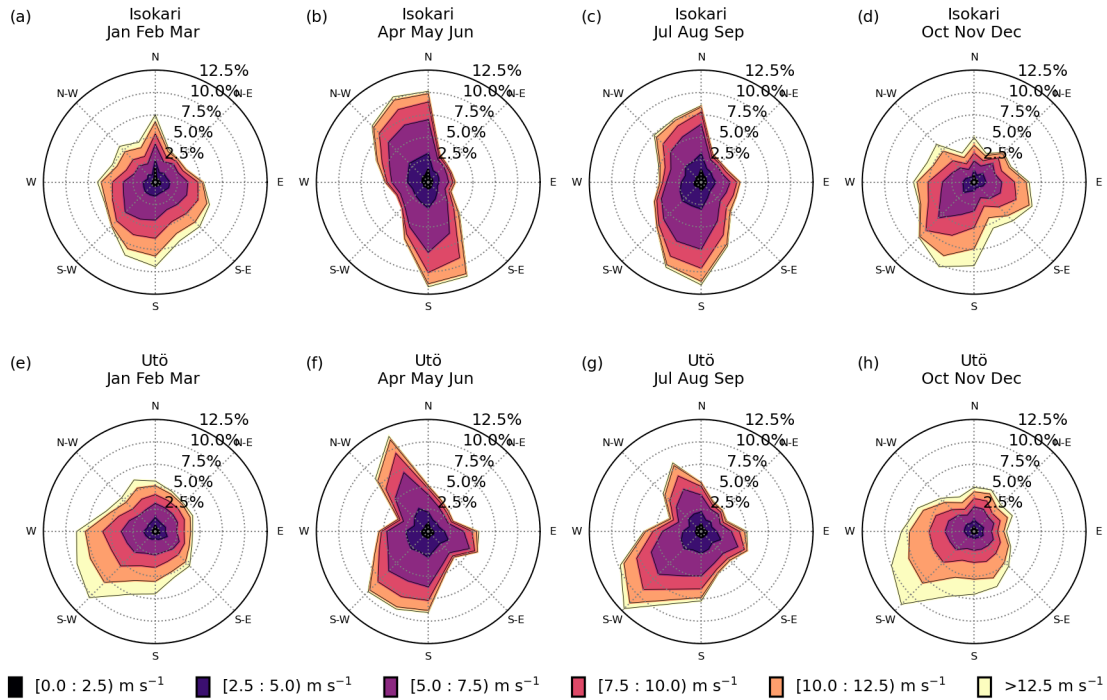


Figure 4. Seasonal difference of Isokari (upper a-d) and Utö winds (lower e-h). Directions show where the wind is coming from.

The current directions in the intermediate layer, between the seasonal thermocline and the halocline, had a large spread and lowest persistencies (P). At Utö station, a large part of the currents were directed toward W/WSW with P of 17%. At Fölskär station, flow in the intermediate layer was evenly distributed between NW and SE with P of 19%, whereas at the surface the most frequent directions were towards NW than SE. ~~Note that a large part of the simultaneous surface measurements were missing in It should be noted that the surface layer measurements were only available from the later Fölskär , making this layer less comparable to other layers. The mean current speed in this intermediate layer was 7 at both stations. deployment (Table 1, ID SVM2S) from April to August and even these had notable data gaps due to lack of scatterers in the surface layer during the day. The short measurement period together with less available data at the layer above the seasonal thermocline largely explains the overall smaller current magnitudes at the Fölskär site as elaborated more in Section 3.5.~~

3.2 Currents inside in the archipelago central Archipelago Sea

Measurements in the central areas of the AS were made in three different locations: Gustaf Dalen, Söderkobb, and Kihti. This central region is relatively open compared to other areas of the AS. However, the area is considerably more open in the NW-SE direction than in the SW-NE direction as there are small islets on both sides of the deep straits crossing the region. Due to this geometry, the main flow direction of the currents at the surface is also toward NW or SE (Fig. 6 upper panels). The persistency

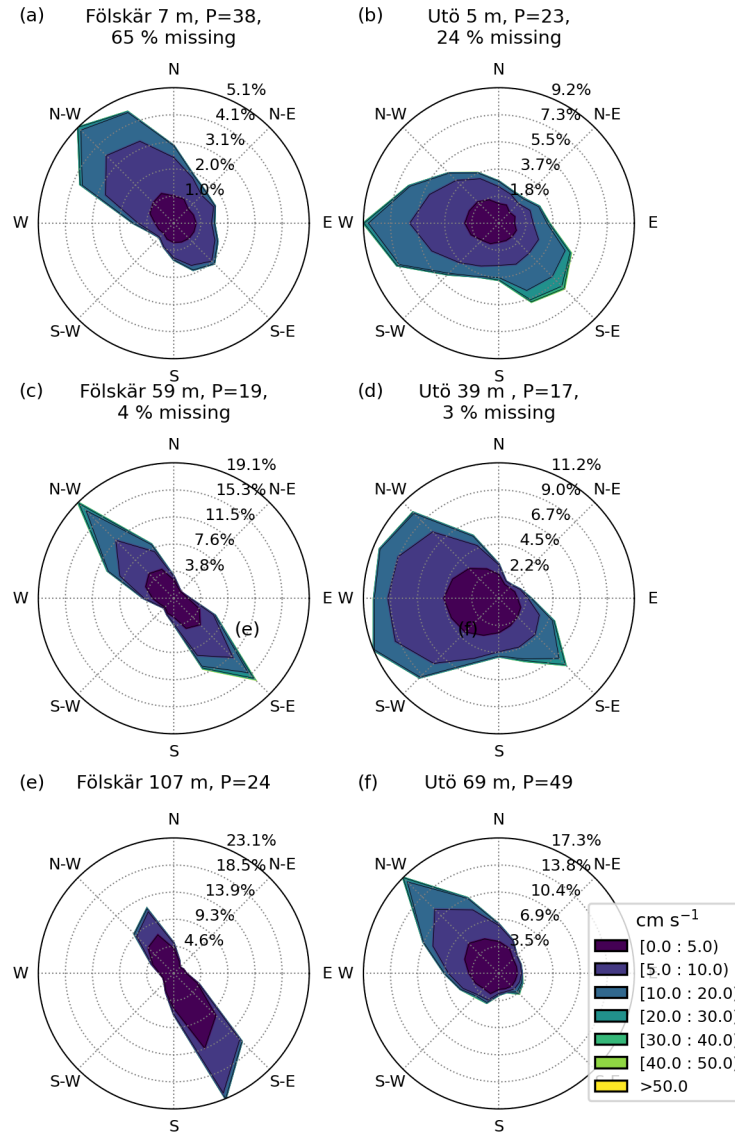


Figure 5. Current roses from the southern stations. The **upper**-panels (a) and (b) show the measurements closest to the surface, the **middle** panels (c) and (d) currents on top of the halocline, and the **lower**-panels (e) and (f) the measurements closest to the sea floor (station depths in Table 2) with corresponding persistency (P, %). The percentage of missing data during the measurement period is shown for layers with significant amount of missing data. Directions show where the current is flowing to. For **further** information of missing data, see Sect. 2.1.1.

at the surface layer was lowest at Gustaf Dalen (P of 16%), located at the crossing of the two deeper straits (Fig. 1), and about twice the value in surrounding Sörderkobb (P of 38%) and Kihti (P of 33%) measurement stations. The magnitudes in the surface layer varied between 8 cm s^{-1} and 9 cm s^{-1} with a higher value measured in Kihti.

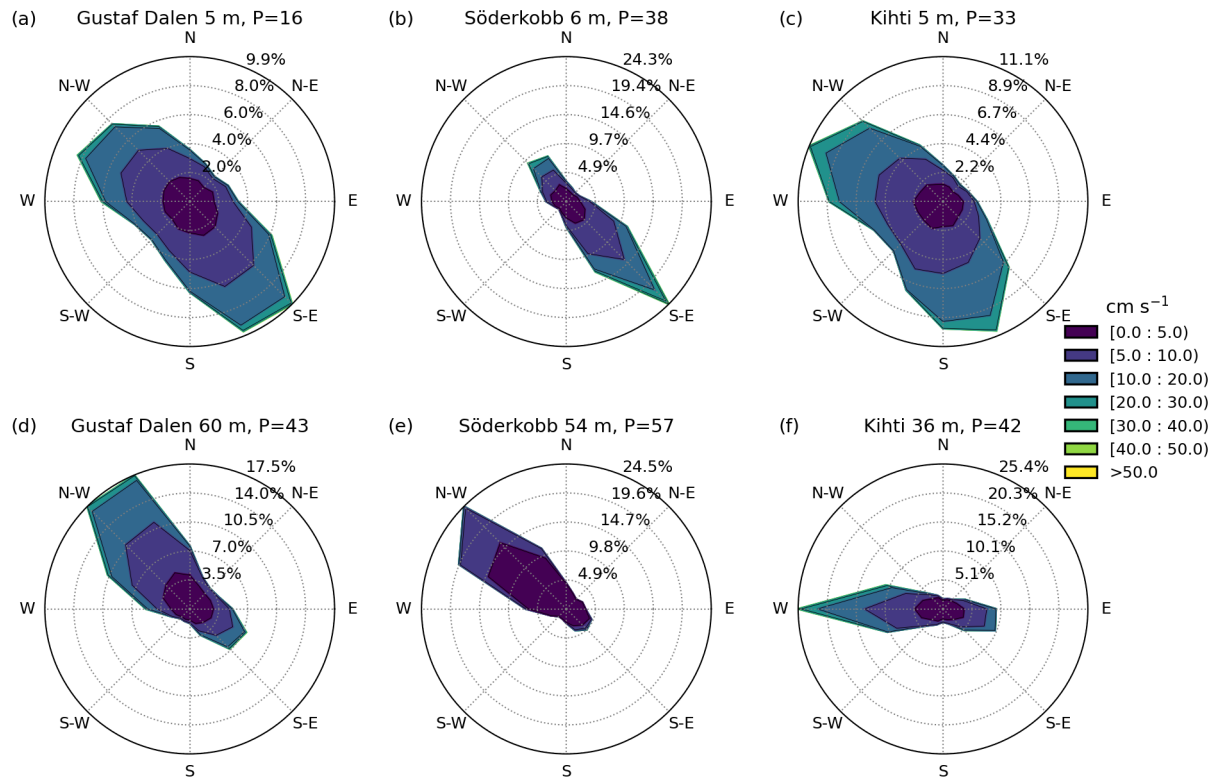


Figure 6. Current roses at the central stations. The upper row shows Panels (a)-(c) show the measurements closest to the surface and the lower row (d)-(f) the measurements closest to the sea floor (approximately 5 m from the sea floor, Table 2) with corresponding persistency (P, %). Directions show where the current is flowing to.

At the bottom, the bathymetry (Fig. 1) steers the currents along the deep straits (Fig. 6 lower panels). At the Kihti station, the bottom currents were more frequently towards the west, with occasional flow to the east with a mean magnitude of 7 cm s^{-1} and P of 42%. At the Gustaf Dalen and Söderkobb stations the main direction was towards the NW along the channel at the bottom with corresponding mean magnitudes of 7 cm s^{-1} and 3 cm s^{-1} and P of 43% and 57%. The mean magnitude within the entire water column varied between 4 cm s^{-1} (Söderkobb) and 7 cm s^{-1} (Kihti and Gustaf Dalen). The maximum magnitudes were measured in the surface layer and ranged from 40 cm s^{-1} at Söderkobb to 55 cm s^{-1} at Gustaf Dalen. The low velocities and higher persistency at Söderkobb compared to the other two stations are explained by the seasonality of the measurements (Sect. 3.5).

3.3 Currents in the narrow straits inside the archipelagoArchipelago Sea

Norrgrundet, Gloskär and Lövsjär measurements were made in the narrow straits closely surrounded by the islands. Thus, the flow direction was more strongly orientated along the strait throughout the water column. Both of these straits are part of major

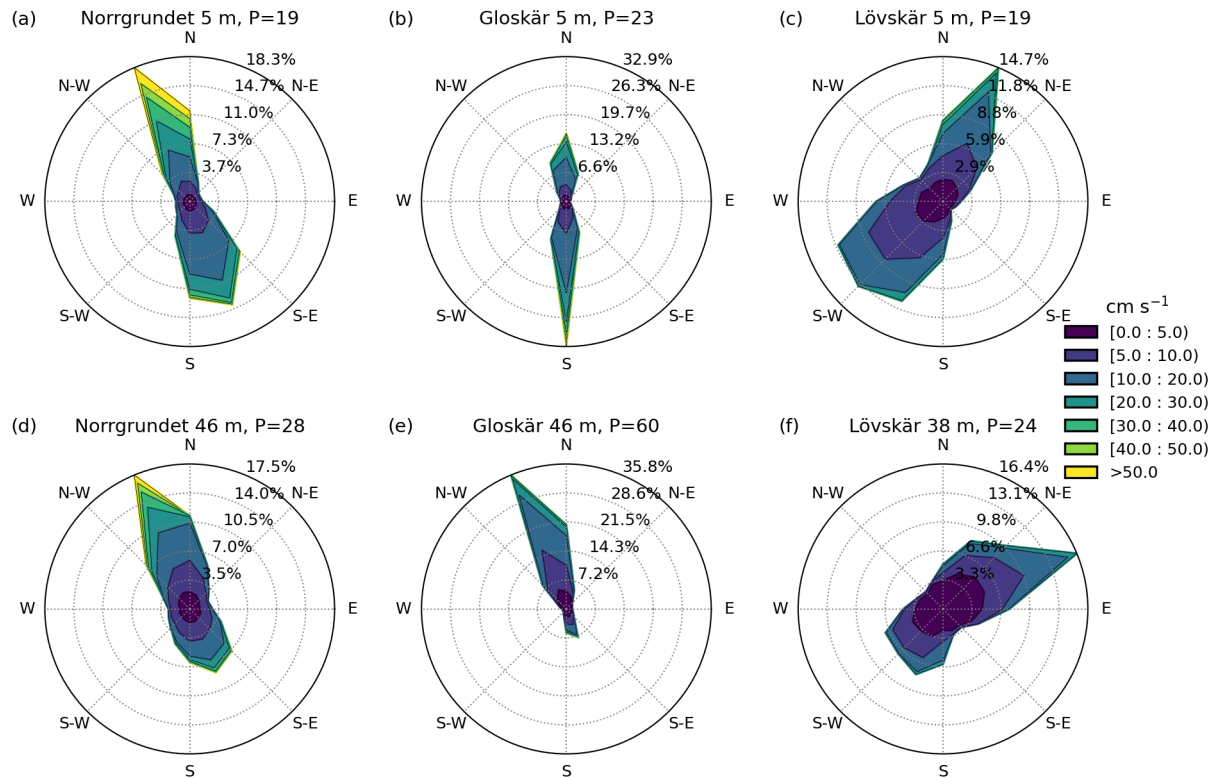


Figure 7. Current roses from the stations surrounded by the dense archipelago. The upper row shows panels (a) to (c) show the measurements closest to the surface and the lower row panels (d) to (f) the measurements closest to the sea floor (approximately 5 m from the sea floor, Table 2) with corresponding persistency (P, %). Directions show where the current is flowing to.

fairways through the AS where occasional strong currents can affect navigation of vessels, especially when perpendicular to the ship's course.

Norrgrundet and Gloskär stations were located in the same north–south aligned strait, which caused the flow to be strictly aligned towards NNW or SSE at Norrgrundet with 19% persistency (P) and toward N or S at Gloskär with P of 23% (Fig. 7). At the bottom layer, flow was most frequently towards the NNW at both station, however the P at the bottom most measurement depth at the Gloskär was around twice (60%) the one of Norrgrundet (28%). This is explained by the bathymetry of the area where Gloskär station was surrounded with shallower region also at south (Fig. 8 left pannel). These stations have almost double the mean magnitudes compared to other measurement locations in the AS, with the mean magnitude of the entire water column being 14 cm s^{-1} at Norrgrundet and 11 cm s^{-1} at Gloskär. The maximum measured magnitudes here reach up to 115 cm s^{-1} at Norrgrundet and 80 cm s^{-1} at Gloskär. The flow is slightly stronger in the surface layer with mean magnitudes of 14 and 17 cm s^{-1} compared to the bottom layer with 10 and 11 cm s^{-1} , with higher values from Norrgrundet.

The ~~narrowness and length of the strait strengthen currents along the flow direction, so that flow speed increases as the water flows into the narrow strait from the more open areas of the north and south. Additionally, wind can further increase the flow speed along the channel. As a result,~~ southward travelling currents ~~are tend to be~~ strongest at the southern edge of the strait and vice versa, as seen from simultaneous measurements of currents in Norrgrundet and Gloskär (Fig. 8). The distance between the stations is around 28 km (15 nautical miles) and within this distance, the current magnitude increases to around double in the northern end of the channel with northward currents. For southward currents, the increase in magnitude along the channel is slightly less. Norrgrundet measurements are located at the very end of the strait, thus having a longer overall fetch along the channel than the Gloskär site.

Lövsjär station is located at the end of a much shorter strait than the one where Norrgrundet and Gloskär are located. Lövsjär measurements were carried out in the cross section of two shallow straits and thus also in the most open area at that location (Fig. 1). Flow in Lövsjär was mainly toward SW or NE, however, bathymetry and geometry steered currents at the surface more toward NNE with a mean magnitude of 9 cms^{-1} and P of 19%, and at the bottom towards NEE with a mean magnitude of 6 cms^{-1} and P of 24% (Fig. 7, rightmost panels). NE currents have been shown to be mostly caused by south-easterly winds whereas SW currents were driven by northerly winds (Kanakar et al., 2018). The maximum measured current velocity at this station was 49 cms^{-1} with a mean magnitude throughout the water column being 7 cms^{-1} .

3.4 Currents in the northern edge of the ~~archipelago~~ Archipelago Sea (in the southern Bothnian Sea).

The northernmost measurements (Norrskäret and Norra Bredan) were located at the northern ends of the westernmost and central straits coming out of the AS (Fig. 1). The mean magnitude of the currents measured throughout the water column in Norrskäret was 4 cms^{-1} and 10 cms^{-1} in Norra Bredan. The large difference between these areas is partly explained by the seasonality of these measurements, which are discussed in more detail later in Section 3.5.

The currents in Norrskäret were most frequently toward the WSW at the surface (Fig. 9, Norrskäret) with a mean magnitude of 8 cms^{-1} and P of 40%, while there was no clear main direction of the flow at lower depths with mean magnitudes of 3 cms^{-1} and P of 15%. Overall, flow at the bottom in Norrskäret was more towards northward directions than toward southward. The directionality was quite different at the northeastern station, Norra Bredan. There, the flow was most frequently towards the south at the surface with a mean magnitude of 9 cms^{-1} and P of 41%. Norra Bredan was located in the centre on narrow strait that strongly steered currents at the bottom layer, and thus the flow was mainly along the canyon (NNW/SSE) with P of 29%. The currents in the bottom layer in Norra Bredan were often stronger than at the surface with the mean magnitude in the bottom layer being 12 cms^{-1} . The strongest currents in this bottom layer reached 62 cms^{-1} and were toward the SSE. The highest value measured in the surface layer of these areas was 50 cms^{-1} at Norrskäret and 52 cms^{-1} at Norra Bredan.

3.5 Seasonal statistics of the current magnitudes

The ~~maximum~~ current speeds varied greatly between different measurement locations around the AS. The strongest currents were measured in the ~~narrow straits in the northern part of the AS~~ long narrow strait in the northeastern AS (Norrgrundet and Gloskär) and ~~the weakest in the more central regions~~ in the end of another long strait by the northern edge of the AS. ~~The~~

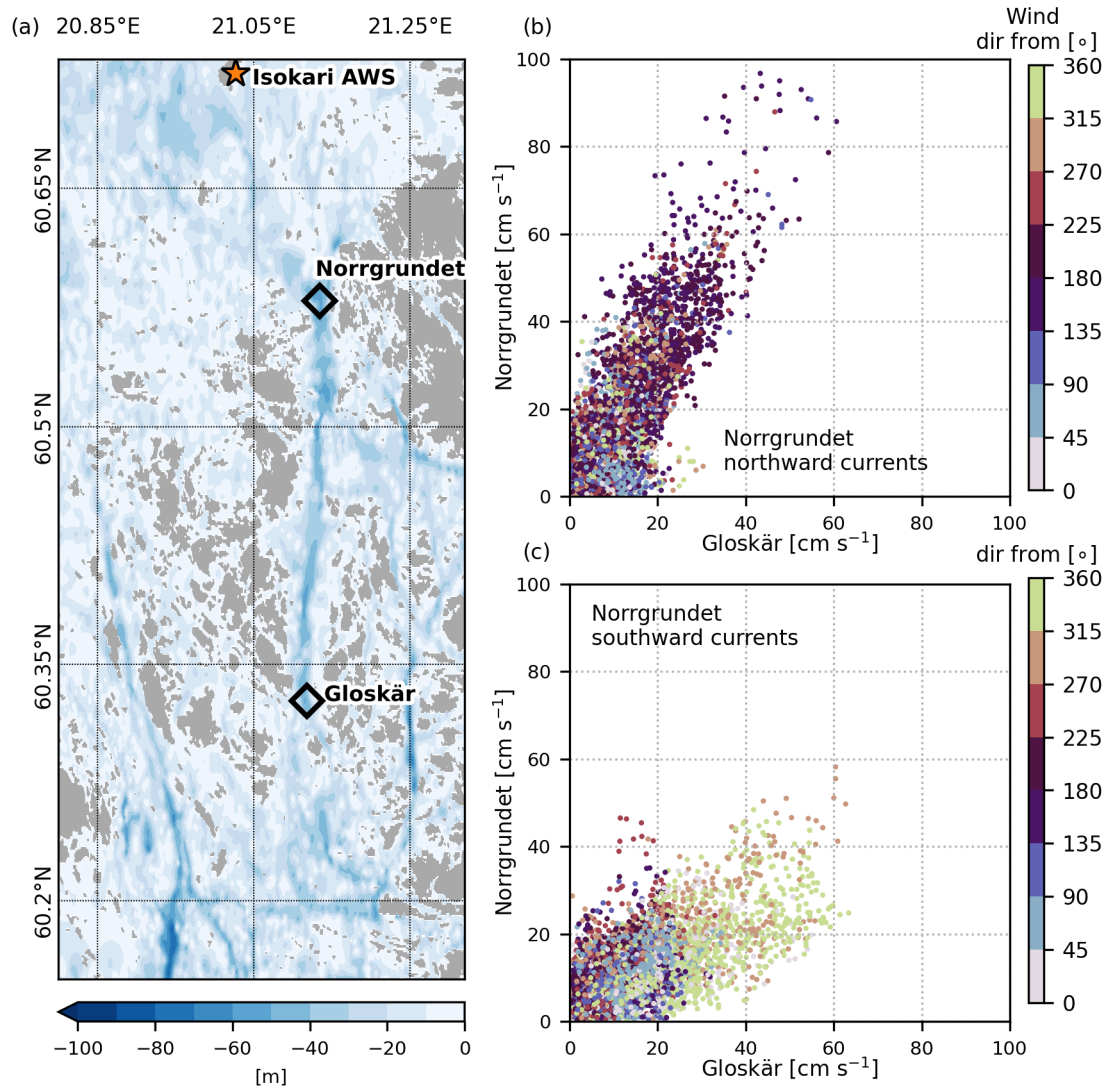


Figure 8. Bathymetry of the narrow north-eastern strait (left panel a) and relation between simultaneous measurements (from 20 May to 3 Dec 2021) of Norrgrundet and Gloskär current magnitudes at 5 m depth, the uppermost measurement layer (right panels b and c). Currents are divided to northward directed currents (upper-right panel b) and southward currents (lower-right panel c) according to the measured direction in Norrgrundet. The colour bar represents the direction of simultaneous winds measured at Isokari AWS.

285 ~~lowest maximum magnitude of 40 was measured in Söderkobb and the highest magnitude of 115 in Norrgrundet. This high magnitudes occurred rarely as 99 of the measurements at each measurement station were typically below half of the maxima (between 18 and 64) and the mean current speeds varied between different regions from 4 (Norrskäret) to 14 (Norrgrundet).~~

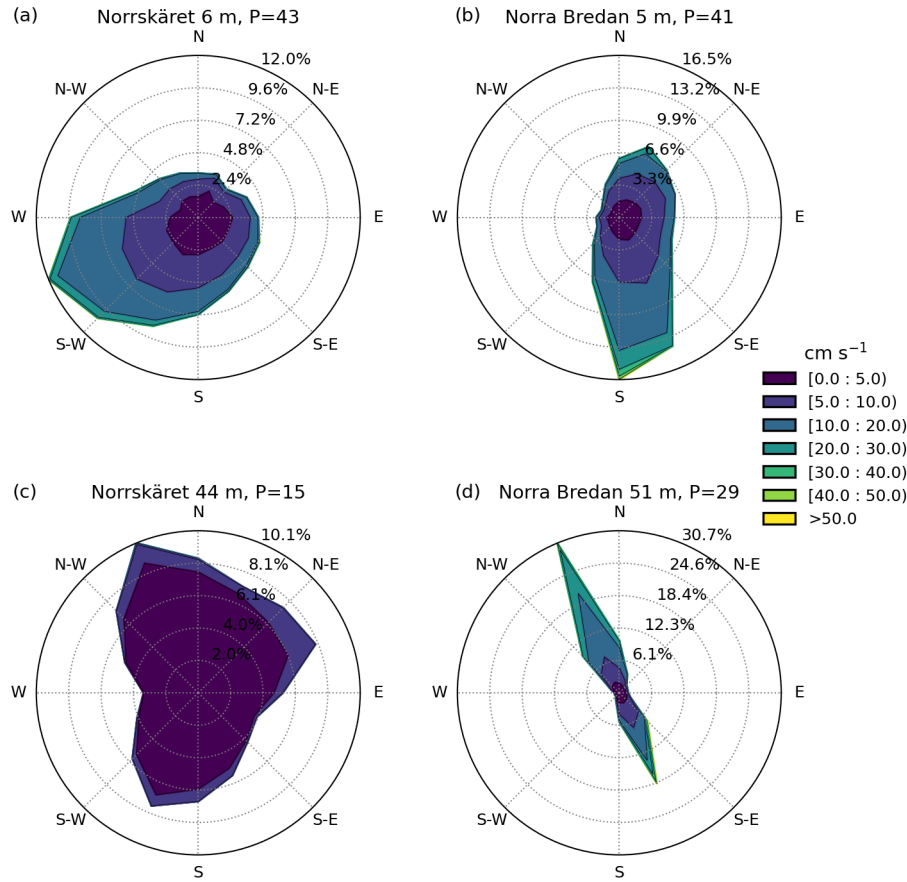


Figure 9. Current roses from the northern stations. The upper-row shows pannels (a) and (b) show the measurements closest to the surface and the lower-row pannels (c) and (d) the measurements closest to the sea floor (approximately 5 m from the sea floor, Table 2) with corresponding persistency (P, %).

(Norra Bredan). The weakest currents were measured in more central regions of the AS. Currents can have large seasonal and year-to-year variations due to variability in the meteorological and sea ice conditions, and stratification. Thus, the magnitudes of the currents at each station with different measurement periods are not directly comparable (Table 1, Fig. 2). To get an overview of spatial and temporal differences, seasonal statistics for each station were calculated over the whole water column (Fig. 10). In the analysis, we focus on the measurements in the southern and central parts of the AS using hourly averaged current magnitudes to account for different measurement frequencies (Table 2). Note also that not all stations have measurements that range through all seasons. For example, very few measurements are available for Lövsjär during spring (Fig. 10b), Norra Bredan during summer (Fig. 10c) and Fölsjär during autumn (Fig. 10d). Moreover, several stations do not have measurements for all four seasons, which limits the temporal comparability of the results (Fig. 10).

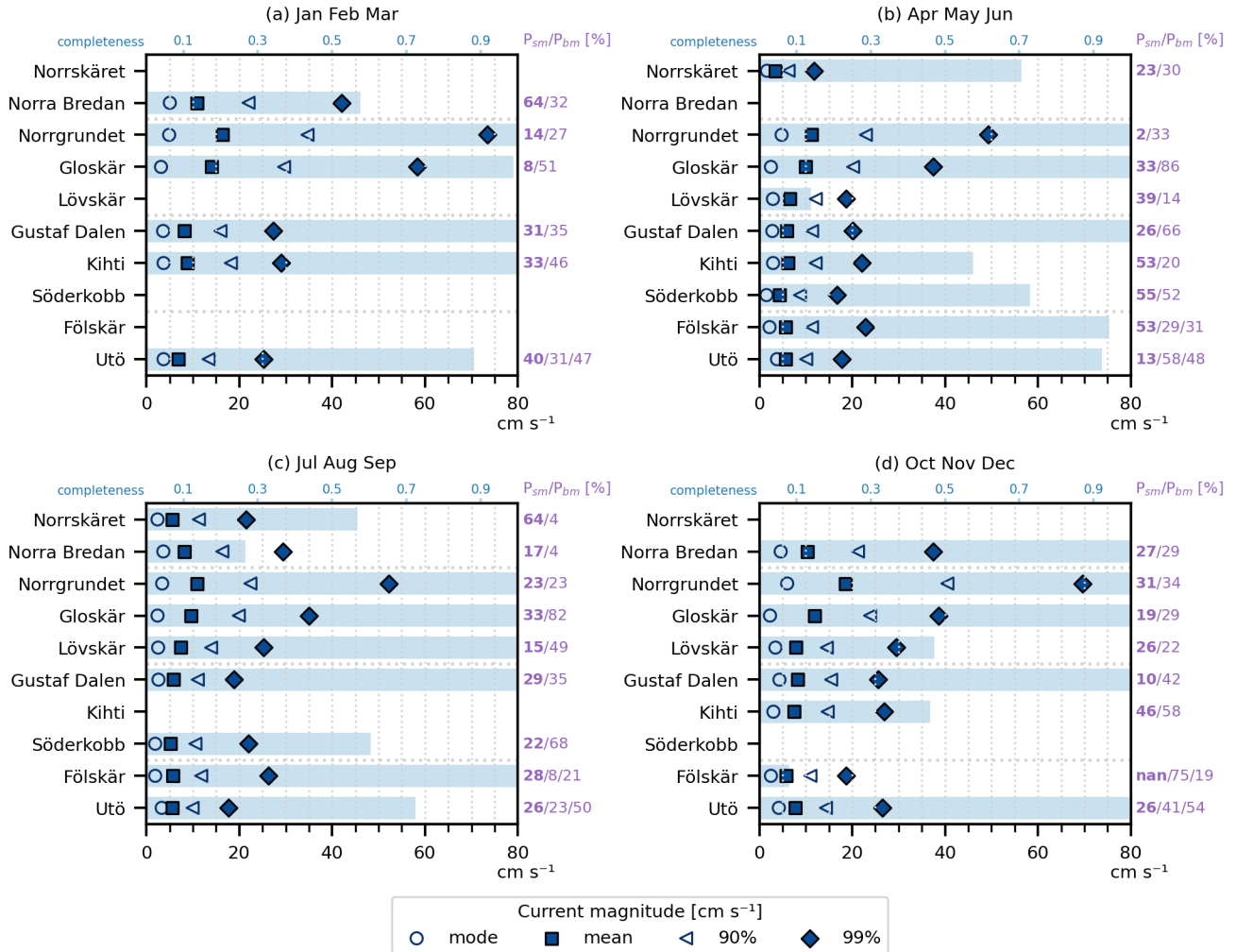


Figure 10. Seasonal statistics of calculated from hourly mean current magnitudes over all depth bins. The value 90% represents and 99% represent the 90th and 99th percentile of the current magnitudes. The maximum Persistency values are given seasonally to each stations surfacemost (P_{bm} , bolded values) and bottommost (P_{bm}) depth cells (corresponding depths can be found in the Norrgrundet from Figures 5, 6, 7 and Gloskär 9). Additional persistency value is given for the stations exceeded at the figure-axis southern edge of the AS (Fölskär and were thus included Utö) with the occasional halocline given between P_{sm} and P_{bm} -values. Completeness of the dataset of each season is given in top x-axis as a separate box in blue bars, where value 1 stands for at least one complete season of measurements with no large data gaps, and for example, 0.5 indicates that during this season the figure measurements only cover around 1.5 months out of the three per in one season.

The seasonal means of the current magnitudes (Fig. 10) are quite uniform within each season throughout the AS. In most of the AS stations, measured currents were weakest during spring when mean magnitudes varied between 4.5 and 6 cm s⁻¹.

The currents were strongest in winter and autumn with mean magnitudes between 7 and 9 cms^{-1} in winter and 6–8 cms^{-1} in autumn. The mean magnitudes in summer ranged between 5–7 cms^{-1} . Note that the most frequently measured values (mode) are below the mean value. The variations between different stations were larger when ~~the maximum velocities were examined.~~ looking at the distribution of the highest 99th percentile of the current magnitudes. Extreme cases were typically caused by single storms, and the occurrence of these cases can vary largely in our heterogeneous dataset. We present the 90th percentile of the current magnitudes together with the ~~measured maxima firstly~~ 99th percentile to represent the rarity of the extremes and secondly to give an overview of the data distribution together with ~~mode~~ (Figure the mode (Fig. 10).

The largest variation in the current magnitudes between the measurement stations occurred during the winter season, when the winds are typically strong (Fig. 4) but occasionally the ice cover hinders the local winds from inducing currents. There are also the fewest measurements from winter of all four seasons. Winter poses challenges to the ADCP measurements and typically some data had to also be discarded due to bad data quality in the Norrgrundet, Gustaf Dalen and Utö stations (Sect. 2.1.1). Statistics are calculated only from good quality data, and thus current magnitudes in the winter represent mainly conditions during ice-free periods.

The mean and ~~maximum~~ 99th percentile magnitudes of the Norrgrundet and Gloskär currents are almost twice the values measured in other areas of the AS (Sect. 3.3 and Fig. 10), most notably in winter (a) and spring (b) months. The strongest currents in the area were measured at the Norrgrundet station. The mean magnitudes for all seasons varied between 11 and 19 cms^{-1} , with the weakest magnitudes ~~always~~ measured in summer and the strongest in autumn. One tenth of the measurements (90th percentile) exceeded the magnitudes of 23–41 cms^{-1} and ~~the maximum values during the measurement period of around 30 months varied from 96 up to 115, which is around 1% of the measurements (99th percentile) exceeded values from 50 to 74 cms^{-1} higher than the maxima measured at the other stations outside this strait.~~ The currents measured at Gloskär, in the slightly more central area of this strait, were slightly weaker and had a different distribution compared to those in Norrgrundet. The most frequent current magnitude (mode) was weaker than or in the same order of magnitude as in other stations in the AS. However, the mean, 90%, and ~~maximum~~ 99% values were clearly higher (or in same order of magnitude as in Norra Bredan in the northern edge of the AS) than at the other stations outside of this strait. This means that strong currents occur more frequently in this strait than in the other measurement stations, although most of the currents at this station are of the same order of magnitude as at other locations in AS with a mode of around 3 cms^{-1} . The mean magnitudes ranged from 10 cms^{-1} to 14 cms^{-1} ~~and~~ 10% of the values exceeded 20–30 cms^{-1} and 1% exceeding 37–58 cms^{-1} with the weakest statistics always measured in spring and summer and the strongest in the winter season. ~~The seasonal maximums in Gloskär ranged between 63 and 80.~~

During seasonal thermocline, measured currents in both Norrgrundet and Gloskär were significantly weaker in the bottom layer than in the surface (Fig. 11): the mean magnitude in the bottommost layer was around ~~7–6~~ 7–8 cms^{-1} in Norrgrundet and ~~9–8~~ 9–8 cms^{-1} in Gloskär². The flow direction of the lower layer during stratification was mainly towards the north (Fig. 11 ~~right~~

²These values were calculated by selecting times when current measurements showed clear stratification of the water column by having visible changes of magnitudes and/or flow direction (Fig. 11 before Sept 28). At Norrgrundet this meant time periods of 6 Sept to 28 Sept 2016, 5 June to 5 Sept 2017 and 17 June to 18 Aug 2021. In Gloskär, measurements from 17 June to 20 September 2021 and from 22 April to 2 June 2022 were used.

panelb and d), as also seen in Miettunen et al. (2024). The persistency was only slightly stronger in Norrgrundet during the seasonal thermocline (P of 32%) than the overall P in the bottom layer (28%), but at Gloskär the P increased to 84% due to the stratification compared to the overall 60%. These low current magnitudes below the thermocline during the summer season caused the mean current speeds (Fig. 10) to be more similar to the mean values of the other AS measurement stations outside of the strait. However, when we compared only surface layer statistics at Norrgrundet and Gloskär (not shown), current magnitudes in the summer followed the same trend as in other seasons of being almost twice the magnitude measured in other regions. Although currents below the thermocline were noticeably weaker than in the surface, there were events where the current magnitude in the bottom layer reached magnitude up to 30 cms^{-1} at Norrgrundet and 38 cms^{-1} at Gloskär with 99th percentile of values reaching 20 cms^{-1} at Norrgrundet and 26 cms^{-1} at Gloskär.

Like in Norrgrundet and Gloskär, most stations showed slightly higher persistency values near the bottom compared to the surface layer (Fig. 10). When examining seasonal persistency, the measurements show substantial variation not only between different seasons but also between nearby stations that were measured during different years.

4 Drivers of strong currents

The Archipelago Sea serves as a route for maritime transport and is crossed by several fairways. Providing information on strong currents is important for maritime safety in this area, and therefore understanding the drivers of these currents is necessary. We will focus our analysis on the long and narrow strait in the north-eastern AS (Sect. 3.3 and Fig. 8). The Norrgrundet station at the northern end of the channel had the highest current magnitudes of the entire measurement data set (Sect. 3.5).

~~There were all together~~ There were altogether 224 events during ~~e-~~approximately 30 months of measurement time series, where the current speed exceeded 40 cms^{-1} . The median and maximum duration of these events were 5.5 h and 35 h, respectively, which constituted almost 8% of the measurements. Most of these strong current events (c. 75%) aligned with the wind direction, while about one-quarter opposed the wind direction for the majority of the event's duration. These events were defined by studying the simultaneous winds during high-current events and classifying the events based on the prevailing wind direction. As this dataset included numerous high current events, we chose to present a few time specific events that demonstrate the main features of the different cases identified.

Strong current events are often the result of the combined effect of wind and differences in sea level. These forcings can work in the same direction, supporting each other, or in different directions, opposing each other. The complicated geometry of the AS region causes the growth of currents driven by local winds to be highly sensitive to the wind direction. Even a slight shift in the wind direction can cease the growth of the currents. This pronounced sensitivity to wind direction for AS currents has previously been demonstrated in the narrow Lövsjär cross section (Kanarik et al., 2018). In the north-south aligned strait studied here, the strongest currents typically occur with strong northward (Fig. 12, ~~central-panela~~) or southward (Fig. 12, ~~right-panelb~~) winds, provided that the opposing sea level difference across the AS is not significant. When winds are weak or misaligned with the strait's geometry, the sea level difference across the AS can become the dominant driver of strong currents

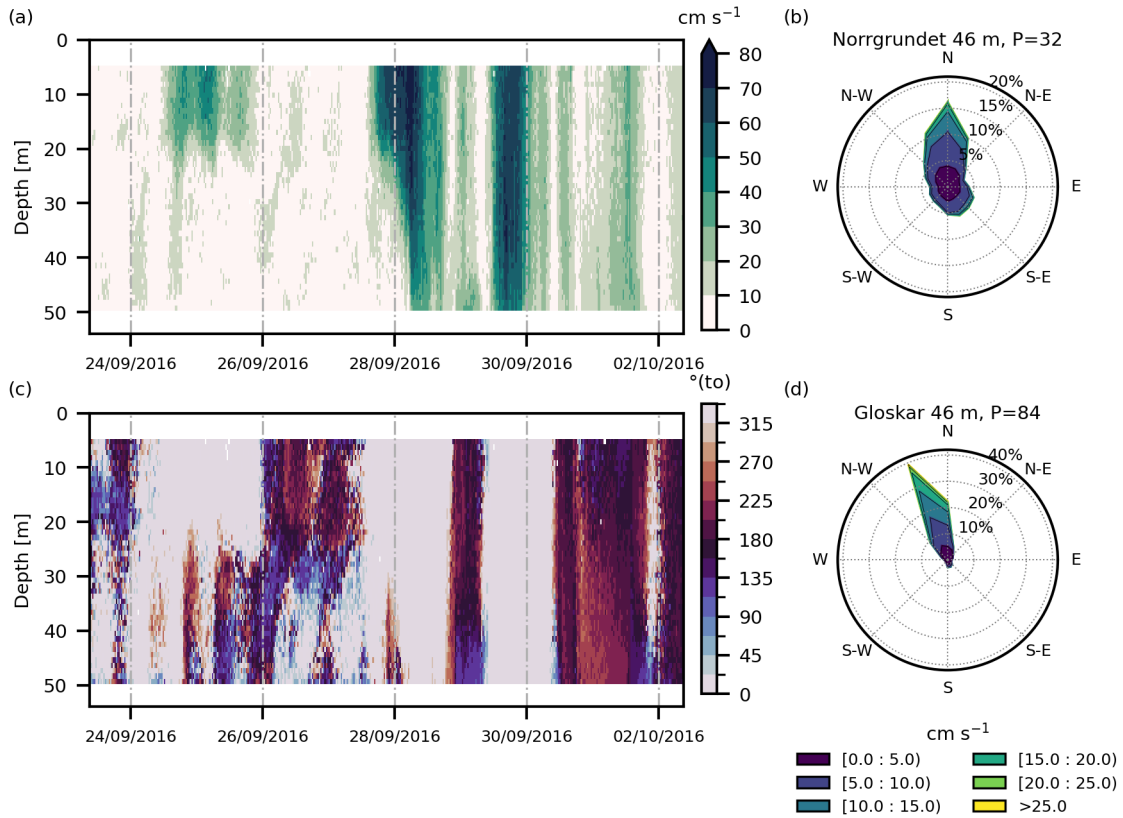


Figure 11. Left panels: Depth profiles of current magnitudes (a) and directions (c) at the Norrgrundet station before and after seasonal overturning on Sept 28, 2016. The thermocline can be seen at a depth of 20–30 m. Right panels: current Current roses in Norrgrundet (b) and Gloskär (d) at approximately 46 m depth during the stratified measurement periods with corresponding persistency (P, %). Norrgrundet data covers the time periods from 6 Sept to 28 Sept 2016, 5 June to 5 Sept 2017 and 17 June to 18 Aug 2021. Gloskär data covers the time periods from 17 June to 20 September 2021 and 22 April to 2 June 2022.

(indicated by light colours with a large SSH difference the ellipse in Fig. 12a). Typically, the largest sea level differences across the AS coincide with strong opposing winds, meaning that the strongest currents rarely align with the highest sea level differences (Fig. 12-left panel).

During the strongest current event, with a magnitude of 115 cm s^{-1} on 22 February 2017 (Fig. 13), both the wind and the sea level forcing gradient drove the northward flow, which was further amplified by changes in atmospheric pressure fields over the Bothnian Sea. In addition to external wind and sea-level pressure forcing, the narrowness of the channel further amplified the flow (Fig. 8). SSE winds with of around 20 ms^{-1} speed blew for several hours and, and during this time the sea level was at Föglö was about 9 higher in Föglö than in cm higher than at Rauma and Hanko (see the locations of the tide gauges in Fig. 1). The current speed grew until the winds turned to a less optimal direction related to the strait (Fig. 13). The growth of

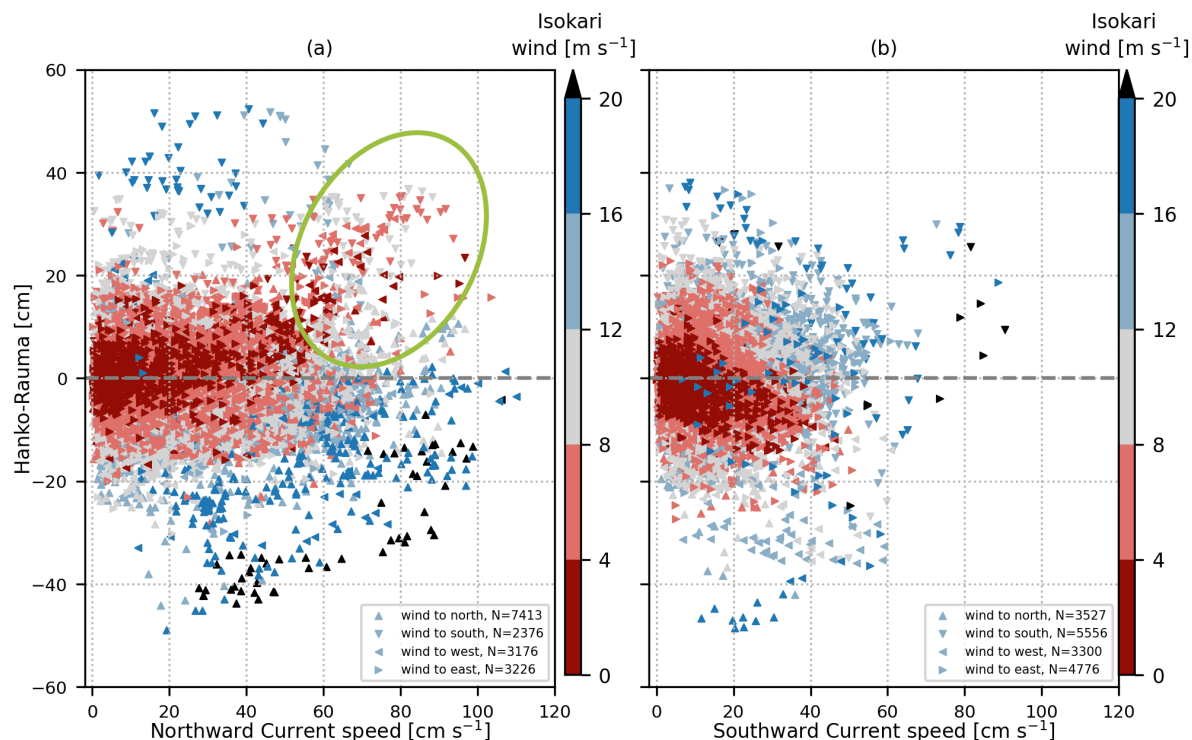


Figure 12. Norrgrundet current magnitudes against sea surface height difference between Hanko and Rauma. Left panels colour shows the simultaneous wind direction and middle and right panel the corresponding wind magnitude. For middle and right panels, the data is divided by the two main current directions: middle panel has northward current events currents (a) and right panel has southward events currents (b). In middle and right panels, the corresponding wind speed is presented as a colour and main wind direction is marked presented by marker arrow direction. Positive sea level difference drives currents northward and vice versa. Northward wind direction is defined as $> 315^\circ$ and $\leq 45^\circ$ and the other three main compass directions are defined correspondingly. N indicates the number of different data points in each scatter. Colourmap used in middle The data are sorted so that events during the smallest wind speeds are shown on the top of up unit 16 ms^{-1} . Rare, over 16 ms^{-1} winds and right panels over are from Cramer (2021) at the very top of the scatterplot. Northwards currents driven by a large sea level difference caused by the oscillation on the surrounding basins are highlighted with an ellipse in panel (a).

high current events were most often stopped by the turning of the wind, thus the maximum values presented in Fig. 12 often measured simultaneous winds from either east or west.

375 The second strongest event, with a magnitude of 104 cm s^{-1} on 28 December 2016 (Fig. 14), followed the sea level gradient over the AS and was formed while the wind was opposing the strong sea level gradient. was driven by a sea level difference across the AS, with the wind blowing in the opposite direction. During this event, a sea level difference of several tens of centimetres (up to 31 cm) between Hanko and Rauma counteracted the northerly winds, and this produced strong northward currents that flowed against the wind once the wind speed had decreased below 10 ms^{-1} . Note that the highest spike

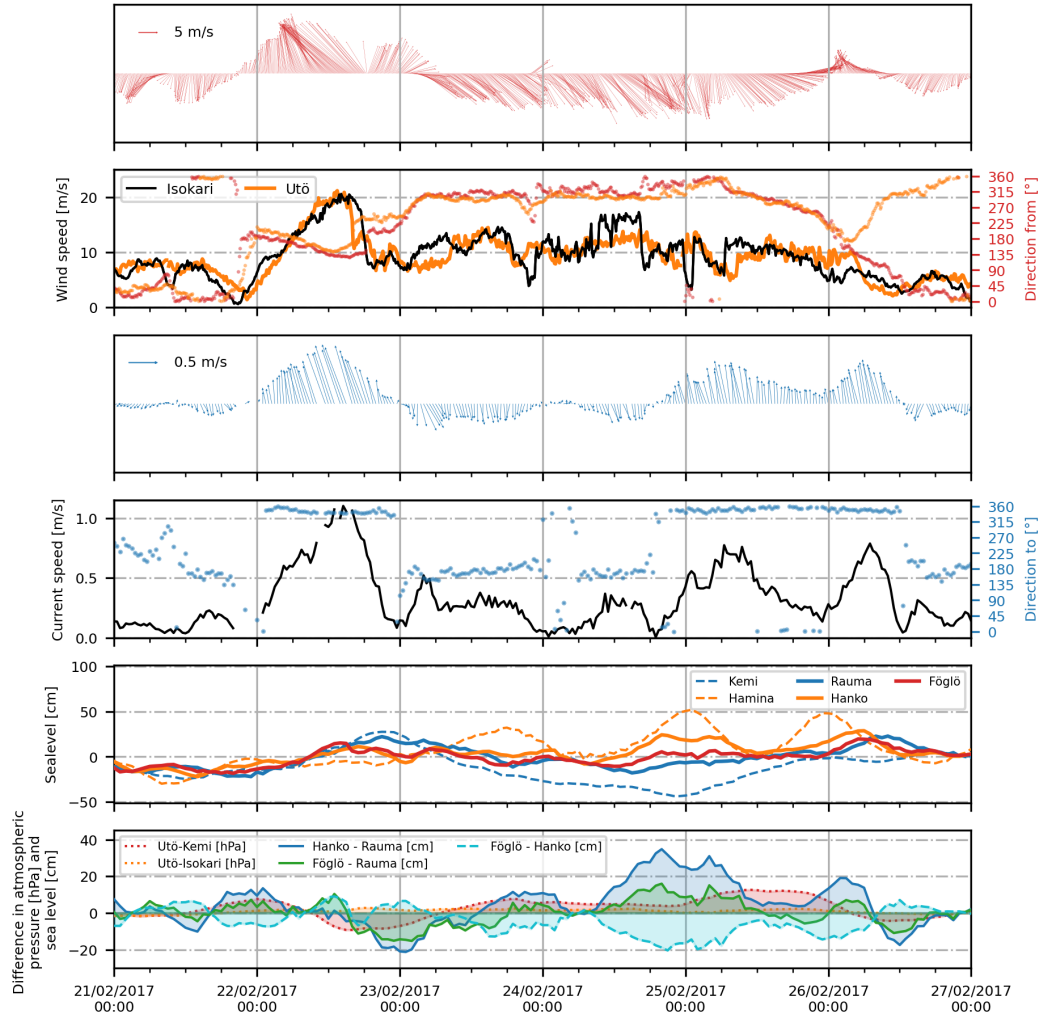


Figure 13. Time series of the strongest current event in Norrgrundet (22 Feb 2017) followed by seiche induced wind opposing currents. Time series shows simultaneous winds, currents and sea levels together with the differences of sea level and atmospheric pressure in northern (Isokari and Rauma) and southern (Utö, Hanko and Föglö) edges of the Archipelago Sea (see the map in Fig. 1). Föglö represents sea levels in the southwestern AS and Hanko in the southeastern AS. Measurements in Kemi represent the conditions at the northern end of Gulf of Bothnia and measurements in Hamina represent the eastern Gulf of Finland. The first and second panels present wind speed and direction at Isokari, and third and fourth panels currents at the uppermost layer measured at Norrgrundet (5 m depth). Upward arrow indicates northward direction both for wind and current measurements. The fifth panel represents the sea level variation around the AS (solid lines) and at the end of the surrounding basins (dashed lines). The lowest panel shows the differences in sea level and atmospheric pressure between various stations around the AS.

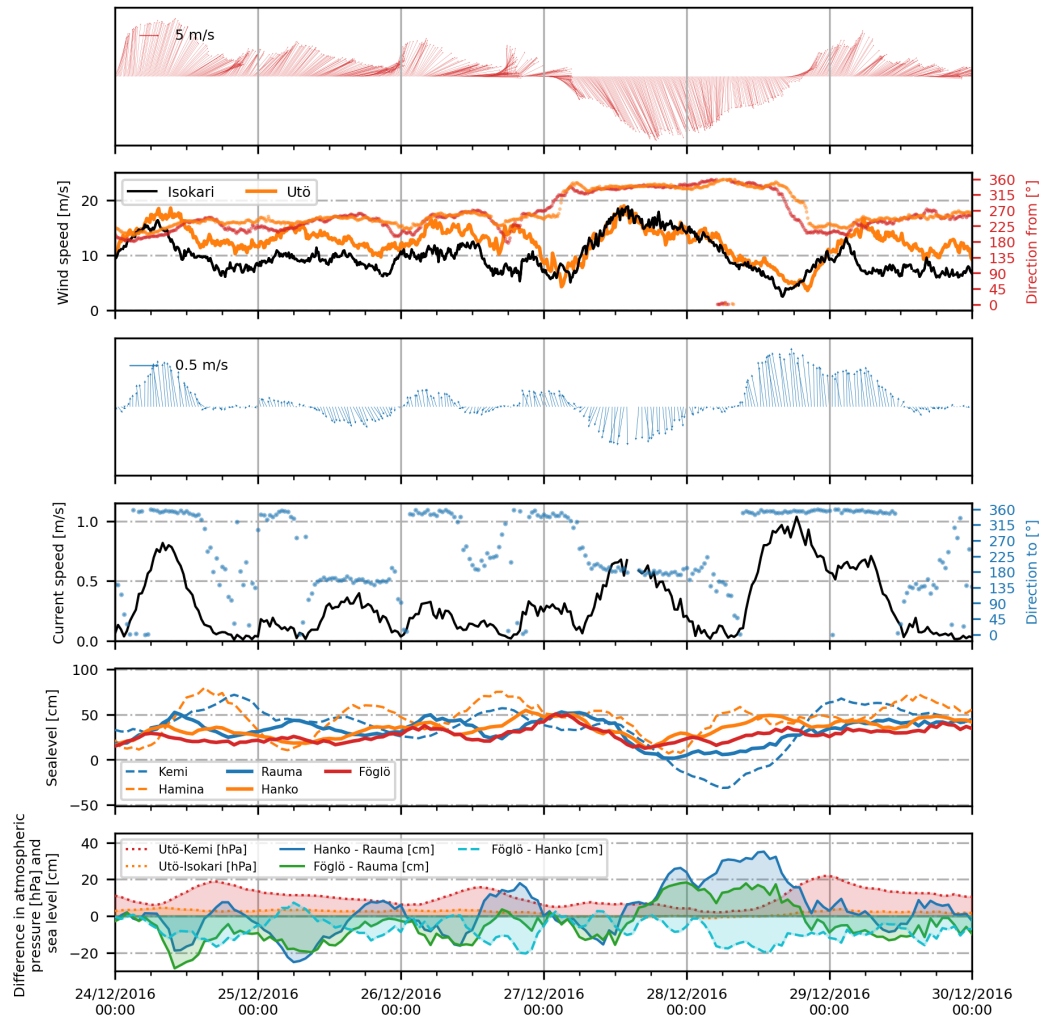


Figure 14. Time series of the second strongest current event in Norrgrundet (29-Jan-28 Dec 2016) with simultaneous wind and sea level measurements together with sea level and atmospheric pressure differences from surrounding stations (Fig. 1). The first and second panels present wind speed and direction at Isokari (and Utö included with orange on the second panel), and third and fourth panel currents at the uppermost layer measured at Norrgrundet. The upward arrow indicates the northward direction both for wind and current measurements. The fifth panel represents the sea level variation around the AS (solid lines) and at the end of the surrounding basins (dashed lines). The lowest panel shows the differences in sea level and atmospheric pressure between various stations around the AS.

380 in current magnitude occurred when local winds shifted to blow along the strait. During this event, sea levels in the Gulf of Finland (Hamina measurements) had started to oscillate after the winds packed-water-to-the-end-of-the-gulf had piled up water at the head of the Gulf of Finland on 24 December 2017 (seiche). Once sea level simultaneously fell at 2016, initiating a seiche. By 28 December, sea level in the Gulf of Bothnia dropped (Kemi measurements) on 28 Dec, the simultaneous seiche at, and the

resulting seiche oscillation in the Gulf of Finland created ~~such a strong gradient over the AS that it a strong sea-level gradient~~
 385 across the AS, one that was able to ~~oppose the weakened drive currents against the now-weakened~~ local wind. A similar event
 was observed between 24 and 26 February 2017, following the strongest measured currents (Fig. 13). These ~~events-type of~~
~~events in general~~ are also well visible in comparison with current speeds, sea level differences, and wind magnitudes in Fig.
 12. ~~There, the light data points in the upper-right corner of the central panel represent, highlighted with an ellipse. There are~~
 the numerous events where sea level gradients drive strong northward currents. The phenomenon is not as visible in southward
 390 currents as the geometry of the strait further enhances the current speed, but is still present. Events related to the seiche in ~~the~~
 Gulf of Finland show better in comparison to Hanko and Rauma tide gauges than between Föglö and Rauma, which in general
 better represents the sea level gradient over the AS. During events with strong seiche, the sea level was also simultaneously
 higher in the SE corner (Hanko) of the AS compared to the SW ~~corner~~ (Föglö).

Mostly, the effect of opposing the sea level gradient to the wind direction only weakens the effect of local winds, whereas
 395 currents still follow the direction of the winds. During storm Toini on 11 January 2017 (Figure A2), the winds ~~measured in~~
 Isokari were up to 22.5 ms^{-1} and stayed around 20 ms^{-1} for more than 18 hours. The maximum ~~currents-measures were~~
~~current was~~ 99 cms^{-1} , being the third strongest event and had the longest lasting duration of currents over 40 cms^{-1} (35 h).
 These were the strongest winds measured during the 30 months of measurement at Norrgrundet station, and the storm resulted
 in record significant wave height measurements by the Northern Baltic proper wave buoy (Björkqvist et al., 2017). However,
 400 during the event, the sea level difference quickly rose to oppose the currents being around 20 cm higher in Rauma than in
 the Föglö and Hanko stations in the south and finally the seiche in the Gulf of Finland made the sea level difference increase
 to 44 cm higher in Hanko than in Rauma. During the highest sea level difference, the current speeds had already decreased
 significantly. However, the currents did not begin to follow the sea level gradients ~~before-until~~ the wind speeds dropped below
 10 ms^{-1} .

405 During non-optimal wind conditions, sea level difference is the dominant factor driving the currents (as seen between 26–31
 August 2021 in Fig. A1). Although easterly winds do not directly induce currents in the measured channel, they do affect sea
 level in more open sea areas, like at the northern edge of the AS, thus contributing to the lower sea levels measured at the
 Rauma station in this case.

It is notable that ~~,in the in~~ AS, when the wind and the sea level gradient support the same flow direction, the wind speed
 410 does not need to be very high to induce strong currents (~~dark-green colours in grey and light blue colours in the lower right~~
~~corner of the ellipse in~~ Fig. 12). For example, on 18 Aug 2021 (Fig. A1), SSE wind only briefly reached the maximum of 16
 ms^{-1} and stayed mainly only slightly above 10 ms^{-1} while simultaneously the water was high at the SE corner (represented
 by Hanko measurements) of the AS with sea level around 10 cm higher in Hanko than in Föglö and Rauma. Together, these
 resulted in up to 97 cms^{-1} current speeds at the Norrgrundet station, which is the fourth highest magnitude measured at this
 415 station.

4.1 Statistics of drivers

There are decades of atmospheric and sea level measurements from automatic weather stations (AWSs) and tide gauges along the Finnish coast (Sec 2.2). As our current measurements consist only of short datasets (Table 1), we extended our analysis to the statistics of the drivers identified as significant around the AS. We used a 30-year reference period from 1991 to 2020 to see the frequency of occurrence of high sea level differences and wind speeds. Continuous atmospheric pressure ~~was~~ data were only available from 2007 onwards (Sect. 2.2).

4.1.1 Local winds

On average, the Utö AWS in the south measures slightly higher winds compared to the Isokari AWS in north. Three-hourly measurements from 1991 to 2020 show that the mean wind speed is 7.5 ms^{-1} in Utö and 6.9 ms^{-1} in Isokari, and ~~99,~~ respectively, 99th percentile of the wind speeds being 18 ms^{-1} and 16 ms^{-1} . The maximum measured wind speed during the 30-year reference period was 29 ms^{-1} in Utö and 27 ms^{-1} in Isokari, both measured on 14 Oct 2010. The seasonality of the local winds is briefly described in Sect. 3 and presented in Fig. 4 showing that the winds in the region are stronger in autumn (OND) and winter (JFM) than in spring (AMJ) and summer (JAS). For example, in Isokari, the 99% of the winds exceeded 14 ms^{-1} during the spring and summer months (AMJ and JAS), while the same percentage was 18 ms^{-1} in the autumn (OND) and 17 ms^{-1} in the winter (JFM) months. Although record high winds were measured in autumn, up to 22 ms^{-1} winds were measured in spring and 25 ms^{-1} in summer at the Isokari station.

During our 30-month measurement period at Norrgrundet station, the distribution of the wind speeds followed rather closely the one from the climatological reference period, with 99% of winds exceeding 17 ms^{-1} at both in Utö and Isokari. However, the maximum measured wind speed of 23 ms^{-1} (storm Toini, Fig. A2), was still far from the maxima measured during the reference period.

4.1.2 Sea level differences

The 30-year reference period for tide gauge measurements compared to theoretical mean water shows that on average the water level is slightly higher in Rauma than in Hanko with a mean difference of 0.9 cm. However, extreme differences where the water level is higher in Hanko than in Rauma are slightly more frequent with 1% values greater than 22 cm and 0.1% greater than 39 cm, than those where the water is higher in Rauma than in Hanko with 1% values being greater than 19 cm and 0.1% above 31 cm. Similar values are seen when looking at the sea level differences from a slightly different angle of the AS, as on average the sea level is 1.4 cm higher in Rauma than in Föglö with 98% of the difference varying between -17 to 14 cm (Föglö-Rauma).

Compared to the 30-year reference period, the Norrgrundet measurement time series reflected the typical distribution of sea level differences. The event on ~~29-28~~ December 2016, which featured maximum current speeds under opposing winds (Fig. 14), was notably rare, with a sea level difference of 31 cm corresponding close to 0.1% occurrence frequency. Comparisons indicate that sea level differences across the AS can exceed those observed in our relatively short 30-month data set by several

tens of centimetres. During the 30-year reference period, the maximum measured sea level difference was 71 cm between Hanko and Rauma and 59 cm between Föglö and Rauma.

450 4.1.3 Atmospheric pressure difference

To account for the inverse barometer effect, we examined measurements of atmospheric pressures over the AS, as strong atmospheric pressure differences can weaken or enhance the currents driven by the sea level difference. Sea level gradients caused by atmospheric pressure differences over the AS (measured between Utö AWS and Isokari AWS) typically vary only a few cm (or hPa) across the approximately 100 km distance between the two weather stations.

455 Simultaneous measurements, from 2007 to 2020, show that atmospheric pressure differences (Utö - Isokari) range between -3 hPa and 4 hPa for 98% of the time. The maximum observed differences during the measurement period ranged from -6 hPa to 10 hPa. In the time series (Figs. 13 and 14) we also present the atmospheric pressure difference between Utö and Kemi, which have about 7 times the [longer](#) distance than between Utö and Isokari. Between Utö and Kemi, the pressure difference varies 98% of the time between -13 hPa and 20 hPa, with the maximum measured differences being -28 hPa and 29 hPa.

460 As the 1 hPa difference is equal to a 1 cm difference in sea level over the same distance, we see that the maximum tilt to the sea surface caused by the atmospheric difference over the AS has been at most 10 cm and in 98% of the cases less than half of this.

During the 30-month measurement period at Norrgrundet, the maximum difference in atmospheric pressure between Isokari and Utö was 5 hPa in both directions. When looking at the strongest measured current events (Figs. 13 and 14), the atmospheric
465 pressure difference has been at most 20 hPa over the entire Gulf of Bothnia (Utö-Kemi) and around 3 hPa over the AS (Utö-Isokari).

5 Discussion

As this analysis is performed by combining measurements from numerous short campaigns, the measurement setups are not consistent with each other. Different measurements had varying depth cell size ensemble intervals and number of pings per
470 ensemble, causing the standard deviation to vary between 0.7 and 1.75 cms^{-1} (Table 2). Our measurements had multiple cases where measurements were not successful due to non-optimal conditions at sea. The main scatterers in the right size range for 300 kHz ADCPs are zooplankton, which can be clearly seen from the analysis of the echo intensity of the signals at the site (Karvo, 2023). The signal quality appeared to be especially poor in springs after winters with substantial ice cover in the AS. However, this paper does not focus on the reasons behind these data gaps as they most likely have a strong biological
475 background. Data were simply flagged as good on the basis of quality parameters provided by the instrument. As the prevailing weather conditions have large seasonal as well as year-to-year variations, a direct detailed comparison between all the measurement sites should be made with caution. The maximum current speeds presented only reflect peaks during the measurement campaigns, and these depend on the type of storms in the area at that time. However, compared to previous measurements in the area (Virtaustutkimuksen neuvottelukunta, 1979; Ambjörn and Gidhagen, 1979; Kanarik et al., 2018), the measurement

480 campaigns presented in this study had a larger coverage in both time and vertical extent (covering almost the entire water column).

~~Our analysis is based on measurement campaigns that vary in time and location.~~ We made seasonal analysis of the current magnitudes to make the measurements from different years and seasons more comparable. This analysis showed that narrow long straits significantly enhanced current speeds, being approximately twice the magnitude of the other areas, which mostly showed similar statistics to each other (e.g. mean speed around 8 cm s^{-1}). Our measurements for the first time show measured currents of 1 m s^{-1} in the AS. Although our measurements were only performed in one of the long north–south aligned straits of the AS, recent model analysis on circulation in the area (Miettunen et al., 2024) shows that the other straits show similar behaviour. In addition, one of the earlier measurement campaigns by Ambjörn and Gidhagen (1979) measured 91 cm s^{-1} currents at the southern end of one of the other northern straits (north of Gustaf Dalen shown in Fig. 1).

490 An early study on general circulation of the Baltic Sea that was based on current observations from lightships (Witting, 1912) indicated that there are seasonal differences in the persistency of surface layer currents in the coastal regions of the Bothnian Sea and in the Gulf of Finland. That study also concluded that there is outflow from the Bothnian Sea through the Archipelago Sea in early summer and inflow to the Bothnian Sea through the Archipelago Sea in autumn. We calculated the seasonal persistency of currents in the Archipelago Sea (results shown in Fig. 10). Our results do not confirm such a clear resultant circulation pattern to be present in the AS. Especially in autumn, the persistence of the currents seems to be smaller. This is in accordance with the rather low persistency of winds in monthly statistics of 2000–2016.

In general, our measurements show a very similar directional distribution of the currents as presented in the model simulations by Miettunen et al. (2024), although the measurements and model results cover different time periods. The focus of these model studies is in the overall circulation and transport dynamics of this area and are not as such comparable for our findings based on measured data. Combining information with measurements with suitable circulation modelling will in the future lead to a more comprehensive overview of the circulation dynamics also in those areas from which we lack measurements. Our findings encourage to take a closer look at single storms and large oscillation events in the surrounding basins (like in Fig. 13) to quantify their significance to the water exchange through the AS.

Our analysis was supported by weather station and tide gauge measurements from the AS and its neighbouring basins; the Gulf of Bothnia, Baltic proper, and Gulf of Finland (Fig. 1). These measurements represent the conditions in the surrounding basins and provide an overview of larger-scale phenomena that affect the dynamics of the AS. However, since weather and sea level measurements are from different areas around AS (Fig. 1), analysing the simultaneous effects of these drivers on currents, again at different locations, is challenging and prohibits a comprehensive overview of the different effects and their combinations.

510 The complicated configuration of islands and narrow channels of the AS affects the wind fields as well. The islands also have different topography and some are covered with dense forests. These can cause channelling effects on the wind field in narrow straits strengthening the winds (e.g., Chaudhari et al., 2023). This can then further enhance the current speeds. As there are no wind measurements available near the narrow straits, we could not quantify the effect. Considering a textbook example of surface currents being around 2–3% of wind speeds in the open sea, extreme wind events, with 30 m s^{-1} speeds,

515 could induce a current speed of up to 60 to 90 cms^{-1} in idealised open sea conditions. The 2–3% estimate from the strongest measured winds of 23 ms^{-1} (storm Toini) during our measurement time series would give an estimate of 50 to 70 cms^{-1} currents. The measured maximum of the currents in Norrgrundet during the Toini storm was 99 cms^{-1} , so the channelling effect has a significant contribution to the current speed in this narrow strait (Fig. 8). When considering the overall magnitudes of the surface current in the AS, where the mean magnitudes vary from 8 cms^{-1} in more open areas to around 14 cms^{-1} in narrow straits, the ~~2–3~~2–3% estimate of mean wind speeds would largely overestimate the currents by giving the magnitude range from 14 to 22 cms^{-1} .

Although atmospheric pressure fields and sea level differences work hand in hand in driving the sea currents, they could not be used directly together in these analyses. However, we can still get an overview of the sea-level gradients. Section 4.1 describes the long-term differences in sea level and atmospheric pressure over the AS and shows that although the atmospheric pressure differences can be quite large, the differences are clearly smaller than the largest differences observed in sea level (Sect. 4.1.2 and Fig. 12). Looking at the highest and lowest 1% of the differences over the AS, the atmospheric pressure difference between Utö and Isokari is approximately a quarter of the difference between Hanko and Rauma. To have more exact comparison, sea level fields could be interpolated to the Utö and Isokari AWS locations using the surrounding three tide gauges. If we were to consider an idealised situation using these highest and lowest 1% of the sea level differences between Hanko and Rauma (around 20 cm) over a distance of around 200 km between the two stations, this tilt could drive geostrophic currents of around 8 cms^{-1} . The highest and lowest percentage of atmospheric pressure difference between Utö and Isokari (around 100 km apart) varied between 3 and 4 hPa. Considering again an idealised situation where 3 hPa air pressure difference would quickly change to equilibrium, this difference could drive around 1 cms^{-1} currents. If we were to consider the rather unlikely condition of atmospheric pressure changing from one 1% extreme to another and thus changing the equilibrium by 7 hPa, this could drive currents up to 3 cms^{-1} . Currents possibly driven by atmospheric pressure changes are thus clearly weaker than the ones driven by overall sea level differences. Comparison to idealised current speeds over the area also shows that ~~neither none~~ of these forcings ~~grows is~~ strong enough to induce currents ~~of the same magnitude as winds alone does~~ as large as the wind can. The maximum sea level difference during our Norrgrundet measurements was 31 cm between Hanko and Rauma, and under ideal conditions this could induce geostrophic currents of up to 12 cms^{-1} while 23 ms^{-1} winds could be estimated to ~~include~~ generate currents well above 50 cms^{-1} . Of course, these analyses are theoretical and not as such suitable for complex conditions of the AS.

~~As we for the first time have such a large~~ This longer data set of measured currents ~~from the AS, we were able~~ allowed us to catch extreme current speeds caused by sea level fluctuations in the basins surrounding the AS. ~~Rantanen et al. (2024) has~~ Rantanen et al. (2024) have shown that sea level extremes in the Baltic Sea are typically linked to the clustering of many cyclones in the area. During the maximum measured currents and following the high wind opposing currents event in February 2017 (Fig. 13) there were four cyclones passing the Baltic Sea from different trajectories, allowing the sea level difference to first enhance currents speeds on Feb 24 and then grow strong enough to oppose the prevailing wind on February 28.

When considering safe navigation in the Archipelago Sea, these measurements show that high currents typically occur with high and storm wind events. But considering also the events where high current speeds occur also during relatively calm

550 weather induced by sea level differences, it is difficult to make any simplified cause-and-effect relationship solely based on
wind forcing, as also shown in Fig. 12. For issuing warnings of high current events, a high-resolution operational model would
be needed.

6 Conclusions

In this paper, we analysed and presented current measurement data sets from the Archipelago Sea (AS). We described the
555 general features of the measured currents and also examined the drivers of the strong currents in the area.

Measurements in the AS can be divided into two types based on current magnitudes: more open sea areas with a mean
surface layer current magnitude of around 8 cms^{-1} and narrow long straits with mean surface current magnitudes of around
 14 cms^{-1} . All of our data sets have measured currents of at least 40 cms^{-1} . In more open areas, maximum currents typically
varied between $50\text{--}60 \text{ cms}^{-1}$ but up to 115 cms^{-1} have been measured in narrow straits. However, these high values are still
560 rare, as 90% of the measurement values were below 10 to 20 cms^{-1} and 99% of the values were around half of the maxima.

The flow direction in the AS is bimodal as the geometry of the area restricts the flow. Due to the geometry, currents in the
northern AS are strongly aligned to the north-south directions following the narrow channels crossing the AS. In central areas,
such as Gustaf Dalen, currents are more widely spread with main flow directions to NE and SE, whereas in the ~~southern-most~~
southernmost Utö stations the flow has significant westward component.

565 Our analysis shows that local winds are the main driver of strong surface currents in the AS and that these currents are very
sensitive to changes in wind direction. However, the sea level difference over the AS has a large role in enhancing or opposing
the growth of the currents. Large sea level differences are formed mainly because of strong local winds, and the sea level
difference over the AS starts to prevent current growth after the wind has blown long enough.

For sea level gradient to dominate the flow direction, the local winds need to either be weak enough or to blow from non-
570 optimal direction related to the open sea. Our analysis shows that currents caused by large sea level differences can grow very
strong when there are large sea level differences in the surrounding basins, independent of the local winds. The most notable
cases in which sea level dominates over local winds occur during strong seiches in the Gulf of Finland with simultaneous low
sea levels in the Gulf of Bothnia, both driven by larger-scale atmospheric phenomena over the entire Baltic Sea. In this paper,
we have presented two events in which low sea level in the Gulf of Bothnia coexisted with strong seiches in the Gulf of Finland
575 both resulting in very strong currents well above 70 cms^{-1} opposing the direction of the prevailing wind (24 February 2017 in
Fig. 13 and ~~on~~ 27 Dec 2016 onward in Fig. 14). In the AS, even weaker winds, together with the supporting sea level gradient
caused by oscillations in surrounding basins, can result in very strong currents in the narrow straits crossing the area (see event
on 18 August 2021, Fig. A1).

Data availability. Wind and sea level data are openly available from the FMI open data portal (<https://en.ilmatieteenlaitos.fi/open-data>).
580 Bathymetry information is available through EMODnet Bathymetry (<https://emodnet.ec.europa.eu/en/bathymetry>). CTD measurements are

available either through <https://www.marinefinland.fi/en-US> or through ICES data system (<https://www.ices.dk>). The ADCP data presented will be available through FMI data storage (<https://doi.org/XXXXXX/XXXX>, **Xxxxxxx et al.,2025**)

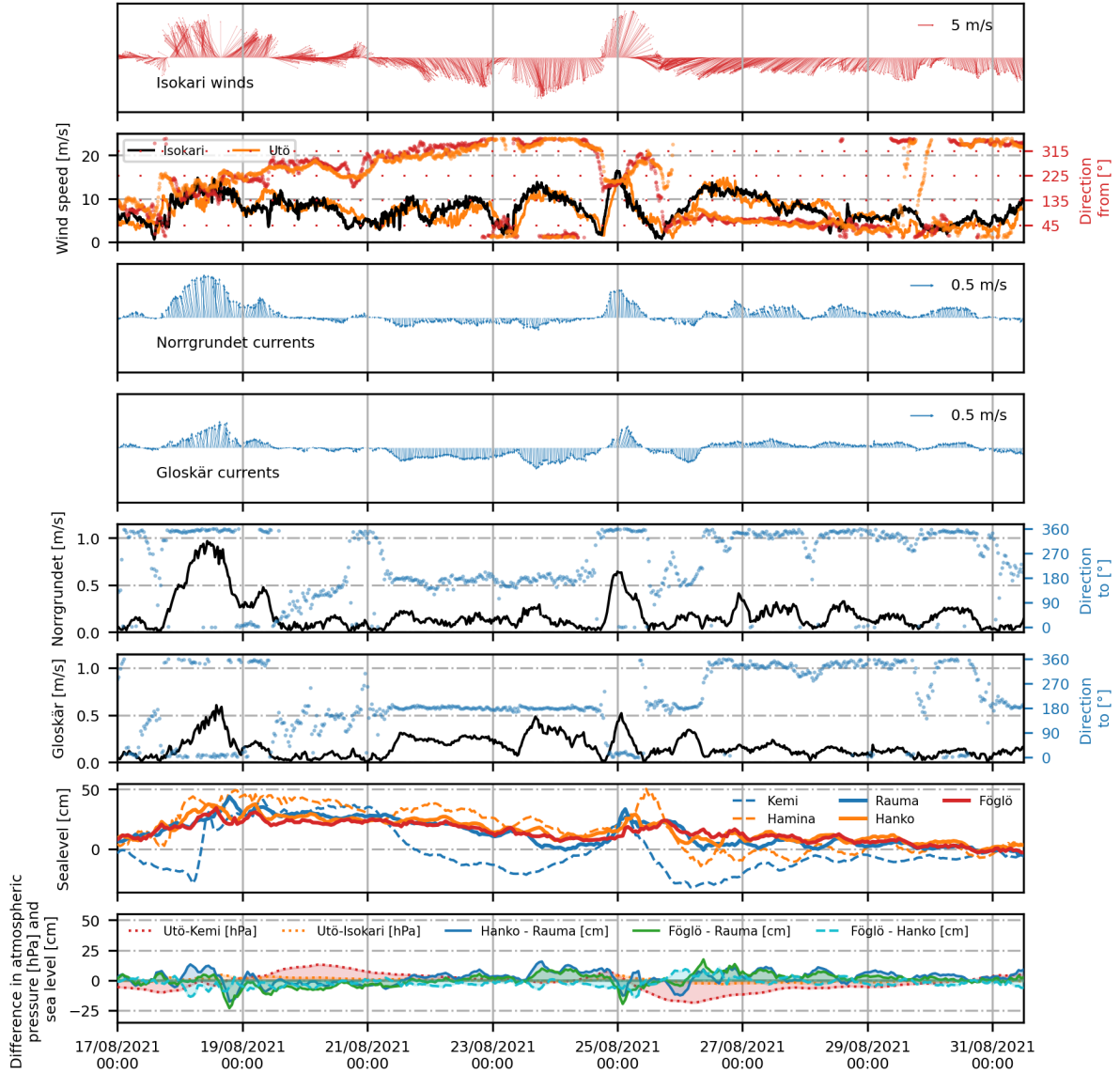


Figure A1. Time series of [the](#) Isokari winds and currents from Norrgrundet and Gloskär with simultaneous wind and sea level measurements together with sealevel and atmospheric pressure differences from surrounding stations (Fig. 1). The first and second panels present wind speed and direction at Isokari (and Utö in orange on second panel), third and fourth panel currents at the uppermost layer measured at Norrgrundet and Gloskär. The upward arrow indicates the northward direction. The lowest panel shows the differences in sea level and atmospheric pressure around the AS.

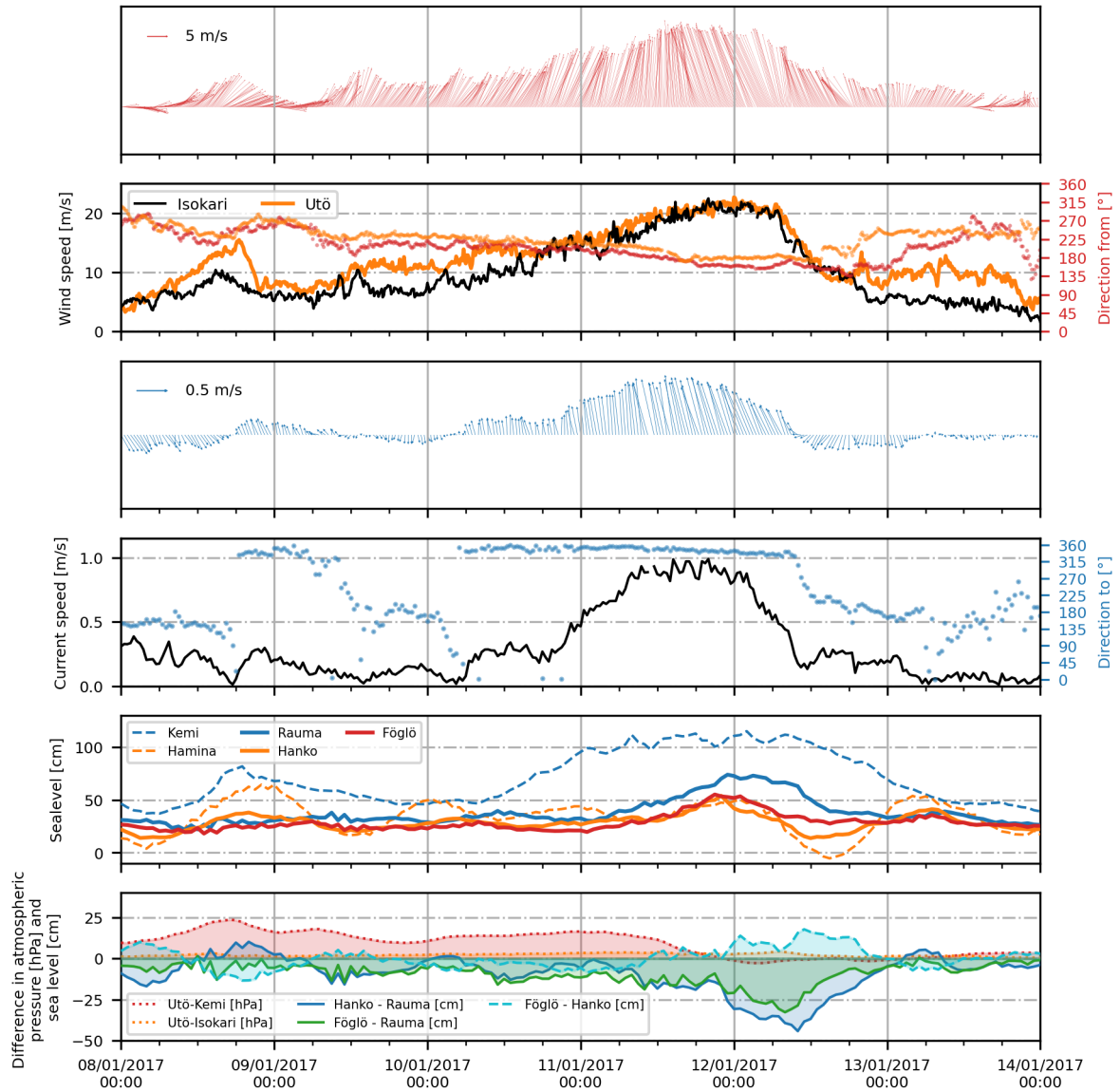


Figure A2. Time series of the third strongest event of Norrgrundet currents (storm Toini on 11 Jan 2017) with simultaneous wind and sea level measurements together with sea level and atmospheric pressure differences from surrounding stations (Fig. 1). The first and second panels present wind speed and direction at Isokari (and Utö in orange on second panel), third and fourth panel currents at the uppermost layer measured at Norrgrundet. The upward arrow indicates the northward direction for wind and current measurements. The fifth panel represents the sea level variation around the AS (solid lines) and at the end of the surrounding basins (dashed lines). The lowest panel shows the differences in sea level and atmospheric pressure fields around the AS.

Author contributions. The study was initiated by PA and LT. HK was responsible of the processing and analysing the ADCP datasets, and curating and presenting the data presented other data in this paper. EM performed the analyses of the hydrography of the area and figures 1 and 3. All authors took part in the extensive discussion of the results and provided expertise and insight to the conclusions from their area of expertise. HK and LT prepared the manuscript with contributions from all authors.

Competing interests. The contact author has declared that none of the authors has any competing interests.

Acknowledgements. This study would not have been possible without our colleagues at the FMI's (and previous FIMR's) Observation Services. Thank you for deployments, technical services and insights of the work at sea to Riikka Hietala, Tero Purokoski, Heini Jalli, Pekka Kosloff and to the others who have worked with us at the sea, and of course the whole crew of RV Aranda for flexible work with us. This work was supported by a grant from the Vilho, Yrjö and Kalle Väisälä Foundation of the Finnish Academy of Science and Letters, the Finnish Ministry of the Environment (Water Protection Programme 2019–2023), the European Union's European Maritime and Fisheries Fund, and national Finnish Marine Research Infrastructure (FINMARI) consortium.

References

- 595 Ambjörn, C. and Gidhagen, L.: Vatten- och materialtransporter mellan bottniska viken och Östersjön, <http://urn.kb.se/resolve?urn=urn:nbn:se:smhi:diva-5829>, 1979.
- Björkqvist, J.-V., Tuomi, L., Tollman, N., Kangas, A., Pettersson, H., Marjamaa, R., Jokinen, H., and Fortelius, C.: Brief communication: Characteristic properties of extreme wave events observed in the northern Baltic Proper, *Baltic Sea, Natural Hazards and Earth System Sciences*, 17, 1653–1658, <https://doi.org/10.5194/nhess-17-1653-2017>, 2017.
- 600 Book, J. W., Perkins, H., Signell, R. P., and Wimbush, M.: The Adriatic Circulation Experiment Winter 2002/2003 Mooring Data Report: A Case Study in ADCP Data Processing, Tech. rep., DTIC Document, 2007.
- Chaudhari, A., Immonen, E., Manngård, M., Westö, J., and Bengs, D.: Assessing the Impact of Forests on Local Wind Conditions in Archipelagos: A CFD Study, in: *Proceedings of the 37th ECMS International Conference on Modelling and Simulation*, Florence, Italy, pp. 341–349, <https://doi.org/10.7148/2023-0341>, 2023.
- 605 Crameri, F.: Scientific colour maps (7.0.0), <https://doi.org/10.5281/zenodo.4491293>, 2021.
- EMODnet Bathymetry Consortium: EMODnet Digital Bathymetry (DTM 2020), EMODnet Bathymetry Consortium [data set], <https://doi.org/10.12770/bb6a87dd-e579-4036-abe1-e649cea9881a>, 2020.
- Hela, I.: Drift currents and permanent flow, *Societas scientiarum Fennica*, 1952.
- HELCOM: PLC Subbasins, HELCOM Map and data service [data set], <https://metadata.helcom.fi/geonetwork/srv/eng/catalog.search#/metadata/1456f8a5-72a2-4327-8894-31287086ebb5>, (last access 19 October 2022), 2018.
- 610 Johansson, M.: Sea level changes on the Finnish coast and their relationship to atmospheric factors, Phd thesis, University of Helsinki, Helsinki, Finland, <http://urn.fi/URN:ISBN:978-951-697-832-4>, 2014.
- Jönsson, B., Döös, K., Nycander, J., and Lundberg, P.: Standing waves in the Gulf of Finland and their relationship to the basin-wide Baltic seiches, *Journal of Geophysical Research: Oceans*, 113, <https://doi.org/10.1029/2006JC003862>, 2008.
- 615 Kanarik, H., Tuomi, L., Alenius, P., Lensu, M., Miettunen, E., and Hietala, R.: Evaluating Strong Currents at a Fairway in the Finnish Archipelago Sea, *Journal of Marine Science and Engineering*, 6, <https://doi.org/10.3390/jmse6040122>, 2018.
- Karvo, S.: Using acoustic current measurements in zooplankton research in the Baltic Sea, Master’s thesis, University of Helsinki, Finland, <http://hdl.handle.net/10138/565797>, 2023.
- Laakso, L., Mikkonen, S., Drebs, A., Karjalainen, A., Pirinen, P., and Alenius, P.: 100 years of atmospheric and marine observations at the Finnish Utö Island in the Baltic Sea, *Ocean Science*, 14, 617–632, <https://doi.org/10.5194/os-14-617-2018>, 2018.
- 620 Laurila, T. K., Gregow, H., Cornér, J., and Sinclair, V. A.: Characteristics of extratropical cyclones and precursors to windstorms in northern Europe, *Weather and Climate Dynamics*, 2, 1111–1130, <https://doi.org/10.5194/wcd-2-1111-2021>, 2021a.
- Laurila, T. K., Sinclair, V. A., and Gregow, H.: Climatology, variability, and trends in near-surface wind speeds over the North Atlantic and Europe during 1979–2018 based on ERA5, *International Journal of Climatology*, 41, 2253–2278, <https://doi.org/10.1002/joc.6957>, 2021b.
- 625 Lilover, M.-J.: Tidal currents as estimated from ADCP measurements in “practically non-tidal” Baltic Sea, in: *2012 IEEE/OES Baltic International Symposium (BALTIC)*, pp. 1–4, <https://doi.org/10.1109/BALTIC.2012.6249181>, 2012.
- Lilover, M.-J., Pavelson, J., and Kõuts, T.: Wind forced currents over the shallow Naissaar Bank in the Gulf of Finland, *Boreal environment research*, 16, 164, <https://www.borenv.net/BER/archive/pdfs/ber16/ber16A-164.pdf>, 2011.
- Lisitzin, E.: A brief Report on the scientific results of the hydrological expedition to the Archipelago and° Aland Sea in the year 1922, *Societas geographica Fenniae*, 1951.
- 630

- Lisitzin, E.: Sea Level Changes., Elsevier Oceanography Series 8. 286 pp., 1974.
- Mattias Green, J., Liljebladh, B., and Omstedt, A.: Physical oceanography and water exchange in the Northern Kvark Strait, Continental Shelf Research, 26, 721–732, <https://doi.org/10.1016/j.csr.2006.01.012>, 2006.
- Medvedev, I., Rabinovich, A., and Kulikov, E.: Tidal oscillations in the Baltic Sea, Oceanology, 53, 526–538, <https://doi.org/10.1134/S0001437013050123>, 2013.
- Miettunen, E., Tuomi, L., and Myrberg, K.: Water exchange between the inner and outer archipelago areas of the Finnish Archipelago Sea in the Baltic Sea, Ocean Dynamics, pp. 1–17, <https://doi.org/10.1007/s10236-020-01407-y>, 2020.
- Miettunen, E., Tuomi, L., Westerlund, A., Kanarik, H., and Myrberg, K.: Transport dynamics in a complex coastal archipelago, Ocean Science, 20, 69–83, <https://doi.org/10.5194/os-20-69-2024>, 2024.
- Muchowski, J., Jakobsson, M., Umlauf, L., Arneborg, L., Gustafsson, B., Holtermann, P., Humborg, C., and Stranne, C.: Observations of strong turbulence and mixing impacting water exchange between two basins in the Baltic Sea, Ocean Science, 19, 1809–1825, <https://doi.org/10.5194/os-19-1809-2023>, 2023.
- Männikus, R., Soomere, T., and Viška, M.: Variations in the mean, seasonal and extreme water level on the Latvian coast, the eastern Baltic Sea, during 1961–2018, Estuarine, Coastal and Shelf Science, 245, 106 827, <https://doi.org/10.1016/j.ecss.2020.106827>, 2020.
- Palmén, E.: Untersuchungen über die Strömungen in den Finnland umgebenden Meeren, Soc. Sc. Fenn., Comm. Phys.-Math., 12, 1930.
- Rantanen, M., van den Broek, D., Cornér, J., Sinclair, V. A., Johansson, M. M., Särkkä, J., Laurila, T. K., and Jylhä, K.: The Impact of Serial Cyclone Clustering on Extremely High Sea Levels in the Baltic Sea, Geophysical Research Letters, 51, <https://doi.org/10.1029/2023GL107203>, 2024.
- Soomere, T. and Keevalik, S.: Anisotropy of moderate and strong winds in the Baltic Proper, Proc. Estonian Acad. Sci. Eng, 7, 35–49, https://kirj.ee/public/va_te/t50-1-3.pdf, 2001.
- Suhhova, I., Liblik, T., Lilover, M.-J., and Lips, U.: A descriptive analysis of the linkage between the vertical stratification and current oscillations in the Gulf of Finland, Boreal Environment Research, 23, 83, <https://www.borenv.net/BER/archive/pdfs/ber23/ber23-083-103.pdf>, 2018.
- Symonds, D.: QA/QC Parameters for Acoustic Doppler Current Profilers, Teledyne RDI Application Note, 2006.
- Tuomi, L., Miettunen, E., Alenius, P., and Myrberg, K.: Evaluating hydrography, circulation and transport in a coastal archipelago using a high-resolution 3D hydrodynamic model, Journal of Marine Systems, 180, 24 – 36, <https://doi.org/10.1016/j.jmarsys.2017.12.006>, 2018.
- Virtaustutkimuksen neuvottelukunta: Saaristomeren virtaustutkimus, in Finnish, 1979.
- Westerlund, A., Miettunen, E., Tuomi, L., and Alenius, P.: Refined estimates of water transport through the Åland Sea in the Baltic Sea, Ocean Science, 18, 89–108, <https://doi.org/10.5194/os-18-89-2022>, 2022.
- Witting, R. und Pettersson, H.: Thalassologische Beobachtungen im Ålands- und Schärenmeer im Juli 1922 and Juli 1923, Merentutkimuslaitoksen julkaisu N:o 30, Helsinki, 1925.
- Witting, R.: Untersuchungen zur Kenntnis der Wasserbewegungen und der Wasserumsetzung in den Finnland umgebenden Meeren, Finnländische Hydrographisch-Biologische Untersuchungen, 2, 173, 1908.
- Witting, R.: Tidvattnen i Östersjön och Finska Viken, Fennia, 29, 1–84, 1911.
- Witting, R.: Zusammenfassende Übersicht der Hydrographie des baltischen und finnischen Meerbusens und der nördlichen Ostsee, nach den Untersuchungen bis Ende 1910, 7, <https://www.doria.fi/handle/10024/171912>, 1912.
- Wubber, C. and Krauss, W.: The two dimensional seiches of the Baltic Sea, Oceanologica Acta, 2, 435–446, 1979.