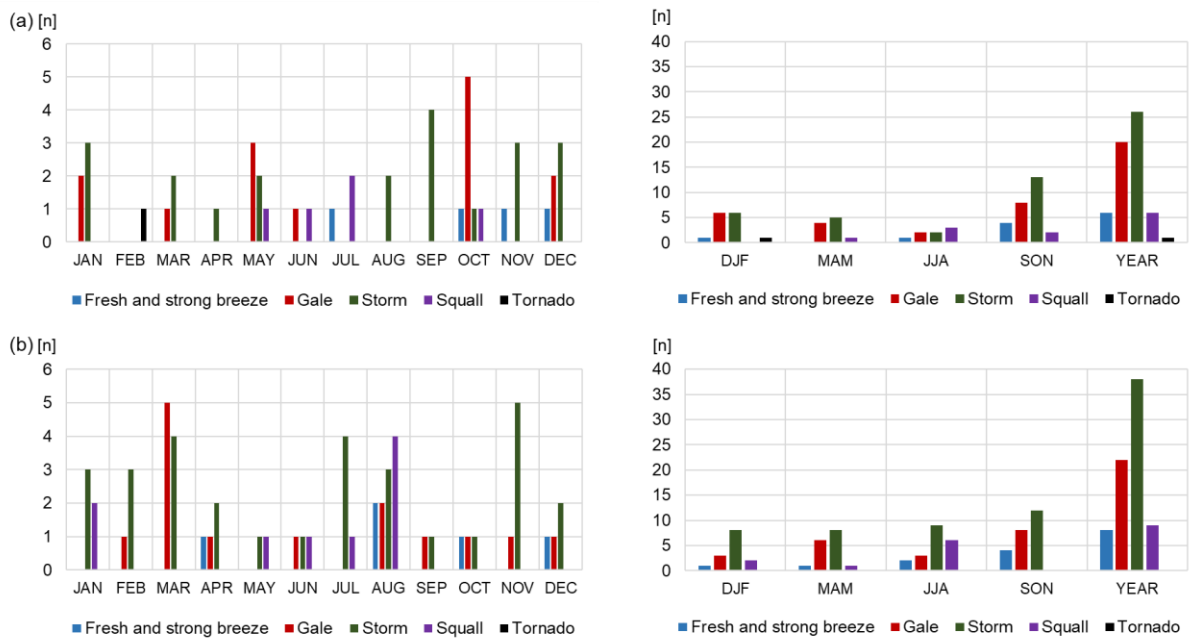


586 Supplementary material

587

588

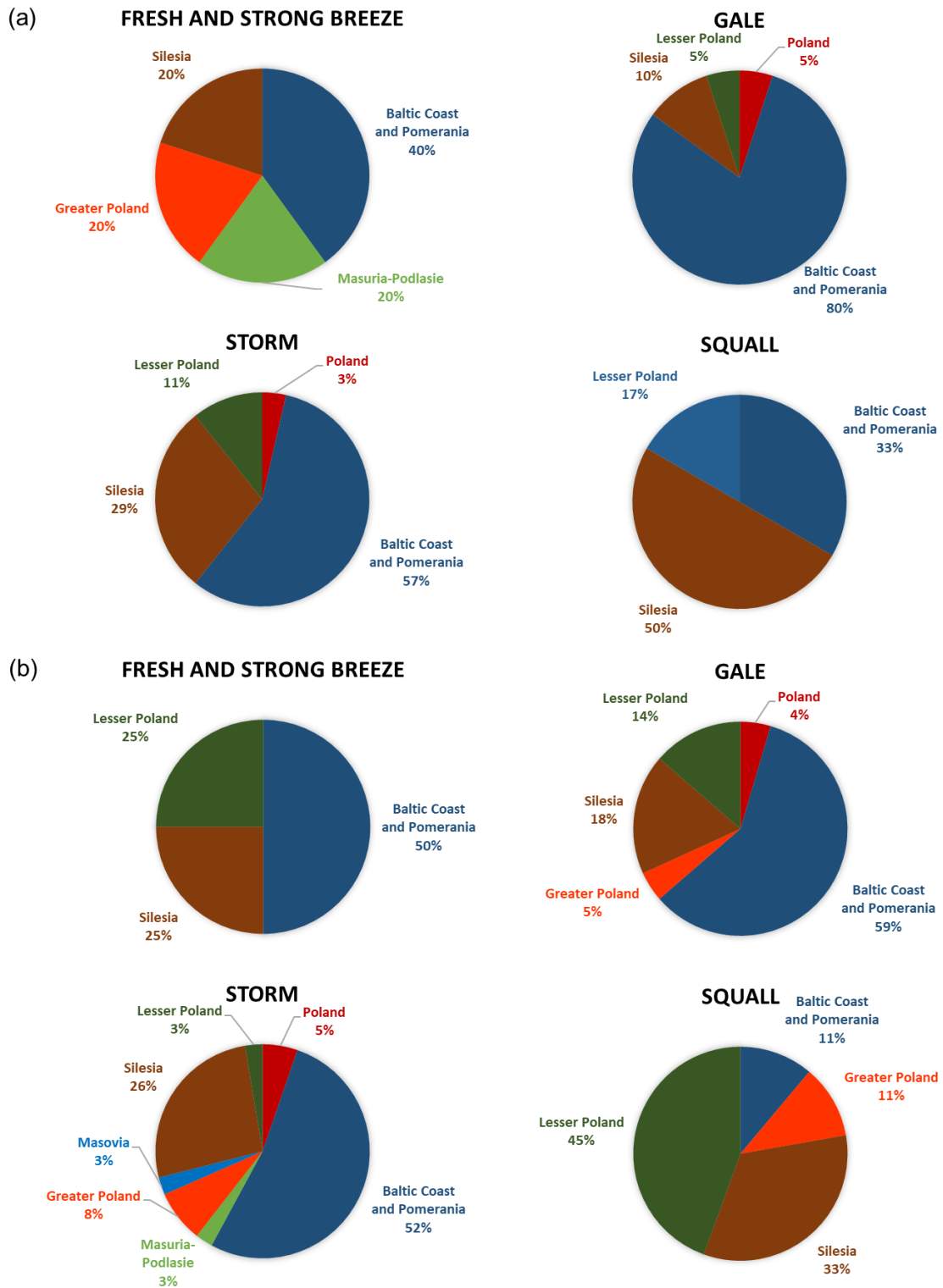


589

590

591 Fig. S1. Monthly (left column) and seasonal (right column) number (n) of occurrences of different types of
592 strong winds in Poland in three periods: a) 1281–1500, b) 1501–1600

593



594

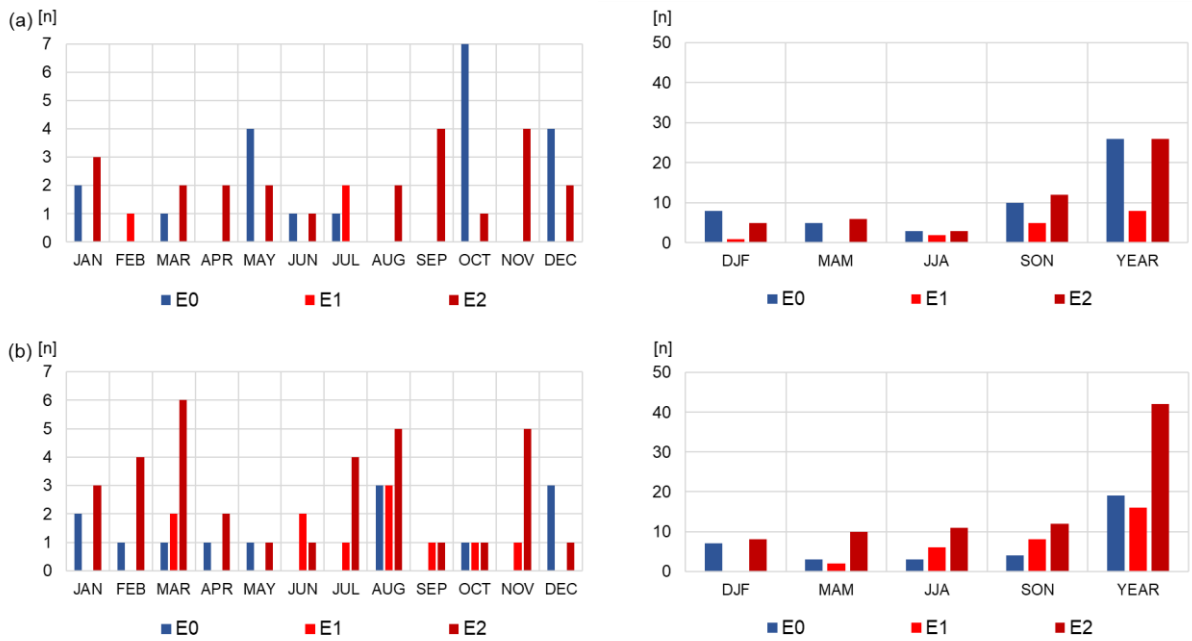
595

596 Fig. S2. Frequencies (%) of occurrence of different types of strong winds in studied regions of Poland, a) 1281–
 597 1500, b) 1501–1600

598

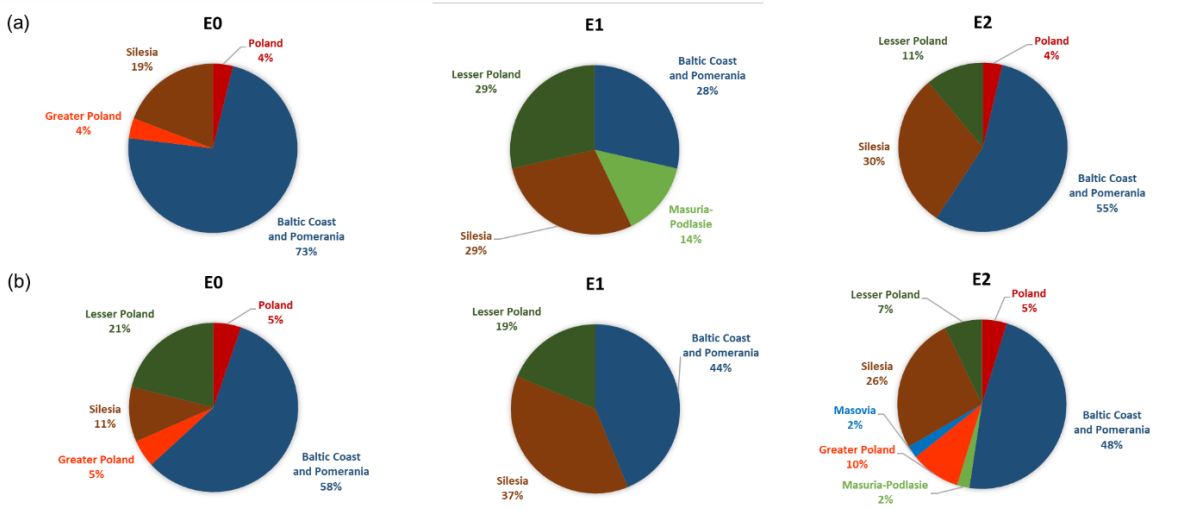
599

600



601
602
603
604
605

Fig. S3. Monthly (left panel) and seasonal (right panel) numbers (n) of occurrence of strong winds in Poland, according to extent of damage, a) 1281–1500, b) 1501–1600. For explanations of abbreviations, see Methods.



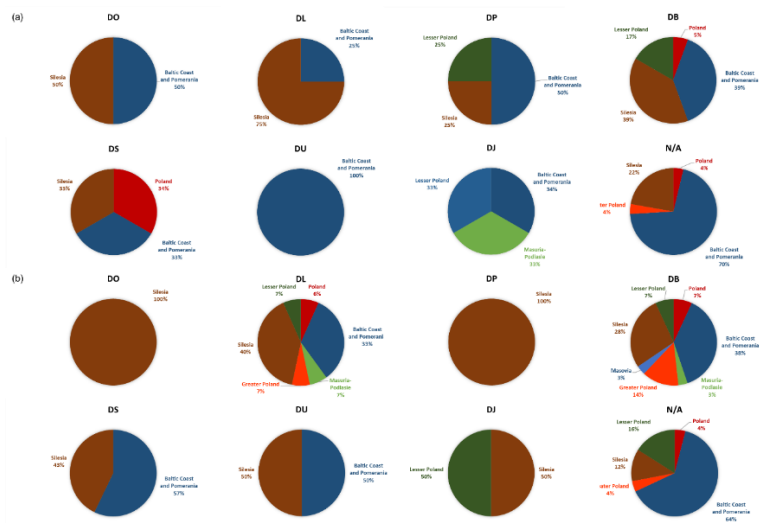
606
607
608
609
610

Fig. S4. Frequencies (%) of occurrence of strong winds in studied regions of Poland for different types of damage, a) 1281–1500, b) 1501–1600. For explanations of abbreviations, see Methods.



611

612 Fig. S5. Monthly, seasonal and annual number (n) of strong winds in Poland for which information about the
 613 character of damage exists (DO, DL, DP, DB, DS., DU, DV, DJ and DF) or does not exist (N/A), a) 1281–1500, b)
 614 1501–1600. For explanations of abbreviations, see Methods.

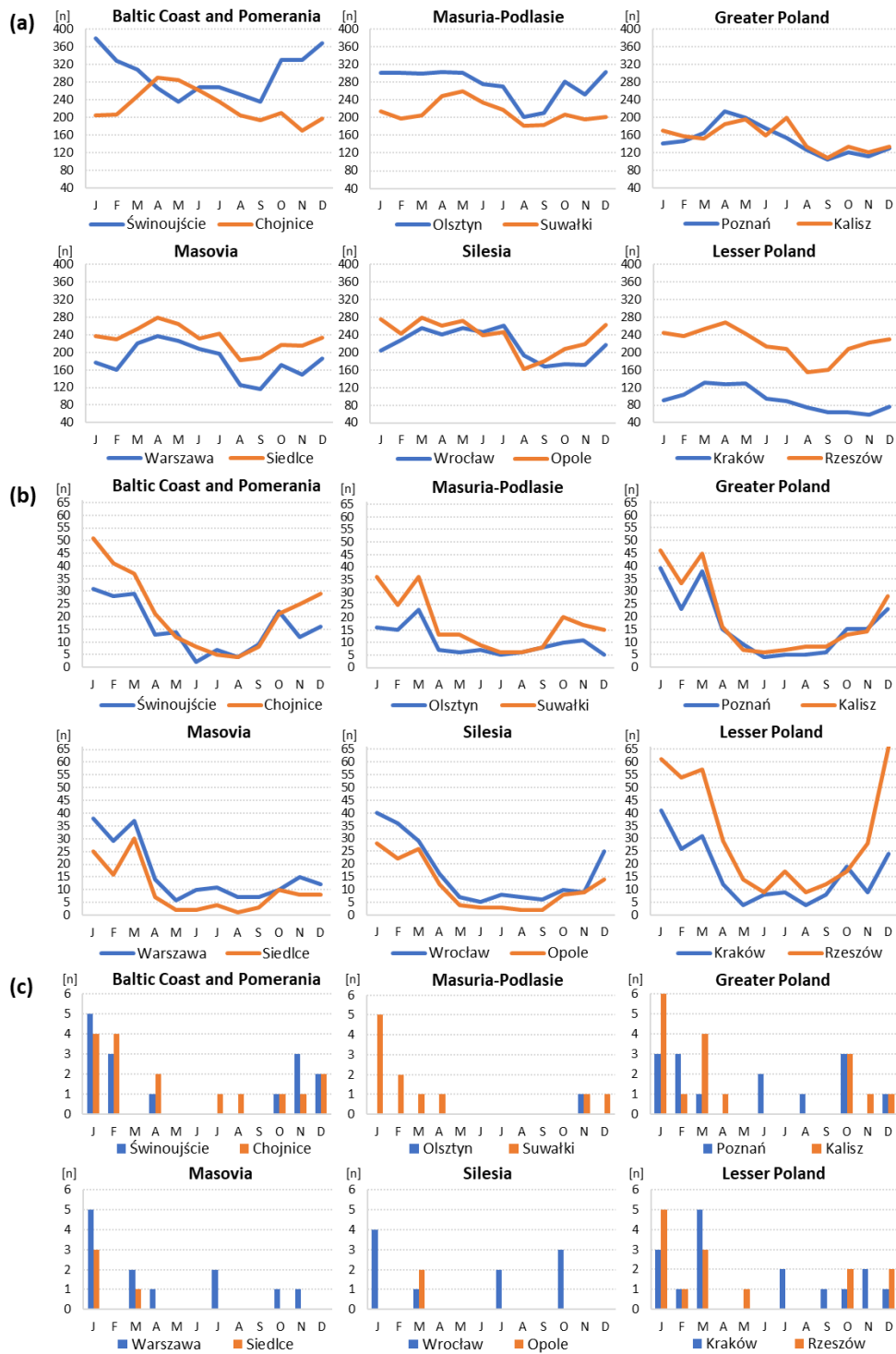


615

616

617 Fig. S6. Frequency (%) of damage categories estimated for particular regions in Poland in the periods: a) 1281–
 618 1500 and b) 1501–1600. Explanations: Two categories (DV and DF) are not shown because they can occur only in the Baltic Coast and
 619 Pomerania region. For explanations of abbreviations, see Methods.

620



621

622 Fig. S7. Annual courses of 30-year total monthly number (n) of: a) fresh and strong breeze (5–7 BS), b) gales (8–
 623 9 BS), and c) storms (10–12 BS) in Poland, 1993–2022

624

625