

20th-century ecological disasters in central European monoculture pine plantations led to critical transitions in peatlands

Mariusz Bąk¹, Mariusz Lamentowicz¹, Piotr Kołaczek¹, Daria Wochal¹, Michał Jakubowicz², Luke Andrews³, Katarzyna Marcisz¹

¹Climate Change Ecology Research Unit, Faculty of Geographical and Geological Sciences, Adam Mickiewicz University, Poznań, Poland

²Isotope Research Unit, Faculty of Geographical and Geological Sciences, Adam Mickiewicz University, Poznań, Poland

³School of Biological and Environmental Sciences, Liverpool John Moores University, Liverpool, United Kingdom

Correspondence to: Mariusz Bąk, mariusz.bak@amu.edu.pl

Abstract

The frequency of extreme events worldwide is steadily increasing. Therefore, it is crucial to recognize the accompanying response of different ecosystems. Monoculture tree plantations with simplified ecosystem linkages in food webs are particularly vulnerable to catastrophic events like fires, wind throws, droughts and insect outbreaks. These events threaten forests and other associated ecosystems, including peatlands, which are extremely important in regulating the global carbon cycle and thus mitigating the effects of a warming climate. Here, we traced a 2000-year history of the Miały peatland located in one of Poland's largest pine plantation complexes, and we examined how this peatland responded to some of the largest environmental disasters observed in the 20th century across Central Europe – the 1922–1924 *Panolis flammea* outbreak and the 1992 fire. As a disturbance proxy, we used a multi-proxy palaeoecological analysis (plant macrofossils, testate amoebae, pollen, non-pollen palynomorphs, micro- and macrocharcoal) supported by a neodymium isotope record. We showed several critical transitions in the peatland associated with extreme events and anthropogenic impacts, which triggered significant changes in the peatland's ecological status.

Introduction

In recent decades, peatlands have been subjected to intense and ever-increasing climatic and anthropogenic pressures (Zhang et al., 2022). Hydrologically unstable due to diverse

anthropogenic impacts, they are becoming extremely susceptible to various types of disturbances and extreme phenomena, which are a threat to human health, cause economic losses, and contribute to the amplification of the global warming effect (Kiely et al., 2021; Page et al., 2002). Peatlands have evolved from being net CO₂ sinks to CO₂ emitters in every climate zone – from tropical (Deshmukh et al., 2021; Page et al., 2022) to boreal realm (Ofiti et al., 2023; Turetsky et al., 2011; Wilkinson et al., 2023). This is particularly important because peatlands are valuable ecosystems accumulating a third of the world's soil carbon stocks (Parish et al., 2008), twice the entire biomass of the world's forests (Beaulne et al., 2021).

Hundreds of thousands of hectares of peatlands in Poland are located in forests, as forests cover 31% of Poland's area, equivalent to 94,770 km² (Statistical Office in Białystok, 2023). More than half of this forest cover comprises coniferous forests dominated by Scots pine (*Pinus sylvestris* L.). It is mainly the result of planned forest management in modern-day Poland in the 19th and 20th centuries (Broda, 2000). Pine monocultures were easier to manage and grew faster on poor soils, securing the continuous supply of raw material for the growing timber industry (Broda, 2000). Such an environment is particularly dangerous for Poland's peatlands because monoculture tree plantations have simplified linkages in food webs and thus are more sensitive to fires, strong winds, droughts, and insect outbreaks (Chapin et al., 2012), which also poses a threat to peatlands. It should be strongly emphasized here that such extreme phenomena have become more common in recent years around the world (Seidl et al., 2014; Westerling, 2016). These negative impacts have been recorded for various peatlands, including those in Central and Eastern Europe (Leonardos et al., 2024; Łuców et al., 2021).

It is essential to recognize how peatlands at different latitudes respond to a warming climate and how they respond to changes resulting from the management of their surroundings (land use change), including the planned forests and monoculture tree plantations. Thanks to their anaerobic and acidic conditions, peatlands are excellent preservers of various types of micro- and macrofossils (Rydin and Jeglum, 2013; Tobolski, 2000). Thus, they are valuable archives of the changes occurring in the peatland (autogenic change) and its surroundings (allogenic changes).

Multi-proxy palaeoecological studies (including analyses of several proxies, e.g., testate amoebae, plant macrofossils, pollen, charcoal and others) are an excellent tool for reconstructing the peatland development (Birks and Birks, 2006; Mitchell et al., 2000). Particularly broad insight can be provided when dendrological (Bąk et al., 2024) or geochemical methods (Fiałkiewicz-Kozieł et al., 2018; Gałka et al., 2019; Marcisz et al., 2023b) are included. In recent years, the neodymium (Nd) isotope composition of the peat-hosted mineral matter has

69 been increasingly used in palaeoecological studies. Among the various applications, the method
70 has been used to determine distant sources of atmospheric dust (Allan et al., 2013; Fagel et al.,
71 2014; Pratte et al., 2017) and the signal associated with anthropogenic pollution (Fiałkiewicz-
72 Koziół et al., 2016). Marcisz et al. (2023b) used this method to identify local disturbances in
73 peat, such as fires or deforestation.

74 The environmental past of the largest European forest complexes, including the Noteć Forest
75 area in Poland studied here, is insufficiently understood. These forests were affected by some
76 of the most severe environmental disasters of the 20th century that took place in pine-dominated
77 forests across Central and Eastern Europe – the 1922-1924 *Panolis flammea* outbreak and the
78 1992 fire. The only palaeoecological data documenting these events in the Noteć Forest were
79 derived from two cores taken from the Rzecin peatland (Barabach, 2014; Lamentowicz et al.,
80 2015; Milecka et al., 2017). However, the interpretation of these extreme events based solely
81 on these two cores appears to leave many questions unanswered and highlights the need for
82 further research into the impact of insect outbreaks and fires on peatland ecosystems. The
83 changes caused by extreme events can lead a peatland to reach a critical transition, that is, to
84 cross a tipping point after which it does not return to its previous hydrological and trophic
85 conditions (Dakos et al., 2019; Lenton et al., 2008, 2019). So far, peatland research has focused
86 chiefly on the tipping points associated with changes in groundwater levels due to a warming
87 climate, fires, pollution, carbon sequestration, or opening landscape caused by agricultural
88 development (Fiałkiewicz-Koziół et al., 2015; Jassey et al., 2018; Lamentowicz et al., 2019a,
89 b; Loisel and Bunsen, 2020). Except for these issues, there is a need for a broader recognition
90 of the consequences of insect outbreaks in forest areas and the accompanying forest
91 management.

92 In this article, we focus on the impact of catastrophic events on the ecosystem of the Miały
93 peatland in the Noteć Forest (local scale) and the broad context of such disturbances for pine
94 plantations in Central and Eastern Europe (regional scale). Our aims were (1) to reconstruct the
95 environmental history of the Miały peatland using multiproxy palaeoecological analyses
96 (including analyses of pollen, non-pollen palynomorphs, testate amoebae, plant macrofossils
97 and charcoal) and geochemical analyses (neodymium isotope signatures), and through this
98 reconstruction to identify peat layers corresponding to severe environmental catastrophic
99 events; (2) assess the impact of such disturbances on the peatland ecosystem, as well as to
100 understand the relation between disturbances occurring in the surrounding forest and the
101 peatland. We hypothesized that catastrophic events in pine plantations, including insect

outbreaks and fires, cause significant changes in the peatlands located in their area and even a complete change in trophic and hydrological conditions, leading to a critical transition.

Materials and methods

Study site

The Miały peatland is located in western Poland, about 65 km northwest of Poznań (Fig. 1). It is located within the boundaries of the Noteć Forest, one of the largest forest complexes in Poland, covering an area of about 1370 km² (Statistical Office in Białystok, 2023). The Noteć Forest is a Scots pine-dominated monoculture (*Pinus sylvestris*, 95% of the tree stand) (Sukovata, 2022). A large part of the pine forest, including our research site, is located in the ‘Puszcza Notecka’ protected landscape area. It is also a special protected area, ‘Puszcza Notecka’ (PLB300015, since 2007), and a special area of conservation, ‘Dolina Miały’ (PLH300042, since 2023), under Natura 2000. According to the physical-geographic regionalization, the peatland is located in the Gorzów Basin mesoregion, in the Warta and Noteć Inter-river submesoregion. It is a high glacial-alluvial terrace covered with dunes with a relative height of 20 to 40 meters (Kondracki, 2001). It has a temperate transitional climate. From 1981 to 2010, the average annual air temperature was 8.4 °C. The warmest month was July, with an average temperature of 18.8 °C, and the coolest month was January, with an average temperature of –1.1 °C. Average annual precipitation for 1981–2010 equalled 563 mm, with the maximum precipitation in July – 69 mm, and the minimum in April – 31 mm (Institute of Meteorology and Water Management, 2025).

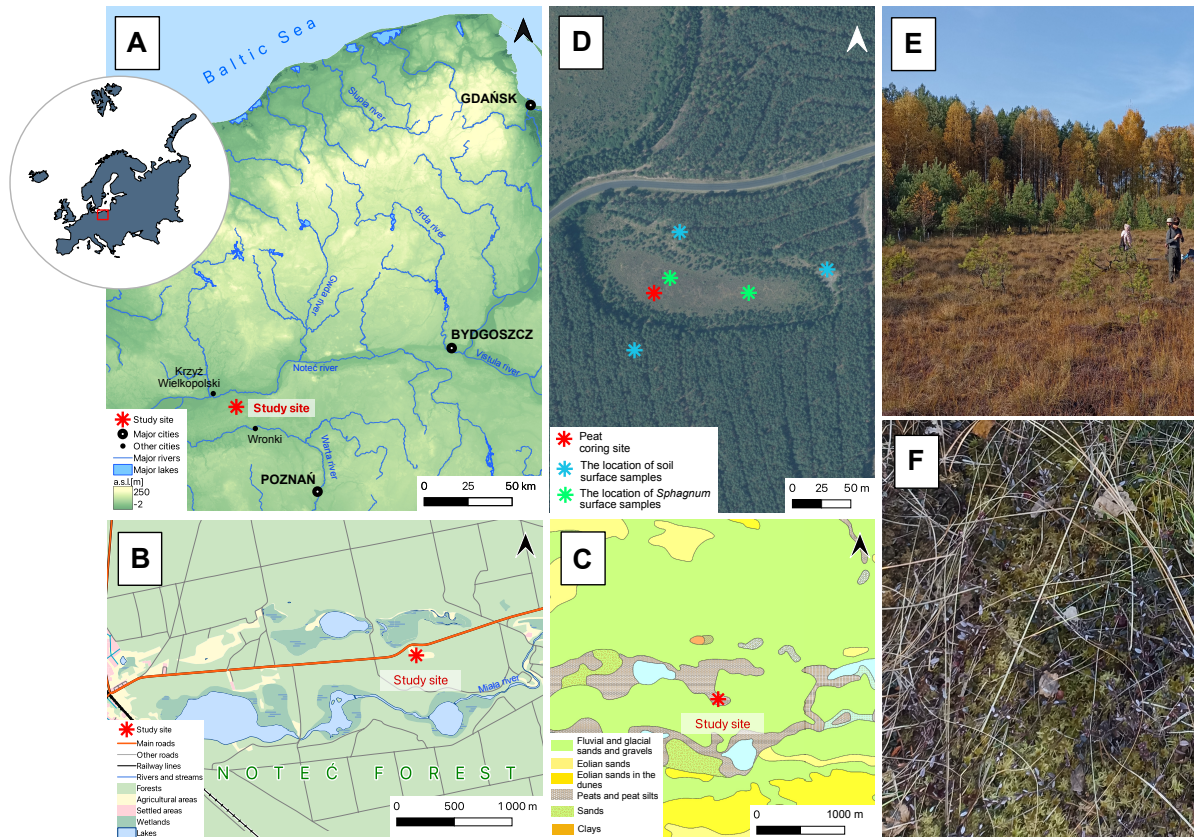


Figure 1. A-C. The location of the study site on topographic (A, B) and geological (C) maps. D. Orthophoto of the Miały peatland with sampling points (asterisks): red – peat core sampling site, blue – soil surface sampling sites for the neodymium isotope analyses, green – *Sphagnum* surface sampling sites for the neodymium isotope analyses. E. Photograph of the peatland and its forest surroundings. F. *Sphagnum* mosses covered the peatland surface.

Fieldwork and sampling

The peat core was collected from the western part of the peatland in October 2021 using a Wardenaar corer (chamber dimensions: 10 cm × 10 cm × 100 cm) (Wardenaar, 1987). The entire length of the sampled peat core – a 97 cm-long monolith – was analyzed. The core was subsampled continuously every 1 cm, except for the first sample (0–2 cm), which contained a living layer of peat-forming vegetation. A total of 96 samples were obtained for multi-proxy analyses, including the water content in fresh material, organic matter content in dry material, ash-free bulk density, peat accumulation rate, peat carbon accumulation rate, plant macrofossils, testate amoebae, macroscopic and microscopic charcoal, pollen and neodymium isotopes. Moreover, five surface samples of *Sphagnum* mosses (two samples) and soil (three samples) were taken as a reference for downcore neodymium measurements (Fig. 1), following the approach of Marcisz et al. (2023b).

Radiocarbon dating, absolute chronology and peat accumulation rates

Ten samples containing *Sphagnum* and brown moss stems were used for accelerator mass spectroscopy (AMS) ^{14}C dating of the entire length of the core, conducted at the Poznan Radiocarbon Laboratory in Poland (laboratory code marked Poz; Tab. 1).

The absolute chronology of the core was based on a Bayesian age-depth model using OxCal v4.4.4 (Bronk Ramsey, 2021). The *P_Sequence* command with a parameter k of 0.75 cm^{-1} calculated the model, assuming $\log_{10}(k/k_0) = 2$, and interpolation = 1 cm. The IntCal20 (Reimer et al., 2020) and Bomb21NH1 (Hua et al., 2021) atmospheric curves were used as calibration sets. The most pronounced changes in peat composition, as manifested by changes in pollen concentration, testate amoeba species composition, and species composition of plant macrofossils, which may signal changes in peat accumulation rates, were inputted using the *Boundary* command. In this model, the *Boundary* command was input at a depth of 26 cm, with a pronounced change in pollen concentration. Two dates (laboratory code – Poz-150636 and Poz-150390) were rejected because they were outside the main trajectory of the model. For better readability of the age-depth model, mean values (μ) rounded to tens were applied in the following section of the text. Peat accumulation rates were retrieved from the age-depth model using the OxCal software.

Table 1. The list of radiocarbon dates from Miały peatland with calibration. The outliers are marked with asterisks (*). The IntCal20 (Reimer et al., 2020) and Bomb21NH1 (Hua et al., 2021) atmospheric curves were used to calibrate the dates. pMC – percent modern carbon

Laboratory code – number sample	Depth (cm)	^{14}C date (^{14}C BP)	Calibrated dates [cal. CE (2s – 95.4%)	Dated material
Poz-150634	10.5	114.23 ± 0.28 pMC	1958-1962 (9.7%) 1986-1996 (85.7%)	<i>Sphagnum</i> stems
Poz-150451	20.5	153.88 ± 0.4 pMC	1964-1974 (95.4%)	<i>Sphagnum</i> stems
Poz-150635	30.5	110 ± 30	1682-1738 (25.7%) 1754-1762 (1.1%) 1801-1938 (68.6%)	<i>Sphagnum</i> stems, seeds
Poz-150681	40.5	370 ± 40	1448-1530 (48.8%) 1540-1635 (46.7%)	<i>Sphagnum</i> and brown mosses stems
Poz-156989	45.5	750 ± 30	1224-1290 (95.4%)	brown mosses stems
Poz-150389	50.5	830 ± 30	1166-1269 (95.4%)	<i>Sphagnum</i> and brown mosses stems

Poz-156994	55.5	840 ± 30	1162-1266 (95.4%)	brown mosses stems
Poz-150636*	60.5	470 ± 30	1407-1460 (95.4%)	<i>Sphagnum</i> and brown mosses stems
Poz-150390*	70.5	1730 ± 30	248-298 (32.6%) 306-406 (62.9%)	brown mosses stems
Poz-156773	75.5	1595 ± 30	417-546 (95.4%)	brown mosses stems
Poz-150637	80.5	1530 ± 30	434-467 (11.3%) 472-519 (15.6%) 526-603 (68.6%)	<i>Sphagnum</i> and brown mosses stems, charcoal, seeds
Poz-150682	96.5	1910 ± 30	28-44 (2.9%) 58-214 (92.6%)	<i>Sphagnum</i> and brown mosses stems

Peat properties and peat carbon accumulation rates

The water content in a wet sample (WC, %), organic matter content in a dry sample (ORG, %), ash content (ASH, g, %), ash-free bulk density (BD, g/cm³), peat accumulation rate (PAR, mm/yr) and peat carbon accumulation rate (PCAR, gC/m²/yr) were calculated for each of the 96 samples. For these analyses, the volume of each sample was accurately measured using calipers. Next, each sample was placed in separate crucibles, weighed, dried, and weighed again to determine the percent of WC. The dried samples were burned in a muffle furnace at 550 °C for 5 hours and reweighed according to the protocol of Heiri et al. (2001) to determine ASH (g, %). BD (g/cm³) was calculated by dividing the weight of the dry sample by the volume of the fresh sample and multiplied by ORG, according to Chambers et al. (2010). PAR was calculated based on core chronology and then multiplied by the BD value obtained earlier and by 50% to obtain PCAR, according to Loisel et al. (2014).

Plant macrofossil analysis

The plant macrofossils were analysed using the modified protocol of Mauquoy et al. (2010). Each sample of approximately 5 cm³ was wet sieved (mesh diameter: 200 µm). The generalized content of the sample was estimated in percentage using a binocular microscope. Fruits, seeds, achenes, perigynia, scales, whole preserved leaves, sporangia, and opercula were counted as total numbers in each sample. The tissues of monocotyledon species and moss leaves (brown and *Sphagnum* mosses) were identified on slides using a magnification of ×200 and ×400. The material was compared with the guides (Anderberg, 1994; Berggren, 1969; Bojňanský and

Fargašová, 2007; Mauquoy and van Geel, 2007). The diagram for the analyzed proxy was plotted using the riojaPlot package for R (Juggins, 2023).

Testate amoeba analysis

Peat samples for testate amoeba analysis were washed under 300 µm mesh following Booth et al. (2010). Testate amoebae were analyzed under a light microscope with ×200 and ×400 magnifications until the sum of 100 tests per sample was reached (Payne and Mitchell, 2009); however, in peat layers below 27 cm, the testate amoeba sums were lower (between 5 and 50) due to the very low concentration of tests. Several keys, including taxonomic monographs (Clarke, 2003; Mazei and Tsyganov, 2006; Meisterfeld, 2001) and online resources (Siemensma, 2023), were used to achieve the highest possible taxonomic resolution. The results of the testate amoeba analysis were used for the quantitative depth-to-water table (DWT) and pH reconstructions. Both reconstructions were performed in C2 software (Juggins, 2007) using the European training set (Amesbury et al., 2016). In layers with low testate amoeba sums, water table reconstruction should be viewed with caution (Payne and Mitchell, 2009).

Pollen and non-pollen palynomorphs analyses

Samples for palynological analysis (volume: 3 cm³ for 0–21 cm and 1 cm³ for 21–97 cm) were prepared using standard laboratory procedures (Berglund and Ralska-Jasiewiczowa, 1986). To remove the carbonates, samples were treated with 10% hydrochloric acid. This step was followed by digestion in hot 10% potassium hydroxide (to remove humic compounds) and soaking in 40% hydrofluoric acid for 24 h (to remove the mineral fraction). Next, acetolysis was carried out. Three *Lycopodium* tablets (Batch 280521291, containing 18,407 spores per tablet; produced by Lund University) were added to each sample during the laboratory procedures for the calculation of microfossil concentration (Stockmarr, 1971). Pollen, spores, and selected non-pollen palynomorphs (NPPs) were counted under an upright microscope (Zeiss Axio SCOPE A1) until the number of total pollen sum (TPS) grains in each sample reached at least 500, apart from 10 samples in which pollen concentrations were very low. Two of them (depths: 19–18 and 17–16 cm) were excluded due to extremely low pollen concentration, and it was impossible to reach 100 grains included in TPS. Sporomorphs were identified with the assistance of atlases, keys (Beug, 2004; Moore et al., 1991), various publications, and the image database in the case of NPPs, for which there are no atlases (Miola, 2012; Shumilovskikh et al., 2022; Shumilovskikh and van Geel, 2020). The results of the palynological analysis were expressed as percentages, calculations are based on the ratio of an

individual taxon to the TPS, i.e., the sum of AP (arboreal pollen) and NAP (non-arboreal pollen), excluding aquatic and wetland plants (together with Cyperaceae and Ericaceae), cryptogams, and fungi. A pollen diagram was drawn using the program Tilia (Grimm, 1991).

Macro- and microcharcoal analyses

Microscopic charcoal particles (size: $> 10 \mu\text{m}$) were analyzed from the same slides as pollen following standard protocol where the number of charcoal particles and *Lycopodium* spores counted together exceeded 200 (Finsinger and Tinner, 2005; Tinner and Hu, 2003). Microscopic charcoal influx or accumulation rates (MIC, particles/cm²/year) were calculated by multiplying the charcoal concentrations by peat accumulation rates (PAR) (Davis and Deevey, 1964; Tinner and Hu, 2003).

Ninety-six contiguous samples (2 cm³) were prepared for macroscopic charcoal analysis. Bleaching was used to create a more visible contrast between the charcoal and the remaining organic matter, following the method described by Whitlock and Larsen (2001). The samples were sieved through a 500- μm mesh and analyzed with a binocular under $\times 60$ magnification. Only charcoal fragments $> 600 \mu\text{m}$ were analyzed to obtain the local fire signal (Adolf et al., 2018). Macroscopic charcoal influx or accumulation rates (MAC, particles/cm²/year) were calculated using the charcoal concentrations and PAR.

Neodymium isotopes

We used neodymium isotopes to assess the impact of disturbances on the Miały peatland. This method helps determine the sources of mineral matter in peat profiles, including whether it was washed into the peatland basin (i.e., the peatland had a connection to groundwater and was of minerotrophic origin) or was primarily of atmospheric origin (meaning the peatland functioned more as an ombrotrophic, rain-fed system) (Marcisz et al., 2023b). Isotopic measurements were performed from peat samples taken along the peat core as well as from reference material from the surface of the peatland and soil around it (Fig. 1). All analytical procedures and isotopic measurements were performed in the Isotope Laboratory of the Adam Mickiewicz University, Poznań, Poland, on a Finnigan MAT 261 multi-collector thermal ionization mass spectrometer. Details of the analytical procedures are provided by Marcisz et al. (2023b). Peat samples, as well as surface *Sphagnum* and soil samples from both peatlands, were dried and burned at 550 °C overnight. Prior to preparation for isotopic measurements, the ash of peat and soil samples was dissolved on a hot plate (~ 100 °C for three days) in closed PFA vials using a mixture of concentrated hydrofluoric- and nitric acids (4:1). The ash of fresh plant material was digested

in 16 N HNO₃. Neodymium was separated using the miniaturized chromatographic techniques described by Pin et al. (1994) and Dopieralska (2003). The analytical precision was monitored by analysing the USGS reference material BHVO-2 (¹⁴³Nd/¹⁴⁴Nd = 0.512986 ± 0.000006 [2σ; n = 2]). Neodymium (loaded as phosphate) was measured on Re in a double-filament configuration. Isotopic ratios were collected in a dynamic mode. Nd isotope ratios were normalized to ¹⁴⁶Nd/¹⁴⁴Nd = 0.7219. Repeated measurements of the AMES standard yielded ¹⁴³Nd/¹⁴⁴Nd = 0.512118 ± 10 (2σ, n = 12). Nd isotope data are reported in the standard ε notation:

$$\varepsilon_{Nd} = \frac{\left(\frac{^{143}Nd}{^{144}Nd}\right)_{sample} - \left(\frac{^{143}Nd}{^{144}Nd}\right)_{CHUR}}{\left(\frac{^{143}Nd}{^{144}Nd}\right)_{CHUR}} \times 10^4$$

where CHUR denotes the present-day Chondritic Uniform Reservoir (¹⁴³Nd/¹⁴⁴Nd = 0.512638 and ¹⁴⁷Sm/¹⁴⁴Nd = 0.1967) (Jacobsen and Wasserburg, 1980).

Statistical analyses

To quantify periods of rapid botanical change and recovery, we apply the principal response curves (PrC) to the data, as outlined by Burge et al. (2023) in their R package ‘baselines’. This approach allows for the identification of directional shifts and when these begin to accumulate beyond the level expected from random variation. The multivariate palynological data (pollen data and NPPs; individual taxa only) were Hellinger-transformed and reduced to a one-dimensional curve using PrC. Thus, PrC results trace changes in the relative abundance of pollen and NPP over time. This method is useful for detecting changes in data with a strong underlying gradient in palaeoecological studies (Van Den Brink and Ter Braak, 1999; De’ath, 1999). Generalised additive mixed models (GAMMs) were then fitted to the data, with a smoothing term accounting for temporal autocorrelation. A cubic regression spline was used as the smoothing basis, with $k = 20$. A range of values for k was tested to ensure the model avoids overfitting or underfitting the data. Likewise, Maximum Likelihood (ML) was used for consistency with Burge’s framework, instead of REML (Restricted Maximum Likelihood). However, REML was used to reanalyse the data in place of ML as a smoothing parameter, and it didn’t make an appreciable difference to the results.

When poor GAMM fits occurred, adaptive splines with GAMS were compared with the GAMM to assess model fits. Adaptive spline GAMs provide better fits to data exhibiting abrupt

changes but cannot yet be incorporated into the GAMM framework (Simpson, 2018). Periods of significant change were identified in the GAMM models by calculating the time intervals where the confidence intervals surrounding the first derivative did not include zero. PrC curves were derived from constrained ordination of the time series palynological data, which use the `prcurve()` function (package `analogue`) in R.

The phases in the palaeoecological analyses were distinguished based on changes in plant communities obtained from palynological and plant macrofossil data.

Results

Chronology, peat accumulation rates and peat properties

The age-depth model shows the agreement index (A_{model}) of 61%, just above the recommended minimum of 60% (Bronk Ramsey, 2008) (Fig. 2). The model has the highest uncertainty, with a 95.4% confidence interval – 80 calibration years (CE) – at depths between 65.5 and 64.5 cm (ca. 840–870 cal. CE, Fig. 2). The age of the oldest layer – 96.5 cm – was modelled at 130 ± 45 (confidence interval: 1σ) cal. CE (Fig. 2).

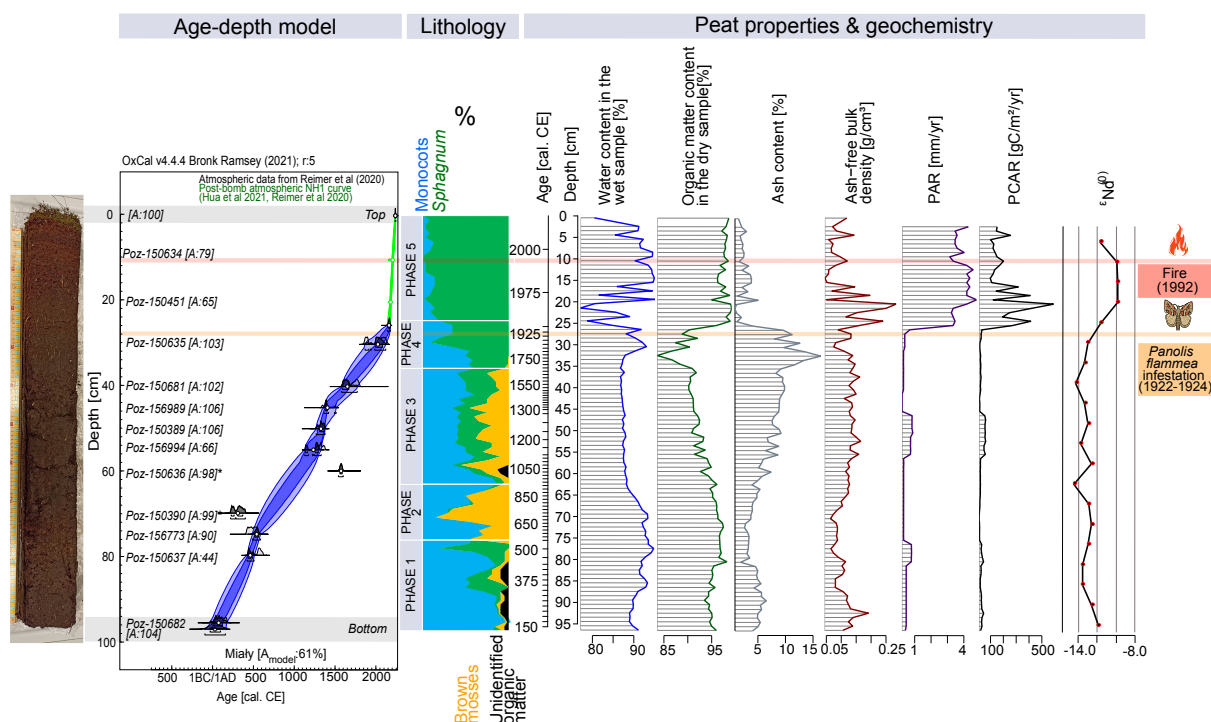


Figure 2. Bayesian age-depth model (based on ^{14}C dating) and lithology (based on plant macrofossils analysis) with palaeoecological phases of the peat profile in Miały (on the left site). Changes in the physical peat properties (water content in the wet sample, organic matter content in the dry sample, ash content, ash-free bulk density, PAR, and PCAR) and neodymium

isotope signatures – ϵ_{Nd} – are marked. The timing of the most critical catastrophic disasters in the 20th century is also marked.

The water content of the wet sample ranged from 77.0% (22–21 cm, ca. 1965 cal. CE) to 95.0% (20–19 cm, ca. 1970 cal. CE), averaging 89.4% throughout the core (Fig. 2). Organic matter content of the dry sample ranged from 83.6% (33–32 cm, ca. 1755–1785 cal. CE) to 99.2% (22–21 cm, ca. 1965 cal. CE), with an average of 94.5% in the entire core (Fig. 2). Bulk density ranged from 0.04 g/cm³ (15–14 cm, ca. 1980 cal. CE) to 0.28 g/cm³ (21–20 cm, ca. 1965–1970 cal. CE), with an average of 0.12 g/cm³ across the core (Fig. 2). Average PAR throughout the core was relatively slow at 1.3 mm/yr, fastest at 4.8 mm/yr (20–19 cm, ca. 1970 cal. CE), slowest at 0.2 mm/yr (43–42 cm, ca. 1395–1440 cal. CE) (Fig. 2). The average PCAR had a value of 73.4 gC/m²/yr, the largest – 590.6 gC/m²/yr (21–20 cm, ca. 1965–1970 cal. CE), the smallest – 10.2 gC/m²/yr (71–70 cm, ca. 665–700 cal. CE) (Fig. 2). Higher PAR and PCAR values were associated with an undecomposed acrotelm zone.

Palaeoecological analysis

Phase 1 (97–76 cm, ca. 130 – 520 cal. CE): very wet peatland with a dominance of monocots, surrounded by mixed forest

The local vegetation (Fig. 3) for most of this period is dominated by monocots (max. 96% of plant macrofossil content), including *Carex*, whose achenes are found in the peat profile. Cyperaceae pollen makes up max. 6.0% (Fig. 4). Short periods of dominance of *Sphagnum* (max. 80%), mainly *Sphagnum* sub. *Cuspidata* (max. 40%), occur (Fig. 3). This phase is also characterized by a high content of unidentified organic matter, reaching up to 10% (Fig. 3).

The low sums of testate amoebae do not allow for a statistically significant reconstruction of water and pH levels in this phase (full data in the open dataset). However, among the testate amoeba taxa, *Centropyxis aculeata* dominates quantitatively. There is a high percentage of Cyanobacteria and algae (Zygnemataceae, *Botryococcus*) (Fig. 4) and a maximum of the *Utricularia* curve in the pollen data (Fig. 4; max. 0.5%).

Pinus sylvestris (39.0–65.8%) grains are the most frequent, but the pollen of deciduous trees is relatively common as well (Fig. 4): *Betula* (7.4–26.4%), *Alnus* (max. 17.0%), *Quercus* (max. 15.6%), *Carpinus betulus* (max. 5.8%), *Corylus avellana* (max. 4.6%), *Fagus sylvatica* (max. 3.5%). Remains of *Betula* (achenes and catkin scales) are present in the plant macrofossils (Fig. 3).

The highest fire activity is recorded for ca. 310–330 cal. CE (macroscopic charcoal concentration ca. 70 particles/cm³, Fig. 3 and microscopic charcoal concentration ca. 420,000 particles/cm³, Fig. 4) and ca. 430–455 cal. CE (90 particles/cm³ of macroscopic charcoal; Fig. 3).

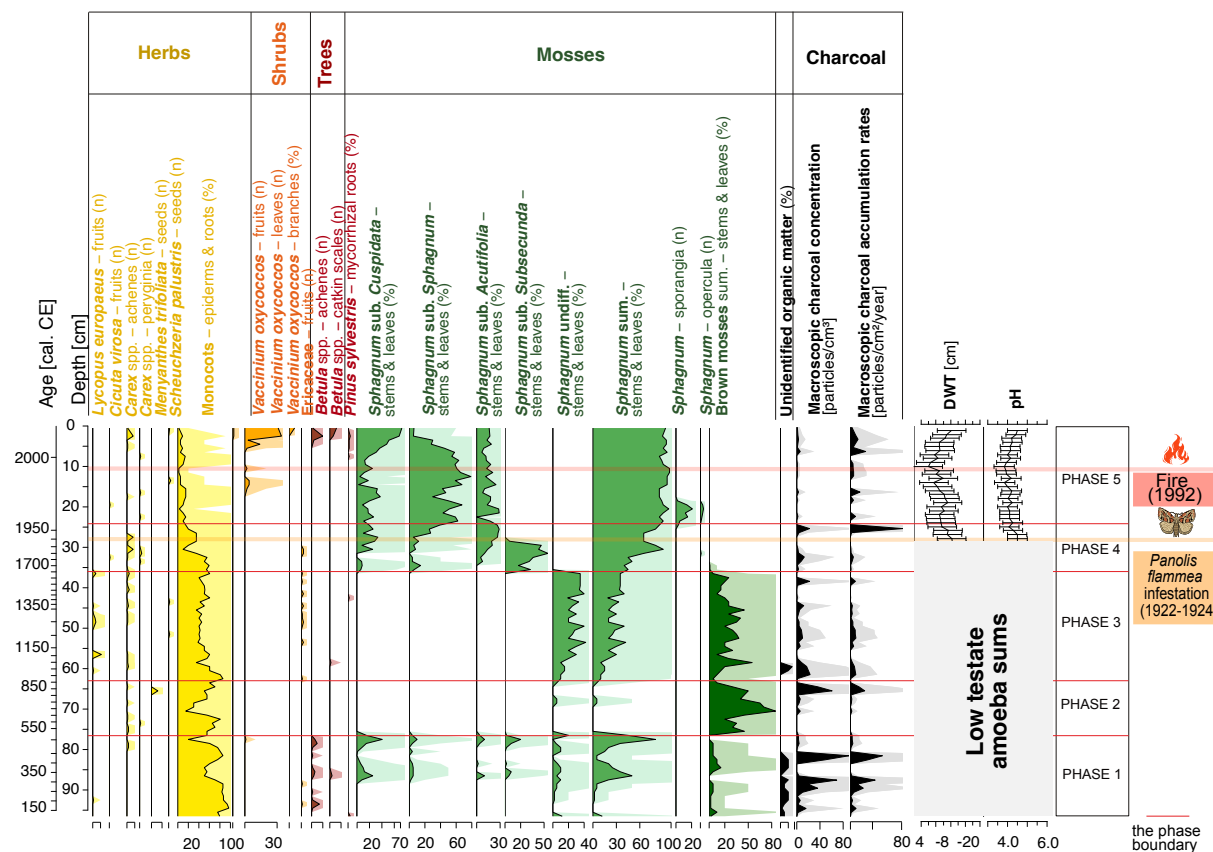


Figure 3. A diagram showing macrofossil percentages, macroscopic charcoal concentrations and influx as a local fire proxy. Testate amoeba-based depth-to-water table and pH curves for 27–0 cm layers are also presented. The timing of the most critical catastrophic disasters in the 20th century is also marked. Ten times exaggeration is presented.

Phase 2 (76–64 cm, ca. 520 – 890 cal. CE): moderately wet peatland, landscape closure – increase in forestation, decrease in ruderal species

The *Sphagnum* content decreases in favour of the brown moss (max. 85%) and monocot remains (max. 80%), including *Carex* (achenes and perigynia of this taxon are found, Fig. 3). Cyperaceae pollen (Fig. 4) make up between 3.4% and 8.4%. This is the only phase in which seeds of *Menyanthes trifoliata* are found (Fig. 3), and the pollen curve maximum of this taxon is observed (0.3%; Fig. 4).

Reconstructions of depth-to-water level and trophic conditions imply a low abundance of testate amoebae, with a continuation of the quantitative dominance of *C. aculeata* (full data in the open

dataset). The share of freshwater bacteria and algae decreases significantly at this time (Fig. 4). Cyanobacteria reach max. 5.9% (Fig. 4). This period has the highest forest cover in the peatland's surroundings. Arboreal pollen accounts for over 90% of total pollen throughout this phase (Fig. 4). Compared to the phase 1, the share of *Betula* pollen decreases (5.1–19.1%), while the share of *Pinus sylvestris* pollen slightly increases (44.6–65.2%) (Fig. 4). Admixture species – *Alnus* (max. 17.9%), *Quercus* (max. 9.2%), *Carpinus betulus* (max. 6.8%), *Corylus avellana* (max. 5.2%), *Fagus sylvatica* (max. 2.7%) – continue to be relatively important (Fig. 4).

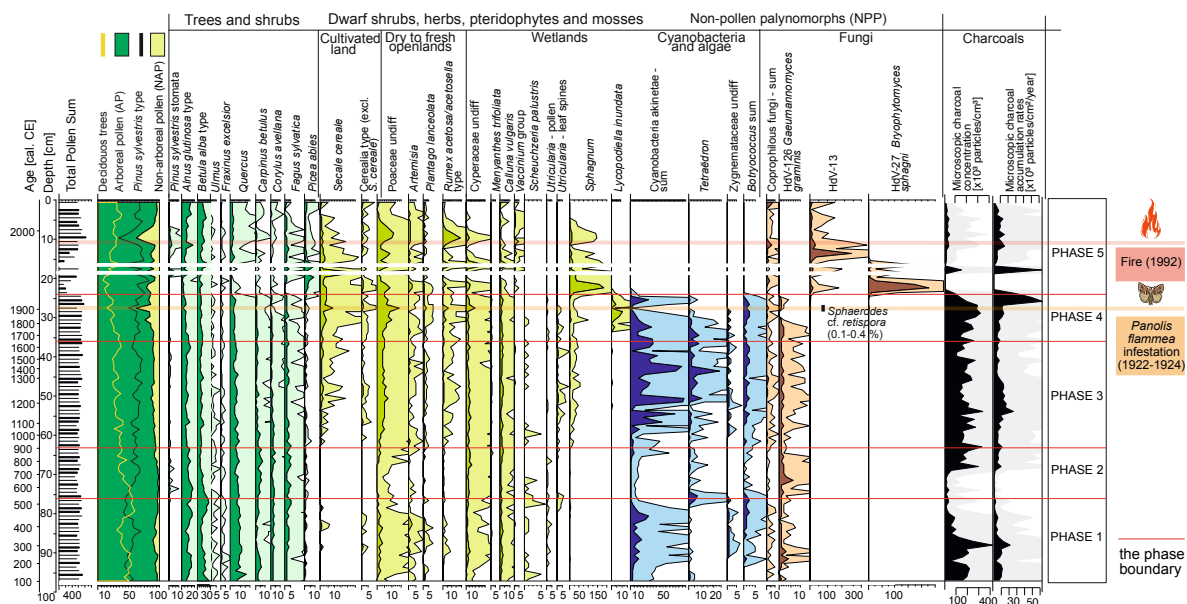


Figure 4. Pollen diagram with selected taxa presented (full list of taxa is provided in the associated open dataset). Pollen percentages are shown in black, and 10 times exaggeration is marked. Microscopic charcoal concentrations and influx as an extra-local fire proxy are also presented.

For the first half of the phase 2, fire activity is low, but increases in the second half. The concentration of both microscopic and macroscopic charcoal increases markedly towards the end of this phase, reaching a maximum of 61 particles/cm³ for macroscopic charcoal (Fig. 3) and 293,600 particles/cm³ for microscopic charcoal (Fig. 4).

Phase 3 (64–36 cm, ca. 890 – 1660 cal. CE): very wet peatland, expansion of *Sphagnum* mosses, development of agriculture and gradual decrease in deciduous trees

Sphagnum mosses (max. 42%) appear again, although, due to the significant degree of the material decomposition, it was not possible to determine lower taxonomic ranks in the plant

macrofossil analysis (Fig. 3). The content of the remains of monocots (max. 85%) and brown mosses (max. 55%) remains high (Fig. 3). *Carex* achenes are also present (Fig. 3). The percentage of Cyperaceae pollen is relatively high (2.0–7.0%; Fig. 4). This is the only phase where fruits of *Lycopus europaeus* are found (Fig. 3). Seeds of *Scheuchzeria palustris* are also present (Fig. 3).

The concentration of testate amoebae remains low, so again, the reconstruction of water levels and trophic conditions should be treated with caution (full data in open dataset). Species of the genera *Centropyxis* sp., *Cyclopyxis* sp., and *Diffflugia* sp. dominate quantitatively. The increase in Cyanobacteria (max. 82.6%) and freshwater algae, especially *Tetraëdron* (max. 24.6%) and *Botryococcus* (max. 2.5%), is significant (Fig. 4).

The share of arboreal pollen is high, ranging from 86% to 94%, although with a slightly decreasing trend, compounded by declines in admixture species (Fig. 4). *Pinus sylvestris* represented 51–68% and *Betula* 6–15% of total pollen. At the end of this phase, the share of *Alnus*, *Quercus*, *Carpinus betulus*, *Corylus avellana* and *Fagus sylvatica* in total pollen is respectively: 11.6%, 5.5%, 2.0%, 1.1% and 1.6%. The declines in the percentage of these taxa may be related to the increased contribution of Cerealia pollen (Fig. 4). Among Cerealia, *Secale cereale* dominates, reaching a maximum of 2.2%. The percentages of Poaceae, *Artemisia*, *Plantago lanceolata*, and *Rumex* also increase (Fig. 4).

Phase 4 (36–24 cm, ca. 1660 – 1960 cal. CE): the further expansion of *Sphagnum* mosses, an increase of *Pinus sylvestris* pollen with an episodic extreme decrease of it

The expansion of *Sphagnum* is continued. The percentage of monocot remains decreases to 15% by the end of this phase. However, the number of achenes and perigynia of *Carex* is higher than in any other part of the profile (Fig. 3). The percentage of Cyperaceae pollen ranges from 2.7% to 13.0% (Fig. 4). The initial part of the phase is dominated by the *Sphagnum* sub. *Subsecunda* (Fig. 3). At the same time, *Lycopodiella inundata* appears (Fig. 4). This is the only phase in which *Sphagnum* sub. *Subsecunda* and *Lycopodiella inundata* occur together. The brown mosses completely disappear.

At the end of the phase 4, the abundance of testate amoebae increases (with *Galeripora discoides*, *Nebela tinctoria*, and *Phryganella acropodia* as dominant species), which allows for statistically significant reconstructions of the water table level and pH level (Fig. 3). The abundance of Cyanobacteria and algae decreases distinctly; most of them disappear entirely at the end of this phase (Fig. 4).

In the pollen dataset (Fig. 4), a further decrease in the percentage of deciduous species is observed. In the upper part of the phase 4, the share of *Alnus*, *Quercus*, *Carpinus betulus*, *Corylus avellana*, and *Fagus sylvatica* in total pollen is 3.4%, 1.9%, 1.2%, 1.3%, and 0.6%, respectively. The share of *Betula* in total pollen remains at about the same level (5.9–12.2%). A significant decrease in *Pinus sylvestris* pollen percentages and an increase in the percentages of *Secale cereale*, Poaceae, *Plantago lanceolata*, and *Rumex* pollen occur in 1900–1926 cal. CE.

Analysis of the macroscopic charcoal data (Fig. 3) shows one local fire event (macroscopic charcoal concentration – 22 particles/cm³, macroscopic charcoal accumulation rate – 7 particles/cm²/year; 1952–1956 cal. CE). The regional fire activity (Fig. 4) remained quite high (ca. 127,000–312,000 particles/cm³ of microscopic charcoal concentration; ca. 3900–61,000 particles/cm²/year of microscopic charcoal accumulation rate).

Phase 5 (24–0 cm, ca. 1960 – 2021 cal. CE): the dominance of *Sphagnum* mosses and the disappearance of Cyanobacteria and algae, the development of microscopic fungi, the episodic extreme collapse of the arboreal pollen curve

The uppermost part of the profile records further development of *Sphagnum*, initially *Sphagnum* sub. *Sphagnum*, later *Sphagnum* sub. *Cuspidata*. The proportion of *Sphagnum* sub. *Acutifolia* remains stable. *Sphagnum* capsule remains – sporangia and opercula – appear; we link their presence with spores of the parasitic fungus *Bryophytomyces sphagni* (see discussion). Tree remains (*Betula* achenes and catkin scales, *Pinus sylvestris* mycorrhizal roots) are abundant. *Vaccinium oxycoccus* leaves appear in large numbers.

At the beginning of this phase, Cyanobacteria and algae disappear completely. Testate amoeba species such as *G. discoides*, *Galeripora catinus*, and *N. tincta* are abundant. *G. discoides* dominates for most of the phase 5, and the abundance of *N. tincta* increases towards its end. The groundwater level remains constant, except for one marked fluctuation (ca. 1990–1995 cal. CE), whereas the pH level increases gradually from ca. 1995 cal. CE (Fig. 3). Both phenomena can be linked to the effect of the 1992 fire (see discussion).

Pinus sylvestris remains the dominant species in this of the profile (32.6–78.9%). Compared to the previous phase, the percentage of *Betula* pollen increases (5.6–20.3%). One significant decrease in the share of tree pollen, in particular *Pinus sylvestris*, is recorded in ca. 1995 cal. CE. We interpret this as decreased forest cover after the 1992 fire (see discussion). At the same time, a higher share of *Pinus* stomata typifies ca. 1980–2000 cal. CE layers (0.2–3.9%). We associate this with massive needle falls associated with the fire (see discussion). *Rumex*

acetosa/acetosella type – a taxon characteristic of open and ruderal areas (Behre, 1981) – reaches its maximum – 19.6% (ca. 1995 cal. CE), which we also interpret as an effect of the fire. The shares of other deciduous trees – *Quercus* (max. 3.9%), *Carpinus* (max. 1.6%), *Corylus* (max. 1.3%), *Ulmus* (max. 0.7%) decrease.

Neodymium isotopes analysis

The ϵ_{Nd} values measured in the mineral matter extracted from the analyzed peat samples range from –14.5 to –9.8. Most samples show a relatively low variability of the strongly negative Nd isotope ratios ($\epsilon_{Nd} < -12$), including the most negative values in layers 61–60 and 41–40 cm. Less negative ϵ_{Nd} values (ranging from –9.9 to –9.8) are only observed in the upper part of the profile, most notably in the layers 21–20, 16–15 and 11–10 cm.

Among the reference surface samples, the mineral material from the peatland surface yielded moderately negative ϵ_{Nd} signatures (–12.1 and –11.7), whereas the soil taken from the slopes of the peatland catchment display strongly unradiogenic Nd isotope composition ($\epsilon_{Nd} = -18.9$ to –16.5; Fig. 2, Tab. 2). The study site is covered by young glacial material dominated by clay and sand derived from Scandinavia, transported and accumulated during the last glaciation (Marks, 2012). Previously, Nd isotope measurements in the young glacial sediments of another outwash plain covered by a pine monoculture were measured only by Marcisz et al. (2023b), who reported ϵ_{Nd} signatures similarly negative ($\epsilon_{Nd} = -26.5$ to –16.6) to those in Miały.

Table 2. Reference ϵ_{Nd} values measured in surface samples taken from the studied peatland and its surrounding (1–5) and ϵ_{Nd} values measured in peat samples.

Nr	Sample code	$^{143}\text{Nd}/^{144}\text{Nd} (0)$	Uncertainty	$\epsilon_{Nd} (t=0)$
1	MŁY01	0.512016	± 0.000011	– 12.1
2	MŁY02	0.511791	± 0.000010	– 16.5
3	MŁY03	0.511671	± 0.000012	– 18.9
4	MŁY04	0.511727	± 0.000012	– 17.8
5	MŁY05	0.512036	± 0.000011	– 11.7
6	MŁY5.5	0.512036	± 0.000012	– 11.7
7	MŁY10.5	0.512129	± 0.000010	– 9.9
8	MŁY15.5	0.512134	± 0.000010	– 9.8
9	MŁY20,5	0.512133	± 0.000009	– 9.9

10	MŁY25.5	0.512042	± 0.000009	– 11.6
11	MŁY30.5	0.511969	± 0.000010	– 13.1
12	MŁY35.5	0.511952	± 0.000015	– 13.4
13	MŁY40.5	0.511905	± 0.000010	– 14.3
14	MŁY45.5	0.511952	± 0.000010	– 13.4
15	MŁY50.5	0.511973	± 0.000010	– 13.0
16	MŁY55	0.511932	± 0.000010	– 13.8
17	MŁY60	0.511991	± 0.000010	– 12.6
18	MŁY65	0.511895	± 0.000017	– 14.5
19	MŁY70	0.511975	± 0.000008	– 12.9
20	MŁY75.5	0.511992	± 0.000011	– 12.6
21	MŁY80.5	0.511972	± 0.000010	– 13.0
22	MŁY85.5	0.511940	± 0.000010	– 13.6
23	MŁY90.5	0.511941	± 0.000010	– 13.6
24	MŁY95.5	0.511992	± 0.000009	– 12.6
25	MŁY97.5	0.512028	± 0.000012	– 11.9

Statistical analyses

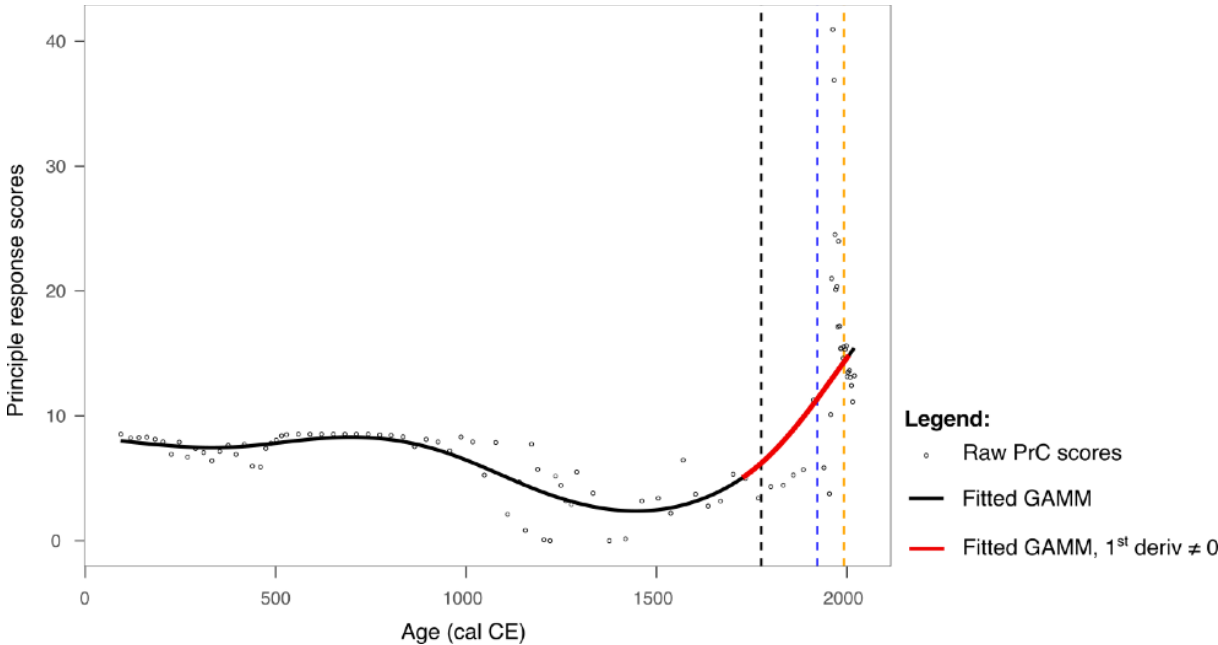


Fig. 5. Changes in the principle response curve derived from pollen count data (circles) fit with a GAMM model fit (solid black and red lines). The red line indicates periods of rapid change. Dashed vertical lines indicate historical periods of forest management change affecting the site:

the 1775 decree by Frederick II the Great (black); infestation by *Panolis flammea* (1922–1924; blue), and the 1992 fire period (yellow).

The PrC explained 73% of the variance in the palynological data. However, the GAMM provided a relatively poor fit to the data. An adaptive spline GAM provided a better explanation of the data, with the differences between the two models primarily related to the improved fit with the more recent samples. This suggests a possible return to previous conditions, although these samples are more likely to be influenced by temporal autocorrelation. Despite this, the GAMM effectively captures the general trends in the data and provides a better fit for the earliest samples (Fig. A1). Therefore, we can proceed to use this data.

The PrC analysis revealed that changes over time occurred between the beginning of the record and 1720 cal. CE. However, there is no substantial evidence of significant or rapid changes until after this time. From approximately 1000 cal. CE until the 1700s, the PrC scores exhibited high variability. A significant increase in the rate of change was identified for the period ca. 1725–2005, as shown in Figure 5.

Discussion

Combining ecological, palaeoecological, geochemical and historical data to understand long-term environmental changes

Present-day pine monoculture plantations of Poland are often perceived as typical for this region by the local populations, whereas these are highly modified forests that are significantly different from the natural ones. Compared to natural potential vegetation maps, these areas should possess a large proportion of deciduous taxa, e.g., oak-hornbeam (*Quercus-Carpinetum medioeuropaeum*) forests (Matuszkiewicz, 2008). The relatively high percentages of deciduous tree pollen compared to the percentages of *Pinus sylvestris* pollen in historical times were recorded at many sites from present-day pine monocultures in northern Poland (Bąk et al., 2024; Czerwiński et al., 2021). The development of the Polish state and agriculture in the early Middle Ages, in our data manifested by the high percentages of cereal pollen grains (incl. *Secale cereale*) and taxa characteristic for open and ruderal areas (Poaceae, *Artemisia*, *Plantago lanceolata*, and *Rumex*), caused a decline of deciduous species in the forest composition (Fig. 4). These changes in the forest structure were distinct but gradual; when planned management was introduced in 18th century, however, the contribution of admixture trees started to decrease rapidly. In 1772 CE, the area of the Noteć Forest was included in the borders of the Kingdom of Prussia as a result of the First Partition of Poland. At that time, some of the first legal

regulations for planned forest management in the area appeared, including the 1775 CE decree of Frederick II the Great regarding government forests in Prussia and the preference for planting pines instead of deciduous species (Bąk et al., 2024; Jaszczak, 2008). Around this time, the PrC analysis began to reveal periods of significant and rapid change in the palynological record. Consequently, the forest has continued to undergo substantially rapid changes ever since, unlike the preceding changes. The results of the PrC analysis proved to be statistically significant, confirming the occurrence of critical transitions in the peatland on a scale that was not observed in the older part of the core. The trend in the PrC aligns broadly with the patterns seen in the data, as shown by the correspondence between the PrC scores and the relative contributions of deciduous trees, arboreal pollen, *Pinus sylvestris* type and NPPs.

It is commonly assumed that outwash plains or eolian sandy dunes, remnants of the Weichselian glaciation (to 11,700 BP), which are currently covered by extensive Scots pine monoculture in northern Poland (e.g., the Noteć Forest, the Tuchola Forest) are not conducive to the growth of other species and *Pinus* is a natural main forest-forming species (Magnuski, 1993; Miś, 2003). Although pollen data suggest the domination of *Pinus sylvestris* since the 2nd century CE, the distinct admixture of *Quercus*, *Carpinus betulus*, and *Corylus avellana* was recognized in our study. Previous multi-proxy palaeoecological studies exist from the Noteć Forest; however, those previous ones were unable to provide such information because the cores collected from the Rzecin peatland covered only the last 200 years and did not capture the entire background of the changes related to human activity and subsequent forest management (Barabach, 2014; Lamentowicz et al., 2015; Milecka et al., 2017; Słowiński et al., 2019). The knowledge of the historical background is essential for the interpretation of the complex response of the peatland ecosystem to a change in forest management, as it allows for the long-term tracing of reference conditions relating to both the composition of the forest and the trophic and hydrological variants of the peatland (Bąk et al., 2024). In this study, we recorded the presence of hydrophytes and later also helophytes and hygrophytes (e.g., *Utricularia*, *Menyanthes trifoliata*, *Lycopus europaeus*, *Scheuchzeria palustris*, *Cicuta virosa*) in the first four phases of the peatland development (up to ca. 1960 CE, Fig. 4). Combined with the high percentages of Cyanobacteria and algae (Zygnemataceae, *Botryococcus*, *Tetraëdron*) and domination of *Centropyxis* sp., *Cyclopyxis* sp. and *Diffflugia* sp. among the testate amoebae, it indicates the existence of a shallow water body supplied not only by rainwater and runoff but also by groundwaters (Figs. 3, 4). All these taxa disappeared in phase 5, after ca. 1960 CE.

The relative stability of the ecosystem until the 20th century appears in line with the moderately variable, unradiogenic neodymium isotope signatures of the mineral matter extracted from the

peat samples ($\epsilon_{Nd} = -14.5$ to -11.6). These data are similar to the results from other peatlands in the Tuchola Forest, Poland: the Stawek peatland (-15.3 to -12.7) and Głęboczek peatland (-13.7 to -12.6) (Marcisz et al., 2023b). The notably consistent ϵ_{Nd} values in the pre-infestation part of the studied profile point to the dominance of local sources of the mineral matter. Strongly unradiogenic ϵ_{Nd} values are generally characteristic of the surface clastic sediments that dominate the young post-glacial landscape of northern Poland (Marcisz et al., 2023a, b). The instability of the ecosystem is a consequence of the introduction of planned forest management and the planting of monoculture plantations in the late 18th century. Indeed, such forests are more sensitive to disturbance and extreme phenomena than mixed forests. The Noteć Forest fell victim to such management and faced two massive ecological disasters in the 20th century – the *Panolis flammea* outbreak in 1922-1924 and a fire in 1992. The consequences of the *Panolis flammea* outbreak were particularly severe, as they directly caused a complete change in the trophic and hydrological conditions of the peatland in the following decades, i.e., in the period around 1925-1960.

Nevertheless, all three above-mentioned disturbance factors (introduction of planned forest management, 1922-1924 outbreak, and 1992 fire) affected the condition of the peatland and were recorded as statistically significant critical transitions in the GAMM model (Fig. 5).

***Panolis flammea* outbreak (1922-1924) and its impact on peatland and pine plantations**

One of the most harmful documented insect outbreaks in Poland happened in 1922-1924 CE (Broda, 2003) and covered vast areas of central and eastern Europe (today's area of Germany, Poland, Lithuania, Belarus, and part of European Russia), progressing from west to east (Ziółkowski, 1924). It was caused by *Panolis flammea*, one of the most dangerous primary pests of pine trees (Szmidt, 1993). As a result of the 1922-1924 *Panolis flammea* infestation, over 500,000 hectares of forests have been defoliated in Europe (Głowacka, 2009). In the Noteć Forest, the first caterpillars found in 1921 CE did not yet herald an ecological disaster (Broda, 2003). Over the next two years, between 1922-1923, ca. 64,000 hectares of the forest were destroyed (Hernik, 1979). In the Potrzebowice Forest District, where our site is located, the outbreak destroyed over 90% of the forest area (~8,000 ha) (Broda, 2003).

This outbreak is evidenced in our pollen record, marked a sharp decrease in the percentage of *Pinus sylvestris* pollen (48.0%) compared to the neighbouring layers – ca. 1875-1900 cal. CE (60.6%) and ca. 1925-1950 cal. CE (62.8%). After almost all the pine trees have been destroyed and the caterpillars had nothing to eat, they attacked the deciduous trees on which they do not usually feed (Przebieg..., 1929). In our data, a manifestation of this shift is probably the decrease

in the proportion of *Betula*, *Alnus* and *Quercus* pollen. This layer also shows the highest share of Poaceae (14.7%), Cerealia (10.4%), and *Plantago lanceolata* (2.7%) pollen in the entire peat core. The share of *Rumex acetosa/acetosella* type (6.6%) is also high. The presence of taxa characteristic of open and ruderal areas indicates that the landscape has opened up due to logging activities in the destroyed forest stands. However, in the Rzecin peatland, 8 km southeast of our site, a significant decrease in *Pinus* pollen has not been observed (Barabach, 2014). According to Barabach (2014), as a result of immediate human activities, heliophytes did not develop, and a natural secondary succession did not occur at the Rzecin bog's surroundings. Barabach (2014) argued that a single pine that stands alone will produce more pollen than the same pine in a compact forest stand, referring to the individual trees that survived the disaster. Later, along with wind and water, the pollen was deposited in natural depressions, including the Rzecin peatland. However, an increase in Poaceae pollen percentages has been recorded, confirming the opening of the landscape at the Rzecin bog's surroundings. The layers corresponding to ca. 1900-1950 cal. CE are the only portions of the core where the spores of *Sphaerodes retispora* (syn. *Microthecium retisporum*) were identified. This taxon occurs on other fungus *Tremates hirsuta*, which inhabits dead trees and their branches, as well as recently dead and decaying wood (Bhatt et al., 2016). It mainly attacks deciduous trees, although reports from coniferous trees are known (Szwalkiewicz, 2009). Perhaps the appearance of the *S. retispora* spores in these layers reflects the presence of *T. hirsuta* on dead wood after the *P. flammée* outbreak. We also observed higher percentages of coprophilous fungi (including HdV-55A *Sordaria* type) in the layer corresponding to ca. 1900-1925 cal. CE (2.7%) compared to neighbouring layers – ca. 1875-1900 cal. CE (0.4%) and ca. 1925-1950 cal. CE (0.9%). *Sordaria* type coprophilous fungi can indicate the presence of open land and the presence of livestock, as well as wood detritus or wood burning (Lageard and Ryan, 2013; Lundqvist, 1972; Mighall et al., 2008; Wheeler et al., 2016). We point out, however, that *Sordaria* type spores can also occur on the faeces of wild herbivores and are predominantly coprophilous, meaning that this taxon may include non-coprophilous species (Shumilovskikh and van Geel, 2020). Kołaczek et al. (2013) at the Jesionowa mire in southern Poland noted the co-occurrence between the high percentage of *Sordaria* type and high percentages of Poaceae, Cerealia, *Rumex acetosa/acetosella* type and *Plantago lanceolata*, i.e., taxa characteristic of open areas that we observed in our pollen dataset during and after the outbreak. However, in the surroundings of the Jesionowa mire, the landscape has not opened up due to deforestation, but the grazing of livestock has intensified. Synchronously, Barabach (2014) reported a massive emergence of Glomeromycota spores, which can be widely considered an indicator of soil

erosion (Ejarque et al., 2010; Van Geel et al., 1989). Indeed, the deforestation associated with the outbreak resulted in increased water and wind erosion. However, Kołaczek et al. (2013) argue that Glomeromycota spores can be considered indicators of soil erosion only in lacustrine deposits. In peatlands, there is a high risk of the presence of plant species capable of forming arbuscular mycorrhizae. Glomeromycota spores then come from fungi that have colonized the roots of plants growing on the surface of the peatland.

In their study of the Rzecin peatland, Milecka et al. (2017) reported an increase in charcoal in ca. 1910-1925 cal. CE. The authors linked this increase to the fires occurring in the Noteć Forest in the 1920s and 1930s. Still, it could also result from cleanup activities after the *P. flammea* outbreak, such as raking and burning litter with dead caterpillars. Barabach (2014) reported a higher content of ash and a higher charcoal concentration in the concerned interval. We did not observe increased micro- or macroscopic charcoal concentrations in the Miały peatland. It is possible that the redistribution of charcoal particles to the edges of the peatland occurred due to high water levels. A core taken closer to the edge could, therefore, give a complete answer as to the extent of burning.

Following the outbreak, an increase in the proportion of *Picea abies* until the early 1970s is observed in our dataset. After the outbreak, initial management plans included diversification of species composition in the newly planted forest's forest stands. Still, *P. sylvestris* was selected as the primary species. Other planted species included *Betula* (mainly along the roads), *Pinus strobus*, *Pinus banksiana*, *Pinus rigida*, *Alnus glutinosa*, *Robinia pseudoacacia*, and *Prunus serotina* (Mroczkiewicz, 1933). Considering that *P. abies* reaches sexual maturity after 20-30 years in open areas (Skrøppa, 2003) or even later in closed areas (~40 years) (Matthias and Giesecke, 2014; Rispens, 2003), we conclude that the observed increase in *P. abies* pollen is an echo of the 1922-1924 outbreak.

Recognizing the ecology of past *Panolis flammea* outbreaks in Central and Eastern Europe can help model and predict its risk of occurrence in Northern Europe, which is warming due to climate change. Pulgarin Díaz et al. (2022) (Pulgarin Díaz et al., 2022) report that between 1970 and 2020, the range of *Panolis flammea* in Finland shifted nearly 5° northward, 50 years earlier than assumed. The remains of these butterflies could help determine the scale and ecology of historical outbreaks in Central and Eastern Europe and thus better predict their future effects in Northern Europe. Unfortunately, they do not preserve well in the sediments (Bak et al., 2024). However, we emphasize that we did not use advanced extraction methods the delicate structures of the butterfly wing remains (Montoro Girona et al., 2018), but only observation under light and stereoscopic microscopes when viewing the samples in the analyses used. We also haven't

encountered them at Miały peatland. Palaeoecological analyses such as pollen and testate amoeba analyses can support recognising the results of such historical outbreaks, but they do not provide an answer that an outbreak occurred. There are, however, palaeoecological reconstructions of outbreaks caused by other pests whose remains are better preserved in the sediment. Schafstall et al. (2022) showed the usefulness of subfossil bark beetles for reconstructing disturbances occurring in *Picea abies* forests in Slovakia.

Changing trophic and hydrological conditions as an effect of post-outbreak forest management

The effect of the *Panolis flammea* outbreak was tens of thousands of hectares of damaged forests. Damaged forests were cleaned, and the land was prepared for new plantings. However, the opportunity to rebuild the forest's species structure was not seized. Easy-to-manage and fast-growing pine trees were used for forest regeneration (Ankudo-Jankowska, 2003), which caused a change in the trophic conditions of the peatland manifested by the decline of pH in our data (Fig. 3). After the infestation, in our dataset, we also notice the expansion of *Sphagnum* mosses, which tolerate more acidic conditions. *Sphagnum* content reaches 65% for ca. 1900-1925 cal. CE and 85% for ca. 1955-1960 cal. CE, further increasing in the upper part of the section (Fig. 3) and almost completely displacing monocot plants and brown mosses. We assume that more acidic conditions in the peatland after the *Panolis flammea* outbreak are the result of monoculture plantings after this devastating event because many studies document the ability of various pine species to acidify the soil (Berthrong et al., 2009; Cifuentes-Croquevielle et al., 2020; Hornung, 1985; Turner and Lambert, 1988). This is confirmed by the highest percentages of *Pinus sylvestris* at Miały between 1950-1960. This is because *Pinus sylvestris* in dense forest complexes begins flowering at the age of about 25-30 years (Mátyás et al., 2004).

The process of peatland acidification is a natural manifestation of peatland development over time, as long as it occurs gradually. We noted a gradual transition from the moderately rich fen to the poor fen in phase 4 (ca. 1660-1960 cal. CE). However, further changes in local plant communities and hydrological and trophic conditions toward acidification occurred abruptly, characteristic of external interference. Bąk et al. (2024) pointed out that such changes are characteristic as a result of forest management activities and can be caused by drainage and transformation in forest species composition. In this study, we emphasize the importance of the consequences of vulnerability and poor resilience of monoculture plantations to disturbances and extreme phenomena such as insect outbreaks.

The change in trophic conditions at this time, and the concomitant change in hydrological conditions, are also documented by the completely disappearing Cyanobacteria and algae (Fig. 4), which indicates that the peatland was cut off from the groundwater supply. Among testate amoebae, *G. discoides*, *N. tinctoria*, and *P. acropodia*, species that tolerate unstable hydrological conditions became dominant, suggesting the lowering of the water table and substantial water table fluctuations (Lamentowicz and Mitchell, 2005; Sullivan and Booth, 2011).

This observation is supported by the concurrent change in the Nd isotopic signatures (Fig. 2). The deforestation caused by the *Panolis flammea* infestation is followed by an increase in the Nd isotope ratios, reaching ϵ_{Nd} values notably higher than those observed in any of our reference samples from the peatland catchment. Therefore, the elevated ϵ_{Nd} values, coinciding with the notably decreased ash contents, most likely reflect a decreased supply of the local sediments by surface runoff and groundwater flow. This interpretation is in agreement with the acidification of the peatland; the transition in the hydrological regime likely resulted in an increased relative role of extra-local, aeolian sources of the sedimentary material (Allan et al., 2013; Fagel et al., 2014; Marcisz et al., 2023a). A specific source of such ^{143}Nd -enriched sediments cannot, however, be identified based on the ϵ_{Nd} record alone.

In the period of the transition of trophic and hydrological conditions in a peatland (ca. 1925-1960 CE), we observed the appearance of *Bryophytomyces sphagni* (HdV-27). Some studies point out that this fungus is an indicator of the change from minerotrophic to ombrotrophic conditions in a peatland, especially in association with the appearance of *Sphagnum* spores (van Geel et al., 2020). Although we observe numerous spores of this fungus in the narrow period of changing trophic and hydrological conditions in our dataset (ca. 1925-1960 CE), we also note that the massive number of *B. sphagni* spores does not necessarily indicate sudden ombrotrophication of the peatland. There are many studies where the appearance of *B. sphagni* does not correlate with the ombrotrophication of the peatland (van der Linden et al., 2008; McCarroll et al., 2017; Yeloff et al., 2007). Thus, we emphasise the need for better recognition of the ecology of *B. sphagni*. With the appearance of *B. sphagni*, *Gaeumannomyces caricis* (HdV-126) disappear. *G. caricis* is a fungus associated with *Carex* (van Geel and Aptroot, 2006; Pals et al., 1980). In our plant macrofossil data, *Sphagnum* mosses, as we mentioned above, have almost completely displaced monocots, including *Carex*, which dominated the peatland in phases 3-5. A coincident disappearance of *G. caricis*, the appearance of *B. sphagni* and the development of *Sphagnum*, have been noted in the past in southwest France (Aoustin et al., 2022). These authors, among others, based on the large number of spores of *B. sphagni*, decided

to separate the developmental phase of the object they studied, which they referred to as Sphagnum bog (Aoustin et al., 2022).

Sudden changes in trophic conditions, resulting in subsequent changes in the vegetation cover in the catchment, are one of the most common causes of critical transitions in peatlands (Lamentowicz et al., 2019b).

Fire in 1992 - the second-largest fire in the post-World War II history of Poland

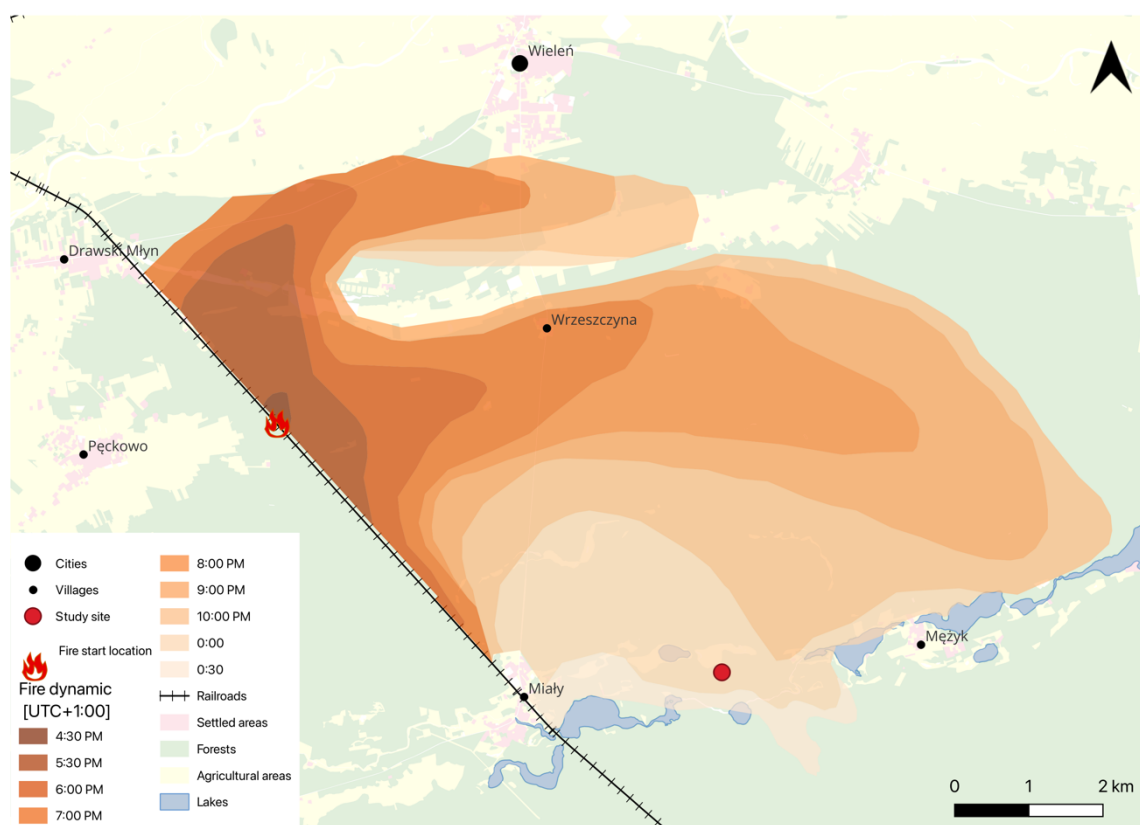


Fig. 6. The rate of fire spread in the Noteć Forest in 1992.

Potential high and medium modern fire danger concerns 83% of forests in Poland (65% in Europe) (Szczygieł, 2012). This is mainly due to poor habitats and a homogeneous forest structure, with *Pinus sylvestris* as the dominant species. *Pinus*, in turn, favours the accumulation of a significant amount of dry biomass on the surface. Fire danger is also a result of the young age of the tree stands, which have not yet developed stable ecosystem links in food webs. The young stands result from planned forest management involving rapid wood harvesting and 20th-century ecological disasters (particularly insect outbreaks). Industrial pollution, increasing accessibility to the public, and climate change, resulting in prolonged droughts and water deficits, amplify the problems of forest composition and management.

The 1992 droughts were marked by fires in many regions of Poland (Polna, 2005) and other countries in central Europe (Kula and Jankovská, 2013; Somsak et al., 2009). Almost 12,000 forest fires were recorded in Poland alone, and nearly 48,000 ha of forest area burned. The largest fire in Poland's post-war history, which burned more than 9,000 ha of forest (Szczygieł, 2012), occurred near the town of Kuźnia Raciborska (Silesia, southern Poland) between 26 and 30 August. Two weeks prior to this event, the second largest fire in Poland's post-war history had affected the Noteć Forest.

In the 1970s, Hernik (1979) and Ratajszczak (1979) signalled that the tree stands of the Noteć Forest were weakened by repeated insect outbreaks (*Panolis flammea*: 1956; *Lymantria monacha*: 1947, 1964; *Barbitistes constrictus*: 1964; *Diprion pini*: 1961; *Bupalus piniarius*, 1966; *Dendrolimus pini*: 1970). Compared to the 1922-1924 *Panolis flammea* outbreak, however, they were smaller, less severe, and covered different locations of the Noteć Forest, rather than a larger area. The authors stressed the need to introduce admixture species to change the age structure of the forest and reduce the fire threat. Their predictions soon turned out to be very accurate. June 2, 1992, a fire covered about 700 hectares of the Noteć Forest (Bugaj, 1992), and on August 10, the fire consumed more than 5,000 hectares of forest in just eight hours (Fabijański, 1996). The total area affected was mapped in detail by the foresters (Fig. 6). Only an enclave of several hectares of deciduous old-growth forest resisted the fire. This event roughly coincides with the period of substantial rapid change identified by the PrC curve (Fig. 5), suggesting that this change may have contributed to the rapid alteration of the forest ecosystem reflected in pollen record.

Macroscopic charcoal concentrations did not register this fire event as we expected. Although the concentration of microscopic charcoal in 1989-1991 cal. CE (ca. 30,800 particles/cm³) and 1991-1994 cal. CE (ca. 27,500 particles/cm³) is higher than in the 1986-1989 cal. CE (ca. 10,000 particles/cm³) and 1994-1997 cal. CE (ca. 16,300 particles/cm³), these values do not reflect the actual scale of the forest destruction, especially since the fire also took place on the peatland (Fig. 6). A smaller-than-expected signal from the 1992 fire in charcoal analysis was also obtained by Barabach (2014) in the nearby Rzecin peatland. The small amount of macroscopic charcoal may be explained by the fact that the more intense the fire, the smaller the charcoal particles it produces (Schaefer, 1973). Additionally, before the particles are deposited, their dispersion by wind and water plays an important role (Patterson et al., 1987). Shortly after the fire reached the peatland, heavy rain had fallen, reaching a value of 31.5 mm (Institute of Meteorology and Water Management, 2025). This rain stopped the fire from spreading further away and significantly limited the movement of charcoal by the wind.

The events are, however, well recorded by other proxies. Directly after the fire – 1991-1994 cal. CE and 1994-1997 cal. CE – a substantial decrease in the percentage of arboreal pollen, especially of Scots pine, is observed in the pollen dataset. At the same time, the *Pinus* stomata appear, which may indicate a fall of needles to the surface. However, we recommend a cautious approach to interpreting the presence of *Pinus* stomata. While burnt *Pinus* stomata would give certainty to the occurrence of fire, needle fall due to other processes should also be considered. High water levels also may have contributed to the shedding of needles by *Pinus* in the peatland (which we explain below). The water table rose to the ground level, probably due to inundation. The rise in the groundwater level shortly after increased fire activity is a well-known phenomenon observed at other sites (Marcisz et al., 2015). The rise in water level is correlated to a high concentration (72%) of the testate amoeba *Galeripora discoides*, which tolerates hydrologically unstable conditions and is abundant in disturbed ecosystems (Lamentowicz and Mitchell, 2005). *Rumex acetosa/acetosella* type reaches its maximum percentage, which is accompanied by an increase in the percentage of pollen of Poaceae, a taxon characteristic of open areas, indicating the landscape's opening due to the forest's reduction. In their study of the Tuchola Forest peatlands, Marcisz et al. (2023b) observed pronounced decreases in the ϵ_{Nd} values following major fire events, attesting to an increased supply of locally-sourced sedimentary material favoured by the forest removal. Analogously, some decrease in the ϵ_{Nd} values following the 1992 fire is observed in the peat profile in this study. -Therefore, we note that it is not always possible to unambiguously identify local fire events from even high-resolution charcoal analysis and that historical sources can validate the data. This is a crucial finding regarding the interpretations of paleofire reconstructions, pointing out that even catastrophic fires can go unnoticed in the sedimentary record.

The scale and frequency of catastrophic fires, including forest and peatland fires, have been increasing worldwide for decades due to climate change (Sayedi et al., 2024). In terms of the total area burnt, the year 2022 was the second-worst year ever recorded in the European Union (San-Miguel-Ayanz et al., 2023). Nearly 900,000 ha of natural areas were burned, 43% of which were located in Natura 2000 sites. In Poland, almost 7,000 fires of natural areas (including more than 4,800 forest fires) were recorded resulting in approximately 2,850 ha of area burnt (including 2,210 ha in forests). In terms of the number of fires in natural areas, more fires were recorded only in France (22,800 fires; 70,300 ha), Spain (10,500; 268,000 ha), and Portugal (10,400; 110,000 ha). Therefore, forest fires in Poland were frequent but covered small areas (0.4 ha/fire on average). Most of the fires in Poland occurred in May (more than 25%), a significant percentage of which were drought-induced. A recent study from the pine-dominated

Tuchola Forest in Poland revealed a negative correlation between Scots pine growth and rainfall in May (Bąk et al., 2024), which indeed indicates a water deficit in that month. In 2022, there were 84 fire incidents in the Noteć Forest resulted in 8.4 ha of burnt area. From 2007 to 2022, there were more than 1170 fire incidents covered 96.7 ha. Hence, the Noteć Forest is a high-fire-risk area and, as a large monoculture forest complex, requires continuous monitoring, including within EU structures.

Conclusions

Understanding the functioning of peatlands that are under severe climatic pressure and exposed to extreme events in recent decades is crucial for their conservation and monitoring. Peatlands, as archives of environmental change, are sources of valuable information about past ecological disasters, recorded in both the palaeoecological and geochemical records. Combining these two approaches gives a complete picture of environmental changes due to fires or insect outbreaks. The conclusions of such studies can be successfully used to predict the consequences of contemporary phenomena. Particularly severe disasters can even lead to peatland ecosystems reaching critical transitions, after which there is an irreversible change in hydrological and trophic conditions, followed by a change in vegetation. We have identified many paleo-indicators that allow a comprehensive assessment of the peatland's response to catastrophic events both at the time of these events and on a long-term scale (Fig. 7).

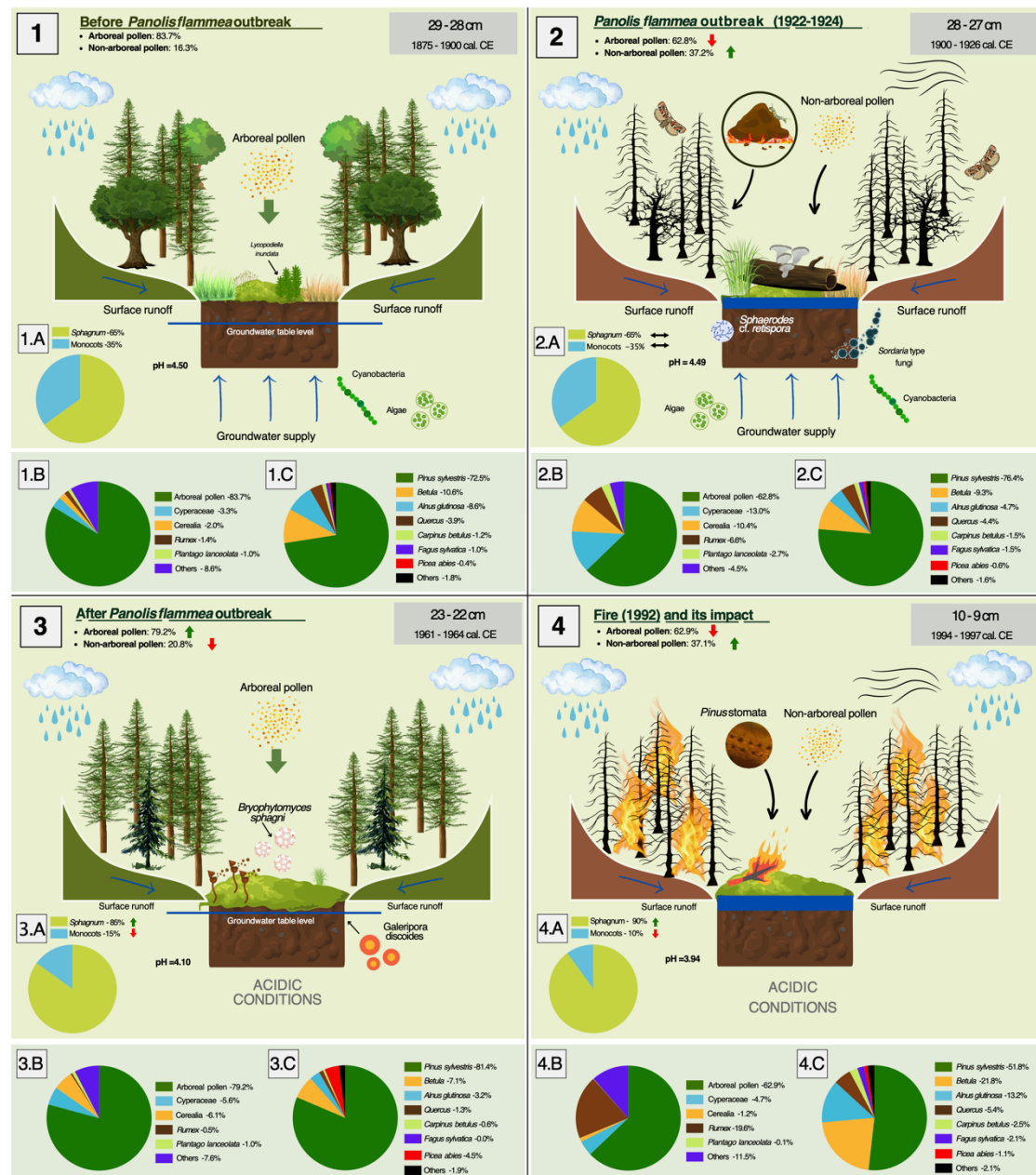


Fig. 7. Diagram showing environmental changes in the Miały peatland and the forest surrounding it as a result of the *Panolis flammea* outbreak (1922-1924; boards no 1 and 2), leading to a change in forest structure to a *Pinus sylvestris* monoculture (3) and the consequences of poorly resilient monocultures in the form of the 1992 fire (4). The percentages of taxa in the pie charts were taken from palynological data. Each of the four boards corresponds to one specific layer in the peat profile – the depth of the layer and the calibrated period are marked in the upper right corners of the boards in the grey box.

We have shown that the Miały peatland has rapidly acidified as a result of *Panolis flammea* infestation and forest restoration activities. We reported a significant decrease in *Pinus sylvestris* pollen during catastrophic events. Competition among plants in the peatland was won by those adapted to acidic conditions *Sphagnum* mosses, which displaced monocotyledonous plants. We point out that it is difficult to identify past *Panolis flammea* outbreaks, as the remains of these butterflies do not preserve well in sediments. We emphasized a cautious approach to fungi as bioindicators of environmental change due to many ambiguous interpretations in studies. Charcoal analysis can provide information on localized fires, but it should be emphasized that not every fire is recorded in this way. For this reason, adequate validation of the data with historical sources or, if these do not exist, multi-proxy palaeoecological analyses are essential. However, we point out that other paleo-recordings, treated cautiously, can help identify past fires, such as *Pinus* stomata. To understand current or recent changes in peatlands and their surroundings, it is often not enough to analyze the last hundred or two years, but the background going back hundreds or thousands of years must be considered. Only such a combination gives a complete overview of changes due to human activity, climate change or ecological disasters. We observed that there has been no catastrophic deforestation for more than 1,800 years. Major deforestation occurred only after changes in forest management. The peatland was also hydrologically and trophically stable for most of the time analyzed. Drastic changes in trophic and hydrological conditions of the Miały peatland began after the introduction of planned forest management in the late 18th century, weakening forests' resilience to environmental disasters. Particularly extreme changes occurred with the 1922-1924 *Panolis flammea* and the subsequent approach from forest restoration after 30-40 years. Keeping the forest structure homogeneous in turn led to a huge fire in 1992 (Fig. 7).

Data availability

The open dataset that supports the findings of this study is available in Mendeley Data with the identifier doi: 10.17632/cv5t59wf24.1

Appendix

Appendix Figure 1

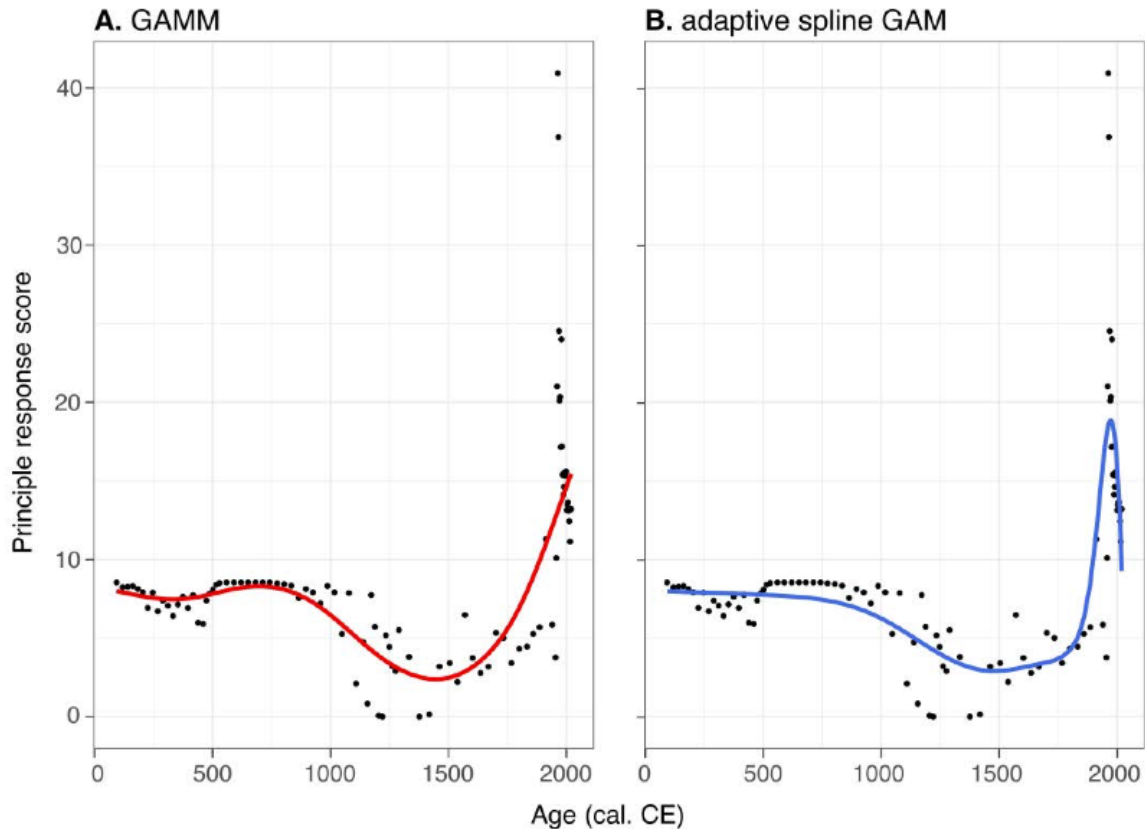


Figure A1. PrC (A) GAMM and (B) GAM with adaptive spline - raw scores and fitted relationships.

Authors contribution

MB – fieldwork, laboratory analyses (bulk density, carbon accumulation, plant macrofossils, selection of plant macrofossils for AMS radiocarbon dating), age-depth modelling, data interpretation, visualization, writing (original draft)

ML – fieldwork, support in plant macrofossil analysis, data interpretation, writing (commenting and editing)

PK – laboratory analyses (pollen and spores), age-depth modelling, data interpretation, visualization, writing (commenting and editing)

DW – laboratory analyses (testate amoebae), testate amoeba-based reconstructions, data interpretation

MJ – fieldwork, data interpretation, writing (commenting and editing)

LA – statistical analyses, data interpretation, writing (commenting and editing)

KM – funding acquisition, conceptualization, fieldwork, laboratory analyses (charcoal), data interpretation, visualization, writing (commenting and editing)

873 **Competing interests**

874 The authors declare no competing interests.

875

876 **Acknowledgements**

877 The study was funded by the National Science Centre, Poland, grant 2020/39/D/ST10/00641.

878 We thank Jay Tipton for his help in the field and Małgorzata Suchorska for the laboratory
879 preparation of pollen samples.

880

881 **Financial support**

882 This research has been supported by the Narodowe Centrum Nauki (grant no.
883 2020/39/D/ST10/00641).

884 **References**

885 Adolf, C., Wunderle, S., Colombaroli, D., Weber, H., Gobet, E., Heiri, O., van Leeuwen, J. F. N.,
886 Bigler, C., Connor, S. E., Gałka, M., La Mantia, T., Makhortykh, S., Svitavská-Svobodová, H.,
887 Vanni  re, B., and Tinner, W.: The sedimentary and remote-sensing reflection of biomass
888 burning in Europe, *Global Ecology and Biogeography*, 27, 199–212,
889 <https://doi.org/10.1111/geb.12682>, 2018.

890 Allan, M., Le Roux, G., Piotrowska, N., Beghin, J., Javaux, E., Court-Picon, M., Mattielli, N.,
891 Verheyden, S., and Fagel, N.: Mid- and late Holocene dust deposition in western Europe: the
892 Misten peat bog (Hautes Fagnes – Belgium), *Climate of the Past*, 9, 2285–2298,
893 <https://doi.org/10.5194/cp-9-2285-2013>, 2013.

894 Amesbury, M. J., Swindles, G. T., Bobrov, A., Charman, D. J., Lamentowicz, M., Mallon, G.,
895 Mazei, Y., Mitchell, E. A. D., Payne, R. J., Roland, T. P., Turner, E. T., and Warner, B. G.:
896 Development of a new pan-European testate amoeba transfer function for reconstructing
897 peatland palaeohydrology, *Quat Sci Rev*, 152, 132–151,
898 <https://doi.org/10.1016/j.quascirev.2016.09.024>, 2016.

899 Anderberg, A.-L.: Atlas of seeds and small fruits of Northwest-European plant species with
900 morphological descriptions. Part 4: Resedaceae - Umbelliferae, Risbergs Tryckeri AB,
901 Uddevalla, 1994.

902 Ankudo-Jankowska, A.: Gospodarka Lasów Państwowych na terenie województwa
 903 poznańskiego i pomorskiego w okresie międzywojennym, *Studia i Materiały Ośrodka Kultury*
 904 *Leśnej*, 5, 5375, 2003.

905 Anon: Przebieg i bilans katastrofy sówkowej w Wielkopolsce, *Rynek Drzewny i Budowlany*, 116,
 906 3–4, 1929.

907 Aoustin, D., Bertran, P., and Leroyer, C.: Late MIS 3 interstadial vegetation in coversands at
 908 Saint-Vincent-de-Paul, Southwest France, *Quaternaire*, 193–206,
 909 <https://doi.org/10.4000/quaternaire.17053>, 2022.

910 Bąk, M., Lamentowicz, M., Kołaczek, P., Wochal, D., Matulewski, P., Kopeć, D., Wietecha, M.,
 911 Jaster, D., and Marcisz, K.: Assessing the impact of forest management and climate on a
 912 peatland under Scots pine monoculture using a multidisciplinary approach, *Biogeosciences*,
 913 21, 5143–5172, <https://doi.org/10.5194/bg-21-5143-2024>, 2024.

914 Barabach, J.: Zapis zdarzeń katastrofalnych na obszarze Puszczy Noteckiej w osadach
 915 Torfowiska Rzecin, 2014.

916 Beaulne, J., Garneau, M., Magnan, G., and Boucher, É.: Peat deposits store more carbon than
 917 trees in forested peatlands of the boreal biome, *Sci Rep*, 11, 2657,
 918 <https://doi.org/10.1038/s41598-021-82004-x>, 2021.

919 Behre, K. E.: The interpretation of anthropogenic indicators in pollen diagrams, *Pollen et*
 920 *Spores*, 23, 225–245, 1981.

921 Berggren, G.: Atlas of seeds and small fruits of Northwest-European plant species (Sweden,
 922 Norway, Denmark, East Fennoscandia and Iceland) with morphological descriptions. Part 2:
 923 Cyperaceae, Berlingska Boktryckeriet, Lund, 1969.

924 Berglund, B. E. and Ralska-Jasiewiczowa, M.: Pollen analysis and pollen diagrams, in: *Handbook*
 925 *of Holocene Palaeoecology and Palaeohydrology*, edited by: Berglund, B. E., John Wiley & Sons,
 926 Chichester, 455–484, 1986.

927 Berthrong, S. T., Jobbágy, E. G., and Jackson, R. B.: A global meta-analysis of soil exchangeable
 928 cations, pH, carbon, and nitrogen with afforestation, *Ecological Applications*, 19, 2228–2241,
 929 <https://doi.org/10.1890/08-1730.1>, 2009.

930 Beug, H.-J.: Leitfaden der Pollenbestimmung für Mitteleuropa und angrenzende Gebiete,
 931 Verlag Dr. Friedrich Pfeil, München, 2004.

932 Bhatt, I. M., Pramod, S., Koyani, R. D., and Rajput, K. S.: Histological changes in the cell wall
 933 structure during wood decay by *Trametes hirsuta* and *Trametes versicolor* in neem (

934 *Azadirachta Indica* A. Juss), Journal of Sustainable Forestry, 35, 578–590,
 935 <https://doi.org/10.1080/10549811.2016.1236277>, 2016.

936 Birks, H. H. and Birks, H. J. B.: Multi-proxy studies in palaeolimnology, Veg Hist Archaeobot, 15,
 937 235–251, <https://doi.org/10.1007/s00334-006-0066-6>, 2006.

938 Bojňanský, V. and Fargašová, A.: Atlas of seeds and fruits of central and east-european flora.
 939 The Carpathian Mountains Region, Springer, Dordrecht, 2007.

940 Booth, R. K., Lamentowicz, M., and Charman, D. J.: Preparation and analysis of testate
 941 amoebae in peatland paleoenvironmental studies, Mires and Peat, 7 (2010/11), 1–7, 2010.

942 Van Den Brink, P. J. and Ter Braak, C. J. F.: Principal Response Curves: analysis of time-
 943 dependent multivariate responses of biological community stress, Environ Toxicol Chem, 18,
 944 138–148, 1999.

945 Broda, J.: Historia leśnictwa w Polsce, Wydawnictwo Akademii Rolniczej im. Augusta
 946 Cieszkowskiego w Poznaniu, Poznań, 20–70 pp., 2000.

947 Broda, J.: Gradacje strzygoni choinówki w Lasach Państwowych Wielkopolski i Pomorza
 948 Gdańskiego w okresie międzywojennych, Studia i Materiały Ośrodka Kultury Leśnej, 5, 77–94,
 949 2003.

950 Bronk Ramsey, C.: Deposition models for chronological records, Quat Sci Rev, 27, 42–60, 2008.
 951 OxCal v4.4.4: <https://c14.arch.ox.ac.uk/oxcal.html>, last access: 21 November 2023.

952 Bugaj, P.: Płonąca puszcza, Wronieckie Sprawy, 5, 1992.

953 Burge, O. R., Richardson, S. J., Wood, J. R., and Wilmshurst, J. M.: A guide to assess distance
 954 from ecological baselines and change over time in palaeoecological records, Holocene, 33,
 955 905–917, <https://doi.org/10.1177/09596836231169986>, 2023.

956 Chambers, F. M., Beilman, D. W., and Yu, Z.: Methods for determining peat humification and
 957 for quantifying peat bulk density, organic matter and carbon content for palaeostudies of
 958 climate and peatland carbon dynamics, Mires and Peat, 7, 1–10, 2010.

959 Chapin, F. S., Matson, P. A., and Vitousek, P.: Managing and Sustaining Ecosystems, in:
 960 Principles of Terrestrial Ecosystem Ecology, edited by: Chapin, F. S., Springer, 447, 2012.

961 Cifuentes-Croquevielle, C., Stanton, D. E., and Armesto, J. J.: Soil invertebrate diversity loss and
 962 functional changes in temperate forest soils replaced by exotic pine plantations, Sci Rep, 10,
 963 7762, <https://doi.org/10.1038/s41598-020-64453-y>, 2020.

964 Clarke, K. J.: Guide to Identification of Soil Protozoa - Testate Amoebae, edited by: Sutcliffe, D.
 965 W., Freshwater Biological Association, Ambleside, U.K., 1–40 pp., 2003.

966 Czerwiński, S., Guzowski, P., Lamentowicz, M., Gałka, M., Karpińska-Kończak, M., Poniat, R.,
 967 Łokas, E., Diaconu, A.-C., Schwarzer, J., Miecznik, M., and Kończak, P.: Environmental
 968 implications of past socioeconomic events in Greater Poland during the last 1200 years.
 969 Synthesis of paleoecological and historical data, *Quat Sci Rev*, 259, 106902,
 970 <https://doi.org/https://doi.org/10.1016/j.quascirev.2021.106902>, 2021.
 971 Dakos, V., Matthews, B., Hendry, A. P., Levine, J., Loeuille, N., Norberg, J., Nosil, P., Scheffer, M.,
 972 and De Meester, L.: Ecosystem tipping points in an evolving world, *Nat Ecol Evol*, 3, 355–362,
 973 <https://doi.org/10.1038/s41559-019-0797-2>, 2019.
 974 Davis, M. B. and Deevey, E. S.: Pollen Accumulation Rates: Estimates from Late-Glacial
 975 Sediment of Rogers Lake, *Science* (1979), 145, 1293–1295,
 976 <https://doi.org/10.1126/science.145.3638.1293>, 1964.
 977 De'ath, G.: Principal Curves: A New Technique for Indirect and Direct Gradient Analysis,
 978 *Ecology*, 80, 2237, <https://doi.org/10.2307/176906>, 1999.
 979 Deshmukh, C. S., Julius, D., Desai, A. R., Asyhari, A., Page, S. E., Nardi, N., Susanto, A. P.,
 980 Nurholis, N., Hendrizal, M., Kurnianto, S., Suardiwerianto, Y., Salam, Y. W., Agus, F., Astiani, D.,
 981 Sabiham, S., Gauci, V., and Evans, C. D.: Conservation slows down emission increase from a
 982 tropical peatland in Indonesia, *Nat Geosci*, 14, 484–490, [https://doi.org/10.1038/s41561-021-](https://doi.org/10.1038/s41561-021-00785-2)
 983 [00785-2](https://doi.org/10.1038/s41561-021-00785-2), 2021.
 984 Dopierańska, J.: Neodymium isotopic composition of conodonts as a palaeoceanographic proxy
 985 in the Variscan oceanic system, PhD Thesis, Justus-Liebig-Universität Gießen, Gießen, 2003.
 986 Ejarque, A., Miras, Y., Riera, S., Palet, J. M., and Orengo, H. A.: Testing micro-regional variability
 987 in the Holocene shaping of high mountain cultural landscapes: a palaeoenvironmental case-
 988 study in the eastern Pyrenees, *J Archaeol Sci*, 37, 1468–1479,
 989 <https://doi.org/10.1016/j.jas.2010.01.007>, 2010.
 990 Fabijański, P.: *Krajobraz po pożarze*, Przyroda Polska, 22, 1996.
 991 Fagel, N., Allan, M., Le Roux, G., Mattielli, N., Piotrowska, N., and Sikorski, J.: Deciphering
 992 human–climate interactions in an ombrotrophic peat record: REE, Nd and Pb isotope
 993 signatures of dust supplies over the last 2500years (Misten bog, Belgium), *Geochim*
 994 *Cosmochim Acta*, 135, 288–306, <https://doi.org/10.1016/j.gca.2014.03.014>, 2014.
 995 Fiałkiewicz-Kozieł, B., Śmieja-Król, B., Ostovnaya, T. M., Frontasyeva, M., Siemińska, A., and
 996 Lamentowicz, M.: Peatland microbial communities as indicators of the extreme atmospheric
 997 dust deposition, *Water Air Soil Pollut*, 226, 97, 2015.

998 Fiałkiewicz-Kozieł, B., Smieja-Król, B., Frontasyeva, M., Słowiński, M., Marcisz, K., Lapshina, E.,
 999 Gilbert, D., Buttler, A., Jassey, V. E. J., Kaliszan, K., Laggoun-Défarge, F., Kołaczek, P., and
 1000 Lamentowicz, M.: Anthropogenic- and natural sources of dust in peatland during the
 1001 Anthropocene, *Sci Rep*, 6, 38731, <https://doi.org/10.1038/srep38731>, 2016.
 1002 Fiałkiewicz-Kozieł, B., De Vleeschouwer, F., Mattielli, N., Fagel, N., Palowski, B., Pazdur, A., and
 1003 Smieja-Król, B.: Record of Anthropocene pollution sources of lead in disturbed peatlands from
 1004 Southern Poland, *Atmos Environ*,
 1005 <https://doi.org/https://doi.org/10.1016/j.atmosenv.2018.02.002>, 2018.
 1006 Finsinger, W. and Tinner, W.: Minimum count sums for charcoal-concentration estimates in
 1007 pollen slides: accuracy and potential errors, *Holocene*, 15, 293–297, 2005.
 1008 Gałka, M., Szal, M., Broder, T., Loisel, J., and Knorr, K.-H.: Peatbog resilience to pollution and
 1009 climate change over the past 2700 years in the Harz Mountains, Germany, *Ecol Indic*, 97, 183–
 1010 193, <https://doi.org/https://doi.org/10.1016/j.ecolind.2018.10.015>, 2019.
 1011 van Geel, B. and Aptroot, A.: Fossil ascomycetes in Quaternary deposits, *Nova Hedwigia*, 82,
 1012 313–329, <https://doi.org/10.1127/0029-5035/2006/0082-0313>, 2006.
 1013 Van Geel, B., Coope, G. R., and Van Der Hammen, T.: Palaeoecology and stratigraphy of the
 1014 lateglacial type section at Usselo (the Netherlands), *Rev Palaeobot Palynol*, 60, 25–129,
 1015 [https://doi.org/10.1016/0034-6667\(89\)90072-9](https://doi.org/10.1016/0034-6667(89)90072-9), 1989.
 1016 van Geel, B., Brinkkemper, O., van Reenen, G. B. A., van der Putten, N. N. L., Sybenga, J. E.,
 1017 Soonius, C., Kooijman, A. M., Hakbijl, T., and Gosling, W. D.: Multicore Study of Upper Holocene
 1018 Mire Development in West-Frisia, Northern Netherlands: Ecological and Archaeological
 1019 Aspects, *Quaternary*, 3, 12, <https://doi.org/10.3390/quat3020012>, 2020.
 1020 Głowacka, B.: Wstęp, in: *Zabiegi agrolotnicze w ochronie lasu*, edited by: Głowacka, B.,
 1021 Centrum Informacyjne Lasów Państwowych, Warszawa, 7–8, 2009.
 1022 Grimm, E. C.: *Tilia and Tilia Graph*, Illinois State Museum, 1991.
 1023 Heiri, O., Lotter, A. F., and Lemcke, G.: Loss on ignition as a method for estimating organic and
 1024 carbonate content in sediments: Reproducibility and comparability of results, *J Paleolimnol*,
 1025 25, 101–110, <https://doi.org/10.1023/A:1008119611481>, 2001.
 1026 Hernik, I.: Problematyka ochrony lasów Puszczy Noteckiej, *Sylvan*, 8, 49–54, 1979.
 1027 Hornung, M.: Acidification of soils by trees and forests, *Soil Use Manag*, 1, 24–27,
 1028 <https://doi.org/10.1111/j.1475-2743.1985.tb00648.x>, 1985.

1029 Hua, Q., Turnbull, J. C., Santos, G. M., Rakowski, A. Z., Ancapichún, S., De Pol-Holz, R., Hammer,
 1030 S., Lehman, S. J., Levin, I., Miller, J. B., Palmer, J. G., and Turney, C. S. M.: ATMOSPHERIC
 1031 RADIOCARBON FOR THE PERIOD 1950–2019, Radiocarbon, 1–23,
 1032 <https://doi.org/10.1017/RDC.2021.95>, 2021.
 1033 Archived data:
 1034 Jacobsen, S. B. and Wasserburg, G. J.: Sm-Nd isotopic evolution of chondrites, Earth Planet Sci
 1035 Lett, 50, 139–155, [https://doi.org/10.1016/0012-821X\(80\)90125-9](https://doi.org/10.1016/0012-821X(80)90125-9), 1980.
 1036 Jassey, V. E. J., Reczuga, M. K., Zielińska, M., Słowińska, S., Robroek, B. J. M., Mariotte, P.,
 1037 Seppey, C. V. W., Lara, E., Barabach, J., Słowiński, M., Bragazza, L., Chojnicki, B. H., Lamentowicz,
 1038 M., Mitchell, E. A. D., and Buttler, A.: Tipping point in plant–fungal interactions under severe
 1039 drought causes abrupt rise in peatland ecosystem respiration, Glob Chang Biol, 24, 972–986,
 1040 <https://doi.org/doi:10.1111/gcb.13928>, 2018.
 1041 Jaszczak, R.: Urządzanie lasu w Polsce do 1939 roku. Część I – początki urządzania lasu na
 1042 ziemiach polskich, Sylwan, 152, 13–21, <https://doi.org/https://10.26202/sylwan.2006126>,
 1043 2008.
 1044 Juggins, S.: C2 Version 1.5 User guide. Software for ecological and palaeoecological data
 1045 analysis and visualisation, Newcastle University, Newcastle upon Tyne, UK, 73, 2007.
 1046 Rioja: Analysis of Quaternary Science Data: [https://cran.r-](https://cran.r-project.org/web/packages/rioja/index.html)
 1047 [project.org/web/packages/rioja/index.html](https://cran.r-project.org/web/packages/rioja/index.html), last access: 4 December 2023.
 1048 Kiely, L., Spracklen, D. V., Arnold, S. R., Papargyropoulou, E., Conibear, L., Wiedinmyer, C.,
 1049 Knote, C., and Adrianto, H. A.: Assessing costs of Indonesian fires and the benefits of restoring
 1050 peatland, Nat Commun, 12, 7044, <https://doi.org/10.1038/s41467-021-27353-x>, 2021.
 1051 Kołaczek, P., Zubek, S., Błaszowski, J., Mleczko, P., and Margielewski, W.: Erosion or plant
 1052 succession — How to interpret the presence of arbuscular mycorrhizal fungi (Glomeromycota)
 1053 spores in pollen profiles collected from mires, Rev Palaeobot Palynol, 189, 29–37,
 1054 <https://doi.org/10.1016/j.revpalbo.2012.11.006>, 2013.
 1055 Kondracki, J.: Geografia regionalna Polski, Wydawnictwo Naukowe PWN, Warszawa, 2001.
 1056 Kula, E. and Jankovská, Z.: Forest fires and their causes in the Czech Republic (1992–2004), J
 1057 For Sci (Prague), 59, 41–53, <https://doi.org/10.17221/36/2012-JFS>, 2013.
 1058 Lagueard, J. G. and Ryan, P. A.: Microscopic fungi as subfossil woodland indicators, Holocene,
 1059 23, 990–1001, <https://doi.org/10.1177/0959683612475145>, 2013.

1060 Lamentowicz, M. and Mitchell, E. A. D.: The ecology of testate amoebae (Protists) in Sphagnum
1061 in north-western Poland in relation to peatland ecology, *Microb Ecol*, 50, 48–63, 2005.

1062 Lamentowicz, M., Mueller, M., Gałka, M., Barabach, J., Milecka, K., Goslar, T., and Binkowski,
1063 M.: Reconstructing human impact on peatland development during the past 200 years in CE
1064 Europe through biotic proxies and X-ray tomography, *Quaternary International*, 357, 282–294,
1065 <https://doi.org/http://dx.doi.org/10.1016/j.quaint.2014.07.045>, 2015.

1066 Lamentowicz, M., Kołaczek, P., Mauquoy, D., Kittel, P., Łokas, E., Słowiński, M., Jassey, V. E. J.,
1067 Niedziółka, K., Kajukało-Drygalska, K., and Marcisz, K.: Always on the tipping point – A search
1068 for signals of past societies and related peatland ecosystem critical transitions during the last
1069 6500 years in N Poland, *Quat Sci Rev*, 225, 105954,
1070 <https://doi.org/https://doi.org/10.1016/j.quascirev.2019.105954>, 2019a.

1071 Lamentowicz, M., Gałka, M., Marcisz, K., Słowiński, M., Kajukało-Drygalska, K., Druguet Dayras,
1072 M., and Jassey, V. E. J.: Unveiling tipping points in long-term ecological records from Sphagnum-
1073 dominated peatlands, *Biol Lett*, 15, 20190043,
1074 <https://doi.org/https://doi.org/10.1098/rsbl.2019.0043>, 2019b.

1075 Lenton, T. M., Held, H., Kriegler, E., Hall, J. W., Lucht, W., Rahmstorf, S., and Schellnhuber, H. J.:
1076 Tipping elements in the Earth's climate system, *Proceedings of the National Academy of*
1077 *Sciences*, 105, 1786–1793, <https://doi.org/10.1073/pnas.0705414105>, 2008.

1078 Lenton, T. M., Rockström, J., Gaffney, O., Rahmstorf, S., Richardson, K., Steffen, W., and
1079 Schellnhuber, H. J.: Climate tipping points — too risky to bet against, *Nature*, 575, 592–595,
1080 <https://doi.org/10.1038/d41586-019-03595-0>, 2019.

1081 Leonardos, L., Gnille, A., Sanders, T. G. M., Shatto, C., Stadelmann, C., Beierkuhnlein, C., and
1082 Jentsch, A.: Synthesis and Perspectives on Disturbance Interactions, and Forest Fire Risk and
1083 Fire Severity in Central Europe, *Fire*, 7, 470, <https://doi.org/10.3390/fire7120470>, 2024.

1084 van der Linden, M., Barke, J., Vickery, E., Charman, D. J., and van Geel, B.: Late Holocene human
1085 impact and climate change recorded in a North Swedish peat deposit, *Palaeogeogr*
1086 *Palaeoclimatol Palaeoecol*, 258, 1–27, <https://doi.org/10.1016/j.palaeo.2007.11.006>, 2008.

1087 Loisel, J. and Bunsen, M.: Abrupt Fen-Bog Transition Across Southern Patagonia: Timing,
1088 Causes, and Impacts on Carbon Sequestration, *Front Ecol Evol*, 8,
1089 <https://doi.org/10.3389/fevo.2020.00273>, 2020.

1090 Loisel, J., Yu, Z., Beilman, D. W., Camill, P., Alm, J., Amesbury, M. J., Anderson, D., Andersson,
1091 S., Bochicchio, C., Barber, K., Belyea, L. R., Bunbury, J., Chambers, F. M., Charman, D. J., De

1092 Vleeschouwer, F., Fiałkiewicz-Kozieł, B., Finkelstein, S. A., Gałka, M., Garneau, M.,
 1093 Hammarlund, D., Hinchcliffe, W., Holmquist, J., Hughes, P., Jones, M. C., Klein, E. S., Kokfelt, U.,
 1094 Korhola, A., Kuhry, P., Lamarre, A., Lamentowicz, M., Large, D., Lavoie, M., MacDonald, G.,
 1095 Magnan, G., Mäkilä, M., Mallon, G., Mathijssen, P., Mauquoy, D., McCarroll, J., Moore, T. R.,
 1096 Nichols, J., O'Reilly, B., Oksanen, P., Packalen, M., Peteet, D., Richard, P. J. H., Robinson, S.,
 1097 Ronkainen, T., Rundgren, M., Sannel, A. B. K., Tarnocai, C., Thom, T., Tuittila, E.-S., Turetsky, M.,
 1098 Välranta, M., van der Linden, M., van Geel, B., van Bellen, S., Vitt, D., Zhao, Y., and Zhou, W.: A
 1099 database and synthesis of northern peatland soil properties and Holocene carbon and nitrogen
 1100 accumulation, *Holocene*, 24, 1028–1042, <https://doi.org/10.1177/0959683614538073>, 2014.
 1101 Łuców, D., Lamentowicz, M., Kołaczek, P., Łokas, E., Marcisz, K., Obremaska, M., Theuerkauf, M.,
 1102 Tyszkowski, S., and Słowiński, M.: Pine Forest Management and Disturbance in Northern
 1103 Poland: Combining High-Resolution 100-Year-Old Paleoecological and Remote Sensing Data,
 1104 *Front Ecol Evol*, 9, <https://doi.org/10.3389/fevo.2021.747976>, 2021.
 1105 Lundqvist, N.: *Nordic Sordariaceae s. lat (Symbolae botanicae Upsalienses)*, Almqvist &
 1106 Wiksells, 1–374 pp., 1972.
 1107 Magnuski, K.: Urzędzeniowe aspekty postępowania gospodarczego w Puszczy Noteckiej,
 1108 *Sylwan*, 2, 49–59, 1993.
 1109 Marcisz, K., Tinner, W., Colombaroli, D., Kołaczek, P., Słowiński, M., Fiałkiewicz-Kozieł, B., Łokas,
 1110 E., and Lamentowicz, M.: Long-term hydrological dynamics and fire history over the last 2000
 1111 years in CE Europe reconstructed from a high-resolution peat archive, *Quat Sci Rev*, 112, 138–
 1112 152, <https://doi.org/10.1016/j.quascirev.2015.01.019>, 2015.
 1113 Marcisz, K., Belka, Z., Dopieralska, J., Jakubowicz, M., Karpińska-Kołaczek, M., Kołaczek, P.,
 1114 Mauquoy, D., Słowiński, M., Zieliński, M., and Lamentowicz, M.: Navigating the limitations,
 1115 assumptions and conceptual pitfalls of Nd isotope research on peatlands: Reply to the
 1116 comments of Le Roux et al. (2023) on 'Neodymium isotopes in peat reveal past local
 1117 environmental disturbances' by Marcisz et al. (2023), *Science of The Total Environment*, 898,
 1118 165398, <https://doi.org/10.1016/j.scitotenv.2023.165398>, 2023a.
 1119 Marcisz, K., Belka, Z., Dopieralska, J., Jakubowicz, M., Karpińska-Kołaczek, M., Kołaczek, P.,
 1120 Mauquoy, D., Słowiński, M., Zieliński, M., and Lamentowicz, M.: Neodymium isotopes in peat
 1121 reveal past local environmental disturbances, *Science of The Total Environment*, 871, 161859,
 1122 <https://doi.org/10.1016/j.scitotenv.2023.161859>, 2023b.

1123 Marks, L.: Timing of the Late Vistulian (Weichselian) glacial phases in Poland, *Quat Sci Rev*, 44,
 1124 81–88, <https://doi.org/https://doi.org/10.1016/j.quascirev.2010.08.008>, 2012.

1125 Matthias, I. and Giesecke, T.: Insights into pollen source area, transport and deposition from
 1126 modern pollen accumulation rates in lake sediments, *Quat Sci Rev*, 87, 12–23,
 1127 <https://doi.org/10.1016/j.quascirev.2013.12.015>, 2014.

1128 Potential natural vegetation of Poland (Potencjalna roślinność naturalna Polski):
 1129 <https://www.igipz.pan.pl/Roslinnosc-potencjalna-zgik.html>, last access: 10 February 2025.

1130 Mátyás, C., Ackzell, L., and Samuel, C. J. A.: EUFORGEN Technical Guidelines for genetic
 1131 conservation and use for Scots pine (*Pinus sylvestris*), International Plant Genetic Resources
 1132 Institute, Rome, 2004.

1133 Mauquoy, D. and van Geel, B.: Mire and peat macros, in: *Encyclopedia of Quaternary Science*,
 1134 vol. 3, Elsevier, Heidelberg, 2315–2336, 2007.

1135 Mauquoy, D., Hughes, P. D. M., and van Geel, B.: A protocol for plant macrofossil analysis of
 1136 peat deposits, *Mires and Peat*, 7, 1–5, 2010.

1137 Mazei, Y. and Tsyganov, A. N.: *Freshwater testate amoebae*, KMK, Moscow, 2006.

1138 McCarroll, J., Chambers, F. M., Webb, J. C., and Thom, T.: Application of palaeoecology for
 1139 peatland conservation at Mossdale Moor, UK, *Quaternary International*, 432, 39–47,
 1140 <https://doi.org/https://doi.org/10.1016/j.quaint.2014.12.068>, 2017.

1141 Meisterfeld, R.: Testate amoebae, in: *Patrimoines Naturels*, vol. 50, edited by: Costello, M. J.,
 1142 Emblow, C. S., and White, R., Muséum National d'Histoire Naturelle - Institut d'Ecologie et de
 1143 Gestion de la Biodiversité (I.E.G.B.) - Service du Patrimoine Naturel (S.P.N.), Paris, 54–57, 2001.

1144 Mighall, T. M., Timpany, S., Blackford, J. J., Innes, J. B., O'Brien, C. E., O'Brien, W., and Harrison,
 1145 S.: Vegetation change during the Mesolithic and Neolithic on the Mizen Peninsula, Co. Cork,
 1146 south-west Ireland, *Veg Hist Archaeobot*, 17, 617–628, [https://doi.org/10.1007/s00334-007-](https://doi.org/10.1007/s00334-007-0136-4)
 1147 0136-4, 2008.

1148 Milecka, K., Kowalewski, G., Fiałkiewicz-Kozieł, B., Gałka, M., Lamentowicz, M., Chojnicki, B. H.,
 1149 Goslar, T., and Barabach, J.: Hydrological changes in the Rzecin peatland (Puszcza Notecka,
 1150 Poland) induced by anthropogenic factors: Implications for mire development and carbon
 1151 sequestration, *Holocene*, 27, 651–664, <https://doi.org/10.1177/0959683616670468>, 2017.

1152 Miola, A.: Tools for Non-Pollen Palynomorphs (NPPs) analysis: A list of Quaternary NPP types
 1153 and reference literature in English language (1972–2011), *Rev Palaeobot Palynol*, 186, 142–
 1154 161, <https://doi.org/10.1016/j.revpalbo.2012.06.010>, 2012.

1155 Miś, R.: Charakterystyka zmian w stanie lasów Puszczy Noteckiej, *Sylvan*, 6, 34–46, 2003.

1156 Mitchell, E. A. D., Buttler, A., Grosvernier, P., Rydin, H., Albinsson, C., Greenup, A. L., Heijmans,
1157 M. M. P. D., Hoosbeek, M. R., and Saarinen, T.: Relationships among testate amoebae
1158 (Protozoa), vegetation and water chemistry in five Sphagnum-dominated peatlands in Europe,
1159 *New Phytologist*, 145, 95–106, 2000.

1160 Montoro Girona, M., Navarro, L., and Morin, H.: A Secret Hidden in the Sediments: Lepidoptera
1161 Scales, *Front Ecol Evol*, 6, <https://doi.org/10.3389/fevo.2018.00002>, 2018.

1162 Moore, P. D., Webb, J. A., and Collinson, M. E.: *Pollen Analysis*, Blackwell Scientific Publications,
1163 Oxford, 1991.

1164 Mroczkiewicz, L.: Zagadnienia hodowlane na terenach posówkowych, Uniwersytet Poznański,
1165 Poznań, 1933.

1166 Ofiti, N. O. E., Schmidt, M. W. I., Abiven, S., Hanson, P. J., Iversen, C. M., Wilson, R. M., Kostka,
1167 J. E., Wiesenberg, G. L. B., and Malhotra, A.: Climate warming and elevated CO₂ alter peatland
1168 soil carbon sources and stability, *Nat Commun*, 14, 7533, [https://doi.org/10.1038/s41467-023-](https://doi.org/10.1038/s41467-023-43410-z)
1169 [43410-z](https://doi.org/10.1038/s41467-023-43410-z), 2023.

1170 Page, S., Mishra, S., Agus, F., Anshari, G., Dargie, G., Evers, S., Jauhiainen, J., Jaya, A., Jovani-
1171 Sancho, A. J., Laurén, A., Sjögersten, S., Suspense, I. A., Wijedasa, L. S., and Evans, C. D.:
1172 Anthropogenic impacts on lowland tropical peatland biogeochemistry, *Nat Rev Earth Environ*,
1173 3, 426–443, <https://doi.org/10.1038/s43017-022-00289-6>, 2022.

1174 Page, S. E., Siegert, F., Rieley, J. O., Boehm, H.-D. V., Jaya, A., and Limin, S.: The amount of
1175 carbon released from peat and forest fires in Indonesia during 1997, *Nature*, 420, 61–65,
1176 <https://doi.org/10.1038/nature01131>, 2002.

1177 Pals, J. P., Van Geel, B., and Delfos, A.: Paleoecological studies in the Klokkeveel bog near
1178 hoogkarspel (prov. of Noord-Holland), *Rev Palaeobot Palynol*, 30, 371–418,
1179 [https://doi.org/10.1016/0034-6667\(80\)90020-2](https://doi.org/10.1016/0034-6667(80)90020-2), 1980.

1180 Parish, F., Sirin, A., Charman, D. J., Joosten, H., Minayeva, T., Silvius, M., and Stringer, L.:
1181 Assessment on peatlands, biodiversity and climate change: main report, 2008.

1182 Patterson, W. A., Edwards, K. J., and Maguire, D. J.: Microscopic Charcoal as a Fossil Indicator
1183 of Fire, *Quat Sci Rev*, 6, 3–23, [https://doi.org/10.1016/0277-3791\(87\)90012-6](https://doi.org/10.1016/0277-3791(87)90012-6), 1987.

1184 Payne, R. J. and Mitchell, E. A. D.: How many is enough? Determining optimal count totals for
1185 ecological and palaeoecological studies of testate amoebae, *J. Paleolimnol.*, 42, 483–495,
1186 <https://doi.org/10.1007/s10933-008-9299-y>, 2009.

1187 Pin, C., Briot, D., Bassin, C., and Poitrasson, F.: Concomitant separation of strontium and
 1188 samarium-neodymium for isotopic analysis in silicate samples, based on specific extraction
 1189 chromatography, *Anal Chim Acta*, 298, 209–217, [https://doi.org/10.1016/0003-](https://doi.org/10.1016/0003-2670(94)00274-6)
 1190 2670(94)00274-6, 1994.

1191 Polna, M.: Zróżnicowanie natężenia pożarów leśnych w Polsce w latach 1990-2003, *Acta*
 1192 *Scientiarum Polonorum. Silvarum Colendarum Ratio et Industria Lignari*, 4, 81–90, 2005.

1193 Pratte, S., Garneau, M., and De Vleeschouwer, F.: Increased atmospheric dust deposition
 1194 during the Neoglacial in a boreal peat bog from north-eastern Canada, *Palaeogeogr*
 1195 *Palaeoclimatol Palaeoecol*, 469, 34–46, <https://doi.org/10.1016/j.palaeo.2016.12.036>, 2017.

1196 Pulgarin Díaz, J. A., Melin, M., and Tikkanen, O.-P.: Thermal sum drives abundance and
 1197 distribution range shift of *Panolis flammea* in Finland, *Scand J For Res*, 37, 93–98,
 1198 <https://doi.org/10.1080/02827581.2022.2060303>, 2022.

1199 Ratajszczak, K.: Problemy gospodarki leśnej w Puszczy Noteckiej, *Sylwan*, 8, 29–37, 1979.

1200 Reimer, P. J., Austin, W. E. N., Bard, E., Bayliss, A., Blackwell, P. G., Bronk Ramsey, C., Butzin, M.,
 1201 Cheng, H., Edwards, R. L., Friedrich, M., Grootes, P. M., Guilderson, T. P., Hajdas, I., Heaton, T.
 1202 J., Hogg, A. G., Hughen, K. A., Kromer, B., Manning, S. W., Muscheler, R., Palmer, J. G., Pearson,
 1203 C., van der Plicht, J., Reimer, R. W., Richards, D. A., Scott, E. M., Southon, J. R., Turney, C. S. M.,
 1204 Wacker, L., Adolphi, F., Büntgen, U., Capano, M., Fahrni, S. M., Fogtmann-Schulz, A., Friedrich,
 1205 R., Köhler, P., Kudsk, S., Miyake, F., Olsen, J., Reinig, F., Sakamoto, M., Sookdeo, A., and Talamo,
 1206 S.: The IntCal20 Northern Hemisphere Radiocarbon Age Calibration Curve (0–55 cal kBP),
 1207 *Radiocarbon*, 62, 725–757, <https://doi.org/10.1017/RDC.2020.41>, 2020.

1208 Rispen, J. A.: Der Nadelbaumtypus. Schritte zu einem imaginativen Baumverständnis,
 1209 *Elemente der Naturwissenschaft*, 79, 51–77, 2003.

1210 Rydin, H. and Jeglum, J. K.: The biology of peatlands (Second Edition), Oxford University Press,
 1211 2013.

1212 San-Miguel-Ayanz, J., Durrant, T., Boca, R., Maianti, P., Liberta`, G., Jacome Felix Oom, D.,
 1213 Branco, A., De Rigo, D., Suarez-Moreno, M., Ferrari, D., Roglia, E., Scionti, N., Broglia, M., Onida,
 1214 M., Tistan, A., and Löffler, P.: Forest fires in Europe, Middle East and North Africa 2022, Ispra,
 1215 <https://doi.org/10.2760/348120>, 2023.

1216 Seyed, S. S., Abbott, B. W., Vannière, B., Leys, B., Colombaroli, D., Romera, G. G., Słowiński, M.,
 1217 Aleman, J. C., Blarquez, O., Feurdean, A., Brown, K., Aakala, T., Alenius, T., Allen, K., Andric, M.,
 1218 Bergeron, Y., Biagioni, S., Bradshaw, R., Bremond, L., Brisset, E., Brooks, J., Brugger, S. O.,

1219 Brussel, T., Cadd, H., Cagliero, E., Carcaillet, C., Carter, V., Catry, F. X., Champreux, A., Chaste,
 1220 E., Chavardès, R. D., Chipman, M., Conedera, M., Connor, S., Constantine, M., Courtney
 1221 Mustaphi, C., Dabengwa, A. N., Daniels, W., De Boer, E., Dietze, E., Estrany, J., Fernandes, P.,
 1222 Finsinger, W., Flantua, S. G. A., Fox-Hughes, P., Gaboriau, D. M., M.Gayo, E., Girardin, Martin.
 1223 P., Glenn, J., Glückler, R., González-Arango, C., Groves, M., Hamilton, D. S., Hamilton, R. J.,
 1224 Hantson, S., Hapsari, K. A., Hardiman, M., Hawthorne, D., Hoffman, K., Inoue, J., Karp, A. T.,
 1225 Krebs, P., Kulkarni, C., Kuosmanen, N., Lacourse, T., Ledru, M.-P., Lestienne, M., Long, C., López-
 1226 Sáez, J. A., Loughlin, N., Niklasson, M., Madrigal, J., Maezumi, S. Y., Marcisz, K., Mariani, M.,
 1227 McWethy, D., Meyer, G., Molinari, C., Montoya, E., Mooney, S., Morales-Molino, C., Morris, J.,
 1228 Moss, P., Oliveras, I., Pereira, J. M., Pezzatti, G. B., Pickarski, N., Pini, R., Rehn, E., Remy, C. C.,
 1229 Revelles, J., Rius, D., Robin, V., Ruan, Y., Rudaya, N., Russell-Smith, J., Seppä, H., Shumilovskikh,
 1230 L., T.Sommers, W., et al.: Assessing changes in global fire regimes, *Fire Ecology*, 20, 18,
 1231 <https://doi.org/10.1186/s42408-023-00237-9>, 2024.
 1232 Schaefer, V. J.: Some Physical Relationships of Fine Particle Smoke, in: Proceedings annual: 13
 1233 Tall Timbers Fire Ecology Conference, March 22-23rd, 283–294, 1973.
 1234 Schafstall, N., Kuosmanen, N., Kuneš, P., Svobodová, H. S., Svitok, M., Chiverrell, R. C., Halsall,
 1235 K., Fleischer, P., Knížek, M., and Clear, J. L.: Sub-fossil bark beetles as indicators of past
 1236 disturbance events in temperate *Picea abies* mountain forests, *Quat Sci Rev*, 275, 107289,
 1237 <https://doi.org/https://doi.org/10.1016/j.quascirev.2021.107289>, 2022.
 1238 Seidl, R., Schelhaas, M.-J., Rammer, W., and Verkerk, P. J.: Increasing forest disturbances in
 1239 Europe and their impact on carbon storage, *Nat Clim Chang*, 4, 806,
 1240 <https://doi.org/10.1038/nclimate2318>
 1241 <https://www.nature.com/articles/nclimate2318#supplementary-information>, 2014.
 1242 Shumilovskikh, L. S. and van Geel, B.: Non-Pollen Palynomorphs, in: Handbook for the Analysis
 1243 of Micro-Particles in Archaeological Samples, edited by: Henry, E. G., Springer Cham, 65–94,
 1244 2020.
 1245 Shumilovskikh, L. S., Shumilovskikh, E. S., Schlütz, F., and van Geel, B.: NPP-ID: Non-Pollen
 1246 Palynomorph Image Database as a research and educational platform, *Veg Hist Archaeobot*,
 1247 31, 323–328, <https://doi.org/10.1007/s00334-021-00849-8>, 2022.
 1248 Microworld, world of amoeboid organisms: <https://arcella.nl/>, last access: 23 November 2023.
 1249 Simpson, G. L.: Modelling Palaeoecological Time Series Using Generalised Additive Models,
 1250 *Front Ecol Evol*, 6, <https://doi.org/10.3389/fevo.2018.00149>, 2018.

1251 Skrøppa, T.: EUFORGEN Technical Guidelines for genetic conservation and use for Norway
 1252 spruce (*Picea abies*), International Plant Genetic Resources Institute, Rome, 2003.

1253 Słowiński, M., Lamentowicz, M., Łuców, D., Barabach, J., Brykała, D., Tyszkowski, S.,
 1254 Pieńczewska, A., Śnieszko, Z., Dietze, E., Jażdżewski, K., Obremaska, M., Ott, F., Brauer, A., and
 1255 Marcisz, K.: Paleoecological and historical data as an important tool in ecosystem
 1256 management, *J Environ Manage*, 236, 755–768,
 1257 <https://doi.org/10.1016/j.jenvman.2019.02.002>, 2019.

1258 Somsak, L., Dlapa, P., Kollar, J., Kubicek, F., Simonovic, V., Janitor, A., Kanka, R., and Simkovic, I.:
 1259 Fire impact on the secondary pine forest and soil in the Borská niziná lowland (SW Slovakia),
 1260 *Ekologia*, 28, 52–65, https://doi.org/10.4149/ekol_2009_01_52, 2009.

1261 Statistical Office in Białystok: Rocznik Statystyczny Leśnictwa (Statistical Yearbook of Forestry),
 1262 edited by: Rozkrut, D., Główny Urząd Statystyczny, Warszawa, Białystok, 27 pp., 2023.

1263 Stockmarr, J.: Tablets with spores used in absolute pollen analysis, *Pollen et Spores*, 13, 615–
 1264 621, 1971.

1265 Sukovata, L.: Gradacje foliofagów sosny w Puszczy Noteckiej – historia, prognoza i możliwości
 1266 przeciwdziałania, *Acta Scientiarum Polonorum Silvarum Colendarum Ratio et Industria*
 1267 *Lignaria*, 21, <https://doi.org/10.17306/J.AFW.2022.3.1>, 2022.

1268 Sullivan, M. E. and Booth, R. K.: The Potential Influence of Short-term Environmental Variability
 1269 on the Composition of Testate Amoeba Communities in Sphagnum Peatlands, *Microb Ecol*, 62,
 1270 80–93, <https://doi.org/10.1007/s00248-011-9875-y>, 2011.

1271 Szczygieł, R.: Wielkoobszarowe pożary lasów w Polsce, *Bezpieczeństwo i Technika Pożarnicza*,
 1272 1, 67–78, 2012.

1273 Szmidt, A.: Ważniejsze szkodniki, in: *Biologia sosny zwyczajnej*, vol. I, edited by: Białobok, S.,
 1274 Boratyński, A., and Bugała, W., Polska Akademia Nauk - Instytut Dendrologii w Kórniku, Poznań-
 1275 Kórnik, 368–385, 1993.

1276 Szwalkiewicz, J.: Uszkodzenia drzew leśnych: poradnik leśnika, Państwowe Wydawnictwo
 1277 Rolne i Leśne, Warszawa, 2009.

1278 Tinner, W. and Hu, F. S.: Size parameters, size-class distribution and area-number relationship
 1279 of microscopic charcoal: relevance for fire reconstruction, *Holocene*, 13, 499–505, 2003.

1280 Tobolski, K.: Przewodnik do oznaczania torfów i osadów jeziornych, PWN, Warszawa, 2000.

1281 Turetsky, M. R., Donahue, W. F., and Benscoter, B. W.: Experimental drying intensifies burning
 1282 and carbon losses in a northern peatland, *Nat Commun*, 2, 514, 2011.

1283 Turner, J. and Lambert, M. J.: Soil properties as affected by *Pinus radiata* plantations, N Z J For
 1284 Sci, 18, 77–91, 1988.
 1285 Wardenaar, E. C. P.: A new hand tool for cutting peat profiles, Canadian Journal of Botany, 65,
 1286 1772–1773, <https://doi.org/10.1139/b87-243>, 1987.
 1287 Westerling, A. L.: Increasing western US forest wildfire activity: sensitivity to changes in the
 1288 timing of spring, Philosophical Transactions of the Royal Society B: Biological Sciences, 371,
 1289 20150178, <https://doi.org/10.1098/rstb.2015.0178>, 2016.
 1290 Wheeler, J., Timpany, S., Mighall, T. M., and Scott, L.: A Palaeoenvironmental Investigation of
 1291 Two Prehistoric Burnt Mound Sites in Northern Ireland, Geoarchaeology, 31, 506–529,
 1292 <https://doi.org/10.1002/gea.21552>, 2016.
 1293 Whitlock, C. and Larsen, C.: Charcoal as a fire proxy., in: Tracking environmental change using
 1294 lake sediments. Terrestrial, algal, and siliceous indicators. J. P. Smol, H. J. B. Birks, and W. M.
 1295 Last, Eds., vol. 3, Dordrecht: Kluwer, 75–97, 2001.
 1296 Wilkinson, S. L., Andersen, R., Moore, P. A., Davidson, S. J., Granath, G., and Waddington, J. M.:
 1297 Wildfire and degradation accelerate northern peatland carbon release, Nat Clim Chang, 13,
 1298 456–461, <https://doi.org/10.1038/s41558-023-01657-w>, 2023.
 1299 Yeloff, D., Charman, D., van Geel, B., and Mauquoy, D.: Reconstruction of hydrology, vegetation
 1300 and past climate change in bogs using fungal microfossils, Rev Palaeobot Palynol, 146, 102–
 1301 145, <https://doi.org/10.1016/j.revpalbo.2007.03.001>, 2007.
 1302 Zhang, H., Väliranta, M., Swindles, G. T., Aquino-López, M. A., Mullan, D., Tan, N., Amesbury,
 1303 M., Babeshko, K. V., Bao, K., Bobrov, A., Chernyshov, V., Davies, M. A., Diaconu, A.-C., Feurdean,
 1304 A., Finkelstein, S. A., Garneau, M., Guo, Z., Jones, M. C., Kay, M., Klein, E. S., Lamentowicz, M.,
 1305 Magnan, G., Marcisz, K., Mazei, N., Mazei, Y., Payne, R., Pelletier, N., Piilo, S. R., Pratte, S.,
 1306 Roland, T., Saldaev, D., Shotyk, W., Sim, T. G., Sloan, T. J., Słowiński, M., Talbot, J., Taylor, L.,
 1307 Tsyganov, A. N., Wetterich, S., Xing, W., and Zhao, Y.: Recent climate change has driven
 1308 divergent hydrological shifts in high-latitude peatlands, Nat Commun, 13, 4959,
 1309 <https://doi.org/10.1038/s41467-022-32711-4>, 2022.
 1310 Ziółkowski, J.: Szkody wyrządzone przez sówkę chojnowkę, Przegląd Leśniczy, 12, 262–268,
 1311 1924.
 1312