

Stratospheric $\delta^{13}\text{CO}_2$ observed over Japan and its governing processes ~~and potential as an air age tracer~~

Satoshi Sugawara¹, Shinji Morimoto², Shigeyuki Ishidoya³, Taku Umezawa^{4,2},
Shuji Aoki², Takakiyo Nakazawa², Sakae Toyoda⁵, Kentaro Ishijima⁶,
Daisuke Goto⁷, and Hideyuki Honda²

¹Miyagi University of Education, Sendai 980-0845, Japan

²Center for Atmospheric and Oceanic Studies, Tohoku University, Sendai 980-8578, Japan

³National Institute of Advanced Industrial Science and Technology, Tsukuba 305-8569, Japan

⁴National Institute for Environmental Studies, Tsukuba 305-8506, Japan

⁵Institute of Science Tokyo, Yokohama 226-8503, Japan

⁶Meteorological Research Institute, Japan Meteorological Agency, Tsukuba 305-0052, Japan

⁷National Institute of Polar Research, Tachikawa 190-8518, Japan

Correspondence to: Satoshi Sugawara (sugawara@staff.miyakyo-u.ac.jp)

Abstract. Due to very few reports of $\delta^{13}\text{CO}_2$ (the stable carbon isotopic ratio of CO_2) observations in the stratosphere, its variations are not well understood. In order to elucidate stratospheric $\delta^{13}\text{CO}_2$ variations and their governing mechanisms, ~~and to investigate usefulness of $\delta^{13}\text{CO}_2$ as an air age tracer,~~ we have collected stratospheric air samples using balloon-borne cryogenic samplers over Japan since 1985 and analyzed them for $\delta^{13}\text{CO}_2$. To obtain precise $\delta^{13}\text{CO}_2$ values, we incorporated the mass-independent fractionation of ^{17}O and ^{18}O in the $\delta^{13}\text{CO}_2$ calculation. $\delta^{13}\text{CO}_2$ has decreased through time in the mid-stratosphere with an average rate of change of $-0.026 \pm 0.001 \text{ ‰ yr}^{-1}$ for the period 1985–2020, consistent with that in the troposphere. However, mid-stratospheric $\delta^{13}\text{CO}_2$ values did not show a time delay compared to the tropical tropospheric values. This could be explained by the production of CO_2 by CH_4 oxidation and the gravitational separation of $^{13}\text{CO}_2$ and $^{12}\text{CO}_2$. To confirm this hypothesis, we used a two-dimensional model to simulate the stratospheric $\delta^{13}\text{CO}_2$ values while accounting for these processes. The results indicate that these two effects strongly impact the vertical distribution of $\delta^{13}\text{CO}_2$. We newly defined ‘stratospheric potential $\delta^{13}\text{C}$ ’ ($\delta^{13}\text{C}_\text{P}$) as a quasi-conservative parameter incorporating the kinetic isotope effect of CH_4 oxidation and gravitational separation, and we found that $\delta^{13}\text{C}_\text{P}$ in the mid-latitude mid-stratosphere decreases over time with an about 5-year lag relative to the tropical upper troposphere. This fact strongly supports that stratospheric $\delta^{13}\text{CO}_2$ variations are governed by the airborne production of ^{13}C -depleted CO_2 by CH_4 oxidation, the gravitational separation, and the propagation of the decreasing tropospheric $\delta^{13}\text{CO}_2$ trend into the stratosphere. used it to estimate the mean age of stratospheric air. Despite large uncertainties, the mean age derived from $\delta^{13}\text{C}_\text{P}$ was consistent with that derived from the CO_2 mole fraction, suggesting its usefulness for further investigation of stratospheric transport processes.

35 1 Introduction

The isotopic ratio of carbon in CO₂ (here, we use ‘ $\delta^{13}\text{CO}_2$ ’ to distinguish it from that in CH₄, ‘ $\delta^{13}\text{CH}_4$ ’) is thought to provide information on the carbon cycle, and observations have been carried out mainly using ground stations, ships, and aircraft in the troposphere (e.g. Keeling et al., 1995; Francey et al., 1995; Nakazawa et al., 1993; Morimoto et al., 2000). However, there have been very few reports of $\delta^{13}\text{CO}_2$ observations in the mid-stratosphere, mainly because of the difficulty in collecting air samples at such altitudes; the only available reports are balloon observations over Japan and Scandinavia (Gamo et al., 1995; Aoki et al., 2003). It is well known that tropospheric $\delta^{13}\text{CO}_2$ values have decreased with time due to anthropogenic emissions with low $\delta^{13}\text{CO}_2$ values resulting from fossil fuel consumption. Gamo et al. (1995) have reported that $\delta^{13}\text{CO}_2$ values observed in the mid-stratosphere were higher than those in the troposphere over the same period and that the average stratospheric $\delta^{13}\text{CO}_2$ value during 1986–1992 was about -7.5‰ and decreasing with time. Aoki et al. (2003) have reported that the mid-stratosphere (25–32 km altitude) $\delta^{13}\text{CO}_2$ value over Japan in 1997 was approximately -7.7‰ ; this value is consistent with the expected value extrapolated from the results of Gamo et al. (1995), suggesting that their estimated secular decreasing trend is plausible.

Anomalous ^{18}O enrichment in stratospheric CO₂ was first reported in balloon observations (Gamo et al., 1989), which spurred extended studies of the mass-independent isotopic effect (MIE) on the triple oxygen isotope system (e.g. Thiemens, 1999; Kawagucci et al., 2008). The isotopic fractionation is usually caused by the effect of mass differences between isotopologues (i.e. the mass-dependent isotopic effect). In this case, the fractionation between ^{18}O and ^{16}O is almost twice as large as that between ^{17}O and ^{16}O . However, the isotopic fractionation that does not follow this relation occurs mainly in photochemical processes. These MIE studies have clarified that the relationship between ^{17}O and ^{18}O enrichment in stratospheric CO₂ is quite different from that in the troposphere. This fact is very important for stratospheric $\delta^{13}\text{CO}_2$ measurements because mass spectrometry measures the ratios $^{45}\text{CO}_2/^{44}\text{CO}_2$ and $^{46}\text{CO}_2/^{44}\text{CO}_2$, and an assumed relationship between ^{17}O and ^{18}O enrichment is needed to calculate $\delta^{13}\text{CO}_2$. The influence of the MIE on oxygen in stratospheric $\delta^{13}\text{CO}_2$ has not been taken into account in previous studies. Although Aoki et al. (2003) have found that $\delta^{13}\text{CO}_2$ values increase with increasing altitude in the stratosphere over Japan and have suggested that the MIE on ^{17}O and ^{18}O should be considered when interpreting such a vertical distribution, no quantitative investigation of these factors has been conducted.

Stratospheric methane (CH₄) is destroyed by reactions with hydroxyl (OH), excited singlet oxygen (O(¹D)), and chlorine (Cl) radicals, and thus plays an important role in stratospheric chemistry. However, the quantitative contributions of these chemical processes to CH₄ loss and their temporal variations remain poorly understood. It is thought that $\delta^{13}\text{CH}_4$ provides useful information about CH₄ destruction in the stratosphere because characteristic isotopic fractionations occur in each reaction (e.g. Saueressig et al., 1995; Sugawara et al., 1997; Rice et al., 2003; Röckmann et al., 2011). However, only a few measurements have been made so far in the mid-stratosphere, mainly due to the difficulty of collecting air samples at such altitudes. Oxidation of CH₄ produces CO, which is eventually oxidized to CO₂. In general, the isotopic fractionations in the above reactions cause the faster destruction of $^{12}\text{CH}_4$ relative to $^{13}\text{CH}_4$, making the chemical products depleted in ^{13}C (decreased $\delta^{13}\text{C}$) while the remaining CH₄ becomes enriched in ^{13}C (increased $\delta^{13}\text{CH}_4$). Indeed, Brenninkmeijer et al. (1996) have found that CO in the lower Antarctic stratosphere is extremely depleted in ^{13}C

(decreased $\delta^{13}\text{CO}$) mainly because of the local production of CO via the reaction of CH_4 with Cl. Recently, Gromov et al. (2018) and Röckmann et al. (2024) have discussed $\delta^{13}\text{CO}$ variations associated with the $\text{CH}_4 + \text{Cl}$ reaction. From these studies, it is expected that the $\text{CH}_4\text{--CO--CO}_2$ chain reaction could be an airborne source of CO_2 with extremely low $\delta^{13}\text{C}$ values, depressing stratospheric $\delta^{13}\text{CO}_2$ values. However, no study has yet quantitatively assessed this effect.

The age of stratospheric air is the transit time of air from around the tropical tropopause to a certain location in the stratosphere, which is a powerful tool for diagnosing stratospheric transport (see Garny et al., 2024 for a review of the latest developments in air age studies). It is expected that possible changes to the Brewer–Dobson circulation induced by climate change are detectable as long-term changes in the mean age of air. For this purpose, age tracers, such as mole fractions of CO_2 and SF_6 , have been measured in air samples collected by scientific balloons and satellites (e.g. Engel et al., 2009, 2017; Stiller et al., 2012). CO_2 mole fractions observed in the mid-stratosphere over Japan have been combined with SF_6 data to provide the longest record of the mean age of air, as reported by Engel et al. (2009, 2017) and Ray et al. (2014). Engel et al. (2017) has reported that the mean age of air in the mid-stratosphere does not indicate a significant trend over the period 1975–2016, with only a slightly positive increase of $+0.15 \pm 0.18$ years decade⁻¹. However, recent models predict accelerating circulation throughout the stratosphere (e.g. Butchart, 2014), which will decrease the mean age of air. Such a decreasing trend is consistent with observational results in the lower stratosphere (Ray et al., 2014). Despite many efforts to elucidate the trend of age of air, a discrepancy remains between mid-stratosphere age trends in models and observations. One reason for this discrepancy is the large uncertainties on the observational trends. To resolve this problem, it is necessary to increase the frequency of high-altitude balloon observations and observe additional age tracers beyond CO_2 and SF_6 . Perfluorocarbons and hydrofluorocarbons with extremely long lifetimes could be alternative age tracers (Leedham Elvidge et al., 2018; Laube et al., 2025; Umezawa et al., 2025), and observations of such multiple age tracers should reduce the uncertainties on mean age of air estimates.

The gravitational separation (hereafter, ‘GS’) of major atmospheric constituents in the stratosphere was first reported from balloon observations (Ishidoya et al., 2006, 2008a, 2008b, 2013). They showed that vertical gradients of the isotopic and elemental ratios of major atmospheric components (N_2 , O_2 , and Ar) in the stratosphere are caused by molecular diffusion and depend on molecular mass. Stratospheric GS has now been observed in polar and equatorial regions (Ishidoya et al., 2018; Sugawara et al., 2018) and reproduced in numerical models (Belikov et al., 2019; Birner et al., 2020). Alongside age of air, stratospheric GS can be used to diagnose stratospheric transport processes (Ishidoya et al., 2013; Sugawara et al., 2018; Birner et al., 2020). These findings also suggest that GS could affect the mole fractions and isotopic ratios of all stratospheric constituents, although no studies have addressed the impact of GS on stratospheric $\delta^{13}\text{CO}_2$ values.

The main objective of this study is to clarify the mechanisms governing $\delta^{13}\text{CO}_2$ variations in the stratosphere and understand the long-term variations. A comprehensive understanding of the variations of stratospheric $\delta^{13}\text{CO}_2$ requires that the MIE on oxygen, CH_4 oxidation and associated isotopic fractionation, mean age of air, and GS be considered. Balloon observations provide a unique opportunity to evaluate these effects by studying a variety of atmospheric constituents using high-precision measurements. In this study, we constructed a new $\delta^{13}\text{CO}_2$ record for the stratosphere over Japan spanning the 35 years from 1985 to 2020, primarily by newly analyzing archived CO_2 samples and in part by

including previously published data (Gamo et al., 1995; Aoki et al. 2003). We then examined vertical and temporal variations in the record. Furthermore, we investigated in detail the various mechanisms affecting the vertical distribution of stratospheric $\delta^{13}\text{CO}_2$ and propose herein a new concept called 'stratospheric potential $\delta^{13}\text{C}$ '. We also investigated the possibility of estimating the age of stratospheric air from the $\delta^{13}\text{CO}_2$ record.

2 Experimental Procedures

2.1 Air sample collection

We have ~~continuously~~ collected stratospheric air samples over Japan since 1985 using balloon-borne cryogenic samplers (e.g. Nakazawa et al., 1995). A large scientific balloon equipped with a sampler was launched nearly once a year during 1985–2002 from the Sanriku Balloon Center (SBC; 39° 10' N, 141° 50' E). The frequency of observations has decreased since 2004, with the longest interval between observations being 5 years. During this period, the balloon launch site was relocated from SBC to the Taiki Aerospace Research Field in Hokkaido (TARF; 42° 30' N 143° 26' E) in 2008. Balloon observations conducted so far over Japan are summarized in Table S1 of the Supplement. The cryogenic air sampler consists mainly of a liquid helium dewar, stainless steel bottles, motor-driven valves, and a control unit (Honda et al., 1996). Liquid helium was used as a refrigerant for collecting stratospheric air cryogenically under low atmospheric pressures, and 20–30 L STP of stratospheric air was collected in each bottle, depending on the altitude ~~and valve operation~~. Air sampling was performed typically at 11 different altitudes, spaced about 2 km apart, between 14 and 35 km altitude. Occasionally, anomalously low CO_2 mole fractions were observed, probably due to sample deterioration in the bottle. In such cases, both CO_2 mole fraction and $\delta^{13}\text{CO}_2$ data were excluded from the data record. In 2020, the CO_2 mole fraction and $\delta^{13}\text{CO}_2$ value at 28.8 and 30.9 km altitude were not available due to water contamination of the air samples.

2.2 Analytical methods of mole fractions and isotopic ratios

Collected air samples were distributed to several institutes in Japan for analysis of the mole fractions and isotopic compositions of various gases. The CO_2 mole fraction was measured using a nondispersive infrared gas analyzer at Tohoku University (TU) with an analytical precision of $<0.02 \mu\text{mol mol}^{-1}$; the CO_2 measurement protocol has been described in detail in previous studies (Nakazawa et al., 1995; Aoki et al., 2003; Sugawara et al., 2018). N_2O and CH_4 mole fractions were measured using gas chromatographs equipped with an electron capture detector and flame ionization detector, respectively, at TU. The N_2O mole fraction was used both for mass spectrometry analyses to determine $\delta^{13}\text{CO}_2$ and to investigate the MIE between ^{17}O and ^{18}O in CO_2 , as described below. The analytical precisions for the N_2O and CH_4 mole fractions were $0.3 \text{ nmol mol}^{-1}$ and 3 nmol mol^{-1} , respectively (Nakazawa et al., 2002; Aoki et al., 2003; Ishijima et al., 2007).

The analytical procedures for $\delta^{13}\text{CO}_2$ in air samples collected after 1988 have already been described in previous studies (Nakazawa et al., 1993, 1997a; Morimoto et al., 2000, ~~2006~~), and is briefly summarized here. An aliquot of each air sample (about 550 mL STP) was introduced into a CO_2 extraction system, and the pure extracted CO_2 was divided and sealed in small glass tubes; some tubes were archived for future study. The carbon and oxygen isotopic ratios ($\delta^{13}\text{C}$ and $\delta^{18}\text{O}$) of the sample CO_2 were measured using a mass spectrometer (Finnigan MAT- δS) installed at TU against

an in-house reference CO₂ calibrated to Vienna Pee Dee Belemnite (VPDB). The analytical precision of $\delta^{13}\text{CO}_2$ was ± 0.02 ‰ (Morimoto et al., 2000). Air samples collected in 1985, 1986, 1988, and 1989 were analyzed for $\delta^{13}\text{CO}_2$ using a mass spectrometer (Finnigan MAT250) with a reproducibility of less than ± 0.02 ‰ at the University of Tokyo (Gamo et al., 1989, 1995).

In this study, we modified the calculation of isotopic ratios to take into account the stratospheric MIE and GS. Hereafter, the isotopic ratios of ^{13}C to ^{12}C , ^{17}O and ^{18}O to ^{16}O , and $^{45}\text{CO}_2$ and $^{46}\text{CO}_2$ to $^{44}\text{CO}_2$ are expressed as $^{13}R = n(^{13}\text{C})/n(^{12}\text{C})$, $^{17}R = n(^{17}\text{O})/n(^{16}\text{O})$, $^{18}R = n(^{18}\text{O})/n(^{16}\text{O})$, $^{45}R = n(^{45}\text{CO}_2)/n(^{44}\text{CO}_2)$, and $^{46}R = n(^{46}\text{CO}_2)/n(^{44}\text{CO}_2)$, respectively, where n is the amount of each isotopologue. $\delta^{13}\text{CO}_2$ is defined as:

$$\delta^{13}\text{CO}_2 = \left(\frac{^{13}R}{^{13}R_{\text{VPDB}}} - 1 \right) \times 10^3 \text{ (‰)}, \quad (1)$$

where $^{13}R_{\text{VPDB}}$ is the known ^{13}R value of VPDB (Coplen and Shrestha, 2016). The isotopic ratios ^{45}R and ^{46}R are expressed as (Santrock et al., 1985):

$$^{45}R = ^{13}R + 2 \cdot ^{17}R, \quad (2a)$$

$$^{46}R = 2 \cdot ^{18}R + 2 \cdot ^{13}R \cdot ^{17}R + (^{17}R)^2. \quad (2b)$$

To calculate $\delta^{13}\text{C}$ and $\delta^{18}\text{O}$ values from ^{45}R and ^{46}R , the relationship between ^{17}O and ^{18}O should be known, because $^{45}\text{CO}_2$ contains $^{12}\text{C}^{17}\text{O}^{16}\text{O}$, whereas $^{46}\text{CO}_2$ contains both $^{13}\text{C}^{17}\text{O}^{16}\text{O}$ and $^{12}\text{C}^{17}\text{O}_2$. The relationship between ^{17}R and ^{18}R can be expressed as (e.g. Meijer and Li, 1998) :

$$\frac{^{17}R}{^{17}R_{\text{VSMOW}}} = \left(\frac{^{18}R}{^{18}R_{\text{VSMOW}}} \right)^{\beta}, \quad (2c)$$

where $^{17}R_{\text{VSMOW}}$ and $^{18}R_{\text{VSMOW}}$ are the known ratios of VSMOW (Coplen and Shrestha, 2016). In measurements of tropospheric $\delta^{13}\text{C}$ and $\delta^{18}\text{O}$, the mass-dependent relationship between ^{17}O and ^{18}O can be assumed, i.e. $\beta = 0.528$ (Meijer and Li, 1998; Assonov and Brenninkmeijer, 2003). However, the MIE between ^{17}O and ^{18}O is non-negligible in the stratosphere (Gamo et al., 1995; Thiemens et al., 1999). Therefore, the $\delta^{17}\text{O}$ value is essential for accurately determining the $\delta^{13}\text{C}$ value in the stratosphere. Our air samples were also measured for triple oxygen isotopes, as reported by Kawagucci et al. (2008). However, $\delta^{17}\text{O}$ measurements were not performed for all of our stratospheric samples. In such cases, the following method was applied to obtain $\delta^{17}\text{O}$ values. The values of ^{17}R and ^{18}R calculated from $\delta^{17}\text{O}$ and $\delta^{18}\text{O}$ observed by Kawagucci et al. (2008) were fitted to Eq. (2c), and the average value of β was calculated to be 1.7 ± 0.2 using the least squares method. For samples for which $\delta^{17}\text{O}$ was not analyzed, we used Eq. (2c) with this β value to calculate $\delta^{13}\text{C}$. By substituting Eqs. (2a) and (2c) into (2b), we obtained the following equation:

$$3(^{17}R)^2 - 2 \cdot ^{45}R \cdot ^{17}R - 2\gamma(^{17}R)^{\frac{1}{\beta}} + ^{46}R = 0, \quad (3a)$$

where, γ is defined as,

$$\gamma = ^{18}R_{\text{VSMOW}}(^{17}R_{\text{VSMOW}})^{-\frac{1}{\beta}}. \quad (3b)$$

Eq. (3a) was solved for ^{17}R numerically using the bisection method and the measured ^{45}R and ^{46}R values, and then ^{13}R and $\delta^{13}\text{C}$ were calculated by Eqs. (2a) and (1), respectively. We note that GS occurs in CO₂ molecules with different mass numbers (44, 45, 46). Therefore, it is not accurate to correct $\delta^{13}\text{C}$ by assuming a mass number difference of uniquely $\Delta m = 1$. To obtain the correct $\delta^{13}\text{C}$ of stratospheric CO₂, it is necessary to first apply the GS correction to the measured values

of ^{45}R and ^{46}R , and then to calculate $\delta^{13}C$ using the method described above. The method used to correct ^{45}R and ^{46}R for GS will be discussed in Sect. 3.3.

The MIE calculation described above was not considered in Gamo et al. (1995) and Aoki et al. (2003), and it is therefore likely that their $\delta^{13}C$ values are not correct, especially at higher altitudes. $\delta^{17}O$ and $\delta^{18}O$ in CO_2 increase rapidly with increasing altitude in the stratosphere (Gamo et al., 1995; Kawagucci et al., 2008), and the deviations from mass-dependent values also increase with altitude, meaning that the overestimation of $\delta^{13}C$ also increases with altitude. The influence of the oxygen MIE on $\delta^{13}C$ is almost zero near the tropopause, but at an altitude of about 35 km over Japan, it is approximately 0.6 ‰. Therefore, this effect significantly impacts the vertical distributions of $\delta^{13}C$. We reanalyzed some of the CO_2 samples used by Gamo et al. (1995) and Aoki et al. (2003) to determine the differences between their results (not accounting for the oxygen MIE) and ours to allow us to correct their data and add them to our long-term record. The MIE on $\delta^{17}O$ and $\delta^{18}O$ occurs through photochemical reactions in O_2 , O_3 , and CO_2 (e.g. Thiemens et al., 1999), which are relatively tightly correlated with the mole fraction of N_2O , which is also destroyed through photochemical processes. Figure 1 shows the relationships between the N_2O mole fraction and $\delta^{17}O$ and $\delta^{18}O$ in CO_2 in the stratosphere over Japan. These results show that $\delta^{17}O$ and $\delta^{18}O$ values calculated using $\beta = 1.7$ are consistent with the values observed by Kawagucci et al. (2008).

While cryogenically extracting CO_2 from the air sample, N_2O was simultaneously trapped with the CO_2 . Because N_2O and CO_2 have the same mass number, we must correct for N_2O to obtain the true $\delta^{13}C$ value. The correction method was described in detail by Nakazawa et al. (1993), and we summarize it here. The ionization efficiency of N_2O was measured in advance, and the measured $\delta^{13}C$ value was corrected using the N_2O/CO_2 mole fraction ratio of the air sample. In the troposphere, the N_2O/CO_2 mole fraction ratio does not change significantly, and the N_2O correction is almost constant (approximately +0.2 ‰) (Nakazawa et al., 1997a). However, because the N_2O mole fraction decreases rapidly with increasing altitude in the stratosphere (e.g. Toyoda et al., 2001), the N_2O/CO_2 mole fraction ratio decreases with altitude, and the magnitude of the N_2O correction also varies vertically. Therefore, the N_2O correction also strongly influences the observed vertical distribution of $\delta^{13}C$ in the stratosphere.

Stratospheric air samples were also measured for $\delta^{13}CH_4$ using a gas chromatograph-combustion-isotope ratio spectrometer developed at the National Institute of Polar Research (NIPR), Japan. The method has been described in detail by Morimoto et al. (2006) and is briefly summarized here. Air sample was flushed by pure helium and passed through a trap containing HayeSep D at a temperature of -120 °C to concentrate CH_4 in the sample. Each air sample was flushed by pure helium, and the contained CH_4 was trapped in a HayeSep D trap at -120 °C. Then, the CH_4 was released and transferred into a PoraBOND Q cryofocusing trap at -197 °C. The CH_4 released from the trap when brought to room temperature was separated from the residual components using a PoraPLOT Q capillary column and combusted into CO_2 in a furnace with a Pt-Ni-Cu catalyst at 940 °C. The converted CO_2 was analyzed using a continuous-flow mass spectrometer (Finnigan MAT252). The precision was reported to be 0.06 ‰ (Morimoto et al., 2006). Before 1996, $\delta^{13}CH_4$ measurements were performed using off-line oxidation equipment (Sugawara et al., 1997), in which CH_4 in the sample was converted to CO_2 using a catalyst (0.5% Pt supported on alumina pellets) at 750 °C, and the pure CO_2 sample thusly prepared was analyzed using the mass spectrometer installed at TU in the same way as for $\delta^{13}CO_2$, except using a micro-

volume inlet system. The overall analytical precision was 0.07 ‰ (Sugawara et al., 1997). To produce a high-quality data record, we needed to verify that these two methods produced the same results. Therefore, several sets of stratospheric air samples were analyzed using both methods, and the $\delta^{13}\text{CH}_4$ results differed by about 0.85 ‰. To correct for this difference, the off-line measurement results were adjusted to match the on-line measurements. In this study, $\delta^{13}\text{CH}_4$ value is reported relative to VPDB. The international comparison of $\delta^{13}\text{CH}_4$ measurements described in detail by Umezawa et al. (2018) revealed a difference of 0.2 ‰ between NIPR and the Institute of Arctic and Alpine Research (INSTAAR) results. Therefore, all $\delta^{13}\text{CH}_4$ values observed by National Oceanic and Atmospheric Administration [Global Monitoring Laboratory](#) ~~Earth System Research Laboratories~~ (NOAA/[GMLESRL](#)) and INSTAAR were shifted to match the NIPR scale.

The method used to analyze GS is described in Appendix A.

3 Results and Discussion

3.1 Vertical profiles of CO_2 mole fraction and $\delta^{13}\text{CO}_2$

Figure 2 shows vertical profiles of the CO_2 mole fraction and $\delta^{13}\text{CO}_2$ over Japan throughout the study period. CO_2 mole fractions and $\delta^{13}\text{CO}_2$ values have increased and decreased, respectively, from 1985 to 2020. Vertical $\delta^{13}\text{CO}_2$ profiles observed by Gamo et al. (1995) in 1985 and 1986 are included in this figure after MIE correction. Previous studies reported that the CO_2 mole fraction decreases with increasing altitude from the tropopause to around 20–25 km, and then it becomes almost constant at higher altitudes (Nakazawa et al., 1995, 2002). Our CO_2 mole fraction data show a similar vertical distribution during the observation period. Because our $\delta^{13}\text{CO}_2$ data are more scattered with respect to altitude than the CO_2 mole fraction, we calculated detrended vertical $\delta^{13}\text{CO}_2$ profiles as follows. First, the long-term trend of the tropospheric $\delta^{13}\text{CO}_2$ at Mauna Loa, Hawaii (hereafter, MLO) ([Michel White et al., 2024](#)) was calculated as a representative tropospheric trend, and all our stratospheric $\delta^{13}\text{CO}_2$ observation data were shifted up or down based on that trend to produce values corresponding to August 2016 for comparison with the model results described below. Then, the $\delta^{13}\text{CO}_2$ values thusly obtained for the entire study period were grouped into eleven 2-km vertical bins, and the average value for each bin was calculated (Fig. 2c). The results showed that $\delta^{13}\text{CO}_2$ values increased with increasing altitude from near the tropopause to around 25 km and then decreased slightly above that altitude. Gamo et al. (1989) originally reported that $\delta^{13}\text{CO}_2$ values increased by approximately 0.4 ‰ from the tropopause to 25 km altitude in September 1985, whereas our recalculated results showed an increase of about 0.2 ‰ (Fig. 2b). The average increase shown in Fig. 2c was even smaller, only about 0.1 ‰. This difference between the vertical profiles originally reported by Gamo et al. (1989) and our present results is due to our incorporation of the MIE on ^{17}O and ^{18}O (Sect. 2.2).

Below an altitude of ~17 km, $\delta^{13}\text{CO}_2$ values are quite variable, often being irregularly high or low depending on the observation year, which is exhibited by the large error bars in Figure 2c. Based on detailed aircraft observations of $\delta^{13}\text{CO}_2$ variations in the troposphere over Japan, Nakazawa et al. (1993) have reported that the seasonal cycle of $\delta^{13}\text{CO}_2$ between 8 km altitude and the tropopause show a minimum around May and a maximum around September, with a peak-to-peak amplitude of 0.36 ‰. Indeed, our balloon observations were conducted in either spring (late May to early June) or summer (late July to early September), and the observed $\delta^{13}\text{CO}_2$ values at lower altitudes tended to be lower in spring

and higher in summer. Accordingly, we attribute the large $\delta^{13}\text{CO}_2$ variations below an altitude of 17 km to the upper tropospheric air itself, or stratospheric air directly influenced by the troposphere.

Our data clearly reveal a secular decrease in mid-stratospheric $\delta^{13}\text{CO}_2$ values. To compare the temporal variations of $\delta^{13}\text{CO}_2$ in the mid-stratosphere with those in the troposphere, the $\delta^{13}\text{CO}_2$ values obtained by averaging mid-stratospheric data above 24 km altitude ($\lesssim 30$ hPa) from each year and monthly average ~~the continuous~~ MLO data are shown in Figure 3. When comparing our data with the NOAA/GML ESRL and INSTAAR data at MLO (Michel White et al., 2024), any possible offset of $\delta^{13}\text{CO}_2$ measurements should be taken into account. The inter-comparison results of the WMO/IAEA Round Robin Comparison Experiment (<https://gml.noaa.gov/ccgg/wmorr/>; accessed 20 February 2025) show that our values are approximately 0.07 ‰ lower than INSTAAR values. In this study, we directly compared $\delta^{13}\text{CO}_2$ data at Ny-Ålesund, Svalbard observed by Goto et al. (2017) with the INSTAAR data at the Zeppelin Observatory (ZEP) in Ny-Ålesund (~~White et al., 2024~~) because we used the same $\delta^{13}\text{CO}_2$ measurement system and standard scale as Goto et al. (2017). Monthly average $\delta^{13}\text{CO}_2$ values at Ny-Ålesund from both studies were calculated by applying a curve-fitting procedure (Nakazawa et al., 1997b) over the years 1996–2014 compared. As a result, we estimated the difference between this study and INSTAAR data to be insignificant (-0.005 ± 0.067 ‰) and did not apply any further correction to our $\delta^{13}\text{CO}_2$ data. ~~Annual average $\delta^{13}\text{CO}_2$ values at MLO were calculated by applying the same curve fitting procedure as described above.~~ The average rate of change of $\delta^{13}\text{CO}_2$ in the mid-stratosphere was calculated to be -0.026 ± 0.001 ‰ yr⁻¹ for the period 1985–2020, consistent with the average rate of change at MLO from 1990 to 2022–2024 (-0.027 ± 0.001 ‰ yr⁻¹) despite the slightly different time periods. Tropospheric $\delta^{13}\text{CO}_2$ values are known to decrease over time due to the emission of CO_2 with low $\delta^{13}\text{CO}_2$ by anthropogenic fossil fuel consumption, and our results show that a similar decreasing trend is observable in the stratosphere. It is also well known that mid-stratospheric air over the mid-latitudes is ‘aged’, mainly because of the slow transport of air from the tropical tropopause to the mid-latitude mid-stratosphere. Indeed, the age of mid-stratospheric air estimated from CO_2 mole fractions was approximately 4.4 years older on average than that of tropical tropospheric air (see Sect. 3.5). Nevertheless, the $\delta^{13}\text{CO}_2$ values observed in the mid-stratosphere over Japan did not seem to show any significant time delay compared with the observed values in the tropical troposphere. Although systematic observations of $\delta^{13}\text{CO}_2$ have not yet been performed in the tropical upper troposphere where stratospheric air originates, Assonov et al. (2010) have found from CARIBIC aircraft observations that $\delta^{13}\text{CO}_2$ variations in the tropical upper troposphere are close to those at MLO. Therefore, if we assume no difference between the $\delta^{13}\text{CO}_2$ values at MLO and those in the tropical upper troposphere, the lack of a delay between the values in the mid-stratosphere over Japan and those at MLO clearly contradicts the concept of the age of air. Simply following the logic of the age of air, we would expect the decrease of stratospheric $\delta^{13}\text{CO}_2$ to lag behind the tropospheric trend, such that the $\delta^{13}\text{CO}_2$ value at any given time should be higher in the mid-stratosphere than in the troposphere. This discrepancy suggests that $\delta^{13}\text{CO}_2$ is not a conserved quantity in the stratosphere and is instead modified not only by air transport but also by other mechanisms. In the following sections, we discuss possible mechanisms in detail.

3.2 Airborne CO_2 source from CH_4 oxidation

In the stratosphere, CH_4 is destroyed by reactions with OH, $\text{O}(^1\text{D})$, and Cl, which produce intermediate products such as

285 CH₃O₂ and CH₂O. These products are immediately converted to CO because of their short lifetimes. However, CO is also destroyed by reaction with OH. Therefore, the chemical budget of CO in the stratosphere is expressed as (Minschwaner et al., 2010):

$$\frac{d[\text{CO}]}{dt} = [\text{CH}_4](k_{\text{CH}_4+\text{OH}}[\text{OH}] + k_{\text{CH}_4+\text{Cl}}[\text{Cl}] + k_{\text{CH}_4+\text{O}}[\text{O}(^1\text{D})]) + J_{\text{CO}_2}[\text{CO}_2] - k_{\text{CO}+\text{OH}}[\text{CO}][\text{OH}], \quad (4)$$

where $k_{\text{CH}_4+\text{OH}}$, $k_{\text{CH}_4+\text{Cl}}$, $k_{\text{CH}_4+\text{O}}$, and $k_{\text{CO}+\text{OH}}$ are the reaction rates for the respective chemical reactions, and J_{CO_2} is the rate of photodissociation of CO₂. The last term on the right-hand side of this equation represents the oxidation of CO to CO₂. Although the amount of CO₂ produced this way is small compared to the stratospheric abundance, it cannot be ignored as an airborne source, especially in terms of isotopic signatures. The timescales for the photochemical loss and production of CO in the mid-latitude mid-stratosphere (~35 km altitude) are about 30 days (Minschwaner et al., 2010), quite short compared to the timescale of the stratospheric mean meridional circulation (more than several years). If we assume that the chemical budget of CO is in a steady state and that CO₂ photodissociation is negligibly small below the mid-stratosphere, the rate of CH₄ loss should equal the rate of CO₂ production. Indeed, to estimate the age of stratospheric air from the CO₂ mole fraction, a small amount of CO₂ produced by the chemical destruction of CH₄ was taken into account (e.g., Engel et al., 2002; Sugawara et al., 2018). To correct for this effect, each observed CO₂ mole fraction was adjusted using the CH₄ mole fraction measured from the corresponding air sample prior to age calculation (see Appendix C). The adjustment increases with increasing altitude and becomes larger than 1 μmol mol⁻¹ at the highest altitudes. As with the CO₂ mole fraction, ¹³C can be corrected by assuming a steady state ¹³CO budget in which ¹³C is added to ¹³CO₂ from ¹³CH₄ through a series of oxidation reactions from CH₄ to CO₂. Indeed, it is well known that isotopic fractionation occurs during CH₄ oxidation (Saueressig et al., 1995; Sugawara et al., 1997; Rice et al., 2003; Röckmann et al., 2011).

Figures 4a, b shows the vertical CH₄ mole fraction and δ¹³CH₄ profiles observed over Japan, respectively. A common feature of both profiles is their rapid change with altitude, although δ¹³CH₄ values increase, whereas the mole fractions decrease with increasing altitude. Such vertical distributions have been attributed to large kinetic isotopic effects (KIEs) associated with the chemical destruction of CH₄ in the stratosphere (Sugawara et al., 1997; Rice et al., 2003; Röckmann et al., 2011). KIEs on CH₄ have also been studied using numerical models (Saueressig et al., 2001; Wang et al., 2002; McCarthy et al., 2003). In previous studies, the apparent fractionation factor was derived from the Rayleigh distillation model by assuming that the chemical destruction of CH₄ occurs in a closed system (Sugawara et al., 1997; Rice et al., 2003). In general, the Rayleigh distillation model for the CH₄ mole fraction and δ¹³CH₄ is expressed as:

$$\delta^{13}\text{CH}_4 = (\delta^{13}\text{CH}_{4_0} + 1)\mu^{\alpha-1} - 1, \quad (5)$$

where δ¹³CH_{4_0}, μ, and α are the isotopic ratio before CH₄ is destroyed, the ratio of mole fractions (μ = [CH₄]/[CH₄]₀), and the apparent fractionation factor, respectively. The apparent fractionation factor can be estimated by applying Eq. (5) to observed data. We note that [CH₄]₀ and δ¹³CH_{4_0} change with time and should be taken here as the values in the tropical upper troposphere at the time when air entered into the stratosphere through the tropical tropopause layer (TTL). Therefore, the tropical upper tropospheric records of CH₄ and δ¹³CH₄ were used to give [CH₄]₀ and δ¹³CH_{4_0} values going back in time based on the mean age estimated from CO₂ mole fractions (see Appendix C). Details of the tropical upper tropospheric records of CH₄ and δ¹³CH₄ are described in Sect. 3.5. Figure 4c shows that the relationship between ln{(δ¹³CH₄ + 1)/(δ¹³CH_{4_0} + 1)} and ln([CH₄]/[CH₄]₀) can be approximated by linear functions if we divided the data

between the lower (<24 km) and mid-stratosphere (>24 km), with the upper layer showing larger isotopic fractionation effects. The apparent fractionation factors calculated using the least-squares method were 0.9889 ± 0.0003 and 0.9866 ± 0.0007 for the lower and mid-stratosphere, respectively. We attributed these differences in apparent fractionation factors to differences in the relative contributions of the CH₄ reactions with OH, O(¹D), or Cl over the air transport pathway, and/or the effect of air mixing (Röckmann et al., 2011).

Eq. (5) expresses the relationship between the mole fraction and isotopic ratio of the remaining CH₄. Similarly, focusing on the CH₄ lost via the CH₄–CO–CO₂ chain reaction, the relationship between the CH₄ mole fraction and isotopic ratio of lost CH₄ (hereafter, $\delta^{13}\text{CH}_4_{\text{L}}$ is derived from Eq. (5) as:

$$\delta^{13}\text{CH}_4_{\text{L}} = (\delta^{13}\text{CH}_4_0 + 1)^{\frac{1-\mu^\alpha}{1-\mu}} - 1. \quad (6)$$

Here, the removed CH₄ includes the total amount of CH₄ loss integrated over the air transport pathway. Based on this equation, we calculated $\delta^{13}\text{CH}_4_{\text{L}}$ for each year's data from the observed CH₄ mole fractions and apparent fractionation factors by grouping them into altitudes below and above 24 km. Typical $\delta^{13}\text{CH}_4_{\text{L}}$ values were about –57, –56, and –55 ‰ around altitudes of 20, 30, and 35 km, respectively. The stratospheric $\delta^{13}\text{CO}_2$ values were corrected for airborne sources simply by assuming that carbon with the isotopic ratio of $\delta^{13}\text{CH}_4_{\text{L}}$ was added to ambient CO₂. We note that the amount of CO₂ added by CH₄ oxidation was estimated from the difference between the CH₄ mole fraction observed in the mid-latitude stratosphere and that estimated at the tropical upper troposphere; this does not represent chemical production at the observed location, but apparent production, because CH₄ oxidation occurs along the transport pathway of the air mass and is accompanied by air mixing. Consequently, the depression of CH₄ integrated over the air transport pathway is observed at a certain location in the stratosphere. Because we assumed simple Rayleigh distillation model, the $\delta^{13}\text{CH}_4_{\text{L}}$ estimated here is also apparent value in a similar sense as described above. Accordingly, our assumption described above was a first-order approximation to correct $\delta^{13}\text{CO}_2$ for airborne CO₂ sources.

As an example, we corrected the vertical distributions of the CO₂ mole fraction and $\delta^{13}\text{CO}_2$ (Fig. 5a) and compared with the CH₄ mole fraction and $\delta^{13}\text{CH}_4$ (Fig. 5b) observed on 22 August 2010. The results indicated that the $\delta^{13}\text{CO}_2$ value decreased by 0.14 ‰ and the CO₂ mole fraction increased by approximately 1.1 $\mu\text{mol mol}^{-1}$ at the highest altitude (~34 km) when corrected for airborne CO₂ sources. Therefore, such a correction for the airborne CO₂ source with low $\delta^{13}\text{CO}_2$ values produced by CH₄ oxidation is essential for understanding CO₂ mole fraction and $\delta^{13}\text{CO}_2$ variations in the mid-stratosphere. This effect is particularly strong on $\delta^{13}\text{CO}_2$ and significantly impacted the shape of the vertical distribution.

We note that the transport of CO from the troposphere into the stratosphere and its oxidation in the lower stratosphere are not considered in the above discussion. Because the photochemical timescales of CO are longer in the lower stratosphere than in the mid-stratosphere, tropospheric CO could be a stratospheric CO₂ source associated with troposphere–stratosphere exchange and may be important in the lower stratospheric CO budget. Observational results on the stable carbon isotopic ratio of CO, $\delta^{13}\text{CO}$, have been reported not only for the troposphere (Brenninkmeijer, 1993; Röckmann and Brenninkmeijer, 1997; Röckmann et al., 1999, 2002; Kato et al., 2000) but also for the lower stratosphere (Brenninkmeijer et al., 1996; Röckmann et al., 2024). In particular, Brenninkmeijer et al. (1996) have found that extremely low $\delta^{13}\text{CO}$ values in the southern high-latitude lower stratosphere are accompanied by increasing $\delta^{13}\text{CH}_4$ values and have

suggested that the large KIE of CH₄ destruction by Cl plays an important role. The local production of CO by CH₄ destruction depleted ¹³C in stratospheric CO is consistent with the above discussion if CO is rapidly oxidized to CO₂ depleted in ¹³C. However, tropospheric CO could be an additional airborne CO₂ source if it is transported into the lower stratosphere and oxidized to CO₂. Previous studies have reported that δ¹³CO values in the free troposphere are around -30 ‰ to -25 ‰ (Brenninkmeijer, 1993; Röckmann and Brenninkmeijer, 1997; Röckmann et al., 1999, 2002; Kato et al., 2000), and the KIE on carbon in the reaction CO + OH depends on atmospheric pressure (Stevens and Wagner, 1989; Bergamaschi et al., 2000). Its fractionation factor is 0.994 (expressed as the ratio of rate constants, ¹³k/¹²k) at 1013 hPa, but increases to about 1.000 at 400 hPa and further to 1.003–1.005 above the tropopause. Therefore, CO₂ produced from the reaction CO + OH should be slightly enriched in ¹³C in the stratosphere, contrary to CO₂ produced in the lower troposphere. Accordingly, tropospheric CO could be an airborne CO₂ source with δ¹³C values lower than around -25 ‰ to -20 ‰ in the lower stratosphere. Assuming that tropospheric air containing 250 nmol mol⁻¹ CO with δ¹³CO = -30 ‰ is transported to the stratosphere where 200 nmol mol⁻¹ CO is lost by reaction with OH, δ¹³CO₂ values should decrease by only about 0.01 ‰ when 0.2 μmol mol⁻¹ CO₂ with δ¹³CO₂ = -28 ‰ is added to 390 μmol mol⁻¹ CO₂ with δ¹³CO₂ = -8.5 ‰. Therefore, this effect would be negligibly small compared with the influence of CH₄ oxidation. Unfortunately, we could not further evaluate the effect of tropospheric CO from our observations, and further study including measurements of δ¹³CO is needed.

3.3 Gravitational separation of δ¹³CO₂

The standardized GS is defined as <δ_G>, which is normalized by the mass number differences of corresponding molecules (see Appendix A). With respect to δ¹³CO₂, the upward decrease due to GS is equal to <δ_G> for ¹³C¹⁶O₂ and ¹²C¹⁷O¹⁶O (Δ*m* = 1), and is 2 times larger for ¹²C¹⁸O¹⁶O, ¹³C¹⁷O¹⁶O, and ¹²C¹⁷O₂ (Δ*m* = 2). Therefore, GS equal to and twice the magnitude of <δ_G> can be considered to act on δ⁴⁵CO₂ and δ⁴⁶CO₂, respectively:

$$\Delta_G(\delta^{45}\text{CO}_2) = \langle \delta_G \rangle - \langle \delta_G \rangle_0, \quad (7a)$$

$$\Delta_G(\delta^{46}\text{CO}_2) = 2(\langle \delta_G \rangle - \langle \delta_G \rangle_0). \quad (7b)$$

Here, Δ_G(*x*) and <δ_G>₀ represent the change in isotopic value *x* due to GS and the value of <δ_G> before GS occurs (i.e. corresponding to the relevant value in the upper troposphere), respectively. ~~represents the change in isotopic value *x* due to GS.~~ Because <δ_G> - <δ_G>₀ is negative in the stratosphere (see Appendix A), Δ_G(δ⁴⁵CO₂) and Δ_G(δ⁴⁶CO₂) are also negative. When δ¹³CO₂ was corrected for GS, Eqs. (7a) and (7b) were first applied to δ⁴⁵CO₂ and δ⁴⁶CO₂, respectively, and then δ¹³CO₂ was determined using the MIE algorithm described in Sect. 2.2. As shown in Figure 5c, |Δ_G(δ¹³CO₂)| was slightly smaller than (about 82% of) |Δ_G(δ⁴⁵CO₂)| in the mid-stratosphere, mainly because of ¹²C¹⁷O¹⁶O enrichment due to the MIE in the stratosphere.

The same method can be applied to the mole fraction of a specific molecule as (Ishidoya et al., 2006):

$$\Delta_G(C) = C_0 \times (m - m_{\text{air}}) \times (\langle \delta_G \rangle - \langle \delta_G \rangle_0). \quad (8)$$

Here, *C*₀ and *C* denote the mole fractions of the molecule before and after GS, respectively, and *m* and *m*_{air} are the respective mass numbers of the molecule and air. The maximum depression of the CO₂ mole fraction amounts to about 0.6 μmol mol⁻¹ at the highest altitude, assuming *C*₀ = 400 μmol mol⁻¹ and <δ_G> - <δ_G>₀ = -100 per meg (10⁻⁶). As an

example, the vertical profile of the CO₂ mole fraction obtained by correcting the 22 August 2010 observations for GS is shown in Figure 5a. Compared to the profiles corrected for airborne CO₂ sources, GS correction increases the CO₂ mole fraction by 0.4 μmol mol⁻¹ and the δ¹³CO₂ by approximately 0.06 ‰ at 34 km altitude. Although the effect of GS on the CO₂ mole fraction is small, that on δ¹³CO₂ is non-negligible, significantly influencing the vertical profile along with CH₄ oxidation. In this regard, the mean age estimated from the CO₂ mole fraction without GS correction has an older age bias that increases with increasing altitude. The age bias is negligibly small (< 1 month) in the lower stratosphere but not negligible in the mid-stratosphere (> 2 months at 35 km altitude). Therefore, we applied the GS correction to the CO₂ mole fraction to estimate the CO₂ age, as described in Appendix C.

Correcting for both CH₄ oxidation and GS, δ¹³CO₂ values increase with altitude and become nearly constant above ~25 km; they are clearly anticorrelated with the CO₂ mole fraction. Assuming a linear relationship between the CO₂ mole fraction and δ¹³CO₂ (Fig. 5d), the slope calculated by least-squares is $-0.005 \pm 0.003 \text{ ‰} (\mu\text{mol mol}^{-1})^{-1}$ for the raw observational data and $-0.023 \pm 0.002 \text{ ‰} (\mu\text{mol mol}^{-1})^{-1}$ for the corrected data. This rate of change for the corrected data is less negative than approximately $-0.05 \text{ ‰} (\mu\text{mol mol}^{-1})^{-1}$ for the seasonal cycles in the troposphere (Nakazawa et al., 1993) and is near the rate of change for their secular trends (Morimoto et al., 2000; Goto et al., 2017). Generally, because of the Brewer–Dobson circulation, air at higher altitudes is older. Therefore, we consider that this rate of change for the corrected data basically reflects different ages of air.

3.4 Two-dimensional model of stratospheric δ¹³CO₂

The mechanisms governing the vertical δ¹³CO₂ profile in the stratosphere are schematically shown in Figure 6, including the influence of the age of air as well as the effects of CH₄ oxidation and GS discussed in Sects. 3.2 and 3.3. Tropospheric δ¹³CO₂ values have been decreasing through time due to the combustion of fossil fuels. If it is assumed that ¹²CO₂ and ¹³CO₂ δ¹³CO₂ has have no sinks or sources in the stratosphere, the air that intrudes from the tropical upper troposphere is slowly transported to the mid-latitude stratosphere by the Brewer–Dobson circulation with conserving δ¹³CO₂ value. Therefore, based on the concept of age of air, it is expected that δ¹³CO₂ values should also decrease with time in the stratosphere after a certain lag time. Accordingly, δ¹³CO₂ values should be higher in the mid-stratosphere than in the troposphere (dotted line in Fig. 6). In contrast, GS decreases δ¹³CO₂ values at higher altitudes because ¹³C¹⁶O₂ is heavier than ¹²C¹⁶O₂ (dashed line in Fig. 6). In addition, ¹³C-depleted CO₂ produced by CH₄ oxidation further decreases δ¹³CO₂ values at high altitudes (solid line in Fig. 6). The observed stratospheric vertical δ¹³CO₂ profile should therefore be formed by a combination of these effects.

To verify this hypothesis, we performed numerical simulations using a two-dimensional model of the middle atmosphere (SOCRATES) developed by the National Center for Atmospheric Research (NCAR; Huang et al., 1998; Park et al., 1999; Khosravi et al., 2002). Details of the model calculations are described in Appendix B. The monthly average meridional δ¹³CO₂ distribution calculated by SOCRATES for August 2016 is shown in Figure 7, which includes the effects of CH₄ oxidation and GS. The effect of the CO₂ production associated with the KIE on CH₄ destruction is included in a simplified manner (see Appendix B). The δ¹³CO₂ values decrease with increasing altitude up to about 14 km and then increase up to about 20 km in the mid-latitudes of the northern hemisphere during summer. The distribution of δ¹³CO₂

from the troposphere to the lower stratosphere should therefore be closely related to the propagation of its seasonal cycle in the troposphere. $\delta^{13}\text{CO}_2$ values reach a maximum at around 20 km and then gradually decrease. At high latitudes in the southern (winter) hemisphere, the vertical decrease of $\delta^{13}\text{CO}_2$ is significant, suggesting that the effects of CH_4 oxidation and GS are enhanced by the descending upper atmosphere.

To investigate the vertical $\delta^{13}\text{CO}_2$ profile in detail, we compared this model with our observations in Figure 2c. The modeled $\delta^{13}\text{CO}_2$ profile calculated without accounting for CH_4 oxidation and GS increased with increasing altitude, and it was 0.14 ‰ higher at altitudes around 35 km than near the tropopause. Because the average rate of change of the long-term $\delta^{13}\text{CO}_2$ record at MLO is $-0.0270.026$ ‰ yr^{-1} for the period 1990–2022, the lag time at 35 km (0.14 ‰ divided by $0.0270.026$ ‰ yr^{-1}) should be approximately $5.25.4$ years, nearly consistent with the calculated mean age of air (see Appendix C). If the effect of GS is further taken into account, the $\delta^{13}\text{CO}_2$ decreased by approximately 0.07 ‰ at 35 km. The most significant impact on the modeled vertical profile was the effect of CH_4 oxidation, which imparted a decrease of 0.26 ‰ at around 35 km. The vertical profile calculated including all effects exhibited a maximum at an altitude of about 20 km and then decreased monotonically at greater altitudes, mainly because of the effect of CH_4 oxidation. However, the observed $\delta^{13}\text{CO}_2$ profile increased to about 25 km altitude, indicating that the model results clearly overestimated the ^{13}C depletion at higher altitudes. We note, though, that this model calculation included the seasonal cycle of tropospheric $\delta^{13}\text{CO}_2$ and nearly reproduced the vertical distribution observed at 14–20 km altitude, which is mainly due to the upward propagation of the seasonal cycle from the upper troposphere to the lower stratosphere. Therefore, the difference between the observed and modeled results above 20 km was likely due mainly to an overestimation of the effect of CH_4 oxidation.

One possible reason for this difference was an overestimation of CH_4 loss at high altitudes. The observed CH_4 mole fraction at ~35 km altitude ranged between about 500 and 900 nmol mol^{-1} (Fig. 4), but the model results indicated a monthly average of about 600 nmol mol^{-1} for August, which was lower than the observed average value (see Fig. B1c in Appendix B). This discrepancy may be related to the fact that we weakened the mass stream function to reproduce a realistic age of air (see Appendix B). Another reason may be that the model simulation set the KIE on CH_4 destruction in a simplified manner, with the apparent fractionation factors set uniformly at 0.9889 and 0.9866 for the lower and mid-stratosphere, respectively. In reality, the apparent fractionation factor for CH_4 oxidation varies with altitude and latitude, and it is determined not only by a complex process that depends on the paths of air masses, but also by the chemical reactions that occur along the pathway (e.g. Röckmann et al., 2011). In this study, the KIEs on the $\text{CH}_4\text{--CO--CO}_2$ reaction processes were not calculated explicitly, but rather in a simplified manner, which may have resulted in an overestimation of the effect on $\delta^{13}\text{CO}_2$. However, the present model simulation was able to prove our hypothesis that three factors – CH_4 oxidation, GS, and air age – are essential to determining vertical $\delta^{13}\text{CO}_2$ profiles.

3.5 Stratospheric potential $\delta^{13}\text{C}$

From the above discussion, we considered that the total amount of ^{13}C in both CO_2 and CH_4 , $\delta^{13}\text{C}_T$, was conserved. We defined $\delta^{13}\text{C}_T$ as:

$$\delta^{13}\text{C}_T = \frac{n(\text{CO}_2) \times \delta^{13}\text{CO}_2 + n(\text{CH}_4) \times \delta^{13}\text{CH}_4}{n(\text{CO}_2) + n(\text{CH}_4)}, \quad (9)$$

465 which is quasi-conservative with respect to the KIEs associated with CH₄ oxidation and consequent CO₂ production in the stratosphere. Furthermore, as mentioned above, the effect of GS cannot be ignored in the stratosphere. Taking this into account, we defined the stratospheric potential $\delta^{13}\text{C}$, $\delta^{13}\text{C}_\text{P}$, by correcting $\delta^{13}\text{C}_\text{T}$ for GS as:

$$\delta^{13}\text{C}_\text{P} = \delta^{13}\text{C}_\text{T} - \Delta_\text{G}(\delta^{13}\text{CO}_2), \quad (10)$$

where $\Delta_\text{G}(\delta^{13}\text{CO}_2)$ denotes the GS correction for $\delta^{13}\text{CO}_2$. Normally, $\Delta_\text{G}(\delta^{13}\text{CO}_2)$ gives a negative value, which means that it has a positive effect on $\delta^{13}\text{C}_\text{P}$. This equation does not include the effect of GS on $\delta^{13}\text{CH}_4$, but that contribution to $\delta^{13}\text{C}_\text{P}$ is negligibly small (about 10^{-4} ‰). Eqs. (9) and (10) were applied to the observed results to calculate stratospheric $\delta^{13}\text{C}_\text{T}$ and $\delta^{13}\text{C}_\text{P}$ profiles. For some air samples without $\delta^{13}\text{CH}_4$ measurements, values were estimated from the CH₄ mole fraction using a linear function fitted to the log-log plot of the observed data shown in Figure 4. The $\langle\delta_\text{G}\rangle$ values were also partially complemented by applying the average vertical profile. The average vertical profile of $\delta^{13}\text{C}_\text{P}$ thus calculated is shown in Figure 8, alongside the CO₂ mole fraction. The data plotted in this figure were detrended and normalized to August 2016. The CO₂ mole fractions were also corrected for CH₄ oxidation and GS, although the magnitude of these corrections was relatively small. $\delta^{13}\text{C}_\text{P}$ increased with increasing altitude from the tropopause to about 25 km, then was almost constant with increasing altitude. Unlike $\delta^{13}\text{CO}_2$ (Fig. 2c), $\delta^{13}\text{C}_\text{P}$ was inversely correlated with the CO₂ mole fraction. Figure 9 shows the temporal variations of the averaged $\delta^{13}\text{CO}_2$, $\delta^{13}\text{C}_\text{T}$, and $\delta^{13}\text{C}_\text{P}$ values above 24 km altitude. $\delta^{13}\text{C}_\text{T}$ and $\delta^{13}\text{C}_\text{P}$ changed almost in parallel with $\delta^{13}\text{CO}_2$, showing a similar decreasing trend through time. The average difference from $\delta^{13}\text{CO}_2$ was -0.079 ± 0.025 ‰ for $\delta^{13}\text{C}_\text{T}$ and -0.034 ± 0.027 ‰ for $\delta^{13}\text{C}_\text{P}$.

~~If $\delta^{13}\text{C}_\text{P}$ is truly a conserved quantity in the stratosphere, it should decrease over time with a time lag relative to the variation in the tropical upper troposphere. To estimate the age of stratospheric air based on $\delta^{13}\text{C}_\text{P}$ observations in the stratosphere, $\delta^{13}\text{C}_\text{P}$ at the tropical upper troposphere was required.~~ However, there are no long-term data records of $\delta^{13}\text{C}$ values in CO₂ and CH₄ in the tropical upper troposphere. Therefore, we hypothetically synthesized a $\delta^{13}\text{C}_\text{P}$ record in the tropical upper troposphere based on surface data observed at MLO and in the equatorial Pacific region by INSTAAR (Michel White et al., 20242025; Michel et al., 2023). In our previous study, we employed CO₂ mole fraction data obtained in the tropical upper troposphere using the Automatic Air Sampling Equipment in the Comprehensive Observation Network for TRace gases by AirLiner (CONTRAIL) program (Machida et al., 2008; Sawa et al., 2008; Matsueda et al., 2015) to estimate the mean age of stratospheric air (Sugawara et al., 2018). A similar method was used in this study. We first estimated the average seasonal cycle of $\delta^{13}\text{CO}_2$ in the tropical upper troposphere from the observed seasonal cycle of CO₂ mole fraction, assuming that the correlation between the seasonal cycles of CO₂ mole fraction and $\delta^{13}\text{CO}_2$ in the upper troposphere was approximately -0.05 ‰ ($\mu\text{mol mol}^{-1}$)⁻¹ (Nakazawa et al., 1993). The long-term $\delta^{13}\text{CO}_2$ trend was calculated from the observation data at MLO and then adjusted to match the observations in the equatorial Pacific region. The average seasonal cycles were then added to the long-term $\delta^{13}\text{CO}_2$ trend estimated in the equatorial Pacific region. The difference between $\delta^{13}\text{CO}_2$ values at the surface and those in the upper troposphere in the equatorial region is currently unknown. However, Sugawara et al. (2018) have reported that the CO₂ and SF₆ ages in the TTL are 0.5–0.6 years, consistent with the SF₆ age of 0–1.5 years in the TTL based on Michelson Interferometer for Passive Atmospheric Sounding (Stiller et al., 2008). Taking this into account, we assumed the difference between surface and upper troposphere $\delta^{13}\text{CO}_2$ values in the equatorial region to be equivalent to 0.5 years. Because systematic measurements of CH₄ mole

fraction and $\delta^{13}\text{CH}_4$ in the upper troposphere were performed in the CONTRAIL program (Umezawa et al., 2012), the MLO data obtained by INSTAAR were adjusted to fit the CONTRAIL data in the equatorial upper troposphere to produce long-term records of CH_4 mole fraction and $\delta^{13}\text{CH}_4$ in the equatorial upper troposphere. Because the seasonal cycle of $\delta^{13}\text{CH}_4$ in the equatorial upper troposphere is not clear (Umezawa et al., 2012), the seasonal cycle was ignored in the calculation of the upper tropospheric $\delta^{13}\text{C}_\text{P}$. Since GS, i.e. $\langle \delta_\text{G} \rangle - \langle \delta_\text{G} \rangle_0$, should be zero in the equatorial upper troposphere, tropospheric $\delta^{13}\text{C}_\text{P} = \delta^{13}\text{C}_\text{T}$.

As seen in Figure 9, $\delta^{13}\text{CO}_2$ values did not differ significantly between the troposphere and the mid-stratosphere. However, the $\delta^{13}\text{C}_\text{P}$ values calculated from observed values in the mid-stratosphere were, on average, about 0.14 ± 0.03 ‰ higher than those calculated for the tropical troposphere. This means that $\delta^{13}\text{C}_\text{P}$ is conservative in the stratosphere and that the decreasing tropospheric $\delta^{13}\text{C}_\text{P}$ trend through time propagates into the stratosphere with a time delay. Roughly calculated, this lag time is about 5 years, consistent with the age of air estimated from CO_2 mole fractions (Appendix C) and the model calculation. If the mid-stratospheric $\delta^{13}\text{C}_\text{P}$ values were shifted by -5 years, they were in good agreement with the tropospheric $\delta^{13}\text{C}_\text{P}$ trend (Fig. 9).

It is thus possible to estimate the mean age of air using $\delta^{13}\text{C}_\text{P}$, which can serve as an additional air age tracer. Therefore, we estimated the mean age of air not only from the CO_2 mole fraction but also from $\delta^{13}\text{C}_\text{P}$ using a convolution method (Ray et al., 2017; Sugawara et al., 2018) (described in Appendix C). Details of the age estimation method are described in Appendix C. It was necessary to consider that both the uncertainties on individual mole fraction or isotopic ratio measurements and those on the tropospheric reference record propagated to the uncertainties on individual age estimates (e.g. Leedham-Elvidge et al., 2018). Regarding our CO_2 ages, Umezawa et al. (2024) have estimated a total uncertainty of 0.72 years, and we estimated the uncertainties on $\delta^{13}\text{C}_\text{P}$ ages in a similar manner: by adding normal pseudo-random numbers to all measured values and calculating $\delta^{13}\text{C}_\text{P}$ values using Eqs. (9) and (10). The uncertainty on individual $\delta^{13}\text{C}_\text{P}$ values was almost the same as that on $\delta^{13}\text{C}$, ± 0.02 ‰. In contrast, the uncertainty on the tropospheric reference record for $\delta^{13}\text{C}_\text{P}$ was calculated to be ± 0.03 ‰, which was the standard deviation when the curve fitting was applied to the MLO $\delta^{13}\text{C}$ data used as the tropospheric reference record. Taking into account all these uncertainties and the tropospheric trend of -0.027 ‰ yr^{-1} , the The total uncertainty on individual $\delta^{13}\text{C}_\text{P}$ ages was estimated to be ± 1.9 years. This rather large uncertainty means that $\delta^{13}\text{C}_\text{P}$, with its smaller tropospheric secular change compared to other age tracers, was somewhat disadvantageous for age estimations. Because the seasonal cycle of $\delta^{13}\text{C}_\text{P}$ is significantly large in the troposphere, its signal propagates into the TTL and then into the stratosphere via the slow air transport. Simultaneously, atmospheric mixing broadens the width of the age spectrum, attenuating seasonal amplitudes with increasing altitude. Because some of the $\delta^{13}\text{C}_\text{P}$ values in the lower stratosphere showed high variability, with values lower than the tropospheric reference record, the convolution method could not provide reasonable age estimations for those data. We attributed these irregularities and low values to the large seasonal variations in the upper troposphere and the stratosphere–troposphere air exchange in the lower stratosphere. Therefore, only mid-stratospheric (>24 km altitude) data were taken into account for age estimations, and the average values of the mean age were calculated.

The results are shown in Figure 10, along with the mean age calculated from the CO_2 mole fraction using the same method (see Appendix C). The average $\delta^{13}\text{C}_\text{P}$ and CO_2 ages were 5.5 ± 1.6 and 4.4 ± 0.6 years, respectively. Because

the uncertainty of the $\delta^{13}\text{C}_\text{P}$ age was large, no significant difference was apparent between the two values. ~~The ratio of moments and its influence on age estimates have been examined in previous studies (e.g. Hauck et al., 2019; Nguyen et al., 2021). Here, as a sensitivity test, the mean age calculation was repeated for different ratios of moments ranging from 0.05 to 2.00 years. As a result, the mean ages derived from $\delta^{13}\text{C}_\text{P}$ were found to be within the observational uncertainties on the $\delta^{13}\text{C}_\text{P}$ age.~~ To examine the long-term trend of mean age, a linear function was fitted to both the CO_2 and $\delta^{13}\text{C}_\text{P}$ age data using the least squares method. A slightly positive trend (0.04 ± 0.01 years yr^{-1}) was observed for the CO_2 age, but no specific trend was observed for the $\delta^{13}\text{C}_\text{P}$ age. It is important to note that our data were unevenly distributed over time, with sparse observations in recent years and more frequent observations before 2007. This made it difficult to clarify the exact 35-year trend from our data alone. ~~However, the result that $\delta^{13}\text{C}_\text{P}$ age and CO_2 age are roughly consistent implies that $\delta^{13}\text{C}_\text{P}$ age could be used in addition to SF_6 , halocarbons, etc., for better multi-component age estimations (Umezawa et al., 2024). At present, the $\delta^{13}\text{C}_\text{P}$ age is subject to larger uncertainties, making unsuitable for use as an additional constraint for age estimation. However, considering that the average $\delta^{13}\text{C}_\text{P}$ age was estimated to be 5.5 ± 1.6 years, the concept of stratospheric $\delta^{13}\text{C}_\text{P}$ itself would be valid.~~

4 Conclusions

Previous studies on $\delta^{13}\text{CO}_2$ have mainly focused on observations in the troposphere and on elucidating the global CO_2 budget based on monitoring programs. However, little research has been performed on $\delta^{13}\text{CO}_2$ in the stratosphere, and the mechanisms of its distribution and variations are not fully understood. This study presented a comprehensive analysis of stratospheric $\delta^{13}\text{CO}_2$ obtained from balloon observations over Japan during the period 1985–2020. The following four factors were found to be important for understanding the variations of $\delta^{13}\text{CO}_2$ in the stratosphere. (1) Appropriate corrections for the MIE on ^{17}O and ^{18}O in isotopic analyses are essential. However, even after applying this correction, we found that the average values of $\delta^{13}\text{CO}_2$ in the northern mid-latitude mid-stratosphere and the tropical troposphere were almost identical, despite the secular decreasing $\delta^{13}\text{CO}_2$ trend and the expected time lag (age of air). We attributed this strange agreement to the other three factors: (2) airborne production of ^{13}C -depleted CO_2 by the oxidation of CH_4 in the stratosphere, (3) GS of $^{12}\text{CO}_2$ and $^{13}\text{CO}_2$ in the stratosphere, and (4) propagation of the decreasing tropospheric $\delta^{13}\text{CO}_2$ trend into the stratosphere. Based on these considerations, we introduced ‘stratospheric potential $\delta^{13}\text{C}$ ’ ($\delta^{13}\text{C}_\text{P}$) as a new concept and inspected $\delta^{13}\text{C}_\text{P}$ in terms of the age of air ~~in detail. Mean age of air was estimated by using $\delta^{13}\text{C}_\text{P}$ value with the convolution method.~~ The average $\delta^{13}\text{C}_\text{P}$ age was calculated to be 5.5 ± 1.6 years for the period of 1985–2020. ~~Although~~ Because the $\delta^{13}\text{C}_\text{P}$ age has larger uncertainties than the CO_2 age at present, it is difficult to refine the mean age estimation. However, $\delta^{13}\text{C}_\text{P}$ in the mid-latitude mid-stratosphere decreased over time with a time delay and it was found to be quasi-conservative in the stratosphere. our results showed that stratospheric $\delta^{13}\text{C}_\text{P}$ can serve as an additional age tracer alongside CO_2 and SF_6 mole fractions, and it should prove a useful tool for investigating stratospheric transport processes.

$\delta^{13}\text{C}_\text{P}$ age is slightly larger than CO_2 age (4.4 ± 0.6 years) by about 1.1 years on average. In this regard, Engel et al. (2009) reported that CO_2 age and SF_6 age observed in the mid-stratosphere at mid-latitudes during the period 1975–2005 ranged from 4.7 to 5.3 years. Compared to their reported ages, our $\delta^{13}\text{C}_\text{P}$ age and CO_2 age tend to be slightly larger and smaller, respectively. It is likely that $\delta^{13}\text{C}_\text{P}$ age is overestimated because the effect of methane oxidation was

underestimated in the calculation of $\delta^{13}\text{C}_\text{T}$. The discrepancy between the two CO_2 ages would be due to differences in the age estimation methods, the tropospheric reference records, and the ratios of moments used in the two studies. Our GS correction for the CO_2 mole fraction also has the effect of lowering CO_2 age. Therefore, it is necessary to perform age estimations by analyzing all observational data using the same method in future study. It is also needed to reduce uncertainty in age estimation by performing multi-component age estimations using additional age tracers, such as halocarbons and $\delta^{13}\text{C}_\text{p}$.

The observation of numerous stratospheric air constituents, as in this study, requires the collection of a large amount of stratospheric air with a high-quality method and multi-component gas analyses of each air sample. GS of atmospheric constituents in the stratosphere was first revealed by our previous balloon observations, and this knowledge is indispensable for a better understanding of the variations of stratospheric $\delta^{13}\text{CO}_2$. The quality of air sample sampling is particularly important for observing GS in the mid-stratosphere, because even slight separations due to molecular diffusion during air sampling could prevent GS observations. At present, the only method capable of such sampling is our cryogenic air sampler.

The 2-D model reproduced the basic structure of stratospheric $\delta^{13}\text{CO}_2$ and elucidated the mechanisms governing $\delta^{13}\text{CO}_2$ behavior. However, our numerical model simulations remained insufficient because the mean age of stratospheric air could not be reproduced adequately without arbitrarily tuning the model. Accordingly, our model overestimated the effect of airborne CO_2 production via CH_4 oxidation because the reaction process was treated in a very coarse manner. To improve upon this model, it will be necessary to incorporate KIEs into all reactions related to stratospheric carbon. Although a two-dimensional model was used in this proof-of-concept study, a three-dimensional model is desirable for more realistic simulations in the future.

Appendix A: Gravitational separation of major atmospheric components

The gravitational separation (GS) of atmospheric components in the stratosphere was first reported from our balloon observations in Japan (Ishidoya et al., 2006, 2008a, 2013), in which the isotopic and elemental ratios of major atmospheric compositions, such as $\delta^{15}\text{N}$ in N_2 , $\delta^{18}\text{O}$ in O_2 , and $\delta(\text{Ar}/\text{N}_2)$, were measured by mass spectrometry at the National Institute of Advanced Industrial Science and Technology (AIST) (e.g. Ishidoya et al., 2006, 2008a; Sugawara et al., 2018). Technical aspects of our mass spectrometry analyses are described in detail in Ishidoya and Murayama (2014). In this study, we used $\delta^{15}\text{N}$, $\delta^{18}\text{O}$, and $\delta(\text{Ar}/\text{N}_2)$ to evaluate GS, which are defined as:

$$\delta^{15}\text{N} = \frac{[n(^{15}\text{N}^{14}\text{N})/n(^{14}\text{N}^{14}\text{N})]_{\text{sp}}}{[n(^{15}\text{N}^{14}\text{N})/n(^{14}\text{N}^{14}\text{N})]_{\text{st}}} - 1, \quad (\text{A1a})$$

$$\delta^{18}\text{O} = \frac{[n(^{18}\text{O}^{16}\text{O})/n(^{16}\text{O}^{16}\text{O})]_{\text{sp}}}{[n(^{18}\text{O}^{16}\text{O})/n(^{16}\text{O}^{16}\text{O})]_{\text{st}}} - 1, \quad (\text{A1b})$$

and

$$\delta(\text{Ar}/\text{N}_2) = \frac{[n(^{40}\text{Ar})/n(^{14}\text{N}^{14}\text{N})]_{\text{sp}}}{[n(^{40}\text{Ar})/n(^{14}\text{N}^{14}\text{N})]_{\text{st}}} - 1, \quad (\text{A1c})$$

where ‘sp’ and ‘st’ denote the sample and standard gases, respectively. The 1σ reproducibilities of our $\delta^{15}\text{N}$, $\delta^{18}\text{O}$, and $\delta(\text{Ar}/\text{N}_2)$ measurements were ± 2 , ± 5 , and ± 7 per meg, respectively, which was sufficient to detect GS in the stratosphere. Ishidoya et al. (2013) have concluded that vertical variations of the isotopic ratios of major atmospheric components are dominated by differences in molecular mass, based on mass-dependent relationships among related molecules such as $\delta^{15}\text{N}$ in N_2 , $\delta^{18}\text{O}$ in O_2 , and the Ar/N_2 ratio. Such GS in the stratosphere is known to be proportional to the mass difference, as would be expected for pure molecular diffusion, even though eddy diffusion obviously far exceeds molecular diffusion in the stratosphere. Therefore, GS can be expressed as follows:

$$\delta - \delta_0 = \Delta m \times (\langle \delta_G \rangle - \langle \delta_G \rangle_0), \quad (\text{A2})$$

where Δm is the mass number difference, the suffix “0” refers to the value before GS occurs (i.e. corresponding to the relevant value in the upper troposphere), and $\langle \delta_G \rangle$ is the average of δ values normalized to $\Delta m = 1$ as reported by Ishidoya et al. (2013) and Sugawara et al. (2018). $\langle \delta_G \rangle$ is defined by:

$$\langle \delta_G \rangle = \frac{1}{3} \left[\delta^{15}\text{N} + \delta^{18}\text{O}/2 + \delta(\text{Ar}/\text{N}_2)/12 \right]. \quad (\text{A3})$$

Figure A1 shows vertical profiles of $\langle \delta_G \rangle$ obtained from balloon observations over Japan (Ishidoya et al., 2013). The value of $\langle \delta_G \rangle$ decreases gradually with increasing altitude. By fitting a linear function to the vertical profiles, the average difference of $\langle \delta_G \rangle$ between the lowermost and uppermost altitudes was found to be -66 ± 17 per meg. Here, it is important to mention the relationship between the GS of $\delta^{18}\text{O}$ and photochemical processes. As mentioned in Sect. 2.2., in the stratosphere, O_3 and CO_2 are significantly enriched in ^{17}O and ^{18}O by MIEs associated with photochemical reaction processes. Because stratospheric O_2 molecules are the source of the ^{17}O and ^{18}O enrichment, $\delta^{17}\text{O}$ and $\delta^{18}\text{O}$ values of O_2 are thought to be lower in the stratosphere than in the troposphere due to photochemical processes. This assumption is crucial not only for the Dole–Morita effect, but also for the ^{17}O budget of tropospheric O_2 (Bender et al., 1994; Luz et al., 1999; Luz and Barkan, 2011; Ishidoya et al., 2025). However, $\delta^{18}\text{O}$ values of stratospheric O_2 measured in our balloon observations show a very large decrease, i.e. by approximately -130 per meg, at around 35 km that is almost entirely dominated by GS. This decrease is probably also due in part to photochemical effects, but their contribution should be negligible, amounting to only a few per meg (Ishidoya et al., 2025).

Appendix B: Two-dimensional model

We used a two-dimensional model of the middle atmosphere (SOCRATES) developed by the National Center for Atmospheric Research (NCAR) (Huang et al., 1998; Park et al., 1999; Khosravi et al., 2002). The advantage of using this model is that we have already calculated $^{13}\text{C}^{16}\text{O}_2$ and $^{12}\text{C}^{16}\text{O}_2$ and examined stratospheric GS in our previous studies (Ishidoya et al., 2013; Sugawara et al., 2018). Therefore, we give only a brief description of the model calculation here. To reproduce GS, the molecular diffusion flux must be calculated. The vertical component of the molecular diffusion flux ($F_{m_{i,z}}$) is given by:

$$F_{m_{i,z}} = -D_{m_i} \left\{ \frac{\partial n_i}{\partial z} + \frac{m_i g}{RT} n_i + (1 + \alpha_{T_i}) \frac{\partial (\ln T)}{\partial z} n_i \right\}, \quad (\text{B1})$$

where n_i , D_{m_i} , m_i , and α_{T_i} are the number density, molecular diffusion coefficient, molecular mass, and thermal diffusion factor of atmospheric constituent i , respectively, and g , R , and T are the gravitational acceleration, gas constant and temperature, respectively (Banks and Kockarts, 1973). However, because the thermal diffusion flux is not important in

this case, we ignored it in the model calculations. Because it is cumbersome to include all CO₂ isotopologues in the model calculations, only ¹²C¹⁶O₂ and ¹³C¹⁶O₂ were calculated independently in the model, and δ¹³CO₂ was approximated using the respective mole fractions of $n(^{13}\text{C}^{16}\text{O}_2)$ and $n(^{12}\text{C}^{16}\text{O}_2)$ as:

$$\delta^{13}\text{CO}_2 = \left(\frac{1}{^{13}\text{R}_{\text{VPDB}}} \frac{n(^{13}\text{C}^{16}\text{O}_2)}{n(^{12}\text{C}^{16}\text{O}_2)} - 1 \right) . \quad (\text{B2})$$

Because δ¹³CO₂ has a large seasonal cycle in the troposphere, we used NOAA/~~GML and INSTAARE~~^{SRL} data to give latitude-dependent seasonal cycles as boundary conditions at the model surface. In addition, a secular decrease of δ¹³CO₂ in the troposphere was given by the MLO data (~~Michel White~~^{et al., 2024}²⁰²⁵). SOCRATES originally included a series of carbon reactions starting with CH₄ oxidation. Model calculations were repeated with and without GS, the secular trend and seasonal cycle of tropospheric δ¹³CO₂, and airborne CO₂ production, and comparisons were made between them (Fig. 2c). The chemical budget of CO₂ in SOCRATES is calculated as:

$$\frac{d[\text{CO}_2]}{dt} = k_{\text{CO}+\text{OH}}[\text{CO}][\text{OH}] + k_{\text{CO}+\text{O}(^3\text{P})}[M][\text{CO}][\text{O}(^3\text{P})] - J_{\text{CO}_2}[\text{CO}_2] , \quad (\text{B3})$$

where $k_{\text{CO}+\text{OH}}$ and $k_{\text{CO}+\text{O}(^3\text{P})}$ are the reaction rates of their respective chemical reactions, and M is the third body which carries off excess energy in a termolecular reaction. Because CO₂ photodissociation is important only above the mesosphere (e.g. Garcia et al., 2014), it was ignored in this study. KIEs in the CH₄–CO–CO₂ chain reaction were not included explicitly in these simulations but were rather treated in a coarse manner as follows. Simulations were performed with and without the chemical production of CO₂. Taking the CO₂ mole fractions simulated with (‘wP’) and without chemical production (‘nP’) to be $n(\text{CO}_2)_{\text{wP}}$ and $n(\text{CO}_2)_{\text{nP}}$, respectively, the CO₂ mole fraction difference between the two simulations, $n(\text{CO}_2)_{\text{wP}} - n(\text{CO}_2)_{\text{nP}}$, was calculated as the apparent CO₂ production in the stratosphere. The apparent CO₂ production is distinct from the local production calculated in Eq. (B3) because it is an apparent value influenced by the accumulated chemical processes along the pathway of the air mass, including transport and mixing. A typical value of the apparent CO₂ production was simulated to be about 1.5 μmol mol⁻¹ at 35 km altitude in the mid-latitudes. Similarly, the δ¹³CO₂ value simulated excluding chemical CO₂ production was expressed by δ¹³CO_{2,nP}. After both these simulations, the δ¹³CO₂ value including airborne CO₂ sources from the CH₄ destruction, δ¹³CO_{2,wP}, was calculated as:

$$\delta^{13}\text{CO}_{2,\text{wP}} = \frac{\delta^{13}\text{CO}_{2,\text{nP}} \times n(\text{CO}_2)_{\text{nP}} + \delta^{13}\text{CH}_{4,\text{L}} \times [n(\text{CO}_2)_{\text{wP}} - n(\text{CO}_2)_{\text{nP}}]}{n(\text{CO}_2)_{\text{wP}}} . \quad (\text{B4})$$

In this equation, δ¹³CH_{4,L} was calculated using Eq. (6) assuming apparent fractionation factors of 0.9889 and 0.9866 at lower (<24 km) and upper (>24 km) altitudes, respectively (see Sect. 3.2). Note that δ¹³CH_{4,L} values were estimated from the apparent fractionation factors by assuming Rayleigh distillation relationships between vertical profiles of CH₄ mole fraction and δ¹³CH₄. Therefore, these apparent fractionation factors differed from fractionation factors sensu stricto and were influenced by the accumulated KIEs along the pathway of the air mass, as with the apparent CO₂ production described above. Eq. (B4) means that δ¹³CO₂ was simulated by combining the apparent fractionation factors estimated from observations with the apparent CO₂ production simulated by the model.

A virtual clock tracer was used to calculate the mean age of air. However, previous research has shown that the speed of the Brewer–Dobson circulation in SOCRATES is fast, leading to an underestimation of age of air. Therefore, similar to Sugawara et al. (2018), we reduced the mass stream function to approximate a realistic mean age, which also

improved the reproduction of GS. The model results of GS reproduced well the almost linear decrease with increasing altitude above the tropopause in the observational results (Fig. A1). The model calculations were carried out over the 25 years from 1995 to 2020. The monthly average meridional distribution of the mean air age, GS, and CH₄ mole fraction calculated by SOCRATES for August 2016 is shown in Figure B1.

Appendix C: ~~CO₂ mole fraction and age~~ Age calculations

We estimated the mean age of air from $\delta^{13}\text{C}_\text{P}$ using the same method that was previously applied to the CO₂ age estimation (Ray et al., 2017; Sugawara et al., 2018). The calculation of CO₂ age based on our balloon observations has been partly reported in previous studies (Engel et al., 2002; Ishidoya et al., 2013; Umezawa et al., 2025). The CO₂ ages estimated using air samples collected from 1995 to 2010 were published as supplementary data in Ishidoya et al. (2013). However, the method of age estimation was subsequently updated in Sugawara et al. (2018). In this study, we further improved the estimation method by correcting the $\delta^{13}\text{C}_\text{P}$ and CO₂ mole fraction data for GS, creating a new 35-year record. We estimated the mean age of air using the convolution method (Ray et al., 2017; Leedham Elvidge et al., 2018; Sugawara et al., 2018). This method has been described in detail by Sugawara et al. (2018), so only a brief explanation is given here. Hypothetical age spectra were used in the convolution method to estimate the mean age (Vaugh and Hall, 2002). Expected temporal variations in the age tracer in the stratosphere, $x(\Gamma, t)$, were calculated by convolution of the tropospheric reference curve, $x_0(t)$, and the age spectrum, $G(\Gamma, t)$:

$$x(\Gamma, t) = \int_{t-T_B}^t x_0(t') G(\Gamma, t - t') dt', \quad (C1)$$

where T_B is the integration time interval. T_B should theoretically be ∞ , but we truncated it to 20 years for the calculations. Actual age spectra, $G(\Gamma, t)$ are usually unknown. Therefore, we used the inverse Gaussian distribution (Vaugh and Hall, 2002) as:

$$G(\Gamma, t) = \left(\frac{\Gamma^3}{4\pi\Delta^2 t^3} \right)^{1/2} \exp \left[\frac{-\Gamma(t-\Gamma)^2}{4\Delta^2 t} \right]. \quad (C2)$$

Here, Δ denotes the width of the age spectrum, and it was parameterized using the mean age (Γ), i.e. the ratio of moments, Δ^2/Γ . This value has usually been assumed to be 0.7 years, as suggested by Hall and Plumb (1994) based on results from a General Circulation Model calculation, and it was used to estimate SF₆- and CO₂-derived mean ages in the northern mid- and high-latitude stratosphere (Engel et al., 2002). Recently, however, Fritsch et al. (2020) have reported that a value of 1.25 years is better for estimating ages from the SF₆ mole fraction. Therefore, we used 1.25 years for the ratio of moments in this study. After calculating the convolutions, the mean age was determined by substituting the observed values, x_{obs} , into the inverse function, $\Gamma(x, t)$. The convolutions are shown in Figure C1 along with the calculated $\delta^{13}\text{C}_\text{P}$ values.

It should be noted that uncertainties of individual mole fraction or isotopic ratio measurements, as well as of the tropospheric reference record, lead to uncertainties of individual age estimates (e.g. Leedham Elvidge et al., 2018). Umezawa et al. (2025) have estimated a total uncertainty of 0.72 years for our CO₂ ages. Similarly, we estimated the uncertainty for $\delta^{13}\text{C}_\text{P}$ ages by adding normal pseudo-random numbers to all measured values and then calculating $\delta^{13}\text{C}_\text{P}$ values using Eqs. (9) and (10). The uncertainty of the individual $\delta^{13}\text{C}_\text{P}$ values was nearly identical to that of $\delta^{13}\text{C}$, ± 0.02 ‰.

On the other hand, the uncertainty of the tropospheric reference record for $\delta^{13}\text{C}_\text{P}$ was calculated to be $\pm 0.03\text{‰}$. This value is in close agreement with the standard deviation obtained by applying curve fitting to the MLO $\delta^{13}\text{C}$ data used as the tropospheric reference record. Taking into account all these uncertainties and the tropospheric trend of -0.026‰ yr^{-1} , the total uncertainty of the individual $\delta^{13}\text{C}_\text{P}$ ages was estimated to be ± 1.9 years. The ratio of moments and its influence on age estimates have been examined in previous studies (e.g. Hauck et al., 2019; Nguyen et al., 2021). In this study, the mean age calculation was repeated as a sensitivity test for different ratios of moments ranging from 0.05 to 2.00 years. As a result, the mean ages derived from $\delta^{13}\text{C}_\text{P}$ were found to be within the observational uncertainties of the $\delta^{13}\text{C}_\text{P}$ age. The $\delta^{13}\text{C}_\text{P}$ age is larger than the CO_2 age (4.4 ± 0.6 years) by about 1.1 years on average. In this regard, $\delta^{13}\text{C}_\text{T}$ was calculated from the observed CH_4 mole fraction and its $\delta^{13}\text{C}$, assuming a closed system (Eq. 9). However, actual chemical processes do not occur in a closed system, and atmospheric mixing processes always result in apparent fractionation being smaller than true fractionation (Rahn et al. 1998; Kaiser et al. 2002; Toyoda et al., 2018). In this study, the isotopic effect of CH_4 oxidation was calculated based on the apparent fractionation factor. This would result in an underestimation of the CH_4 oxidation effect in Eq. 9 and an overestimation of the $\delta^{13}\text{C}_\text{P}$ age. To solve this problem, it is necessary to explicitly incorporate the isotope effect of CH_4 into the model, which will be a future challenge.

Corresponding to the secular decrease of $\delta^{13}\text{CO}_2$, an increase in CO_2 mole fraction was also clearly observed in the mid-stratosphere. To compare the temporal variations of the CO_2 mole fraction in the mid-stratosphere with those in the troposphere, the average values above 24 km altitude were calculated for each year, shown in Figure C1-C2 alongside the monthly average data obtained by NOAA/GML ESRL at MLO. The results of the 6th WMO/IAEA Round Robin Comparison Experiment showed that our CO_2 mole fraction values were approximately $0.2\text{ }\mu\text{mol mol}^{-1}$ higher than the NOAA/GML ESRL values on the WMO-CO2-X2007 scale; accordingly, our CO_2 mole fraction values are plotted in Figure C1-C2 only after subtracting $0.2\text{ }\mu\text{mol mol}^{-1}$. The CO_2 mole fraction in the mid-stratosphere over Japan increased monotonously and reached about $400\text{ }\mu\text{mol mol}^{-1}$ in 2020, lagging behind that at MLO by about 5 years. The average rate of change of the CO_2 mole fraction in the mid-stratosphere was calculated to be $1.68 \pm 0.04\text{ }\mu\text{mol mol}^{-1}\text{ yr}^{-1}$ by applying the least-squares method to the observed values. However, this increasing trend was not linear, gradually steepening over the last 40 years. Therefore, a quadratic function of the form $n(\text{CO}_2) = K_0 + (K_1 \times t) + (K_2 \times t^2)$ would better represent the observed variations. Here, t (years) is the elapsed time since 1980. The coefficients of CO_2 mole fraction in the mid-stratosphere K_0 , K_1 , and K_2 were calculated to be 333.7, 1.0448, and 0.014755, respectively. The standard deviation of residuals was $0.8\text{ }\mu\text{mol mol}^{-1}$. The same procedure was applied to the annual mean CO_2 mole fractions at MLO for the period 1980–2015, considering a time lag of 5 years between the mid-stratosphere and the troposphere. The coefficients K_0 , K_1 , and K_2 for the MLO data were calculated to be 338.85, 1.2307, and 0.014577, respectively. As seen in Figure C1, the two quadratic functions thusly obtained agreed well to within $\pm 0.7\text{ }\mu\text{mol mol}^{-1}$. This result suggested that even temporal changes in the rate of increase in the troposphere propagate to the mid-stratosphere with a certain time delay. The CO_2 age based on our balloon observations has been partly reported in previous studies (Engel et al., 2002; Ishidoya et al., 2013; Umezawa et al., 2024). CO_2 ages estimated using air samples collected from 1995 to 2010 have been published as supplementary data in Ishidoya et al. (2013). However, the method of age estimation was subsequently updated in Sugawara et al. (2018). In this study, we further improved the estimation method by correcting the CO_2 mole fraction data

for GS and created a new 35-year CO₂ age record. We estimated the mean age of air from the CO₂ mole fraction using the convolution method (Ray et al., 2017; Leedham Elvidge et al., 2018; Sugawara et al., 2018); this method has been described in detail by Sugawara et al. (2018), so only a brief explanation is given here. Hypothetical age spectra were used in the convolution method to estimate the mean age (Vaugh and Hall, 2002). Expected temporal variations in the CO₂ mole fraction in the stratosphere, $x(I, t)$, were calculated by convolution of the tropospheric reference curve, $x_0(t)$, and the age spectrum, $G(I, t)$:

$$x(I, t) = \int_{t-T_B}^t x_0(t') G(I, t-t') dt', \quad (C1)$$

where T_B is the integration time interval. T_B should theoretically be ∞ , but we truncated it to 20 years for the calculations. Actual age spectra, $G(I, t)$ are usually unknown. Therefore, we used the inverse Gaussian distribution (Vaugh and Hall, 2002) as:

$$G(I, t) = \left(\frac{I^2}{4\pi\Delta^2 t^3} \right)^{1/2} \exp \left[-\frac{I(t-I)^2}{4\Delta^2 t} \right], \quad (C2)$$

where Δ denotes the width of the age spectrum, which was parameterized using the mean age (I), i.e. the ratio of moments, Δ^2/I . This value has usually been assumed to be 0.7 years, as suggested by Hall and Plumb (1994) based on results from a General Circulation Model calculation, and was used to estimate SF₆ and CO₂ derived mean ages in the northern mid- and high-latitude stratosphere (Engel et al., 2002). Recently, however, Fritsch et al. (2020) have reported that a value of 1.25 years is better for estimating ages from the SF₆ mole fraction. Therefore, we used 1.25 years for the ratio of moments in this study. After calculating the convolutions, the CO₂ age was determined by substituting the observed CO₂ mole fractions, x_{obs} , into the inverse function, $I(x, t)$.

As described in the main text, the influences of CO₂ production by CH₄ oxidation and GS should be considered to precisely estimate the CO₂ age. Therefore, the CO₂ mole fraction was corrected as follows. At first, the tropical upper tropospheric CH₄ data, $x_{\text{CH}_4\text{-tp}}(t)$, were created by adjusting the annual mean data at MLO to fit the CONTRAIL data in the tropical upper troposphere (Umezawa et al., 2012). Then, we corrected x_{obs} as:

$$x_{\text{cor}}(t) = x_{\text{obs}}(t) - [x_{\text{CH}_4\text{-tp}}(t - I) - x_{\text{CH}_4\text{-obs}}(t)] - \Delta_G(x_{\text{obs}}(t)), \quad (C3)$$

where x_{cor} and $x_{\text{CH}_4\text{-obs}}$ denote the corrected CO₂ mole fraction and observed CH₄ mole fraction, respectively. Δ_G is the correction for GS (see Sect. 3.3.). The CO₂ mole fractions corrected for CH₄ oxidation and GS are shown with the convolutions in Figure C2C3. Finally, the CO₂ age was determined as $I_{\text{CO}_2} = I(x_{\text{cor}}, t)$. We note that Eq. (C3) contains the mean age of air, I , because the CH₄ mole fraction in the troposphere has increased with time and CH₄ is destroyed over the air transport pathway from the tropical upper troposphere to the observation altitude in the stratosphere. Therefore, I_{CO_2} was solved iteratively by starting from $I_{\text{CO}_2} = 0$. This iteration converged sufficiently after the second time of I_{CO_2} calculation. The vertical profiles of I_{CO_2} , corresponding to CO₂ age, are shown in Figure C3C4. The $\delta^{13}\text{C}_\text{p}$ age was also calculated using the same method, except that the corrections for CH₄ oxidation and GS were already included when calculating $\delta^{13}\text{C}_\text{p}$. The convolutions are shown with the calculated $\delta^{13}\text{C}_\text{p}$ values in Figure C4.

Data availability. The observational data obtained by our balloon measurements are included as an electronic supplement

to the manuscript.

Author contributions. SS designed the study, conducted the measurements of mole fractions of greenhouse gases, and drafted the manuscript. SM, TN, SA, and SS conducted the measurements of carbon isotopic ratios of CO₂. SM, SS, and TU conducted the measurements of carbon isotopic ratios of CH₄. SI conducted the measurements of isotopic and elemental ratios of atmospheric major compositions. KI conducted the measurements of N₂O mole fraction. HH, TN, SA, SM, and SS conducted the balloon experiments. SI, ST, and DG participated in balloon experiments. All authors approved the final manuscript.

Competing interests. The corresponding author declares that none of the authors has any competing interests.

Acknowledgements. We deeply thank the Scientific Ballooning (DAIKIKYU) Research and Operation Group of the Institute of Space and Astronautical Science (ISAS), JAXA, Japan. We also deeply thank Sylvia E. Michel, Kerstin Braun, Justin Reid Clark, and John Ortega at INSTAAR, University of Colorado, and John Mund at NOAA GML for providing us their isotopic data.

Financial support. This study was supported by Japan Society for the Promotion of Science KAKENHI grants (grant nos. 22H05006, 23H00513, and 23K11396).

References

- Aoki, S., Nakazawa, T., Machida, T., Sugawara, S., Morimoto, S., Hashida, G., Yamanouchi, T., Kawamura, K., and Honda, H.: Carbon dioxide variations in the stratosphere over Japan, Scandinavia and Antarctica. *Tellus B*, 55: 178–186. <https://doi.org/10.1034/j.1600-0889.2003.00059.x>, 2003.
- Assonov S. S. and Brenninkmeijer C. A. M.: A redetermination of absolute values for 17RVPDB-CO₂ and 17RVSMOW, *Rapid Commun Mass Spectrom.*, 17(10):1017–29. doi: 10.1002/rcm.1011. PMID: 12720281, 2003.
- Assonov, S. S., Brenninkmeijer, C. A. M., Schuck, T. J., and Taylor, P.: Analysis of ¹³C and ¹⁸O isotope data of CO₂ in CARIBIC aircraft samples as tracers of upper troposphere/lower stratosphere mixing and the global carbon cycle, *Atmos. Chem. Phys.*, 10, 8575–8599, <https://doi.org/10.5194/acp-10-8575-2010>, 2010.
- Belikov, D., Sugawara, S., Ishidoya, S., Hasebe, F., Maksyutov, S., Aoki, S., Morimoto, S., and Nakazawa, T.: Three-dimensional simulation of stratospheric gravitational separation using the NIES global atmospheric tracer transport model, *Atmos. Chem. Phys.*, 19, 5349–5361, <https://doi.org/10.5194/acp-19-5349-2019>, 2019.
- Banks, P. M. and Kockarts, G.: *Aeronomy, Parts A and B*, Academic Press, Inc. New York, 1973.
- Bender, M., Sowers, T., and Labeyrie, L.: The Dole effect and its variations during the last 130,000 years as measured in the Vostok ice core, *Global Biogeochem. Cycles*, 8(3), 363–376, 1994.
- Bergamaschi, P., Hein, R., Brenninkmeijer, C. A. M., and Crutzen P. J.: Inverse modeling of the global CO cycle: 2. Inversion of ¹³C/¹²C and ¹⁸O/¹⁶O isotope ratios, *J. Geophys. Res.*, 105(D2), 1929–1945, doi:10.1029/1999JD900819,

2000.

- 820 Birner, B., Chipperfield, M. P., Morgan, E. J., Stephens, B. B., Linz, M., Feng, W., Wilson, C., Bent, J. D., Wofsy, S. C.,
Severinghaus, J., and Keeling, R. F.: Gravitational separation of Ar/N₂ and age of air in the lowermost stratosphere
in airborne observations and a chemical transport model, *Atmos. Chem. Phys.*, 20, 12391–12408,
<https://doi.org/10.5194/acp-20-12391-2020>, 2020.
- Brenninkmeijer, C. A. M.: Measurement of the abundance of ¹⁴CO in the atmosphere and the ¹³C/¹²C and ¹⁸O/¹⁶O ratio of
atmospheric CO, with application in New-Zealand and Antarctica, *J. Geophys. Res.*, 98, 10 595–10 614, 1993.
- 825 Brenninkmeijer C. A. M., Müller R., Crutzen P. J., Lowe D. C., Manning M. R., Sparks R. J. and Velthoven P. J. V.: A
large ¹³CO deficit in the lower Antarctic stratosphere due to “ozone hole” chemistry: part 1, observations *Geophys.*
Res. Lett. 23 2125–8, 1996.
- Butchart, N.: The Brewer-Dobson circulation. *Reviews of Geophysics*, 52(2), 157–184.
<https://doi.org/10.1002/2013RG000448>, 2014.
- 830 Coplen T. B. and Shrestha Y.: Isotope-abundance variations and atomic weights of selected elements: 2016 (IUPAC
Technical Report), *Pure Appl. Chem.*, 88, 1203–1224, <https://doi.org/10.1515/pac-2016-0302>, 2016.
- Engel, A., Strunk, M., Müller, M., Haase, H.-P., Poss, C., Levin, I., and Schmidt, U.: Temporal development of total
chlorine in the high-latitude stratosphere based on reference distributions of mean age derived from CO₂ and SF₆, *J.*
Geophys. Res., 107(D12), doi:10.1029/2001JD000584, 2002.
- 835 Engel, A., Möbius, T., Bönisch, H., Schmidt, U., Heinz, R., Levin, I., Atlas, E., Aoki, S., Nakazawa, T., Sugawara, S.,
Moore, F., Hurst, D., Elkins, J., Schauffler, S., Andrews, A., and Boering, K.: Age of stratospheric air unchanged
within uncertainties over the past 30 years, *Nature Geoscience*, 2, 28–31, doi:10.1038/Ngeo388, 2009.
- Engel, A., Bönisch, H., Ullrich, M., Sitals, R., Membrive, O., Danis, F., and Crevoisier, C.: Mean age of stratospheric air
derived from AirCore observations, *Atmos. Chem. Phys.*, 17, 6825–6838, <https://doi.org/10.5194/acp-17-6825-2017>,
840 2017.
- Francey, R. J., Tans, P. P., Allison, C. E., Enting, I. G., White, J. W. C., and Trolier, M.: Changes in oceanic and terrestrial
carbon uptake since 1982. *Nature* 373, 326–330, <https://doi.org/10.1038/373326a0>, 1995.
- Fritsch, F., Garny, H., Engel, A., Bönisch, H., and Eichinger, R.: Sensitivity of age of air trends to the derivation method
for non-linear increasing inert SF₆, *Atmos. Chem. Phys.*, 20, 8709–8725, <https://doi.org/10.5194/acp-20-8709-2020>,
845 2020.
- Gamo, T., Tsutsumi, M., Sakai, H., Nakazawa, T., Tanaka, M., Honda, H., Kubo, H., and Itoh, T.: Carbon and oxygen
isotopic ratios of carbon dioxide of a stratospheric profile over Japan, *Tellus, Ser. B*, 41, 127–133, doi:10.1111/j.1600-
0889.1989.tb00130.x, 1989.
- Gamo, T., Tsutsumi, M., Sakai, H., Nakazawa, T., Machida, T., Honda H. and Itoh, T.: Long-term monitoring of carbon
850 and oxygen isotope ratios of stratospheric CO₂ over Japan. *Geophys. Res. Lett.* 22, 397–400, 1995.
- Garcia, R. R., López-Puertas, M., Funke, B., Marsh, D. R., Kinnison, D. E., Smith, A. K., and González-Galindo, F.: On
the distribution of CO₂ and CO in the mesosphere and lower thermosphere, *J. Geophys. Res. Atmos.*, 119, 5700–5718,
doi:10.1002/2013JD021208, 2014.

- Garny, H., Ploeger, F., Abalos, M., Bönisch, H., von Clarmann, T., Diallo, M., Engel, A., Laube, J. C., Linz, M., Neu, J.,
855 L., Podglajen, A., Ray, E., Rivoire, L., Saunders, L. N., Stiller, G., Voet, F., Wagenhäuser, T., and Walker, K. A.: Age
of stratospheric air: Progress on processes, observations, and long-term trends. *Reviews of Geophysics*, 62,
e2023RG000832. <https://doi.org/10.1029/2023RG000832>, 2024.
- Goto, D., Morimoto, S., Ishidoya, S., Aoki, S., and Nakazawa, T.: Terrestrial biospheric and oceanic CO₂ uptakes
estimated from long-term measurements of atmospheric CO₂ mole fraction, $\delta^{13}\text{C}$, and $\delta(\text{O}_2/\text{N}_2)$ at Ny-Ålesund,
860 Svalbard, *J. Geophys. Res. Biogeosci.*, 122, 1192–1202, doi:10.1002/2017JG003845, 2017.
- Gromov, S., Brenninkmeijer, C. A. M., and Jöckel, P.: A very limited role of tropospheric chlorine as a sink of the
greenhouse gas methane, *Atmos. Chem. Phys.*, 18, 9831–9843, <https://doi.org/10.5194/acp-18-9831-2018>, 2018.
- Hall, T. M., and Plumb, R. A.: Age as a diagnostic of stratospheric transport. *J. Geophys. Res.*, 99(D1), 1059–1070, 1994.
- Hauck, M., Fritsch, H. Garny, and A. Engel, Deriving stratospheric age of air spectra using an idealized set of chemically
865 active trace gases. *Atmos. Chem. Phys.*, 19, 5269–5291. <https://doi.org/10.5194/acp-19-5269-2019>, 2019.
- Honda, H., Aoki, S., Nakazawa, T., Morimoto, S., and Yajima, N.: Cryogenic air sampling system for measurements of
the concentrations of stratospheric trace gases and their isotopic ratios over Antarctica, *J. Geomagn. Geoelectr.*, 48,
1145–1155, 1996.
- Huang, T. Walters, S., Brasseur, G., Hauglustaine, D., and Wu, W.: Description of SOCRATES – A chemical dynamical
870 radiative two-dimensional model, NCAR/TN-440+EDD NCAR TECHNICAL NOTE, 1998.
- Ishidoya, S., and Murayama, S.: Development of high precision continuous measuring system of the atmospheric O₂/N₂
and Ar/N₂ ratios and its application to the observation in Tsukuba, Japan, *Tellus* 66B, 22574,
<http://dx.doi.org/10.3402/tellusb.v66.22574>, 2014.
- Ishidoya, S., Sugawara, S., Hashida, G., Morimoto, S., Aoki, S., Nakazawa, T., and Yamanouchi, T.: Vertical profiles of
875 the O₂/N₂ ratio in the stratosphere over Japan and Antarctica, *Geophys. Res. Lett.*, **33**, L13701,
doi:10.1029/2006GL025886, 2006.
- Ishidoya, S., Sugawara, S., Morimoto, S., Aoki, S., and Nakazawa, T.: Gravitational separation of major atmospheric
components of nitrogen and oxygen in the stratosphere, *Geophys. Res. Lett.*, **35**, L03811, doi:10.1029/2007GL030456,
2008a.
- 880 Ishidoya, S., Morimoto, S., Sugawara, S., Watai, T., Machida, T. Aoki, S., Nakazawa, T., and Yamanouchi, T.:
Gravitational separation suggested by O₂/N₂, $\delta^{15}\text{N}$ of N₂, $\delta^{18}\text{O}$ of O₂, Ar/N₂ observed in the lowermost part of the
stratosphere at northern middle and high latitudes in the early spring of 2002, *Geophys. Res. Lett.*, **35**, L03812,
doi:10.1029/2007GL031526, 2008b.
- Ishidoya, S., Sugawara, S., Morimoto, S., Aoki, S., Nakazawa, T., Honda, H., and Murayama, S.: Gravitational separation
885 in the stratosphere – a new indicator of atmospheric circulation, *Atmos. Chem. Phys.*, **13**, 8787–8796,
doi:10.5194/acp-13-8787-2013, 2013.
- Ishidoya S, Sugawara S, Inai Y, S. Morimoto, H. Honda, C. Ikeda, G. Hashida, T. Machida, Y. Tomikawa, S. Toyoda, D.
Goto, S. Aoki, T. Nakazawa: Gravitational separation of the stratospheric air over Syowa, Antarctica and its
connection with meteorological fields, *Atmos Sci Lett.*, 19:e857. <https://doi.org/10.1002/asl.857>, 2018.

- 890 Ishidoya, S., Sugawara, S., and Okazaki, A.: Diurnal, seasonal, and interannual variations in $\delta(^{18}\text{O})$ of atmospheric O_2 and its application to evaluate natural and anthropogenic changes in oxygen, carbon, and water cycles, *Atmos. Chem. Phys.*, 25, 1965–1987, <https://doi.org/10.5194/acp-25-1965-2025>, 2025.
- Ishijima, K., Sugawara, S., Kawamura, K., Hashida, G., Morimoto, S., Murayama, S., Aoki, S., and Nakazawa, T.: Temporal variations of the atmospheric nitrous oxide concentration and its $\delta^{15}\text{N}$ and $\delta^{18}\text{O}$ for the latter half of the 20th century reconstructed from firn air analyses, *J. Geophys. Res.*, 112, D03305, doi:10.1029/2006JD007208, 2007.
- 895 [Kaiser, J., Engel, A., Borchers, R., and Röckmann, T.: Probing stratospheric transport and chemistry with new balloon and aircraft observations of the meridional and vertical \$\text{N}_2\text{O}\$ isotope distribution, *Atmos. Chem. Phys.*, 6, 3535–3556, <https://doi.org/10.5194/acp-6-3535-2006>, 2006.](https://doi.org/10.5194/acp-6-3535-2006)
- Kato, S., Kajii, Y., Akimoto, H., Bräunlich, M., Röckmann, T., and Brenninkmeijer, C. A. M.: Observed and modeled seasonal variation of ^{13}C , ^{18}O , and ^{14}C of atmospheric CO at Happo, a remote site in Japan, and a comparison with other records, *J. Geophys. Res.*, 105(D7), 8891–8900, doi:10.1029/1999JD901144, 2000.
- 900 Kawagucci, S., Tsunogai, U., Kudo, S., Nakagawa, F., Honda, H., Aoki, S., Nakazawa, T., Tsutsumi, M., and Gamo, T.: Long-term observation of mass-independent oxygen isotope anomaly in stratospheric CO_2 , *Atmos. Chem. Phys.*, 8, 6189–6197, <https://doi.org/10.5194/acp-8-6189-2008>, 2008.
- 905 Keeling, C. D., Wholf, T. P., Wahlen, M., and van der Plichtt, J.: Interannual extremes in the rate of rise of atmospheric carbon dioxide since 1980. *Nature* 375, 666–670, <https://doi.org/10.1038/375666a0>, 1995.
- Khosravi, R., Brasseur, G., Smith, A., Rusch, D., Walters, S., Chabrilat, and Kockarts, G.: Response of the mesosphere to human-induced perturbations and solar variability calculated by a 2-D model, *J. Geophys. Res.*, 107, 4358, <https://doi.org/10.1029/2001JD001235>, 2002.
- 910 Laube, J. C., Schuck, T. J., Chen, H., Geldenhuys, M., van Heuven, S., Keber, T., Popa, M. E., Tuffnell, E., Vogel, B., Wagenhäuser, T., Zanchetta, A., and Engel, A.: Vertical distribution of halogenated trace gases in the summer Arctic stratosphere determined by two independent in situ methods, *EGUsphere* [preprint], <https://doi.org/10.5194/egusphere-2024-4034>, 2025.
- Leedham Elvidge, E. C., Bönisch, H., Brenninkmeijer, C. A. M., Engel, A., Fraser, P. J., Gallacher, E., Langenfelds, R., Mühle, J., Oram, D. E., Ray, E. A., Ridley, A. R., Röckmann, T., Sturges, W. T., Weiss, R. F., and Laube, J. C.: Evaluation of stratospheric age of air from CF_4 , C_2F_6 , C_3F_8 , CHF_3 , HFC-125, HFC-227ea and SF_6 ; implications for the calculations of halocarbon lifetimes, fractional release factors and ozone depletion potentials, *Atmos. Chem. Phys.*, 18, 3369–3385, <https://doi.org/10.5194/acp-18-3369-2018>, 2018.
- 915 Luz, B., and Barkan, E.: The isotopic composition of atmospheric oxygen, *Global Biogeochem. Cycles*, 25, GB3001, doi:10.1029/2010GB003883, 2011.
- 920 Luz, B., Barkan, E., Bender, M. L., Thiemens, M. H., and Boering, K. A.: Triple-isotope composition of atmospheric oxygen as a tracer of biosphere productivity, *Nature*, 400, 547–550, doi:10.1038/22987, 1999.
- Machida, T., Matsueda, H., Sawa, Y., Nakagawa, Y., Hirotani, K., Kondo, N., Goto, K., Nakazawa, N., Ishikawa, K., and Ogawa, T.: Worldwide measurements of atmospheric CO_2 and other trace gas species using commercial airlines, *J. Atmos. Oceanic Technol.*, 25(10), 1744–1754, doi:10.1175/2008JTECHA1082.1, 2008.
- 925

Matsueda, H., Machida, T., Sawa, Y., and Niwa, Y.: Long-term change of CO₂ latitudinal distribution in the upper troposphere, *Geophys. Res. Lett.*, 42, doi:10.1002/2014GL062768, 2015.

McCarthy, M.C., Boering, K.A., Rice, A. L., Tyler, S. C., Connell P., and Atlas, E.: Carbon and hydrogen isotopic compositions of stratospheric methane: 2. Two-dimensional model results and implications for kinetic isotope effects, *J. Geophys. Res.*, 108, doi:10.1029/2002JD003183, 2003.

Meijer, H. A. J., and Li, W. J.: The use of electrolysis for accurate $\delta^{17}\text{O}$ and $\delta^{18}\text{O}$ isotope measurements in water. *Isotopes in Environmental and Health Studies*, 34(4), 349–369. <https://doi.org/10.1080/10256019808234072>, 1998.

Michel, S. E., Clark, J. R., Vaughn, B. H., Crotwell, M., Madronich, M., Moglia, E., Neff, D., and Mund, J., University of Colorado, Institute of Arctic and Alpine Research (INSTAAR). Stable Isotopic Composition of Atmospheric Methane ($\delta^{13}\text{C}$) from the NOAA GML Carbon Cycle Cooperative Global Air Sampling Network, 1998-2022 Version: 2023-09-21, <https://doi.org/10.15138/9p89-1x02>, 2023.

Michel, S., Braun, K., Ortega, J., Tans, P., Li, J., Baugh, K., Crotwell, M., Madronich, M., Moglia, E., Mund, J., NOAA Global Monitoring Laboratory, & University Of Colorado Institute Of Arctic And Alpine Research (INSTAAR). Monthly means of Stable Isotopic Composition of Atmospheric Carbon Dioxide ($\delta^{13}\text{C}$ -CO₂) from the NOAA GML Carbon Cycle Cooperative Global Air Sampling Network, 1990-2024 [Data set]. NOAA Global Monitoring Laboratory. <https://doi.org/10.15138/6E9X-QA28>, 2025.

Minschwaner, K., Manney, G. L., Livesey, N. J., Pumphrey, H. C., Pickett, H. M., Froidevaux, L., Lambert, A., Schwartz, M. J., Bernath, P. F., Walker, K. A., and Boone, C. D.: The photochemistry of carbon monoxide in the stratosphere and mesosphere evaluated from observations by the Microwave Limb Sounder on the Aura satellite, *J. Geophys. Res.*, 115, D13303, doi:10.1029/2009JD012654, 2010.

Morimoto, S., Nakazawa, T., Higuchi, K., and Aoki, S.: Latitudinal distribution of atmospheric CO₂ sources and sinks inferred by $\delta^{13}\text{C}$ measurements from 1985 to 1991, *J. Geophys. Res.*, 105(D19), 24315–24326, doi:10.1029/2000JD900386, 2000.

Morimoto, S., Aoki, S., Nakazawa T., and Yamanouchi, T.: Temporal Variations of the Carbon Isotopic Ratio of Atmospheric Methane Observed at Ny Ålesund, Svalbard from 1996 to 2004, *Geophys. Res. Lett.*, 33, doi:10.1029/2005GL024648, 2006.

Nakazawa, T., Morimoto, S., Aoki, S., and Tanaka, M.: Time and space variations of the carbon isotopic ratio of tropospheric carbon dioxide over Japan. *Tellus B: Chemical and Physical Meteorology*, 45(3), 258–274. <https://doi.org/10.3402/tellusb.v45i3.15728>, 1993

Nakazawa, T., Machida, T., Sugawara, S., Murayama, S., Morimoto, S., Hashida, G., Honda, H., and Itoh, T.: Measurements of the stratospheric carbon dioxide concentration over Japan using a balloon-borne cryogenic sampler, *Geophys. Res. Lett.*, 22, 1229–1232, <https://doi.org/10.1029/95GL01188>, 1995.

Nakazawa, T., Morimoto, S., Aoki, S., and Tanaka, M.: Temporal and spatial variations of the carbon isotopic ratio of atmospheric carbon dioxide in the western Pacific region, *J. Geophys. Res.*, 102, 1271–1285, 1997a.

Nakazawa, T., Ishizawa, M., Higuchi, K., and Trivett, N. B. A.: Two curve fitting methods applied to CO₂ flask data, *Environmetrics*, 8: 197-218. [https://doi.org/10.1002/\(SICI\)1099-095X\(199705\)8:3<197::AID-ENV248>3.0.CO;2-C](https://doi.org/10.1002/(SICI)1099-095X(199705)8:3<197::AID-ENV248>3.0.CO;2-C),

1997b.

- 965 Nakazawa, T., Aoki, S., Kawamura, K., Saeki, T., Sugawara, S., Honda, H., Hashida, G., Morimoto, S., Yoshida, N., Toyoda, S., Makide, Y., and Shirai, T.: Variations of stratospheric trace gases measured using a balloon-borne cryogenic sampler, *Adv. Space Res.*, 30, 1349–1357, [https://doi.org/10.1016/S0273-1177\(02\)00551-3](https://doi.org/10.1016/S0273-1177(02)00551-3), 2002.
- Nguyen, T. H., Ishijima, K., Sugawara, S., and Hasebe, F.: Application of a nudged general circulation model to the interpretation of the mean age of air derived from stratospheric samples in the tropics, *Journal of the Meteorological Society of Japan. Ser. II*, 2021, Volume 99, Issue 5, Pages 1149–1167, <https://doi.org/10.2151/jmsj.2021-056>, 2021.
- 970 Park, J. H., Ko, M. K. W., Jackman, C. H., Plumb, R. A., Kaye, J. A., and Sage, K. H.: Models and Measurements Intercomparison II, NASA/TM-1999-209554, available at: <http://www.cs.odu.edu/~mln/ltrs-pdfs/NASA-99-tm209554.pdf>, 1999.
- [Rahn, T., Zhang, H., Wahlen, M., and Blake, G. A.: Stable isotope fractionation during ultraviolet photolysis of N₂O. *Geophys. Res. Lett.*, 25\(24\), 4489–4492, doi:10.1029/1998GL900186, 1998.](#)
- 975 Ray, E. A., Moore, F. L., Rosenlof, K. H., Davis, S. M., Sweeney, C., Tans, P., Wang, T., Elkins, J. W., Bönisch, H., Engel, A., Sugawara, S., Nakazawa, T., and Aoki, S.: Improving stratospheric transport trend analysis based on SF₆ and CO₂ measurements, *J. Geophys. Res.-Atmos.*, 119, 14110–14128, <https://doi.org/10.1002/2014JD021802>, 2014.
- Ray, E. A., Moore, F. L., Elkins, J. W., Rosenlof, K. H., Laube, J. C., Röckmann, T., Marsh, D. R., and Andrews, A. E.: Quantification of the SF₆ lifetime based on mesospheric loss measured in the stratospheric polar vortex, *J. Geophys. Res. Atmos.*, 122, 4626–4638, doi:10.1002/2016JD026198, 2017.
- 980 Rice, A.L., Tyler, S.C., McCarthy, M.C., Boering K.A., and Atlas, E.: Carbon and hydrogen isotopic compositions of stratospheric methane: 1. High-precision observations from the NASA ER-2 aircraft, *J. Geophys. Res.*, 108(D15), 4460, doi:10.1029/2002/JD003042, 2003.
- Röckmann, T. and Brenninkmeijer, C. A. M.: CO and CO₂ isotopic composition in Spitsbergen during the 1995 ARCTOC campaign, *Tellus*, 49B, 455–465, 1997.
- 985 Röckmann, T., Brenninkmeijer, C. A. M., Crutzen, P. J., and Platt, U.: Short-term variations in the ¹³C/¹²C ratio of CO as a measure of Cl activation during tropospheric ozone depletion events in the Arctic, *J. Geophys. Res.*, 104(D1), 1691–1697, doi:10.1029/1998JD100020, 1999.
- Röckmann, T., Jöckel, P., Gros, V., Bräunlich, M., Possnert, G., and Brenninkmeijer, C. A. M.: Using ¹⁴C, ¹³C, ¹⁸O and ¹⁷O isotopic variations to provide insights into the high northern latitude surface CO inventory, *Atmos. Chem. Phys.*, 2, 147–159, <https://doi.org/10.5194/acp-2-147-2002>, 2002.
- 990 Röckmann, T., Brass, M., Borchers, R., and Engel, A.: The isotopic composition of methane in the stratosphere: high-altitude balloon sample measurements. *Atmos. Chem. Phys.*, 11, 13287–13304, 2011.
- Röckmann T., van Herpen, M., Brashear, C., van der Veen, C., Gromov, S., Li, Q., Saiz-Lopez, A., Meidan, D., Barreto, A., Prats, N., Mármol, I., Ramos, R., Baños, I., Arrieta, J. M., Zaehle, S., Jordan, A., Moossen, H., Timas, H., Young, D., Sperlich, P., Moss, R., and Johnson, M. S.: The use of δ¹³C in CO to determine removal of CH₄ by Cl radicals in the atmosphere, *Environ. Res. Lett.* 19 064054, doi:10.1088/1748-9326/ad4375, 2024.
- 995 Santrock, J., Studley, S. A., and Hayes, J. M.: Isotopic analyses based on the mass spectra of carbon dioxide. *Anal. Chem.*

57, 1444–1448. doi:10.1021/ac00284a060, 1985.

- 1000 Saueressig, G., Bergamaschi, P., Crowley, J. N., and Fischer, H.: Carbon KIE in the reaction of CH₄ with Cl atoms, *Geophys. Res. Lett.*, 22, 1225–1228, 1995.
- Saueressig, G., Crowley, J. N., Bergamaschi, P., Brühl, C., Brenninkmeijer, C.A.M., and Fischer, H.: Carbon-13 and D kinetic isotope effects in the reactions of CH₄ with O(¹D) and OH: New laboratory measurements and their implications for the isotopic composition of stratospheric methane, *J. Geophys. Res.*, 106, 23127–23138, 2001.
- 1005 Sawa, Y., Machida, T., and Matsueda, H.: Seasonal variations of CO₂ near the tropopause observation by commercial aircraft, *J. Geophys. Res.*, 113, D23301, doi:10.1029/2008JD010568, 2008.
- Stevens, C. M., and Wagner, A. F.: The Role of isotope fractionation effects in atmospheric chemistry: *Zeitschrift für Naturforschung A* 44(5), 376–384, DOI:10.1515/zna-1989-0505, 1989.
- 1010 Stiller, G. P., von Clarmann, T., Höpfner, M., Glatthor, N., Grabowski, U., Kellmann, S., Kleinert, A., Linden, A., Milz, M., Reddmann, T., Steck, T., Fischer, H., Funke, B., López-Puertas, M., and Engel, A.: Global distribution of mean age of stratospheric air from MIPAS SF₆ measurements, *Atmos. Chem. Phys.*, 8, 677–695, <https://doi.org/10.5194/acp-8-677-2008>, 2008.
- Stiller, G. P., von Clarmann, T., Haenel, F., Funke, B., Glatthor, N., Grabowski, U., Kellmann, S., Kiefer, M., Linden, A., Lossow, S., and López-Puertas, M.: Observed temporal evolution of global mean age of stratospheric air for the 2002 to 2010 period, *Atmos. Chem. Phys.*, 12, 3311–3331, <https://doi.org/10.5194/acp-12-3311-2012>, 2012.
- 1015 Sugawara, S., Nakazawa, T., Shirakawa, Y., Kawamura, K., Aoki, S., Machida, T., and Honda, H.: Vertical profile of the carbon isotopic ratio of stratospheric methane over Japan, *Geophys. Res. Lett.*, 24, 2989–2992, 1997.
- Sugawara, S., Ishidoya, S., Aoki, S., Morimoto, S., Nakazawa, T., Toyoda, S., Inai, Y., Hasebe, F., Ikeda, C., Honda, H., Goto, D., and Putri, F. A.: Age and gravitational separation of the stratospheric air over Indonesia, *Atmos. Chem. Phys.*, 18, 1819–1833, <https://doi.org/10.5194/acp-18-1819-2018>, 2018.
- 1020 Thiemens, M. H.: Mass-independent isotope effects in planetary atmospheres and the early solar system, *Science*, 283, 341–345, doi:10.1126/science.283.5400.341, 1999.
- Toyoda, S., Yoshida, N., Urabe, T., Aoki, S., Nakazawa, T., Sugawara, S., and Honda H.: Fractionation of N₂O isotopomers in the stratosphere, *J. Geophys. Res.*, 106(D7), 7515–7522, doi:10.1029/2000JD900680, 2001.
- 1025 [Toyoda, S., Yoshida, N., Morimoto, S., Aoki, S., Nakazawa, T., Sugawara, S., Ishidoya, S., Uematsu, M., Inai, Y., Hasebe, F., Ikeda, C., Honda, H., and Ishijima, K.: Vertical distributions of N₂O isotopocules in the equatorial stratosphere, *Atmos. Chem. Phys.*, 18, 833–844, <https://doi.org/10.5194/acp-18-833-2018>, 2018.](#)
- Umezawa, T., Machida, T., Ishijima, K., Matsueda, H., Sawa, Y., Patra, P. K., Aoki, S., and Nakazawa, T.: Carbon and hydrogen isotopic ratios of atmospheric methane in the upper troposphere over the Western Pacific, *Atmos. Chem. Phys.*, 12, 8095–8113, <https://doi.org/10.5194/acp-12-8095-2012>, 2012.
- 1030 Umezawa, T., Brenninkmeijer, C. A. M., Röckmann, T., van der Veen, C., Tyler, S. C., Fujita, R., Morimoto, S., Aoki, S., Sowers, T., Schmitt, J., Bock, M., Beck, J., Fischer, H., Michel, S. E., Vaughn, B. H., Miller, J. B., White, J. W. C., Brailsford, G., Schaefer, H., Sperlich, P., Brand, W. A., Rothe, M., Blunier, T., Lowry, D., Fisher, R. E., Nisbet, E. G., Rice, A. L., Bergamaschi, P., Veidt, C., and Levin, I.: Interlaboratory comparison of δ¹³C and δD measurements of

atmospheric CH₄ for combined use of data sets from different laboratories, Atmos. Meas. Tech., 11, 1207–1231, <https://doi.org/10.5194/amt-11-1207-2018>, 2018.

[Umezawa, T., Sugawara, S., Hikichi, S., Morimoto, S., Saito, T., Krummel, P. B., Fraser, P. J., and Weiss, R. F.: Evaluation of stratospheric age of air estimated from halocarbon measurements of air samples collected by a balloon-borne cryogenic air sampler over Japan, SOLA, 21, p. 237-243, <https://doi.org/10.2151/sola.2025-029>, 2025.](#)

[Umezawa, T., Sugawara, S., Hikichi, S., Morimoto, S., Saito, T., Krummel, P. B., Fraser, P. J., and Weiss, R. F.: New estimates of stratospheric age of air from halocarbon measurements of air samples collected by a balloon-borne cryogenic air sampler over Japan. ESS Open Archive. July 15, DOI: 10.22541/essoar.172108247.78209450/v1, 2024.](#)

Wang, J. S., McElroy, M.B., Spivakovsky C.M., and Jones, D. B. A.: On the contribution of anthropogenic Cl to the increase in $\delta^{13}\text{C}$ of atmospheric methane, Global Biogeochem. Cycles, 16(3), 1047, doi:10.1029/2001GB001572, 2002.

Waugh, D.W., and Hall, T. M.: Age of stratospheric air: Theory, observations, and models. Rev. Geophys., 40, no. 4, 1010, doi:10.1029/2000RG000101, 2002.

[White, J. W. C., Vaughn, B. H., and Michel, S. E.: Atmospheric \$^{13}\text{CO}_2\$ at Mauna Loa \(HI\) by Global Monitoring Laboratory, NOAA, dataset published as \$^{13}\text{CO}_2\$ _MLO_surface flask_NOAA_sil at WDCGG, ver. 2022-07-05-1524 \(Reference date: 2024/06/12\), 2024.](#)

Figures

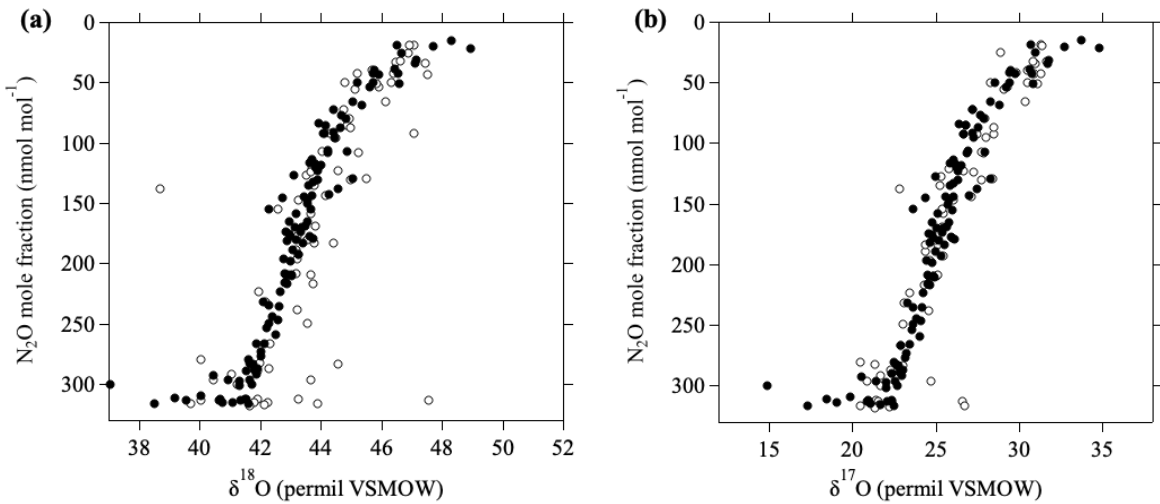


Figure 1. The relationship between the N₂O mole fraction and (a) δ¹⁸O in CO₂ and (b) δ¹⁷O in CO₂. δ¹⁸O and δ¹⁷O values

measured by Kawagucci et al. (2008) are shown by open circles. $\delta^{18}\text{O}$ and $\delta^{17}\text{O}$ values calculated assuming a MIE factor of 1.7 (see text) in this study are shown by closed circles.

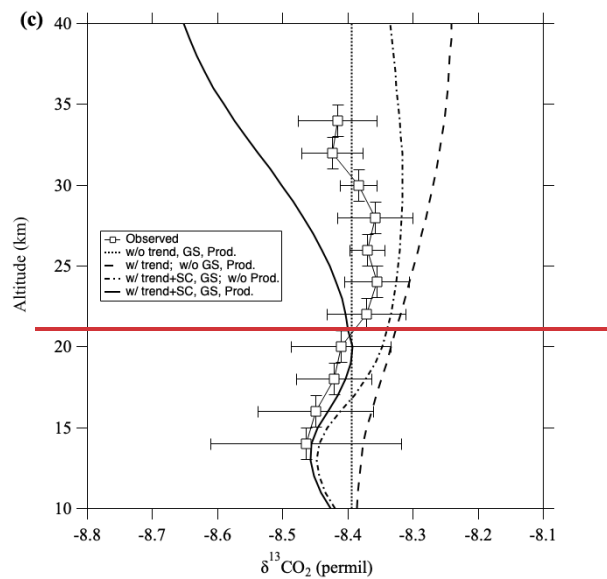
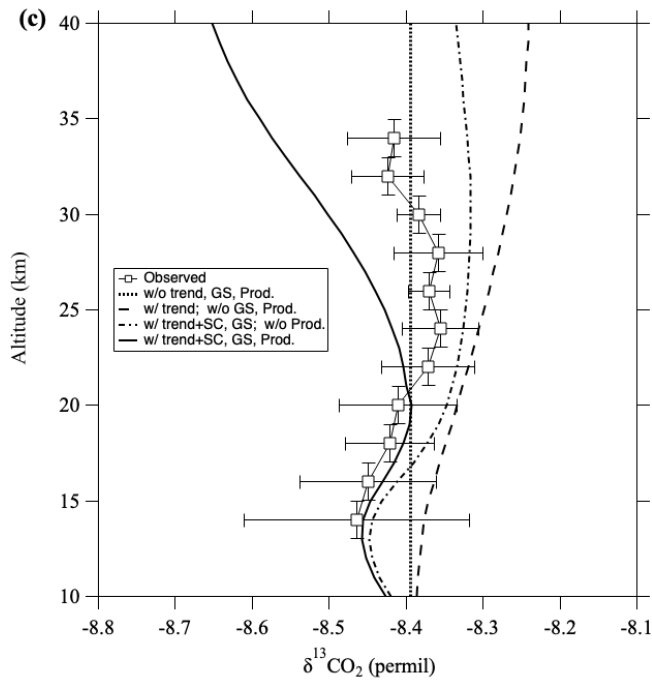
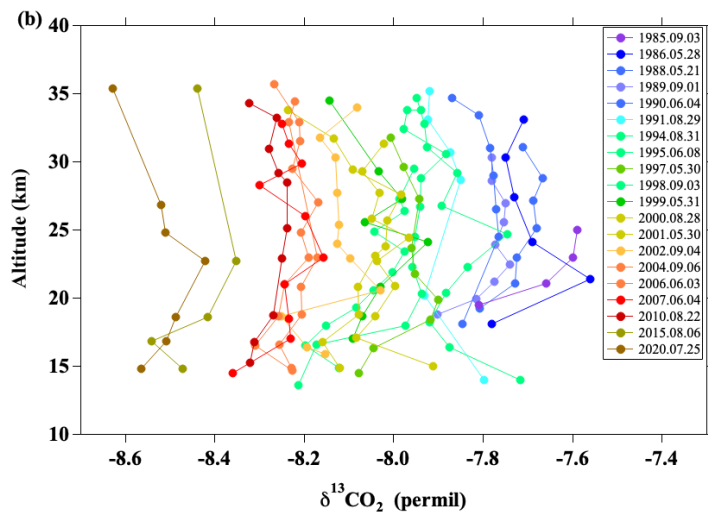
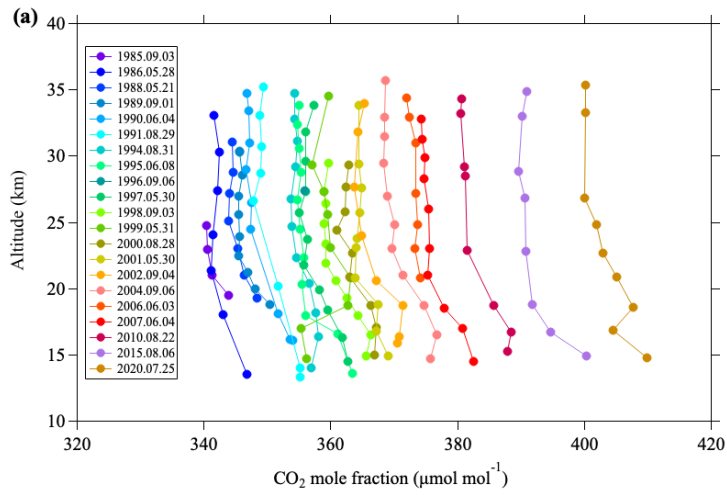
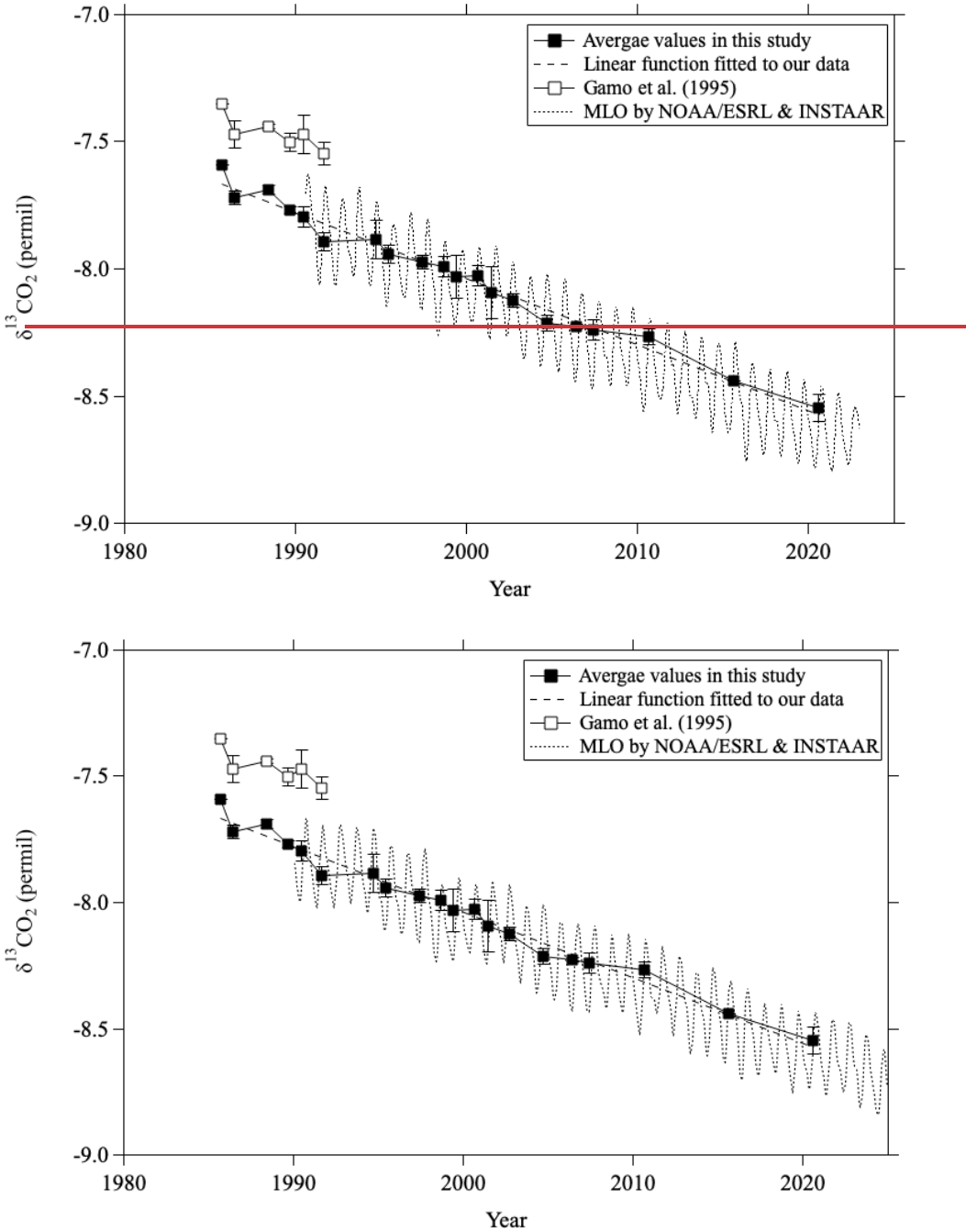


Figure 2. Vertical profiles of (a) CO_2 mole fraction and (b) $\delta^{13}\text{CO}_2$ over Japan during the period 1985–2020. (c) $\delta^{13}\text{CO}_2$ values averaged over the study period and grouped in eleven 2-km vertical bins (open squares). Curves show 2-D

1070

modeling results without the tropospheric trend, seasonal cycle, GS, or airborne sources (thick dotted line), including only the tropospheric trend (dashed line), including the tropospheric trend, seasonal cycle, and GS (dotted-dashed line), and including the tropospheric trend, seasonal cycle, GS, and airborne sources (solid line).



1075

Figure 3. Average mid-stratospheric (>24 km altitude) $\delta^{13}\text{CO}_2$ values over Japan (closed squares). The linear function fitted to the average values using the least-squares method is shown by the dashed line. Values reported by Gamo et al. (1995) are shown by open squares. Monthly average ~~The best-fit curve for~~ $\delta^{13}\text{CO}_2$ observed at Mauna Loa by NOAA/GMLESRL and INSTAAR (Michel et al., 2025) is also shown by the dotted line.

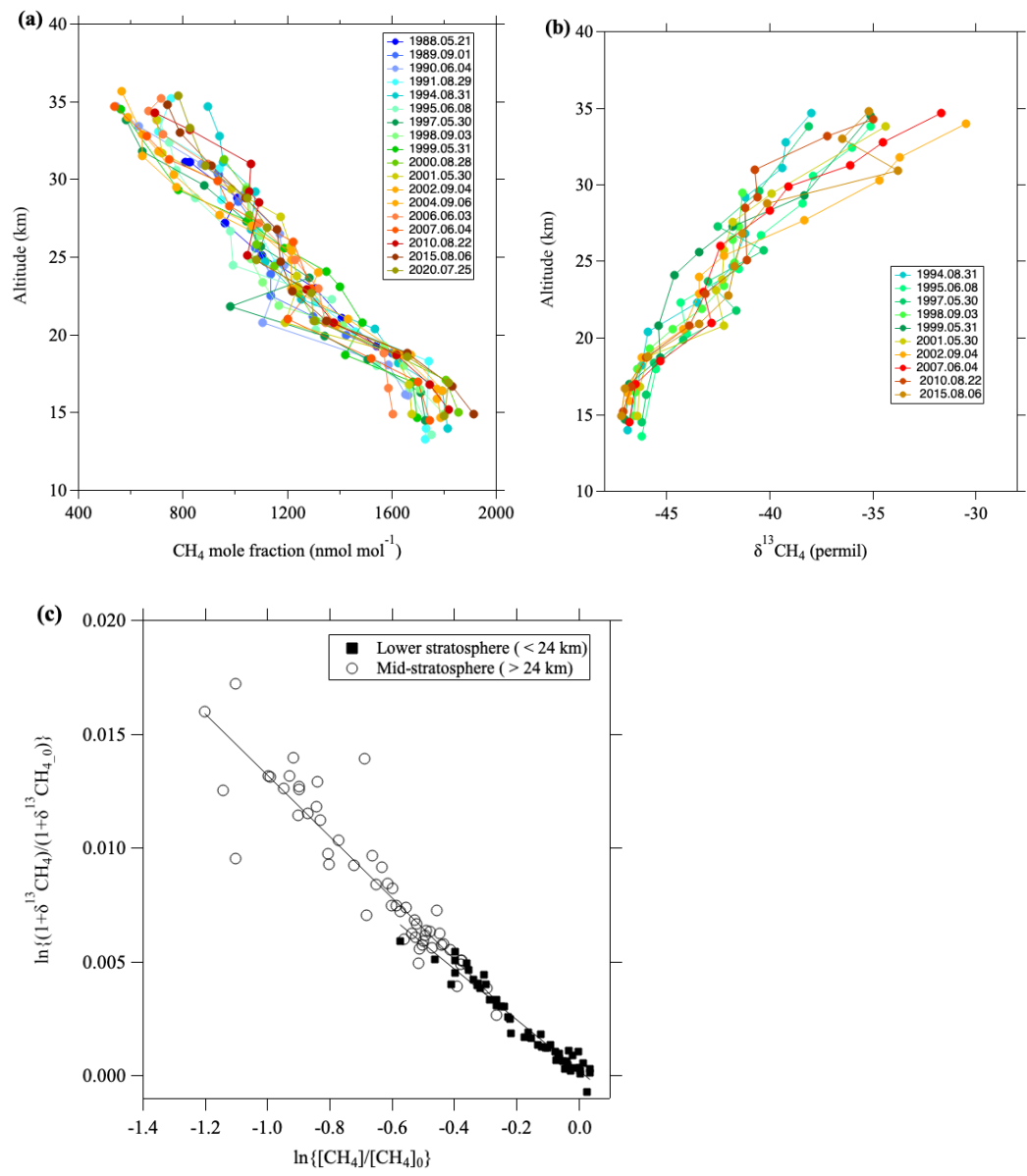


Figure 4. Vertical profiles of (a) CH₄ mole fraction and (b) δ¹³CH₄ over Japan, and (c) the relationship between $\ln\{(\delta^{13}\text{CH}_4 + 1)/(\delta^{13}\text{CH}_{4_0} + 1)\}$ and $\ln\{[\text{CH}_4]/[\text{CH}_4]_0\}$. In (c), the data are divided into the lower (<24 km, closed squares) and mid-stratosphere (>24 km, open circles), and the linear functions fitted to each dataset using the least-squares method are shown by lines.

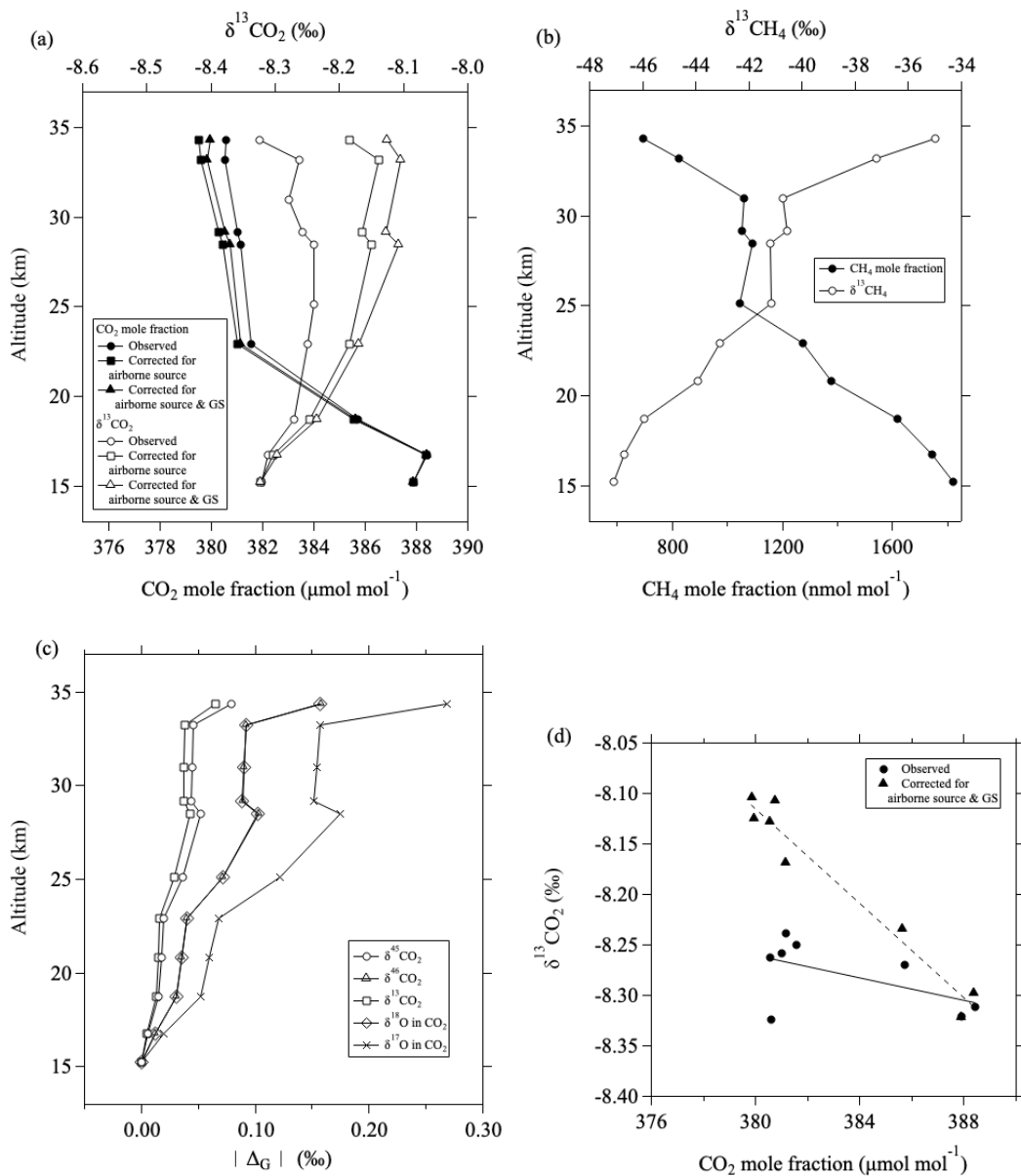
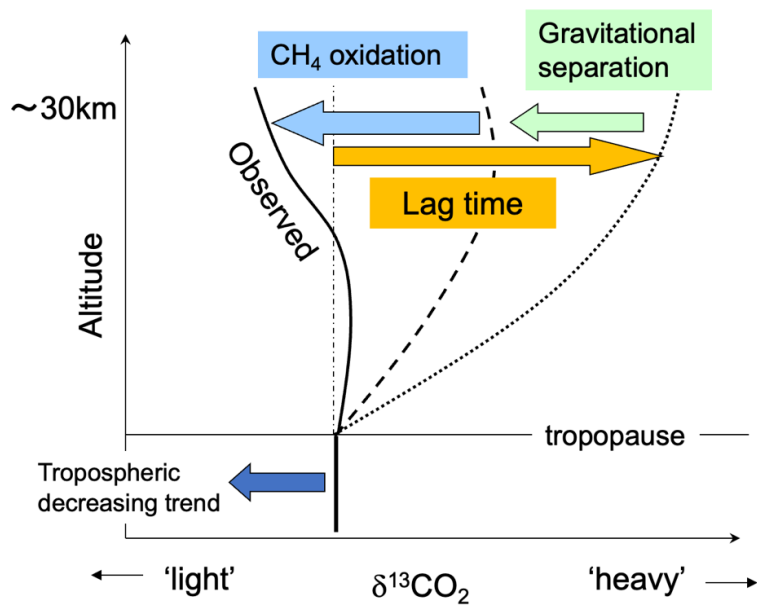
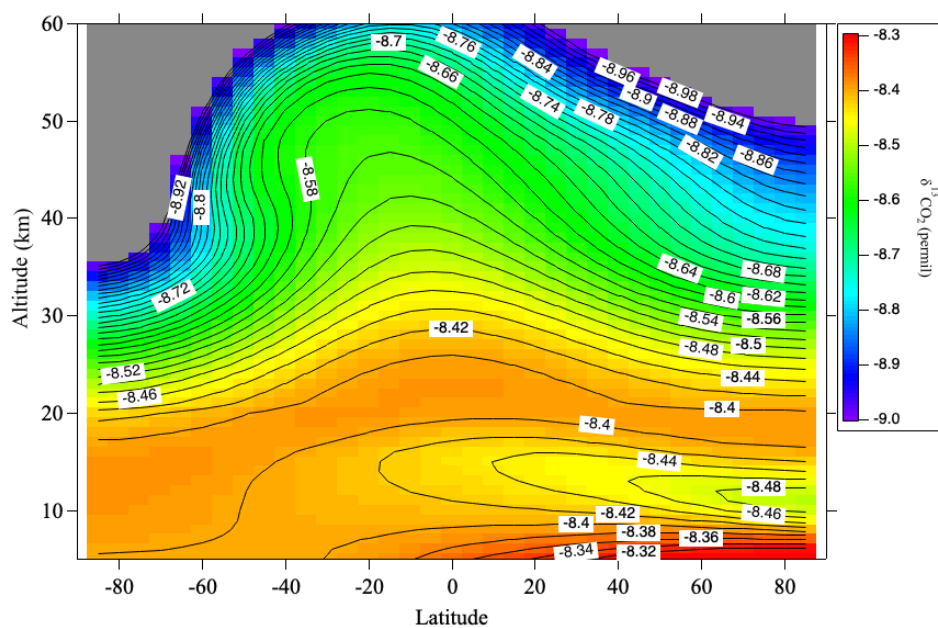


Figure 5. (a) Vertical profiles of the CO_2 mole fraction (closed circles) and $\delta^{13}\text{CO}_2$ (open circles) observed over Japan on 22 August 2010. Values corrected for airborne CO_2 sources (squares) and additionally for GS (triangles) are also shown. (b) Vertical profiles of the CH_4 mole fraction (closed circles) and $\delta^{13}\text{CH}_4$ (open circles). (c) Vertical profiles of the magnitude of GS corrections, $|\Delta_G|$, for $\delta^{45}\text{CO}_2$ (circles), $\delta^{46}\text{CO}_2$ (triangles), $\delta^{13}\text{CO}_2$ (squares), and $\delta^{18}\text{O}$ (diamonds) and $\delta^{17}\text{O}$ (crosses) in CO_2 . (d) Observed $\delta^{13}\text{CO}_2$ plotted against CO_2 mole fraction (closed circles) and those corrected for airborne CO_2 sources and GS (triangles). Lines are linear functions fitted to each trend by the least-squares method.



1100

Figure 6. Schematic representation of the mechanisms influencing the vertical profile of stratospheric $\delta^{13}\text{CO}_2$ (see text).



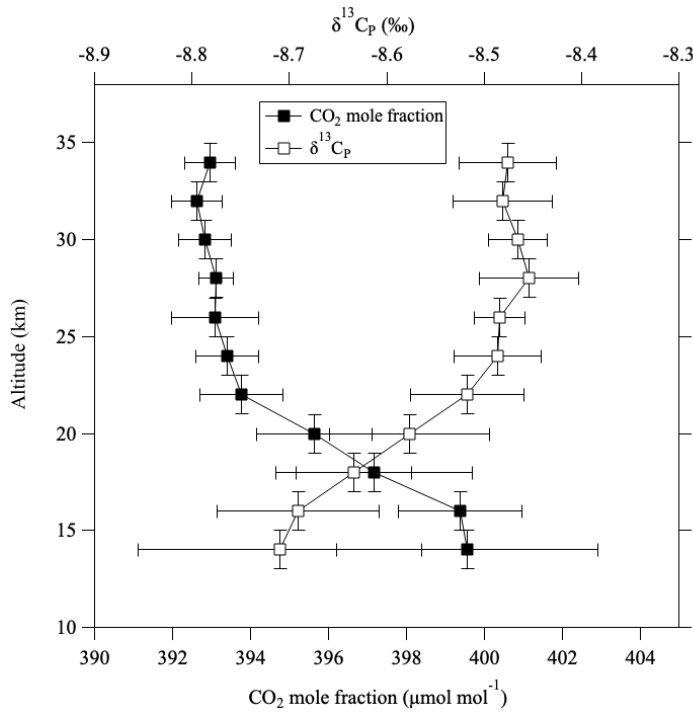


Figure 8. Vertical profiles of CO₂ mole fraction (closed squares) and stratospheric potential $\delta^{13}\text{C}$ ($\delta^{13}\text{C}_\text{P}$, open squares) based on their averages in 11 vertical bins over the period 1985–2020. All values were detrended and normalized to values in August 2016.

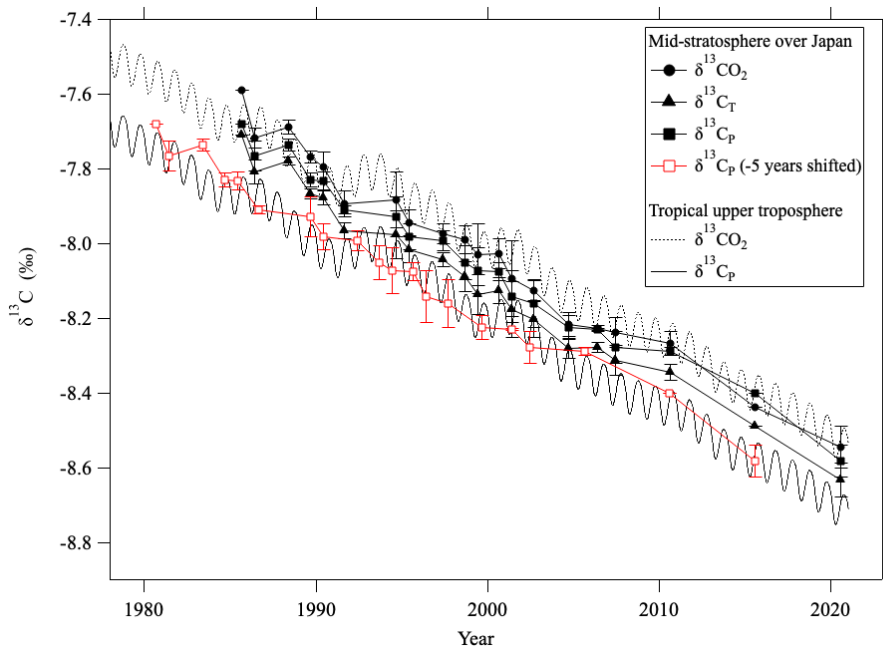


Figure 9. Average mid-stratospheric (>24 km altitude) values of $\delta^{13}\text{CO}_2$ (closed circles), $\delta^{13}\text{C}_\text{T}$ (closed triangles), and $\delta^{13}\text{C}_\text{P}$ (closed squares) over Japan. $\delta^{13}\text{CO}_2$ and $\delta^{13}\text{C}_\text{P}$ in the tropical upper troposphere are shown by dashed and solid lines, respectively. Red squares show the mid-stratospheric $\delta^{13}\text{C}_\text{P}$ shifted by -5.0 years.

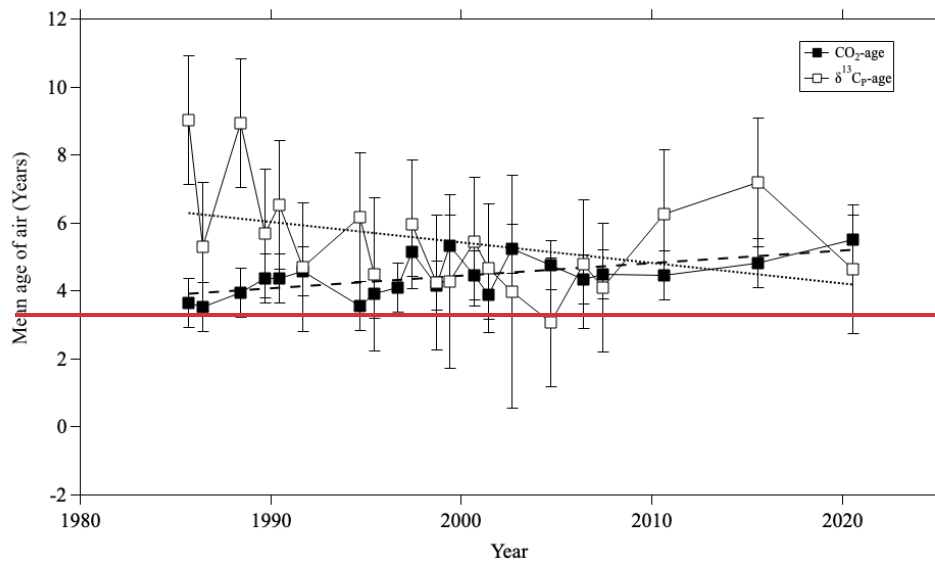
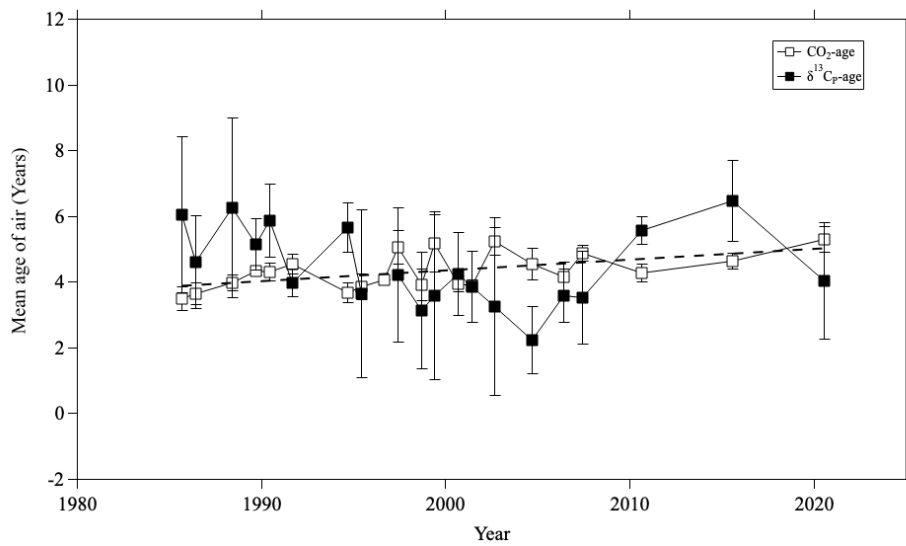


Figure 10. Temporal variations of averaged $\delta^{13}\text{C}_\text{p}$ ages (open squares) and CO_2 ages (closed squares) in the mid-stratosphere (>24 km altitude) over Japan. Dotted and dashed lines are linear least squares fits to the $\delta^{13}\text{C}_\text{p}$ and CO_2 ages, respectively. Dashed line is a linear least-squares fit to the CO_2 ages. The linear fit to the $\delta^{13}\text{C}_\text{p}$ age is not shown because the trend is not significant.

Figures for appendix

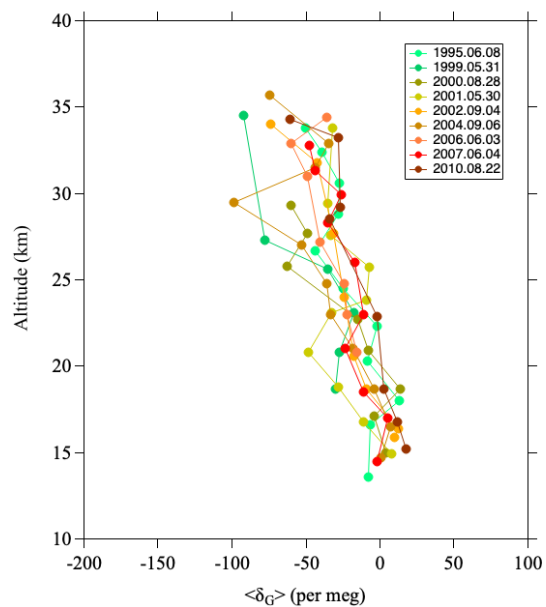


Figure A1. Vertical profiles of GS, $\langle \delta_G \rangle$, observed over Japan (Ishidoya et al., 2013).

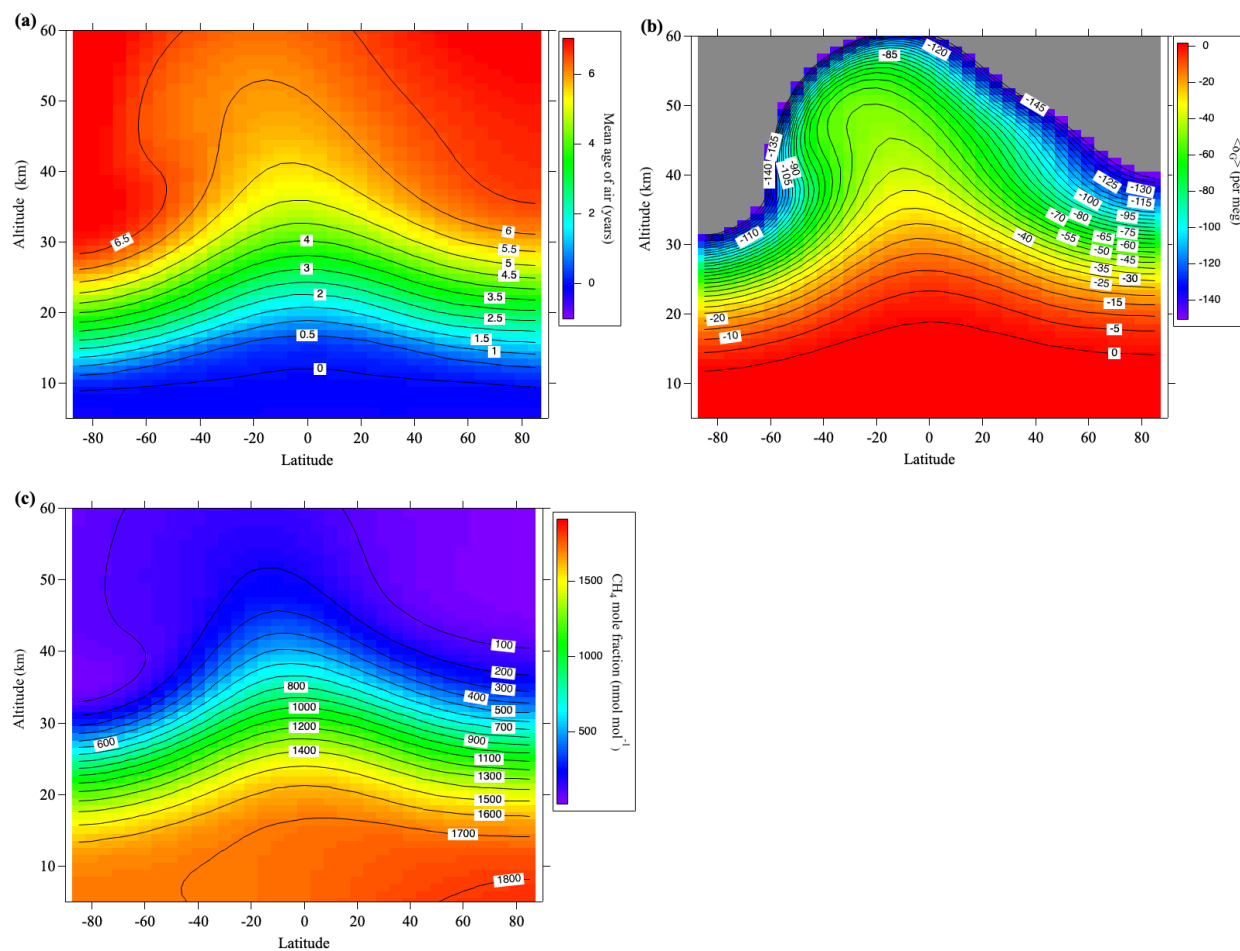


Figure B1. (a) Monthly average meridional distributions of the mean age of air for August 2016 calculated using the SOCRATES model. (b) As in (a), but for gravitational separation, $\langle \delta_G \rangle$. Values lower than -150 per meg are shown in gray. (c) As in (a), but for the CH₄ mole fraction.

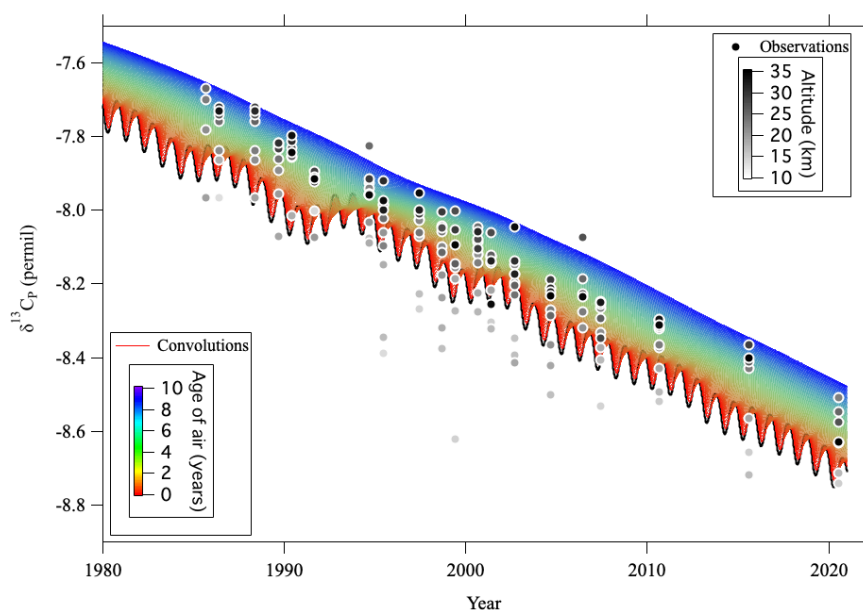


Figure C1. $\delta^{13}\text{C}_p$ observed over Japan (circles) and convolutions of $\delta^{13}\text{C}_p$ (colored lines) calculated from the tropospheric reference record and age spectrum. Observation altitudes of $\delta^{13}\text{C}_p$ are indicated by the gray scale of the symbol colors.

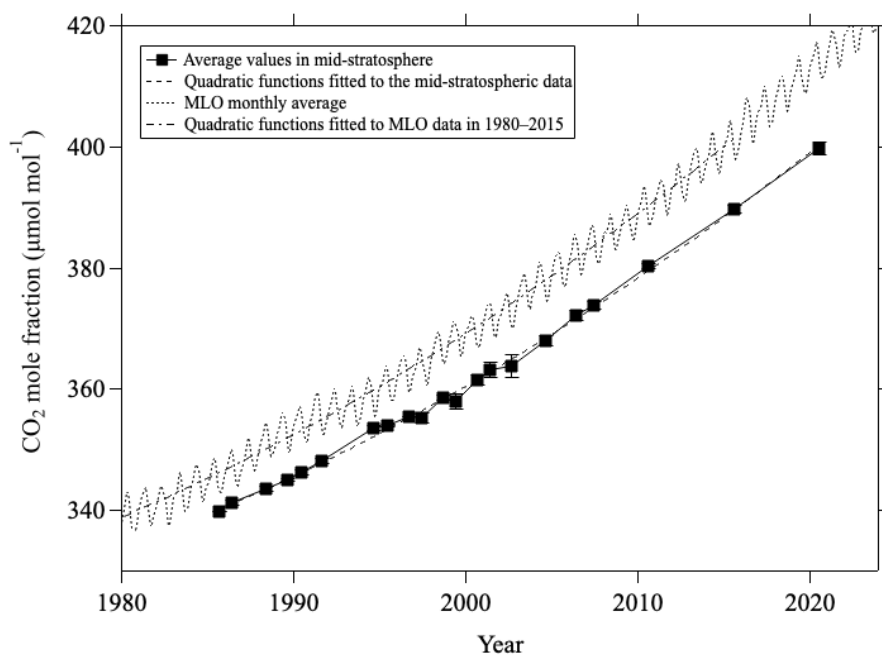


Figure C2. Average values of mid-stratospheric CO_2 mole fraction (>24 km altitude) over Japan (closed squares). Monthly average CO_2 mole fractions at Mauna Loa observed by NOAA/GMLESRL are shown by the dotted line. Quadratic functions fitted to the mid-stratospheric data (dashed line) and annual average MLO data from 1980 to 2015 (dashed-dotted line) are also shown.

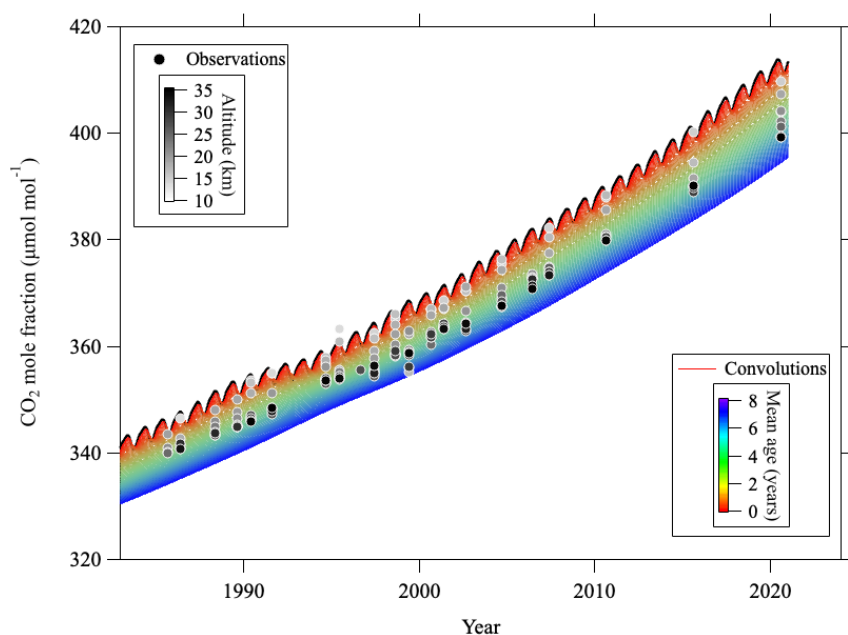


Figure E2C3. CO₂ mole fractions observed over Japan (circles) and convolutions (colored lines) calculated from the tropospheric reference record and age spectrum. Observation altitudes of the CO₂ mole fraction are indicated by the gray scale of the symbol colors. Note that the CO₂ mole fractions plotted have been corrected for CH₄ oxidation and GS.

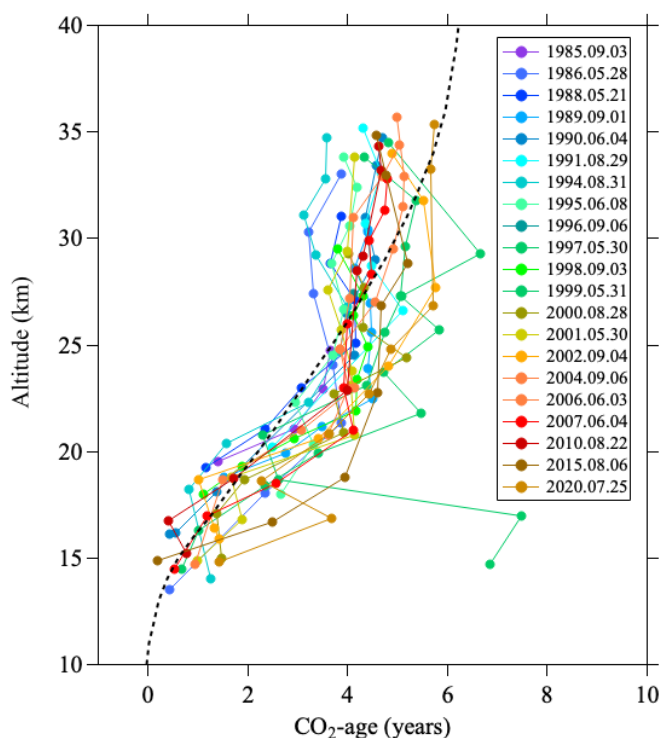


Figure E3C4. Vertical profiles of the CO₂ age calculated from CO₂ mole fractions from 1985 to 2020. The monthly average vertical profile of the mean age of air for August 2016 calculated using the SOCRATES model is shown by the dashed line.

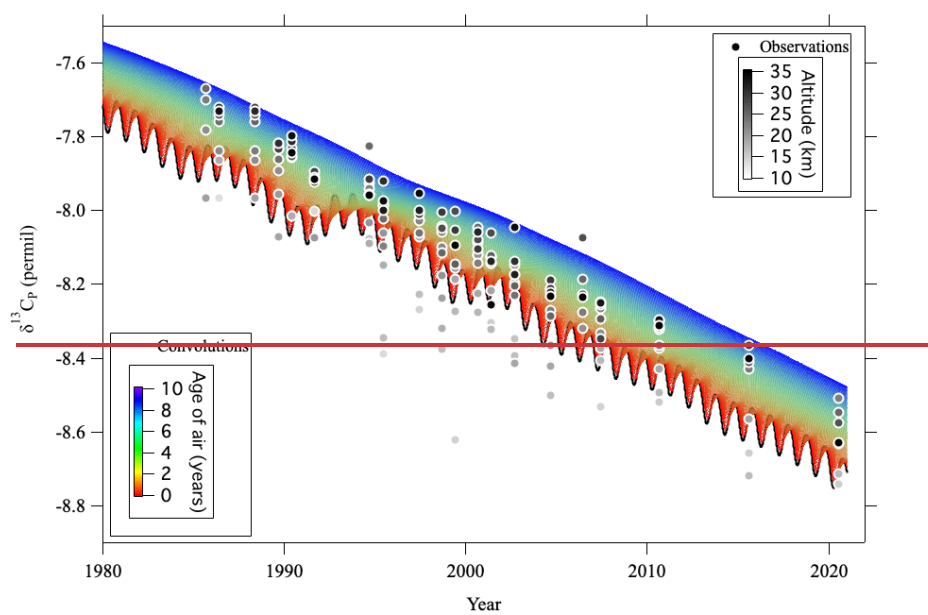


Figure C4. $\delta^{13}\text{C}_p$ observed over Japan (circles) and convolutions of $\delta^{13}\text{C}_p$ (colored lines) calculated from the tropospheric reference record and age spectrum. Observation altitudes of $\delta^{13}\text{C}_p$ are indicated by the gray scale of the symbol colors.