

## Response to the Referee

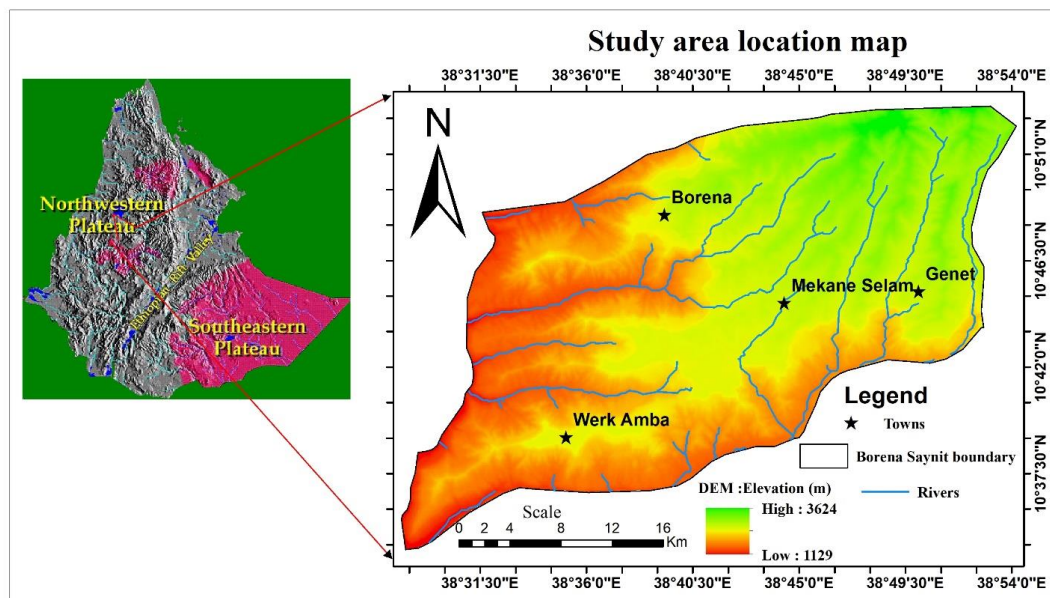
Dear referee thanks you for your valuable feeds these makes my paper more strengthen to scientific importance.

Yes, the paper deals more regional way in Northwestern Plateau of Ethiopia,

So, we have made major revision of our manuscript based your comments and journal standards.

Like the title: **The Impact of Geological Structures on Groundwater Potential Assessment in Volcanic Rocks in the Borena Saynit district, Northwestern Ethiopian Plateau: A Review.**

We prepared the **study area and location map** which provide a clear map that defines the study area with precise geographic coordinates (see below). So, the study area is located in Borena saynit district, Northwestern Plateau. And Structural map (e.g. lineament map) that significant to infer the orientation of structures and groundwater flow system, etc. Please see the revised manuscript.



*Figure 1. The location map of the study area*

Thank your consideration, reviewing and valuable comments.

We hope, we look forward your positive response to our work.

Best of regards,

\*Corresponding Authors