

Response to the Referee

Dear referee thanks you for your valuable feeds these makes my paper more strengthen to scientific importance.

Yes, the paper deals more regional way in Northwestern Plateau of Ethiopia,

So, we have made revision of our manuscript based your comments and journal standards.

Like the title: **The Impact of Geological Structures on Groundwater Potential Assessment in Volcanic Rocks in the Borena Saynit district, Northwestern Ethiopian Plateau: A Review.**

We prepared the **Study Area and Location Map**: Provide a clear map that defines the study area with precise geographic coordinates (see below). So the study area is located in Borena saynit district, Southwollo zone, Northwestern Plateau.

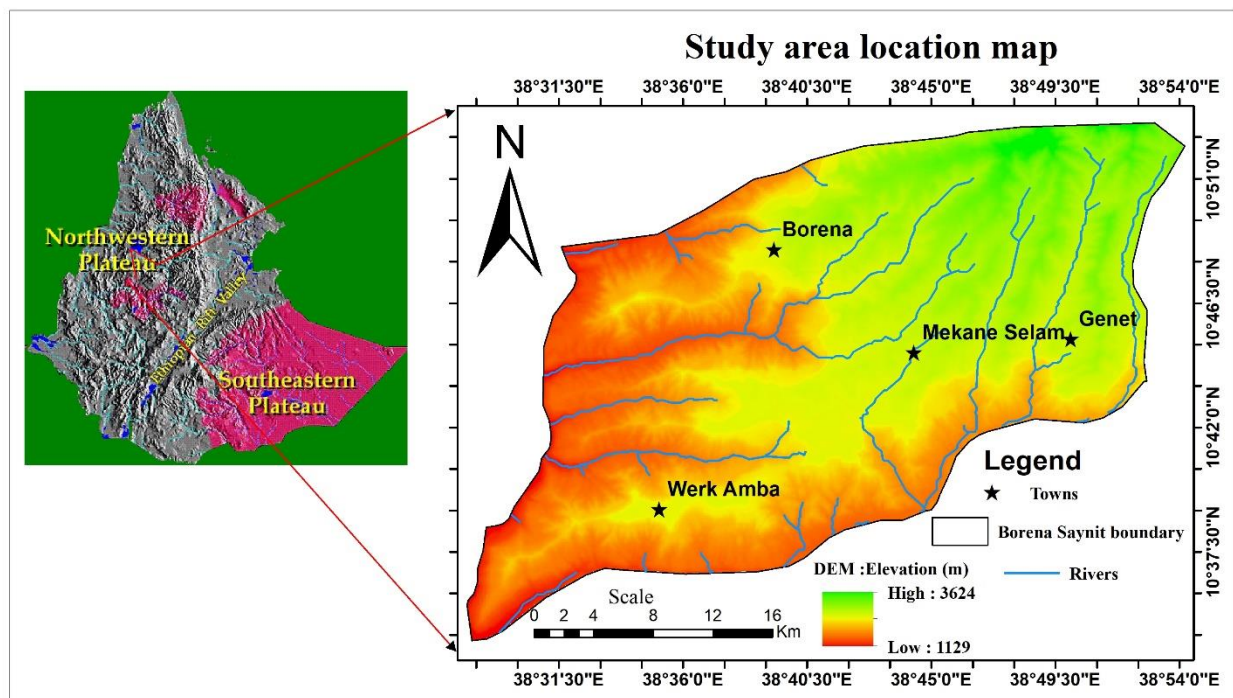


Figure 1. The location map of the study area

Thank your consideration, reviewing and valuable comments.

We hope, we look forward your positive response to our work.

Best of regards,

*Corresponding Authors