

Dear Reviewer,

Thank you for your valuable feedbacks, those feedbacks and suggestions are very important to strengthen my paper quality.

I correct all comments one by one on the revised manuscript based the journal standard.

Abstract and Introduction	Thank you, your comments and suggestion, I try to correct by rewrite and elaborate more.
Methods for Assessing Structural Influence on Groundwater Potential	Yes, the methodology is somewhat complex and inconsistent incase of reviewing papers on this section
Role of Geological Structures in Groundwater Potential	I put the detail structural features with evidences of field photographs and digitizing in map on the revised manuscript
Case Studies	I accept your suggestions and comments, so I address specific case studies based the objectives my reviews.
Challenges and Opportunities	I correct on the revised manuscript paper, and put specific methods and ways of opportunities to the review
Conclusion and Recommendations	Yes, try to rewrite again the concept based on the objectives of the research review guideline and your suggestions.
Technical Corrections	I correct it on revised part like "This review examines how geological structures influence groundwater potential in the volcanic rocks of the Northwestern Ethiopian Plateau."

With kind regards,

Bishaw Mihret

*corresponding author.

Response to the Referee

Dear referee thanks you for your valuable feedbacks these makes my paper more strengthen to scientific importance.

Yes, the paper deals more regional way in Northwestern Plateau of Ethiopia, and you raised more detail suggestions and feedbacks

So, we have made major revision of our manuscript based your comments and journal standards.

Like the title: **The Impact of Geological Structures on Groundwater Potential Assessment in Volcanic Rocks in the Borena Saynit district, Northwestern Ethiopian Plateau: A Review.**

We prepared the **study area and location map** which provide a clear map that defines the study area with precise geographic coordinates (see below). So, the study area is located in Borena saynit district, Northwestern Plateau. And Structural map (e.g. lineament map) that significant to infer the orientation of structures and groundwater flow system, etc.

We modify the regional Regional and Hydrogeological setting of the review study area

We wrote clear finding on case study part with field photographs of the review region

Please see the revised manuscript.

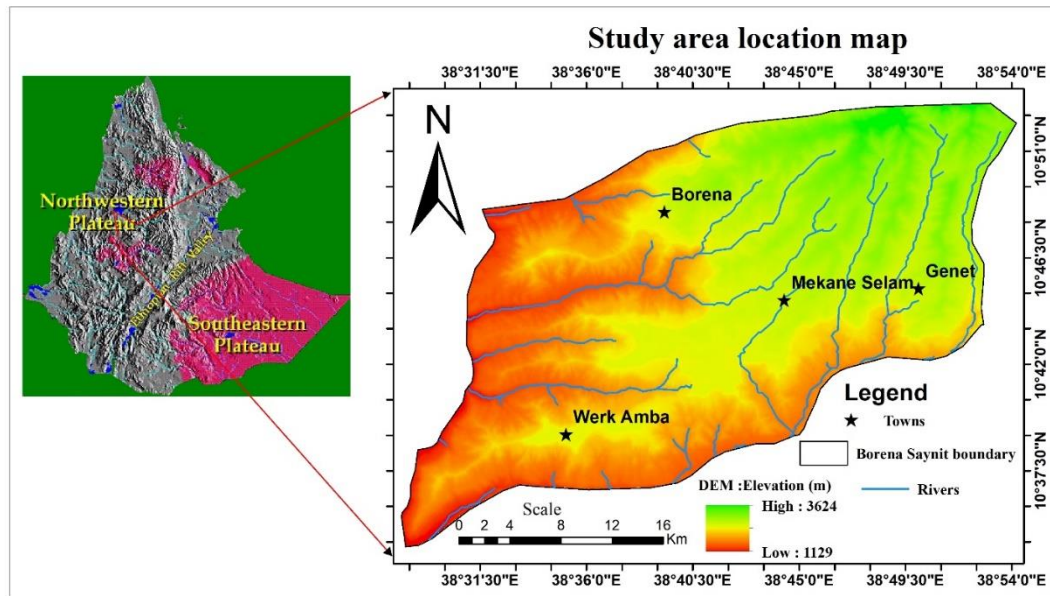


Figure 1. The location map of the study area

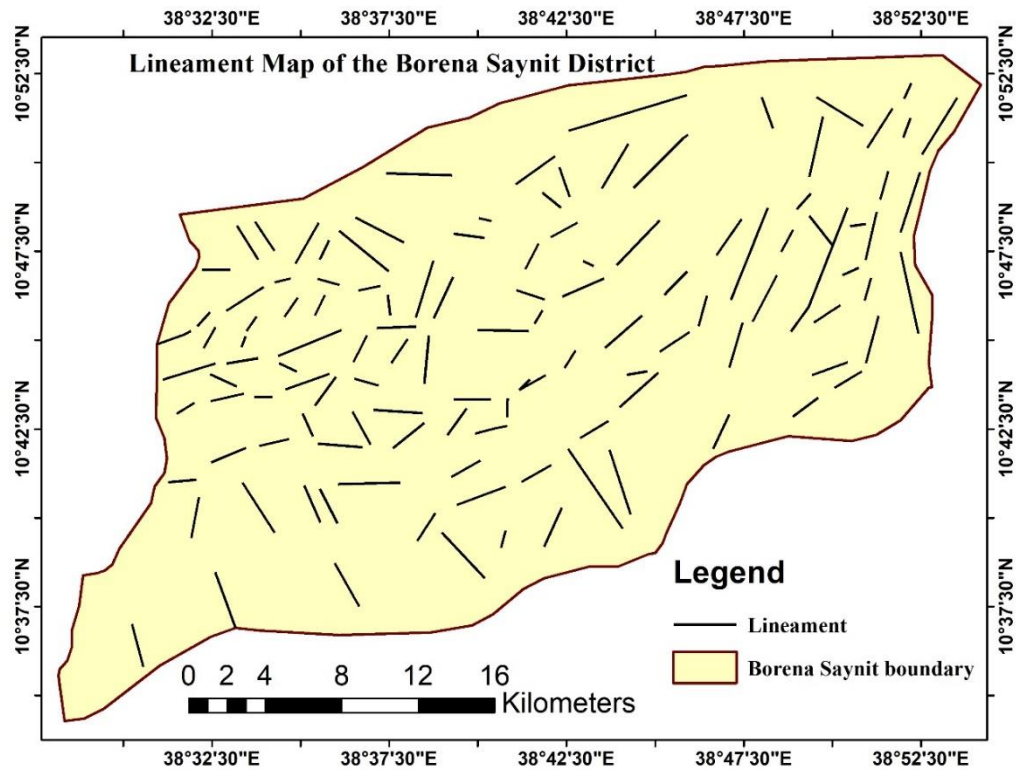


Figure 2. The lineament map of the study area (Borena Saynit district)

Thank your consideration, reviewing and valuable comments.

We hope, we look forward your positive response to our work.

Best of regards,

*Corresponding Authors