

Cross-regional comparison Stable yet dynamic: A cross-era comparative case study of drought impacts and social responses: ~~case studies~~ in Germany and Jing-Jin-Ji Region (China) ~~since the 19th century~~

5 Diyang Zhang¹, Rüdiger Glaser¹, Michael Kahle¹

¹Physical Geography, Institute of Environmental Social Science and Geography, Faculty of Environment and Natural Resources, University of Freiburg, Stefan-Meier-Straße 76, 79104 Freiburg, Germany

Correspondence to: Diyang Zhang (diyang.zhang@geographie.uni-freiburg.de)

Abstract. Droughts, as one of the costliest weather-related disasters, have been and will continue to be part of the common human experience. However, insufficient endeavors have been made to ~~investigate the similarities and differences in~~ ~~compare~~ explore drought-society interactions ~~underin~~ different ~~climatic systems~~ natural and sociocultural contexts. In light of this, the ~~presentis~~ study ~~took~~ focused on Germany and the Jing-Jin-Ji Region (China) ~~as examples,~~ where ~~have abundant written documents~~ are dominated by marine climate and monsoon climate, respectively, and ~~distinct socio-environmental contexts, and compared drought impacts and social responses in three pairs of~~ examined the similarities and differences among six extreme drought events ~~since the 19th century~~ that occurred at different episodes of the transformation from agrarian to modern societies over the last two centuries. Based on area-specific reconstructions of dry-wet indices and multilingual written documents, drought events were first selected according to the relative extremity a comparable profile of precipitation deficits within each study area, then depicted in terms of five impact categories and five response attributes presented in ~~events~~ was first created under a common impact-response structural framework, ~~and finally compared with particular attention to the unchanging nature and dynamics of drought society interactions during the transformation from agrarian to modern societies. The that encompassed five drought categories and five response attributes. Then, cross-event comparisons revealed~~ were conducted, highlighting the stable and dynamic elements of drought effects/impacts and social response patterns. It was found that: (1) ~~Abnormally~~ Abnormal dry and hot conditions, vegetation damage, unsatisfactory crop performance, insufficient river flow, food insecurity, and social instability were ~~drought~~ effects and impacts independent of climate systems (~~i.e., marine climate and monsoon climate~~) and were well documented by different societies regardless of ~~their~~ severity. (2) ~~Tackling socioeconomic issues within drought stricken areas by balancing the supply~~ Despite distinct socio-environmental contexts and demand of scarce goods was a common responding preference of different disaster relief modes (e.g., top-down or bottom-up), maintaining or restoring goods supply-demand balance was an underlying logic of drought mitigation shared by different societies ~~under different circumstances. In.~~ Under this ~~case~~ logic, actions ~~were~~ often ~~reactive~~ focused on the socioeconomic systems in drought-stricken areas, and ~~needed~~ the participation of governments: was common due to the need for organization and coordination. (3) The diversification of documented drought ~~manifestations in the~~ impacts on socioeconomic ~~category~~ systems was observed in both study areas as society developed, owing to increasingly complicated economic sectors and the wider range of social concerns. (4) ~~Early and multiple reactive~~ In recent droughts, both study areas have averted survival-threatening food insecurity through early interventions ~~reduced~~ in agricultural production, multiple remedies after harvest failure, and efficient resources distribution at the threat of food insecurity to individual survival in recent droughts,

as they successfully stopped the development from harvest failures to food crises national or larger scale. However, in any of the study areas, their current responses have not been sufficient enough to eliminate survival-threatening manifestations of the threat of compound drought-heatwave events to individual survival with regard to water security (i.e., insufficient drinking water scarcity) and health (i.e., mortality in vulnerable populations heat-related deaths). The results not only provided empirical evidence of climate-environment-society nexus that goes beyond period-specific experiences but also demonstrated the feasibility of conducting documentary-based cross-regional comparative studies comparisons in spite of linguistic differences.

1 Introduction

~~Droughts are~~ Drought, as a climate extreme that can lead to water shortages, is thought to have the largest adverse impacts of all climate variables weather-related natural hazards throughout human history, with far-reaching effects documented on each inhabited continent (Kchouk et al., 2022; Trnka et al., 2018). As a recurring feature of all climates, a drought usually begins with a period of inadequate precipitation and/or increased atmospheric water demand and then spreads to almost all sectors of social-ecological systems as direct and indirect impacts accumulate (Cammalleri et al., 2023; UNDRR, 2021). In history, numerous cases evidenced the destructive power of drought, which resulted in water scarcity, agrarian crises, economic depression, migration, conflicts, institutional failure, regime collapse, and even the demise of civilizations (Camenisch et al., 2020; Hakenbeck and Büntgen, 2022; Hornbeck, 2023; Kennett et al., 2012; Pribyl et al., 2019; Watanabe et al., 2019; Zheng et al., 2014). In the recent past, drought-related events contributed to 34% of disaster-related deaths during 1970–2019, although they only accounted for 7% of all the disaster-related events (WMO, 2021). In the near future, anthropogenic climate change is projected to increase the likelihood and severity of droughts in many parts of the world, leading to increased-growing population and natural resource exposures and more-increasing negative outcomes across all economic sectors (Elkhouk et al., 2022; Runde et al., 2022).

Motivated by the growing recognition that both natural hazards and human responses can incur risks (IPCC, 2022), drought studies exhibit increasing interests in exploring human-nature interactions by analyzing meteorological processes, natural and socioeconomic consequences, and ensuing social responses based on a variety of documentary evidence (Brázdil et al., 2018; Savelli et al., 2022). Of these studies, many focused on a single event, reconstructed its course in detail, identified the cascading effects of drought across socio-ecological systems, and depicted how society addressed them at the moment (Chen et al., 2022; Gergis et al., 2010; Metzger and Jacob-Rousseau, 2020; Van Der Schrier et al., 2021; Zhai et al., 2020). Some revolved around a specific topic, such as famine (Seyf, 2010), epidemics (Burns et al., 2014), migration (McLeman et al., 2022), and conflicts (Elkhouk et al., 2022; Klein et al., 2018), and discussed their nexus with drought. A few took a long-term perspective, investigated a series of drought cases in a particular place, and retraced drought impacts and social responses over time (Erfurt et al., 2019; Moerman, 2024; Noone et al., 2017). The abundant studies have shown the disruptive and complex nature of drought, enriched the understanding of drought propagation that take human actions into account, and demonstrated the contributions that historical research could make, such as providing baseline and contextualization for climate change adaptation options (Adamson et al., 2018).

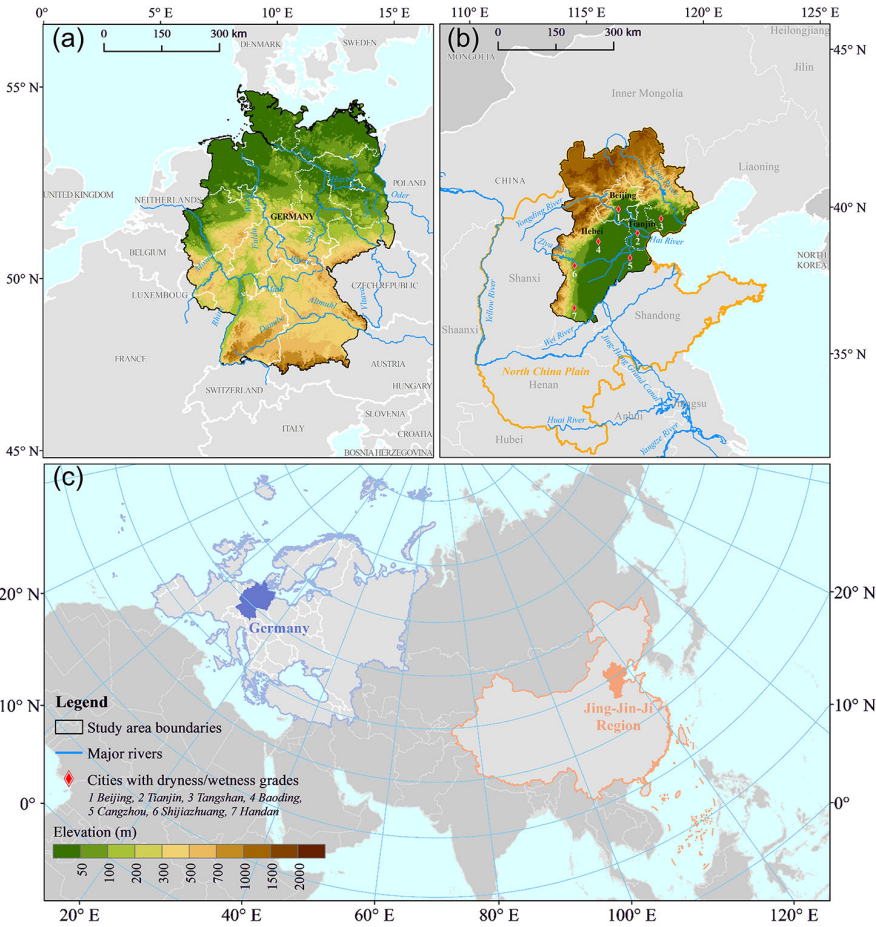
~~However, as studies generally emphasize place-specific experiences~~ However, little is known about the similarities and differences between individuals or groups in different socio-environmental contexts when facing the same climatic stimulus (i.e., precipitation ~~deficit~~-deficits), as studies on past drought impacts tend to emphasize place-specific (e.g., a given region or country) experiences due to the geographical and chronological specialization of historical research. In addition, rare attention is paid to investigating the commonalities, ~~or rather the stable elements~~ among drought events, which ~~reveal the unchanging nature of drought and provide~~ have the potential to serve as a bridge between the past and present. These, to some extent, hinder the comprehensive understanding of the general mechanism through which human societies interplay with natural systems during droughts, thereby limiting the potential for identifying and sharing effective mitigation or adaptation strategies that go beyond place- and period-specific experiences.

This study aims to close the abovementioned gaps by attempting comparisons of impacts and social responses to drought in Germany and the Jing-Jin-Ji Region (China), where both have rich written documents but differ in climate systems, sociocultural backgrounds, and languages. To achieve this purpose, this study first selected three extreme drought events in each study area, representing drought scenarios ~~at different social development stages since the 19th century in agrarian societies, during industrialization, and in recent years~~. Then, a common ~~impact-response~~ structural framework, which comprised five ~~impact~~ categories of drought effects and impacts and five ~~response~~ attributes of social response, was developed to help extract and integrate textual information on selected drought events from various types, forms, and languages of written documents. Next, the progression of each drought event was established under the same structural framework to make multiple drought cases comparable. Finally, cross-time and cross-regional comparisons were conducted among the six events, with a focus on the ~~immutable nature~~ stable and ~~dynamics~~ dynamic elements of impacts and social responses to drought. The results are expected to provide empirical evidence of drought risks and coping strategies ~~at different episodes of the during the~~ transformation from agrarian to modern societies ~~over the past two centuries~~ and, meanwhile, demonstrate the feasibility of cross-regional comparisons on climate-society interactions involving ~~various~~ distinct environmental conditions, sociocultural circumstances, and actors based on written documents in different languages.

2 Study areas

~~Germany is situated in the central part of the European continent (Fig. 1). Its~~ The contemporary territory is of Germany covers an area of $35.7 \times 10^4 \text{ km}^2$, 90% of which is covered by the Elbe, Weser, Ems, Rhine, and Danube River basins (Huang et al., 2013) (Fig. 1). Forests, grassland, and arable land account for 30%, 13%, and 33% of the overall territory, respectively, and the latter two are both used for agricultural purposes. With regard to cereal farming alone, which is generally dominated by sowing in spring and autumn and harvesting since July, 57% of its yields are used as fodder. This confirms animal husbandry as a mainstay of Germany's agricultural sector (BMEL, 2020). Germany is characterized by a humid temperate climate with warm summers (i.e., Cfb class in Köppen-Geiger climate classification) (Kottek et al., 2006). Due to the maritime influence, it has a relatively mild climate compared to other areas at similar latitudes, as evidenced by a relatively narrow annual amplitude of temperature (16–25 °C) and sufficient annual precipitation (around 800 mm) evenly distributed in four seasons. However, obvious regional differences in precipitation and groundwater recharge exist since continentality gradually increases from the northwest to the east. This puts the eastern part of Germany, such as the Elbe River

Basin, under higher water stress in the summer, when evapotranspiration is at its highest and the water level of rivers is relatively low (Gebhardt et al., 2013; Glaser et al., 2007).



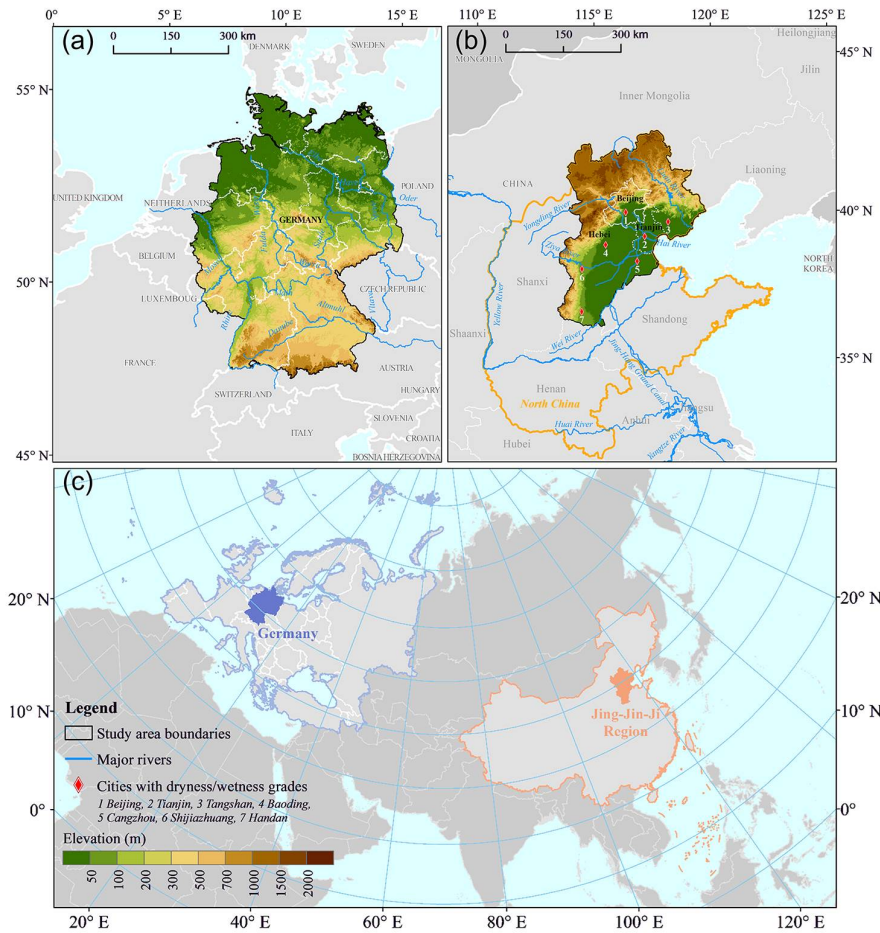


Figure 1 Study areas: (a) Germany, (b) the Jing-Jin-Ji Region, and (c) their relative locations on the Eurasian continent

The Jing-Jin-Ji Region includes three present province-level administrative divisions of China, namely Beijing municipality (abbr. Jing), Tianjin municipality (abbr. Jin), and Hebei province (abbr. Ji). The total area is 21.6×10⁴ km². It is located in the northern part of the North China Plain (Fig. 1), a traditional agricultural region and densely populated zone of China, and is mostly covered by the Hai River basin (Guo et al., 2019) (Fig. 1). Arable land accounts for 35% of the whole region and occupies most of the plains, while forests and grassland are mainly distributed in the mountainous areas and account for 35% and 9%, respectively (National Bureau of Statistics of China, 2023). Crop cultivation is the traditional livelihood of farmers in this region. Three-quarters of the annual yields come from crops sown in spring and harvested in autumn, and crops sown in autumn and harvested in the following summer contribute to the remaining quarter (Xiao, 2020). Most of this region has a continental climate with dry winters and hot summers (i.e., Dwa class in Köppen-Geiger climate classification) (Kottek et al., 2006). As deeply influenced by the East Asian Monsoon, climate here is characterized by a relatively large annual amplitude of temperature (30–32 °C), annual precipitation (400–800 mm) concentrated mostly in hot months (i.e., June to September), and four distinct seasons. During March to May, the rapid warming, months-long rainless period, and frequent windy days often lead to high evapotranspiration, insufficient surface runoff, and low groundwater levels and result in severe water stress in the spring. Additionally, the onset of the wet season varies from April to early August in different years, which depends on the strength of the summer monsoon, thus increasing the risk of consecutive seasons of drought (Wei et al., 2016; Zhao et al., 2015).

3 Material and methods

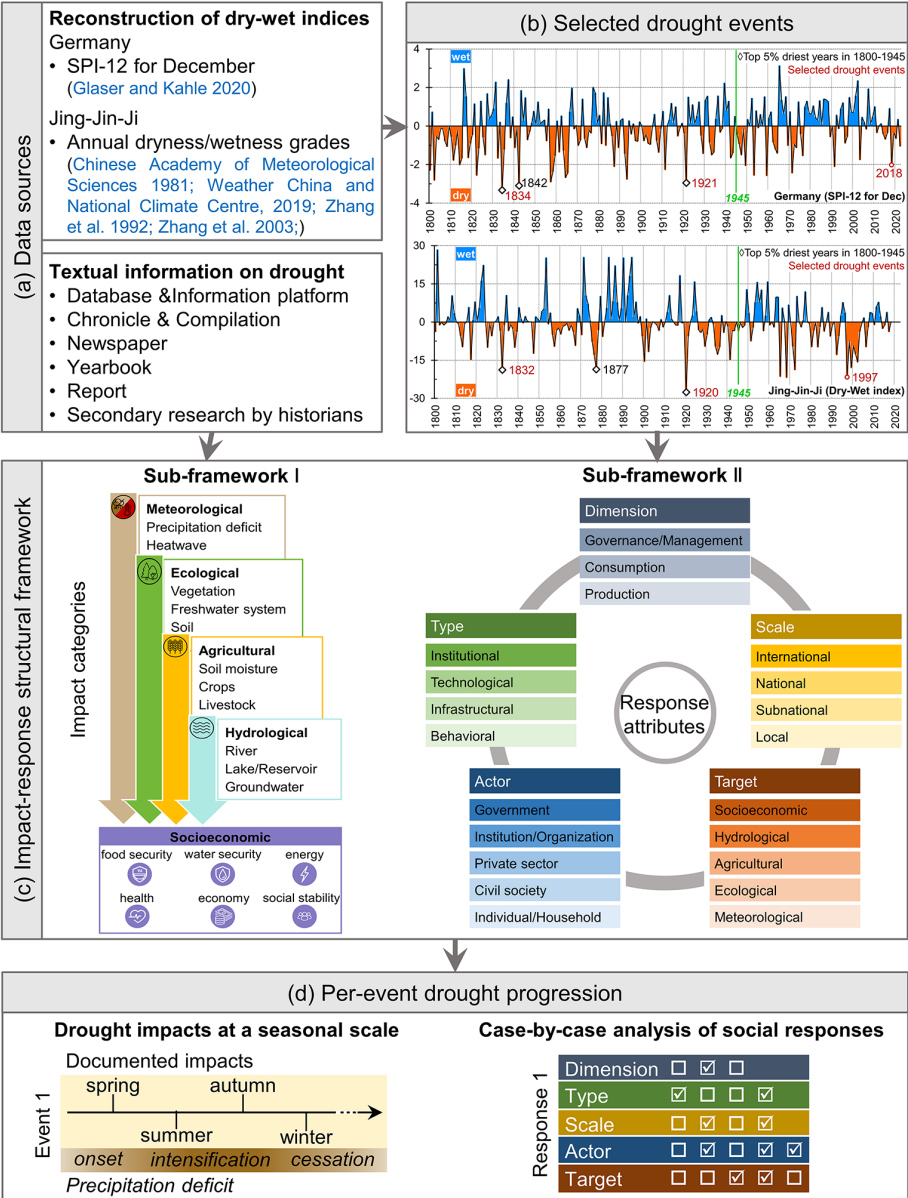
3.1 Data sources

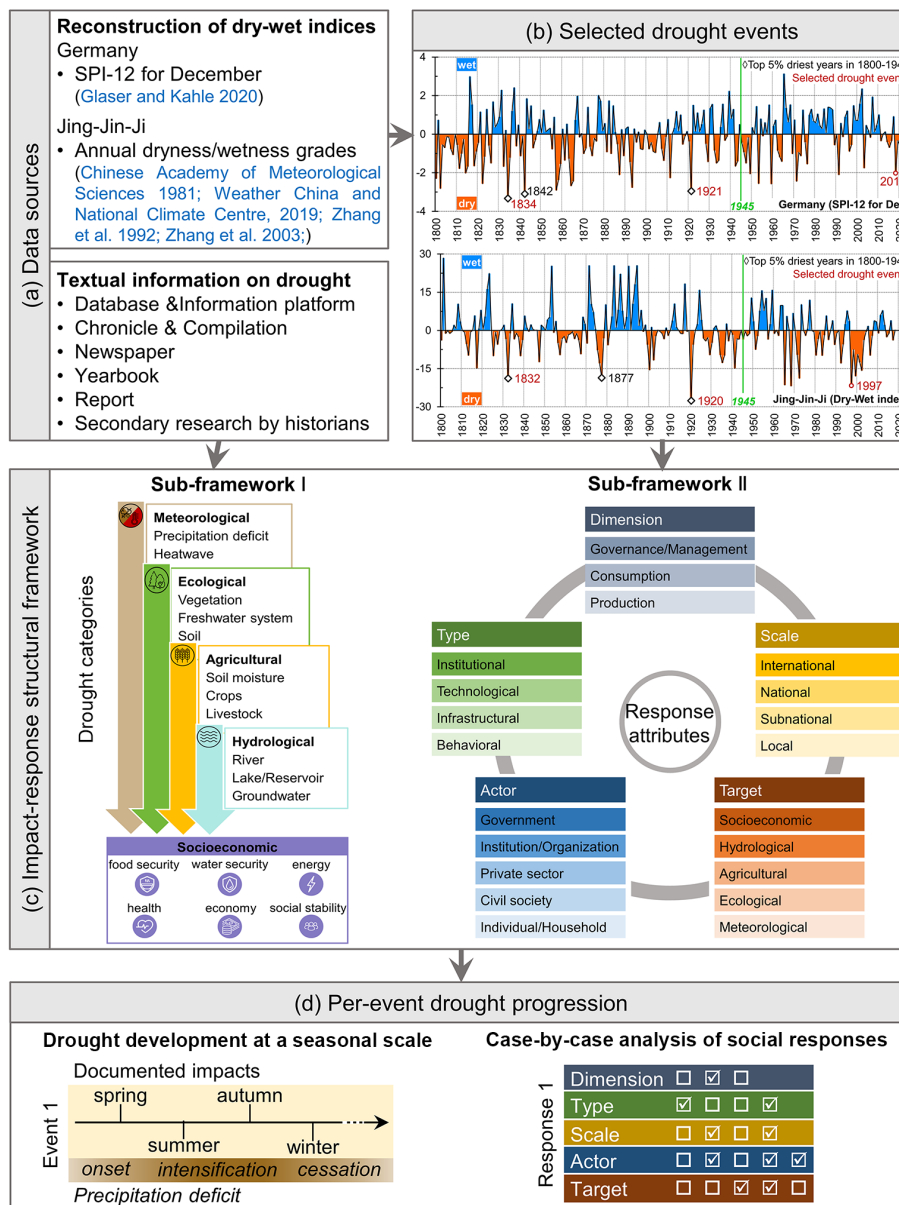
In the context of climate change, the interactions among climate, ecosystems, and human society are not only producers of emerging risks but also providers of future opportunities. However, the complex nature of climate risk, the varying exposure and vulnerability of affected socio-ecological systems, and the diverse human responses make it difficult to capture those interactions by using a single metric (IPCC, 2022). Therefore, multiple sources of data are desired for gaining comprehensive and holistic insights into climate-related hazards and repercussions.

Two groups of data sources were adopted in this study (Fig. 2a). The first was (semi-) quantitative reconstructions of past dry and wet conditions, namely indices that could reflect the occurrence and extremity of precipitation deficits. Priority was given to good temporal continuity and full spatial coverage when picking the suitable index for each study area. For Germany, the annual standardized precipitation index (SPI-12 for December) from 1800 to 2022 was chosen, which was reconstructed by integrating hermeneutic information from written documents in 1500–1996 and official instrumental records from 1881 onwards (Glaser and Kahle, 2020). As for the Jing-Jin-Ji Region, annual dryness/wetness grades at seven stations (Fig. 1) were available from 1800 to 2018, which were semantic-based reconstructions and were extended with official instrumental data after 1951 (Chinese Academy of Meteorological Sciences, 1981; Weather China and National Climate Centre, 2019; Zhang et al., 2003; Zhang and Liu, 1992), and were converted into to a regional dry-wet index (Fig. 2b) by Eq. (1).

$$DW(t) = \left(\frac{m+n}{N}\right) \times [\sum_{i=1}^m \beta_5 \times A(i, t) + \sum_{i=1}^n \beta_4 \times A(i, t)] + \left(\frac{j+k}{N}\right) \times [\sum_{i=1}^j \beta_2 \times A(i, t) + \sum_{i=1}^k \beta_1 \times A(i, t)], (1)$$

Where $DW(t)$ is the dry-wet index for the whole Jing-Jin-Ji Region in year t . N is the number of all stations in the Jing-Jin-Ji Region. m , n , j , and k denote the number of stations reporting very dry (grade 5), dry (grade 4), wet (grade 2), and very wet (grade 1), respectively. $A(i, t)$ is the grade anomaly at station i in year t . β refers to the coefficient for each grade (i.e., $\beta_5 = -2$, $\beta_4 = -1$, $\beta_2 = 1$, $\beta_1 = 2$). Stations with grade 3 (normal years) and no data are excluded in the calculation, because they reflect a situation that is neither dry nor wet.





170 **Figure 2 Conceptual framework**

The second group of data sources were multiple types of written documents listed in Supplement A, which could provide details on the development of precipitation deficits, subsequent impacts, and actions taken by humans. The original content of drought-related descriptions was either directly obtained from subject-specific databases and information platforms or newly extracted from chronicles and compilations, local or national newspapers, official yearbooks, and formal or informal reports. For instance, specific records could be searched in the Collaborative Research Environment *tambora.org* (Riemann et al., 2015) and the Integrated Natural Disaster Information System of Qing Dynasty (Fang et al., 2020; Xia, 2015) by disaster type, time of occurrence, and position, while textual information on the social focus at a given moment needed to be captured manually from newspapers such as the *Freiburger Zeitung* and *People's Daily*. Meanwhile, secondary research (e.g., peer-reviewed papers, monographic studies) by historians was adopted as a supplement when the original materials were unavailable.

3.2 Selection of drought events

The selection of drought events ~~were~~^{was} based on the extremity of dry conditions and the representativeness of different social development stages. In other words, for a selected event, its precipitation deficits should be severe enough to be considered as ~~a crisis and one of the greatest exogenous pressures on a specific region with respect to climatic conditions; meanwhile,~~ its occurrence should be at a certain episode in the profound transformation from agrarian to modern societies that human society experienced over the last 200 years (IPCC, 2022). Following this principle, it is expected to capture the performance of socio-ecological systems under the pressure form extremely dry conditions in representative socio-environmental contexts, although the drought events ultimately selected are not necessarily the most socially disruptive ones.

Before setting the criteria for selection, a couple of differences across regions or over time should be noted, which include:

- (1) There are fundamental differences between Germany and the Jing-Jin-Ji Region in terms of climate systems and usable proxies for long-term climate reconstructions. This makes it nearly impossible to simply compare the dry-wet indices available for the two study areas and select events with close meteorological features.
- (2) As dry-wet indices for both study areas absorbed official instrumental data at certain points, uncertainties introduced by non-climatic influences on weather stations are also noteworthy, such as possible changes in standard procedures, observation techniques, network densities, and station locations over time (Brugnara et al., 2020, 2022). This challenges the identification of events with the same intensity of precipitation deficits at different periods within one study area.
- (3) The pace of social transformations and consequent environmental changes differed from time to time, which have accelerated considerably after the Second World War, i.e., in the post-1945 period (McNeill and Engelke, 2014). This hints at the need for developing selection criteria segmentally.

~~Thus, starting from the definition of crisis—a deviation from the state of normal (Steg, 2020), this study gave up seeking events with similar dry conditions.~~ In other words, based on currently available data, it is impracticable to ensure that the two study areas were always under the same strong exogenous pressures from precipitation deficits in selected drought events. Thus, this study turned its attention to the most significant deviations (i.e., the driest years) reflected in the dry-wet indices applied to each study area, and then set criteria independent of the location and data. Additionally, distinctive selection criteria were applied for periods before and after 1945:

- (1) For the period from 1800 to 1945, in each study area, all years with a SPI-12 or dry-wet index < 0 were first identified as dry years. Then, those dry years were ranked according to the specific value of the index. Next, the top 5% driest of all dry years were picked out, and events covering those extremely dry years were considered as potential options. After that, two events were selected among them to represent drought in agrarian society and during industrialization, respectively.
- (2) For the period after 1945, the most recent drought events with prolonged and severe precipitation deficits were selected for each study area, aiming to best reflect the context of modern society.

Ultimately, three pairs of drought events were selected (Fig. 2b), namely the Germany 1834 (SPI-12 = -3.33) and Jing-Jin-Ji 1832 (dry-wet index = -18.81) events in agrarian societies, the Germany 1921 (SPI-12 = -2.95) and Jing-Jin-Ji 1920 (dry-wet index = -27.58) events during industrialization, and the Germany 2018 (SPI-12 = -2.02)

and Jing-Jin-Ji 1997 (dry-wet index = -21.68) events in modern societies. These events were named after the driest years they witnessed, and their durations were determined as described in Sect. 3.4.3.4. Admittedly, the temporal distance of the two modern drought events was greater than that of the selected paired drought events during the period of 1800–1945, as the dry and wet conditions in the two study areas showed different trends, especially in the past three decades (Fig. 2b). In this situation, priority was given to the severity and recentness of dry conditions when extremity, modernity, and simultaneity were too difficult to achieve at the same time. It should also be noted that the relatively well-developed railway system was an important consideration for dividing the Jing-Jin-Ji 1920 event into the era of industrialization, although the broad population shift from agriculture to manufacturing had not yet been observed in this region at the time (Li, 2007; Wu, 1985).

3.3 Development of impact-response structural framework

Comparability is an important issue in documentary-based comparative studies involving different areas at different periods, as the type, character, complexity, and information density of data sources are always varied (Erfurt et al., 2019). Conducting comparative analyses under a common structure reflected in all cases can be a feasible strategy for ensuring comparability, which has been applied in domains such as human response systems in the face of natural hazards (Knight, 2001). Following this strategy, this study formulated a common structural framework to guide the characterization of drought progression in multiple cases, which consists of two sub-frameworks as below.

In the sub-framework I (Fig. 2c), five drought categories of negative drought impacts were generalized/abstracted from the various textual information on the negative outcomes of drought manifestations, with reference to the meteorological drought, agricultural drought, hydrological drought, groundwater drought, and socioeconomic drought defined by Bernhofer et al. (2015). To better serve documentary-based research from a historical perspective, this study created a separate category for ecological drought, merged groundwater drought into the hydrological category, and developed comprehensive sub-categories with typical manifestations (Table 1) effects and impacts of drought (Table 1). In addition, compound heatwaves were incorporated into the meteorological category, considering not only the contribution of abnormal high temperature to the likelihood and destructiveness of drought (Zscheischler et al., 2018), but also the not rare descriptions in written documents of the combined effects of heat and drought. Supplement B provided a list of keywords for the 56 specific effects and impacts in each drought category, along with examples of how they were documented in historical, early modern, and contemporary source materials.

Table 1 ~~Categories~~ Drought categories, sub-categories, and manifestations of specific negative drought effects and impacts

Categories	Sub-categories	Manifestations <u>Effects and impacts</u>
Meteorological	Precipitation	Deficit, severe deficit (described by degree adverbs such as unprecedented, rare, extreme, severe, great, very, etc.)
	Temperature ^a	Heatwave (abnormal hot weather lasting from several days to months or extreme maximum temperatures recurring in a short period)
Ecological	Vegetation ^{ba}	Abnormal phenological period, poor plant growth, plant death, decreased vegetation cover, insect plague, wildfire
	Freshwater system	Increased water temperature, deteriorated water quality, fish death

	Soil	Dust storm
Agricultural	Soil moisture	Insufficient moisture, cracks in land
	Crop	Difficulty in sowing, growth affected, poor quality, harvest failure
	Livestock	Lack of fodder, lack of bedding material, decrease in production, death
Hydrological	River	Low water level, reduced flow, cutoff
	Lake & Reservoir	Shrinking water body, decreased water stock, dry up
	Groundwater	Dropped water level, insufficiently derfilled aquifer, wells dry up
Socioeconomic	Food security	Affordable (price), available (supply), famine
	Water security	Drinking water (supply, quality, price), hygiene and sanitation, other usage (daily life, agriculture, industry, etc.)
	Energy	Fuel (cooking, heating, other usage), electricity (generation, supply, price)
	Health	Malnutrition and decreased labour capacity, injury (fire disaster), heat-related illness, epidemic, mental health, death
	Economy ^{ba}	Private property losses (fire disaster), infrastructure damage, decrease in income, increase in expenditure, obstruction of transport, limitations on other economic activities
	Social stability	Conflict, displacement and migration, crime, moral and ethical collapse

~~a.—Considering the positive correlation between abnormal high temperature and drought severity (Zscheischler et al., 2018), compound heatwaves were incorporated into the meteorological category.~~

~~b-a.~~ The forestry industry is an important economic sector in Germany but not a major livelihood in the Jing-Jin-Ji Region.

260 Thus, instead of setting a separate (sub-) category, this study classified drought impacts on forestry into either ecological or socioeconomic categories based on specific descriptions. For example, impacts described as trees in poor condition belong to the vegetation subcategory in the ecological category; while, impacts described as decreases in income due to damaged trees belong to the economy subcategory in the socioeconomic category.

265 The sub-framework II (Fig. 2c) depicted five general attributes of social responses to drought, based on which diverse responses could be comparable to each other after appropriate abstraction:

- (1) *Dimension* demonstrates the levels of social responses. Production-level responses intend to minimize drought impacts on producing primary products by taking remedial actions based on current resources (e.g., irrigation, replanting short-season crops to compensate for harvest failures) or exploiting environmental potentials- (e.g., digging wells deeper). Consumption-level responses aim to balance the supply and demand of a particular good or service by expanding supply- (e.g., transporting food or water to drought-stricken areas, releasing grain reserves to the market), reducing waste and/or outflow- (e.g., promoting water conservation), increasing purchasing power- (e.g., increasing remuneration), restraining demands- (e.g., water restrictions and rationing), adjusting allocation strategy- (e.g., prioritizing domestic consumption in case of electricity shortages), and finding substitutes- (e.g., eating famine food such as ground corn cobs and tree leaves). Governance/management-level responses attempt to maintain or recover the function of social-ecological systems through assessment, intervention, coordination, and social innovation, which, in many cases, are designed from a top-down and comprehensive perspective (adapted from Fang et al. (20242019)).
- (2) *Type* specifies the manner in which a social response is conducted. Behavioral responses involve attempts to mitigate risks or repercussions directly, such as praying for rain, irrigation, emergence slaughter, transporting life necessities to and relocating from drought-stricken areas, and temporarily relaxing or restricting regulations. Infrastructural responses refer to the investment, construction, and maintenance of equipment and infrastructure, such as firefighting equipment, water facilities, transport infrastructure, and power supply

systems. Technological responses comprise implementing monitoring and early warning systems, improving farming practices and water-saving technologies, breeding and planting climate-resilient plants, providing technical assistance and training, and updating coping concepts. Institutional responses include creating long-term policies and programmes, establishing laws and regulations, and setting up permanent institutions or organizations (adapted from Berrang-Ford et al. (2021)).

- (3) *Scale* characterizes the spatial extents of social responses. Actions can be taken within the affected place (i.e., local scale); engage less-affected areas, such as neighboring provinces or states (i.e., subnational scale); be supported by ~~the central~~ government authorities or have nationwide influence in present-day territories (i.e., national scale); and involve other countries and/or international organizations (i.e., international scale).
- (4) *Actor* indicates who undertakes social responses. It ranges from individuals or households to civil society, the private sector, institutions or organizations, and multiple levels of government-, indicating the extent of social involvement in coping with droughts.
- (5) *Target* identifies the categories of drought effects and impacts (i.e., from meteorological phenomena to socioeconomic impacts) that a given social response aims to address. This attribute was designed to show the original intentions key concerns of each social response reflected in their original intentions, whether or not those intentions were achieved in the end.

3.4 Establishment of the drought progression for each selected event

~~Guided by the abovementioned structural framework, Providing comprehensive and comparative profiles of selected drought events (i.e., drought progression of the six selected events was established individually and described) was the first step in general terms due to space limitations. Details on each drought impact and responding way have been elaborated in Supplement B and Supplement C, separately.~~

comparing the drought-society interactions they implied. This study took the onset and cessation of precipitation deficits as the beginning and end of an event. ~~Other drought impacts, as sequels to abnormally dry conditions, might not occur or be noticed in every-, which was a trade-off between the limited availability and relatively narrow scope of drought, or could~~ records in history and the abundant and comprehensive drought reports at present. As sequels to the lack of precipitation, other effects and impacts of drought may not take place (e.g., electricity shortage) or be well documented (e.g., degree of soil moisture at different soil depths) in every region and at every episode of social development. In addition, some impacts can continue in an inconspicuous manner for an unmeasurable time manner over a non-measurable span after precipitation returned to normal. ~~Subsequently, for each drought event, different categories of impacts were identified at a seasonal scale according to the following principles: (e.g., reduced coping capacity for future hazards), which goes more or less beyond the scope of the current case study.~~ Nevertheless, it should be noticed that this definition of event duration is not ideal for exploring drought effects in the long run (e.g., post-drought labor shortages due to climate exodus) or drawing a complete picture of drought resilience over a period.

Subsequently, drought progression of the six selected events was established, respectively, under the guidance of the abovementioned structural framework (Fig. 2c, 2d). In brief, when dealing with historical evidence about a particular event derived from multiple types of written documents, categorization was employed to identify specific effects and impacts of drought, while different records of the same response action were integrated into

one way of responding. Compared with counting the number of mentions in written documents, these approaches could reduce the influence of changes in the availability and nature of historical evidence over time on per-event analysis and cross-event comparison. For example, water insecurity in the summer was considered to have occurred only once, whether there were two records of lacking drinking water in a summer in history or ten reports on difficult drinking water supply in a summer in recent years. Similarly, irrigation was counted only as one way of responding, no matter how many mentions of farmers irrigating their fields in a single event. Thus, differences in the quantity of historical evidence between the past and present would not be captured as differences in drought impacts and/or social responses when comparing historical and recent events.

To piece together a clear timeline of each selected event, different categories of drought effects and impacts were identified at a seasonal scale according to the following principles:

- (1) For an impact with records detailed to the date or month, the season to which the date or month belonged was adopted.
- (2) For an impact that had records with clear seasonal information, the documented season was adopted directly.
- (3) For an impact described as ~~a persistent manifestation~~ persisting across several seasons, all ~~these seasons~~ mentioned ~~seasons~~ were taken into account.
- (4) For an impact without clear seasonal information but derived from time-sensitive sources (e.g., newspaper), the season in which those sources were published was chosen.
- (5) For an impact that was only documented as existing in the event, it was omitted here.

~~Social responses were analyzed on a case-by-case basis, as actions might be taken before, during, or after a drought, with influences lasting from days to decades. For a given drought event, all responses mentioned were first analyzed according to the five attributes and then tallied in terms of the number of different ways to respond, the share of classes in the *Dimension* attribute, and the proportions of classes in other attributes within each dimension. Finally, response preferences in different social structures were discussed.~~

Regarding social responses made in a particular event, they were not analyzed at a seasonal scale but on a case-by-case basis, due to their relatively vague temporal information (especially when these actions ended). In other word, each way of responding should be marked by one or more classes from each of the five response attributes (Fig. 2d). Additionally, to better extract and visualize the patterns of social response, this study first grouped all ways of responding in a particular event according to their *Dimension* (i.e., production-level, consumption-level, or governance/management-level responses). Then, the proportion of social responses belonging to a given group was calculated by Eq. (2), illustrating the general distribution of responses at different levels during this event. Next, within each group, the proportion of social responses marked by each class in the four other was calculated by Eq. (3), depicting the manners (*Type*), spatial extents (*Scale*), social involvement (*Actor*), and key concerns (*Target*) of responses at different levels. Finally, cross-event comparisons were conducted between the response patterns in different regions and/or at different social development stages.

$$P(k) = [N(k)/N] \times 100\%, (2)$$

$$P(m_i, k) = [N(m_i, k)/N(k)] \times 100\%, (3)$$

Where $P(k)$ represents the proportion of social responses belonging to group k (k =production, consumption, or governance/management) during a particular event. $N(k)$ denotes to the number of social responses falling into

group k . N refers to the total amount of social responses that were mentioned in the entire event. $P(m_i, k)$ represents the proportion of social responses in group k that were marked by class i of attribute m (m = type, scale, actor, or target). $N(m_i, k)$ denotes the number of social responses in group k that were marked by class i of attribute m . The proportions of social responses marked by different classes of a given attribute could sum to more than 100%, since classes of attributes except for *Dimension* were not necessarily mutually exclusive.

Due to space limitation, the progression of selected drought events was described in relatively general terms in Section 4, rather than itemizing historical evidence. Details on specific effects and impacts of drought and ways of responding were elaborated on event by event in Supplement C and Supplement D, separately.

4 Results

4.1 Recurring summer droughts in agrarian societies

The Germany 1834 drought event occurred two decades after the Napoleonic Wars. In this context, Germany had undergone a series of territorial reshufflings and social reforms, which are believed to lay the foundations of the modern state and society, but had not been unified into a nation-state. Moreover, some important parts of its traditional structure remained in place during the post-Napoleonic era, such as the nobility's local power and the irreplaceable role of agriculture among all livelihoods (Grab, 2003; Slicher van Bath, 1963). This event was marked by recurring hot summer droughts. It spanned from autumn 1833 to summer 1836 and culminated in summer 1834 with 16 specific effects and impacts of drought manifestations in 11 sub-categories (Fig. 3a, Supplement BC). Of those 12 seasons, 58.33% nearly three fifths were considered too dry due to insufficient precipitation, with heatwaves occurring in 42.86% of the abnormally more than two-fifths abnormal dry seasons; a quarter observed ecological impacts in the form of damage to vegetation; 30.77% close to one third saw drought affecting agriculture, manifested as difficulties in crop production and livestock feeding; and 58.33% almost three fifths reported low surface water and groundwater levels in the hydrological category. Meanwhile, seasons in which drought spilled over into socioeconomic systems accounted for 41.67%; in slightly over two fifths of the 12 seasons, and food supply risk, water insecurity, economic losses, and water conflicts depicted the challenges that society faced at the time.

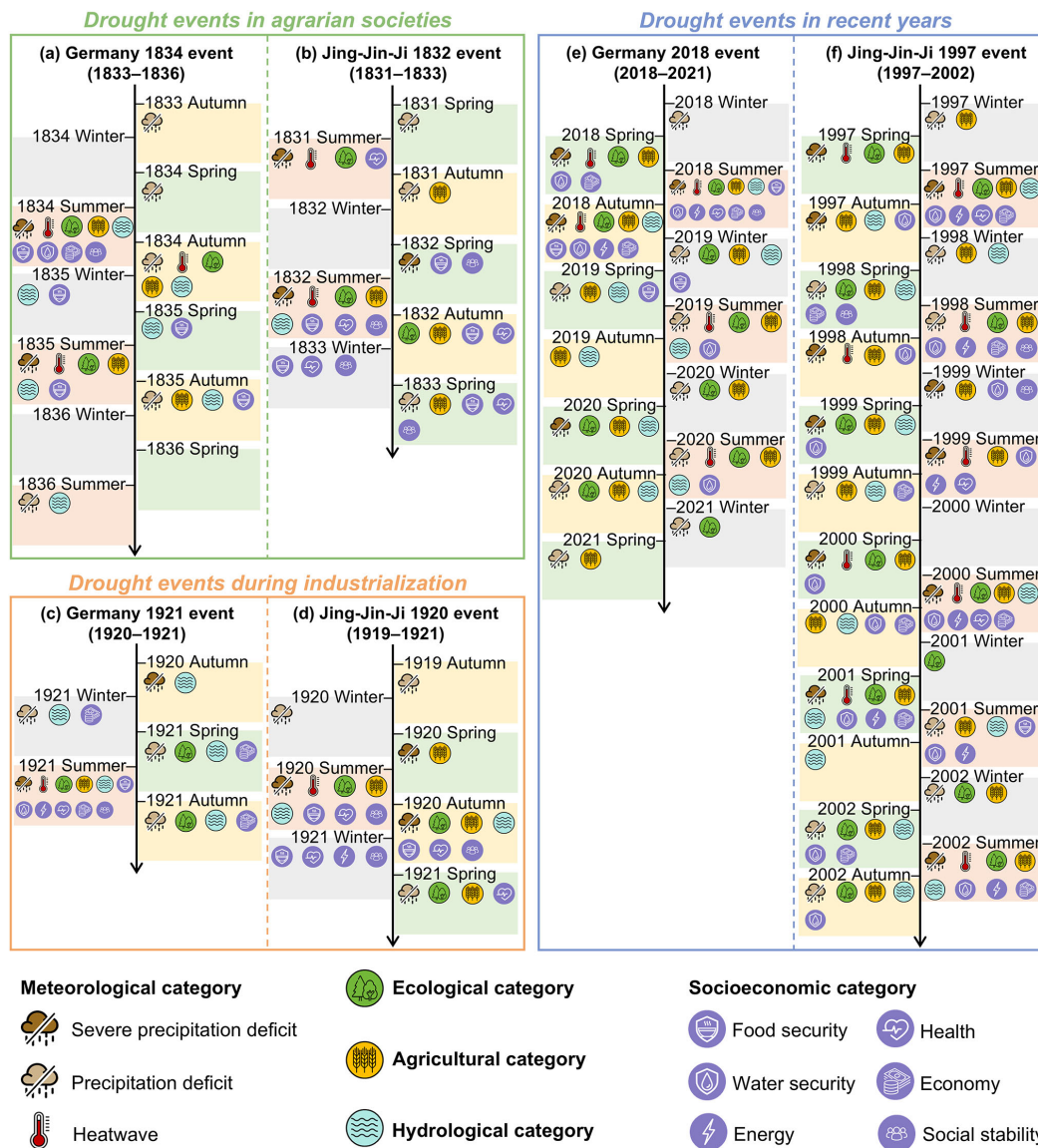


Figure 3 Progression of extreme drought events in Germany (abbr. DE) and the Jing-Jin-Ji Region (abbr. JJJ), depicted by different (sub-) categories of drought effects and impacts at a seasonal scale. For each event, the beginning and ending seasons correspond to the first and last mentions of precipitation deficits, respectively.

395

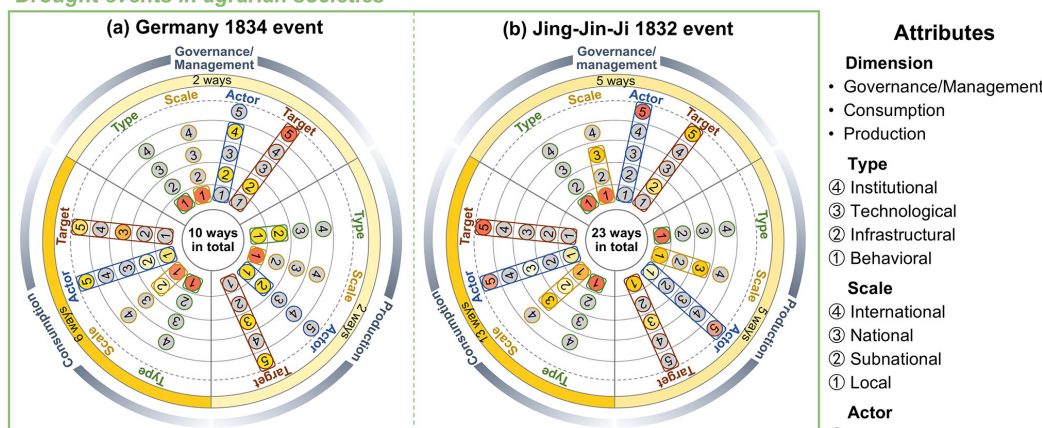
Ten response-ways of responding were documented in this event (Fig. 4a, Supplement C), six of which were taken at the consumption level to deal with inadequate supplies of fodder and water by expanding supply, reducing demand, or adjusting allocation strategy. The local At this level, government was the most engaged actor who dominated that was visible in 50% of responses at this level, while the individual/household and civil society the responses, implying the active participation of local authorities in addressing supply-demand imbalances in drought-stricken areas despite the lack of central authority. Meantime, individuals/households also took a few actions to prevent livestock from starvation and secure community's drinking, while the civil society organized water supply, separately. At transport to alleviate water scarcity in severely affected communities. For the two responses at the production level, farmers attempted to compensate for summer cereal failures by replanting; meanwhile, while community wells were carefully protected to ensure water accessibility for the whole community. While As for the two responses at the governance/management level, precautionary water storage in community cisterns and the activities of fire brigades were endeavors to protect local socio-ecological systems

400

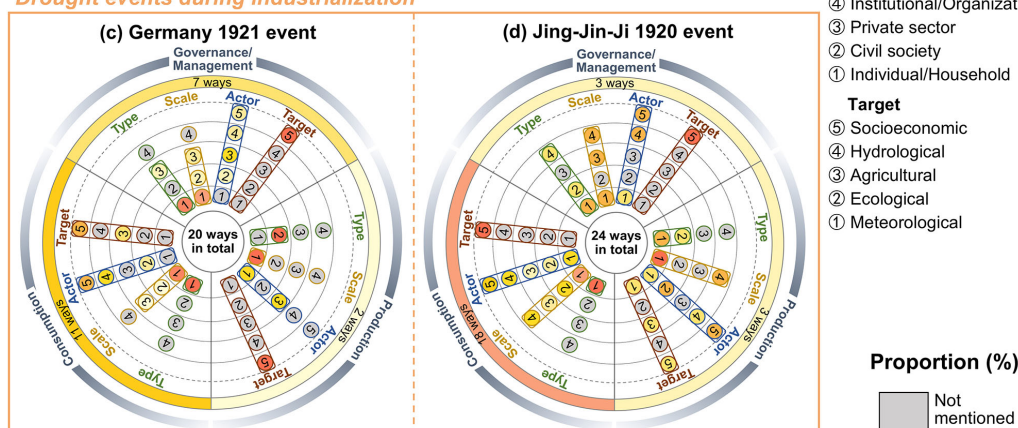
405

from fire threats. In short, the dashboard of this event (Fig. 4a) illustrated a major response pattern in which actions were often taken locally to mitigate drought impacts on agricultural and socioeconomic systems through maintaining or restoring the supply-demand balance of scarce goods. Private sector was the only actor not acting in this event.

Drought events in agrarian societies



Drought events during industrialization



Drought events in recent years

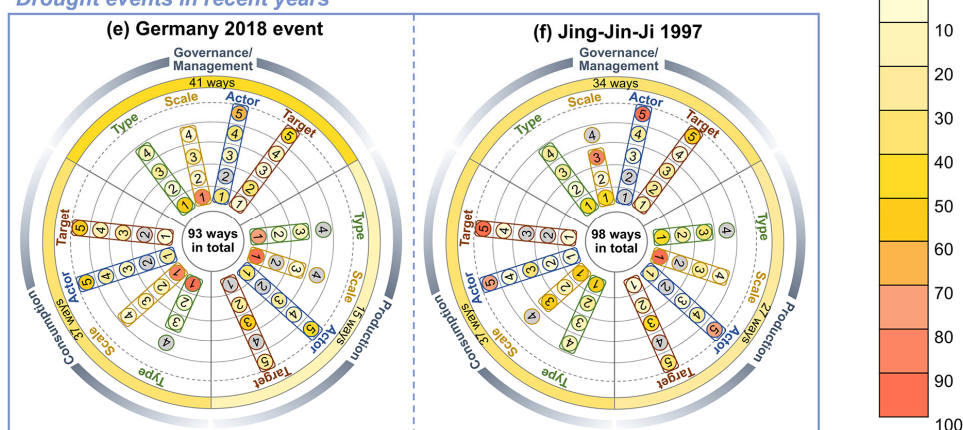


Figure 4 Per-event statistics Dashboards of social responses. Classes response patterns in attributes except for selected drought events, outlining levels (Dimension) are not mutually exclusive. In other words, manners (Type), spatial extents (Scale), social involvement (Actor), and key concerns (Target) of drought coping strategies in each different regions and at different social development stages. For a particular event, the sum of the proportions of the three classes in responses belonging to different Dimension should be 100%, but within each dimension were calculated by Eq. (2) in the section 3.4. Meanwhile, the proportions of the mentioned classes responses in a given attribute could sum to more than 100%. dimension that were marked by each class of the four other attributes were calculated by and Eq. (3) in the section 3.4.

Roughly two years earlier, recurring summer droughts compounded with heatwaves were also documented in the Jing-Jin-Ji Region, where drought-affected groups lived very close to the center of power of the Qing Dynasty and their livelihoods largely relied on crop farming. The Jing-Jin-Ji 1832 drought event began with precipitation deficits in spring 1831, peaked in summer 1832 with 13 ~~manifestations~~specific effects and impacts of drought in eight sub-categories, and ended with sufficient rainfall in the early summer of 1833 (Fig. 3b, Supplement BC). From spring 1831 to spring 1833, rather dry conditions prevailed ~~66.67%~~two thirds of the time, with one-third of all ~~abnormally~~abnormal dry seasons ~~also~~ accompanied by heatwaves. Among the nine seasons, ~~33.33%~~three mentioned ecological impacts described as vegetation damage; ~~44.44%~~over four witnessed impacts on agriculture highlighted by harvest failures of crops; and ~~11.11%~~one reported river cutoff, the only impact belonging to the hydrological category. Additionally, drought impacts on socioeconomic systems were recorded in two-thirds of the nine seasons, with particular concerns about food security, health, and social stability. The displacement and death of individuals due to drought-induced famine and the consequent rise in crime put considerable ~~pressure~~pressures on the society.

During this event, 23 ways of responding were observed (Fig. 4b, Supplement CD). Here, responses belonging at the consumption level were the most ~~common~~popular (56.52%), mainly designed to mitigate drought impacts on food security through actions at local, subnational, and/or national scales. Similar to Germany, expanding supply and adjusting allocation strategy were also the main approaches adopted by both governments and individuals. ~~Additionally, households. Meantime, both~~ production-level responses and governance/management-level responses ~~both~~ accounted for ~~about~~slightly over 20%. The former ~~mainly responded~~were reactions of governments and individuals/households to ~~abnormal meteorological phenomena and~~ insufficient rainfall and subsequent difficulties in local agricultural production, while the latter focused most on the assessment and control of locust plague, food insecurity, and social instability. ~~As for actors, the central and local governments participated in over 80% of all responses. While the individual/household, despite being the second most active participants, was about 65 percentage points lower than government in terms of involvement.~~ led by the central authority and carried out by local officials. Overall, the main response pattern in this event showed similarities to that in the Germany 1843 event. In both cases, it was common practice that major efforts were put into maintaining or restoring the supply-demand balance of scarce goods, with the intention of tackling drought-induced socioeconomic issues, and governments normally took an active part in these actions. Nonetheless, different from the Germany 1834 event, this event showed a clear top-down mode in which disaster relief was directed and coordinated by the central authority and implemented in drought-stricken areas with support from less-affected neighboring regions, displayed on its dashboard (Fig. 4b) as high degree of government involvement (82.61% of all responses) and large spatial extents of social responses (about 60% at the national scale).

4.2 Yearlong drought during industrialization

The Germany 1921 drought event occurred in the initial years of the Weimar Republic, when the country had benefited from the technological progress of the Industrial Revolution but was also limited by the burdens of the First World War (Erfurt et al., 2019; Streb et al., 2006). Overall, below-average precipitation persisted in five consecutive seasons from autumn 1920 onwards, ~~40%~~two fifths of which coincided with heatwaves, and summer 1921, when this event came to a peak, witnessed up to 28 specific effects and impacts of drought ~~manifestations~~

in 16 sub-categories (Fig. 3c, Supplement [BC](#)). By the autumn of 1921, ~~60%~~three of the five seasons had observed ecological impacts, involving threats to both vegetation and freshwater systems; ~~20% of the seasons~~one season had seen drought affecting agriculture in terms of soil moisture, crop, and livestock; all seasons had experienced at least one of the impacts in the hydrological category, i.e., low water levels in major rivers; and ~~80%~~four of the five seasons had reported impacts on socioeconomic systems, such as economic losses. In addition, summer 1921 was described as a serious challenge for society. At that moment, troubles arose in all six sub-categories of the socioeconomic category, ranging from unaffordable food prices to ~~illegal~~widespread profiteering, some of which worsened the living conditions of vulnerable groups and led to ~~a remarkable increase~~increases in infant mortality.

Twenty ways of responding were mentioned in this event, ~~mostly~~many of which belonged to the dimensions of consumption and governance/management (Fig. 4c, Supplement [CD](#)). Specifically, consumption-level responses, comprising 55% of the total responses, sought to address problems with livestock feeding, food price, drinking water, and electricity. Over 80% of them were behavioral responses attempting to mitigate the negative repercussions at a local scale. ~~Responses at the production level only accounted for 10% and water availability remained their primary focus. However, more actions were taken in the manner of infrastructure construction. The share of responses at the~~ Although the proportion of governance/management-level responses was 20 percentage points lower than that ~~at the~~of consumption-level. ~~Compared with examples of agrarian societies, helping-level responses, more than 70% of them were also made in the behavioral manner and at a local scale. Socioeconomic issues were the only concerns of responses at this level, including food and water insecurity, fire disaster, rising morbidity and mortality in vulnerable groups (e.g., infants), and potato profiteering. There were only two responses at the production level, but both were made in the manner of infrastructure construction focusing on the improvement of local water availability. Similar to survive heatwaves became a new concern in this dimension. Additionally, wider participation in the previous cases in agrarian societies, balancing goods supply and demand remained a preferred strategy for German society at the time to mitigate drought impacts on local socioeconomic systems. Nevertheless, a broader social responses involvement was observed during in this event. The case. In brief, government (45%) and institution/organization (35%) were the most engaged actors, while the private sector (20%), civil society (20%), and individual/household (5%) were also involved to some extent. In addition, national-scale responses were also mentioned in this event, but unlike in the 1832 Jing-Jin-Ji event, most of these actions were not strong governmental instructions for disaster relief.~~

A year earlier, the Jing-Jin-Ji Region also suffered from a long absence of rainfall. At that time, this region was witnessing the early stage of industrialization, which brought about the development of railways; ~~meanwhile, it, but much of it was still under a self-contained natural economy where grains were produced mainly for producers' direct consumption. Additionally, the region~~ was undergoing fractured governance by warlords after the recent fall of the Qing Dynasty (Fuller, 2013; [Wu, 1985](#)). The Jing-Jin-Ji 1920 drought event started with insufficient rainfall in autumn 1919, peaked in summer 1920 with 13 specific effects and impacts of drought ~~manifestations~~ in nine sub-categories, and ended after a brief return of precipitation deficits in spring 1921 (Fig. 3d, Supplement [BC](#)). Of the seven seasons, ~~85.71%~~six were identified as ~~abnormally~~abnormal dry seasons, with only ~~16.67%~~one sixth of such dry conditions accompanied by heatwaves; ~~42.86%~~three observed ecological impacts characterized by vegetation damage and soil degradation; ~~57.14%~~four underwent agricultural impacts manifesting as insurmountable obstacles in crop sowing and harvesting; and ~~28.57%~~two reported hydrological impacts reflected

in surface-water bodies. Moreover, drought impacts propagated into socioeconomic systems in 57.41%four of the seven seasons and provoked wide-ranging ramifications in the sub-categories of food security, health, energy, and social stability, including, but not limited, to life-threatening food crises, lack of straw for fuel, epidemics along the railways, massive displacement and deaths, individual mental breakdowns, and the collapse of social ethics.

~~There~~Twenty-four ways of responding were ~~24 response ways~~ recorded in this event (Fig. 4d, Supplement ~~C~~). ~~ThreeD~~, three-quarters of the responseswhich were adopted at the consumption level to alleviate socioeconomic impacts, particularly food insecurity. ~~Apart~~Despite little top-down direction for famine relief due to the power vacuum following the collapse of the Qing Dynasty, traditional measures, such as releasing local grain reserves, transporting grains from ~~that, limited~~less-affected areas, and establishing soup kitchens in cities and towns, were adopted spontaneously by individuals, local officials, companies, and native and international relief societies. Meanwhile, a few actions were taken at the production and governance/management levels ~~(12.50% each)~~. Production-level responses include praying for rain, providing seeds to affected farmers, and digging new wells. While at governance/management level, ~~plenty of~~ efforts were put into maintaining social stability, such as resettling the displaced and reducing human trafficking. Compared to the aforementioned ~~examples, social responses here had a wider spatial extent since actions at all four scales, especially the native and international life-saving relief, were well documented.~~ Selfevents, rebalancing goods supply and demand within drought-stricken areas with government involvement was still identified as the main response pattern in this events, which also aimed to alleviate that huge pressures that drought placed on socioeconomic systems. Nevertheless, in the absence of a recognized central authority, self-help was anotherbecame a notable feature of this event. At the time, the involvement of In contrast to the clear government-led mode in the Jing-Jin-Ji 1832 event, the involvement of government in this case dropped to 58.33%, while institution/organization and civil society were two emerging actors involved in 50% and nearly 30% of all documented responses, respectively. Meantime, individual/household ~~(45.83%) was much closer to that of government (58.33%) and civil society (29.71%) became a new important actor~~ participation here also increased by about 30 percentage points compared with the Jing-Jin-Ji 1832 event. In this context, a half of social responses included international disaster relief efforts.

4.3 Prolonged drought with record-breaking heat in recent years

The Germany 2018 drought event took place in an era where remarkable prosperity coexists with unprecedented challenges. On one hand, the country has developed into a more stable and well-functioning society with comprehensive modern economic sectors and, as a member state of the European Union (EU), deepened cross-boundary collaborations. On the other hand, ongoing climate change has been intensifying climate extremes, and the 2018 event, as a microcosm, has set a new benchmark for exceptional drought in Germany and even on a European scale (Conradt et al., 2023; Rakovec et al., 2022). Specifically, this event started in winter 2017/2018, reached its maximum in summer 2018 with as many as 33 specific effects and impacts of drought manifestations in 17 sub-categories, and lasted until spring 2021 (Fig. 3e, Supplement BC). Thirteen of the 14 seasons ~~(92.86%)~~ experienced varying degrees of precipitation deficits that were accompanied by intense heatwaves in ~~38.46%over one third~~ of cases. Seasons reporting impacts inImpacts belonging to the ecological, agricultural, and hydrological categories ~~accounted for 71.43%, 85.71%,were reported in nearly three quarters, over five sixths, and 64.29%,about two thirds of the 14 seasons,~~ respectively. In these three categories, broader repercussions of drought were observed when compared to previous events, as over three-quarters of manifestationsdrought effects and

impacts in all nine sub-categories were documented. Furthermore, half of the seasons saw socioeconomic impacts, ranging from limited food price increases to short-term water conflicts; meanwhile, water scarcity became the most frequent emergency that society had to face.

Ninety-three ways of responding were taken atduring this timeevent (Fig. 3e4e, Supplement CD). Responses at the governance/management, consumption, and production levels accounted for 44.09%, 39.78%, and 16.13%, respectively. ~~For the first time, governance~~Governance/management became the level at which responses were most often taken, with particular attention paid to drought and/or heat impacts on ecosystems, hydrological systems, individual health, and economy. At this level, government was the most active participant in responses, and some efforts were put into developing long-term strategies and plans (i.e., institutional responses). At this level, the majority of manifestations in all impact categories were addressed to some extent, particular attention was given to aftermaths such as wildfires and heat-induced problems (e.g., heatstroke, infrastructure damage), and government became the most active implementer. Although for disaster management and resilient development. For consumption-level responses, although their proportion dropped below 50% of all responses, they not only remained the most popular option when facing fodder shortages and water insecurity but also served as an important way to compensate for income decreases. Production leveleconomic losses. As for responses hereat the production level, they were most concerned with agriculture (53.33%), especially crop performance. Farmers, as one of the most engaged actors in production-level responses, made efforts to minimize harvest losses in both behavioral and technological manners, including irrigating fields, postponing harvest dates, changing farming practices, and adjusting planting structures. In sum, the dashboard of this event (Fig. 4e) illustrated a response pattern that were characterized by broad concerns and multiple approaches, as drought effects and impacts in all five categories were dealt with, to some extent, by nearly a hundred actions. Compared with the 1834 and 1921 events in Germany, a further increase in the participation of government was noticed here, especially regarding financial and resource support from the Federal Government, and the proportion of responses with government involved exceeded 50% for the first in this study area. Additionally, more and more responses were made in the technological and institutional manners towards better adaptation to climate change in the future. Nevertheless, “behavioral”, “local”, and “socioeconomic” remained the most often mentioned attributes of responses in this case, suggesting that alleviating exogenous pressures on the socioeconomic systems in drought-stricken areas was prioritized, both past and present.

The Jing-Jin-Ji Region also had an unforgettable experience with persistent hot and dry conditions in the late 1990s, ~~when society was largely strengthened by. At the time,~~ improvements in technology and productivity since the 1950s ~~but also increasingly constrained by the~~ had largely strengthened the coping capacity of the society, but growing scarcity of water resources increasingly constrained the economic development of this region (Zhang et al., 2009). The Jing-Jin-Ji 1997 event spanned 24 seasons from winter 1996/1997 to autumn 2002, culminated in summer 1997 with 16 specific effects and impacts of drought manifestations in 12 sub-categories, and peaked again in summer 2000 with 14 manifestationsdrought effects and impacts in 13 sub-categories (Fig. 3f, Supplement BC). During this event, the lack of precipitation was observed in 83.33%five sixths of all seasons, with intense heatwaves occurring in 45%nine of ~~these abnormally~~the 20 abnormal dry seasons. Meanwhile, ~~seasons that witnessed drought affecting ecosystems, agricultural production, and hydrological cycle accounted for 50%, 87.50%, and 58.33%, were reported in half, seven-eighths, and five-eighths seasons,~~ respectively. In the

abovementioned categories, all sub-categories except for freshwater systems were noted to some extent, and unfavorable circumstances for soil moisture, livestock feeding, and groundwater level received attention for the first time- in this study area. Additionally, 70.83%¹⁷ of the 24 seasons reported that drought disturbed the functioning of socioeconomic functionssystems. By the end of this event, all six sub-categories belonging to the socioeconomic category were involved, and water scarcity ~~had~~ replaced food insecurity as the most threatening issue.

Ninety-eight responses were documented in this event, with 34.69% at the governance/management level, 37.76% at the consumption level, and 27.55% at the production level (Fig. ~~3f4f~~, Supplement ~~CD~~). Consumption-level responses were the most employed, especially for ensuring food security, balancing water supply and demand, and alleviating the temporary financial stress ~~ofon~~ drought-affected farmers, companies, and local governments. Local ~~governmentsauthorities~~, sometimes under the guidance and financial support ~~offrom~~ the central ~~government~~, ~~gaveauthority~~, made most of these responses, ~~while~~. Meantime, the private sector showed relatively high ~~interestinterests~~ in improving water-saving technologies. Governance/management-level responses were designed to address the majority of documented drought impacts, with particular ~~foeus~~focuses on water scarcity and subsequent water conflicts. The central ~~governmentauthority~~ played an indispensable role in this case, especially with regard to technological and institutional and technological responses. Production-level responses here showed the greatest concern for agricultureagricultural production (48.15%) ~~and attempted%~~, aiming to reduce crop harvest losses, and attempts were made mainly in the manner of behavioral responses (e.g., irrigating fields) and technological responses (e.g., promoting dry farming techniques), ~~which was similar to the Germany 2018 event~~. ~~Nevertheless, plenty of efforts were also invested in the improvement of water facilities to expand usable water and thus alleviate water stress~~. In addition, plenty of efforts were also invested in the improvement of water facilities to reduce local water stress by increasing the availability of water resources. Similar to the Germany 2018 event, the response pattern in this event showed a greater richness of approaches and a broader range of concerns than historical drought cases, although the mitigation of socioeconomic issues within drought-stricken areas, especially those associated with supply-demand imbalances, remained the primary concern in recent drought cases. Meanwhile, increases were found in responses at the governance/management level and with long-term goals, indicating the growing recognition of the need for comprehensive disaster management and climate-resilient development. Furthermore, the top-down mode of disaster relief, i.e., local practices and cross-regional cooperation with guidance and support from the central authority, was again evident in this region at the turn of the 21st century, which was obvious in the Jing-Jin-Ji 1832 drought but became less tangible in the chaotic early 1920s.

5 Discussion

5.1 ~~The unchanging nature~~Stable elements of drought impacts and ~~responding preference~~response patterns

So far, according to textual information documented in Chinese, English, and German, ~~all six drought events have been portrayed~~ this study has provided a comprehensive and comparable profile of each selected extreme event in terms of ~~negative-categorized drought effects and impacts and as well as different attributes of social responses, and their progression has been built on a common structural framework, respectively~~. On this basis, a

universalizing comparative analysis was first applied, which emphasized similar rules followed in different cases (Tilly, 1984), to reveal the unchanging nature/stable elements of drought across regions and over time.

Out of the 17 sub-categories of drought impacts, seven can be recognized as universal key impacts in both study areas, as they were always mentioned despite the passing of time (Fig. 5a). These sub-categories are precipitation and temperature in the meteorological category, vegetation in the ecological category, crop in the agricultural category, river in the hydrological category, and food security and social stability in the socioeconomic category. Their recurrence across multiple drought cases reveals/revealed that anomalous weather, damage to vegetation, unsatisfactory crop performance, insufficient river flow, hunger, and disorder are/were not only location-independent signals and/or threats of droughts but also inescapable and unresolved challenges from the past to the present, in both historical and contemporary contexts. In addition, a number of other case studies on drought further confirmed the widespread nature of those key impacts, at least in other provinces of China (Chen et al., 2022), other European countries (Metzger and Jacob-Rousseau, 2020; Noone et al., 2017), south-eastern Africa (Klein et al., 2018; Pribyl et al., 2019)), the Middle East (Eklund et al., 2022), and North America (Burns et al., 2014; Hornbeck, 2023) during the 19th century to the early 21st century.

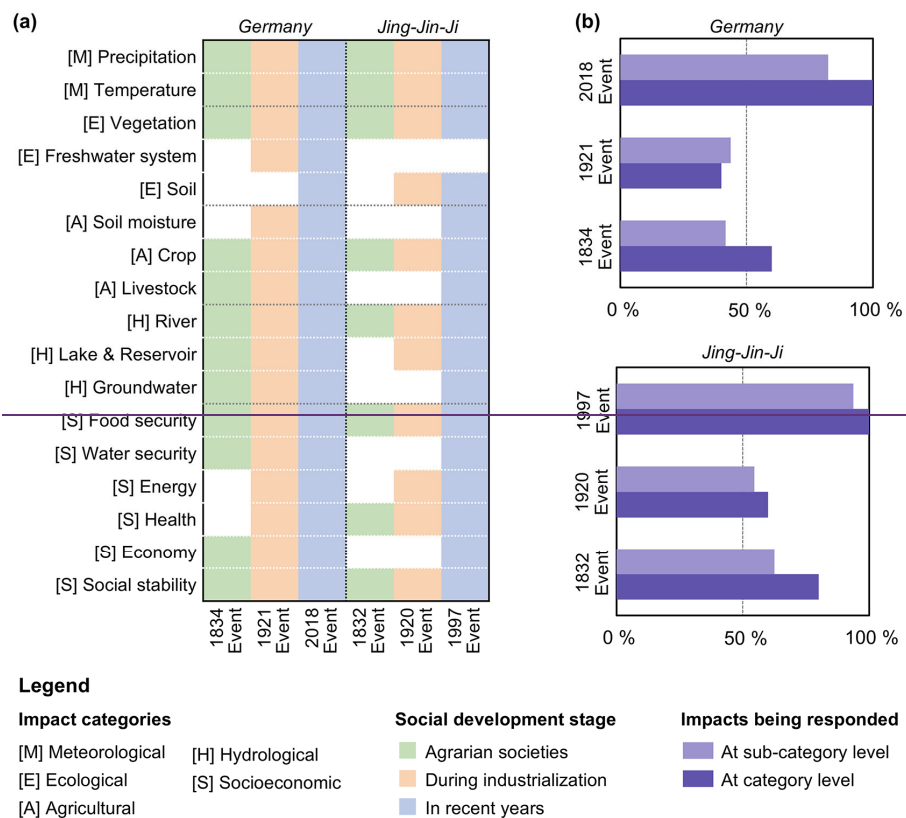


Figure 5 (a) Sub-categories of documented drought impacts and (b) proportions of drought impacts being responded at the category and sub-category levels

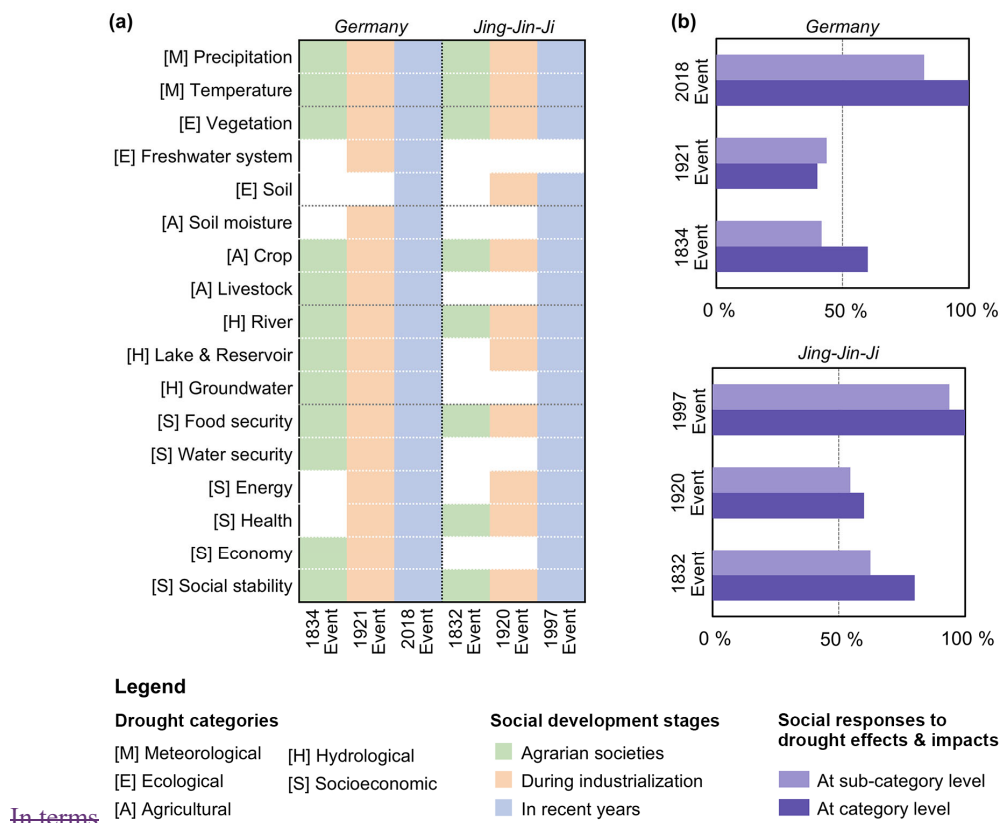


Figure 5 The documentation of and reaction to drought impacts in Germany and the Jing-Jin-Ji Region. The former is presented as (a) the categories and sub-categories of drought impacts that were mentioned in written documents at different social development stages. The latter is illustrated by (b) the percentage of drought categories or sub-categories to which society responded in all five categories or in all 17 sub-categories during each event

As for patterns of social responses to drought, a common preference for coping strategy can be identified, societies in the two study areas and at all the three social development stages shared a common preference for drought mitigation options, despite the distinct climate systems and varied socio-cultural obvious differences in social-environmental contexts. It was found that societies often tend to mitigate drought impacts on socioeconomic systems through balancing intended to take reactive actions that intended to maintain or restore the supply and demand balance of scarce goods in the drought-stricken areas, with most actions reactively taken at a local scale. Meanwhile, government usually plays an important role the expectation of alleviating drought pressures on local socioeconomic systems and thus minimizing spillover effects. Governments were often actively involved in these responding processes, with or without a recognized central authority, indicating a consensus on the need for organization and coordination in the face of natural hazards (Fig. 4).

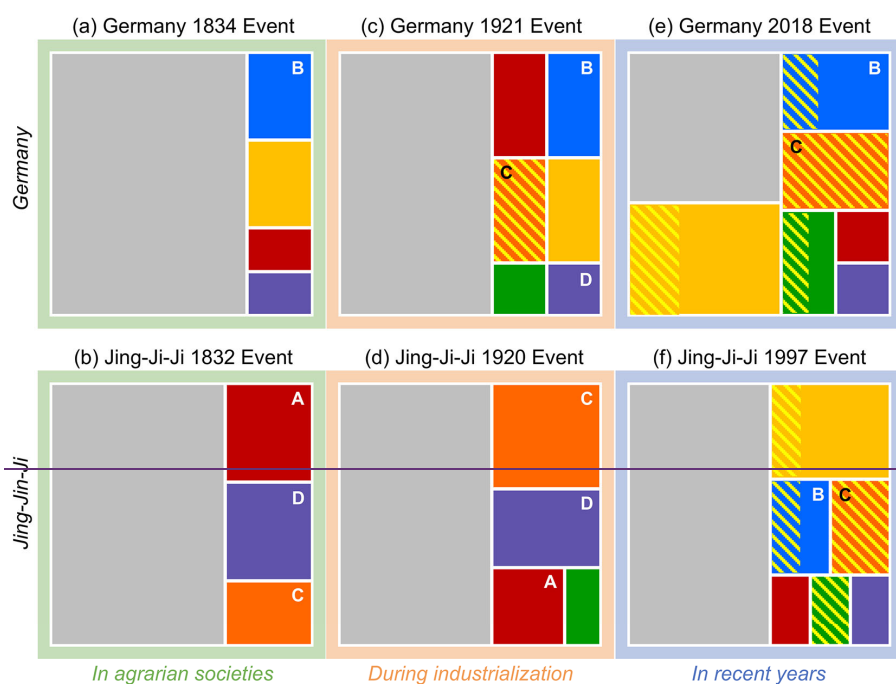
In other words, drought is drought. Regarding the pathways through which drought affects socioeconomic systems, it typically starts in the parts of human-natural systems that support basic human activities and then leads to imbalances in the supply and demand of life necessities in drought-stricken areas. As the organizational capability is gradually exhausted, the normal functioning of local societies is hindered, which, in some severe cases, causes individual deaths, and social disruption, and, ultimately, spillover effects spills over to less-affected areas.

Nevertheless, positive signs for better coping with droughts were observed have emerged in both study areas as moving the move towards to a stable and modern societies society. The two study areas showed a similar trend in

increasing efforts to reduce drought risk and damage through responses at the governance/management level and/or in an institutional manner (Fig. 4), which reflected growing attempts at the integration of short-term mitigation and long-term preparedness and rising interests in non-structural measures. Moreover, in ~~recent~~ events both the Germany 2018 event and the Jing-Jin-Ji 1997 event, drought impacts in all categories and over 80% of sub-categories received some degree of response (Fig. 5b), implying that societies became ~~able to react~~ responsive to broader concerns beyond the basic needs of drought-stricken groups, although the effectiveness of ~~those actions~~ these responses remains to be assessed.

5.2 ~~Dynamics~~ Dynamic elements of socioeconomic ~~manifestations~~ impacts and ~~responding toolbox~~ coping strategies

To gain insight into drought-society interactions ~~under~~ in different ~~circumstances~~ social-environmental contexts, comparison in this section was conducted with a special focus on the 24 specific drought ~~manifestations~~ impacts listed in the socioeconomic category (Table 1). As shown in Fig. 6, ~~during~~ in the transformation from agrarian to modern societies, the diversification of drought impacts on socioeconomic systems can be observed in both study areas, reflected by increases in the proportion of documented ~~manifestations~~ impacts and in the number of involved sub-categories. Such changes can be attributed to two possible causes, namely increasingly complicated economic sectors and changing social concerns. The former has contributed to diversifying ~~drought manifestations~~ socioeconomic impacts, particularly in the sub-categories of energy and economy, since ~~more complex~~ complicated economic activities usually ~~involve~~ encompass a greater number of intermediate links and a wider range of actors, ~~leading and thus lead~~ to increased exposure to drought. The latter may explain why water insecurity was ~~not only~~ mentioned during the 1997 drought event in the Jing-Jin-Ji Region ~~until the 1997 drought event, in which, when~~ food insecurity was no longer the most pressing issue as famine had been eradicated, despite the fact that drinking water scarcity ~~being~~ was an enduring problem in remote rural areas of this region (Wang, 2002).



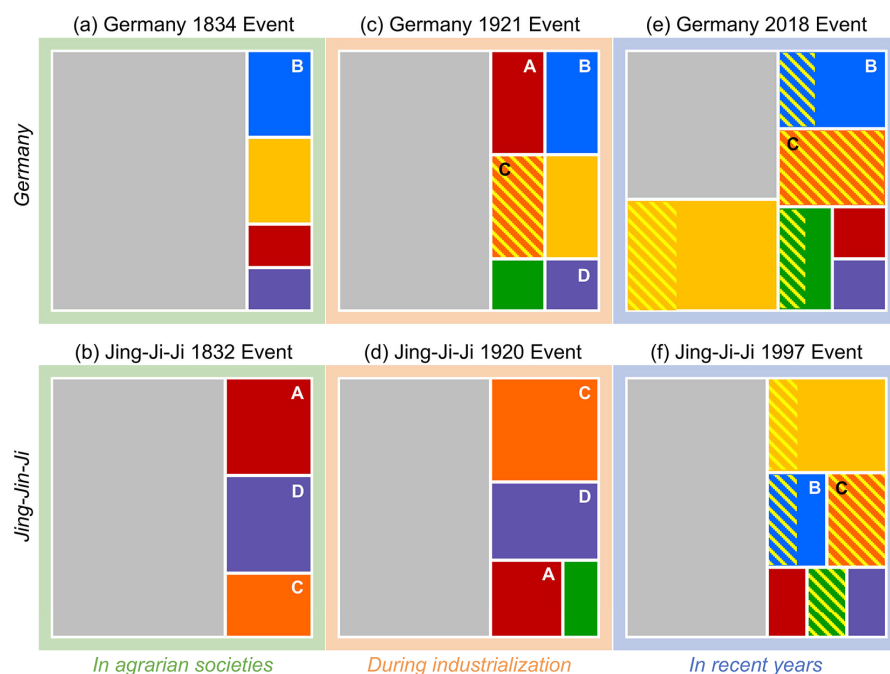
Legend

Sub-categories of manifestations in the socio-economic category



Existence of survival-threatening manifestations

- A. famine (food security) B. lack of drinking water (water security)
C. death (health) D. crime (social stability)



Legend

Sub-categories of drought impacts in the socioeconomic category



Existence of survival-threatening situations

- A. food crisis/famine (food security) B. insufficient drinking water (water security)
C. death (health) D. crime (social stability)

Figure 6 ~~Changes~~Differences in ~~manifestations of drought affecting impacts on~~ socioeconomic systems in (a, c, e) Germany and (b, d, f) the Jing-Jin-Ji Region ~~during at different episodes of the transformation from agrarian to modern societies. For each event, the area of colored or gray rectangles represents the proportion of manifestations that belongs to specific sub-categories or are not impacts mentioned in the entire each sub-category to all 24 impacts listed in the socioeconomic category, and the~~. The area of gray rectangles denotes the proportion of all unmentioned impacts to the 24 impacts in the socioeconomic category. The area of colored rectangles covered by yellow diagonal lines indicates the proportion of ~~heat-impacts related manifestationsto heat~~ in each sub-category. Heat-related impacts refer to those clearly described in written documents as being associated with or caused by abnormal hot conditions, such as increasing imbalances in water or electricity supply and demand due to increased consumption in hot weather, heat-related illness and death, and heat damage to infrastructure (e.g., railway, road)

Although ~~manifestations of drought affecting impacts on~~ socioeconomic systems have ~~increased~~diversified in general, ~~they are less survival threatening in the sub-categories of food insecuritysecurity and social instability, which have been recognized as universal drought impacts independent of climate systems and social development stages, are less survival threatening than in the paststability in the contemporary context~~ (Fig. 6). This ~~should can~~ be largely credited to the advanced responding toolbox in ~~modern societiesrecent years~~, which ~~has made progress~~ allows for effective early and multiple interventions in the spread of drought impacts into socioeconomic systems. ~~Specifically, when considering the~~For Germany, an impact chain of precipitation deficit → harvest failure → rising food prices → ~~crime in Germany, it can be seen that there was no record of~~ (→ crime) → food crisis was identified during the 1921 drought. At the time, the country was struggling with reparations, restrictions, and overall tough sociopolitical circumstances after the First World War. Under these circumstances, no response was recorded as taken prior to food security being affected, while the massive import of scarce products was not easy to realize. In addition, ~~some actions taken before drought affecting food security in the 1921 event, but 10 measures aiming to reduce or compensate harvest losses were adopted in the 2018 event (Supplement C):~~ against rising food prices, such as the decision to raise wages (Freiburger Zeitung, 1921a), actually pushed up food prices due to increased labor costs. As a result, the summer of 1921 witnessed an unmanageable food crisis caused by exorbitant food prices of basic foodstuffs (e.g., bread prices rose by 40%), which was further exacerbated by ~~subsequent~~ criminal profiteering ~~and the decision to raise wages~~ (Freiburger Zeitung, 1921a, b1921b, c). While ~~induring~~ the 2018 drought, the state of food security had been improved significantly, as evidenced by the controllable rise in food prices in the entire event, earlier. Such improvement was mainly achieved through early interventions together within agricultural production (e.g., monitoring soil moisture, irrigating fields, and changing farming practices), multiple remedies to compensate harvest losses (e.g., expanding planting areas, postponing harvest date, and shifting to drought-resistant crops), and grain imports from France and Eastern Europe (Henning, 2018) successfully ended the abovementioned. Consequently, the development from precipitation deficits to food insecurity stopped before falling into survival-threatening food crisis, and crime, an intermediate link in the impact chain ~~with slight increases in food price, existing in the early 1920s, did not occur in this case.~~

As for the Jing-Ji-Ji Region, the impact chain of precipitation deficit → harvest failure → famine → crimes and deaths was a dominant pathway of drought causing mortality and disorder in ~~history. Famineagrarian societies and in the early years of industrialization. During the 1832 and 1920 droughts, famine-induced epidemics, displacement, violent crimes, and even massive deaths were frequently mentioned in the 1832 event and the 1920 event, even though a dozen solutions were triedspite of dozens responses to alleviate massive faminesfamine and theirits~~ aftermaths (Li, 1993; Zhang, 2013). ~~However, those manifestations disappeared in the~~Different from the Germany 1921 event, unaffordable food prices were not seen as an indispensable link in the process from harvest

failures to survival-threatening food insecurity (i.e., famine) in the Jing-Jin-Ji 1832 and 1920 events, which could be explained by the very limited degree of agricultural commercialization and population urbanization in this region (Wu, 1985). Nevertheless, societies, particularly those in volatile political circumstances, were prone to survival-threatening situations when food insecurity began to spiral out of control, regardless of whether top-down disaster relief or bottom-up self-help was implemented thereafter. When it came to the contemporary context, early interventions in agricultural production (e.g., irrigation, pest control, and late sowing techniques) and multiple remedies after harvest failures (e.g., expanding planting areas, replanting alternative crops, and shifting to drought-resistant species) helped reduce drought damage to crop performance during the Jing-Jin-Ji 1997 event, as the development of famine was interrupted. In this event, the impacts chain stopped at a less severe level of food insecurity (i.e., insufficient food for which was similar to the Germany 2018 event. Moreover, temporary shortfalls in food supply to some rural households (People's Daily, 2000a), thanks to the implementation of 23 measures to mitigate water stress and pest damage to crop performance and the improved) were properly resolved before anything got out of control, benefiting from the greatly improved national capacity for state regulation of to store and coordinate resources (e.g., grain supply and demand (Supplement C) reserve and allocation) in recent years.

In contrast to the successful breaking of pathways from precipitation deficits to food crisis/famine and subsequent social instability through the agricultural system, pathways from precipitation deficits to survival-threatening water insecurity (i.e., insufficient drinking water-searcity) via the hydrological system were still mentioned remained widespread in recent droughts, i.e., the Germany 2018 event (Fig. 6e) and the Jing-Jin-Ji 1997 event (Fig. 6f). To meet water demand during drought, various coping strategies were adopted in the two study areas, including, but not limited to usingreleasing stored water, transporting water to affected areas, issuing water-usage restrictions on the principle of ensuring drinking water, improving water facilities, and promoting water conservation. Simultaneously, actions related to sustainable water management were also taken in both study areas to mitigate present impacts and future risks of drought on the hydrological system such as insufficient river flows, inadequate reservoir storages, and low groundwater levels (Supplement CD). In spite of these efforts, the lack of drinking water was still widely reported in the two events, as relevant responses were either difficult to maintain in a prolonged drought (e.g., storing water) or required a relatively long time to be effective. (e.g., improving infrastructure). This suggests a greater need for anticipatory drought adaptation to ensure water security when compared to food security.

Last but not the least, extreme heat has become increasingly destructive in compound drought-heatwave events since the early 20th century and has gradually replaced precipitation deficits as the main climatic impact-driver of mortality in vulnerable population (e.g., infant, and the elderly) (Fig. 6c, 6e, 6f). Furthermore, a wider range of heat-related impacts on water security, energy, and economy were observed in recent drought events (Fig. 6e, 6f), as compound drought-heatwave events became more frequent and intense in both Germany and the Jing-Jin-Ji Region (Fig. 3e, 3f). In addition to directly causing illness, death, and heat damage to infrastructure, heatwaves often exacerbateexacerbated existing socioeconomic issues induced by precipitation deficits, such as increasing consumption of water and electricity and thus worsening supply-demand imbalances (Nicolai, 2018; People's Daily, 2000b). Unfortunately, although the two study areas could recognize and react to the additional effects of extreme heat within a relatively short time, responses including issuing extreme weather warnings, giving health advice on heat and sun protection, and changing consumption habits and working hours were not able to eliminate

those tangible and intangible impacts, even in modern societies. This indicates a common adaptation gap in the face of intensifying compound drought-heatwave events.

780 6 Conclusions

The general objective of this study was to ~~discuss~~explore the ~~unchanging nature~~stable and ~~dynamics~~dynamic elements of drought-society interactions in different socio-environmental contexts. ~~Based~~based on ~~reconstructed~~(semi-) quantitative ~~the comparable profiles of six representative drought events in Germany and the Jing-Jin-Ji Region (China) over the past two centuries.~~the comparable profiles of six representative drought events in Germany and the Jing-Jin-Ji Region (China) over the past two centuries. Adopting the area-specific reconstruction of dry-wet indices and

785 multilingual written documents ~~since the 19th century,~~since the 19th century, this study first selected ~~three pairs of six~~three pairs of six extreme drought events in Germany and the Jing Jin Ji Region (China), then established the progression of each event under a common impact-response structural framework, and finally conducted cross-time and cross-regional comparisons among meteorological droughts in agrarian societies (i.e., Germany 1834 and Jing-Jin-Ji 1832 events), during the industrialization (i.e., Germany 1921 and Jing-Jin-Ji 1920 events), and in recent years (i.e., Germany 2018 and

790 Jing-Jin-Ji 1997 events). Then, the progression of each selected event was established and analyzed according to categorized effects and impacts of drought and social responses patterns portrayed by five attributes, under the guidance of a common impact-response structural framework. Finally, comparisons were conducted among the six events, focusing on the similarities and differences across regions and over time.

795 ~~During the transformation from agrarian to modern societies, seven~~Seven key effects and impacts of drought impacts and a common responding preference were observed major pattern of social responses were considered stable elements of drought-society interactions existing in both study areas and at all three social development stages. Despite dissimilarities in different climate systems (i.e., marine climate and monsoon climate) and and sociocultural backgrounds, ~~abnormally.~~For key effects and impacts of drought, abnormal dry and hot conditions,

800 vegetation damage, unsatisfactory crop performance, insufficient river flow, food insecurity, and social instability were ~~always considered drought challenges by societies and were well documented~~reported universally in both study areas and at all three social development stages, regardless of their severity. ~~Meanwhile, societies often took reactive actions to mitigate drought impacts by balancing,~~implying that they were non-negligible challenges to societies in both historical and contemporary contexts. As for the major response pattern, maintaining or restoring

805 the supply-and-demand balance of scarce goods (i.e., ~~consumption-level responses, g.,~~consumption-level responses, g., food, water, and electricity) in drought-stricken areas, ~~which in over 50% of the cases was a popular and practical option for different societies to mitigate drought impacts on the local socioeconomic systems and thus minimize spillover effects.~~Government were ~~implemented with the participation of governments,~~commonly involved in such reactive actions, suggesting the need for organization and coordination in disaster management. Building on the above findings, ~~this study depicted an immutable~~common pathway of drought impacts cascading into socioeconomic systems. ~~Specifically, precipitation deficits could be depicted: the impacts of abnormal weather conditions first affected~~appeared in the parts of human-natural systems that support basic human activities, then caused supply-demand imbalance in life necessities at a local scale, next exhausted the organizational capability of drought-stricken societies, and eventually ~~spillings~~spilled over to less-affected areas when ~~social~~in situ responses failed.

815

Nevertheless, Differences were visible in the specific implementations of disaster relief between the two study areas despite a similar underlying logic (i.e., balancing goods supply and demand within drought-stricken areas), particularly with respect to the participation of central authorities. In the Jing-Jin-Ji Region, it was time-honored practice to tackle drought-induced supply-demand imbalances through local efforts and cross-regional cooperation—both official and non-official—under the direction and support of the central authority. Although relief efforts in the 1920 event were partially characterized by self-help due to a power vacuum after the collapse of the Qing Dynasty, cross-regional and even nationwide allocation of resources and resettlement of displaced persons were still well documented, reflecting a tradition of mutual support arising from the long history of ~~fighting~~ ~~confronting~~ ~~combating~~ disasters as a unified country. While in Germany, the top-down mode where the central authority directs disaster relief and less-affected areas provide support was less pronounced. As time passed, national and subnational relief actions were increasingly mentioned in this study area, but their proportions in all social responses were consistently lower than 20% and 10%, respectively. In addition, the central authority here tended to promote disaster relief through less prescriptive approaches, such as negotiating with local authorities and/or non-governmental organizations (e.g., trade unions and associations) over financial aids.

It should be noted that the abovementioned differences in drought manifestations and coping strategies were visible when comparing the six events with a special focus on disaster relief modes were not directly responsible for the varying socioeconomic impacts. Such differences mainly stemmed from variations between and response effectiveness among events. In contrast, changes in drought-society interactions were often observed when comparing drought events at different social development stages, rather than from dissimilarities in different environmental ~~or~~ and cultural backgrounds. As moving towards modern societies, both Germany and the Jing-Jin-Ji Region witnessed ~~an increase~~ ~~increases~~ in the amount and type of documented drought manifestations and, at the same time, a decrease in the threat of drought to individual survival. The former socioeconomic impacts, which could be explained by increased drought exposure due to ~~increasingly more~~ complicated economic sectors and broader social concerns beyond traditional drought challenges, ~~while the latter benefited from~~. Meanwhile, drought became less threatening to individual survival in the contemporary context, especially with regard to food security. Prior to modern societies, despite considerable efforts to reduce food shortages, the two study areas were generally prone to survival-threatening food insecurity (i.e., food crisis or famine) during extreme droughts, particularly in the volatile political climate of the early ~~and multiple reactive~~ 1920s. Food crisis and its aftermaths (e.g., crimes and deaths) were mentioned from time to time, whether or not disaster relief was implemented in a top-down mode. While in recent years, societies in both study areas were able to take early interventions before drought affected socioeconomic systems, which had succeeded in breaking the impact chain of precipitation deficits → harvest failure → food insecurity → social instability. However, in contrast to ~~in~~ agricultural productions and multiple remedies after harvest failures, which cushioned the impact of drought on crop performance, and resolve temporary shortfalls in food supply before things got out of control through either efficient domestic resources allocation or extensive international food trade.

Nevertheless, compared with the remarkable progress made in ensuring food security, survival-threatening manifestations such as situations in the sub-categories of water security (i.e., drinking water scarcity) and health (i.e., heat-induced mortality in vulnerable population were still frequently reported in recent years, as the most) still existed in both the Germany 2018 event and the Jing-Jin-Ji 1997 event. An underlying cause was that the

potential effective responses to ~~those manifestations~~ these situations (e.g., improving infrastructure, adopting sustainable water management, and building climate-resilient city) ~~normally took some time~~ could not be expected to take effect- as immediately as actions to address food insecurity. This revealed a common adaptation gap in mitigating ~~drought~~ climate impacts on water security and health ~~in the two study areas~~ and urged anticipatory adaptation in the face of intensifying compound drought-heatwave events.

Data availability

All the data used in this study are available in Supplement BC and Supplement CD.

Author contribution

DZ and RG contributed to the development of research concept and methodology. RG and MK performed the collection and extraction of German documentary data. DZ collected Chinese documentary data, analyzed textual information from both study areas, and prepared the manuscript with contributions from all co-authors. All authors have read and commented on the latest version of the manuscript.

Competing interests

The authors declare that they have no conflict of interest.

Acknowledgement

The authors would like to thank Siyu Chen for her help in collecting historical disaster data in China, Dr. Nils Riach for his advice in improving article structure, and the China Scholarship Council (grant no. 202106040016) for the financial support.

References

- Adamson, G. C. D., Hannaford, M. J., and Rohland, E. J.: Re-thinking the present: The role of a historical focus in climate change adaptation research, *Glob. Environ. Change*, 48, 195–205, <https://doi.org/10.1016/j.gloenvcha.2017.12.003>, 2018.
- Bernhofer, C., Hänsel, S., Schaller, A., and Pluntke, T.: Charakterisierung von meteorologischer Trockenheit: Untersuchungen zur Erfassung und Charakterisierung von meteorologischer Trockenheit, Sächsisches Landesamt für Umwelt, Landwirtschaft und Geologie, Dresden, 2015.
- Berrang-Ford, L., Siders, A. R., Lesnikowski, A., Fischer, A. P., Callaghan, M. W., Haddaway, N. R., Mach, K. J., Araos, M., Shah, M. A. R., Wannewitz, M., Doshi, D., Leiter, T., Matavel, C., Musah-Surugu, J. I., Wong-Parodi, G., Antwi-Agyei, P., Ajibade, I., Chauhan, N., Kakenmaster, W., Grady, C., Chalastani, V. I., Jagannathan, K., Galappaththi, E. K., Sitati, A., Scarpa, G., Totin, E., Davis, K., Hamilton, N. C., Kirchhoff, C. J., Kumar, P., Pentz, B., Simpson, N. P., Theokritoff, E., Deryng, D., Reckien, D., Zavaleta-Cortijo, C., Ulibarri, N., Segnon, A. C., Khavhagali, V., Shang, Y., Zvobgo, L., Zommers, Z., Xu, J., Williams, P. A., Canosa, I. V., Van Maanen, N., Van Bavel, B., Van Aalst, M., Turek-Hankins, L. L., Trivedi, H., Trisos, C. H., Thomas, A., Thakur, S.,

- Templeman, S., Stringer, L. C., Sotnik, G., Sjostrom, K. D., Singh, C., Siña, M. Z., Shukla, R., Sardans, J., Salubi,
890 E. A., Safae Chalkasra, L. S., Ruiz-Díaz, R., Richards, C., Pokharel, P., Petzold, J., Penuelas, J., Pelaez Avila, J.,
Murillo, J. B. P., Ouni, S., Niemann, J., Nielsen, M., New, M., Nayna Schwerdtle, P., Nagle Alverio, G., Mullin,
C. A., Mullenite, J., Mosurska, A., Morecroft, M. D., Minx, J. C., Maskell, G., Nunbogu, A. M., Magnan, A. K.,
Lwasa, S., Lukas-Sithole, M., Lissner, T., Lilford, O., Koller, S. F., Jurjonas, M., Joe, E. T., Huynh, L. T. M., Hill,
A., Hernandez, R. R., Hegde, G., Hawxwell, T., Harper, S., Harden, A., Haasnoot, M., et al.: A systematic global
895 stocktake of evidence on human adaptation to climate change, *Nat. Clim. Change*, 11, 989–1000,
<https://doi.org/10.1038/s41558-021-01170-y>, 2021.
- BMEL: Understanding Farming: Facts and figures about German farming, Federal Ministry of Food and
Agriculture, Berlin, 2020.
- Brázdil, R., Kiss, A., Luterbacher, J., Nash, D. J., and Řezníčková, L.: Documentary data and the study of past
900 droughts: a global state of the art, *Clim. Past*, 14, 1915–1960, <https://doi.org/10.5194/cp-14-1915-2018>, 2018.
- Brugnara, Y., Pfister, L., Villiger, L., Rohr, C., Isotta, F. A., and Brönnimann, S.: Early instrumental
meteorological observations in Switzerland: 1708–1873, *Earth Syst. Sci. Data*, 12, 1179–1190,
<https://doi.org/10.5194/essd-12-1179-2020>, 2020.
- Brugnara, Y., Hari, C., Pfister, L., Valler, V., and Brönnimann, S.: Pre-industrial temperature variability on the
905 Swiss Plateau derived from the instrumental daily series of Bern and Zurich, *Clim. Past*, 18, 2357–2379,
<https://doi.org/10.5194/cp-18-2357-2022>, 2022.
- Burns, J. N., Acuna-Soto, R., and Stahle, D. W.: Drought and Epidemic Typhus, Central Mexico, 1655–1918,
Emerg. Infect. Dis., 20, 442–447, <https://doi.org/10.3201/eid2003.131366>, 2014.
- Cammalleri, C., Navarro, J. C. A., Bavera, D., Diaz, V., and Toreti, A.: An event-oriented database of
910 meteorological droughts, *Sci. Rep.*, 13, 3145, <https://doi.org/10.1038/s41598-023-30153-6>, 2023.
- Chen, X., Tian, F., and Su, Y.: How did the late 1920s drought affect northern Chinese society?, *Weather Clim.
Extrem.*, 36, 100451, <https://doi.org/10.1016/j.wace.2022.100451>, 2022.
- Chinese Academy of Meteorological Sciences: Yearly charts of dryness/wetness in China for the last 500-year
period, SinoMaps Press, Beijing, 1981.
- 915 Conradt, T., Engelhardt, H., Menz, C., Vicente-Serrano, S. M., Farizo, B. A., Peña-Angulo, D., Domínguez-Castro,
F., Eklundh, L., Jin, H., Boincean, B., Murphy, C., and López-Moreno, J. I.: Cross-sectoral impacts of the 2018–
2019 Central European drought and climate resilience in the German part of the Elbe River basin, *Reg. Environ.
Change*, 23, 32, <https://doi.org/10.1007/s10113-023-02032-3>, 2023.
- Eklund, L., Theisen, O. M., Baumann, M., Forø Tollefsen, A., Kuemmerle, T., and Østergaard Nielsen, J.: Societal
920 drought vulnerability and the Syrian climate-conflict nexus are better explained by agriculture than meteorology,
Commun. Earth Environ., 3, 85, <https://doi.org/10.1038/s43247-022-00405-w>, 2022.
- Elkhouk, A., Pokhrel, Y., Satoh, Y., and Bouchaou, L.: Implications of changes in climate and human development
on 21st-century global drought risk, *J. Environ. Manage.*, 317, 115378,
<https://doi.org/10.1016/j.jenvman.2022.115378>, 2022.
- 925 Erfurt, M., Glaser, R., and Blauhut, V.: Changing impacts and societal responses to drought in southwestern
Germany since 1800, *Reg. Environ. Change*, 19, 2311–2323, <https://doi.org/10.1007/s10113-019-01522-7>, 2019.
- Fang, X., Zhao, W., Song, R., Chen, S., and Ye, Y.: The integrated natural disaster information system of the Qing
Dynasty, *Soc. Hist. Res. J.*, 29–46, 2020.

- Fang, X., Su, Y., Zheng, J., Xiao, L., Wei, Z., and Yin, J.: The Social Impacts of Climate Change in China over the Past 2000 Years, [Springer, Singapore, 2024](#)[Science Press, Beijing, 2019](#).
- Freiburger Zeitung: Freiburg 1784–1943 (edition from 10 August 1921), <https://fz.ub.uni-freiburg.de/show/fz.cgi?pKuerzel=FZ> (last access: 1 March 2023), 1921a.
- Freiburger Zeitung: Freiburg 1784–1943 (edition from 11 August 1921), <https://fz.ub.uni-freiburg.de/show/fz.cgi?pKuerzel=FZ> (last access: 1 March 2023), 1921b.
- 935 Freiburg Zeitung: Freiburg 1784–1943 (edition from 13 August 1921), <https://fz.ub.uni-freiburg.de/show/fz.cgi?pKuerzel=FZ> (last access: 1 March 2023), 1921c.
- Fuller, P.: North China Famine Revisited: Unsung Native Relief in the Warlord Era, 1920–1921, *Mod. Asian Stud.*, 47, 820–850, <https://doi.org/10.1017/S0026749X12000534>, 2013.
- Gebhardt, H., Glaser, R., and Lentz, S.: *Europa-eine Geographie*, Springer Spektrum, Heidelberg, 2013.
- 940 Gergis, J., Garden, D., and Fenby, C.: The Influence of Climate on the First European Settlement of Australia: A Comparison of Weather Journals, Documentary Data and Palaeoclimate Records, 1788–1793, *Environ. Hist.*, 15, 485–507, <https://doi.org/10.1093/envhis/emq079>, 2010.
- Glaser, R. and Kahle, M.: Reconstructions of droughts in Germany since 1500 – combining hermeneutic information and instrumental records in historical and modern perspectives, *Clim. Past*, 16, 1207–1222, <https://doi.org/10.5194/cp-16-1207-2020>, 2020.
- 945 Glaser, R., Gebhardt, H., Schenk, W., and Baumhauer, R.: *Geographie Deutschlands*, Wissenschaftliche Buchgesellschaft, Darmstadt, 2007.
- Grab, A.: *Napoleon and the transformation of Europe*, Palgrave Macmillan, New York, 2003.
- Guo, J., Ren, G., Xiong, M., and Huang, H.: The Spatiotemporal Pattern of Rainy-Season Precipitation in the Haihe River Basin, North China, *Hydrology*, 6, 73, <https://doi.org/10.3390/hydrology6030073>, 2019.
- 950 Henning, L.: Brot wird teurer - aber nicht wegen der schlechten Ernte, *Neue Westfäl* (edition from 6 September 2018), https://www.nw.de/nachrichten/wirtschaft/22235828_Brot-wird-teurer-aber-nicht-wegen-der-schlechten-Ernte.html (last access: 27 February 2024), 2018.
- Hornbeck, R.: Dust Bowl Migrants: Environmental Refugees and Economic Adaptation, *J. Econ. Hist.*, 83, 645–675, <https://doi.org/10.1017/S0022050723000244>, 2023.
- 955 Huang, S., Hattermann, F. F., Krysanova, V., and Bronstert, A.: Projections of climate change impacts on river flood conditions in Germany by combining three different RCMs with a regional eco-hydrological model, *Clim. Change*, 116, 631–663, <https://doi.org/10.1007/s10584-012-0586-2>, 2013.
- IPCC: *Climate Change 2022 – Impacts, Adaptation and Vulnerability: Working Group II Contribution to the Sixth Assessment Report of the Intergovernmental Panel on Climate Change*, Cambridge University Press, <https://doi.org/10.1017/9781009325844>, 2022.
- 960 Kchouk, S., Melsen, L. A., Walker, D. W., and Van Oel, P. R.: A geography of drought indices: mismatch between indicators of drought and its impacts on water and food securities, *Nat. Hazards Earth Syst. Sci.*, 22, 323–344, <https://doi.org/10.5194/nhess-22-323-2022>, 2022.
- 965 Klein, J., Nash, D. J., Pribyl, K., Endfield, G. H., and Hannaford, M.: Climate, Conflict and Society: Changing Responses to Weather Extremes in Nineteenth Century Zululand, *Environ. Hist.*, 24, 377–401, <https://doi.org/10.3197/096734018X15137949591963>, 2018.
- Knight, C. G.: Human–Environment Relationship: Comparative Case Studies, in: *International Encyclopedia of the Social & Behavioral Sciences*, Elsevier, 7039–7045, <https://doi.org/10.1016/B0-08-043076-7/04195-4>, 2001.

- 970 Kottek, M., Grieser, J., Beck, C., Rudolf, B., and Rubel, F.: World Map of the Köppen-Geiger climate classification updated, *Meteorol. Z.*, 15, 259–263, <https://doi.org/10.1127/0941-2948/2006/0130>, 2006.
- Li, L. M.: Fighting famine in North China: State, market, and environmental decline, 1690s–1990s, Stanford University Press, Stanford, 2007.
- Li, W.: The continuation of disaster annals in recent China 1919–1949, Hunan Education Publishing House, Changsha, 1993.
- 975 McLeman, R., Fontanella, F., Greig, C., Heath, G., and Robertson, C.: Population responses to the 1976 South Dakota drought: Insights for wider drought migration research, *Popul. Space Place*, 28, e2465, <https://doi.org/10.1002/psp.2465>, 2022.
- McNeill, J. R. and Engelke, P.: The great acceleration : an environmental history of the anthropocene since 1945, The Belknap Press of Harvard University Press, Cambridge, Massachusetts, 2014.
- 980 Metzger, A. and Jacob-Rousseau, N.: The 1857–1858 drought in Alsace: from water shortage to a socio-political extreme event, *Reg. Environ. Change*, 20, 48, <https://doi.org/10.1007/s10113-020-01632-7>, 2020.
- Moerman, D. J.: Documentary evidence of urban droughts and their impact in the eastern Netherlands: the cases of Deventer and Zutphen, 1500–1795, *Clim. Past*, 20, 1721–1734, <https://doi.org/10.5194/cp-20-1721-2024>, 2024.
- 985 National Bureau of Statistics of China: China Statistical Yearbook 2023, China Statistics Press, Beijing, 2023.
- Nicolai, B.: In Norddeutschland herrscht die größte Dürre seit 15 Jahren, *Welt* (edition from 8 June 2018), https://www.nw.de/nachrichten/wirtschaft/22235828_Brot-wird-teurer-aber-nicht-wegen-der-schlechten-Ernte.html (last access: 27 February 2024), 2018.
- Noone, S., Broderick, C., Duffy, C., Matthews, T., Wilby, R. L., and Murphy, C.: A 250-year drought catalogue for the island of Ireland (1765–2015), *Int. J. Climatol.*, 37, 239–254, <https://doi.org/10.1002/joc.4999>, 2017.
- 990 People’s Daily: People’s Daily (edition from 21 August 2000), <https://data.people.com.cn/rmr/b/> (last access: 30 September 2023), 2000a.
- People’s Daily: People’s Daily (edition from 11 September 2000), <https://data.people.com.cn/rmr/b/> (last access: 30 September 2023), 2000b.
- 995 Pribyl, K., Nash, D. J., Klein, J., and Endfield, G. H.: The role of drought in agrarian crisis and social change: the famine of the 1890s in south-eastern Africa, *Reg. Environ. Change*, 19, 2683–2695, <https://doi.org/10.1007/s10113-019-01563-y>, 2019.
- Rakovec, O., Samaniego, L., Hari, V., Markonis, Y., Moravec, V., Thober, S., Hanel, M., and Kumar, R.: The 2018–2020 Multi-Year Drought Sets a New Benchmark in Europe, *Earths Future*, 10, e2021EF002394, <https://doi.org/10.1029/2021EF002394>, 2022.
- 1000 Riemann, D., Glaser, R., Kahle, M., and Vogt, S.: The CRE tambora.org – new data and tools for collaborative research in climate and environmental history, *Geosci. Data J.*, 2, 63–77, <https://doi.org/10.1002/gdj3.30>, 2015.
- Runde, I., Zobel, Z., and Schwalm, C.: Human and natural resource exposure to extreme drought at 1.0 °C–4.0 °C warming levels, *Environ. Res. Lett.*, 17, 064005, <https://doi.org/10.1088/1748-9326/ac681a>, 2022.
- 1005 Savelli, E., Rusca, M., Cloke, H., and Di Baldassarre, G.: Drought and society: Scientific progress, blind spots, and future prospects, *WIREs Clim. Change*, 13, e761, <https://doi.org/10.1002/wcc.761>, 2022.
- Seyf, A.: Iran and the Great Famine, 1870–72, *Middle East. Stud.*, 46, 289–306, <https://doi.org/10.1080/00263201003616584>, 2010.
- Slicher van Bath, B. H.: The agrarian history of Western Europe: A. D. 500–1850, Arnold, London, 1963.
- 1010 Steg, J.: Was heißt eigentlich Krise?, *Soziologie*, 4, 423–435, 2020.

- Streb, J., Baten, J., and Yin, S.: Technological and geographical knowledge spillover in the German empire 1877–1918, *Econ. Hist. Rev.*, 59, 347–373, <https://doi.org/10.1111/j.1468-0289.2006.00347.x>, 2006.
- Tilly, C.: *Big structures, large processes, huge comparisons*, Russell Sage Foundation, New York, 1984.
- Trnka, M., Hayes, M., Jurečka, F., Bartošová, L., Anderson, M., Brázdil, R., Brown, J., Camarero, J., Cudlín, P., Dobrovolný, P., Eitzinger, J., Feng, S., Finnessey, T., Gregorič, G., Havlik, P., Hain, C., Holman, I., Johnson, D., Kersebaum, K., Ljungqvist, F., Luterbacher, J., Micale, F., Hartl-Meier, C., Možný, M., Nejedlik, P., Olesen, J., Ruiz-Ramos, M., Rötter, R., Senay, G., Vicente-Serrano, S., Svoboda, M., Susnik, A., Tadesse, T., Vizina, A., Wardlaw, B., Žalud, Z., and Büntgen, U.: Priority questions in multidisciplinary drought research, *Clim. Res.*, 75, 241–260, <https://doi.org/10.3354/cr01509>, 2018.
- 1020 [Wu, C.: Chinese capitalism and domestic markets, Chine Social Sciences Press, Beijing, 1985.](#)
- UNDRR: Special report on drought 2021, United Union, Geneva, 2021.
- Van Der Schrier, G., Allan, R. P., Ossó, A., Sousa, P. M., Van De Vyver, H., Van Schaeybroeck, B., Coscarelli, R., Pasqua, A. A., Petrucci, O., Curley, M., Mietus, M., Filipiak, J., Štěpánek, P., Zahradníček, P., Brázdil, R., Řezníčková, L., Van Den Besselaar, E. J. M., Trigo, R., and Aguilar, E.: The 1921 European drought: impacts, reconstruction and drivers, *Clim. Past*, 17, 2201–2221, <https://doi.org/10.5194/cp-17-2201-2021>, 2021.
- 1025 Wang, G.: *Almanac of China Water Resources 2002*, China Water & Power Press, Beijing, 2002.
- Weather China and National Climate Centre: Droughts and floods in China over the past 500 years (1470–2018), <https://tq121.weather.com.cn/sciname/modules/datanew/pc/index.html> (last access: 15 November 2022), 2019.
- Wei, X., Ye, Y., Zhang, Q., and Fang, X.: Reconstruction of cropland change over the past 300 years in the Jing-Jin-Ji area, China, *Reg. Environ. Change*, 16, 2097–2109, <https://doi.org/10.1007/s10113-016-0933-3>, 2016.
- 1030 WMO: *WMO Atlas of Mortality and Economic Losses from Weather, Climate and Water Extremes (1970–2019)*, WMO, Geneva, 2021.
- Xia, M.: Big data and ecological history: The compilation and database construction of the historical sources of Chinese disaster history in an information age, *Qing Hist. J.*, 67–82, 2015.
- 1035 Xiao, L.: *Disasters and the social ecology of the North China Plain in Qing Dynasty*, Science Press, Beijing, 2020.
- Zhai, X., Fang, X., and Su, Y.: Regional Interactions in Social Responses to Extreme Climate Events: A Case Study of the North China Famine of 1876–1879, *Atmosphere*, 11, 393, <https://doi.org/10.3390/atmos11040393>, 2020.
- Zhang, D.: *A compendium of Chinese meteorological records of the last 3,000 years*, 2nd ed., Jiangsu Education Publishing House, Nanjing, 2013.
- 1040 Zhang, D. and Liu, C.: Updating of the yearly charts of dryness/wetness in China for the last 500-year period (1980–1992), *Meteorol. Mon.*, 19, 41–45, 1992.
- Zhang, D., Li, X., and Liang, Y.: Re-updating of the yearly charts of dryness/wetness in China for the last 500-year period (1993–2000), *J. Appl. Meteorol. Sci.*, 14, 379–388, 2003.
- 1045 Zhang, Q., Pan, X., and Ma, Z.: *Droughts*, China Meteorological Press, Beijing, 2009.
- Zhao, J., Fang, X., and Wang, W.: *Newly compiled physical geography of China*, Higher Education Press, Beijing, 2015.
- Zscheischler, J., Westra, S., Van Den Hurk, B. J. J. M., Seneviratne, S. I., Ward, P. J., Pitman, A., AghaKouchak, A., Bresch, D. N., Leonard, M., Wahl, T., and Zhang, X.: Future climate risk from compound events, *Nat. Clim. Change*, 8, 469–477, <https://doi.org/10.1038/s41558-018-0156-3>, 2018.
- 1050